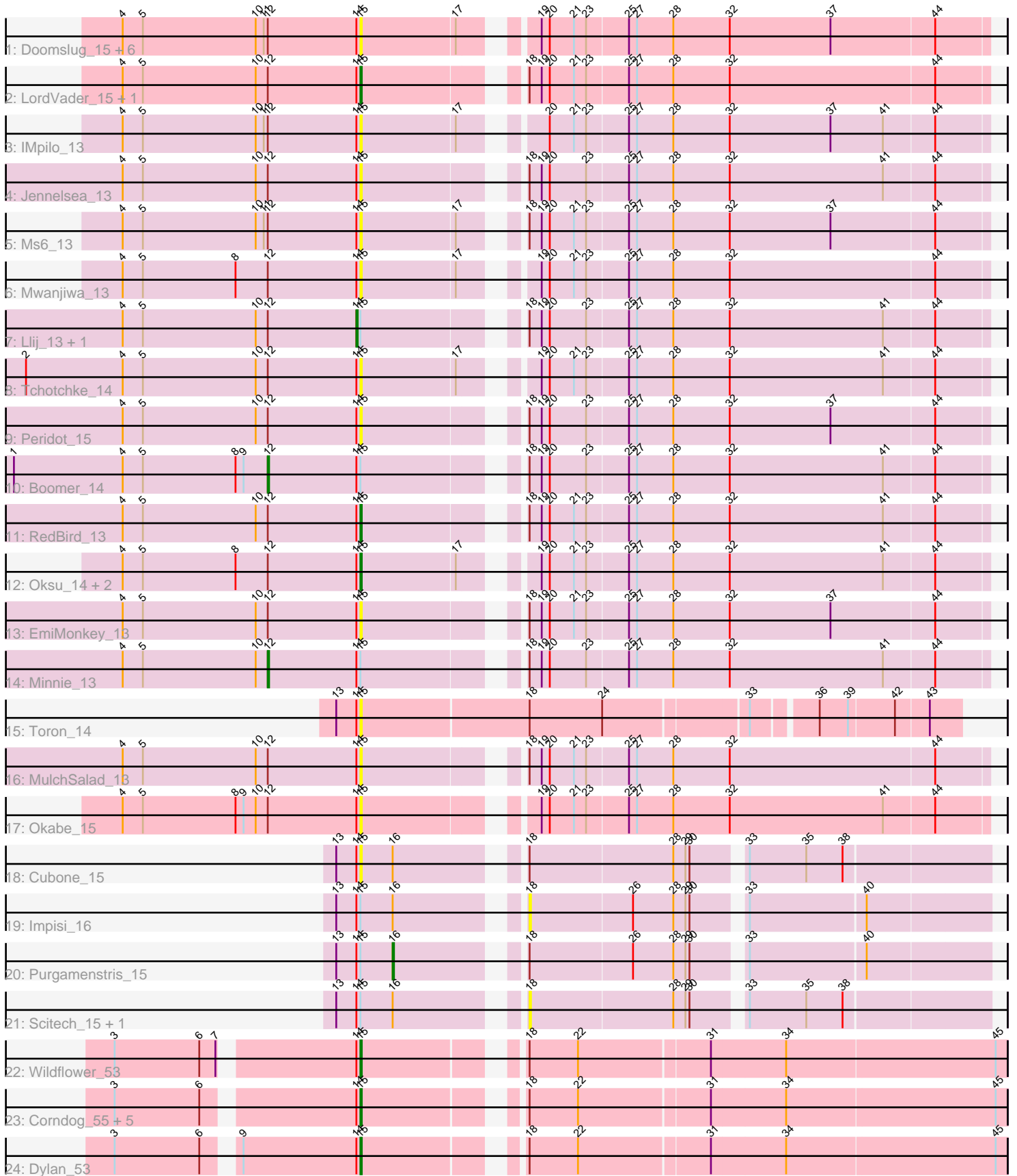


Pham 308879



Note: Tracks are now grouped by subcluster and scaled. Switching in subcluster is indicated by changes in track color. Track scale is now set by default to display the region 30 bp upstream of start 1 to 30 bp downstream of the last possible start. If this default region is judged to be packed too tightly with annotated starts, the track will be further scaled to only show that region of the ORF with annotated starts. This action will be indicated by adding "Zoomed" to the title. For starts, yellow indicates the location of called starts comprised solely of Glimmer/GeneMark auto-annotations, green indicates the location of called starts with at least 1 manual gene annotation.

Pham 308879 Report

This analysis was run 06/27/26 on database version 652.

Pham number 308879 has 40 members, 24 are drafts.

Phages represented in each track:

- Track 1 : Doomslug_15, Corium_13, PatoPoderoso_13, Clank_13, Medindi_13, Jant_13, Topiatin_15
- Track 2 : LordVader_15, Empress_13
- Track 3 : IMpilo_13
- Track 4 : Jennelsea_13
- Track 5 : Ms6_13
- Track 6 : Mwanjiwa_13
- Track 7 : Lij_13, PMC_13
- Track 8 : Tchotchke_14
- Track 9 : Peridot_15
- Track 10 : Boomer_14
- Track 11 : RedBird_13
- Track 12 : Oksu_14, AlpineSix_13, Nichirin_13
- Track 13 : EmiMonkey_13
- Track 14 : Minnie_13
- Track 15 : Toron_14
- Track 16 : MulchSalad_13
- Track 17 : Okabe_15
- Track 18 : Cubone_15
- Track 19 : Impisi_16
- Track 20 : Purgamenstris_15
- Track 21 : Scitech_15, Tessdabest_14
- Track 22 : Wildflower_53
- Track 23 : Corndog_55, Schuy_54, Firecracker_53, Ashwin_54, FoulBall_53, Idergollasper_53
- Track 24 : Dylan_53

Summary of Final Annotations (See graph section above for start numbers):

The start number called the most often in the published annotations is 15, it was called in 11 of the 16 non-draft genes in the pham.

Genes that call this "Most Annotated" start:

- AlpineSix_13, Ashwin_54, Clank_13, Corium_13, Corndog_55, Cubone_15, Doomslug_15, Dylan_53, EmiMonkey_13, Empress_13, Firecracker_53, FoulBall_53, IMpilo_13, Idergollasper_53, Jant_13, Jennelsea_13, LordVader_15, Medindi_13, Ms6_13, MulchSalad_13, Mwanjiwa_13, Nichirin_13, Okabe_15, Oksu_14, PatoPoderoso_13, Peridot_15, RedBird_13, Schuy_54, Tchotchke_14, Topiatin_15, Toron_14, Wildflower_53,

Genes that have the "Most Annotated" start but do not call it:

- Boomer_14, Impisi_16, Llij_13, Minnie_13, PMC_13, Purgamenstris_15, Scitech_15, Tessdabest_14,

Genes that do not have the "Most Annotated" start:

-

Summary by start number:

Start 12:

- Found in 26 of 40 (65.0%) of genes in pham
- Manual Annotations of this start: 2 of 16
- Called 7.7% of time when present
- Phage (with cluster) where this start called: Boomer_14 (F1), Minnie_13 (F1),

Start 14:

- Found in 40 of 40 (100.0%) of genes in pham
- Manual Annotations of this start: 2 of 16
- Called 5.0% of time when present
- Phage (with cluster) where this start called: Llij_13 (F1), PMC_13 (F1),

Start 15:

- Found in 40 of 40 (100.0%) of genes in pham
- Manual Annotations of this start: 11 of 16
- Called 80.0% of time when present
- Phage (with cluster) where this start called: AlpineSix_13 (F1), Ashwin_54 (O), Clank_13 (F), Corium_13 (F1), Corndog_55 (O), Cubone_15 (N), Doomslug_15 (F), Dylan_53 (O), EmiMonkey_13 (F1), Empress_13 (F1), Firecracker_53 (O), FoulBall_53 (O), IMpilo_13 (F1), Idergollasper_53 (O), Jant_13 (F1), Jennelsea_13 (F1), LordVader_15 (F), Medindi_13 (F1), Ms6_13 (F1), MulchSalad_13 (F7), Mwanjiwa_13 (F1), Nichirin_13 (F1), Okabe_15 (F8), Oksu_14 (F1), PatoPoderoso_13 (F1), Peridot_15 (F1), RedBird_13 (F1), Schuy_54 (O), Tchotchke_14 (F1), Topiatin_15 (F1), Toron_14 (F6), Wildflower_53 (O),

Start 16:

- Found in 5 of 40 (12.5%) of genes in pham
- Manual Annotations of this start: 1 of 16
- Called 20.0% of time when present
- Phage (with cluster) where this start called: Purgamenstris_15 (N),

Start 18:

- Found in 26 of 40 (65.0%) of genes in pham
- No Manual Annotations of this start.
- Called 11.5% of time when present
- Phage (with cluster) where this start called: Impisi_16 (N), Scitech_15 (N), Tessdabest_14 (N),

Summary by clusters:

There are 7 clusters represented in this pham: F1, F6, F7, F8, F, O, N,

Info for manual annotations of cluster F1:

- Start number 12 was manually annotated 2 times for cluster F1.
- Start number 14 was manually annotated 2 times for cluster F1.
- Start number 15 was manually annotated 3 times for cluster F1.

Info for manual annotations of cluster N:

- Start number 16 was manually annotated 1 time for cluster N.

Info for manual annotations of cluster O:

- Start number 15 was manually annotated 8 times for cluster O.

Gene Information:

Gene: AlpineSix_13 Start: 9037, Stop: 9471, Start Num: 15

Candidate Starts for AlpineSix_13:

(4, 8860), (5, 8875), (8, 8944), (Start: 12 @8968 has 2 MA's), (Start: 14 @9034 has 2 MA's), (Start: 15 @9037 has 11 MA's), (17, 9106), (19, 9145), (20, 9151), (21, 9169), (23, 9178), (25, 9208), (27, 9214), (28, 9241), (32, 9283), (41, 9397), (44, 9433),

Gene: Ashwin_54 Start: 26165, Stop: 26608, Start Num: 15

Candidate Starts for Ashwin_54:

(3, 25997), (6, 26060), (Start: 14 @26162 has 2 MA's), (Start: 15 @26165 has 11 MA's), (18, 26264), (22, 26300), (31, 26393), (34, 26447), (45, 26600),

Gene: Boomer_14 Start: 8822, Stop: 9325, Start Num: 12

Candidate Starts for Boomer_14:

(1, 8633), (4, 8714), (5, 8729), (8, 8798), (9, 8804), (Start: 12 @8822 has 2 MA's), (Start: 14 @8888 has 2 MA's), (Start: 15 @8891 has 11 MA's), (18, 8990), (19, 8999), (20, 9005), (23, 9032), (25, 9062), (27, 9068), (28, 9095), (32, 9137), (41, 9251), (44, 9287),

Gene: Clank_13 Start: 9047, Stop: 9481, Start Num: 15

Candidate Starts for Clank_13:

(4, 8870), (5, 8885), (10, 8969), (11, 8975), (Start: 12 @8978 has 2 MA's), (Start: 14 @9044 has 2 MA's), (Start: 15 @9047 has 11 MA's), (17, 9116), (19, 9155), (20, 9161), (21, 9179), (23, 9188), (25, 9218), (27, 9224), (28, 9251), (32, 9293), (37, 9368), (44, 9443),

Gene: Corium_13 Start: 9080, Stop: 9514, Start Num: 15

Candidate Starts for Corium_13:

(4, 8903), (5, 8918), (10, 9002), (11, 9008), (Start: 12 @9011 has 2 MA's), (Start: 14 @9077 has 2 MA's), (Start: 15 @9080 has 11 MA's), (17, 9149), (19, 9188), (20, 9194), (21, 9212), (23, 9221), (25, 9251), (27, 9257), (28, 9284), (32, 9326), (37, 9401), (44, 9476),

Gene: Corndog_55 Start: 26715, Stop: 27158, Start Num: 15

Candidate Starts for Corndog_55:

(3, 26547), (6, 26610), (Start: 14 @26712 has 2 MA's), (Start: 15 @26715 has 11 MA's), (18, 26814), (22, 26850), (31, 26943), (34, 26997), (45, 27150),

Gene: Cubone_15 Start: 9542, Stop: 9967, Start Num: 15

Candidate Starts for Cubone_15:

(13, 9524), (Start: 14 @9539 has 2 MA's), (Start: 15 @9542 has 11 MA's), (Start: 16 @9566 has 1 MA's), (18, 9644), (28, 9749), (29, 9758), (30, 9761), (33, 9794), (35, 9836), (38, 9863),

Gene: Doomslug_15 Start: 8913, Stop: 9347, Start Num: 15

Candidate Starts for Doomslug_15:

(4, 8736), (5, 8751), (10, 8835), (11, 8841), (Start: 12 @8844 has 2 MA's), (Start: 14 @8910 has 2 MA's), (Start: 15 @8913 has 11 MA's), (17, 8982), (19, 9021), (20, 9027), (21, 9045), (23, 9054), (25, 9084), (27, 9090), (28, 9117), (32, 9159), (37, 9234), (44, 9309),

Gene: Dylan_53 Start: 26379, Stop: 26822, Start Num: 15

Candidate Starts for Dylan_53:

(3, 26211), (6, 26274), (9, 26292), (Start: 14 @26376 has 2 MA's), (Start: 15 @26379 has 11 MA's), (18, 26478), (22, 26514), (31, 26607), (34, 26661), (45, 26814),

Gene: EmiMonkey_13 Start: 9051, Stop: 9485, Start Num: 15

Candidate Starts for EmiMonkey_13:

(4, 8874), (5, 8889), (10, 8973), (Start: 12 @8982 has 2 MA's), (Start: 14 @9048 has 2 MA's), (Start: 15 @9051 has 11 MA's), (18, 9150), (19, 9159), (20, 9165), (21, 9183), (23, 9192), (25, 9222), (27, 9228), (28, 9255), (32, 9297), (37, 9372), (44, 9447),

Gene: Empress_13 Start: 9055, Stop: 9489, Start Num: 15

Candidate Starts for Empress_13:

(4, 8878), (5, 8893), (10, 8977), (Start: 12 @8986 has 2 MA's), (Start: 14 @9052 has 2 MA's), (Start: 15 @9055 has 11 MA's), (18, 9154), (19, 9163), (20, 9169), (21, 9187), (23, 9196), (25, 9226), (27, 9232), (28, 9259), (32, 9301), (44, 9451),

Gene: Firecracker_53 Start: 25868, Stop: 26311, Start Num: 15

Candidate Starts for Firecracker_53:

(3, 25700), (6, 25763), (Start: 14 @25865 has 2 MA's), (Start: 15 @25868 has 11 MA's), (18, 25967), (22, 26003), (31, 26096), (34, 26150), (45, 26303),

Gene: FoulBall_53 Start: 26255, Stop: 26698, Start Num: 15

Candidate Starts for FoulBall_53:

(3, 26087), (6, 26150), (Start: 14 @26252 has 2 MA's), (Start: 15 @26255 has 11 MA's), (18, 26354), (22, 26390), (31, 26483), (34, 26537), (45, 26690),

Gene: IMpilo_13 Start: 9064, Stop: 9498, Start Num: 15

Candidate Starts for IMpilo_13:

(4, 8887), (5, 8902), (10, 8986), (11, 8992), (Start: 12 @8995 has 2 MA's), (Start: 14 @9061 has 2 MA's), (Start: 15 @9064 has 11 MA's), (17, 9133), (20, 9178), (21, 9196), (23, 9205), (25, 9235), (27, 9241), (28, 9268), (32, 9310), (37, 9385), (41, 9424), (44, 9460),

Gene: Idergollasper_53 Start: 26255, Stop: 26698, Start Num: 15

Candidate Starts for Idergollasper_53:

(3, 26087), (6, 26150), (Start: 14 @26252 has 2 MA's), (Start: 15 @26255 has 11 MA's), (18, 26354), (22, 26390), (31, 26483), (34, 26537), (45, 26690),

Gene: Impisi_16 Start: 9664, Stop: 9987, Start Num: 18

Candidate Starts for Impisi_16:

(13, 9544), (Start: 14 @9559 has 2 MA's), (Start: 15 @9562 has 11 MA's), (Start: 16 @9586 has 1 MA's), (18, 9664), (26, 9739), (28, 9769), (29, 9778), (30, 9781), (33, 9814), (40, 9898),

Gene: Jant_13 Start: 9081, Stop: 9515, Start Num: 15

Candidate Starts for Jant_13:

(4, 8904), (5, 8919), (10, 9003), (11, 9009), (Start: 12 @9012 has 2 MA's), (Start: 14 @9078 has 2 MA's), (Start: 15 @9081 has 11 MA's), (17, 9150), (19, 9189), (20, 9195), (21, 9213), (23, 9222), (25, 9252), (27, 9258), (28, 9285), (32, 9327), (37, 9402), (44, 9477),

Gene: Jennelsea_13 Start: 9022, Stop: 9456, Start Num: 15

Candidate Starts for Jennelsea_13:

(4, 8845), (5, 8860), (10, 8944), (Start: 12 @8953 has 2 MA's), (Start: 14 @9019 has 2 MA's), (Start: 15 @9022 has 11 MA's), (18, 9121), (19, 9130), (20, 9136), (23, 9163), (25, 9193), (27, 9199), (28, 9226), (32, 9268), (41, 9382), (44, 9418),

Gene: Llij_13 Start: 9048, Stop: 9485, Start Num: 14

Candidate Starts for Llij_13:

(4, 8874), (5, 8889), (10, 8973), (Start: 12 @8982 has 2 MA's), (Start: 14 @9048 has 2 MA's), (Start: 15 @9051 has 11 MA's), (18, 9150), (19, 9159), (20, 9165), (23, 9192), (25, 9222), (27, 9228), (28, 9255), (32, 9297), (41, 9411), (44, 9447),

Gene: LordVader_15 Start: 8893, Stop: 9327, Start Num: 15

Candidate Starts for LordVader_15:

(4, 8716), (5, 8731), (10, 8815), (Start: 12 @8824 has 2 MA's), (Start: 14 @8890 has 2 MA's), (Start: 15 @8893 has 11 MA's), (18, 8992), (19, 9001), (20, 9007), (21, 9025), (23, 9034), (25, 9064), (27, 9070), (28, 9097), (32, 9139), (44, 9289),

Gene: Medindi_13 Start: 9068, Stop: 9502, Start Num: 15

Candidate Starts for Medindi_13:

(4, 8891), (5, 8906), (10, 8990), (11, 8996), (Start: 12 @8999 has 2 MA's), (Start: 14 @9065 has 2 MA's), (Start: 15 @9068 has 11 MA's), (17, 9137), (19, 9176), (20, 9182), (21, 9200), (23, 9209), (25, 9239), (27, 9245), (28, 9272), (32, 9314), (37, 9389), (44, 9464),

Gene: Minnie_13 Start: 8982, Stop: 9485, Start Num: 12

Candidate Starts for Minnie_13:

(4, 8874), (5, 8889), (10, 8973), (Start: 12 @8982 has 2 MA's), (Start: 14 @9048 has 2 MA's), (Start: 15 @9051 has 11 MA's), (18, 9150), (19, 9159), (20, 9165), (23, 9192), (25, 9222), (27, 9228), (28, 9255), (32, 9297), (41, 9411), (44, 9447),

Gene: Ms6_13 Start: 9079, Stop: 9513, Start Num: 15

Candidate Starts for Ms6_13:

(4, 8902), (5, 8917), (10, 9001), (11, 9007), (Start: 12 @9010 has 2 MA's), (Start: 14 @9076 has 2 MA's), (Start: 15 @9079 has 11 MA's), (17, 9148), (18, 9178), (19, 9187), (20, 9193), (21, 9211), (23, 9220), (25, 9250), (27, 9256), (28, 9283), (32, 9325), (37, 9400), (44, 9475),

Gene: MulchSalad_13 Start: 9051, Stop: 9485, Start Num: 15

Candidate Starts for MulchSalad_13:

(4, 8874), (5, 8889), (10, 8973), (Start: 12 @8982 has 2 MA's), (Start: 14 @9048 has 2 MA's), (Start: 15 @9051 has 11 MA's), (18, 9150), (19, 9159), (20, 9165), (21, 9183), (23, 9192), (25, 9222), (27, 9228), (28, 9255), (32, 9297), (44, 9447),

Gene: Mwanjiwa_13 Start: 9013, Stop: 9447, Start Num: 15

Candidate Starts for Mwanjiwa_13:

(4, 8836), (5, 8851), (8, 8920), (Start: 12 @8944 has 2 MA's), (Start: 14 @9010 has 2 MA's), (Start: 15 @9013 has 11 MA's), (17, 9082), (19, 9121), (20, 9127), (21, 9145), (23, 9154), (25, 9184), (27, 9190), (28, 9217), (32, 9259), (44, 9409),

Gene: Nichirin_13 Start: 9038, Stop: 9472, Start Num: 15

Candidate Starts for Nichirin_13:

(4, 8861), (5, 8876), (8, 8945), (Start: 12 @8969 has 2 MA's), (Start: 14 @9035 has 2 MA's), (Start: 15 @9038 has 11 MA's), (17, 9107), (19, 9146), (20, 9152), (21, 9170), (23, 9179), (25, 9209), (27, 9215), (28, 9242), (32, 9284), (41, 9398), (44, 9434),

Gene: Okabe_15 Start: 9703, Stop: 10137, Start Num: 15

Candidate Starts for Okabe_15:

(4, 9526), (5, 9541), (8, 9610), (9, 9616), (10, 9625), (Start: 12 @9634 has 2 MA's), (Start: 14 @9700 has 2 MA's), (Start: 15 @9703 has 11 MA's), (19, 9811), (20, 9817), (21, 9835), (23, 9844), (25, 9874), (27, 9880), (28, 9907), (32, 9949), (41, 10063), (44, 10099),

Gene: Oksu_14 Start: 8900, Stop: 9334, Start Num: 15

Candidate Starts for Oksu_14:

(4, 8723), (5, 8738), (8, 8807), (Start: 12 @8831 has 2 MA's), (Start: 14 @8897 has 2 MA's), (Start: 15 @8900 has 11 MA's), (17, 8969), (19, 9008), (20, 9014), (21, 9032), (23, 9041), (25, 9071), (27, 9077), (28, 9104), (32, 9146), (41, 9260), (44, 9296),

Gene: PMC_13 Start: 9048, Stop: 9485, Start Num: 14

Candidate Starts for PMC_13:

(4, 8874), (5, 8889), (10, 8973), (Start: 12 @8982 has 2 MA's), (Start: 14 @9048 has 2 MA's), (Start: 15 @9051 has 11 MA's), (18, 9150), (19, 9159), (20, 9165), (23, 9192), (25, 9222), (27, 9228), (28, 9255), (32, 9297), (41, 9411), (44, 9447),

Gene: PatoPoderoso_13 Start: 9080, Stop: 9514, Start Num: 15

Candidate Starts for PatoPoderoso_13:

(4, 8903), (5, 8918), (10, 9002), (11, 9008), (Start: 12 @9011 has 2 MA's), (Start: 14 @9077 has 2 MA's), (Start: 15 @9080 has 11 MA's), (17, 9149), (19, 9188), (20, 9194), (21, 9212), (23, 9221), (25, 9251), (27, 9257), (28, 9284), (32, 9326), (37, 9401), (44, 9476),

Gene: Peridot_15 Start: 8893, Stop: 9327, Start Num: 15

Candidate Starts for Peridot_15:

(4, 8716), (5, 8731), (10, 8815), (Start: 12 @8824 has 2 MA's), (Start: 14 @8890 has 2 MA's), (Start: 15 @8893 has 11 MA's), (18, 8992), (19, 9001), (20, 9007), (23, 9034), (25, 9064), (27, 9070), (28, 9097), (32, 9139), (37, 9214), (44, 9289),

Gene: Purgamenstris_15 Start: 9586, Stop: 9987, Start Num: 16

Candidate Starts for Purgamenstris_15:

(13, 9544), (Start: 14 @9559 has 2 MA's), (Start: 15 @9562 has 11 MA's), (Start: 16 @9586 has 1 MA's), (18, 9664), (26, 9739), (28, 9769), (29, 9778), (30, 9781), (33, 9814), (40, 9898),

Gene: RedBird_13 Start: 9034, Stop: 9468, Start Num: 15

Candidate Starts for RedBird_13:

(4, 8857), (5, 8872), (10, 8956), (Start: 12 @8965 has 2 MA's), (Start: 14 @9031 has 2 MA's), (Start: 15 @9034 has 11 MA's), (18, 9133), (19, 9142), (20, 9148), (21, 9166), (23, 9175), (25, 9205), (27, 9211), (28, 9238), (32, 9280), (41, 9394), (44, 9430),

Gene: Schuy_54 Start: 26191, Stop: 26634, Start Num: 15

Candidate Starts for Schuy_54:

(3, 26023), (6, 26086), (Start: 14 @26188 has 2 MA's), (Start: 15 @26191 has 11 MA's), (18, 26290), (22, 26326), (31, 26419), (34, 26473), (45, 26626),

Gene: Scitech_15 Start: 9619, Stop: 9942, Start Num: 18

Candidate Starts for Scitech_15:

(13, 9499), (Start: 14 @9514 has 2 MA's), (Start: 15 @9517 has 11 MA's), (Start: 16 @9541 has 1 MA's), (18, 9619), (28, 9724), (29, 9733), (30, 9736), (33, 9769), (35, 9811), (38, 9838),

Gene: Tchotchke_14 Start: 8886, Stop: 9320, Start Num: 15

Candidate Starts for Tchotchke_14:

(2, 8637), (4, 8709), (5, 8724), (10, 8808), (Start: 12 @8817 has 2 MA's), (Start: 14 @8883 has 2 MA's), (Start: 15 @8886 has 11 MA's), (17, 8955), (19, 8994), (20, 9000), (21, 9018), (23, 9027), (25, 9057), (27, 9063), (28, 9090), (32, 9132), (41, 9246), (44, 9282),

Gene: Tessdabest_14 Start: 9619, Stop: 9942, Start Num: 18

Candidate Starts for Tessdabest_14:

(13, 9499), (Start: 14 @9514 has 2 MA's), (Start: 15 @9517 has 11 MA's), (Start: 16 @9541 has 1 MA's), (18, 9619), (28, 9724), (29, 9733), (30, 9736), (33, 9769), (35, 9811), (38, 9838),

Gene: Topiatin_15 Start: 9731, Stop: 10165, Start Num: 15

Candidate Starts for Topiatin_15:

(4, 9554), (5, 9569), (10, 9653), (11, 9659), (Start: 12 @9662 has 2 MA's), (Start: 14 @9728 has 2 MA's), (Start: 15 @9731 has 11 MA's), (17, 9800), (19, 9839), (20, 9845), (21, 9863), (23, 9872), (25, 9902), (27, 9908), (28, 9935), (32, 9977), (37, 10052), (44, 10127),

Gene: Toron_14 Start: 9495, Stop: 9914, Start Num: 15

Candidate Starts for Toron_14:

(13, 9477), (Start: 14 @9492 has 2 MA's), (Start: 15 @9495 has 11 MA's), (18, 9618), (24, 9672), (33, 9771), (36, 9813), (39, 9834), (42, 9867), (43, 9891),

Gene: Wildflower_53 Start: 25830, Stop: 26273, Start Num: 15

Candidate Starts for Wildflower_53:

(3, 25662), (6, 25725), (7, 25737), (Start: 14 @25827 has 2 MA's), (Start: 15 @25830 has 11 MA's), (18, 25929), (22, 25965), (31, 26058), (34, 26112), (45, 26265),