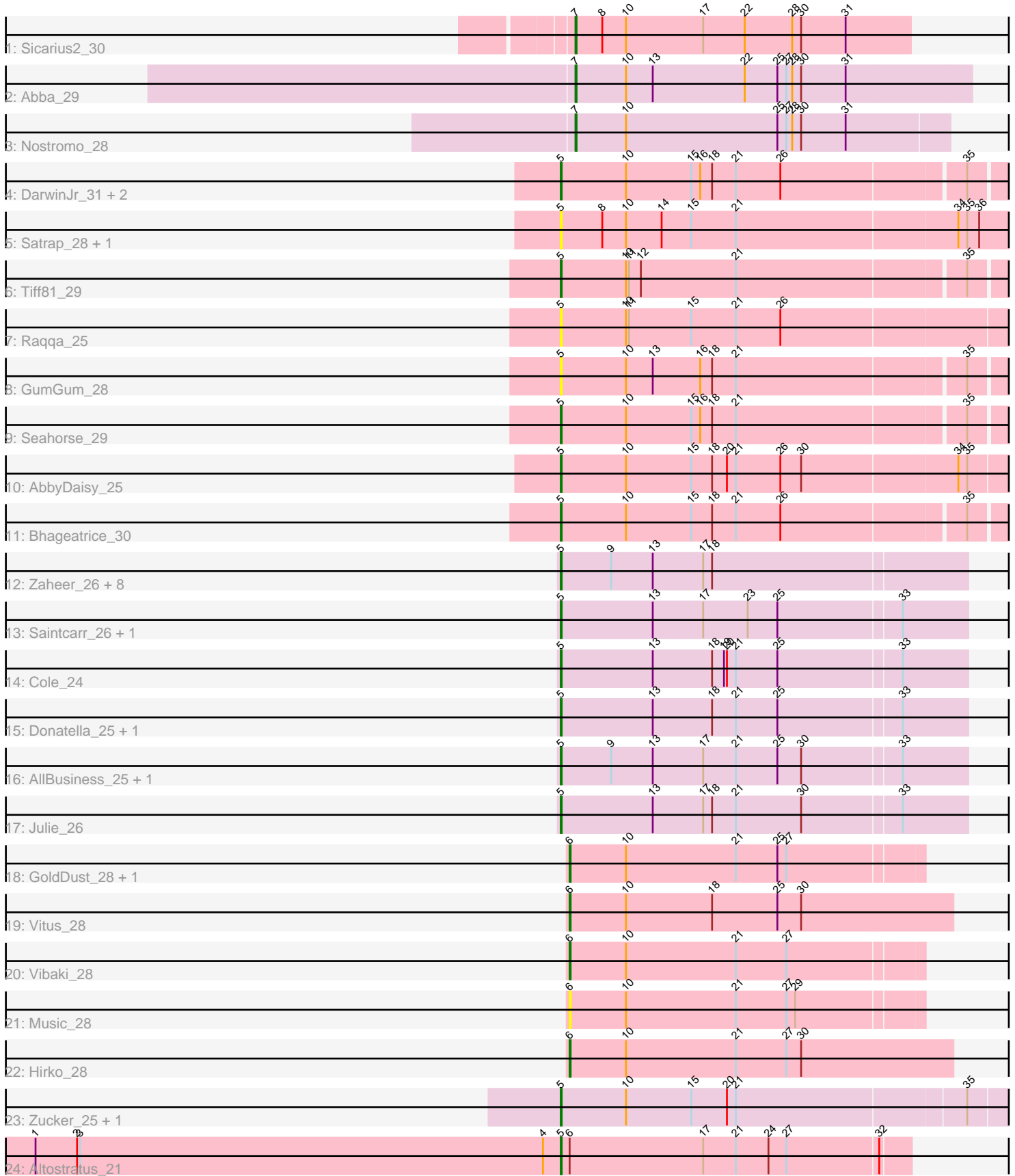


Pham 308885



Note: Tracks are now grouped by subcluster and scaled. Switching in subcluster is indicated by changes in track color. Track scale is now set by default to display the region 30 bp upstream of start 1 to 30 bp downstream of the last possible start. If this default region is judged to be packed too tightly with annotated starts, the track will be further scaled to only show that region of the ORF with annotated starts. This action will be indicated by adding "Zoomed" to the title. For starts, yellow indicates the location of called starts comprised solely of Glimmer/GeneMark auto-annotations, green indicates the location of called starts with at least 1 manual gene annotation.

Pham 308885 Report

This analysis was run 06/27/26 on database version 652.

Pham number 308885 has 40 members, 8 are drafts.

Phages represented in each track:

- Track 1 : Sicarius2_30
- Track 2 : Abba_29
- Track 3 : Nostromo_28
- Track 4 : DarwinJr_31, Anekin_27, Crescenzo_28
- Track 5 : Satrap_28, Shukran_28
- Track 6 : Tiff81_29
- Track 7 : Raqqa_25
- Track 8 : GumGum_28
- Track 9 : Seahorse_29
- Track 10 : AbbyDaisy_25
- Track 11 : Bhageatrice_30
- Track 12 : Zaheer_26, Nandita_26, Guinevere_26, Lenoxika_26, GoodLuckBabe_26, Schism_26, Yonex_26, Ryan_26, Kihatsu_27
- Track 13 : Saintcarr_26, ToastyOats_28
- Track 14 : Cole_24
- Track 15 : Donatella_25, Popper_24
- Track 16 : AllBusiness_25, Toodles_26
- Track 17 : Julie_26
- Track 18 : GoldDust_28, Gooberta_28
- Track 19 : Vitus_28
- Track 20 : Vibaki_28
- Track 21 : Music_28
- Track 22 : Hirko_28
- Track 23 : Zucker_25, Bauer_26
- Track 24 : Altostratus_21

Summary of Final Annotations (See graph section above for start numbers):

The start number called the most often in the published annotations is 5, it was called in 24 of the 32 non-draft genes in the pham.

Genes that call this "Most Annotated" start:

- AbbyDaisy_25, AllBusiness_25, Altostratus_21, Anekin_27, Bauer_26, Bhageatrice_30, Cole_24, Crescenzo_28, DarwinJr_31, Donatella_25,

GoodLuckBabe_26, Guinevere_26, GumGum_28, Julie_26, Kihatsu_27, Lenoxika_26, Nandita_26, Popper_24, Raqqa_25, Ryan_26, Saintcarr_26, Satrap_28, Schism_26, Seahorse_29, Shukran_28, Tiff81_29, ToastyOats_28, Toodles_26, Yonex_26, Zaheer_26, Zucker_25,

Genes that have the "Most Annotated" start but do not call it:

-

Genes that do not have the "Most Annotated" start:

- Abba_29, GoldDust_28, Gooberta_28, Hirko_28, Music_28, Nostromo_28, Sicarius2_30, Vibaki_28, Vitus_28,

Summary by start number:

Start 5:

- Found in 31 of 40 (77.5%) of genes in pham
- Manual Annotations of this start: 24 of 32
- Called 100.0% of time when present
- Phage (with cluster) where this start called: AbbyDaisy_25 (AY), AllBusiness_25 (FF), Altostratus_21 (FS), Anekin_27 (AY), Bauer_26 (FN), Bhageatrice_30 (AY), Cole_24 (FF), Crescenzo_28 (AY), DarwinJr_31 (AY), Donatella_25 (FF), GoodLuckBabe_26 (FF), Guinevere_26 (FF), GumGum_28 (AY), Julie_26 (FF), Kihatsu_27 (FF), Lenoxika_26 (FF), Nandita_26 (FF), Popper_24 (FF), Raqqa_25 (AY), Ryan_26 (FF), Saintcarr_26 (FF), Satrap_28 (AY), Schism_26 (FF), Seahorse_29 (AY), Shukran_28 (AY), Tiff81_29 (AY), ToastyOats_28 (FF), Toodles_26 (FF), Yonex_26 (FF), Zaheer_26 (FF), Zucker_25 (FN),

Start 6:

- Found in 7 of 40 (17.5%) of genes in pham
- Manual Annotations of this start: 5 of 32
- Called 85.7% of time when present
- Phage (with cluster) where this start called: GoldDust_28 (FL), Gooberta_28 (FL), Hirko_28 (FL), Music_28 (FL), Vibaki_28 (FL), Vitus_28 (FL),

Start 7:

- Found in 3 of 40 (7.5%) of genes in pham
- Manual Annotations of this start: 3 of 32
- Called 100.0% of time when present
- Phage (with cluster) where this start called: Abba_29 (AO3), Nostromo_28 (AO3), Sicarius2_30 (AO2),

Summary by clusters:

There are 7 clusters represented in this pham: FS, AO3, AO2, FF, AY, FL, FN,

Info for manual annotations of cluster AO2:

- Start number 7 was manually annotated 1 time for cluster AO2.

Info for manual annotations of cluster AO3:

- Start number 7 was manually annotated 2 times for cluster AO3.

Info for manual annotations of cluster AY:

- Start number 5 was manually annotated 7 times for cluster AY.

Info for manual annotations of cluster FF:

- Start number 5 was manually annotated 14 times for cluster FF.

Info for manual annotations of cluster FL:

- Start number 6 was manually annotated 5 times for cluster FL.

Info for manual annotations of cluster FN:

- Start number 5 was manually annotated 2 times for cluster FN.

Info for manual annotations of cluster FS:

- Start number 5 was manually annotated 1 time for cluster FS.

Gene Information:

Gene: Abba_29 Start: 24790, Stop: 25188, Start Num: 7

Candidate Starts for Abba_29:

(Start: 7 @24790 has 3 MA's), (10, 24841), (13, 24868), (22, 24961), (25, 24994), (27, 25003), (28, 25009), (30, 25018), (31, 25063),

Gene: AbbyDaisy_25 Start: 19357, Stop: 19806, Start Num: 5

Candidate Starts for AbbyDaisy_25:

(Start: 5 @19357 has 24 MA's), (10, 19423), (15, 19489), (18, 19510), (20, 19525), (21, 19534), (26, 19579), (30, 19600), (34, 19753), (35, 19762),

Gene: AllBusiness_25 Start: 19877, Stop: 20281, Start Num: 5

Candidate Starts for AllBusiness_25:

(Start: 5 @19877 has 24 MA's), (9, 19928), (13, 19970), (17, 20021), (21, 20054), (25, 20096), (30, 20120), (33, 20216),

Gene: Altostratus_21 Start: 17562, Stop: 17909, Start Num: 5

Candidate Starts for Altostratus_21:

(1, 17031), (2, 17073), (3, 17076), (4, 17544), (Start: 5 @17562 has 24 MA's), (Start: 6 @17571 has 5 MA's), (17, 17706), (21, 17739), (24, 17772), (27, 17790), (32, 17880),

Gene: Anekin_27 Start: 20364, Stop: 20804, Start Num: 5

Candidate Starts for Anekin_27:

(Start: 5 @20364 has 24 MA's), (10, 20430), (15, 20496), (16, 20505), (18, 20517), (21, 20541), (26, 20586), (35, 20763),

Gene: Bauer_26 Start: 20069, Stop: 20515, Start Num: 5

Candidate Starts for Bauer_26:

(Start: 5 @20069 has 24 MA's), (10, 20135), (15, 20201), (20, 20237), (21, 20246), (35, 20471),

Gene: Bhageatrice_30 Start: 21686, Stop: 22126, Start Num: 5

Candidate Starts for Bhageatrice_30:

(Start: 5 @21686 has 24 MA's), (10, 21752), (15, 21818), (18, 21839), (21, 21863), (26, 21908), (35, 22085),

Gene: Cole_24 Start: 19378, Stop: 19782, Start Num: 5

Candidate Starts for Cole_24:

(Start: 5 @19378 has 24 MA's), (13, 19471), (18, 19531), (19, 19543), (20, 19546), (21, 19555), (25, 19597), (33, 19717),

Gene: Crescenzo_28 Start: 20292, Stop: 20732, Start Num: 5

Candidate Starts for Crescenzo_28:

(Start: 5 @20292 has 24 MA's), (10, 20358), (15, 20424), (16, 20433), (18, 20445), (21, 20469), (26, 20514), (35, 20691),

Gene: DarwinJr_31 Start: 21596, Stop: 22036, Start Num: 5

Candidate Starts for DarwinJr_31:

(Start: 5 @21596 has 24 MA's), (10, 21662), (15, 21728), (16, 21737), (18, 21749), (21, 21773), (26, 21818), (35, 21995),

Gene: Donatella_25 Start: 19842, Stop: 20246, Start Num: 5

Candidate Starts for Donatella_25:

(Start: 5 @19842 has 24 MA's), (13, 19935), (18, 19995), (21, 20019), (25, 20061), (33, 20181),

Gene: GoldDust_28 Start: 26513, Stop: 26863, Start Num: 6

Candidate Starts for GoldDust_28:

(Start: 6 @26513 has 5 MA's), (10, 26570), (21, 26681), (25, 26723), (27, 26732),

Gene: Gooberta_28 Start: 26512, Stop: 26862, Start Num: 6

Candidate Starts for Gooberta_28:

(Start: 6 @26512 has 5 MA's), (10, 26569), (21, 26680), (25, 26722), (27, 26731),

Gene: GoodLuckBabe_26 Start: 19987, Stop: 20391, Start Num: 5

Candidate Starts for GoodLuckBabe_26:

(Start: 5 @19987 has 24 MA's), (9, 20038), (13, 20080), (17, 20131), (18, 20140),

Gene: Guinevere_26 Start: 19577, Stop: 19981, Start Num: 5

Candidate Starts for Guinevere_26:

(Start: 5 @19577 has 24 MA's), (9, 19628), (13, 19670), (17, 19721), (18, 19730),

Gene: GumGum_28 Start: 20348, Stop: 20788, Start Num: 5

Candidate Starts for GumGum_28:

(Start: 5 @20348 has 24 MA's), (10, 20414), (13, 20441), (16, 20489), (18, 20501), (21, 20525), (35, 20747),

Gene: Hirko_28 Start: 26841, Stop: 27227, Start Num: 6

Candidate Starts for Hirko_28:

(Start: 6 @26841 has 5 MA's), (10, 26898), (21, 27009), (27, 27060), (30, 27075),

Gene: Julie_26 Start: 20028, Stop: 20432, Start Num: 5

Candidate Starts for Julie_26:

(Start: 5 @20028 has 24 MA's), (13, 20121), (17, 20172), (18, 20181), (21, 20205), (30, 20271), (33, 20367),

Gene: Kihatsu_27 Start: 19902, Stop: 20306, Start Num: 5

Candidate Starts for Kihatsu_27:

(Start: 5 @19902 has 24 MA's), (9, 19953), (13, 19995), (17, 20046), (18, 20055),

Gene: Lenoxika_26 Start: 19573, Stop: 19977, Start Num: 5

Candidate Starts for Lenoxika_26:

(Start: 5 @19573 has 24 MA's), (9, 19624), (13, 19666), (17, 19717), (18, 19726),

Gene: Music_28 Start: 26363, Stop: 26713, Start Num: 6

Candidate Starts for Music_28:

(Start: 6 @26363 has 5 MA's), (10, 26420), (21, 26531), (27, 26582), (29, 26591),

Gene: Nandita_26 Start: 19577, Stop: 19981, Start Num: 5

Candidate Starts for Nandita_26:

(Start: 5 @19577 has 24 MA's), (9, 19628), (13, 19670), (17, 19721), (18, 19730),

Gene: Nostromo_28 Start: 24269, Stop: 24643, Start Num: 7

Candidate Starts for Nostromo_28:

(Start: 7 @24269 has 3 MA's), (10, 24320), (25, 24473), (27, 24482), (28, 24488), (30, 24497), (31, 24542),

Gene: Popper_24 Start: 19482, Stop: 19886, Start Num: 5

Candidate Starts for Popper_24:

(Start: 5 @19482 has 24 MA's), (13, 19575), (18, 19635), (21, 19659), (25, 19701), (33, 19821),

Gene: Raqqa_25 Start: 19651, Stop: 20100, Start Num: 5

Candidate Starts for Raqqa_25:

(Start: 5 @19651 has 24 MA's), (10, 19717), (11, 19720), (15, 19783), (21, 19828), (26, 19873),

Gene: Ryan_26 Start: 20167, Stop: 20571, Start Num: 5

Candidate Starts for Ryan_26:

(Start: 5 @20167 has 24 MA's), (9, 20218), (13, 20260), (17, 20311), (18, 20320),

Gene: Saintcarr_26 Start: 19723, Stop: 20127, Start Num: 5

Candidate Starts for Saintcarr_26:

(Start: 5 @19723 has 24 MA's), (13, 19816), (17, 19867), (23, 19912), (25, 19942), (33, 20062),

Gene: Satrap_28 Start: 20319, Stop: 20777, Start Num: 5

Candidate Starts for Satrap_28:

(Start: 5 @20319 has 24 MA's), (8, 20361), (10, 20385), (14, 20421), (15, 20451), (21, 20496), (34, 20715), (35, 20724), (36, 20736),

Gene: Schism_26 Start: 19577, Stop: 19981, Start Num: 5

Candidate Starts for Schism_26:

(Start: 5 @19577 has 24 MA's), (9, 19628), (13, 19670), (17, 19721), (18, 19730),

Gene: Seahorse_29 Start: 20763, Stop: 21203, Start Num: 5

Candidate Starts for Seahorse_29:

(Start: 5 @20763 has 24 MA's), (10, 20829), (15, 20895), (16, 20904), (18, 20916), (21, 20940), (35, 21162),

Gene: Shukran_28 Start: 20319, Stop: 20777, Start Num: 5

Candidate Starts for Shukran_28:

(Start: 5 @20319 has 24 MA's), (8, 20361), (10, 20385), (14, 20421), (15, 20451), (21, 20496), (34, 20715), (35, 20724), (36, 20736),

Gene: Sicarius2_30 Start: 24899, Stop: 25237, Start Num: 7

Candidate Starts for Sicarius2_30:

(Start: 7 @24899 has 3 MA's), (8, 24926), (10, 24950), (17, 25028), (22, 25070), (28, 25118), (30, 25127), (31, 25172),

Gene: Tiff81_29 Start: 20491, Stop: 20931, Start Num: 5

Candidate Starts for Tiff81_29:

(Start: 5 @20491 has 24 MA's), (10, 20557), (11, 20560), (12, 20572), (21, 20668), (35, 20890),

Gene: ToastyOats_28 Start: 20181, Stop: 20585, Start Num: 5

Candidate Starts for ToastyOats_28:

(Start: 5 @20181 has 24 MA's), (13, 20274), (17, 20325), (23, 20370), (25, 20400), (33, 20520),

Gene: Toodles_26 Start: 20007, Stop: 20411, Start Num: 5

Candidate Starts for Toodles_26:

(Start: 5 @20007 has 24 MA's), (9, 20058), (13, 20100), (17, 20151), (21, 20184), (25, 20226), (30, 20250), (33, 20346),

Gene: Vibaki_28 Start: 26388, Stop: 26738, Start Num: 6

Candidate Starts for Vibaki_28:

(Start: 6 @26388 has 5 MA's), (10, 26445), (21, 26556), (27, 26607),

Gene: Vitus_28 Start: 23173, Stop: 23559, Start Num: 6

Candidate Starts for Vitus_28:

(Start: 6 @23173 has 5 MA's), (10, 23230), (18, 23317), (25, 23383), (30, 23407),

Gene: Yonex_26 Start: 20167, Stop: 20571, Start Num: 5

Candidate Starts for Yonex_26:

(Start: 5 @20167 has 24 MA's), (9, 20218), (13, 20260), (17, 20311), (18, 20320),

Gene: Zaheer_26 Start: 20256, Stop: 20660, Start Num: 5

Candidate Starts for Zaheer_26:

(Start: 5 @20256 has 24 MA's), (9, 20307), (13, 20349), (17, 20400), (18, 20409),

Gene: Zucker_25 Start: 19382, Stop: 19828, Start Num: 5

Candidate Starts for Zucker_25:

(Start: 5 @19382 has 24 MA's), (10, 19448), (15, 19514), (20, 19550), (21, 19559), (35, 19784),