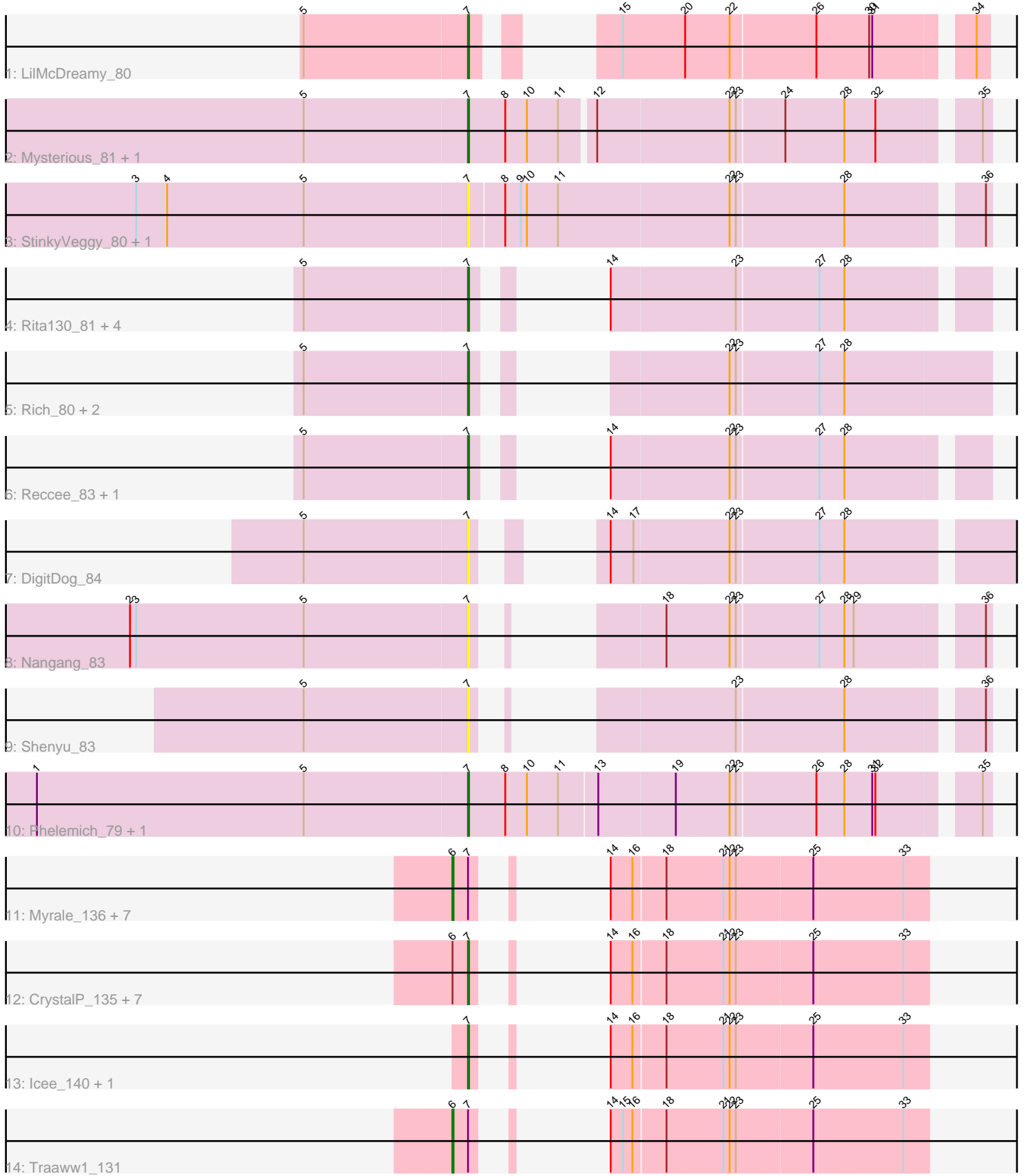


Pham 308899



Note: Tracks are now grouped by subcluster and scaled. Switching in subcluster is indicated by changes in track color. Track scale is now set by default to display the region 30 bp upstream of start 1 to 30 bp downstream of the last possible start. If this default region is judged to be packed too tightly with annotated starts, the track will be further scaled to only show that region of the ORF with annotated starts. This action will be indicated by adding "Zoomed" to the title. For starts, yellow indicates the location of called starts comprised solely of Glimmer/GeneMark auto-annotations, green indicates the location of called starts with at least 1 manual gene annotation.

Pham 308899 Report

This analysis was run 06/27/26 on database version 652.

Pham number 308899 has 39 members, 9 are drafts.

Phages represented in each track:

- Track 1 : LilMcDreamy_80
- Track 2 : Mysterious_81, Nehemiah_81
- Track 3 : StinkyVeggy_80, KarasumaRum_80
- Track 4 : Rita130_81, EastView9101_81, SirJeffery_80, Suigeneris_83, Acadian_82
- Track 5 : Rich_80, Bae_81, Serendipitous_82
- Track 6 : Recce_83, Donny_82
- Track 7 : DigitDog_84
- Track 8 : Nangang_83
- Track 9 : Shenyu_83
- Track 10 : Phelemich_79, Reprobate_81
- Track 11 : Myrale_136, Henry_137, Asriel_132, Command613_137, Flypotenuse_130, Mindy_138, Daikon_137, SophKB_133
- Track 12 : CrystalP_135, Balomaji_135, Barbarian_135, BilboSwaggins_133, Rakim_136, Kostya_136, SirDuracell_138, DrDrey_138
- Track 13 : Icee_140, NelitzaMV_133
- Track 14 : Traaww1_131

Summary of Final Annotations (See graph section above for start numbers):

The start number called the most often in the published annotations is 7, it was called in 22 of the 30 non-draft genes in the pham.

Genes that call this "Most Annotated" start:

- Acadian_82, Bae_81, Balomaji_135, Barbarian_135, BilboSwaggins_133, CrystalP_135, DigitDog_84, Donny_82, DrDrey_138, EastView9101_81, Icee_140, KarasumaRum_80, Kostya_136, LilMcDreamy_80, Mysterious_81, Nangang_83, Nehemiah_81, NelitzaMV_133, Phelemich_79, Rakim_136, Recce_83, Reprobate_81, Rich_80, Rita130_81, Serendipitous_82, Shenyu_83, SirDuracell_138, SirJeffery_80, StinkyVeggy_80, Suigeneris_83,

Genes that have the "Most Annotated" start but do not call it:

- Asriel_132, Command613_137, Daikon_137, Flypotenuse_130, Henry_137, Mindy_138, Myrale_136, SophKB_133, Traaww1_131,

Genes that do not have the "Most Annotated" start:

-

Summary by start number:

Start 6:

- Found in 17 of 39 (43.6%) of genes in pham
- Manual Annotations of this start: 8 of 30
- Called 52.9% of time when present
- Phage (with cluster) where this start called: Asriel_132 (E), Command613_137 (E), Daikon_137 (E), Flypotenuse_130 (E), Henry_137 (E), Mindy_138 (E), Myrale_136 (E), SophKB_133 (E), Traaww1_131 (E),

Start 7:

- Found in 39 of 39 (100.0%) of genes in pham
- Manual Annotations of this start: 22 of 30
- Called 76.9% of time when present
- Phage (with cluster) where this start called: Acadian_82 (B5), Bae_81 (B5), Balomaji_135 (E), Barbarian_135 (E), BilboSwaggins_133 (E), CrystalP_135 (E), DigitDog_84 (B5), Donny_82 (B5), DrDrey_138 (E), EastView9101_81 (B5), Icee_140 (E), KarasumaRum_80 (B5), Kostya_136 (E), LilMcDreamy_80 (B12), Mysterious_81 (B5), Nangang_83 (B5), Nehemiah_81 (B5), NelitzaMV_133 (E), Phelemich_79 (B5), Rakim_136 (E), Reccee_83 (B5), Reprobate_81 (B5), Rich_80 (B5), Rita130_81 (B5), Serendipitous_82 (B5), Shenyu_83 (B5), SirDuracell_138 (E), SirJeffery_80 (B5), StinkyVeggy_80 (B5), Suigeneris_83 (B5),

Summary by clusters:

There are 3 clusters represented in this pham: B5, B12, E,

Info for manual annotations of cluster B12:

- Start number 7 was manually annotated 1 time for cluster B12.

Info for manual annotations of cluster B5:

- Start number 7 was manually annotated 11 times for cluster B5.

Info for manual annotations of cluster E:

- Start number 6 was manually annotated 8 times for cluster E.
- Start number 7 was manually annotated 10 times for cluster E.

Gene Information:

Gene: Acadian_82 Start: 63529, Stop: 63164, Start Num: 7

Candidate Starts for Acadian_82:

(5, 63685), (Start: 7 @63529 has 22 MA's), (14, 63505), (23, 63388), (27, 63310), (28, 63286),

Gene: Asriel_132 Start: 70638, Stop: 70312, Start Num: 6

Candidate Starts for Asriel_132:

(Start: 6 @70638 has 8 MA's), (Start: 7 @70623 has 22 MA's), (14, 70608), (16, 70587), (18, 70557), (21, 70503), (22, 70497), (23, 70491), (25, 70419), (33, 70335),

Gene: Bae_81 Start: 64165, Stop: 63800, Start Num: 7

Candidate Starts for Bae_81:

(5, 64321), (Start: 7 @64165 has 22 MA's), (22, 64030), (23, 64024), (27, 63946), (28, 63922),

Gene: Balomoji_135 Start: 72412, Stop: 72101, Start Num: 7

Candidate Starts for Balomoji_135:

(Start: 6 @72427 has 8 MA's), (Start: 7 @72412 has 22 MA's), (14, 72397), (16, 72376), (18, 72346), (21, 72292), (22, 72286), (23, 72280), (25, 72208), (33, 72124),

Gene: Barbarian_135 Start: 70623, Stop: 70312, Start Num: 7

Candidate Starts for Barbarian_135:

(Start: 6 @70638 has 8 MA's), (Start: 7 @70623 has 22 MA's), (14, 70608), (16, 70587), (18, 70557), (21, 70503), (22, 70497), (23, 70491), (25, 70419), (33, 70335),

Gene: BilboSwaggins_133 Start: 72903, Stop: 72592, Start Num: 7

Candidate Starts for BilboSwaggins_133:

(Start: 6 @72918 has 8 MA's), (Start: 7 @72903 has 22 MA's), (14, 72888), (16, 72867), (18, 72837), (21, 72783), (22, 72777), (23, 72771), (25, 72699), (33, 72615),

Gene: Command613_137 Start: 72418, Stop: 72092, Start Num: 6

Candidate Starts for Command613_137:

(Start: 6 @72418 has 8 MA's), (Start: 7 @72403 has 22 MA's), (14, 72388), (16, 72367), (18, 72337), (21, 72283), (22, 72277), (23, 72271), (25, 72199), (33, 72115),

Gene: CrystalP_135 Start: 72903, Stop: 72592, Start Num: 7

Candidate Starts for CrystalP_135:

(Start: 6 @72918 has 8 MA's), (Start: 7 @72903 has 22 MA's), (14, 72888), (16, 72867), (18, 72837), (21, 72783), (22, 72777), (23, 72771), (25, 72699), (33, 72615),

Gene: Daikon_137 Start: 71723, Stop: 71397, Start Num: 6

Candidate Starts for Daikon_137:

(Start: 6 @71723 has 8 MA's), (Start: 7 @71708 has 22 MA's), (14, 71693), (16, 71672), (18, 71642), (21, 71588), (22, 71582), (23, 71576), (25, 71504), (33, 71420),

Gene: DigitDog_84 Start: 64028, Stop: 63579, Start Num: 7

Candidate Starts for DigitDog_84:

(5, 64184), (Start: 7 @64028 has 22 MA's), (14, 63989), (17, 63968), (22, 63878), (23, 63872), (27, 63794), (28, 63770),

Gene: Donny_82 Start: 63363, Stop: 62998, Start Num: 7

Candidate Starts for Donny_82:

(5, 63519), (Start: 7 @63363 has 22 MA's), (14, 63339), (22, 63228), (23, 63222), (27, 63144), (28, 63120),

Gene: DrDrey_138 Start: 74101, Stop: 73790, Start Num: 7

Candidate Starts for DrDrey_138:

(Start: 6 @74116 has 8 MA's), (Start: 7 @74101 has 22 MA's), (14, 74086), (16, 74065), (18, 74035), (21, 73981), (22, 73975), (23, 73969), (25, 73897), (33, 73813),

Gene: EastView9101_81 Start: 63273, Stop: 62908, Start Num: 7

Candidate Starts for EastView9101_81:

(5, 63429), (Start: 7 @63273 has 22 MA's), (14, 63249), (23, 63132), (27, 63054), (28, 63030),

Gene: Flypotenuse_130 Start: 71292, Stop: 70966, Start Num: 6
Candidate Starts for Flypotenuse_130:
(Start: 6 @71292 has 8 MA's), (Start: 7 @71277 has 22 MA's), (14, 71262), (16, 71241), (18, 71211),
(21, 71157), (22, 71151), (23, 71145), (25, 71073), (33, 70989),

Gene: Henry_137 Start: 72786, Stop: 72460, Start Num: 6
Candidate Starts for Henry_137:
(Start: 6 @72786 has 8 MA's), (Start: 7 @72771 has 22 MA's), (14, 72756), (16, 72735), (18, 72705),
(21, 72651), (22, 72645), (23, 72639), (25, 72567), (33, 72483),

Gene: Icee_140 Start: 72218, Stop: 71907, Start Num: 7
Candidate Starts for Icee_140:
(Start: 7 @72218 has 22 MA's), (14, 72203), (16, 72182), (18, 72152), (21, 72098), (22, 72092), (23,
72086), (25, 72014), (33, 71930),

Gene: KarasumaRum_80 Start: 63426, Stop: 62950, Start Num: 7
Candidate Starts for KarasumaRum_80:
(3, 63744), (4, 63714), (5, 63582), (Start: 7 @63426 has 22 MA's), (8, 63393), (9, 63378), (10, 63372),
(11, 63342), (22, 63180), (23, 63174), (28, 63072), (36, 62955),

Gene: Kostya_136 Start: 72442, Stop: 72131, Start Num: 7
Candidate Starts for Kostya_136:
(Start: 6 @72457 has 8 MA's), (Start: 7 @72442 has 22 MA's), (14, 72427), (16, 72406), (18, 72376),
(21, 72322), (22, 72316), (23, 72310), (25, 72238), (33, 72154),

Gene: LilMcDreamy_80 Start: 63671, Stop: 63285, Start Num: 7
Candidate Starts for LilMcDreamy_80:
(5, 63827), (Start: 7 @63671 has 22 MA's), (15, 63614), (20, 63554), (22, 63512), (26, 63431), (30,
63380), (31, 63377), (34, 63296),

Gene: Mindy_138 Start: 72213, Stop: 71887, Start Num: 6
Candidate Starts for Mindy_138:
(Start: 6 @72213 has 8 MA's), (Start: 7 @72198 has 22 MA's), (14, 72183), (16, 72162), (18, 72132),
(21, 72078), (22, 72072), (23, 72066), (25, 71994), (33, 71910),

Gene: Myrale_136 Start: 73156, Stop: 72830, Start Num: 6
Candidate Starts for Myrale_136:
(Start: 6 @73156 has 8 MA's), (Start: 7 @73141 has 22 MA's), (14, 73126), (16, 73105), (18, 73075),
(21, 73021), (22, 73015), (23, 73009), (25, 72937), (33, 72853),

Gene: Mysterious_81 Start: 63613, Stop: 63143, Start Num: 7
Candidate Starts for Mysterious_81:
(5, 63769), (Start: 7 @63613 has 22 MA's), (8, 63577), (10, 63556), (11, 63526), (12, 63496), (22,
63373), (23, 63367), (24, 63322), (28, 63265), (32, 63235), (35, 63151),

Gene: Nangang_83 Start: 64011, Stop: 63643, Start Num: 7
Candidate Starts for Nangang_83:
(2, 64335), (3, 64329), (5, 64167), (Start: 7 @64011 has 22 MA's), (18, 63933), (22, 63873), (23,
63867), (27, 63789), (28, 63765), (29, 63756), (36, 63648),

Gene: Nehemiah_81 Start: 63493, Stop: 63023, Start Num: 7
Candidate Starts for Nehemiah_81:

(5, 63649), (Start: 7 @63493 has 22 MA's), (8, 63457), (10, 63436), (11, 63406), (12, 63376), (22, 63253), (23, 63247), (24, 63202), (28, 63145), (32, 63115), (35, 63031),

Gene: NelitzaMV_133 Start: 70505, Stop: 70194, Start Num: 7

Candidate Starts for NelitzaMV_133:

(Start: 7 @70505 has 22 MA's), (14, 70490), (16, 70469), (18, 70439), (21, 70385), (22, 70379), (23, 70373), (25, 70301), (33, 70217),

Gene: Phelemich_79 Start: 63571, Stop: 63095, Start Num: 7

Candidate Starts for Phelemich_79:

(1, 63985), (5, 63727), (Start: 7 @63571 has 22 MA's), (8, 63535), (10, 63514), (11, 63484), (13, 63448), (19, 63376), (22, 63325), (23, 63319), (26, 63244), (28, 63217), (31, 63190), (32, 63187), (35, 63103),

Gene: Rakim_136 Start: 72028, Stop: 71717, Start Num: 7

Candidate Starts for Rakim_136:

(Start: 6 @72043 has 8 MA's), (Start: 7 @72028 has 22 MA's), (14, 72013), (16, 71992), (18, 71962), (21, 71908), (22, 71902), (23, 71896), (25, 71824), (33, 71740),

Gene: Reccee_83 Start: 63833, Stop: 63468, Start Num: 7

Candidate Starts for Reccee_83:

(5, 63989), (Start: 7 @63833 has 22 MA's), (14, 63809), (22, 63698), (23, 63692), (27, 63614), (28, 63590),

Gene: Reprobate_81 Start: 63576, Stop: 63100, Start Num: 7

Candidate Starts for Reprobate_81:

(1, 63990), (5, 63732), (Start: 7 @63576 has 22 MA's), (8, 63540), (10, 63519), (11, 63489), (13, 63453), (19, 63381), (22, 63330), (23, 63324), (26, 63249), (28, 63222), (31, 63195), (32, 63192), (35, 63108),

Gene: Rich_80 Start: 64229, Stop: 63846, Start Num: 7

Candidate Starts for Rich_80:

(5, 64385), (Start: 7 @64229 has 22 MA's), (22, 64094), (23, 64088), (27, 64010), (28, 63986),

Gene: Rita130_81 Start: 63503, Stop: 63138, Start Num: 7

Candidate Starts for Rita130_81:

(5, 63659), (Start: 7 @63503 has 22 MA's), (14, 63479), (23, 63362), (27, 63284), (28, 63260),

Gene: Serendipitous_82 Start: 63359, Stop: 62994, Start Num: 7

Candidate Starts for Serendipitous_82:

(5, 63515), (Start: 7 @63359 has 22 MA's), (22, 63224), (23, 63218), (27, 63140), (28, 63116),

Gene: Shenyu_83 Start: 64027, Stop: 63659, Start Num: 7

Candidate Starts for Shenyu_83:

(5, 64183), (Start: 7 @64027 has 22 MA's), (23, 63883), (28, 63781), (36, 63664),

Gene: SirDuracell_138 Start: 72519, Stop: 72208, Start Num: 7

Candidate Starts for SirDuracell_138:

(Start: 6 @72534 has 8 MA's), (Start: 7 @72519 has 22 MA's), (14, 72504), (16, 72483), (18, 72453), (21, 72399), (22, 72393), (23, 72387), (25, 72315), (33, 72231),

Gene: SirJeffery_80 Start: 63313, Stop: 62948, Start Num: 7

Candidate Starts for SirJeffery_80:

(5, 63469), (Start: 7 @63313 has 22 MA's), (14, 63289), (23, 63172), (27, 63094), (28, 63070),

Gene: SophKB_133 Start: 72020, Stop: 71694, Start Num: 6

Candidate Starts for SophKB_133:

(Start: 6 @72020 has 8 MA's), (Start: 7 @72005 has 22 MA's), (14, 71990), (16, 71969), (18, 71939), (21, 71885), (22, 71879), (23, 71873), (25, 71801), (33, 71717),

Gene: StinkyVeggy_80 Start: 63426, Stop: 62950, Start Num: 7

Candidate Starts for StinkyVeggy_80:

(3, 63744), (4, 63714), (5, 63582), (Start: 7 @63426 has 22 MA's), (8, 63393), (9, 63378), (10, 63372), (11, 63342), (22, 63180), (23, 63174), (28, 63072), (36, 62955),

Gene: Suigeneris_83 Start: 63751, Stop: 63386, Start Num: 7

Candidate Starts for Suigeneris_83:

(5, 63907), (Start: 7 @63751 has 22 MA's), (14, 63727), (23, 63610), (27, 63532), (28, 63508),

Gene: Traaww1_131 Start: 71467, Stop: 71141, Start Num: 6

Candidate Starts for Traaww1_131:

(Start: 6 @71467 has 8 MA's), (Start: 7 @71452 has 22 MA's), (14, 71437), (15, 71425), (16, 71416), (18, 71386), (21, 71332), (22, 71326), (23, 71320), (25, 71248), (33, 71164),