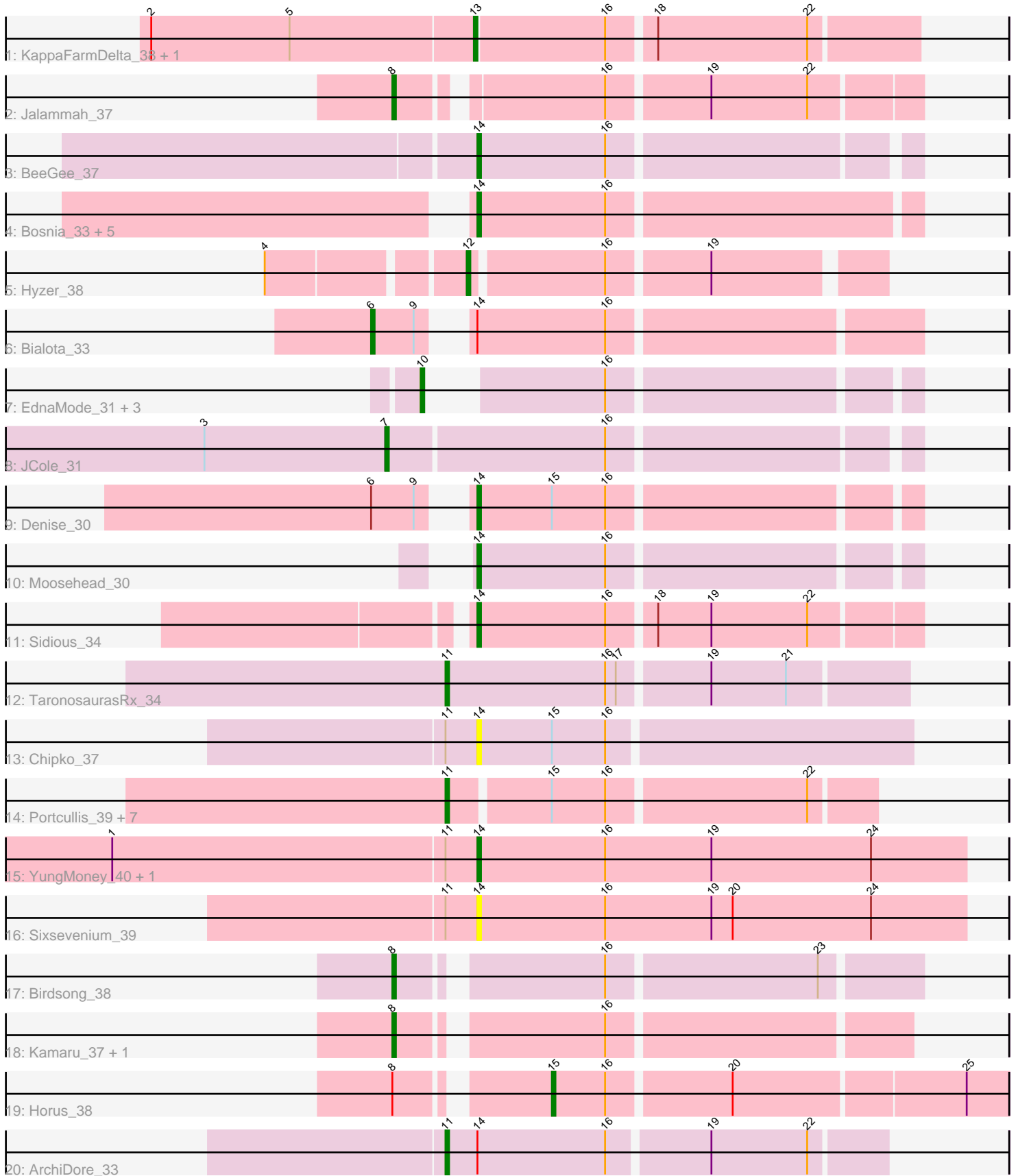


Pham 308911



Note: Tracks are now grouped by subcluster and scaled. Switching in subcluster is indicated by changes in track color. Track scale is now set by default to display the region 30 bp upstream of start 1 to 30 bp downstream of the last possible start. If this default region is judged to be packed too tightly with annotated starts, the track will be further scaled to only show that region of the ORF with annotated starts. This action will be indicated by adding "Zoomed" to the title. For starts, yellow indicates the location of called starts comprised solely of Glimmer/GeneMark auto-annotations, green indicates the location of called starts with at least 1 manual gene annotation.

Pham 308911 Report

This analysis was run 06/27/26 on database version 652.

Pham number 308911 has 38 members, 5 are drafts.

Phages represented in each track:

- Track 1 : KappaFarmDelta_38, Wocket_37
- Track 2 : Jalammah_37
- Track 3 : BeeGee_37
- Track 4 : Bosnia_33, Herod_33, Nymphadora_33, BatStarr_33, Eviarto_33, TimTam_33
- Track 5 : Hyzer_38
- Track 6 : Bialota_33
- Track 7 : EdnaMode_31, LordFarquaad_33, Lamberg_31, Nettuno_31
- Track 8 : JCole_31
- Track 9 : Denise_30
- Track 10 : Moosehead_30
- Track 11 : Sidious_34
- Track 12 : TaronosaurusRx_34
- Track 13 : Chipko_37
- Track 14 : Portcullis_39, SmokingBunny_38, Sendy_39, TillyBobJoe_38, CoveyB_41, Savbucketdawg_38, Fireball_39, JohnPork_39
- Track 15 : YungMoney_40, SharkTale_38
- Track 16 : Sixsevenium_39
- Track 17 : Birdsong_38
- Track 18 : Kamaru_37, PhorbesPhlower_30
- Track 19 : Horus_38
- Track 20 : ArchiDore_33

Summary of Final Annotations (See graph section above for start numbers):

The start number called the most often in the published annotations is 14, it was called in 11 of the 33 non-draft genes in the pham.

Genes that call this "Most Annotated" start:

- BatStarr_33, BeeGee_37, Bosnia_33, Chipko_37, Denise_30, Eviarto_33, Herod_33, Moosehead_30, Nymphadora_33, SharkTale_38, Sidious_34, Sixsevenium_39, TimTam_33, YungMoney_40,

Genes that have the "Most Annotated" start but do not call it:

- ArchiDore_33, Bialota_33,

Genes that do not have the "Most Annotated" start:

- Birdsong_38, CoveyB_41, EdnaMode_31, Fireball_39, Horus_38, Hyzer_38, JCole_31, Jalammah_37, JohnPork_39, Kamaru_37, KappaFarmDelta_38, Lamberg_31, LordFarquaad_33, Nettuno_31, PhorbesPhlower_30, Portcullis_39, Savbucketdawg_38, Sendy_39, SmokingBunny_38, TaronosaurusRx_34, TillyBobJoe_38, Wocket_37,

Summary by start number:

Start 6:

- Found in 2 of 38 (5.3%) of genes in pham
- Manual Annotations of this start: 1 of 33
- Called 50.0% of time when present
- Phage (with cluster) where this start called: Bialota_33 (CZ1),

Start 7:

- Found in 1 of 38 (2.6%) of genes in pham
- Manual Annotations of this start: 1 of 33
- Called 100.0% of time when present
- Phage (with cluster) where this start called: JCole_31 (CZ2),

Start 8:

- Found in 5 of 38 (13.2%) of genes in pham
- Manual Annotations of this start: 4 of 33
- Called 80.0% of time when present
- Phage (with cluster) where this start called: Birdsong_38 (DN), Jalammah_37 (CV), Kamaru_37 (DN1), PhorbesPhlower_30 (DH),

Start 10:

- Found in 4 of 38 (10.5%) of genes in pham
- Manual Annotations of this start: 4 of 33
- Called 100.0% of time when present
- Phage (with cluster) where this start called: EdnaMode_31 (CZ2), Lamberg_31 (CZ2), LordFarquaad_33 (CZ2), Nettuno_31 (CZ2),

Start 11:

- Found in 14 of 38 (36.8%) of genes in pham
- Manual Annotations of this start: 8 of 33
- Called 71.4% of time when present
- Phage (with cluster) where this start called: ArchiDore_33 (DW), CoveyB_41 (DC1), Fireball_39 (DC1), JohnPork_39 (DC1), Portcullis_39 (DC1), Savbucketdawg_38 (DC1), Sendy_39 (DC1), SmokingBunny_38 (DC1), TaronosaurusRx_34 (DB), TillyBobJoe_38 (DC1),

Start 12:

- Found in 1 of 38 (2.6%) of genes in pham
- Manual Annotations of this start: 1 of 33
- Called 100.0% of time when present
- Phage (with cluster) where this start called: Hyzer_38 (CZ1),

Start 13:

- Found in 2 of 38 (5.3%) of genes in pham
- Manual Annotations of this start: 2 of 33
- Called 100.0% of time when present
- Phage (with cluster) where this start called: KappaFarmDelta_38 (CV), Wocket_37 (CV),

Start 14:

- Found in 16 of 38 (42.1%) of genes in pham
- Manual Annotations of this start: 11 of 33
- Called 87.5% of time when present
- Phage (with cluster) where this start called: BatStarr_33 (CZ1), BeeGee_37 (CY5), Bosnia_33 (CZ1), Chipko_37 (DB), Denise_30 (CZ5), Eviarto_33 (CZ1), Herod_33 (CZ1), Moosehead_30 (CZ6), Nymphadora_33 (CZ1), SharkTale_38 (DC1), Sidious_34 (CZ7), Sixsevenium_39 (DC1), TimTam_33 (CZ1), YungMoney_40 (DC1),

Start 15:

- Found in 11 of 38 (28.9%) of genes in pham
- Manual Annotations of this start: 1 of 33
- Called 9.1% of time when present
- Phage (with cluster) where this start called: Horus_38 (DN1),

Summary by clusters:

There are 13 clusters represented in this pham: DN, DH, CY5, CZ2, DB, CZ1, CZ6, CZ7, CZ5, DN1, DW, CV, DC1,

Info for manual annotations of cluster CV:

- Start number 8 was manually annotated 1 time for cluster CV.
- Start number 13 was manually annotated 2 times for cluster CV.

Info for manual annotations of cluster CY5:

- Start number 14 was manually annotated 1 time for cluster CY5.

Info for manual annotations of cluster CZ1:

- Start number 6 was manually annotated 1 time for cluster CZ1.
- Start number 12 was manually annotated 1 time for cluster CZ1.
- Start number 14 was manually annotated 6 times for cluster CZ1.

Info for manual annotations of cluster CZ2:

- Start number 7 was manually annotated 1 time for cluster CZ2.
- Start number 10 was manually annotated 4 times for cluster CZ2.

Info for manual annotations of cluster CZ5:

- Start number 14 was manually annotated 1 time for cluster CZ5.

Info for manual annotations of cluster CZ6:

- Start number 14 was manually annotated 1 time for cluster CZ6.

Info for manual annotations of cluster CZ7:

- Start number 14 was manually annotated 1 time for cluster CZ7.

Info for manual annotations of cluster DB:

- Start number 11 was manually annotated 1 time for cluster DB.

Info for manual annotations of cluster DC1:

- Start number 11 was manually annotated 6 times for cluster DC1.
- Start number 14 was manually annotated 1 time for cluster DC1.

Info for manual annotations of cluster DH:

- Start number 8 was manually annotated 1 time for cluster DH.

Info for manual annotations of cluster DN:

- Start number 8 was manually annotated 1 time for cluster DN.

Info for manual annotations of cluster DN1:

- Start number 8 was manually annotated 1 time for cluster DN1.
- Start number 15 was manually annotated 1 time for cluster DN1.

Info for manual annotations of cluster DW:

- Start number 11 was manually annotated 1 time for cluster DW.

Gene Information:

Gene: ArchiDore_33 Start: 28546, Stop: 28665, Start Num: 11

Candidate Starts for ArchiDore_33:

(Start: 11 @28546 has 8 MA's), (Start: 14 @28555 has 11 MA's), (16, 28591), (19, 28618), (22, 28645),

Gene: BatStarr_33 Start: 29140, Stop: 29259, Start Num: 14

Candidate Starts for BatStarr_33:

(Start: 14 @29140 has 11 MA's), (16, 29176),

Gene: BeeGee_37 Start: 29928, Stop: 30044, Start Num: 14

Candidate Starts for BeeGee_37:

(Start: 14 @29928 has 11 MA's), (16, 29964),

Gene: Bialota_33 Start: 29702, Stop: 29839, Start Num: 6

Candidate Starts for Bialota_33:

(Start: 6 @29702 has 1 MA's), (9, 29714), (Start: 14 @29720 has 11 MA's), (16, 29756),

Gene: Birdsong_38 Start: 29874, Stop: 30008, Start Num: 8

Candidate Starts for Birdsong_38:

(Start: 8 @29874 has 4 MA's), (16, 29925), (23, 29982),

Gene: Bosnia_33 Start: 29140, Stop: 29259, Start Num: 14

Candidate Starts for Bosnia_33:

(Start: 14 @29140 has 11 MA's), (16, 29176),

Gene: Chipko_37 Start: 31077, Stop: 31196, Start Num: 14

Candidate Starts for Chipko_37:

(Start: 11 @31068 has 8 MA's), (Start: 14 @31077 has 11 MA's), (Start: 15 @31098 has 1 MA's), (16, 31113),

Gene: CoveyB_41 Start: 33552, Stop: 33665, Start Num: 11

Candidate Starts for CoveyB_41:

(Start: 11 @33552 has 8 MA's), (Start: 15 @33579 has 1 MA's), (16, 33594), (22, 33648),

Gene: Denise_30 Start: 25534, Stop: 25650, Start Num: 14

Candidate Starts for Denise_30:

(Start: 6 @25516 has 1 MA's), (9, 25528), (Start: 14 @25534 has 11 MA's), (Start: 15 @25555 has 1 MA's), (16, 25570),

Gene: EdnaMode_31 Start: 25366, Stop: 25482, Start Num: 10

Candidate Starts for EdnaMode_31:

(Start: 10 @25366 has 4 MA's), (16, 25402),

Gene: Eviarto_33 Start: 29116, Stop: 29235, Start Num: 14

Candidate Starts for Eviarto_33:

(Start: 14 @29116 has 11 MA's), (16, 29152),

Gene: Fireball_39 Start: 33696, Stop: 33809, Start Num: 11

Candidate Starts for Fireball_39:

(Start: 11 @33696 has 8 MA's), (Start: 15 @33723 has 1 MA's), (16, 33738), (22, 33792),

Gene: Herod_33 Start: 29140, Stop: 29259, Start Num: 14

Candidate Starts for Herod_33:

(Start: 14 @29140 has 11 MA's), (16, 29176),

Gene: Horus_38 Start: 30205, Stop: 30327, Start Num: 15

Candidate Starts for Horus_38:

(Start: 8 @30169 has 4 MA's), (Start: 15 @30205 has 1 MA's), (16, 30220), (20, 30253), (25, 30316),

Gene: Hyzer_38 Start: 31801, Stop: 31908, Start Num: 12

Candidate Starts for Hyzer_38:

(4, 31750), (Start: 12 @31801 has 1 MA's), (16, 31837), (19, 31864),

Gene: JCole_31 Start: 25778, Stop: 25918, Start Num: 7

Candidate Starts for JCole_31:

(3, 25727), (Start: 7 @25778 has 1 MA's), (16, 25838),

Gene: Jallahmah_37 Start: 30167, Stop: 30301, Start Num: 8

Candidate Starts for Jallahmah_37:

(Start: 8 @30167 has 4 MA's), (16, 30218), (19, 30245), (22, 30272),

Gene: JohnPork_39 Start: 33073, Stop: 33186, Start Num: 11

Candidate Starts for JohnPork_39:

(Start: 11 @33073 has 8 MA's), (Start: 15 @33100 has 1 MA's), (16, 33115), (22, 33169),

Gene: Kamaru_37 Start: 28823, Stop: 28954, Start Num: 8

Candidate Starts for Kamaru_37:

(Start: 8 @28823 has 4 MA's), (16, 28874),

Gene: KappaFarmDelta_38 Start: 28584, Stop: 28703, Start Num: 13

Candidate Starts for KappaFarmDelta_38:

(2, 28494), (5, 28533), (Start: 13 @28584 has 2 MA's), (16, 28620), (18, 28632), (22, 28674),

Gene: Lamberg_31 Start: 25366, Stop: 25482, Start Num: 10

Candidate Starts for Lamberg_31:
(Start: 10 @25366 has 4 MA's), (16, 25402),

Gene: LordFarquaad_33 Start: 26678, Stop: 26794, Start Num: 10
Candidate Starts for LordFarquaad_33:
(Start: 10 @26678 has 4 MA's), (16, 26714),

Gene: Moosehead_30 Start: 23681, Stop: 23797, Start Num: 14
Candidate Starts for Moosehead_30:
(Start: 14 @23681 has 11 MA's), (16, 23717),

Gene: Nettuno_31 Start: 25366, Stop: 25482, Start Num: 10
Candidate Starts for Nettuno_31:
(Start: 10 @25366 has 4 MA's), (16, 25402),

Gene: Nymphadora_33 Start: 29140, Stop: 29259, Start Num: 14
Candidate Starts for Nymphadora_33:
(Start: 14 @29140 has 11 MA's), (16, 29176),

Gene: PhorbesPhlower_30 Start: 24643, Stop: 24777, Start Num: 8
Candidate Starts for PhorbesPhlower_30:
(Start: 8 @24643 has 4 MA's), (16, 24694),

Gene: Portcullis_39 Start: 33073, Stop: 33186, Start Num: 11
Candidate Starts for Portcullis_39:
(Start: 11 @33073 has 8 MA's), (Start: 15 @33100 has 1 MA's), (16, 33115), (22, 33169),

Gene: Savbucketdawg_38 Start: 33352, Stop: 33465, Start Num: 11
Candidate Starts for Savbucketdawg_38:
(Start: 11 @33352 has 8 MA's), (Start: 15 @33379 has 1 MA's), (16, 33394), (22, 33448),

Gene: Sendy_39 Start: 33777, Stop: 33890, Start Num: 11
Candidate Starts for Sendy_39:
(Start: 11 @33777 has 8 MA's), (Start: 15 @33804 has 1 MA's), (16, 33819), (22, 33873),

Gene: SharkTale_38 Start: 33452, Stop: 33589, Start Num: 14
Candidate Starts for SharkTale_38:
(1, 33350), (Start: 11 @33443 has 8 MA's), (Start: 14 @33452 has 11 MA's), (16, 33488), (19, 33518),
(24, 33563),

Gene: Sidious_34 Start: 29708, Stop: 29827, Start Num: 14
Candidate Starts for Sidious_34:
(Start: 14 @29708 has 11 MA's), (16, 29744), (18, 29756), (19, 29771), (22, 29798),

Gene: Sixsevenium_39 Start: 32477, Stop: 32614, Start Num: 14
Candidate Starts for Sixsevenium_39:
(Start: 11 @32468 has 8 MA's), (Start: 14 @32477 has 11 MA's), (16, 32513), (19, 32543), (20, 32549),
(24, 32588),

Gene: SmokingBunny_38 Start: 33562, Stop: 33675, Start Num: 11
Candidate Starts for SmokingBunny_38:
(Start: 11 @33562 has 8 MA's), (Start: 15 @33589 has 1 MA's), (16, 33604), (22, 33658),

Gene: TaronosaurusRx_34 Start: 28268, Stop: 28393, Start Num: 11
Candidate Starts for TaronosaurusRx_34:
(Start: 11 @28268 has 8 MA's), (16, 28313), (17, 28316), (19, 28340), (21, 28361),

Gene: TillyBobJoe_38 Start: 33366, Stop: 33479, Start Num: 11
Candidate Starts for TillyBobJoe_38:
(Start: 11 @33366 has 8 MA's), (Start: 15 @33393 has 1 MA's), (16, 33408), (22, 33462),

Gene: TimTam_33 Start: 29140, Stop: 29259, Start Num: 14
Candidate Starts for TimTam_33:
(Start: 14 @29140 has 11 MA's), (16, 29176),

Gene: Wocket_37 Start: 28749, Stop: 28868, Start Num: 13
Candidate Starts for Wocket_37:
(2, 28659), (5, 28698), (Start: 13 @28749 has 2 MA's), (16, 28785), (18, 28797), (22, 28839),

Gene: YungMoney_40 Start: 34999, Stop: 35136, Start Num: 14
Candidate Starts for YungMoney_40:
(1, 34897), (Start: 11 @34990 has 8 MA's), (Start: 14 @34999 has 11 MA's), (16, 35035), (19, 35065),
(24, 35110),