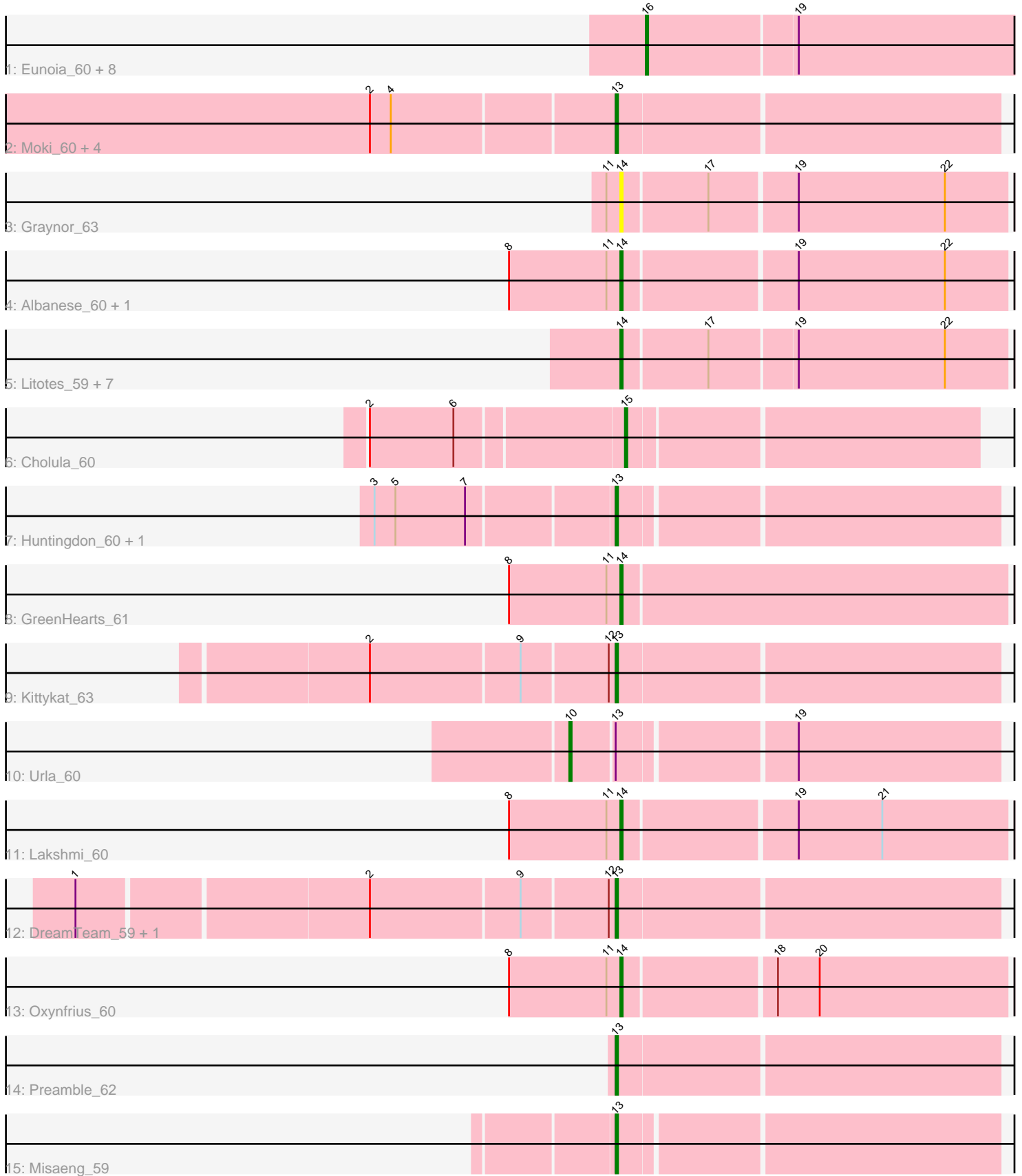


Pham 308925



Note: Tracks are now grouped by subcluster and scaled. Switching in subcluster is indicated by changes in track color. Track scale is now set by default to display the region 30 bp upstream of start 1 to 30 bp downstream of the last possible start. If this default region is judged to be packed too tightly with annotated starts, the track will be further scaled to only show that region of the ORF with annotated starts. This action will be indicated by adding "Zoomed" to the title. For starts, yellow indicates the location of called starts comprised solely of Glimmer/GeneMark auto-annotations, green indicates the location of called starts with at least 1 manual gene annotation.

Pham 308925 Report

This analysis was run 06/27/26 on database version 652.

Pham number 308925 has 37 members, 2 are drafts.

Phages represented in each track:

- Track 1 : Eunoia_60, Riovina_58, Chridison_55, AustinPowers_58, OMalley_58, Supakev_58, Aledel_58, HunterDalle_58, Vulture_58
- Track 2 : Moki_60, Beethoven_61, Bennie_61, Huckleberry_60, HeadNerd_60
- Track 3 : Graynor_63
- Track 4 : Albanese_60, Nubia_60
- Track 5 : Litotes_59, Suppi_60, MrBoss_62, AppleCider_59, Wayne_62, CallieOMalley_60, PartyCup_61, Canowicakte_60
- Track 6 : Cholula_60
- Track 7 : Huntingdon_60, RcigaStruga_60
- Track 8 : GreenHearts_61
- Track 9 : Kittykat_63
- Track 10 : Urla_60
- Track 11 : Lakshmi_60
- Track 12 : DreamTeam_59, Gisselle_59
- Track 13 : Oxynfrius_60
- Track 14 : Preamble_62
- Track 15 : Misaeng_59

Summary of Final Annotations (See graph section above for start numbers):

The start number called the most often in the published annotations is 13, it was called in 12 of the 35 non-draft genes in the pham.

Genes that call this "Most Annotated" start:

- Beethoven_61, Bennie_61, DreamTeam_59, Gisselle_59, HeadNerd_60, Huckleberry_60, Huntingdon_60, Kittykat_63, Misaeng_59, Moki_60, Preamble_62, RcigaStruga_60,

Genes that have the "Most Annotated" start but do not call it:

- Urla_60,

Genes that do not have the "Most Annotated" start:

- Albanese_60, Aledel_58, AppleCider_59, AustinPowers_58, CallieOMalley_60, Canowicakte_60, Cholula_60, Chridison_55, Eunoia_60, Graynor_63,

GreenHearts_61, HunterDalle_58, Lakshmi_60, Litotes_59, MrBoss_62, Nubia_60, OMalley_58, Oxyntrius_60, PartyCup_61, Riovina_58, Supakev_58, Suppi_60, Vulture_58, Wayne_62,

Summary by start number:

Start 10:

- Found in 1 of 37 (2.7%) of genes in pham
- Manual Annotations of this start: 1 of 35
- Called 100.0% of time when present
- Phage (with cluster) where this start called: Urla_60 (AK),

Start 13:

- Found in 13 of 37 (35.1%) of genes in pham
- Manual Annotations of this start: 12 of 35
- Called 92.3% of time when present
- Phage (with cluster) where this start called: Beethoven_61 (AK), Bennie_61 (AK), DreamTeam_59 (AK), Gisselle_59 (AK), HeadNerd_60 (AK), Huckleberry_60 (AK), Huntingdon_60 (AK), Kittykat_63 (AK), Misaeng_59 (AK), Moki_60 (AK), Preamble_62 (AK), RcigaStruga_60 (AK),

Start 14:

- Found in 14 of 37 (37.8%) of genes in pham
- Manual Annotations of this start: 12 of 35
- Called 100.0% of time when present
- Phage (with cluster) where this start called: Albanese_60 (AK), AppleCider_59 (AK), CallieOMalley_60 (AK), Canowicakte_60 (AK), Graynor_63 (AK), GreenHearts_61 (AK), Lakshmi_60 (AK), Litotes_59 (AK), MrBoss_62 (AK), Nubia_60 (AK), Oxyntrius_60 (AK), PartyCup_61 (AK), Suppi_60 (AK), Wayne_62 (AK),

Start 15:

- Found in 1 of 37 (2.7%) of genes in pham
- Manual Annotations of this start: 1 of 35
- Called 100.0% of time when present
- Phage (with cluster) where this start called: Cholula_60 (AK),

Start 16:

- Found in 9 of 37 (24.3%) of genes in pham
- Manual Annotations of this start: 9 of 35
- Called 100.0% of time when present
- Phage (with cluster) where this start called: Aledel_58 (AK), AustinPowers_58 (AK), Chridison_55 (AK), Eunoia_60 (AK), HunterDalle_58 (AK), OMalley_58 (AK), Riovina_58 (AK), Supakev_58 (AK), Vulture_58 (AK),

Summary by clusters:

There is one cluster represented in this pham: AK

Info for manual annotations of cluster AK:

- Start number 10 was manually annotated 1 time for cluster AK.
- Start number 13 was manually annotated 12 times for cluster AK.
- Start number 14 was manually annotated 12 times for cluster AK.
- Start number 15 was manually annotated 1 time for cluster AK.

- Start number 16 was manually annotated 9 times for cluster AK.

Gene Information:

Gene: Albanese_60 Start: 43265, Stop: 43435, Start Num: 14

Candidate Starts for Albanese_60:

(8, 43217), (11, 43259), (Start: 14 @43265 has 12 MA's), (19, 43337), (22, 43400),

Gene: Aledel_58 Start: 42820, Stop: 42984, Start Num: 16

Candidate Starts for Aledel_58:

(Start: 16 @42820 has 9 MA's), (19, 42883),

Gene: AppleCider_59 Start: 42819, Stop: 42989, Start Num: 14

Candidate Starts for AppleCider_59:

(Start: 14 @42819 has 12 MA's), (17, 42855), (19, 42891), (22, 42954),

Gene: AustinPowers_58 Start: 42842, Stop: 43006, Start Num: 16

Candidate Starts for AustinPowers_58:

(Start: 16 @42842 has 9 MA's), (19, 42905),

Gene: Beethoven_61 Start: 43146, Stop: 43307, Start Num: 13

Candidate Starts for Beethoven_61:

(2, 43044), (4, 43053), (Start: 13 @43146 has 12 MA's),

Gene: Bennie_61 Start: 42286, Stop: 42447, Start Num: 13

Candidate Starts for Bennie_61:

(2, 42184), (4, 42193), (Start: 13 @42286 has 12 MA's),

Gene: CallieOMalley_60 Start: 43007, Stop: 43177, Start Num: 14

Candidate Starts for CallieOMalley_60:

(Start: 14 @43007 has 12 MA's), (17, 43043), (19, 43079), (22, 43142),

Gene: Canowicakte_60 Start: 43059, Stop: 43229, Start Num: 14

Candidate Starts for Canowicakte_60:

(Start: 14 @43059 has 12 MA's), (17, 43095), (19, 43131), (22, 43194),

Gene: Cholula_60 Start: 42921, Stop: 43067, Start Num: 15

Candidate Starts for Cholula_60:

(2, 42816), (6, 42852), (Start: 15 @42921 has 1 MA's),

Gene: Chridison_55 Start: 42098, Stop: 42262, Start Num: 16

Candidate Starts for Chridison_55:

(Start: 16 @42098 has 9 MA's), (19, 42161),

Gene: DreamTeam_59 Start: 42224, Stop: 42385, Start Num: 13

Candidate Starts for DreamTeam_59:

(1, 42002), (2, 42122), (9, 42185), (12, 42221), (Start: 13 @42224 has 12 MA's),

Gene: Eunoia_60 Start: 43497, Stop: 43661, Start Num: 16

Candidate Starts for Eunoia_60:

(Start: 16 @43497 has 9 MA's), (19, 43560),

Gene: Gisselle_59 Start: 42224, Stop: 42385, Start Num: 13
Candidate Starts for Gisselle_59:
(1, 42002), (2, 42122), (9, 42185), (12, 42221), (Start: 13 @42224 has 12 MA's),

Gene: Graynor_63 Start: 42644, Stop: 42814, Start Num: 14
Candidate Starts for Graynor_63:
(11, 42638), (Start: 14 @42644 has 12 MA's), (17, 42680), (19, 42716), (22, 42779),

Gene: GreenHearts_61 Start: 43583, Stop: 43753, Start Num: 14
Candidate Starts for GreenHearts_61:
(8, 43535), (11, 43577), (Start: 14 @43583 has 12 MA's),

Gene: HeadNerd_60 Start: 42180, Stop: 42341, Start Num: 13
Candidate Starts for HeadNerd_60:
(2, 42078), (4, 42087), (Start: 13 @42180 has 12 MA's),

Gene: Huckleberry_60 Start: 42184, Stop: 42345, Start Num: 13
Candidate Starts for Huckleberry_60:
(2, 42082), (4, 42091), (Start: 13 @42184 has 12 MA's),

Gene: HunterDalle_58 Start: 42419, Stop: 42583, Start Num: 16
Candidate Starts for HunterDalle_58:
(Start: 16 @42419 has 9 MA's), (19, 42482),

Gene: Huntingdon_60 Start: 43135, Stop: 43293, Start Num: 13
Candidate Starts for Huntingdon_60:
(3, 43036), (5, 43045), (7, 43075), (Start: 13 @43135 has 12 MA's),

Gene: Kittykat_63 Start: 42738, Stop: 42899, Start Num: 13
Candidate Starts for Kittykat_63:
(2, 42636), (9, 42699), (12, 42735), (Start: 13 @42738 has 12 MA's),

Gene: Lakshmi_60 Start: 43353, Stop: 43520, Start Num: 14
Candidate Starts for Lakshmi_60:
(8, 43305), (11, 43347), (Start: 14 @43353 has 12 MA's), (19, 43425), (21, 43461),

Gene: Litotes_59 Start: 42606, Stop: 42776, Start Num: 14
Candidate Starts for Litotes_59:
(Start: 14 @42606 has 12 MA's), (17, 42642), (19, 42678), (22, 42741),

Gene: Misaeng_59 Start: 43061, Stop: 43219, Start Num: 13
Candidate Starts for Misaeng_59:
(Start: 13 @43061 has 12 MA's),

Gene: Moki_60 Start: 42373, Stop: 42534, Start Num: 13
Candidate Starts for Moki_60:
(2, 42271), (4, 42280), (Start: 13 @42373 has 12 MA's),

Gene: MrBoss_62 Start: 42400, Stop: 42570, Start Num: 14
Candidate Starts for MrBoss_62:
(Start: 14 @42400 has 12 MA's), (17, 42436), (19, 42472), (22, 42535),

Gene: Nubia_60 Start: 43196, Stop: 43366, Start Num: 14
Candidate Starts for Nubia_60:
(8, 43148), (11, 43190), (Start: 14 @43196 has 12 MA's), (19, 43268), (22, 43331),

Gene: OMalley_58 Start: 42820, Stop: 42984, Start Num: 16
Candidate Starts for OMalley_58:
(Start: 16 @42820 has 9 MA's), (19, 42883),

Gene: Oxynfrius_60 Start: 43314, Stop: 43484, Start Num: 14
Candidate Starts for Oxynfrius_60:
(8, 43266), (11, 43308), (Start: 14 @43314 has 12 MA's), (18, 43377), (20, 43395),

Gene: PartyCup_61 Start: 43254, Stop: 43424, Start Num: 14
Candidate Starts for PartyCup_61:
(Start: 14 @43254 has 12 MA's), (17, 43290), (19, 43326), (22, 43389),

Gene: Preamble_62 Start: 42610, Stop: 42771, Start Num: 13
Candidate Starts for Preamble_62:
(Start: 13 @42610 has 12 MA's),

Gene: RcigaStruga_60 Start: 43135, Stop: 43293, Start Num: 13
Candidate Starts for RcigaStruga_60:
(3, 43036), (5, 43045), (7, 43075), (Start: 13 @43135 has 12 MA's),

Gene: Riovina_58 Start: 42820, Stop: 42984, Start Num: 16
Candidate Starts for Riovina_58:
(Start: 16 @42820 has 9 MA's), (19, 42883),

Gene: Supakev_58 Start: 42847, Stop: 43011, Start Num: 16
Candidate Starts for Supakev_58:
(Start: 16 @42847 has 9 MA's), (19, 42910),

Gene: Suppi_60 Start: 43059, Stop: 43229, Start Num: 14
Candidate Starts for Suppi_60:
(Start: 14 @43059 has 12 MA's), (17, 43095), (19, 43131), (22, 43194),

Gene: Urla_60 Start: 43172, Stop: 43348, Start Num: 10
Candidate Starts for Urla_60:
(Start: 10 @43172 has 1 MA's), (Start: 13 @43190 has 12 MA's), (19, 43262),

Gene: Vulture_58 Start: 42419, Stop: 42583, Start Num: 16
Candidate Starts for Vulture_58:
(Start: 16 @42419 has 9 MA's), (19, 42482),

Gene: Wayne_62 Start: 43516, Stop: 43686, Start Num: 14
Candidate Starts for Wayne_62:
(Start: 14 @43516 has 12 MA's), (17, 43552), (19, 43588), (22, 43651),