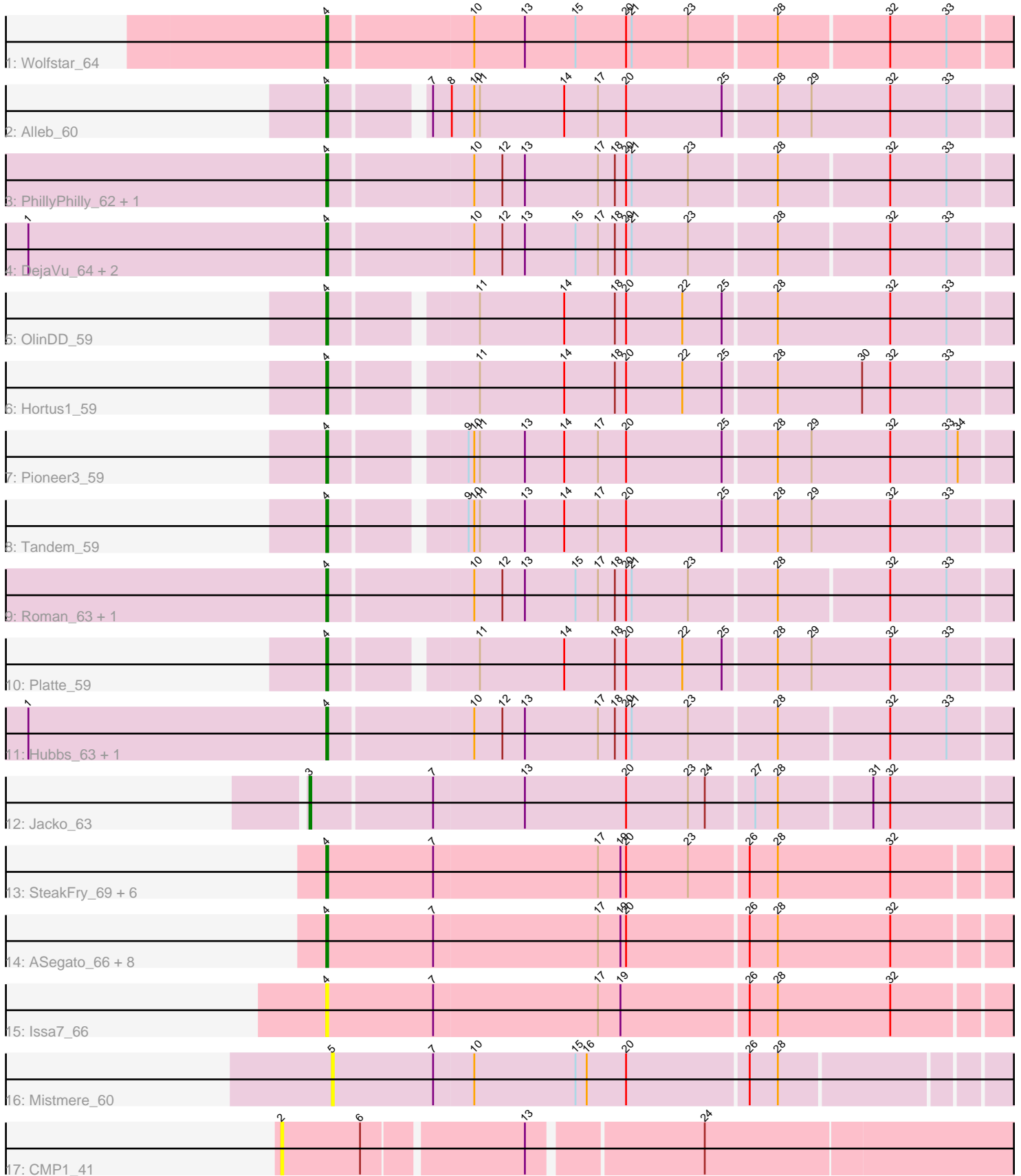


Pham 308930



Note: Tracks are now grouped by subcluster and scaled. Switching in subcluster is indicated by changes in track color. Track scale is now set by default to display the region 30 bp upstream of start 1 to 30 bp downstream of the last possible start. If this default region is judged to be packed too tightly with annotated starts, the track will be further scaled to only show that region of the ORF with annotated starts. This action will be indicated by adding "Zoomed" to the title. For starts, yellow indicates the location of called starts comprised solely of Glimmer/GeneMark auto-annotations, green indicates the location of called starts with at least 1 manual gene annotation.

Pham 308930 Report

This analysis was run 06/27/26 on database version 652.

WARNING: Pham size does not match number of genes in report. Either unphamerated genes have been added (by you) or starterator has removed genes due to invalid start codon.

Pham number 308930 has 36 members, 7 are drafts.

Phages represented in each track:

- Track 1 : Wolfstar_64
- Track 2 : Alleb_60
- Track 3 : PhillyPhilly_62, Pavlo_62
- Track 4 : DejaVu_64, Solimine_63, Saradis_63
- Track 5 : OlinDD_59
- Track 6 : Hortus1_59
- Track 7 : Pioneer3_59
- Track 8 : Tandem_59
- Track 9 : Roman_63, Lupine_61
- Track 10 : Platte_59
- Track 11 : Hubbs_63, Uterion_65
- Track 12 : Jacko_63
- Track 13 : SteakFry_69, Necrophoxinus_69, Fork_63, HollowPurple_68, Musetta_67, Lyell_67, Welcome_68
- Track 14 : ASegato_66, Yuma_66, Casablanacas_68, DustyDino_70, Deschain_68, RunningBrook_68, Erenyeager_67, StevieWelch_67, Shroomer_71
- Track 15 : Issa7_66
- Track 16 : Mistmere_60
- Track 17 : CMP1_41

Summary of Final Annotations (See graph section above for start numbers):

The start number called the most often in the published annotations is 4, it was called in 28 of the 29 non-draft genes in the pham.

Genes that call this "Most Annotated" start:

- ASegato_66, Alleb_60, Casablanacas_68, DejaVu_64, Deschain_68, DustyDino_70, Erenyeager_67, Fork_63, HollowPurple_68, Hortus1_59, Hubbs_63, Issa7_66, Lupine_61, Lyell_67, Musetta_67, Necrophoxinus_69, OlinDD_59, Pavlo_62, PhillyPhilly_62, Pioneer3_59, Platte_59, Roman_63, RunningBrook_68, Saradis_63,

Shroomer_71, Solimine_63, SteakFry_69, StevieWelch_67, Tandem_59, Uterion_65, Welcome_68, Wolfstar_64, Yuma_66,

Genes that have the "Most Annotated" start but do not call it:

-

Genes that do not have the "Most Annotated" start:

- CMP1_41, Jacko_63, Mistmere_60,

Summary by start number:

Start 2:

- Found in 1 of 36 (2.8%) of genes in pham
- No Manual Annotations of this start.
- Called 100.0% of time when present
- Phage (with cluster) where this start called: CMP1_41 (singleton),

Start 3:

- Found in 1 of 36 (2.8%) of genes in pham
- Manual Annotations of this start: 1 of 29
- Called 100.0% of time when present
- Phage (with cluster) where this start called: Jacko_63 (ED1),

Start 4:

- Found in 33 of 36 (91.7%) of genes in pham
- Manual Annotations of this start: 28 of 29
- Called 100.0% of time when present
- Phage (with cluster) where this start called: ASegato_66 (ED2), Alleb_60 (ED1), Casablanacas_68 (ED2), DejaVu_64 (ED1), Deschain_68 (ED2), DustyDino_70 (ED2), Erenyeager_67 (ED2), Fork_63 (ED2), HollowPurple_68 (ED2), Hortus1_59 (ED1), Hubbs_63 (ED1), Issa7_66 (ED2), Lupine_61 (ED1), Lyell_67 (ED2), Musetta_67 (ED2), Necrophoxinus_69 (ED2), OlinDD_59 (ED1), Pavlo_62 (ED1), PhillyPhilly_62 (ED1), Pioneer3_59 (ED1), Platte_59 (ED1), Roman_63 (ED1), RunningBrook_68 (ED2), Saradis_63 (ED1), Shroomer_71 (ED2), Solimine_63 (ED1), SteakFry_69 (ED2), StevieWelch_67 (ED2), Tandem_59 (ED1), Uterion_65 (ED1), Welcome_68 (ED2), Wolfstar_64 (ED), Yuma_66 (ED2),

Start 5:

- Found in 1 of 36 (2.8%) of genes in pham
- No Manual Annotations of this start.
- Called 100.0% of time when present
- Phage (with cluster) where this start called: Mistmere_60 (ED3),

Summary by clusters:

There are 5 clusters represented in this pham: ED2, ED, singleton, ED1, ED3,

Info for manual annotations of cluster ED:

- Start number 4 was manually annotated 1 time for cluster ED.

Info for manual annotations of cluster ED1:

- Start number 3 was manually annotated 1 time for cluster ED1.
- Start number 4 was manually annotated 12 times for cluster ED1.

Info for manual annotations of cluster ED2:

•Start number 4 was manually annotated 15 times for cluster ED2.

Gene Information:

Gene: ASegato_66 Start: 37638, Stop: 37264, Start Num: 4

Candidate Starts for ASegato_66:

(Start: 4 @37638 has 28 MA's), (7, 37581), (17, 37494), (19, 37482), (20, 37479), (26, 37416), (28, 37401), (32, 37341),

Gene: Alleb_60 Start: 37560, Stop: 37192, Start Num: 4

Candidate Starts for Alleb_60:

(Start: 4 @37560 has 28 MA's), (7, 37515), (8, 37506), (10, 37494), (11, 37491), (14, 37446), (17, 37428), (20, 37413), (25, 37362), (28, 37335), (29, 37317), (32, 37275), (33, 37245),

Gene: CMP1_41 Start: 39546, Stop: 39145, Start Num: 2

Candidate Starts for CMP1_41:

(2, 39546), (6, 39504), (13, 39423), (24, 39336),

Gene: Casablanclas_68 Start: 37378, Stop: 37004, Start Num: 4

Candidate Starts for Casablanclas_68:

(Start: 4 @37378 has 28 MA's), (7, 37321), (17, 37234), (19, 37222), (20, 37219), (26, 37156), (28, 37141), (32, 37081),

Gene: DejaVu_64 Start: 37715, Stop: 37341, Start Num: 4

Candidate Starts for DejaVu_64:

(1, 37874), (Start: 4 @37715 has 28 MA's), (10, 37640), (12, 37625), (13, 37613), (15, 37586), (17, 37574), (18, 37565), (20, 37559), (21, 37556), (23, 37526), (28, 37481), (32, 37424), (33, 37394),

Gene: Deschain_68 Start: 38042, Stop: 37668, Start Num: 4

Candidate Starts for Deschain_68:

(Start: 4 @38042 has 28 MA's), (7, 37985), (17, 37898), (19, 37886), (20, 37883), (26, 37820), (28, 37805), (32, 37745),

Gene: DustyDino_70 Start: 38601, Stop: 38227, Start Num: 4

Candidate Starts for DustyDino_70:

(Start: 4 @38601 has 28 MA's), (7, 38544), (17, 38457), (19, 38445), (20, 38442), (26, 38379), (28, 38364), (32, 38304),

Gene: Erenyeager_67 Start: 37633, Stop: 37259, Start Num: 4

Candidate Starts for Erenyeager_67:

(Start: 4 @37633 has 28 MA's), (7, 37576), (17, 37489), (19, 37477), (20, 37474), (26, 37411), (28, 37396), (32, 37336),

Gene: Fork_63 Start: 37288, Stop: 36914, Start Num: 4

Candidate Starts for Fork_63:

(Start: 4 @37288 has 28 MA's), (7, 37231), (17, 37144), (19, 37132), (20, 37129), (23, 37096), (26, 37066), (28, 37051), (32, 36991),

Gene: HollowPurple_68 Start: 37844, Stop: 37470, Start Num: 4

Candidate Starts for HollowPurple_68:

(Start: 4 @37844 has 28 MA's), (7, 37787), (17, 37700), (19, 37688), (20, 37685), (23, 37652), (26, 37622), (28, 37607), (32, 37547),

Gene: Hortus1_59 Start: 37715, Stop: 37347, Start Num: 4

Candidate Starts for Hortus1_59:

(Start: 4 @37715 has 28 MA's), (11, 37646), (14, 37601), (18, 37574), (20, 37568), (22, 37538), (25, 37517), (28, 37490), (30, 37445), (32, 37430), (33, 37400),

Gene: Hubbs_63 Start: 37923, Stop: 37549, Start Num: 4

Candidate Starts for Hubbs_63:

(1, 38082), (Start: 4 @37923 has 28 MA's), (10, 37848), (12, 37833), (13, 37821), (17, 37782), (18, 37773), (20, 37767), (21, 37764), (23, 37734), (28, 37689), (32, 37632), (33, 37602),

Gene: Issa7_66 Start: 37295, Stop: 36921, Start Num: 4

Candidate Starts for Issa7_66:

(Start: 4 @37295 has 28 MA's), (7, 37238), (17, 37151), (19, 37139), (26, 37073), (28, 37058), (32, 36998),

Gene: Jacko_63 Start: 36648, Stop: 36265, Start Num: 3

Candidate Starts for Jacko_63:

(Start: 3 @36648 has 1 MA's), (7, 36585), (13, 36537), (20, 36483), (23, 36450), (24, 36441), (27, 36417), (28, 36405), (31, 36357), (32, 36348),

Gene: Lupine_61 Start: 37129, Stop: 36755, Start Num: 4

Candidate Starts for Lupine_61:

(Start: 4 @37129 has 28 MA's), (10, 37054), (12, 37039), (13, 37027), (15, 37000), (17, 36988), (18, 36979), (20, 36973), (21, 36970), (23, 36940), (28, 36895), (32, 36838), (33, 36808),

Gene: Lyell_67 Start: 37547, Stop: 37173, Start Num: 4

Candidate Starts for Lyell_67:

(Start: 4 @37547 has 28 MA's), (7, 37490), (17, 37403), (19, 37391), (20, 37388), (23, 37355), (26, 37325), (28, 37310), (32, 37250),

Gene: Mistmere_60 Start: 36383, Stop: 36018, Start Num: 5

Candidate Starts for Mistmere_60:

(5, 36383), (7, 36329), (10, 36308), (15, 36254), (16, 36248), (20, 36227), (26, 36164), (28, 36149),

Gene: Musetta_67 Start: 38008, Stop: 37634, Start Num: 4

Candidate Starts for Musetta_67:

(Start: 4 @38008 has 28 MA's), (7, 37951), (17, 37864), (19, 37852), (20, 37849), (23, 37816), (26, 37786), (28, 37771), (32, 37711),

Gene: Necrophoxinus_69 Start: 38242, Stop: 37868, Start Num: 4

Candidate Starts for Necrophoxinus_69:

(Start: 4 @38242 has 28 MA's), (7, 38185), (17, 38098), (19, 38086), (20, 38083), (23, 38050), (26, 38020), (28, 38005), (32, 37945),

Gene: OlinDD_59 Start: 37714, Stop: 37346, Start Num: 4

Candidate Starts for OlinDD_59:

(Start: 4 @37714 has 28 MA's), (11, 37645), (14, 37600), (18, 37573), (20, 37567), (22, 37537), (25, 37516), (28, 37489), (32, 37429), (33, 37399),

Gene: Pavlo_62 Start: 37774, Stop: 37400, Start Num: 4

Candidate Starts for Pavlo_62:

(Start: 4 @37774 has 28 MA's), (10, 37699), (12, 37684), (13, 37672), (17, 37633), (18, 37624), (20, 37618), (21, 37615), (23, 37585), (28, 37540), (32, 37483), (33, 37453),

Gene: PhillyPhilly_62 Start: 37308, Stop: 36934, Start Num: 4

Candidate Starts for PhillyPhilly_62:

(Start: 4 @37308 has 28 MA's), (10, 37233), (12, 37218), (13, 37206), (17, 37167), (18, 37158), (20, 37152), (21, 37149), (23, 37119), (28, 37074), (32, 37017), (33, 36987),

Gene: Pioneer3_59 Start: 37557, Stop: 37189, Start Num: 4

Candidate Starts for Pioneer3_59:

(Start: 4 @37557 has 28 MA's), (9, 37494), (10, 37491), (11, 37488), (13, 37464), (14, 37443), (17, 37425), (20, 37410), (25, 37359), (28, 37332), (29, 37314), (32, 37272), (33, 37242), (34, 37236),

Gene: Platte_59 Start: 37507, Stop: 37139, Start Num: 4

Candidate Starts for Platte_59:

(Start: 4 @37507 has 28 MA's), (11, 37438), (14, 37393), (18, 37366), (20, 37360), (22, 37330), (25, 37309), (28, 37282), (29, 37264), (32, 37222), (33, 37192),

Gene: Roman_63 Start: 37771, Stop: 37397, Start Num: 4

Candidate Starts for Roman_63:

(Start: 4 @37771 has 28 MA's), (10, 37696), (12, 37681), (13, 37669), (15, 37642), (17, 37630), (18, 37621), (20, 37615), (21, 37612), (23, 37582), (28, 37537), (32, 37480), (33, 37450),

Gene: RunningBrook_68 Start: 38601, Stop: 38227, Start Num: 4

Candidate Starts for RunningBrook_68:

(Start: 4 @38601 has 28 MA's), (7, 38544), (17, 38457), (19, 38445), (20, 38442), (26, 38379), (28, 38364), (32, 38304),

Gene: Saradis_63 Start: 37367, Stop: 36993, Start Num: 4

Candidate Starts for Saradis_63:

(1, 37526), (Start: 4 @37367 has 28 MA's), (10, 37292), (12, 37277), (13, 37265), (15, 37238), (17, 37226), (18, 37217), (20, 37211), (21, 37208), (23, 37178), (28, 37133), (32, 37076), (33, 37046),

Gene: Shroomer_71 Start: 37778, Stop: 37404, Start Num: 4

Candidate Starts for Shroomer_71:

(Start: 4 @37778 has 28 MA's), (7, 37721), (17, 37634), (19, 37622), (20, 37619), (26, 37556), (28, 37541), (32, 37481),

Gene: Solimine_63 Start: 37781, Stop: 37407, Start Num: 4

Candidate Starts for Solimine_63:

(1, 37940), (Start: 4 @37781 has 28 MA's), (10, 37706), (12, 37691), (13, 37679), (15, 37652), (17, 37640), (18, 37631), (20, 37625), (21, 37622), (23, 37592), (28, 37547), (32, 37490), (33, 37460),

Gene: SteakFry_69 Start: 37844, Stop: 37470, Start Num: 4

Candidate Starts for SteakFry_69:

(Start: 4 @37844 has 28 MA's), (7, 37787), (17, 37700), (19, 37688), (20, 37685), (23, 37652), (26, 37622), (28, 37607), (32, 37547),

Gene: StevieWelch_67 Start: 37633, Stop: 37259, Start Num: 4

Candidate Starts for StevieWelch_67:

(Start: 4 @37633 has 28 MA's), (7, 37576), (17, 37489), (19, 37477), (20, 37474), (26, 37411), (28, 37396), (32, 37336),

Gene: Tandem_59 Start: 37655, Stop: 37287, Start Num: 4

Candidate Starts for Tandem_59:

(Start: 4 @37655 has 28 MA's), (9, 37592), (10, 37589), (11, 37586), (13, 37562), (14, 37541), (17, 37523), (20, 37508), (25, 37457), (28, 37430), (29, 37412), (32, 37370), (33, 37340),

Gene: Uterion_65 Start: 37876, Stop: 37502, Start Num: 4

Candidate Starts for Uterion_65:

(1, 38035), (Start: 4 @37876 has 28 MA's), (10, 37801), (12, 37786), (13, 37774), (17, 37735), (18, 37726), (20, 37720), (21, 37717), (23, 37687), (28, 37642), (32, 37585), (33, 37555),

Gene: Welcome_68 Start: 37993, Stop: 37619, Start Num: 4

Candidate Starts for Welcome_68:

(Start: 4 @37993 has 28 MA's), (7, 37936), (17, 37849), (19, 37837), (20, 37834), (23, 37801), (26, 37771), (28, 37756), (32, 37696),

Gene: Wolfstar_64 Start: 38817, Stop: 38440, Start Num: 4

Candidate Starts for Wolfstar_64:

(Start: 4 @38817 has 28 MA's), (10, 38742), (13, 38715), (15, 38688), (20, 38661), (21, 38658), (23, 38628), (28, 38583), (32, 38526), (33, 38496),

Gene: Yuma_66 Start: 37562, Stop: 37188, Start Num: 4

Candidate Starts for Yuma_66:

(Start: 4 @37562 has 28 MA's), (7, 37505), (17, 37418), (19, 37406), (20, 37403), (26, 37340), (28, 37325), (32, 37265),