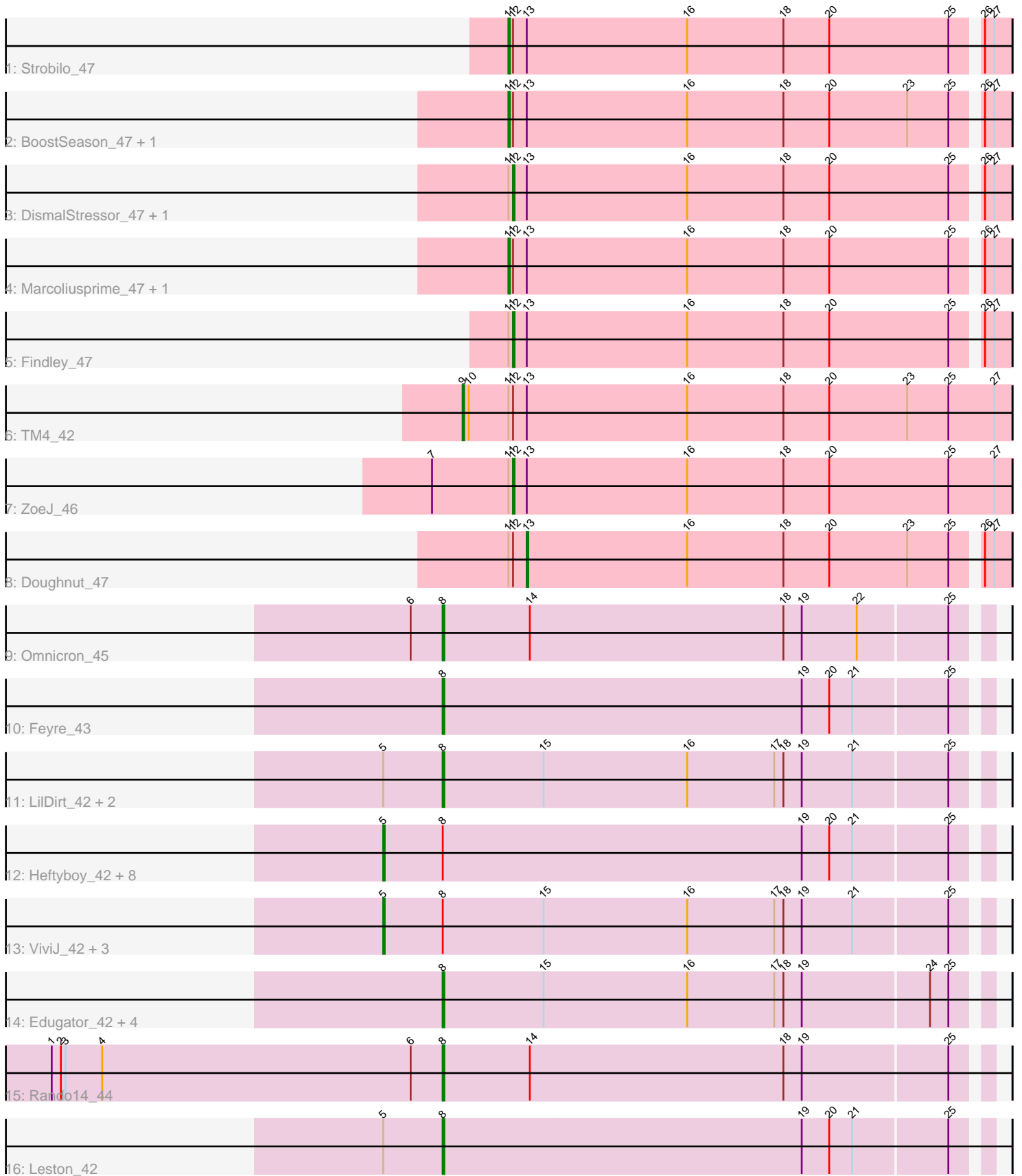


Pham 308946



Note: Tracks are now grouped by subcluster and scaled. Switching in subcluster is indicated by changes in track color. Track scale is now set by default to display the region 30 bp upstream of start 1 to 30 bp downstream of the last possible start. If this default region is judged to be packed too tightly with annotated starts, the track will be further scaled to only show that region of the ORF with annotated starts. This action will be indicated by adding "Zoomed" to the title. For starts, yellow indicates the location of called starts comprised solely of Glimmer/GeneMark auto-annotations, green indicates the location of called starts with at least 1 manual gene annotation.

Pham 308946 Report

This analysis was run 06/27/26 on database version 652.

Pham number 308946 has 36 members, 0 are drafts.

Phages represented in each track:

- Track 1 : Strobilo_47
- Track 2 : BoostSeason_47, Mufasa_47
- Track 3 : DismalStressor_47, Milly_47
- Track 4 : Marcoliusprime_47, DismalFunk_47
- Track 5 : Findley_47
- Track 6 : TM4_42
- Track 7 : ZoeJ_46
- Track 8 : Doughnut_47
- Track 9 : Omnicron_45
- Track 10 : Feyre_43
- Track 11 : LilDirt_42, Agent47_43, BananenDer11_43
- Track 12 : Heftyboy_42, Paola_42, Thyatira_44, Miryou_44, Guillsminger_43, Gengar_42, Waterfoul_43, OkiRoe_42, SoSeph_42
- Track 13 : ViviJ_42, Collard_42, Kratio_41, InvictusManeo_42
- Track 14 : Edugator_42, Psycho_43, AlleyCat_43, Larva_43, Dadosky_43
- Track 15 : Rando14_44
- Track 16 : Leston_42

Summary of Final Annotations (See graph section above for start numbers):

The start number called the most often in the published annotations is 5, it was called in 13 of the 36 non-draft genes in the pham.

Genes that call this "Most Annotated" start:

- Collard_42, Gengar_42, Guillsminger_43, Heftyboy_42, InvictusManeo_42, Kratio_41, Miryou_44, OkiRoe_42, Paola_42, SoSeph_42, Thyatira_44, ViviJ_42, Waterfoul_43,

Genes that have the "Most Annotated" start but do not call it:

- Agent47_43, BananenDer11_43, Leston_42, LilDirt_42,

Genes that do not have the "Most Annotated" start:

- AlleyCat_43, BoostSeason_47, Dadosky_43, DismalFunk_47, DismalStressor_47, Doughnut_47, Edugator_42, Feyre_43, Findley_47, Larva_43, Marcoliusprime_47,

Milly_47, Mufasa_47, Omnicron_45, Psycho_43, Rando14_44, Strobilo_47, TM4_42, ZoeJ_46,

Summary by start number:

Start 5:

- Found in 17 of 36 (47.2%) of genes in pham
- Manual Annotations of this start: 13 of 36
- Called 76.5% of time when present
- Phage (with cluster) where this start called: Collard_42 (K5), Gengar_42 (K5), Guillsminger_43 (K5), Heftyboy_42 (K5), InvictusManeo_42 (K5), Kratio_41 (K5), Miryou_44 (K5), OkiRoe_42 (K5), Paola_42 (K5), SoSeph_42 (K5), Thyatira_44 (K5), ViviJ_42 (K5), Waterfoul_43 (K5),

Start 8:

- Found in 25 of 36 (69.4%) of genes in pham
- Manual Annotations of this start: 12 of 36
- Called 48.0% of time when present
- Phage (with cluster) where this start called: Agent47_43 (K5), AlleyCat_43 (K5), BananenDer11_43 (K5), Dadosky_43 (K5), Edugator_42 (K5), Feyre_43 (K5), Larva_43 (K5), Leston_42 (K5), LiIDirt_42 (K5), Omnicron_45 (K5), Psycho_43 (K5), Rando14_44 (K5),

Start 9:

- Found in 1 of 36 (2.8%) of genes in pham
- Manual Annotations of this start: 1 of 36
- Called 100.0% of time when present
- Phage (with cluster) where this start called: TM4_42 (K2),

Start 11:

- Found in 11 of 36 (30.6%) of genes in pham
- Manual Annotations of this start: 5 of 36
- Called 45.5% of time when present
- Phage (with cluster) where this start called: BoostSeason_47 (K2), DismalFunk_47 (K2), Marcoliusprime_47 (K2), Mufasa_47 (K2), Strobilo_47 (K2),

Start 12:

- Found in 11 of 36 (30.6%) of genes in pham
- Manual Annotations of this start: 4 of 36
- Called 36.4% of time when present
- Phage (with cluster) where this start called: DismalStressor_47 (K2), Findley_47 (K2), Milly_47 (K2), ZoeJ_46 (K2),

Start 13:

- Found in 11 of 36 (30.6%) of genes in pham
- Manual Annotations of this start: 1 of 36
- Called 9.1% of time when present
- Phage (with cluster) where this start called: Doughnut_47 (K2),

Summary by clusters:

There are 2 clusters represented in this pham: K2, K5,

Info for manual annotations of cluster K2:

- Start number 9 was manually annotated 1 time for cluster K2.
- Start number 11 was manually annotated 5 times for cluster K2.
- Start number 12 was manually annotated 4 times for cluster K2.
- Start number 13 was manually annotated 1 time for cluster K2.

Info for manual annotations of cluster K5:

- Start number 5 was manually annotated 13 times for cluster K5.
- Start number 8 was manually annotated 12 times for cluster K5.

Gene Information:

Gene: Agent47_43 Start: 34663, Stop: 35010, Start Num: 8

Candidate Starts for Agent47_43:

(Start: 5 @34624 has 13 MA's), (Start: 8 @34663 has 12 MA's), (15, 34729), (16, 34822), (17, 34879), (18, 34885), (19, 34897), (21, 34930), (25, 34990),

Gene: AlleyCat_43 Start: 34517, Stop: 34864, Start Num: 8

Candidate Starts for AlleyCat_43:

(Start: 8 @34517 has 12 MA's), (15, 34583), (16, 34676), (17, 34733), (18, 34739), (19, 34751), (24, 34832), (25, 34844),

Gene: BananenDer11_43 Start: 34624, Stop: 34971, Start Num: 8

Candidate Starts for BananenDer11_43:

(Start: 5 @34585 has 13 MA's), (Start: 8 @34624 has 12 MA's), (15, 34690), (16, 34783), (17, 34840), (18, 34846), (19, 34858), (21, 34891), (25, 34951),

Gene: BoostSeason_47 Start: 36788, Stop: 37108, Start Num: 11

Candidate Starts for BoostSeason_47:

(Start: 11 @36788 has 5 MA's), (Start: 12 @36791 has 4 MA's), (Start: 13 @36800 has 1 MA's), (16, 36905), (18, 36968), (20, 36998), (23, 37049), (25, 37076), (26, 37091), (27, 37097),

Gene: Collard_42 Start: 34585, Stop: 34971, Start Num: 5

Candidate Starts for Collard_42:

(Start: 5 @34585 has 13 MA's), (Start: 8 @34624 has 12 MA's), (15, 34690), (16, 34783), (17, 34840), (18, 34846), (19, 34858), (21, 34891), (25, 34951),

Gene: Dadosky_43 Start: 34519, Stop: 34866, Start Num: 8

Candidate Starts for Dadosky_43:

(Start: 8 @34519 has 12 MA's), (15, 34585), (16, 34678), (17, 34735), (18, 34741), (19, 34753), (24, 34834), (25, 34846),

Gene: DismalFunk_47 Start: 37222, Stop: 37542, Start Num: 11

Candidate Starts for DismalFunk_47:

(Start: 11 @37222 has 5 MA's), (Start: 12 @37225 has 4 MA's), (Start: 13 @37234 has 1 MA's), (16, 37339), (18, 37402), (20, 37432), (25, 37510), (26, 37525), (27, 37531),

Gene: DismalStressor_47 Start: 37225, Stop: 37542, Start Num: 12

Candidate Starts for DismalStressor_47:

(Start: 11 @37222 has 5 MA's), (Start: 12 @37225 has 4 MA's), (Start: 13 @37234 has 1 MA's), (16, 37339), (18, 37402), (20, 37432), (25, 37510), (26, 37525), (27, 37531),

Gene: Doughnut_47 Start: 36847, Stop: 37155, Start Num: 13

Candidate Starts for Doughnut_47:

(Start: 11 @36835 has 5 MA's), (Start: 12 @36838 has 4 MA's), (Start: 13 @36847 has 1 MA's), (16, 36952), (18, 37015), (20, 37045), (23, 37096), (25, 37123), (26, 37138), (27, 37144),

Gene: Edugator_42 Start: 34944, Stop: 35291, Start Num: 8

Candidate Starts for Edugator_42:

(Start: 8 @34944 has 12 MA's), (15, 35010), (16, 35103), (17, 35160), (18, 35166), (19, 35178), (24, 35259), (25, 35271),

Gene: Feyre_43 Start: 35869, Stop: 36216, Start Num: 8

Candidate Starts for Feyre_43:

(Start: 8 @35869 has 12 MA's), (19, 36103), (20, 36121), (21, 36136), (25, 36196),

Gene: Findley_47 Start: 37218, Stop: 37535, Start Num: 12

Candidate Starts for Findley_47:

(Start: 11 @37215 has 5 MA's), (Start: 12 @37218 has 4 MA's), (Start: 13 @37227 has 1 MA's), (16, 37332), (18, 37395), (20, 37425), (25, 37503), (26, 37518), (27, 37524),

Gene: Gengar_42 Start: 34445, Stop: 34831, Start Num: 5

Candidate Starts for Gengar_42:

(Start: 5 @34445 has 13 MA's), (Start: 8 @34484 has 12 MA's), (19, 34718), (20, 34736), (21, 34751), (25, 34811),

Gene: Guillsminger_43 Start: 34416, Stop: 34802, Start Num: 5

Candidate Starts for Guillsminger_43:

(Start: 5 @34416 has 13 MA's), (Start: 8 @34455 has 12 MA's), (19, 34689), (20, 34707), (21, 34722), (25, 34782),

Gene: Heftyboy_42 Start: 34566, Stop: 34952, Start Num: 5

Candidate Starts for Heftyboy_42:

(Start: 5 @34566 has 13 MA's), (Start: 8 @34605 has 12 MA's), (19, 34839), (20, 34857), (21, 34872), (25, 34932),

Gene: InvictusManeo_42 Start: 34628, Stop: 35014, Start Num: 5

Candidate Starts for InvictusManeo_42:

(Start: 5 @34628 has 13 MA's), (Start: 8 @34667 has 12 MA's), (15, 34733), (16, 34826), (17, 34883), (18, 34889), (19, 34901), (21, 34934), (25, 34994),

Gene: Kratio_41 Start: 34179, Stop: 34565, Start Num: 5

Candidate Starts for Kratio_41:

(Start: 5 @34179 has 13 MA's), (Start: 8 @34218 has 12 MA's), (15, 34284), (16, 34377), (17, 34434), (18, 34440), (19, 34452), (21, 34485), (25, 34545),

Gene: Larva_43 Start: 34386, Stop: 34733, Start Num: 8

Candidate Starts for Larva_43:

(Start: 8 @34386 has 12 MA's), (15, 34452), (16, 34545), (17, 34602), (18, 34608), (19, 34620), (24, 34701), (25, 34713),

Gene: Leston_42 Start: 34584, Stop: 34931, Start Num: 8

Candidate Starts for Leston_42:

(Start: 5 @34545 has 13 MA's), (Start: 8 @34584 has 12 MA's), (19, 34818), (20, 34836), (21, 34851), (25, 34911),

Gene: LilDirt_42 Start: 34425, Stop: 34772, Start Num: 8

Candidate Starts for LilDirt_42:

(Start: 5 @34386 has 13 MA's), (Start: 8 @34425 has 12 MA's), (15, 34491), (16, 34584), (17, 34641), (18, 34647), (19, 34659), (21, 34692), (25, 34752),

Gene: Marcoliusprime_47 Start: 37222, Stop: 37542, Start Num: 11

Candidate Starts for Marcoliusprime_47:

(Start: 11 @37222 has 5 MA's), (Start: 12 @37225 has 4 MA's), (Start: 13 @37234 has 1 MA's), (16, 37339), (18, 37402), (20, 37432), (25, 37510), (26, 37525), (27, 37531),

Gene: Milly_47 Start: 37198, Stop: 37515, Start Num: 12

Candidate Starts for Milly_47:

(Start: 11 @37195 has 5 MA's), (Start: 12 @37198 has 4 MA's), (Start: 13 @37207 has 1 MA's), (16, 37312), (18, 37375), (20, 37405), (25, 37483), (26, 37498), (27, 37504),

Gene: Miryou_44 Start: 36748, Stop: 37134, Start Num: 5

Candidate Starts for Miryou_44:

(Start: 5 @36748 has 13 MA's), (Start: 8 @36787 has 12 MA's), (19, 37021), (20, 37039), (21, 37054), (25, 37114),

Gene: Mufasa_47 Start: 36779, Stop: 37099, Start Num: 11

Candidate Starts for Mufasa_47:

(Start: 11 @36779 has 5 MA's), (Start: 12 @36782 has 4 MA's), (Start: 13 @36791 has 1 MA's), (16, 36896), (18, 36959), (20, 36989), (23, 37040), (25, 37067), (26, 37082), (27, 37088),

Gene: OkiRoe_42 Start: 34418, Stop: 34804, Start Num: 5

Candidate Starts for OkiRoe_42:

(Start: 5 @34418 has 13 MA's), (Start: 8 @34457 has 12 MA's), (19, 34691), (20, 34709), (21, 34724), (25, 34784),

Gene: Omnicron_45 Start: 34067, Stop: 34414, Start Num: 8

Candidate Starts for Omnicron_45:

(6, 34046), (Start: 8 @34067 has 12 MA's), (14, 34124), (18, 34289), (19, 34301), (22, 34337), (25, 34394),

Gene: Paola_42 Start: 34416, Stop: 34802, Start Num: 5

Candidate Starts for Paola_42:

(Start: 5 @34416 has 13 MA's), (Start: 8 @34455 has 12 MA's), (19, 34689), (20, 34707), (21, 34722), (25, 34782),

Gene: Psycho_43 Start: 34516, Stop: 34863, Start Num: 8

Candidate Starts for Psycho_43:

(Start: 8 @34516 has 12 MA's), (15, 34582), (16, 34675), (17, 34732), (18, 34738), (19, 34750), (24, 34831), (25, 34843),

Gene: Rando14_44 Start: 33637, Stop: 33984, Start Num: 8

Candidate Starts for Rando14_44:

(1, 33382), (2, 33388), (3, 33391), (4, 33415), (6, 33616), (Start: 8 @33637 has 12 MA's), (14, 33694), (18, 33859), (19, 33871), (25, 33964),

Gene: SoSeph_42 Start: 34566, Stop: 34952, Start Num: 5

Candidate Starts for SoSeph_42:

(Start: 5 @34566 has 13 MA's), (Start: 8 @34605 has 12 MA's), (19, 34839), (20, 34857), (21, 34872), (25, 34932),

Gene: Strobilo_47 Start: 37197, Stop: 37517, Start Num: 11

Candidate Starts for Strobilo_47:

(Start: 11 @37197 has 5 MA's), (Start: 12 @37200 has 4 MA's), (Start: 13 @37209 has 1 MA's), (16, 37314), (18, 37377), (20, 37407), (25, 37485), (26, 37500), (27, 37506),

Gene: TM4_42 Start: 31544, Stop: 31900, Start Num: 9

Candidate Starts for TM4_42:

(Start: 9 @31544 has 1 MA's), (10, 31547), (Start: 11 @31571 has 5 MA's), (Start: 12 @31574 has 4 MA's), (Start: 13 @31583 has 1 MA's), (16, 31688), (18, 31751), (20, 31781), (23, 31832), (25, 31859), (27, 31889),

Gene: Thyatira_44 Start: 36765, Stop: 37151, Start Num: 5

Candidate Starts for Thyatira_44:

(Start: 5 @36765 has 13 MA's), (Start: 8 @36804 has 12 MA's), (19, 37038), (20, 37056), (21, 37071), (25, 37131),

Gene: ViviJ_42 Start: 34385, Stop: 34771, Start Num: 5

Candidate Starts for ViviJ_42:

(Start: 5 @34385 has 13 MA's), (Start: 8 @34424 has 12 MA's), (15, 34490), (16, 34583), (17, 34640), (18, 34646), (19, 34658), (21, 34691), (25, 34751),

Gene: Waterfoul_43 Start: 34659, Stop: 35045, Start Num: 5

Candidate Starts for Waterfoul_43:

(Start: 5 @34659 has 13 MA's), (Start: 8 @34698 has 12 MA's), (19, 34932), (20, 34950), (21, 34965), (25, 35025),

Gene: ZoeJ_46 Start: 36666, Stop: 36992, Start Num: 12

Candidate Starts for ZoeJ_46:

(7, 36615), (Start: 11 @36663 has 5 MA's), (Start: 12 @36666 has 4 MA's), (Start: 13 @36675 has 1 MA's), (16, 36780), (18, 36843), (20, 36873), (25, 36951), (27, 36981),