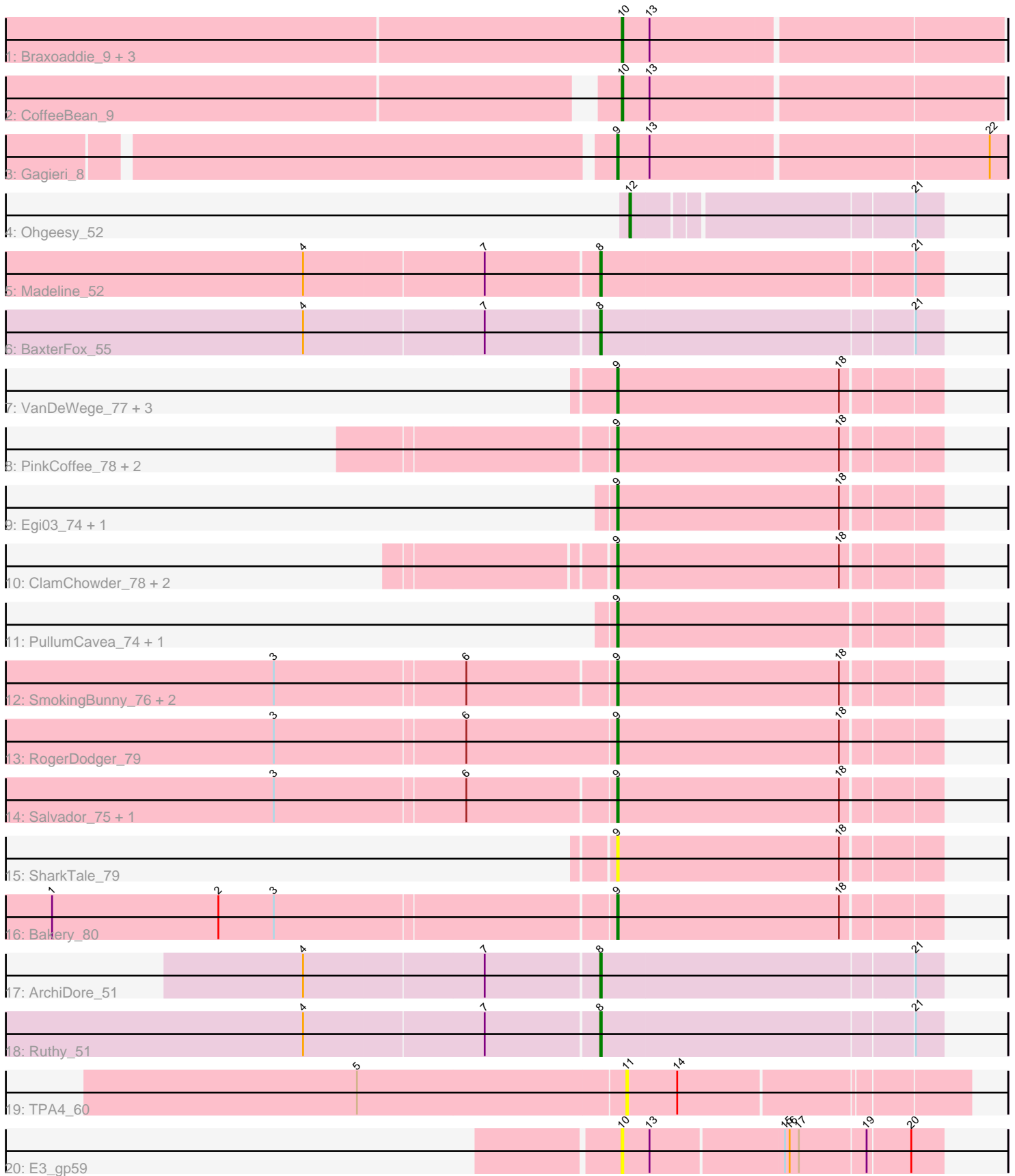


Pham 308956



Note: Tracks are now grouped by subcluster and scaled. Switching in subcluster is indicated by changes in track color. Track scale is now set by default to display the region 30 bp upstream of start 1 to 30 bp downstream of the last possible start. If this default region is judged to be packed too tightly with annotated starts, the track will be further scaled to only show that region of the ORF with annotated starts. This action will be indicated by adding "Zoomed" to the title. For starts, yellow indicates the location of called starts comprised solely of Glimmer/GeneMark auto-annotations, green indicates the location of called starts with at least 1 manual gene annotation.

Pham 308956 Report

This analysis was run 06/27/26 on database version 652.

Pham number 308956 has 35 members, 5 are drafts.

Phages represented in each track:

- Track 1 : Braxoaddie_9, Polyyuki_9, Maselop_9, Apiary_9
- Track 2 : CoffeeBean_9
- Track 3 : Gagieri_8
- Track 4 : Ohgeesy_52
- Track 5 : Madeline_52
- Track 6 : BaxterFox_55
- Track 7 : VanDeWege_77, JohnPork_77, Portcullis_76, Arri_76
- Track 8 : PinkCoffee_78, Fireball_78, Danyall_77
- Track 9 : Egi03_74, Shinji_74
- Track 10 : ClamChowder_78, Fugax_79, Barb_78
- Track 11 : PullumCavea_74, Phlop_73
- Track 12 : SmokingBunny_76, Togo_75, Twister6_76
- Track 13 : RogerDodger_79
- Track 14 : Salvador_75, Evamon_75
- Track 15 : SharkTale_79
- Track 16 : Bakery_80
- Track 17 : ArchiDore_51
- Track 18 : Ruthy_51
- Track 19 : TPA4_60
- Track 20 : E3_gp59

Summary of Final Annotations (See graph section above for start numbers):

The start number called the most often in the published annotations is 9, it was called in 20 of the 30 non-draft genes in the pham.

Genes that call this "Most Annotated" start:

• Arri_76, Bakery_80, Barb_78, ClamChowder_78, Danyall_77, Egi03_74, Evamon_75, Fireball_78, Fugax_79, Gagieri_8, JohnPork_77, Phlop_73, PinkCoffee_78, Portcullis_76, PullumCavea_74, RogerDodger_79, Salvador_75, SharkTale_79, Shinji_74, SmokingBunny_76, Togo_75, Twister6_76, VanDeWege_77,

Genes that have the "Most Annotated" start but do not call it:

-

Genes that do not have the "Most Annotated" start:

- Apiary_9, ArchiDore_51, BaxterFox_55, Braxoaddie_9, CoffeeBean_9, E3_gp59, Madeline_52, Maselop_9, Ohgeesy_52, Polyuyuki_9, Ruthy_51, TPA4_60,

Summary by start number:

Start 8:

- Found in 4 of 35 (11.4%) of genes in pham
- Manual Annotations of this start: 4 of 30
- Called 100.0% of time when present
- Phage (with cluster) where this start called: ArchiDore_51 (DW), BaxterFox_55 (CZ3), Madeline_52 (CZ1), Ruthy_51 (DW),

Start 9:

- Found in 23 of 35 (65.7%) of genes in pham
- Manual Annotations of this start: 20 of 30
- Called 100.0% of time when present
- Phage (with cluster) where this start called: Arri_76 (DC1), Bakery_80 (DC1), Barb_78 (DC1), ClamChowder_78 (DC1), Danyall_77 (DC1), Egi03_74 (DC1), Evamon_75 (DC1), Fireball_78 (DC1), Fugax_79 (DC1), Gagieri_8 (CR6), JohnPork_77 (DC1), Phlop_73 (DC1), PinkCoffee_78 (DC1), Portcullis_76 (DC1), PullumCavea_74 (DC1), RogerDodger_79 (DC1), Salvador_75 (DC1), SharkTale_79 (DC1), Shinji_74 (DC1), SmokingBunny_76 (DC1), Togo_75 (DC1), Twister6_76 (DC1), VanDeWege_77 (DC1),

Start 10:

- Found in 6 of 35 (17.1%) of genes in pham
- Manual Annotations of this start: 5 of 30
- Called 100.0% of time when present
- Phage (with cluster) where this start called: Apiary_9 (CR6), Braxoaddie_9 (CR6), CoffeeBean_9 (CR6), E3_gp59 (singleton), Maselop_9 (CR6), Polyuyuki_9 (CR6),

Start 11:

- Found in 1 of 35 (2.9%) of genes in pham
- No Manual Annotations of this start.
- Called 100.0% of time when present
- Phage (with cluster) where this start called: TPA4_60 (singleton),

Start 12:

- Found in 1 of 35 (2.9%) of genes in pham
- Manual Annotations of this start: 1 of 30
- Called 100.0% of time when present
- Phage (with cluster) where this start called: Ohgeesy_52 (CZ),

Summary by clusters:

There are 7 clusters represented in this pham: singleton, CR6, CZ3, CZ1, CZ, DW, DC1,

Info for manual annotations of cluster CR6:

- Start number 9 was manually annotated 1 time for cluster CR6.

- Start number 10 was manually annotated 5 times for cluster CR6.

Info for manual annotations of cluster CZ:

- Start number 12 was manually annotated 1 time for cluster CZ.

Info for manual annotations of cluster CZ1:

- Start number 8 was manually annotated 1 time for cluster CZ1.

Info for manual annotations of cluster CZ3:

- Start number 8 was manually annotated 1 time for cluster CZ3.

Info for manual annotations of cluster DC1:

- Start number 9 was manually annotated 19 times for cluster DC1.

Info for manual annotations of cluster DW:

- Start number 8 was manually annotated 2 times for cluster DW.

Gene Information:

Gene: Apiary_9 Start: 5227, Stop: 5466, Start Num: 10

Candidate Starts for Apiary_9:

(Start: 10 @5227 has 5 MA's), (13, 5245),

Gene: ArchiDore_51 Start: 39232, Stop: 39444, Start Num: 8

Candidate Starts for ArchiDore_51:

(4, 39046), (7, 39160), (Start: 8 @39232 has 4 MA's), (21, 39427),

Gene: Arri_76 Start: 51272, Stop: 51475, Start Num: 9

Candidate Starts for Arri_76:

(Start: 9 @51272 has 20 MA's), (18, 51416),

Gene: Bakery_80 Start: 53540, Stop: 53743, Start Num: 9

Candidate Starts for Bakery_80:

(1, 53183), (2, 53291), (3, 53327), (Start: 9 @53540 has 20 MA's), (18, 53684),

Gene: Barb_78 Start: 51382, Stop: 51585, Start Num: 9

Candidate Starts for Barb_78:

(Start: 9 @51382 has 20 MA's), (18, 51526),

Gene: BaxterFox_55 Start: 40002, Stop: 40214, Start Num: 8

Candidate Starts for BaxterFox_55:

(4, 39816), (7, 39930), (Start: 8 @40002 has 4 MA's), (21, 40197),

Gene: Braxoaddie_9 Start: 5236, Stop: 5475, Start Num: 10

Candidate Starts for Braxoaddie_9:

(Start: 10 @5236 has 5 MA's), (13, 5254),

Gene: ClamChowder_78 Start: 51382, Stop: 51585, Start Num: 9

Candidate Starts for ClamChowder_78:

(Start: 9 @51382 has 20 MA's), (18, 51526),

Gene: CoffeeBean_9 Start: 5151, Stop: 5390, Start Num: 10
Candidate Starts for CoffeeBean_9:
(Start: 10 @5151 has 5 MA's), (13, 5169),

Gene: Danyall_77 Start: 51474, Stop: 51677, Start Num: 9
Candidate Starts for Danyall_77:
(Start: 9 @51474 has 20 MA's), (18, 51618),

Gene: E3_gp59 Start: 23775, Stop: 23975, Start Num: 10
Candidate Starts for E3_gp59:
(Start: 10 @23775 has 5 MA's), (13, 23793), (15, 23877), (16, 23880), (17, 23886), (19, 23928), (20, 23955),

Gene: Egi03_74 Start: 50627, Stop: 50830, Start Num: 9
Candidate Starts for Egi03_74:
(Start: 9 @50627 has 20 MA's), (18, 50771),

Gene: Evamon_75 Start: 51007, Stop: 51210, Start Num: 9
Candidate Starts for Evamon_75:
(3, 50794), (6, 50914), (Start: 9 @51007 has 20 MA's), (18, 51151),

Gene: Fireball_78 Start: 51678, Stop: 51881, Start Num: 9
Candidate Starts for Fireball_78:
(Start: 9 @51678 has 20 MA's), (18, 51822),

Gene: Fugax_79 Start: 51374, Stop: 51577, Start Num: 9
Candidate Starts for Fugax_79:
(Start: 9 @51374 has 20 MA's), (18, 51518),

Gene: Gagieri_8 Start: 4726, Stop: 4971, Start Num: 9
Candidate Starts for Gagieri_8:
(Start: 9 @4726 has 20 MA's), (13, 4747), (22, 4960),

Gene: JohnPork_77 Start: 50978, Stop: 51181, Start Num: 9
Candidate Starts for JohnPork_77:
(Start: 9 @50978 has 20 MA's), (18, 51122),

Gene: Madeline_52 Start: 39132, Stop: 39344, Start Num: 8
Candidate Starts for Madeline_52:
(4, 38946), (7, 39060), (Start: 8 @39132 has 4 MA's), (21, 39327),

Gene: Maselop_9 Start: 5227, Stop: 5466, Start Num: 10
Candidate Starts for Maselop_9:
(Start: 10 @5227 has 5 MA's), (13, 5245),

Gene: Ohgeesy_52 Start: 38373, Stop: 38558, Start Num: 12
Candidate Starts for Ohgeesy_52:
(Start: 12 @38373 has 1 MA's), (21, 38541),

Gene: Phlop_73 Start: 50891, Stop: 51094, Start Num: 9
Candidate Starts for Phlop_73:
(Start: 9 @50891 has 20 MA's),

Gene: PinkCoffee_78 Start: 51515, Stop: 51718, Start Num: 9
Candidate Starts for PinkCoffee_78:
(Start: 9 @51515 has 20 MA's), (18, 51659),

Gene: Polyuyki_9 Start: 5238, Stop: 5477, Start Num: 10
Candidate Starts for Polyuyki_9:
(Start: 10 @5238 has 5 MA's), (13, 5256),

Gene: Portcullis_76 Start: 50978, Stop: 51181, Start Num: 9
Candidate Starts for Portcullis_76:
(Start: 9 @50978 has 20 MA's), (18, 51122),

Gene: PullumCavea_74 Start: 51068, Stop: 51271, Start Num: 9
Candidate Starts for PullumCavea_74:
(Start: 9 @51068 has 20 MA's),

Gene: RogerDodger_79 Start: 52166, Stop: 52369, Start Num: 9
Candidate Starts for RogerDodger_79:
(3, 51950), (6, 52070), (Start: 9 @52166 has 20 MA's), (18, 52310),

Gene: Ruthy_51 Start: 38798, Stop: 39010, Start Num: 8
Candidate Starts for Ruthy_51:
(4, 38612), (7, 38726), (Start: 8 @38798 has 4 MA's), (21, 38993),

Gene: Salvador_75 Start: 51005, Stop: 51208, Start Num: 9
Candidate Starts for Salvador_75:
(3, 50792), (6, 50912), (Start: 9 @51005 has 20 MA's), (18, 51149),

Gene: SharkTale_79 Start: 53609, Stop: 53812, Start Num: 9
Candidate Starts for SharkTale_79:
(Start: 9 @53609 has 20 MA's), (18, 53753),

Gene: Shinji_74 Start: 50670, Stop: 50873, Start Num: 9
Candidate Starts for Shinji_74:
(Start: 9 @50670 has 20 MA's), (18, 50814),

Gene: SmokingBunny_76 Start: 52001, Stop: 52204, Start Num: 9
Candidate Starts for SmokingBunny_76:
(3, 51788), (6, 51908), (Start: 9 @52001 has 20 MA's), (18, 52145),

Gene: TPA4_60 Start: 42608, Stop: 42820, Start Num: 11
Candidate Starts for TPA4_60:
(5, 42437), (11, 42608), (14, 42641),

Gene: Togo_75 Start: 52001, Stop: 52204, Start Num: 9
Candidate Starts for Togo_75:
(3, 51788), (6, 51908), (Start: 9 @52001 has 20 MA's), (18, 52145),

Gene: Twister6_76 Start: 50350, Stop: 50553, Start Num: 9
Candidate Starts for Twister6_76:
(3, 50137), (6, 50257), (Start: 9 @50350 has 20 MA's), (18, 50494),

Gene: VanDeWege_77 Start: 51335, Stop: 51538, Start Num: 9

Candidate Starts for VanDeWege_77:
(Start: 9 @51335 has 20 MA's), (18, 51479),