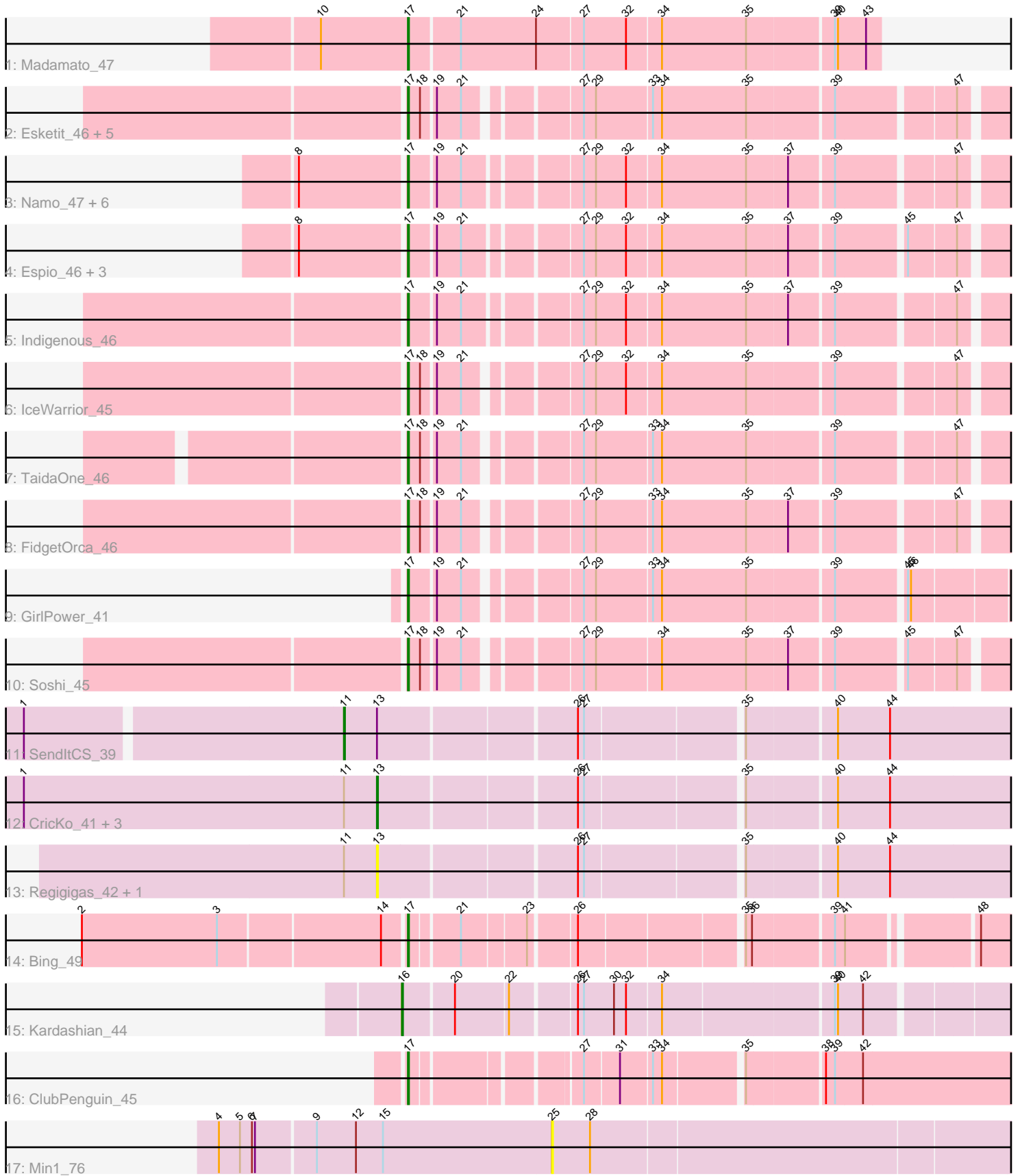


Pham 308963



Note: Tracks are now grouped by subcluster and scaled. Switching in subcluster is indicated by changes in track color. Track scale is now set by default to display the region 30 bp upstream of start 1 to 30 bp downstream of the last possible start. If this default region is judged to be packed too tightly with annotated starts, the track will be further scaled to only show that region of the ORF with annotated starts. This action will be indicated by adding "Zoomed" to the title. For starts, yellow indicates the location of called starts comprised solely of Glimmer/GeneMark auto-annotations, green indicates the location of called starts with at least 1 manual gene annotation.

Pham 308963 Report

This analysis was run 06/27/26 on database version 652.

Pham number 308963 has 35 members, 3 are drafts.

Phages represented in each track:

- Track 1 : Madamato_47
- Track 2 : Esketit_46, Hoshi_45, OlympicHelado_46, Spectropatronm_46, CherryBlossom_46, TonyStarch_45
- Track 3 : Namu_47, Jaylociraptor_46, TieDye_45, Rima_47, Meibysrarus_44, HazuAndZazu_45, Maya_46
- Track 4 : Espio_46, Popy_46, FrodoSwaggins_46, DrGrey_45
- Track 5 : Indigenous_46
- Track 6 : IceWarrior_45
- Track 7 : TaidaOne_46
- Track 8 : FidgetOrca_46
- Track 9 : GirlPower_41
- Track 10 : Soshi_45
- Track 11 : SendItCS_39
- Track 12 : CricKo_41, Miek_40, Thiqqums_41, Rainydai_40
- Track 13 : Regigigas_42, FromIndy_41
- Track 14 : Bing_49
- Track 15 : Kardashian_44
- Track 16 : ClubPenguin_45
- Track 17 : Min1_76

Summary of Final Annotations (See graph section above for start numbers):

The start number called the most often in the published annotations is 17, it was called in 26 of the 32 non-draft genes in the pham.

Genes that call this "Most Annotated" start:

- Bing_49, CherryBlossom_46, ClubPenguin_45, DrGrey_45, Esketit_46, Espio_46, FidgetOrca_46, FrodoSwaggins_46, GirlPower_41, HazuAndZazu_45, Hoshi_45, IceWarrior_45, Indigenous_46, Jaylociraptor_46, Madamato_47, Maya_46, Meibysrarus_44, Namu_47, OlympicHelado_46, Popy_46, Rima_47, Soshi_45, Spectropatronm_46, TaidaOne_46, TieDye_45, TonyStarch_45,

Genes that have the "Most Annotated" start but do not call it:

-

Genes that do not have the "Most Annotated" start:

- CricKo_41, FromIndy_41, Kardashian_44, Miek_40, Min1_76, Rainydai_40, Regigigas_42, SendItCS_39, Thiqqums_41,

Summary by start number:

Start 11:

- Found in 7 of 35 (20.0%) of genes in pham
- Manual Annotations of this start: 1 of 32
- Called 14.3% of time when present
- Phage (with cluster) where this start called: SendItCS_39 (BI4),

Start 13:

- Found in 7 of 35 (20.0%) of genes in pham
- Manual Annotations of this start: 4 of 32
- Called 85.7% of time when present
- Phage (with cluster) where this start called: CricKo_41 (BI4), FromIndy_41 (BI4), Miek_40 (BI4), Rainydai_40 (BI4), Regigigas_42 (BI4), Thiqqums_41 (BI4),

Start 16:

- Found in 1 of 35 (2.9%) of genes in pham
- Manual Annotations of this start: 1 of 32
- Called 100.0% of time when present
- Phage (with cluster) where this start called: Kardashian_44 (BI6),

Start 17:

- Found in 26 of 35 (74.3%) of genes in pham
- Manual Annotations of this start: 26 of 32
- Called 100.0% of time when present
- Phage (with cluster) where this start called: Bing_49 (BI5), CherryBlossom_46 (BI1), ClubPenguin_45 (BI7), DrGrey_45 (BI1), Esketit_46 (BI1), Espio_46 (BI1), FidgetOrca_46 (BI1), FrodoSwaggins_46 (BI1), GirlPower_41 (BI1), HazuAndZazu_45 (BI1), Hoshi_45 (BI1), IceWarrior_45 (BI1), Indigenous_46 (BI1), Jaylociraptor_46 (BI1), Madamato_47 (BI1), Maya_46 (BI1), Meibysrarus_44 (BI1), Namu_47 (BI1), OlympicHelado_46 (BI1), Popy_46 (BI1), Rima_47 (BI1), Soshi_45 (BI1), Spectropatronm_46 (BI1), TaidaOne_46 (BI1), TieDye_45 (BI1), TonyStarch_45 (BI1),

Start 25:

- Found in 1 of 35 (2.9%) of genes in pham
- No Manual Annotations of this start.
- Called 100.0% of time when present
- Phage (with cluster) where this start called: Min1_76 (singleton),

Summary by clusters:

There are 6 clusters represented in this pham: singleton, BI6, BI7, BI4, BI5, BI1,

Info for manual annotations of cluster BI1:

- Start number 17 was manually annotated 24 times for cluster BI1.

Info for manual annotations of cluster BI4:

- Start number 11 was manually annotated 1 time for cluster BI4.
- Start number 13 was manually annotated 4 times for cluster BI4.

Info for manual annotations of cluster BI5:

- Start number 17 was manually annotated 1 time for cluster BI5.

Info for manual annotations of cluster BI6:

- Start number 16 was manually annotated 1 time for cluster BI6.

Info for manual annotations of cluster BI7:

- Start number 17 was manually annotated 1 time for cluster BI7.

Gene Information:

Gene: Bing_49 Start: 31363, Stop: 31917, Start Num: 17

Candidate Starts for Bing_49:

(2, 31051), (3, 31186), (14, 31342), (Start: 17 @31363 has 26 MA's), (21, 31408), (23, 31468), (26, 31510), (35, 31660), (36, 31666), (39, 31741), (41, 31750), (48, 31864),

Gene: CherryBlossom_46 Start: 30705, Stop: 31265, Start Num: 17

Candidate Starts for CherryBlossom_46:

(Start: 17 @30705 has 26 MA's), (18, 30717), (19, 30729), (21, 30753), (27, 30849), (29, 30861), (33, 30915), (34, 30924), (35, 31008), (39, 31089), (47, 31197),

Gene: ClubPenguin_45 Start: 30100, Stop: 30660, Start Num: 17

Candidate Starts for ClubPenguin_45:

(Start: 17 @30100 has 26 MA's), (27, 30247), (31, 30280), (33, 30310), (34, 30319), (35, 30391), (38, 30463), (39, 30472), (42, 30499),

Gene: CricKo_41 Start: 28563, Stop: 29183, Start Num: 13

Candidate Starts for CricKo_41:

(1, 28212), (Start: 11 @28530 has 1 MA's), (Start: 13 @28563 has 4 MA's), (26, 28749), (27, 28755), (35, 28902), (40, 28986), (44, 29037),

Gene: DrGrey_45 Start: 31045, Stop: 31611, Start Num: 17

Candidate Starts for DrGrey_45:

(8, 30943), (Start: 17 @31045 has 26 MA's), (19, 31069), (21, 31093), (27, 31195), (29, 31207), (32, 31237), (34, 31270), (35, 31354), (37, 31393), (39, 31435), (45, 31498), (47, 31543),

Gene: Esketit_46 Start: 30783, Stop: 31343, Start Num: 17

Candidate Starts for Esketit_46:

(Start: 17 @30783 has 26 MA's), (18, 30795), (19, 30807), (21, 30831), (27, 30927), (29, 30939), (33, 30993), (34, 31002), (35, 31086), (39, 31167), (47, 31275),

Gene: Espio_46 Start: 31440, Stop: 32006, Start Num: 17

Candidate Starts for Espio_46:

(8, 31338), (Start: 17 @31440 has 26 MA's), (19, 31464), (21, 31488), (27, 31590), (29, 31602), (32, 31632), (34, 31665), (35, 31749), (37, 31788), (39, 31830), (45, 31893), (47, 31938),

Gene: FidgetOrca_46 Start: 30788, Stop: 31348, Start Num: 17

Candidate Starts for FidgetOrca_46:

(Start: 17 @30788 has 26 MA's), (18, 30800), (19, 30812), (21, 30836), (27, 30932), (29, 30944), (33, 30998), (34, 31007), (35, 31091), (37, 31130), (39, 31172), (47, 31280),

Gene: FrodoSwaggins_46 Start: 31439, Stop: 32005, Start Num: 17

Candidate Starts for FrodoSwaggins_46:

(8, 31337), (Start: 17 @31439 has 26 MA's), (19, 31463), (21, 31487), (27, 31589), (29, 31601), (32, 31631), (34, 31664), (35, 31748), (37, 31787), (39, 31829), (45, 31892), (47, 31937),

Gene: FromIndy_41 Start: 28167, Stop: 28787, Start Num: 13

Candidate Starts for FromIndy_41:

(Start: 11 @28134 has 1 MA's), (Start: 13 @28167 has 4 MA's), (26, 28353), (27, 28359), (35, 28506), (40, 28590), (44, 28641),

Gene: GirlPower_41 Start: 31227, Stop: 31793, Start Num: 17

Candidate Starts for GirlPower_41:

(Start: 17 @31227 has 26 MA's), (19, 31251), (21, 31275), (27, 31371), (29, 31383), (33, 31437), (34, 31446), (35, 31530), (39, 31611), (45, 31674), (46, 31677),

Gene: HazuAndZazu_45 Start: 31041, Stop: 31607, Start Num: 17

Candidate Starts for HazuAndZazu_45:

(8, 30939), (Start: 17 @31041 has 26 MA's), (19, 31065), (21, 31089), (27, 31191), (29, 31203), (32, 31233), (34, 31266), (35, 31350), (37, 31389), (39, 31431), (47, 31539),

Gene: Hoshi_45 Start: 30380, Stop: 30940, Start Num: 17

Candidate Starts for Hoshi_45:

(Start: 17 @30380 has 26 MA's), (18, 30392), (19, 30404), (21, 30428), (27, 30524), (29, 30536), (33, 30590), (34, 30599), (35, 30683), (39, 30764), (47, 30872),

Gene: IceWarrior_45 Start: 30483, Stop: 31043, Start Num: 17

Candidate Starts for IceWarrior_45:

(Start: 17 @30483 has 26 MA's), (18, 30495), (19, 30507), (21, 30531), (27, 30627), (29, 30639), (32, 30669), (34, 30702), (35, 30786), (39, 30867), (47, 30975),

Gene: Indigenous_46 Start: 30783, Stop: 31349, Start Num: 17

Candidate Starts for Indigenous_46:

(Start: 17 @30783 has 26 MA's), (19, 30807), (21, 30831), (27, 30933), (29, 30945), (32, 30975), (34, 31008), (35, 31092), (37, 31131), (39, 31173), (47, 31281),

Gene: Jaylociraptor_46 Start: 30782, Stop: 31348, Start Num: 17

Candidate Starts for Jaylociraptor_46:

(8, 30680), (Start: 17 @30782 has 26 MA's), (19, 30806), (21, 30830), (27, 30932), (29, 30944), (32, 30974), (34, 31007), (35, 31091), (37, 31130), (39, 31172), (47, 31280),

Gene: Kardashian_44 Start: 30811, Stop: 31389, Start Num: 16

Candidate Starts for Kardashian_44:

(Start: 16 @30811 has 1 MA's), (20, 30859), (22, 30910), (26, 30970), (27, 30976), (30, 31006), (32, 31018), (34, 31051), (39, 31213), (40, 31216), (42, 31240),

Gene: Madamoto_47 Start: 30942, Stop: 31394, Start Num: 17

Candidate Starts for Madamoto_47:

(10, 30855), (Start: 17 @30942 has 26 MA's), (21, 30990), (24, 31065), (27, 31110), (32, 31152), (34, 31185), (35, 31269), (39, 31350), (40, 31353), (43, 31380),

Gene: Maya_46 Start: 30796, Stop: 31362, Start Num: 17

Candidate Starts for Maya_46:

(8, 30694), (Start: 17 @30796 has 26 MA's), (19, 30820), (21, 30844), (27, 30946), (29, 30958), (32, 30988), (34, 31021), (35, 31105), (37, 31144), (39, 31186), (47, 31294),

Gene: Meibysrarus_44 Start: 30159, Stop: 30725, Start Num: 17

Candidate Starts for Meibysrarus_44:

(8, 30057), (Start: 17 @30159 has 26 MA's), (19, 30183), (21, 30207), (27, 30309), (29, 30321), (32, 30351), (34, 30384), (35, 30468), (37, 30507), (39, 30549), (47, 30657),

Gene: Miek_40 Start: 28179, Stop: 28799, Start Num: 13

Candidate Starts for Miek_40:

(1, 27828), (Start: 11 @28146 has 1 MA's), (Start: 13 @28179 has 4 MA's), (26, 28365), (27, 28371), (35, 28518), (40, 28602), (44, 28653),

Gene: Min1_76 Start: 45786, Stop: 45313, Start Num: 25

Candidate Starts for Min1_76:

(4, 46113), (5, 46092), (6, 46080), (7, 46077), (9, 46020), (12, 45981), (15, 45954), (25, 45786), (28, 45750),

Gene: Namo_47 Start: 31127, Stop: 31693, Start Num: 17

Candidate Starts for Namo_47:

(8, 31025), (Start: 17 @31127 has 26 MA's), (19, 31151), (21, 31175), (27, 31277), (29, 31289), (32, 31319), (34, 31352), (35, 31436), (37, 31475), (39, 31517), (47, 31625),

Gene: OlympicHelado_46 Start: 30804, Stop: 31364, Start Num: 17

Candidate Starts for OlympicHelado_46:

(Start: 17 @30804 has 26 MA's), (18, 30816), (19, 30828), (21, 30852), (27, 30948), (29, 30960), (33, 31014), (34, 31023), (35, 31107), (39, 31188), (47, 31296),

Gene: Popy_46 Start: 31439, Stop: 32005, Start Num: 17

Candidate Starts for Popy_46:

(8, 31337), (Start: 17 @31439 has 26 MA's), (19, 31463), (21, 31487), (27, 31589), (29, 31601), (32, 31631), (34, 31664), (35, 31748), (37, 31787), (39, 31829), (45, 31892), (47, 31937),

Gene: Rainydai_40 Start: 28563, Stop: 29183, Start Num: 13

Candidate Starts for Rainydai_40:

(1, 28212), (Start: 11 @28530 has 1 MA's), (Start: 13 @28563 has 4 MA's), (26, 28749), (27, 28755), (35, 28902), (40, 28986), (44, 29037),

Gene: Regigigas_42 Start: 28564, Stop: 29184, Start Num: 13

Candidate Starts for Regigigas_42:

(Start: 11 @28531 has 1 MA's), (Start: 13 @28564 has 4 MA's), (26, 28750), (27, 28756), (35, 28903), (40, 28987), (44, 29038),

Gene: Rima_47 Start: 31127, Stop: 31693, Start Num: 17

Candidate Starts for Rima_47:

(8, 31025), (Start: 17 @31127 has 26 MA's), (19, 31151), (21, 31175), (27, 31277), (29, 31289), (32, 31319), (34, 31352), (35, 31436), (37, 31475), (39, 31517), (47, 31625),

Gene: SendItCS_39 Start: 28134, Stop: 28787, Start Num: 11

Candidate Starts for SendItCS_39:

(1, 27828), (Start: 11 @28134 has 1 MA's), (Start: 13 @28167 has 4 MA's), (26, 28353), (27, 28359), (35, 28506), (40, 28590), (44, 28641),

Gene: Soshi_45 Start: 31051, Stop: 31611, Start Num: 17

Candidate Starts for Soshi_45:

(Start: 17 @31051 has 26 MA's), (18, 31063), (19, 31075), (21, 31099), (27, 31195), (29, 31207), (34, 31270), (35, 31354), (37, 31393), (39, 31435), (45, 31498), (47, 31543),

Gene: Spectropatronm_46 Start: 30783, Stop: 31343, Start Num: 17

Candidate Starts for Spectropatronm_46:

(Start: 17 @30783 has 26 MA's), (18, 30795), (19, 30807), (21, 30831), (27, 30927), (29, 30939), (33, 30993), (34, 31002), (35, 31086), (39, 31167), (47, 31275),

Gene: TaidaOne_46 Start: 31321, Stop: 31881, Start Num: 17

Candidate Starts for TaidaOne_46:

(Start: 17 @31321 has 26 MA's), (18, 31333), (19, 31345), (21, 31369), (27, 31465), (29, 31477), (33, 31531), (34, 31540), (35, 31624), (39, 31705), (47, 31813),

Gene: Thiqqums_41 Start: 28563, Stop: 29183, Start Num: 13

Candidate Starts for Thiqqums_41:

(1, 28212), (Start: 11 @28530 has 1 MA's), (Start: 13 @28563 has 4 MA's), (26, 28749), (27, 28755), (35, 28902), (40, 28986), (44, 29037),

Gene: TieDye_45 Start: 30382, Stop: 30948, Start Num: 17

Candidate Starts for TieDye_45:

(8, 30280), (Start: 17 @30382 has 26 MA's), (19, 30406), (21, 30430), (27, 30532), (29, 30544), (32, 30574), (34, 30607), (35, 30691), (37, 30730), (39, 30772), (47, 30880),

Gene: TonyStarch_45 Start: 30485, Stop: 31045, Start Num: 17

Candidate Starts for TonyStarch_45:

(Start: 17 @30485 has 26 MA's), (18, 30497), (19, 30509), (21, 30533), (27, 30629), (29, 30641), (33, 30695), (34, 30704), (35, 30788), (39, 30869), (47, 30977),