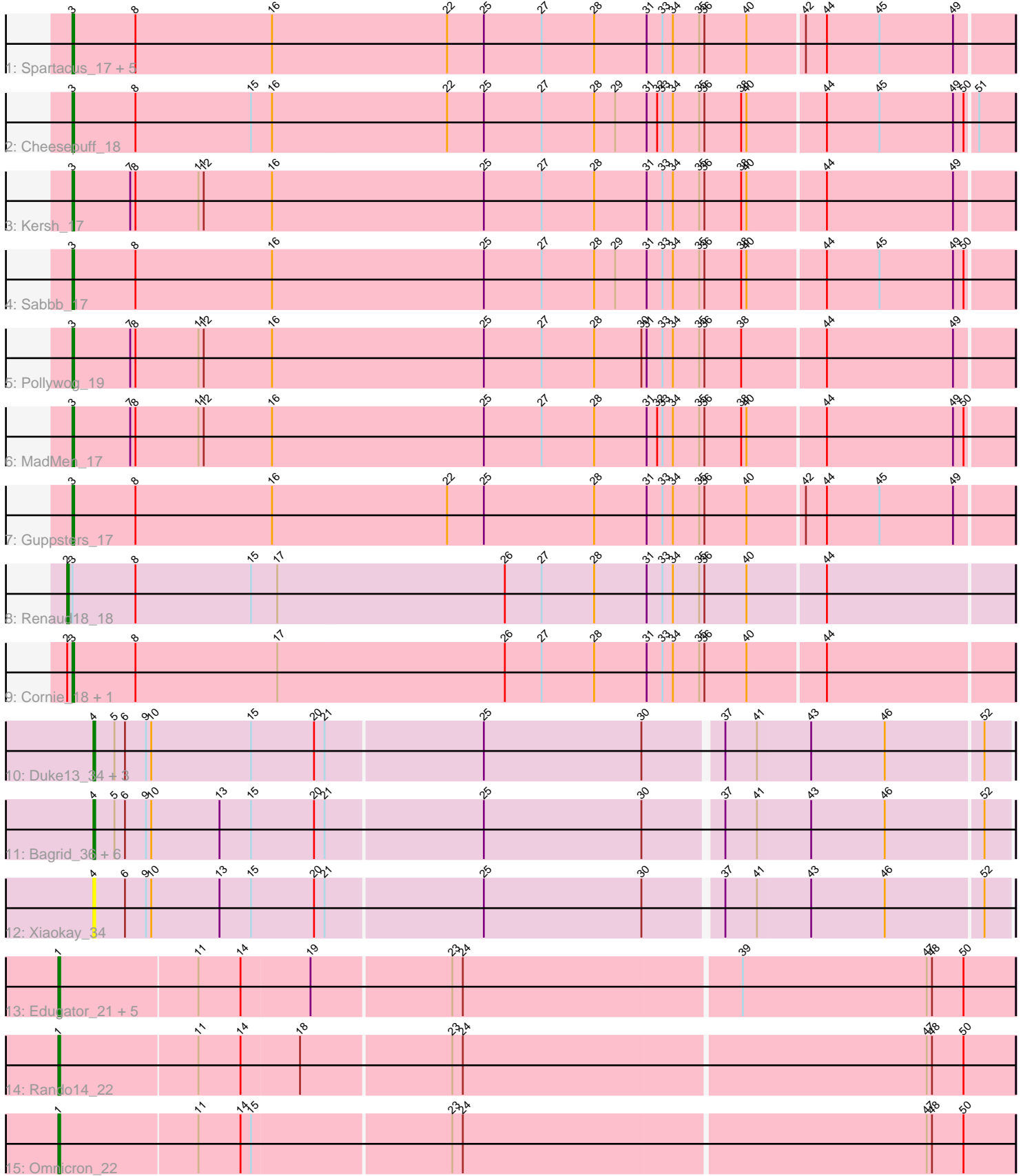


Pham 308967



Note: Tracks are now grouped by subcluster and scaled. Switching in subcluster is indicated by changes in track color. Track scale is now set by default to display the region 30 bp upstream of start 1 to 30 bp downstream of the last possible start. If this default region is judged to be packed too tightly with annotated starts, the track will be further scaled to only show that region of the ORF with annotated starts. This action will be indicated by adding "Zoomed" to the title. For starts, yellow indicates the location of called starts comprised solely of Glimmer/GeneMark auto-annotations, green indicates the location of called starts with at least 1 manual gene annotation.

Pham 308967 Report

This analysis was run 06/27/26 on database version 652.

Pham number 308967 has 35 members, 6 are drafts.

Phages represented in each track:

- Track 1 : Spartacus_17, Polo2Bam_18, SeaLumen_17, NewHope4_17, LunaBlu_17, Enzomatic_18
- Track 2 : Cheesepuff_18
- Track 3 : Kersh_17
- Track 4 : Sabbb_17
- Track 5 : Pollywog_19
- Track 6 : MadMen_17
- Track 7 : Guppsters_17
- Track 8 : Renaud18_18
- Track 9 : Cornie_18, ThetaBob_18
- Track 10 : Duke13_34, HokkenD_32, EricMillard_37, Beem_37
- Track 11 : Bagrid_36, NihilNomen_36, Yeet_35, Pound_38, Dallas_38, Halley_37, JuicyJay_39
- Track 12 : Xiaokay_34
- Track 13 : Edugator_21, AlleyCat_22, Neighly_22, Psycho_22, Larva_22, Dadosky_22
- Track 14 : Rando14_22
- Track 15 : Omnicron_22

Summary of Final Annotations (See graph section above for start numbers):

The start number called the most often in the published annotations is 3, it was called in 11 of the 29 non-draft genes in the pham.

Genes that call this "Most Annotated" start:

- Cheesepuff_18, Cornie_18, Enzomatic_18, Guppsters_17, Kersh_17, LunaBlu_17, MadMen_17, NewHope4_17, Pollywog_19, Polo2Bam_18, Sabbb_17, SeaLumen_17, Spartacus_17, ThetaBob_18,

Genes that have the "Most Annotated" start but do not call it:

- Renaud18_18,

Genes that do not have the "Most Annotated" start:

- AlleyCat_22, Bagrid_36, Beem_37, Dadosky_22, Dallas_38, Duke13_34, Edugator_21, EricMillard_37, Halley_37, HokkenD_32, JuicyJay_39, Larva_22, Neighly_22, NihilNomen_36, Omnicron_22, Pound_38, Psycho_22, Rando14_22, Xiaokay_34, Yeet_35,

Summary by start number:

Start 1:

- Found in 8 of 35 (22.9%) of genes in pham
- Manual Annotations of this start: 7 of 29
- Called 100.0% of time when present
- Phage (with cluster) where this start called: AlleyCat_22 (K5), Dadosky_22 (K5), Edugator_21 (K5), Larva_22 (K5), Neighly_22 (K3), Omnicron_22 (K5), Psycho_22 (K5), Rando14_22 (K5),

Start 2:

- Found in 3 of 35 (8.6%) of genes in pham
- Manual Annotations of this start: 1 of 29
- Called 33.3% of time when present
- Phage (with cluster) where this start called: Renaud18_18 (F4),

Start 3:

- Found in 15 of 35 (42.9%) of genes in pham
- Manual Annotations of this start: 11 of 29
- Called 93.3% of time when present
- Phage (with cluster) where this start called: CheesePuff_18 (F1), Cornie_18 (F5), Enzomatic_18 (F1), Guppsters_17 (F1), Kersh_17 (F1), LunaBlu_17 (F1), MadMen_17 (F1), NewHope4_17 (F1), Pollywog_19 (F1), Polo2Bam_18 (F1), Sabbb_17 (F1), SeaLumen_17 (F1), Spartacus_17 (F1), ThetaBob_18 (F4),

Start 4:

- Found in 12 of 35 (34.3%) of genes in pham
- Manual Annotations of this start: 10 of 29
- Called 100.0% of time when present
- Phage (with cluster) where this start called: Bagrid_36 (J), Beem_37 (J), Dallas_38 (J), Duke13_34 (J), EricMillard_37 (J), Halley_37 (J), HokkenD_32 (J), JuicyJay_39 (J), NihilNomen_36 (J), Pound_38 (J), Xiaokay_34 (J), Yeet_35 (J),

Summary by clusters:

There are 6 clusters represented in this pham: F1, F4, F5, J, K3, K5,

Info for manual annotations of cluster F1:

- Start number 3 was manually annotated 9 times for cluster F1.

Info for manual annotations of cluster F4:

- Start number 2 was manually annotated 1 time for cluster F4.
- Start number 3 was manually annotated 1 time for cluster F4.

Info for manual annotations of cluster F5:

- Start number 3 was manually annotated 1 time for cluster F5.

Info for manual annotations of cluster J:

- Start number 4 was manually annotated 10 times for cluster J.

Info for manual annotations of cluster K5:

- Start number 1 was manually annotated 7 times for cluster K5.

Gene Information:

Gene: AlleyCat_22 Start: 18767, Stop: 19300, Start Num: 1

Candidate Starts for AlleyCat_22:

(Start: 1 @18767 has 7 MA's), (11, 18845), (14, 18869), (19, 18908), (23, 18986), (24, 18992), (39, 19145), (47, 19250), (48, 19253), (50, 19271),

Gene: Bagrid_36 Start: 28258, Stop: 28767, Start Num: 4

Candidate Starts for Bagrid_36:

(Start: 4 @28258 has 10 MA's), (5, 28270), (6, 28276), (9, 28288), (10, 28291), (13, 28330), (15, 28348), (20, 28384), (21, 28390), (25, 28477), (30, 28567), (37, 28609), (41, 28627), (43, 28657), (46, 28699), (52, 28753),

Gene: Beem_37 Start: 28824, Stop: 29333, Start Num: 4

Candidate Starts for Beem_37:

(Start: 4 @28824 has 10 MA's), (5, 28836), (6, 28842), (9, 28854), (10, 28857), (15, 28914), (20, 28950), (21, 28956), (25, 29043), (30, 29133), (37, 29175), (41, 29193), (43, 29223), (46, 29265), (52, 29319),

Gene: Cheese puff_18 Start: 16831, Stop: 17361, Start Num: 3

Candidate Starts for Cheese puff_18:

(Start: 3 @16831 has 11 MA's), (8, 16867), (15, 16933), (16, 16945), (22, 17044), (25, 17065), (27, 17098), (28, 17128), (29, 17140), (31, 17158), (32, 17164), (33, 17167), (34, 17173), (35, 17188), (36, 17191), (38, 17212), (40, 17215), (44, 17257), (45, 17287), (49, 17329), (50, 17335), (51, 17341),

Gene: Cornie_18 Start: 16895, Stop: 17425, Start Num: 3

Candidate Starts for Cornie_18:

(Start: 2 @16892 has 1 MA's), (Start: 3 @16895 has 11 MA's), (8, 16931), (17, 17012), (26, 17141), (27, 17162), (28, 17192), (31, 17222), (33, 17231), (34, 17237), (35, 17252), (36, 17255), (40, 17279), (44, 17321),

Gene: Dadosky_22 Start: 18768, Stop: 19301, Start Num: 1

Candidate Starts for Dadosky_22:

(Start: 1 @18768 has 7 MA's), (11, 18846), (14, 18870), (19, 18909), (23, 18987), (24, 18993), (39, 19146), (47, 19251), (48, 19254), (50, 19272),

Gene: Dallas_38 Start: 28349, Stop: 28858, Start Num: 4

Candidate Starts for Dallas_38:

(Start: 4 @28349 has 10 MA's), (5, 28361), (6, 28367), (9, 28379), (10, 28382), (13, 28421), (15, 28439), (20, 28475), (21, 28481), (25, 28568), (30, 28658), (37, 28700), (41, 28718), (43, 28748), (46, 28790), (52, 28844),

Gene: Duke13_34 Start: 28379, Stop: 28888, Start Num: 4

Candidate Starts for Duke13_34:

(Start: 4 @28379 has 10 MA's), (5, 28391), (6, 28397), (9, 28409), (10, 28412), (15, 28469), (20, 28505), (21, 28511), (25, 28598), (30, 28688), (37, 28730), (41, 28748), (43, 28778), (46, 28820), (52, 28874),

Gene: Edugator_21 Start: 18767, Stop: 19300, Start Num: 1

Candidate Starts for Edugator_21:

(Start: 1 @18767 has 7 MA's), (11, 18845), (14, 18869), (19, 18908), (23, 18986), (24, 18992), (39, 19145), (47, 19250), (48, 19253), (50, 19271),

Gene: Enzomatic_18 Start: 16034, Stop: 16564, Start Num: 3

Candidate Starts for Enzomatic_18:

(Start: 3 @16034 has 11 MA's), (8, 16070), (16, 16148), (22, 16247), (25, 16268), (27, 16301), (28, 16331), (31, 16361), (33, 16370), (34, 16376), (35, 16391), (36, 16394), (40, 16418), (42, 16448), (44, 16460), (45, 16490), (49, 16532),

Gene: EricMillard_37 Start: 29110, Stop: 29619, Start Num: 4

Candidate Starts for EricMillard_37:

(Start: 4 @29110 has 10 MA's), (5, 29122), (6, 29128), (9, 29140), (10, 29143), (15, 29200), (20, 29236), (21, 29242), (25, 29329), (30, 29419), (37, 29461), (41, 29479), (43, 29509), (46, 29551), (52, 29605),

Gene: Guppsters_17 Start: 16169, Stop: 16699, Start Num: 3

Candidate Starts for Guppsters_17:

(Start: 3 @16169 has 11 MA's), (8, 16205), (16, 16283), (22, 16382), (25, 16403), (28, 16466), (31, 16496), (33, 16505), (34, 16511), (35, 16526), (36, 16529), (40, 16553), (42, 16583), (44, 16595), (45, 16625), (49, 16667),

Gene: Halley_37 Start: 28823, Stop: 29332, Start Num: 4

Candidate Starts for Halley_37:

(Start: 4 @28823 has 10 MA's), (5, 28835), (6, 28841), (9, 28853), (10, 28856), (13, 28895), (15, 28913), (20, 28949), (21, 28955), (25, 29042), (30, 29132), (37, 29174), (41, 29192), (43, 29222), (46, 29264), (52, 29318),

Gene: HokkenD_32 Start: 28372, Stop: 28881, Start Num: 4

Candidate Starts for HokkenD_32:

(Start: 4 @28372 has 10 MA's), (5, 28384), (6, 28390), (9, 28402), (10, 28405), (15, 28462), (20, 28498), (21, 28504), (25, 28591), (30, 28681), (37, 28723), (41, 28741), (43, 28771), (46, 28813), (52, 28867),

Gene: JuicyJay_39 Start: 30573, Stop: 31082, Start Num: 4

Candidate Starts for JuicyJay_39:

(Start: 4 @30573 has 10 MA's), (5, 30585), (6, 30591), (9, 30603), (10, 30606), (13, 30645), (15, 30663), (20, 30699), (21, 30705), (25, 30792), (30, 30882), (37, 30924), (41, 30942), (43, 30972), (46, 31014), (52, 31068),

Gene: Kersh_17 Start: 16154, Stop: 16684, Start Num: 3

Candidate Starts for Kersh_17:

(Start: 3 @16154 has 11 MA's), (7, 16187), (8, 16190), (11, 16226), (12, 16229), (16, 16268), (25, 16388), (27, 16421), (28, 16451), (31, 16481), (33, 16490), (34, 16496), (35, 16511), (36, 16514), (38, 16535), (40, 16538), (44, 16580), (49, 16652),

Gene: Larva_22 Start: 18635, Stop: 19168, Start Num: 1

Candidate Starts for Larva_22:

(Start: 1 @18635 has 7 MA's), (11, 18713), (14, 18737), (19, 18776), (23, 18854), (24, 18860), (39, 19013), (47, 19118), (48, 19121), (50, 19139),

Gene: LunaBlu_17 Start: 16064, Stop: 16594, Start Num: 3

Candidate Starts for LunaBlu_17:

(Start: 3 @16064 has 11 MA's), (8, 16100), (16, 16178), (22, 16277), (25, 16298), (27, 16331), (28, 16361), (31, 16391), (33, 16400), (34, 16406), (35, 16421), (36, 16424), (40, 16448), (42, 16478), (44, 16490), (45, 16520), (49, 16562),

Gene: MadMen_17 Start: 16223, Stop: 16753, Start Num: 3

Candidate Starts for MadMen_17:

(Start: 3 @16223 has 11 MA's), (7, 16256), (8, 16259), (11, 16295), (12, 16298), (16, 16337), (25, 16457), (27, 16490), (28, 16520), (31, 16550), (32, 16556), (33, 16559), (34, 16565), (35, 16580), (36, 16583), (38, 16604), (40, 16607), (44, 16649), (49, 16721), (50, 16727),

Gene: Neighly_22 Start: 18634, Stop: 19167, Start Num: 1

Candidate Starts for Neighly_22:

(Start: 1 @18634 has 7 MA's), (11, 18712), (14, 18736), (19, 18775), (23, 18853), (24, 18859), (39, 19012), (47, 19117), (48, 19120), (50, 19138),

Gene: NewHope4_17 Start: 16034, Stop: 16564, Start Num: 3

Candidate Starts for NewHope4_17:

(Start: 3 @16034 has 11 MA's), (8, 16070), (16, 16148), (22, 16247), (25, 16268), (27, 16301), (28, 16331), (31, 16361), (33, 16370), (34, 16376), (35, 16391), (36, 16394), (40, 16418), (42, 16448), (44, 16460), (45, 16490), (49, 16532),

Gene: NihilNomen_36 Start: 28868, Stop: 29377, Start Num: 4

Candidate Starts for NihilNomen_36:

(Start: 4 @28868 has 10 MA's), (5, 28880), (6, 28886), (9, 28898), (10, 28901), (13, 28940), (15, 28958), (20, 28994), (21, 29000), (25, 29087), (30, 29177), (37, 29219), (41, 29237), (43, 29267), (46, 29309), (52, 29363),

Gene: Omnicron_22 Start: 17554, Stop: 18087, Start Num: 1

Candidate Starts for Omnicron_22:

(Start: 1 @17554 has 7 MA's), (11, 17632), (14, 17656), (15, 17662), (23, 17773), (24, 17779), (47, 18037), (48, 18040), (50, 18058),

Gene: Pollywog_19 Start: 17190, Stop: 17720, Start Num: 3

Candidate Starts for Pollywog_19:

(Start: 3 @17190 has 11 MA's), (7, 17223), (8, 17226), (11, 17262), (12, 17265), (16, 17304), (25, 17424), (27, 17457), (28, 17487), (30, 17514), (31, 17517), (33, 17526), (34, 17532), (35, 17547), (36, 17550), (38, 17571), (44, 17616), (49, 17688),

Gene: Polo2Bam_18 Start: 16034, Stop: 16564, Start Num: 3

Candidate Starts for Polo2Bam_18:

(Start: 3 @16034 has 11 MA's), (8, 16070), (16, 16148), (22, 16247), (25, 16268), (27, 16301), (28, 16331), (31, 16361), (33, 16370), (34, 16376), (35, 16391), (36, 16394), (40, 16418), (42, 16448), (44, 16460), (45, 16490), (49, 16532),

Gene: Pound_38 Start: 30099, Stop: 30608, Start Num: 4

Candidate Starts for Pound_38:

(Start: 4 @30099 has 10 MA's), (5, 30111), (6, 30117), (9, 30129), (10, 30132), (13, 30171), (15, 30189), (20, 30225), (21, 30231), (25, 30318), (30, 30408), (37, 30450), (41, 30468), (43, 30498), (46,

30540), (52, 30594),

Gene: Psycho_22 Start: 18765, Stop: 19298, Start Num: 1

Candidate Starts for Psycho_22:

(Start: 1 @18765 has 7 MA's), (11, 18843), (14, 18867), (19, 18906), (23, 18984), (24, 18990), (39, 19143), (47, 19248), (48, 19251), (50, 19269),

Gene: Rando14_22 Start: 17453, Stop: 17986, Start Num: 1

Candidate Starts for Rando14_22:

(Start: 1 @17453 has 7 MA's), (11, 17531), (14, 17555), (18, 17588), (23, 17672), (24, 17678), (47, 17936), (48, 17939), (50, 17957),

Gene: Renaud18_18 Start: 16461, Stop: 16994, Start Num: 2

Candidate Starts for Renaud18_18:

(Start: 2 @16461 has 1 MA's), (Start: 3 @16464 has 11 MA's), (8, 16500), (15, 16566), (17, 16581), (26, 16710), (27, 16731), (28, 16761), (31, 16791), (33, 16800), (34, 16806), (35, 16821), (36, 16824), (40, 16848), (44, 16890),

Gene: Sabbb_17 Start: 16210, Stop: 16740, Start Num: 3

Candidate Starts for Sabbb_17:

(Start: 3 @16210 has 11 MA's), (8, 16246), (16, 16324), (25, 16444), (27, 16477), (28, 16507), (29, 16519), (31, 16537), (33, 16546), (34, 16552), (35, 16567), (36, 16570), (38, 16591), (40, 16594), (44, 16636), (45, 16666), (49, 16708), (50, 16714),

Gene: SeaLumen_17 Start: 16034, Stop: 16564, Start Num: 3

Candidate Starts for SeaLumen_17:

(Start: 3 @16034 has 11 MA's), (8, 16070), (16, 16148), (22, 16247), (25, 16268), (27, 16301), (28, 16331), (31, 16361), (33, 16370), (34, 16376), (35, 16391), (36, 16394), (40, 16418), (42, 16448), (44, 16460), (45, 16490), (49, 16532),

Gene: Spartacus_17 Start: 16068, Stop: 16598, Start Num: 3

Candidate Starts for Spartacus_17:

(Start: 3 @16068 has 11 MA's), (8, 16104), (16, 16182), (22, 16281), (25, 16302), (27, 16335), (28, 16365), (31, 16395), (33, 16404), (34, 16410), (35, 16425), (36, 16428), (40, 16452), (42, 16482), (44, 16494), (45, 16524), (49, 16566),

Gene: ThetaBob_18 Start: 16382, Stop: 16912, Start Num: 3

Candidate Starts for ThetaBob_18:

(Start: 2 @16379 has 1 MA's), (Start: 3 @16382 has 11 MA's), (8, 16418), (17, 16499), (26, 16628), (27, 16649), (28, 16679), (31, 16709), (33, 16718), (34, 16724), (35, 16739), (36, 16742), (40, 16766), (44, 16808),

Gene: Xiaokay_34 Start: 28374, Stop: 28883, Start Num: 4

Candidate Starts for Xiaokay_34:

(Start: 4 @28374 has 10 MA's), (6, 28392), (9, 28404), (10, 28407), (13, 28446), (15, 28464), (20, 28500), (21, 28506), (25, 28593), (30, 28683), (37, 28725), (41, 28743), (43, 28773), (46, 28815), (52, 28869),

Gene: Yeet_35 Start: 28094, Stop: 28603, Start Num: 4

Candidate Starts for Yeet_35:

(Start: 4 @28094 has 10 MA's), (5, 28106), (6, 28112), (9, 28124), (10, 28127), (13, 28166), (15, 28184), (20, 28220), (21, 28226), (25, 28313), (30, 28403), (37, 28445), (41, 28463), (43, 28493), (46, 28535), (52, 28589),

