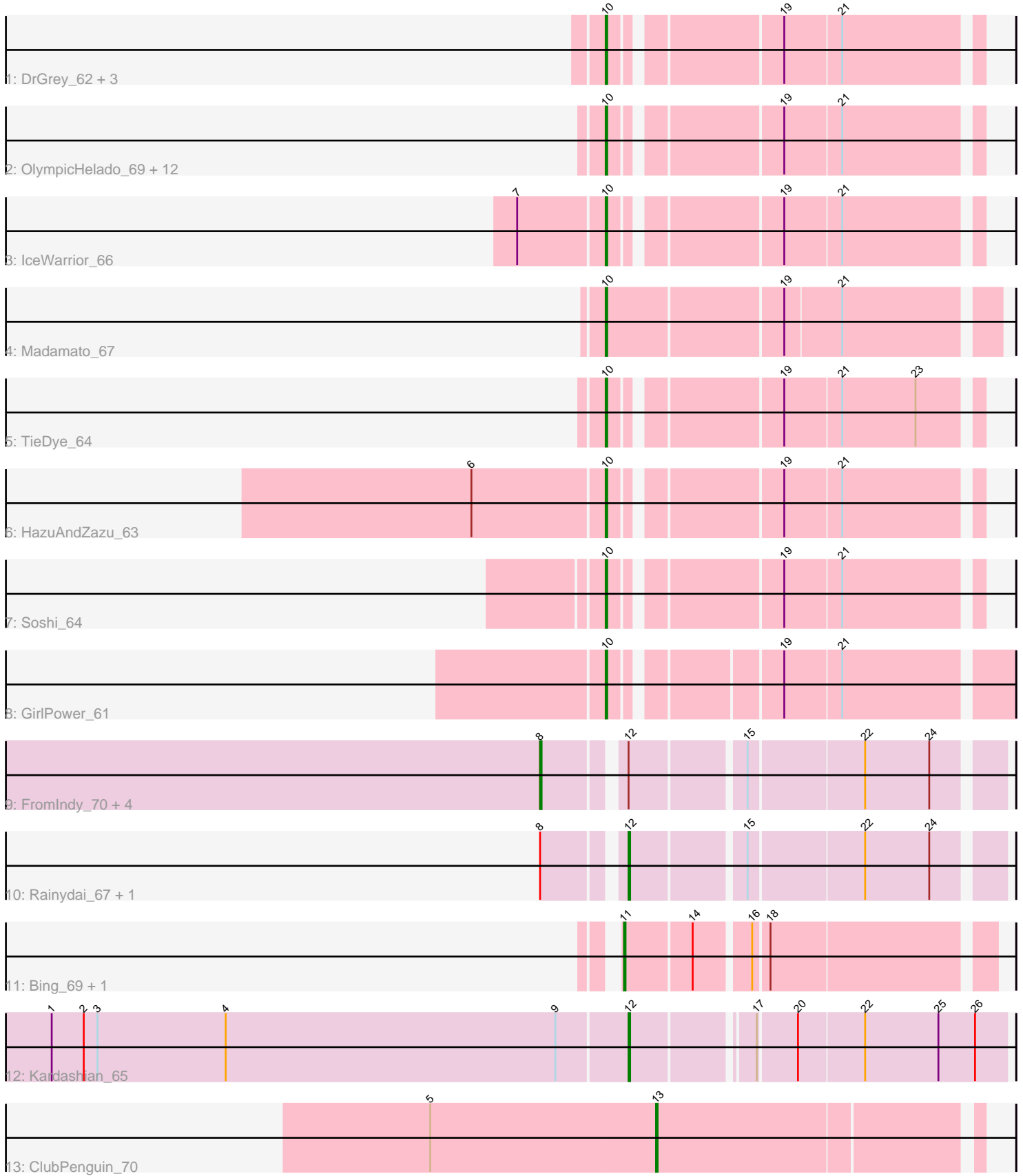


Pham 308972



Note: Tracks are now grouped by subcluster and scaled. Switching in subcluster is indicated by changes in track color. Track scale is now set by default to display the region 30 bp upstream of start 1 to 30 bp downstream of the last possible start. If this default region is judged to be packed too tightly with annotated starts, the track will be further scaled to only show that region of the ORF with annotated starts. This action will be indicated by adding "Zoomed" to the title. For starts, yellow indicates the location of called starts comprised solely of Glimmer/GeneMark auto-annotations, green indicates the location of called starts with at least 1 manual gene annotation.

Pham 308972 Report

This analysis was run 06/27/26 on database version 652.

Pham number 308972 has 34 members, 2 are drafts.

Phages represented in each track:

- Track 1 : DrGrey_62, Espio_64, Popy_64, FrodoSwaggins_64
- Track 2 : OlympicHelado_69, Namu_68, Hoshi_68, Indigenous_69, Rima_68, CherryBlossom_67, Jaylociraptor_67, Meibysrarus_65, TaidaOne_69, TonyStarch_66, Spectropatronm_67, FidgetOrca_69, Maya_67
- Track 3 : IceWarrior_66
- Track 4 : Madamato_67
- Track 5 : TieDye_64
- Track 6 : HazuAndZazu_63
- Track 7 : Soshi_64
- Track 8 : GirlPower_61
- Track 9 : FromIndy_70, CricKo_69, Miek_65, Thiqqums_69, SendItCS_64
- Track 10 : Rainydai_67, Regigigas_69
- Track 11 : Bing_69, Wigberry_70
- Track 12 : Kardashian_65
- Track 13 : ClubPenguin_70

Summary of Final Annotations (See graph section above for start numbers):

The start number called the most often in the published annotations is 10, it was called in 23 of the 32 non-draft genes in the pham.

Genes that call this "Most Annotated" start:

- CherryBlossom_67, DrGrey_62, Espio_64, FidgetOrca_69, FrodoSwaggins_64, GirlPower_61, HazuAndZazu_63, Hoshi_68, IceWarrior_66, Indigenous_69, Jaylociraptor_67, Madamato_67, Maya_67, Meibysrarus_65, Namu_68, OlympicHelado_69, Popy_64, Rima_68, Soshi_64, Spectropatronm_67, TaidaOne_69, TieDye_64, TonyStarch_66,

Genes that have the "Most Annotated" start but do not call it:

-

Genes that do not have the "Most Annotated" start:

- Bing_69, ClubPenguin_70, CricKo_69, FromIndy_70, Kardashian_65, Miek_65, Rainydai_67, Regigigas_69, SendItCS_64, Thiqqums_69, Wigberry_70,

Summary by start number:

Start 8:

- Found in 7 of 34 (20.6%) of genes in pham
- Manual Annotations of this start: 4 of 32
- Called 71.4% of time when present
- Phage (with cluster) where this start called: CricKo_69 (BI4), FromIndy_70 (BI4), Miek_65 (BI4), SendItCS_64 (BI4), Thiqqums_69 (BI4),

Start 10:

- Found in 23 of 34 (67.6%) of genes in pham
- Manual Annotations of this start: 23 of 32
- Called 100.0% of time when present
- Phage (with cluster) where this start called: CherryBlossom_67 (BI1), DrGrey_62 (BI1), Espio_64 (BI1), FidgetOrca_69 (BI1), FrodoSwaggins_64 (BI1), GirlPower_61 (BI1), HazuAndZazu_63 (BI1), Hoshi_68 (BI1), IceWarrior_66 (BI1), Indigenous_69 (BI1), Jaylociraptor_67 (BI1), Madamoto_67 (BI1), Maya_67 (BI1), Meibysrarus_65 (BI1), Namu_68 (BI1), OlympicHelado_69 (BI1), Popy_64 (BI1), Rima_68 (BI1), Soshi_64 (BI1), Spectropatronm_67 (BI1), TaidaOne_69 (BI1), TieDye_64 (BI1), TonyStarch_66 (BI1),

Start 11:

- Found in 2 of 34 (5.9%) of genes in pham
- Manual Annotations of this start: 2 of 32
- Called 100.0% of time when present
- Phage (with cluster) where this start called: Bing_69 (BI5), Wigberry_70 (BI5),

Start 12:

- Found in 8 of 34 (23.5%) of genes in pham
- Manual Annotations of this start: 2 of 32
- Called 37.5% of time when present
- Phage (with cluster) where this start called: Kardashian_65 (BI6), Rainydai_67 (BI4), Regigigas_69 (BI4),

Start 13:

- Found in 1 of 34 (2.9%) of genes in pham
- Manual Annotations of this start: 1 of 32
- Called 100.0% of time when present
- Phage (with cluster) where this start called: ClubPenguin_70 (BI7),

Summary by clusters:

There are 5 clusters represented in this pham: BI6, BI7, BI4, BI5, BI1,

Info for manual annotations of cluster BI1:

- Start number 10 was manually annotated 23 times for cluster BI1.

Info for manual annotations of cluster BI4:

- Start number 8 was manually annotated 4 times for cluster BI4.
- Start number 12 was manually annotated 1 time for cluster BI4.

Info for manual annotations of cluster BI5:

- Start number 11 was manually annotated 2 times for cluster BI5.

Info for manual annotations of cluster BI6:

- Start number 12 was manually annotated 1 time for cluster BI6.

Info for manual annotations of cluster BI7:

- Start number 13 was manually annotated 1 time for cluster BI7.

Gene Information:

Gene: Bing_69 Start: 44260, Stop: 44481, Start Num: 11

Candidate Starts for Bing_69:

(Start: 11 @44260 has 2 MA's), (14, 44302), (16, 44335), (18, 44344),

Gene: CherryBlossom_67 Start: 43613, Stop: 43831, Start Num: 10

Candidate Starts for CherryBlossom_67:

(Start: 10 @43613 has 23 MA's), (19, 43712), (21, 43748),

Gene: ClubPenguin_70 Start: 43825, Stop: 44025, Start Num: 13

Candidate Starts for ClubPenguin_70:

(5, 43678), (Start: 13 @43825 has 1 MA's),

Gene: CricKo_69 Start: 43794, Stop: 44063, Start Num: 8

Candidate Starts for CricKo_69:

(Start: 8 @43794 has 4 MA's), (Start: 12 @43839 has 2 MA's), (15, 43908), (22, 43980), (24, 44022),

Gene: DrGrey_62 Start: 43577, Stop: 43795, Start Num: 10

Candidate Starts for DrGrey_62:

(Start: 10 @43577 has 23 MA's), (19, 43676), (21, 43712),

Gene: Espio_64 Start: 43972, Stop: 44190, Start Num: 10

Candidate Starts for Espio_64:

(Start: 10 @43972 has 23 MA's), (19, 44071), (21, 44107),

Gene: FidgetOrca_69 Start: 44149, Stop: 44367, Start Num: 10

Candidate Starts for FidgetOrca_69:

(Start: 10 @44149 has 23 MA's), (19, 44248), (21, 44284),

Gene: FrodoSwaggins_64 Start: 43971, Stop: 44189, Start Num: 10

Candidate Starts for FrodoSwaggins_64:

(Start: 10 @43971 has 23 MA's), (19, 44070), (21, 44106),

Gene: FromIndy_70 Start: 43387, Stop: 43656, Start Num: 8

Candidate Starts for FromIndy_70:

(Start: 8 @43387 has 4 MA's), (Start: 12 @43432 has 2 MA's), (15, 43501), (22, 43573), (24, 43615),

Gene: GirlPower_61 Start: 43884, Stop: 44120, Start Num: 10

Candidate Starts for GirlPower_61:

(Start: 10 @43884 has 23 MA's), (19, 43980), (21, 44016),

Gene: HazuAndZazu_63 Start: 43606, Stop: 43824, Start Num: 10

Candidate Starts for HazuAndZazu_63:
(6, 43522), (Start: 10 @43606 has 23 MA's), (19, 43705), (21, 43741),

Gene: Hoshi_68 Start: 43756, Stop: 43974, Start Num: 10
Candidate Starts for Hoshi_68:
(Start: 10 @43756 has 23 MA's), (19, 43855), (21, 43891),

Gene: IceWarrior_66 Start: 43432, Stop: 43650, Start Num: 10
Candidate Starts for IceWarrior_66:
(7, 43378), (Start: 10 @43432 has 23 MA's), (19, 43531), (21, 43567),

Gene: Indigenous_69 Start: 44153, Stop: 44371, Start Num: 10
Candidate Starts for Indigenous_69:
(Start: 10 @44153 has 23 MA's), (19, 44252), (21, 44288),

Gene: Jaylociraptor_67 Start: 43749, Stop: 43967, Start Num: 10
Candidate Starts for Jaylociraptor_67:
(Start: 10 @43749 has 23 MA's), (19, 43848), (21, 43884),

Gene: Kardashian_65 Start: 44204, Stop: 44434, Start Num: 12
Candidate Starts for Kardashian_65:
(1, 43829), (2, 43850), (3, 43859), (4, 43943), (9, 44159), (Start: 12 @44204 has 2 MA's), (17, 44276),
(20, 44300), (22, 44342), (25, 44390), (26, 44414),

Gene: Madamoto_67 Start: 43819, Stop: 44061, Start Num: 10
Candidate Starts for Madamoto_67:
(Start: 10 @43819 has 23 MA's), (19, 43930), (21, 43966),

Gene: Maya_67 Start: 43763, Stop: 43981, Start Num: 10
Candidate Starts for Maya_67:
(Start: 10 @43763 has 23 MA's), (19, 43862), (21, 43898),

Gene: Meibysrarus_65 Start: 43126, Stop: 43344, Start Num: 10
Candidate Starts for Meibysrarus_65:
(Start: 10 @43126 has 23 MA's), (19, 43225), (21, 43261),

Gene: Miek_65 Start: 42576, Stop: 42845, Start Num: 8
Candidate Starts for Miek_65:
(Start: 8 @42576 has 4 MA's), (Start: 12 @42621 has 2 MA's), (15, 42690), (22, 42762), (24, 42804),

Gene: Namo_68 Start: 44100, Stop: 44318, Start Num: 10
Candidate Starts for Namo_68:
(Start: 10 @44100 has 23 MA's), (19, 44199), (21, 44235),

Gene: OlympicHelado_69 Start: 44216, Stop: 44434, Start Num: 10
Candidate Starts for OlympicHelado_69:
(Start: 10 @44216 has 23 MA's), (19, 44315), (21, 44351),

Gene: Popy_64 Start: 43971, Stop: 44189, Start Num: 10
Candidate Starts for Popy_64:
(Start: 10 @43971 has 23 MA's), (19, 44070), (21, 44106),

Gene: Rainydai_67 Start: 43839, Stop: 44063, Start Num: 12

Candidate Starts for Rainydai_67:

(Start: 8 @43794 has 4 MA's), (Start: 12 @43839 has 2 MA's), (15, 43908), (22, 43980), (24, 44022),

Gene: Regigigas_69 Start: 43451, Stop: 43675, Start Num: 12

Candidate Starts for Regigigas_69:

(Start: 8 @43406 has 4 MA's), (Start: 12 @43451 has 2 MA's), (15, 43520), (22, 43592), (24, 43634),

Gene: Rima_68 Start: 44100, Stop: 44318, Start Num: 10

Candidate Starts for Rima_68:

(Start: 10 @44100 has 23 MA's), (19, 44199), (21, 44235),

Gene: SendItCS_64 Start: 42564, Stop: 42833, Start Num: 8

Candidate Starts for SendItCS_64:

(Start: 8 @42564 has 4 MA's), (Start: 12 @42609 has 2 MA's), (15, 42678), (22, 42750), (24, 42792),

Gene: Soshi_64 Start: 43803, Stop: 44021, Start Num: 10

Candidate Starts for Soshi_64:

(Start: 10 @43803 has 23 MA's), (19, 43902), (21, 43938),

Gene: Spectropatronm_67 Start: 43756, Stop: 43974, Start Num: 10

Candidate Starts for Spectropatronm_67:

(Start: 10 @43756 has 23 MA's), (19, 43855), (21, 43891),

Gene: TaidaOne_69 Start: 44662, Stop: 44880, Start Num: 10

Candidate Starts for TaidaOne_69:

(Start: 10 @44662 has 23 MA's), (19, 44761), (21, 44797),

Gene: Thiqqums_69 Start: 43794, Stop: 44063, Start Num: 8

Candidate Starts for Thiqqums_69:

(Start: 8 @43794 has 4 MA's), (Start: 12 @43839 has 2 MA's), (15, 43908), (22, 43980), (24, 44022),

Gene: TieDye_64 Start: 43087, Stop: 43305, Start Num: 10

Candidate Starts for TieDye_64:

(Start: 10 @43087 has 23 MA's), (19, 43186), (21, 43222), (23, 43270),

Gene: TonyStarch_66 Start: 43498, Stop: 43716, Start Num: 10

Candidate Starts for TonyStarch_66:

(Start: 10 @43498 has 23 MA's), (19, 43597), (21, 43633),

Gene: Wigberry_70 Start: 44280, Stop: 44498, Start Num: 11

Candidate Starts for Wigberry_70:

(Start: 11 @44280 has 2 MA's), (14, 44322), (16, 44355), (18, 44364),