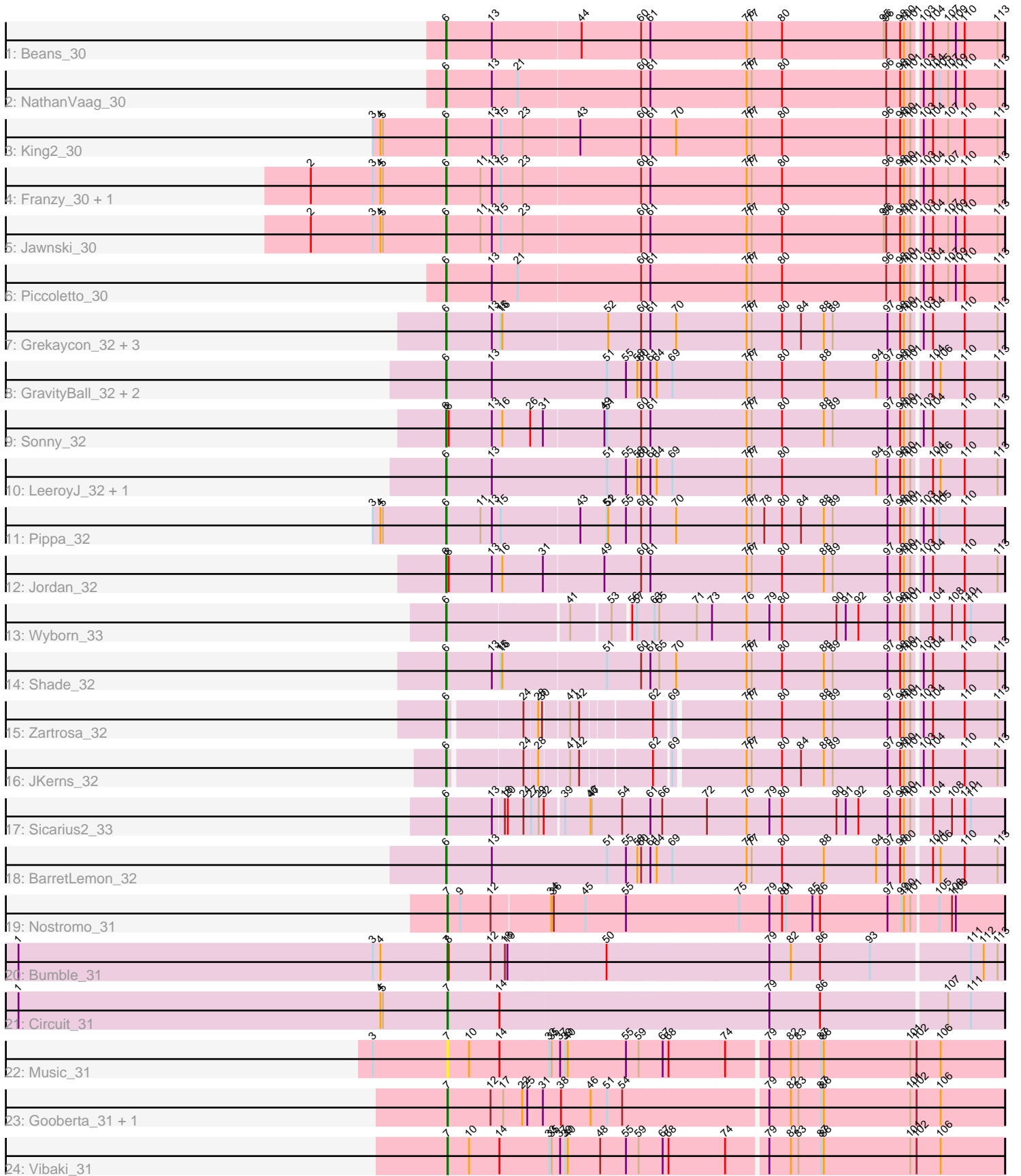


Pham 308989



Note: Tracks are now grouped by subcluster and scaled. Switching in subcluster is indicated by changes in track color. Track scale is now set by default to display the region 30 bp upstream of start 1 to 30 bp downstream of the last possible start. If this default region is judged to be packed too tightly with annotated starts, the track will be further scaled to only show that region of the ORF with annotated starts. This action will be indicated by adding "Zoomed" to the title. For starts, yellow indicates the location of called starts comprised solely of Glimmer/GeneMark auto-annotations, green indicates the location of called starts with at least 1 manual gene annotation.

Pham 308989 Report

This analysis was run 06/27/26 on database version 652.

Pham number 308989 has 32 members, 2 are drafts.

Phages represented in each track:

- Track 1 : Beans_30
- Track 2 : NathanVaag_30
- Track 3 : King2_30
- Track 4 : Franzy_30, Brent_30
- Track 5 : Jawnski_30
- Track 6 : Piccoletto_30
- Track 7 : Grekaycon_32, Martha_32, BossLady_32, TaeYoung_32
- Track 8 : GravityBall_32, StevieBAY_32, BigDome_32
- Track 9 : Sonny_32
- Track 10 : LeeroyJ_32, Timinator_32
- Track 11 : Pippa_32
- Track 12 : Jordan_32
- Track 13 : Wyborn_33
- Track 14 : Shade_32
- Track 15 : Zartrosa_32
- Track 16 : JKerns_32
- Track 17 : Sicarius2_33
- Track 18 : BarretLemon_32
- Track 19 : Nostromo_31
- Track 20 : Bumble_31
- Track 21 : Circuit_31
- Track 22 : Music_31
- Track 23 : Gooberta_31, GoldDust_31
- Track 24 : Vibaki_31

Summary of Final Annotations (See graph section above for start numbers):

The start number called the most often in the published annotations is 6, it was called in 24 of the 30 non-draft genes in the pham.

Genes that call this "Most Annotated" start:

- BarretLemon_32, Beans_30, BigDome_32, BossLady_32, Brent_30, Franzy_30, GravityBall_32, Grekaycon_32, JKerns_32, Jawnski_30, Jordan_32, King2_30, LeeroyJ_32, Martha_32, NathanVaag_30, Piccoletto_30, Pippa_32, Shade_32,

Sicarius2_33, Sonny_32, StevieBAY_32, TaeYoung_32, Timinator_32, Wyborn_33, Zartrosa_32,

Genes that have the "Most Annotated" start but do not call it:

-

Genes that do not have the "Most Annotated" start:

- Bumble_31, Circuit_31, GoldDust_31, Gooberta_31, Music_31, Nostromo_31, Vibaki_31,

Summary by start number:

Start 6:

- Found in 25 of 32 (78.1%) of genes in pham
- Manual Annotations of this start: 24 of 30
- Called 100.0% of time when present
- Phage (with cluster) where this start called: BarretLemon_32 (AO2), Beans_30 (AO1), BigDome_32 (AO2), BossLady_32 (AO2), Brent_30 (AO1), Franzy_30 (AO1), GravityBall_32 (AO2), Grekaycon_32 (AO2), JKerns_32 (AO2), Jawnski_30 (AO1), Jordan_32 (AO2), King2_30 (AO1), LeeroyJ_32 (AO2), Martha_32 (AO2), NathanVaag_30 (AO1), Piccoletto_30 (AO1), Pippa_32 (AO2), Shade_32 (AO2), Sicarius2_33 (AO2), Sonny_32 (AO2), StevieBAY_32 (AO2), TaeYoung_32 (AO2), Timinator_32 (AO2), Wyborn_33 (AO2), Zartrosa_32 (AO2),

Start 7:

- Found in 7 of 32 (21.9%) of genes in pham
- Manual Annotations of this start: 6 of 30
- Called 100.0% of time when present
- Phage (with cluster) where this start called: Bumble_31 (FH), Circuit_31 (FH), GoldDust_31 (FL), Gooberta_31 (FL), Music_31 (FL), Nostromo_31 (AO3), Vibaki_31 (FL),

Summary by clusters:

There are 5 clusters represented in this pham: FH, AO3, FL, AO2, AO1,

Info for manual annotations of cluster AO1:

- Start number 6 was manually annotated 7 times for cluster AO1.

Info for manual annotations of cluster AO2:

- Start number 6 was manually annotated 17 times for cluster AO2.

Info for manual annotations of cluster AO3:

- Start number 7 was manually annotated 1 time for cluster AO3.

Info for manual annotations of cluster FH:

- Start number 7 was manually annotated 2 times for cluster FH.

Info for manual annotations of cluster FL:

- Start number 7 was manually annotated 3 times for cluster FL.

Gene Information:

Gene: BarretLemon_32 Start: 27189, Stop: 28472, Start Num: 6

Candidate Starts for BarretLemon_32:

(Start: 6 @27189 has 24 MA's), (13, 27297), (51, 27567), (55, 27609), (58, 27636), (60, 27645), (61, 27663), (64, 27678), (69, 27711), (76, 27885), (77, 27897), (80, 27969), (88, 28065), (94, 28188), (97, 28215), (98, 28245), (100, 28254), (104, 28305), (106, 28323), (110, 28380), (113, 28458),

Gene: Beans_30 Start: 26891, Stop: 28168, Start Num: 6

Candidate Starts for Beans_30:

(Start: 6 @26891 has 24 MA's), (13, 26999), (44, 27203), (60, 27341), (61, 27359), (76, 27581), (77, 27593), (80, 27665), (95, 27902), (96, 27908), (98, 27941), (100, 27950), (101, 27965), (103, 27983), (104, 28001), (107, 28037), (109, 28055), (110, 28076), (113, 28154),

Gene: BigDome_32 Start: 27181, Stop: 28464, Start Num: 6

Candidate Starts for BigDome_32:

(Start: 6 @27181 has 24 MA's), (13, 27289), (51, 27559), (55, 27601), (58, 27628), (60, 27637), (61, 27655), (64, 27670), (69, 27703), (76, 27877), (77, 27889), (80, 27961), (88, 28057), (94, 28180), (97, 28207), (98, 28237), (100, 28246), (101, 28261), (104, 28297), (106, 28315), (110, 28372), (113, 28450),

Gene: BossLady_32 Start: 27166, Stop: 28443, Start Num: 6

Candidate Starts for BossLady_32:

(Start: 6 @27166 has 24 MA's), (13, 27274), (15, 27295), (16, 27298), (52, 27541), (60, 27616), (61, 27634), (70, 27691), (76, 27856), (77, 27868), (80, 27940), (84, 27985), (88, 28036), (89, 28057), (97, 28186), (98, 28216), (100, 28225), (101, 28240), (103, 28258), (104, 28276), (110, 28351), (113, 28429),

Gene: Brent_30 Start: 26853, Stop: 28130, Start Num: 6

Candidate Starts for Brent_30:

(2, 26532), (3, 26679), (4, 26697), (5, 26703), (Start: 6 @26853 has 24 MA's), (11, 26934), (13, 26961), (15, 26982), (23, 27033), (60, 27303), (61, 27321), (76, 27543), (77, 27555), (80, 27627), (96, 27870), (98, 27903), (100, 27912), (101, 27927), (103, 27945), (104, 27963), (107, 27999), (110, 28038), (113, 28116),

Gene: Bumble_31 Start: 25165, Stop: 26421, Start Num: 7

Candidate Starts for Bumble_31:

(1, 24151), (3, 24991), (4, 25009), (Start: 7 @25165 has 6 MA's), (8, 25168), (12, 25264), (18, 25294), (19, 25300), (50, 25516), (79, 25888), (82, 25939), (86, 26008), (93, 26125), (111, 26347), (112, 26377), (113, 26410),

Gene: Circuit_31 Start: 26021, Stop: 27280, Start Num: 7

Candidate Starts for Circuit_31:

(1, 25004), (4, 25862), (5, 25868), (Start: 7 @26021 has 6 MA's), (14, 26129), (79, 26747), (86, 26867), (107, 27152), (111, 27206),

Gene: Franzy_30 Start: 26852, Stop: 28129, Start Num: 6

Candidate Starts for Franzy_30:

(2, 26531), (3, 26678), (4, 26696), (5, 26702), (Start: 6 @26852 has 24 MA's), (11, 26933), (13, 26960), (15, 26981), (23, 27032), (60, 27302), (61, 27320), (76, 27542), (77, 27554), (80, 27626), (96, 27869), (98, 27902), (100, 27911), (101, 27926), (103, 27944), (104, 27962), (107, 27998), (110, 28037), (113, 28115),

Gene: GoldDust_31 Start: 28354, Stop: 29616, Start Num: 7

Candidate Starts for GoldDust_31:

(Start: 7 @28354 has 6 MA's), (12, 28453), (17, 28483), (22, 28519), (25, 28531), (31, 28567), (38, 28606), (46, 28669), (51, 28705), (54, 28741), (79, 29065), (82, 29116), (83, 29134), (87, 29185), (88, 29191), (101, 29395), (102, 29410), (106, 29467),

Gene: Gooberta_31 Start: 28353, Stop: 29615, Start Num: 7

Candidate Starts for Gooberta_31:

(Start: 7 @28353 has 6 MA's), (12, 28452), (17, 28482), (22, 28518), (25, 28530), (31, 28566), (38, 28605), (46, 28668), (51, 28704), (54, 28740), (79, 29064), (82, 29115), (83, 29133), (87, 29184), (88, 29190), (101, 29394), (102, 29409), (106, 29466),

Gene: GravityBall_32 Start: 27188, Stop: 28471, Start Num: 6

Candidate Starts for GravityBall_32:

(Start: 6 @27188 has 24 MA's), (13, 27296), (51, 27566), (55, 27608), (58, 27635), (60, 27644), (61, 27662), (64, 27677), (69, 27710), (76, 27884), (77, 27896), (80, 27968), (88, 28064), (94, 28187), (97, 28214), (98, 28244), (100, 28253), (101, 28268), (104, 28304), (106, 28322), (110, 28379), (113, 28457),

Gene: Grekaycon_32 Start: 27112, Stop: 28389, Start Num: 6

Candidate Starts for Grekaycon_32:

(Start: 6 @27112 has 24 MA's), (13, 27220), (15, 27241), (16, 27244), (52, 27487), (60, 27562), (61, 27580), (70, 27637), (76, 27802), (77, 27814), (80, 27886), (84, 27931), (88, 27982), (89, 28003), (97, 28132), (98, 28162), (100, 28171), (101, 28186), (103, 28204), (104, 28222), (110, 28297), (113, 28375),

Gene: JKerns_32 Start: 27139, Stop: 28335, Start Num: 6

Candidate Starts for JKerns_32:

(Start: 6 @27139 has 24 MA's), (24, 27295), (28, 27325), (41, 27388), (42, 27409), (62, 27556), (69, 27589), (76, 27748), (77, 27760), (80, 27832), (84, 27877), (88, 27928), (89, 27949), (97, 28078), (98, 28108), (100, 28117), (101, 28132), (103, 28150), (104, 28168), (110, 28243), (113, 28321),

Gene: Jawnski_30 Start: 26862, Stop: 28139, Start Num: 6

Candidate Starts for Jawnski_30:

(2, 26541), (3, 26688), (4, 26706), (5, 26712), (Start: 6 @26862 has 24 MA's), (11, 26943), (13, 26970), (15, 26991), (23, 27042), (60, 27312), (61, 27330), (76, 27552), (77, 27564), (80, 27636), (95, 27873), (96, 27879), (98, 27912), (100, 27921), (101, 27936), (103, 27954), (104, 27972), (107, 28008), (109, 28026), (110, 28047), (113, 28125),

Gene: Jordan_32 Start: 27109, Stop: 28386, Start Num: 6

Candidate Starts for Jordan_32:

(Start: 6 @27109 has 24 MA's), (8, 27115), (13, 27217), (16, 27241), (31, 27337), (49, 27475), (60, 27559), (61, 27577), (76, 27799), (77, 27811), (80, 27883), (88, 27979), (89, 28000), (97, 28129), (98, 28159), (100, 28168), (101, 28183), (103, 28201), (104, 28219), (110, 28294), (113, 28372),

Gene: King2_30 Start: 26849, Stop: 28126, Start Num: 6

Candidate Starts for King2_30:

(3, 26675), (4, 26693), (5, 26699), (Start: 6 @26849 has 24 MA's), (13, 26957), (15, 26978), (23, 27029), (43, 27158), (60, 27299), (61, 27317), (70, 27374), (76, 27539), (77, 27551), (80, 27623), (96, 27866), (98, 27899), (100, 27908), (101, 27923), (103, 27941), (104, 27959), (107, 27995), (110, 28034), (113, 28112),

Gene: LeeroyJ_32 Start: 27188, Stop: 28471, Start Num: 6

Candidate Starts for LeeroyJ_32:

(Start: 6 @27188 has 24 MA's), (13, 27296), (51, 27566), (55, 27608), (58, 27635), (60, 27644), (61, 27662), (64, 27677), (69, 27710), (76, 27884), (77, 27896), (80, 27968), (94, 28187), (97, 28214), (98, 28244), (100, 28253), (101, 28268), (104, 28304), (106, 28322), (110, 28379), (113, 28457),

Gene: Martha_32 Start: 27113, Stop: 28390, Start Num: 6

Candidate Starts for Martha_32:

(Start: 6 @27113 has 24 MA's), (13, 27221), (15, 27242), (16, 27245), (52, 27488), (60, 27563), (61, 27581), (70, 27638), (76, 27803), (77, 27815), (80, 27887), (84, 27932), (88, 27983), (89, 28004), (97, 28133), (98, 28163), (100, 28172), (101, 28187), (103, 28205), (104, 28223), (110, 28298), (113, 28376),

Gene: Music_31 Start: 28204, Stop: 29466, Start Num: 7

Candidate Starts for Music_31:

(3, 28030), (Start: 7 @28204 has 6 MA's), (10, 28249), (14, 28318), (33, 28435), (35, 28441), (37, 28459), (39, 28471), (40, 28477), (55, 28603), (59, 28630), (67, 28684), (68, 28696), (74, 28825), (79, 28915), (82, 28966), (83, 28984), (87, 29035), (88, 29041), (101, 29245), (102, 29260), (106, 29317),

Gene: NathanVaag_30 Start: 26865, Stop: 28142, Start Num: 6

Candidate Starts for NathanVaag_30:

(Start: 6 @26865 has 24 MA's), (13, 26973), (21, 27033), (60, 27315), (61, 27333), (76, 27555), (77, 27567), (80, 27639), (96, 27882), (98, 27915), (100, 27924), (101, 27939), (103, 27957), (104, 27975), (105, 27990), (107, 28011), (109, 28029), (110, 28050), (113, 28128),

Gene: Nostromo_31 Start: 26138, Stop: 27400, Start Num: 7

Candidate Starts for Nostromo_31:

(Start: 7 @26138 has 6 MA's), (9, 26168), (12, 26228), (34, 26354), (36, 26360), (45, 26435), (55, 26531), (75, 26795), (79, 26867), (80, 26897), (81, 26906), (85, 26966), (86, 26984), (97, 27143), (99, 27176), (100, 27182), (101, 27197), (105, 27251), (108, 27281), (109, 27290),

Gene: Piccoletto_30 Start: 26867, Stop: 28144, Start Num: 6

Candidate Starts for Piccoletto_30:

(Start: 6 @26867 has 24 MA's), (13, 26975), (21, 27035), (60, 27317), (61, 27335), (76, 27557), (77, 27569), (80, 27641), (96, 27884), (98, 27917), (100, 27926), (101, 27941), (103, 27959), (104, 27977), (107, 28013), (109, 28031), (110, 28052), (113, 28130),

Gene: Pippa_32 Start: 27238, Stop: 28515, Start Num: 6

Candidate Starts for Pippa_32:

(3, 27064), (4, 27082), (5, 27088), (Start: 6 @27238 has 24 MA's), (11, 27319), (13, 27346), (15, 27367), (43, 27547), (51, 27610), (52, 27613), (55, 27652), (60, 27688), (61, 27706), (70, 27763), (76, 27928), (77, 27940), (78, 27970), (80, 28012), (84, 28057), (88, 28108), (89, 28129), (97, 28258), (98, 28288), (100, 28297), (101, 28312), (103, 28330), (104, 28348), (105, 28363), (110, 28423),

Gene: Shade_32 Start: 27079, Stop: 28356, Start Num: 6

Candidate Starts for Shade_32:

(Start: 6 @27079 has 24 MA's), (13, 27187), (15, 27208), (16, 27211), (51, 27451), (60, 27529), (61, 27547), (65, 27568), (70, 27604), (76, 27769), (77, 27781), (80, 27853), (88, 27949), (89, 27970), (97, 28099), (98, 28129), (100, 28138), (101, 28153), (103, 28171), (104, 28189), (110, 28264), (113, 28342),

Gene: Sicarius2_33 Start: 26732, Stop: 27994, Start Num: 6

Candidate Starts for Sicarius2_33:

(Start: 6 @26732 has 24 MA's), (13, 26831), (18, 26855), (20, 26861), (24, 26897), (27, 26915), (29, 26933), (32, 26945), (39, 26984), (46, 27044), (47, 27047), (54, 27119), (61, 27182), (66, 27209), (72, 27311), (76, 27404), (79, 27458), (80, 27488), (90, 27614), (91, 27635), (92, 27665), (97, 27734), (98, 27764), (100, 27773), (101, 27788), (104, 27824), (108, 27869), (110, 27899), (111, 27914),

Gene: Sonny_32 Start: 27109, Stop: 28386, Start Num: 6

Candidate Starts for Sonny_32:

(Start: 6 @27109 has 24 MA's), (8, 27115), (13, 27217), (16, 27241), (26, 27307), (31, 27337), (49, 27475), (51, 27481), (60, 27559), (61, 27577), (76, 27799), (77, 27811), (80, 27883), (88, 27979), (89, 28000), (97, 28129), (98, 28159), (100, 28168), (101, 28183), (103, 28201), (104, 28219), (110, 28294), (113, 28372),

Gene: StevieBAY_32 Start: 27188, Stop: 28471, Start Num: 6

Candidate Starts for StevieBAY_32:

(Start: 6 @27188 has 24 MA's), (13, 27296), (51, 27566), (55, 27608), (58, 27635), (60, 27644), (61, 27662), (64, 27677), (69, 27710), (76, 27884), (77, 27896), (80, 27968), (88, 28064), (94, 28187), (97, 28214), (98, 28244), (100, 28253), (101, 28268), (104, 28304), (106, 28322), (110, 28379), (113, 28457),

Gene: TaeYoung_32 Start: 27113, Stop: 28390, Start Num: 6

Candidate Starts for TaeYoung_32:

(Start: 6 @27113 has 24 MA's), (13, 27221), (15, 27242), (16, 27245), (52, 27488), (60, 27563), (61, 27581), (70, 27638), (76, 27803), (77, 27815), (80, 27887), (84, 27932), (88, 27983), (89, 28004), (97, 28133), (98, 28163), (100, 28172), (101, 28187), (103, 28205), (104, 28223), (110, 28298), (113, 28376),

Gene: Timinator_32 Start: 27188, Stop: 28471, Start Num: 6

Candidate Starts for Timinator_32:

(Start: 6 @27188 has 24 MA's), (13, 27296), (51, 27566), (55, 27608), (58, 27635), (60, 27644), (61, 27662), (64, 27677), (69, 27710), (76, 27884), (77, 27896), (80, 27968), (94, 28187), (97, 28214), (98, 28244), (100, 28253), (101, 28268), (104, 28304), (106, 28322), (110, 28379), (113, 28457),

Gene: Vibaki_31 Start: 28229, Stop: 29491, Start Num: 7

Candidate Starts for Vibaki_31:

(Start: 7 @28229 has 6 MA's), (10, 28274), (14, 28343), (33, 28460), (35, 28466), (37, 28484), (39, 28496), (40, 28502), (48, 28568), (55, 28628), (59, 28655), (67, 28709), (68, 28721), (74, 28850), (79, 28940), (82, 28991), (83, 29009), (87, 29060), (88, 29066), (101, 29270), (102, 29285), (106, 29342),

Gene: Wyborn_33 Start: 27430, Stop: 28632, Start Num: 6

Candidate Starts for Wyborn_33:

(Start: 6 @27430 has 24 MA's), (41, 27682), (53, 27760), (56, 27796), (57, 27802), (63, 27832), (65, 27841), (71, 27925), (73, 27961), (76, 28042), (79, 28096), (80, 28126), (90, 28252), (91, 28273), (92, 28303), (97, 28372), (98, 28402), (100, 28411), (101, 28426), (104, 28462), (108, 28507), (110, 28537), (111, 28552),

Gene: Zartrosa_32 Start: 27103, Stop: 28299, Start Num: 6

Candidate Starts for Zartrosa_32:

(Start: 6 @27103 has 24 MA's), (24, 27259), (28, 27289), (30, 27298), (41, 27352), (42, 27373), (62, 27520), (69, 27553), (76, 27712), (77, 27724), (80, 27796), (88, 27892), (89, 27913), (97, 28042), (98, 28072), (100, 28081), (101, 28096), (103, 28114), (104, 28132), (110, 28207), (113, 28285),