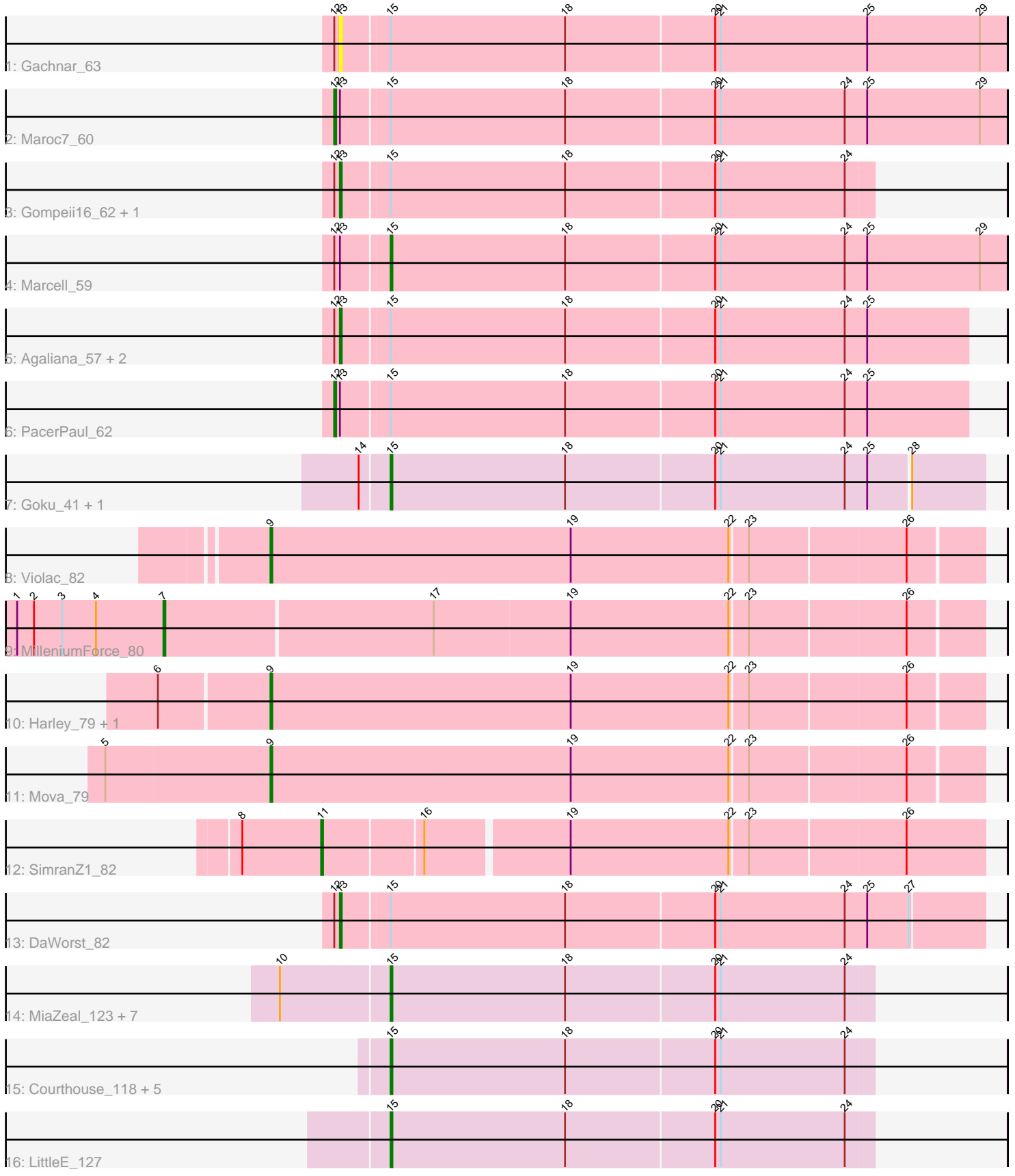


Pham 308996



Note: Tracks are now grouped by subcluster and scaled. Switching in subcluster is indicated by changes in track color. Track scale is now set by default to display the region 30 bp upstream of start 1 to 30 bp downstream of the last possible start. If this default region is judged to be packed too tightly with annotated starts, the track will be further scaled to only show that region of the ORF with annotated starts. This action will be indicated by adding "Zoomed" to the title. For starts, yellow indicates the location of called starts comprised solely of Glimmer/GeneMark auto-annotations, green indicates the location of called starts with at least 1 manual gene annotation.

Pham 308996 Report

This analysis was run 06/27/26 on database version 652.

Pham number 308996 has 33 members, 8 are drafts.

Phages represented in each track:

- Track 1 : Gachnar_63
- Track 2 : Maroc7_60
- Track 3 : Gompeii16_62, Bircsak_62
- Track 4 : Marcell_59
- Track 5 : Agaliana_57, Francis47_61, Guppsters_73
- Track 6 : PacerPaul_62
- Track 7 : Goku_41, Eureka_41
- Track 8 : Violac_82
- Track 9 : MilleniumForce_80
- Track 10 : Harley_79, Eish_83
- Track 11 : Mova_79
- Track 12 : SimranZ1_82
- Track 13 : DaWorst_82
- Track 14 : MiaZeal_123, Nibley_120, Hannaconda_114, Nekros_126, KashFlow_120, BronnyJames_120, Rearden_121, Shaboozey_124
- Track 15 : Courthouse_118, Gonephishing_117, Omega_134, Ariel_123, Superphikiman_120, Squint_121
- Track 16 : LittleE_127

Summary of Final Annotations (See graph section above for start numbers):

The start number called the most often in the published annotations is 15, it was called in 12 of the 25 non-draft genes in the pham.

Genes that call this "Most Annotated" start:

- Ariel_123, BronnyJames_120, Courthouse_118, Eureka_41, Goku_41, Gonephishing_117, Hannaconda_114, KashFlow_120, LittleE_127, Marcell_59, MiaZeal_123, Nekros_126, Nibley_120, Omega_134, Rearden_121, Shaboozey_124, Squint_121, Superphikiman_120,

Genes that have the "Most Annotated" start but do not call it:

- Agaliana_57, Bircsak_62, DaWorst_82, Francis47_61, Gachnar_63, Gompeii16_62, Guppsters_73, Maroc7_60, PacerPaul_62,

Genes that do not have the "Most Annotated" start:

- Eish_83, Harley_79, MilleniumForce_80, Mova_79, SimranZ1_82, Violac_82,

Summary by start number:

Start 7:

- Found in 1 of 33 (3.0%) of genes in pham
- Manual Annotations of this start: 1 of 25
- Called 100.0% of time when present
- Phage (with cluster) where this start called: MilleniumForce_80 (F1),

Start 9:

- Found in 4 of 33 (12.1%) of genes in pham
- Manual Annotations of this start: 4 of 25
- Called 100.0% of time when present
- Phage (with cluster) where this start called: Eish_83 (F1), Harley_79 (F1), Mova_79 (F1), Violac_82 (F1),

Start 11:

- Found in 1 of 33 (3.0%) of genes in pham
- Manual Annotations of this start: 1 of 25
- Called 100.0% of time when present
- Phage (with cluster) where this start called: SimranZ1_82 (F1),

Start 12:

- Found in 10 of 33 (30.3%) of genes in pham
- Manual Annotations of this start: 2 of 25
- Called 20.0% of time when present
- Phage (with cluster) where this start called: Maroc7_60 (A1), PacerPaul_62 (A1),

Start 13:

- Found in 10 of 33 (30.3%) of genes in pham
- Manual Annotations of this start: 5 of 25
- Called 70.0% of time when present
- Phage (with cluster) where this start called: Agaliana_57 (A1), Bircsak_62 (A1), DaWorst_82 (F1), Francis47_61 (A1), Gachnar_63 (A1), Gompeii16_62 (A1), Guppsters_73 (F1),

Start 15:

- Found in 27 of 33 (81.8%) of genes in pham
- Manual Annotations of this start: 12 of 25
- Called 66.7% of time when present
- Phage (with cluster) where this start called: Ariel_123 (J), BronnyJames_120 (J), Courthouse_118 (J), Eureka_41 (E), Goku_41 (E), Gonephishing_117 (J), Hannaconda_114 (J), KashFlow_120 (J), LittleE_127 (J), Marcell_59 (A1), MiaZeal_123 (J), Nekros_126 (J), Nibley_120 (J), Omega_134 (J), Rearden_121 (J), Shaboozey_124 (J), Squint_121 (J), Superphikiman_120 (J),

Summary by clusters:

There are 4 clusters represented in this pham: A1, F1, J, E,

Info for manual annotations of cluster A1:

- Start number 12 was manually annotated 2 times for cluster A1.
- Start number 13 was manually annotated 3 times for cluster A1.
- Start number 15 was manually annotated 1 time for cluster A1.

Info for manual annotations of cluster E:

- Start number 15 was manually annotated 2 times for cluster E.

Info for manual annotations of cluster F1:

- Start number 7 was manually annotated 1 time for cluster F1.
- Start number 9 was manually annotated 4 times for cluster F1.
- Start number 11 was manually annotated 1 time for cluster F1.
- Start number 13 was manually annotated 2 times for cluster F1.

Info for manual annotations of cluster J:

- Start number 15 was manually annotated 9 times for cluster J.

Gene Information:

Gene: Agaliana_57 Start: 38241, Stop: 37912, Start Num: 13

Candidate Starts for Agaliana_57:

(Start: 12 @38244 has 2 MA's), (Start: 13 @38241 has 5 MA's), (Start: 15 @38217 has 12 MA's), (18, 38124), (20, 38046), (21, 38043), (24, 37977), (25, 37965),

Gene: Ariel_123 Start: 65698, Stop: 65952, Start Num: 15

Candidate Starts for Ariel_123:

(Start: 15 @65698 has 12 MA's), (18, 65791), (20, 65869), (21, 65872), (24, 65938),

Gene: Bircsak_62 Start: 43158, Stop: 42880, Start Num: 13

Candidate Starts for Bircsak_62:

(Start: 12 @43161 has 2 MA's), (Start: 13 @43158 has 5 MA's), (Start: 15 @43134 has 12 MA's), (18, 43041), (20, 42963), (21, 42960), (24, 42894),

Gene: BronnyJames_120 Start: 66678, Stop: 66932, Start Num: 15

Candidate Starts for BronnyJames_120:

(10, 66621), (Start: 15 @66678 has 12 MA's), (18, 66771), (20, 66849), (21, 66852), (24, 66918),

Gene: Courthouse_118 Start: 65298, Stop: 65552, Start Num: 15

Candidate Starts for Courthouse_118:

(Start: 15 @65298 has 12 MA's), (18, 65391), (20, 65469), (21, 65472), (24, 65538),

Gene: DaWorst_82 Start: 48589, Stop: 48924, Start Num: 13

Candidate Starts for DaWorst_82:

(Start: 12 @48586 has 2 MA's), (Start: 13 @48589 has 5 MA's), (Start: 15 @48613 has 12 MA's), (18, 48706), (20, 48784), (21, 48787), (24, 48853), (25, 48865), (27, 48886),

Gene: Eish_83 Start: 49626, Stop: 49997, Start Num: 9

Candidate Starts for Eish_83:

(6, 49569), (Start: 9 @49626 has 4 MA's), (19, 49785), (22, 49869), (23, 49878), (26, 49959),

Gene: Eureka_41 Start: 35273, Stop: 34962, Start Num: 15

Candidate Starts for Eureka_41:

(14, 35288), (Start: 15 @35273 has 12 MA's), (18, 35180), (20, 35102), (21, 35099), (24, 35033), (25, 35021), (28, 35000),

Gene: Francis47_61 Start: 42085, Stop: 41756, Start Num: 13

Candidate Starts for Francis47_61:

(Start: 12 @42088 has 2 MA's), (Start: 13 @42085 has 5 MA's), (Start: 15 @42061 has 12 MA's), (18, 41968), (20, 41890), (21, 41887), (24, 41821), (25, 41809),

Gene: Gachnar_63 Start: 41716, Stop: 41366, Start Num: 13

Candidate Starts for Gachnar_63:

(Start: 12 @41719 has 2 MA's), (Start: 13 @41716 has 5 MA's), (Start: 15 @41692 has 12 MA's), (18, 41599), (20, 41521), (21, 41518), (25, 41440), (29, 41380),

Gene: Goku_41 Start: 35002, Stop: 34691, Start Num: 15

Candidate Starts for Goku_41:

(14, 35017), (Start: 15 @35002 has 12 MA's), (18, 34909), (20, 34831), (21, 34828), (24, 34762), (25, 34750), (28, 34729),

Gene: Gompeii16_62 Start: 43159, Stop: 42881, Start Num: 13

Candidate Starts for Gompeii16_62:

(Start: 12 @43162 has 2 MA's), (Start: 13 @43159 has 5 MA's), (Start: 15 @43135 has 12 MA's), (18, 43042), (20, 42964), (21, 42961), (24, 42895),

Gene: Gonephishing_117 Start: 64717, Stop: 64971, Start Num: 15

Candidate Starts for Gonephishing_117:

(Start: 15 @64717 has 12 MA's), (18, 64810), (20, 64888), (21, 64891), (24, 64957),

Gene: Guppsters_73 Start: 45751, Stop: 46098, Start Num: 13

Candidate Starts for Guppsters_73:

(Start: 12 @45748 has 2 MA's), (Start: 13 @45751 has 5 MA's), (Start: 15 @45775 has 12 MA's), (18, 45868), (20, 45946), (21, 45949), (24, 46015), (25, 46027),

Gene: Hannaconda_114 Start: 64647, Stop: 64901, Start Num: 15

Candidate Starts for Hannaconda_114:

(10, 64590), (Start: 15 @64647 has 12 MA's), (18, 64740), (20, 64818), (21, 64821), (24, 64887),

Gene: Harley_79 Start: 47972, Stop: 48343, Start Num: 9

Candidate Starts for Harley_79:

(6, 47915), (Start: 9 @47972 has 4 MA's), (19, 48131), (22, 48215), (23, 48224), (26, 48305),

Gene: KashFlow_120 Start: 67152, Stop: 67406, Start Num: 15

Candidate Starts for KashFlow_120:

(10, 67095), (Start: 15 @67152 has 12 MA's), (18, 67245), (20, 67323), (21, 67326), (24, 67392),

Gene: LittleE_127 Start: 68903, Stop: 69157, Start Num: 15

Candidate Starts for LittleE_127:

(Start: 15 @68903 has 12 MA's), (18, 68996), (20, 69074), (21, 69077), (24, 69143),

Gene: Marcell_59 Start: 40110, Stop: 39784, Start Num: 15

Candidate Starts for Marcell_59:

(Start: 12 @40137 has 2 MA's), (Start: 13 @40134 has 5 MA's), (Start: 15 @40110 has 12 MA's), (18, 40017), (20, 39939), (21, 39936), (24, 39870), (25, 39858), (29, 39798),

Gene: Maroc7_60 Start: 41661, Stop: 41308, Start Num: 12

Candidate Starts for Maroc7_60:

(Start: 12 @41661 has 2 MA's), (Start: 13 @41658 has 5 MA's), (Start: 15 @41634 has 12 MA's), (18, 41541), (20, 41463), (21, 41460), (24, 41394), (25, 41382), (29, 41322),

Gene: MiaZeal_123 Start: 66376, Stop: 66630, Start Num: 15

Candidate Starts for MiaZeal_123:

(10, 66319), (Start: 15 @66376 has 12 MA's), (18, 66469), (20, 66547), (21, 66550), (24, 66616),

Gene: MilleniumForce_80 Start: 49084, Stop: 49509, Start Num: 7

Candidate Starts for MilleniumForce_80:

(1, 49006), (2, 49015), (3, 49030), (4, 49048), (Start: 7 @49084 has 1 MA's), (17, 49225), (19, 49297), (22, 49381), (23, 49390), (26, 49471),

Gene: Mova_79 Start: 47484, Stop: 47855, Start Num: 9

Candidate Starts for Mova_79:

(5, 47397), (Start: 9 @47484 has 4 MA's), (19, 47643), (22, 47727), (23, 47736), (26, 47817),

Gene: Nekros_126 Start: 69872, Stop: 70126, Start Num: 15

Candidate Starts for Nekros_126:

(10, 69815), (Start: 15 @69872 has 12 MA's), (18, 69965), (20, 70043), (21, 70046), (24, 70112),

Gene: Nibley_120 Start: 66255, Stop: 66509, Start Num: 15

Candidate Starts for Nibley_120:

(10, 66198), (Start: 15 @66255 has 12 MA's), (18, 66348), (20, 66426), (21, 66429), (24, 66495),

Gene: Omega_134 Start: 70584, Stop: 70838, Start Num: 15

Candidate Starts for Omega_134:

(Start: 15 @70584 has 12 MA's), (18, 70677), (20, 70755), (21, 70758), (24, 70824),

Gene: PacerPaul_62 Start: 41455, Stop: 41123, Start Num: 12

Candidate Starts for PacerPaul_62:

(Start: 12 @41455 has 2 MA's), (Start: 13 @41452 has 5 MA's), (Start: 15 @41428 has 12 MA's), (18, 41335), (20, 41257), (21, 41254), (24, 41188), (25, 41176),

Gene: Rearden_121 Start: 66275, Stop: 66529, Start Num: 15

Candidate Starts for Rearden_121:

(10, 66218), (Start: 15 @66275 has 12 MA's), (18, 66368), (20, 66446), (21, 66449), (24, 66515),

Gene: Shaboozey_124 Start: 66699, Stop: 66953, Start Num: 15

Candidate Starts for Shaboozey_124:

(10, 66642), (Start: 15 @66699 has 12 MA's), (18, 66792), (20, 66870), (21, 66873), (24, 66939),

Gene: SimranZ1_82 Start: 48589, Stop: 48927, Start Num: 11

Candidate Starts for SimranZ1_82:

(8, 48547), (Start: 11 @48589 has 1 MA's), (16, 48640), (19, 48712), (22, 48796), (23, 48805), (26, 48886),

Gene: Squint_121 Start: 66489, Stop: 66743, Start Num: 15

Candidate Starts for Squint_121:

(Start: 15 @66489 has 12 MA's), (18, 66582), (20, 66660), (21, 66663), (24, 66729),

Gene: Superphikiman_120 Start: 65580, Stop: 65834, Start Num: 15

Candidate Starts for Superphikiman_120:

(Start: 15 @65580 has 12 MA's), (18, 65673), (20, 65751), (21, 65754), (24, 65820),

Gene: Violac_82 Start: 50136, Stop: 50507, Start Num: 9

Candidate Starts for Violac_82:

(Start: 9 @50136 has 4 MA's), (19, 50295), (22, 50379), (23, 50388), (26, 50469),