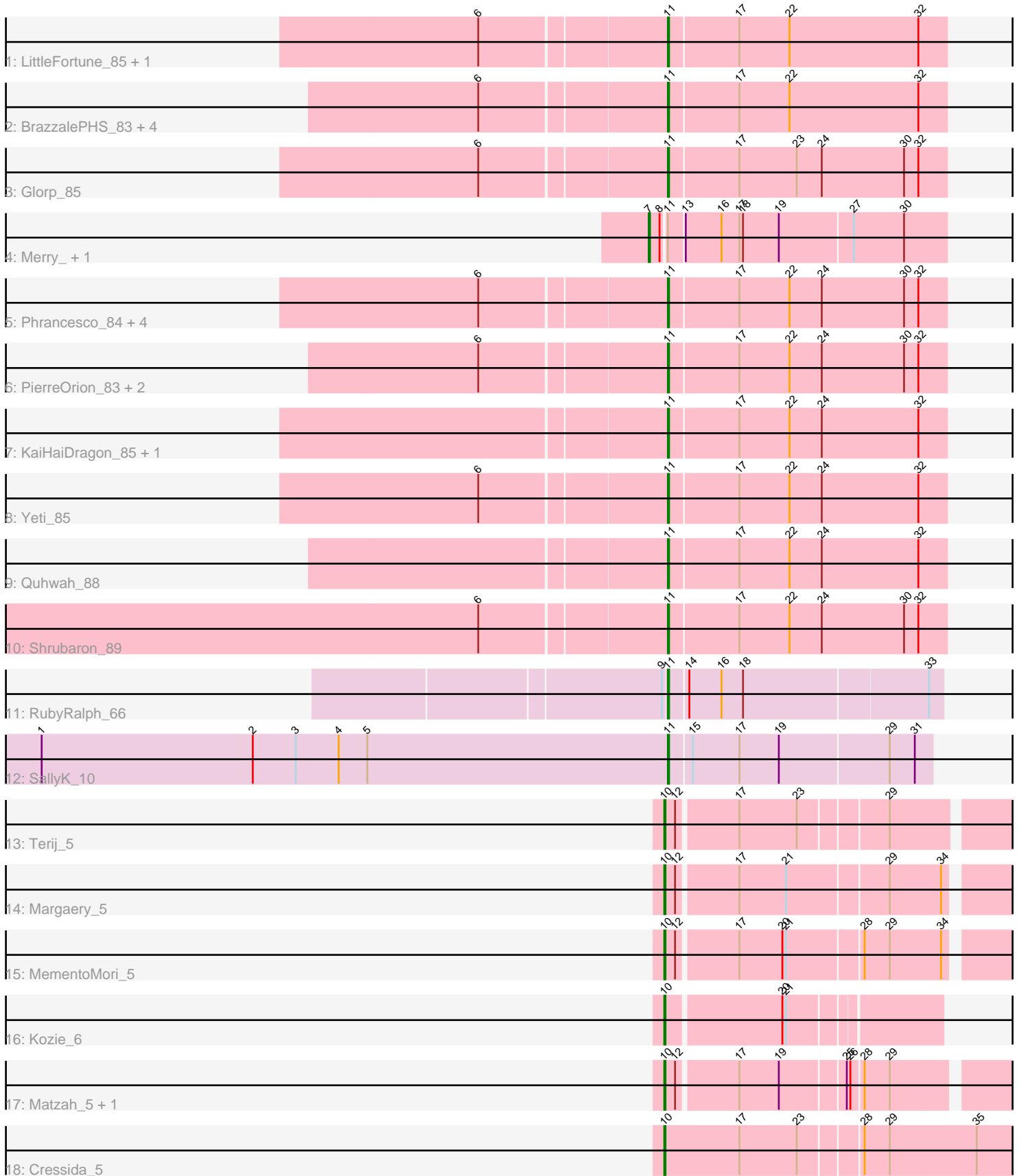


Pham 309015



Note: Tracks are now grouped by subcluster and scaled. Switching in subcluster is indicated by changes in track color. Track scale is now set by default to display the region 30 bp upstream of start 1 to 30 bp downstream of the last possible start. If this default region is judged to be packed too tightly with annotated starts, the track will be further scaled to only show that region of the ORF with annotated starts. This action will be indicated by adding "Zoomed" to the title. For starts, yellow indicates the location of called starts comprised solely of Glimmer/GeneMark auto-annotations, green indicates the location of called starts with at least 1 manual gene annotation.

Pham 309015 Report

This analysis was run 06/27/26 on database version 652.

Pham number 309015 has 32 members, 2 are drafts.

Phages represented in each track:

- Track 1 : LittleFortune_85, Rockwell_83
- Track 2 : BrazzalePHS_83, Onika_83, Kowalski_83, Ramiel05_83, Antares_84
- Track 3 : Glorp_85
- Track 4 : Merry_, Sunny_
- Track 5 : Phrancesco_84, PiperSansNom_85, PhedwardCullen_82, CrazyRich_82, Shotgun_83
- Track 6 : PierreOrion_83, Jefe_84, BeagleBug_83
- Track 7 : KaiHaiDragon_85, EarickHC_85
- Track 8 : Yeti_85
- Track 9 : Quhwah_88
- Track 10 : Shrubaron_89
- Track 11 : RubyRalph_66
- Track 12 : SallyK_10
- Track 13 : Terij_5
- Track 14 : Margaery_5
- Track 15 : MementoMori_5
- Track 16 : Kozie_6
- Track 17 : Matzah_5, Cinna_5
- Track 18 : Cressida_5

Summary of Final Annotations (See graph section above for start numbers):

The start number called the most often in the published annotations is 11, it was called in 21 of the 30 non-draft genes in the pham.

Genes that call this "Most Annotated" start:

- Antares_84, BeagleBug_83, BrazzalePHS_83, CrazyRich_82, EarickHC_85, Glorp_85, Jefe_84, KaiHaiDragon_85, Kowalski_83, LittleFortune_85, Onika_83, PhedwardCullen_82, Phrancesco_84, PierreOrion_83, PiperSansNom_85, Quhwah_88, Ramiel05_83, Rockwell_83, RubyRalph_66, SallyK_10, Shotgun_83, Shrubaron_89, Yeti_85,

Genes that have the "Most Annotated" start but do not call it:

- Merry_, Sunny_

Genes that do not have the "Most Annotated" start:

- Cinna_5, Cressida_5, Kozie_6, Margaery_5, Matzah_5, MementoMori_5, Terij_5,

Summary by start number:

Start 7:

- Found in 2 of 32 (6.2%) of genes in pham
- Manual Annotations of this start: 2 of 30
- Called 100.0% of time when present
- Phage (with cluster) where this start called: Merry_ (EC), Sunny_ (EC),

Start 10:

- Found in 7 of 32 (21.9%) of genes in pham
- Manual Annotations of this start: 7 of 30
- Called 100.0% of time when present
- Phage (with cluster) where this start called: Cinna_5 (EI), Cressida_5 (EI), Kozie_6 (EI), Margaery_5 (EI), Matzah_5 (EI), MementoMori_5 (EI), Terij_5 (EI),

Start 11:

- Found in 25 of 32 (78.1%) of genes in pham
- Manual Annotations of this start: 21 of 30
- Called 92.0% of time when present
- Phage (with cluster) where this start called: Antares_84 (EC), BeagleBug_83 (EC), BrazzalePHS_83 (EC), CrazyRich_82 (EC), EarickHC_85 (EC), Glorp_85 (EC), Jefe_84 (EC), KaiHaiDragon_85 (EC), Kowalski_83 (EC), LittleFortune_85 (EC), Onika_83 (EC), PhedwardCullen_82 (EC), Phrancesco_84 (EC), PierreOrion_83 (EC), PiperSansNom_85 (EC), Quhwah_88 (EC), Ramiel05_83 (EC), Rockwell_83 (EC), RubyRalph_66 (EG), SallyK_10 (EG), Shotgun_83 (EC), Shrubaron_89 (EC), Yeti_85 (EC),

Summary by clusters:

There are 3 clusters represented in this pham: EG, EI, EC,

Info for manual annotations of cluster EC:

- Start number 7 was manually annotated 2 times for cluster EC.
- Start number 11 was manually annotated 19 times for cluster EC.

Info for manual annotations of cluster EG:

- Start number 11 was manually annotated 2 times for cluster EG.

Info for manual annotations of cluster EI:

- Start number 10 was manually annotated 7 times for cluster EI.

Gene Information:

Gene: Antares_84 Start: 49769, Stop: 49999, Start Num: 11

Candidate Starts for Antares_84:

(6, 49619), (Start: 11 @49769 has 21 MA's), (17, 49826), (22, 49868), (32, 49976),

Gene: BeagleBug_83 Start: 49572, Stop: 49802, Start Num: 11
Candidate Starts for BeagleBug_83:
(6, 49422), (Start: 11 @49572 has 21 MA's), (17, 49629), (22, 49671), (24, 49698), (30, 49767), (32, 49779),

Gene: BrazzalePHS_83 Start: 49569, Stop: 49799, Start Num: 11
Candidate Starts for BrazzalePHS_83:
(6, 49419), (Start: 11 @49569 has 21 MA's), (17, 49626), (22, 49668), (32, 49776),

Gene: Cinna_5 Start: 3842, Stop: 4123, Start Num: 10
Candidate Starts for Cinna_5:
(Start: 10 @3842 has 7 MA's), (12, 3851), (17, 3899), (19, 3932), (25, 3983), (26, 3986), (28, 3995), (29, 4016),

Gene: CrazyRich_82 Start: 49260, Stop: 49490, Start Num: 11
Candidate Starts for CrazyRich_82:
(6, 49110), (Start: 11 @49260 has 21 MA's), (17, 49317), (22, 49359), (24, 49386), (30, 49455), (32, 49467),

Gene: Cressida_5 Start: 3937, Stop: 4236, Start Num: 10
Candidate Starts for Cressida_5:
(Start: 10 @3937 has 7 MA's), (17, 4000), (23, 4048), (28, 4096), (29, 4117), (35, 4189),

Gene: EarickHC_85 Start: 49634, Stop: 49864, Start Num: 11
Candidate Starts for EarickHC_85:
(Start: 11 @49634 has 21 MA's), (17, 49691), (22, 49733), (24, 49760), (32, 49841),

Gene: Glorp_85 Start: 49521, Stop: 49751, Start Num: 11
Candidate Starts for Glorp_85:
(6, 49371), (Start: 11 @49521 has 21 MA's), (17, 49578), (23, 49626), (24, 49647), (30, 49716), (32, 49728),

Gene: Jefe_84 Start: 49532, Stop: 49762, Start Num: 11
Candidate Starts for Jefe_84:
(6, 49382), (Start: 11 @49532 has 21 MA's), (17, 49589), (22, 49631), (24, 49658), (30, 49727), (32, 49739),

Gene: KaiHaiDragon_85 Start: 49634, Stop: 49864, Start Num: 11
Candidate Starts for KaiHaiDragon_85:
(Start: 11 @49634 has 21 MA's), (17, 49691), (22, 49733), (24, 49760), (32, 49841),

Gene: Kowalski_83 Start: 49564, Stop: 49794, Start Num: 11
Candidate Starts for Kowalski_83:
(6, 49414), (Start: 11 @49564 has 21 MA's), (17, 49621), (22, 49663), (32, 49771),

Gene: Kozie_6 Start: 4920, Stop: 5135, Start Num: 10
Candidate Starts for Kozie_6:
(Start: 10 @4920 has 7 MA's), (20, 5013), (21, 5016),

Gene: LittleFortune_85 Start: 49547, Stop: 49777, Start Num: 11
Candidate Starts for LittleFortune_85:
(6, 49397), (Start: 11 @49547 has 21 MA's), (17, 49604), (22, 49646), (32, 49754),

Gene: Margaery_5 Start: 3926, Stop: 4210, Start Num: 10
Candidate Starts for Margaery_5:
(Start: 10 @3926 has 7 MA's), (12, 3935), (17, 3983), (21, 4022), (29, 4103), (34, 4145),

Gene: Matzah_5 Start: 3842, Stop: 4123, Start Num: 10
Candidate Starts for Matzah_5:
(Start: 10 @3842 has 7 MA's), (12, 3851), (17, 3899), (19, 3932), (25, 3983), (26, 3986), (28, 3995),
(29, 4016),

Gene: MementoMori_5 Start: 3839, Stop: 4123, Start Num: 10
Candidate Starts for MementoMori_5:
(Start: 10 @3839 has 7 MA's), (12, 3848), (17, 3896), (20, 3932), (21, 3935), (28, 3995), (29, 4016),
(34, 4058),

Gene: Merry_ Start: 49722, Stop: 49961, Start Num: 7
Candidate Starts for Merry_:
(Start: 7 @49722 has 2 MA's), (8, 49731), (Start: 11 @49734 has 21 MA's), (13, 49746), (16, 49776),
(17, 49791), (18, 49794), (19, 49824), (27, 49884), (30, 49926),

Gene: Onika_83 Start: 49535, Stop: 49765, Start Num: 11
Candidate Starts for Onika_83:
(6, 49385), (Start: 11 @49535 has 21 MA's), (17, 49592), (22, 49634), (32, 49742),

Gene: PhedwardCullen_82 Start: 49007, Stop: 49237, Start Num: 11
Candidate Starts for PhedwardCullen_82:
(6, 48857), (Start: 11 @49007 has 21 MA's), (17, 49064), (22, 49106), (24, 49133), (30, 49202), (32,
49214),

Gene: Phrancesco_84 Start: 49662, Stop: 49892, Start Num: 11
Candidate Starts for Phrancesco_84:
(6, 49512), (Start: 11 @49662 has 21 MA's), (17, 49719), (22, 49761), (24, 49788), (30, 49857), (32,
49869),

Gene: PierreOrion_83 Start: 49371, Stop: 49601, Start Num: 11
Candidate Starts for PierreOrion_83:
(6, 49221), (Start: 11 @49371 has 21 MA's), (17, 49428), (22, 49470), (24, 49497), (30, 49566), (32,
49578),

Gene: PiperSansNom_85 Start: 49865, Stop: 50095, Start Num: 11
Candidate Starts for PiperSansNom_85:
(6, 49715), (Start: 11 @49865 has 21 MA's), (17, 49922), (22, 49964), (24, 49991), (30, 50060), (32,
50072),

Gene: Quhwah_88 Start: 50191, Stop: 50421, Start Num: 11
Candidate Starts for Quhwah_88:
(Start: 11 @50191 has 21 MA's), (17, 50248), (22, 50290), (24, 50317), (32, 50398),

Gene: Ramiel05_83 Start: 49564, Stop: 49794, Start Num: 11
Candidate Starts for Ramiel05_83:
(6, 49414), (Start: 11 @49564 has 21 MA's), (17, 49621), (22, 49663), (32, 49771),

Gene: Rockwell_83 Start: 49588, Stop: 49818, Start Num: 11
Candidate Starts for Rockwell_83:

(6, 49438), (Start: 11 @49588 has 21 MA's), (17, 49645), (22, 49687), (32, 49795),

Gene: RubyRalph_66 Start: 46574, Stop: 46353, Start Num: 11

Candidate Starts for RubyRalph_66:

(9, 46577), (Start: 11 @46574 has 21 MA's), (14, 46559), (16, 46532), (18, 46514), (33, 46364),

Gene: SallyK_10 Start: 3979, Stop: 3764, Start Num: 11

Candidate Starts for SallyK_10:

(1, 4504), (2, 4327), (3, 4291), (4, 4255), (5, 4231), (Start: 11 @3979 has 21 MA's), (15, 3961), (17, 3922), (19, 3889), (29, 3799), (31, 3778),

Gene: Shotgun_83 Start: 49066, Stop: 49296, Start Num: 11

Candidate Starts for Shotgun_83:

(6, 48916), (Start: 11 @49066 has 21 MA's), (17, 49123), (22, 49165), (24, 49192), (30, 49261), (32, 49273),

Gene: Shrubaron_89 Start: 50226, Stop: 50456, Start Num: 11

Candidate Starts for Shrubaron_89:

(6, 50076), (Start: 11 @50226 has 21 MA's), (17, 50283), (22, 50325), (24, 50352), (30, 50421), (32, 50433),

Gene: Sunny_ Start: 49724, Stop: 49963, Start Num: 7

Candidate Starts for Sunny_:

(Start: 7 @49724 has 2 MA's), (8, 49733), (Start: 11 @49736 has 21 MA's), (13, 49748), (16, 49778), (17, 49793), (18, 49796), (19, 49826), (27, 49886), (30, 49928),

Gene: Terij_5 Start: 3842, Stop: 4123, Start Num: 10

Candidate Starts for Terij_5:

(Start: 10 @3842 has 7 MA's), (12, 3851), (17, 3899), (23, 3947), (29, 4016),

Gene: Yeti_85 Start: 49092, Stop: 49322, Start Num: 11

Candidate Starts for Yeti_85:

(6, 48942), (Start: 11 @49092 has 21 MA's), (17, 49149), (22, 49191), (24, 49218), (32, 49299),