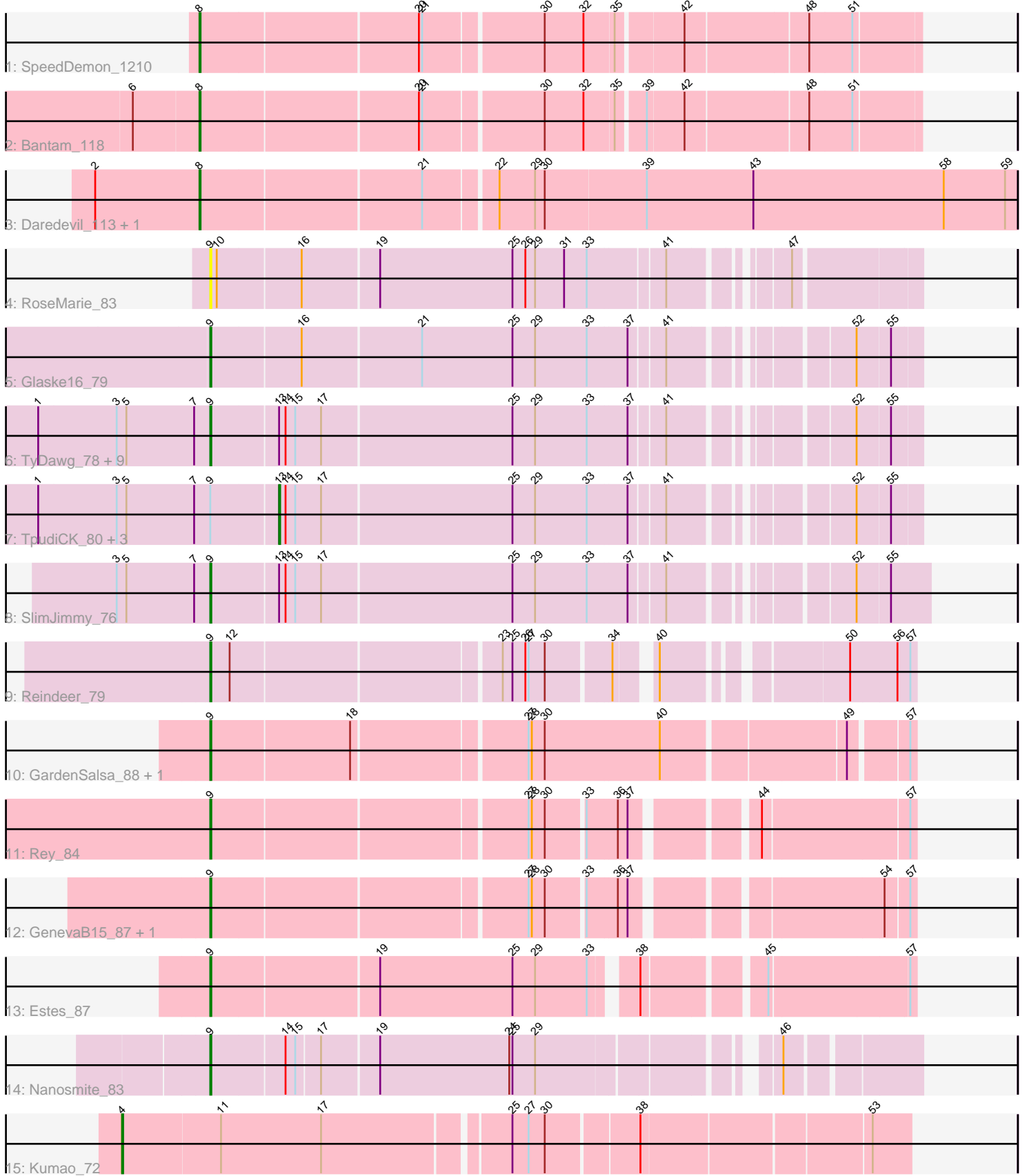


Pham 309040



Note: Tracks are now grouped by subcluster and scaled. Switching in subcluster is indicated by changes in track color. Track scale is now set by default to display the region 30 bp upstream of start 1 to 30 bp downstream of the last possible start. If this default region is judged to be packed too tightly with annotated starts, the track will be further scaled to only show that region of the ORF with annotated starts. This action will be indicated by adding "Zoomed" to the title. For starts, yellow indicates the location of called starts comprised solely of Glimmer/GeneMark auto-annotations, green indicates the location of called starts with at least 1 manual gene annotation.

Pham 309040 Report

This analysis was run 06/27/26 on database version 652.

Pham number 309040 has 30 members, 3 are drafts.

Phages represented in each track:

- Track 1 : SpeedDemon_1210
- Track 2 : Bantam_118
- Track 3 : Daredevil_113, Towmatter_113
- Track 4 : RoseMarie_83
- Track 5 : Glaske16_79
- Track 6 : TyDawg_78, Skinny_81, Bricole_76, LilhomieP_78, Dulcita_79, IPhane7_77, Diminimus_79, Bongo_78, Auspice_78, Izel_79
- Track 7 : TpudiCK_80, KleverKiS_75, FreakyGoo_80, PegLeg_77
- Track 8 : SlimJimmy_76
- Track 9 : Reindeer_79
- Track 10 : GardenSalsa_88, MrMagoo_88
- Track 11 : Rey_84
- Track 12 : GenevaB15_87, Aziz_85
- Track 13 : Estes_87
- Track 14 : Nanosmite_83
- Track 15 : Kumao_72

Summary of Final Annotations (See graph section above for start numbers):

The start number called the most often in the published annotations is 9, it was called in 20 of the 27 non-draft genes in the pham.

Genes that call this "Most Annotated" start:

- Auspice_78, Aziz_85, Bongo_78, Bricole_76, Diminimus_79, Dulcita_79, Estes_87, GardenSalsa_88, GenevaB15_87, Glaske16_79, IPhane7_77, Izel_79, LilhomieP_78, MrMagoo_88, Nanosmite_83, Reindeer_79, Rey_84, RoseMarie_83, Skinny_81, SlimJimmy_76, TyDawg_78,

Genes that have the "Most Annotated" start but do not call it:

- FreakyGoo_80, KleverKiS_75, PegLeg_77, TpudiCK_80,

Genes that do not have the "Most Annotated" start:

- Bantam_118, Daredevil_113, Kumao_72, SpeedDemon_1210, Towmatter_113,

Summary by start number:

Start 4:

- Found in 1 of 30 (3.3%) of genes in pham
- Manual Annotations of this start: 1 of 27
- Called 100.0% of time when present
- Phage (with cluster) where this start called: Kumao_72 (singleton),

Start 8:

- Found in 4 of 30 (13.3%) of genes in pham
- Manual Annotations of this start: 4 of 27
- Called 100.0% of time when present
- Phage (with cluster) where this start called: Bantam_118 (DL), Daredevil_113 (DL), SpeedDemon_1210 (DL), Towmatter_113 (DL),

Start 9:

- Found in 25 of 30 (83.3%) of genes in pham
- Manual Annotations of this start: 20 of 27
- Called 84.0% of time when present
- Phage (with cluster) where this start called: Auspice_78 (M1), Aziz_85 (M2), Bongo_78 (M1), Bricole_76 (M1), Diminimus_79 (M1), Dulcita_79 (M1), Estes_87 (M2), GardenSalsa_88 (M2), GenevaB15_87 (M2), Glaske16_79 (M1), IPhone7_77 (M1), Izel_79 (M1), LilhomieP_78 (M1), MrMagoo_88 (M2), Nanosmite_83 (M3), Reindeer_79 (M1), Rey_84 (M2), RoseMarie_83 (M1), Skinny_81 (M1), SlimJimmy_76 (M1), TyDawg_78 (M1),

Start 13:

- Found in 15 of 30 (50.0%) of genes in pham
- Manual Annotations of this start: 2 of 27
- Called 26.7% of time when present
- Phage (with cluster) where this start called: FreakyGoo_80 (M1), KleverKiS_75 (M1), PegLeg_77 (M1), TpudiCK_80 (M1),

Summary by clusters:

There are 5 clusters represented in this pham: singleton, M1, DL, M3, M2,

Info for manual annotations of cluster DL:

- Start number 8 was manually annotated 4 times for cluster DL.

Info for manual annotations of cluster M1:

- Start number 9 was manually annotated 13 times for cluster M1.
- Start number 13 was manually annotated 2 times for cluster M1.

Info for manual annotations of cluster M2:

- Start number 9 was manually annotated 6 times for cluster M2.

Info for manual annotations of cluster M3:

- Start number 9 was manually annotated 1 time for cluster M3.

Gene Information:

Gene: Auspice_78 Start: 49587, Stop: 50189, Start Num: 9

Candidate Starts for Auspice_78:

(1, 49428), (3, 49500), (5, 49509), (7, 49572), (Start: 9 @49587 has 20 MA's), (Start: 13 @49647 has 2 MA's), (14, 49653), (15, 49662), (17, 49686), (25, 49860), (29, 49881), (33, 49929), (37, 49965), (41, 49995), (52, 50133), (55, 50163),

Gene: Aziz_85 Start: 51504, Stop: 52097, Start Num: 9

Candidate Starts for Aziz_85:

(Start: 9 @51504 has 20 MA's), (27, 51783), (28, 51786), (30, 51798), (33, 51831), (36, 51858), (37, 51867), (54, 52071), (57, 52092),

Gene: Bantam_118 Start: 73828, Stop: 74457, Start Num: 8

Candidate Starts for Bantam_118:

(6, 73768), (Start: 8 @73828 has 4 MA's), (20, 74023), (21, 74026), (30, 74131), (32, 74167), (35, 74194), (39, 74218), (42, 74251), (48, 74359), (51, 74398),

Gene: Bongo_78 Start: 49591, Stop: 50193, Start Num: 9

Candidate Starts for Bongo_78:

(1, 49432), (3, 49504), (5, 49513), (7, 49576), (Start: 9 @49591 has 20 MA's), (Start: 13 @49651 has 2 MA's), (14, 49657), (15, 49666), (17, 49690), (25, 49864), (29, 49885), (33, 49933), (37, 49969), (41, 49999), (52, 50137), (55, 50167),

Gene: Bricole_76 Start: 49076, Stop: 49687, Start Num: 9

Candidate Starts for Bricole_76:

(1, 48917), (3, 48989), (5, 48998), (7, 49061), (Start: 9 @49076 has 20 MA's), (Start: 13 @49136 has 2 MA's), (14, 49142), (15, 49151), (17, 49175), (25, 49349), (29, 49370), (33, 49418), (37, 49454), (41, 49484), (52, 49622), (55, 49652),

Gene: Daredevil_113 Start: 70798, Stop: 71538, Start Num: 8

Candidate Starts for Daredevil_113:

(2, 70702), (Start: 8 @70798 has 4 MA's), (21, 70996), (22, 71059), (29, 71092), (30, 71101), (39, 71194), (43, 71293), (58, 71470), (59, 71527),

Gene: Diminimus_79 Start: 49586, Stop: 50188, Start Num: 9

Candidate Starts for Diminimus_79:

(1, 49427), (3, 49499), (5, 49508), (7, 49571), (Start: 9 @49586 has 20 MA's), (Start: 13 @49646 has 2 MA's), (14, 49652), (15, 49661), (17, 49685), (25, 49859), (29, 49880), (33, 49928), (37, 49964), (41, 49994), (52, 50132), (55, 50162),

Gene: Dulcita_79 Start: 49587, Stop: 50189, Start Num: 9

Candidate Starts for Dulcita_79:

(1, 49428), (3, 49500), (5, 49509), (7, 49572), (Start: 9 @49587 has 20 MA's), (Start: 13 @49647 has 2 MA's), (14, 49653), (15, 49662), (17, 49686), (25, 49860), (29, 49881), (33, 49929), (37, 49965), (41, 49995), (52, 50133), (55, 50163),

Gene: Estes_87 Start: 51851, Stop: 52453, Start Num: 9

Candidate Starts for Estes_87:

(Start: 9 @51851 has 20 MA's), (19, 52001), (25, 52124), (29, 52145), (33, 52193), (38, 52226), (45, 52325), (57, 52448),

Gene: FreakyGoo_80 Start: 50126, Stop: 50668, Start Num: 13

Candidate Starts for FreakyGoo_80:

(1, 49907), (3, 49979), (5, 49988), (7, 50051), (Start: 9 @50066 has 20 MA's), (Start: 13 @50126 has 2 MA's), (14, 50132), (15, 50141), (17, 50165), (25, 50339), (29, 50360), (33, 50408), (37, 50444), (41, 50474), (52, 50612), (55, 50642),

Gene: GardenSalsa_88 Start: 52055, Stop: 52666, Start Num: 9

Candidate Starts for GardenSalsa_88:

(Start: 9 @52055 has 20 MA's), (18, 52181), (27, 52334), (28, 52337), (30, 52349), (40, 52454), (49, 52613), (57, 52661),

Gene: GenevaB15_87 Start: 51504, Stop: 52097, Start Num: 9

Candidate Starts for GenevaB15_87:

(Start: 9 @51504 has 20 MA's), (27, 51783), (28, 51786), (30, 51798), (33, 51831), (36, 51858), (37, 51867), (54, 52071), (57, 52092),

Gene: Glaske16_79 Start: 49651, Stop: 50253, Start Num: 9

Candidate Starts for Glaske16_79:

(Start: 9 @49651 has 20 MA's), (16, 49732), (21, 49840), (25, 49924), (29, 49945), (33, 49993), (37, 50029), (41, 50059), (52, 50197), (55, 50227),

Gene: IPhone7_77 Start: 49591, Stop: 50193, Start Num: 9

Candidate Starts for IPhone7_77:

(1, 49432), (3, 49504), (5, 49513), (7, 49576), (Start: 9 @49591 has 20 MA's), (Start: 13 @49651 has 2 MA's), (14, 49657), (15, 49666), (17, 49690), (25, 49864), (29, 49885), (33, 49933), (37, 49969), (41, 49999), (52, 50137), (55, 50167),

Gene: Izel_79 Start: 49586, Stop: 50188, Start Num: 9

Candidate Starts for Izel_79:

(1, 49427), (3, 49499), (5, 49508), (7, 49571), (Start: 9 @49586 has 20 MA's), (Start: 13 @49646 has 2 MA's), (14, 49652), (15, 49661), (17, 49685), (25, 49859), (29, 49880), (33, 49928), (37, 49964), (41, 49994), (52, 50132), (55, 50162),

Gene: KleverKiS_75 Start: 49130, Stop: 49681, Start Num: 13

Candidate Starts for KleverKiS_75:

(1, 48911), (3, 48983), (5, 48992), (7, 49055), (Start: 9 @49070 has 20 MA's), (Start: 13 @49130 has 2 MA's), (14, 49136), (15, 49145), (17, 49169), (25, 49343), (29, 49364), (33, 49412), (37, 49448), (41, 49478), (52, 49616), (55, 49646),

Gene: Kumao_72 Start: 49482, Stop: 50174, Start Num: 4

Candidate Starts for Kumao_72:

(Start: 4 @49482 has 1 MA's), (11, 49572), (17, 49665), (25, 49827), (27, 49842), (30, 49857), (38, 49938), (53, 50139),

Gene: LilhomieP_78 Start: 50070, Stop: 50672, Start Num: 9

Candidate Starts for LilhomieP_78:

(1, 49911), (3, 49983), (5, 49992), (7, 50055), (Start: 9 @50070 has 20 MA's), (Start: 13 @50130 has 2 MA's), (14, 50136), (15, 50145), (17, 50169), (25, 50343), (29, 50364), (33, 50412), (37, 50448), (41, 50478), (52, 50616), (55, 50646),

Gene: MrMagoo_88 Start: 52055, Stop: 52666, Start Num: 9

Candidate Starts for MrMagoo_88:

(Start: 9 @52055 has 20 MA's), (18, 52181), (27, 52334), (28, 52337), (30, 52349), (40, 52454), (49, 52613), (57, 52661),

Gene: Nanosmite_83 Start: 51032, Stop: 51622, Start Num: 9

Candidate Starts for Nanosmite_83:

(Start: 9 @51032 has 20 MA's), (14, 51098), (15, 51107), (17, 51128), (19, 51179), (24, 51299), (25, 51302), (29, 51323), (46, 51509),

Gene: PegLeg_77 Start: 49391, Stop: 49933, Start Num: 13

Candidate Starts for PegLeg_77:

(1, 49172), (3, 49244), (5, 49253), (7, 49316), (Start: 9 @49331 has 20 MA's), (Start: 13 @49391 has 2 MA's), (14, 49397), (15, 49406), (17, 49430), (25, 49604), (29, 49625), (33, 49673), (37, 49709), (41, 49739), (52, 49877), (55, 49907),

Gene: Reindeer_79 Start: 50345, Stop: 50923, Start Num: 9

Candidate Starts for Reindeer_79:

(Start: 9 @50345 has 20 MA's), (12, 50363), (23, 50600), (25, 50609), (26, 50621), (27, 50624), (30, 50639), (34, 50693), (40, 50720), (50, 50864), (56, 50906), (57, 50918),

Gene: Rey_84 Start: 51185, Stop: 51778, Start Num: 9

Candidate Starts for Rey_84:

(Start: 9 @51185 has 20 MA's), (27, 51464), (28, 51467), (30, 51479), (33, 51512), (36, 51539), (37, 51548), (44, 51644), (57, 51773),

Gene: RoseMarie_83 Start: 52812, Stop: 53417, Start Num: 9

Candidate Starts for RoseMarie_83:

(Start: 9 @52812 has 20 MA's), (10, 52818), (16, 52893), (19, 52962), (25, 53085), (26, 53097), (29, 53106), (31, 53133), (33, 53154), (41, 53220), (47, 53307),

Gene: Skinny_81 Start: 50499, Stop: 51101, Start Num: 9

Candidate Starts for Skinny_81:

(1, 50340), (3, 50412), (5, 50421), (7, 50484), (Start: 9 @50499 has 20 MA's), (Start: 13 @50559 has 2 MA's), (14, 50565), (15, 50574), (17, 50598), (25, 50772), (29, 50793), (33, 50841), (37, 50877), (41, 50907), (52, 51045), (55, 51075),

Gene: SlimJimmy_76 Start: 49649, Stop: 50260, Start Num: 9

Candidate Starts for SlimJimmy_76:

(3, 49562), (5, 49571), (7, 49634), (Start: 9 @49649 has 20 MA's), (Start: 13 @49709 has 2 MA's), (14, 49715), (15, 49724), (17, 49748), (25, 49922), (29, 49943), (33, 49991), (37, 50027), (41, 50057), (52, 50195), (55, 50225),

Gene: SpeedDemon_1210 Start: 77384, Stop: 78013, Start Num: 8

Candidate Starts for SpeedDemon_1210:

(Start: 8 @77384 has 4 MA's), (20, 77579), (21, 77582), (30, 77687), (32, 77723), (35, 77750), (42, 77807), (48, 77915), (51, 77954),

Gene: Towmatter_113 Start: 70879, Stop: 71619, Start Num: 8

Candidate Starts for Towmatter_113:

(2, 70783), (Start: 8 @70879 has 4 MA's), (21, 71077), (22, 71140), (29, 71173), (30, 71182), (39, 71275), (43, 71374), (58, 71551), (59, 71608),

Gene: TpudiCK_80 Start: 49650, Stop: 50192, Start Num: 13

Candidate Starts for TpudiCK_80:

(1, 49431), (3, 49503), (5, 49512), (7, 49575), (Start: 9 @49590 has 20 MA's), (Start: 13 @49650 has 2 MA's), (14, 49656), (15, 49665), (17, 49689), (25, 49863), (29, 49884), (33, 49932), (37, 49968), (41, 49998), (52, 50136), (55, 50166),

Gene: TyDawg_78 Start: 49591, Stop: 50193, Start Num: 9

Candidate Starts for TyDawg_78:

(1, 49432), (3, 49504), (5, 49513), (7, 49576), (Start: 9 @49591 has 20 MA's), (Start: 13 @49651 has 2 MA's), (14, 49657), (15, 49666), (17, 49690), (25, 49864), (29, 49885), (33, 49933), (37, 49969), (41, 49999), (52, 50137), (55, 50167),