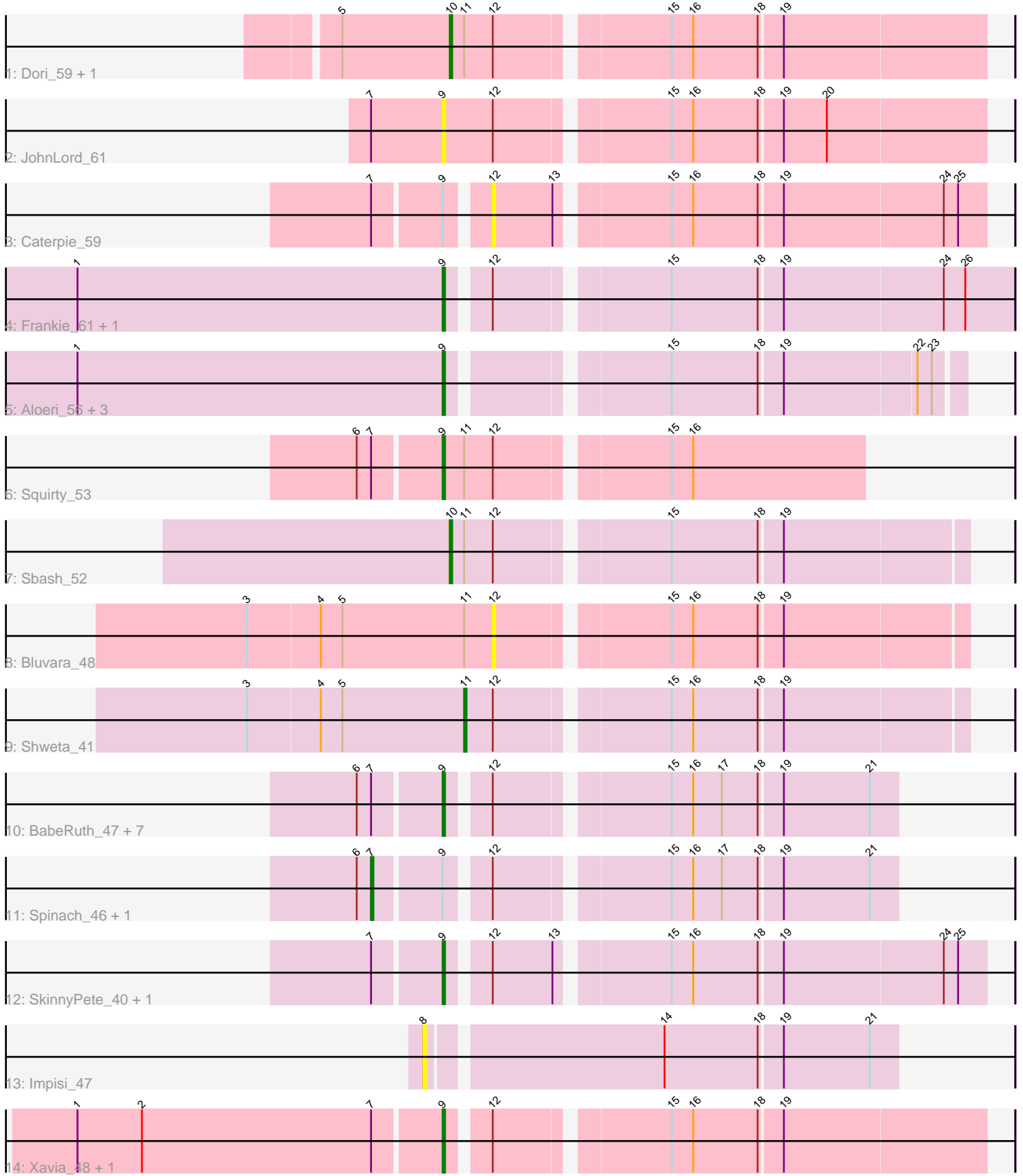


Pham 309054



Note: Tracks are now grouped by subcluster and scaled. Switching in subcluster is indicated by changes in track color. Track scale is now set by default to display the region 30 bp upstream of start 1 to 30 bp downstream of the last possible start. If this default region is judged to be packed too tightly with annotated starts, the track will be further scaled to only show that region of the ORF with annotated starts. This action will be indicated by adding "Zoomed" to the title. For starts, yellow indicates the location of called starts comprised solely of Glimmer/GeneMark auto-annotations, green indicates the location of called starts with at least 1 manual gene annotation.

Pham 309054 Report

This analysis was run 06/27/26 on database version 652.

Pham number 309054 has 29 members, 5 are drafts.

Phages represented in each track:

- Track 1 : Dori_59, Mask_59
- Track 2 : JohnLord_61
- Track 3 : Caterpie_59
- Track 4 : Frankie_61, LordVader_52
- Track 5 : Aloeri_56, ChickenDinner_55, Piper2020_56, DocMcStuffins_55
- Track 6 : Squirty_53
- Track 7 : Sbash_52
- Track 8 : Bluvara_48
- Track 9 : Shweta_41
- Track 10 : BabeRuth_47, Raymond7_40, Redi_46, Rebel_38, ShrimpFriedEgg_46, Hanako_46, PhancyPhin_46, Nenae_46
- Track 11 : Spinach_46, Purgamenstris_46
- Track 12 : SkinnyPete_40, Sejanus_56
- Track 13 : Impisi_47
- Track 14 : Xavia_48, Tortellini_48

Summary of Final Annotations (See graph section above for start numbers):

The start number called the most often in the published annotations is 9, it was called in 18 of the 24 non-draft genes in the pham.

Genes that call this "Most Annotated" start:

- Aloeri_56, BabeRuth_47, ChickenDinner_55, DocMcStuffins_55, Frankie_61, Hanako_46, JohnLord_61, LordVader_52, Nenae_46, PhancyPhin_46, Piper2020_56, Raymond7_40, Rebel_38, Redi_46, Sejanus_56, ShrimpFriedEgg_46, SkinnyPete_40, Squirty_53, Tortellini_48, Xavia_48,

Genes that have the "Most Annotated" start but do not call it:

- Caterpie_59, Purgamenstris_46, Spinach_46,

Genes that do not have the "Most Annotated" start:

- Bluvara_48, Dori_59, Impisi_47, Mask_59, Sbash_52, Shweta_41,

Summary by start number:

Start 7:

- Found in 17 of 29 (58.6%) of genes in pham
- Manual Annotations of this start: 2 of 24
- Called 11.8% of time when present
- Phage (with cluster) where this start called: Purgamenstris_46 (N), Spinach_46 (N),

Start 8:

- Found in 1 of 29 (3.4%) of genes in pham
- No Manual Annotations of this start.
- Called 100.0% of time when present
- Phage (with cluster) where this start called: Impisi_47 (N),

Start 9:

- Found in 23 of 29 (79.3%) of genes in pham
- Manual Annotations of this start: 18 of 24
- Called 87.0% of time when present
- Phage (with cluster) where this start called: Aloeri_56 (F1), BabeRuth_47 (N), ChickenDinner_55 (F1), DocMcStuffins_55 (F1), Frankie_61 (F1), Hanako_46 (N), JohnLord_61 (AD), LordVader_52 (F), Nenae_46 (N), PhancyPhin_46 (N), Piper2020_56 (F1), Raymond7_40 (N), Rebel_38 (N), Redi_46 (N), Sejanus_56 (AD), ShrimpFriedEgg_46 (N), SkinnyPete_40 (N), Squirty_53 (F3), Tortellini_48 (P2), Xavia_48 (P3),

Start 10:

- Found in 3 of 29 (10.3%) of genes in pham
- Manual Annotations of this start: 3 of 24
- Called 100.0% of time when present
- Phage (with cluster) where this start called: Dori_59 (AD), Mask_59 (AD), Sbash_52 (I2),

Start 11:

- Found in 6 of 29 (20.7%) of genes in pham
- Manual Annotations of this start: 1 of 24
- Called 16.7% of time when present
- Phage (with cluster) where this start called: Shweta_41 (N),

Start 12:

- Found in 24 of 29 (82.8%) of genes in pham
- No Manual Annotations of this start.
- Called 8.3% of time when present
- Phage (with cluster) where this start called: Bluvara_48 (I3), Caterpie_59 (AD),

Summary by clusters:

There are 9 clusters represented in this pham: P2, P3, F3, AD, F, I3, I2, F1, N,

Info for manual annotations of cluster AD:

- Start number 9 was manually annotated 1 time for cluster AD.
- Start number 10 was manually annotated 2 times for cluster AD.

Info for manual annotations of cluster F1:

- Start number 9 was manually annotated 5 times for cluster F1.

Info for manual annotations of cluster F3:

- Start number 9 was manually annotated 1 time for cluster F3.

Info for manual annotations of cluster I2:

- Start number 10 was manually annotated 1 time for cluster I2.

Info for manual annotations of cluster N:

- Start number 7 was manually annotated 2 times for cluster N.
- Start number 9 was manually annotated 9 times for cluster N.
- Start number 11 was manually annotated 1 time for cluster N.

Info for manual annotations of cluster P2:

- Start number 9 was manually annotated 1 time for cluster P2.

Info for manual annotations of cluster P3:

- Start number 9 was manually annotated 1 time for cluster P3.

Gene Information:

Gene: Aloeri_56 Start: 38348, Stop: 38545, Start Num: 9

Candidate Starts for Aloeri_56:

(1, 38195), (Start: 9 @38348 has 18 MA's), (15, 38429), (18, 38465), (19, 38474), (22, 38528), (23, 38534),

Gene: BabeRuth_47 Start: 32063, Stop: 32236, Start Num: 9

Candidate Starts for BabeRuth_47:

(6, 32030), (Start: 7 @32036 has 2 MA's), (Start: 9 @32063 has 18 MA's), (12, 32078), (15, 32144), (16, 32153), (17, 32165), (18, 32180), (19, 32189), (21, 32225),

Gene: Bluvara_48 Start: 36065, Stop: 36250, Start Num: 12

Candidate Starts for Bluvara_48:

(3, 35963), (4, 35993), (5, 36002), (Start: 11 @36053 has 1 MA's), (12, 36065), (15, 36131), (16, 36140), (18, 36167), (19, 36176),

Gene: Caterpie_59 Start: 46425, Stop: 46619, Start Num: 12

Candidate Starts for Caterpie_59:

(Start: 7 @46383 has 2 MA's), (Start: 9 @46410 has 18 MA's), (12, 46425), (13, 46449), (15, 46491), (16, 46500), (18, 46527), (19, 46536), (24, 46602), (25, 46608),

Gene: ChickenDinner_55 Start: 38348, Stop: 38545, Start Num: 9

Candidate Starts for ChickenDinner_55:

(1, 38195), (Start: 9 @38348 has 18 MA's), (15, 38429), (18, 38465), (19, 38474), (22, 38528), (23, 38534),

Gene: DocMcStuffins_55 Start: 38348, Stop: 38545, Start Num: 9

Candidate Starts for DocMcStuffins_55:

(1, 38195), (Start: 9 @38348 has 18 MA's), (15, 38429), (18, 38465), (19, 38474), (22, 38528), (23, 38534),

Gene: Dori_59 Start: 48092, Stop: 48304, Start Num: 10

Candidate Starts for Dori_59:

(5, 48047), (Start: 10 @48092 has 3 MA's), (Start: 11 @48098 has 1 MA's), (12, 48110), (15, 48176), (16, 48185), (18, 48212), (19, 48221),

Gene: Frankie_61 Start: 40829, Stop: 41050, Start Num: 9

Candidate Starts for Frankie_61:

(1, 40676), (Start: 9 @40829 has 18 MA's), (12, 40844), (15, 40910), (18, 40946), (19, 40955), (24, 41021), (26, 41030),

Gene: Hanako_46 Start: 32062, Stop: 32235, Start Num: 9

Candidate Starts for Hanako_46:

(6, 32029), (Start: 7 @32035 has 2 MA's), (Start: 9 @32062 has 18 MA's), (12, 32077), (15, 32143), (16, 32152), (17, 32164), (18, 32179), (19, 32188), (21, 32224),

Gene: Impisi_47 Start: 31845, Stop: 32033, Start Num: 8

Candidate Starts for Impisi_47:

(8, 31845), (14, 31938), (18, 31977), (19, 31986), (21, 32022),

Gene: JohnLord_61 Start: 47104, Stop: 47319, Start Num: 9

Candidate Starts for JohnLord_61:

(Start: 7 @47074 has 2 MA's), (Start: 9 @47104 has 18 MA's), (12, 47125), (15, 47191), (16, 47200), (18, 47227), (19, 47236), (20, 47254),

Gene: LordVader_52 Start: 34190, Stop: 34411, Start Num: 9

Candidate Starts for LordVader_52:

(1, 34037), (Start: 9 @34190 has 18 MA's), (12, 34205), (15, 34271), (18, 34307), (19, 34316), (24, 34382), (26, 34391),

Gene: Mask_59 Start: 48835, Stop: 49047, Start Num: 10

Candidate Starts for Mask_59:

(5, 48790), (Start: 10 @48835 has 3 MA's), (Start: 11 @48841 has 1 MA's), (12, 48853), (15, 48919), (16, 48928), (18, 48955), (19, 48964),

Gene: Nenae_46 Start: 32065, Stop: 32238, Start Num: 9

Candidate Starts for Nenae_46:

(6, 32032), (Start: 7 @32038 has 2 MA's), (Start: 9 @32065 has 18 MA's), (12, 32080), (15, 32146), (16, 32155), (17, 32167), (18, 32182), (19, 32191), (21, 32227),

Gene: PhancyPhin_46 Start: 32059, Stop: 32232, Start Num: 9

Candidate Starts for PhancyPhin_46:

(6, 32026), (Start: 7 @32032 has 2 MA's), (Start: 9 @32059 has 18 MA's), (12, 32074), (15, 32140), (16, 32149), (17, 32161), (18, 32176), (19, 32185), (21, 32221),

Gene: Piper2020_56 Start: 38331, Stop: 38528, Start Num: 9

Candidate Starts for Piper2020_56:

(1, 38178), (Start: 9 @38331 has 18 MA's), (15, 38412), (18, 38448), (19, 38457), (22, 38511), (23, 38517),

Gene: Purgamenstris_46 Start: 32036, Stop: 32236, Start Num: 7

Candidate Starts for Purgamenstris_46:

(6, 32030), (Start: 7 @32036 has 2 MA's), (Start: 9 @32063 has 18 MA's), (12, 32078), (15, 32144), (16, 32153), (17, 32165), (18, 32180), (19, 32189), (21, 32225),

Gene: Raymond7_40 Start: 31851, Stop: 32024, Start Num: 9

Candidate Starts for Raymond7_40:

(6, 31818), (Start: 7 @31824 has 2 MA's), (Start: 9 @31851 has 18 MA's), (12, 31866), (15, 31932), (16, 31941), (17, 31953), (18, 31968), (19, 31977), (21, 32013),

Gene: Rebel_38 Start: 28193, Stop: 28366, Start Num: 9

Candidate Starts for Rebel_38:

(6, 28160), (Start: 7 @28166 has 2 MA's), (Start: 9 @28193 has 18 MA's), (12, 28208), (15, 28274), (16, 28283), (17, 28295), (18, 28310), (19, 28319), (21, 28355),

Gene: Redi_46 Start: 32062, Stop: 32235, Start Num: 9

Candidate Starts for Redi_46:

(6, 32029), (Start: 7 @32035 has 2 MA's), (Start: 9 @32062 has 18 MA's), (12, 32077), (15, 32143), (16, 32152), (17, 32164), (18, 32179), (19, 32188), (21, 32224),

Gene: Sbash_52 Start: 39507, Stop: 39710, Start Num: 10

Candidate Starts for Sbash_52:

(Start: 10 @39507 has 3 MA's), (Start: 11 @39513 has 1 MA's), (12, 39525), (15, 39591), (18, 39627), (19, 39636),

Gene: Sejanus_56 Start: 47338, Stop: 47547, Start Num: 9

Candidate Starts for Sejanus_56:

(Start: 7 @47311 has 2 MA's), (Start: 9 @47338 has 18 MA's), (12, 47353), (13, 47377), (15, 47419), (16, 47428), (18, 47455), (19, 47464), (24, 47530), (25, 47536),

Gene: ShrimpFriedEgg_46 Start: 32062, Stop: 32235, Start Num: 9

Candidate Starts for ShrimpFriedEgg_46:

(6, 32029), (Start: 7 @32035 has 2 MA's), (Start: 9 @32062 has 18 MA's), (12, 32077), (15, 32143), (16, 32152), (17, 32164), (18, 32179), (19, 32188), (21, 32224),

Gene: Shweta_41 Start: 30432, Stop: 30629, Start Num: 11

Candidate Starts for Shweta_41:

(3, 30342), (4, 30372), (5, 30381), (Start: 11 @30432 has 1 MA's), (12, 30444), (15, 30510), (16, 30519), (18, 30546), (19, 30555),

Gene: SkinnyPete_40 Start: 29521, Stop: 29730, Start Num: 9

Candidate Starts for SkinnyPete_40:

(Start: 7 @29494 has 2 MA's), (Start: 9 @29521 has 18 MA's), (12, 29536), (13, 29560), (15, 29602), (16, 29611), (18, 29638), (19, 29647), (24, 29713), (25, 29719),

Gene: Spinach_46 Start: 32035, Stop: 32235, Start Num: 7

Candidate Starts for Spinach_46:

(6, 32029), (Start: 7 @32035 has 2 MA's), (Start: 9 @32062 has 18 MA's), (12, 32077), (15, 32143), (16, 32152), (17, 32164), (18, 32179), (19, 32188), (21, 32224),

Gene: Squirty_53 Start: 37709, Stop: 37876, Start Num: 9

Candidate Starts for Squirty_53:

(6, 37676), (Start: 7 @37682 has 2 MA's), (Start: 9 @37709 has 18 MA's), (Start: 11 @37718 has 1 MA's), (12, 37730), (15, 37796), (16, 37805),

Gene: Tortellini_48 Start: 37529, Stop: 37738, Start Num: 9

Candidate Starts for Tortellini_48:

(1, 37379), (2, 37406), (Start: 7 @37502 has 2 MA's), (Start: 9 @37529 has 18 MA's), (12, 37544), (15, 37610), (16, 37619), (18, 37646), (19, 37655),

Gene: Xavia_48 Start: 37365, Stop: 37574, Start Num: 9

Candidate Starts for Xavia_48:

(1, 37215), (2, 37242), (Start: 7 @37338 has 2 MA's), (Start: 9 @37365 has 18 MA's), (12, 37380), (15, 37446), (16, 37455), (18, 37482), (19, 37491),