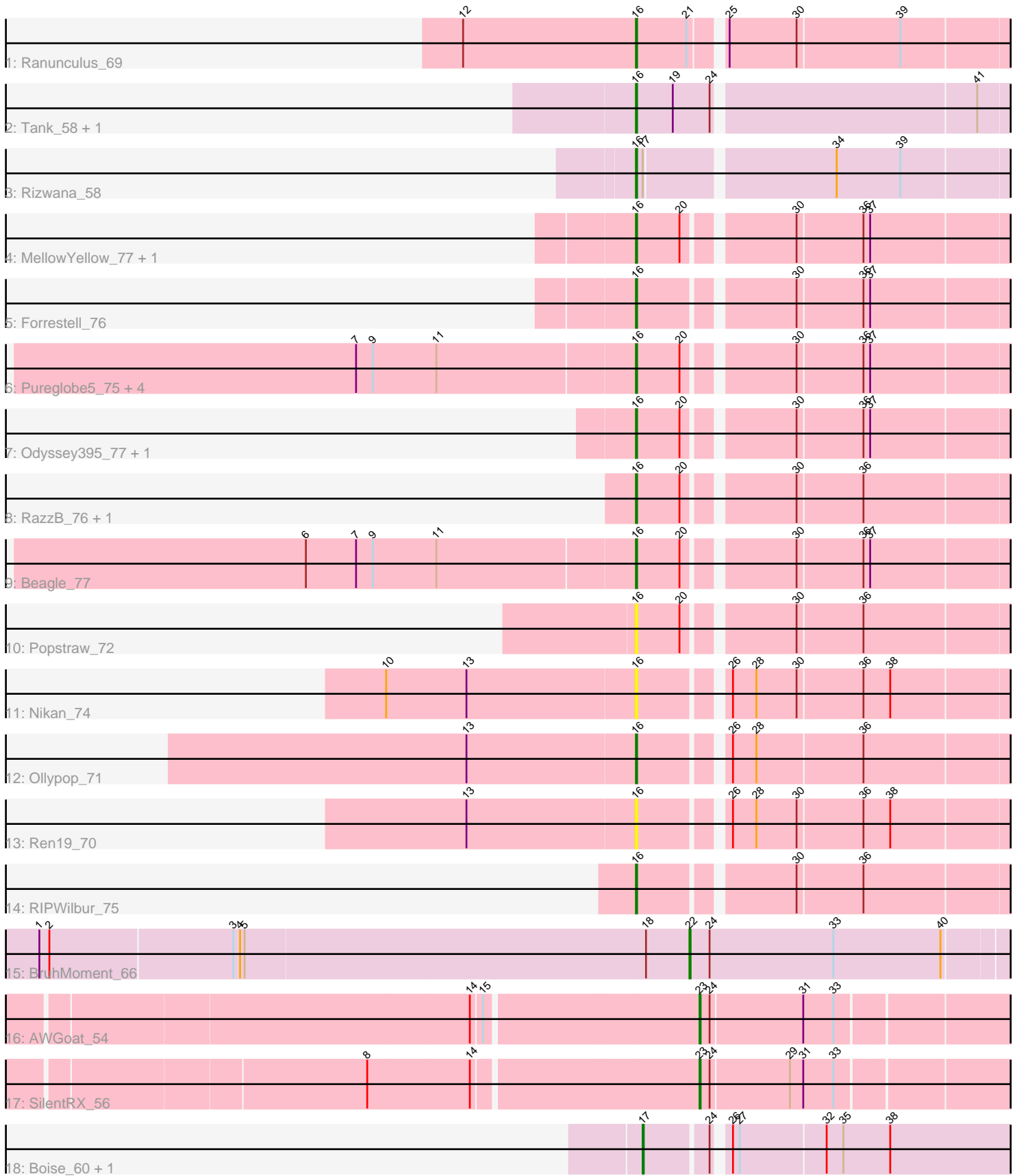


Pham 309090



Note: Tracks are now grouped by subcluster and scaled. Switching in subcluster is indicated by changes in track color. Track scale is now set by default to display the region 30 bp upstream of start 1 to 30 bp downstream of the last possible start. If this default region is judged to be packed too tightly with annotated starts, the track will be further scaled to only show that region of the ORF with annotated starts. This action will be indicated by adding "Zoomed" to the title. For starts, yellow indicates the location of called starts comprised solely of Glimmer/GeneMark auto-annotations, green indicates the location of called starts with at least 1 manual gene annotation.

Pham 309090 Report

This analysis was run 06/27/26 on database version 652.

Pham number 309090 has 27 members, 7 are drafts.

Phages represented in each track:

- Track 1 : Ranunculus_69
- Track 2 : Tank_58, Wilde_60
- Track 3 : Rizwana_58
- Track 4 : MellowYellow_77, NyleyClemson_75
- Track 5 : Forrestell_76
- Track 6 : Pureglobe5_75, Pointis_73, Hive_72, DogYard_76, Kubulix_76
- Track 7 : Odyssey395_77, BetaFish_76
- Track 8 : RazzB_76, PhuzzTulsa_74
- Track 9 : Beagle_77
- Track 10 : Popstraw_72
- Track 11 : Nikan_74
- Track 12 : Ollypop_71
- Track 13 : Ren19_70
- Track 14 : RIPWilbur_75
- Track 15 : BruhMoment_66
- Track 16 : AWGoat_54
- Track 17 : SilentRX_56
- Track 18 : Boise_60, RomansRevenge_61

Summary of Final Annotations (See graph section above for start numbers):

The start number called the most often in the published annotations is 16, it was called in 16 of the 20 non-draft genes in the pham.

Genes that call this "Most Annotated" start:

- Beagle_77, BetaFish_76, DogYard_76, Forrestell_76, Hive_72, Kubulix_76, MellowYellow_77, Nikan_74, NyleyClemson_75, Odyssey395_77, Ollypop_71, PhuzzTulsa_74, Pointis_73, Popstraw_72, Pureglobe5_75, RIPWilbur_75, Ranunculus_69, RazzB_76, Ren19_70, Rizwana_58, Tank_58, Wilde_60,

Genes that have the "Most Annotated" start but do not call it:

-

Genes that do not have the "Most Annotated" start:

- AWGoat_54, Boise_60, BruhMoment_66, RomansRevenge_61, SilentRX_56,

Summary by start number:

Start 16:

- Found in 22 of 27 (81.5%) of genes in pham
- Manual Annotations of this start: 16 of 20
- Called 100.0% of time when present
- Phage (with cluster) where this start called: Beagle_77 (AP2), BetaFish_76 (AP2), DogYard_76 (AP2), Forrestell_76 (AP2), Hive_72 (AP2), Kubulix_76 (AP2), MellowYellow_77 (AP2), Nikan_74 (AP2), NyleyClemson_75 (AP2), Odyssey395_77 (AP2), Ollypop_71 (AP2), PhuzzTulsa_74 (AP2), Pointis_73 (AP2), Popstraw_72 (AP2), Pureglobe5_75 (AP2), RIPWilbur_75 (AP2), Ranunculus_69 (AP), RazzB_76 (AP2), Ren19_70 (AP2), Rizwana_58 (AP1), Tank_58 (AP1), Wilde_60 (AP1),

Start 17:

- Found in 3 of 27 (11.1%) of genes in pham
- Manual Annotations of this start: 1 of 20
- Called 66.7% of time when present
- Phage (with cluster) where this start called: Boise_60 (FT), RomansRevenge_61 (FT),

Start 22:

- Found in 1 of 27 (3.7%) of genes in pham
- Manual Annotations of this start: 1 of 20
- Called 100.0% of time when present
- Phage (with cluster) where this start called: BruhMoment_66 (AP3),

Start 23:

- Found in 2 of 27 (7.4%) of genes in pham
- Manual Annotations of this start: 2 of 20
- Called 100.0% of time when present
- Phage (with cluster) where this start called: AWGoat_54 (AP4), SilentRX_56 (AP4),

Summary by clusters:

There are 6 clusters represented in this pham: FT, AP2, AP3, AP1, AP4, AP,

Info for manual annotations of cluster AP:

- Start number 16 was manually annotated 1 time for cluster AP.

Info for manual annotations of cluster AP1:

- Start number 16 was manually annotated 3 times for cluster AP1.

Info for manual annotations of cluster AP2:

- Start number 16 was manually annotated 12 times for cluster AP2.

Info for manual annotations of cluster AP3:

- Start number 22 was manually annotated 1 time for cluster AP3.

Info for manual annotations of cluster AP4:

- Start number 23 was manually annotated 2 times for cluster AP4.

Info for manual annotations of cluster FT:

•Start number 17 was manually annotated 1 time for cluster FT.

Gene Information:

Gene: AWGoat_54 Start: 40572, Stop: 40297, Start Num: 23

Candidate Starts for AWGoat_54:

(14, 40764), (15, 40755), (Start: 23 @40572 has 2 MA's), (24, 40563), (31, 40482), (33, 40455),

Gene: Beagle_77 Start: 45890, Stop: 45579, Start Num: 16

Candidate Starts for Beagle_77:

(6, 46181), (7, 46136), (9, 46121), (11, 46064), (Start: 16 @45890 has 16 MA's), (20, 45851), (30, 45764), (36, 45707), (37, 45701),

Gene: BetaFish_76 Start: 46619, Stop: 46308, Start Num: 16

Candidate Starts for BetaFish_76:

(Start: 16 @46619 has 16 MA's), (20, 46580), (30, 46493), (36, 46436), (37, 46430),

Gene: Boise_60 Start: 43517, Stop: 43197, Start Num: 17

Candidate Starts for Boise_60:

(Start: 17 @43517 has 1 MA's), (24, 43463), (26, 43454), (27, 43448), (32, 43373), (35, 43358), (38, 43316),

Gene: BruhMoment_66 Start: 45018, Stop: 44731, Start Num: 22

Candidate Starts for BruhMoment_66:

(1, 45591), (2, 45582), (3, 45420), (4, 45414), (5, 45411), (18, 45057), (Start: 22 @45018 has 1 MA's), (24, 45000), (33, 44889), (40, 44793),

Gene: DogYard_76 Start: 46106, Stop: 45795, Start Num: 16

Candidate Starts for DogYard_76:

(7, 46352), (9, 46337), (11, 46280), (Start: 16 @46106 has 16 MA's), (20, 46067), (30, 45980), (36, 45923), (37, 45917),

Gene: Forrestell_76 Start: 45414, Stop: 45103, Start Num: 16

Candidate Starts for Forrestell_76:

(Start: 16 @45414 has 16 MA's), (30, 45288), (36, 45231), (37, 45225),

Gene: Hive_72 Start: 45886, Stop: 45575, Start Num: 16

Candidate Starts for Hive_72:

(7, 46132), (9, 46117), (11, 46060), (Start: 16 @45886 has 16 MA's), (20, 45847), (30, 45760), (36, 45703), (37, 45697),

Gene: Kubulix_76 Start: 45776, Stop: 45465, Start Num: 16

Candidate Starts for Kubulix_76:

(7, 46022), (9, 46007), (11, 45950), (Start: 16 @45776 has 16 MA's), (20, 45737), (30, 45650), (36, 45593), (37, 45587),

Gene: MellowYellow_77 Start: 46087, Stop: 45776, Start Num: 16

Candidate Starts for MellowYellow_77:

(Start: 16 @46087 has 16 MA's), (20, 46048), (30, 45961), (36, 45904), (37, 45898),

Gene: Nikan_74 Start: 46008, Stop: 45691, Start Num: 16
Candidate Starts for Nikan_74:
(10, 46230), (13, 46158), (Start: 16 @46008 has 16 MA's), (26, 45939), (28, 45918), (30, 45882), (36, 45825), (38, 45801),

Gene: NyleyClemson_75 Start: 45702, Stop: 45391, Start Num: 16
Candidate Starts for NyleyClemson_75:
(Start: 16 @45702 has 16 MA's), (20, 45663), (30, 45576), (36, 45519), (37, 45513),

Gene: Odyssey395_77 Start: 46127, Stop: 45816, Start Num: 16
Candidate Starts for Odyssey395_77:
(Start: 16 @46127 has 16 MA's), (20, 46088), (30, 46001), (36, 45944), (37, 45938),

Gene: Ollypop_71 Start: 46232, Stop: 45915, Start Num: 16
Candidate Starts for Ollypop_71:
(13, 46382), (Start: 16 @46232 has 16 MA's), (26, 46163), (28, 46142), (36, 46049),

Gene: PhuzzTulsa_74 Start: 46390, Stop: 46079, Start Num: 16
Candidate Starts for PhuzzTulsa_74:
(Start: 16 @46390 has 16 MA's), (20, 46351), (30, 46264), (36, 46207),

Gene: Pointis_73 Start: 45703, Stop: 45392, Start Num: 16
Candidate Starts for Pointis_73:
(7, 45949), (9, 45934), (11, 45877), (Start: 16 @45703 has 16 MA's), (20, 45664), (30, 45577), (36, 45520), (37, 45514),

Gene: Popstraw_72 Start: 45862, Stop: 45551, Start Num: 16
Candidate Starts for Popstraw_72:
(Start: 16 @45862 has 16 MA's), (20, 45823), (30, 45736), (36, 45679),

Gene: Pureglobe5_75 Start: 46147, Stop: 45836, Start Num: 16
Candidate Starts for Pureglobe5_75:
(7, 46393), (9, 46378), (11, 46321), (Start: 16 @46147 has 16 MA's), (20, 46108), (30, 46021), (36, 45964), (37, 45958),

Gene: RIPWilbur_75 Start: 45736, Stop: 45425, Start Num: 16
Candidate Starts for RIPWilbur_75:
(Start: 16 @45736 has 16 MA's), (30, 45610), (36, 45553),

Gene: Ranunculus_69 Start: 48341, Stop: 48024, Start Num: 16
Candidate Starts for Ranunculus_69:
(12, 48494), (Start: 16 @48341 has 16 MA's), (21, 48296), (25, 48272), (30, 48212), (39, 48122),

Gene: RazzB_76 Start: 45824, Stop: 45513, Start Num: 16
Candidate Starts for RazzB_76:
(Start: 16 @45824 has 16 MA's), (20, 45785), (30, 45698), (36, 45641),

Gene: Ren19_70 Start: 45603, Stop: 45286, Start Num: 16
Candidate Starts for Ren19_70:
(13, 45753), (Start: 16 @45603 has 16 MA's), (26, 45534), (28, 45513), (30, 45477), (36, 45420), (38, 45396),

Gene: Rizwana_58 Start: 42843, Stop: 42529, Start Num: 16

Candidate Starts for Rizwana_58:

(Start: 16 @42843 has 16 MA's), (Start: 17 @42837 has 1 MA's), (34, 42678), (39, 42621),

Gene: RomansRevenge_61 Start: 43517, Stop: 43197, Start Num: 17

Candidate Starts for RomansRevenge_61:

(Start: 17 @43517 has 1 MA's), (24, 43463), (26, 43454), (27, 43448), (32, 43373), (35, 43358), (38, 43316),

Gene: SilentRX_56 Start: 41820, Stop: 41545, Start Num: 23

Candidate Starts for SilentRX_56:

(8, 42102), (14, 42012), (Start: 23 @41820 has 2 MA's), (24, 41811), (29, 41742), (31, 41730), (33, 41703),

Gene: Tank_58 Start: 42893, Stop: 42576, Start Num: 16

Candidate Starts for Tank_58:

(Start: 16 @42893 has 16 MA's), (19, 42860), (24, 42827), (41, 42602),

Gene: Wilde_60 Start: 43192, Stop: 42875, Start Num: 16

Candidate Starts for Wilde_60:

(Start: 16 @43192 has 16 MA's), (19, 43159), (24, 43126), (41, 42901),