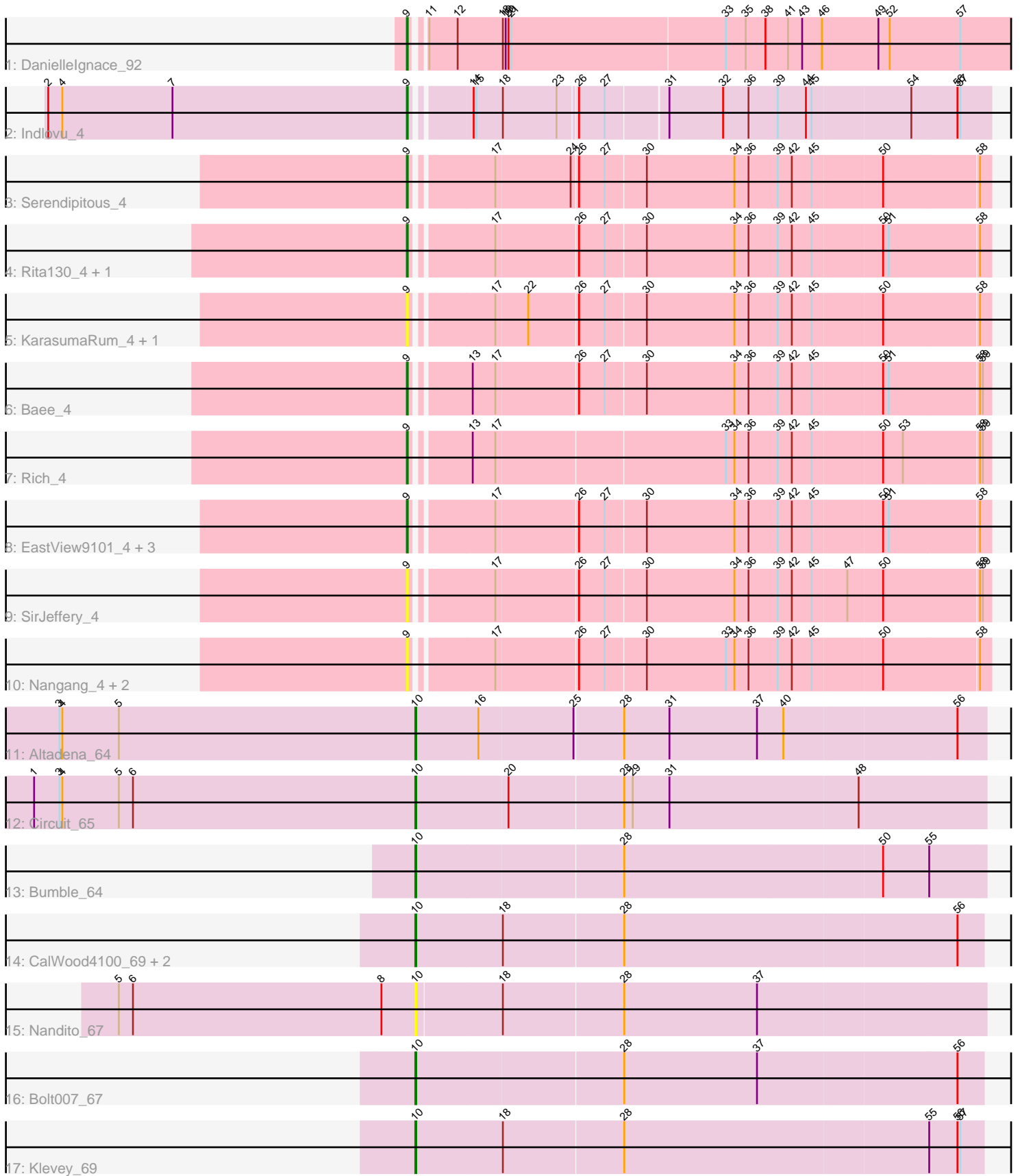


Pham 309121



Note: Tracks are now grouped by subcluster and scaled. Switching in subcluster is indicated by changes in track color. Track scale is now set by default to display the region 30 bp upstream of start 1 to 30 bp downstream of the last possible start. If this default region is judged to be packed too tightly with annotated starts, the track will be further scaled to only show that region of the ORF with annotated starts. This action will be indicated by adding "Zoomed" to the title. For starts, yellow indicates the location of called starts comprised solely of Glimmer/GeneMark auto-annotations, green indicates the location of called starts with at least 1 manual gene annotation.

Pham 309121 Report

This analysis was run 06/27/26 on database version 652.

Pham number 309121 has 26 members, 9 are drafts.

Phages represented in each track:

- Track 1 : DanielleIgnace_92
- Track 2 : Indlovu_4
- Track 3 : Serendipitous_4
- Track 4 : Rita130_4, Reccee_4
- Track 5 : KarasumaRum_4, StinkyVeggy_4
- Track 6 : Bae_4
- Track 7 : Rich_4
- Track 8 : EastView9101_4, Donny_4, Acadian_4, Suigeneris_4
- Track 9 : SirJeffery_4
- Track 10 : Nangang_4, Shenyu_4, DigitDog_4
- Track 11 : Altadena_64
- Track 12 : Circuit_65
- Track 13 : Bumble_64
- Track 14 : CalWood4100_69, Prairie_66, Lilmac1015_69
- Track 15 : Nandito_67
- Track 16 : Bolt007_67
- Track 17 : Klevey_69

Summary of Final Annotations (See graph section above for start numbers):

The start number called the most often in the published annotations is 9, it was called in 10 of the 17 non-draft genes in the pham.

Genes that call this "Most Annotated" start:

- Acadian_4, Bae_4, DanielleIgnace_92, DigitDog_4, Donny_4, EastView9101_4, Indlovu_4, KarasumaRum_4, Nangang_4, Reccee_4, Rich_4, Rita130_4, Serendipitous_4, Shenyu_4, SirJeffery_4, StinkyVeggy_4, Suigeneris_4,

Genes that have the "Most Annotated" start but do not call it:

-

Genes that do not have the "Most Annotated" start:

- Altadena_64, Bolt007_67, Bumble_64, CalWood4100_69, Circuit_65, Klevey_69, Lilmac1015_69, Nandito_67, Prairie_66,

Summary by start number:

Start 9:

- Found in 17 of 26 (65.4%) of genes in pham
- Manual Annotations of this start: 10 of 17
- Called 100.0% of time when present
- Phage (with cluster) where this start called: Acadian_4 (B5), Bae_4 (B5), DanielleIgnace_92 (AT), DigitDog_4 (B5), Donny_4 (B5), EastView9101_4 (B5), Indlovu_4 (B11), KarasumaRum_4 (B5), Nangang_4 (B5), Reccee_4 (B5), Rich_4 (B5), Rita130_4 (B5), Serendipitous_4 (B5), Shenyu_4 (B5), SirJeffery_4 (B5), StinkyVeggy_4 (B5), Suigeneris_4 (B5),

Start 10:

- Found in 9 of 26 (34.6%) of genes in pham
- Manual Annotations of this start: 7 of 17
- Called 100.0% of time when present
- Phage (with cluster) where this start called: Altadena_64 (FH), Bolt007_67 (FH), Bumble_64 (FH), CalWood4100_69 (FH), Circuit_65 (FH), Klevey_69 (FH), Lilmac1015_69 (FH), Nandito_67 (FH), Prairie_66 (FH),

Summary by clusters:

There are 4 clusters represented in this pham: FH, B5, AT, B11,

Info for manual annotations of cluster AT:

- Start number 9 was manually annotated 1 time for cluster AT.

Info for manual annotations of cluster B11:

- Start number 9 was manually annotated 1 time for cluster B11.

Info for manual annotations of cluster B5:

- Start number 9 was manually annotated 8 times for cluster B5.

Info for manual annotations of cluster FH:

- Start number 10 was manually annotated 7 times for cluster FH.

Gene Information:

Gene: Acadian_4 Start: 2438, Stop: 3025, Start Num: 9

Candidate Starts for Acadian_4:

(Start: 9 @2438 has 10 MA's), (17, 2516), (26, 2600), (27, 2627), (30, 2669), (34, 2762), (36, 2777), (39, 2807), (42, 2822), (45, 2843), (50, 2915), (51, 2921), (58, 3014),

Gene: Altadena_64 Start: 41471, Stop: 42064, Start Num: 10

Candidate Starts for Altadena_64:

(3, 41093), (4, 41096), (5, 41156), (Start: 10 @41471 has 7 MA's), (16, 41537), (25, 41636), (28, 41687), (31, 41735), (37, 41828), (40, 41855), (56, 42035),

Gene: Bae_4 Start: 2444, Stop: 3031, Start Num: 9

Candidate Starts for Bae_4:

(Start: 9 @2444 has 10 MA's), (13, 2498), (17, 2522), (26, 2606), (27, 2633), (30, 2675), (34, 2768), (36, 2783), (39, 2813), (42, 2828), (45, 2849), (50, 2921), (51, 2927), (58, 3020), (59, 3023),

Gene: Bolt007_67 Start: 43669, Stop: 44259, Start Num: 10

Candidate Starts for Bolt007_67:

(Start: 10 @43669 has 7 MA's), (28, 43885), (37, 44026), (56, 44233),

Gene: Bumble_64 Start: 42340, Stop: 42933, Start Num: 10

Candidate Starts for Bumble_64:

(Start: 10 @42340 has 7 MA's), (28, 42556), (50, 42826), (55, 42874),

Gene: CalWood4100_69 Start: 43640, Stop: 44230, Start Num: 10

Candidate Starts for CalWood4100_69:

(Start: 10 @43640 has 7 MA's), (18, 43730), (28, 43856), (56, 44204),

Gene: Circuit_65 Start: 43066, Stop: 43659, Start Num: 10

Candidate Starts for Circuit_65:

(1, 42661), (3, 42688), (4, 42691), (5, 42751), (6, 42766), (Start: 10 @43066 has 7 MA's), (20, 43162), (28, 43282), (29, 43291), (31, 43330), (48, 43528),

Gene: DanielleIgnace_92 Start: 55139, Stop: 55762, Start Num: 9

Candidate Starts for DanielleIgnace_92:

(Start: 9 @55139 has 10 MA's), (11, 55148), (12, 55178), (18, 55226), (19, 55229), (20, 55232), (21, 55235), (33, 55460), (35, 55481), (38, 55502), (41, 55526), (43, 55541), (46, 55562), (49, 55622), (52, 55634), (57, 55709),

Gene: DigitDog_4 Start: 2429, Stop: 3016, Start Num: 9

Candidate Starts for DigitDog_4:

(Start: 9 @2429 has 10 MA's), (17, 2507), (26, 2591), (27, 2618), (30, 2660), (33, 2744), (34, 2753), (36, 2768), (39, 2798), (42, 2813), (45, 2834), (50, 2906), (58, 3005),

Gene: Donny_4 Start: 2438, Stop: 3025, Start Num: 9

Candidate Starts for Donny_4:

(Start: 9 @2438 has 10 MA's), (17, 2516), (26, 2600), (27, 2627), (30, 2669), (34, 2762), (36, 2777), (39, 2807), (42, 2822), (45, 2843), (50, 2915), (51, 2921), (58, 3014),

Gene: EastView9101_4 Start: 2438, Stop: 3025, Start Num: 9

Candidate Starts for EastView9101_4:

(Start: 9 @2438 has 10 MA's), (17, 2516), (26, 2600), (27, 2627), (30, 2669), (34, 2762), (36, 2777), (39, 2807), (42, 2822), (45, 2843), (50, 2915), (51, 2921), (58, 3014),

Gene: Indlovu_4 Start: 2470, Stop: 3048, Start Num: 9

Candidate Starts for Indlovu_4:

(2, 2089), (4, 2104), (7, 2221), (Start: 9 @2470 has 10 MA's), (14, 2524), (15, 2527), (18, 2551), (23, 2608), (26, 2626), (27, 2653), (31, 2713), (32, 2770), (36, 2797), (39, 2827), (44, 2857), (45, 2863), (54, 2965), (56, 3013), (57, 3016),

Gene: KarasumaRum_4 Start: 2429, Stop: 3016, Start Num: 9

Candidate Starts for KarasumaRum_4:

(Start: 9 @2429 has 10 MA's), (17, 2507), (22, 2540), (26, 2591), (27, 2618), (30, 2660), (34, 2753), (36, 2768), (39, 2798), (42, 2813), (45, 2834), (50, 2906), (58, 3005),

Gene: Klevey_69 Start: 43577, Stop: 44167, Start Num: 10

Candidate Starts for Klevey_69:

(Start: 10 @43577 has 7 MA's), (18, 43667), (28, 43793), (55, 44111), (56, 44141), (57, 44144),

Gene: Lilmac1015_69 Start: 43640, Stop: 44230, Start Num: 10

Candidate Starts for Lilmac1015_69:

(Start: 10 @43640 has 7 MA's), (18, 43730), (28, 43856), (56, 44204),

Gene: Nandito_67 Start: 43648, Stop: 44238, Start Num: 10

Candidate Starts for Nandito_67:

(5, 43333), (6, 43348), (8, 43612), (Start: 10 @43648 has 7 MA's), (18, 43735), (28, 43861), (37, 44002),

Gene: Nangang_4 Start: 2429, Stop: 3016, Start Num: 9

Candidate Starts for Nangang_4:

(Start: 9 @2429 has 10 MA's), (17, 2507), (26, 2591), (27, 2618), (30, 2660), (33, 2744), (34, 2753), (36, 2768), (39, 2798), (42, 2813), (45, 2834), (50, 2906), (58, 3005),

Gene: Prairie_66 Start: 43092, Stop: 43682, Start Num: 10

Candidate Starts for Prairie_66:

(Start: 10 @43092 has 7 MA's), (18, 43182), (28, 43308), (56, 43656),

Gene: Reccee_4 Start: 2438, Stop: 3025, Start Num: 9

Candidate Starts for Reccee_4:

(Start: 9 @2438 has 10 MA's), (17, 2516), (26, 2600), (27, 2627), (30, 2669), (34, 2762), (36, 2777), (39, 2807), (42, 2822), (45, 2843), (50, 2915), (51, 2921), (58, 3014),

Gene: Rich_4 Start: 2441, Stop: 3028, Start Num: 9

Candidate Starts for Rich_4:

(Start: 9 @2441 has 10 MA's), (13, 2495), (17, 2519), (33, 2756), (34, 2765), (36, 2780), (39, 2810), (42, 2825), (45, 2846), (50, 2918), (53, 2939), (58, 3017), (59, 3020),

Gene: Rita130_4 Start: 2438, Stop: 3025, Start Num: 9

Candidate Starts for Rita130_4:

(Start: 9 @2438 has 10 MA's), (17, 2516), (26, 2600), (27, 2627), (30, 2669), (34, 2762), (36, 2777), (39, 2807), (42, 2822), (45, 2843), (50, 2915), (51, 2921), (58, 3014),

Gene: Serendipitous_4 Start: 2504, Stop: 3091, Start Num: 9

Candidate Starts for Serendipitous_4:

(Start: 9 @2504 has 10 MA's), (17, 2582), (24, 2660), (26, 2666), (27, 2693), (30, 2735), (34, 2828), (36, 2843), (39, 2873), (42, 2888), (45, 2909), (50, 2981), (58, 3080),

Gene: Shenyu_4 Start: 2429, Stop: 3016, Start Num: 9

Candidate Starts for Shenyu_4:

(Start: 9 @2429 has 10 MA's), (17, 2507), (26, 2591), (27, 2618), (30, 2660), (33, 2744), (34, 2753), (36, 2768), (39, 2798), (42, 2813), (45, 2834), (50, 2906), (58, 3005),

Gene: SirJeffery_4 Start: 2438, Stop: 3025, Start Num: 9

Candidate Starts for SirJeffery_4:

(Start: 9 @2438 has 10 MA's), (17, 2516), (26, 2600), (27, 2627), (30, 2669), (34, 2762), (36, 2777), (39, 2807), (42, 2822), (45, 2843), (47, 2879), (50, 2915), (58, 3014), (59, 3017),

Gene: StinkyVeggy_4 Start: 2429, Stop: 3016, Start Num: 9

Candidate Starts for StinkyVeggy_4:

(Start: 9 @2429 has 10 MA's), (17, 2507), (22, 2540), (26, 2591), (27, 2618), (30, 2660), (34, 2753), (36, 2768), (39, 2798), (42, 2813), (45, 2834), (50, 2906), (58, 3005),

Gene: Suigeneris_4 Start: 2438, Stop: 3025, Start Num: 9

Candidate Starts for Suigeneris_4:

(Start: 9 @2438 has 10 MA's), (17, 2516), (26, 2600), (27, 2627), (30, 2669), (34, 2762), (36, 2777), (39, 2807), (42, 2822), (45, 2843), (50, 2915), (51, 2921), (58, 3014),