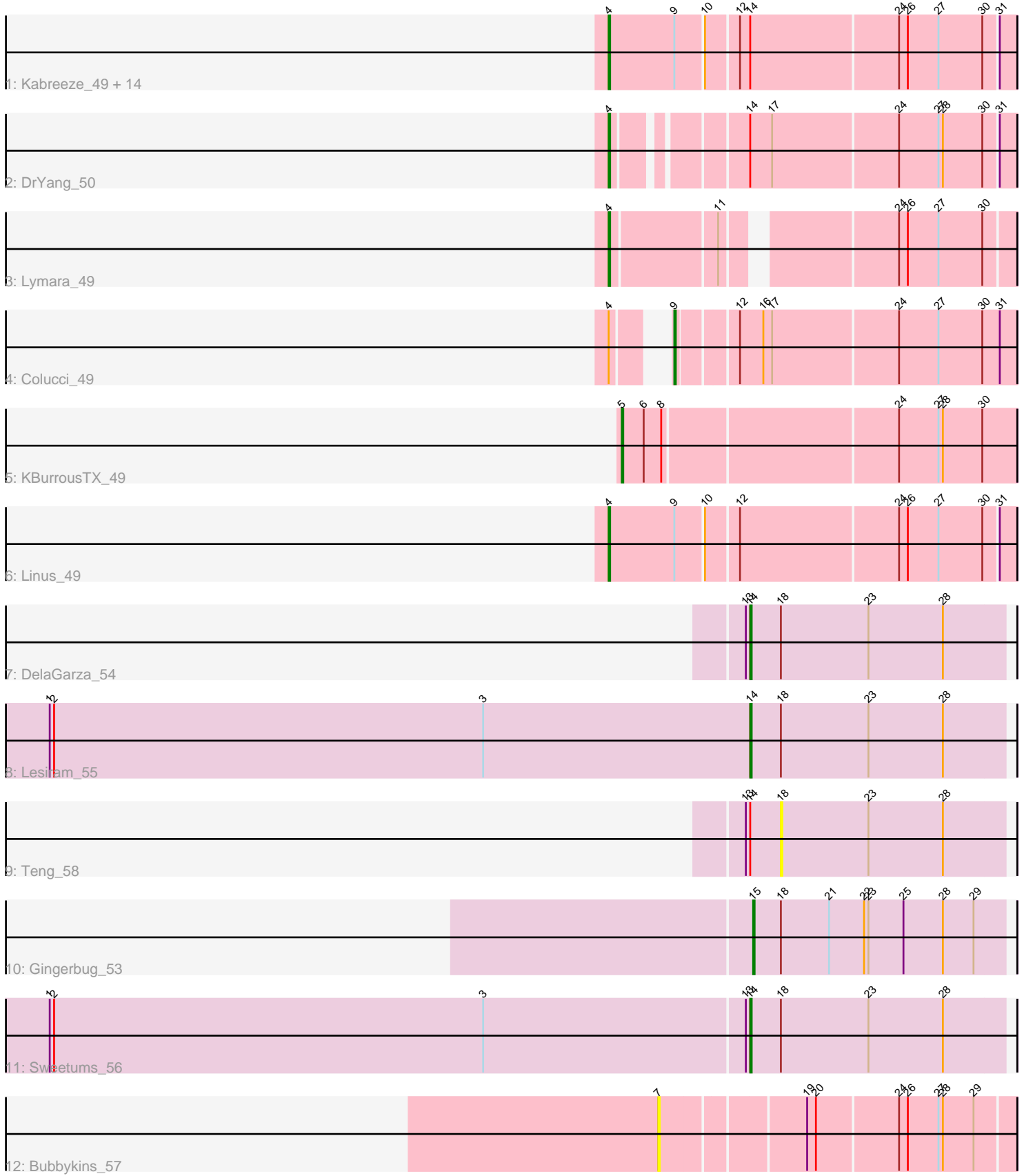


Pham 309127



Note: Tracks are now grouped by subcluster and scaled. Switching in subcluster is indicated by changes in track color. Track scale is now set by default to display the region 30 bp upstream of start 1 to 30 bp downstream of the last possible start. If this default region is judged to be packed too tightly with annotated starts, the track will be further scaled to only show that region of the ORF with annotated starts. This action will be indicated by adding "Zoomed" to the title. For starts, yellow indicates the location of called starts comprised solely of Glimmer/GeneMark auto-annotations, green indicates the location of called starts with at least 1 manual gene annotation.

Pham 309127 Report

This analysis was run 06/27/26 on database version 652.

Pham number 309127 has 26 members, 3 are drafts.

Phages represented in each track:

- Track 1 : Kabreeze_49, Conboy_49, Scavito_49, Chocolat_49, JaNo_49, PrincessTrina_49, Chubster_49, MoyaNatalis_49, Mordred_49, JayCookie_49, RosiePosie_49, Chipper1996_490, Tophat_49, EdgarPoe_49, HumptyDumpty_49
- Track 2 : DrYang_50
- Track 3 : Lymara_49
- Track 4 : Colucci_49
- Track 5 : KBurrousTX_49
- Track 6 : Linus_49
- Track 7 : DelaGarza_54
- Track 8 : Lesiram_55
- Track 9 : Teng_58
- Track 10 : Gingerbug_53
- Track 11 : Sweetums_56
- Track 12 : Bubbykins_57

Summary of Final Annotations (See graph section above for start numbers):

The start number called the most often in the published annotations is 4, it was called in 17 of the 23 non-draft genes in the pham.

Genes that call this "Most Annotated" start:

- Chipper1996_490, Chocolat_49, Chubster_49, Conboy_49, DrYang_50, EdgarPoe_49, HumptyDumpty_49, JaNo_49, JayCookie_49, Kabreeze_49, Linus_49, Lymara_49, Mordred_49, MoyaNatalis_49, PrincessTrina_49, RosiePosie_49, Scavito_49, Tophat_49,

Genes that have the "Most Annotated" start but do not call it:

- Colucci_49,

Genes that do not have the "Most Annotated" start:

- Bubbykins_57, DelaGarza_54, Gingerbug_53, KBurrousTX_49, Lesiram_55, Sweetums_56, Teng_58,

Summary by start number:

Start 4:

- Found in 19 of 26 (73.1%) of genes in pham
- Manual Annotations of this start: 17 of 23
- Called 94.7% of time when present
- Phage (with cluster) where this start called: Chipper1996_490 (AR), Chocolat_49 (AR), Chubster_49 (AR), Conboy_49 (AR), DrYang_50 (AR), EdgarPoe_49 (AR), HumptyDumpty_49 (AR), JaNo_49 (AR), JayCookie_49 (AR), Kabreeze_49 (AR), Linus_49 (AR), Lymara_49 (AR), Mordred_49 (AR), MoyaNatalis_49 (AR), PrincessTrina_49 (AR), RosiePosie_49 (AR), Scavito_49 (AR), Tophat_49 (AR),

Start 5:

- Found in 1 of 26 (3.8%) of genes in pham
- Manual Annotations of this start: 1 of 23
- Called 100.0% of time when present
- Phage (with cluster) where this start called: KBurrousTX_49 (AR),

Start 7:

- Found in 1 of 26 (3.8%) of genes in pham
- No Manual Annotations of this start.
- Called 100.0% of time when present
- Phage (with cluster) where this start called: Bubbykins_57 (UNK),

Start 9:

- Found in 17 of 26 (65.4%) of genes in pham
- Manual Annotations of this start: 1 of 23
- Called 5.9% of time when present
- Phage (with cluster) where this start called: Colucci_49 (AR),

Start 14:

- Found in 20 of 26 (76.9%) of genes in pham
- Manual Annotations of this start: 3 of 23
- Called 15.0% of time when present
- Phage (with cluster) where this start called: DelaGarza_54 (GF), Lesiram_55 (GF), Sweetums_56 (GF),

Start 15:

- Found in 1 of 26 (3.8%) of genes in pham
- Manual Annotations of this start: 1 of 23
- Called 100.0% of time when present
- Phage (with cluster) where this start called: Gingerbug_53 (GF),

Start 18:

- Found in 5 of 26 (19.2%) of genes in pham
- No Manual Annotations of this start.
- Called 20.0% of time when present
- Phage (with cluster) where this start called: Teng_58 (GF),

Summary by clusters:

There are 3 clusters represented in this pham: GF, UNK, AR,

Info for manual annotations of cluster AR:

- Start number 4 was manually annotated 17 times for cluster AR.
- Start number 5 was manually annotated 1 time for cluster AR.
- Start number 9 was manually annotated 1 time for cluster AR.

Info for manual annotations of cluster GF:

- Start number 14 was manually annotated 3 times for cluster GF.
- Start number 15 was manually annotated 1 time for cluster GF.

Gene Information:

Gene: Bubbykins_57 Start: 43476, Stop: 43703, Start Num: 7

Candidate Starts for Bubbykins_57:

(7, 43476), (19, 43566), (20, 43572), (24, 43626), (26, 43632), (27, 43653), (28, 43656), (29, 43677),

Gene: Chipper1996_490 Start: 38571, Stop: 38837, Start Num: 4

Candidate Starts for Chipper1996_490:

(Start: 4 @38571 has 17 MA's), (Start: 9 @38616 has 1 MA's), (10, 38634), (12, 38655), (Start: 14 @38661 has 3 MA's), (24, 38760), (26, 38766), (27, 38787), (30, 38817), (31, 38826),

Gene: Chocolat_49 Start: 38551, Stop: 38817, Start Num: 4

Candidate Starts for Chocolat_49:

(Start: 4 @38551 has 17 MA's), (Start: 9 @38596 has 1 MA's), (10, 38614), (12, 38635), (Start: 14 @38641 has 3 MA's), (24, 38740), (26, 38746), (27, 38767), (30, 38797), (31, 38806),

Gene: Chubster_49 Start: 38471, Stop: 38737, Start Num: 4

Candidate Starts for Chubster_49:

(Start: 4 @38471 has 17 MA's), (Start: 9 @38516 has 1 MA's), (10, 38534), (12, 38555), (Start: 14 @38561 has 3 MA's), (24, 38660), (26, 38666), (27, 38687), (30, 38717), (31, 38726),

Gene: Colucci_49 Start: 38303, Stop: 38524, Start Num: 9

Candidate Starts for Colucci_49:

(Start: 4 @38282 has 17 MA's), (Start: 9 @38303 has 1 MA's), (12, 38339), (16, 38354), (17, 38360), (24, 38444), (27, 38471), (30, 38501), (31, 38513),

Gene: Conboy_49 Start: 38699, Stop: 38965, Start Num: 4

Candidate Starts for Conboy_49:

(Start: 4 @38699 has 17 MA's), (Start: 9 @38744 has 1 MA's), (10, 38762), (12, 38783), (Start: 14 @38789 has 3 MA's), (24, 38888), (26, 38894), (27, 38915), (30, 38945), (31, 38954),

Gene: DelaGarza_54 Start: 31843, Stop: 32016, Start Num: 14

Candidate Starts for DelaGarza_54:

(13, 31840), (Start: 14 @31843 has 3 MA's), (18, 31864), (23, 31924), (28, 31975),

Gene: DrYang_50 Start: 40623, Stop: 40874, Start Num: 4

Candidate Starts for DrYang_50:

(Start: 4 @40623 has 17 MA's), (Start: 14 @40698 has 3 MA's), (17, 40713), (24, 40797), (27, 40824), (28, 40827), (30, 40854), (31, 40863),

Gene: EdgarPoe_49 Start: 38699, Stop: 38965, Start Num: 4

Candidate Starts for EdgarPoe_49:

(Start: 4 @38699 has 17 MA's), (Start: 9 @38744 has 1 MA's), (10, 38762), (12, 38783), (Start: 14 @38789 has 3 MA's), (24, 38888), (26, 38894), (27, 38915), (30, 38945), (31, 38954),

Gene: Gingerbug_53 Start: 32316, Stop: 32486, Start Num: 15

Candidate Starts for Gingerbug_53:

(Start: 15 @32316 has 1 MA's), (18, 32334), (21, 32367), (22, 32391), (23, 32394), (25, 32418), (28, 32445), (29, 32466),

Gene: HumptyDumpty_49 Start: 38569, Stop: 38835, Start Num: 4

Candidate Starts for HumptyDumpty_49:

(Start: 4 @38569 has 17 MA's), (Start: 9 @38614 has 1 MA's), (10, 38632), (12, 38653), (Start: 14 @38659 has 3 MA's), (24, 38758), (26, 38764), (27, 38785), (30, 38815), (31, 38824),

Gene: JaNo_49 Start: 38569, Stop: 38835, Start Num: 4

Candidate Starts for JaNo_49:

(Start: 4 @38569 has 17 MA's), (Start: 9 @38614 has 1 MA's), (10, 38632), (12, 38653), (Start: 14 @38659 has 3 MA's), (24, 38758), (26, 38764), (27, 38785), (30, 38815), (31, 38824),

Gene: JayCookie_49 Start: 38705, Stop: 38971, Start Num: 4

Candidate Starts for JayCookie_49:

(Start: 4 @38705 has 17 MA's), (Start: 9 @38750 has 1 MA's), (10, 38768), (12, 38789), (Start: 14 @38795 has 3 MA's), (24, 38894), (26, 38900), (27, 38921), (30, 38951), (31, 38960),

Gene: KBurrousTX_49 Start: 39798, Stop: 40058, Start Num: 5

Candidate Starts for KBurrousTX_49:

(Start: 5 @39798 has 1 MA's), (6, 39813), (8, 39825), (24, 39978), (27, 40005), (28, 40008), (30, 40035),

Gene: Kabreeze_49 Start: 38569, Stop: 38835, Start Num: 4

Candidate Starts for Kabreeze_49:

(Start: 4 @38569 has 17 MA's), (Start: 9 @38614 has 1 MA's), (10, 38632), (12, 38653), (Start: 14 @38659 has 3 MA's), (24, 38758), (26, 38764), (27, 38785), (30, 38815), (31, 38824),

Gene: Lesiram_55 Start: 31822, Stop: 31995, Start Num: 14

Candidate Starts for Lesiram_55:

(1, 31342), (2, 31345), (3, 31639), (Start: 14 @31822 has 3 MA's), (18, 31843), (23, 31903), (28, 31954),

Gene: Linus_49 Start: 38690, Stop: 38956, Start Num: 4

Candidate Starts for Linus_49:

(Start: 4 @38690 has 17 MA's), (Start: 9 @38735 has 1 MA's), (10, 38753), (12, 38774), (24, 38879), (26, 38885), (27, 38906), (30, 38936), (31, 38945),

Gene: Lymara_49 Start: 38517, Stop: 38765, Start Num: 4

Candidate Starts for Lymara_49:

(Start: 4 @38517 has 17 MA's), (11, 38586), (24, 38688), (26, 38694), (27, 38715), (30, 38745),

Gene: Mordred_49 Start: 38569, Stop: 38835, Start Num: 4

Candidate Starts for Mordred_49:

(Start: 4 @38569 has 17 MA's), (Start: 9 @38614 has 1 MA's), (10, 38632), (12, 38653), (Start: 14 @38659 has 3 MA's), (24, 38758), (26, 38764), (27, 38785), (30, 38815), (31, 38824),

Gene: MoyaNatalis_49 Start: 38550, Stop: 38816, Start Num: 4

Candidate Starts for MoyaNatalis_49:

(Start: 4 @38550 has 17 MA's), (Start: 9 @38595 has 1 MA's), (10, 38613), (12, 38634), (Start: 14 @38640 has 3 MA's), (24, 38739), (26, 38745), (27, 38766), (30, 38796), (31, 38805),

Gene: PrincessTrina_49 Start: 38693, Stop: 38959, Start Num: 4

Candidate Starts for PrincessTrina_49:

(Start: 4 @38693 has 17 MA's), (Start: 9 @38738 has 1 MA's), (10, 38756), (12, 38777), (Start: 14 @38783 has 3 MA's), (24, 38882), (26, 38888), (27, 38909), (30, 38939), (31, 38948),

Gene: RosiePosie_49 Start: 38572, Stop: 38838, Start Num: 4

Candidate Starts for RosiePosie_49:

(Start: 4 @38572 has 17 MA's), (Start: 9 @38617 has 1 MA's), (10, 38635), (12, 38656), (Start: 14 @38662 has 3 MA's), (24, 38761), (26, 38767), (27, 38788), (30, 38818), (31, 38827),

Gene: Scavito_49 Start: 38570, Stop: 38836, Start Num: 4

Candidate Starts for Scavito_49:

(Start: 4 @38570 has 17 MA's), (Start: 9 @38615 has 1 MA's), (10, 38633), (12, 38654), (Start: 14 @38660 has 3 MA's), (24, 38759), (26, 38765), (27, 38786), (30, 38816), (31, 38825),

Gene: Sweetums_56 Start: 31933, Stop: 32106, Start Num: 14

Candidate Starts for Sweetums_56:

(1, 31456), (2, 31459), (3, 31753), (13, 31930), (Start: 14 @31933 has 3 MA's), (18, 31954), (23, 32014), (28, 32065),

Gene: Teng_58 Start: 31858, Stop: 32010, Start Num: 18

Candidate Starts for Teng_58:

(13, 31834), (Start: 14 @31837 has 3 MA's), (18, 31858), (23, 31918), (28, 31969),

Gene: Tophat_49 Start: 38571, Stop: 38837, Start Num: 4

Candidate Starts for Tophat_49:

(Start: 4 @38571 has 17 MA's), (Start: 9 @38616 has 1 MA's), (10, 38634), (12, 38655), (Start: 14 @38661 has 3 MA's), (24, 38760), (26, 38766), (27, 38787), (30, 38817), (31, 38826),