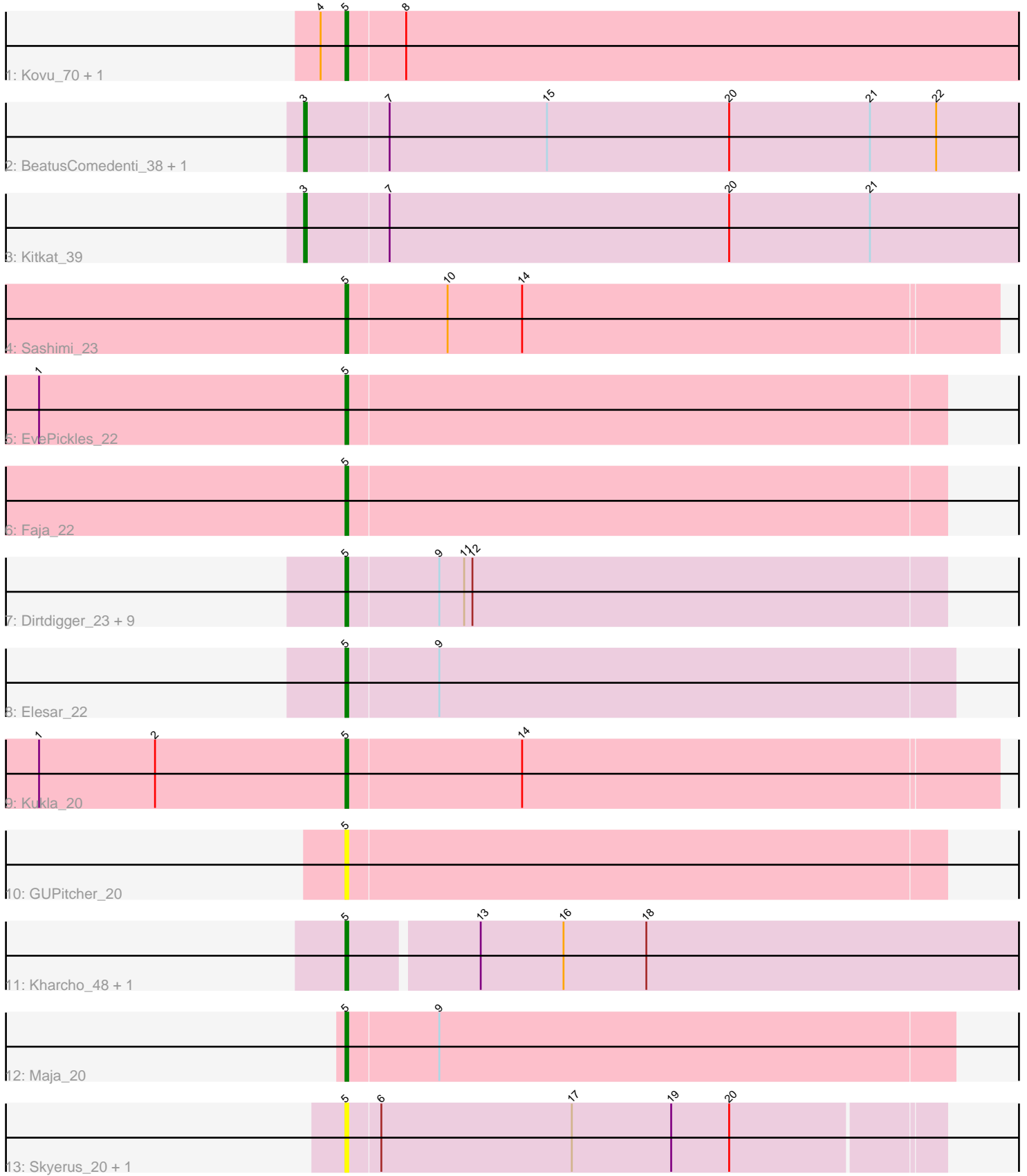


Pham 309131



Note: Tracks are now grouped by subcluster and scaled. Switching in subcluster is indicated by changes in track color. Track scale is now set by default to display the region 30 bp upstream of start 1 to 30 bp downstream of the last possible start. If this default region is judged to be packed too tightly with annotated starts, the track will be further scaled to only show that region of the ORF with annotated starts. This action will be indicated by adding "Zoomed" to the title. For starts, yellow indicates the location of called starts comprised solely of Glimmer/GeneMark auto-annotations, green indicates the location of called starts with at least 1 manual gene annotation.

Pham 309131 Report

This analysis was run 06/27/26 on database version 652.

Pham number 309131 has 26 members, 5 are drafts.

Phages represented in each track:

- Track 1 : Kovu_70, ApoKipo_74
- Track 2 : BeatusComedenti_38, KellEzio_38
- Track 3 : Kitkat_39
- Track 4 : Sashimi_23
- Track 5 : EvePickles_22
- Track 6 : Faja_22
- Track 7 : Dirdigger_23, Cole_21, MillySue_23, Saintcarr_22, Donatella_22, Ichiang_21, Halloweekend_21, QuinnAvery_23, BigSherm_23, ToastyOats_25
- Track 8 : Elesar_22
- Track 9 : Kukla_20
- Track 10 : GUPitcher_20
- Track 11 : Kharcho_48, Ottawa_48
- Track 12 : Maja_20
- Track 13 : Skyerus_20, Raya_20

Summary of Final Annotations (See graph section above for start numbers):

The start number called the most often in the published annotations is 5, it was called in 18 of the 21 non-draft genes in the pham.

Genes that call this "Most Annotated" start:

- ApoKipo_74, BigSherm_23, Cole_21, Dirdigger_23, Donatella_22, Elesar_22, EvePickles_22, Faja_22, GUPitcher_20, Halloweekend_21, Ichiang_21, Kharcho_48, Kovu_70, Kukla_20, Maja_20, MillySue_23, Ottawa_48, QuinnAvery_23, Raya_20, Saintcarr_22, Sashimi_23, Skyerus_20, ToastyOats_25,

Genes that have the "Most Annotated" start but do not call it:

-

Genes that do not have the "Most Annotated" start:

- BeatusComedenti_38, KellEzio_38, Kitkat_39,

Summary by start number:

Start 3:

- Found in 3 of 26 (11.5%) of genes in pham
- Manual Annotations of this start: 3 of 21
- Called 100.0% of time when present
- Phage (with cluster) where this start called: BeatusComedenti_38 (AT), KellEzio_38 (AT), Kitkat_39 (AT),

Start 5:

- Found in 23 of 26 (88.5%) of genes in pham
- Manual Annotations of this start: 18 of 21
- Called 100.0% of time when present
- Phage (with cluster) where this start called: ApoKipo_74 (AL), BigSherm_23 (FF), Cole_21 (FF), Dirdigger_23 (FF), Donatella_22 (FF), Elesar_22 (FF), EvePickles_22 (AY), Faja_22 (AY), GUPitcher_20 (FJ), Halloweekend_21 (FF), Ichiang_21 (FF), Kharcho_48 (FM), Kovu_70 (AL), Kukla_20 (FJ), Maja_20 (FO), MillySue_23 (FF), Ottawa_48 (FM), QuinnAvery_23 (FF), Raya_20 (FQ2), Saintcarr_22 (FF), Sashimi_23 (AY), Skyerus_20 (FQ2), ToastyOats_25 (FF),

Summary by clusters:

There are 8 clusters represented in this pham: AL, FQ2, AT, FF, AY, FJ, FM, FO,

Info for manual annotations of cluster AL:

- Start number 5 was manually annotated 2 times for cluster AL.

Info for manual annotations of cluster AT:

- Start number 3 was manually annotated 3 times for cluster AT.

Info for manual annotations of cluster AY:

- Start number 5 was manually annotated 3 times for cluster AY.

Info for manual annotations of cluster FF:

- Start number 5 was manually annotated 9 times for cluster FF.

Info for manual annotations of cluster FJ:

- Start number 5 was manually annotated 1 time for cluster FJ.

Info for manual annotations of cluster FM:

- Start number 5 was manually annotated 2 times for cluster FM.

Info for manual annotations of cluster FO:

- Start number 5 was manually annotated 1 time for cluster FO.

Gene Information:

Gene: ApoKipo_74 Start: 45156, Stop: 45401, Start Num: 5

Candidate Starts for ApoKipo_74:

(4, 45147), (Start: 5 @45156 has 18 MA's), (8, 45177),

Gene: BeatusComedenti_38 Start: 29110, Stop: 29382, Start Num: 3

Candidate Starts for BeatusComedenti_38:

(Start: 3 @29110 has 3 MA's), (7, 29140), (15, 29197), (20, 29263), (21, 29314), (22, 29338),

Gene: BigSherm_23 Start: 17822, Stop: 18037, Start Num: 5

Candidate Starts for BigSherm_23:

(Start: 5 @17822 has 18 MA's), (9, 17855), (11, 17864), (12, 17867),

Gene: Cole_21 Start: 17484, Stop: 17699, Start Num: 5

Candidate Starts for Cole_21:

(Start: 5 @17484 has 18 MA's), (9, 17517), (11, 17526), (12, 17529),

Gene: Dirdigger_23 Start: 17802, Stop: 18017, Start Num: 5

Candidate Starts for Dirdigger_23:

(Start: 5 @17802 has 18 MA's), (9, 17835), (11, 17844), (12, 17847),

Gene: Donatella_22 Start: 17948, Stop: 18163, Start Num: 5

Candidate Starts for Donatella_22:

(Start: 5 @17948 has 18 MA's), (9, 17981), (11, 17990), (12, 17993),

Gene: Elesar_22 Start: 17875, Stop: 18093, Start Num: 5

Candidate Starts for Elesar_22:

(Start: 5 @17875 has 18 MA's), (9, 17908),

Gene: EvePickles_22 Start: 17081, Stop: 17296, Start Num: 5

Candidate Starts for EvePickles_22:

(1, 16970), (Start: 5 @17081 has 18 MA's),

Gene: Faja_22 Start: 16977, Stop: 17192, Start Num: 5

Candidate Starts for Faja_22:

(Start: 5 @16977 has 18 MA's),

Gene: GUPitcher_20 Start: 16835, Stop: 17050, Start Num: 5

Candidate Starts for GUPitcher_20:

(Start: 5 @16835 has 18 MA's),

Gene: Halloweekend_21 Start: 17448, Stop: 17663, Start Num: 5

Candidate Starts for Halloweekend_21:

(Start: 5 @17448 has 18 MA's), (9, 17481), (11, 17490), (12, 17493),

Gene: Ichiang_21 Start: 17465, Stop: 17680, Start Num: 5

Candidate Starts for Ichiang_21:

(Start: 5 @17465 has 18 MA's), (9, 17498), (11, 17507), (12, 17510),

Gene: Kellezio_38 Start: 29112, Stop: 29384, Start Num: 3

Candidate Starts for Kellezio_38:

(Start: 3 @29112 has 3 MA's), (7, 29142), (15, 29199), (20, 29265), (21, 29316), (22, 29340),

Gene: Kharcho_48 Start: 26756, Stop: 26998, Start Num: 5

Candidate Starts for Kharcho_48:

(Start: 5 @26756 has 18 MA's), (13, 26801), (16, 26831), (18, 26861),

Gene: Kitkat_39 Start: 29230, Stop: 29502, Start Num: 3

Candidate Starts for Kitkat_39:

(Start: 3 @29230 has 3 MA's), (7, 29260), (20, 29383), (21, 29434),

Gene: Kovu_70 Start: 44816, Stop: 45061, Start Num: 5

Candidate Starts for Kovu_70:

(4, 44807), (Start: 5 @44816 has 18 MA's), (8, 44837),

Gene: Kukla_20 Start: 16456, Stop: 16689, Start Num: 5

Candidate Starts for Kukla_20:

(1, 16345), (2, 16387), (Start: 5 @16456 has 18 MA's), (14, 16519),

Gene: Maja_20 Start: 16740, Stop: 16958, Start Num: 5

Candidate Starts for Maja_20:

(Start: 5 @16740 has 18 MA's), (9, 16773),

Gene: MillySue_23 Start: 17824, Stop: 18039, Start Num: 5

Candidate Starts for MillySue_23:

(Start: 5 @17824 has 18 MA's), (9, 17857), (11, 17866), (12, 17869),

Gene: Ottawa_48 Start: 26754, Stop: 26996, Start Num: 5

Candidate Starts for Ottawa_48:

(Start: 5 @26754 has 18 MA's), (13, 26799), (16, 26829), (18, 26859),

Gene: QuinnAvery_23 Start: 17822, Stop: 18037, Start Num: 5

Candidate Starts for QuinnAvery_23:

(Start: 5 @17822 has 18 MA's), (9, 17855), (11, 17864), (12, 17867),

Gene: Raya_20 Start: 15472, Stop: 15684, Start Num: 5

Candidate Starts for Raya_20:

(Start: 5 @15472 has 18 MA's), (6, 15484), (17, 15553), (19, 15589), (20, 15610),

Gene: Saintcarr_22 Start: 17832, Stop: 18047, Start Num: 5

Candidate Starts for Saintcarr_22:

(Start: 5 @17832 has 18 MA's), (9, 17865), (11, 17874), (12, 17877),

Gene: Sashimi_23 Start: 17083, Stop: 17316, Start Num: 5

Candidate Starts for Sashimi_23:

(Start: 5 @17083 has 18 MA's), (10, 17119), (14, 17146),

Gene: Skyerus_20 Start: 15472, Stop: 15684, Start Num: 5

Candidate Starts for Skyerus_20:

(Start: 5 @15472 has 18 MA's), (6, 15484), (17, 15553), (19, 15589), (20, 15610),

Gene: ToastyOats_25 Start: 18287, Stop: 18502, Start Num: 5

Candidate Starts for ToastyOats_25:

(Start: 5 @18287 has 18 MA's), (9, 18320), (11, 18329), (12, 18332),