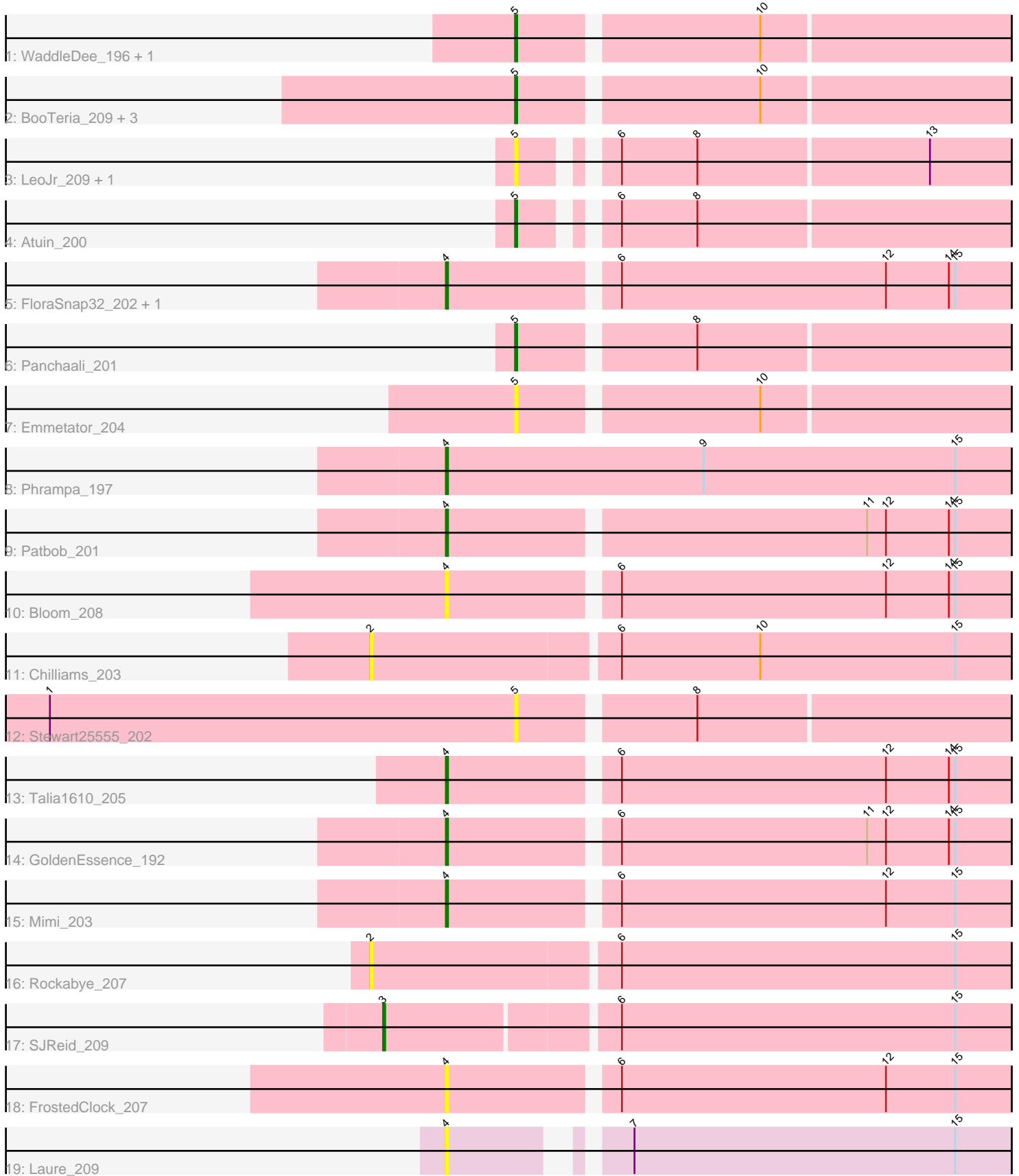


Pham 309152



Note: Tracks are now grouped by subcluster and scaled. Switching in subcluster is indicated by changes in track color. Track scale is now set by default to display the region 30 bp upstream of start 1 to 30 bp downstream of the last possible start. If this default region is judged to be packed too tightly with annotated starts, the track will be further scaled to only show that region of the ORF with annotated starts. This action will be indicated by adding "Zoomed" to the title. For starts, yellow indicates the location of called starts comprised solely of Glimmer/GeneMark auto-annotations, green indicates the location of called starts with at least 1 manual gene annotation.

## Pham 309152 Report

This analysis was run 06/27/26 on database version 652.

Pham number 309152 has 25 members, 13 are drafts.

Phages represented in each track:

- Track 1 : WaddleDee\_196, DunneganBoMo\_201
- Track 2 : BooTeria\_209, KSunshine22\_204, Ellewin\_199, Artu\_202
- Track 3 : LeoJr\_209, ReginaGlobina\_212
- Track 4 : Atuin\_200
- Track 5 : FloraSnap32\_202, Racecar\_205
- Track 6 : Panchaali\_201
- Track 7 : Emmetator\_204
- Track 8 : Phrampa\_197
- Track 9 : Patbob\_201
- Track 10 : Bloom\_208
- Track 11 : Chilliams\_203
- Track 12 : Stewart25555\_202
- Track 13 : Talia1610\_205
- Track 14 : GoldenEssence\_192
- Track 15 : Mimi\_203
- Track 16 : Rockabye\_207
- Track 17 : SJReid\_209
- Track 18 : FrostedClock\_207
- Track 19 : Laure\_209

### ***Summary of Final Annotations (See graph section above for start numbers):***

The start number called the most often in the published annotations is 4, it was called in 6 of the 12 non-draft genes in the pham.

Genes that call this "Most Annotated" start:

- Bloom\_208, FloraSnap32\_202, FrostedClock\_207, GoldenEssence\_192, Laure\_209, Mimi\_203, Patbob\_201, Phrampa\_197, Racecar\_205, Talia1610\_205,

Genes that have the "Most Annotated" start but do not call it:

- 

Genes that do not have the "Most Annotated" start:

- Artu\_202, Atuin\_200, BooTeria\_209, Chilliams\_203, DunneganBoMo\_201, Ellewin\_199, Emmetator\_204, KSunshine22\_204, LeoJr\_209, Panchaali\_201, ReginaGlobina\_212, Rockabye\_207, SJReid\_209, Stewart25555\_202, WaddleDee\_196,

### Summary by start number:

#### Start 2:

- Found in 2 of 25 ( 8.0% ) of genes in pham
- No Manual Annotations of this start.
- Called 100.0% of time when present
- Phage (with cluster) where this start called: Chilliams\_203 (FC), Rockabye\_207 (FC),

#### Start 3:

- Found in 1 of 25 ( 4.0% ) of genes in pham
- Manual Annotations of this start: 1 of 12
- Called 100.0% of time when present
- Phage (with cluster) where this start called: SJReid\_209 (FC),

#### Start 4:

- Found in 10 of 25 ( 40.0% ) of genes in pham
- Manual Annotations of this start: 6 of 12
- Called 100.0% of time when present
- Phage (with cluster) where this start called: Bloom\_208 (FC), FloraSnap32\_202 (FC), FrostedClock\_207 (FC), GoldenEssence\_192 (FC), Laure\_209 (UNK), Mimi\_203 (FC), Patbob\_201 (FC), Phrampa\_197 (FC), Racecar\_205 (FC), Talia1610\_205 (FC),

#### Start 5:

- Found in 12 of 25 ( 48.0% ) of genes in pham
- Manual Annotations of this start: 5 of 12
- Called 100.0% of time when present
- Phage (with cluster) where this start called: Artu\_202 (FC), Atuin\_200 (FC), BooTeria\_209 (FC), DunneganBoMo\_201 (FC), Ellewin\_199 (FC), Emmetator\_204 (FC), KSunshine22\_204 (FC), LeoJr\_209 (FC), Panchaali\_201 (FC), ReginaGlobina\_212 (FC), Stewart25555\_202 (FC), WaddleDee\_196 (FC),

### Summary by clusters:

There are 2 clusters represented in this pham: UNK, FC,

#### Info for manual annotations of cluster FC:

- Start number 3 was manually annotated 1 time for cluster FC.
- Start number 4 was manually annotated 6 times for cluster FC.
- Start number 5 was manually annotated 5 times for cluster FC.

### Gene Information:

Gene: Artu\_202 Start: 147288, Stop: 147512, Start Num: 5

Candidate Starts for Artu\_202:  
(Start: 5 @147288 has 5 MA's), (10, 147396),

Gene: Atuin\_200 Start: 140989, Stop: 141204, Start Num: 5  
Candidate Starts for Atuin\_200:  
(Start: 5 @140989 has 5 MA's), (6, 141022), (8, 141058),

Gene: Bloom\_208 Start: 141986, Stop: 142246, Start Num: 4  
Candidate Starts for Bloom\_208:  
(Start: 4 @141986 has 6 MA's), (6, 142061), (12, 142187), (14, 142217), (15, 142220),

Gene: BooTeria\_209 Start: 146798, Stop: 147022, Start Num: 5  
Candidate Starts for BooTeria\_209:  
(Start: 5 @146798 has 5 MA's), (10, 146906),

Gene: Chilliams\_203 Start: 137809, Stop: 138108, Start Num: 2  
Candidate Starts for Chilliams\_203:  
(2, 137809), (6, 137923), (10, 137989), (15, 138082),

Gene: DunneganBoMo\_201 Start: 146262, Stop: 146486, Start Num: 5  
Candidate Starts for DunneganBoMo\_201:  
(Start: 5 @146262 has 5 MA's), (10, 146370),

Gene: Ellewin\_199 Start: 145529, Stop: 145753, Start Num: 5  
Candidate Starts for Ellewin\_199:  
(Start: 5 @145529 has 5 MA's), (10, 145637),

Gene: Emmetator\_204 Start: 145658, Stop: 145882, Start Num: 5  
Candidate Starts for Emmetator\_204:  
(Start: 5 @145658 has 5 MA's), (10, 145766),

Gene: FloraSnap32\_202 Start: 140579, Stop: 140839, Start Num: 4  
Candidate Starts for FloraSnap32\_202:  
(Start: 4 @140579 has 6 MA's), (6, 140654), (12, 140780), (14, 140810), (15, 140813),

Gene: FrostedClock\_207 Start: 141907, Stop: 142167, Start Num: 4  
Candidate Starts for FrostedClock\_207:  
(Start: 4 @141907 has 6 MA's), (6, 141982), (12, 142108), (15, 142141),

Gene: GoldenEssence\_192 Start: 135953, Stop: 136213, Start Num: 4  
Candidate Starts for GoldenEssence\_192:  
(Start: 4 @135953 has 6 MA's), (6, 136028), (11, 136145), (12, 136154), (14, 136184), (15, 136187),

Gene: KSunshine22\_204 Start: 144940, Stop: 145164, Start Num: 5  
Candidate Starts for KSunshine22\_204:  
(Start: 5 @144940 has 5 MA's), (10, 145048),

Gene: Laure\_209 Start: 130943, Stop: 131188, Start Num: 4  
Candidate Starts for Laure\_209:  
(Start: 4 @130943 has 6 MA's), (7, 131009), (15, 131162),

Gene: LeoJr\_209 Start: 141160, Stop: 141375, Start Num: 5  
Candidate Starts for LeoJr\_209:

(Start: 5 @141160 has 5 MA's), (6, 141193), (8, 141229), (13, 141337),

Gene: Mimi\_203 Start: 141362, Stop: 141622, Start Num: 4

Candidate Starts for Mimi\_203:

(Start: 4 @141362 has 6 MA's), (6, 141437), (12, 141563), (15, 141596),

Gene: Panchaali\_201 Start: 146866, Stop: 147090, Start Num: 5

Candidate Starts for Panchaali\_201:

(Start: 5 @146866 has 5 MA's), (8, 146944),

Gene: Patbob\_201 Start: 141749, Stop: 142009, Start Num: 4

Candidate Starts for Patbob\_201:

(Start: 4 @141749 has 6 MA's), (11, 141941), (12, 141950), (14, 141980), (15, 141983),

Gene: Phrampa\_197 Start: 141421, Stop: 141690, Start Num: 4

Candidate Starts for Phrampa\_197:

(Start: 4 @141421 has 6 MA's), (9, 141544), (15, 141664),

Gene: Racecar\_205 Start: 141742, Stop: 142002, Start Num: 4

Candidate Starts for Racecar\_205:

(Start: 4 @141742 has 6 MA's), (6, 141817), (12, 141943), (14, 141973), (15, 141976),

Gene: ReginaGlobina\_212 Start: 142445, Stop: 142660, Start Num: 5

Candidate Starts for ReginaGlobina\_212:

(Start: 5 @142445 has 5 MA's), (6, 142478), (8, 142514), (13, 142622),

Gene: Rockabye\_207 Start: 136248, Stop: 136547, Start Num: 2

Candidate Starts for Rockabye\_207:

(2, 136248), (6, 136362), (15, 136521),

Gene: SJReid\_209 Start: 135153, Stop: 135443, Start Num: 3

Candidate Starts for SJReid\_209:

(Start: 3 @135153 has 1 MA's), (6, 135258), (15, 135417),

Gene: Stewart25555\_202 Start: 144174, Stop: 144398, Start Num: 5

Candidate Starts for Stewart25555\_202:

(1, 143952), (Start: 5 @144174 has 5 MA's), (8, 144252),

Gene: Talia1610\_205 Start: 141771, Stop: 142031, Start Num: 4

Candidate Starts for Talia1610\_205:

(Start: 4 @141771 has 6 MA's), (6, 141846), (12, 141972), (14, 142002), (15, 142005),

Gene: WaddleDee\_196 Start: 144723, Stop: 144947, Start Num: 5

Candidate Starts for WaddleDee\_196:

(Start: 5 @144723 has 5 MA's), (10, 144831),