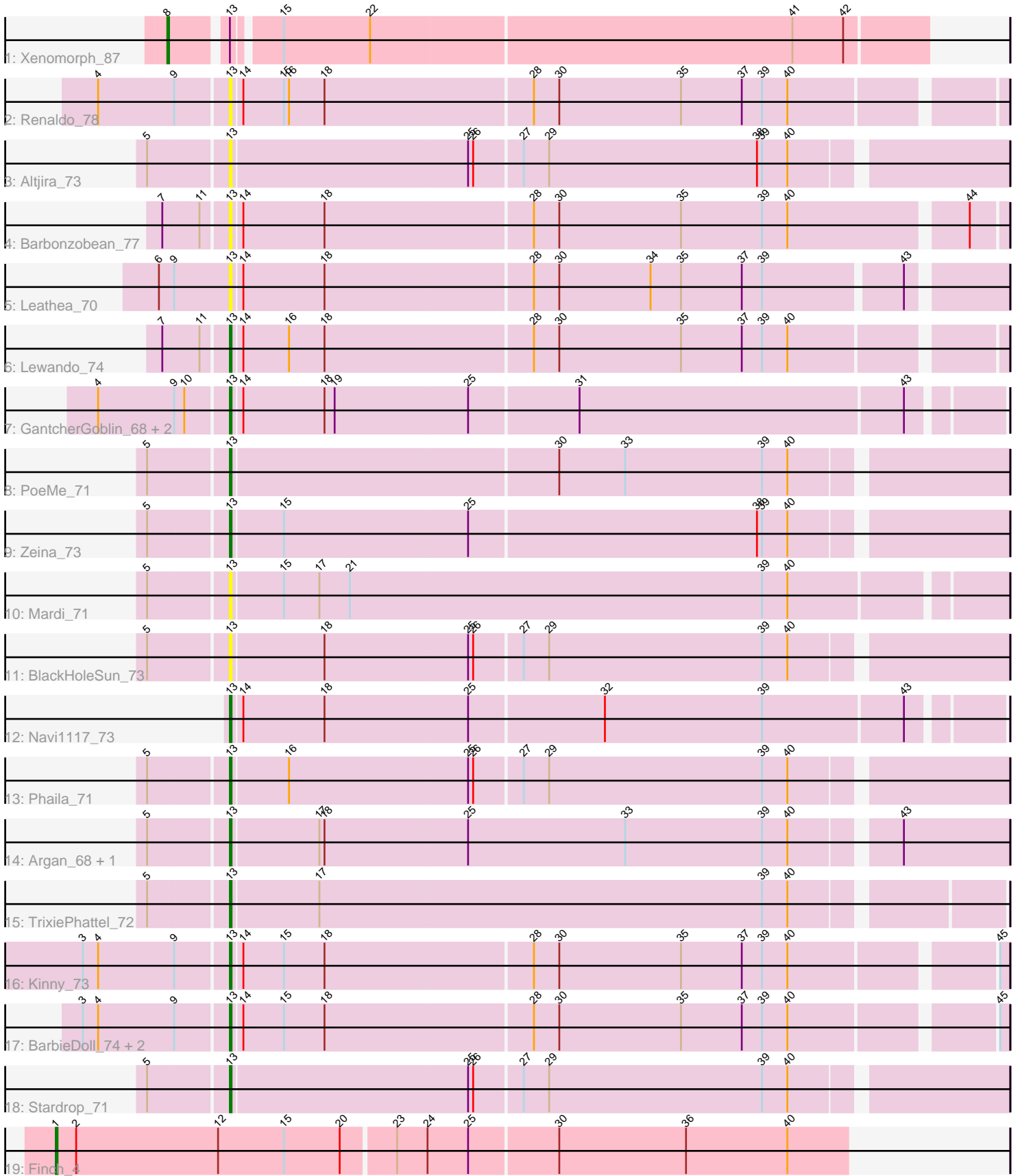


Pham 309191



Note: Tracks are now grouped by subcluster and scaled. Switching in subcluster is indicated by changes in track color. Track scale is now set by default to display the region 30 bp upstream of start 1 to 30 bp downstream of the last possible start. If this default region is judged to be packed too tightly with annotated starts, the track will be further scaled to only show that region of the ORF with annotated starts. This action will be indicated by adding "Zoomed" to the title. For starts, yellow indicates the location of called starts comprised solely of Glimmer/GeneMark auto-annotations, green indicates the location of called starts with at least 1 manual gene annotation.

Pham 309191 Report

This analysis was run 06/27/26 on database version 652.

Pham number 309191 has 24 members, 8 are drafts.

Phages represented in each track:

- Track 1 : Xenomorph_87
- Track 2 : Renaldo_78
- Track 3 : Altjira_73
- Track 4 : Barbonzobean_77
- Track 5 : Leathea_70
- Track 6 : Lewando_74
- Track 7 : GantcherGoblin_68, Uzumaki_67, Tenney120_71
- Track 8 : PoeMe_71
- Track 9 : Zeina_73
- Track 10 : Mardi_71
- Track 11 : BlackHoleSun_73
- Track 12 : Navi1117_73
- Track 13 : Phaila_71
- Track 14 : Argan_68, KevinMinion_69
- Track 15 : TrixiePhattel_72
- Track 16 : Kinny_73
- Track 17 : BarbieDoll_74, Muglass_72, Biscute_70
- Track 18 : Stardrop_71
- Track 19 : Finch_4

Summary of Final Annotations (See graph section above for start numbers):

The start number called the most often in the published annotations is 13, it was called in 14 of the 16 non-draft genes in the pham.

Genes that call this "Most Annotated" start:

- Altjira_73, Argan_68, BarbieDoll_74, Barbonzobean_77, Biscute_70, BlackHoleSun_73, GantcherGoblin_68, KevinMinion_69, Kinny_73, Leathea_70, Lewando_74, Mardi_71, Muglass_72, Navi1117_73, Phaila_71, PoeMe_71, Renaldo_78, Stardrop_71, Tenney120_71, TrixiePhattel_72, Uzumaki_67, Zeina_73,

Genes that have the "Most Annotated" start but do not call it:

- Xenomorph_87,

Genes that do not have the "Most Annotated" start:

- Finch_4,

Summary by start number:

Start 1:

- Found in 1 of 24 (4.2%) of genes in pham
- Manual Annotations of this start: 1 of 16
- Called 100.0% of time when present
- Phage (with cluster) where this start called: Finch_4 (singleton),

Start 8:

- Found in 1 of 24 (4.2%) of genes in pham
- Manual Annotations of this start: 1 of 16
- Called 100.0% of time when present
- Phage (with cluster) where this start called: Xenomorph_87 (AM),

Start 13:

- Found in 23 of 24 (95.8%) of genes in pham
- Manual Annotations of this start: 14 of 16
- Called 95.7% of time when present
- Phage (with cluster) where this start called: Altjira_73 (AU6), Argan_68 (AU6), BarbieDoll_74 (AU6), Barbonzobean_77 (AU6), Biscute_70 (AU6), BlackHoleSun_73 (AU6), GantcherGoblin_68 (AU6), KevinMinion_69 (AU6), Kinny_73 (AU6), Leathea_70 (AU6), Lewando_74 (AU6), Mardi_71 (AU6), Muglass_72 (AU6), Navi1117_73 (AU6), Phaila_71 (AU6), PoeMe_71 (AU6), Renaldo_78 (AU6), Stardrop_71 (AU6), Tenney120_71 (AU6), TrixiePhattel_72 (AU6), Uzumaki_67 (AU6), Zeina_73 (AU6),

Summary by clusters:

There are 3 clusters represented in this pham: singleton, AM, AU6,

Info for manual annotations of cluster AM:

- Start number 8 was manually annotated 1 time for cluster AM.

Info for manual annotations of cluster AU6:

- Start number 13 was manually annotated 14 times for cluster AU6.

Gene Information:

Gene: Altjira_73 Start: 44965, Stop: 45408, Start Num: 13

Candidate Starts for Altjira_73:

(5, 44920), (Start: 13 @44965 has 14 MA's), (25, 45103), (26, 45106), (27, 45133), (29, 45148), (38, 45271), (39, 45274), (40, 45289),

Gene: Argan_68 Start: 43685, Stop: 44131, Start Num: 13

Candidate Starts for Argan_68:

(5, 43640), (Start: 13 @43685 has 14 MA's), (17, 43736), (18, 43739), (25, 43823), (33, 43916), (39, 43997), (40, 44012), (43, 44069),

Gene: BarbieDoll_74 Start: 45295, Stop: 45735, Start Num: 13

Candidate Starts for BarbieDoll_74:

(3, 45211), (4, 45220), (9, 45265), (Start: 13 @45295 has 14 MA's), (14, 45301), (15, 45325), (18, 45349), (28, 45469), (30, 45484), (35, 45556), (37, 45592), (39, 45604), (40, 45619), (45, 45730),

Gene: Barbonzobean_77 Start: 45688, Stop: 46131, Start Num: 13

Candidate Starts for Barbonzobean_77:

(7, 45652), (11, 45673), (Start: 13 @45688 has 14 MA's), (14, 45694), (18, 45742), (28, 45862), (30, 45877), (35, 45949), (39, 45997), (40, 46012), (44, 46111),

Gene: Biscute_70 Start: 44947, Stop: 45387, Start Num: 13

Candidate Starts for Biscute_70:

(3, 44863), (4, 44872), (9, 44917), (Start: 13 @44947 has 14 MA's), (14, 44953), (15, 44977), (18, 45001), (28, 45121), (30, 45136), (35, 45208), (37, 45244), (39, 45256), (40, 45271), (45, 45382),

Gene: BlackHoleSun_73 Start: 43806, Stop: 44249, Start Num: 13

Candidate Starts for BlackHoleSun_73:

(5, 43761), (Start: 13 @43806 has 14 MA's), (18, 43860), (25, 43944), (26, 43947), (27, 43974), (29, 43989), (39, 44115), (40, 44130),

Gene: Finch_4 Start: 2539, Stop: 3000, Start Num: 1

Candidate Starts for Finch_4:

(Start: 1 @2539 has 1 MA's), (2, 2551), (12, 2635), (15, 2674), (20, 2707), (23, 2737), (24, 2755), (25, 2779), (30, 2830), (36, 2905), (40, 2965),

Gene: GantcherGoblin_68 Start: 43638, Stop: 44078, Start Num: 13

Candidate Starts for GantcherGoblin_68:

(4, 43563), (9, 43608), (10, 43614), (Start: 13 @43638 has 14 MA's), (14, 43644), (18, 43692), (19, 43698), (25, 43776), (31, 43839), (43, 44028),

Gene: KevinMinion_69 Start: 44636, Stop: 45082, Start Num: 13

Candidate Starts for KevinMinion_69:

(5, 44591), (Start: 13 @44636 has 14 MA's), (17, 44687), (18, 44690), (25, 44774), (33, 44867), (39, 44948), (40, 44963), (43, 45020),

Gene: Kinny_73 Start: 45775, Stop: 46215, Start Num: 13

Candidate Starts for Kinny_73:

(3, 45691), (4, 45700), (9, 45745), (Start: 13 @45775 has 14 MA's), (14, 45781), (15, 45805), (18, 45829), (28, 45949), (30, 45964), (35, 46036), (37, 46072), (39, 46084), (40, 46099), (45, 46210),

Gene: Leathea_70 Start: 43549, Stop: 43989, Start Num: 13

Candidate Starts for Leathea_70:

(6, 43507), (9, 43516), (Start: 13 @43549 has 14 MA's), (14, 43555), (18, 43603), (28, 43723), (30, 43738), (34, 43792), (35, 43810), (37, 43846), (39, 43858), (43, 43936),

Gene: Lewando_74 Start: 45512, Stop: 45952, Start Num: 13

Candidate Starts for Lewando_74:

(7, 45476), (11, 45497), (Start: 13 @45512 has 14 MA's), (14, 45518), (16, 45545), (18, 45566), (28, 45686), (30, 45701), (35, 45773), (37, 45809), (39, 45821), (40, 45836),

Gene: Mardi_71 Start: 44206, Stop: 44652, Start Num: 13

Candidate Starts for Mardi_71:

(5, 44161), (Start: 13 @44206 has 14 MA's), (15, 44236), (17, 44257), (21, 44275), (39, 44518), (40, 44533),

Gene: Muglass_72 Start: 44851, Stop: 45291, Start Num: 13

Candidate Starts for Muglass_72:

(3, 44767), (4, 44776), (9, 44821), (Start: 13 @44851 has 14 MA's), (14, 44857), (15, 44881), (18, 44905), (28, 45025), (30, 45040), (35, 45112), (37, 45148), (39, 45160), (40, 45175), (45, 45286),

Gene: Navi1117_73 Start: 44718, Stop: 45158, Start Num: 13

Candidate Starts for Navi1117_73:

(Start: 13 @44718 has 14 MA's), (14, 44724), (18, 44772), (25, 44856), (32, 44934), (39, 45027), (43, 45108),

Gene: Phaila_71 Start: 43871, Stop: 44314, Start Num: 13

Candidate Starts for Phaila_71:

(5, 43826), (Start: 13 @43871 has 14 MA's), (16, 43904), (25, 44009), (26, 44012), (27, 44039), (29, 44054), (39, 44180), (40, 44195),

Gene: PoeMe_71 Start: 44359, Stop: 44802, Start Num: 13

Candidate Starts for PoeMe_71:

(5, 44314), (Start: 13 @44359 has 14 MA's), (30, 44548), (33, 44587), (39, 44668), (40, 44683),

Gene: Renaldo_78 Start: 45733, Stop: 46173, Start Num: 13

Candidate Starts for Renaldo_78:

(4, 45658), (9, 45703), (Start: 13 @45733 has 14 MA's), (14, 45739), (15, 45763), (16, 45766), (18, 45787), (28, 45907), (30, 45922), (35, 45994), (37, 46030), (39, 46042), (40, 46057),

Gene: Stardrop_71 Start: 44461, Stop: 44904, Start Num: 13

Candidate Starts for Stardrop_71:

(5, 44416), (Start: 13 @44461 has 14 MA's), (25, 44599), (26, 44602), (27, 44629), (29, 44644), (39, 44770), (40, 44785),

Gene: Tenney120_71 Start: 44298, Stop: 44738, Start Num: 13

Candidate Starts for Tenney120_71:

(4, 44223), (9, 44268), (10, 44274), (Start: 13 @44298 has 14 MA's), (14, 44304), (18, 44352), (19, 44358), (25, 44436), (31, 44499), (43, 44688),

Gene: TrixiePhattel_72 Start: 44033, Stop: 44473, Start Num: 13

Candidate Starts for TrixiePhattel_72:

(5, 43988), (Start: 13 @44033 has 14 MA's), (17, 44084), (39, 44345), (40, 44360),

Gene: Uzumaki_67 Start: 43739, Stop: 44179, Start Num: 13

Candidate Starts for Uzumaki_67:

(4, 43664), (9, 43709), (10, 43715), (Start: 13 @43739 has 14 MA's), (14, 43745), (18, 43793), (19, 43799), (25, 43877), (31, 43940), (43, 44129),

Gene: Xenomorph_87 Start: 52772, Stop: 53200, Start Num: 8

Candidate Starts for Xenomorph_87:

(Start: 8 @52772 has 1 MA's), (Start: 13 @52802 has 14 MA's), (15, 52826), (22, 52877), (41, 53123), (42, 53153),

Gene: Zeina_73 Start: 44539, Stop: 44982, Start Num: 13

Candidate Starts for Zeina_73:

(5, 44494), (Start: 13 @44539 has 14 MA's), (15, 44569), (25, 44677), (38, 44845), (39, 44848), (40, 44863),