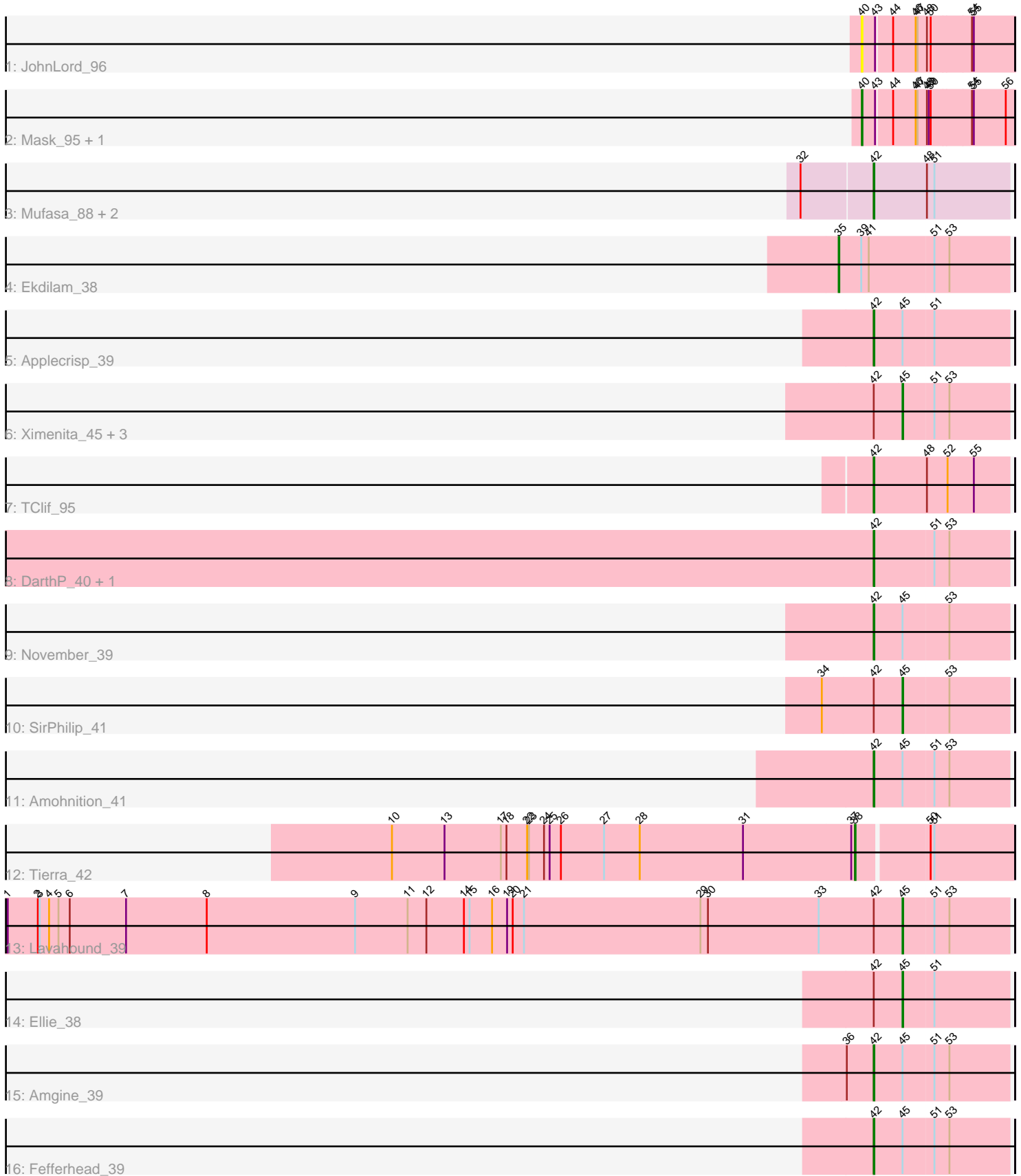


Pham 309210



Note: Tracks are now grouped by subcluster and scaled. Switching in subcluster is indicated by changes in track color. Track scale is now set by default to display the region 30 bp upstream of start 1 to 30 bp downstream of the last possible start. If this default region is judged to be packed too tightly with annotated starts, the track will be further scaled to only show that region of the ORF with annotated starts. This action will be indicated by adding "Zoomed" to the title. For starts, yellow indicates the location of called starts comprised solely of Glimmer/GeneMark auto-annotations, green indicates the location of called starts with at least 1 manual gene annotation.

## Pham 309210 Report

This analysis was run 06/27/26 on database version 652.

Pham number 309210 has 23 members, 1 are drafts.

Phages represented in each track:

- Track 1 : JohnLord\_96
- Track 2 : Mask\_95, Sejanus\_97
- Track 3 : Mufasa\_88, BoostSeason\_88, Doughnut\_89
- Track 4 : Ekdilam\_38
- Track 5 : Applecrisp\_39
- Track 6 : Ximenita\_45, Sunflower1121\_44, Shadow1\_44, Syra333\_44
- Track 7 : TClif\_95
- Track 8 : DarthP\_40, Hammy\_40
- Track 9 : November\_39
- Track 10 : SirPhilip\_41
- Track 11 : Amohnition\_41
- Track 12 : Tierra\_42
- Track 13 : Lavahound\_39
- Track 14 : Ellie\_38
- Track 15 : Amgine\_39
- Track 16 : Fefferhead\_39

### ***Summary of Final Annotations (See graph section above for start numbers):***

The start number called the most often in the published annotations is 42, it was called in 11 of the 22 non-draft genes in the pham.

Genes that call this "Most Annotated" start:

- Amgine\_39, Amohnition\_41, Applecrisp\_39, BoostSeason\_88, DarthP\_40, Doughnut\_89, Fefferhead\_39, Hammy\_40, Mufasa\_88, November\_39, TClif\_95,

Genes that have the "Most Annotated" start but do not call it:

- Ellie\_38, Lavahound\_39, Shadow1\_44, SirPhilip\_41, Sunflower1121\_44, Syra333\_44, Ximenita\_45,

Genes that do not have the "Most Annotated" start:

- Ekdilam\_38, JohnLord\_96, Mask\_95, Sejanus\_97, Tierra\_42,

### **Summary by start number:**

Start 35:

- Found in 1 of 23 ( 4.3% ) of genes in pham
- Manual Annotations of this start: 1 of 22
- Called 100.0% of time when present
- Phage (with cluster) where this start called: Ekdilam\_38 (K6),

Start 38:

- Found in 1 of 23 ( 4.3% ) of genes in pham
- Manual Annotations of this start: 1 of 22
- Called 100.0% of time when present
- Phage (with cluster) where this start called: Tierra\_42 (K6),

Start 40:

- Found in 3 of 23 ( 13.0% ) of genes in pham
- Manual Annotations of this start: 2 of 22
- Called 100.0% of time when present
- Phage (with cluster) where this start called: JohnLord\_96 (AD), Mask\_95 (AD), Sejanus\_97 (AD),

Start 42:

- Found in 18 of 23 ( 78.3% ) of genes in pham
- Manual Annotations of this start: 11 of 22
- Called 61.1% of time when present
- Phage (with cluster) where this start called: Amgine\_39 (K6), Amohntion\_41 (K6), Applecrisp\_39 (K6), BoostSeason\_88 (K2), DarthP\_40 (K6), Doughnut\_89 (K2), Fefferhead\_39 (K6), Hammy\_40 (K6), Mufasa\_88 (K2), November\_39 (K6), TClif\_95 (K6),

Start 45:

- Found in 12 of 23 ( 52.2% ) of genes in pham
- Manual Annotations of this start: 7 of 22
- Called 58.3% of time when present
- Phage (with cluster) where this start called: Ellie\_38 (K6), Lavahound\_39 (K6), Shadow1\_44 (K6), SirPhilip\_41 (K6), Sunflower1121\_44 (K6), Syra333\_44 (K6), Ximenita\_45 (K6),

**Summary by clusters:**

There are 3 clusters represented in this pham: K2, K6, AD,

Info for manual annotations of cluster AD:

- Start number 40 was manually annotated 2 times for cluster AD.

Info for manual annotations of cluster K2:

- Start number 42 was manually annotated 3 times for cluster K2.

Info for manual annotations of cluster K6:

- Start number 35 was manually annotated 1 time for cluster K6.
- Start number 38 was manually annotated 1 time for cluster K6.
- Start number 42 was manually annotated 8 times for cluster K6.
- Start number 45 was manually annotated 7 times for cluster K6.

**Gene Information:**

Gene: Amgine\_39 Start: 33010, Stop: 32798, Start Num: 42

Candidate Starts for Amgine\_39:

(36, 33052), (Start: 42 @33010 has 11 MA's), (Start: 45 @32965 has 7 MA's), (51, 32917), (53, 32893),

Gene: Amohnition\_41 Start: 32710, Stop: 32498, Start Num: 42

Candidate Starts for Amohnition\_41:

(Start: 42 @32710 has 11 MA's), (Start: 45 @32665 has 7 MA's), (51, 32617), (53, 32593),

Gene: Applecrisp\_39 Start: 32507, Stop: 32295, Start Num: 42

Candidate Starts for Applecrisp\_39:

(Start: 42 @32507 has 11 MA's), (Start: 45 @32462 has 7 MA's), (51, 32414),

Gene: BoostSeason\_88 Start: 56098, Stop: 56313, Start Num: 42

Candidate Starts for BoostSeason\_88:

(32, 55987), (Start: 42 @56098 has 11 MA's), (48, 56182), (51, 56194),

Gene: DarthP\_40 Start: 32347, Stop: 32135, Start Num: 42

Candidate Starts for DarthP\_40:

(Start: 42 @32347 has 11 MA's), (51, 32254), (53, 32230),

Gene: Doughnut\_89 Start: 56285, Stop: 56500, Start Num: 42

Candidate Starts for Doughnut\_89:

(32, 56174), (Start: 42 @56285 has 11 MA's), (48, 56369), (51, 56381),

Gene: Ekdilam\_38 Start: 32274, Stop: 32005, Start Num: 35

Candidate Starts for Ekdilam\_38:

(Start: 35 @32274 has 1 MA's), (39, 32238), (41, 32226), (51, 32124), (53, 32100),

Gene: Ellie\_38 Start: 32153, Stop: 31986, Start Num: 45

Candidate Starts for Ellie\_38:

(Start: 42 @32198 has 11 MA's), (Start: 45 @32153 has 7 MA's), (51, 32105),

Gene: Fefferhead\_39 Start: 32152, Stop: 31940, Start Num: 42

Candidate Starts for Fefferhead\_39:

(Start: 42 @32152 has 11 MA's), (Start: 45 @32107 has 7 MA's), (51, 32059), (53, 32035),

Gene: Hammy\_40 Start: 32335, Stop: 32123, Start Num: 42

Candidate Starts for Hammy\_40:

(Start: 42 @32335 has 11 MA's), (51, 32242), (53, 32218),

Gene: JohnLord\_96 Start: 65110, Stop: 65346, Start Num: 40

Candidate Starts for JohnLord\_96:

(Start: 40 @65110 has 2 MA's), (43, 65131), (44, 65155), (46, 65191), (47, 65194), (48, 65209), (50, 65215), (54, 65278), (55, 65281),

Gene: Lavahound\_39 Start: 33085, Stop: 32918, Start Num: 45

Candidate Starts for Lavahound\_39:

(1, 34513), (2, 34465), (3, 34462), (4, 34447), (5, 34432), (6, 34414), (7, 34324), (8, 34195), (9, 33958), (11, 33874), (12, 33844), (14, 33784), (15, 33775), (16, 33739), (19, 33715), (20, 33706), (21, 33688),

(29, 33406), (30, 33394), (33, 33217), (Start: 42 @33130 has 11 MA's), (Start: 45 @33085 has 7 MA's), (51, 33037), (53, 33013),

Gene: Mask\_95 Start: 63858, Stop: 64094, Start Num: 40

Candidate Starts for Mask\_95:

(Start: 40 @63858 has 2 MA's), (43, 63879), (44, 63903), (46, 63939), (47, 63942), (48, 63957), (49, 63960), (50, 63963), (54, 64026), (55, 64029), (56, 64080),

Gene: Mufasa\_88 Start: 56085, Stop: 56300, Start Num: 42

Candidate Starts for Mufasa\_88:

(32, 55974), (Start: 42 @56085 has 11 MA's), (48, 56169), (51, 56181),

Gene: November\_39 Start: 32306, Stop: 32094, Start Num: 42

Candidate Starts for November\_39:

(Start: 42 @32306 has 11 MA's), (Start: 45 @32261 has 7 MA's), (53, 32189),

Gene: Sejanus\_97 Start: 62878, Stop: 63114, Start Num: 40

Candidate Starts for Sejanus\_97:

(Start: 40 @62878 has 2 MA's), (43, 62899), (44, 62923), (46, 62959), (47, 62962), (48, 62977), (49, 62980), (50, 62983), (54, 63046), (55, 63049), (56, 63100),

Gene: Shadow1\_44 Start: 32514, Stop: 32347, Start Num: 45

Candidate Starts for Shadow1\_44:

(Start: 42 @32559 has 11 MA's), (Start: 45 @32514 has 7 MA's), (51, 32466), (53, 32442),

Gene: SirPhilip\_41 Start: 32747, Stop: 32580, Start Num: 45

Candidate Starts for SirPhilip\_41:

(34, 32873), (Start: 42 @32792 has 11 MA's), (Start: 45 @32747 has 7 MA's), (53, 32675),

Gene: Sunflower1121\_44 Start: 32609, Stop: 32442, Start Num: 45

Candidate Starts for Sunflower1121\_44:

(Start: 42 @32654 has 11 MA's), (Start: 45 @32609 has 7 MA's), (51, 32561), (53, 32537),

Gene: Syra333\_44 Start: 32270, Stop: 32103, Start Num: 45

Candidate Starts for Syra333\_44:

(Start: 42 @32315 has 11 MA's), (Start: 45 @32270 has 7 MA's), (51, 32222), (53, 32198),

Gene: TClif\_95 Start: 58904, Stop: 59119, Start Num: 42

Candidate Starts for TClif\_95:

(Start: 42 @58904 has 11 MA's), (48, 58988), (52, 59021), (55, 59063),

Gene: Tierra\_42 Start: 32376, Stop: 32137, Start Num: 38

Candidate Starts for Tierra\_42:

(10, 33114), (13, 33030), (17, 32940), (18, 32931), (22, 32898), (23, 32895), (24, 32871), (25, 32862), (26, 32844), (27, 32775), (28, 32718), (31, 32553), (37, 32382), (Start: 38 @32376 has 1 MA's), (50, 32268), (51, 32262),

Gene: Ximenita\_45 Start: 32454, Stop: 32287, Start Num: 45

Candidate Starts for Ximenita\_45:

(Start: 42 @32499 has 11 MA's), (Start: 45 @32454 has 7 MA's), (51, 32406), (53, 32382),