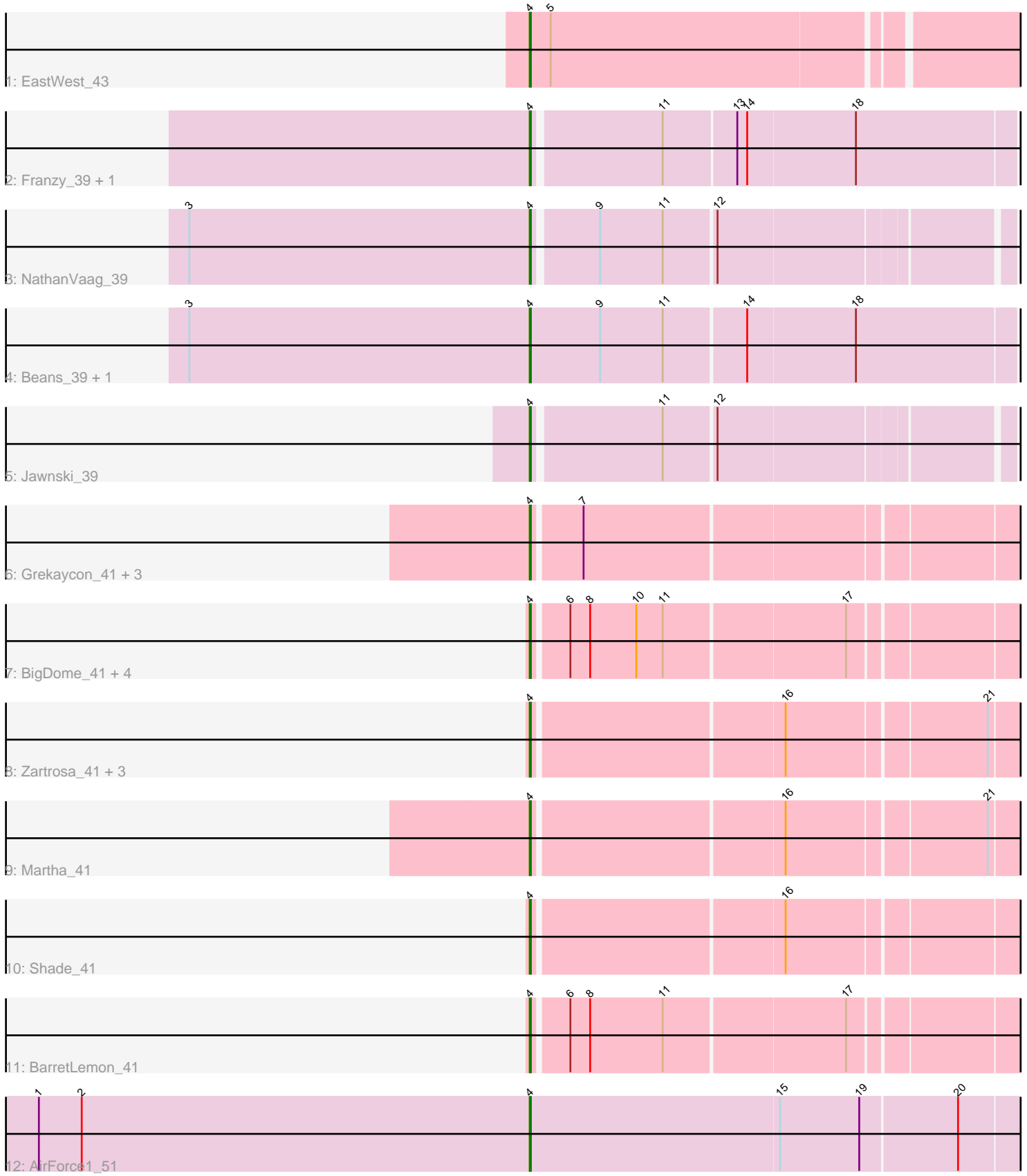


Pham 309222



Note: Tracks are now grouped by subcluster and scaled. Switching in subcluster is indicated by changes in track color. Track scale is now set by default to display the region 30 bp upstream of start 1 to 30 bp downstream of the last possible start. If this default region is judged to be packed too tightly with annotated starts, the track will be further scaled to only show that region of the ORF with annotated starts. This action will be indicated by adding "Zoomed" to the title. For starts, yellow indicates the location of called starts comprised solely of Glimmer/GeneMark auto-annotations, green indicates the location of called starts with at least 1 manual gene annotation.

Pham 309222 Report

This analysis was run 06/27/26 on database version 652.

Pham number 309222 has 24 members, 1 are drafts.

Phages represented in each track:

- Track 1 : EastWest_43
- Track 2 : Franzy_39, Brent_39
- Track 3 : NathanVaag_39
- Track 4 : Beans_39, Piccoletto_39
- Track 5 : Jawnski_39
- Track 6 : Grekaycon_41, BossLady_41, Pippa_41, TaeYoung_41
- Track 7 : BigDome_41, Timinator_41, LeeroyJ_41, GravityBall_41, StevieBAY_41
- Track 8 : Zartrosa_41, JKerns_41, Sonny_41, Jordan_41
- Track 9 : Martha_41
- Track 10 : Shade_41
- Track 11 : BarretLemon_41
- Track 12 : AirForce1_51

Summary of Final Annotations (See graph section above for start numbers):

The start number called the most often in the published annotations is 4, it was called in 23 of the 23 non-draft genes in the pham.

Genes that call this "Most Annotated" start:

- AirForce1_51, BarretLemon_41, Beans_39, BigDome_41, BossLady_41, Brent_39, EastWest_43, Franzy_39, GravityBall_41, Grekaycon_41, JKerns_41, Jawnski_39, Jordan_41, LeeroyJ_41, Martha_41, NathanVaag_39, Piccoletto_39, Pippa_41, Shade_41, Sonny_41, StevieBAY_41, TaeYoung_41, Timinator_41, Zartrosa_41,

Genes that have the "Most Annotated" start but do not call it:

-

Genes that do not have the "Most Annotated" start:

-

Summary by start number:

Start 4:

- Found in 24 of 24 (100.0%) of genes in pham

- Manual Annotations of this start: 23 of 23
- Called 100.0% of time when present
- Phage (with cluster) where this start called: AirForce1_51 (FL), BarretLemon_41 (AO2), Beans_39 (AO1), BigDome_41 (AO2), BossLady_41 (AO2), Brent_39 (AO1), EastWest_43 (AO), Franzy_39 (AO1), GravityBall_41 (AO2), Grekaycon_41 (AO2), JKerns_41 (AO2), Jawnski_39 (AO1), Jordan_41 (AO2), LeeroyJ_41 (AO2), Martha_41 (AO2), NathanVaag_39 (AO1), Piccoletto_39 (AO1), Pippa_41 (AO2), Shade_41 (AO2), Sonny_41 (AO2), StevieBAY_41 (AO2), TaeYoung_41 (AO2), Timinator_41 (AO2), Zartrosa_41 (AO2),

Summary by clusters:

There are 4 clusters represented in this pham: AO, FL, AO2, AO1,

Info for manual annotations of cluster AO:

- Start number 4 was manually annotated 1 time for cluster AO.

Info for manual annotations of cluster AO1:

- Start number 4 was manually annotated 6 times for cluster AO1.

Info for manual annotations of cluster AO2:

- Start number 4 was manually annotated 15 times for cluster AO2.

Info for manual annotations of cluster FL:

- Start number 4 was manually annotated 1 time for cluster FL.

Gene Information:

Gene: AirForce1_51 Start: 35382, Stop: 35912, Start Num: 4

Candidate Starts for AirForce1_51:

(1, 34935), (2, 34974), (Start: 4 @35382 has 23 MA's), (15, 35607), (19, 35679), (20, 35763),

Gene: BarretLemon_41 Start: 33490, Stop: 34032, Start Num: 4

Candidate Starts for BarretLemon_41:

(Start: 4 @33490 has 23 MA's), (6, 33520), (8, 33538), (11, 33604), (17, 33763),

Gene: Beans_39 Start: 33259, Stop: 33819, Start Num: 4

Candidate Starts for Beans_39:

(3, 32950), (Start: 4 @33259 has 23 MA's), (9, 33322), (11, 33379), (14, 33451), (18, 33547),

Gene: BigDome_41 Start: 33514, Stop: 34056, Start Num: 4

Candidate Starts for BigDome_41:

(Start: 4 @33514 has 23 MA's), (6, 33544), (8, 33562), (10, 33604), (11, 33628), (17, 33787),

Gene: BossLady_41 Start: 33497, Stop: 34015, Start Num: 4

Candidate Starts for BossLady_41:

(Start: 4 @33497 has 23 MA's), (7, 33539),

Gene: Brent_39 Start: 33230, Stop: 33781, Start Num: 4

Candidate Starts for Brent_39:

(Start: 4 @33230 has 23 MA's), (11, 33341), (13, 33404), (14, 33413), (18, 33509),

Gene: EastWest_43 Start: 33016, Stop: 33681, Start Num: 4

Candidate Starts for EastWest_43:

(Start: 4 @33016 has 23 MA's), (5, 33034),

Gene: Franzy_39 Start: 33246, Stop: 33797, Start Num: 4

Candidate Starts for Franzy_39:

(Start: 4 @33246 has 23 MA's), (11, 33357), (13, 33420), (14, 33429), (18, 33525),

Gene: GravityBall_41 Start: 33520, Stop: 34062, Start Num: 4

Candidate Starts for GravityBall_41:

(Start: 4 @33520 has 23 MA's), (6, 33550), (8, 33568), (10, 33610), (11, 33634), (17, 33793),

Gene: Grekaycon_41 Start: 33443, Stop: 33961, Start Num: 4

Candidate Starts for Grekaycon_41:

(Start: 4 @33443 has 23 MA's), (7, 33485),

Gene: JKerns_41 Start: 33516, Stop: 34010, Start Num: 4

Candidate Starts for JKerns_41:

(Start: 4 @33516 has 23 MA's), (16, 33735), (21, 33906),

Gene: Jawnski_39 Start: 33236, Stop: 33769, Start Num: 4

Candidate Starts for Jawnski_39:

(Start: 4 @33236 has 23 MA's), (11, 33347), (12, 33392),

Gene: Jordan_41 Start: 33553, Stop: 34047, Start Num: 4

Candidate Starts for Jordan_41:

(Start: 4 @33553 has 23 MA's), (16, 33772), (21, 33943),

Gene: LeeroyJ_41 Start: 33459, Stop: 34001, Start Num: 4

Candidate Starts for LeeroyJ_41:

(Start: 4 @33459 has 23 MA's), (6, 33489), (8, 33507), (10, 33549), (11, 33573), (17, 33732),

Gene: Martha_41 Start: 33444, Stop: 33938, Start Num: 4

Candidate Starts for Martha_41:

(Start: 4 @33444 has 23 MA's), (16, 33663), (21, 33834),

Gene: NathanVaag_39 Start: 33235, Stop: 33768, Start Num: 4

Candidate Starts for NathanVaag_39:

(3, 32926), (Start: 4 @33235 has 23 MA's), (9, 33289), (11, 33346), (12, 33391),

Gene: Piccoletto_39 Start: 33233, Stop: 33793, Start Num: 4

Candidate Starts for Piccoletto_39:

(3, 32924), (Start: 4 @33233 has 23 MA's), (9, 33296), (11, 33353), (14, 33425), (18, 33521),

Gene: Pippa_41 Start: 33599, Stop: 34117, Start Num: 4

Candidate Starts for Pippa_41:

(Start: 4 @33599 has 23 MA's), (7, 33641),

Gene: Shade_41 Start: 33527, Stop: 34045, Start Num: 4

Candidate Starts for Shade_41:

(Start: 4 @33527 has 23 MA's), (16, 33746),

Gene: Sonny_41 Start: 33562, Stop: 34056, Start Num: 4

Candidate Starts for Sonny_41:

(Start: 4 @33562 has 23 MA's), (16, 33781), (21, 33952),

Gene: StevieBAY_41 Start: 33520, Stop: 34062, Start Num: 4

Candidate Starts for StevieBAY_41:

(Start: 4 @33520 has 23 MA's), (6, 33550), (8, 33568), (10, 33610), (11, 33634), (17, 33793),

Gene: TaeYoung_41 Start: 33444, Stop: 33962, Start Num: 4

Candidate Starts for TaeYoung_41:

(Start: 4 @33444 has 23 MA's), (7, 33486),

Gene: Timinator_41 Start: 33459, Stop: 34001, Start Num: 4

Candidate Starts for Timinator_41:

(Start: 4 @33459 has 23 MA's), (6, 33489), (8, 33507), (10, 33549), (11, 33573), (17, 33732),

Gene: Zartrosa_41 Start: 33469, Stop: 33963, Start Num: 4

Candidate Starts for Zartrosa_41:

(Start: 4 @33469 has 23 MA's), (16, 33688), (21, 33859),