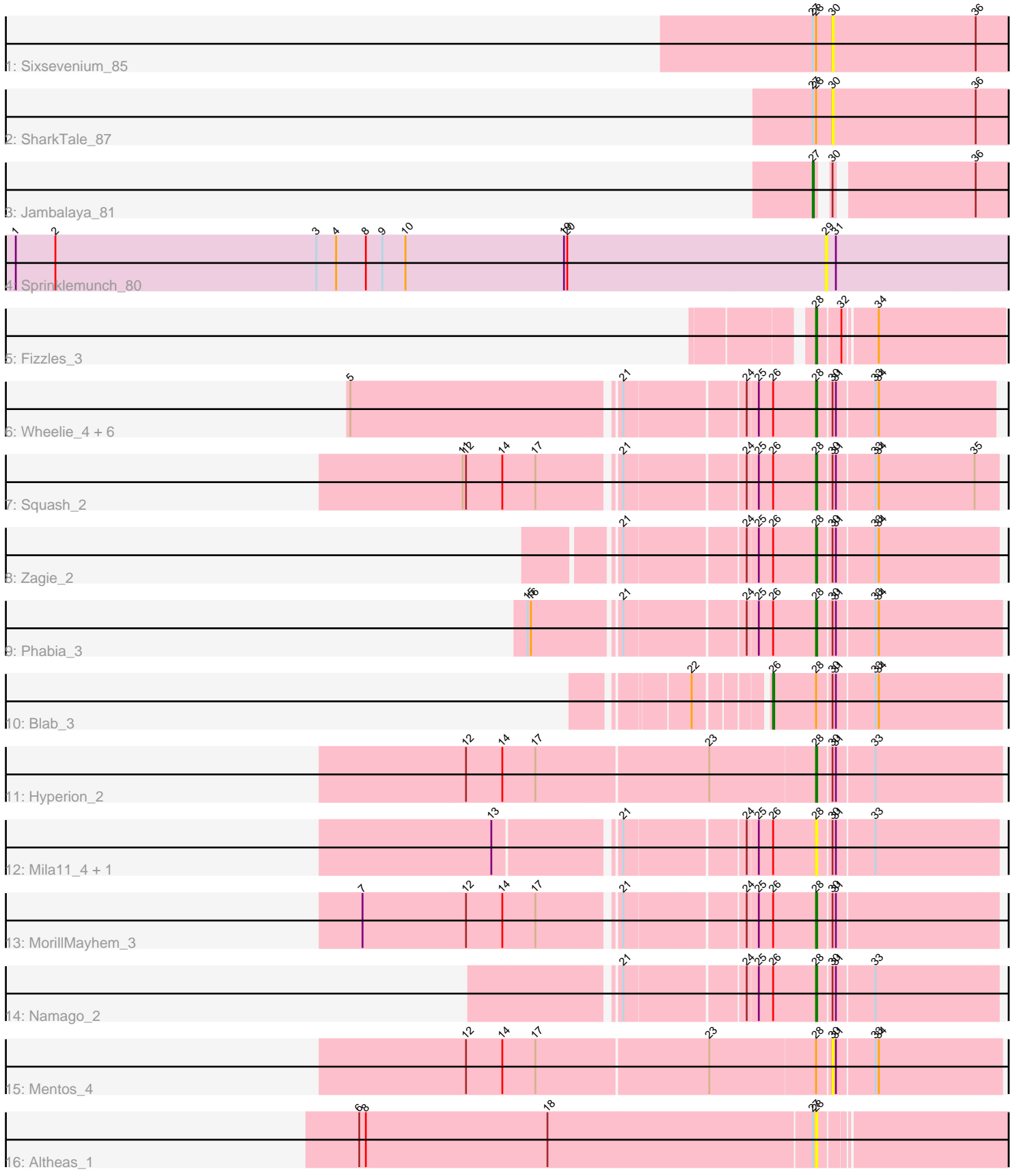


Pham 309233



Note: Tracks are now grouped by subcluster and scaled. Switching in subcluster is indicated by changes in track color. Track scale is now set by default to display the region 30 bp upstream of start 1 to 30 bp downstream of the last possible start. If this default region is judged to be packed too tightly with annotated starts, the track will be further scaled to only show that region of the ORF with annotated starts. This action will be indicated by adding "Zoomed" to the title. For starts, yellow indicates the location of called starts comprised solely of Glimmer/GeneMark auto-annotations, green indicates the location of called starts with at least 1 manual gene annotation.

Pham 309233 Report

This analysis was run 06/27/26 on database version 652.

Pham number 309233 has 23 members, 7 are drafts.

Phages represented in each track:

- Track 1 : Sixsevenium_85
- Track 2 : SharkTale_87
- Track 3 : Jambalaya_81
- Track 4 : Sprinklemunch_80
- Track 5 : Fizzles_3
- Track 6 : Wheelie_4, Quammi_3, Viceroy_4, Rudy_3, Llemily_4, Sillytadpoles_4, DonaldDuck_4
- Track 7 : Squash_2
- Track 8 : Zagie_2
- Track 9 : Phabia_3
- Track 10 : Blab_3
- Track 11 : Hyperion_2
- Track 12 : Mila11_4, BaconCheese_3
- Track 13 : MorillMayhem_3
- Track 14 : Namago_2
- Track 15 : Mentos_4
- Track 16 : Altheas_1

Summary of Final Annotations (See graph section above for start numbers):

The start number called the most often in the published annotations is 28, it was called in 14 of the 16 non-draft genes in the pham.

Genes that call this "Most Annotated" start:

- Altheas_1, BaconCheese_3, DonaldDuck_4, Fizzles_3, Hyperion_2, Llemily_4, Mila11_4, MorillMayhem_3, Namago_2, Phabia_3, Quammi_3, Rudy_3, Sillytadpoles_4, Squash_2, Viceroy_4, Wheelie_4, Zagie_2,

Genes that have the "Most Annotated" start but do not call it:

- Blab_3, Mentos_4, SharkTale_87, Sixsevenium_85,

Genes that do not have the "Most Annotated" start:

- Jambalaya_81, Sprinklemunch_80,

Summary by start number:

Start 26:

- Found in 15 of 23 (65.2%) of genes in pham
- Manual Annotations of this start: 1 of 16
- Called 6.7% of time when present
- Phage (with cluster) where this start called: Blab_3 (EG),

Start 27:

- Found in 4 of 23 (17.4%) of genes in pham
- Manual Annotations of this start: 1 of 16
- Called 25.0% of time when present
- Phage (with cluster) where this start called: Jambalaya_81 (DC1),

Start 28:

- Found in 21 of 23 (91.3%) of genes in pham
- Manual Annotations of this start: 14 of 16
- Called 81.0% of time when present
- Phage (with cluster) where this start called: Altheas_1 (EG), BaconCheese_3 (EG), DonaldDuck_4 (EG), Fizzles_3 (EG), Hyperion_2 (EG), Llemily_4 (EG), Mila11_4 (EG), MorillMayhem_3 (EG), Namago_2 (EG), Phabia_3 (EG), Quammi_3 (EG), Rudy_3 (EG), Sillytadpoles_4 (EG), Squash_2 (EG), Viceroy_4 (EG), Wheelie_4 (EG), Zagie_2 (EG),

Start 29:

- Found in 1 of 23 (4.3%) of genes in pham
- No Manual Annotations of this start.
- Called 100.0% of time when present
- Phage (with cluster) where this start called: Sprinklemunch_80 (DW),

Start 30:

- Found in 20 of 23 (87.0%) of genes in pham
- No Manual Annotations of this start.
- Called 15.0% of time when present
- Phage (with cluster) where this start called: Mentos_4 (EG), SharkTale_87 (DC1), Sixsevenium_85 (DC1),

Summary by clusters:

There are 3 clusters represented in this pham: DW, EG, DC1,

Info for manual annotations of cluster DC1:

- Start number 27 was manually annotated 1 time for cluster DC1.

Info for manual annotations of cluster EG:

- Start number 26 was manually annotated 1 time for cluster EG.
- Start number 28 was manually annotated 14 times for cluster EG.

Gene Information:

Gene: Altheas_1 Start: 875, Stop: 705, Start Num: 28

Candidate Starts for Altheas_1:

(6, 1286), (8, 1280), (18, 1115), (Start: 27 @878 has 1 MA's), (Start: 28 @875 has 14 MA's),

Gene: BaconCheese_3 Start: 1395, Stop: 1237, Start Num: 28

Candidate Starts for BaconCheese_3:

(13, 1659), (21, 1557), (24, 1455), (25, 1446), (Start: 26 @1434 has 1 MA's), (Start: 28 @1395 has 14 MA's), (30, 1383), (31, 1380), (33, 1347),

Gene: Blab_3 Start: 1114, Stop: 914, Start Num: 26

Candidate Starts for Blab_3:

(22, 1168), (Start: 26 @1114 has 1 MA's), (Start: 28 @1075 has 14 MA's), (30, 1063), (31, 1060), (33, 1027), (34, 1024),

Gene: DonaldDuck_4 Start: 1323, Stop: 1168, Start Num: 28

Candidate Starts for DonaldDuck_4:

(5, 1719), (21, 1485), (24, 1383), (25, 1374), (Start: 26 @1362 has 1 MA's), (Start: 28 @1323 has 14 MA's), (30, 1311), (31, 1308), (33, 1275), (34, 1272),

Gene: Fizzles_3 Start: 1493, Stop: 1335, Start Num: 28

Candidate Starts for Fizzles_3:

(Start: 28 @1493 has 14 MA's), (32, 1475), (34, 1448),

Gene: Hyperion_2 Start: 1074, Stop: 913, Start Num: 28

Candidate Starts for Hyperion_2:

(12, 1383), (14, 1350), (17, 1320), (23, 1167), (Start: 28 @1074 has 14 MA's), (30, 1062), (31, 1059), (33, 1026),

Gene: Jambalaya_81 Start: 54484, Stop: 54323, Start Num: 27

Candidate Starts for Jambalaya_81:

(Start: 27 @54484 has 1 MA's), (30, 54478), (36, 54361),

Gene: Llemily_4 Start: 1324, Stop: 1169, Start Num: 28

Candidate Starts for Llemily_4:

(5, 1720), (21, 1486), (24, 1384), (25, 1375), (Start: 26 @1363 has 1 MA's), (Start: 28 @1324 has 14 MA's), (30, 1312), (31, 1309), (33, 1276), (34, 1273),

Gene: Mentos_4 Start: 1398, Stop: 1249, Start Num: 30

Candidate Starts for Mentos_4:

(12, 1719), (14, 1686), (17, 1656), (23, 1503), (Start: 28 @1410 has 14 MA's), (30, 1398), (31, 1395), (33, 1362), (34, 1359),

Gene: Mila11_4 Start: 1380, Stop: 1222, Start Num: 28

Candidate Starts for Mila11_4:

(13, 1644), (21, 1542), (24, 1440), (25, 1431), (Start: 26 @1419 has 1 MA's), (Start: 28 @1380 has 14 MA's), (30, 1368), (31, 1365), (33, 1332),

Gene: MorillMayhem_3 Start: 1397, Stop: 1239, Start Num: 28

Candidate Starts for MorillMayhem_3:

(7, 1781), (12, 1688), (14, 1655), (17, 1625), (21, 1559), (24, 1457), (25, 1448), (Start: 26 @1436 has 1 MA's), (Start: 28 @1397 has 14 MA's), (30, 1385), (31, 1382),

Gene: Namago_2 Start: 991, Stop: 833, Start Num: 28

Candidate Starts for Namago_2:

(21, 1153), (24, 1051), (25, 1042), (Start: 26 @1030 has 1 MA's), (Start: 28 @991 has 14 MA's), (30, 979), (31, 976), (33, 943),

Gene: Phabia_3 Start: 1324, Stop: 1163, Start Num: 28

Candidate Starts for Phabia_3:

(15, 1561), (16, 1558), (21, 1486), (24, 1384), (25, 1375), (Start: 26 @1363 has 1 MA's), (Start: 28 @1324 has 14 MA's), (30, 1312), (31, 1309), (33, 1276), (34, 1273),

Gene: Quammi_3 Start: 1328, Stop: 1167, Start Num: 28

Candidate Starts for Quammi_3:

(5, 1724), (21, 1490), (24, 1388), (25, 1379), (Start: 26 @1367 has 1 MA's), (Start: 28 @1328 has 14 MA's), (30, 1316), (31, 1313), (33, 1280), (34, 1277),

Gene: Rudy_3 Start: 1328, Stop: 1167, Start Num: 28

Candidate Starts for Rudy_3:

(5, 1724), (21, 1490), (24, 1388), (25, 1379), (Start: 26 @1367 has 1 MA's), (Start: 28 @1328 has 14 MA's), (30, 1316), (31, 1313), (33, 1280), (34, 1277),

Gene: SharkTale_87 Start: 56568, Stop: 56401, Start Num: 30

Candidate Starts for SharkTale_87:

(Start: 27 @56586 has 1 MA's), (Start: 28 @56583 has 14 MA's), (30, 56568), (36, 56439),

Gene: Sillytadpoles_4 Start: 1326, Stop: 1165, Start Num: 28

Candidate Starts for Sillytadpoles_4:

(5, 1722), (21, 1488), (24, 1386), (25, 1377), (Start: 26 @1365 has 1 MA's), (Start: 28 @1326 has 14 MA's), (30, 1314), (31, 1311), (33, 1278), (34, 1275),

Gene: Sixsevenium_85 Start: 56714, Stop: 56547, Start Num: 30

Candidate Starts for Sixsevenium_85:

(Start: 27 @56732 has 1 MA's), (Start: 28 @56729 has 14 MA's), (30, 56714), (36, 56585),

Gene: Sprinklemunch_80 Start: 50799, Stop: 50972, Start Num: 29

Candidate Starts for Sprinklemunch_80:

(1, 50064), (2, 50100), (3, 50337), (4, 50355), (8, 50382), (9, 50397), (10, 50418), (19, 50562), (20, 50565), (29, 50799), (31, 50808),

Gene: Squash_2 Start: 1005, Stop: 847, Start Num: 28

Candidate Starts for Squash_2:

(11, 1299), (12, 1296), (14, 1263), (17, 1233), (21, 1167), (24, 1065), (25, 1056), (Start: 26 @1044 has 1 MA's), (Start: 28 @1005 has 14 MA's), (30, 993), (31, 990), (33, 957), (34, 954), (35, 867),

Gene: Viceroy_4 Start: 1328, Stop: 1167, Start Num: 28

Candidate Starts for Viceroy_4:

(5, 1724), (21, 1490), (24, 1388), (25, 1379), (Start: 26 @1367 has 1 MA's), (Start: 28 @1328 has 14 MA's), (30, 1316), (31, 1313), (33, 1280), (34, 1277),

Gene: Wheelie_4 Start: 1323, Stop: 1168, Start Num: 28

Candidate Starts for Wheelie_4:

(5, 1719), (21, 1485), (24, 1383), (25, 1374), (Start: 26 @1362 has 1 MA's), (Start: 28 @1323 has 14 MA's), (30, 1311), (31, 1308), (33, 1275), (34, 1272),

Gene: Zagie_2 Start: 996, Stop: 838, Start Num: 28

Candidate Starts for Zagie_2:

(21, 1158), (24, 1056), (25, 1047), (Start: 26 @1035 has 1 MA's), (Start: 28 @996 has 14 MA's), (30, 984), (31, 981), (33, 948), (34, 945),