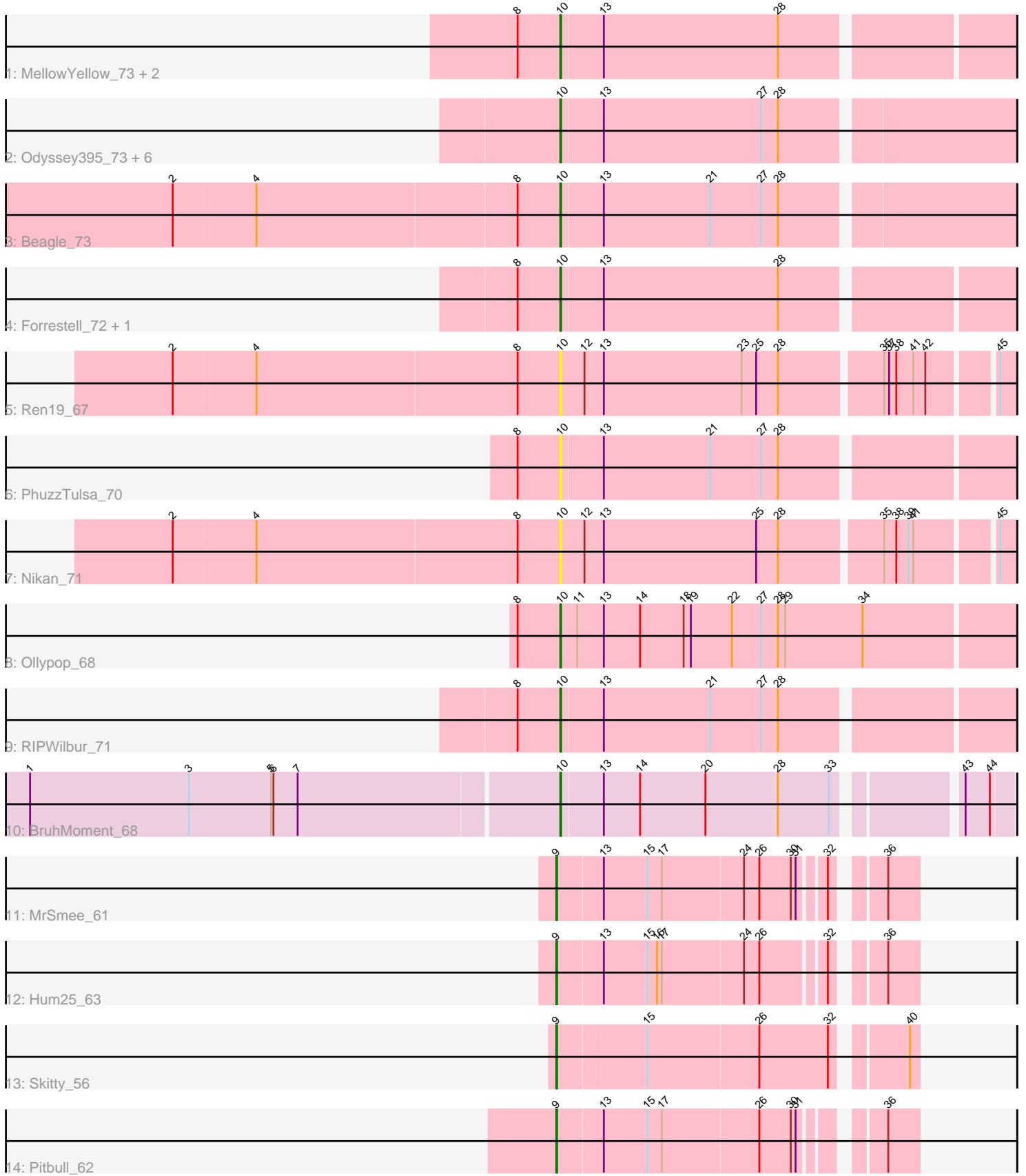


Pham 309239



Note: Tracks are now grouped by subcluster and scaled. Switching in subcluster is indicated by changes in track color. Track scale is now set by default to display the region 30 bp upstream of start 1 to 30 bp downstream of the last possible start. If this default region is judged to be packed too tightly with annotated starts, the track will be further scaled to only show that region of the ORF with annotated starts. This action will be indicated by adding "Zoomed" to the title. For starts, yellow indicates the location of called starts comprised solely of Glimmer/GeneMark auto-annotations, green indicates the location of called starts with at least 1 manual gene annotation.

Pham 309239 Report

This analysis was run 06/27/26 on database version 652.

Pham number 309239 has 23 members, 6 are drafts.

Phages represented in each track:

- Track 1 : MellowYellow_73, NyleyClemson_71, Popstraw_68
- Track 2 : Odyssey395_73, DogYard_72, Pointis_69, Pureglobe5_71, BetaFish_72, Kubulix_72, Hive_68
- Track 3 : Beagle_73
- Track 4 : Forrestell_72, RazzB_72
- Track 5 : Ren19_67
- Track 6 : PhuzzTulsa_70
- Track 7 : Nikan_71
- Track 8 : Ollypop_68
- Track 9 : RIPWilbur_71
- Track 10 : BruhMoment_68
- Track 11 : MrSmee_61
- Track 12 : Hum25_63
- Track 13 : Skitty_56
- Track 14 : Pitbull_62

Summary of Final Annotations (See graph section above for start numbers):

The start number called the most often in the published annotations is 10, it was called in 13 of the 17 non-draft genes in the pham.

Genes that call this "Most Annotated" start:

- Beagle_73, BetaFish_72, BruhMoment_68, DogYard_72, Forrestell_72, Hive_68, Kubulix_72, MellowYellow_73, Nikan_71, NyleyClemson_71, Odyssey395_73, Ollypop_68, PhuzzTulsa_70, Pointis_69, Popstraw_68, Pureglobe5_71, RIPWilbur_71, RazzB_72, Ren19_67,

Genes that have the "Most Annotated" start but do not call it:

-

Genes that do not have the "Most Annotated" start:

- Hum25_63, MrSmee_61, Pitbull_62, Skitty_56,

Summary by start number:

Start 9:

- Found in 4 of 23 (17.4%) of genes in pham
- Manual Annotations of this start: 4 of 17
- Called 100.0% of time when present
- Phage (with cluster) where this start called: Hum25_63 (FQ1), MrSmee_61 (FQ1), Pitbull_62 (FQ1), Skitty_56 (FQ1),

Start 10:

- Found in 19 of 23 (82.6%) of genes in pham
- Manual Annotations of this start: 13 of 17
- Called 100.0% of time when present
- Phage (with cluster) where this start called: Beagle_73 (AP2), BetaFish_72 (AP2), BruhMoment_68 (AP3), DogYard_72 (AP2), Forrestell_72 (AP2), Hive_68 (AP2), Kubulix_72 (AP2), MellowYellow_73 (AP2), Nikan_71 (AP2), NyleyClemson_71 (AP2), Odyssey395_73 (AP2), Ollypop_68 (AP2), PhuzzTulsa_70 (AP2), Pointis_69 (AP2), Popstraw_68 (AP2), Pureglobe5_71 (AP2), RIPWilbur_71 (AP2), RazzB_72 (AP2), Ren19_67 (AP2),

Summary by clusters:

There are 3 clusters represented in this pham: AP2, AP3, FQ1,

Info for manual annotations of cluster AP2:

- Start number 10 was manually annotated 12 times for cluster AP2.

Info for manual annotations of cluster AP3:

- Start number 10 was manually annotated 1 time for cluster AP3.

Info for manual annotations of cluster FQ1:

- Start number 9 was manually annotated 4 times for cluster FQ1.

Gene Information:

Gene: Beagle_73 Start: 44474, Stop: 43932, Start Num: 10

Candidate Starts for Beagle_73:

(2, 44945), (4, 44843), (8, 44525), (Start: 10 @44474 has 13 MA's), (13, 44423), (21, 44291), (27, 44228), (28, 44207),

Gene: BetaFish_72 Start: 45203, Stop: 44661, Start Num: 10

Candidate Starts for BetaFish_72:

(Start: 10 @45203 has 13 MA's), (13, 45152), (27, 44957), (28, 44936),

Gene: BruhMoment_68 Start: 45710, Stop: 45192, Start Num: 10

Candidate Starts for BruhMoment_68:

(1, 46355), (3, 46160), (5, 46058), (6, 46055), (7, 46025), (Start: 10 @45710 has 13 MA's), (13, 45659), (14, 45614), (20, 45533), (28, 45443), (33, 45380), (43, 45248), (44, 45218),

Gene: DogYard_72 Start: 44690, Stop: 44148, Start Num: 10

Candidate Starts for DogYard_72:

(Start: 10 @44690 has 13 MA's), (13, 44639), (27, 44444), (28, 44423),

Gene: Forrestell_72 Start: 43998, Stop: 43462, Start Num: 10
Candidate Starts for Forrestell_72:
(8, 44049), (Start: 10 @43998 has 13 MA's), (13, 43947), (28, 43731),

Gene: Hive_68 Start: 44470, Stop: 43925, Start Num: 10
Candidate Starts for Hive_68:
(Start: 10 @44470 has 13 MA's), (13, 44419), (27, 44224), (28, 44203),

Gene: Hum25_63 Start: 36216, Stop: 36614, Start Num: 9
Candidate Starts for Hum25_63:
(Start: 9 @36216 has 4 MA's), (13, 36270), (15, 36324), (16, 36336), (17, 36342), (24, 36438), (26, 36456), (32, 36528), (36, 36576),

Gene: Kubulix_72 Start: 44360, Stop: 43818, Start Num: 10
Candidate Starts for Kubulix_72:
(Start: 10 @44360 has 13 MA's), (13, 44309), (27, 44114), (28, 44093),

Gene: MellowYellow_73 Start: 44668, Stop: 44132, Start Num: 10
Candidate Starts for MellowYellow_73:
(8, 44719), (Start: 10 @44668 has 13 MA's), (13, 44617), (28, 44401),

Gene: MrSmee_61 Start: 35873, Stop: 36271, Start Num: 9
Candidate Starts for MrSmee_61:
(Start: 9 @35873 has 4 MA's), (13, 35927), (15, 35981), (17, 35999), (24, 36095), (26, 36113), (30, 36152), (31, 36158), (32, 36185), (36, 36233),

Gene: Nikan_71 Start: 44860, Stop: 44327, Start Num: 10
Candidate Starts for Nikan_71:
(2, 45334), (4, 45232), (8, 44911), (Start: 10 @44860 has 13 MA's), (12, 44830), (13, 44806), (25, 44617), (28, 44590), (35, 44473), (38, 44458), (39, 44443), (41, 44437), (45, 44347),

Gene: NyleyClemson_71 Start: 44283, Stop: 43747, Start Num: 10
Candidate Starts for NyleyClemson_71:
(8, 44334), (Start: 10 @44283 has 13 MA's), (13, 44232), (28, 44016),

Gene: Odyssey395_73 Start: 44711, Stop: 44169, Start Num: 10
Candidate Starts for Odyssey395_73:
(Start: 10 @44711 has 13 MA's), (13, 44660), (27, 44465), (28, 44444),

Gene: Ollypop_68 Start: 45070, Stop: 44513, Start Num: 10
Candidate Starts for Ollypop_68:
(8, 45121), (Start: 10 @45070 has 13 MA's), (11, 45049), (13, 45016), (14, 44971), (18, 44917), (19, 44908), (22, 44857), (27, 44821), (28, 44800), (29, 44791), (34, 44695),

Gene: PhuzzTulsa_70 Start: 44956, Stop: 44420, Start Num: 10
Candidate Starts for PhuzzTulsa_70:
(8, 45007), (Start: 10 @44956 has 13 MA's), (13, 44905), (21, 44773), (27, 44710), (28, 44689),

Gene: Pitbull_62 Start: 35055, Stop: 35453, Start Num: 9
Candidate Starts for Pitbull_62:
(Start: 9 @35055 has 4 MA's), (13, 35109), (15, 35163), (17, 35181), (26, 35295), (30, 35334), (31, 35340), (36, 35415),

Gene: Pointis_69 Start: 44287, Stop: 43745, Start Num: 10
Candidate Starts for Pointis_69:
(Start: 10 @44287 has 13 MA's), (13, 44236), (27, 44041), (28, 44020),

Gene: Popstraw_68 Start: 44443, Stop: 43907, Start Num: 10
Candidate Starts for Popstraw_68:
(8, 44494), (Start: 10 @44443 has 13 MA's), (13, 44392), (28, 44176),

Gene: Pureglobe5_71 Start: 44731, Stop: 44189, Start Num: 10
Candidate Starts for Pureglobe5_71:
(Start: 10 @44731 has 13 MA's), (13, 44680), (27, 44485), (28, 44464),

Gene: RIPWilbur_71 Start: 44320, Stop: 43784, Start Num: 10
Candidate Starts for RIPWilbur_71:
(8, 44371), (Start: 10 @44320 has 13 MA's), (13, 44269), (21, 44137), (27, 44074), (28, 44053),

Gene: RazzB_72 Start: 44414, Stop: 43878, Start Num: 10
Candidate Starts for RazzB_72:
(8, 44465), (Start: 10 @44414 has 13 MA's), (13, 44363), (28, 44147),

Gene: Ren19_67 Start: 44455, Stop: 43922, Start Num: 10
Candidate Starts for Ren19_67:
(2, 44929), (4, 44827), (8, 44506), (Start: 10 @44455 has 13 MA's), (12, 44425), (13, 44401), (23, 44230), (25, 44212), (28, 44185), (35, 44068), (37, 44062), (38, 44053), (41, 44032), (42, 44017), (45, 43942),

Gene: Skitty_56 Start: 34103, Stop: 34513, Start Num: 9
Candidate Starts for Skitty_56:
(Start: 9 @34103 has 4 MA's), (15, 34211), (26, 34343), (32, 34427), (40, 34502),