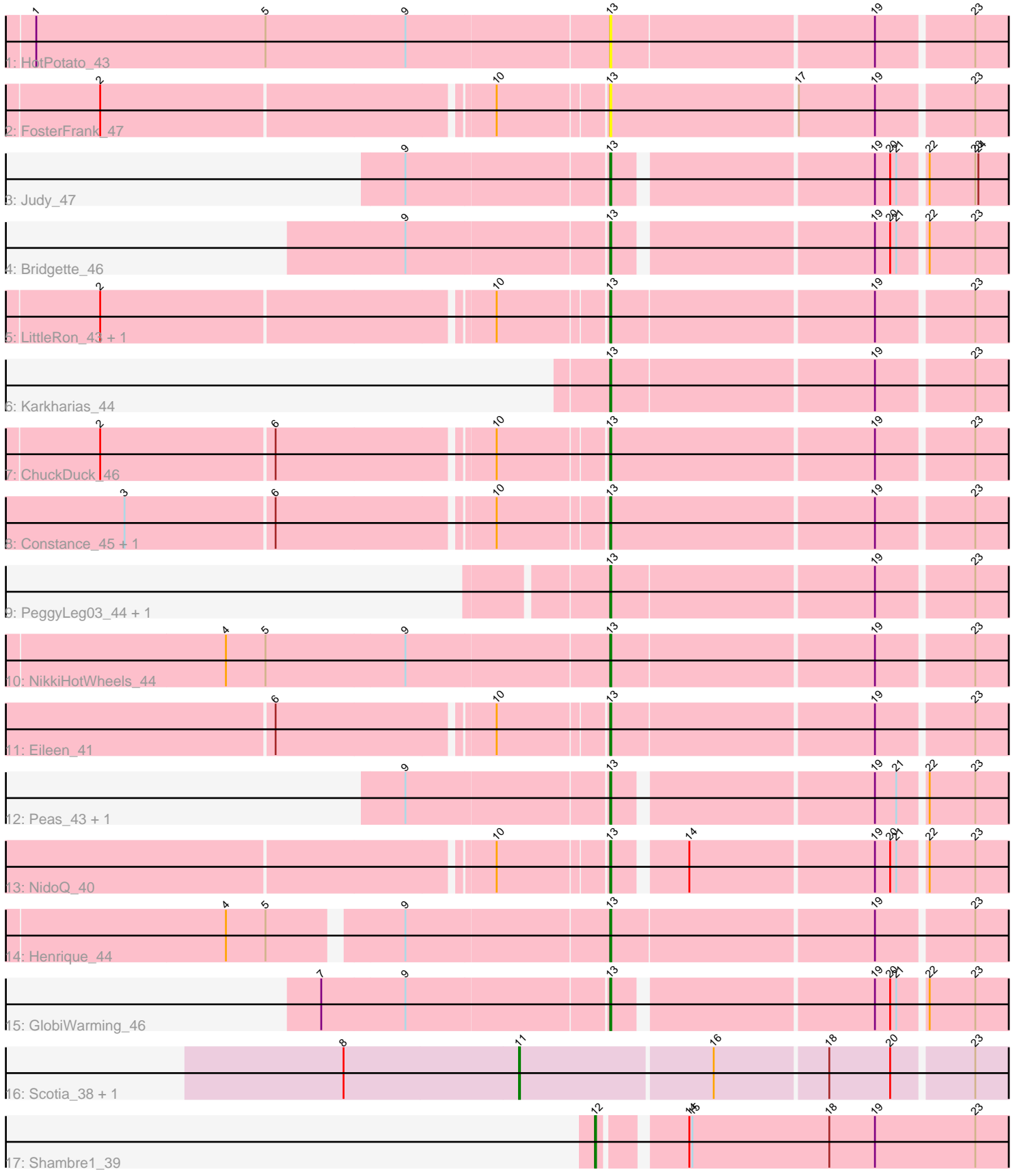


Pham 309259



Note: Tracks are now grouped by subcluster and scaled. Switching in subcluster is indicated by changes in track color. Track scale is now set by default to display the region 30 bp upstream of start 1 to 30 bp downstream of the last possible start. If this default region is judged to be packed too tightly with annotated starts, the track will be further scaled to only show that region of the ORF with annotated starts. This action will be indicated by adding "Zoomed" to the title. For starts, yellow indicates the location of called starts comprised solely of Glimmer/GeneMark auto-annotations, green indicates the location of called starts with at least 1 manual gene annotation.

Pham 309259 Report

This analysis was run 06/27/26 on database version 652.

Pham number 309259 has 22 members, 5 are drafts.

Phages represented in each track:

- Track 1 : HotPotato_43
- Track 2 : FosterFrank_47
- Track 3 : Judy_47
- Track 4 : Bridgette_46
- Track 5 : LittleRon_43, RootBeer_36
- Track 6 : Karkharias_44
- Track 7 : ChuckDuck_46
- Track 8 : Constance_45, KayMoney_45
- Track 9 : PeggyLeg03_44, Pucara_41
- Track 10 : NikkiHotWheels_44
- Track 11 : Eileen_41
- Track 12 : Peas_43, LilyBell_46
- Track 13 : NidoQ_40
- Track 14 : Henrique_44
- Track 15 : GlobiWarming_46
- Track 16 : Scotia_38, NoSwimming_40
- Track 17 : Shambre1_39

Summary of Final Annotations (See graph section above for start numbers):

The start number called the most often in the published annotations is 13, it was called in 14 of the 17 non-draft genes in the pham.

Genes that call this "Most Annotated" start:

- Bridgette_46, ChuckDuck_46, Constance_45, Eileen_41, FosterFrank_47, GlobiWarming_46, Henrique_44, HotPotato_43, Judy_47, Karkharias_44, KayMoney_45, LilyBell_46, LittleRon_43, NidoQ_40, NikkiHotWheels_44, Peas_43, PeggyLeg03_44, Pucara_41, RootBeer_36,

Genes that have the "Most Annotated" start but do not call it:

-

Genes that do not have the "Most Annotated" start:

- NoSwimming_40, Scotia_38, Shambre1_39,

Summary by start number:

Start 11:

- Found in 2 of 22 (9.1%) of genes in pham
- Manual Annotations of this start: 2 of 17
- Called 100.0% of time when present
- Phage (with cluster) where this start called: NoSwimming_40 (FO), Scotia_38 (FO),

Start 12:

- Found in 1 of 22 (4.5%) of genes in pham
- Manual Annotations of this start: 1 of 17
- Called 100.0% of time when present
- Phage (with cluster) where this start called: Shambre1_39 (singleton),

Start 13:

- Found in 19 of 22 (86.4%) of genes in pham
- Manual Annotations of this start: 14 of 17
- Called 100.0% of time when present
- Phage (with cluster) where this start called: Bridgette_46 (FA), ChuckDuck_46 (FA), Constance_45 (FA), Eileen_41 (FA), FosterFrank_47 (FA), GlobiWarming_46 (FA), Henrique_44 (FA), HotPotato_43 (FA), Judy_47 (FA), Karkharias_44 (FA), KayMoney_45 (FA), LilyBell_46 (FA), LittleRon_43 (FA), NidoQ_40 (FA), NikkiHotWheels_44 (FA), Peas_43 (FA), PeggyLeg03_44 (FA), Pucara_41 (FA), RootBeer_36 (FA),

Summary by clusters:

There are 3 clusters represented in this pham: FA, singleton, FO,

Info for manual annotations of cluster FA:

- Start number 13 was manually annotated 14 times for cluster FA.

Info for manual annotations of cluster FO:

- Start number 11 was manually annotated 2 times for cluster FO.

Gene Information:

Gene: Bridgette_46 Start: 30540, Stop: 30911, Start Num: 13

Candidate Starts for Bridgette_46:

(9, 30348), (Start: 13 @30540 has 14 MA's), (19, 30780), (20, 30795), (21, 30801), (22, 30825), (23, 30870),

Gene: ChuckDuck_46 Start: 29965, Stop: 30351, Start Num: 13

Candidate Starts for ChuckDuck_46:

(2, 29494), (6, 29662), (10, 29863), (Start: 13 @29965 has 14 MA's), (19, 30220), (23, 30310),

Gene: Constance_45 Start: 30303, Stop: 30689, Start Num: 13

Candidate Starts for Constance_45:

(3, 29856), (6, 30000), (10, 30201), (Start: 13 @30303 has 14 MA's), (19, 30558), (23, 30648),

Gene: Eileen_41 Start: 28379, Stop: 28762, Start Num: 13
Candidate Starts for Eileen_41:
(6, 28076), (10, 28277), (Start: 13 @28379 has 14 MA's), (19, 28631), (23, 28721),

Gene: FosterFrank_47 Start: 30024, Stop: 30410, Start Num: 13
Candidate Starts for FosterFrank_47:
(2, 29553), (10, 29922), (Start: 13 @30024 has 14 MA's), (17, 30204), (19, 30279), (23, 30369),

Gene: GlobiWarming_46 Start: 29937, Stop: 30308, Start Num: 13
Candidate Starts for GlobiWarming_46:
(7, 29664), (9, 29745), (Start: 13 @29937 has 14 MA's), (19, 30177), (20, 30192), (21, 30198), (22, 30222), (23, 30267),

Gene: Henrique_44 Start: 29373, Stop: 29756, Start Num: 13
Candidate Starts for Henrique_44:
(4, 29022), (5, 29061), (9, 29178), (Start: 13 @29373 has 14 MA's), (19, 29625), (23, 29715),

Gene: HotPotato_43 Start: 29994, Stop: 30377, Start Num: 13
Candidate Starts for HotPotato_43:
(1, 29439), (5, 29664), (9, 29799), (Start: 13 @29994 has 14 MA's), (19, 30246), (23, 30336),

Gene: Judy_47 Start: 30849, Stop: 31220, Start Num: 13
Candidate Starts for Judy_47:
(9, 30657), (Start: 13 @30849 has 14 MA's), (19, 31089), (20, 31104), (21, 31110), (22, 31134), (23, 31179), (24, 31182),

Gene: Karkharias_44 Start: 29868, Stop: 30251, Start Num: 13
Candidate Starts for Karkharias_44:
(Start: 13 @29868 has 14 MA's), (19, 30120), (23, 30210),

Gene: KayMoney_45 Start: 29646, Stop: 30032, Start Num: 13
Candidate Starts for KayMoney_45:
(3, 29199), (6, 29343), (10, 29544), (Start: 13 @29646 has 14 MA's), (19, 29901), (23, 29991),

Gene: LilyBell_46 Start: 30255, Stop: 30626, Start Num: 13
Candidate Starts for LilyBell_46:
(9, 30063), (Start: 13 @30255 has 14 MA's), (19, 30495), (21, 30516), (22, 30540), (23, 30585),

Gene: LittleRon_43 Start: 29246, Stop: 29629, Start Num: 13
Candidate Starts for LittleRon_43:
(2, 28775), (10, 29144), (Start: 13 @29246 has 14 MA's), (19, 29498), (23, 29588),

Gene: NidoQ_40 Start: 28980, Stop: 29351, Start Num: 13
Candidate Starts for NidoQ_40:
(10, 28878), (Start: 13 @28980 has 14 MA's), (14, 29043), (19, 29220), (20, 29235), (21, 29241), (22, 29265), (23, 29310),

Gene: NikkiHotWheels_44 Start: 29384, Stop: 29767, Start Num: 13
Candidate Starts for NikkiHotWheels_44:
(4, 29015), (5, 29054), (9, 29189), (Start: 13 @29384 has 14 MA's), (19, 29636), (23, 29726),

Gene: NoSwimming_40 Start: 29220, Stop: 29690, Start Num: 11
Candidate Starts for NoSwimming_40:

(8, 29049), (Start: 11 @29220 has 2 MA's), (16, 29406), (18, 29514), (20, 29574), (23, 29649),

Gene: Peas_43 Start: 30908, Stop: 31279, Start Num: 13

Candidate Starts for Peas_43:

(9, 30716), (Start: 13 @30908 has 14 MA's), (19, 31148), (21, 31169), (22, 31193), (23, 31238),

Gene: PeggyLeg03_44 Start: 30022, Stop: 30405, Start Num: 13

Candidate Starts for PeggyLeg03_44:

(Start: 13 @30022 has 14 MA's), (19, 30274), (23, 30364),

Gene: Pucara_41 Start: 29627, Stop: 30010, Start Num: 13

Candidate Starts for Pucara_41:

(Start: 13 @29627 has 14 MA's), (19, 29879), (23, 29969),

Gene: RootBeer_36 Start: 26422, Stop: 26802, Start Num: 13

Candidate Starts for RootBeer_36:

(2, 25951), (10, 26320), (Start: 13 @26422 has 14 MA's), (19, 26671), (23, 26761),

Gene: Scotia_38 Start: 28261, Stop: 28731, Start Num: 11

Candidate Starts for Scotia_38:

(8, 28090), (Start: 11 @28261 has 2 MA's), (16, 28447), (18, 28555), (20, 28615), (23, 28690),

Gene: Shambre1_39 Start: 25922, Stop: 26317, Start Num: 12

Candidate Starts for Shambre1_39:

(Start: 12 @25922 has 1 MA's), (14, 25994), (15, 25997), (18, 26132), (19, 26177), (23, 26276),