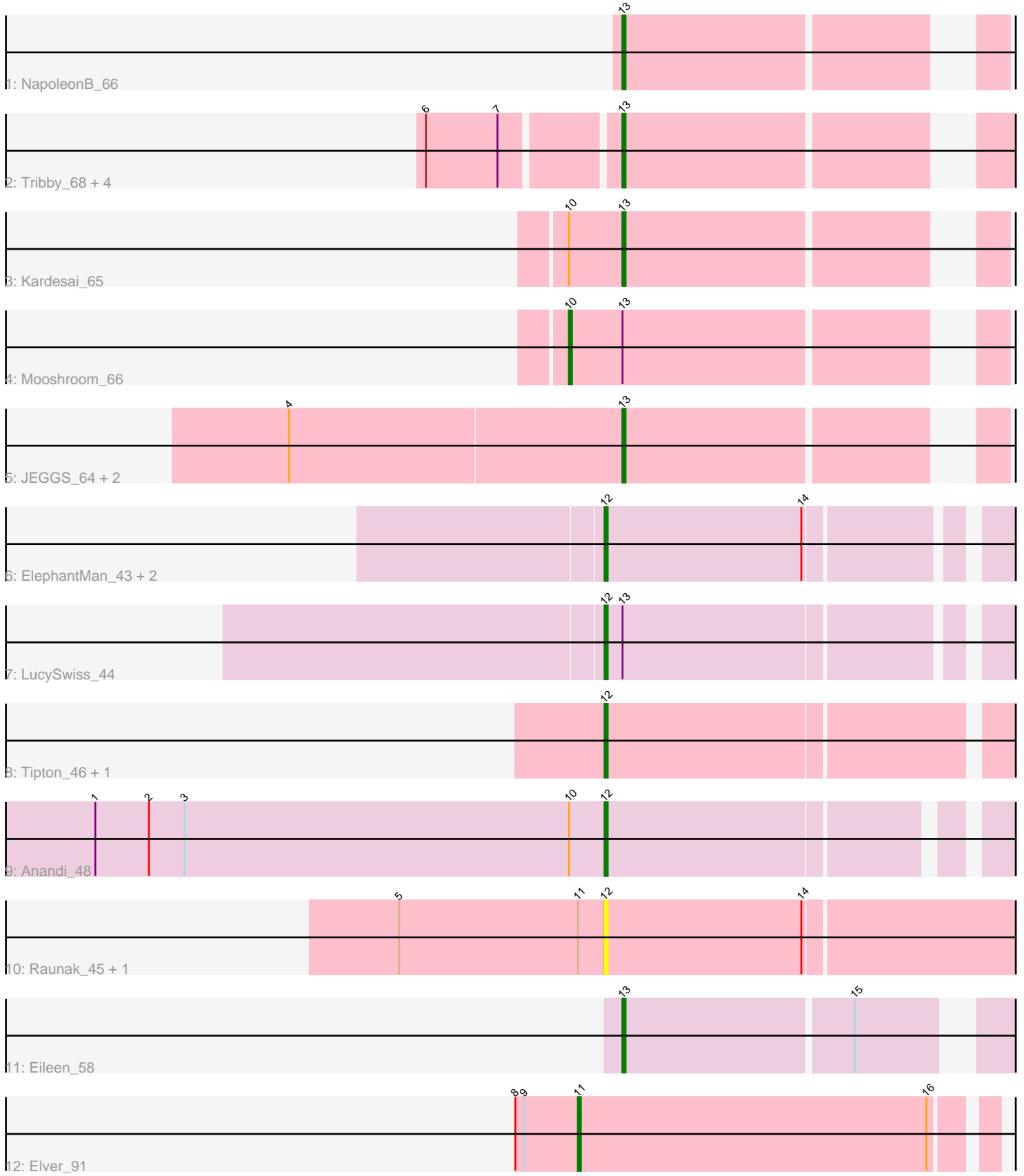


Pham 309272



Note: Tracks are now grouped by subcluster and scaled. Switching in subcluster is indicated by changes in track color. Track scale is now set by default to display the region 30 bp upstream of start 1 to 30 bp downstream of the last possible start. If this default region is judged to be packed too tightly with annotated starts, the track will be further scaled to only show that region of the ORF with annotated starts. This action will be indicated by adding "Zoomed" to the title. For starts, yellow indicates the location of called starts comprised solely of Glimmer/GeneMark auto-annotations, green indicates the location of called starts with at least 1 manual gene annotation.

## Pham 309272 Report

This analysis was run 06/27/26 on database version 652.

Pham number 309272 has 22 members, 2 are drafts.

Phages represented in each track:

- Track 1 : NapoleonB\_66
- Track 2 : Tribby\_68, Cheesy\_65, Correa\_63, Hankly\_64, Circum\_66
- Track 3 : Kardesai\_65
- Track 4 : Mooshroom\_66
- Track 5 : JEGGS\_64, Bowling\_66, Heisenberger\_64
- Track 6 : ElephantMan\_43, CastorTray\_46, Niktson\_43
- Track 7 : LucySwiss\_44
- Track 8 : Tipton\_46, Tokki\_47
- Track 9 : Anandi\_48
- Track 10 : Raunak\_45, Spain\_45
- Track 11 : Eileen\_58
- Track 12 : Elver\_91

### ***Summary of Final Annotations (See graph section above for start numbers):***

The start number called the most often in the published annotations is 13, it was called in 11 of the 20 non-draft genes in the pham.

Genes that call this "Most Annotated" start:

- Bowling\_66, Cheesy\_65, Circum\_66, Correa\_63, Eileen\_58, Hankly\_64, Heisenberger\_64, JEGGS\_64, Kardesai\_65, NapoleonB\_66, Tribby\_68,

Genes that have the "Most Annotated" start but do not call it:

- LucySwiss\_44, Mooshroom\_66,

Genes that do not have the "Most Annotated" start:

- Anandi\_48, CastorTray\_46, ElephantMan\_43, Elver\_91, Niktson\_43, Raunak\_45, Spain\_45, Tipton\_46, Tokki\_47,

### **Summary by start number:**

Start 10:

- Found in 3 of 22 ( 13.6% ) of genes in pham
- Manual Annotations of this start: 1 of 20

- Called 33.3% of time when present
- Phage (with cluster) where this start called: Mooshroom\_66 (AM),

Start 11:

- Found in 3 of 22 ( 13.6% ) of genes in pham
- Manual Annotations of this start: 1 of 20
- Called 33.3% of time when present
- Phage (with cluster) where this start called: Elver\_91 (FK),

Start 12:

- Found in 9 of 22 ( 40.9% ) of genes in pham
- Manual Annotations of this start: 7 of 20
- Called 100.0% of time when present
- Phage (with cluster) where this start called: Anandi\_48 (AU4), CastorTray\_46 (AU1), ElephantMan\_43 (AU1), LucySwiss\_44 (AU1), Niktson\_43 (AU1), Raunak\_45 (AW), Spain\_45 (AW), Tipton\_46 (AU2), Tokki\_47 (AU2),

Start 13:

- Found in 13 of 22 ( 59.1% ) of genes in pham
- Manual Annotations of this start: 11 of 20
- Called 84.6% of time when present
- Phage (with cluster) where this start called: Bowling\_66 (AM), Cheesy\_65 (AM), Circum\_66 (AM), Correa\_63 (AM), Eileen\_58 (FA), Hankly\_64 (AM), Heisenberger\_64 (AM), JEGGS\_64 (AM), Kardesai\_65 (AM), NapoleonB\_66 (AM), Tribby\_68 (AM),

### **Summary by clusters:**

There are 7 clusters represented in this pham: AM, AU1, FA, AU2, AU4, AW, FK,

Info for manual annotations of cluster AM:

- Start number 10 was manually annotated 1 time for cluster AM.
- Start number 13 was manually annotated 10 times for cluster AM.

Info for manual annotations of cluster AU1:

- Start number 12 was manually annotated 4 times for cluster AU1.

Info for manual annotations of cluster AU2:

- Start number 12 was manually annotated 2 times for cluster AU2.

Info for manual annotations of cluster AU4:

- Start number 12 was manually annotated 1 time for cluster AU4.

Info for manual annotations of cluster FA:

- Start number 13 was manually annotated 1 time for cluster FA.

Info for manual annotations of cluster FK:

- Start number 11 was manually annotated 1 time for cluster FK.

### **Gene Information:**

Gene: Anandi\_48 Start: 33696, Stop: 33824, Start Num: 12  
Candidate Starts for Anandi\_48:  
(1, 33525), (2, 33543), (3, 33555), (Start: 10 @33684 has 1 MA's), (Start: 12 @33696 has 7 MA's),

Gene: Bowling\_66 Start: 42311, Stop: 42424, Start Num: 13  
Candidate Starts for Bowling\_66:  
(4, 42200), (Start: 13 @42311 has 11 MA's),

Gene: CastorTray\_46 Start: 33775, Stop: 33903, Start Num: 12  
Candidate Starts for CastorTray\_46:  
(Start: 12 @33775 has 7 MA's), (14, 33841),

Gene: Cheesy\_65 Start: 41545, Stop: 41658, Start Num: 13  
Candidate Starts for Cheesy\_65:  
(6, 41485), (7, 41509), (Start: 13 @41545 has 11 MA's),

Gene: Circum\_66 Start: 42112, Stop: 42225, Start Num: 13  
Candidate Starts for Circum\_66:  
(6, 42052), (7, 42076), (Start: 13 @42112 has 11 MA's),

Gene: Correa\_63 Start: 41116, Stop: 41229, Start Num: 13  
Candidate Starts for Correa\_63:  
(6, 41056), (7, 41080), (Start: 13 @41116 has 11 MA's),

Gene: Eileen\_58 Start: 38097, Stop: 38216, Start Num: 13  
Candidate Starts for Eileen\_58:  
(Start: 13 @38097 has 11 MA's), (15, 38172),

Gene: ElephantMan\_43 Start: 33620, Stop: 33748, Start Num: 12  
Candidate Starts for ElephantMan\_43:  
(Start: 12 @33620 has 7 MA's), (14, 33686),

Gene: Elver\_91 Start: 52137, Stop: 52271, Start Num: 11  
Candidate Starts for Elver\_91:  
(8, 52116), (9, 52119), (Start: 11 @52137 has 1 MA's), (16, 52254),

Gene: Hankly\_64 Start: 41193, Stop: 41303, Start Num: 13  
Candidate Starts for Hankly\_64:  
(6, 41133), (7, 41157), (Start: 13 @41193 has 11 MA's),

Gene: Heisenberger\_64 Start: 41531, Stop: 41641, Start Num: 13  
Candidate Starts for Heisenberger\_64:  
(4, 41420), (Start: 13 @41531 has 11 MA's),

Gene: JEGGS\_64 Start: 41610, Stop: 41720, Start Num: 13  
Candidate Starts for JEGGS\_64:  
(4, 41499), (Start: 13 @41610 has 11 MA's),

Gene: Kardesai\_65 Start: 41919, Stop: 42029, Start Num: 13  
Candidate Starts for Kardesai\_65:  
(Start: 10 @41901 has 1 MA's), (Start: 13 @41919 has 11 MA's),

Gene: LucySwiss\_44 Start: 33041, Stop: 33169, Start Num: 12

Candidate Starts for LucySwiss\_44:

(Start: 12 @33041 has 7 MA's), (Start: 13 @33047 has 11 MA's),

Gene: Mooshroom\_66 Start: 41901, Stop: 42029, Start Num: 10

Candidate Starts for Mooshroom\_66:

(Start: 10 @41901 has 1 MA's), (Start: 13 @41919 has 11 MA's),

Gene: NapoleonB\_66 Start: 42125, Stop: 42235, Start Num: 13

Candidate Starts for NapoleonB\_66:

(Start: 13 @42125 has 11 MA's),

Gene: Niktson\_43 Start: 33620, Stop: 33748, Start Num: 12

Candidate Starts for Niktson\_43:

(Start: 12 @33620 has 7 MA's), (14, 33686),

Gene: Raunak\_45 Start: 30555, Stop: 30695, Start Num: 12

Candidate Starts for Raunak\_45:

(5, 30486), (Start: 11 @30546 has 1 MA's), (Start: 12 @30555 has 7 MA's), (14, 30621),

Gene: Spain\_45 Start: 30857, Stop: 30997, Start Num: 12

Candidate Starts for Spain\_45:

(5, 30788), (Start: 11 @30848 has 1 MA's), (Start: 12 @30857 has 7 MA's), (14, 30923),

Gene: Tipton\_46 Start: 33486, Stop: 33620, Start Num: 12

Candidate Starts for Tipton\_46:

(Start: 12 @33486 has 7 MA's),

Gene: Tokki\_47 Start: 33138, Stop: 33272, Start Num: 12

Candidate Starts for Tokki\_47:

(Start: 12 @33138 has 7 MA's),

Gene: Tribby\_68 Start: 42502, Stop: 42615, Start Num: 13

Candidate Starts for Tribby\_68:

(6, 42442), (7, 42466), (Start: 13 @42502 has 11 MA's),