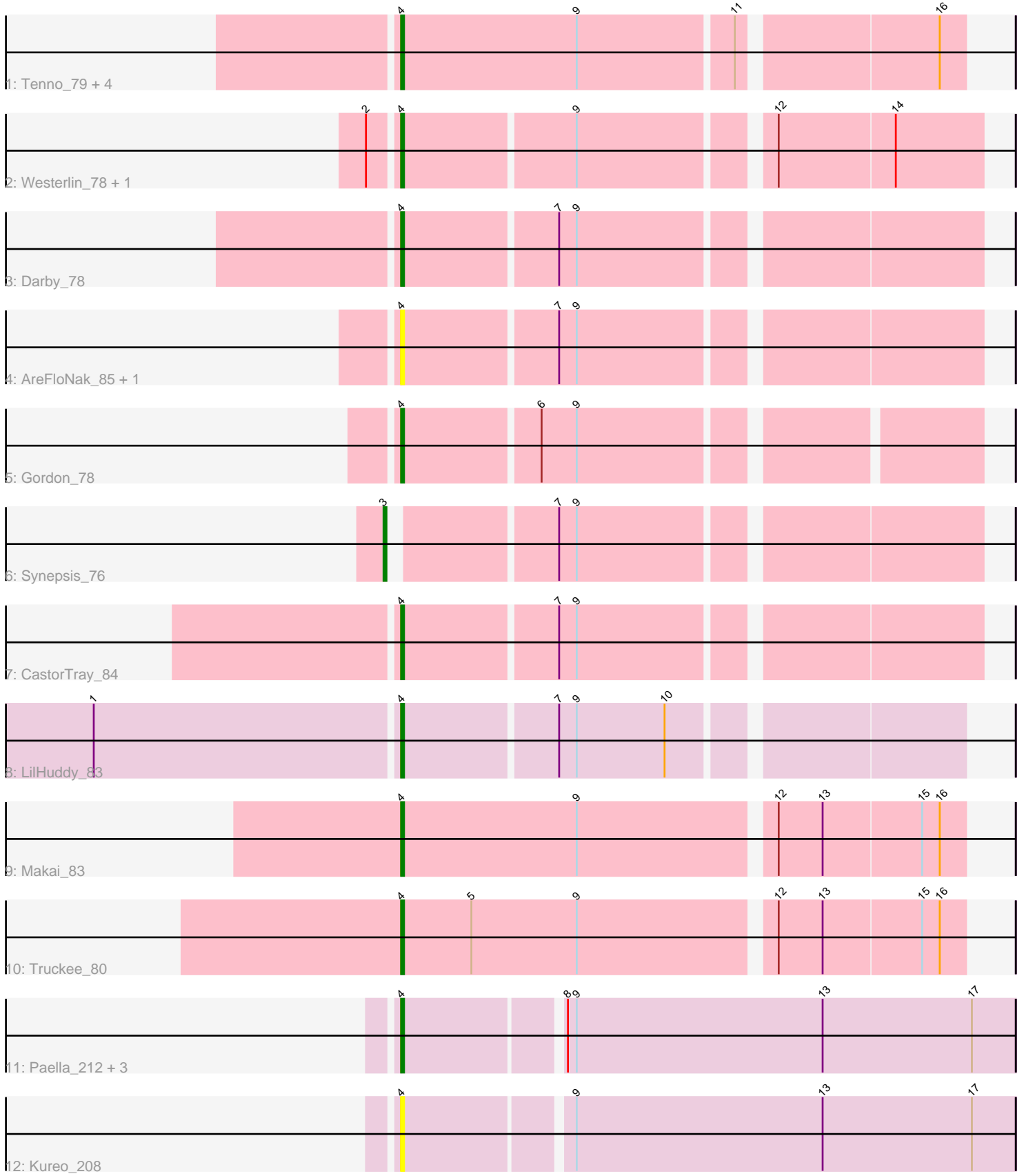


Pham 309280



Note: Tracks are now grouped by subcluster and scaled. Switching in subcluster is indicated by changes in track color. Track scale is now set by default to display the region 30 bp upstream of start 1 to 30 bp downstream of the last possible start. If this default region is judged to be packed too tightly with annotated starts, the track will be further scaled to only show that region of the ORF with annotated starts. This action will be indicated by adding "Zoomed" to the title. For starts, yellow indicates the location of called starts comprised solely of Glimmer/GeneMark auto-annotations, green indicates the location of called starts with at least 1 manual gene annotation.

Pham 309280 Report

This analysis was run 06/27/26 on database version 652.

Pham number 309280 has 21 members, 6 are drafts.

Phages represented in each track:

- Track 1 : Tenno_79, Dinallo_74, Issa_74, CapnMurica_76, MiniBagel_80
- Track 2 : Westerlin_78, LucySwiss_81
- Track 3 : Darby_78
- Track 4 : AreFloNak_85, Nivinsha_82
- Track 5 : Gordon_78
- Track 6 : Synepsis_76
- Track 7 : CastorTray_84
- Track 8 : LilHuddy_83
- Track 9 : Makai_83
- Track 10 : Truckee_80
- Track 11 : Paella_212, Elver_211, JeNeSaisPas_206, Qui_212
- Track 12 : Kureo_208

Summary of Final Annotations (See graph section above for start numbers):

The start number called the most often in the published annotations is 4, it was called in 14 of the 15 non-draft genes in the pham.

Genes that call this "Most Annotated" start:

- AreFloNak_85, CapnMurica_76, CastorTray_84, Darby_78, Dinallo_74, Elver_211, Gordon_78, Issa_74, JeNeSaisPas_206, Kureo_208, LilHuddy_83, LucySwiss_81, Makai_83, MiniBagel_80, Nivinsha_82, Paella_212, Qui_212, Tenno_79, Truckee_80, Westerlin_78,

Genes that have the "Most Annotated" start but do not call it:

-

Genes that do not have the "Most Annotated" start:

- Synepsis_76,

Summary by start number:

Start 3:

- Found in 1 of 21 (4.8%) of genes in pham

- Manual Annotations of this start: 1 of 15
- Called 100.0% of time when present
- Phage (with cluster) where this start called: Synopsis_76 (AU1),

Start 4:

- Found in 20 of 21 (95.2%) of genes in pham
- Manual Annotations of this start: 14 of 15
- Called 100.0% of time when present
- Phage (with cluster) where this start called: AreFloNak_85 (AU1), CapnMurica_76 (AU1), CastorTray_84 (AU1), Darby_78 (AU1), Dinallo_74 (AU1), Elver_211 (FK), Gordon_78 (AU1), Issa_74 (AU1), JeNeSaisPas_206 (FK), Kureo_208 (FK), LilHuddy_83 (AU2), LucySwiss_81 (AU1), Makai_83 (AU5), MiniBagel_80 (AU1), Nivinsha_82 (AU1), Paella_212 (FK), Qui_212 (FK), Tenno_79 (AU1), Truckee_80 (AU5), Westerlin_78 (AU1),

Summary by clusters:

There are 4 clusters represented in this pham: AU1, AU2, FK, AU5,

Info for manual annotations of cluster AU1:

- Start number 3 was manually annotated 1 time for cluster AU1.
- Start number 4 was manually annotated 8 times for cluster AU1.

Info for manual annotations of cluster AU2:

- Start number 4 was manually annotated 1 time for cluster AU2.

Info for manual annotations of cluster AU5:

- Start number 4 was manually annotated 2 times for cluster AU5.

Info for manual annotations of cluster FK:

- Start number 4 was manually annotated 3 times for cluster FK.

Gene Information:

Gene: AreFloNak_85 Start: 51430, Stop: 51615, Start Num: 4

Candidate Starts for AreFloNak_85:

(Start: 4 @51430 has 14 MA's), (7, 51481), (9, 51487),

Gene: CapnMurica_76 Start: 51657, Stop: 51839, Start Num: 4

Candidate Starts for CapnMurica_76:

(Start: 4 @51657 has 14 MA's), (9, 51717), (11, 51768), (16, 51831),

Gene: CastorTray_84 Start: 52198, Stop: 52383, Start Num: 4

Candidate Starts for CastorTray_84:

(Start: 4 @52198 has 14 MA's), (7, 52249), (9, 52255),

Gene: Darby_78 Start: 51244, Stop: 51429, Start Num: 4

Candidate Starts for Darby_78:

(Start: 4 @51244 has 14 MA's), (7, 51295), (9, 51301),

Gene: Dinallo_74 Start: 51903, Stop: 52085, Start Num: 4

Candidate Starts for Dinallo_74:

(Start: 4 @51903 has 14 MA's), (9, 51963), (11, 52014), (16, 52077),

Gene: Elver_211 Start: 97960, Stop: 98163, Start Num: 4

Candidate Starts for Elver_211:

(Start: 4 @97960 has 14 MA's), (8, 98011), (9, 98014), (13, 98098), (17, 98149),

Gene: Gordon_78 Start: 51987, Stop: 52169, Start Num: 4

Candidate Starts for Gordon_78:

(Start: 4 @51987 has 14 MA's), (6, 52032), (9, 52044),

Gene: Issa_74 Start: 50728, Stop: 50910, Start Num: 4

Candidate Starts for Issa_74:

(Start: 4 @50728 has 14 MA's), (9, 50788), (11, 50839), (16, 50902),

Gene: JeNeSaisPas_206 Start: 98081, Stop: 98284, Start Num: 4

Candidate Starts for JeNeSaisPas_206:

(Start: 4 @98081 has 14 MA's), (8, 98132), (9, 98135), (13, 98219), (17, 98270),

Gene: Kureo_208 Start: 96625, Stop: 96828, Start Num: 4

Candidate Starts for Kureo_208:

(Start: 4 @96625 has 14 MA's), (9, 96679), (13, 96763), (17, 96814),

Gene: LilHuddy_83 Start: 51535, Stop: 51714, Start Num: 4

Candidate Starts for LilHuddy_83:

(1, 51433), (Start: 4 @51535 has 14 MA's), (7, 51586), (9, 51592), (10, 51622),

Gene: LucySwiss_81 Start: 51150, Stop: 51335, Start Num: 4

Candidate Starts for LucySwiss_81:

(2, 51141), (Start: 4 @51150 has 14 MA's), (9, 51207), (12, 51267), (14, 51306),

Gene: Makai_83 Start: 52100, Stop: 52285, Start Num: 4

Candidate Starts for Makai_83:

(Start: 4 @52100 has 14 MA's), (9, 52160), (12, 52223), (13, 52238), (15, 52271), (16, 52277),

Gene: MiniBagel_80 Start: 51661, Stop: 51843, Start Num: 4

Candidate Starts for MiniBagel_80:

(Start: 4 @51661 has 14 MA's), (9, 51721), (11, 51772), (16, 51835),

Gene: Nivinsha_82 Start: 51431, Stop: 51616, Start Num: 4

Candidate Starts for Nivinsha_82:

(Start: 4 @51431 has 14 MA's), (7, 51482), (9, 51488),

Gene: Paella_212 Start: 98845, Stop: 99048, Start Num: 4

Candidate Starts for Paella_212:

(Start: 4 @98845 has 14 MA's), (8, 98896), (9, 98899), (13, 98983), (17, 99034),

Gene: Qui_212 Start: 98833, Stop: 99036, Start Num: 4

Candidate Starts for Qui_212:

(Start: 4 @98833 has 14 MA's), (8, 98884), (9, 98887), (13, 98971), (17, 99022),

Gene: Synopsis_76 Start: 51357, Stop: 51542, Start Num: 3

Candidate Starts for Synopsis_76:

(Start: 3 @51357 has 1 MA's), (7, 51408), (9, 51414),

Gene: Tenno_79 Start: 51694, Stop: 51876, Start Num: 4

Candidate Starts for Tenno_79:

(Start: 4 @51694 has 14 MA's), (9, 51754), (11, 51805), (16, 51868),

Gene: Truckee_80 Start: 51793, Stop: 51978, Start Num: 4

Candidate Starts for Truckee_80:

(Start: 4 @51793 has 14 MA's), (5, 51817), (9, 51853), (12, 51916), (13, 51931), (15, 51964), (16, 51970),

Gene: Westerlin_78 Start: 52479, Stop: 52664, Start Num: 4

Candidate Starts for Westerlin_78:

(2, 52470), (Start: 4 @52479 has 14 MA's), (9, 52536), (12, 52596), (14, 52635),