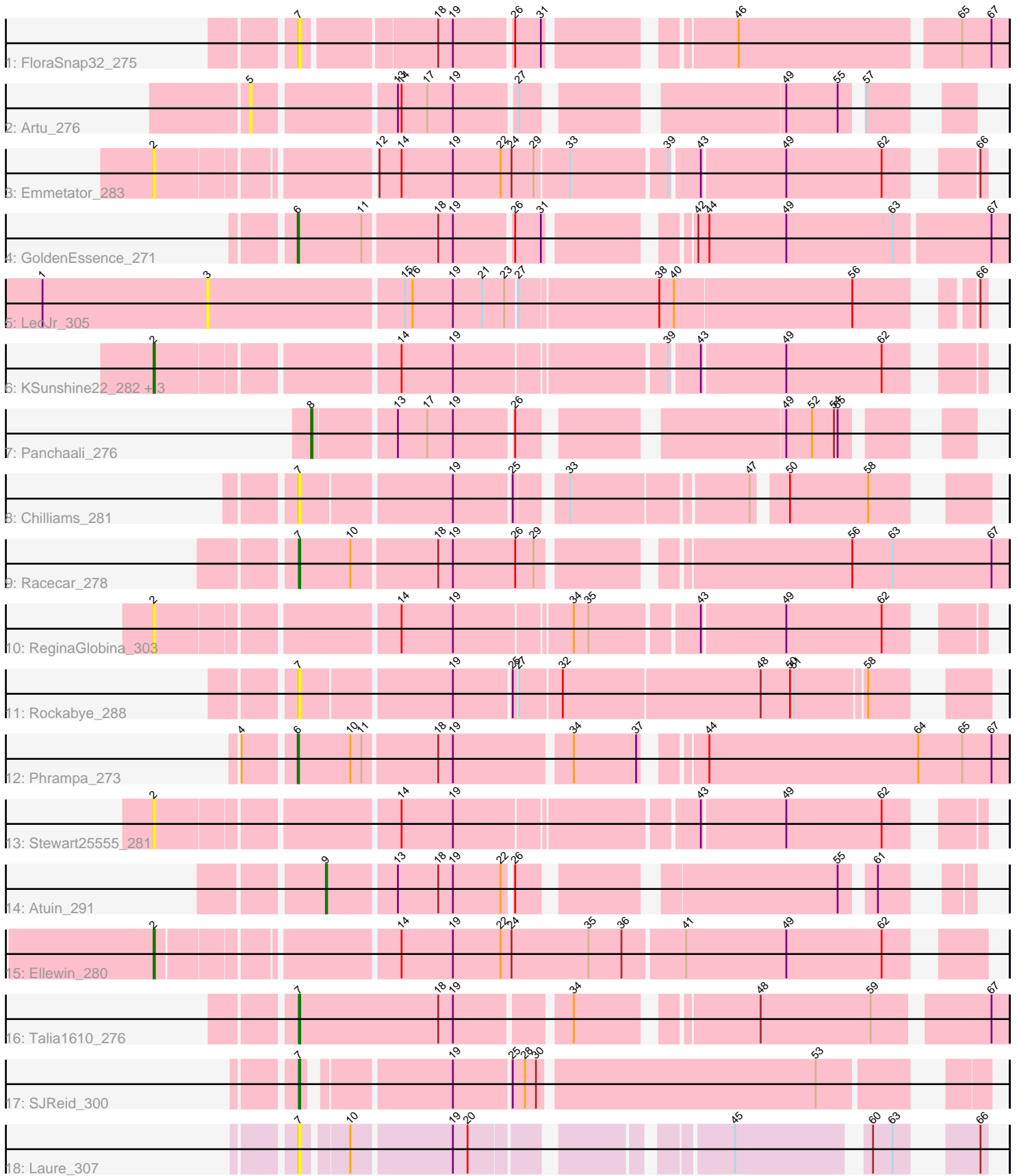


Pham 309286



Note: Tracks are now grouped by subcluster and scaled. Switching in subcluster is indicated by changes in track color. Track scale is now set by default to display the region 30 bp upstream of start 1 to 30 bp downstream of the last possible start. If this default region is judged to be packed too tightly with annotated starts, the track will be further scaled to only show that region of the ORF with annotated starts. This action will be indicated by adding "Zoomed" to the title. For starts, yellow indicates the location of called starts comprised solely of Glimmer/GeneMark auto-annotations, green indicates the location of called starts with at least 1 manual gene annotation.

Pham 309286 Report

This analysis was run 06/27/26 on database version 652.

Pham number 309286 has 21 members, 11 are drafts.

Phages represented in each track:

- Track 1 : FloraSnap32_275
- Track 2 : Artu_276
- Track 3 : Emmetator_283
- Track 4 : GoldenEssence_271
- Track 5 : LeoJr_305
- Track 6 : KSunshine22_282, BooTeria_287, DunneganBoMo_283, WaddleDee_279
- Track 7 : Panchaali_276
- Track 8 : Chilliams_281
- Track 9 : Racecar_278
- Track 10 : ReginaGlobina_303
- Track 11 : Rockabye_288
- Track 12 : Phrampa_273
- Track 13 : Stewart25555_281
- Track 14 : Atuin_291
- Track 15 : Ellewin_280
- Track 16 : Talia1610_276
- Track 17 : SJReid_300
- Track 18 : Laure_307

Summary of Final Annotations (See graph section above for start numbers):

The start number called the most often in the published annotations is 7, it was called in 3 of the 10 non-draft genes in the pham.

Genes that call this "Most Annotated" start:

- Chilliams_281, FloraSnap32_275, Laure_307, Racecar_278, Rockabye_288, SJReid_300, Talia1610_276,

Genes that have the "Most Annotated" start but do not call it:

-

Genes that do not have the "Most Annotated" start:

- Artu_276, Atuin_291, BooTeria_287, DunneganBoMo_283, Ellewin_280, Emmetator_283, GoldenEssence_271, KSunshine22_282, LeoJr_305,

Panchaali_276, Phrampa_273, ReginaGlobina_303, Stewart25555_281, WaddleDee_279,

Summary by start number:

Start 2:

- Found in 8 of 21 (38.1%) of genes in pham
- Manual Annotations of this start: 3 of 10
- Called 100.0% of time when present
- Phage (with cluster) where this start called: BooTeria_287 (FC), DunneganBoMo_283 (FC), Ellewin_280 (FC), Emmetator_283 (FC), KSunshine22_282 (FC), ReginaGlobina_303 (FC), Stewart25555_281 (FC), WaddleDee_279 (FC),

Start 3:

- Found in 1 of 21 (4.8%) of genes in pham
- No Manual Annotations of this start.
- Called 100.0% of time when present
- Phage (with cluster) where this start called: LeoJr_305 (FC),

Start 5:

- Found in 1 of 21 (4.8%) of genes in pham
- No Manual Annotations of this start.
- Called 100.0% of time when present
- Phage (with cluster) where this start called: Artu_276 (FC),

Start 6:

- Found in 2 of 21 (9.5%) of genes in pham
- Manual Annotations of this start: 2 of 10
- Called 100.0% of time when present
- Phage (with cluster) where this start called: GoldenEssence_271 (FC), Phrampa_273 (FC),

Start 7:

- Found in 7 of 21 (33.3%) of genes in pham
- Manual Annotations of this start: 3 of 10
- Called 100.0% of time when present
- Phage (with cluster) where this start called: Chilliams_281 (FC), FloraSnap32_275 (FC), Laure_307 (UNK), Racecar_278 (FC), Rockabye_288 (FC), SJReid_300 (FC), Talia1610_276 (FC),

Start 8:

- Found in 1 of 21 (4.8%) of genes in pham
- Manual Annotations of this start: 1 of 10
- Called 100.0% of time when present
- Phage (with cluster) where this start called: Panchaali_276 (FC),

Start 9:

- Found in 1 of 21 (4.8%) of genes in pham
- Manual Annotations of this start: 1 of 10
- Called 100.0% of time when present
- Phage (with cluster) where this start called: Atuin_291 (FC),

Summary by clusters:

There are 2 clusters represented in this pham: UNK, FC,

Info for manual annotations of cluster FC:

- Start number 2 was manually annotated 3 times for cluster FC.
- Start number 6 was manually annotated 2 times for cluster FC.
- Start number 7 was manually annotated 3 times for cluster FC.
- Start number 8 was manually annotated 1 time for cluster FC.
- Start number 9 was manually annotated 1 time for cluster FC.

Gene Information:

Gene: Artu_276 Start: 174790, Stop: 175290, Start Num: 5

Candidate Starts for Artu_276:

(5, 174790), (13, 174898), (14, 174901), (17, 174922), (19, 174943), (27, 174991), (49, 175174), (55, 175216), (57, 175228),

Gene: Atuin_291 Start: 173414, Stop: 173854, Start Num: 9

Candidate Starts for Atuin_291:

(Start: 9 @173414 has 1 MA's), (13, 173465), (18, 173498), (19, 173510), (22, 173549), (26, 173555), (55, 173783), (61, 173804),

Gene: BooTeria_287 Start: 174093, Stop: 174704, Start Num: 2

Candidate Starts for BooTeria_287:

(Start: 2 @174093 has 3 MA's), (14, 174276), (19, 174318), (39, 174480), (43, 174501), (49, 174567), (62, 174645),

Gene: Chilliams_281 Start: 168229, Stop: 168711, Start Num: 7

Candidate Starts for Chilliams_281:

(Start: 7 @168229 has 3 MA's), (19, 168346), (25, 168391), (33, 168424), (47, 168559), (50, 168580), (58, 168643),

Gene: DunneganBoMo_283 Start: 174595, Stop: 175206, Start Num: 2

Candidate Starts for DunneganBoMo_283:

(Start: 2 @174595 has 3 MA's), (14, 174778), (19, 174820), (39, 174982), (43, 175003), (49, 175069), (62, 175147),

Gene: Ellewin_280 Start: 173977, Stop: 174603, Start Num: 2

Candidate Starts for Ellewin_280:

(Start: 2 @173977 has 3 MA's), (14, 174154), (19, 174196), (22, 174235), (24, 174244), (35, 174307), (36, 174334), (41, 174382), (49, 174463), (62, 174541),

Gene: Emmetator_283 Start: 173895, Stop: 174509, Start Num: 2

Candidate Starts for Emmetator_283:

(Start: 2 @173895 has 3 MA's), (12, 174057), (14, 174075), (19, 174117), (22, 174156), (24, 174165), (29, 174183), (33, 174210), (39, 174285), (43, 174306), (49, 174372), (62, 174450), (66, 174504),

Gene: FloraSnap32_275 Start: 170256, Stop: 170774, Start Num: 7

Candidate Starts for FloraSnap32_275:

(Start: 7 @170256 has 3 MA's), (18, 170358), (19, 170370), (26, 170415), (31, 170436), (46, 170565), (65, 170736), (67, 170760),

Gene: GoldenEssence_271 Start: 166691, Stop: 167221, Start Num: 6

Candidate Starts for GoldenEssence_271:

(Start: 6 @166691 has 2 MA's), (11, 166742), (18, 166799), (19, 166811), (26, 166856), (31, 166877), (42, 166973), (44, 166982), (49, 167045), (63, 167132), (67, 167207),

Gene: KSunshine22_282 Start: 172813, Stop: 173424, Start Num: 2

Candidate Starts for KSunshine22_282:

(Start: 2 @172813 has 3 MA's), (14, 172996), (19, 173038), (39, 173200), (43, 173221), (49, 173287), (62, 173365),

Gene: Laure_307 Start: 164871, Stop: 165326, Start Num: 7

Candidate Starts for Laure_307:

(Start: 7 @164871 has 3 MA's), (10, 164904), (19, 164982), (20, 164994), (45, 165168), (60, 165264), (63, 165279), (66, 165321),

Gene: LeoJr_305 Start: 173796, Stop: 174383, Start Num: 3

Candidate Starts for LeoJr_305:

(1, 173661), (3, 173796), (15, 173952), (16, 173958), (19, 173991), (21, 174015), (23, 174033), (27, 174042), (38, 174150), (40, 174162), (56, 174306), (66, 174378),

Gene: Panchaali_276 Start: 174600, Stop: 175055, Start Num: 8

Candidate Starts for Panchaali_276:

(Start: 8 @174600 has 1 MA's), (13, 174663), (17, 174687), (19, 174708), (26, 174753), (49, 174939), (52, 174960), (54, 174978), (55, 174981),

Gene: Phrampa_273 Start: 172393, Stop: 172935, Start Num: 6

Candidate Starts for Phrampa_273:

(4, 172354), (Start: 6 @172393 has 2 MA's), (10, 172435), (11, 172444), (18, 172501), (19, 172513), (34, 172603), (37, 172654), (44, 172690), (64, 172861), (65, 172897), (67, 172921),

Gene: Racecar_278 Start: 169786, Stop: 170328, Start Num: 7

Candidate Starts for Racecar_278:

(Start: 7 @169786 has 3 MA's), (10, 169828), (18, 169894), (19, 169906), (26, 169957), (29, 169972), (56, 170200), (63, 170233), (67, 170314),

Gene: ReginaGlobina_303 Start: 173940, Stop: 174551, Start Num: 2

Candidate Starts for ReginaGlobina_303:

(Start: 2 @173940 has 3 MA's), (14, 174123), (19, 174165), (34, 174255), (35, 174267), (43, 174348), (49, 174414), (62, 174492),

Gene: Rockabye_288 Start: 168270, Stop: 168776, Start Num: 7

Candidate Starts for Rockabye_288:

(Start: 7 @168270 has 3 MA's), (19, 168387), (25, 168432), (27, 168435), (32, 168468), (48, 168627), (50, 168651), (51, 168654), (58, 168708),

Gene: SJReid_300 Start: 169574, Stop: 170062, Start Num: 7

Candidate Starts for SJReid_300:

(Start: 7 @169574 has 3 MA's), (19, 169679), (25, 169724), (28, 169733), (30, 169742), (53, 169961),

Gene: Stewart25555_281 Start: 173556, Stop: 174167, Start Num: 2

Candidate Starts for Stewart25555_281:

(Start: 2 @173556 has 3 MA's), (14, 173739), (19, 173781), (43, 173964), (49, 174030), (62, 174108),

Gene: Talia1610_276 Start: 170693, Stop: 171220, Start Num: 7

Candidate Starts for Talia1610_276:

(Start: 7 @170693 has 3 MA's), (18, 170807), (19, 170819), (34, 170903), (48, 171032), (59, 171122), (67, 171206),

Gene: WaddleDee_279 Start: 173379, Stop: 173990, Start Num: 2

Candidate Starts for WaddleDee_279:

(Start: 2 @173379 has 3 MA's), (14, 173562), (19, 173604), (39, 173766), (43, 173787), (49, 173853), (62, 173931),