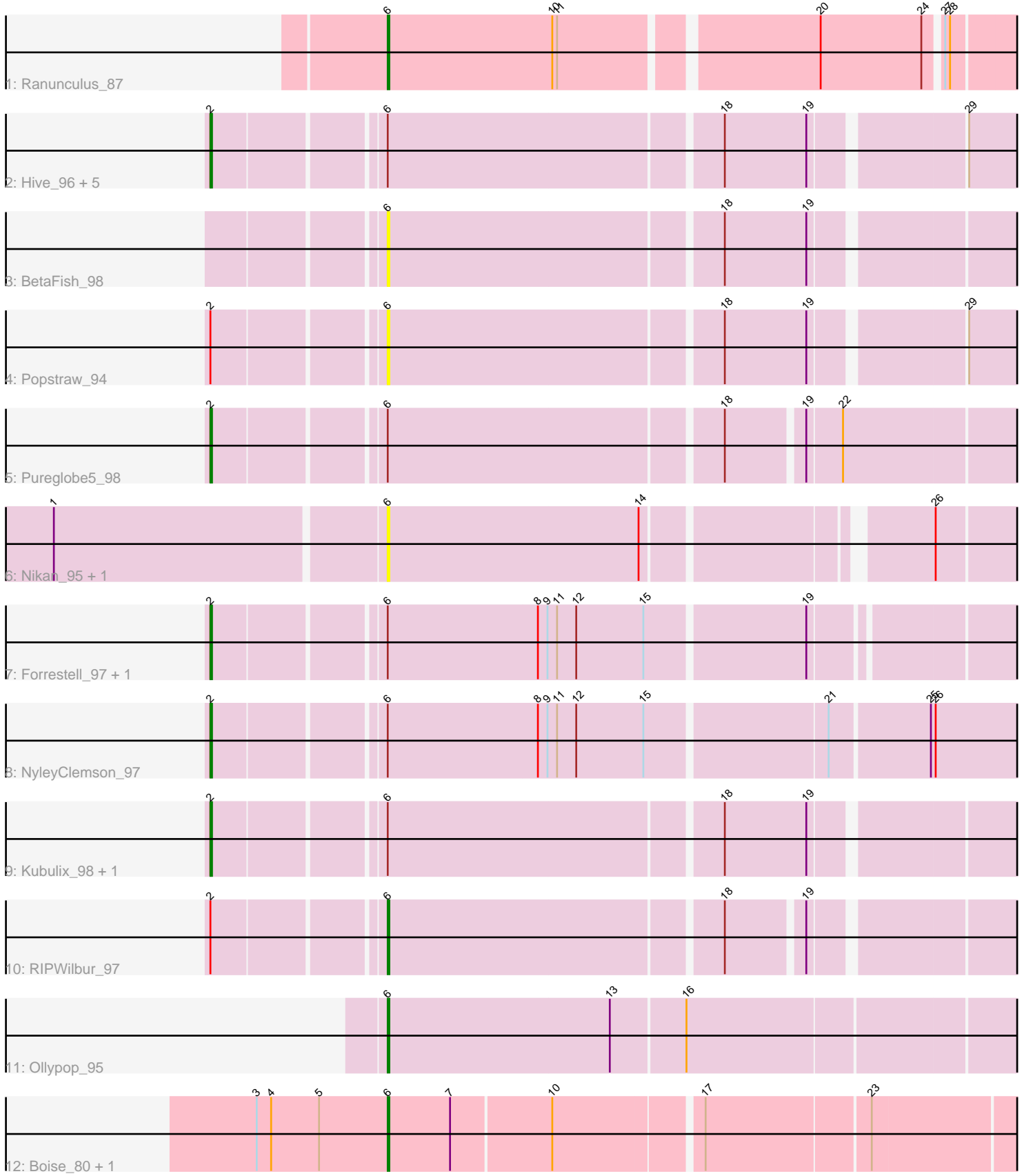


Pham 309293



Note: Tracks are now grouped by subcluster and scaled. Switching in subcluster is indicated by changes in track color. Track scale is now set by default to display the region 30 bp upstream of start 1 to 30 bp downstream of the last possible start. If this default region is judged to be packed too tightly with annotated starts, the track will be further scaled to only show that region of the ORF with annotated starts. This action will be indicated by adding "Zoomed" to the title. For starts, yellow indicates the location of called starts comprised solely of Glimmer/GeneMark auto-annotations, green indicates the location of called starts with at least 1 manual gene annotation.

Pham 309293 Report

This analysis was run 06/27/26 on database version 652.

Pham number 309293 has 21 members, 7 are drafts.

Phages represented in each track:

- Track 1 : Ranunculus_87
- Track 2 : Hive_96, MellowYellow_99, DogYard_98, PhuzzTulsa_97, Beagle_100, Odyssey395_98
- Track 3 : BetaFish_98
- Track 4 : Popstraw_94
- Track 5 : Pureglobe5_98
- Track 6 : Nikan_95, Ren19_90
- Track 7 : Forrestell_97, RazzB_97
- Track 8 : NyleyClemson_97
- Track 9 : Kubulix_98, Pointis_95
- Track 10 : RIPWilbur_97
- Track 11 : Ollypop_95
- Track 12 : Boise_80, RomansRevenge_82

Summary of Final Annotations (See graph section above for start numbers):

The start number called the most often in the published annotations is 2, it was called in 10 of the 14 non-draft genes in the pham.

Genes that call this "Most Annotated" start:

- Beagle_100, DogYard_98, Forrestell_97, Hive_96, Kubulix_98, MellowYellow_99, NyleyClemson_97, Odyssey395_98, PhuzzTulsa_97, Pointis_95, Pureglobe5_98, RazzB_97,

Genes that have the "Most Annotated" start but do not call it:

- Popstraw_94, RIPWilbur_97,

Genes that do not have the "Most Annotated" start:

- BetaFish_98, Boise_80, Nikan_95, Ollypop_95, Ranunculus_87, Ren19_90, RomansRevenge_82,

Summary by start number:

Start 2:

- Found in 14 of 21 (66.7%) of genes in pham
- Manual Annotations of this start: 10 of 14
- Called 85.7% of time when present
- Phage (with cluster) where this start called: Beagle_100 (AP2), DogYard_98 (AP2), Forrestell_97 (AP2), Hive_96 (AP2), Kubulix_98 (AP2), MellowYellow_99 (AP2), NyleyClemson_97 (AP2), Odyssey395_98 (AP2), PhuzzTulsa_97 (AP2), Pointis_95 (AP2), Pureglobe5_98 (AP2), RazzB_97 (AP2),

Start 6:

- Found in 21 of 21 (100.0%) of genes in pham
- Manual Annotations of this start: 4 of 14
- Called 42.9% of time when present
- Phage (with cluster) where this start called: BetaFish_98 (AP2), Boise_80 (FT), Nikan_95 (AP2), Ollypop_95 (AP2), Popstraw_94 (AP2), RIPWilbur_97 (AP2), Ranunculus_87 (AP), Ren19_90 (AP2), RomansRevenge_82 (FT),

Summary by clusters:

There are 3 clusters represented in this pham: AP2, AP, FT,

Info for manual annotations of cluster AP:

- Start number 6 was manually annotated 1 time for cluster AP.

Info for manual annotations of cluster AP2:

- Start number 2 was manually annotated 10 times for cluster AP2.
- Start number 6 was manually annotated 2 times for cluster AP2.

Info for manual annotations of cluster FT:

- Start number 6 was manually annotated 1 time for cluster FT.

Gene Information:

Gene: Beagle_100 Start: 58664, Stop: 58173, Start Num: 2

Candidate Starts for Beagle_100:

(Start: 2 @58664 has 10 MA's), (Start: 6 @58565 has 4 MA's), (18, 58364), (19, 58313), (29, 58226),

Gene: BetaFish_98 Start: 58780, Stop: 58388, Start Num: 6

Candidate Starts for BetaFish_98:

(Start: 6 @58780 has 4 MA's), (18, 58579), (19, 58528),

Gene: Boise_80 Start: 54195, Stop: 53803, Start Num: 6

Candidate Starts for Boise_80:

(3, 54276), (4, 54267), (5, 54237), (Start: 6 @54195 has 4 MA's), (7, 54156), (10, 54096), (17, 54009), (23, 53910),

Gene: DogYard_98 Start: 58369, Stop: 57878, Start Num: 2

Candidate Starts for DogYard_98:

(Start: 2 @58369 has 10 MA's), (Start: 6 @58270 has 4 MA's), (18, 58069), (19, 58018), (29, 57931),

Gene: Forrestell_97 Start: 57077, Stop: 56583, Start Num: 2

Candidate Starts for Forrestell_97:

(Start: 2 @57077 has 10 MA's), (Start: 6 @56978 has 4 MA's), (8, 56885), (9, 56879), (11, 56873), (12, 56861), (15, 56819), (19, 56723),

Gene: Hive_96 Start: 58354, Stop: 57863, Start Num: 2

Candidate Starts for Hive_96:

(Start: 2 @58354 has 10 MA's), (Start: 6 @58255 has 4 MA's), (18, 58054), (19, 58003), (29, 57916),

Gene: Kubulix_98 Start: 58036, Stop: 57545, Start Num: 2

Candidate Starts for Kubulix_98:

(Start: 2 @58036 has 10 MA's), (Start: 6 @57937 has 4 MA's), (18, 57736), (19, 57685),

Gene: MellowYellow_99 Start: 58279, Stop: 57788, Start Num: 2

Candidate Starts for MellowYellow_99:

(Start: 2 @58279 has 10 MA's), (Start: 6 @58180 has 4 MA's), (18, 57979), (19, 57928), (29, 57841),

Gene: Nikan_95 Start: 57954, Stop: 57568, Start Num: 6

Candidate Starts for Nikan_95:

(1, 58155), (Start: 6 @57954 has 4 MA's), (14, 57798), (26, 57639),

Gene: NyleyClemson_97 Start: 57909, Stop: 57406, Start Num: 2

Candidate Starts for NyleyClemson_97:

(Start: 2 @57909 has 10 MA's), (Start: 6 @57810 has 4 MA's), (8, 57717), (9, 57711), (11, 57705), (12, 57693), (15, 57651), (21, 57543), (25, 57483), (26, 57480),

Gene: Odyssey395_98 Start: 58059, Stop: 57568, Start Num: 2

Candidate Starts for Odyssey395_98:

(Start: 2 @58059 has 10 MA's), (Start: 6 @57960 has 4 MA's), (18, 57759), (19, 57708), (29, 57621),

Gene: Ollypop_95 Start: 59279, Stop: 58875, Start Num: 6

Candidate Starts for Ollypop_95:

(Start: 6 @59279 has 4 MA's), (13, 59141), (16, 59096),

Gene: PhuzzTulsa_97 Start: 58507, Stop: 58016, Start Num: 2

Candidate Starts for PhuzzTulsa_97:

(Start: 2 @58507 has 10 MA's), (Start: 6 @58408 has 4 MA's), (18, 58207), (19, 58156), (29, 58069),

Gene: Pointis_95 Start: 57955, Stop: 57464, Start Num: 2

Candidate Starts for Pointis_95:

(Start: 2 @57955 has 10 MA's), (Start: 6 @57856 has 4 MA's), (18, 57655), (19, 57604),

Gene: Popstraw_94 Start: 58032, Stop: 57640, Start Num: 6

Candidate Starts for Popstraw_94:

(Start: 2 @58131 has 10 MA's), (Start: 6 @58032 has 4 MA's), (18, 57831), (19, 57780), (29, 57693),

Gene: Pureglobe5_98 Start: 58620, Stop: 58126, Start Num: 2

Candidate Starts for Pureglobe5_98:

(Start: 2 @58620 has 10 MA's), (Start: 6 @58521 has 4 MA's), (18, 58320), (19, 58275), (22, 58254),

Gene: RIPWilbur_97 Start: 57829, Stop: 57443, Start Num: 6

Candidate Starts for RIPWilbur_97:

(Start: 2 @57928 has 10 MA's), (Start: 6 @57829 has 4 MA's), (18, 57628), (19, 57583),

Gene: Ranunculus_87 Start: 58807, Stop: 58421, Start Num: 6

Candidate Starts for Ranunculus_87:

(Start: 6 @58807 has 4 MA's), (10, 58705), (11, 58702), (20, 58552), (24, 58489), (27, 58480), (28, 58477),

Gene: RazzB_97 Start: 57489, Stop: 56995, Start Num: 2

Candidate Starts for RazzB_97:

(Start: 2 @57489 has 10 MA's), (Start: 6 @57390 has 4 MA's), (8, 57297), (9, 57291), (11, 57285), (12, 57273), (15, 57231), (19, 57135),

Gene: Ren19_90 Start: 56979, Stop: 56593, Start Num: 6

Candidate Starts for Ren19_90:

(1, 57180), (Start: 6 @56979 has 4 MA's), (14, 56823), (26, 56664),

Gene: RomansRevenge_82 Start: 54471, Stop: 54079, Start Num: 6

Candidate Starts for RomansRevenge_82:

(3, 54552), (4, 54543), (5, 54513), (Start: 6 @54471 has 4 MA's), (7, 54432), (10, 54372), (17, 54285), (23, 54186),