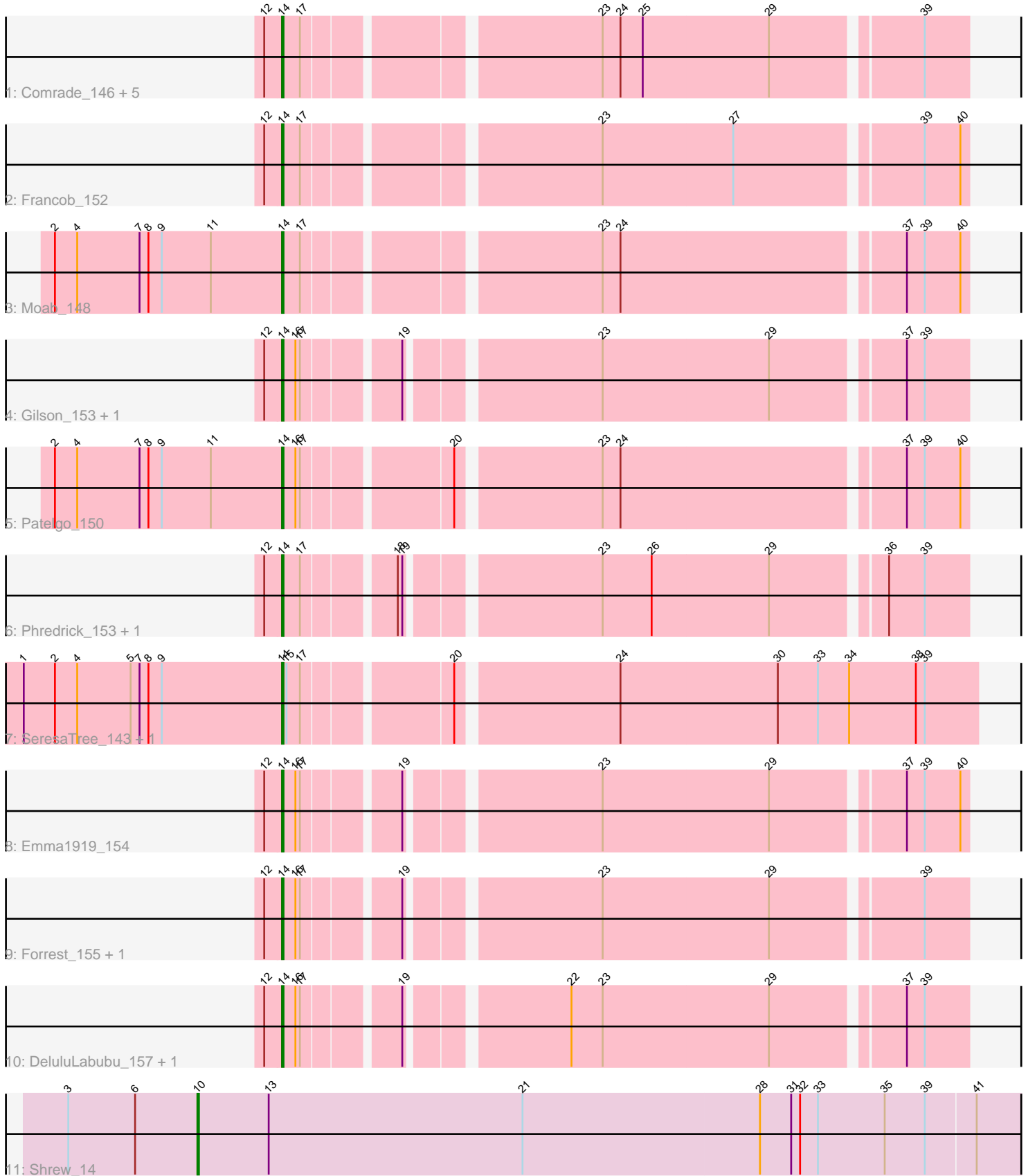


Pham 309303



Note: Tracks are now grouped by subcluster and scaled. Switching in subcluster is indicated by changes in track color. Track scale is now set by default to display the region 30 bp upstream of start 1 to 30 bp downstream of the last possible start. If this default region is judged to be packed too tightly with annotated starts, the track will be further scaled to only show that region of the ORF with annotated starts. This action will be indicated by adding "Zoomed" to the title. For starts, yellow indicates the location of called starts comprised solely of Glimmer/GeneMark auto-annotations, green indicates the location of called starts with at least 1 manual gene annotation.

Pham 309303 Report

This analysis was run 06/27/26 on database version 652.

Pham number 309303 has 21 members, 2 are drafts.

Phages represented in each track:

- Track 1 : Comrade_146, SparkleGoddess_148, Karp_143, Stigma_147, Westy_151, Belfort_149
- Track 2 : Francob_152
- Track 3 : Moab_148
- Track 4 : Gilson_153, Maupel_154
- Track 5 : Patelgo_150
- Track 6 : Phredrick_153, Kenrey_156
- Track 7 : SeresaTree_143, Faust_142
- Track 8 : Emma1919_154
- Track 9 : Forrest_155, Jada_152
- Track 10 : DeluluLabubu_157, MeganTheeKilla_150
- Track 11 : Shrew_14

Summary of Final Annotations (See graph section above for start numbers):

The start number called the most often in the published annotations is 14, it was called in 18 of the 19 non-draft genes in the pham.

Genes that call this "Most Annotated" start:

- Belfort_149, Comrade_146, DeluluLabubu_157, Emma1919_154, Faust_142, Forrest_155, Francob_152, Gilson_153, Jada_152, Karp_143, Kenrey_156, Maupel_154, MeganTheeKilla_150, Moab_148, Patelgo_150, Phredrick_153, SeresaTree_143, SparkleGoddess_148, Stigma_147, Westy_151,

Genes that have the "Most Annotated" start but do not call it:

-

Genes that do not have the "Most Annotated" start:

- Shrew_14,

Summary by start number:

Start 10:

- Found in 1 of 21 (4.8%) of genes in pham

- Manual Annotations of this start: 1 of 19
- Called 100.0% of time when present
- Phage (with cluster) where this start called: Shrew_14 (singleton),

Start 14:

- Found in 20 of 21 (95.2%) of genes in pham
- Manual Annotations of this start: 18 of 19
- Called 100.0% of time when present
- Phage (with cluster) where this start called: Belfort_149 (BK1), Comrade_146 (BK1), DeluluLabubu_157 (BK1), Emma1919_154 (BK1), Faust_142 (BK1), Forrest_155 (BK1), Francob_152 (BK1), Gilson_153 (BK1), Jada_152 (BK1), Karp_143 (BK1), Kenrey_156 (BK1), Maupel_154 (BK1), MeganTheeKilla_150 (BK1), Moab_148 (BK1), Patelgo_150 (BK1), Phredrick_153 (BK1), SeresaTree_143 (BK1), SparkleGoddess_148 (BK1), Stigma_147 (BK1), Westy_151 (BK1),

Summary by clusters:

There are 2 clusters represented in this pham: singleton, BK1,

Info for manual annotations of cluster BK1:

- Start number 14 was manually annotated 18 times for cluster BK1.

Gene Information:

Gene: Belfort_149 Start: 84378, Stop: 84803, Start Num: 14

Candidate Starts for Belfort_149:

(12, 84369), (Start: 14 @84378 has 18 MA's), (17, 84390), (23, 84570), (24, 84582), (25, 84597), (29, 84681), (39, 84774),

Gene: Comrade_146 Start: 84577, Stop: 85002, Start Num: 14

Candidate Starts for Comrade_146:

(12, 84568), (Start: 14 @84577 has 18 MA's), (17, 84589), (23, 84769), (24, 84781), (25, 84796), (29, 84880), (39, 84973),

Gene: DeluluLabubu_157 Start: 86047, Stop: 86466, Start Num: 14

Candidate Starts for DeluluLabubu_157:

(12, 86038), (Start: 14 @86047 has 18 MA's), (16, 86056), (17, 86059), (19, 86116), (22, 86212), (23, 86233), (29, 86344), (37, 86425), (39, 86437),

Gene: Emma1919_154 Start: 83995, Stop: 84414, Start Num: 14

Candidate Starts for Emma1919_154:

(12, 83986), (Start: 14 @83995 has 18 MA's), (16, 84004), (17, 84007), (19, 84064), (23, 84181), (29, 84292), (37, 84373), (39, 84385), (40, 84409),

Gene: Faust_142 Start: 83595, Stop: 84038, Start Num: 14

Candidate Starts for Faust_142:

(1, 83421), (2, 83442), (4, 83457), (5, 83493), (7, 83499), (8, 83505), (9, 83514), (Start: 14 @83595 has 18 MA's), (15, 83598), (17, 83607), (20, 83697), (24, 83799), (30, 83904), (33, 83931), (34, 83952), (38, 83997), (39, 84003),

Gene: Forrest_155 Start: 85089, Stop: 85508, Start Num: 14

Candidate Starts for Forrest_155:

(12, 85080), (Start: 14 @85089 has 18 MA's), (16, 85098), (17, 85101), (19, 85158), (23, 85275), (29, 85386), (39, 85479),

Gene: Francob_152 Start: 84510, Stop: 84935, Start Num: 14

Candidate Starts for Francob_152:

(12, 84501), (Start: 14 @84510 has 18 MA's), (17, 84522), (23, 84702), (27, 84789), (39, 84906), (40, 84930),

Gene: Gilson_153 Start: 83957, Stop: 84376, Start Num: 14

Candidate Starts for Gilson_153:

(12, 83948), (Start: 14 @83957 has 18 MA's), (16, 83966), (17, 83969), (19, 84026), (23, 84143), (29, 84254), (37, 84335), (39, 84347),

Gene: Jada_152 Start: 83786, Stop: 84205, Start Num: 14

Candidate Starts for Jada_152:

(12, 83777), (Start: 14 @83786 has 18 MA's), (16, 83795), (17, 83798), (19, 83855), (23, 83972), (29, 84083), (39, 84176),

Gene: Karp_143 Start: 83805, Stop: 84230, Start Num: 14

Candidate Starts for Karp_143:

(12, 83796), (Start: 14 @83805 has 18 MA's), (17, 83817), (23, 83997), (24, 84009), (25, 84024), (29, 84108), (39, 84201),

Gene: Kenrey_156 Start: 85116, Stop: 85535, Start Num: 14

Candidate Starts for Kenrey_156:

(12, 85107), (Start: 14 @85116 has 18 MA's), (17, 85128), (18, 85182), (19, 85185), (23, 85302), (26, 85335), (29, 85413), (36, 85482), (39, 85506),

Gene: Maupel_154 Start: 83957, Stop: 84376, Start Num: 14

Candidate Starts for Maupel_154:

(12, 83948), (Start: 14 @83957 has 18 MA's), (16, 83966), (17, 83969), (19, 84026), (23, 84143), (29, 84254), (37, 84335), (39, 84347),

Gene: MeganTheeKilla_150 Start: 83308, Stop: 83727, Start Num: 14

Candidate Starts for MeganTheeKilla_150:

(12, 83299), (Start: 14 @83308 has 18 MA's), (16, 83317), (17, 83320), (19, 83377), (22, 83473), (23, 83494), (29, 83605), (37, 83686), (39, 83698),

Gene: Moab_148 Start: 85468, Stop: 85893, Start Num: 14

Candidate Starts for Moab_148:

(2, 85315), (4, 85330), (7, 85372), (8, 85378), (9, 85387), (11, 85420), (Start: 14 @85468 has 18 MA's), (17, 85480), (23, 85660), (24, 85672), (37, 85852), (39, 85864), (40, 85888),

Gene: Patelgo_150 Start: 86160, Stop: 86585, Start Num: 14

Candidate Starts for Patelgo_150:

(2, 86007), (4, 86022), (7, 86064), (8, 86070), (9, 86079), (11, 86112), (Start: 14 @86160 has 18 MA's), (16, 86169), (17, 86172), (20, 86262), (23, 86352), (24, 86364), (37, 86544), (39, 86556), (40, 86580),

Gene: Phredrick_153 Start: 83460, Stop: 83879, Start Num: 14

Candidate Starts for Phredrick_153:

(12, 83451), (Start: 14 @83460 has 18 MA's), (17, 83472), (18, 83526), (19, 83529), (23, 83646), (26, 83679), (29, 83757), (36, 83826), (39, 83850),

Gene: SeresaTree_143 Start: 82977, Stop: 83420, Start Num: 14

Candidate Starts for SeresaTree_143:

(1, 82803), (2, 82824), (4, 82839), (5, 82875), (7, 82881), (8, 82887), (9, 82896), (Start: 14 @82977 has 18 MA's), (15, 82980), (17, 82989), (20, 83079), (24, 83181), (30, 83286), (33, 83313), (34, 83334), (38, 83379), (39, 83385),

Gene: Shrew_14 Start: 6086, Stop: 6655, Start Num: 10

Candidate Starts for Shrew_14:

(3, 5999), (6, 6044), (Start: 10 @6086 has 1 MA's), (13, 6134), (21, 6305), (28, 6464), (31, 6485), (32, 6491), (33, 6503), (35, 6548), (39, 6575), (41, 6608),

Gene: SparkleGoddess_148 Start: 84624, Stop: 85049, Start Num: 14

Candidate Starts for SparkleGoddess_148:

(12, 84615), (Start: 14 @84624 has 18 MA's), (17, 84636), (23, 84816), (24, 84828), (25, 84843), (29, 84927), (39, 85020),

Gene: Stigma_147 Start: 85022, Stop: 85447, Start Num: 14

Candidate Starts for Stigma_147:

(12, 85013), (Start: 14 @85022 has 18 MA's), (17, 85034), (23, 85214), (24, 85226), (25, 85241), (29, 85325), (39, 85418),

Gene: Westy_151 Start: 85337, Stop: 85762, Start Num: 14

Candidate Starts for Westy_151:

(12, 85328), (Start: 14 @85337 has 18 MA's), (17, 85349), (23, 85529), (24, 85541), (25, 85556), (29, 85640), (39, 85733),