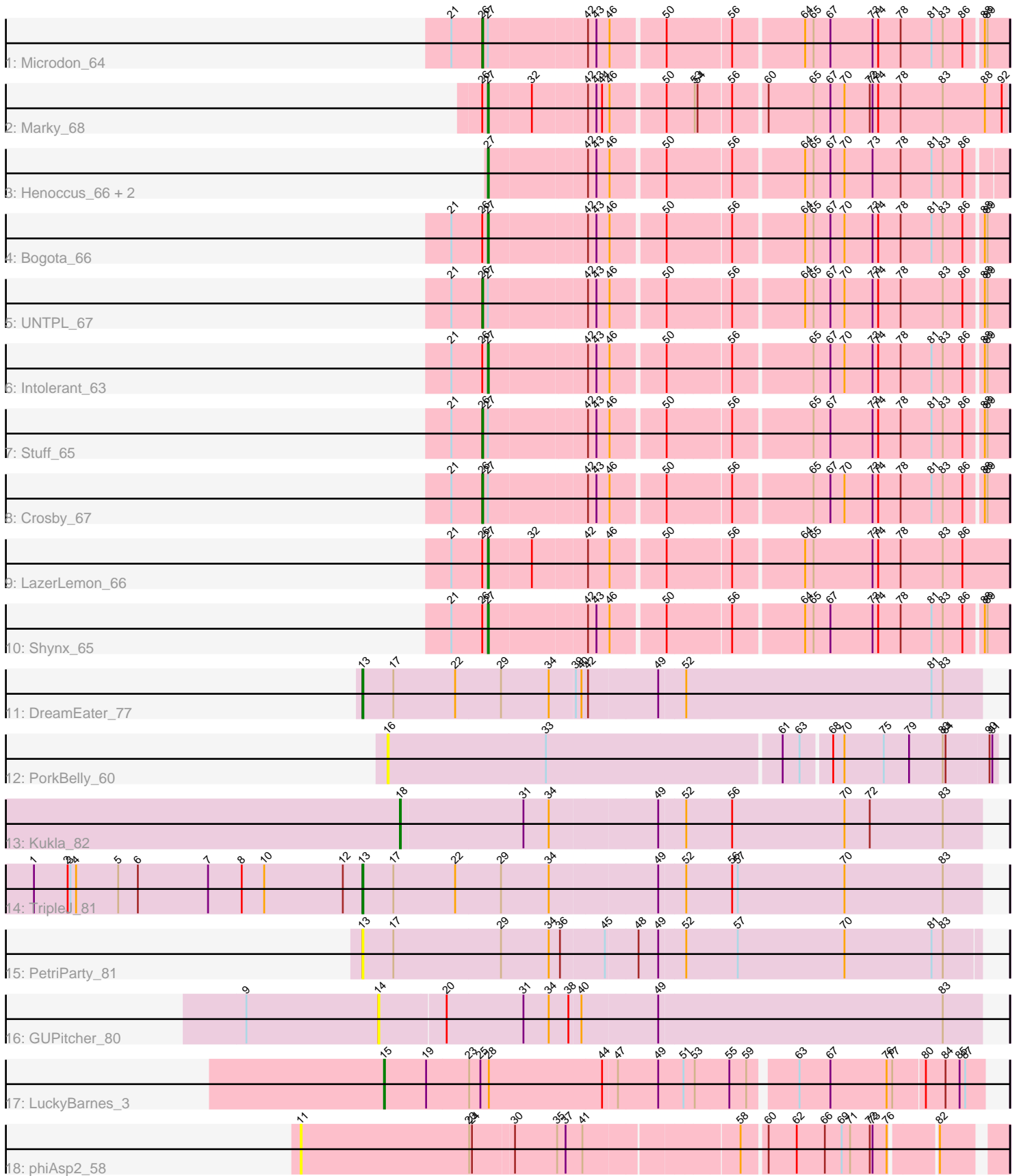


Pham 309330



Note: Tracks are now grouped by subcluster and scaled. Switching in subcluster is indicated by changes in track color. Track scale is now set by default to display the region 30 bp upstream of start 1 to 30 bp downstream of the last possible start. If this default region is judged to be packed too tightly with annotated starts, the track will be further scaled to only show that region of the ORF with annotated starts. This action will be indicated by adding "Zoomed" to the title. For starts, yellow indicates the location of called starts comprised solely of Glimmer/GeneMark auto-annotations, green indicates the location of called starts with at least 1 manual gene annotation.

Pham 309330 Report

This analysis was run 06/27/26 on database version 652.

Pham number 309330 has 20 members, 4 are drafts.

Phages represented in each track:

- Track 1 : Microdon_64
- Track 2 : Marky_68
- Track 3 : Henoccus_66, JackieB_66, Araceli_65
- Track 4 : Bogota_66
- Track 5 : UNTPL_67
- Track 6 : Intolerant_63
- Track 7 : Stuff_65
- Track 8 : Crosby_67
- Track 9 : LazerLemon_66
- Track 10 : Shynx_65
- Track 11 : DreamEater_77
- Track 12 : PorkBelly_60
- Track 13 : Kukla_82
- Track 14 : TripleJ_81
- Track 15 : PetriParty_81
- Track 16 : GUPitcher_80
- Track 17 : LuckyBarnes_3
- Track 18 : phiAsp2_58

Summary of Final Annotations (See graph section above for start numbers):

The start number called the most often in the published annotations is 27, it was called in 8 of the 16 non-draft genes in the pham.

Genes that call this "Most Annotated" start:

- Araceli_65, Bogota_66, Henoccus_66, Intolerant_63, JackieB_66, LazerLemon_66, Marky_68, Shynx_65,

Genes that have the "Most Annotated" start but do not call it:

- Crosby_67, Microdon_64, Stuff_65, UNTPL_67,

Genes that do not have the "Most Annotated" start:

- DreamEater_77, GUPitcher_80, Kukla_82, LuckyBarnes_3, PetriParty_81, PorkBelly_60, TripleJ_81, phiAsp2_58,

Summary by start number:

Start 11:

- Found in 1 of 20 (5.0%) of genes in pham
- No Manual Annotations of this start.
- Called 100.0% of time when present
- Phage (with cluster) where this start called: phiAsp2_58 (singleton),

Start 13:

- Found in 3 of 20 (15.0%) of genes in pham
- Manual Annotations of this start: 2 of 16
- Called 100.0% of time when present
- Phage (with cluster) where this start called: DreamEater_77 (FJ), PetriParty_81 (FJ), TripleJ_81 (FJ),

Start 14:

- Found in 1 of 20 (5.0%) of genes in pham
- No Manual Annotations of this start.
- Called 100.0% of time when present
- Phage (with cluster) where this start called: GUPitcher_80 (FJ),

Start 15:

- Found in 1 of 20 (5.0%) of genes in pham
- Manual Annotations of this start: 1 of 16
- Called 100.0% of time when present
- Phage (with cluster) where this start called: LuckyBarnes_3 (singleton),

Start 16:

- Found in 1 of 20 (5.0%) of genes in pham
- No Manual Annotations of this start.
- Called 100.0% of time when present
- Phage (with cluster) where this start called: PorkBelly_60 (FJ),

Start 18:

- Found in 1 of 20 (5.0%) of genes in pham
- Manual Annotations of this start: 1 of 16
- Called 100.0% of time when present
- Phage (with cluster) where this start called: Kukla_82 (FJ),

Start 26:

- Found in 9 of 20 (45.0%) of genes in pham
- Manual Annotations of this start: 4 of 16
- Called 44.4% of time when present
- Phage (with cluster) where this start called: Crosby_67 (BH), Microdon_64 (BH), Stuff_65 (BH), UNTPL_67 (BH),

Start 27:

- Found in 12 of 20 (60.0%) of genes in pham
- Manual Annotations of this start: 8 of 16
- Called 66.7% of time when present
- Phage (with cluster) where this start called: Araceli_65 (BH), Bogota_66 (BH), Henoccus_66 (BH), Intolerant_63 (BH), JackieB_66 (BH), LazerLemon_66 (BH),

Marky_68 (BH), Shynx_65 (BH),

Summary by clusters:

There are 3 clusters represented in this pham: singleton, BH, FJ,

Info for manual annotations of cluster BH:

- Start number 26 was manually annotated 4 times for cluster BH.
- Start number 27 was manually annotated 8 times for cluster BH.

Info for manual annotations of cluster FJ:

- Start number 13 was manually annotated 2 times for cluster FJ.
- Start number 18 was manually annotated 1 time for cluster FJ.

Gene Information:

Gene: Araceli_65 Start: 47314, Stop: 47829, Start Num: 27

Candidate Starts for Araceli_65:

(Start: 27 @47314 has 8 MA's), (42, 47413), (43, 47422), (46, 47434), (50, 47485), (56, 47548), (64, 47620), (65, 47629), (67, 47647), (70, 47662), (73, 47692), (78, 47722), (81, 47755), (83, 47767), (86, 47788),

Gene: Bogota_66 Start: 47563, Stop: 48081, Start Num: 27

Candidate Starts for Bogota_66:

(21, 47524), (Start: 26 @47557 has 4 MA's), (Start: 27 @47563 has 8 MA's), (42, 47662), (43, 47671), (46, 47683), (50, 47734), (56, 47797), (64, 47869), (65, 47878), (67, 47896), (70, 47911), (73, 47941), (74, 47947), (78, 47971), (81, 48004), (83, 48016), (86, 48037), (88, 48055), (89, 48058),

Gene: Crosby_67 Start: 47571, Stop: 48095, Start Num: 26

Candidate Starts for Crosby_67:

(21, 47538), (Start: 26 @47571 has 4 MA's), (Start: 27 @47577 has 8 MA's), (42, 47676), (43, 47685), (46, 47697), (50, 47748), (56, 47811), (65, 47892), (67, 47910), (70, 47925), (73, 47955), (74, 47961), (78, 47985), (81, 48018), (83, 48030), (86, 48051), (88, 48069), (89, 48072),

Gene: DreamEater_77 Start: 43961, Stop: 44611, Start Num: 13

Candidate Starts for DreamEater_77:

(Start: 13 @43961 has 2 MA's), (17, 43994), (22, 44060), (29, 44108), (34, 44159), (39, 44186), (40, 44192), (42, 44198), (49, 44270), (52, 44297), (81, 44558), (83, 44570),

Gene: GUPitcher_80 Start: 44251, Stop: 44880, Start Num: 14

Candidate Starts for GUPitcher_80:

(9, 44110), (14, 44251), (20, 44320), (31, 44401), (34, 44428), (38, 44449), (40, 44461), (49, 44539), (83, 44839),

Gene: Henococcus_66 Start: 47326, Stop: 47841, Start Num: 27

Candidate Starts for Henococcus_66:

(Start: 27 @47326 has 8 MA's), (42, 47425), (43, 47434), (46, 47446), (50, 47497), (56, 47560), (64, 47632), (65, 47641), (67, 47659), (70, 47674), (73, 47704), (78, 47734), (81, 47767), (83, 47779), (86, 47800),

Gene: Intolerant_63 Start: 47268, Stop: 47786, Start Num: 27

Candidate Starts for Intolerant_63:

(21, 47229), (Start: 26 @47262 has 4 MA's), (Start: 27 @47268 has 8 MA's), (42, 47367), (43, 47376), (46, 47388), (50, 47439), (56, 47502), (65, 47583), (67, 47601), (70, 47616), (73, 47646), (74, 47652), (78, 47676), (81, 47709), (83, 47721), (86, 47742), (88, 47760), (89, 47763),

Gene: JackieB_66 Start: 47164, Stop: 47679, Start Num: 27

Candidate Starts for JackieB_66:

(Start: 27 @47164 has 8 MA's), (42, 47263), (43, 47272), (46, 47284), (50, 47335), (56, 47398), (64, 47470), (65, 47479), (67, 47497), (70, 47512), (73, 47542), (78, 47572), (81, 47605), (83, 47617), (86, 47638),

Gene: Kukla_82 Start: 44547, Stop: 45155, Start Num: 18

Candidate Starts for Kukla_82:

(Start: 18 @44547 has 1 MA's), (31, 44676), (34, 44703), (49, 44814), (52, 44841), (56, 44889), (70, 45009), (72, 45036), (83, 45114),

Gene: LazerLemon_66 Start: 48016, Stop: 48540, Start Num: 27

Candidate Starts for LazerLemon_66:

(21, 47977), (Start: 26 @48010 has 4 MA's), (Start: 27 @48016 has 8 MA's), (32, 48061), (42, 48115), (46, 48136), (50, 48187), (56, 48250), (64, 48322), (65, 48331), (73, 48394), (74, 48400), (78, 48424), (83, 48469), (86, 48490),

Gene: LuckyBarnes_3 Start: 726, Stop: 1346, Start Num: 15

Candidate Starts for LuckyBarnes_3:

(Start: 15 @726 has 1 MA's), (19, 771), (23, 816), (25, 828), (28, 837), (44, 957), (47, 972), (49, 1014), (51, 1041), (53, 1053), (55, 1089), (59, 1107), (63, 1152), (67, 1185), (76, 1245), (77, 1251), (80, 1284), (84, 1305), (85, 1320), (87, 1326),

Gene: Marky_68 Start: 47686, Stop: 48207, Start Num: 27

Candidate Starts for Marky_68:

(Start: 26 @47680 has 4 MA's), (Start: 27 @47686 has 8 MA's), (32, 47731), (42, 47785), (43, 47794), (44, 47800), (46, 47806), (50, 47857), (53, 47884), (54, 47887), (56, 47920), (60, 47953), (65, 48001), (67, 48019), (70, 48034), (72, 48061), (73, 48064), (74, 48070), (78, 48094), (83, 48139), (88, 48184), (92, 48202),

Gene: Microdon_64 Start: 46831, Stop: 47355, Start Num: 26

Candidate Starts for Microdon_64:

(21, 46798), (Start: 26 @46831 has 4 MA's), (Start: 27 @46837 has 8 MA's), (42, 46936), (43, 46945), (46, 46957), (50, 47008), (56, 47071), (64, 47143), (65, 47152), (67, 47170), (73, 47215), (74, 47221), (78, 47245), (81, 47278), (83, 47290), (86, 47311), (88, 47329), (89, 47332),

Gene: PetriParty_81 Start: 43126, Stop: 43773, Start Num: 13

Candidate Starts for PetriParty_81:

(Start: 13 @43126 has 2 MA's), (17, 43159), (29, 43273), (34, 43324), (36, 43336), (45, 43381), (48, 43414), (49, 43435), (52, 43462), (57, 43516), (70, 43630), (81, 43723), (83, 43735),

Gene: PorkBelly_60 Start: 45798, Stop: 46433, Start Num: 16

Candidate Starts for PorkBelly_60:

(16, 45798), (33, 45966), (61, 46212), (63, 46230), (68, 46260), (70, 46272), (75, 46314), (79, 46341), (83, 46377), (84, 46380), (90, 46425), (91, 46428),

Gene: Shynx_65 Start: 47503, Stop: 48021, Start Num: 27

Candidate Starts for Shynx_65:

(21, 47464), (Start: 26 @47497 has 4 MA's), (Start: 27 @47503 has 8 MA's), (42, 47602), (43, 47611), (46, 47623), (50, 47674), (56, 47737), (64, 47809), (65, 47818), (67, 47836), (73, 47881), (74, 47887), (78, 47911), (81, 47944), (83, 47956), (86, 47977), (88, 47995), (89, 47998),

Gene: Stuff_65 Start: 47538, Stop: 48062, Start Num: 26

Candidate Starts for Stuff_65:

(21, 47505), (Start: 26 @47538 has 4 MA's), (Start: 27 @47544 has 8 MA's), (42, 47643), (43, 47652), (46, 47664), (50, 47715), (56, 47778), (65, 47859), (67, 47877), (73, 47922), (74, 47928), (78, 47952), (81, 47985), (83, 47997), (86, 48018), (88, 48036), (89, 48039),

Gene: TripleJ_81 Start: 43166, Stop: 43816, Start Num: 13

Candidate Starts for TripleJ_81:

(1, 42815), (2, 42851), (3, 42854), (4, 42860), (5, 42905), (6, 42926), (7, 43001), (8, 43037), (10, 43061), (12, 43145), (Start: 13 @43166 has 2 MA's), (17, 43199), (22, 43265), (29, 43313), (34, 43364), (49, 43475), (52, 43502), (56, 43550), (57, 43556), (70, 43670), (83, 43775),

Gene: UNTPL_67 Start: 47592, Stop: 48116, Start Num: 26

Candidate Starts for UNTPL_67:

(21, 47559), (Start: 26 @47592 has 4 MA's), (Start: 27 @47598 has 8 MA's), (42, 47697), (43, 47706), (46, 47718), (50, 47769), (56, 47832), (64, 47904), (65, 47913), (67, 47931), (70, 47946), (73, 47976), (74, 47982), (78, 48006), (83, 48051), (86, 48072), (88, 48090), (89, 48093),

Gene: phiAsp2_58 Start: 49432, Stop: 50136, Start Num: 11

Candidate Starts for phiAsp2_58:

(11, 49432), (23, 49612), (24, 49615), (30, 49657), (35, 49702), (37, 49711), (41, 49729), (58, 49882), (60, 49906), (62, 49936), (66, 49966), (69, 49984), (71, 49993), (72, 50014), (73, 50017), (76, 50032), (82, 50077),