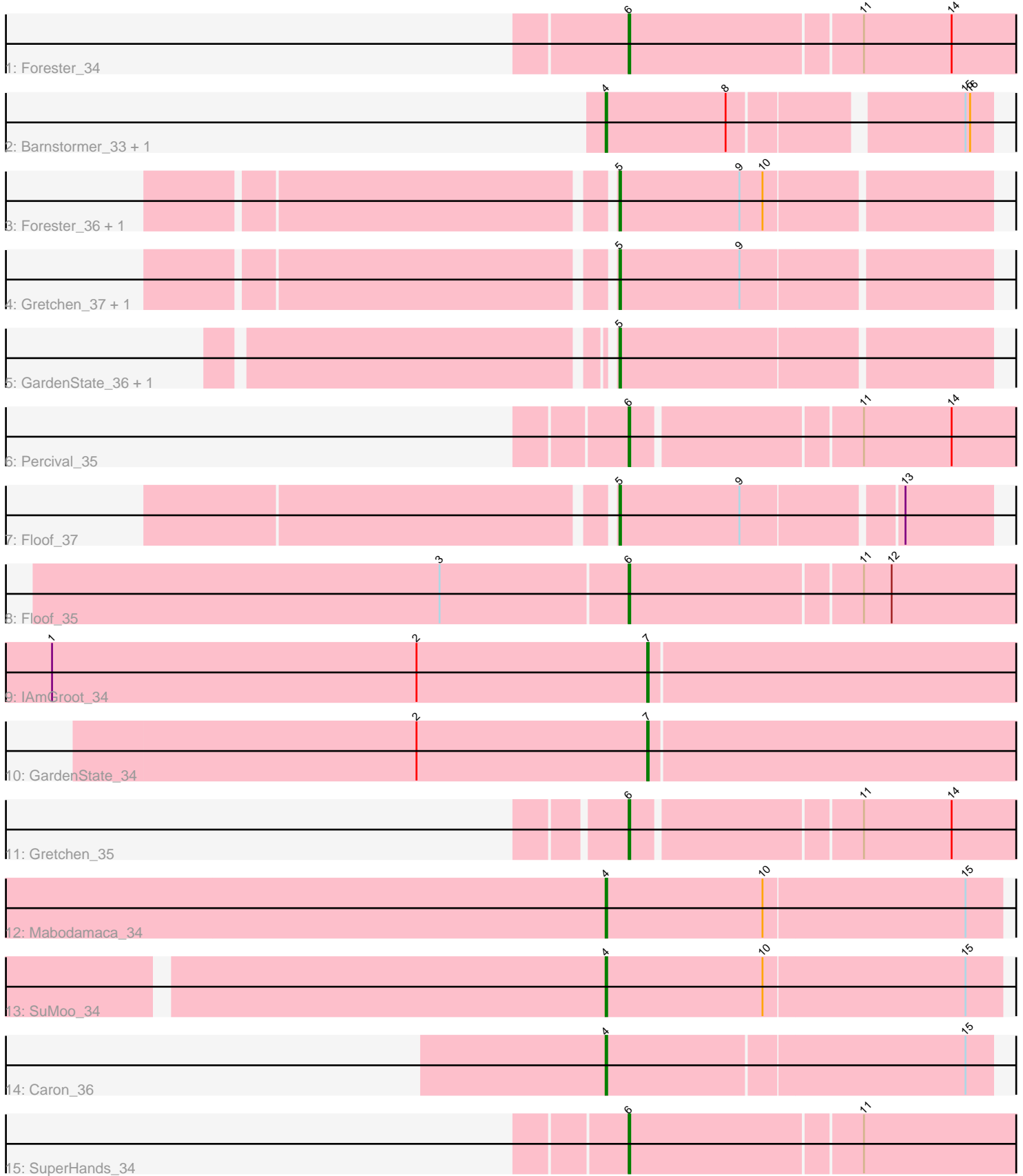


Pham 309343



Note: Tracks are now grouped by subcluster and scaled. Switching in subcluster is indicated by changes in track color. Track scale is now set by default to display the region 30 bp upstream of start 1 to 30 bp downstream of the last possible start. If this default region is judged to be packed too tightly with annotated starts, the track will be further scaled to only show that region of the ORF with annotated starts. This action will be indicated by adding "Zoomed" to the title. For starts, yellow indicates the location of called starts comprised solely of Glimmer/GeneMark auto-annotations, green indicates the location of called starts with at least 1 manual gene annotation.

## Pham 309343 Report

This analysis was run 06/27/26 on database version 652.

Pham number 309343 has 19 members, 0 are drafts.

Phages represented in each track:

- Track 1 : Forester\_34
- Track 2 : Barnstormer\_33, UtzChips\_33
- Track 3 : Forester\_36, SuperHands\_36
- Track 4 : Gretchen\_37, Percival\_37
- Track 5 : GardenState\_36, IAmGroot\_36
- Track 6 : Percival\_35
- Track 7 : Floof\_37
- Track 8 : Floof\_35
- Track 9 : IAmGroot\_34
- Track 10 : GardenState\_34
- Track 11 : Gretchen\_35
- Track 12 : Mabodamaca\_34
- Track 13 : SuMoo\_34
- Track 14 : Caron\_36
- Track 15 : SuperHands\_34

### ***Summary of Final Annotations (See graph section above for start numbers):***

The start number called the most often in the published annotations is 5, it was called in 7 of the 19 non-draft genes in the pham.

Genes that call this "Most Annotated" start:

- Floof\_37, Forester\_36, GardenState\_36, Gretchen\_37, IAmGroot\_36, Percival\_37, SuperHands\_36,

Genes that have the "Most Annotated" start but do not call it:

- 

Genes that do not have the "Most Annotated" start:

- Barnstormer\_33, Caron\_36, Floof\_35, Forester\_34, GardenState\_34, Gretchen\_35, IAmGroot\_34, Mabodamaca\_34, Percival\_35, SuMoo\_34, SuperHands\_34, UtzChips\_33,

### **Summary by start number:**

Start 4:

- Found in 5 of 19 ( 26.3% ) of genes in pham
- Manual Annotations of this start: 5 of 19
- Called 100.0% of time when present
- Phage (with cluster) where this start called: Barnstormer\_33 (EH), Caron\_36 (EH), Mabodamaca\_34 (EH), SuMoo\_34 (EH), UtzChips\_33 (EH),

Start 5:

- Found in 7 of 19 ( 36.8% ) of genes in pham
- Manual Annotations of this start: 7 of 19
- Called 100.0% of time when present
- Phage (with cluster) where this start called: Floof\_37 (EH), Forester\_36 (EH), GardenState\_36 (EH), Gretchen\_37 (EH), IAmGroot\_36 (EH), Percival\_37 (EH), SuperHands\_36 (EH),

Start 6:

- Found in 5 of 19 ( 26.3% ) of genes in pham
- Manual Annotations of this start: 5 of 19
- Called 100.0% of time when present
- Phage (with cluster) where this start called: Floof\_35 (EH), Forester\_34 (EH), Gretchen\_35 (EH), Percival\_35 (EH), SuperHands\_34 (EH),

Start 7:

- Found in 2 of 19 ( 10.5% ) of genes in pham
- Manual Annotations of this start: 2 of 19
- Called 100.0% of time when present
- Phage (with cluster) where this start called: GardenState\_34 (EH), IAmGroot\_34 (EH),

**Summary by clusters:**

There is one cluster represented in this pham: EH

Info for manual annotations of cluster EH:

- Start number 4 was manually annotated 5 times for cluster EH.
- Start number 5 was manually annotated 7 times for cluster EH.
- Start number 6 was manually annotated 5 times for cluster EH.
- Start number 7 was manually annotated 2 times for cluster EH.

**Gene Information:**

Gene: Barnstormer\_33 Start: 24015, Stop: 24248, Start Num: 4

Candidate Starts for Barnstormer\_33:

(Start: 4 @24015 has 5 MA's), (8, 24093), (15, 24231), (16, 24234),

Gene: Caron\_36 Start: 24488, Stop: 24733, Start Num: 4

Candidate Starts for Caron\_36:

(Start: 4 @24488 has 5 MA's), (15, 24716),

Gene: Floof\_37 Start: 25424, Stop: 25654, Start Num: 5

Candidate Starts for Floof\_37:  
(Start: 5 @25424 has 7 MA's), (9, 25502), (13, 25598),

Gene: Floof\_35 Start: 24943, Stop: 25212, Start Num: 6  
Candidate Starts for Floof\_35:  
(3, 24823), (Start: 6 @24943 has 5 MA's), (11, 25090), (12, 25108),

Gene: Forester\_34 Start: 26375, Stop: 26638, Start Num: 6  
Candidate Starts for Forester\_34:  
(Start: 6 @26375 has 5 MA's), (11, 26522), (14, 26579),

Gene: Forester\_36 Start: 26850, Stop: 27083, Start Num: 5  
Candidate Starts for Forester\_36:  
(Start: 5 @26850 has 7 MA's), (9, 26928), (10, 26943),

Gene: GardenState\_36 Start: 24939, Stop: 25172, Start Num: 5  
Candidate Starts for GardenState\_36:  
(Start: 5 @24939 has 7 MA's),

Gene: GardenState\_34 Start: 24476, Stop: 24727, Start Num: 7  
Candidate Starts for GardenState\_34:  
(2, 24326), (Start: 7 @24476 has 2 MA's),

Gene: Gretchen\_37 Start: 26532, Stop: 26765, Start Num: 5  
Candidate Starts for Gretchen\_37:  
(Start: 5 @26532 has 7 MA's), (9, 26610),

Gene: Gretchen\_35 Start: 26063, Stop: 26320, Start Num: 6  
Candidate Starts for Gretchen\_35:  
(Start: 6 @26063 has 5 MA's), (11, 26204), (14, 26261),

Gene: IAmGroot\_34 Start: 25141, Stop: 25392, Start Num: 7  
Candidate Starts for IAmGroot\_34:  
(1, 24754), (2, 24991), (Start: 7 @25141 has 2 MA's),

Gene: IAmGroot\_36 Start: 25604, Stop: 25837, Start Num: 5  
Candidate Starts for IAmGroot\_36:  
(Start: 5 @25604 has 7 MA's),

Gene: Mabodamaca\_34 Start: 24789, Stop: 25043, Start Num: 4  
Candidate Starts for Mabodamaca\_34:  
(Start: 4 @24789 has 5 MA's), (10, 24891), (15, 25020),

Gene: Percival\_35 Start: 25897, Stop: 26154, Start Num: 6  
Candidate Starts for Percival\_35:  
(Start: 6 @25897 has 5 MA's), (11, 26038), (14, 26095),

Gene: Percival\_37 Start: 26366, Stop: 26599, Start Num: 5  
Candidate Starts for Percival\_37:  
(Start: 5 @26366 has 7 MA's), (9, 26444),

Gene: SuMoo\_34 Start: 23735, Stop: 23989, Start Num: 4  
Candidate Starts for SuMoo\_34:

(Start: 4 @23735 has 5 MA's), (10, 23837), (15, 23966),

Gene: SuperHands\_36 Start: 26869, Stop: 27102, Start Num: 5

Candidate Starts for SuperHands\_36:

(Start: 5 @26869 has 7 MA's), (9, 26947), (10, 26962),

Gene: SuperHands\_34 Start: 26394, Stop: 26657, Start Num: 6

Candidate Starts for SuperHands\_34:

(Start: 6 @26394 has 5 MA's), (11, 26541),

Gene: UtzChips\_33 Start: 24000, Stop: 24233, Start Num: 4

Candidate Starts for UtzChips\_33:

(Start: 4 @24000 has 5 MA's), (8, 24078), (15, 24216), (16, 24219),