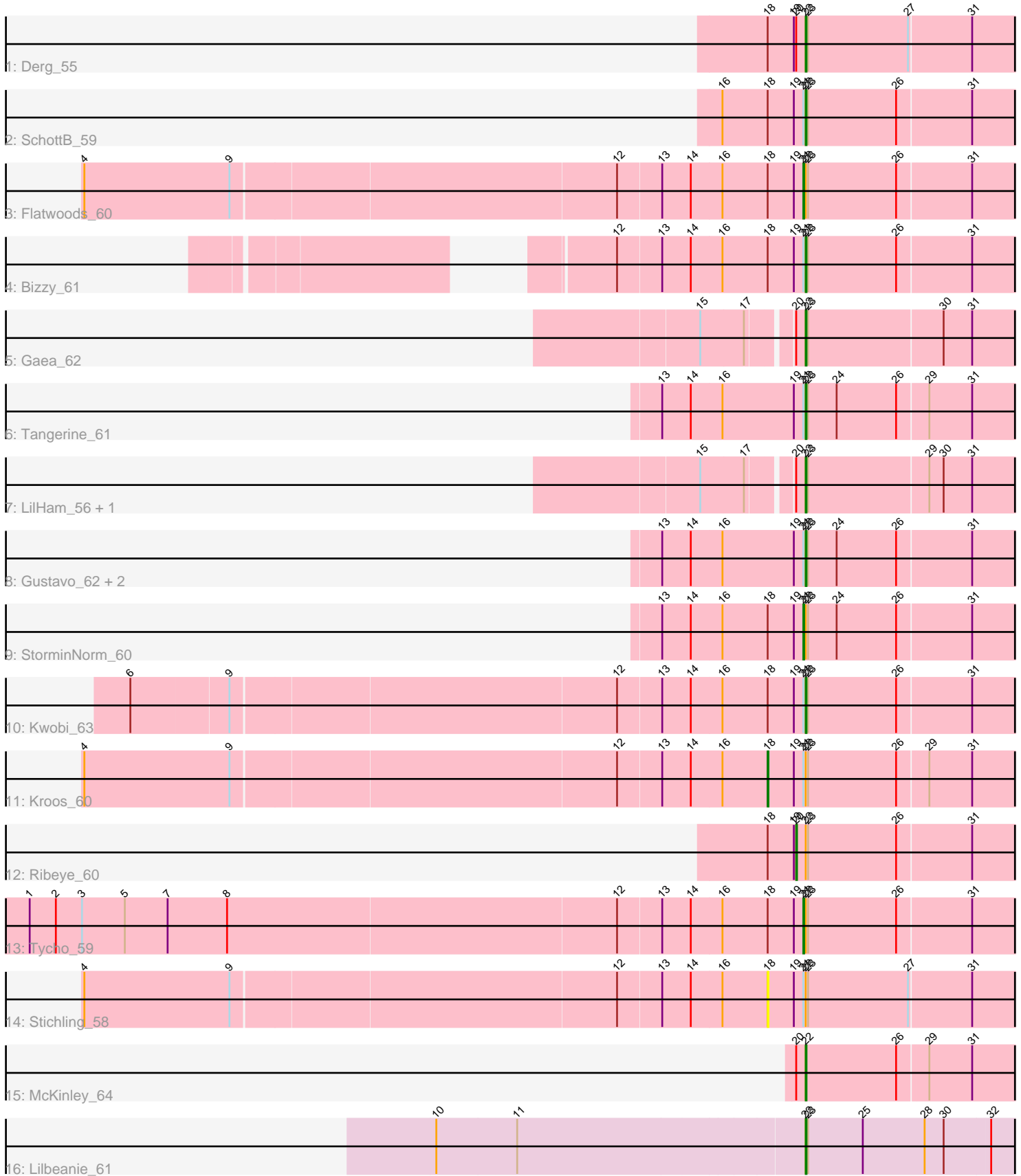


Pham 309347



Note: Tracks are now grouped by subcluster and scaled. Switching in subcluster is indicated by changes in track color. Track scale is now set by default to display the region 30 bp upstream of start 1 to 30 bp downstream of the last possible start. If this default region is judged to be packed too tightly with annotated starts, the track will be further scaled to only show that region of the ORF with annotated starts. This action will be indicated by adding "Zoomed" to the title. For starts, yellow indicates the location of called starts comprised solely of Glimmer/GeneMark auto-annotations, green indicates the location of called starts with at least 1 manual gene annotation.

## Pham 309347 Report

This analysis was run 06/27/26 on database version 652.

Pham number 309347 has 19 members, 1 are drafts.

Phages represented in each track:

- Track 1 : Derg\_55
- Track 2 : SchottB\_59
- Track 3 : Flatwoods\_60
- Track 4 : Bizzy\_61
- Track 5 : Gaea\_62
- Track 6 : Tangerine\_61
- Track 7 : LilHam\_56, Ashertheman\_62
- Track 8 : Gustavo\_62, Saronaya\_62, Baumdotcom\_58
- Track 9 : StorminNorm\_60
- Track 10 : Kwobi\_63
- Track 11 : Kroos\_60
- Track 12 : Ribeye\_60
- Track 13 : Tycho\_59
- Track 14 : Stichling\_58
- Track 15 : McKinley\_64
- Track 16 : Lilbeanie\_61

### ***Summary of Final Annotations (See graph section above for start numbers):***

The start number called the most often in the published annotations is 22, it was called in 13 of the 18 non-draft genes in the pham.

Genes that call this "Most Annotated" start:

- Ashertheman\_62, Baumdotcom\_58, Bizzy\_61, Derg\_55, Gaea\_62, Gustavo\_62, Kwobi\_63, LilHam\_56, Lilbeanie\_61, McKinley\_64, Saronaya\_62, SchottB\_59, Tangerine\_61,

Genes that have the "Most Annotated" start but do not call it:

- Flatwoods\_60, Kroos\_60, Ribeye\_60, Stichling\_58, StorminNorm\_60, Tycho\_59,

Genes that do not have the "Most Annotated" start:

- 

### **Summary by start number:**

Start 18:

- Found in 10 of 19 ( 52.6% ) of genes in pham
- Manual Annotations of this start: 1 of 18
- Called 20.0% of time when present
- Phage (with cluster) where this start called: Kroos\_60 (DE1), Stichling\_58 (DE1),

Start 20:

- Found in 6 of 19 ( 31.6% ) of genes in pham
- Manual Annotations of this start: 1 of 18
- Called 16.7% of time when present
- Phage (with cluster) where this start called: Ribeye\_60 (DE1),

Start 21:

- Found in 12 of 19 ( 63.2% ) of genes in pham
- Manual Annotations of this start: 3 of 18
- Called 25.0% of time when present
- Phage (with cluster) where this start called: Flatwoods\_60 (DE1), StorminNorm\_60 (DE1), Tycho\_59 (DE1),

Start 22:

- Found in 19 of 19 ( 100.0% ) of genes in pham
- Manual Annotations of this start: 13 of 18
- Called 68.4% of time when present
- Phage (with cluster) where this start called: Ashertheman\_62 (DE1), Baumdotcom\_58 (DE1), Bizzy\_61 (DE1), Derg\_55 (DE1), Gaea\_62 (DE1), Gustavo\_62 (DE1), Kwobi\_63 (DE1), LilHam\_56 (DE1), Lilbeanie\_61 (DE5), McKinley\_64 (DE1), Saronaya\_62 (DE1), SchottB\_59 (DE1), Tangerine\_61 (DE1),

**Summary by clusters:**

There are 2 clusters represented in this pham: DE1, DE5,

Info for manual annotations of cluster DE1:

- Start number 18 was manually annotated 1 time for cluster DE1.
- Start number 20 was manually annotated 1 time for cluster DE1.
- Start number 21 was manually annotated 3 times for cluster DE1.
- Start number 22 was manually annotated 12 times for cluster DE1.

Info for manual annotations of cluster DE5:

- Start number 22 was manually annotated 1 time for cluster DE5.

**Gene Information:**

Gene: Ashertheman\_62 Start: 48524, Stop: 48796, Start Num: 22

Candidate Starts for Ashertheman\_62:

(15, 48410), (17, 48464), (Start: 20 @48512 has 1 MA's), (Start: 22 @48524 has 13 MA's), (23, 48527), (29, 48674), (30, 48692), (31, 48728),

Gene: Baumdotcom\_58 Start: 48035, Stop: 48307, Start Num: 22

Candidate Starts for Baumdotcom\_58:

(13, 47855), (14, 47891), (16, 47930), (19, 48020), (Start: 21 @48032 has 3 MA's), (Start: 22 @48035 has 13 MA's), (23, 48038), (24, 48074), (26, 48149), (31, 48239),

Gene: Bizzy\_61 Start: 48138, Stop: 48410, Start Num: 22

Candidate Starts for Bizzy\_61:

(12, 47904), (13, 47958), (14, 47994), (16, 48033), (Start: 18 @48090 has 1 MA's), (19, 48123), (Start: 21 @48135 has 3 MA's), (Start: 22 @48138 has 13 MA's), (23, 48141), (26, 48252), (31, 48342),

Gene: Derg\_55 Start: 46968, Stop: 47240, Start Num: 22

Candidate Starts for Derg\_55:

(Start: 18 @46920 has 1 MA's), (19, 46953), (Start: 20 @46956 has 1 MA's), (Start: 22 @46968 has 13 MA's), (23, 46971), (27, 47097), (31, 47172),

Gene: Flatwoods\_60 Start: 47605, Stop: 47880, Start Num: 21

Candidate Starts for Flatwoods\_60:

(4, 46717), (9, 46900), (12, 47374), (13, 47428), (14, 47464), (16, 47503), (Start: 18 @47560 has 1 MA's), (19, 47593), (Start: 21 @47605 has 3 MA's), (Start: 22 @47608 has 13 MA's), (23, 47611), (26, 47722), (31, 47812),

Gene: Gaea\_62 Start: 48297, Stop: 48569, Start Num: 22

Candidate Starts for Gaea\_62:

(15, 48183), (17, 48237), (Start: 20 @48285 has 1 MA's), (Start: 22 @48297 has 13 MA's), (23, 48300), (30, 48465), (31, 48501),

Gene: Gustavo\_62 Start: 48964, Stop: 49236, Start Num: 22

Candidate Starts for Gustavo\_62:

(13, 48784), (14, 48820), (16, 48859), (19, 48949), (Start: 21 @48961 has 3 MA's), (Start: 22 @48964 has 13 MA's), (23, 48967), (24, 49003), (26, 49078), (31, 49168),

Gene: Kroos\_60 Start: 48657, Stop: 48977, Start Num: 18

Candidate Starts for Kroos\_60:

(4, 47814), (9, 47997), (12, 48471), (13, 48525), (14, 48561), (16, 48600), (Start: 18 @48657 has 1 MA's), (19, 48690), (Start: 21 @48702 has 3 MA's), (Start: 22 @48705 has 13 MA's), (23, 48708), (26, 48819), (29, 48855), (31, 48909),

Gene: Kwobi\_63 Start: 49106, Stop: 49378, Start Num: 22

Candidate Starts for Kwobi\_63:

(6, 48278), (9, 48398), (12, 48872), (13, 48926), (14, 48962), (16, 49001), (Start: 18 @49058 has 1 MA's), (19, 49091), (Start: 21 @49103 has 3 MA's), (Start: 22 @49106 has 13 MA's), (23, 49109), (26, 49220), (31, 49310),

Gene: LilHam\_56 Start: 46247, Stop: 46519, Start Num: 22

Candidate Starts for LilHam\_56:

(15, 46133), (17, 46187), (Start: 20 @46235 has 1 MA's), (Start: 22 @46247 has 13 MA's), (23, 46250), (29, 46397), (30, 46415), (31, 46451),

Gene: Lilbeanie\_61 Start: 43535, Stop: 43810, Start Num: 22

Candidate Starts for Lilbeanie\_61:

(10, 43082), (11, 43181), (Start: 22 @43535 has 13 MA's), (23, 43538), (25, 43607), (28, 43685), (30, 43709), (32, 43766),

Gene: McKinley\_64 Start: 49837, Stop: 50109, Start Num: 22

Candidate Starts for McKinley\_64:

(Start: 20 @49825 has 1 MA's), (Start: 22 @49837 has 13 MA's), (26, 49951), (29, 49987), (31, 50041),

Gene: Ribeye\_60 Start: 48019, Stop: 48303, Start Num: 20

Candidate Starts for Ribeye\_60:

(Start: 18 @47983 has 1 MA's), (19, 48016), (Start: 20 @48019 has 1 MA's), (Start: 22 @48031 has 13 MA's), (23, 48034), (26, 48145), (31, 48235),

Gene: Saronaya\_62 Start: 48964, Stop: 49236, Start Num: 22

Candidate Starts for Saronaya\_62:

(13, 48784), (14, 48820), (16, 48859), (19, 48949), (Start: 21 @48961 has 3 MA's), (Start: 22 @48964 has 13 MA's), (23, 48967), (24, 49003), (26, 49078), (31, 49168),

Gene: SchottB\_59 Start: 48874, Stop: 49146, Start Num: 22

Candidate Starts for SchottB\_59:

(16, 48769), (Start: 18 @48826 has 1 MA's), (19, 48859), (Start: 21 @48871 has 3 MA's), (Start: 22 @48874 has 13 MA's), (23, 48877), (26, 48988), (31, 49078),

Gene: Stichling\_58 Start: 47967, Stop: 48287, Start Num: 18

Candidate Starts for Stichling\_58:

(4, 47124), (9, 47307), (12, 47781), (13, 47835), (14, 47871), (16, 47910), (Start: 18 @47967 has 1 MA's), (19, 48000), (Start: 21 @48012 has 3 MA's), (Start: 22 @48015 has 13 MA's), (23, 48018), (27, 48144), (31, 48219),

Gene: StorminNorm\_60 Start: 48603, Stop: 48878, Start Num: 21

Candidate Starts for StorminNorm\_60:

(13, 48426), (14, 48462), (16, 48501), (Start: 18 @48558 has 1 MA's), (19, 48591), (Start: 21 @48603 has 3 MA's), (Start: 22 @48606 has 13 MA's), (23, 48609), (24, 48645), (26, 48720), (31, 48810),

Gene: Tangerine\_61 Start: 48357, Stop: 48629, Start Num: 22

Candidate Starts for Tangerine\_61:

(13, 48177), (14, 48213), (16, 48252), (19, 48342), (Start: 21 @48354 has 3 MA's), (Start: 22 @48357 has 13 MA's), (23, 48360), (24, 48396), (26, 48471), (29, 48507), (31, 48561),

Gene: Tycho\_59 Start: 48124, Stop: 48399, Start Num: 21

Candidate Starts for Tycho\_59:

(1, 47158), (2, 47191), (3, 47224), (5, 47278), (7, 47332), (8, 47407), (12, 47893), (13, 47947), (14, 47983), (16, 48022), (Start: 18 @48079 has 1 MA's), (19, 48112), (Start: 21 @48124 has 3 MA's), (Start: 22 @48127 has 13 MA's), (23, 48130), (26, 48241), (31, 48331),