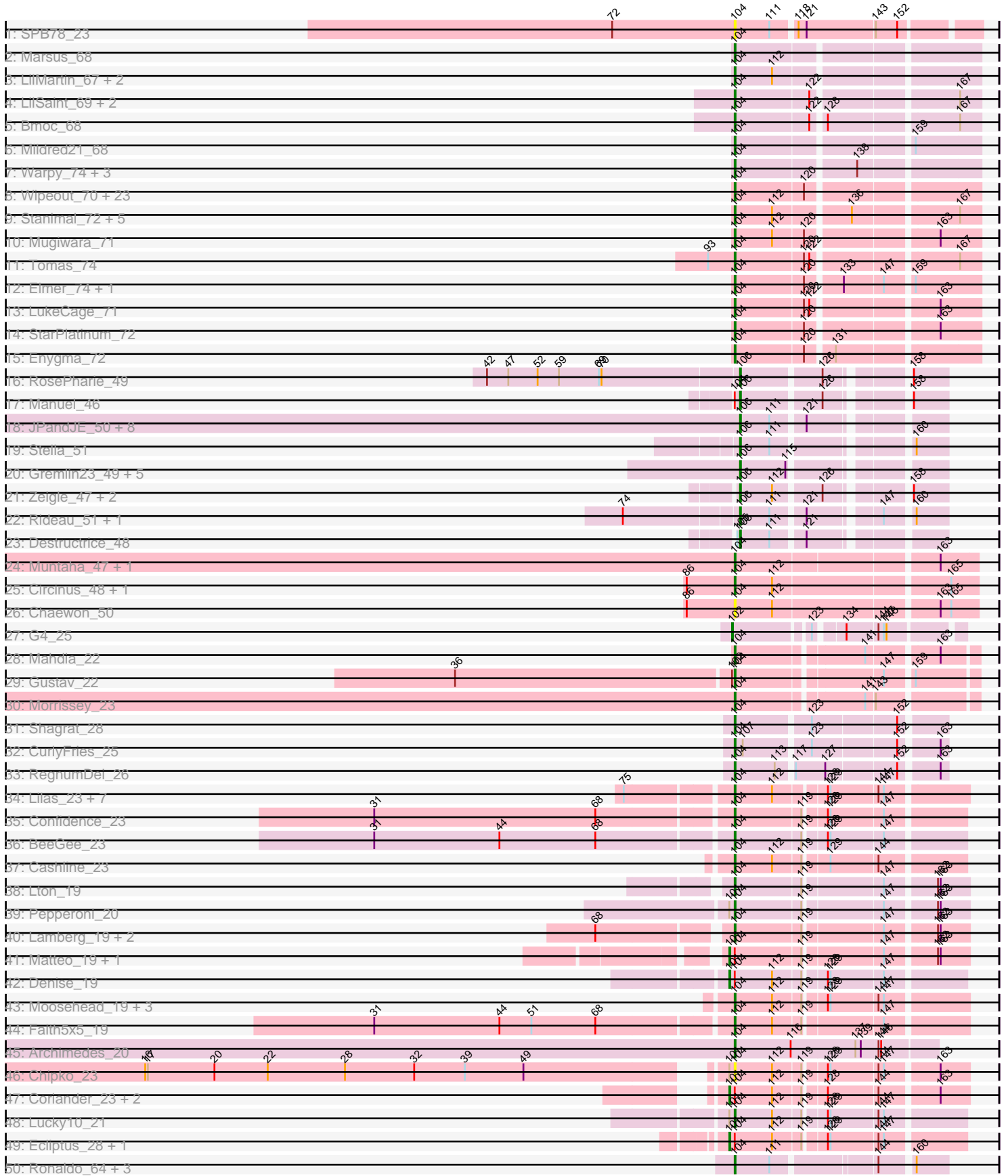
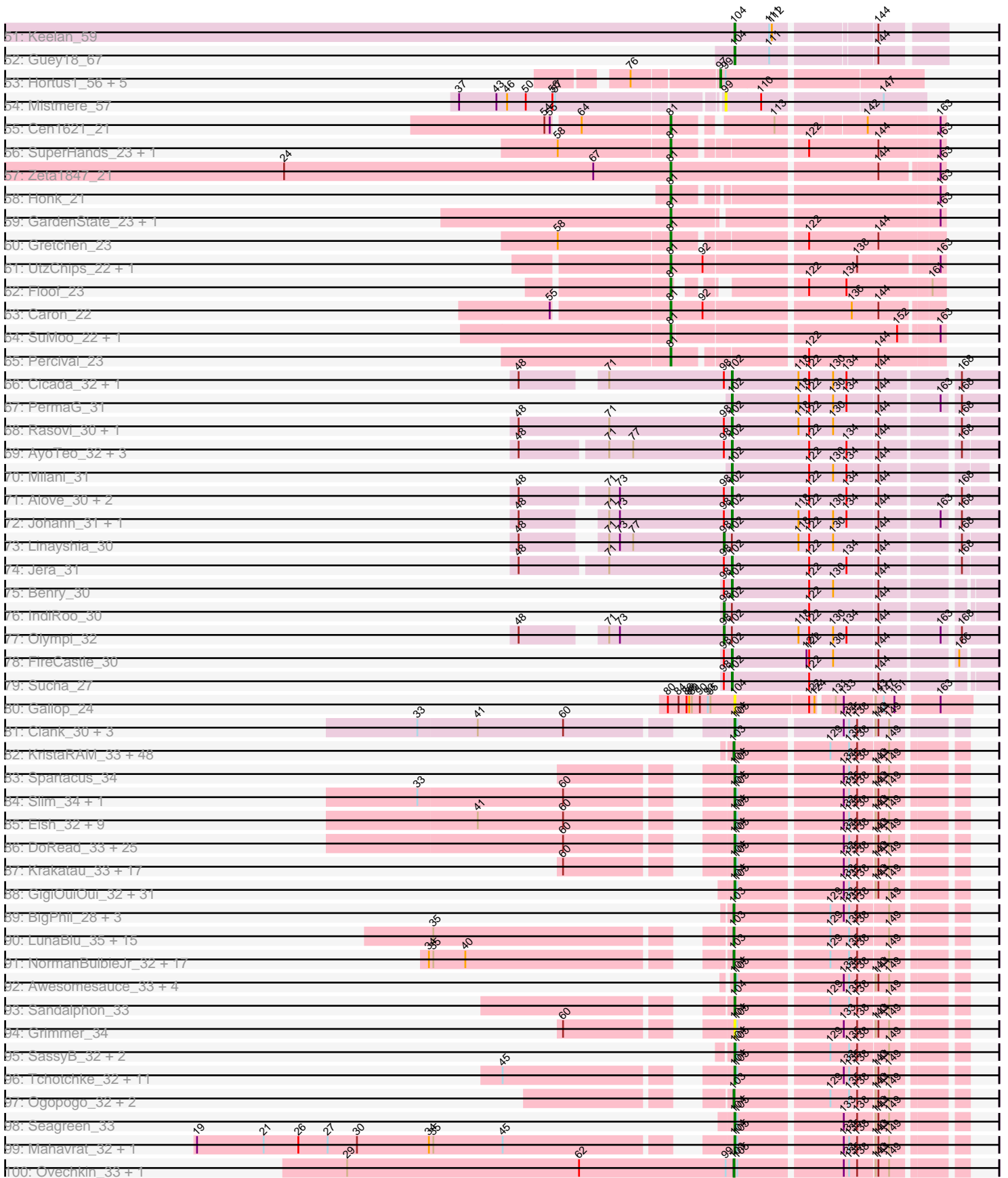


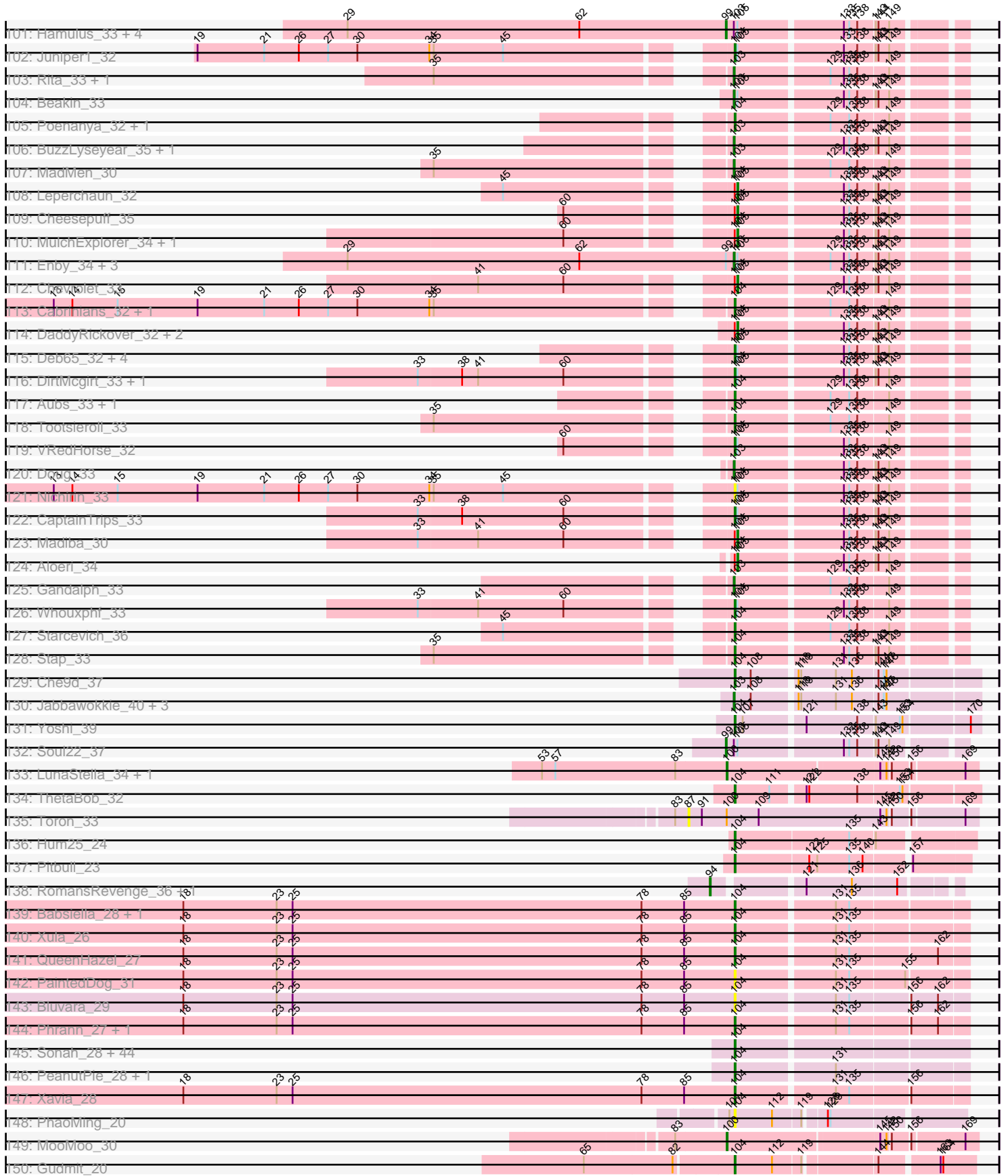
Zoomed Pham 311055



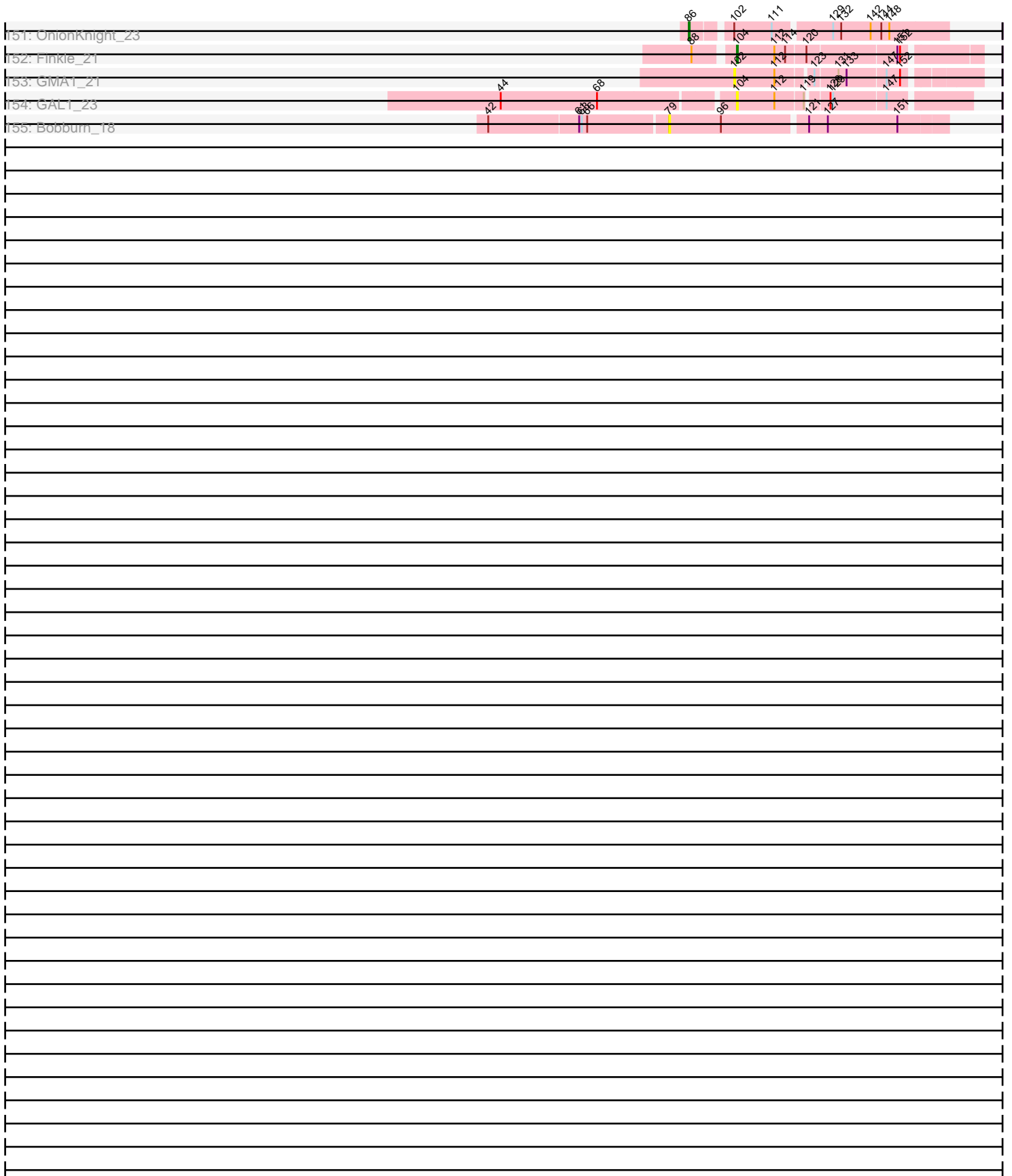
Zoomed Pham 311055



Zoomed Pham 311055



Zoomed Pham 311055



Note: Tracks are now grouped by subcluster and scaled. Switching in subcluster is indicated by changes in track color. Track scale is now set by default to display the region 30 bp upstream of start 1 to 30 bp downstream of the last possible start. If this default region is judged to be packed too tightly with annotated starts, the track will be further scaled to only show that region of the ORF with annotated starts. This action will be indicated by adding "Zoomed" to the title. For starts, yellow indicates the location of called starts comprised solely of Glimmer/GeneMark auto-annotations, green indicates the location of called starts with at least 1 manual gene annotation.

Pham 311055 Report

This analysis was run 06/27/26 on database version 652.

Pham number 311055 has 507 members, 52 are drafts.

Phages represented in each track:

- Track 1 : SPB78_23
- Track 2 : Marsus_68
- Track 3 : LilMartin_67, MulchMansion_67, Angela_67
- Track 4 : LilSaint_69, Riptide_67, Anedea_68
- Track 5 : Bmoc_68
- Track 6 : Mildred21_68
- Track 7 : Warpy_74, Jay2Jay_75, Evy_71, Targaryen_71
- Track 8 : Wipeout_70, Quaran19_72, Spelly_72, Spilled_73, Gibbi_76, MindFlayer_70, JimJam_72, Jollison_71, Brizzy_71, Bordeaux_70, Battuta_70, Birchlyn_69, Karimac_71, Amabiko_72, AcciDwight_76, SaltySpittoon_72, Daisy123_76, KentuckyRacer_72, PumpkinSpice_71, CeilingFan_71, TomSawyer_70, IchabodCrane_69, Rikishi_72, Starbow_70
- Track 9 : Stanimal_72, Sollertia_72, Genie2_72, BoomerJR_72, AngryGiraffe_71, Yaboi_72
- Track 10 : Mugiwara_71
- Track 11 : Tomas_74
- Track 12 : Elmer_74, Wofford_71
- Track 13 : LukeCage_71
- Track 14 : StarPlatinum_72
- Track 15 : Enygma_72
- Track 16 : RosePharie_49
- Track 17 : Manuel_46
- Track 18 : JPandJE_50, Romero_49, ToriToki_49, HaugeAnator_49, Percastrophe_49, Immanuel3_49, Olicious_49, ZooBear_49, Treat_49
- Track 19 : Stella_51
- Track 20 : Gremlin23_49, Geostin_44, Fabian_46, RetrieverFever_49, Vorvolakos_49, FlowerPower_49
- Track 21 : Zeigle_47, WRightOn_50, Kumquat_47
- Track 22 : Rideau_51, Dennebes_50
- Track 23 : Destructrice_48
- Track 24 : Muntaha_47, Wakanda_47
- Track 25 : Circinus_48, BillNye_46
- Track 26 : Chaewon_50
- Track 27 : G4_25
- Track 28 : Mahdia_22
- Track 29 : Gustav_22
- Track 30 : Morrissey_23

- Track 31 : Shagrat_28
- Track 32 : CurlyFries_25
- Track 33 : RegnumDei_26
- Track 34 : Lilas_23, EMsquaredA_23, Pollux_23, BritBrat_23, Bradissa_23, EnalisNailo_23, Marteena_23, Floral_23
- Track 35 : Confidence_23
- Track 36 : BeeGee_23
- Track 37 : Cashline_23
- Track 38 : Lton_19
- Track 39 : Pepperoni_20
- Track 40 : Lamberg_19, Nettuno_19, EdnaMode_19
- Track 41 : Matteo_19, Pickett_19
- Track 42 : Denise_19
- Track 43 : Moosehead_19, Morkie_21, InLimbo_22, PhorbesPhlower_21
- Track 44 : Faith5x5_19
- Track 45 : Archimedes_20
- Track 46 : Chipko_23
- Track 47 : Coriander_23, RayTheFireFly_23, Doggs_22
- Track 48 : Lucky10_21
- Track 49 : Ecliptus_28, ODay_29
- Track 50 : Ronaldo_64, Ziko_64, Fryberger_61, Volt_64
- Track 51 : Keelan_59
- Track 52 : Guey18_67
- Track 53 : Hortus1_56, Alleb_57, Pioneer3_56, OlinDD_56, Tandem_56, Platte_56
- Track 54 : Mistmere_57
- Track 55 : Cen1621_21
- Track 56 : SuperHands_23, Forester_23
- Track 57 : Zeta1847_21
- Track 58 : Honk_21
- Track 59 : GardenState_23, IAmGroot_23
- Track 60 : Gretchen_23
- Track 61 : UtzChips_22, Barnstormer_22
- Track 62 : Floof_23
- Track 63 : Caron_22
- Track 64 : SuMoo_22, Mabodamaca_23
- Track 65 : Percival_23
- Track 66 : Cicada_32, SBlackberry_30
- Track 67 : PermaG_31
- Track 68 : Rasovi_30, Htur_30
- Track 69 : AyoTeo_32, Labella_32, TurboVicky_30, Typher_32
- Track 70 : Milani_31
- Track 71 : Alove_30, Zanella_30, Rootkit7_30
- Track 72 : Johann_31, Goodman_31
- Track 73 : Linayshia_30
- Track 74 : Jera_31
- Track 75 : Benry_30
- Track 76 : IndiRoo_30
- Track 77 : Olympi_32
- Track 78 : FireCastle_30
- Track 79 : Sucha_27
- Track 80 : Gallop_24
- Track 81 : Clank_30, Harley_32, Ibhubesi_32, Minnie_34

- Track 82 : KristaRAM_33, Shauna1_29, Hegedechwinu_33, MinionDave_35, MilleniumForce_33, Hlubikazi_33, Whatsapiecost_33, Eradicator_32, Melissauren88_32, Violac_33, DeadP_32, Fruitloop_31, Akhila_26, Batiatus_32, WillSterrel_34, Piper2020_34, Juice456_34, Tweety_32, Mandlovu_33, Latretium_33, JalFarm20_35, IrishSherpFalk_34, Flathead_32, Ardmore_31, Doomslug_36, Blarby_41, Brocalys_27, Strokeseat_33, OwlsT2W_33, Ms6_26, PhesterPhotato_32, MilanaBonita_26, NewHope4_36, Brushbloom_33, Coco12_32, Taj_32, Phanphagia_29, Pippy_26, Vivum_33, SilverChicken_40, Mutaforma13_32, Wee_33, DLane_32, Beanstalk_37, Brookers_30, MulchSalad_31, Wachhund_32, Phalconet_32, Leozinho_34
- Track 83 : Spartacus_34
- Track 84 : Slim_34, Emmaloid_34
- Track 85 : Eish_32, KingJulian_32, Corium_32, PatoPoderoso_32, Sabbb_33, Job42_36, Fancypants_32, Moonbeam_33, DosHalletts_34, ArcusAngelus_32
- Track 86 : DoRead_33, Gorge_32, Enzomatic_37, QuickMath_33, Kimberlium_34, Quico_33, Girafales_33, Saal_32, Spoonbill_32, Sparkdehlily_32, EmiMonkey_33, DRBy19_32, James_32, PhilipPhlop_33, SeaLumen_36, Florinda_32, Mattes_32, Crumble_26, Kersh_31, Okabe_33, Radiance_32, BobaPhett_32, OlympiaSaint_32, Philus_32, Polo2Bam_37, TDanisky_32
- Track 87 : Krakatau_33, Peridot_37, Cornucopia_33, DillTech15_32, Fastidio_34, Mantra_32, Chuckly_32, Totinger_33, LittleShirley_35, Rockne_32, Phatniss_33, UncleRicky_35, Llij_32, DotProduct_32, Drago_33, PMC_32, Rialto_36, XFactor_32
- Track 88 : GigiOuiOui_32, Blexus_32, Empress_33, Royals2015_32, Inventum_32, JoeyJr_32, OldBen_32, Phasih_33, Plumbus_34, SiSi_32, RockyHorror_33, Pollywog_32, RitaG_33, Veteran_32, Scottish_33, Sassafras_33, Frankie_36, Zerg_32, Polka14_33, Dorothy_32, GUmbie_32, Mozy_34, KingMidas_34, Nitzel_33, Karhdo_32, Dante_32, Daenerys_32, RedBird_32, Che8_34, Alexphander_35, Mwanjiwa_33, DaWorst_34
- Track 89 : BigPhil_28, Sarma624_28, Cerasum_28, Velveteen_28
- Track 90 : LunaBlu_35, Jant_33, Cornie_32, Emma_34, Galactic_34, Renaud18_32, Filuzino_32, ShroomBoi_29, Firehouse51_33, Mova_33, Kenuha5_29, Bobi_34, SuperGrey_33, Byougenkin_32, Bubbles123_34, Guppsters_34
- Track 91 : NormanBulbieJr_32, SwagPiggett_32, Yorick_32, Jarcob_32, LastJedi_26, Martik_32, Koella_26, Maravista_32, LilMoolah_32, Lizziana_32, Hades_33, Jennelsea_26, ShiLan_32, Clifton_26, Nivrat_32, ShowerHandel_32, Burwell21_32, Zizzle_32
- Track 92 : Awesomesauce_33, Misha28_33, TootsiePop_33, ChickenDinner_34, DocMcStuffins_34
- Track 93 : Sandalphon_33
- Track 94 : Grimmer_34
- Track 95 : SassyB_32, PopTart_32, Boomer_34
- Track 96 : Tchotchke_32, Seabastian_32, Ochi17_30, Estave1_30, Pacc40_32, OfUltron_32, Llama_32, Jinglebell_31, Modragons_32, AlpineSix_33, SimranZ1_35, Oksu_33
- Track 97 : Ogopogo_32, IbOuu_33, Ramsey_35
- Track 98 : Seagreen_33
- Track 99 : Mahavrat_32, Topiatin_35
- Track 100 : Ovechkin_33, StAnnes_31
- Track 101 : Hamulus_33, Girr_34, Ruby_34, Kingsley_31, MisterCuddles_34
- Track 102 : Juniper1_32
- Track 103 : Rita_33, Bipolar_29
- Track 104 : Beakin_33
- Track 105 : Poenanya_32, Doomphist_32

- Track 106 : BuzzLyseyear_35, Spikelee_34
- Track 107 : MadMen_30
- Track 108 : Leperchaun_32
- Track 109 : Cheesepuff_35
- Track 110 : MulchExplorer_34, FreddyB_32
- Track 111 : Enby_34, SG4_33, Lorde_34, EleanorGeorge_33
- Track 112 : Chevrolet_33
- Track 113 : Cabrinians_32, Priscilla_32
- Track 114 : DaddyRickover_32, BodEinwohner17_32, Marker_33
- Track 115 : Deb65_32, BlueCrab_32, Geralt_32, Nimbo_32, PHappiness_32
- Track 116 : DirtMcgirt_33, Lucia_33
- Track 117 : Aubs_33, Donkeykong_32
- Track 118 : Tootsieroll_33
- Track 119 : VRedHorse_32
- Track 120 : Doug_33
- Track 121 : Nichirin_33
- Track 122 : CaptainTrips_33
- Track 123 : Madiba_30
- Track 124 : Aloeri_34
- Track 125 : Gandalph_33
- Track 126 : Whouxphf_33
- Track 127 : Starcevich_36
- Track 128 : Stap_33
- Track 129 : Che9d_37
- Track 130 : Jabbawokkie_40, Zapner_39, Demsculpinboyz_38, Avani_37
- Track 131 : Yoshi_39
- Track 132 : Soul22_37
- Track 133 : LunaStella_34, TChen_32
- Track 134 : ThetaBob_32
- Track 135 : Toron_33
- Track 136 : Hum25_24
- Track 137 : Pitbull_23
- Track 138 : RomansRevenge_36, Boise_35
- Track 139 : Babsiella_28, HC_29
- Track 140 : Xula_26
- Track 141 : QueenHazel_27
- Track 142 : PaintedDog_31
- Track 143 : Bluvara_29
- Track 144 : Phrann_27, Impisi_28
- Track 145 : Sonah_28, Jung_27, Gavriela_28, Chubbello_28, Ksquared_28, Phegasus_28, Fishburne_28, Techage_28, BronnyJr_28, Brusacoram_28, Shipwreck_30, Pygmy_30, Jebeks_28, Etoile_28, CactusJack_28, Juniormint_28, Atcoo_28, StressBall_28, Glaske_28, Bartholomew_27, Venti_28, Dynamo_28, Polkaroo_28, Necropolis_28, Mangethe_28, Majeke_28, HUHilltop_28, FirstPlacePfu_28, Vidya_28, Megiddo_28, Zilizebeth_28, Camster_28, Kari_28, KilKor_28, Phalm_28, Phineas_28, Langerak_28, GreaseLightnin_28, StevieRay_28, Bunnies_28, Donovan_28, Malithi_28, Thespis_28, Arib1_28, GaloreK_28
- Track 146 : PeanutPie_28, Bhagsy_28
- Track 147 : Xavia_28
- Track 148 : PhaoMing_20
- Track 149 : MooMoo_30
- Track 150 : Gudmit_20
- Track 151 : OnionKnight_23

- Track 152 : Finkle_21
- Track 153 : GMA1_21
- Track 154 : GAL1_23
- Track 155 : Bobburn_18

Summary of Final Annotations (See graph section above for start numbers):

The start number called the most often in the published annotations is 104, it was called in 263 of the 455 non-draft genes in the pham.

Genes that call this "Most Annotated" start:

- AcciDwight_76, Alexphander_35, AlpineSix_33, Amabiko_72, Anedea_68, Angela_67, AngryGiraffe_71, Archimedes_20, ArcusAngelus_32, Arib1_28, Atcoo_28, Aubs_33, Awesomesauce_33, Babsiella_28, Bartholomew_27, Battuta_70, BeeGee_23, Bhagsy_28, BillNye_46, Birchlyn_69, Blexus_32, BlueCrab_32, Bluvara_29, Bmoc_68, BobaPhett_32, BoomerJR_72, Boomer_34, Bordeaux_70, Bradissa_23, BritBrat_23, Brizzy_71, BronnyJr_28, Brusacoram_28, Bunnies_28, Cabrinians_32, CactusJack_28, Camster_28, CaptainTrips_33, Cashline_23, CeilingFan_71, Chaewon_50, Che8_34, Che9d_37, ChickenDinner_34, Chipko_23, Chubbello_28, Chuckly_32, Circinus_48, Clank_30, Confidence_23, Corium_32, Cornucopia_33, Crumble_26, CurlyFries_25, DRBy19_32, DaWorst_34, Daenerys_32, Daisy123_76, Dante_32, Deb65_32, DillTech15_32, DirtMcgirt_33, DoRead_33, DocMcStuffins_34, Donkeykong_32, Donovan_28, Doomphist_32, Dorothy_32, DosHalletts_34, DotProduct_32, Drago_33, Dynamo_28, EMSquaredA_23, EdnaMode_19, Eish_32, Elmer_74, EmiMonkey_33, Emmaloid_34, Empress_33, EnalisNailo_23, Enygma_72, Enzomatic_37, Estave1_30, Etoile_28, Evy_71, Faith5x5_19, Fancypants_32, Fastidio_34, Finkle_21, FirstPlacePfu_28, Fishburne_28, Floral_23, Florinda_32, Frankie_36, Fryberger_61, GAL1_23, GUmbie_32, Gallop_24, GaloreK_28, Gavriela_28, Genie2_72, Geralt_32, Gibbi_76, GigiOuiOui_32, Girafales_33, Glaske_28, Gorge_32, GreaseLightnin_28, Grimmer_34, Gudmit_20, Guey18_67, Gustav_22, HC_29, HUHilltop_28, Harley_32, Hum25_24, Ibhubesi_32, IchabodCrane_69, Impisi_28, InLimbo_22, Inventum_32, James_32, Jay2Jay_75, Jebeks_28, JimJam_72, Jinglebell_31, Job42_36, JoeyJr_32, Jollison_71, Jung_27, Juniormint_28, Juniper1_32, Karhdo_32, Kari_28, Karimac_71, Keelan_59, KentuckyRacer_72, Kersh_31, KilKor_28, Kimberlium_34, KingJulian_32, KingMidas_34, Krakatau_33, Ksquared_28, Lamberg_19, Langerak_28, LilMartin_67, LilSaint_69, Lilas_23, LittleShirley_35, Llama_32, Llij_32, Lton_19, Lucia_33, Lucky10_21, LukeCage_71, Mahavrat_32, Mahdia_22, Majeke_28, Malithi_28, Mangethe_28, Mantra_32, Marsus_68, Marteena_23, Mattes_32, Megiddo_28, Mildred21_68, MindFlayer_70, Minnie_34, Misha28_33, Modragons_32, Moonbeam_33, Moosehead_19, Morkie_21, Morrissey_23, Mozy_34, Mugiwara_71, MulchMansion_67, Muntaha_47, Mwanjiwa_33, Necropolis_28, Nettuno_19, Nichirin_33, Nimbo_32, Nitzel_33, Ochi17_30, OfUltron_32, Okabe_33, Oksu_33, OldBen_32, OlympiaSaint_32, PHappiness_32, PMC_32, Pacc40_32, PaintedDog_31, PatoPoderoso_32, PeanutPie_28, Pepperoni_20, Peridot_37, Phalm_28, PhaoMing_20, Phasih_33, Phatniss_33, Phegasus_28, Philus_32, Phineas_28, PhlipPhlop_33, PhorbesPhlower_21, Phrann_27, Pitbull_23, Plumbus_34, Poenanya_32, Polka14_33, Polkaroo_28, Pollux_23, Pollywog_32, Polo2Bam_37, PopTart_32, Priscilla_32, PumpkinSpice_71, Pygmy_30, Quarant19_72, QueenHazel_27, QuickMath_33, Quico_33, Radiance_32,

RedBird_32, RegnumDei_26, Rialto_36, Rikishi_72, Riptide_67, RitaG_33, Rockne_32, RockyHorror_33, Ronaldo_64, Royals2015_32, SPB78_23, Saal_32, Sabbb_33, SaltySpitoon_72, Sandalphon_33, Sassafras_33, SassyB_32, Scottish_33, SeaLumen_36, Seabastian_32, Seagreen_33, Shagrat_28, Shipwreck_30, SiSi_32, SimranZ1_35, Slim_34, Sollertia_72, Sonah_28, Sparkdehlily_32, Spartacus_34, Spelly_72, Spilled_73, Spoonbill_32, Stanimal_72, Stap_33, StarPlatinum_72, Starbow_70, Starcevich_36, StevieRay_28, StressBall_28, TDanisky_32, Targaryen_71, Tchochke_32, Techage_28, Thespis_28, ThetaBob_32, TomSawyer_70, Tomas_74, TootsiePop_33, Tootsieroll_33, Topiatin_35, Totinger_33, UncleRicky_35, VRedHorse_32, Venti_28, Veteran_32, Vidya_28, Volt_64, Wakanda_47, Warpy_74, Whouxphf_33, Wipeout_70, Wofford_71, XFactor_32, Xavia_28, Xula_26, Yaboi_72, Yoshi_39, Zerg_32, Ziko_64, Zilizebeth_28,

Genes that have the "Most Annotated" start but do not call it:

- Aleri_34, BodEinwohner17_32, CheesePuff_35, Chevrolet_33, Coriander_23, DaddyRickover_32, Denise_19, Doggs_22, Ecliptus_28, FreddyB_32, Leperchaun_32, Madiba_30, Manuel_46, Marker_33, Matteo_19, MulchExplorer_34, ODay_29, Pickett_19, RayTheFireFly_23,

Genes that do not have the "Most Annotated" start:

- Akhila_26, Alleb_57, Alove_30, Ardmore_31, Avani_37, AyoTeo_32, Barnstormer_22, Batiatus_32, Beakin_33, Beanstalk_37, Benry_30, BigPhil_28, Bipolar_29, Blarby_41, Bobburn_18, Bobi_34, Boise_35, Brocalys_27, Brookers_30, Brushbloom_33, Bubbles123_34, Burwell21_32, BuzzLyseyear_35, Byougenkin_32, Caron_22, Cen1621_21, Cerasum_28, Cicada_32, Clifton_26, Coco12_32, Cornie_32, DLane_32, DeadP_32, Demsculpinboyz_38, Dennebes_50, Destructrice_48, Doomslug_36, Doug_33, EleanorGeorge_33, Emma_34, Enby_34, Eradicator_32, Fabian_46, Filuzino_32, FireCastle_30, Firehouse51_33, Flathead_32, Floof_23, FlowerPower_49, Forester_23, Fruitloop_31, G4_25, GMA1_21, Galactic_34, Gandolph_33, GardenState_23, Geostin_44, Girr_34, Goodman_31, Gremlin23_49, Gretchen_23, Guppsters_34, Hades_33, Hamulus_33, HaugeAnator_49, Hegedechwinu_33, Hlubikazi_33, Honk_21, Hortus1_56, Htur_30, IAmGroot_23, IbOuu_33, Immanuel3_49, IndiRoo_30, IrishSherpFalk_34, JPandJE_50, Jabbawokkie_40, JalFarm20_35, Jant_33, Jarcob_32, Jennelsea_26, Jera_31, Johann_31, Juice456_34, Kenuha5_29, Kingsley_31, Koella_26, KristaRAM_33, Kumquat_47, Labella_32, LastJedi_26, Latretium_33, Leozinho_34, LilMoolah_32, Linayshia_30, Lizziana_32, Lorde_34, LunaBlu_35, LunaStella_34, Mabodamaca_23, MadMen_30, Mandlovu_33, Maravista_32, Martik_32, Melissauren88_32, MilanaBonita_26, Milani_31, MilleniumForce_33, MinionDave_35, MisterCuddles_34, Mistmere_57, MooMoo_30, Mova_33, Ms6_26, MulchSalad_31, Mutaforma13_32, NewHope4_36, Nivrat_32, NormanBulbieJr_32, OgoPogo_32, Olicious_49, OlinDD_56, Olympi_32, OnionKnight_23, Ovechkin_33, OwlsT2W_33, Percastrophe_49, Percival_23, PermaG_31, Phalconet_32, Phanphagia_29, PhesterPhotato_32, Pioneer3_56, Piper2020_34, Pippy_26, Platte_56, Ramsey_35, Rasovi_30, Renaud18_32, RetrieverFever_49, Rideau_51, Rita_33, RomansRevenge_36, Romero_49, Rootkit7_30, RosePharie_49, Ruby_34, SBlackberry_30, SG4_33, Sarma624_28, Shauna1_29, ShiLan_32, ShowerHandel_32, ShroomBoi_29, SilverChicken_40, Soul22_37, Spikelee_34, StAnnes_31, Stella_51, Strokeseat_33, SuMoo_22, Sucha_27, SuperGrey_33, SuperHands_23, SwagPigglett_32, TChen_32, Taj_32, Tandem_56, ToriToki_49, Toron_33, Treat_49, TurboVicky_30, Tweety_32, Typher_32, UtzChips_22, Velveteen_28, Violac_33, Vivum_33, Vorvolakos_49, WRightOn_50, Wachhund_32,

Wee_33, Whatsapiecost_33, WillSterrel_34, Yorick_32, Zanella_30, Zapner_39, Zeigle_47, Zeta1847_21, Zizzle_32, ZooBear_49,

Summary by start number:

Start 79:

- Found in 1 of 507 (0.2%) of genes in pham
- No Manual Annotations of this start.
- Called 100.0% of time when present
- Phage (with cluster) where this start called: Bobburn_18 (singleton),

Start 81:

- Found in 15 of 507 (3.0%) of genes in pham
- Manual Annotations of this start: 15 of 455
- Called 100.0% of time when present
- Phage (with cluster) where this start called: Barnstormer_22 (EH), Caron_22 (EH), Cen1621_21 (EH), Floof_23 (EH), Forester_23 (EH), GardenState_23 (EH), Gretchen_23 (EH), Honk_21 (EH), IAmGroot_23 (EH), Mabodamaca_23 (EH), Percival_23 (EH), SuMoo_22 (EH), SuperHands_23 (EH), UtzChips_22 (EH), Zeta1847_21 (EH),

Start 86:

- Found in 5 of 507 (1.0%) of genes in pham
- Manual Annotations of this start: 1 of 455
- Called 20.0% of time when present
- Phage (with cluster) where this start called: OnionKnight_23 (singleton),

Start 87:

- Found in 1 of 507 (0.2%) of genes in pham
- No Manual Annotations of this start.
- Called 100.0% of time when present
- Phage (with cluster) where this start called: Toron_33 (F6),

Start 94:

- Found in 2 of 507 (0.4%) of genes in pham
- Manual Annotations of this start: 1 of 455
- Called 100.0% of time when present
- Phage (with cluster) where this start called: Boise_35 (FT), RomansRevenge_36 (FT),

Start 97:

- Found in 6 of 507 (1.2%) of genes in pham
- Manual Annotations of this start: 6 of 455
- Called 100.0% of time when present
- Phage (with cluster) where this start called: Alleb_57 (ED1), Hortus1_56 (ED1), OlinDD_56 (ED1), Pioneer3_56 (ED1), Platte_56 (ED1), Tandem_56 (ED1),

Start 98:

- Found in 20 of 507 (3.9%) of genes in pham
- Manual Annotations of this start: 3 of 455
- Called 15.0% of time when present
- Phage (with cluster) where this start called: IndiRoo_30 (EJ), Linayshia_30 (EJ), Olympi_32 (EJ),

Start 99:

- Found in 19 of 507 (3.7%) of genes in pham
- Manual Annotations of this start: 6 of 455
- Called 36.8% of time when present
- Phage (with cluster) where this start called: Girr_34 (F1), Hamulus_33 (F1), Kingsley_31 (F1), MisterCuddles_34 (F1), Mistmere_57 (ED3), Ruby_34 (F1), Soul22_37 (F2),

Start 100:

- Found in 4 of 507 (0.8%) of genes in pham
- Manual Annotations of this start: 3 of 455
- Called 75.0% of time when present
- Phage (with cluster) where this start called: LunaStella_34 (F4), MooMoo_30 (singleton), TChen_32 (F4),

Start 101:

- Found in 12 of 507 (2.4%) of genes in pham
- Manual Annotations of this start: 8 of 455
- Called 66.7% of time when present
- Phage (with cluster) where this start called: Coriander_23 (DB), Denise_19 (CZ5), Doggs_22 (DB), Ecliptus_28 (DN), Matteo_19 (CZ2), ODay_29 (DN), Pickett_19 (CZ2), RayTheFireFly_23 (DB),

Start 102:

- Found in 26 of 507 (5.1%) of genes in pham
- Manual Annotations of this start: 17 of 455
- Called 80.8% of time when present
- Phage (with cluster) where this start called: Alove_30 (EJ), AyoTeo_32 (EJ), Benry_30 (EJ), Cicada_32 (EJ), FireCastle_30 (EJ), G4_25 (BW), GMA1_21 (singleton), Goodman_31 (EJ), Htur_30 (EJ), Jera_31 (EJ), Johann_31 (EJ), Labella_32 (EJ), Milani_31 (EJ), PermaG_31 (EJ), Rasovi_30 (EJ), Rootkit7_30 (EJ), SBlackberry_30 (EJ), Sucha_27 (EJ), TurboVicky_30 (EJ), Typher_32 (EJ), Zanella_30 (EJ),

Start 103:

- Found in 114 of 507 (22.5%) of genes in pham
- Manual Annotations of this start: 99 of 455
- Called 94.7% of time when present
- Phage (with cluster) where this start called: Akhila_26 (F1), Ardmore_31 (F1), Avani_37 (F2), Batiatus_32 (F1), Beakin_33 (F1), Beanstalk_37 (F1), BigPhil_28 (F1), Bipolar_29 (F1), Blarby_41 (F), Bobi_34 (F1), Brocalys_27 (F1), Brookers_30 (F1), Brushbloom_33 (F1), Bubbles123_34 (F1), Burwell21_32 (F1), BuzzLyseyear_35 (F1), Byougenkin_32 (F1), Cerasum_28 (F1), Clifton_26 (F1), Coco12_32 (F1), Cornie_32 (F5), DLane_32 (F1), DeadP_32 (F1), Demsculpinboyz_38 (F2), Doomslug_36 (F), Doug_33 (F1), EleanorGeorge_33 (F1), Emma_34 (F1), Enby_34 (F1), Eradicator_32 (F1), Filuzino_32 (F1), Firehouse51_33 (F1), Flathead_32 (F1), Fruitloop_31 (F1), Galactic_34 (F1), Gandolph_33 (F1), Guppsters_34 (F1), Hades_33 (F1), Hegedechwinu_33 (F1), Hlubikazi_33 (F1), IbOuu_33 (F1), IrishSherpFalk_34 (F1), Jabbawokkie_40 (F2), JalFarm20_35 (F1), Jant_33 (F1), Jarcob_32 (F1), Jennelsea_26 (F1), Juice456_34 (F1), Kenuha5_29 (F1), Koella_26 (F1), KristaRAM_33 (F1), LastJedi_26 (F1), Latretium_33 (F1), Leozinho_34 (F1), LilMoolah_32 (F1), Lizziana_32 (F1), Lorde_34 (F1), LunaBlu_35 (F1), MadMen_30

(F1), Mandlovu_33 (F1), Maravista_32 (F1), Martik_32 (F1), Melissauren88_32 (F1), MilanaBonita_26 (F1), MilleniumForce_33 (F1), MinionDave_35 (F1), Mova_33 (F1), Ms6_26 (F1), MulchSalad_31 (F7), Mutaforma13_32 (F1), NewHope4_36 (F1), Nivrat_32 (F1), NormanBulbieJr_32 (F1), OgoPogo_32 (F1), Ovechkin_33 (F1), OwlsT2W_33 (F1), Phalconet_32 (F1), Phanphagia_29 (F1), PhesterPhotato_32 (F1), Piper2020_34 (F1), Pippy_26 (F1), Ramsey_35 (F1), Renaud18_32 (F4), Rita_33 (F1), SG4_33 (F1), Sarma624_28 (F1), Shauna1_29 (F1), ShiLan_32 (F1), ShowerHandel_32 (F1), ShroomBoi_29 (F1), SilverChicken_40 (F2), Spikelee_34 (F1), StAnnes_31 (F1), Strokeseat_33 (F1), SuperGrey_33 (F1), SwagPiggett_32 (F1), Taj_32 (F1), Tweety_32 (F1), Velveteen_28 (F1), Violac_33 (F1), Vivum_33 (F1), Wachhund_32 (F1), Wee_33 (F1), Whatsapiecost_33 (F1), WillSterrel_34 (F1), Yorick_32 (F1), Zapner_39 (F2), Zizzle_32 (F1),

Start 104:

- Found in 316 of 507 (62.3%) of genes in pham
- Manual Annotations of this start: 263 of 455
- Called 94.0% of time when present
- Phage (with cluster) where this start called: AcciDwight_76 (BE2), Alexphander_35 (F1), AlpineSix_33 (F1), Amabiko_72 (BE2), Anedea_68 (BE1), Angela_67 (BE1), AngryGiraffe_71 (BE2), Archimedes_20 (DA), ArcusAngelus_32 (F1), Arib1_28 (P1), Atcoo_28 (P1), Aubs_33 (F1), Awesomesauce_33 (F1), Babsiella_28 (I1), Bartholomew_27 (P1), Battuta_70 (BE2), BeeGee_23 (CY5), Bhagsy_28 (P1), BillNye_46 (BK2), Birchlyn_69 (BE2), Blexus_32 (F1), BlueCrab_32 (F1), Bluvara_29 (I3), Bmoc_68 (BE1), BobaPhett_32 (F1), BoomerJR_72 (BE2), Boomer_34 (F1), Bordeaux_70 (BE2), Bradissa_23 (CY1), BritBrat_23 (CY2), Brizzy_71 (BE2), BronnyJr_28 (P1), Brusacoram_28 (P1), Bunnies_28 (P1), Cabrinians_32 (F1), CactusJack_28 (P1), Camster_28 (P1), CaptainTrips_33 (F1), Cashline_23 (CY6), CeilingFan_71 (BE2), Chaewon_50 (BK2), Che8_34 (F1), Che9d_37 (F2), ChickenDinner_34 (F1), Chipko_23 (DB), Chubbello_28 (P1), Chuckly_32 (F1), Circinus_48 (BK2), Clank_30 (F), Confidence_23 (CY1), Corium_32 (F1), Cornucopia_33 (F1), Crumble_26 (F1), CurlyFries_25 (CF), DRBy19_32 (F1), DaWorst_34 (F1), Daenerys_32 (F1), Daisy123_76 (BE2), Dante_32 (F1), Deb65_32 (F1), DillTech15_32 (F1), DirtMcGirt_33 (F1), DoRead_33 (F1), DocMcStuffs_34 (F1), Donkeykong_32 (F1), Donovan_28 (P1), Doomphist_32 (F1), Dorothy_32 (F1), DosHalletts_34 (F1), DotProduct_32 (F1), Drago_33 (F1), Dynamo_28 (P1), EMSquaredA_23 (CY1), EdnaMode_19 (CZ2), Eish_32 (F1), Elmer_74 (BE2), EmiMonkey_33 (F1), Emmaloid_34 (F1), Empress_33 (F1), EnalisNailo_23 (CY1), Enygma_72 (BE2), Enzomatic_37 (F1), Estave1_30 (F1), Etoile_28 (P1), Evy_71 (BE1), Faith5x5_19 (CZ6), Fancypants_32 (F1), Fastidio_34 (F1), Finkle_21 (singleton), FirstPlacePfu_28 (P1), Fishburne_28 (P1), Floral_23 (CY1), Florinda_32 (F1), Frankie_36 (F1), Fryberger_61 (DP), GAL1_23 (singleton), GUmble_32 (F1), Gallop_24 (ES), GaloreK_28 (P1), Gavriela_28 (P1), Genie2_72 (BE2), Geralt_32 (F1), Gibbi_76 (BE2), GigiOuiOui_32 (F1), Girafales_33 (F1), Glaske_28 (P1), Gorge_32 (F1), GreaseLightnin_28 (P1), Grimmer_34 (F1), Gudmit_20 (singleton), Guey18_67 (DP), Gustav_22 (CD), HC_29 (I1), HUHilltop_28 (P1), Harley_32 (F1), Hum25_24 (FQ1), Ibhuesi_32 (F1), IchabodCrane_69 (BE2), Impisi_28 (N), InLimbo_22 (DH), Invention_32 (F1), James_32 (F1), Jay2Jay_75 (BE1), Jebeks_28 (P1), JimJam_72 (BE2), Jinglebell_31 (F1), Job42_36 (F1), JoeyJr_32 (F1), Jollison_71 (BE2), Jung_27 (P1), Juniormint_28 (P1), Juniper1_32 (F1), Karhdo_32 (F1), Kari_28 (P1), Karimac_71 (BE2), Keelan_59 (DP), KentuckyRacer_72 (BE2), Kersh_31 (F1), KilKor_28 (P1), Kimberlium_34 (F1), KingJulian_32 (F1), KingMidas_34 (F1), Krakatau_33 (F1), Ksquared_28 (P1), Lamberg_19 (CZ2), Langerak_28 (P1), LilMartin_67 (BE1), LilSaint_69 (BE1), Lilas_23 (CY1),

LittleShirley_35 (F1), Llama_32 (F1), Llij_32 (F1), Lton_19 (CZ), Lucia_33 (F1), Lucky10_21 (DH), LukeCage_71 (BE2), Mahavrat_32 (F1), Mahdia_22 (CD), Majeke_28 (P1), Malithi_28 (P1), Mangethe_28 (P1), Mantra_32 (F1), Marsus_68 (BE1), Marteena_23 (CY1), Mattes_32 (F1), Megiddo_28 (P1), Mildred21_68 (BE1), MindFlayer_70 (BE2), Minnie_34 (F1), Misha28_33 (F1), Modragons_32 (F1), Moonbeam_33 (F1), Moosehead_19 (CZ6), Morkie_21 (DH), Morrissey_23 (CD), Mozy_34 (F1), Mugiwara_71 (BE2), MulchMansion_67 (BE1), Muntaha_47 (BK2), Mwanjiwa_33 (F1), Necropolis_28 (P1), Nettuno_19 (CZ2), Nichirin_33 (F1), Nimbo_32 (F1), Nitzel_33 (F1), Ochi17_30 (F1), OfUltron_32 (F1), Okabe_33 (F8), Oksu_33 (F1), OldBen_32 (F1), OlympiaSaint_32 (F1), PHappiness_32 (F1), PMC_32 (F1), Pacc40_32 (F1), PaintedDog_31 (I1), PatoPoderoso_32 (F1), PeanutPie_28 (P1), Pepperoni_20 (CZ), Peridot_37 (F1), Phalm_28 (P1), PhaoMing_20 (UNK), Phasih_33 (F1), Phatniss_33 (F1), Phegasus_28 (P1), Philus_32 (F1), Phineas_28 (P1), PhilipPhlop_33 (F1), PhorbesPhlower_21 (DH), Phrann_27 (N), Pitbull_23 (FQ1), Plumbus_34 (F1), Poenanya_32 (F1), Polka14_33 (F1), Polkaroo_28 (P1), Pollux_23 (CY1), Pollywog_32 (F1), Polo2Bam_37 (F1), PopTart_32 (F1), Priscilla_32 (F1), PumpkinSpice_71 (BE2), Pygmy_30 (P1), Quarant19_72 (BE2), QueenHazel_27 (I1), QuickMath_33 (F1), Quico_33 (F1), Radiance_32 (F1), RedBird_32 (F1), RegnumDei_26 (CF), Rialto_36 (F1), Rikishi_72 (BE2), Riptide_67 (BE1), RitaG_33 (F1), Rockne_32 (F1), RockyHorror_33 (F1), Ronaldo_64 (DP), Royals2015_32 (F1), SPB78_23 (BA), Saal_32 (F1), Sabbb_33 (F1), SaltySpittoon_72 (BE2), Sandalphon_33 (F1), Sassafras_33 (F1), SassyB_32 (F1), Scottish_33 (F1), SeaLumen_36 (F1), Seabastian_32 (F1), Seagreen_33 (F1), Shagrat_28 (CF), Shipwreck_30 (P1), SiSi_32 (F1), SimranZ1_35 (F1), Slim_34 (F1), Sollertia_72 (BE2), Sonah_28 (P1), Sparkdehlily_32 (F1), Spartacus_34 (F1), Spelly_72 (BE2), Spilled_73 (BE2), Spoonbill_32 (F1), Stanimal_72 (BE2), Stap_33 (F1), StarPlatinum_72 (BE2), Starbow_70 (BE2), Starcevic_36 (F1), StevieRay_28 (P1), StressBall_28 (P1), TDanisky_32 (F1), Targaryen_71 (BE1), Tchotchke_32 (F1), Techage_28 (P1), Thespis_28 (P1), ThetaBob_32 (F4), TomSawyer_70 (BE2), Tomas_74 (BE2), TootsiePop_33 (F1), Tootsieroll_33 (F1), Topiatin_35 (F1), Totinger_33 (F1), UncleRicky_35 (F1), VRedHorse_32 (F1), Venti_28 (P1), Veteran_32 (F1), Vidya_28 (P1), Volt_64 (DP), Wakanda_47 (BK2), Warpy_74 (BE1), Whouxphf_33 (F1), Wipeout_70 (BE2), Wofford_71 (BE2), XFactor_32 (F1), Xavia_28 (P3), Xula_26 (I1), Yaboi_72 (BE2), Yoshi_39 (F2), Zerg_32 (F1), Ziko_64 (DP), Zilizebeth_28 (P1),

Start 105:

- Found in 153 of 507 (30.2%) of genes in pham
- Manual Annotations of this start: 10 of 455
- Called 6.5% of time when present
- Phage (with cluster) where this start called: Aloeri_34 (F1), BodEinwohner17_32 (F1), Cheesepuff_35 (F1), Chevrolet_33 (F1), DaddyRickover_32 (F1), FreddyB_32 (F1), Leperchaun_32 (F1), Madiba_30 (F1), Marker_33 (F1), MulchExplorer_34 (F1),

Start 106:

- Found in 24 of 507 (4.7%) of genes in pham
- Manual Annotations of this start: 23 of 455
- Called 100.0% of time when present
- Phage (with cluster) where this start called: Dennebes_50 (BF), Destructrice_48 (BF), Fabian_46 (BF), FlowerPower_49 (BF), Geostin_44 (BF), Gremlin23_49 (BF), HaugeAnator_49 (BF), Immanuel3_49 (BF), JPandJE_50 (BF), Kumquat_47 (BF), Manuel_46 (BF), Olicious_49 (BF), Percastrophe_49 (BF), RetrieverFever_49 (BF), Rideau_51 (BF), Romero_49 (BF), RosePharie_49 (BF), Stella_51 (BF), ToriToki_49

(BF), Treat_49 (BF), Vorvolakos_49 (BF), WRightOn_50 (BF), Zeigle_47 (BF), ZooBear_49 (BF),

Summary by clusters:

There are 43 clusters represented in this pham: DN, BF, FT, BA, DH, P3, CZ2, CZ6, singleton, DA, ED3, ED1, CZ5, DP, CY6, I1, I3, F, CY2, CY1, P1, EH, CY5, EJ, DB, CF, N, CZ, BK2, UNK, ES, F1, F2, FQ1, F4, F5, F6, F7, F8, CD, BW, BE2, BE1,

Info for manual annotations of cluster BE1:

- Start number 104 was manually annotated 13 times for cluster BE1.

Info for manual annotations of cluster BE2:

- Start number 104 was manually annotated 34 times for cluster BE2.

Info for manual annotations of cluster BF:

- Start number 106 was manually annotated 23 times for cluster BF.

Info for manual annotations of cluster BK2:

- Start number 104 was manually annotated 4 times for cluster BK2.

Info for manual annotations of cluster BW:

- Start number 102 was manually annotated 1 time for cluster BW.

Info for manual annotations of cluster CD:

- Start number 104 was manually annotated 3 times for cluster CD.

Info for manual annotations of cluster CF:

- Start number 104 was manually annotated 3 times for cluster CF.

Info for manual annotations of cluster CY1:

- Start number 104 was manually annotated 8 times for cluster CY1.

Info for manual annotations of cluster CY2:

- Start number 104 was manually annotated 1 time for cluster CY2.

Info for manual annotations of cluster CY5:

- Start number 104 was manually annotated 1 time for cluster CY5.

Info for manual annotations of cluster CY6:

- Start number 104 was manually annotated 1 time for cluster CY6.

Info for manual annotations of cluster CZ:

- Start number 104 was manually annotated 2 times for cluster CZ.

Info for manual annotations of cluster CZ2:

- Start number 101 was manually annotated 2 times for cluster CZ2.
- Start number 104 was manually annotated 3 times for cluster CZ2.

Info for manual annotations of cluster CZ5:

- Start number 101 was manually annotated 1 time for cluster CZ5.

Info for manual annotations of cluster CZ6:

- Start number 104 was manually annotated 2 times for cluster CZ6.

Info for manual annotations of cluster DA:

- Start number 104 was manually annotated 1 time for cluster DA.

Info for manual annotations of cluster DB:

- Start number 101 was manually annotated 3 times for cluster DB.

Info for manual annotations of cluster DH:

- Start number 104 was manually annotated 3 times for cluster DH.

Info for manual annotations of cluster DN:

- Start number 101 was manually annotated 2 times for cluster DN.

Info for manual annotations of cluster DP:

- Start number 104 was manually annotated 6 times for cluster DP.

Info for manual annotations of cluster ED1:

- Start number 97 was manually annotated 6 times for cluster ED1.

Info for manual annotations of cluster EH:

- Start number 81 was manually annotated 15 times for cluster EH.

Info for manual annotations of cluster EJ:

- Start number 98 was manually annotated 3 times for cluster EJ.
- Start number 102 was manually annotated 16 times for cluster EJ.

Info for manual annotations of cluster F1:

- Start number 99 was manually annotated 5 times for cluster F1.
- Start number 103 was manually annotated 93 times for cluster F1.
- Start number 104 was manually annotated 124 times for cluster F1.
- Start number 105 was manually annotated 10 times for cluster F1.

Info for manual annotations of cluster F2:

- Start number 99 was manually annotated 1 time for cluster F2.
- Start number 103 was manually annotated 4 times for cluster F2.
- Start number 104 was manually annotated 2 times for cluster F2.

Info for manual annotations of cluster F4:

- Start number 100 was manually annotated 2 times for cluster F4.
- Start number 103 was manually annotated 1 time for cluster F4.
- Start number 104 was manually annotated 1 time for cluster F4.

Info for manual annotations of cluster F5:

- Start number 103 was manually annotated 1 time for cluster F5.

Info for manual annotations of cluster FQ1:

- Start number 104 was manually annotated 2 times for cluster FQ1.

Info for manual annotations of cluster FT:

- Start number 94 was manually annotated 1 time for cluster FT.

Info for manual annotations of cluster I1:

- Start number 104 was manually annotated 4 times for cluster I1.

Info for manual annotations of cluster N:

- Start number 104 was manually annotated 1 time for cluster N.

Info for manual annotations of cluster P1:

- Start number 104 was manually annotated 41 times for cluster P1.

Info for manual annotations of cluster P3:

- Start number 104 was manually annotated 1 time for cluster P3.

Gene Information:

Gene: AcciDwight_76 Start: 53084, Stop: 53335, Start Num: 104

Candidate Starts for AcciDwight_76:

(Start: 104 @53084 has 263 MA's), (120, 53159),

Gene: Akhila_26 Start: 24607, Stop: 24840, Start Num: 103

Candidate Starts for Akhila_26:

(Start: 103 @24607 has 99 MA's), (129, 24706), (135, 24727), (138, 24736), (149, 24769),

Gene: Alexphander_35 Start: 29298, Stop: 29531, Start Num: 104

Candidate Starts for Alexphander_35:

(Start: 104 @29298 has 263 MA's), (Start: 105 @29301 has 10 MA's), (133, 29412), (135, 29418), (138, 29427), (143, 29445), (144, 29448), (149, 29460),

Gene: Alleb_57 Start: 35882, Stop: 36097, Start Num: 97

Candidate Starts for Alleb_57:

(76, 35792), (Start: 97 @35882 has 6 MA's), (Start: 99 @35888 has 6 MA's),

Gene: Aloeri_34 Start: 29154, Stop: 29384, Start Num: 105

Candidate Starts for Aloeri_34:

(Start: 104 @29151 has 263 MA's), (Start: 105 @29154 has 10 MA's), (133, 29265), (135, 29271), (138, 29280), (143, 29298), (144, 29301), (149, 29313),

Gene: Alove_30 Start: 22521, Stop: 22799, Start Num: 102

Candidate Starts for Alove_30:

(48, 22290), (71, 22383), (73, 22395), (Start: 98 @22512 has 3 MA's), (Start: 102 @22521 has 17 MA's), (122, 22608), (134, 22650), (144, 22683), (168, 22761),

Gene: AlpineSix_33 Start: 28745, Stop: 28978, Start Num: 104

Candidate Starts for AlpineSix_33:

(45, 28529), (Start: 104 @28745 has 263 MA's), (Start: 105 @28748 has 10 MA's), (133, 28859), (135, 28865), (138, 28874), (143, 28892), (144, 28895), (149, 28907),

Gene: Amabiko_72 Start: 53129, Stop: 53380, Start Num: 104
Candidate Starts for Amabiko_72:
(Start: 104 @53129 has 263 MA's), (120, 53204),

Gene: Anedea_68 Start: 52701, Stop: 52952, Start Num: 104
Candidate Starts for Anedea_68:
(Start: 104 @52701 has 263 MA's), (122, 52782), (167, 52929),

Gene: Angela_67 Start: 52161, Stop: 52412, Start Num: 104
Candidate Starts for Angela_67:
(Start: 104 @52161 has 263 MA's), (112, 52203),

Gene: AngryGiraffe_71 Start: 53092, Stop: 53343, Start Num: 104
Candidate Starts for AngryGiraffe_71:
(Start: 104 @53092 has 263 MA's), (112, 53134), (136, 53212), (167, 53320),

Gene: Archimedes_20 Start: 18843, Stop: 19064, Start Num: 104
Candidate Starts for Archimedes_20:
(Start: 104 @18843 has 263 MA's), (116, 18906), (137, 18978), (139, 18984), (144, 19002), (146, 19005),

Gene: ArcusAngelus_32 Start: 29080, Stop: 29313, Start Num: 104
Candidate Starts for ArcusAngelus_32:
(41, 28837), (60, 28933), (Start: 104 @29080 has 263 MA's), (Start: 105 @29083 has 10 MA's), (133, 29194), (135, 29200), (138, 29209), (143, 29227), (144, 29230), (149, 29242),

Gene: Ardmore_31 Start: 28524, Stop: 28757, Start Num: 103
Candidate Starts for Ardmore_31:
(Start: 103 @28524 has 99 MA's), (129, 28623), (135, 28644), (138, 28653), (149, 28686),

Gene: Arib1_28 Start: 25246, Stop: 25494, Start Num: 104
Candidate Starts for Arib1_28:
(Start: 104 @25246 has 263 MA's),

Gene: Atcoo_28 Start: 25729, Stop: 25977, Start Num: 104
Candidate Starts for Atcoo_28:
(Start: 104 @25729 has 263 MA's),

Gene: Aubs_33 Start: 28859, Stop: 29092, Start Num: 104
Candidate Starts for Aubs_33:
(Start: 104 @28859 has 263 MA's), (129, 28958), (135, 28979), (138, 28988), (149, 29021),

Gene: Avani_37 Start: 28000, Stop: 28257, Start Num: 103
Candidate Starts for Avani_37:
(Start: 103 @28000 has 99 MA's), (108, 28018), (118, 28063), (119, 28066), (131, 28105), (136, 28123), (144, 28150), (147, 28156), (148, 28159),

Gene: Awesomesauce_33 Start: 28413, Stop: 28646, Start Num: 104
Candidate Starts for Awesomesauce_33:

(Start: 104 @28413 has 263 MA's), (Start: 105 @28416 has 10 MA's), (133, 28527), (135, 28533), (138, 28542), (143, 28560), (144, 28563), (149, 28575),

Gene: AyoTeo_32 Start: 22645, Stop: 22923, Start Num: 102

Candidate Starts for AyoTeo_32:

(48, 22414), (71, 22507), (77, 22534), (Start: 98 @22636 has 3 MA's), (Start: 102 @22645 has 17 MA's), (122, 22732), (134, 22774), (144, 22807), (168, 22885),

Gene: Babsiella_28 Start: 25313, Stop: 25558, Start Num: 104

Candidate Starts for Babsiella_28:

(1, 23846), (2, 23891), (3, 23966), (4, 24071), (5, 24230), (12, 24476), (18, 24692), (23, 24797), (25, 24815), (78, 25208), (85, 25256), (Start: 104 @25313 has 263 MA's), (131, 25418), (135, 25433),

Gene: Barnstormer_22 Start: 18840, Stop: 19127, Start Num: 81

Candidate Starts for Barnstormer_22:

(Start: 81 @18840 has 15 MA's), (92, 18876), (138, 19038), (163, 19122),

Gene: Bartholomew_27 Start: 25240, Stop: 25488, Start Num: 104

Candidate Starts for Bartholomew_27:

(Start: 104 @25240 has 263 MA's),

Gene: Batiatus_32 Start: 28517, Stop: 28750, Start Num: 103

Candidate Starts for Batiatus_32:

(Start: 103 @28517 has 99 MA's), (129, 28616), (135, 28637), (138, 28646), (149, 28679),

Gene: Battuta_70 Start: 53103, Stop: 53354, Start Num: 104

Candidate Starts for Battuta_70:

(Start: 104 @53103 has 263 MA's), (120, 53178),

Gene: Beakin_33 Start: 28431, Stop: 28664, Start Num: 103

Candidate Starts for Beakin_33:

(Start: 103 @28431 has 99 MA's), (Start: 105 @28434 has 10 MA's), (133, 28545), (135, 28551), (138, 28560), (143, 28578), (144, 28581), (149, 28593),

Gene: Beanstalk_37 Start: 28722, Stop: 28955, Start Num: 103

Candidate Starts for Beanstalk_37:

(Start: 103 @28722 has 99 MA's), (129, 28821), (135, 28842), (138, 28851), (149, 28884),

Gene: BeeGee_23 Start: 20766, Stop: 21002, Start Num: 104

Candidate Starts for BeeGee_23:

(31, 20376), (44, 20517), (68, 20625), (Start: 104 @20766 has 263 MA's), (119, 20838), (128, 20859), (129, 20862), (147, 20919),

Gene: Benry_30 Start: 20899, Stop: 21171, Start Num: 102

Candidate Starts for Benry_30:

(Start: 98 @20890 has 3 MA's), (Start: 102 @20899 has 17 MA's), (122, 20986), (130, 21013), (144, 21061),

Gene: Bhagsy_28 Start: 25241, Stop: 25486, Start Num: 104

Candidate Starts for Bhagsy_28:

(Start: 104 @25241 has 263 MA's), (131, 25346),

Gene: BigPhil_28 Start: 24741, Stop: 24974, Start Num: 103

Candidate Starts for BigPhil_28:

(Start: 103 @24741 has 99 MA's), (129, 24840), (133, 24855), (135, 24861), (138, 24870), (149, 24903),

Gene: BillNye_46 Start: 46091, Stop: 46348, Start Num: 104

Candidate Starts for BillNye_46:

(Start: 86 @46037 has 1 MA's), (Start: 104 @46091 has 263 MA's), (112, 46133), (165, 46319),

Gene: Bipolar_29 Start: 27603, Stop: 27836, Start Num: 103

Candidate Starts for Bipolar_29:

(35, 27315), (Start: 103 @27603 has 99 MA's), (129, 27702), (133, 27717), (135, 27723), (138, 27732), (149, 27765),

Gene: Birchlyn_69 Start: 50986, Stop: 51237, Start Num: 104

Candidate Starts for Birchlyn_69:

(Start: 104 @50986 has 263 MA's), (120, 51061),

Gene: Blarby_41 Start: 28996, Stop: 29229, Start Num: 103

Candidate Starts for Blarby_41:

(Start: 103 @28996 has 99 MA's), (129, 29095), (135, 29116), (138, 29125), (149, 29158),

Gene: Blexus_32 Start: 28853, Stop: 29086, Start Num: 104

Candidate Starts for Blexus_32:

(Start: 104 @28853 has 263 MA's), (Start: 105 @28856 has 10 MA's), (133, 28967), (135, 28973), (138, 28982), (143, 29000), (144, 29003), (149, 29015),

Gene: BlueCrab_32 Start: 28703, Stop: 28936, Start Num: 104

Candidate Starts for BlueCrab_32:

(Start: 104 @28703 has 263 MA's), (Start: 105 @28706 has 10 MA's), (133, 28817), (135, 28823), (138, 28832), (143, 28850), (144, 28853), (149, 28865),

Gene: Bluvara_29 Start: 25643, Stop: 25888, Start Num: 104

Candidate Starts for Bluvara_29:

(12, 24806), (18, 25022), (23, 25127), (25, 25145), (78, 25538), (85, 25586), (Start: 104 @25643 has 263 MA's), (131, 25748), (135, 25763), (156, 25826), (162, 25856),

Gene: Bmoc_68 Start: 52505, Stop: 52756, Start Num: 104

Candidate Starts for Bmoc_68:

(Start: 104 @52505 has 263 MA's), (122, 52586), (128, 52598), (167, 52733),

Gene: BobaPhett_32 Start: 28723, Stop: 28956, Start Num: 104

Candidate Starts for BobaPhett_32:

(60, 28576), (Start: 104 @28723 has 263 MA's), (Start: 105 @28726 has 10 MA's), (133, 28837), (135, 28843), (138, 28852), (143, 28870), (144, 28873), (149, 28885),

Gene: Bobburn_18 Start: 13648, Stop: 13947, Start Num: 79

Candidate Starts for Bobburn_18:

(42, 13453), (61, 13552), (63, 13555), (66, 13561), (79, 13648), (96, 13705), (121, 13795), (127, 13816), (151, 13894),

Gene: Bobi_34 Start: 29230, Stop: 29463, Start Num: 103

Candidate Starts for Bobi_34:

(35, 28942), (Start: 103 @29230 has 99 MA's), (129, 29329), (135, 29350), (138, 29359), (149, 29392),

Gene: BodEinwohner17_32 Start: 28926, Stop: 29156, Start Num: 105

Candidate Starts for BodEinwohner17_32:

(Start: 104 @28923 has 263 MA's), (Start: 105 @28926 has 10 MA's), (133, 29037), (135, 29043), (138, 29052), (143, 29070), (144, 29073), (149, 29085),

Gene: Boise_35 Start: 33483, Stop: 33725, Start Num: 94

Candidate Starts for Boise_35:

(Start: 94 @33483 has 1 MA's), (121, 33570), (136, 33621), (152, 33669),

Gene: Boomer_34 Start: 28593, Stop: 28826, Start Num: 104

Candidate Starts for Boomer_34:

(Start: 104 @28593 has 263 MA's), (Start: 105 @28596 has 10 MA's), (129, 28692), (135, 28713), (138, 28722), (149, 28755),

Gene: BoomerJR_72 Start: 52981, Stop: 53232, Start Num: 104

Candidate Starts for BoomerJR_72:

(Start: 104 @52981 has 263 MA's), (112, 53023), (136, 53101), (167, 53209),

Gene: Bordeaux_70 Start: 53258, Stop: 53509, Start Num: 104

Candidate Starts for Bordeaux_70:

(Start: 104 @53258 has 263 MA's), (120, 53333),

Gene: Bradissa_23 Start: 20951, Stop: 21190, Start Num: 104

Candidate Starts for Bradissa_23:

(75, 20843), (Start: 104 @20951 has 263 MA's), (112, 20993), (128, 21044), (129, 21047), (144, 21098), (147, 21104),

Gene: BritBrat_23 Start: 20804, Stop: 21043, Start Num: 104

Candidate Starts for BritBrat_23:

(75, 20696), (Start: 104 @20804 has 263 MA's), (112, 20846), (128, 20897), (129, 20900), (144, 20951), (147, 20957),

Gene: Brizzy_71 Start: 52777, Stop: 53028, Start Num: 104

Candidate Starts for Brizzy_71:

(Start: 104 @52777 has 263 MA's), (120, 52852),

Gene: Brocalys_27 Start: 24320, Stop: 24553, Start Num: 103

Candidate Starts for Brocalys_27:

(Start: 103 @24320 has 99 MA's), (129, 24419), (135, 24440), (138, 24449), (149, 24482),

Gene: BronnyJr_28 Start: 25705, Stop: 25953, Start Num: 104

Candidate Starts for BronnyJr_28:

(Start: 104 @25705 has 263 MA's),

Gene: Brookers_30 Start: 27466, Stop: 27699, Start Num: 103

Candidate Starts for Brookers_30:

(Start: 103 @27466 has 99 MA's), (129, 27565), (135, 27586), (138, 27595), (149, 27628),

Gene: Brusacoram_28 Start: 25235, Stop: 25483, Start Num: 104

Candidate Starts for Brusacoram_28:

(Start: 104 @25235 has 263 MA's),

Gene: Brushbloom_33 Start: 28541, Stop: 28774, Start Num: 103
Candidate Starts for Brushbloom_33:
(Start: 103 @28541 has 99 MA's), (129, 28640), (135, 28661), (138, 28670), (149, 28703),

Gene: Bubbles123_34 Start: 29508, Stop: 29741, Start Num: 103
Candidate Starts for Bubbles123_34:
(35, 29220), (Start: 103 @29508 has 99 MA's), (129, 29607), (135, 29628), (138, 29637), (149, 29670),

Gene: Bunnies_28 Start: 25256, Stop: 25504, Start Num: 104
Candidate Starts for Bunnies_28:
(Start: 104 @25256 has 263 MA's),

Gene: Burwell21_32 Start: 28707, Stop: 28940, Start Num: 103
Candidate Starts for Burwell21_32:
(34, 28416), (35, 28419), (40, 28455), (Start: 103 @28707 has 99 MA's), (129, 28806), (135, 28827),
(138, 28836), (149, 28869),

Gene: BuzzLyseyear_35 Start: 29322, Stop: 29555, Start Num: 103
Candidate Starts for BuzzLyseyear_35:
(Start: 103 @29322 has 99 MA's), (133, 29436), (135, 29442), (138, 29451), (143, 29469), (144,
29472), (149, 29484),

Gene: Byougenkin_32 Start: 28605, Stop: 28838, Start Num: 103
Candidate Starts for Byougenkin_32:
(35, 28317), (Start: 103 @28605 has 99 MA's), (129, 28704), (135, 28725), (138, 28734), (149, 28767),

Gene: Cabrinians_32 Start: 28785, Stop: 29018, Start Num: 104
Candidate Starts for Cabrinians_32:
(13, 28071), (14, 28092), (15, 28143), (19, 28233), (21, 28308), (26, 28347), (27, 28380), (30, 28413),
(34, 28494), (35, 28497), (Start: 104 @28785 has 263 MA's), (129, 28884), (135, 28905), (138, 28914),
(149, 28947),

Gene: CactusJack_28 Start: 25499, Stop: 25747, Start Num: 104
Candidate Starts for CactusJack_28:
(Start: 104 @25499 has 263 MA's),

Gene: Camster_28 Start: 25272, Stop: 25520, Start Num: 104
Candidate Starts for Camster_28:
(Start: 104 @25272 has 263 MA's),

Gene: CaptainTrips_33 Start: 28930, Stop: 29163, Start Num: 104
Candidate Starts for CaptainTrips_33:
(33, 28621), (38, 28669), (60, 28783), (Start: 104 @28930 has 263 MA's), (Start: 105 @28933 has 10
MA's), (133, 29044), (135, 29050), (138, 29059), (143, 29077), (144, 29080), (149, 29092),

Gene: Caron_22 Start: 18225, Stop: 18512, Start Num: 81
Candidate Starts for Caron_22:
(55, 18102), (Start: 81 @18225 has 15 MA's), (92, 18261), (136, 18417), (144, 18447),

Gene: Cashline_23 Start: 20633, Stop: 20869, Start Num: 104
Candidate Starts for Cashline_23:
(Start: 104 @20633 has 263 MA's), (112, 20675), (119, 20705), (129, 20729), (144, 20780),

Gene: CeilingFan_71 Start: 53018, Stop: 53269, Start Num: 104
Candidate Starts for CeilingFan_71:
(Start: 104 @53018 has 263 MA's), (120, 53093),

Gene: Cen1621_21 Start: 17291, Stop: 17560, Start Num: 81
Candidate Starts for Cen1621_21:
(54, 17165), (55, 17171), (64, 17198), (Start: 81 @17291 has 15 MA's), (113, 17387), (142, 17477),
(163, 17555),

Gene: Cerasum_28 Start: 24741, Stop: 24974, Start Num: 103
Candidate Starts for Cerasum_28:
(Start: 103 @24741 has 99 MA's), (129, 24840), (133, 24855), (135, 24861), (138, 24870), (149,
24903),

Gene: Chaewon_50 Start: 46231, Stop: 46488, Start Num: 104
Candidate Starts for Chaewon_50:
(Start: 86 @46177 has 1 MA's), (Start: 104 @46231 has 263 MA's), (112, 46273), (163, 46447), (165,
46459),

Gene: Che8_34 Start: 28974, Stop: 29207, Start Num: 104
Candidate Starts for Che8_34:
(Start: 104 @28974 has 263 MA's), (Start: 105 @28977 has 10 MA's), (133, 29088), (135, 29094),
(138, 29103), (143, 29121), (144, 29124), (149, 29136),

Gene: Che9d_37 Start: 28009, Stop: 28266, Start Num: 104
Candidate Starts for Che9d_37:
(Start: 104 @28009 has 263 MA's), (108, 28027), (118, 28072), (119, 28075), (131, 28114), (136,
28132), (144, 28159), (147, 28165), (148, 28168),

Gene: Cheesepuff_35 Start: 29796, Stop: 30026, Start Num: 105
Candidate Starts for Cheesepuff_35:
(60, 29646), (Start: 104 @29793 has 263 MA's), (Start: 105 @29796 has 10 MA's), (133, 29907), (135,
29913), (138, 29922), (143, 29940), (144, 29943), (149, 29955),

Gene: Chevrolet_33 Start: 29084, Stop: 29314, Start Num: 105
Candidate Starts for Chevrolet_33:
(41, 28838), (60, 28934), (Start: 104 @29081 has 263 MA's), (Start: 105 @29084 has 10 MA's), (133,
29195), (135, 29201), (138, 29210), (143, 29228), (144, 29231), (149, 29243),

Gene: ChickenDinner_34 Start: 29151, Stop: 29384, Start Num: 104
Candidate Starts for ChickenDinner_34:
(Start: 104 @29151 has 263 MA's), (Start: 105 @29154 has 10 MA's), (133, 29265), (135, 29271),
(138, 29280), (143, 29298), (144, 29301), (149, 29313),

Gene: Chipko_23 Start: 21360, Stop: 21599, Start Num: 104
Candidate Starts for Chipko_23:
(7, 20469), (8, 20496), (10, 20559), (11, 20562), (16, 20739), (17, 20742), (20, 20817), (22, 20877),
(28, 20964), (32, 21042), (39, 21099), (49, 21165), (Start: 101 @21354 has 8 MA's), (Start: 104
@21360 has 263 MA's), (112, 21402), (119, 21432), (128, 21453), (129, 21456), (144, 21507), (147,
21513), (163, 21567),

Gene: Chubbello_28 Start: 25239, Stop: 25487, Start Num: 104
Candidate Starts for Chubbello_28:

(Start: 104 @25239 has 263 MA's),

Gene: Chuckly_32 Start: 28706, Stop: 28939, Start Num: 104

Candidate Starts for Chuckly_32:

(60, 28559), (Start: 104 @28706 has 263 MA's), (Start: 105 @28709 has 10 MA's), (133, 28820), (135, 28826), (138, 28835), (143, 28853), (144, 28856), (149, 28868),

Gene: Cicada_32 Start: 22721, Stop: 23002, Start Num: 102

Candidate Starts for Cicada_32:

(48, 22508), (71, 22583), (Start: 98 @22712 has 3 MA's), (Start: 102 @22721 has 17 MA's), (118, 22796), (122, 22808), (130, 22835), (134, 22850), (144, 22883), (168, 22961),

Gene: Circinus_48 Start: 46230, Stop: 46487, Start Num: 104

Candidate Starts for Circinus_48:

(Start: 86 @46176 has 1 MA's), (Start: 104 @46230 has 263 MA's), (112, 46272), (165, 46458),

Gene: Clank_30 Start: 27963, Stop: 28196, Start Num: 104

Candidate Starts for Clank_30:

(33, 27654), (41, 27720), (60, 27816), (Start: 104 @27963 has 263 MA's), (Start: 105 @27966 has 10 MA's), (133, 28077), (135, 28083), (138, 28092), (143, 28110), (144, 28113), (149, 28125),

Gene: Clifton_26 Start: 24671, Stop: 24904, Start Num: 103

Candidate Starts for Clifton_26:

(34, 24380), (35, 24383), (40, 24419), (Start: 103 @24671 has 99 MA's), (129, 24770), (135, 24791), (138, 24800), (149, 24833),

Gene: Coco12_32 Start: 28590, Stop: 28823, Start Num: 103

Candidate Starts for Coco12_32:

(Start: 103 @28590 has 99 MA's), (129, 28689), (135, 28710), (138, 28719), (149, 28752),

Gene: Confidence_23 Start: 20796, Stop: 21032, Start Num: 104

Candidate Starts for Confidence_23:

(31, 20406), (68, 20655), (Start: 104 @20796 has 263 MA's), (119, 20868), (128, 20889), (129, 20892), (147, 20949),

Gene: Coriander_23 Start: 21339, Stop: 21584, Start Num: 101

Candidate Starts for Coriander_23:

(Start: 101 @21339 has 8 MA's), (Start: 104 @21345 has 263 MA's), (112, 21387), (119, 21417), (128, 21438), (144, 21492), (163, 21552),

Gene: Corium_32 Start: 28730, Stop: 28963, Start Num: 104

Candidate Starts for Corium_32:

(41, 28487), (60, 28583), (Start: 104 @28730 has 263 MA's), (Start: 105 @28733 has 10 MA's), (133, 28844), (135, 28850), (138, 28859), (143, 28877), (144, 28880), (149, 28892),

Gene: Cornie_32 Start: 29028, Stop: 29261, Start Num: 103

Candidate Starts for Cornie_32:

(35, 28740), (Start: 103 @29028 has 99 MA's), (129, 29127), (135, 29148), (138, 29157), (149, 29190),

Gene: Cornucopia_33 Start: 28549, Stop: 28782, Start Num: 104

Candidate Starts for Cornucopia_33:

(60, 28402), (Start: 104 @28549 has 263 MA's), (Start: 105 @28552 has 10 MA's), (133, 28663), (135, 28669), (138, 28678), (143, 28696), (144, 28699), (149, 28711),

Gene: Crumble_26 Start: 24720, Stop: 24953, Start Num: 104

Candidate Starts for Crumble_26:

(60, 24573), (Start: 104 @24720 has 263 MA's), (Start: 105 @24723 has 10 MA's), (133, 24834), (135, 24840), (138, 24849), (143, 24867), (144, 24870), (149, 24882),

Gene: CurlyFries_25 Start: 25102, Stop: 25317, Start Num: 104

Candidate Starts for CurlyFries_25:

(Start: 104 @25102 has 263 MA's), (107, 25111), (123, 25180), (152, 25270), (163, 25309),

Gene: DLane_32 Start: 28494, Stop: 28727, Start Num: 103

Candidate Starts for DLane_32:

(Start: 103 @28494 has 99 MA's), (129, 28593), (135, 28614), (138, 28623), (149, 28656),

Gene: DRBy19_32 Start: 28632, Stop: 28865, Start Num: 104

Candidate Starts for DRBy19_32:

(60, 28485), (Start: 104 @28632 has 263 MA's), (Start: 105 @28635 has 10 MA's), (133, 28746), (135, 28752), (138, 28761), (143, 28779), (144, 28782), (149, 28794),

Gene: DaWorst_34 Start: 29072, Stop: 29305, Start Num: 104

Candidate Starts for DaWorst_34:

(Start: 104 @29072 has 263 MA's), (Start: 105 @29075 has 10 MA's), (133, 29186), (135, 29192), (138, 29201), (143, 29219), (144, 29222), (149, 29234),

Gene: DaddyRickover_32 Start: 28718, Stop: 28948, Start Num: 105

Candidate Starts for DaddyRickover_32:

(Start: 104 @28715 has 263 MA's), (Start: 105 @28718 has 10 MA's), (133, 28829), (135, 28835), (138, 28844), (143, 28862), (144, 28865), (149, 28877),

Gene: Daenerys_32 Start: 28536, Stop: 28769, Start Num: 104

Candidate Starts for Daenerys_32:

(Start: 104 @28536 has 263 MA's), (Start: 105 @28539 has 10 MA's), (133, 28650), (135, 28656), (138, 28665), (143, 28683), (144, 28686), (149, 28698),

Gene: Daisy123_76 Start: 52877, Stop: 53128, Start Num: 104

Candidate Starts for Daisy123_76:

(Start: 104 @52877 has 263 MA's), (120, 52952),

Gene: Dante_32 Start: 28654, Stop: 28887, Start Num: 104

Candidate Starts for Dante_32:

(Start: 104 @28654 has 263 MA's), (Start: 105 @28657 has 10 MA's), (133, 28768), (135, 28774), (138, 28783), (143, 28801), (144, 28804), (149, 28816),

Gene: DeadP_32 Start: 28691, Stop: 28924, Start Num: 103

Candidate Starts for DeadP_32:

(Start: 103 @28691 has 99 MA's), (129, 28790), (135, 28811), (138, 28820), (149, 28853),

Gene: Deb65_32 Start: 28537, Stop: 28770, Start Num: 104

Candidate Starts for Deb65_32:

(Start: 104 @28537 has 263 MA's), (Start: 105 @28540 has 10 MA's), (133, 28651), (135, 28657), (138, 28666), (143, 28684), (144, 28687), (149, 28699),

Gene: Demsculpinboyz_38 Start: 27942, Stop: 28199, Start Num: 103

Candidate Starts for Demsculpinboyz_38:

(Start: 103 @27942 has 99 MA's), (108, 27960), (118, 28005), (119, 28008), (131, 28047), (136, 28065), (144, 28092), (147, 28098), (148, 28101),

Gene: Denise_19 Start: 17855, Stop: 18097, Start Num: 101

Candidate Starts for Denise_19:

(Start: 101 @17855 has 8 MA's), (Start: 104 @17861 has 263 MA's), (112, 17903), (119, 17933), (128, 17954), (129, 17957), (147, 18014),

Gene: Dennebes_50 Start: 27480, Stop: 27677, Start Num: 106

Candidate Starts for Dennebes_50:

(74, 27357), (Start: 106 @27480 has 23 MA's), (111, 27513), (121, 27546), (147, 27615), (160, 27642),

Gene: Destructrice_48 Start: 27852, Stop: 28049, Start Num: 106

Candidate Starts for Destructrice_48:

(Start: 105 @27849 has 10 MA's), (Start: 106 @27852 has 23 MA's), (111, 27885), (121, 27918),

Gene: DillTech15_32 Start: 28622, Stop: 28855, Start Num: 104

Candidate Starts for DillTech15_32:

(60, 28475), (Start: 104 @28622 has 263 MA's), (Start: 105 @28625 has 10 MA's), (133, 28736), (135, 28742), (138, 28751), (143, 28769), (144, 28772), (149, 28784),

Gene: DirtMcgirt_33 Start: 28357, Stop: 28590, Start Num: 104

Candidate Starts for DirtMcgirt_33:

(33, 28048), (38, 28096), (41, 28114), (60, 28210), (Start: 104 @28357 has 263 MA's), (Start: 105 @28360 has 10 MA's), (133, 28471), (135, 28477), (138, 28486), (143, 28504), (144, 28507), (149, 28519),

Gene: DoRead_33 Start: 28766, Stop: 28999, Start Num: 104

Candidate Starts for DoRead_33:

(60, 28619), (Start: 104 @28766 has 263 MA's), (Start: 105 @28769 has 10 MA's), (133, 28880), (135, 28886), (138, 28895), (143, 28913), (144, 28916), (149, 28928),

Gene: DocMcStuffins_34 Start: 29151, Stop: 29384, Start Num: 104

Candidate Starts for DocMcStuffins_34:

(Start: 104 @29151 has 263 MA's), (Start: 105 @29154 has 10 MA's), (133, 29265), (135, 29271), (138, 29280), (143, 29298), (144, 29301), (149, 29313),

Gene: Doggs_22 Start: 21038, Stop: 21283, Start Num: 101

Candidate Starts for Doggs_22:

(Start: 101 @21038 has 8 MA's), (Start: 104 @21044 has 263 MA's), (112, 21086), (119, 21116), (128, 21137), (144, 21191), (163, 21251),

Gene: Donkeykong_32 Start: 28717, Stop: 28950, Start Num: 104

Candidate Starts for Donkeykong_32:

(Start: 104 @28717 has 263 MA's), (129, 28816), (135, 28837), (138, 28846), (149, 28879),

Gene: Donovan_28 Start: 25229, Stop: 25477, Start Num: 104

Candidate Starts for Donovan_28:

(Start: 104 @25229 has 263 MA's),

Gene: Doomphist_32 Start: 28654, Stop: 28887, Start Num: 104

Candidate Starts for Doomphist_32:

(Start: 104 @28654 has 263 MA's), (129, 28753), (135, 28774), (138, 28783), (149, 28816),

Gene: Doomslug_36 Start: 28365, Stop: 28598, Start Num: 103

Candidate Starts for Doomslug_36:

(Start: 103 @28365 has 99 MA's), (129, 28464), (135, 28485), (138, 28494), (149, 28527),

Gene: Dorothy_32 Start: 28500, Stop: 28733, Start Num: 104

Candidate Starts for Dorothy_32:

(Start: 104 @28500 has 263 MA's), (Start: 105 @28503 has 10 MA's), (133, 28614), (135, 28620), (138, 28629), (143, 28647), (144, 28650), (149, 28662),

Gene: DosHalletts_34 Start: 28918, Stop: 29151, Start Num: 104

Candidate Starts for DosHalletts_34:

(41, 28675), (60, 28771), (Start: 104 @28918 has 263 MA's), (Start: 105 @28921 has 10 MA's), (133, 29032), (135, 29038), (138, 29047), (143, 29065), (144, 29068), (149, 29080),

Gene: DotProduct_32 Start: 28523, Stop: 28756, Start Num: 104

Candidate Starts for DotProduct_32:

(60, 28376), (Start: 104 @28523 has 263 MA's), (Start: 105 @28526 has 10 MA's), (133, 28637), (135, 28643), (138, 28652), (143, 28670), (144, 28673), (149, 28685),

Gene: Doug_33 Start: 29095, Stop: 29328, Start Num: 103

Candidate Starts for Doug_33:

(Start: 103 @29095 has 99 MA's), (133, 29209), (135, 29215), (138, 29224), (143, 29242), (144, 29245), (149, 29257),

Gene: Drago_33 Start: 28350, Stop: 28583, Start Num: 104

Candidate Starts for Drago_33:

(60, 28203), (Start: 104 @28350 has 263 MA's), (Start: 105 @28353 has 10 MA's), (133, 28464), (135, 28470), (138, 28479), (143, 28497), (144, 28500), (149, 28512),

Gene: Dynamo_28 Start: 25651, Stop: 25899, Start Num: 104

Candidate Starts for Dynamo_28:

(Start: 104 @25651 has 263 MA's),

Gene: EMSquaredA_23 Start: 20804, Stop: 21043, Start Num: 104

Candidate Starts for EMSquaredA_23:

(75, 20696), (Start: 104 @20804 has 263 MA's), (112, 20846), (128, 20897), (129, 20900), (144, 20951), (147, 20957),

Gene: Ecliptus_28 Start: 22063, Stop: 22305, Start Num: 101

Candidate Starts for Ecliptus_28:

(Start: 101 @22063 has 8 MA's), (Start: 104 @22069 has 263 MA's), (112, 22111), (119, 22141), (128, 22162), (129, 22165), (144, 22216), (147, 22222),

Gene: EdnaMode_19 Start: 17610, Stop: 17849, Start Num: 104

Candidate Starts for EdnaMode_19:

(68, 17475), (Start: 104 @17610 has 263 MA's), (119, 17682), (147, 17763), (162, 17814), (163, 17817),

Gene: Eish_32 Start: 29242, Stop: 29475, Start Num: 104

Candidate Starts for Eish_32:

(41, 28999), (60, 29095), (Start: 104 @29242 has 263 MA's), (Start: 105 @29245 has 10 MA's), (133, 29356), (135, 29362), (138, 29371), (143, 29389), (144, 29392), (149, 29404),

Gene: EleanorGeorge_33 Start: 29267, Stop: 29500, Start Num: 103

Candidate Starts for EleanorGeorge_33:

(29, 28832), (62, 29093), (Start: 99 @29258 has 6 MA's), (Start: 103 @29267 has 99 MA's), (Start: 105 @29270 has 10 MA's), (129, 29366), (133, 29381), (135, 29387), (138, 29396), (143, 29414), (144, 29417), (149, 29429),

Gene: Elmer_74 Start: 54196, Stop: 54447, Start Num: 104

Candidate Starts for Elmer_74:

(Start: 104 @54196 has 263 MA's), (120, 54271), (133, 54307), (147, 54349), (159, 54376),

Gene: EmiMonkey_33 Start: 30146, Stop: 30379, Start Num: 104

Candidate Starts for EmiMonkey_33:

(60, 29999), (Start: 104 @30146 has 263 MA's), (Start: 105 @30149 has 10 MA's), (133, 30260), (135, 30266), (138, 30275), (143, 30293), (144, 30296), (149, 30308),

Gene: Emma_34 Start: 29135, Stop: 29368, Start Num: 103

Candidate Starts for Emma_34:

(35, 28847), (Start: 103 @29135 has 99 MA's), (129, 29234), (135, 29255), (138, 29264), (149, 29297),

Gene: Emmaloid_34 Start: 29915, Stop: 30148, Start Num: 104

Candidate Starts for Emmaloid_34:

(33, 29606), (60, 29768), (Start: 104 @29915 has 263 MA's), (Start: 105 @29918 has 10 MA's), (133, 30029), (135, 30035), (138, 30044), (143, 30062), (144, 30065), (149, 30077),

Gene: Empress_33 Start: 29950, Stop: 30183, Start Num: 104

Candidate Starts for Empress_33:

(Start: 104 @29950 has 263 MA's), (Start: 105 @29953 has 10 MA's), (133, 30064), (135, 30070), (138, 30079), (143, 30097), (144, 30100), (149, 30112),

Gene: EnalisNailo_23 Start: 20953, Stop: 21192, Start Num: 104

Candidate Starts for EnalisNailo_23:

(75, 20845), (Start: 104 @20953 has 263 MA's), (112, 20995), (128, 21046), (129, 21049), (144, 21100), (147, 21106),

Gene: Enby_34 Start: 28796, Stop: 29029, Start Num: 103

Candidate Starts for Enby_34:

(29, 28361), (62, 28622), (Start: 99 @28787 has 6 MA's), (Start: 103 @28796 has 99 MA's), (Start: 105 @28799 has 10 MA's), (129, 28895), (133, 28910), (135, 28916), (138, 28925), (143, 28943), (144, 28946), (149, 28958),

Gene: Enygma_72 Start: 54921, Stop: 55172, Start Num: 104

Candidate Starts for Enygma_72:

(Start: 104 @54921 has 263 MA's), (120, 54996), (131, 55023),

Gene: Enzomatic_37 Start: 28713, Stop: 28946, Start Num: 104

Candidate Starts for Enzomatic_37:

(60, 28566), (Start: 104 @28713 has 263 MA's), (Start: 105 @28716 has 10 MA's), (133, 28827), (135, 28833), (138, 28842), (143, 28860), (144, 28863), (149, 28875),

Gene: Eradicator_32 Start: 28637, Stop: 28870, Start Num: 103

Candidate Starts for Eradicator_32:

(Start: 103 @28637 has 99 MA's), (129, 28736), (135, 28757), (138, 28766), (149, 28799),

Gene: Estave1_30 Start: 28054, Stop: 28287, Start Num: 104

Candidate Starts for Estave1_30:

(45, 27838), (Start: 104 @28054 has 263 MA's), (Start: 105 @28057 has 10 MA's), (133, 28168), (135, 28174), (138, 28183), (143, 28201), (144, 28204), (149, 28216),

Gene: Etoile_28 Start: 25240, Stop: 25488, Start Num: 104

Candidate Starts for Etoile_28:

(Start: 104 @25240 has 263 MA's),

Gene: Evy_71 Start: 53796, Stop: 54047, Start Num: 104

Candidate Starts for Evy_71:

(Start: 104 @53796 has 263 MA's), (138, 53922),

Gene: Fabian_46 Start: 27549, Stop: 27746, Start Num: 106

Candidate Starts for Fabian_46:

(Start: 106 @27549 has 23 MA's), (115, 27600),

Gene: Faith5x5_19 Start: 17558, Stop: 17797, Start Num: 104

Candidate Starts for Faith5x5_19:

(31, 17168), (44, 17309), (51, 17345), (68, 17417), (Start: 104 @17558 has 263 MA's), (112, 17600), (119, 17630), (147, 17711),

Gene: Fancypants_32 Start: 28543, Stop: 28776, Start Num: 104

Candidate Starts for Fancypants_32:

(41, 28300), (60, 28396), (Start: 104 @28543 has 263 MA's), (Start: 105 @28546 has 10 MA's), (133, 28657), (135, 28663), (138, 28672), (143, 28690), (144, 28693), (149, 28705),

Gene: Fastidio_34 Start: 28851, Stop: 29084, Start Num: 104

Candidate Starts for Fastidio_34:

(60, 28704), (Start: 104 @28851 has 263 MA's), (Start: 105 @28854 has 10 MA's), (133, 28965), (135, 28971), (138, 28980), (143, 28998), (144, 29001), (149, 29013),

Gene: Filuzino_32 Start: 28485, Stop: 28718, Start Num: 103

Candidate Starts for Filuzino_32:

(35, 28197), (Start: 103 @28485 has 99 MA's), (129, 28584), (135, 28605), (138, 28614), (149, 28647),

Gene: Finkle_21 Start: 18973, Stop: 19227, Start Num: 104

Candidate Starts for Finkle_21:

(88, 18934), (Start: 104 @18973 has 263 MA's), (112, 19015), (114, 19027), (120, 19048), (151, 19144), (152, 19147),

Gene: FireCastle_30 Start: 22475, Stop: 22750, Start Num: 102

Candidate Starts for FireCastle_30:

(Start: 98 @22466 has 3 MA's), (Start: 102 @22475 has 17 MA's), (121, 22559), (122, 22562), (130, 22589), (144, 22637), (166, 22712),

Gene: Firehouse51_33 Start: 29324, Stop: 29557, Start Num: 103

Candidate Starts for Firehouse51_33:

(35, 29036), (Start: 103 @29324 has 99 MA's), (129, 29423), (135, 29444), (138, 29453), (149, 29486),

Gene: FirstPlacePfu_28 Start: 25240, Stop: 25488, Start Num: 104
Candidate Starts for FirstPlacePfu_28:
(Start: 104 @25240 has 263 MA's),

Gene: Fishburne_28 Start: 25240, Stop: 25488, Start Num: 104
Candidate Starts for Fishburne_28:
(Start: 104 @25240 has 263 MA's),

Gene: Flathead_32 Start: 29131, Stop: 29364, Start Num: 103
Candidate Starts for Flathead_32:
(Start: 103 @29131 has 99 MA's), (129, 29230), (135, 29251), (138, 29260), (149, 29293),

Gene: Floof_23 Start: 18951, Stop: 19205, Start Num: 81
Candidate Starts for Floof_23:
(Start: 81 @18951 has 15 MA's), (122, 19056), (134, 19098), (161, 19191),

Gene: Floral_23 Start: 20804, Stop: 21043, Start Num: 104
Candidate Starts for Floral_23:
(75, 20696), (Start: 104 @20804 has 263 MA's), (112, 20846), (128, 20897), (129, 20900), (144, 20951), (147, 20957),

Gene: Florinda_32 Start: 28535, Stop: 28768, Start Num: 104
Candidate Starts for Florinda_32:
(60, 28388), (Start: 104 @28535 has 263 MA's), (Start: 105 @28538 has 10 MA's), (133, 28649), (135, 28655), (138, 28664), (143, 28682), (144, 28685), (149, 28697),

Gene: FlowerPower_49 Start: 27549, Stop: 27746, Start Num: 106
Candidate Starts for FlowerPower_49:
(Start: 106 @27549 has 23 MA's), (115, 27600),

Gene: Forester_23 Start: 20702, Stop: 20983, Start Num: 81
Candidate Starts for Forester_23:
(58, 20579), (Start: 81 @20702 has 15 MA's), (122, 20834), (144, 20912), (163, 20978),

Gene: Frankie_36 Start: 29679, Stop: 29912, Start Num: 104
Candidate Starts for Frankie_36:
(Start: 104 @29679 has 263 MA's), (Start: 105 @29682 has 10 MA's), (133, 29793), (135, 29799), (138, 29808), (143, 29826), (144, 29829), (149, 29841),

Gene: FreddyB_32 Start: 28802, Stop: 29032, Start Num: 105
Candidate Starts for FreddyB_32:
(60, 28652), (Start: 104 @28799 has 263 MA's), (Start: 105 @28802 has 10 MA's), (133, 28913), (135, 28919), (138, 28928), (143, 28946), (144, 28949), (149, 28961),

Gene: Fruitloop_31 Start: 28680, Stop: 28913, Start Num: 103
Candidate Starts for Fruitloop_31:
(Start: 103 @28680 has 99 MA's), (129, 28779), (135, 28800), (138, 28809), (149, 28842),

Gene: Fryberger_61 Start: 34752, Stop: 34964, Start Num: 104
Candidate Starts for Fryberger_61:
(Start: 104 @34752 has 263 MA's), (111, 34791), (144, 34896), (160, 34929),

Gene: G4_25 Start: 19311, Stop: 19532, Start Num: 102

Candidate Starts for G4_25:

(Start: 102 @19311 has 17 MA's), (123, 19389), (134, 19416), (144, 19449), (147, 19455), (148, 19458),

Gene: GAL1_23 Start: 20309, Stop: 20548, Start Num: 104

Candidate Starts for GAL1_23:

(44, 20060), (68, 20168), (Start: 104 @20309 has 263 MA's), (112, 20351), (119, 20381), (128, 20402), (129, 20405), (147, 20462),

Gene: GMA1_21 Start: 18613, Stop: 18861, Start Num: 102

Candidate Starts for GMA1_21:

(Start: 102 @18613 has 17 MA's), (112, 18658), (123, 18694), (131, 18718), (133, 18727), (147, 18769), (152, 18784),

Gene: GUmbie_32 Start: 28554, Stop: 28787, Start Num: 104

Candidate Starts for GUmbie_32:

(Start: 104 @28554 has 263 MA's), (Start: 105 @28557 has 10 MA's), (133, 28668), (135, 28674), (138, 28683), (143, 28701), (144, 28704), (149, 28716),

Gene: Galactic_34 Start: 29372, Stop: 29605, Start Num: 103

Candidate Starts for Galactic_34:

(35, 29084), (Start: 103 @29372 has 99 MA's), (129, 29471), (135, 29492), (138, 29501), (149, 29534),

Gene: Gallop_24 Start: 23254, Stop: 23496, Start Num: 104

Candidate Starts for Gallop_24:

(80, 23179), (84, 23191), (Start: 86 @23200 has 1 MA's), (88, 23203), (89, 23206), (90, 23215), (93, 23224), (95, 23227), (Start: 104 @23254 has 263 MA's), (122, 23335), (124, 23341), (131, 23356), (133, 23365), (143, 23398), (147, 23407), (151, 23419), (163, 23461),

Gene: GaloreK_28 Start: 25236, Stop: 25484, Start Num: 104

Candidate Starts for GaloreK_28:

(Start: 104 @25236 has 263 MA's),

Gene: Gandalph_33 Start: 28870, Stop: 29103, Start Num: 103

Candidate Starts for Gandalph_33:

(Start: 103 @28870 has 99 MA's), (129, 28969), (135, 28990), (138, 28999), (149, 29032),

Gene: GardenState_23 Start: 19313, Stop: 19597, Start Num: 81

Candidate Starts for GardenState_23:

(Start: 81 @19313 has 15 MA's), (163, 19592),

Gene: Gavriela_28 Start: 25499, Stop: 25747, Start Num: 104

Candidate Starts for Gavriela_28:

(Start: 104 @25499 has 263 MA's),

Gene: Genie2_72 Start: 53095, Stop: 53346, Start Num: 104

Candidate Starts for Genie2_72:

(Start: 104 @53095 has 263 MA's), (112, 53137), (136, 53215), (167, 53323),

Gene: Geostin_44 Start: 27549, Stop: 27746, Start Num: 106

Candidate Starts for Geostin_44:

(Start: 106 @27549 has 23 MA's), (115, 27600),

Gene: Geralt_32 Start: 28536, Stop: 28769, Start Num: 104

Candidate Starts for Geralt_32:

(Start: 104 @28536 has 263 MA's), (Start: 105 @28539 has 10 MA's), (133, 28650), (135, 28656), (138, 28665), (143, 28683), (144, 28686), (149, 28698),

Gene: Gibbi_76 Start: 53241, Stop: 53492, Start Num: 104

Candidate Starts for Gibbi_76:

(Start: 104 @53241 has 263 MA's), (120, 53316),

Gene: GigiOuiOui_32 Start: 28666, Stop: 28899, Start Num: 104

Candidate Starts for GigiOuiOui_32:

(Start: 104 @28666 has 263 MA's), (Start: 105 @28669 has 10 MA's), (133, 28780), (135, 28786), (138, 28795), (143, 28813), (144, 28816), (149, 28828),

Gene: Girafales_33 Start: 28343, Stop: 28576, Start Num: 104

Candidate Starts for Girafales_33:

(60, 28196), (Start: 104 @28343 has 263 MA's), (Start: 105 @28346 has 10 MA's), (133, 28457), (135, 28463), (138, 28472), (143, 28490), (144, 28493), (149, 28505),

Gene: Girr_34 Start: 29563, Stop: 29805, Start Num: 99

Candidate Starts for Girr_34:

(29, 29137), (62, 29398), (Start: 99 @29563 has 6 MA's), (Start: 103 @29572 has 99 MA's), (Start: 105 @29575 has 10 MA's), (133, 29686), (135, 29692), (138, 29701), (143, 29719), (144, 29722), (149, 29734),

Gene: Glaske_28 Start: 25499, Stop: 25747, Start Num: 104

Candidate Starts for Glaske_28:

(Start: 104 @25499 has 263 MA's),

Gene: Goodman_31 Start: 22634, Stop: 22915, Start Num: 102

Candidate Starts for Goodman_31:

(48, 22421), (71, 22496), (73, 22508), (Start: 98 @22625 has 3 MA's), (Start: 102 @22634 has 17 MA's), (118, 22709), (122, 22721), (130, 22748), (134, 22763), (144, 22796), (163, 22859), (168, 22874),

Gene: Gorge_32 Start: 28766, Stop: 28999, Start Num: 104

Candidate Starts for Gorge_32:

(60, 28619), (Start: 104 @28766 has 263 MA's), (Start: 105 @28769 has 10 MA's), (133, 28880), (135, 28886), (138, 28895), (143, 28913), (144, 28916), (149, 28928),

Gene: GreaseLightnin_28 Start: 25491, Stop: 25739, Start Num: 104

Candidate Starts for GreaseLightnin_28:

(Start: 104 @25491 has 263 MA's),

Gene: Gremlin23_49 Start: 27549, Stop: 27746, Start Num: 106

Candidate Starts for Gremlin23_49:

(Start: 106 @27549 has 23 MA's), (115, 27600),

Gene: Gretchen_23 Start: 19981, Stop: 20262, Start Num: 81

Candidate Starts for Gretchen_23:

(58, 19858), (Start: 81 @19981 has 15 MA's), (122, 20113), (144, 20191),

Gene: Grimmer_34 Start: 29257, Stop: 29490, Start Num: 104

Candidate Starts for Grimmer_34:

(60, 29110), (Start: 104 @29257 has 263 MA's), (Start: 105 @29260 has 10 MA's), (133, 29371), (138, 29386), (143, 29404), (144, 29407), (149, 29419),

Gene: Gudmit_20 Start: 18449, Stop: 18694, Start Num: 104

Candidate Starts for Gudmit_20:

(65, 18287), (82, 18386), (Start: 104 @18449 has 263 MA's), (112, 18491), (119, 18521), (144, 18596), (163, 18656), (164, 18659),

Gene: Guey18_67 Start: 36272, Stop: 36484, Start Num: 104

Candidate Starts for Guey18_67:

(Start: 104 @36272 has 263 MA's), (111, 36311), (144, 36416),

Gene: Guppsters_34 Start: 29052, Stop: 29285, Start Num: 103

Candidate Starts for Guppsters_34:

(35, 28764), (Start: 103 @29052 has 99 MA's), (129, 29151), (135, 29172), (138, 29181), (149, 29214),

Gene: Gustav_22 Start: 19031, Stop: 19273, Start Num: 104

Candidate Starts for Gustav_22:

(36, 18722), (Start: 102 @19028 has 17 MA's), (Start: 104 @19031 has 263 MA's), (147, 19181), (159, 19208),

Gene: HC_29 Start: 25369, Stop: 25614, Start Num: 104

Candidate Starts for HC_29:

(1, 23902), (2, 23947), (3, 24022), (4, 24127), (5, 24286), (12, 24532), (18, 24748), (23, 24853), (25, 24871), (78, 25264), (85, 25312), (Start: 104 @25369 has 263 MA's), (131, 25474), (135, 25489),

Gene: HUHilltop_28 Start: 25240, Stop: 25488, Start Num: 104

Candidate Starts for HUHilltop_28:

(Start: 104 @25240 has 263 MA's),

Gene: Hades_33 Start: 28863, Stop: 29096, Start Num: 103

Candidate Starts for Hades_33:

(34, 28572), (35, 28575), (40, 28611), (Start: 103 @28863 has 99 MA's), (129, 28962), (135, 28983), (138, 28992), (149, 29025),

Gene: Hamulus_33 Start: 29517, Stop: 29759, Start Num: 99

Candidate Starts for Hamulus_33:

(29, 29091), (62, 29352), (Start: 99 @29517 has 6 MA's), (Start: 103 @29526 has 99 MA's), (Start: 105 @29529 has 10 MA's), (133, 29640), (135, 29646), (138, 29655), (143, 29673), (144, 29676), (149, 29688),

Gene: Harley_32 Start: 28472, Stop: 28705, Start Num: 104

Candidate Starts for Harley_32:

(33, 28163), (41, 28229), (60, 28325), (Start: 104 @28472 has 263 MA's), (Start: 105 @28475 has 10 MA's), (133, 28586), (135, 28592), (138, 28601), (143, 28619), (144, 28622), (149, 28634),

Gene: HaugeAnator_49 Start: 27959, Stop: 28156, Start Num: 106

Candidate Starts for HaugeAnator_49:

(Start: 106 @27959 has 23 MA's), (111, 27992), (121, 28025),

Gene: Hegedechwinu_33 Start: 28561, Stop: 28794, Start Num: 103

Candidate Starts for Hegedechwinu_33:

(Start: 103 @28561 has 99 MA's), (129, 28660), (135, 28681), (138, 28690), (149, 28723),

Gene: Hlubikazi_33 Start: 29358, Stop: 29591, Start Num: 103

Candidate Starts for Hlubikazi_33:

(Start: 103 @29358 has 99 MA's), (129, 29457), (135, 29478), (138, 29487), (149, 29520),

Gene: Honk_21 Start: 17157, Stop: 17432, Start Num: 81

Candidate Starts for Honk_21:

(Start: 81 @17157 has 15 MA's), (163, 17427),

Gene: Hortus1_56 Start: 35872, Stop: 36087, Start Num: 97

Candidate Starts for Hortus1_56:

(76, 35782), (Start: 97 @35872 has 6 MA's), (Start: 99 @35878 has 6 MA's),

Gene: Htur_30 Start: 22726, Stop: 23004, Start Num: 102

Candidate Starts for Htur_30:

(48, 22486), (71, 22588), (Start: 98 @22717 has 3 MA's), (Start: 102 @22726 has 17 MA's), (118, 22801), (122, 22813), (130, 22840), (144, 22888), (168, 22966),

Gene: Hum25_24 Start: 17738, Stop: 17992, Start Num: 104

Candidate Starts for Hum25_24:

(Start: 104 @17738 has 263 MA's), (135, 17864), (143, 17891),

Gene: IAmGroot_23 Start: 19974, Stop: 20258, Start Num: 81

Candidate Starts for IAmGroot_23:

(Start: 81 @19974 has 15 MA's), (163, 20253),

Gene: IbOuu_33 Start: 29111, Stop: 29344, Start Num: 103

Candidate Starts for IbOuu_33:

(Start: 103 @29111 has 99 MA's), (129, 29210), (135, 29231), (138, 29240), (143, 29258), (144, 29261), (149, 29273),

Gene: Ibhubesi_32 Start: 28479, Stop: 28712, Start Num: 104

Candidate Starts for Ibhubesi_32:

(33, 28170), (41, 28236), (60, 28332), (Start: 104 @28479 has 263 MA's), (Start: 105 @28482 has 10 MA's), (133, 28593), (135, 28599), (138, 28608), (143, 28626), (144, 28629), (149, 28641),

Gene: IchabodCrane_69 Start: 52830, Stop: 53081, Start Num: 104

Candidate Starts for IchabodCrane_69:

(Start: 104 @52830 has 263 MA's), (120, 52905),

Gene: Immanuel3_49 Start: 27963, Stop: 28160, Start Num: 106

Candidate Starts for Immanuel3_49:

(Start: 106 @27963 has 23 MA's), (111, 27996), (121, 28029),

Gene: Impisi_28 Start: 24168, Stop: 24413, Start Num: 104

Candidate Starts for Impisi_28:

(6, 23151), (12, 23331), (18, 23547), (23, 23652), (25, 23670), (78, 24063), (85, 24111), (Start: 104 @24168 has 263 MA's), (131, 24273), (135, 24288), (156, 24351), (162, 24381),

Gene: InLimbo_22 Start: 18439, Stop: 18675, Start Num: 104

Candidate Starts for InLimbo_22:

(Start: 104 @18439 has 263 MA's), (112, 18481), (119, 18511), (128, 18532), (129, 18535), (144, 18586), (147, 18592),

Gene: IndiRoo_30 Start: 20923, Stop: 21204, Start Num: 98

Candidate Starts for IndiRoo_30:

(Start: 98 @20923 has 3 MA's), (Start: 102 @20932 has 17 MA's), (122, 21019), (144, 21094),

Gene: Inventum_32 Start: 29216, Stop: 29449, Start Num: 104

Candidate Starts for Inventum_32:

(Start: 104 @29216 has 263 MA's), (Start: 105 @29219 has 10 MA's), (133, 29330), (135, 29336), (138, 29345), (143, 29363), (144, 29366), (149, 29378),

Gene: IrishSherpFalk_34 Start: 30123, Stop: 30356, Start Num: 103

Candidate Starts for IrishSherpFalk_34:

(Start: 103 @30123 has 99 MA's), (129, 30222), (135, 30243), (138, 30252), (149, 30285),

Gene: JPandJE_50 Start: 28427, Stop: 28624, Start Num: 106

Candidate Starts for JPandJE_50:

(Start: 106 @28427 has 23 MA's), (111, 28460), (121, 28493),

Gene: Jabbawokkie_40 Start: 29390, Stop: 29647, Start Num: 103

Candidate Starts for Jabbawokkie_40:

(Start: 103 @29390 has 99 MA's), (108, 29408), (118, 29453), (119, 29456), (131, 29495), (136, 29513), (144, 29540), (147, 29546), (148, 29549),

Gene: JalFarm20_35 Start: 29611, Stop: 29844, Start Num: 103

Candidate Starts for JalFarm20_35:

(Start: 103 @29611 has 99 MA's), (129, 29710), (135, 29731), (138, 29740), (149, 29773),

Gene: James_32 Start: 28723, Stop: 28956, Start Num: 104

Candidate Starts for James_32:

(60, 28576), (Start: 104 @28723 has 263 MA's), (Start: 105 @28726 has 10 MA's), (133, 28837), (135, 28843), (138, 28852), (143, 28870), (144, 28873), (149, 28885),

Gene: Jant_33 Start: 28705, Stop: 28938, Start Num: 103

Candidate Starts for Jant_33:

(35, 28417), (Start: 103 @28705 has 99 MA's), (129, 28804), (135, 28825), (138, 28834), (149, 28867),

Gene: Jacob_32 Start: 28759, Stop: 28992, Start Num: 103

Candidate Starts for Jacob_32:

(34, 28468), (35, 28471), (40, 28507), (Start: 103 @28759 has 99 MA's), (129, 28858), (135, 28879), (138, 28888), (149, 28921),

Gene: Jay2Jay_75 Start: 54649, Stop: 54900, Start Num: 104

Candidate Starts for Jay2Jay_75:

(Start: 104 @54649 has 263 MA's), (138, 54775),

Gene: Jebeks_28 Start: 25225, Stop: 25473, Start Num: 104

Candidate Starts for Jebeks_28:

(Start: 104 @25225 has 263 MA's),

Gene: Jennelsea_26 Start: 24671, Stop: 24904, Start Num: 103

Candidate Starts for Jennelsea_26:

(34, 24380), (35, 24383), (40, 24419), (Start: 103 @24671 has 99 MA's), (129, 24770), (135, 24791), (138, 24800), (149, 24833),

Gene: Jera_31 Start: 21768, Stop: 22046, Start Num: 102

Candidate Starts for Jera_31:

(48, 21537), (71, 21630), (Start: 98 @21759 has 3 MA's), (Start: 102 @21768 has 17 MA's), (122, 21855), (134, 21897), (144, 21930), (168, 22008),

Gene: JimJam_72 Start: 53204, Stop: 53455, Start Num: 104

Candidate Starts for JimJam_72:

(Start: 104 @53204 has 263 MA's), (120, 53279),

Gene: Jinglebell_31 Start: 28744, Stop: 28977, Start Num: 104

Candidate Starts for Jinglebell_31:

(45, 28528), (Start: 104 @28744 has 263 MA's), (Start: 105 @28747 has 10 MA's), (133, 28858), (135, 28864), (138, 28873), (143, 28891), (144, 28894), (149, 28906),

Gene: Job42_36 Start: 30532, Stop: 30765, Start Num: 104

Candidate Starts for Job42_36:

(41, 30289), (60, 30385), (Start: 104 @30532 has 263 MA's), (Start: 105 @30535 has 10 MA's), (133, 30646), (135, 30652), (138, 30661), (143, 30679), (144, 30682), (149, 30694),

Gene: JoeyJr_32 Start: 28704, Stop: 28937, Start Num: 104

Candidate Starts for JoeyJr_32:

(Start: 104 @28704 has 263 MA's), (Start: 105 @28707 has 10 MA's), (133, 28818), (135, 28824), (138, 28833), (143, 28851), (144, 28854), (149, 28866),

Gene: Johann_31 Start: 22634, Stop: 22915, Start Num: 102

Candidate Starts for Johann_31:

(48, 22421), (71, 22496), (73, 22508), (Start: 98 @22625 has 3 MA's), (Start: 102 @22634 has 17 MA's), (118, 22709), (122, 22721), (130, 22748), (134, 22763), (144, 22796), (163, 22859), (168, 22874),

Gene: Jollison_71 Start: 53086, Stop: 53337, Start Num: 104

Candidate Starts for Jollison_71:

(Start: 104 @53086 has 263 MA's), (120, 53161),

Gene: Juice456_34 Start: 29832, Stop: 30065, Start Num: 103

Candidate Starts for Juice456_34:

(Start: 103 @29832 has 99 MA's), (129, 29931), (135, 29952), (138, 29961), (149, 29994),

Gene: Jung_27 Start: 25202, Stop: 25450, Start Num: 104

Candidate Starts for Jung_27:

(Start: 104 @25202 has 263 MA's),

Gene: Juniormint_28 Start: 25278, Stop: 25526, Start Num: 104

Candidate Starts for Juniormint_28:

(Start: 104 @25278 has 263 MA's),

Gene: Juniper1_32 Start: 28502, Stop: 28735, Start Num: 104

Candidate Starts for Juniper1_32:

(19, 27944), (21, 28019), (26, 28058), (27, 28091), (30, 28124), (34, 28205), (35, 28208), (45, 28286), (Start: 104 @28502 has 263 MA's), (Start: 105 @28505 has 10 MA's), (133, 28616), (138, 28631),

(143, 28649), (144, 28652), (149, 28664),

Gene: Karhdo_32 Start: 28668, Stop: 28901, Start Num: 104

Candidate Starts for Karhdo_32:

(Start: 104 @28668 has 263 MA's), (Start: 105 @28671 has 10 MA's), (133, 28782), (135, 28788), (138, 28797), (143, 28815), (144, 28818), (149, 28830),

Gene: Kari_28 Start: 25237, Stop: 25485, Start Num: 104

Candidate Starts for Kari_28:

(Start: 104 @25237 has 263 MA's),

Gene: Karimac_71 Start: 53235, Stop: 53486, Start Num: 104

Candidate Starts for Karimac_71:

(Start: 104 @53235 has 263 MA's), (120, 53310),

Gene: Keelan_59 Start: 34992, Stop: 35204, Start Num: 104

Candidate Starts for Keelan_59:

(Start: 104 @34992 has 263 MA's), (111, 35031), (112, 35034), (144, 35136),

Gene: KentuckyRacer_72 Start: 53019, Stop: 53270, Start Num: 104

Candidate Starts for KentuckyRacer_72:

(Start: 104 @53019 has 263 MA's), (120, 53094),

Gene: Kenuha5_29 Start: 27646, Stop: 27879, Start Num: 103

Candidate Starts for Kenuha5_29:

(35, 27358), (Start: 103 @27646 has 99 MA's), (129, 27745), (135, 27766), (138, 27775), (149, 27808),

Gene: Kersh_31 Start: 29742, Stop: 29975, Start Num: 104

Candidate Starts for Kersh_31:

(60, 29595), (Start: 104 @29742 has 263 MA's), (Start: 105 @29745 has 10 MA's), (133, 29856), (135, 29862), (138, 29871), (143, 29889), (144, 29892), (149, 29904),

Gene: KilKor_28 Start: 25499, Stop: 25747, Start Num: 104

Candidate Starts for KilKor_28:

(Start: 104 @25499 has 263 MA's),

Gene: Kimberlium_34 Start: 29660, Stop: 29893, Start Num: 104

Candidate Starts for Kimberlium_34:

(60, 29513), (Start: 104 @29660 has 263 MA's), (Start: 105 @29663 has 10 MA's), (133, 29774), (135, 29780), (138, 29789), (143, 29807), (144, 29810), (149, 29822),

Gene: KingJulian_32 Start: 28730, Stop: 28963, Start Num: 104

Candidate Starts for KingJulian_32:

(41, 28487), (60, 28583), (Start: 104 @28730 has 263 MA's), (Start: 105 @28733 has 10 MA's), (133, 28844), (135, 28850), (138, 28859), (143, 28877), (144, 28880), (149, 28892),

Gene: KingMidas_34 Start: 30399, Stop: 30632, Start Num: 104

Candidate Starts for KingMidas_34:

(Start: 104 @30399 has 263 MA's), (Start: 105 @30402 has 10 MA's), (133, 30513), (135, 30519), (138, 30528), (143, 30546), (144, 30549), (149, 30561),

Gene: Kingsley_31 Start: 28346, Stop: 28588, Start Num: 99

Candidate Starts for Kingsley_31:

(29, 27920), (62, 28181), (Start: 99 @28346 has 6 MA's), (Start: 103 @28355 has 99 MA's), (Start: 105 @28358 has 10 MA's), (133, 28469), (135, 28475), (138, 28484), (143, 28502), (144, 28505), (149, 28517),

Gene: Koella_26 Start: 24683, Stop: 24916, Start Num: 103

Candidate Starts for Koella_26:

(34, 24392), (35, 24395), (40, 24431), (Start: 103 @24683 has 99 MA's), (129, 24782), (135, 24803), (138, 24812), (149, 24845),

Gene: Krakatau_33 Start: 29229, Stop: 29462, Start Num: 104

Candidate Starts for Krakatau_33:

(60, 29082), (Start: 104 @29229 has 263 MA's), (Start: 105 @29232 has 10 MA's), (133, 29343), (135, 29349), (138, 29358), (143, 29376), (144, 29379), (149, 29391),

Gene: KristaRAM_33 Start: 29355, Stop: 29588, Start Num: 103

Candidate Starts for KristaRAM_33:

(Start: 103 @29355 has 99 MA's), (129, 29454), (135, 29475), (138, 29484), (149, 29517),

Gene: Ksquared_28 Start: 25256, Stop: 25504, Start Num: 104

Candidate Starts for Ksquared_28:

(Start: 104 @25256 has 263 MA's),

Gene: Kumquat_47 Start: 27506, Stop: 27703, Start Num: 106

Candidate Starts for Kumquat_47:

(Start: 106 @27506 has 23 MA's), (112, 27542), (126, 27590), (158, 27665),

Gene: Labella_32 Start: 22644, Stop: 22922, Start Num: 102

Candidate Starts for Labella_32:

(48, 22413), (71, 22506), (77, 22533), (Start: 98 @22635 has 3 MA's), (Start: 102 @22644 has 17 MA's), (122, 22731), (134, 22773), (144, 22806), (168, 22884),

Gene: Lamberg_19 Start: 17610, Stop: 17849, Start Num: 104

Candidate Starts for Lamberg_19:

(68, 17475), (Start: 104 @17610 has 263 MA's), (119, 17682), (147, 17763), (162, 17814), (163, 17817),

Gene: Langerak_28 Start: 25224, Stop: 25472, Start Num: 104

Candidate Starts for Langerak_28:

(Start: 104 @25224 has 263 MA's),

Gene: LastJedi_26 Start: 24714, Stop: 24947, Start Num: 103

Candidate Starts for LastJedi_26:

(34, 24423), (35, 24426), (40, 24462), (Start: 103 @24714 has 99 MA's), (129, 24813), (135, 24834), (138, 24843), (149, 24876),

Gene: Latretium_33 Start: 29314, Stop: 29547, Start Num: 103

Candidate Starts for Latretium_33:

(Start: 103 @29314 has 99 MA's), (129, 29413), (135, 29434), (138, 29443), (149, 29476),

Gene: Leozinho_34 Start: 28957, Stop: 29190, Start Num: 103

Candidate Starts for Leozinho_34:

(Start: 103 @28957 has 99 MA's), (129, 29056), (135, 29077), (138, 29086), (149, 29119),

Gene: Leperchaun_32 Start: 28612, Stop: 28842, Start Num: 105

Candidate Starts for Leperchaun_32:

(45, 28393), (Start: 104 @28609 has 263 MA's), (Start: 105 @28612 has 10 MA's), (133, 28723), (135, 28729), (138, 28738), (143, 28756), (144, 28759), (149, 28771),

Gene: LilMartin_67 Start: 52109, Stop: 52360, Start Num: 104

Candidate Starts for LilMartin_67:

(Start: 104 @52109 has 263 MA's), (112, 52151),

Gene: LilMoolah_32 Start: 28807, Stop: 29040, Start Num: 103

Candidate Starts for LilMoolah_32:

(34, 28516), (35, 28519), (40, 28555), (Start: 103 @28807 has 99 MA's), (129, 28906), (135, 28927), (138, 28936), (149, 28969),

Gene: LilSaint_69 Start: 52373, Stop: 52624, Start Num: 104

Candidate Starts for LilSaint_69:

(Start: 104 @52373 has 263 MA's), (122, 52454), (167, 52601),

Gene: Lilas_23 Start: 20953, Stop: 21192, Start Num: 104

Candidate Starts for Lilas_23:

(75, 20845), (Start: 104 @20953 has 263 MA's), (112, 20995), (128, 21046), (129, 21049), (144, 21100), (147, 21106),

Gene: Linayshia_30 Start: 22682, Stop: 22969, Start Num: 98

Candidate Starts for Linayshia_30:

(48, 22478), (71, 22553), (73, 22565), (77, 22580), (Start: 98 @22682 has 3 MA's), (Start: 102 @22691 has 17 MA's), (118, 22766), (122, 22778), (130, 22805), (144, 22853), (168, 22931),

Gene: LittleShirley_35 Start: 30174, Stop: 30407, Start Num: 104

Candidate Starts for LittleShirley_35:

(60, 30027), (Start: 104 @30174 has 263 MA's), (Start: 105 @30177 has 10 MA's), (133, 30288), (135, 30294), (138, 30303), (143, 30321), (144, 30324), (149, 30336),

Gene: Lizziana_32 Start: 28682, Stop: 28915, Start Num: 103

Candidate Starts for Lizziana_32:

(34, 28391), (35, 28394), (40, 28430), (Start: 103 @28682 has 99 MA's), (129, 28781), (135, 28802), (138, 28811), (149, 28844),

Gene: Llama_32 Start: 28743, Stop: 28976, Start Num: 104

Candidate Starts for Llama_32:

(45, 28527), (Start: 104 @28743 has 263 MA's), (Start: 105 @28746 has 10 MA's), (133, 28857), (135, 28863), (138, 28872), (143, 28890), (144, 28893), (149, 28905),

Gene: Llij_32 Start: 28514, Stop: 28747, Start Num: 104

Candidate Starts for Llij_32:

(60, 28367), (Start: 104 @28514 has 263 MA's), (Start: 105 @28517 has 10 MA's), (133, 28628), (135, 28634), (138, 28643), (143, 28661), (144, 28664), (149, 28676),

Gene: Lorde_34 Start: 28771, Stop: 29004, Start Num: 103

Candidate Starts for Lorde_34:

(29, 28336), (62, 28597), (Start: 99 @28762 has 6 MA's), (Start: 103 @28771 has 99 MA's), (Start: 105 @28774 has 10 MA's), (129, 28870), (133, 28885), (135, 28891), (138, 28900), (143, 28918), (144, 28921), (149, 28933),

Gene: Lton_19 Start: 17639, Stop: 17878, Start Num: 104

Candidate Starts for Lton_19:

(Start: 104 @17639 has 263 MA's), (119, 17711), (147, 17792), (162, 17843), (163, 17846),

Gene: Lucia_33 Start: 28645, Stop: 28878, Start Num: 104

Candidate Starts for Lucia_33:

(33, 28336), (38, 28384), (41, 28402), (60, 28498), (Start: 104 @28645 has 263 MA's), (Start: 105 @28648 has 10 MA's), (133, 28759), (135, 28765), (138, 28774), (143, 28792), (144, 28795), (149, 28807),

Gene: Lucky10_21 Start: 18592, Stop: 18828, Start Num: 104

Candidate Starts for Lucky10_21:

(Start: 101 @18586 has 8 MA's), (Start: 104 @18592 has 263 MA's), (112, 18634), (119, 18664), (128, 18685), (129, 18688), (144, 18739), (147, 18745),

Gene: LukeCage_71 Start: 52989, Stop: 53240, Start Num: 104

Candidate Starts for LukeCage_71:

(Start: 104 @52989 has 263 MA's), (120, 53064), (122, 53070), (163, 53196),

Gene: LunaBlu_35 Start: 29546, Stop: 29779, Start Num: 103

Candidate Starts for LunaBlu_35:

(35, 29258), (Start: 103 @29546 has 99 MA's), (129, 29645), (135, 29666), (138, 29675), (149, 29708),

Gene: LunaStella_34 Start: 29277, Stop: 29540, Start Num: 100

Candidate Starts for LunaStella_34:

(53, 29070), (57, 29085), (83, 29220), (Start: 100 @29277 has 3 MA's), (145, 29442), (148, 29448), (150, 29451), (156, 29469), (169, 29526),

Gene: Mabodamaca_23 Start: 19124, Stop: 19408, Start Num: 81

Candidate Starts for Mabodamaca_23:

(Start: 81 @19124 has 15 MA's), (152, 19364), (163, 19403),

Gene: MadMen_30 Start: 27967, Stop: 28200, Start Num: 103

Candidate Starts for MadMen_30:

(35, 27679), (Start: 103 @27967 has 99 MA's), (129, 28066), (135, 28087), (138, 28096), (149, 28129),

Gene: Madiba_30 Start: 27447, Stop: 27677, Start Num: 105

Candidate Starts for Madiba_30:

(33, 27135), (41, 27201), (60, 27297), (Start: 104 @27444 has 263 MA's), (Start: 105 @27447 has 10 MA's), (133, 27558), (135, 27564), (138, 27573), (143, 27591), (144, 27594), (149, 27606),

Gene: Mahavrat_32 Start: 28574, Stop: 28807, Start Num: 104

Candidate Starts for Mahavrat_32:

(19, 28016), (21, 28091), (26, 28130), (27, 28163), (30, 28196), (34, 28277), (35, 28280), (45, 28358), (Start: 104 @28574 has 263 MA's), (Start: 105 @28577 has 10 MA's), (133, 28688), (135, 28694), (138, 28703), (143, 28721), (144, 28724), (149, 28736),

Gene: Mahdia_22 Start: 18708, Stop: 18950, Start Num: 104

Candidate Starts for Mahdia_22:

(Start: 104 @18708 has 263 MA's), (141, 18840), (163, 18912),

Gene: Majeke_28 Start: 25246, Stop: 25494, Start Num: 104

Candidate Starts for Majeke_28:
(Start: 104 @25246 has 263 MA's),

Gene: Malithi_28 Start: 25165, Stop: 25413, Start Num: 104
Candidate Starts for Malithi_28:
(Start: 104 @25165 has 263 MA's),

Gene: Mandlovu_33 Start: 29300, Stop: 29533, Start Num: 103
Candidate Starts for Mandlovu_33:
(Start: 103 @29300 has 99 MA's), (129, 29399), (135, 29420), (138, 29429), (149, 29462),

Gene: Mangethe_28 Start: 25246, Stop: 25494, Start Num: 104
Candidate Starts for Mangethe_28:
(Start: 104 @25246 has 263 MA's),

Gene: Mantra_32 Start: 28633, Stop: 28866, Start Num: 104
Candidate Starts for Mantra_32:
(60, 28486), (Start: 104 @28633 has 263 MA's), (Start: 105 @28636 has 10 MA's), (133, 28747), (135, 28753), (138, 28762), (143, 28780), (144, 28783), (149, 28795),

Gene: Manuel_46 Start: 27594, Stop: 27791, Start Num: 106
Candidate Starts for Manuel_46:
(Start: 104 @27588 has 263 MA's), (Start: 106 @27594 has 23 MA's), (126, 27678), (158, 27753),

Gene: Maravista_32 Start: 28464, Stop: 28697, Start Num: 103
Candidate Starts for Maravista_32:
(34, 28173), (35, 28176), (40, 28212), (Start: 103 @28464 has 99 MA's), (129, 28563), (135, 28584), (138, 28593), (149, 28626),

Gene: Marker_33 Start: 28403, Stop: 28633, Start Num: 105
Candidate Starts for Marker_33:
(Start: 104 @28400 has 263 MA's), (Start: 105 @28403 has 10 MA's), (133, 28514), (135, 28520), (138, 28529), (143, 28547), (144, 28550), (149, 28562),

Gene: Marsus_68 Start: 52381, Stop: 52632, Start Num: 104
Candidate Starts for Marsus_68:
(Start: 104 @52381 has 263 MA's),

Gene: Marteena_23 Start: 20804, Stop: 21043, Start Num: 104
Candidate Starts for Marteena_23:
(75, 20696), (Start: 104 @20804 has 263 MA's), (112, 20846), (128, 20897), (129, 20900), (144, 20951), (147, 20957),

Gene: Martik_32 Start: 28709, Stop: 28942, Start Num: 103
Candidate Starts for Martik_32:
(34, 28418), (35, 28421), (40, 28457), (Start: 103 @28709 has 99 MA's), (129, 28808), (135, 28829), (138, 28838), (149, 28871),

Gene: Matteo_19 Start: 17541, Stop: 17786, Start Num: 101
Candidate Starts for Matteo_19:
(Start: 101 @17541 has 8 MA's), (Start: 104 @17547 has 263 MA's), (119, 17619), (147, 17700), (162, 17751), (163, 17754),

Gene: Mattes_32 Start: 28723, Stop: 28956, Start Num: 104
Candidate Starts for Mattes_32:
(60, 28576), (Start: 104 @28723 has 263 MA's), (Start: 105 @28726 has 10 MA's), (133, 28837), (135, 28843), (138, 28852), (143, 28870), (144, 28873), (149, 28885),

Gene: Megiddo_28 Start: 25499, Stop: 25747, Start Num: 104
Candidate Starts for Megiddo_28:
(Start: 104 @25499 has 263 MA's),

Gene: Melissauren88_32 Start: 28676, Stop: 28909, Start Num: 103
Candidate Starts for Melissauren88_32:
(Start: 103 @28676 has 99 MA's), (129, 28775), (135, 28796), (138, 28805), (149, 28838),

Gene: MilanaBonita_26 Start: 24607, Stop: 24840, Start Num: 103
Candidate Starts for MilanaBonita_26:
(Start: 103 @24607 has 99 MA's), (129, 24706), (135, 24727), (138, 24736), (149, 24769),

Gene: Milani_31 Start: 21543, Stop: 21809, Start Num: 102
Candidate Starts for Milani_31:
(Start: 102 @21543 has 17 MA's), (122, 21630), (130, 21657), (134, 21672), (144, 21705),

Gene: Mildred21_68 Start: 52306, Stop: 52557, Start Num: 104
Candidate Starts for Mildred21_68:
(Start: 104 @52306 has 263 MA's), (159, 52486),

Gene: MilleniumForce_33 Start: 29468, Stop: 29701, Start Num: 103
Candidate Starts for MilleniumForce_33:
(Start: 103 @29468 has 99 MA's), (129, 29567), (135, 29588), (138, 29597), (149, 29630),

Gene: MindFlayer_70 Start: 52737, Stop: 52988, Start Num: 104
Candidate Starts for MindFlayer_70:
(Start: 104 @52737 has 263 MA's), (120, 52812),

Gene: MinionDave_35 Start: 29705, Stop: 29938, Start Num: 103
Candidate Starts for MinionDave_35:
(Start: 103 @29705 has 99 MA's), (129, 29804), (135, 29825), (138, 29834), (149, 29867),

Gene: Minnie_34 Start: 29518, Stop: 29751, Start Num: 104
Candidate Starts for Minnie_34:
(33, 29209), (41, 29275), (60, 29371), (Start: 104 @29518 has 263 MA's), (Start: 105 @29521 has 10 MA's), (133, 29632), (135, 29638), (138, 29647), (143, 29665), (144, 29668), (149, 29680),

Gene: Misha28_33 Start: 28418, Stop: 28651, Start Num: 104
Candidate Starts for Misha28_33:
(Start: 104 @28418 has 263 MA's), (Start: 105 @28421 has 10 MA's), (133, 28532), (135, 28538), (138, 28547), (143, 28565), (144, 28568), (149, 28580),

Gene: MisterCuddles_34 Start: 29563, Stop: 29805, Start Num: 99
Candidate Starts for MisterCuddles_34:
(29, 29137), (62, 29398), (Start: 99 @29563 has 6 MA's), (Start: 103 @29572 has 99 MA's), (Start: 105 @29575 has 10 MA's), (133, 29686), (135, 29692), (138, 29701), (143, 29719), (144, 29722), (149, 29734),

Gene: Mistmere_57 Start: 34724, Stop: 34936, Start Num: 99
Candidate Starts for Mistmere_57:
(37, 34445), (43, 34487), (46, 34499), (50, 34520), (56, 34550), (57, 34553), (Start: 99 @34724 has 6 MA's), (110, 34763), (147, 34889),

Gene: Modragons_32 Start: 28588, Stop: 28821, Start Num: 104
Candidate Starts for Modragons_32:
(45, 28372), (Start: 104 @28588 has 263 MA's), (Start: 105 @28591 has 10 MA's), (133, 28702), (135, 28708), (138, 28717), (143, 28735), (144, 28738), (149, 28750),

Gene: MooMoo_30 Start: 27824, Stop: 28087, Start Num: 100
Candidate Starts for MooMoo_30:
(83, 27767), (Start: 100 @27824 has 3 MA's), (145, 27989), (148, 27995), (150, 27998), (156, 28016), (169, 28073),

Gene: Moonbeam_33 Start: 29222, Stop: 29455, Start Num: 104
Candidate Starts for Moonbeam_33:
(41, 28979), (60, 29075), (Start: 104 @29222 has 263 MA's), (Start: 105 @29225 has 10 MA's), (133, 29336), (135, 29342), (138, 29351), (143, 29369), (144, 29372), (149, 29384),

Gene: Moosehead_19 Start: 17566, Stop: 17805, Start Num: 104
Candidate Starts for Moosehead_19:
(Start: 104 @17566 has 263 MA's), (112, 17608), (119, 17638), (128, 17659), (129, 17662), (144, 17713), (147, 17719),

Gene: Morkie_21 Start: 18439, Stop: 18675, Start Num: 104
Candidate Starts for Morkie_21:
(Start: 104 @18439 has 263 MA's), (112, 18481), (119, 18511), (128, 18532), (129, 18535), (144, 18586), (147, 18592),

Gene: Morrissey_23 Start: 19911, Stop: 20153, Start Num: 104
Candidate Starts for Morrissey_23:
(Start: 104 @19911 has 263 MA's), (141, 20043), (143, 20052),

Gene: Mova_33 Start: 28357, Stop: 28590, Start Num: 103
Candidate Starts for Mova_33:
(35, 28069), (Start: 103 @28357 has 99 MA's), (129, 28456), (135, 28477), (138, 28486), (149, 28519),

Gene: Mozy_34 Start: 29413, Stop: 29646, Start Num: 104
Candidate Starts for Mozy_34:
(Start: 104 @29413 has 263 MA's), (Start: 105 @29416 has 10 MA's), (133, 29527), (135, 29533), (138, 29542), (143, 29560), (144, 29563), (149, 29575),

Gene: Ms6_26 Start: 24139, Stop: 24372, Start Num: 103
Candidate Starts for Ms6_26:
(Start: 103 @24139 has 99 MA's), (129, 24238), (135, 24259), (138, 24268), (149, 24301),

Gene: Mugiwara_71 Start: 53488, Stop: 53739, Start Num: 104
Candidate Starts for Mugiwara_71:
(Start: 104 @53488 has 263 MA's), (112, 53530), (120, 53563), (163, 53695),

Gene: MulchExplorer_34 Start: 29662, Stop: 29892, Start Num: 105
Candidate Starts for MulchExplorer_34:

(60, 29512), (Start: 104 @29659 has 263 MA's), (Start: 105 @29662 has 10 MA's), (133, 29773), (135, 29779), (138, 29788), (143, 29806), (144, 29809), (149, 29821),

Gene: MulchMansion_67 Start: 52109, Stop: 52360, Start Num: 104
Candidate Starts for MulchMansion_67:
(Start: 104 @52109 has 263 MA's), (112, 52151),

Gene: MulchSalad_31 Start: 25420, Stop: 25653, Start Num: 103
Candidate Starts for MulchSalad_31:
(Start: 103 @25420 has 99 MA's), (129, 25519), (135, 25540), (138, 25549), (149, 25582),

Gene: Muntaha_47 Start: 44490, Stop: 44744, Start Num: 104
Candidate Starts for Muntaha_47:
(Start: 104 @44490 has 263 MA's), (163, 44703),

Gene: Mutaforma13_32 Start: 28792, Stop: 29025, Start Num: 103
Candidate Starts for Mutaforma13_32:
(Start: 103 @28792 has 99 MA's), (129, 28891), (135, 28912), (138, 28921), (149, 28954),

Gene: Mwanjiwa_33 Start: 28667, Stop: 28900, Start Num: 104
Candidate Starts for Mwanjiwa_33:
(Start: 104 @28667 has 263 MA's), (Start: 105 @28670 has 10 MA's), (133, 28781), (135, 28787), (138, 28796), (143, 28814), (144, 28817), (149, 28829),

Gene: Necropolis_28 Start: 25237, Stop: 25485, Start Num: 104
Candidate Starts for Necropolis_28:
(Start: 104 @25237 has 263 MA's),

Gene: Nettuno_19 Start: 17613, Stop: 17852, Start Num: 104
Candidate Starts for Nettuno_19:
(68, 17478), (Start: 104 @17613 has 263 MA's), (119, 17685), (147, 17766), (162, 17817), (163, 17820),

Gene: NewHope4_36 Start: 29348, Stop: 29581, Start Num: 103
Candidate Starts for NewHope4_36:
(Start: 103 @29348 has 99 MA's), (129, 29447), (135, 29468), (138, 29477), (149, 29510),

Gene: Nichirin_33 Start: 28772, Stop: 29005, Start Num: 104
Candidate Starts for Nichirin_33:
(13, 28052), (14, 28073), (15, 28124), (19, 28214), (21, 28289), (26, 28328), (27, 28361), (30, 28394), (34, 28475), (35, 28478), (45, 28556), (Start: 104 @28772 has 263 MA's), (Start: 105 @28775 has 10 MA's), (133, 28886), (135, 28892), (138, 28901), (143, 28919), (144, 28922), (149, 28934),

Gene: Nimbo_32 Start: 28540, Stop: 28773, Start Num: 104
Candidate Starts for Nimbo_32:
(Start: 104 @28540 has 263 MA's), (Start: 105 @28543 has 10 MA's), (133, 28654), (135, 28660), (138, 28669), (143, 28687), (144, 28690), (149, 28702),

Gene: Nitzel_33 Start: 29256, Stop: 29489, Start Num: 104
Candidate Starts for Nitzel_33:
(Start: 104 @29256 has 263 MA's), (Start: 105 @29259 has 10 MA's), (133, 29370), (135, 29376), (138, 29385), (143, 29403), (144, 29406), (149, 29418),

Gene: Nivrat_32 Start: 28681, Stop: 28914, Start Num: 103
Candidate Starts for Nivrat_32:
(34, 28390), (35, 28393), (40, 28429), (Start: 103 @28681 has 99 MA's), (129, 28780), (135, 28801),
(138, 28810), (149, 28843),

Gene: NormanBulbieJr_32 Start: 28696, Stop: 28929, Start Num: 103
Candidate Starts for NormanBulbieJr_32:
(34, 28405), (35, 28408), (40, 28444), (Start: 103 @28696 has 99 MA's), (129, 28795), (135, 28816),
(138, 28825), (149, 28858),

Gene: ODay_29 Start: 22346, Stop: 22588, Start Num: 101
Candidate Starts for ODay_29:
(Start: 101 @22346 has 8 MA's), (Start: 104 @22352 has 263 MA's), (112, 22394), (119, 22424), (128,
22445), (129, 22448), (144, 22499), (147, 22505),

Gene: Ochi17_30 Start: 28195, Stop: 28428, Start Num: 104
Candidate Starts for Ochi17_30:
(45, 27979), (Start: 104 @28195 has 263 MA's), (Start: 105 @28198 has 10 MA's), (133, 28309), (135,
28315), (138, 28324), (143, 28342), (144, 28345), (149, 28357),

Gene: OfUltron_32 Start: 28744, Stop: 28977, Start Num: 104
Candidate Starts for OfUltron_32:
(45, 28528), (Start: 104 @28744 has 263 MA's), (Start: 105 @28747 has 10 MA's), (133, 28858), (135,
28864), (138, 28873), (143, 28891), (144, 28894), (149, 28906),

Gene: Ogopogo_32 Start: 27888, Stop: 28121, Start Num: 103
Candidate Starts for Ogopogo_32:
(Start: 103 @27888 has 99 MA's), (129, 27987), (135, 28008), (138, 28017), (143, 28035), (144,
28038), (149, 28050),

Gene: Okabe_33 Start: 25582, Stop: 25815, Start Num: 104
Candidate Starts for Okabe_33:
(60, 25435), (Start: 104 @25582 has 263 MA's), (Start: 105 @25585 has 10 MA's), (133, 25696), (135,
25702), (138, 25711), (143, 25729), (144, 25732), (149, 25744),

Gene: Oksu_33 Start: 28588, Stop: 28821, Start Num: 104
Candidate Starts for Oksu_33:
(45, 28372), (Start: 104 @28588 has 263 MA's), (Start: 105 @28591 has 10 MA's), (133, 28702), (135,
28708), (138, 28717), (143, 28735), (144, 28738), (149, 28750),

Gene: OldBen_32 Start: 28571, Stop: 28804, Start Num: 104
Candidate Starts for OldBen_32:
(Start: 104 @28571 has 263 MA's), (Start: 105 @28574 has 10 MA's), (133, 28685), (135, 28691),
(138, 28700), (143, 28718), (144, 28721), (149, 28733),

Gene: Olicious_49 Start: 27959, Stop: 28156, Start Num: 106
Candidate Starts for Olicious_49:
(Start: 106 @27959 has 23 MA's), (111, 27992), (121, 28025),

Gene: OlinDD_56 Start: 35871, Stop: 36086, Start Num: 97
Candidate Starts for OlinDD_56:
(76, 35781), (Start: 97 @35871 has 6 MA's), (Start: 99 @35877 has 6 MA's),

Gene: Olympi_32 Start: 22612, Stop: 22902, Start Num: 98

Candidate Starts for Olympi_32:

(48, 22408), (71, 22483), (73, 22495), (Start: 98 @22612 has 3 MA's), (Start: 102 @22621 has 17 MA's), (118, 22696), (122, 22708), (130, 22735), (134, 22750), (144, 22783), (163, 22846), (168, 22861),

Gene: OlympiaSaint_32 Start: 28985, Stop: 29218, Start Num: 104

Candidate Starts for OlympiaSaint_32:

(60, 28838), (Start: 104 @28985 has 263 MA's), (Start: 105 @28988 has 10 MA's), (133, 29099), (135, 29105), (138, 29114), (143, 29132), (144, 29135), (149, 29147),

Gene: OnionKnight_23 Start: 18605, Stop: 18871, Start Num: 86

Candidate Starts for OnionKnight_23:

(Start: 86 @18605 has 1 MA's), (Start: 102 @18641 has 17 MA's), (111, 18683), (129, 18743), (132, 18752), (142, 18785), (144, 18797), (148, 18806),

Gene: Ovechkin_33 Start: 29544, Stop: 29777, Start Num: 103

Candidate Starts for Ovechkin_33:

(29, 29109), (62, 29370), (Start: 99 @29535 has 6 MA's), (Start: 103 @29544 has 99 MA's), (Start: 105 @29547 has 10 MA's), (133, 29658), (135, 29664), (138, 29673), (143, 29691), (144, 29694), (149, 29706),

Gene: OwlsT2W_33 Start: 28960, Stop: 29193, Start Num: 103

Candidate Starts for OwlsT2W_33:

(Start: 103 @28960 has 99 MA's), (129, 29059), (135, 29080), (138, 29089), (149, 29122),

Gene: PHappiness_32 Start: 28513, Stop: 28746, Start Num: 104

Candidate Starts for PHappiness_32:

(Start: 104 @28513 has 263 MA's), (Start: 105 @28516 has 10 MA's), (133, 28627), (135, 28633), (138, 28642), (143, 28660), (144, 28663), (149, 28675),

Gene: PMC_32 Start: 28514, Stop: 28747, Start Num: 104

Candidate Starts for PMC_32:

(60, 28367), (Start: 104 @28514 has 263 MA's), (Start: 105 @28517 has 10 MA's), (133, 28628), (135, 28634), (138, 28643), (143, 28661), (144, 28664), (149, 28676),

Gene: Pacc40_32 Start: 28705, Stop: 28938, Start Num: 104

Candidate Starts for Pacc40_32:

(45, 28489), (Start: 104 @28705 has 263 MA's), (Start: 105 @28708 has 10 MA's), (133, 28819), (135, 28825), (138, 28834), (143, 28852), (144, 28855), (149, 28867),

Gene: PaintedDog_31 Start: 27027, Stop: 27272, Start Num: 104

Candidate Starts for PaintedDog_31:

(9, 26148), (18, 26406), (23, 26511), (25, 26529), (78, 26922), (85, 26970), (Start: 104 @27027 has 263 MA's), (131, 27132), (135, 27147), (155, 27207),

Gene: PatoPoderoso_32 Start: 28730, Stop: 28963, Start Num: 104

Candidate Starts for PatoPoderoso_32:

(41, 28487), (60, 28583), (Start: 104 @28730 has 263 MA's), (Start: 105 @28733 has 10 MA's), (133, 28844), (135, 28850), (138, 28859), (143, 28877), (144, 28880), (149, 28892),

Gene: PeanutPie_28 Start: 25241, Stop: 25486, Start Num: 104

Candidate Starts for PeanutPie_28:

(Start: 104 @25241 has 263 MA's), (131, 25346),

Gene: Pepperoni_20 Start: 18419, Stop: 18658, Start Num: 104

Candidate Starts for Pepperoni_20:

(Start: 101 @18413 has 8 MA's), (Start: 104 @18419 has 263 MA's), (119, 18491), (147, 18572), (162, 18623), (163, 18626),

Gene: Percastrophe_49 Start: 27893, Stop: 28090, Start Num: 106

Candidate Starts for Percastrophe_49:

(Start: 106 @27893 has 23 MA's), (111, 27926), (121, 27959),

Gene: Percival_23 Start: 19815, Stop: 20096, Start Num: 81

Candidate Starts for Percival_23:

(Start: 81 @19815 has 15 MA's), (122, 19947), (144, 20025),

Gene: Peridot_37 Start: 30033, Stop: 30266, Start Num: 104

Candidate Starts for Peridot_37:

(60, 29886), (Start: 104 @30033 has 263 MA's), (Start: 105 @30036 has 10 MA's), (133, 30147), (135, 30153), (138, 30162), (143, 30180), (144, 30183), (149, 30195),

Gene: PermaG_31 Start: 22670, Stop: 22951, Start Num: 102

Candidate Starts for PermaG_31:

(Start: 102 @22670 has 17 MA's), (118, 22745), (122, 22757), (130, 22784), (134, 22799), (144, 22832), (163, 22895), (168, 22910),

Gene: Phalconet_32 Start: 28642, Stop: 28875, Start Num: 103

Candidate Starts for Phalconet_32:

(Start: 103 @28642 has 99 MA's), (129, 28741), (135, 28762), (138, 28771), (149, 28804),

Gene: Phalm_28 Start: 25499, Stop: 25747, Start Num: 104

Candidate Starts for Phalm_28:

(Start: 104 @25499 has 263 MA's),

Gene: Phanphagia_29 Start: 27665, Stop: 27898, Start Num: 103

Candidate Starts for Phanphagia_29:

(Start: 103 @27665 has 99 MA's), (129, 27764), (135, 27785), (138, 27794), (149, 27827),

Gene: PhaoMing_20 Start: 19060, Stop: 19296, Start Num: 104

Candidate Starts for PhaoMing_20:

(Start: 101 @19054 has 8 MA's), (Start: 104 @19060 has 263 MA's), (112, 19102), (119, 19132), (128, 19153), (129, 19156),

Gene: Phasih_33 Start: 29091, Stop: 29324, Start Num: 104

Candidate Starts for Phasih_33:

(Start: 104 @29091 has 263 MA's), (Start: 105 @29094 has 10 MA's), (133, 29205), (135, 29211), (138, 29220), (143, 29238), (144, 29241), (149, 29253),

Gene: Phatniss_33 Start: 29031, Stop: 29264, Start Num: 104

Candidate Starts for Phatniss_33:

(60, 28884), (Start: 104 @29031 has 263 MA's), (Start: 105 @29034 has 10 MA's), (133, 29145), (135, 29151), (138, 29160), (143, 29178), (144, 29181), (149, 29193),

Gene: Phegasus_28 Start: 25246, Stop: 25494, Start Num: 104

Candidate Starts for Phegasus_28:
(Start: 104 @25246 has 263 MA's),

Gene: PhesterPhotato_32 Start: 28562, Stop: 28795, Start Num: 103
Candidate Starts for PhesterPhotato_32:
(Start: 103 @28562 has 99 MA's), (129, 28661), (135, 28682), (138, 28691), (149, 28724),

Gene: Philus_32 Start: 28608, Stop: 28841, Start Num: 104
Candidate Starts for Philus_32:
(60, 28461), (Start: 104 @28608 has 263 MA's), (Start: 105 @28611 has 10 MA's), (133, 28722), (135, 28728), (138, 28737), (143, 28755), (144, 28758), (149, 28770),

Gene: Phineas_28 Start: 25611, Stop: 25859, Start Num: 104
Candidate Starts for Phineas_28:
(Start: 104 @25611 has 263 MA's),

Gene: PhlipPhlop_33 Start: 30146, Stop: 30379, Start Num: 104
Candidate Starts for PhlipPhlop_33:
(60, 29999), (Start: 104 @30146 has 263 MA's), (Start: 105 @30149 has 10 MA's), (133, 30260), (135, 30266), (138, 30275), (143, 30293), (144, 30296), (149, 30308),

Gene: PhorbesPhlower_21 Start: 18439, Stop: 18675, Start Num: 104
Candidate Starts for PhorbesPhlower_21:
(Start: 104 @18439 has 263 MA's), (112, 18481), (119, 18511), (128, 18532), (129, 18535), (144, 18586), (147, 18592),

Gene: Phrann_27 Start: 24392, Stop: 24637, Start Num: 104
Candidate Starts for Phrann_27:
(6, 23375), (12, 23555), (18, 23771), (23, 23876), (25, 23894), (78, 24287), (85, 24335), (Start: 104 @24392 has 263 MA's), (131, 24497), (135, 24512), (156, 24575), (162, 24605),

Gene: Pickett_19 Start: 17534, Stop: 17779, Start Num: 101
Candidate Starts for Pickett_19:
(Start: 101 @17534 has 8 MA's), (Start: 104 @17540 has 263 MA's), (119, 17612), (147, 17693), (162, 17744), (163, 17747),

Gene: Pioneer3_56 Start: 35879, Stop: 36094, Start Num: 97
Candidate Starts for Pioneer3_56:
(76, 35789), (Start: 97 @35879 has 6 MA's), (Start: 99 @35885 has 6 MA's),

Gene: Piper2020_34 Start: 29134, Stop: 29367, Start Num: 103
Candidate Starts for Piper2020_34:
(Start: 103 @29134 has 99 MA's), (129, 29233), (135, 29254), (138, 29263), (149, 29296),

Gene: Pippy_26 Start: 24672, Stop: 24905, Start Num: 103
Candidate Starts for Pippy_26:
(Start: 103 @24672 has 99 MA's), (129, 24771), (135, 24792), (138, 24801), (149, 24834),

Gene: Pitbull_23 Start: 17606, Stop: 17854, Start Num: 104
Candidate Starts for Pitbull_23:
(Start: 104 @17606 has 263 MA's), (122, 17687), (125, 17696), (135, 17732), (140, 17747), (157, 17792),

Gene: Platte_56 Start: 35664, Stop: 35879, Start Num: 97
Candidate Starts for Platte_56:
(76, 35574), (Start: 97 @35664 has 6 MA's), (Start: 99 @35670 has 6 MA's),

Gene: Plumbus_34 Start: 28611, Stop: 28844, Start Num: 104
Candidate Starts for Plumbus_34:
(Start: 104 @28611 has 263 MA's), (Start: 105 @28614 has 10 MA's), (133, 28725), (135, 28731),
(138, 28740), (143, 28758), (144, 28761), (149, 28773),

Gene: Poenanya_32 Start: 28654, Stop: 28887, Start Num: 104
Candidate Starts for Poenanya_32:
(Start: 104 @28654 has 263 MA's), (129, 28753), (135, 28774), (138, 28783), (149, 28816),

Gene: Polka14_33 Start: 29157, Stop: 29390, Start Num: 104
Candidate Starts for Polka14_33:
(Start: 104 @29157 has 263 MA's), (Start: 105 @29160 has 10 MA's), (133, 29271), (135, 29277),
(138, 29286), (143, 29304), (144, 29307), (149, 29319),

Gene: Polkaroo_28 Start: 25256, Stop: 25504, Start Num: 104
Candidate Starts for Polkaroo_28:
(Start: 104 @25256 has 263 MA's),

Gene: Pollux_23 Start: 20804, Stop: 21043, Start Num: 104
Candidate Starts for Pollux_23:
(75, 20696), (Start: 104 @20804 has 263 MA's), (112, 20846), (128, 20897), (129, 20900), (144,
20951), (147, 20957),

Gene: Pollywog_32 Start: 28866, Stop: 29099, Start Num: 104
Candidate Starts for Pollywog_32:
(Start: 104 @28866 has 263 MA's), (Start: 105 @28869 has 10 MA's), (133, 28980), (135, 28986),
(138, 28995), (143, 29013), (144, 29016), (149, 29028),

Gene: Polo2Bam_37 Start: 28713, Stop: 28946, Start Num: 104
Candidate Starts for Polo2Bam_37:
(60, 28566), (Start: 104 @28713 has 263 MA's), (Start: 105 @28716 has 10 MA's), (133, 28827), (135,
28833), (138, 28842), (143, 28860), (144, 28863), (149, 28875),

Gene: PopTart_32 Start: 28847, Stop: 29080, Start Num: 104
Candidate Starts for PopTart_32:
(Start: 104 @28847 has 263 MA's), (Start: 105 @28850 has 10 MA's), (129, 28946), (135, 28967),
(138, 28976), (149, 29009),

Gene: Priscilla_32 Start: 28794, Stop: 29027, Start Num: 104
Candidate Starts for Priscilla_32:
(13, 28080), (14, 28101), (15, 28152), (19, 28242), (21, 28317), (26, 28356), (27, 28389), (30, 28422),
(34, 28503), (35, 28506), (Start: 104 @28794 has 263 MA's), (129, 28893), (135, 28914), (138, 28923),
(149, 28956),

Gene: PumpkinSpice_71 Start: 53129, Stop: 53380, Start Num: 104
Candidate Starts for PumpkinSpice_71:
(Start: 104 @53129 has 263 MA's), (120, 53204),

Gene: Pygmy_30 Start: 27079, Stop: 27327, Start Num: 104

Candidate Starts for Pygmy_30:
(Start: 104 @27079 has 263 MA's),

Gene: Quaran19_72 Start: 53120, Stop: 53371, Start Num: 104
Candidate Starts for Quaran19_72:
(Start: 104 @53120 has 263 MA's), (120, 53195),

Gene: QueenHazel_27 Start: 25412, Stop: 25657, Start Num: 104
Candidate Starts for QueenHazel_27:
(12, 24575), (18, 24791), (23, 24896), (25, 24914), (78, 25307), (85, 25355), (Start: 104 @25412 has 263 MA's), (131, 25517), (135, 25532), (162, 25625),

Gene: QuickMath_33 Start: 29883, Stop: 30116, Start Num: 104
Candidate Starts for QuickMath_33:
(60, 29736), (Start: 104 @29883 has 263 MA's), (Start: 105 @29886 has 10 MA's), (133, 29997), (135, 30003), (138, 30012), (143, 30030), (144, 30033), (149, 30045),

Gene: Quico_33 Start: 28343, Stop: 28576, Start Num: 104
Candidate Starts for Quico_33:
(60, 28196), (Start: 104 @28343 has 263 MA's), (Start: 105 @28346 has 10 MA's), (133, 28457), (135, 28463), (138, 28472), (143, 28490), (144, 28493), (149, 28505),

Gene: Radiance_32 Start: 28707, Stop: 28940, Start Num: 104
Candidate Starts for Radiance_32:
(60, 28560), (Start: 104 @28707 has 263 MA's), (Start: 105 @28710 has 10 MA's), (133, 28821), (135, 28827), (138, 28836), (143, 28854), (144, 28857), (149, 28869),

Gene: Ramsey_35 Start: 29367, Stop: 29600, Start Num: 103
Candidate Starts for Ramsey_35:
(Start: 103 @29367 has 99 MA's), (129, 29466), (135, 29487), (138, 29496), (143, 29514), (144, 29517), (149, 29529),

Gene: Rasovi_30 Start: 22726, Stop: 23004, Start Num: 102
Candidate Starts for Rasovi_30:
(48, 22486), (71, 22588), (Start: 98 @22717 has 3 MA's), (Start: 102 @22726 has 17 MA's), (118, 22801), (122, 22813), (130, 22840), (144, 22888), (168, 22966),

Gene: RayTheFireFly_23 Start: 21371, Stop: 21616, Start Num: 101
Candidate Starts for RayTheFireFly_23:
(Start: 101 @21371 has 8 MA's), (Start: 104 @21377 has 263 MA's), (112, 21419), (119, 21449), (128, 21470), (144, 21524), (163, 21584),

Gene: RedBird_32 Start: 28512, Stop: 28745, Start Num: 104
Candidate Starts for RedBird_32:
(Start: 104 @28512 has 263 MA's), (Start: 105 @28515 has 10 MA's), (133, 28626), (135, 28632), (138, 28641), (143, 28659), (144, 28662), (149, 28674),

Gene: RegnumDei_26 Start: 25854, Stop: 26069, Start Num: 104
Candidate Starts for RegnumDei_26:
(Start: 104 @25854 has 263 MA's), (113, 25899), (117, 25914), (127, 25947), (152, 26022), (163, 26061),

Gene: Renaud18_32 Start: 28732, Stop: 28965, Start Num: 103

Candidate Starts for Renaud18_32:

(35, 28444), (Start: 103 @28732 has 99 MA's), (129, 28831), (135, 28852), (138, 28861), (149, 28894),

Gene: RetrieverFever_49 Start: 27549, Stop: 27746, Start Num: 106

Candidate Starts for RetrieverFever_49:

(Start: 106 @27549 has 23 MA's), (115, 27600),

Gene: Rialto_36 Start: 30865, Stop: 31098, Start Num: 104

Candidate Starts for Rialto_36:

(60, 30718), (Start: 104 @30865 has 263 MA's), (Start: 105 @30868 has 10 MA's), (133, 30979), (135, 30985), (138, 30994), (143, 31012), (144, 31015), (149, 31027),

Gene: Rideau_51 Start: 27480, Stop: 27677, Start Num: 106

Candidate Starts for Rideau_51:

(74, 27357), (Start: 106 @27480 has 23 MA's), (111, 27513), (121, 27546), (147, 27615), (160, 27642),

Gene: Rikishi_72 Start: 53035, Stop: 53286, Start Num: 104

Candidate Starts for Rikishi_72:

(Start: 104 @53035 has 263 MA's), (120, 53110),

Gene: Riptide_67 Start: 51923, Stop: 52174, Start Num: 104

Candidate Starts for Riptide_67:

(Start: 104 @51923 has 263 MA's), (122, 52004), (167, 52151),

Gene: Rita_33 Start: 28781, Stop: 29014, Start Num: 103

Candidate Starts for Rita_33:

(35, 28493), (Start: 103 @28781 has 99 MA's), (129, 28880), (133, 28895), (135, 28901), (138, 28910), (149, 28943),

Gene: RitaG_33 Start: 28977, Stop: 29210, Start Num: 104

Candidate Starts for RitaG_33:

(Start: 104 @28977 has 263 MA's), (Start: 105 @28980 has 10 MA's), (133, 29091), (135, 29097), (138, 29106), (143, 29124), (144, 29127), (149, 29139),

Gene: Rockne_32 Start: 28514, Stop: 28747, Start Num: 104

Candidate Starts for Rockne_32:

(60, 28367), (Start: 104 @28514 has 263 MA's), (Start: 105 @28517 has 10 MA's), (133, 28628), (135, 28634), (138, 28643), (143, 28661), (144, 28664), (149, 28676),

Gene: RockyHorror_33 Start: 28458, Stop: 28691, Start Num: 104

Candidate Starts for RockyHorror_33:

(Start: 104 @28458 has 263 MA's), (Start: 105 @28461 has 10 MA's), (133, 28572), (135, 28578), (138, 28587), (143, 28605), (144, 28608), (149, 28620),

Gene: RomansRevenge_36 Start: 33483, Stop: 33725, Start Num: 94

Candidate Starts for RomansRevenge_36:

(Start: 94 @33483 has 1 MA's), (121, 33570), (136, 33621), (152, 33669),

Gene: Romero_49 Start: 27952, Stop: 28149, Start Num: 106

Candidate Starts for Romero_49:

(Start: 106 @27952 has 23 MA's), (111, 27985), (121, 28018),

Gene: Ronaldo_64 Start: 35651, Stop: 35863, Start Num: 104

Candidate Starts for Ronaldo_64:

(Start: 104 @35651 has 263 MA's), (111, 35690), (144, 35795), (160, 35828),

Gene: Rootkit7_30 Start: 22521, Stop: 22799, Start Num: 102

Candidate Starts for Rootkit7_30:

(48, 22290), (71, 22383), (73, 22395), (Start: 98 @22512 has 3 MA's), (Start: 102 @22521 has 17 MA's), (122, 22608), (134, 22650), (144, 22683), (168, 22761),

Gene: RosePharie_49 Start: 28196, Stop: 28393, Start Num: 106

Candidate Starts for RosePharie_49:

(42, 27917), (47, 27941), (52, 27974), (59, 27998), (69, 28043), (70, 28046), (Start: 106 @28196 has 23 MA's), (126, 28280), (158, 28355),

Gene: Royals2015_32 Start: 28631, Stop: 28864, Start Num: 104

Candidate Starts for Royals2015_32:

(Start: 104 @28631 has 263 MA's), (Start: 105 @28634 has 10 MA's), (133, 28745), (135, 28751), (138, 28760), (143, 28778), (144, 28781), (149, 28793),

Gene: Ruby_34 Start: 29563, Stop: 29805, Start Num: 99

Candidate Starts for Ruby_34:

(29, 29137), (62, 29398), (Start: 99 @29563 has 6 MA's), (Start: 103 @29572 has 99 MA's), (Start: 105 @29575 has 10 MA's), (133, 29686), (135, 29692), (138, 29701), (143, 29719), (144, 29722), (149, 29734),

Gene: SBlackberry_30 Start: 22499, Stop: 22780, Start Num: 102

Candidate Starts for SBlackberry_30:

(48, 22286), (71, 22361), (Start: 98 @22490 has 3 MA's), (Start: 102 @22499 has 17 MA's), (118, 22574), (122, 22586), (130, 22613), (134, 22628), (144, 22661), (168, 22739),

Gene: SG4_33 Start: 29281, Stop: 29514, Start Num: 103

Candidate Starts for SG4_33:

(29, 28846), (62, 29107), (Start: 99 @29272 has 6 MA's), (Start: 103 @29281 has 99 MA's), (Start: 105 @29284 has 10 MA's), (129, 29380), (133, 29395), (135, 29401), (138, 29410), (143, 29428), (144, 29431), (149, 29443),

Gene: SPB78_23 Start: 20233, Stop: 20484, Start Num: 104

Candidate Starts for SPB78_23:

(72, 20095), (Start: 104 @20233 has 263 MA's), (111, 20272), (118, 20296), (121, 20305), (143, 20380), (152, 20404),

Gene: Saal_32 Start: 28586, Stop: 28819, Start Num: 104

Candidate Starts for Saal_32:

(60, 28439), (Start: 104 @28586 has 263 MA's), (Start: 105 @28589 has 10 MA's), (133, 28700), (135, 28706), (138, 28715), (143, 28733), (144, 28736), (149, 28748),

Gene: Sabbb_33 Start: 28931, Stop: 29164, Start Num: 104

Candidate Starts for Sabbb_33:

(41, 28688), (60, 28784), (Start: 104 @28931 has 263 MA's), (Start: 105 @28934 has 10 MA's), (133, 29045), (135, 29051), (138, 29060), (143, 29078), (144, 29081), (149, 29093),

Gene: SaltySpittoon_72 Start: 53129, Stop: 53380, Start Num: 104

Candidate Starts for SaltySpittoon_72:

(Start: 104 @53129 has 263 MA's), (120, 53204),

Gene: Sandalphon_33 Start: 29315, Stop: 29548, Start Num: 104
Candidate Starts for Sandalphon_33:
(Start: 104 @29315 has 263 MA's), (129, 29414), (135, 29435), (138, 29444), (149, 29477),

Gene: Sarma624_28 Start: 24741, Stop: 24974, Start Num: 103
Candidate Starts for Sarma624_28:
(Start: 103 @24741 has 99 MA's), (129, 24840), (133, 24855), (135, 24861), (138, 24870), (149, 24903),

Gene: Sassafras_33 Start: 29216, Stop: 29449, Start Num: 104
Candidate Starts for Sassafras_33:
(Start: 104 @29216 has 263 MA's), (Start: 105 @29219 has 10 MA's), (133, 29330), (135, 29336), (138, 29345), (143, 29363), (144, 29366), (149, 29378),

Gene: SassyB_32 Start: 28847, Stop: 29080, Start Num: 104
Candidate Starts for SassyB_32:
(Start: 104 @28847 has 263 MA's), (Start: 105 @28850 has 10 MA's), (129, 28946), (135, 28967), (138, 28976), (149, 29009),

Gene: Scottish_33 Start: 29837, Stop: 30070, Start Num: 104
Candidate Starts for Scottish_33:
(Start: 104 @29837 has 263 MA's), (Start: 105 @29840 has 10 MA's), (133, 29951), (135, 29957), (138, 29966), (143, 29984), (144, 29987), (149, 29999),

Gene: SeaLumen_36 Start: 28713, Stop: 28946, Start Num: 104
Candidate Starts for SeaLumen_36:
(60, 28566), (Start: 104 @28713 has 263 MA's), (Start: 105 @28716 has 10 MA's), (133, 28827), (135, 28833), (138, 28842), (143, 28860), (144, 28863), (149, 28875),

Gene: Seabastian_32 Start: 28744, Stop: 28977, Start Num: 104
Candidate Starts for Seabastian_32:
(45, 28528), (Start: 104 @28744 has 263 MA's), (Start: 105 @28747 has 10 MA's), (133, 28858), (135, 28864), (138, 28873), (143, 28891), (144, 28894), (149, 28906),

Gene: Seagreen_33 Start: 28654, Stop: 28887, Start Num: 104
Candidate Starts for Seagreen_33:
(Start: 104 @28654 has 263 MA's), (Start: 105 @28657 has 10 MA's), (133, 28768), (138, 28783), (143, 28801), (144, 28804), (149, 28816),

Gene: Shagrat_28 Start: 27081, Stop: 27296, Start Num: 104
Candidate Starts for Shagrat_28:
(Start: 104 @27081 has 263 MA's), (123, 27159), (152, 27249),

Gene: Shauna1_29 Start: 27668, Stop: 27901, Start Num: 103
Candidate Starts for Shauna1_29:
(Start: 103 @27668 has 99 MA's), (129, 27767), (135, 27788), (138, 27797), (149, 27830),

Gene: ShiLan_32 Start: 28750, Stop: 28983, Start Num: 103
Candidate Starts for ShiLan_32:
(34, 28459), (35, 28462), (40, 28498), (Start: 103 @28750 has 99 MA's), (129, 28849), (135, 28870), (138, 28879), (149, 28912),

Gene: Shipwreck_30 Start: 27054, Stop: 27302, Start Num: 104
Candidate Starts for Shipwreck_30:
(Start: 104 @27054 has 263 MA's),

Gene: ShowerHandel_32 Start: 28709, Stop: 28942, Start Num: 103
Candidate Starts for ShowerHandel_32:
(34, 28418), (35, 28421), (40, 28457), (Start: 103 @28709 has 99 MA's), (129, 28808), (135, 28829),
(138, 28838), (149, 28871),

Gene: ShroomBoi_29 Start: 27607, Stop: 27840, Start Num: 103
Candidate Starts for ShroomBoi_29:
(35, 27319), (Start: 103 @27607 has 99 MA's), (129, 27706), (135, 27727), (138, 27736), (149, 27769),

Gene: SiSi_32 Start: 28515, Stop: 28748, Start Num: 104
Candidate Starts for SiSi_32:
(Start: 104 @28515 has 263 MA's), (Start: 105 @28518 has 10 MA's), (133, 28629), (135, 28635),
(138, 28644), (143, 28662), (144, 28665), (149, 28677),

Gene: SilverChicken_40 Start: 28433, Stop: 28666, Start Num: 103
Candidate Starts for SilverChicken_40:
(Start: 103 @28433 has 99 MA's), (129, 28532), (135, 28553), (138, 28562), (149, 28595),

Gene: SimranZ1_35 Start: 28834, Stop: 29067, Start Num: 104
Candidate Starts for SimranZ1_35:
(45, 28618), (Start: 104 @28834 has 263 MA's), (Start: 105 @28837 has 10 MA's), (133, 28948), (135,
28954), (138, 28963), (143, 28981), (144, 28984), (149, 28996),

Gene: Slim_34 Start: 29906, Stop: 30139, Start Num: 104
Candidate Starts for Slim_34:
(33, 29597), (60, 29759), (Start: 104 @29906 has 263 MA's), (Start: 105 @29909 has 10 MA's), (133,
30020), (135, 30026), (138, 30035), (143, 30053), (144, 30056), (149, 30068),

Gene: Sollertia_72 Start: 53095, Stop: 53346, Start Num: 104
Candidate Starts for Sollertia_72:
(Start: 104 @53095 has 263 MA's), (112, 53137), (136, 53215), (167, 53323),

Gene: Sonah_28 Start: 25227, Stop: 25475, Start Num: 104
Candidate Starts for Sonah_28:
(Start: 104 @25227 has 263 MA's),

Gene: Soul22_37 Start: 28902, Stop: 29144, Start Num: 99
Candidate Starts for Soul22_37:
(Start: 99 @28902 has 6 MA's), (Start: 103 @28911 has 99 MA's), (Start: 105 @28914 has 10 MA's),
(133, 29025), (135, 29031), (138, 29040), (143, 29058), (144, 29061), (149, 29073),

Gene: Sparkdehlily_32 Start: 28632, Stop: 28865, Start Num: 104
Candidate Starts for Sparkdehlily_32:
(60, 28485), (Start: 104 @28632 has 263 MA's), (Start: 105 @28635 has 10 MA's), (133, 28746), (135,
28752), (138, 28761), (143, 28779), (144, 28782), (149, 28794),

Gene: Spartacus_34 Start: 29042, Stop: 29275, Start Num: 104
Candidate Starts for Spartacus_34:

(Start: 104 @29042 has 263 MA's), (Start: 105 @29045 has 10 MA's), (133, 29156), (135, 29162), (138, 29171), (143, 29189), (144, 29192), (149, 29204),

Gene: Spelly_72 Start: 53084, Stop: 53335, Start Num: 104

Candidate Starts for Spelly_72:

(Start: 104 @53084 has 263 MA's), (120, 53159),

Gene: Spikelee_34 Start: 28780, Stop: 29013, Start Num: 103

Candidate Starts for Spikelee_34:

(Start: 103 @28780 has 99 MA's), (133, 28894), (135, 28900), (138, 28909), (143, 28927), (144, 28930), (149, 28942),

Gene: Spilled_73 Start: 53201, Stop: 53452, Start Num: 104

Candidate Starts for Spilled_73:

(Start: 104 @53201 has 263 MA's), (120, 53276),

Gene: Spoonbill_32 Start: 28796, Stop: 29029, Start Num: 104

Candidate Starts for Spoonbill_32:

(60, 28649), (Start: 104 @28796 has 263 MA's), (Start: 105 @28799 has 10 MA's), (133, 28910), (135, 28916), (138, 28925), (143, 28943), (144, 28946), (149, 28958),

Gene: StAnnes_31 Start: 29111, Stop: 29344, Start Num: 103

Candidate Starts for StAnnes_31:

(29, 28676), (62, 28937), (Start: 99 @29102 has 6 MA's), (Start: 103 @29111 has 99 MA's), (Start: 105 @29114 has 10 MA's), (133, 29225), (135, 29231), (138, 29240), (143, 29258), (144, 29261), (149, 29273),

Gene: Stanimal_72 Start: 52984, Stop: 53235, Start Num: 104

Candidate Starts for Stanimal_72:

(Start: 104 @52984 has 263 MA's), (112, 53026), (136, 53104), (167, 53212),

Gene: Stap_33 Start: 28688, Stop: 28921, Start Num: 104

Candidate Starts for Stap_33:

(35, 28397), (Start: 104 @28688 has 263 MA's), (133, 28802), (135, 28808), (138, 28817), (143, 28835), (144, 28838), (149, 28850),

Gene: StarPlatinum_72 Start: 53629, Stop: 53880, Start Num: 104

Candidate Starts for StarPlatinum_72:

(Start: 104 @53629 has 263 MA's), (120, 53704), (163, 53836),

Gene: Starbow_70 Start: 53105, Stop: 53356, Start Num: 104

Candidate Starts for Starbow_70:

(Start: 104 @53105 has 263 MA's), (120, 53180),

Gene: Starcevich_36 Start: 29410, Stop: 29643, Start Num: 104

Candidate Starts for Starcevich_36:

(45, 29200), (Start: 104 @29410 has 263 MA's), (129, 29509), (135, 29530), (138, 29539), (149, 29572),

Gene: Stella_51 Start: 28187, Stop: 28384, Start Num: 106

Candidate Starts for Stella_51:

(Start: 106 @28187 has 23 MA's), (111, 28220), (160, 28349),

Gene: StevieRay_28 Start: 25219, Stop: 25464, Start Num: 104
Candidate Starts for StevieRay_28:
(Start: 104 @25219 has 263 MA's),

Gene: StressBall_28 Start: 25499, Stop: 25747, Start Num: 104
Candidate Starts for StressBall_28:
(Start: 104 @25499 has 263 MA's),

Gene: Strokeseat_33 Start: 29357, Stop: 29590, Start Num: 103
Candidate Starts for Strokeseat_33:
(Start: 103 @29357 has 99 MA's), (129, 29456), (135, 29477), (138, 29486), (149, 29519),

Gene: SuMoo_22 Start: 18079, Stop: 18363, Start Num: 81
Candidate Starts for SuMoo_22:
(Start: 81 @18079 has 15 MA's), (152, 18319), (163, 18358),

Gene: Sucha_27 Start: 19896, Stop: 20168, Start Num: 102
Candidate Starts for Sucha_27:
(Start: 98 @19887 has 3 MA's), (Start: 102 @19896 has 17 MA's), (122, 19983), (144, 20058),

Gene: SuperGrey_33 Start: 29503, Stop: 29736, Start Num: 103
Candidate Starts for SuperGrey_33:
(35, 29215), (Start: 103 @29503 has 99 MA's), (129, 29602), (135, 29623), (138, 29632), (149, 29665),

Gene: SuperHands_23 Start: 20712, Stop: 20993, Start Num: 81
Candidate Starts for SuperHands_23:
(58, 20589), (Start: 81 @20712 has 15 MA's), (122, 20844), (144, 20922), (163, 20988),

Gene: SwagPigglett_32 Start: 28520, Stop: 28753, Start Num: 103
Candidate Starts for SwagPigglett_32:
(34, 28229), (35, 28232), (40, 28268), (Start: 103 @28520 has 99 MA's), (129, 28619), (135, 28640),
(138, 28649), (149, 28682),

Gene: TChen_32 Start: 29278, Stop: 29541, Start Num: 100
Candidate Starts for TChen_32:
(53, 29071), (57, 29086), (83, 29221), (Start: 100 @29278 has 3 MA's), (145, 29443), (148, 29449),
(150, 29452), (156, 29470), (169, 29527),

Gene: TDanisky_32 Start: 28632, Stop: 28865, Start Num: 104
Candidate Starts for TDanisky_32:
(60, 28485), (Start: 104 @28632 has 263 MA's), (Start: 105 @28635 has 10 MA's), (133, 28746), (135,
28752), (138, 28761), (143, 28779), (144, 28782), (149, 28794),

Gene: Taj_32 Start: 28693, Stop: 28926, Start Num: 103
Candidate Starts for Taj_32:
(Start: 103 @28693 has 99 MA's), (129, 28792), (135, 28813), (138, 28822), (149, 28855),

Gene: Tandem_56 Start: 35818, Stop: 36033, Start Num: 97
Candidate Starts for Tandem_56:
(76, 35728), (Start: 97 @35818 has 6 MA's), (Start: 99 @35824 has 6 MA's),

Gene: Targaryen_71 Start: 54698, Stop: 54949, Start Num: 104
Candidate Starts for Targaryen_71:

(Start: 104 @54698 has 263 MA's), (138, 54824),

Gene: Tchotchke_32 Start: 28135, Stop: 28368, Start Num: 104

Candidate Starts for Tchotchke_32:

(45, 27919), (Start: 104 @28135 has 263 MA's), (Start: 105 @28138 has 10 MA's), (133, 28249), (135, 28255), (138, 28264), (143, 28282), (144, 28285), (149, 28297),

Gene: Techage_28 Start: 25231, Stop: 25479, Start Num: 104

Candidate Starts for Techage_28:

(Start: 104 @25231 has 263 MA's),

Gene: Thespis_28 Start: 25235, Stop: 25483, Start Num: 104

Candidate Starts for Thespis_28:

(Start: 104 @25235 has 263 MA's),

Gene: ThetaBob_32 Start: 28234, Stop: 28491, Start Num: 104

Candidate Starts for ThetaBob_32:

(Start: 104 @28234 has 263 MA's), (111, 28273), (121, 28306), (122, 28309), (138, 28363), (153, 28408), (154, 28411),

Gene: TomSawyer_70 Start: 52723, Stop: 52974, Start Num: 104

Candidate Starts for TomSawyer_70:

(Start: 104 @52723 has 263 MA's), (120, 52798),

Gene: Tomas_74 Start: 55444, Stop: 55695, Start Num: 104

Candidate Starts for Tomas_74:

(93, 55414), (Start: 104 @55444 has 263 MA's), (120, 55519), (122, 55525), (167, 55672),

Gene: TootsiePop_33 Start: 28418, Stop: 28651, Start Num: 104

Candidate Starts for TootsiePop_33:

(Start: 104 @28418 has 263 MA's), (Start: 105 @28421 has 10 MA's), (133, 28532), (135, 28538), (138, 28547), (143, 28565), (144, 28568), (149, 28580),

Gene: Tootsieroll_33 Start: 28584, Stop: 28817, Start Num: 104

Candidate Starts for Tootsieroll_33:

(35, 28293), (Start: 104 @28584 has 263 MA's), (129, 28683), (135, 28704), (138, 28713), (149, 28746),

Gene: Topiatin_35 Start: 29220, Stop: 29453, Start Num: 104

Candidate Starts for Topiatin_35:

(19, 28662), (21, 28737), (26, 28776), (27, 28809), (30, 28842), (34, 28923), (35, 28926), (45, 29004), (Start: 104 @29220 has 263 MA's), (Start: 105 @29223 has 10 MA's), (133, 29334), (135, 29340), (138, 29349), (143, 29367), (144, 29370), (149, 29382),

Gene: ToriToki_49 Start: 27955, Stop: 28152, Start Num: 106

Candidate Starts for ToriToki_49:

(Start: 106 @27955 has 23 MA's), (111, 27988), (121, 28021),

Gene: Toron_33 Start: 29073, Stop: 29384, Start Num: 87

Candidate Starts for Toron_33:

(83, 29058), (87, 29073), (91, 29088), (Start: 100 @29115 has 3 MA's), (109, 29151), (145, 29286), (148, 29292), (150, 29295), (156, 29313), (169, 29370),

Gene: Totinger_33 Start: 28516, Stop: 28749, Start Num: 104

Candidate Starts for Totinger_33:

(60, 28369), (Start: 104 @28516 has 263 MA's), (Start: 105 @28519 has 10 MA's), (133, 28630), (135, 28636), (138, 28645), (143, 28663), (144, 28666), (149, 28678),

Gene: Treat_49 Start: 27896, Stop: 28093, Start Num: 106

Candidate Starts for Treat_49:

(Start: 106 @27896 has 23 MA's), (111, 27929), (121, 27962),

Gene: TurboVicky_30 Start: 22515, Stop: 22793, Start Num: 102

Candidate Starts for TurboVicky_30:

(48, 22284), (71, 22377), (77, 22404), (Start: 98 @22506 has 3 MA's), (Start: 102 @22515 has 17 MA's), (122, 22602), (134, 22644), (144, 22677), (168, 22755),

Gene: Tweety_32 Start: 28751, Stop: 28984, Start Num: 103

Candidate Starts for Tweety_32:

(Start: 103 @28751 has 99 MA's), (129, 28850), (135, 28871), (138, 28880), (149, 28913),

Gene: Typher_32 Start: 22644, Stop: 22922, Start Num: 102

Candidate Starts for Typher_32:

(48, 22413), (71, 22506), (77, 22533), (Start: 98 @22635 has 3 MA's), (Start: 102 @22644 has 17 MA's), (122, 22731), (134, 22773), (144, 22806), (168, 22884),

Gene: UncleRicky_35 Start: 29847, Stop: 30080, Start Num: 104

Candidate Starts for UncleRicky_35:

(60, 29700), (Start: 104 @29847 has 263 MA's), (Start: 105 @29850 has 10 MA's), (133, 29961), (135, 29967), (138, 29976), (143, 29994), (144, 29997), (149, 30009),

Gene: UtzChips_22 Start: 18828, Stop: 19115, Start Num: 81

Candidate Starts for UtzChips_22:

(Start: 81 @18828 has 15 MA's), (92, 18864), (138, 19026), (163, 19110),

Gene: VRedHorse_32 Start: 28705, Stop: 28938, Start Num: 104

Candidate Starts for VRedHorse_32:

(60, 28558), (Start: 104 @28705 has 263 MA's), (Start: 105 @28708 has 10 MA's), (133, 28819), (135, 28825), (138, 28834), (149, 28867),

Gene: Velveteen_28 Start: 24741, Stop: 24974, Start Num: 103

Candidate Starts for Velveteen_28:

(Start: 103 @24741 has 99 MA's), (129, 24840), (133, 24855), (135, 24861), (138, 24870), (149, 24903),

Gene: Venti_28 Start: 25240, Stop: 25488, Start Num: 104

Candidate Starts for Venti_28:

(Start: 104 @25240 has 263 MA's),

Gene: Veteran_32 Start: 28554, Stop: 28787, Start Num: 104

Candidate Starts for Veteran_32:

(Start: 104 @28554 has 263 MA's), (Start: 105 @28557 has 10 MA's), (133, 28668), (135, 28674), (138, 28683), (143, 28701), (144, 28704), (149, 28716),

Gene: Vidya_28 Start: 25240, Stop: 25488, Start Num: 104

Candidate Starts for Vidya_28:

(Start: 104 @25240 has 263 MA's),

Gene: Violac_33 Start: 29236, Stop: 29469, Start Num: 103

Candidate Starts for Violac_33:

(Start: 103 @29236 has 99 MA's), (129, 29335), (135, 29356), (138, 29365), (149, 29398),

Gene: Vivum_33 Start: 28532, Stop: 28765, Start Num: 103

Candidate Starts for Vivum_33:

(Start: 103 @28532 has 99 MA's), (129, 28631), (135, 28652), (138, 28661), (149, 28694),

Gene: Volt_64 Start: 35815, Stop: 36027, Start Num: 104

Candidate Starts for Volt_64:

(Start: 104 @35815 has 263 MA's), (111, 35854), (144, 35959), (160, 35992),

Gene: Vorvolakos_49 Start: 27548, Stop: 27745, Start Num: 106

Candidate Starts for Vorvolakos_49:

(Start: 106 @27548 has 23 MA's), (115, 27599),

Gene: WRightOn_50 Start: 27662, Stop: 27859, Start Num: 106

Candidate Starts for WRightOn_50:

(Start: 106 @27662 has 23 MA's), (112, 27698), (126, 27746), (158, 27821),

Gene: Wachhund_32 Start: 28708, Stop: 28941, Start Num: 103

Candidate Starts for Wachhund_32:

(Start: 103 @28708 has 99 MA's), (129, 28807), (135, 28828), (138, 28837), (149, 28870),

Gene: Wakanda_47 Start: 44427, Stop: 44681, Start Num: 104

Candidate Starts for Wakanda_47:

(Start: 104 @44427 has 263 MA's), (163, 44640),

Gene: Warpy_74 Start: 54162, Stop: 54413, Start Num: 104

Candidate Starts for Warpy_74:

(Start: 104 @54162 has 263 MA's), (138, 54288),

Gene: Wee_33 Start: 29231, Stop: 29464, Start Num: 103

Candidate Starts for Wee_33:

(Start: 103 @29231 has 99 MA's), (129, 29330), (135, 29351), (138, 29360), (149, 29393),

Gene: Whatsapiecost_33 Start: 28967, Stop: 29200, Start Num: 103

Candidate Starts for Whatsapiecost_33:

(Start: 103 @28967 has 99 MA's), (129, 29066), (135, 29087), (138, 29096), (149, 29129),

Gene: Whouxphf_33 Start: 29025, Stop: 29258, Start Num: 104

Candidate Starts for Whouxphf_33:

(33, 28716), (41, 28782), (60, 28878), (Start: 104 @29025 has 263 MA's), (Start: 105 @29028 has 10 MA's), (133, 29139), (135, 29145), (138, 29154), (149, 29187),

Gene: WillSterrel_34 Start: 30156, Stop: 30389, Start Num: 103

Candidate Starts for WillSterrel_34:

(Start: 103 @30156 has 99 MA's), (129, 30255), (135, 30276), (138, 30285), (149, 30318),

Gene: Wipeout_70 Start: 53474, Stop: 53725, Start Num: 104

Candidate Starts for Wipeout_70:

(Start: 104 @53474 has 263 MA's), (120, 53549),

Gene: Wofford_71 Start: 54159, Stop: 54410, Start Num: 104

Candidate Starts for Wofford_71:

(Start: 104 @54159 has 263 MA's), (120, 54234), (133, 54270), (147, 54312), (159, 54339),

Gene: XFactor_32 Start: 28712, Stop: 28945, Start Num: 104

Candidate Starts for XFactor_32:

(60, 28565), (Start: 104 @28712 has 263 MA's), (Start: 105 @28715 has 10 MA's), (133, 28826), (135, 28832), (138, 28841), (143, 28859), (144, 28862), (149, 28874),

Gene: Xavia_28 Start: 25869, Stop: 26114, Start Num: 104

Candidate Starts for Xavia_28:

(6, 24852), (12, 25032), (18, 25248), (23, 25353), (25, 25371), (78, 25764), (85, 25812), (Start: 104 @25869 has 263 MA's), (131, 25974), (135, 25989), (156, 26052),

Gene: Xula_26 Start: 24936, Stop: 25181, Start Num: 104

Candidate Starts for Xula_26:

(12, 24099), (18, 24315), (23, 24420), (25, 24438), (78, 24831), (85, 24879), (Start: 104 @24936 has 263 MA's), (131, 25041), (135, 25056),

Gene: Yaboi_72 Start: 53072, Stop: 53323, Start Num: 104

Candidate Starts for Yaboi_72:

(Start: 104 @53072 has 263 MA's), (112, 53114), (136, 53192), (167, 53300),

Gene: Yorick_32 Start: 28707, Stop: 28940, Start Num: 103

Candidate Starts for Yorick_32:

(34, 28416), (35, 28419), (40, 28455), (Start: 103 @28707 has 99 MA's), (129, 28806), (135, 28827), (138, 28836), (149, 28869),

Gene: Yoshi_39 Start: 28311, Stop: 28568, Start Num: 104

Candidate Starts for Yoshi_39:

(Start: 104 @28311 has 263 MA's), (107, 28320), (121, 28383), (138, 28440), (143, 28458), (153, 28485), (154, 28488), (170, 28557),

Gene: Zanella_30 Start: 22523, Stop: 22801, Start Num: 102

Candidate Starts for Zanella_30:

(48, 22292), (71, 22385), (73, 22397), (Start: 98 @22514 has 3 MA's), (Start: 102 @22523 has 17 MA's), (122, 22610), (134, 22652), (144, 22685), (168, 22763),

Gene: Zapner_39 Start: 29391, Stop: 29648, Start Num: 103

Candidate Starts for Zapner_39:

(Start: 103 @29391 has 99 MA's), (108, 29409), (118, 29454), (119, 29457), (131, 29496), (136, 29514), (144, 29541), (147, 29547), (148, 29550),

Gene: Zeigle_47 Start: 27506, Stop: 27703, Start Num: 106

Candidate Starts for Zeigle_47:

(Start: 106 @27506 has 23 MA's), (112, 27542), (126, 27590), (158, 27665),

Gene: Zerg_32 Start: 28567, Stop: 28800, Start Num: 104

Candidate Starts for Zerg_32:

(Start: 104 @28567 has 263 MA's), (Start: 105 @28570 has 10 MA's), (133, 28681), (135, 28687), (138, 28696), (143, 28714), (144, 28717), (149, 28729),

Gene: Zeta1847_21 Start: 18934, Stop: 19224, Start Num: 81

Candidate Starts for Zeta1847_21:

(24, 18499), (67, 18847), (Start: 81 @18934 has 15 MA's), (144, 19159), (163, 19219),

Gene: Ziko_64 Start: 35637, Stop: 35849, Start Num: 104

Candidate Starts for Ziko_64:

(Start: 104 @35637 has 263 MA's), (111, 35676), (144, 35781), (160, 35814),

Gene: Zilizebeth_28 Start: 25240, Stop: 25488, Start Num: 104

Candidate Starts for Zilizebeth_28:

(Start: 104 @25240 has 263 MA's),

Gene: Zizzle_32 Start: 28651, Stop: 28884, Start Num: 103

Candidate Starts for Zizzle_32:

(34, 28360), (35, 28363), (40, 28399), (Start: 103 @28651 has 99 MA's), (129, 28750), (135, 28771),
(138, 28780), (149, 28813),

Gene: ZooBear_49 Start: 27959, Stop: 28156, Start Num: 106

Candidate Starts for ZooBear_49:

(Start: 106 @27959 has 23 MA's), (111, 27992), (121, 28025),