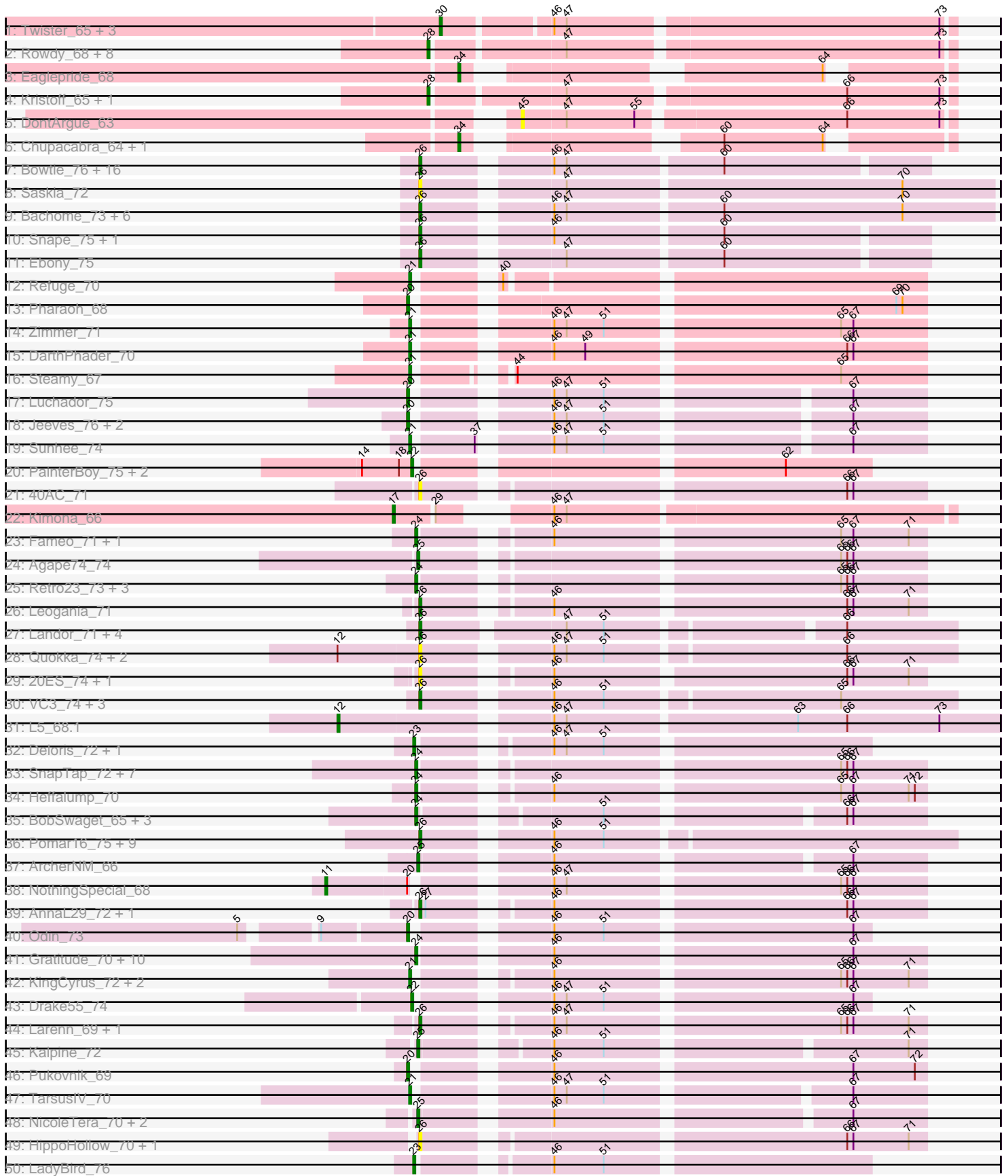
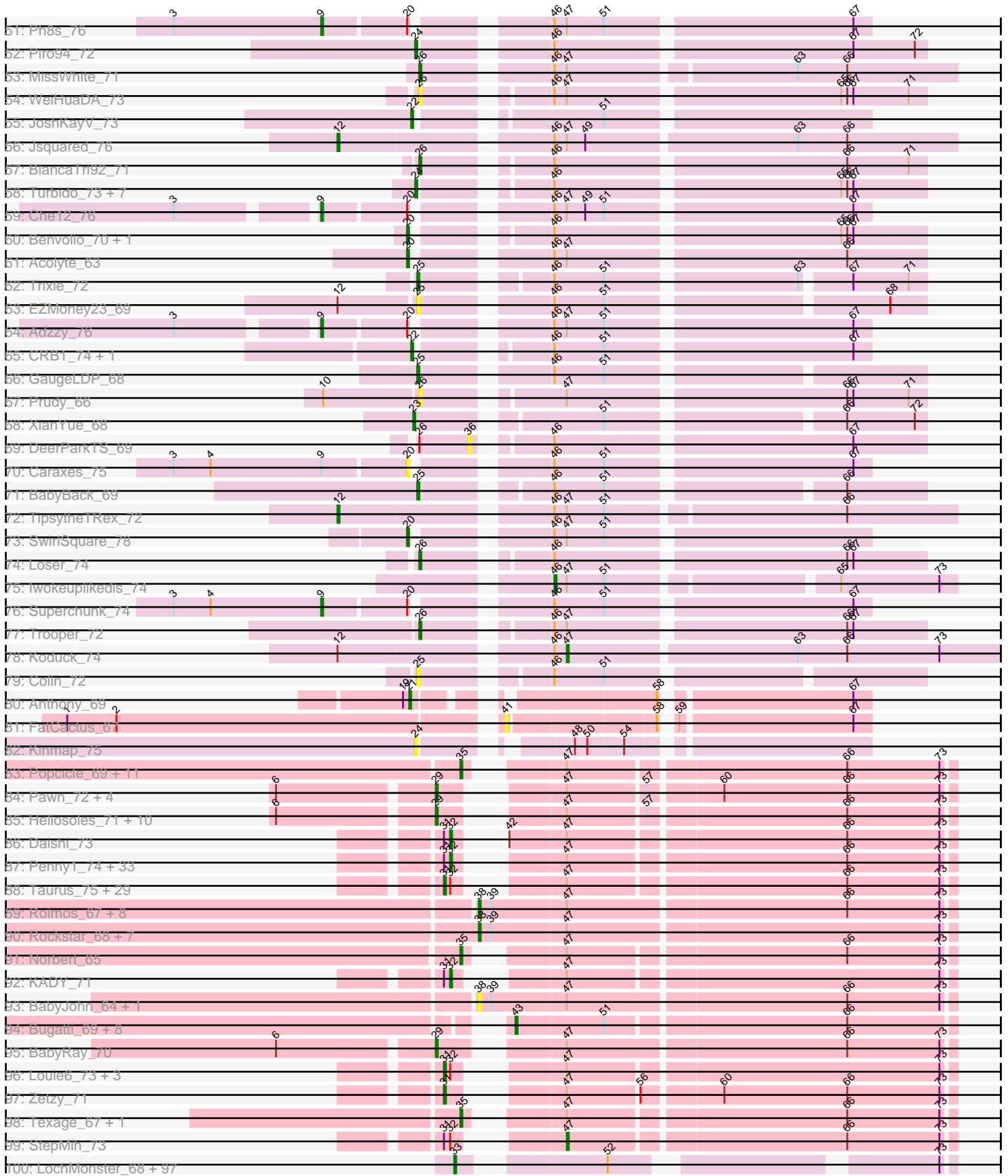


Pham 311056



Pham 311056



Note: Tracks are now grouped by subcluster and scaled. Switching in subcluster is indicated by changes in track color. Track scale is now set by default to display the region 30 bp upstream of start 1 to 30 bp downstream of the last possible start. If this default region is judged to be packed too tightly with annotated starts, the track will be further scaled to only show that region of the ORF with annotated starts. This action will be indicated by adding "Zoomed" to the title. For starts, yellow indicates the location of called starts comprised solely of Glimmer/GeneMark auto-annotations, green indicates the location of called starts with at least 1 manual gene annotation.

Pham 311056 Report

This analysis was run 06/27/26 on database version 652.

Pham number 311056 has 501 members, 63 are drafts.

Phages represented in each track:

- Track 1 : Twister_65, Topanga_63, Edison31_63, WalterMcMickey_65
- Track 2 : Rowdy_68, Severus_64, Poompha_63, KittenMittens_63, PeaceMeal1_64, Shapes_68, DustyMartin_68, Trike_63, Drake94_64
- Track 3 : Eaglepride_68
- Track 4 : Kristoff_65, Rebeuca_67
- Track 5 : DontArgue_63
- Track 6 : Chupacabra_64, Goose_67
- Track 7 : Bowtie_76, Et2Brutus_74, Flaverint_76, Joselito_74, Fibonacci_74, Mabel_75, Timothy_75, Kimba_72, Lucivia_76, Munch_75, Aneem_76, MaCh_75, Jabith_74, Wolpertinger_73, Orange_74, TinyTimmy_73, Insomnia_74
- Track 8 : Saskia_72
- Track 9 : Bachome_73, Salz_70, Sham4_71, Hutc2_70, Bud_70, Petersenfast_69, Gilberta_72
- Track 10 : Snape_75, Mulciber_73
- Track 11 : Ebony_75
- Track 12 : Refuge_70
- Track 13 : Pharaoh_68
- Track 14 : Zimmer_71
- Track 15 : DarthPhader_70
- Track 16 : Steamy_67
- Track 17 : Luchador_75
- Track 18 : Jeeves_76, SororFago_74, Gail_74
- Track 19 : Sunhee_74
- Track 20 : PainterBoy_75, EagleEye_77, Lucyedi_76
- Track 21 : 40AC_71
- Track 22 : Kimona_66
- Track 23 : Fameo_71, QueenB2_70
- Track 24 : Agape74_74
- Track 25 : Retro23_73, Dalmatian_73, DudeLittle_71, Anselm_74
- Track 26 : Leogania_71
- Track 27 : Landor_71, Tristan_69, IronMan_70, Phaded_68, Jaan_71
- Track 28 : Quokka_74, MajorMajor_74, Bradman_75
- Track 29 : 20ES_74, First_0073
- Track 30 : VC3_74, AN9_75, ANI8_75, C3_68
- Track 31 : L5_68.1
- Track 32 : Deloris_72, BengiVuitton_72

- Track 33 : SnapTap_72, FiringLine_73, Crucio_73, QueenBeesly_73, Georgie2_74, Power_72, SemperFi_73, SweetiePie_72
- Track 34 : Heffalump_70
- Track 35 : BobSwaget_65, Rachaly_68, Miko_66, Lokk_66
- Track 36 : Pomar16_75, Naji_75, D32_74, Tomathan_75, D29_68.1, StarStuff_75, Duplo_75, Kerberos_75, DBQu4n_75, Travvers_74
- Track 37 : ArcherNM_66
- Track 38 : NothingSpecial_68
- Track 39 : AnnaL29_72, RedRock_71
- Track 40 : Odin_73
- Track 41 : Gratitude_70, Baehexic_71, Centaur_73, WideWale_73, NaSiaTalie_73, Terrific_73, Flare16_73, Updawg_73, Equemioh13_72, Sknot_73, MiculUcigas_73
- Track 42 : KingCyrus_72, ChipMunk_73, EvilGenius_72
- Track 43 : Drake55_74
- Track 44 : Larenn_69, Malec_70
- Track 45 : Kalpine_72
- Track 46 : Pukovnik_69
- Track 47 : TarsusIV_70
- Track 48 : NicoleTera_70, Changeling_71, ForesterFrank_68
- Track 49 : HippoHollow_70, LionsBait_72
- Track 50 : LadyBird_76
- Track 51 : Ph8s_76
- Track 52 : Piro94_72
- Track 53 : MissWhite_71
- Track 54 : WeiHuaDA_73
- Track 55 : JoshKayV_73
- Track 56 : Jsquared_76
- Track 57 : BiancaTri92_71
- Track 58 : Turbido_73, Buggy_74, Dignity_74, Jerm_74, Leviathan_74, Smeagan_75, LilTurb_73, Whabigail7_73
- Track 59 : Che12_76
- Track 60 : Benvolio_70, Echild_73
- Track 61 : Acolyte_63
- Track 62 : Trixie_72
- Track 63 : EZMoney23_69
- Track 64 : Adzzy_76
- Track 65 : CRB1_74, HarryHoudini_73
- Track 66 : GaugeLDP_68
- Track 67 : Prudy_66
- Track 68 : XianYue_68
- Track 69 : DeerParkTS_69
- Track 70 : Caraxes_75
- Track 71 : BabyBack_69
- Track 72 : TopsytheTRex_72
- Track 73 : SwirlSquare_78
- Track 74 : Loser_74
- Track 75 : Iwokeuplikedis_74
- Track 76 : Superchunk_74
- Track 77 : Trooper_72
- Track 78 : Koduck_74
- Track 79 : Colin_72
- Track 80 : Anthony_69
- Track 81 : FatCactus_67

- Track 82 : Kinmap_75
- Track 83 : Popcicle_69, Panamaxus_67, Veracruz_66, Hookmount_69, Caviar_69, Lambert1_69, QuinnKiro_68, Todacoro_69, EtoileNova_67, Pocahontas_68, ResDef_67, Margo_69
- Track 84 : Pawn_72, Kalnoky_74, ACFishhook_71, JeppNRM_74, Marius_74
- Track 85 : Heliosoles_71, Kalb97_74, PurpleHaze_73, Groupthink_74, Gemma_71, OlanP_72, Calvinny_71, ClownCar_71, PhishRPhriends_70, HaveUMetTed_74, Manu_73
- Track 86 : Daishi_73
- Track 87 : Penny1_74, Stagni_71, Dieselweasel_74, EpicPhail_75, Montavir_69, AgronaGT15_71, Croquant_71, Aglet_75, AugsMagnumOpus_77, Pembroke_74, GtownJaz_74, Lilith_72, Bxz2_69, Gwennie_69, Malinsilva_76, SoYo_71, Snickers_74, Marie_72, MuchMore_77, SoilDragon_73, Beauxregard13_73, Fernando_74, Grub_72, MadMarie_72, LarryKay_74, PGHhamlin_76, Lowa_71, Bigflo_71, Ollie_74, BreSam8_74, HashRod_75, Grif_72, Sabinator_72, Watson_73
- Track 88 : Taurus_75, MarQuardt_74, Vix_70, Jobu08_70, GingkoMaracino_74, Grum1_73, Soshari_76, Sabia_72, P28Green_74, Phoxy_74, Wooldri_76, Hercules11_74, LBerry_75, Rummer_73, Spike509_74, JenCasNa_75, Methuselah_67, Mainiac_73, Cullens_74, LugYA_77, PotatoSplit_75, Tiffany_73, Anubis_77, JHC117_70, MoneyMay_73, Microwolf_70, Colbster_70, Farber_74, DaHudson_73, Phoebe_75
- Track 89 : Roimos_67, Fred313_67, Marchesa_67, DropBear_67, Kachowdy_67, Heathen_69, Zarafa_67, HelDan_69, Scout_68
- Track 90 : Rockstar_68, Isca_67, MK4_69, B1_61, MA5_69, JF4_67, Phantastic_71, JF2_67
- Track 91 : Norbert_65
- Track 92 : KADY_71
- Track 93 : BabyJohn_64, Chiqui_64
- Track 94 : Bugatti_69, Clammy_69, Idleandcovert_70, TNguyen7_70, BlueBird_72, SaturnRing_69, Puppy_70, Pistachio_69, Giroux_72
- Track 95 : BabyRay_70
- Track 96 : Louie6_73, TinyPebbles_73, BuzzBuzz_68, Misomonster_75
- Track 97 : Zetzy_71
- Track 98 : Texage_67, Noella_69
- Track 99 : StepMih_73
- Track 100 : LochMonster_68, Kingmustik0402_67, Mazhar510_67, JoongJeon_66, Sparxx_68, Romney_66, MeeZee_66, PeterPeter_67, Koan_64, Peaches_65, NorthStar_65, Eapen_67, Deano_64, Alberto7_68, Kyee_67, KFPoly_66, NotAPhaseMom_66, Connomayer_67, Scamp_67, Camperdownii_65, LittleB_67, Ulysses_66, Arturo_64, Druantia_66, Eros_67, LittleGuy_67, Phighter1804_67, Holli_66, TygerBlood_67, Citius_67, Caelakin_66, Skipitt_66, Lunsford_67, Annyong_66, Phontbonne_67, Kampy_66, Medusa_67, Spino_66, Phacado_67, Funston_66, OKaNui_66, Clarenza_66, Sabertooth_67, SeniorClean_68, Burger_65, Mayonnaise_64, Millski_66, Huxley_66, Taquarus_66, Commander_65, Bartimeaus_67, Nyxis_66, YoSam321_67, Relief_66, Wander_67, Albee_67, Maxo_68, Flux_67, RockieBear_64, Maverick_66, Eris_66, Lorenzo_67, Blackmoor_66, TiroTheta9_66, Shaka_65, KekoraPapaka_64, Melvin_69, HamSlice_63, Jaykayelowell_64, Broseidon_67, Koreni_66, Cocoaberry_67, Gadost_67, Sultana_67, Baby16_67, Tinybot_66, LappelDuVide_67, Iracema64_67, DirtyDunning_66, Houdini22_66, Avle17_67, Iceman_66, Chaph_67, Pumbaa_67, Wilbur_67, Bruiser_66, Roosevelt_65, TinaFeyge_65, Abdiel_67, Ruin_67, SteMason_67, Florean_67, Palestino_66, Nemo27_66, Bombshell_67, Dhanush_67, Pipcraft_64, Rosa24_64

- Track 101 : BellusTerra_68, Kremtemulon_66, Obama12_68, LHTSCC_69, ICleared_66, Kratark_66, Cerulean_68, Shygu2_66, Happiness_66, TroyPia_68, Cintron_67, Eurydice_68, Eagle_66, Ohfah_68, BangNhom_65, Phelipe_68, Polymorphads_67, SheldonCooper_67, Nebs_68, CentreCat_67, Morrow_68, ChampagnePapi_69, JetBlade_67, LeoAvram_66
- Track 102 : Bumblebee11_65, AbbysRanger_66, Mundrea_66, Backyardigan_64, BubbleTrouble_66, PetiteSangsue_66, Wizard007_66, Morpher26_66, Xena_65, Katalie136_66, Cici_66, Datway_66, Perplexer_66, Cindaradix_63, Achebe_65, Wile_65, Badger_65
- Track 103 : Stasia_66
- Track 104 : Stink_66, Miramae_66, AvatarAhPeg_66
- Track 105 : Noelle_67
- Track 106 : Thanksgivukkah_66
- Track 107 : Lemur_67
- Track 108 : Blinn1_78
- Track 109 : Horex_72, Myxus_74, Priya_72, Catalina_76, EdogawaKiddo_72, Aliter_75, Pioneer_74, EmyBug_71, Phonnegut_74, Conquerage_72, Alma_72, Ayanochan_72, HortumSL17_75, PackMan_73, Jiawan_71, Tubs_74, Spouty_72, Beemo_74, Qobbit_72, Phaeder_74, RyeScarlet_75, Onglai_72, Sachima_70, ExplosioNervosa_72, Scherzo_73, Ugenie5_69, Lilleskat_71, Hanray_72, Eidsmoe_72
- Track 110 : Fayely_72
- Track 111 : Darrell_75
- Track 112 : Minispark_72, Bellris_72, Rahalelujah_74, CogOmlette_72
- Track 113 : Keziacharles14_71, LoneWolf_75
- Track 114 : WorldCup_72
- Track 115 : SheaKeira_68
- Track 116 : Yecey3_76

Summary of Final Annotations (See graph section above for start numbers):

The start number called the most often in the published annotations is 33, it was called in 143 of the 438 non-draft genes in the pham.

Genes that call this "Most Annotated" start:

- AbbysRanger_66, Abdiel_67, Achebe_65, Albee_67, Alberto7_68, Annyong_66, Arturo_64, AvatarAhPeg_66, Avle17_67, Baby16_67, Backyardigan_64, Badger_65, BangNhom_65, Bartimeaus_67, BellusTerra_68, Blackmoor_66, Bombshell_67, Broseidon_67, Bruiser_66, BubbleTrouble_66, Bumblebee11_65, Burger_65, Caelakin_66, Camperdownii_65, CentreCat_67, Cerulean_68, ChampagnePapi_69, Chaph_67, Cici_66, Cindaradix_63, Cintron_67, Citius_67, Clarenza_66, Cocoaberry_67, Commander_65, Connomayer_67, Datway_66, Deano_64, Dhanush_67, DirtyDunning_66, Druantia_66, Eagle_66, Eapen_67, Eris_66, Eros_67, Eurydice_68, Florean_67, Flux_67, Funston_66, Gadost_67, HamSlice_63, Happiness_66, Holli_66, Houdini22_66, Huxley_66, ICleared_66, Iceman_66, Iracema64_67, Jaykayelowell_64, JetBlade_67, JoongJeon_66, KFPoly_66, Kampy_66, Katalie136_66, KekoraPapaka_64, Kingmustik0402_67, Koan_64, Koreni_66, Kratark_66, Kremtemulon_66, Kyee_67, LHTSCC_69, LappelDuVide_67, Lemur_67, LeoAvram_66, LittleB_67, LittleGuy_67, LochMonster_68, Lorenzo_67, Lunsford_67, Maverick_66, Maxo_68, Mayonnaise_64, Mazhar510_67, Medusa_67,

MeeZee_66, Melvin_69, Millski_66, Miramae_66, Morpher26_66, Morrow_68, Mundrea_66, Nebs_68, Nemo27_66, Noelle_67, NorthStar_65, NotAPhaseMom_66, Nyxis_66, OKaNui_66, Obama12_68, Ohfah_68, Palestino_66, Peaches_65, Perplexer_66, PeterPeter_67, PetiteSangsue_66, Phacado_67, Phelipe_68, Phighter1804_67, Phontbonne_67, Pipcraft_64, Polymorphads_67, Pumbaa_67, Relief_66, RockieBear_64, Romney_66, Roosevelt_65, Rosa24_64, Ruin_67, Sabertooth_67, Scamp_67, SenorClean_68, Shaka_65, SheldonCooper_67, Shygu2_66, Skipitt_66, Sparxx_68, Spino_66, Stasia_66, SteMason_67, Stink_66, Sultana_67, Taquarus_66, Thanksgivukkah_66, TinaFeyge_65, Tinybot_66, TiroTheta9_66, TroyPia_68, TygerBlood_67, Ulysses_66, Wander_67, Wilbur_67, Wile_65, Wizard007_66, Xena_65, YoSam321_67,

Genes that have the "Most Annotated" start but do not call it:

•

Genes that do not have the "Most Annotated" start:

• 20ES_74, 40AC_71, ACFishhook_71, AN9_75, ANI8_75, Acolyte_63, Adzzy_76, Agape74_74, Aglet_75, AgronaGT15_71, Aliter_75, Alma_72, Aneem_76, AnnaL29_72, Anselm_74, Anthony_69, Anubis_77, ArcherNM_66, AugsMagnumOpus_77, Ayanochan_72, B1_61, BabyBack_69, BabyJohn_64, BabyRay_70, Bachome_73, Baehexic_71, Beauxregard13_73, Beemo_74, Bellris_72, BengiVuitton_72, Benvolio_70, BiancaTri92_71, Bigflo_71, Blinn1_78, BlueBird_72, BobSwaget_65, Bowtie_76, Bradman_75, BreSam8_74, Bud_70, Bugatti_69, Buggy_74, BuzzBuzz_68, Bxz2_69, C3_68, CRB1_74, Calvinny_71, Caraxes_75, Catalina_76, Caviar_69, Centaur_73, Changeling_71, Che12_76, ChipMunk_73, Chiqui_64, Chupacabra_64, Clammy_69, ClownCar_71, CogOmlette_72, Colbster_70, Colin_72, Conquerage_72, Croquant_71, Crucio_73, Cullens_74, D29_68.1, D32_74, DBQu4n_75, DaHudson_73, Daishi_73, Dalmatian_73, Darrell_75, DarthPhader_70, DeerParkTS_69, Deloris_72, Dieselweasel_74, Dignity_74, DontArgue_63, Drake55_74, Drake94_64, DropBear_67, DudeLittle_71, Duplo_75, DustyMartin_68, EZMoney23_69, EagleEye_77, Eaglepride_68, Ebony_75, Echild_73, Edison31_63, EdogawaKiddo_72, Eidsmoe_72, EmyBug_71, EpicPhail_75, Equemioh13_72, Et2Brutus_74, EtoileNova_67, EvilGenius_72, ExplosioNervosa_72, Fameo_71, Farber_74, FatCactus_67, Fayely_72, Fernando_74, Fibonacci_74, FiringLine_73, First_0073, Flare16_73, Flaverint_76, ForesterFrank_68, Fred313_67, Gail_74, GaugeLDP_68, Gemma_71, Georgie2_74, Gilberta_72, GingkoMaracino_74, Giroux_72, Goose_67, Gratitude_70, Grif_72, Groupthink_74, Grub_72, Grum1_73, GtownJaz_74, Gwennie_69, Hanray_72, HarryHoudini_73, HashRod_75, HaveUMetTed_74, Heathen_69, Heffalump_70, HelDan_69, Heliosoles_71, Hercules11_74, HippoHollow_70, Holes_72, Hookmount_69, HortumSL17_75, Hutc2_70, Idleandcovert_70, Insomnia_74, IronMan_70, Isca_67, Iwokeuplikedis_74, JF2_67, JF4_67, JHC117_70, Jaan_71, Jabith_74, Jeeves_76, JenCasNa_75, JeppNRM_74, Jerm_74, Jiawan_71, Jobu08_70, Joselito_74, JoshKayV_73, Jsquared_76, KADY_71, Kachowdy_67, Kalb97_74, Kalnoky_74, Kalpine_72, Kerberos_75, Keziacharles14_71, Kimba_72, Kimona_66, KingCyrus_72, Kinmap_75, KittenMittens_63, Koduck_74, Kristoff_65, L5_68.1, LBerry_75, LadyBird_76, Lambert1_69, Landor_71, Larenn_69, LarryKay_74, Leogania_71, Leviathan_74, LilTurb_73, Lilith_72, Lilleskat_71, LionsBait_72, Lökk_66, LoneWolf_75, Loser_74, Louie6_73, Iowa_71, Luchador_75, Lucivia_76, Lucyedi_76, LugYA_77, MA5_69, MK4_69, MaCh_75, Mabel_75, MadMarie_72, Mainiac_73, MajorMajor_74, Malec_70, Malinsilva_76, Manu_73, MarQuardt_74, Marchesa_67, Margo_69, Marie_72, Marius_74, Methuselah_67, Microwolf_70,

MiculUcigas_73, Miko_66, Minispark_72, Misomonster_75, MissWhite_71, MoneyMay_73, Montavir_69, MuchMore_77, Mulciber_73, Munch_75, Myxus_74, NaSiaTalie_73, Naji_75, NicoleTera_70, Noella_69, Norbert_65, NothingSpecial_68, Odin_73, OlanP_72, Ollie_74, Onglai_72, Orange_74, P28Green_74, PGHhamlin_76, PackMan_73, PainterBoy_75, Panamaxus_67, Pawn_72, PeaceMeal1_64, Pembroke_74, Penny1_74, Petersenfast_69, Ph8s_76, Phaded_68, Phaeder_74, Phantastic_71, Pharaoh_68, PhishRPhriends_70, Phoebe_75, Phonnegut_74, Phoxy_74, Pioneer_74, Piro94_72, Pistachio_69, Pocahontas_68, Pomar16_75, Poompha_63, Popcicle_69, PotatoSplit_75, Power_72, Priya_72, Prudy_66, Pukovnik_69, Puppy_70, PurpleHaze_73, Qobbit_72, QueenB2_70, QueenBeesly_73, QuinnKiro_68, Quokka_74, Rachaly_68, Rahalelujah_74, Rebeuca_67, RedRock_71, Refuge_70, ResDef_67, Retro23_73, Rockstar_68, Roimos_67, Rowdy_68, Rummer_73, RyeScarlet_75, Sabia_72, Sabinator_72, Sachima_70, Salz_70, Saskia_72, SaturnRing_69, Scherzo_73, Scout_68, SemperFi_73, Severus_64, Sham4_71, Shapes_68, SheaKeira_68, Sknot_73, Smeagan_75, SnapTap_72, Snape_75, Snickers_74, SoYo_71, SoilDragon_73, SororFago_74, Soshari_76, Spike509_74, Spouty_72, Stagni_71, StarStuff_75, Steamy_67, StepMih_73, Sunhee_74, Superchunk_74, SweetiePie_72, SwirlSquare_78, TNguyen7_70, TarsusIV_70, Taurus_75, Terrific_73, Texage_67, Tiffany_73, Timothy_75, TinyPebbles_73, TinyTimmy_73, TipsytheTRex_72, Todacoro_69, Tomathan_75, Topanga_63, Travvers_74, Trike_63, Tristan_69, Trixie_72, Trooper_72, Tubs_74, Turbido_73, Twister_65, Ugenie5_69, Updawg_73, VC3_74, Veracruz_66, Vix_70, WalterMcMickey_65, Watson_73, WeiHuaDA_73, Whabigail7_73, WideWale_73, Wolpertinger_73, Wooldri_76, WorldCup_72, XianYue_68, Yecey3_76, Zarafa_67, Zetzy_71, Zimmer_71,

Summary by start number:

Start 9:

- Found in 6 of 501 (1.2%) of genes in pham
- Manual Annotations of this start: 4 of 438
- Called 66.7% of time when present
- Phage (with cluster) where this start called: Adzzy_76 (A2), Che12_76 (A2), Ph8s_76 (A2), Superchunk_74 (A2),

Start 11:

- Found in 1 of 501 (0.2%) of genes in pham
- Manual Annotations of this start: 1 of 438
- Called 100.0% of time when present
- Phage (with cluster) where this start called: NothingSpecial_68 (A2),

Start 12:

- Found in 9 of 501 (1.8%) of genes in pham
- Manual Annotations of this start: 4 of 438
- Called 44.4% of time when present
- Phage (with cluster) where this start called: Blinn1_78 (A6), Jsquared_76 (A2), L5_68.1 (A2), TipsytheTRex_72 (A2),

Start 15:

- Found in 1 of 501 (0.2%) of genes in pham
- Manual Annotations of this start: 1 of 438
- Called 100.0% of time when present
- Phage (with cluster) where this start called: Darrell_75 (A9),

Start 16:

- Found in 5 of 501 (1.0%) of genes in pham
- Manual Annotations of this start: 1 of 438
- Called 100.0% of time when present
- Phage (with cluster) where this start called: Bellris_72 (A9), CogOmlette_72 (A9), Minispark_72 (A9), Rahalelujah_74 (A9), WorldCup_72 (A9),

Start 17:

- Found in 1 of 501 (0.2%) of genes in pham
- Manual Annotations of this start: 1 of 438
- Called 100.0% of time when present
- Phage (with cluster) where this start called: Kimona_66 (A19),

Start 20:

- Found in 47 of 501 (9.4%) of genes in pham
- Manual Annotations of this start: 32 of 438
- Called 89.4% of time when present
- Phage (with cluster) where this start called: Acolyte_63 (A2), Aliter_75 (A9), Alma_72 (A9), Ayanochan_72 (A9), Beemo_74 (A9), Benvolio_70 (A2), Caraxes_75 (A2), Catalina_76 (A9), Conquerage_72 (A9), Echild_73 (A2), EdogawaKiddo_72 (A9), Eidsmoe_72 (A9), EmyBug_71 (A9), ExplosioNervosa_72 (A9), Fayely_72 (A9), Gail_74 (A14), Hanray_72 (A9), Halex_72 (A9), HortumSL17_75 (A9), Jeeves_76 (A14), Jiawan_71 (A9), Lilleskat_71 (A9), Luchador_75 (A14), Myxus_74 (A9), Odin_73 (A2), Onglai_72 (A9), PackMan_73 (A9), Phaeder_74 (A9), Pharaoh_68 (A12), Phonnegut_74 (A9), Pioneer_74 (A9), Priya_72 (A9), Pukovnik_69 (A2), Qobbit_72 (A9), RyeScarlet_75 (A9), Sachima_70 (A9), Scherzo_73 (A9), SororFago_74 (A14), Spouty_72 (A9), SwirlSquare_78 (A2), Tubs_74 (A9), Ugenie5_69 (A9),

Start 21:

- Found in 13 of 501 (2.6%) of genes in pham
- Manual Annotations of this start: 13 of 438
- Called 100.0% of time when present
- Phage (with cluster) where this start called: Anthony_69 (A20), ChipMunk_73 (A2), DarthPhader_70 (A12), EvilGenius_72 (A2), Keziacharles14_71 (A9), KingCyrus_72 (A2), LoneWolf_75 (A9), Refuge_70 (A12), SheaKeira_68 (A9), Steamy_67 (A12), Sunhee_74 (A14), TarsusIV_70 (A2), Zimmer_71 (A12),

Start 22:

- Found in 7 of 501 (1.4%) of genes in pham
- Manual Annotations of this start: 6 of 438
- Called 100.0% of time when present
- Phage (with cluster) where this start called: CRB1_74 (A2), Drake55_74 (A2), EagleEye_77 (A16), HarryHoudini_73 (A2), JoshKayV_73 (A2), Lucyedi_76 (A16), PainterBoy_75 (A16),

Start 23:

- Found in 4 of 501 (0.8%) of genes in pham
- Manual Annotations of this start: 4 of 438
- Called 100.0% of time when present
- Phage (with cluster) where this start called: BengiVuitton_72 (A2), Deloris_72 (A2), LadyBird_76 (A2), XianYue_68 (A2),

Start 24:

- Found in 40 of 501 (8.0%) of genes in pham
- Manual Annotations of this start: 37 of 438
- Called 100.0% of time when present
- Phage (with cluster) where this start called: Anselm_74 (A2), Baehexic_71 (A2), BobSwaget_65 (A2), Buggy_74 (A2), Centaur_73 (A2), Crucio_73 (A2), Dalmatian_73 (A2), Dignity_74 (A2), DudeLittle_71 (A2), Equemioh13_72 (A2), Fameo_71 (A2), FiringLine_73 (A2), Flare16_73 (A2), Georgie2_74 (A2), Gratitude_70 (A2), Heffalump_70 (A2), Jerm_74 (A2), Kinmap_75 (A21), Leviathan_74 (A2), LilTurb_73 (A2), Lokk_66 (A2), MiculUcigas_73 (A2), Miko_66 (A2), NaSiaTalie_73 (A2), Piro94_72 (A2), Power_72 (A2), QueenB2_70 (A2), QueenBeesly_73 (A2), Rachaly_68 (A2), Retro23_73 (A2), SemperFi_73 (A2), Sknot_73 (A2), Smeagan_75 (A2), SnapTap_72 (A2), SweetiePie_72 (A2), Terrific_73 (A2), Turbido_73 (A2), Updawg_73 (A2), Whabigail7_73 (A2), WideWale_73 (A2),

Start 25:

- Found in 12 of 501 (2.4%) of genes in pham
- Manual Annotations of this start: 9 of 438
- Called 100.0% of time when present
- Phage (with cluster) where this start called: Agape74_74 (A2), ArcherNM_66 (A2), BabyBack_69 (A2), Changeling_71 (A2), Colin_72 (A2), EZMoney23_69 (A2), ForesterFrank_68 (A2), GaugeLDP_68 (A2), Kalpine_72 (A2), NicoleTera_70 (A2), Trixie_72 (A2), Yecey3_76 (A9),

Start 26:

- Found in 67 of 501 (13.4%) of genes in pham
- Manual Annotations of this start: 51 of 438
- Called 98.5% of time when present
- Phage (with cluster) where this start called: 20ES_74 (A2), 40AC_71 (A17), AN9_75 (A2), ANi8_75 (A2), Aneem_76 (A11), AnnaL29_72 (A2), Bachome_73 (A11), BiancaTri92_71 (A2), Bowtie_76 (A11), Bradman_75 (A2), Bud_70 (A11), C3_68 (A2), D29_68.1 (A2), D32_74 (A2), DBQu4n_75 (A2), Duplo_75 (A2), Ebony_75 (A11), Et2Brutus_74 (A11), Fibonacci_74 (A11), First_0073 (A2), Flaverint_76 (A11), Gilberta_72 (A11), HippoHollow_70 (A2), Hutc2_70 (A11), Insomnia_74 (A11), IronMan_70 (A2), Jaan_71 (A2), Jabith_74 (A11), Joselito_74 (A11), Kerberos_75 (A2), Kimba_72 (A11), Landor_71 (A2), Larenn_69 (A2), Leogania_71 (A2), LionsBait_72 (A2), Loser_74 (A2), Lucivia_76 (A11), MaCh_75 (A11), Mabel_75 (A11), MajorMajor_74 (A2), Malec_70 (A2), MissWhite_71 (A2), Mulciber_73 (A11), Munch_75 (A11), Naji_75 (A2), Orange_74 (A11), Petersenfast_69 (A11), Phaded_68 (A2), Pomar16_75 (A2), Prudy_66 (A2), Quokka_74 (A2), RedRock_71 (A2), Salz_70 (A11), Saskia_72 (A11), Sham4_71 (A11), Snape_75 (A11), StarStuff_75 (A2), Timothy_75 (A11), TinyTimmy_73 (A11), Tomathan_75 (A2), Travvers_74 (A2), Tristan_69 (A2), Trooper_72 (A2), VC3_74 (A2), WeiHuaDA_73 (A2), Wolpertinger_73 (A11),

Start 28:

- Found in 11 of 501 (2.2%) of genes in pham
- Manual Annotations of this start: 8 of 438
- Called 100.0% of time when present
- Phage (with cluster) where this start called: Drake94_64 (A10), DustyMartin_68 (A10), KittenMittens_63 (A10), Kristoff_65 (A10), PeaceMeal1_64 (A10), Poompha_63 (A10), Rebeuca_67 (A10), Rowdy_68 (A10), Severus_64 (A10),

Shapes_68 (A10), Trike_63 (A10),

Start 29:

- Found in 18 of 501 (3.6%) of genes in pham
- Manual Annotations of this start: 15 of 438
- Called 94.4% of time when present
- Phage (with cluster) where this start called: ACFishhook_71 (A3), BabyRay_70 (A3), Calvinny_71 (A3), ClownCar_71 (A3), Gemma_71 (A3), Groupthink_74 (A3), HaveUMetTed_74 (A3), Heliosoles_71 (A3), JeppNRM_74 (A3), Kalb97_74 (A3), Kalnoky_74 (A3), Manu_73 (A3), Marius_74 (A3), OlanP_72 (A3), Pawn_72 (A3), PhishRPhriends_70 (A3), PurpleHaze_73 (A3),

Start 30:

- Found in 4 of 501 (0.8%) of genes in pham
- Manual Annotations of this start: 4 of 438
- Called 100.0% of time when present
- Phage (with cluster) where this start called: Edison31_63 (A10), Topanga_63 (A10), Twister_65 (A10), WalterMcMickey_65 (A10),

Start 31:

- Found in 72 of 501 (14.4%) of genes in pham
- Manual Annotations of this start: 35 of 438
- Called 48.6% of time when present
- Phage (with cluster) where this start called: Anubis_77 (A3), BuzzBuzz_68 (A3), Colbster_70 (A3), Cullens_74 (A3), DaHudson_73 (A3), Farber_74 (A3), GingkoMaracino_74 (A3), Grum1_73 (A3), Hercules11_74 (A3), JHC117_70 (A3), JenCasNa_75 (A3), Jobu08_70 (A3), LBerry_75 (A3), Louie6_73 (A3), LugYA_77 (A3), Mainiac_73 (A3), MarQuardt_74 (A3), Methuselah_67 (A3), Microwolf_70 (A3), Misomonster_75 (A3), MoneyMay_73 (A3), P28Green_74 (A3), Phoebe_75 (A3), Phoxy_74 (A3), PotatoSplit_75 (A3), Rummer_73 (A3), Sabia_72 (A3), Soshari_76 (A3), Spike509_74 (A3), Taurus_75 (A3), Tiffany_73 (A3), TinyPebbles_73 (A3), Vix_70 (A3), Wooldri_76 (A3), Zetzy_71 (A3),

Start 32:

- Found in 71 of 501 (14.2%) of genes in pham
- Manual Annotations of this start: 31 of 438
- Called 50.7% of time when present
- Phage (with cluster) where this start called: Aglet_75 (A3), AgronaGT15_71 (A3), AugsMagnumOpus_77 (A3), Beauxregard13_73 (A3), Bigflo_71 (A3), BreSam8_74 (A3), Bxz2_69 (A3), Croquant_71 (A3), Daishi_73 (A3), Dieselweasel_74 (A3), EpicPhail_75 (A3), Fernando_74 (A3), Grif_72 (A3), Grub_72 (A3), GtownJaz_74 (A3), Gwennie_69 (A3), HashRod_75 (A3), KADY_71 (A3), LarryKay_74 (A3), Lilith_72 (A3), Iowa_71 (A3), MadMarie_72 (A3), Malinsilva_76 (A3), Marie_72 (A3), Montavir_69 (A3), MuchMore_77 (A3), Ollie_74 (A3), PGHhamlin_76 (A3), Pembroke_74 (A3), Penny1_74 (A3), Sabinator_72 (A3), Snickers_74 (A3), SoYo_71 (A3), SoilDragon_73 (A3), Stagni_71 (A3), Watson_73 (A3),

Start 33:

- Found in 146 of 501 (29.1%) of genes in pham
- Manual Annotations of this start: 143 of 438
- Called 100.0% of time when present
- Phage (with cluster) where this start called: AbbysRanger_66 (A4), Abdiel_67 (A4), Achebe_65 (A4), Albee_67 (A4), Alberto7_68 (A4), Annyong_66 (A4), Arturo_64 (A4),

AvatarAhPeg_66 (A4), Avle17_67 (A4), Baby16_67 (A4), Backyardigan_64 (A4), Badger_65 (A4), BangNhom_65 (A4), Bartimeaus_67 (A4), BellusTerra_68 (A4), Blackmoor_66 (A4), Bombshell_67 (A4), Broseidon_67 (A4), Bruiser_66 (A4), BubbleTrouble_66 (A4), Bumblebee11_65 (A4), Burger_65 (A4), Caelakin_66 (A4), Camperdownii_65 (A4), CentreCat_67 (A4), Cerulean_68 (A4), ChampagnePapi_69 (A4), Chaph_67 (A4), Cici_66 (A4), Cindaradix_63 (A4), Cintron_67 (A4), Citius_67 (A4), Clarenza_66 (A4), Cocoaberry_67 (A4), Commander_65 (A4), Connomayer_67 (A4), Datway_66 (A4), Deano_64 (A4), Dhanush_67 (A4), DirtyDunning_66 (A4), Druantia_66 (A4), Eagle_66 (A4), Eapen_67 (A4), Eris_66 (A4), Eros_67 (A4), Eurydice_68 (A4), Florean_67 (A4), Flux_67 (A4), Funston_66 (A4), Gadost_67 (A4), HamSlice_63 (A4), Happiness_66 (A4), Holli_66 (A4), Houdini22_66 (A4), Huxley_66 (A4), ICleared_66 (A4), Iceman_66 (A4), Iracema64_67 (A4), Jaykayelowell_64 (A4), JetBlade_67 (A4), JoongJeon_66 (A4), KFPoly_66 (A4), Kampy_66 (A4), Katalie136_66 (A4), KekoraPapaka_64 (A4), Kingmustik0402_67 (A4), Koan_64 (A4), Koreni_66 (A4), Kratak_66 (A4), Kremtemulon_66 (A4), Kyee_67 (A4), LHTSCC_69 (A4), LappelDuVide_67 (A4), Lemur_67 (A4), LeoAvram_66 (A4), LittleB_67 (A4), LittleGuy_67 (A4), LochMonster_68 (A4), Lorenzo_67 (A4), Lunsford_67 (A4), Maverick_66 (A4), Maxo_68 (A4), Mayonnaise_64 (A4), Mazhar510_67 (A4), Medusa_67 (A4), MeeZee_66 (A4), Melvin_69 (A4), Millski_66 (A4), Miramae_66 (A4), Morpher26_66 (A4), Morrow_68 (A4), Mundrea_66 (A4), Nebs_68 (A4), Nemo27_66 (A4), Noelle_67 (A4), NorthStar_65 (A4), NotAPhaseMom_66 (A4), Nyxis_66 (A4), OKaNui_66 (A4), Obama12_68 (A4), Ohfah_68 (A4), Palestino_66 (A4), Peaches_65 (A4), Perplexer_66 (A4), PeterPeter_67 (A4), PetiteSangsue_66 (A4), Phacado_67 (A4), Phelipe_68 (A4), Phighter1804_67 (A4), Phontbonne_67 (A4), Pipcraft_64 (A4), Polymorphads_67 (A4), Pumbaa_67 (A4), Relief_66 (A4), RockieBear_64 (A4), Romney_66 (A4), Roosevelt_65 (A4), Rosa24_64 (A4), Ruin_67 (A4), Sabertooth_67 (A4), Scamp_67 (A4), SenorClean_68 (A4), Shaka_65 (A4), SheldonCooper_67 (A4), Shygu2_66 (A4), Skipitt_66 (A4), Sparxx_68 (A4), Spino_66 (A4), Stasia_66 (A4), SteMason_67 (A4), Stink_66 (A4), Sultana_67 (A4), Taquarus_66 (A4), Thanksgivukkah_66 (A4), TinaFeyge_65 (A4), Tinybot_66 (A4), TiroTheta9_66 (A4), TroyPia_68 (A4), TygerBlood_67 (A4), Ulysses_66 (A4), Wander_67 (A4), Wilbur_67 (A4), Wile_65 (A4), Wizard007_66 (A4), Xena_65 (A4), YoSam321_67 (A4),

Start 34:

- Found in 3 of 501 (0.6%) of genes in pham
- Manual Annotations of this start: 3 of 438
- Called 100.0% of time when present
- Phage (with cluster) where this start called: Chupacabra_64 (A10), Eaglepride_68 (A10), Goose_67 (A10),

Start 35:

- Found in 15 of 501 (3.0%) of genes in pham
- Manual Annotations of this start: 14 of 438
- Called 100.0% of time when present
- Phage (with cluster) where this start called: Caviar_69 (A3), EtoileNova_67 (A3), Hookmount_69 (A3), Lambert1_69 (A3), Margo_69 (A3), Noella_69 (A3), Norbert_65 (A3), Panamaxus_67 (A3), Pocahontas_68 (A3), Popcicle_69 (A3), QuinnKiro_68 (A3), ResDef_67 (A3), Texage_67 (A3), Todacoro_69 (A3), Veracruz_66 (A3),

Start 36:

- Found in 1 of 501 (0.2%) of genes in pham
- No Manual Annotations of this start.

- Called 100.0% of time when present
- Phage (with cluster) where this start called: DeerParkTS_69 (A2),

Start 38:

- Found in 19 of 501 (3.8%) of genes in pham
- Manual Annotations of this start: 12 of 438
- Called 100.0% of time when present
- Phage (with cluster) where this start called: B1_61 (A3), BabyJohn_64 (A3), Chiqui_64 (A3), DropBear_67 (A3), Fred313_67 (A3), Heathen_69 (A3), HelDan_69 (A3), Isca_67 (A3), JF2_67 (A3), JF4_67 (A3), Kachowdy_67 (A3), MA5_69 (A3), MK4_69 (A3), Marchesa_67 (A3), Phantastic_71 (A3), Rockstar_68 (A3), Roimos_67 (A3), Scout_68 (A3), Zarafa_67 (A3),

Start 41:

- Found in 1 of 501 (0.2%) of genes in pham
- No Manual Annotations of this start.
- Called 100.0% of time when present
- Phage (with cluster) where this start called: FatCactus_67 (A20),

Start 43:

- Found in 9 of 501 (1.8%) of genes in pham
- Manual Annotations of this start: 6 of 438
- Called 100.0% of time when present
- Phage (with cluster) where this start called: BlueBird_72 (A3), Bugatti_69 (A3), Clammy_69 (A3), Giroux_72 (A3), Idleandcovert_70 (A3), Pistachio_69 (A3), Puppy_70 (A3), SaturnRing_69 (A3), TNguyen7_70 (A3),

Start 45:

- Found in 1 of 501 (0.2%) of genes in pham
- No Manual Annotations of this start.
- Called 100.0% of time when present
- Phage (with cluster) where this start called: DontArgue_63 (A10),

Start 46:

- Found in 129 of 501 (25.7%) of genes in pham
- Manual Annotations of this start: 1 of 438
- Called 0.8% of time when present
- Phage (with cluster) where this start called: Iwokeuplikedis_74 (A2),

Start 47:

- Found in 240 of 501 (47.9%) of genes in pham
- Manual Annotations of this start: 2 of 438
- Called 0.8% of time when present
- Phage (with cluster) where this start called: Koduck_74 (A2), StepMih_73 (A3),

Summary by clusters:

There are 14 clusters represented in this pham: A20, A14, A17, A16, A11, A10, A12, A19, A21, A3, A2, A4, A6, A9,

Info for manual annotations of cluster A10:

- Start number 28 was manually annotated 8 times for cluster A10.
- Start number 30 was manually annotated 4 times for cluster A10.

- Start number 34 was manually annotated 3 times for cluster A10.

Info for manual annotations of cluster A11:

- Start number 26 was manually annotated 24 times for cluster A11.

Info for manual annotations of cluster A12:

- Start number 20 was manually annotated 1 time for cluster A12.
- Start number 21 was manually annotated 4 times for cluster A12.

Info for manual annotations of cluster A14:

- Start number 20 was manually annotated 4 times for cluster A14.
- Start number 21 was manually annotated 1 time for cluster A14.

Info for manual annotations of cluster A16:

- Start number 22 was manually annotated 3 times for cluster A16.

Info for manual annotations of cluster A19:

- Start number 17 was manually annotated 1 time for cluster A19.

Info for manual annotations of cluster A2:

- Start number 9 was manually annotated 4 times for cluster A2.
- Start number 11 was manually annotated 1 time for cluster A2.
- Start number 12 was manually annotated 3 times for cluster A2.
- Start number 20 was manually annotated 6 times for cluster A2.
- Start number 21 was manually annotated 4 times for cluster A2.
- Start number 22 was manually annotated 3 times for cluster A2.
- Start number 23 was manually annotated 4 times for cluster A2.
- Start number 24 was manually annotated 37 times for cluster A2.
- Start number 25 was manually annotated 8 times for cluster A2.
- Start number 26 was manually annotated 27 times for cluster A2.
- Start number 46 was manually annotated 1 time for cluster A2.
- Start number 47 was manually annotated 1 time for cluster A2.

Info for manual annotations of cluster A20:

- Start number 21 was manually annotated 1 time for cluster A20.

Info for manual annotations of cluster A3:

- Start number 29 was manually annotated 15 times for cluster A3.
- Start number 31 was manually annotated 35 times for cluster A3.
- Start number 32 was manually annotated 31 times for cluster A3.
- Start number 35 was manually annotated 14 times for cluster A3.
- Start number 38 was manually annotated 12 times for cluster A3.
- Start number 43 was manually annotated 6 times for cluster A3.
- Start number 47 was manually annotated 1 time for cluster A3.

Info for manual annotations of cluster A4:

- Start number 33 was manually annotated 143 times for cluster A4.

Info for manual annotations of cluster A6:

- Start number 12 was manually annotated 1 time for cluster A6.

Info for manual annotations of cluster A9:

- Start number 15 was manually annotated 1 time for cluster A9.
- Start number 16 was manually annotated 1 time for cluster A9.
- Start number 20 was manually annotated 21 times for cluster A9.
- Start number 21 was manually annotated 3 times for cluster A9.
- Start number 25 was manually annotated 1 time for cluster A9.

Gene Information:

Gene: 20ES_74 Start: 43517, Stop: 43293, Start Num: 26

Candidate Starts for 20ES_74:

(Start: 26 @43517 has 51 MA's), (Start: 46 @43466 has 1 MA's), (66, 43331), (67, 43328), (71, 43301),

Gene: 40AC_71 Start: 44020, Stop: 43796, Start Num: 26

Candidate Starts for 40AC_71:

(Start: 26 @44020 has 51 MA's), (66, 43834), (67, 43831),

Gene: ACFishhook_71 Start: 42736, Stop: 42518, Start Num: 29

Candidate Starts for ACFishhook_71:

(6, 42805), (Start: 29 @42736 has 15 MA's), (Start: 47 @42697 has 2 MA's), (57, 42661), (60, 42628), (66, 42568), (73, 42523),

Gene: AN9_75 Start: 43459, Stop: 43217, Start Num: 26

Candidate Starts for AN9_75:

(Start: 26 @43459 has 51 MA's), (Start: 46 @43405 has 1 MA's), (51, 43381), (65, 43273),

Gene: ANI8_75 Start: 43459, Stop: 43217, Start Num: 26

Candidate Starts for ANI8_75:

(Start: 26 @43459 has 51 MA's), (Start: 46 @43405 has 1 MA's), (51, 43381), (65, 43273),

Gene: AbbysRanger_66 Start: 42647, Stop: 42423, Start Num: 33

Candidate Starts for AbbysRanger_66:

(Start: 33 @42647 has 143 MA's), (52, 42590), (53, 42584), (60, 42533), (73, 42428),

Gene: Abdiel_67 Start: 42370, Stop: 42173, Start Num: 33

Candidate Starts for Abdiel_67:

(Start: 33 @42370 has 143 MA's), (52, 42313), (73, 42178),

Gene: Achebe_65 Start: 42630, Stop: 42406, Start Num: 33

Candidate Starts for Achebe_65:

(Start: 33 @42630 has 143 MA's), (52, 42573), (53, 42567), (60, 42516), (73, 42411),

Gene: Acolyte_63 Start: 41528, Stop: 41301, Start Num: 20

Candidate Starts for Acolyte_63:

(Start: 20 @41528 has 32 MA's), (Start: 46 @41474 has 1 MA's), (Start: 47 @41468 has 2 MA's), (66, 41339),

Gene: Adzzy_76 Start: 42404, Stop: 42165, Start Num: 9

Candidate Starts for Adzzy_76:

(3, 42464), (Start: 9 @42404 has 4 MA's), (Start: 20 @42365 has 32 MA's), (Start: 46 @42311 has 1 MA's), (Start: 47 @42305 has 2 MA's), (51, 42287), (67, 42173),

Gene: Agape74_74 Start: 43761, Stop: 43537, Start Num: 25

Candidate Starts for Agape74_74:

(Start: 25 @43761 has 9 MA's), (65, 43578), (66, 43575), (67, 43572),

Gene: Aglet_75 Start: 42842, Stop: 42630, Start Num: 32

Candidate Starts for Aglet_75:

(Start: 31 @42845 has 35 MA's), (Start: 32 @42842 has 31 MA's), (Start: 47 @42809 has 2 MA's), (66, 42680), (73, 42635),

Gene: AgronaGT15_71 Start: 42690, Stop: 42478, Start Num: 32

Candidate Starts for AgronaGT15_71:

(Start: 31 @42693 has 35 MA's), (Start: 32 @42690 has 31 MA's), (Start: 47 @42657 has 2 MA's), (66, 42528), (73, 42483),

Gene: Albee_67 Start: 42357, Stop: 42160, Start Num: 33

Candidate Starts for Albee_67:

(Start: 33 @42357 has 143 MA's), (52, 42300), (73, 42165),

Gene: Alberto7_68 Start: 42694, Stop: 42497, Start Num: 33

Candidate Starts for Alberto7_68:

(Start: 33 @42694 has 143 MA's), (52, 42637), (73, 42502),

Gene: Aliter_75 Start: 42851, Stop: 42633, Start Num: 20

Candidate Starts for Aliter_75:

(Start: 20 @42851 has 32 MA's), (Start: 47 @42794 has 2 MA's), (51, 42776),

Gene: Alma_72 Start: 42828, Stop: 42610, Start Num: 20

Candidate Starts for Alma_72:

(Start: 20 @42828 has 32 MA's), (Start: 47 @42771 has 2 MA's), (51, 42753),

Gene: Aneem_76 Start: 43515, Stop: 43288, Start Num: 26

Candidate Starts for Aneem_76:

(Start: 26 @43515 has 51 MA's), (Start: 46 @43461 has 1 MA's), (Start: 47 @43455 has 2 MA's), (60, 43383),

Gene: AnnaL29_72 Start: 43717, Stop: 43493, Start Num: 26

Candidate Starts for AnnaL29_72:

(Start: 26 @43717 has 51 MA's), (27, 43714), (Start: 46 @43666 has 1 MA's), (66, 43531), (67, 43528),

Gene: Annyong_66 Start: 42402, Stop: 42205, Start Num: 33

Candidate Starts for Annyong_66:

(Start: 33 @42402 has 143 MA's), (52, 42345), (73, 42210),

Gene: Anselm_74 Start: 43911, Stop: 43687, Start Num: 24

Candidate Starts for Anselm_74:

(Start: 24 @43911 has 37 MA's), (65, 43728), (66, 43725), (67, 43722),

Gene: Anthony_69 Start: 41982, Stop: 41797, Start Num: 21

Candidate Starts for Anthony_69:

(19, 41985), (Start: 21 @41982 has 13 MA's), (58, 41889), (67, 41805),

Gene: Anubis_77 Start: 42731, Stop: 42516, Start Num: 31

Candidate Starts for Anubis_77:

(Start: 31 @42731 has 35 MA's), (Start: 32 @42728 has 31 MA's), (Start: 47 @42695 has 2 MA's), (66, 42566), (73, 42521),

Gene: ArcherNM_66 Start: 42985, Stop: 42764, Start Num: 25

Candidate Starts for ArcherNM_66:

(Start: 25 @42985 has 9 MA's), (Start: 46 @42931 has 1 MA's), (67, 42799),

Gene: Arturo_64 Start: 42484, Stop: 42287, Start Num: 33

Candidate Starts for Arturo_64:

(Start: 33 @42484 has 143 MA's), (52, 42427), (73, 42292),

Gene: AugsMagnumOpus_77 Start: 42833, Stop: 42621, Start Num: 32

Candidate Starts for AugsMagnumOpus_77:

(Start: 31 @42836 has 35 MA's), (Start: 32 @42833 has 31 MA's), (Start: 47 @42800 has 2 MA's), (66, 42671), (73, 42626),

Gene: AvatarAhPeg_66 Start: 42517, Stop: 42293, Start Num: 33

Candidate Starts for AvatarAhPeg_66:

(Start: 33 @42517 has 143 MA's), (52, 42460), (53, 42454), (73, 42298),

Gene: Avle17_67 Start: 42354, Stop: 42157, Start Num: 33

Candidate Starts for Avle17_67:

(Start: 33 @42354 has 143 MA's), (52, 42297), (73, 42162),

Gene: Ayanochan_72 Start: 42614, Stop: 42396, Start Num: 20

Candidate Starts for Ayanochan_72:

(Start: 20 @42614 has 32 MA's), (Start: 47 @42557 has 2 MA's), (51, 42539),

Gene: B1_61 Start: 40764, Stop: 40540, Start Num: 38

Candidate Starts for B1_61:

(Start: 38 @40764 has 12 MA's), (39, 40758), (Start: 47 @40722 has 2 MA's), (73, 40545),

Gene: Baby16_67 Start: 42368, Stop: 42171, Start Num: 33

Candidate Starts for Baby16_67:

(Start: 33 @42368 has 143 MA's), (52, 42311), (73, 42176),

Gene: BabyBack_69 Start: 43490, Stop: 43272, Start Num: 25

Candidate Starts for BabyBack_69:

(Start: 25 @43490 has 9 MA's), (Start: 46 @43439 has 1 MA's), (51, 43415), (66, 43310),

Gene: BabyJohn_64 Start: 42591, Stop: 42367, Start Num: 38

Candidate Starts for BabyJohn_64:

(Start: 38 @42591 has 12 MA's), (39, 42585), (Start: 47 @42549 has 2 MA's), (66, 42417), (73, 42372),

Gene: BabyRay_70 Start: 42572, Stop: 42345, Start Num: 29

Candidate Starts for BabyRay_70:

(6, 42641), (Start: 29 @42572 has 15 MA's), (Start: 47 @42527 has 2 MA's), (66, 42395), (73, 42350),

Gene: Bachome_73 Start: 42394, Stop: 42131, Start Num: 26

Candidate Starts for Bachome_73:

(Start: 26 @42394 has 51 MA's), (Start: 46 @42340 has 1 MA's), (Start: 47 @42334 has 2 MA's), (60, 42262), (70, 42175),

Gene: Backyardigan_64 Start: 42663, Stop: 42439, Start Num: 33
Candidate Starts for Backyardigan_64:
(Start: 33 @42663 has 143 MA's), (52, 42606), (53, 42600), (60, 42549), (73, 42444),

Gene: Badger_65 Start: 42631, Stop: 42407, Start Num: 33
Candidate Starts for Badger_65:
(Start: 33 @42631 has 143 MA's), (52, 42574), (53, 42568), (60, 42517), (73, 42412),

Gene: Baehexic_71 Start: 43242, Stop: 43015, Start Num: 24
Candidate Starts for Baehexic_71:
(Start: 24 @43242 has 37 MA's), (Start: 46 @43188 has 1 MA's), (67, 43050),

Gene: BangNhom_65 Start: 42796, Stop: 42572, Start Num: 33
Candidate Starts for BangNhom_65:
(Start: 33 @42796 has 143 MA's), (52, 42739), (53, 42733), (73, 42577),

Gene: Bartimeaus_67 Start: 42359, Stop: 42162, Start Num: 33
Candidate Starts for Bartimeaus_67:
(Start: 33 @42359 has 143 MA's), (52, 42302), (73, 42167),

Gene: Beauxregard13_73 Start: 42845, Stop: 42633, Start Num: 32
Candidate Starts for Beauxregard13_73:
(Start: 31 @42848 has 35 MA's), (Start: 32 @42845 has 31 MA's), (Start: 47 @42812 has 2 MA's), (66, 42683), (73, 42638),

Gene: Beemo_74 Start: 42869, Stop: 42651, Start Num: 20
Candidate Starts for Beemo_74:
(Start: 20 @42869 has 32 MA's), (Start: 47 @42812 has 2 MA's), (51, 42794),

Gene: Bellris_72 Start: 42751, Stop: 42518, Start Num: 16
Candidate Starts for Bellris_72:
(7, 42790), (Start: 16 @42751 has 1 MA's), (Start: 47 @42679 has 2 MA's), (51, 42661),

Gene: BellusTerra_68 Start: 42397, Stop: 42173, Start Num: 33
Candidate Starts for BellusTerra_68:
(Start: 33 @42397 has 143 MA's), (52, 42340), (53, 42334), (73, 42178),

Gene: BengiVuitton_72 Start: 43467, Stop: 43270, Start Num: 23
Candidate Starts for BengiVuitton_72:
(Start: 23 @43467 has 4 MA's), (Start: 46 @43416 has 1 MA's), (Start: 47 @43410 has 2 MA's), (51, 43392),

Gene: Benvolio_70 Start: 43151, Stop: 42927, Start Num: 20
Candidate Starts for Benvolio_70:
(Start: 20 @43151 has 32 MA's), (Start: 46 @43100 has 1 MA's), (65, 42968), (66, 42965), (67, 42962),

Gene: BiancaTri92_71 Start: 43505, Stop: 43281, Start Num: 26
Candidate Starts for BiancaTri92_71:
(Start: 26 @43505 has 51 MA's), (Start: 46 @43454 has 1 MA's), (66, 43319), (71, 43289),

Gene: Bigflo_71 Start: 42841, Stop: 42629, Start Num: 32
Candidate Starts for Bigflo_71:

(Start: 31 @42844 has 35 MA's), (Start: 32 @42841 has 31 MA's), (Start: 47 @42808 has 2 MA's), (66, 42679), (73, 42634),

Gene: Blackmoor_66 Start: 42359, Stop: 42162, Start Num: 33
Candidate Starts for Blackmoor_66:
(Start: 33 @42359 has 143 MA's), (52, 42302), (73, 42167),

Gene: Blinn1_78 Start: 42893, Stop: 42633, Start Num: 12
Candidate Starts for Blinn1_78:
(Start: 12 @42893 has 4 MA's), (51, 42776), (67, 42668),

Gene: BlueBird_72 Start: 42595, Stop: 42392, Start Num: 43
Candidate Starts for BlueBird_72:
(Start: 43 @42595 has 6 MA's), (51, 42553), (66, 42442),

Gene: BobSwaget_65 Start: 41376, Stop: 41158, Start Num: 24
Candidate Starts for BobSwaget_65:
(Start: 24 @41376 has 37 MA's), (51, 41301), (66, 41196), (67, 41193),

Gene: Bombshell_67 Start: 42354, Stop: 42157, Start Num: 33
Candidate Starts for Bombshell_67:
(Start: 33 @42354 has 143 MA's), (52, 42297), (73, 42162),

Gene: Bowtie_76 Start: 43522, Stop: 43295, Start Num: 26
Candidate Starts for Bowtie_76:
(Start: 26 @43522 has 51 MA's), (Start: 46 @43468 has 1 MA's), (Start: 47 @43462 has 2 MA's), (60, 43390),

Gene: Bradman_75 Start: 42863, Stop: 42621, Start Num: 26
Candidate Starts for Bradman_75:
(Start: 12 @42902 has 4 MA's), (Start: 26 @42863 has 51 MA's), (Start: 46 @42809 has 1 MA's),
(Start: 47 @42803 has 2 MA's), (51, 42785), (66, 42674),

Gene: BreSam8_74 Start: 42835, Stop: 42623, Start Num: 32
Candidate Starts for BreSam8_74:
(Start: 31 @42838 has 35 MA's), (Start: 32 @42835 has 31 MA's), (Start: 47 @42802 has 2 MA's), (66, 42673), (73, 42628),

Gene: Broseidon_67 Start: 42359, Stop: 42162, Start Num: 33
Candidate Starts for Broseidon_67:
(Start: 33 @42359 has 143 MA's), (52, 42302), (73, 42167),

Gene: Bruiser_66 Start: 42357, Stop: 42160, Start Num: 33
Candidate Starts for Bruiser_66:
(Start: 33 @42357 has 143 MA's), (52, 42300), (73, 42165),

Gene: BubbleTrouble_66 Start: 42384, Stop: 42160, Start Num: 33
Candidate Starts for BubbleTrouble_66:
(Start: 33 @42384 has 143 MA's), (52, 42327), (53, 42321), (60, 42270), (73, 42165),

Gene: Bud_70 Start: 41952, Stop: 41689, Start Num: 26
Candidate Starts for Bud_70:

(Start: 26 @41952 has 51 MA's), (Start: 46 @41898 has 1 MA's), (Start: 47 @41892 has 2 MA's), (60, 41820), (70, 41733),

Gene: Bugatti_69 Start: 42595, Stop: 42392, Start Num: 43

Candidate Starts for Bugatti_69:

(Start: 43 @42595 has 6 MA's), (51, 42553), (66, 42442),

Gene: Buggy_74 Start: 43814, Stop: 43590, Start Num: 24

Candidate Starts for Buggy_74:

(Start: 24 @43814 has 37 MA's), (Start: 46 @43763 has 1 MA's), (65, 43631), (66, 43628), (67, 43625),

Gene: Bumblebee11_65 Start: 42633, Stop: 42409, Start Num: 33

Candidate Starts for Bumblebee11_65:

(Start: 33 @42633 has 143 MA's), (52, 42576), (53, 42570), (60, 42519), (73, 42414),

Gene: Burger_65 Start: 42357, Stop: 42160, Start Num: 33

Candidate Starts for Burger_65:

(Start: 33 @42357 has 143 MA's), (52, 42300), (73, 42165),

Gene: BuzzBuzz_68 Start: 42872, Stop: 42657, Start Num: 31

Candidate Starts for BuzzBuzz_68:

(Start: 31 @42872 has 35 MA's), (Start: 32 @42869 has 31 MA's), (Start: 47 @42836 has 2 MA's), (73, 42662),

Gene: Bxz2_69 Start: 42876, Stop: 42664, Start Num: 32

Candidate Starts for Bxz2_69:

(Start: 31 @42879 has 35 MA's), (Start: 32 @42876 has 31 MA's), (Start: 47 @42843 has 2 MA's), (66, 42714), (73, 42669),

Gene: C3_68 Start: 43459, Stop: 43217, Start Num: 26

Candidate Starts for C3_68:

(Start: 26 @43459 has 51 MA's), (Start: 46 @43405 has 1 MA's), (51, 43381), (65, 43273),

Gene: CRB1_74 Start: 44013, Stop: 43816, Start Num: 22

Candidate Starts for CRB1_74:

(Start: 22 @44013 has 6 MA's), (Start: 46 @43962 has 1 MA's), (51, 43938), (67, 43824),

Gene: Caelakin_66 Start: 42357, Stop: 42160, Start Num: 33

Candidate Starts for Caelakin_66:

(Start: 33 @42357 has 143 MA's), (52, 42300), (73, 42165),

Gene: Calvinny_71 Start: 42664, Stop: 42446, Start Num: 29

Candidate Starts for Calvinny_71:

(6, 42733), (Start: 29 @42664 has 15 MA's), (Start: 47 @42625 has 2 MA's), (57, 42589), (66, 42496), (73, 42451),

Gene: Camperdownii_65 Start: 42031, Stop: 41834, Start Num: 33

Candidate Starts for Camperdownii_65:

(Start: 33 @42031 has 143 MA's), (52, 41974), (73, 41839),

Gene: Caraxes_75 Start: 42129, Stop: 41929, Start Num: 20

Candidate Starts for Caraxes_75:

(3, 42240), (4, 42222), (Start: 9 @42168 has 4 MA's), (Start: 20 @42129 has 32 MA's), (Start: 46 @42075 has 1 MA's), (51, 42051), (67, 41937),

Gene: Catalina_76 Start: 42925, Stop: 42707, Start Num: 20

Candidate Starts for Catalina_76:

(Start: 20 @42925 has 32 MA's), (Start: 47 @42868 has 2 MA's), (51, 42850),

Gene: Caviar_69 Start: 42560, Stop: 42348, Start Num: 35

Candidate Starts for Caviar_69:

(Start: 35 @42560 has 14 MA's), (Start: 47 @42527 has 2 MA's), (66, 42398), (73, 42353),

Gene: Centaur_73 Start: 43457, Stop: 43230, Start Num: 24

Candidate Starts for Centaur_73:

(Start: 24 @43457 has 37 MA's), (Start: 46 @43403 has 1 MA's), (67, 43265),

Gene: CentreCat_67 Start: 42396, Stop: 42172, Start Num: 33

Candidate Starts for CentreCat_67:

(Start: 33 @42396 has 143 MA's), (52, 42339), (53, 42333), (73, 42177),

Gene: Cerulean_68 Start: 42797, Stop: 42573, Start Num: 33

Candidate Starts for Cerulean_68:

(Start: 33 @42797 has 143 MA's), (52, 42740), (53, 42734), (73, 42578),

Gene: ChampagnePapi_69 Start: 42796, Stop: 42572, Start Num: 33

Candidate Starts for ChampagnePapi_69:

(Start: 33 @42796 has 143 MA's), (52, 42739), (53, 42733), (73, 42577),

Gene: Changeling_71 Start: 43693, Stop: 43472, Start Num: 25

Candidate Starts for Changeling_71:

(Start: 25 @43693 has 9 MA's), (Start: 46 @43639 has 1 MA's), (67, 43507),

Gene: Chaph_67 Start: 42368, Stop: 42171, Start Num: 33

Candidate Starts for Chaph_67:

(Start: 33 @42368 has 143 MA's), (52, 42311), (73, 42176),

Gene: Che12_76 Start: 42288, Stop: 42049, Start Num: 9

Candidate Starts for Che12_76:

(3, 42348), (Start: 9 @42288 has 4 MA's), (Start: 20 @42249 has 32 MA's), (Start: 46 @42195 has 1 MA's), (Start: 47 @42189 has 2 MA's), (49, 42180), (51, 42171), (67, 42057),

Gene: ChipMunk_73 Start: 44854, Stop: 44630, Start Num: 21

Candidate Starts for ChipMunk_73:

(Start: 21 @44854 has 13 MA's), (Start: 46 @44803 has 1 MA's), (65, 44671), (66, 44668), (67, 44665), (71, 44638),

Gene: Chiqui_64 Start: 42600, Stop: 42376, Start Num: 38

Candidate Starts for Chiqui_64:

(Start: 38 @42600 has 12 MA's), (39, 42594), (Start: 47 @42558 has 2 MA's), (66, 42426), (73, 42381),

Gene: Chupacabra_64 Start: 41694, Stop: 41500, Start Num: 34

Candidate Starts for Chupacabra_64:

(Start: 34 @41694 has 3 MA's), (60, 41598), (64, 41550),

Gene: Cici_66 Start: 42648, Stop: 42424, Start Num: 33
Candidate Starts for Cici_66:
(Start: 33 @42648 has 143 MA's), (52, 42591), (53, 42585), (60, 42534), (73, 42429),

Gene: Cindaradix_63 Start: 42259, Stop: 42035, Start Num: 33
Candidate Starts for Cindaradix_63:
(Start: 33 @42259 has 143 MA's), (52, 42202), (53, 42196), (60, 42145), (73, 42040),

Gene: Cintron_67 Start: 42507, Stop: 42283, Start Num: 33
Candidate Starts for Cintron_67:
(Start: 33 @42507 has 143 MA's), (52, 42450), (53, 42444), (73, 42288),

Gene: Citius_67 Start: 42378, Stop: 42181, Start Num: 33
Candidate Starts for Citius_67:
(Start: 33 @42378 has 143 MA's), (52, 42321), (73, 42186),

Gene: Clammy_69 Start: 42595, Stop: 42392, Start Num: 43
Candidate Starts for Clammy_69:
(Start: 43 @42595 has 6 MA's), (51, 42553), (66, 42442),

Gene: Clarenza_66 Start: 42354, Stop: 42157, Start Num: 33
Candidate Starts for Clarenza_66:
(Start: 33 @42354 has 143 MA's), (52, 42297), (73, 42162),

Gene: ClownCar_71 Start: 42657, Stop: 42439, Start Num: 29
Candidate Starts for ClownCar_71:
(6, 42726), (Start: 29 @42657 has 15 MA's), (Start: 47 @42618 has 2 MA's), (57, 42582), (66, 42489),
(73, 42444),

Gene: Cocoaberry_67 Start: 42361, Stop: 42164, Start Num: 33
Candidate Starts for Cocoaberry_67:
(Start: 33 @42361 has 143 MA's), (52, 42304), (73, 42169),

Gene: CogOmlette_72 Start: 42748, Stop: 42515, Start Num: 16
Candidate Starts for CogOmlette_72:
(7, 42787), (Start: 16 @42748 has 1 MA's), (Start: 47 @42676 has 2 MA's), (51, 42658),

Gene: Colbster_70 Start: 42848, Stop: 42633, Start Num: 31
Candidate Starts for Colbster_70:
(Start: 31 @42848 has 35 MA's), (Start: 32 @42845 has 31 MA's), (Start: 47 @42812 has 2 MA's), (66,
42683), (73, 42638),

Gene: Colin_72 Start: 44437, Stop: 44219, Start Num: 25
Candidate Starts for Colin_72:
(Start: 25 @44437 has 9 MA's), (Start: 46 @44386 has 1 MA's), (51, 44362),

Gene: Commander_65 Start: 42356, Stop: 42159, Start Num: 33
Candidate Starts for Commander_65:
(Start: 33 @42356 has 143 MA's), (52, 42299), (73, 42164),

Gene: Connomayer_67 Start: 42357, Stop: 42160, Start Num: 33
Candidate Starts for Connomayer_67:
(Start: 33 @42357 has 143 MA's), (52, 42300), (73, 42165),

Gene: Conquerage_72 Start: 42600, Stop: 42382, Start Num: 20
Candidate Starts for Conquerage_72:
(Start: 20 @42600 has 32 MA's), (Start: 47 @42543 has 2 MA's), (51, 42525),

Gene: Croquant_71 Start: 42839, Stop: 42627, Start Num: 32
Candidate Starts for Croquant_71:
(Start: 31 @42842 has 35 MA's), (Start: 32 @42839 has 31 MA's), (Start: 47 @42806 has 2 MA's), (66, 42677), (73, 42632),

Gene: Crucio_73 Start: 43811, Stop: 43587, Start Num: 24
Candidate Starts for Crucio_73:
(Start: 24 @43811 has 37 MA's), (65, 43628), (66, 43625), (67, 43622),

Gene: Cullens_74 Start: 42844, Stop: 42629, Start Num: 31
Candidate Starts for Cullens_74:
(Start: 31 @42844 has 35 MA's), (Start: 32 @42841 has 31 MA's), (Start: 47 @42808 has 2 MA's), (66, 42679), (73, 42634),

Gene: D29_68.1 Start: 44004, Stop: 43762, Start Num: 26
Candidate Starts for D29_68.1:
(Start: 26 @44004 has 51 MA's), (Start: 46 @43950 has 1 MA's), (51, 43926),

Gene: D32_74 Start: 44004, Stop: 43762, Start Num: 26
Candidate Starts for D32_74:
(Start: 26 @44004 has 51 MA's), (Start: 46 @43950 has 1 MA's), (51, 43926),

Gene: DBQu4n_75 Start: 43984, Stop: 43742, Start Num: 26
Candidate Starts for DBQu4n_75:
(Start: 26 @43984 has 51 MA's), (Start: 46 @43930 has 1 MA's), (51, 43906),

Gene: DaHudson_73 Start: 42837, Stop: 42622, Start Num: 31
Candidate Starts for DaHudson_73:
(Start: 31 @42837 has 35 MA's), (Start: 32 @42834 has 31 MA's), (Start: 47 @42801 has 2 MA's), (66, 42672), (73, 42627),

Gene: Daishi_73 Start: 41709, Stop: 41497, Start Num: 32
Candidate Starts for Daishi_73:
(Start: 31 @41712 has 35 MA's), (Start: 32 @41709 has 31 MA's), (42, 41703), (Start: 47 @41676 has 2 MA's), (66, 41547), (73, 41502),

Gene: Dalmatian_73 Start: 43630, Stop: 43406, Start Num: 24
Candidate Starts for Dalmatian_73:
(Start: 24 @43630 has 37 MA's), (65, 43447), (66, 43444), (67, 43441),

Gene: Darrell_75 Start: 43432, Stop: 43193, Start Num: 15
Candidate Starts for Darrell_75:
(8, 43462), (13, 43444), (Start: 15 @43432 has 1 MA's), (Start: 47 @43354 has 2 MA's), (51, 43336),

Gene: DarthPhader_70 Start: 44013, Stop: 43786, Start Num: 21
Candidate Starts for DarthPhader_70:
(Start: 21 @44013 has 13 MA's), (Start: 46 @43959 has 1 MA's), (49, 43944), (66, 43824), (67, 43821),

Gene: Datway_66 Start: 42619, Stop: 42395, Start Num: 33
Candidate Starts for Datway_66:
(Start: 33 @42619 has 143 MA's), (52, 42562), (53, 42556), (60, 42505), (73, 42400),

Gene: Deano_64 Start: 42365, Stop: 42168, Start Num: 33
Candidate Starts for Deano_64:
(Start: 33 @42365 has 143 MA's), (52, 42308), (73, 42173),

Gene: DeerParkTS_69 Start: 42438, Stop: 42238, Start Num: 36
Candidate Starts for DeerParkTS_69:
(Start: 26 @42462 has 51 MA's), (36, 42438), (Start: 46 @42411 has 1 MA's), (67, 42273),

Gene: Deloris_72 Start: 43163, Stop: 42966, Start Num: 23
Candidate Starts for Deloris_72:
(Start: 23 @43163 has 4 MA's), (Start: 46 @43112 has 1 MA's), (Start: 47 @43106 has 2 MA's), (51, 43088),

Gene: Dhanush_67 Start: 42360, Stop: 42163, Start Num: 33
Candidate Starts for Dhanush_67:
(Start: 33 @42360 has 143 MA's), (52, 42303), (73, 42168),

Gene: Dieselweasel_74 Start: 42843, Stop: 42631, Start Num: 32
Candidate Starts for Dieselweasel_74:
(Start: 31 @42846 has 35 MA's), (Start: 32 @42843 has 31 MA's), (Start: 47 @42810 has 2 MA's), (66, 42681), (73, 42636),

Gene: Dignity_74 Start: 43852, Stop: 43628, Start Num: 24
Candidate Starts for Dignity_74:
(Start: 24 @43852 has 37 MA's), (Start: 46 @43801 has 1 MA's), (65, 43669), (66, 43666), (67, 43663),

Gene: DirtyDunning_66 Start: 42372, Stop: 42175, Start Num: 33
Candidate Starts for DirtyDunning_66:
(Start: 33 @42372 has 143 MA's), (52, 42315), (73, 42180),

Gene: DontArgue_63 Start: 40833, Stop: 40633, Start Num: 45
Candidate Starts for DontArgue_63:
(45, 40833), (Start: 47 @40812 has 2 MA's), (55, 40779), (66, 40683), (73, 40638),

Gene: Drake55_74 Start: 43531, Stop: 43331, Start Num: 22
Candidate Starts for Drake55_74:
(Start: 22 @43531 has 6 MA's), (Start: 46 @43477 has 1 MA's), (Start: 47 @43471 has 2 MA's), (51, 43453), (67, 43339),

Gene: Drake94_64 Start: 40814, Stop: 40575, Start Num: 28
Candidate Starts for Drake94_64:
(Start: 28 @40814 has 8 MA's), (Start: 47 @40754 has 2 MA's), (73, 40580),

Gene: DropBear_67 Start: 42515, Stop: 42291, Start Num: 38
Candidate Starts for DropBear_67:
(Start: 38 @42515 has 12 MA's), (39, 42509), (Start: 47 @42473 has 2 MA's), (66, 42341), (73, 42296),

Gene: Druantia_66 Start: 42360, Stop: 42163, Start Num: 33
Candidate Starts for Druantia_66:

(Start: 33 @42360 has 143 MA's), (52, 42303), (73, 42168),

Gene: DudeLittle_71 Start: 43396, Stop: 43172, Start Num: 24

Candidate Starts for DudeLittle_71:

(Start: 24 @43396 has 37 MA's), (65, 43213), (66, 43210), (67, 43207),

Gene: Duplo_75 Start: 44041, Stop: 43799, Start Num: 26

Candidate Starts for Duplo_75:

(Start: 26 @44041 has 51 MA's), (Start: 46 @43987 has 1 MA's), (51, 43963),

Gene: DustyMartin_68 Start: 41850, Stop: 41611, Start Num: 28

Candidate Starts for DustyMartin_68:

(Start: 28 @41850 has 8 MA's), (Start: 47 @41790 has 2 MA's), (73, 41616),

Gene: EZMoney23_69 Start: 43235, Stop: 43014, Start Num: 25

Candidate Starts for EZMoney23_69:

(Start: 12 @43271 has 4 MA's), (Start: 25 @43235 has 9 MA's), (Start: 46 @43181 has 1 MA's), (51, 43157), (68, 43031),

Gene: Eagle_66 Start: 42418, Stop: 42194, Start Num: 33

Candidate Starts for Eagle_66:

(Start: 33 @42418 has 143 MA's), (52, 42361), (53, 42355), (73, 42199),

Gene: EagleEye_77 Start: 43527, Stop: 43327, Start Num: 22

Candidate Starts for EagleEye_77:

(14, 43551), (18, 43533), (Start: 22 @43527 has 6 MA's), (62, 43368),

Gene: Eaglepride_68 Start: 41798, Stop: 41607, Start Num: 34

Candidate Starts for Eaglepride_68:

(Start: 34 @41798 has 3 MA's), (64, 41657),

Gene: Eapen_67 Start: 42352, Stop: 42155, Start Num: 33

Candidate Starts for Eapen_67:

(Start: 33 @42352 has 143 MA's), (52, 42295), (73, 42160),

Gene: Ebony_75 Start: 43086, Stop: 42859, Start Num: 26

Candidate Starts for Ebony_75:

(Start: 26 @43086 has 51 MA's), (Start: 47 @43026 has 2 MA's), (60, 42954),

Gene: Echild_73 Start: 43175, Stop: 42951, Start Num: 20

Candidate Starts for Echild_73:

(Start: 20 @43175 has 32 MA's), (Start: 46 @43124 has 1 MA's), (65, 42992), (66, 42989), (67, 42986),

Gene: Edison31_63 Start: 41608, Stop: 41375, Start Num: 30

Candidate Starts for Edison31_63:

(Start: 30 @41608 has 4 MA's), (Start: 46 @41560 has 1 MA's), (Start: 47 @41554 has 2 MA's), (73, 41380),

Gene: EdogawaKiddo_72 Start: 42891, Stop: 42673, Start Num: 20

Candidate Starts for EdogawaKiddo_72:

(Start: 20 @42891 has 32 MA's), (Start: 47 @42834 has 2 MA's), (51, 42816),

Gene: Eidsmoe_72 Start: 42592, Stop: 42374, Start Num: 20

Candidate Starts for Eidsmoe_72:

(Start: 20 @42592 has 32 MA's), (Start: 47 @42535 has 2 MA's), (51, 42517),

Gene: EmyBug_71 Start: 42594, Stop: 42376, Start Num: 20

Candidate Starts for EmyBug_71:

(Start: 20 @42594 has 32 MA's), (Start: 47 @42537 has 2 MA's), (51, 42519),

Gene: EpicPhail_75 Start: 42845, Stop: 42633, Start Num: 32

Candidate Starts for EpicPhail_75:

(Start: 31 @42848 has 35 MA's), (Start: 32 @42845 has 31 MA's), (Start: 47 @42812 has 2 MA's), (66, 42683), (73, 42638),

Gene: Equemioh13_72 Start: 43362, Stop: 43135, Start Num: 24

Candidate Starts for Equemioh13_72:

(Start: 24 @43362 has 37 MA's), (Start: 46 @43308 has 1 MA's), (67, 43170),

Gene: Eris_66 Start: 42372, Stop: 42175, Start Num: 33

Candidate Starts for Eris_66:

(Start: 33 @42372 has 143 MA's), (52, 42315), (73, 42180),

Gene: Eros_67 Start: 42359, Stop: 42162, Start Num: 33

Candidate Starts for Eros_67:

(Start: 33 @42359 has 143 MA's), (52, 42302), (73, 42167),

Gene: Et2Brutus_74 Start: 43049, Stop: 42822, Start Num: 26

Candidate Starts for Et2Brutus_74:

(Start: 26 @43049 has 51 MA's), (Start: 46 @42995 has 1 MA's), (Start: 47 @42989 has 2 MA's), (60, 42917),

Gene: EtoileNova_67 Start: 42564, Stop: 42352, Start Num: 35

Candidate Starts for EtoileNova_67:

(Start: 35 @42564 has 14 MA's), (Start: 47 @42531 has 2 MA's), (66, 42402), (73, 42357),

Gene: Eurydice_68 Start: 42393, Stop: 42169, Start Num: 33

Candidate Starts for Eurydice_68:

(Start: 33 @42393 has 143 MA's), (52, 42336), (53, 42330), (73, 42174),

Gene: EvilGenius_72 Start: 44855, Stop: 44631, Start Num: 21

Candidate Starts for EvilGenius_72:

(Start: 21 @44855 has 13 MA's), (Start: 46 @44804 has 1 MA's), (65, 44672), (66, 44669), (67, 44666), (71, 44639),

Gene: ExplosioNervosa_72 Start: 42660, Stop: 42442, Start Num: 20

Candidate Starts for ExplosioNervosa_72:

(Start: 20 @42660 has 32 MA's), (Start: 47 @42603 has 2 MA's), (51, 42585),

Gene: Fameo_71 Start: 43438, Stop: 43214, Start Num: 24

Candidate Starts for Fameo_71:

(Start: 24 @43438 has 37 MA's), (Start: 46 @43387 has 1 MA's), (65, 43255), (67, 43249), (71, 43222),

Gene: Farber_74 Start: 42834, Stop: 42619, Start Num: 31

Candidate Starts for Farber_74:

(Start: 31 @42834 has 35 MA's), (Start: 32 @42831 has 31 MA's), (Start: 47 @42798 has 2 MA's), (66, 42669), (73, 42624),

Gene: FatCactus_67 Start: 41591, Stop: 41430, Start Num: 41
Candidate Starts for FatCactus_67:
(1, 41792), (2, 41768), (41, 41591), (58, 41522), (59, 41519), (67, 41438),

Gene: Fayely_72 Start: 42561, Stop: 42343, Start Num: 20
Candidate Starts for Fayely_72:
(Start: 20 @42561 has 32 MA's), (Start: 47 @42504 has 2 MA's),

Gene: Fernando_74 Start: 42841, Stop: 42629, Start Num: 32
Candidate Starts for Fernando_74:
(Start: 31 @42844 has 35 MA's), (Start: 32 @42841 has 31 MA's), (Start: 47 @42808 has 2 MA's), (66, 42679), (73, 42634),

Gene: Fibonacci_74 Start: 43055, Stop: 42828, Start Num: 26
Candidate Starts for Fibonacci_74:
(Start: 26 @43055 has 51 MA's), (Start: 46 @43001 has 1 MA's), (Start: 47 @42995 has 2 MA's), (60, 42923),

Gene: FiringLine_73 Start: 43793, Stop: 43569, Start Num: 24
Candidate Starts for FiringLine_73:
(Start: 24 @43793 has 37 MA's), (65, 43610), (66, 43607), (67, 43604),

Gene: First_0073 Start: 43417, Stop: 43193, Start Num: 26
Candidate Starts for First_0073:
(Start: 26 @43417 has 51 MA's), (Start: 46 @43366 has 1 MA's), (66, 43231), (67, 43228), (71, 43201),

Gene: Flare16_73 Start: 43501, Stop: 43274, Start Num: 24
Candidate Starts for Flare16_73:
(Start: 24 @43501 has 37 MA's), (Start: 46 @43447 has 1 MA's), (67, 43309),

Gene: Flaverint_76 Start: 43513, Stop: 43286, Start Num: 26
Candidate Starts for Flaverint_76:
(Start: 26 @43513 has 51 MA's), (Start: 46 @43459 has 1 MA's), (Start: 47 @43453 has 2 MA's), (60, 43381),

Gene: Florean_67 Start: 42356, Stop: 42159, Start Num: 33
Candidate Starts for Florean_67:
(Start: 33 @42356 has 143 MA's), (52, 42299), (73, 42164),

Gene: Flux_67 Start: 42356, Stop: 42159, Start Num: 33
Candidate Starts for Flux_67:
(Start: 33 @42356 has 143 MA's), (52, 42299), (73, 42164),

Gene: ForesterFrank_68 Start: 43507, Stop: 43286, Start Num: 25
Candidate Starts for ForesterFrank_68:
(Start: 25 @43507 has 9 MA's), (Start: 46 @43453 has 1 MA's), (67, 43321),

Gene: Fred313_67 Start: 42209, Stop: 41985, Start Num: 38
Candidate Starts for Fred313_67:
(Start: 38 @42209 has 12 MA's), (39, 42203), (Start: 47 @42167 has 2 MA's), (66, 42035), (73, 41990),

Gene: Funston_66 Start: 42357, Stop: 42160, Start Num: 33
Candidate Starts for Funston_66:
(Start: 33 @42357 has 143 MA's), (52, 42300), (73, 42165),

Gene: Gadost_67 Start: 42361, Stop: 42164, Start Num: 33
Candidate Starts for Gadost_67:
(Start: 33 @42361 has 143 MA's), (52, 42304), (73, 42169),

Gene: Gail_74 Start: 43840, Stop: 43619, Start Num: 20
Candidate Starts for Gail_74:
(Start: 20 @43840 has 32 MA's), (Start: 46 @43786 has 1 MA's), (Start: 47 @43780 has 2 MA's), (51, 43762), (67, 43654),

Gene: GaugeLDP_68 Start: 43061, Stop: 42840, Start Num: 25
Candidate Starts for GaugeLDP_68:
(Start: 25 @43061 has 9 MA's), (Start: 46 @43007 has 1 MA's), (51, 42983),

Gene: Gemma_71 Start: 42660, Stop: 42442, Start Num: 29
Candidate Starts for Gemma_71:
(6, 42729), (Start: 29 @42660 has 15 MA's), (Start: 47 @42621 has 2 MA's), (57, 42585), (66, 42492), (73, 42447),

Gene: Georgie2_74 Start: 43838, Stop: 43614, Start Num: 24
Candidate Starts for Georgie2_74:
(Start: 24 @43838 has 37 MA's), (65, 43655), (66, 43652), (67, 43649),

Gene: Gilberta_72 Start: 42389, Stop: 42126, Start Num: 26
Candidate Starts for Gilberta_72:
(Start: 26 @42389 has 51 MA's), (Start: 46 @42335 has 1 MA's), (Start: 47 @42329 has 2 MA's), (60, 42257), (70, 42170),

Gene: GingkoMaracino_74 Start: 42730, Stop: 42515, Start Num: 31
Candidate Starts for GingkoMaracino_74:
(Start: 31 @42730 has 35 MA's), (Start: 32 @42727 has 31 MA's), (Start: 47 @42694 has 2 MA's), (66, 42565), (73, 42520),

Gene: Giroux_72 Start: 42594, Stop: 42391, Start Num: 43
Candidate Starts for Giroux_72:
(Start: 43 @42594 has 6 MA's), (51, 42552), (66, 42441),

Gene: Goose_67 Start: 41510, Stop: 41316, Start Num: 34
Candidate Starts for Goose_67:
(Start: 34 @41510 has 3 MA's), (60, 41414), (64, 41366),

Gene: Gratitude_70 Start: 43362, Stop: 43135, Start Num: 24
Candidate Starts for Gratitude_70:
(Start: 24 @43362 has 37 MA's), (Start: 46 @43308 has 1 MA's), (67, 43170),

Gene: Grif_72 Start: 42915, Stop: 42703, Start Num: 32
Candidate Starts for Grif_72:
(Start: 31 @42918 has 35 MA's), (Start: 32 @42915 has 31 MA's), (Start: 47 @42882 has 2 MA's), (66, 42753), (73, 42708),

Gene: Groupthink_74 Start: 42664, Stop: 42446, Start Num: 29

Candidate Starts for Groupthink_74:

(6, 42733), (Start: 29 @42664 has 15 MA's), (Start: 47 @42625 has 2 MA's), (57, 42589), (66, 42496), (73, 42451),

Gene: Grub_72 Start: 42833, Stop: 42621, Start Num: 32

Candidate Starts for Grub_72:

(Start: 31 @42836 has 35 MA's), (Start: 32 @42833 has 31 MA's), (Start: 47 @42800 has 2 MA's), (66, 42671), (73, 42626),

Gene: Grum1_73 Start: 42844, Stop: 42629, Start Num: 31

Candidate Starts for Grum1_73:

(Start: 31 @42844 has 35 MA's), (Start: 32 @42841 has 31 MA's), (Start: 47 @42808 has 2 MA's), (66, 42679), (73, 42634),

Gene: GtownJaz_74 Start: 42842, Stop: 42630, Start Num: 32

Candidate Starts for GtownJaz_74:

(Start: 31 @42845 has 35 MA's), (Start: 32 @42842 has 31 MA's), (Start: 47 @42809 has 2 MA's), (66, 42680), (73, 42635),

Gene: Gwennie_69 Start: 42845, Stop: 42633, Start Num: 32

Candidate Starts for Gwennie_69:

(Start: 31 @42848 has 35 MA's), (Start: 32 @42845 has 31 MA's), (Start: 47 @42812 has 2 MA's), (66, 42683), (73, 42638),

Gene: HamSlice_63 Start: 42355, Stop: 42158, Start Num: 33

Candidate Starts for HamSlice_63:

(Start: 33 @42355 has 143 MA's), (52, 42298), (73, 42163),

Gene: Hanray_72 Start: 42923, Stop: 42705, Start Num: 20

Candidate Starts for Hanray_72:

(Start: 20 @42923 has 32 MA's), (Start: 47 @42866 has 2 MA's), (51, 42848),

Gene: Happiness_66 Start: 42379, Stop: 42155, Start Num: 33

Candidate Starts for Happiness_66:

(Start: 33 @42379 has 143 MA's), (52, 42322), (53, 42316), (73, 42160),

Gene: HarryHoudini_73 Start: 43532, Stop: 43332, Start Num: 22

Candidate Starts for HarryHoudini_73:

(Start: 22 @43532 has 6 MA's), (Start: 46 @43478 has 1 MA's), (51, 43454), (67, 43340),

Gene: HashRod_75 Start: 42869, Stop: 42657, Start Num: 32

Candidate Starts for HashRod_75:

(Start: 31 @42872 has 35 MA's), (Start: 32 @42869 has 31 MA's), (Start: 47 @42836 has 2 MA's), (66, 42707), (73, 42662),

Gene: HaveUMetTed_74 Start: 42649, Stop: 42431, Start Num: 29

Candidate Starts for HaveUMetTed_74:

(6, 42718), (Start: 29 @42649 has 15 MA's), (Start: 47 @42610 has 2 MA's), (57, 42574), (66, 42481), (73, 42436),

Gene: Heathen_69 Start: 42304, Stop: 42080, Start Num: 38

Candidate Starts for Heathen_69:

(Start: 38 @42304 has 12 MA's), (39, 42298), (Start: 47 @42262 has 2 MA's), (66, 42130), (73, 42085),

Gene: Heffalump_70 Start: 43906, Stop: 43682, Start Num: 24

Candidate Starts for Heffalump_70:

(Start: 24 @43906 has 37 MA's), (Start: 46 @43855 has 1 MA's), (65, 43723), (67, 43717), (71, 43690), (72, 43687),

Gene: HelDan_69 Start: 42520, Stop: 42296, Start Num: 38

Candidate Starts for HelDan_69:

(Start: 38 @42520 has 12 MA's), (39, 42514), (Start: 47 @42478 has 2 MA's), (66, 42346), (73, 42301),

Gene: Heliosoles_71 Start: 42667, Stop: 42449, Start Num: 29

Candidate Starts for Heliosoles_71:

(6, 42736), (Start: 29 @42667 has 15 MA's), (Start: 47 @42628 has 2 MA's), (57, 42592), (66, 42499), (73, 42454),

Gene: Hercules11_74 Start: 42853, Stop: 42638, Start Num: 31

Candidate Starts for Hercules11_74:

(Start: 31 @42853 has 35 MA's), (Start: 32 @42850 has 31 MA's), (Start: 47 @42817 has 2 MA's), (66, 42688), (73, 42643),

Gene: HippoHollow_70 Start: 44531, Stop: 44307, Start Num: 26

Candidate Starts for HippoHollow_70:

(Start: 26 @44531 has 51 MA's), (66, 44345), (67, 44342), (71, 44315),

Gene: Horex_72 Start: 42939, Stop: 42721, Start Num: 20

Candidate Starts for Horex_72:

(Start: 20 @42939 has 32 MA's), (Start: 47 @42882 has 2 MA's), (51, 42864),

Gene: Holli_66 Start: 42147, Stop: 41950, Start Num: 33

Candidate Starts for Holli_66:

(Start: 33 @42147 has 143 MA's), (52, 42090), (73, 41955),

Gene: Hookmount_69 Start: 42561, Stop: 42349, Start Num: 35

Candidate Starts for Hookmount_69:

(Start: 35 @42561 has 14 MA's), (Start: 47 @42528 has 2 MA's), (66, 42399), (73, 42354),

Gene: HortumSL17_75 Start: 42923, Stop: 42705, Start Num: 20

Candidate Starts for HortumSL17_75:

(Start: 20 @42923 has 32 MA's), (Start: 47 @42866 has 2 MA's), (51, 42848),

Gene: Houdini22_66 Start: 42361, Stop: 42164, Start Num: 33

Candidate Starts for Houdini22_66:

(Start: 33 @42361 has 143 MA's), (52, 42304), (73, 42169),

Gene: Hutc2_70 Start: 41938, Stop: 41675, Start Num: 26

Candidate Starts for Hutc2_70:

(Start: 26 @41938 has 51 MA's), (Start: 46 @41884 has 1 MA's), (Start: 47 @41878 has 2 MA's), (60, 41806), (70, 41719),

Gene: Huxley_66 Start: 42421, Stop: 42224, Start Num: 33

Candidate Starts for Huxley_66:

(Start: 33 @42421 has 143 MA's), (52, 42364), (73, 42229),

Gene: ICleared_66 Start: 42425, Stop: 42201, Start Num: 33

Candidate Starts for ICleared_66:

(Start: 33 @42425 has 143 MA's), (52, 42368), (53, 42362), (73, 42206),

Gene: Iceman_66 Start: 42646, Stop: 42449, Start Num: 33

Candidate Starts for Iceman_66:

(Start: 33 @42646 has 143 MA's), (52, 42589), (73, 42454),

Gene: Idleandcovert_70 Start: 42595, Stop: 42392, Start Num: 43

Candidate Starts for Idleandcovert_70:

(Start: 43 @42595 has 6 MA's), (51, 42553), (66, 42442),

Gene: Insomnia_74 Start: 43230, Stop: 43003, Start Num: 26

Candidate Starts for Insomnia_74:

(Start: 26 @43230 has 51 MA's), (Start: 46 @43176 has 1 MA's), (Start: 47 @43170 has 2 MA's), (60, 43098),

Gene: Iracema64_67 Start: 42624, Stop: 42427, Start Num: 33

Candidate Starts for Iracema64_67:

(Start: 33 @42624 has 143 MA's), (52, 42567), (73, 42432),

Gene: IronMan_70 Start: 44663, Stop: 44424, Start Num: 26

Candidate Starts for IronMan_70:

(Start: 26 @44663 has 51 MA's), (Start: 47 @44600 has 2 MA's), (51, 44582), (66, 44477),

Gene: Isca_67 Start: 42069, Stop: 41845, Start Num: 38

Candidate Starts for Isca_67:

(Start: 38 @42069 has 12 MA's), (39, 42063), (Start: 47 @42027 has 2 MA's), (73, 41850),

Gene: Iwokeuplikedis_74 Start: 43821, Stop: 43639, Start Num: 46

Candidate Starts for Iwokeuplikedis_74:

(Start: 46 @43821 has 1 MA's), (Start: 47 @43815 has 2 MA's), (51, 43797), (65, 43695), (73, 43647),

Gene: JF2_67 Start: 40764, Stop: 40540, Start Num: 38

Candidate Starts for JF2_67:

(Start: 38 @40764 has 12 MA's), (39, 40758), (Start: 47 @40722 has 2 MA's), (73, 40545),

Gene: JF4_67 Start: 40764, Stop: 40540, Start Num: 38

Candidate Starts for JF4_67:

(Start: 38 @40764 has 12 MA's), (39, 40758), (Start: 47 @40722 has 2 MA's), (73, 40545),

Gene: JHC117_70 Start: 42842, Stop: 42627, Start Num: 31

Candidate Starts for JHC117_70:

(Start: 31 @42842 has 35 MA's), (Start: 32 @42839 has 31 MA's), (Start: 47 @42806 has 2 MA's), (66, 42677), (73, 42632),

Gene: Jaan_71 Start: 44833, Stop: 44594, Start Num: 26

Candidate Starts for Jaan_71:

(Start: 26 @44833 has 51 MA's), (Start: 47 @44770 has 2 MA's), (51, 44752), (66, 44647),

Gene: Jabith_74 Start: 43247, Stop: 43020, Start Num: 26

Candidate Starts for Jabith_74:

(Start: 26 @43247 has 51 MA's), (Start: 46 @43193 has 1 MA's), (Start: 47 @43187 has 2 MA's), (60, 43115),

Gene: Jaykayelowell_64 Start: 42350, Stop: 42153, Start Num: 33

Candidate Starts for Jaykayelowell_64:

(Start: 33 @42350 has 143 MA's), (52, 42293), (73, 42158),

Gene: Jeeves_76 Start: 42825, Stop: 42604, Start Num: 20

Candidate Starts for Jeeves_76:

(Start: 20 @42825 has 32 MA's), (Start: 46 @42771 has 1 MA's), (Start: 47 @42765 has 2 MA's), (51, 42747), (67, 42639),

Gene: JenCasNa_75 Start: 42844, Stop: 42629, Start Num: 31

Candidate Starts for JenCasNa_75:

(Start: 31 @42844 has 35 MA's), (Start: 32 @42841 has 31 MA's), (Start: 47 @42808 has 2 MA's), (66, 42679), (73, 42634),

Gene: JeppNRM_74 Start: 42665, Stop: 42447, Start Num: 29

Candidate Starts for JeppNRM_74:

(6, 42734), (Start: 29 @42665 has 15 MA's), (Start: 47 @42626 has 2 MA's), (57, 42590), (60, 42557), (66, 42497), (73, 42452),

Gene: Jerm_74 Start: 43834, Stop: 43610, Start Num: 24

Candidate Starts for Jerm_74:

(Start: 24 @43834 has 37 MA's), (Start: 46 @43783 has 1 MA's), (65, 43651), (66, 43648), (67, 43645),

Gene: JetBlade_67 Start: 42387, Stop: 42163, Start Num: 33

Candidate Starts for JetBlade_67:

(Start: 33 @42387 has 143 MA's), (52, 42330), (53, 42324), (73, 42168),

Gene: Jiawan_71 Start: 42955, Stop: 42737, Start Num: 20

Candidate Starts for Jiawan_71:

(Start: 20 @42955 has 32 MA's), (Start: 47 @42898 has 2 MA's), (51, 42880),

Gene: Jobu08_70 Start: 42676, Stop: 42461, Start Num: 31

Candidate Starts for Jobu08_70:

(Start: 31 @42676 has 35 MA's), (Start: 32 @42673 has 31 MA's), (Start: 47 @42640 has 2 MA's), (66, 42511), (73, 42466),

Gene: JoongJeon_66 Start: 42354, Stop: 42157, Start Num: 33

Candidate Starts for JoongJeon_66:

(Start: 33 @42354 has 143 MA's), (52, 42297), (73, 42162),

Gene: Joselito_74 Start: 43267, Stop: 43040, Start Num: 26

Candidate Starts for Joselito_74:

(Start: 26 @43267 has 51 MA's), (Start: 46 @43213 has 1 MA's), (Start: 47 @43207 has 2 MA's), (60, 43135),

Gene: JoshKayV_73 Start: 43858, Stop: 43661, Start Num: 22

Candidate Starts for JoshKayV_73:

(Start: 22 @43858 has 6 MA's), (51, 43783),

Gene: Jsquared_76 Start: 43035, Stop: 42751, Start Num: 12

Candidate Starts for Jsquared_76:

(Start: 12 @43035 has 4 MA's), (Start: 46 @42942 has 1 MA's), (Start: 47 @42936 has 2 MA's), (49, 42927), (63, 42828), (66, 42804),

Gene: KADY_71 Start: 42869, Stop: 42657, Start Num: 32

Candidate Starts for KADY_71:

(Start: 31 @42872 has 35 MA's), (Start: 32 @42869 has 31 MA's), (Start: 47 @42836 has 2 MA's), (73, 42662),

Gene: KFPoly_66 Start: 42351, Stop: 42154, Start Num: 33

Candidate Starts for KFPoly_66:

(Start: 33 @42351 has 143 MA's), (52, 42294), (73, 42159),

Gene: Kachowdy_67 Start: 42556, Stop: 42332, Start Num: 38

Candidate Starts for Kachowdy_67:

(Start: 38 @42556 has 12 MA's), (39, 42550), (Start: 47 @42514 has 2 MA's), (66, 42382), (73, 42337),

Gene: Kalb97_74 Start: 42663, Stop: 42445, Start Num: 29

Candidate Starts for Kalb97_74:

(6, 42732), (Start: 29 @42663 has 15 MA's), (Start: 47 @42624 has 2 MA's), (57, 42588), (66, 42495), (73, 42450),

Gene: Kalnoky_74 Start: 42661, Stop: 42443, Start Num: 29

Candidate Starts for Kalnoky_74:

(6, 42730), (Start: 29 @42661 has 15 MA's), (Start: 47 @42622 has 2 MA's), (57, 42586), (60, 42553), (66, 42493), (73, 42448),

Gene: Kalpine_72 Start: 43855, Stop: 43637, Start Num: 25

Candidate Starts for Kalpine_72:

(Start: 25 @43855 has 9 MA's), (Start: 46 @43804 has 1 MA's), (51, 43780), (71, 43645),

Gene: Kampy_66 Start: 42359, Stop: 42162, Start Num: 33

Candidate Starts for Kampy_66:

(Start: 33 @42359 has 143 MA's), (52, 42302), (73, 42167),

Gene: Katalie136_66 Start: 42633, Stop: 42409, Start Num: 33

Candidate Starts for Katalie136_66:

(Start: 33 @42633 has 143 MA's), (52, 42576), (53, 42570), (60, 42519), (73, 42414),

Gene: KekoraPapaka_64 Start: 42357, Stop: 42160, Start Num: 33

Candidate Starts for KekoraPapaka_64:

(Start: 33 @42357 has 143 MA's), (52, 42300), (73, 42165),

Gene: Kerberos_75 Start: 44003, Stop: 43761, Start Num: 26

Candidate Starts for Kerberos_75:

(Start: 26 @44003 has 51 MA's), (Start: 46 @43949 has 1 MA's), (51, 43925),

Gene: Keziacharles14_71 Start: 43500, Stop: 43279, Start Num: 21

Candidate Starts for Keziacharles14_71:

(Start: 21 @43500 has 13 MA's), (Start: 47 @43440 has 2 MA's), (51, 43422),

Gene: Kimba_72 Start: 42767, Stop: 42540, Start Num: 26

Candidate Starts for Kimba_72:

(Start: 26 @42767 has 51 MA's), (Start: 46 @42713 has 1 MA's), (Start: 47 @42707 has 2 MA's), (60, 42635),

Gene: Kimona_66 Start: 41475, Stop: 41236, Start Num: 17

Candidate Starts for Kimona_66:

(Start: 17 @41475 has 1 MA's), (Start: 29 @41457 has 15 MA's), (Start: 46 @41424 has 1 MA's), (Start: 47 @41418 has 2 MA's),

Gene: KingCyrus_72 Start: 44850, Stop: 44626, Start Num: 21

Candidate Starts for KingCyrus_72:

(Start: 21 @44850 has 13 MA's), (Start: 46 @44799 has 1 MA's), (65, 44667), (66, 44664), (67, 44661), (71, 44634),

Gene: Kingmustik0402_67 Start: 42346, Stop: 42149, Start Num: 33

Candidate Starts for Kingmustik0402_67:

(Start: 33 @42346 has 143 MA's), (52, 42289), (73, 42154),

Gene: Kinmap_75 Start: 42177, Stop: 41995, Start Num: 24

Candidate Starts for Kinmap_75:

(Start: 24 @42177 has 37 MA's), (48, 42123), (50, 42117), (54, 42102),

Gene: KittenMittens_63 Start: 40822, Stop: 40583, Start Num: 28

Candidate Starts for KittenMittens_63:

(Start: 28 @40822 has 8 MA's), (Start: 47 @40762 has 2 MA's), (73, 40588),

Gene: Koan_64 Start: 42357, Stop: 42160, Start Num: 33

Candidate Starts for Koan_64:

(Start: 33 @42357 has 143 MA's), (52, 42300), (73, 42165),

Gene: Koduck_74 Start: 42710, Stop: 42504, Start Num: 47

Candidate Starts for Koduck_74:

(Start: 12 @42809 has 4 MA's), (Start: 46 @42716 has 1 MA's), (Start: 47 @42710 has 2 MA's), (63, 42602), (66, 42578), (73, 42533),

Gene: Koreni_66 Start: 42038, Stop: 41841, Start Num: 33

Candidate Starts for Koreni_66:

(Start: 33 @42038 has 143 MA's), (52, 41981), (73, 41846),

Gene: Kratark_66 Start: 42394, Stop: 42170, Start Num: 33

Candidate Starts for Kratark_66:

(Start: 33 @42394 has 143 MA's), (52, 42337), (53, 42331), (73, 42175),

Gene: Kremtemulon_66 Start: 42490, Stop: 42266, Start Num: 33

Candidate Starts for Kremtemulon_66:

(Start: 33 @42490 has 143 MA's), (52, 42433), (53, 42427), (73, 42271),

Gene: Kristoff_65 Start: 42136, Stop: 41897, Start Num: 28

Candidate Starts for Kristoff_65:

(Start: 28 @42136 has 8 MA's), (Start: 47 @42076 has 2 MA's), (66, 41947), (73, 41902),

Gene: Kyee_67 Start: 42355, Stop: 42158, Start Num: 33

Candidate Starts for Kyee_67:

(Start: 33 @42355 has 143 MA's), (52, 42298), (73, 42163),

Gene: L5_68.1 Start: 42962, Stop: 42657, Start Num: 12

Candidate Starts for L5_68.1:

(Start: 12 @42962 has 4 MA's), (Start: 46 @42869 has 1 MA's), (Start: 47 @42863 has 2 MA's), (63, 42755), (66, 42731), (73, 42686),

Gene: LBerry_75 Start: 42848, Stop: 42633, Start Num: 31

Candidate Starts for LBerry_75:

(Start: 31 @42848 has 35 MA's), (Start: 32 @42845 has 31 MA's), (Start: 47 @42812 has 2 MA's), (66, 42683), (73, 42638),

Gene: LHTSCC_69 Start: 42796, Stop: 42572, Start Num: 33

Candidate Starts for LHTSCC_69:

(Start: 33 @42796 has 143 MA's), (52, 42739), (53, 42733), (73, 42577),

Gene: LadyBird_76 Start: 44079, Stop: 43882, Start Num: 23

Candidate Starts for LadyBird_76:

(Start: 23 @44079 has 4 MA's), (Start: 46 @44028 has 1 MA's), (51, 44004),

Gene: Lambert1_69 Start: 42560, Stop: 42348, Start Num: 35

Candidate Starts for Lambert1_69:

(Start: 35 @42560 has 14 MA's), (Start: 47 @42527 has 2 MA's), (66, 42398), (73, 42353),

Gene: Landor_71 Start: 44756, Stop: 44517, Start Num: 26

Candidate Starts for Landor_71:

(Start: 26 @44756 has 51 MA's), (Start: 47 @44693 has 2 MA's), (51, 44675), (66, 44570),

Gene: LappelDuVide_67 Start: 42356, Stop: 42159, Start Num: 33

Candidate Starts for LappelDuVide_67:

(Start: 33 @42356 has 143 MA's), (52, 42299), (73, 42164),

Gene: Larenn_69 Start: 43196, Stop: 42972, Start Num: 26

Candidate Starts for Larenn_69:

(Start: 26 @43196 has 51 MA's), (Start: 46 @43145 has 1 MA's), (Start: 47 @43139 has 2 MA's), (65, 43013), (66, 43010), (67, 43007), (71, 42980),

Gene: LarryKay_74 Start: 42870, Stop: 42658, Start Num: 32

Candidate Starts for LarryKay_74:

(Start: 31 @42873 has 35 MA's), (Start: 32 @42870 has 31 MA's), (Start: 47 @42837 has 2 MA's), (66, 42708), (73, 42663),

Gene: Lemur_67 Start: 42354, Stop: 42157, Start Num: 33

Candidate Starts for Lemur_67:

(Start: 33 @42354 has 143 MA's), (73, 42162),

Gene: LeoAvram_66 Start: 42387, Stop: 42163, Start Num: 33

Candidate Starts for LeoAvram_66:

(Start: 33 @42387 has 143 MA's), (52, 42330), (53, 42324), (73, 42168),

Gene: Leogania_71 Start: 43883, Stop: 43659, Start Num: 26

Candidate Starts for Leogania_71:

(Start: 26 @43883 has 51 MA's), (Start: 46 @43832 has 1 MA's), (66, 43697), (67, 43694), (71, 43667),

Gene: Leviathan_74 Start: 43901, Stop: 43677, Start Num: 24

Candidate Starts for Leviathan_74:

(Start: 24 @43901 has 37 MA's), (Start: 46 @43850 has 1 MA's), (65, 43718), (66, 43715), (67, 43712),

Gene: LilTurb_73 Start: 43715, Stop: 43491, Start Num: 24

Candidate Starts for LilTurb_73:

(Start: 24 @43715 has 37 MA's), (Start: 46 @43664 has 1 MA's), (65, 43532), (66, 43529), (67, 43526),

Gene: Lilith_72 Start: 42834, Stop: 42622, Start Num: 32

Candidate Starts for Lilith_72:

(Start: 31 @42837 has 35 MA's), (Start: 32 @42834 has 31 MA's), (Start: 47 @42801 has 2 MA's), (66, 42672), (73, 42627),

Gene: Lilleskat_71 Start: 42880, Stop: 42662, Start Num: 20

Candidate Starts for Lilleskat_71:

(Start: 20 @42880 has 32 MA's), (Start: 47 @42823 has 2 MA's), (51, 42805),

Gene: LionsBait_72 Start: 44532, Stop: 44308, Start Num: 26

Candidate Starts for LionsBait_72:

(Start: 26 @44532 has 51 MA's), (66, 44346), (67, 44343), (71, 44316),

Gene: LittleB_67 Start: 42358, Stop: 42161, Start Num: 33

Candidate Starts for LittleB_67:

(Start: 33 @42358 has 143 MA's), (52, 42301), (73, 42166),

Gene: LittleGuy_67 Start: 42253, Stop: 42056, Start Num: 33

Candidate Starts for LittleGuy_67:

(Start: 33 @42253 has 143 MA's), (52, 42196), (73, 42061),

Gene: LochMonster_68 Start: 42596, Stop: 42399, Start Num: 33

Candidate Starts for LochMonster_68:

(Start: 33 @42596 has 143 MA's), (52, 42539), (73, 42404),

Gene: Lokk_66 Start: 42000, Stop: 41782, Start Num: 24

Candidate Starts for Lokk_66:

(Start: 24 @42000 has 37 MA's), (51, 41925), (66, 41820), (67, 41817),

Gene: LoneWolf_75 Start: 43122, Stop: 42901, Start Num: 21

Candidate Starts for LoneWolf_75:

(Start: 21 @43122 has 13 MA's), (Start: 47 @43062 has 2 MA's), (51, 43044),

Gene: Lorenzo_67 Start: 42357, Stop: 42160, Start Num: 33

Candidate Starts for Lorenzo_67:

(Start: 33 @42357 has 143 MA's), (52, 42300), (73, 42165),

Gene: Loser_74 Start: 43958, Stop: 43734, Start Num: 26

Candidate Starts for Loser_74:

(Start: 26 @43958 has 51 MA's), (Start: 46 @43907 has 1 MA's), (66, 43772), (67, 43769),

Gene: Louie6_73 Start: 42874, Stop: 42659, Start Num: 31

Candidate Starts for Louie6_73:

(Start: 31 @42874 has 35 MA's), (Start: 32 @42871 has 31 MA's), (Start: 47 @42838 has 2 MA's), (73, 42664),

Gene: Lowa_71 Start: 42833, Stop: 42621, Start Num: 32

Candidate Starts for Lowa_71:

(Start: 31 @42836 has 35 MA's), (Start: 32 @42833 has 31 MA's), (Start: 47 @42800 has 2 MA's), (66, 42671), (73, 42626),

Gene: Luchador_75 Start: 44307, Stop: 44086, Start Num: 20

Candidate Starts for Luchador_75:

(Start: 20 @44307 has 32 MA's), (Start: 46 @44253 has 1 MA's), (Start: 47 @44247 has 2 MA's), (51, 44229), (67, 44121),

Gene: Lucivia_76 Start: 43546, Stop: 43319, Start Num: 26

Candidate Starts for Lucivia_76:

(Start: 26 @43546 has 51 MA's), (Start: 46 @43492 has 1 MA's), (Start: 47 @43486 has 2 MA's), (60, 43414),

Gene: Lucyedi_76 Start: 43723, Stop: 43523, Start Num: 22

Candidate Starts for Lucyedi_76:

(14, 43747), (18, 43729), (Start: 22 @43723 has 6 MA's), (62, 43564),

Gene: LugYA_77 Start: 42845, Stop: 42630, Start Num: 31

Candidate Starts for LugYA_77:

(Start: 31 @42845 has 35 MA's), (Start: 32 @42842 has 31 MA's), (Start: 47 @42809 has 2 MA's), (66, 42680), (73, 42635),

Gene: Lunsford_67 Start: 42351, Stop: 42154, Start Num: 33

Candidate Starts for Lunsford_67:

(Start: 33 @42351 has 143 MA's), (52, 42294), (73, 42159),

Gene: MA5_69 Start: 41973, Stop: 41749, Start Num: 38

Candidate Starts for MA5_69:

(Start: 38 @41973 has 12 MA's), (39, 41967), (Start: 47 @41931 has 2 MA's), (73, 41754),

Gene: MK4_69 Start: 42048, Stop: 41824, Start Num: 38

Candidate Starts for MK4_69:

(Start: 38 @42048 has 12 MA's), (39, 42042), (Start: 47 @42006 has 2 MA's), (73, 41829),

Gene: MaCh_75 Start: 43510, Stop: 43283, Start Num: 26

Candidate Starts for MaCh_75:

(Start: 26 @43510 has 51 MA's), (Start: 46 @43456 has 1 MA's), (Start: 47 @43450 has 2 MA's), (60, 43378),

Gene: Mabel_75 Start: 43511, Stop: 43284, Start Num: 26

Candidate Starts for Mabel_75:

(Start: 26 @43511 has 51 MA's), (Start: 46 @43457 has 1 MA's), (Start: 47 @43451 has 2 MA's), (60, 43379),

Gene: MadMarie_72 Start: 42842, Stop: 42630, Start Num: 32

Candidate Starts for MadMarie_72:

(Start: 31 @42845 has 35 MA's), (Start: 32 @42842 has 31 MA's), (Start: 47 @42809 has 2 MA's), (66, 42680), (73, 42635),

Gene: Mainiac_73 Start: 42837, Stop: 42622, Start Num: 31

Candidate Starts for Mainiac_73:

(Start: 31 @42837 has 35 MA's), (Start: 32 @42834 has 31 MA's), (Start: 47 @42801 has 2 MA's), (66, 42672), (73, 42627),

Gene: MajorMajor_74 Start: 42863, Stop: 42621, Start Num: 26

Candidate Starts for MajorMajor_74:

(Start: 12 @42902 has 4 MA's), (Start: 26 @42863 has 51 MA's), (Start: 46 @42809 has 1 MA's), (Start: 47 @42803 has 2 MA's), (51, 42785), (66, 42674),

Gene: Malec_70 Start: 43763, Stop: 43539, Start Num: 26

Candidate Starts for Malec_70:

(Start: 26 @43763 has 51 MA's), (Start: 46 @43712 has 1 MA's), (Start: 47 @43706 has 2 MA's), (65, 43580), (66, 43577), (67, 43574), (71, 43547),

Gene: Malinsilva_76 Start: 42833, Stop: 42621, Start Num: 32

Candidate Starts for Malinsilva_76:

(Start: 31 @42836 has 35 MA's), (Start: 32 @42833 has 31 MA's), (Start: 47 @42800 has 2 MA's), (66, 42671), (73, 42626),

Gene: Manu_73 Start: 42664, Stop: 42446, Start Num: 29

Candidate Starts for Manu_73:

(6, 42733), (Start: 29 @42664 has 15 MA's), (Start: 47 @42625 has 2 MA's), (57, 42589), (66, 42496), (73, 42451),

Gene: MarQuardt_74 Start: 42846, Stop: 42631, Start Num: 31

Candidate Starts for MarQuardt_74:

(Start: 31 @42846 has 35 MA's), (Start: 32 @42843 has 31 MA's), (Start: 47 @42810 has 2 MA's), (66, 42681), (73, 42636),

Gene: Marchesa_67 Start: 42506, Stop: 42282, Start Num: 38

Candidate Starts for Marchesa_67:

(Start: 38 @42506 has 12 MA's), (39, 42500), (Start: 47 @42464 has 2 MA's), (66, 42332), (73, 42287),

Gene: Margo_69 Start: 42586, Stop: 42374, Start Num: 35

Candidate Starts for Margo_69:

(Start: 35 @42586 has 14 MA's), (Start: 47 @42553 has 2 MA's), (66, 42424), (73, 42379),

Gene: Marie_72 Start: 42841, Stop: 42629, Start Num: 32

Candidate Starts for Marie_72:

(Start: 31 @42844 has 35 MA's), (Start: 32 @42841 has 31 MA's), (Start: 47 @42808 has 2 MA's), (66, 42679), (73, 42634),

Gene: Marius_74 Start: 42661, Stop: 42443, Start Num: 29

Candidate Starts for Marius_74:

(6, 42730), (Start: 29 @42661 has 15 MA's), (Start: 47 @42622 has 2 MA's), (57, 42586), (60, 42553), (66, 42493), (73, 42448),

Gene: Maverick_66 Start: 42357, Stop: 42160, Start Num: 33

Candidate Starts for Maverick_66:

(Start: 33 @42357 has 143 MA's), (52, 42300), (73, 42165),

Gene: Maxo_68 Start: 42359, Stop: 42162, Start Num: 33
Candidate Starts for Maxo_68:
(Start: 33 @42359 has 143 MA's), (52, 42302), (73, 42167),

Gene: Mayonnaise_64 Start: 42357, Stop: 42160, Start Num: 33
Candidate Starts for Mayonnaise_64:
(Start: 33 @42357 has 143 MA's), (52, 42300), (73, 42165),

Gene: Mazhar510_67 Start: 42358, Stop: 42161, Start Num: 33
Candidate Starts for Mazhar510_67:
(Start: 33 @42358 has 143 MA's), (52, 42301), (73, 42166),

Gene: Medusa_67 Start: 42371, Stop: 42174, Start Num: 33
Candidate Starts for Medusa_67:
(Start: 33 @42371 has 143 MA's), (52, 42314), (73, 42179),

Gene: MeeZee_66 Start: 42354, Stop: 42157, Start Num: 33
Candidate Starts for MeeZee_66:
(Start: 33 @42354 has 143 MA's), (52, 42297), (73, 42162),

Gene: Melvin_69 Start: 42352, Stop: 42155, Start Num: 33
Candidate Starts for Melvin_69:
(Start: 33 @42352 has 143 MA's), (52, 42295), (73, 42160),

Gene: Methuselah_67 Start: 42868, Stop: 42653, Start Num: 31
Candidate Starts for Methuselah_67:
(Start: 31 @42868 has 35 MA's), (Start: 32 @42865 has 31 MA's), (Start: 47 @42832 has 2 MA's), (66, 42703), (73, 42658),

Gene: Microwolf_70 Start: 42860, Stop: 42645, Start Num: 31
Candidate Starts for Microwolf_70:
(Start: 31 @42860 has 35 MA's), (Start: 32 @42857 has 31 MA's), (Start: 47 @42824 has 2 MA's), (66, 42695), (73, 42650),

Gene: MiculUcigas_73 Start: 43404, Stop: 43177, Start Num: 24
Candidate Starts for MiculUcigas_73:
(Start: 24 @43404 has 37 MA's), (Start: 46 @43350 has 1 MA's), (67, 43212),

Gene: Miko_66 Start: 42778, Stop: 42560, Start Num: 24
Candidate Starts for Miko_66:
(Start: 24 @42778 has 37 MA's), (51, 42703), (66, 42598), (67, 42595),

Gene: Millski_66 Start: 42358, Stop: 42161, Start Num: 33
Candidate Starts for Millski_66:
(Start: 33 @42358 has 143 MA's), (52, 42301), (73, 42166),

Gene: Minispark_72 Start: 42745, Stop: 42512, Start Num: 16
Candidate Starts for Minispark_72:
(7, 42784), (Start: 16 @42745 has 1 MA's), (Start: 47 @42673 has 2 MA's), (51, 42655),

Gene: Miramae_66 Start: 42179, Stop: 41955, Start Num: 33
Candidate Starts for Miramae_66:
(Start: 33 @42179 has 143 MA's), (52, 42122), (53, 42116), (73, 41960),

Gene: Misomonster_75 Start: 42871, Stop: 42656, Start Num: 31
Candidate Starts for Misomonster_75:
(Start: 31 @42871 has 35 MA's), (Start: 32 @42868 has 31 MA's), (Start: 47 @42835 has 2 MA's), (73, 42661),

Gene: MissWhite_71 Start: 41889, Stop: 41647, Start Num: 26
Candidate Starts for MissWhite_71:
(Start: 26 @41889 has 51 MA's), (Start: 46 @41835 has 1 MA's), (Start: 47 @41829 has 2 MA's), (63, 41724), (66, 41700),

Gene: MoneyMay_73 Start: 42844, Stop: 42629, Start Num: 31
Candidate Starts for MoneyMay_73:
(Start: 31 @42844 has 35 MA's), (Start: 32 @42841 has 31 MA's), (Start: 47 @42808 has 2 MA's), (66, 42679), (73, 42634),

Gene: Montavir_69 Start: 42841, Stop: 42629, Start Num: 32
Candidate Starts for Montavir_69:
(Start: 31 @42844 has 35 MA's), (Start: 32 @42841 has 31 MA's), (Start: 47 @42808 has 2 MA's), (66, 42679), (73, 42634),

Gene: Morpher26_66 Start: 42654, Stop: 42430, Start Num: 33
Candidate Starts for Morpher26_66:
(Start: 33 @42654 has 143 MA's), (52, 42597), (53, 42591), (60, 42540), (73, 42435),

Gene: Morrow_68 Start: 42399, Stop: 42175, Start Num: 33
Candidate Starts for Morrow_68:
(Start: 33 @42399 has 143 MA's), (52, 42342), (53, 42336), (73, 42180),

Gene: MuchMore_77 Start: 42833, Stop: 42621, Start Num: 32
Candidate Starts for MuchMore_77:
(Start: 31 @42836 has 35 MA's), (Start: 32 @42833 has 31 MA's), (Start: 47 @42800 has 2 MA's), (66, 42671), (73, 42626),

Gene: Mulciber_73 Start: 43052, Stop: 42825, Start Num: 26
Candidate Starts for Mulciber_73:
(Start: 26 @43052 has 51 MA's), (Start: 46 @42998 has 1 MA's), (60, 42920),

Gene: Munch_75 Start: 43515, Stop: 43288, Start Num: 26
Candidate Starts for Munch_75:
(Start: 26 @43515 has 51 MA's), (Start: 46 @43461 has 1 MA's), (Start: 47 @43455 has 2 MA's), (60, 43383),

Gene: Mundrea_66 Start: 42647, Stop: 42423, Start Num: 33
Candidate Starts for Mundrea_66:
(Start: 33 @42647 has 143 MA's), (52, 42590), (53, 42584), (60, 42533), (73, 42428),

Gene: Myxus_74 Start: 42923, Stop: 42705, Start Num: 20
Candidate Starts for Myxus_74:
(Start: 20 @42923 has 32 MA's), (Start: 47 @42866 has 2 MA's), (51, 42848),

Gene: NaSiaTalie_73 Start: 43498, Stop: 43271, Start Num: 24
Candidate Starts for NaSiaTalie_73:

(Start: 24 @43498 has 37 MA's), (Start: 46 @43444 has 1 MA's), (67, 43306),

Gene: Naji_75 Start: 44004, Stop: 43762, Start Num: 26

Candidate Starts for Naji_75:

(Start: 26 @44004 has 51 MA's), (Start: 46 @43950 has 1 MA's), (51, 43926),

Gene: Nebs_68 Start: 42396, Stop: 42172, Start Num: 33

Candidate Starts for Nebs_68:

(Start: 33 @42396 has 143 MA's), (52, 42339), (53, 42333), (73, 42177),

Gene: Nemo27_66 Start: 42356, Stop: 42159, Start Num: 33

Candidate Starts for Nemo27_66:

(Start: 33 @42356 has 143 MA's), (52, 42299), (73, 42164),

Gene: NicoleTera_70 Start: 43518, Stop: 43297, Start Num: 25

Candidate Starts for NicoleTera_70:

(Start: 25 @43518 has 9 MA's), (Start: 46 @43464 has 1 MA's), (67, 43332),

Gene: Noella_69 Start: 42561, Stop: 42349, Start Num: 35

Candidate Starts for Noella_69:

(Start: 35 @42561 has 14 MA's), (Start: 47 @42528 has 2 MA's), (66, 42399), (73, 42354),

Gene: Noelle_67 Start: 42962, Stop: 42738, Start Num: 33

Candidate Starts for Noelle_67:

(Start: 33 @42962 has 143 MA's), (52, 42905), (53, 42899), (66, 42788), (73, 42743),

Gene: Norbert_65 Start: 42560, Stop: 42348, Start Num: 35

Candidate Starts for Norbert_65:

(Start: 35 @42560 has 14 MA's), (Start: 47 @42527 has 2 MA's), (66, 42398), (73, 42353),

Gene: NorthStar_65 Start: 42357, Stop: 42160, Start Num: 33

Candidate Starts for NorthStar_65:

(Start: 33 @42357 has 143 MA's), (52, 42300), (73, 42165),

Gene: NotAPhaseMom_66 Start: 42361, Stop: 42164, Start Num: 33

Candidate Starts for NotAPhaseMom_66:

(Start: 33 @42361 has 143 MA's), (52, 42304), (73, 42169),

Gene: NothingSpecial_68 Start: 43574, Stop: 43308, Start Num: 11

Candidate Starts for NothingSpecial_68:

(Start: 11 @43574 has 1 MA's), (Start: 20 @43535 has 32 MA's), (Start: 46 @43481 has 1 MA's),
(Start: 47 @43475 has 2 MA's), (65, 43349), (66, 43346), (67, 43343),

Gene: Nyxis_66 Start: 42247, Stop: 42050, Start Num: 33

Candidate Starts for Nyxis_66:

(Start: 33 @42247 has 143 MA's), (52, 42190), (73, 42055),

Gene: OKaNui_66 Start: 42407, Stop: 42210, Start Num: 33

Candidate Starts for OKaNui_66:

(Start: 33 @42407 has 143 MA's), (52, 42350), (73, 42215),

Gene: Obama12_68 Start: 42780, Stop: 42556, Start Num: 33

Candidate Starts for Obama12_68:

(Start: 33 @42780 has 143 MA's), (52, 42723), (53, 42717), (73, 42561),

Gene: Odin_73 Start: 42517, Stop: 42317, Start Num: 20

Candidate Starts for Odin_73:

(5, 42586), (Start: 9 @42556 has 4 MA's), (Start: 20 @42517 has 32 MA's), (Start: 46 @42463 has 1 MA's), (51, 42439), (67, 42325),

Gene: Ohfah_68 Start: 42396, Stop: 42172, Start Num: 33

Candidate Starts for Ohfah_68:

(Start: 33 @42396 has 143 MA's), (52, 42339), (53, 42333), (73, 42177),

Gene: OlanP_72 Start: 42837, Stop: 42619, Start Num: 29

Candidate Starts for OlanP_72:

(6, 42906), (Start: 29 @42837 has 15 MA's), (Start: 47 @42798 has 2 MA's), (57, 42762), (66, 42669), (73, 42624),

Gene: Ollie_74 Start: 42712, Stop: 42500, Start Num: 32

Candidate Starts for Ollie_74:

(Start: 31 @42715 has 35 MA's), (Start: 32 @42712 has 31 MA's), (Start: 47 @42679 has 2 MA's), (66, 42550), (73, 42505),

Gene: Onglai_72 Start: 41127, Stop: 40909, Start Num: 20

Candidate Starts for Onglai_72:

(Start: 20 @41127 has 32 MA's), (Start: 47 @41070 has 2 MA's), (51, 41052),

Gene: Orange_74 Start: 43064, Stop: 42837, Start Num: 26

Candidate Starts for Orange_74:

(Start: 26 @43064 has 51 MA's), (Start: 46 @43010 has 1 MA's), (Start: 47 @43004 has 2 MA's), (60, 42932),

Gene: P28Green_74 Start: 42847, Stop: 42632, Start Num: 31

Candidate Starts for P28Green_74:

(Start: 31 @42847 has 35 MA's), (Start: 32 @42844 has 31 MA's), (Start: 47 @42811 has 2 MA's), (66, 42682), (73, 42637),

Gene: PGHhamlin_76 Start: 42833, Stop: 42621, Start Num: 32

Candidate Starts for PGHhamlin_76:

(Start: 31 @42836 has 35 MA's), (Start: 32 @42833 has 31 MA's), (Start: 47 @42800 has 2 MA's), (66, 42671), (73, 42626),

Gene: PackMan_73 Start: 42798, Stop: 42580, Start Num: 20

Candidate Starts for PackMan_73:

(Start: 20 @42798 has 32 MA's), (Start: 47 @42741 has 2 MA's), (51, 42723),

Gene: PainterBoy_75 Start: 43432, Stop: 43232, Start Num: 22

Candidate Starts for PainterBoy_75:

(14, 43456), (18, 43438), (Start: 22 @43432 has 6 MA's), (62, 43273),

Gene: Palestino_66 Start: 42357, Stop: 42160, Start Num: 33

Candidate Starts for Palestino_66:

(Start: 33 @42357 has 143 MA's), (52, 42300), (73, 42165),

Gene: Panamaxus_67 Start: 42560, Stop: 42348, Start Num: 35

Candidate Starts for Panamaxus_67:

(Start: 35 @42560 has 14 MA's), (Start: 47 @42527 has 2 MA's), (66, 42398), (73, 42353),

Gene: Pawn_72 Start: 42668, Stop: 42450, Start Num: 29

Candidate Starts for Pawn_72:

(6, 42737), (Start: 29 @42668 has 15 MA's), (Start: 47 @42629 has 2 MA's), (57, 42593), (60, 42560), (66, 42500), (73, 42455),

Gene: PeaceMeal1_64 Start: 40823, Stop: 40584, Start Num: 28

Candidate Starts for PeaceMeal1_64:

(Start: 28 @40823 has 8 MA's), (Start: 47 @40763 has 2 MA's), (73, 40589),

Gene: Peaches_65 Start: 42356, Stop: 42159, Start Num: 33

Candidate Starts for Peaches_65:

(Start: 33 @42356 has 143 MA's), (52, 42299), (73, 42164),

Gene: Pembroke_74 Start: 42842, Stop: 42630, Start Num: 32

Candidate Starts for Pembroke_74:

(Start: 31 @42845 has 35 MA's), (Start: 32 @42842 has 31 MA's), (Start: 47 @42809 has 2 MA's), (66, 42680), (73, 42635),

Gene: Penny1_74 Start: 42845, Stop: 42633, Start Num: 32

Candidate Starts for Penny1_74:

(Start: 31 @42848 has 35 MA's), (Start: 32 @42845 has 31 MA's), (Start: 47 @42812 has 2 MA's), (66, 42683), (73, 42638),

Gene: Perplexer_66 Start: 42630, Stop: 42406, Start Num: 33

Candidate Starts for Perplexer_66:

(Start: 33 @42630 has 143 MA's), (52, 42573), (53, 42567), (60, 42516), (73, 42411),

Gene: PeterPeter_67 Start: 42354, Stop: 42157, Start Num: 33

Candidate Starts for PeterPeter_67:

(Start: 33 @42354 has 143 MA's), (52, 42297), (73, 42162),

Gene: Petersenfast_69 Start: 41946, Stop: 41683, Start Num: 26

Candidate Starts for Petersenfast_69:

(Start: 26 @41946 has 51 MA's), (Start: 46 @41892 has 1 MA's), (Start: 47 @41886 has 2 MA's), (60, 41814), (70, 41727),

Gene: PetiteSangsue_66 Start: 42633, Stop: 42409, Start Num: 33

Candidate Starts for PetiteSangsue_66:

(Start: 33 @42633 has 143 MA's), (52, 42576), (53, 42570), (60, 42519), (73, 42414),

Gene: Ph8s_76 Start: 42621, Stop: 42382, Start Num: 9

Candidate Starts for Ph8s_76:

(3, 42693), (Start: 9 @42621 has 4 MA's), (Start: 20 @42582 has 32 MA's), (Start: 46 @42528 has 1 MA's), (Start: 47 @42522 has 2 MA's), (51, 42504), (67, 42390),

Gene: Phacado_67 Start: 42356, Stop: 42159, Start Num: 33

Candidate Starts for Phacado_67:

(Start: 33 @42356 has 143 MA's), (52, 42299), (73, 42164),

Gene: Phaded_68 Start: 44715, Stop: 44476, Start Num: 26

Candidate Starts for Phaded_68:
(Start: 26 @44715 has 51 MA's), (Start: 47 @44652 has 2 MA's), (51, 44634), (66, 44529),

Gene: Phaeder_74 Start: 42798, Stop: 42580, Start Num: 20
Candidate Starts for Phaeder_74:
(Start: 20 @42798 has 32 MA's), (Start: 47 @42741 has 2 MA's), (51, 42723),

Gene: Phantastic_71 Start: 42234, Stop: 42010, Start Num: 38
Candidate Starts for Phantastic_71:
(Start: 38 @42234 has 12 MA's), (39, 42228), (Start: 47 @42192 has 2 MA's), (73, 42015),

Gene: Pharaoh_68 Start: 42838, Stop: 42611, Start Num: 20
Candidate Starts for Pharaoh_68:
(Start: 20 @42838 has 32 MA's), (69, 42625), (70, 42622),

Gene: Phelipe_68 Start: 42396, Stop: 42172, Start Num: 33
Candidate Starts for Phelipe_68:
(Start: 33 @42396 has 143 MA's), (52, 42339), (53, 42333), (73, 42177),

Gene: Phighter1804_67 Start: 42421, Stop: 42224, Start Num: 33
Candidate Starts for Phighter1804_67:
(Start: 33 @42421 has 143 MA's), (52, 42364), (73, 42229),

Gene: PhishRPhriends_70 Start: 41845, Stop: 41627, Start Num: 29
Candidate Starts for PhishRPhriends_70:
(6, 41914), (Start: 29 @41845 has 15 MA's), (Start: 47 @41806 has 2 MA's), (57, 41770), (66, 41677),
(73, 41632),

Gene: Phoebe_75 Start: 42837, Stop: 42622, Start Num: 31
Candidate Starts for Phoebe_75:
(Start: 31 @42837 has 35 MA's), (Start: 32 @42834 has 31 MA's), (Start: 47 @42801 has 2 MA's), (66,
42672), (73, 42627),

Gene: Phonnegut_74 Start: 42868, Stop: 42650, Start Num: 20
Candidate Starts for Phonnegut_74:
(Start: 20 @42868 has 32 MA's), (Start: 47 @42811 has 2 MA's), (51, 42793),

Gene: Phontbonne_67 Start: 42263, Stop: 42066, Start Num: 33
Candidate Starts for Phontbonne_67:
(Start: 33 @42263 has 143 MA's), (52, 42206), (73, 42071),

Gene: Phoxy_74 Start: 42869, Stop: 42654, Start Num: 31
Candidate Starts for Phoxy_74:
(Start: 31 @42869 has 35 MA's), (Start: 32 @42866 has 31 MA's), (Start: 47 @42833 has 2 MA's), (66,
42704), (73, 42659),

Gene: Pioneer_74 Start: 42868, Stop: 42650, Start Num: 20
Candidate Starts for Pioneer_74:
(Start: 20 @42868 has 32 MA's), (Start: 47 @42811 has 2 MA's), (51, 42793),

Gene: Pipcraft_64 Start: 42357, Stop: 42160, Start Num: 33
Candidate Starts for Pipcraft_64:
(Start: 33 @42357 has 143 MA's), (52, 42300), (73, 42165),

Gene: Piro94_72 Start: 43466, Stop: 43239, Start Num: 24
Candidate Starts for Piro94_72:
(Start: 24 @43466 has 37 MA's), (Start: 46 @43412 has 1 MA's), (67, 43274), (72, 43244),

Gene: Pistachio_69 Start: 42142, Stop: 41939, Start Num: 43
Candidate Starts for Pistachio_69:
(Start: 43 @42142 has 6 MA's), (51, 42100), (66, 41989),

Gene: Pocahontas_68 Start: 42557, Stop: 42345, Start Num: 35
Candidate Starts for Pocahontas_68:
(Start: 35 @42557 has 14 MA's), (Start: 47 @42524 has 2 MA's), (66, 42395), (73, 42350),

Gene: Polymorphads_67 Start: 42377, Stop: 42153, Start Num: 33
Candidate Starts for Polymorphads_67:
(Start: 33 @42377 has 143 MA's), (52, 42320), (53, 42314), (73, 42158),

Gene: Pomar16_75 Start: 44044, Stop: 43802, Start Num: 26
Candidate Starts for Pomar16_75:
(Start: 26 @44044 has 51 MA's), (Start: 46 @43990 has 1 MA's), (51, 43966),

Gene: Poompha_63 Start: 40821, Stop: 40582, Start Num: 28
Candidate Starts for Poompha_63:
(Start: 28 @40821 has 8 MA's), (Start: 47 @40761 has 2 MA's), (73, 40587),

Gene: Popcicle_69 Start: 42557, Stop: 42345, Start Num: 35
Candidate Starts for Popcicle_69:
(Start: 35 @42557 has 14 MA's), (Start: 47 @42524 has 2 MA's), (66, 42395), (73, 42350),

Gene: PotatoSplit_75 Start: 42848, Stop: 42633, Start Num: 31
Candidate Starts for PotatoSplit_75:
(Start: 31 @42848 has 35 MA's), (Start: 32 @42845 has 31 MA's), (Start: 47 @42812 has 2 MA's), (66, 42683), (73, 42638),

Gene: Power_72 Start: 43836, Stop: 43612, Start Num: 24
Candidate Starts for Power_72:
(Start: 24 @43836 has 37 MA's), (65, 43653), (66, 43650), (67, 43647),

Gene: Priya_72 Start: 42595, Stop: 42377, Start Num: 20
Candidate Starts for Priya_72:
(Start: 20 @42595 has 32 MA's), (Start: 47 @42538 has 2 MA's), (51, 42520),

Gene: Prudy_66 Start: 43483, Stop: 43259, Start Num: 26
Candidate Starts for Prudy_66:
(10, 43528), (Start: 26 @43483 has 51 MA's), (Start: 47 @43426 has 2 MA's), (66, 43297), (67, 43294), (71, 43267),

Gene: Pukovnik_69 Start: 44363, Stop: 44136, Start Num: 20
Candidate Starts for Pukovnik_69:
(Start: 20 @44363 has 32 MA's), (Start: 46 @44309 has 1 MA's), (67, 44171), (72, 44141),

Gene: Pumbaa_67 Start: 42302, Stop: 42105, Start Num: 33
Candidate Starts for Pumbaa_67:

(Start: 33 @42302 has 143 MA's), (52, 42245), (73, 42110),

Gene: Puppy_70 Start: 42214, Stop: 42011, Start Num: 43

Candidate Starts for Puppy_70:

(Start: 43 @42214 has 6 MA's), (51, 42172), (66, 42061),

Gene: PurpleHaze_73 Start: 42663, Stop: 42445, Start Num: 29

Candidate Starts for PurpleHaze_73:

(6, 42732), (Start: 29 @42663 has 15 MA's), (Start: 47 @42624 has 2 MA's), (57, 42588), (66, 42495), (73, 42450),

Gene: Qobbit_72 Start: 42557, Stop: 42339, Start Num: 20

Candidate Starts for Qobbit_72:

(Start: 20 @42557 has 32 MA's), (Start: 47 @42500 has 2 MA's), (51, 42482),

Gene: QueenB2_70 Start: 43119, Stop: 42895, Start Num: 24

Candidate Starts for QueenB2_70:

(Start: 24 @43119 has 37 MA's), (Start: 46 @43068 has 1 MA's), (65, 42936), (67, 42930), (71, 42903),

Gene: QueenBeesly_73 Start: 43793, Stop: 43569, Start Num: 24

Candidate Starts for QueenBeesly_73:

(Start: 24 @43793 has 37 MA's), (65, 43610), (66, 43607), (67, 43604),

Gene: QuinnKiro_68 Start: 42560, Stop: 42348, Start Num: 35

Candidate Starts for QuinnKiro_68:

(Start: 35 @42560 has 14 MA's), (Start: 47 @42527 has 2 MA's), (66, 42398), (73, 42353),

Gene: Quokka_74 Start: 42863, Stop: 42621, Start Num: 26

Candidate Starts for Quokka_74:

(Start: 12 @42902 has 4 MA's), (Start: 26 @42863 has 51 MA's), (Start: 46 @42809 has 1 MA's), (Start: 47 @42803 has 2 MA's), (51, 42785), (66, 42674),

Gene: Rachaly_68 Start: 42923, Stop: 42705, Start Num: 24

Candidate Starts for Rachaly_68:

(Start: 24 @42923 has 37 MA's), (51, 42848), (66, 42743), (67, 42740),

Gene: Rahalelujah_74 Start: 42760, Stop: 42527, Start Num: 16

Candidate Starts for Rahalelujah_74:

(7, 42799), (Start: 16 @42760 has 1 MA's), (Start: 47 @42688 has 2 MA's), (51, 42670),

Gene: Rebeuca_67 Start: 42137, Stop: 41898, Start Num: 28

Candidate Starts for Rebeuca_67:

(Start: 28 @42137 has 8 MA's), (Start: 47 @42077 has 2 MA's), (66, 41948), (73, 41903),

Gene: RedRock_71 Start: 43761, Stop: 43537, Start Num: 26

Candidate Starts for RedRock_71:

(Start: 26 @43761 has 51 MA's), (27, 43758), (Start: 46 @43710 has 1 MA's), (66, 43575), (67, 43572),

Gene: Refuge_70 Start: 44062, Stop: 43841, Start Num: 21

Candidate Starts for Refuge_70:

(Start: 21 @44062 has 13 MA's), (40, 44032),

Gene: Relief_66 Start: 42354, Stop: 42157, Start Num: 33

Candidate Starts for Relief_66:
(Start: 33 @42354 has 143 MA's), (52, 42297), (73, 42162),

Gene: ResDef_67 Start: 42560, Stop: 42348, Start Num: 35
Candidate Starts for ResDef_67:
(Start: 35 @42560 has 14 MA's), (Start: 47 @42527 has 2 MA's), (66, 42398), (73, 42353),

Gene: Retro23_73 Start: 43524, Stop: 43300, Start Num: 24
Candidate Starts for Retro23_73:
(Start: 24 @43524 has 37 MA's), (65, 43341), (66, 43338), (67, 43335),

Gene: RockieBear_64 Start: 42357, Stop: 42160, Start Num: 33
Candidate Starts for RockieBear_64:
(Start: 33 @42357 has 143 MA's), (52, 42300), (73, 42165),

Gene: Rockstar_68 Start: 42057, Stop: 41833, Start Num: 38
Candidate Starts for Rockstar_68:
(Start: 38 @42057 has 12 MA's), (39, 42051), (Start: 47 @42015 has 2 MA's), (73, 41838),

Gene: Roimos_67 Start: 42436, Stop: 42212, Start Num: 38
Candidate Starts for Roimos_67:
(Start: 38 @42436 has 12 MA's), (39, 42430), (Start: 47 @42394 has 2 MA's), (66, 42262), (73, 42217),

Gene: Romney_66 Start: 42354, Stop: 42157, Start Num: 33
Candidate Starts for Romney_66:
(Start: 33 @42354 has 143 MA's), (52, 42297), (73, 42162),

Gene: Roosevelt_65 Start: 42359, Stop: 42162, Start Num: 33
Candidate Starts for Roosevelt_65:
(Start: 33 @42359 has 143 MA's), (52, 42302), (73, 42167),

Gene: Rosa24_64 Start: 42388, Stop: 42191, Start Num: 33
Candidate Starts for Rosa24_64:
(Start: 33 @42388 has 143 MA's), (52, 42331), (73, 42196),

Gene: Rowdy_68 Start: 41850, Stop: 41611, Start Num: 28
Candidate Starts for Rowdy_68:
(Start: 28 @41850 has 8 MA's), (Start: 47 @41790 has 2 MA's), (73, 41616),

Gene: Ruin_67 Start: 42350, Stop: 42153, Start Num: 33
Candidate Starts for Ruin_67:
(Start: 33 @42350 has 143 MA's), (52, 42293), (73, 42158),

Gene: Rummer_73 Start: 42872, Stop: 42657, Start Num: 31
Candidate Starts for Rummer_73:
(Start: 31 @42872 has 35 MA's), (Start: 32 @42869 has 31 MA's), (Start: 47 @42836 has 2 MA's), (66, 42707), (73, 42662),

Gene: RyeScarlet_75 Start: 42843, Stop: 42625, Start Num: 20
Candidate Starts for RyeScarlet_75:
(Start: 20 @42843 has 32 MA's), (Start: 47 @42786 has 2 MA's), (51, 42768),

Gene: Sabertooth_67 Start: 42359, Stop: 42162, Start Num: 33

Candidate Starts for Sabertooth_67:
(Start: 33 @42359 has 143 MA's), (52, 42302), (73, 42167),

Gene: Sabia_72 Start: 42852, Stop: 42637, Start Num: 31
Candidate Starts for Sabia_72:
(Start: 31 @42852 has 35 MA's), (Start: 32 @42849 has 31 MA's), (Start: 47 @42816 has 2 MA's), (66, 42687), (73, 42642),

Gene: Sabinator_72 Start: 42840, Stop: 42628, Start Num: 32
Candidate Starts for Sabinator_72:
(Start: 31 @42843 has 35 MA's), (Start: 32 @42840 has 31 MA's), (Start: 47 @42807 has 2 MA's), (66, 42678), (73, 42633),

Gene: Sachima_70 Start: 42824, Stop: 42606, Start Num: 20
Candidate Starts for Sachima_70:
(Start: 20 @42824 has 32 MA's), (Start: 47 @42767 has 2 MA's), (51, 42749),

Gene: Salz_70 Start: 41861, Stop: 41598, Start Num: 26
Candidate Starts for Salz_70:
(Start: 26 @41861 has 51 MA's), (Start: 46 @41807 has 1 MA's), (Start: 47 @41801 has 2 MA's), (60, 41729), (70, 41642),

Gene: Saskia_72 Start: 42409, Stop: 42146, Start Num: 26
Candidate Starts for Saskia_72:
(Start: 26 @42409 has 51 MA's), (Start: 47 @42349 has 2 MA's), (70, 42190),

Gene: SaturnRing_69 Start: 42595, Stop: 42392, Start Num: 43
Candidate Starts for SaturnRing_69:
(Start: 43 @42595 has 6 MA's), (51, 42553), (66, 42442),

Gene: Scamp_67 Start: 42359, Stop: 42162, Start Num: 33
Candidate Starts for Scamp_67:
(Start: 33 @42359 has 143 MA's), (52, 42302), (73, 42167),

Gene: Scherzo_73 Start: 43087, Stop: 42869, Start Num: 20
Candidate Starts for Scherzo_73:
(Start: 20 @43087 has 32 MA's), (Start: 47 @43030 has 2 MA's), (51, 43012),

Gene: Scout_68 Start: 41767, Stop: 41543, Start Num: 38
Candidate Starts for Scout_68:
(Start: 38 @41767 has 12 MA's), (39, 41761), (Start: 47 @41725 has 2 MA's), (66, 41593), (73, 41548),

Gene: SemperFi_73 Start: 43681, Stop: 43457, Start Num: 24
Candidate Starts for SemperFi_73:
(Start: 24 @43681 has 37 MA's), (65, 43498), (66, 43495), (67, 43492),

Gene: SenorClean_68 Start: 42357, Stop: 42160, Start Num: 33
Candidate Starts for SenorClean_68:
(Start: 33 @42357 has 143 MA's), (52, 42300), (73, 42165),

Gene: Severus_64 Start: 40821, Stop: 40582, Start Num: 28
Candidate Starts for Severus_64:
(Start: 28 @40821 has 8 MA's), (Start: 47 @40761 has 2 MA's), (73, 40587),

Gene: Shaka_65 Start: 42354, Stop: 42157, Start Num: 33
Candidate Starts for Shaka_65:
(Start: 33 @42354 has 143 MA's), (52, 42297), (73, 42162),

Gene: Sham4_71 Start: 41945, Stop: 41682, Start Num: 26
Candidate Starts for Sham4_71:
(Start: 26 @41945 has 51 MA's), (Start: 46 @41891 has 1 MA's), (Start: 47 @41885 has 2 MA's), (60, 41813), (70, 41726),

Gene: Shapes_68 Start: 41850, Stop: 41611, Start Num: 28
Candidate Starts for Shapes_68:
(Start: 28 @41850 has 8 MA's), (Start: 47 @41790 has 2 MA's), (73, 41616),

Gene: SheaKeira_68 Start: 41846, Stop: 41625, Start Num: 21
Candidate Starts for SheaKeira_68:
(Start: 21 @41846 has 13 MA's), (Start: 46 @41792 has 1 MA's), (67, 41660),

Gene: SheldonCooper_67 Start: 42797, Stop: 42573, Start Num: 33
Candidate Starts for SheldonCooper_67:
(Start: 33 @42797 has 143 MA's), (52, 42740), (53, 42734), (73, 42578),

Gene: Shygu2_66 Start: 42684, Stop: 42460, Start Num: 33
Candidate Starts for Shygu2_66:
(Start: 33 @42684 has 143 MA's), (52, 42627), (53, 42621), (73, 42465),

Gene: Skipitt_66 Start: 42351, Stop: 42154, Start Num: 33
Candidate Starts for Skipitt_66:
(Start: 33 @42351 has 143 MA's), (52, 42294), (73, 42159),

Gene: Sknot_73 Start: 43498, Stop: 43271, Start Num: 24
Candidate Starts for Sknot_73:
(Start: 24 @43498 has 37 MA's), (Start: 46 @43444 has 1 MA's), (67, 43306),

Gene: Smeagan_75 Start: 43992, Stop: 43768, Start Num: 24
Candidate Starts for Smeagan_75:
(Start: 24 @43992 has 37 MA's), (Start: 46 @43941 has 1 MA's), (65, 43809), (66, 43806), (67, 43803),

Gene: SnapTap_72 Start: 43492, Stop: 43268, Start Num: 24
Candidate Starts for SnapTap_72:
(Start: 24 @43492 has 37 MA's), (65, 43309), (66, 43306), (67, 43303),

Gene: Snape_75 Start: 43054, Stop: 42827, Start Num: 26
Candidate Starts for Snape_75:
(Start: 26 @43054 has 51 MA's), (Start: 46 @43000 has 1 MA's), (60, 42922),

Gene: Snickers_74 Start: 42814, Stop: 42602, Start Num: 32
Candidate Starts for Snickers_74:
(Start: 31 @42817 has 35 MA's), (Start: 32 @42814 has 31 MA's), (Start: 47 @42781 has 2 MA's), (66, 42652), (73, 42607),

Gene: SoYo_71 Start: 42753, Stop: 42541, Start Num: 32
Candidate Starts for SoYo_71:

(Start: 31 @42756 has 35 MA's), (Start: 32 @42753 has 31 MA's), (Start: 47 @42720 has 2 MA's), (66, 42591), (73, 42546),

Gene: SoilDragon_73 Start: 42289, Stop: 42077, Start Num: 32

Candidate Starts for SoilDragon_73:

(Start: 31 @42292 has 35 MA's), (Start: 32 @42289 has 31 MA's), (Start: 47 @42256 has 2 MA's), (66, 42127), (73, 42082),

Gene: SororFago_74 Start: 44027, Stop: 43806, Start Num: 20

Candidate Starts for SororFago_74:

(Start: 20 @44027 has 32 MA's), (Start: 46 @43973 has 1 MA's), (Start: 47 @43967 has 2 MA's), (51, 43949), (67, 43841),

Gene: Soshari_76 Start: 42868, Stop: 42653, Start Num: 31

Candidate Starts for Soshari_76:

(Start: 31 @42868 has 35 MA's), (Start: 32 @42865 has 31 MA's), (Start: 47 @42832 has 2 MA's), (66, 42703), (73, 42658),

Gene: Sparxx_68 Start: 42352, Stop: 42155, Start Num: 33

Candidate Starts for Sparxx_68:

(Start: 33 @42352 has 143 MA's), (52, 42295), (73, 42160),

Gene: Spike509_74 Start: 42869, Stop: 42654, Start Num: 31

Candidate Starts for Spike509_74:

(Start: 31 @42869 has 35 MA's), (Start: 32 @42866 has 31 MA's), (Start: 47 @42833 has 2 MA's), (66, 42704), (73, 42659),

Gene: Spino_66 Start: 42360, Stop: 42163, Start Num: 33

Candidate Starts for Spino_66:

(Start: 33 @42360 has 143 MA's), (52, 42303), (73, 42168),

Gene: Spouty_72 Start: 42594, Stop: 42376, Start Num: 20

Candidate Starts for Spouty_72:

(Start: 20 @42594 has 32 MA's), (Start: 47 @42537 has 2 MA's), (51, 42519),

Gene: Stagni_71 Start: 42844, Stop: 42632, Start Num: 32

Candidate Starts for Stagni_71:

(Start: 31 @42847 has 35 MA's), (Start: 32 @42844 has 31 MA's), (Start: 47 @42811 has 2 MA's), (66, 42682), (73, 42637),

Gene: StarStuff_75 Start: 44006, Stop: 43764, Start Num: 26

Candidate Starts for StarStuff_75:

(Start: 26 @44006 has 51 MA's), (Start: 46 @43952 has 1 MA's), (51, 43928),

Gene: Stasia_66 Start: 42567, Stop: 42343, Start Num: 33

Candidate Starts for Stasia_66:

(Start: 33 @42567 has 143 MA's), (52, 42510), (53, 42504), (66, 42393), (73, 42348),

Gene: SteMason_67 Start: 42354, Stop: 42157, Start Num: 33

Candidate Starts for SteMason_67:

(Start: 33 @42354 has 143 MA's), (52, 42297), (73, 42162),

Gene: Steamy_67 Start: 42288, Stop: 42067, Start Num: 21

Candidate Starts for Steamy_67:
(Start: 21 @42288 has 13 MA's), (44, 42258), (65, 42108),

Gene: StepMih_73 Start: 42802, Stop: 42623, Start Num: 47
Candidate Starts for StepMih_73:
(Start: 31 @42838 has 35 MA's), (Start: 32 @42835 has 31 MA's), (Start: 47 @42802 has 2 MA's), (66, 42673), (73, 42628),

Gene: Stink_66 Start: 42459, Stop: 42235, Start Num: 33
Candidate Starts for Stink_66:
(Start: 33 @42459 has 143 MA's), (52, 42402), (53, 42396), (73, 42240),

Gene: Sultana_67 Start: 42357, Stop: 42160, Start Num: 33
Candidate Starts for Sultana_67:
(Start: 33 @42357 has 143 MA's), (52, 42300), (73, 42165),

Gene: Sunhee_74 Start: 42079, Stop: 41858, Start Num: 21
Candidate Starts for Sunhee_74:
(Start: 21 @42079 has 13 MA's), (37, 42052), (Start: 46 @42025 has 1 MA's), (Start: 47 @42019 has 2 MA's), (51, 42001), (67, 41893),

Gene: Superchunk_74 Start: 42168, Stop: 41929, Start Num: 9
Candidate Starts for Superchunk_74:
(3, 42240), (4, 42222), (Start: 9 @42168 has 4 MA's), (Start: 20 @42129 has 32 MA's), (Start: 46 @42075 has 1 MA's), (51, 42051), (67, 41937),

Gene: SweetiePie_72 Start: 43624, Stop: 43400, Start Num: 24
Candidate Starts for SweetiePie_72:
(Start: 24 @43624 has 37 MA's), (65, 43441), (66, 43438), (67, 43435),

Gene: SwirlSquare_78 Start: 42851, Stop: 42651, Start Num: 20
Candidate Starts for SwirlSquare_78:
(Start: 20 @42851 has 32 MA's), (Start: 46 @42797 has 1 MA's), (Start: 47 @42791 has 2 MA's), (51, 42773),

Gene: TNguyen7_70 Start: 42555, Stop: 42352, Start Num: 43
Candidate Starts for TNguyen7_70:
(Start: 43 @42555 has 6 MA's), (51, 42513), (66, 42402),

Gene: Taquarus_66 Start: 42360, Stop: 42163, Start Num: 33
Candidate Starts for Taquarus_66:
(Start: 33 @42360 has 143 MA's), (52, 42303), (73, 42168),

Gene: TarsusIV_70 Start: 43465, Stop: 43244, Start Num: 21
Candidate Starts for TarsusIV_70:
(Start: 21 @43465 has 13 MA's), (Start: 46 @43411 has 1 MA's), (Start: 47 @43405 has 2 MA's), (51, 43387), (67, 43279),

Gene: Taurus_75 Start: 42844, Stop: 42629, Start Num: 31
Candidate Starts for Taurus_75:
(Start: 31 @42844 has 35 MA's), (Start: 32 @42841 has 31 MA's), (Start: 47 @42808 has 2 MA's), (66, 42679), (73, 42634),

Gene: Terrific_73 Start: 43472, Stop: 43245, Start Num: 24
Candidate Starts for Terrific_73:
(Start: 24 @43472 has 37 MA's), (Start: 46 @43418 has 1 MA's), (67, 43280),

Gene: Texage_67 Start: 42561, Stop: 42349, Start Num: 35
Candidate Starts for Texage_67:
(Start: 35 @42561 has 14 MA's), (Start: 47 @42528 has 2 MA's), (66, 42399), (73, 42354),

Gene: Thanksgivukkah_66 Start: 42355, Stop: 42158, Start Num: 33
Candidate Starts for Thanksgivukkah_66:
(Start: 33 @42355 has 143 MA's), (52, 42298), (61, 42244), (73, 42163),

Gene: Tiffany_73 Start: 42729, Stop: 42514, Start Num: 31
Candidate Starts for Tiffany_73:
(Start: 31 @42729 has 35 MA's), (Start: 32 @42726 has 31 MA's), (Start: 47 @42693 has 2 MA's), (66, 42564), (73, 42519),

Gene: Timothy_75 Start: 43031, Stop: 42804, Start Num: 26
Candidate Starts for Timothy_75:
(Start: 26 @43031 has 51 MA's), (Start: 46 @42977 has 1 MA's), (Start: 47 @42971 has 2 MA's), (60, 42899),

Gene: TinaFeyge_65 Start: 42352, Stop: 42155, Start Num: 33
Candidate Starts for TinaFeyge_65:
(Start: 33 @42352 has 143 MA's), (52, 42295), (73, 42160),

Gene: TinyPebbles_73 Start: 42874, Stop: 42659, Start Num: 31
Candidate Starts for TinyPebbles_73:
(Start: 31 @42874 has 35 MA's), (Start: 32 @42871 has 31 MA's), (Start: 47 @42838 has 2 MA's), (73, 42664),

Gene: TinyTimmy_73 Start: 42760, Stop: 42533, Start Num: 26
Candidate Starts for TinyTimmy_73:
(Start: 26 @42760 has 51 MA's), (Start: 46 @42706 has 1 MA's), (Start: 47 @42700 has 2 MA's), (60, 42628),

Gene: Tinybot_66 Start: 42387, Stop: 42190, Start Num: 33
Candidate Starts for Tinybot_66:
(Start: 33 @42387 has 143 MA's), (52, 42330), (73, 42195),

Gene: TopsytheTRex_72 Start: 43101, Stop: 42820, Start Num: 12
Candidate Starts for TopsytheTRex_72:
(Start: 12 @43101 has 4 MA's), (Start: 46 @43008 has 1 MA's), (Start: 47 @43002 has 2 MA's), (51, 42984), (66, 42873),

Gene: TiroTheta9_66 Start: 42351, Stop: 42154, Start Num: 33
Candidate Starts for TiroTheta9_66:
(Start: 33 @42351 has 143 MA's), (52, 42294), (73, 42159),

Gene: Todacoro_69 Start: 42560, Stop: 42348, Start Num: 35
Candidate Starts for Todacoro_69:
(Start: 35 @42560 has 14 MA's), (Start: 47 @42527 has 2 MA's), (66, 42398), (73, 42353),

Gene: Tomathan_75 Start: 44117, Stop: 43875, Start Num: 26
Candidate Starts for Tomathan_75:
(Start: 26 @44117 has 51 MA's), (Start: 46 @44063 has 1 MA's), (51, 44039),

Gene: Topanga_63 Start: 41611, Stop: 41378, Start Num: 30
Candidate Starts for Topanga_63:
(Start: 30 @41611 has 4 MA's), (Start: 46 @41563 has 1 MA's), (Start: 47 @41557 has 2 MA's), (73, 41383),

Gene: Travvers_74 Start: 44003, Stop: 43761, Start Num: 26
Candidate Starts for Travvers_74:
(Start: 26 @44003 has 51 MA's), (Start: 46 @43949 has 1 MA's), (51, 43925),

Gene: Trike_63 Start: 40825, Stop: 40589, Start Num: 28
Candidate Starts for Trike_63:
(Start: 28 @40825 has 8 MA's), (Start: 47 @40768 has 2 MA's), (73, 40594),

Gene: Tristan_69 Start: 44578, Stop: 44339, Start Num: 26
Candidate Starts for Tristan_69:
(Start: 26 @44578 has 51 MA's), (Start: 47 @44515 has 2 MA's), (51, 44497), (66, 44392),

Gene: Trixie_72 Start: 44253, Stop: 44035, Start Num: 25
Candidate Starts for Trixie_72:
(Start: 25 @44253 has 9 MA's), (Start: 46 @44202 has 1 MA's), (51, 44178), (63, 44091), (67, 44070), (71, 44043),

Gene: Trooper_72 Start: 43427, Stop: 43203, Start Num: 26
Candidate Starts for Trooper_72:
(Start: 26 @43427 has 51 MA's), (Start: 46 @43376 has 1 MA's), (Start: 47 @43370 has 2 MA's), (66, 43241), (67, 43238),

Gene: TroyPia_68 Start: 42391, Stop: 42167, Start Num: 33
Candidate Starts for TroyPia_68:
(Start: 33 @42391 has 143 MA's), (52, 42334), (53, 42328), (73, 42172),

Gene: Tubs_74 Start: 42798, Stop: 42580, Start Num: 20
Candidate Starts for Tubs_74:
(Start: 20 @42798 has 32 MA's), (Start: 47 @42741 has 2 MA's), (51, 42723),

Gene: Turbido_73 Start: 43711, Stop: 43487, Start Num: 24
Candidate Starts for Turbido_73:
(Start: 24 @43711 has 37 MA's), (Start: 46 @43660 has 1 MA's), (65, 43528), (66, 43525), (67, 43522),

Gene: Twister_65 Start: 41732, Stop: 41499, Start Num: 30
Candidate Starts for Twister_65:
(Start: 30 @41732 has 4 MA's), (Start: 46 @41684 has 1 MA's), (Start: 47 @41678 has 2 MA's), (73, 41504),

Gene: TygerBlood_67 Start: 42357, Stop: 42160, Start Num: 33
Candidate Starts for TygerBlood_67:
(Start: 33 @42357 has 143 MA's), (52, 42300), (73, 42165),

Gene: Ugenie5_69 Start: 43086, Stop: 42868, Start Num: 20

Candidate Starts for Ugenie5_69:
(Start: 20 @43086 has 32 MA's), (Start: 47 @43029 has 2 MA's), (51, 43011),

Gene: Ulysses_66 Start: 42043, Stop: 41846, Start Num: 33
Candidate Starts for Ulysses_66:
(Start: 33 @42043 has 143 MA's), (52, 41986), (73, 41851),

Gene: Updawg_73 Start: 43362, Stop: 43135, Start Num: 24
Candidate Starts for Updawg_73:
(Start: 24 @43362 has 37 MA's), (Start: 46 @43308 has 1 MA's), (67, 43170),

Gene: VC3_74 Start: 43459, Stop: 43217, Start Num: 26
Candidate Starts for VC3_74:
(Start: 26 @43459 has 51 MA's), (Start: 46 @43405 has 1 MA's), (51, 43381), (65, 43273),

Gene: Veracruz_66 Start: 42560, Stop: 42348, Start Num: 35
Candidate Starts for Veracruz_66:
(Start: 35 @42560 has 14 MA's), (Start: 47 @42527 has 2 MA's), (66, 42398), (73, 42353),

Gene: Vix_70 Start: 42927, Stop: 42712, Start Num: 31
Candidate Starts for Vix_70:
(Start: 31 @42927 has 35 MA's), (Start: 32 @42924 has 31 MA's), (Start: 47 @42891 has 2 MA's), (66, 42762), (73, 42717),

Gene: WalterMcMickey_65 Start: 41732, Stop: 41499, Start Num: 30
Candidate Starts for WalterMcMickey_65:
(Start: 30 @41732 has 4 MA's), (Start: 46 @41684 has 1 MA's), (Start: 47 @41678 has 2 MA's), (73, 41504),

Gene: Wander_67 Start: 42354, Stop: 42157, Start Num: 33
Candidate Starts for Wander_67:
(Start: 33 @42354 has 143 MA's), (52, 42297), (73, 42162),

Gene: Watson_73 Start: 42833, Stop: 42621, Start Num: 32
Candidate Starts for Watson_73:
(Start: 31 @42836 has 35 MA's), (Start: 32 @42833 has 31 MA's), (Start: 47 @42800 has 2 MA's), (66, 42671), (73, 42626),

Gene: WeiHuaDA_73 Start: 44299, Stop: 44075, Start Num: 26
Candidate Starts for WeiHuaDA_73:
(Start: 26 @44299 has 51 MA's), (Start: 46 @44248 has 1 MA's), (Start: 47 @44242 has 2 MA's), (65, 44116), (66, 44113), (67, 44110), (71, 44083),

Gene: Whabigail7_73 Start: 43711, Stop: 43487, Start Num: 24
Candidate Starts for Whabigail7_73:
(Start: 24 @43711 has 37 MA's), (Start: 46 @43660 has 1 MA's), (65, 43528), (66, 43525), (67, 43522),

Gene: WideWale_73 Start: 43362, Stop: 43135, Start Num: 24
Candidate Starts for WideWale_73:
(Start: 24 @43362 has 37 MA's), (Start: 46 @43308 has 1 MA's), (67, 43170),

Gene: Wilbur_67 Start: 42354, Stop: 42157, Start Num: 33
Candidate Starts for Wilbur_67:

(Start: 33 @42354 has 143 MA's), (52, 42297), (73, 42162),

Gene: Wile_65 Start: 42663, Stop: 42439, Start Num: 33

Candidate Starts for Wile_65:

(Start: 33 @42663 has 143 MA's), (52, 42606), (53, 42600), (60, 42549), (73, 42444),

Gene: Wizard007_66 Start: 42389, Stop: 42165, Start Num: 33

Candidate Starts for Wizard007_66:

(Start: 33 @42389 has 143 MA's), (52, 42332), (53, 42326), (60, 42275), (73, 42170),

Gene: Wolpertinger_73 Start: 43063, Stop: 42836, Start Num: 26

Candidate Starts for Wolpertinger_73:

(Start: 26 @43063 has 51 MA's), (Start: 46 @43009 has 1 MA's), (Start: 47 @43003 has 2 MA's), (60, 42931),

Gene: Wooldri_76 Start: 42756, Stop: 42541, Start Num: 31

Candidate Starts for Wooldri_76:

(Start: 31 @42756 has 35 MA's), (Start: 32 @42753 has 31 MA's), (Start: 47 @42720 has 2 MA's), (66, 42591), (73, 42546),

Gene: WorldCup_72 Start: 42754, Stop: 42521, Start Num: 16

Candidate Starts for WorldCup_72:

(7, 42793), (Start: 16 @42754 has 1 MA's), (Start: 47 @42682 has 2 MA's), (51, 42664),

Gene: Xena_65 Start: 42630, Stop: 42406, Start Num: 33

Candidate Starts for Xena_65:

(Start: 33 @42630 has 143 MA's), (52, 42573), (53, 42567), (60, 42516), (73, 42411),

Gene: XianYue_68 Start: 43295, Stop: 43074, Start Num: 23

Candidate Starts for XianYue_68:

(Start: 23 @43295 has 4 MA's), (51, 43217), (66, 43112), (72, 43079),

Gene: Yecey3_76 Start: 42829, Stop: 42608, Start Num: 25

Candidate Starts for Yecey3_76:

(Start: 25 @42829 has 9 MA's), (Start: 47 @42769 has 2 MA's), (51, 42751), (63, 42664),

Gene: YoSam321_67 Start: 42351, Stop: 42154, Start Num: 33

Candidate Starts for YoSam321_67:

(Start: 33 @42351 has 143 MA's), (52, 42294), (73, 42159),

Gene: Zarafa_67 Start: 42529, Stop: 42305, Start Num: 38

Candidate Starts for Zarafa_67:

(Start: 38 @42529 has 12 MA's), (39, 42523), (Start: 47 @42487 has 2 MA's), (66, 42355), (73, 42310),

Gene: Zetzy_71 Start: 42407, Stop: 42192, Start Num: 31

Candidate Starts for Zetzy_71:

(Start: 31 @42407 has 35 MA's), (Start: 47 @42371 has 2 MA's), (56, 42338), (60, 42302), (66, 42242), (73, 42197),

Gene: Zimmer_71 Start: 43934, Stop: 43707, Start Num: 21

Candidate Starts for Zimmer_71:

(Start: 21 @43934 has 13 MA's), (Start: 46 @43880 has 1 MA's), (Start: 47 @43874 has 2 MA's), (51, 43856), (65, 43748), (67, 43742),

