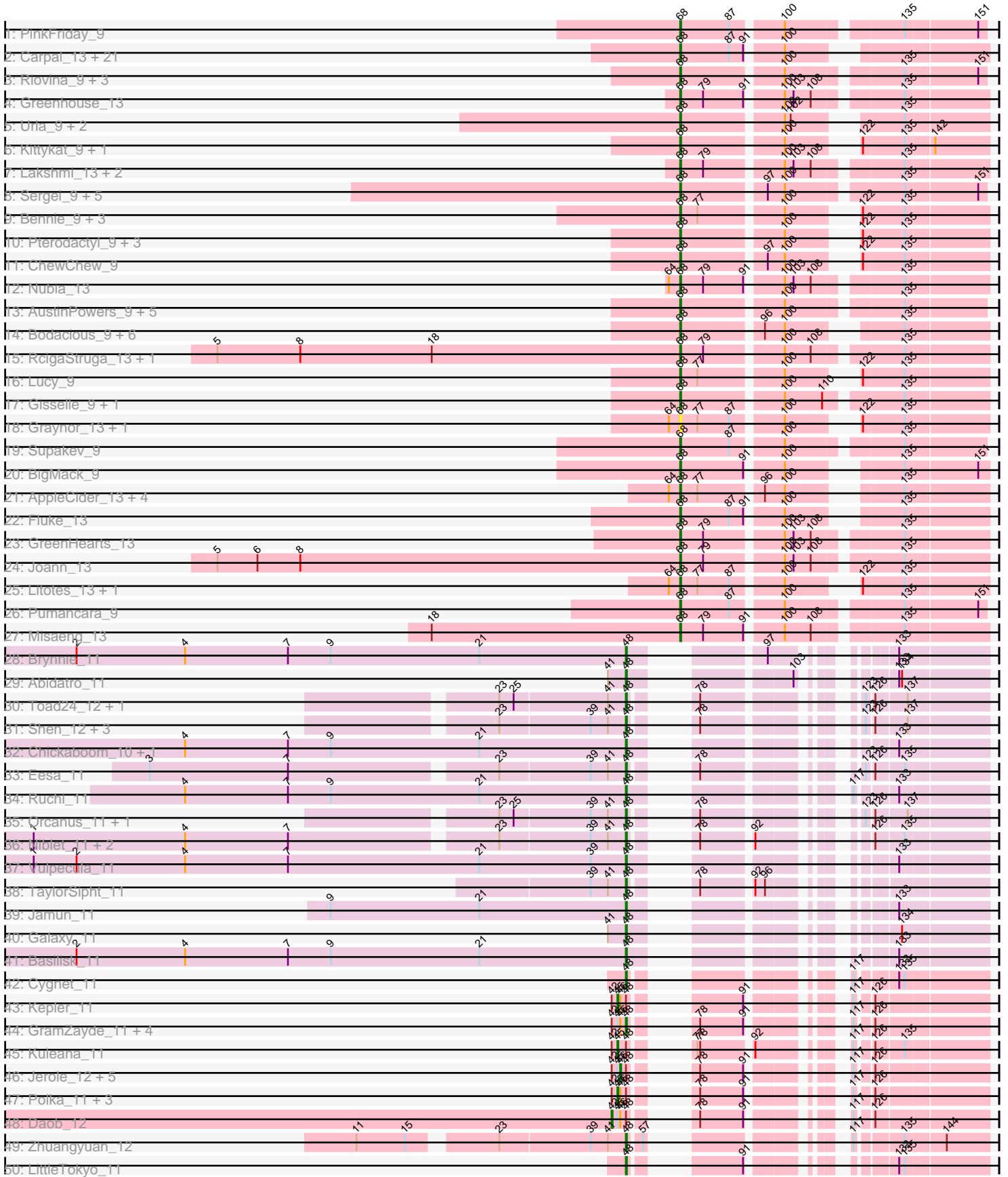
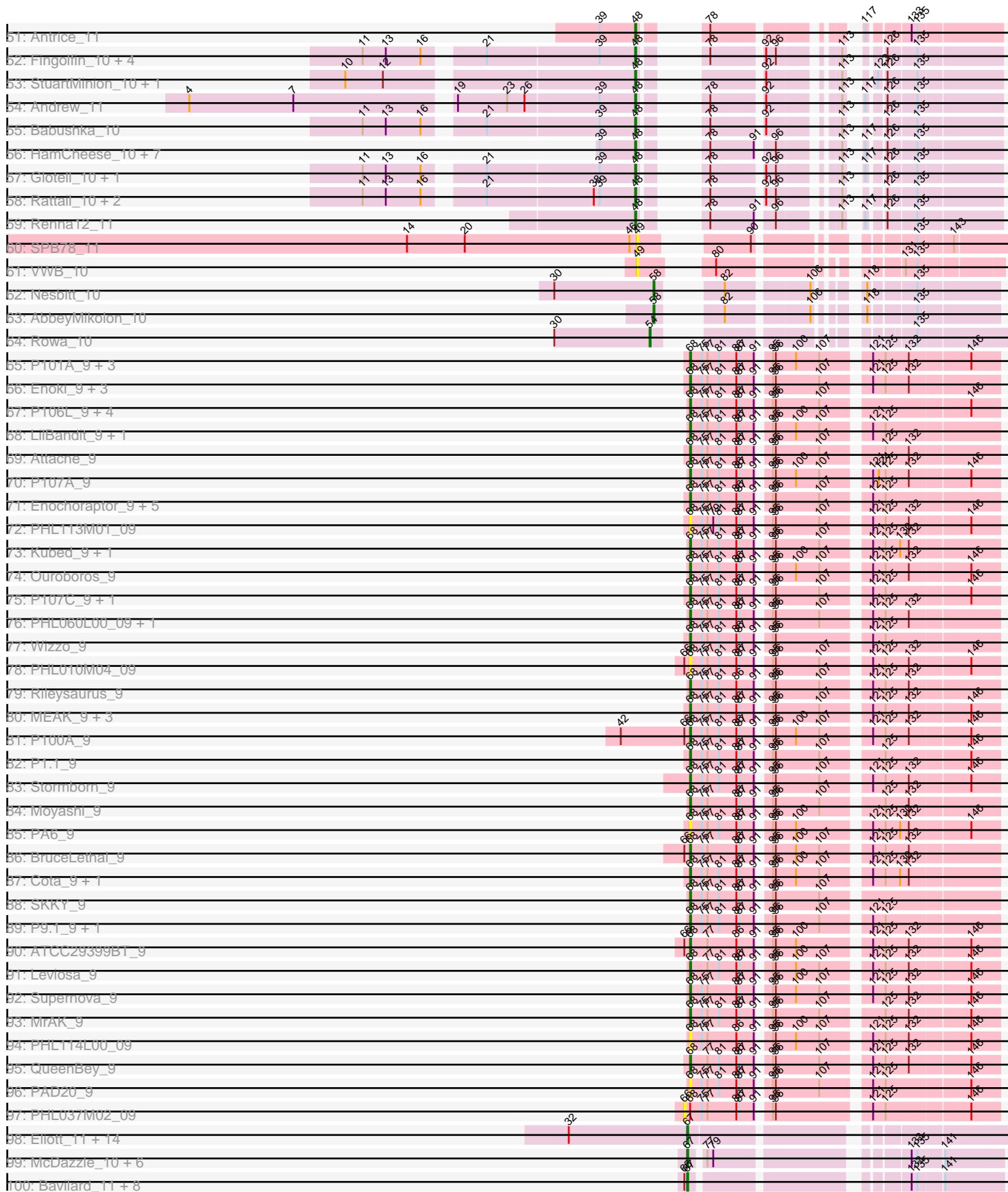


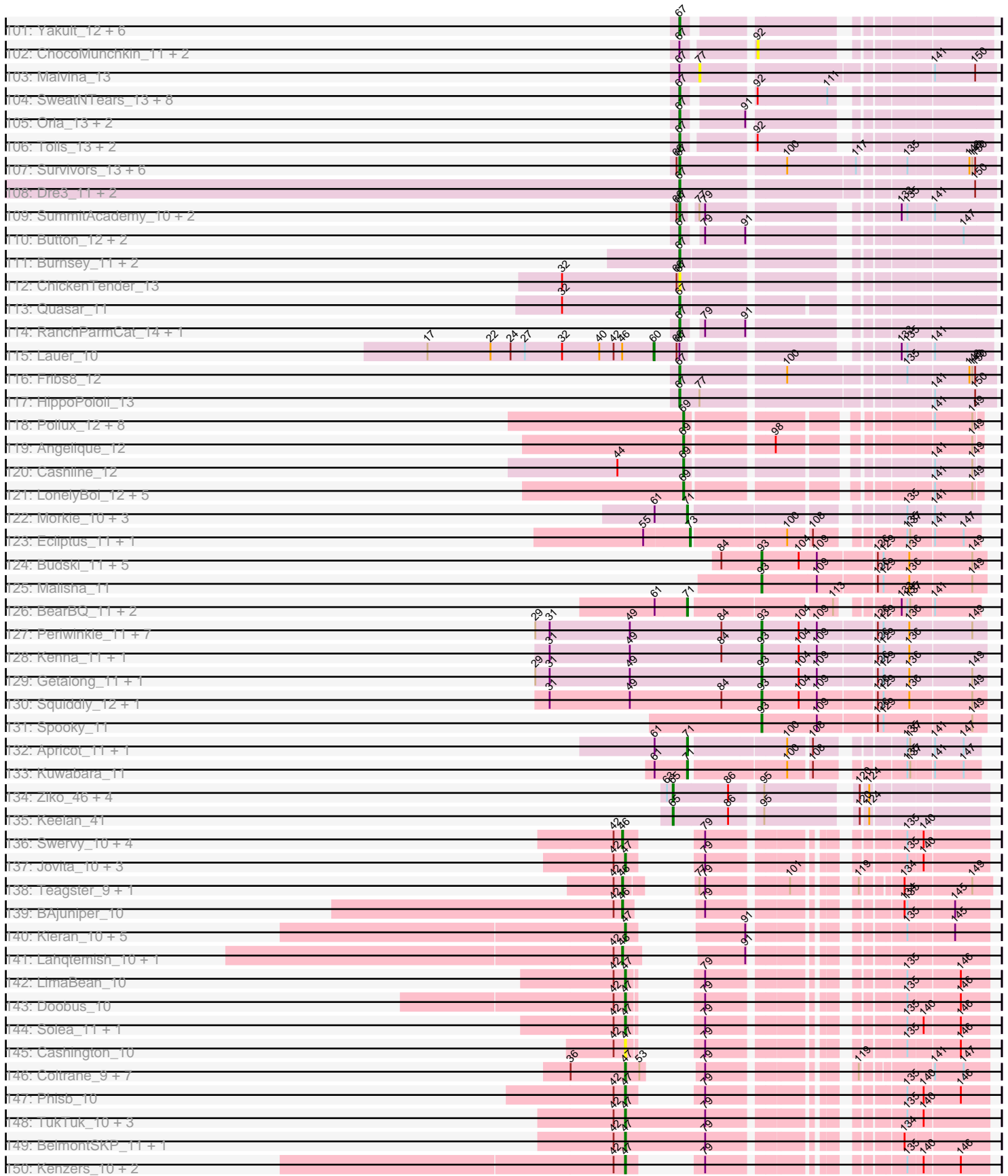
Pham 311059



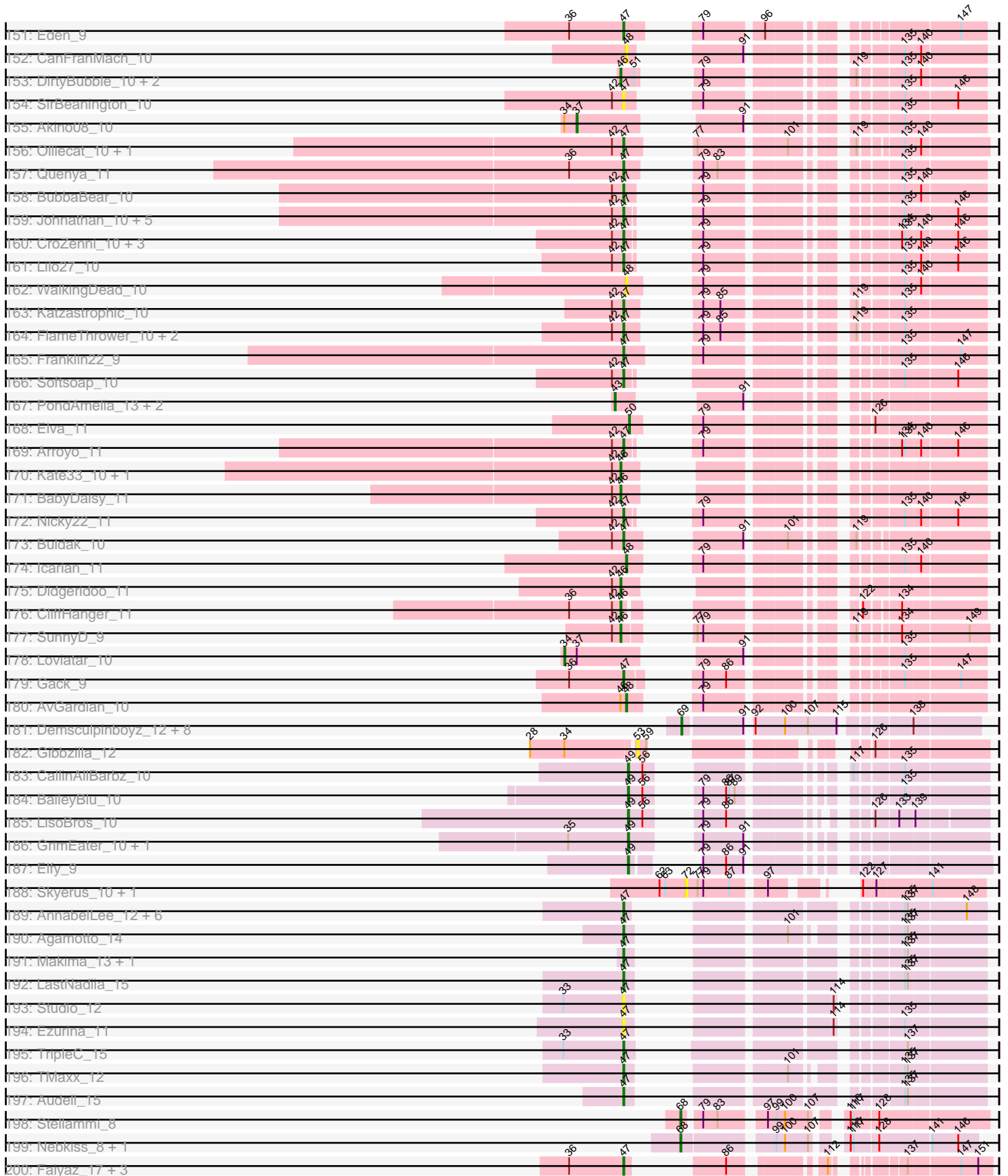
Pham 311059



Pham 311059



Pham 311059



Note: Tracks are now grouped by subcluster and scaled. Switching in subcluster is indicated by changes in track color. Track scale is now set by default to display the region 30 bp upstream of start 1 to 30 bp downstream of the last possible start. If this default region is judged to be packed too tightly with annotated starts, the track will be further scaled to only show that region of the ORF with annotated starts. This action will be indicated by adding "Zoomed" to the title. For starts, yellow indicates the location of called starts comprised solely of Glimmer/GeneMark auto-annotations, green indicates the location of called starts with at least 1 manual gene annotation.

Pham 311059 Report

This analysis was run 06/27/26 on database version 652.

WARNING: Pham size does not match number of genes in report. Either unphamerated genes have been added (by you) or starterator has removed genes due to invalid start codon.

Pham number 311059 has 493 members, 72 are drafts.

Phages represented in each track:

- Track 1 : PinkFriday_9
- Track 2 : Carpal_13, Dino_13, Cholula_13, Korra_13, Glenn_13, Kalizoi_13, RAP15_13, Vallejo_13, Wawa_13, TattModd_13, BrotherBLo_13, Jumboset_13, Rozby_13, MrGloopy_13, Riverdale_13, MeganNoll_13, Scuttle_13, Potatoes_13, Savage2526_13, Immaculata_13, Beethoven_13, Zorro_13
- Track 3 : Riovina_9, Eunoia_9, Aledel_9, OMalley_9
- Track 4 : Greenhouse_13
- Track 5 : Urla_9, EstebanJulior_9, MamaPearl_9
- Track 6 : Kittykat_9, Preamble_9
- Track 7 : Lakshmi_13, Oxynfrius_13, Albanese_13
- Track 8 : Sergei_9, Maria1952_9, Daiboju_9, Temper16_9, KingBob_9, Herb_9
- Track 9 : Bennie_9, Moki_9, Huckleberry_9, HeadNerd_9
- Track 10 : Pterodactyl_9, Lennox_9, PitaDog_9, Makoto_9
- Track 11 : ChewChew_9
- Track 12 : Nubia_13
- Track 13 : AustinPowers_9, DrRobert_9, Vulture_9, Chridison_9, WonderBoy_9, HunterDalle_9
- Track 14 : Bodacious_9, Nancia_9, Lasagna_9, OurGirlNessie_9, Christian_9, CristinaYang_9, LilStuart_9
- Track 15 : RcigaStruga_13, Huntingdon_13
- Track 16 : Lucy_9
- Track 17 : Gisselle_9, DreamTeam_9
- Track 18 : Graynor_13, MrBoss_13
- Track 19 : Supakev_9
- Track 20 : BigMack_9
- Track 21 : AppleCider_13, Wayne_13, CallieOMalley_13, Suppi_13, Canowicakte_13
- Track 22 : Fluke_13
- Track 23 : GreenHearts_13
- Track 24 : Joann_13
- Track 25 : Litotes_13, PartyCup_13
- Track 26 : Pumancara_9
- Track 27 : Misaeng_13

- Track 28 : Brynnie_11
- Track 29 : Abidatro_11
- Track 30 : Toad24_12, KendraB23_12
- Track 31 : Shen_12, Gravel_12, Amanises_12, Pelletreau_12
- Track 32 : Chickaboom_10, WileyE_10
- Track 33 : Eesa_11
- Track 34 : Ruchi_11
- Track 35 : Orcanus_11, Westrich_12
- Track 36 : Niblet_11, Chicken_11, Zixiang_11
- Track 37 : Vulpecula_11
- Track 38 : TaylorSipht_11
- Track 39 : Jamun_11
- Track 40 : Galaxy_11
- Track 41 : Basilisk_11
- Track 42 : Cygnet_11
- Track 43 : Kepler_11
- Track 44 : GramZayde_11, Bibble12_12, PhirstandPhine_12, Damocles_12, OtsoOtso_11
- Track 45 : Kuleana_11
- Track 46 : Jerole_12, Colusalem_11, HannahPhantana_12, Bedetta_12, Amelia_12, Lunar_12
- Track 47 : Polka_11, Coral_11, Melons_12, Cote_12
- Track 48 : Daob_12
- Track 49 : Zhuangyuan_12
- Track 50 : LittleTokyo_11
- Track 51 : Antrice_11
- Track 52 : Fingolfin_10, Juno112_10, Oppalora_10, Atlantica_10, AmiCi24_10
- Track 53 : StuartMinion_10, AlexMinion_10
- Track 54 : Andrew_11
- Track 55 : Babushka_10
- Track 56 : HamCheese_10, PhluffyCoco_10, RedFox_10, Amphitrite_10, DanHam62_10, Laphuphu24k_10, AdoptaAdorbs_10, Camara_10
- Track 57 : Glotell_10, KHumphrey_10
- Track 58 : Rattail_10, Azaz_10, Leona_10
- Track 59 : Renna12_11
- Track 60 : SPB78_11
- Track 61 : VWB_10
- Track 62 : Nesbitt_10
- Track 63 : AbbeyMikolon_10
- Track 64 : Rowa_10
- Track 65 : P101A_9, DrParker_9, P100.1_9, P105_9
- Track 66 : Enoki_9, PAS50_9, P100D_9, PHL067M10_09
- Track 67 : P106L_9, P106I_9, P106C_9, P106M_9, P106A_9
- Track 68 : LilBandit_9, P104B_9
- Track 69 : Attacne_9
- Track 70 : P107A_9
- Track 71 : Enochoraptor_9, Pirate_9, PHL071N05_09, P14.4_9, P108C_9, Aquarius_9
- Track 72 : PHL113M01_09
- Track 73 : Kubed_9, PHL112N00_09
- Track 74 : Ouroboros_9
- Track 75 : P107C_9, ATCC29399BC_9
- Track 76 : PHL060L00_09, Lauchelly_9

- Track 77 : Wizzo_9
- Track 78 : PHL010M04_09
- Track 79 : Rileysaurus_9
- Track 80 : MEAK_9, Procrass1_9, Solid_9, P104A_9
- Track 81 : P100A_9
- Track 82 : P1.1_9
- Track 83 : Stormborn_9
- Track 84 : Moyashi_9
- Track 85 : PA6_9
- Track 86 : BruceLethal_9
- Track 87 : Cota_9, Keiki_9
- Track 88 : SKKY_9
- Track 89 : P9.1_9, PHL111M01_09
- Track 90 : ATCC29399BT_9
- Track 91 : Leviosa_9
- Track 92 : Supernova_9
- Track 93 : MrAK_9
- Track 94 : PHL114L00_09
- Track 95 : QueenBey_9
- Track 96 : PAD20_9
- Track 97 : PHL037M02_09
- Track 98 : Elliott_11, Bubble_11, Nina_12, Starburst_12, RedBaron_13, Cozz_11, PsychoKiller_11, Typhonmarchy_11, MunkgeeRoachy_11, RADical_12, Carsonalex_12, Sopespian_11, Socotra_12, Axym_11, RSchmailzl_12
- Track 99 : McDazzle_10, Mayweather_12, SheckWes_10, ElJefes_10, MAnor_11, CherryonLim_12, Pons_11
- Track 100 : Bavilard_11, Feastonyeet_10, Balloona_10, Yucky_11, Tarnish_11, KayGee_11, BigChungus_10, Elinal_12, Vine_12
- Track 101 : Yakult_12, Amok_10, AndPeggy_10, AikoCarson_10, Yarn_10, Emalyn_10, BillDoor_13
- Track 102 : ChocoMunchkin_11, CanesSauce_11, CaramelLatte_11
- Track 103 : Malvina_13
- Track 104 : SweatNTears_13, MScarn_13, SketchMex_10, Troje_11, Blondies_12, Horseradish_12, Yummy_12, Biskit_12, Buttrmlkdreams_11
- Track 105 : Orla_13, Nodigi_13, Hexbug_13
- Track 106 : Tolls_13, SteamedHams_13, GTE2_09
- Track 107 : Survivors_13, MaVan_13, Wolfwood_13, Zareef_13, Wallaby_15, Azira_13, Nibbles_13
- Track 108 : Dre3_11, Cleo_11, Gibbous_11
- Track 109 : SummitAcademy_10, CocoaPuff_10, PotPie_11
- Track 110 : Button_12, Jamzy_14, GiKK_14
- Track 111 : Burnsey_11, Agatha_11, GoldHunter_12
- Track 112 : ChickenTender_13
- Track 113 : Quasar_11
- Track 114 : RanchParmCat_14, Margaret_14
- Track 115 : Lauer_10
- Track 116 : Fribs8_12
- Track 117 : HippoPololi_13
- Track 118 : Pollux_12, BritBrat_12, EMSquaredA_12, Lilas_12, Bradissa_12, Floral_12, EnalisNailo_12, Confidence_12, Marteena_12
- Track 119 : Angelique_12
- Track 120 : Cashline_12

- Track 121 : LonelyBoi_12, Posh_12, BeeGee_12, Wrigley_12, Jablanski_12, Pytheas_12
- Track 122 : Morkie_10, InLimbo_11, PhorbesPhlower_10, Lucky10_10
- Track 123 : Ecliptus_11, ODay_11
- Track 124 : Budski_11, Phabuloso_11, CheeseTouch_11, LitninMcQueen_11, Kamaru_11, Holliday_11
- Track 125 : Malisha_11
- Track 126 : BearBQ_11, MortyNRick_11, Birdsong_11
- Track 127 : Periwinkle_11, BotCity_11, Horus_11, BENtherdunthat_11, ShawBrad_11, Frickyeah_11, Leroy_11, Asapag_11
- Track 128 : Kenna_11, Lutum_11
- Track 129 : Getalong_11, Whitney_11
- Track 130 : Squiddly_12, Phistory_11
- Track 131 : Spooky_11
- Track 132 : Apricot_11, Crater_11
- Track 133 : Kuwabara_11
- Track 134 : Ziko_46, Guey18_48, Volt_45, Fryberger_43, Ronaldo_46
- Track 135 : Keelan_41
- Track 136 : Swervy_10, Slay_10, AylexOG_11, Finalfrontier_11, SarBear_10
- Track 137 : Jovita_10, Pecas_10, Eula_10, QMacho_11
- Track 138 : Teagster_9, Shayna_9
- Track 139 : BAjuniper_10
- Track 140 : Kieran_10, Rona_10, Kamdara_10, Sharkboy_10, ChiliPepper_10, Dismas_10
- Track 141 : Lahqtemish_10, PastaFagioli_10
- Track 142 : LimaBean_10
- Track 143 : Doobus_10
- Track 144 : Solea_11, Milomuff_11
- Track 145 : Cashington_10
- Track 146 : Coltrane_9, Skylord_9, Clayda5_9, Rollins_9, Vitas_9, Brahms_9, Armstrong_9, Bernstein_9
- Track 147 : Phisb_10
- Track 148 : TukTuk_10, CupcakePrincess_10, Jabb_10, MsUbiquitous_10
- Track 149 : BelmontSKP_11, AnnaLie_11
- Track 150 : Kenzers_10, Lynlen_10, Albedo_10
- Track 151 : Eden_9
- Track 152 : CanFranMach_10
- Track 153 : DirtyBubble_10, Stromboli_10, BabyYoda_10
- Track 154 : SirBeanington_10
- Track 155 : Akino08_10
- Track 156 : Olliecat_10, Squircle_10
- Track 157 : Quenya_11
- Track 158 : BubbaBear_10
- Track 159 : Johnathan_10, Bengal_10, Avocadoman_10, Albright_10, Abigail_10, Burritobowl_10
- Track 160 : CroZenni_10, SansAfet_10, DickRichards_10, PhigPhack_10
- Track 161 : Lilo27_10
- Track 162 : WalkingDead_10
- Track 163 : Katzastrophic_10
- Track 164 : FlameThrower_10, Celaena_10, Bachaco_10
- Track 165 : Franklin22_9
- Track 166 : Softsoap_10
- Track 167 : PondAmelia_13, Stoor_10, SanaSana_11

- Track 168 : Elva_11
- Track 169 : Arroyo_11
- Track 170 : Kate33_10, IndyLu_10
- Track 171 : BabyDaisy_11
- Track 172 : Nicky22_11
- Track 173 : Buldak_10
- Track 174 : Icarian_11
- Track 175 : Didgeridoo_11
- Track 176 : CliffHanger_11
- Track 177 : SunnyD_9
- Track 178 : Loviatar_10
- Track 179 : Gack_9
- Track 180 : AvGardian_10
- Track 181 : Demsculpinboyz_12, Avani_12, Soul22_12, Che9d_12, Zapner_13, Blarby_13, Jabbawokkie_13, Yoshi_12, SilverChicken_12
- Track 182 : Gibbzilla_12
- Track 183 : CallinAllBarbz_10
- Track 184 : BaileyBlu_10
- Track 185 : LisoBros_10
- Track 186 : GrimEater_10, Jankie_10
- Track 187 : Elfy_9
- Track 188 : Skyerus_10, Raya_10
- Track 189 : AnnabelLee_12, CardboardBox_12, ChamoyPickle_12, Neuville_12, Roberts_12, Gerri43_12, ChipsNGuac_12
- Track 190 : Agamoto_14
- Track 191 : Makima_13, Mireles_12
- Track 192 : LastNadiia_15
- Track 193 : Studio_12
- Track 194 : Ezurina_11
- Track 195 : TripleC_15
- Track 196 : TMaxx_12
- Track 197 : Audell_15
- Track 198 : Stellammi_8
- Track 199 : Nebkiss_8, Gaia_8
- Track 200 : Faiyaz_17, Hilltopfarm_17, Typha_17, AuntGwenStacy_17
- Track 201 : Bipper_17
- Track 202 : Cracklewink_17
- Track 203 : DS6A_14
- Track 204 : Shambre1_11
- Track 205 : Juicebox_12
- Track 206 : LilSpotty_10
- Track 207 : Spartoi_9
- Track 208 : Sleepyhead_11

Summary of Final Annotations (See graph section above for start numbers):

The start number called the most often in the published annotations is 68, it was called in 135 of the 421 non-draft genes in the pham.

Genes that call this "Most Annotated" start:

- ATCC29399BC_9, ATCC29399BT_9, Albanese_13, Aledel_9, AppleCider_13, Aquarius_9, Attacne_9, AustinPowers_9, Beethoven_13, Bennie_9, BigMack_9, Bodacious_9, BrotherBLo_13, BruceLethal_9, CallieOMalley_13, Canowicakte_13, Carpal_13, ChewChew_9, Cholula_13, Chridison_9, Christian_9, Cota_9, CristinaYang_9, DS6A_14, Daiboju_9, Dino_13, DrParker_9, DrRobert_9, DreamTeam_9, Enochoraptor_9, Enoki_9, EstebanJulior_9, Eunoia_9, Fluke_13, Gaia_8, Gisselle_9, Glenn_13, Graynor_13, GreenHearts_13, Greenhouse_13, HeadNerd_9, Herb_9, Huckleberry_9, HunterDalle_9, Huntingdon_13, Immaculata_13, Joann_13, Jumboset_13, Kalizoi_13, Keiki_9, KingBob_9, Kittykat_9, Korra_13, Kubed_9, Lakshmi_13, Lasagna_9, Lauchelly_9, Lennox_9, Leviosa_9, LilBandit_9, LilSpotty_10, LilStuart_9, Litotes_13, Lucy_9, MEAK_9, Makoto_9, MamaPearl_9, Maria1952_9, MeganNoll_13, Misaeng_13, Moki_9, Moyashi_9, MrAK_9, MrBoss_13, MrGloopy_13, Nancia_9, Nebkiss_8, Nubia_13, OMalley_9, OurGirlNessie_9, Ouroboros_9, Oxynfrius_13, P1.1_9, P100.1_9, P100A_9, P100D_9, P101A_9, P104A_9, P104B_9, P105_9, P106A_9, P106C_9, P106I_9, P106L_9, P106M_9, P107A_9, P107C_9, P108C_9, P14.4_9, P9.1_9, PA6_9, PAD20_9, PAS50_9, PHL010M04_09, PHL060L00_09, PHL067M10_09, PHL071N05_09, PHL111M01_09, PHL112N00_09, PHL113M01_09, PHL114L00_09, PartyCup_13, PinkFriday_9, Pirate_9, PitaDog_9, Potatoes_13, Preamble_9, Procrass1_9, Pterodactyl_9, Pumancara_9, QueenBey_9, RAP15_13, RcigaStruga_13, Rileysaurus_9, Riovina_9, Riverdale_13, Rozby_13, SKKY_9, Savage2526_13, Scuttle_13, Sergei_9, Solid_9, Spartoi_9, Stellammi_8, Stormborn_9, Supakev_9, Supernova_9, Suppi_13, TattModd_13, Temper16_9, Urla_9, Vallejo_13, Vulture_9, Wawa_13, Wayne_13, Wizzo_9, WonderBoy_9, Zorro_13,

Genes that have the "Most Annotated" start but do not call it:

- PHL037M02_09,

Genes that do not have the "Most Annotated" start:

- AbbeyMikolon_10, Abidatro_11, Abigail_10, AdoptaAdorbs_10, Agamoto_14, Agatha_11, AikoCarson_10, Akino08_10, Albedo_10, Albright_10, AlexMinion_10, Amanises_12, Amelia_12, AmiCi24_10, Amok_10, Amphitrite_10, AndPeggy_10, Andrew_11, Angelique_12, AnnaLie_11, AnnabelLee_12, Antrice_11, Apricot_11, Armstrong_9, Arroyo_11, Asapag_11, Atlantica_10, Audell_15, AuntGwenStacy_17, AvGardian_10, Avani_12, Avocadoman_10, Axym_11, AylexOG_11, Azaz_10, Azira_13, BAjuniper_10, BENtherdunthat_11, Babushka_10, BabyDaisy_11, BabyYoda_10, Bachaco_10, BaileyBlu_10, Balloona_10, Basilisk_11, Bavailard_11, BearBQ_11, Bedetta_12, BeeGee_12, BelmontSKP_11, Bengal_10, Bernstein_9, Bible12_12, BigChungus_10, BillDoor_13, Bipper_17, Birdsong_11, Biskit_12, Blarby_13, Blondies_12, BotCity_11, Bradissa_12, Brahms_9, BritBrat_12, Brynnie_11, BubbaBear_10, Bubble_11, Budski_11, Buldak_10, Burnsey_11, Burritobowl_10, Button_12, Buttrmlkdreams_11, CallinAllBarbz_10, Camara_10, CanFranMach_10, CanesSauce_11, CaramelLatte_11, CardboardBox_12, Carsonalex_12, Cashington_10, Cashline_12, Celaena_10, ChamoyPickle_12, Che9d_12, CheeseTouch_11, CherryonLim_12, Chickaboom_10, ChickenTender_13, Chicken_11, ChiliPepper_10, ChipsNGuac_12, ChocoMunchkin_11, Clayda5_9, Cleo_11, CliffHanger_11, CocoaPuff_10, Coltrane_9, Colusalem_11, Confidence_12, Coral_11, Cote_12, Cozz_11, Cracklewink_17, Crater_11, CroZenni_10, CupcakePrincess_10, Cygnet_11, Damocles_12, DanHam62_10, Daob_12, Demsculpinboyz_12, DickRichards_10, Didgeridoo_11, DirtyBubble_10, Dismas_10, Doobus_10, Dre3_11, EMSquaredA_12, Ecliptus_11, Eden_9, Eesa_11, ElJefes_10, Elfy_9, Elinal_12, Eliott_11, Elva_11,

Emalyn_10, EnalisNailo_12, Eula_10, Ezurina_11, Faiyaz_17, Feastonyeet_10, Finalfrontier_11, Fingolfin_10, FlameThrower_10, Floral_12, Franklin22_9, Fribs8_12, Frickyeah_11, Fryberger_43, GTE2_09, Gack_9, Galaxy_11, Gerri43_12, Getalong_11, GiKK_14, Gibbous_11, Gibbzilla_12, Glotell_10, GoldHunter_12, GramZayde_11, Gravel_12, GrimEater_10, Guey18_48, HamCheese_10, HannahPhantana_12, Hexbug_13, Hilltopfarm_17, HippoPololi_13, Holliday_11, Horseradish_12, Horus_11, Icarian_11, InLimbo_11, IndyLu_10, Jabb_10, Jabbawokkie_13, Jablanski_12, Jamun_11, Jamzy_14, Jankie_10, Jerole_12, Johnathan_10, Jovita_10, Juicebox_12, Juno112_10, KHumphrey_10, Kamaru_11, Kamdara_10, Kate33_10, Katzastrophic_10, KayGee_11, Keelan_41, KendraB23_12, Kenna_11, Kenzers_10, Kepler_11, Kieran_10, Kuleana_11, Kuwabara_11, Lahqtemish_10, Laphuphu24k_10, LastNadiia_15, Lauer_10, Leona_10, Leroy_11, Lilas_12, Lilo27_10, LimaBean_10, LisoBros_10, LitninMcQueen_11, LittleTokyo_11, LonelyBoi_12, Loviatar_10, Lucky10_10, Lunar_12, Lutum_11, Lynlen_10, MAnor_11, MScarn_13, MaVan_13, Makima_13, Malisha_11, Malvina_13, Margaret_14, Marteena_12, Mayweather_12, McDazzle_10, Melons_12, Milomuff_11, Mireles_12, Morkie_10, MortyNRick_11, MsUbiquitous_10, MunkgeeRoachy_11, Nesbitt_10, Neuvillelette_12, Nibbles_13, Niblet_11, Nicky22_11, Nina_12, Nodigi_13, ODay_11, Olliecat_10, Oppalora_10, Orcanus_11, Orla_13, OtsoOtso_11, PastaFagioli_10, Pecas_10, Pelletreau_12, Periwinkle_11, Phabuloso_11, PhigPhack_10, PhirstandPhine_12, Phisb_10, Phistory_11, PhluffyCoco_10, PhorbesPhlower_10, Polka_11, Pollux_12, PondAmelia_13, Pons_11, Posh_12, PotPie_11, PsychoKiller_11, Pytheas_12, QMacho_11, Quasar_11, Quenya_11, RADical_12, RSchmailzl_12, RanchParmCat_14, Rattail_10, Raya_10, RedBaron_13, RedFox_10, Renna12_11, Roberts_12, Rollins_9, Rona_10, Ronaldo_46, Rowa_10, Ruchi_11, SPB78_11, SanaSana_11, SansAfet_10, SarBear_10, Shambre1_11, Sharkboy_10, ShawBrad_11, Shayna_9, SheckWes_10, Shen_12, SilverChicken_12, SirBeanington_10, SketchMex_10, Skyerus_10, Skylord_9, Slay_10, Sleepyhead_11, Socotra_12, Softsoap_10, Solea_11, Sopespian_11, Soul22_12, Spooky_11, Squiddly_12, Squircle_10, Starburst_12, SteamedHams_13, Stoor_10, Stromboli_10, StuartMinion_10, Studio_12, SummitAcademy_10, SunnyD_9, Survivors_13, SweatNTears_13, Swervy_10, TMaxx_12, Tarnish_11, TaylorSipht_11, Teagster_9, Toad24_12, Tolls_13, TripleC_15, Troje_11, TukTuk_10, Typha_17, Typhonmarchy_11, VWB_10, Vine_12, Vitas_9, Volt_45, Vulpecula_11, WalkingDead_10, Wallaby_15, Westrich_12, Whitney_11, WileyE_10, Wolfwood_13, Wrigley_12, Yakult_12, Yarn_10, Yoshi_12, Yucky_11, Yummy_12, Zapner_13, Zareef_13, Zhuangyuan_12, Ziko_46, Zixiang_11,

Summary by start number:

Start 34:

- Found in 3 of 493 (0.6%) of genes in pham
- Manual Annotations of this start: 1 of 421
- Called 33.3% of time when present
- Phage (with cluster) where this start called: Loviatar_10 (EB),

Start 37:

- Found in 2 of 493 (0.4%) of genes in pham
- Manual Annotations of this start: 1 of 421
- Called 50.0% of time when present
- Phage (with cluster) where this start called: Akino08_10 (EB),

Start 42:

- Found in 78 of 493 (15.8%) of genes in pham
- Manual Annotations of this start: 1 of 421
- Called 1.3% of time when present
- Phage (with cluster) where this start called: Daob_12 (AS2),

Start 43:

- Found in 3 of 493 (0.6%) of genes in pham
- Manual Annotations of this start: 2 of 421
- Called 100.0% of time when present
- Phage (with cluster) where this start called: PondAmelia_13 (EB), SanaSana_11 (EB), Stoor_10 (EB),

Start 45:

- Found in 18 of 493 (3.7%) of genes in pham
- Manual Annotations of this start: 6 of 421
- Called 33.3% of time when present
- Phage (with cluster) where this start called: Coral_11 (AS2), Cote_12 (AS2), Kepler_11 (AS2), Kuleana_11 (AS2), Melons_12 (AS2), Polka_11 (AS2),

Start 46:

- Found in 39 of 493 (7.9%) of genes in pham
- Manual Annotations of this start: 23 of 421
- Called 64.1% of time when present
- Phage (with cluster) where this start called: Amelia_12 (AS2), AylexOG_11 (EB), BAjuniper_10 (EB), BabyDaisy_11 (EB), BabyYoda_10 (EB), Bedetta_12 (AS2), CliffHanger_11 (EB), Colusalem_11 (AS2), Didgeridoo_11 (EB), DirtyBubble_10 (EB), Finalfrontier_11 (EB), HannahPhantana_12 (AS2), IndyLu_10 (EB), Jerole_12 (AS2), Kate33_10 (EB), Lahqtemish_10 (EB), Lunar_12 (AS2), PastaFagioli_10 (EB), SarBear_10 (EB), Shayna_9 (EB), Slay_10 (EB), Stromboli_10 (EB), SunnyD_9 (EB), Swervy_10 (EB), Teagster_9 (EB),

Start 47:

- Found in 82 of 493 (16.6%) of genes in pham
- Manual Annotations of this start: 73 of 421
- Called 100.0% of time when present
- Phage (with cluster) where this start called: Abigail_10 (EB), Agamoto_14 (FR), Albedo_10 (EB), Albright_10 (EB), AnnaLie_11 (EB), AnnabelLee_12 (FR), Armstrong_9 (EB), Arroyo_11 (EB), Audell_15 (FR), AuntGwenStacy_17 (Y), Avocadoman_10 (EB), Bachaco_10 (EB), BelmontSKP_11 (EB), Bengal_10 (EB), Bernstein_9 (EB), Bipper_17 (Y), Brahms_9 (EB), BubbaBear_10 (EB), Buldak_10 (EB), Burritobowl_10 (EB), CardboardBox_12 (FR), Cashington_10 (EB), Celaena_10 (EB), ChamoyPickle_12 (FR), ChiliPepper_10 (EB), ChipsNGuac_12 (FR), Clayda5_9 (EB), Coltrane_9 (EB), Cracklewink_17 (Y), CroZenni_10 (EB), CupcakePrincess_10 (EB), DickRichards_10 (EB), Dismas_10 (EB), Doobus_10 (EB), Eden_9 (EB), Eula_10 (EB), Ezurina_11 (FR), Faiyaz_17 (Y), FlameThrower_10 (EB), Franklin22_9 (EB), Gack_9 (EB), Gerri43_12 (FR), Hilltopfarm_17 (Y), Jabb_10 (EB), Johnathan_10 (EB), Jovita_10 (EB), Kamdara_10 (EB), Katzastrophic_10 (EB), Kenzers_10 (EB), Kieran_10 (EB), LastNadiia_15 (FR), Lilo27_10 (EB), LimaBean_10 (EB), Lynlen_10 (EB), Makima_13 (FR), Milomuff_11 (EB), Mireles_12 (FR), MsUbiquitous_10 (EB), Neuville_12 (FR), Nicky22_11 (EB), Olliecat_10 (EB), Pecas_10 (EB), PhigPhack_10 (EB), Phisb_10 (EB), QMacho_11 (EB), Quenya_11 (EB), Roberts_12 (FR), Rollins_9 (EB), Rona_10 (EB), SansAfet_10 (EB),

Sharkboy_10 (EB), SirBeanington_10 (EB), Skylord_9 (EB), Softsoap_10 (EB), Solea_11 (EB), Squiracle_10 (EB), Studio_12 (FR), TMaxx_12 (FR), TripleC_15 (FR), TukTuk_10 (EB), Typha_17 (Y), Vitas_9 (EB),

Start 48:

- Found in 71 of 493 (14.4%) of genes in pham
- Manual Annotations of this start: 42 of 421
- Called 81.7% of time when present
- Phage (with cluster) where this start called: Abidatro_11 (AS1), AdoptaAdorbs_10 (AS3), AlexMinion_10 (AS3), Amanises_12 (AS1), AmCi24_10 (AS3), Amphitrite_10 (AS3), Andrew_11 (AS3), Antrice_11 (AS2), Atlantica_10 (AS3), AvGardian_10 (EB), Azaz_10 (AS3), Babushka_10 (AS3), Basilisk_11 (AS1), Bibble12_12 (AS2), Brynnie_11 (AS1), Camara_10 (AS3), CanFranMach_10 (EB), Chickaboom_10 (AS1), Chicken_11 (AS1), Cygnet_11 (AS2), Damocles_12 (AS2), DanHam62_10 (AS3), Eesa_11 (AS1), Fingolfin_10 (AS3), Galaxy_11 (AS1), Glotell_10 (AS3), GramZayde_11 (AS2), Gravel_12 (AS1), HamCheese_10 (AS3), Icarian_11 (EB), Jamun_11 (AS1), Juno112_10 (AS3), KHumphrey_10 (AS3), KendraB23_12 (AS1), Laphuphu24k_10 (AS3), Leona_10 (AS3), LittleTokyo_11 (AS2), Niblet_11 (AS1), Oppalora_10 (AS3), Orcanus_11 (AS1), OtsoOtso_11 (AS2), Pelletreau_12 (AS1), PhirstandPhine_12 (AS2), PhluffyCoco_10 (AS3), Rattail_10 (AS3), RedFox_10 (AS3), Renna12_11 (AS3), Ruchi_11 (AS1), Shen_12 (AS1), StuartMinion_10 (AS3), TaylorSipt_11 (AS1), Toad24_12 (AS1), Vulpecula_11 (AS1), WalkingDead_10 (EB), Westrich_12 (AS1), WileyE_10 (AS1), Zhuangyuan_12 (AS2), Zixiang_11 (AS1),

Start 49:

- Found in 22 of 493 (4.5%) of genes in pham
- Manual Annotations of this start: 6 of 421
- Called 36.4% of time when present
- Phage (with cluster) where this start called: BaileyBlu_10 (FP), CallinAllBarbz_10 (FP), Elfy_9 (FP), GrimEater_10 (FP), Jankie_10 (FP), LisoBros_10 (FP), SPB78_11 (BA), VWB_10 (BA),

Start 50:

- Found in 1 of 493 (0.2%) of genes in pham
- Manual Annotations of this start: 1 of 421
- Called 100.0% of time when present
- Phage (with cluster) where this start called: Elva_11 (EB),

Start 52:

- Found in 1 of 493 (0.2%) of genes in pham
- Manual Annotations of this start: 1 of 421
- Called 100.0% of time when present
- Phage (with cluster) where this start called: Shambre1_11 (singleton),

Start 53:

- Found in 10 of 493 (2.0%) of genes in pham
- No Manual Annotations of this start.
- Called 10.0% of time when present
- Phage (with cluster) where this start called: Gibbzilla_12 (FB),

Start 54:

- Found in 1 of 493 (0.2%) of genes in pham

- Manual Annotations of this start: 1 of 421
- Called 100.0% of time when present
- Phage (with cluster) where this start called: Rowa_10 (BL),

Start 58:

- Found in 2 of 493 (0.4%) of genes in pham
- Manual Annotations of this start: 2 of 421
- Called 100.0% of time when present
- Phage (with cluster) where this start called: AbbeyMikolon_10 (BL), Nesbitt_10 (BL),

Start 60:

- Found in 1 of 493 (0.2%) of genes in pham
- Manual Annotations of this start: 1 of 421
- Called 100.0% of time when present
- Phage (with cluster) where this start called: Lauer_10 (CT),

Start 65:

- Found in 6 of 493 (1.2%) of genes in pham
- Manual Annotations of this start: 6 of 421
- Called 100.0% of time when present
- Phage (with cluster) where this start called: Fryberger_43 (DP), Guey18_48 (DP), Keelan_41 (DP), Ronaldo_46 (DP), Volt_45 (DP), Ziko_46 (DP),

Start 66:

- Found in 26 of 493 (5.3%) of genes in pham
- No Manual Annotations of this start.
- Called 3.8% of time when present
- Phage (with cluster) where this start called: PHL037M02_09 (BU),

Start 67:

- Found in 83 of 493 (16.8%) of genes in pham
- Manual Annotations of this start: 62 of 421
- Called 94.0% of time when present
- Phage (with cluster) where this start called: Agatha_11 (CT), AikoCarson_10 (CT), Amok_10 (CT), AndPeggy_10 (CT), Axym_11 (CT), Azira_13 (CT), Balloona_10 (CT), Bavidard_11 (CT), BigChungus_10 (CT), BillDoor_13 (CT), Biskit_12 (CT), Blondies_12 (CT), Bubble_11 (CT), Burnsey_11 (CT), Button_12 (CT), Buttrmlkdreams_11 (CT), Carsonalex_12 (CT), CherryonLim_12 (CT), ChickenTender_13 (CT), Cleo_11 (CT), CocoaPuff_10 (CT), Cozz_11 (CT), Dre3_11 (CT), ElJefes_10 (CT), Elinal_12 (CT), Elliott_11 (CT), Emalyn_10 (CT), Feastonyeet_10 (CT), Fribs8_12 (CT), GTE2_09 (CT), GiKK_14 (CT), Gibbous_11 (CT), GoldHunter_12 (CT), Hexbug_13 (CT), HippoPololi_13 (CT), Horseradish_12 (CT), Jamzy_14 (CT), KayGee_11 (CT), MAnor_11 (CT), MScarn_13 (CT), MaVan_13 (CT), Margaret_14 (CT), Mayweather_12 (CT), McDazzle_10 (CT), MunkgeeRoachy_11 (CT), Nibbles_13 (CT), Nina_12 (CT), Nodigi_13 (CT), Orla_13 (CT), Pons_11 (CT), PotPie_11 (CT), PsychoKiller_11 (CT), Quasar_11 (CT), RADical_12 (CT), RSchmailzl_12 (CT), RanchParmCat_14 (CT), RedBaron_13 (CT), SheckWes_10 (CT), SketchMex_10 (CT), Socotra_12 (CT), Sopespian_11 (CT), Starburst_12 (CT), SteamedHams_13 (CT), SummitAcademy_10 (CT), Survivors_13 (CT), SweatNTears_13 (CT), Tarnish_11 (CT), Tolls_13 (CT), Troje_11 (CT), Typhonomachy_11 (CT), Vine_12 (CT), Wallaby_15 (CT), Wolfwood_13 (CT), Yakult_12 (CT), Yarn_10 (CT), Yucky_11 (CT), Yummy_12 (CT), Zareef_13 (CT),

Start 68:

- Found in 149 of 493 (30.2%) of genes in pham
- Manual Annotations of this start: 135 of 421
- Called 99.3% of time when present
- Phage (with cluster) where this start called: ATCC29399BC_9 (BU), ATCC29399BT_9 (BU), Albanese_13 (AK), Aledel_9 (AK), AppleCider_13 (AK), Aquarius_9 (BU), Attacne_9 (BU), AustinPowers_9 (AK), Beethoven_13 (AK), Bennie_9 (AK), BigMack_9 (AK), Bodacious_9 (AK), BrotherBLo_13 (AK), BruceLethal_9 (BU), CallieOMalley_13 (AK), Canowicakte_13 (AK), Carpal_13 (AK), ChewChew_9 (AK), Cholula_13 (AK), Chridison_9 (AK), Christian_9 (AK), Cota_9 (BU), CristinaYang_9 (AK), DS6A_14 (singleton), Daiboju_9 (AK), Dino_13 (AK), DrParker_9 (BU), DrRobert_9 (AK), DreamTeam_9 (AK), Enochoraptor_9 (BU), Enoki_9 (BU), EstebanJulior_9 (AK), Eunoia_9 (AK), Fluke_13 (AK), Gaia_8 (X), Gisselle_9 (AK), Glenn_13 (AK), Graynor_13 (AK), GreenHearts_13 (AK), Greenhouse_13 (AK), HeadNerd_9 (AK), Herb_9 (AK), Huckleberry_9 (AK), HunterDalle_9 (AK), Huntingdon_13 (AK), Immaculata_13 (AK), Joann_13 (AK), Jumboset_13 (AK), Kalizoi_13 (AK), Keiki_9 (BU), KingBob_9 (AK), Kittykat_9 (AK), Korra_13 (AK), Kubed_9 (BU), Lakshmi_13 (AK), Lasagna_9 (AK), Lauchelly_9 (BU), Lennox_9 (AK), Leviosa_9 (BU), LilBandit_9 (BU), LilSpotty_10 (singleton), LilStuart_9 (AK), Litotes_13 (AK), Lucy_9 (AK), MEAK_9 (BU), Makoto_9 (AK), MamaPearl_9 (AK), Maria1952_9 (AK), MeganNoll_13 (AK), Misaeng_13 (AK), Moki_9 (AK), Moyashi_9 (BU), MrAK_9 (BU), MrBoss_13 (AK), MrGloopy_13 (AK), Nancia_9 (AK), Nebkiss_8 (X), Nubia_13 (AK), OMalley_9 (AK), OurGirlNessie_9 (AK), Ouroboros_9 (BU), Oxynfrius_13 (AK), P1.1_9 (BU), P100.1_9 (BU), P100A_9 (BU), P100D_9 (BU), P101A_9 (BU), P104A_9 (BU), P104B_9 (BU), P105_9 (BU), P106A_9 (BU), P106C_9 (BU), P106I_9 (BU), P106L_9 (BU), P106M_9 (BU), P107A_9 (BU), P107C_9 (BU), P108C_9 (BU), P14.4_9 (BU), P9.1_9 (BU), PA6_9 (BU), PAD20_9 (BU), PAS50_9 (BU), PHL010M04_09 (BU), PHL060L00_09 (BU), PHL067M10_09 (BU), PHL071N05_09 (BU), PHL111M01_09 (BU), PHL112N00_09 (BU), PHL113M01_09 (BU), PHL114L00_09 (BU), PartyCup_13 (AK), PinkFriday_9 (AK), Pirate_9 (BU), PitaDog_9 (AK), Potatoes_13 (AK), Preamble_9 (AK), Procrass1_9 (BU), Pterodactyl_9 (AK), Pumancara_9 (AK), QueenBey_9 (BU), RAP15_13 (AK), RcigaStruga_13 (AK), Rileysaurus_9 (BU), Rivovina_9 (AK), Riverdale_13 (AK), Rozby_13 (AK), SKKY_9 (BU), Savage2526_13 (AK), Scuttle_13 (AK), Sergei_9 (AK), Solid_9 (BU), Spartoi_9 (singleton), Stellammi_8 (UNK), Stormborn_9 (BU), Supakev_9 (AK), Supernova_9 (BU), Suppi_13 (AK), TattModd_13 (AK), Temper16_9 (AK), Urla_9 (AK), Vallejo_13 (AK), Vulture_9 (AK), Wawa_13 (AK), Wayne_13 (AK), Wizzo_9 (BU), WonderBoy_9 (AK), Zorro_13 (AK),

Start 69:

- Found in 26 of 493 (5.3%) of genes in pham
- Manual Annotations of this start: 24 of 421
- Called 100.0% of time when present
- Phage (with cluster) where this start called: Angelique_12 (CY1), Avani_12 (F2), BeeGee_12 (CY5), Blarby_13 (F), Bradissa_12 (CY1), BritBrat_12 (CY2), Cashline_12 (CY6), Che9d_12 (F2), Confidence_12 (CY1), Demsculpinboyz_12 (F2), EMSquaredA_12 (CY1), EnalisNailo_12 (CY1), Floral_12 (CY1), Jabbawokkie_13 (F2), Jablanski_12 (CY3), Lilas_12 (CY1), LonelyBoi_12 (CY7), Marteena_12 (CY1), Pollux_12 (CY1), Posh_12 (CY4), Pytheas_12 (CY3), SilverChicken_12 (F2), Soul22_12 (F2), Wrigley_12 (CY4), Yoshi_12 (F2), Zapner_13 (F2),

Start 70:

- Found in 1 of 493 (0.2%) of genes in pham

- Manual Annotations of this start: 1 of 421
- Called 100.0% of time when present
- Phage (with cluster) where this start called: Sleepyhead_11 (singleton),

Start 71:

- Found in 10 of 493 (2.0%) of genes in pham
- Manual Annotations of this start: 9 of 421
- Called 100.0% of time when present
- Phage (with cluster) where this start called: Apricot_11 (DN3), BearBQ_11 (DN), Birdsong_11 (DN), Crater_11 (DN3), InLimbo_11 (DH), Kuwabara_11 (DN4), Lucky10_10 (DH), Morkie_10 (DH), MortyNRick_11 (DN), PhorbesPhlower_10 (DH),

Start 72:

- Found in 2 of 493 (0.4%) of genes in pham
- No Manual Annotations of this start.
- Called 100.0% of time when present
- Phage (with cluster) where this start called: Raya_10 (FQ2), Skyerus_10 (FQ2),

Start 73:

- Found in 3 of 493 (0.6%) of genes in pham
- Manual Annotations of this start: 3 of 421
- Called 100.0% of time when present
- Phage (with cluster) where this start called: Ecliptus_11 (DN), Juicebox_12 (singleton), ODay_11 (DN),

Start 77:

- Found in 92 of 493 (18.7%) of genes in pham
- No Manual Annotations of this start.
- Called 1.1% of time when present
- Phage (with cluster) where this start called: Malvina_13 (CT),

Start 92:

- Found in 44 of 493 (8.9%) of genes in pham
- No Manual Annotations of this start.
- Called 6.8% of time when present
- Phage (with cluster) where this start called: CanesSauce_11 (CT), CaramelLatte_11 (CT), ChocoMunchkin_11 (CT),

Start 93:

- Found in 22 of 493 (4.5%) of genes in pham
- Manual Annotations of this start: 20 of 421
- Called 100.0% of time when present
- Phage (with cluster) where this start called: Asapag_11 (DN1), BENtherdunthat_11 (DN1), BotCity_11 (DN), Budski_11 (DN), CheeseTouch_11 (DN1), Frickyeah_11 (DN1), Getalong_11 (DN1), Holliday_11 (DN1), Horus_11 (DN1), Kamaru_11 (DN1), Kenna_11 (DN1), Leroy_11 (DN1), LitninMcQueen_11 (DN1), Lutum_11 (DN1), Malisha_11 (DN), Periwinkle_11 (DN1), Phabuloso_11 (DN1), Phistory_11 (DN1), ShawBrad_11 (DN1), Spooky_11 (DN2), Squiddly_12 (DN2), Whitney_11 (DN1),

Summary by clusters:

There are 33 clusters represented in this pham: DN, FP, FR, BA, DH, CY2, BL, CY1, BU, FB, DP, CY3, F, DN4, DN1, DN3, DN2, AS3, AS2, AS1, CY7, CY6, CY5, CY4,

AK, EB, Y, X, singleton, UNK, CT, F2, FQ2,

Info for manual annotations of cluster AK:

- Start number 68 was manually annotated 84 times for cluster AK.

Info for manual annotations of cluster AS1:

- Start number 48 was manually annotated 17 times for cluster AS1.

Info for manual annotations of cluster AS2:

- Start number 42 was manually annotated 1 time for cluster AS2.
- Start number 45 was manually annotated 6 times for cluster AS2.
- Start number 46 was manually annotated 5 times for cluster AS2.
- Start number 48 was manually annotated 5 times for cluster AS2.

Info for manual annotations of cluster AS3:

- Start number 48 was manually annotated 18 times for cluster AS3.

Info for manual annotations of cluster BL:

- Start number 54 was manually annotated 1 time for cluster BL.
- Start number 58 was manually annotated 2 times for cluster BL.

Info for manual annotations of cluster BU:

- Start number 68 was manually annotated 45 times for cluster BU.

Info for manual annotations of cluster CT:

- Start number 60 was manually annotated 1 time for cluster CT.
- Start number 67 was manually annotated 62 times for cluster CT.

Info for manual annotations of cluster CY1:

- Start number 69 was manually annotated 9 times for cluster CY1.

Info for manual annotations of cluster CY2:

- Start number 69 was manually annotated 1 time for cluster CY2.

Info for manual annotations of cluster CY3:

- Start number 69 was manually annotated 2 times for cluster CY3.

Info for manual annotations of cluster CY4:

- Start number 69 was manually annotated 2 times for cluster CY4.

Info for manual annotations of cluster CY5:

- Start number 69 was manually annotated 1 time for cluster CY5.

Info for manual annotations of cluster CY6:

- Start number 69 was manually annotated 1 time for cluster CY6.

Info for manual annotations of cluster CY7:

- Start number 69 was manually annotated 1 time for cluster CY7.

Info for manual annotations of cluster DH:

- Start number 71 was manually annotated 3 times for cluster DH.

Info for manual annotations of cluster DN:

- Start number 71 was manually annotated 3 times for cluster DN.
- Start number 73 was manually annotated 2 times for cluster DN.
- Start number 93 was manually annotated 3 times for cluster DN.

Info for manual annotations of cluster DN1:

- Start number 93 was manually annotated 15 times for cluster DN1.

Info for manual annotations of cluster DN2:

- Start number 93 was manually annotated 2 times for cluster DN2.

Info for manual annotations of cluster DN3:

- Start number 71 was manually annotated 2 times for cluster DN3.

Info for manual annotations of cluster DN4:

- Start number 71 was manually annotated 1 time for cluster DN4.

Info for manual annotations of cluster DP:

- Start number 65 was manually annotated 6 times for cluster DP.

Info for manual annotations of cluster EB:

- Start number 34 was manually annotated 1 time for cluster EB.
- Start number 37 was manually annotated 1 time for cluster EB.
- Start number 43 was manually annotated 2 times for cluster EB.
- Start number 46 was manually annotated 18 times for cluster EB.
- Start number 47 was manually annotated 56 times for cluster EB.
- Start number 48 was manually annotated 2 times for cluster EB.
- Start number 50 was manually annotated 1 time for cluster EB.

Info for manual annotations of cluster F2:

- Start number 69 was manually annotated 7 times for cluster F2.

Info for manual annotations of cluster FP:

- Start number 49 was manually annotated 6 times for cluster FP.

Info for manual annotations of cluster FR:

- Start number 47 was manually annotated 11 times for cluster FR.

Info for manual annotations of cluster UNK:

- Start number 68 was manually annotated 1 time for cluster UNK.

Info for manual annotations of cluster X:

- Start number 68 was manually annotated 2 times for cluster X.

Info for manual annotations of cluster Y:

- Start number 47 was manually annotated 6 times for cluster Y.

Gene Information:

Gene: ATCC29399BC_9 Start: 6452, Stop: 6742, Start Num: 68
Candidate Starts for ATCC29399BC_9:
(Start: 68 @6452 has 135 MA's), (75, 6464), (77, 6470), (81, 6482), (86, 6500), (87, 6503), (91, 6518),
(95, 6527), (96, 6530), (107, 6575), (121, 6617), (125, 6629), (146, 6713),

Gene: ATCC29399BT_9 Start: 6448, Stop: 6738, Start Num: 68
Candidate Starts for ATCC29399BT_9:
(66, 6442), (Start: 68 @6448 has 135 MA's), (77, 6466), (86, 6496), (91, 6514), (95, 6523), (96, 6526),
(100, 6547), (121, 6613), (125, 6625), (132, 6649), (146, 6709),

Gene: AbbeyMikolon_10 Start: 7532, Stop: 7783, Start Num: 58
Candidate Starts for AbbeyMikolon_10:
(Start: 58 @7532 has 2 MA's), (82, 7562), (106, 7637), (118, 7664), (135, 7703),

Gene: Abidatro_11 Start: 8071, Stop: 8328, Start Num: 48
Candidate Starts for Abidatro_11:
(41, 8053), (Start: 48 @8071 has 42 MA's), (103, 8185), (133, 8239), (134, 8242),

Gene: Abigail_10 Start: 7773, Stop: 8030, Start Num: 47
Candidate Starts for Abigail_10:
(Start: 42 @7761 has 1 MA's), (Start: 47 @7773 has 73 MA's), (79, 7794), (135, 7950), (146, 8001),

Gene: AdoptaAdorbs_10 Start: 7655, Stop: 7909, Start Num: 48
Candidate Starts for AdoptaAdorbs_10:
(39, 7619), (Start: 48 @7655 has 42 MA's), (78, 7679), (91, 7724), (96, 7736), (113, 7781), (117, 7787),
(126, 7799), (135, 7826),

Gene: Agamoto_14 Start: 10531, Stop: 10791, Start Num: 47
Candidate Starts for Agamoto_14:
(Start: 47 @10531 has 73 MA's), (101, 10630), (135, 10711), (137, 10714),

Gene: Agatha_11 Start: 7257, Stop: 7538, Start Num: 67
Candidate Starts for Agatha_11:
(Start: 67 @7257 has 62 MA's),

Gene: AikoCarson_10 Start: 6987, Stop: 7256, Start Num: 67
Candidate Starts for AikoCarson_10:
(Start: 67 @6987 has 62 MA's),

Gene: Akino08_10 Start: 7908, Stop: 8216, Start Num: 37
Candidate Starts for Akino08_10:
(Start: 34 @7896 has 1 MA's), (Start: 37 @7908 has 1 MA's), (91, 8022), (135, 8136),

Gene: Albanese_13 Start: 10184, Stop: 10474, Start Num: 68
Candidate Starts for Albanese_13:
(Start: 68 @10184 has 135 MA's), (79, 10208), (100, 10283), (103, 10292), (108, 10310), (135, 10391),

Gene: Albedo_10 Start: 7645, Stop: 7905, Start Num: 47
Candidate Starts for Albedo_10:
(Start: 42 @7633 has 1 MA's), (Start: 47 @7645 has 73 MA's), (79, 7669), (135, 7825), (140, 7840),
(146, 7876),

Gene: Albright_10 Start: 7654, Stop: 7911, Start Num: 47

Candidate Starts for Albright_10:

(Start: 42 @7642 has 1 MA's), (Start: 47 @7654 has 73 MA's), (79, 7675), (135, 7831), (146, 7882),

Gene: Aledel_9 Start: 7261, Stop: 7548, Start Num: 68

Candidate Starts for Aledel_9:

(Start: 68 @7261 has 135 MA's), (100, 7360), (135, 7468), (151, 7540),

Gene: AlexMinion_10 Start: 7681, Stop: 7935, Start Num: 48

Candidate Starts for AlexMinion_10:

(10, 7405), (12, 7444), (Start: 48 @7681 has 42 MA's), (92, 7753), (113, 7807), (123, 7819), (126, 7825), (135, 7852),

Gene: Amanises_12 Start: 8245, Stop: 8499, Start Num: 48

Candidate Starts for Amanises_12:

(23, 8116), (39, 8209), (41, 8227), (Start: 48 @8245 has 42 MA's), (78, 8269), (123, 8383), (126, 8389), (137, 8419),

Gene: Amelia_12 Start: 8244, Stop: 8504, Start Num: 46

Candidate Starts for Amelia_12:

(Start: 42 @8235 has 1 MA's), (Start: 45 @8241 has 6 MA's), (Start: 46 @8244 has 23 MA's), (Start: 48 @8250 has 42 MA's), (78, 8274), (91, 8319), (117, 8382), (126, 8394),

Gene: AmiCi24_10 Start: 7655, Stop: 7909, Start Num: 48

Candidate Starts for AmiCi24_10:

(11, 7397), (13, 7421), (16, 7457), (21, 7505), (39, 7619), (Start: 48 @7655 has 42 MA's), (78, 7679), (92, 7727), (96, 7736), (113, 7781), (126, 7799), (135, 7826),

Gene: Amok_10 Start: 6987, Stop: 7256, Start Num: 67

Candidate Starts for Amok_10:

(Start: 67 @6987 has 62 MA's),

Gene: Amphitrite_10 Start: 7653, Stop: 7907, Start Num: 48

Candidate Starts for Amphitrite_10:

(39, 7617), (Start: 48 @7653 has 42 MA's), (78, 7677), (91, 7722), (96, 7734), (113, 7779), (117, 7785), (126, 7797), (135, 7824),

Gene: AndPeggy_10 Start: 7275, Stop: 7547, Start Num: 67

Candidate Starts for AndPeggy_10:

(Start: 67 @7275 has 62 MA's),

Gene: Andrew_11 Start: 8034, Stop: 8288, Start Num: 48

Candidate Starts for Andrew_11:

(4, 7596), (7, 7704), (19, 7854), (23, 7905), (26, 7923), (39, 7998), (Start: 48 @8034 has 42 MA's), (78, 8058), (92, 8106), (113, 8160), (117, 8166), (126, 8178), (135, 8205),

Gene: Angelique_12 Start: 8007, Stop: 8264, Start Num: 69

Candidate Starts for Angelique_12:

(Start: 69 @8007 has 24 MA's), (98, 8088), (149, 8256),

Gene: AnnaLie_11 Start: 8000, Stop: 8320, Start Num: 47

Candidate Starts for AnnaLie_11:

(Start: 42 @7988 has 1 MA's), (Start: 47 @8000 has 73 MA's), (79, 8084), (134, 8237),

Gene: AnnabelLee_12 Start: 7464, Stop: 7730, Start Num: 47
Candidate Starts for AnnabelLee_12:
(Start: 47 @7464 has 73 MA's), (135, 7650), (137, 7653), (148, 7710),

Gene: Antrice_11 Start: 7990, Stop: 8244, Start Num: 48
Candidate Starts for Antrice_11:
(39, 7954), (Start: 48 @7990 has 42 MA's), (78, 8014), (117, 8122), (133, 8155), (135, 8161),

Gene: AppleCider_13 Start: 10140, Stop: 10409, Start Num: 68
Candidate Starts for AppleCider_13:
(64, 10128), (Start: 68 @10140 has 135 MA's), (77, 10158), (96, 10218), (100, 10239), (135, 10326),

Gene: Apricot_11 Start: 7129, Stop: 7386, Start Num: 71
Candidate Starts for Apricot_11:
(61, 7096), (Start: 71 @7129 has 9 MA's), (100, 7222), (108, 7243), (135, 7315), (137, 7318), (141, 7339), (147, 7369),

Gene: Aquarius_9 Start: 6442, Stop: 6732, Start Num: 68
Candidate Starts for Aquarius_9:
(Start: 68 @6442 has 135 MA's), (75, 6454), (77, 6460), (81, 6472), (86, 6490), (87, 6493), (91, 6508), (95, 6517), (96, 6520), (107, 6565), (121, 6607), (125, 6619),

Gene: Armstrong_9 Start: 7425, Stop: 7688, Start Num: 47
Candidate Starts for Armstrong_9:
(36, 7368), (Start: 47 @7425 has 73 MA's), (53, 7440), (79, 7455), (119, 7572), (141, 7632), (147, 7662),

Gene: Arroyo_11 Start: 8124, Stop: 8381, Start Num: 47
Candidate Starts for Arroyo_11:
(Start: 42 @8112 has 1 MA's), (Start: 47 @8124 has 73 MA's), (79, 8145), (134, 8298), (135, 8301), (140, 8316), (146, 8352),

Gene: Asapag_11 Start: 6824, Stop: 7048, Start Num: 93
Candidate Starts for Asapag_11:
(29, 6587), (31, 6602), (Start: 49 @6686 has 6 MA's), (84, 6782), (Start: 93 @6824 has 20 MA's), (104, 6863), (109, 6881), (126, 6938), (129, 6944), (136, 6971), (149, 7034),

Gene: Atlantica_10 Start: 7655, Stop: 7909, Start Num: 48
Candidate Starts for Atlantica_10:
(11, 7397), (13, 7421), (16, 7457), (21, 7505), (39, 7619), (Start: 48 @7655 has 42 MA's), (78, 7679), (92, 7727), (96, 7736), (113, 7781), (126, 7799), (135, 7826),

Gene: Attacne_9 Start: 6453, Stop: 6743, Start Num: 68
Candidate Starts for Attacne_9:
(Start: 68 @6453 has 135 MA's), (75, 6465), (77, 6471), (81, 6483), (86, 6501), (87, 6504), (91, 6519), (95, 6528), (96, 6531), (107, 6576), (125, 6630), (132, 6654),

Gene: Audell_15 Start: 10801, Stop: 11070, Start Num: 47
Candidate Starts for Audell_15:
(Start: 47 @10801 has 73 MA's), (135, 10990), (137, 10993),

Gene: AuntGwenStacy_17 Start: 11749, Stop: 11997, Start Num: 47
Candidate Starts for AuntGwenStacy_17:

(36, 11692), (Start: 47 @11749 has 73 MA's), (86, 11791), (112, 11866), (137, 11914), (147, 11965), (151, 11983),

Gene: AustinPowers_9 Start: 7262, Stop: 7549, Start Num: 68

Candidate Starts for AustinPowers_9:

(Start: 68 @7262 has 135 MA's), (100, 7361), (135, 7469),

Gene: AvGardian_10 Start: 7705, Stop: 7968, Start Num: 48

Candidate Starts for AvGardian_10:

(Start: 46 @7699 has 23 MA's), (Start: 48 @7705 has 42 MA's), (79, 7732),

Gene: Avani_12 Start: 6948, Stop: 7220, Start Num: 69

Candidate Starts for Avani_12:

(Start: 69 @6948 has 24 MA's), (91, 7008), (92, 7011), (100, 7041), (107, 7065), (115, 7095), (138, 7155),

Gene: Avocadoman_10 Start: 7712, Stop: 7969, Start Num: 47

Candidate Starts for Avocadoman_10:

(Start: 42 @7700 has 1 MA's), (Start: 47 @7712 has 73 MA's), (79, 7733), (135, 7889), (146, 7940),

Gene: Axym_11 Start: 7257, Stop: 7538, Start Num: 67

Candidate Starts for Axym_11:

(32, 7134), (Start: 67 @7257 has 62 MA's),

Gene: AylexOG_11 Start: 7993, Stop: 8256, Start Num: 46

Candidate Starts for AylexOG_11:

(Start: 42 @7984 has 1 MA's), (Start: 46 @7993 has 23 MA's), (79, 8020), (135, 8176), (140, 8191),

Gene: Azaz_10 Start: 7706, Stop: 7960, Start Num: 48

Candidate Starts for Azaz_10:

(11, 7448), (13, 7472), (16, 7508), (21, 7556), (38, 7664), (39, 7670), (Start: 48 @7706 has 42 MA's), (78, 7730), (92, 7778), (96, 7787), (113, 7832), (126, 7850), (135, 7877),

Gene: Azira_13 Start: 8163, Stop: 8462, Start Num: 67

Candidate Starts for Azira_13:

(66, 8160), (Start: 67 @8163 has 62 MA's), (100, 8265), (117, 8334), (135, 8376), (148, 8436), (149, 8439), (150, 8442),

Gene: BAjuniper_10 Start: 7595, Stop: 7852, Start Num: 46

Candidate Starts for BAjuniper_10:

(Start: 42 @7586 has 1 MA's), (Start: 46 @7595 has 23 MA's), (79, 7616), (134, 7769), (135, 7772), (145, 7817),

Gene: BENtherdunthat_11 Start: 6824, Stop: 7048, Start Num: 93

Candidate Starts for BENtherdunthat_11:

(29, 6587), (31, 6602), (Start: 49 @6686 has 6 MA's), (84, 6782), (Start: 93 @6824 has 20 MA's), (104, 6863), (109, 6881), (126, 6938), (129, 6944), (136, 6971), (149, 7034),

Gene: Babushka_10 Start: 7703, Stop: 7957, Start Num: 48

Candidate Starts for Babushka_10:

(11, 7445), (13, 7469), (16, 7505), (21, 7553), (39, 7667), (Start: 48 @7703 has 42 MA's), (78, 7727), (92, 7775), (113, 7829), (126, 7847), (135, 7874),

Gene: BabyDaisy_11 Start: 7870, Stop: 8133, Start Num: 46
Candidate Starts for BabyDaisy_11:
(Start: 42 @7861 has 1 MA's), (Start: 46 @7870 has 23 MA's),

Gene: BabyYoda_10 Start: 7899, Stop: 8162, Start Num: 46
Candidate Starts for BabyYoda_10:
(Start: 46 @7899 has 23 MA's), (51, 7911), (79, 7926), (119, 8043), (135, 8082), (140, 8097),

Gene: Bachaco_10 Start: 7786, Stop: 8049, Start Num: 47
Candidate Starts for Bachaco_10:
(Start: 42 @7774 has 1 MA's), (Start: 47 @7786 has 73 MA's), (79, 7813), (85, 7831), (119, 7930),
(135, 7969),

Gene: BaileyBlu_10 Start: 6510, Stop: 6782, Start Num: 49
Candidate Starts for BaileyBlu_10:
(Start: 49 @6510 has 6 MA's), (56, 6525), (79, 6546), (86, 6570), (87, 6573), (89, 6579), (135, 6699),

Gene: Balloona_10 Start: 7029, Stop: 7301, Start Num: 67
Candidate Starts for Balloona_10:
(66, 7026), (Start: 67 @7029 has 62 MA's), (133, 7212), (135, 7218), (141, 7242),

Gene: Basilisk_11 Start: 8395, Stop: 8652, Start Num: 48
Candidate Starts for Basilisk_11:
(2, 7819), (4, 7933), (7, 8041), (9, 8086), (21, 8242), (Start: 48 @8395 has 42 MA's), (133, 8563),

Gene: Bavilard_11 Start: 7809, Stop: 8081, Start Num: 67
Candidate Starts for Bavilard_11:
(66, 7806), (Start: 67 @7809 has 62 MA's), (133, 7992), (135, 7998), (141, 8022),

Gene: BearBQ_11 Start: 7129, Stop: 7386, Start Num: 71
Candidate Starts for BearBQ_11:
(61, 7096), (Start: 71 @7129 has 9 MA's), (113, 7264), (133, 7309), (135, 7315), (137, 7318), (141,
7339),

Gene: Bedetta_12 Start: 8244, Stop: 8504, Start Num: 46
Candidate Starts for Bedetta_12:
(Start: 42 @8235 has 1 MA's), (Start: 45 @8241 has 6 MA's), (Start: 46 @8244 has 23 MA's), (Start: 48
@8250 has 42 MA's), (78, 8274), (91, 8319), (117, 8382), (126, 8394),

Gene: BeeGee_12 Start: 8009, Stop: 8266, Start Num: 69
Candidate Starts for BeeGee_12:
(Start: 69 @8009 has 24 MA's), (141, 8219), (149, 8258),

Gene: Beethoven_13 Start: 10100, Stop: 10369, Start Num: 68
Candidate Starts for Beethoven_13:
(Start: 68 @10100 has 135 MA's), (87, 10151), (91, 10166), (100, 10199),

Gene: BelmontSKP_11 Start: 8000, Stop: 8320, Start Num: 47
Candidate Starts for BelmontSKP_11:
(Start: 42 @7988 has 1 MA's), (Start: 47 @8000 has 73 MA's), (79, 8084), (134, 8237),

Gene: Bengal_10 Start: 7654, Stop: 7911, Start Num: 47
Candidate Starts for Bengal_10:

(Start: 42 @7642 has 1 MA's), (Start: 47 @7654 has 73 MA's), (79, 7675), (135, 7831), (146, 7882),

Gene: Bennie_9 Start: 7245, Stop: 7514, Start Num: 68

Candidate Starts for Bennie_9:

(Start: 68 @7245 has 135 MA's), (77, 7263), (100, 7344), (122, 7389), (135, 7431),

Gene: Bernstein_9 Start: 7485, Stop: 7748, Start Num: 47

Candidate Starts for Bernstein_9:

(36, 7428), (Start: 47 @7485 has 73 MA's), (53, 7500), (79, 7515), (119, 7632), (141, 7692), (147, 7722),

Gene: Bible12_12 Start: 8253, Stop: 8507, Start Num: 48

Candidate Starts for Bible12_12:

(Start: 42 @8238 has 1 MA's), (Start: 45 @8244 has 6 MA's), (Start: 46 @8247 has 23 MA's), (Start: 48 @8253 has 42 MA's), (78, 8277), (91, 8322), (117, 8385), (126, 8397),

Gene: BigChungus_10 Start: 7054, Stop: 7326, Start Num: 67

Candidate Starts for BigChungus_10:

(66, 7051), (Start: 67 @7054 has 62 MA's), (133, 7237), (135, 7243), (141, 7267),

Gene: BigMack_9 Start: 7245, Stop: 7514, Start Num: 68

Candidate Starts for BigMack_9:

(Start: 68 @7245 has 135 MA's), (91, 7311), (100, 7344), (135, 7431), (151, 7503),

Gene: BillDoor_13 Start: 7240, Stop: 7512, Start Num: 67

Candidate Starts for BillDoor_13:

(Start: 67 @7240 has 62 MA's),

Gene: Bipper_17 Start: 11835, Stop: 12083, Start Num: 47

Candidate Starts for Bipper_17:

(36, 11778), (Start: 47 @11835 has 73 MA's), (105, 11934), (112, 11952), (114, 11955), (137, 12000),

Gene: Birdsong_11 Start: 7129, Stop: 7386, Start Num: 71

Candidate Starts for Birdsong_11:

(61, 7096), (Start: 71 @7129 has 9 MA's), (113, 7264), (133, 7309), (135, 7315), (137, 7318), (141, 7339),

Gene: Biskit_12 Start: 7241, Stop: 7519, Start Num: 67

Candidate Starts for Biskit_12:

(Start: 67 @7241 has 62 MA's), (92, 7310), (111, 7382),

Gene: Blarby_13 Start: 7472, Stop: 7744, Start Num: 69

Candidate Starts for Blarby_13:

(Start: 69 @7472 has 24 MA's), (91, 7532), (92, 7535), (100, 7565), (107, 7589), (115, 7619), (138, 7679),

Gene: Blondies_12 Start: 7236, Stop: 7505, Start Num: 67

Candidate Starts for Blondies_12:

(Start: 67 @7236 has 62 MA's), (92, 7296), (111, 7368),

Gene: Bodacious_9 Start: 7243, Stop: 7512, Start Num: 68

Candidate Starts for Bodacious_9:

(Start: 68 @7243 has 135 MA's), (96, 7321), (100, 7342), (135, 7429),

Gene: BotCity_11 Start: 6822, Stop: 7046, Start Num: 93

Candidate Starts for BotCity_11:

(29, 6585), (31, 6600), (Start: 49 @6684 has 6 MA's), (84, 6780), (Start: 93 @6822 has 20 MA's), (104, 6861), (109, 6879), (126, 6936), (129, 6942), (136, 6969), (149, 7032),

Gene: Bradissa_12 Start: 8013, Stop: 8270, Start Num: 69

Candidate Starts for Bradissa_12:

(Start: 69 @8013 has 24 MA's), (141, 8223), (149, 8262),

Gene: Brahms_9 Start: 7425, Stop: 7688, Start Num: 47

Candidate Starts for Brahms_9:

(36, 7368), (Start: 47 @7425 has 73 MA's), (53, 7440), (79, 7455), (119, 7572), (141, 7632), (147, 7662),

Gene: BritBrat_12 Start: 8015, Stop: 8272, Start Num: 69

Candidate Starts for BritBrat_12:

(Start: 69 @8015 has 24 MA's), (141, 8225), (149, 8264),

Gene: BrotherBLo_13 Start: 10107, Stop: 10376, Start Num: 68

Candidate Starts for BrotherBLo_13:

(Start: 68 @10107 has 135 MA's), (87, 10158), (91, 10173), (100, 10206),

Gene: BruceLethal_9 Start: 6441, Stop: 6731, Start Num: 68

Candidate Starts for BruceLethal_9:

(66, 6435), (Start: 68 @6441 has 135 MA's), (75, 6453), (77, 6459), (86, 6489), (87, 6492), (91, 6507), (95, 6516), (96, 6519), (100, 6540), (107, 6564), (121, 6606), (125, 6618), (132, 6642),

Gene: Brynnie_11 Start: 8207, Stop: 8464, Start Num: 48

Candidate Starts for Brynnie_11:

(2, 7631), (4, 7745), (7, 7853), (9, 7898), (21, 8054), (Start: 48 @8207 has 42 MA's), (97, 8297), (133, 8375),

Gene: BubbaBear_10 Start: 7645, Stop: 7905, Start Num: 47

Candidate Starts for BubbaBear_10:

(Start: 42 @7633 has 1 MA's), (Start: 47 @7645 has 73 MA's), (79, 7669), (135, 7825), (140, 7840),

Gene: Bubble_11 Start: 7257, Stop: 7538, Start Num: 67

Candidate Starts for Bubble_11:

(32, 7134), (Start: 67 @7257 has 62 MA's),

Gene: Budski_11 Start: 6829, Stop: 7053, Start Num: 93

Candidate Starts for Budski_11:

(84, 6787), (Start: 93 @6829 has 20 MA's), (104, 6868), (109, 6886), (126, 6943), (129, 6949), (136, 6976), (149, 7039),

Gene: Buldak_10 Start: 7930, Stop: 8196, Start Num: 47

Candidate Starts for Buldak_10:

(Start: 42 @7918 has 1 MA's), (Start: 47 @7930 has 73 MA's), (91, 8002), (101, 8035), (119, 8077),

Gene: Burnsey_11 Start: 7258, Stop: 7539, Start Num: 67

Candidate Starts for Burnsey_11:

(Start: 67 @7258 has 62 MA's),

Gene: Burritobowl_10 Start: 7681, Stop: 7938, Start Num: 47
Candidate Starts for Burritobowl_10:
(Start: 42 @7669 has 1 MA's), (Start: 47 @7681 has 73 MA's), (79, 7702), (135, 7858), (146, 7909),

Gene: Button_12 Start: 7274, Stop: 7543, Start Num: 67
Candidate Starts for Button_12:
(Start: 67 @7274 has 62 MA's), (79, 7289), (91, 7331), (147, 7514),

Gene: Buttrmlkdreams_11 Start: 7235, Stop: 7504, Start Num: 67
Candidate Starts for Buttrmlkdreams_11:
(Start: 67 @7235 has 62 MA's), (92, 7295), (111, 7367),

Gene: CallieOMalley_13 Start: 10140, Stop: 10409, Start Num: 68
Candidate Starts for CallieOMalley_13:
(64, 10128), (Start: 68 @10140 has 135 MA's), (77, 10158), (96, 10218), (100, 10239), (135, 10326),

Gene: CallinAllBarbz_10 Start: 6520, Stop: 6792, Start Num: 49
Candidate Starts for CallinAllBarbz_10:
(Start: 49 @6520 has 6 MA's), (56, 6535), (117, 6667), (135, 6709),

Gene: Camara_10 Start: 7656, Stop: 7910, Start Num: 48
Candidate Starts for Camara_10:
(39, 7620), (Start: 48 @7656 has 42 MA's), (78, 7680), (91, 7725), (96, 7737), (113, 7782), (117, 7788),
(126, 7800), (135, 7827),

Gene: CanFranMach_10 Start: 7671, Stop: 7928, Start Num: 48
Candidate Starts for CanFranMach_10:
(Start: 48 @7671 has 42 MA's), (91, 7734), (135, 7848), (140, 7863),

Gene: CanesSauce_11 Start: 7339, Stop: 7548, Start Num: 92
Candidate Starts for CanesSauce_11:
(Start: 67 @7276 has 62 MA's), (92, 7339),

Gene: Canowicakte_13 Start: 10175, Stop: 10444, Start Num: 68
Candidate Starts for Canowicakte_13:
(64, 10163), (Start: 68 @10175 has 135 MA's), (77, 10193), (96, 10253), (100, 10274), (135, 10361),

Gene: CaramelLatte_11 Start: 7339, Stop: 7548, Start Num: 92
Candidate Starts for CaramelLatte_11:
(Start: 67 @7276 has 62 MA's), (92, 7339),

Gene: CardboardBox_12 Start: 7464, Stop: 7730, Start Num: 47
Candidate Starts for CardboardBox_12:
(Start: 47 @7464 has 73 MA's), (135, 7650), (137, 7653), (148, 7710),

Gene: Carpal_13 Start: 10107, Stop: 10376, Start Num: 68
Candidate Starts for Carpal_13:
(Start: 68 @10107 has 135 MA's), (87, 10158), (91, 10173), (100, 10206),

Gene: Carsonalex_12 Start: 7314, Stop: 7595, Start Num: 67
Candidate Starts for Carsonalex_12:
(32, 7191), (Start: 67 @7314 has 62 MA's),

Gene: Cashington_10 Start: 7671, Stop: 7928, Start Num: 47
Candidate Starts for Cashington_10:
(Start: 42 @7659 has 1 MA's), (Start: 47 @7671 has 73 MA's), (79, 7692), (135, 7848), (146, 7899),

Gene: Cashline_12 Start: 7862, Stop: 8119, Start Num: 69
Candidate Starts for Cashline_12:
(44, 7793), (Start: 69 @7862 has 24 MA's), (141, 8072), (149, 8111),

Gene: Celaena_10 Start: 7723, Stop: 7986, Start Num: 47
Candidate Starts for Celaena_10:
(Start: 42 @7711 has 1 MA's), (Start: 47 @7723 has 73 MA's), (79, 7750), (85, 7768), (119, 7867),
(135, 7906),

Gene: ChamoyPickle_12 Start: 7464, Stop: 7730, Start Num: 47
Candidate Starts for ChamoyPickle_12:
(Start: 47 @7464 has 73 MA's), (135, 7650), (137, 7653), (148, 7710),

Gene: Che9d_12 Start: 6957, Stop: 7229, Start Num: 69
Candidate Starts for Che9d_12:
(Start: 69 @6957 has 24 MA's), (91, 7017), (92, 7020), (100, 7050), (107, 7074), (115, 7104), (138,
7164),

Gene: CheeseTouch_11 Start: 6829, Stop: 7053, Start Num: 93
Candidate Starts for CheeseTouch_11:
(84, 6787), (Start: 93 @6829 has 20 MA's), (104, 6868), (109, 6886), (126, 6943), (129, 6949), (136,
6976), (149, 7039),

Gene: CherryonLim_12 Start: 7780, Stop: 8052, Start Num: 67
Candidate Starts for CherryonLim_12:
(Start: 67 @7780 has 62 MA's), (77, 7792), (79, 7798), (133, 7963), (135, 7969), (141, 7993),

Gene: ChewChew_9 Start: 7242, Stop: 7511, Start Num: 68
Candidate Starts for ChewChew_9:
(Start: 68 @7242 has 135 MA's), (97, 7323), (100, 7341), (122, 7386), (135, 7428),

Gene: Chickaboom_10 Start: 7752, Stop: 8009, Start Num: 48
Candidate Starts for Chickaboom_10:
(4, 7290), (7, 7398), (9, 7443), (21, 7599), (Start: 48 @7752 has 42 MA's), (133, 7920),

Gene: Chicken_11 Start: 8034, Stop: 8288, Start Num: 48
Candidate Starts for Chicken_11:
(1, 7434), (4, 7593), (7, 7701), (23, 7905), (39, 7998), (41, 8016), (Start: 48 @8034 has 42 MA's), (78,
8058), (92, 8106), (126, 8178), (135, 8205),

Gene: ChickenTender_13 Start: 7300, Stop: 7581, Start Num: 67
Candidate Starts for ChickenTender_13:
(32, 7177), (66, 7297), (Start: 67 @7300 has 62 MA's),

Gene: ChiliPepper_10 Start: 7882, Stop: 8139, Start Num: 47
Candidate Starts for ChiliPepper_10:
(Start: 47 @7882 has 73 MA's), (91, 7945), (135, 8059), (145, 8104),

Gene: ChipsNGuac_12 Start: 7464, Stop: 7730, Start Num: 47
Candidate Starts for ChipsNGuac_12:
(Start: 47 @7464 has 73 MA's), (135, 7650), (137, 7653), (148, 7710),

Gene: ChocoMunchkin_11 Start: 7339, Stop: 7548, Start Num: 92
Candidate Starts for ChocoMunchkin_11:
(Start: 67 @7276 has 62 MA's), (92, 7339),

Gene: Cholula_13 Start: 10152, Stop: 10421, Start Num: 68
Candidate Starts for Cholula_13:
(Start: 68 @10152 has 135 MA's), (87, 10203), (91, 10218), (100, 10251),

Gene: Chridison_9 Start: 7262, Stop: 7549, Start Num: 68
Candidate Starts for Chridison_9:
(Start: 68 @7262 has 135 MA's), (100, 7361), (135, 7469),

Gene: Christian_9 Start: 7243, Stop: 7512, Start Num: 68
Candidate Starts for Christian_9:
(Start: 68 @7243 has 135 MA's), (96, 7321), (100, 7342), (135, 7429),

Gene: Clayda5_9 Start: 7425, Stop: 7688, Start Num: 47
Candidate Starts for Clayda5_9:
(36, 7368), (Start: 47 @7425 has 73 MA's), (53, 7440), (79, 7455), (119, 7572), (141, 7632), (147, 7662),

Gene: Cleo_11 Start: 7463, Stop: 7762, Start Num: 67
Candidate Starts for Cleo_11:
(Start: 67 @7463 has 62 MA's), (150, 7742),

Gene: CliffHanger_11 Start: 7626, Stop: 7886, Start Num: 46
Candidate Starts for CliffHanger_11:
(36, 7572), (Start: 42 @7617 has 1 MA's), (Start: 46 @7626 has 23 MA's), (122, 7773), (134, 7803),

Gene: CocoaPuff_10 Start: 7029, Stop: 7301, Start Num: 67
Candidate Starts for CocoaPuff_10:
(66, 7026), (Start: 67 @7029 has 62 MA's), (77, 7041), (79, 7047), (133, 7212), (135, 7218), (141, 7242),

Gene: Coltrane_9 Start: 7425, Stop: 7688, Start Num: 47
Candidate Starts for Coltrane_9:
(36, 7368), (Start: 47 @7425 has 73 MA's), (53, 7440), (79, 7455), (119, 7572), (141, 7632), (147, 7662),

Gene: Colusalem_11 Start: 8083, Stop: 8343, Start Num: 46
Candidate Starts for Colusalem_11:
(Start: 42 @8074 has 1 MA's), (Start: 45 @8080 has 6 MA's), (Start: 46 @8083 has 23 MA's), (Start: 48 @8089 has 42 MA's), (78, 8113), (91, 8158), (117, 8221), (126, 8233),

Gene: Confidence_12 Start: 8009, Stop: 8266, Start Num: 69
Candidate Starts for Confidence_12:
(Start: 69 @8009 has 24 MA's), (141, 8219), (149, 8258),

Gene: Coral_11 Start: 8080, Stop: 8343, Start Num: 45

Candidate Starts for Coral_11:

(Start: 42 @8074 has 1 MA's), (Start: 45 @8080 has 6 MA's), (Start: 46 @8083 has 23 MA's), (Start: 48 @8089 has 42 MA's), (78, 8113), (91, 8158), (117, 8221), (126, 8233),

Gene: Cota_9 Start: 6460, Stop: 6750, Start Num: 68

Candidate Starts for Cota_9:

(Start: 68 @6460 has 135 MA's), (75, 6472), (77, 6478), (81, 6490), (86, 6508), (87, 6511), (91, 6526), (95, 6535), (96, 6538), (100, 6559), (107, 6583), (121, 6625), (125, 6637), (130, 6652), (132, 6661),

Gene: Cote_12 Start: 8241, Stop: 8504, Start Num: 45

Candidate Starts for Cote_12:

(Start: 42 @8235 has 1 MA's), (Start: 45 @8241 has 6 MA's), (Start: 46 @8244 has 23 MA's), (Start: 48 @8250 has 42 MA's), (78, 8274), (91, 8319), (117, 8382), (126, 8394),

Gene: Cozz_11 Start: 7258, Stop: 7539, Start Num: 67

Candidate Starts for Cozz_11:

(32, 7135), (Start: 67 @7258 has 62 MA's),

Gene: Cracklewink_17 Start: 11835, Stop: 12083, Start Num: 47

Candidate Starts for Cracklewink_17:

(36, 11778), (Start: 47 @11835 has 73 MA's), (112, 11952), (114, 11955), (137, 12000),

Gene: Crater_11 Start: 7129, Stop: 7386, Start Num: 71

Candidate Starts for Crater_11:

(61, 7096), (Start: 71 @7129 has 9 MA's), (100, 7222), (108, 7243), (135, 7315), (137, 7318), (141, 7339), (147, 7369),

Gene: CristinaYang_9 Start: 7243, Stop: 7512, Start Num: 68

Candidate Starts for CristinaYang_9:

(Start: 68 @7243 has 135 MA's), (96, 7321), (100, 7342), (135, 7429),

Gene: CroZenni_10 Start: 7654, Stop: 7911, Start Num: 47

Candidate Starts for CroZenni_10:

(Start: 42 @7642 has 1 MA's), (Start: 47 @7654 has 73 MA's), (79, 7675), (134, 7828), (135, 7831), (140, 7846), (146, 7882),

Gene: CupcakePrincess_10 Start: 7631, Stop: 7951, Start Num: 47

Candidate Starts for CupcakePrincess_10:

(Start: 42 @7619 has 1 MA's), (Start: 47 @7631 has 73 MA's), (79, 7715), (135, 7871), (140, 7886),

Gene: Cygnet_11 Start: 8032, Stop: 8286, Start Num: 48

Candidate Starts for Cygnet_11:

(Start: 48 @8032 has 42 MA's), (117, 8164), (133, 8197), (135, 8203),

Gene: DS6A_14 Start: 10056, Stop: 10361, Start Num: 68

Candidate Starts for DS6A_14:

(Start: 68 @10056 has 135 MA's), (77, 10074), (97, 10134), (99, 10143), (117, 10224), (141, 10302),

Gene: Daiboju_9 Start: 7263, Stop: 7550, Start Num: 68

Candidate Starts for Daiboju_9:

(Start: 68 @7263 has 135 MA's), (97, 7344), (100, 7362), (135, 7470), (151, 7542),

Gene: Damocles_12 Start: 8250, Stop: 8504, Start Num: 48

Candidate Starts for Damocles_12:

(Start: 42 @8235 has 1 MA's), (Start: 45 @8241 has 6 MA's), (Start: 46 @8244 has 23 MA's), (Start: 48 @8250 has 42 MA's), (78, 8274), (91, 8319), (117, 8382), (126, 8394),

Gene: DanHam62_10 Start: 7655, Stop: 7909, Start Num: 48

Candidate Starts for DanHam62_10:

(39, 7619), (Start: 48 @7655 has 42 MA's), (78, 7679), (91, 7724), (96, 7736), (113, 7781), (117, 7787), (126, 7799), (135, 7826),

Gene: Daob_12 Start: 8238, Stop: 8507, Start Num: 42

Candidate Starts for Daob_12:

(Start: 42 @8238 has 1 MA's), (Start: 45 @8244 has 6 MA's), (Start: 46 @8247 has 23 MA's), (Start: 48 @8253 has 42 MA's), (78, 8277), (91, 8322), (117, 8385), (126, 8397),

Gene: Demsculpinboyz_12 Start: 6948, Stop: 7220, Start Num: 69

Candidate Starts for Demsculpinboyz_12:

(Start: 69 @6948 has 24 MA's), (91, 7008), (92, 7011), (100, 7041), (107, 7065), (115, 7095), (138, 7155),

Gene: DickRichards_10 Start: 8148, Stop: 8405, Start Num: 47

Candidate Starts for DickRichards_10:

(Start: 42 @8136 has 1 MA's), (Start: 47 @8148 has 73 MA's), (79, 8169), (134, 8322), (135, 8325), (140, 8340), (146, 8376),

Gene: Didgeridoo_11 Start: 7870, Stop: 8133, Start Num: 46

Candidate Starts for Didgeridoo_11:

(Start: 42 @7861 has 1 MA's), (Start: 46 @7870 has 23 MA's),

Gene: Dino_13 Start: 10106, Stop: 10375, Start Num: 68

Candidate Starts for Dino_13:

(Start: 68 @10106 has 135 MA's), (87, 10157), (91, 10172), (100, 10205),

Gene: DirtyBubble_10 Start: 7907, Stop: 8170, Start Num: 46

Candidate Starts for DirtyBubble_10:

(Start: 46 @7907 has 23 MA's), (51, 7919), (79, 7934), (119, 8051), (135, 8090), (140, 8105),

Gene: Dismas_10 Start: 7882, Stop: 8139, Start Num: 47

Candidate Starts for Dismas_10:

(Start: 47 @7882 has 73 MA's), (91, 7945), (135, 8059), (145, 8104),

Gene: Doobus_10 Start: 7885, Stop: 8142, Start Num: 47

Candidate Starts for Doobus_10:

(Start: 42 @7873 has 1 MA's), (Start: 47 @7885 has 73 MA's), (79, 7906), (135, 8062), (146, 8113),

Gene: DrParker_9 Start: 6467, Stop: 6757, Start Num: 68

Candidate Starts for DrParker_9:

(Start: 68 @6467 has 135 MA's), (75, 6479), (77, 6485), (81, 6497), (86, 6515), (87, 6518), (91, 6533), (95, 6542), (96, 6545), (100, 6566), (107, 6590), (121, 6632), (125, 6644), (132, 6668), (146, 6728),

Gene: DrRobert_9 Start: 7243, Stop: 7512, Start Num: 68

Candidate Starts for DrRobert_9:

(Start: 68 @7243 has 135 MA's), (100, 7342), (135, 7429),

Gene: Dre3_11 Start: 7410, Stop: 7709, Start Num: 67

Candidate Starts for Dre3_11:

(Start: 67 @7410 has 62 MA's), (150, 7689),

Gene: DreamTeam_9 Start: 7289, Stop: 7579, Start Num: 68

Candidate Starts for DreamTeam_9:

(Start: 68 @7289 has 135 MA's), (100, 7388), (110, 7427), (135, 7496),

Gene: EMSquaredA_12 Start: 8015, Stop: 8272, Start Num: 69

Candidate Starts for EMSquaredA_12:

(Start: 69 @8015 has 24 MA's), (141, 8225), (149, 8264),

Gene: Ecliptus_11 Start: 6857, Stop: 7114, Start Num: 73

Candidate Starts for Ecliptus_11:

(55, 6812), (Start: 73 @6857 has 3 MA's), (100, 6950), (108, 6971), (135, 7043), (137, 7046), (141, 7067), (147, 7097),

Gene: Eden_9 Start: 7514, Stop: 7780, Start Num: 47

Candidate Starts for Eden_9:

(36, 7457), (Start: 47 @7514 has 73 MA's), (79, 7547), (96, 7601), (147, 7754),

Gene: Eesa_11 Start: 8248, Stop: 8502, Start Num: 48

Candidate Starts for Eesa_11:

(3, 7771), (7, 7915), (23, 8119), (39, 8212), (41, 8230), (Start: 48 @8248 has 42 MA's), (78, 8272), (123, 8386), (126, 8392), (135, 8419),

Gene: ElJefes_10 Start: 7506, Stop: 7778, Start Num: 67

Candidate Starts for ElJefes_10:

(Start: 67 @7506 has 62 MA's), (77, 7518), (79, 7524), (133, 7689), (135, 7695), (141, 7719),

Gene: Elfy_9 Start: 6462, Stop: 6722, Start Num: 49

Candidate Starts for Elfy_9:

(Start: 49 @6462 has 6 MA's), (79, 6483), (86, 6507), (91, 6525),

Gene: Elinal_12 Start: 7035, Stop: 7307, Start Num: 67

Candidate Starts for Elinal_12:

(66, 7032), (Start: 67 @7035 has 62 MA's), (133, 7218), (135, 7224), (141, 7248),

Gene: Elliott_11 Start: 7257, Stop: 7538, Start Num: 67

Candidate Starts for Elliott_11:

(32, 7134), (Start: 67 @7257 has 62 MA's),

Gene: Elva_11 Start: 7965, Stop: 8225, Start Num: 50

Candidate Starts for Elva_11:

(Start: 50 @7965 has 1 MA's), (79, 7989), (126, 8118),

Gene: Emalyn_10 Start: 6986, Stop: 7255, Start Num: 67

Candidate Starts for Emalyn_10:

(Start: 67 @6986 has 62 MA's),

Gene: EnalisNailo_12 Start: 8015, Stop: 8272, Start Num: 69

Candidate Starts for EnalisNailo_12:

(Start: 69 @8015 has 24 MA's), (141, 8225), (149, 8264),

Gene: Enochoraptor_9 Start: 6463, Stop: 6753, Start Num: 68

Candidate Starts for Enochoraptor_9:

(Start: 68 @6463 has 135 MA's), (75, 6475), (77, 6481), (81, 6493), (86, 6511), (87, 6514), (91, 6529), (95, 6538), (96, 6541), (107, 6586), (121, 6628), (125, 6640),

Gene: Enoki_9 Start: 6448, Stop: 6738, Start Num: 68

Candidate Starts for Enoki_9:

(Start: 68 @6448 has 135 MA's), (75, 6460), (77, 6466), (81, 6478), (86, 6496), (87, 6499), (91, 6514), (95, 6523), (96, 6526), (107, 6571), (121, 6613), (125, 6625), (132, 6649),

Gene: EstebanJulior_9 Start: 7287, Stop: 7556, Start Num: 68

Candidate Starts for EstebanJulior_9:

(Start: 68 @7287 has 135 MA's), (100, 7386), (102, 7392), (135, 7473),

Gene: Eula_10 Start: 7652, Stop: 7912, Start Num: 47

Candidate Starts for Eula_10:

(Start: 42 @7640 has 1 MA's), (Start: 47 @7652 has 73 MA's), (79, 7676), (135, 7832), (140, 7847),

Gene: Eunoia_9 Start: 7261, Stop: 7548, Start Num: 68

Candidate Starts for Eunoia_9:

(Start: 68 @7261 has 135 MA's), (100, 7360), (135, 7468), (151, 7540),

Gene: Ezurina_11 Start: 7029, Stop: 7298, Start Num: 47

Candidate Starts for Ezurina_11:

(Start: 47 @7029 has 73 MA's), (114, 7170), (135, 7218),

Gene: Faiyaz_17 Start: 11749, Stop: 11997, Start Num: 47

Candidate Starts for Faiyaz_17:

(36, 11692), (Start: 47 @11749 has 73 MA's), (86, 11791), (112, 11866), (137, 11914), (147, 11965), (151, 11983),

Gene: Feastonyeet_10 Start: 7054, Stop: 7326, Start Num: 67

Candidate Starts for Feastonyeet_10:

(66, 7051), (Start: 67 @7054 has 62 MA's), (133, 7237), (135, 7243), (141, 7267),

Gene: Finalfrontier_11 Start: 8160, Stop: 8423, Start Num: 46

Candidate Starts for Finalfrontier_11:

(Start: 42 @8151 has 1 MA's), (Start: 46 @8160 has 23 MA's), (79, 8187), (135, 8343), (140, 8358),

Gene: Fingolfin_10 Start: 7656, Stop: 7910, Start Num: 48

Candidate Starts for Fingolfin_10:

(11, 7398), (13, 7422), (16, 7458), (21, 7506), (39, 7620), (Start: 48 @7656 has 42 MA's), (78, 7680), (92, 7728), (96, 7737), (113, 7782), (126, 7800), (135, 7827),

Gene: FlameThrower_10 Start: 7611, Stop: 7874, Start Num: 47

Candidate Starts for FlameThrower_10:

(Start: 42 @7599 has 1 MA's), (Start: 47 @7611 has 73 MA's), (79, 7638), (85, 7656), (119, 7755), (135, 7794),

Gene: Floral_12 Start: 8015, Stop: 8272, Start Num: 69

Candidate Starts for Floral_12:

(Start: 69 @8015 has 24 MA's), (141, 8225), (149, 8264),

Gene: Fluke_13 Start: 10148, Stop: 10417, Start Num: 68

Candidate Starts for Fluke_13:

(Start: 68 @10148 has 135 MA's), (87, 10199), (91, 10214), (100, 10247), (135, 10334),

Gene: Franklin22_9 Start: 7495, Stop: 7761, Start Num: 47

Candidate Starts for Franklin22_9:

(Start: 47 @7495 has 73 MA's), (79, 7528), (135, 7681), (147, 7735),

Gene: Fribs8_12 Start: 7976, Stop: 8275, Start Num: 67

Candidate Starts for Fribs8_12:

(Start: 67 @7976 has 62 MA's), (100, 8078), (135, 8189), (148, 8249), (149, 8252), (150, 8255),

Gene: Frickyeah_11 Start: 6824, Stop: 7048, Start Num: 93

Candidate Starts for Frickyeah_11:

(29, 6587), (31, 6602), (Start: 49 @6686 has 6 MA's), (84, 6782), (Start: 93 @6824 has 20 MA's), (104, 6863), (109, 6881), (126, 6938), (129, 6944), (136, 6971), (149, 7034),

Gene: Fryberger_43 Start: 16293, Stop: 16577, Start Num: 65

Candidate Starts for Fryberger_43:

(63, 16287), (Start: 65 @16293 has 6 MA's), (86, 16350), (95, 16377), (120, 16458), (124, 16464),

Gene: GTE2_09 Start: 6936, Stop: 7208, Start Num: 67

Candidate Starts for GTE2_09:

(Start: 67 @6936 has 62 MA's), (92, 6999),

Gene: Gack_9 Start: 7565, Stop: 7828, Start Num: 47

Candidate Starts for Gack_9:

(36, 7508), (Start: 47 @7565 has 73 MA's), (79, 7595), (86, 7619), (135, 7748), (147, 7802),

Gene: Gaia_8 Start: 7366, Stop: 7629, Start Num: 68

Candidate Starts for Gaia_8:

(Start: 68 @7366 has 135 MA's), (99, 7450), (100, 7459), (107, 7483), (116, 7504), (117, 7507), (128, 7531), (141, 7582), (146, 7609),

Gene: Galaxy_11 Start: 8078, Stop: 8335, Start Num: 48

Candidate Starts for Galaxy_11:

(41, 8060), (Start: 48 @8078 has 42 MA's), (134, 8249),

Gene: Gerri43_12 Start: 7464, Stop: 7730, Start Num: 47

Candidate Starts for Gerri43_12:

(Start: 47 @7464 has 73 MA's), (135, 7650), (137, 7653), (148, 7710),

Gene: Getalong_11 Start: 6824, Stop: 7048, Start Num: 93

Candidate Starts for Getalong_11:

(29, 6587), (31, 6602), (Start: 49 @6686 has 6 MA's), (Start: 93 @6824 has 20 MA's), (104, 6863), (109, 6881), (126, 6938), (129, 6944), (136, 6971), (149, 7034),

Gene: GiKK_14 Start: 7577, Stop: 7846, Start Num: 67

Candidate Starts for GiKK_14:

(Start: 67 @7577 has 62 MA's), (79, 7592), (91, 7634), (147, 7817),

Gene: Gibbous_11 Start: 7410, Stop: 7709, Start Num: 67

Candidate Starts for Gibbous_11:
(Start: 67 @7410 has 62 MA's), (150, 7689),

Gene: Gibbzilla_12 Start: 7535, Stop: 7786, Start Num: 53
Candidate Starts for Gibbzilla_12:
(28, 7430), (Start: 34 @7466 has 1 MA's), (53, 7535), (59, 7544), (126, 7676),

Gene: Gisselle_9 Start: 7289, Stop: 7579, Start Num: 68
Candidate Starts for Gisselle_9:
(Start: 68 @7289 has 135 MA's), (100, 7388), (110, 7427), (135, 7496),

Gene: Glenn_13 Start: 10158, Stop: 10427, Start Num: 68
Candidate Starts for Glenn_13:
(Start: 68 @10158 has 135 MA's), (87, 10209), (91, 10224), (100, 10257),

Gene: Glotell_10 Start: 7655, Stop: 7909, Start Num: 48
Candidate Starts for Glotell_10:
(11, 7397), (13, 7421), (16, 7457), (21, 7505), (39, 7619), (Start: 48 @7655 has 42 MA's), (78, 7679),
(92, 7727), (96, 7736), (113, 7781), (117, 7787), (126, 7799), (135, 7826),

Gene: GoldHunter_12 Start: 7258, Stop: 7539, Start Num: 67
Candidate Starts for GoldHunter_12:
(Start: 67 @7258 has 62 MA's),

Gene: GramZayde_11 Start: 8089, Stop: 8343, Start Num: 48
Candidate Starts for GramZayde_11:
(Start: 42 @8074 has 1 MA's), (Start: 45 @8080 has 6 MA's), (Start: 46 @8083 has 23 MA's), (Start: 48 @8089 has 42 MA's), (78, 8113), (91, 8158), (117, 8221), (126, 8233),

Gene: Gravel_12 Start: 8244, Stop: 8498, Start Num: 48
Candidate Starts for Gravel_12:
(23, 8115), (39, 8208), (41, 8226), (Start: 48 @8244 has 42 MA's), (78, 8268), (123, 8382), (126, 8388),
(137, 8418),

Gene: Graynor_13 Start: 10164, Stop: 10433, Start Num: 68
Candidate Starts for Graynor_13:
(64, 10152), (Start: 68 @10164 has 135 MA's), (77, 10182), (87, 10215), (100, 10263), (122, 10308),
(135, 10350),

Gene: GreenHearts_13 Start: 10230, Stop: 10520, Start Num: 68
Candidate Starts for GreenHearts_13:
(Start: 68 @10230 has 135 MA's), (79, 10254), (100, 10329), (103, 10338), (108, 10356), (135, 10437),

Gene: Greenhouse_13 Start: 10155, Stop: 10445, Start Num: 68
Candidate Starts for Greenhouse_13:
(Start: 68 @10155 has 135 MA's), (79, 10179), (91, 10221), (100, 10254), (103, 10263), (108, 10281),
(135, 10362),

Gene: GrimEater_10 Start: 6522, Stop: 6794, Start Num: 49
Candidate Starts for GrimEater_10:
(35, 6459), (Start: 49 @6522 has 6 MA's), (79, 6558), (91, 6600),

Gene: Guey18_48 Start: 17486, Stop: 17770, Start Num: 65

Candidate Starts for Guey18_48:

(63, 17480), (Start: 65 @17486 has 6 MA's), (86, 17543), (95, 17570), (120, 17651), (124, 17657),

Gene: HamCheese_10 Start: 7655, Stop: 7909, Start Num: 48

Candidate Starts for HamCheese_10:

(39, 7619), (Start: 48 @7655 has 42 MA's), (78, 7679), (91, 7724), (96, 7736), (113, 7781), (117, 7787), (126, 7799), (135, 7826),

Gene: HannahPhantana_12 Start: 8247, Stop: 8507, Start Num: 46

Candidate Starts for HannahPhantana_12:

(Start: 42 @8238 has 1 MA's), (Start: 45 @8244 has 6 MA's), (Start: 46 @8247 has 23 MA's), (Start: 48 @8253 has 42 MA's), (78, 8277), (91, 8322), (117, 8385), (126, 8397),

Gene: HeadNerd_9 Start: 7245, Stop: 7514, Start Num: 68

Candidate Starts for HeadNerd_9:

(Start: 68 @7245 has 135 MA's), (77, 7263), (100, 7344), (122, 7389), (135, 7431),

Gene: Herb_9 Start: 7263, Stop: 7550, Start Num: 68

Candidate Starts for Herb_9:

(Start: 68 @7263 has 135 MA's), (97, 7344), (100, 7362), (135, 7470), (151, 7542),

Gene: Hexbug_13 Start: 8263, Stop: 8532, Start Num: 67

Candidate Starts for Hexbug_13:

(Start: 67 @8263 has 62 MA's), (91, 8320),

Gene: Hilltopfarm_17 Start: 11779, Stop: 12027, Start Num: 47

Candidate Starts for Hilltopfarm_17:

(36, 11722), (Start: 47 @11779 has 73 MA's), (86, 11821), (112, 11896), (137, 11944), (147, 11995), (151, 12013),

Gene: HippoPololi_13 Start: 8062, Stop: 8361, Start Num: 67

Candidate Starts for HippoPololi_13:

(Start: 67 @8062 has 62 MA's), (77, 8083), (141, 8299), (150, 8341),

Gene: Holliday_11 Start: 6829, Stop: 7053, Start Num: 93

Candidate Starts for Holliday_11:

(84, 6787), (Start: 93 @6829 has 20 MA's), (104, 6868), (109, 6886), (126, 6943), (129, 6949), (136, 6976), (149, 7039),

Gene: Horseradish_12 Start: 7139, Stop: 7417, Start Num: 67

Candidate Starts for Horseradish_12:

(Start: 67 @7139 has 62 MA's), (92, 7208), (111, 7280),

Gene: Horus_11 Start: 6824, Stop: 7048, Start Num: 93

Candidate Starts for Horus_11:

(29, 6587), (31, 6602), (Start: 49 @6686 has 6 MA's), (84, 6782), (Start: 93 @6824 has 20 MA's), (104, 6863), (109, 6881), (126, 6938), (129, 6944), (136, 6971), (149, 7034),

Gene: Huckleberry_9 Start: 7245, Stop: 7514, Start Num: 68

Candidate Starts for Huckleberry_9:

(Start: 68 @7245 has 135 MA's), (77, 7263), (100, 7344), (122, 7389), (135, 7431),

Gene: HunterDalle_9 Start: 7261, Stop: 7548, Start Num: 68

Candidate Starts for HunterDalle_9:
(Start: 68 @7261 has 135 MA's), (100, 7360), (135, 7468),

Gene: Huntingdon_13 Start: 10141, Stop: 10431, Start Num: 68
Candidate Starts for Huntingdon_13:
(5, 9655), (8, 9742), (18, 9880), (Start: 68 @10141 has 135 MA's), (79, 10165), (100, 10240), (108, 10267), (135, 10348),

Gene: Icarian_11 Start: 7889, Stop: 8152, Start Num: 48
Candidate Starts for Icarian_11:
(Start: 48 @7889 has 42 MA's), (79, 7916), (135, 8072), (140, 8087),

Gene: Immaculata_13 Start: 10152, Stop: 10421, Start Num: 68
Candidate Starts for Immaculata_13:
(Start: 68 @10152 has 135 MA's), (87, 10203), (91, 10218), (100, 10251),

Gene: InLimbo_11 Start: 6300, Stop: 6557, Start Num: 71
Candidate Starts for InLimbo_11:
(61, 6267), (Start: 71 @6300 has 9 MA's), (135, 6486), (141, 6510),

Gene: IndyLu_10 Start: 7694, Stop: 7957, Start Num: 46
Candidate Starts for IndyLu_10:
(Start: 42 @7685 has 1 MA's), (Start: 46 @7694 has 23 MA's),

Gene: Jabb_10 Start: 7631, Stop: 7951, Start Num: 47
Candidate Starts for Jabb_10:
(Start: 42 @7619 has 1 MA's), (Start: 47 @7631 has 73 MA's), (79, 7715), (135, 7871), (140, 7886),

Gene: Jabbawokkie_13 Start: 7471, Stop: 7743, Start Num: 69
Candidate Starts for Jabbawokkie_13:
(Start: 69 @7471 has 24 MA's), (91, 7531), (92, 7534), (100, 7564), (107, 7588), (115, 7618), (138, 7678),

Gene: Jablanski_12 Start: 7862, Stop: 8119, Start Num: 69
Candidate Starts for Jablanski_12:
(Start: 69 @7862 has 24 MA's), (141, 8072), (149, 8111),

Gene: Jamun_11 Start: 8419, Stop: 8676, Start Num: 48
Candidate Starts for Jamun_11:
(9, 8110), (21, 8266), (Start: 48 @8419 has 42 MA's), (133, 8587),

Gene: Jamzy_14 Start: 7587, Stop: 7856, Start Num: 67
Candidate Starts for Jamzy_14:
(Start: 67 @7587 has 62 MA's), (79, 7602), (91, 7644), (147, 7827),

Gene: Jankie_10 Start: 6521, Stop: 6793, Start Num: 49
Candidate Starts for Jankie_10:
(35, 6458), (Start: 49 @6521 has 6 MA's), (79, 6557), (91, 6599),

Gene: Jerole_12 Start: 8244, Stop: 8504, Start Num: 46
Candidate Starts for Jerole_12:
(Start: 42 @8235 has 1 MA's), (Start: 45 @8241 has 6 MA's), (Start: 46 @8244 has 23 MA's), (Start: 48 @8250 has 42 MA's), (78, 8274), (91, 8319), (117, 8382), (126, 8394),

Gene: Joann_13 Start: 10133, Stop: 10423, Start Num: 68

Candidate Starts for Joann_13:

(5, 9647), (6, 9689), (8, 9734), (Start: 68 @10133 has 135 MA's), (79, 10157), (100, 10232), (103, 10241), (108, 10259), (135, 10340),

Gene: Johnathan_10 Start: 7654, Stop: 7911, Start Num: 47

Candidate Starts for Johnathan_10:

(Start: 42 @7642 has 1 MA's), (Start: 47 @7654 has 73 MA's), (79, 7675), (135, 7831), (146, 7882),

Gene: Jovita_10 Start: 7753, Stop: 8013, Start Num: 47

Candidate Starts for Jovita_10:

(Start: 42 @7741 has 1 MA's), (Start: 47 @7753 has 73 MA's), (79, 7777), (135, 7933), (140, 7948),

Gene: Juicebox_12 Start: 8597, Stop: 8833, Start Num: 73

Candidate Starts for Juicebox_12:

(Start: 73 @8597 has 3 MA's), (81, 8615), (94, 8660), (135, 8753),

Gene: Jumboset_13 Start: 10101, Stop: 10370, Start Num: 68

Candidate Starts for Jumboset_13:

(Start: 68 @10101 has 135 MA's), (87, 10152), (91, 10167), (100, 10200),

Gene: Juno112_10 Start: 7656, Stop: 7910, Start Num: 48

Candidate Starts for Juno112_10:

(11, 7398), (13, 7422), (16, 7458), (21, 7506), (39, 7620), (Start: 48 @7656 has 42 MA's), (78, 7680), (92, 7728), (96, 7737), (113, 7782), (126, 7800), (135, 7827),

Gene: KHumphrey_10 Start: 7655, Stop: 7909, Start Num: 48

Candidate Starts for KHumphrey_10:

(11, 7397), (13, 7421), (16, 7457), (21, 7505), (39, 7619), (Start: 48 @7655 has 42 MA's), (78, 7679), (92, 7727), (96, 7736), (113, 7781), (117, 7787), (126, 7799), (135, 7826),

Gene: Kalizoi_13 Start: 10100, Stop: 10369, Start Num: 68

Candidate Starts for Kalizoi_13:

(Start: 68 @10100 has 135 MA's), (87, 10151), (91, 10166), (100, 10199),

Gene: Kamaru_11 Start: 6829, Stop: 7053, Start Num: 93

Candidate Starts for Kamaru_11:

(84, 6787), (Start: 93 @6829 has 20 MA's), (104, 6868), (109, 6886), (126, 6943), (129, 6949), (136, 6976), (149, 7039),

Gene: Kamdara_10 Start: 7881, Stop: 8138, Start Num: 47

Candidate Starts for Kamdara_10:

(Start: 47 @7881 has 73 MA's), (91, 7944), (135, 8058), (145, 8103),

Gene: Kate33_10 Start: 7693, Stop: 7956, Start Num: 46

Candidate Starts for Kate33_10:

(Start: 42 @7684 has 1 MA's), (Start: 46 @7693 has 23 MA's),

Gene: Katzastrophic_10 Start: 7786, Stop: 8049, Start Num: 47

Candidate Starts for Katzastrophic_10:

(Start: 42 @7774 has 1 MA's), (Start: 47 @7786 has 73 MA's), (79, 7813), (85, 7831), (119, 7930), (135, 7969),

Gene: KayGee_11 Start: 7035, Stop: 7307, Start Num: 67

Candidate Starts for KayGee_11:

(66, 7032), (Start: 67 @7035 has 62 MA's), (133, 7218), (135, 7224), (141, 7248),

Gene: Keelan_41 Start: 16268, Stop: 16552, Start Num: 65

Candidate Starts for Keelan_41:

(Start: 65 @16268 has 6 MA's), (86, 16325), (95, 16352), (120, 16433), (124, 16439),

Gene: Keiki_9 Start: 6460, Stop: 6750, Start Num: 68

Candidate Starts for Keiki_9:

(Start: 68 @6460 has 135 MA's), (75, 6472), (77, 6478), (81, 6490), (86, 6508), (87, 6511), (91, 6526), (95, 6535), (96, 6538), (100, 6559), (107, 6583), (121, 6625), (125, 6637), (130, 6652), (132, 6661),

Gene: KendraB23_12 Start: 8245, Stop: 8499, Start Num: 48

Candidate Starts for KendraB23_12:

(23, 8116), (25, 8131), (41, 8227), (Start: 48 @8245 has 42 MA's), (78, 8269), (123, 8383), (126, 8389), (137, 8419),

Gene: Kenna_11 Start: 6824, Stop: 7048, Start Num: 93

Candidate Starts for Kenna_11:

(31, 6602), (Start: 49 @6686 has 6 MA's), (84, 6782), (Start: 93 @6824 has 20 MA's), (104, 6863), (109, 6881), (126, 6938), (129, 6944), (136, 6971),

Gene: Kenzers_10 Start: 7668, Stop: 7928, Start Num: 47

Candidate Starts for Kenzers_10:

(Start: 42 @7656 has 1 MA's), (Start: 47 @7668 has 73 MA's), (79, 7692), (135, 7848), (140, 7863), (146, 7899),

Gene: Kepler_11 Start: 8079, Stop: 8342, Start Num: 45

Candidate Starts for Kepler_11:

(Start: 42 @8073 has 1 MA's), (Start: 45 @8079 has 6 MA's), (Start: 46 @8082 has 23 MA's), (Start: 48 @8088 has 42 MA's), (91, 8157), (117, 8220), (126, 8232),

Gene: Kieran_10 Start: 7885, Stop: 8142, Start Num: 47

Candidate Starts for Kieran_10:

(Start: 47 @7885 has 73 MA's), (91, 7948), (135, 8062), (145, 8107),

Gene: KingBob_9 Start: 7263, Stop: 7550, Start Num: 68

Candidate Starts for KingBob_9:

(Start: 68 @7263 has 135 MA's), (97, 7344), (100, 7362), (135, 7470), (151, 7542),

Gene: Kittykat_9 Start: 7286, Stop: 7555, Start Num: 68

Candidate Starts for Kittykat_9:

(Start: 68 @7286 has 135 MA's), (100, 7385), (122, 7430), (135, 7472), (142, 7499),

Gene: Korra_13 Start: 10106, Stop: 10375, Start Num: 68

Candidate Starts for Korra_13:

(Start: 68 @10106 has 135 MA's), (87, 10157), (91, 10172), (100, 10205),

Gene: Kubed_9 Start: 6450, Stop: 6740, Start Num: 68

Candidate Starts for Kubed_9:

(Start: 68 @6450 has 135 MA's), (75, 6462), (77, 6468), (81, 6480), (86, 6498), (87, 6501), (91, 6516), (95, 6525), (96, 6528), (107, 6573), (121, 6615), (125, 6627), (130, 6642), (132, 6651),

Gene: Kuleana_11 Start: 8039, Stop: 8302, Start Num: 45

Candidate Starts for Kuleana_11:

(Start: 42 @8033 has 1 MA's), (Start: 45 @8039 has 6 MA's), (Start: 48 @8048 has 42 MA's), (77, 8069), (78, 8072), (92, 8120), (117, 8180), (126, 8192), (135, 8219),

Gene: Kuwabara_11 Start: 7129, Stop: 7386, Start Num: 71

Candidate Starts for Kuwabara_11:

(61, 7096), (Start: 71 @7129 has 9 MA's), (100, 7222), (108, 7243), (135, 7315), (137, 7318), (141, 7339), (147, 7369),

Gene: Lahqtemish_10 Start: 7738, Stop: 8001, Start Num: 46

Candidate Starts for Lahqtemish_10:

(Start: 42 @7729 has 1 MA's), (Start: 46 @7738 has 23 MA's), (91, 7807),

Gene: Lakshmi_13 Start: 10160, Stop: 10450, Start Num: 68

Candidate Starts for Lakshmi_13:

(Start: 68 @10160 has 135 MA's), (79, 10184), (100, 10259), (103, 10268), (108, 10286), (135, 10367),

Gene: Laphuphu24k_10 Start: 7655, Stop: 7909, Start Num: 48

Candidate Starts for Laphuphu24k_10:

(39, 7619), (Start: 48 @7655 has 42 MA's), (78, 7679), (91, 7724), (96, 7736), (113, 7781), (117, 7787), (126, 7799), (135, 7826),

Gene: Lasagna_9 Start: 7243, Stop: 7512, Start Num: 68

Candidate Starts for Lasagna_9:

(Start: 68 @7243 has 135 MA's), (96, 7321), (100, 7342), (135, 7429),

Gene: LastNadiia_15 Start: 9753, Stop: 10022, Start Num: 47

Candidate Starts for LastNadiia_15:

(Start: 47 @9753 has 73 MA's), (135, 9942), (137, 9945),

Gene: Lauchelly_9 Start: 6445, Stop: 6735, Start Num: 68

Candidate Starts for Lauchelly_9:

(Start: 68 @6445 has 135 MA's), (75, 6457), (77, 6463), (81, 6475), (86, 6493), (87, 6496), (91, 6511), (95, 6520), (96, 6523), (107, 6568), (121, 6610), (125, 6622), (132, 6646),

Gene: Lauer_10 Start: 7057, Stop: 7356, Start Num: 60

Candidate Starts for Lauer_10:

(17, 6820), (22, 6886), (24, 6907), (27, 6922), (32, 6961), (40, 7000), (Start: 42 @7015 has 1 MA's), (Start: 46 @7024 has 23 MA's), (Start: 60 @7057 has 1 MA's), (66, 7081), (Start: 67 @7084 has 62 MA's), (133, 7267), (135, 7273), (141, 7297),

Gene: Lennox_9 Start: 7243, Stop: 7512, Start Num: 68

Candidate Starts for Lennox_9:

(Start: 68 @7243 has 135 MA's), (100, 7342), (122, 7387), (135, 7429),

Gene: Leona_10 Start: 7706, Stop: 7960, Start Num: 48

Candidate Starts for Leona_10:

(11, 7448), (13, 7472), (16, 7508), (21, 7556), (38, 7664), (39, 7670), (Start: 48 @7706 has 42 MA's), (78, 7730), (92, 7778), (96, 7787), (113, 7832), (126, 7850), (135, 7877),

Gene: Leroy_11 Start: 6825, Stop: 7049, Start Num: 93

Candidate Starts for Leroy_11:

(29, 6588), (31, 6603), (Start: 49 @6687 has 6 MA's), (84, 6783), (Start: 93 @6825 has 20 MA's), (104, 6864), (109, 6882), (126, 6939), (129, 6945), (136, 6972), (149, 7035),

Gene: Leviosa_9 Start: 6466, Stop: 6756, Start Num: 68

Candidate Starts for Leviosa_9:

(Start: 68 @6466 has 135 MA's), (77, 6484), (81, 6496), (86, 6514), (87, 6517), (91, 6532), (95, 6541), (96, 6544), (100, 6565), (107, 6589), (121, 6631), (125, 6643), (132, 6667), (146, 6727),

Gene: LilBandit_9 Start: 6450, Stop: 6740, Start Num: 68

Candidate Starts for LilBandit_9:

(Start: 68 @6450 has 135 MA's), (75, 6462), (77, 6468), (81, 6480), (86, 6498), (87, 6501), (91, 6516), (95, 6525), (96, 6528), (100, 6549), (107, 6573), (121, 6615), (125, 6627),

Gene: LilSpotty_10 Start: 6830, Stop: 7105, Start Num: 68

Candidate Starts for LilSpotty_10:

(53, 6785), (Start: 68 @6830 has 135 MA's), (74, 6839), (117, 6968), (135, 7019), (141, 7043),

Gene: LilStuart_9 Start: 7243, Stop: 7512, Start Num: 68

Candidate Starts for LilStuart_9:

(Start: 68 @7243 has 135 MA's), (96, 7321), (100, 7342), (135, 7429),

Gene: Lilas_12 Start: 8015, Stop: 8272, Start Num: 69

Candidate Starts for Lilas_12:

(Start: 69 @8015 has 24 MA's), (141, 8225), (149, 8264),

Gene: Lilo27_10 Start: 7631, Stop: 7888, Start Num: 47

Candidate Starts for Lilo27_10:

(Start: 42 @7619 has 1 MA's), (Start: 47 @7631 has 73 MA's), (79, 7652), (135, 7808), (140, 7823), (146, 7859),

Gene: LimaBean_10 Start: 7654, Stop: 7911, Start Num: 47

Candidate Starts for LimaBean_10:

(Start: 42 @7642 has 1 MA's), (Start: 47 @7654 has 73 MA's), (79, 7675), (135, 7831), (146, 7882),

Gene: LisoBros_10 Start: 6809, Stop: 7069, Start Num: 49

Candidate Starts for LisoBros_10:

(Start: 49 @6809 has 6 MA's), (56, 6824), (79, 6845), (86, 6869), (126, 6965), (133, 6986), (139, 7001),

Gene: LitninMcQueen_11 Start: 6829, Stop: 7053, Start Num: 93

Candidate Starts for LitninMcQueen_11:

(84, 6787), (Start: 93 @6829 has 20 MA's), (104, 6868), (109, 6886), (126, 6943), (129, 6949), (136, 6976), (149, 7039),

Gene: Litotes_13 Start: 10128, Stop: 10397, Start Num: 68

Candidate Starts for Litotes_13:

(64, 10116), (Start: 68 @10128 has 135 MA's), (77, 10146), (87, 10179), (100, 10227), (122, 10272), (135, 10314),

Gene: LittleTokyo_11 Start: 7988, Stop: 8242, Start Num: 48

Candidate Starts for LittleTokyo_11:

(Start: 48 @7988 has 42 MA's), (91, 8057), (133, 8153), (135, 8159),

Gene: LonelyBoi_12 Start: 7862, Stop: 8119, Start Num: 69

Candidate Starts for LonelyBoi_12:

(Start: 69 @7862 has 24 MA's), (141, 8072), (149, 8111),

Gene: Loviatar_10 Start: 7911, Stop: 8231, Start Num: 34

Candidate Starts for Loviatar_10:

(Start: 34 @7911 has 1 MA's), (Start: 37 @7923 has 1 MA's), (91, 8037), (135, 8151),

Gene: Lucky10_10 Start: 6338, Stop: 6595, Start Num: 71

Candidate Starts for Lucky10_10:

(61, 6305), (Start: 71 @6338 has 9 MA's), (135, 6524), (141, 6548),

Gene: Lucy_9 Start: 7234, Stop: 7503, Start Num: 68

Candidate Starts for Lucy_9:

(Start: 68 @7234 has 135 MA's), (77, 7252), (100, 7333), (122, 7378), (135, 7420),

Gene: Lunar_12 Start: 8244, Stop: 8504, Start Num: 46

Candidate Starts for Lunar_12:

(Start: 42 @8235 has 1 MA's), (Start: 45 @8241 has 6 MA's), (Start: 46 @8244 has 23 MA's), (Start: 48 @8250 has 42 MA's), (78, 8274), (91, 8319), (117, 8382), (126, 8394),

Gene: Lutum_11 Start: 6824, Stop: 7048, Start Num: 93

Candidate Starts for Lutum_11:

(31, 6602), (Start: 49 @6686 has 6 MA's), (84, 6782), (Start: 93 @6824 has 20 MA's), (104, 6863), (109, 6881), (126, 6938), (129, 6944), (136, 6971),

Gene: Lynlen_10 Start: 7668, Stop: 7928, Start Num: 47

Candidate Starts for Lynlen_10:

(Start: 42 @7656 has 1 MA's), (Start: 47 @7668 has 73 MA's), (79, 7692), (135, 7848), (140, 7863), (146, 7899),

Gene: MAnor_11 Start: 7025, Stop: 7297, Start Num: 67

Candidate Starts for MAnor_11:

(Start: 67 @7025 has 62 MA's), (77, 7037), (79, 7043), (133, 7208), (135, 7214), (141, 7238),

Gene: MEAK_9 Start: 6452, Stop: 6742, Start Num: 68

Candidate Starts for MEAK_9:

(Start: 68 @6452 has 135 MA's), (75, 6464), (77, 6470), (81, 6482), (86, 6500), (87, 6503), (91, 6518), (95, 6527), (96, 6530), (107, 6575), (121, 6617), (125, 6629), (132, 6653), (146, 6713),

Gene: MScarn_13 Start: 7235, Stop: 7504, Start Num: 67

Candidate Starts for MScarn_13:

(Start: 67 @7235 has 62 MA's), (92, 7295), (111, 7367),

Gene: MaVan_13 Start: 8163, Stop: 8462, Start Num: 67

Candidate Starts for MaVan_13:

(66, 8160), (Start: 67 @8163 has 62 MA's), (100, 8265), (117, 8334), (135, 8376), (148, 8436), (149, 8439), (150, 8442),

Gene: Makima_13 Start: 8837, Stop: 9106, Start Num: 47

Candidate Starts for Makima_13:

(Start: 47 @8837 has 73 MA's), (135, 9026), (137, 9029),

Gene: Makoto_9 Start: 7243, Stop: 7512, Start Num: 68

Candidate Starts for Makoto_9:

(Start: 68 @7243 has 135 MA's), (100, 7342), (122, 7387), (135, 7429),

Gene: Malisha_11 Start: 7874, Stop: 8098, Start Num: 93

Candidate Starts for Malisha_11:

(Start: 93 @7874 has 20 MA's), (109, 7931), (126, 7988), (129, 7994), (136, 8021), (149, 8084),

Gene: Malvina_13 Start: 8086, Stop: 8364, Start Num: 77

Candidate Starts for Malvina_13:

(Start: 67 @8065 has 62 MA's), (77, 8086), (141, 8302), (150, 8344),

Gene: MamaPearl_9 Start: 7287, Stop: 7556, Start Num: 68

Candidate Starts for MamaPearl_9:

(Start: 68 @7287 has 135 MA's), (100, 7386), (102, 7392), (135, 7473),

Gene: Margaret_14 Start: 7972, Stop: 8241, Start Num: 67

Candidate Starts for Margaret_14:

(Start: 67 @7972 has 62 MA's), (79, 7987), (91, 8029),

Gene: Maria1952_9 Start: 7263, Stop: 7550, Start Num: 68

Candidate Starts for Maria1952_9:

(Start: 68 @7263 has 135 MA's), (97, 7344), (100, 7362), (135, 7470), (151, 7542),

Gene: Marteena_12 Start: 8015, Stop: 8272, Start Num: 69

Candidate Starts for Marteena_12:

(Start: 69 @8015 has 24 MA's), (141, 8225), (149, 8264),

Gene: Mayweather_12 Start: 7658, Stop: 7930, Start Num: 67

Candidate Starts for Mayweather_12:

(Start: 67 @7658 has 62 MA's), (77, 7670), (79, 7676), (133, 7841), (135, 7847), (141, 7871),

Gene: McDazzle_10 Start: 7500, Stop: 7772, Start Num: 67

Candidate Starts for McDazzle_10:

(Start: 67 @7500 has 62 MA's), (77, 7512), (79, 7518), (133, 7683), (135, 7689), (141, 7713),

Gene: MeganNoll_13 Start: 10158, Stop: 10427, Start Num: 68

Candidate Starts for MeganNoll_13:

(Start: 68 @10158 has 135 MA's), (87, 10209), (91, 10224), (100, 10257),

Gene: Melons_12 Start: 8241, Stop: 8504, Start Num: 45

Candidate Starts for Melons_12:

(Start: 42 @8235 has 1 MA's), (Start: 45 @8241 has 6 MA's), (Start: 46 @8244 has 23 MA's), (Start: 48 @8250 has 42 MA's), (78, 8274), (91, 8319), (117, 8382), (126, 8394),

Gene: Milomuff_11 Start: 8040, Stop: 8297, Start Num: 47

Candidate Starts for Milomuff_11:

(Start: 42 @8028 has 1 MA's), (Start: 47 @8040 has 73 MA's), (79, 8061), (135, 8217), (140, 8232), (146, 8268),

Gene: Mireles_12 Start: 7233, Stop: 7502, Start Num: 47

Candidate Starts for Mireles_12:

(Start: 47 @7233 has 73 MA's), (135, 7422), (137, 7425),

Gene: Misaeng_13 Start: 10206, Stop: 10496, Start Num: 68

Candidate Starts for Misaeng_13:

(18, 9945), (Start: 68 @10206 has 135 MA's), (79, 10230), (91, 10272), (100, 10305), (108, 10332), (135, 10413),

Gene: Moki_9 Start: 7245, Stop: 7514, Start Num: 68

Candidate Starts for Moki_9:

(Start: 68 @7245 has 135 MA's), (77, 7263), (100, 7344), (122, 7389), (135, 7431),

Gene: Morkie_10 Start: 6300, Stop: 6557, Start Num: 71

Candidate Starts for Morkie_10:

(61, 6267), (Start: 71 @6300 has 9 MA's), (135, 6486), (141, 6510),

Gene: MortyNRick_11 Start: 7129, Stop: 7386, Start Num: 71

Candidate Starts for MortyNRick_11:

(61, 7096), (Start: 71 @7129 has 9 MA's), (113, 7264), (133, 7309), (135, 7315), (137, 7318), (141, 7339),

Gene: Moyashi_9 Start: 6470, Stop: 6760, Start Num: 68

Candidate Starts for Moyashi_9:

(Start: 68 @6470 has 135 MA's), (75, 6482), (77, 6488), (86, 6518), (87, 6521), (91, 6536), (95, 6545), (96, 6548), (107, 6593), (125, 6647), (132, 6671),

Gene: MrAK_9 Start: 6479, Stop: 6769, Start Num: 68

Candidate Starts for MrAK_9:

(Start: 68 @6479 has 135 MA's), (75, 6491), (77, 6497), (81, 6509), (86, 6527), (87, 6530), (91, 6545), (95, 6554), (96, 6557), (107, 6602), (125, 6656), (132, 6680), (146, 6740),

Gene: MrBoss_13 Start: 10128, Stop: 10397, Start Num: 68

Candidate Starts for MrBoss_13:

(64, 10116), (Start: 68 @10128 has 135 MA's), (77, 10146), (87, 10179), (100, 10227), (122, 10272), (135, 10314),

Gene: MrGloopy_13 Start: 10091, Stop: 10360, Start Num: 68

Candidate Starts for MrGloopy_13:

(Start: 68 @10091 has 135 MA's), (87, 10142), (91, 10157), (100, 10190),

Gene: MsUbiquitous_10 Start: 7631, Stop: 7951, Start Num: 47

Candidate Starts for MsUbiquitous_10:

(Start: 42 @7619 has 1 MA's), (Start: 47 @7631 has 73 MA's), (79, 7715), (135, 7871), (140, 7886),

Gene: MunkgeeRoachy_11 Start: 7305, Stop: 7586, Start Num: 67

Candidate Starts for MunkgeeRoachy_11:

(32, 7182), (Start: 67 @7305 has 62 MA's),

Gene: Nancia_9 Start: 7243, Stop: 7512, Start Num: 68

Candidate Starts for Nancia_9:

(Start: 68 @7243 has 135 MA's), (96, 7321), (100, 7342), (135, 7429),

Gene: Nebkiss_8 Start: 7367, Stop: 7630, Start Num: 68

Candidate Starts for Nebkiss_8:

(Start: 68 @7367 has 135 MA's), (99, 7451), (100, 7460), (107, 7484), (116, 7505), (117, 7508), (128, 7532), (141, 7583), (146, 7610),

Gene: Nesbitt_10 Start: 7604, Stop: 7855, Start Num: 58

Candidate Starts for Nesbitt_10:

(30, 7502), (Start: 58 @7604 has 2 MA's), (82, 7634), (106, 7709), (118, 7736), (135, 7775),

Gene: Neuville_12 Start: 7464, Stop: 7730, Start Num: 47

Candidate Starts for Neuville_12:

(Start: 47 @7464 has 73 MA's), (135, 7650), (137, 7653), (148, 7710),

Gene: Nibbles_13 Start: 8163, Stop: 8462, Start Num: 67

Candidate Starts for Nibbles_13:

(66, 8160), (Start: 67 @8163 has 62 MA's), (100, 8265), (117, 8334), (135, 8376), (148, 8436), (149, 8439), (150, 8442),

Gene: Niblet_11 Start: 8034, Stop: 8288, Start Num: 48

Candidate Starts for Niblet_11:

(1, 7434), (4, 7593), (7, 7701), (23, 7905), (39, 7998), (41, 8016), (Start: 48 @8034 has 42 MA's), (78, 8058), (92, 8106), (126, 8178), (135, 8205),

Gene: Nicky22_11 Start: 8102, Stop: 8359, Start Num: 47

Candidate Starts for Nicky22_11:

(Start: 42 @8090 has 1 MA's), (Start: 47 @8102 has 73 MA's), (79, 8123), (135, 8279), (140, 8294), (146, 8330),

Gene: Nina_12 Start: 8291, Stop: 8572, Start Num: 67

Candidate Starts for Nina_12:

(32, 8168), (Start: 67 @8291 has 62 MA's),

Gene: Nodigi_13 Start: 8256, Stop: 8525, Start Num: 67

Candidate Starts for Nodigi_13:

(Start: 67 @8256 has 62 MA's), (91, 8313),

Gene: Nubia_13 Start: 10120, Stop: 10410, Start Num: 68

Candidate Starts for Nubia_13:

(64, 10108), (Start: 68 @10120 has 135 MA's), (79, 10144), (91, 10186), (100, 10219), (103, 10228), (108, 10246), (135, 10327),

Gene: ODay_11 Start: 6855, Stop: 7112, Start Num: 73

Candidate Starts for ODay_11:

(55, 6810), (Start: 73 @6855 has 3 MA's), (100, 6948), (108, 6969), (135, 7041), (137, 7044), (141, 7065), (147, 7095),

Gene: OMalley_9 Start: 7261, Stop: 7548, Start Num: 68

Candidate Starts for OMalley_9:

(Start: 68 @7261 has 135 MA's), (100, 7360), (135, 7468), (151, 7540),

Gene: Olliecat_10 Start: 7885, Stop: 8151, Start Num: 47

Candidate Starts for Olliecat_10:

(Start: 42 @7873 has 1 MA's), (Start: 47 @7885 has 73 MA's), (77, 7909), (101, 7990), (119, 8032), (135, 8068), (140, 8083),

Gene: Oppalora_10 Start: 7655, Stop: 7909, Start Num: 48

Candidate Starts for Oppalora_10:

(11, 7397), (13, 7421), (16, 7457), (21, 7505), (39, 7619), (Start: 48 @7655 has 42 MA's), (78, 7679), (92, 7727), (96, 7736), (113, 7781), (126, 7799), (135, 7826),

Gene: Orcanus_11 Start: 8038, Stop: 8292, Start Num: 48

Candidate Starts for Orcanus_11:

(23, 7909), (25, 7924), (39, 8002), (41, 8020), (Start: 48 @8038 has 42 MA's), (78, 8062), (123, 8176), (126, 8182), (137, 8212),

Gene: Orla_13 Start: 8260, Stop: 8529, Start Num: 67

Candidate Starts for Orla_13:

(Start: 67 @8260 has 62 MA's), (91, 8317),

Gene: OtsoOtso_11 Start: 8089, Stop: 8343, Start Num: 48

Candidate Starts for OtsoOtso_11:

(Start: 42 @8074 has 1 MA's), (Start: 45 @8080 has 6 MA's), (Start: 46 @8083 has 23 MA's), (Start: 48 @8089 has 42 MA's), (78, 8113), (91, 8158), (117, 8221), (126, 8233),

Gene: OurGirlNessie_9 Start: 7234, Stop: 7503, Start Num: 68

Candidate Starts for OurGirlNessie_9:

(Start: 68 @7234 has 135 MA's), (96, 7312), (100, 7333), (135, 7420),

Gene: Ouroboros_9 Start: 6453, Stop: 6743, Start Num: 68

Candidate Starts for Ouroboros_9:

(Start: 68 @6453 has 135 MA's), (75, 6465), (77, 6471), (81, 6483), (86, 6501), (87, 6504), (91, 6519), (95, 6528), (96, 6531), (100, 6552), (107, 6576), (121, 6618), (125, 6630), (132, 6654), (146, 6714),

Gene: Oxynfrius_13 Start: 10133, Stop: 10423, Start Num: 68

Candidate Starts for Oxynfrius_13:

(Start: 68 @10133 has 135 MA's), (79, 10157), (100, 10232), (103, 10241), (108, 10259), (135, 10340),

Gene: P1.1_9 Start: 6453, Stop: 6743, Start Num: 68

Candidate Starts for P1.1_9:

(Start: 68 @6453 has 135 MA's), (75, 6465), (77, 6471), (81, 6483), (86, 6501), (87, 6504), (91, 6519), (95, 6528), (96, 6531), (107, 6576), (125, 6630), (146, 6714),

Gene: P100.1_9 Start: 6443, Stop: 6733, Start Num: 68

Candidate Starts for P100.1_9:

(Start: 68 @6443 has 135 MA's), (75, 6455), (77, 6461), (81, 6473), (86, 6491), (87, 6494), (91, 6509), (95, 6518), (96, 6521), (100, 6542), (107, 6566), (121, 6608), (125, 6620), (132, 6644), (146, 6704),

Gene: P100A_9 Start: 6464, Stop: 6754, Start Num: 68

Candidate Starts for P100A_9:

(Start: 42 @6392 has 1 MA's), (66, 6458), (Start: 68 @6464 has 135 MA's), (75, 6476), (77, 6482), (81, 6494), (86, 6512), (87, 6515), (91, 6530), (95, 6539), (96, 6542), (100, 6563), (107, 6587), (121, 6629), (125, 6641), (132, 6665), (146, 6725),

Gene: P100D_9 Start: 6447, Stop: 6737, Start Num: 68

Candidate Starts for P100D_9:

(Start: 68 @6447 has 135 MA's), (75, 6459), (77, 6465), (81, 6477), (86, 6495), (87, 6498), (91, 6513), (95, 6522), (96, 6525), (107, 6570), (121, 6612), (125, 6624), (132, 6648),

Gene: P101A_9 Start: 6446, Stop: 6736, Start Num: 68

Candidate Starts for P101A_9:

(Start: 68 @6446 has 135 MA's), (75, 6458), (77, 6464), (81, 6476), (86, 6494), (87, 6497), (91, 6512), (95, 6521), (96, 6524), (100, 6545), (107, 6569), (121, 6611), (125, 6623), (132, 6647), (146, 6707),

Gene: P104A_9 Start: 6448, Stop: 6738, Start Num: 68

Candidate Starts for P104A_9:

(Start: 68 @6448 has 135 MA's), (75, 6460), (77, 6466), (81, 6478), (86, 6496), (87, 6499), (91, 6514), (95, 6523), (96, 6526), (107, 6571), (121, 6613), (125, 6625), (132, 6649), (146, 6709),

Gene: P104B_9 Start: 6452, Stop: 6742, Start Num: 68

Candidate Starts for P104B_9:

(Start: 68 @6452 has 135 MA's), (75, 6464), (77, 6470), (81, 6482), (86, 6500), (87, 6503), (91, 6518), (95, 6527), (96, 6530), (100, 6551), (107, 6575), (121, 6617), (125, 6629),

Gene: P105_9 Start: 6442, Stop: 6732, Start Num: 68

Candidate Starts for P105_9:

(Start: 68 @6442 has 135 MA's), (75, 6454), (77, 6460), (81, 6472), (86, 6490), (87, 6493), (91, 6508), (95, 6517), (96, 6520), (100, 6541), (107, 6565), (121, 6607), (125, 6619), (132, 6643), (146, 6703),

Gene: P106A_9 Start: 6470, Stop: 6760, Start Num: 68

Candidate Starts for P106A_9:

(Start: 68 @6470 has 135 MA's), (75, 6482), (77, 6488), (81, 6500), (86, 6518), (87, 6521), (91, 6536), (95, 6545), (96, 6548), (107, 6593), (146, 6731),

Gene: P106C_9 Start: 6470, Stop: 6760, Start Num: 68

Candidate Starts for P106C_9:

(Start: 68 @6470 has 135 MA's), (75, 6482), (77, 6488), (81, 6500), (86, 6518), (87, 6521), (91, 6536), (95, 6545), (96, 6548), (107, 6593), (146, 6731),

Gene: P106I_9 Start: 6470, Stop: 6760, Start Num: 68

Candidate Starts for P106I_9:

(Start: 68 @6470 has 135 MA's), (75, 6482), (77, 6488), (81, 6500), (86, 6518), (87, 6521), (91, 6536), (95, 6545), (96, 6548), (107, 6593), (146, 6731),

Gene: P106L_9 Start: 6470, Stop: 6760, Start Num: 68

Candidate Starts for P106L_9:

(Start: 68 @6470 has 135 MA's), (75, 6482), (77, 6488), (81, 6500), (86, 6518), (87, 6521), (91, 6536), (95, 6545), (96, 6548), (107, 6593), (146, 6731),

Gene: P106M_9 Start: 6470, Stop: 6760, Start Num: 68

Candidate Starts for P106M_9:

(Start: 68 @6470 has 135 MA's), (75, 6482), (77, 6488), (81, 6500), (86, 6518), (87, 6521), (91, 6536), (95, 6545), (96, 6548), (107, 6593), (146, 6731),

Gene: P107A_9 Start: 6456, Stop: 6746, Start Num: 68

Candidate Starts for P107A_9:

(Start: 68 @6456 has 135 MA's), (75, 6468), (77, 6474), (81, 6486), (86, 6504), (87, 6507), (91, 6522), (95, 6531), (96, 6534), (100, 6555), (107, 6579), (121, 6621), (124, 6627), (125, 6633), (132, 6657), (146, 6717),

Gene: P107C_9 Start: 6452, Stop: 6742, Start Num: 68

Candidate Starts for P107C_9:

(Start: 68 @6452 has 135 MA's), (75, 6464), (77, 6470), (81, 6482), (86, 6500), (87, 6503), (91, 6518), (95, 6527), (96, 6530), (107, 6575), (121, 6617), (125, 6629), (146, 6713),

Gene: P108C_9 Start: 6456, Stop: 6746, Start Num: 68

Candidate Starts for P108C_9:

(Start: 68 @6456 has 135 MA's), (75, 6468), (77, 6474), (81, 6486), (86, 6504), (87, 6507), (91, 6522), (95, 6531), (96, 6534), (107, 6579), (121, 6621), (125, 6633),

Gene: P14.4_9 Start: 6447, Stop: 6737, Start Num: 68

Candidate Starts for P14.4_9:

(Start: 68 @6447 has 135 MA's), (75, 6459), (77, 6465), (81, 6477), (86, 6495), (87, 6498), (91, 6513), (95, 6522), (96, 6525), (107, 6570), (121, 6612), (125, 6624),

Gene: P9.1_9 Start: 6445, Stop: 6735, Start Num: 68

Candidate Starts for P9.1_9:

(Start: 68 @6445 has 135 MA's), (75, 6457), (77, 6463), (81, 6475), (86, 6493), (87, 6496), (91, 6511), (95, 6520), (96, 6523), (107, 6568), (121, 6610), (125, 6622),

Gene: PA6_9 Start: 6455, Stop: 6745, Start Num: 68

Candidate Starts for PA6_9:

(Start: 68 @6455 has 135 MA's), (75, 6467), (77, 6473), (81, 6485), (86, 6503), (87, 6506), (91, 6521), (95, 6530), (96, 6533), (100, 6554), (121, 6620), (125, 6632), (130, 6647), (132, 6656), (146, 6716),

Gene: PAD20_9 Start: 6453, Stop: 6743, Start Num: 68

Candidate Starts for PAD20_9:

(Start: 68 @6453 has 135 MA's), (75, 6465), (77, 6471), (81, 6483), (86, 6501), (87, 6504), (91, 6519), (95, 6528), (96, 6531), (107, 6576), (121, 6618), (125, 6630), (146, 6714),

Gene: PAS50_9 Start: 6450, Stop: 6740, Start Num: 68

Candidate Starts for PAS50_9:

(Start: 68 @6450 has 135 MA's), (75, 6462), (77, 6468), (81, 6480), (86, 6498), (87, 6501), (91, 6516), (95, 6525), (96, 6528), (107, 6573), (121, 6615), (125, 6627), (132, 6651),

Gene: PHL010M04_09 Start: 6444, Stop: 6734, Start Num: 68

Candidate Starts for PHL010M04_09:

(66, 6438), (Start: 68 @6444 has 135 MA's), (75, 6456), (77, 6462), (81, 6474), (86, 6492), (87, 6495), (91, 6510), (95, 6519), (96, 6522), (107, 6567), (121, 6609), (125, 6621), (132, 6645), (146, 6705),

Gene: PHL037M02_09 Start: 6444, Stop: 6740, Start Num: 66

Candidate Starts for PHL037M02_09:

(66, 6444), (Start: 68 @6450 has 135 MA's), (75, 6462), (77, 6468), (86, 6498), (87, 6501), (91, 6516), (95, 6525), (96, 6528), (121, 6615), (125, 6627), (146, 6711),

Gene: PHL060L00_09 Start: 6443, Stop: 6733, Start Num: 68

Candidate Starts for PHL060L00_09:

(Start: 68 @6443 has 135 MA's), (75, 6455), (77, 6461), (81, 6473), (86, 6491), (87, 6494), (91, 6509), (95, 6518), (96, 6521), (107, 6566), (121, 6608), (125, 6620), (132, 6644),

Gene: PHL067M10_09 Start: 6447, Stop: 6737, Start Num: 68

Candidate Starts for PHL067M10_09:

(Start: 68 @6447 has 135 MA's), (75, 6459), (77, 6465), (81, 6477), (86, 6495), (87, 6498), (91, 6513), (95, 6522), (96, 6525), (107, 6570), (121, 6612), (125, 6624), (132, 6648),

Gene: PHL071N05_09 Start: 6449, Stop: 6739, Start Num: 68

Candidate Starts for PHL071N05_09:

(Start: 68 @6449 has 135 MA's), (75, 6461), (77, 6467), (81, 6479), (86, 6497), (87, 6500), (91, 6515), (95, 6524), (96, 6527), (107, 6572), (121, 6614), (125, 6626),

Gene: PHL111M01_09 Start: 6453, Stop: 6743, Start Num: 68

Candidate Starts for PHL111M01_09:

(Start: 68 @6453 has 135 MA's), (75, 6465), (77, 6471), (81, 6483), (86, 6501), (87, 6504), (91, 6519), (95, 6528), (96, 6531), (107, 6576), (121, 6618), (125, 6630),

Gene: PHL112N00_09 Start: 6453, Stop: 6743, Start Num: 68

Candidate Starts for PHL112N00_09:

(Start: 68 @6453 has 135 MA's), (75, 6465), (77, 6471), (81, 6483), (86, 6501), (87, 6504), (91, 6519), (95, 6528), (96, 6531), (107, 6576), (121, 6618), (125, 6630), (130, 6645), (132, 6654),

Gene: PHL113M01_09 Start: 6453, Stop: 6743, Start Num: 68

Candidate Starts for PHL113M01_09:

(Start: 68 @6453 has 135 MA's), (75, 6465), (77, 6471), (79, 6477), (81, 6483), (86, 6501), (87, 6504), (91, 6519), (95, 6528), (96, 6531), (107, 6576), (121, 6618), (125, 6630), (132, 6654), (146, 6714),

Gene: PHL114L00_09 Start: 6452, Stop: 6742, Start Num: 68

Candidate Starts for PHL114L00_09:

(Start: 68 @6452 has 135 MA's), (75, 6464), (77, 6470), (86, 6500), (91, 6518), (95, 6527), (96, 6530), (100, 6551), (107, 6575), (121, 6617), (125, 6629), (132, 6653), (146, 6713),

Gene: PartyCup_13 Start: 10175, Stop: 10444, Start Num: 68

Candidate Starts for PartyCup_13:

(64, 10163), (Start: 68 @10175 has 135 MA's), (77, 10193), (87, 10226), (100, 10274), (122, 10319), (135, 10361),

Gene: PastaFagioli_10 Start: 7726, Stop: 7989, Start Num: 46

Candidate Starts for PastaFagioli_10:

(Start: 42 @7717 has 1 MA's), (Start: 46 @7726 has 23 MA's), (91, 7795),

Gene: Pecas_10 Start: 7652, Stop: 7912, Start Num: 47

Candidate Starts for Pecas_10:

(Start: 42 @7640 has 1 MA's), (Start: 47 @7652 has 73 MA's), (79, 7676), (135, 7832), (140, 7847),

Gene: Pelletreau_12 Start: 8244, Stop: 8498, Start Num: 48

Candidate Starts for Pelletreau_12:

(23, 8115), (39, 8208), (41, 8226), (Start: 48 @8244 has 42 MA's), (78, 8268), (123, 8382), (126, 8388), (137, 8418),

Gene: Periwinkle_11 Start: 6824, Stop: 7048, Start Num: 93

Candidate Starts for Periwinkle_11:

(29, 6587), (31, 6602), (Start: 49 @6686 has 6 MA's), (84, 6782), (Start: 93 @6824 has 20 MA's), (104, 6863), (109, 6881), (126, 6938), (129, 6944), (136, 6971), (149, 7034),

Gene: Phabuloso_11 Start: 6829, Stop: 7053, Start Num: 93

Candidate Starts for Phabuloso_11:

(84, 6787), (Start: 93 @6829 has 20 MA's), (104, 6868), (109, 6886), (126, 6943), (129, 6949), (136, 6976), (149, 7039),

Gene: PhigPhack_10 Start: 7683, Stop: 7940, Start Num: 47

Candidate Starts for PhigPhack_10:

(Start: 42 @7671 has 1 MA's), (Start: 47 @7683 has 73 MA's), (79, 7704), (134, 7857), (135, 7860), (140, 7875), (146, 7911),

Gene: PhirstandPhine_12 Start: 8250, Stop: 8504, Start Num: 48

Candidate Starts for PhirstandPhine_12:

(Start: 42 @8235 has 1 MA's), (Start: 45 @8241 has 6 MA's), (Start: 46 @8244 has 23 MA's), (Start: 48 @8250 has 42 MA's), (78, 8274), (91, 8319), (117, 8382), (126, 8394),

Gene: Phisb_10 Start: 7645, Stop: 7905, Start Num: 47

Candidate Starts for Phisb_10:

(Start: 42 @7633 has 1 MA's), (Start: 47 @7645 has 73 MA's), (79, 7669), (135, 7825), (140, 7840), (146, 7876),

Gene: Phistory_11 Start: 6813, Stop: 7037, Start Num: 93

Candidate Starts for Phistory_11:

(31, 6591), (Start: 49 @6675 has 6 MA's), (84, 6771), (Start: 93 @6813 has 20 MA's), (104, 6852), (109, 6870), (126, 6927), (129, 6933), (136, 6960), (149, 7023),

Gene: PhluffyCoco_10 Start: 7655, Stop: 7909, Start Num: 48

Candidate Starts for PhluffyCoco_10:

(39, 7619), (Start: 48 @7655 has 42 MA's), (78, 7679), (91, 7724), (96, 7736), (113, 7781), (117, 7787), (126, 7799), (135, 7826),

Gene: PhorbesPhlower_10 Start: 6300, Stop: 6557, Start Num: 71

Candidate Starts for PhorbesPhlower_10:

(61, 6267), (Start: 71 @6300 has 9 MA's), (135, 6486), (141, 6510),

Gene: PinkFriday_9 Start: 7264, Stop: 7551, Start Num: 68

Candidate Starts for PinkFriday_9:

(Start: 68 @7264 has 135 MA's), (87, 7315), (100, 7363), (135, 7471), (151, 7543),

Gene: Pirate_9 Start: 6445, Stop: 6735, Start Num: 68

Candidate Starts for Pirate_9:

(Start: 68 @6445 has 135 MA's), (75, 6457), (77, 6463), (81, 6475), (86, 6493), (87, 6496), (91, 6511), (95, 6520), (96, 6523), (107, 6568), (121, 6610), (125, 6622),

Gene: PitaDog_9 Start: 7234, Stop: 7503, Start Num: 68

Candidate Starts for PitaDog_9:

(Start: 68 @7234 has 135 MA's), (100, 7333), (122, 7378), (135, 7420),

Gene: Polka_11 Start: 8080, Stop: 8343, Start Num: 45

Candidate Starts for Polka_11:

(Start: 42 @8074 has 1 MA's), (Start: 45 @8080 has 6 MA's), (Start: 46 @8083 has 23 MA's), (Start: 48 @8089 has 42 MA's), (78, 8113), (91, 8158), (117, 8221), (126, 8233),

Gene: Pollux_12 Start: 8015, Stop: 8272, Start Num: 69

Candidate Starts for Pollux_12:

(Start: 69 @8015 has 24 MA's), (141, 8225), (149, 8264),

Gene: PondAmelia_13 Start: 7900, Stop: 8160, Start Num: 43

Candidate Starts for PondAmelia_13:
(Start: 43 @7900 has 2 MA's), (91, 7966),

Gene: Pons_11 Start: 7037, Stop: 7309, Start Num: 67
Candidate Starts for Pons_11:
(Start: 67 @7037 has 62 MA's), (77, 7049), (79, 7055), (133, 7220), (135, 7226), (141, 7250),

Gene: Posh_12 Start: 8009, Stop: 8266, Start Num: 69
Candidate Starts for Posh_12:
(Start: 69 @8009 has 24 MA's), (141, 8219), (149, 8258),

Gene: PotPie_11 Start: 7888, Stop: 8160, Start Num: 67
Candidate Starts for PotPie_11:
(66, 7885), (Start: 67 @7888 has 62 MA's), (77, 7900), (79, 7906), (133, 8071), (135, 8077), (141, 8101),

Gene: Potatoes_13 Start: 10152, Stop: 10421, Start Num: 68
Candidate Starts for Potatoes_13:
(Start: 68 @10152 has 135 MA's), (87, 10203), (91, 10218), (100, 10251),

Gene: Preamble_9 Start: 7244, Stop: 7513, Start Num: 68
Candidate Starts for Preamble_9:
(Start: 68 @7244 has 135 MA's), (100, 7343), (122, 7388), (135, 7430), (142, 7457),

Gene: Procrass1_9 Start: 6452, Stop: 6742, Start Num: 68
Candidate Starts for Procrass1_9:
(Start: 68 @6452 has 135 MA's), (75, 6464), (77, 6470), (81, 6482), (86, 6500), (87, 6503), (91, 6518), (95, 6527), (96, 6530), (107, 6575), (121, 6617), (125, 6629), (132, 6653), (146, 6713),

Gene: PsychoKiller_11 Start: 7257, Stop: 7538, Start Num: 67
Candidate Starts for PsychoKiller_11:
(32, 7134), (Start: 67 @7257 has 62 MA's),

Gene: Pterodactyl_9 Start: 7235, Stop: 7504, Start Num: 68
Candidate Starts for Pterodactyl_9:
(Start: 68 @7235 has 135 MA's), (100, 7334), (122, 7379), (135, 7421),

Gene: Pumancara_9 Start: 7263, Stop: 7550, Start Num: 68
Candidate Starts for Pumancara_9:
(Start: 68 @7263 has 135 MA's), (87, 7314), (100, 7362), (135, 7470), (151, 7542),

Gene: Pytheas_12 Start: 7862, Stop: 8119, Start Num: 69
Candidate Starts for Pytheas_12:
(Start: 69 @7862 has 24 MA's), (141, 8072), (149, 8111),

Gene: QMacho_11 Start: 8135, Stop: 8395, Start Num: 47
Candidate Starts for QMacho_11:
(Start: 42 @8123 has 1 MA's), (Start: 47 @8135 has 73 MA's), (79, 8159), (135, 8315), (140, 8330),

Gene: Quasar_11 Start: 7872, Stop: 8147, Start Num: 67
Candidate Starts for Quasar_11:
(32, 7749), (Start: 67 @7872 has 62 MA's),

Gene: QueenBey_9 Start: 6446, Stop: 6736, Start Num: 68
Candidate Starts for QueenBey_9:
(Start: 68 @6446 has 135 MA's), (77, 6464), (81, 6476), (86, 6494), (87, 6497), (91, 6512), (95, 6521),
(96, 6524), (107, 6569), (121, 6611), (125, 6623), (132, 6647), (146, 6707),

Gene: Quenya_11 Start: 7781, Stop: 8044, Start Num: 47
Candidate Starts for Quenya_11:
(36, 7724), (Start: 47 @7781 has 73 MA's), (79, 7808), (83, 7823), (135, 7964),

Gene: RADical_12 Start: 7258, Stop: 7539, Start Num: 67
Candidate Starts for RADical_12:
(32, 7135), (Start: 67 @7258 has 62 MA's),

Gene: RAP15_13 Start: 10158, Stop: 10427, Start Num: 68
Candidate Starts for RAP15_13:
(Start: 68 @10158 has 135 MA's), (87, 10209), (91, 10224), (100, 10257),

Gene: RSchmailzl_12 Start: 7398, Stop: 7679, Start Num: 67
Candidate Starts for RSchmailzl_12:
(32, 7275), (Start: 67 @7398 has 62 MA's),

Gene: RanchParmCat_14 Start: 7972, Stop: 8241, Start Num: 67
Candidate Starts for RanchParmCat_14:
(Start: 67 @7972 has 62 MA's), (79, 7987), (91, 8029),

Gene: Rattail_10 Start: 7706, Stop: 7960, Start Num: 48
Candidate Starts for Rattail_10:
(11, 7448), (13, 7472), (16, 7508), (21, 7556), (38, 7664), (39, 7670), (Start: 48 @7706 has 42 MA's),
(78, 7730), (92, 7778), (96, 7787), (113, 7832), (126, 7850), (135, 7877),

Gene: Raya_10 Start: 6319, Stop: 6558, Start Num: 72
Candidate Starts for Raya_10:
(62, 6292), (63, 6298), (72, 6319), (77, 6331), (79, 6337), (87, 6364), (97, 6394), (122, 6439), (127,
6451), (141, 6505),

Gene: RcigaStruga_13 Start: 10141, Stop: 10431, Start Num: 68
Candidate Starts for RcigaStruga_13:
(5, 9655), (8, 9742), (18, 9880), (Start: 68 @10141 has 135 MA's), (79, 10165), (100, 10240), (108,
10267), (135, 10348),

Gene: RedBaron_13 Start: 7302, Stop: 7583, Start Num: 67
Candidate Starts for RedBaron_13:
(32, 7179), (Start: 67 @7302 has 62 MA's),

Gene: RedFox_10 Start: 7655, Stop: 7909, Start Num: 48
Candidate Starts for RedFox_10:
(39, 7619), (Start: 48 @7655 has 42 MA's), (78, 7679), (91, 7724), (96, 7736), (113, 7781), (117, 7787),
(126, 7799), (135, 7826),

Gene: Renna12_11 Start: 7855, Stop: 8109, Start Num: 48
Candidate Starts for Renna12_11:
(Start: 48 @7855 has 42 MA's), (78, 7879), (91, 7924), (96, 7936), (113, 7981), (117, 7987), (126,
7999), (135, 8026),

Gene: Rileysaurus_9 Start: 6441, Stop: 6731, Start Num: 68

Candidate Starts for Rileysaurus_9:

(Start: 68 @6441 has 135 MA's), (75, 6453), (77, 6459), (81, 6471), (86, 6489), (91, 6507), (95, 6516), (96, 6519), (107, 6564), (121, 6606), (125, 6618), (132, 6642),

Gene: Riovina_9 Start: 7261, Stop: 7548, Start Num: 68

Candidate Starts for Riovina_9:

(Start: 68 @7261 has 135 MA's), (100, 7360), (135, 7468), (151, 7540),

Gene: Riverdale_13 Start: 10089, Stop: 10358, Start Num: 68

Candidate Starts for Riverdale_13:

(Start: 68 @10089 has 135 MA's), (87, 10140), (91, 10155), (100, 10188),

Gene: Roberts_12 Start: 7464, Stop: 7730, Start Num: 47

Candidate Starts for Roberts_12:

(Start: 47 @7464 has 73 MA's), (135, 7650), (137, 7653), (148, 7710),

Gene: Rollins_9 Start: 7485, Stop: 7748, Start Num: 47

Candidate Starts for Rollins_9:

(36, 7428), (Start: 47 @7485 has 73 MA's), (53, 7500), (79, 7515), (119, 7632), (141, 7692), (147, 7722),

Gene: Rona_10 Start: 7882, Stop: 8139, Start Num: 47

Candidate Starts for Rona_10:

(Start: 47 @7882 has 73 MA's), (91, 7945), (135, 8059), (145, 8104),

Gene: Ronaldo_46 Start: 17223, Stop: 17507, Start Num: 65

Candidate Starts for Ronaldo_46:

(63, 17217), (Start: 65 @17223 has 6 MA's), (86, 17280), (95, 17307), (120, 17388), (124, 17394),

Gene: Rowa_10 Start: 7361, Stop: 7627, Start Num: 54

Candidate Starts for Rowa_10:

(30, 7262), (Start: 54 @7361 has 1 MA's), (135, 7535),

Gene: Rozby_13 Start: 10089, Stop: 10358, Start Num: 68

Candidate Starts for Rozby_13:

(Start: 68 @10089 has 135 MA's), (87, 10140), (91, 10155), (100, 10188),

Gene: Ruchi_11 Start: 8341, Stop: 8598, Start Num: 48

Candidate Starts for Ruchi_11:

(4, 7879), (7, 7987), (9, 8032), (21, 8188), (Start: 48 @8341 has 42 MA's), (117, 8479), (133, 8509),

Gene: SKKY_9 Start: 6477, Stop: 6767, Start Num: 68

Candidate Starts for SKKY_9:

(Start: 68 @6477 has 135 MA's), (75, 6489), (77, 6495), (81, 6507), (86, 6525), (87, 6528), (91, 6543), (95, 6552), (96, 6555), (107, 6600),

Gene: SPB78_11 Start: 7748, Stop: 8026, Start Num: 49

Candidate Starts for SPB78_11:

(14, 7511), (20, 7571), (Start: 46 @7742 has 23 MA's), (Start: 49 @7748 has 6 MA's), (90, 7820), (135, 7940), (143, 7973),

Gene: SanaSana_11 Start: 7900, Stop: 8160, Start Num: 43

Candidate Starts for SanaSana_11:

(Start: 43 @7900 has 2 MA's), (91, 7966),

Gene: SansAfet_10 Start: 7665, Stop: 7922, Start Num: 47

Candidate Starts for SansAfet_10:

(Start: 42 @7653 has 1 MA's), (Start: 47 @7665 has 73 MA's), (79, 7686), (134, 7839), (135, 7842), (140, 7857), (146, 7893),

Gene: SarBear_10 Start: 7625, Stop: 7888, Start Num: 46

Candidate Starts for SarBear_10:

(Start: 42 @7616 has 1 MA's), (Start: 46 @7625 has 23 MA's), (79, 7652), (135, 7808), (140, 7823),

Gene: Savage2526_13 Start: 10152, Stop: 10421, Start Num: 68

Candidate Starts for Savage2526_13:

(Start: 68 @10152 has 135 MA's), (87, 10203), (91, 10218), (100, 10251),

Gene: Scuttle_13 Start: 10158, Stop: 10427, Start Num: 68

Candidate Starts for Scuttle_13:

(Start: 68 @10158 has 135 MA's), (87, 10209), (91, 10224), (100, 10257),

Gene: Sergei_9 Start: 7263, Stop: 7550, Start Num: 68

Candidate Starts for Sergei_9:

(Start: 68 @7263 has 135 MA's), (97, 7344), (100, 7362), (135, 7470), (151, 7542),

Gene: Shambre1_11 Start: 8534, Stop: 8782, Start Num: 52

Candidate Starts for Shambre1_11:

(Start: 52 @8534 has 1 MA's), (92, 8600), (113, 8654),

Gene: Sharkboy_10 Start: 7881, Stop: 8138, Start Num: 47

Candidate Starts for Sharkboy_10:

(Start: 47 @7881 has 73 MA's), (91, 7944), (135, 8058), (145, 8103),

Gene: ShawBrad_11 Start: 6829, Stop: 7053, Start Num: 93

Candidate Starts for ShawBrad_11:

(29, 6592), (31, 6607), (Start: 49 @6691 has 6 MA's), (84, 6787), (Start: 93 @6829 has 20 MA's), (104, 6868), (109, 6886), (126, 6943), (129, 6949), (136, 6976), (149, 7039),

Gene: Shayna_9 Start: 7487, Stop: 7753, Start Num: 46

Candidate Starts for Shayna_9:

(Start: 42 @7478 has 1 MA's), (Start: 46 @7487 has 23 MA's), (77, 7511), (79, 7517), (101, 7592), (119, 7634), (134, 7667), (149, 7733),

Gene: SheckWes_10 Start: 7025, Stop: 7297, Start Num: 67

Candidate Starts for SheckWes_10:

(Start: 67 @7025 has 62 MA's), (77, 7037), (79, 7043), (133, 7208), (135, 7214), (141, 7238),

Gene: Shen_12 Start: 8245, Stop: 8499, Start Num: 48

Candidate Starts for Shen_12:

(23, 8116), (39, 8209), (41, 8227), (Start: 48 @8245 has 42 MA's), (78, 8269), (123, 8383), (126, 8389), (137, 8419),

Gene: SilverChicken_12 Start: 6948, Stop: 7220, Start Num: 69

Candidate Starts for SilverChicken_12:

(Start: 69 @6948 has 24 MA's), (91, 7008), (92, 7011), (100, 7041), (107, 7065), (115, 7095), (138, 7155),

Gene: SirBeanington_10 Start: 7654, Stop: 7914, Start Num: 47

Candidate Starts for SirBeanington_10:

(Start: 42 @7642 has 1 MA's), (Start: 47 @7654 has 73 MA's), (79, 7678), (135, 7834), (146, 7885),

Gene: SketchMex_10 Start: 7241, Stop: 7519, Start Num: 67

Candidate Starts for SketchMex_10:

(Start: 67 @7241 has 62 MA's), (92, 7310), (111, 7382),

Gene: Skyerus_10 Start: 6319, Stop: 6558, Start Num: 72

Candidate Starts for Skyerus_10:

(62, 6292), (63, 6298), (72, 6319), (77, 6331), (79, 6337), (87, 6364), (97, 6394), (122, 6439), (127, 6451), (141, 6505),

Gene: Skylord_9 Start: 7425, Stop: 7688, Start Num: 47

Candidate Starts for Skylord_9:

(36, 7368), (Start: 47 @7425 has 73 MA's), (53, 7440), (79, 7455), (119, 7572), (141, 7632), (147, 7662),

Gene: Slay_10 Start: 8101, Stop: 8364, Start Num: 46

Candidate Starts for Slay_10:

(Start: 42 @8092 has 1 MA's), (Start: 46 @8101 has 23 MA's), (79, 8128), (135, 8284), (140, 8299),

Gene: Sleepyhead_11 Start: 7625, Stop: 7879, Start Num: 70

Candidate Starts for Sleepyhead_11:

(Start: 70 @7625 has 1 MA's), (88, 7667), (98, 7706), (100, 7718),

Gene: Socotra_12 Start: 7257, Stop: 7538, Start Num: 67

Candidate Starts for Socotra_12:

(32, 7134), (Start: 67 @7257 has 62 MA's),

Gene: Softsoap_10 Start: 7654, Stop: 7911, Start Num: 47

Candidate Starts for Softsoap_10:

(Start: 42 @7642 has 1 MA's), (Start: 47 @7654 has 73 MA's), (135, 7831), (146, 7882),

Gene: Solea_11 Start: 8040, Stop: 8297, Start Num: 47

Candidate Starts for Solea_11:

(Start: 42 @8028 has 1 MA's), (Start: 47 @8040 has 73 MA's), (79, 8061), (135, 8217), (140, 8232), (146, 8268),

Gene: Solid_9 Start: 6453, Stop: 6743, Start Num: 68

Candidate Starts for Solid_9:

(Start: 68 @6453 has 135 MA's), (75, 6465), (77, 6471), (81, 6483), (86, 6501), (87, 6504), (91, 6519), (95, 6528), (96, 6531), (107, 6576), (121, 6618), (125, 6630), (132, 6654), (146, 6714),

Gene: Sopespian_11 Start: 7257, Stop: 7538, Start Num: 67

Candidate Starts for Sopespian_11:

(32, 7134), (Start: 67 @7257 has 62 MA's),

Gene: Soul22_12 Start: 6947, Stop: 7219, Start Num: 69

Candidate Starts for Soul22_12:

(Start: 69 @6947 has 24 MA's), (91, 7007), (92, 7010), (100, 7040), (107, 7064), (115, 7094), (138, 7154),

Gene: Spartoi_9 Start: 6351, Stop: 6599, Start Num: 68

Candidate Starts for Spartoi_9:

(Start: 68 @6351 has 135 MA's), (76, 6366), (91, 6414), (141, 6540),

Gene: Spooky_11 Start: 6822, Stop: 7046, Start Num: 93

Candidate Starts for Spooky_11:

(Start: 93 @6822 has 20 MA's), (109, 6879), (126, 6936), (129, 6942), (149, 7032),

Gene: Squiddly_12 Start: 7509, Stop: 7733, Start Num: 93

Candidate Starts for Squiddly_12:

(31, 7287), (Start: 49 @7371 has 6 MA's), (84, 7467), (Start: 93 @7509 has 20 MA's), (104, 7548), (109, 7566), (126, 7623), (129, 7629), (136, 7656), (149, 7719),

Gene: Squircle_10 Start: 7884, Stop: 8150, Start Num: 47

Candidate Starts for Squircle_10:

(Start: 42 @7872 has 1 MA's), (Start: 47 @7884 has 73 MA's), (77, 7908), (101, 7989), (119, 8031), (135, 8067), (140, 8082),

Gene: Starburst_12 Start: 7257, Stop: 7538, Start Num: 67

Candidate Starts for Starburst_12:

(32, 7134), (Start: 67 @7257 has 62 MA's),

Gene: SteamedHams_13 Start: 7276, Stop: 7548, Start Num: 67

Candidate Starts for SteamedHams_13:

(Start: 67 @7276 has 62 MA's), (92, 7339),

Gene: Stellammi_8 Start: 6263, Stop: 6532, Start Num: 68

Candidate Starts for Stellammi_8:

(Start: 68 @6263 has 135 MA's), (79, 6278), (83, 6293), (97, 6332), (99, 6341), (100, 6350), (107, 6374), (116, 6395), (117, 6398), (128, 6422),

Gene: Stoor_10 Start: 7897, Stop: 8157, Start Num: 43

Candidate Starts for Stoor_10:

(Start: 43 @7897 has 2 MA's), (91, 7963),

Gene: Stormborn_9 Start: 6448, Stop: 6738, Start Num: 68

Candidate Starts for Stormborn_9:

(Start: 68 @6448 has 135 MA's), (75, 6460), (77, 6466), (81, 6478), (86, 6496), (87, 6499), (91, 6514), (95, 6523), (96, 6526), (107, 6571), (121, 6613), (125, 6625), (132, 6649), (146, 6709),

Gene: Stromboli_10 Start: 7898, Stop: 8161, Start Num: 46

Candidate Starts for Stromboli_10:

(Start: 46 @7898 has 23 MA's), (51, 7910), (79, 7925), (119, 8042), (135, 8081), (140, 8096),

Gene: StuartMinion_10 Start: 7681, Stop: 7935, Start Num: 48

Candidate Starts for StuartMinion_10:

(10, 7405), (12, 7444), (Start: 48 @7681 has 42 MA's), (92, 7753), (113, 7807), (123, 7819), (126, 7825), (135, 7852),

Gene: Studio_12 Start: 7220, Stop: 7489, Start Num: 47

Candidate Starts for Studio_12:

(33, 7157), (Start: 47 @7220 has 73 MA's), (114, 7361),

Gene: SummitAcademy_10 Start: 7103, Stop: 7375, Start Num: 67

Candidate Starts for SummitAcademy_10:

(66, 7100), (Start: 67 @7103 has 62 MA's), (77, 7115), (79, 7121), (133, 7286), (135, 7292), (141, 7316),

Gene: SunnyD_9 Start: 7487, Stop: 7753, Start Num: 46

Candidate Starts for SunnyD_9:

(Start: 42 @7478 has 1 MA's), (Start: 46 @7487 has 23 MA's), (77, 7511), (79, 7517), (119, 7634), (134, 7667), (149, 7733),

Gene: Supakev_9 Start: 7263, Stop: 7550, Start Num: 68

Candidate Starts for Supakev_9:

(Start: 68 @7263 has 135 MA's), (87, 7314), (100, 7362), (135, 7470),

Gene: Supernova_9 Start: 6445, Stop: 6735, Start Num: 68

Candidate Starts for Supernova_9:

(Start: 68 @6445 has 135 MA's), (75, 6457), (77, 6463), (86, 6493), (87, 6496), (91, 6511), (95, 6520), (96, 6523), (100, 6544), (107, 6568), (121, 6610), (125, 6622), (132, 6646), (146, 6706),

Gene: Suppi_13 Start: 10175, Stop: 10444, Start Num: 68

Candidate Starts for Suppi_13:

(64, 10163), (Start: 68 @10175 has 135 MA's), (77, 10193), (96, 10253), (100, 10274), (135, 10361),

Gene: Survivors_13 Start: 8017, Stop: 8316, Start Num: 67

Candidate Starts for Survivors_13:

(66, 8014), (Start: 67 @8017 has 62 MA's), (100, 8119), (117, 8188), (135, 8230), (148, 8290), (149, 8293), (150, 8296),

Gene: SweatNTears_13 Start: 7761, Stop: 8030, Start Num: 67

Candidate Starts for SweatNTears_13:

(Start: 67 @7761 has 62 MA's), (92, 7821), (111, 7893),

Gene: Swervy_10 Start: 7625, Stop: 7888, Start Num: 46

Candidate Starts for Swervy_10:

(Start: 42 @7616 has 1 MA's), (Start: 46 @7625 has 23 MA's), (79, 7652), (135, 7808), (140, 7823),

Gene: TMaxx_12 Start: 7340, Stop: 7600, Start Num: 47

Candidate Starts for TMaxx_12:

(Start: 47 @7340 has 73 MA's), (101, 7439), (135, 7520), (137, 7523),

Gene: Tarnish_11 Start: 7402, Stop: 7674, Start Num: 67

Candidate Starts for Tarnish_11:

(66, 7399), (Start: 67 @7402 has 62 MA's), (133, 7585), (135, 7591), (141, 7615),

Gene: TattModd_13 Start: 10152, Stop: 10421, Start Num: 68

Candidate Starts for TattModd_13:

(Start: 68 @10152 has 135 MA's), (87, 10203), (91, 10218), (100, 10251),

Gene: TaylorSipht_11 Start: 8123, Stop: 8377, Start Num: 48

Candidate Starts for TaylorSipt_11:

(39, 8087), (41, 8105), (Start: 48 @8123 has 42 MA's), (78, 8147), (92, 8195), (96, 8204),

Gene: Teagster_9 Start: 7487, Stop: 7753, Start Num: 46

Candidate Starts for Teagster_9:

(Start: 42 @7478 has 1 MA's), (Start: 46 @7487 has 23 MA's), (77, 7511), (79, 7517), (101, 7592), (119, 7634), (134, 7667), (149, 7733),

Gene: Temper16_9 Start: 7263, Stop: 7550, Start Num: 68

Candidate Starts for Temper16_9:

(Start: 68 @7263 has 135 MA's), (97, 7344), (100, 7362), (135, 7470), (151, 7542),

Gene: Toad24_12 Start: 8245, Stop: 8499, Start Num: 48

Candidate Starts for Toad24_12:

(23, 8116), (25, 8131), (41, 8227), (Start: 48 @8245 has 42 MA's), (78, 8269), (123, 8383), (126, 8389), (137, 8419),

Gene: Tolls_13 Start: 7279, Stop: 7551, Start Num: 67

Candidate Starts for Tolls_13:

(Start: 67 @7279 has 62 MA's), (92, 7342),

Gene: TripleC_15 Start: 10834, Stop: 11106, Start Num: 47

Candidate Starts for TripleC_15:

(33, 10771), (Start: 47 @10834 has 73 MA's), (137, 11029),

Gene: Troje_11 Start: 7235, Stop: 7504, Start Num: 67

Candidate Starts for Troje_11:

(Start: 67 @7235 has 62 MA's), (92, 7295), (111, 7367),

Gene: TukTuk_10 Start: 7628, Stop: 7948, Start Num: 47

Candidate Starts for TukTuk_10:

(Start: 42 @7616 has 1 MA's), (Start: 47 @7628 has 73 MA's), (79, 7712), (135, 7868), (140, 7883),

Gene: Typha_17 Start: 11749, Stop: 11997, Start Num: 47

Candidate Starts for Typha_17:

(36, 11692), (Start: 47 @11749 has 73 MA's), (86, 11791), (112, 11866), (137, 11914), (147, 11965), (151, 11983),

Gene: Typhonomachy_11 Start: 7257, Stop: 7538, Start Num: 67

Candidate Starts for Typhonomachy_11:

(32, 7134), (Start: 67 @7257 has 62 MA's),

Gene: Urla_9 Start: 7290, Stop: 7559, Start Num: 68

Candidate Starts for Urla_9:

(Start: 68 @7290 has 135 MA's), (100, 7389), (102, 7395), (135, 7476),

Gene: VWB_10 Start: 7804, Stop: 8076, Start Num: 49

Candidate Starts for VWB_10:

(Start: 49 @7804 has 6 MA's), (80, 7846), (131, 7984), (135, 7996),

Gene: Vallejo_13 Start: 10090, Stop: 10359, Start Num: 68

Candidate Starts for Vallejo_13:

(Start: 68 @10090 has 135 MA's), (87, 10141), (91, 10156), (100, 10189),

Gene: Vine_12 Start: 8032, Stop: 8304, Start Num: 67

Candidate Starts for Vine_12:

(66, 8029), (Start: 67 @8032 has 62 MA's), (133, 8215), (135, 8221), (141, 8245),

Gene: Vitas_9 Start: 7425, Stop: 7688, Start Num: 47

Candidate Starts for Vitas_9:

(36, 7368), (Start: 47 @7425 has 73 MA's), (53, 7440), (79, 7455), (119, 7572), (141, 7632), (147, 7662),

Gene: Volt_45 Start: 17223, Stop: 17507, Start Num: 65

Candidate Starts for Volt_45:

(63, 17217), (Start: 65 @17223 has 6 MA's), (86, 17280), (95, 17307), (120, 17388), (124, 17394),

Gene: Vulpecula_11 Start: 8417, Stop: 8674, Start Num: 48

Candidate Starts for Vulpecula_11:

(1, 7796), (2, 7841), (4, 7955), (7, 8063), (21, 8264), (39, 8381), (Start: 48 @8417 has 42 MA's), (133, 8585),

Gene: Vulture_9 Start: 7261, Stop: 7548, Start Num: 68

Candidate Starts for Vulture_9:

(Start: 68 @7261 has 135 MA's), (100, 7360), (135, 7468),

Gene: WalkingDead_10 Start: 7885, Stop: 8148, Start Num: 48

Candidate Starts for WalkingDead_10:

(Start: 48 @7885 has 42 MA's), (79, 7912), (135, 8068), (140, 8083),

Gene: Wallaby_15 Start: 8162, Stop: 8461, Start Num: 67

Candidate Starts for Wallaby_15:

(66, 8159), (Start: 67 @8162 has 62 MA's), (100, 8264), (117, 8333), (135, 8375), (148, 8435), (149, 8438), (150, 8441),

Gene: Wawa_13 Start: 10127, Stop: 10396, Start Num: 68

Candidate Starts for Wawa_13:

(Start: 68 @10127 has 135 MA's), (87, 10178), (91, 10193), (100, 10226),

Gene: Wayne_13 Start: 10221, Stop: 10490, Start Num: 68

Candidate Starts for Wayne_13:

(64, 10209), (Start: 68 @10221 has 135 MA's), (77, 10239), (96, 10299), (100, 10320), (135, 10407),

Gene: Westrich_12 Start: 8233, Stop: 8487, Start Num: 48

Candidate Starts for Westrich_12:

(23, 8104), (25, 8119), (39, 8197), (41, 8215), (Start: 48 @8233 has 42 MA's), (78, 8257), (123, 8371), (126, 8377), (137, 8407),

Gene: Whitney_11 Start: 6824, Stop: 7048, Start Num: 93

Candidate Starts for Whitney_11:

(29, 6587), (31, 6602), (Start: 49 @6686 has 6 MA's), (Start: 93 @6824 has 20 MA's), (104, 6863), (109, 6881), (126, 6938), (129, 6944), (136, 6971), (149, 7034),

Gene: WileyE_10 Start: 7752, Stop: 8009, Start Num: 48

Candidate Starts for WileyE_10:

(4, 7290), (7, 7398), (9, 7443), (21, 7599), (Start: 48 @7752 has 42 MA's), (133, 7920),

Gene: Wizzo_9 Start: 6457, Stop: 6747, Start Num: 68

Candidate Starts for Wizzo_9:

(Start: 68 @6457 has 135 MA's), (75, 6469), (77, 6475), (81, 6487), (86, 6505), (87, 6508), (91, 6523), (95, 6532), (96, 6535), (121, 6622), (125, 6634),

Gene: Wolfwood_13 Start: 8162, Stop: 8461, Start Num: 67

Candidate Starts for Wolfwood_13:

(66, 8159), (Start: 67 @8162 has 62 MA's), (100, 8264), (117, 8333), (135, 8375), (148, 8435), (149, 8438), (150, 8441),

Gene: WonderBoy_9 Start: 7243, Stop: 7512, Start Num: 68

Candidate Starts for WonderBoy_9:

(Start: 68 @7243 has 135 MA's), (100, 7342), (135, 7429),

Gene: Wrigley_12 Start: 7859, Stop: 8116, Start Num: 69

Candidate Starts for Wrigley_12:

(Start: 69 @7859 has 24 MA's), (141, 8069), (149, 8108),

Gene: Yakult_12 Start: 7168, Stop: 7437, Start Num: 67

Candidate Starts for Yakult_12:

(Start: 67 @7168 has 62 MA's),

Gene: Yarn_10 Start: 7269, Stop: 7541, Start Num: 67

Candidate Starts for Yarn_10:

(Start: 67 @7269 has 62 MA's),

Gene: Yoshi_12 Start: 6947, Stop: 7219, Start Num: 69

Candidate Starts for Yoshi_12:

(Start: 69 @6947 has 24 MA's), (91, 7007), (92, 7010), (100, 7040), (107, 7064), (115, 7094), (138, 7154),

Gene: Yucky_11 Start: 7892, Stop: 8164, Start Num: 67

Candidate Starts for Yucky_11:

(66, 7889), (Start: 67 @7892 has 62 MA's), (133, 8075), (135, 8081), (141, 8105),

Gene: Yummy_12 Start: 7139, Stop: 7417, Start Num: 67

Candidate Starts for Yummy_12:

(Start: 67 @7139 has 62 MA's), (92, 7208), (111, 7280),

Gene: Zapner_13 Start: 7472, Stop: 7744, Start Num: 69

Candidate Starts for Zapner_13:

(Start: 69 @7472 has 24 MA's), (91, 7532), (92, 7535), (100, 7565), (107, 7589), (115, 7619), (138, 7679),

Gene: Zareef_13 Start: 8164, Stop: 8463, Start Num: 67

Candidate Starts for Zareef_13:

(66, 8161), (Start: 67 @8164 has 62 MA's), (100, 8266), (117, 8335), (135, 8377), (148, 8437), (149, 8440), (150, 8443),

Gene: Zhuangyuan_12 Start: 8412, Stop: 8666, Start Num: 48

Candidate Starts for Zhuangyuan_12:

(11, 8154), (15, 8205), (23, 8283), (39, 8376), (41, 8394), (Start: 48 @8412 has 42 MA's), (57, 8424), (117, 8544), (135, 8583), (144, 8622),

Gene: Ziko_46 Start: 17163, Stop: 17447, Start Num: 65

Candidate Starts for Ziko_46:

(63, 17157), (Start: 65 @17163 has 6 MA's), (86, 17220), (95, 17247), (120, 17328), (124, 17334),

Gene: Zixiang_11 Start: 8034, Stop: 8288, Start Num: 48

Candidate Starts for Zixiang_11:

(1, 7434), (4, 7593), (7, 7701), (23, 7905), (39, 7998), (41, 8016), (Start: 48 @8034 has 42 MA's), (78, 8058), (92, 8106), (126, 8178), (135, 8205),

Gene: Zorro_13 Start: 10106, Stop: 10375, Start Num: 68

Candidate Starts for Zorro_13:

(Start: 68 @10106 has 135 MA's), (87, 10157), (91, 10172), (100, 10205),