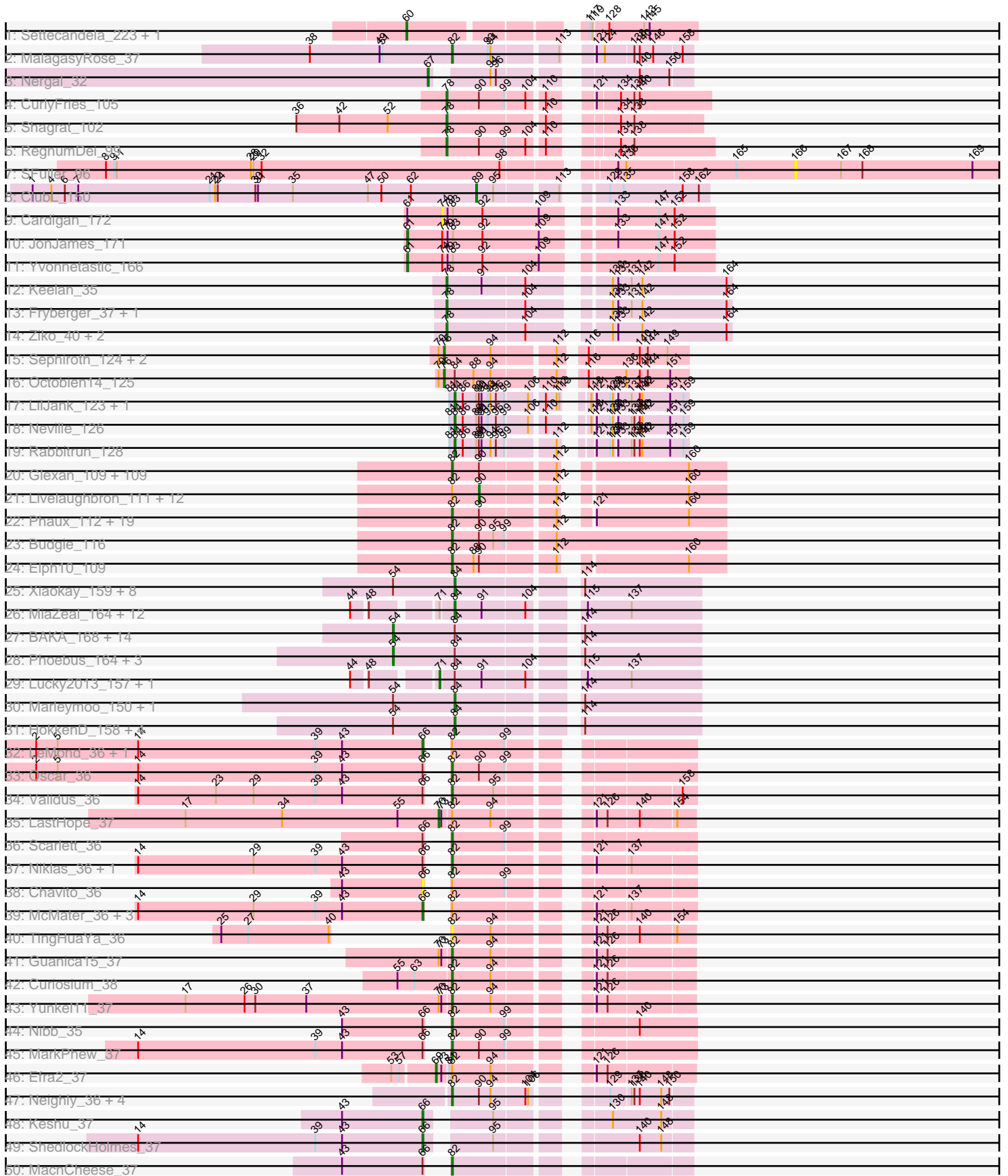
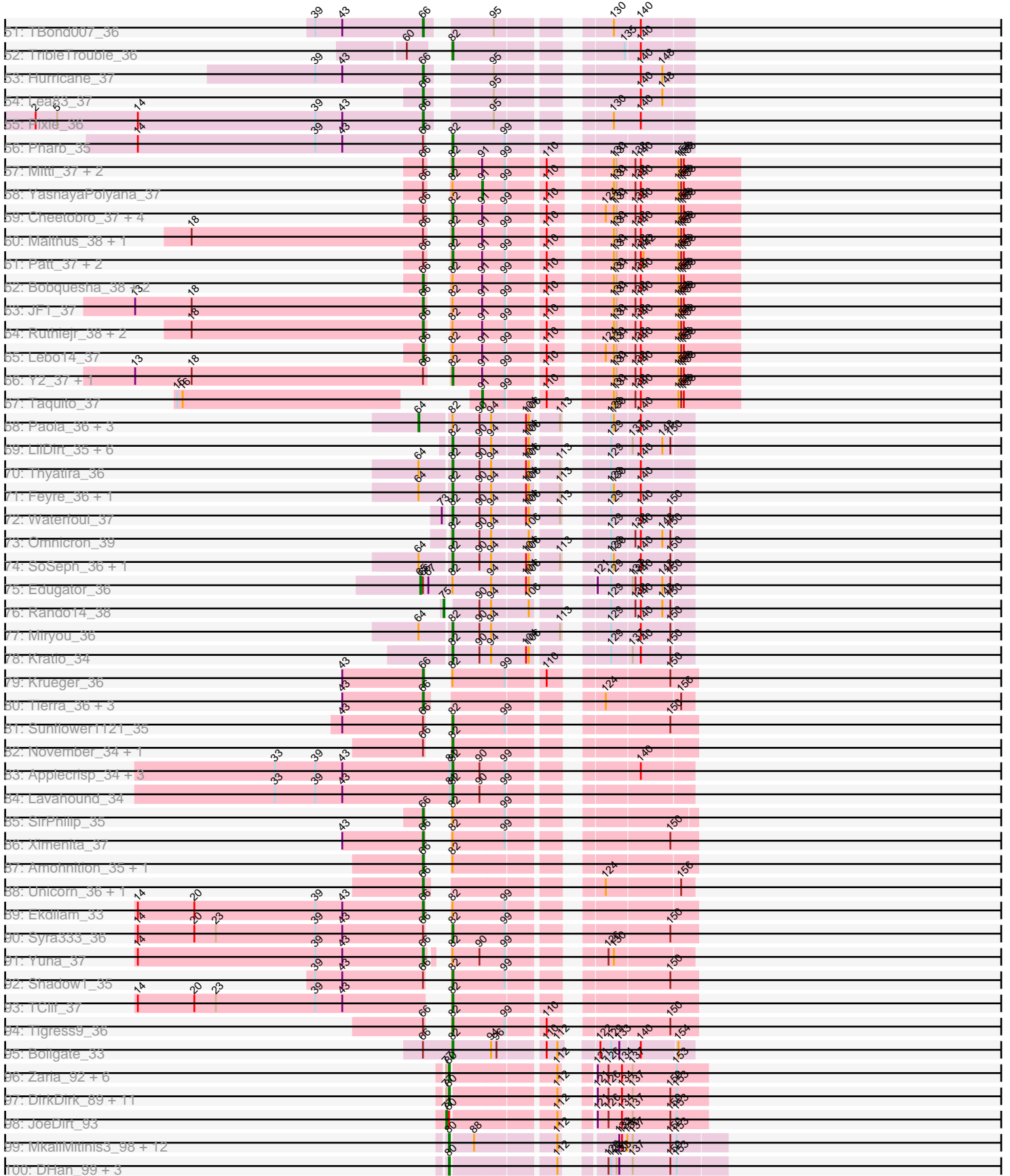


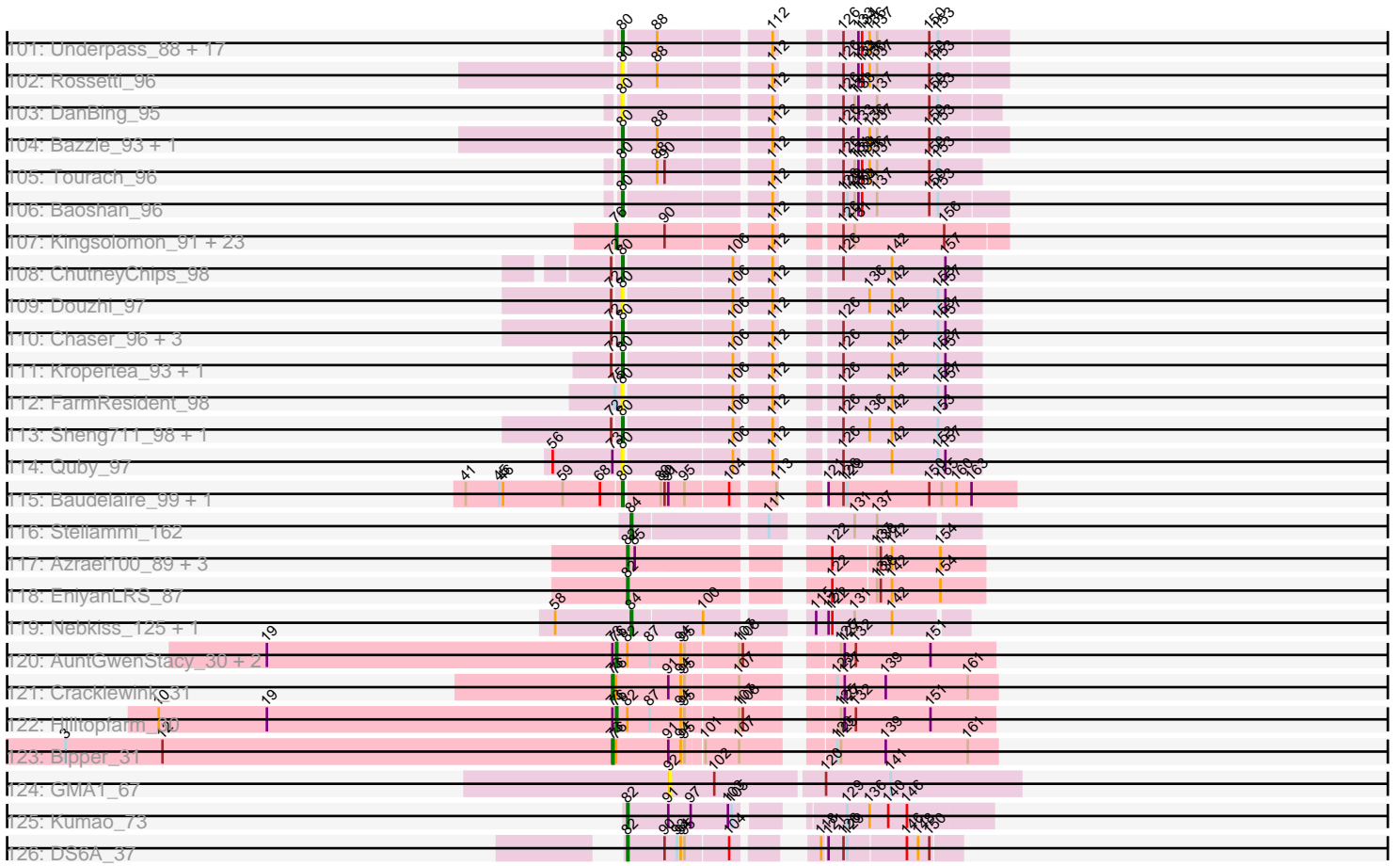
Pham 311079



Pham 311079



Pham 311079



Note: Tracks are now grouped by subcluster and scaled. Switching in subcluster is indicated by changes in track color. Track scale is now set by default to display the region 30 bp upstream of start 1 to 30 bp downstream of the last possible start. If this default region is judged to be packed too tightly with annotated starts, the track will be further scaled to only show that region of the ORF with annotated starts. This action will be indicated by adding "Zoomed" to the title. For starts, yellow indicates the location of called starts comprised solely of Glimmer/GeneMark auto-annotations, green indicates the location of called starts with at least 1 manual gene annotation.

Pham 311079 Report

This analysis was run 06/27/26 on database version 652.

Pham number 311079 has 444 members, 58 are drafts.

Phages represented in each track:

- Track 1 : Settecandela_223, Phrappuccino_198
- Track 2 : MalagasyRose_37
- Track 3 : Nergal_32
- Track 4 : CurlyFries_105
- Track 5 : Shagrat_102
- Track 6 : RegnumDei_99
- Track 7 : SFuller_96
- Track 8 : ClubL_150
- Track 9 : Cardigan_172
- Track 10 : JonJames_171
- Track 11 : Yvonnetastic_166
- Track 12 : Keelan_35
- Track 13 : Fryberger_37, Guey18_42
- Track 14 : Ziko_40, Ronaldo_40, Volt_39
- Track 15 : Sephiroth_124, Kudefre_129, Syleon_129
- Track 16 : Octobien14_125
- Track 17 : LilJank_123, Trax_127
- Track 18 : Neville_126
- Track 19 : Rabbitrun_128
- Track 20 : Glexan_109, Lilizi_110, Nimrod_110, ShamWow_110, RiverMonster_109, NonchalantPear_110, Adnama_114, Contagion_107, Inca_107, Misfit_111, SirDuracell_110, Bruin_107, Harella_111, NelitzaMV_107, ChotaBhai_110, Thresher_111, Gator_108, Flypotenuse_106, Wiggin_112, Sotrice96_111, Dusk_107, Policronamos_113, Balomoji_110, Tuco_111, StellaBean_108, Pharsalus_107, Palpatine_111, Amao_110, Gage_112, Hopey_110, Traaww1_106, Phaja_108, Cookies_107, Buck_111, StolenFromERC_112, Daikon_111, Mindy_109, Pumpkin_111, Barbarian_109, Pat3_107, ABCat_107, Hoonter_113, Cactus_114, FireRed_113, Icee_111, Gemini_115, MPhalcon_111, Rimmer_108, Willez_105, ShereKhan_108, Bench_112, FoghornLeghorn_103, Tomaszewski_105, Phrux_106, GooberAzure_113, Paperbeatsrock_109, Stark_110, PhatBacter_113, Teaspoon_110, Tarkin_109, Elite2014_109, xkcd_114, CrystalP_110, Stank_112, Ukulele_104, Quallification_111, FairyPath_111, Brewer_106, DoctorDiddles_109, AmericanBeauty_113, Bogg_111, Goldilocks_113, BugsBunny_109, Mosby_107, HufflyPuff_112, Cjw1_110, NoSleep_110, Kanye_107, IHOP_108, JeTaime_108, Lilpickle_109, DrDrey_110, Kimchi_114, Murica_114, TBrady12_113, BilboSwaggins_108, Kostya_110, ChosenOne_110, Dumbo_110, Bask21_110, TeardropMSU_106, Youngblood_114, YassJohnny_107, BadStone_107, Asriel_108,

Filch_112, Lilac_111, Argent26_114, Miniwave_105, Terminus_113, Thimble_112, Czyszczone1_110, Myrale_110, Maxxinista_112, BigBubba_111, Xandras_109, Holt_115, Rakim_111, Toto_108, Nala_112

- Track 21 : Liveloughbron_111, GoldenSpark_114, Becksu_108, MollyToe_104, StormChicken_112, Greep_114, Petra64142_114, Sassay_105, TeamEdward_110, PaddyBaddy_109, Command613_112, Ptowny_106, MISSy_111
- Track 22 : Phaux_112, Emmina_110, 244_111, Easy2Say_110, SophKB_108, Eureka_110, Porky_108, Simpliphy_108, Moldemort_112, Manda_111, Goku_109, Murphy_109, HanKaySha_110, Saints25_106, Highbury_106, OrionPax_108, Henry_108, BaboJay_109, MadamMonkfish_109, Marshmallow_108
- Track 23 : Budgie_116
- Track 24 : Elph10_109
- Track 25 : Xiaokay_159, Dallas_163, Yeet_155, Bagrid_172, Minerva_163, Odette_167, Hidrated_156, DmpstrDiver_162, Zelink_156
- Track 26 : MiaZeal_164, Squint_155, Nibley_155, BronnyJames_157, Ariel_161, Shaboozey_160, Nekros_160, Hannaconda_156, KashFlow_161, Superphikiman_159, Porcelain_161, Rearden_161, LittleE_169
- Track 27 : BAKA_168, Omega_172, Klein_166, Ejimix_154, Hughesyang_162, Schatzie_158, Duke13_165, ThreeRngTarjay_160, Constella_159, Beem_164, Halley_164, Wanda_161, EricMillard_161, Optimus_159, Kalah2_159
- Track 28 : Phoebus_164, Redno2_157, Thibault_146, Dove_150
- Track 29 : Lucky2013_157, Courthouse_158
- Track 30 : Marleymoo_150, Bobby_155
- Track 31 : HokkenD_158, Bombitas_150, JuicyJay_158, NihilNomen_165, Pound_156
- Track 32 : LeMond_36, KiSi_36
- Track 33 : Oscar_36
- Track 34 : Validus_36
- Track 35 : LastHope_37
- Track 36 : Scarlett_36
- Track 37 : Niklas_36, Shaobing_36
- Track 38 : Chavito_36
- Track 39 : McMater_36, Richo_36, Dartin_36, Peanam_36
- Track 40 : TingHuaYa_36
- Track 41 : Guanica15_37
- Track 42 : Curiosium_38
- Track 43 : Yunkel11_37
- Track 44 : Nibb_35
- Track 45 : MarkPhew_37
- Track 46 : Efra2_37
- Track 47 : Neighly_36, Psycho_36, Larva_36, Dadosky_36, AlleyCat_36
- Track 48 : Keshu_37
- Track 49 : ShedlockHolmes_37
- Track 50 : MacnCheese_37
- Track 51 : TBond007_36
- Track 52 : TribbleTrouble_36
- Track 53 : Hurricane_37
- Track 54 : Lea83_37
- Track 55 : Pixie_36
- Track 56 : Pharb_35
- Track 57 : Mitti_37, Wintermute_37, Eponine_39
- Track 58 : YasnayaPolyana_37
- Track 59 : Cheetobro_37, Chancellor_37, Qhanda_38, DanSyl44_40, Slarp_37

- Track 60 : Malthus_38, Fionnbharth_37
- Track 61 : Patt_37, MissDaisy_37, Reptar3000_37
- Track 62 : Bobquesha_38, SamScheppers_37, OmniCritical_37
- Track 63 : JF1_37
- Track 64 : Ruthiejr_38, Kraw_37, Juliette_39
- Track 65 : Lebo14_37
- Track 66 : Y2_37, Y10_37
- Track 67 : Taquito_37
- Track 68 : Paola_36, Gengar_36, Guillsminger_36, Leston_36
- Track 69 : LilDirt_35, BananenDer11_36, DoubleChamp_35, InvictusManeo_35, Collard_35, ViviJ_35, Agent47_36
- Track 70 : Thyatira_36
- Track 71 : Feyre_36, OkiRoe_36
- Track 72 : Waterfoul_37
- Track 73 : Omnicron_39
- Track 74 : SoSeph_36, Heftyboy_36
- Track 75 : Edugator_36
- Track 76 : Rando14_38
- Track 77 : Miryou_36
- Track 78 : Kratio_34
- Track 79 : Krueger_36
- Track 80 : Tierra_36, Phrank_36, Bryler_36, Cain_36
- Track 81 : Sunflower1121_35
- Track 82 : November_34, DARTH_P_35
- Track 83 : Applecrisp_34, Fefferhead_35, Amgine_34, Ellie_33
- Track 84 : Lavahound_34
- Track 85 : SirPhilip_35
- Track 86 : Ximenita_37
- Track 87 : Amohnition_35, Hammy_35
- Track 88 : Unicorn_36, PhelpsODU_36
- Track 89 : Ekdilam_33
- Track 90 : Syra333_36
- Track 91 : Yuna_37
- Track 92 : Shadow1_35
- Track 93 : TClif_37
- Track 94 : Tigress9_36
- Track 95 : Boilgate_33
- Track 96 : Zaria_92, Tyson_93, Acquire49_92, LeBron_91, Calm_93, AvadaKedavra_92, Silverleaf_91
- Track 97 : DirkDirk_89, Enceladus_89, OhShagHennessy_88, Wamburggrxpress_91, MAckerman_90, Wyatt2_93, Rose5_93, Appletree2_91, UPIE_91, Poochiewood_90, Halena_89, CicholasNage_89
- Track 98 : JoeDirt_93
- Track 99 : MkaliMitinis3_98, Miley16_96, Netyap_95, Faith1_96, DrSeegs_95, Breezona_96, Sarshaun_97, Gabriela_96, Lewan_97, Wigglewiggle_96, Itos_96, Soap141_96, Winky_96
- Track 100 : DHan_99, Hafay_97, Claus_95, ZhongYanYuan_93
- Track 101 : Underpass_88, GuuelaD_93, Lynnae_97, BobsGarage_95, LilDestine_94, Wilder_97, Rumpelstiltskin_92, Finemlucis_97, SoJulia_98, Loadrie_95, BigCheese_96, Kahlid_95, Nicholasp3_96, Vetrix_94, OverPar_98, Zakai_97, Crossroads_96, Gardann_96
- Track 102 : Rossetti_96
- Track 103 : DanBing_95

- Track 104 : Bazzle_93, Archie_93
- Track 105 : Tourach_96
- Track 106 : Baoshan_96
- Track 107 : Kingsolomon_91, Jubie_92, Nicholas_91, Bellis_93, Whirlwind_94, MiniLon_97, Snenia_92, Finnry_93, Jobypre_93, LiyuLake_92, Lumos_93, MsGreen_93, Red305_94, KirDoubleO7_91, BourbonZero_94, Ellson_92, TriFive_94, Samty_92, Krypton555_95, DuncansLeg_93, Moostard_90, Lolly9_92, MiniMac_97, Clautastrophe_91
- Track 108 : ChutneyChips_98
- Track 109 : Douzhi_97
- Track 110 : Chaser_96, PYPDinur_97, Bromden_97, BrainDrainer_98
- Track 111 : Kropertea_93, DyoEdafos_99
- Track 112 : FarmResident_98
- Track 113 : Sheng711_98, Douge_97
- Track 114 : Quby_97
- Track 115 : Baudelaire_99, Aegeus_99
- Track 116 : Stellammi_162
- Track 117 : Azrael100_89, MaryV_91, Cosmo_90, Wildcat_91
- Track 118 : EniyanLRS_87
- Track 119 : Nebkiss_125, Gaia_124
- Track 120 : AuntGwenStacy_30, Faiyaz_30, Typha_30
- Track 121 : Cracklewink_31
- Track 122 : Hilltopfarm_30
- Track 123 : Bipper_31
- Track 124 : GMA1_67
- Track 125 : Kumao_73
- Track 126 : DS6A_37

Summary of Final Annotations (See graph section above for start numbers):

The start number called the most often in the published annotations is 82, it was called in 194 of the 386 non-draft genes in the pham.

Genes that call this "Most Annotated" start:

- 244_111, ABCat_107, Adnama_114, Agent47_36, AlleyCat_36, Amao_110, AmericanBeauty_113, Amgine_34, Applecrisp_34, Argent26_114, Asriel_108, Azrael100_89, BaboJay_109, BadStone_107, Balomoji_110, BananenDer11_36, Barbarian_109, Bask21_110, Bench_112, BigBubba_111, BilboSwaggins_108, Bogg_111, Boilgate_33, Brewer_106, Bruin_107, Buck_111, Budgie_116, BugsBunny_109, Cactus_114, Chancellor_37, Cheetobro_37, ChosenOne_110, ChotaBhai_110, Cjw1_110, Collard_35, Contagion_107, Cookies_107, Cosmo_90, CrystalP_110, Curiosium_38, Czyszczone1_110, DS6A_37, Dadosky_36, Daikon_111, DanSyl44_40, DarthP_35, DoctorDiddles_109, DoubleChamp_35, DrDrey_110, Dumbo_110, Dusk_107, Easy2Say_110, Elite2014_109, Ellie_33, Elph10_109, Emmina_110, EniyanLRS_87, Eponine_39, Eureka_110, FairyPath_111, Fefferhead_35, Feyre_36, Filch_112, Fionnbharth_37, FireRed_113, Flypotenuse_106, FoghornLeghorn_103, Gage_112, Gator_108, Gemini_115, Glexan_109, Goku_109, Goldilocks_113, GooberAzure_113, Guanica15_37, HanKaySha_110, Harella_111, Heftyboy_36, Henry_108, Highbury_106, Holt_115, Hoonter_113, Hopey_110, HuffyPuff_112, IHOP_108, Icee_111, Inca_107,

InvictusManeo_35, JeTaime_108, Kanye_107, Kimchi_114, Kostya_110, Kratio_34, Kumao_73, Larva_36, Lavahound_34, LiIDirt_35, Lilac_111, Lilizi_110, Lilpickle_109, MPhalcon_111, MacnCheese_37, MadamMonkfish_109, MalagasyRose_37, Malthus_38, Manda_111, MarkPhew_37, Marshmallow_108, MaryV_91, Maxxinista_112, Mindy_109, Miniwave_105, Miryou_36, Misfit_111, MissDaisy_37, Mitti_37, Moldemort_112, Mosby_107, Murica_114, Murphy_109, Myrale_110, Nala_112, Neighly_36, NelitzaMV_107, Nibb_35, Niklas_36, Nimrod_110, NoSleep_110, NonchalantPear_110, November_34, OkiRoe_36, Omnicron_39, OrionPax_108, Oscar_36, Palpatine_111, Paperbeatsrock_109, Pat3_107, Patt_37, Phaja_108, Pharb_35, Pharsalus_107, PhatBacter_113, Phaux_112, Phrux_106, Policronamos_113, Porky_108, Psycho_36, Pumpkin_111, Qhanda_38, Quallification_111, Rakim_111, Reptar3000_37, Rimmer_108, RiverMonster_109, Saints25_106, Scarlett_36, Shadow1_35, ShamWow_110, Shaobing_36, ShereKhan_108, Simpliphy_108, SirDuracell_110, Slarp_37, SoSeph_36, SophKB_108, Sotrice96_111, Stank_112, Stark_110, StellaBean_108, StolenFromERC_112, Sunflower1121_35, Syra333_36, TBrady12_113, TClif_37, Tarkin_109, TeardropMSU_106, Teaspoon_110, Terminus_113, Thimble_112, Thresher_111, Thyatira_36, Tigress9_36, TingHuaYa_36, Tomaszewski_105, Toto_108, Traaww1_106, TribbleTrouble_36, Tuco_111, Ukulele_104, Validus_36, ViviJ_35, Waterfoul_37, Wiggin_112, Wildcat_91, Willez_105, Wintermute_37, Xandras_109, Y10_37, Y2_37, YassJohnny_107, Youngblood_114, Yunkel11_37, xkcd_114,

Genes that have the "Most Annotated" start but do not call it:

- Amohnition_35, AuntGwenStacy_30, Becksu_108, Bobquesha_38, Chavito_36, Command613_112, Dartin_36, Edugator_36, Efra2_37, Ekdilam_33, Faiyaz_30, Gengar_36, GoldenSpark_114, Greep_114, Guillsminger_36, Hammy_35, Hilltopfarm_30, JF1_37, Juliette_39, KiSi_36, Kraw_37, Krueger_36, LastHope_37, LeMond_36, Lebo14_37, Leston_36, Liveloughbron_111, MISSy_111, McMater_36, MollyToe_104, OmniCritical_37, PaddyBaddy_109, Paola_36, Peanam_36, Petra64142_114, Ptowny_106, Richo_36, Ruthiejr_38, SamScheppers_37, Sassay_105, SirPhilip_35, StormChicken_112, TeamEdward_110, Typha_30, Ximenita_37, YasnayaPolyana_37, Yuna_37,

Genes that do not have the "Most Annotated" start:

- Acquire49_92, Aegeus_99, Appletree2_91, Archie_93, Ariel_161, AvadaKedavra_92, BAKA_168, Bagrid_172, Baoshan_96, Baudelaire_99, Bazzle_93, Beem_164, Bellis_93, BigCheese_96, Bipper_31, Bobby_155, BobsGarage_95, Bombitas_150, BourbonZero_94, BrainDrainer_98, Breezona_96, Bromden_97, BronnyJames_157, Bryler_36, Cain_36, Calm_93, Cardigan_172, Chaser_96, ChutneyChips_98, CicholasNage_89, Claus_95, Clautastrophe_91, ClubL_150, Constella_159, Courthouse_158, Cracklewink_31, Crossroads_96, CurlyFries_105, DHan_99, Dallas_163, DanBing_95, DirkDirk_89, DmpstrDiver_162, Douge_97, Douzhi_97, Dove_150, DrSeegs_95, Duke13_165, DuncansLeg_93, DyoEdafos_99, Ejimix_154, Ellson_92, Enceladus_89, EricMillard_161, Faith1_96, FarmResident_98, Finemlucis_97, Finnry_93, Fryberger_37, GMA1_67, Gabriela_96, Gaia_124, Gardann_96, Guey18_42, GuuelaD_93, Hafay_97, Halena_89, Halley_164, Hannaconda_156, Hidrated_156, HokkenD_158, Hughesyang_162, Hurricane_37, Itos_96, Jobypre_93, JoeDirt_93, JonJames_171, Jubie_92, JuicyJay_158, Kahlid_95, Kalah2_159, KashFlow_161, Keelan_35, Keshu_37, Kingsolomon_91, KirDoubleO7_91, Klein_166, Kropertea_93, Krypton555_95, Kudrefre_129, LeBron_91, Lea83_37, Lewan_97, LilDestine_94, LilJank_123, LittleE_169, LiyuLake_92, Loadrie_95, Lolly9_92, Lucky2013_157, Lumos_93, Lynnae_97,

MAckerman_90, Marleymoo_150, MiaZeal_164, Miley16_96, Minerva_163, MiniLon_97, MiniMac_97, MkaliMitinis3_98, Moostard_90, MsGreen_93, Nebkiss_125, Nekros_160, Nergal_32, Netyap_95, Neville_126, Nibley_155, Nicholas_91, Nicholasp3_96, NihilNomen_165, Octobien14_125, Odette_167, OhShagHennessy_88, Omega_172, Optimus_159, OverPar_98, PYPDinur_97, PhelpsODU_36, Phoebus_164, Phrank_36, Phrappuccino_198, Pixie_36, Poochiewood_90, Porcelain_161, Pound_156, Quby_97, Rabbitrun_128, Rando14_38, Rearden_161, Red305_94, Redno2_157, RegnumDei_99, Ronaldo_40, Rose5_93, Rossetti_96, Rumpelstiltskin_92, SFuller_96, Samty_92, Sarshaun_97, Schatzie_158, Sephiroth_124, Settecandela_223, Shaboozey_160, Shagrat_102, ShedlockHolmes_37, Sheng711_98, Silverleaf_91, Snenia_92, SoJulia_98, Soap141_96, Squint_155, Stellammi_162, Superphikiman_159, Syleon_129, TBond007_36, Taquito_37, Thibault_146, ThreeRngTarjay_160, Tierra_36, Tourach_96, Trax_127, TriFive_94, Tyson_93, UPIE_91, Underpass_88, Unicorn_36, Vetrix_94, Volt_39, Wamburggrxpress_91, Wanda_161, Whirlwind_94, Wigglewiggles_96, Wilder_97, Winky_96, Wyatt2_93, Xiaokay_159, Yeet_155, Yvonnestic_166, Zakai_97, Zaria_92, Zelink_156, ZhongYanYuan_93, Ziko_40,

Summary by start number:

Start 54:

- Found in 35 of 444 (7.9%) of genes in pham
- Manual Annotations of this start: 19 of 386
- Called 54.3% of time when present
- Phage (with cluster) where this start called: BAKA_168 (J), Beem_164 (J), Constella_159 (J), Dove_150 (J), Duke13_165 (J), Ejimix_154 (J), EricMillard_161 (J), Halley_164 (J), Hughesyang_162 (J), Kalah2_159 (J), Klein_166 (J), Omega_172 (J), Optimus_159 (J), Phoebus_164 (J), Redno2_157 (J), Schatzie_158 (J), Thibault_146 (J), ThreeRngTarjay_160 (J), Wanda_161 (J),

Start 60:

- Found in 3 of 444 (0.7%) of genes in pham
- Manual Annotations of this start: 2 of 386
- Called 66.7% of time when present
- Phage (with cluster) where this start called: Phrappuccino_198 (AA), Settecandela_223 (AA),

Start 61:

- Found in 3 of 444 (0.7%) of genes in pham
- Manual Annotations of this start: 2 of 386
- Called 66.7% of time when present
- Phage (with cluster) where this start called: JonJames_171 (DD), Yvonnestic_166 (DD),

Start 64:

- Found in 10 of 444 (2.3%) of genes in pham
- Manual Annotations of this start: 4 of 386
- Called 40.0% of time when present
- Phage (with cluster) where this start called: Gengar_36 (K5), Guillsminger_36 (K5), Leston_36 (K5), Paola_36 (K5),

Start 65:

- Found in 1 of 444 (0.2%) of genes in pham

- Manual Annotations of this start: 1 of 386
- Called 100.0% of time when present
- Phage (with cluster) where this start called: Edugator_36 (K5),

Start 66:

- Found in 67 of 444 (15.1%) of genes in pham
- Manual Annotations of this start: 29 of 386
- Called 50.7% of time when present
- Phage (with cluster) where this start called: Amohnition_35 (K6), Bobquesha_38 (K4), Bryler_36 (K6), Cain_36 (K6), Chavito_36 (K1), Dartin_36 (K1), Ekdilam_33 (K6), Hammy_35 (K6), Hurricane_37 (K3), JF1_37 (K4), Juliette_39 (K4), Keshu_37 (K3), KiSi_36 (K1), Kraw_37 (K4), Krueger_36 (K6), LeMond_36 (K1), Lea83_37 (K3), Lebo14_37 (K4), McMater_36 (K1), OmniCritical_37 (K4), Peanam_36 (K1), PhelpsODU_36 (K6), Phrank_36 (K6), Pixie_36 (K3), Richo_36 (K1), Ruthiejr_38 (K4), SamScheppers_37 (K4), ShedlockHolmes_37 (K3), SirPhilip_35 (K6), TBond007_36 (K3), Tierra_36 (K6), Unicorn_36 (K6), Ximenita_37 (K6), Yuna_37 (K6),

Start 67:

- Found in 2 of 444 (0.5%) of genes in pham
- Manual Annotations of this start: 1 of 386
- Called 50.0% of time when present
- Phage (with cluster) where this start called: Nergal_32 (AG),

Start 69:

- Found in 1 of 444 (0.2%) of genes in pham
- Manual Annotations of this start: 1 of 386
- Called 100.0% of time when present
- Phage (with cluster) where this start called: Efra2_37 (K1),

Start 70:

- Found in 7 of 444 (1.6%) of genes in pham
- Manual Annotations of this start: 1 of 386
- Called 14.3% of time when present
- Phage (with cluster) where this start called: LastHope_37 (K1),

Start 71:

- Found in 15 of 444 (3.4%) of genes in pham
- Manual Annotations of this start: 2 of 386
- Called 13.3% of time when present
- Phage (with cluster) where this start called: Courthouse_158 (J), Lucky2013_157 (J),

Start 73:

- Found in 12 of 444 (2.7%) of genes in pham
- Manual Annotations of this start: 2 of 386
- Called 16.7% of time when present
- Phage (with cluster) where this start called: Bipper_31 (Y), Cracklewink_31 (Y),

Start 74:

- Found in 3 of 444 (0.7%) of genes in pham
- No Manual Annotations of this start.
- Called 33.3% of time when present
- Phage (with cluster) where this start called: Cardigan_172 (DD),

Start 75:

- Found in 2 of 444 (0.5%) of genes in pham
- Manual Annotations of this start: 1 of 386
- Called 50.0% of time when present
- Phage (with cluster) where this start called: Rando14_38 (K5),

Start 76:

- Found in 34 of 444 (7.7%) of genes in pham
- Manual Annotations of this start: 27 of 386
- Called 94.1% of time when present
- Phage (with cluster) where this start called: AuntGwenStacy_30 (Y), Bellis_93 (L3), BourbonZero_94 (L3), Clautastrophe_91 (L3), DuncansLeg_93 (L3), Ellson_92 (L3), Faiyaz_30 (Y), Finnry_93 (L3), Hilltopfarm_30 (Y), Jobypre_93 (L3), Jubie_92 (L3), Kingsolomon_91 (L3), KirDoubleO7_91 (L3), Krypton555_95 (L3), Kudrefre_129 (DU1), LiyuLake_92 (L3), Lolly9_92 (L3), Lumos_93 (L3), MiniLon_97 (L3), MiniMac_97 (L3), Moostard_90 (L3), MsGreen_93 (L3), Nicholas_91 (L3), Octobien14_125 (DU1), Red305_94 (L3), Samty_92 (L3), Sephiroth_124 (DU1), Snenia_92 (L3), Syleon_129 (DU1), TriFive_94 (L3), Typha_30 (Y), Whirlwind_94 (L3),

Start 77:

- Found in 20 of 444 (4.5%) of genes in pham
- Manual Annotations of this start: 1 of 386
- Called 5.0% of time when present
- Phage (with cluster) where this start called: JoeDirt_93 (L1),

Start 78:

- Found in 9 of 444 (2.0%) of genes in pham
- Manual Annotations of this start: 9 of 386
- Called 100.0% of time when present
- Phage (with cluster) where this start called: CurlyFries_105 (CF), Fryberger_37 (DP), Guey18_42 (DP), Keelan_35 (DP), RegnumDei_99 (CF), Ronaldo_40 (DP), Shagrat_102 (CF), Volt_39 (DP), Ziko_40 (DP),

Start 80:

- Found in 75 of 444 (16.9%) of genes in pham
- Manual Annotations of this start: 58 of 386
- Called 98.7% of time when present
- Phage (with cluster) where this start called: Acquire49_92 (L1), Aegeus_99 (L5), Appletree2_91 (L1), Archie_93 (L2), AvadaKedavra_92 (L1), Baoshan_96 (L2), Baudelaire_99 (L5), Bazzle_93 (L2), BigCheese_96 (L2), BobsGarage_95 (L2), BrainDrainer_98 (L4), Breezona_96 (L2), Bromden_97 (L4), Calm_93 (L1), Chaser_96 (L4), ChutneyChips_98 (L4), CicholasNage_89 (L1), Claus_95 (L2), Crossroads_96 (L2), DHan_99 (L2), DanBing_95 (L2), DirkDirk_89 (L1), Douge_97 (L4), Douzhi_97 (L4), DrSeegs_95 (L2), DyoEdafos_99 (L4), Enceladus_89 (L1), Faith1_96 (L2), FarmResident_98 (L4), Finemlucis_97 (L2), Gabriela_96 (L2), Gardann_96 (L2), GuuelaD_93 (L2), Hafay_97 (L2), Halena_89 (L1), Itos_96 (L2), Kahlid_95 (L2), Kropertea_93 (L4), LeBron_91 (L1), Lewan_97 (L2), LilDestine_94 (L2), Loadrie_95 (L2), Lynnae_97 (L2), MAckerman_90 (L1), Miley16_96 (L2), MkaliMinitis3_98 (L2), Netyap_95 (L2), Nicholasp3_96 (L2), OhShagHennessy_88 (L1), OverPar_98 (L2), PYPDinur_97 (L4), Poochiewood_90 (L1), Quby_97 (L4), Rose5_93 (L1), Rossetti_96 (L2), Rumpelstiltskin_92 (L2), Sarshaun_97 (L2),

Sheng711_98 (L4), Silverleaf_91 (L1), SoJulia_98 (L2), Soap141_96 (L2),
Tourach_96 (L2), Tyson_93 (L1), UPIE_91 (L1), Underpass_88 (L2), Vetric_94 (L2),
Wamburgexpress_91 (L1), Wigglewobble_96 (L2), Wilder_97 (L2), Winky_96 (L2),
Wyatt2_93 (L1), Zakai_97 (L2), Zaria_92 (L1), ZhongYanYuan_93 (L2),

Start 82:

- Found in 250 of 444 (56.3%) of genes in pham
- Manual Annotations of this start: 194 of 386
- Called 81.2% of time when present
- Phage (with cluster) where this start called: 244_111 (E), ABCat_107 (E), Adnama_114 (E), Agent47_36 (K5), AlleyCat_36 (K5), Amao_110 (E), AmericanBeauty_113 (E), Amgine_34 (K6), Applecrisp_34 (K6), Argent26_114 (E), Asriel_108 (E), Azrael100_89 (V), BaboJay_109 (E), BadStone_107 (E), Balomoji_110 (E), BananenDer11_36 (K5), Barbarian_109 (E), Bask21_110 (E), Bench_112 (E), BigBubba_111 (E), BilboSwaggins_108 (E), Bogg_111 (E), Boilgate_33 (K8), Brewer_106 (E), Bruin_107 (E), Buck_111 (E), Budgie_116 (E), BugsBunny_109 (E), Cactus_114 (E), Chancellor_37 (K4), Cheetobro_37 (K4), ChosenOne_110 (E), ChotaBhai_110 (E), Cjw1_110 (E), Collard_35 (K5), Contagion_107 (E), Cookies_107 (E), Cosmo_90 (V), CrystalP_110 (E), Curiosium_38 (K1), Czyszczonek_110 (E), DS6A_37 (singleton), Dadosky_36 (K5), Daikon_111 (E), DanSyl44_40 (K4), DarthP_35 (K6), DoctorDiddles_109 (E), DoubleChamp_35 (K5), DrDrey_110 (E), Dumbo_110 (E), Dusk_107 (E), Easy2Say_110 (E), Elite2014_109 (E), Ellie_33 (K6), Elph10_109 (E), Emmina_110 (E), EniyanLRS_87 (V), Eponine_39 (K4), Eureka_110 (E), FairyPath_111 (E), Fefferhead_35 (K6), Feyre_36 (K5), Filch_112 (E), Fionnbharth_37 (K4), FireRed_113 (E), Flypotenuse_106 (E), FoghornLeghorn_103 (E), Gage_112 (E), Gator_108 (E), Gemini_115 (E), Glexan_109 (E), Goku_109 (E), Goldilocks_113 (E), GooberAzure_113 (E), Guanica15_37 (K1), HanKaySha_110 (E), Harella_111 (E), Heftyboy_36 (K5), Henry_108 (E), Highbury_106 (E), Holt_115 (E), Hoonter_113 (E), Hopey_110 (E), HufflyPuff_112 (E), IHOP_108 (E), Icee_111 (E), Inca_107 (E), InvictusManeo_35 (K5), JeTaime_108 (E), Kanye_107 (E), Kimchi_114 (E), Kostya_110 (E), Kratio_34 (K5), Kumao_73 (singleton), Larva_36 (K5), Lavahound_34 (K6), LilDirt_35 (K5), Lilac_111 (E), Lilizi_110 (E), Lilpickle_109 (E), MPhalcon_111 (E), MacnCheese_37 (K3), MadamMonkfish_109 (E), MalagasyRose_37 (AG), Malthus_38 (K4), Manda_111 (E), MarkPhew_37 (K1), Marshmallow_108 (E), MaryV_91 (V), Maxxinista_112 (E), Mindy_109 (E), Miniwave_105 (E), Miryou_36 (K5), Misfit_111 (E), MissDaisy_37 (K4), Mitti_37 (K4), Moldemort_112 (E), Mosby_107 (E), Murica_114 (E), Murphy_109 (E), Myrale_110 (E), Nala_112 (E), Neighly_36 (K3), NelitzaMV_107 (E), Nibb_35 (K1), Niklas_36 (K1), Nimrod_110 (E), NoSleep_110 (E), NonchalantPear_110 (E), November_34 (K6), OkiRoe_36 (K5), Omnicron_39 (K5), OrionPax_108 (E), Oscar_36 (K1), Palpatine_111 (E), Paperbeatsrock_109 (E), Pat3_107 (E), Patt_37 (K4), Phaja_108 (E), Pharb_35 (K3), Pharsalus_107 (E), PhatBacter_113 (E), Phaux_112 (E), Phrux_106 (E), Policronamos_113 (E), Porky_108 (E), Psycho_36 (K5), Pumpkin_111 (E), Qhanda_38 (K4), Qualification_111 (E), Rakim_111 (E), Reptar3000_37 (K4), Rimmer_108 (E), RiverMonster_109 (E), Saints25_106 (E), Scarlett_36 (K1), Shadow1_35 (K6), ShamWow_110 (E), Shaobing_36 (K1), ShereKhan_108 (E), Simpliphy_108 (E), SirDuracell_110 (E), Slarp_37 (K4), SoSeph_36 (K5), SophKB_108 (E), Sotrice96_111 (E), Stank_112 (E), Stark_110 (E), StellaBean_108 (E), StolenFromERC_112 (E), Sunflower1121_35 (K6), Syra333_36 (K6), TBrady12_113 (E), TClif_37 (K6), Tarkin_109 (E), TeardropMSU_106 (E), Teaspoon_110 (E), Terminus_113 (E), Thimble_112 (E), Thresher_111 (E), Thyatira_36 (K5), Tigress9_36 (K6), TingHuaYa_36 (K1), Tomaszewski_105 (E),

Toto_108 (E), Traaww1_106 (E), TribbleTrouble_36 (K3), Tuco_111 (E), Ukulele_104 (E), Validus_36 (K1), ViviJ_35 (K5), Waterfoul_37 (K5), Wiggin_112 (E), Wildcat_91 (V), Willez_105 (E), Wintermute_37 (K4), Xandras_109 (E), Y10_37 (K4), Y2_37 (K4), YassJohnny_107 (E), Youngblood_114 (E), Yunkel11_37 (K1), xkcd_114 (E),

Start 84:

- Found in 58 of 444 (13.1%) of genes in pham
- Manual Annotations of this start: 25 of 386
- Called 62.1% of time when present
- Phage (with cluster) where this start called: Ariel_161 (J), Bagrid_172 (J), Bobby_155 (J), Bombitas_150 (J), BronnyJames_157 (J), Dallas_163 (J), DmpstrDiver_162 (J), Gaia_124 (X), Hannaconda_156 (J), Hidrated_156 (J), HokkenD_158 (J), JuicyJay_158 (J), KashFlow_161 (J), LilJank_123 (DU2), LittleE_169 (J), Marleymoo_150 (J), MiaZeal_164 (J), Minerva_163 (J), Nebkiss_125 (X), Nekros_160 (J), Neville_126 (DU2), Nibley_155 (J), NihilNomen_165 (J), Odette_167 (J), Porcelain_161 (J), Pound_156 (J), Rabbitrun_128 (DU2), Rearden_161 (J), Shaboozey_160 (J), Squint_155 (J), Stellammi_162 (UNK), Superphikiman_159 (J), Trax_127 (DU2), Xiaokay_159 (J), Yeet_155 (J), Zelink_156 (J),

Start 89:

- Found in 7 of 444 (1.6%) of genes in pham
- Manual Annotations of this start: 1 of 386
- Called 14.3% of time when present
- Phage (with cluster) where this start called: ClubL_150 (CQ1),

Start 90:

- Found in 213 of 444 (48.0%) of genes in pham
- Manual Annotations of this start: 4 of 386
- Called 6.1% of time when present
- Phage (with cluster) where this start called: Becksu_108 (E), Command613_112 (E), GoldenSpark_114 (E), Greep_114 (E), Liveloughbron_111 (E), MISSy_111 (E), MollyToe_104 (E), PaddyBaddy_109 (E), Petra64142_114 (E), Ptowny_106 (E), Sassay_105 (E), StormChicken_112 (E), TeamEdward_110 (E),

Start 91:

- Found in 50 of 444 (11.3%) of genes in pham
- Manual Annotations of this start: 2 of 386
- Called 4.0% of time when present
- Phage (with cluster) where this start called: Taquito_37 (K4), YasnayaPolyana_37 (K4),

Start 92:

- Found in 4 of 444 (0.9%) of genes in pham
- No Manual Annotations of this start.
- Called 25.0% of time when present
- Phage (with cluster) where this start called: GMA1_67 (singleton),

Start 166:

- Found in 1 of 444 (0.2%) of genes in pham
- No Manual Annotations of this start.
- Called 100.0% of time when present
- Phage (with cluster) where this start called: SFuller_96 (CF),

Summary by clusters:

There are 26 clusters represented in this pham: singleton, DD, L1, K3, K1, K6, K5, K4, K8, DP, DU1, DU2, AA, E, AG, J, CF, L4, L5, L2, L3, V, Y, X, UNK, CQ1,

Info for manual annotations of cluster AA:

- Start number 60 was manually annotated 2 times for cluster AA.

Info for manual annotations of cluster AG:

- Start number 67 was manually annotated 1 time for cluster AG.
- Start number 82 was manually annotated 1 time for cluster AG.

Info for manual annotations of cluster CF:

- Start number 78 was manually annotated 3 times for cluster CF.

Info for manual annotations of cluster CQ1:

- Start number 89 was manually annotated 1 time for cluster CQ1.

Info for manual annotations of cluster DD:

- Start number 61 was manually annotated 2 times for cluster DD.

Info for manual annotations of cluster DP:

- Start number 78 was manually annotated 6 times for cluster DP.

Info for manual annotations of cluster DU1:

- Start number 76 was manually annotated 4 times for cluster DU1.

Info for manual annotations of cluster DU2:

- Start number 84 was manually annotated 3 times for cluster DU2.

Info for manual annotations of cluster E:

- Start number 82 was manually annotated 128 times for cluster E.
- Start number 90 was manually annotated 4 times for cluster E.

Info for manual annotations of cluster J:

- Start number 54 was manually annotated 19 times for cluster J.
- Start number 71 was manually annotated 2 times for cluster J.
- Start number 84 was manually annotated 19 times for cluster J.

Info for manual annotations of cluster K1:

- Start number 66 was manually annotated 3 times for cluster K1.
- Start number 69 was manually annotated 1 time for cluster K1.
- Start number 70 was manually annotated 1 time for cluster K1.
- Start number 82 was manually annotated 10 times for cluster K1.

Info for manual annotations of cluster K3:

- Start number 66 was manually annotated 6 times for cluster K3.
- Start number 82 was manually annotated 3 times for cluster K3.

Info for manual annotations of cluster K4:

- Start number 66 was manually annotated 7 times for cluster K4.
- Start number 82 was manually annotated 13 times for cluster K4.

- Start number 91 was manually annotated 2 times for cluster K4.

Info for manual annotations of cluster K5:

- Start number 64 was manually annotated 4 times for cluster K5.
- Start number 65 was manually annotated 1 time for cluster K5.
- Start number 75 was manually annotated 1 time for cluster K5.
- Start number 82 was manually annotated 19 times for cluster K5.

Info for manual annotations of cluster K6:

- Start number 66 was manually annotated 13 times for cluster K6.
- Start number 82 was manually annotated 12 times for cluster K6.

Info for manual annotations of cluster K8:

- Start number 82 was manually annotated 1 time for cluster K8.

Info for manual annotations of cluster L1:

- Start number 77 was manually annotated 1 time for cluster L1.
- Start number 80 was manually annotated 18 times for cluster L1.

Info for manual annotations of cluster L2:

- Start number 80 was manually annotated 32 times for cluster L2.

Info for manual annotations of cluster L3:

- Start number 76 was manually annotated 19 times for cluster L3.

Info for manual annotations of cluster L4:

- Start number 80 was manually annotated 6 times for cluster L4.

Info for manual annotations of cluster L5:

- Start number 80 was manually annotated 2 times for cluster L5.

Info for manual annotations of cluster UNK:

- Start number 84 was manually annotated 1 time for cluster UNK.

Info for manual annotations of cluster V:

- Start number 82 was manually annotated 5 times for cluster V.

Info for manual annotations of cluster X:

- Start number 84 was manually annotated 2 times for cluster X.

Info for manual annotations of cluster Y:

- Start number 73 was manually annotated 2 times for cluster Y.
- Start number 76 was manually annotated 4 times for cluster Y.

Gene Information:

Gene: 244_111 Start: 62553, Stop: 62816, Start Num: 82

Candidate Starts for 244_111:

(Start: 82 @62553 has 194 MA's), (Start: 90 @62583 has 4 MA's), (112, 62658), (121, 62673), (160, 62775),

Gene: ABCat_107 Start: 63757, Stop: 64020, Start Num: 82
Candidate Starts for ABCat_107:
(Start: 82 @63757 has 194 MA's), (Start: 90 @63787 has 4 MA's), (112, 63862), (160, 63979),

Gene: Acquire49_92 Start: 57880, Stop: 58119, Start Num: 80
Candidate Starts for Acquire49_92:
(Start: 77 @57877 has 1 MA's), (Start: 80 @57880 has 58 MA's), (112, 57985), (121, 58000), (126, 58012), (134, 58027), (137, 58039), (153, 58087),

Gene: Adnama_114 Start: 63046, Stop: 63309, Start Num: 82
Candidate Starts for Adnama_114:
(Start: 82 @63046 has 194 MA's), (Start: 90 @63076 has 4 MA's), (112, 63151), (160, 63268),

Gene: Aegeus_99 Start: 60382, Stop: 60651, Start Num: 80
Candidate Starts for Aegeus_99:
(41, 60259), (45, 60286), (46, 60289), (59, 60337), (68, 60367), (Start: 80 @60382 has 58 MA's),
(Start: 89 @60409 has 1 MA's), (Start: 90 @60412 has 4 MA's), (Start: 91 @60415 has 2 MA's), (95, 60427), (104, 60460), (113, 60490), (121, 60502), (126, 60514), (129, 60517), (150, 60583), (155, 60592), (160, 60604), (163, 60616),

Gene: Agent47_36 Start: 30297, Stop: 30521, Start Num: 82
Candidate Starts for Agent47_36:
(Start: 82 @30297 has 194 MA's), (Start: 90 @30327 has 4 MA's), (94, 30339), (104, 30375), (106, 30378), (129, 30435), (137, 30456), (140, 30465), (148, 30489), (150, 30498),

Gene: AlleyCat_36 Start: 30143, Stop: 30367, Start Num: 82
Candidate Starts for AlleyCat_36:
(Start: 82 @30143 has 194 MA's), (Start: 90 @30173 has 4 MA's), (94, 30185), (104, 30221), (106, 30224), (129, 30281), (137, 30302), (138, 30305), (140, 30311), (148, 30335), (150, 30344),

Gene: Amao_110 Start: 63320, Stop: 63583, Start Num: 82
Candidate Starts for Amao_110:
(Start: 82 @63320 has 194 MA's), (Start: 90 @63350 has 4 MA's), (112, 63425), (160, 63542),

Gene: AmericanBeauty_113 Start: 63088, Stop: 63351, Start Num: 82
Candidate Starts for AmericanBeauty_113:
(Start: 82 @63088 has 194 MA's), (Start: 90 @63118 has 4 MA's), (112, 63193), (160, 63310),

Gene: Amgine_34 Start: 29490, Stop: 29714, Start Num: 82
Candidate Starts for Amgine_34:
(33, 29292), (39, 29337), (43, 29367), (81, 29487), (Start: 82 @29490 has 194 MA's), (Start: 90 @29520 has 4 MA's), (99, 29547), (140, 29658),

Gene: Amohndition_35 Start: 29885, Stop: 30115, Start Num: 66
Candidate Starts for Amohndition_35:
(Start: 66 @29885 has 29 MA's), (Start: 82 @29888 has 194 MA's),

Gene: Applecrisp_34 Start: 29912, Stop: 30136, Start Num: 82
Candidate Starts for Applecrisp_34:
(33, 29714), (39, 29759), (43, 29789), (81, 29909), (Start: 82 @29912 has 194 MA's), (Start: 90 @29942 has 4 MA's), (99, 29969), (140, 30080),

Gene: Appletree2_91 Start: 57640, Stop: 57879, Start Num: 80

Candidate Starts for Appletree2_91:

(Start: 77 @57637 has 1 MA's), (Start: 80 @57640 has 58 MA's), (112, 57745), (121, 57760), (126, 57772), (134, 57787), (137, 57799), (150, 57841), (153, 57847),

Gene: Archie_93 Start: 59561, Stop: 59821, Start Num: 80

Candidate Starts for Archie_93:

(Start: 80 @59561 has 58 MA's), (88, 59585), (112, 59666), (126, 59693), (133, 59705), (136, 59714), (137, 59720), (150, 59762), (153, 59768),

Gene: Argent26_114 Start: 62970, Stop: 63233, Start Num: 82

Candidate Starts for Argent26_114:

(Start: 82 @62970 has 194 MA's), (Start: 90 @63000 has 4 MA's), (112, 63075), (160, 63192),

Gene: Ariel_161 Start: 83041, Stop: 83286, Start Num: 84

Candidate Starts for Ariel_161:

(44, 82951), (48, 82966), (Start: 71 @83029 has 2 MA's), (Start: 84 @83041 has 25 MA's), (Start: 91 @83071 has 2 MA's), (104, 83116), (115, 83161), (137, 83209),

Gene: Asriel_108 Start: 61503, Stop: 61766, Start Num: 82

Candidate Starts for Asriel_108:

(Start: 82 @61503 has 194 MA's), (Start: 90 @61533 has 4 MA's), (112, 61608), (160, 61725),

Gene: AuntGwenStacy_30 Start: 27510, Stop: 27782, Start Num: 76

Candidate Starts for AuntGwenStacy_30:

(19, 27231), (Start: 73 @27507 has 2 MA's), (Start: 76 @27510 has 27 MA's), (Start: 82 @27519 has 194 MA's), (87, 27537), (94, 27561), (95, 27564), (107, 27603), (108, 27606), (125, 27660), (127, 27663), (132, 27672), (151, 27732),

Gene: AvadaKedavra_92 Start: 57992, Stop: 58231, Start Num: 80

Candidate Starts for AvadaKedavra_92:

(Start: 77 @57989 has 1 MA's), (Start: 80 @57992 has 58 MA's), (112, 58097), (121, 58112), (126, 58124), (134, 58139), (137, 58151), (153, 58199),

Gene: Azrael100_89 Start: 54974, Stop: 55225, Start Num: 82

Candidate Starts for Azrael100_89:

(Start: 82 @54974 has 194 MA's), (85, 54980), (122, 55106), (137, 55139), (138, 55142), (142, 55151), (154, 55190),

Gene: BAKA_168 Start: 87886, Stop: 88200, Start Num: 54

Candidate Starts for BAKA_168:

(Start: 54 @87886 has 19 MA's), (Start: 84 @87955 has 25 MA's), (114, 88072),

Gene: BaboJay_109 Start: 63726, Stop: 63989, Start Num: 82

Candidate Starts for BaboJay_109:

(Start: 82 @63726 has 194 MA's), (Start: 90 @63756 has 4 MA's), (112, 63831), (121, 63846), (160, 63948),

Gene: BadStone_107 Start: 63305, Stop: 63568, Start Num: 82

Candidate Starts for BadStone_107:

(Start: 82 @63305 has 194 MA's), (Start: 90 @63335 has 4 MA's), (112, 63410), (160, 63527),

Gene: Bagrid_172 Start: 89184, Stop: 89429, Start Num: 84

Candidate Starts for Bagrid_172:

(Start: 54 @89115 has 19 MA's), (Start: 84 @89184 has 25 MA's), (114, 89301),

Gene: Balomoji_110 Start: 63286, Stop: 63549, Start Num: 82

Candidate Starts for Balomoji_110:

(Start: 82 @63286 has 194 MA's), (Start: 90 @63316 has 4 MA's), (112, 63391), (160, 63508),

Gene: BananenDer11_36 Start: 30258, Stop: 30482, Start Num: 82

Candidate Starts for BananenDer11_36:

(Start: 82 @30258 has 194 MA's), (Start: 90 @30288 has 4 MA's), (94, 30300), (104, 30336), (106, 30339), (129, 30396), (137, 30417), (140, 30426), (148, 30450), (150, 30459),

Gene: Baoshan_96 Start: 60216, Stop: 60476, Start Num: 80

Candidate Starts for Baoshan_96:

(Start: 80 @60216 has 58 MA's), (112, 60321), (126, 60348), (129, 60351), (131, 60357), (133, 60360), (134, 60363), (137, 60375), (150, 60417), (153, 60423),

Gene: Barbarian_109 Start: 61503, Stop: 61766, Start Num: 82

Candidate Starts for Barbarian_109:

(Start: 82 @61503 has 194 MA's), (Start: 90 @61533 has 4 MA's), (112, 61608), (160, 61725),

Gene: Bask21_110 Start: 62122, Stop: 62385, Start Num: 82

Candidate Starts for Bask21_110:

(Start: 82 @62122 has 194 MA's), (Start: 90 @62152 has 4 MA's), (112, 62227), (160, 62344),

Gene: Baudelaire_99 Start: 60382, Stop: 60651, Start Num: 80

Candidate Starts for Baudelaire_99:

(41, 60259), (45, 60286), (46, 60289), (59, 60337), (68, 60367), (Start: 80 @60382 has 58 MA's), (Start: 89 @60409 has 1 MA's), (Start: 90 @60412 has 4 MA's), (Start: 91 @60415 has 2 MA's), (95, 60427), (104, 60460), (113, 60490), (121, 60502), (126, 60514), (129, 60517), (150, 60583), (155, 60592), (160, 60604), (163, 60616),

Gene: Bazzle_93 Start: 60117, Stop: 60377, Start Num: 80

Candidate Starts for Bazzle_93:

(Start: 80 @60117 has 58 MA's), (88, 60141), (112, 60222), (126, 60249), (133, 60261), (136, 60270), (137, 60276), (150, 60318), (153, 60324),

Gene: Becksu_108 Start: 63389, Stop: 63622, Start Num: 90

Candidate Starts for Becksu_108:

(Start: 82 @63359 has 194 MA's), (Start: 90 @63389 has 4 MA's), (112, 63464), (160, 63581),

Gene: Beem_164 Start: 87883, Stop: 88197, Start Num: 54

Candidate Starts for Beem_164:

(Start: 54 @87883 has 19 MA's), (Start: 84 @87952 has 25 MA's), (114, 88069),

Gene: Bellis_93 Start: 59734, Stop: 60003, Start Num: 76

Candidate Starts for Bellis_93:

(Start: 76 @59734 has 27 MA's), (Start: 90 @59773 has 4 MA's), (112, 59848), (126, 59875), (131, 59884), (156, 59956),

Gene: Bench_112 Start: 63727, Stop: 63990, Start Num: 82

Candidate Starts for Bench_112:

(Start: 82 @63727 has 194 MA's), (Start: 90 @63757 has 4 MA's), (112, 63832), (160, 63949),

Gene: BigBubba_111 Start: 62199, Stop: 62462, Start Num: 82
Candidate Starts for BigBubba_111:
(Start: 82 @62199 has 194 MA's), (Start: 90 @62229 has 4 MA's), (112, 62304), (160, 62421),

Gene: BigCheese_96 Start: 60326, Stop: 60586, Start Num: 80
Candidate Starts for BigCheese_96:
(Start: 80 @60326 has 58 MA's), (88, 60350), (112, 60431), (126, 60458), (133, 60470), (134, 60473),
(136, 60479), (137, 60485), (150, 60527), (153, 60533),

Gene: BilboSwaggins_108 Start: 63783, Stop: 64046, Start Num: 82
Candidate Starts for BilboSwaggins_108:
(Start: 82 @63783 has 194 MA's), (Start: 90 @63813 has 4 MA's), (112, 63888), (160, 64005),

Gene: Bipper_31 Start: 28074, Stop: 28352, Start Num: 73
Candidate Starts for Bipper_31:
(3, 27636), (12, 27714), (Start: 73 @28074 has 2 MA's), (Start: 76 @28077 has 27 MA's), (Start: 91
@28119 has 2 MA's), (94, 28128), (95, 28131), (101, 28143), (107, 28170), (123, 28224), (125,
28227), (139, 28263), (161, 28329),

Gene: Bobby_155 Start: 88907, Stop: 89152, Start Num: 84
Candidate Starts for Bobby_155:
(Start: 54 @88838 has 19 MA's), (Start: 84 @88907 has 25 MA's), (114, 89024),

Gene: Bobquesha_38 Start: 30372, Stop: 30659, Start Num: 66
Candidate Starts for Bobquesha_38:
(Start: 66 @30372 has 29 MA's), (Start: 82 @30378 has 194 MA's), (Start: 91 @30411 has 2 MA's),
(99, 30435), (110, 30471), (130, 30522), (131, 30525), (138, 30543), (140, 30549), (154, 30591), (156,
30594), (158, 30597),

Gene: BobsGarage_95 Start: 60326, Stop: 60586, Start Num: 80
Candidate Starts for BobsGarage_95:
(Start: 80 @60326 has 58 MA's), (88, 60350), (112, 60431), (126, 60458), (133, 60470), (134, 60473),
(136, 60479), (137, 60485), (150, 60527), (153, 60533),

Gene: Bogg_111 Start: 63246, Stop: 63509, Start Num: 82
Candidate Starts for Bogg_111:
(Start: 82 @63246 has 194 MA's), (Start: 90 @63276 has 4 MA's), (112, 63351), (160, 63468),

Gene: Boilgate_33 Start: 31436, Stop: 31663, Start Num: 82
Candidate Starts for Boilgate_33:
(Start: 66 @31433 has 29 MA's), (Start: 82 @31436 has 194 MA's), (94, 31478), (96, 31484), (110,
31529), (112, 31541), (122, 31565), (129, 31577), (133, 31586), (140, 31607), (154, 31646),

Gene: Bombitas_150 Start: 84182, Stop: 84427, Start Num: 84
Candidate Starts for Bombitas_150:
(Start: 54 @84113 has 19 MA's), (Start: 84 @84182 has 25 MA's), (114, 84299),

Gene: BourbonZero_94 Start: 59760, Stop: 60029, Start Num: 76
Candidate Starts for BourbonZero_94:
(Start: 76 @59760 has 27 MA's), (Start: 90 @59799 has 4 MA's), (112, 59874), (126, 59901), (131,
59910), (156, 59982),

Gene: BrainDrainer_98 Start: 60036, Stop: 60275, Start Num: 80

Candidate Starts for BrainDrainer_98:

(72, 60030), (Start: 80 @60036 has 58 MA's), (106, 60117), (112, 60141), (126, 60168), (142, 60207), (153, 60243), (157, 60249),

Gene: Breezona_96 Start: 60332, Stop: 60592, Start Num: 80

Candidate Starts for Breezona_96:

(Start: 80 @60332 has 58 MA's), (88, 60356), (112, 60437), (133, 60476), (134, 60479), (136, 60485), (137, 60491), (150, 60533), (153, 60539),

Gene: Brewer_106 Start: 61883, Stop: 62146, Start Num: 82

Candidate Starts for Brewer_106:

(Start: 82 @61883 has 194 MA's), (Start: 90 @61913 has 4 MA's), (112, 61988), (160, 62105),

Gene: Bromden_97 Start: 60914, Stop: 61153, Start Num: 80

Candidate Starts for Bromden_97:

(72, 60908), (Start: 80 @60914 has 58 MA's), (106, 60995), (112, 61019), (126, 61046), (142, 61085), (153, 61121), (157, 61127),

Gene: BronnyJames_157 Start: 83845, Stop: 84090, Start Num: 84

Candidate Starts for BronnyJames_157:

(44, 83755), (48, 83770), (Start: 71 @83833 has 2 MA's), (Start: 84 @83845 has 25 MA's), (Start: 91 @83875 has 2 MA's), (104, 83920), (115, 83965), (137, 84013),

Gene: Bruin_107 Start: 62411, Stop: 62674, Start Num: 82

Candidate Starts for Bruin_107:

(Start: 82 @62411 has 194 MA's), (Start: 90 @62441 has 4 MA's), (112, 62516), (160, 62633),

Gene: Bryler_36 Start: 28890, Stop: 29123, Start Num: 66

Candidate Starts for Bryler_36:

(43, 28800), (Start: 66 @28890 has 29 MA's), (124, 29031), (156, 29109),

Gene: Buck_111 Start: 64227, Stop: 64490, Start Num: 82

Candidate Starts for Buck_111:

(Start: 82 @64227 has 194 MA's), (Start: 90 @64257 has 4 MA's), (112, 64332), (160, 64449),

Gene: Budgie_116 Start: 63676, Stop: 63969, Start Num: 82

Candidate Starts for Budgie_116:

(Start: 82 @63676 has 194 MA's), (Start: 90 @63706 has 4 MA's), (95, 63721), (99, 63733), (112, 63781),

Gene: BugsBunny_109 Start: 63725, Stop: 63988, Start Num: 82

Candidate Starts for BugsBunny_109:

(Start: 82 @63725 has 194 MA's), (Start: 90 @63755 has 4 MA's), (112, 63830), (160, 63947),

Gene: Cactus_114 Start: 62665, Stop: 62928, Start Num: 82

Candidate Starts for Cactus_114:

(Start: 82 @62665 has 194 MA's), (Start: 90 @62695 has 4 MA's), (112, 62770), (160, 62887),

Gene: Cain_36 Start: 28878, Stop: 29111, Start Num: 66

Candidate Starts for Cain_36:

(43, 28788), (Start: 66 @28878 has 29 MA's), (124, 29019), (156, 29097),

Gene: Calm_93 Start: 57891, Stop: 58130, Start Num: 80

Candidate Starts for Calm_93:

(Start: 77 @57888 has 1 MA's), (Start: 80 @57891 has 58 MA's), (112, 57996), (121, 58011), (126, 58023), (134, 58038), (137, 58050), (153, 58098),

Gene: Cardigan_172 Start: 88613, Stop: 88891, Start Num: 74

Candidate Starts for Cardigan_172:

(Start: 61 @88574 has 2 MA's), (74, 88613), (79, 88619), (83, 88625), (92, 88658), (109, 88721), (133, 88784), (147, 88829), (152, 88847),

Gene: Chancellor_37 Start: 30638, Stop: 30919, Start Num: 82

Candidate Starts for Chancellor_37:

(Start: 66 @30632 has 29 MA's), (Start: 82 @30638 has 194 MA's), (Start: 91 @30671 has 2 MA's), (99, 30695), (110, 30731), (124, 30773), (130, 30782), (131, 30785), (138, 30803), (140, 30809), (154, 30851), (156, 30854), (158, 30857),

Gene: Chaser_96 Start: 59337, Stop: 59576, Start Num: 80

Candidate Starts for Chaser_96:

(72, 59331), (Start: 80 @59337 has 58 MA's), (106, 59418), (112, 59442), (126, 59469), (142, 59508), (153, 59544), (157, 59550),

Gene: Chavito_36 Start: 29119, Stop: 29349, Start Num: 66

Candidate Starts for Chavito_36:

(43, 29029), (Start: 66 @29119 has 29 MA's), (Start: 82 @29122 has 194 MA's), (99, 29179),

Gene: Cheetobro_37 Start: 30635, Stop: 30916, Start Num: 82

Candidate Starts for Cheetobro_37:

(Start: 66 @30629 has 29 MA's), (Start: 82 @30635 has 194 MA's), (Start: 91 @30668 has 2 MA's), (99, 30692), (110, 30728), (124, 30770), (130, 30779), (131, 30782), (138, 30800), (140, 30806), (154, 30848), (156, 30851), (158, 30854),

Gene: ChosenOne_110 Start: 62611, Stop: 62874, Start Num: 82

Candidate Starts for ChosenOne_110:

(Start: 82 @62611 has 194 MA's), (Start: 90 @62641 has 4 MA's), (112, 62716), (160, 62833),

Gene: ChotaBhai_110 Start: 63064, Stop: 63327, Start Num: 82

Candidate Starts for ChotaBhai_110:

(Start: 82 @63064 has 194 MA's), (Start: 90 @63094 has 4 MA's), (112, 63169), (160, 63286),

Gene: ChutneyChips_98 Start: 60068, Stop: 60307, Start Num: 80

Candidate Starts for ChutneyChips_98:

(72, 60062), (Start: 80 @60068 has 58 MA's), (106, 60149), (112, 60173), (126, 60200), (142, 60239), (157, 60281),

Gene: CicholasNage_89 Start: 57544, Stop: 57783, Start Num: 80

Candidate Starts for CicholasNage_89:

(Start: 77 @57541 has 1 MA's), (Start: 80 @57544 has 58 MA's), (112, 57649), (121, 57664), (126, 57676), (134, 57691), (137, 57703), (150, 57745), (153, 57751),

Gene: Cjw1_110 Start: 64420, Stop: 64683, Start Num: 82

Candidate Starts for Cjw1_110:

(Start: 82 @64420 has 194 MA's), (Start: 90 @64450 has 4 MA's), (112, 64525), (160, 64642),

Gene: Claus_95 Start: 60040, Stop: 60279, Start Num: 80

Candidate Starts for Claus_95:

(Start: 80 @60040 has 58 MA's), (112, 60145), (126, 60172), (129, 60175), (131, 60181), (133, 60184), (137, 60199), (150, 60241), (153, 60247),

Gene: Clautastrophe_91 Start: 59729, Stop: 59998, Start Num: 76

Candidate Starts for Clautastrophe_91:

(Start: 76 @59729 has 27 MA's), (Start: 90 @59768 has 4 MA's), (112, 59843), (126, 59870), (131, 59879), (156, 59951),

Gene: ClubL_150 Start: 80767, Stop: 80985, Start Num: 89

Candidate Starts for ClubL_150:

(1, 80272), (4, 80293), (6, 80308), (7, 80323), (21, 80470), (22, 80476), (24, 80479), (30, 80521), (31, 80524), (35, 80563), (47, 80647), (50, 80662), (62, 80695), (Start: 89 @80767 has 1 MA's), (95, 80785), (113, 80848), (129, 80875), (135, 80890), (158, 80956), (162, 80974),

Gene: Collard_35 Start: 30258, Stop: 30482, Start Num: 82

Candidate Starts for Collard_35:

(Start: 82 @30258 has 194 MA's), (Start: 90 @30288 has 4 MA's), (94, 30300), (104, 30336), (106, 30339), (129, 30396), (137, 30417), (140, 30426), (148, 30450), (150, 30459),

Gene: Command613_112 Start: 63309, Stop: 63542, Start Num: 90

Candidate Starts for Command613_112:

(Start: 82 @63279 has 194 MA's), (Start: 90 @63309 has 4 MA's), (112, 63384), (160, 63501),

Gene: Constella_159 Start: 86642, Stop: 86956, Start Num: 54

Candidate Starts for Constella_159:

(Start: 54 @86642 has 19 MA's), (Start: 84 @86711 has 25 MA's), (114, 86828),

Gene: Contagion_107 Start: 62773, Stop: 63036, Start Num: 82

Candidate Starts for Contagion_107:

(Start: 82 @62773 has 194 MA's), (Start: 90 @62803 has 4 MA's), (112, 62878), (160, 62995),

Gene: Cookies_107 Start: 63050, Stop: 63313, Start Num: 82

Candidate Starts for Cookies_107:

(Start: 82 @63050 has 194 MA's), (Start: 90 @63080 has 4 MA's), (112, 63155), (160, 63272),

Gene: Cosmo_90 Start: 54975, Stop: 55226, Start Num: 82

Candidate Starts for Cosmo_90:

(Start: 82 @54975 has 194 MA's), (85, 54981), (122, 55107), (137, 55140), (138, 55143), (142, 55152), (154, 55191),

Gene: Courthouse_158 Start: 83473, Stop: 83730, Start Num: 71

Candidate Starts for Courthouse_158:

(44, 83395), (48, 83410), (Start: 71 @83473 has 2 MA's), (Start: 84 @83485 has 25 MA's), (Start: 91 @83515 has 2 MA's), (104, 83560), (115, 83605), (137, 83653),

Gene: Cracklewink_31 Start: 28074, Stop: 28352, Start Num: 73

Candidate Starts for Cracklewink_31:

(Start: 73 @28074 has 2 MA's), (Start: 76 @28077 has 27 MA's), (Start: 91 @28119 has 2 MA's), (94, 28128), (95, 28131), (107, 28170), (123, 28224), (127, 28230), (139, 28263), (161, 28329),

Gene: Crossroads_96 Start: 60044, Stop: 60304, Start Num: 80

Candidate Starts for Crossroads_96:

(Start: 80 @60044 has 58 MA's), (88, 60068), (112, 60149), (126, 60176), (133, 60188), (134, 60191), (136, 60197), (137, 60203), (150, 60245), (153, 60251),

Gene: CrystalP_110 Start: 63783, Stop: 64046, Start Num: 82

Candidate Starts for CrystalP_110:

(Start: 82 @63783 has 194 MA's), (Start: 90 @63813 has 4 MA's), (112, 63888), (160, 64005),

Gene: Curiosium_38 Start: 29582, Stop: 29809, Start Num: 82

Candidate Starts for Curiosium_38:

(55, 29525), (63, 29543), (Start: 82 @29582 has 194 MA's), (94, 29624), (121, 29705), (126, 29717),

Gene: CurlyFries_105 Start: 54587, Stop: 54838, Start Num: 78

Candidate Starts for CurlyFries_105:

(Start: 78 @54587 has 9 MA's), (Start: 90 @54623 has 4 MA's), (99, 54650), (104, 54671), (110, 54686), (121, 54716), (134, 54740), (138, 54755), (140, 54761),

Gene: Czyszczone1_110 Start: 62766, Stop: 63029, Start Num: 82

Candidate Starts for Czyszczone1_110:

(Start: 82 @62766 has 194 MA's), (Start: 90 @62796 has 4 MA's), (112, 62871), (160, 62988),

Gene: DHan_99 Start: 60263, Stop: 60523, Start Num: 80

Candidate Starts for DHan_99:

(Start: 80 @60263 has 58 MA's), (112, 60368), (126, 60395), (129, 60398), (131, 60404), (133, 60407), (137, 60422), (150, 60464), (153, 60470),

Gene: DS6A_37 Start: 31428, Stop: 31652, Start Num: 82

Candidate Starts for DS6A_37:

(Start: 82 @31428 has 194 MA's), (Start: 90 @31458 has 4 MA's), (93, 31467), (94, 31470), (95, 31473), (104, 31506), (118, 31548), (121, 31551), (126, 31563), (129, 31566), (146, 31611), (148, 31620), (150, 31629),

Gene: Dadosky_36 Start: 30144, Stop: 30368, Start Num: 82

Candidate Starts for Dadosky_36:

(Start: 82 @30144 has 194 MA's), (Start: 90 @30174 has 4 MA's), (94, 30186), (104, 30222), (106, 30225), (129, 30282), (137, 30303), (138, 30306), (140, 30312), (148, 30336), (150, 30345),

Gene: Daikon_111 Start: 62582, Stop: 62845, Start Num: 82

Candidate Starts for Daikon_111:

(Start: 82 @62582 has 194 MA's), (Start: 90 @62612 has 4 MA's), (112, 62687), (160, 62804),

Gene: Dallas_163 Start: 87175, Stop: 87420, Start Num: 84

Candidate Starts for Dallas_163:

(Start: 54 @87106 has 19 MA's), (Start: 84 @87175 has 25 MA's), (114, 87292),

Gene: DanBing_95 Start: 59956, Stop: 60210, Start Num: 80

Candidate Starts for DanBing_95:

(Start: 80 @59956 has 58 MA's), (112, 60061), (126, 60088), (131, 60097), (133, 60100), (137, 60115), (150, 60157), (153, 60163),

Gene: DanSyl44_40 Start: 31504, Stop: 31785, Start Num: 82

Candidate Starts for DanSyl44_40:

(Start: 66 @31498 has 29 MA's), (Start: 82 @31504 has 194 MA's), (Start: 91 @31537 has 2 MA's), (99, 31561), (110, 31597), (124, 31639), (130, 31648), (131, 31651), (138, 31669), (140, 31675), (154,

31717), (156, 31720), (158, 31723),

Gene: DarthP_35 Start: 29810, Stop: 30037, Start Num: 82
Candidate Starts for DarthP_35:
(Start: 66 @29807 has 29 MA's), (Start: 82 @29810 has 194 MA's),

Gene: Dartin_36 Start: 28807, Stop: 29037, Start Num: 66
Candidate Starts for Dartin_36:
(14, 28489), (29, 28618), (39, 28687), (43, 28717), (Start: 66 @28807 has 29 MA's), (Start: 82 @28810 has 194 MA's), (121, 28933), (137, 28969),

Gene: DirkDirk_89 Start: 57220, Stop: 57459, Start Num: 80
Candidate Starts for DirkDirk_89:
(Start: 77 @57217 has 1 MA's), (Start: 80 @57220 has 58 MA's), (112, 57325), (121, 57340), (126, 57352), (134, 57367), (137, 57379), (150, 57421), (153, 57427),

Gene: DmpstrDiver_162 Start: 85902, Stop: 86147, Start Num: 84
Candidate Starts for DmpstrDiver_162:
(Start: 54 @85833 has 19 MA's), (Start: 84 @85902 has 25 MA's), (114, 86019),

Gene: DoctorDiddles_109 Start: 62552, Stop: 62815, Start Num: 82
Candidate Starts for DoctorDiddles_109:
(Start: 82 @62552 has 194 MA's), (Start: 90 @62582 has 4 MA's), (112, 62657), (160, 62774),

Gene: DoubleChamp_35 Start: 30258, Stop: 30482, Start Num: 82
Candidate Starts for DoubleChamp_35:
(Start: 82 @30258 has 194 MA's), (Start: 90 @30288 has 4 MA's), (94, 30300), (104, 30336), (106, 30339), (129, 30396), (137, 30417), (140, 30426), (148, 30450), (150, 30459),

Gene: Douge_97 Start: 59456, Stop: 59695, Start Num: 80
Candidate Starts for Douge_97:
(72, 59450), (Start: 80 @59456 has 58 MA's), (106, 59537), (112, 59561), (126, 59588), (136, 59609), (142, 59627), (153, 59663),

Gene: Douzhi_97 Start: 59725, Stop: 59964, Start Num: 80
Candidate Starts for Douzhi_97:
(72, 59719), (Start: 80 @59725 has 58 MA's), (106, 59806), (112, 59830), (136, 59878), (142, 59896), (153, 59932), (157, 59938),

Gene: Dove_150 Start: 82469, Stop: 82783, Start Num: 54
Candidate Starts for Dove_150:
(Start: 54 @82469 has 19 MA's), (Start: 84 @82538 has 25 MA's), (114, 82655),

Gene: DrDrey_110 Start: 64443, Stop: 64706, Start Num: 82
Candidate Starts for DrDrey_110:
(Start: 82 @64443 has 194 MA's), (Start: 90 @64473 has 4 MA's), (112, 64548), (160, 64665),

Gene: DrSeegs_95 Start: 60332, Stop: 60592, Start Num: 80
Candidate Starts for DrSeegs_95:
(Start: 80 @60332 has 58 MA's), (88, 60356), (112, 60437), (133, 60476), (134, 60479), (136, 60485), (137, 60491), (150, 60533), (153, 60539),

Gene: Duke13_165 Start: 86382, Stop: 86696, Start Num: 54

Candidate Starts for Duke13_165:

(Start: 54 @86382 has 19 MA's), (Start: 84 @86451 has 25 MA's), (114, 86568),

Gene: Dumbo_110 Start: 62803, Stop: 63066, Start Num: 82

Candidate Starts for Dumbo_110:

(Start: 82 @62803 has 194 MA's), (Start: 90 @62833 has 4 MA's), (112, 62908), (160, 63025),

Gene: DuncansLeg_93 Start: 59748, Stop: 60017, Start Num: 76

Candidate Starts for DuncansLeg_93:

(Start: 76 @59748 has 27 MA's), (Start: 90 @59787 has 4 MA's), (112, 59862), (126, 59889), (131, 59898), (156, 59970),

Gene: Dusk_107 Start: 62965, Stop: 63228, Start Num: 82

Candidate Starts for Dusk_107:

(Start: 82 @62965 has 194 MA's), (Start: 90 @62995 has 4 MA's), (112, 63070), (160, 63187),

Gene: DyoEdafos_99 Start: 60045, Stop: 60284, Start Num: 80

Candidate Starts for DyoEdafos_99:

(72, 60039), (Start: 80 @60045 has 58 MA's), (106, 60126), (112, 60150), (126, 60177), (142, 60216), (153, 60252), (157, 60258),

Gene: Easy2Say_110 Start: 63437, Stop: 63700, Start Num: 82

Candidate Starts for Easy2Say_110:

(Start: 82 @63437 has 194 MA's), (Start: 90 @63467 has 4 MA's), (112, 63542), (121, 63557), (160, 63659),

Gene: Edugator_36 Start: 30537, Stop: 30794, Start Num: 65

Candidate Starts for Edugator_36:

(Start: 65 @30537 has 1 MA's), (Start: 66 @30540 has 29 MA's), (Start: 67 @30546 has 1 MA's), (Start: 82 @30570 has 194 MA's), (94, 30612), (104, 30648), (106, 30651), (121, 30693), (129, 30708), (137, 30729), (138, 30732), (140, 30738), (148, 30762), (150, 30771),

Gene: Efra2_37 Start: 29012, Stop: 29254, Start Num: 69

Candidate Starts for Efra2_37:

(53, 28967), (57, 28976), (Start: 69 @29012 has 1 MA's), (Start: 73 @29018 has 2 MA's), (81, 29024), (Start: 82 @29027 has 194 MA's), (94, 29069), (121, 29150), (126, 29162),

Gene: Ejimix_154 Start: 86094, Stop: 86408, Start Num: 54

Candidate Starts for Ejimix_154:

(Start: 54 @86094 has 19 MA's), (Start: 84 @86163 has 25 MA's), (114, 86280),

Gene: Ekdilam_33 Start: 29562, Stop: 29792, Start Num: 66

Candidate Starts for Ekdilam_33:

(14, 29244), (20, 29307), (39, 29442), (43, 29472), (Start: 66 @29562 has 29 MA's), (Start: 82 @29565 has 194 MA's), (99, 29622),

Gene: Elite2014_109 Start: 62610, Stop: 62873, Start Num: 82

Candidate Starts for Elite2014_109:

(Start: 82 @62610 has 194 MA's), (Start: 90 @62640 has 4 MA's), (112, 62715), (160, 62832),

Gene: Ellie_33 Start: 29603, Stop: 29827, Start Num: 82

Candidate Starts for Ellie_33:

(33, 29405), (39, 29450), (43, 29480), (81, 29600), (Start: 82 @29603 has 194 MA's), (Start: 90 @29633 has 4 MA's), (99, 29660), (140, 29771),

Gene: Ellson_92 Start: 60063, Stop: 60332, Start Num: 76

Candidate Starts for Ellson_92:

(Start: 76 @60063 has 27 MA's), (Start: 90 @60102 has 4 MA's), (112, 60177), (126, 60204), (131, 60213), (156, 60285),

Gene: Elph10_109 Start: 62449, Stop: 62712, Start Num: 82

Candidate Starts for Elph10_109:

(Start: 82 @62449 has 194 MA's), (88, 62473), (Start: 90 @62479 has 4 MA's), (112, 62554), (160, 62671),

Gene: Emmina_110 Start: 62388, Stop: 62651, Start Num: 82

Candidate Starts for Emmina_110:

(Start: 82 @62388 has 194 MA's), (Start: 90 @62418 has 4 MA's), (112, 62493), (121, 62508), (160, 62610),

Gene: Enceladus_89 Start: 57921, Stop: 58160, Start Num: 80

Candidate Starts for Enceladus_89:

(Start: 77 @57918 has 1 MA's), (Start: 80 @57921 has 58 MA's), (112, 58026), (121, 58041), (126, 58053), (134, 58068), (137, 58080), (150, 58122), (153, 58128),

Gene: EniyanLRS_87 Start: 54969, Stop: 55220, Start Num: 82

Candidate Starts for EniyanLRS_87:

(Start: 82 @54969 has 194 MA's), (122, 55101), (137, 55134), (138, 55137), (142, 55146), (154, 55185),

Gene: Eponine_39 Start: 31391, Stop: 31672, Start Num: 82

Candidate Starts for Eponine_39:

(Start: 66 @31385 has 29 MA's), (Start: 82 @31391 has 194 MA's), (Start: 91 @31424 has 2 MA's), (99, 31448), (110, 31484), (130, 31535), (131, 31538), (138, 31556), (140, 31562), (154, 31604), (156, 31607), (158, 31610),

Gene: EricMillard_161 Start: 87725, Stop: 88039, Start Num: 54

Candidate Starts for EricMillard_161:

(Start: 54 @87725 has 19 MA's), (Start: 84 @87794 has 25 MA's), (114, 87911),

Gene: Eureka_110 Start: 63576, Stop: 63839, Start Num: 82

Candidate Starts for Eureka_110:

(Start: 82 @63576 has 194 MA's), (Start: 90 @63606 has 4 MA's), (112, 63681), (121, 63696), (160, 63798),

Gene: FairyPath_111 Start: 63881, Stop: 64144, Start Num: 82

Candidate Starts for FairyPath_111:

(Start: 82 @63881 has 194 MA's), (Start: 90 @63911 has 4 MA's), (112, 63986), (160, 64103),

Gene: Faith1_96 Start: 59969, Stop: 60229, Start Num: 80

Candidate Starts for Faith1_96:

(Start: 80 @59969 has 58 MA's), (88, 59993), (112, 60074), (133, 60113), (134, 60116), (136, 60122), (137, 60128), (150, 60170), (153, 60176),

Gene: Faiyaz_30 Start: 27510, Stop: 27782, Start Num: 76

Candidate Starts for Faiyaz_30:

(19, 27231), (Start: 73 @27507 has 2 MA's), (Start: 76 @27510 has 27 MA's), (Start: 82 @27519 has 194 MA's), (87, 27537), (94, 27561), (95, 27564), (107, 27603), (108, 27606), (125, 27660), (127, 27663), (132, 27672), (151, 27732),

Gene: FarmResident_98 Start: 59612, Stop: 59851, Start Num: 80

Candidate Starts for FarmResident_98:

(Start: 75 @59606 has 1 MA's), (Start: 80 @59612 has 58 MA's), (106, 59693), (112, 59717), (126, 59744), (142, 59783), (153, 59819), (157, 59825),

Gene: Fefferhead_35 Start: 29803, Stop: 30027, Start Num: 82

Candidate Starts for Fefferhead_35:

(33, 29605), (39, 29650), (43, 29680), (81, 29800), (Start: 82 @29803 has 194 MA's), (Start: 90 @29833 has 4 MA's), (99, 29860), (140, 29971),

Gene: Feyre_36 Start: 30208, Stop: 30432, Start Num: 82

Candidate Starts for Feyre_36:

(Start: 64 @30175 has 4 MA's), (Start: 82 @30208 has 194 MA's), (Start: 90 @30238 has 4 MA's), (94, 30250), (104, 30286), (106, 30289), (113, 30316), (129, 30346), (130, 30349), (140, 30376),

Gene: Filch_112 Start: 62762, Stop: 63025, Start Num: 82

Candidate Starts for Filch_112:

(Start: 82 @62762 has 194 MA's), (Start: 90 @62792 has 4 MA's), (112, 62867), (160, 62984),

Gene: Finemlucis_97 Start: 61077, Stop: 61337, Start Num: 80

Candidate Starts for Finemlucis_97:

(Start: 80 @61077 has 58 MA's), (88, 61101), (112, 61182), (126, 61209), (133, 61221), (134, 61224), (136, 61230), (137, 61236), (150, 61278), (153, 61284),

Gene: Finnry_93 Start: 60082, Stop: 60351, Start Num: 76

Candidate Starts for Finnry_93:

(Start: 76 @60082 has 27 MA's), (Start: 90 @60121 has 4 MA's), (112, 60196), (126, 60223), (131, 60232), (156, 60304),

Gene: Fionnbharth_37 Start: 30626, Stop: 30907, Start Num: 82

Candidate Starts for Fionnbharth_37:

(18, 30362), (Start: 66 @30620 has 29 MA's), (Start: 82 @30626 has 194 MA's), (Start: 91 @30659 has 2 MA's), (99, 30683), (110, 30719), (130, 30770), (131, 30773), (138, 30791), (140, 30797), (154, 30839), (156, 30842), (158, 30845),

Gene: FireRed_113 Start: 63852, Stop: 64115, Start Num: 82

Candidate Starts for FireRed_113:

(Start: 82 @63852 has 194 MA's), (Start: 90 @63882 has 4 MA's), (112, 63957), (160, 64074),

Gene: Flypotenuse_106 Start: 62157, Stop: 62420, Start Num: 82

Candidate Starts for Flypotenuse_106:

(Start: 82 @62157 has 194 MA's), (Start: 90 @62187 has 4 MA's), (112, 62262), (160, 62379),

Gene: FoghornLeghorn_103 Start: 60742, Stop: 61005, Start Num: 82

Candidate Starts for FoghornLeghorn_103:

(Start: 82 @60742 has 194 MA's), (Start: 90 @60772 has 4 MA's), (112, 60847), (160, 60964),

Gene: Fryberger_37 Start: 13385, Stop: 13669, Start Num: 78

Candidate Starts for Fryberger_37:

(Start: 78 @13385 has 9 MA's), (104, 13469), (130, 13538), (133, 13544), (137, 13559), (142, 13571), (164, 13664),

Gene: GMA1_67 Start: 40045, Stop: 40320, Start Num: 92

Candidate Starts for GMA1_67:

(92, 40045), (102, 40081), (120, 40165), (141, 40216),

Gene: Gabriela_96 Start: 59315, Stop: 59575, Start Num: 80

Candidate Starts for Gabriela_96:

(Start: 80 @59315 has 58 MA's), (88, 59339), (112, 59420), (133, 59459), (134, 59462), (136, 59468), (137, 59474), (150, 59516), (153, 59522),

Gene: Gage_112 Start: 63108, Stop: 63371, Start Num: 82

Candidate Starts for Gage_112:

(Start: 82 @63108 has 194 MA's), (Start: 90 @63138 has 4 MA's), (112, 63213), (160, 63330),

Gene: Gaia_124 Start: 69033, Stop: 69269, Start Num: 84

Candidate Starts for Gaia_124:

(58, 68973), (Start: 84 @69033 has 25 MA's), (100, 69087), (115, 69153), (121, 69162), (122, 69165), (131, 69183), (142, 69213),

Gene: Gardann_96 Start: 59810, Stop: 60070, Start Num: 80

Candidate Starts for Gardann_96:

(Start: 80 @59810 has 58 MA's), (88, 59834), (112, 59915), (126, 59942), (133, 59954), (134, 59957), (136, 59963), (137, 59969), (150, 60011), (153, 60017),

Gene: Gator_108 Start: 63017, Stop: 63280, Start Num: 82

Candidate Starts for Gator_108:

(Start: 82 @63017 has 194 MA's), (Start: 90 @63047 has 4 MA's), (112, 63122), (160, 63239),

Gene: Gemini_115 Start: 63487, Stop: 63750, Start Num: 82

Candidate Starts for Gemini_115:

(Start: 82 @63487 has 194 MA's), (Start: 90 @63517 has 4 MA's), (112, 63592), (160, 63709),

Gene: Gengar_36 Start: 30285, Stop: 30542, Start Num: 64

Candidate Starts for Gengar_36:

(Start: 64 @30285 has 4 MA's), (Start: 82 @30318 has 194 MA's), (Start: 90 @30348 has 4 MA's), (94, 30360), (104, 30396), (106, 30399), (113, 30426), (129, 30456), (130, 30459), (140, 30486),

Gene: Glexan_109 Start: 63167, Stop: 63430, Start Num: 82

Candidate Starts for Glexan_109:

(Start: 82 @63167 has 194 MA's), (Start: 90 @63197 has 4 MA's), (112, 63272), (160, 63389),

Gene: Goku_109 Start: 63305, Stop: 63568, Start Num: 82

Candidate Starts for Goku_109:

(Start: 82 @63305 has 194 MA's), (Start: 90 @63335 has 4 MA's), (112, 63410), (121, 63425), (160, 63527),

Gene: GoldenSpark_114 Start: 63000, Stop: 63233, Start Num: 90

Candidate Starts for GoldenSpark_114:

(Start: 82 @62970 has 194 MA's), (Start: 90 @63000 has 4 MA's), (112, 63075), (160, 63192),

Gene: Goldilocks_113 Start: 62986, Stop: 63249, Start Num: 82
Candidate Starts for Goldilocks_113:
(Start: 82 @62986 has 194 MA's), (Start: 90 @63016 has 4 MA's), (112, 63091), (160, 63208),

Gene: GooberAzure_113 Start: 62970, Stop: 63233, Start Num: 82
Candidate Starts for GooberAzure_113:
(Start: 82 @62970 has 194 MA's), (Start: 90 @63000 has 4 MA's), (112, 63075), (160, 63192),

Gene: Greep_114 Start: 64572, Stop: 64805, Start Num: 90
Candidate Starts for Greep_114:
(Start: 82 @64542 has 194 MA's), (Start: 90 @64572 has 4 MA's), (112, 64647), (160, 64764),

Gene: Guanica15_37 Start: 28984, Stop: 29211, Start Num: 82
Candidate Starts for Guanica15_37:
(Start: 70 @28972 has 1 MA's), (Start: 73 @28975 has 2 MA's), (Start: 82 @28984 has 194 MA's), (94, 29026), (121, 29107), (126, 29119),

Gene: Guey18_42 Start: 14578, Stop: 14862, Start Num: 78
Candidate Starts for Guey18_42:
(Start: 78 @14578 has 9 MA's), (104, 14662), (130, 14731), (133, 14737), (137, 14752), (142, 14764), (164, 14857),

Gene: Guillsminger_36 Start: 30256, Stop: 30513, Start Num: 64
Candidate Starts for Guillsminger_36:
(Start: 64 @30256 has 4 MA's), (Start: 82 @30289 has 194 MA's), (Start: 90 @30319 has 4 MA's), (94, 30331), (104, 30367), (106, 30370), (113, 30397), (129, 30427), (130, 30430), (140, 30457),

Gene: GuuelaD_93 Start: 59928, Stop: 60188, Start Num: 80
Candidate Starts for GuuelaD_93:
(Start: 80 @59928 has 58 MA's), (88, 59952), (112, 60033), (126, 60060), (133, 60072), (134, 60075), (136, 60081), (137, 60087), (150, 60129), (153, 60135),

Gene: Hafay_97 Start: 60035, Stop: 60274, Start Num: 80
Candidate Starts for Hafay_97:
(Start: 80 @60035 has 58 MA's), (112, 60140), (126, 60167), (129, 60170), (131, 60176), (133, 60179), (137, 60194), (150, 60236), (153, 60242),

Gene: Halena_89 Start: 56807, Stop: 57046, Start Num: 80
Candidate Starts for Halena_89:
(Start: 77 @56804 has 1 MA's), (Start: 80 @56807 has 58 MA's), (112, 56912), (121, 56927), (126, 56939), (134, 56954), (137, 56966), (150, 57008), (153, 57014),

Gene: Halley_164 Start: 86410, Stop: 86724, Start Num: 54
Candidate Starts for Halley_164:
(Start: 54 @86410 has 19 MA's), (Start: 84 @86479 has 25 MA's), (114, 86596),

Gene: Hammy_35 Start: 29798, Stop: 30028, Start Num: 66
Candidate Starts for Hammy_35:
(Start: 66 @29798 has 29 MA's), (Start: 82 @29801 has 194 MA's),

Gene: HanKaySha_110 Start: 63158, Stop: 63421, Start Num: 82
Candidate Starts for HanKaySha_110:

(Start: 82 @63158 has 194 MA's), (Start: 90 @63188 has 4 MA's), (112, 63263), (121, 63278), (160, 63380),

Gene: Hannaconda_156 Start: 86966, Stop: 87211, Start Num: 84

Candidate Starts for Hannaconda_156:

(44, 86876), (48, 86891), (Start: 71 @86954 has 2 MA's), (Start: 84 @86966 has 25 MA's), (Start: 91 @86996 has 2 MA's), (104, 87041), (115, 87086), (137, 87134),

Gene: Harella_111 Start: 63683, Stop: 63946, Start Num: 82

Candidate Starts for Harella_111:

(Start: 82 @63683 has 194 MA's), (Start: 90 @63713 has 4 MA's), (112, 63788), (160, 63905),

Gene: Heftyboy_36 Start: 30435, Stop: 30659, Start Num: 82

Candidate Starts for Heftyboy_36:

(Start: 64 @30402 has 4 MA's), (Start: 82 @30435 has 194 MA's), (Start: 90 @30465 has 4 MA's), (94, 30477), (104, 30513), (106, 30516), (113, 30543), (129, 30573), (130, 30576), (140, 30603), (150, 30636),

Gene: Henry_108 Start: 62968, Stop: 63231, Start Num: 82

Candidate Starts for Henry_108:

(Start: 82 @62968 has 194 MA's), (Start: 90 @62998 has 4 MA's), (112, 63073), (121, 63088), (160, 63190),

Gene: Hidrated_156 Start: 88206, Stop: 88451, Start Num: 84

Candidate Starts for Hidrated_156:

(Start: 54 @88137 has 19 MA's), (Start: 84 @88206 has 25 MA's), (114, 88323),

Gene: Highbury_106 Start: 61315, Stop: 61578, Start Num: 82

Candidate Starts for Highbury_106:

(Start: 82 @61315 has 194 MA's), (Start: 90 @61345 has 4 MA's), (112, 61420), (121, 61435), (160, 61537),

Gene: Hilltopfarm_30 Start: 27540, Stop: 27812, Start Num: 76

Candidate Starts for Hilltopfarm_30:

(10, 27174), (19, 27261), (Start: 73 @27537 has 2 MA's), (Start: 76 @27540 has 27 MA's), (Start: 82 @27549 has 194 MA's), (87, 27567), (94, 27591), (95, 27594), (107, 27633), (108, 27636), (125, 27690), (127, 27693), (132, 27702), (151, 27762),

Gene: HokkenD_158 Start: 88260, Stop: 88505, Start Num: 84

Candidate Starts for HokkenD_158:

(Start: 54 @88191 has 19 MA's), (Start: 84 @88260 has 25 MA's), (114, 88377),

Gene: Holt_115 Start: 63384, Stop: 63647, Start Num: 82

Candidate Starts for Holt_115:

(Start: 82 @63384 has 194 MA's), (Start: 90 @63414 has 4 MA's), (112, 63489), (160, 63606),

Gene: Hoonter_113 Start: 63463, Stop: 63726, Start Num: 82

Candidate Starts for Hoonter_113:

(Start: 82 @63463 has 194 MA's), (Start: 90 @63493 has 4 MA's), (112, 63568), (160, 63685),

Gene: Hopey_110 Start: 63769, Stop: 64032, Start Num: 82

Candidate Starts for Hopey_110:

(Start: 82 @63769 has 194 MA's), (Start: 90 @63799 has 4 MA's), (112, 63874), (160, 63991),

Gene: HufflyPuff_112 Start: 64078, Stop: 64341, Start Num: 82
Candidate Starts for HufflyPuff_112:
(Start: 82 @64078 has 194 MA's), (Start: 90 @64108 has 4 MA's), (112, 64183), (160, 64300),

Gene: Hughesyang_162 Start: 86917, Stop: 87231, Start Num: 54
Candidate Starts for Hughesyang_162:
(Start: 54 @86917 has 19 MA's), (Start: 84 @86986 has 25 MA's), (114, 87103),

Gene: Hurricane_37 Start: 30347, Stop: 30586, Start Num: 66
Candidate Starts for Hurricane_37:
(39, 30227), (43, 30257), (Start: 66 @30347 has 29 MA's), (95, 30404), (140, 30530), (148, 30554),

Gene: IHOP_108 Start: 62686, Stop: 62949, Start Num: 82
Candidate Starts for IHOP_108:
(Start: 82 @62686 has 194 MA's), (Start: 90 @62716 has 4 MA's), (112, 62791), (160, 62908),

Gene: Icee_111 Start: 62494, Stop: 62757, Start Num: 82
Candidate Starts for Icee_111:
(Start: 82 @62494 has 194 MA's), (Start: 90 @62524 has 4 MA's), (112, 62599), (160, 62716),

Gene: Inca_107 Start: 61175, Stop: 61438, Start Num: 82
Candidate Starts for Inca_107:
(Start: 82 @61175 has 194 MA's), (Start: 90 @61205 has 4 MA's), (112, 61280), (160, 61397),

Gene: InvictusManeo_35 Start: 30301, Stop: 30525, Start Num: 82
Candidate Starts for InvictusManeo_35:
(Start: 82 @30301 has 194 MA's), (Start: 90 @30331 has 4 MA's), (94, 30343), (104, 30379), (106, 30382), (129, 30439), (137, 30460), (140, 30469), (148, 30493), (150, 30502),

Gene: Itos_96 Start: 58875, Stop: 59135, Start Num: 80
Candidate Starts for Itos_96:
(Start: 80 @58875 has 58 MA's), (88, 58899), (112, 58980), (133, 59019), (134, 59022), (136, 59028), (137, 59034), (150, 59076), (153, 59082),

Gene: JF1_37 Start: 30619, Stop: 30906, Start Num: 66
Candidate Starts for JF1_37:
(13, 30298), (18, 30361), (Start: 66 @30619 has 29 MA's), (Start: 82 @30625 has 194 MA's), (Start: 91 @30658 has 2 MA's), (99, 30682), (110, 30718), (130, 30769), (131, 30772), (138, 30790), (140, 30796), (154, 30838), (156, 30841), (158, 30844),

Gene: JeTaime_108 Start: 62594, Stop: 62857, Start Num: 82
Candidate Starts for JeTaime_108:
(Start: 82 @62594 has 194 MA's), (Start: 90 @62624 has 4 MA's), (112, 62699), (160, 62816),

Gene: Jobypre_93 Start: 59729, Stop: 59998, Start Num: 76
Candidate Starts for Jobypre_93:
(Start: 76 @59729 has 27 MA's), (Start: 90 @59768 has 4 MA's), (112, 59843), (126, 59870), (131, 59879), (156, 59951),

Gene: JoeDirt_93 Start: 58479, Stop: 58721, Start Num: 77
Candidate Starts for JoeDirt_93:

(Start: 77 @58479 has 1 MA's), (Start: 80 @58482 has 58 MA's), (112, 58587), (121, 58602), (126, 58614), (134, 58629), (137, 58641), (150, 58683), (153, 58689),

Gene: JonJames_171 Start: 90387, Stop: 90704, Start Num: 61

Candidate Starts for JonJames_171:

(Start: 61 @90387 has 2 MA's), (74, 90426), (79, 90432), (83, 90438), (92, 90471), (109, 90534), (133, 90597), (147, 90642), (152, 90660),

Gene: Jubie_92 Start: 59864, Stop: 60133, Start Num: 76

Candidate Starts for Jubie_92:

(Start: 76 @59864 has 27 MA's), (Start: 90 @59903 has 4 MA's), (112, 59978), (126, 60005), (131, 60014), (156, 60086),

Gene: JuicyJay_158 Start: 87907, Stop: 88152, Start Num: 84

Candidate Starts for JuicyJay_158:

(Start: 54 @87838 has 19 MA's), (Start: 84 @87907 has 25 MA's), (114, 88024),

Gene: Juliette_39 Start: 30778, Stop: 31065, Start Num: 66

Candidate Starts for Juliette_39:

(18, 30520), (Start: 66 @30778 has 29 MA's), (Start: 82 @30784 has 194 MA's), (Start: 91 @30817 has 2 MA's), (99, 30841), (110, 30877), (130, 30928), (131, 30931), (138, 30949), (140, 30955), (154, 30997), (156, 31000), (158, 31003),

Gene: Kahlid_95 Start: 59728, Stop: 59988, Start Num: 80

Candidate Starts for Kahlid_95:

(Start: 80 @59728 has 58 MA's), (88, 59752), (112, 59833), (126, 59860), (133, 59872), (134, 59875), (136, 59881), (137, 59887), (150, 59929), (153, 59935),

Gene: Kalah2_159 Start: 87313, Stop: 87627, Start Num: 54

Candidate Starts for Kalah2_159:

(Start: 54 @87313 has 19 MA's), (Start: 84 @87382 has 25 MA's), (114, 87499),

Gene: Kanye_107 Start: 63219, Stop: 63482, Start Num: 82

Candidate Starts for Kanye_107:

(Start: 82 @63219 has 194 MA's), (Start: 90 @63249 has 4 MA's), (112, 63324), (160, 63441),

Gene: KashFlow_161 Start: 86779, Stop: 87024, Start Num: 84

Candidate Starts for KashFlow_161:

(44, 86689), (48, 86704), (Start: 71 @86767 has 2 MA's), (Start: 84 @86779 has 25 MA's), (Start: 91 @86809 has 2 MA's), (104, 86854), (115, 86899), (137, 86947),

Gene: Keelan_35 Start: 13344, Stop: 13628, Start Num: 78

Candidate Starts for Keelan_35:

(Start: 78 @13344 has 9 MA's), (Start: 91 @13383 has 2 MA's), (104, 13428), (130, 13497), (133, 13503), (137, 13518), (142, 13530), (164, 13623),

Gene: Keshu_37 Start: 30338, Stop: 30577, Start Num: 66

Candidate Starts for Keshu_37:

(43, 30248), (Start: 66 @30338 has 29 MA's), (95, 30395), (130, 30491), (148, 30545),

Gene: KiSi_36 Start: 29106, Stop: 29339, Start Num: 66

Candidate Starts for KiSi_36:

(2, 28674), (5, 28698), (14, 28788), (39, 28986), (43, 29016), (Start: 66 @29106 has 29 MA's), (Start: 82 @29109 has 194 MA's), (99, 29166),

Gene: Kimchi_114 Start: 63111, Stop: 63374, Start Num: 82

Candidate Starts for Kimchi_114:

(Start: 82 @63111 has 194 MA's), (Start: 90 @63141 has 4 MA's), (112, 63216), (160, 63333),

Gene: Kingsolomon_91 Start: 59838, Stop: 60107, Start Num: 76

Candidate Starts for Kingsolomon_91:

(Start: 76 @59838 has 27 MA's), (Start: 90 @59877 has 4 MA's), (112, 59952), (126, 59979), (131, 59988), (156, 60060),

Gene: KirDoubleO7_91 Start: 59750, Stop: 60019, Start Num: 76

Candidate Starts for KirDoubleO7_91:

(Start: 76 @59750 has 27 MA's), (Start: 90 @59789 has 4 MA's), (112, 59864), (126, 59891), (131, 59900), (156, 59972),

Gene: Klein_166 Start: 85673, Stop: 85987, Start Num: 54

Candidate Starts for Klein_166:

(Start: 54 @85673 has 19 MA's), (Start: 84 @85742 has 25 MA's), (114, 85859),

Gene: Kostya_110 Start: 62788, Stop: 63051, Start Num: 82

Candidate Starts for Kostya_110:

(Start: 82 @62788 has 194 MA's), (Start: 90 @62818 has 4 MA's), (112, 62893), (160, 63010),

Gene: Kratio_34 Start: 29847, Stop: 30071, Start Num: 82

Candidate Starts for Kratio_34:

(Start: 82 @29847 has 194 MA's), (Start: 90 @29877 has 4 MA's), (94, 29889), (104, 29925), (106, 29928), (129, 29985), (137, 30006), (140, 30015), (150, 30048),

Gene: Kraw_37 Start: 30544, Stop: 30831, Start Num: 66

Candidate Starts for Kraw_37:

(18, 30286), (Start: 66 @30544 has 29 MA's), (Start: 82 @30550 has 194 MA's), (Start: 91 @30583 has 2 MA's), (99, 30607), (110, 30643), (130, 30694), (131, 30697), (138, 30715), (140, 30721), (154, 30763), (156, 30766), (158, 30769),

Gene: Kropertea_93 Start: 59330, Stop: 59569, Start Num: 80

Candidate Starts for Kropertea_93:

(72, 59324), (Start: 80 @59330 has 58 MA's), (106, 59411), (112, 59435), (126, 59462), (142, 59501), (153, 59537), (157, 59543),

Gene: Krueger_36 Start: 28751, Stop: 28984, Start Num: 66

Candidate Starts for Krueger_36:

(43, 28661), (Start: 66 @28751 has 29 MA's), (Start: 82 @28754 has 194 MA's), (99, 28811), (110, 28847), (150, 28955),

Gene: Krypton555_95 Start: 60241, Stop: 60510, Start Num: 76

Candidate Starts for Krypton555_95:

(Start: 76 @60241 has 27 MA's), (Start: 90 @60280 has 4 MA's), (112, 60355), (126, 60382), (131, 60391), (156, 60463),

Gene: Kudfre_129 Start: 69576, Stop: 69818, Start Num: 76

Candidate Starts for Kudfre_129:

(Start: 70 @69570 has 1 MA's), (Start: 76 @69576 has 27 MA's), (94, 69627), (112, 69690), (116, 69711), (140, 69765), (144, 69774), (149, 69795),

Gene: Kumao_73 Start: 50178, Stop: 50432, Start Num: 82

Candidate Starts for Kumao_73:

(Start: 82 @50178 has 194 MA's), (Start: 91 @50211 has 2 MA's), (97, 50229), (103, 50256), (105, 50259), (129, 50319), (136, 50337), (140, 50352), (146, 50367),

Gene: Larva_36 Start: 30011, Stop: 30235, Start Num: 82

Candidate Starts for Larva_36:

(Start: 82 @30011 has 194 MA's), (Start: 90 @30041 has 4 MA's), (94, 30053), (104, 30089), (106, 30092), (129, 30149), (137, 30170), (138, 30173), (140, 30179), (148, 30203), (150, 30212),

Gene: LastHope_37 Start: 28857, Stop: 29096, Start Num: 70

Candidate Starts for LastHope_37:

(17, 28575), (34, 28683), (55, 28812), (Start: 70 @28857 has 1 MA's), (Start: 73 @28860 has 2 MA's), (Start: 82 @28869 has 194 MA's), (94, 28911), (121, 28992), (126, 29004), (140, 29037), (154, 29076),

Gene: Lavahound_34 Start: 29495, Stop: 29719, Start Num: 82

Candidate Starts for Lavahound_34:

(33, 29297), (39, 29342), (43, 29372), (81, 29492), (Start: 82 @29495 has 194 MA's), (Start: 90 @29525 has 4 MA's), (99, 29552),

Gene: LeBron_91 Start: 57114, Stop: 57353, Start Num: 80

Candidate Starts for LeBron_91:

(Start: 77 @57111 has 1 MA's), (Start: 80 @57114 has 58 MA's), (112, 57219), (121, 57234), (126, 57246), (134, 57261), (137, 57273), (153, 57321),

Gene: LeMond_36 Start: 29177, Stop: 29410, Start Num: 66

Candidate Starts for LeMond_36:

(2, 28745), (5, 28769), (14, 28859), (39, 29057), (43, 29087), (Start: 66 @29177 has 29 MA's), (Start: 82 @29180 has 194 MA's), (99, 29237),

Gene: Lea83_37 Start: 30405, Stop: 30644, Start Num: 66

Candidate Starts for Lea83_37:

(Start: 66 @30405 has 29 MA's), (95, 30462), (140, 30588), (148, 30612),

Gene: Lebo14_37 Start: 30633, Stop: 30920, Start Num: 66

Candidate Starts for Lebo14_37:

(Start: 66 @30633 has 29 MA's), (Start: 82 @30639 has 194 MA's), (Start: 91 @30672 has 2 MA's), (99, 30696), (110, 30732), (124, 30774), (130, 30783), (131, 30786), (138, 30804), (140, 30810), (154, 30852), (156, 30855), (158, 30858),

Gene: Leston_36 Start: 30386, Stop: 30643, Start Num: 64

Candidate Starts for Leston_36:

(Start: 64 @30386 has 4 MA's), (Start: 82 @30419 has 194 MA's), (Start: 90 @30449 has 4 MA's), (94, 30461), (104, 30497), (106, 30500), (113, 30527), (129, 30557), (130, 30560), (140, 30587),

Gene: Lewan_97 Start: 59968, Stop: 60228, Start Num: 80

Candidate Starts for Lewan_97:

(Start: 80 @59968 has 58 MA's), (88, 59992), (112, 60073), (133, 60112), (134, 60115), (136, 60121), (137, 60127), (150, 60169), (153, 60175),

Gene: LilDestine_94 Start: 59639, Stop: 59899, Start Num: 80

Candidate Starts for LilDestine_94:

(Start: 80 @59639 has 58 MA's), (88, 59663), (112, 59744), (126, 59771), (133, 59783), (134, 59786), (136, 59792), (137, 59798), (150, 59840), (153, 59846),

Gene: LilDirt_35 Start: 30058, Stop: 30282, Start Num: 82

Candidate Starts for LilDirt_35:

(Start: 82 @30058 has 194 MA's), (Start: 90 @30088 has 4 MA's), (94, 30100), (104, 30136), (106, 30139), (129, 30196), (137, 30217), (140, 30226), (148, 30250), (150, 30259),

Gene: LilJank_123 Start: 71338, Stop: 71556, Start Num: 84

Candidate Starts for LilJank_123:

(81, 71332), (Start: 84 @71338 has 25 MA's), (86, 71347), (Start: 89 @71362 has 1 MA's), (Start: 90 @71365 has 4 MA's), (Start: 91 @71368 has 2 MA's), (93, 71374), (94, 71377), (96, 71383), (99, 71392), (106, 71416), (110, 71428), (112, 71440), (113, 71443), (118, 71455), (121, 71458), (129, 71473), (130, 71476), (133, 71479), (137, 71494), (140, 71503), (142, 71506), (151, 71536), (159, 71551),

Gene: Lilac_111 Start: 63912, Stop: 64175, Start Num: 82

Candidate Starts for Lilac_111:

(Start: 82 @63912 has 194 MA's), (Start: 90 @63942 has 4 MA's), (112, 64017), (160, 64134),

Gene: Lilizi_110 Start: 63198, Stop: 63461, Start Num: 82

Candidate Starts for Lilizi_110:

(Start: 82 @63198 has 194 MA's), (Start: 90 @63228 has 4 MA's), (112, 63303), (160, 63420),

Gene: Lilpickle_109 Start: 62610, Stop: 62873, Start Num: 82

Candidate Starts for Lilpickle_109:

(Start: 82 @62610 has 194 MA's), (Start: 90 @62640 has 4 MA's), (112, 62715), (160, 62832),

Gene: LittleE_169 Start: 87841, Stop: 88086, Start Num: 84

Candidate Starts for LittleE_169:

(44, 87751), (48, 87766), (Start: 71 @87829 has 2 MA's), (Start: 84 @87841 has 25 MA's), (Start: 91 @87871 has 2 MA's), (104, 87916), (115, 87961), (137, 88009),

Gene: Livilaughbron_111 Start: 64241, Stop: 64474, Start Num: 90

Candidate Starts for Livilaughbron_111:

(Start: 82 @64211 has 194 MA's), (Start: 90 @64241 has 4 MA's), (112, 64316), (160, 64433),

Gene: LiyuLake_92 Start: 59823, Stop: 60092, Start Num: 76

Candidate Starts for LiyuLake_92:

(Start: 76 @59823 has 27 MA's), (Start: 90 @59862 has 4 MA's), (112, 59937), (126, 59964), (131, 59973), (156, 60045),

Gene: Loadrie_95 Start: 60130, Stop: 60390, Start Num: 80

Candidate Starts for Loadrie_95:

(Start: 80 @60130 has 58 MA's), (88, 60154), (112, 60235), (126, 60262), (133, 60274), (134, 60277), (136, 60283), (137, 60289), (150, 60331), (153, 60337),

Gene: Lolly9_92 Start: 59914, Stop: 60183, Start Num: 76

Candidate Starts for Lolly9_92:

(Start: 76 @59914 has 27 MA's), (Start: 90 @59953 has 4 MA's), (112, 60028), (126, 60055), (131, 60064), (156, 60136),

Gene: Lucky2013_157 Start: 82436, Stop: 82693, Start Num: 71

Candidate Starts for Lucky2013_157:

(44, 82358), (48, 82373), (Start: 71 @82436 has 2 MA's), (Start: 84 @82448 has 25 MA's), (Start: 91 @82478 has 2 MA's), (104, 82523), (115, 82568), (137, 82616),

Gene: Lumos_93 Start: 59726, Stop: 59995, Start Num: 76

Candidate Starts for Lumos_93:

(Start: 76 @59726 has 27 MA's), (Start: 90 @59765 has 4 MA's), (112, 59840), (126, 59867), (131, 59876), (156, 59948),

Gene: Lynnae_97 Start: 59740, Stop: 60000, Start Num: 80

Candidate Starts for Lynnae_97:

(Start: 80 @59740 has 58 MA's), (88, 59764), (112, 59845), (126, 59872), (133, 59884), (134, 59887), (136, 59893), (137, 59899), (150, 59941), (153, 59947),

Gene: MAckerman_90 Start: 56800, Stop: 57039, Start Num: 80

Candidate Starts for MAckerman_90:

(Start: 77 @56797 has 1 MA's), (Start: 80 @56800 has 58 MA's), (112, 56905), (121, 56920), (126, 56932), (134, 56947), (137, 56959), (150, 57001), (153, 57007),

Gene: MISSy_111 Start: 63925, Stop: 64158, Start Num: 90

Candidate Starts for MISSy_111:

(Start: 82 @63895 has 194 MA's), (Start: 90 @63925 has 4 MA's), (112, 64000), (160, 64117),

Gene: MPhalcon_111 Start: 63313, Stop: 63576, Start Num: 82

Candidate Starts for MPhalcon_111:

(Start: 82 @63313 has 194 MA's), (Start: 90 @63343 has 4 MA's), (112, 63418), (160, 63535),

Gene: MacnCheese_37 Start: 30394, Stop: 30618, Start Num: 82

Candidate Starts for MacnCheese_37:

(43, 30301), (Start: 66 @30391 has 29 MA's), (Start: 82 @30394 has 194 MA's),

Gene: MadamMonkfish_109 Start: 62620, Stop: 62883, Start Num: 82

Candidate Starts for MadamMonkfish_109:

(Start: 82 @62620 has 194 MA's), (Start: 90 @62650 has 4 MA's), (112, 62725), (121, 62740), (160, 62842),

Gene: MalagasyRose_37 Start: 29428, Stop: 29652, Start Num: 82

Candidate Starts for MalagasyRose_37:

(38, 29272), (49, 29350), (51, 29353), (Start: 82 @29428 has 194 MA's), (93, 29467), (94, 29470), (113, 29536), (121, 29551), (124, 29560), (138, 29590), (140, 29596), (146, 29611), (158, 29641),

Gene: Malthus_38 Start: 30550, Stop: 30831, Start Num: 82

Candidate Starts for Malthus_38:

(18, 30286), (Start: 66 @30544 has 29 MA's), (Start: 82 @30550 has 194 MA's), (Start: 91 @30583 has 2 MA's), (99, 30607), (110, 30643), (130, 30694), (131, 30697), (138, 30715), (140, 30721), (154, 30763), (156, 30766), (158, 30769),

Gene: Manda_111 Start: 63350, Stop: 63613, Start Num: 82

Candidate Starts for Manda_111:

(Start: 82 @63350 has 194 MA's), (Start: 90 @63380 has 4 MA's), (112, 63455), (121, 63470), (160, 63572),

Gene: MarkPhew_37 Start: 29081, Stop: 29311, Start Num: 82
Candidate Starts for MarkPhew_37:
(14, 28760), (39, 28958), (43, 28988), (Start: 66 @29078 has 29 MA's), (Start: 82 @29081 has 194 MA's), (Start: 90 @29111 has 4 MA's), (99, 29138),

Gene: Marleymoo_150 Start: 84999, Stop: 85244, Start Num: 84
Candidate Starts for Marleymoo_150:
(Start: 54 @84930 has 19 MA's), (Start: 84 @84999 has 25 MA's), (114, 85116),

Gene: Marshmallow_108 Start: 63308, Stop: 63571, Start Num: 82
Candidate Starts for Marshmallow_108:
(Start: 82 @63308 has 194 MA's), (Start: 90 @63338 has 4 MA's), (112, 63413), (121, 63428), (160, 63530),

Gene: MaryV_91 Start: 55039, Stop: 55290, Start Num: 82
Candidate Starts for MaryV_91:
(Start: 82 @55039 has 194 MA's), (85, 55045), (122, 55171), (137, 55204), (138, 55207), (142, 55216), (154, 55255),

Gene: Maxxinista_112 Start: 63097, Stop: 63360, Start Num: 82
Candidate Starts for Maxxinista_112:
(Start: 82 @63097 has 194 MA's), (Start: 90 @63127 has 4 MA's), (112, 63202), (160, 63319),

Gene: McMater_36 Start: 28807, Stop: 29037, Start Num: 66
Candidate Starts for McMater_36:
(14, 28489), (29, 28618), (39, 28687), (43, 28717), (Start: 66 @28807 has 29 MA's), (Start: 82 @28810 has 194 MA's), (121, 28933), (137, 28969),

Gene: MiaZeal_164 Start: 83595, Stop: 83840, Start Num: 84
Candidate Starts for MiaZeal_164:
(44, 83505), (48, 83520), (Start: 71 @83583 has 2 MA's), (Start: 84 @83595 has 25 MA's), (Start: 91 @83625 has 2 MA's), (104, 83670), (115, 83715), (137, 83763),

Gene: Miley16_96 Start: 60332, Stop: 60592, Start Num: 80
Candidate Starts for Miley16_96:
(Start: 80 @60332 has 58 MA's), (88, 60356), (112, 60437), (133, 60476), (134, 60479), (136, 60485), (137, 60491), (150, 60533), (153, 60539),

Gene: Mindy_109 Start: 62629, Stop: 62892, Start Num: 82
Candidate Starts for Mindy_109:
(Start: 82 @62629 has 194 MA's), (Start: 90 @62659 has 4 MA's), (112, 62734), (160, 62851),

Gene: Minerva_163 Start: 86325, Stop: 86570, Start Num: 84
Candidate Starts for Minerva_163:
(Start: 54 @86256 has 19 MA's), (Start: 84 @86325 has 25 MA's), (114, 86442),

Gene: MiniLon_97 Start: 59915, Stop: 60184, Start Num: 76
Candidate Starts for MiniLon_97:
(Start: 76 @59915 has 27 MA's), (Start: 90 @59954 has 4 MA's), (112, 60029), (126, 60056), (131, 60065), (156, 60137),

Gene: MiniMac_97 Start: 59910, Stop: 60179, Start Num: 76

Candidate Starts for MiniMac_97:

(Start: 76 @59910 has 27 MA's), (Start: 90 @59949 has 4 MA's), (112, 60024), (126, 60051), (131, 60060), (156, 60132),

Gene: Miniwave_105 Start: 62806, Stop: 63069, Start Num: 82

Candidate Starts for Miniwave_105:

(Start: 82 @62806 has 194 MA's), (Start: 90 @62836 has 4 MA's), (112, 62911), (160, 63028),

Gene: Miryou_36 Start: 30274, Stop: 30498, Start Num: 82

Candidate Starts for Miryou_36:

(Start: 64 @30241 has 4 MA's), (Start: 82 @30274 has 194 MA's), (Start: 90 @30304 has 4 MA's), (94, 30316), (113, 30382), (129, 30412), (140, 30442), (150, 30475),

Gene: Misfit_111 Start: 64409, Stop: 64672, Start Num: 82

Candidate Starts for Misfit_111:

(Start: 82 @64409 has 194 MA's), (Start: 90 @64439 has 4 MA's), (112, 64514), (160, 64631),

Gene: MissDaisy_37 Start: 30393, Stop: 30674, Start Num: 82

Candidate Starts for MissDaisy_37:

(Start: 66 @30387 has 29 MA's), (Start: 82 @30393 has 194 MA's), (Start: 91 @30426 has 2 MA's), (99, 30450), (110, 30486), (130, 30537), (131, 30540), (138, 30558), (140, 30564), (142, 30567), (154, 30606), (156, 30609), (158, 30612),

Gene: Mitti_37 Start: 30551, Stop: 30832, Start Num: 82

Candidate Starts for Mitti_37:

(Start: 66 @30545 has 29 MA's), (Start: 82 @30551 has 194 MA's), (Start: 91 @30584 has 2 MA's), (99, 30608), (110, 30644), (130, 30695), (131, 30698), (138, 30716), (140, 30722), (154, 30764), (156, 30767), (158, 30770),

Gene: MkaliMitinis3_98 Start: 60094, Stop: 60354, Start Num: 80

Candidate Starts for MkaliMitinis3_98:

(Start: 80 @60094 has 58 MA's), (88, 60118), (112, 60199), (133, 60238), (134, 60241), (136, 60247), (137, 60253), (150, 60295), (153, 60301),

Gene: Moldemort_112 Start: 63078, Stop: 63341, Start Num: 82

Candidate Starts for Moldemort_112:

(Start: 82 @63078 has 194 MA's), (Start: 90 @63108 has 4 MA's), (112, 63183), (121, 63198), (160, 63300),

Gene: MollyToe_104 Start: 61216, Stop: 61449, Start Num: 90

Candidate Starts for MollyToe_104:

(Start: 82 @61186 has 194 MA's), (Start: 90 @61216 has 4 MA's), (112, 61291), (160, 61408),

Gene: Moostard_90 Start: 59833, Stop: 60102, Start Num: 76

Candidate Starts for Moostard_90:

(Start: 76 @59833 has 27 MA's), (Start: 90 @59872 has 4 MA's), (112, 59947), (126, 59974), (131, 59983), (156, 60055),

Gene: Mosby_107 Start: 62773, Stop: 63036, Start Num: 82

Candidate Starts for Mosby_107:

(Start: 82 @62773 has 194 MA's), (Start: 90 @62803 has 4 MA's), (112, 62878), (160, 62995),

Gene: MsGreen_93 Start: 59728, Stop: 59997, Start Num: 76

Candidate Starts for MsGreen_93:

(Start: 76 @59728 has 27 MA's), (Start: 90 @59767 has 4 MA's), (112, 59842), (126, 59869), (131, 59878), (156, 59950),

Gene: Murica_114 Start: 65112, Stop: 65375, Start Num: 82

Candidate Starts for Murica_114:

(Start: 82 @65112 has 194 MA's), (Start: 90 @65142 has 4 MA's), (112, 65217), (160, 65334),

Gene: Murphy_109 Start: 63470, Stop: 63733, Start Num: 82

Candidate Starts for Murphy_109:

(Start: 82 @63470 has 194 MA's), (Start: 90 @63500 has 4 MA's), (112, 63575), (121, 63590), (160, 63692),

Gene: Myrale_110 Start: 63567, Stop: 63830, Start Num: 82

Candidate Starts for Myrale_110:

(Start: 82 @63567 has 194 MA's), (Start: 90 @63597 has 4 MA's), (112, 63672), (160, 63789),

Gene: Nala_112 Start: 63822, Stop: 64085, Start Num: 82

Candidate Starts for Nala_112:

(Start: 82 @63822 has 194 MA's), (Start: 90 @63852 has 4 MA's), (112, 63927), (160, 64044),

Gene: Nebkiss_125 Start: 67959, Stop: 68195, Start Num: 84

Candidate Starts for Nebkiss_125:

(58, 67899), (Start: 84 @67959 has 25 MA's), (100, 68013), (115, 68079), (121, 68088), (122, 68091), (131, 68109), (142, 68139),

Gene: Neighly_36 Start: 30010, Stop: 30234, Start Num: 82

Candidate Starts for Neighly_36:

(Start: 82 @30010 has 194 MA's), (Start: 90 @30040 has 4 MA's), (94, 30052), (104, 30088), (106, 30091), (129, 30148), (137, 30169), (138, 30172), (140, 30178), (148, 30202), (150, 30211),

Gene: Nekros_160 Start: 86261, Stop: 86506, Start Num: 84

Candidate Starts for Nekros_160:

(44, 86171), (48, 86186), (Start: 71 @86249 has 2 MA's), (Start: 84 @86261 has 25 MA's), (Start: 91 @86291 has 2 MA's), (104, 86336), (115, 86381), (137, 86429),

Gene: NelitzaMV_107 Start: 61795, Stop: 62058, Start Num: 82

Candidate Starts for NelitzaMV_107:

(Start: 82 @61795 has 194 MA's), (Start: 90 @61825 has 4 MA's), (112, 61900), (160, 62017),

Gene: Nergal_32 Start: 27271, Stop: 27504, Start Num: 67

Candidate Starts for Nergal_32:

(Start: 67 @27271 has 1 MA's), (94, 27319), (96, 27325), (140, 27448), (150, 27481),

Gene: Netyap_95 Start: 59970, Stop: 60230, Start Num: 80

Candidate Starts for Netyap_95:

(Start: 80 @59970 has 58 MA's), (88, 59994), (112, 60075), (133, 60114), (134, 60117), (136, 60123), (137, 60129), (150, 60171), (153, 60177),

Gene: Neville_126 Start: 70558, Stop: 70776, Start Num: 84

Candidate Starts for Neville_126:

(81, 70552), (Start: 84 @70558 has 25 MA's), (86, 70567), (Start: 89 @70582 has 1 MA's), (Start: 90 @70585 has 4 MA's), (Start: 91 @70588 has 2 MA's), (93, 70594), (96, 70603), (99, 70612), (106,

70636), (110, 70648), (118, 70675), (121, 70678), (129, 70693), (130, 70696), (133, 70699), (137, 70714), (138, 70717), (140, 70723), (142, 70726), (151, 70756), (159, 70771),

Gene: Nibb_35 Start: 28648, Stop: 28878, Start Num: 82

Candidate Starts for Nibb_35:

(43, 28555), (Start: 66 @28645 has 29 MA's), (Start: 82 @28648 has 194 MA's), (99, 28705), (140, 28816),

Gene: Nibley_155 Start: 83422, Stop: 83667, Start Num: 84

Candidate Starts for Nibley_155:

(44, 83332), (48, 83347), (Start: 71 @83410 has 2 MA's), (Start: 84 @83422 has 25 MA's), (Start: 91 @83452 has 2 MA's), (104, 83497), (115, 83542), (137, 83590),

Gene: Nicholas_91 Start: 59838, Stop: 60107, Start Num: 76

Candidate Starts for Nicholas_91:

(Start: 76 @59838 has 27 MA's), (Start: 90 @59877 has 4 MA's), (112, 59952), (126, 59979), (131, 59988), (156, 60060),

Gene: Nicholasp3_96 Start: 59810, Stop: 60070, Start Num: 80

Candidate Starts for Nicholasp3_96:

(Start: 80 @59810 has 58 MA's), (88, 59834), (112, 59915), (126, 59942), (133, 59954), (134, 59957), (136, 59963), (137, 59969), (150, 60011), (153, 60017),

Gene: NihilNomen_165 Start: 86033, Stop: 86278, Start Num: 84

Candidate Starts for NihilNomen_165:

(Start: 54 @85964 has 19 MA's), (Start: 84 @86033 has 25 MA's), (114, 86150),

Gene: Niklas_36 Start: 28813, Stop: 29040, Start Num: 82

Candidate Starts for Niklas_36:

(14, 28492), (29, 28621), (39, 28690), (43, 28720), (Start: 66 @28810 has 29 MA's), (Start: 82 @28813 has 194 MA's), (121, 28936), (137, 28972),

Gene: Nimrod_110 Start: 63456, Stop: 63719, Start Num: 82

Candidate Starts for Nimrod_110:

(Start: 82 @63456 has 194 MA's), (Start: 90 @63486 has 4 MA's), (112, 63561), (160, 63678),

Gene: NoSleep_110 Start: 62630, Stop: 62893, Start Num: 82

Candidate Starts for NoSleep_110:

(Start: 82 @62630 has 194 MA's), (Start: 90 @62660 has 4 MA's), (112, 62735), (160, 62852),

Gene: NonchalantPear_110 Start: 62063, Stop: 62326, Start Num: 82

Candidate Starts for NonchalantPear_110:

(Start: 82 @62063 has 194 MA's), (Start: 90 @62093 has 4 MA's), (112, 62168), (160, 62285),

Gene: November_34 Start: 29729, Stop: 29956, Start Num: 82

Candidate Starts for November_34:

(Start: 66 @29726 has 29 MA's), (Start: 82 @29729 has 194 MA's),

Gene: Octobien14_125 Start: 68110, Stop: 68352, Start Num: 76

Candidate Starts for Octobien14_125:

(Start: 70 @68104 has 1 MA's), (Start: 76 @68110 has 27 MA's), (Start: 84 @68122 has 25 MA's), (88, 68143), (94, 68161), (112, 68224), (116, 68245), (136, 68284), (140, 68299), (144, 68308), (151, 68332),

Gene: Odette_167 Start: 88739, Stop: 88984, Start Num: 84

Candidate Starts for Odette_167:

(Start: 54 @88670 has 19 MA's), (Start: 84 @88739 has 25 MA's), (114, 88856),

Gene: OhShagHennessy_88 Start: 57057, Stop: 57296, Start Num: 80

Candidate Starts for OhShagHennessy_88:

(Start: 77 @57054 has 1 MA's), (Start: 80 @57057 has 58 MA's), (112, 57162), (121, 57177), (126, 57189), (134, 57204), (137, 57216), (150, 57258), (153, 57264),

Gene: OkiRoe_36 Start: 30291, Stop: 30515, Start Num: 82

Candidate Starts for OkiRoe_36:

(Start: 64 @30258 has 4 MA's), (Start: 82 @30291 has 194 MA's), (Start: 90 @30321 has 4 MA's), (94, 30333), (104, 30369), (106, 30372), (113, 30399), (129, 30429), (130, 30432), (140, 30459),

Gene: Omega_172 Start: 88730, Stop: 89044, Start Num: 54

Candidate Starts for Omega_172:

(Start: 54 @88730 has 19 MA's), (Start: 84 @88799 has 25 MA's), (114, 88916),

Gene: OmniCritical_37 Start: 30529, Stop: 30816, Start Num: 66

Candidate Starts for OmniCritical_37:

(Start: 66 @30529 has 29 MA's), (Start: 82 @30535 has 194 MA's), (Start: 91 @30568 has 2 MA's), (99, 30592), (110, 30628), (130, 30679), (131, 30682), (138, 30700), (140, 30706), (154, 30748), (156, 30751), (158, 30754),

Gene: Omnicron_39 Start: 29782, Stop: 30006, Start Num: 82

Candidate Starts for Omnicron_39:

(Start: 82 @29782 has 194 MA's), (Start: 90 @29812 has 4 MA's), (94, 29824), (106, 29863), (129, 29920), (138, 29944), (140, 29950), (148, 29974), (150, 29983),

Gene: Optimus_159 Start: 86202, Stop: 86516, Start Num: 54

Candidate Starts for Optimus_159:

(Start: 54 @86202 has 19 MA's), (Start: 84 @86271 has 25 MA's), (114, 86388),

Gene: OrionPax_108 Start: 62703, Stop: 62966, Start Num: 82

Candidate Starts for OrionPax_108:

(Start: 82 @62703 has 194 MA's), (Start: 90 @62733 has 4 MA's), (112, 62808), (121, 62823), (160, 62925),

Gene: Oscar_36 Start: 29182, Stop: 29412, Start Num: 82

Candidate Starts for Oscar_36:

(2, 28747), (5, 28771), (14, 28861), (39, 29059), (43, 29089), (Start: 66 @29179 has 29 MA's), (Start: 82 @29182 has 194 MA's), (Start: 90 @29212 has 4 MA's), (99, 29239),

Gene: OverPar_98 Start: 60130, Stop: 60390, Start Num: 80

Candidate Starts for OverPar_98:

(Start: 80 @60130 has 58 MA's), (88, 60154), (112, 60235), (126, 60262), (133, 60274), (134, 60277), (136, 60283), (137, 60289), (150, 60331), (153, 60337),

Gene: PYPDinur_97 Start: 60288, Stop: 60527, Start Num: 80

Candidate Starts for PYPDinur_97:

(72, 60282), (Start: 80 @60288 has 58 MA's), (106, 60369), (112, 60393), (126, 60420), (142, 60459), (153, 60495), (157, 60501),

Gene: PaddyBaddy_109 Start: 62851, Stop: 63084, Start Num: 90
Candidate Starts for PaddyBaddy_109:
(Start: 82 @62821 has 194 MA's), (Start: 90 @62851 has 4 MA's), (112, 62926), (160, 63043),

Gene: Palpatine_111 Start: 64107, Stop: 64370, Start Num: 82
Candidate Starts for Palpatine_111:
(Start: 82 @64107 has 194 MA's), (Start: 90 @64137 has 4 MA's), (112, 64212), (160, 64329),

Gene: Paola_36 Start: 30256, Stop: 30513, Start Num: 64
Candidate Starts for Paola_36:
(Start: 64 @30256 has 4 MA's), (Start: 82 @30289 has 194 MA's), (Start: 90 @30319 has 4 MA's), (94, 30331), (104, 30367), (106, 30370), (113, 30397), (129, 30427), (130, 30430), (140, 30457),

Gene: Paperbeatsrock_109 Start: 63484, Stop: 63747, Start Num: 82
Candidate Starts for Paperbeatsrock_109:
(Start: 82 @63484 has 194 MA's), (Start: 90 @63514 has 4 MA's), (112, 63589), (160, 63706),

Gene: Pat3_107 Start: 62123, Stop: 62386, Start Num: 82
Candidate Starts for Pat3_107:
(Start: 82 @62123 has 194 MA's), (Start: 90 @62153 has 4 MA's), (112, 62228), (160, 62345),

Gene: Patt_37 Start: 30369, Stop: 30650, Start Num: 82
Candidate Starts for Patt_37:
(Start: 66 @30363 has 29 MA's), (Start: 82 @30369 has 194 MA's), (Start: 91 @30402 has 2 MA's), (99, 30426), (110, 30462), (130, 30513), (131, 30516), (138, 30534), (140, 30540), (142, 30543), (154, 30582), (156, 30585), (158, 30588),

Gene: Peanam_36 Start: 28807, Stop: 29037, Start Num: 66
Candidate Starts for Peanam_36:
(14, 28489), (29, 28618), (39, 28687), (43, 28717), (Start: 66 @28807 has 29 MA's), (Start: 82 @28810 has 194 MA's), (121, 28933), (137, 28969),

Gene: Petra64142_114 Start: 63982, Stop: 64215, Start Num: 90
Candidate Starts for Petra64142_114:
(Start: 82 @63952 has 194 MA's), (Start: 90 @63982 has 4 MA's), (112, 64057), (160, 64174),

Gene: Phaja_108 Start: 62688, Stop: 62951, Start Num: 82
Candidate Starts for Phaja_108:
(Start: 82 @62688 has 194 MA's), (Start: 90 @62718 has 4 MA's), (112, 62793), (160, 62910),

Gene: Pharb_35 Start: 29653, Stop: 29877, Start Num: 82
Candidate Starts for Pharb_35:
(14, 29332), (39, 29530), (43, 29560), (Start: 66 @29650 has 29 MA's), (Start: 82 @29653 has 194 MA's), (99, 29710),

Gene: Pharsalus_107 Start: 63183, Stop: 63446, Start Num: 82
Candidate Starts for Pharsalus_107:
(Start: 82 @63183 has 194 MA's), (Start: 90 @63213 has 4 MA's), (112, 63288), (160, 63405),

Gene: PhatBacter_113 Start: 63852, Stop: 64115, Start Num: 82
Candidate Starts for PhatBacter_113:
(Start: 82 @63852 has 194 MA's), (Start: 90 @63882 has 4 MA's), (112, 63957), (160, 64074),

Gene: Phaux_112 Start: 64412, Stop: 64675, Start Num: 82
Candidate Starts for Phaux_112:
(Start: 82 @64412 has 194 MA's), (Start: 90 @64442 has 4 MA's), (112, 64517), (121, 64532), (160, 64634),

Gene: PhelpsODU_36 Start: 28916, Stop: 29149, Start Num: 66
Candidate Starts for PhelpsODU_36:
(Start: 66 @28916 has 29 MA's), (124, 29057), (156, 29135),

Gene: Phoebus_164 Start: 89651, Stop: 89965, Start Num: 54
Candidate Starts for Phoebus_164:
(Start: 54 @89651 has 19 MA's), (Start: 84 @89720 has 25 MA's), (114, 89837),

Gene: Phrank_36 Start: 28866, Stop: 29099, Start Num: 66
Candidate Starts for Phrank_36:
(43, 28776), (Start: 66 @28866 has 29 MA's), (124, 29007), (156, 29085),

Gene: Phrappuccino_198 Start: 133100, Stop: 133375, Start Num: 60
Candidate Starts for Phrappuccino_198:
(Start: 60 @133100 has 2 MA's), (117, 133265), (119, 133268), (128, 133283), (143, 133319), (145, 133325),

Gene: Phrux_106 Start: 62490, Stop: 62753, Start Num: 82
Candidate Starts for Phrux_106:
(Start: 82 @62490 has 194 MA's), (Start: 90 @62520 has 4 MA's), (112, 62595), (160, 62712),

Gene: Pixie_36 Start: 29889, Stop: 30128, Start Num: 66
Candidate Starts for Pixie_36:
(2, 29457), (5, 29481), (14, 29571), (39, 29769), (43, 29799), (Start: 66 @29889 has 29 MA's), (95, 29946), (130, 30042), (140, 30072),

Gene: Policronamos_113 Start: 64116, Stop: 64379, Start Num: 82
Candidate Starts for Policronamos_113:
(Start: 82 @64116 has 194 MA's), (Start: 90 @64146 has 4 MA's), (112, 64221), (160, 64338),

Gene: Pochiewood_90 Start: 58454, Stop: 58693, Start Num: 80
Candidate Starts for Pochiewood_90:
(Start: 77 @58451 has 1 MA's), (Start: 80 @58454 has 58 MA's), (112, 58559), (121, 58574), (126, 58586), (134, 58601), (137, 58613), (150, 58655), (153, 58661),

Gene: Porcelain_161 Start: 83394, Stop: 83639, Start Num: 84
Candidate Starts for Porcelain_161:
(44, 83304), (48, 83319), (Start: 71 @83382 has 2 MA's), (Start: 84 @83394 has 25 MA's), (Start: 91 @83424 has 2 MA's), (104, 83469), (115, 83514), (137, 83562),

Gene: Porky_108 Start: 62234, Stop: 62497, Start Num: 82
Candidate Starts for Porky_108:
(Start: 82 @62234 has 194 MA's), (Start: 90 @62264 has 4 MA's), (112, 62339), (121, 62354), (160, 62456),

Gene: Pound_156 Start: 84927, Stop: 85172, Start Num: 84
Candidate Starts for Pound_156:

(Start: 54 @84858 has 19 MA's), (Start: 84 @84927 has 25 MA's), (114, 85044),

Gene: Psycho_36 Start: 30141, Stop: 30365, Start Num: 82

Candidate Starts for Psycho_36:

(Start: 82 @30141 has 194 MA's), (Start: 90 @30171 has 4 MA's), (94, 30183), (104, 30219), (106, 30222), (129, 30279), (137, 30300), (138, 30303), (140, 30309), (148, 30333), (150, 30342),

Gene: Ptowny_106 Start: 61554, Stop: 61787, Start Num: 90

Candidate Starts for Ptowny_106:

(Start: 82 @61524 has 194 MA's), (Start: 90 @61554 has 4 MA's), (112, 61629), (160, 61746),

Gene: Pumpkin_111 Start: 62830, Stop: 63093, Start Num: 82

Candidate Starts for Pumpkin_111:

(Start: 82 @62830 has 194 MA's), (Start: 90 @62860 has 4 MA's), (112, 62935), (160, 63052),

Gene: Qhanda_38 Start: 30647, Stop: 30928, Start Num: 82

Candidate Starts for Qhanda_38:

(Start: 66 @30641 has 29 MA's), (Start: 82 @30647 has 194 MA's), (Start: 91 @30680 has 2 MA's), (99, 30704), (110, 30740), (124, 30782), (130, 30791), (131, 30794), (138, 30812), (140, 30818), (154, 30860), (156, 30863), (158, 30866),

Gene: Quallification_111 Start: 63898, Stop: 64161, Start Num: 82

Candidate Starts for Quallification_111:

(Start: 82 @63898 has 194 MA's), (Start: 90 @63928 has 4 MA's), (112, 64003), (160, 64120),

Gene: Quby_97 Start: 59700, Stop: 59939, Start Num: 80

Candidate Starts for Quby_97:

(56, 59646), (Start: 73 @59694 has 2 MA's), (Start: 80 @59700 has 58 MA's), (106, 59781), (112, 59805), (126, 59832), (142, 59871), (153, 59907), (157, 59913),

Gene: Rabbitrun_128 Start: 72178, Stop: 72396, Start Num: 84

Candidate Starts for Rabbitrun_128:

(81, 72172), (Start: 84 @72178 has 25 MA's), (86, 72187), (Start: 89 @72202 has 1 MA's), (Start: 90 @72205 has 4 MA's), (Start: 91 @72208 has 2 MA's), (94, 72217), (96, 72223), (99, 72232), (112, 72280), (121, 72298), (129, 72313), (130, 72316), (133, 72319), (137, 72334), (138, 72337), (140, 72343), (142, 72346), (151, 72376), (159, 72391),

Gene: Rakim_111 Start: 62900, Stop: 63163, Start Num: 82

Candidate Starts for Rakim_111:

(Start: 82 @62900 has 194 MA's), (Start: 90 @62930 has 4 MA's), (112, 63005), (160, 63122),

Gene: Rando14_38 Start: 29354, Stop: 29578, Start Num: 75

Candidate Starts for Rando14_38:

(Start: 75 @29354 has 1 MA's), (Start: 90 @29384 has 4 MA's), (94, 29396), (106, 29435), (129, 29492), (138, 29516), (140, 29522), (148, 29546), (150, 29555),

Gene: Rearden_161 Start: 84648, Stop: 84893, Start Num: 84

Candidate Starts for Rearden_161:

(44, 84558), (48, 84573), (Start: 71 @84636 has 2 MA's), (Start: 84 @84648 has 25 MA's), (Start: 91 @84678 has 2 MA's), (104, 84723), (115, 84768), (137, 84816),

Gene: Red305_94 Start: 59729, Stop: 59998, Start Num: 76

Candidate Starts for Red305_94:

(Start: 76 @59729 has 27 MA's), (Start: 90 @59768 has 4 MA's), (112, 59843), (126, 59870), (131, 59879), (156, 59951),

Gene: Redno2_157 Start: 83764, Stop: 84078, Start Num: 54

Candidate Starts for Redno2_157:

(Start: 54 @83764 has 19 MA's), (Start: 84 @83833 has 25 MA's), (114, 83950),

Gene: RegnumDei_99 Start: 55213, Stop: 55470, Start Num: 78

Candidate Starts for RegnumDei_99:

(Start: 78 @55213 has 9 MA's), (Start: 90 @55249 has 4 MA's), (99, 55276), (104, 55297), (110, 55312), (134, 55366), (138, 55381),

Gene: Reptar3000_37 Start: 30360, Stop: 30641, Start Num: 82

Candidate Starts for Reptar3000_37:

(Start: 66 @30354 has 29 MA's), (Start: 82 @30360 has 194 MA's), (Start: 91 @30393 has 2 MA's), (99, 30417), (110, 30453), (130, 30504), (131, 30507), (138, 30525), (140, 30531), (142, 30534), (154, 30573), (156, 30576), (158, 30579),

Gene: Richo_36 Start: 28807, Stop: 29037, Start Num: 66

Candidate Starts for Richo_36:

(14, 28489), (29, 28618), (39, 28687), (43, 28717), (Start: 66 @28807 has 29 MA's), (Start: 82 @28810 has 194 MA's), (121, 28933), (137, 28969),

Gene: Rimmer_108 Start: 63289, Stop: 63552, Start Num: 82

Candidate Starts for Rimmer_108:

(Start: 82 @63289 has 194 MA's), (Start: 90 @63319 has 4 MA's), (112, 63394), (160, 63511),

Gene: RiverMonster_109 Start: 63385, Stop: 63648, Start Num: 82

Candidate Starts for RiverMonster_109:

(Start: 82 @63385 has 194 MA's), (Start: 90 @63415 has 4 MA's), (112, 63490), (160, 63607),

Gene: Ronaldo_40 Start: 14315, Stop: 14599, Start Num: 78

Candidate Starts for Ronaldo_40:

(Start: 78 @14315 has 9 MA's), (104, 14399), (130, 14468), (133, 14474), (142, 14501), (164, 14594),

Gene: Rose5_93 Start: 58324, Stop: 58563, Start Num: 80

Candidate Starts for Rose5_93:

(Start: 77 @58321 has 1 MA's), (Start: 80 @58324 has 58 MA's), (112, 58429), (121, 58444), (126, 58456), (134, 58471), (137, 58483), (150, 58525), (153, 58531),

Gene: Rossetti_96 Start: 60130, Stop: 60390, Start Num: 80

Candidate Starts for Rossetti_96:

(Start: 80 @60130 has 58 MA's), (88, 60154), (112, 60235), (126, 60262), (133, 60274), (134, 60277), (136, 60283), (137, 60289), (150, 60331), (153, 60337),

Gene: Rumpelstiltskin_92 Start: 59603, Stop: 59863, Start Num: 80

Candidate Starts for Rumpelstiltskin_92:

(Start: 80 @59603 has 58 MA's), (88, 59627), (112, 59708), (126, 59735), (133, 59747), (134, 59750), (136, 59756), (137, 59762), (150, 59804), (153, 59810),

Gene: Ruthiejr_38 Start: 30510, Stop: 30797, Start Num: 66

Candidate Starts for Ruthiejr_38:

(18, 30252), (Start: 66 @30510 has 29 MA's), (Start: 82 @30516 has 194 MA's), (Start: 91 @30549 has 2 MA's), (99, 30573), (110, 30609), (130, 30660), (131, 30663), (138, 30681), (140, 30687), (154, 30729), (156, 30732), (158, 30735),

Gene: SFuller_96 Start: 56122, Stop: 56364, Start Num: 166

Candidate Starts for SFuller_96:

(8, 55393), (9, 55402), (11, 55405), (28, 55555), (29, 55558), (32, 55567), (98, 55828), (133, 55927), (136, 55936), (165, 56056), (166, 56122), (167, 56173), (168, 56197), (169, 56320),

Gene: Saints25_106 Start: 61315, Stop: 61578, Start Num: 82

Candidate Starts for Saints25_106:

(Start: 82 @61315 has 194 MA's), (Start: 90 @61345 has 4 MA's), (112, 61420), (121, 61435), (160, 61537),

Gene: SamScheppers_37 Start: 31023, Stop: 31310, Start Num: 66

Candidate Starts for SamScheppers_37:

(Start: 66 @31023 has 29 MA's), (Start: 82 @31029 has 194 MA's), (Start: 91 @31062 has 2 MA's), (99, 31086), (110, 31122), (130, 31173), (131, 31176), (138, 31194), (140, 31200), (154, 31242), (156, 31245), (158, 31248),

Gene: Samty_92 Start: 59826, Stop: 60095, Start Num: 76

Candidate Starts for Samty_92:

(Start: 76 @59826 has 27 MA's), (Start: 90 @59865 has 4 MA's), (112, 59940), (126, 59967), (131, 59976), (156, 60048),

Gene: Sarshaun_97 Start: 60721, Stop: 60981, Start Num: 80

Candidate Starts for Sarshaun_97:

(Start: 80 @60721 has 58 MA's), (88, 60745), (112, 60826), (133, 60865), (134, 60868), (136, 60874), (137, 60880), (150, 60922), (153, 60928),

Gene: Sassay_105 Start: 61765, Stop: 61998, Start Num: 90

Candidate Starts for Sassay_105:

(Start: 82 @61735 has 194 MA's), (Start: 90 @61765 has 4 MA's), (112, 61840), (160, 61957),

Gene: Scarlett_36 Start: 29182, Stop: 29412, Start Num: 82

Candidate Starts for Scarlett_36:

(Start: 66 @29179 has 29 MA's), (Start: 82 @29182 has 194 MA's), (99, 29239),

Gene: Schatzie_158 Start: 86724, Stop: 87038, Start Num: 54

Candidate Starts for Schatzie_158:

(Start: 54 @86724 has 19 MA's), (Start: 84 @86793 has 25 MA's), (114, 86910),

Gene: Sephiroth_124 Start: 69346, Stop: 69588, Start Num: 76

Candidate Starts for Sephiroth_124:

(Start: 70 @69340 has 1 MA's), (Start: 76 @69346 has 27 MA's), (94, 69397), (112, 69460), (116, 69481), (140, 69535), (144, 69544), (149, 69565),

Gene: Settecandela_223 Start: 141947, Stop: 142222, Start Num: 60

Candidate Starts for Settecandela_223:

(Start: 60 @141947 has 2 MA's), (117, 142112), (119, 142115), (128, 142130), (143, 142166), (145, 142172),

Gene: Shaboozey_160 Start: 83866, Stop: 84111, Start Num: 84

Candidate Starts for Shaboozey_160:

(44, 83776), (48, 83791), (Start: 71 @83854 has 2 MA's), (Start: 84 @83866 has 25 MA's), (Start: 91 @83896 has 2 MA's), (104, 83941), (115, 83986), (137, 84034),

Gene: Shadow1_35 Start: 28661, Stop: 28891, Start Num: 82

Candidate Starts for Shadow1_35:

(39, 28538), (43, 28568), (Start: 66 @28658 has 29 MA's), (Start: 82 @28661 has 194 MA's), (99, 28718), (150, 28862),

Gene: Shagrat_102 Start: 54294, Stop: 54536, Start Num: 78

Candidate Starts for Shagrat_102:

(36, 54126), (42, 54174), (52, 54228), (Start: 78 @54294 has 9 MA's), (110, 54393), (134, 54447), (138, 54462),

Gene: ShamWow_110 Start: 63783, Stop: 64046, Start Num: 82

Candidate Starts for ShamWow_110:

(Start: 82 @63783 has 194 MA's), (Start: 90 @63813 has 4 MA's), (112, 63888), (160, 64005),

Gene: Shaobing_36 Start: 28810, Stop: 29037, Start Num: 82

Candidate Starts for Shaobing_36:

(14, 28489), (29, 28618), (39, 28687), (43, 28717), (Start: 66 @28807 has 29 MA's), (Start: 82 @28810 has 194 MA's), (121, 28933), (137, 28969),

Gene: ShedlockHolmes_37 Start: 30411, Stop: 30650, Start Num: 66

Candidate Starts for ShedlockHolmes_37:

(14, 30093), (39, 30291), (43, 30321), (Start: 66 @30411 has 29 MA's), (95, 30468), (140, 30594), (148, 30618),

Gene: Sheng711_98 Start: 59764, Stop: 60003, Start Num: 80

Candidate Starts for Sheng711_98:

(72, 59758), (Start: 80 @59764 has 58 MA's), (106, 59845), (112, 59869), (126, 59896), (136, 59917), (142, 59935), (153, 59971),

Gene: ShereKhan_108 Start: 64144, Stop: 64407, Start Num: 82

Candidate Starts for ShereKhan_108:

(Start: 82 @64144 has 194 MA's), (Start: 90 @64174 has 4 MA's), (112, 64249), (160, 64366),

Gene: Silverleaf_91 Start: 57820, Stop: 58059, Start Num: 80

Candidate Starts for Silverleaf_91:

(Start: 77 @57817 has 1 MA's), (Start: 80 @57820 has 58 MA's), (112, 57925), (121, 57940), (126, 57952), (134, 57967), (137, 57979), (153, 58027),

Gene: Simpliphy_108 Start: 62956, Stop: 63219, Start Num: 82

Candidate Starts for Simpliphy_108:

(Start: 82 @62956 has 194 MA's), (Start: 90 @62986 has 4 MA's), (112, 63061), (121, 63076), (160, 63178),

Gene: SirDuracell_110 Start: 62622, Stop: 62885, Start Num: 82

Candidate Starts for SirDuracell_110:

(Start: 82 @62622 has 194 MA's), (Start: 90 @62652 has 4 MA's), (112, 62727), (160, 62844),

Gene: SirPhilip_35 Start: 28286, Stop: 28516, Start Num: 66

Candidate Starts for SirPhilip_35:

(Start: 66 @28286 has 29 MA's), (Start: 82 @28289 has 194 MA's), (99, 28346),

Gene: Slarp_37 Start: 30638, Stop: 30919, Start Num: 82

Candidate Starts for Slarp_37:

(Start: 66 @30632 has 29 MA's), (Start: 82 @30638 has 194 MA's), (Start: 91 @30671 has 2 MA's), (99, 30695), (110, 30731), (124, 30773), (130, 30782), (131, 30785), (138, 30803), (140, 30809), (154, 30851), (156, 30854), (158, 30857),

Gene: Snenia_92 Start: 59730, Stop: 59999, Start Num: 76

Candidate Starts for Snenia_92:

(Start: 76 @59730 has 27 MA's), (Start: 90 @59769 has 4 MA's), (112, 59844), (126, 59871), (131, 59880), (156, 59952),

Gene: SoJulia_98 Start: 61486, Stop: 61746, Start Num: 80

Candidate Starts for SoJulia_98:

(Start: 80 @61486 has 58 MA's), (88, 61510), (112, 61591), (126, 61618), (133, 61630), (134, 61633), (136, 61639), (137, 61645), (150, 61687), (153, 61693),

Gene: SoSeph_36 Start: 30435, Stop: 30659, Start Num: 82

Candidate Starts for SoSeph_36:

(Start: 64 @30402 has 4 MA's), (Start: 82 @30435 has 194 MA's), (Start: 90 @30465 has 4 MA's), (94, 30477), (104, 30513), (106, 30516), (113, 30543), (129, 30573), (130, 30576), (140, 30603), (150, 30636),

Gene: Soap141_96 Start: 60721, Stop: 60981, Start Num: 80

Candidate Starts for Soap141_96:

(Start: 80 @60721 has 58 MA's), (88, 60745), (112, 60826), (133, 60865), (134, 60868), (136, 60874), (137, 60880), (150, 60922), (153, 60928),

Gene: SophKB_108 Start: 62945, Stop: 63208, Start Num: 82

Candidate Starts for SophKB_108:

(Start: 82 @62945 has 194 MA's), (Start: 90 @62975 has 4 MA's), (112, 63050), (121, 63065), (160, 63167),

Gene: Sotrice96_111 Start: 63409, Stop: 63672, Start Num: 82

Candidate Starts for Sotrice96_111:

(Start: 82 @63409 has 194 MA's), (Start: 90 @63439 has 4 MA's), (112, 63514), (160, 63631),

Gene: Squint_155 Start: 83260, Stop: 83505, Start Num: 84

Candidate Starts for Squint_155:

(44, 83170), (48, 83185), (Start: 71 @83248 has 2 MA's), (Start: 84 @83260 has 25 MA's), (Start: 91 @83290 has 2 MA's), (104, 83335), (115, 83380), (137, 83428),

Gene: Stank_112 Start: 63183, Stop: 63446, Start Num: 82

Candidate Starts for Stank_112:

(Start: 82 @63183 has 194 MA's), (Start: 90 @63213 has 4 MA's), (112, 63288), (160, 63405),

Gene: Stark_110 Start: 63269, Stop: 63532, Start Num: 82

Candidate Starts for Stark_110:

(Start: 82 @63269 has 194 MA's), (Start: 90 @63299 has 4 MA's), (112, 63374), (160, 63491),

Gene: StellaBean_108 Start: 63566, Stop: 63829, Start Num: 82

Candidate Starts for StellaBean_108:

(Start: 82 @63566 has 194 MA's), (Start: 90 @63596 has 4 MA's), (112, 63671), (160, 63788),

Gene: Stellammi_162 Start: 74291, Stop: 74536, Start Num: 84

Candidate Starts for Stellammi_162:

(Start: 84 @74291 has 25 MA's), (111, 74390), (131, 74441), (137, 74459),

Gene: StolenFromERC_112 Start: 63108, Stop: 63371, Start Num: 82

Candidate Starts for StolenFromERC_112:

(Start: 82 @63108 has 194 MA's), (Start: 90 @63138 has 4 MA's), (112, 63213), (160, 63330),

Gene: StormChicken_112 Start: 63483, Stop: 63716, Start Num: 90

Candidate Starts for StormChicken_112:

(Start: 82 @63453 has 194 MA's), (Start: 90 @63483 has 4 MA's), (112, 63558), (160, 63675),

Gene: Sunflower1121_35 Start: 28754, Stop: 28984, Start Num: 82

Candidate Starts for Sunflower1121_35:

(43, 28661), (Start: 66 @28751 has 29 MA's), (Start: 82 @28754 has 194 MA's), (99, 28811), (150, 28955),

Gene: Superphikiman_159 Start: 83181, Stop: 83426, Start Num: 84

Candidate Starts for Superphikiman_159:

(44, 83091), (48, 83106), (Start: 71 @83169 has 2 MA's), (Start: 84 @83181 has 25 MA's), (Start: 91 @83211 has 2 MA's), (104, 83256), (115, 83301), (137, 83349),

Gene: Syleon_129 Start: 70097, Stop: 70339, Start Num: 76

Candidate Starts for Syleon_129:

(Start: 70 @70091 has 1 MA's), (Start: 76 @70097 has 27 MA's), (94, 70148), (112, 70211), (116, 70232), (140, 70286), (144, 70295), (149, 70316),

Gene: Syra333_36 Start: 28680, Stop: 28910, Start Num: 82

Candidate Starts for Syra333_36:

(14, 28359), (20, 28422), (23, 28446), (39, 28557), (43, 28587), (Start: 66 @28677 has 29 MA's), (Start: 82 @28680 has 194 MA's), (99, 28737), (150, 28881),

Gene: TBond007_36 Start: 29888, Stop: 30127, Start Num: 66

Candidate Starts for TBond007_36:

(39, 29768), (43, 29798), (Start: 66 @29888 has 29 MA's), (95, 29945), (130, 30041), (140, 30071),

Gene: TBrady12_113 Start: 62620, Stop: 62883, Start Num: 82

Candidate Starts for TBrady12_113:

(Start: 82 @62620 has 194 MA's), (Start: 90 @62650 has 4 MA's), (112, 62725), (160, 62842),

Gene: TClif_37 Start: 29261, Stop: 29491, Start Num: 82

Candidate Starts for TClif_37:

(14, 28940), (20, 29003), (23, 29027), (39, 29138), (43, 29168), (Start: 82 @29261 has 194 MA's),

Gene: Taquito_37 Start: 31057, Stop: 31305, Start Num: 91

Candidate Starts for Taquito_37:

(15, 30796), (16, 30802), (Start: 91 @31057 has 2 MA's), (99, 31081), (110, 31117), (130, 31168), (131, 31171), (138, 31189), (140, 31195), (154, 31237), (156, 31240), (158, 31243),

Gene: Tarkin_109 Start: 64009, Stop: 64272, Start Num: 82

Candidate Starts for Tarkin_109:

(Start: 82 @64009 has 194 MA's), (Start: 90 @64039 has 4 MA's), (112, 64114), (160, 64231),

Gene: TeamEdward_110 Start: 63680, Stop: 63913, Start Num: 90

Candidate Starts for TeamEdward_110:

(Start: 82 @63650 has 194 MA's), (Start: 90 @63680 has 4 MA's), (112, 63755), (160, 63872),

Gene: TeardropMSU_106 Start: 62511, Stop: 62774, Start Num: 82

Candidate Starts for TeardropMSU_106:

(Start: 82 @62511 has 194 MA's), (Start: 90 @62541 has 4 MA's), (112, 62616), (160, 62733),

Gene: Teaspoon_110 Start: 63168, Stop: 63431, Start Num: 82

Candidate Starts for Teaspoon_110:

(Start: 82 @63168 has 194 MA's), (Start: 90 @63198 has 4 MA's), (112, 63273), (160, 63390),

Gene: Terminus_113 Start: 64409, Stop: 64672, Start Num: 82

Candidate Starts for Terminus_113:

(Start: 82 @64409 has 194 MA's), (Start: 90 @64439 has 4 MA's), (112, 64514), (160, 64631),

Gene: Thibault_146 Start: 83138, Stop: 83452, Start Num: 54

Candidate Starts for Thibault_146:

(Start: 54 @83138 has 19 MA's), (Start: 84 @83207 has 25 MA's), (114, 83324),

Gene: Thimble_112 Start: 62370, Stop: 62633, Start Num: 82

Candidate Starts for Thimble_112:

(Start: 82 @62370 has 194 MA's), (Start: 90 @62400 has 4 MA's), (112, 62475), (160, 62592),

Gene: ThreeRngTarjay_160 Start: 87598, Stop: 87912, Start Num: 54

Candidate Starts for ThreeRngTarjay_160:

(Start: 54 @87598 has 19 MA's), (Start: 84 @87667 has 25 MA's), (114, 87784),

Gene: Thresher_111 Start: 64049, Stop: 64312, Start Num: 82

Candidate Starts for Thresher_111:

(Start: 82 @64049 has 194 MA's), (Start: 90 @64079 has 4 MA's), (112, 64154), (160, 64271),

Gene: Thyatira_36 Start: 30289, Stop: 30513, Start Num: 82

Candidate Starts for Thyatira_36:

(Start: 64 @30256 has 4 MA's), (Start: 82 @30289 has 194 MA's), (Start: 90 @30319 has 4 MA's), (94, 30331), (104, 30367), (106, 30370), (113, 30397), (129, 30427), (140, 30457),

Gene: Tierra_36 Start: 29587, Stop: 29820, Start Num: 66

Candidate Starts for Tierra_36:

(43, 29497), (Start: 66 @29587 has 29 MA's), (124, 29728), (156, 29806),

Gene: Tigress9_36 Start: 28754, Stop: 28984, Start Num: 82

Candidate Starts for Tigress9_36:

(Start: 66 @28751 has 29 MA's), (Start: 82 @28754 has 194 MA's), (99, 28811), (110, 28847), (150, 28955),

Gene: TingHuaYa_36 Start: 28723, Stop: 28950, Start Num: 82

Candidate Starts for TingHuaYa_36:

(25, 28600), (27, 28630), (40, 28720), (Start: 82 @28723 has 194 MA's), (94, 28765), (121, 28846), (126, 28858), (140, 28891), (154, 28930),

Gene: Tomaszewski_105 Start: 62947, Stop: 63210, Start Num: 82
Candidate Starts for Tomaszewski_105:
(Start: 82 @62947 has 194 MA's), (Start: 90 @62977 has 4 MA's), (112, 63052), (160, 63169),

Gene: Toto_108 Start: 63783, Stop: 64046, Start Num: 82
Candidate Starts for Toto_108:
(Start: 82 @63783 has 194 MA's), (Start: 90 @63813 has 4 MA's), (112, 63888), (160, 64005),

Gene: Tourach_96 Start: 60701, Stop: 60940, Start Num: 80
Candidate Starts for Tourach_96:
(Start: 80 @60701 has 58 MA's), (88, 60725), (Start: 90 @60731 has 4 MA's), (112, 60806), (126, 60833), (131, 60842), (133, 60845), (134, 60848), (136, 60854), (137, 60860), (150, 60902), (153, 60908),

Gene: Traaww1_106 Start: 62332, Stop: 62595, Start Num: 82
Candidate Starts for Traaww1_106:
(Start: 82 @62332 has 194 MA's), (Start: 90 @62362 has 4 MA's), (112, 62437), (160, 62554),

Gene: Trax_127 Start: 71378, Stop: 71596, Start Num: 84
Candidate Starts for Trax_127:
(81, 71372), (Start: 84 @71378 has 25 MA's), (86, 71387), (Start: 89 @71402 has 1 MA's), (Start: 90 @71405 has 4 MA's), (Start: 91 @71408 has 2 MA's), (93, 71414), (94, 71417), (96, 71423), (99, 71432), (106, 71456), (110, 71468), (112, 71480), (113, 71483), (118, 71495), (121, 71498), (129, 71513), (130, 71516), (133, 71519), (137, 71534), (140, 71543), (142, 71546), (151, 71576), (159, 71591),

Gene: TriFive_94 Start: 59842, Stop: 60111, Start Num: 76
Candidate Starts for TriFive_94:
(Start: 76 @59842 has 27 MA's), (Start: 90 @59881 has 4 MA's), (112, 59956), (126, 59983), (131, 59992), (156, 60064),

Gene: TribbleTrouble_36 Start: 30199, Stop: 30423, Start Num: 82
Candidate Starts for TribbleTrouble_36:
(Start: 60 @30175 has 2 MA's), (Start: 82 @30199 has 194 MA's), (135, 30352), (140, 30367),

Gene: Tuco_111 Start: 64570, Stop: 64833, Start Num: 82
Candidate Starts for Tuco_111:
(Start: 82 @64570 has 194 MA's), (Start: 90 @64600 has 4 MA's), (112, 64675), (160, 64792),

Gene: Typha_30 Start: 27510, Stop: 27782, Start Num: 76
Candidate Starts for Typha_30:
(19, 27231), (Start: 73 @27507 has 2 MA's), (Start: 76 @27510 has 27 MA's), (Start: 82 @27519 has 194 MA's), (87, 27537), (94, 27561), (95, 27564), (107, 27603), (108, 27606), (125, 27660), (127, 27663), (132, 27672), (151, 27732),

Gene: Tyson_93 Start: 58217, Stop: 58456, Start Num: 80
Candidate Starts for Tyson_93:
(Start: 77 @58214 has 1 MA's), (Start: 80 @58217 has 58 MA's), (112, 58322), (121, 58337), (126, 58349), (134, 58364), (137, 58376), (153, 58424),

Gene: UPIE_91 Start: 57813, Stop: 58052, Start Num: 80
Candidate Starts for UPIE_91:

(Start: 77 @57810 has 1 MA's), (Start: 80 @57813 has 58 MA's), (112, 57918), (121, 57933), (126, 57945), (134, 57960), (137, 57972), (150, 58014), (153, 58020),

Gene: Ukulele_104 Start: 62768, Stop: 63031, Start Num: 82

Candidate Starts for Ukulele_104:

(Start: 82 @62768 has 194 MA's), (Start: 90 @62798 has 4 MA's), (112, 62873), (160, 62990),

Gene: Underpass_88 Start: 54846, Stop: 55106, Start Num: 80

Candidate Starts for Underpass_88:

(Start: 80 @54846 has 58 MA's), (88, 54870), (112, 54951), (126, 54978), (133, 54990), (134, 54993), (136, 54999), (137, 55005), (150, 55047), (153, 55053),

Gene: Unicorn_36 Start: 28916, Stop: 29149, Start Num: 66

Candidate Starts for Unicorn_36:

(Start: 66 @28916 has 29 MA's), (124, 29057), (156, 29135),

Gene: Validus_36 Start: 28742, Stop: 28969, Start Num: 82

Candidate Starts for Validus_36:

(14, 28421), (23, 28508), (29, 28550), (39, 28619), (43, 28649), (Start: 66 @28739 has 29 MA's), (Start: 82 @28742 has 194 MA's), (95, 28787), (158, 28955),

Gene: Vetric_94 Start: 59584, Stop: 59844, Start Num: 80

Candidate Starts for Vetric_94:

(Start: 80 @59584 has 58 MA's), (88, 59608), (112, 59689), (126, 59716), (133, 59728), (134, 59731), (136, 59737), (137, 59743), (150, 59785), (153, 59791),

Gene: ViviJ_35 Start: 30058, Stop: 30282, Start Num: 82

Candidate Starts for ViviJ_35:

(Start: 82 @30058 has 194 MA's), (Start: 90 @30088 has 4 MA's), (94, 30100), (104, 30136), (106, 30139), (129, 30196), (137, 30217), (140, 30226), (148, 30250), (150, 30259),

Gene: Volt_39 Start: 14315, Stop: 14599, Start Num: 78

Candidate Starts for Volt_39:

(Start: 78 @14315 has 9 MA's), (104, 14399), (130, 14468), (133, 14474), (142, 14501), (164, 14594),

Gene: Wamburgexpress_91 Start: 57941, Stop: 58180, Start Num: 80

Candidate Starts for Wamburgexpress_91:

(Start: 77 @57938 has 1 MA's), (Start: 80 @57941 has 58 MA's), (112, 58046), (121, 58061), (126, 58073), (134, 58088), (137, 58100), (150, 58142), (153, 58148),

Gene: Wanda_161 Start: 84189, Stop: 84503, Start Num: 54

Candidate Starts for Wanda_161:

(Start: 54 @84189 has 19 MA's), (Start: 84 @84258 has 25 MA's), (114, 84375),

Gene: Waterfoul_37 Start: 30530, Stop: 30754, Start Num: 82

Candidate Starts for Waterfoul_37:

(Start: 73 @30524 has 2 MA's), (Start: 82 @30530 has 194 MA's), (Start: 90 @30560 has 4 MA's), (94, 30572), (104, 30608), (106, 30611), (113, 30638), (129, 30668), (140, 30698), (150, 30731),

Gene: Whirlwind_94 Start: 60069, Stop: 60338, Start Num: 76

Candidate Starts for Whirlwind_94:

(Start: 76 @60069 has 27 MA's), (Start: 90 @60108 has 4 MA's), (112, 60183), (126, 60210), (131, 60219), (156, 60291),

Gene: Wiggin_112 Start: 62613, Stop: 62876, Start Num: 82
Candidate Starts for Wiggin_112:
(Start: 82 @62613 has 194 MA's), (Start: 90 @62643 has 4 MA's), (112, 62718), (160, 62835),

Gene: Wigglewigggle_96 Start: 59892, Stop: 60152, Start Num: 80
Candidate Starts for Wigglewigggle_96:
(Start: 80 @59892 has 58 MA's), (88, 59916), (112, 59997), (133, 60036), (134, 60039), (136, 60045),
(137, 60051), (150, 60093), (153, 60099),

Gene: Wildcat_91 Start: 55049, Stop: 55300, Start Num: 82
Candidate Starts for Wildcat_91:
(Start: 82 @55049 has 194 MA's), (85, 55055), (122, 55181), (137, 55214), (138, 55217), (142, 55226),
(154, 55265),

Gene: Wilder_97 Start: 59728, Stop: 59988, Start Num: 80
Candidate Starts for Wilder_97:
(Start: 80 @59728 has 58 MA's), (88, 59752), (112, 59833), (126, 59860), (133, 59872), (134, 59875),
(136, 59881), (137, 59887), (150, 59929), (153, 59935),

Gene: Willez_105 Start: 61735, Stop: 61998, Start Num: 82
Candidate Starts for Willez_105:
(Start: 82 @61735 has 194 MA's), (Start: 90 @61765 has 4 MA's), (112, 61840), (160, 61957),

Gene: Winky_96 Start: 60332, Stop: 60592, Start Num: 80
Candidate Starts for Winky_96:
(Start: 80 @60332 has 58 MA's), (88, 60356), (112, 60437), (133, 60476), (134, 60479), (136, 60485),
(137, 60491), (150, 60533), (153, 60539),

Gene: Wintermute_37 Start: 30625, Stop: 30906, Start Num: 82
Candidate Starts for Wintermute_37:
(Start: 66 @30619 has 29 MA's), (Start: 82 @30625 has 194 MA's), (Start: 91 @30658 has 2 MA's),
(99, 30682), (110, 30718), (130, 30769), (131, 30772), (138, 30790), (140, 30796), (154, 30838), (156,
30841), (158, 30844),

Gene: Wyatt2_93 Start: 58248, Stop: 58487, Start Num: 80
Candidate Starts for Wyatt2_93:
(Start: 77 @58245 has 1 MA's), (Start: 80 @58248 has 58 MA's), (112, 58353), (121, 58368), (126,
58380), (134, 58395), (137, 58407), (150, 58449), (153, 58455),

Gene: Xandras_109 Start: 62436, Stop: 62699, Start Num: 82
Candidate Starts for Xandras_109:
(Start: 82 @62436 has 194 MA's), (Start: 90 @62466 has 4 MA's), (112, 62541), (160, 62658),

Gene: Xiaokay_159 Start: 87675, Stop: 87920, Start Num: 84
Candidate Starts for Xiaokay_159:
(Start: 54 @87606 has 19 MA's), (Start: 84 @87675 has 25 MA's), (114, 87792),

Gene: Ximenita_37 Start: 28862, Stop: 29095, Start Num: 66
Candidate Starts for Ximenita_37:
(43, 28772), (Start: 66 @28862 has 29 MA's), (Start: 82 @28865 has 194 MA's), (99, 28922), (150,
29066),

Gene: Y10_37 Start: 30625, Stop: 30906, Start Num: 82

Candidate Starts for Y10_37:

(13, 30298), (18, 30361), (Start: 66 @30619 has 29 MA's), (Start: 82 @30625 has 194 MA's), (Start: 91 @30658 has 2 MA's), (99, 30682), (110, 30718), (130, 30769), (131, 30772), (138, 30790), (140, 30796), (154, 30838), (156, 30841), (158, 30844),

Gene: Y2_37 Start: 30625, Stop: 30906, Start Num: 82

Candidate Starts for Y2_37:

(13, 30298), (18, 30361), (Start: 66 @30619 has 29 MA's), (Start: 82 @30625 has 194 MA's), (Start: 91 @30658 has 2 MA's), (99, 30682), (110, 30718), (130, 30769), (131, 30772), (138, 30790), (140, 30796), (154, 30838), (156, 30841), (158, 30844),

Gene: YasnayaPolyana_37 Start: 30659, Stop: 30907, Start Num: 91

Candidate Starts for YasnayaPolyana_37:

(Start: 66 @30620 has 29 MA's), (Start: 82 @30626 has 194 MA's), (Start: 91 @30659 has 2 MA's), (99, 30683), (110, 30719), (130, 30770), (131, 30773), (138, 30791), (140, 30797), (154, 30839), (156, 30842), (158, 30845),

Gene: YassJohnny_107 Start: 61756, Stop: 62019, Start Num: 82

Candidate Starts for YassJohnny_107:

(Start: 82 @61756 has 194 MA's), (Start: 90 @61786 has 4 MA's), (112, 61861), (160, 61978),

Gene: Yeet_155 Start: 85621, Stop: 85866, Start Num: 84

Candidate Starts for Yeet_155:

(Start: 54 @85552 has 19 MA's), (Start: 84 @85621 has 25 MA's), (114, 85738),

Gene: Youngblood_114 Start: 63905, Stop: 64168, Start Num: 82

Candidate Starts for Youngblood_114:

(Start: 82 @63905 has 194 MA's), (Start: 90 @63935 has 4 MA's), (112, 64010), (160, 64127),

Gene: Yuna_37 Start: 29330, Stop: 29563, Start Num: 66

Candidate Starts for Yuna_37:

(14, 29012), (39, 29210), (43, 29240), (Start: 66 @29330 has 29 MA's), (Start: 82 @29339 has 194 MA's), (Start: 90 @29369 has 4 MA's), (99, 29396), (126, 29474), (130, 29480),

Gene: Yunkel11_37 Start: 28983, Stop: 29210, Start Num: 82

Candidate Starts for Yunkel11_37:

(17, 28689), (26, 28755), (30, 28767), (37, 28824), (Start: 70 @28971 has 1 MA's), (Start: 73 @28974 has 2 MA's), (Start: 82 @28983 has 194 MA's), (94, 29025), (121, 29106), (126, 29118),

Gene: Yvonnetastic_166 Start: 86474, Stop: 86791, Start Num: 61

Candidate Starts for Yvonnetastic_166:

(Start: 61 @86474 has 2 MA's), (74, 86513), (79, 86519), (83, 86525), (92, 86558), (109, 86621), (147, 86729), (152, 86747),

Gene: Zakai_97 Start: 60371, Stop: 60631, Start Num: 80

Candidate Starts for Zakai_97:

(Start: 80 @60371 has 58 MA's), (88, 60395), (112, 60476), (126, 60503), (133, 60515), (134, 60518), (136, 60524), (137, 60530), (150, 60572), (153, 60578),

Gene: Zaria_92 Start: 57356, Stop: 57595, Start Num: 80

Candidate Starts for Zaria_92:

(Start: 77 @57353 has 1 MA's), (Start: 80 @57356 has 58 MA's), (112, 57461), (121, 57476), (126, 57488), (134, 57503), (137, 57515), (153, 57563),

Gene: Zelink_156 Start: 85981, Stop: 86226, Start Num: 84

Candidate Starts for Zelink_156:

(Start: 54 @85912 has 19 MA's), (Start: 84 @85981 has 25 MA's), (114, 86098),

Gene: ZhongYanYuan_93 Start: 59783, Stop: 60043, Start Num: 80

Candidate Starts for ZhongYanYuan_93:

(Start: 80 @59783 has 58 MA's), (112, 59888), (126, 59915), (129, 59918), (131, 59924), (133, 59927), (137, 59942), (150, 59984), (153, 59990),

Gene: Ziko_40 Start: 14255, Stop: 14539, Start Num: 78

Candidate Starts for Ziko_40:

(Start: 78 @14255 has 9 MA's), (104, 14339), (130, 14408), (133, 14414), (142, 14441), (164, 14534),

Gene: xkcd_114 Start: 64090, Stop: 64353, Start Num: 82

Candidate Starts for xkcd_114:

(Start: 82 @64090 has 194 MA's), (Start: 90 @64120 has 4 MA's), (112, 64195), (160, 64312),