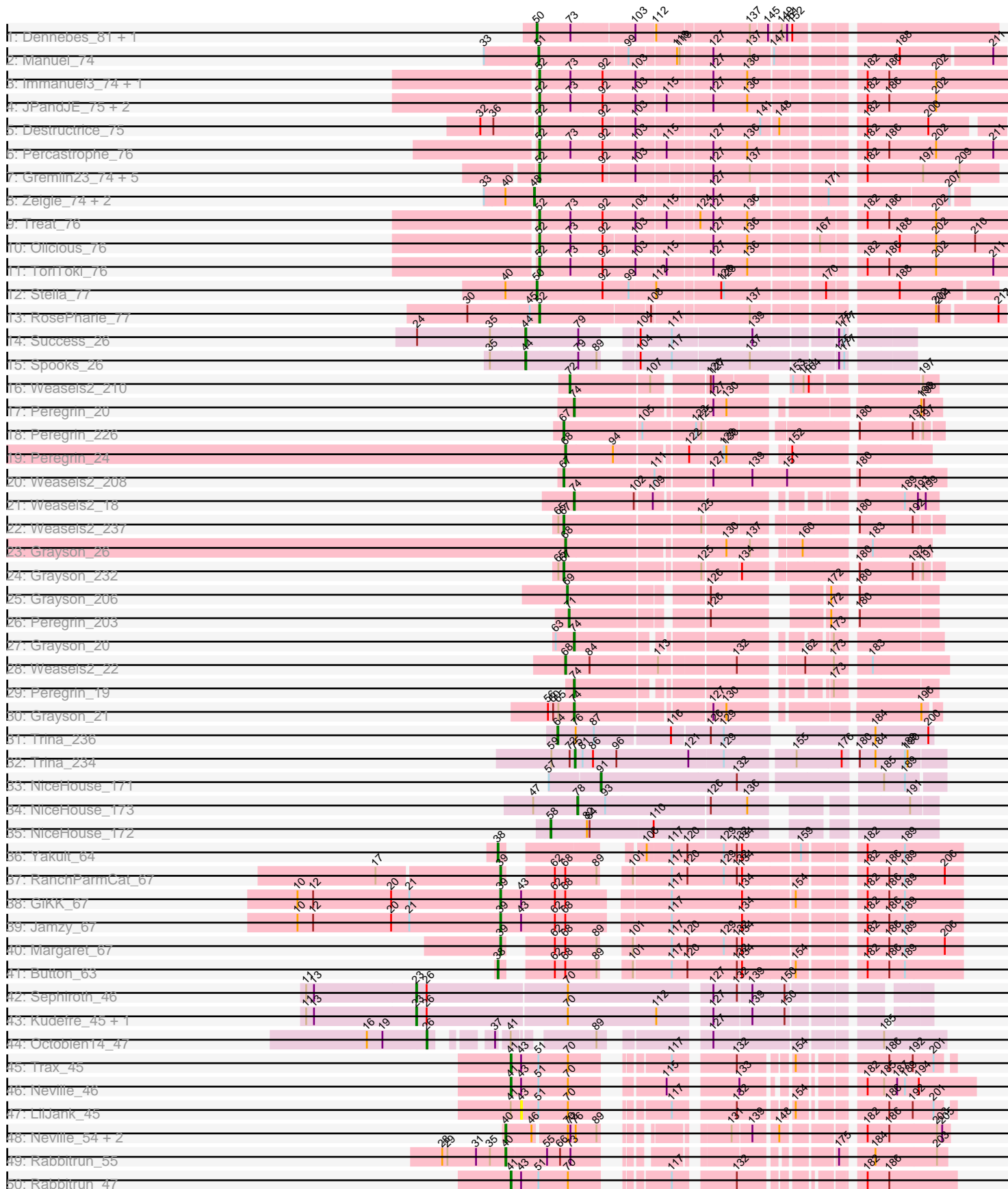
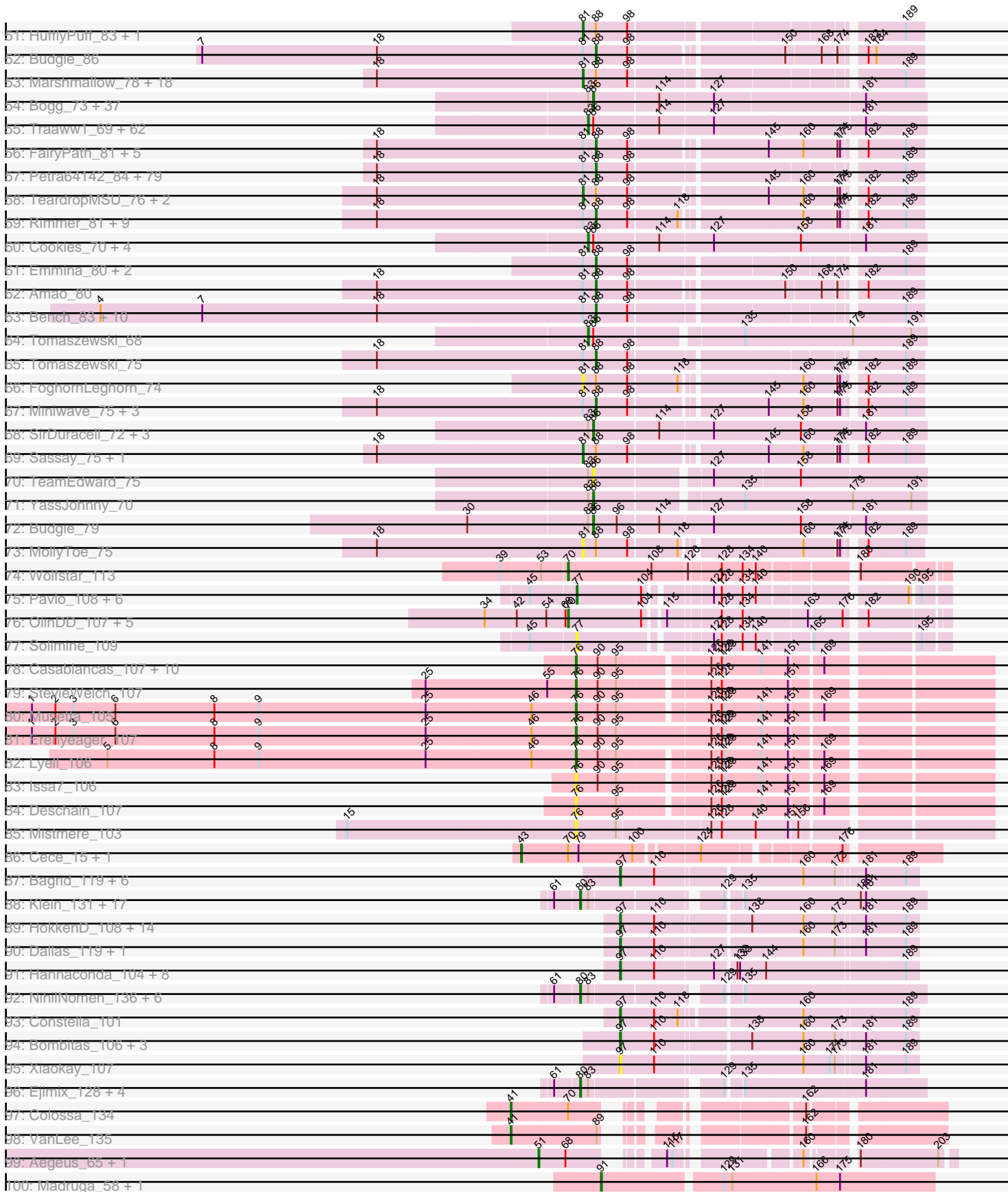


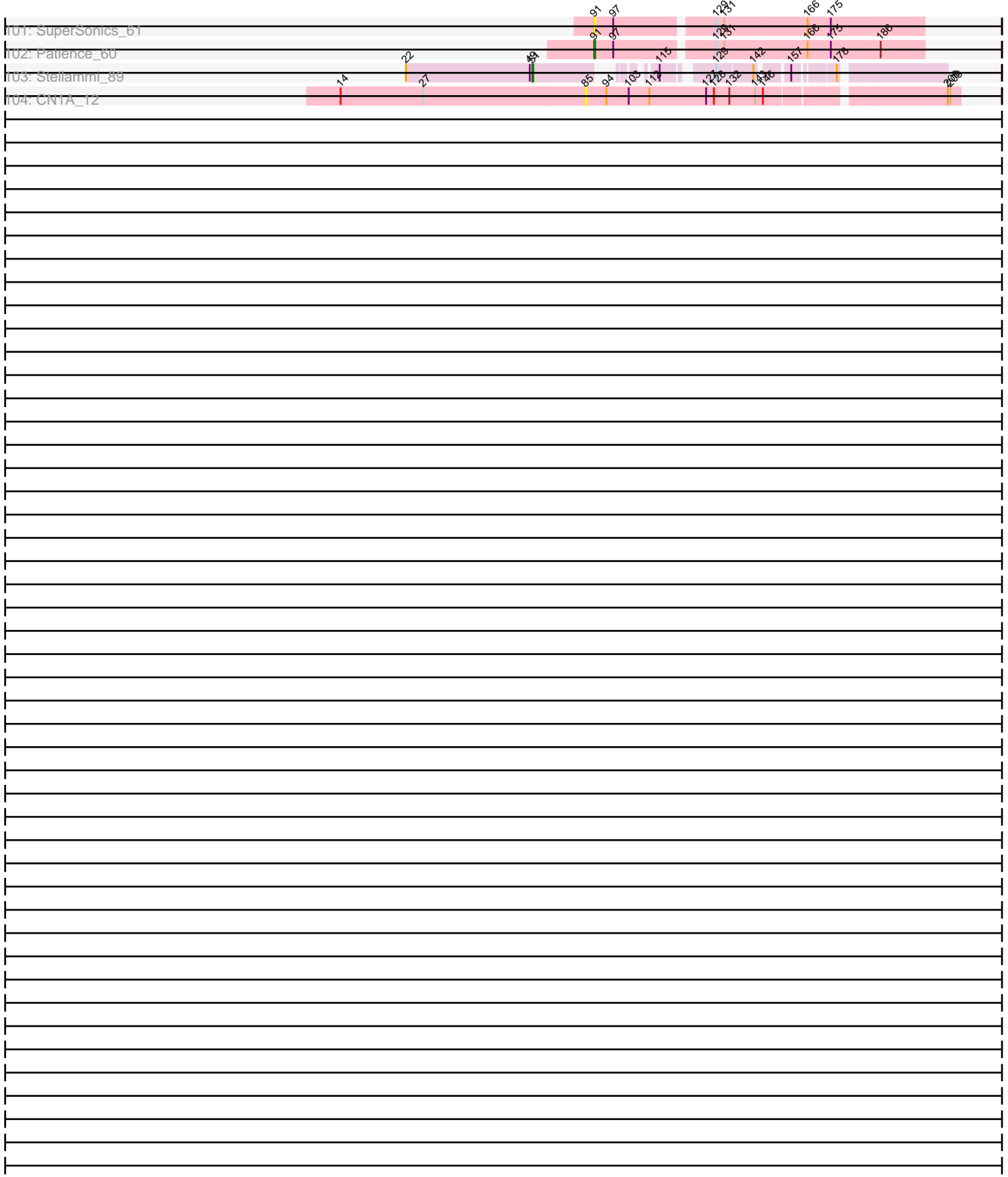
Pham 311085



Pham 311085



Pham 311085



Note: Tracks are now grouped by subcluster and scaled. Switching in subcluster is indicated by changes in track color. Track scale is now set by default to display the region 30 bp upstream of start 1 to 30 bp downstream of the last possible start. If this default region is judged to be packed too tightly with annotated starts, the track will be further scaled to only show that region of the ORF with annotated starts. This action will be indicated by adding "Zoomed" to the title. For starts, yellow indicates the location of called starts comprised solely of Glimmer/GeneMark auto-annotations, green indicates the location of called starts with at least 1 manual gene annotation.

Pham 311085 Report

This analysis was run 06/27/26 on database version 652.

Pham number 311085 has 437 members, 48 are drafts.

Phages represented in each track:

- Track 1 : Dennebes_81, Rideau_80
- Track 2 : Manuel_74
- Track 3 : Immanuel3_74, Romero_76
- Track 4 : JPandJE_75, HaugeAnator_76, ZooBear_76
- Track 5 : Destructrice_75
- Track 6 : Percastrophe_76
- Track 7 : Gremlin23_74, FlowerPower_74, RetrieverFever_74, Fabian_73, Geostin_69, Vorvolakos_75
- Track 8 : Zeigle_74, Kumquat_74, WRightOn_78
- Track 9 : Treat_76
- Track 10 : Olicious_76
- Track 11 : ToriToki_76
- Track 12 : Stella_77
- Track 13 : RosePharie_77
- Track 14 : Success_26
- Track 15 : Spooks_26
- Track 16 : Weasels2_210
- Track 17 : Peregrin_20
- Track 18 : Peregrin_226
- Track 19 : Peregrin_24
- Track 20 : Weasels2_208
- Track 21 : Weasels2_18
- Track 22 : Weasels2_237
- Track 23 : Grayson_26
- Track 24 : Grayson_232
- Track 25 : Grayson_206
- Track 26 : Peregrin_203
- Track 27 : Grayson_20
- Track 28 : Weasels2_22
- Track 29 : Peregrin_19
- Track 30 : Grayson_21
- Track 31 : Trina_236
- Track 32 : Trina_234
- Track 33 : NiceHouse_171
- Track 34 : NiceHouse_173
- Track 35 : NiceHouse_172
- Track 36 : Yakult_64

- Track 37 : RanchParmCat_67
- Track 38 : GiKK_67
- Track 39 : Jamzy_67
- Track 40 : Margaret_67
- Track 41 : Button_63
- Track 42 : Sephiroth_46
- Track 43 : Kudrefre_45, Syleon_46
- Track 44 : Octobien14_47
- Track 45 : Trax_45
- Track 46 : Neville_46
- Track 47 : LilJank_45
- Track 48 : Neville_54, LilJank_52, Trax_53
- Track 49 : Rabbitrun_55
- Track 50 : Rabbitrun_47
- Track 51 : HufflyPuff_83, Porky_79
- Track 52 : Budgie_86
- Track 53 : Marshmallow_78, BugsBunny_80, Kostya_80, Stank_83, Bogg_80, Cjw1_80, Daikon_82, Elph10_80, DrDrey_80, Adnama_84, NelitzaMV_78, Goku_78, Bruin_77, GoldenSpark_84, MISSy_81, Command613_82, Eureka_78, ABCat_77, Dumbo_80
- Track 54 : Bogg_73, Teaspoon_74, Nala_75, PaddyBaddy_73, Sassay_68, Dumbo_73, Greep_77, Thresher_75, Murica_76, Nimrod_74, Becksu_72, Command613_75, StellaBean_71, Kostya_73, FoghornLeghorn_67, Youngblood_76, Livilaughbron_75, MadamMonkfish_73, Simpliphy_72, NelitzaMV_71, Eureka_71, Goldilocks_76, Terminus_76, CrystalP_72, Cjw1_73, BugsBunny_73, NonchalantPear_73, Filch_74, Porky_72, Pumpkin_76, Amao_73, Elph10_73, Murphy_73, Maxxinista_75, Wiggin_75, FireRed_77, Thimble_74, Willez_68
- Track 55 : Traaww1_69, Miniwave_68, Highbury_72, NoSleep_74, Lilizi_74, Inca_70, MISSy_74, Moldemort_76, Henry_71, Phaja_71, HanKaySha_73, Mosby_69, BilboSwaggins_71, Manda_74, SophKB_70, Tuco_74, IHOP_71, MPhalcon_74, Dusk_70, Kanye_70, Saints25_72, PhatBacter_77, FairyPath_74, BadStone_70, Lilpickle_72, Contagion_69, Palpatine_75, ShereKhan_72, Emmina_73, Mindy_72, Lilac_75, Phaux_75, Ukulele_68, Adnama_77, Hopey_73, TBrady12_76, Bench_76, Phrux_70, BaboJay_70, Goku_71, Asriel_72, Policronamos_76, Bruin_70, Xandras_72, Quallification_74, Barbarian_72, ShamWow_73, xkcd_76, Czyszczone1_74, Toto_71, Pharsalus_70, Gator_71, Stark_74, Elite2014_72, Misfit_74, ChosenOne_73, Tarkin_72, ABCat_70, HufflyPuff_76, RiverMonster_73, Ptowny_70, DrDrey_73, Paperbeatsrock_72
- Track 56 : FairyPath_81, Phaja_78, SophKB_77, Myrale_80, ShereKhan_78, Quallification_81
- Track 57 : Petra64142_84, Highbury_79, Glexan_79, Kanye_77, Inca_77, Sotrice96_81, Moldemort_83, NonchalantPear_80, Becksu_79, StellaBean_78, BilboSwaggins_78, AmericanBeauty_84, Rakim_81, Ukulele_75, Misfit_81, Terminus_83, IHOP_78, Dusk_77, Saints25_79, Cactus_83, Buck_81, Simpliphy_79, GooberAzure_83, MadamMonkfish_80, Lilpickle_79, Holt_85, JeTaime_80, Greep_84, Icee_81, MPhalcon_81, Mosby_76, Filch_81, Kimchi_84, Czyszczone1_81, Maxxinista_82, Hopey_80, BadStone_77, Balomoji_80, Harella_80, TBrady12_83, Livilaughbron_82, Stark_81, RiverMonster_80, Easy2Say_81, Phrux_77, BaboJay_77, Asriel_79, Murphy_80, Henry_78, Brewer_76, Lilac_82, Mindy_79, HanKaySha_80, Goldilocks_83, StolenFromERC_83, Tuco_81, BigBubba_80, Traaww1_76, Barbarian_79, Flypotenuse_76, OrionPax_79, Thresher_82, ShamWow_80, ChosenOne_80, CrystalP_79, Contagion_76, Youngblood_83, Toto_78, Manda_81, Gator_78, Teaspoon_81, Elite2014_79, NoSleep_81,

Wiggin_82, Argent26_84, PaddyBaddy_80, Gemini_85, Ptowny_77, Gage_82, Palpatine_82

- Track 58 : TeardropMSU_76, StormChicken_82, YassJohnny_77
- Track 59 : Rimmer_81, Cookies_77, Bask21_80, ChotaBhai_80, SirDuracell_79, Pat3_78, Phaux_82, Policronamos_83, TeamEdward_82, DoctorDiddles_79
- Track 60 : Cookies_70, ChotaBhai_73, Rakim_74, Pat3_71, BigBubba_73
- Track 61 : Emmina_80, xkcd_83, Murica_83
- Track 62 : Amao_80
- Track 63 : Bench_83, Thimble_81, 244_81, Xandras_79, Pumpkin_83, PhatBacter_84, Lilizi_81, FireRed_84, Hoonter_83, Nimrod_81, Nala_82
- Track 64 : Tomaszewski_68
- Track 65 : Tomaszewski_75
- Track 66 : FoghornLeghorn_74
- Track 67 : Miniwave_75, Pharsalus_77, Paperbeatsrock_79, Tarkin_79
- Track 68 : SirDuracell_72, Bask21_73, OrionPax_72, DoctorDiddles_72
- Track 69 : Sassay_75, Willez_75
- Track 70 : TeamEdward_75
- Track 71 : YassJohnny_70
- Track 72 : Budgie_79
- Track 73 : MollyToe_75
- Track 74 : Wolfstar_113
- Track 75 : Pavlo_108, Roman_109, Hubbs_107, DejaVu_108, Uterion_112, PhillyPhilly_105, Saradis_109
- Track 76 : OlinDD_107, Pioneer3_107, Hortus1_107, Platte_106, Alleb_103, Tandem_107
- Track 77 : Solimine_109
- Track 78 : Casablanca_107, DustyDino_110, RunningBrook_108, SteakFry_110, HollowPurple_108, Yuma_105, Welcome_109, Necrophoxinus_109, ASegato_105, Shroomer_112, Fork_103
- Track 79 : StevieWelch_107
- Track 80 : Musetta_105
- Track 81 : Erenyeager_107
- Track 82 : Lyell_106
- Track 83 : Issa7_106
- Track 84 : Deschain_107
- Track 85 : Mistmere_103
- Track 86 : Cece_15, Cece_317
- Track 87 : Bagrid_119, Halley_121, Minerva_116, Hughesyang_118, Pound_108, DmpstrDiver_119, Ejimix_113
- Track 88 : Klein_131, Redno2_126, Yeet_128, Wanda_133, Odette_138, Hughesyang_134, ThreeRngTarjay_130, Dove_120, Minerva_133, HokkenD_126, DmpstrDiver_134, Constella_128, Duke13_129, Schatzie_130, Bagrid_135, Phoebus_135, EricMillard_126, Zelink_129
- Track 89 : HokkenD_108, Ariel_113, Superphikiman_110, Lucky2013_110, Courthouse_108, JuicyJay_115, Phoebus_119, Porcelain_113, Squint_111, Rearden_107, Redno2_112, Beem_120, MiaZeal_113, NihilNomen_120, Dove_104
- Track 90 : Dallas_119, Thibault_99
- Track 91 : Hannaconda_104, Nibley_106, KashFlow_110, Nekros_115, Shaboozey_111, BronnyJames_111, LittleE_118, Gonephishing_107, Omega_124
- Track 92 : NihilNomen_136, Marleymoo_119, Hidrated_121, Bombitas_122, JuicyJay_131, Bobby_126, Beem_136
- Track 93 : Constella_101
- Track 94 : Bombitas_106, Schatzie_113, Yeet_109, Odette_120

- Track 95 : Xiaokay_107
- Track 96 : Ejimix_128, Xiaokay_130, Halley_136, Thibault_119, Dallas_135
- Track 97 : Colossa_134
- Track 98 : VanLee_135
- Track 99 : Aegeus_65, Baudelaire_65
- Track 100 : Madrugua_58, Demikore_60
- Track 101 : SuperSonics_61
- Track 102 : Patience_60
- Track 103 : Stellammi_89
- Track 104 : CN1A_12

Summary of Final Annotations (See graph section above for start numbers):

The start number called the most often in the published annotations is 88, it was called in 110 of the 389 non-draft genes in the pham.

Genes that call this "Most Annotated" start:

- 244_81, Amao_80, AmericanBeauty_84, Argent26_84, Asriel_79, BaboJay_77, BadStone_77, Balomoji_80, Barbarian_79, Bask21_80, Becksu_79, Bench_83, BigBubba_80, BilboSwaggins_78, Brewer_76, Buck_81, Budgie_86, Cactus_83, ChosenOne_80, ChotaBhai_80, Contagion_76, Cookies_77, CrystalP_79, Czystczon1_81, DoctorDiddles_79, Dusk_77, Easy2Say_81, Elite2014_79, Emmina_80, FairyPath_81, Filch_81, FireRed_84, Flypotenuse_76, Gage_82, Gator_78, Gemini_85, Glexan_79, Goldilocks_83, GooberAzure_83, Greep_84, HanKaySha_80, Harella_80, Henry_78, Highbury_79, Holt_85, Hoonter_83, Hopey_80, IHOP_78, Icee_81, Inca_77, JeTaimé_80, Kanye_77, Kimchi_84, Lilac_82, Lilizi_81, Lilpickle_79, Liveloughbron_82, MPhalcon_81, MadamMonkfish_80, Manda_81, Maxxinista_82, Mindy_79, Miniwave_75, Misfit_81, Moldemort_83, Mosby_76, Murica_83, Murphy_80, Myrale_80, Nala_82, Nimrod_81, NoSleep_81, NonchalantPear_80, OrionPax_79, PaddyBaddy_80, Palpatine_82, Paperbeatsrock_79, Pat3_78, Petra64142_84, Phaja_78, Pharsalus_77, PhatBacter_84, Phaux_82, Phrux_77, Policronamos_83, Ptowny_77, Pumpkin_83, Quallification_81, Rakim_81, Rimmer_81, RiverMonster_80, Saints25_79, ShamWow_80, ShereKhan_78, Simpliphy_79, SirDuracell_79, SophKB_77, Sotrice96_81, Stark_81, StellaBean_78, StolenFromERC_83, TBrady12_83, Tarkin_79, TeamEdward_82, Teaspoon_81, Terminus_83, Thimble_81, Thresher_82, Tomaszewski_75, Toto_78, Traaww1_76, Tuco_81, Ukulele_75, Wiggin_82, Xandras_79, Youngblood_83, xkcd_83,

Genes that have the "Most Annotated" start but do not call it:

- ABCat_77, Adnama_84, Bogg_80, Bruin_77, BugsBunny_80, Cjw1_80, Command613_82, Daikon_82, DrDrey_80, Dumbo_80, Elph10_80, Eureka_78, FoghornLeghorn_74, Goku_78, GoldenSpark_84, HufflyPuff_83, Kostya_80, MISSy_81, Marshmallow_78, MollyToe_75, NelitzaMV_78, Porky_79, Sassay_75, Stank_83, StormChicken_82, TeardropMSU_76, Willez_75, YassJohnny_77,

Genes that do not have the "Most Annotated" start:

- ABCat_70, ASegato_105, Adnama_77, Aegeus_65, Alleb_103, Amao_73, Ariel_113, Asriel_72, BaboJay_70, BadStone_70, Bagrid_119, Bagrid_135, Barbarian_72, Bask21_73, Baudelaire_65, Becksu_72, Beem_120, Beem_136,

Bench_76, BigBubba_73, BilboSwaggins_71, Bobby_126, Bogg_73, Bombitas_106, Bombitas_122, BronnyJames_111, Bruin_70, Budgie_79, BugsBunny_73, Button_63, CN1A_12, Casablancas_107, Cece_15, Cece_317, ChosenOne_73, ChotaBhai_73, Cjw1_73, Colossa_134, Command613_75, Constella_101, Constella_128, Contagion_69, Cookies_70, Courthouse_108, CrystalP_72, Czyszczonek_74, Dallas_119, Dallas_135, DejaVu_108, Demikore_60, Dennebes_81, Deschain_107, Destructrice_75, DmpstrDiver_119, DmpstrDiver_134, DoctorDiddles_72, Dove_104, Dove_120, DrDrey_73, Duke13_129, Dumbo_73, Dusk_70, DustyDino_110, Ejimix_113, Ejimix_128, Elite2014_72, Elph10_73, Emmina_73, Erenyeager_107, EricMillard_126, Eureka_71, Fabian_73, FairyPath_74, Filch_74, FireRed_77, FlowerPower_74, FoghornLeghorn_67, Fork_103, Gator_71, Geostin_69, GiKK_67, Goku_71, Goldilocks_76, Gonephishing_107, Grayson_20, Grayson_206, Grayson_21, Grayson_232, Grayson_26, Greep_77, Gremlin23_74, Halley_121, Halley_136, HanKaySha_73, Hannaconda_104, HaugeAnator_76, Henry_71, Hidrated_121, Highbury_72, HokkenD_108, HokkenD_126, HollowPurple_108, Hopey_73, Hortus1_107, Hubbs_107, HufflyPuff_76, Hughesyang_118, Hughesyang_134, IHOP_71, Immanuel3_74, Inca_70, Issa7_106, JPandJE_75, Jamzy_67, JuicyJay_115, JuicyJay_131, Kanye_70, KashFlow_110, Klein_131, Kostya_73, Kudrefre_45, Kumquat_74, LilJank_45, LilJank_52, Lilac_75, Lilizi_74, Lilpickle_72, LittleE_118, Liveloughbron_75, Lucky2013_110, Lyell_106, MISSy_74, MPhalcon_74, MadamMonkfish_73, Madrugada_58, Manda_74, Manuel_74, Margaret_67, Marleymoo_119, Maxxinista_75, MiaZeal_113, Mindy_72, Minerva_116, Minerva_133, Miniwave_68, Misfit_74, Mistmere_103, Moldemort_76, Mosby_69, Murica_76, Murphy_73, Musetta_105, Nala_75, Necrophoxinus_109, Nekros_115, NelitzaMV_71, Neville_46, Neville_54, Nibley_106, NiceHouse_171, NiceHouse_172, NiceHouse_173, NihilNomen_120, NihilNomen_136, Nimrod_74, NoSleep_74, NonchalantPear_73, Octobien14_47, Odette_120, Odette_138, Olicious_76, OlinDD_107, Omega_124, OrionPax_72, PaddyBaddy_73, Palpatine_75, Paperbeatsrock_72, Pat3_71, Patience_60, Pavlo_108, Percastrophe_76, Peregrin_19, Peregrin_20, Peregrin_203, Peregrin_226, Peregrin_24, Phaja_71, Pharsalus_70, PhatBacter_77, Phaux_75, PhillyPhilly_105, Phoebus_119, Phoebus_135, Phrux_70, Pioneer3_107, Platte_106, Policronamos_76, Porcelain_113, Porky_72, Pound_108, Ptowny_70, Pumpkin_76, Quallification_74, Rabbitrun_47, Rabbitrun_55, Rakim_74, RanchParmCat_67, Rearden_107, Redno2_112, Redno2_126, RetrieverFever_74, Rideau_80, RiverMonster_73, Roman_109, Romero_76, RosePharie_77, RunningBrook_108, Saints25_72, Saradis_109, Sassay_68, Schatzie_113, Schatzie_130, Sephiroth_46, Shaboozey_111, ShamWow_73, ShereKhan_72, Shroomer_112, Simpliphy_72, SirDuracell_72, Solimine_109, SophKB_70, Spooks_26, Squint_111, Stark_74, SteakFry_110, StellaBean_71, Stella_77, Stellammi_89, StevieWelch_107, Success_26, SuperSonics_61, Superphikiman_110, Syleon_46, TBrady12_76, Tandem_107, Tarkin_72, TeamEdward_75, Teaspoon_74, Terminus_76, Thibault_119, Thibault_99, Thimble_74, ThreeRngTarjay_130, Thresher_75, Tomaszewski_68, ToriToki_76, Toto_71, Traaww1_69, Trax_45, Trax_53, Treat_76, Trina_234, Trina_236, Tuco_74, Ukulele_68, Uterion_112, VanLee_135, Vorvolakos_75, WRightOn_78, Wanda_133, Weasels2_18, Weasels2_208, Weasels2_210, Weasels2_22, Weasels2_237, Welcome_109, Wiggin_75, Willez_68, Wolfstar_113, Xandras_72, Xiaokay_107, Xiaokay_130, Yakult_64, YassJohnny_70, Yeet_109, Yeet_128, Youngblood_76, Yuma_105, Zeigle_74, Zelink_129, ZooBear_76, xkcd_76,

Summary by start number:

Start 23:

- Found in 3 of 437 (0.7%) of genes in pham
- Manual Annotations of this start: 3 of 389
- Called 100.0% of time when present
- Phage (with cluster) where this start called: Kudefre_45 (DU1), Sephiroth_46 (DU1), Syleon_46 (DU1),

Start 26:

- Found in 4 of 437 (0.9%) of genes in pham
- Manual Annotations of this start: 1 of 389
- Called 25.0% of time when present
- Phage (with cluster) where this start called: Octobien14_47 (DU1),

Start 38:

- Found in 2 of 437 (0.5%) of genes in pham
- Manual Annotations of this start: 2 of 389
- Called 100.0% of time when present
- Phage (with cluster) where this start called: Button_63 (CT), Yakult_64 (CT),

Start 39:

- Found in 5 of 437 (1.1%) of genes in pham
- Manual Annotations of this start: 4 of 389
- Called 80.0% of time when present
- Phage (with cluster) where this start called: GiKK_67 (CT), Jamzy_67 (CT), Margaret_67 (CT), RanchParmCat_67 (CT),

Start 40:

- Found in 8 of 437 (1.8%) of genes in pham
- Manual Annotations of this start: 3 of 389
- Called 50.0% of time when present
- Phage (with cluster) where this start called: LilJank_52 (DU2), Neville_54 (DU2), Rabbitrun_55 (DU2), Trax_53 (DU2),

Start 41:

- Found in 7 of 437 (1.6%) of genes in pham
- Manual Annotations of this start: 5 of 389
- Called 71.4% of time when present
- Phage (with cluster) where this start called: Colossa_134 (KA), Neville_46 (DU2), Rabbitrun_47 (DU2), Trax_45 (DU2), VanLee_135 (KA),

Start 43:

- Found in 8 of 437 (1.8%) of genes in pham
- Manual Annotations of this start: 2 of 389
- Called 37.5% of time when present
- Phage (with cluster) where this start called: Cece_15 (GD3), Cece_317 (GD3), LilJank_45 (DU2),

Start 44:

- Found in 2 of 437 (0.5%) of genes in pham
- Manual Annotations of this start: 2 of 389
- Called 100.0% of time when present
- Phage (with cluster) where this start called: Spooks_26 (BT), Success_26 (BT),

Start 48:

- Found in 3 of 437 (0.7%) of genes in pham
- Manual Annotations of this start: 3 of 389
- Called 100.0% of time when present
- Phage (with cluster) where this start called: Kumquat_74 (BF), WRightOn_78 (BF), Zeigle_74 (BF),

Start 50:

- Found in 3 of 437 (0.7%) of genes in pham
- Manual Annotations of this start: 2 of 389
- Called 100.0% of time when present
- Phage (with cluster) where this start called: Dennebes_81 (BF), Rideau_80 (BF), Stella_77 (BF),

Start 51:

- Found in 8 of 437 (1.8%) of genes in pham
- Manual Annotations of this start: 4 of 389
- Called 50.0% of time when present
- Phage (with cluster) where this start called: Aegeus_65 (L5), Baudelaire_65 (L5), Manuel_74 (BF), Stellammi_89 (UNK),

Start 52:

- Found in 17 of 437 (3.9%) of genes in pham
- Manual Annotations of this start: 17 of 389
- Called 100.0% of time when present
- Phage (with cluster) where this start called: Destructrice_75 (BF), Fabian_73 (BF), FlowerPower_74 (BF), Geostin_69 (BF), Gremlin23_74 (BF), HaugeAnator_76 (BF), Immanuel3_74 (BF), JPandJE_75 (BF), Olicious_76 (BF), Percastrophe_76 (BF), RetrieverFever_74 (BF), Romero_76 (BF), RosePharie_77 (BF), ToriToki_76 (BF), Treat_76 (BF), Vorvolakos_75 (BF), ZooBear_76 (BF),

Start 58:

- Found in 1 of 437 (0.2%) of genes in pham
- Manual Annotations of this start: 1 of 389
- Called 100.0% of time when present
- Phage (with cluster) where this start called: NiceHouse_172 (CE),

Start 64:

- Found in 1 of 437 (0.2%) of genes in pham
- Manual Annotations of this start: 1 of 389
- Called 100.0% of time when present
- Phage (with cluster) where this start called: Trina_236 (CE),

Start 67:

- Found in 4 of 437 (0.9%) of genes in pham
- Manual Annotations of this start: 4 of 389
- Called 100.0% of time when present
- Phage (with cluster) where this start called: Grayson_232 (CB), Peregrin_226 (CB), Weasels2_208 (CB), Weasels2_237 (CB),

Start 68:

- Found in 16 of 437 (3.7%) of genes in pham
- Manual Annotations of this start: 3 of 389

- Called 18.8% of time when present
- Phage (with cluster) where this start called: Grayson_26 (CB), Peregrin_24 (CB), Weasels2_22 (CB),

Start 69:

- Found in 1 of 437 (0.2%) of genes in pham
- Manual Annotations of this start: 1 of 389
- Called 100.0% of time when present
- Phage (with cluster) where this start called: Grayson_206 (CB),

Start 70:

- Found in 20 of 437 (4.6%) of genes in pham
- Manual Annotations of this start: 7 of 389
- Called 35.0% of time when present
- Phage (with cluster) where this start called: Alleb_103 (ED1), Hortus1_107 (ED1), OlinDD_107 (ED1), Pioneer3_107 (ED1), Platte_106 (ED1), Tandem_107 (ED1), Wolfstar_113 (ED),

Start 71:

- Found in 1 of 437 (0.2%) of genes in pham
- Manual Annotations of this start: 1 of 389
- Called 100.0% of time when present
- Phage (with cluster) where this start called: Peregrin_203 (CB),

Start 72:

- Found in 2 of 437 (0.5%) of genes in pham
- Manual Annotations of this start: 1 of 389
- Called 50.0% of time when present
- Phage (with cluster) where this start called: Weasels2_210 (CB),

Start 74:

- Found in 5 of 437 (1.1%) of genes in pham
- Manual Annotations of this start: 5 of 389
- Called 100.0% of time when present
- Phage (with cluster) where this start called: Grayson_20 (CB), Grayson_21 (CB), Peregrin_19 (CB), Peregrin_20 (CB), Weasels2_18 (CB),

Start 75:

- Found in 1 of 437 (0.2%) of genes in pham
- Manual Annotations of this start: 1 of 389
- Called 100.0% of time when present
- Phage (with cluster) where this start called: Trina_234 (CE),

Start 76:

- Found in 22 of 437 (5.0%) of genes in pham
- Manual Annotations of this start: 15 of 389
- Called 81.8% of time when present
- Phage (with cluster) where this start called: ASegato_105 (ED2), Casablanclas_107 (ED2), Deschain_107 (ED2), DustyDino_110 (ED2), Erenyeager_107 (ED2), Fork_103 (ED2), HollowPurple_108 (ED2), Issa7_106 (ED2), Lyell_106 (ED2), Mistmere_103 (ED3), Musetta_105 (ED2), Necrophoxinus_109 (ED2), RunningBrook_108 (ED2), Shroomer_112 (ED2), SteakFry_110 (ED2), StevieWelch_107 (ED2), Welcome_109 (ED2), Yuma_105 (ED2),

Start 77:

- Found in 8 of 437 (1.8%) of genes in pham
- Manual Annotations of this start: 5 of 389
- Called 100.0% of time when present
- Phage (with cluster) where this start called: DejaVu_108 (ED1), Hubbs_107 (ED1), Pavlo_108 (ED1), PhillyPhilly_105 (ED1), Roman_109 (ED1), Saradis_109 (ED1), Solimine_109 (ED1), Uterion_112 (ED1),

Start 78:

- Found in 1 of 437 (0.2%) of genes in pham
- Manual Annotations of this start: 1 of 389
- Called 100.0% of time when present
- Phage (with cluster) where this start called: NiceHouse_173 (CE),

Start 80:

- Found in 30 of 437 (6.9%) of genes in pham
- Manual Annotations of this start: 25 of 389
- Called 100.0% of time when present
- Phage (with cluster) where this start called: Bagrid_135 (J), Beem_136 (J), Bobby_126 (J), Bombitas_122 (J), Constella_128 (J), Dallas_135 (J), DmpstrDiver_134 (J), Dove_120 (J), Duke13_129 (J), Ejimix_128 (J), EricMillard_126 (J), Halley_136 (J), Hidrated_121 (J), HokkenD_126 (J), Hughesyang_134 (J), JuicyJay_131 (J), Klein_131 (J), Marleymoo_119 (J), Minerva_133 (J), NihilNomen_136 (J), Odette_138 (J), Phoebus_135 (J), Redno2_126 (J), Schatzie_130 (J), Thibault_119 (J), ThreeRngTarjay_130 (J), Wanda_133 (J), Xiaokay_130 (J), Yeet_128 (J), Zelink_129 (J),

Start 81:

- Found in 146 of 437 (33.4%) of genes in pham
- Manual Annotations of this start: 22 of 389
- Called 19.2% of time when present
- Phage (with cluster) where this start called: ABCat_77 (E), Adnama_84 (E), Bogg_80 (E), Bruin_77 (E), BugsBunny_80 (E), Cjw1_80 (E), Command613_82 (E), Daikon_82 (E), DrDrey_80 (E), Dumbo_80 (E), Elph10_80 (E), Eureka_78 (E), FoghornLeghorn_74 (E), Goku_78 (E), GoldenSpark_84 (E), HufflyPuff_83 (E), Kostya_80 (E), MISSy_81 (E), Marshmallow_78 (E), MollyToe_75 (E), NelitzaMV_78 (E), Porky_79 (E), Sassay_75 (E), Stank_83 (E), StormChicken_82 (E), TeardropMSU_76 (E), Willez_75 (E), YassJohnny_77 (E),

Start 83:

- Found in 144 of 437 (33.0%) of genes in pham
- Manual Annotations of this start: 68 of 389
- Called 47.9% of time when present
- Phage (with cluster) where this start called: ABCat_70 (E), Adnama_77 (E), Asriel_72 (E), BaboJay_70 (E), BadStone_70 (E), Barbarian_72 (E), Bench_76 (E), BigBubba_73 (E), BilboSwaggins_71 (E), Bruin_70 (E), ChosenOne_73 (E), ChotaBhai_73 (E), Contagion_69 (E), Cookies_70 (E), Czyszczonek_74 (E), DrDrey_73 (E), Dusk_70 (E), Elite2014_72 (E), Emmina_73 (E), FairyPath_74 (E), Gator_71 (E), Goku_71 (E), HanKaySha_73 (E), Henry_71 (E), Highbury_72 (E), Hopey_73 (E), HufflyPuff_76 (E), IHOP_71 (E), Inca_70 (E), Kanye_70 (E), Lilac_75 (E), Lilizi_74 (E), Lilpickle_72 (E), MISSy_74 (E), MPfalcon_74 (E), Manda_74 (E), Mindy_72 (E), Miniwave_68 (E), Misfit_74 (E), Moldemort_76 (E), Mosby_69 (E),

NoSleep_74 (E), Palpatine_75 (E), Paperbeatsrock_72 (E), Pat3_71 (E), Phaja_71 (E), Pharsalus_70 (E), PhatBacter_77 (E), Phaux_75 (E), Phrux_70 (E), Policronamos_76 (E), Ptowny_70 (E), Qualification_74 (E), Rakim_74 (E), RiverMonster_73 (E), Saints25_72 (E), ShamWow_73 (E), ShereKhan_72 (E), SophKB_70 (E), Stark_74 (E), TBrady12_76 (E), Tarkin_72 (E), Tomaszewski_68 (E), Toto_71 (E), Traaww1_69 (E), Tuco_74 (E), Ukulele_68 (E), Xandras_72 (E), xkcd_76 (E),

Start 85:

- Found in 1 of 437 (0.2%) of genes in pham
- No Manual Annotations of this start.
- Called 100.0% of time when present
- Phage (with cluster) where this start called: CN1A_12 (singleton),

Start 86:

- Found in 115 of 437 (26.3%) of genes in pham
- Manual Annotations of this start: 37 of 389
- Called 39.1% of time when present
- Phage (with cluster) where this start called: Amao_73 (E), Bask21_73 (E), Becksu_72 (E), Bogg_73 (E), Budgie_79 (E), BugsBunny_73 (E), Cjw1_73 (E), Command613_75 (E), CrystalP_72 (E), DoctorDiddles_72 (E), Dumbo_73 (E), Elph10_73 (E), Eureka_71 (E), Filch_74 (E), FireRed_77 (E), FoghornLeghorn_67 (E), Goldilocks_76 (E), Greep_77 (E), Kostya_73 (E), Livelaughbron_75 (E), MadamMonkfish_73 (E), Maxxinista_75 (E), Murica_76 (E), Murphy_73 (E), Nala_75 (E), NelitzaMV_71 (E), Nimrod_74 (E), NonchalantPear_73 (E), OrionPax_72 (E), PaddyBaddy_73 (E), Porky_72 (E), Pumpkin_76 (E), Sassay_68 (E), Simpliphy_72 (E), SirDuracell_72 (E), StellaBean_71 (E), TeamEdward_75 (E), Teaspoon_74 (E), Terminus_76 (E), Thimble_74 (E), Thresher_75 (E), Wiggin_75 (E), Willez_68 (E), YassJohnny_70 (E), Youngblood_76 (E),

Start 88:

- Found in 145 of 437 (33.2%) of genes in pham
- Manual Annotations of this start: 110 of 389
- Called 80.7% of time when present
- Phage (with cluster) where this start called: 244_81 (E), Amao_80 (E), AmericanBeauty_84 (E), Argent26_84 (E), Asriel_79 (E), BaboJay_77 (E), BadStone_77 (E), Balomoji_80 (E), Barbarian_79 (E), Bask21_80 (E), Becksu_79 (E), Bench_83 (E), BigBubba_80 (E), BilboSwaggins_78 (E), Brewer_76 (E), Buck_81 (E), Budgie_86 (E), Cactus_83 (E), ChosenOne_80 (E), ChotaBhai_80 (E), Contagion_76 (E), Cookies_77 (E), CrystalP_79 (E), Czyszczonek_81 (E), DoctorDiddles_79 (E), Dusk_77 (E), Easy2Say_81 (E), Elite2014_79 (E), Emmina_80 (E), FairyPath_81 (E), Filch_81 (E), FireRed_84 (E), Flypotenuse_76 (E), Gage_82 (E), Gator_78 (E), Gemini_85 (E), Glexan_79 (E), Goldilocks_83 (E), GooberAzure_83 (E), Greep_84 (E), HanKaySha_80 (E), Harella_80 (E), Henry_78 (E), Highbury_79 (E), Holt_85 (E), Hoonter_83 (E), Hopey_80 (E), IHOP_78 (E), Icee_81 (E), Inca_77 (E), JeTaime_80 (E), Kanye_77 (E), Kimchi_84 (E), Lilac_82 (E), Lilizi_81 (E), Lilipickle_79 (E), Livelaughbron_82 (E), MPhalcon_81 (E), MadamMonkfish_80 (E), Manda_81 (E), Maxxinista_82 (E), Mindy_79 (E), Miniwave_75 (E), Misfit_81 (E), Moldemort_83 (E), Mosby_76 (E), Murica_83 (E), Murphy_80 (E), Myrale_80 (E), Nala_82 (E), Nimrod_81 (E), NoSleep_81 (E), NonchalantPear_80 (E), OrionPax_79 (E), PaddyBaddy_80 (E), Palpatine_82 (E), Paperbeatsrock_79 (E), Pat3_78 (E), Petra64142_84 (E), Phaja_78 (E), Pharsalus_77 (E), PhatBacter_84 (E), Phaux_82 (E), Phrux_77 (E), Policronamos_83 (E), Ptowny_77 (E), Pumpkin_83 (E),

Qualification_81 (E), Rakim_81 (E), Rimmer_81 (E), RiverMonster_80 (E), Saints25_79 (E), ShamWow_80 (E), ShereKhan_78 (E), Simpliphy_79 (E), SirDuracell_79 (E), SophKB_77 (E), Sotrice96_81 (E), Stark_81 (E), StellaBean_78 (E), StolenFromERC_83 (E), TBrady12_83 (E), Tarkin_79 (E), TeamEdward_82 (E), Teaspoon_81 (E), Terminus_83 (E), Thimble_81 (E), Thresher_82 (E), Tomaszewski_75 (E), Toto_78 (E), Traaww1_76 (E), Tuco_81 (E), Ukulele_75 (E), Wiggin_82 (E), Xandras_79 (E), Youngblood_83 (E), xkcd_83 (E),

Start 91:

- Found in 5 of 437 (1.1%) of genes in pham
- Manual Annotations of this start: 3 of 389
- Called 100.0% of time when present
- Phage (with cluster) where this start called: Demikore_60 (U), Madruga_58 (U), NiceHouse_171 (CE), Patience_60 (U), SuperSonics_61 (U),

Start 97:

- Found in 41 of 437 (9.4%) of genes in pham
- Manual Annotations of this start: 30 of 389
- Called 95.1% of time when present
- Phage (with cluster) where this start called: Ariel_113 (J), Bagrid_119 (J), Beem_120 (J), Bombitas_106 (J), BronnyJames_111 (J), Constella_101 (J), Courthouse_108 (J), Dallas_119 (J), DmpstrDiver_119 (J), Dove_104 (J), Ejimix_113 (J), Gonephishing_107 (J), Halley_121 (J), Hannaconda_104 (J), HokkenD_108 (J), Hughesyang_118 (J), JuicyJay_115 (J), KashFlow_110 (J), LittleE_118 (J), Lucky2013_110 (J), MiaZeal_113 (J), Minerva_116 (J), Nekros_115 (J), Nibley_106 (J), NihilNomen_120 (J), Odette_120 (J), Omega_124 (J), Phoebus_119 (J), Porcelain_113 (J), Pound_108 (J), Rearden_107 (J), Redno2_112 (J), Schatzie_113 (J), Shaboozey_111 (J), Squint_111 (J), Superphikiman_110 (J), Thibault_99 (J), Xiaokay_107 (J), Yeet_109 (J),

Summary by clusters:

There are 19 clusters represented in this pham: BT, BF, GD3, E, ED1, CB, J, KA, CE, singleton, ED2, ED3, L5, U, ED, DU1, DU2, UNK, CT,

Info for manual annotations of cluster BF:

- Start number 48 was manually annotated 3 times for cluster BF.
- Start number 50 was manually annotated 2 times for cluster BF.
- Start number 51 was manually annotated 1 time for cluster BF.
- Start number 52 was manually annotated 17 times for cluster BF.

Info for manual annotations of cluster BT:

- Start number 44 was manually annotated 2 times for cluster BT.

Info for manual annotations of cluster CB:

- Start number 67 was manually annotated 4 times for cluster CB.
- Start number 68 was manually annotated 3 times for cluster CB.
- Start number 69 was manually annotated 1 time for cluster CB.
- Start number 71 was manually annotated 1 time for cluster CB.
- Start number 72 was manually annotated 1 time for cluster CB.
- Start number 74 was manually annotated 5 times for cluster CB.

Info for manual annotations of cluster CE:

- Start number 58 was manually annotated 1 time for cluster CE.
- Start number 64 was manually annotated 1 time for cluster CE.
- Start number 75 was manually annotated 1 time for cluster CE.
- Start number 78 was manually annotated 1 time for cluster CE.
- Start number 91 was manually annotated 1 time for cluster CE.

Info for manual annotations of cluster CT:

- Start number 38 was manually annotated 2 times for cluster CT.
- Start number 39 was manually annotated 4 times for cluster CT.

Info for manual annotations of cluster DU1:

- Start number 23 was manually annotated 3 times for cluster DU1.
- Start number 26 was manually annotated 1 time for cluster DU1.

Info for manual annotations of cluster DU2:

- Start number 40 was manually annotated 3 times for cluster DU2.
- Start number 41 was manually annotated 3 times for cluster DU2.

Info for manual annotations of cluster E:

- Start number 81 was manually annotated 22 times for cluster E.
- Start number 83 was manually annotated 68 times for cluster E.
- Start number 86 was manually annotated 37 times for cluster E.
- Start number 88 was manually annotated 110 times for cluster E.

Info for manual annotations of cluster ED:

- Start number 70 was manually annotated 1 time for cluster ED.

Info for manual annotations of cluster ED1:

- Start number 70 was manually annotated 6 times for cluster ED1.
- Start number 77 was manually annotated 5 times for cluster ED1.

Info for manual annotations of cluster ED2:

- Start number 76 was manually annotated 15 times for cluster ED2.

Info for manual annotations of cluster GD3:

- Start number 43 was manually annotated 2 times for cluster GD3.

Info for manual annotations of cluster J:

- Start number 80 was manually annotated 25 times for cluster J.
- Start number 97 was manually annotated 30 times for cluster J.

Info for manual annotations of cluster KA:

- Start number 41 was manually annotated 2 times for cluster KA.

Info for manual annotations of cluster L5:

- Start number 51 was manually annotated 2 times for cluster L5.

Info for manual annotations of cluster U:

- Start number 91 was manually annotated 2 times for cluster U.

Info for manual annotations of cluster UNK:

- Start number 51 was manually annotated 1 time for cluster UNK.

Gene Information:

Gene: 244_81 Start: 49796, Stop: 50131, Start Num: 88

Candidate Starts for 244_81:

(4, 49226), (7, 49343), (18, 49544), (Start: 81 @49781 has 22 MA's), (Start: 88 @49796 has 110 MA's), (98, 49832), (189, 50111),

Gene: ABCat_70 Start: 47769, Stop: 48146, Start Num: 83

Candidate Starts for ABCat_70:

(Start: 83 @47769 has 68 MA's), (Start: 86 @47775 has 37 MA's), (114, 47847), (127, 47907), (181, 48078),

Gene: ABCat_77 Start: 50134, Stop: 50484, Start Num: 81

Candidate Starts for ABCat_77:

(18, 49897), (Start: 81 @50134 has 22 MA's), (Start: 88 @50149 has 110 MA's), (98, 50185), (189, 50464),

Gene: ASegato_105 Start: 56034, Stop: 55597, Start Num: 76

Candidate Starts for ASegato_105:

(Start: 76 @56034 has 15 MA's), (90, 56010), (95, 55989), (126, 55893), (128, 55881), (129, 55878), (141, 55836), (151, 55806), (169, 55773),

Gene: Adnama_84 Start: 50160, Stop: 50507, Start Num: 81

Candidate Starts for Adnama_84:

(18, 49923), (Start: 81 @50160 has 22 MA's), (Start: 88 @50175 has 110 MA's), (98, 50211), (189, 50487),

Gene: Adnama_77 Start: 47795, Stop: 48172, Start Num: 83

Candidate Starts for Adnama_77:

(Start: 83 @47795 has 68 MA's), (Start: 86 @47801 has 37 MA's), (114, 47873), (127, 47933), (181, 48104),

Gene: Aegeus_65 Start: 44400, Stop: 44765, Start Num: 51

Candidate Starts for Aegeus_65:

(Start: 51 @44400 has 4 MA's), (Start: 68 @44430 has 3 MA's), (115, 44502), (117, 44508), (160, 44622), (180, 44664), (203, 44751),

Gene: Alleb_103 Start: 57500, Stop: 57114, Start Num: 70

Candidate Starts for Alleb_103:

(34, 57593), (42, 57557), (54, 57524), (Start: 68 @57503 has 3 MA's), (Start: 70 @57500 has 7 MA's), (104, 57419), (115, 57401), (128, 57347), (134, 57323), (163, 57251), (176, 57215), (182, 57197),

Gene: Amao_80 Start: 49569, Stop: 49901, Start Num: 88

Candidate Starts for Amao_80:

(18, 49317), (Start: 81 @49554 has 22 MA's), (Start: 88 @49569 has 110 MA's), (98, 49605), (150, 49764), (168, 49803), (174, 49818), (182, 49839),

Gene: Amao_73 Start: 47195, Stop: 47566, Start Num: 86

Candidate Starts for Amao_73:

(Start: 83 @47189 has 68 MA's), (Start: 86 @47195 has 37 MA's), (114, 47267), (127, 47327), (181, 47498),

Gene: AmericanBeauty_84 Start: 50318, Stop: 50653, Start Num: 88

Candidate Starts for AmericanBeauty_84:

(18, 50066), (Start: 81 @50303 has 22 MA's), (Start: 88 @50318 has 110 MA's), (98, 50354), (189, 50633),

Gene: Argent26_84 Start: 49956, Stop: 50291, Start Num: 88

Candidate Starts for Argent26_84:

(18, 49704), (Start: 81 @49941 has 22 MA's), (Start: 88 @49956 has 110 MA's), (98, 49992), (189, 50271),

Gene: Ariel_113 Start: 61833, Stop: 62153, Start Num: 97

Candidate Starts for Ariel_113:

(Start: 97 @61833 has 30 MA's), (110, 61872), (138, 61971), (160, 62028), (173, 62064), (181, 62094), (189, 62139),

Gene: Asriel_72 Start: 46132, Stop: 46509, Start Num: 83

Candidate Starts for Asriel_72:

(Start: 83 @46132 has 68 MA's), (Start: 86 @46138 has 37 MA's), (114, 46210), (127, 46270), (181, 46441),

Gene: Asriel_79 Start: 48512, Stop: 48844, Start Num: 88

Candidate Starts for Asriel_79:

(18, 48260), (Start: 81 @48497 has 22 MA's), (Start: 88 @48512 has 110 MA's), (98, 48548), (189, 48824),

Gene: BaboJay_70 Start: 46969, Stop: 47346, Start Num: 83

Candidate Starts for BaboJay_70:

(Start: 83 @46969 has 68 MA's), (Start: 86 @46975 has 37 MA's), (114, 47047), (127, 47107), (181, 47278),

Gene: BaboJay_77 Start: 49349, Stop: 49684, Start Num: 88

Candidate Starts for BaboJay_77:

(18, 49097), (Start: 81 @49334 has 22 MA's), (Start: 88 @49349 has 110 MA's), (98, 49385), (189, 49664),

Gene: BadStone_70 Start: 47338, Stop: 47715, Start Num: 83

Candidate Starts for BadStone_70:

(Start: 83 @47338 has 68 MA's), (Start: 86 @47344 has 37 MA's), (114, 47416), (127, 47476), (181, 47647),

Gene: BadStone_77 Start: 49718, Stop: 50053, Start Num: 88

Candidate Starts for BadStone_77:

(18, 49466), (Start: 81 @49703 has 22 MA's), (Start: 88 @49718 has 110 MA's), (98, 49754), (189, 50033),

Gene: Bagrid_119 Start: 66108, Stop: 66428, Start Num: 97

Candidate Starts for Bagrid_119:

(Start: 97 @66108 has 30 MA's), (110, 66147), (160, 66303), (173, 66339), (181, 66369), (189, 66414),

Gene: Bagrid_135 Start: 72784, Stop: 73143, Start Num: 80

Candidate Starts for Bagrid_135:

(61, 72757), (Start: 80 @72784 has 25 MA's), (Start: 83 @72793 has 68 MA's), (129, 72925), (135, 72940), (180, 73069), (181, 73075),

Gene: Balomoji_80 Start: 50279, Stop: 50614, Start Num: 88

Candidate Starts for Balomoji_80:

(18, 50027), (Start: 81 @50264 has 22 MA's), (Start: 88 @50279 has 110 MA's), (98, 50315), (189, 50594),

Gene: Barbarian_72 Start: 46132, Stop: 46509, Start Num: 83

Candidate Starts for Barbarian_72:

(Start: 83 @46132 has 68 MA's), (Start: 86 @46138 has 37 MA's), (114, 46210), (127, 46270), (181, 46441),

Gene: Barbarian_79 Start: 48512, Stop: 48844, Start Num: 88

Candidate Starts for Barbarian_79:

(18, 48260), (Start: 81 @48497 has 22 MA's), (Start: 88 @48512 has 110 MA's), (98, 48548), (189, 48824),

Gene: Bask21_80 Start: 49132, Stop: 49467, Start Num: 88

Candidate Starts for Bask21_80:

(18, 48880), (Start: 81 @49117 has 22 MA's), (Start: 88 @49132 has 110 MA's), (98, 49168), (118, 49222), (160, 49348), (174, 49384), (175, 49387), (182, 49405), (189, 49447),

Gene: Bask21_73 Start: 46758, Stop: 47129, Start Num: 86

Candidate Starts for Bask21_73:

(Start: 83 @46752 has 68 MA's), (Start: 86 @46758 has 37 MA's), (114, 46830), (127, 46890), (158, 46989), (181, 47061),

Gene: Baudelaire_65 Start: 44400, Stop: 44765, Start Num: 51

Candidate Starts for Baudelaire_65:

(Start: 51 @44400 has 4 MA's), (Start: 68 @44430 has 3 MA's), (115, 44502), (117, 44508), (160, 44622), (180, 44664), (203, 44751),

Gene: Becksu_72 Start: 47977, Stop: 48345, Start Num: 86

Candidate Starts for Becksu_72:

(Start: 83 @47971 has 68 MA's), (Start: 86 @47977 has 37 MA's), (114, 48049), (127, 48109), (181, 48277),

Gene: Becksu_79 Start: 50348, Stop: 50683, Start Num: 88

Candidate Starts for Becksu_79:

(18, 50096), (Start: 81 @50333 has 22 MA's), (Start: 88 @50348 has 110 MA's), (98, 50384), (189, 50663),

Gene: Beem_120 Start: 67476, Stop: 67796, Start Num: 97

Candidate Starts for Beem_120:

(Start: 97 @67476 has 30 MA's), (110, 67515), (138, 67614), (160, 67671), (173, 67707), (181, 67737), (189, 67782),

Gene: Beem_136 Start: 74259, Stop: 74618, Start Num: 80

Candidate Starts for Beem_136:

(61, 74232), (Start: 80 @74259 has 25 MA's), (Start: 83 @74268 has 68 MA's), (129, 74400), (135, 74415),

Gene: Bench_83 Start: 49816, Stop: 50148, Start Num: 88

Candidate Starts for Bench_83:

(4, 49246), (7, 49363), (18, 49564), (Start: 81 @49801 has 22 MA's), (Start: 88 @49816 has 110 MA's), (98, 49852), (189, 50128),

Gene: Bench_76 Start: 47439, Stop: 47813, Start Num: 83

Candidate Starts for Bench_76:

(Start: 83 @47439 has 68 MA's), (Start: 86 @47445 has 37 MA's), (114, 47517), (127, 47577), (181, 47745),

Gene: BigBubba_73 Start: 47151, Stop: 47525, Start Num: 83

Candidate Starts for BigBubba_73:

(Start: 83 @47151 has 68 MA's), (Start: 86 @47157 has 37 MA's), (114, 47229), (127, 47289), (158, 47385), (181, 47457),

Gene: BigBubba_80 Start: 49528, Stop: 49860, Start Num: 88

Candidate Starts for BigBubba_80:

(18, 49276), (Start: 81 @49513 has 22 MA's), (Start: 88 @49528 has 110 MA's), (98, 49564), (189, 49840),

Gene: BilboSwaggins_71 Start: 47777, Stop: 48154, Start Num: 83

Candidate Starts for BilboSwaggins_71:

(Start: 83 @47777 has 68 MA's), (Start: 86 @47783 has 37 MA's), (114, 47855), (127, 47915), (181, 48086),

Gene: BilboSwaggins_78 Start: 50157, Stop: 50489, Start Num: 88

Candidate Starts for BilboSwaggins_78:

(18, 49905), (Start: 81 @50142 has 22 MA's), (Start: 88 @50157 has 110 MA's), (98, 50193), (189, 50469),

Gene: Bobby_126 Start: 74360, Stop: 74719, Start Num: 80

Candidate Starts for Bobby_126:

(61, 74333), (Start: 80 @74360 has 25 MA's), (Start: 83 @74369 has 68 MA's), (129, 74501), (135, 74516),

Gene: Bogg_73 Start: 46724, Stop: 47092, Start Num: 86

Candidate Starts for Bogg_73:

(Start: 83 @46718 has 68 MA's), (Start: 86 @46724 has 37 MA's), (114, 46796), (127, 46856), (181, 47024),

Gene: Bogg_80 Start: 49080, Stop: 49427, Start Num: 81

Candidate Starts for Bogg_80:

(18, 48843), (Start: 81 @49080 has 22 MA's), (Start: 88 @49095 has 110 MA's), (98, 49131), (189, 49407),

Gene: Bombitas_106 Start: 63398, Stop: 63718, Start Num: 97

Candidate Starts for Bombitas_106:

(Start: 97 @63398 has 30 MA's), (110, 63437), (138, 63536), (160, 63593), (173, 63629), (181, 63659), (189, 63704),

Gene: Bombitas_122 Start: 71670, Stop: 72029, Start Num: 80

Candidate Starts for Bombitas_122:

(61, 71643), (Start: 80 @71670 has 25 MA's), (Start: 83 @71679 has 68 MA's), (129, 71811), (135, 71826),

Gene: Brewer_76 Start: 48618, Stop: 48950, Start Num: 88

Candidate Starts for Brewer_76:

(18, 48366), (Start: 81 @48603 has 22 MA's), (Start: 88 @48618 has 110 MA's), (98, 48654), (189, 48930),

Gene: BronnyJames_111 Start: 62319, Stop: 62642, Start Num: 97

Candidate Starts for BronnyJames_111:

(Start: 97 @62319 has 30 MA's), (110, 62358), (127, 62424), (132, 62445), (133, 62448), (144, 62475), (189, 62628),

Gene: Bruin_77 Start: 48677, Stop: 49027, Start Num: 81

Candidate Starts for Bruin_77:

(18, 48440), (Start: 81 @48677 has 22 MA's), (Start: 88 @48692 has 110 MA's), (98, 48728), (189, 49007),

Gene: Bruin_70 Start: 46315, Stop: 46689, Start Num: 83

Candidate Starts for Bruin_70:

(Start: 83 @46315 has 68 MA's), (Start: 86 @46321 has 37 MA's), (114, 46393), (127, 46453), (181, 46621),

Gene: Buck_81 Start: 50397, Stop: 50732, Start Num: 88

Candidate Starts for Buck_81:

(18, 50145), (Start: 81 @50382 has 22 MA's), (Start: 88 @50397 has 110 MA's), (98, 50433), (189, 50712),

Gene: Budgie_86 Start: 50187, Stop: 50519, Start Num: 88

Candidate Starts for Budgie_86:

(7, 49734), (18, 49935), (Start: 81 @50172 has 22 MA's), (Start: 88 @50187 has 110 MA's), (98, 50223), (150, 50382), (168, 50421), (174, 50436), (182, 50457), (184, 50466),

Gene: Budgie_79 Start: 47813, Stop: 48184, Start Num: 86

Candidate Starts for Budgie_79:

(30, 47672), (Start: 83 @47807 has 68 MA's), (Start: 86 @47813 has 37 MA's), (96, 47840), (114, 47885), (127, 47945), (158, 48044), (181, 48116),

Gene: BugsBunny_80 Start: 50209, Stop: 50556, Start Num: 81

Candidate Starts for BugsBunny_80:

(18, 49972), (Start: 81 @50209 has 22 MA's), (Start: 88 @50224 has 110 MA's), (98, 50260), (189, 50536),

Gene: BugsBunny_73 Start: 47853, Stop: 48221, Start Num: 86

Candidate Starts for BugsBunny_73:

(Start: 83 @47847 has 68 MA's), (Start: 86 @47853 has 37 MA's), (114, 47925), (127, 47985), (181, 48153),

Gene: Button_63 Start: 43199, Stop: 43654, Start Num: 38

Candidate Starts for Button_63:

(Start: 38 @43199 has 2 MA's), (62, 43241), (Start: 68 @43253 has 3 MA's), (89, 43289), (101, 43304), (117, 43346), (120, 43364), (132, 43421), (134, 43427), (154, 43484), (182, 43547), (186, 43571), (189, 43589),

Gene: CN1A_12 Start: 5964, Stop: 6377, Start Num: 85

Candidate Starts for CN1A_12:

(14, 5682), (27, 5778), (85, 5964), (94, 5988), (103, 6012), (112, 6036), (127, 6102), (128, 6111), (132, 6129), (143, 6159), (146, 6168), (208, 6363), (209, 6366),

Gene: Cactus_83 Start: 49173, Stop: 49508, Start Num: 88

Candidate Starts for Cactus_83:

(18, 48921), (Start: 81 @49158 has 22 MA's), (Start: 88 @49173 has 110 MA's), (98, 49209), (189, 49488),

Gene: Casablanacas_107 Start: 55664, Stop: 55227, Start Num: 76

Candidate Starts for Casablanacas_107:

(Start: 76 @55664 has 15 MA's), (90, 55640), (95, 55619), (126, 55523), (128, 55511), (129, 55508), (141, 55466), (151, 55436), (169, 55403),

Gene: Cece_15 Start: 5418, Stop: 5840, Start Num: 43

Candidate Starts for Cece_15:

(Start: 43 @5418 has 2 MA's), (Start: 70 @5472 has 7 MA's), (79, 5484), (100, 5544), (124, 5607), (176, 5742),

Gene: Cece_317 Start: 173852, Stop: 174274, Start Num: 43

Candidate Starts for Cece_317:

(Start: 43 @173852 has 2 MA's), (Start: 70 @173906 has 7 MA's), (79, 173918), (100, 173978), (124, 174041), (176, 174176),

Gene: ChosenOne_80 Start: 49173, Stop: 49508, Start Num: 88

Candidate Starts for ChosenOne_80:

(18, 48921), (Start: 81 @49158 has 22 MA's), (Start: 88 @49173 has 110 MA's), (98, 49209), (189, 49488),

Gene: ChosenOne_73 Start: 46796, Stop: 47170, Start Num: 83

Candidate Starts for ChosenOne_73:

(Start: 83 @46796 has 68 MA's), (Start: 86 @46802 has 37 MA's), (114, 46874), (127, 46934), (181, 47102),

Gene: ChotaBhai_73 Start: 47117, Stop: 47494, Start Num: 83

Candidate Starts for ChotaBhai_73:

(Start: 83 @47117 has 68 MA's), (Start: 86 @47123 has 37 MA's), (114, 47195), (127, 47255), (158, 47354), (181, 47426),

Gene: ChotaBhai_80 Start: 49497, Stop: 49832, Start Num: 88

Candidate Starts for ChotaBhai_80:

(18, 49245), (Start: 81 @49482 has 22 MA's), (Start: 88 @49497 has 110 MA's), (98, 49533), (118, 49587), (160, 49713), (174, 49749), (175, 49752), (182, 49770), (189, 49812),

Gene: Cjw1_80 Start: 50855, Stop: 51202, Start Num: 81

Candidate Starts for Cjw1_80:

(18, 50618), (Start: 81 @50855 has 22 MA's), (Start: 88 @50870 has 110 MA's), (98, 50906), (189, 51182),

Gene: Cjw1_73 Start: 48499, Stop: 48867, Start Num: 86

Candidate Starts for Cjw1_73:

(Start: 83 @48493 has 68 MA's), (Start: 86 @48499 has 37 MA's), (114, 48571), (127, 48631), (181, 48799),

Gene: Colossa_134 Start: 73240, Stop: 72845, Start Num: 41

Candidate Starts for Colossa_134:

(Start: 41 @73240 has 5 MA's), (Start: 70 @73177 has 7 MA's), (162, 72985),

Gene: Command613_75 Start: 47838, Stop: 48209, Start Num: 86

Candidate Starts for Command613_75:

(Start: 83 @47832 has 68 MA's), (Start: 86 @47838 has 37 MA's), (114, 47910), (127, 47970), (181, 48141),

Gene: Command613_82 Start: 50197, Stop: 50547, Start Num: 81

Candidate Starts for Command613_82:

(18, 49960), (Start: 81 @50197 has 22 MA's), (Start: 88 @50212 has 110 MA's), (98, 50248), (189, 50527),

Gene: Constella_101 Start: 60252, Stop: 60566, Start Num: 97

Candidate Starts for Constella_101:

(Start: 97 @60252 has 30 MA's), (110, 60291), (118, 60318), (160, 60441), (189, 60552),

Gene: Constella_128 Start: 72912, Stop: 73271, Start Num: 80

Candidate Starts for Constella_128:

(61, 72885), (Start: 80 @72912 has 25 MA's), (Start: 83 @72921 has 68 MA's), (129, 73053), (135, 73068), (180, 73197), (181, 73203),

Gene: Contagion_69 Start: 46596, Stop: 46970, Start Num: 83

Candidate Starts for Contagion_69:

(Start: 83 @46596 has 68 MA's), (Start: 86 @46602 has 37 MA's), (114, 46674), (127, 46734), (181, 46902),

Gene: Contagion_76 Start: 48973, Stop: 49308, Start Num: 88

Candidate Starts for Contagion_76:

(18, 48721), (Start: 81 @48958 has 22 MA's), (Start: 88 @48973 has 110 MA's), (98, 49009), (189, 49288),

Gene: Cookies_77 Start: 49354, Stop: 49689, Start Num: 88

Candidate Starts for Cookies_77:

(18, 49102), (Start: 81 @49339 has 22 MA's), (Start: 88 @49354 has 110 MA's), (98, 49390), (118, 49444), (160, 49570), (174, 49606), (175, 49609), (182, 49627), (189, 49669),

Gene: Cookies_70 Start: 46974, Stop: 47351, Start Num: 83

Candidate Starts for Cookies_70:

(Start: 83 @46974 has 68 MA's), (Start: 86 @46980 has 37 MA's), (114, 47052), (127, 47112), (158, 47211), (181, 47283),

Gene: Courthouse_108 Start: 61433, Stop: 61753, Start Num: 97

Candidate Starts for Courthouse_108:

(Start: 97 @61433 has 30 MA's), (110, 61472), (138, 61571), (160, 61628), (173, 61664), (181, 61694), (189, 61739),

Gene: CrystalP_72 Start: 47783, Stop: 48154, Start Num: 86

Candidate Starts for CrystalP_72:

(Start: 83 @47777 has 68 MA's), (Start: 86 @47783 has 37 MA's), (114, 47855), (127, 47915), (181, 48086),

Gene: CrystalP_79 Start: 50157, Stop: 50489, Start Num: 88

Candidate Starts for CrystalP_79:

(18, 49905), (Start: 81 @50142 has 22 MA's), (Start: 88 @50157 has 110 MA's), (98, 50193), (189, 50469),

Gene: Czyszczone1_81 Start: 49679, Stop: 50011, Start Num: 88

Candidate Starts for Czyszczone1_81:

(18, 49427), (Start: 81 @49664 has 22 MA's), (Start: 88 @49679 has 110 MA's), (98, 49715), (189, 49991),

Gene: Czyszczone1_74 Start: 47302, Stop: 47676, Start Num: 83

Candidate Starts for Czyszczone1_74:

(Start: 83 @47302 has 68 MA's), (Start: 86 @47308 has 37 MA's), (114, 47380), (127, 47440), (181, 47608),

Gene: Daikon_82 Start: 50285, Stop: 50635, Start Num: 81

Candidate Starts for Daikon_82:

(18, 50048), (Start: 81 @50285 has 22 MA's), (Start: 88 @50300 has 110 MA's), (98, 50336), (189, 50615),

Gene: Dallas_119 Start: 66991, Stop: 67311, Start Num: 97

Candidate Starts for Dallas_119:

(Start: 97 @66991 has 30 MA's), (110, 67030), (160, 67186), (173, 67222), (181, 67252), (189, 67297),

Gene: Dallas_135 Start: 73726, Stop: 74085, Start Num: 80

Candidate Starts for Dallas_135:

(61, 73699), (Start: 80 @73726 has 25 MA's), (Start: 83 @73735 has 68 MA's), (129, 73867), (135, 73882), (181, 74017),

Gene: DejaVu_108 Start: 57205, Stop: 56840, Start Num: 77

Candidate Starts for DejaVu_108:

(45, 57256), (Start: 77 @57205 has 5 MA's), (104, 57136), (127, 57076), (128, 57067), (134, 57043), (140, 57028), (190, 56878), (195, 56869),

Gene: Demikore_60 Start: 43030, Stop: 43398, Start Num: 91

Candidate Starts for Demikore_60:

(Start: 91 @43030 has 3 MA's), (129, 43159), (131, 43168), (166, 43264), (175, 43291),

Gene: Dennebes_81 Start: 39474, Stop: 38989, Start Num: 50

Candidate Starts for Dennebes_81:

(Start: 50 @39474 has 2 MA's), (73, 39435), (103, 39366), (112, 39345), (137, 39243), (145, 39225), (149, 39213), (151, 39207), (152, 39204),

Gene: Deschain_107 Start: 56328, Stop: 55891, Start Num: 76

Candidate Starts for Deschain_107:

(Start: 76 @56328 has 15 MA's), (95, 56283), (126, 56187), (128, 56175), (129, 56172), (141, 56130), (151, 56100), (169, 56067),

Gene: Destructrice_75 Start: 38837, Stop: 38355, Start Num: 52

Candidate Starts for Destructrice_75:

(32, 38900), (36, 38885), (Start: 52 @38837 has 17 MA's), (92, 38765), (103, 38732), (141, 38597), (148, 38579), (182, 38501), (200, 38432),

Gene: DmpstrDiver_134 Start: 73073, Stop: 73432, Start Num: 80

Candidate Starts for DmpstrDiver_134:

(61, 73046), (Start: 80 @73073 has 25 MA's), (Start: 83 @73082 has 68 MA's), (129, 73214), (135, 73229), (180, 73358), (181, 73364),

Gene: DmpstrDiver_119 Start: 66397, Stop: 66717, Start Num: 97

Candidate Starts for DmpstrDiver_119:

(Start: 97 @66397 has 30 MA's), (110, 66436), (160, 66592), (173, 66628), (181, 66658), (189, 66703),

Gene: DoctorDiddles_72 Start: 47167, Stop: 47538, Start Num: 86

Candidate Starts for DoctorDiddles_72:

(Start: 83 @47161 has 68 MA's), (Start: 86 @47167 has 37 MA's), (114, 47239), (127, 47299), (158, 47398), (181, 47470),

Gene: DoctorDiddles_79 Start: 49541, Stop: 49876, Start Num: 88

Candidate Starts for DoctorDiddles_79:

(18, 49289), (Start: 81 @49526 has 22 MA's), (Start: 88 @49541 has 110 MA's), (98, 49577), (118, 49631), (160, 49757), (174, 49793), (175, 49796), (182, 49814), (189, 49856),

Gene: Dove_120 Start: 68672, Stop: 69031, Start Num: 80

Candidate Starts for Dove_120:

(61, 68645), (Start: 80 @68672 has 25 MA's), (Start: 83 @68681 has 68 MA's), (129, 68813), (135, 68828), (180, 68957), (181, 68963),

Gene: Dove_104 Start: 61905, Stop: 62225, Start Num: 97

Candidate Starts for Dove_104:

(Start: 97 @61905 has 30 MA's), (110, 61944), (138, 62043), (160, 62100), (173, 62136), (181, 62166), (189, 62211),

Gene: DrDrey_80 Start: 50583, Stop: 50930, Start Num: 81

Candidate Starts for DrDrey_80:

(18, 50346), (Start: 81 @50583 has 22 MA's), (Start: 88 @50598 has 110 MA's), (98, 50634), (189, 50910),

Gene: DrDrey_73 Start: 48218, Stop: 48595, Start Num: 83

Candidate Starts for DrDrey_73:

(Start: 83 @48218 has 68 MA's), (Start: 86 @48224 has 37 MA's), (114, 48296), (127, 48356), (181, 48527),

Gene: Duke13_129 Start: 70374, Stop: 70733, Start Num: 80

Candidate Starts for Duke13_129:

(61, 70347), (Start: 80 @70374 has 25 MA's), (Start: 83 @70383 has 68 MA's), (129, 70515), (135, 70530), (180, 70659), (181, 70665),

Gene: Dumbo_73 Start: 46707, Stop: 47075, Start Num: 86

Candidate Starts for Dumbo_73:

(Start: 83 @46701 has 68 MA's), (Start: 86 @46707 has 37 MA's), (114, 46779), (127, 46839), (181, 47007),

Gene: Dumbo_80 Start: 49063, Stop: 49413, Start Num: 81

Candidate Starts for Dumbo_80:

(18, 48826), (Start: 81 @49063 has 22 MA's), (Start: 88 @49078 has 110 MA's), (98, 49114), (189, 49393),

Gene: Dusk_70 Start: 46998, Stop: 47375, Start Num: 83

Candidate Starts for Dusk_70:

(Start: 83 @46998 has 68 MA's), (Start: 86 @47004 has 37 MA's), (114, 47076), (127, 47136), (181, 47307),

Gene: Dusk_77 Start: 49378, Stop: 49713, Start Num: 88

Candidate Starts for Dusk_77:

(18, 49126), (Start: 81 @49363 has 22 MA's), (Start: 88 @49378 has 110 MA's), (98, 49414), (189, 49693),

Gene: DustyDino_110 Start: 56887, Stop: 56450, Start Num: 76

Candidate Starts for DustyDino_110:

(Start: 76 @56887 has 15 MA's), (90, 56863), (95, 56842), (126, 56746), (128, 56734), (129, 56731), (141, 56689), (151, 56659), (169, 56626),

Gene: Easy2Say_81 Start: 50622, Stop: 50954, Start Num: 88

Candidate Starts for Easy2Say_81:

(18, 50370), (Start: 81 @50607 has 22 MA's), (Start: 88 @50622 has 110 MA's), (98, 50658), (189, 50934),

Gene: Ejimix_128 Start: 73794, Stop: 74153, Start Num: 80

Candidate Starts for Ejimix_128:

(61, 73767), (Start: 80 @73794 has 25 MA's), (Start: 83 @73803 has 68 MA's), (129, 73935), (135, 73950), (181, 74085),

Gene: Ejimix_113 Start: 67525, Stop: 67845, Start Num: 97

Candidate Starts for Ejimix_113:

(Start: 97 @67525 has 30 MA's), (110, 67564), (160, 67720), (173, 67756), (181, 67786), (189, 67831),

Gene: Elite2014_79 Start: 49172, Stop: 49507, Start Num: 88

Candidate Starts for Elite2014_79:

(18, 48920), (Start: 81 @49157 has 22 MA's), (Start: 88 @49172 has 110 MA's), (98, 49208), (189, 49487),

Gene: Elite2014_72 Start: 46795, Stop: 47169, Start Num: 83

Candidate Starts for Elite2014_72:

(Start: 83 @46795 has 68 MA's), (Start: 86 @46801 has 37 MA's), (114, 46873), (127, 46933), (181, 47101),

Gene: Elph10_80 Start: 49162, Stop: 49509, Start Num: 81

Candidate Starts for Elph10_80:

(18, 48925), (Start: 81 @49162 has 22 MA's), (Start: 88 @49177 has 110 MA's), (98, 49213), (189, 49489),

Gene: Elph10_73 Start: 46806, Stop: 47174, Start Num: 86

Candidate Starts for Elph10_73:

(Start: 83 @46800 has 68 MA's), (Start: 86 @46806 has 37 MA's), (114, 46878), (127, 46938), (181, 47106),

Gene: Emmina_80 Start: 49079, Stop: 49411, Start Num: 88
Candidate Starts for Emmina_80:
(Start: 81 @49064 has 22 MA's), (Start: 88 @49079 has 110 MA's), (98, 49115), (189, 49391),

Gene: Emmina_73 Start: 46702, Stop: 47076, Start Num: 83
Candidate Starts for Emmina_73:
(Start: 83 @46702 has 68 MA's), (Start: 86 @46708 has 37 MA's), (114, 46780), (127, 46840), (181, 47008),

Gene: Erenyeager_107 Start: 55997, Stop: 55551, Start Num: 76
Candidate Starts for Erenyeager_107:
(1, 56621), (2, 56594), (3, 56573), (6, 56525), (8, 56411), (9, 56360), (25, 56168), (46, 56048), (Start: 76 @55997 has 15 MA's), (90, 55973), (95, 55952), (126, 55847), (128, 55835), (129, 55832), (141, 55790), (151, 55760),

Gene: EricMillard_126 Start: 72298, Stop: 72657, Start Num: 80
Candidate Starts for EricMillard_126:
(61, 72271), (Start: 80 @72298 has 25 MA's), (Start: 83 @72307 has 68 MA's), (129, 72439), (135, 72454), (180, 72583), (181, 72589),

Gene: Eureka_71 Start: 47272, Stop: 47640, Start Num: 86
Candidate Starts for Eureka_71:
(Start: 83 @47266 has 68 MA's), (Start: 86 @47272 has 37 MA's), (114, 47344), (127, 47404), (181, 47572),

Gene: Eureka_78 Start: 49628, Stop: 49975, Start Num: 81
Candidate Starts for Eureka_78:
(18, 49391), (Start: 81 @49628 has 22 MA's), (Start: 88 @49643 has 110 MA's), (98, 49679), (189, 49955),

Gene: Fabian_73 Start: 38951, Stop: 38469, Start Num: 52
Candidate Starts for Fabian_73:
(Start: 52 @38951 has 17 MA's), (92, 38879), (103, 38846), (127, 38768), (137, 38726), (182, 38618), (197, 38555), (209, 38513),

Gene: FairyPath_81 Start: 50291, Stop: 50626, Start Num: 88
Candidate Starts for FairyPath_81:
(18, 50039), (Start: 81 @50276 has 22 MA's), (Start: 88 @50291 has 110 MA's), (98, 50327), (145, 50468), (160, 50507), (174, 50543), (175, 50546), (182, 50564), (189, 50606),

Gene: FairyPath_74 Start: 47911, Stop: 48288, Start Num: 83
Candidate Starts for FairyPath_74:
(Start: 83 @47911 has 68 MA's), (Start: 86 @47917 has 37 MA's), (114, 47989), (127, 48049), (181, 48220),

Gene: Filch_81 Start: 49104, Stop: 49436, Start Num: 88
Candidate Starts for Filch_81:
(18, 48852), (Start: 81 @49089 has 22 MA's), (Start: 88 @49104 has 110 MA's), (98, 49140), (189, 49416),

Gene: Filch_74 Start: 46733, Stop: 47101, Start Num: 86
Candidate Starts for Filch_74:

(Start: 83 @46727 has 68 MA's), (Start: 86 @46733 has 37 MA's), (114, 46805), (127, 46865), (181, 47033),

Gene: FireRed_84 Start: 50666, Stop: 51001, Start Num: 88

Candidate Starts for FireRed_84:

(4, 50096), (7, 50213), (18, 50414), (Start: 81 @50651 has 22 MA's), (Start: 88 @50666 has 110 MA's), (98, 50702), (189, 50981),

Gene: FireRed_77 Start: 48298, Stop: 48663, Start Num: 86

Candidate Starts for FireRed_77:

(Start: 83 @48292 has 68 MA's), (Start: 86 @48298 has 37 MA's), (114, 48370), (127, 48424), (181, 48595),

Gene: FlowerPower_74 Start: 38621, Stop: 38139, Start Num: 52

Candidate Starts for FlowerPower_74:

(Start: 52 @38621 has 17 MA's), (92, 38549), (103, 38516), (127, 38438), (137, 38396), (182, 38288), (197, 38225), (209, 38183),

Gene: Flypotenuse_76 Start: 49163, Stop: 49498, Start Num: 88

Candidate Starts for Flypotenuse_76:

(18, 48911), (Start: 81 @49148 has 22 MA's), (Start: 88 @49163 has 110 MA's), (98, 49199), (189, 49478),

Gene: FoghornLeghorn_74 Start: 48161, Stop: 48511, Start Num: 81

Candidate Starts for FoghornLeghorn_74:

(Start: 81 @48161 has 22 MA's), (Start: 88 @48176 has 110 MA's), (98, 48212), (118, 48266), (160, 48392), (174, 48428), (175, 48431), (182, 48449), (189, 48491),

Gene: FoghornLeghorn_67 Start: 45805, Stop: 46173, Start Num: 86

Candidate Starts for FoghornLeghorn_67:

(Start: 83 @45799 has 68 MA's), (Start: 86 @45805 has 37 MA's), (114, 45877), (127, 45937), (181, 46105),

Gene: Fork_103 Start: 55912, Stop: 55475, Start Num: 76

Candidate Starts for Fork_103:

(Start: 76 @55912 has 15 MA's), (90, 55888), (95, 55867), (126, 55771), (128, 55759), (129, 55756), (141, 55714), (151, 55684), (169, 55651),

Gene: Gage_82 Start: 49956, Stop: 50291, Start Num: 88

Candidate Starts for Gage_82:

(18, 49704), (Start: 81 @49941 has 22 MA's), (Start: 88 @49956 has 110 MA's), (98, 49992), (189, 50271),

Gene: Gator_71 Start: 47629, Stop: 48006, Start Num: 83

Candidate Starts for Gator_71:

(Start: 83 @47629 has 68 MA's), (Start: 86 @47635 has 37 MA's), (114, 47707), (127, 47767), (181, 47938),

Gene: Gator_78 Start: 50009, Stop: 50341, Start Num: 88

Candidate Starts for Gator_78:

(18, 49757), (Start: 81 @49994 has 22 MA's), (Start: 88 @50009 has 110 MA's), (98, 50045), (189, 50321),

Gene: Gemini_85 Start: 50473, Stop: 50808, Start Num: 88

Candidate Starts for Gemini_85:

(18, 50221), (Start: 81 @50458 has 22 MA's), (Start: 88 @50473 has 110 MA's), (98, 50509), (189, 50788),

Gene: Geostin_69 Start: 38621, Stop: 38139, Start Num: 52

Candidate Starts for Geostin_69:

(Start: 52 @38621 has 17 MA's), (92, 38549), (103, 38516), (127, 38438), (137, 38396), (182, 38288), (197, 38225), (209, 38183),

Gene: GiKK_67 Start: 44458, Stop: 44943, Start Num: 39

Candidate Starts for GiKK_67:

(10, 44224), (12, 44242), (20, 44332), (21, 44353), (Start: 39 @44458 has 4 MA's), (Start: 43 @44482 has 2 MA's), (62, 44521), (Start: 68 @44533 has 3 MA's), (117, 44635), (134, 44716), (154, 44773), (182, 44836), (186, 44860), (189, 44878),

Gene: Glexan_79 Start: 50293, Stop: 50628, Start Num: 88

Candidate Starts for Glexan_79:

(18, 50041), (Start: 81 @50278 has 22 MA's), (Start: 88 @50293 has 110 MA's), (98, 50329), (189, 50608),

Gene: Goku_78 Start: 49357, Stop: 49704, Start Num: 81

Candidate Starts for Goku_78:

(18, 49120), (Start: 81 @49357 has 22 MA's), (Start: 88 @49372 has 110 MA's), (98, 49408), (189, 49684),

Gene: Goku_71 Start: 46995, Stop: 47369, Start Num: 83

Candidate Starts for Goku_71:

(Start: 83 @46995 has 68 MA's), (Start: 86 @47001 has 37 MA's), (114, 47073), (127, 47133), (181, 47301),

Gene: GoldenSpark_84 Start: 49941, Stop: 50291, Start Num: 81

Candidate Starts for GoldenSpark_84:

(18, 49704), (Start: 81 @49941 has 22 MA's), (Start: 88 @49956 has 110 MA's), (98, 49992), (189, 50271),

Gene: Goldilocks_76 Start: 47080, Stop: 47451, Start Num: 86

Candidate Starts for Goldilocks_76:

(Start: 83 @47074 has 68 MA's), (Start: 86 @47080 has 37 MA's), (114, 47152), (127, 47212), (181, 47383),

Gene: Goldilocks_83 Start: 49454, Stop: 49786, Start Num: 88

Candidate Starts for Goldilocks_83:

(18, 49202), (Start: 81 @49439 has 22 MA's), (Start: 88 @49454 has 110 MA's), (98, 49490), (189, 49766),

Gene: Gonephishing_107 Start: 60857, Stop: 61180, Start Num: 97

Candidate Starts for Gonephishing_107:

(Start: 97 @60857 has 30 MA's), (110, 60896), (127, 60962), (132, 60983), (133, 60986), (144, 61013), (189, 61166),

Gene: GooberAzure_83 Start: 49956, Stop: 50291, Start Num: 88

Candidate Starts for GooberAzure_83:

(18, 49704), (Start: 81 @49941 has 22 MA's), (Start: 88 @49956 has 110 MA's), (98, 49992), (189, 50271),

Gene: Grayson_26 Start: 7449, Stop: 7075, Start Num: 68

Candidate Starts for Grayson_26:

(Start: 68 @7449 has 3 MA's), (130, 7281), (137, 7254), (160, 7209), (183, 7140),

Gene: Grayson_232 Start: 113102, Stop: 113485, Start Num: 67

Candidate Starts for Grayson_232:

(65, 113096), (Start: 67 @113102 has 4 MA's), (125, 113249), (134, 113288), (180, 113396), (192, 113456), (197, 113465),

Gene: Grayson_206 Start: 104718, Stop: 105071, Start Num: 69

Candidate Starts for Grayson_206:

(Start: 69 @104718 has 1 MA's), (126, 104859), (172, 104967), (180, 104985),

Gene: Grayson_20 Start: 5707, Stop: 5357, Start Num: 74

Candidate Starts for Grayson_20:

(63, 5728), (Start: 74 @5707 has 5 MA's), (173, 5467),

Gene: Grayson_21 Start: 6068, Stop: 5700, Start Num: 74

Candidate Starts for Grayson_21:

(56, 6098), (60, 6092), (65, 6086), (Start: 74 @6068 has 5 MA's), (127, 5924), (130, 5909), (196, 5717),

Gene: Greep_77 Start: 48584, Stop: 48952, Start Num: 86

Candidate Starts for Greep_77:

(Start: 83 @48578 has 68 MA's), (Start: 86 @48584 has 37 MA's), (114, 48656), (127, 48716), (181, 48884),

Gene: Greep_84 Start: 50955, Stop: 51287, Start Num: 88

Candidate Starts for Greep_84:

(18, 50703), (Start: 81 @50940 has 22 MA's), (Start: 88 @50955 has 110 MA's), (98, 50991), (189, 51267),

Gene: Gremlin23_74 Start: 38621, Stop: 38139, Start Num: 52

Candidate Starts for Gremlin23_74:

(Start: 52 @38621 has 17 MA's), (92, 38549), (103, 38516), (127, 38438), (137, 38396), (182, 38288), (197, 38225), (209, 38183),

Gene: Halley_121 Start: 67841, Stop: 68161, Start Num: 97

Candidate Starts for Halley_121:

(Start: 97 @67841 has 30 MA's), (110, 67880), (160, 68036), (173, 68072), (181, 68102), (189, 68147),

Gene: Halley_136 Start: 74110, Stop: 74469, Start Num: 80

Candidate Starts for Halley_136:

(61, 74083), (Start: 80 @74110 has 25 MA's), (Start: 83 @74119 has 68 MA's), (129, 74251), (135, 74266), (181, 74401),

Gene: HanKaySha_73 Start: 46880, Stop: 47254, Start Num: 83

Candidate Starts for HanKaySha_73:

(Start: 83 @46880 has 68 MA's), (Start: 86 @46886 has 37 MA's), (114, 46958), (127, 47018), (181, 47186),

Gene: HanKaySha_80 Start: 49257, Stop: 49589, Start Num: 88

Candidate Starts for HanKaySha_80:

(18, 49005), (Start: 81 @49242 has 22 MA's), (Start: 88 @49257 has 110 MA's), (98, 49293), (189, 49569),

Gene: Hannaconda_104 Start: 59803, Stop: 60126, Start Num: 97

Candidate Starts for Hannaconda_104:

(Start: 97 @59803 has 30 MA's), (110, 59842), (127, 59908), (132, 59929), (133, 59932), (144, 59959), (189, 60112),

Gene: Harella_80 Start: 50809, Stop: 51144, Start Num: 88

Candidate Starts for Harella_80:

(18, 50557), (Start: 81 @50794 has 22 MA's), (Start: 88 @50809 has 110 MA's), (98, 50845), (189, 51124),

Gene: HaugeAnator_76 Start: 38999, Stop: 38496, Start Num: 52

Candidate Starts for HaugeAnator_76:

(Start: 52 @38999 has 17 MA's), (73, 38963), (92, 38927), (103, 38891), (115, 38858), (127, 38810), (136, 38771), (182, 38660), (186, 38636), (202, 38582),

Gene: Henry_71 Start: 47217, Stop: 47594, Start Num: 83

Candidate Starts for Henry_71:

(Start: 83 @47217 has 68 MA's), (Start: 86 @47223 has 37 MA's), (114, 47295), (127, 47355), (181, 47526),

Gene: Henry_78 Start: 49597, Stop: 49929, Start Num: 88

Candidate Starts for Henry_78:

(18, 49345), (Start: 81 @49582 has 22 MA's), (Start: 88 @49597 has 110 MA's), (98, 49633), (189, 49909),

Gene: Hidrated_121 Start: 72693, Stop: 73052, Start Num: 80

Candidate Starts for Hidrated_121:

(61, 72666), (Start: 80 @72693 has 25 MA's), (Start: 83 @72702 has 68 MA's), (129, 72834), (135, 72849),

Gene: Highbury_72 Start: 46868, Stop: 47242, Start Num: 83

Candidate Starts for Highbury_72:

(Start: 83 @46868 has 68 MA's), (Start: 86 @46874 has 37 MA's), (114, 46946), (127, 47006), (181, 47174),

Gene: Highbury_79 Start: 49245, Stop: 49580, Start Num: 88

Candidate Starts for Highbury_79:

(18, 48993), (Start: 81 @49230 has 22 MA's), (Start: 88 @49245 has 110 MA's), (98, 49281), (189, 49560),

Gene: HokkenD_108 Start: 64913, Stop: 65233, Start Num: 97

Candidate Starts for HokkenD_108:

(Start: 97 @64913 has 30 MA's), (110, 64952), (138, 65051), (160, 65108), (173, 65144), (181, 65174), (189, 65219),

Gene: HokkenD_126 Start: 72994, Stop: 73353, Start Num: 80

Candidate Starts for HokkenD_126:

(61, 72967), (Start: 80 @72994 has 25 MA's), (Start: 83 @73003 has 68 MA's), (129, 73135), (135, 73150), (180, 73279), (181, 73285),

Gene: HollowPurple_108 Start: 56575, Stop: 56138, Start Num: 76

Candidate Starts for HollowPurple_108:

(Start: 76 @56575 has 15 MA's), (90, 56551), (95, 56530), (126, 56434), (128, 56422), (129, 56419), (141, 56377), (151, 56347), (169, 56314),

Gene: Holt_85 Start: 50370, Stop: 50705, Start Num: 88

Candidate Starts for Holt_85:

(18, 50118), (Start: 81 @50355 has 22 MA's), (Start: 88 @50370 has 110 MA's), (98, 50406), (189, 50685),

Gene: Hoonter_83 Start: 49956, Stop: 50288, Start Num: 88

Candidate Starts for Hoonter_83:

(4, 49386), (7, 49503), (18, 49704), (Start: 81 @49941 has 22 MA's), (Start: 88 @49956 has 110 MA's), (98, 49992), (189, 50268),

Gene: Hokey_80 Start: 49789, Stop: 50121, Start Num: 88

Candidate Starts for Hokey_80:

(18, 49537), (Start: 81 @49774 has 22 MA's), (Start: 88 @49789 has 110 MA's), (98, 49825), (189, 50101),

Gene: Hokey_73 Start: 47412, Stop: 47786, Start Num: 83

Candidate Starts for Hokey_73:

(Start: 83 @47412 has 68 MA's), (Start: 86 @47418 has 37 MA's), (114, 47490), (127, 47550), (181, 47718),

Gene: Hortus1_107 Start: 58256, Stop: 57870, Start Num: 70

Candidate Starts for Hortus1_107:

(34, 58349), (42, 58313), (54, 58280), (Start: 68 @58259 has 3 MA's), (Start: 70 @58256 has 7 MA's), (104, 58175), (115, 58157), (128, 58103), (134, 58079), (163, 58007), (176, 57971), (182, 57953),

Gene: Hubbs_107 Start: 57469, Stop: 57104, Start Num: 77

Candidate Starts for Hubbs_107:

(45, 57520), (Start: 77 @57469 has 5 MA's), (104, 57400), (127, 57340), (128, 57331), (134, 57307), (140, 57292), (190, 57142), (195, 57133),

Gene: HufflyPuff_83 Start: 50607, Stop: 50954, Start Num: 81

Candidate Starts for HufflyPuff_83:

(Start: 81 @50607 has 22 MA's), (Start: 88 @50622 has 110 MA's), (98, 50658), (189, 50934),

Gene: HufflyPuff_76 Start: 48245, Stop: 48619, Start Num: 83

Candidate Starts for HufflyPuff_76:

(Start: 83 @48245 has 68 MA's), (Start: 86 @48251 has 37 MA's), (114, 48323), (127, 48383), (181, 48551),

Gene: Hughesyang_134 Start: 73880, Stop: 74239, Start Num: 80

Candidate Starts for Hughesyang_134:

(61, 73853), (Start: 80 @73880 has 25 MA's), (Start: 83 @73889 has 68 MA's), (129, 74021), (135, 74036), (180, 74165), (181, 74171),

Gene: Hughesyang_118 Start: 67297, Stop: 67617, Start Num: 97

Candidate Starts for Hughesyang_118:

(Start: 97 @67297 has 30 MA's), (110, 67336), (160, 67492), (173, 67528), (181, 67558), (189, 67603),

Gene: IHOP_71 Start: 47341, Stop: 47718, Start Num: 83

Candidate Starts for IHOP_71:

(Start: 83 @47341 has 68 MA's), (Start: 86 @47347 has 37 MA's), (114, 47419), (127, 47479), (181, 47650),

Gene: IHOP_78 Start: 49721, Stop: 50053, Start Num: 88

Candidate Starts for IHOP_78:

(18, 49469), (Start: 81 @49706 has 22 MA's), (Start: 88 @49721 has 110 MA's), (98, 49757), (189, 50033),

Gene: Icee_81 Start: 49620, Stop: 49955, Start Num: 88

Candidate Starts for Icee_81:

(18, 49368), (Start: 81 @49605 has 22 MA's), (Start: 88 @49620 has 110 MA's), (98, 49656), (189, 49935),

Gene: Immanuel3_74 Start: 39005, Stop: 38502, Start Num: 52

Candidate Starts for Immanuel3_74:

(Start: 52 @39005 has 17 MA's), (73, 38969), (92, 38933), (103, 38897), (127, 38816), (136, 38777), (182, 38666), (186, 38642), (202, 38588),

Gene: Inca_70 Start: 45869, Stop: 46243, Start Num: 83

Candidate Starts for Inca_70:

(Start: 83 @45869 has 68 MA's), (Start: 86 @45875 has 37 MA's), (114, 45947), (127, 46007), (181, 46175),

Gene: Inca_77 Start: 48246, Stop: 48581, Start Num: 88

Candidate Starts for Inca_77:

(18, 47994), (Start: 81 @48231 has 22 MA's), (Start: 88 @48246 has 110 MA's), (98, 48282), (189, 48561),

Gene: Issa7_106 Start: 55958, Stop: 55521, Start Num: 76

Candidate Starts for Issa7_106:

(Start: 76 @55958 has 15 MA's), (90, 55934), (95, 55913), (126, 55817), (128, 55805), (129, 55802), (141, 55760), (151, 55730), (169, 55697),

Gene: JPandJE_75 Start: 39350, Stop: 38847, Start Num: 52

Candidate Starts for JPandJE_75:

(Start: 52 @39350 has 17 MA's), (73, 39314), (92, 39278), (103, 39242), (115, 39209), (127, 39161), (136, 39122), (182, 39011), (186, 38987), (202, 38933),

Gene: Jamzy_67 Start: 44194, Stop: 44679, Start Num: 39

Candidate Starts for Jamzy_67:

(10, 43960), (12, 43978), (20, 44068), (21, 44089), (Start: 39 @44194 has 4 MA's), (Start: 43 @44218 has 2 MA's), (62, 44257), (Start: 68 @44269 has 3 MA's), (117, 44371), (134, 44452), (182, 44572), (186, 44596), (189, 44614),

Gene: JeTaime_80 Start: 50438, Stop: 50770, Start Num: 88

Candidate Starts for JeTaime_80:

(18, 50186), (Start: 81 @50423 has 22 MA's), (Start: 88 @50438 has 110 MA's), (98, 50474), (189, 50750),

Gene: JuicyJay_115 Start: 68611, Stop: 68931, Start Num: 97

Candidate Starts for JuicyJay_115:

(Start: 97 @68611 has 30 MA's), (110, 68650), (138, 68749), (160, 68806), (173, 68842), (181, 68872), (189, 68917),

Gene: JuicyJay_131 Start: 75395, Stop: 75754, Start Num: 80

Candidate Starts for JuicyJay_131:

(61, 75368), (Start: 80 @75395 has 25 MA's), (Start: 83 @75404 has 68 MA's), (129, 75536), (135, 75551),

Gene: Kanye_77 Start: 49302, Stop: 49637, Start Num: 88

Candidate Starts for Kanye_77:

(18, 49050), (Start: 81 @49287 has 22 MA's), (Start: 88 @49302 has 110 MA's), (98, 49338), (189, 49617),

Gene: Kanye_70 Start: 46922, Stop: 47299, Start Num: 83

Candidate Starts for Kanye_70:

(Start: 83 @46922 has 68 MA's), (Start: 86 @46928 has 37 MA's), (114, 47000), (127, 47060), (181, 47231),

Gene: KashFlow_110 Start: 62308, Stop: 62631, Start Num: 97

Candidate Starts for KashFlow_110:

(Start: 97 @62308 has 30 MA's), (110, 62347), (127, 62413), (132, 62434), (133, 62437), (144, 62464), (189, 62617),

Gene: Kimchi_84 Start: 49959, Stop: 50294, Start Num: 88

Candidate Starts for Kimchi_84:

(18, 49707), (Start: 81 @49944 has 22 MA's), (Start: 88 @49959 has 110 MA's), (98, 49995), (189, 50274),

Gene: Klein_131 Start: 71031, Stop: 71390, Start Num: 80

Candidate Starts for Klein_131:

(61, 71004), (Start: 80 @71031 has 25 MA's), (Start: 83 @71040 has 68 MA's), (129, 71172), (135, 71187), (180, 71316), (181, 71322),

Gene: Kostya_80 Start: 49805, Stop: 50155, Start Num: 81

Candidate Starts for Kostya_80:

(18, 49568), (Start: 81 @49805 has 22 MA's), (Start: 88 @49820 has 110 MA's), (98, 49856), (189, 50135),

Gene: Kostya_73 Start: 47446, Stop: 47817, Start Num: 86

Candidate Starts for Kostya_73:

(Start: 83 @47440 has 68 MA's), (Start: 86 @47446 has 37 MA's), (114, 47518), (127, 47578), (181, 47749),

Gene: Kudrefre_45 Start: 34124, Stop: 34657, Start Num: 23

Candidate Starts for Kudrefre_45:

(11, 33998), (13, 34007), (Start: 23 @34124 has 3 MA's), (Start: 26 @34136 has 1 MA's), (Start: 70 @34295 has 7 MA's), (112, 34397), (127, 34448), (139, 34490), (150, 34526),

Gene: Kumquat_74 Start: 38229, Stop: 37786, Start Num: 48

Candidate Starts for Kumquat_74:

(33, 38286), (Start: 40 @38262 has 3 MA's), (Start: 48 @38229 has 3 MA's), (127, 38040), (171, 37926), (207, 37803),

Gene: LilJank_45 Start: 35208, Stop: 35594, Start Num: 43

Candidate Starts for LilJank_45:

(Start: 41 @35196 has 5 MA's), (Start: 43 @35208 has 2 MA's), (Start: 51 @35226 has 4 MA's), (Start: 70 @35259 has 7 MA's), (117, 35340), (132, 35400), (154, 35451), (186, 35529), (192, 35556), (201, 35577),

Gene: LilJank_52 Start: 37710, Stop: 38108, Start Num: 40

Candidate Starts for LilJank_52:

(Start: 40 @37710 has 3 MA's), (46, 37740), (Start: 70 @37776 has 7 MA's), (73, 37779), (Start: 76 @37785 has 15 MA's), (89, 37809), (131, 37896), (139, 37917), (148, 37941), (182, 38016), (186, 38040), (203, 38094), (205, 38100),

Gene: Lilac_75 Start: 47197, Stop: 47571, Start Num: 83

Candidate Starts for Lilac_75:

(Start: 83 @47197 has 68 MA's), (Start: 86 @47203 has 37 MA's), (114, 47275), (127, 47335), (181, 47503),

Gene: Lilac_82 Start: 49574, Stop: 49906, Start Num: 88

Candidate Starts for Lilac_82:

(18, 49322), (Start: 81 @49559 has 22 MA's), (Start: 88 @49574 has 110 MA's), (98, 49610), (189, 49886),

Gene: Lilizi_74 Start: 46910, Stop: 47284, Start Num: 83

Candidate Starts for Lilizi_74:

(Start: 83 @46910 has 68 MA's), (Start: 86 @46916 has 37 MA's), (114, 46988), (127, 47048), (181, 47216),

Gene: Lilizi_81 Start: 49287, Stop: 49619, Start Num: 88

Candidate Starts for Lilizi_81:

(4, 48717), (7, 48834), (18, 49035), (Start: 81 @49272 has 22 MA's), (Start: 88 @49287 has 110 MA's), (98, 49323), (189, 49599),

Gene: Lilpickle_72 Start: 46795, Stop: 47169, Start Num: 83

Candidate Starts for Lilpickle_72:

(Start: 83 @46795 has 68 MA's), (Start: 86 @46801 has 37 MA's), (114, 46873), (127, 46933), (181, 47101),

Gene: Lilpickle_79 Start: 49172, Stop: 49507, Start Num: 88

Candidate Starts for Lilpickle_79:

(18, 48920), (Start: 81 @49157 has 22 MA's), (Start: 88 @49172 has 110 MA's), (98, 49208), (189, 49487),

Gene: LittleE_118 Start: 65723, Stop: 66046, Start Num: 97

Candidate Starts for LittleE_118:

(Start: 97 @65723 has 30 MA's), (110, 65762), (127, 65828), (132, 65849), (133, 65852), (144, 65879), (189, 66032),

Gene: Liveloughbron_75 Start: 48379, Stop: 48747, Start Num: 86

Candidate Starts for Liveloughbron_75:

(Start: 83 @48373 has 68 MA's), (Start: 86 @48379 has 37 MA's), (114, 48451), (127, 48511), (181, 48679),

Gene: Liveloughbron_82 Start: 50750, Stop: 51082, Start Num: 88

Candidate Starts for Liveloughbron_82:

(18, 50498), (Start: 81 @50735 has 22 MA's), (Start: 88 @50750 has 110 MA's), (98, 50786), (189, 51062),

Gene: Lucky2013_110 Start: 61874, Stop: 62194, Start Num: 97

Candidate Starts for Lucky2013_110:

(Start: 97 @61874 has 30 MA's), (110, 61913), (138, 62012), (160, 62069), (173, 62105), (181, 62135), (189, 62180),

Gene: Lyell_106 Start: 55834, Stop: 55397, Start Num: 76

Candidate Starts for Lyell_106:

(5, 56371), (8, 56248), (9, 56197), (25, 56005), (46, 55885), (Start: 76 @55834 has 15 MA's), (90, 55810), (95, 55789), (126, 55693), (128, 55681), (129, 55678), (141, 55636), (151, 55606), (169, 55573),

Gene: MISSy_74 Start: 47301, Stop: 47675, Start Num: 83

Candidate Starts for MISSy_74:

(Start: 83 @47301 has 68 MA's), (Start: 86 @47307 has 37 MA's), (114, 47379), (127, 47439), (181, 47607),

Gene: MISSy_81 Start: 49663, Stop: 50013, Start Num: 81

Candidate Starts for MISSy_81:

(18, 49426), (Start: 81 @49663 has 22 MA's), (Start: 88 @49678 has 110 MA's), (98, 49714), (189, 49993),

Gene: MPhalcon_74 Start: 47294, Stop: 47668, Start Num: 83

Candidate Starts for MPhalcon_74:

(Start: 83 @47294 has 68 MA's), (Start: 86 @47300 has 37 MA's), (114, 47372), (127, 47432), (181, 47600),

Gene: MPhalcon_81 Start: 49671, Stop: 50006, Start Num: 88

Candidate Starts for MPhalcon_81:

(18, 49419), (Start: 81 @49656 has 22 MA's), (Start: 88 @49671 has 110 MA's), (98, 49707), (189, 49986),

Gene: MadamMonkfish_80 Start: 48896, Stop: 49234, Start Num: 88

Candidate Starts for MadamMonkfish_80:

(18, 48644), (Start: 81 @48881 has 22 MA's), (Start: 88 @48896 has 110 MA's), (98, 48932), (189, 49214),

Gene: MadamMonkfish_73 Start: 46525, Stop: 46893, Start Num: 86

Candidate Starts for MadamMonkfish_73:

(Start: 83 @46519 has 68 MA's), (Start: 86 @46525 has 37 MA's), (114, 46597), (127, 46657), (181, 46825),

Gene: Madruga_58 Start: 42688, Stop: 43056, Start Num: 91

Candidate Starts for Madruga_58:

(Start: 91 @42688 has 3 MA's), (129, 42817), (131, 42826), (166, 42922), (175, 42949),

Gene: Manda_74 Start: 48378, Stop: 48755, Start Num: 83
Candidate Starts for Manda_74:
(Start: 83 @48378 has 68 MA's), (Start: 86 @48384 has 37 MA's), (114, 48456), (127, 48516), (181, 48687),

Gene: Manda_81 Start: 50758, Stop: 51093, Start Num: 88
Candidate Starts for Manda_81:
(18, 50506), (Start: 81 @50743 has 22 MA's), (Start: 88 @50758 has 110 MA's), (98, 50794), (189, 51073),

Gene: Manuel_74 Start: 38664, Stop: 38179, Start Num: 51
Candidate Starts for Manuel_74:
(33, 38724), (Start: 51 @38664 has 4 MA's), (99, 38565), (118, 38517), (119, 38514), (127, 38481), (137, 38439), (147, 38415), (188, 38295), (211, 38193),

Gene: Margaret_67 Start: 43929, Stop: 44381, Start Num: 39
Candidate Starts for Margaret_67:
(Start: 39 @43929 has 4 MA's), (62, 43968), (Start: 68 @43980 has 3 MA's), (89, 44016), (101, 44031), (117, 44073), (120, 44091), (129, 44133), (132, 44148), (134, 44154), (182, 44274), (186, 44298), (189, 44316), (206, 44361),

Gene: Marleymoo_119 Start: 70106, Stop: 70465, Start Num: 80
Candidate Starts for Marleymoo_119:
(61, 70079), (Start: 80 @70106 has 25 MA's), (Start: 83 @70115 has 68 MA's), (129, 70247), (135, 70262),

Gene: Marshmallow_78 Start: 50436, Stop: 50783, Start Num: 81
Candidate Starts for Marshmallow_78:
(18, 50199), (Start: 81 @50436 has 22 MA's), (Start: 88 @50451 has 110 MA's), (98, 50487), (189, 50763),

Gene: Maxxinista_82 Start: 49547, Stop: 49879, Start Num: 88
Candidate Starts for Maxxinista_82:
(18, 49295), (Start: 81 @49532 has 22 MA's), (Start: 88 @49547 has 110 MA's), (98, 49583), (189, 49859),

Gene: Maxxinista_75 Start: 47176, Stop: 47544, Start Num: 86
Candidate Starts for Maxxinista_75:
(Start: 83 @47170 has 68 MA's), (Start: 86 @47176 has 37 MA's), (114, 47248), (127, 47308), (181, 47476),

Gene: MiaZeal_113 Start: 62505, Stop: 62825, Start Num: 97
Candidate Starts for MiaZeal_113:
(Start: 97 @62505 has 30 MA's), (110, 62544), (138, 62643), (160, 62700), (173, 62736), (181, 62766), (189, 62811),

Gene: Mindy_72 Start: 46383, Stop: 46760, Start Num: 83
Candidate Starts for Mindy_72:
(Start: 83 @46383 has 68 MA's), (Start: 86 @46389 has 37 MA's), (114, 46461), (127, 46521), (181, 46692),

Gene: Mindy_79 Start: 48763, Stop: 49095, Start Num: 88
Candidate Starts for Mindy_79:

(18, 48511), (Start: 81 @48748 has 22 MA's), (Start: 88 @48763 has 110 MA's), (98, 48799), (189, 49075),

Gene: Minerva_133 Start: 72481, Stop: 72840, Start Num: 80

Candidate Starts for Minerva_133:

(61, 72454), (Start: 80 @72481 has 25 MA's), (Start: 83 @72490 has 68 MA's), (129, 72622), (135, 72637), (180, 72766), (181, 72772),

Gene: Minerva_116 Start: 65898, Stop: 66218, Start Num: 97

Candidate Starts for Minerva_116:

(Start: 97 @65898 has 30 MA's), (110, 65937), (160, 66093), (173, 66129), (181, 66159), (189, 66204),

Gene: Miniwave_68 Start: 46836, Stop: 47213, Start Num: 83

Candidate Starts for Miniwave_68:

(Start: 83 @46836 has 68 MA's), (Start: 86 @46842 has 37 MA's), (114, 46914), (127, 46974), (181, 47145),

Gene: Miniwave_75 Start: 49216, Stop: 49551, Start Num: 88

Candidate Starts for Miniwave_75:

(18, 48964), (Start: 81 @49201 has 22 MA's), (Start: 88 @49216 has 110 MA's), (98, 49252), (145, 49393), (160, 49432), (174, 49468), (175, 49471), (182, 49489), (189, 49531),

Gene: Misfit_81 Start: 50690, Stop: 51025, Start Num: 88

Candidate Starts for Misfit_81:

(18, 50438), (Start: 81 @50675 has 22 MA's), (Start: 88 @50690 has 110 MA's), (98, 50726), (189, 51005),

Gene: Misfit_74 Start: 48313, Stop: 48687, Start Num: 83

Candidate Starts for Misfit_74:

(Start: 83 @48313 has 68 MA's), (Start: 86 @48319 has 37 MA's), (114, 48391), (127, 48451), (181, 48619),

Gene: Mistmere_103 Start: 54853, Stop: 54416, Start Num: 76

Candidate Starts for Mistmere_103:

(15, 55114), (Start: 76 @54853 has 15 MA's), (95, 54808), (126, 54709), (128, 54697), (140, 54658), (151, 54622), (156, 54613),

Gene: Moldemort_76 Start: 47395, Stop: 47772, Start Num: 83

Candidate Starts for Moldemort_76:

(Start: 83 @47395 has 68 MA's), (Start: 86 @47401 has 37 MA's), (114, 47473), (127, 47533), (181, 47704),

Gene: Moldemort_83 Start: 49775, Stop: 50107, Start Num: 88

Candidate Starts for Moldemort_83:

(18, 49523), (Start: 81 @49760 has 22 MA's), (Start: 88 @49775 has 110 MA's), (98, 49811), (189, 50087),

Gene: MollyToe_75 Start: 48502, Stop: 48852, Start Num: 81

Candidate Starts for MollyToe_75:

(18, 48265), (Start: 81 @48502 has 22 MA's), (Start: 88 @48517 has 110 MA's), (98, 48553), (118, 48607), (160, 48733), (174, 48769), (175, 48772), (182, 48790), (189, 48832),

Gene: Mosby_69 Start: 46596, Stop: 46970, Start Num: 83

Candidate Starts for Mosby_69:

(Start: 83 @46596 has 68 MA's), (Start: 86 @46602 has 37 MA's), (114, 46674), (127, 46734), (181, 46902),

Gene: Mosby_76 Start: 48973, Stop: 49308, Start Num: 88

Candidate Starts for Mosby_76:

(18, 48721), (Start: 81 @48958 has 22 MA's), (Start: 88 @48973 has 110 MA's), (98, 49009), (189, 49288),

Gene: Murica_76 Start: 48251, Stop: 48619, Start Num: 86

Candidate Starts for Murica_76:

(Start: 83 @48245 has 68 MA's), (Start: 86 @48251 has 37 MA's), (114, 48323), (127, 48383), (181, 48551),

Gene: Murica_83 Start: 50622, Stop: 50954, Start Num: 88

Candidate Starts for Murica_83:

(Start: 81 @50607 has 22 MA's), (Start: 88 @50622 has 110 MA's), (98, 50658), (189, 50934),

Gene: Murphy_80 Start: 50059, Stop: 50391, Start Num: 88

Candidate Starts for Murphy_80:

(18, 49807), (Start: 81 @50044 has 22 MA's), (Start: 88 @50059 has 110 MA's), (98, 50095), (189, 50371),

Gene: Murphy_73 Start: 47688, Stop: 48056, Start Num: 86

Candidate Starts for Murphy_73:

(Start: 83 @47682 has 68 MA's), (Start: 86 @47688 has 37 MA's), (114, 47760), (127, 47820), (181, 47988),

Gene: Musetta_105 Start: 56187, Stop: 55750, Start Num: 76

Candidate Starts for Musetta_105:

(1, 56811), (2, 56784), (3, 56763), (6, 56715), (8, 56601), (9, 56550), (25, 56358), (46, 56238), (Start: 76 @56187 has 15 MA's), (90, 56163), (95, 56142), (126, 56046), (128, 56034), (129, 56031), (141, 55989), (151, 55959), (169, 55926),

Gene: Myrale_80 Start: 50316, Stop: 50651, Start Num: 88

Candidate Starts for Myrale_80:

(18, 50064), (Start: 81 @50301 has 22 MA's), (Start: 88 @50316 has 110 MA's), (98, 50352), (145, 50493), (160, 50532), (174, 50568), (175, 50571), (182, 50589), (189, 50631),

Gene: Nala_75 Start: 47812, Stop: 48177, Start Num: 86

Candidate Starts for Nala_75:

(Start: 83 @47806 has 68 MA's), (Start: 86 @47812 has 37 MA's), (114, 47884), (127, 47938), (181, 48109),

Gene: Nala_82 Start: 50180, Stop: 50515, Start Num: 88

Candidate Starts for Nala_82:

(4, 49610), (7, 49727), (18, 49928), (Start: 81 @50165 has 22 MA's), (Start: 88 @50180 has 110 MA's), (98, 50216), (189, 50495),

Gene: Necrophoxinus_109 Start: 56843, Stop: 56406, Start Num: 76

Candidate Starts for Necrophoxinus_109:

(Start: 76 @56843 has 15 MA's), (90, 56819), (95, 56798), (126, 56702), (128, 56690), (129, 56687), (141, 56645), (151, 56615), (169, 56582),

Gene: Nekros_115 Start: 65028, Stop: 65351, Start Num: 97

Candidate Starts for Nekros_115:

(Start: 97 @65028 has 30 MA's), (110, 65067), (127, 65133), (132, 65154), (133, 65157), (144, 65184), (189, 65337),

Gene: NelitzaMV_78 Start: 49247, Stop: 49597, Start Num: 81

Candidate Starts for NelitzaMV_78:

(18, 49010), (Start: 81 @49247 has 22 MA's), (Start: 88 @49262 has 110 MA's), (98, 49298), (189, 49577),

Gene: NelitzaMV_71 Start: 46888, Stop: 47259, Start Num: 86

Candidate Starts for NelitzaMV_71:

(Start: 83 @46882 has 68 MA's), (Start: 86 @46888 has 37 MA's), (114, 46960), (127, 47020), (181, 47191),

Gene: Neville_46 Start: 34837, Stop: 35271, Start Num: 41

Candidate Starts for Neville_46:

(Start: 41 @34837 has 5 MA's), (Start: 43 @34849 has 2 MA's), (Start: 51 @34867 has 4 MA's), (Start: 70 @34900 has 7 MA's), (115, 34981), (133, 35050), (182, 35149), (185, 35167), (187, 35182), (189, 35191), (194, 35206),

Gene: Neville_54 Start: 37372, Stop: 37770, Start Num: 40

Candidate Starts for Neville_54:

(Start: 40 @37372 has 3 MA's), (46, 37402), (Start: 70 @37438 has 7 MA's), (73, 37441), (Start: 76 @37447 has 15 MA's), (89, 37471), (131, 37558), (139, 37579), (148, 37603), (182, 37678), (186, 37702), (203, 37756), (205, 37762),

Gene: Nibley_106 Start: 61896, Stop: 62219, Start Num: 97

Candidate Starts for Nibley_106:

(Start: 97 @61896 has 30 MA's), (110, 61935), (127, 62001), (132, 62022), (133, 62025), (144, 62052), (189, 62205),

Gene: NiceHouse_171 Start: 97963, Stop: 98331, Start Num: 91

Candidate Starts for NiceHouse_171:

(57, 97906), (Start: 91 @97963 has 3 MA's), (132, 98119), (185, 98266), (189, 98290),

Gene: NiceHouse_173 Start: 98723, Stop: 99082, Start Num: 78

Candidate Starts for NiceHouse_173:

(47, 98672), (Start: 78 @98723 has 1 MA's), (93, 98753), (126, 98870), (136, 98912), (191, 99053),

Gene: NiceHouse_172 Start: 98331, Stop: 98723, Start Num: 58

Candidate Starts for NiceHouse_172:

(Start: 58 @98331 has 1 MA's), (82, 98373), (84, 98376), (110, 98448),

Gene: NihilNomen_136 Start: 73340, Stop: 73699, Start Num: 80

Candidate Starts for NihilNomen_136:

(61, 73313), (Start: 80 @73340 has 25 MA's), (Start: 83 @73349 has 68 MA's), (129, 73481), (135, 73496),

Gene: NihilNomen_120 Start: 66563, Stop: 66883, Start Num: 97

Candidate Starts for NihilNomen_120:

(Start: 97 @66563 has 30 MA's), (110, 66602), (138, 66701), (160, 66758), (173, 66794), (181, 66824), (189, 66869),

Gene: Nimrod_74 Start: 48509, Stop: 48880, Start Num: 86

Candidate Starts for Nimrod_74:

(Start: 83 @48503 has 68 MA's), (Start: 86 @48509 has 37 MA's), (114, 48581), (127, 48641), (181, 48812),

Gene: Nimrod_81 Start: 50883, Stop: 51218, Start Num: 88

Candidate Starts for Nimrod_81:

(4, 50313), (7, 50430), (18, 50631), (Start: 81 @50868 has 22 MA's), (Start: 88 @50883 has 110 MA's), (98, 50919), (189, 51198),

Gene: NoSleep_74 Start: 47140, Stop: 47514, Start Num: 83

Candidate Starts for NoSleep_74:

(Start: 83 @47140 has 68 MA's), (Start: 86 @47146 has 37 MA's), (114, 47218), (127, 47278), (181, 47446),

Gene: NoSleep_81 Start: 49517, Stop: 49852, Start Num: 88

Candidate Starts for NoSleep_81:

(18, 49265), (Start: 81 @49502 has 22 MA's), (Start: 88 @49517 has 110 MA's), (98, 49553), (189, 49832),

Gene: NonchalantPear_80 Start: 49370, Stop: 49708, Start Num: 88

Candidate Starts for NonchalantPear_80:

(18, 49118), (Start: 81 @49355 has 22 MA's), (Start: 88 @49370 has 110 MA's), (98, 49406), (189, 49688),

Gene: NonchalantPear_73 Start: 46996, Stop: 47367, Start Num: 86

Candidate Starts for NonchalantPear_73:

(Start: 83 @46990 has 68 MA's), (Start: 86 @46996 has 37 MA's), (114, 47068), (127, 47128), (181, 47299),

Gene: Octobien14_47 Start: 34822, Stop: 35292, Start Num: 26

Candidate Starts for Octobien14_47:

(16, 34765), (19, 34783), (Start: 26 @34822 has 1 MA's), (37, 34867), (Start: 41 @34879 has 5 MA's), (89, 34957), (127, 35053), (185, 35221),

Gene: Odette_138 Start: 74911, Stop: 75270, Start Num: 80

Candidate Starts for Odette_138:

(61, 74884), (Start: 80 @74911 has 25 MA's), (Start: 83 @74920 has 68 MA's), (129, 75052), (135, 75067), (180, 75196), (181, 75202),

Gene: Odette_120 Start: 66457, Stop: 66777, Start Num: 97

Candidate Starts for Odette_120:

(Start: 97 @66457 has 30 MA's), (110, 66496), (138, 66595), (160, 66652), (173, 66688), (181, 66718), (189, 66763),

Gene: Olicious_76 Start: 39002, Stop: 38499, Start Num: 52

Candidate Starts for Olicious_76:

(Start: 52 @39002 has 17 MA's), (73, 38966), (92, 38930), (103, 38897), (127, 38813), (136, 38774), (167, 38702), (188, 38627), (202, 38585), (210, 38540),

Gene: OlinDD_107 Start: 58261, Stop: 57875, Start Num: 70

Candidate Starts for OlinDD_107:

(34, 58354), (42, 58318), (54, 58285), (Start: 68 @58264 has 3 MA's), (Start: 70 @58261 has 7 MA's), (104, 58180), (115, 58162), (128, 58108), (134, 58084), (163, 58012), (176, 57976), (182, 57958),

Gene: Omega_124 Start: 66872, Stop: 67195, Start Num: 97

Candidate Starts for Omega_124:

(Start: 97 @66872 has 30 MA's), (110, 66911), (127, 66977), (132, 66998), (133, 67001), (144, 67028), (189, 67181),

Gene: OrionPax_72 Start: 46894, Stop: 47265, Start Num: 86

Candidate Starts for OrionPax_72:

(Start: 83 @46888 has 68 MA's), (Start: 86 @46894 has 37 MA's), (114, 46966), (127, 47026), (158, 47125), (181, 47197),

Gene: OrionPax_79 Start: 49268, Stop: 49603, Start Num: 88

Candidate Starts for OrionPax_79:

(18, 49016), (Start: 81 @49253 has 22 MA's), (Start: 88 @49268 has 110 MA's), (98, 49304), (189, 49583),

Gene: PaddyBaddy_73 Start: 46900, Stop: 47268, Start Num: 86

Candidate Starts for PaddyBaddy_73:

(Start: 83 @46894 has 68 MA's), (Start: 86 @46900 has 37 MA's), (114, 46972), (127, 47032), (181, 47200),

Gene: PaddyBaddy_80 Start: 49271, Stop: 49603, Start Num: 88

Candidate Starts for PaddyBaddy_80:

(18, 49019), (Start: 81 @49256 has 22 MA's), (Start: 88 @49271 has 110 MA's), (98, 49307), (189, 49583),

Gene: Palpatine_75 Start: 48272, Stop: 48646, Start Num: 83

Candidate Starts for Palpatine_75:

(Start: 83 @48272 has 68 MA's), (Start: 86 @48278 has 37 MA's), (114, 48350), (127, 48410), (181, 48578),

Gene: Palpatine_82 Start: 50649, Stop: 50981, Start Num: 88

Candidate Starts for Palpatine_82:

(18, 50397), (Start: 81 @50634 has 22 MA's), (Start: 88 @50649 has 110 MA's), (98, 50685), (189, 50961),

Gene: Paperbeatsrock_79 Start: 49894, Stop: 50229, Start Num: 88

Candidate Starts for Paperbeatsrock_79:

(18, 49642), (Start: 81 @49879 has 22 MA's), (Start: 88 @49894 has 110 MA's), (98, 49930), (145, 50071), (160, 50110), (174, 50146), (175, 50149), (182, 50167), (189, 50209),

Gene: Paperbeatsrock_72 Start: 47514, Stop: 47891, Start Num: 83

Candidate Starts for Paperbeatsrock_72:

(Start: 83 @47514 has 68 MA's), (Start: 86 @47520 has 37 MA's), (114, 47592), (127, 47652), (181, 47823),

Gene: Pat3_78 Start: 48426, Stop: 48761, Start Num: 88

Candidate Starts for Pat3_78:

(18, 48174), (Start: 81 @48411 has 22 MA's), (Start: 88 @48426 has 110 MA's), (98, 48462), (118, 48516), (160, 48642), (174, 48678), (175, 48681), (182, 48699), (189, 48741),

Gene: Pat3_71 Start: 46046, Stop: 46423, Start Num: 83

Candidate Starts for Pat3_71:

(Start: 83 @46046 has 68 MA's), (Start: 86 @46052 has 37 MA's), (114, 46124), (127, 46184), (158, 46283), (181, 46355),

Gene: Patience_60 Start: 43583, Stop: 43951, Start Num: 91

Candidate Starts for Patience_60:

(Start: 91 @43583 has 3 MA's), (Start: 97 @43604 has 30 MA's), (129, 43712), (131, 43721), (166, 43817), (175, 43844), (186, 43901),

Gene: Pavlo_108 Start: 57864, Stop: 57499, Start Num: 77

Candidate Starts for Pavlo_108:

(45, 57915), (Start: 77 @57864 has 5 MA's), (104, 57795), (127, 57735), (128, 57726), (134, 57702), (140, 57687), (190, 57537), (195, 57528),

Gene: Percastrophe_76 Start: 38934, Stop: 38431, Start Num: 52

Candidate Starts for Percastrophe_76:

(Start: 52 @38934 has 17 MA's), (73, 38898), (92, 38862), (103, 38826), (115, 38793), (127, 38745), (136, 38706), (182, 38595), (186, 38571), (202, 38517), (211, 38451),

Gene: Peregrin_20 Start: 5906, Stop: 5532, Start Num: 74

Candidate Starts for Peregrin_20:

(Start: 74 @5906 has 5 MA's), (127, 5762), (130, 5747), (196, 5555), (198, 5552),

Gene: Peregrin_226 Start: 113095, Stop: 113481, Start Num: 67

Candidate Starts for Peregrin_226:

(Start: 67 @113095 has 4 MA's), (105, 113182), (123, 113239), (125, 113245), (180, 113392), (192, 113452), (197, 113461),

Gene: Peregrin_24 Start: 6762, Stop: 6388, Start Num: 68

Candidate Starts for Peregrin_24:

(Start: 68 @6762 has 3 MA's), (94, 6708), (122, 6633), (129, 6597), (130, 6594), (152, 6534),

Gene: Peregrin_203 Start: 105124, Stop: 105477, Start Num: 71

Candidate Starts for Peregrin_203:

(Start: 71 @105124 has 1 MA's), (126, 105265), (172, 105373), (180, 105391),

Gene: Peregrin_19 Start: 5539, Stop: 5195, Start Num: 74

Candidate Starts for Peregrin_19:

(Start: 74 @5539 has 5 MA's), (173, 5299),

Gene: Petra64142_84 Start: 51113, Stop: 51448, Start Num: 88

Candidate Starts for Petra64142_84:

(18, 50861), (Start: 81 @51098 has 22 MA's), (Start: 88 @51113 has 110 MA's), (98, 51149), (189, 51428),

Gene: Phaja_71 Start: 47340, Stop: 47717, Start Num: 83

Candidate Starts for Phaja_71:

(Start: 83 @47340 has 68 MA's), (Start: 86 @47346 has 37 MA's), (114, 47418), (127, 47478), (181, 47649),

Gene: Phaja_78 Start: 49720, Stop: 50055, Start Num: 88

Candidate Starts for Phaja_78:

(18, 49468), (Start: 81 @49705 has 22 MA's), (Start: 88 @49720 has 110 MA's), (98, 49756), (145, 49897), (160, 49936), (174, 49972), (175, 49975), (182, 49993), (189, 50035),

Gene: Pharsalus_70 Start: 47314, Stop: 47691, Start Num: 83

Candidate Starts for Pharsalus_70:

(Start: 83 @47314 has 68 MA's), (Start: 86 @47320 has 37 MA's), (114, 47392), (127, 47452), (181, 47623),

Gene: Pharsalus_77 Start: 49694, Stop: 50029, Start Num: 88

Candidate Starts for Pharsalus_77:

(18, 49442), (Start: 81 @49679 has 22 MA's), (Start: 88 @49694 has 110 MA's), (98, 49730), (145, 49871), (160, 49910), (174, 49946), (175, 49949), (182, 49967), (189, 50009),

Gene: PhatBacter_77 Start: 48289, Stop: 48663, Start Num: 83

Candidate Starts for PhatBacter_77:

(Start: 83 @48289 has 68 MA's), (Start: 86 @48295 has 37 MA's), (114, 48367), (127, 48427), (181, 48595),

Gene: PhatBacter_84 Start: 50666, Stop: 51001, Start Num: 88

Candidate Starts for PhatBacter_84:

(4, 50096), (7, 50213), (18, 50414), (Start: 81 @50651 has 22 MA's), (Start: 88 @50666 has 110 MA's), (98, 50702), (189, 50981),

Gene: Phaux_75 Start: 48284, Stop: 48658, Start Num: 83

Candidate Starts for Phaux_75:

(Start: 83 @48284 has 68 MA's), (Start: 86 @48290 has 37 MA's), (114, 48362), (127, 48422), (181, 48590),

Gene: Phaux_82 Start: 50661, Stop: 50996, Start Num: 88

Candidate Starts for Phaux_82:

(18, 50409), (Start: 81 @50646 has 22 MA's), (Start: 88 @50661 has 110 MA's), (98, 50697), (118, 50751), (160, 50877), (174, 50913), (175, 50916), (182, 50934), (189, 50976),

Gene: PhillyPhilly_105 Start: 56853, Stop: 56488, Start Num: 77

Candidate Starts for PhillyPhilly_105:

(45, 56904), (Start: 77 @56853 has 5 MA's), (104, 56784), (127, 56724), (128, 56715), (134, 56691), (140, 56676), (190, 56526), (195, 56517),

Gene: Phoebus_119 Start: 68421, Stop: 68741, Start Num: 97

Candidate Starts for Phoebus_119:

(Start: 97 @68421 has 30 MA's), (110, 68460), (138, 68559), (160, 68616), (173, 68652), (181, 68682), (189, 68727),

Gene: Phoebus_135 Start: 75234, Stop: 75593, Start Num: 80

Candidate Starts for Phoebus_135:

(61, 75207), (Start: 80 @75234 has 25 MA's), (Start: 83 @75243 has 68 MA's), (129, 75375), (135, 75390), (180, 75519), (181, 75525),

Gene: Phrux_70 Start: 46880, Stop: 47254, Start Num: 83

Candidate Starts for Phrux_70:

(Start: 83 @46880 has 68 MA's), (Start: 86 @46886 has 37 MA's), (114, 46958), (127, 47018), (181, 47186),

Gene: Phrux_77 Start: 49257, Stop: 49589, Start Num: 88

Candidate Starts for Phrux_77:

(18, 49005), (Start: 81 @49242 has 22 MA's), (Start: 88 @49257 has 110 MA's), (98, 49293), (189, 49569),

Gene: Pioneer3_107 Start: 58059, Stop: 57673, Start Num: 70

Candidate Starts for Pioneer3_107:

(34, 58152), (42, 58116), (54, 58083), (Start: 68 @58062 has 3 MA's), (Start: 70 @58059 has 7 MA's), (104, 57978), (115, 57960), (128, 57906), (134, 57882), (163, 57810), (176, 57774), (182, 57756),

Gene: Platte_106 Start: 57843, Stop: 57457, Start Num: 70

Candidate Starts for Platte_106:

(34, 57936), (42, 57900), (54, 57867), (Start: 68 @57846 has 3 MA's), (Start: 70 @57843 has 7 MA's), (104, 57762), (115, 57744), (128, 57690), (134, 57666), (163, 57594), (176, 57558), (182, 57540),

Gene: Policronamos_76 Start: 48284, Stop: 48658, Start Num: 83

Candidate Starts for Policronamos_76:

(Start: 83 @48284 has 68 MA's), (Start: 86 @48290 has 37 MA's), (114, 48362), (127, 48422), (181, 48590),

Gene: Policronamos_83 Start: 50661, Stop: 50996, Start Num: 88

Candidate Starts for Policronamos_83:

(18, 50409), (Start: 81 @50646 has 22 MA's), (Start: 88 @50661 has 110 MA's), (98, 50697), (118, 50751), (160, 50877), (174, 50913), (175, 50916), (182, 50934), (189, 50976),

Gene: Porcelain_113 Start: 62820, Stop: 63140, Start Num: 97

Candidate Starts for Porcelain_113:

(Start: 97 @62820 has 30 MA's), (110, 62859), (138, 62958), (160, 63015), (173, 63051), (181, 63081), (189, 63126),

Gene: Porky_72 Start: 46716, Stop: 47084, Start Num: 86

Candidate Starts for Porky_72:

(Start: 83 @46710 has 68 MA's), (Start: 86 @46716 has 37 MA's), (114, 46788), (127, 46848), (181, 47016),

Gene: Porky_79 Start: 49072, Stop: 49419, Start Num: 81

Candidate Starts for Porky_79:

(Start: 81 @49072 has 22 MA's), (Start: 88 @49087 has 110 MA's), (98, 49123), (189, 49399),

Gene: Pound_108 Start: 64917, Stop: 65237, Start Num: 97

Candidate Starts for Pound_108:

(Start: 97 @64917 has 30 MA's), (110, 64956), (160, 65112), (173, 65148), (181, 65178), (189, 65223),

Gene: Ptowny_77 Start: 48556, Stop: 48891, Start Num: 88

Candidate Starts for Ptowny_77:

(18, 48304), (Start: 81 @48541 has 22 MA's), (Start: 88 @48556 has 110 MA's), (98, 48592), (189, 48871),

Gene: Ptowny_70 Start: 46176, Stop: 46553, Start Num: 83

Candidate Starts for Ptowny_70:

(Start: 83 @46176 has 68 MA's), (Start: 86 @46182 has 37 MA's), (114, 46254), (127, 46314), (181, 46485),

Gene: Pumpkin_83 Start: 50315, Stop: 50647, Start Num: 88

Candidate Starts for Pumpkin_83:

(4, 49745), (7, 49862), (18, 50063), (Start: 81 @50300 has 22 MA's), (Start: 88 @50315 has 110 MA's), (98, 50351), (189, 50627),

Gene: Pumpkin_76 Start: 47944, Stop: 48312, Start Num: 86

Candidate Starts for Pumpkin_76:

(Start: 83 @47938 has 68 MA's), (Start: 86 @47944 has 37 MA's), (114, 48016), (127, 48076), (181, 48244),

Gene: Quallification_81 Start: 50302, Stop: 50637, Start Num: 88

Candidate Starts for Quallification_81:

(18, 50050), (Start: 81 @50287 has 22 MA's), (Start: 88 @50302 has 110 MA's), (98, 50338), (145, 50479), (160, 50518), (174, 50554), (175, 50557), (182, 50575), (189, 50617),

Gene: Quallification_74 Start: 47922, Stop: 48299, Start Num: 83

Candidate Starts for Quallification_74:

(Start: 83 @47922 has 68 MA's), (Start: 86 @47928 has 37 MA's), (114, 48000), (127, 48060), (181, 48231),

Gene: Rabbitrun_55 Start: 37898, Stop: 38293, Start Num: 40

Candidate Starts for Rabbitrun_55:

(28, 37826), (29, 37832), (31, 37865), (35, 37880), (Start: 40 @37898 has 3 MA's), (55, 37943), (66, 37958), (73, 37970), (175, 38183), (184, 38213), (203, 38282),

Gene: Rabbitrun_47 Start: 35261, Stop: 35668, Start Num: 41

Candidate Starts for Rabbitrun_47:

(Start: 41 @35261 has 5 MA's), (Start: 43 @35273 has 2 MA's), (Start: 51 @35291 has 4 MA's), (Start: 70 @35324 has 7 MA's), (117, 35405), (132, 35465), (182, 35570), (186, 35594),

Gene: Rakim_81 Start: 49771, Stop: 50103, Start Num: 88

Candidate Starts for Rakim_81:

(18, 49519), (Start: 81 @49756 has 22 MA's), (Start: 88 @49771 has 110 MA's), (98, 49807), (189, 50083),

Gene: Rakim_74 Start: 47394, Stop: 47768, Start Num: 83

Candidate Starts for Rakim_74:

(Start: 83 @47394 has 68 MA's), (Start: 86 @47400 has 37 MA's), (114, 47472), (127, 47532), (158, 47628), (181, 47700),

Gene: RanchParmCat_67 Start: 44221, Stop: 44673, Start Num: 39

Candidate Starts for RanchParmCat_67:

(17, 44083), (Start: 39 @44221 has 4 MA's), (62, 44260), (Start: 68 @44272 has 3 MA's), (89, 44308), (101, 44323), (117, 44365), (120, 44383), (129, 44425), (132, 44440), (134, 44446), (182, 44566), (186, 44590), (189, 44608), (206, 44653),

Gene: Rearden_107 Start: 62553, Stop: 62873, Start Num: 97

Candidate Starts for Rearden_107:

(Start: 97 @62553 has 30 MA's), (110, 62592), (138, 62691), (160, 62748), (173, 62784), (181, 62814), (189, 62859),

Gene: Redno2_126 Start: 70622, Stop: 70981, Start Num: 80

Candidate Starts for Redno2_126:

(61, 70595), (Start: 80 @70622 has 25 MA's), (Start: 83 @70631 has 68 MA's), (129, 70763), (135, 70778), (180, 70907), (181, 70913),

Gene: Redno2_112 Start: 64353, Stop: 64673, Start Num: 97

Candidate Starts for Redno2_112:

(Start: 97 @64353 has 30 MA's), (110, 64392), (138, 64491), (160, 64548), (173, 64584), (181, 64614), (189, 64659),

Gene: RetrieverFever_74 Start: 38621, Stop: 38139, Start Num: 52

Candidate Starts for RetrieverFever_74:

(Start: 52 @38621 has 17 MA's), (92, 38549), (103, 38516), (127, 38438), (137, 38396), (182, 38288), (197, 38225), (209, 38183),

Gene: Rideau_80 Start: 39365, Stop: 38880, Start Num: 50

Candidate Starts for Rideau_80:

(Start: 50 @39365 has 2 MA's), (73, 39326), (103, 39257), (112, 39236), (137, 39134), (145, 39116), (149, 39104), (151, 39098), (152, 39095),

Gene: Rimmer_81 Start: 50007, Stop: 50342, Start Num: 88

Candidate Starts for Rimmer_81:

(18, 49755), (Start: 81 @49992 has 22 MA's), (Start: 88 @50007 has 110 MA's), (98, 50043), (118, 50097), (160, 50223), (174, 50259), (175, 50262), (182, 50280), (189, 50322),

Gene: RiverMonster_80 Start: 49835, Stop: 50167, Start Num: 88

Candidate Starts for RiverMonster_80:

(18, 49583), (Start: 81 @49820 has 22 MA's), (Start: 88 @49835 has 110 MA's), (98, 49871), (189, 50147),

Gene: RiverMonster_73 Start: 47458, Stop: 47832, Start Num: 83

Candidate Starts for RiverMonster_73:

(Start: 83 @47458 has 68 MA's), (Start: 86 @47464 has 37 MA's), (114, 47536), (127, 47596), (181, 47764),

Gene: Roman_109 Start: 57913, Stop: 57548, Start Num: 77

Candidate Starts for Roman_109:

(45, 57964), (Start: 77 @57913 has 5 MA's), (104, 57844), (127, 57784), (128, 57775), (134, 57751), (140, 57736), (190, 57586), (195, 57577),

Gene: Romero_76 Start: 38995, Stop: 38492, Start Num: 52

Candidate Starts for Romero_76:

(Start: 52 @38995 has 17 MA's), (73, 38959), (92, 38923), (103, 38887), (127, 38806), (136, 38767), (182, 38656), (186, 38632), (202, 38578),

Gene: RosePharie_77 Start: 39114, Stop: 38629, Start Num: 52

Candidate Starts for RosePharie_77:

(30, 39192), (45, 39123), (Start: 52 @39114 has 17 MA's), (108, 38994), (137, 38889), (202, 38703), (204, 38700), (212, 38637),

Gene: RunningBrook_108 Start: 56887, Stop: 56450, Start Num: 76

Candidate Starts for RunningBrook_108:

(Start: 76 @56887 has 15 MA's), (90, 56863), (95, 56842), (126, 56746), (128, 56734), (129, 56731), (141, 56689), (151, 56659), (169, 56626),

Gene: Saints25_72 Start: 46868, Stop: 47242, Start Num: 83

Candidate Starts for Saints25_72:

(Start: 83 @46868 has 68 MA's), (Start: 86 @46874 has 37 MA's), (114, 46946), (127, 47006), (181, 47174),

Gene: Saints25_79 Start: 49245, Stop: 49580, Start Num: 88

Candidate Starts for Saints25_79:

(18, 48993), (Start: 81 @49230 has 22 MA's), (Start: 88 @49245 has 110 MA's), (98, 49281), (189, 49560),

Gene: Saradis_109 Start: 56880, Stop: 56515, Start Num: 77

Candidate Starts for Saradis_109:

(45, 56931), (Start: 77 @56880 has 5 MA's), (104, 56811), (127, 56751), (128, 56742), (134, 56718), (140, 56703), (190, 56553), (195, 56544),

Gene: Sassay_68 Start: 45564, Stop: 45932, Start Num: 86

Candidate Starts for Sassay_68:

(Start: 83 @45558 has 68 MA's), (Start: 86 @45564 has 37 MA's), (114, 45636), (127, 45696), (181, 45864),

Gene: Sassay_75 Start: 47920, Stop: 48270, Start Num: 81

Candidate Starts for Sassay_75:

(18, 47683), (Start: 81 @47920 has 22 MA's), (Start: 88 @47935 has 110 MA's), (98, 47971), (145, 48112), (160, 48151), (174, 48187), (175, 48190), (182, 48208), (189, 48250),

Gene: Schatzie_113 Start: 65339, Stop: 65659, Start Num: 97

Candidate Starts for Schatzie_113:

(Start: 97 @65339 has 30 MA's), (110, 65378), (138, 65477), (160, 65534), (173, 65570), (181, 65600), (189, 65645),

Gene: Schatzie_130 Start: 73330, Stop: 73689, Start Num: 80

Candidate Starts for Schatzie_130:

(61, 73303), (Start: 80 @73330 has 25 MA's), (Start: 83 @73339 has 68 MA's), (129, 73471), (135, 73486), (180, 73615), (181, 73621),

Gene: Sephiroth_46 Start: 34293, Stop: 34826, Start Num: 23

Candidate Starts for Sephiroth_46:

(11, 34167), (13, 34176), (Start: 23 @34293 has 3 MA's), (Start: 26 @34305 has 1 MA's), (Start: 70 @34464 has 7 MA's), (127, 34617), (132, 34644), (139, 34659), (150, 34695),

Gene: Shaboozey_111 Start: 62340, Stop: 62663, Start Num: 97

Candidate Starts for Shaboozey_111:

(Start: 97 @62340 has 30 MA's), (110, 62379), (127, 62445), (132, 62466), (133, 62469), (144, 62496), (189, 62649),

Gene: ShamWow_73 Start: 47777, Stop: 48154, Start Num: 83

Candidate Starts for ShamWow_73:

(Start: 83 @47777 has 68 MA's), (Start: 86 @47783 has 37 MA's), (114, 47855), (127, 47915), (181, 48086),

Gene: ShamWow_80 Start: 50157, Stop: 50489, Start Num: 88

Candidate Starts for ShamWow_80:

(18, 49905), (Start: 81 @50142 has 22 MA's), (Start: 88 @50157 has 110 MA's), (98, 50193), (189, 50469),

Gene: ShereKhan_72 Start: 47846, Stop: 48223, Start Num: 83

Candidate Starts for ShereKhan_72:

(Start: 83 @47846 has 68 MA's), (Start: 86 @47852 has 37 MA's), (114, 47924), (127, 47984), (181, 48155),

Gene: ShereKhan_78 Start: 50227, Stop: 50562, Start Num: 88

Candidate Starts for ShereKhan_78:

(18, 49975), (Start: 81 @50212 has 22 MA's), (Start: 88 @50227 has 110 MA's), (98, 50263), (145, 50404), (160, 50443), (174, 50479), (175, 50482), (182, 50500), (189, 50542),

Gene: Shroomer_112 Start: 56444, Stop: 56007, Start Num: 76

Candidate Starts for Shroomer_112:

(Start: 76 @56444 has 15 MA's), (90, 56420), (95, 56399), (126, 56303), (128, 56291), (129, 56288), (141, 56246), (151, 56216), (169, 56183),

Gene: Simpliphy_79 Start: 49235, Stop: 49570, Start Num: 88

Candidate Starts for Simpliphy_79:

(18, 48983), (Start: 81 @49220 has 22 MA's), (Start: 88 @49235 has 110 MA's), (98, 49271), (189, 49550),

Gene: Simpliphy_72 Start: 46864, Stop: 47232, Start Num: 86

Candidate Starts for Simpliphy_72:

(Start: 83 @46858 has 68 MA's), (Start: 86 @46864 has 37 MA's), (114, 46936), (127, 46996), (181, 47164),

Gene: SirDuracell_79 Start: 48521, Stop: 48856, Start Num: 88

Candidate Starts for SirDuracell_79:

(18, 48269), (Start: 81 @48506 has 22 MA's), (Start: 88 @48521 has 110 MA's), (98, 48557), (118, 48611), (160, 48737), (174, 48773), (175, 48776), (182, 48794), (189, 48836),

Gene: SirDuracell_72 Start: 46147, Stop: 46518, Start Num: 86

Candidate Starts for SirDuracell_72:

(Start: 83 @46141 has 68 MA's), (Start: 86 @46147 has 37 MA's), (114, 46219), (127, 46279), (158, 46378), (181, 46450),

Gene: Solimine_109 Start: 57788, Stop: 57423, Start Num: 77

Candidate Starts for Solimine_109:

(45, 57839), (Start: 77 @57788 has 5 MA's), (127, 57659), (128, 57650), (134, 57626), (140, 57611), (165, 57557), (195, 57452),

Gene: SophKB_70 Start: 46533, Stop: 46910, Start Num: 83

Candidate Starts for SophKB_70:

(Start: 83 @46533 has 68 MA's), (Start: 86 @46539 has 37 MA's), (114, 46611), (127, 46671), (181, 46842),

Gene: SophKB_77 Start: 48913, Stop: 49248, Start Num: 88

Candidate Starts for SophKB_77:

(18, 48661), (Start: 81 @48898 has 22 MA's), (Start: 88 @48913 has 110 MA's), (98, 48949), (145, 49090), (160, 49129), (174, 49165), (175, 49168), (182, 49186), (189, 49228),

Gene: Sotrice96_81 Start: 49916, Stop: 50251, Start Num: 88

Candidate Starts for Sotrice96_81:

(18, 49664), (Start: 81 @49901 has 22 MA's), (Start: 88 @49916 has 110 MA's), (98, 49952), (189, 50231),

Gene: Spooks_26 Start: 18379, Stop: 17993, Start Num: 44

Candidate Starts for Spooks_26:

(35, 18403), (Start: 44 @18379 has 2 MA's), (79, 18319), (89, 18298), (104, 18277), (117, 18241), (137, 18154), (175, 18064), (177, 18058),

Gene: Squint_111 Start: 62624, Stop: 62944, Start Num: 97

Candidate Starts for Squint_111:

(Start: 97 @62624 has 30 MA's), (110, 62663), (138, 62762), (160, 62819), (173, 62855), (181, 62885), (189, 62930),

Gene: Stank_83 Start: 50159, Stop: 50509, Start Num: 81

Candidate Starts for Stank_83:

(18, 49922), (Start: 81 @50159 has 22 MA's), (Start: 88 @50174 has 110 MA's), (98, 50210), (189, 50489),

Gene: Stark_81 Start: 49718, Stop: 50050, Start Num: 88

Candidate Starts for Stark_81:

(18, 49466), (Start: 81 @49703 has 22 MA's), (Start: 88 @49718 has 110 MA's), (98, 49754), (189, 50030),

Gene: Stark_74 Start: 47341, Stop: 47715, Start Num: 83

Candidate Starts for Stark_74:

(Start: 83 @47341 has 68 MA's), (Start: 86 @47347 has 37 MA's), (114, 47419), (127, 47479), (181, 47647),

Gene: SteakFry_110 Start: 56575, Stop: 56138, Start Num: 76

Candidate Starts for SteakFry_110:

(Start: 76 @56575 has 15 MA's), (90, 56551), (95, 56530), (126, 56434), (128, 56422), (129, 56419), (141, 56377), (151, 56347), (169, 56314),

Gene: Stella_77 Start: 39604, Stop: 39116, Start Num: 50

Candidate Starts for Stella_77:

(Start: 40 @39637 has 3 MA's), (Start: 50 @39604 has 2 MA's), (92, 39529), (99, 39499), (112, 39469), (128, 39400), (129, 39397), (170, 39292), (188, 39223),

Gene: StellaBean_71 Start: 47107, Stop: 47478, Start Num: 86

Candidate Starts for StellaBean_71:

(Start: 83 @47101 has 68 MA's), (Start: 86 @47107 has 37 MA's), (114, 47179), (127, 47239), (181, 47410),

Gene: StellaBean_78 Start: 49481, Stop: 49813, Start Num: 88

Candidate Starts for StellaBean_78:

(18, 49229), (Start: 81 @49466 has 22 MA's), (Start: 88 @49481 has 110 MA's), (98, 49517), (189, 49793),

Gene: Stellammi_89 Start: 46045, Stop: 46407, Start Num: 51
Candidate Starts for Stellammi_89:
(22, 45898), (49, 46042), (Start: 51 @46045 has 4 MA's), (115, 46141), (129, 46186), (142, 46225),
(157, 46255), (178, 46294),

Gene: StevieWelch_107 Start: 56127, Stop: 55690, Start Num: 76
Candidate Starts for StevieWelch_107:
(25, 56298), (55, 56160), (Start: 76 @56127 has 15 MA's), (90, 56103), (95, 56082), (126, 55986),
(128, 55974), (151, 55899),

Gene: StolenFromERC_83 Start: 49956, Stop: 50291, Start Num: 88
Candidate Starts for StolenFromERC_83:
(18, 49704), (Start: 81 @49941 has 22 MA's), (Start: 88 @49956 has 110 MA's), (98, 49992), (189,
50271),

Gene: StormChicken_82 Start: 50599, Stop: 50949, Start Num: 81
Candidate Starts for StormChicken_82:
(18, 50362), (Start: 81 @50599 has 22 MA's), (Start: 88 @50614 has 110 MA's), (98, 50650), (145,
50791), (160, 50830), (174, 50866), (175, 50869), (182, 50887), (189, 50929),

Gene: Success_26 Start: 17594, Stop: 17208, Start Num: 44
Candidate Starts for Success_26:
(24, 17702), (35, 17618), (Start: 44 @17594 has 2 MA's), (79, 17534), (104, 17492), (117, 17456),
(139, 17366), (175, 17279), (177, 17273),

Gene: SuperSonics_61 Start: 42729, Stop: 43097, Start Num: 91
Candidate Starts for SuperSonics_61:
(Start: 91 @42729 has 3 MA's), (Start: 97 @42750 has 30 MA's), (129, 42858), (131, 42867), (166,
42963), (175, 42990),

Gene: Superphikiman_110 Start: 61715, Stop: 62035, Start Num: 97
Candidate Starts for Superphikiman_110:
(Start: 97 @61715 has 30 MA's), (110, 61754), (138, 61853), (160, 61910), (173, 61946), (181, 61976),
(189, 62021),

Gene: Syleon_46 Start: 34218, Stop: 34751, Start Num: 23
Candidate Starts for Syleon_46:
(11, 34092), (13, 34101), (Start: 23 @34218 has 3 MA's), (Start: 26 @34230 has 1 MA's), (Start: 70
@34389 has 7 MA's), (112, 34491), (127, 34542), (139, 34584), (150, 34620),

Gene: TBrady12_83 Start: 49655, Stop: 49990, Start Num: 88
Candidate Starts for TBrady12_83:
(18, 49403), (Start: 81 @49640 has 22 MA's), (Start: 88 @49655 has 110 MA's), (98, 49691), (189,
49970),

Gene: TBrady12_76 Start: 47275, Stop: 47652, Start Num: 83
Candidate Starts for TBrady12_76:
(Start: 83 @47275 has 68 MA's), (Start: 86 @47281 has 37 MA's), (114, 47353), (127, 47413), (181,
47584),

Gene: Tandem_107 Start: 58139, Stop: 57753, Start Num: 70
Candidate Starts for Tandem_107:

(34, 58232), (42, 58196), (54, 58163), (Start: 68 @58142 has 3 MA's), (Start: 70 @58139 has 7 MA's), (104, 58058), (115, 58040), (128, 57986), (134, 57962), (163, 57890), (176, 57854), (182, 57836),

Gene: Tarkin_72 Start: 47523, Stop: 47900, Start Num: 83

Candidate Starts for Tarkin_72:

(Start: 83 @47523 has 68 MA's), (Start: 86 @47529 has 37 MA's), (114, 47601), (127, 47661), (181, 47832),

Gene: Tarkin_79 Start: 49903, Stop: 50238, Start Num: 88

Candidate Starts for Tarkin_79:

(18, 49651), (Start: 81 @49888 has 22 MA's), (Start: 88 @49903 has 110 MA's), (98, 49939), (145, 50080), (160, 50119), (174, 50155), (175, 50158), (182, 50176), (189, 50218),

Gene: TeamEdward_75 Start: 48249, Stop: 48605, Start Num: 86

Candidate Starts for TeamEdward_75:

(Start: 83 @48243 has 68 MA's), (Start: 86 @48249 has 37 MA's), (127, 48369), (158, 48465),

Gene: TeamEdward_82 Start: 50608, Stop: 50943, Start Num: 88

Candidate Starts for TeamEdward_82:

(18, 50356), (Start: 81 @50593 has 22 MA's), (Start: 88 @50608 has 110 MA's), (98, 50644), (118, 50698), (160, 50824), (174, 50860), (175, 50863), (182, 50881), (189, 50923),

Gene: TeardropMSU_76 Start: 48888, Stop: 49238, Start Num: 81

Candidate Starts for TeardropMSU_76:

(18, 48651), (Start: 81 @48888 has 22 MA's), (Start: 88 @48903 has 110 MA's), (98, 48939), (145, 49080), (160, 49119), (174, 49155), (175, 49158), (182, 49176), (189, 49218),

Gene: Teaspoon_74 Start: 47423, Stop: 47794, Start Num: 86

Candidate Starts for Teaspoon_74:

(Start: 83 @47417 has 68 MA's), (Start: 86 @47423 has 37 MA's), (114, 47495), (127, 47555), (181, 47726),

Gene: Teaspoon_81 Start: 49797, Stop: 50132, Start Num: 88

Candidate Starts for Teaspoon_81:

(18, 49545), (Start: 81 @49782 has 22 MA's), (Start: 88 @49797 has 110 MA's), (98, 49833), (189, 50112),

Gene: Terminus_83 Start: 50690, Stop: 51025, Start Num: 88

Candidate Starts for Terminus_83:

(18, 50438), (Start: 81 @50675 has 22 MA's), (Start: 88 @50690 has 110 MA's), (98, 50726), (189, 51005),

Gene: Terminus_76 Start: 48319, Stop: 48687, Start Num: 86

Candidate Starts for Terminus_76:

(Start: 83 @48313 has 68 MA's), (Start: 86 @48319 has 37 MA's), (114, 48391), (127, 48451), (181, 48619),

Gene: Thibault_99 Start: 60528, Stop: 60848, Start Num: 97

Candidate Starts for Thibault_99:

(Start: 97 @60528 has 30 MA's), (110, 60567), (160, 60723), (173, 60759), (181, 60789), (189, 60834),

Gene: Thibault_119 Start: 70544, Stop: 70903, Start Num: 80

Candidate Starts for Thibault_119:

(61, 70517), (Start: 80 @70544 has 25 MA's), (Start: 83 @70553 has 68 MA's), (129, 70685), (135, 70700), (181, 70835),

Gene: Thimble_81 Start: 49138, Stop: 49470, Start Num: 88

Candidate Starts for Thimble_81:

(4, 48568), (7, 48685), (18, 48886), (Start: 81 @49123 has 22 MA's), (Start: 88 @49138 has 110 MA's), (98, 49174), (189, 49450),

Gene: Thimble_74 Start: 46764, Stop: 47135, Start Num: 86

Candidate Starts for Thimble_74:

(Start: 83 @46758 has 68 MA's), (Start: 86 @46764 has 37 MA's), (114, 46836), (127, 46896), (181, 47067),

Gene: ThreeRngTarjay_130 Start: 73825, Stop: 74184, Start Num: 80

Candidate Starts for ThreeRngTarjay_130:

(61, 73798), (Start: 80 @73825 has 25 MA's), (Start: 83 @73834 has 68 MA's), (129, 73966), (135, 73981), (180, 74110), (181, 74116),

Gene: Thresher_75 Start: 48406, Stop: 48774, Start Num: 86

Candidate Starts for Thresher_75:

(Start: 83 @48400 has 68 MA's), (Start: 86 @48406 has 37 MA's), (114, 48478), (127, 48538), (181, 48706),

Gene: Thresher_82 Start: 50777, Stop: 51109, Start Num: 88

Candidate Starts for Thresher_82:

(18, 50525), (Start: 81 @50762 has 22 MA's), (Start: 88 @50777 has 110 MA's), (98, 50813), (189, 51089),

Gene: Tomaszewski_68 Start: 46695, Stop: 47063, Start Num: 83

Candidate Starts for Tomaszewski_68:

(Start: 83 @46695 has 68 MA's), (Start: 86 @46701 has 37 MA's), (135, 46857), (179, 46980), (191, 47046),

Gene: Tomaszewski_75 Start: 49066, Stop: 49401, Start Num: 88

Candidate Starts for Tomaszewski_75:

(18, 48814), (Start: 81 @49051 has 22 MA's), (Start: 88 @49066 has 110 MA's), (98, 49102), (189, 49381),

Gene: ToriToki_76 Start: 38998, Stop: 38495, Start Num: 52

Candidate Starts for ToriToki_76:

(Start: 52 @38998 has 17 MA's), (73, 38962), (92, 38926), (103, 38890), (115, 38857), (127, 38809), (136, 38770), (182, 38659), (186, 38635), (202, 38581), (211, 38515),

Gene: Toto_71 Start: 47777, Stop: 48154, Start Num: 83

Candidate Starts for Toto_71:

(Start: 83 @47777 has 68 MA's), (Start: 86 @47783 has 37 MA's), (114, 47855), (127, 47915), (181, 48086),

Gene: Toto_78 Start: 50157, Stop: 50489, Start Num: 88

Candidate Starts for Toto_78:

(18, 49905), (Start: 81 @50142 has 22 MA's), (Start: 88 @50157 has 110 MA's), (98, 50193), (189, 50469),

Gene: Traaww1_69 Start: 46961, Stop: 47338, Start Num: 83

Candidate Starts for Traaww1_69:

(Start: 83 @46961 has 68 MA's), (Start: 86 @46967 has 37 MA's), (114, 47039), (127, 47099), (181, 47270),

Gene: Traaww1_76 Start: 49341, Stop: 49673, Start Num: 88

Candidate Starts for Traaww1_76:

(18, 49089), (Start: 81 @49326 has 22 MA's), (Start: 88 @49341 has 110 MA's), (98, 49377), (189, 49653),

Gene: Trax_45 Start: 35143, Stop: 35541, Start Num: 41

Candidate Starts for Trax_45:

(Start: 41 @35143 has 5 MA's), (Start: 43 @35155 has 2 MA's), (Start: 51 @35173 has 4 MA's), (Start: 70 @35206 has 7 MA's), (117, 35287), (132, 35347), (154, 35398), (186, 35476), (192, 35503), (201, 35524),

Gene: Trax_53 Start: 37657, Stop: 38055, Start Num: 40

Candidate Starts for Trax_53:

(Start: 40 @37657 has 3 MA's), (46, 37687), (Start: 70 @37723 has 7 MA's), (73, 37726), (Start: 76 @37732 has 15 MA's), (89, 37756), (131, 37843), (139, 37864), (148, 37888), (182, 37963), (186, 37987), (203, 38041), (205, 38047),

Gene: Treat_76 Start: 38873, Stop: 38370, Start Num: 52

Candidate Starts for Treat_76:

(Start: 52 @38873 has 17 MA's), (73, 38837), (92, 38801), (103, 38765), (115, 38732), (124, 38699), (127, 38684), (136, 38645), (182, 38534), (186, 38510), (202, 38456),

Gene: Trina_236 Start: 121948, Stop: 122328, Start Num: 64

Candidate Starts for Trina_236:

(Start: 64 @121948 has 1 MA's), (Start: 76 @121969 has 15 MA's), (87, 121990), (116, 122074), (126, 122116), (129, 122131), (184, 122263), (200, 122323),

Gene: Trina_234 Start: 121206, Stop: 121604, Start Num: 75

Candidate Starts for Trina_234:

(59, 121179), (Start: 72 @121200 has 1 MA's), (Start: 75 @121206 has 1 MA's), (Start: 81 @121215 has 22 MA's), (Start: 86 @121227 has 37 MA's), (96, 121254), (121, 121335), (129, 121374), (155, 121449), (176, 121500), (180, 121509), (184, 121527), (189, 121560), (190, 121563),

Gene: Tuco_74 Start: 48285, Stop: 48662, Start Num: 83

Candidate Starts for Tuco_74:

(Start: 83 @48285 has 68 MA's), (Start: 86 @48291 has 37 MA's), (114, 48363), (127, 48423), (181, 48594),

Gene: Tuco_81 Start: 50665, Stop: 50997, Start Num: 88

Candidate Starts for Tuco_81:

(18, 50413), (Start: 81 @50650 has 22 MA's), (Start: 88 @50665 has 110 MA's), (98, 50701), (189, 50977),

Gene: Ukulele_75 Start: 49048, Stop: 49383, Start Num: 88

Candidate Starts for Ukulele_75:

(18, 48796), (Start: 81 @49033 has 22 MA's), (Start: 88 @49048 has 110 MA's), (98, 49084), (189, 49363),

Gene: Ukulele_68 Start: 46671, Stop: 47045, Start Num: 83
Candidate Starts for Ukulele_68:
(Start: 83 @46671 has 68 MA's), (Start: 86 @46677 has 37 MA's), (114, 46749), (127, 46809), (181, 46977),

Gene: Uterion_112 Start: 57310, Stop: 56945, Start Num: 77
Candidate Starts for Uterion_112:
(45, 57361), (Start: 77 @57310 has 5 MA's), (104, 57241), (127, 57181), (128, 57172), (134, 57148), (140, 57133), (190, 56983), (195, 56974),

Gene: VanLee_135 Start: 73104, Stop: 72706, Start Num: 41
Candidate Starts for VanLee_135:
(Start: 41 @73104 has 5 MA's), (89, 73008), (162, 72846),

Gene: Vorvolakos_75 Start: 38620, Stop: 38138, Start Num: 52
Candidate Starts for Vorvolakos_75:
(Start: 52 @38620 has 17 MA's), (92, 38548), (103, 38515), (127, 38437), (137, 38395), (182, 38287), (197, 38224), (209, 38182),

Gene: WRightOn_78 Start: 38385, Stop: 37942, Start Num: 48
Candidate Starts for WRightOn_78:
(33, 38442), (Start: 40 @38418 has 3 MA's), (Start: 48 @38385 has 3 MA's), (127, 38196), (171, 38082), (207, 37959),

Gene: Wanda_133 Start: 70960, Stop: 71319, Start Num: 80
Candidate Starts for Wanda_133:
(61, 70933), (Start: 80 @70960 has 25 MA's), (Start: 83 @70969 has 68 MA's), (129, 71101), (135, 71116), (180, 71245), (181, 71251),

Gene: Weasels2_210 Start: 108355, Stop: 108705, Start Num: 72
Candidate Starts for Weasels2_210:
(Start: 72 @108355 has 1 MA's), (107, 108442), (126, 108496), (127, 108499), (153, 108562), (161, 108574), (164, 108580), (197, 108688),

Gene: Weasels2_208 Start: 107565, Stop: 107978, Start Num: 67
Candidate Starts for Weasels2_208:
(Start: 67 @107565 has 4 MA's), (111, 107664), (127, 107721), (139, 107766), (151, 107805), (180, 107880),

Gene: Weasels2_18 Start: 5542, Stop: 5186, Start Num: 74
Candidate Starts for Weasels2_18:
(Start: 74 @5542 has 5 MA's), (102, 5473), (109, 5455), (189, 5224), (193, 5209), (199, 5200),

Gene: Weasels2_237 Start: 116136, Stop: 116522, Start Num: 67
Candidate Starts for Weasels2_237:
(65, 116130), (Start: 67 @116136 has 4 MA's), (125, 116286), (180, 116433), (192, 116493),

Gene: Weasels2_22 Start: 6969, Stop: 6571, Start Num: 68
Candidate Starts for Weasels2_22:
(Start: 68 @6969 has 3 MA's), (84, 6942), (113, 6867), (132, 6786), (162, 6723), (173, 6690), (183, 6657),

Gene: Welcome_109 Start: 56727, Stop: 56290, Start Num: 76

Candidate Starts for Welcome_109:

(Start: 76 @56727 has 15 MA's), (90, 56703), (95, 56682), (126, 56586), (128, 56574), (129, 56571), (141, 56529), (151, 56499), (169, 56466),

Gene: Wiggin_82 Start: 49742, Stop: 50074, Start Num: 88

Candidate Starts for Wiggin_82:

(18, 49490), (Start: 81 @49727 has 22 MA's), (Start: 88 @49742 has 110 MA's), (98, 49778), (189, 50054),

Gene: Wiggin_75 Start: 47368, Stop: 47739, Start Num: 86

Candidate Starts for Wiggin_75:

(Start: 83 @47362 has 68 MA's), (Start: 86 @47368 has 37 MA's), (114, 47440), (127, 47500), (181, 47671),

Gene: Willez_75 Start: 47920, Stop: 48270, Start Num: 81

Candidate Starts for Willez_75:

(18, 47683), (Start: 81 @47920 has 22 MA's), (Start: 88 @47935 has 110 MA's), (98, 47971), (145, 48112), (160, 48151), (174, 48187), (175, 48190), (182, 48208), (189, 48250),

Gene: Willez_68 Start: 45564, Stop: 45932, Start Num: 86

Candidate Starts for Willez_68:

(Start: 83 @45558 has 68 MA's), (Start: 86 @45564 has 37 MA's), (114, 45636), (127, 45696), (181, 45864),

Gene: Wolfstar_113 Start: 59574, Stop: 59188, Start Num: 70

Candidate Starts for Wolfstar_113:

(Start: 39 @59646 has 4 MA's), (53, 59601), (Start: 70 @59574 has 7 MA's), (108, 59481), (120, 59442), (128, 59409), (134, 59385), (140, 59373), (180, 59277),

Gene: Xandras_79 Start: 49150, Stop: 49482, Start Num: 88

Candidate Starts for Xandras_79:

(4, 48580), (7, 48697), (18, 48898), (Start: 81 @49135 has 22 MA's), (Start: 88 @49150 has 110 MA's), (98, 49186), (189, 49462),

Gene: Xandras_72 Start: 46773, Stop: 47147, Start Num: 83

Candidate Starts for Xandras_72:

(Start: 83 @46773 has 68 MA's), (Start: 86 @46779 has 37 MA's), (114, 46851), (127, 46911), (181, 47079),

Gene: Xiaokay_107 Start: 63424, Stop: 63744, Start Num: 97

Candidate Starts for Xiaokay_107:

(Start: 97 @63424 has 30 MA's), (110, 63463), (160, 63619), (171, 63649), (173, 63655), (181, 63685), (189, 63730),

Gene: Xiaokay_130 Start: 73215, Stop: 73574, Start Num: 80

Candidate Starts for Xiaokay_130:

(61, 73188), (Start: 80 @73215 has 25 MA's), (Start: 83 @73224 has 68 MA's), (129, 73356), (135, 73371), (181, 73506),

Gene: Yakult_64 Start: 44046, Stop: 44489, Start Num: 38

Candidate Starts for Yakult_64:

(Start: 38 @44046 has 2 MA's), (106, 44154), (117, 44181), (120, 44199), (129, 44241), (132, 44256), (134, 44262), (159, 44325), (182, 44382), (189, 44424),

Gene: YassJohnny_77 Start: 49090, Stop: 49440, Start Num: 81

Candidate Starts for YassJohnny_77:

(18, 48853), (Start: 81 @49090 has 22 MA's), (Start: 88 @49105 has 110 MA's), (98, 49141), (145, 49282), (160, 49321), (174, 49357), (175, 49360), (182, 49378), (189, 49420),

Gene: YassJohnny_70 Start: 46740, Stop: 47102, Start Num: 86

Candidate Starts for YassJohnny_70:

(Start: 83 @46734 has 68 MA's), (Start: 86 @46740 has 37 MA's), (135, 46896), (179, 47019), (191, 47085),

Gene: Yeet_128 Start: 73023, Stop: 73382, Start Num: 80

Candidate Starts for Yeet_128:

(61, 72996), (Start: 80 @73023 has 25 MA's), (Start: 83 @73032 has 68 MA's), (129, 73164), (135, 73179), (180, 73308), (181, 73314),

Gene: Yeet_109 Start: 64277, Stop: 64597, Start Num: 97

Candidate Starts for Yeet_109:

(Start: 97 @64277 has 30 MA's), (110, 64316), (138, 64415), (160, 64472), (173, 64508), (181, 64538), (189, 64583),

Gene: Youngblood_76 Start: 48246, Stop: 48614, Start Num: 86

Candidate Starts for Youngblood_76:

(Start: 83 @48240 has 68 MA's), (Start: 86 @48246 has 37 MA's), (114, 48318), (127, 48378), (181, 48546),

Gene: Youngblood_83 Start: 50617, Stop: 50952, Start Num: 88

Candidate Starts for Youngblood_83:

(18, 50365), (Start: 81 @50602 has 22 MA's), (Start: 88 @50617 has 110 MA's), (98, 50653), (189, 50932),

Gene: Yuma_105 Start: 55848, Stop: 55411, Start Num: 76

Candidate Starts for Yuma_105:

(Start: 76 @55848 has 15 MA's), (90, 55824), (95, 55803), (126, 55707), (128, 55695), (129, 55692), (141, 55650), (151, 55620), (169, 55587),

Gene: Zeigle_74 Start: 38229, Stop: 37786, Start Num: 48

Candidate Starts for Zeigle_74:

(33, 38286), (Start: 40 @38262 has 3 MA's), (Start: 48 @38229 has 3 MA's), (127, 38040), (171, 37926), (207, 37803),

Gene: Zelink_129 Start: 73772, Stop: 74131, Start Num: 80

Candidate Starts for Zelink_129:

(61, 73745), (Start: 80 @73772 has 25 MA's), (Start: 83 @73781 has 68 MA's), (129, 73913), (135, 73928), (180, 74057), (181, 74063),

Gene: ZooBear_76 Start: 38999, Stop: 38496, Start Num: 52

Candidate Starts for ZooBear_76:

(Start: 52 @38999 has 17 MA's), (73, 38963), (92, 38927), (103, 38891), (115, 38858), (127, 38810), (136, 38771), (182, 38660), (186, 38636), (202, 38582),

Gene: xkcd_83 Start: 50807, Stop: 51139, Start Num: 88

Candidate Starts for xkcd_83:

(Start: 81 @50792 has 22 MA's), (Start: 88 @50807 has 110 MA's), (98, 50843), (189, 51119),

Gene: xkcd_76 Start: 48430, Stop: 48804, Start Num: 83

Candidate Starts for xkcd_76:

(Start: 83 @48430 has 68 MA's), (Start: 86 @48436 has 37 MA's), (114, 48508), (127, 48568), (181, 48736),