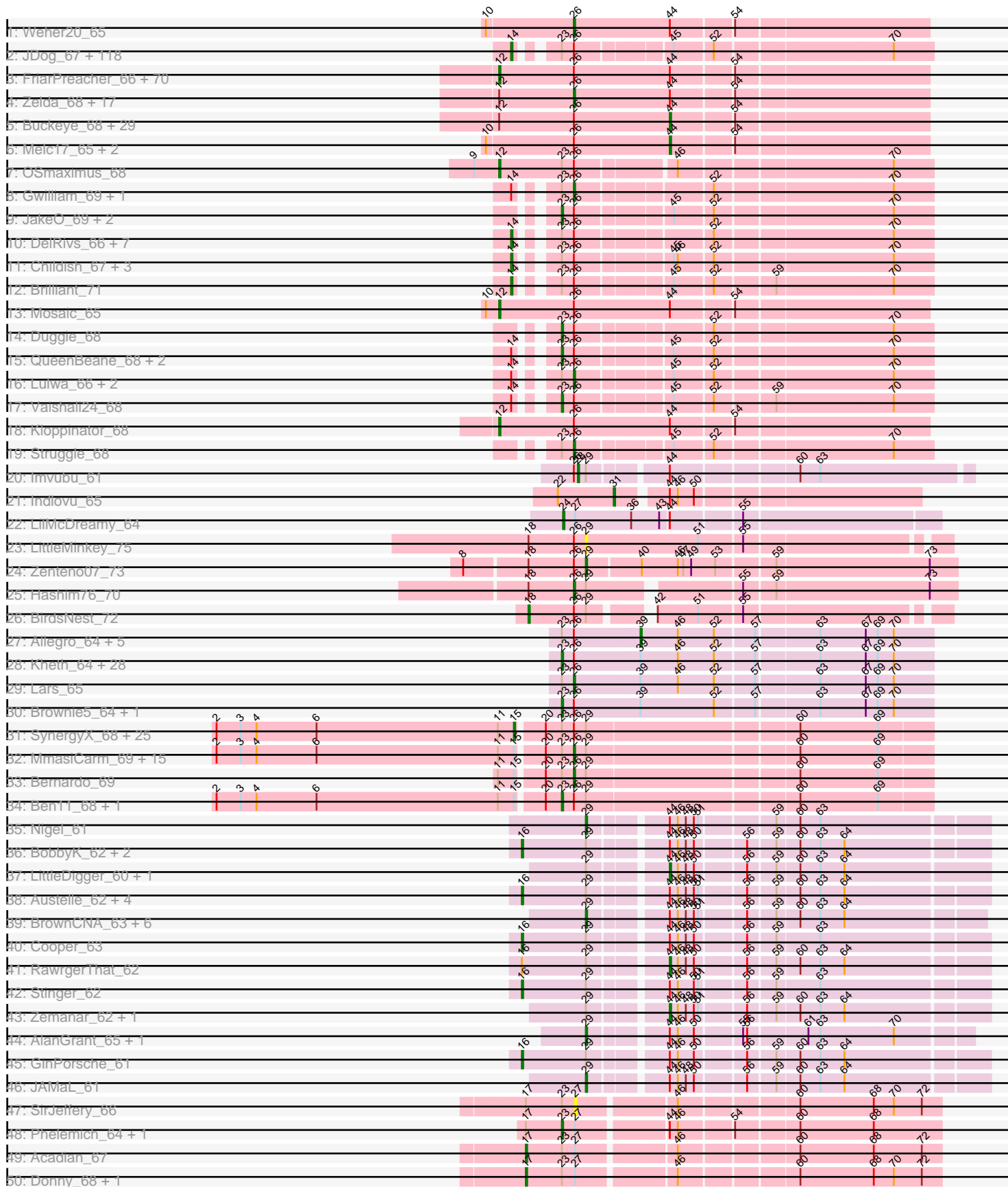
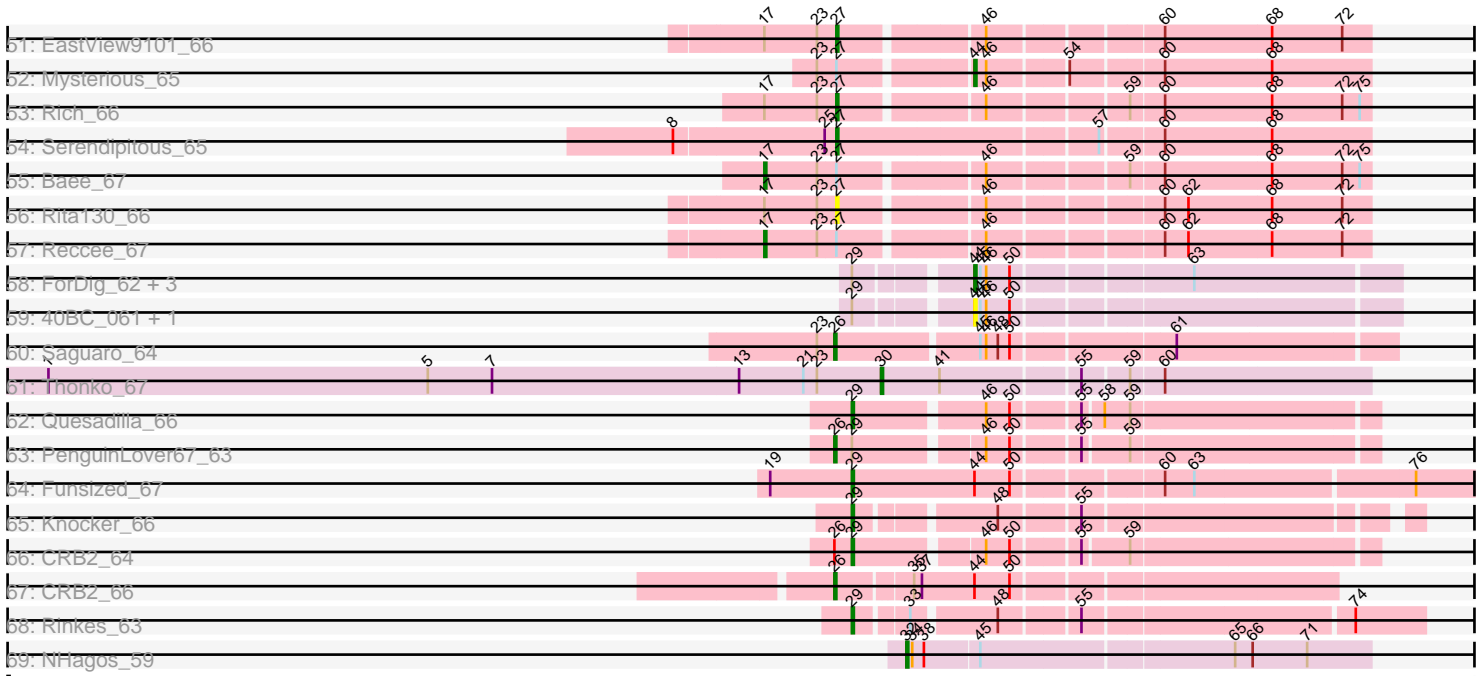


Pham 311089



Pham 311089



Note: Tracks are now grouped by subcluster and scaled. Switching in subcluster is indicated by changes in track color. Track scale is now set by default to display the region 30 bp upstream of start 1 to 30 bp downstream of the last possible start. If this default region is judged to be packed too tightly with annotated starts, the track will be further scaled to only show that region of the ORF with annotated starts. This action will be indicated by adding "Zoomed" to the title. For starts, yellow indicates the location of called starts comprised solely of Glimmer/GeneMark auto-annotations, green indicates the location of called starts with at least 1 manual gene annotation.

Pham 311089 Report

This analysis was run 06/27/26 on database version 652.

Pham number 311089 has 418 members, 16 are drafts.

Phages represented in each track:

- Track 1 : Weher20_65
- Track 2 : JDog_67, Riggan_69, EmpTee_67, Riverton_67, Orwigg_67, FleetyMac_71, LuckyMarjie_65, Mesmerelda_67, Aelin_67, Tomlahrah_69, PG1_67, Pacifista_67, Chah_69, Gareth_68, Serpentine_0068, Nicole21_69, Manad_67, Simielle_68, Waterdiva_68, Giraffe_68, Freya_65, OneBrain_71, Selr12_69, Chunky_68, Roy17_66, ThreeOh3D2_69, Bishoperium_68, Windsor_68, Schadenfreude_68, OliverWalter_67, Mutante_68, Piglet_0068, Serendipity_67, Cornbread_66, Mcshane_67, AngelCake_67, KLucky39_66, KlimbOn_67, Altwerkus_66, Suffolk_66, Kikipoo_69, Skippy_69, ProfessorX_66, Virapocalypse_69, Newman_66, Swiphy_70, Badfish_68, Antonia_67, Chaelin_69, ABU_67, Kwadwo_67, Longacauda_69, Mecca_68, DoesntMatter_65, Toni_68, Haleema_67, Olak_67, Lulumae_65, PhatLouie_70, Scoot17C_68, LeiMonet_71, Sigman_68, Colbert_66, Megatron_68, HSavage_66, Hertubise_67, Quisquiliae_69, IsaacEli_69, Spartan300_67, CheetO_67, Beaglebox_66, Xavier_67, Jillium_68, Eremos_67, True_66, Timmi_67, Katniss_69, Coletti_71, Orfeu_67, JacAttac_68, Telesworld_66, Charles1_69, Phunky_66, Omniscient_69, MrPhizzler_71, PhatCats2014_68, Iridessa_69, Hartsy_67, Vaticameos_65, Robyn_68, Fringe_72, Dice_67, Aonishiki_68, Keitherie_70, CampRoach_69, Andre_70, Tooj_66, ShiVal_66, Anderson_69, Nyala_67, Apizium_67, Nacho_0071, JangoPhett_102, Carthage_68, SirBeauregard_69, Cannibal_68, Gophee_69, ShadowBud_68, Jesabah_70, Dione_66, Kimbrough_69, Samaymay_68, Hetaeria_67, Oosterbaan_67, Lumine_69, Numberten_67, Burr_68, Valjean_67, Morty_69
- Track 3 : FriarPreacher_66, DirtJuice_68, Murdoc_65, Podrick_67, Mulan_67, Pherdinand_68, Soto_65, Prickles_69, Vista_66, Thora_66, Derpp_68, Zonia_68, Cher_68, Vortex_67, Pipsqueak_65, SDcharge11_67, Vivaldi_68, Banjo_66, MichaelPhcott_66, Iridoclysis_67, MitKao_67, Maru_67, FluffyNinja_68, Craff_71, UncleHowie_65, Phergie_68, PhrodoBaggins_69, Pinkman_67, LeeLot_67, PinheadLarry_67, Doddsville_66, TyrionL_68, Trypo_69, Yoshand_68, Kailash_66, Mana_66, Squid_67, Daffy_66, Lego3393_65, Fang_69, PhrankReynolds_67, LemonSlice_68, Cobra_68, Swish_68, Morgushi_66, PhenghisKhan_68, KingTut_59, Oline_67, Slatt_68, Harvey_65, Daka_70, SassyCat97_66, Squiggle_67, Phipps_67, Held_66, FugateOSU_68, Phamished_69, Placalicious_68, HighStump_69, TallGrassMM_66, Labeouficaum_68, Phleuron_66, Kwksand96_68, Haimas_66, Puhltonio_66, CharlieGBrown_66, Mesh1_68, DuchessDung_67, Matalotodo_66, KingVeVeVe_66, BatteryCK_66
- Track 4 : Zelda_68, Veritas_67, Plmatters_66, Legolas_69, Durga_70, Sophia_66, Etaye_67, Surely_68, LostAndPhound_67, SallyH_70, Emiris_69, Wallhey_68,

Solosis_66, Roliet_65, Mag7_66, YouGoGlencoco_68, MRabcd_67, TomBombadil_68

- Track 5 : Buckeye_68, Basato_67, Nathan_68, BlackStallion_68, ImtiyazSitla_68, Ashraf_68, Gyarad_0067, Grand2040_66, ElvisPhasley_68, Chorkpop_68, Mikota_65, GeneCoco_68, TooFast2Furius_67, MiniBoss_65, Hamish_65, Horchata_65, Scrick_67, MelsMeow_67, Phareon_66, Inverness_66, RedRaider89_67, Lasso_67, AltPhacts_66, Potter_65, DonSanchon_64, Dingo_65, Sheila_64, Adriana_69, Maskar_68, Caspiboi_67
- Track 6 : Melc17_65, Dati_65, BlueHusk_69
- Track 7 : OSmaximus_68
- Track 8 : Gwilliam_69, Frankicide_66
- Track 9 : JakeO_69, Pops_66, Thunderbird_68
- Track 10 : DelRivs_66, Rimu_68, Crownjwl_66, Gwennie1_67, Soile_69, Ricotta_68, Jiraiya_69, Roscoe_68
- Track 11 : Childish_67, HenryJackson_68, Kahve_68, DaddyDaniels_70
- Track 12 : Brilliant_71
- Track 13 : Mosaic_65
- Track 14 : Duggie_68
- Track 15 : QueenBeane_68, CamL_68, Cosmolli16_69
- Track 16 : Lulwa_66, Usavi_69, Zaider_69
- Track 17 : Vaishali24_68
- Track 18 : Kloppinator_68
- Track 19 : Struggle_68
- Track 20 : Imvubu_61
- Track 21 : Indlovu_65
- Track 22 : LilMcDreamy_64
- Track 23 : LittleMinkey_75
- Track 24 : Zenteno07_73
- Track 25 : Hashim76_70
- Track 26 : BirdsNest_72
- Track 27 : Allegro_64, Kaleb_64, Faze9_63, Coffee_64, Phantasmagoria_63, Vic9_00063
- Track 28 : Kheth_64, Glass_65, LizLemon_64, Lephleur_64, ItsyBitsy1_63, West99_64, Calamitous_65, Kolhan_65, Godines_65, Laurie_64, Rosebush_63, Opia_65, TA17A_66, Holeinone_64, Eaglehorse_64, Qyrzula_58, Boyle_64, Arbiter_62, Hedgerow_64, LilSmirk_64, Rhinoforte_64, Tres_64, Ares_64, Blocker23_64, Bananafish_65, MasterPo_65, FrenchFry_65, Sabella_64, PrinceCharming_65
- Track 29 : Lars_65
- Track 30 : Brownie5_64, Tinciduntolum_65
- Track 31 : SynergyX_68, Jackstina_64, Yinz_68, Chalmers_67, ChaChing_68, Phlyer_68, Glubnar_69, GlenHope_69, RagingRooster_67, Audrey_68, OrangeOswald_68, RomaT_68, Rita1961_69, Philly_67, Nozo_68, Corofin_68, Devonte_67, Heathcliff_68, Gadget_69, Deenasa_68, Abingghost_68, Casbah_68, Halfpint_67, Athena_70, SwainyDoc_69, TinyTerror_69
- Track 32 : MmasiCarm_69, Olivio_68, Marlia_69, Phaedrus_63, Akoma_68, Daisy_67, Kronus_68, Yahalom_66, Kamiyu_68, Mortcellus_68, Chandler_68, Compostia_67, Mulaychimus_69, Baloo_67, Shenandoah_67, LestyG_66
- Track 33 : Bernardo_69
- Track 34 : Ben11_68, Gervas_69
- Track 35 : Nigel_61
- Track 36 : BobbyK_62, Frederick_62, ChrisnMich_61
- Track 37 : LittleDigger_60, Renkei_60

- Track 38 : Austelle_62, Mudslide_61, Prince_61, Hydro_61, Apex_62
- Track 39 : BrownCNA_63, Waleliano_61, Mithril_61, Hangman_61, Fortunato_62, VioletZ_63, Lolalove_62
- Track 40 : Cooper_63
- Track 41 : RawrgerThat_62
- Track 42 : Stinger_62
- Track 43 : Zemanar_62, Heath_60
- Track 44 : AlanGrant_65, Vincenzo_64
- Track 45 : GinPorsche_61
- Track 46 : JAMaL_61
- Track 47 : SirJeffery_66
- Track 48 : Phelemich_64, Reprobate_65
- Track 49 : Acadian_67
- Track 50 : Donny_68, Suigeneris_68
- Track 51 : EastView9101_66
- Track 52 : Mysterious_65
- Track 53 : Rich_66
- Track 54 : Serendipitous_65
- Track 55 : Bae_67
- Track 56 : Rita130_66
- Track 57 : Reccee_67
- Track 58 : ForDig_62, Jolie1_061, KayaCho_61, Hosp_059
- Track 59 : 40BC_061, 39HC_061
- Track 60 : Saguaro_64
- Track 61 : Thonko_67
- Track 62 : Quesadilla_66
- Track 63 : PenguinLover67_63
- Track 64 : Funsized_67
- Track 65 : Knocker_66
- Track 66 : CRB2_64
- Track 67 : CRB2_66
- Track 68 : Rinkes_63
- Track 69 : NHagos_59

Summary of Final Annotations (See graph section above for start numbers):

The start number called the most often in the published annotations is 14, it was called in 129 of the 402 non-draft genes in the pham.

Genes that call this "Most Annotated" start:

- ABU_67, Aelin_67, Altwerkus_66, Anderson_69, Andre_70, AngelCake_67, Antonia_67, Aonishiki_68, Apizium_67, Badfish_68, Beaglebox_66, Bishoperium_68, Brilliant_71, Burr_68, CampRoach_69, Cannibal_68, Carthage_68, Chaelin_69, Chah_69, Charles1_69, CheetO_67, Childish_67, Chunky_68, Colbert_66, Coletti_71, Cornbread_66, Crownjwl_66, DaddyDaniels_70, DelRivs_66, Dice_67, Dione_66, DoesntMatter_65, EmpTee_67, Eremos_67, FleetyMac_71, Freya_65, Fringe_72, Gareth_68, Giraffe_68, Gophee_69, Gwennie1_67, HSavage_66, Haleema_67, Hartsy_67, HenryJackson_68, Hertubise_67, Hetaeria_67, Iridessa_69, IsaacEli_69, JDog_67, JacAttac_68, JangoPhett_102, Jesabah_70, Jillium_68, Jiraiya_69, KLucky39_66, Kahve_68, Katniss_69, Keitherie_70, Kikipoo_69,

Kimbrough_69, KlimbOn_67, Kwadwo_67, LeiMonet_71, Longacauda_69, LuckyMarjie_65, Lulumae_65, Lumine_69, Manad_67, Mcshane_67, Mecca_68, Megatron_68, Mesmerelda_67, Morty_69, MrPhizzler_71, Mutante_68, Nacho_0071, Newman_66, Nicole21_69, Numberten_67, Nyala_67, Olak_67, OliverWalter_67, Omniscient_69, OneBrain_71, Oosterbaan_67, Orfeu_67, Orwigg_67, PG1_67, Pacifista_67, PhatCats2014_68, PhatLouie_70, Phunky_66, Piglet_0068, ProfessorX_66, Quisquilliae_69, Ricotta_68, Riggan_69, Rimu_68, Riverton_67, Robyn_68, Roscoe_68, Roy17_66, Samaymay_68, Schadenfreude_68, Scoot17C_68, Selr12_69, Serendipity_67, Serpentine_0068, ShadowBud_68, ShiVal_66, Sigman_68, Simielle_68, SirBeauregard_69, Skippy_69, Soile_69, Spartan300_67, Suffolk_66, Swiphy_70, Telesworld_66, ThreeOh3D2_69, Timmi_67, Tomlarah_69, Toni_68, Tooj_66, True_66, Valjean_67, Vaticameos_65, Virapocalypse_69, Waterdiva_68, Windsor_68, Xavier_67,

Genes that have the "Most Annotated" start but do not call it:

- CamL_68, Cosmolli16_69, Frankicide_66, Gwilliam_69, Lulwa_66, QueenBeane_68, Usavi_69, Vaishali24_68, Zaider_69,

Genes that do not have the "Most Annotated" start:

- 39HC_061, 40BC_061, Abingghost_68, Acadian_67, Adriana_69, Akoma_68, AlanGrant_65, Allegro_64, AltPhacts_66, Apex_62, Arbiter_62, Ares_64, Ashraf_68, Athena_70, Audrey_68, Austelle_62, Bae_67, Baloo_67, Bananafish_65, Banjo_66, Basato_67, BatteryCK_66, Ben11_68, Bernardo_69, BirdsNest_72, BlackStallion_68, Blocker23_64, BlueHusk_69, BobbyK_62, Boyle_64, BrownCNA_63, Brownie5_64, Buckeye_68, CRB2_64, CRB2_66, Calamitous_65, Casbah_68, Caspiboi_67, ChaChing_68, Chalmers_67, Chandler_68, CharlieGBrown_66, Cher_68, Chorkpop_68, ChrisnMich_61, Cobra_68, Coffee_64, Compostia_67, Cooper_63, Corofin_68, Craff_71, Daffy_66, Daisy_67, Daka_70, Dati_65, Deenasa_68, Derpp_68, Devonte_67, Dingo_65, DirtJuice_68, Doddsville_66, DonSanchon_64, Donny_68, DuchessDung_67, Duggie_68, Durga_70, Eaglehorse_64, EastView9101_66, ElvisPhasley_68, Emiris_69, Etaye_67, Fang_69, Faze9_63, FluffyNinja_68, ForDig_62, Fortunato_62, Frederick_62, FrenchFry_65, FriarPreacher_66, FugateOSU_68, Funsized_67, Gadget_69, GeneCoco_68, Gervas_69, GinPorsche_61, Glass_65, GlenHope_69, Glubnar_69, Godines_65, Grand2040_66, Gyarad_0067, Haimas_66, Halfpint_67, Hamish_65, Hangman_61, Harvey_65, Hashim76_70, Heath_60, Heathcliff_68, Hedgerow_64, Held_66, HighStump_69, Holeinone_64, Horchata_65, Hosp_059, Hydro_61, ImtiyazSitla_68, Imvubu_61, Indlovu_65, Inverness_66, Iridoclysis_67, ItsyBitsy1_63, JAMaL_61, Jackstina_64, JakeO_69, Jolie1_061, Kailash_66, Kaleb_64, Kamiyu_68, KayaCho_61, Kheth_64, KingTut_59, KingVeVeVe_66, Kloppinator_68, Knocker_66, Kolhan_65, Kronus_68, Kwksand96_68, Labeouficaum_68, Lars_65, Lasso_67, Laurie_64, LeeLot_67, Lego3393_65, Legolas_69, LemonSlice_68, Lephleur_64, LestyG_66, LilMcDreamy_64, LilSmirk_64, LittleDigger_60, LittleMinkey_75, LizLemon_64, Lolalove_62, LostAndPhound_67, MRabcd_67, Mag7_66, Mana_66, Marlia_69, Maru_67, Maskar_68, MasterPo_65, Matalotodo_66, Melc17_65, MelsMeow_67, Mesh1_68, MichaelPhcott_66, Mikota_65, MiniBoss_65, MitKao_67, Mithril_61, MmasiCarm_69, Morgushi_66, Mortcellus_68, Mosaic_65, Mudslide_61, Mulan_67, Mulaychimus_69, Murdoc_65, Mysterious_65, NHagos_59, Nathan_68, Nigel_61, Nozo_68, OSmaximus_68, Oline_67, Olivio_68, Opia_65, OrangeOswald_68, PenguinLover67_63, Phaedrus_63, Phamished_69, Phantasmagoria_63, Phareon_66, Phelemich_64, PhenghisKhan_68, Pherdinand_68, Phergie_68, Philly_67, Phipps_67, Phleuron_66, Phlyer_68, PhrankReynolds_67, PhrodoBaggins_69, PinheadLarry_67, Pinkman_67,

Pipsqueak_65, Placalicious_68, Plmatters_66, Podrick_67, Pops_66, Potter_65, Prickles_69, PrinceCharming_65, Prince_61, Puhltonio_66, Quesadilla_66, Qyrzula_58, RagingRooster_67, RawrgerThat_62, Reccee_67, RedRaider89_67, Renkei_60, Reprobate_65, Rhinoforte_64, Rich_66, Rinkes_63, Rita130_66, Rita1961_69, Roliet_65, RomaT_68, Rosebush_63, SDcharge11_67, Sabella_64, Saguaro_64, SallyH_70, SassyCat97_66, Scrick_67, Serendipitous_65, Sheila_64, Shenandoah_67, SirJeffery_66, Slatt_68, Solosis_66, Sophia_66, Soto_65, Squid_67, Squiggle_67, Stinger_62, Struggle_68, Suigeneris_68, Surely_68, SwainyDoc_69, Swish_68, SynergyX_68, TA17A_66, TallGrassMM_66, Thonko_67, Thora_66, Thunderbird_68, Tinciduntolum_65, TinyTerror_69, TomBombadil_68, TooFast2Furius_67, Tres_64, Trypo_69, TyrionL_68, UncleHowie_65, Veritas_67, Vic9_00063, Vincenzo_64, VioletZ_63, Vista_66, Vivaldi_68, Vortex_67, Waleliano_61, Wallhey_68, Weher20_65, West99_64, Yahalom_66, Yinz_68, Yoshand_68, YouGoGlencoco_68, Zelda_68, Zemanar_62, Zenteno07_73, Zonia_68,

Summary by start number:

Start 12:

- Found in 122 of 418 (29.2%) of genes in pham
- Manual Annotations of this start: 74 of 402
- Called 60.7% of time when present
- Phage (with cluster) where this start called: Banjo_66 (B1), BatteryCK_66 (B1), CharlieGBrown_66 (B1), Cher_68 (B1), Cobra_68 (B1), Craff_71 (B1), Daffy_66 (B1), Daka_70 (B1), Derpp_68 (B1), DirtJuice_68 (B1), Doddsville_66 (B1), DuchessDung_67 (B1), Fang_69 (B1), FluffyNinja_68 (B1), FriarPreacher_66 (B1), FugateOSU_68 (B1), Haimas_66 (B1), Harvey_65 (B1), Held_66 (B1), HighStump_69 (B1), Iridoclysis_67 (B1), Kailash_66 (B1), KingTut_59 (B1), KingVeVeVe_66 (B1), Kloppinator_68 (B1), Kwksand96_68 (B1), Labeouficaum_68 (B1), LeeLot_67 (B1), Lego3393_65 (B1), LemonSlice_68 (B1), Mana_66 (B1), Maru_67 (B1), Matalotodo_66 (B1), Mesh1_68 (B1), MichaelPhcott_66 (B1), MitKao_67 (B1), Morgushi_66 (B1), Mosaic_65 (B1), Mulan_67 (B1), Murdoc_65 (B1), OSmaximus_68 (B1), Oline_67 (B1), Phamished_69 (B1), PhenghisKhan_68 (B1), Pherdinand_68 (B1), Phergie_68 (B1), Phipps_67 (B1), Phleuron_66 (B1), PhrankReynolds_67 (B1), PhrodoBaggins_69 (B1), PinheadLarry_67 (B1), Pinkman_67 (B1), Pipsqueak_65 (B1), Placalicious_68 (B1), Podrick_67 (B1), Prickles_69 (B1), Puhltonio_66 (B1), SDcharge11_67 (B1), SassyCat97_66 (B1), Slatt_68 (B1), Soto_65 (B1), Squid_67 (B1), Squiggle_67 (B1), Swish_68 (B1), TallGrassMM_66 (B1), Thora_66 (B1), Trypo_69 (B1), TyrionL_68 (B1), UncleHowie_65 (B1), Vista_66 (B1), Vivaldi_68 (B1), Vortex_67 (B1), Yoshand_68 (B1), Zonia_68 (B1),

Start 14:

- Found in 141 of 418 (33.7%) of genes in pham
- Manual Annotations of this start: 129 of 402
- Called 93.6% of time when present
- Phage (with cluster) where this start called: ABU_67 (B1), Aelin_67 (B1), Altwerkus_66 (B1), Anderson_69 (B1), Andre_70 (B1), AngelCake_67 (B1), Antonia_67 (B1), Aonishiki_68 (B1), Apizium_67 (B1), Badfish_68 (B1), Beaglebox_66 (B1), Bishoperium_68 (B1), Brilliant_71 (B1), Burr_68 (B1), CampRoach_69 (B1), Cannibal_68 (B1), Carthage_68 (B1), Chaelin_69 (B1), Chah_69 (B1), Charles1_69 (B1), CheetO_67 (B1), Childish_67 (B1), Chunky_68 (B1), Colbert_66 (B1), Coletti_71 (B1), Cornbread_66 (B1), Crownjwl_66 (B1), DaddyDaniels_70 (B1), DelRivs_66 (B1), Dice_67 (B1), Dione_66 (B1),

DoesntMatter_65 (B1), EmpTee_67 (B1), Eremos_67 (B1), FleetyMac_71 (B1), Freya_65 (B1), Fringe_72 (B1), Gareth_68 (B1), Giraffe_68 (B1), Gophee_69 (B1), Gwennie1_67 (B1), HSavage_66 (B1), Haleema_67 (B1), Hartsy_67 (B1), HenryJackson_68 (B1), Hertubise_67 (B1), Hetaeria_67 (B1), Iridessa_69 (B1), IsaacEli_69 (B1), JDog_67 (B1), JacAttac_68 (B1), JangoPhett_102 (B1), Jesabah_70 (B1), Jillium_68 (B1), Jiraiya_69 (B1), KLucky39_66 (B1), Kahve_68 (B1), Katniss_69 (B1), Keitherie_70 (B1), Kikipoo_69 (B1), Kimbrough_69 (B1), KlimbOn_67 (B1), Kwadwo_67 (B1), LeiMonet_71 (B1), Longacauda_69 (B1), LuckyMarjie_65 (B1), Lulumae_65 (B1), Lumine_69 (B1), Manad_67 (B1), Mcshane_67 (B1), Mecca_68 (B1), Megatron_68 (B1), Mesmerelda_67 (B1), Morty_69 (B1), MrPhizzler_71 (B1), Mutante_68 (B1), Nacho_0071 (B1), Newman_66 (B1), Nicole21_69 (B1), Numberten_67 (B1), Nyala_67 (B1), Olak_67 (B1), OliverWalter_67 (B1), Omniscient_69 (B1), OneBrain_71 (B1), Oosterbaan_67 (B1), Orfeu_67 (B1), Orwigg_67 (B1), PG1_67 (B1), Pacifista_67 (B1), PhatCats2014_68 (B1), PhatLouie_70 (B1), Phunky_66 (B1), Piglet_0068 (B1), ProfessorX_66 (B1), Quisquiliae_69 (B1), Ricotta_68 (B1), Riggan_69 (B1), Rimu_68 (B1), Riverton_67 (B1), Robyn_68 (B1), Roscoe_68 (B1), Roy17_66 (B1), Samaymay_68 (B1), Schadenfreude_68 (B1), Scoot17C_68 (B1), Selr12_69 (B1), Serendipity_67 (B1), Serpentine_0068 (B1), ShadowBud_68 (B1), ShiVal_66 (B1), Sigman_68 (B1), Simielle_68 (B1), SirBeauregard_69 (B1), Skippy_69 (B1), Soile_69 (B1), Spartan300_67 (B1), Suffolk_66 (B1), Swiphy_70 (B1), Telesworld_66 (B1), ThreeOh3D2_69 (B1), Timmi_67 (B1), Tomlarah_69 (B1), Toni_68 (B1), Tooj_66 (B1), True_66 (B1), Valjean_67 (B1), Vaticameos_65 (B1), Virapocalypse_69 (B1), Waterdiva_68 (B1), Windsor_68 (B1), Xavier_67 (B1),

Start 15:

- Found in 45 of 418 (10.8%) of genes in pham
- Manual Annotations of this start: 26 of 402
- Called 57.8% of time when present
- Phage (with cluster) where this start called: Abinghost_68 (B3), Athena_70 (B3), Audrey_68 (B3), Casbah_68 (B3), ChaChing_68 (B3), Chalmers_67 (B3), Corofin_68 (B3), Deenasa_68 (B3), Devonte_67 (B3), Gadjet_69 (B3), GlenHope_69 (B3), Glubnar_69 (B3), Halfpint_67 (B3), Heathcliff_68 (B3), Jackstina_64 (B3), Nozo_68 (B3), OrangeOswald_68 (B3), Philly_67 (B3), Phlyer_68 (B3), RagingRooster_67 (B3), Rita1961_69 (B3), RomaT_68 (B3), SwainyDoc_69 (B3), SynergyX_68 (B3), TinyTerror_69 (B3), Yinz_68 (B3),

Start 16:

- Found in 12 of 418 (2.9%) of genes in pham
- Manual Annotations of this start: 11 of 402
- Called 91.7% of time when present
- Phage (with cluster) where this start called: Apex_62 (B4), Austelle_62 (B4), BobbyK_62 (B4), ChrisnMich_61 (B4), Cooper_63 (B4), Frederick_62 (B4), GinPorsche_61 (B4), Hydro_61 (B4), Mudslide_61 (B4), Prince_61 (B4), Stinger_62 (B4),

Start 17:

- Found in 11 of 418 (2.6%) of genes in pham
- Manual Annotations of this start: 5 of 402
- Called 45.5% of time when present
- Phage (with cluster) where this start called: Acadian_67 (B5), Bae_67 (B5), Donny_68 (B5), Reccee_67 (B5), Suigeneris_68 (B5),

Start 18:

- Found in 4 of 418 (1.0%) of genes in pham
- Manual Annotations of this start: 1 of 402
- Called 25.0% of time when present
- Phage (with cluster) where this start called: BirdsNest_72 (B13),

Start 23:

- Found in 244 of 418 (58.4%) of genes in pham
- Manual Annotations of this start: 42 of 402
- Called 17.6% of time when present
- Phage (with cluster) where this start called: Arbitrator_62 (B2), Ares_64 (B2), Bananafish_65 (B2), Ben11_68 (B3), Blocker23_64 (B2), Boyle_64 (B2), Brownie5_64 (B2), Calamitous_65 (B2), CamL_68 (B1), Cosmolli16_69 (B1), Duggie_68 (B1), Eaglehorse_64 (B2), FrenchFry_65 (B2), Gervas_69 (B3), Glass_65 (B2), Godines_65 (B2), Hedgerow_64 (B2), Holeinone_64 (B2), ItsyBitsy1_63 (B2), JakeO_69 (B1), Kheth_64 (B2), Kolhan_65 (B2), Laurie_64 (B2), Lephleur_64 (B2), LilSmirk_64 (B2), LizLemon_64 (B2), MasterPo_65 (B2), Opia_65 (B2), Phelemich_64 (B5), Pops_66 (B1), PrinceCharming_65 (B2), QueenBeane_68 (B1), Qyrzula_58 (B2), Reprobate_65 (B5), Rhinoforte_64 (B2), Rosebush_63 (B2), Sabella_64 (B2), TA17A_66 (B2), Thunderbird_68 (B1), Tinciduntolum_65 (B2), Tres_64 (B2), Vaishali24_68 (B1), West99_64 (B2),

Start 24:

- Found in 1 of 418 (0.2%) of genes in pham
- Manual Annotations of this start: 1 of 402
- Called 100.0% of time when present
- Phage (with cluster) where this start called: LilMcDreamy_64 (B12),

Start 26:

- Found in 364 of 418 (87.1%) of genes in pham
- Manual Annotations of this start: 42 of 402
- Called 12.9% of time when present
- Phage (with cluster) where this start called: Akoma_68 (B3), Baloo_67 (B3), Bernardo_69 (B3), CRB2_66 (B9), Chandler_68 (B3), Compostia_67 (B3), Daisy_67 (B3), Durga_70 (B1), Emiris_69 (B1), Etaye_67 (B1), Frankicide_66 (B1), Gwilliam_69 (B1), Hashim76_70 (B13), Kamiyu_68 (B3), Kronus_68 (B3), Lars_65 (B2), Legolas_69 (B1), LestyG_66 (B3), LostAndPhound_67 (B1), Lulwa_66 (B1), MRabcd_67 (B1), Mag7_66 (B1), Marlia_69 (B3), MmasiCarm_69 (B3), Mortcellus_68 (B3), Mulaychimus_69 (B3), Olivio_68 (B3), PenguinLover67_63 (B9), Phaedrus_63 (B3), Plmatters_66 (B1), Roliet_65 (B1), Saguaro_64 (B7), SallyH_70 (B1), Shenandoah_67 (B3), Solosis_66 (B1), Sophia_66 (B1), Struggle_68 (B1), Surely_68 (B1), TomBombadil_68 (B1), Usavi_69 (B1), Veritas_67 (B1), Wallhey_68 (B1), Weher20_65 (B1), Yahalom_66 (B3), YouGoGlencoco_68 (B1), Zaider_69 (B1), Zelda_68 (B1),

Start 27:

- Found in 14 of 418 (3.3%) of genes in pham
- Manual Annotations of this start: 3 of 402
- Called 35.7% of time when present
- Phage (with cluster) where this start called: EastView9101_66 (B5), Rich_66 (B5), Rita130_66 (B5), Serendipitous_65 (B5), SirJeffery_66 (B5),

Start 28:

- Found in 1 of 418 (0.2%) of genes in pham
- Manual Annotations of this start: 1 of 402
- Called 100.0% of time when present
- Phage (with cluster) where this start called: Imvubu_61 (B10),

Start 29:

- Found in 89 of 418 (21.3%) of genes in pham
- Manual Annotations of this start: 17 of 402
- Called 20.2% of time when present
- Phage (with cluster) where this start called: AlanGrant_65 (B4), BrownCNA_63 (B4), CRB2_64 (B9), Fortunato_62 (B4), Funsized_67 (B9), Hangman_61 (B4), JAMaL_61 (B4), Knocker_66 (B9), LittleMinkey_75 (B13), Lolalove_62 (B4), Mithril_61 (B4), Nigel_61 (B4), Quesadilla_66 (B9), Rinkes_63 (B9), Vincenzo_64 (B4), VioletZ_63 (B4), Waleliano_61 (B4), Zenteno07_73 (B13),

Start 30:

- Found in 1 of 418 (0.2%) of genes in pham
- Manual Annotations of this start: 1 of 402
- Called 100.0% of time when present
- Phage (with cluster) where this start called: Thonko_67 (B8),

Start 31:

- Found in 1 of 418 (0.2%) of genes in pham
- Manual Annotations of this start: 1 of 402
- Called 100.0% of time when present
- Phage (with cluster) where this start called: Indlovu_65 (B11),

Start 32:

- Found in 1 of 418 (0.2%) of genes in pham
- Manual Annotations of this start: 1 of 402
- Called 100.0% of time when present
- Phage (with cluster) where this start called: NHagos_59 (DR),

Start 39:

- Found in 38 of 418 (9.1%) of genes in pham
- Manual Annotations of this start: 6 of 402
- Called 15.8% of time when present
- Phage (with cluster) where this start called: Allegro_64 (B2), Coffee_64 (B2), Faze9_63 (B2), Kaleb_64 (B2), Phantasmagoria_63 (B2), Vic9_00063 (B2),

Start 44:

- Found in 166 of 418 (39.7%) of genes in pham
- Manual Annotations of this start: 41 of 402
- Called 27.1% of time when present
- Phage (with cluster) where this start called: 39HC_061 (B6), 40BC_061 (B6), Adriana_69 (B1), AltPhacts_66 (B1), Ashraf_68 (B1), Basato_67 (B1), BlackStallion_68 (B1), BlueHusk_69 (B1), Buckeye_68 (B1), Caspiroi_67 (B1), Chorkpop_68 (B1), Dati_65 (B1), Dingo_65 (B1), DonSancho_64 (B1), ElvisPhasley_68 (B1), ForDig_62 (B6), GeneCoco_68 (B1), Grand2040_66 (B1), Gyarad_0067 (B1), Hamish_65 (B1), Heath_60 (B4), Horchata_65 (B1), Hosp_059 (B6), ImtiyazSitla_68 (B1), Inverness_66 (B1), Jolie1_061 (B6), KayaCho_61 (B6), Lasso_67 (B1), LittleDigger_60 (B4), Maskar_68 (B1), Melc17_65 (B1), MelsMeow_67 (B1), Mikota_65 (B1), MiniBoss_65 (B1), Mysterious_65 (B5),

Nathan_68 (B1), Phareon_66 (B1), Potter_65 (B1), RawrgerThat_62 (B4), RedRaider89_67 (B1), Renkei_60 (B4), Scrick_67 (B1), Sheila_64 (B1), TooFast2Furius_67 (B1), Zemanar_62 (B4),

Summary by clusters:

There are 14 clusters represented in this pham: B10, B8, B11, B4, B5, B6, B7, B12, B1, B2, B3, DR, B9, B13,

Info for manual annotations of cluster B1:

- Start number 12 was manually annotated 74 times for cluster B1.
- Start number 14 was manually annotated 129 times for cluster B1.
- Start number 23 was manually annotated 8 times for cluster B1.
- Start number 26 was manually annotated 24 times for cluster B1.
- Start number 44 was manually annotated 33 times for cluster B1.

Info for manual annotations of cluster B10:

- Start number 28 was manually annotated 1 time for cluster B10.

Info for manual annotations of cluster B11:

- Start number 31 was manually annotated 1 time for cluster B11.

Info for manual annotations of cluster B12:

- Start number 24 was manually annotated 1 time for cluster B12.

Info for manual annotations of cluster B13:

- Start number 18 was manually annotated 1 time for cluster B13.
- Start number 26 was manually annotated 1 time for cluster B13.
- Start number 29 was manually annotated 1 time for cluster B13.

Info for manual annotations of cluster B2:

- Start number 23 was manually annotated 30 times for cluster B2.
- Start number 26 was manually annotated 1 time for cluster B2.
- Start number 39 was manually annotated 6 times for cluster B2.

Info for manual annotations of cluster B3:

- Start number 15 was manually annotated 26 times for cluster B3.
- Start number 23 was manually annotated 2 times for cluster B3.
- Start number 26 was manually annotated 13 times for cluster B3.

Info for manual annotations of cluster B4:

- Start number 16 was manually annotated 11 times for cluster B4.
- Start number 29 was manually annotated 11 times for cluster B4.
- Start number 44 was manually annotated 5 times for cluster B4.

Info for manual annotations of cluster B5:

- Start number 17 was manually annotated 5 times for cluster B5.
- Start number 23 was manually annotated 2 times for cluster B5.
- Start number 27 was manually annotated 3 times for cluster B5.
- Start number 44 was manually annotated 1 time for cluster B5.

Info for manual annotations of cluster B6:

- Start number 44 was manually annotated 2 times for cluster B6.

Info for manual annotations of cluster B7:

- Start number 26 was manually annotated 1 time for cluster B7.

Info for manual annotations of cluster B8:

- Start number 30 was manually annotated 1 time for cluster B8.

Info for manual annotations of cluster B9:

- Start number 26 was manually annotated 2 times for cluster B9.
- Start number 29 was manually annotated 5 times for cluster B9.

Info for manual annotations of cluster DR:

- Start number 32 was manually annotated 1 time for cluster DR.

Gene Information:

Gene: 39HC_061 Start: 56330, Stop: 56530, Start Num: 44

Candidate Starts for 39HC_061:

(Start: 29 @56279 has 17 MA's), (Start: 44 @56330 has 41 MA's), (45, 56333), (46, 56336), (50, 56348),

Gene: 40BC_061 Start: 56330, Stop: 56530, Start Num: 44

Candidate Starts for 40BC_061:

(Start: 29 @56279 has 17 MA's), (Start: 44 @56330 has 41 MA's), (45, 56333), (46, 56336), (50, 56348),

Gene: ABU_67 Start: 57301, Stop: 57573, Start Num: 14

Candidate Starts for ABU_67:

(Start: 14 @57301 has 129 MA's), (Start: 23 @57322 has 42 MA's), (Start: 26 @57331 has 42 MA's), (45, 57394), (52, 57421), (70, 57544),

Gene: Abinghost_68 Start: 57207, Stop: 57494, Start Num: 15

Candidate Starts for Abinghost_68:

(2, 56985), (3, 57003), (4, 57015), (6, 57060), (11, 57195), (Start: 15 @57207 has 26 MA's), (20, 57225), (Start: 23 @57237 has 42 MA's), (Start: 26 @57246 has 42 MA's), (Start: 29 @57255 has 17 MA's), (60, 57399), (69, 57456),

Gene: Acadian_67 Start: 58258, Stop: 58542, Start Num: 17

Candidate Starts for Acadian_67:

(Start: 17 @58258 has 5 MA's), (Start: 23 @58285 has 42 MA's), (Start: 27 @58294 has 3 MA's), (46, 58360), (60, 58438), (68, 58492), (72, 58528),

Gene: Adriana_69 Start: 57994, Stop: 58173, Start Num: 44

Candidate Starts for Adriana_69:

(Start: 12 @57871 has 74 MA's), (Start: 26 @57925 has 42 MA's), (Start: 44 @57994 has 41 MA's), (54, 58036),

Gene: Aelin_67 Start: 56821, Stop: 57093, Start Num: 14

Candidate Starts for Aelin_67:

(Start: 14 @56821 has 129 MA's), (Start: 23 @56842 has 42 MA's), (Start: 26 @56851 has 42 MA's), (45, 56914), (52, 56941), (70, 57064),

Gene: Akoma_68 Start: 57286, Stop: 57534, Start Num: 26

Candidate Starts for Akoma_68:

(2, 57025), (3, 57043), (4, 57055), (6, 57100), (11, 57235), (Start: 15 @57247 has 26 MA's), (20, 57265), (Start: 23 @57277 has 42 MA's), (Start: 26 @57286 has 42 MA's), (Start: 29 @57295 has 17 MA's), (60, 57439), (69, 57496),

Gene: AlanGrant_65 Start: 59138, Stop: 59395, Start Num: 29

Candidate Starts for AlanGrant_65:

(Start: 29 @59138 has 17 MA's), (Start: 44 @59189 has 41 MA's), (46, 59195), (50, 59207), (55, 59237), (56, 59240), (61, 59279), (63, 59288), (70, 59342),

Gene: Allegro_64 Start: 55516, Stop: 55722, Start Num: 39

Candidate Starts for Allegro_64:

(Start: 23 @55462 has 42 MA's), (Start: 26 @55471 has 42 MA's), (Start: 39 @55516 has 6 MA's), (46, 55543), (52, 55570), (57, 55597), (63, 55639), (67, 55672), (69, 55681), (70, 55693),

Gene: AltPhacts_66 Start: 56481, Stop: 56660, Start Num: 44

Candidate Starts for AltPhacts_66:

(Start: 12 @56358 has 74 MA's), (Start: 26 @56412 has 42 MA's), (Start: 44 @56481 has 41 MA's), (54, 56523),

Gene: Altwerkus_66 Start: 56464, Stop: 56736, Start Num: 14

Candidate Starts for Altwerkus_66:

(Start: 14 @56464 has 129 MA's), (Start: 23 @56485 has 42 MA's), (Start: 26 @56494 has 42 MA's), (45, 56557), (52, 56584), (70, 56707),

Gene: Anderson_69 Start: 57036, Stop: 57308, Start Num: 14

Candidate Starts for Anderson_69:

(Start: 14 @57036 has 129 MA's), (Start: 23 @57057 has 42 MA's), (Start: 26 @57066 has 42 MA's), (45, 57129), (52, 57156), (70, 57279),

Gene: Andre_70 Start: 57216, Stop: 57488, Start Num: 14

Candidate Starts for Andre_70:

(Start: 14 @57216 has 129 MA's), (Start: 23 @57237 has 42 MA's), (Start: 26 @57246 has 42 MA's), (45, 57309), (52, 57336), (70, 57459),

Gene: AngelCake_67 Start: 56953, Stop: 57225, Start Num: 14

Candidate Starts for AngelCake_67:

(Start: 14 @56953 has 129 MA's), (Start: 23 @56974 has 42 MA's), (Start: 26 @56983 has 42 MA's), (45, 57046), (52, 57073), (70, 57196),

Gene: Antonia_67 Start: 56820, Stop: 57092, Start Num: 14

Candidate Starts for Antonia_67:

(Start: 14 @56820 has 129 MA's), (Start: 23 @56841 has 42 MA's), (Start: 26 @56850 has 42 MA's), (45, 56913), (52, 56940), (70, 57063),

Gene: Aonishiki_68 Start: 57079, Stop: 57351, Start Num: 14

Candidate Starts for Aonishiki_68:

(Start: 14 @57079 has 129 MA's), (Start: 23 @57100 has 42 MA's), (Start: 26 @57109 has 42 MA's), (45, 57172), (52, 57199), (70, 57322),

Gene: Apex_62 Start: 58091, Stop: 58408, Start Num: 16

Candidate Starts for Apex_62:

(Start: 16 @58091 has 11 MA's), (Start: 29 @58139 has 17 MA's), (Start: 44 @58190 has 41 MA's), (46, 58196), (48, 58202), (50, 58208), (51, 58211), (56, 58241), (59, 58259), (60, 58274), (63, 58289), (64, 58307),

Gene: Apizium_67 Start: 56482, Stop: 56754, Start Num: 14

Candidate Starts for Apizium_67:

(Start: 14 @56482 has 129 MA's), (Start: 23 @56503 has 42 MA's), (Start: 26 @56512 has 42 MA's), (45, 56575), (52, 56602), (70, 56725),

Gene: Arbiter_62 Start: 55569, Stop: 55829, Start Num: 23

Candidate Starts for Arbiter_62:

(Start: 23 @55569 has 42 MA's), (Start: 26 @55578 has 42 MA's), (Start: 39 @55623 has 6 MA's), (46, 55650), (52, 55677), (57, 55704), (63, 55746), (67, 55779), (69, 55788), (70, 55800),

Gene: Ares_64 Start: 55540, Stop: 55800, Start Num: 23

Candidate Starts for Ares_64:

(Start: 23 @55540 has 42 MA's), (Start: 26 @55549 has 42 MA's), (Start: 39 @55594 has 6 MA's), (46, 55621), (52, 55648), (57, 55675), (63, 55717), (67, 55750), (69, 55759), (70, 55771),

Gene: Ashraf_68 Start: 57146, Stop: 57325, Start Num: 44

Candidate Starts for Ashraf_68:

(Start: 12 @57023 has 74 MA's), (Start: 26 @57077 has 42 MA's), (Start: 44 @57146 has 41 MA's), (54, 57188),

Gene: Athena_70 Start: 57982, Stop: 58269, Start Num: 15

Candidate Starts for Athena_70:

(2, 57760), (3, 57778), (4, 57790), (6, 57835), (11, 57970), (Start: 15 @57982 has 26 MA's), (20, 58000), (Start: 23 @58012 has 42 MA's), (Start: 26 @58021 has 42 MA's), (Start: 29 @58030 has 17 MA's), (60, 58174), (69, 58231),

Gene: Audrey_68 Start: 57246, Stop: 57533, Start Num: 15

Candidate Starts for Audrey_68:

(2, 57024), (3, 57042), (4, 57054), (6, 57099), (11, 57234), (Start: 15 @57246 has 26 MA's), (20, 57264), (Start: 23 @57276 has 42 MA's), (Start: 26 @57285 has 42 MA's), (Start: 29 @57294 has 17 MA's), (60, 57438), (69, 57495),

Gene: Austelle_62 Start: 58545, Stop: 58862, Start Num: 16

Candidate Starts for Austelle_62:

(Start: 16 @58545 has 11 MA's), (Start: 29 @58593 has 17 MA's), (Start: 44 @58644 has 41 MA's), (46, 58650), (48, 58656), (50, 58662), (51, 58665), (56, 58695), (59, 58713), (60, 58728), (63, 58743), (64, 58761),

Gene: Badfish_68 Start: 57322, Stop: 57594, Start Num: 14

Candidate Starts for Badfish_68:

(Start: 14 @57322 has 129 MA's), (Start: 23 @57343 has 42 MA's), (Start: 26 @57352 has 42 MA's), (45, 57415), (52, 57442), (70, 57565),

Gene: Bae_67 Start: 59301, Stop: 59585, Start Num: 17

Candidate Starts for Bae_67:

(Start: 17 @59301 has 5 MA's), (Start: 23 @59328 has 42 MA's), (Start: 27 @59337 has 3 MA's), (46, 59403), (59, 59466), (60, 59481), (68, 59535), (72, 59571), (75, 59580),

Gene: Baloo_67 Start: 57118, Stop: 57366, Start Num: 26

Candidate Starts for Baloo_67:

(2, 56857), (3, 56875), (4, 56887), (6, 56932), (11, 57067), (Start: 15 @57079 has 26 MA's), (20, 57097), (Start: 23 @57109 has 42 MA's), (Start: 26 @57118 has 42 MA's), (Start: 29 @57127 has 17 MA's), (60, 57271), (69, 57328),

Gene: Bananafish_65 Start: 55470, Stop: 55730, Start Num: 23

Candidate Starts for Bananafish_65:

(Start: 23 @55470 has 42 MA's), (Start: 26 @55479 has 42 MA's), (Start: 39 @55524 has 6 MA's), (46, 55551), (52, 55578), (57, 55605), (63, 55647), (67, 55680), (69, 55689), (70, 55701),

Gene: Banjo_66 Start: 56800, Stop: 57102, Start Num: 12

Candidate Starts for Banjo_66:

(Start: 12 @56800 has 74 MA's), (Start: 26 @56854 has 42 MA's), (Start: 44 @56923 has 41 MA's), (54, 56965),

Gene: Basato_67 Start: 57199, Stop: 57378, Start Num: 44

Candidate Starts for Basato_67:

(Start: 12 @57076 has 74 MA's), (Start: 26 @57130 has 42 MA's), (Start: 44 @57199 has 41 MA's), (54, 57241),

Gene: BatteryCK_66 Start: 56770, Stop: 57072, Start Num: 12

Candidate Starts for BatteryCK_66:

(Start: 12 @56770 has 74 MA's), (Start: 26 @56824 has 42 MA's), (Start: 44 @56893 has 41 MA's), (54, 56935),

Gene: Beaglebox_66 Start: 56876, Stop: 57148, Start Num: 14

Candidate Starts for Beaglebox_66:

(Start: 14 @56876 has 129 MA's), (Start: 23 @56897 has 42 MA's), (Start: 26 @56906 has 42 MA's), (45, 56969), (52, 56996), (70, 57119),

Gene: Ben11_68 Start: 57494, Stop: 57751, Start Num: 23

Candidate Starts for Ben11_68:

(2, 57242), (3, 57260), (4, 57272), (6, 57317), (11, 57452), (Start: 15 @57464 has 26 MA's), (20, 57482), (Start: 23 @57494 has 42 MA's), (Start: 26 @57503 has 42 MA's), (Start: 29 @57512 has 17 MA's), (60, 57656), (69, 57713),

Gene: Bernardo_69 Start: 57484, Stop: 57732, Start Num: 26

Candidate Starts for Bernardo_69:

(11, 57433), (Start: 15 @57445 has 26 MA's), (20, 57463), (Start: 23 @57475 has 42 MA's), (Start: 26 @57484 has 42 MA's), (Start: 29 @57493 has 17 MA's), (60, 57637), (69, 57694),

Gene: BirdsNest_72 Start: 58539, Stop: 58814, Start Num: 18

Candidate Starts for BirdsNest_72:

(Start: 18 @58539 has 1 MA's), (Start: 26 @58572 has 42 MA's), (Start: 29 @58581 has 17 MA's), (42, 58617), (51, 58647), (55, 58677),

Gene: Bishoperium_68 Start: 57350, Stop: 57622, Start Num: 14

Candidate Starts for Bishoperium_68:

(Start: 14 @57350 has 129 MA's), (Start: 23 @57371 has 42 MA's), (Start: 26 @57380 has 42 MA's), (45, 57443), (52, 57470), (70, 57593),

Gene: BlackStallion_68 Start: 57193, Stop: 57372, Start Num: 44

Candidate Starts for BlackStallion_68:

(Start: 12 @57070 has 74 MA's), (Start: 26 @57124 has 42 MA's), (Start: 44 @57193 has 41 MA's), (54, 57235),

Gene: Blocker23_64 Start: 55537, Stop: 55797, Start Num: 23

Candidate Starts for Blocker23_64:

(Start: 23 @55537 has 42 MA's), (Start: 26 @55546 has 42 MA's), (Start: 39 @55591 has 6 MA's), (46, 55618), (52, 55645), (57, 55672), (63, 55714), (67, 55747), (69, 55756), (70, 55768),

Gene: BlueHusk_69 Start: 56949, Stop: 57128, Start Num: 44

Candidate Starts for BlueHusk_69:

(10, 56817), (Start: 26 @56880 has 42 MA's), (Start: 44 @56949 has 41 MA's), (54, 56991),

Gene: BobbyK_62 Start: 57853, Stop: 58170, Start Num: 16

Candidate Starts for BobbyK_62:

(Start: 16 @57853 has 11 MA's), (Start: 29 @57901 has 17 MA's), (Start: 44 @57952 has 41 MA's), (46, 57958), (48, 57964), (50, 57970), (56, 58003), (59, 58021), (60, 58036), (63, 58051), (64, 58069),

Gene: Boyle_64 Start: 55578, Stop: 55838, Start Num: 23

Candidate Starts for Boyle_64:

(Start: 23 @55578 has 42 MA's), (Start: 26 @55587 has 42 MA's), (Start: 39 @55632 has 6 MA's), (46, 55659), (52, 55686), (57, 55713), (63, 55755), (67, 55788), (69, 55797), (70, 55809),

Gene: Brilliant_71 Start: 57319, Stop: 57591, Start Num: 14

Candidate Starts for Brilliant_71:

(Start: 14 @57319 has 129 MA's), (Start: 23 @57340 has 42 MA's), (Start: 26 @57349 has 42 MA's), (45, 57412), (52, 57439), (59, 57478), (70, 57562),

Gene: BrownCNA_63 Start: 58302, Stop: 58568, Start Num: 29

Candidate Starts for BrownCNA_63:

(Start: 29 @58302 has 17 MA's), (Start: 44 @58353 has 41 MA's), (46, 58359), (48, 58365), (50, 58371), (51, 58374), (56, 58404), (59, 58422), (60, 58437), (63, 58452), (64, 58470),

Gene: Brownie5_64 Start: 55580, Stop: 55840, Start Num: 23

Candidate Starts for Brownie5_64:

(Start: 23 @55580 has 42 MA's), (Start: 26 @55589 has 42 MA's), (Start: 39 @55634 has 6 MA's), (52, 55688), (57, 55715), (63, 55757), (67, 55790), (69, 55799), (70, 55811),

Gene: Buckeye_68 Start: 58013, Stop: 58192, Start Num: 44

Candidate Starts for Buckeye_68:

(Start: 12 @57890 has 74 MA's), (Start: 26 @57944 has 42 MA's), (Start: 44 @58013 has 41 MA's), (54, 58055),

Gene: Burr_68 Start: 56786, Stop: 57058, Start Num: 14

Candidate Starts for Burr_68:

(Start: 14 @56786 has 129 MA's), (Start: 23 @56807 has 42 MA's), (Start: 26 @56816 has 42 MA's), (45, 56879), (52, 56906), (70, 57029),

Gene: CRB2_64 Start: 58911, Stop: 59153, Start Num: 29

Candidate Starts for CRB2_64:

(Start: 26 @58902 has 42 MA's), (Start: 29 @58911 has 17 MA's), (46, 58971), (50, 58983), (55, 59013), (59, 59034),

Gene: CRB2_66 Start: 60189, Stop: 60422, Start Num: 26
Candidate Starts for CRB2_66:
(Start: 26 @60189 has 42 MA's), (35, 60222), (37, 60225), (Start: 44 @60252 has 41 MA's), (50, 60270),

Gene: Calamitous_65 Start: 55468, Stop: 55728, Start Num: 23
Candidate Starts for Calamitous_65:
(Start: 23 @55468 has 42 MA's), (Start: 26 @55477 has 42 MA's), (Start: 39 @55522 has 6 MA's), (46, 55549), (52, 55576), (57, 55603), (63, 55645), (67, 55678), (69, 55687), (70, 55699),

Gene: CamL_68 Start: 57139, Stop: 57390, Start Num: 23
Candidate Starts for CamL_68:
(Start: 14 @57118 has 129 MA's), (Start: 23 @57139 has 42 MA's), (Start: 26 @57148 has 42 MA's), (45, 57211), (52, 57238), (70, 57361),

Gene: CampRoach_69 Start: 57225, Stop: 57497, Start Num: 14
Candidate Starts for CampRoach_69:
(Start: 14 @57225 has 129 MA's), (Start: 23 @57246 has 42 MA's), (Start: 26 @57255 has 42 MA's), (45, 57318), (52, 57345), (70, 57468),

Gene: Cannibal_68 Start: 57060, Stop: 57332, Start Num: 14
Candidate Starts for Cannibal_68:
(Start: 14 @57060 has 129 MA's), (Start: 23 @57081 has 42 MA's), (Start: 26 @57090 has 42 MA's), (45, 57153), (52, 57180), (70, 57303),

Gene: Carthage_68 Start: 56724, Stop: 56996, Start Num: 14
Candidate Starts for Carthage_68:
(Start: 14 @56724 has 129 MA's), (Start: 23 @56745 has 42 MA's), (Start: 26 @56754 has 42 MA's), (45, 56817), (52, 56844), (70, 56967),

Gene: Casbah_68 Start: 57566, Stop: 57853, Start Num: 15
Candidate Starts for Casbah_68:
(2, 57344), (3, 57362), (4, 57374), (6, 57419), (11, 57554), (Start: 15 @57566 has 26 MA's), (20, 57584), (Start: 23 @57596 has 42 MA's), (Start: 26 @57605 has 42 MA's), (Start: 29 @57614 has 17 MA's), (60, 57758), (69, 57815),

Gene: Caspiboi_67 Start: 57156, Stop: 57335, Start Num: 44
Candidate Starts for Caspiboi_67:
(Start: 12 @57033 has 74 MA's), (Start: 26 @57087 has 42 MA's), (Start: 44 @57156 has 41 MA's), (54, 57198),

Gene: ChaChing_68 Start: 57264, Stop: 57551, Start Num: 15
Candidate Starts for ChaChing_68:
(2, 57042), (3, 57060), (4, 57072), (6, 57117), (11, 57252), (Start: 15 @57264 has 26 MA's), (20, 57282), (Start: 23 @57294 has 42 MA's), (Start: 26 @57303 has 42 MA's), (Start: 29 @57312 has 17 MA's), (60, 57456), (69, 57513),

Gene: Chaelin_69 Start: 57349, Stop: 57621, Start Num: 14
Candidate Starts for Chaelin_69:
(Start: 14 @57349 has 129 MA's), (Start: 23 @57370 has 42 MA's), (Start: 26 @57379 has 42 MA's), (45, 57442), (52, 57469), (70, 57592),

Gene: Chah_69 Start: 56763, Stop: 57035, Start Num: 14

Candidate Starts for Chah_69:

(Start: 14 @56763 has 129 MA's), (Start: 23 @56784 has 42 MA's), (Start: 26 @56793 has 42 MA's), (45, 56856), (52, 56883), (70, 57006),

Gene: Chalmers_67 Start: 57697, Stop: 57984, Start Num: 15

Candidate Starts for Chalmers_67:

(2, 57475), (3, 57493), (4, 57505), (6, 57550), (11, 57685), (Start: 15 @57697 has 26 MA's), (20, 57715), (Start: 23 @57727 has 42 MA's), (Start: 26 @57736 has 42 MA's), (Start: 29 @57745 has 17 MA's), (60, 57889), (69, 57946),

Gene: Chandler_68 Start: 58065, Stop: 58313, Start Num: 26

Candidate Starts for Chandler_68:

(2, 57804), (3, 57822), (4, 57834), (6, 57879), (11, 58014), (Start: 15 @58026 has 26 MA's), (20, 58044), (Start: 23 @58056 has 42 MA's), (Start: 26 @58065 has 42 MA's), (Start: 29 @58074 has 17 MA's), (60, 58218), (69, 58275),

Gene: Charles1_69 Start: 57073, Stop: 57345, Start Num: 14

Candidate Starts for Charles1_69:

(Start: 14 @57073 has 129 MA's), (Start: 23 @57094 has 42 MA's), (Start: 26 @57103 has 42 MA's), (45, 57166), (52, 57193), (70, 57316),

Gene: CharlieGBrown_66 Start: 56715, Stop: 57017, Start Num: 12

Candidate Starts for CharlieGBrown_66:

(Start: 12 @56715 has 74 MA's), (Start: 26 @56769 has 42 MA's), (Start: 44 @56838 has 41 MA's), (54, 56880),

Gene: CheetO_67 Start: 57036, Stop: 57308, Start Num: 14

Candidate Starts for CheetO_67:

(Start: 14 @57036 has 129 MA's), (Start: 23 @57057 has 42 MA's), (Start: 26 @57066 has 42 MA's), (45, 57129), (52, 57156), (70, 57279),

Gene: Cher_68 Start: 57320, Stop: 57622, Start Num: 12

Candidate Starts for Cher_68:

(Start: 12 @57320 has 74 MA's), (Start: 26 @57374 has 42 MA's), (Start: 44 @57443 has 41 MA's), (54, 57485),

Gene: Childish_67 Start: 57339, Stop: 57611, Start Num: 14

Candidate Starts for Childish_67:

(Start: 14 @57339 has 129 MA's), (Start: 23 @57360 has 42 MA's), (Start: 26 @57369 has 42 MA's), (45, 57432), (46, 57435), (52, 57459), (70, 57582),

Gene: Chorkpop_68 Start: 56930, Stop: 57109, Start Num: 44

Candidate Starts for Chorkpop_68:

(Start: 12 @56807 has 74 MA's), (Start: 26 @56861 has 42 MA's), (Start: 44 @56930 has 41 MA's), (54, 56972),

Gene: ChrisnMich_61 Start: 56895, Stop: 57212, Start Num: 16

Candidate Starts for ChrisnMich_61:

(Start: 16 @56895 has 11 MA's), (Start: 29 @56943 has 17 MA's), (Start: 44 @56994 has 41 MA's), (46, 57000), (48, 57006), (50, 57012), (56, 57045), (59, 57063), (60, 57078), (63, 57093), (64, 57111),

Gene: Chunky_68 Start: 56653, Stop: 56925, Start Num: 14

Candidate Starts for Chunky_68:

(Start: 14 @56653 has 129 MA's), (Start: 23 @56674 has 42 MA's), (Start: 26 @56683 has 42 MA's), (45, 56746), (52, 56773), (70, 56896),

Gene: Cobra_68 Start: 57351, Stop: 57653, Start Num: 12

Candidate Starts for Cobra_68:

(Start: 12 @57351 has 74 MA's), (Start: 26 @57405 has 42 MA's), (Start: 44 @57474 has 41 MA's), (54, 57516),

Gene: Coffee_64 Start: 55626, Stop: 55832, Start Num: 39

Candidate Starts for Coffee_64:

(Start: 23 @55572 has 42 MA's), (Start: 26 @55581 has 42 MA's), (Start: 39 @55626 has 6 MA's), (46, 55653), (52, 55680), (57, 55707), (63, 55749), (67, 55782), (69, 55791), (70, 55803),

Gene: Colbert_66 Start: 56375, Stop: 56647, Start Num: 14

Candidate Starts for Colbert_66:

(Start: 14 @56375 has 129 MA's), (Start: 23 @56396 has 42 MA's), (Start: 26 @56405 has 42 MA's), (45, 56468), (52, 56495), (70, 56618),

Gene: Coletti_71 Start: 57877, Stop: 58149, Start Num: 14

Candidate Starts for Coletti_71:

(Start: 14 @57877 has 129 MA's), (Start: 23 @57898 has 42 MA's), (Start: 26 @57907 has 42 MA's), (45, 57970), (52, 57997), (70, 58120),

Gene: Compostia_67 Start: 57686, Stop: 57934, Start Num: 26

Candidate Starts for Compostia_67:

(2, 57425), (3, 57443), (4, 57455), (6, 57500), (11, 57635), (Start: 15 @57647 has 26 MA's), (20, 57665), (Start: 23 @57677 has 42 MA's), (Start: 26 @57686 has 42 MA's), (Start: 29 @57695 has 17 MA's), (60, 57839), (69, 57896),

Gene: Cooper_63 Start: 57347, Stop: 57664, Start Num: 16

Candidate Starts for Cooper_63:

(Start: 16 @57347 has 11 MA's), (Start: 29 @57395 has 17 MA's), (Start: 44 @57446 has 41 MA's), (46, 57452), (48, 57458), (50, 57464), (56, 57497), (59, 57515), (63, 57545),

Gene: Cornbread_66 Start: 56841, Stop: 57113, Start Num: 14

Candidate Starts for Cornbread_66:

(Start: 14 @56841 has 129 MA's), (Start: 23 @56862 has 42 MA's), (Start: 26 @56871 has 42 MA's), (45, 56934), (52, 56961), (70, 57084),

Gene: Corofin_68 Start: 57277, Stop: 57564, Start Num: 15

Candidate Starts for Corofin_68:

(2, 57055), (3, 57073), (4, 57085), (6, 57130), (11, 57265), (Start: 15 @57277 has 26 MA's), (20, 57295), (Start: 23 @57307 has 42 MA's), (Start: 26 @57316 has 42 MA's), (Start: 29 @57325 has 17 MA's), (60, 57469), (69, 57526),

Gene: Cosmolli16_69 Start: 57541, Stop: 57792, Start Num: 23

Candidate Starts for Cosmolli16_69:

(Start: 14 @57520 has 129 MA's), (Start: 23 @57541 has 42 MA's), (Start: 26 @57550 has 42 MA's), (45, 57613), (52, 57640), (70, 57763),

Gene: Craff_71 Start: 57754, Stop: 58056, Start Num: 12

Candidate Starts for Craff_71:

(Start: 12 @57754 has 74 MA's), (Start: 26 @57808 has 42 MA's), (Start: 44 @57877 has 41 MA's), (54, 57919),

Gene: Crownjwl_66 Start: 56838, Stop: 57110, Start Num: 14

Candidate Starts for Crownjwl_66:

(Start: 14 @56838 has 129 MA's), (Start: 23 @56859 has 42 MA's), (Start: 26 @56868 has 42 MA's), (52, 56958), (70, 57081),

Gene: DaddyDaniels_70 Start: 57296, Stop: 57568, Start Num: 14

Candidate Starts for DaddyDaniels_70:

(Start: 14 @57296 has 129 MA's), (Start: 23 @57317 has 42 MA's), (Start: 26 @57326 has 42 MA's), (45, 57389), (46, 57392), (52, 57416), (70, 57539),

Gene: Daffy_66 Start: 56792, Stop: 57094, Start Num: 12

Candidate Starts for Daffy_66:

(Start: 12 @56792 has 74 MA's), (Start: 26 @56846 has 42 MA's), (Start: 44 @56915 has 41 MA's), (54, 56957),

Gene: Daisy_67 Start: 56849, Stop: 57097, Start Num: 26

Candidate Starts for Daisy_67:

(2, 56588), (3, 56606), (4, 56618), (6, 56663), (11, 56798), (Start: 15 @56810 has 26 MA's), (20, 56828), (Start: 23 @56840 has 42 MA's), (Start: 26 @56849 has 42 MA's), (Start: 29 @56858 has 17 MA's), (60, 57002), (69, 57059),

Gene: Daka_70 Start: 57306, Stop: 57608, Start Num: 12

Candidate Starts for Daka_70:

(Start: 12 @57306 has 74 MA's), (Start: 26 @57360 has 42 MA's), (Start: 44 @57429 has 41 MA's), (54, 57471),

Gene: Dati_65 Start: 57259, Stop: 57438, Start Num: 44

Candidate Starts for Dati_65:

(10, 57127), (Start: 26 @57190 has 42 MA's), (Start: 44 @57259 has 41 MA's), (54, 57301),

Gene: Deenasa_68 Start: 58113, Stop: 58400, Start Num: 15

Candidate Starts for Deenasa_68:

(2, 57891), (3, 57909), (4, 57921), (6, 57966), (11, 58101), (Start: 15 @58113 has 26 MA's), (20, 58131), (Start: 23 @58143 has 42 MA's), (Start: 26 @58152 has 42 MA's), (Start: 29 @58161 has 17 MA's), (60, 58305), (69, 58362),

Gene: DelRivs_66 Start: 56786, Stop: 57058, Start Num: 14

Candidate Starts for DelRivs_66:

(Start: 14 @56786 has 129 MA's), (Start: 23 @56807 has 42 MA's), (Start: 26 @56816 has 42 MA's), (52, 56906), (70, 57029),

Gene: Derpp_68 Start: 56891, Stop: 57193, Start Num: 12

Candidate Starts for Derpp_68:

(Start: 12 @56891 has 74 MA's), (Start: 26 @56945 has 42 MA's), (Start: 44 @57014 has 41 MA's), (54, 57056),

Gene: Devonte_67 Start: 56889, Stop: 57176, Start Num: 15

Candidate Starts for Devonte_67:

(2, 56667), (3, 56685), (4, 56697), (6, 56742), (11, 56877), (Start: 15 @56889 has 26 MA's), (20, 56907), (Start: 23 @56919 has 42 MA's), (Start: 26 @56928 has 42 MA's), (Start: 29 @56937 has 17

MA's), (60, 57081), (69, 57138),

Gene: Dice_67 Start: 56784, Stop: 57056, Start Num: 14

Candidate Starts for Dice_67:

(Start: 14 @56784 has 129 MA's), (Start: 23 @56805 has 42 MA's), (Start: 26 @56814 has 42 MA's), (45, 56877), (52, 56904), (70, 57027),

Gene: Dingo_65 Start: 56457, Stop: 56636, Start Num: 44

Candidate Starts for Dingo_65:

(Start: 12 @56334 has 74 MA's), (Start: 26 @56388 has 42 MA's), (Start: 44 @56457 has 41 MA's), (54, 56499),

Gene: Dione_66 Start: 56518, Stop: 56790, Start Num: 14

Candidate Starts for Dione_66:

(Start: 14 @56518 has 129 MA's), (Start: 23 @56539 has 42 MA's), (Start: 26 @56548 has 42 MA's), (45, 56611), (52, 56638), (70, 56761),

Gene: DirtJuice_68 Start: 57097, Stop: 57399, Start Num: 12

Candidate Starts for DirtJuice_68:

(Start: 12 @57097 has 74 MA's), (Start: 26 @57151 has 42 MA's), (Start: 44 @57220 has 41 MA's), (54, 57262),

Gene: Doddsville_66 Start: 56854, Stop: 57156, Start Num: 12

Candidate Starts for Doddsville_66:

(Start: 12 @56854 has 74 MA's), (Start: 26 @56908 has 42 MA's), (Start: 44 @56977 has 41 MA's), (54, 57019),

Gene: DoesntMatter_65 Start: 56808, Stop: 57080, Start Num: 14

Candidate Starts for DoesntMatter_65:

(Start: 14 @56808 has 129 MA's), (Start: 23 @56829 has 42 MA's), (Start: 26 @56838 has 42 MA's), (45, 56901), (52, 56928), (70, 57051),

Gene: DonSanchon_64 Start: 56612, Stop: 56791, Start Num: 44

Candidate Starts for DonSanchon_64:

(Start: 12 @56489 has 74 MA's), (Start: 26 @56543 has 42 MA's), (Start: 44 @56612 has 41 MA's), (54, 56654),

Gene: Donny_68 Start: 58302, Stop: 58586, Start Num: 17

Candidate Starts for Donny_68:

(Start: 17 @58302 has 5 MA's), (Start: 23 @58329 has 42 MA's), (Start: 27 @58338 has 3 MA's), (46, 58404), (60, 58482), (68, 58536), (70, 58551), (72, 58572),

Gene: DuchessDung_67 Start: 56370, Stop: 56672, Start Num: 12

Candidate Starts for DuchessDung_67:

(Start: 12 @56370 has 74 MA's), (Start: 26 @56424 has 42 MA's), (Start: 44 @56493 has 41 MA's), (54, 56535),

Gene: Duggie_68 Start: 57082, Stop: 57333, Start Num: 23

Candidate Starts for Duggie_68:

(Start: 23 @57082 has 42 MA's), (Start: 26 @57091 has 42 MA's), (52, 57181), (70, 57304),

Gene: Durga_70 Start: 57651, Stop: 57899, Start Num: 26

Candidate Starts for Durga_70:

(Start: 12 @57597 has 74 MA's), (Start: 26 @57651 has 42 MA's), (Start: 44 @57720 has 41 MA's), (54, 57762),

Gene: Eaglehorse_64 Start: 55458, Stop: 55718, Start Num: 23

Candidate Starts for Eaglehorse_64:

(Start: 23 @55458 has 42 MA's), (Start: 26 @55467 has 42 MA's), (Start: 39 @55512 has 6 MA's), (46, 55539), (52, 55566), (57, 55593), (63, 55635), (67, 55668), (69, 55677), (70, 55689),

Gene: EastView9101_66 Start: 58038, Stop: 58286, Start Num: 27

Candidate Starts for EastView9101_66:

(Start: 17 @58002 has 5 MA's), (Start: 23 @58029 has 42 MA's), (Start: 27 @58038 has 3 MA's), (46, 58104), (60, 58182), (68, 58236), (72, 58272),

Gene: ElvisPhasley_68 Start: 57946, Stop: 58125, Start Num: 44

Candidate Starts for ElvisPhasley_68:

(Start: 12 @57823 has 74 MA's), (Start: 26 @57877 has 42 MA's), (Start: 44 @57946 has 41 MA's), (54, 57988),

Gene: Emiris_69 Start: 57560, Stop: 57808, Start Num: 26

Candidate Starts for Emiris_69:

(Start: 12 @57506 has 74 MA's), (Start: 26 @57560 has 42 MA's), (Start: 44 @57629 has 41 MA's), (54, 57671),

Gene: EmpTee_67 Start: 57028, Stop: 57300, Start Num: 14

Candidate Starts for EmpTee_67:

(Start: 14 @57028 has 129 MA's), (Start: 23 @57049 has 42 MA's), (Start: 26 @57058 has 42 MA's), (45, 57121), (52, 57148), (70, 57271),

Gene: Eremos_67 Start: 57023, Stop: 57295, Start Num: 14

Candidate Starts for Eremos_67:

(Start: 14 @57023 has 129 MA's), (Start: 23 @57044 has 42 MA's), (Start: 26 @57053 has 42 MA's), (45, 57116), (52, 57143), (70, 57266),

Gene: Etaye_67 Start: 57703, Stop: 57951, Start Num: 26

Candidate Starts for Etaye_67:

(Start: 12 @57649 has 74 MA's), (Start: 26 @57703 has 42 MA's), (Start: 44 @57772 has 41 MA's), (54, 57814),

Gene: Fang_69 Start: 57339, Stop: 57641, Start Num: 12

Candidate Starts for Fang_69:

(Start: 12 @57339 has 74 MA's), (Start: 26 @57393 has 42 MA's), (Start: 44 @57462 has 41 MA's), (54, 57504),

Gene: Faze9_63 Start: 55651, Stop: 55857, Start Num: 39

Candidate Starts for Faze9_63:

(Start: 23 @55597 has 42 MA's), (Start: 26 @55606 has 42 MA's), (Start: 39 @55651 has 6 MA's), (46, 55678), (52, 55705), (57, 55732), (63, 55774), (67, 55807), (69, 55816), (70, 55828),

Gene: FleetyMac_71 Start: 56999, Stop: 57271, Start Num: 14

Candidate Starts for FleetyMac_71:

(Start: 14 @56999 has 129 MA's), (Start: 23 @57020 has 42 MA's), (Start: 26 @57029 has 42 MA's), (45, 57092), (52, 57119), (70, 57242),

Gene: FluffyNinja_68 Start: 57071, Stop: 57373, Start Num: 12
Candidate Starts for FluffyNinja_68:
(Start: 12 @57071 has 74 MA's), (Start: 26 @57125 has 42 MA's), (Start: 44 @57194 has 41 MA's),
(54, 57236),

Gene: ForDig_62 Start: 56642, Stop: 56842, Start Num: 44
Candidate Starts for ForDig_62:
(Start: 29 @56591 has 17 MA's), (Start: 44 @56642 has 41 MA's), (45, 56645), (46, 56648), (50,
56660), (63, 56741),

Gene: Fortunato_62 Start: 58000, Stop: 58269, Start Num: 29
Candidate Starts for Fortunato_62:
(Start: 29 @58000 has 17 MA's), (Start: 44 @58051 has 41 MA's), (46, 58057), (48, 58063), (50,
58069), (51, 58072), (56, 58102), (59, 58120), (60, 58135), (63, 58150), (64, 58168),

Gene: Frankicide_66 Start: 56878, Stop: 57120, Start Num: 26
Candidate Starts for Frankicide_66:
(Start: 14 @56848 has 129 MA's), (Start: 23 @56869 has 42 MA's), (Start: 26 @56878 has 42 MA's),
(52, 56968), (70, 57091),

Gene: Frederick_62 Start: 57795, Stop: 58112, Start Num: 16
Candidate Starts for Frederick_62:
(Start: 16 @57795 has 11 MA's), (Start: 29 @57843 has 17 MA's), (Start: 44 @57894 has 41 MA's),
(46, 57900), (48, 57906), (50, 57912), (56, 57945), (59, 57963), (60, 57978), (63, 57993), (64, 58011),

Gene: FrenchFry_65 Start: 55583, Stop: 55843, Start Num: 23
Candidate Starts for FrenchFry_65:
(Start: 23 @55583 has 42 MA's), (Start: 26 @55592 has 42 MA's), (Start: 39 @55637 has 6 MA's), (46,
55664), (52, 55691), (57, 55718), (63, 55760), (67, 55793), (69, 55802), (70, 55814),

Gene: Freya_65 Start: 56508, Stop: 56780, Start Num: 14
Candidate Starts for Freya_65:
(Start: 14 @56508 has 129 MA's), (Start: 23 @56529 has 42 MA's), (Start: 26 @56538 has 42 MA's),
(45, 56601), (52, 56628), (70, 56751),

Gene: FriarPreacher_66 Start: 56890, Stop: 57192, Start Num: 12
Candidate Starts for FriarPreacher_66:
(Start: 12 @56890 has 74 MA's), (Start: 26 @56944 has 42 MA's), (Start: 44 @57013 has 41 MA's),
(54, 57055),

Gene: Fringe_72 Start: 57683, Stop: 57955, Start Num: 14
Candidate Starts for Fringe_72:
(Start: 14 @57683 has 129 MA's), (Start: 23 @57704 has 42 MA's), (Start: 26 @57713 has 42 MA's),
(45, 57776), (52, 57803), (70, 57926),

Gene: FugateOSU_68 Start: 57843, Stop: 58145, Start Num: 12
Candidate Starts for FugateOSU_68:
(Start: 12 @57843 has 74 MA's), (Start: 26 @57897 has 42 MA's), (Start: 44 @57966 has 41 MA's),
(54, 58008),

Gene: Funsized_67 Start: 60141, Stop: 60473, Start Num: 29
Candidate Starts for Funsized_67:

(19, 60099), (Start: 29 @60141 has 17 MA's), (Start: 44 @60204 has 41 MA's), (50, 60222), (60, 60288), (63, 60303), (76, 60411),

Gene: Gadget_69 Start: 57577, Stop: 57864, Start Num: 15

Candidate Starts for Gadget_69:

(2, 57355), (3, 57373), (4, 57385), (6, 57430), (11, 57565), (Start: 15 @57577 has 26 MA's), (20, 57595), (Start: 23 @57607 has 42 MA's), (Start: 26 @57616 has 42 MA's), (Start: 29 @57625 has 17 MA's), (60, 57769), (69, 57826),

Gene: Gareth_68 Start: 57304, Stop: 57576, Start Num: 14

Candidate Starts for Gareth_68:

(Start: 14 @57304 has 129 MA's), (Start: 23 @57325 has 42 MA's), (Start: 26 @57334 has 42 MA's), (45, 57397), (52, 57424), (70, 57547),

Gene: GeneCoco_68 Start: 57462, Stop: 57641, Start Num: 44

Candidate Starts for GeneCoco_68:

(Start: 12 @57339 has 74 MA's), (Start: 26 @57393 has 42 MA's), (Start: 44 @57462 has 41 MA's), (54, 57504),

Gene: Gervas_69 Start: 57701, Stop: 57958, Start Num: 23

Candidate Starts for Gervas_69:

(2, 57449), (3, 57467), (4, 57479), (6, 57524), (11, 57659), (Start: 15 @57671 has 26 MA's), (20, 57689), (Start: 23 @57701 has 42 MA's), (Start: 26 @57710 has 42 MA's), (Start: 29 @57719 has 17 MA's), (60, 57863), (69, 57920),

Gene: GinPorsche_61 Start: 56881, Stop: 57198, Start Num: 16

Candidate Starts for GinPorsche_61:

(Start: 16 @56881 has 11 MA's), (Start: 29 @56929 has 17 MA's), (Start: 44 @56980 has 41 MA's), (46, 56986), (50, 56998), (56, 57031), (59, 57049), (60, 57064), (63, 57079), (64, 57097),

Gene: Giraffe_68 Start: 57299, Stop: 57571, Start Num: 14

Candidate Starts for Giraffe_68:

(Start: 14 @57299 has 129 MA's), (Start: 23 @57320 has 42 MA's), (Start: 26 @57329 has 42 MA's), (45, 57392), (52, 57419), (70, 57542),

Gene: Glass_65 Start: 55585, Stop: 55845, Start Num: 23

Candidate Starts for Glass_65:

(Start: 23 @55585 has 42 MA's), (Start: 26 @55594 has 42 MA's), (Start: 39 @55639 has 6 MA's), (46, 55666), (52, 55693), (57, 55720), (63, 55762), (67, 55795), (69, 55804), (70, 55816),

Gene: GlenHope_69 Start: 57237, Stop: 57524, Start Num: 15

Candidate Starts for GlenHope_69:

(2, 57015), (3, 57033), (4, 57045), (6, 57090), (11, 57225), (Start: 15 @57237 has 26 MA's), (20, 57255), (Start: 23 @57267 has 42 MA's), (Start: 26 @57276 has 42 MA's), (Start: 29 @57285 has 17 MA's), (60, 57429), (69, 57486),

Gene: Glubnar_69 Start: 57143, Stop: 57430, Start Num: 15

Candidate Starts for Glubnar_69:

(2, 56921), (3, 56939), (4, 56951), (6, 56996), (11, 57131), (Start: 15 @57143 has 26 MA's), (20, 57161), (Start: 23 @57173 has 42 MA's), (Start: 26 @57182 has 42 MA's), (Start: 29 @57191 has 17 MA's), (60, 57335), (69, 57392),

Gene: Godines_65 Start: 55844, Stop: 56104, Start Num: 23

Candidate Starts for Godines_65:

(Start: 23 @55844 has 42 MA's), (Start: 26 @55853 has 42 MA's), (Start: 39 @55898 has 6 MA's), (46, 55925), (52, 55952), (57, 55979), (63, 56021), (67, 56054), (69, 56063), (70, 56075),

Gene: Gophee_69 Start: 57290, Stop: 57562, Start Num: 14

Candidate Starts for Gophee_69:

(Start: 14 @57290 has 129 MA's), (Start: 23 @57311 has 42 MA's), (Start: 26 @57320 has 42 MA's), (45, 57383), (52, 57410), (70, 57533),

Gene: Grand2040_66 Start: 57405, Stop: 57584, Start Num: 44

Candidate Starts for Grand2040_66:

(Start: 12 @57282 has 74 MA's), (Start: 26 @57336 has 42 MA's), (Start: 44 @57405 has 41 MA's), (54, 57447),

Gene: Gwennie1_67 Start: 57190, Stop: 57462, Start Num: 14

Candidate Starts for Gwennie1_67:

(Start: 14 @57190 has 129 MA's), (Start: 23 @57211 has 42 MA's), (Start: 26 @57220 has 42 MA's), (52, 57310), (70, 57433),

Gene: Gwilliam_69 Start: 57728, Stop: 57970, Start Num: 26

Candidate Starts for Gwilliam_69:

(Start: 14 @57698 has 129 MA's), (Start: 23 @57719 has 42 MA's), (Start: 26 @57728 has 42 MA's), (52, 57818), (70, 57941),

Gene: Gyarad_0067 Start: 56782, Stop: 56961, Start Num: 44

Candidate Starts for Gyarad_0067:

(Start: 12 @56659 has 74 MA's), (Start: 26 @56713 has 42 MA's), (Start: 44 @56782 has 41 MA's), (54, 56824),

Gene: HSavage_66 Start: 56826, Stop: 57098, Start Num: 14

Candidate Starts for HSavage_66:

(Start: 14 @56826 has 129 MA's), (Start: 23 @56847 has 42 MA's), (Start: 26 @56856 has 42 MA's), (45, 56919), (52, 56946), (70, 57069),

Gene: Haimas_66 Start: 56790, Stop: 57092, Start Num: 12

Candidate Starts for Haimas_66:

(Start: 12 @56790 has 74 MA's), (Start: 26 @56844 has 42 MA's), (Start: 44 @56913 has 41 MA's), (54, 56955),

Gene: Haleema_67 Start: 56845, Stop: 57117, Start Num: 14

Candidate Starts for Haleema_67:

(Start: 14 @56845 has 129 MA's), (Start: 23 @56866 has 42 MA's), (Start: 26 @56875 has 42 MA's), (45, 56938), (52, 56965), (70, 57088),

Gene: Halfpint_67 Start: 56988, Stop: 57275, Start Num: 15

Candidate Starts for Halfpint_67:

(2, 56766), (3, 56784), (4, 56796), (6, 56841), (11, 56976), (Start: 15 @56988 has 26 MA's), (20, 57006), (Start: 23 @57018 has 42 MA's), (Start: 26 @57027 has 42 MA's), (Start: 29 @57036 has 17 MA's), (60, 57180), (69, 57237),

Gene: Hamish_65 Start: 56845, Stop: 57024, Start Num: 44

Candidate Starts for Hamish_65:

(Start: 12 @56722 has 74 MA's), (Start: 26 @56776 has 42 MA's), (Start: 44 @56845 has 41 MA's), (54, 56887),

Gene: Hangman_61 Start: 58042, Stop: 58311, Start Num: 29

Candidate Starts for Hangman_61:

(Start: 29 @58042 has 17 MA's), (Start: 44 @58093 has 41 MA's), (46, 58099), (48, 58105), (50, 58111), (51, 58114), (56, 58144), (59, 58162), (60, 58177), (63, 58192), (64, 58210),

Gene: Hartsy_67 Start: 56987, Stop: 57259, Start Num: 14

Candidate Starts for Hartsy_67:

(Start: 14 @56987 has 129 MA's), (Start: 23 @57008 has 42 MA's), (Start: 26 @57017 has 42 MA's), (45, 57080), (52, 57107), (70, 57230),

Gene: Harvey_65 Start: 56819, Stop: 57121, Start Num: 12

Candidate Starts for Harvey_65:

(Start: 12 @56819 has 74 MA's), (Start: 26 @56873 has 42 MA's), (Start: 44 @56942 has 41 MA's), (54, 56984),

Gene: Hashim76_70 Start: 58554, Stop: 58817, Start Num: 26

Candidate Starts for Hashim76_70:

(Start: 18 @58521 has 1 MA's), (Start: 26 @58554 has 42 MA's), (Start: 29 @58563 has 17 MA's), (55, 58665), (59, 58686), (73, 58797),

Gene: Heath_60 Start: 57720, Stop: 57938, Start Num: 44

Candidate Starts for Heath_60:

(Start: 29 @57669 has 17 MA's), (Start: 44 @57720 has 41 MA's), (46, 57726), (48, 57732), (50, 57738), (51, 57741), (56, 57771), (59, 57789), (60, 57804), (63, 57819), (64, 57837),

Gene: Heathcliff_68 Start: 57204, Stop: 57491, Start Num: 15

Candidate Starts for Heathcliff_68:

(2, 56982), (3, 57000), (4, 57012), (6, 57057), (11, 57192), (Start: 15 @57204 has 26 MA's), (20, 57222), (Start: 23 @57234 has 42 MA's), (Start: 26 @57243 has 42 MA's), (Start: 29 @57252 has 17 MA's), (60, 57396), (69, 57453),

Gene: Hedgerow_64 Start: 55555, Stop: 55815, Start Num: 23

Candidate Starts for Hedgerow_64:

(Start: 23 @55555 has 42 MA's), (Start: 26 @55564 has 42 MA's), (Start: 39 @55609 has 6 MA's), (46, 55636), (52, 55663), (57, 55690), (63, 55732), (67, 55765), (69, 55774), (70, 55786),

Gene: Held_66 Start: 56793, Stop: 57095, Start Num: 12

Candidate Starts for Held_66:

(Start: 12 @56793 has 74 MA's), (Start: 26 @56847 has 42 MA's), (Start: 44 @56916 has 41 MA's), (54, 56958),

Gene: HenryJackson_68 Start: 57328, Stop: 57600, Start Num: 14

Candidate Starts for HenryJackson_68:

(Start: 14 @57328 has 129 MA's), (Start: 23 @57349 has 42 MA's), (Start: 26 @57358 has 42 MA's), (45, 57421), (46, 57424), (52, 57448), (70, 57571),

Gene: Hertubise_67 Start: 57094, Stop: 57366, Start Num: 14

Candidate Starts for Hertubise_67:

(Start: 14 @57094 has 129 MA's), (Start: 23 @57115 has 42 MA's), (Start: 26 @57124 has 42 MA's), (45, 57187), (52, 57214), (70, 57337),

Gene: Hetaeria_67 Start: 57034, Stop: 57306, Start Num: 14

Candidate Starts for Hetaeria_67:

(Start: 14 @57034 has 129 MA's), (Start: 23 @57055 has 42 MA's), (Start: 26 @57064 has 42 MA's), (45, 57127), (52, 57154), (70, 57277),

Gene: HighStump_69 Start: 57296, Stop: 57598, Start Num: 12

Candidate Starts for HighStump_69:

(Start: 12 @57296 has 74 MA's), (Start: 26 @57350 has 42 MA's), (Start: 44 @57419 has 41 MA's), (54, 57461),

Gene: Holeinone_64 Start: 55443, Stop: 55703, Start Num: 23

Candidate Starts for Holeinone_64:

(Start: 23 @55443 has 42 MA's), (Start: 26 @55452 has 42 MA's), (Start: 39 @55497 has 6 MA's), (46, 55524), (52, 55551), (57, 55578), (63, 55620), (67, 55653), (69, 55662), (70, 55674),

Gene: Horchata_65 Start: 56937, Stop: 57116, Start Num: 44

Candidate Starts for Horchata_65:

(Start: 12 @56814 has 74 MA's), (Start: 26 @56868 has 42 MA's), (Start: 44 @56937 has 41 MA's), (54, 56979),

Gene: Hosp_059 Start: 54555, Stop: 54755, Start Num: 44

Candidate Starts for Hosp_059:

(Start: 29 @54504 has 17 MA's), (Start: 44 @54555 has 41 MA's), (45, 54558), (46, 54561), (50, 54573), (63, 54654),

Gene: Hydro_61 Start: 57932, Stop: 58249, Start Num: 16

Candidate Starts for Hydro_61:

(Start: 16 @57932 has 11 MA's), (Start: 29 @57980 has 17 MA's), (Start: 44 @58031 has 41 MA's), (46, 58037), (48, 58043), (50, 58049), (51, 58052), (56, 58082), (59, 58100), (60, 58115), (63, 58130), (64, 58148),

Gene: ImtiyazSitla_68 Start: 57146, Stop: 57325, Start Num: 44

Candidate Starts for ImtiyazSitla_68:

(Start: 12 @57023 has 74 MA's), (Start: 26 @57077 has 42 MA's), (Start: 44 @57146 has 41 MA's), (54, 57188),

Gene: Imvubu_61 Start: 56360, Stop: 56623, Start Num: 28

Candidate Starts for Imvubu_61:

(Start: 26 @56357 has 42 MA's), (Start: 28 @56360 has 1 MA's), (Start: 29 @56366 has 17 MA's), (Start: 44 @56417 has 41 MA's), (60, 56501), (63, 56516),

Gene: Indlovu_65 Start: 58320, Stop: 58526, Start Num: 31

Candidate Starts for Indlovu_65:

(22, 58278), (Start: 31 @58320 has 1 MA's), (Start: 44 @58353 has 41 MA's), (46, 58359), (50, 58371),

Gene: Inverness_66 Start: 56946, Stop: 57125, Start Num: 44

Candidate Starts for Inverness_66:

(Start: 12 @56823 has 74 MA's), (Start: 26 @56877 has 42 MA's), (Start: 44 @56946 has 41 MA's), (54, 56988),

Gene: Iridessa_69 Start: 56753, Stop: 57025, Start Num: 14

Candidate Starts for Iridessa_69:

(Start: 14 @56753 has 129 MA's), (Start: 23 @56774 has 42 MA's), (Start: 26 @56783 has 42 MA's), (45, 56846), (52, 56873), (70, 56996),

Gene: Iridoclysis_67 Start: 57107, Stop: 57409, Start Num: 12

Candidate Starts for Iridoclysis_67:

(Start: 12 @57107 has 74 MA's), (Start: 26 @57161 has 42 MA's), (Start: 44 @57230 has 41 MA's), (54, 57272),

Gene: IsaacEli_69 Start: 57317, Stop: 57589, Start Num: 14

Candidate Starts for IsaacEli_69:

(Start: 14 @57317 has 129 MA's), (Start: 23 @57338 has 42 MA's), (Start: 26 @57347 has 42 MA's), (45, 57410), (52, 57437), (70, 57560),

Gene: ItsyBitsy1_63 Start: 55673, Stop: 55933, Start Num: 23

Candidate Starts for ItsyBitsy1_63:

(Start: 23 @55673 has 42 MA's), (Start: 26 @55682 has 42 MA's), (Start: 39 @55727 has 6 MA's), (46, 55754), (52, 55781), (57, 55808), (63, 55850), (67, 55883), (69, 55892), (70, 55904),

Gene: JAMaL_61 Start: 58031, Stop: 58300, Start Num: 29

Candidate Starts for JAMaL_61:

(Start: 29 @58031 has 17 MA's), (Start: 44 @58082 has 41 MA's), (46, 58088), (48, 58094), (50, 58100), (56, 58133), (59, 58151), (60, 58166), (63, 58181), (64, 58199),

Gene: JDog_67 Start: 57338, Stop: 57610, Start Num: 14

Candidate Starts for JDog_67:

(Start: 14 @57338 has 129 MA's), (Start: 23 @57359 has 42 MA's), (Start: 26 @57368 has 42 MA's), (45, 57431), (52, 57458), (70, 57581),

Gene: JacAttac_68 Start: 56782, Stop: 57054, Start Num: 14

Candidate Starts for JacAttac_68:

(Start: 14 @56782 has 129 MA's), (Start: 23 @56803 has 42 MA's), (Start: 26 @56812 has 42 MA's), (45, 56875), (52, 56902), (70, 57025),

Gene: Jackstina_64 Start: 57129, Stop: 57416, Start Num: 15

Candidate Starts for Jackstina_64:

(2, 56907), (3, 56925), (4, 56937), (6, 56982), (11, 57117), (Start: 15 @57129 has 26 MA's), (20, 57147), (Start: 23 @57159 has 42 MA's), (Start: 26 @57168 has 42 MA's), (Start: 29 @57177 has 17 MA's), (60, 57321), (69, 57378),

Gene: JakeO_69 Start: 57084, Stop: 57335, Start Num: 23

Candidate Starts for JakeO_69:

(Start: 23 @57084 has 42 MA's), (Start: 26 @57093 has 42 MA's), (45, 57156), (52, 57183), (70, 57306),

Gene: JangoPhett_102 Start: 57123, Stop: 57395, Start Num: 14

Candidate Starts for JangoPhett_102:

(Start: 14 @57123 has 129 MA's), (Start: 23 @57144 has 42 MA's), (Start: 26 @57153 has 42 MA's), (45, 57216), (52, 57243), (70, 57366),

Gene: Jesabah_70 Start: 57918, Stop: 58190, Start Num: 14

Candidate Starts for Jesabah_70:

(Start: 14 @57918 has 129 MA's), (Start: 23 @57939 has 42 MA's), (Start: 26 @57948 has 42 MA's), (45, 58011), (52, 58038), (70, 58161),

Gene: Jillium_68 Start: 57323, Stop: 57595, Start Num: 14

Candidate Starts for Jillium_68:

(Start: 14 @57323 has 129 MA's), (Start: 23 @57344 has 42 MA's), (Start: 26 @57353 has 42 MA's), (45, 57416), (52, 57443), (70, 57566),

Gene: Jiraiya_69 Start: 57095, Stop: 57367, Start Num: 14

Candidate Starts for Jiraiya_69:

(Start: 14 @57095 has 129 MA's), (Start: 23 @57116 has 42 MA's), (Start: 26 @57125 has 42 MA's), (52, 57215), (70, 57338),

Gene: Jolie1_061 Start: 56473, Stop: 56673, Start Num: 44

Candidate Starts for Jolie1_061:

(Start: 29 @56422 has 17 MA's), (Start: 44 @56473 has 41 MA's), (45, 56476), (46, 56479), (50, 56491), (63, 56572),

Gene: KLucky39_66 Start: 56669, Stop: 56941, Start Num: 14

Candidate Starts for KLucky39_66:

(Start: 14 @56669 has 129 MA's), (Start: 23 @56690 has 42 MA's), (Start: 26 @56699 has 42 MA's), (45, 56762), (52, 56789), (70, 56912),

Gene: Kahve_68 Start: 57325, Stop: 57597, Start Num: 14

Candidate Starts for Kahve_68:

(Start: 14 @57325 has 129 MA's), (Start: 23 @57346 has 42 MA's), (Start: 26 @57355 has 42 MA's), (45, 57418), (46, 57421), (52, 57445), (70, 57568),

Gene: Kailash_66 Start: 57214, Stop: 57516, Start Num: 12

Candidate Starts for Kailash_66:

(Start: 12 @57214 has 74 MA's), (Start: 26 @57268 has 42 MA's), (Start: 44 @57337 has 41 MA's), (54, 57379),

Gene: Kaleb_64 Start: 55644, Stop: 55850, Start Num: 39

Candidate Starts for Kaleb_64:

(Start: 23 @55590 has 42 MA's), (Start: 26 @55599 has 42 MA's), (Start: 39 @55644 has 6 MA's), (46, 55671), (52, 55698), (57, 55725), (63, 55767), (67, 55800), (69, 55809), (70, 55821),

Gene: Kamiyu_68 Start: 57245, Stop: 57493, Start Num: 26

Candidate Starts for Kamiyu_68:

(2, 56984), (3, 57002), (4, 57014), (6, 57059), (11, 57194), (Start: 15 @57206 has 26 MA's), (20, 57224), (Start: 23 @57236 has 42 MA's), (Start: 26 @57245 has 42 MA's), (Start: 29 @57254 has 17 MA's), (60, 57398), (69, 57455),

Gene: Katniss_69 Start: 56765, Stop: 57037, Start Num: 14

Candidate Starts for Katniss_69:

(Start: 14 @56765 has 129 MA's), (Start: 23 @56786 has 42 MA's), (Start: 26 @56795 has 42 MA's), (45, 56858), (52, 56885), (70, 57008),

Gene: KayaCho_61 Start: 56583, Stop: 56783, Start Num: 44

Candidate Starts for KayaCho_61:

(Start: 29 @56532 has 17 MA's), (Start: 44 @56583 has 41 MA's), (45, 56586), (46, 56589), (50, 56601), (63, 56682),

Gene: Keitherie_70 Start: 57387, Stop: 57659, Start Num: 14

Candidate Starts for Keitherie_70:

(Start: 14 @57387 has 129 MA's), (Start: 23 @57408 has 42 MA's), (Start: 26 @57417 has 42 MA's), (45, 57480), (52, 57507), (70, 57630),

Gene: Kheth_64 Start: 55502, Stop: 55762, Start Num: 23

Candidate Starts for Kheth_64:

(Start: 23 @55502 has 42 MA's), (Start: 26 @55511 has 42 MA's), (Start: 39 @55556 has 6 MA's), (46, 55583), (52, 55610), (57, 55637), (63, 55679), (67, 55712), (69, 55721), (70, 55733),

Gene: Kikipoo_69 Start: 57317, Stop: 57589, Start Num: 14

Candidate Starts for Kikipoo_69:

(Start: 14 @57317 has 129 MA's), (Start: 23 @57338 has 42 MA's), (Start: 26 @57347 has 42 MA's), (45, 57410), (52, 57437), (70, 57560),

Gene: Kimbrough_69 Start: 57367, Stop: 57639, Start Num: 14

Candidate Starts for Kimbrough_69:

(Start: 14 @57367 has 129 MA's), (Start: 23 @57388 has 42 MA's), (Start: 26 @57397 has 42 MA's), (45, 57460), (52, 57487), (70, 57610),

Gene: KingTut_59 Start: 53521, Stop: 53823, Start Num: 12

Candidate Starts for KingTut_59:

(Start: 12 @53521 has 74 MA's), (Start: 26 @53575 has 42 MA's), (Start: 44 @53644 has 41 MA's), (54, 53686),

Gene: KingVeVeVe_66 Start: 56324, Stop: 56626, Start Num: 12

Candidate Starts for KingVeVeVe_66:

(Start: 12 @56324 has 74 MA's), (Start: 26 @56378 has 42 MA's), (Start: 44 @56447 has 41 MA's), (54, 56489),

Gene: KlimbOn_67 Start: 56826, Stop: 57098, Start Num: 14

Candidate Starts for KlimbOn_67:

(Start: 14 @56826 has 129 MA's), (Start: 23 @56847 has 42 MA's), (Start: 26 @56856 has 42 MA's), (45, 56919), (52, 56946), (70, 57069),

Gene: Kloppinator_68 Start: 56982, Stop: 57284, Start Num: 12

Candidate Starts for Kloppinator_68:

(Start: 12 @56982 has 74 MA's), (Start: 26 @57036 has 42 MA's), (Start: 44 @57105 has 41 MA's), (54, 57147),

Gene: Knocker_66 Start: 59276, Stop: 59527, Start Num: 29

Candidate Starts for Knocker_66:

(Start: 29 @59276 has 17 MA's), (48, 59339), (55, 59375),

Gene: Kolhan_65 Start: 55479, Stop: 55739, Start Num: 23

Candidate Starts for Kolhan_65:

(Start: 23 @55479 has 42 MA's), (Start: 26 @55488 has 42 MA's), (Start: 39 @55533 has 6 MA's), (46, 55560), (52, 55587), (57, 55614), (63, 55656), (67, 55689), (69, 55698), (70, 55710),

Gene: Kronus_68 Start: 58341, Stop: 58589, Start Num: 26

Candidate Starts for Kronus_68:

(2, 58080), (3, 58098), (4, 58110), (6, 58155), (11, 58290), (Start: 15 @58302 has 26 MA's), (20, 58320), (Start: 23 @58332 has 42 MA's), (Start: 26 @58341 has 42 MA's), (Start: 29 @58350 has 17 MA's), (60, 58494), (69, 58551),

Gene: Kwadwo_67 Start: 56776, Stop: 57048, Start Num: 14
Candidate Starts for Kwadwo_67:
(Start: 14 @56776 has 129 MA's), (Start: 23 @56797 has 42 MA's), (Start: 26 @56806 has 42 MA's),
(45, 56869), (52, 56896), (70, 57019),

Gene: Kwksand96_68 Start: 56903, Stop: 57205, Start Num: 12
Candidate Starts for Kwksand96_68:
(Start: 12 @56903 has 74 MA's), (Start: 26 @56957 has 42 MA's), (Start: 44 @57026 has 41 MA's),
(54, 57068),

Gene: Labeouficaum_68 Start: 56891, Stop: 57193, Start Num: 12
Candidate Starts for Labeouficaum_68:
(Start: 12 @56891 has 74 MA's), (Start: 26 @56945 has 42 MA's), (Start: 44 @57014 has 41 MA's),
(54, 57056),

Gene: Lars_65 Start: 55572, Stop: 55823, Start Num: 26
Candidate Starts for Lars_65:
(Start: 23 @55563 has 42 MA's), (Start: 26 @55572 has 42 MA's), (Start: 39 @55617 has 6 MA's), (46,
55644), (52, 55671), (57, 55698), (63, 55740), (67, 55773), (69, 55782), (70, 55794),

Gene: Lasso_67 Start: 57164, Stop: 57343, Start Num: 44
Candidate Starts for Lasso_67:
(Start: 12 @57041 has 74 MA's), (Start: 26 @57095 has 42 MA's), (Start: 44 @57164 has 41 MA's),
(54, 57206),

Gene: Laurie_64 Start: 55263, Stop: 55523, Start Num: 23
Candidate Starts for Laurie_64:
(Start: 23 @55263 has 42 MA's), (Start: 26 @55272 has 42 MA's), (Start: 39 @55317 has 6 MA's), (46,
55344), (52, 55371), (57, 55398), (63, 55440), (67, 55473), (69, 55482), (70, 55494),

Gene: LeeLot_67 Start: 57397, Stop: 57699, Start Num: 12
Candidate Starts for LeeLot_67:
(Start: 12 @57397 has 74 MA's), (Start: 26 @57451 has 42 MA's), (Start: 44 @57520 has 41 MA's),
(54, 57562),

Gene: Lego3393_65 Start: 57349, Stop: 57651, Start Num: 12
Candidate Starts for Lego3393_65:
(Start: 12 @57349 has 74 MA's), (Start: 26 @57403 has 42 MA's), (Start: 44 @57472 has 41 MA's),
(54, 57514),

Gene: Legolas_69 Start: 57190, Stop: 57438, Start Num: 26
Candidate Starts for Legolas_69:
(Start: 12 @57136 has 74 MA's), (Start: 26 @57190 has 42 MA's), (Start: 44 @57259 has 41 MA's),
(54, 57301),

Gene: LeiMonet_71 Start: 57269, Stop: 57541, Start Num: 14
Candidate Starts for LeiMonet_71:
(Start: 14 @57269 has 129 MA's), (Start: 23 @57290 has 42 MA's), (Start: 26 @57299 has 42 MA's),
(45, 57362), (52, 57389), (70, 57512),

Gene: LemonSlice_68 Start: 56788, Stop: 57090, Start Num: 12
Candidate Starts for LemonSlice_68:

(Start: 12 @56788 has 74 MA's), (Start: 26 @56842 has 42 MA's), (Start: 44 @56911 has 41 MA's), (54, 56953),

Gene: Lephleur_64 Start: 55428, Stop: 55688, Start Num: 23

Candidate Starts for Lephleur_64:

(Start: 23 @55428 has 42 MA's), (Start: 26 @55437 has 42 MA's), (Start: 39 @55482 has 6 MA's), (46, 55509), (52, 55536), (57, 55563), (63, 55605), (67, 55638), (69, 55647), (70, 55659),

Gene: LestyG_66 Start: 56771, Stop: 57019, Start Num: 26

Candidate Starts for LestyG_66:

(2, 56510), (3, 56528), (4, 56540), (6, 56585), (11, 56720), (Start: 15 @56732 has 26 MA's), (20, 56750), (Start: 23 @56762 has 42 MA's), (Start: 26 @56771 has 42 MA's), (Start: 29 @56780 has 17 MA's), (60, 56924), (69, 56981),

Gene: LilMcDreamy_64 Start: 57921, Stop: 58187, Start Num: 24

Candidate Starts for LilMcDreamy_64:

(Start: 24 @57921 has 1 MA's), (Start: 27 @57930 has 3 MA's), (36, 57972), (43, 57993), (Start: 44 @57999 has 41 MA's), (55, 58047),

Gene: LilSmirk_64 Start: 55461, Stop: 55721, Start Num: 23

Candidate Starts for LilSmirk_64:

(Start: 23 @55461 has 42 MA's), (Start: 26 @55470 has 42 MA's), (Start: 39 @55515 has 6 MA's), (46, 55542), (52, 55569), (57, 55596), (63, 55638), (67, 55671), (69, 55680), (70, 55692),

Gene: LittleDigger_60 Start: 57005, Stop: 57226, Start Num: 44

Candidate Starts for LittleDigger_60:

(Start: 29 @56954 has 17 MA's), (Start: 44 @57005 has 41 MA's), (46, 57011), (48, 57017), (50, 57023), (56, 57056), (59, 57074), (60, 57089), (63, 57104), (64, 57122),

Gene: LittleMinkey_75 Start: 58467, Stop: 58718, Start Num: 29

Candidate Starts for LittleMinkey_75:

(Start: 18 @58425 has 1 MA's), (Start: 26 @58458 has 42 MA's), (Start: 29 @58467 has 17 MA's), (51, 58551), (55, 58581),

Gene: LizLemon_64 Start: 55590, Stop: 55850, Start Num: 23

Candidate Starts for LizLemon_64:

(Start: 23 @55590 has 42 MA's), (Start: 26 @55599 has 42 MA's), (Start: 39 @55644 has 6 MA's), (46, 55671), (52, 55698), (57, 55725), (63, 55767), (67, 55800), (69, 55809), (70, 55821),

Gene: Lolalove_62 Start: 58003, Stop: 58272, Start Num: 29

Candidate Starts for Lolalove_62:

(Start: 29 @58003 has 17 MA's), (Start: 44 @58054 has 41 MA's), (46, 58060), (48, 58066), (50, 58072), (51, 58075), (56, 58105), (59, 58123), (60, 58138), (63, 58153), (64, 58171),

Gene: Longacauda_69 Start: 57172, Stop: 57444, Start Num: 14

Candidate Starts for Longacauda_69:

(Start: 14 @57172 has 129 MA's), (Start: 23 @57193 has 42 MA's), (Start: 26 @57202 has 42 MA's), (45, 57265), (52, 57292), (70, 57415),

Gene: LostAndPhound_67 Start: 57395, Stop: 57643, Start Num: 26

Candidate Starts for LostAndPhound_67:

(Start: 12 @57341 has 74 MA's), (Start: 26 @57395 has 42 MA's), (Start: 44 @57464 has 41 MA's), (54, 57506),

Gene: LuckyMarjie_65 Start: 56527, Stop: 56799, Start Num: 14
Candidate Starts for LuckyMarjie_65:
(Start: 14 @56527 has 129 MA's), (Start: 23 @56548 has 42 MA's), (Start: 26 @56557 has 42 MA's),
(45, 56620), (52, 56647), (70, 56770),

Gene: Lulumae_65 Start: 56511, Stop: 56783, Start Num: 14
Candidate Starts for Lulumae_65:
(Start: 14 @56511 has 129 MA's), (Start: 23 @56532 has 42 MA's), (Start: 26 @56541 has 42 MA's),
(45, 56604), (52, 56631), (70, 56754),

Gene: Lulwa_66 Start: 56139, Stop: 56381, Start Num: 26
Candidate Starts for Lulwa_66:
(Start: 14 @56109 has 129 MA's), (Start: 23 @56130 has 42 MA's), (Start: 26 @56139 has 42 MA's),
(45, 56202), (52, 56229), (70, 56352),

Gene: Lumine_69 Start: 56995, Stop: 57267, Start Num: 14
Candidate Starts for Lumine_69:
(Start: 14 @56995 has 129 MA's), (Start: 23 @57016 has 42 MA's), (Start: 26 @57025 has 42 MA's),
(45, 57088), (52, 57115), (70, 57238),

Gene: MRabcd_67 Start: 57164, Stop: 57412, Start Num: 26
Candidate Starts for MRabcd_67:
(Start: 12 @57110 has 74 MA's), (Start: 26 @57164 has 42 MA's), (Start: 44 @57233 has 41 MA's),
(54, 57275),

Gene: Mag7_66 Start: 56812, Stop: 57060, Start Num: 26
Candidate Starts for Mag7_66:
(Start: 12 @56758 has 74 MA's), (Start: 26 @56812 has 42 MA's), (Start: 44 @56881 has 41 MA's),
(54, 56923),

Gene: Mana_66 Start: 56783, Stop: 57085, Start Num: 12
Candidate Starts for Mana_66:
(Start: 12 @56783 has 74 MA's), (Start: 26 @56837 has 42 MA's), (Start: 44 @56906 has 41 MA's),
(54, 56948),

Gene: Manad_67 Start: 57078, Stop: 57350, Start Num: 14
Candidate Starts for Manad_67:
(Start: 14 @57078 has 129 MA's), (Start: 23 @57099 has 42 MA's), (Start: 26 @57108 has 42 MA's),
(45, 57171), (52, 57198), (70, 57321),

Gene: Marlia_69 Start: 57714, Stop: 57962, Start Num: 26
Candidate Starts for Marlia_69:
(2, 57453), (3, 57471), (4, 57483), (6, 57528), (11, 57663), (Start: 15 @57675 has 26 MA's), (20,
57693), (Start: 23 @57705 has 42 MA's), (Start: 26 @57714 has 42 MA's), (Start: 29 @57723 has 17
MA's), (60, 57867), (69, 57924),

Gene: Maru_67 Start: 57222, Stop: 57524, Start Num: 12
Candidate Starts for Maru_67:
(Start: 12 @57222 has 74 MA's), (Start: 26 @57276 has 42 MA's), (Start: 44 @57345 has 41 MA's),
(54, 57387),

Gene: Maskar_68 Start: 57146, Stop: 57325, Start Num: 44

Candidate Starts for Maskar_68:

(Start: 12 @57023 has 74 MA's), (Start: 26 @57077 has 42 MA's), (Start: 44 @57146 has 41 MA's), (54, 57188),

Gene: MasterPo_65 Start: 55460, Stop: 55720, Start Num: 23

Candidate Starts for MasterPo_65:

(Start: 23 @55460 has 42 MA's), (Start: 26 @55469 has 42 MA's), (Start: 39 @55514 has 6 MA's), (46, 55541), (52, 55568), (57, 55595), (63, 55637), (67, 55670), (69, 55679), (70, 55691),

Gene: Matalotodo_66 Start: 57622, Stop: 57924, Start Num: 12

Candidate Starts for Matalotodo_66:

(Start: 12 @57622 has 74 MA's), (Start: 26 @57676 has 42 MA's), (Start: 44 @57745 has 41 MA's), (54, 57787),

Gene: Mcshane_67 Start: 56789, Stop: 57061, Start Num: 14

Candidate Starts for Mcshane_67:

(Start: 14 @56789 has 129 MA's), (Start: 23 @56810 has 42 MA's), (Start: 26 @56819 has 42 MA's), (45, 56882), (52, 56909), (70, 57032),

Gene: Mecca_68 Start: 57354, Stop: 57626, Start Num: 14

Candidate Starts for Mecca_68:

(Start: 14 @57354 has 129 MA's), (Start: 23 @57375 has 42 MA's), (Start: 26 @57384 has 42 MA's), (45, 57447), (52, 57474), (70, 57597),

Gene: Megatron_68 Start: 57304, Stop: 57576, Start Num: 14

Candidate Starts for Megatron_68:

(Start: 14 @57304 has 129 MA's), (Start: 23 @57325 has 42 MA's), (Start: 26 @57334 has 42 MA's), (45, 57397), (52, 57424), (70, 57547),

Gene: Melc17_65 Start: 57547, Stop: 57726, Start Num: 44

Candidate Starts for Melc17_65:

(10, 57415), (Start: 26 @57478 has 42 MA's), (Start: 44 @57547 has 41 MA's), (54, 57589),

Gene: MelsMeow_67 Start: 57199, Stop: 57378, Start Num: 44

Candidate Starts for MelsMeow_67:

(Start: 12 @57076 has 74 MA's), (Start: 26 @57130 has 42 MA's), (Start: 44 @57199 has 41 MA's), (54, 57241),

Gene: Mesh1_68 Start: 57358, Stop: 57660, Start Num: 12

Candidate Starts for Mesh1_68:

(Start: 12 @57358 has 74 MA's), (Start: 26 @57412 has 42 MA's), (Start: 44 @57481 has 41 MA's), (54, 57523),

Gene: Mesmerelda_67 Start: 57347, Stop: 57619, Start Num: 14

Candidate Starts for Mesmerelda_67:

(Start: 14 @57347 has 129 MA's), (Start: 23 @57368 has 42 MA's), (Start: 26 @57377 has 42 MA's), (45, 57440), (52, 57467), (70, 57590),

Gene: MichaelPhcott_66 Start: 56755, Stop: 57057, Start Num: 12

Candidate Starts for MichaelPhcott_66:

(Start: 12 @56755 has 74 MA's), (Start: 26 @56809 has 42 MA's), (Start: 44 @56878 has 41 MA's), (54, 56920),

Gene: Mikota_65 Start: 56445, Stop: 56624, Start Num: 44
Candidate Starts for Mikota_65:
(Start: 12 @56322 has 74 MA's), (Start: 26 @56376 has 42 MA's), (Start: 44 @56445 has 41 MA's),
(54, 56487),

Gene: MiniBoss_65 Start: 56250, Stop: 56429, Start Num: 44
Candidate Starts for MiniBoss_65:
(Start: 12 @56127 has 74 MA's), (Start: 26 @56181 has 42 MA's), (Start: 44 @56250 has 41 MA's),
(54, 56292),

Gene: MitKao_67 Start: 56792, Stop: 57094, Start Num: 12
Candidate Starts for MitKao_67:
(Start: 12 @56792 has 74 MA's), (Start: 26 @56846 has 42 MA's), (Start: 44 @56915 has 41 MA's),
(54, 56957),

Gene: Mithril_61 Start: 58157, Stop: 58423, Start Num: 29
Candidate Starts for Mithril_61:
(Start: 29 @58157 has 17 MA's), (Start: 44 @58208 has 41 MA's), (46, 58214), (48, 58220), (50,
58226), (51, 58229), (56, 58259), (59, 58277), (60, 58292), (63, 58307), (64, 58325),

Gene: MmasiCarm_69 Start: 57696, Stop: 57944, Start Num: 26
Candidate Starts for MmasiCarm_69:
(2, 57435), (3, 57453), (4, 57465), (6, 57510), (11, 57645), (Start: 15 @57657 has 26 MA's), (20,
57675), (Start: 23 @57687 has 42 MA's), (Start: 26 @57696 has 42 MA's), (Start: 29 @57705 has 17
MA's), (60, 57849), (69, 57906),

Gene: Morgushi_66 Start: 56781, Stop: 57083, Start Num: 12
Candidate Starts for Morgushi_66:
(Start: 12 @56781 has 74 MA's), (Start: 26 @56835 has 42 MA's), (Start: 44 @56904 has 41 MA's),
(54, 56946),

Gene: Mortcellus_68 Start: 58358, Stop: 58606, Start Num: 26
Candidate Starts for Mortcellus_68:
(2, 58097), (3, 58115), (4, 58127), (6, 58172), (11, 58307), (Start: 15 @58319 has 26 MA's), (20,
58337), (Start: 23 @58349 has 42 MA's), (Start: 26 @58358 has 42 MA's), (Start: 29 @58367 has 17
MA's), (60, 58511), (69, 58568),

Gene: Morty_69 Start: 57318, Stop: 57590, Start Num: 14
Candidate Starts for Morty_69:
(Start: 14 @57318 has 129 MA's), (Start: 23 @57339 has 42 MA's), (Start: 26 @57348 has 42 MA's),
(45, 57411), (52, 57438), (70, 57561),

Gene: Mosaic_65 Start: 56787, Stop: 57089, Start Num: 12
Candidate Starts for Mosaic_65:
(10, 56778), (Start: 12 @56787 has 74 MA's), (Start: 26 @56841 has 42 MA's), (Start: 44 @56910 has
41 MA's), (54, 56952),

Gene: MrPhizzler_71 Start: 57258, Stop: 57530, Start Num: 14
Candidate Starts for MrPhizzler_71:
(Start: 14 @57258 has 129 MA's), (Start: 23 @57279 has 42 MA's), (Start: 26 @57288 has 42 MA's),
(45, 57351), (52, 57378), (70, 57501),

Gene: Mudslide_61 Start: 58184, Stop: 58498, Start Num: 16

Candidate Starts for Mudslide_61:

(Start: 16 @58184 has 11 MA's), (Start: 29 @58232 has 17 MA's), (Start: 44 @58283 has 41 MA's), (46, 58289), (48, 58295), (50, 58301), (51, 58304), (56, 58334), (59, 58352), (60, 58367), (63, 58382), (64, 58400),

Gene: Mulan_67 Start: 57021, Stop: 57323, Start Num: 12

Candidate Starts for Mulan_67:

(Start: 12 @57021 has 74 MA's), (Start: 26 @57075 has 42 MA's), (Start: 44 @57144 has 41 MA's), (54, 57186),

Gene: Mulaychimus_69 Start: 57713, Stop: 57961, Start Num: 26

Candidate Starts for Mulaychimus_69:

(2, 57452), (3, 57470), (4, 57482), (6, 57527), (11, 57662), (Start: 15 @57674 has 26 MA's), (20, 57692), (Start: 23 @57704 has 42 MA's), (Start: 26 @57713 has 42 MA's), (Start: 29 @57722 has 17 MA's), (60, 57866), (69, 57923),

Gene: Murdoc_65 Start: 57070, Stop: 57372, Start Num: 12

Candidate Starts for Murdoc_65:

(Start: 12 @57070 has 74 MA's), (Start: 26 @57124 has 42 MA's), (Start: 44 @57193 has 41 MA's), (54, 57235),

Gene: Mutante_68 Start: 56801, Stop: 57073, Start Num: 14

Candidate Starts for Mutante_68:

(Start: 14 @56801 has 129 MA's), (Start: 23 @56822 has 42 MA's), (Start: 26 @56831 has 42 MA's), (45, 56894), (52, 56921), (70, 57044),

Gene: Mysterious_65 Start: 58405, Stop: 58593, Start Num: 44

Candidate Starts for Mysterious_65:

(Start: 23 @58336 has 42 MA's), (Start: 27 @58345 has 3 MA's), (Start: 44 @58405 has 41 MA's), (46, 58411), (54, 58447), (60, 58489), (68, 58543),

Gene: NHagos_59 Start: 49828, Stop: 50055, Start Num: 32

Candidate Starts for NHagos_59:

(Start: 32 @49828 has 1 MA's), (34, 49831), (38, 49837), (45, 49864), (65, 49987), (66, 49996), (71, 50023),

Gene: Nacho_0071 Start: 57839, Stop: 58111, Start Num: 14

Candidate Starts for Nacho_0071:

(Start: 14 @57839 has 129 MA's), (Start: 23 @57860 has 42 MA's), (Start: 26 @57869 has 42 MA's), (45, 57932), (52, 57959), (70, 58082),

Gene: Nathan_68 Start: 57281, Stop: 57460, Start Num: 44

Candidate Starts for Nathan_68:

(Start: 12 @57158 has 74 MA's), (Start: 26 @57212 has 42 MA's), (Start: 44 @57281 has 41 MA's), (54, 57323),

Gene: Newman_66 Start: 57116, Stop: 57388, Start Num: 14

Candidate Starts for Newman_66:

(Start: 14 @57116 has 129 MA's), (Start: 23 @57137 has 42 MA's), (Start: 26 @57146 has 42 MA's), (45, 57209), (52, 57236), (70, 57359),

Gene: Nicole21_69 Start: 57080, Stop: 57352, Start Num: 14

Candidate Starts for Nicole21_69:

(Start: 14 @57080 has 129 MA's), (Start: 23 @57101 has 42 MA's), (Start: 26 @57110 has 42 MA's), (45, 57173), (52, 57200), (70, 57323),

Gene: Nigel_61 Start: 57023, Stop: 57292, Start Num: 29

Candidate Starts for Nigel_61:

(Start: 29 @57023 has 17 MA's), (Start: 44 @57074 has 41 MA's), (46, 57080), (48, 57086), (50, 57092), (51, 57095), (59, 57143), (60, 57158), (63, 57173),

Gene: Nozo_68 Start: 58013, Stop: 58300, Start Num: 15

Candidate Starts for Nozo_68:

(2, 57791), (3, 57809), (4, 57821), (6, 57866), (11, 58001), (Start: 15 @58013 has 26 MA's), (20, 58031), (Start: 23 @58043 has 42 MA's), (Start: 26 @58052 has 42 MA's), (Start: 29 @58061 has 17 MA's), (60, 58205), (69, 58262),

Gene: Numberten_67 Start: 57024, Stop: 57296, Start Num: 14

Candidate Starts for Numberten_67:

(Start: 14 @57024 has 129 MA's), (Start: 23 @57045 has 42 MA's), (Start: 26 @57054 has 42 MA's), (45, 57117), (52, 57144), (70, 57267),

Gene: Nyala_67 Start: 56799, Stop: 57071, Start Num: 14

Candidate Starts for Nyala_67:

(Start: 14 @56799 has 129 MA's), (Start: 23 @56820 has 42 MA's), (Start: 26 @56829 has 42 MA's), (45, 56892), (52, 56919), (70, 57042),

Gene: OSmaximus_68 Start: 57554, Stop: 57850, Start Num: 12

Candidate Starts for OSmaximus_68:

(9, 57536), (Start: 12 @57554 has 74 MA's), (Start: 23 @57599 has 42 MA's), (Start: 26 @57608 has 42 MA's), (46, 57674), (70, 57821),

Gene: Olak_67 Start: 56805, Stop: 57077, Start Num: 14

Candidate Starts for Olak_67:

(Start: 14 @56805 has 129 MA's), (Start: 23 @56826 has 42 MA's), (Start: 26 @56835 has 42 MA's), (45, 56898), (52, 56925), (70, 57048),

Gene: Oline_67 Start: 56953, Stop: 57255, Start Num: 12

Candidate Starts for Oline_67:

(Start: 12 @56953 has 74 MA's), (Start: 26 @57007 has 42 MA's), (Start: 44 @57076 has 41 MA's), (54, 57118),

Gene: OliverWalter_67 Start: 57124, Stop: 57396, Start Num: 14

Candidate Starts for OliverWalter_67:

(Start: 14 @57124 has 129 MA's), (Start: 23 @57145 has 42 MA's), (Start: 26 @57154 has 42 MA's), (45, 57217), (52, 57244), (70, 57367),

Gene: Olivio_68 Start: 57508, Stop: 57756, Start Num: 26

Candidate Starts for Olivio_68:

(2, 57247), (3, 57265), (4, 57277), (6, 57322), (11, 57457), (Start: 15 @57469 has 26 MA's), (20, 57487), (Start: 23 @57499 has 42 MA's), (Start: 26 @57508 has 42 MA's), (Start: 29 @57517 has 17 MA's), (60, 57661), (69, 57718),

Gene: Omniscient_69 Start: 57662, Stop: 57934, Start Num: 14

Candidate Starts for Omniscient_69:

(Start: 14 @57662 has 129 MA's), (Start: 23 @57683 has 42 MA's), (Start: 26 @57692 has 42 MA's), (45, 57755), (52, 57782), (70, 57905),

Gene: OneBrain_71 Start: 57068, Stop: 57340, Start Num: 14

Candidate Starts for OneBrain_71:

(Start: 14 @57068 has 129 MA's), (Start: 23 @57089 has 42 MA's), (Start: 26 @57098 has 42 MA's), (45, 57161), (52, 57188), (70, 57311),

Gene: Oosterbaan_67 Start: 57081, Stop: 57353, Start Num: 14

Candidate Starts for Oosterbaan_67:

(Start: 14 @57081 has 129 MA's), (Start: 23 @57102 has 42 MA's), (Start: 26 @57111 has 42 MA's), (45, 57174), (52, 57201), (70, 57324),

Gene: Opia_65 Start: 55480, Stop: 55740, Start Num: 23

Candidate Starts for Opia_65:

(Start: 23 @55480 has 42 MA's), (Start: 26 @55489 has 42 MA's), (Start: 39 @55534 has 6 MA's), (46, 55561), (52, 55588), (57, 55615), (63, 55657), (67, 55690), (69, 55699), (70, 55711),

Gene: OrangeOswald_68 Start: 57254, Stop: 57541, Start Num: 15

Candidate Starts for OrangeOswald_68:

(2, 57032), (3, 57050), (4, 57062), (6, 57107), (11, 57242), (Start: 15 @57254 has 26 MA's), (20, 57272), (Start: 23 @57284 has 42 MA's), (Start: 26 @57293 has 42 MA's), (Start: 29 @57302 has 17 MA's), (60, 57446), (69, 57503),

Gene: Orfeu_67 Start: 57338, Stop: 57610, Start Num: 14

Candidate Starts for Orfeu_67:

(Start: 14 @57338 has 129 MA's), (Start: 23 @57359 has 42 MA's), (Start: 26 @57368 has 42 MA's), (45, 57431), (52, 57458), (70, 57581),

Gene: Orwigg_67 Start: 56723, Stop: 56995, Start Num: 14

Candidate Starts for Orwigg_67:

(Start: 14 @56723 has 129 MA's), (Start: 23 @56744 has 42 MA's), (Start: 26 @56753 has 42 MA's), (45, 56816), (52, 56843), (70, 56966),

Gene: PG1_67 Start: 57314, Stop: 57586, Start Num: 14

Candidate Starts for PG1_67:

(Start: 14 @57314 has 129 MA's), (Start: 23 @57335 has 42 MA's), (Start: 26 @57344 has 42 MA's), (45, 57407), (52, 57434), (70, 57557),

Gene: Pacifista_67 Start: 56800, Stop: 57072, Start Num: 14

Candidate Starts for Pacifista_67:

(Start: 14 @56800 has 129 MA's), (Start: 23 @56821 has 42 MA's), (Start: 26 @56830 has 42 MA's), (45, 56893), (52, 56920), (70, 57043),

Gene: PenguinLover67_63 Start: 57825, Stop: 58076, Start Num: 26

Candidate Starts for PenguinLover67_63:

(Start: 26 @57825 has 42 MA's), (Start: 29 @57834 has 17 MA's), (46, 57894), (50, 57906), (55, 57936), (59, 57957),

Gene: Phaedrus_63 Start: 56718, Stop: 56966, Start Num: 26

Candidate Starts for Phaedrus_63:

(2, 56457), (3, 56475), (4, 56487), (6, 56532), (11, 56667), (Start: 15 @56679 has 26 MA's), (20, 56697), (Start: 23 @56709 has 42 MA's), (Start: 26 @56718 has 42 MA's), (Start: 29 @56727 has 17

MA's), (60, 56871), (69, 56928),

Gene: Phamished_69 Start: 57004, Stop: 57306, Start Num: 12

Candidate Starts for Phamished_69:

(Start: 12 @57004 has 74 MA's), (Start: 26 @57058 has 42 MA's), (Start: 44 @57127 has 41 MA's), (54, 57169),

Gene: Phantasmagoria_63 Start: 55526, Stop: 55732, Start Num: 39

Candidate Starts for Phantasmagoria_63:

(Start: 23 @55472 has 42 MA's), (Start: 26 @55481 has 42 MA's), (Start: 39 @55526 has 6 MA's), (46, 55553), (52, 55580), (57, 55607), (63, 55649), (67, 55682), (69, 55691), (70, 55703),

Gene: Phareon_66 Start: 56635, Stop: 56814, Start Num: 44

Candidate Starts for Phareon_66:

(Start: 12 @56512 has 74 MA's), (Start: 26 @56566 has 42 MA's), (Start: 44 @56635 has 41 MA's), (54, 56677),

Gene: PhatCats2014_68 Start: 57319, Stop: 57591, Start Num: 14

Candidate Starts for PhatCats2014_68:

(Start: 14 @57319 has 129 MA's), (Start: 23 @57340 has 42 MA's), (Start: 26 @57349 has 42 MA's), (45, 57412), (52, 57439), (70, 57562),

Gene: PhatLouie_70 Start: 57338, Stop: 57610, Start Num: 14

Candidate Starts for PhatLouie_70:

(Start: 14 @57338 has 129 MA's), (Start: 23 @57359 has 42 MA's), (Start: 26 @57368 has 42 MA's), (45, 57431), (52, 57458), (70, 57581),

Gene: Phelemich_64 Start: 58168, Stop: 58425, Start Num: 23

Candidate Starts for Phelemich_64:

(Start: 17 @58141 has 5 MA's), (Start: 23 @58168 has 42 MA's), (Start: 27 @58177 has 3 MA's), (Start: 44 @58237 has 41 MA's), (46, 58243), (54, 58279), (60, 58321), (68, 58375),

Gene: PhenghisKhan_68 Start: 56960, Stop: 57262, Start Num: 12

Candidate Starts for PhenghisKhan_68:

(Start: 12 @56960 has 74 MA's), (Start: 26 @57014 has 42 MA's), (Start: 44 @57083 has 41 MA's), (54, 57125),

Gene: Pherdinand_68 Start: 57073, Stop: 57375, Start Num: 12

Candidate Starts for Pherdinand_68:

(Start: 12 @57073 has 74 MA's), (Start: 26 @57127 has 42 MA's), (Start: 44 @57196 has 41 MA's), (54, 57238),

Gene: Phergie_68 Start: 56952, Stop: 57254, Start Num: 12

Candidate Starts for Phergie_68:

(Start: 12 @56952 has 74 MA's), (Start: 26 @57006 has 42 MA's), (Start: 44 @57075 has 41 MA's), (54, 57117),

Gene: Philly_67 Start: 57066, Stop: 57353, Start Num: 15

Candidate Starts for Philly_67:

(2, 56844), (3, 56862), (4, 56874), (6, 56919), (11, 57054), (Start: 15 @57066 has 26 MA's), (20, 57084), (Start: 23 @57096 has 42 MA's), (Start: 26 @57105 has 42 MA's), (Start: 29 @57114 has 17 MA's), (60, 57258), (69, 57315),

Gene: Phipps_67 Start: 56871, Stop: 57173, Start Num: 12
Candidate Starts for Phipps_67:
(Start: 12 @56871 has 74 MA's), (Start: 26 @56925 has 42 MA's), (Start: 44 @56994 has 41 MA's),
(54, 57036),

Gene: Phleuron_66 Start: 56758, Stop: 57060, Start Num: 12
Candidate Starts for Phleuron_66:
(Start: 12 @56758 has 74 MA's), (Start: 26 @56812 has 42 MA's), (Start: 44 @56881 has 41 MA's),
(54, 56923),

Gene: Phlyer_68 Start: 57962, Stop: 58249, Start Num: 15
Candidate Starts for Phlyer_68:
(2, 57740), (3, 57758), (4, 57770), (6, 57815), (11, 57950), (Start: 15 @57962 has 26 MA's), (20,
57980), (Start: 23 @57992 has 42 MA's), (Start: 26 @58001 has 42 MA's), (Start: 29 @58010 has 17
MA's), (60, 58154), (69, 58211),

Gene: PhrankReynolds_67 Start: 56957, Stop: 57259, Start Num: 12
Candidate Starts for PhrankReynolds_67:
(Start: 12 @56957 has 74 MA's), (Start: 26 @57011 has 42 MA's), (Start: 44 @57080 has 41 MA's),
(54, 57122),

Gene: PhrodoBaggins_69 Start: 57177, Stop: 57479, Start Num: 12
Candidate Starts for PhrodoBaggins_69:
(Start: 12 @57177 has 74 MA's), (Start: 26 @57231 has 42 MA's), (Start: 44 @57300 has 41 MA's),
(54, 57342),

Gene: Phunky_66 Start: 56822, Stop: 57094, Start Num: 14
Candidate Starts for Phunky_66:
(Start: 14 @56822 has 129 MA's), (Start: 23 @56843 has 42 MA's), (Start: 26 @56852 has 42 MA's),
(45, 56915), (52, 56942), (70, 57065),

Gene: Piglet_0068 Start: 57291, Stop: 57563, Start Num: 14
Candidate Starts for Piglet_0068:
(Start: 14 @57291 has 129 MA's), (Start: 23 @57312 has 42 MA's), (Start: 26 @57321 has 42 MA's),
(45, 57384), (52, 57411), (70, 57534),

Gene: PinheadLarry_67 Start: 57119, Stop: 57421, Start Num: 12
Candidate Starts for PinheadLarry_67:
(Start: 12 @57119 has 74 MA's), (Start: 26 @57173 has 42 MA's), (Start: 44 @57242 has 41 MA's),
(54, 57284),

Gene: Pinkman_67 Start: 56895, Stop: 57197, Start Num: 12
Candidate Starts for Pinkman_67:
(Start: 12 @56895 has 74 MA's), (Start: 26 @56949 has 42 MA's), (Start: 44 @57018 has 41 MA's),
(54, 57060),

Gene: Pipsqueak_65 Start: 56798, Stop: 57100, Start Num: 12
Candidate Starts for Pipsqueak_65:
(Start: 12 @56798 has 74 MA's), (Start: 26 @56852 has 42 MA's), (Start: 44 @56921 has 41 MA's),
(54, 56963),

Gene: Placalicious_68 Start: 57839, Stop: 58141, Start Num: 12
Candidate Starts for Placalicious_68:

(Start: 12 @57839 has 74 MA's), (Start: 26 @57893 has 42 MA's), (Start: 44 @57962 has 41 MA's), (54, 58004),

Gene: Plmatters_66 Start: 56864, Stop: 57112, Start Num: 26

Candidate Starts for Plmatters_66:

(Start: 12 @56810 has 74 MA's), (Start: 26 @56864 has 42 MA's), (Start: 44 @56933 has 41 MA's), (54, 56975),

Gene: Podrick_67 Start: 56879, Stop: 57181, Start Num: 12

Candidate Starts for Podrick_67:

(Start: 12 @56879 has 74 MA's), (Start: 26 @56933 has 42 MA's), (Start: 44 @57002 has 41 MA's), (54, 57044),

Gene: Pops_66 Start: 56842, Stop: 57093, Start Num: 23

Candidate Starts for Pops_66:

(Start: 23 @56842 has 42 MA's), (Start: 26 @56851 has 42 MA's), (45, 56914), (52, 56941), (70, 57064),

Gene: Potter_65 Start: 56927, Stop: 57106, Start Num: 44

Candidate Starts for Potter_65:

(Start: 12 @56804 has 74 MA's), (Start: 26 @56858 has 42 MA's), (Start: 44 @56927 has 41 MA's), (54, 56969),

Gene: Prickles_69 Start: 57305, Stop: 57607, Start Num: 12

Candidate Starts for Prickles_69:

(Start: 12 @57305 has 74 MA's), (Start: 26 @57359 has 42 MA's), (Start: 44 @57428 has 41 MA's), (54, 57470),

Gene: Prince_61 Start: 58088, Stop: 58405, Start Num: 16

Candidate Starts for Prince_61:

(Start: 16 @58088 has 11 MA's), (Start: 29 @58136 has 17 MA's), (Start: 44 @58187 has 41 MA's), (46, 58193), (48, 58199), (50, 58205), (51, 58208), (56, 58238), (59, 58256), (60, 58271), (63, 58286), (64, 58304),

Gene: PrinceCharming_65 Start: 55515, Stop: 55775, Start Num: 23

Candidate Starts for PrinceCharming_65:

(Start: 23 @55515 has 42 MA's), (Start: 26 @55524 has 42 MA's), (Start: 39 @55569 has 6 MA's), (46, 55596), (52, 55623), (57, 55650), (63, 55692), (67, 55725), (69, 55734), (70, 55746),

Gene: ProfessorX_66 Start: 56815, Stop: 57087, Start Num: 14

Candidate Starts for ProfessorX_66:

(Start: 14 @56815 has 129 MA's), (Start: 23 @56836 has 42 MA's), (Start: 26 @56845 has 42 MA's), (45, 56908), (52, 56935), (70, 57058),

Gene: Puhltonio_66 Start: 57079, Stop: 57381, Start Num: 12

Candidate Starts for Puhltonio_66:

(Start: 12 @57079 has 74 MA's), (Start: 26 @57133 has 42 MA's), (Start: 44 @57202 has 41 MA's), (54, 57244),

Gene: QueenBeane_68 Start: 57139, Stop: 57390, Start Num: 23

Candidate Starts for QueenBeane_68:

(Start: 14 @57118 has 129 MA's), (Start: 23 @57139 has 42 MA's), (Start: 26 @57148 has 42 MA's), (45, 57211), (52, 57238), (70, 57361),

Gene: Quesadilla_66 Start: 58228, Stop: 58470, Start Num: 29
Candidate Starts for Quesadilla_66:
(Start: 29 @58228 has 17 MA's), (46, 58288), (50, 58300), (55, 58330), (58, 58339), (59, 58351),

Gene: Quisquilliae_69 Start: 57079, Stop: 57351, Start Num: 14
Candidate Starts for Quisquilliae_69:
(Start: 14 @57079 has 129 MA's), (Start: 23 @57100 has 42 MA's), (Start: 26 @57109 has 42 MA's),
(45, 57172), (52, 57199), (70, 57322),

Gene: Qyrzula_58 Start: 55591, Stop: 55851, Start Num: 23
Candidate Starts for Qyrzula_58:
(Start: 23 @55591 has 42 MA's), (Start: 26 @55600 has 42 MA's), (Start: 39 @55645 has 6 MA's), (46,
55672), (52, 55699), (57, 55726), (63, 55768), (67, 55801), (69, 55810), (70, 55822),

Gene: RagingRooster_67 Start: 56894, Stop: 57181, Start Num: 15
Candidate Starts for RagingRooster_67:
(2, 56672), (3, 56690), (4, 56702), (6, 56747), (11, 56882), (Start: 15 @56894 has 26 MA's), (20,
56912), (Start: 23 @56924 has 42 MA's), (Start: 26 @56933 has 42 MA's), (Start: 29 @56942 has 17
MA's), (60, 57086), (69, 57143),

Gene: RawrgerThat_62 Start: 58029, Stop: 58247, Start Num: 44
Candidate Starts for RawrgerThat_62:
(Start: 16 @57930 has 11 MA's), (Start: 29 @57978 has 17 MA's), (Start: 44 @58029 has 41 MA's),
(46, 58035), (48, 58041), (50, 58047), (56, 58080), (59, 58098), (60, 58113), (63, 58128), (64, 58146),

Gene: Reccee_67 Start: 58386, Stop: 58670, Start Num: 17
Candidate Starts for Reccee_67:
(Start: 17 @58386 has 5 MA's), (Start: 23 @58413 has 42 MA's), (Start: 27 @58422 has 3 MA's), (46,
58488), (60, 58566), (62, 58578), (68, 58620), (72, 58656),

Gene: RedRaider89_67 Start: 57358, Stop: 57537, Start Num: 44
Candidate Starts for RedRaider89_67:
(Start: 12 @57235 has 74 MA's), (Start: 26 @57289 has 42 MA's), (Start: 44 @57358 has 41 MA's),
(54, 57400),

Gene: Renkei_60 Start: 56999, Stop: 57220, Start Num: 44
Candidate Starts for Renkei_60:
(Start: 29 @56948 has 17 MA's), (Start: 44 @56999 has 41 MA's), (46, 57005), (48, 57011), (50,
57017), (56, 57050), (59, 57068), (60, 57083), (63, 57098), (64, 57116),

Gene: Reprobate_65 Start: 58173, Stop: 58430, Start Num: 23
Candidate Starts for Reprobate_65:
(Start: 17 @58146 has 5 MA's), (Start: 23 @58173 has 42 MA's), (Start: 27 @58182 has 3 MA's),
(Start: 44 @58242 has 41 MA's), (46, 58248), (54, 58284), (60, 58326), (68, 58380),

Gene: Rhinoforte_64 Start: 55513, Stop: 55773, Start Num: 23
Candidate Starts for Rhinoforte_64:
(Start: 23 @55513 has 42 MA's), (Start: 26 @55522 has 42 MA's), (Start: 39 @55567 has 6 MA's), (46,
55594), (52, 55621), (57, 55648), (63, 55690), (67, 55723), (69, 55732), (70, 55744),

Gene: Rich_66 Start: 59397, Stop: 59645, Start Num: 27
Candidate Starts for Rich_66:

(Start: 17 @59361 has 5 MA's), (Start: 23 @59388 has 42 MA's), (Start: 27 @59397 has 3 MA's), (46, 59463), (59, 59526), (60, 59541), (68, 59595), (72, 59631), (75, 59640),

Gene: Ricotta_68 Start: 56812, Stop: 57084, Start Num: 14

Candidate Starts for Ricotta_68:

(Start: 14 @56812 has 129 MA's), (Start: 23 @56833 has 42 MA's), (Start: 26 @56842 has 42 MA's), (52, 56932), (70, 57055),

Gene: Riggan_69 Start: 57111, Stop: 57383, Start Num: 14

Candidate Starts for Riggan_69:

(Start: 14 @57111 has 129 MA's), (Start: 23 @57132 has 42 MA's), (Start: 26 @57141 has 42 MA's), (45, 57204), (52, 57231), (70, 57354),

Gene: Rimu_68 Start: 57279, Stop: 57551, Start Num: 14

Candidate Starts for Rimu_68:

(Start: 14 @57279 has 129 MA's), (Start: 23 @57300 has 42 MA's), (Start: 26 @57309 has 42 MA's), (52, 57399), (70, 57522),

Gene: Rinkes_63 Start: 57811, Stop: 58074, Start Num: 29

Candidate Starts for Rinkes_63:

(Start: 29 @57811 has 17 MA's), (33, 57835), (48, 57874), (55, 57910), (74, 58039),

Gene: Rita130_66 Start: 58235, Stop: 58483, Start Num: 27

Candidate Starts for Rita130_66:

(Start: 17 @58199 has 5 MA's), (Start: 23 @58226 has 42 MA's), (Start: 27 @58235 has 3 MA's), (46, 58301), (60, 58379), (62, 58391), (68, 58433), (72, 58469),

Gene: Rita1961_69 Start: 57612, Stop: 57899, Start Num: 15

Candidate Starts for Rita1961_69:

(2, 57390), (3, 57408), (4, 57420), (6, 57465), (11, 57600), (Start: 15 @57612 has 26 MA's), (20, 57630), (Start: 23 @57642 has 42 MA's), (Start: 26 @57651 has 42 MA's), (Start: 29 @57660 has 17 MA's), (60, 57804), (69, 57861),

Gene: Riverton_67 Start: 57041, Stop: 57313, Start Num: 14

Candidate Starts for Riverton_67:

(Start: 14 @57041 has 129 MA's), (Start: 23 @57062 has 42 MA's), (Start: 26 @57071 has 42 MA's), (45, 57134), (52, 57161), (70, 57284),

Gene: Robyn_68 Start: 57384, Stop: 57656, Start Num: 14

Candidate Starts for Robyn_68:

(Start: 14 @57384 has 129 MA's), (Start: 23 @57405 has 42 MA's), (Start: 26 @57414 has 42 MA's), (45, 57477), (52, 57504), (70, 57627),

Gene: Roliet_65 Start: 56199, Stop: 56447, Start Num: 26

Candidate Starts for Roliet_65:

(Start: 12 @56145 has 74 MA's), (Start: 26 @56199 has 42 MA's), (Start: 44 @56268 has 41 MA's), (54, 56310),

Gene: RomaT_68 Start: 57813, Stop: 58100, Start Num: 15

Candidate Starts for RomaT_68:

(2, 57591), (3, 57609), (4, 57621), (6, 57666), (11, 57801), (Start: 15 @57813 has 26 MA's), (20, 57831), (Start: 23 @57843 has 42 MA's), (Start: 26 @57852 has 42 MA's), (Start: 29 @57861 has 17 MA's), (60, 58005), (69, 58062),

Gene: Roscoe_68 Start: 57258, Stop: 57530, Start Num: 14

Candidate Starts for Roscoe_68:

(Start: 14 @57258 has 129 MA's), (Start: 23 @57279 has 42 MA's), (Start: 26 @57288 has 42 MA's), (52, 57378), (70, 57501),

Gene: Rosebush_63 Start: 55576, Stop: 55836, Start Num: 23

Candidate Starts for Rosebush_63:

(Start: 23 @55576 has 42 MA's), (Start: 26 @55585 has 42 MA's), (Start: 39 @55630 has 6 MA's), (46, 55657), (52, 55684), (57, 55711), (63, 55753), (67, 55786), (69, 55795), (70, 55807),

Gene: Roy17_66 Start: 56511, Stop: 56783, Start Num: 14

Candidate Starts for Roy17_66:

(Start: 14 @56511 has 129 MA's), (Start: 23 @56532 has 42 MA's), (Start: 26 @56541 has 42 MA's), (45, 56604), (52, 56631), (70, 56754),

Gene: SDcharge11_67 Start: 56317, Stop: 56619, Start Num: 12

Candidate Starts for SDcharge11_67:

(Start: 12 @56317 has 74 MA's), (Start: 26 @56371 has 42 MA's), (Start: 44 @56440 has 41 MA's), (54, 56482),

Gene: Sabella_64 Start: 55412, Stop: 55672, Start Num: 23

Candidate Starts for Sabella_64:

(Start: 23 @55412 has 42 MA's), (Start: 26 @55421 has 42 MA's), (Start: 39 @55466 has 6 MA's), (46, 55493), (52, 55520), (57, 55547), (63, 55589), (67, 55622), (69, 55631), (70, 55643),

Gene: Saguaro_64 Start: 57561, Stop: 57827, Start Num: 26

Candidate Starts for Saguaro_64:

(Start: 23 @57552 has 42 MA's), (Start: 26 @57561 has 42 MA's), (45, 57630), (46, 57633), (48, 57639), (50, 57645), (61, 57720),

Gene: SallyH_70 Start: 57110, Stop: 57358, Start Num: 26

Candidate Starts for SallyH_70:

(Start: 12 @57056 has 74 MA's), (Start: 26 @57110 has 42 MA's), (Start: 44 @57179 has 41 MA's), (54, 57221),

Gene: Samaymay_68 Start: 57118, Stop: 57390, Start Num: 14

Candidate Starts for Samaymay_68:

(Start: 14 @57118 has 129 MA's), (Start: 23 @57139 has 42 MA's), (Start: 26 @57148 has 42 MA's), (45, 57211), (52, 57238), (70, 57361),

Gene: SassyCat97_66 Start: 56794, Stop: 57096, Start Num: 12

Candidate Starts for SassyCat97_66:

(Start: 12 @56794 has 74 MA's), (Start: 26 @56848 has 42 MA's), (Start: 44 @56917 has 41 MA's), (54, 56959),

Gene: Schadenfreude_68 Start: 56686, Stop: 56958, Start Num: 14

Candidate Starts for Schadenfreude_68:

(Start: 14 @56686 has 129 MA's), (Start: 23 @56707 has 42 MA's), (Start: 26 @56716 has 42 MA's), (45, 56779), (52, 56806), (70, 56929),

Gene: Scoot17C_68 Start: 56745, Stop: 57017, Start Num: 14

Candidate Starts for Scoot17C_68:

(Start: 14 @56745 has 129 MA's), (Start: 23 @56766 has 42 MA's), (Start: 26 @56775 has 42 MA's), (45, 56838), (52, 56865), (70, 56988),

Gene: Scrick_67 Start: 56929, Stop: 57108, Start Num: 44

Candidate Starts for Scrick_67:

(Start: 12 @56806 has 74 MA's), (Start: 26 @56860 has 42 MA's), (Start: 44 @56929 has 41 MA's), (54, 56971),

Gene: Selr12_69 Start: 56827, Stop: 57099, Start Num: 14

Candidate Starts for Selr12_69:

(Start: 14 @56827 has 129 MA's), (Start: 23 @56848 has 42 MA's), (Start: 26 @56857 has 42 MA's), (45, 56920), (52, 56947), (70, 57070),

Gene: Serendipitous_65 Start: 57769, Stop: 58026, Start Num: 27

Candidate Starts for Serendipitous_65:

(8, 57688), (25, 57763), (Start: 27 @57769 has 3 MA's), (57, 57895), (60, 57922), (68, 57976),

Gene: Serendipity_67 Start: 57100, Stop: 57372, Start Num: 14

Candidate Starts for Serendipity_67:

(Start: 14 @57100 has 129 MA's), (Start: 23 @57121 has 42 MA's), (Start: 26 @57130 has 42 MA's), (45, 57193), (52, 57220), (70, 57343),

Gene: Serpentine_0068 Start: 57183, Stop: 57455, Start Num: 14

Candidate Starts for Serpentine_0068:

(Start: 14 @57183 has 129 MA's), (Start: 23 @57204 has 42 MA's), (Start: 26 @57213 has 42 MA's), (45, 57276), (52, 57303), (70, 57426),

Gene: ShadowBud_68 Start: 57076, Stop: 57348, Start Num: 14

Candidate Starts for ShadowBud_68:

(Start: 14 @57076 has 129 MA's), (Start: 23 @57097 has 42 MA's), (Start: 26 @57106 has 42 MA's), (45, 57169), (52, 57196), (70, 57319),

Gene: Sheila_64 Start: 56299, Stop: 56478, Start Num: 44

Candidate Starts for Sheila_64:

(Start: 12 @56176 has 74 MA's), (Start: 26 @56230 has 42 MA's), (Start: 44 @56299 has 41 MA's), (54, 56341),

Gene: Shenandoah_67 Start: 56910, Stop: 57158, Start Num: 26

Candidate Starts for Shenandoah_67:

(2, 56649), (3, 56667), (4, 56679), (6, 56724), (11, 56859), (Start: 15 @56871 has 26 MA's), (20, 56889), (Start: 23 @56901 has 42 MA's), (Start: 26 @56910 has 42 MA's), (Start: 29 @56919 has 17 MA's), (60, 57063), (69, 57120),

Gene: ShiVal_66 Start: 56826, Stop: 57098, Start Num: 14

Candidate Starts for ShiVal_66:

(Start: 14 @56826 has 129 MA's), (Start: 23 @56847 has 42 MA's), (Start: 26 @56856 has 42 MA's), (45, 56919), (52, 56946), (70, 57069),

Gene: Sigman_68 Start: 56782, Stop: 57054, Start Num: 14

Candidate Starts for Sigman_68:

(Start: 14 @56782 has 129 MA's), (Start: 23 @56803 has 42 MA's), (Start: 26 @56812 has 42 MA's), (45, 56875), (52, 56902), (70, 57025),

Gene: Simielle_68 Start: 56783, Stop: 57055, Start Num: 14
Candidate Starts for Simielle_68:
(Start: 14 @56783 has 129 MA's), (Start: 23 @56804 has 42 MA's), (Start: 26 @56813 has 42 MA's),
(45, 56876), (52, 56903), (70, 57026),

Gene: SirBeauregard_69 Start: 57349, Stop: 57621, Start Num: 14
Candidate Starts for SirBeauregard_69:
(Start: 14 @57349 has 129 MA's), (Start: 23 @57370 has 42 MA's), (Start: 26 @57379 has 42 MA's),
(45, 57442), (52, 57469), (70, 57592),

Gene: SirJeffery_66 Start: 58371, Stop: 58619, Start Num: 27
Candidate Starts for SirJeffery_66:
(Start: 17 @58335 has 5 MA's), (Start: 23 @58362 has 42 MA's), (Start: 27 @58371 has 3 MA's), (46,
58437), (60, 58515), (68, 58569), (70, 58584), (72, 58605),

Gene: Skippy_69 Start: 57036, Stop: 57308, Start Num: 14
Candidate Starts for Skippy_69:
(Start: 14 @57036 has 129 MA's), (Start: 23 @57057 has 42 MA's), (Start: 26 @57066 has 42 MA's),
(45, 57129), (52, 57156), (70, 57279),

Gene: Slatt_68 Start: 57090, Stop: 57392, Start Num: 12
Candidate Starts for Slatt_68:
(Start: 12 @57090 has 74 MA's), (Start: 26 @57144 has 42 MA's), (Start: 44 @57213 has 41 MA's),
(54, 57255),

Gene: Soile_69 Start: 57332, Stop: 57604, Start Num: 14
Candidate Starts for Soile_69:
(Start: 14 @57332 has 129 MA's), (Start: 23 @57353 has 42 MA's), (Start: 26 @57362 has 42 MA's),
(52, 57452), (70, 57575),

Gene: Solosis_66 Start: 56843, Stop: 57091, Start Num: 26
Candidate Starts for Solosis_66:
(Start: 12 @56789 has 74 MA's), (Start: 26 @56843 has 42 MA's), (Start: 44 @56912 has 41 MA's),
(54, 56954),

Gene: Sophia_66 Start: 56836, Stop: 57084, Start Num: 26
Candidate Starts for Sophia_66:
(Start: 12 @56782 has 74 MA's), (Start: 26 @56836 has 42 MA's), (Start: 44 @56905 has 41 MA's),
(54, 56947),

Gene: Soto_65 Start: 56349, Stop: 56651, Start Num: 12
Candidate Starts for Soto_65:
(Start: 12 @56349 has 74 MA's), (Start: 26 @56403 has 42 MA's), (Start: 44 @56472 has 41 MA's),
(54, 56514),

Gene: Spartan300_67 Start: 57023, Stop: 57295, Start Num: 14
Candidate Starts for Spartan300_67:
(Start: 14 @57023 has 129 MA's), (Start: 23 @57044 has 42 MA's), (Start: 26 @57053 has 42 MA's),
(45, 57116), (52, 57143), (70, 57266),

Gene: Squid_67 Start: 57082, Stop: 57384, Start Num: 12
Candidate Starts for Squid_67:

(Start: 12 @57082 has 74 MA's), (Start: 26 @57136 has 42 MA's), (Start: 44 @57205 has 41 MA's), (54, 57247),

Gene: Squiggle_67 Start: 56801, Stop: 57103, Start Num: 12

Candidate Starts for Squiggle_67:

(Start: 12 @56801 has 74 MA's), (Start: 26 @56855 has 42 MA's), (Start: 44 @56924 has 41 MA's), (54, 56966),

Gene: Stinger_62 Start: 56901, Stop: 57218, Start Num: 16

Candidate Starts for Stinger_62:

(Start: 16 @56901 has 11 MA's), (Start: 29 @56949 has 17 MA's), (Start: 44 @57000 has 41 MA's), (46, 57006), (50, 57018), (51, 57021), (56, 57051), (59, 57069), (63, 57099),

Gene: Struggle_68 Start: 56927, Stop: 57169, Start Num: 26

Candidate Starts for Struggle_68:

(Start: 23 @56918 has 42 MA's), (Start: 26 @56927 has 42 MA's), (45, 56990), (52, 57017), (70, 57140),

Gene: Suffolk_66 Start: 56596, Stop: 56868, Start Num: 14

Candidate Starts for Suffolk_66:

(Start: 14 @56596 has 129 MA's), (Start: 23 @56617 has 42 MA's), (Start: 26 @56626 has 42 MA's), (45, 56689), (52, 56716), (70, 56839),

Gene: Suigeneris_68 Start: 58477, Stop: 58761, Start Num: 17

Candidate Starts for Suigeneris_68:

(Start: 17 @58477 has 5 MA's), (Start: 23 @58504 has 42 MA's), (Start: 27 @58513 has 3 MA's), (46, 58579), (60, 58657), (68, 58711), (70, 58726), (72, 58747),

Gene: Surely_68 Start: 57426, Stop: 57674, Start Num: 26

Candidate Starts for Surely_68:

(Start: 12 @57372 has 74 MA's), (Start: 26 @57426 has 42 MA's), (Start: 44 @57495 has 41 MA's), (54, 57537),

Gene: SwainyDoc_69 Start: 57635, Stop: 57922, Start Num: 15

Candidate Starts for SwainyDoc_69:

(2, 57413), (3, 57431), (4, 57443), (6, 57488), (11, 57623), (Start: 15 @57635 has 26 MA's), (20, 57653), (Start: 23 @57665 has 42 MA's), (Start: 26 @57674 has 42 MA's), (Start: 29 @57683 has 17 MA's), (60, 57827), (69, 57884),

Gene: Swiphy_70 Start: 57338, Stop: 57610, Start Num: 14

Candidate Starts for Swiphy_70:

(Start: 14 @57338 has 129 MA's), (Start: 23 @57359 has 42 MA's), (Start: 26 @57368 has 42 MA's), (45, 57431), (52, 57458), (70, 57581),

Gene: Swish_68 Start: 57058, Stop: 57360, Start Num: 12

Candidate Starts for Swish_68:

(Start: 12 @57058 has 74 MA's), (Start: 26 @57112 has 42 MA's), (Start: 44 @57181 has 41 MA's), (54, 57223),

Gene: SynergyX_68 Start: 57251, Stop: 57538, Start Num: 15

Candidate Starts for SynergyX_68:

(2, 57029), (3, 57047), (4, 57059), (6, 57104), (11, 57239), (Start: 15 @57251 has 26 MA's), (20, 57269), (Start: 23 @57281 has 42 MA's), (Start: 26 @57290 has 42 MA's), (Start: 29 @57299 has 17

MA's), (60, 57443), (69, 57500),

Gene: TA17A_66 Start: 55418, Stop: 55678, Start Num: 23

Candidate Starts for TA17A_66:

(Start: 23 @55418 has 42 MA's), (Start: 26 @55427 has 42 MA's), (Start: 39 @55472 has 6 MA's), (46, 55499), (52, 55526), (57, 55553), (63, 55595), (67, 55628), (69, 55637), (70, 55649),

Gene: TallGrassMM_66 Start: 56698, Stop: 57000, Start Num: 12

Candidate Starts for TallGrassMM_66:

(Start: 12 @56698 has 74 MA's), (Start: 26 @56752 has 42 MA's), (Start: 44 @56821 has 41 MA's), (54, 56863),

Gene: Telesworld_66 Start: 56912, Stop: 57184, Start Num: 14

Candidate Starts for Telesworld_66:

(Start: 14 @56912 has 129 MA's), (Start: 23 @56933 has 42 MA's), (Start: 26 @56942 has 42 MA's), (45, 57005), (52, 57032), (70, 57155),

Gene: Thonko_67 Start: 56230, Stop: 56466, Start Num: 30

Candidate Starts for Thonko_67:

(1, 55804), (5, 55999), (7, 56032), (13, 56158), (21, 56191), (Start: 23 @56197 has 42 MA's), (Start: 30 @56230 has 1 MA's), (41, 56260), (55, 56326), (59, 56347), (60, 56362),

Gene: Thora_66 Start: 57138, Stop: 57440, Start Num: 12

Candidate Starts for Thora_66:

(Start: 12 @57138 has 74 MA's), (Start: 26 @57192 has 42 MA's), (Start: 44 @57261 has 41 MA's), (54, 57303),

Gene: ThreeOh3D2_69 Start: 57310, Stop: 57582, Start Num: 14

Candidate Starts for ThreeOh3D2_69:

(Start: 14 @57310 has 129 MA's), (Start: 23 @57331 has 42 MA's), (Start: 26 @57340 has 42 MA's), (45, 57403), (52, 57430), (70, 57553),

Gene: Thunderbird_68 Start: 57071, Stop: 57322, Start Num: 23

Candidate Starts for Thunderbird_68:

(Start: 23 @57071 has 42 MA's), (Start: 26 @57080 has 42 MA's), (45, 57143), (52, 57170), (70, 57293),

Gene: Timmi_67 Start: 56794, Stop: 57066, Start Num: 14

Candidate Starts for Timmi_67:

(Start: 14 @56794 has 129 MA's), (Start: 23 @56815 has 42 MA's), (Start: 26 @56824 has 42 MA's), (45, 56887), (52, 56914), (70, 57037),

Gene: Tinciduntolum_65 Start: 55579, Stop: 55839, Start Num: 23

Candidate Starts for Tinciduntolum_65:

(Start: 23 @55579 has 42 MA's), (Start: 26 @55588 has 42 MA's), (Start: 39 @55633 has 6 MA's), (52, 55687), (57, 55714), (63, 55756), (67, 55789), (69, 55798), (70, 55810),

Gene: TinyTerror_69 Start: 57673, Stop: 57960, Start Num: 15

Candidate Starts for TinyTerror_69:

(2, 57451), (3, 57469), (4, 57481), (6, 57526), (11, 57661), (Start: 15 @57673 has 26 MA's), (20, 57691), (Start: 23 @57703 has 42 MA's), (Start: 26 @57712 has 42 MA's), (Start: 29 @57721 has 17 MA's), (60, 57865), (69, 57922),

Gene: TomBombadil_68 Start: 57410, Stop: 57658, Start Num: 26
Candidate Starts for TomBombadil_68:
(Start: 12 @57356 has 74 MA's), (Start: 26 @57410 has 42 MA's), (Start: 44 @57479 has 41 MA's),
(54, 57521),

Gene: Tomlarah_69 Start: 57647, Stop: 57919, Start Num: 14
Candidate Starts for Tomlarah_69:
(Start: 14 @57647 has 129 MA's), (Start: 23 @57668 has 42 MA's), (Start: 26 @57677 has 42 MA's),
(45, 57740), (52, 57767), (70, 57890),

Gene: Toni_68 Start: 57239, Stop: 57511, Start Num: 14
Candidate Starts for Toni_68:
(Start: 14 @57239 has 129 MA's), (Start: 23 @57260 has 42 MA's), (Start: 26 @57269 has 42 MA's),
(45, 57332), (52, 57359), (70, 57482),

Gene: TooFast2Furius_67 Start: 57172, Stop: 57351, Start Num: 44
Candidate Starts for TooFast2Furius_67:
(Start: 12 @57049 has 74 MA's), (Start: 26 @57103 has 42 MA's), (Start: 44 @57172 has 41 MA's),
(54, 57214),

Gene: Tooj_66 Start: 56464, Stop: 56736, Start Num: 14
Candidate Starts for Tooj_66:
(Start: 14 @56464 has 129 MA's), (Start: 23 @56485 has 42 MA's), (Start: 26 @56494 has 42 MA's),
(45, 56557), (52, 56584), (70, 56707),

Gene: Tres_64 Start: 55433, Stop: 55693, Start Num: 23
Candidate Starts for Tres_64:
(Start: 23 @55433 has 42 MA's), (Start: 26 @55442 has 42 MA's), (Start: 39 @55487 has 6 MA's), (46,
55514), (52, 55541), (57, 55568), (63, 55610), (67, 55643), (69, 55652), (70, 55664),

Gene: True_66 Start: 56803, Stop: 57075, Start Num: 14
Candidate Starts for True_66:
(Start: 14 @56803 has 129 MA's), (Start: 23 @56824 has 42 MA's), (Start: 26 @56833 has 42 MA's),
(45, 56896), (52, 56923), (70, 57046),

Gene: Trypo_69 Start: 57523, Stop: 57825, Start Num: 12
Candidate Starts for Trypo_69:
(Start: 12 @57523 has 74 MA's), (Start: 26 @57577 has 42 MA's), (Start: 44 @57646 has 41 MA's),
(54, 57688),

Gene: TyrionL_68 Start: 56891, Stop: 57193, Start Num: 12
Candidate Starts for TyrionL_68:
(Start: 12 @56891 has 74 MA's), (Start: 26 @56945 has 42 MA's), (Start: 44 @57014 has 41 MA's),
(54, 57056),

Gene: UncleHowie_65 Start: 56493, Stop: 56795, Start Num: 12
Candidate Starts for UncleHowie_65:
(Start: 12 @56493 has 74 MA's), (Start: 26 @56547 has 42 MA's), (Start: 44 @56616 has 41 MA's),
(54, 56658),

Gene: Usavi_69 Start: 57492, Stop: 57734, Start Num: 26
Candidate Starts for Usavi_69:

(Start: 14 @57462 has 129 MA's), (Start: 23 @57483 has 42 MA's), (Start: 26 @57492 has 42 MA's), (45, 57555), (52, 57582), (70, 57705),

Gene: Vaishali24_68 Start: 57154, Stop: 57405, Start Num: 23

Candidate Starts for Vaishali24_68:

(Start: 14 @57133 has 129 MA's), (Start: 23 @57154 has 42 MA's), (Start: 26 @57163 has 42 MA's), (45, 57226), (52, 57253), (59, 57292), (70, 57376),

Gene: Valjean_67 Start: 57033, Stop: 57305, Start Num: 14

Candidate Starts for Valjean_67:

(Start: 14 @57033 has 129 MA's), (Start: 23 @57054 has 42 MA's), (Start: 26 @57063 has 42 MA's), (45, 57126), (52, 57153), (70, 57276),

Gene: Vaticameos_65 Start: 55337, Stop: 55609, Start Num: 14

Candidate Starts for Vaticameos_65:

(Start: 14 @55337 has 129 MA's), (Start: 23 @55358 has 42 MA's), (Start: 26 @55367 has 42 MA's), (45, 55430), (52, 55457), (70, 55580),

Gene: Veritas_67 Start: 57024, Stop: 57272, Start Num: 26

Candidate Starts for Veritas_67:

(Start: 12 @56970 has 74 MA's), (Start: 26 @57024 has 42 MA's), (Start: 44 @57093 has 41 MA's), (54, 57135),

Gene: Vic9_00063 Start: 56338, Stop: 56544, Start Num: 39

Candidate Starts for Vic9_00063:

(Start: 23 @56284 has 42 MA's), (Start: 26 @56293 has 42 MA's), (Start: 39 @56338 has 6 MA's), (46, 56365), (52, 56392), (57, 56419), (63, 56461), (67, 56494), (69, 56503), (70, 56515),

Gene: Vincenzo_64 Start: 59168, Stop: 59425, Start Num: 29

Candidate Starts for Vincenzo_64:

(Start: 29 @59168 has 17 MA's), (Start: 44 @59219 has 41 MA's), (46, 59225), (50, 59237), (55, 59267), (56, 59270), (61, 59309), (63, 59318), (70, 59372),

Gene: VioletZ_63 Start: 58094, Stop: 58360, Start Num: 29

Candidate Starts for VioletZ_63:

(Start: 29 @58094 has 17 MA's), (Start: 44 @58145 has 41 MA's), (46, 58151), (48, 58157), (50, 58163), (51, 58166), (56, 58196), (59, 58214), (60, 58229), (63, 58244), (64, 58262),

Gene: Virapocalypse_69 Start: 57132, Stop: 57404, Start Num: 14

Candidate Starts for Virapocalypse_69:

(Start: 14 @57132 has 129 MA's), (Start: 23 @57153 has 42 MA's), (Start: 26 @57162 has 42 MA's), (45, 57225), (52, 57252), (70, 57375),

Gene: Vista_66 Start: 56794, Stop: 57096, Start Num: 12

Candidate Starts for Vista_66:

(Start: 12 @56794 has 74 MA's), (Start: 26 @56848 has 42 MA's), (Start: 44 @56917 has 41 MA's), (54, 56959),

Gene: Vivaldi_68 Start: 57255, Stop: 57557, Start Num: 12

Candidate Starts for Vivaldi_68:

(Start: 12 @57255 has 74 MA's), (Start: 26 @57309 has 42 MA's), (Start: 44 @57378 has 41 MA's), (54, 57420),

Gene: Vortex_67 Start: 57078, Stop: 57380, Start Num: 12
Candidate Starts for Vortex_67:
(Start: 12 @57078 has 74 MA's), (Start: 26 @57132 has 42 MA's), (Start: 44 @57201 has 41 MA's),
(54, 57243),

Gene: Waleliano_61 Start: 58034, Stop: 58300, Start Num: 29
Candidate Starts for Waleliano_61:
(Start: 29 @58034 has 17 MA's), (Start: 44 @58085 has 41 MA's), (46, 58091), (48, 58097), (50,
58103), (51, 58106), (56, 58136), (59, 58154), (60, 58169), (63, 58184), (64, 58202),

Gene: Wallhey_68 Start: 56955, Stop: 57203, Start Num: 26
Candidate Starts for Wallhey_68:
(Start: 12 @56901 has 74 MA's), (Start: 26 @56955 has 42 MA's), (Start: 44 @57024 has 41 MA's),
(54, 57066),

Gene: Waterdiva_68 Start: 57166, Stop: 57438, Start Num: 14
Candidate Starts for Waterdiva_68:
(Start: 14 @57166 has 129 MA's), (Start: 23 @57187 has 42 MA's), (Start: 26 @57196 has 42 MA's),
(45, 57259), (52, 57286), (70, 57409),

Gene: Weher20_65 Start: 57467, Stop: 57715, Start Num: 26
Candidate Starts for Weher20_65:
(10, 57404), (Start: 26 @57467 has 42 MA's), (Start: 44 @57536 has 41 MA's), (54, 57578),

Gene: West99_64 Start: 55606, Stop: 55866, Start Num: 23
Candidate Starts for West99_64:
(Start: 23 @55606 has 42 MA's), (Start: 26 @55615 has 42 MA's), (Start: 39 @55660 has 6 MA's), (46,
55687), (52, 55714), (57, 55741), (63, 55783), (67, 55816), (69, 55825), (70, 55837),

Gene: Windsor_68 Start: 57353, Stop: 57625, Start Num: 14
Candidate Starts for Windsor_68:
(Start: 14 @57353 has 129 MA's), (Start: 23 @57374 has 42 MA's), (Start: 26 @57383 has 42 MA's),
(45, 57446), (52, 57473), (70, 57596),

Gene: Xavier_67 Start: 56794, Stop: 57066, Start Num: 14
Candidate Starts for Xavier_67:
(Start: 14 @56794 has 129 MA's), (Start: 23 @56815 has 42 MA's), (Start: 26 @56824 has 42 MA's),
(45, 56887), (52, 56914), (70, 57037),

Gene: Yahalom_66 Start: 57095, Stop: 57343, Start Num: 26
Candidate Starts for Yahalom_66:
(2, 56834), (3, 56852), (4, 56864), (6, 56909), (11, 57044), (Start: 15 @57056 has 26 MA's), (20,
57074), (Start: 23 @57086 has 42 MA's), (Start: 26 @57095 has 42 MA's), (Start: 29 @57104 has 17
MA's), (60, 57248), (69, 57305),

Gene: Yinz_68 Start: 57121, Stop: 57408, Start Num: 15
Candidate Starts for Yinz_68:
(2, 56899), (3, 56917), (4, 56929), (6, 56974), (11, 57109), (Start: 15 @57121 has 26 MA's), (20,
57139), (Start: 23 @57151 has 42 MA's), (Start: 26 @57160 has 42 MA's), (Start: 29 @57169 has 17
MA's), (60, 57313), (69, 57370),

Gene: Yoshand_68 Start: 57071, Stop: 57373, Start Num: 12
Candidate Starts for Yoshand_68:

(Start: 12 @57071 has 74 MA's), (Start: 26 @57125 has 42 MA's), (Start: 44 @57194 has 41 MA's), (54, 57236),

Gene: YouGoGlencoco_68 Start: 57137, Stop: 57385, Start Num: 26

Candidate Starts for YouGoGlencoco_68:

(Start: 12 @57083 has 74 MA's), (Start: 26 @57137 has 42 MA's), (Start: 44 @57206 has 41 MA's), (54, 57248),

Gene: Zaider_69 Start: 57303, Stop: 57545, Start Num: 26

Candidate Starts for Zaider_69:

(Start: 14 @57273 has 129 MA's), (Start: 23 @57294 has 42 MA's), (Start: 26 @57303 has 42 MA's), (45, 57366), (52, 57393), (70, 57516),

Gene: Zelda_68 Start: 57477, Stop: 57725, Start Num: 26

Candidate Starts for Zelda_68:

(Start: 12 @57423 has 74 MA's), (Start: 26 @57477 has 42 MA's), (Start: 44 @57546 has 41 MA's), (54, 57588),

Gene: Zemanar_62 Start: 57920, Stop: 58138, Start Num: 44

Candidate Starts for Zemanar_62:

(Start: 29 @57869 has 17 MA's), (Start: 44 @57920 has 41 MA's), (46, 57926), (48, 57932), (50, 57938), (51, 57941), (56, 57971), (59, 57989), (60, 58004), (63, 58019), (64, 58037),

Gene: Zenteno07_73 Start: 58751, Stop: 59014, Start Num: 29

Candidate Starts for Zenteno07_73:

(8, 58664), (Start: 18 @58709 has 1 MA's), (Start: 26 @58742 has 42 MA's), (Start: 29 @58751 has 17 MA's), (40, 58790), (46, 58817), (47, 58820), (49, 58826), (53, 58844), (59, 58883), (73, 58994),

Gene: Zonia_68 Start: 57352, Stop: 57654, Start Num: 12

Candidate Starts for Zonia_68:

(Start: 12 @57352 has 74 MA's), (Start: 26 @57406 has 42 MA's), (Start: 44 @57475 has 41 MA's), (54, 57517),