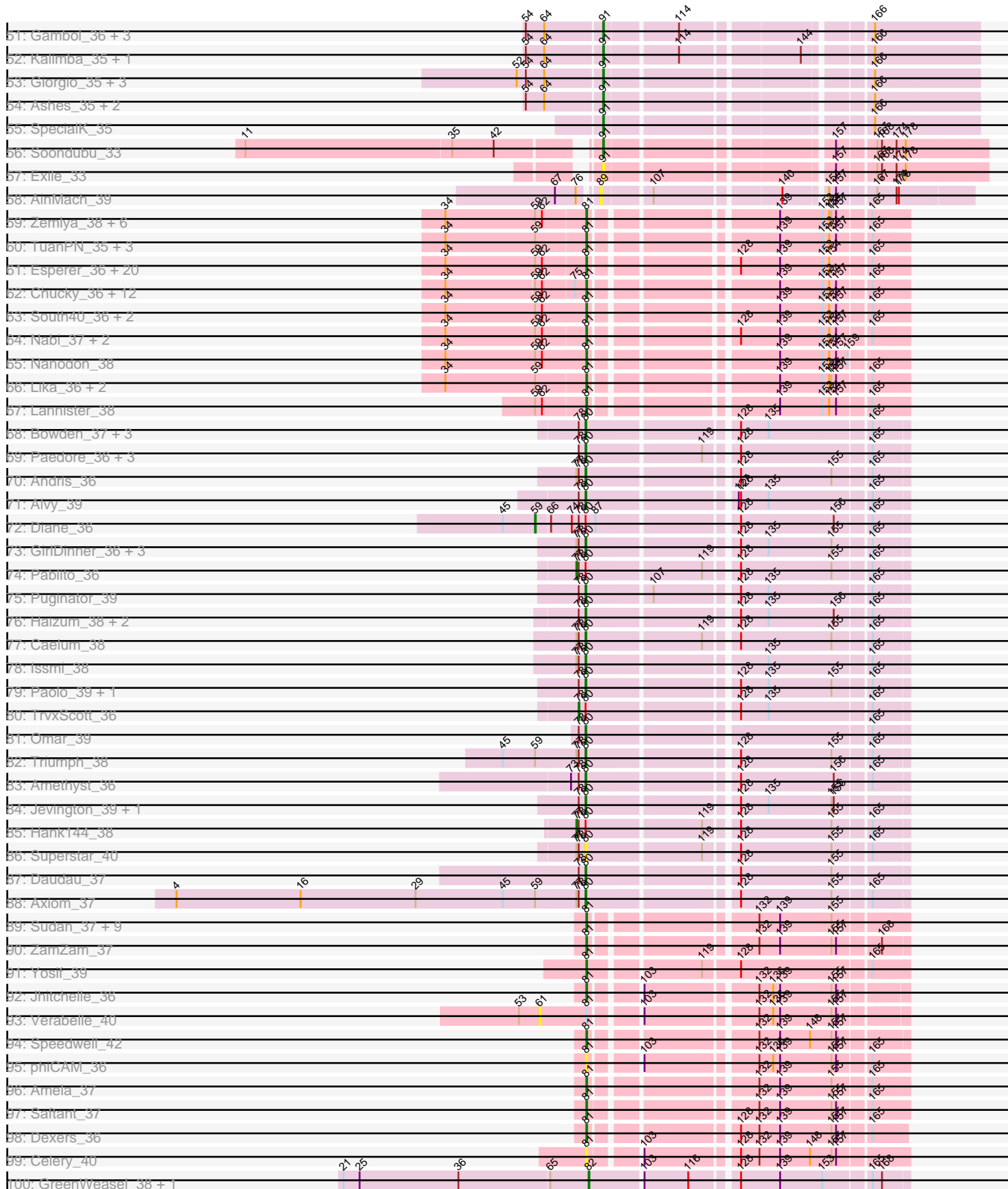
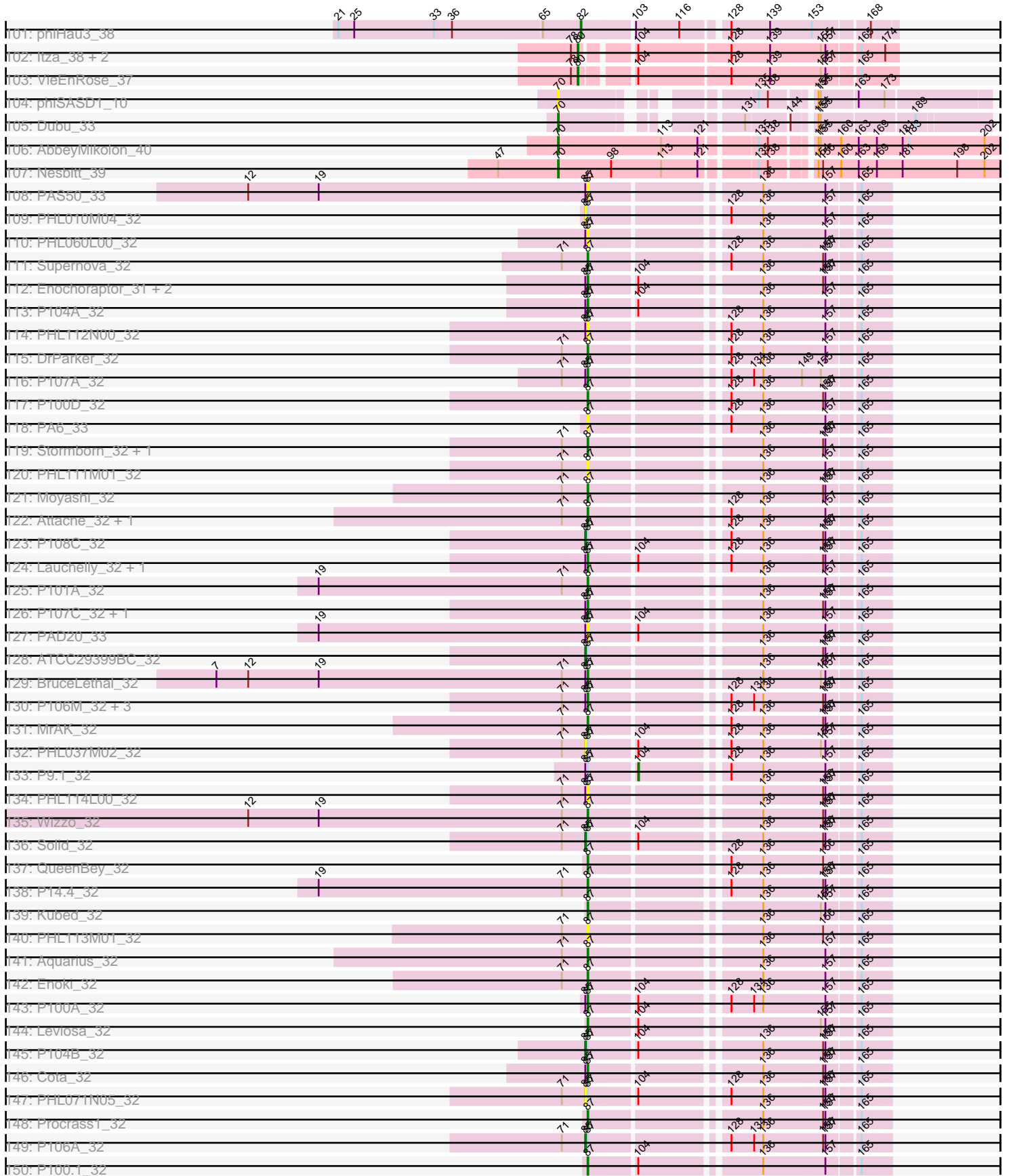


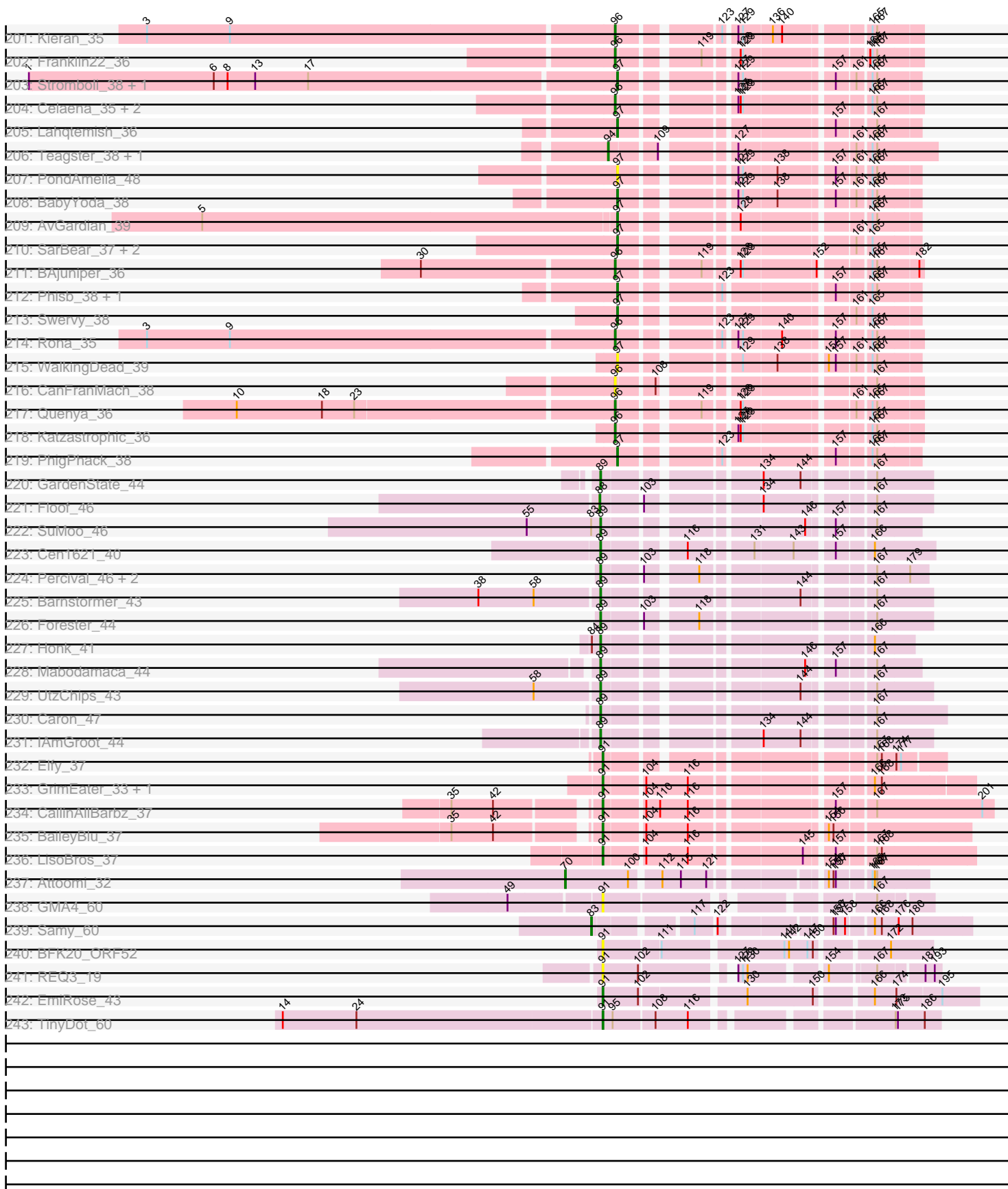
Pham 311095



Pham 311095



Pham 311095



Note: Tracks are now grouped by subcluster and scaled. Switching in subcluster is indicated by changes in track color. Track scale is now set by default to display the region 30 bp upstream of start 1 to 30 bp downstream of the last possible start. If this default region is judged to be packed too tightly with annotated starts, the track will be further scaled to only show that region of the ORF with annotated starts. This action will be indicated by adding "Zoomed" to the title. For starts, yellow indicates the location of called starts comprised solely of Glimmer/GeneMark auto-annotations, green indicates the location of called starts with at least 1 manual gene annotation.

Pham 311095 Report

This analysis was run 06/27/26 on database version 652.

WARNING: Pham size does not match number of genes in report. Either unphamerated genes have been added (by you) or starterator has removed genes due to invalid start codon.

Pham number 311095 has 409 members, 55 are drafts.

Phages represented in each track:

- Track 1 : Flutur_35, Tutumahutu_35, Joemato_35, Simpson_37
- Track 2 : Michkear_37
- Track 3 : ThursdayNight_39
- Track 4 : Cyan_35
- Track 5 : Tuck_39, Community_38
- Track 6 : Kaylissa_35, AGrandiflora_36, YesChef_35, JohnDoe_35, Powerpuff_37
- Track 7 : Warda_35, Tbone_34
- Track 8 : Crewmate_41, ObiToo_40
- Track 9 : Berrie_37
- Track 10 : Nitro_36
- Track 11 : PandaPo_35, MissSwiss_35
- Track 12 : JuneStar_37
- Track 13 : Tallboi_36
- Track 14 : Lizalica_34
- Track 15 : DrSierra_34
- Track 16 : Niobe_35, Eraser_35, Jstan_37, Skelbel_36, Asa16_35
- Track 17 : Pumpkins_36
- Track 18 : Cassia_36
- Track 19 : Turab_34, AEgle_34
- Track 20 : Amploria_35
- Track 21 : KeAlii_36
- Track 22 : Janeemi_38
- Track 23 : Wildwest_35
- Track 24 : TforTroy_37
- Track 25 : Sue2_36
- Track 26 : Elezi_35, London_35, Subaru_36
- Track 27 : Ascela_37, Iter_37
- Track 28 : Phives_38
- Track 29 : Yang_36
- Track 30 : Schaffner_36
- Track 31 : Amyev_35, Tian_35, Pixelle_35
- Track 32 : Lego_35
- Track 33 : Adumb2043_34

- Track 34 : Mudpuppy_34
- Track 35 : Reedo_35
- Track 36 : IttyBittyPiggy_36
- Track 37 : Adolin_35
- Track 38 : VResidence_36
- Track 39 : DrManhattan_35
- Track 40 : MaGuCo_35
- Track 41 : Maureen_37, Liebe_37, IUFootball_37
- Track 42 : Tweety19_35, Snek_35
- Track 43 : LadyAstra_43
- Track 44 : JohnThicc_43, FiveHead_44
- Track 45 : VroomVroom_40
- Track 46 : AceofSpades_41
- Track 47 : Emotion_40
- Track 48 : Origami_42
- Track 49 : JasmineDragon_40, ShakeltOph_40, MiniMommy_41
- Track 50 : Stuu_35, Mysterium_35
- Track 51 : Gambol_36, Sooty_35, Cappuccino_35, Sabourin_35
- Track 52 : Kalimba_35, Donkey_35
- Track 53 : Giorgio_35, Moss_35, Gumpizza_35, RockScotty_35
- Track 54 : Ashes_35, Halsey_35, Beaupre_35
- Track 55 : SpecialK_35
- Track 56 : Soondubu_33
- Track 57 : Exile_33
- Track 58 : AinMach_39
- Track 59 : Zemlya_38, Toma_36, Brataylor_39, Dattran_38, Goby_36, Celeste_37, Danzina_38
- Track 60 : TuanPN_35, Yasdnil_36, Maneekul_36, Ejemplo_35
- Track 61 : Esperer_36, Phettuccine_36, Caliburn_36, EnochSoames_39, Izzy_37, Bovely_36, Eddasa_37, Oliyinyk_37, Hydra_38, Rusticus_37, Legacy_36, Nerdos_35, Unstoppable_36, Leviticus_36, Aaronocolus_36, BryanRecycles_37, Ozzie_36, BeardedLady_37, SunsetPointe_36, Jash_37, Indigo_35
- Track 62 : Chucky_36, BarryBee_39, OzzyJ_37, Asten_36, Werner_36, TagePghter_38, Hippo_36, Triste_36, Snorlax_36, Dwayne_36, SarahRose_36, Whatever_36, Emaanora_39
- Track 63 : South40_36, RedBear_37, Katalie_36
- Track 64 : Nabi_37, Lorelei_37, Rana_37
- Track 65 : Nanodon_38
- Track 66 : Lika_36, Sujidade_37, Godpower_37
- Track 67 : Lannister_38
- Track 68 : Bowden_37, TinaBelcher_37, Thestral_38, BartholomewSD_39
- Track 69 : Paedore_36, R4_37, ELB20_35, Loofah_37
- Track 70 : Andris_36
- Track 71 : Alvy_39
- Track 72 : Diane_36
- Track 73 : GirlDinner_36, Animus_36, SqueakyClean_36, Janus_37
- Track 74 : Pablito_36
- Track 75 : Puginator_39
- Track 76 : Haizum_38, Tefunt_38, Nishikigoi_38
- Track 77 : Caelum_38
- Track 78 : Issmi_38
- Track 79 : Paolo_39, Zainub_39
- Track 80 : TrvxScott_36

- Track 81 : Omar_39
- Track 82 : Triumph_38
- Track 83 : Amethyst_36
- Track 84 : Jevington_39, Marav_40
- Track 85 : Hank144_38
- Track 86 : Superstar_40
- Track 87 : Daudau_37
- Track 88 : Axiom_37
- Track 89 : Sudan_37, Pavo_38, Vanseggelen_42, Kaine_37, SunkenRoot_39, Conan_38, Provolone_38, Alsaber_38, ElGato_38, Verse_37
- Track 90 : ZamZam_37
- Track 91 : Yosif_39
- Track 92 : Jhitchelle_36
- Track 93 : Verabelle_40
- Track 94 : Speedwell_42
- Track 95 : phiCAM_36
- Track 96 : Amela_37
- Track 97 : Saftant_37
- Track 98 : Dexers_36
- Track 99 : Celery_40
- Track 100 : GreenWeasel_38, BroPlease_37
- Track 101 : phiHau3_38
- Track 102 : Itza_38, Celia_38, Urza_38
- Track 103 : VieEnRose_37
- Track 104 : phiSASD1_10
- Track 105 : Dubu_33
- Track 106 : AbbeyMikolon_40
- Track 107 : Nesbitt_39
- Track 108 : PAS50_33
- Track 109 : PHL010M04_32
- Track 110 : PHL060L00_32
- Track 111 : Supernova_32
- Track 112 : Enochoraptor_31, Pirate_32, Keiki_32
- Track 113 : P104A_32
- Track 114 : PHL112N00_32
- Track 115 : DrParker_32
- Track 116 : P107A_32
- Track 117 : P100D_32
- Track 118 : PA6_33
- Track 119 : Stormborn_32, P105_32
- Track 120 : PHL111M01_32
- Track 121 : Moyashi_32
- Track 122 : Attacne_32, SKKY_32
- Track 123 : P108C_32
- Track 124 : Lauchelly_32, Rileysaurus_31
- Track 125 : P101A_32
- Track 126 : P107C_32, ATCC29399BT_32
- Track 127 : PAD20_33
- Track 128 : ATCC29399BC_32
- Track 129 : BruceLethal_32
- Track 130 : P106M_32, P106L_32, P106I_32, P106C_33
- Track 131 : MrAK_32
- Track 132 : PHL037M02_32

- Track 133 : P9.1_32
- Track 134 : PHL114L00_32
- Track 135 : Wizzo_32
- Track 136 : Solid_32
- Track 137 : QueenBey_32
- Track 138 : P14.4_32
- Track 139 : Kubed_32
- Track 140 : PHL113M01_32
- Track 141 : Aquarius_32
- Track 142 : Enoki_32
- Track 143 : P100A_32
- Track 144 : Leviosa_32
- Track 145 : P104B_32
- Track 146 : Cota_32
- Track 147 : PHL071N05_32
- Track 148 : Procrass1_32
- Track 149 : P106A_32
- Track 150 : P100.1_32
- Track 151 : LilBandit_32
- Track 152 : PHL067M10_32
- Track 153 : Ouroboros_32
- Track 154 : MEAK_32
- Track 155 : Applejacks_61
- Track 156 : Widow_60
- Track 157 : Trine_64
- Track 158 : Upyo_68
- Track 159 : Mahdia_59
- Track 160 : Morrissey_62
- Track 161 : Gustav_66
- Track 162 : Puppets_60
- Track 163 : Banquo_56
- Track 164 : TinaLin_56
- Track 165 : Gsput1_48
- Track 166 : Dardanus_52
- Track 167 : Schmidt_51
- Track 168 : Towmatter_63, Daredevil_63
- Track 169 : DatBoi_70
- Track 170 : Bantam_72, SpeedDemon_740
- Track 171 : Mollymur_72
- Track 172 : BearBQ_90
- Track 173 : Birdsong_84
- Track 174 : LitninMcQueen_97
- Track 175 : CheeseTouch_97
- Track 176 : Asapag_85
- Track 177 : Gack_34
- Track 178 : Didgeridoo_39, Kate33_37
- Track 179 : Bengal_38, Albright_35, Avocadoman_36, Doobus_36
- Track 180 : AylexOG_39
- Track 181 : AnnaLie_38, Burritobowl_37, Arroyo_38, IndyLu_36, BelmontSKP_38, CroZenni_37, Johnathan_36, DickRichards_36
- Track 182 : Rollins_34, Skylord_34, Vitas_34, Brahms_34, Bernstein_34, Armstrong_34, Coltrane_34, Clayda5_35
- Track 183 : Kamdara_35, ChiliPepper_34, Dismas_35

- Track 184 : Sharkboy_36
- Track 185 : Jabb_38, MsUbiquitous_38, Jovita_38, Eula_38, CupcakePrincess_38
- Track 186 : Finalfrontier_37
- Track 187 : SunnyD_37
- Track 188 : Softsoap_37
- Track 189 : QMacho_39, Pecas_37
- Track 190 : BabyDaisy_36, Cashington_35
- Track 191 : LimaBean_36, Abigail_36, Solea_38, Milomuff_37, BubbaBear_36, SansAfet_38
- Track 192 : Albedo_37, Kenzers_37, Lynlen_37, SirBeanington_37
- Track 193 : Nicky22_38
- Track 194 : Elva_39
- Track 195 : CliffHanger_38
- Track 196 : Icarian_40, Loviatar_38, Akino08_38
- Track 197 : SanaSana_40
- Track 198 : Stoor_38
- Track 199 : PastaFagioli_36
- Track 200 : Eden_35
- Track 201 : Kieran_35
- Track 202 : Franklin22_36
- Track 203 : Stromboli_38, DirtyBubble_37
- Track 204 : Celaena_35, Bachaco_35, FlameThrower_35
- Track 205 : Lahqtemish_36
- Track 206 : Teagster_38, Shayna_37
- Track 207 : PondAmelia_48
- Track 208 : BabyYoda_38
- Track 209 : AvGardian_39
- Track 210 : SarBear_37, Slay_38, Lilo27_38
- Track 211 : BAjuniper_36
- Track 212 : Phisb_38, TukTuk_38
- Track 213 : Swervy_38
- Track 214 : Rona_35
- Track 215 : WalkingDead_39
- Track 216 : CanFranMach_38
- Track 217 : Quenya_36
- Track 218 : Katzastrophic_36
- Track 219 : PhigPhack_38
- Track 220 : GardenState_44
- Track 221 : Floof_46
- Track 222 : SuMoo_46
- Track 223 : Cen1621_40
- Track 224 : Percival_46, SuperHands_44, Gretchen_45
- Track 225 : Barnstormer_43
- Track 226 : Forester_44
- Track 227 : Honk_41
- Track 228 : Mabodamaca_44
- Track 229 : UtzChips_43
- Track 230 : Caron_47
- Track 231 : IAmGroot_44
- Track 232 : Elfy_37
- Track 233 : GrimEater_33, Jankie_34
- Track 234 : CallinAllBarbz_37
- Track 235 : BaileyBlu_37

- Track 236 : LisoBros_37
- Track 237 : Attoomi_32
- Track 238 : GMA4_60
- Track 239 : Samy_60
- Track 240 : BFK20_ORF52
- Track 241 : REQ3_19
- Track 242 : EmiRose_43
- Track 243 : TinyDot_60

Summary of Final Annotations (See graph section above for start numbers):

The start number called the most often in the published annotations is 91, it was called in 91 of the 354 non-draft genes in the pham.

Genes that call this "Most Annotated" start:

- AEgle_34, AGrandiflora_36, AceofSpades_41, Adolin_35, Adumb2043_34, Amploria_35, Amyev_35, Applejacks_61, Asa16_35, Asapag_85, Ascela_37, Ashes_35, BFK20_ORF52, BaileyBlu_37, Banquo_56, BearBQ_90, Beaupre_35, Berrie_37, Birdsong_84, CallinAllBarbz_37, Cappuccino_35, Cassia_36, CheeseTouch_97, Community_38, Crewmate_41, Cyan_35, Dardanus_52, Daredevil_63, Donkey_35, DrManhattan_35, DrSierra_34, Elezi_35, Elfy_37, EmiRose_43, Emotion_40, Eraser_35, Exile_33, Flutur_35, GMA4_60, Gambol_36, Giorgio_35, GrimEater_33, Gumpizza_35, Gustav_66, Halsey_35, IUFootball_37, Iter_37, IttyBittyPiggy_36, Janeemi_38, Jankie_34, JasmineDragon_40, Joemato_35, JohnDoe_35, Jstan_37, Kalimba_35, Kaylissa_35, KeAlii_36, LadyAstra_43, Lego_35, Liebe_37, LisoBros_37, LitninMcQueen_97, Lizalica_34, London_35, Mahdia_59, Maureen_37, Michkear_37, MiniMommy_41, MissSwiss_35, Morrissey_62, Moss_35, Mudpuppy_34, Mysterium_35, Niobe_35, Nitro_36, ObiToo_40, Origami_42, PandaPo_35, Phives_38, Pixelle_35, Powerpuff_37, Puppies_60, REQ3_19, Reedo_35, RockScotty_35, Sabourin_35, Schmidt_51, ShakeltOph_40, Simpson_37, Skelbel_36, Snek_35, Soondubu_33, Sooty_35, SpecialK_35, Stuu_35, Subaru_36, Sue2_36, Tallboi_36, Tbone_34, ThursdayNight_39, Tian_35, TinyDot_60, Towmatter_63, Tuck_39, Turab_34, Tutumahutu_35, Tweety19_35, Upyo_68, VResidence_36, VroomVroom_40, Warda_35, Widow_60, Wildwest_35, YesChef_35,

Genes that have the "Most Annotated" start but do not call it:

- FiveHead_44, JohnThicc_43, TinaLin_56,

Genes that do not have the "Most Annotated" start:

- ATCC29399BC_32, ATCC29399BT_32, Aaronocolus_36, AbbeyMikolon_40, Abigail_36, AinMach_39, Akino08_38, Albedo_37, Albright_35, Alsaber_38, Alvy_39, Amela_37, Amethyst_36, Andris_36, Animus_36, AnnaLie_38, Aquarius_32, Armstrong_34, Arroyo_38, Asten_36, Attacne_32, Attoomi_32, AvGuardian_39, Avocadoman_36, Axiom_37, AylexOG_39, BAjuniper_36, BabyDaisy_36, BabyYoda_38, Bachaco_35, Bantam_72, Barnstormer_43, BarryBee_39, BartholomewSD_39, BeardedLady_37, BelmontSKP_38, Bengal_38, Bernstein_34, Bovely_36, Bowden_37, Brahms_34, Brataylor_39, BroPlease_37, BruceLethal_32, BryanRecycles_37, BubbaBear_36, Burritobowl_37, Caelum_38, Caliburn_36, CanFranMach_38, Caron_47, Cashington_35, Celaena_35, Celery_40, Celeste_37,

Celia_38, Cen1621_40, ChiliPepper_34, Chucky_36, Clayda5_35, CliffHanger_38, Coltrane_34, Conan_38, Cota_32, CroZenni_37, CupcakePrincess_38, Danzina_38, DatBoi_70, Dattran_38, Daudau_37, Dexers_36, Diane_36, DickRichards_36, Didgeridoo_39, DirtyBubble_37, Dismas_35, Doobus_36, DrParker_32, Dubu_33, Dwayne_36, ELB20_35, Eddasa_37, Eden_35, Ejemplo_35, ElGato_38, Elva_39, Emaanora_39, EnochSoames_39, Enochoraptor_31, Enoki_32, Esperer_36, Eula_38, Finalfrontier_37, FlameThrower_35, Floof_46, Forester_44, Franklin22_36, Gack_34, GardenState_44, GirlDinner_36, Goby_36, Godpower_37, GreenWeasel_38, Gretchen_45, Gspu1_48, Haizum_38, Hank144_38, Hippo_36, Honk_41, Hydra_38, IAmGroot_44, Icarian_40, Indigo_35, IndyLu_36, Issmi_38, Itza_38, Izzy_37, Jabb_38, Janus_37, Jash_37, Jevington_39, Jhitchelle_36, Johnathan_36, Jovita_38, JuneStar_37, Kaine_37, Kamdara_35, Katalie_36, Kate33_37, Katzastrophic_36, Keiki_32, Kenzers_37, Kieran_35, Kubed_32, Lahqtemish_36, Lannister_38, Lauchelly_32, Legacy_36, Leviosa_32, Leviticus_36, Lika_36, LilBandit_32, Lilo27_38, LimaBean_36, Loofah_37, Lorelei_37, Loviatar_38, Lynlen_37, MEAK_32, MaGuCo_35, Mabodamaca_44, Maneekul_36, Marav_40, Milomuff_37, Mollymur_72, Moyashi_32, MrAK_32, MsUbiquitous_38, Nabi_37, Nanodon_38, Nerds_35, Nesbitt_39, Nicky22_38, Nishikigoi_38, Oliynyk_37, Omar_39, Ouroboros_32, Ozzie_36, OzzyJ_37, P100.1_32, P100A_32, P100D_32, P101A_32, P104A_32, P104B_32, P105_32, P106A_32, P106C_33, P106I_32, P106L_32, P106M_32, P107A_32, P107C_32, P108C_32, P14.4_32, P9.1_32, PA6_33, PAD20_33, PAS50_33, PHL010M04_32, PHL037M02_32, PHL060L00_32, PHL067M10_32, PHL071N05_32, PHL111M01_32, PHL112N00_32, PHL113M01_32, PHL114L00_32, Pablito_36, Paedore_36, Paolo_39, PastaFagioli_36, Pavo_38, Pecas_37, Percival_46, Phettuccine_36, PhigPhack_38, Phisb_38, Pirate_32, PondAmelia_48, Procrass1_32, Provolone_38, Puginator_39, Pumpkins_36, QMacho_39, QueenBey_32, Quenya_36, R4_37, Rana_37, RedBear_37, Rileysaurus_31, Rollins_34, Rona_35, Rusticus_37, SKKY_32, Saftant_37, Samy_60, SanaSana_40, SansAfet_38, SarBear_37, SarahRose_36, Schaffner_36, Sharkboy_36, Shayna_37, SirBeanington_37, Skylord_34, Slay_38, Snorlax_36, Softsoap_37, Solea_38, Solid_32, South40_36, SpeedDemon_740, Speedwell_42, SqueakyClean_36, Stoor_38, Stormborn_32, Stromboli_38, SuMoo_46, Sudan_37, Sujidade_37, SunkenRoot_39, SunnyD_37, SunsetPointe_36, SuperHands_44, Supernova_32, Superstar_40, Swervy_38, TagePhighter_38, Teagster_38, Tefunt_38, TforTroy_37, Thestral_38, TinaBelcher_37, Toma_36, Trine_64, Triste_36, Triumph_38, TrvxScott_36, TuanPN_35, TukTuk_38, Unstoppable_36, Urza_38, UtzChips_43, Vanseggelen_42, Verabelle_40, Verse_37, VieEnRose_37, Vitas_34, WalkingDead_39, Werner_36, Whatever_36, Wizzo_32, Yang_36, Yasdnil_36, Yosif_39, Zainub_39, ZamZam_37, Zemlya_38, phiCAM_36, phiHau3_38, phiSASD1_10,

Summary by start number:

Start 59:

- Found in 60 of 409 (14.7%) of genes in pham
- Manual Annotations of this start: 1 of 354
- Called 1.7% of time when present
- Phage (with cluster) where this start called: Diane_36 (BD2),

Start 61:

- Found in 1 of 409 (0.2%) of genes in pham
- No Manual Annotations of this start.
- Called 100.0% of time when present

- Phage (with cluster) where this start called: Verabelle_40 (BD3),

Start 70:

- Found in 5 of 409 (1.2%) of genes in pham
- Manual Annotations of this start: 4 of 354
- Called 100.0% of time when present
- Phage (with cluster) where this start called: AbbeyMikolon_40 (BL), Attoomi_32 (singleton), Dubu_33 (BJ), Nesbitt_39 (BL), phiSASD1_10 (BJ),

Start 77:

- Found in 12 of 409 (2.9%) of genes in pham
- Manual Annotations of this start: 2 of 354
- Called 16.7% of time when present
- Phage (with cluster) where this start called: Hank144_38 (BD2), Pablito_36 (BD2),

Start 78:

- Found in 38 of 409 (9.3%) of genes in pham
- Manual Annotations of this start: 1 of 354
- Called 2.6% of time when present
- Phage (with cluster) where this start called: TrvxScott_36 (BD2),

Start 79:

- Found in 2 of 409 (0.5%) of genes in pham
- No Manual Annotations of this start.
- Called 100.0% of time when present
- Phage (with cluster) where this start called: FiveHead_44 (AZ4), JohnThicc_43 (AZ4),

Start 80:

- Found in 38 of 409 (9.3%) of genes in pham
- Manual Annotations of this start: 33 of 354
- Called 89.5% of time when present
- Phage (with cluster) where this start called: Alvy_39 (BD2), Amethyst_36 (BD2), Andris_36 (BD2), Animus_36 (BD2), Axiom_37 (BD2), BartholomewSD_39 (BD2), Bowden_37 (BD2), Caelum_38 (BD2), Celia_38 (BD6), Daudau_37 (BD2), ELB20_35 (BD2), GirlDinner_36 (BD2), Haizum_38 (BD2), Issmi_38 (BD2), Itza_38 (BD6), Janus_37 (BD2), Jevington_39 (BD2), Loofah_37 (BD2), Marav_40 (BD2), Nishikigoi_38 (BD2), Omar_39 (BD2), Paedore_36 (BD2), Paolo_39 (BD2), Puginator_39 (BD2), R4_37 (BD2), SqueakyClean_36 (BD2), Superstar_40 (BD2), Tefunt_38 (BD2), Thestral_38 (BD2), TinaBelcher_37 (BD2), Triumph_38 (BD2), Urza_38 (BD6), VieEnRose_37 (BD6), Zainub_39 (BD2),

Start 81:

- Found in 76 of 409 (18.6%) of genes in pham
- Manual Annotations of this start: 70 of 354
- Called 98.7% of time when present
- Phage (with cluster) where this start called: Aaronocolus_36 (BD1), Alsaber_38 (BD3), Amela_37 (BD3), Asten_36 (BD1), BarryBee_39 (BD1), BeardedLady_37 (BD1), Bovely_36 (BD1), Brataylor_39 (BD1), BryanRecycles_37 (BD1), Caliburn_36 (BD1), Celery_40 (BD3), Celeste_37 (BD1), Chucky_36 (BD1), Conan_38 (BD3), Danzina_38 (BD1), Dattran_38 (BD1), Dexers_36 (BD3), Dwayne_36 (BD1), Eddasa_37 (BD1), Ejemplo_35 (BD1), ElGato_38 (BD3), Emaanora_39 (BD1), EnochSoames_39 (BD1), Esperer_36 (BD1), Goby_36 (BD1), Godpower_37 (BD1),

Hippo_36 (BD1), Hydra_38 (BD1), Indigo_35 (BD1), Izzy_37 (BD1), Jash_37 (BD1), Jhitchelle_36 (BD3), Kaine_37 (BD3), Katalie_36 (BD1), Lannister_38 (BD1), Legacy_36 (BD1), Leviticus_36 (BD1), Lika_36 (BD1), Lorelei_37 (BD1), Maneekul_36 (BD1), Nabi_37 (BD1), Nanodon_38 (BD1), Nerdos_35 (BD1), Oliynyk_37 (BD1), Ozzie_36 (BD1), OzzyJ_37 (BD1), Pavo_38 (BD3), Phettuccine_36 (BD1), Provolone_38 (BD3), Rana_37 (BD1), RedBear_37 (BD1), Rusticus_37 (BD1), Saftant_37 (BD3), SarahRose_36 (BD1), Snorlax_36 (BD1), South40_36 (BD1), Speedwell_42 (BD3), Sudan_37 (BD3), Sujidade_37 (BD1), SunkenRoot_39 (BD3), SunsetPointe_36 (BD1), TagePhighter_38 (BD1), Toma_36 (BD1), Triste_36 (BD1), TuanPN_35 (BD1), Unstoppable_36 (BD1), Vanseggelen_42 (BD3), Verse_37 (BD3), Werner_36 (BD1), Whatever_36 (BD1), Yasdnii_36 (BD1), Yosif_39 (BD3), ZamZam_37 (BD3), Zemlya_38 (BD1), phiCAM_36 (BD3),

Start 82:

- Found in 3 of 409 (0.7%) of genes in pham
- Manual Annotations of this start: 3 of 354
- Called 100.0% of time when present
- Phage (with cluster) where this start called: BroPlease_37 (BD4), GreenWeasel_38 (BD4), phiHau3_38 (BD4),

Start 83:

- Found in 2 of 409 (0.5%) of genes in pham
- Manual Annotations of this start: 1 of 354
- Called 50.0% of time when present
- Phage (with cluster) where this start called: Samy_60 (singleton),

Start 85:

- Found in 33 of 409 (8.1%) of genes in pham
- Manual Annotations of this start: 7 of 354
- Called 30.3% of time when present
- Phage (with cluster) where this start called: ATCC29399BC_32 (BU), LilBandit_32 (BU), Ouroboros_32 (BU), P104B_32 (BU), P106A_32 (BU), P108C_32 (BU), PHL010M04_32 (BU), PHL037M02_32 (BU), PHL071N05_32 (BU), Solid_32 (BU),

Start 87:

- Found in 57 of 409 (13.9%) of genes in pham
- Manual Annotations of this start: 36 of 354
- Called 78.9% of time when present
- Phage (with cluster) where this start called: ATCC29399BT_32 (BU), Aquarius_32 (BU), Attacne_32 (BU), BruceLethal_32 (BU), Cota_32 (BU), DrParker_32 (BU), Enochoraptor_31 (BU), Enoki_32 (BU), Keiki_32 (BU), Kubed_32 (BU), Lauchelly_32 (BU), Leviosa_32 (BU), MEAK_32 (BU), Moyashi_32 (BU), MrAK_32 (BU), P100.1_32 (BU), P100A_32 (BU), P100D_32 (BU), P101A_32 (BU), P104A_32 (BU), P105_32 (BU), P106C_33 (BU), P106I_32 (BU), P106L_32 (BU), P106M_32 (BU), P107A_32 (BU), P107C_32 (BU), P14.4_32 (BU), PA6_33 (BU), PAD20_33 (BU), PAS50_33 (BU), PHL060L00_32 (BU), PHL067M10_32 (BU), PHL111M01_32 (BU), PHL112N00_32 (BU), PHL113M01_32 (BU), PHL114L00_32 (BU), Pirate_32 (BU), Procrass1_32 (BU), QueenBey_32 (BU), Rileysaurus_31 (BU), SKKY_32 (BU), Stormborn_32 (BU), Supernova_32 (BU), Wizzo_32 (BU),

Start 88:

- Found in 1 of 409 (0.2%) of genes in pham
- Manual Annotations of this start: 1 of 354

- Called 100.0% of time when present
- Phage (with cluster) where this start called: Floop_46 (EH),

Start 89:

- Found in 18 of 409 (4.4%) of genes in pham
- Manual Annotations of this start: 17 of 354
- Called 100.0% of time when present
- Phage (with cluster) where this start called: AinMach_39 (AZ7), Bantam_72 (DL), Barnstormer_43 (EH), Caron_47 (EH), Cen1621_40 (EH), DatBoi_70 (DL), Forester_44 (EH), GardenState_44 (EH), Gretchen_45 (EH), Honk_41 (EH), IAmGroot_44 (EH), Mabodamaca_44 (EH), Mollymur_72 (DL), Percival_46 (EH), SpeedDemon_740 (DL), SuMoo_46 (EH), SuperHands_44 (EH), UtzChips_43 (EH),

Start 90:

- Found in 6 of 409 (1.5%) of genes in pham
- Manual Annotations of this start: 5 of 354
- Called 83.3% of time when present
- Phage (with cluster) where this start called: JuneStar_37 (AZ1), Pumpkins_36 (AZ1), Schaffner_36 (AZ1), TforTroy_37 (AZ1), Yang_36 (AZ1),

Start 91:

- Found in 117 of 409 (28.6%) of genes in pham
- Manual Annotations of this start: 91 of 354
- Called 97.4% of time when present
- Phage (with cluster) where this start called: AEgle_34 (AZ1), AGrandiflora_36 (AZ1), AceofSpades_41 (AZ4), Adolin_35 (AZ1), Adumb2043_34 (AZ1), Amploria_35 (AZ1), Amyev_35 (AZ1), Applejacks_61 (CD), Asa16_35 (AZ1), Asapag_85 (DN1), Ascela_37 (AZ1), Ashes_35 (AZ5), BFK20_ORF52 (singleton), BaileyBlu_37 (FP), Banquo_56 (CU1), BearBQ_90 (DN), Beaupre_35 (AZ5), Berrie_37 (AZ1), Birdsong_84 (DN), CallinAllBarbz_37 (FP), Cappuccino_35 (AZ5), Cassia_36 (AZ1), CheeseTouch_97 (DN1), Community_38 (AZ1), Crewmate_41 (AZ1), Cyan_35 (AZ1), Dardanus_52 (CU3), Daredevil_63 (DL), Donkey_35 (AZ5), DrManhattan_35 (AZ1), DrSierra_34 (AZ1), Elezi_35 (AZ1), Elfy_37 (FP), EmiRose_43 (singleton), Emotion_40 (AZ4), Eraser_35 (AZ1), Exile_33 (AZ6), Flutur_35 (AZ), GMA4_60 (singleton), Gambol_36 (AZ5), Giorgio_35 (AZ5), GrimEater_33 (FP), Gumpizza_35 (AZ5), Gustav_66 (CD), Halsey_35 (AZ5), IUFootball_37 (AZ2), Iter_37 (AZ1), IttyBittyPiggy_36 (AZ1), Janeemi_38 (AZ1), Jankie_34 (FP), JasmineDragon_40 (AZ4), Joemato_35 (AZ1), JohnDoe_35 (AZ1), Jstan_37 (AZ1), Kalimba_35 (AZ5), Kaylissa_35 (AZ1), KeAlii_36 (AZ1), LadyAstra_43 (AZ4), Lego_35 (AZ1), Liebe_37 (AZ2), LisoBros_37 (FP), LitninMcQueen_97 (DN1), Lizalica_34 (AZ1), London_35 (AZ1), Mahdia_59 (CD), Maureen_37 (AZ2), Michkear_37 (AZ), MiniMommy_41 (AZ4), MissSwiss_35 (AZ1), Morrissey_62 (CD), Moss_35 (AZ5), Mudpuppy_34 (AZ1), Mysterium_35 (AZ5), Niobe_35 (AZ1), Nitro_36 (AZ1), ObiToo_40 (AZ1), Origami_42 (AZ4), PandaPo_35 (AZ1), Phives_38 (AZ1), Pixelle_35 (AZ1), Powerpuff_37 (AZ1), Puppies_60 (CD), REQ3_19 (singleton), Reedo_35 (AZ1), RockScotty_35 (AZ5), Sabourin_35 (AZ5), Schmidt_51 (CU4), ShakeItOph_40 (AZ4), Simpson_37 (AZ1), Skelbel_36 (AZ1), Snek_35 (AZ3), Soondubu_33 (AZ6), Sooty_35 (AZ5), SpecialK_35 (AZ5), Stuu_35 (AZ5), Subaru_36 (AZ1), Sue2_36 (AZ1), Tallboi_36 (AZ1), Tbone_34 (AZ1), ThursdayNight_39 (AZ), Tian_35 (AZ1), TinyDot_60 (singleton), Towmatter_63 (DL), Tuck_39 (AZ1), Turab_34 (AZ1), Tutumahutu_35 (AZ1), Tweety19_35 (AZ3), Upyo_68 (CD), VResidence_36 (AZ1), VroomVroom_40 (AZ4), Warda_35 (AZ1), Widow_60 (CD), Wildwest_35 (AZ1), YesChef_35 (AZ1),

Start 92:

- Found in 1 of 409 (0.2%) of genes in pham
- Manual Annotations of this start: 1 of 354
- Called 100.0% of time when present
- Phage (with cluster) where this start called: Trine_64 (CD),

Start 93:

- Found in 2 of 409 (0.5%) of genes in pham
- Manual Annotations of this start: 1 of 354
- Called 50.0% of time when present
- Phage (with cluster) where this start called: TinaLin_56 (CU1),

Start 94:

- Found in 4 of 409 (1.0%) of genes in pham
- Manual Annotations of this start: 3 of 354
- Called 75.0% of time when present
- Phage (with cluster) where this start called: CliffHanger_38 (EB), Shayna_37 (EB), Teagster_38 (EB),

Start 95:

- Found in 11 of 409 (2.7%) of genes in pham
- No Manual Annotations of this start.
- Called 9.1% of time when present
- Phage (with cluster) where this start called: Gspu1_48 (CU2),

Start 96:

- Found in 24 of 409 (5.9%) of genes in pham
- Manual Annotations of this start: 22 of 354
- Called 100.0% of time when present
- Phage (with cluster) where this start called: Armstrong_34 (EB), BAjuniper_36 (EB), Bachaco_35 (EB), Bernstein_34 (EB), Brahms_34 (EB), CanFranMach_38 (EB), Celaena_35 (EB), ChiliPepper_34 (EB), Clayda5_35 (EB), Coltrane_34 (EB), Dismas_35 (EB), Eden_35 (EB), FlameThrower_35 (EB), Franklin22_36 (EB), Gack_34 (EB), Kamdara_35 (EB), Katzastrophic_36 (EB), Kieran_35 (EB), Quenya_36 (EB), Rollins_34 (EB), Rona_35 (EB), Sharkboy_36 (EB), Skylord_34 (EB), Vitas_34 (EB),

Start 97:

- Found in 58 of 409 (14.2%) of genes in pham
- Manual Annotations of this start: 52 of 354
- Called 100.0% of time when present
- Phage (with cluster) where this start called: Abigail_36 (EB), Akino08_38 (EB), Albedo_37 (EB), Albright_35 (EB), AnnaLie_38 (EB), Arroyo_38 (EB), AvGuardian_39 (EB), Avocadoman_36 (EB), AylexOG_39 (EB), BabyDaisy_36 (EB), BabyYoda_38 (EB), BelmontSKP_38 (EB), Bengal_38 (EB), BubbaBear_36 (EB), Burritobowl_37 (EB), Cashington_35 (EB), CroZenni_37 (EB), CupcakePrincess_38 (EB), DickRichards_36 (EB), Didgeridoo_39 (EB), DirtyBubble_37 (EB), Doobus_36 (EB), Elva_39 (EB), Eula_38 (EB), Finalfrontier_37 (EB), Icarian_40 (EB), IndyLu_36 (EB), Jabb_38 (EB), Johnathan_36 (EB), Jovita_38 (EB), Kate33_37 (EB), Kenzers_37 (EB), Lahqtemish_36 (EB), Lilo27_38 (EB), LimaBean_36 (EB), Loviatar_38 (EB), Lynlen_37 (EB), Milomuff_37 (EB), MsUbiquitous_38 (EB), Nicky22_38 (EB), PastaFagioli_36 (EB), Pecas_37 (EB), PhigPhack_38 (EB), Phisb_38 (EB),

PondAmelia_48 (EB), QMacho_39 (EB), SanaSana_40 (EB), SansAfet_38 (EB), SarBear_37 (EB), SirBeanington_37 (EB), Slay_38 (EB), Softsoap_37 (EB), Solea_38 (EB), Stoor_38 (EB), Stromboli_38 (EB), Swervy_38 (EB), TukTuk_38 (EB), WalkingDead_39 (EB),

Start 104:

- Found in 45 of 409 (11.0%) of genes in pham
- Manual Annotations of this start: 1 of 354
- Called 2.2% of time when present
- Phage (with cluster) where this start called: P9.1_32 (BU),

Start 109:

- Found in 3 of 409 (0.7%) of genes in pham
- Manual Annotations of this start: 1 of 354
- Called 33.3% of time when present
- Phage (with cluster) where this start called: SunnyD_37 (EB),

Start 114:

- Found in 10 of 409 (2.4%) of genes in pham
- Manual Annotations of this start: 1 of 354
- Called 10.0% of time when present
- Phage (with cluster) where this start called: MaGuCo_35 (AZ2),

Summary by clusters:

There are 28 clusters represented in this pham: DN, FP, DL, BL, singleton, BJ, BU, CU4, CU3, CU2, CU1, BD4, BD6, BD1, BD3, BD2, DN1, EH, EB, CD, AZ, AZ1, AZ2, AZ3, AZ4, AZ5, AZ6, AZ7,

Info for manual annotations of cluster AZ1:

- Start number 90 was manually annotated 5 times for cluster AZ1.
- Start number 91 was manually annotated 41 times for cluster AZ1.

Info for manual annotations of cluster AZ2:

- Start number 91 was manually annotated 2 times for cluster AZ2.
- Start number 114 was manually annotated 1 time for cluster AZ2.

Info for manual annotations of cluster AZ3:

- Start number 91 was manually annotated 2 times for cluster AZ3.

Info for manual annotations of cluster AZ4:

- Start number 91 was manually annotated 5 times for cluster AZ4.

Info for manual annotations of cluster AZ5:

- Start number 91 was manually annotated 16 times for cluster AZ5.

Info for manual annotations of cluster AZ6:

- Start number 91 was manually annotated 1 time for cluster AZ6.

Info for manual annotations of cluster BD1:

- Start number 81 was manually annotated 55 times for cluster BD1.

Info for manual annotations of cluster BD2:

- Start number 59 was manually annotated 1 time for cluster BD2.
- Start number 77 was manually annotated 2 times for cluster BD2.
- Start number 78 was manually annotated 1 time for cluster BD2.
- Start number 80 was manually annotated 29 times for cluster BD2.

Info for manual annotations of cluster BD3:

- Start number 81 was manually annotated 15 times for cluster BD3.

Info for manual annotations of cluster BD4:

- Start number 82 was manually annotated 3 times for cluster BD4.

Info for manual annotations of cluster BD6:

- Start number 80 was manually annotated 4 times for cluster BD6.

Info for manual annotations of cluster BJ:

- Start number 70 was manually annotated 1 time for cluster BJ.

Info for manual annotations of cluster BL:

- Start number 70 was manually annotated 2 times for cluster BL.

Info for manual annotations of cluster BU:

- Start number 85 was manually annotated 7 times for cluster BU.
- Start number 87 was manually annotated 36 times for cluster BU.
- Start number 104 was manually annotated 1 time for cluster BU.

Info for manual annotations of cluster CD:

- Start number 91 was manually annotated 6 times for cluster CD.
- Start number 92 was manually annotated 1 time for cluster CD.

Info for manual annotations of cluster CU1:

- Start number 91 was manually annotated 1 time for cluster CU1.
- Start number 93 was manually annotated 1 time for cluster CU1.

Info for manual annotations of cluster CU3:

- Start number 91 was manually annotated 1 time for cluster CU3.

Info for manual annotations of cluster CU4:

- Start number 91 was manually annotated 1 time for cluster CU4.

Info for manual annotations of cluster DL:

- Start number 89 was manually annotated 4 times for cluster DL.
- Start number 91 was manually annotated 2 times for cluster DL.

Info for manual annotations of cluster DN:

- Start number 91 was manually annotated 2 times for cluster DN.

Info for manual annotations of cluster DN1:

- Start number 91 was manually annotated 3 times for cluster DN1.

Info for manual annotations of cluster EB:

- Start number 94 was manually annotated 3 times for cluster EB.
- Start number 96 was manually annotated 22 times for cluster EB.
- Start number 97 was manually annotated 52 times for cluster EB.
- Start number 109 was manually annotated 1 time for cluster EB.

Info for manual annotations of cluster EH:

- Start number 88 was manually annotated 1 time for cluster EH.
- Start number 89 was manually annotated 13 times for cluster EH.

Info for manual annotations of cluster FP:

- Start number 91 was manually annotated 6 times for cluster FP.

Gene Information:

Gene: AEgle_34 Start: 25272, Stop: 25622, Start Num: 91

Candidate Starts for AEgle_34:

(35, 25092), (42, 25146), (Start: 91 @25272 has 91 MA's), (Start: 104 @25317 has 1 MA's), (116, 25356), (157, 25518), (167, 25560),

Gene: AGrandiflora_36 Start: 25133, Stop: 25576, Start Num: 91

Candidate Starts for AGrandiflora_36:

(Start: 91 @25133 has 91 MA's), (154, 25385), (167, 25436),

Gene: ATCC29399BC_32 Start: 21881, Stop: 21522, Start Num: 85

Candidate Starts for ATCC29399BC_32:

(Start: 85 @21881 has 7 MA's), (Start: 87 @21878 has 36 MA's), (136, 21677), (156, 21599), (157, 21596), (165, 21560),

Gene: ATCC29399BT_32 Start: 21878, Stop: 21522, Start Num: 87

Candidate Starts for ATCC29399BT_32:

(Start: 85 @21881 has 7 MA's), (Start: 87 @21878 has 36 MA's), (136, 21677), (156, 21599), (157, 21596), (165, 21560),

Gene: Aaronocolus_36 Start: 27054, Stop: 27416, Start Num: 81

Candidate Starts for Aaronocolus_36:

(34, 26874), (Start: 59 @26991 has 1 MA's), (62, 27000), (Start: 81 @27054 has 70 MA's), (128, 27210), (139, 27261), (153, 27315), (154, 27324), (165, 27369),

Gene: AbbeyMikolon_40 Start: 26256, Stop: 26795, Start Num: 70

Candidate Starts for AbbeyMikolon_40:

(Start: 70 @26256 has 4 MA's), (113, 26391), (121, 26439), (135, 26499), (138, 26511), (154, 26559), (155, 26562), (160, 26589), (163, 26610), (169, 26634), (181, 26667), (183, 26676), (202, 26775),

Gene: Abigail_36 Start: 25222, Stop: 25548, Start Num: 97

Candidate Starts for Abigail_36:

(Start: 97 @25222 has 52 MA's), (157, 25453), (165, 25489), (167, 25495),

Gene: AceofSpades_41 Start: 27016, Stop: 27462, Start Num: 91

Candidate Starts for AceofSpades_41:

(86, 27004), (Start: 91 @27016 has 91 MA's), (116, 27115), (167, 27319), (197, 27412),

Gene: Adolin_35 Start: 24126, Stop: 24476, Start Num: 91
Candidate Starts for Adolin_35:
(37, 23973), (42, 24003), (54, 24045), (Start: 91 @24126 has 91 MA's), (116, 24210), (167, 24414),
(168, 24420),

Gene: Adumb2043_34 Start: 25291, Stop: 25641, Start Num: 91
Candidate Starts for Adumb2043_34:
(Start: 91 @25291 has 91 MA's), (Start: 104 @25336 has 1 MA's), (116, 25375), (157, 25537), (167,
25579),

Gene: AinMach_39 Start: 26488, Stop: 26916, Start Num: 89
Candidate Starts for AinMach_39:
(67, 26443), (76, 26470), (Start: 89 @26488 has 17 MA's), (107, 26545), (140, 26695), (154, 26743),
(157, 26752), (167, 26794), (174, 26818), (176, 26821),

Gene: Akino08_38 Start: 27649, Stop: 27975, Start Num: 97
Candidate Starts for Akino08_38:
(2, 27016), (6, 27136), (8, 27154), (13, 27190), (17, 27259), (Start: 97 @27649 has 52 MA's), (129,
27775), (138, 27817), (157, 27880), (161, 27901), (165, 27916), (167, 27922),

Gene: Albedo_37 Start: 25772, Stop: 26098, Start Num: 97
Candidate Starts for Albedo_37:
(Start: 97 @25772 has 52 MA's), (128, 25895), (161, 26024), (165, 26039),

Gene: Albright_35 Start: 24924, Stop: 25250, Start Num: 97
Candidate Starts for Albright_35:
(Start: 97 @24924 has 52 MA's), (157, 25155), (165, 25191), (167, 25197),

Gene: Alsaber_38 Start: 28924, Stop: 29289, Start Num: 81
Candidate Starts for Alsaber_38:
(Start: 81 @28924 has 70 MA's), (132, 29107), (139, 29134), (155, 29200),

Gene: Alvy_39 Start: 28390, Stop: 28767, Start Num: 80
Candidate Starts for Alvy_39:
(Start: 78 @28381 has 1 MA's), (Start: 80 @28390 has 33 MA's), (127, 28561), (128, 28564), (135,
28600), (165, 28723),

Gene: Amela_37 Start: 29758, Stop: 30123, Start Num: 81
Candidate Starts for Amela_37:
(Start: 81 @29758 has 70 MA's), (132, 29941), (139, 29968), (155, 30034), (165, 30076),

Gene: Amethyst_36 Start: 27761, Stop: 28138, Start Num: 80
Candidate Starts for Amethyst_36:
(73, 27743), (Start: 78 @27752 has 1 MA's), (Start: 80 @27761 has 33 MA's), (128, 27935), (156,
28055), (165, 28094),

Gene: Amploria_35 Start: 25474, Stop: 25824, Start Num: 91
Candidate Starts for Amploria_35:
(39, 25345), (40, 25348), (69, 25438), (Start: 91 @25474 has 91 MA's), (Start: 104 @25519 has 1
MA's), (116, 25558), (157, 25720), (167, 25762),

Gene: Amyev_35 Start: 26817, Stop: 27164, Start Num: 91
Candidate Starts for Amyev_35:

(Start: 91 @26817 has 91 MA's), (116, 26901), (157, 27063), (167, 27105),

Gene: Andris_36 Start: 27819, Stop: 28196, Start Num: 80

Candidate Starts for Andris_36:

(Start: 77 @27807 has 2 MA's), (Start: 78 @27810 has 1 MA's), (Start: 80 @27819 has 33 MA's), (128, 27993), (155, 28110), (165, 28152),

Gene: Animus_36 Start: 28249, Stop: 28626, Start Num: 80

Candidate Starts for Animus_36:

(Start: 77 @28237 has 2 MA's), (Start: 78 @28240 has 1 MA's), (Start: 80 @28249 has 33 MA's), (128, 28423), (135, 28459), (155, 28540), (165, 28582),

Gene: AnnaLie_38 Start: 26045, Stop: 26371, Start Num: 97

Candidate Starts for AnnaLie_38:

(Start: 97 @26045 has 52 MA's), (157, 26276), (165, 26312), (167, 26318),

Gene: Applejacks_61 Start: 41338, Stop: 41739, Start Num: 91

Candidate Starts for Applejacks_61:

(Start: 91 @41338 has 91 MA's), (102, 41383), (107, 41398), (119, 41458), (120, 41461), (125, 41485), (165, 41638), (166, 41641), (167, 41644), (176, 41671), (196, 41728),

Gene: Aquarius_32 Start: 21351, Stop: 20995, Start Num: 87

Candidate Starts for Aquarius_32:

(71, 21384), (Start: 87 @21351 has 36 MA's), (136, 21150), (157, 21069), (165, 21033),

Gene: Armstrong_34 Start: 23647, Stop: 23988, Start Num: 96

Candidate Starts for Armstrong_34:

(Start: 96 @23647 has 22 MA's), (121, 23740), (167, 23920),

Gene: Arroyo_38 Start: 26083, Stop: 26409, Start Num: 97

Candidate Starts for Arroyo_38:

(Start: 97 @26083 has 52 MA's), (157, 26314), (165, 26350), (167, 26356),

Gene: Asa16_35 Start: 26861, Stop: 27211, Start Num: 91

Candidate Starts for Asa16_35:

(Start: 91 @26861 has 91 MA's), (Start: 104 @26906 has 1 MA's), (116, 26945), (128, 26999), (154, 27098), (167, 27149),

Gene: Asapag_85 Start: 49353, Stop: 49730, Start Num: 91

Candidate Starts for Asapag_85:

(28, 49113), (Start: 91 @49353 has 91 MA's), (95, 49365), (121, 49482), (127, 49494), (131, 49515), (145, 49566), (154, 49590), (157, 49599), (166, 49644), (167, 49647), (171, 49662), (177, 49674), (191, 49707),

Gene: Ascela_37 Start: 25854, Stop: 26297, Start Num: 91

Candidate Starts for Ascela_37:

(39, 25725), (Start: 91 @25854 has 91 MA's), (Start: 104 @25899 has 1 MA's), (154, 26106), (157, 26115), (167, 26157), (168, 26163),

Gene: Ashes_35 Start: 24212, Stop: 24646, Start Num: 91

Candidate Starts for Ashes_35:

(54, 24116), (64, 24140), (Start: 91 @24212 has 91 MA's), (166, 24512),

Gene: Asten_36 Start: 27412, Stop: 27774, Start Num: 81
Candidate Starts for Asten_36:
(34, 27235), (Start: 59 @27349 has 1 MA's), (62, 27358), (75, 27397), (Start: 81 @27412 has 70 MA's),
(139, 27619), (153, 27673), (154, 27682), (157, 27691), (165, 27727),

Gene: Attacne_32 Start: 21366, Stop: 21010, Start Num: 87
Candidate Starts for Attacne_32:
(71, 21399), (Start: 87 @21366 has 36 MA's), (128, 21207), (136, 21165), (157, 21084), (165, 21048),

Gene: Attoomi_32 Start: 23857, Stop: 24264, Start Num: 70
Candidate Starts for Attoomi_32:
(Start: 70 @23857 has 4 MA's), (100, 23938), (112, 23971), (115, 23995), (121, 24028), (154, 24148),
(156, 24154), (157, 24157), (165, 24193), (166, 24196), (167, 24199),

Gene: AvGardian_39 Start: 26215, Stop: 26541, Start Num: 97
Candidate Starts for AvGardian_39:
(5, 25681), (Start: 97 @26215 has 52 MA's), (128, 26338), (165, 26482), (167, 26488),

Gene: Avocadoman_36 Start: 25161, Stop: 25487, Start Num: 97
Candidate Starts for Avocadoman_36:
(Start: 97 @25161 has 52 MA's), (157, 25392), (165, 25428), (167, 25434),

Gene: Axiom_37 Start: 27982, Stop: 28359, Start Num: 80
Candidate Starts for Axiom_37:
(4, 27451), (16, 27613), (29, 27763), (45, 27877), (Start: 59 @27919 has 1 MA's), (Start: 77 @27970
has 2 MA's), (Start: 78 @27973 has 1 MA's), (Start: 80 @27982 has 33 MA's), (128, 28156), (155,
28273), (165, 28315),

Gene: AylexOG_39 Start: 26118, Stop: 26444, Start Num: 97
Candidate Starts for AylexOG_39:
(Start: 97 @26118 has 52 MA's), (128, 26241), (161, 26370), (165, 26385),

Gene: BAjuniper_36 Start: 26884, Stop: 27216, Start Num: 96
Candidate Starts for BAjuniper_36:
(30, 26641), (Start: 96 @26884 has 22 MA's), (119, 26974), (128, 27010), (129, 27013), (152, 27103),
(165, 27154), (167, 27160), (182, 27211),

Gene: BFK20_ORF52 Start: 41172, Stop: 41558, Start Num: 91
Candidate Starts for BFK20_ORF52:
(Start: 91 @41172 has 91 MA's), (111, 41238), (141, 41385), (142, 41391), (147, 41415), (150, 41421),
(172, 41505),

Gene: BabyDaisy_36 Start: 25684, Stop: 26010, Start Num: 97
Candidate Starts for BabyDaisy_36:
(Start: 97 @25684 has 52 MA's), (123, 25792), (157, 25915), (165, 25951), (167, 25957),

Gene: BabyYoda_38 Start: 26829, Stop: 27155, Start Num: 97
Candidate Starts for BabyYoda_38:
(Start: 97 @26829 has 52 MA's), (127, 26949), (129, 26955), (138, 26997), (157, 27060), (161, 27081),
(165, 27096), (167, 27102),

Gene: Bachaco_35 Start: 26844, Stop: 27173, Start Num: 96
Candidate Starts for Bachaco_35:

(Start: 96 @26844 has 22 MA's), (127, 26964), (128, 26967), (129, 26970), (165, 27111), (167, 27117),

Gene: BaileyBlu_37 Start: 25414, Stop: 25836, Start Num: 91

Candidate Starts for BaileyBlu_37:

(35, 25246), (42, 25300), (Start: 91 @25414 has 91 MA's), (Start: 104 @25459 has 1 MA's), (116, 25513), (154, 25666), (156, 25672),

Gene: Banquo_56 Start: 37048, Stop: 37422, Start Num: 91

Candidate Starts for Banquo_56:

(Start: 91 @37048 has 91 MA's), (Start: 93 @37051 has 1 MA's), (95, 37060), (103, 37096), (121, 37177), (127, 37204), (156, 37306), (170, 37372),

Gene: Bantam_72 Start: 52490, Stop: 52125, Start Num: 89

Candidate Starts for Bantam_72:

(72, 52520), (Start: 89 @52490 has 17 MA's), (166, 52193), (186, 52145),

Gene: Barnstormer_43 Start: 27456, Stop: 27818, Start Num: 89

Candidate Starts for Barnstormer_43:

(38, 27303), (58, 27375), (Start: 89 @27456 has 17 MA's), (144, 27672), (167, 27747),

Gene: BarryBee_39 Start: 27422, Stop: 27784, Start Num: 81

Candidate Starts for BarryBee_39:

(34, 27245), (Start: 59 @27359 has 1 MA's), (62, 27368), (75, 27407), (Start: 81 @27422 has 70 MA's), (139, 27629), (153, 27683), (154, 27692), (157, 27701), (165, 27737),

Gene: BartholomewSD_39 Start: 28389, Stop: 28766, Start Num: 80

Candidate Starts for BartholomewSD_39:

(Start: 78 @28380 has 1 MA's), (Start: 80 @28389 has 33 MA's), (128, 28563), (135, 28599), (165, 28722),

Gene: BearBQ_90 Start: 50811, Stop: 51185, Start Num: 91

Candidate Starts for BearBQ_90:

(Start: 91 @50811 has 91 MA's), (95, 50823), (127, 50952), (140, 51009), (146, 51027), (154, 51048), (155, 51051), (156, 51054), (157, 51057), (166, 51102), (167, 51105), (168, 51111), (171, 51120), (177, 51132),

Gene: BeardedLady_37 Start: 27307, Stop: 27669, Start Num: 81

Candidate Starts for BeardedLady_37:

(34, 27127), (Start: 59 @27244 has 1 MA's), (62, 27253), (Start: 81 @27307 has 70 MA's), (128, 27463), (139, 27514), (153, 27568), (154, 27577), (165, 27622),

Gene: Beaupre_35 Start: 24213, Stop: 24647, Start Num: 91

Candidate Starts for Beaupre_35:

(54, 24117), (64, 24141), (Start: 91 @24213 has 91 MA's), (166, 24513),

Gene: BelmontSKP_38 Start: 26045, Stop: 26371, Start Num: 97

Candidate Starts for BelmontSKP_38:

(Start: 97 @26045 has 52 MA's), (157, 26276), (165, 26312), (167, 26318),

Gene: Bengal_38 Start: 25673, Stop: 25999, Start Num: 97

Candidate Starts for Bengal_38:

(Start: 97 @25673 has 52 MA's), (157, 25904), (165, 25940), (167, 25946),

Gene: Bernstein_34 Start: 23702, Stop: 24043, Start Num: 96
Candidate Starts for Bernstein_34:
(Start: 96 @23702 has 22 MA's), (121, 23795), (167, 23975),

Gene: Berrie_37 Start: 26747, Stop: 27190, Start Num: 91
Candidate Starts for Berrie_37:
(35, 26564), (43, 26618), (Start: 91 @26747 has 91 MA's), (154, 26999), (157, 27008), (166, 27047),
(167, 27050),

Gene: Birdsong_84 Start: 49089, Stop: 49466, Start Num: 91
Candidate Starts for Birdsong_84:
(28, 48849), (Start: 91 @49089 has 91 MA's), (95, 49101), (127, 49230), (131, 49251), (145, 49302),
(154, 49326), (157, 49335), (166, 49380), (167, 49383), (171, 49398), (177, 49410), (191, 49443),

Gene: Bovely_36 Start: 27060, Stop: 27422, Start Num: 81
Candidate Starts for Bovely_36:
(34, 26880), (Start: 59 @26997 has 1 MA's), (62, 27006), (Start: 81 @27060 has 70 MA's), (128,
27216), (139, 27267), (153, 27321), (154, 27330), (165, 27375),

Gene: Bowden_37 Start: 28305, Stop: 28682, Start Num: 80
Candidate Starts for Bowden_37:
(Start: 78 @28296 has 1 MA's), (Start: 80 @28305 has 33 MA's), (128, 28479), (135, 28515), (165,
28638),

Gene: Brahms_34 Start: 23649, Stop: 23990, Start Num: 96
Candidate Starts for Brahms_34:
(Start: 96 @23649 has 22 MA's), (121, 23742), (167, 23922),

Gene: Brataylor_39 Start: 28396, Stop: 28758, Start Num: 81
Candidate Starts for Brataylor_39:
(34, 28216), (Start: 59 @28333 has 1 MA's), (62, 28342), (Start: 81 @28396 has 70 MA's), (139,
28603), (153, 28657), (154, 28666), (155, 28669), (157, 28675), (165, 28711),

Gene: BroPlease_37 Start: 27534, Stop: 27908, Start Num: 82
Candidate Starts for BroPlease_37:
(21, 27219), (25, 27240), (36, 27369), (65, 27486), (Start: 82 @27534 has 3 MA's), (103, 27597), (116,
27654), (128, 27705), (139, 27756), (153, 27810), (165, 27864), (168, 27876),

Gene: BruceLethal_32 Start: 21887, Stop: 21531, Start Num: 87
Candidate Starts for BruceLethal_32:
(7, 22376), (12, 22334), (19, 22241), (71, 21920), (Start: 85 @21890 has 7 MA's), (Start: 87 @21887
has 36 MA's), (136, 21686), (155, 21611), (157, 21605), (165, 21569),

Gene: BryanRecycles_37 Start: 27411, Stop: 27773, Start Num: 81
Candidate Starts for BryanRecycles_37:
(34, 27231), (Start: 59 @27348 has 1 MA's), (62, 27357), (Start: 81 @27411 has 70 MA's), (128,
27567), (139, 27618), (153, 27672), (154, 27681), (165, 27726),

Gene: BubbaBear_36 Start: 25617, Stop: 25943, Start Num: 97
Candidate Starts for BubbaBear_36:
(Start: 97 @25617 has 52 MA's), (157, 25848), (165, 25884), (167, 25890),

Gene: Burritobowl_37 Start: 25618, Stop: 25944, Start Num: 97

Candidate Starts for Burritobowl_37:

(Start: 97 @25618 has 52 MA's), (157, 25849), (165, 25885), (167, 25891),

Gene: Caelum_38 Start: 28011, Stop: 28388, Start Num: 80

Candidate Starts for Caelum_38:

(Start: 77 @27999 has 2 MA's), (Start: 78 @28002 has 1 MA's), (Start: 80 @28011 has 33 MA's), (119, 28152), (128, 28185), (155, 28302), (165, 28344),

Gene: Caliburn_36 Start: 27037, Stop: 27399, Start Num: 81

Candidate Starts for Caliburn_36:

(34, 26857), (Start: 59 @26974 has 1 MA's), (62, 26983), (Start: 81 @27037 has 70 MA's), (128, 27193), (139, 27244), (153, 27298), (154, 27307), (165, 27352),

Gene: CallinAllBarbz_37 Start: 25811, Stop: 26263, Start Num: 91

Candidate Starts for CallinAllBarbz_37:

(35, 25643), (42, 25697), (Start: 91 @25811 has 91 MA's), (Start: 104 @25856 has 1 MA's), (110, 25874), (116, 25910), (157, 26072), (167, 26114), (201, 26249),

Gene: CanFranMach_38 Start: 25703, Stop: 26032, Start Num: 96

Candidate Starts for CanFranMach_38:

(Start: 96 @25703 has 22 MA's), (108, 25745), (167, 25976),

Gene: Cappuccino_35 Start: 24079, Stop: 24513, Start Num: 91

Candidate Starts for Cappuccino_35:

(54, 23983), (64, 24007), (Start: 91 @24079 has 91 MA's), (Start: 114 @24166 has 1 MA's), (166, 24379),

Gene: Caron_47 Start: 28859, Stop: 29239, Start Num: 89

Candidate Starts for Caron_47:

(Start: 89 @28859 has 17 MA's), (167, 29150),

Gene: Cashington_35 Start: 24964, Stop: 25290, Start Num: 97

Candidate Starts for Cashington_35:

(Start: 97 @24964 has 52 MA's), (123, 25072), (157, 25195), (165, 25231), (167, 25237),

Gene: Cassia_36 Start: 25737, Stop: 26096, Start Num: 91

Candidate Starts for Cassia_36:

(32, 25515), (Start: 91 @25737 has 91 MA's), (167, 26025),

Gene: Celaena_35 Start: 26594, Stop: 26923, Start Num: 96

Candidate Starts for Celaena_35:

(Start: 96 @26594 has 22 MA's), (127, 26714), (128, 26717), (129, 26720), (165, 26861), (167, 26867),

Gene: Celery_40 Start: 28854, Stop: 29222, Start Num: 81

Candidate Starts for Celery_40:

(Start: 81 @28854 has 70 MA's), (103, 28908), (128, 29016), (132, 29040), (139, 29067), (148, 29106), (155, 29133), (157, 29139),

Gene: Celeste_37 Start: 27865, Stop: 28227, Start Num: 81

Candidate Starts for Celeste_37:

(34, 27685), (Start: 59 @27802 has 1 MA's), (62, 27811), (Start: 81 @27865 has 70 MA's), (139, 28072), (153, 28126), (154, 28135), (155, 28138), (157, 28144), (165, 28180),

Gene: Celia_38 Start: 27923, Stop: 28297, Start Num: 80

Candidate Starts for Celia_38:

(Start: 78 @27914 has 1 MA's), (Start: 80 @27923 has 33 MA's), (Start: 104 @27977 has 1 MA's),
(128, 28091), (139, 28142), (155, 28208), (157, 28214), (165, 28250), (174, 28280),

Gene: Cen1621_40 Start: 25799, Stop: 26167, Start Num: 89

Candidate Starts for Cen1621_40:

(Start: 89 @25799 has 17 MA's), (116, 25886), (131, 25958), (143, 26006), (157, 26051), (166, 26090),

Gene: CheeseTouch_97 Start: 48676, Stop: 49053, Start Num: 91

Candidate Starts for CheeseTouch_97:

(28, 48436), (Start: 91 @48676 has 91 MA's), (95, 48688), (127, 48817), (131, 48838), (154, 48913),
(166, 48967), (167, 48970), (171, 48985), (177, 48997), (191, 49030),

Gene: ChiliPepper_34 Start: 26048, Stop: 26380, Start Num: 96

Candidate Starts for ChiliPepper_34:

(Start: 96 @26048 has 22 MA's), (123, 26159), (127, 26171), (129, 26177), (140, 26225), (157, 26282),
(165, 26318), (167, 26324),

Gene: Chucky_36 Start: 27426, Stop: 27788, Start Num: 81

Candidate Starts for Chucky_36:

(34, 27249), (Start: 59 @27363 has 1 MA's), (62, 27372), (75, 27411), (Start: 81 @27426 has 70 MA's),
(139, 27633), (153, 27687), (154, 27696), (157, 27705), (165, 27741),

Gene: Clayda5_35 Start: 23636, Stop: 23977, Start Num: 96

Candidate Starts for Clayda5_35:

(Start: 96 @23636 has 22 MA's), (121, 23729), (167, 23909),

Gene: CliffHanger_38 Start: 24541, Stop: 24900, Start Num: 94

Candidate Starts for CliffHanger_38:

(Start: 94 @24541 has 3 MA's), (127, 24670), (161, 24802), (165, 24817), (167, 24823),

Gene: Coltrane_34 Start: 23649, Stop: 23990, Start Num: 96

Candidate Starts for Coltrane_34:

(Start: 96 @23649 has 22 MA's), (121, 23742), (167, 23922),

Gene: Community_38 Start: 27474, Stop: 27917, Start Num: 91

Candidate Starts for Community_38:

(Start: 91 @27474 has 91 MA's), (154, 27726), (157, 27735), (167, 27777), (176, 27804), (188, 27840),

Gene: Conan_38 Start: 28818, Stop: 29183, Start Num: 81

Candidate Starts for Conan_38:

(Start: 81 @28818 has 70 MA's), (132, 29001), (139, 29028), (155, 29094),

Gene: Cota_32 Start: 21927, Stop: 21571, Start Num: 87

Candidate Starts for Cota_32:

(Start: 85 @21930 has 7 MA's), (Start: 87 @21927 has 36 MA's), (136, 21726), (156, 21648), (157,
21645), (165, 21609),

Gene: Crewmate_41 Start: 26389, Stop: 26751, Start Num: 91

Candidate Starts for Crewmate_41:

(Start: 91 @26389 has 91 MA's), (128, 26527), (157, 26635), (167, 26677),

Gene: CroZenni_37 Start: 25508, Stop: 25834, Start Num: 97
Candidate Starts for CroZenni_37:
(Start: 97 @25508 has 52 MA's), (157, 25739), (165, 25775), (167, 25781),

Gene: CupcakePrincess_38 Start: 25806, Stop: 26132, Start Num: 97
Candidate Starts for CupcakePrincess_38:
(Start: 97 @25806 has 52 MA's), (157, 26037), (161, 26058), (165, 26073),

Gene: Cyan_35 Start: 25187, Stop: 25630, Start Num: 91
Candidate Starts for Cyan_35:
(Start: 91 @25187 has 91 MA's), (116, 25286), (154, 25439), (167, 25490),

Gene: Danzina_38 Start: 28166, Stop: 28528, Start Num: 81
Candidate Starts for Danzina_38:
(34, 27986), (Start: 59 @28103 has 1 MA's), (62, 28112), (Start: 81 @28166 has 70 MA's), (139, 28373), (153, 28427), (154, 28436), (155, 28439), (157, 28445), (165, 28481),

Gene: Dardanus_52 Start: 35477, Stop: 35866, Start Num: 91
Candidate Starts for Dardanus_52:
(Start: 91 @35477 has 91 MA's), (95, 35489), (101, 35519), (102, 35522), (156, 35735), (167, 35783),

Gene: Daredevil_63 Start: 48481, Stop: 48092, Start Num: 91
Candidate Starts for Daredevil_63:
(Start: 91 @48481 has 91 MA's), (116, 48376), (156, 48208), (162, 48172), (167, 48157), (176, 48133),

Gene: DatBoi_70 Start: 52480, Stop: 52115, Start Num: 89
Candidate Starts for DatBoi_70:
(Start: 89 @52480 has 17 MA's), (105, 52426), (124, 52336), (159, 52213), (166, 52183), (186, 52135),

Gene: Dattran_38 Start: 27972, Stop: 28334, Start Num: 81
Candidate Starts for Dattran_38:
(34, 27792), (Start: 59 @27909 has 1 MA's), (62, 27918), (Start: 81 @27972 has 70 MA's), (139, 28179), (153, 28233), (154, 28242), (155, 28245), (157, 28251), (165, 28287),

Gene: Daudau_37 Start: 28123, Stop: 28500, Start Num: 80
Candidate Starts for Daudau_37:
(Start: 78 @28114 has 1 MA's), (Start: 80 @28123 has 33 MA's), (128, 28297), (155, 28414),

Gene: Dexers_36 Start: 28846, Stop: 29208, Start Num: 81
Candidate Starts for Dexers_36:
(Start: 81 @28846 has 70 MA's), (128, 29005), (132, 29029), (139, 29056), (155, 29122), (157, 29128), (165, 29164),

Gene: Diane_36 Start: 27972, Stop: 28412, Start Num: 59
Candidate Starts for Diane_36:
(45, 27930), (Start: 59 @27972 has 1 MA's), (66, 27990), (74, 28017), (Start: 78 @28026 has 1 MA's), (Start: 80 @28035 has 33 MA's), (Start: 87 @28047 has 36 MA's), (128, 28209), (156, 28329), (165, 28368),

Gene: DickRichards_36 Start: 25947, Stop: 26273, Start Num: 97
Candidate Starts for DickRichards_36:
(Start: 97 @25947 has 52 MA's), (157, 26178), (165, 26214), (167, 26220),

Gene: Didgeridoo_39 Start: 26093, Stop: 26419, Start Num: 97
Candidate Starts for Didgeridoo_39:
(Start: 97 @26093 has 52 MA's), (157, 26324), (165, 26360), (167, 26366),

Gene: DirtyBubble_37 Start: 26477, Stop: 26803, Start Num: 97
Candidate Starts for DirtyBubble_37:
(1, 25724), (6, 25964), (8, 25982), (13, 26018), (17, 26087), (Start: 97 @26477 has 52 MA's), (127, 26597), (129, 26603), (157, 26708), (161, 26729), (165, 26744), (167, 26750),

Gene: Dismas_35 Start: 26219, Stop: 26551, Start Num: 96
Candidate Starts for Dismas_35:
(Start: 96 @26219 has 22 MA's), (123, 26330), (127, 26342), (129, 26348), (140, 26396), (157, 26453), (165, 26489), (167, 26495),

Gene: Donkey_35 Start: 24069, Stop: 24503, Start Num: 91
Candidate Starts for Donkey_35:
(54, 23973), (64, 23997), (Start: 91 @24069 has 91 MA's), (Start: 114 @24156 has 1 MA's), (144, 24297), (166, 24369),

Gene: Doobus_36 Start: 25328, Stop: 25654, Start Num: 97
Candidate Starts for Doobus_36:
(Start: 97 @25328 has 52 MA's), (157, 25559), (165, 25595), (167, 25601),

Gene: DrManhattan_35 Start: 24117, Stop: 24467, Start Num: 91
Candidate Starts for DrManhattan_35:
(35, 23940), (37, 23964), (42, 23994), (54, 24036), (Start: 91 @24117 has 91 MA's), (116, 24201), (167, 24405), (168, 24411),

Gene: DrParker_32 Start: 21981, Stop: 21625, Start Num: 87
Candidate Starts for DrParker_32:
(71, 22014), (Start: 87 @21981 has 36 MA's), (128, 21822), (136, 21780), (157, 21699), (165, 21663),

Gene: DrSierra_34 Start: 24046, Stop: 24489, Start Num: 91
Candidate Starts for DrSierra_34:
(26, 23824), (Start: 91 @24046 has 91 MA's), (154, 24298), (157, 24307), (167, 24349), (184, 24406), (200, 24469),

Gene: Dubu_33 Start: 24220, Stop: 24681, Start Num: 70
Candidate Starts for Dubu_33:
(Start: 70 @24220 has 4 MA's), (131, 24400), (144, 24451), (154, 24475), (155, 24478), (189, 24589),

Gene: Dwayne_36 Start: 27413, Stop: 27775, Start Num: 81
Candidate Starts for Dwayne_36:
(34, 27236), (Start: 59 @27350 has 1 MA's), (62, 27359), (75, 27398), (Start: 81 @27413 has 70 MA's), (139, 27620), (153, 27674), (154, 27683), (157, 27692), (165, 27728),

Gene: ELB20_35 Start: 28408, Stop: 28785, Start Num: 80
Candidate Starts for ELB20_35:
(Start: 78 @28399 has 1 MA's), (Start: 80 @28408 has 33 MA's), (119, 28549), (128, 28582), (165, 28741),

Gene: Eddasa_37 Start: 27411, Stop: 27773, Start Num: 81
Candidate Starts for Eddasa_37:

(34, 27231), (Start: 59 @27348 has 1 MA's), (62, 27357), (Start: 81 @27411 has 70 MA's), (128, 27567), (139, 27618), (153, 27672), (154, 27681), (165, 27726),

Gene: Eden_35 Start: 24432, Stop: 24761, Start Num: 96

Candidate Starts for Eden_35:

(Start: 96 @24432 has 22 MA's), (121, 24525), (127, 24552), (128, 24555), (165, 24699), (167, 24705),

Gene: Ejemplo_35 Start: 27357, Stop: 27719, Start Num: 81

Candidate Starts for Ejemplo_35:

(34, 27177), (Start: 59 @27294 has 1 MA's), (Start: 81 @27357 has 70 MA's), (139, 27564), (153, 27618), (154, 27627), (157, 27636), (165, 27672),

Gene: ElGato_38 Start: 28482, Stop: 28847, Start Num: 81

Candidate Starts for ElGato_38:

(Start: 81 @28482 has 70 MA's), (132, 28665), (139, 28692), (155, 28758),

Gene: Elezi_35 Start: 26877, Stop: 27227, Start Num: 91

Candidate Starts for Elezi_35:

(60, 26808), (Start: 91 @26877 has 91 MA's), (Start: 104 @26922 has 1 MA's), (116, 26961), (128, 27015), (154, 27114), (157, 27123), (167, 27165),

Gene: Elfy_37 Start: 25169, Stop: 25540, Start Num: 91

Candidate Starts for Elfy_37:

(Start: 91 @25169 has 91 MA's), (167, 25457), (168, 25463), (174, 25481), (177, 25487),

Gene: Elva_39 Start: 26539, Stop: 26865, Start Num: 97

Candidate Starts for Elva_39:

(Start: 97 @26539 has 52 MA's), (121, 26632), (128, 26662), (161, 26791), (165, 26806), (167, 26812),

Gene: Emaanora_39 Start: 27371, Stop: 27733, Start Num: 81

Candidate Starts for Emaanora_39:

(34, 27194), (Start: 59 @27308 has 1 MA's), (62, 27317), (75, 27356), (Start: 81 @27371 has 70 MA's), (139, 27578), (153, 27632), (154, 27641), (157, 27650), (165, 27686),

Gene: EmiRose_43 Start: 35914, Stop: 36360, Start Num: 91

Candidate Starts for EmiRose_43:

(Start: 91 @35914 has 91 MA's), (102, 35959), (130, 36082), (150, 36166), (166, 36229), (174, 36256), (195, 36313),

Gene: Emotion_40 Start: 26793, Stop: 27239, Start Num: 91

Candidate Starts for Emotion_40:

(Start: 91 @26793 has 91 MA's), (167, 27096),

Gene: EnochSoames_39 Start: 27406, Stop: 27768, Start Num: 81

Candidate Starts for EnochSoames_39:

(34, 27226), (Start: 59 @27343 has 1 MA's), (62, 27352), (Start: 81 @27406 has 70 MA's), (128, 27562), (139, 27613), (153, 27667), (154, 27676), (165, 27721),

Gene: Enochoraptor_31 Start: 21900, Stop: 21544, Start Num: 87

Candidate Starts for Enochoraptor_31:

(Start: 85 @21903 has 7 MA's), (Start: 87 @21900 has 36 MA's), (Start: 104 @21843 has 1 MA's), (136, 21699), (156, 21621), (157, 21618), (165, 21582),

Gene: Enoki_32 Start: 21911, Stop: 21555, Start Num: 87
Candidate Starts for Enoki_32:
(71, 21944), (Start: 87 @21911 has 36 MA's), (136, 21710), (157, 21629), (165, 21593),

Gene: Eraser_35 Start: 26868, Stop: 27218, Start Num: 91
Candidate Starts for Eraser_35:
(Start: 91 @26868 has 91 MA's), (Start: 104 @26913 has 1 MA's), (116, 26952), (128, 27006), (154, 27105), (167, 27156),

Gene: Esperer_36 Start: 26873, Stop: 27235, Start Num: 81
Candidate Starts for Esperer_36:
(34, 26693), (Start: 59 @26810 has 1 MA's), (62, 26819), (Start: 81 @26873 has 70 MA's), (128, 27029), (139, 27080), (153, 27134), (154, 27143), (165, 27188),

Gene: Eula_38 Start: 25719, Stop: 26045, Start Num: 97
Candidate Starts for Eula_38:
(Start: 97 @25719 has 52 MA's), (157, 25950), (161, 25971), (165, 25986),

Gene: Exile_33 Start: 27350, Stop: 27793, Start Num: 91
Candidate Starts for Exile_33:
(Start: 91 @27350 has 91 MA's), (157, 27611), (167, 27653), (168, 27659), (174, 27677), (178, 27689),

Gene: Finalfrontier_37 Start: 26331, Stop: 26657, Start Num: 97
Candidate Starts for Finalfrontier_37:
(Start: 97 @26331 has 52 MA's), (157, 26562), (164, 26595), (167, 26604),

Gene: FiveHead_44 Start: 26853, Stop: 27311, Start Num: 79
Candidate Starts for FiveHead_44:
(79, 26853), (86, 26868), (Start: 91 @26880 has 91 MA's), (140, 27084), (154, 27132),

Gene: FlameThrower_35 Start: 26044, Stop: 26373, Start Num: 96
Candidate Starts for FlameThrower_35:
(Start: 96 @26044 has 22 MA's), (127, 26164), (128, 26167), (129, 26170), (165, 26311), (167, 26317),

Gene: Floof_46 Start: 28537, Stop: 28899, Start Num: 88
Candidate Starts for Floof_46:
(Start: 88 @28537 has 1 MA's), (103, 28582), (134, 28705), (167, 28828),

Gene: Flutur_35 Start: 25445, Stop: 25888, Start Num: 91
Candidate Starts for Flutur_35:
(Start: 91 @25445 has 91 MA's), (116, 25544), (154, 25697), (167, 25748),

Gene: Forester_44 Start: 29475, Stop: 29837, Start Num: 89
Candidate Starts for Forester_44:
(Start: 89 @29475 has 17 MA's), (103, 29520), (118, 29577), (167, 29766),

Gene: Franklin22_36 Start: 24418, Stop: 24747, Start Num: 96
Candidate Starts for Franklin22_36:
(Start: 96 @24418 has 22 MA's), (119, 24505), (128, 24541), (129, 24544), (164, 24682), (165, 24685), (167, 24691),

Gene: GMA4_60 Start: 40216, Stop: 40572, Start Num: 91
Candidate Starts for GMA4_60:

(49, 40105), (Start: 91 @40216 has 91 MA's), (167, 40510),

Gene: Gack_34 Start: 24169, Stop: 24498, Start Num: 96

Candidate Starts for Gack_34:

(Start: 96 @24169 has 22 MA's), (128, 24292), (164, 24433), (167, 24442),

Gene: Gambol_36 Start: 24088, Stop: 24522, Start Num: 91

Candidate Starts for Gambol_36:

(54, 23992), (64, 24016), (Start: 91 @24088 has 91 MA's), (Start: 114 @24175 has 1 MA's), (166, 24388),

Gene: GardenState_44 Start: 27681, Stop: 28043, Start Num: 89

Candidate Starts for GardenState_44:

(Start: 89 @27681 has 17 MA's), (134, 27849), (144, 27897), (167, 27972),

Gene: Giorgio_35 Start: 24196, Stop: 24630, Start Num: 91

Candidate Starts for Giorgio_35:

(52, 24088), (54, 24100), (64, 24124), (Start: 91 @24196 has 91 MA's), (166, 24496),

Gene: GirlDinner_36 Start: 27750, Stop: 28127, Start Num: 80

Candidate Starts for GirlDinner_36:

(Start: 77 @27738 has 2 MA's), (Start: 78 @27741 has 1 MA's), (Start: 80 @27750 has 33 MA's), (128, 27924), (135, 27960), (155, 28041), (165, 28083),

Gene: Goby_36 Start: 27871, Stop: 28233, Start Num: 81

Candidate Starts for Goby_36:

(34, 27691), (Start: 59 @27808 has 1 MA's), (62, 27817), (Start: 81 @27871 has 70 MA's), (139, 28078), (153, 28132), (154, 28141), (155, 28144), (157, 28150), (165, 28186),

Gene: Godpower_37 Start: 27866, Stop: 28228, Start Num: 81

Candidate Starts for Godpower_37:

(34, 27686), (Start: 59 @27803 has 1 MA's), (Start: 81 @27866 has 70 MA's), (139, 28073), (153, 28127), (154, 28136), (155, 28139), (157, 28145), (165, 28181),

Gene: GreenWeasel_38 Start: 27541, Stop: 27915, Start Num: 82

Candidate Starts for GreenWeasel_38:

(21, 27226), (25, 27247), (36, 27376), (65, 27493), (Start: 82 @27541 has 3 MA's), (103, 27604), (116, 27661), (128, 27712), (139, 27763), (153, 27817), (165, 27871), (168, 27883),

Gene: Gretchen_45 Start: 29159, Stop: 29515, Start Num: 89

Candidate Starts for Gretchen_45:

(Start: 89 @29159 has 17 MA's), (103, 29204), (118, 29261), (167, 29450), (179, 29492),

Gene: GrimEater_33 Start: 24325, Stop: 24750, Start Num: 91

Candidate Starts for GrimEater_33:

(Start: 91 @24325 has 91 MA's), (Start: 104 @24370 has 1 MA's), (116, 24424), (166, 24625), (168, 24634),

Gene: Gspu1_48 Start: 35124, Stop: 35474, Start Num: 95

Candidate Starts for Gspu1_48:

(68, 35067), (Start: 90 @35112 has 5 MA's), (95, 35124), (121, 35241), (162, 35403), (166, 35415), (167, 35418),

Gene: Gumpizza_35 Start: 24152, Stop: 24586, Start Num: 91
Candidate Starts for Gumpizza_35:
(52, 24044), (54, 24056), (64, 24080), (Start: 91 @24152 has 91 MA's), (166, 24452),

Gene: Gustav_66 Start: 43170, Stop: 43571, Start Num: 91
Candidate Starts for Gustav_66:
(Start: 91 @43170 has 91 MA's), (140, 43383), (167, 43476), (176, 43503), (178, 43512), (190, 43542),
(194, 43557), (196, 43560),

Gene: Haizum_38 Start: 28102, Stop: 28479, Start Num: 80
Candidate Starts for Haizum_38:
(Start: 78 @28093 has 1 MA's), (Start: 80 @28102 has 33 MA's), (128, 28276), (135, 28312), (156,
28396), (165, 28435),

Gene: Halsey_35 Start: 24217, Stop: 24651, Start Num: 91
Candidate Starts for Halsey_35:
(54, 24121), (64, 24145), (Start: 91 @24217 has 91 MA's), (166, 24517),

Gene: Hank144_38 Start: 28134, Stop: 28523, Start Num: 77
Candidate Starts for Hank144_38:
(Start: 77 @28134 has 2 MA's), (Start: 78 @28137 has 1 MA's), (Start: 80 @28146 has 33 MA's), (119,
28287), (128, 28320), (155, 28437), (165, 28479),

Gene: Hippo_36 Start: 27422, Stop: 27784, Start Num: 81
Candidate Starts for Hippo_36:
(34, 27245), (Start: 59 @27359 has 1 MA's), (62, 27368), (75, 27407), (Start: 81 @27422 has 70 MA's),
(139, 27629), (153, 27683), (154, 27692), (157, 27701), (165, 27737),

Gene: Honk_41 Start: 24866, Stop: 25207, Start Num: 89
Candidate Starts for Honk_41:
(84, 24857), (Start: 89 @24866 has 17 MA's), (166, 25157),

Gene: Hydra_38 Start: 27585, Stop: 27947, Start Num: 81
Candidate Starts for Hydra_38:
(34, 27405), (Start: 59 @27522 has 1 MA's), (62, 27531), (Start: 81 @27585 has 70 MA's), (128,
27741), (139, 27792), (153, 27846), (154, 27855), (165, 27900),

Gene: IAmGroot_44 Start: 28148, Stop: 28510, Start Num: 89
Candidate Starts for IAmGroot_44:
(Start: 89 @28148 has 17 MA's), (134, 28316), (144, 28364), (167, 28439),

Gene: IUFootball_37 Start: 26991, Stop: 27434, Start Num: 91
Candidate Starts for IUFootball_37:
(Start: 91 @26991 has 91 MA's), (Start: 114 @27078 has 1 MA's), (154, 27243), (157, 27252), (166,
27291), (167, 27294), (168, 27300),

Gene: Icarian_40 Start: 27112, Stop: 27438, Start Num: 97
Candidate Starts for Icarian_40:
(2, 26479), (6, 26599), (8, 26617), (13, 26653), (17, 26722), (Start: 97 @27112 has 52 MA's), (129,
27238), (138, 27280), (157, 27343), (161, 27364), (165, 27379), (167, 27385),

Gene: Indigo_35 Start: 27053, Stop: 27415, Start Num: 81
Candidate Starts for Indigo_35:

(34, 26873), (Start: 59 @26990 has 1 MA's), (62, 26999), (Start: 81 @27053 has 70 MA's), (128, 27209), (139, 27260), (153, 27314), (154, 27323), (165, 27368),

Gene: IndyLu_36 Start: 25645, Stop: 25971, Start Num: 97
Candidate Starts for IndyLu_36:
(Start: 97 @25645 has 52 MA's), (157, 25876), (165, 25912), (167, 25918),

Gene: Issmi_38 Start: 28702, Stop: 29079, Start Num: 80
Candidate Starts for Issmi_38:
(Start: 77 @28690 has 2 MA's), (Start: 78 @28693 has 1 MA's), (Start: 80 @28702 has 33 MA's), (135, 28912), (165, 29035),

Gene: Iter_37 Start: 25853, Stop: 26296, Start Num: 91
Candidate Starts for Iter_37:
(39, 25724), (Start: 91 @25853 has 91 MA's), (Start: 104 @25898 has 1 MA's), (154, 26105), (157, 26114), (167, 26156), (168, 26162),

Gene: IttyBittyPiggy_36 Start: 25503, Stop: 25862, Start Num: 91
Candidate Starts for IttyBittyPiggy_36:
(Start: 91 @25503 has 91 MA's), (128, 25641), (167, 25791),

Gene: Itza_38 Start: 27837, Stop: 28211, Start Num: 80
Candidate Starts for Itza_38:
(Start: 78 @27828 has 1 MA's), (Start: 80 @27837 has 33 MA's), (Start: 104 @27891 has 1 MA's), (128, 28005), (139, 28056), (155, 28122), (157, 28128), (165, 28164), (174, 28194),

Gene: Izzy_37 Start: 27458, Stop: 27820, Start Num: 81
Candidate Starts for Izzy_37:
(34, 27278), (Start: 59 @27395 has 1 MA's), (62, 27404), (Start: 81 @27458 has 70 MA's), (128, 27614), (139, 27665), (153, 27719), (154, 27728), (165, 27773),

Gene: Jabb_38 Start: 25806, Stop: 26132, Start Num: 97
Candidate Starts for Jabb_38:
(Start: 97 @25806 has 52 MA's), (157, 26037), (161, 26058), (165, 26073),

Gene: Janeemi_38 Start: 27485, Stop: 27928, Start Num: 91
Candidate Starts for Janeemi_38:
(48, 27377), (50, 27380), (52, 27389), (Start: 91 @27485 has 91 MA's), (154, 27737), (157, 27746), (167, 27788), (176, 27815),

Gene: Jankie_34 Start: 24505, Stop: 24930, Start Num: 91
Candidate Starts for Jankie_34:
(Start: 91 @24505 has 91 MA's), (Start: 104 @24550 has 1 MA's), (116, 24604), (166, 24805), (168, 24814),

Gene: Janus_37 Start: 28090, Stop: 28467, Start Num: 80
Candidate Starts for Janus_37:
(Start: 77 @28078 has 2 MA's), (Start: 78 @28081 has 1 MA's), (Start: 80 @28090 has 33 MA's), (128, 28264), (135, 28300), (155, 28381), (165, 28423),

Gene: Jash_37 Start: 27411, Stop: 27773, Start Num: 81
Candidate Starts for Jash_37:

(34, 27231), (Start: 59 @27348 has 1 MA's), (62, 27357), (Start: 81 @27411 has 70 MA's), (128, 27567), (139, 27618), (153, 27672), (154, 27681), (165, 27726),

Gene: JasmineDragon_40 Start: 26737, Stop: 27180, Start Num: 91
Candidate Starts for JasmineDragon_40:
(Start: 91 @26737 has 91 MA's), (116, 26836), (167, 27040), (177, 27070),

Gene: Jevington_39 Start: 28493, Stop: 28870, Start Num: 80
Candidate Starts for Jevington_39:
(Start: 78 @28484 has 1 MA's), (Start: 80 @28493 has 33 MA's), (128, 28667), (135, 28703), (155, 28784), (156, 28787),

Gene: Jhitchelle_36 Start: 28359, Stop: 28721, Start Num: 81
Candidate Starts for Jhitchelle_36:
(Start: 81 @28359 has 70 MA's), (103, 28410), (132, 28542), (136, 28560), (139, 28569), (155, 28635), (157, 28641),

Gene: Joemato_35 Start: 25218, Stop: 25661, Start Num: 91
Candidate Starts for Joemato_35:
(Start: 91 @25218 has 91 MA's), (116, 25317), (154, 25470), (167, 25521),

Gene: JohnDoe_35 Start: 25209, Stop: 25652, Start Num: 91
Candidate Starts for JohnDoe_35:
(Start: 91 @25209 has 91 MA's), (154, 25461), (167, 25512),

Gene: JohnThicc_43 Start: 26853, Stop: 27311, Start Num: 79
Candidate Starts for JohnThicc_43:
(79, 26853), (86, 26868), (Start: 91 @26880 has 91 MA's), (140, 27084), (154, 27132),

Gene: Johnathan_36 Start: 25051, Stop: 25377, Start Num: 97
Candidate Starts for Johnathan_36:
(Start: 97 @25051 has 52 MA's), (157, 25282), (165, 25318), (167, 25324),

Gene: Jovita_38 Start: 25821, Stop: 26147, Start Num: 97
Candidate Starts for Jovita_38:
(Start: 97 @25821 has 52 MA's), (157, 26052), (161, 26073), (165, 26088),

Gene: Jstan_37 Start: 26862, Stop: 27212, Start Num: 91
Candidate Starts for Jstan_37:
(Start: 91 @26862 has 91 MA's), (Start: 104 @26907 has 1 MA's), (116, 26946), (128, 27000), (154, 27099), (167, 27150),

Gene: JuneStar_37 Start: 27633, Stop: 27992, Start Num: 90
Candidate Starts for JuneStar_37:
(15, 27243), (Start: 90 @27633 has 5 MA's), (116, 27717), (128, 27771), (144, 27846), (167, 27921),

Gene: Kaine_37 Start: 28633, Stop: 28998, Start Num: 81
Candidate Starts for Kaine_37:
(Start: 81 @28633 has 70 MA's), (132, 28816), (139, 28843), (155, 28909),

Gene: Kalimba_35 Start: 24066, Stop: 24500, Start Num: 91
Candidate Starts for Kalimba_35:

(54, 23970), (64, 23994), (Start: 91 @24066 has 91 MA's), (Start: 114 @24153 has 1 MA's), (144, 24294), (166, 24366),

Gene: Kamdara_35 Start: 26224, Stop: 26556, Start Num: 96

Candidate Starts for Kamdara_35:

(Start: 96 @26224 has 22 MA's), (123, 26335), (127, 26347), (129, 26353), (140, 26401), (157, 26458), (165, 26494), (167, 26500),

Gene: Katalie_36 Start: 27596, Stop: 27958, Start Num: 81

Candidate Starts for Katalie_36:

(34, 27413), (Start: 59 @27530 has 1 MA's), (62, 27539), (Start: 81 @27596 has 70 MA's), (139, 27803), (153, 27857), (154, 27866), (157, 27875), (165, 27911),

Gene: Kate33_37 Start: 25417, Stop: 25743, Start Num: 97

Candidate Starts for Kate33_37:

(Start: 97 @25417 has 52 MA's), (157, 25648), (165, 25684), (167, 25690),

Gene: Katzastrophic_36 Start: 26173, Stop: 26502, Start Num: 96

Candidate Starts for Katzastrophic_36:

(Start: 96 @26173 has 22 MA's), (127, 26293), (128, 26296), (129, 26299), (165, 26440), (167, 26446),

Gene: Kaylissa_35 Start: 25154, Stop: 25597, Start Num: 91

Candidate Starts for Kaylissa_35:

(Start: 91 @25154 has 91 MA's), (154, 25406), (167, 25457),

Gene: KeAlii_36 Start: 25807, Stop: 26250, Start Num: 91

Candidate Starts for KeAlii_36:

(35, 25615), (37, 25639), (42, 25669), (54, 25711), (Start: 59 @25723 has 1 MA's), (Start: 91 @25807 has 91 MA's), (116, 25906), (154, 26059), (167, 26110), (168, 26116), (174, 26134), (185, 26167),

Gene: Keiki_32 Start: 21826, Stop: 21470, Start Num: 87

Candidate Starts for Keiki_32:

(Start: 85 @21829 has 7 MA's), (Start: 87 @21826 has 36 MA's), (Start: 104 @21769 has 1 MA's), (136, 21625), (156, 21547), (157, 21544), (165, 21508),

Gene: Kenzers_37 Start: 25644, Stop: 25970, Start Num: 97

Candidate Starts for Kenzers_37:

(Start: 97 @25644 has 52 MA's), (128, 25767), (161, 25896), (165, 25911),

Gene: Kieran_35 Start: 26228, Stop: 26560, Start Num: 96

Candidate Starts for Kieran_35:

(3, 25631), (9, 25739), (Start: 96 @26228 has 22 MA's), (123, 26339), (127, 26351), (129, 26357), (136, 26393), (140, 26405), (165, 26498), (167, 26504),

Gene: Kubed_32 Start: 21882, Stop: 21526, Start Num: 87

Candidate Starts for Kubed_32:

(Start: 87 @21882 has 36 MA's), (136, 21681), (155, 21606), (157, 21600), (165, 21564),

Gene: LadyAstra_43 Start: 26980, Stop: 27411, Start Num: 91

Candidate Starts for LadyAstra_43:

(Start: 91 @26980 has 91 MA's), (154, 27232),

Gene: Lahqtemish_36 Start: 25690, Stop: 26016, Start Num: 97

Candidate Starts for Lahqtemish_36:
(Start: 97 @25690 has 52 MA's), (157, 25921), (167, 25963),

Gene: Lannister_38 Start: 28076, Stop: 28438, Start Num: 81
Candidate Starts for Lannister_38:
(Start: 59 @28013 has 1 MA's), (62, 28022), (Start: 81 @28076 has 70 MA's), (139, 28283), (153, 28337), (154, 28346), (157, 28355), (165, 28391),

Gene: Lauchelly_32 Start: 21931, Stop: 21575, Start Num: 87
Candidate Starts for Lauchelly_32:
(Start: 85 @21934 has 7 MA's), (Start: 87 @21931 has 36 MA's), (Start: 104 @21874 has 1 MA's), (128, 21772), (136, 21730), (156, 21652), (157, 21649), (165, 21613),

Gene: Legacy_36 Start: 27028, Stop: 27390, Start Num: 81
Candidate Starts for Legacy_36:
(34, 26848), (Start: 59 @26965 has 1 MA's), (62, 26974), (Start: 81 @27028 has 70 MA's), (128, 27184), (139, 27235), (153, 27289), (154, 27298), (165, 27343),

Gene: Lego_35 Start: 25100, Stop: 25543, Start Num: 91
Candidate Starts for Lego_35:
(48, 25007), (Start: 91 @25100 has 91 MA's), (154, 25352), (167, 25403),

Gene: Leviosa_32 Start: 21927, Stop: 21571, Start Num: 87
Candidate Starts for Leviosa_32:
(Start: 87 @21927 has 36 MA's), (Start: 104 @21870 has 1 MA's), (155, 21651), (157, 21645), (165, 21609),

Gene: Leviticus_36 Start: 27057, Stop: 27419, Start Num: 81
Candidate Starts for Leviticus_36:
(34, 26877), (Start: 59 @26994 has 1 MA's), (62, 27003), (Start: 81 @27057 has 70 MA's), (128, 27213), (139, 27264), (153, 27318), (154, 27327), (165, 27372),

Gene: Liebe_37 Start: 26991, Stop: 27434, Start Num: 91
Candidate Starts for Liebe_37:
(Start: 91 @26991 has 91 MA's), (Start: 114 @27078 has 1 MA's), (154, 27243), (157, 27252), (166, 27291), (167, 27294), (168, 27300),

Gene: Lika_36 Start: 27869, Stop: 28231, Start Num: 81
Candidate Starts for Lika_36:
(34, 27689), (Start: 59 @27806 has 1 MA's), (Start: 81 @27869 has 70 MA's), (139, 28076), (153, 28130), (154, 28139), (155, 28142), (157, 28148), (165, 28184),

Gene: LilBandit_32 Start: 21724, Stop: 21365, Start Num: 85
Candidate Starts for LilBandit_32:
(Start: 85 @21724 has 7 MA's), (Start: 87 @21721 has 36 MA's), (Start: 104 @21664 has 1 MA's), (136, 21520), (156, 21442), (157, 21439), (165, 21403),

Gene: Lilo27_38 Start: 25629, Stop: 25955, Start Num: 97
Candidate Starts for Lilo27_38:
(Start: 97 @25629 has 52 MA's), (161, 25881), (165, 25896),

Gene: LimaBean_36 Start: 25100, Stop: 25426, Start Num: 97
Candidate Starts for LimaBean_36:

(Start: 97 @25100 has 52 MA's), (157, 25331), (165, 25367), (167, 25373),

Gene: LisoBros_37 Start: 27383, Stop: 27811, Start Num: 91

Candidate Starts for LisoBros_37:

(Start: 91 @27383 has 91 MA's), (Start: 104 @27428 has 1 MA's), (116, 27482), (145, 27614), (157, 27644), (167, 27686), (168, 27692),

Gene: LitninMcQueen_97 Start: 51856, Stop: 52233, Start Num: 91

Candidate Starts for LitninMcQueen_97:

(57, 51772), (Start: 91 @51856 has 91 MA's), (95, 51868), (121, 51985), (127, 51997), (131, 52018), (145, 52069), (154, 52093), (166, 52147), (167, 52150), (171, 52165), (177, 52177), (191, 52210),

Gene: Lizalica_34 Start: 25001, Stop: 25444, Start Num: 91

Candidate Starts for Lizalica_34:

(26, 24788), (Start: 91 @25001 has 91 MA's), (116, 25100), (154, 25253), (157, 25262), (167, 25304), (168, 25310), (200, 25424),

Gene: London_35 Start: 26877, Stop: 27227, Start Num: 91

Candidate Starts for London_35:

(60, 26808), (Start: 91 @26877 has 91 MA's), (Start: 104 @26922 has 1 MA's), (116, 26961), (128, 27015), (154, 27114), (157, 27123), (167, 27165),

Gene: Loofah_37 Start: 28278, Stop: 28655, Start Num: 80

Candidate Starts for Loofah_37:

(Start: 78 @28269 has 1 MA's), (Start: 80 @28278 has 33 MA's), (119, 28419), (128, 28452), (165, 28611),

Gene: Lorelei_37 Start: 27928, Stop: 28290, Start Num: 81

Candidate Starts for Lorelei_37:

(34, 27748), (Start: 59 @27865 has 1 MA's), (62, 27874), (Start: 81 @27928 has 70 MA's), (128, 28084), (139, 28135), (153, 28189), (154, 28198), (157, 28207), (165, 28243),

Gene: Loviatar_38 Start: 27664, Stop: 27990, Start Num: 97

Candidate Starts for Loviatar_38:

(2, 27031), (6, 27151), (8, 27169), (13, 27205), (17, 27274), (Start: 97 @27664 has 52 MA's), (129, 27790), (138, 27832), (157, 27895), (161, 27916), (165, 27931), (167, 27937),

Gene: Lynlen_37 Start: 25644, Stop: 25970, Start Num: 97

Candidate Starts for Lynlen_37:

(Start: 97 @25644 has 52 MA's), (128, 25767), (161, 25896), (165, 25911),

Gene: MEAK_32 Start: 21588, Stop: 21232, Start Num: 87

Candidate Starts for MEAK_32:

(71, 21621), (Start: 87 @21588 has 36 MA's), (136, 21387), (157, 21306), (165, 21270),

Gene: MaGuCo_35 Start: 25925, Stop: 26281, Start Num: 114

Candidate Starts for MaGuCo_35:

(Start: 114 @25925 has 1 MA's), (157, 26099), (167, 26141), (168, 26147),

Gene: Mabodamaca_44 Start: 28805, Stop: 29152, Start Num: 89

Candidate Starts for Mabodamaca_44:

(Start: 89 @28805 has 17 MA's), (146, 29027), (157, 29054), (167, 29096),

Gene: Mahdia_59 Start: 41385, Stop: 41786, Start Num: 91
Candidate Starts for Mahdia_59:
(Start: 91 @41385 has 91 MA's), (107, 41445), (120, 41508), (131, 41562), (140, 41598), (165, 41685),
(167, 41691), (176, 41718), (190, 41757), (196, 41775),

Gene: Maneekul_36 Start: 27447, Stop: 27809, Start Num: 81
Candidate Starts for Maneekul_36:
(34, 27267), (Start: 59 @27384 has 1 MA's), (Start: 81 @27447 has 70 MA's), (139, 27654), (153,
27708), (154, 27717), (157, 27726), (165, 27762),

Gene: Marav_40 Start: 28818, Stop: 29195, Start Num: 80
Candidate Starts for Marav_40:
(Start: 78 @28809 has 1 MA's), (Start: 80 @28818 has 33 MA's), (128, 28992), (135, 29028), (155,
29109), (156, 29112),

Gene: Maureen_37 Start: 26991, Stop: 27434, Start Num: 91
Candidate Starts for Maureen_37:
(Start: 91 @26991 has 91 MA's), (Start: 114 @27078 has 1 MA's), (154, 27243), (157, 27252), (166,
27291), (167, 27294), (168, 27300),

Gene: Michkear_37 Start: 26449, Stop: 26892, Start Num: 91
Candidate Starts for Michkear_37:
(4, 25903), (31, 26227), (Start: 91 @26449 has 91 MA's), (154, 26701), (157, 26710), (167, 26752),

Gene: Milomuff_37 Start: 25521, Stop: 25847, Start Num: 97
Candidate Starts for Milomuff_37:
(Start: 97 @25521 has 52 MA's), (157, 25752), (165, 25788), (167, 25794),

Gene: MiniMommy_41 Start: 26738, Stop: 27181, Start Num: 91
Candidate Starts for MiniMommy_41:
(Start: 91 @26738 has 91 MA's), (116, 26837), (167, 27041), (177, 27071),

Gene: MissSwiss_35 Start: 24190, Stop: 24540, Start Num: 91
Candidate Starts for MissSwiss_35:
(35, 23998), (37, 24022), (42, 24052), (54, 24094), (Start: 91 @24190 has 91 MA's), (116, 24274),
(157, 24436), (167, 24478), (168, 24484),

Gene: Mollymur_72 Start: 52998, Stop: 52633, Start Num: 89
Candidate Starts for Mollymur_72:
(63, 53064), (72, 53028), (Start: 89 @52998 has 17 MA's), (166, 52701), (167, 52698),

Gene: Morrissey_62 Start: 43281, Stop: 43685, Start Num: 91
Candidate Starts for Morrissey_62:
(46, 43155), (Start: 91 @43281 has 91 MA's), (106, 43338), (140, 43494), (151, 43524), (165, 43581),
(166, 43584), (167, 43587), (176, 43614), (178, 43623), (190, 43653),

Gene: Moss_35 Start: 24158, Stop: 24592, Start Num: 91
Candidate Starts for Moss_35:
(52, 24050), (54, 24062), (64, 24086), (Start: 91 @24158 has 91 MA's), (166, 24458),

Gene: Moyashi_32 Start: 21693, Stop: 21337, Start Num: 87
Candidate Starts for Moyashi_32:
(71, 21726), (Start: 87 @21693 has 36 MA's), (136, 21492), (156, 21414), (157, 21411), (165, 21375),

Gene: MrAK_32 Start: 21698, Stop: 21342, Start Num: 87

Candidate Starts for MrAK_32:

(71, 21731), (Start: 87 @21698 has 36 MA's), (128, 21539), (136, 21497), (156, 21419), (157, 21416), (165, 21380),

Gene: MsUbiquitous_38 Start: 25806, Stop: 26132, Start Num: 97

Candidate Starts for MsUbiquitous_38:

(Start: 97 @25806 has 52 MA's), (157, 26037), (161, 26058), (165, 26073),

Gene: Mudpuppy_34 Start: 24965, Stop: 25408, Start Num: 91

Candidate Starts for Mudpuppy_34:

(26, 24752), (Start: 91 @24965 has 91 MA's), (116, 25064), (154, 25217), (167, 25268),

Gene: Mysterium_35 Start: 24178, Stop: 24612, Start Num: 91

Candidate Starts for Mysterium_35:

(Start: 91 @24178 has 91 MA's), (166, 24478),

Gene: Nabi_37 Start: 27928, Stop: 28290, Start Num: 81

Candidate Starts for Nabi_37:

(34, 27748), (Start: 59 @27865 has 1 MA's), (62, 27874), (Start: 81 @27928 has 70 MA's), (128, 28084), (139, 28135), (153, 28189), (154, 28198), (157, 28207), (165, 28243),

Gene: Nanodon_38 Start: 27697, Stop: 28059, Start Num: 81

Candidate Starts for Nanodon_38:

(34, 27514), (Start: 59 @27631 has 1 MA's), (62, 27640), (Start: 81 @27697 has 70 MA's), (139, 27904), (153, 27958), (154, 27967), (157, 27976), (159, 27991),

Gene: Nerdos_35 Start: 27052, Stop: 27414, Start Num: 81

Candidate Starts for Nerdos_35:

(34, 26872), (Start: 59 @26989 has 1 MA's), (62, 26998), (Start: 81 @27052 has 70 MA's), (128, 27208), (139, 27259), (153, 27313), (154, 27322), (165, 27367),

Gene: Nesbitt_39 Start: 26358, Stop: 26897, Start Num: 70

Candidate Starts for Nesbitt_39:

(47, 26283), (Start: 70 @26358 has 4 MA's), (98, 26427), (113, 26493), (121, 26541), (135, 26601), (138, 26613), (154, 26661), (156, 26667), (160, 26691), (163, 26712), (169, 26736), (181, 26769), (198, 26841), (202, 26877),

Gene: Nicky22_38 Start: 26183, Stop: 26509, Start Num: 97

Candidate Starts for Nicky22_38:

(Start: 97 @26183 has 52 MA's), (161, 26435), (165, 26450),

Gene: Niobe_35 Start: 26862, Stop: 27212, Start Num: 91

Candidate Starts for Niobe_35:

(Start: 91 @26862 has 91 MA's), (Start: 104 @26907 has 1 MA's), (116, 26946), (128, 27000), (154, 27099), (167, 27150),

Gene: Nishikigoi_38 Start: 28102, Stop: 28479, Start Num: 80

Candidate Starts for Nishikigoi_38:

(Start: 78 @28093 has 1 MA's), (Start: 80 @28102 has 33 MA's), (128, 28276), (135, 28312), (156, 28396), (165, 28435),

Gene: Nitro_36 Start: 26582, Stop: 26929, Start Num: 91
Candidate Starts for Nitro_36:
(Start: 91 @26582 has 91 MA's), (Start: 104 @26627 has 1 MA's), (116, 26666), (128, 26720), (157, 26828), (167, 26870),

Gene: ObiToo_40 Start: 26129, Stop: 26491, Start Num: 91
Candidate Starts for ObiToo_40:
(Start: 91 @26129 has 91 MA's), (128, 26267), (157, 26375), (167, 26417),

Gene: Oliynyk_37 Start: 27411, Stop: 27773, Start Num: 81
Candidate Starts for Oliynyk_37:
(34, 27231), (Start: 59 @27348 has 1 MA's), (62, 27357), (Start: 81 @27411 has 70 MA's), (128, 27567), (139, 27618), (153, 27672), (154, 27681), (165, 27726),

Gene: Omar_39 Start: 28330, Stop: 28707, Start Num: 80
Candidate Starts for Omar_39:
(Start: 78 @28321 has 1 MA's), (Start: 80 @28330 has 33 MA's), (165, 28663),

Gene: Origami_42 Start: 26772, Stop: 27203, Start Num: 91
Candidate Starts for Origami_42:
(Start: 91 @26772 has 91 MA's), (154, 27024),

Gene: Ouroboros_32 Start: 21911, Stop: 21552, Start Num: 85
Candidate Starts for Ouroboros_32:
(71, 21941), (Start: 85 @21911 has 7 MA's), (Start: 87 @21908 has 36 MA's), (128, 21749), (134, 21719), (136, 21707), (157, 21626), (165, 21590),

Gene: Ozzie_36 Start: 27037, Stop: 27399, Start Num: 81
Candidate Starts for Ozzie_36:
(34, 26857), (Start: 59 @26974 has 1 MA's), (62, 26983), (Start: 81 @27037 has 70 MA's), (128, 27193), (139, 27244), (153, 27298), (154, 27307), (165, 27352),

Gene: OzzyJ_37 Start: 27413, Stop: 27775, Start Num: 81
Candidate Starts for OzzyJ_37:
(34, 27236), (Start: 59 @27350 has 1 MA's), (62, 27359), (75, 27398), (Start: 81 @27413 has 70 MA's), (139, 27620), (153, 27674), (154, 27683), (157, 27692), (165, 27728),

Gene: P100.1_32 Start: 21963, Stop: 21607, Start Num: 87
Candidate Starts for P100.1_32:
(Start: 87 @21963 has 36 MA's), (Start: 104 @21906 has 1 MA's), (136, 21762), (157, 21681), (165, 21645),

Gene: P100A_32 Start: 21913, Stop: 21557, Start Num: 87
Candidate Starts for P100A_32:
(Start: 85 @21916 has 7 MA's), (Start: 87 @21913 has 36 MA's), (Start: 104 @21856 has 1 MA's), (128, 21754), (134, 21724), (136, 21712), (157, 21631), (165, 21595),

Gene: P100D_32 Start: 21906, Stop: 21550, Start Num: 87
Candidate Starts for P100D_32:
(Start: 87 @21906 has 36 MA's), (128, 21747), (136, 21705), (156, 21627), (157, 21624), (165, 21588),

Gene: P101A_32 Start: 21932, Stop: 21576, Start Num: 87
Candidate Starts for P101A_32:

(19, 22286), (71, 21965), (Start: 87 @21932 has 36 MA's), (136, 21731), (157, 21650), (165, 21614),

Gene: P104A_32 Start: 21701, Stop: 21345, Start Num: 87

Candidate Starts for P104A_32:

(Start: 85 @21704 has 7 MA's), (Start: 87 @21701 has 36 MA's), (Start: 104 @21644 has 1 MA's), (136, 21500), (157, 21419), (165, 21383),

Gene: P104B_32 Start: 21899, Stop: 21540, Start Num: 85

Candidate Starts for P104B_32:

(Start: 85 @21899 has 7 MA's), (Start: 87 @21896 has 36 MA's), (Start: 104 @21839 has 1 MA's), (136, 21695), (156, 21617), (157, 21614), (165, 21578),

Gene: P105_32 Start: 21561, Stop: 21205, Start Num: 87

Candidate Starts for P105_32:

(71, 21594), (Start: 87 @21561 has 36 MA's), (136, 21360), (156, 21282), (157, 21279), (165, 21243),

Gene: P106A_32 Start: 21990, Stop: 21631, Start Num: 85

Candidate Starts for P106A_32:

(71, 22020), (Start: 85 @21990 has 7 MA's), (Start: 87 @21987 has 36 MA's), (128, 21828), (134, 21798), (136, 21786), (156, 21708), (157, 21705), (165, 21669),

Gene: P106C_33 Start: 21925, Stop: 21569, Start Num: 87

Candidate Starts for P106C_33:

(71, 21958), (Start: 85 @21928 has 7 MA's), (Start: 87 @21925 has 36 MA's), (128, 21766), (134, 21736), (136, 21724), (156, 21646), (157, 21643), (165, 21607),

Gene: P106I_32 Start: 21754, Stop: 21398, Start Num: 87

Candidate Starts for P106I_32:

(71, 21787), (Start: 85 @21757 has 7 MA's), (Start: 87 @21754 has 36 MA's), (128, 21595), (134, 21565), (136, 21553), (156, 21475), (157, 21472), (165, 21436),

Gene: P106L_32 Start: 21925, Stop: 21569, Start Num: 87

Candidate Starts for P106L_32:

(71, 21958), (Start: 85 @21928 has 7 MA's), (Start: 87 @21925 has 36 MA's), (128, 21766), (134, 21736), (136, 21724), (156, 21646), (157, 21643), (165, 21607),

Gene: P106M_32 Start: 21925, Stop: 21569, Start Num: 87

Candidate Starts for P106M_32:

(71, 21958), (Start: 85 @21928 has 7 MA's), (Start: 87 @21925 has 36 MA's), (128, 21766), (134, 21736), (136, 21724), (156, 21646), (157, 21643), (165, 21607),

Gene: P107A_32 Start: 21941, Stop: 21585, Start Num: 87

Candidate Starts for P107A_32:

(71, 21974), (Start: 85 @21944 has 7 MA's), (Start: 87 @21941 has 36 MA's), (128, 21782), (134, 21752), (136, 21740), (149, 21689), (155, 21665), (165, 21623),

Gene: P107C_32 Start: 21878, Stop: 21522, Start Num: 87

Candidate Starts for P107C_32:

(Start: 85 @21881 has 7 MA's), (Start: 87 @21878 has 36 MA's), (136, 21677), (156, 21599), (157, 21596), (165, 21560),

Gene: P108C_32 Start: 21895, Stop: 21536, Start Num: 85

Candidate Starts for P108C_32:

(Start: 85 @21895 has 7 MA's), (Start: 87 @21892 has 36 MA's), (128, 21733), (136, 21691), (156, 21613), (157, 21610), (165, 21574),

Gene: P14.4_32 Start: 21894, Stop: 21538, Start Num: 87

Candidate Starts for P14.4_32:

(19, 22248), (71, 21927), (Start: 87 @21894 has 36 MA's), (128, 21735), (136, 21693), (156, 21615), (157, 21612), (165, 21576),

Gene: P9.1_32 Start: 21865, Stop: 21566, Start Num: 104

Candidate Starts for P9.1_32:

(Start: 85 @21925 has 7 MA's), (Start: 87 @21922 has 36 MA's), (Start: 104 @21865 has 1 MA's), (128, 21763), (136, 21721), (157, 21640), (165, 21604),

Gene: PA6_33 Start: 21886, Stop: 21530, Start Num: 87

Candidate Starts for PA6_33:

(Start: 87 @21886 has 36 MA's), (128, 21727), (136, 21685), (157, 21604), (165, 21568),

Gene: PAD20_33 Start: 21666, Stop: 21310, Start Num: 87

Candidate Starts for PAD20_33:

(19, 22020), (Start: 85 @21669 has 7 MA's), (Start: 87 @21666 has 36 MA's), (Start: 104 @21609 has 1 MA's), (136, 21465), (157, 21384), (165, 21348),

Gene: PAS50_33 Start: 21831, Stop: 21475, Start Num: 87

Candidate Starts for PAS50_33:

(12, 22278), (19, 22185), (Start: 85 @21834 has 7 MA's), (Start: 87 @21831 has 36 MA's), (136, 21630), (157, 21549), (165, 21513),

Gene: PHL010M04_32 Start: 21909, Stop: 21550, Start Num: 85

Candidate Starts for PHL010M04_32:

(Start: 85 @21909 has 7 MA's), (Start: 87 @21906 has 36 MA's), (128, 21747), (136, 21705), (157, 21624), (165, 21588),

Gene: PHL037M02_32 Start: 21893, Stop: 21534, Start Num: 85

Candidate Starts for PHL037M02_32:

(71, 21923), (Start: 85 @21893 has 7 MA's), (Start: 87 @21890 has 36 MA's), (Start: 104 @21833 has 1 MA's), (128, 21731), (136, 21689), (155, 21614), (157, 21608), (165, 21572),

Gene: PHL060L00_32 Start: 21736, Stop: 21380, Start Num: 87

Candidate Starts for PHL060L00_32:

(Start: 85 @21739 has 7 MA's), (Start: 87 @21736 has 36 MA's), (136, 21535), (157, 21454), (165, 21418),

Gene: PHL067M10_32 Start: 21856, Stop: 21500, Start Num: 87

Candidate Starts for PHL067M10_32:

(Start: 85 @21859 has 7 MA's), (Start: 87 @21856 has 36 MA's), (Start: 104 @21799 has 1 MA's), (128, 21697), (136, 21655), (156, 21577), (157, 21574), (165, 21538),

Gene: PHL071N05_32 Start: 21918, Stop: 21559, Start Num: 85

Candidate Starts for PHL071N05_32:

(71, 21948), (Start: 85 @21918 has 7 MA's), (Start: 87 @21915 has 36 MA's), (Start: 104 @21858 has 1 MA's), (128, 21756), (136, 21714), (156, 21636), (157, 21633), (165, 21597),

Gene: PHL111M01_32 Start: 21613, Stop: 21257, Start Num: 87

Candidate Starts for PHL111M01_32:

(71, 21646), (Start: 87 @21613 has 36 MA's), (136, 21412), (157, 21331), (165, 21295),

Gene: PHL112N00_32 Start: 21923, Stop: 21567, Start Num: 87

Candidate Starts for PHL112N00_32:

(Start: 85 @21926 has 7 MA's), (Start: 87 @21923 has 36 MA's), (128, 21764), (136, 21722), (157, 21641), (165, 21605),

Gene: PHL113M01_32 Start: 21662, Stop: 21306, Start Num: 87

Candidate Starts for PHL113M01_32:

(71, 21695), (Start: 87 @21662 has 36 MA's), (136, 21461), (156, 21383), (165, 21344),

Gene: PHL114L00_32 Start: 21878, Stop: 21522, Start Num: 87

Candidate Starts for PHL114L00_32:

(71, 21911), (Start: 85 @21881 has 7 MA's), (Start: 87 @21878 has 36 MA's), (136, 21677), (156, 21599), (157, 21596), (165, 21560),

Gene: Pablito_36 Start: 27641, Stop: 28030, Start Num: 77

Candidate Starts for Pablito_36:

(Start: 77 @27641 has 2 MA's), (Start: 78 @27644 has 1 MA's), (Start: 80 @27653 has 33 MA's), (119, 27794), (128, 27827), (155, 27944), (165, 27986),

Gene: Paedore_36 Start: 28263, Stop: 28640, Start Num: 80

Candidate Starts for Paedore_36:

(Start: 78 @28254 has 1 MA's), (Start: 80 @28263 has 33 MA's), (119, 28404), (128, 28437), (165, 28596),

Gene: PandaPo_35 Start: 24193, Stop: 24543, Start Num: 91

Candidate Starts for PandaPo_35:

(35, 24001), (37, 24025), (42, 24055), (54, 24097), (Start: 91 @24193 has 91 MA's), (116, 24277), (157, 24439), (167, 24481), (168, 24487),

Gene: Paolo_39 Start: 28672, Stop: 29049, Start Num: 80

Candidate Starts for Paolo_39:

(Start: 78 @28663 has 1 MA's), (Start: 80 @28672 has 33 MA's), (128, 28846), (135, 28882), (155, 28963), (165, 29005),

Gene: PastaFagioli_36 Start: 25674, Stop: 26000, Start Num: 97

Candidate Starts for PastaFagioli_36:

(Start: 97 @25674 has 52 MA's), (157, 25905), (167, 25947),

Gene: Pavo_38 Start: 29091, Stop: 29456, Start Num: 81

Candidate Starts for Pavo_38:

(Start: 81 @29091 has 70 MA's), (132, 29274), (139, 29301), (155, 29367),

Gene: Pecas_37 Start: 25718, Stop: 26044, Start Num: 97

Candidate Starts for Pecas_37:

(Start: 97 @25718 has 52 MA's), (161, 25970), (165, 25985),

Gene: Percival_46 Start: 28994, Stop: 29350, Start Num: 89

Candidate Starts for Percival_46:

(Start: 89 @28994 has 17 MA's), (103, 29039), (118, 29096), (167, 29285), (179, 29327),

Gene: Phettuccine_36 Start: 27053, Stop: 27415, Start Num: 81

Candidate Starts for Phettuccine_36:

(34, 26873), (Start: 59 @26990 has 1 MA's), (62, 26999), (Start: 81 @27053 has 70 MA's), (128, 27209), (139, 27260), (153, 27314), (154, 27323), (165, 27368),

Gene: PhigPhack_38 Start: 25544, Stop: 25870, Start Num: 97

Candidate Starts for PhigPhack_38:

(Start: 97 @25544 has 52 MA's), (123, 25652), (157, 25775), (165, 25811), (167, 25817),

Gene: Phisb_38 Start: 25777, Stop: 26103, Start Num: 97

Candidate Starts for Phisb_38:

(Start: 97 @25777 has 52 MA's), (123, 25885), (157, 26008), (165, 26044), (167, 26050),

Gene: Phives_38 Start: 27302, Stop: 27745, Start Num: 91

Candidate Starts for Phives_38:

(48, 27194), (50, 27197), (52, 27206), (Start: 91 @27302 has 91 MA's), (154, 27554), (157, 27563), (167, 27605), (176, 27632), (188, 27668),

Gene: Pirate_32 Start: 21811, Stop: 21455, Start Num: 87

Candidate Starts for Pirate_32:

(Start: 85 @21814 has 7 MA's), (Start: 87 @21811 has 36 MA's), (Start: 104 @21754 has 1 MA's), (136, 21610), (156, 21532), (157, 21529), (165, 21493),

Gene: Pixelle_35 Start: 26837, Stop: 27184, Start Num: 91

Candidate Starts for Pixelle_35:

(Start: 91 @26837 has 91 MA's), (116, 26921), (157, 27083), (167, 27125),

Gene: PondAmelia_48 Start: 26644, Stop: 26970, Start Num: 97

Candidate Starts for PondAmelia_48:

(Start: 97 @26644 has 52 MA's), (127, 26764), (129, 26770), (138, 26812), (157, 26875), (161, 26896), (165, 26911), (167, 26917),

Gene: Powerpuff_37 Start: 26303, Stop: 26746, Start Num: 91

Candidate Starts for Powerpuff_37:

(Start: 91 @26303 has 91 MA's), (154, 26555), (167, 26606),

Gene: Procrass1_32 Start: 21885, Stop: 21529, Start Num: 87

Candidate Starts for Procrass1_32:

(Start: 87 @21885 has 36 MA's), (136, 21684), (156, 21606), (157, 21603), (165, 21567),

Gene: Provolone_38 Start: 28473, Stop: 28838, Start Num: 81

Candidate Starts for Provolone_38:

(Start: 81 @28473 has 70 MA's), (132, 28656), (139, 28683), (155, 28749),

Gene: Puginator_39 Start: 28693, Stop: 29070, Start Num: 80

Candidate Starts for Puginator_39:

(Start: 78 @28684 has 1 MA's), (Start: 80 @28693 has 33 MA's), (107, 28771), (128, 28867), (135, 28903), (165, 29026),

Gene: Pumpkins_36 Start: 26180, Stop: 26539, Start Num: 90

Candidate Starts for Pumpkins_36:

(45, 26060), (Start: 90 @26180 has 5 MA's), (128, 26318), (167, 26468),

Gene: Puppies_60 Start: 41273, Stop: 41683, Start Num: 91
Candidate Starts for Puppies_60:
(Start: 91 @41273 has 91 MA's), (99, 41294), (126, 41426), (135, 41468), (137, 41477), (165, 41582),
(167, 41588),

Gene: QMacho_39 Start: 26201, Stop: 26527, Start Num: 97
Candidate Starts for QMacho_39:
(Start: 97 @26201 has 52 MA's), (161, 26453), (165, 26468),

Gene: QueenBey_32 Start: 21868, Stop: 21512, Start Num: 87
Candidate Starts for QueenBey_32:
(Start: 87 @21868 has 36 MA's), (128, 21709), (136, 21667), (156, 21589), (165, 21550),

Gene: Quenya_36 Start: 25890, Stop: 26219, Start Num: 96
Candidate Starts for Quenya_36:
(10, 25413), (18, 25524), (23, 25566), (Start: 96 @25890 has 22 MA's), (119, 25977), (128, 26013),
(129, 26016), (161, 26142), (165, 26157), (167, 26163),

Gene: R4_37 Start: 28418, Stop: 28795, Start Num: 80
Candidate Starts for R4_37:
(Start: 78 @28409 has 1 MA's), (Start: 80 @28418 has 33 MA's), (119, 28559), (128, 28592), (165,
28751),

Gene: REQ3_19 Start: 8920, Stop: 9282, Start Num: 91
Candidate Starts for REQ3_19:
(Start: 91 @8920 has 91 MA's), (102, 8965), (127, 9061), (129, 9067), (130, 9073), (154, 9157), (167,
9211), (187, 9262), (193, 9274),

Gene: Rana_37 Start: 27928, Stop: 28290, Start Num: 81
Candidate Starts for Rana_37:
(34, 27748), (Start: 59 @27865 has 1 MA's), (62, 27874), (Start: 81 @27928 has 70 MA's), (128,
28084), (139, 28135), (153, 28189), (154, 28198), (157, 28207), (165, 28243),

Gene: RedBear_37 Start: 27596, Stop: 27958, Start Num: 81
Candidate Starts for RedBear_37:
(34, 27413), (Start: 59 @27530 has 1 MA's), (62, 27539), (Start: 81 @27596 has 70 MA's), (139,
27803), (153, 27857), (154, 27866), (157, 27875), (165, 27911),

Gene: Reedo_35 Start: 24148, Stop: 24591, Start Num: 91
Candidate Starts for Reedo_35:
(Start: 91 @24148 has 91 MA's), (Start: 104 @24193 has 1 MA's), (116, 24247), (154, 24400), (157,
24409), (167, 24451), (168, 24457), (176, 24478),

Gene: Rileysaurus_31 Start: 21916, Stop: 21560, Start Num: 87
Candidate Starts for Rileysaurus_31:
(Start: 85 @21919 has 7 MA's), (Start: 87 @21916 has 36 MA's), (Start: 104 @21859 has 1 MA's),
(128, 21757), (136, 21715), (156, 21637), (157, 21634), (165, 21598),

Gene: RockScotty_35 Start: 24176, Stop: 24610, Start Num: 91
Candidate Starts for RockScotty_35:
(52, 24068), (54, 24080), (64, 24104), (Start: 91 @24176 has 91 MA's), (166, 24476),

Gene: Rollins_34 Start: 23702, Stop: 24043, Start Num: 96

Candidate Starts for Rollins_34:
(Start: 96 @23702 has 22 MA's), (121, 23795), (167, 23975),

Gene: Rona_35 Start: 26210, Stop: 26542, Start Num: 96
Candidate Starts for Rona_35:
(3, 25613), (9, 25721), (Start: 96 @26210 has 22 MA's), (123, 26321), (127, 26333), (129, 26339),
(140, 26387), (157, 26444), (165, 26480), (167, 26486),

Gene: Rusticus_37 Start: 27411, Stop: 27773, Start Num: 81
Candidate Starts for Rusticus_37:
(34, 27231), (Start: 59 @27348 has 1 MA's), (62, 27357), (Start: 81 @27411 has 70 MA's), (128,
27567), (139, 27618), (153, 27672), (154, 27681), (165, 27726),

Gene: SKKY_32 Start: 21667, Stop: 21311, Start Num: 87
Candidate Starts for SKKY_32:
(71, 21700), (Start: 87 @21667 has 36 MA's), (128, 21508), (136, 21466), (157, 21385), (165, 21349),

Gene: Sabourin_35 Start: 24066, Stop: 24500, Start Num: 91
Candidate Starts for Sabourin_35:
(54, 23970), (64, 23994), (Start: 91 @24066 has 91 MA's), (Start: 114 @24153 has 1 MA's), (166,
24366),

Gene: Saftant_37 Start: 29043, Stop: 29411, Start Num: 81
Candidate Starts for Saftant_37:
(Start: 81 @29043 has 70 MA's), (132, 29229), (139, 29256), (155, 29322), (157, 29328), (165, 29364),

Gene: Samy_60 Start: 37282, Stop: 37698, Start Num: 83
Candidate Starts for Samy_60:
(Start: 83 @37282 has 1 MA's), (117, 37390), (122, 37414), (156, 37534), (157, 37537), (158, 37549),
(166, 37576), (168, 37585), (176, 37606), (180, 37624),

Gene: SanaSana_40 Start: 27314, Stop: 27640, Start Num: 97
Candidate Starts for SanaSana_40:
(Start: 97 @27314 has 52 MA's), (129, 27440), (157, 27545), (161, 27566), (165, 27581), (167, 27587),

Gene: SansAfet_38 Start: 25631, Stop: 25957, Start Num: 97
Candidate Starts for SansAfet_38:
(Start: 97 @25631 has 52 MA's), (157, 25862), (165, 25898), (167, 25904),

Gene: SarBear_37 Start: 25498, Stop: 25824, Start Num: 97
Candidate Starts for SarBear_37:
(Start: 97 @25498 has 52 MA's), (161, 25750), (165, 25765),

Gene: SarahRose_36 Start: 27421, Stop: 27783, Start Num: 81
Candidate Starts for SarahRose_36:
(34, 27244), (Start: 59 @27358 has 1 MA's), (62, 27367), (75, 27406), (Start: 81 @27421 has 70 MA's),
(139, 27628), (153, 27682), (154, 27691), (157, 27700), (165, 27736),

Gene: Schaffner_36 Start: 26410, Stop: 26769, Start Num: 90
Candidate Starts for Schaffner_36:
(Start: 90 @26410 has 5 MA's), (116, 26494), (128, 26548), (144, 26623), (167, 26698),

Gene: Schmidt_51 Start: 34772, Stop: 35146, Start Num: 91

Candidate Starts for Schmidt_51:

(Start: 91 @34772 has 91 MA's), (95, 34784), (121, 34901), (127, 34928), (129, 34934), (156, 35030), (164, 35072), (170, 35096),

Gene: ShakeltOph_40 Start: 26737, Stop: 27180, Start Num: 91

Candidate Starts for ShakeltOph_40:

(Start: 91 @26737 has 91 MA's), (116, 26836), (167, 27040), (177, 27070),

Gene: Sharkboy_36 Start: 26309, Stop: 26641, Start Num: 96

Candidate Starts for Sharkboy_36:

(Start: 96 @26309 has 22 MA's), (123, 26420), (127, 26432), (129, 26438), (140, 26486), (157, 26543), (167, 26585),

Gene: Shayna_37 Start: 24987, Stop: 25346, Start Num: 94

Candidate Starts for Shayna_37:

(Start: 94 @24987 has 3 MA's), (Start: 109 @25041 has 1 MA's), (127, 25116), (161, 25248), (165, 25263), (167, 25269),

Gene: Simpson_37 Start: 25218, Stop: 25661, Start Num: 91

Candidate Starts for Simpson_37:

(Start: 91 @25218 has 91 MA's), (116, 25317), (154, 25470), (167, 25521),

Gene: SirBeanington_37 Start: 25819, Stop: 26145, Start Num: 97

Candidate Starts for SirBeanington_37:

(Start: 97 @25819 has 52 MA's), (128, 25942), (161, 26071), (165, 26086),

Gene: Skelbel_36 Start: 26862, Stop: 27212, Start Num: 91

Candidate Starts for Skelbel_36:

(Start: 91 @26862 has 91 MA's), (Start: 104 @26907 has 1 MA's), (116, 26946), (128, 27000), (154, 27099), (167, 27150),

Gene: Skylord_34 Start: 23633, Stop: 23974, Start Num: 96

Candidate Starts for Skylord_34:

(Start: 96 @23633 has 22 MA's), (121, 23726), (167, 23906),

Gene: Slay_38 Start: 26179, Stop: 26505, Start Num: 97

Candidate Starts for Slay_38:

(Start: 97 @26179 has 52 MA's), (161, 26431), (165, 26446),

Gene: Snek_35 Start: 24475, Stop: 24915, Start Num: 91

Candidate Starts for Snek_35:

(35, 24304), (37, 24328), (43, 24358), (56, 24400), (Start: 91 @24475 has 91 MA's), (Start: 104 @24520 has 1 MA's), (154, 24727), (167, 24778), (184, 24835),

Gene: Snorlax_36 Start: 27425, Stop: 27787, Start Num: 81

Candidate Starts for Snorlax_36:

(34, 27248), (Start: 59 @27362 has 1 MA's), (62, 27371), (75, 27410), (Start: 81 @27425 has 70 MA's), (139, 27632), (153, 27686), (154, 27695), (157, 27704), (165, 27740),

Gene: Softsoap_37 Start: 25542, Stop: 25868, Start Num: 97

Candidate Starts for Softsoap_37:

(Start: 97 @25542 has 52 MA's), (157, 25773), (167, 25815),

Gene: Solea_38 Start: 25521, Stop: 25847, Start Num: 97
Candidate Starts for Solea_38:
(Start: 97 @25521 has 52 MA's), (157, 25752), (165, 25788), (167, 25794),

Gene: Solid_32 Start: 21901, Stop: 21542, Start Num: 85
Candidate Starts for Solid_32:
(71, 21931), (Start: 85 @21901 has 7 MA's), (Start: 87 @21898 has 36 MA's), (Start: 104 @21841 has 1 MA's), (136, 21697), (156, 21619), (157, 21616), (165, 21580),

Gene: Soondubu_33 Start: 27354, Stop: 27797, Start Num: 91
Candidate Starts for Soondubu_33:
(11, 26925), (35, 27192), (42, 27246), (Start: 91 @27354 has 91 MA's), (157, 27615), (167, 27657), (168, 27663), (174, 27681), (178, 27693),

Gene: Sooty_35 Start: 24081, Stop: 24515, Start Num: 91
Candidate Starts for Sooty_35:
(54, 23985), (64, 24009), (Start: 91 @24081 has 91 MA's), (Start: 114 @24168 has 1 MA's), (166, 24381),

Gene: South40_36 Start: 27596, Stop: 27958, Start Num: 81
Candidate Starts for South40_36:
(34, 27413), (Start: 59 @27530 has 1 MA's), (62, 27539), (Start: 81 @27596 has 70 MA's), (139, 27803), (153, 27857), (154, 27866), (157, 27875), (165, 27911),

Gene: SpecialK_35 Start: 24066, Stop: 24500, Start Num: 91
Candidate Starts for SpecialK_35:
(Start: 91 @24066 has 91 MA's), (166, 24366),

Gene: SpeedDemon_740 Start: 54721, Stop: 54356, Start Num: 89
Candidate Starts for SpeedDemon_740:
(72, 54751), (Start: 89 @54721 has 17 MA's), (166, 54424), (186, 54376),

Gene: Speedwell_42 Start: 30345, Stop: 30707, Start Num: 81
Candidate Starts for Speedwell_42:
(Start: 81 @30345 has 70 MA's), (132, 30528), (139, 30555), (148, 30594), (155, 30621), (157, 30627),

Gene: SqueakyClean_36 Start: 28181, Stop: 28558, Start Num: 80
Candidate Starts for SqueakyClean_36:
(Start: 77 @28169 has 2 MA's), (Start: 78 @28172 has 1 MA's), (Start: 80 @28181 has 33 MA's), (128, 28355), (135, 28391), (155, 28472), (165, 28514),

Gene: Stoor_38 Start: 26983, Stop: 27309, Start Num: 97
Candidate Starts for Stoor_38:
(6, 26470), (8, 26488), (13, 26524), (17, 26593), (Start: 97 @26983 has 52 MA's), (127, 27103), (129, 27109), (138, 27151), (157, 27214), (161, 27235), (165, 27250), (167, 27256),

Gene: Stormborn_32 Start: 21505, Stop: 21149, Start Num: 87
Candidate Starts for Stormborn_32:
(71, 21538), (Start: 87 @21505 has 36 MA's), (136, 21304), (156, 21226), (157, 21223), (165, 21187),

Gene: Stromboli_38 Start: 26847, Stop: 27173, Start Num: 97
Candidate Starts for Stromboli_38:

(1, 26094), (6, 26334), (8, 26352), (13, 26388), (17, 26457), (Start: 97 @26847 has 52 MA's), (127, 26967), (129, 26973), (157, 27078), (161, 27099), (165, 27114), (167, 27120),

Gene: Stuu_35 Start: 24178, Stop: 24612, Start Num: 91

Candidate Starts for Stuu_35:

(Start: 91 @24178 has 91 MA's), (166, 24478),

Gene: SuMoo_46 Start: 28468, Stop: 28815, Start Num: 89

Candidate Starts for SuMoo_46:

(55, 28372), (Start: 83 @28456 has 1 MA's), (Start: 89 @28468 has 17 MA's), (146, 28690), (157, 28717), (167, 28759),

Gene: Subaru_36 Start: 26877, Stop: 27227, Start Num: 91

Candidate Starts for Subaru_36:

(60, 26808), (Start: 91 @26877 has 91 MA's), (Start: 104 @26922 has 1 MA's), (116, 26961), (128, 27015), (154, 27114), (157, 27123), (167, 27165),

Gene: Sudan_37 Start: 28920, Stop: 29285, Start Num: 81

Candidate Starts for Sudan_37:

(Start: 81 @28920 has 70 MA's), (132, 29103), (139, 29130), (155, 29196),

Gene: Sue2_36 Start: 26239, Stop: 26682, Start Num: 91

Candidate Starts for Sue2_36:

(Start: 91 @26239 has 91 MA's), (128, 26392), (161, 26521), (167, 26542), (168, 26548),

Gene: Sujidade_37 Start: 28154, Stop: 28516, Start Num: 81

Candidate Starts for Sujidade_37:

(34, 27974), (Start: 59 @28091 has 1 MA's), (Start: 81 @28154 has 70 MA's), (139, 28361), (153, 28415), (154, 28424), (155, 28427), (157, 28433), (165, 28469),

Gene: SunkenRoot_39 Start: 29558, Stop: 29923, Start Num: 81

Candidate Starts for SunkenRoot_39:

(Start: 81 @29558 has 70 MA's), (132, 29741), (139, 29768), (155, 29834),

Gene: SunnyD_37 Start: 25043, Stop: 25348, Start Num: 109

Candidate Starts for SunnyD_37:

(Start: 94 @24989 has 3 MA's), (Start: 109 @25043 has 1 MA's), (127, 25118), (140, 25172), (161, 25250), (165, 25265), (167, 25271),

Gene: SunsetPointe_36 Start: 27044, Stop: 27406, Start Num: 81

Candidate Starts for SunsetPointe_36:

(34, 26864), (Start: 59 @26981 has 1 MA's), (62, 26990), (Start: 81 @27044 has 70 MA's), (128, 27200), (139, 27251), (153, 27305), (154, 27314), (165, 27359),

Gene: SuperHands_44 Start: 29494, Stop: 29850, Start Num: 89

Candidate Starts for SuperHands_44:

(Start: 89 @29494 has 17 MA's), (103, 29539), (118, 29596), (167, 29785), (179, 29827),

Gene: Supernova_32 Start: 21669, Stop: 21313, Start Num: 87

Candidate Starts for Supernova_32:

(71, 21702), (Start: 87 @21669 has 36 MA's), (128, 21510), (136, 21468), (156, 21390), (157, 21387), (165, 21351),

Gene: Superstar_40 Start: 29217, Stop: 29594, Start Num: 80

Candidate Starts for Superstar_40:

(Start: 77 @29205 has 2 MA's), (Start: 78 @29208 has 1 MA's), (Start: 80 @29217 has 33 MA's), (119, 29358), (128, 29391), (155, 29508), (165, 29550),

Gene: Swervy_38 Start: 25698, Stop: 26024, Start Num: 97

Candidate Starts for Swervy_38:

(Start: 97 @25698 has 52 MA's), (161, 25950), (165, 25965),

Gene: TagePighter_38 Start: 27425, Stop: 27787, Start Num: 81

Candidate Starts for TagePighter_38:

(34, 27248), (Start: 59 @27362 has 1 MA's), (62, 27371), (75, 27410), (Start: 81 @27425 has 70 MA's), (139, 27632), (153, 27686), (154, 27695), (157, 27704), (165, 27740),

Gene: Tallboi_36 Start: 27029, Stop: 27379, Start Num: 91

Candidate Starts for Tallboi_36:

(41, 26903), (Start: 91 @27029 has 91 MA's), (Start: 104 @27074 has 1 MA's), (157, 27275), (167, 27317),

Gene: Tbone_34 Start: 25013, Stop: 25456, Start Num: 91

Candidate Starts for Tbone_34:

(26, 24791), (Start: 91 @25013 has 91 MA's), (116, 25112), (154, 25265), (167, 25316),

Gene: Teagster_38 Start: 25820, Stop: 26179, Start Num: 94

Candidate Starts for Teagster_38:

(Start: 94 @25820 has 3 MA's), (Start: 109 @25874 has 1 MA's), (127, 25949), (161, 26081), (165, 26096), (167, 26102),

Gene: Tefunt_38 Start: 28104, Stop: 28481, Start Num: 80

Candidate Starts for Tefunt_38:

(Start: 78 @28095 has 1 MA's), (Start: 80 @28104 has 33 MA's), (128, 28278), (135, 28314), (156, 28398), (165, 28437),

Gene: TforTroy_37 Start: 26052, Stop: 26408, Start Num: 90

Candidate Starts for TforTroy_37:

(45, 25932), (Start: 90 @26052 has 5 MA's), (167, 26340),

Gene: Thestral_38 Start: 28297, Stop: 28674, Start Num: 80

Candidate Starts for Thestral_38:

(Start: 78 @28288 has 1 MA's), (Start: 80 @28297 has 33 MA's), (128, 28471), (135, 28507), (165, 28630),

Gene: ThursdayNight_39 Start: 26870, Stop: 27295, Start Num: 91

Candidate Starts for ThursdayNight_39:

(44, 26753), (Start: 91 @26870 has 91 MA's), (116, 26969), (154, 27122), (167, 27173), (177, 27203),

Gene: Tian_35 Start: 26817, Stop: 27164, Start Num: 91

Candidate Starts for Tian_35:

(Start: 91 @26817 has 91 MA's), (116, 26901), (157, 27063), (167, 27105),

Gene: TinaBelcher_37 Start: 28244, Stop: 28621, Start Num: 80

Candidate Starts for TinaBelcher_37:

(Start: 78 @28235 has 1 MA's), (Start: 80 @28244 has 33 MA's), (128, 28418), (135, 28454), (165, 28577),

Gene: TinaLin_56 Start: 36975, Stop: 37346, Start Num: 93

Candidate Starts for TinaLin_56:

(Start: 91 @36972 has 91 MA's), (Start: 93 @36975 has 1 MA's), (95, 36984), (121, 37101), (156, 37230), (170, 37296),

Gene: TinyDot_60 Start: 38014, Stop: 38394, Start Num: 91

Candidate Starts for TinyDot_60:

(14, 37603), (24, 37699), (Start: 91 @38014 has 91 MA's), (95, 38026), (108, 38077), (116, 38119), (173, 38338), (175, 38341), (186, 38374),

Gene: Toma_36 Start: 27871, Stop: 28233, Start Num: 81

Candidate Starts for Toma_36:

(34, 27691), (Start: 59 @27808 has 1 MA's), (62, 27817), (Start: 81 @27871 has 70 MA's), (139, 28078), (153, 28132), (154, 28141), (155, 28144), (157, 28150), (165, 28186),

Gene: Towmatter_63 Start: 48560, Stop: 48171, Start Num: 91

Candidate Starts for Towmatter_63:

(Start: 91 @48560 has 91 MA's), (116, 48455), (156, 48287), (162, 48251), (167, 48236), (176, 48212),

Gene: Trine_64 Start: 42629, Stop: 43021, Start Num: 92

Candidate Starts for Trine_64:

(20, 42272), (22, 42302), (27, 42380), (Start: 92 @42629 has 1 MA's), (130, 42797), (133, 42815), (151, 42872), (165, 42929), (166, 42932), (167, 42935), (176, 42962),

Gene: Triste_36 Start: 27413, Stop: 27775, Start Num: 81

Candidate Starts for Triste_36:

(34, 27236), (Start: 59 @27350 has 1 MA's), (62, 27359), (75, 27398), (Start: 81 @27413 has 70 MA's), (139, 27620), (153, 27674), (154, 27683), (157, 27692), (165, 27728),

Gene: Triumph_38 Start: 27999, Stop: 28376, Start Num: 80

Candidate Starts for Triumph_38:

(45, 27894), (Start: 59 @27936 has 1 MA's), (Start: 77 @27987 has 2 MA's), (Start: 78 @27990 has 1 MA's), (Start: 80 @27999 has 33 MA's), (128, 28173), (155, 28290), (165, 28332),

Gene: TrvxScott_36 Start: 28281, Stop: 28667, Start Num: 78

Candidate Starts for TrvxScott_36:

(Start: 78 @28281 has 1 MA's), (Start: 80 @28290 has 33 MA's), (128, 28464), (135, 28500), (165, 28623),

Gene: TuanPN_35 Start: 27357, Stop: 27719, Start Num: 81

Candidate Starts for TuanPN_35:

(34, 27177), (Start: 59 @27294 has 1 MA's), (Start: 81 @27357 has 70 MA's), (139, 27564), (153, 27618), (154, 27627), (157, 27636), (165, 27672),

Gene: Tuck_39 Start: 27855, Stop: 28298, Start Num: 91

Candidate Starts for Tuck_39:

(Start: 91 @27855 has 91 MA's), (154, 28107), (157, 28116), (167, 28158), (176, 28185), (188, 28221),

Gene: TukTuk_38 Start: 25769, Stop: 26095, Start Num: 97

Candidate Starts for TukTuk_38:

(Start: 97 @25769 has 52 MA's), (123, 25877), (157, 26000), (165, 26036), (167, 26042),

Gene: Turab_34 Start: 25291, Stop: 25641, Start Num: 91

Candidate Starts for Turab_34:

(35, 25111), (42, 25165), (Start: 91 @25291 has 91 MA's), (Start: 104 @25336 has 1 MA's), (116, 25375), (157, 25537), (167, 25579),

Gene: Tutumahutu_35 Start: 25185, Stop: 25628, Start Num: 91

Candidate Starts for Tutumahutu_35:

(Start: 91 @25185 has 91 MA's), (116, 25284), (154, 25437), (167, 25488),

Gene: Tweety19_35 Start: 24474, Stop: 24914, Start Num: 91

Candidate Starts for Tweety19_35:

(35, 24303), (37, 24327), (43, 24357), (56, 24399), (Start: 91 @24474 has 91 MA's), (Start: 104 @24519 has 1 MA's), (154, 24726), (167, 24777), (184, 24834),

Gene: Unstoppable_36 Start: 27048, Stop: 27410, Start Num: 81

Candidate Starts for Unstoppable_36:

(34, 26868), (Start: 59 @26985 has 1 MA's), (62, 26994), (Start: 81 @27048 has 70 MA's), (128, 27204), (139, 27255), (153, 27309), (154, 27318), (165, 27363),

Gene: Upyo_68 Start: 44581, Stop: 44982, Start Num: 91

Candidate Starts for Upyo_68:

(41, 44440), (Start: 91 @44581 has 91 MA's), (131, 44758), (140, 44794), (141, 44797), (165, 44881), (167, 44887), (176, 44914), (178, 44923), (192, 44959), (194, 44968),

Gene: Urza_38 Start: 27858, Stop: 28232, Start Num: 80

Candidate Starts for Urza_38:

(Start: 78 @27849 has 1 MA's), (Start: 80 @27858 has 33 MA's), (Start: 104 @27912 has 1 MA's), (128, 28026), (139, 28077), (155, 28143), (157, 28149), (165, 28185), (174, 28215),

Gene: UtzChips_43 Start: 27442, Stop: 27804, Start Num: 89

Candidate Starts for UtzChips_43:

(58, 27361), (Start: 89 @27442 has 17 MA's), (144, 27658), (167, 27733),

Gene: VResidence_36 Start: 25348, Stop: 25791, Start Num: 91

Candidate Starts for VResidence_36:

(Start: 91 @25348 has 91 MA's), (154, 25600), (157, 25609), (167, 25651), (168, 25657), (177, 25681), (199, 25768),

Gene: Vanseggelen_42 Start: 28601, Stop: 28966, Start Num: 81

Candidate Starts for Vanseggelen_42:

(Start: 81 @28601 has 70 MA's), (132, 28784), (139, 28811), (155, 28877),

Gene: Verabelle_40 Start: 28933, Stop: 29355, Start Num: 61

Candidate Starts for Verabelle_40:

(53, 28906), (61, 28933), (Start: 81 @28993 has 70 MA's), (103, 29044), (132, 29176), (136, 29194), (139, 29203), (155, 29269), (157, 29275),

Gene: Verse_37 Start: 29752, Stop: 30117, Start Num: 81

Candidate Starts for Verse_37:

(Start: 81 @29752 has 70 MA's), (132, 29935), (139, 29962), (155, 30028),

Gene: VieEnRose_37 Start: 27779, Stop: 28156, Start Num: 80
Candidate Starts for VieEnRose_37:
(Start: 78 @27770 has 1 MA's), (Start: 80 @27779 has 33 MA's), (Start: 104 @27836 has 1 MA's),
(128, 27950), (139, 28001), (155, 28067), (157, 28073), (165, 28109),

Gene: Vitas_34 Start: 23642, Stop: 23983, Start Num: 96
Candidate Starts for Vitas_34:
(Start: 96 @23642 has 22 MA's), (121, 23735), (167, 23915),

Gene: VroomVroom_40 Start: 26879, Stop: 27325, Start Num: 91
Candidate Starts for VroomVroom_40:
(51, 26771), (86, 26867), (Start: 91 @26879 has 91 MA's), (116, 26978), (167, 27182), (197, 27275),

Gene: WalkingDead_39 Start: 27238, Stop: 27564, Start Num: 97
Candidate Starts for WalkingDead_39:
(Start: 97 @27238 has 52 MA's), (129, 27364), (138, 27406), (154, 27460), (157, 27469), (161, 27490),
(165, 27505), (167, 27511),

Gene: Warda_35 Start: 25189, Stop: 25632, Start Num: 91
Candidate Starts for Warda_35:
(26, 24967), (Start: 91 @25189 has 91 MA's), (116, 25288), (154, 25441), (167, 25492),

Gene: Werner_36 Start: 27423, Stop: 27785, Start Num: 81
Candidate Starts for Werner_36:
(34, 27246), (Start: 59 @27360 has 1 MA's), (62, 27369), (75, 27408), (Start: 81 @27423 has 70 MA's),
(139, 27630), (153, 27684), (154, 27693), (157, 27702), (165, 27738),

Gene: Whatever_36 Start: 27423, Stop: 27785, Start Num: 81
Candidate Starts for Whatever_36:
(34, 27246), (Start: 59 @27360 has 1 MA's), (62, 27369), (75, 27408), (Start: 81 @27423 has 70 MA's),
(139, 27630), (153, 27684), (154, 27693), (157, 27702), (165, 27738),

Gene: Widow_60 Start: 41819, Stop: 42229, Start Num: 91
Candidate Starts for Widow_60:
(Start: 91 @41819 has 91 MA's), (126, 41972), (135, 42014), (137, 42023), (165, 42128), (167, 42134),

Gene: Wildwest_35 Start: 25377, Stop: 25820, Start Num: 91
Candidate Starts for Wildwest_35:
(35, 25194), (37, 25218), (43, 25248), (Start: 91 @25377 has 91 MA's), (154, 25629), (157, 25638),
(167, 25680), (168, 25686), (188, 25743), (200, 25800),

Gene: Wizzo_32 Start: 21394, Stop: 21038, Start Num: 87
Candidate Starts for Wizzo_32:
(12, 21841), (19, 21748), (71, 21427), (Start: 87 @21394 has 36 MA's), (136, 21193), (156, 21115),
(157, 21112), (165, 21076),

Gene: Yang_36 Start: 25545, Stop: 25904, Start Num: 90
Candidate Starts for Yang_36:
(Start: 90 @25545 has 5 MA's), (128, 25683), (144, 25758), (167, 25833),

Gene: Yasdnii_36 Start: 27475, Stop: 27837, Start Num: 81
Candidate Starts for Yasdnii_36:

(34, 27295), (Start: 59 @27412 has 1 MA's), (Start: 81 @27475 has 70 MA's), (139, 27682), (153, 27736), (154, 27745), (157, 27754), (165, 27790),

Gene: YesChef_35 Start: 25162, Stop: 25605, Start Num: 91
Candidate Starts for YesChef_35:
(Start: 91 @25162 has 91 MA's), (154, 25414), (167, 25465),

Gene: Yosif_39 Start: 29550, Stop: 29933, Start Num: 81
Candidate Starts for Yosif_39:
(Start: 81 @29550 has 70 MA's), (119, 29682), (128, 29727), (165, 29886),

Gene: Zainub_39 Start: 28633, Stop: 29010, Start Num: 80
Candidate Starts for Zainub_39:
(Start: 78 @28624 has 1 MA's), (Start: 80 @28633 has 33 MA's), (128, 28807), (135, 28843), (155, 28924), (165, 28966),

Gene: ZamZam_37 Start: 29022, Stop: 29384, Start Num: 81
Candidate Starts for ZamZam_37:
(Start: 81 @29022 has 70 MA's), (132, 29205), (139, 29232), (155, 29298), (157, 29304), (168, 29352),

Gene: Zemlya_38 Start: 27972, Stop: 28334, Start Num: 81
Candidate Starts for Zemlya_38:
(34, 27792), (Start: 59 @27909 has 1 MA's), (62, 27918), (Start: 81 @27972 has 70 MA's), (139, 28179), (153, 28233), (154, 28242), (155, 28245), (157, 28251), (165, 28287),

Gene: phiCAM_36 Start: 30877, Stop: 31242, Start Num: 81
Candidate Starts for phiCAM_36:
(Start: 81 @30877 has 70 MA's), (103, 30928), (132, 31060), (136, 31078), (139, 31087), (155, 31153), (157, 31159), (165, 31195),

Gene: phiHau3_38 Start: 27506, Stop: 27880, Start Num: 82
Candidate Starts for phiHau3_38:
(21, 27191), (25, 27212), (33, 27317), (36, 27341), (65, 27458), (Start: 82 @27506 has 3 MA's), (103, 27569), (116, 27626), (128, 27677), (139, 27728), (153, 27782), (168, 27848),

Gene: phiSASD1_10 Start: 25051, Stop: 25515, Start Num: 70
Candidate Starts for phiSASD1_10:
(Start: 70 @25051 has 4 MA's), (135, 25246), (138, 25258), (154, 25306), (155, 25309), (163, 25351), (173, 25384),