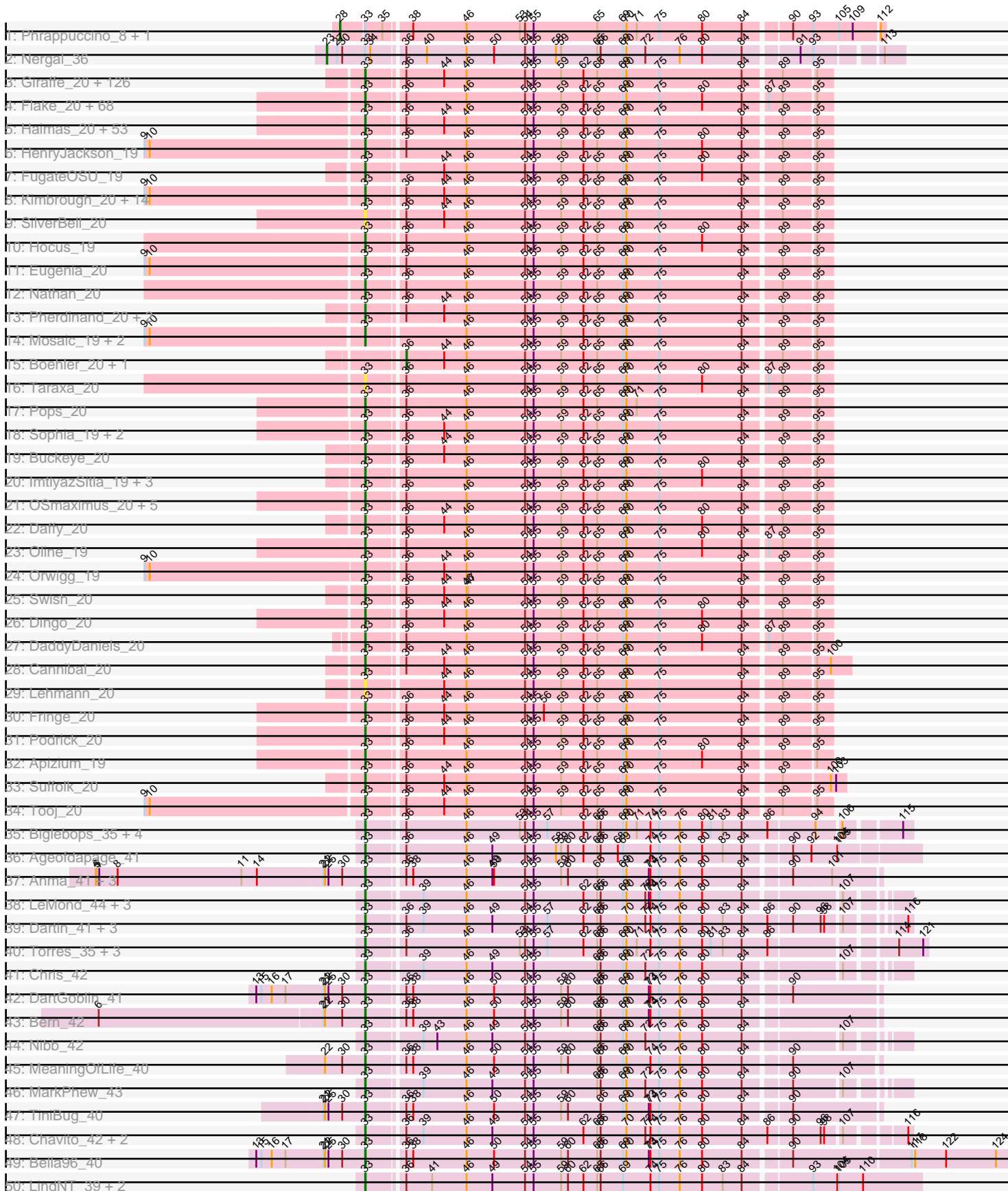
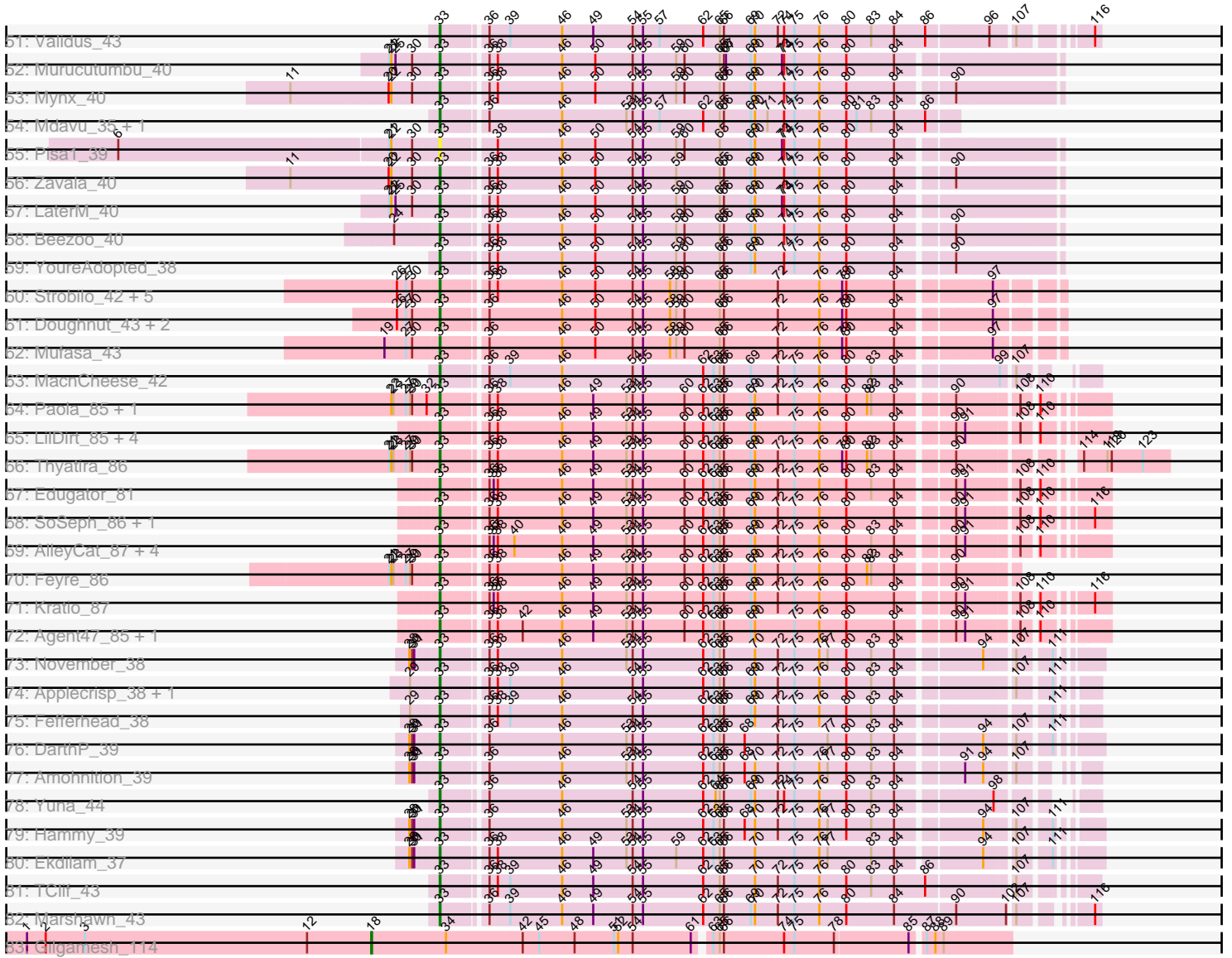


Pham 311098



Pham 311098



Note: Tracks are now grouped by subcluster and scaled. Switching in subcluster is indicated by changes in track color. Track scale is now set by default to display the region 30 bp upstream of start 1 to 30 bp downstream of the last possible start. If this default region is judged to be packed too tightly with annotated starts, the track will be further scaled to only show that region of the ORF with annotated starts. This action will be indicated by adding "Zoomed" to the title. For starts, yellow indicates the location of called starts comprised solely of Glimmer/GeneMark auto-annotations, green indicates the location of called starts with at least 1 manual gene annotation.

Pham 311098 Report

This analysis was run 06/27/26 on database version 652.

Pham number 311098 has 400 members, 36 are drafts.

Phages represented in each track:

- Track 1 : Phrappuccino_8, Settecandela_8
- Track 2 : Nergal_36
- Track 3 : Giraffe_20, Serpentine_0020, Simielle_19, Iridoclysis_20, Mikota_20, Chunky_20, Cornobble_19, Nicole21_20, FremontTroll_20, Hetaeria_20, Toni_19, Valjean_20, Murdoc_20, UncleHowie_20, Olive_20, Usavi_20, Fang_20, Gyarad_0020, Horchata_20, Zelda_20, Piglet_0019, EmpTee_20, Prickles_20, Antonia_19, Basato_21, Nacho_0020, KLucky39_20, Grand2040_19, Mutante_19, Solosis_19, Aelin_19, SDcharge11_20, Gareth_19, Placalicious_19, Megamind20_20, Newman_20, Waterdiva_20, RedRaider89_21, Jiraiya_19, NiaNia_20, OliverWalter_20, ThreeOh3D2_20, Frankicide_20, Burr_19, MitKao_20, Serendipity_20, Childish_19, Orion_20, Lulwa_20, CheetO_20, Roy17_20, Emiris_20, Mulan_19, Ricotta_19, Spartan300_20, KlimbOn_20, PinheadLarry_20, Mana_19, Timmi_19, True_19, Thunderbird_19, Chorkpop_20, Slatt_20, ProfessorX_20, Jesabah_20, Bishoperium_19, Virapocalypse_20, AbsoluteMadLad_19, Crownjwl_20, Mecca_19, Roliet_20, Harvey_20, Kikipoo_20, Selr12_20, QueenBeane_20, DonSanchon_19, Manad_19, Held_20, Lego3393_20, JangoPhett_20, Bluephacebaby_19, LostAndPhound_19, Haleema_19, Freya_19, Schadenfreude_19, Colbert_20, RedMaple_19, Phareon_20, Pacifista_19, Lulumae_19, LeiMonet_20, Inverness_20, YouGoGlencoco_20, LemonSlice_20, Chipette_21, HSavage_20, Eremos_20, Potter_19, Morgushi_20, EmGer13_19, IsaacEli_20, Puhltonio_20, Lasso_20, UAch1_20, Mesh1_20, Samaymay_20, Daka_20, Squiggle_20, Nyala_19, Phipps_20, Craff_20, Soto_20, Fozzie_19, Banjo_19, CamL_20, HighStump_19, MRabcd_19, Altwerkus_19, Vaticameos_20, GreenChile_20, LuckyMarjie_19, FriarPreacher_20, Cher_19, Kahve_19, Tomlarah_20, Vortex_20, Chah_20
- Track 4 : Flake_20, Phergie_19, Struggle_19, Larson_21, OneBrain_20, Pinkman_19, Rimu_20, Virgeve_19, Aleia_20, KingVeVeVe_20, MrPhizzler_20, JakeO_19, Karn_19, DelRivs_19, AngelCake_20, Magic8_20, Windsor_19, PhenghisKhan_19, Zonia_20, Trypo_20, PhrankReynolds_19, Coletti_20, Swiphy_20, Doddsville_20, Etaye_20, Labeouficaum_19, CharlieGBrown_19, BatteryCK_19, Kailash_20, Derpp_19, Phleuron_19, Keitherie_20, Durga_20, MichaelPhcott_19, Schueller_19, Gwennie1_20, ElvisPhasley_20, FleetyMac_19, TyrionL_19, MelsMeow_19, GeneCoco_20, Wallhey_19, Dati_20, Duggie_19, Soile_20, Kwksand96_19, Chute_19, JDog_19, Iridessa_20, Mag7_19, Chaelin_19, BoogieWoogie_19, HogWash_19, Longacauda_19, Brilliant_20, Sheila_20, Happabalu_20, Caspiboi_19, Jiminy_19, Hartsy_20, SirBeauregard_19, Weher20_20, Cornbread_19, PhatLouie_20, Veritas_19, Melc17_20, Plata_19, Khan1_20,

Nova1_19

- Track 5 : Haimas_20, ShadowBud_20, Vaishali24_19, Orfeu_19, Dione_19, Inchworm_20, Chuni_19, Riverton_20, Thora_20, DirtJuice_20, Charles1_20, Skippy_20, Maru_19, Squid_20, ABU_20, Hamish_20, Andre_20, Scoot17C_20, Sigman_20, Gwilliam_20, Megatron_20, Oosterbaan_20, PhrodoBaggins_19, Surely_20, Mcshane_19, Hertubise_20, Omniscient_20, Kwadwo_19, MiniBoss_20, Badfish_20, Robyn_19, DoesntMatter_20, SassyCat97_19, Quisquiliae_20, ShiVal_20, PallasAthena_20, LasagnaCat_20, JacAttac_20, Katniss_20, TomBombadil_20, AltPhacts_20, Kloppinator_20, PhatCats2014_20, Zaider_21, Morty_20, Phamished_20, DoLOn_21, Dice_19, Vista_20, Aonishiki_20, CampRoach_20, Anderson_20, Cosmolli16_19, PG1_20
- Track 6 : HenryJackson_19
- Track 7 : FugateOSU_19
- Track 8 : Kimbrough_20, Mesmerelda_19, BlackStallion_20, Matalotodo_20, FluffyNinja_20, Adriana_20, Phunky_20, Numberten_20, Yoshand_20, LeeLot_20, Beaglebox_19, Lopsy_19, Gophee_20, Riggan_20, SallyH_20
- Track 9 : SilverBell_20
- Track 10 : Hocus_19
- Track 11 : Eugenia_20
- Track 12 : Nathan_20
- Track 13 : Pherdinand_20, Jillium_19, Lumine_19
- Track 14 : Mosaic_19, Xavier_19, Telesworld_19
- Track 15 : Boehler_20, Roscoe_21
- Track 16 : Taraxa_20
- Track 17 : Pops_20
- Track 18 : Sophia_19, Olak_19, Plmatters_20
- Track 19 : Buckeye_20
- Track 20 : ImtiyazSitla_19, Maskar_19, BlacksBerry_19, Ashraf_19
- Track 21 : OSmaximus_20, Pipsqueak_20, Cobra_20, TallGrassMM_20, TooFast2Furius_21, Vivaldi_20
- Track 22 : Daffy_20
- Track 23 : Oline_19
- Track 24 : Orwigg_19
- Track 25 : Swish_20
- Track 26 : Dingo_20
- Track 27 : DaddyDaniels_20
- Track 28 : Cannibal_20
- Track 29 : Lehmann_20
- Track 30 : Fringe_20
- Track 31 : Podrick_20
- Track 32 : Apizium_19
- Track 33 : Suffolk_20
- Track 34 : Tooj_20
- Track 35 : Biglebops_35, LilPharaoh_35, SgtBeansprout_35, Nutello_35, Amelie_35
- Track 36 : Ageofdapage_41
- Track 37 : Anma_41, Urkel_40, DrHayes_40, SamuelLPlaqson_40
- Track 38 : LeMond_44, KiSi_44, Oscar_44, Scarlett_44
- Track 39 : Dartin_41, Richo_41, McMater_41, Peanam_41
- Track 40 : Torres_35, Nikao_35, Teejan_35, Enkosi_35
- Track 41 : Chris_42
- Track 42 : DartGoblin_41
- Track 43 : Bern_42
- Track 44 : Nibb_42

- Track 45 : MeaningOfLife_40
- Track 46 : MarkPhew_43
- Track 47 : TiniBug_40
- Track 48 : Chavito_42, Niklas_41, Shaobing_41
- Track 49 : Bella96_40
- Track 50 : LindNT_39, Prithvi_39, TreyKay_39
- Track 51 : Validus_43
- Track 52 : Murucutumbu_40
- Track 53 : Mynx_40
- Track 54 : Mdavu_35, Trice_35
- Track 55 : Pisa1_39
- Track 56 : Zavala_40
- Track 57 : LaterM_40
- Track 58 : Beezoo_40
- Track 59 : YoureAdopted_38
- Track 60 : Strobilo_42, DismalStressor_42, Findley_42, Marcoliusprime_42, Milly_42, DismalFunk_42
- Track 61 : Doughnut_43, BoostSeason_43, ZoeJ_42
- Track 62 : Mufasa_43
- Track 63 : MacnCheese_42
- Track 64 : Paola_85, Guillsminger_86
- Track 65 : LilDirt_85, BananenDer11_86, Collard_84, ViviJ_92, DoubleChamp_83
- Track 66 : Thyatira_86
- Track 67 : Edugator_81
- Track 68 : SoSeph_86, Heftyboy_86
- Track 69 : AlleyCat_87, Larva_86, Neighly_87, Psycho_85, Dadosky_87
- Track 70 : Feyre_86
- Track 71 : Kratio_87
- Track 72 : Agent47_85, InvictusManeo_83
- Track 73 : November_38
- Track 74 : Applecrisp_38, Ellie_37
- Track 75 : Fefferhead_38
- Track 76 : DarthP_39
- Track 77 : Amohnition_39
- Track 78 : Yuna_44
- Track 79 : Hammy_39
- Track 80 : Ekdilam_37
- Track 81 : TClif_43
- Track 82 : Marshawn_43
- Track 83 : Gilgamesh_114

Summary of Final Annotations (See graph section above for start numbers):

The start number called the most often in the published annotations is 33, it was called in 358 of the 364 non-draft genes in the pham.

Genes that call this "Most Annotated" start:

• ABU_20, AbsoluteMadLad_19, Adriana_20, Aelin_19, Agent47_85, Ageofdapage_41, Aleia_20, AlleyCat_87, AltPhacts_20, Altwerkus_19, Amelie_35, Amohnition_39, Anderson_20, Andre_20, AngelCake_20, Anma_41, Antonia_19,

Aonishiki_20, Apizium_19, Applecrisp_38, Ashraf_19, Badfish_20, BananenDer11_86, Banjo_19, Basato_21, BatteryCK_19, Beaglebox_19, Beezoo_40, Bella96_40, Bern_42, Binglebops_35, Bishoperium_19, BlackStallion_20, BlacksBerry_19, Bluephacebaby_19, BoogieWoogie_19, BoostSeason_43, Brilliant_20, Buckeye_20, Burr_19, CamL_20, CampRoach_20, Cannibal_20, Caspiboi_19, Chaelin_19, Chah_20, Charles1_20, CharlieGBrown_19, Chavito_42, CheetO_20, Cher_19, Childish_19, Chipette_21, Chorkpop_20, Chris_42, Chuni_19, Chunky_20, Chute_19, Cobra_20, Colbert_20, Coletti_20, Collard_84, Cornbread_19, Cornobble_19, Cosmolli16_19, Craff_20, Crownjwl_20, DaddyDaniels_20, Dadosky_87, Daffy_20, Daka_20, DartGoblin_41, DarthP_39, Dartin_41, Dati_20, DelRivs_19, Derpp_19, Dice_19, Dingo_20, Dione_19, DirtJuice_20, DismalFunk_42, DismalStressor_42, Doddsville_20, DoesntMatter_20, DoOn_21, DonSancho_19, DoubleChamp_83, Doughnut_43, DrHayes_40, Duggie_19, Durga_20, Edugator_81, Ekdilam_37, Ellie_37, ElvisPhasley_20, EmGer13_19, Emiris_20, EmpTee_20, Enkosi_35, Eremos_20, Etaye_20, Eugenia_20, Fang_20, Fefferhead_38, Feyre_86, Findley_42, Flake_20, FleetyMac_19, FluffyNinja_20, Fozzie_19, Frankicide_20, FremontTroll_20, Freya_19, FriarPreacher_20, Fringe_20, FugateOSU_19, Gareth_19, GeneCoco_20, Giraffe_20, Gophee_20, Grand2040_19, GreenChile_20, Guillsminger_86, Gwennie1_20, Gwilliam_20, Gyarad_0020, HSavage_20, Haimas_20, Haleema_19, Hamish_20, Hammy_39, Happabalu_20, Hartsy_20, Harvey_20, Heftyboy_86, Held_20, HenryJackson_19, Hertubise_20, Hetaeria_20, HighStump_19, Hocus_19, HogWash_19, Horchata_20, ImtiyazSitla_19, Inchworm_20, Inverness_20, InvictusManeo_83, Iridessa_20, Iridoclysis_20, IsaacEli_20, JDog_19, JacAttac_20, JakeO_19, JangoPhett_20, Jesabah_20, Jillium_19, Jiminy_19, Jiraiya_19, KLucky39_20, Kahve_19, Kailash_20, Karn_19, Katniss_20, Keitherie_20, Khan1_20, KiSi_44, Kikipoo_20, Kimbrough_20, KingVeVeVe_20, KlimbOn_20, Kloppinator_20, Kratio_87, Kwadwo_19, Kwksand96_19, Labeouficaum_19, Larson_21, Larva_86, LasagnaCat_20, Lasso_20, LaterM_40, LeMond_44, LeeLot_20, Lego3393_20, Lehmann_20, LeiMonet_20, LemonSlice_20, LiDirt_85, LilPharaoh_35, LindNT_39, Longacauda_19, Lopsy_19, LostAndPhound_19, LuckyMarjie_19, Lulumae_19, Lulwa_20, Lumine_19, MRabcd_19, MacnCheese_42, Mag7_19, Magic8_20, Mana_19, Manad_19, Marcoliusprime_42, MarkPhew_43, Marshawn_43, Maru_19, Maskar_19, Matalotodo_20, McMater_41, Mcshane_19, Mdavu_35, MeaningOfLife_40, Mecca_19, Megamind20_20, Megatron_20, Melc17_20, MelsMeow_19, Mesh1_20, Mesmerelda_19, MichaelPhcott_19, Mikota_20, Milly_42, MiniBoss_20, MitKao_20, Morgushi_20, Morty_20, Mosaic_19, MrPhizzler_20, Mufasa_43, Mulan_19, Murdoc_20, Murucutumbu_40, Mutante_19, Mynx_40, Nacho_0020, Nathan_20, Neighly_87, Newman_20, NiaNia_20, Nibb_42, Nicole21_20, Nikao_35, Niklas_41, Nova1_19, November_38, Numberten_20, Nutello_35, Nyala_19, OSmaximus_20, Olak_19, Oline_19, Olive_20, OliverWalter_20, Omniscient_20, OneBrain_20, Oosterbaan_20, Orfeu_19, Orion_20, Orwigg_19, Oscar_44, PG1_20, Pacifista_19, PallasAthena_20, Paola_85, Peanam_41, Phamished_20, Phareon_20, PhatCats2014_20, PhatLouie_20, PhenghisKhan_19, Pherdinand_20, Phergie_19, Phipps_20, Phleuron_19, PhrankReynolds_19, PhrodoBaggins_19, Phunky_20, Piglet_0019, PinheadLarry_20, Pinkman_19, Pipsqueak_20, Pisa1_39, Placalicious_19, Plata_19, Plmatters_20, Podrick_20, Pops_20, Potter_19, Prickles_20, Prithvi_39, ProfessorX_20, Psycho_85, Puhltonio_20, QueenBeane_20, Quisquilliae_20, RedMaple_19, RedRaider89_21, Richo_41, Ricotta_19, Riggan_20, Rimu_20, Riverton_20, Robyn_19, Roliet_20, Roy17_20, SDcharge11_20, SallyH_20, Samaymay_20, SamuelLPlaqson_40, SassyCat97_19, Scarlett_44, Schadenfreude_19, Schueller_19, Scoot17C_20, Selr12_20, Serendipity_20, Serpentine_0020,

SgtBeansprout_35, ShadowBud_20, Shaobing_41, Sheila_20, ShiVal_20, Sigman_20, SilverBell_20, Simielle_19, SirBeauregard_19, Skippy_20, Slatt_20, SoSeph_86, Soile_20, Solosis_19, Sophia_19, Soto_20, Spartan300_20, Squid_20, Squiggle_20, Strobilo_42, Struggle_19, Suffolk_20, Surely_20, Swiphy_20, Swish_20, TClif_43, TallGrassMM_20, Taraxa_20, Teejan_35, Telesworld_19, Thora_20, ThreeOh3D2_20, Thunderbird_19, Thyatira_86, Timmi_19, TiniBug_40, TomBombadil_20, Tomlarah_20, Toni_19, TooFast2Furius_21, Tooj_20, Torres_35, TreyKay_39, Trice_35, True_19, Trypo_20, TyrionL_19, UAch1_20, UncleHowie_20, Urkel_40, Usavi_20, Vaishali24_19, Validus_43, Valjean_20, Vaticameos_20, Veritas_19, Virapocalypse_20, Virgeve_19, Vista_20, Vivaldi_20, ViviJ_92, Vortex_20, Wallhey_19, Waterdiva_20, Weher20_20, Windsor_19, Xavier_19, Yoshand_20, YouGoGlencoco_20, YoureAdopted_38, Yuna_44, Zaider_21, Zavala_40, Zelda_20, ZoeJ_42, Zonia_20,

Genes that have the "Most Annotated" start but do not call it:

- Nergal_36, Phrappuccino_8, Settecandela_8,

Genes that do not have the "Most Annotated" start:

- Boehler_20, Gilgamesh_114, Roscoe_21,

Summary by start number:

Start 18:

- Found in 1 of 400 (0.2%) of genes in pham
- Manual Annotations of this start: 1 of 364
- Called 100.0% of time when present
- Phage (with cluster) where this start called: Gilgamesh_114 (singleton),

Start 23:

- Found in 5 of 400 (1.2%) of genes in pham
- Manual Annotations of this start: 1 of 364
- Called 20.0% of time when present
- Phage (with cluster) where this start called: Nergal_36 (AG),

Start 28:

- Found in 7 of 400 (1.8%) of genes in pham
- Manual Annotations of this start: 2 of 364
- Called 28.6% of time when present
- Phage (with cluster) where this start called: Phrappuccino_8 (AA), Settecandela_8 (AA),

Start 33:

- Found in 397 of 400 (99.2%) of genes in pham
- Manual Annotations of this start: 358 of 364
- Called 99.2% of time when present
- Phage (with cluster) where this start called: ABU_20 (B1), AbsoluteMadLad_19 (B1), Adriana_20 (B1), Aelin_19 (B1), Agent47_85 (K5), Ageofdapage_41 (K1), Aleia_20 (B1), AlleyCat_87 (K5), AltPhacts_20 (B1), Altwerkus_19 (B1), Amelie_35 (K1), Amohntion_39 (K6), Anderson_20 (B1), Andre_20 (B1), AngelCake_20 (B1), Anma_41 (K1), Antonia_19 (B1), Aonishiki_20 (B1), Apizium_19 (B1), Applecrisp_38 (K6), Ashraf_19 (B1), Badfish_20 (B1), BananenDer11_86 (K5), Banjo_19 (B1), Basato_21 (B1), BatteryCK_19 (B1), Beaglebox_19 (B1), Beezoo_40 (K1), Bella96_40 (K1), Bern_42 (K1), Binglebops_35 (K1), Bishoperium_19 (B1),

BlackStallion_20 (B1), BlacksBerry_19 (B1), Bluephacebaby_19 (B1), BoogieWoogie_19 (B1), BoostSeason_43 (K2), Brilliant_20 (B1), Buckeye_20 (B1), Burr_19 (B1), CamL_20 (B1), CampRoach_20 (B1), Cannibal_20 (B1), Caspiroi_19 (B1), Chaelin_19 (B1), Chah_20 (B1), Charles1_20 (B1), CharlieGBrown_19 (B1), Chavito_42 (K1), CheetO_20 (B1), Cher_19 (B1), Childish_19 (B1), Chipette_21 (B1), Chorkpop_20 (B1), Chris_42 (K1), Chuni_19 (B1), Chunky_20 (B1), Chute_19 (B1), Cobra_20 (B1), Colbert_20 (B1), Coletti_20 (B1), Collard_84 (K5), Cornbread_19 (B1), Cornobble_19 (B1), Cosmolli16_19 (B1), Craff_20 (B1), Crownjwl_20 (B1), DaddyDaniels_20 (B1), Dadosky_87 (K5), Daffy_20 (B1), Daka_20 (B1), DartGoblin_41 (K1), DarthP_39 (K6), Dartin_41 (K1), Dati_20 (B1), DelRivs_19 (B1), Derpp_19 (B1), Dice_19 (B1), Dingo_20 (B1), Dione_19 (B1), DirtJuice_20 (B1), DismalFunk_42 (K2), DismalStressor_42 (K2), Doddsville_20 (B1), DoesntMatter_20 (B1), DolOn_21 (B1), DonSanchon_19 (B1), DoubleChamp_83 (K5), Doughnut_43 (K2), DrHayes_40 (K1), Duggie_19 (B1), Durga_20 (B1), Edugator_81 (K5), Ekdilam_37 (K6), Ellie_37 (K6), ElvisPhasley_20 (B1), EmGer13_19 (B1), Emiris_20 (B1), EmpTee_20 (B1), Enkosi_35 (K1), Eremos_20 (B1), Etaye_20 (B1), Eugenia_20 (B1), Fang_20 (B1), Fefferhead_38 (K6), Feyre_86 (K5), Findley_42 (K2), Flake_20 (B1), FleetyMac_19 (B1), FluffyNinja_20 (B1), Fozzie_19 (B1), Frankicide_20 (B1), FremontTroll_20 (B1), Freya_19 (B1), FriarPreacher_20 (B1), Fringe_20 (B1), FugateOSU_19 (B1), Gareth_19 (B1), GeneCoco_20 (B1), Giraffe_20 (B1), Gophee_20 (B1), Grand2040_19 (B1), GreenChile_20 (B1), Guillsminger_86 (K5), Gwennie1_20 (B1), Gwilliam_20 (B1), Gyarad_0020 (B1), HSavage_20 (B1), Haimas_20 (B1), Haleema_19 (B1), Hamish_20 (B1), Hammy_39 (K6), Happabalu_20 (B1), Hartsy_20 (B1), Harvey_20 (B1), Heftyboy_86 (K5), Held_20 (B1), HenryJackson_19 (B1), Hertubise_20 (B1), Hetaeria_20 (B1), HighStump_19 (B1), Hocus_19 (B1), HogWash_19 (B1), Horchata_20 (B1), ImtiyazSitla_19 (B1), Inchworm_20 (B1), Inverness_20 (B1), InvictusManeo_83 (K5), Iridessa_20 (B1), Iridoclysis_20 (B1), IsaacEli_20 (B1), JDog_19 (B1), JacAttac_20 (B1), JakeO_19 (B1), JangoPhett_20 (B1), Jesabah_20 (B1), Jillium_19 (B1), Jiminy_19 (B1), Jiraiya_19 (B1), KLUcky39_20 (B1), Kahve_19 (B1), Kailash_20 (B1), Karn_19 (B1), Katniss_20 (B1), Keitherie_20 (B1), Khan1_20 (B1), KiSi_44 (K1), Kikipoo_20 (B1), Kimbrough_20 (B1), KingVeVeVe_20 (B1), KlimbOn_20 (B1), Kloppinator_20 (B1), Kratio_87 (K5), Kwadwo_19 (B1), Kwksand96_19 (B1), Labeouficaum_19 (B1), Larson_21 (B1), Larva_86 (K5), LasagnaCat_20 (B1), Lasso_20 (B1), LaterM_40 (K1), LeMond_44 (K1), LeeLot_20 (B1), Lego3393_20 (B1), Lehmann_20 (B1), LeiMonet_20 (B1), LemonSlice_20 (B1), LilDirt_85 (K5), LilPharaoh_35 (K1), LindNT_39 (K1), Longacauda_19 (B1), Lopsy_19 (B1), LostAndPhound_19 (B1), LuckyMarjie_19 (B1), Lulumae_19 (B1), Lulwa_20 (B1), Lumine_19 (B1), MRabcd_19 (B1), MacnCheese_42 (K3), Mag7_19 (B1), Magic8_20 (B1), Mana_19 (B1), Manad_19 (B1), Marcoliusprime_42 (K2), MarkPhew_43 (K1), Marshawn_43 (K6), Maru_19 (B1), Maskar_19 (B1), Matalotodo_20 (B1), McMater_41 (K1), Mcshane_19 (B1), Mdavu_35 (K1), MeaningOfLife_40 (K1), Mecca_19 (B1), Megamind20_20 (B1), Megatron_20 (B1), Melc17_20 (B1), MelsMeow_19 (B1), Mesh1_20 (B1), Mesmerelda_19 (B1), MichaelPhcott_19 (B1), Mikota_20 (B1), Milly_42 (K2), MiniBoss_20 (B1), MitKao_20 (B1), Morgushi_20 (B1), Morty_20 (B1), Mosaic_19 (B1), MrPhizzler_20 (B1), Mufasa_43 (K2), Mulan_19 (B1), Murdoc_20 (B1), Murucutumbu_40 (K1), Mutante_19 (B1), Mynx_40 (K1), Nacho_0020 (B1), Nathan_20 (B1), Neighly_87 (K3), Newman_20 (B1), NiaNia_20 (B1), Nibb_42 (K1), Nicole21_20 (B1), Nikao_35 (K1), Niklas_41 (K1), Nova1_19 (B1), November_38 (K6), Numberten_20 (B1), Nutello_35 (K1), Nyala_19 (B1), OSmaximus_20 (B1), Olak_19 (B1), Oline_19 (B1), Olive_20 (B1), OliverWalter_20 (B1), Omniscient_20 (B1), OneBrain_20 (B1), Oosterbaan_20 (B1), Orfeu_19 (B1), Orion_20 (B1), Orwigg_19 (B1), Oscar_44 (K1), PG1_20 (B1), Pacifista_19 (B1),

PallasAthena_20 (B1), Paola_85 (K5), Peanam_41 (K1), Phamished_20 (B1), Phareon_20 (B1), PhatCats2014_20 (B1), PhatLouie_20 (B1), PhenghisKhan_19 (B1), Pherdinand_20 (B1), Phergie_19 (B1), Phipps_20 (B1), Phleuron_19 (B1), PhrankReynolds_19 (B1), PhrodoBaggins_19 (B1), Phunky_20 (B1), Piglet_0019 (B1), PinheadLarry_20 (B1), Pinkman_19 (B1), Pipsqueak_20 (B1), Pisa1_39 (K1), Placalicious_19 (B1), Plata_19 (B1), Plmatters_20 (B1), Podrick_20 (B1), Pops_20 (B1), Potter_19 (B1), Prickles_20 (B1), Prithvi_39 (K1), ProfessorX_20 (B1), Psycho_85 (K5), Puhltonio_20 (B1), QueenBeane_20 (B1), Quisquiliae_20 (B1), RedMaple_19 (B1), RedRaider89_21 (B1), Richo_41 (K1), Ricotta_19 (B1), Riggan_20 (B1), Rimu_20 (B1), Riverton_20 (B1), Robyn_19 (B1), Roliet_20 (B1), Roy17_20 (B1), SDcharge11_20 (B1), SallyH_20 (B1), Samaymay_20 (B1), SamuelLPlaqson_40 (K1), SassyCat97_19 (B1), Scarlett_44 (K1), Schadenfreude_19 (B1), Schueller_19 (B1), Scoot17C_20 (B1), Selr12_20 (B1), Serendipity_20 (B1), Serpentine_0020 (B1), SgtBeansprout_35 (K1), ShadowBud_20 (B1), Shaobing_41 (K1), Sheila_20 (B1), ShiVal_20 (B1), Sigman_20 (B1), SilverBell_20 (B1), Simielle_19 (B1), SirBeauregard_19 (B1), Skippy_20 (B1), Slatt_20 (B1), SoSeph_86 (K5), Soile_20 (B1), Solosis_19 (B1), Sophia_19 (B1), Soto_20 (B1), Spartan300_20 (B1), Squid_20 (B1), Squiggle_20 (B1), Strobilo_42 (K2), Struggle_19 (B1), Suffolk_20 (B1), Surely_20 (B1), Swiphy_20 (B1), Swish_20 (B1), TClif_43 (K6), TallGrassMM_20 (B1), Taraxa_20 (B1), Teejan_35 (K1), Telesworld_19 (B1), Thora_20 (B1), ThreeOh3D2_20 (B1), Thunderbird_19 (B1), Thyatira_86 (K5), Timmi_19 (B1), TiniBug_40 (K1), TomBombadil_20 (B1), Tomlarah_20 (B1), Toni_19 (B1), TooFast2Furius_21 (B1), Tooj_20 (B1), Torres_35 (K1), TreyKay_39 (K1), Trice_35 (K1), True_19 (B1), Trypo_20 (B1), TyrionL_19 (B1), UAch1_20 (B1), UncleHowie_20 (B1), Urkel_40 (K1), Usavi_20 (B1), Vaishali24_19 (B1), Validus_43 (K1), Valjean_20 (B1), Vaticameos_20 (B1), Veritas_19 (B1), Virapocalypse_20 (B1), Virgeve_19 (B1), Vista_20 (B1), Vivaldi_20 (B1), ViviJ_92 (K5), Vortex_20 (B1), Wallhey_19 (B1), Waterdiva_20 (B1), Weher20_20 (B1), Windsor_19 (B1), Xavier_19 (B1), Yoshand_20 (B1), YouGoGlencoco_20 (B1), YoureAdopted_38 (K1), Yuna_44 (K6), Zaider_21 (B1), Zavala_40 (K1), Zelda_20 (B1), ZoeJ_42 (K2), Zonia_20 (B1),

Start 36:

- Found in 384 of 400 (96.0%) of genes in pham
- Manual Annotations of this start: 2 of 364
- Called 0.5% of time when present
- Phage (with cluster) where this start called: Boehler_20 (B1), Roscoe_21 (B1),

Summary by clusters:

There are 9 clusters represented in this pham: AA, singleton, AG, K3, K2, K1, K6, K5, B1,

Info for manual annotations of cluster AA:

- Start number 28 was manually annotated 2 times for cluster AA.

Info for manual annotations of cluster AG:

- Start number 23 was manually annotated 1 time for cluster AG.

Info for manual annotations of cluster B1:

- Start number 33 was manually annotated 280 times for cluster B1.
- Start number 36 was manually annotated 2 times for cluster B1.

Info for manual annotations of cluster K1:

- Start number 33 was manually annotated 38 times for cluster K1.

Info for manual annotations of cluster K2:

- Start number 33 was manually annotated 10 times for cluster K2.

Info for manual annotations of cluster K3:

- Start number 33 was manually annotated 1 time for cluster K3.

Info for manual annotations of cluster K5:

- Start number 33 was manually annotated 18 times for cluster K5.

Info for manual annotations of cluster K6:

- Start number 33 was manually annotated 11 times for cluster K6.

Gene Information:

Gene: ABU_20 Start: 16635, Stop: 15859, Start Num: 33

Candidate Starts for ABU_20:

(Start: 33 @16635 has 358 MA's), (Start: 36 @16578 has 2 MA's), (44, 16515), (46, 16476), (54, 16374), (55, 16359), (59, 16311), (62, 16272), (65, 16248), (69, 16203), (70, 16197), (75, 16140), (84, 15996), (89, 15936), (95, 15885),

Gene: AbsoluteMadLad_19 Start: 16637, Stop: 15861, Start Num: 33

Candidate Starts for AbsoluteMadLad_19:

(Start: 33 @16637 has 358 MA's), (Start: 36 @16580 has 2 MA's), (44, 16517), (46, 16478), (54, 16376), (55, 16361), (59, 16313), (62, 16274), (65, 16250), (69, 16205), (70, 16199), (75, 16142), (84, 15998), (89, 15938), (95, 15887),

Gene: Adriana_20 Start: 16637, Stop: 15861, Start Num: 33

Candidate Starts for Adriana_20:

(9, 17009), (10, 17000), (Start: 33 @16637 has 358 MA's), (Start: 36 @16580 has 2 MA's), (44, 16517), (46, 16478), (54, 16376), (55, 16361), (59, 16313), (62, 16274), (65, 16250), (69, 16205), (70, 16199), (75, 16142), (84, 15998), (89, 15938), (95, 15887),

Gene: Aelin_19 Start: 16202, Stop: 15426, Start Num: 33

Candidate Starts for Aelin_19:

(Start: 33 @16202 has 358 MA's), (Start: 36 @16145 has 2 MA's), (44, 16082), (46, 16043), (54, 15941), (55, 15926), (59, 15878), (62, 15839), (65, 15815), (69, 15770), (70, 15764), (75, 15707), (84, 15563), (89, 15503), (95, 15452),

Gene: Agent47_85 Start: 54005, Stop: 54889, Start Num: 33

Candidate Starts for Agent47_85:

(Start: 33 @54005 has 358 MA's), (Start: 36 @54062 has 2 MA's), (38, 54074), (42, 54110), (46, 54167), (49, 54212), (53, 54260), (54, 54269), (55, 54284), (60, 54344), (62, 54371), (63, 54386), (65, 54395), (66, 54401), (69, 54440), (70, 54446), (75, 54503), (76, 54539), (80, 54578), (84, 54647), (90, 54719), (91, 54731), (108, 54794), (110, 54812),

Gene: Ageofdapage_41 Start: 31808, Stop: 32728, Start Num: 33

Candidate Starts for Ageofdapage_41:

(Start: 33 @31808 has 358 MA's), (Start: 36 @31865 has 2 MA's), (46, 31970), (49, 32015), (54, 32072), (55, 32087), (58, 32126), (59, 32135), (60, 32147), (62, 32174), (65, 32198), (66, 32204), (68,

32234), (69, 32243), (74, 32291), (75, 32306), (76, 32342), (80, 32381), (83, 32417), (84, 32450), (90, 32522), (92, 32552), (104, 32597), (105, 32600),

Gene: Aleia_20 Start: 16214, Stop: 15438, Start Num: 33

Candidate Starts for Aleia_20:

(Start: 33 @16214 has 358 MA's), (Start: 36 @16157 has 2 MA's), (46, 16055), (54, 15953), (55, 15938), (59, 15890), (62, 15851), (65, 15827), (69, 15782), (70, 15776), (75, 15719), (80, 15644), (84, 15575), (87, 15539), (89, 15515), (95, 15464),

Gene: AlleyCat_87 Start: 55143, Stop: 56027, Start Num: 33

Candidate Starts for AlleyCat_87:

(Start: 33 @55143 has 358 MA's), (Start: 36 @55200 has 2 MA's), (37, 55206), (38, 55212), (40, 55236), (46, 55305), (49, 55350), (53, 55398), (54, 55407), (55, 55422), (60, 55482), (62, 55509), (63, 55524), (65, 55533), (66, 55539), (69, 55578), (70, 55584), (72, 55617), (75, 55641), (76, 55677), (80, 55716), (83, 55752), (84, 55785), (90, 55857), (91, 55869), (108, 55932), (110, 55950),

Gene: AltPhacts_20 Start: 16630, Stop: 15845, Start Num: 33

Candidate Starts for AltPhacts_20:

(Start: 33 @16630 has 358 MA's), (Start: 36 @16573 has 2 MA's), (44, 16510), (46, 16471), (54, 16369), (55, 16354), (59, 16306), (62, 16267), (65, 16243), (69, 16198), (70, 16192), (75, 16135), (84, 15991), (89, 15931), (95, 15880),

Gene: Altwerkus_19 Start: 16331, Stop: 15555, Start Num: 33

Candidate Starts for Altwerkus_19:

(Start: 33 @16331 has 358 MA's), (Start: 36 @16274 has 2 MA's), (44, 16211), (46, 16172), (54, 16070), (55, 16055), (59, 16007), (62, 15968), (65, 15944), (69, 15899), (70, 15893), (75, 15836), (84, 15692), (89, 15632), (95, 15581),

Gene: Amelie_35 Start: 30629, Stop: 31519, Start Num: 33

Candidate Starts for Amelie_35:

(Start: 33 @30629 has 358 MA's), (Start: 36 @30686 has 2 MA's), (46, 30791), (53, 30884), (54, 30893), (55, 30908), (57, 30932), (62, 30995), (65, 31019), (66, 31025), (69, 31064), (70, 31070), (71, 31088), (74, 31112), (75, 31127), (76, 31163), (80, 31202), (81, 31217), (83, 31238), (84, 31271), (86, 31316), (94, 31388), (106, 31424), (115, 31502),

Gene: Amohndition_39 Start: 31281, Stop: 32135, Start Num: 33

Candidate Starts for Amohndition_39:

(Start: 28 @31245 has 2 MA's), (30, 31248), (31, 31251), (Start: 33 @31281 has 358 MA's), (Start: 36 @31338 has 2 MA's), (46, 31443), (53, 31536), (54, 31545), (55, 31560), (62, 31647), (63, 31662), (65, 31671), (66, 31677), (68, 31707), (70, 31722), (72, 31755), (75, 31779), (76, 31815), (77, 31827), (80, 31854), (83, 31890), (84, 31923), (91, 32007), (94, 32028), (107, 32064),

Gene: Anderson_20 Start: 16628, Stop: 15852, Start Num: 33

Candidate Starts for Anderson_20:

(Start: 33 @16628 has 358 MA's), (Start: 36 @16571 has 2 MA's), (44, 16508), (46, 16469), (54, 16367), (55, 16352), (59, 16304), (62, 16265), (65, 16241), (69, 16196), (70, 16190), (75, 16133), (84, 15989), (89, 15929), (95, 15878),

Gene: Andre_20 Start: 16626, Stop: 15850, Start Num: 33

Candidate Starts for Andre_20:

(Start: 33 @16626 has 358 MA's), (Start: 36 @16569 has 2 MA's), (44, 16506), (46, 16467), (54, 16365), (55, 16350), (59, 16302), (62, 16263), (65, 16239), (69, 16194), (70, 16188), (75, 16131), (84, 15987), (89, 15927), (95, 15876),

Gene: AngelCake_20 Start: 16638, Stop: 15862, Start Num: 33

Candidate Starts for AngelCake_20:

(Start: 33 @16638 has 358 MA's), (Start: 36 @16581 has 2 MA's), (46, 16479), (54, 16377), (55, 16362), (59, 16314), (62, 16275), (65, 16251), (69, 16206), (70, 16200), (75, 16143), (80, 16068), (84, 15999), (87, 15963), (89, 15939), (95, 15888),

Gene: Anma_41 Start: 31795, Stop: 32652, Start Num: 33

Candidate Starts for Anma_41:

(4, 31339), (5, 31342), (7, 31345), (8, 31375), (11, 31591), (14, 31618), (21, 31729), (22, 31732), (25, 31738), (30, 31762), (Start: 33 @31795 has 358 MA's), (Start: 36 @31852 has 2 MA's), (38, 31864), (46, 31957), (49, 32002), (50, 32005), (54, 32059), (55, 32074), (59, 32122), (60, 32134), (65, 32185), (69, 32230), (70, 32236), (73, 32275), (74, 32278), (75, 32293), (76, 32329), (80, 32368), (84, 32437), (90, 32509), (101, 32575),

Gene: Antonia_19 Start: 16202, Stop: 15426, Start Num: 33

Candidate Starts for Antonia_19:

(Start: 33 @16202 has 358 MA's), (Start: 36 @16145 has 2 MA's), (44, 16082), (46, 16043), (54, 15941), (55, 15926), (59, 15878), (62, 15839), (65, 15815), (69, 15770), (70, 15764), (75, 15707), (84, 15563), (89, 15503), (95, 15452),

Gene: Aonishiki_20 Start: 16656, Stop: 15880, Start Num: 33

Candidate Starts for Aonishiki_20:

(Start: 33 @16656 has 358 MA's), (Start: 36 @16599 has 2 MA's), (44, 16536), (46, 16497), (54, 16395), (55, 16380), (59, 16332), (62, 16293), (65, 16269), (69, 16224), (70, 16218), (75, 16161), (84, 16017), (89, 15957), (95, 15906),

Gene: Apizium_19 Start: 16371, Stop: 15595, Start Num: 33

Candidate Starts for Apizium_19:

(Start: 33 @16371 has 358 MA's), (Start: 36 @16314 has 2 MA's), (46, 16212), (54, 16110), (55, 16095), (59, 16047), (62, 16008), (65, 15984), (69, 15939), (70, 15933), (75, 15876), (80, 15801), (84, 15732), (89, 15672), (95, 15621),

Gene: Applecrisp_38 Start: 31335, Stop: 32201, Start Num: 33

Candidate Starts for Applecrisp_38:

(29, 31299), (Start: 33 @31335 has 358 MA's), (Start: 36 @31392 has 2 MA's), (38, 31404), (39, 31422), (46, 31497), (54, 31599), (55, 31614), (62, 31701), (63, 31716), (65, 31725), (66, 31731), (69, 31770), (70, 31776), (72, 31809), (75, 31833), (76, 31869), (80, 31908), (83, 31944), (84, 31977), (107, 32118), (111, 32160),

Gene: Ashraf_19 Start: 16190, Stop: 15414, Start Num: 33

Candidate Starts for Ashraf_19:

(Start: 33 @16190 has 358 MA's), (Start: 36 @16133 has 2 MA's), (46, 16031), (54, 15929), (55, 15914), (59, 15866), (62, 15827), (65, 15803), (69, 15758), (70, 15752), (75, 15695), (80, 15620), (84, 15551), (89, 15491), (95, 15440),

Gene: Badfish_20 Start: 16660, Stop: 15884, Start Num: 33

Candidate Starts for Badfish_20:

(Start: 33 @16660 has 358 MA's), (Start: 36 @16603 has 2 MA's), (44, 16540), (46, 16501), (54, 16399), (55, 16384), (59, 16336), (62, 16297), (65, 16273), (69, 16228), (70, 16222), (75, 16165), (84, 16021), (89, 15961), (95, 15910),

Gene: BananenDer11_86 Start: 54255, Stop: 55139, Start Num: 33

Candidate Starts for BananenDer11_86:

(Start: 33 @54255 has 358 MA's), (Start: 36 @54312 has 2 MA's), (38, 54324), (46, 54417), (49, 54462), (53, 54510), (54, 54519), (55, 54534), (60, 54594), (62, 54621), (63, 54636), (65, 54645), (66, 54651), (69, 54690), (70, 54696), (75, 54753), (76, 54789), (80, 54828), (84, 54897), (90, 54969), (91, 54981), (108, 55044), (110, 55062),

Gene: Banjo_19 Start: 16338, Stop: 15562, Start Num: 33

Candidate Starts for Banjo_19:

(Start: 33 @16338 has 358 MA's), (Start: 36 @16281 has 2 MA's), (44, 16218), (46, 16179), (54, 16077), (55, 16062), (59, 16014), (62, 15975), (65, 15951), (69, 15906), (70, 15900), (75, 15843), (84, 15699), (89, 15639), (95, 15588),

Gene: Basato_21 Start: 16863, Stop: 16087, Start Num: 33

Candidate Starts for Basato_21:

(Start: 33 @16863 has 358 MA's), (Start: 36 @16806 has 2 MA's), (44, 16743), (46, 16704), (54, 16602), (55, 16587), (59, 16539), (62, 16500), (65, 16476), (69, 16431), (70, 16425), (75, 16368), (84, 16224), (89, 16164), (95, 16113),

Gene: BatteryCK_19 Start: 16194, Stop: 15418, Start Num: 33

Candidate Starts for BatteryCK_19:

(Start: 33 @16194 has 358 MA's), (Start: 36 @16137 has 2 MA's), (46, 16035), (54, 15933), (55, 15918), (59, 15870), (62, 15831), (65, 15807), (69, 15762), (70, 15756), (75, 15699), (80, 15624), (84, 15555), (87, 15519), (89, 15495), (95, 15444),

Gene: Beaglebox_19 Start: 16356, Stop: 15580, Start Num: 33

Candidate Starts for Beaglebox_19:

(9, 16728), (10, 16719), (Start: 33 @16356 has 358 MA's), (Start: 36 @16299 has 2 MA's), (44, 16236), (46, 16197), (54, 16095), (55, 16080), (59, 16032), (62, 15993), (65, 15969), (69, 15924), (70, 15918), (75, 15861), (84, 15717), (89, 15657), (95, 15606),

Gene: Beezoo_40 Start: 31857, Stop: 32714, Start Num: 33

Candidate Starts for Beezoo_40:

(24, 31797), (Start: 33 @31857 has 358 MA's), (Start: 36 @31914 has 2 MA's), (38, 31926), (46, 32019), (50, 32067), (54, 32121), (55, 32136), (59, 32184), (60, 32196), (65, 32247), (66, 32253), (69, 32292), (70, 32298), (74, 32340), (75, 32355), (76, 32391), (80, 32430), (84, 32499), (90, 32571),

Gene: Bella96_40 Start: 31751, Stop: 32869, Start Num: 33

Candidate Starts for Bella96_40:

(13, 31568), (15, 31577), (16, 31595), (17, 31619), (21, 31685), (22, 31688), (25, 31694), (30, 31718), (Start: 33 @31751 has 358 MA's), (Start: 36 @31808 has 2 MA's), (38, 31820), (46, 31913), (50, 31961), (54, 32015), (55, 32030), (59, 32078), (60, 32090), (65, 32141), (66, 32147), (69, 32186), (70, 32192), (73, 32231), (74, 32234), (75, 32249), (76, 32285), (80, 32324), (84, 32393), (90, 32465), (117, 32660), (118, 32666), (122, 32720), (124, 32807),

Gene: Bern_42 Start: 32439, Stop: 33296, Start Num: 33

Candidate Starts for Bern_42:

(6, 31992), (21, 32373), (22, 32376), (30, 32406), (Start: 33 @32439 has 358 MA's), (Start: 36 @32496 has 2 MA's), (38, 32508), (46, 32601), (50, 32649), (54, 32703), (55, 32718), (59, 32766), (60, 32778), (65, 32829), (66, 32835), (69, 32874), (70, 32880), (73, 32919), (74, 32922), (75, 32937), (76, 32973), (80, 33012), (84, 33081),

Gene: Biglebops_35 Start: 30629, Stop: 31519, Start Num: 33

Candidate Starts for Biglebops_35:

(Start: 33 @30629 has 358 MA's), (Start: 36 @30686 has 2 MA's), (46, 30791), (53, 30884), (54, 30893), (55, 30908), (57, 30932), (62, 30995), (65, 31019), (66, 31025), (69, 31064), (70, 31070), (71, 31088), (74, 31112), (75, 31127), (76, 31163), (80, 31202), (81, 31217), (83, 31238), (84, 31271), (86, 31316), (94, 31388), (106, 31424), (115, 31502),

Gene: Bishoperium_19 Start: 16344, Stop: 15568, Start Num: 33

Candidate Starts for Bishoperium_19:

(Start: 33 @16344 has 358 MA's), (Start: 36 @16287 has 2 MA's), (44, 16224), (46, 16185), (54, 16083), (55, 16068), (59, 16020), (62, 15981), (65, 15957), (69, 15912), (70, 15906), (75, 15849), (84, 15705), (89, 15645), (95, 15594),

Gene: BlackStallion_20 Start: 16647, Stop: 15871, Start Num: 33

Candidate Starts for BlackStallion_20:

(9, 17019), (10, 17010), (Start: 33 @16647 has 358 MA's), (Start: 36 @16590 has 2 MA's), (44, 16527), (46, 16488), (54, 16386), (55, 16371), (59, 16323), (62, 16284), (65, 16260), (69, 16215), (70, 16209), (75, 16152), (84, 16008), (89, 15948), (95, 15897),

Gene: BlacksBerry_19 Start: 16350, Stop: 15574, Start Num: 33

Candidate Starts for BlacksBerry_19:

(Start: 33 @16350 has 358 MA's), (Start: 36 @16293 has 2 MA's), (46, 16191), (54, 16089), (55, 16074), (59, 16026), (62, 15987), (65, 15963), (69, 15918), (70, 15912), (75, 15855), (80, 15780), (84, 15711), (89, 15651), (95, 15600),

Gene: Bluephacebaby_19 Start: 16344, Stop: 15568, Start Num: 33

Candidate Starts for Bluephacebaby_19:

(Start: 33 @16344 has 358 MA's), (Start: 36 @16287 has 2 MA's), (44, 16224), (46, 16185), (54, 16083), (55, 16068), (59, 16020), (62, 15981), (65, 15957), (69, 15912), (70, 15906), (75, 15849), (84, 15705), (89, 15645), (95, 15594),

Gene: Boehler_20 Start: 16597, Stop: 15878, Start Num: 36

Candidate Starts for Boehler_20:

(Start: 36 @16597 has 2 MA's), (44, 16534), (46, 16495), (54, 16393), (55, 16378), (59, 16330), (62, 16291), (65, 16267), (69, 16222), (70, 16216), (75, 16159), (84, 16015), (89, 15955), (95, 15904),

Gene: BoogieWoogie_19 Start: 16330, Stop: 15554, Start Num: 33

Candidate Starts for BoogieWoogie_19:

(Start: 33 @16330 has 358 MA's), (Start: 36 @16273 has 2 MA's), (46, 16171), (54, 16069), (55, 16054), (59, 16006), (62, 15967), (65, 15943), (69, 15898), (70, 15892), (75, 15835), (80, 15760), (84, 15691), (87, 15655), (89, 15631), (95, 15580),

Gene: BoostSeason_43 Start: 32922, Stop: 33767, Start Num: 33

Candidate Starts for BoostSeason_43:

(26, 32865), (27, 32877), (30, 32886), (Start: 33 @32922 has 358 MA's), (Start: 36 @32979 has 2 MA's), (46, 33084), (50, 33132), (54, 33186), (55, 33201), (58, 33240), (59, 33249), (60, 33261), (65, 33312), (66, 33318), (72, 33396), (76, 33456), (79, 33489), (80, 33495), (84, 33564), (97, 33687),

Gene: Brilliant_20 Start: 16348, Stop: 15572, Start Num: 33

Candidate Starts for Brilliant_20:

(Start: 33 @16348 has 358 MA's), (Start: 36 @16291 has 2 MA's), (46, 16189), (54, 16087), (55, 16072), (59, 16024), (62, 15985), (65, 15961), (69, 15916), (70, 15910), (75, 15853), (80, 15778), (84, 15709), (87, 15673), (89, 15649), (95, 15598),

Gene: Buckeye_20 Start: 16662, Stop: 15886, Start Num: 33

Candidate Starts for Buckeye_20:

(Start: 33 @16662 has 358 MA's), (Start: 36 @16605 has 2 MA's), (44, 16542), (46, 16503), (54, 16401), (55, 16386), (59, 16338), (62, 16299), (65, 16275), (69, 16230), (70, 16224), (75, 16167), (84, 16023), (89, 15963), (95, 15912),

Gene: Burr_19 Start: 16343, Stop: 15567, Start Num: 33

Candidate Starts for Burr_19:

(Start: 33 @16343 has 358 MA's), (Start: 36 @16286 has 2 MA's), (44, 16223), (46, 16184), (54, 16082), (55, 16067), (59, 16019), (62, 15980), (65, 15956), (69, 15911), (70, 15905), (75, 15848), (84, 15704), (89, 15644), (95, 15593),

Gene: CamL_20 Start: 16642, Stop: 15866, Start Num: 33

Candidate Starts for CamL_20:

(Start: 33 @16642 has 358 MA's), (Start: 36 @16585 has 2 MA's), (44, 16522), (46, 16483), (54, 16381), (55, 16366), (59, 16318), (62, 16279), (65, 16255), (69, 16210), (70, 16204), (75, 16147), (84, 16003), (89, 15943), (95, 15892),

Gene: CampRoach_20 Start: 16634, Stop: 15858, Start Num: 33

Candidate Starts for CampRoach_20:

(Start: 33 @16634 has 358 MA's), (Start: 36 @16577 has 2 MA's), (44, 16514), (46, 16475), (54, 16373), (55, 16358), (59, 16310), (62, 16271), (65, 16247), (69, 16202), (70, 16196), (75, 16139), (84, 15995), (89, 15935), (95, 15884),

Gene: Cannibal_20 Start: 16628, Stop: 15819, Start Num: 33

Candidate Starts for Cannibal_20:

(Start: 33 @16628 has 358 MA's), (Start: 36 @16571 has 2 MA's), (44, 16508), (46, 16469), (54, 16367), (55, 16352), (59, 16304), (62, 16265), (65, 16241), (69, 16196), (70, 16190), (75, 16133), (84, 15989), (89, 15929), (95, 15878), (100, 15854),

Gene: Caspiboi_19 Start: 16348, Stop: 15572, Start Num: 33

Candidate Starts for Caspiboi_19:

(Start: 33 @16348 has 358 MA's), (Start: 36 @16291 has 2 MA's), (46, 16189), (54, 16087), (55, 16072), (59, 16024), (62, 15985), (65, 15961), (69, 15916), (70, 15910), (75, 15853), (80, 15778), (84, 15709), (87, 15673), (89, 15649), (95, 15598),

Gene: Chaelin_19 Start: 16310, Stop: 15534, Start Num: 33

Candidate Starts for Chaelin_19:

(Start: 33 @16310 has 358 MA's), (Start: 36 @16253 has 2 MA's), (46, 16151), (54, 16049), (55, 16034), (59, 15986), (62, 15947), (65, 15923), (69, 15878), (70, 15872), (75, 15815), (80, 15740), (84, 15671), (87, 15635), (89, 15611), (95, 15560),

Gene: Chah_20 Start: 16660, Stop: 15884, Start Num: 33

Candidate Starts for Chah_20:

(Start: 33 @16660 has 358 MA's), (Start: 36 @16603 has 2 MA's), (44, 16540), (46, 16501), (54, 16399), (55, 16384), (59, 16336), (62, 16297), (65, 16273), (69, 16228), (70, 16222), (75, 16165), (84, 16021), (89, 15961), (95, 15910),

Gene: Charles1_20 Start: 16625, Stop: 15849, Start Num: 33

Candidate Starts for Charles1_20:

(Start: 33 @16625 has 358 MA's), (Start: 36 @16568 has 2 MA's), (44, 16505), (46, 16466), (54, 16364), (55, 16349), (59, 16301), (62, 16262), (65, 16238), (69, 16193), (70, 16187), (75, 16130), (84, 15986), (89, 15926), (95, 15875),

Gene: CharlieGBrown_19 Start: 16212, Stop: 15436, Start Num: 33

Candidate Starts for CharlieGBrown_19:

(Start: 33 @16212 has 358 MA's), (Start: 36 @16155 has 2 MA's), (46, 16053), (54, 15951), (55, 15936), (59, 15888), (62, 15849), (65, 15825), (69, 15780), (70, 15774), (75, 15717), (80, 15642), (84, 15573), (87, 15537), (89, 15513), (95, 15462),

Gene: Chavito_42 Start: 32045, Stop: 32935, Start Num: 33

Candidate Starts for Chavito_42:

(Start: 33 @32045 has 358 MA's), (Start: 36 @32102 has 2 MA's), (39, 32132), (46, 32207), (49, 32252), (54, 32309), (55, 32324), (62, 32411), (65, 32435), (66, 32441), (70, 32486), (72, 32519), (74, 32528), (75, 32543), (76, 32579), (80, 32618), (84, 32687), (86, 32732), (90, 32771), (96, 32813), (98, 32819), (107, 32840), (116, 32927),

Gene: CheetO_20 Start: 16641, Stop: 15865, Start Num: 33

Candidate Starts for CheetO_20:

(Start: 33 @16641 has 358 MA's), (Start: 36 @16584 has 2 MA's), (44, 16521), (46, 16482), (54, 16380), (55, 16365), (59, 16317), (62, 16278), (65, 16254), (69, 16209), (70, 16203), (75, 16146), (84, 16002), (89, 15942), (95, 15891),

Gene: Cher_19 Start: 16367, Stop: 15591, Start Num: 33

Candidate Starts for Cher_19:

(Start: 33 @16367 has 358 MA's), (Start: 36 @16310 has 2 MA's), (44, 16247), (46, 16208), (54, 16106), (55, 16091), (59, 16043), (62, 16004), (65, 15980), (69, 15935), (70, 15929), (75, 15872), (84, 15728), (89, 15668), (95, 15617),

Gene: Childish_19 Start: 16355, Stop: 15579, Start Num: 33

Candidate Starts for Childish_19:

(Start: 33 @16355 has 358 MA's), (Start: 36 @16298 has 2 MA's), (44, 16235), (46, 16196), (54, 16094), (55, 16079), (59, 16031), (62, 15992), (65, 15968), (69, 15923), (70, 15917), (75, 15860), (84, 15716), (89, 15656), (95, 15605),

Gene: Chipette_21 Start: 16864, Stop: 16088, Start Num: 33

Candidate Starts for Chipette_21:

(Start: 33 @16864 has 358 MA's), (Start: 36 @16807 has 2 MA's), (44, 16744), (46, 16705), (54, 16603), (55, 16588), (59, 16540), (62, 16501), (65, 16477), (69, 16432), (70, 16426), (75, 16369), (84, 16225), (89, 16165), (95, 16114),

Gene: Chorkpop_20 Start: 16366, Stop: 15590, Start Num: 33

Candidate Starts for Chorkpop_20:

(Start: 33 @16366 has 358 MA's), (Start: 36 @16309 has 2 MA's), (44, 16246), (46, 16207), (54, 16105), (55, 16090), (59, 16042), (62, 16003), (65, 15979), (69, 15934), (70, 15928), (75, 15871), (84, 15727), (89, 15667), (95, 15616),

Gene: Chris_42 Start: 32063, Stop: 32935, Start Num: 33

Candidate Starts for Chris_42:

(Start: 33 @32063 has 358 MA's), (39, 32150), (46, 32225), (49, 32270), (54, 32327), (55, 32342), (65, 32453), (66, 32459), (69, 32498), (70, 32504), (72, 32537), (75, 32561), (76, 32597), (80, 32636), (84, 32705), (107, 32849),

Gene: Chuni_19 Start: 16659, Stop: 15883, Start Num: 33

Candidate Starts for Chuni_19:

(Start: 33 @16659 has 358 MA's), (Start: 36 @16602 has 2 MA's), (44, 16539), (46, 16500), (54, 16398), (55, 16383), (59, 16335), (62, 16296), (65, 16272), (69, 16227), (70, 16221), (75, 16164), (84,

16020), (89, 15960), (95, 15909),

Gene: Chunky_20 Start: 16654, Stop: 15878, Start Num: 33

Candidate Starts for Chunky_20:

(Start: 33 @16654 has 358 MA's), (Start: 36 @16597 has 2 MA's), (44, 16534), (46, 16495), (54, 16393), (55, 16378), (59, 16330), (62, 16291), (65, 16267), (69, 16222), (70, 16216), (75, 16159), (84, 16015), (89, 15955), (95, 15904),

Gene: Chute_19 Start: 16658, Stop: 15882, Start Num: 33

Candidate Starts for Chute_19:

(Start: 33 @16658 has 358 MA's), (Start: 36 @16601 has 2 MA's), (46, 16499), (54, 16397), (55, 16382), (59, 16334), (62, 16295), (65, 16271), (69, 16226), (70, 16220), (75, 16163), (80, 16088), (84, 16019), (87, 15983), (89, 15959), (95, 15908),

Gene: Cobra_20 Start: 16646, Stop: 15870, Start Num: 33

Candidate Starts for Cobra_20:

(Start: 33 @16646 has 358 MA's), (Start: 36 @16589 has 2 MA's), (46, 16487), (54, 16385), (55, 16370), (59, 16322), (62, 16283), (65, 16259), (69, 16214), (70, 16208), (75, 16151), (84, 16007), (89, 15947), (95, 15896),

Gene: Colbert_20 Start: 16644, Stop: 15868, Start Num: 33

Candidate Starts for Colbert_20:

(Start: 33 @16644 has 358 MA's), (Start: 36 @16587 has 2 MA's), (44, 16524), (46, 16485), (54, 16383), (55, 16368), (59, 16320), (62, 16281), (65, 16257), (69, 16212), (70, 16206), (75, 16149), (84, 16005), (89, 15945), (95, 15894),

Gene: Coletti_20 Start: 16658, Stop: 15882, Start Num: 33

Candidate Starts for Coletti_20:

(Start: 33 @16658 has 358 MA's), (Start: 36 @16601 has 2 MA's), (46, 16499), (54, 16397), (55, 16382), (59, 16334), (62, 16295), (65, 16271), (69, 16226), (70, 16220), (75, 16163), (80, 16088), (84, 16019), (87, 15983), (89, 15959), (95, 15908),

Gene: Collard_84 Start: 54255, Stop: 55139, Start Num: 33

Candidate Starts for Collard_84:

(Start: 33 @54255 has 358 MA's), (Start: 36 @54312 has 2 MA's), (38, 54324), (46, 54417), (49, 54462), (53, 54510), (54, 54519), (55, 54534), (60, 54594), (62, 54621), (63, 54636), (65, 54645), (66, 54651), (69, 54690), (70, 54696), (75, 54753), (76, 54789), (80, 54828), (84, 54897), (90, 54969), (91, 54981), (108, 55044), (110, 55062),

Gene: Cornbread_19 Start: 16359, Stop: 15583, Start Num: 33

Candidate Starts for Cornbread_19:

(Start: 33 @16359 has 358 MA's), (Start: 36 @16302 has 2 MA's), (46, 16200), (54, 16098), (55, 16083), (59, 16035), (62, 15996), (65, 15972), (69, 15927), (70, 15921), (75, 15864), (80, 15789), (84, 15720), (87, 15684), (89, 15660), (95, 15609),

Gene: Cornobble_19 Start: 16202, Stop: 15426, Start Num: 33

Candidate Starts for Cornobble_19:

(Start: 33 @16202 has 358 MA's), (Start: 36 @16145 has 2 MA's), (44, 16082), (46, 16043), (54, 15941), (55, 15926), (59, 15878), (62, 15839), (65, 15815), (69, 15770), (70, 15764), (75, 15707), (84, 15563), (89, 15503), (95, 15452),

Gene: Cosmolli16_19 Start: 16360, Stop: 15584, Start Num: 33

Candidate Starts for Cosmolli16_19:

(Start: 33 @16360 has 358 MA's), (Start: 36 @16303 has 2 MA's), (44, 16240), (46, 16201), (54, 16099), (55, 16084), (59, 16036), (62, 15997), (65, 15973), (69, 15928), (70, 15922), (75, 15865), (84, 15721), (89, 15661), (95, 15610),

Gene: Craff_20 Start: 16648, Stop: 15872, Start Num: 33

Candidate Starts for Craff_20:

(Start: 33 @16648 has 358 MA's), (Start: 36 @16591 has 2 MA's), (44, 16528), (46, 16489), (54, 16387), (55, 16372), (59, 16324), (62, 16285), (65, 16261), (69, 16216), (70, 16210), (75, 16153), (84, 16009), (89, 15949), (95, 15898),

Gene: Crownjwl_20 Start: 16415, Stop: 15639, Start Num: 33

Candidate Starts for Crownjwl_20:

(Start: 33 @16415 has 358 MA's), (Start: 36 @16358 has 2 MA's), (44, 16295), (46, 16256), (54, 16154), (55, 16139), (59, 16091), (62, 16052), (65, 16028), (69, 15983), (70, 15977), (75, 15920), (84, 15776), (89, 15716), (95, 15665),

Gene: DaddyDaniels_20 Start: 16352, Stop: 15576, Start Num: 33

Candidate Starts for DaddyDaniels_20:

(Start: 33 @16352 has 358 MA's), (Start: 36 @16295 has 2 MA's), (46, 16193), (54, 16091), (55, 16076), (59, 16028), (62, 15989), (65, 15965), (69, 15920), (70, 15914), (75, 15857), (80, 15782), (84, 15713), (87, 15677), (89, 15653), (95, 15602),

Gene: Dadosky_87 Start: 55144, Stop: 56028, Start Num: 33

Candidate Starts for Dadosky_87:

(Start: 33 @55144 has 358 MA's), (Start: 36 @55201 has 2 MA's), (37, 55207), (38, 55213), (40, 55237), (46, 55306), (49, 55351), (53, 55399), (54, 55408), (55, 55423), (60, 55483), (62, 55510), (63, 55525), (65, 55534), (66, 55540), (69, 55579), (70, 55585), (72, 55618), (75, 55642), (76, 55678), (80, 55717), (83, 55753), (84, 55786), (90, 55858), (91, 55870), (108, 55933), (110, 55951),

Gene: Daffy_20 Start: 16367, Stop: 15591, Start Num: 33

Candidate Starts for Daffy_20:

(Start: 33 @16367 has 358 MA's), (Start: 36 @16310 has 2 MA's), (44, 16247), (46, 16208), (54, 16106), (55, 16091), (59, 16043), (62, 16004), (65, 15980), (69, 15935), (70, 15929), (75, 15872), (80, 15797), (84, 15728), (89, 15668), (95, 15617),

Gene: Daka_20 Start: 16644, Stop: 15868, Start Num: 33

Candidate Starts for Daka_20:

(Start: 33 @16644 has 358 MA's), (Start: 36 @16587 has 2 MA's), (44, 16524), (46, 16485), (54, 16383), (55, 16368), (59, 16320), (62, 16281), (65, 16257), (69, 16212), (70, 16206), (75, 16149), (84, 16005), (89, 15945), (95, 15894),

Gene: DartGoblin_41 Start: 31746, Stop: 32603, Start Num: 33

Candidate Starts for DartGoblin_41:

(13, 31563), (15, 31572), (16, 31590), (17, 31614), (21, 31680), (22, 31683), (25, 31689), (30, 31713), (Start: 33 @31746 has 358 MA's), (Start: 36 @31803 has 2 MA's), (38, 31815), (46, 31908), (50, 31956), (54, 32010), (55, 32025), (59, 32073), (60, 32085), (65, 32136), (66, 32142), (69, 32181), (70, 32187), (73, 32226), (74, 32229), (75, 32244), (76, 32280), (80, 32319), (84, 32388), (90, 32460),

Gene: DarthP_39 Start: 31203, Stop: 32078, Start Num: 33

Candidate Starts for DarthP_39:

(Start: 28 @31167 has 2 MA's), (30, 31170), (31, 31173), (Start: 33 @31203 has 358 MA's), (Start: 36 @31260 has 2 MA's), (46, 31365), (53, 31458), (54, 31467), (55, 31482), (62, 31569), (63, 31584), (65, 31593), (66, 31599), (68, 31629), (72, 31677), (75, 31701), (77, 31749), (80, 31776), (83, 31812), (84,

31845), (94, 31950), (107, 31986), (111, 32028),

Gene: Dartin_41 Start: 31431, Stop: 32309, Start Num: 33

Candidate Starts for Dartin_41:

(Start: 33 @31431 has 358 MA's), (Start: 36 @31488 has 2 MA's), (39, 31518), (46, 31593), (49, 31638), (54, 31695), (55, 31710), (57, 31734), (62, 31797), (65, 31821), (66, 31827), (70, 31872), (72, 31905), (74, 31914), (75, 31929), (76, 31965), (80, 32004), (83, 32040), (84, 32073), (86, 32118), (90, 32157), (96, 32199), (98, 32205), (107, 32226), (116, 32301),

Gene: Dati_20 Start: 16356, Stop: 15580, Start Num: 33

Candidate Starts for Dati_20:

(Start: 33 @16356 has 358 MA's), (Start: 36 @16299 has 2 MA's), (46, 16197), (54, 16095), (55, 16080), (59, 16032), (62, 15993), (65, 15969), (69, 15924), (70, 15918), (75, 15861), (80, 15786), (84, 15717), (87, 15681), (89, 15657), (95, 15606),

Gene: DelRivs_19 Start: 16355, Stop: 15579, Start Num: 33

Candidate Starts for DelRivs_19:

(Start: 33 @16355 has 358 MA's), (Start: 36 @16298 has 2 MA's), (46, 16196), (54, 16094), (55, 16079), (59, 16031), (62, 15992), (65, 15968), (69, 15923), (70, 15917), (75, 15860), (80, 15785), (84, 15716), (87, 15680), (89, 15656), (95, 15605),

Gene: Derpp_19 Start: 16202, Stop: 15426, Start Num: 33

Candidate Starts for Derpp_19:

(Start: 33 @16202 has 358 MA's), (Start: 36 @16145 has 2 MA's), (46, 16043), (54, 15941), (55, 15926), (59, 15878), (62, 15839), (65, 15815), (69, 15770), (70, 15764), (75, 15707), (80, 15632), (84, 15563), (87, 15527), (89, 15503), (95, 15452),

Gene: Dice_19 Start: 16343, Stop: 15567, Start Num: 33

Candidate Starts for Dice_19:

(Start: 33 @16343 has 358 MA's), (Start: 36 @16286 has 2 MA's), (44, 16223), (46, 16184), (54, 16082), (55, 16067), (59, 16019), (62, 15980), (65, 15956), (69, 15911), (70, 15905), (75, 15848), (84, 15704), (89, 15644), (95, 15593),

Gene: Dingo_20 Start: 16627, Stop: 15851, Start Num: 33

Candidate Starts for Dingo_20:

(Start: 33 @16627 has 358 MA's), (Start: 36 @16570 has 2 MA's), (44, 16507), (46, 16468), (54, 16366), (55, 16351), (59, 16303), (62, 16264), (65, 16240), (69, 16195), (70, 16189), (75, 16132), (80, 16057), (84, 15988), (89, 15928), (95, 15877),

Gene: Dione_19 Start: 16344, Stop: 15568, Start Num: 33

Candidate Starts for Dione_19:

(Start: 33 @16344 has 358 MA's), (Start: 36 @16287 has 2 MA's), (44, 16224), (46, 16185), (54, 16083), (55, 16068), (59, 16020), (62, 15981), (65, 15957), (69, 15912), (70, 15906), (75, 15849), (84, 15705), (89, 15645), (95, 15594),

Gene: DirtJuice_20 Start: 16629, Stop: 15853, Start Num: 33

Candidate Starts for DirtJuice_20:

(Start: 33 @16629 has 358 MA's), (Start: 36 @16572 has 2 MA's), (44, 16509), (46, 16470), (54, 16368), (55, 16353), (59, 16305), (62, 16266), (65, 16242), (69, 16197), (70, 16191), (75, 16134), (84, 15990), (89, 15930), (95, 15879),

Gene: DismalFunk_42 Start: 33015, Stop: 33860, Start Num: 33

Candidate Starts for DismalFunk_42:

(26, 32958), (27, 32970), (30, 32979), (Start: 33 @33015 has 358 MA's), (Start: 36 @33072 has 2 MA's), (38, 33084), (46, 33177), (50, 33225), (54, 33279), (55, 33294), (58, 33333), (59, 33342), (60, 33354), (65, 33405), (66, 33411), (72, 33489), (76, 33549), (79, 33582), (80, 33588), (84, 33657), (97, 33780),

Gene: DismalStressor_42 Start: 33015, Stop: 33860, Start Num: 33

Candidate Starts for DismalStressor_42:

(26, 32958), (27, 32970), (30, 32979), (Start: 33 @33015 has 358 MA's), (Start: 36 @33072 has 2 MA's), (38, 33084), (46, 33177), (50, 33225), (54, 33279), (55, 33294), (58, 33333), (59, 33342), (60, 33354), (65, 33405), (66, 33411), (72, 33489), (76, 33549), (79, 33582), (80, 33588), (84, 33657), (97, 33780),

Gene: Doddsville_20 Start: 16356, Stop: 15580, Start Num: 33

Candidate Starts for Doddsville_20:

(Start: 33 @16356 has 358 MA's), (Start: 36 @16299 has 2 MA's), (46, 16197), (54, 16095), (55, 16080), (59, 16032), (62, 15993), (65, 15969), (69, 15924), (70, 15918), (75, 15861), (80, 15786), (84, 15717), (87, 15681), (89, 15657), (95, 15606),

Gene: DoesntMatter_20 Start: 16625, Stop: 15849, Start Num: 33

Candidate Starts for DoesntMatter_20:

(Start: 33 @16625 has 358 MA's), (Start: 36 @16568 has 2 MA's), (44, 16505), (46, 16466), (54, 16364), (55, 16349), (59, 16301), (62, 16262), (65, 16238), (69, 16193), (70, 16187), (75, 16130), (84, 15986), (89, 15926), (95, 15875),

Gene: DolOn_21 Start: 16876, Stop: 16100, Start Num: 33

Candidate Starts for DolOn_21:

(Start: 33 @16876 has 358 MA's), (Start: 36 @16819 has 2 MA's), (44, 16756), (46, 16717), (54, 16615), (55, 16600), (59, 16552), (62, 16513), (65, 16489), (69, 16444), (70, 16438), (75, 16381), (84, 16237), (89, 16177), (95, 16126),

Gene: DonSanchon_19 Start: 16343, Stop: 15567, Start Num: 33

Candidate Starts for DonSanchon_19:

(Start: 33 @16343 has 358 MA's), (Start: 36 @16286 has 2 MA's), (44, 16223), (46, 16184), (54, 16082), (55, 16067), (59, 16019), (62, 15980), (65, 15956), (69, 15911), (70, 15905), (75, 15848), (84, 15704), (89, 15644), (95, 15593),

Gene: DoubleChamp_83 Start: 54255, Stop: 55139, Start Num: 33

Candidate Starts for DoubleChamp_83:

(Start: 33 @54255 has 358 MA's), (Start: 36 @54312 has 2 MA's), (38, 54324), (46, 54417), (49, 54462), (53, 54510), (54, 54519), (55, 54534), (60, 54594), (62, 54621), (63, 54636), (65, 54645), (66, 54651), (69, 54690), (70, 54696), (75, 54753), (76, 54789), (80, 54828), (84, 54897), (90, 54969), (91, 54981), (108, 55044), (110, 55062),

Gene: Doughnut_43 Start: 32909, Stop: 33754, Start Num: 33

Candidate Starts for Doughnut_43:

(26, 32852), (27, 32864), (30, 32873), (Start: 33 @32909 has 358 MA's), (Start: 36 @32966 has 2 MA's), (46, 33071), (50, 33119), (54, 33173), (55, 33188), (58, 33227), (59, 33236), (60, 33248), (65, 33299), (66, 33305), (72, 33383), (76, 33443), (79, 33476), (80, 33482), (84, 33551), (97, 33674),

Gene: DrHayes_40 Start: 31795, Stop: 32652, Start Num: 33

Candidate Starts for DrHayes_40:

(4, 31339), (5, 31342), (7, 31345), (8, 31375), (11, 31591), (14, 31618), (21, 31729), (22, 31732), (25, 31738), (30, 31762), (Start: 33 @31795 has 358 MA's), (Start: 36 @31852 has 2 MA's), (38, 31864),

(46, 31957), (49, 32002), (50, 32005), (54, 32059), (55, 32074), (59, 32122), (60, 32134), (65, 32185), (69, 32230), (70, 32236), (73, 32275), (74, 32278), (75, 32293), (76, 32329), (80, 32368), (84, 32437), (90, 32509), (101, 32575),

Gene: Duggie_19 Start: 16358, Stop: 15582, Start Num: 33

Candidate Starts for Duggie_19:

(Start: 33 @16358 has 358 MA's), (Start: 36 @16301 has 2 MA's), (46, 16199), (54, 16097), (55, 16082), (59, 16034), (62, 15995), (65, 15971), (69, 15926), (70, 15920), (75, 15863), (80, 15788), (84, 15719), (87, 15683), (89, 15659), (95, 15608),

Gene: Durga_20 Start: 16655, Stop: 15879, Start Num: 33

Candidate Starts for Durga_20:

(Start: 33 @16655 has 358 MA's), (Start: 36 @16598 has 2 MA's), (46, 16496), (54, 16394), (55, 16379), (59, 16331), (62, 16292), (65, 16268), (69, 16223), (70, 16217), (75, 16160), (80, 16085), (84, 16016), (87, 15980), (89, 15956), (95, 15905),

Gene: Edugator_81 Start: 56315, Stop: 57199, Start Num: 33

Candidate Starts for Edugator_81:

(Start: 33 @56315 has 358 MA's), (Start: 36 @56372 has 2 MA's), (37, 56378), (38, 56384), (46, 56477), (49, 56522), (53, 56570), (54, 56579), (55, 56594), (60, 56654), (62, 56681), (63, 56696), (65, 56705), (66, 56711), (69, 56750), (70, 56756), (72, 56789), (75, 56813), (76, 56849), (80, 56888), (83, 56924), (84, 56957), (90, 57029), (91, 57041), (108, 57104), (110, 57122),

Gene: Ekdilam_37 Start: 31037, Stop: 31912, Start Num: 33

Candidate Starts for Ekdilam_37:

(Start: 28 @31001 has 2 MA's), (30, 31004), (31, 31007), (Start: 33 @31037 has 358 MA's), (Start: 36 @31094 has 2 MA's), (38, 31106), (46, 31199), (49, 31244), (53, 31292), (54, 31301), (55, 31316), (59, 31364), (62, 31403), (63, 31418), (65, 31427), (66, 31433), (70, 31478), (75, 31535), (76, 31571), (77, 31583), (83, 31646), (84, 31679), (94, 31784), (107, 31820), (111, 31862),

Gene: Ellie_37 Start: 31026, Stop: 31892, Start Num: 33

Candidate Starts for Ellie_37:

(29, 30990), (Start: 33 @31026 has 358 MA's), (Start: 36 @31083 has 2 MA's), (38, 31095), (39, 31113), (46, 31188), (54, 31290), (55, 31305), (62, 31392), (63, 31407), (65, 31416), (66, 31422), (69, 31461), (70, 31467), (72, 31500), (75, 31524), (76, 31560), (80, 31599), (83, 31635), (84, 31668), (107, 31809), (111, 31851),

Gene: ElvisPhasley_20 Start: 16654, Stop: 15878, Start Num: 33

Candidate Starts for ElvisPhasley_20:

(Start: 33 @16654 has 358 MA's), (Start: 36 @16597 has 2 MA's), (46, 16495), (54, 16393), (55, 16378), (59, 16330), (62, 16291), (65, 16267), (69, 16222), (70, 16216), (75, 16159), (80, 16084), (84, 16015), (87, 15979), (89, 15955), (95, 15904),

Gene: EmGer13_19 Start: 16202, Stop: 15426, Start Num: 33

Candidate Starts for EmGer13_19:

(Start: 33 @16202 has 358 MA's), (Start: 36 @16145 has 2 MA's), (44, 16082), (46, 16043), (54, 15941), (55, 15926), (59, 15878), (62, 15839), (65, 15815), (69, 15770), (70, 15764), (75, 15707), (84, 15563), (89, 15503), (95, 15452),

Gene: Emiris_20 Start: 16637, Stop: 15861, Start Num: 33

Candidate Starts for Emiris_20:

(Start: 33 @16637 has 358 MA's), (Start: 36 @16580 has 2 MA's), (44, 16517), (46, 16478), (54, 16376), (55, 16361), (59, 16313), (62, 16274), (65, 16250), (69, 16205), (70, 16199), (75, 16142), (84,

15998), (89, 15938), (95, 15887),

Gene: EmpTee_20 Start: 16643, Stop: 15867, Start Num: 33

Candidate Starts for EmpTee_20:

(Start: 33 @16643 has 358 MA's), (Start: 36 @16586 has 2 MA's), (44, 16523), (46, 16484), (54, 16382), (55, 16367), (59, 16319), (62, 16280), (65, 16256), (69, 16211), (70, 16205), (75, 16148), (84, 16004), (89, 15944), (95, 15893),

Gene: Enkosi_35 Start: 30629, Stop: 31555, Start Num: 33

Candidate Starts for Enkosi_35:

(Start: 33 @30629 has 358 MA's), (Start: 36 @30686 has 2 MA's), (46, 30791), (53, 30884), (54, 30893), (55, 30908), (57, 30932), (62, 30995), (65, 31019), (66, 31025), (69, 31064), (70, 31070), (71, 31088), (74, 31112), (75, 31127), (76, 31163), (80, 31202), (81, 31217), (83, 31238), (84, 31271), (86, 31316), (114, 31505), (121, 31547),

Gene: Eremos_20 Start: 16643, Stop: 15867, Start Num: 33

Candidate Starts for Eremos_20:

(Start: 33 @16643 has 358 MA's), (Start: 36 @16586 has 2 MA's), (44, 16523), (46, 16484), (54, 16382), (55, 16367), (59, 16319), (62, 16280), (65, 16256), (69, 16211), (70, 16205), (75, 16148), (84, 16004), (89, 15944), (95, 15893),

Gene: Etaye_20 Start: 16628, Stop: 15852, Start Num: 33

Candidate Starts for Etaye_20:

(Start: 33 @16628 has 358 MA's), (Start: 36 @16571 has 2 MA's), (46, 16469), (54, 16367), (55, 16352), (59, 16304), (62, 16265), (65, 16241), (69, 16196), (70, 16190), (75, 16133), (80, 16058), (84, 15989), (87, 15953), (89, 15929), (95, 15878),

Gene: Eugenia_20 Start: 16654, Stop: 15878, Start Num: 33

Candidate Starts for Eugenia_20:

(9, 17026), (10, 17017), (Start: 33 @16654 has 358 MA's), (Start: 36 @16597 has 2 MA's), (46, 16495), (54, 16393), (55, 16378), (59, 16330), (62, 16291), (65, 16267), (69, 16222), (70, 16216), (75, 16159), (84, 16015), (89, 15955), (95, 15904),

Gene: Fang_20 Start: 16657, Stop: 15881, Start Num: 33

Candidate Starts for Fang_20:

(Start: 33 @16657 has 358 MA's), (Start: 36 @16600 has 2 MA's), (44, 16537), (46, 16498), (54, 16396), (55, 16381), (59, 16333), (62, 16294), (65, 16270), (69, 16225), (70, 16219), (75, 16162), (84, 16018), (89, 15958), (95, 15907),

Gene: Fefferhead_38 Start: 30980, Stop: 31846, Start Num: 33

Candidate Starts for Fefferhead_38:

(29, 30944), (Start: 33 @30980 has 358 MA's), (Start: 36 @31037 has 2 MA's), (38, 31049), (39, 31067), (46, 31142), (54, 31244), (55, 31259), (62, 31346), (63, 31361), (65, 31370), (66, 31376), (69, 31415), (70, 31421), (72, 31454), (75, 31478), (76, 31514), (80, 31553), (83, 31589), (84, 31622), (111, 31805),

Gene: Feyre_86 Start: 57242, Stop: 58030, Start Num: 33

Candidate Starts for Feyre_86:

(21, 57176), (22, 57179), (Start: 23 @57182 has 1 MA's), (27, 57200), (29, 57206), (30, 57209), (Start: 33 @57242 has 358 MA's), (Start: 36 @57299 has 2 MA's), (38, 57311), (46, 57404), (49, 57449), (53, 57497), (54, 57506), (55, 57521), (60, 57581), (62, 57608), (63, 57623), (65, 57632), (66, 57638), (69, 57677), (70, 57683), (72, 57716), (75, 57740), (76, 57776), (80, 57815), (82, 57845), (83, 57851), (84, 57884), (90, 57956),

Gene: Findley_42 Start: 33008, Stop: 33853, Start Num: 33

Candidate Starts for Findley_42:

(26, 32951), (27, 32963), (30, 32972), (Start: 33 @33008 has 358 MA's), (Start: 36 @33065 has 2 MA's), (38, 33077), (46, 33170), (50, 33218), (54, 33272), (55, 33287), (58, 33326), (59, 33335), (60, 33347), (65, 33398), (66, 33404), (72, 33482), (76, 33542), (79, 33575), (80, 33581), (84, 33650), (97, 33773),

Gene: Flake_20 Start: 16658, Stop: 15882, Start Num: 33

Candidate Starts for Flake_20:

(Start: 33 @16658 has 358 MA's), (Start: 36 @16601 has 2 MA's), (46, 16499), (54, 16397), (55, 16382), (59, 16334), (62, 16295), (65, 16271), (69, 16226), (70, 16220), (75, 16163), (80, 16088), (84, 16019), (87, 15983), (89, 15959), (95, 15908),

Gene: FleetyMac_19 Start: 16641, Stop: 15865, Start Num: 33

Candidate Starts for FleetyMac_19:

(Start: 33 @16641 has 358 MA's), (Start: 36 @16584 has 2 MA's), (46, 16482), (54, 16380), (55, 16365), (59, 16317), (62, 16278), (65, 16254), (69, 16209), (70, 16203), (75, 16146), (80, 16071), (84, 16002), (87, 15966), (89, 15942), (95, 15891),

Gene: FluffyNinja_20 Start: 16647, Stop: 15871, Start Num: 33

Candidate Starts for FluffyNinja_20:

(9, 17019), (10, 17010), (Start: 33 @16647 has 358 MA's), (Start: 36 @16590 has 2 MA's), (44, 16527), (46, 16488), (54, 16386), (55, 16371), (59, 16323), (62, 16284), (65, 16260), (69, 16215), (70, 16209), (75, 16152), (84, 16008), (89, 15948), (95, 15897),

Gene: Fozzie_19 Start: 16652, Stop: 15876, Start Num: 33

Candidate Starts for Fozzie_19:

(Start: 33 @16652 has 358 MA's), (Start: 36 @16595 has 2 MA's), (44, 16532), (46, 16493), (54, 16391), (55, 16376), (59, 16328), (62, 16289), (65, 16265), (69, 16220), (70, 16214), (75, 16157), (84, 16013), (89, 15953), (95, 15902),

Gene: Frankicide_20 Start: 16643, Stop: 15867, Start Num: 33

Candidate Starts for Frankicide_20:

(Start: 33 @16643 has 358 MA's), (Start: 36 @16586 has 2 MA's), (44, 16523), (46, 16484), (54, 16382), (55, 16367), (59, 16319), (62, 16280), (65, 16256), (69, 16211), (70, 16205), (75, 16148), (84, 16004), (89, 15944), (95, 15893),

Gene: FremontTroll_20 Start: 16340, Stop: 15564, Start Num: 33

Candidate Starts for FremontTroll_20:

(Start: 33 @16340 has 358 MA's), (Start: 36 @16283 has 2 MA's), (44, 16220), (46, 16181), (54, 16079), (55, 16064), (59, 16016), (62, 15977), (65, 15953), (69, 15908), (70, 15902), (75, 15845), (84, 15701), (89, 15641), (95, 15590),

Gene: Freya_19 Start: 16338, Stop: 15562, Start Num: 33

Candidate Starts for Freya_19:

(Start: 33 @16338 has 358 MA's), (Start: 36 @16281 has 2 MA's), (44, 16218), (46, 16179), (54, 16077), (55, 16062), (59, 16014), (62, 15975), (65, 15951), (69, 15906), (70, 15900), (75, 15843), (84, 15699), (89, 15639), (95, 15588),

Gene: FriarPreacher_20 Start: 16663, Stop: 15887, Start Num: 33

Candidate Starts for FriarPreacher_20:

(Start: 33 @16663 has 358 MA's), (Start: 36 @16606 has 2 MA's), (44, 16543), (46, 16504), (54, 16402), (55, 16387), (59, 16339), (62, 16300), (65, 16276), (69, 16231), (70, 16225), (75, 16168), (84, 16024), (89, 15964), (95, 15913),

Gene: Fringe_20 Start: 16626, Stop: 15850, Start Num: 33

Candidate Starts for Fringe_20:

(Start: 33 @16626 has 358 MA's), (Start: 36 @16569 has 2 MA's), (44, 16506), (46, 16467), (54, 16365), (55, 16350), (56, 16332), (59, 16302), (62, 16263), (65, 16239), (69, 16194), (70, 16188), (75, 16131), (84, 15987), (89, 15927), (95, 15876),

Gene: FugateOSU_19 Start: 16349, Stop: 15573, Start Num: 33

Candidate Starts for FugateOSU_19:

(Start: 33 @16349 has 358 MA's), (44, 16229), (46, 16190), (54, 16088), (55, 16073), (59, 16025), (62, 15986), (65, 15962), (69, 15917), (70, 15911), (75, 15854), (80, 15779), (84, 15710), (89, 15650), (95, 15599),

Gene: Gareth_19 Start: 16346, Stop: 15570, Start Num: 33

Candidate Starts for Gareth_19:

(Start: 33 @16346 has 358 MA's), (Start: 36 @16289 has 2 MA's), (44, 16226), (46, 16187), (54, 16085), (55, 16070), (59, 16022), (62, 15983), (65, 15959), (69, 15914), (70, 15908), (75, 15851), (84, 15707), (89, 15647), (95, 15596),

Gene: GeneCoco_20 Start: 16647, Stop: 15871, Start Num: 33

Candidate Starts for GeneCoco_20:

(Start: 33 @16647 has 358 MA's), (Start: 36 @16590 has 2 MA's), (46, 16488), (54, 16386), (55, 16371), (59, 16323), (62, 16284), (65, 16260), (69, 16215), (70, 16209), (75, 16152), (80, 16077), (84, 16008), (87, 15972), (89, 15948), (95, 15897),

Gene: Gilgamesh_114 Start: 102391, Stop: 101504, Start Num: 18

Candidate Starts for Gilgamesh_114:

(1, 102889), (2, 102862), (3, 102805), (12, 102484), (Start: 18 @102391 has 1 MA's), (34, 102283), (42, 102175), (45, 102151), (48, 102100), (51, 102043), (52, 102037), (54, 102016), (61, 101932), (63, 101914), (65, 101905), (66, 101899), (74, 101812), (75, 101797), (78, 101740), (85, 101638), (87, 101623), (88, 101611), (89, 101599),

Gene: Giraffe_20 Start: 16351, Stop: 15575, Start Num: 33

Candidate Starts for Giraffe_20:

(Start: 33 @16351 has 358 MA's), (Start: 36 @16294 has 2 MA's), (44, 16231), (46, 16192), (54, 16090), (55, 16075), (59, 16027), (62, 15988), (65, 15964), (69, 15919), (70, 15913), (75, 15856), (84, 15712), (89, 15652), (95, 15601),

Gene: Gophee_20 Start: 16627, Stop: 15851, Start Num: 33

Candidate Starts for Gophee_20:

(9, 16999), (10, 16990), (Start: 33 @16627 has 358 MA's), (Start: 36 @16570 has 2 MA's), (44, 16507), (46, 16468), (54, 16366), (55, 16351), (59, 16303), (62, 16264), (65, 16240), (69, 16195), (70, 16189), (75, 16132), (84, 15988), (89, 15928), (95, 15877),

Gene: Grand2040_19 Start: 16366, Stop: 15590, Start Num: 33

Candidate Starts for Grand2040_19:

(Start: 33 @16366 has 358 MA's), (Start: 36 @16309 has 2 MA's), (44, 16246), (46, 16207), (54, 16105), (55, 16090), (59, 16042), (62, 16003), (65, 15979), (69, 15934), (70, 15928), (75, 15871), (84, 15727), (89, 15667), (95, 15616),

Gene: GreenChile_20 Start: 16643, Stop: 15867, Start Num: 33

Candidate Starts for GreenChile_20:

(Start: 33 @16643 has 358 MA's), (Start: 36 @16586 has 2 MA's), (44, 16523), (46, 16484), (54, 16382), (55, 16367), (59, 16319), (62, 16280), (65, 16256), (69, 16211), (70, 16205), (75, 16148), (84, 16004), (89, 15944), (95, 15893),

Gene: Guillsminger_86 Start: 55951, Stop: 56835, Start Num: 33

Candidate Starts for Guillsminger_86:

(22, 55888), (Start: 23 @55891 has 1 MA's), (27, 55909), (29, 55915), (30, 55918), (32, 55936), (Start: 33 @55951 has 358 MA's), (Start: 36 @56008 has 2 MA's), (38, 56020), (46, 56113), (49, 56158), (53, 56206), (54, 56215), (55, 56230), (60, 56290), (62, 56317), (63, 56332), (65, 56341), (66, 56347), (69, 56386), (70, 56392), (72, 56425), (75, 56449), (76, 56485), (80, 56524), (82, 56554), (83, 56560), (84, 56593), (90, 56665), (108, 56740), (110, 56758),

Gene: Gwennie1_20 Start: 16667, Stop: 15891, Start Num: 33

Candidate Starts for Gwennie1_20:

(Start: 33 @16667 has 358 MA's), (Start: 36 @16610 has 2 MA's), (46, 16508), (54, 16406), (55, 16391), (59, 16343), (62, 16304), (65, 16280), (69, 16235), (70, 16229), (75, 16172), (80, 16097), (84, 16028), (87, 15992), (89, 15968), (95, 15917),

Gene: Gwilliam_20 Start: 16638, Stop: 15862, Start Num: 33

Candidate Starts for Gwilliam_20:

(Start: 33 @16638 has 358 MA's), (Start: 36 @16581 has 2 MA's), (44, 16518), (46, 16479), (54, 16377), (55, 16362), (59, 16314), (62, 16275), (65, 16251), (69, 16206), (70, 16200), (75, 16143), (84, 15999), (89, 15939), (95, 15888),

Gene: Gyarad_0020 Start: 16641, Stop: 15865, Start Num: 33

Candidate Starts for Gyarad_0020:

(Start: 33 @16641 has 358 MA's), (Start: 36 @16584 has 2 MA's), (44, 16521), (46, 16482), (54, 16380), (55, 16365), (59, 16317), (62, 16278), (65, 16254), (69, 16209), (70, 16203), (75, 16146), (84, 16002), (89, 15942), (95, 15891),

Gene: HSavage_20 Start: 16649, Stop: 15873, Start Num: 33

Candidate Starts for HSavage_20:

(Start: 33 @16649 has 358 MA's), (Start: 36 @16592 has 2 MA's), (44, 16529), (46, 16490), (54, 16388), (55, 16373), (59, 16325), (62, 16286), (65, 16262), (69, 16217), (70, 16211), (75, 16154), (84, 16010), (89, 15950), (95, 15899),

Gene: Haimas_20 Start: 16643, Stop: 15867, Start Num: 33

Candidate Starts for Haimas_20:

(Start: 33 @16643 has 358 MA's), (Start: 36 @16586 has 2 MA's), (44, 16523), (46, 16484), (54, 16382), (55, 16367), (59, 16319), (62, 16280), (65, 16256), (69, 16211), (70, 16205), (75, 16148), (84, 16004), (89, 15944), (95, 15893),

Gene: Haleema_19 Start: 16366, Stop: 15590, Start Num: 33

Candidate Starts for Haleema_19:

(Start: 33 @16366 has 358 MA's), (Start: 36 @16309 has 2 MA's), (44, 16246), (46, 16207), (54, 16105), (55, 16090), (59, 16042), (62, 16003), (65, 15979), (69, 15934), (70, 15928), (75, 15871), (84, 15727), (89, 15667), (95, 15616),

Gene: Hamish_20 Start: 16635, Stop: 15859, Start Num: 33

Candidate Starts for Hamish_20:

(Start: 33 @16635 has 358 MA's), (Start: 36 @16578 has 2 MA's), (44, 16515), (46, 16476), (54, 16374), (55, 16359), (59, 16311), (62, 16272), (65, 16248), (69, 16203), (70, 16197), (75, 16140), (84, 15996), (89, 15936), (95, 15885),

Gene: Hammy_39 Start: 31194, Stop: 32066, Start Num: 33

Candidate Starts for Hammy_39:

(Start: 28 @31158 has 2 MA's), (30, 31161), (31, 31164), (Start: 33 @31194 has 358 MA's), (Start: 36 @31251 has 2 MA's), (46, 31356), (53, 31449), (54, 31458), (55, 31473), (62, 31560), (63, 31575), (65, 31584), (66, 31590), (68, 31620), (70, 31635), (72, 31668), (75, 31692), (76, 31728), (77, 31740), (80, 31767), (83, 31803), (84, 31836), (94, 31941), (107, 31977), (111, 32019),

Gene: Happabalu_20 Start: 16337, Stop: 15561, Start Num: 33

Candidate Starts for Happabalu_20:

(Start: 33 @16337 has 358 MA's), (Start: 36 @16280 has 2 MA's), (46, 16178), (54, 16076), (55, 16061), (59, 16013), (62, 15974), (65, 15950), (69, 15905), (70, 15899), (75, 15842), (80, 15767), (84, 15698), (87, 15662), (89, 15638), (95, 15587),

Gene: Hartsy_20 Start: 16638, Stop: 15862, Start Num: 33

Candidate Starts for Hartsy_20:

(Start: 33 @16638 has 358 MA's), (Start: 36 @16581 has 2 MA's), (46, 16479), (54, 16377), (55, 16362), (59, 16314), (62, 16275), (65, 16251), (69, 16206), (70, 16200), (75, 16143), (80, 16068), (84, 15999), (87, 15963), (89, 15939), (95, 15888),

Gene: Harvey_20 Start: 16665, Stop: 15889, Start Num: 33

Candidate Starts for Harvey_20:

(Start: 33 @16665 has 358 MA's), (Start: 36 @16608 has 2 MA's), (44, 16545), (46, 16506), (54, 16404), (55, 16389), (59, 16341), (62, 16302), (65, 16278), (69, 16233), (70, 16227), (75, 16170), (84, 16026), (89, 15966), (95, 15915),

Gene: Heftyboy_86 Start: 55982, Stop: 56866, Start Num: 33

Candidate Starts for Heftyboy_86:

(Start: 33 @55982 has 358 MA's), (Start: 36 @56039 has 2 MA's), (38, 56051), (46, 56144), (49, 56189), (53, 56237), (54, 56246), (55, 56261), (60, 56321), (62, 56348), (63, 56363), (65, 56372), (66, 56378), (69, 56417), (70, 56423), (72, 56456), (75, 56480), (76, 56516), (80, 56555), (84, 56624), (90, 56696), (91, 56708), (108, 56771), (110, 56789), (116, 56843),

Gene: Held_20 Start: 16350, Stop: 15574, Start Num: 33

Candidate Starts for Held_20:

(Start: 33 @16350 has 358 MA's), (Start: 36 @16293 has 2 MA's), (44, 16230), (46, 16191), (54, 16089), (55, 16074), (59, 16026), (62, 15987), (65, 15963), (69, 15918), (70, 15912), (75, 15855), (84, 15711), (89, 15651), (95, 15600),

Gene: HenryJackson_19 Start: 16364, Stop: 15588, Start Num: 33

Candidate Starts for HenryJackson_19:

(9, 16736), (10, 16727), (Start: 33 @16364 has 358 MA's), (Start: 36 @16307 has 2 MA's), (46, 16205), (54, 16103), (55, 16088), (59, 16040), (62, 16001), (65, 15977), (69, 15932), (70, 15926), (75, 15869), (80, 15794), (84, 15725), (89, 15665), (95, 15614),

Gene: Hertubise_20 Start: 16657, Stop: 15881, Start Num: 33

Candidate Starts for Hertubise_20:

(Start: 33 @16657 has 358 MA's), (Start: 36 @16600 has 2 MA's), (44, 16537), (46, 16498), (54, 16396), (55, 16381), (59, 16333), (62, 16294), (65, 16270), (69, 16225), (70, 16219), (75, 16162), (84, 16018), (89, 15958), (95, 15907),

Gene: Hetaeria_20 Start: 16659, Stop: 15883, Start Num: 33

Candidate Starts for Hetaeria_20:

(Start: 33 @16659 has 358 MA's), (Start: 36 @16602 has 2 MA's), (44, 16539), (46, 16500), (54, 16398), (55, 16383), (59, 16335), (62, 16296), (65, 16272), (69, 16227), (70, 16221), (75, 16164), (84, 16020), (89, 15960), (95, 15909),

Gene: HighStump_19 Start: 16349, Stop: 15573, Start Num: 33

Candidate Starts for HighStump_19:

(Start: 33 @16349 has 358 MA's), (Start: 36 @16292 has 2 MA's), (44, 16229), (46, 16190), (54, 16088), (55, 16073), (59, 16025), (62, 15986), (65, 15962), (69, 15917), (70, 15911), (75, 15854), (84, 15710), (89, 15650), (95, 15599),

Gene: Hocus_19 Start: 16350, Stop: 15574, Start Num: 33

Candidate Starts for Hocus_19:

(Start: 33 @16350 has 358 MA's), (Start: 36 @16293 has 2 MA's), (46, 16191), (54, 16089), (55, 16074), (59, 16026), (62, 15987), (65, 15963), (69, 15918), (70, 15912), (75, 15855), (80, 15780), (84, 15711), (89, 15651), (95, 15600),

Gene: HogWash_19 Start: 16645, Stop: 15869, Start Num: 33

Candidate Starts for HogWash_19:

(Start: 33 @16645 has 358 MA's), (Start: 36 @16588 has 2 MA's), (46, 16486), (54, 16384), (55, 16369), (59, 16321), (62, 16282), (65, 16258), (69, 16213), (70, 16207), (75, 16150), (80, 16075), (84, 16006), (87, 15970), (89, 15946), (95, 15895),

Gene: Horchata_20 Start: 16628, Stop: 15852, Start Num: 33

Candidate Starts for Horchata_20:

(Start: 33 @16628 has 358 MA's), (Start: 36 @16571 has 2 MA's), (44, 16508), (46, 16469), (54, 16367), (55, 16352), (59, 16304), (62, 16265), (65, 16241), (69, 16196), (70, 16190), (75, 16133), (84, 15989), (89, 15929), (95, 15878),

Gene: ImtiyazSitla_19 Start: 16190, Stop: 15414, Start Num: 33

Candidate Starts for ImtiyazSitla_19:

(Start: 33 @16190 has 358 MA's), (Start: 36 @16133 has 2 MA's), (46, 16031), (54, 15929), (55, 15914), (59, 15866), (62, 15827), (65, 15803), (69, 15758), (70, 15752), (75, 15695), (80, 15620), (84, 15551), (89, 15491), (95, 15440),

Gene: Inchworm_20 Start: 16634, Stop: 15858, Start Num: 33

Candidate Starts for Inchworm_20:

(Start: 33 @16634 has 358 MA's), (Start: 36 @16577 has 2 MA's), (44, 16514), (46, 16475), (54, 16373), (55, 16358), (59, 16310), (62, 16271), (65, 16247), (69, 16202), (70, 16196), (75, 16139), (84, 15995), (89, 15935), (95, 15884),

Gene: Inverness_20 Start: 16649, Stop: 15873, Start Num: 33

Candidate Starts for Inverness_20:

(Start: 33 @16649 has 358 MA's), (Start: 36 @16592 has 2 MA's), (44, 16529), (46, 16490), (54, 16388), (55, 16373), (59, 16325), (62, 16286), (65, 16262), (69, 16217), (70, 16211), (75, 16154), (84, 16010), (89, 15950), (95, 15899),

Gene: InvictusManeo_83 Start: 54009, Stop: 54893, Start Num: 33

Candidate Starts for InvictusManeo_83:

(Start: 33 @54009 has 358 MA's), (Start: 36 @54066 has 2 MA's), (38, 54078), (42, 54114), (46, 54171), (49, 54216), (53, 54264), (54, 54273), (55, 54288), (60, 54348), (62, 54375), (63, 54390), (65,

54399), (66, 54405), (69, 54444), (70, 54450), (75, 54507), (76, 54543), (80, 54582), (84, 54651), (90, 54723), (91, 54735), (108, 54798), (110, 54816),

Gene: Iridessa_20 Start: 16317, Stop: 15541, Start Num: 33

Candidate Starts for Iridessa_20:

(Start: 33 @16317 has 358 MA's), (Start: 36 @16260 has 2 MA's), (46, 16158), (54, 16056), (55, 16041), (59, 15993), (62, 15954), (65, 15930), (69, 15885), (70, 15879), (75, 15822), (80, 15747), (84, 15678), (87, 15642), (89, 15618), (95, 15567),

Gene: Iridoclysis_20 Start: 16623, Stop: 15847, Start Num: 33

Candidate Starts for Iridoclysis_20:

(Start: 33 @16623 has 358 MA's), (Start: 36 @16566 has 2 MA's), (44, 16503), (46, 16464), (54, 16362), (55, 16347), (59, 16299), (62, 16260), (65, 16236), (69, 16191), (70, 16185), (75, 16128), (84, 15984), (89, 15924), (95, 15873),

Gene: IsaacEli_20 Start: 16653, Stop: 15877, Start Num: 33

Candidate Starts for IsaacEli_20:

(Start: 33 @16653 has 358 MA's), (Start: 36 @16596 has 2 MA's), (44, 16533), (46, 16494), (54, 16392), (55, 16377), (59, 16329), (62, 16290), (65, 16266), (69, 16221), (70, 16215), (75, 16158), (84, 16014), (89, 15954), (95, 15903),

Gene: JDog_19 Start: 16358, Stop: 15582, Start Num: 33

Candidate Starts for JDog_19:

(Start: 33 @16358 has 358 MA's), (Start: 36 @16301 has 2 MA's), (46, 16199), (54, 16097), (55, 16082), (59, 16034), (62, 15995), (65, 15971), (69, 15926), (70, 15920), (75, 15863), (80, 15788), (84, 15719), (87, 15683), (89, 15659), (95, 15608),

Gene: JacAttac_20 Start: 16634, Stop: 15858, Start Num: 33

Candidate Starts for JacAttac_20:

(Start: 33 @16634 has 358 MA's), (Start: 36 @16577 has 2 MA's), (44, 16514), (46, 16475), (54, 16373), (55, 16358), (59, 16310), (62, 16271), (65, 16247), (69, 16202), (70, 16196), (75, 16139), (84, 15995), (89, 15935), (95, 15884),

Gene: JakeO_19 Start: 16358, Stop: 15582, Start Num: 33

Candidate Starts for JakeO_19:

(Start: 33 @16358 has 358 MA's), (Start: 36 @16301 has 2 MA's), (46, 16199), (54, 16097), (55, 16082), (59, 16034), (62, 15995), (65, 15971), (69, 15926), (70, 15920), (75, 15863), (80, 15788), (84, 15719), (87, 15683), (89, 15659), (95, 15608),

Gene: JangoPhett_20 Start: 16633, Stop: 15857, Start Num: 33

Candidate Starts for JangoPhett_20:

(Start: 33 @16633 has 358 MA's), (Start: 36 @16576 has 2 MA's), (44, 16513), (46, 16474), (54, 16372), (55, 16357), (59, 16309), (62, 16270), (65, 16246), (69, 16201), (70, 16195), (75, 16138), (84, 15994), (89, 15934), (95, 15883),

Gene: Jesabah_20 Start: 16361, Stop: 15585, Start Num: 33

Candidate Starts for Jesabah_20:

(Start: 33 @16361 has 358 MA's), (Start: 36 @16304 has 2 MA's), (44, 16241), (46, 16202), (54, 16100), (55, 16085), (59, 16037), (62, 15998), (65, 15974), (69, 15929), (70, 15923), (75, 15866), (84, 15722), (89, 15662), (95, 15611),

Gene: Jillium_19 Start: 16356, Stop: 15580, Start Num: 33

Candidate Starts for Jillium_19:

(Start: 33 @16356 has 358 MA's), (Start: 36 @16299 has 2 MA's), (44, 16236), (46, 16197), (54, 16095), (55, 16080), (59, 16032), (62, 15993), (65, 15969), (69, 15924), (70, 15918), (75, 15861), (84, 15717), (89, 15657), (95, 15606),

Gene: Jiminy_19 Start: 16196, Stop: 15420, Start Num: 33

Candidate Starts for Jiminy_19:

(Start: 33 @16196 has 358 MA's), (Start: 36 @16139 has 2 MA's), (46, 16037), (54, 15935), (55, 15920), (59, 15872), (62, 15833), (65, 15809), (69, 15764), (70, 15758), (75, 15701), (80, 15626), (84, 15557), (87, 15521), (89, 15497), (95, 15446),

Gene: Jiraiya_19 Start: 16357, Stop: 15581, Start Num: 33

Candidate Starts for Jiraiya_19:

(Start: 33 @16357 has 358 MA's), (Start: 36 @16300 has 2 MA's), (44, 16237), (46, 16198), (54, 16096), (55, 16081), (59, 16033), (62, 15994), (65, 15970), (69, 15925), (70, 15919), (75, 15862), (84, 15718), (89, 15658), (95, 15607),

Gene: KLucky39_20 Start: 16641, Stop: 15865, Start Num: 33

Candidate Starts for KLucky39_20:

(Start: 33 @16641 has 358 MA's), (Start: 36 @16584 has 2 MA's), (44, 16521), (46, 16482), (54, 16380), (55, 16365), (59, 16317), (62, 16278), (65, 16254), (69, 16209), (70, 16203), (75, 16146), (84, 16002), (89, 15942), (95, 15891),

Gene: Kahve_19 Start: 16363, Stop: 15587, Start Num: 33

Candidate Starts for Kahve_19:

(Start: 33 @16363 has 358 MA's), (Start: 36 @16306 has 2 MA's), (44, 16243), (46, 16204), (54, 16102), (55, 16087), (59, 16039), (62, 16000), (65, 15976), (69, 15931), (70, 15925), (75, 15868), (84, 15724), (89, 15664), (95, 15613),

Gene: Kailash_20 Start: 16650, Stop: 15874, Start Num: 33

Candidate Starts for Kailash_20:

(Start: 33 @16650 has 358 MA's), (Start: 36 @16593 has 2 MA's), (46, 16491), (54, 16389), (55, 16374), (59, 16326), (62, 16287), (65, 16263), (69, 16218), (70, 16212), (75, 16155), (80, 16080), (84, 16011), (87, 15975), (89, 15951), (95, 15900),

Gene: Karn_19 Start: 16356, Stop: 15580, Start Num: 33

Candidate Starts for Karn_19:

(Start: 33 @16356 has 358 MA's), (Start: 36 @16299 has 2 MA's), (46, 16197), (54, 16095), (55, 16080), (59, 16032), (62, 15993), (65, 15969), (69, 15924), (70, 15918), (75, 15861), (80, 15786), (84, 15717), (87, 15681), (89, 15657), (95, 15606),

Gene: Katniss_20 Start: 16660, Stop: 15884, Start Num: 33

Candidate Starts for Katniss_20:

(Start: 33 @16660 has 358 MA's), (Start: 36 @16603 has 2 MA's), (44, 16540), (46, 16501), (54, 16399), (55, 16384), (59, 16336), (62, 16297), (65, 16273), (69, 16228), (70, 16222), (75, 16165), (84, 16021), (89, 15961), (95, 15910),

Gene: Keitherie_20 Start: 16663, Stop: 15887, Start Num: 33

Candidate Starts for Keitherie_20:

(Start: 33 @16663 has 358 MA's), (Start: 36 @16606 has 2 MA's), (46, 16504), (54, 16402), (55, 16387), (59, 16339), (62, 16300), (65, 16276), (69, 16231), (70, 16225), (75, 16168), (80, 16093), (84, 16024), (87, 15988), (89, 15964), (95, 15913),

Gene: Khan1_20 Start: 16356, Stop: 15580, Start Num: 33

Candidate Starts for Khan1_20:

(Start: 33 @16356 has 358 MA's), (Start: 36 @16299 has 2 MA's), (46, 16197), (54, 16095), (55, 16080), (59, 16032), (62, 15993), (65, 15969), (69, 15924), (70, 15918), (75, 15861), (80, 15786), (84, 15717), (87, 15681), (89, 15657), (95, 15606),

Gene: KiSi_44 Start: 32387, Stop: 33259, Start Num: 33

Candidate Starts for KiSi_44:

(Start: 33 @32387 has 358 MA's), (39, 32474), (46, 32549), (54, 32651), (55, 32666), (62, 32753), (65, 32777), (66, 32783), (69, 32822), (70, 32828), (72, 32861), (73, 32867), (74, 32870), (75, 32885), (76, 32921), (80, 32960), (84, 33029), (107, 33173),

Gene: Kikipoo_20 Start: 16653, Stop: 15877, Start Num: 33

Candidate Starts for Kikipoo_20:

(Start: 33 @16653 has 358 MA's), (Start: 36 @16596 has 2 MA's), (44, 16533), (46, 16494), (54, 16392), (55, 16377), (59, 16329), (62, 16290), (65, 16266), (69, 16221), (70, 16215), (75, 16158), (84, 16014), (89, 15954), (95, 15903),

Gene: Kimbrough_20 Start: 16353, Stop: 15577, Start Num: 33

Candidate Starts for Kimbrough_20:

(9, 16725), (10, 16716), (Start: 33 @16353 has 358 MA's), (Start: 36 @16296 has 2 MA's), (44, 16233), (46, 16194), (54, 16092), (55, 16077), (59, 16029), (62, 15990), (65, 15966), (69, 15921), (70, 15915), (75, 15858), (84, 15714), (89, 15654), (95, 15603),

Gene: KingVeVeVe_20 Start: 16631, Stop: 15855, Start Num: 33

Candidate Starts for KingVeVeVe_20:

(Start: 33 @16631 has 358 MA's), (Start: 36 @16574 has 2 MA's), (46, 16472), (54, 16370), (55, 16355), (59, 16307), (62, 16268), (65, 16244), (69, 16199), (70, 16193), (75, 16136), (80, 16061), (84, 15992), (87, 15956), (89, 15932), (95, 15881),

Gene: KlimbOn_20 Start: 16641, Stop: 15865, Start Num: 33

Candidate Starts for KlimbOn_20:

(Start: 33 @16641 has 358 MA's), (Start: 36 @16584 has 2 MA's), (44, 16521), (46, 16482), (54, 16380), (55, 16365), (59, 16317), (62, 16278), (65, 16254), (69, 16209), (70, 16203), (75, 16146), (84, 16002), (89, 15942), (95, 15891),

Gene: Kloppinator_20 Start: 16660, Stop: 15884, Start Num: 33

Candidate Starts for Kloppinator_20:

(Start: 33 @16660 has 358 MA's), (Start: 36 @16603 has 2 MA's), (44, 16540), (46, 16501), (54, 16399), (55, 16384), (59, 16336), (62, 16297), (65, 16273), (69, 16228), (70, 16222), (75, 16165), (84, 16021), (89, 15961), (95, 15910),

Gene: Kratio_87 Start: 55038, Stop: 55922, Start Num: 33

Candidate Starts for Kratio_87:

(Start: 33 @55038 has 358 MA's), (Start: 36 @55095 has 2 MA's), (37, 55101), (38, 55107), (46, 55200), (49, 55245), (53, 55293), (54, 55302), (55, 55317), (60, 55377), (62, 55404), (63, 55419), (65, 55428), (66, 55434), (69, 55473), (70, 55479), (72, 55512), (75, 55536), (76, 55572), (80, 55611), (84, 55680), (90, 55752), (91, 55764), (108, 55827), (110, 55845), (116, 55899),

Gene: Kwadwo_19 Start: 16344, Stop: 15568, Start Num: 33

Candidate Starts for Kwadwo_19:

(Start: 33 @16344 has 358 MA's), (Start: 36 @16287 has 2 MA's), (44, 16224), (46, 16185), (54, 16083), (55, 16068), (59, 16020), (62, 15981), (65, 15957), (69, 15912), (70, 15906), (75, 15849), (84, 15705), (89, 15645), (95, 15594),

Gene: Kwksand96_19 Start: 16206, Stop: 15430, Start Num: 33

Candidate Starts for Kwksand96_19:

(Start: 33 @16206 has 358 MA's), (Start: 36 @16149 has 2 MA's), (46, 16047), (54, 15945), (55, 15930), (59, 15882), (62, 15843), (65, 15819), (69, 15774), (70, 15768), (75, 15711), (80, 15636), (84, 15567), (87, 15531), (89, 15507), (95, 15456),

Gene: Labeouficaum_19 Start: 16202, Stop: 15426, Start Num: 33

Candidate Starts for Labeouficaum_19:

(Start: 33 @16202 has 358 MA's), (Start: 36 @16145 has 2 MA's), (46, 16043), (54, 15941), (55, 15926), (59, 15878), (62, 15839), (65, 15815), (69, 15770), (70, 15764), (75, 15707), (80, 15632), (84, 15563), (87, 15527), (89, 15503), (95, 15452),

Gene: Larson_21 Start: 16658, Stop: 15882, Start Num: 33

Candidate Starts for Larson_21:

(Start: 33 @16658 has 358 MA's), (Start: 36 @16601 has 2 MA's), (46, 16499), (54, 16397), (55, 16382), (59, 16334), (62, 16295), (65, 16271), (69, 16226), (70, 16220), (75, 16163), (80, 16088), (84, 16019), (87, 15983), (89, 15959), (95, 15908),

Gene: Larva_86 Start: 56016, Stop: 56900, Start Num: 33

Candidate Starts for Larva_86:

(Start: 33 @56016 has 358 MA's), (Start: 36 @56073 has 2 MA's), (37, 56079), (38, 56085), (40, 56109), (46, 56178), (49, 56223), (53, 56271), (54, 56280), (55, 56295), (60, 56355), (62, 56382), (63, 56397), (65, 56406), (66, 56412), (69, 56451), (70, 56457), (72, 56490), (75, 56514), (76, 56550), (80, 56589), (83, 56625), (84, 56658), (90, 56730), (91, 56742), (108, 56805), (110, 56823),

Gene: LasagnaCat_20 Start: 16646, Stop: 15870, Start Num: 33

Candidate Starts for LasagnaCat_20:

(Start: 33 @16646 has 358 MA's), (Start: 36 @16589 has 2 MA's), (44, 16526), (46, 16487), (54, 16385), (55, 16370), (59, 16322), (62, 16283), (65, 16259), (69, 16214), (70, 16208), (75, 16151), (84, 16007), (89, 15947), (95, 15896),

Gene: Lasso_20 Start: 16620, Stop: 15844, Start Num: 33

Candidate Starts for Lasso_20:

(Start: 33 @16620 has 358 MA's), (Start: 36 @16563 has 2 MA's), (44, 16500), (46, 16461), (54, 16359), (55, 16344), (59, 16296), (62, 16257), (65, 16233), (69, 16188), (70, 16182), (75, 16125), (84, 15981), (89, 15921), (95, 15870),

Gene: LaterM_40 Start: 31797, Stop: 32651, Start Num: 33

Candidate Starts for LaterM_40:

(21, 31731), (22, 31734), (25, 31740), (30, 31764), (Start: 33 @31797 has 358 MA's), (Start: 36 @31854 has 2 MA's), (38, 31866), (46, 31959), (50, 32007), (54, 32061), (55, 32076), (59, 32124), (60, 32136), (65, 32187), (66, 32193), (69, 32232), (70, 32238), (73, 32277), (74, 32280), (75, 32295), (76, 32331), (80, 32370), (84, 32439),

Gene: LeMond_44 Start: 32458, Stop: 33330, Start Num: 33

Candidate Starts for LeMond_44:

(Start: 33 @32458 has 358 MA's), (39, 32545), (46, 32620), (54, 32722), (55, 32737), (62, 32824), (65, 32848), (66, 32854), (69, 32893), (70, 32899), (72, 32932), (73, 32938), (74, 32941), (75, 32956), (76, 32992), (80, 33031), (84, 33100), (107, 33244),

Gene: LeeLot_20 Start: 16643, Stop: 15867, Start Num: 33

Candidate Starts for LeeLot_20:

(9, 17015), (10, 17006), (Start: 33 @16643 has 358 MA's), (Start: 36 @16586 has 2 MA's), (44, 16523), (46, 16484), (54, 16382), (55, 16367), (59, 16319), (62, 16280), (65, 16256), (69, 16211), (70, 16205), (75, 16148), (84, 16004), (89, 15944), (95, 15893),

Gene: Lego3393_20 Start: 16657, Stop: 15881, Start Num: 33

Candidate Starts for Lego3393_20:

(Start: 33 @16657 has 358 MA's), (Start: 36 @16600 has 2 MA's), (44, 16537), (46, 16498), (54, 16396), (55, 16381), (59, 16333), (62, 16294), (65, 16270), (69, 16225), (70, 16219), (75, 16162), (84, 16018), (89, 15958), (95, 15907),

Gene: Lehmann_20 Start: 16187, Stop: 15411, Start Num: 33

Candidate Starts for Lehmann_20:

(Start: 33 @16187 has 358 MA's), (44, 16067), (46, 16028), (54, 15926), (55, 15911), (59, 15863), (62, 15824), (65, 15800), (69, 15755), (70, 15749), (75, 15692), (84, 15548), (89, 15488), (95, 15437),

Gene: LeiMonet_20 Start: 16352, Stop: 15576, Start Num: 33

Candidate Starts for LeiMonet_20:

(Start: 33 @16352 has 358 MA's), (Start: 36 @16295 has 2 MA's), (44, 16232), (46, 16193), (54, 16091), (55, 16076), (59, 16028), (62, 15989), (65, 15965), (69, 15920), (70, 15914), (75, 15857), (84, 15713), (89, 15653), (95, 15602),

Gene: LemonSlice_20 Start: 16352, Stop: 15576, Start Num: 33

Candidate Starts for LemonSlice_20:

(Start: 33 @16352 has 358 MA's), (Start: 36 @16295 has 2 MA's), (44, 16232), (46, 16193), (54, 16091), (55, 16076), (59, 16028), (62, 15989), (65, 15965), (69, 15920), (70, 15914), (75, 15857), (84, 15713), (89, 15653), (95, 15602),

Gene: LilDirt_85 Start: 54056, Stop: 54940, Start Num: 33

Candidate Starts for LilDirt_85:

(Start: 33 @54056 has 358 MA's), (Start: 36 @54113 has 2 MA's), (38, 54125), (46, 54218), (49, 54263), (53, 54311), (54, 54320), (55, 54335), (60, 54395), (62, 54422), (63, 54437), (65, 54446), (66, 54452), (69, 54491), (70, 54497), (75, 54554), (76, 54590), (80, 54629), (84, 54698), (90, 54770), (91, 54782), (108, 54845), (110, 54863),

Gene: LilPharaoh_35 Start: 30629, Stop: 31519, Start Num: 33

Candidate Starts for LilPharaoh_35:

(Start: 33 @30629 has 358 MA's), (Start: 36 @30686 has 2 MA's), (46, 30791), (53, 30884), (54, 30893), (55, 30908), (57, 30932), (62, 30995), (65, 31019), (66, 31025), (69, 31064), (70, 31070), (71, 31088), (74, 31112), (75, 31127), (76, 31163), (80, 31202), (81, 31217), (83, 31238), (84, 31271), (86, 31316), (94, 31388), (106, 31424), (115, 31502),

Gene: LindNT_39 Start: 31008, Stop: 31940, Start Num: 33

Candidate Starts for LindNT_39:

(Start: 33 @31008 has 358 MA's), (Start: 36 @31065 has 2 MA's), (41, 31110), (46, 31170), (49, 31215), (54, 31272), (55, 31287), (59, 31335), (60, 31347), (62, 31374), (65, 31398), (66, 31404), (69, 31443), (74, 31491), (75, 31506), (76, 31542), (80, 31581), (83, 31617), (84, 31650), (93, 31755), (104, 31797), (105, 31800), (110, 31839),

Gene: Longacauda_19 Start: 16346, Stop: 15570, Start Num: 33

Candidate Starts for Longacauda_19:

(Start: 33 @16346 has 358 MA's), (Start: 36 @16289 has 2 MA's), (46, 16187), (54, 16085), (55, 16070), (59, 16022), (62, 15983), (65, 15959), (69, 15914), (70, 15908), (75, 15851), (80, 15776), (84, 15707), (87, 15671), (89, 15647), (95, 15596),

Gene: Lopsy_19 Start: 16201, Stop: 15425, Start Num: 33

Candidate Starts for Lopsy_19:

(9, 16573), (10, 16564), (Start: 33 @16201 has 358 MA's), (Start: 36 @16144 has 2 MA's), (44, 16081), (46, 16042), (54, 15940), (55, 15925), (59, 15877), (62, 15838), (65, 15814), (69, 15769), (70, 15763), (75, 15706), (84, 15562), (89, 15502), (95, 15451),

Gene: LostAndPhound_19 Start: 16354, Stop: 15578, Start Num: 33

Candidate Starts for LostAndPhound_19:

(Start: 33 @16354 has 358 MA's), (Start: 36 @16297 has 2 MA's), (44, 16234), (46, 16195), (54, 16093), (55, 16078), (59, 16030), (62, 15991), (65, 15967), (69, 15922), (70, 15916), (75, 15859), (84, 15715), (89, 15655), (95, 15604),

Gene: LuckyMarjie_19 Start: 16367, Stop: 15591, Start Num: 33

Candidate Starts for LuckyMarjie_19:

(Start: 33 @16367 has 358 MA's), (Start: 36 @16310 has 2 MA's), (44, 16247), (46, 16208), (54, 16106), (55, 16091), (59, 16043), (62, 16004), (65, 15980), (69, 15935), (70, 15929), (75, 15872), (84, 15728), (89, 15668), (95, 15617),

Gene: Lulumae_19 Start: 16345, Stop: 15569, Start Num: 33

Candidate Starts for Lulumae_19:

(Start: 33 @16345 has 358 MA's), (Start: 36 @16288 has 2 MA's), (44, 16225), (46, 16186), (54, 16084), (55, 16069), (59, 16021), (62, 15982), (65, 15958), (69, 15913), (70, 15907), (75, 15850), (84, 15706), (89, 15646), (95, 15595),

Gene: Lulwa_20 Start: 16632, Stop: 15856, Start Num: 33

Candidate Starts for Lulwa_20:

(Start: 33 @16632 has 358 MA's), (Start: 36 @16575 has 2 MA's), (44, 16512), (46, 16473), (54, 16371), (55, 16356), (59, 16308), (62, 16269), (65, 16245), (69, 16200), (70, 16194), (75, 16137), (84, 15993), (89, 15933), (95, 15882),

Gene: Lumine_19 Start: 16338, Stop: 15562, Start Num: 33

Candidate Starts for Lumine_19:

(Start: 33 @16338 has 358 MA's), (Start: 36 @16281 has 2 MA's), (44, 16218), (46, 16179), (54, 16077), (55, 16062), (59, 16014), (62, 15975), (65, 15951), (69, 15906), (70, 15900), (75, 15843), (84, 15699), (89, 15639), (95, 15588),

Gene: MRabcd_19 Start: 16346, Stop: 15570, Start Num: 33

Candidate Starts for MRabcd_19:

(Start: 33 @16346 has 358 MA's), (Start: 36 @16289 has 2 MA's), (44, 16226), (46, 16187), (54, 16085), (55, 16070), (59, 16022), (62, 15983), (65, 15959), (69, 15914), (70, 15908), (75, 15851), (84, 15707), (89, 15647), (95, 15596),

Gene: MacnCheese_42 Start: 31958, Stop: 32809, Start Num: 33

Candidate Starts for MacnCheese_42:

(Start: 33 @31958 has 358 MA's), (Start: 36 @32015 has 2 MA's), (39, 32045), (46, 32120), (54, 32222), (55, 32237), (62, 32324), (63, 32339), (65, 32348), (66, 32354), (69, 32393), (72, 32432), (75, 32456), (76, 32492), (80, 32531), (83, 32567), (84, 32600), (99, 32726), (107, 32741),

Gene: Mag7_19 Start: 16200, Stop: 15424, Start Num: 33

Candidate Starts for Mag7_19:

(Start: 33 @16200 has 358 MA's), (Start: 36 @16143 has 2 MA's), (46, 16041), (54, 15939), (55, 15924), (59, 15876), (62, 15837), (65, 15813), (69, 15768), (70, 15762), (75, 15705), (80, 15630), (84,

15561), (87, 15525), (89, 15501), (95, 15450),

Gene: Magic8_20 Start: 16638, Stop: 15862, Start Num: 33

Candidate Starts for Magic8_20:

(Start: 33 @16638 has 358 MA's), (Start: 36 @16581 has 2 MA's), (46, 16479), (54, 16377), (55, 16362), (59, 16314), (62, 16275), (65, 16251), (69, 16206), (70, 16200), (75, 16143), (80, 16068), (84, 15999), (87, 15963), (89, 15939), (95, 15888),

Gene: Mana_19 Start: 16348, Stop: 15572, Start Num: 33

Candidate Starts for Mana_19:

(Start: 33 @16348 has 358 MA's), (Start: 36 @16291 has 2 MA's), (44, 16228), (46, 16189), (54, 16087), (55, 16072), (59, 16024), (62, 15985), (65, 15961), (69, 15916), (70, 15910), (75, 15853), (84, 15709), (89, 15649), (95, 15598),

Gene: Manad_19 Start: 16198, Stop: 15422, Start Num: 33

Candidate Starts for Manad_19:

(Start: 33 @16198 has 358 MA's), (Start: 36 @16141 has 2 MA's), (44, 16078), (46, 16039), (54, 15937), (55, 15922), (59, 15874), (62, 15835), (65, 15811), (69, 15766), (70, 15760), (75, 15703), (84, 15559), (89, 15499), (95, 15448),

Gene: Marcoliusprime_42 Start: 33015, Stop: 33860, Start Num: 33

Candidate Starts for Marcoliusprime_42:

(26, 32958), (27, 32970), (30, 32979), (Start: 33 @33015 has 358 MA's), (Start: 36 @33072 has 2 MA's), (38, 33084), (46, 33177), (50, 33225), (54, 33279), (55, 33294), (58, 33333), (59, 33342), (60, 33354), (65, 33405), (66, 33411), (72, 33489), (76, 33549), (79, 33582), (80, 33588), (84, 33657), (97, 33780),

Gene: MarkPhew_43 Start: 31900, Stop: 32772, Start Num: 33

Candidate Starts for MarkPhew_43:

(Start: 33 @31900 has 358 MA's), (39, 31987), (46, 32062), (49, 32107), (54, 32164), (55, 32179), (65, 32290), (66, 32296), (69, 32335), (70, 32341), (72, 32374), (75, 32398), (76, 32434), (80, 32473), (84, 32542), (90, 32614), (107, 32686),

Gene: Marshawn_43 Start: 32188, Stop: 33066, Start Num: 33

Candidate Starts for Marshawn_43:

(Start: 33 @32188 has 358 MA's), (Start: 36 @32245 has 2 MA's), (39, 32275), (46, 32350), (49, 32395), (54, 32452), (55, 32467), (62, 32554), (65, 32578), (66, 32584), (69, 32623), (70, 32629), (72, 32662), (75, 32686), (76, 32722), (80, 32761), (84, 32830), (90, 32914), (102, 32980), (107, 32986), (116, 33058),

Gene: Maru_19 Start: 16346, Stop: 15570, Start Num: 33

Candidate Starts for Maru_19:

(Start: 33 @16346 has 358 MA's), (Start: 36 @16289 has 2 MA's), (44, 16226), (46, 16187), (54, 16085), (55, 16070), (59, 16022), (62, 15983), (65, 15959), (69, 15914), (70, 15908), (75, 15851), (84, 15707), (89, 15647), (95, 15596),

Gene: Maskar_19 Start: 16190, Stop: 15414, Start Num: 33

Candidate Starts for Maskar_19:

(Start: 33 @16190 has 358 MA's), (Start: 36 @16133 has 2 MA's), (46, 16031), (54, 15929), (55, 15914), (59, 15866), (62, 15827), (65, 15803), (69, 15758), (70, 15752), (75, 15695), (80, 15620), (84, 15551), (89, 15491), (95, 15440),

Gene: Matalotodo_20 Start: 16638, Stop: 15862, Start Num: 33

Candidate Starts for Matalotodo_20:

(9, 17010), (10, 17001), (Start: 33 @16638 has 358 MA's), (Start: 36 @16581 has 2 MA's), (44, 16518), (46, 16479), (54, 16377), (55, 16362), (59, 16314), (62, 16275), (65, 16251), (69, 16206), (70, 16200), (75, 16143), (84, 15999), (89, 15939), (95, 15888),

Gene: McMater_41 Start: 31431, Stop: 32309, Start Num: 33

Candidate Starts for McMater_41:

(Start: 33 @31431 has 358 MA's), (Start: 36 @31488 has 2 MA's), (39, 31518), (46, 31593), (49, 31638), (54, 31695), (55, 31710), (57, 31734), (62, 31797), (65, 31821), (66, 31827), (70, 31872), (72, 31905), (74, 31914), (75, 31929), (76, 31965), (80, 32004), (83, 32040), (84, 32073), (86, 32118), (90, 32157), (96, 32199), (98, 32205), (107, 32226), (116, 32301),

Gene: Mcshane_19 Start: 16342, Stop: 15566, Start Num: 33

Candidate Starts for Mcshane_19:

(Start: 33 @16342 has 358 MA's), (Start: 36 @16285 has 2 MA's), (44, 16222), (46, 16183), (54, 16081), (55, 16066), (59, 16018), (62, 15979), (65, 15955), (69, 15910), (70, 15904), (75, 15847), (84, 15703), (89, 15643), (95, 15592),

Gene: Mdavu_35 Start: 30617, Stop: 31348, Start Num: 33

Candidate Starts for Mdavu_35:

(Start: 33 @30617 has 358 MA's), (Start: 36 @30674 has 2 MA's), (46, 30779), (53, 30872), (54, 30881), (55, 30896), (57, 30920), (62, 30983), (65, 31007), (66, 31013), (69, 31052), (70, 31058), (71, 31076), (74, 31100), (75, 31115), (76, 31151), (80, 31190), (81, 31205), (83, 31226), (84, 31259), (86, 31304),

Gene: MeaningOfLife_40 Start: 31828, Stop: 32682, Start Num: 33

Candidate Starts for MeaningOfLife_40:

(22, 31765), (30, 31795), (Start: 33 @31828 has 358 MA's), (Start: 36 @31885 has 2 MA's), (38, 31897), (46, 31990), (50, 32038), (54, 32092), (55, 32107), (59, 32155), (60, 32167), (65, 32218), (66, 32224), (69, 32263), (70, 32269), (74, 32311), (75, 32326), (76, 32362), (80, 32401), (84, 32470), (90, 32542),

Gene: Mecca_19 Start: 16340, Stop: 15564, Start Num: 33

Candidate Starts for Mecca_19:

(Start: 33 @16340 has 358 MA's), (Start: 36 @16283 has 2 MA's), (44, 16220), (46, 16181), (54, 16079), (55, 16064), (59, 16016), (62, 15977), (65, 15953), (69, 15908), (70, 15902), (75, 15845), (84, 15701), (89, 15641), (95, 15590),

Gene: Megamind20_20 Start: 16361, Stop: 15585, Start Num: 33

Candidate Starts for Megamind20_20:

(Start: 33 @16361 has 358 MA's), (Start: 36 @16304 has 2 MA's), (44, 16241), (46, 16202), (54, 16100), (55, 16085), (59, 16037), (62, 15998), (65, 15974), (69, 15929), (70, 15923), (75, 15866), (84, 15722), (89, 15662), (95, 15611),

Gene: Megatron_20 Start: 16643, Stop: 15867, Start Num: 33

Candidate Starts for Megatron_20:

(Start: 33 @16643 has 358 MA's), (Start: 36 @16586 has 2 MA's), (44, 16523), (46, 16484), (54, 16382), (55, 16367), (59, 16319), (62, 16280), (65, 16256), (69, 16211), (70, 16205), (75, 16148), (84, 16004), (89, 15944), (95, 15893),

Gene: Melc17_20 Start: 16634, Stop: 15858, Start Num: 33

Candidate Starts for Melc17_20:

(Start: 33 @16634 has 358 MA's), (Start: 36 @16577 has 2 MA's), (46, 16475), (54, 16373), (55, 16358), (59, 16310), (62, 16271), (65, 16247), (69, 16202), (70, 16196), (75, 16139), (80, 16064), (84, 15995), (87, 15959), (89, 15935), (95, 15884),

Gene: MelsMeow_19 Start: 16200, Stop: 15424, Start Num: 33

Candidate Starts for MelsMeow_19:

(Start: 33 @16200 has 358 MA's), (Start: 36 @16143 has 2 MA's), (46, 16041), (54, 15939), (55, 15924), (59, 15876), (62, 15837), (65, 15813), (69, 15768), (70, 15762), (75, 15705), (80, 15630), (84, 15561), (87, 15525), (89, 15501), (95, 15450),

Gene: Mesh1_20 Start: 16652, Stop: 15876, Start Num: 33

Candidate Starts for Mesh1_20:

(Start: 33 @16652 has 358 MA's), (Start: 36 @16595 has 2 MA's), (44, 16532), (46, 16493), (54, 16391), (55, 16376), (59, 16328), (62, 16289), (65, 16265), (69, 16220), (70, 16214), (75, 16157), (84, 16013), (89, 15953), (95, 15902),

Gene: Mesmerelda_19 Start: 16344, Stop: 15568, Start Num: 33

Candidate Starts for Mesmerelda_19:

(9, 16716), (10, 16707), (Start: 33 @16344 has 358 MA's), (Start: 36 @16287 has 2 MA's), (44, 16224), (46, 16185), (54, 16083), (55, 16068), (59, 16020), (62, 15981), (65, 15957), (69, 15912), (70, 15906), (75, 15849), (84, 15705), (89, 15645), (95, 15594),

Gene: MichaelPhcott_19 Start: 16200, Stop: 15424, Start Num: 33

Candidate Starts for MichaelPhcott_19:

(Start: 33 @16200 has 358 MA's), (Start: 36 @16143 has 2 MA's), (46, 16041), (54, 15939), (55, 15924), (59, 15876), (62, 15837), (65, 15813), (69, 15768), (70, 15762), (75, 15705), (80, 15630), (84, 15561), (87, 15525), (89, 15501), (95, 15450),

Gene: Mikota_20 Start: 16628, Stop: 15852, Start Num: 33

Candidate Starts for Mikota_20:

(Start: 33 @16628 has 358 MA's), (Start: 36 @16571 has 2 MA's), (44, 16508), (46, 16469), (54, 16367), (55, 16352), (59, 16304), (62, 16265), (65, 16241), (69, 16196), (70, 16190), (75, 16133), (84, 15989), (89, 15929), (95, 15878),

Gene: Milly_42 Start: 32988, Stop: 33833, Start Num: 33

Candidate Starts for Milly_42:

(26, 32931), (27, 32943), (30, 32952), (Start: 33 @32988 has 358 MA's), (Start: 36 @33045 has 2 MA's), (38, 33057), (46, 33150), (50, 33198), (54, 33252), (55, 33267), (58, 33306), (59, 33315), (60, 33327), (65, 33378), (66, 33384), (72, 33462), (76, 33522), (79, 33555), (80, 33561), (84, 33630), (97, 33753),

Gene: MiniBoss_20 Start: 16630, Stop: 15854, Start Num: 33

Candidate Starts for MiniBoss_20:

(Start: 33 @16630 has 358 MA's), (Start: 36 @16573 has 2 MA's), (44, 16510), (46, 16471), (54, 16369), (55, 16354), (59, 16306), (62, 16267), (65, 16243), (69, 16198), (70, 16192), (75, 16135), (84, 15991), (89, 15931), (95, 15880),

Gene: MitKao_20 Start: 16349, Stop: 15573, Start Num: 33

Candidate Starts for MitKao_20:

(Start: 33 @16349 has 358 MA's), (Start: 36 @16292 has 2 MA's), (44, 16229), (46, 16190), (54, 16088), (55, 16073), (59, 16025), (62, 15986), (65, 15962), (69, 15917), (70, 15911), (75, 15854), (84, 15710), (89, 15650), (95, 15599),

Gene: Morgushi_20 Start: 16354, Stop: 15578, Start Num: 33

Candidate Starts for Morgushi_20:

(Start: 33 @16354 has 358 MA's), (Start: 36 @16297 has 2 MA's), (44, 16234), (46, 16195), (54, 16093), (55, 16078), (59, 16030), (62, 15991), (65, 15967), (69, 15922), (70, 15916), (75, 15859), (84, 15715), (89, 15655), (95, 15604),

Gene: Morty_20 Start: 16652, Stop: 15876, Start Num: 33

Candidate Starts for Morty_20:

(Start: 33 @16652 has 358 MA's), (Start: 36 @16595 has 2 MA's), (44, 16532), (46, 16493), (54, 16391), (55, 16376), (59, 16328), (62, 16289), (65, 16265), (69, 16220), (70, 16214), (75, 16157), (84, 16013), (89, 15953), (95, 15902),

Gene: Mosaic_19 Start: 16356, Stop: 15580, Start Num: 33

Candidate Starts for Mosaic_19:

(9, 16725), (10, 16716), (Start: 33 @16356 has 358 MA's), (46, 16197), (54, 16095), (55, 16080), (59, 16032), (62, 15993), (65, 15969), (69, 15924), (70, 15918), (75, 15861), (84, 15717), (89, 15657), (95, 15606),

Gene: MrPhizzler_20 Start: 16353, Stop: 15577, Start Num: 33

Candidate Starts for MrPhizzler_20:

(Start: 33 @16353 has 358 MA's), (Start: 36 @16296 has 2 MA's), (46, 16194), (54, 16092), (55, 16077), (59, 16029), (62, 15990), (65, 15966), (69, 15921), (70, 15915), (75, 15858), (80, 15783), (84, 15714), (87, 15678), (89, 15654), (95, 15603),

Gene: Mufasa_43 Start: 32913, Stop: 33758, Start Num: 33

Candidate Starts for Mufasa_43:

(19, 32838), (27, 32868), (30, 32877), (Start: 33 @32913 has 358 MA's), (Start: 36 @32970 has 2 MA's), (46, 33075), (50, 33123), (54, 33177), (55, 33192), (58, 33231), (59, 33240), (60, 33252), (65, 33303), (66, 33309), (72, 33387), (76, 33447), (79, 33480), (80, 33486), (84, 33555), (97, 33678),

Gene: Mulan_19 Start: 16349, Stop: 15573, Start Num: 33

Candidate Starts for Mulan_19:

(Start: 33 @16349 has 358 MA's), (Start: 36 @16292 has 2 MA's), (44, 16229), (46, 16190), (54, 16088), (55, 16073), (59, 16025), (62, 15986), (65, 15962), (69, 15917), (70, 15911), (75, 15854), (84, 15710), (89, 15650), (95, 15599),

Gene: Murdoc_20 Start: 16642, Stop: 15866, Start Num: 33

Candidate Starts for Murdoc_20:

(Start: 33 @16642 has 358 MA's), (Start: 36 @16585 has 2 MA's), (44, 16522), (46, 16483), (54, 16381), (55, 16366), (59, 16318), (62, 16279), (65, 16255), (69, 16210), (70, 16204), (75, 16147), (84, 16003), (89, 15943), (95, 15892),

Gene: Murucutumbu_40 Start: 31891, Stop: 32745, Start Num: 33

Candidate Starts for Murucutumbu_40:

(21, 31825), (22, 31828), (25, 31834), (30, 31858), (Start: 33 @31891 has 358 MA's), (Start: 36 @31948 has 2 MA's), (38, 31960), (46, 32053), (50, 32101), (54, 32155), (55, 32170), (59, 32218), (60, 32230), (65, 32281), (66, 32287), (67, 32290), (69, 32326), (70, 32332), (73, 32371), (74, 32374), (75, 32389), (76, 32425), (80, 32464), (84, 32533),

Gene: Mutante_19 Start: 16352, Stop: 15576, Start Num: 33

Candidate Starts for Mutante_19:

(Start: 33 @16352 has 358 MA's), (Start: 36 @16295 has 2 MA's), (44, 16232), (46, 16193), (54, 16091), (55, 16076), (59, 16028), (62, 15989), (65, 15965), (69, 15920), (70, 15914), (75, 15857), (84,

15713), (89, 15653), (95, 15602),

Gene: Mynx_40 Start: 31214, Stop: 32071, Start Num: 33

Candidate Starts for Mynx_40:

(11, 31010), (20, 31148), (22, 31151), (30, 31181), (Start: 33 @31214 has 358 MA's), (Start: 36 @31271 has 2 MA's), (38, 31283), (46, 31376), (50, 31424), (54, 31478), (55, 31493), (59, 31541), (60, 31553), (65, 31604), (66, 31610), (69, 31649), (70, 31655), (74, 31697), (75, 31712), (76, 31748), (80, 31787), (84, 31856), (90, 31928),

Gene: Nacho_0020 Start: 16641, Stop: 15865, Start Num: 33

Candidate Starts for Nacho_0020:

(Start: 33 @16641 has 358 MA's), (Start: 36 @16584 has 2 MA's), (44, 16521), (46, 16482), (54, 16380), (55, 16365), (59, 16317), (62, 16278), (65, 16254), (69, 16209), (70, 16203), (75, 16146), (84, 16002), (89, 15942), (95, 15891),

Gene: Nathan_20 Start: 16652, Stop: 15876, Start Num: 33

Candidate Starts for Nathan_20:

(Start: 33 @16652 has 358 MA's), (Start: 36 @16595 has 2 MA's), (46, 16493), (54, 16391), (55, 16376), (59, 16328), (62, 16289), (65, 16265), (69, 16220), (70, 16214), (75, 16157), (84, 16013), (89, 15953), (95, 15902),

Gene: Neighly_87 Start: 56015, Stop: 56899, Start Num: 33

Candidate Starts for Neighly_87:

(Start: 33 @56015 has 358 MA's), (Start: 36 @56072 has 2 MA's), (37, 56078), (38, 56084), (40, 56108), (46, 56177), (49, 56222), (53, 56270), (54, 56279), (55, 56294), (60, 56354), (62, 56381), (63, 56396), (65, 56405), (66, 56411), (69, 56450), (70, 56456), (72, 56489), (75, 56513), (76, 56549), (80, 56588), (83, 56624), (84, 56657), (90, 56729), (91, 56741), (108, 56804), (110, 56822),

Gene: Nergal_36 Start: 29438, Stop: 30382, Start Num: 23

Candidate Starts for Nergal_36:

(Start: 23 @29438 has 1 MA's), (27, 29456), (30, 29465), (Start: 33 @29501 has 358 MA's), (34, 29510), (Start: 36 @29558 has 2 MA's), (40, 29594), (46, 29663), (50, 29711), (54, 29765), (55, 29780), (58, 29819), (59, 29828), (65, 29891), (66, 29897), (69, 29936), (70, 29942), (72, 29975), (76, 30035), (80, 30074), (84, 30143), (91, 30227), (93, 30248), (113, 30347),

Gene: Newman_20 Start: 16641, Stop: 15865, Start Num: 33

Candidate Starts for Newman_20:

(Start: 33 @16641 has 358 MA's), (Start: 36 @16584 has 2 MA's), (44, 16521), (46, 16482), (54, 16380), (55, 16365), (59, 16317), (62, 16278), (65, 16254), (69, 16209), (70, 16203), (75, 16146), (84, 16002), (89, 15942), (95, 15891),

Gene: NiaNia_20 Start: 16366, Stop: 15590, Start Num: 33

Candidate Starts for NiaNia_20:

(Start: 33 @16366 has 358 MA's), (Start: 36 @16309 has 2 MA's), (44, 16246), (46, 16207), (54, 16105), (55, 16090), (59, 16042), (62, 16003), (65, 15979), (69, 15934), (70, 15928), (75, 15871), (84, 15727), (89, 15667), (95, 15616),

Gene: Nibb_42 Start: 31619, Stop: 32491, Start Num: 33

Candidate Starts for Nibb_42:

(Start: 33 @31619 has 358 MA's), (39, 31706), (43, 31730), (46, 31781), (49, 31826), (54, 31883), (55, 31898), (65, 32009), (66, 32015), (69, 32054), (70, 32060), (72, 32093), (75, 32117), (76, 32153), (80, 32192), (84, 32261), (107, 32405),

Gene: Nicole21_20 Start: 16633, Stop: 15857, Start Num: 33

Candidate Starts for Nicole21_20:

(Start: 33 @16633 has 358 MA's), (Start: 36 @16576 has 2 MA's), (44, 16513), (46, 16474), (54, 16372), (55, 16357), (59, 16309), (62, 16270), (65, 16246), (69, 16201), (70, 16195), (75, 16138), (84, 15994), (89, 15934), (95, 15883),

Gene: Nikao_35 Start: 30629, Stop: 31555, Start Num: 33

Candidate Starts for Nikao_35:

(Start: 33 @30629 has 358 MA's), (Start: 36 @30686 has 2 MA's), (46, 30791), (53, 30884), (54, 30893), (55, 30908), (57, 30932), (62, 30995), (65, 31019), (66, 31025), (69, 31064), (70, 31070), (71, 31088), (74, 31112), (75, 31127), (76, 31163), (80, 31202), (81, 31217), (83, 31238), (84, 31271), (86, 31316), (114, 31505), (121, 31547),

Gene: Niklas_41 Start: 31436, Stop: 32326, Start Num: 33

Candidate Starts for Niklas_41:

(Start: 33 @31436 has 358 MA's), (Start: 36 @31493 has 2 MA's), (39, 31523), (46, 31598), (49, 31643), (54, 31700), (55, 31715), (62, 31802), (65, 31826), (66, 31832), (70, 31877), (72, 31910), (74, 31919), (75, 31934), (76, 31970), (80, 32009), (84, 32078), (86, 32123), (90, 32162), (96, 32204), (98, 32210), (107, 32231), (116, 32318),

Gene: Nova1_19 Start: 16215, Stop: 15439, Start Num: 33

Candidate Starts for Nova1_19:

(Start: 33 @16215 has 358 MA's), (Start: 36 @16158 has 2 MA's), (46, 16056), (54, 15954), (55, 15939), (59, 15891), (62, 15852), (65, 15828), (69, 15783), (70, 15777), (75, 15720), (80, 15645), (84, 15576), (87, 15540), (89, 15516), (95, 15465),

Gene: November_38 Start: 31124, Stop: 31999, Start Num: 33

Candidate Starts for November_38:

(Start: 28 @31088 has 2 MA's), (30, 31091), (31, 31094), (Start: 33 @31124 has 358 MA's), (Start: 36 @31181 has 2 MA's), (38, 31193), (46, 31286), (53, 31379), (54, 31388), (55, 31403), (62, 31490), (63, 31505), (65, 31514), (66, 31520), (70, 31565), (72, 31598), (75, 31622), (76, 31658), (77, 31670), (80, 31697), (83, 31733), (84, 31766), (94, 31871), (107, 31907), (111, 31949),

Gene: Numberten_20 Start: 16644, Stop: 15868, Start Num: 33

Candidate Starts for Numberten_20:

(9, 17016), (10, 17007), (Start: 33 @16644 has 358 MA's), (Start: 36 @16587 has 2 MA's), (44, 16524), (46, 16485), (54, 16383), (55, 16368), (59, 16320), (62, 16281), (65, 16257), (69, 16212), (70, 16206), (75, 16149), (84, 16005), (89, 15945), (95, 15894),

Gene: Nutello_35 Start: 30629, Stop: 31519, Start Num: 33

Candidate Starts for Nutello_35:

(Start: 33 @30629 has 358 MA's), (Start: 36 @30686 has 2 MA's), (46, 30791), (53, 30884), (54, 30893), (55, 30908), (57, 30932), (62, 30995), (65, 31019), (66, 31025), (69, 31064), (70, 31070), (71, 31088), (74, 31112), (75, 31127), (76, 31163), (80, 31202), (81, 31217), (83, 31238), (84, 31271), (86, 31316), (94, 31388), (106, 31424), (115, 31502),

Gene: Nyala_19 Start: 16344, Stop: 15568, Start Num: 33

Candidate Starts for Nyala_19:

(Start: 33 @16344 has 358 MA's), (Start: 36 @16287 has 2 MA's), (44, 16224), (46, 16185), (54, 16083), (55, 16068), (59, 16020), (62, 15981), (65, 15957), (69, 15912), (70, 15906), (75, 15849), (84, 15705), (89, 15645), (95, 15594),

Gene: OSmaximus_20 Start: 16652, Stop: 15876, Start Num: 33

Candidate Starts for OSmaximus_20:

(Start: 33 @16652 has 358 MA's), (Start: 36 @16595 has 2 MA's), (46, 16493), (54, 16391), (55, 16376), (59, 16328), (62, 16289), (65, 16265), (69, 16220), (70, 16214), (75, 16157), (84, 16013), (89, 15953), (95, 15902),

Gene: Olak_19 Start: 16341, Stop: 15565, Start Num: 33

Candidate Starts for Olak_19:

(Start: 33 @16341 has 358 MA's), (Start: 36 @16284 has 2 MA's), (44, 16221), (46, 16182), (54, 16080), (55, 16065), (59, 16017), (62, 15978), (65, 15954), (69, 15909), (70, 15903), (75, 15846), (84, 15702), (89, 15642), (95, 15591),

Gene: Oline_19 Start: 16200, Stop: 15424, Start Num: 33

Candidate Starts for Oline_19:

(Start: 33 @16200 has 358 MA's), (Start: 36 @16143 has 2 MA's), (46, 16041), (54, 15939), (55, 15924), (59, 15876), (62, 15837), (65, 15813), (69, 15768), (70, 15762), (75, 15705), (80, 15630), (84, 15561), (87, 15525), (89, 15501), (95, 15450),

Gene: Olive_20 Start: 16634, Stop: 15858, Start Num: 33

Candidate Starts for Olive_20:

(Start: 33 @16634 has 358 MA's), (Start: 36 @16577 has 2 MA's), (44, 16514), (46, 16475), (54, 16373), (55, 16358), (59, 16310), (62, 16271), (65, 16247), (69, 16202), (70, 16196), (75, 16139), (84, 15995), (89, 15935), (95, 15884),

Gene: OliverWalter_20 Start: 16650, Stop: 15874, Start Num: 33

Candidate Starts for OliverWalter_20:

(Start: 33 @16650 has 358 MA's), (Start: 36 @16593 has 2 MA's), (44, 16530), (46, 16491), (54, 16389), (55, 16374), (59, 16326), (62, 16287), (65, 16263), (69, 16218), (70, 16212), (75, 16155), (84, 16011), (89, 15951), (95, 15900),

Gene: Omniscient_20 Start: 16652, Stop: 15876, Start Num: 33

Candidate Starts for Omniscient_20:

(Start: 33 @16652 has 358 MA's), (Start: 36 @16595 has 2 MA's), (44, 16532), (46, 16493), (54, 16391), (55, 16376), (59, 16328), (62, 16289), (65, 16265), (69, 16220), (70, 16214), (75, 16157), (84, 16013), (89, 15953), (95, 15902),

Gene: OneBrain_20 Start: 16344, Stop: 15568, Start Num: 33

Candidate Starts for OneBrain_20:

(Start: 33 @16344 has 358 MA's), (Start: 36 @16287 has 2 MA's), (46, 16185), (54, 16083), (55, 16068), (59, 16020), (62, 15981), (65, 15957), (69, 15912), (70, 15906), (75, 15849), (80, 15774), (84, 15705), (87, 15669), (89, 15645), (95, 15594),

Gene: Oosterbaan_20 Start: 16644, Stop: 15868, Start Num: 33

Candidate Starts for Oosterbaan_20:

(Start: 33 @16644 has 358 MA's), (Start: 36 @16587 has 2 MA's), (44, 16524), (46, 16485), (54, 16383), (55, 16368), (59, 16320), (62, 16281), (65, 16257), (69, 16212), (70, 16206), (75, 16149), (84, 16005), (89, 15945), (95, 15894),

Gene: Orfeu_19 Start: 16342, Stop: 15566, Start Num: 33

Candidate Starts for Orfeu_19:

(Start: 33 @16342 has 358 MA's), (Start: 36 @16285 has 2 MA's), (44, 16222), (46, 16183), (54, 16081), (55, 16066), (59, 16018), (62, 15979), (65, 15955), (69, 15910), (70, 15904), (75, 15847), (84, 15703), (89, 15643), (95, 15592),

Gene: Orion_20 Start: 16642, Stop: 15866, Start Num: 33

Candidate Starts for Orion_20:

(Start: 33 @16642 has 358 MA's), (Start: 36 @16585 has 2 MA's), (44, 16522), (46, 16483), (54, 16381), (55, 16366), (59, 16318), (62, 16279), (65, 16255), (69, 16210), (70, 16204), (75, 16147), (84, 16003), (89, 15943), (95, 15892),

Gene: Orwigg_19 Start: 16334, Stop: 15558, Start Num: 33

Candidate Starts for Orwigg_19:

(9, 16709), (10, 16700), (Start: 33 @16334 has 358 MA's), (Start: 36 @16277 has 2 MA's), (44, 16214), (46, 16175), (54, 16073), (55, 16058), (59, 16010), (62, 15971), (65, 15947), (69, 15902), (70, 15896), (75, 15839), (84, 15695), (89, 15635), (95, 15584),

Gene: Oscar_44 Start: 32293, Stop: 33165, Start Num: 33

Candidate Starts for Oscar_44:

(Start: 33 @32293 has 358 MA's), (39, 32380), (46, 32455), (54, 32557), (55, 32572), (62, 32659), (65, 32683), (66, 32689), (69, 32728), (70, 32734), (72, 32767), (73, 32773), (74, 32776), (75, 32791), (76, 32827), (80, 32866), (84, 32935), (107, 33079),

Gene: PG1_20 Start: 16654, Stop: 15878, Start Num: 33

Candidate Starts for PG1_20:

(Start: 33 @16654 has 358 MA's), (Start: 36 @16597 has 2 MA's), (44, 16534), (46, 16495), (54, 16393), (55, 16378), (59, 16330), (62, 16291), (65, 16267), (69, 16222), (70, 16216), (75, 16159), (84, 16015), (89, 15955), (95, 15904),

Gene: Pacifista_19 Start: 16346, Stop: 15570, Start Num: 33

Candidate Starts for Pacifista_19:

(Start: 33 @16346 has 358 MA's), (Start: 36 @16289 has 2 MA's), (44, 16226), (46, 16187), (54, 16085), (55, 16070), (59, 16022), (62, 15983), (65, 15959), (69, 15914), (70, 15908), (75, 15851), (84, 15707), (89, 15647), (95, 15596),

Gene: PallasAthena_20 Start: 16351, Stop: 15575, Start Num: 33

Candidate Starts for PallasAthena_20:

(Start: 33 @16351 has 358 MA's), (Start: 36 @16294 has 2 MA's), (44, 16231), (46, 16192), (54, 16090), (55, 16075), (59, 16027), (62, 15988), (65, 15964), (69, 15919), (70, 15913), (75, 15856), (84, 15712), (89, 15652), (95, 15601),

Gene: Paola_85 Start: 55951, Stop: 56835, Start Num: 33

Candidate Starts for Paola_85:

(22, 55888), (Start: 23 @55891 has 1 MA's), (27, 55909), (29, 55915), (30, 55918), (32, 55936), (Start: 33 @55951 has 358 MA's), (Start: 36 @56008 has 2 MA's), (38, 56020), (46, 56113), (49, 56158), (53, 56206), (54, 56215), (55, 56230), (60, 56290), (62, 56317), (63, 56332), (65, 56341), (66, 56347), (69, 56386), (70, 56392), (72, 56425), (75, 56449), (76, 56485), (80, 56524), (82, 56554), (83, 56560), (84, 56593), (90, 56665), (108, 56740), (110, 56758),

Gene: Peanam_41 Start: 31431, Stop: 32309, Start Num: 33

Candidate Starts for Peanam_41:

(Start: 33 @31431 has 358 MA's), (Start: 36 @31488 has 2 MA's), (39, 31518), (46, 31593), (49, 31638), (54, 31695), (55, 31710), (57, 31734), (62, 31797), (65, 31821), (66, 31827), (70, 31872), (72, 31905), (74, 31914), (75, 31929), (76, 31965), (80, 32004), (83, 32040), (84, 32073), (86, 32118), (90, 32157), (96, 32199), (98, 32205), (107, 32226), (116, 32301),

Gene: Phamished_20 Start: 16649, Stop: 15873, Start Num: 33

Candidate Starts for Phamished_20:

(Start: 33 @16649 has 358 MA's), (Start: 36 @16592 has 2 MA's), (44, 16529), (46, 16490), (54, 16388), (55, 16373), (59, 16325), (62, 16286), (65, 16262), (69, 16217), (70, 16211), (75, 16154), (84, 16010), (89, 15950), (95, 15899),

Gene: Phareon_20 Start: 16350, Stop: 15574, Start Num: 33

Candidate Starts for Phareon_20:

(Start: 33 @16350 has 358 MA's), (Start: 36 @16293 has 2 MA's), (44, 16230), (46, 16191), (54, 16089), (55, 16074), (59, 16026), (62, 15987), (65, 15963), (69, 15918), (70, 15912), (75, 15855), (84, 15711), (89, 15651), (95, 15600),

Gene: PhatCats2014_20 Start: 16659, Stop: 15883, Start Num: 33

Candidate Starts for PhatCats2014_20:

(Start: 33 @16659 has 358 MA's), (Start: 36 @16602 has 2 MA's), (44, 16539), (46, 16500), (54, 16398), (55, 16383), (59, 16335), (62, 16296), (65, 16272), (69, 16227), (70, 16221), (75, 16164), (84, 16020), (89, 15960), (95, 15909),

Gene: PhatLouie_20 Start: 16641, Stop: 15865, Start Num: 33

Candidate Starts for PhatLouie_20:

(Start: 33 @16641 has 358 MA's), (Start: 36 @16584 has 2 MA's), (46, 16482), (54, 16380), (55, 16365), (59, 16317), (62, 16278), (65, 16254), (69, 16209), (70, 16203), (75, 16146), (80, 16071), (84, 16002), (87, 15966), (89, 15942), (95, 15891),

Gene: PhenghisKhan_19 Start: 16200, Stop: 15424, Start Num: 33

Candidate Starts for PhenghisKhan_19:

(Start: 33 @16200 has 358 MA's), (Start: 36 @16143 has 2 MA's), (46, 16041), (54, 15939), (55, 15924), (59, 15876), (62, 15837), (65, 15813), (69, 15768), (70, 15762), (75, 15705), (80, 15630), (84, 15561), (87, 15525), (89, 15501), (95, 15450),

Gene: Pherdinand_20 Start: 16647, Stop: 15871, Start Num: 33

Candidate Starts for Pherdinand_20:

(Start: 33 @16647 has 358 MA's), (Start: 36 @16590 has 2 MA's), (44, 16527), (46, 16488), (54, 16386), (55, 16371), (59, 16323), (62, 16284), (65, 16260), (69, 16215), (70, 16209), (75, 16152), (84, 16008), (89, 15948), (95, 15897),

Gene: Phergie_19 Start: 16194, Stop: 15418, Start Num: 33

Candidate Starts for Phergie_19:

(Start: 33 @16194 has 358 MA's), (Start: 36 @16137 has 2 MA's), (46, 16035), (54, 15933), (55, 15918), (59, 15870), (62, 15831), (65, 15807), (69, 15762), (70, 15756), (75, 15699), (80, 15624), (84, 15555), (87, 15519), (89, 15495), (95, 15444),

Gene: Phipps_20 Start: 16620, Stop: 15844, Start Num: 33

Candidate Starts for Phipps_20:

(Start: 33 @16620 has 358 MA's), (Start: 36 @16563 has 2 MA's), (44, 16500), (46, 16461), (54, 16359), (55, 16344), (59, 16296), (62, 16257), (65, 16233), (69, 16188), (70, 16182), (75, 16125), (84, 15981), (89, 15921), (95, 15870),

Gene: Phleuron_19 Start: 16200, Stop: 15424, Start Num: 33

Candidate Starts for Phleuron_19:

(Start: 33 @16200 has 358 MA's), (Start: 36 @16143 has 2 MA's), (46, 16041), (54, 15939), (55, 15924), (59, 15876), (62, 15837), (65, 15813), (69, 15768), (70, 15762), (75, 15705), (80, 15630), (84, 15561), (87, 15525), (89, 15501), (95, 15450),

Gene: PhrankReynolds_19 Start: 16200, Stop: 15424, Start Num: 33

Candidate Starts for PhrankReynolds_19:

(Start: 33 @16200 has 358 MA's), (Start: 36 @16143 has 2 MA's), (46, 16041), (54, 15939), (55, 15924), (59, 15876), (62, 15837), (65, 15813), (69, 15768), (70, 15762), (75, 15705), (80, 15630), (84, 15561), (87, 15525), (89, 15501), (95, 15450),

Gene: Phrappuccino_8 Start: 7132, Stop: 8028, Start Num: 28

Candidate Starts for Phrappuccino_8:

(Start: 28 @7132 has 2 MA's), (Start: 33 @7168 has 358 MA's), (35, 7198), (38, 7237), (46, 7327), (53, 7420), (54, 7429), (55, 7444), (65, 7555), (69, 7600), (70, 7606), (71, 7624), (75, 7663), (80, 7738), (84, 7807), (90, 7879), (93, 7912), (105, 7954), (109, 7978), (112, 8020),

Gene: PhrodoBaggins_19 Start: 16637, Stop: 15861, Start Num: 33

Candidate Starts for PhrodoBaggins_19:

(Start: 33 @16637 has 358 MA's), (Start: 36 @16580 has 2 MA's), (44, 16517), (46, 16478), (54, 16376), (55, 16361), (59, 16313), (62, 16274), (65, 16250), (69, 16205), (70, 16199), (75, 16142), (84, 15998), (89, 15938), (95, 15887),

Gene: Phunky_20 Start: 16642, Stop: 15866, Start Num: 33

Candidate Starts for Phunky_20:

(9, 17014), (10, 17005), (Start: 33 @16642 has 358 MA's), (Start: 36 @16585 has 2 MA's), (44, 16522), (46, 16483), (54, 16381), (55, 16366), (59, 16318), (62, 16279), (65, 16255), (69, 16210), (70, 16204), (75, 16147), (84, 16003), (89, 15943), (95, 15892),

Gene: Piglet_0019 Start: 16644, Stop: 15868, Start Num: 33

Candidate Starts for Piglet_0019:

(Start: 33 @16644 has 358 MA's), (Start: 36 @16587 has 2 MA's), (44, 16524), (46, 16485), (54, 16383), (55, 16368), (59, 16320), (62, 16281), (65, 16257), (69, 16212), (70, 16206), (75, 16149), (84, 16005), (89, 15945), (95, 15894),

Gene: PinheadLarry_20 Start: 16361, Stop: 15585, Start Num: 33

Candidate Starts for PinheadLarry_20:

(Start: 33 @16361 has 358 MA's), (Start: 36 @16304 has 2 MA's), (44, 16241), (46, 16202), (54, 16100), (55, 16085), (59, 16037), (62, 15998), (65, 15974), (69, 15929), (70, 15923), (75, 15866), (84, 15722), (89, 15662), (95, 15611),

Gene: Pinkman_19 Start: 16200, Stop: 15424, Start Num: 33

Candidate Starts for Pinkman_19:

(Start: 33 @16200 has 358 MA's), (Start: 36 @16143 has 2 MA's), (46, 16041), (54, 15939), (55, 15924), (59, 15876), (62, 15837), (65, 15813), (69, 15768), (70, 15762), (75, 15705), (80, 15630), (84, 15561), (87, 15525), (89, 15501), (95, 15450),

Gene: Pipsqueak_20 Start: 16649, Stop: 15873, Start Num: 33

Candidate Starts for Pipsqueak_20:

(Start: 33 @16649 has 358 MA's), (Start: 36 @16592 has 2 MA's), (46, 16490), (54, 16388), (55, 16373), (59, 16325), (62, 16286), (65, 16262), (69, 16217), (70, 16211), (75, 16154), (84, 16010), (89, 15950), (95, 15899),

Gene: Pisa1_39 Start: 32187, Stop: 33044, Start Num: 33

Candidate Starts for Pisa1_39:

(6, 31740), (21, 32121), (22, 32124), (30, 32154), (Start: 33 @32187 has 358 MA's), (38, 32256), (46, 32349), (50, 32397), (54, 32451), (55, 32466), (59, 32514), (60, 32526), (65, 32577), (69, 32622), (70, 32628), (73, 32667), (74, 32670), (75, 32685), (76, 32721), (80, 32760), (84, 32829),

Gene: Placalicious_19 Start: 16343, Stop: 15567, Start Num: 33

Candidate Starts for Placalicious_19:

(Start: 33 @16343 has 358 MA's), (Start: 36 @16286 has 2 MA's), (44, 16223), (46, 16184), (54, 16082), (55, 16067), (59, 16019), (62, 15980), (65, 15956), (69, 15911), (70, 15905), (75, 15848), (84, 15704), (89, 15644), (95, 15593),

Gene: Plata_19 Start: 16356, Stop: 15580, Start Num: 33

Candidate Starts for Plata_19:

(Start: 33 @16356 has 358 MA's), (Start: 36 @16299 has 2 MA's), (46, 16197), (54, 16095), (55, 16080), (59, 16032), (62, 15993), (65, 15969), (69, 15924), (70, 15918), (75, 15861), (80, 15786), (84, 15717), (87, 15681), (89, 15657), (95, 15606),

Gene: Plmatters_20 Start: 16643, Stop: 15867, Start Num: 33

Candidate Starts for Plmatters_20:

(Start: 33 @16643 has 358 MA's), (Start: 36 @16586 has 2 MA's), (44, 16523), (46, 16484), (54, 16382), (55, 16367), (59, 16319), (62, 16280), (65, 16256), (69, 16211), (70, 16205), (75, 16148), (84, 16004), (89, 15944), (95, 15893),

Gene: Podrick_20 Start: 16632, Stop: 15856, Start Num: 33

Candidate Starts for Podrick_20:

(Start: 33 @16632 has 358 MA's), (Start: 36 @16575 has 2 MA's), (44, 16512), (46, 16473), (54, 16371), (55, 16356), (59, 16308), (62, 16269), (65, 16245), (69, 16200), (70, 16194), (75, 16137), (84, 15993), (89, 15933), (95, 15882),

Gene: Pops_20 Start: 16646, Stop: 15870, Start Num: 33

Candidate Starts for Pops_20:

(Start: 33 @16646 has 358 MA's), (Start: 36 @16589 has 2 MA's), (46, 16487), (54, 16385), (55, 16370), (59, 16322), (62, 16283), (65, 16259), (69, 16214), (70, 16208), (71, 16190), (75, 16151), (84, 16007), (89, 15947), (95, 15896),

Gene: Potter_19 Start: 16357, Stop: 15581, Start Num: 33

Candidate Starts for Potter_19:

(Start: 33 @16357 has 358 MA's), (Start: 36 @16300 has 2 MA's), (44, 16237), (46, 16198), (54, 16096), (55, 16081), (59, 16033), (62, 15994), (65, 15970), (69, 15925), (70, 15919), (75, 15862), (84, 15718), (89, 15658), (95, 15607),

Gene: Prickles_20 Start: 16636, Stop: 15860, Start Num: 33

Candidate Starts for Prickles_20:

(Start: 33 @16636 has 358 MA's), (Start: 36 @16579 has 2 MA's), (44, 16516), (46, 16477), (54, 16375), (55, 16360), (59, 16312), (62, 16273), (65, 16249), (69, 16204), (70, 16198), (75, 16141), (84, 15997), (89, 15937), (95, 15886),

Gene: Prithvi_39 Start: 31008, Stop: 31940, Start Num: 33

Candidate Starts for Prithvi_39:

(Start: 33 @31008 has 358 MA's), (Start: 36 @31065 has 2 MA's), (41, 31110), (46, 31170), (49, 31215), (54, 31272), (55, 31287), (59, 31335), (60, 31347), (62, 31374), (65, 31398), (66, 31404), (69, 31443), (74, 31491), (75, 31506), (76, 31542), (80, 31581), (83, 31617), (84, 31650), (93, 31755), (104, 31797), (105, 31800), (110, 31839),

Gene: ProfessorX_20 Start: 16634, Stop: 15858, Start Num: 33

Candidate Starts for ProfessorX_20:

(Start: 33 @16634 has 358 MA's), (Start: 36 @16577 has 2 MA's), (44, 16514), (46, 16475), (54, 16373), (55, 16358), (59, 16310), (62, 16271), (65, 16247), (69, 16202), (70, 16196), (75, 16139), (84,

15995), (89, 15935), (95, 15884),

Gene: Psycho_85 Start: 55141, Stop: 56025, Start Num: 33

Candidate Starts for Psycho_85:

(Start: 33 @55141 has 358 MA's), (Start: 36 @55198 has 2 MA's), (37, 55204), (38, 55210), (40, 55234), (46, 55303), (49, 55348), (53, 55396), (54, 55405), (55, 55420), (60, 55480), (62, 55507), (63, 55522), (65, 55531), (66, 55537), (69, 55576), (70, 55582), (72, 55615), (75, 55639), (76, 55675), (80, 55714), (83, 55750), (84, 55783), (90, 55855), (91, 55867), (108, 55930), (110, 55948),

Gene: Puhltonio_20 Start: 16650, Stop: 15874, Start Num: 33

Candidate Starts for Puhltonio_20:

(Start: 33 @16650 has 358 MA's), (Start: 36 @16593 has 2 MA's), (44, 16530), (46, 16491), (54, 16389), (55, 16374), (59, 16326), (62, 16287), (65, 16263), (69, 16218), (70, 16212), (75, 16155), (84, 16011), (89, 15951), (95, 15900),

Gene: QueenBeane_20 Start: 16642, Stop: 15866, Start Num: 33

Candidate Starts for QueenBeane_20:

(Start: 33 @16642 has 358 MA's), (Start: 36 @16585 has 2 MA's), (44, 16522), (46, 16483), (54, 16381), (55, 16366), (59, 16318), (62, 16279), (65, 16255), (69, 16210), (70, 16204), (75, 16147), (84, 16003), (89, 15943), (95, 15892),

Gene: Quisquilliae_20 Start: 16656, Stop: 15880, Start Num: 33

Candidate Starts for Quisquilliae_20:

(Start: 33 @16656 has 358 MA's), (Start: 36 @16599 has 2 MA's), (44, 16536), (46, 16497), (54, 16395), (55, 16380), (59, 16332), (62, 16293), (65, 16269), (69, 16224), (70, 16218), (75, 16161), (84, 16017), (89, 15957), (95, 15906),

Gene: RedMaple_19 Start: 16653, Stop: 15877, Start Num: 33

Candidate Starts for RedMaple_19:

(Start: 33 @16653 has 358 MA's), (Start: 36 @16596 has 2 MA's), (44, 16533), (46, 16494), (54, 16392), (55, 16377), (59, 16329), (62, 16290), (65, 16266), (69, 16221), (70, 16215), (75, 16158), (84, 16014), (89, 15954), (95, 15903),

Gene: RedRaider89_21 Start: 16873, Stop: 16097, Start Num: 33

Candidate Starts for RedRaider89_21:

(Start: 33 @16873 has 358 MA's), (Start: 36 @16816 has 2 MA's), (44, 16753), (46, 16714), (54, 16612), (55, 16597), (59, 16549), (62, 16510), (65, 16486), (69, 16441), (70, 16435), (75, 16378), (84, 16234), (89, 16174), (95, 16123),

Gene: Richo_41 Start: 31431, Stop: 32309, Start Num: 33

Candidate Starts for Richo_41:

(Start: 33 @31431 has 358 MA's), (Start: 36 @31488 has 2 MA's), (39, 31518), (46, 31593), (49, 31638), (54, 31695), (55, 31710), (57, 31734), (62, 31797), (65, 31821), (66, 31827), (70, 31872), (72, 31905), (74, 31914), (75, 31929), (76, 31965), (80, 32004), (83, 32040), (84, 32073), (86, 32118), (90, 32157), (96, 32199), (98, 32205), (107, 32226), (116, 32301),

Gene: Ricotta_19 Start: 16365, Stop: 15589, Start Num: 33

Candidate Starts for Ricotta_19:

(Start: 33 @16365 has 358 MA's), (Start: 36 @16308 has 2 MA's), (44, 16245), (46, 16206), (54, 16104), (55, 16089), (59, 16041), (62, 16002), (65, 15978), (69, 15933), (70, 15927), (75, 15870), (84, 15726), (89, 15666), (95, 15615),

Gene: Riggan_20 Start: 16623, Stop: 15847, Start Num: 33

Candidate Starts for Riggan_20:

(9, 16995), (10, 16986), (Start: 33 @16623 has 358 MA's), (Start: 36 @16566 has 2 MA's), (44, 16503), (46, 16464), (54, 16362), (55, 16347), (59, 16299), (62, 16260), (65, 16236), (69, 16191), (70, 16185), (75, 16128), (84, 15984), (89, 15924), (95, 15873),

Gene: Rimu_20 Start: 16353, Stop: 15577, Start Num: 33

Candidate Starts for Rimu_20:

(Start: 33 @16353 has 358 MA's), (Start: 36 @16296 has 2 MA's), (46, 16194), (54, 16092), (55, 16077), (59, 16029), (62, 15990), (65, 15966), (69, 15921), (70, 15915), (75, 15858), (80, 15783), (84, 15714), (87, 15678), (89, 15654), (95, 15603),

Gene: Riverton_20 Start: 16648, Stop: 15872, Start Num: 33

Candidate Starts for Riverton_20:

(Start: 33 @16648 has 358 MA's), (Start: 36 @16591 has 2 MA's), (44, 16528), (46, 16489), (54, 16387), (55, 16372), (59, 16324), (62, 16285), (65, 16261), (69, 16216), (70, 16210), (75, 16153), (84, 16009), (89, 15949), (95, 15898),

Gene: Robyn_19 Start: 16215, Stop: 15439, Start Num: 33

Candidate Starts for Robyn_19:

(Start: 33 @16215 has 358 MA's), (Start: 36 @16158 has 2 MA's), (44, 16095), (46, 16056), (54, 15954), (55, 15939), (59, 15891), (62, 15852), (65, 15828), (69, 15783), (70, 15777), (75, 15720), (84, 15576), (89, 15516), (95, 15465),

Gene: Roliet_20 Start: 16641, Stop: 15865, Start Num: 33

Candidate Starts for Roliet_20:

(Start: 33 @16641 has 358 MA's), (Start: 36 @16584 has 2 MA's), (44, 16521), (46, 16482), (54, 16380), (55, 16365), (59, 16317), (62, 16278), (65, 16254), (69, 16209), (70, 16203), (75, 16146), (84, 16002), (89, 15942), (95, 15891),

Gene: Roscoe_21 Start: 16826, Stop: 16107, Start Num: 36

Candidate Starts for Roscoe_21:

(Start: 36 @16826 has 2 MA's), (44, 16763), (46, 16724), (54, 16622), (55, 16607), (59, 16559), (62, 16520), (65, 16496), (69, 16451), (70, 16445), (75, 16388), (84, 16244), (89, 16184), (95, 16133),

Gene: Roy17_20 Start: 16345, Stop: 15569, Start Num: 33

Candidate Starts for Roy17_20:

(Start: 33 @16345 has 358 MA's), (Start: 36 @16288 has 2 MA's), (44, 16225), (46, 16186), (54, 16084), (55, 16069), (59, 16021), (62, 15982), (65, 15958), (69, 15913), (70, 15907), (75, 15850), (84, 15706), (89, 15646), (95, 15595),

Gene: SDcharge11_20 Start: 16623, Stop: 15847, Start Num: 33

Candidate Starts for SDcharge11_20:

(Start: 33 @16623 has 358 MA's), (Start: 36 @16566 has 2 MA's), (44, 16503), (46, 16464), (54, 16362), (55, 16347), (59, 16299), (62, 16260), (65, 16236), (69, 16191), (70, 16185), (75, 16128), (84, 15984), (89, 15924), (95, 15873),

Gene: SallyH_20 Start: 16653, Stop: 15877, Start Num: 33

Candidate Starts for SallyH_20:

(9, 17025), (10, 17016), (Start: 33 @16653 has 358 MA's), (Start: 36 @16596 has 2 MA's), (44, 16533), (46, 16494), (54, 16392), (55, 16377), (59, 16329), (62, 16290), (65, 16266), (69, 16221), (70, 16215), (75, 16158), (84, 16014), (89, 15954), (95, 15903),

Gene: Samaymay_20 Start: 16642, Stop: 15866, Start Num: 33

Candidate Starts for Samaymay_20:

(Start: 33 @16642 has 358 MA's), (Start: 36 @16585 has 2 MA's), (44, 16522), (46, 16483), (54, 16381), (55, 16366), (59, 16318), (62, 16279), (65, 16255), (69, 16210), (70, 16204), (75, 16147), (84, 16003), (89, 15943), (95, 15892),

Gene: SamuelLPlaqson_40 Start: 31795, Stop: 32652, Start Num: 33

Candidate Starts for SamuelLPlaqson_40:

(4, 31339), (5, 31342), (7, 31345), (8, 31375), (11, 31591), (14, 31618), (21, 31729), (22, 31732), (25, 31738), (30, 31762), (Start: 33 @31795 has 358 MA's), (Start: 36 @31852 has 2 MA's), (38, 31864), (46, 31957), (49, 32002), (50, 32005), (54, 32059), (55, 32074), (59, 32122), (60, 32134), (65, 32185), (69, 32230), (70, 32236), (73, 32275), (74, 32278), (75, 32293), (76, 32329), (80, 32368), (84, 32437), (90, 32509), (101, 32575),

Gene: SassyCat97_19 Start: 16350, Stop: 15574, Start Num: 33

Candidate Starts for SassyCat97_19:

(Start: 33 @16350 has 358 MA's), (Start: 36 @16293 has 2 MA's), (44, 16230), (46, 16191), (54, 16089), (55, 16074), (59, 16026), (62, 15987), (65, 15963), (69, 15918), (70, 15912), (75, 15855), (84, 15711), (89, 15651), (95, 15600),

Gene: Scarlett_44 Start: 32285, Stop: 33157, Start Num: 33

Candidate Starts for Scarlett_44:

(Start: 33 @32285 has 358 MA's), (39, 32372), (46, 32447), (54, 32549), (55, 32564), (62, 32651), (65, 32675), (66, 32681), (69, 32720), (70, 32726), (72, 32759), (73, 32765), (74, 32768), (75, 32783), (76, 32819), (80, 32858), (84, 32927), (107, 33071),

Gene: Schadenfreude_19 Start: 16199, Stop: 15423, Start Num: 33

Candidate Starts for Schadenfreude_19:

(Start: 33 @16199 has 358 MA's), (Start: 36 @16142 has 2 MA's), (44, 16079), (46, 16040), (54, 15938), (55, 15923), (59, 15875), (62, 15836), (65, 15812), (69, 15767), (70, 15761), (75, 15704), (84, 15560), (89, 15500), (95, 15449),

Gene: Schueller_19 Start: 16341, Stop: 15565, Start Num: 33

Candidate Starts for Schueller_19:

(Start: 33 @16341 has 358 MA's), (Start: 36 @16284 has 2 MA's), (46, 16182), (54, 16080), (55, 16065), (59, 16017), (62, 15978), (65, 15954), (69, 15909), (70, 15903), (75, 15846), (80, 15771), (84, 15702), (87, 15666), (89, 15642), (95, 15591),

Gene: Scoot17C_20 Start: 16643, Stop: 15867, Start Num: 33

Candidate Starts for Scoot17C_20:

(Start: 33 @16643 has 358 MA's), (Start: 36 @16586 has 2 MA's), (44, 16523), (46, 16484), (54, 16382), (55, 16367), (59, 16319), (62, 16280), (65, 16256), (69, 16211), (70, 16205), (75, 16148), (84, 16004), (89, 15944), (95, 15893),

Gene: Selr12_20 Start: 16366, Stop: 15590, Start Num: 33

Candidate Starts for Selr12_20:

(Start: 33 @16366 has 358 MA's), (Start: 36 @16309 has 2 MA's), (44, 16246), (46, 16207), (54, 16105), (55, 16090), (59, 16042), (62, 16003), (65, 15979), (69, 15934), (70, 15928), (75, 15871), (84, 15727), (89, 15667), (95, 15616),

Gene: Serendipity_20 Start: 16664, Stop: 15888, Start Num: 33

Candidate Starts for Serendipity_20:

(Start: 33 @16664 has 358 MA's), (Start: 36 @16607 has 2 MA's), (44, 16544), (46, 16505), (54, 16403), (55, 16388), (59, 16340), (62, 16301), (65, 16277), (69, 16232), (70, 16226), (75, 16169), (84,

16025), (89, 15965), (95, 15914),

Gene: Serpentine_0020 Start: 16644, Stop: 15868, Start Num: 33

Candidate Starts for Serpentine_0020:

(Start: 33 @16644 has 358 MA's), (Start: 36 @16587 has 2 MA's), (44, 16524), (46, 16485), (54, 16383), (55, 16368), (59, 16320), (62, 16281), (65, 16257), (69, 16212), (70, 16206), (75, 16149), (84, 16005), (89, 15945), (95, 15894),

Gene: Settecandela_8 Start: 7132, Stop: 8028, Start Num: 28

Candidate Starts for Settecandela_8:

(Start: 28 @7132 has 2 MA's), (Start: 33 @7168 has 358 MA's), (35, 7198), (38, 7237), (46, 7327), (53, 7420), (54, 7429), (55, 7444), (65, 7555), (69, 7600), (70, 7606), (71, 7624), (75, 7663), (80, 7738), (84, 7807), (90, 7879), (93, 7912), (105, 7954), (109, 7978), (112, 8020),

Gene: SgtBeansprout_35 Start: 30629, Stop: 31519, Start Num: 33

Candidate Starts for SgtBeansprout_35:

(Start: 33 @30629 has 358 MA's), (Start: 36 @30686 has 2 MA's), (46, 30791), (53, 30884), (54, 30893), (55, 30908), (57, 30932), (62, 30995), (65, 31019), (66, 31025), (69, 31064), (70, 31070), (71, 31088), (74, 31112), (75, 31127), (76, 31163), (80, 31202), (81, 31217), (83, 31238), (84, 31271), (86, 31316), (94, 31388), (106, 31424), (115, 31502),

Gene: ShadowBud_20 Start: 16656, Stop: 15880, Start Num: 33

Candidate Starts for ShadowBud_20:

(Start: 33 @16656 has 358 MA's), (Start: 36 @16599 has 2 MA's), (44, 16536), (46, 16497), (54, 16395), (55, 16380), (59, 16332), (62, 16293), (65, 16269), (69, 16224), (70, 16218), (75, 16161), (84, 16017), (89, 15957), (95, 15906),

Gene: Shaobing_41 Start: 31433, Stop: 32323, Start Num: 33

Candidate Starts for Shaobing_41:

(Start: 33 @31433 has 358 MA's), (Start: 36 @31490 has 2 MA's), (39, 31520), (46, 31595), (49, 31640), (54, 31697), (55, 31712), (62, 31799), (65, 31823), (66, 31829), (70, 31874), (72, 31907), (74, 31916), (75, 31931), (76, 31967), (80, 32006), (84, 32075), (86, 32120), (90, 32159), (96, 32201), (98, 32207), (107, 32228), (116, 32315),

Gene: Sheila_20 Start: 16635, Stop: 15859, Start Num: 33

Candidate Starts for Sheila_20:

(Start: 33 @16635 has 358 MA's), (Start: 36 @16578 has 2 MA's), (46, 16476), (54, 16374), (55, 16359), (59, 16311), (62, 16272), (65, 16248), (69, 16203), (70, 16197), (75, 16140), (80, 16065), (84, 15996), (87, 15960), (89, 15936), (95, 15885),

Gene: ShiVal_20 Start: 16635, Stop: 15859, Start Num: 33

Candidate Starts for ShiVal_20:

(Start: 33 @16635 has 358 MA's), (Start: 36 @16578 has 2 MA's), (44, 16515), (46, 16476), (54, 16374), (55, 16359), (59, 16311), (62, 16272), (65, 16248), (69, 16203), (70, 16197), (75, 16140), (84, 15996), (89, 15936), (95, 15885),

Gene: Sigman_20 Start: 16634, Stop: 15858, Start Num: 33

Candidate Starts for Sigman_20:

(Start: 33 @16634 has 358 MA's), (Start: 36 @16577 has 2 MA's), (44, 16514), (46, 16475), (54, 16373), (55, 16358), (59, 16310), (62, 16271), (65, 16247), (69, 16202), (70, 16196), (75, 16139), (84, 15995), (89, 15935), (95, 15884),

Gene: SilverBell_20 Start: 16649, Stop: 15873, Start Num: 33

Candidate Starts for SilverBell_20:

(Start: 33 @16649 has 358 MA's), (Start: 36 @16592 has 2 MA's), (44, 16529), (46, 16490), (54, 16388), (55, 16373), (59, 16325), (62, 16286), (65, 16262), (69, 16217), (70, 16211), (75, 16154), (84, 16010), (89, 15950), (95, 15899),

Gene: Simielle_19 Start: 16334, Stop: 15558, Start Num: 33

Candidate Starts for Simielle_19:

(Start: 33 @16334 has 358 MA's), (Start: 36 @16277 has 2 MA's), (44, 16214), (46, 16175), (54, 16073), (55, 16058), (59, 16010), (62, 15971), (65, 15947), (69, 15902), (70, 15896), (75, 15839), (84, 15695), (89, 15635), (95, 15584),

Gene: SirBeauregard_19 Start: 16310, Stop: 15534, Start Num: 33

Candidate Starts for SirBeauregard_19:

(Start: 33 @16310 has 358 MA's), (Start: 36 @16253 has 2 MA's), (46, 16151), (54, 16049), (55, 16034), (59, 15986), (62, 15947), (65, 15923), (69, 15878), (70, 15872), (75, 15815), (80, 15740), (84, 15671), (87, 15635), (89, 15611), (95, 15560),

Gene: Skippy_20 Start: 16628, Stop: 15852, Start Num: 33

Candidate Starts for Skippy_20:

(Start: 33 @16628 has 358 MA's), (Start: 36 @16571 has 2 MA's), (44, 16508), (46, 16469), (54, 16367), (55, 16352), (59, 16304), (62, 16265), (65, 16241), (69, 16196), (70, 16190), (75, 16133), (84, 15989), (89, 15929), (95, 15878),

Gene: Slatt_20 Start: 16658, Stop: 15882, Start Num: 33

Candidate Starts for Slatt_20:

(Start: 33 @16658 has 358 MA's), (Start: 36 @16601 has 2 MA's), (44, 16538), (46, 16499), (54, 16397), (55, 16382), (59, 16334), (62, 16295), (65, 16271), (69, 16226), (70, 16220), (75, 16163), (84, 16019), (89, 15959), (95, 15908),

Gene: SoSeph_86 Start: 55982, Stop: 56866, Start Num: 33

Candidate Starts for SoSeph_86:

(Start: 33 @55982 has 358 MA's), (Start: 36 @56039 has 2 MA's), (38, 56051), (46, 56144), (49, 56189), (53, 56237), (54, 56246), (55, 56261), (60, 56321), (62, 56348), (63, 56363), (65, 56372), (66, 56378), (69, 56417), (70, 56423), (72, 56456), (75, 56480), (76, 56516), (80, 56555), (84, 56624), (90, 56696), (91, 56708), (108, 56771), (110, 56789), (116, 56843),

Gene: Soile_20 Start: 16355, Stop: 15579, Start Num: 33

Candidate Starts for Soile_20:

(Start: 33 @16355 has 358 MA's), (Start: 36 @16298 has 2 MA's), (46, 16196), (54, 16094), (55, 16079), (59, 16031), (62, 15992), (65, 15968), (69, 15923), (70, 15917), (75, 15860), (80, 15785), (84, 15716), (87, 15680), (89, 15656), (95, 15605),

Gene: Solosis_19 Start: 16361, Stop: 15585, Start Num: 33

Candidate Starts for Solosis_19:

(Start: 33 @16361 has 358 MA's), (Start: 36 @16304 has 2 MA's), (44, 16241), (46, 16202), (54, 16100), (55, 16085), (59, 16037), (62, 15998), (65, 15974), (69, 15929), (70, 15923), (75, 15866), (84, 15722), (89, 15662), (95, 15611),

Gene: Sophia_19 Start: 16350, Stop: 15574, Start Num: 33

Candidate Starts for Sophia_19:

(Start: 33 @16350 has 358 MA's), (Start: 36 @16293 has 2 MA's), (44, 16230), (46, 16191), (54, 16089), (55, 16074), (59, 16026), (62, 15987), (65, 15963), (69, 15918), (70, 15912), (75, 15855), (84, 15711), (89, 15651), (95, 15600),

Gene: Soto_20 Start: 16638, Stop: 15862, Start Num: 33

Candidate Starts for Soto_20:

(Start: 33 @16638 has 358 MA's), (Start: 36 @16581 has 2 MA's), (44, 16518), (46, 16479), (54, 16377), (55, 16362), (59, 16314), (62, 16275), (65, 16251), (69, 16206), (70, 16200), (75, 16143), (84, 15999), (89, 15939), (95, 15888),

Gene: Spartan300_20 Start: 16639, Stop: 15863, Start Num: 33

Candidate Starts for Spartan300_20:

(Start: 33 @16639 has 358 MA's), (Start: 36 @16582 has 2 MA's), (44, 16519), (46, 16480), (54, 16378), (55, 16363), (59, 16315), (62, 16276), (65, 16252), (69, 16207), (70, 16201), (75, 16144), (84, 16000), (89, 15940), (95, 15889),

Gene: Squid_20 Start: 16350, Stop: 15574, Start Num: 33

Candidate Starts for Squid_20:

(Start: 33 @16350 has 358 MA's), (Start: 36 @16293 has 2 MA's), (44, 16230), (46, 16191), (54, 16089), (55, 16074), (59, 16026), (62, 15987), (65, 15963), (69, 15918), (70, 15912), (75, 15855), (84, 15711), (89, 15651), (95, 15600),

Gene: Squiggle_20 Start: 16348, Stop: 15572, Start Num: 33

Candidate Starts for Squiggle_20:

(Start: 33 @16348 has 358 MA's), (Start: 36 @16291 has 2 MA's), (44, 16228), (46, 16189), (54, 16087), (55, 16072), (59, 16024), (62, 15985), (65, 15961), (69, 15916), (70, 15910), (75, 15853), (84, 15709), (89, 15649), (95, 15598),

Gene: Strobilo_42 Start: 32989, Stop: 33834, Start Num: 33

Candidate Starts for Strobilo_42:

(26, 32932), (27, 32944), (30, 32953), (Start: 33 @32989 has 358 MA's), (Start: 36 @33046 has 2 MA's), (38, 33058), (46, 33151), (50, 33199), (54, 33253), (55, 33268), (58, 33307), (59, 33316), (60, 33328), (65, 33379), (66, 33385), (72, 33463), (76, 33523), (79, 33556), (80, 33562), (84, 33631), (97, 33754),

Gene: Struggle_19 Start: 16194, Stop: 15418, Start Num: 33

Candidate Starts for Struggle_19:

(Start: 33 @16194 has 358 MA's), (Start: 36 @16137 has 2 MA's), (46, 16035), (54, 15933), (55, 15918), (59, 15870), (62, 15831), (65, 15807), (69, 15762), (70, 15756), (75, 15699), (80, 15624), (84, 15555), (87, 15519), (89, 15495), (95, 15444),

Gene: Suffolk_20 Start: 16641, Stop: 15841, Start Num: 33

Candidate Starts for Suffolk_20:

(Start: 33 @16641 has 358 MA's), (Start: 36 @16584 has 2 MA's), (44, 16521), (46, 16482), (54, 16380), (55, 16365), (59, 16317), (62, 16278), (65, 16254), (69, 16209), (70, 16203), (75, 16146), (84, 16002), (89, 15942), (100, 15867), (103, 15858),

Gene: Surely_20 Start: 16652, Stop: 15876, Start Num: 33

Candidate Starts for Surely_20:

(Start: 33 @16652 has 358 MA's), (Start: 36 @16595 has 2 MA's), (44, 16532), (46, 16493), (54, 16391), (55, 16376), (59, 16328), (62, 16289), (65, 16265), (69, 16220), (70, 16214), (75, 16157), (84, 16013), (89, 15953), (95, 15902),

Gene: Swiphy_20 Start: 16641, Stop: 15865, Start Num: 33

Candidate Starts for Swiphy_20:

(Start: 33 @16641 has 358 MA's), (Start: 36 @16584 has 2 MA's), (46, 16482), (54, 16380), (55, 16365), (59, 16317), (62, 16278), (65, 16254), (69, 16209), (70, 16203), (75, 16146), (80, 16071), (84, 16002), (87, 15966), (89, 15942), (95, 15891),

Gene: Swish_20 Start: 16636, Stop: 15860, Start Num: 33

Candidate Starts for Swish_20:

(Start: 33 @16636 has 358 MA's), (Start: 36 @16579 has 2 MA's), (44, 16516), (46, 16477), (47, 16474), (54, 16375), (55, 16360), (59, 16312), (62, 16273), (65, 16249), (69, 16204), (70, 16198), (75, 16141), (84, 15997), (89, 15937), (95, 15886),

Gene: TClif_43 Start: 31920, Stop: 32798, Start Num: 33

Candidate Starts for TClif_43:

(Start: 33 @31920 has 358 MA's), (Start: 36 @31977 has 2 MA's), (38, 31989), (39, 32007), (46, 32082), (49, 32127), (54, 32184), (55, 32199), (62, 32286), (65, 32310), (66, 32316), (70, 32361), (72, 32394), (75, 32418), (76, 32454), (80, 32493), (83, 32529), (84, 32562), (86, 32607), (107, 32715),

Gene: TallGrassMM_20 Start: 16367, Stop: 15591, Start Num: 33

Candidate Starts for TallGrassMM_20:

(Start: 33 @16367 has 358 MA's), (Start: 36 @16310 has 2 MA's), (46, 16208), (54, 16106), (55, 16091), (59, 16043), (62, 16004), (65, 15980), (69, 15935), (70, 15929), (75, 15872), (84, 15728), (89, 15668), (95, 15617),

Gene: Taraxa_20 Start: 16220, Stop: 15444, Start Num: 33

Candidate Starts for Taraxa_20:

(Start: 33 @16220 has 358 MA's), (Start: 36 @16163 has 2 MA's), (46, 16061), (54, 15959), (55, 15944), (59, 15896), (62, 15857), (65, 15833), (69, 15788), (70, 15782), (75, 15725), (80, 15650), (84, 15581), (87, 15545), (89, 15521), (95, 15470),

Gene: Teejan_35 Start: 30629, Stop: 31555, Start Num: 33

Candidate Starts for Teejan_35:

(Start: 33 @30629 has 358 MA's), (Start: 36 @30686 has 2 MA's), (46, 30791), (53, 30884), (54, 30893), (55, 30908), (57, 30932), (62, 30995), (65, 31019), (66, 31025), (69, 31064), (70, 31070), (71, 31088), (74, 31112), (75, 31127), (76, 31163), (80, 31202), (81, 31217), (83, 31238), (84, 31271), (86, 31316), (114, 31505), (121, 31547),

Gene: Telesworld_19 Start: 16348, Stop: 15572, Start Num: 33

Candidate Starts for Telesworld_19:

(9, 16717), (10, 16708), (Start: 33 @16348 has 358 MA's), (46, 16189), (54, 16087), (55, 16072), (59, 16024), (62, 15985), (65, 15961), (69, 15916), (70, 15910), (75, 15853), (84, 15709), (89, 15649), (95, 15598),

Gene: Thora_20 Start: 16651, Stop: 15875, Start Num: 33

Candidate Starts for Thora_20:

(Start: 33 @16651 has 358 MA's), (Start: 36 @16594 has 2 MA's), (44, 16531), (46, 16492), (54, 16390), (55, 16375), (59, 16327), (62, 16288), (65, 16264), (69, 16219), (70, 16213), (75, 16156), (84, 16012), (89, 15952), (95, 15901),

Gene: ThreeOh3D2_20 Start: 16651, Stop: 15875, Start Num: 33

Candidate Starts for ThreeOh3D2_20:

(Start: 33 @16651 has 358 MA's), (Start: 36 @16594 has 2 MA's), (44, 16531), (46, 16492), (54, 16390), (55, 16375), (59, 16327), (62, 16288), (65, 16264), (69, 16219), (70, 16213), (75, 16156), (84, 16012), (89, 15952), (95, 15901),

Gene: Thunderbird_19 Start: 16351, Stop: 15575, Start Num: 33

Candidate Starts for Thunderbird_19:

(Start: 33 @16351 has 358 MA's), (Start: 36 @16294 has 2 MA's), (44, 16231), (46, 16192), (54, 16090), (55, 16075), (59, 16027), (62, 15988), (65, 15964), (69, 15919), (70, 15913), (75, 15856), (84, 15712), (89, 15652), (95, 15601),

Gene: Thyatira_86 Start: 57660, Stop: 58622, Start Num: 33

Candidate Starts for Thyatira_86:

(21, 57594), (22, 57597), (Start: 23 @57600 has 1 MA's), (27, 57618), (29, 57624), (30, 57627), (Start: 33 @57660 has 358 MA's), (Start: 36 @57717 has 2 MA's), (38, 57729), (46, 57822), (49, 57867), (53, 57915), (54, 57924), (55, 57939), (60, 57999), (62, 58026), (63, 58041), (65, 58050), (66, 58056), (69, 58095), (70, 58101), (72, 58134), (75, 58158), (76, 58194), (79, 58227), (80, 58233), (82, 58263), (83, 58269), (84, 58302), (90, 58374), (114, 58500), (119, 58533), (120, 58539), (123, 58584),

Gene: Timmi_19 Start: 16362, Stop: 15586, Start Num: 33

Candidate Starts for Timmi_19:

(Start: 33 @16362 has 358 MA's), (Start: 36 @16305 has 2 MA's), (44, 16242), (46, 16203), (54, 16101), (55, 16086), (59, 16038), (62, 15999), (65, 15975), (69, 15930), (70, 15924), (75, 15867), (84, 15723), (89, 15663), (95, 15612),

Gene: TiniBug_40 Start: 31791, Stop: 32648, Start Num: 33

Candidate Starts for TiniBug_40:

(21, 31725), (22, 31728), (25, 31734), (30, 31758), (Start: 33 @31791 has 358 MA's), (Start: 36 @31848 has 2 MA's), (38, 31860), (46, 31953), (50, 32001), (54, 32055), (55, 32070), (59, 32118), (60, 32130), (66, 32187), (69, 32226), (70, 32232), (73, 32271), (74, 32274), (75, 32289), (76, 32325), (80, 32364), (84, 32433), (90, 32505),

Gene: TomBombadil_20 Start: 16646, Stop: 15870, Start Num: 33

Candidate Starts for TomBombadil_20:

(Start: 33 @16646 has 358 MA's), (Start: 36 @16589 has 2 MA's), (44, 16526), (46, 16487), (54, 16385), (55, 16370), (59, 16322), (62, 16283), (65, 16259), (69, 16214), (70, 16208), (75, 16151), (84, 16007), (89, 15947), (95, 15896),

Gene: Tomlarah_20 Start: 16637, Stop: 15861, Start Num: 33

Candidate Starts for Tomlarah_20:

(Start: 33 @16637 has 358 MA's), (Start: 36 @16580 has 2 MA's), (44, 16517), (46, 16478), (54, 16376), (55, 16361), (59, 16313), (62, 16274), (65, 16250), (69, 16205), (70, 16199), (75, 16142), (84, 15998), (89, 15938), (95, 15887),

Gene: Toni_19 Start: 16346, Stop: 15570, Start Num: 33

Candidate Starts for Toni_19:

(Start: 33 @16346 has 358 MA's), (Start: 36 @16289 has 2 MA's), (44, 16226), (46, 16187), (54, 16085), (55, 16070), (59, 16022), (62, 15983), (65, 15959), (69, 15914), (70, 15908), (75, 15851), (84, 15707), (89, 15647), (95, 15596),

Gene: TooFast2Furius_21 Start: 16882, Stop: 16106, Start Num: 33

Candidate Starts for TooFast2Furius_21:

(Start: 33 @16882 has 358 MA's), (Start: 36 @16825 has 2 MA's), (46, 16723), (54, 16621), (55, 16606), (59, 16558), (62, 16519), (65, 16495), (69, 16450), (70, 16444), (75, 16387), (84, 16243), (89, 16183), (95, 16132),

Gene: Tooj_20 Start: 16649, Stop: 15873, Start Num: 33

Candidate Starts for Tooj_20:

(9, 17018), (10, 17009), (Start: 33 @16649 has 358 MA's), (Start: 36 @16592 has 2 MA's), (44, 16529), (46, 16490), (54, 16388), (55, 16373), (59, 16325), (62, 16286), (65, 16262), (69, 16217), (70, 16211), (75, 16154), (84, 16010), (89, 15950), (95, 15899),

Gene: Torres_35 Start: 30629, Stop: 31555, Start Num: 33

Candidate Starts for Torres_35:

(Start: 33 @30629 has 358 MA's), (Start: 36 @30686 has 2 MA's), (46, 30791), (53, 30884), (54, 30893), (55, 30908), (57, 30932), (62, 30995), (65, 31019), (66, 31025), (69, 31064), (70, 31070), (71, 31088), (74, 31112), (75, 31127), (76, 31163), (80, 31202), (81, 31217), (83, 31238), (84, 31271), (86, 31316), (114, 31505), (121, 31547),

Gene: TreyKay_39 Start: 31008, Stop: 31940, Start Num: 33

Candidate Starts for TreyKay_39:

(Start: 33 @31008 has 358 MA's), (Start: 36 @31065 has 2 MA's), (41, 31110), (46, 31170), (49, 31215), (54, 31272), (55, 31287), (59, 31335), (60, 31347), (62, 31374), (65, 31398), (66, 31404), (69, 31443), (74, 31491), (75, 31506), (76, 31542), (80, 31581), (83, 31617), (84, 31650), (93, 31755), (104, 31797), (105, 31800), (110, 31839),

Gene: Trice_35 Start: 30629, Stop: 31360, Start Num: 33

Candidate Starts for Trice_35:

(Start: 33 @30629 has 358 MA's), (Start: 36 @30686 has 2 MA's), (46, 30791), (53, 30884), (54, 30893), (55, 30908), (57, 30932), (62, 30995), (65, 31019), (66, 31025), (69, 31064), (70, 31070), (71, 31088), (74, 31112), (75, 31127), (76, 31163), (80, 31202), (81, 31217), (83, 31238), (84, 31271), (86, 31316),

Gene: True_19 Start: 16350, Stop: 15574, Start Num: 33

Candidate Starts for True_19:

(Start: 33 @16350 has 358 MA's), (Start: 36 @16293 has 2 MA's), (44, 16230), (46, 16191), (54, 16089), (55, 16074), (59, 16026), (62, 15987), (65, 15963), (69, 15918), (70, 15912), (75, 15855), (84, 15711), (89, 15651), (95, 15600),

Gene: Trypo_20 Start: 16638, Stop: 15862, Start Num: 33

Candidate Starts for Trypo_20:

(Start: 33 @16638 has 358 MA's), (Start: 36 @16581 has 2 MA's), (46, 16479), (54, 16377), (55, 16362), (59, 16314), (62, 16275), (65, 16251), (69, 16206), (70, 16200), (75, 16143), (80, 16068), (84, 15999), (87, 15963), (89, 15939), (95, 15888),

Gene: TyrionL_19 Start: 16202, Stop: 15426, Start Num: 33

Candidate Starts for TyrionL_19:

(Start: 33 @16202 has 358 MA's), (Start: 36 @16145 has 2 MA's), (46, 16043), (54, 15941), (55, 15926), (59, 15878), (62, 15839), (65, 15815), (69, 15770), (70, 15764), (75, 15707), (80, 15632), (84, 15563), (87, 15527), (89, 15503), (95, 15452),

Gene: UAch1_20 Start: 16659, Stop: 15883, Start Num: 33

Candidate Starts for UAch1_20:

(Start: 33 @16659 has 358 MA's), (Start: 36 @16602 has 2 MA's), (44, 16539), (46, 16500), (54, 16398), (55, 16383), (59, 16335), (62, 16296), (65, 16272), (69, 16227), (70, 16221), (75, 16164), (84, 16020), (89, 15960), (95, 15909),

Gene: UncleHowie_20 Start: 16349, Stop: 15573, Start Num: 33

Candidate Starts for UncleHowie_20:

(Start: 33 @16349 has 358 MA's), (Start: 36 @16292 has 2 MA's), (44, 16229), (46, 16190), (54, 16088), (55, 16073), (59, 16025), (62, 15986), (65, 15962), (69, 15917), (70, 15911), (75, 15854), (84,

15710), (89, 15650), (95, 15599),

Gene: Urkel_40 Start: 31795, Stop: 32652, Start Num: 33

Candidate Starts for Urkel_40:

(4, 31339), (5, 31342), (7, 31345), (8, 31375), (11, 31591), (14, 31618), (21, 31729), (22, 31732), (25, 31738), (30, 31762), (Start: 33 @31795 has 358 MA's), (Start: 36 @31852 has 2 MA's), (38, 31864), (46, 31957), (49, 32002), (50, 32005), (54, 32059), (55, 32074), (59, 32122), (60, 32134), (65, 32185), (69, 32230), (70, 32236), (73, 32275), (74, 32278), (75, 32293), (76, 32329), (80, 32368), (84, 32437), (90, 32509), (101, 32575),

Gene: Usavi_20 Start: 16650, Stop: 15874, Start Num: 33

Candidate Starts for Usavi_20:

(Start: 33 @16650 has 358 MA's), (Start: 36 @16593 has 2 MA's), (44, 16530), (46, 16491), (54, 16389), (55, 16374), (59, 16326), (62, 16287), (65, 16263), (69, 16218), (70, 16212), (75, 16155), (84, 16011), (89, 15951), (95, 15900),

Gene: Vaishali24_19 Start: 16302, Stop: 15526, Start Num: 33

Candidate Starts for Vaishali24_19:

(Start: 33 @16302 has 358 MA's), (Start: 36 @16245 has 2 MA's), (44, 16182), (46, 16143), (54, 16041), (55, 16026), (59, 15978), (62, 15939), (65, 15915), (69, 15870), (70, 15864), (75, 15807), (84, 15663), (89, 15603), (95, 15552),

Gene: Validus_43 Start: 31502, Stop: 32383, Start Num: 33

Candidate Starts for Validus_43:

(Start: 33 @31502 has 358 MA's), (Start: 36 @31559 has 2 MA's), (39, 31589), (46, 31664), (49, 31709), (54, 31766), (55, 31781), (57, 31805), (62, 31868), (65, 31892), (66, 31898), (69, 31937), (70, 31943), (72, 31976), (74, 31985), (75, 32000), (76, 32036), (80, 32075), (83, 32111), (84, 32144), (86, 32189), (96, 32270), (107, 32297), (116, 32375),

Gene: Valjean_20 Start: 16642, Stop: 15866, Start Num: 33

Candidate Starts for Valjean_20:

(Start: 33 @16642 has 358 MA's), (Start: 36 @16585 has 2 MA's), (44, 16522), (46, 16483), (54, 16381), (55, 16366), (59, 16318), (62, 16279), (65, 16255), (69, 16210), (70, 16204), (75, 16147), (84, 16003), (89, 15943), (95, 15892),

Gene: Vaticameos_20 Start: 16340, Stop: 15564, Start Num: 33

Candidate Starts for Vaticameos_20:

(Start: 33 @16340 has 358 MA's), (Start: 36 @16283 has 2 MA's), (44, 16220), (46, 16181), (54, 16079), (55, 16064), (59, 16016), (62, 15977), (65, 15953), (69, 15908), (70, 15902), (75, 15845), (84, 15701), (89, 15641), (95, 15590),

Gene: Veritas_19 Start: 16188, Stop: 15412, Start Num: 33

Candidate Starts for Veritas_19:

(Start: 33 @16188 has 358 MA's), (Start: 36 @16131 has 2 MA's), (46, 16029), (54, 15927), (55, 15912), (59, 15864), (62, 15825), (65, 15801), (69, 15756), (70, 15750), (75, 15693), (80, 15618), (84, 15549), (87, 15513), (89, 15489), (95, 15438),

Gene: Virapocalypse_20 Start: 16633, Stop: 15857, Start Num: 33

Candidate Starts for Virapocalypse_20:

(Start: 33 @16633 has 358 MA's), (Start: 36 @16576 has 2 MA's), (44, 16513), (46, 16474), (54, 16372), (55, 16357), (59, 16309), (62, 16270), (65, 16246), (69, 16201), (70, 16195), (75, 16138), (84, 15994), (89, 15934), (95, 15883),

Gene: Virgeve_19 Start: 16354, Stop: 15578, Start Num: 33

Candidate Starts for Virgeve_19:

(Start: 33 @16354 has 358 MA's), (Start: 36 @16297 has 2 MA's), (46, 16195), (54, 16093), (55, 16078), (59, 16030), (62, 15991), (65, 15967), (69, 15922), (70, 15916), (75, 15859), (80, 15784), (84, 15715), (87, 15679), (89, 15655), (95, 15604),

Gene: Vista_20 Start: 16646, Stop: 15870, Start Num: 33

Candidate Starts for Vista_20:

(Start: 33 @16646 has 358 MA's), (Start: 36 @16589 has 2 MA's), (44, 16526), (46, 16487), (54, 16385), (55, 16370), (59, 16322), (62, 16283), (65, 16259), (69, 16214), (70, 16208), (75, 16151), (84, 16007), (89, 15947), (95, 15896),

Gene: Vivaldi_20 Start: 16676, Stop: 15900, Start Num: 33

Candidate Starts for Vivaldi_20:

(Start: 33 @16676 has 358 MA's), (Start: 36 @16619 has 2 MA's), (46, 16517), (54, 16415), (55, 16400), (59, 16352), (62, 16313), (65, 16289), (69, 16244), (70, 16238), (75, 16181), (84, 16037), (89, 15977), (95, 15926),

Gene: ViviJ_92 Start: 56344, Stop: 57228, Start Num: 33

Candidate Starts for ViviJ_92:

(Start: 33 @56344 has 358 MA's), (Start: 36 @56401 has 2 MA's), (38, 56413), (46, 56506), (49, 56551), (53, 56599), (54, 56608), (55, 56623), (60, 56683), (62, 56710), (63, 56725), (65, 56734), (66, 56740), (69, 56779), (70, 56785), (75, 56842), (76, 56878), (80, 56917), (84, 56986), (90, 57058), (91, 57070), (108, 57133), (110, 57151),

Gene: Vortex_20 Start: 16357, Stop: 15581, Start Num: 33

Candidate Starts for Vortex_20:

(Start: 33 @16357 has 358 MA's), (Start: 36 @16300 has 2 MA's), (44, 16237), (46, 16198), (54, 16096), (55, 16081), (59, 16033), (62, 15994), (65, 15970), (69, 15925), (70, 15919), (75, 15862), (84, 15718), (89, 15658), (95, 15607),

Gene: Wallhey_19 Start: 16206, Stop: 15430, Start Num: 33

Candidate Starts for Wallhey_19:

(Start: 33 @16206 has 358 MA's), (Start: 36 @16149 has 2 MA's), (46, 16047), (54, 15945), (55, 15930), (59, 15882), (62, 15843), (65, 15819), (69, 15774), (70, 15768), (75, 15711), (80, 15636), (84, 15567), (87, 15531), (89, 15507), (95, 15456),

Gene: Waterdiva_20 Start: 16642, Stop: 15866, Start Num: 33

Candidate Starts for Waterdiva_20:

(Start: 33 @16642 has 358 MA's), (Start: 36 @16585 has 2 MA's), (44, 16522), (46, 16483), (54, 16381), (55, 16366), (59, 16318), (62, 16279), (65, 16255), (69, 16210), (70, 16204), (75, 16147), (84, 16003), (89, 15943), (95, 15892),

Gene: Weher20_20 Start: 16634, Stop: 15858, Start Num: 33

Candidate Starts for Weher20_20:

(Start: 33 @16634 has 358 MA's), (Start: 36 @16577 has 2 MA's), (46, 16475), (54, 16373), (55, 16358), (59, 16310), (62, 16271), (65, 16247), (69, 16202), (70, 16196), (75, 16139), (80, 16064), (84, 15995), (87, 15959), (89, 15935), (95, 15884),

Gene: Windsor_19 Start: 16309, Stop: 15533, Start Num: 33

Candidate Starts for Windsor_19:

(Start: 33 @16309 has 358 MA's), (Start: 36 @16252 has 2 MA's), (46, 16150), (54, 16048), (55, 16033), (59, 15985), (62, 15946), (65, 15922), (69, 15877), (70, 15871), (75, 15814), (80, 15739), (84,

15670), (87, 15634), (89, 15610), (95, 15559),

Gene: Xavier_19 Start: 16361, Stop: 15585, Start Num: 33

Candidate Starts for Xavier_19:

(9, 16730), (10, 16721), (Start: 33 @16361 has 358 MA's), (46, 16202), (54, 16100), (55, 16085), (59, 16037), (62, 15998), (65, 15974), (69, 15929), (70, 15923), (75, 15866), (84, 15722), (89, 15662), (95, 15611),

Gene: Yoshand_20 Start: 16647, Stop: 15871, Start Num: 33

Candidate Starts for Yoshand_20:

(9, 17019), (10, 17010), (Start: 33 @16647 has 358 MA's), (Start: 36 @16590 has 2 MA's), (44, 16527), (46, 16488), (54, 16386), (55, 16371), (59, 16323), (62, 16284), (65, 16260), (69, 16215), (70, 16209), (75, 16152), (84, 16008), (89, 15948), (95, 15897),

Gene: YouGoGlencoco_20 Start: 16638, Stop: 15862, Start Num: 33

Candidate Starts for YouGoGlencoco_20:

(Start: 33 @16638 has 358 MA's), (Start: 36 @16581 has 2 MA's), (44, 16518), (46, 16479), (54, 16377), (55, 16362), (59, 16314), (62, 16275), (65, 16251), (69, 16206), (70, 16200), (75, 16143), (84, 15999), (89, 15939), (95, 15888),

Gene: YoureAdopted_38 Start: 31097, Stop: 31954, Start Num: 33

Candidate Starts for YoureAdopted_38:

(Start: 33 @31097 has 358 MA's), (Start: 36 @31154 has 2 MA's), (38, 31166), (46, 31259), (50, 31307), (54, 31361), (55, 31376), (59, 31424), (60, 31436), (65, 31487), (66, 31493), (69, 31532), (70, 31538), (74, 31580), (75, 31595), (76, 31631), (80, 31670), (84, 31739), (90, 31811),

Gene: Yuna_44 Start: 32404, Stop: 33252, Start Num: 33

Candidate Starts for Yuna_44:

(Start: 33 @32404 has 358 MA's), (Start: 36 @32461 has 2 MA's), (46, 32566), (54, 32668), (55, 32683), (62, 32770), (64, 32788), (65, 32794), (66, 32800), (69, 32839), (70, 32845), (72, 32878), (74, 32887), (75, 32902), (76, 32938), (80, 32977), (83, 33013), (84, 33046), (98, 33166),

Gene: Zaider_21 Start: 16873, Stop: 16097, Start Num: 33

Candidate Starts for Zaider_21:

(Start: 33 @16873 has 358 MA's), (Start: 36 @16816 has 2 MA's), (44, 16753), (46, 16714), (54, 16612), (55, 16597), (59, 16549), (62, 16510), (65, 16486), (69, 16441), (70, 16435), (75, 16378), (84, 16234), (89, 16174), (95, 16123),

Gene: Zavala_40 Start: 31174, Stop: 32031, Start Num: 33

Candidate Starts for Zavala_40:

(11, 30970), (20, 31108), (22, 31111), (30, 31141), (Start: 33 @31174 has 358 MA's), (Start: 36 @31231 has 2 MA's), (38, 31243), (46, 31336), (50, 31384), (54, 31438), (55, 31453), (59, 31501), (65, 31564), (66, 31570), (69, 31609), (70, 31615), (74, 31657), (75, 31672), (76, 31708), (80, 31747), (84, 31816), (90, 31888),

Gene: Zelda_20 Start: 16643, Stop: 15867, Start Num: 33

Candidate Starts for Zelda_20:

(Start: 33 @16643 has 358 MA's), (Start: 36 @16586 has 2 MA's), (44, 16523), (46, 16484), (54, 16382), (55, 16367), (59, 16319), (62, 16280), (65, 16256), (69, 16211), (70, 16205), (75, 16148), (84, 16004), (89, 15944), (95, 15893),

Gene: ZoeJ_42 Start: 32676, Stop: 33515, Start Num: 33

Candidate Starts for ZoeJ_42:

(26, 32619), (27, 32631), (30, 32640), (Start: 33 @32676 has 358 MA's), (Start: 36 @32733 has 2 MA's), (46, 32838), (50, 32886), (54, 32940), (55, 32955), (58, 32994), (59, 33003), (60, 33015), (65, 33066), (66, 33072), (72, 33150), (76, 33210), (79, 33243), (80, 33249), (84, 33318), (97, 33441),

Gene: Zonia_20 Start: 16655, Stop: 15879, Start Num: 33

Candidate Starts for Zonia_20:

(Start: 33 @16655 has 358 MA's), (Start: 36 @16598 has 2 MA's), (46, 16496), (54, 16394), (55, 16379), (59, 16331), (62, 16292), (65, 16268), (69, 16223), (70, 16217), (75, 16160), (80, 16085), (84, 16016), (87, 15980), (89, 15956), (95, 15905),