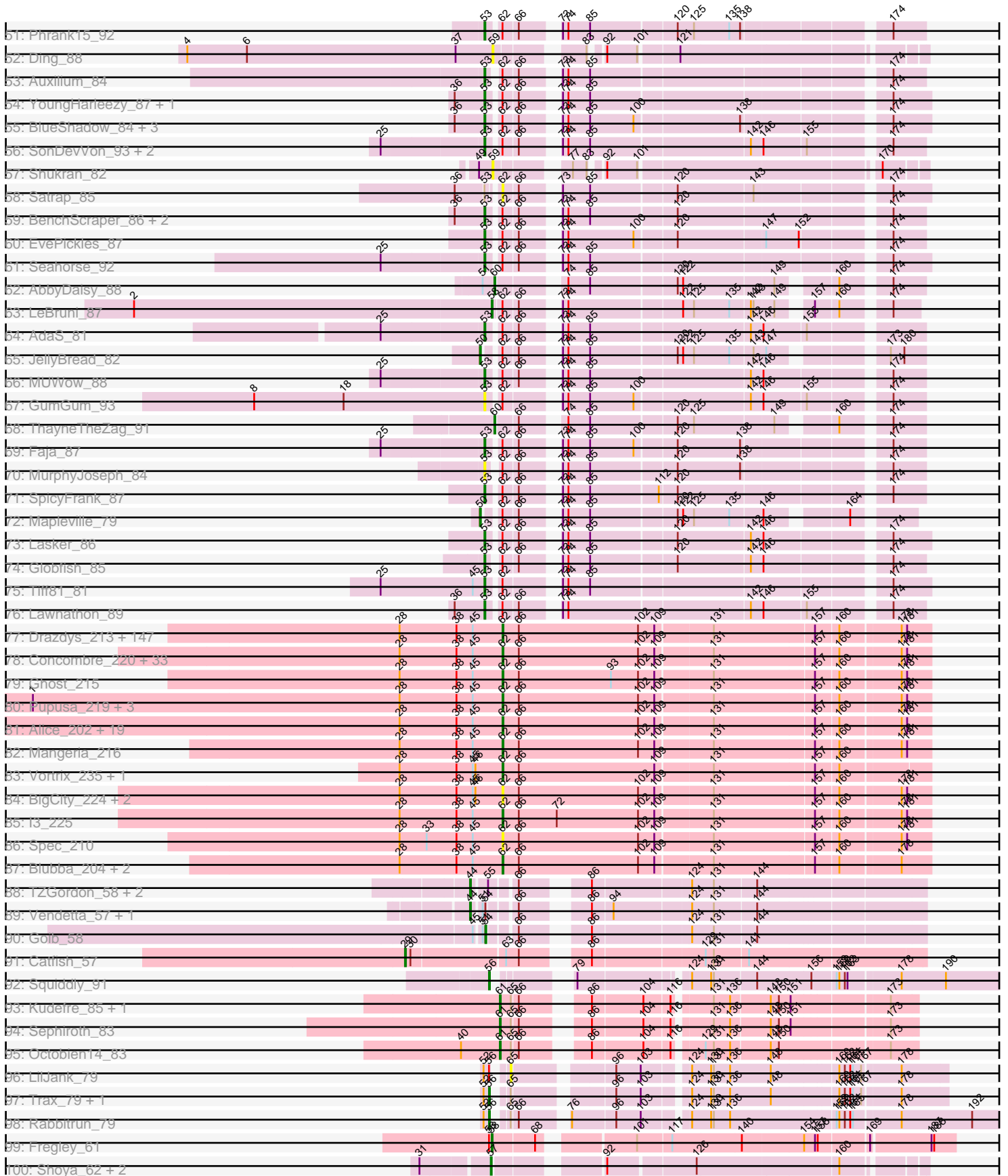
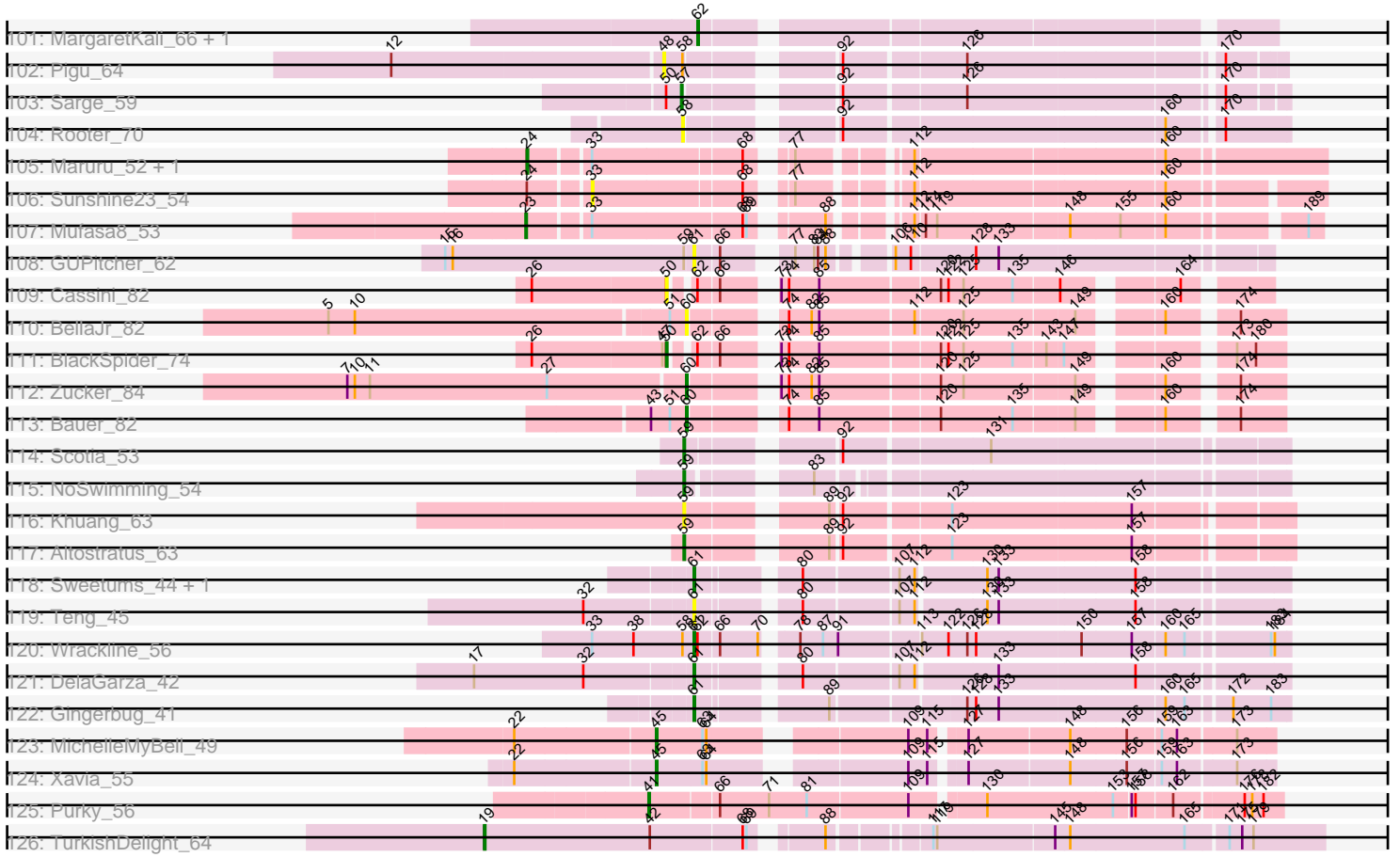


Pham 311100



Pham 311100



Note: Tracks are now grouped by subcluster and scaled. Switching in subcluster is indicated by changes in track color. Track scale is now set by default to display the region 30 bp upstream of start 1 to 30 bp downstream of the last possible start. If this default region is judged to be packed too tightly with annotated starts, the track will be further scaled to only show that region of the ORF with annotated starts. This action will be indicated by adding "Zoomed" to the title. For starts, yellow indicates the location of called starts comprised solely of Glimmer/GeneMark auto-annotations, green indicates the location of called starts with at least 1 manual gene annotation.

Pham 311100 Report

This analysis was run 06/27/26 on database version 652.

Pham number 311100 has 392 members, 79 are drafts.

Phages represented in each track:

- Track 1 : Caterpie_69
- Track 2 : Sejanus_66
- Track 3 : MalagasyRose_70
- Track 4 : Chicken_42, Niblet_42
- Track 5 : WileyE_44, Chickaboom_44
- Track 6 : Eesa_42, Westrich_51, Pelletreau_52, Gravel_52
- Track 7 : Galaxy_41
- Track 8 : Zixiang_42, Amanises_45, KendraB23_53, Toad24_45, Shen_42
- Track 9 : Brynnie_41
- Track 10 : Basilisk_42
- Track 11 : Ruchi_41
- Track 12 : Orcanus_43
- Track 13 : Jamun_42
- Track 14 : TaylorSipht_43
- Track 15 : Abidatro_44
- Track 16 : Vulpecula_41
- Track 17 : Bedetta_48, Damocles_47, Amelia_43, Cote_45, Bibble12_47, Colusalem_44, HannahPhantana_44, Pineda_45, Jerole_44
- Track 18 : GramZayde_45
- Track 19 : Kepler_45
- Track 20 : Zhuangyuan_47
- Track 21 : LittleTokyo_43
- Track 22 : Melons_45, Polka_43, Coral_43, OtsoOtso_44
- Track 23 : Lunar_45, PhirstandPhine_52, Daob_45
- Track 24 : Antrice_46
- Track 25 : Cygnet_45
- Track 26 : Kuleana_45
- Track 27 : Camara_45, Oppalora_44
- Track 28 : Amphitrite_45
- Track 29 : Atlantica_45, AdoptaAdorbs_44, HamCheese_45, Laphuphu24k_43, Glotell_46, DanHam62_45, AmiCi24_44, Juno112_44, Fingolfin_45
- Track 30 : Andrew_46
- Track 31 : RedFox_45, PhluffyCoco_45
- Track 32 : Leona_44, Azaz_45
- Track 33 : Babushka_42
- Track 34 : StuartMinion_37, AlexMinion_47
- Track 35 : Rattail_45

- Track 36 : Renna12_44
- Track 37 : KHumphrey_45
- Track 38 : Nyilah_93
- Track 39 : MaterMagnus_86
- Track 40 : Hillester_90, RadFad_91, BasketStar_86
- Track 41 : CosmicBrownie_85
- Track 42 : Persistence_79, JakeTheSnake_89
- Track 43 : Kabloowy_86
- Track 44 : Hestia_80, Bhageatrice_90
- Track 45 : Gorpy_83, Sakai_82
- Track 46 : BillyTP_87
- Track 47 : Raqqa_86
- Track 48 : Anekin_86, Aikyam_84
- Track 49 : Crescenzo_87, DarwinJr_89
- Track 50 : NewKitty_87
- Track 51 : Phrank15_92
- Track 52 : Ding_88
- Track 53 : Auxilium_84
- Track 54 : YoungHarleezy_87, Isolde_87
- Track 55 : BlueShadow_84, Raphaella_86, Vopal_87, MidnightRain_92
- Track 56 : SonDevVon_93, Sporco_87, CookieBear_84
- Track 57 : Shukran_82
- Track 58 : Satrap_85
- Track 59 : BenchScraper_86, Richie_89, Windest_90
- Track 60 : EvePickles_87
- Track 61 : Seahorse_92
- Track 62 : AbbyDaisy_88
- Track 63 : LeBruni_87
- Track 64 : AdaS_81
- Track 65 : JellyBread_82
- Track 66 : MUWow_88
- Track 67 : GumGum_93
- Track 68 : ThayneTheZag_91
- Track 69 : Faja_87
- Track 70 : MurphyJoseph_84
- Track 71 : SpicyFrank_87
- Track 72 : Mapleville_79
- Track 73 : Lasker_86
- Track 74 : Globfish_85
- Track 75 : Tiff81_81
- Track 76 : Lawnathon_89
- Track 77 : Drazdys_213, BobaPhatt_207, SVoro_211, Bipolarisk_213, Koguma_214, CharlieB_209, Jessibeth14_215, Ewok_214, Naval22_222, Patter_216, MoMoMixon_213, Breeniome_214, SoilZilla_210, Astraea_209, InigoMontoya_218, Fixie_215, Lukilu_206, Latch_215, Shrimp_217, Burrough_217, Cleatunium_208, Grungle_199, Jedediah_215, LookingGlass_214, Bowman_213, Halldule_208, Teardrop_212, MikeLiesIn_217, Tortoise16_213, Morizzled23_212, Asterius_217, Pleione_219, Adlitam_214, Guwapp_210, Littleton_218, Gabriel_218, Salacia_215, Kamryn_214, Janiyra_218, Fongie_216, Tyke_213, Audrick_217, FudgeTart_210, Naija_216, IkeLoa_207, Duckfeet_209, Rizal_207, RoMag_210, Delylah_217, Willis_216, JustHall_209, Shelob_216, DTDevon_217, Gamgam_216, Issimir_208, Roots515_217, McGee_214, Catera_207, SmallFry_215, Atlantean_215, Rahel_216, YoungMoneyMata_214, Babyland_218, Bangla1971_215, Domi_209,

DirtMonster_208, Substance289_212, LifeSavor_214, Daffodil_220, Labradorite_213, Matsumoto_213, Dessert_213, Iota_210, Primadonna_210, Loanshark_212, Khaleesi_214, Essence_212, CindyLou_216, ValleyTerrace_216, YemiJoy2021_216, Jezreel_212, ArcherS7_215, Pivoine_216, Rocha_212, Maby2021_215, Melpomini_210, NedWong_214, Kboogie_219, OrediggerDelux_211, Amataga_216, Momo_216, Dietrick_204, Ading_216, Gizmo_221, Phusco_213, Zeenon_217, ScottMcG_209, EmmaElysia_219, NoodleTree_221, ParkTD_214, Chomp_215, Megamind_212, StubbySaigey_220, PurduePete_215, Zalkecks_214, Ronan_211, Nidhogg_216, Norm_215, Phlegm_219, McWolfish_212, TinyTim_213, ShiaLabeouf_212, SrishMeg2525_212, GlutenPhree_216, BadAgartude_209, JPickles_211, Erdmann_216, Blackdragon_210, Shaqnato_206, Delilah_213, ZygoTaiga_212, Shnickers_213, Derek_212, StephanieG_211, Capablanca_220, Jaygup_211, Bread_210, Bonray_217, Ngannou_212, ET08_203, Napoleon13_212, DrPhinkDaddy_212, Sprinklers_213, Ava3_214, Jemmno_214, Izajani_213, Lethe_215, Wally_213, Lee7_215, Spud_209, Mikro_211, Yucca_215, BananaFence_212, Caravan_206, Darko_214, FoxtrotP1_213, EmToTheThree_215, SilverDipper_219

- Track 78 : Concombre_220, Cali_208, Turret_208, Bigswole_220, PharkleMinkus_217, Phox_216, Bxz1_205, Bezza_204, LordLeafolot_216, EasyJones_218, FrayBell_218, Demodog_221, Trinitium_211, Belieber_208, Nappy_216, Dandelion_223, InterFolia_218, Ablatia_214, LolaVinca_213, LRRHood_208, ChickenPhender_211, Specks_219, Quasimodo_217, Fludd_215, Cactojaque_210, ErnieJ_208, QBert_207, Chargie21_212, Tainan_216, BeanWater_207, Basquiat_212, Blackbrain_212, JigglyPuff_222, Pio_223

- Track 79 : Ghost_215

- Track 80 : Pupusa_219, Sauce_211, JulietS_206, Yassified_212

- Track 81 : Alice_202, DeejaClivia_203, HyRo_203, Flabslab_210, JayJay_217, Stubby_199, Shifa_192, Maturis_212, Moby_211, Pier_216, Montpel_213, NuevoMundo_218, ChaylaJr_213, Sebata_216, Pinkcreek_199, Rabinovish_208, Moiqah_210, BackyardAgain_211, Lunareta_213, LinStu_214

- Track 82 : Mangeria_216

- Track 83 : Vortrix_235, Tonenili_237

- Track 84 : BigCity_224, EggyFarm_224, Grasshills_223

- Track 85 : l3_225

- Track 86 : Spec_210

- Track 87 : Blubba_204, Colt_206, Cane17_206

- Track 88 : TZGordon_58, DinoDaryn_57, Huffy_57

- Track 89 : Vendetta_57, Splinter_57

- Track 90 : Goib_58

- Track 91 : Catfish_57

- Track 92 : Squiddly_91

- Track 93 : Kudefre_85, Syleon_86

- Track 94 : Sephiroth_83

- Track 95 : Octobien14_83

- Track 96 : LilJank_79

- Track 97 : Trax_79, Neville_76

- Track 98 : Rabbitrun_79

- Track 99 : Fregley_61

- Track 100 : Shoya_62, BrayBeast_62, JeanClaude_61

- Track 101 : MargaretKali_66, Kumotta_70

- Track 102 : Pigu_64

- Track 103 : Sarge_59

- Track 104 : Rooter_70

- Track 105 : Maruru_52, Sonali_52
- Track 106 : Sunshine23_54
- Track 107 : Mufasa8_53
- Track 108 : GUPitcher_62
- Track 109 : Cassini_82
- Track 110 : BellaJr_82
- Track 111 : BlackSpider_74
- Track 112 : Zucker_84
- Track 113 : Bauer_82
- Track 114 : Scotia_53
- Track 115 : NoSwimming_54
- Track 116 : Khuang_63
- Track 117 : Altostratus_63
- Track 118 : Sweetums_44, Lesiram_43
- Track 119 : Teng_45
- Track 120 : Wrackline_56
- Track 121 : DelaGarza_42
- Track 122 : Gingerbug_41
- Track 123 : MichelleMyBell_49
- Track 124 : Xavia_55
- Track 125 : Purky_56
- Track 126 : TurkishDelight_64

Summary of Final Annotations (See graph section above for start numbers):

The start number called the most often in the published annotations is 62, it was called in 183 of the 313 non-draft genes in the pham.

Genes that call this "Most Annotated" start:

- Ablatia_214, Ading_216, Adlitam_214, Alice_202, Amataga_216, ArcherS7_215, Asterius_217, Astraea_209, Atlantean_215, Audrick_217, Ava3_214, Babyland_218, BackyardAgain_211, BadAgartude_209, BananaFence_212, Bangla1971_215, Basquiat_212, BeanWater_207, Belieber_208, Bezza_204, BigCity_224, Bigswole_220, Bipolarisk_213, Blackbrain_212, Blackdragon_210, Blubba_204, BobaPhatt_207, Bonray_217, Bowman_213, Bread_210, Breeniome_214, Burrough_217, Bxz1_205, Cactojaque_210, Cali_208, Cane17_206, Capablanca_220, Caravan_206, Catera_207, Chargie21_212, CharlieB_209, ChaylaJr_213, ChickenPhender_211, Chomp_215, CindyLou_216, Cleatunium_208, Colt_206, Concombre_220, DTDevon_217, Daffodil_220, Dandelion_223, Darko_214, DeejaClivia_203, Delilah_213, Delylah_217, Demodog_221, Derek_212, Dessert_213, Dietrick_204, DirtMonster_208, Domi_209, DrPhinkDaddy_212, Drazdys_213, Duckfeet_209, ET08_203, EasyJones_218, EggyFarm_224, EmToTheThree_215, EmmaElysia_219, Erdmann_216, ErnieJ_208, Essence_212, Ewok_214, Fixie_215, Flabslab_210, Fludd_215, Fongie_216, FoxtrotP1_213, FrayBell_218, FudgeTart_210, Gabriel_218, Gangam_216, Ghost_215, Gizmo_221, GlutenPhree_216, Grasshills_223, Grungle_199, Guwapp_210, Halldule_208, HyRo_203, I3_225, IkeLoa_207, InigoMontoya_218, InterFolia_218, Iota_210, Issimir_208, Izajani_213, JPickles_211, Janiyra_218, JayJay_217, Jaygup_211, Jedediah_215, Jemmno_214, Jessibeth14_215, Jezreel_212, JigglyPuff_222, JulietS_206, JustHall_209, Kamryn_214, Kboogie_219, Khaleesi_214, Koguma_214,

Kumotta_70, LRRHood_208, Labradorite_213, Latch_215, Lee7_215, Lethe_215, LifeSavor_214, LinStu_214, Littleton_218, Loanshark_212, LolaVinca_213, LookingGlass_214, LordLeafolot_216, Lukilu_206, Lunareta_213, Maby2021_215, Mangeria_216, MargaretKali_66, Matsumoto_213, Maturis_212, McGee_214, McWolfish_212, Megamind_212, Melpomini_210, MikeLiesIn_217, Mikro_211, MoMoMixon_213, Moby_211, Moiqah_210, Momo_216, Montpel_213, Morizzled23_212, Naija_216, Napoleon13_212, Nappy_216, Naval22_222, NedWong_214, Ngannou_212, Nidhogg_216, NoodleTree_221, Norm_215, NuevoMundo_218, OrediggerDelux_211, ParkTD_214, Patter_216, PharkleMinkus_217, Phlegm_219, Phox_216, Phusco_213, Pier_216, Pinkcreek_199, Pio_223, Pivoine_216, Pleione_219, Primadonna_210, Pupusa_219, PurduePete_215, QBert_207, Quasimodo_217, Rabinovish_208, Rahel_216, Rizal_207, RoMag_210, Rocha_212, Ronan_211, Roots515_217, SVoro_211, Salacia_215, Satrap_85, Sauce_211, ScottMcG_209, Sebata_216, Shaqnato_206, Shelob_216, ShiaLabeouf_212, Shifa_192, Shnickers_213, Shrimp_217, SilverDipper_219, SmallFry_215, SoilZilla_210, Spec_210, Specks_219, Sprinklers_213, Spud_209, SrishMeg2525_212, StephanieG_211, StubbySaigey_220, Stubby_199, Substance289_212, Tainan_216, Teardrop_212, TinyTim_213, Tonenili_237, Tortoise16_213, Trinitium_211, Turret_208, Tyke_213, ValleyTerrace_216, Vortrix_235, Wally_213, Willis_216, Yassified_212, YemiJoy2021_216, YoungMoneyMata_214, Yucca_215, Zalkecks_214, Zeenon_217, ZygoTaiga_212,

Genes that have the "Most Annotated" start but do not call it:

- AdaS_81, Aikyam_84, Anekin_86, Auxilium_84, BasketStar_86, BenchScraper_86, Bhageatrice_90, BillyTP_87, BlackSpider_74, BlueShadow_84, Cassini_82, CookieBear_84, CosmicBrownie_85, Crescenzo_87, DarwinJr_89, EvePickles_87, Faja_87, Globfish_85, Gorpy_83, GumGum_93, Hestia_80, Hillester_90, Isolde_87, JellyBread_82, Kabloowy_86, Lasker_86, Lawnathon_89, LeBruni_87, MUWow_88, Mapleville_79, MaterMagnus_86, MidnightRain_92, MurphyJoseph_84, NewKitty_87, Nyilah_93, Phrank15_92, RadFad_91, Raphaella_86, Richie_89, Sakai_82, Seahorse_92, SonDevVon_93, SpicyFrank_87, Sporco_87, Tiff81_81, Vopal_87, Windest_90, Wrackline_56, YoungHarleezy_87,

Genes that do not have the "Most Annotated" start:

- AbbyDaisy_88, Abidatro_44, AdoptaAdorbs_44, AlexMinion_47, Altostratus_63, Amanises_45, Amelia_43, AmiCi24_44, Amphitrite_45, Andrew_46, Antrice_46, Atlantica_45, Azaz_45, Babushka_42, Basilisk_42, Bauer_82, Bedetta_48, BellaJr_82, Bibble12_47, BrayBeast_62, Brynnie_41, Camara_45, Caterpie_69, Catfish_57, Chickaboom_44, Chicken_42, Colusalem_44, Coral_43, Cote_45, Cygnet_45, Damocles_47, DanHam62_45, Daob_45, DelaGarza_42, Ding_88, DinoDaryn_57, Eesa_42, Fingolfin_45, Fregley_61, GUPitcher_62, Galaxy_41, Gingerbug_41, Glotell_46, Goib_58, GramZayde_45, Gravel_52, HamCheese_45, HannahPhantana_44, Huffy_57, JakeTheSnake_89, Jamun_42, JeanClaude_61, Jerole_44, Juno112_44, KHumphrey_45, KendraB23_53, Kepler_45, Khuang_63, Kudrefre_85, Kuleana_45, Laphuphu24k_43, Leona_44, Lesiram_43, LilJank_79, LittleTokyo_43, Lunar_45, MalagasyRose_70, Maruru_52, Melons_45, MichelleMyBell_49, Mufasa8_53, Neville_76, Niblet_42, NoSwimming_54, Octobien14_83, Oppalora_44, Orcanus_43, OtsoOtso_44, Pelletreau_52, Persistence_79, PhirstandPhine_52, PhluffyCoco_45, Pigu_64, Pineda_45, Polka_43, Purky_56, Rabbitrun_79, Raqqa_86, Rattail_45, RedFox_45, Renna12_44, Rooter_70, Ruchi_41, Sarge_59, Scotia_53, Sejanus_66, Sephiroth_83, Shen_42, Shoya_62, Shukran_82, Sonali_52, Splinter_57, Squiddly_91, StuartMinion_37,

Sunshine23_54, Sweetums_44, Syleon_86, TZGordon_58, TaylorSipt_43, Teng_45, ThayneTheZag_91, Toad24_45, Trax_79, TurkishDelight_64, Vendetta_57, Vulpecula_41, Westrich_51, WileyE_44, Xavia_55, Zhuangyuan_47, Zixiang_42, Zucker_84,

Summary by start number:

Start 19:

- Found in 1 of 392 (0.3%) of genes in pham
- Manual Annotations of this start: 1 of 313
- Called 100.0% of time when present
- Phage (with cluster) where this start called: TurkishDelight_64 (singleton),

Start 21:

- Found in 1 of 392 (0.3%) of genes in pham
- Manual Annotations of this start: 1 of 313
- Called 100.0% of time when present
- Phage (with cluster) where this start called: MalagasyRose_70 (AG),

Start 23:

- Found in 1 of 392 (0.3%) of genes in pham
- Manual Annotations of this start: 1 of 313
- Called 100.0% of time when present
- Phage (with cluster) where this start called: Mufasa8_53 (FG),

Start 24:

- Found in 3 of 392 (0.8%) of genes in pham
- Manual Annotations of this start: 2 of 313
- Called 66.7% of time when present
- Phage (with cluster) where this start called: Maruru_52 (FG), Sonali_52 (FG),

Start 29:

- Found in 1 of 392 (0.3%) of genes in pham
- Manual Annotations of this start: 1 of 313
- Called 100.0% of time when present
- Phage (with cluster) where this start called: Catfish_57 (CU5),

Start 33:

- Found in 7 of 392 (1.8%) of genes in pham
- No Manual Annotations of this start.
- Called 14.3% of time when present
- Phage (with cluster) where this start called: Sunshine23_54 (FG),

Start 35:

- Found in 68 of 392 (17.3%) of genes in pham
- Manual Annotations of this start: 52 of 313
- Called 92.6% of time when present
- Phage (with cluster) where this start called: Abidatro_44 (AS1), AdoptaAdorbs_44 (AS3), AlexMinion_47 (AS3), Amanises_45 (AS1), Amelia_43 (AS2), AmiCi24_44 (AS3), Amphitrite_45 (AS3), Andrew_46 (AS3), Antrice_46 (AS2), Atlantica_45 (AS3), Azaz_45 (AS3), Babushka_42 (AS3), Basilisk_42 (AS1), Bedetta_48 (AS2), Bibble12_47 (AS2), Brynnie_41 (AS1), Chickaboom_44 (AS1), Chicken_42 (AS1), Colusalem_44 (AS2), Coral_43 (AS2), Cote_45 (AS2), Cygnet_45 (AS2),

Damocles_47 (AS2), DanHam62_45 (AS3), Daob_45 (AS2), Eesa_42 (AS1), Fingolfin_45 (AS3), Galaxy_41 (AS1), Glotell_46 (AS3), Gravel_52 (AS1), HamCheese_45 (AS3), HannahPhantana_44 (AS2), Jamun_42 (AS1), Jerole_44 (AS2), Juno112_44 (AS3), KendraB23_53 (AS1), Kepler_45 (AS2), Kuleana_45 (AS2), Laphuphu24k_43 (AS3), Leona_44 (AS3), LittleTokyo_43 (AS2), Lunar_45 (AS2), Melons_45 (AS2), Niblet_42 (AS1), Orcanus_43 (AS1), OtsoOtso_44 (AS2), Pelletreau_52 (AS1), PhirstandPhine_52 (AS2), PhluffyCoco_45 (AS3), Pineda_45 (AS2), Polka_43 (AS2), RedFox_45 (AS3), Renna12_44 (AS3), Ruchi_41 (AS1), Shen_42 (AS1), StuartMinion_37 (AS3), TaylorSipht_43 (AS1), Toad24_45 (AS1), Vulpecula_41 (AS1), Westrich_51 (AS1), WileyE_44 (AS1), Zhuangyuan_47 (AS2), Zixiang_42 (AS1),

Start 41:

- Found in 3 of 392 (0.8%) of genes in pham
- Manual Annotations of this start: 2 of 313
- Called 66.7% of time when present
- Phage (with cluster) where this start called: Purky_56 (P6), Sejanus_66 (AD),

Start 44:

- Found in 5 of 392 (1.3%) of genes in pham
- Manual Annotations of this start: 5 of 313
- Called 100.0% of time when present
- Phage (with cluster) where this start called: DinoDaryn_57 (CU1), Huffy_57 (CU1), Splinter_57 (CU1), TZGordon_58 (CU1), Vendetta_57 (CU1),

Start 45:

- Found in 223 of 392 (56.9%) of genes in pham
- Manual Annotations of this start: 2 of 313
- Called 0.9% of time when present
- Phage (with cluster) where this start called: MichelleMyBell_49 (N), Xavia_55 (P3),

Start 48:

- Found in 68 of 392 (17.3%) of genes in pham
- Manual Annotations of this start: 1 of 313
- Called 7.4% of time when present
- Phage (with cluster) where this start called: Camara_45 (AS3), KHumphrey_45 (AS3), Oppalora_44 (AS3), Pigu_64 (FB), Rattail_45 (AS3),

Start 50:

- Found in 5 of 392 (1.3%) of genes in pham
- Manual Annotations of this start: 3 of 313
- Called 80.0% of time when present
- Phage (with cluster) where this start called: BlackSpider_74 (FN), Cassini_82 (FN), JellyBread_82 (AY), Mapleville_79 (AY),

Start 53:

- Found in 44 of 392 (11.2%) of genes in pham
- Manual Annotations of this start: 32 of 313
- Called 97.7% of time when present
- Phage (with cluster) where this start called: AdaS_81 (AY), Aikyam_84 (AY), Anekin_86 (AY), Auxilium_84 (AY), BasketStar_86 (AY), BenchScraper_86 (AY), Bhageatrice_90 (AY), BillyTP_87 (AY), BlueShadow_84 (AY), CookieBear_84 (AY), CosmicBrownie_85 (AY), Crescenzo_87 (AY), DarwinJr_89 (AY), EvePickles_87

(AY), Faja_87 (AY), Globfish_85 (AY), Gorpy_83 (AY), GumGum_93 (AY), Hestia_80 (AY), Hillester_90 (AY), Isolde_87 (AY), Kabloowy_86 (AY), Lasker_86 (AY), Lawnathon_89 (AY), MUWow_88 (AY), MaterMagnus_86 (AY), MidnightRain_92 (AY), MurphyJoseph_84 (AY), NewKitty_87 (AY), Nyilah_93 (AY), Phrank15_92 (AY), RadFad_91 (AY), Raphaella_86 (AY), Richie_89 (AY), Sakai_82 (AY), Seahorse_92 (AY), SonDevVon_93 (AY), SpicyFrank_87 (AY), Sporco_87 (AY), Tiff81_81 (AY), Vopal_87 (AY), Windest_90 (AY), YoungHarleezy_87 (AY),

Start 54:

- Found in 3 of 392 (0.8%) of genes in pham
- Manual Annotations of this start: 1 of 313
- Called 33.3% of time when present
- Phage (with cluster) where this start called: Goib_58 (CU1),

Start 56:

- Found in 6 of 392 (1.5%) of genes in pham
- Manual Annotations of this start: 4 of 313
- Called 66.7% of time when present
- Phage (with cluster) where this start called: Neville_76 (DU2), Rabbitrun_79 (DU2), Squiddly_91 (DN2), Trax_79 (DU2),

Start 57:

- Found in 4 of 392 (1.0%) of genes in pham
- Manual Annotations of this start: 3 of 313
- Called 100.0% of time when present
- Phage (with cluster) where this start called: BrayBeast_62 (FB), JeanClaude_61 (FB), Sarge_59 (FB), Shoya_62 (FB),

Start 58:

- Found in 5 of 392 (1.3%) of genes in pham
- Manual Annotations of this start: 2 of 313
- Called 60.0% of time when present
- Phage (with cluster) where this start called: Fregley_61 (EG), LeBruni_87 (AY), Rooter_70 (FB),

Start 59:

- Found in 9 of 392 (2.3%) of genes in pham
- Manual Annotations of this start: 4 of 313
- Called 88.9% of time when present
- Phage (with cluster) where this start called: Altostratus_63 (FS), Ding_88 (AY), JakeTheSnake_89 (AY), Khuang_63 (FS), NoSwimming_54 (FO), Persistence_79 (AY), Scotia_53 (FO), Shukran_82 (AY),

Start 60:

- Found in 6 of 392 (1.5%) of genes in pham
- Manual Annotations of this start: 4 of 313
- Called 100.0% of time when present
- Phage (with cluster) where this start called: AbbyDaisy_88 (AY), Bauer_82 (FN), BellaJr_82 (FN), Raqqa_86 (AY), ThayneTheZag_91 (AY), Zucker_84 (FN),

Start 61:

- Found in 11 of 392 (2.8%) of genes in pham
- Manual Annotations of this start: 9 of 313

- Called 100.0% of time when present
- Phage (with cluster) where this start called: DelaGarza_42 (GF), GUPitcher_62 (FJ), Gingerbug_41 (GF), Kudrefre_85 (DU1), Lesiram_43 (GF), Octobien14_83 (DU1), Sephiroth_83 (DU1), Sweetums_44 (GF), Syleon_86 (DU1), Teng_45 (GF), Wrackline_56 (GF),

Start 62:

- Found in 270 of 392 (68.9%) of genes in pham
- Manual Annotations of this start: 183 of 313
- Called 81.9% of time when present
- Phage (with cluster) where this start called: Ablatia_214 (C1), Ading_216 (C1), Adlitam_214 (C1), Alice_202 (C1), Amataga_216 (C1), ArcherS7_215 (C1), Asterius_217 (C1), Astraea_209 (C1), Atlantean_215 (C1), Audrick_217 (C1), Ava3_214 (C1), Babyland_218 (C1), BackyardAgain_211 (C1), BadAgartude_209 (C1), BananaFence_212 (C1), Bangla1971_215 (C1), Basquiat_212 (C1), BeanWater_207 (C1), Belieber_208 (C1), Bezza_204 (C1), BigCity_224 (C1), Bigswole_220 (C1), Bipolarisk_213 (C1), Blackbrain_212 (C1), Blackdragon_210 (C1), Blubba_204 (C1), BobaPhatt_207 (C1), Bonray_217 (C1), Bowman_213 (C1), Bread_210 (C1), Breeniome_214 (C1), Burrough_217 (C1), Bxz1_205 (C1), Cactojaque_210 (C1), Cali_208 (C1), Cane17_206 (C1), Capablanca_220 (C1), Caravan_206 (C1), Catera_207 (C1), Chargie21_212 (C1), CharlieB_209 (C1), ChaylaJr_213 (C1), ChickenPhender_211 (C1), Chomp_215 (C1), CindyLou_216 (C1), Cleatunium_208 (C1), Colt_206 (C1), Concombre_220 (C1), DTDevon_217 (C1), Daffodil_220 (C1), Dandelion_223 (C1), Darko_214 (C1), DeejaClivia_203 (C1), Delilah_213 (C1), Delylah_217 (C1), Demodog_221 (C1), Derek_212 (C1), Dessert_213 (C1), Dietrick_204 (C1), DirtMonster_208 (C1), Domi_209 (C1), DrPhinkDaddy_212 (C1), Drazdys_213 (C1), Duckfeet_209 (C1), ET08_203 (C1), EasyJones_218 (C1), EggyFarm_224 (C1), EmToTheThree_215 (C1), EmmaElysia_219 (C1), Erdmann_216 (C1), ErnieJ_208 (C1), Essence_212 (C1), Ewok_214 (C1), Fixie_215 (C1), Flabslab_210 (C1), Fludd_215 (C1), Fongie_216 (C1), FoxtrotP1_213 (C1), FrayBell_218 (C1), FudgeTart_210 (C1), Gabriel_218 (C1), Gamgam_216 (C1), Ghost_215 (C1), Gizmo_221 (C1), GlutenPhree_216 (C1), Grasshills_223 (C1), Grungle_199 (C1), Guwapp_210 (C1), Halldule_208 (C1), HyRo_203 (C1), I3_225 (C1), IkeLoa_207 (C1), InigoMontoya_218 (C1), InterFolia_218 (C1), Iota_210 (C1), Issimir_208 (C1), Izajani_213 (C1), JPickles_211 (C1), Janiyr_218 (C1), JayJay_217 (C1), Jaygup_211 (C1), Jedediah_215 (C1), Jemmno_214 (C1), Jessibeth14_215 (C1), Jezreel_212 (C1), JigglyPuff_222 (C1), JulietS_206 (C1), JustHall_209 (C1), Kamryn_214 (C1), Kboogie_219 (C1), Khaleesi_214 (C1), Koguma_214 (C1), Kumotta_70 (FB), LRRHood_208 (C1), Labradorite_213 (C1), Latch_215 (C1), Lee7_215 (C1), Leth_215 (C1), LifeSavor_214 (C1), LinStu_214 (C1), Littleton_218 (C1), Loanshark_212 (C1), LolaVince_213 (C1), LookingGlass_214 (C1), LordLeafot_216 (C1), Lukilu_206 (C1), Lunareta_213 (C1), Maby2021_215 (C1), Mangeria_216 (C1), MargaretKali_66 (FB), Matsumoto_213 (C1), Maturis_212 (C1), McGee_214 (C1), McWolfish_212 (C1), Megamind_212 (C1), Melpomini_210 (C1), MikeLiesIn_217 (C1), Mikro_211 (C1), MoMoMixon_213 (C1), Moby_211 (C1), Moiqah_210 (C1), Momo_216 (C1), Montpel_213 (C1), Morizzled23_212 (C1), Naija_216 (C1), Napoleon13_212 (C1), Nappy_216 (C1), Naval22_222 (C1), NedWong_214 (C1), Ngannou_212 (C1), Nidhogg_216 (C1), NoodleTree_221 (C1), Norm_215 (C1), NuevoMundo_218 (C1), OrediggerDelux_211 (C1), ParkTD_214 (C1), Patter_216 (C1), PharkleMinkus_217 (C1), Phlegm_219 (C1), Phox_216 (C1), Phusco_213 (C1), Pier_216 (C1), Pinkcreek_199 (C1), Pio_223 (C1), Pivoine_216 (C1), Pleione_219 (C1), Primadonna_210 (C1), Pupusa_219 (C1), PurduePete_215 (C1), QBert_207 (C1),

Quasimodo_217 (C1), Rabinovish_208 (C1), Rahel_216 (C1), Rizal_207 (C1), RoMag_210 (C1), Rocha_212 (C1), Ronan_211 (C1), Roots515_217 (C1), SVoro_211 (C1), Salacia_215 (C1), Satrap_85 (AY), Sauce_211 (C1), ScottMcG_209 (C1), Sebata_216 (C1), Shaqnato_206 (C1), Shelob_216 (C1), ShiaLabeouf_212 (C1), Shifa_192 (C1), Shnickers_213 (C1), Shrimp_217 (C1), SilverDipper_219 (C1), SmallFry_215 (C1), SoilZilla_210 (C1), Spec_210 (C1), Specks_219 (C1), Sprinklers_213 (C1), Spud_209 (C1), SrishMeg2525_212 (C1), StephanieG_211 (C1), StubbySaigey_220 (C1), Stubby_199 (C1), Substance289_212 (C1), Tainan_216 (C1), Teardrop_212 (C1), TinyTim_213 (C1), Tonenili_237 (C1), Tortoise16_213 (C1), Trinitium_211 (C1), Turret_208 (C1), Tyke_213 (C1), ValleyTerrace_216 (C1), Vortrix_235 (C1), Wally_213 (C1), Willis_216 (C1), Yassified_212 (C1), YemiJoy2021_216 (C1), YoungMoneyMata_214 (C1), Yucca_215 (C1), Zalkecks_214 (C1), Zeenon_217 (C1), ZygoTaiga_212 (C1),

Start 65:

- Found in 8 of 392 (2.0%) of genes in pham
- No Manual Annotations of this start.
- Called 12.5% of time when present
- Phage (with cluster) where this start called: LilJank_79 (DU2),

Start 68:

- Found in 39 of 392 (9.9%) of genes in pham
- No Manual Annotations of this start.
- Called 2.6% of time when present
- Phage (with cluster) where this start called: GramZayde_45 (AS2),

Start 71:

- Found in 3 of 392 (0.8%) of genes in pham
- No Manual Annotations of this start.
- Called 33.3% of time when present
- Phage (with cluster) where this start called: Caterpie_69 (AD),

Summary by clusters:

There are 24 clusters represented in this pham: singleton, FS, P3, FB, FG, FJ, FN, FO, CU5, CU1, DN2, DU1, C1, AS3, AS2, AS1, P6, AD, AG, EG, N, GF, AY, DU2,

Info for manual annotations of cluster AD:

- Start number 41 was manually annotated 1 time for cluster AD.

Info for manual annotations of cluster AG:

- Start number 21 was manually annotated 1 time for cluster AG.

Info for manual annotations of cluster AS1:

- Start number 35 was manually annotated 17 times for cluster AS1.

Info for manual annotations of cluster AS2:

- Start number 35 was manually annotated 18 times for cluster AS2.

Info for manual annotations of cluster AS3:

- Start number 35 was manually annotated 17 times for cluster AS3.
- Start number 48 was manually annotated 1 time for cluster AS3.

Info for manual annotations of cluster AY:

- Start number 50 was manually annotated 2 times for cluster AY.
- Start number 53 was manually annotated 32 times for cluster AY.
- Start number 58 was manually annotated 1 time for cluster AY.
- Start number 59 was manually annotated 1 time for cluster AY.
- Start number 60 was manually annotated 2 times for cluster AY.

Info for manual annotations of cluster C1:

- Start number 62 was manually annotated 181 times for cluster C1.

Info for manual annotations of cluster CU1:

- Start number 44 was manually annotated 5 times for cluster CU1.
- Start number 54 was manually annotated 1 time for cluster CU1.

Info for manual annotations of cluster CU5:

- Start number 29 was manually annotated 1 time for cluster CU5.

Info for manual annotations of cluster DN2:

- Start number 56 was manually annotated 1 time for cluster DN2.

Info for manual annotations of cluster DU1:

- Start number 61 was manually annotated 4 times for cluster DU1.

Info for manual annotations of cluster DU2:

- Start number 56 was manually annotated 3 times for cluster DU2.

Info for manual annotations of cluster EG:

- Start number 58 was manually annotated 1 time for cluster EG.

Info for manual annotations of cluster FB:

- Start number 57 was manually annotated 3 times for cluster FB.
- Start number 62 was manually annotated 2 times for cluster FB.

Info for manual annotations of cluster FG:

- Start number 23 was manually annotated 1 time for cluster FG.
- Start number 24 was manually annotated 2 times for cluster FG.

Info for manual annotations of cluster FN:

- Start number 50 was manually annotated 1 time for cluster FN.
- Start number 60 was manually annotated 2 times for cluster FN.

Info for manual annotations of cluster FO:

- Start number 59 was manually annotated 2 times for cluster FO.

Info for manual annotations of cluster FS:

- Start number 59 was manually annotated 1 time for cluster FS.

Info for manual annotations of cluster GF:

- Start number 61 was manually annotated 5 times for cluster GF.

Info for manual annotations of cluster N:

- Start number 45 was manually annotated 1 time for cluster N.

Info for manual annotations of cluster P3:

- Start number 45 was manually annotated 1 time for cluster P3.

Info for manual annotations of cluster P6:

- Start number 41 was manually annotated 1 time for cluster P6.

Gene Information:

Gene: AbbyDaisy_88 Start: 50419, Stop: 50823, Start Num: 60

Candidate Starts for AbbyDaisy_88:

(51, 50407), (Start: 60 @50419 has 4 MA's), (74, 50476), (85, 50500), (120, 50590), (122, 50596), (149, 50692), (160, 50743), (174, 50788),

Gene: Abidatro_44 Start: 29002, Stop: 29472, Start Num: 35

Candidate Starts for Abidatro_44:

(Start: 35 @29002 has 52 MA's), (Start: 48 @29038 has 1 MA's), (52, 29044), (67, 29095), (86, 29140), (114, 29200), (122, 29218), (132, 29254), (157, 29353), (166, 29395), (176, 29434), (178, 29440), (186, 29461),

Gene: Ablatia_214 Start: 119512, Stop: 119967, Start Num: 62

Candidate Starts for Ablatia_214:

(28, 119398), (38, 119461), (Start: 45 @119479 has 2 MA's), (Start: 62 @119512 has 183 MA's), (66, 119530), (102, 119662), (109, 119680), (131, 119740), (157, 119848), (160, 119872), (178, 119935), (181, 119941),

Gene: AdaS_81 Start: 45341, Stop: 45766, Start Num: 53

Candidate Starts for AdaS_81:

(25, 45236), (Start: 53 @45341 has 32 MA's), (Start: 62 @45353 has 183 MA's), (66, 45368), (73, 45398), (74, 45404), (85, 45428), (142, 45596), (146, 45608), (155, 45653),

Gene: Ading_216 Start: 121132, Stop: 121587, Start Num: 62

Candidate Starts for Ading_216:

(28, 121018), (38, 121081), (Start: 45 @121099 has 2 MA's), (Start: 62 @121132 has 183 MA's), (66, 121150), (102, 121282), (109, 121300), (131, 121360), (157, 121468), (160, 121492), (178, 121555), (181, 121561),

Gene: Adlitam_214 Start: 119736, Stop: 120191, Start Num: 62

Candidate Starts for Adlitam_214:

(28, 119622), (38, 119685), (Start: 45 @119703 has 2 MA's), (Start: 62 @119736 has 183 MA's), (66, 119754), (102, 119886), (109, 119904), (131, 119964), (157, 120072), (160, 120096), (178, 120159), (181, 120165),

Gene: AdoptaAdorbs_44 Start: 28239, Stop: 28709, Start Num: 35

Candidate Starts for AdoptaAdorbs_44:

(Start: 35 @28239 has 52 MA's), (Start: 48 @28275 has 1 MA's), (75, 28356), (86, 28380), (97, 28404), (108, 28428), (114, 28440), (119, 28449), (122, 28458), (132, 28494), (144, 28530), (148, 28542), (151, 28563), (153, 28575), (161, 28617), (173, 28665), (177, 28674),

Gene: Aikyam_84 Start: 46399, Stop: 46830, Start Num: 53

Candidate Starts for Aikyam_84:

(25, 46294), (Start: 53 @46399 has 32 MA's), (Start: 62 @46411 has 183 MA's), (66, 46426), (73, 46456), (74, 46462), (85, 46486), (174, 46789),

Gene: AlexMinion_47 Start: 28495, Stop: 28965, Start Num: 35

Candidate Starts for AlexMinion_47:

(Start: 35 @28495 has 52 MA's), (Start: 48 @28531 has 1 MA's), (86, 28636), (97, 28660), (114, 28696), (119, 28705), (122, 28714), (144, 28786), (148, 28798), (151, 28819), (153, 28831), (161, 28873), (173, 28921), (177, 28930),

Gene: Alice_202 Start: 118711, Stop: 119166, Start Num: 62

Candidate Starts for Alice_202:

(28, 118597), (38, 118660), (Start: 45 @118678 has 2 MA's), (Start: 62 @118711 has 183 MA's), (66, 118729), (102, 118861), (109, 118879), (131, 118939), (157, 119047), (160, 119071), (178, 119134), (181, 119140),

Gene: Altostratus_63 Start: 36693, Stop: 37115, Start Num: 59

Candidate Starts for Altostratus_63:

(Start: 59 @36693 has 4 MA's), (89, 36783), (92, 36789), (123, 36867), (157, 37005),

Gene: Amanises_45 Start: 29930, Stop: 30397, Start Num: 35

Candidate Starts for Amanises_45:

(Start: 35 @29930 has 52 MA's), (Start: 48 @29966 has 1 MA's), (68, 30026), (97, 30092), (114, 30128), (122, 30146), (139, 30206), (157, 30278), (160, 30302), (162, 30308), (176, 30359), (185, 30380), (186, 30386),

Gene: Amataga_216 Start: 119548, Stop: 120003, Start Num: 62

Candidate Starts for Amataga_216:

(28, 119434), (38, 119497), (Start: 45 @119515 has 2 MA's), (Start: 62 @119548 has 183 MA's), (66, 119566), (102, 119698), (109, 119716), (131, 119776), (157, 119884), (160, 119908), (178, 119971), (181, 119977),

Gene: Amelia_43 Start: 27285, Stop: 27752, Start Num: 35

Candidate Starts for Amelia_43:

(27, 27228), (Start: 35 @27285 has 52 MA's), (Start: 48 @27321 has 1 MA's), (68, 27381), (90, 27432), (97, 27447), (114, 27483), (139, 27561), (144, 27573), (157, 27633), (160, 27657), (173, 27708), (176, 27714), (185, 27735), (186, 27741),

Gene: AmiCi24_44 Start: 28339, Stop: 28809, Start Num: 35

Candidate Starts for AmiCi24_44:

(Start: 35 @28339 has 52 MA's), (Start: 48 @28375 has 1 MA's), (75, 28456), (86, 28480), (97, 28504), (108, 28528), (114, 28540), (119, 28549), (122, 28558), (132, 28594), (144, 28630), (148, 28642), (151, 28663), (153, 28675), (161, 28717), (173, 28765), (177, 28774),

Gene: Amphitrite_45 Start: 28238, Stop: 28708, Start Num: 35

Candidate Starts for Amphitrite_45:

(Start: 35 @28238 has 52 MA's), (Start: 48 @28274 has 1 MA's), (75, 28355), (86, 28379), (97, 28403), (114, 28439), (119, 28448), (122, 28457), (132, 28493), (144, 28529), (148, 28541), (151, 28562), (153, 28574), (161, 28616), (173, 28664), (177, 28673),

Gene: Andrew_46 Start: 28224, Stop: 28688, Start Num: 35

Candidate Starts for Andrew_46:

(Start: 35 @28224 has 52 MA's), (68, 28320), (86, 28365), (114, 28425), (148, 28524), (151, 28545), (157, 28572), (173, 28647), (177, 28656), (182, 28668),

Gene: Anekin_86 Start: 48622, Stop: 49053, Start Num: 53

Candidate Starts for Anekin_86:

(25, 48517), (Start: 53 @48622 has 32 MA's), (Start: 62 @48634 has 183 MA's), (66, 48649), (73, 48679), (74, 48685), (85, 48709), (174, 49012),

Gene: Antrice_46 Start: 28458, Stop: 28919, Start Num: 35

Candidate Starts for Antrice_46:

(Start: 35 @28458 has 52 MA's), (Start: 48 @28494 has 1 MA's), (52, 28500), (86, 28599), (90, 28608), (97, 28623), (117, 28671), (148, 28764), (151, 28785), (159, 28833), (160, 28836), (162, 28842), (182, 28908),

Gene: ArcherS7_215 Start: 120590, Stop: 121045, Start Num: 62

Candidate Starts for ArcherS7_215:

(28, 120476), (38, 120539), (Start: 45 @120557 has 2 MA's), (Start: 62 @120590 has 183 MA's), (66, 120608), (102, 120740), (109, 120758), (131, 120818), (157, 120926), (160, 120950), (178, 121013), (181, 121019),

Gene: Asterius_217 Start: 119957, Stop: 120412, Start Num: 62

Candidate Starts for Asterius_217:

(28, 119843), (38, 119906), (Start: 45 @119924 has 2 MA's), (Start: 62 @119957 has 183 MA's), (66, 119975), (102, 120107), (109, 120125), (131, 120185), (157, 120293), (160, 120317), (178, 120380), (181, 120386),

Gene: Astraea_209 Start: 119152, Stop: 119607, Start Num: 62

Candidate Starts for Astraea_209:

(28, 119038), (38, 119101), (Start: 45 @119119 has 2 MA's), (Start: 62 @119152 has 183 MA's), (66, 119170), (102, 119302), (109, 119320), (131, 119380), (157, 119488), (160, 119512), (178, 119575), (181, 119581),

Gene: Atlantean_215 Start: 119548, Stop: 120003, Start Num: 62

Candidate Starts for Atlantean_215:

(28, 119434), (38, 119497), (Start: 45 @119515 has 2 MA's), (Start: 62 @119548 has 183 MA's), (66, 119566), (102, 119698), (109, 119716), (131, 119776), (157, 119884), (160, 119908), (178, 119971), (181, 119977),

Gene: Atlantica_45 Start: 28341, Stop: 28811, Start Num: 35

Candidate Starts for Atlantica_45:

(Start: 35 @28341 has 52 MA's), (Start: 48 @28377 has 1 MA's), (75, 28458), (86, 28482), (97, 28506), (108, 28530), (114, 28542), (119, 28551), (122, 28560), (132, 28596), (144, 28632), (148, 28644), (151, 28665), (153, 28677), (161, 28719), (173, 28767), (177, 28776),

Gene: Audrick_217 Start: 119438, Stop: 119893, Start Num: 62

Candidate Starts for Audrick_217:

(28, 119324), (38, 119387), (Start: 45 @119405 has 2 MA's), (Start: 62 @119438 has 183 MA's), (66, 119456), (102, 119588), (109, 119606), (131, 119666), (157, 119774), (160, 119798), (178, 119861), (181, 119867),

Gene: Auxilium_84 Start: 46039, Stop: 46461, Start Num: 53

Candidate Starts for Auxilium_84:

(Start: 53 @46039 has 32 MA's), (Start: 62 @46048 has 183 MA's), (66, 46063), (73, 46093), (74, 46099), (85, 46123), (174, 46426),

Gene: Ava3_214 Start: 119982, Stop: 120437, Start Num: 62

Candidate Starts for Ava3_214:

(28, 119868), (38, 119931), (Start: 45 @119949 has 2 MA's), (Start: 62 @119982 has 183 MA's), (66, 120000), (102, 120132), (109, 120150), (131, 120210), (157, 120318), (160, 120342), (178, 120405), (181, 120411),

Gene: Azaz_45 Start: 28419, Stop: 28889, Start Num: 35

Candidate Starts for Azaz_45:

(Start: 35 @28419 has 52 MA's), (Start: 48 @28455 has 1 MA's), (86, 28560), (97, 28584), (108, 28608), (114, 28620), (119, 28629), (122, 28638), (132, 28674), (144, 28710), (148, 28722), (151, 28743), (153, 28755), (161, 28797), (173, 28845), (177, 28854),

Gene: Babushka_42 Start: 28169, Stop: 28636, Start Num: 35

Candidate Starts for Babushka_42:

(Start: 35 @28169 has 52 MA's), (75, 28286), (86, 28310), (97, 28334), (105, 28352), (112, 28364), (114, 28370), (119, 28379), (122, 28388), (148, 28469), (151, 28490), (153, 28502), (155, 28508), (160, 28541), (161, 28544), (173, 28592), (176, 28598),

Gene: Babyland_218 Start: 120325, Stop: 120780, Start Num: 62

Candidate Starts for Babyland_218:

(28, 120211), (38, 120274), (Start: 45 @120292 has 2 MA's), (Start: 62 @120325 has 183 MA's), (66, 120343), (102, 120475), (109, 120493), (131, 120553), (157, 120661), (160, 120685), (178, 120748), (181, 120754),

Gene: BackyardAgain_211 Start: 117513, Stop: 117968, Start Num: 62

Candidate Starts for BackyardAgain_211:

(28, 117399), (38, 117462), (Start: 45 @117480 has 2 MA's), (Start: 62 @117513 has 183 MA's), (66, 117531), (102, 117663), (109, 117681), (131, 117741), (157, 117849), (160, 117873), (178, 117936), (181, 117942),

Gene: BadAgartude_209 Start: 119650, Stop: 120105, Start Num: 62

Candidate Starts for BadAgartude_209:

(28, 119536), (38, 119599), (Start: 45 @119617 has 2 MA's), (Start: 62 @119650 has 183 MA's), (66, 119668), (102, 119800), (109, 119818), (131, 119878), (157, 119986), (160, 120010), (178, 120073), (181, 120079),

Gene: BananaFence_212 Start: 119781, Stop: 120236, Start Num: 62

Candidate Starts for BananaFence_212:

(28, 119667), (38, 119730), (Start: 45 @119748 has 2 MA's), (Start: 62 @119781 has 183 MA's), (66, 119799), (102, 119931), (109, 119949), (131, 120009), (157, 120117), (160, 120141), (178, 120204), (181, 120210),

Gene: Bangla1971_215 Start: 119554, Stop: 120009, Start Num: 62

Candidate Starts for Bangla1971_215:

(28, 119440), (38, 119503), (Start: 45 @119521 has 2 MA's), (Start: 62 @119554 has 183 MA's), (66, 119572), (102, 119704), (109, 119722), (131, 119782), (157, 119890), (160, 119914), (178, 119977), (181, 119983),

Gene: Basilisk_42 Start: 28172, Stop: 28642, Start Num: 35

Candidate Starts for Basilisk_42:

(Start: 35 @28172 has 52 MA's), (Start: 48 @28208 has 1 MA's), (52, 28214), (68, 28268), (86, 28310), (95, 28331), (102, 28349), (114, 28370), (122, 28388), (132, 28424), (157, 28523), (160, 28547), (166, 28565), (178, 28610), (186, 28631),

Gene: BasketStar_86 Start: 48582, Stop: 49007, Start Num: 53

Candidate Starts for BasketStar_86:

(36, 48552), (Start: 53 @48582 has 32 MA's), (Start: 62 @48594 has 183 MA's), (66, 48609), (73, 48639), (74, 48645), (85, 48669), (100, 48717), (120, 48759), (138, 48828), (174, 48972),

Gene: Basquiat_212 Start: 118067, Stop: 118522, Start Num: 62

Candidate Starts for Basquiat_212:

(28, 117953), (38, 118016), (Start: 45 @118034 has 2 MA's), (Start: 62 @118067 has 183 MA's), (66, 118085), (102, 118217), (109, 118235), (131, 118295), (157, 118403), (160, 118427), (178, 118490), (181, 118496),

Gene: Bauer_82 Start: 45126, Stop: 45530, Start Num: 60

Candidate Starts for Bauer_82:

(43, 45099), (51, 45114), (Start: 60 @45126 has 4 MA's), (74, 45183), (85, 45207), (120, 45297), (135, 45354), (149, 45399), (160, 45450), (174, 45495),

Gene: BeanWater_207 Start: 118593, Stop: 119048, Start Num: 62

Candidate Starts for BeanWater_207:

(28, 118479), (38, 118542), (Start: 45 @118560 has 2 MA's), (Start: 62 @118593 has 183 MA's), (66, 118611), (102, 118743), (109, 118761), (131, 118821), (157, 118929), (160, 118953), (178, 119016), (181, 119022),

Gene: Bedetta_48 Start: 27432, Stop: 27899, Start Num: 35

Candidate Starts for Bedetta_48:

(27, 27375), (Start: 35 @27432 has 52 MA's), (Start: 48 @27468 has 1 MA's), (68, 27528), (90, 27579), (97, 27594), (114, 27630), (139, 27708), (144, 27720), (157, 27780), (160, 27804), (173, 27855), (176, 27861), (185, 27882), (186, 27888),

Gene: Belieber_208 Start: 117381, Stop: 117836, Start Num: 62

Candidate Starts for Belieber_208:

(28, 117267), (38, 117330), (Start: 45 @117348 has 2 MA's), (Start: 62 @117381 has 183 MA's), (66, 117399), (102, 117531), (109, 117549), (131, 117609), (157, 117717), (160, 117741), (178, 117804), (181, 117810),

Gene: BellaJr_82 Start: 47457, Stop: 47861, Start Num: 60

Candidate Starts for BellaJr_82:

(5, 47181), (10, 47202), (51, 47445), (Start: 60 @47457 has 4 MA's), (74, 47514), (82, 47532), (85, 47538), (112, 47610), (125, 47646), (149, 47730), (160, 47781), (174, 47826),

Gene: BenchScraper_86 Start: 46987, Stop: 47412, Start Num: 53

Candidate Starts for BenchScraper_86:

(36, 46957), (Start: 53 @46987 has 32 MA's), (Start: 62 @46999 has 183 MA's), (66, 47014), (73, 47044), (74, 47050), (85, 47074), (120, 47164), (174, 47377),

Gene: Bezza_204 Start: 119105, Stop: 119560, Start Num: 62

Candidate Starts for Bezza_204:

(28, 118991), (38, 119054), (Start: 45 @119072 has 2 MA's), (Start: 62 @119105 has 183 MA's), (66, 119123), (102, 119255), (109, 119273), (131, 119333), (157, 119441), (160, 119465), (178, 119528), (181, 119534),

Gene: Bhageatrice_90 Start: 51263, Stop: 51688, Start Num: 53

Candidate Starts for Bhageatrice_90:

(Start: 53 @51263 has 32 MA's), (Start: 62 @51275 has 183 MA's), (66, 51290), (73, 51320), (74, 51326), (85, 51350), (120, 51440), (174, 51653),

Gene: Bibble12_47 Start: 27280, Stop: 27747, Start Num: 35

Candidate Starts for Bibble12_47:

(27, 27223), (Start: 35 @27280 has 52 MA's), (Start: 48 @27316 has 1 MA's), (68, 27376), (90, 27427), (97, 27442), (114, 27478), (139, 27556), (144, 27568), (157, 27628), (160, 27652), (173, 27703), (176, 27709), (185, 27730), (186, 27736),

Gene: BigCity_224 Start: 122164, Stop: 122619, Start Num: 62

Candidate Starts for BigCity_224:

(28, 122050), (38, 122113), (Start: 45 @122131 has 2 MA's), (46, 122134), (Start: 62 @122164 has 183 MA's), (66, 122182), (102, 122314), (109, 122332), (131, 122392), (157, 122500), (160, 122524), (178, 122587), (181, 122593),

Gene: Bigswole_220 Start: 122018, Stop: 122473, Start Num: 62

Candidate Starts for Bigswole_220:

(28, 121904), (38, 121967), (Start: 45 @121985 has 2 MA's), (Start: 62 @122018 has 183 MA's), (66, 122036), (102, 122168), (109, 122186), (131, 122246), (157, 122354), (160, 122378), (178, 122441), (181, 122447),

Gene: BillyTP_87 Start: 49093, Stop: 49518, Start Num: 53

Candidate Starts for BillyTP_87:

(36, 49063), (Start: 53 @49093 has 32 MA's), (Start: 62 @49105 has 183 MA's), (66, 49120), (73, 49150), (74, 49156), (85, 49180), (120, 49270), (149, 49372), (174, 49483),

Gene: Bipolarisk_213 Start: 120251, Stop: 120706, Start Num: 62

Candidate Starts for Bipolarisk_213:

(28, 120137), (38, 120200), (Start: 45 @120218 has 2 MA's), (Start: 62 @120251 has 183 MA's), (66, 120269), (102, 120401), (109, 120419), (131, 120479), (157, 120587), (160, 120611), (178, 120674), (181, 120680),

Gene: BlackSpider_74 Start: 45516, Stop: 45926, Start Num: 50

Candidate Starts for BlackSpider_74:

(26, 45411), (47, 45513), (Start: 50 @45516 has 3 MA's), (Start: 62 @45528 has 183 MA's), (66, 45543), (73, 45573), (74, 45579), (85, 45603), (120, 45693), (122, 45699), (125, 45711), (135, 45750), (143, 45774), (147, 45786), (173, 45888), (180, 45903),

Gene: Blackbrain_212 Start: 119152, Stop: 119607, Start Num: 62

Candidate Starts for Blackbrain_212:

(28, 119038), (38, 119101), (Start: 45 @119119 has 2 MA's), (Start: 62 @119152 has 183 MA's), (66, 119170), (102, 119302), (109, 119320), (131, 119380), (157, 119488), (160, 119512), (178, 119575), (181, 119581),

Gene: Blackdragon_210 Start: 119884, Stop: 120339, Start Num: 62

Candidate Starts for Blackdragon_210:

(28, 119770), (38, 119833), (Start: 45 @119851 has 2 MA's), (Start: 62 @119884 has 183 MA's), (66, 119902), (102, 120034), (109, 120052), (131, 120112), (157, 120220), (160, 120244), (178, 120307), (181, 120313),

Gene: Blubba_204 Start: 123233, Stop: 123688, Start Num: 62

Candidate Starts for Blubba_204:

(28, 123119), (38, 123182), (Start: 45 @123200 has 2 MA's), (Start: 62 @123233 has 183 MA's), (66, 123251), (102, 123383), (109, 123401), (131, 123461), (157, 123569), (160, 123593), (178, 123656),

Gene: BlueShadow_84 Start: 48348, Stop: 48779, Start Num: 53

Candidate Starts for BlueShadow_84:

(36, 48318), (Start: 53 @48348 has 32 MA's), (Start: 62 @48360 has 183 MA's), (66, 48375), (73, 48405), (74, 48411), (85, 48435), (100, 48483), (138, 48594), (174, 48738),

Gene: BobaPhatt_207 Start: 118259, Stop: 118714, Start Num: 62

Candidate Starts for BobaPhatt_207:

(28, 118145), (38, 118208), (Start: 45 @118226 has 2 MA's), (Start: 62 @118259 has 183 MA's), (66, 118277), (102, 118409), (109, 118427), (131, 118487), (157, 118595), (160, 118619), (178, 118682), (181, 118688),

Gene: Bonray_217 Start: 121653, Stop: 122108, Start Num: 62

Candidate Starts for Bonray_217:

(28, 121539), (38, 121602), (Start: 45 @121620 has 2 MA's), (Start: 62 @121653 has 183 MA's), (66, 121671), (102, 121803), (109, 121821), (131, 121881), (157, 121989), (160, 122013), (178, 122076), (181, 122082),

Gene: Bowman_213 Start: 120759, Stop: 121214, Start Num: 62

Candidate Starts for Bowman_213:

(28, 120645), (38, 120708), (Start: 45 @120726 has 2 MA's), (Start: 62 @120759 has 183 MA's), (66, 120777), (102, 120909), (109, 120927), (131, 120987), (157, 121095), (160, 121119), (178, 121182), (181, 121188),

Gene: BrayBeast_62 Start: 35523, Stop: 35936, Start Num: 57

Candidate Starts for BrayBeast_62:

(31, 35457), (Start: 57 @35523 has 3 MA's), (92, 35619), (126, 35709), (160, 35859),

Gene: Bread_210 Start: 119651, Stop: 120106, Start Num: 62

Candidate Starts for Bread_210:

(28, 119537), (38, 119600), (Start: 45 @119618 has 2 MA's), (Start: 62 @119651 has 183 MA's), (66, 119669), (102, 119801), (109, 119819), (131, 119879), (157, 119987), (160, 120011), (178, 120074), (181, 120080),

Gene: Breeniome_214 Start: 119105, Stop: 119560, Start Num: 62

Candidate Starts for Breeniome_214:

(28, 118991), (38, 119054), (Start: 45 @119072 has 2 MA's), (Start: 62 @119105 has 183 MA's), (66, 119123), (102, 119255), (109, 119273), (131, 119333), (157, 119441), (160, 119465), (178, 119528), (181, 119534),

Gene: Brynnie_41 Start: 28050, Stop: 28520, Start Num: 35

Candidate Starts for Brynnie_41:

(Start: 35 @28050 has 52 MA's), (Start: 48 @28086 has 1 MA's), (52, 28092), (68, 28146), (86, 28188), (102, 28227), (114, 28248), (122, 28266), (132, 28302), (157, 28401), (160, 28425), (166, 28443), (178, 28488), (186, 28509),

Gene: Burrough_217 Start: 121421, Stop: 121876, Start Num: 62

Candidate Starts for Burrough_217:

(28, 121307), (38, 121370), (Start: 45 @121388 has 2 MA's), (Start: 62 @121421 has 183 MA's), (66, 121439), (102, 121571), (109, 121589), (131, 121649), (157, 121757), (160, 121781), (178, 121844), (181, 121850),

Gene: Bxz1_205 Start: 121627, Stop: 122082, Start Num: 62

Candidate Starts for Bxz1_205:

(28, 121513), (38, 121576), (Start: 45 @121594 has 2 MA's), (Start: 62 @121627 has 183 MA's), (66, 121645), (102, 121777), (109, 121795), (131, 121855), (157, 121963), (160, 121987), (178, 122050), (181, 122056),

Gene: Cactojaque_210 Start: 118087, Stop: 118542, Start Num: 62

Candidate Starts for Cactojaque_210:

(28, 117973), (38, 118036), (Start: 45 @118054 has 2 MA's), (Start: 62 @118087 has 183 MA's), (66, 118105), (102, 118237), (109, 118255), (131, 118315), (157, 118423), (160, 118447), (178, 118510), (181, 118516),

Gene: Cali_208 Start: 120034, Stop: 120489, Start Num: 62

Candidate Starts for Cali_208:

(28, 119920), (38, 119983), (Start: 45 @120001 has 2 MA's), (Start: 62 @120034 has 183 MA's), (66, 120052), (102, 120184), (109, 120202), (131, 120262), (157, 120370), (160, 120394), (178, 120457), (181, 120463),

Gene: Camara_45 Start: 28277, Stop: 28711, Start Num: 48

Candidate Starts for Camara_45:

(Start: 35 @28241 has 52 MA's), (Start: 48 @28277 has 1 MA's), (75, 28358), (86, 28382), (97, 28406), (108, 28430), (114, 28442), (119, 28451), (122, 28460), (132, 28496), (144, 28532), (148, 28544), (151, 28565), (153, 28577), (161, 28619), (173, 28667), (177, 28676),

Gene: Cane17_206 Start: 123642, Stop: 124097, Start Num: 62

Candidate Starts for Cane17_206:

(28, 123528), (38, 123591), (Start: 45 @123609 has 2 MA's), (Start: 62 @123642 has 183 MA's), (66, 123660), (102, 123792), (109, 123810), (131, 123870), (157, 123978), (160, 124002), (178, 124065),

Gene: Capablanca_220 Start: 122248, Stop: 122703, Start Num: 62

Candidate Starts for Capablanca_220:

(28, 122134), (38, 122197), (Start: 45 @122215 has 2 MA's), (Start: 62 @122248 has 183 MA's), (66, 122266), (102, 122398), (109, 122416), (131, 122476), (157, 122584), (160, 122608), (178, 122671), (181, 122677),

Gene: Caravan_206 Start: 120368, Stop: 120823, Start Num: 62

Candidate Starts for Caravan_206:

(28, 120254), (38, 120317), (Start: 45 @120335 has 2 MA's), (Start: 62 @120368 has 183 MA's), (66, 120386), (102, 120518), (109, 120536), (131, 120596), (157, 120704), (160, 120728), (178, 120791), (181, 120797),

Gene: Cassini_82 Start: 47390, Stop: 47791, Start Num: 50

Candidate Starts for Cassini_82:

(26, 47285), (Start: 50 @47390 has 3 MA's), (Start: 62 @47402 has 183 MA's), (66, 47417), (73, 47447), (74, 47453), (85, 47477), (120, 47567), (122, 47573), (125, 47585), (135, 47624), (146, 47657), (164, 47732),

Gene: Catera_207 Start: 118761, Stop: 119216, Start Num: 62

Candidate Starts for Catera_207:

(28, 118647), (38, 118710), (Start: 45 @118728 has 2 MA's), (Start: 62 @118761 has 183 MA's), (66, 118779), (102, 118911), (109, 118929), (131, 118989), (157, 119097), (160, 119121), (178, 119184), (181, 119190),

Gene: Caterpie_69 Start: 50850, Stop: 51224, Start Num: 71

Candidate Starts for Caterpie_69:

(Start: 41 @50760 has 2 MA's), (66, 50811), (71, 50850), (81, 50880), (109, 50958), (130, 51009), (153, 51108), (157, 51120), (158, 51123), (162, 51150), (176, 51201), (182, 51216),

Gene: Catfish_57 Start: 38946, Stop: 39467, Start Num: 29

Candidate Starts for Catfish_57:

(Start: 29 @38946 has 1 MA's), (30, 38952), (63, 39051), (66, 39063), (86, 39117), (129, 39234), (131, 39243), (141, 39279),

Gene: Chargie21_212 Start: 118067, Stop: 118522, Start Num: 62

Candidate Starts for Chargie21_212:

(28, 117953), (38, 118016), (Start: 45 @118034 has 2 MA's), (Start: 62 @118067 has 183 MA's), (66, 118085), (102, 118217), (109, 118235), (131, 118295), (157, 118403), (160, 118427), (178, 118490), (181, 118496),

Gene: CharlieB_209 Start: 119788, Stop: 120243, Start Num: 62

Candidate Starts for CharlieB_209:

(28, 119674), (38, 119737), (Start: 45 @119755 has 2 MA's), (Start: 62 @119788 has 183 MA's), (66, 119806), (102, 119938), (109, 119956), (131, 120016), (157, 120124), (160, 120148), (178, 120211), (181, 120217),

Gene: ChaylaJr_213 Start: 118767, Stop: 119222, Start Num: 62

Candidate Starts for ChaylaJr_213:

(28, 118653), (38, 118716), (Start: 45 @118734 has 2 MA's), (Start: 62 @118767 has 183 MA's), (66, 118785), (102, 118917), (109, 118935), (131, 118995), (157, 119103), (160, 119127), (178, 119190), (181, 119196),

Gene: Chickaboom_44 Start: 28771, Stop: 29241, Start Num: 35

Candidate Starts for Chickaboom_44:

(Start: 35 @28771 has 52 MA's), (Start: 48 @28807 has 1 MA's), (52, 28813), (86, 28909), (102, 28948), (114, 28969), (122, 28987), (132, 29023), (134, 29029), (148, 29074), (151, 29095), (160, 29146), (166, 29164), (178, 29209), (186, 29230),

Gene: Chicken_42 Start: 29231, Stop: 29698, Start Num: 35

Candidate Starts for Chicken_42:

(Start: 35 @29231 has 52 MA's), (Start: 48 @29267 has 1 MA's), (68, 29327), (114, 29429), (122, 29447), (139, 29507), (151, 29552), (157, 29579), (160, 29603), (162, 29609), (176, 29660), (186, 29687),

Gene: ChickenPhender_211 Start: 118214, Stop: 118669, Start Num: 62

Candidate Starts for ChickenPhender_211:

(28, 118100), (38, 118163), (Start: 45 @118181 has 2 MA's), (Start: 62 @118214 has 183 MA's), (66, 118232), (102, 118364), (109, 118382), (131, 118442), (157, 118550), (160, 118574), (178, 118637), (181, 118643),

Gene: Chomp_215 Start: 120837, Stop: 121292, Start Num: 62

Candidate Starts for Chomp_215:

(28, 120723), (38, 120786), (Start: 45 @120804 has 2 MA's), (Start: 62 @120837 has 183 MA's), (66, 120855), (102, 120987), (109, 121005), (131, 121065), (157, 121173), (160, 121197), (178, 121260), (181, 121266),

Gene: CindyLou_216 Start: 121097, Stop: 121552, Start Num: 62

Candidate Starts for CindyLou_216:

(28, 120983), (38, 121046), (Start: 45 @121064 has 2 MA's), (Start: 62 @121097 has 183 MA's), (66, 121115), (102, 121247), (109, 121265), (131, 121325), (157, 121433), (160, 121457), (178, 121520), (181, 121526),

Gene: Cleatunium_208 Start: 119480, Stop: 119935, Start Num: 62

Candidate Starts for Cleatunium_208:

(28, 119366), (38, 119429), (Start: 45 @119447 has 2 MA's), (Start: 62 @119480 has 183 MA's), (66, 119498), (102, 119630), (109, 119648), (131, 119708), (157, 119816), (160, 119840), (178, 119903), (181, 119909),

Gene: Colt_206 Start: 122873, Stop: 123328, Start Num: 62

Candidate Starts for Colt_206:

(28, 122759), (38, 122822), (Start: 45 @122840 has 2 MA's), (Start: 62 @122873 has 183 MA's), (66, 122891), (102, 123023), (109, 123041), (131, 123101), (157, 123209), (160, 123233), (178, 123296),

Gene: Colusalem_44 Start: 27262, Stop: 27729, Start Num: 35

Candidate Starts for Colusalem_44:

(27, 27205), (Start: 35 @27262 has 52 MA's), (Start: 48 @27298 has 1 MA's), (68, 27358), (90, 27409), (97, 27424), (114, 27460), (139, 27538), (144, 27550), (157, 27610), (160, 27634), (173, 27685), (176, 27691), (185, 27712), (186, 27718),

Gene: Concombres_220 Start: 121707, Stop: 122162, Start Num: 62

Candidate Starts for Concombres_220:

(28, 121593), (38, 121656), (Start: 45 @121674 has 2 MA's), (Start: 62 @121707 has 183 MA's), (66, 121725), (102, 121857), (109, 121875), (131, 121935), (157, 122043), (160, 122067), (178, 122130), (181, 122136),

Gene: CookieBear_84 Start: 47392, Stop: 47817, Start Num: 53

Candidate Starts for CookieBear_84:

(25, 47287), (Start: 53 @47392 has 32 MA's), (Start: 62 @47404 has 183 MA's), (66, 47419), (73, 47449), (74, 47455), (85, 47479), (142, 47647), (146, 47659), (155, 47704), (174, 47782),

Gene: Coral_43 Start: 27133, Stop: 27600, Start Num: 35

Candidate Starts for Coral_43:

(27, 27076), (Start: 35 @27133 has 52 MA's), (Start: 48 @27169 has 1 MA's), (68, 27229), (90, 27280), (97, 27295), (98, 27298), (114, 27331), (139, 27409), (144, 27421), (157, 27481), (160, 27505), (173, 27556), (176, 27562), (185, 27583), (186, 27589),

Gene: CosmicBrownie_85 Start: 47189, Stop: 47614, Start Num: 53

Candidate Starts for CosmicBrownie_85:

(Start: 53 @47189 has 32 MA's), (Start: 62 @47201 has 183 MA's), (66, 47216), (73, 47246), (74, 47252), (82, 47270), (85, 47276), (100, 47324), (174, 47579),

Gene: Cote_45 Start: 27610, Stop: 28077, Start Num: 35

Candidate Starts for Cote_45:

(27, 27553), (Start: 35 @27610 has 52 MA's), (Start: 48 @27646 has 1 MA's), (68, 27706), (90, 27757), (97, 27772), (114, 27808), (139, 27886), (144, 27898), (157, 27958), (160, 27982), (173, 28033), (176, 28039), (185, 28060), (186, 28066),

Gene: Crescenzo_87 Start: 49757, Stop: 50182, Start Num: 53

Candidate Starts for Crescenzo_87:

(Start: 53 @49757 has 32 MA's), (Start: 62 @49769 has 183 MA's), (66, 49784), (73, 49814), (74, 49820), (85, 49844), (174, 50147),

Gene: Cygnet_45 Start: 29068, Stop: 29529, Start Num: 35

Candidate Starts for Cygnet_45:

(Start: 35 @29068 has 52 MA's), (Start: 48 @29104 has 1 MA's), (86, 29209), (97, 29233), (114, 29275), (151, 29395), (159, 29443), (162, 29452), (168, 29476), (178, 29509), (182, 29518),

Gene: DTDevon_217 Start: 121586, Stop: 122041, Start Num: 62

Candidate Starts for DTDevon_217:

(28, 121472), (38, 121535), (Start: 45 @121553 has 2 MA's), (Start: 62 @121586 has 183 MA's), (66, 121604), (102, 121736), (109, 121754), (131, 121814), (157, 121922), (160, 121946), (178, 122009), (181, 122015),

Gene: Daffodil_220 Start: 120551, Stop: 121006, Start Num: 62

Candidate Starts for Daffodil_220:

(28, 120437), (38, 120500), (Start: 45 @120518 has 2 MA's), (Start: 62 @120551 has 183 MA's), (66, 120569), (102, 120701), (109, 120719), (131, 120779), (157, 120887), (160, 120911), (178, 120974), (181, 120980),

Gene: Damocles_47 Start: 27421, Stop: 27888, Start Num: 35

Candidate Starts for Damocles_47:

(27, 27364), (Start: 35 @27421 has 52 MA's), (Start: 48 @27457 has 1 MA's), (68, 27517), (90, 27568), (97, 27583), (114, 27619), (139, 27697), (144, 27709), (157, 27769), (160, 27793), (173, 27844), (176, 27850), (185, 27871), (186, 27877),

Gene: DanHam62_45 Start: 28340, Stop: 28810, Start Num: 35

Candidate Starts for DanHam62_45:

(Start: 35 @28340 has 52 MA's), (Start: 48 @28376 has 1 MA's), (75, 28457), (86, 28481), (97, 28505), (108, 28529), (114, 28541), (119, 28550), (122, 28559), (132, 28595), (144, 28631), (148, 28643), (151, 28664), (153, 28676), (161, 28718), (173, 28766), (177, 28775),

Gene: Dandelion_223 Start: 123191, Stop: 123646, Start Num: 62

Candidate Starts for Dandelion_223:

(28, 123077), (38, 123140), (Start: 45 @123158 has 2 MA's), (Start: 62 @123191 has 183 MA's), (66, 123209), (102, 123341), (109, 123359), (131, 123419), (157, 123527), (160, 123551), (178, 123614), (181, 123620),

Gene: Daob_45 Start: 27618, Stop: 28085, Start Num: 35

Candidate Starts for Daob_45:

(27, 27561), (Start: 35 @27618 has 52 MA's), (Start: 48 @27654 has 1 MA's), (68, 27714), (90, 27765), (97, 27780), (114, 27816), (139, 27894), (144, 27906), (157, 27966), (160, 27990), (173, 28041), (176, 28047), (185, 28068), (186, 28074),

Gene: Darko_214 Start: 119785, Stop: 120240, Start Num: 62

Candidate Starts for Darko_214:

(28, 119671), (38, 119734), (Start: 45 @119752 has 2 MA's), (Start: 62 @119785 has 183 MA's), (66, 119803), (102, 119935), (109, 119953), (131, 120013), (157, 120121), (160, 120145), (178, 120208), (181, 120214),

Gene: DarwinJr_89 Start: 49871, Stop: 50296, Start Num: 53

Candidate Starts for DarwinJr_89:

(Start: 53 @49871 has 32 MA's), (Start: 62 @49883 has 183 MA's), (66, 49898), (73, 49928), (74, 49934), (85, 49958), (174, 50261),

Gene: DeejaClivia_203 Start: 117927, Stop: 118382, Start Num: 62

Candidate Starts for DeejaClivia_203:

(28, 117813), (38, 117876), (Start: 45 @117894 has 2 MA's), (Start: 62 @117927 has 183 MA's), (66, 117945), (102, 118077), (109, 118095), (131, 118155), (157, 118263), (160, 118287), (178, 118350), (181, 118356),

Gene: DelaGarza_42 Start: 25918, Stop: 25496, Start Num: 61

Candidate Starts for DelaGarza_42:

(17, 26086), (32, 25999), (Start: 61 @25918 has 9 MA's), (80, 25852), (107, 25783), (112, 25771), (133, 25711), (158, 25606),

Gene: Delilah_213 Start: 120669, Stop: 121124, Start Num: 62

Candidate Starts for Delilah_213:

(28, 120555), (38, 120618), (Start: 45 @120636 has 2 MA's), (Start: 62 @120669 has 183 MA's), (66, 120687), (102, 120819), (109, 120837), (131, 120897), (157, 121005), (160, 121029), (178, 121092), (181, 121098),

Gene: Delylah_217 Start: 120958, Stop: 121413, Start Num: 62

Candidate Starts for Delylah_217:

(28, 120844), (38, 120907), (Start: 45 @120925 has 2 MA's), (Start: 62 @120958 has 183 MA's), (66, 120976), (102, 121108), (109, 121126), (131, 121186), (157, 121294), (160, 121318), (178, 121381), (181, 121387),

Gene: Demodog_221 Start: 121717, Stop: 122172, Start Num: 62

Candidate Starts for Demodog_221:

(28, 121603), (38, 121666), (Start: 45 @121684 has 2 MA's), (Start: 62 @121717 has 183 MA's), (66, 121735), (102, 121867), (109, 121885), (131, 121945), (157, 122053), (160, 122077), (178, 122140), (181, 122146),

Gene: Derek_212 Start: 120114, Stop: 120569, Start Num: 62

Candidate Starts for Derek_212:

(28, 120000), (38, 120063), (Start: 45 @120081 has 2 MA's), (Start: 62 @120114 has 183 MA's), (66, 120132), (102, 120264), (109, 120282), (131, 120342), (157, 120450), (160, 120474), (178, 120537), (181, 120543),

Gene: Dessert_213 Start: 119114, Stop: 119569, Start Num: 62

Candidate Starts for Dessert_213:

(28, 119000), (38, 119063), (Start: 45 @119081 has 2 MA's), (Start: 62 @119114 has 183 MA's), (66, 119132), (102, 119264), (109, 119282), (131, 119342), (157, 119450), (160, 119474), (178, 119537), (181, 119543),

Gene: Dietrick_204 Start: 118790, Stop: 119245, Start Num: 62

Candidate Starts for Dietrick_204:

(28, 118676), (38, 118739), (Start: 45 @118757 has 2 MA's), (Start: 62 @118790 has 183 MA's), (66, 118808), (102, 118940), (109, 118958), (131, 119018), (157, 119126), (160, 119150), (178, 119213), (181, 119219),

Gene: Ding_88 Start: 47949, Stop: 48350, Start Num: 59

Candidate Starts for Ding_88:

(4, 47613), (6, 47679), (37, 47910), (Start: 59 @47949 has 4 MA's), (83, 48024), (92, 48033), (101, 48066), (121, 48105),

Gene: DinoDaryn_57 Start: 37067, Stop: 37507, Start Num: 44

Candidate Starts for DinoDaryn_57:

(Start: 44 @37067 has 5 MA's), (55, 37082), (66, 37106), (86, 37160), (124, 37262), (131, 37286), (144, 37331),

Gene: DirtMonster_208 Start: 120030, Stop: 120485, Start Num: 62

Candidate Starts for DirtMonster_208:

(28, 119916), (38, 119979), (Start: 45 @119997 has 2 MA's), (Start: 62 @120030 has 183 MA's), (66, 120048), (102, 120180), (109, 120198), (131, 120258), (157, 120366), (160, 120390), (178, 120453), (181, 120459),

Gene: Domi_209 Start: 120141, Stop: 120596, Start Num: 62

Candidate Starts for Domi_209:

(28, 120027), (38, 120090), (Start: 45 @120108 has 2 MA's), (Start: 62 @120141 has 183 MA's), (66, 120159), (102, 120291), (109, 120309), (131, 120369), (157, 120477), (160, 120501), (178, 120564), (181, 120570),

Gene: DrPhinkDaddy_212 Start: 121329, Stop: 121784, Start Num: 62

Candidate Starts for DrPhinkDaddy_212:

(28, 121215), (38, 121278), (Start: 45 @121296 has 2 MA's), (Start: 62 @121329 has 183 MA's), (66, 121347), (102, 121479), (109, 121497), (131, 121557), (157, 121665), (160, 121689), (178, 121752), (181, 121758),

Gene: Drazdys_213 Start: 120231, Stop: 120686, Start Num: 62

Candidate Starts for Drazdys_213:

(28, 120117), (38, 120180), (Start: 45 @120198 has 2 MA's), (Start: 62 @120231 has 183 MA's), (66, 120249), (102, 120381), (109, 120399), (131, 120459), (157, 120567), (160, 120591), (178, 120654), (181, 120660),

Gene: Duckfeet_209 Start: 119757, Stop: 120212, Start Num: 62

Candidate Starts for Duckfeet_209:

(28, 119643), (38, 119706), (Start: 45 @119724 has 2 MA's), (Start: 62 @119757 has 183 MA's), (66, 119775), (102, 119907), (109, 119925), (131, 119985), (157, 120093), (160, 120117), (178, 120180), (181, 120186),

Gene: ET08_203 Start: 119822, Stop: 120277, Start Num: 62

Candidate Starts for ET08_203:

(28, 119708), (38, 119771), (Start: 45 @119789 has 2 MA's), (Start: 62 @119822 has 183 MA's), (66, 119840), (102, 119972), (109, 119990), (131, 120050), (157, 120158), (160, 120182), (178, 120245), (181, 120251),

Gene: EasyJones_218 Start: 119310, Stop: 119765, Start Num: 62

Candidate Starts for EasyJones_218:

(28, 119196), (38, 119259), (Start: 45 @119277 has 2 MA's), (Start: 62 @119310 has 183 MA's), (66, 119328), (102, 119460), (109, 119478), (131, 119538), (157, 119646), (160, 119670), (178, 119733), (181, 119739),

Gene: Eesa_42 Start: 29653, Stop: 30120, Start Num: 35

Candidate Starts for Eesa_42:

(Start: 35 @29653 has 52 MA's), (Start: 48 @29689 has 1 MA's), (68, 29749), (97, 29815), (114, 29851), (122, 29869), (139, 29929), (151, 29974), (157, 30001), (160, 30025), (162, 30031), (176, 30082), (186, 30109),

Gene: EggyFarm_224 Start: 122165, Stop: 122620, Start Num: 62

Candidate Starts for EggyFarm_224:

(28, 122051), (38, 122114), (Start: 45 @122132 has 2 MA's), (46, 122135), (Start: 62 @122165 has 183 MA's), (66, 122183), (102, 122315), (109, 122333), (131, 122393), (157, 122501), (160, 122525), (178, 122588), (181, 122594),

Gene: EmToTheThree_215 Start: 120702, Stop: 121157, Start Num: 62

Candidate Starts for EmToTheThree_215:

(28, 120588), (38, 120651), (Start: 45 @120669 has 2 MA's), (Start: 62 @120702 has 183 MA's), (66, 120720), (102, 120852), (109, 120870), (131, 120930), (157, 121038), (160, 121062), (178, 121125), (181, 121131),

Gene: EmmaElysia_219 Start: 120993, Stop: 121448, Start Num: 62

Candidate Starts for EmmaElysia_219:

(28, 120879), (38, 120942), (Start: 45 @120960 has 2 MA's), (Start: 62 @120993 has 183 MA's), (66, 121011), (102, 121143), (109, 121161), (131, 121221), (157, 121329), (160, 121353), (178, 121416), (181, 121422),

Gene: Erdmann_216 Start: 120661, Stop: 121116, Start Num: 62

Candidate Starts for Erdmann_216:

(28, 120547), (38, 120610), (Start: 45 @120628 has 2 MA's), (Start: 62 @120661 has 183 MA's), (66, 120679), (102, 120811), (109, 120829), (131, 120889), (157, 120997), (160, 121021), (178, 121084), (181, 121090),

Gene: ErnieJ_208 Start: 117489, Stop: 117944, Start Num: 62

Candidate Starts for ErnieJ_208:

(28, 117375), (38, 117438), (Start: 45 @117456 has 2 MA's), (Start: 62 @117489 has 183 MA's), (66, 117507), (102, 117639), (109, 117657), (131, 117717), (157, 117825), (160, 117849), (178, 117912), (181, 117918),

Gene: Essence_212 Start: 119443, Stop: 119898, Start Num: 62

Candidate Starts for Essence_212:

(28, 119329), (38, 119392), (Start: 45 @119410 has 2 MA's), (Start: 62 @119443 has 183 MA's), (66, 119461), (102, 119593), (109, 119611), (131, 119671), (157, 119779), (160, 119803), (178, 119866), (181, 119872),

Gene: EvePickles_87 Start: 49459, Stop: 49884, Start Num: 53

Candidate Starts for EvePickles_87:

(Start: 53 @49459 has 32 MA's), (Start: 62 @49471 has 183 MA's), (66, 49486), (73, 49516), (74, 49522), (100, 49594), (120, 49636), (147, 49729), (152, 49765), (174, 49849),

Gene: Ewok_214 Start: 120579, Stop: 121034, Start Num: 62

Candidate Starts for Ewok_214:

(28, 120465), (38, 120528), (Start: 45 @120546 has 2 MA's), (Start: 62 @120579 has 183 MA's), (66, 120597), (102, 120729), (109, 120747), (131, 120807), (157, 120915), (160, 120939), (178, 121002), (181, 121008),

Gene: Faja_87 Start: 48745, Stop: 49170, Start Num: 53

Candidate Starts for Faja_87:

(25, 48640), (Start: 53 @48745 has 32 MA's), (Start: 62 @48757 has 183 MA's), (66, 48772), (73, 48802), (74, 48808), (85, 48832), (100, 48880), (120, 48922), (138, 48991), (174, 49135),

Gene: Fingolfin_45 Start: 28343, Stop: 28813, Start Num: 35

Candidate Starts for Fingolfin_45:

(Start: 35 @28343 has 52 MA's), (Start: 48 @28379 has 1 MA's), (75, 28460), (86, 28484), (97, 28508), (108, 28532), (114, 28544), (119, 28553), (122, 28562), (132, 28598), (144, 28634), (148, 28646), (151, 28667), (153, 28679), (161, 28721), (173, 28769), (177, 28778),

Gene: Fixie_215 Start: 120223, Stop: 120678, Start Num: 62

Candidate Starts for Fixie_215:

(28, 120109), (38, 120172), (Start: 45 @120190 has 2 MA's), (Start: 62 @120223 has 183 MA's), (66, 120241), (102, 120373), (109, 120391), (131, 120451), (157, 120559), (160, 120583), (178, 120646), (181, 120652),

Gene: Flabslab_210 Start: 117631, Stop: 118086, Start Num: 62

Candidate Starts for Flabslab_210:

(28, 117517), (38, 117580), (Start: 45 @117598 has 2 MA's), (Start: 62 @117631 has 183 MA's), (66, 117649), (102, 117781), (109, 117799), (131, 117859), (157, 117967), (160, 117991), (178, 118054), (181, 118060),

Gene: Fludd_215 Start: 119022, Stop: 119477, Start Num: 62

Candidate Starts for Fludd_215:

(28, 118908), (38, 118971), (Start: 45 @118989 has 2 MA's), (Start: 62 @119022 has 183 MA's), (66, 119040), (102, 119172), (109, 119190), (131, 119250), (157, 119358), (160, 119382), (178, 119445), (181, 119451),

Gene: Fongie_216 Start: 120602, Stop: 121057, Start Num: 62

Candidate Starts for Fongie_216:

(28, 120488), (38, 120551), (Start: 45 @120569 has 2 MA's), (Start: 62 @120602 has 183 MA's), (66, 120620), (102, 120752), (109, 120770), (131, 120830), (157, 120938), (160, 120962), (178, 121025), (181, 121031),

Gene: FoxtrotP1_213 Start: 121259, Stop: 121714, Start Num: 62

Candidate Starts for FoxtrotP1_213:

(28, 121145), (38, 121208), (Start: 45 @121226 has 2 MA's), (Start: 62 @121259 has 183 MA's), (66, 121277), (102, 121409), (109, 121427), (131, 121487), (157, 121595), (160, 121619), (178, 121682), (181, 121688),

Gene: FrayBell_218 Start: 119112, Stop: 119567, Start Num: 62

Candidate Starts for FrayBell_218:

(28, 118998), (38, 119061), (Start: 45 @119079 has 2 MA's), (Start: 62 @119112 has 183 MA's), (66, 119130), (102, 119262), (109, 119280), (131, 119340), (157, 119448), (160, 119472), (178, 119535), (181, 119541),

Gene: Fregley_61 Start: 42057, Stop: 41593, Start Num: 58

Candidate Starts for Fregley_61:

(Start: 56 @42060 has 4 MA's), (Start: 58 @42057 has 2 MA's), (68, 42012), (101, 41925), (117, 41889), (140, 41814), (154, 41748), (157, 41736), (158, 41733), (169, 41682), (187, 41619), (188, 41616),

Gene: FudgeTart_210 Start: 119726, Stop: 120181, Start Num: 62

Candidate Starts for FudgeTart_210:

(28, 119612), (38, 119675), (Start: 45 @119693 has 2 MA's), (Start: 62 @119726 has 183 MA's), (66, 119744), (102, 119876), (109, 119894), (131, 119954), (157, 120062), (160, 120086), (178, 120149), (181, 120155),

Gene: GUPitcher_62 Start: 39387, Stop: 39782, Start Num: 61

Candidate Starts for GUPitcher_62:

(15, 39192), (16, 39198), (Start: 59 @39381 has 4 MA's), (Start: 61 @39387 has 9 MA's), (66, 39405), (77, 39444), (83, 39459), (84, 39462), (88, 39468), (106, 39504), (110, 39516), (128, 39564), (133, 39582),

Gene: Gabriel_218 Start: 119181, Stop: 119636, Start Num: 62

Candidate Starts for Gabriel_218:

(28, 119067), (38, 119130), (Start: 45 @119148 has 2 MA's), (Start: 62 @119181 has 183 MA's), (66, 119199), (102, 119331), (109, 119349), (131, 119409), (157, 119517), (160, 119541), (178, 119604), (181, 119610),

Gene: Galaxy_41 Start: 27422, Stop: 27892, Start Num: 35

Candidate Starts for Galaxy_41:

(Start: 35 @27422 has 52 MA's), (39, 27437), (Start: 48 @27458 has 1 MA's), (52, 27464), (86, 27560), (114, 27620), (122, 27638), (132, 27674), (157, 27773), (160, 27797), (166, 27815), (176, 27854), (178, 27860), (186, 27881),

Gene: Gamgam_216 Start: 119538, Stop: 119993, Start Num: 62

Candidate Starts for Gamgam_216:

(28, 119424), (38, 119487), (Start: 45 @119505 has 2 MA's), (Start: 62 @119538 has 183 MA's), (66, 119556), (102, 119688), (109, 119706), (131, 119766), (157, 119874), (160, 119898), (178, 119961), (181, 119967),

Gene: Ghost_215 Start: 119459, Stop: 119914, Start Num: 62

Candidate Starts for Ghost_215:

(28, 119345), (38, 119408), (Start: 45 @119426 has 2 MA's), (Start: 62 @119459 has 183 MA's), (66, 119477), (93, 119579), (102, 119609), (109, 119627), (131, 119687), (157, 119795), (160, 119819), (178, 119882), (181, 119888),

Gene: Gingerbug_41 Start: 26445, Stop: 26023, Start Num: 61

Candidate Starts for Gingerbug_41:

(Start: 61 @26445 has 9 MA's), (89, 26358), (126, 26262), (128, 26256), (133, 26238), (160, 26112), (165, 26097), (172, 26067), (183, 26037),

Gene: Gizmo_221 Start: 122577, Stop: 123032, Start Num: 62

Candidate Starts for Gizmo_221:

(28, 122463), (38, 122526), (Start: 45 @122544 has 2 MA's), (Start: 62 @122577 has 183 MA's), (66, 122595), (102, 122727), (109, 122745), (131, 122805), (157, 122913), (160, 122937), (178, 123000), (181, 123006),

Gene: Globfish_85 Start: 47014, Stop: 47436, Start Num: 53

Candidate Starts for Globfish_85:

(Start: 53 @47014 has 32 MA's), (Start: 62 @47023 has 183 MA's), (66, 47038), (73, 47068), (74, 47074), (85, 47098), (120, 47188), (142, 47266), (146, 47278), (174, 47401),

Gene: Glotell_46 Start: 28397, Stop: 28867, Start Num: 35

Candidate Starts for Glotell_46:

(Start: 35 @28397 has 52 MA's), (Start: 48 @28433 has 1 MA's), (75, 28514), (86, 28538), (97, 28562), (108, 28586), (114, 28598), (119, 28607), (122, 28616), (132, 28652), (144, 28688), (148, 28700), (151, 28721), (153, 28733), (161, 28775), (173, 28823), (177, 28832),

Gene: GlutenPhree_216 Start: 119549, Stop: 120004, Start Num: 62

Candidate Starts for GlutenPhree_216:

(28, 119435), (38, 119498), (Start: 45 @119516 has 2 MA's), (Start: 62 @119549 has 183 MA's), (66, 119567), (102, 119699), (109, 119717), (131, 119777), (157, 119885), (160, 119909), (178, 119972), (181, 119978),

Gene: Goib_58 Start: 38192, Stop: 38617, Start Num: 54

Candidate Starts for Goib_58:

(Start: 45 @38183 has 2 MA's), (51, 38189), (Start: 54 @38192 has 1 MA's), (66, 38216), (86, 38270), (124, 38372), (131, 38396), (144, 38441),

Gene: Gorpy_83 Start: 48809, Stop: 49234, Start Num: 53

Candidate Starts for Gorpy_83:

(Start: 53 @48809 has 32 MA's), (Start: 62 @48821 has 183 MA's), (66, 48836), (73, 48866), (74, 48872), (142, 49064), (146, 49076), (174, 49199),

Gene: GramZayde_45 Start: 27542, Stop: 27913, Start Num: 68

Candidate Starts for GramZayde_45:

(27, 27389), (Start: 35 @27446 has 52 MA's), (Start: 48 @27482 has 1 MA's), (68, 27542), (90, 27593), (97, 27608), (114, 27644), (139, 27722), (144, 27734), (157, 27794), (160, 27818), (173, 27869), (176, 27875), (185, 27896), (186, 27902),

Gene: Grasshills_223 Start: 122164, Stop: 122619, Start Num: 62

Candidate Starts for Grasshills_223:

(28, 122050), (38, 122113), (Start: 45 @122131 has 2 MA's), (46, 122134), (Start: 62 @122164 has 183 MA's), (66, 122182), (102, 122314), (109, 122332), (131, 122392), (157, 122500), (160, 122524), (178, 122587), (181, 122593),

Gene: Gravel_52 Start: 29743, Stop: 30210, Start Num: 35

Candidate Starts for Gravel_52:

(Start: 35 @29743 has 52 MA's), (Start: 48 @29779 has 1 MA's), (68, 29839), (97, 29905), (114, 29941), (122, 29959), (139, 30019), (151, 30064), (157, 30091), (160, 30115), (162, 30121), (176, 30172), (186, 30199),

Gene: Grungle_199 Start: 117496, Stop: 117951, Start Num: 62

Candidate Starts for Grungle_199:

(28, 117382), (38, 117445), (Start: 45 @117463 has 2 MA's), (Start: 62 @117496 has 183 MA's), (66, 117514), (102, 117646), (109, 117664), (131, 117724), (157, 117832), (160, 117856), (178, 117919), (181, 117925),

Gene: GumGum_93 Start: 49153, Stop: 49578, Start Num: 53

Candidate Starts for GumGum_93:

(8, 48901), (18, 49000), (Start: 53 @49153 has 32 MA's), (Start: 62 @49165 has 183 MA's), (73, 49210), (74, 49216), (85, 49240), (100, 49288), (142, 49408), (146, 49420), (155, 49465), (174, 49543),

Gene: Guwapp_210 Start: 118293, Stop: 118748, Start Num: 62

Candidate Starts for Guwapp_210:

(28, 118179), (38, 118242), (Start: 45 @118260 has 2 MA's), (Start: 62 @118293 has 183 MA's), (66, 118311), (102, 118443), (109, 118461), (131, 118521), (157, 118629), (160, 118653), (178, 118716), (181, 118722),

Gene: Halldule_208 Start: 118678, Stop: 119133, Start Num: 62

Candidate Starts for Halldule_208:

(28, 118564), (38, 118627), (Start: 45 @118645 has 2 MA's), (Start: 62 @118678 has 183 MA's), (66, 118696), (102, 118828), (109, 118846), (131, 118906), (157, 119014), (160, 119038), (178, 119101), (181, 119107),

Gene: HamCheese_45 Start: 28327, Stop: 28797, Start Num: 35

Candidate Starts for HamCheese_45:

(Start: 35 @28327 has 52 MA's), (Start: 48 @28363 has 1 MA's), (75, 28444), (86, 28468), (97, 28492), (108, 28516), (114, 28528), (119, 28537), (122, 28546), (132, 28582), (144, 28618), (148, 28630), (151, 28651), (153, 28663), (161, 28705), (173, 28753), (177, 28762),

Gene: HannahPhantana_44 Start: 27280, Stop: 27747, Start Num: 35

Candidate Starts for HannahPhantana_44:

(27, 27223), (Start: 35 @27280 has 52 MA's), (Start: 48 @27316 has 1 MA's), (68, 27376), (90, 27427), (97, 27442), (114, 27478), (139, 27556), (144, 27568), (157, 27628), (160, 27652), (173, 27703), (176, 27709), (185, 27730), (186, 27736),

Gene: Hestia_80 Start: 45962, Stop: 46387, Start Num: 53

Candidate Starts for Hestia_80:

(Start: 53 @45962 has 32 MA's), (Start: 62 @45974 has 183 MA's), (66, 45989), (73, 46019), (74, 46025), (85, 46049), (120, 46139), (174, 46352),

Gene: Hillester_90 Start: 48709, Stop: 49134, Start Num: 53

Candidate Starts for Hillester_90:

(36, 48679), (Start: 53 @48709 has 32 MA's), (Start: 62 @48721 has 183 MA's), (66, 48736), (73, 48766), (74, 48772), (85, 48796), (100, 48844), (120, 48886), (138, 48955), (174, 49099),

Gene: Huffy_57 Start: 37067, Stop: 37507, Start Num: 44

Candidate Starts for Huffy_57:

(Start: 44 @37067 has 5 MA's), (55, 37082), (66, 37106), (86, 37160), (124, 37262), (131, 37286), (144, 37331),

Gene: HyRo_203 Start: 118809, Stop: 119264, Start Num: 62

Candidate Starts for HyRo_203:

(28, 118695), (38, 118758), (Start: 45 @118776 has 2 MA's), (Start: 62 @118809 has 183 MA's), (66, 118827), (102, 118959), (109, 118977), (131, 119037), (157, 119145), (160, 119169), (178, 119232), (181, 119238),

Gene: I3_225 Start: 121254, Stop: 121709, Start Num: 62

Candidate Starts for I3_225:

(28, 121140), (38, 121203), (Start: 45 @121221 has 2 MA's), (Start: 62 @121254 has 183 MA's), (66, 121272), (72, 121314), (102, 121404), (109, 121422), (131, 121482), (157, 121590), (160, 121614), (178, 121677), (181, 121683),

Gene: IkeLoa_207 Start: 119203, Stop: 119658, Start Num: 62

Candidate Starts for IkeLoa_207:

(28, 119089), (38, 119152), (Start: 45 @119170 has 2 MA's), (Start: 62 @119203 has 183 MA's), (66, 119221), (102, 119353), (109, 119371), (131, 119431), (157, 119539), (160, 119563), (178, 119626),

(181, 119632),

Gene: InigoMontoya_218 Start: 120212, Stop: 120667, Start Num: 62

Candidate Starts for InigoMontoya_218:

(28, 120098), (38, 120161), (Start: 45 @120179 has 2 MA's), (Start: 62 @120212 has 183 MA's), (66, 120230), (102, 120362), (109, 120380), (131, 120440), (157, 120548), (160, 120572), (178, 120635), (181, 120641),

Gene: InterFolia_218 Start: 120917, Stop: 121372, Start Num: 62

Candidate Starts for InterFolia_218:

(28, 120803), (38, 120866), (Start: 45 @120884 has 2 MA's), (Start: 62 @120917 has 183 MA's), (66, 120935), (102, 121067), (109, 121085), (131, 121145), (157, 121253), (160, 121277), (178, 121340), (181, 121346),

Gene: Iota_210 Start: 119897, Stop: 120352, Start Num: 62

Candidate Starts for Iota_210:

(28, 119783), (38, 119846), (Start: 45 @119864 has 2 MA's), (Start: 62 @119897 has 183 MA's), (66, 119915), (102, 120047), (109, 120065), (131, 120125), (157, 120233), (160, 120257), (178, 120320), (181, 120326),

Gene: Isolde_87 Start: 49198, Stop: 49623, Start Num: 53

Candidate Starts for Isolde_87:

(36, 49168), (Start: 53 @49198 has 32 MA's), (Start: 62 @49210 has 183 MA's), (66, 49225), (73, 49255), (74, 49261), (85, 49285), (174, 49588),

Gene: Issimir_208 Start: 119850, Stop: 120305, Start Num: 62

Candidate Starts for Issimir_208:

(28, 119736), (38, 119799), (Start: 45 @119817 has 2 MA's), (Start: 62 @119850 has 183 MA's), (66, 119868), (102, 120000), (109, 120018), (131, 120078), (157, 120186), (160, 120210), (178, 120273), (181, 120279),

Gene: Izajani_213 Start: 120719, Stop: 121174, Start Num: 62

Candidate Starts for Izajani_213:

(28, 120605), (38, 120668), (Start: 45 @120686 has 2 MA's), (Start: 62 @120719 has 183 MA's), (66, 120737), (102, 120869), (109, 120887), (131, 120947), (157, 121055), (160, 121079), (178, 121142), (181, 121148),

Gene: JPickles_211 Start: 118197, Stop: 118652, Start Num: 62

Candidate Starts for JPickles_211:

(28, 118083), (38, 118146), (Start: 45 @118164 has 2 MA's), (Start: 62 @118197 has 183 MA's), (66, 118215), (102, 118347), (109, 118365), (131, 118425), (157, 118533), (160, 118557), (178, 118620), (181, 118626),

Gene: JakeTheSnake_89 Start: 50117, Stop: 50518, Start Num: 59

Candidate Starts for JakeTheSnake_89:

(49, 50102), (Start: 59 @50117 has 4 MA's), (83, 50192), (92, 50201), (170, 50477),

Gene: Jamun_42 Start: 28931, Stop: 29401, Start Num: 35

Candidate Starts for Jamun_42:

(Start: 35 @28931 has 52 MA's), (Start: 48 @28967 has 1 MA's), (52, 28973), (86, 29069), (114, 29129), (122, 29147), (132, 29183), (139, 29210), (148, 29234), (157, 29282), (160, 29306), (166, 29324), (173, 29357), (176, 29363), (178, 29369), (186, 29390),

Gene: Janiyra_218 Start: 120437, Stop: 120892, Start Num: 62

Candidate Starts for Janiyra_218:

(28, 120323), (38, 120386), (Start: 45 @120404 has 2 MA's), (Start: 62 @120437 has 183 MA's), (66, 120455), (102, 120587), (109, 120605), (131, 120665), (157, 120773), (160, 120797), (178, 120860), (181, 120866),

Gene: JayJay_217 Start: 120141, Stop: 120596, Start Num: 62

Candidate Starts for JayJay_217:

(28, 120027), (38, 120090), (Start: 45 @120108 has 2 MA's), (Start: 62 @120141 has 183 MA's), (66, 120159), (102, 120291), (109, 120309), (131, 120369), (157, 120477), (160, 120501), (178, 120564), (181, 120570),

Gene: Jaygup_211 Start: 119258, Stop: 119713, Start Num: 62

Candidate Starts for Jaygup_211:

(28, 119144), (38, 119207), (Start: 45 @119225 has 2 MA's), (Start: 62 @119258 has 183 MA's), (66, 119276), (102, 119408), (109, 119426), (131, 119486), (157, 119594), (160, 119618), (178, 119681), (181, 119687),

Gene: JeanClaude_61 Start: 33888, Stop: 34313, Start Num: 57

Candidate Starts for JeanClaude_61:

(31, 33822), (Start: 57 @33888 has 3 MA's), (92, 33984), (126, 34074), (160, 34224),

Gene: Jedediah_215 Start: 120311, Stop: 120766, Start Num: 62

Candidate Starts for Jedediah_215:

(28, 120197), (38, 120260), (Start: 45 @120278 has 2 MA's), (Start: 62 @120311 has 183 MA's), (66, 120329), (102, 120461), (109, 120479), (131, 120539), (157, 120647), (160, 120671), (178, 120734), (181, 120740),

Gene: JellyBread_82 Start: 47875, Stop: 48285, Start Num: 50

Candidate Starts for JellyBread_82:

(Start: 50 @47875 has 3 MA's), (Start: 62 @47887 has 183 MA's), (66, 47902), (73, 47932), (74, 47938), (85, 47962), (120, 48052), (122, 48058), (125, 48070), (135, 48109), (143, 48133), (147, 48145), (173, 48247), (180, 48262),

Gene: Jemmno_214 Start: 119140, Stop: 119595, Start Num: 62

Candidate Starts for Jemmno_214:

(28, 119026), (38, 119089), (Start: 45 @119107 has 2 MA's), (Start: 62 @119140 has 183 MA's), (66, 119158), (102, 119290), (109, 119308), (131, 119368), (157, 119476), (160, 119500), (178, 119563), (181, 119569),

Gene: Jerole_44 Start: 27404, Stop: 27871, Start Num: 35

Candidate Starts for Jerole_44:

(27, 27347), (Start: 35 @27404 has 52 MA's), (Start: 48 @27440 has 1 MA's), (68, 27500), (90, 27551), (97, 27566), (114, 27602), (139, 27680), (144, 27692), (157, 27752), (160, 27776), (173, 27827), (176, 27833), (185, 27854), (186, 27860),

Gene: Jessibeth14_215 Start: 121328, Stop: 121783, Start Num: 62

Candidate Starts for Jessibeth14_215:

(28, 121214), (38, 121277), (Start: 45 @121295 has 2 MA's), (Start: 62 @121328 has 183 MA's), (66, 121346), (102, 121478), (109, 121496), (131, 121556), (157, 121664), (160, 121688), (178, 121751), (181, 121757),

Gene: Jezreel_212 Start: 120398, Stop: 120853, Start Num: 62

Candidate Starts for Jezreel_212:

(28, 120284), (38, 120347), (Start: 45 @120365 has 2 MA's), (Start: 62 @120398 has 183 MA's), (66, 120416), (102, 120548), (109, 120566), (131, 120626), (157, 120734), (160, 120758), (178, 120821), (181, 120827),

Gene: JigglyPuff_222 Start: 121715, Stop: 122170, Start Num: 62

Candidate Starts for JigglyPuff_222:

(28, 121601), (38, 121664), (Start: 45 @121682 has 2 MA's), (Start: 62 @121715 has 183 MA's), (66, 121733), (102, 121865), (109, 121883), (131, 121943), (157, 122051), (160, 122075), (178, 122138), (181, 122144),

Gene: JulietS_206 Start: 117438, Stop: 117893, Start Num: 62

Candidate Starts for JulietS_206:

(1, 116919), (28, 117324), (38, 117387), (Start: 45 @117405 has 2 MA's), (Start: 62 @117438 has 183 MA's), (66, 117456), (102, 117588), (109, 117606), (131, 117666), (157, 117774), (160, 117798), (178, 117861), (181, 117867),

Gene: Juno112_44 Start: 28343, Stop: 28813, Start Num: 35

Candidate Starts for Juno112_44:

(Start: 35 @28343 has 52 MA's), (Start: 48 @28379 has 1 MA's), (75, 28460), (86, 28484), (97, 28508), (108, 28532), (114, 28544), (119, 28553), (122, 28562), (132, 28598), (144, 28634), (148, 28646), (151, 28667), (153, 28679), (161, 28721), (173, 28769), (177, 28778),

Gene: JustHall_209 Start: 119344, Stop: 119799, Start Num: 62

Candidate Starts for JustHall_209:

(28, 119230), (38, 119293), (Start: 45 @119311 has 2 MA's), (Start: 62 @119344 has 183 MA's), (66, 119362), (102, 119494), (109, 119512), (131, 119572), (157, 119680), (160, 119704), (178, 119767), (181, 119773),

Gene: KHumphrey_45 Start: 28276, Stop: 28710, Start Num: 48

Candidate Starts for KHumphrey_45:

(Start: 35 @28240 has 52 MA's), (Start: 48 @28276 has 1 MA's), (75, 28357), (86, 28381), (97, 28405), (108, 28429), (114, 28441), (119, 28450), (122, 28459), (132, 28495), (144, 28531), (151, 28564), (153, 28576), (161, 28618), (173, 28666), (177, 28675),

Gene: Kabloowy_86 Start: 48768, Stop: 49193, Start Num: 53

Candidate Starts for Kabloowy_86:

(Start: 53 @48768 has 32 MA's), (Start: 62 @48780 has 183 MA's), (66, 48795), (73, 48825), (74, 48831), (85, 48855), (99, 48900), (100, 48903), (174, 49158),

Gene: Kamryn_214 Start: 120974, Stop: 121429, Start Num: 62

Candidate Starts for Kamryn_214:

(28, 120860), (38, 120923), (Start: 45 @120941 has 2 MA's), (Start: 62 @120974 has 183 MA's), (66, 120992), (102, 121124), (109, 121142), (131, 121202), (157, 121310), (160, 121334), (178, 121397), (181, 121403),

Gene: Kboogie_219 Start: 120002, Stop: 120457, Start Num: 62

Candidate Starts for Kboogie_219:

(28, 119888), (38, 119951), (Start: 45 @119969 has 2 MA's), (Start: 62 @120002 has 183 MA's), (66, 120020), (102, 120152), (109, 120170), (131, 120230), (157, 120338), (160, 120362), (178, 120425), (181, 120431),

Gene: KendraB23_53 Start: 29930, Stop: 30397, Start Num: 35

Candidate Starts for KendraB23_53:

(Start: 35 @29930 has 52 MA's), (Start: 48 @29966 has 1 MA's), (68, 30026), (97, 30092), (114, 30128), (122, 30146), (139, 30206), (157, 30278), (160, 30302), (162, 30308), (176, 30359), (185, 30380), (186, 30386),

Gene: Kepler_45 Start: 28028, Stop: 28495, Start Num: 35

Candidate Starts for Kepler_45:

(27, 27971), (Start: 35 @28028 has 52 MA's), (Start: 48 @28064 has 1 MA's), (68, 28124), (90, 28175), (97, 28190), (98, 28193), (114, 28226), (139, 28304), (144, 28316), (157, 28376), (160, 28400), (173, 28451), (176, 28457), (186, 28484),

Gene: Khaleesi_214 Start: 120795, Stop: 121250, Start Num: 62

Candidate Starts for Khaleesi_214:

(28, 120681), (38, 120744), (Start: 45 @120762 has 2 MA's), (Start: 62 @120795 has 183 MA's), (66, 120813), (102, 120945), (109, 120963), (131, 121023), (157, 121131), (160, 121155), (178, 121218), (181, 121224),

Gene: Khuang_63 Start: 36921, Stop: 37343, Start Num: 59

Candidate Starts for Khuang_63:

(Start: 59 @36921 has 4 MA's), (89, 37011), (92, 37017), (123, 37095), (157, 37233),

Gene: Koguma_214 Start: 119655, Stop: 120110, Start Num: 62

Candidate Starts for Koguma_214:

(28, 119541), (38, 119604), (Start: 45 @119622 has 2 MA's), (Start: 62 @119655 has 183 MA's), (66, 119673), (102, 119805), (109, 119823), (131, 119883), (157, 119991), (160, 120015), (178, 120078), (181, 120084),

Gene: Kudrefre_85 Start: 49906, Stop: 50304, Start Num: 61

Candidate Starts for Kudrefre_85:

(Start: 61 @49906 has 9 MA's), (65, 49918), (66, 49924), (86, 49978), (104, 50032), (116, 50059), (131, 50095), (136, 50113), (148, 50155), (150, 50164), (151, 50176), (173, 50275),

Gene: Kuleana_45 Start: 27612, Stop: 28070, Start Num: 35

Candidate Starts for Kuleana_45:

(Start: 35 @27612 has 52 MA's), (Start: 48 @27648 has 1 MA's), (97, 27777), (105, 27795), (114, 27813), (122, 27831), (160, 27987), (173, 28038), (176, 28044), (182, 28059),

Gene: Kumotta_70 Start: 37512, Stop: 37922, Start Num: 62

Candidate Starts for Kumotta_70:

(Start: 62 @37512 has 183 MA's),

Gene: LRRHood_208 Start: 119007, Stop: 119462, Start Num: 62

Candidate Starts for LRRHood_208:

(28, 118893), (38, 118956), (Start: 45 @118974 has 2 MA's), (Start: 62 @119007 has 183 MA's), (66, 119025), (102, 119157), (109, 119175), (131, 119235), (157, 119343), (160, 119367), (178, 119430), (181, 119436),

Gene: Labradorite_213 Start: 118749, Stop: 119204, Start Num: 62

Candidate Starts for Labradorite_213:

(28, 118635), (38, 118698), (Start: 45 @118716 has 2 MA's), (Start: 62 @118749 has 183 MA's), (66, 118767), (102, 118899), (109, 118917), (131, 118977), (157, 119085), (160, 119109), (178, 119172), (181, 119178),

Gene: Laphuphu24k_43 Start: 28327, Stop: 28797, Start Num: 35

Candidate Starts for Laphuphu24k_43:

(Start: 35 @28327 has 52 MA's), (Start: 48 @28363 has 1 MA's), (75, 28444), (86, 28468), (97, 28492), (108, 28516), (114, 28528), (119, 28537), (122, 28546), (132, 28582), (144, 28618), (148, 28630), (151, 28651), (153, 28663), (161, 28705), (173, 28753), (177, 28762),

Gene: Lasker_86 Start: 49087, Stop: 49518, Start Num: 53

Candidate Starts for Lasker_86:

(Start: 53 @49087 has 32 MA's), (Start: 62 @49099 has 183 MA's), (66, 49114), (73, 49144), (74, 49150), (85, 49174), (120, 49264), (142, 49342), (146, 49354), (174, 49477),

Gene: Latch_215 Start: 119548, Stop: 120003, Start Num: 62

Candidate Starts for Latch_215:

(28, 119434), (38, 119497), (Start: 45 @119515 has 2 MA's), (Start: 62 @119548 has 183 MA's), (66, 119566), (102, 119698), (109, 119716), (131, 119776), (157, 119884), (160, 119908), (178, 119971), (181, 119977),

Gene: Lawnathon_89 Start: 48159, Stop: 48584, Start Num: 53

Candidate Starts for Lawnathon_89:

(36, 48129), (Start: 53 @48159 has 32 MA's), (Start: 62 @48171 has 183 MA's), (66, 48186), (73, 48216), (74, 48222), (142, 48414), (146, 48426), (155, 48471), (174, 48549),

Gene: LeBruni_87 Start: 48342, Stop: 48743, Start Num: 58

Candidate Starts for LeBruni_87:

(2, 47949), (Start: 58 @48342 has 2 MA's), (Start: 62 @48351 has 183 MA's), (66, 48366), (73, 48396), (74, 48402), (122, 48522), (125, 48534), (135, 48573), (142, 48594), (143, 48597), (149, 48618), (157, 48645), (160, 48669), (174, 48714),

Gene: Lee7_215 Start: 122175, Stop: 122630, Start Num: 62

Candidate Starts for Lee7_215:

(28, 122061), (38, 122124), (Start: 45 @122142 has 2 MA's), (Start: 62 @122175 has 183 MA's), (66, 122193), (102, 122325), (109, 122343), (131, 122403), (157, 122511), (160, 122535), (178, 122598), (181, 122604),

Gene: Leona_44 Start: 28420, Stop: 28890, Start Num: 35

Candidate Starts for Leona_44:

(Start: 35 @28420 has 52 MA's), (Start: 48 @28456 has 1 MA's), (86, 28561), (97, 28585), (108, 28609), (114, 28621), (119, 28630), (122, 28639), (132, 28675), (144, 28711), (148, 28723), (151, 28744), (153, 28756), (161, 28798), (173, 28846), (177, 28855),

Gene: Lesiram_43 Start: 25890, Stop: 25468, Start Num: 61

Candidate Starts for Lesiram_43:

(Start: 61 @25890 has 9 MA's), (80, 25824), (107, 25755), (112, 25743), (130, 25692), (133, 25683), (158, 25578),

Gene: Lethe_215 Start: 121438, Stop: 121893, Start Num: 62

Candidate Starts for Lethe_215:

(28, 121324), (38, 121387), (Start: 45 @121405 has 2 MA's), (Start: 62 @121438 has 183 MA's), (66, 121456), (102, 121588), (109, 121606), (131, 121666), (157, 121774), (160, 121798), (178, 121861), (181, 121867),

Gene: LifeSavor_214 Start: 120073, Stop: 120528, Start Num: 62

Candidate Starts for LifeSavor_214:

(28, 119959), (38, 120022), (Start: 45 @120040 has 2 MA's), (Start: 62 @120073 has 183 MA's), (66, 120091), (102, 120223), (109, 120241), (131, 120301), (157, 120409), (160, 120433), (178, 120496), (181, 120502),

Gene: LilJank_79 Start: 49581, Stop: 50012, Start Num: 65

Candidate Starts for LilJank_79:

(52, 49566), (Start: 56 @49572 has 4 MA's), (65, 49581), (96, 49674), (103, 49701), (124, 49743), (130, 49764), (131, 49767), (136, 49785), (148, 49830), (160, 49899), (162, 49905), (164, 49911), (165, 49914), (167, 49923), (178, 49962),

Gene: LinStu_214 Start: 119294, Stop: 119749, Start Num: 62

Candidate Starts for LinStu_214:

(28, 119180), (38, 119243), (Start: 45 @119261 has 2 MA's), (Start: 62 @119294 has 183 MA's), (66, 119312), (102, 119444), (109, 119462), (131, 119522), (157, 119630), (160, 119654), (178, 119717), (181, 119723),

Gene: LittleTokyo_43 Start: 27119, Stop: 27583, Start Num: 35

Candidate Starts for LittleTokyo_43:

(Start: 35 @27119 has 52 MA's), (Start: 48 @27155 has 1 MA's), (86, 27260), (122, 27335), (148, 27416), (151, 27437), (173, 27539), (176, 27545),

Gene: Littleton_218 Start: 120785, Stop: 121240, Start Num: 62

Candidate Starts for Littleton_218:

(28, 120671), (38, 120734), (Start: 45 @120752 has 2 MA's), (Start: 62 @120785 has 183 MA's), (66, 120803), (102, 120935), (109, 120953), (131, 121013), (157, 121121), (160, 121145), (178, 121208), (181, 121214),

Gene: Loanshark_212 Start: 120110, Stop: 120565, Start Num: 62

Candidate Starts for Loanshark_212:

(28, 119996), (38, 120059), (Start: 45 @120077 has 2 MA's), (Start: 62 @120110 has 183 MA's), (66, 120128), (102, 120260), (109, 120278), (131, 120338), (157, 120446), (160, 120470), (178, 120533), (181, 120539),

Gene: LolaVinca_213 Start: 120347, Stop: 120802, Start Num: 62

Candidate Starts for LolaVinca_213:

(28, 120233), (38, 120296), (Start: 45 @120314 has 2 MA's), (Start: 62 @120347 has 183 MA's), (66, 120365), (102, 120497), (109, 120515), (131, 120575), (157, 120683), (160, 120707), (178, 120770), (181, 120776),

Gene: LookingGlass_214 Start: 120305, Stop: 120760, Start Num: 62

Candidate Starts for LookingGlass_214:

(28, 120191), (38, 120254), (Start: 45 @120272 has 2 MA's), (Start: 62 @120305 has 183 MA's), (66, 120323), (102, 120455), (109, 120473), (131, 120533), (157, 120641), (160, 120665), (178, 120728), (181, 120734),

Gene: LordLeafolot_216 Start: 119960, Stop: 120415, Start Num: 62

Candidate Starts for LordLeafolot_216:

(28, 119846), (38, 119909), (Start: 45 @119927 has 2 MA's), (Start: 62 @119960 has 183 MA's), (66, 119978), (102, 120110), (109, 120128), (131, 120188), (157, 120296), (160, 120320), (178, 120383), (181, 120389),

Gene: Lukilu_206 Start: 121010, Stop: 121465, Start Num: 62

Candidate Starts for Lukilu_206:

(28, 120896), (38, 120959), (Start: 45 @120977 has 2 MA's), (Start: 62 @121010 has 183 MA's), (66, 121028), (102, 121160), (109, 121178), (131, 121238), (157, 121346), (160, 121370), (178, 121433), (181, 121439),

Gene: Lunar_45 Start: 27944, Stop: 28411, Start Num: 35

Candidate Starts for Lunar_45:

(27, 27887), (Start: 35 @27944 has 52 MA's), (Start: 48 @27980 has 1 MA's), (68, 28040), (90, 28091), (97, 28106), (114, 28142), (139, 28220), (144, 28232), (157, 28292), (160, 28316), (173, 28367), (176, 28373), (185, 28394), (186, 28400),

Gene: Lunareta_213 Start: 120653, Stop: 121108, Start Num: 62

Candidate Starts for Lunareta_213:

(28, 120539), (38, 120602), (Start: 45 @120620 has 2 MA's), (Start: 62 @120653 has 183 MA's), (66, 120671), (102, 120803), (109, 120821), (131, 120881), (157, 120989), (160, 121013), (178, 121076), (181, 121082),

Gene: MUWow_88 Start: 49555, Stop: 49980, Start Num: 53

Candidate Starts for MUWow_88:

(25, 49450), (Start: 53 @49555 has 32 MA's), (Start: 62 @49567 has 183 MA's), (66, 49582), (73, 49612), (74, 49618), (85, 49642), (142, 49810), (146, 49822), (174, 49945),

Gene: Maby2021_215 Start: 121239, Stop: 121694, Start Num: 62

Candidate Starts for Maby2021_215:

(28, 121125), (38, 121188), (Start: 45 @121206 has 2 MA's), (Start: 62 @121239 has 183 MA's), (66, 121257), (102, 121389), (109, 121407), (131, 121467), (157, 121575), (160, 121599), (178, 121662), (181, 121668),

Gene: MalagasyRose_70 Start: 46724, Stop: 47353, Start Num: 21

Candidate Starts for MalagasyRose_70:

(9, 46601), (13, 46634), (14, 46643), (Start: 21 @46724 has 1 MA's), (33, 46790), (34, 46805), (Start: 45 @46835 has 2 MA's), (Start: 48 @46841 has 1 MA's), (66, 46883), (94, 46973), (109, 47018), (111, 47021), (118, 47039), (124, 47060), (128, 47072), (130, 47081), (131, 47084), (144, 47129), (150, 47153), (151, 47165), (156, 47186), (157, 47189), (167, 47237), (171, 47258), (191, 47327),

Gene: Mangeria_216 Start: 121341, Stop: 121796, Start Num: 62

Candidate Starts for Mangeria_216:

(28, 121227), (38, 121290), (Start: 45 @121308 has 2 MA's), (Start: 62 @121341 has 183 MA's), (66, 121359), (102, 121491), (109, 121509), (131, 121569), (157, 121677), (160, 121701), (178, 121764), (181, 121770),

Gene: Mapleville_79 Start: 46764, Stop: 47165, Start Num: 50

Candidate Starts for Mapleville_79:

(Start: 50 @46764 has 3 MA's), (Start: 62 @46776 has 183 MA's), (66, 46791), (73, 46821), (74, 46827), (85, 46851), (120, 46941), (122, 46947), (125, 46959), (135, 46998), (146, 47031), (164, 47106),

Gene: MargaretKali_66 Start: 36130, Stop: 36540, Start Num: 62

Candidate Starts for MargaretKali_66:

(Start: 62 @36130 has 183 MA's),

Gene: Maruru_52 Start: 40561, Stop: 41109, Start Num: 24

Candidate Starts for Maruru_52:

(Start: 24 @40561 has 2 MA's), (33, 40603), (68, 40714), (77, 40735), (112, 40804), (160, 40990),

Gene: MaterMagnus_86 Start: 49021, Stop: 49443, Start Num: 53

Candidate Starts for MaterMagnus_86:

(Start: 53 @49021 has 32 MA's), (Start: 62 @49030 has 183 MA's), (66, 49045), (73, 49075), (74, 49081), (85, 49105), (120, 49195), (174, 49408),

Gene: Matsumoto_213 Start: 119990, Stop: 120445, Start Num: 62

Candidate Starts for Matsumoto_213:

(28, 119876), (38, 119939), (Start: 45 @119957 has 2 MA's), (Start: 62 @119990 has 183 MA's), (66, 120008), (102, 120140), (109, 120158), (131, 120218), (157, 120326), (160, 120350), (178, 120413), (181, 120419),

Gene: Maturis_212 Start: 119509, Stop: 119964, Start Num: 62

Candidate Starts for Maturis_212:

(28, 119395), (38, 119458), (Start: 45 @119476 has 2 MA's), (Start: 62 @119509 has 183 MA's), (66, 119527), (102, 119659), (109, 119677), (131, 119737), (157, 119845), (160, 119869), (178, 119932), (181, 119938),

Gene: McGee_214 Start: 119184, Stop: 119639, Start Num: 62

Candidate Starts for McGee_214:

(28, 119070), (38, 119133), (Start: 45 @119151 has 2 MA's), (Start: 62 @119184 has 183 MA's), (66, 119202), (102, 119334), (109, 119352), (131, 119412), (157, 119520), (160, 119544), (178, 119607), (181, 119613),

Gene: McWolfish_212 Start: 120006, Stop: 120461, Start Num: 62

Candidate Starts for McWolfish_212:

(28, 119892), (38, 119955), (Start: 45 @119973 has 2 MA's), (Start: 62 @120006 has 183 MA's), (66, 120024), (102, 120156), (109, 120174), (131, 120234), (157, 120342), (160, 120366), (178, 120429), (181, 120435),

Gene: Megamind_212 Start: 120297, Stop: 120752, Start Num: 62

Candidate Starts for Megamind_212:

(28, 120183), (38, 120246), (Start: 45 @120264 has 2 MA's), (Start: 62 @120297 has 183 MA's), (66, 120315), (102, 120447), (109, 120465), (131, 120525), (157, 120633), (160, 120657), (178, 120720), (181, 120726),

Gene: Melons_45 Start: 27758, Stop: 28225, Start Num: 35

Candidate Starts for Melons_45:

(27, 27701), (Start: 35 @27758 has 52 MA's), (Start: 48 @27794 has 1 MA's), (68, 27854), (90, 27905), (97, 27920), (98, 27923), (114, 27956), (139, 28034), (144, 28046), (157, 28106), (160, 28130), (173, 28181), (176, 28187), (185, 28208), (186, 28214),

Gene: Melpomini_210 Start: 119082, Stop: 119537, Start Num: 62

Candidate Starts for Melpomini_210:

(28, 118968), (38, 119031), (Start: 45 @119049 has 2 MA's), (Start: 62 @119082 has 183 MA's), (66, 119100), (102, 119232), (109, 119250), (131, 119310), (157, 119418), (160, 119442), (178, 119505), (181, 119511),

Gene: MichelleMyBell_49 Start: 33179, Stop: 33610, Start Num: 45

Candidate Starts for MichelleMyBell_49:

(22, 33071), (Start: 45 @33179 has 2 MA's), (63, 33215), (64, 33218), (109, 33347), (115, 33362), (127, 33383), (148, 33461), (156, 33503), (159, 33527), (163, 33539), (173, 33581),

Gene: MidnightRain_92 Start: 49545, Stop: 49970, Start Num: 53

Candidate Starts for MidnightRain_92:

(36, 49515), (Start: 53 @49545 has 32 MA's), (Start: 62 @49557 has 183 MA's), (66, 49572), (73, 49602), (74, 49608), (85, 49632), (100, 49680), (138, 49791), (174, 49935),

Gene: MikeLiesIn_217 Start: 121433, Stop: 121888, Start Num: 62

Candidate Starts for MikeLiesIn_217:

(28, 121319), (38, 121382), (Start: 45 @121400 has 2 MA's), (Start: 62 @121433 has 183 MA's), (66, 121451), (102, 121583), (109, 121601), (131, 121661), (157, 121769), (160, 121793), (178, 121856), (181, 121862),

Gene: Mikro_211 Start: 121982, Stop: 122437, Start Num: 62

Candidate Starts for Mikro_211:

(28, 121868), (38, 121931), (Start: 45 @121949 has 2 MA's), (Start: 62 @121982 has 183 MA's), (66, 122000), (102, 122132), (109, 122150), (131, 122210), (157, 122318), (160, 122342), (178, 122405), (181, 122411),

Gene: MoMoMixon_213 Start: 120472, Stop: 120927, Start Num: 62

Candidate Starts for MoMoMixon_213:

(28, 120358), (38, 120421), (Start: 45 @120439 has 2 MA's), (Start: 62 @120472 has 183 MA's), (66, 120490), (102, 120622), (109, 120640), (131, 120700), (157, 120808), (160, 120832), (178, 120895), (181, 120901),

Gene: Moby_211 Start: 118454, Stop: 118909, Start Num: 62

Candidate Starts for Moby_211:

(28, 118340), (38, 118403), (Start: 45 @118421 has 2 MA's), (Start: 62 @118454 has 183 MA's), (66, 118472), (102, 118604), (109, 118622), (131, 118682), (157, 118790), (160, 118814), (178, 118877), (181, 118883),

Gene: Moiqah_210 Start: 118431, Stop: 118886, Start Num: 62

Candidate Starts for Moiqah_210:

(28, 118317), (38, 118380), (Start: 45 @118398 has 2 MA's), (Start: 62 @118431 has 183 MA's), (66, 118449), (102, 118581), (109, 118599), (131, 118659), (157, 118767), (160, 118791), (178, 118854), (181, 118860),

Gene: Momo_216 Start: 119548, Stop: 120003, Start Num: 62

Candidate Starts for Momo_216:

(28, 119434), (38, 119497), (Start: 45 @119515 has 2 MA's), (Start: 62 @119548 has 183 MA's), (66, 119566), (102, 119698), (109, 119716), (131, 119776), (157, 119884), (160, 119908), (178, 119971), (181, 119977),

Gene: Montpel_213 Start: 120651, Stop: 121106, Start Num: 62

Candidate Starts for Montpel_213:

(28, 120537), (38, 120600), (Start: 45 @120618 has 2 MA's), (Start: 62 @120651 has 183 MA's), (66, 120669), (102, 120801), (109, 120819), (131, 120879), (157, 120987), (160, 121011), (178, 121074), (181, 121080),

Gene: Morizzled23_212 Start: 118915, Stop: 119370, Start Num: 62

Candidate Starts for Morizzled23_212:

(28, 118801), (38, 118864), (Start: 45 @118882 has 2 MA's), (Start: 62 @118915 has 183 MA's), (66, 118933), (102, 119065), (109, 119083), (131, 119143), (157, 119251), (160, 119275), (178, 119338), (181, 119344),

Gene: Mufasa8_53 Start: 38883, Stop: 39419, Start Num: 23

Candidate Starts for Mufasa8_53:

(Start: 23 @38883 has 1 MA's), (33, 38925), (68, 39039), (69, 39042), (88, 39084), (112, 39129), (114, 39135), (119, 39144), (148, 39243), (155, 39282), (160, 39315), (189, 39408),

Gene: MurphyJoseph_84 Start: 47041, Stop: 47463, Start Num: 53

Candidate Starts for MurphyJoseph_84:

(Start: 53 @47041 has 32 MA's), (Start: 62 @47050 has 183 MA's), (66, 47065), (73, 47095), (74, 47101), (85, 47125), (120, 47215), (138, 47284), (174, 47428),

Gene: Naija_216 Start: 120251, Stop: 120706, Start Num: 62

Candidate Starts for Naija_216:

(28, 120137), (38, 120200), (Start: 45 @120218 has 2 MA's), (Start: 62 @120251 has 183 MA's), (66, 120269), (102, 120401), (109, 120419), (131, 120479), (157, 120587), (160, 120611), (178, 120674), (181, 120680),

Gene: Napoleon13_212 Start: 119279, Stop: 119734, Start Num: 62

Candidate Starts for Napoleon13_212:

(28, 119165), (38, 119228), (Start: 45 @119246 has 2 MA's), (Start: 62 @119279 has 183 MA's), (66, 119297), (102, 119429), (109, 119447), (131, 119507), (157, 119615), (160, 119639), (178, 119702), (181, 119708),

Gene: Nappy_216 Start: 120952, Stop: 121407, Start Num: 62

Candidate Starts for Nappy_216:

(28, 120838), (38, 120901), (Start: 45 @120919 has 2 MA's), (Start: 62 @120952 has 183 MA's), (66, 120970), (102, 121102), (109, 121120), (131, 121180), (157, 121288), (160, 121312), (178, 121375), (181, 121381),

Gene: Naval22_222 Start: 122028, Stop: 122483, Start Num: 62

Candidate Starts for Naval22_222:

(28, 121914), (38, 121977), (Start: 45 @121995 has 2 MA's), (Start: 62 @122028 has 183 MA's), (66, 122046), (102, 122178), (109, 122196), (131, 122256), (157, 122364), (160, 122388), (178, 122451), (181, 122457),

Gene: NedWong_214 Start: 120684, Stop: 121139, Start Num: 62

Candidate Starts for NedWong_214:

(28, 120570), (38, 120633), (Start: 45 @120651 has 2 MA's), (Start: 62 @120684 has 183 MA's), (66, 120702), (102, 120834), (109, 120852), (131, 120912), (157, 121020), (160, 121044), (178, 121107), (181, 121113),

Gene: Neville_76 Start: 48231, Stop: 48671, Start Num: 56

Candidate Starts for Neville_76:

(52, 48225), (Start: 56 @48231 has 4 MA's), (65, 48240), (96, 48333), (103, 48360), (124, 48402), (130, 48423), (131, 48426), (136, 48444), (148, 48489), (160, 48558), (162, 48564), (164, 48570), (165, 48573), (167, 48582), (178, 48621),

Gene: NewKitty_87 Start: 49196, Stop: 49621, Start Num: 53

Candidate Starts for NewKitty_87:

(25, 49091), (Start: 53 @49196 has 32 MA's), (Start: 62 @49208 has 183 MA's), (73, 49253), (74, 49259), (85, 49283), (174, 49586),

Gene: Ngannou_212 Start: 118530, Stop: 118985, Start Num: 62

Candidate Starts for Ngannou_212:

(28, 118416), (38, 118479), (Start: 45 @118497 has 2 MA's), (Start: 62 @118530 has 183 MA's), (66, 118548), (102, 118680), (109, 118698), (131, 118758), (157, 118866), (160, 118890), (178, 118953), (181, 118959),

Gene: Niblet_42 Start: 29318, Stop: 29785, Start Num: 35

Candidate Starts for Niblet_42:

(Start: 35 @29318 has 52 MA's), (Start: 48 @29354 has 1 MA's), (68, 29414), (114, 29516), (122, 29534), (139, 29594), (151, 29639), (157, 29666), (160, 29690), (162, 29696), (176, 29747), (186, 29774),

Gene: Nidhogg_216 Start: 121077, Stop: 121532, Start Num: 62

Candidate Starts for Nidhogg_216:

(28, 120963), (38, 121026), (Start: 45 @121044 has 2 MA's), (Start: 62 @121077 has 183 MA's), (66, 121095), (102, 121227), (109, 121245), (131, 121305), (157, 121413), (160, 121437), (178, 121500), (181, 121506),

Gene: NoSwimming_54 Start: 38737, Stop: 39144, Start Num: 59

Candidate Starts for NoSwimming_54:

(Start: 59 @38737 has 4 MA's), (83, 38809),

Gene: NoodleTree_221 Start: 120984, Stop: 121439, Start Num: 62

Candidate Starts for NoodleTree_221:

(28, 120870), (38, 120933), (Start: 45 @120951 has 2 MA's), (Start: 62 @120984 has 183 MA's), (66, 121002), (102, 121134), (109, 121152), (131, 121212), (157, 121320), (160, 121344), (178, 121407), (181, 121413),

Gene: Norm_215 Start: 120986, Stop: 121441, Start Num: 62

Candidate Starts for Norm_215:

(28, 120872), (38, 120935), (Start: 45 @120953 has 2 MA's), (Start: 62 @120986 has 183 MA's), (66, 121004), (102, 121136), (109, 121154), (131, 121214), (157, 121322), (160, 121346), (178, 121409), (181, 121415),

Gene: NuevoMundo_218 Start: 121545, Stop: 122000, Start Num: 62

Candidate Starts for NuevoMundo_218:

(28, 121431), (38, 121494), (Start: 45 @121512 has 2 MA's), (Start: 62 @121545 has 183 MA's), (66, 121563), (102, 121695), (109, 121713), (131, 121773), (157, 121881), (160, 121905), (178, 121968), (181, 121974),

Gene: Nyilah_93 Start: 48310, Stop: 48735, Start Num: 53

Candidate Starts for Nyilah_93:

(3, 47962), (18, 48157), (Start: 53 @48310 has 32 MA's), (Start: 62 @48322 has 183 MA's), (73, 48367), (74, 48373), (85, 48397), (100, 48445), (120, 48487), (174, 48700),

Gene: Octobien14_83 Start: 49218, Stop: 49616, Start Num: 61

Candidate Starts for Octobien14_83:

(40, 49179), (Start: 61 @49218 has 9 MA's), (65, 49230), (66, 49236), (86, 49290), (104, 49344), (116, 49371), (129, 49398), (131, 49407), (136, 49425), (148, 49467), (150, 49476), (173, 49587),

Gene: Oppalora_44 Start: 28377, Stop: 28811, Start Num: 48

Candidate Starts for Oppalora_44:

(Start: 35 @28341 has 52 MA's), (Start: 48 @28377 has 1 MA's), (75, 28458), (86, 28482), (97, 28506), (108, 28530), (114, 28542), (119, 28551), (122, 28560), (132, 28596), (144, 28632), (148, 28644), (151, 28665), (153, 28677), (161, 28719), (173, 28767), (177, 28776),

Gene: Orcanus_43 Start: 29287, Stop: 29754, Start Num: 35

Candidate Starts for Orcanus_43:

(Start: 35 @29287 has 52 MA's), (Start: 48 @29323 has 1 MA's), (68, 29383), (97, 29449), (114, 29485), (139, 29563), (144, 29575), (151, 29608), (157, 29635), (160, 29659), (176, 29716), (185, 29737), (186, 29743),

Gene: OrediggerDelux_211 Start: 121216, Stop: 121671, Start Num: 62

Candidate Starts for OrediggerDelux_211:

(28, 121102), (38, 121165), (Start: 45 @121183 has 2 MA's), (Start: 62 @121216 has 183 MA's), (66, 121234), (102, 121366), (109, 121384), (131, 121444), (157, 121552), (160, 121576), (178, 121639), (181, 121645),

Gene: OtsoOtso_44 Start: 27134, Stop: 27601, Start Num: 35

Candidate Starts for OtsoOtso_44:

(27, 27077), (Start: 35 @27134 has 52 MA's), (Start: 48 @27170 has 1 MA's), (68, 27230), (90, 27281), (97, 27296), (98, 27299), (114, 27332), (139, 27410), (144, 27422), (157, 27482), (160, 27506), (173, 27557), (176, 27563), (185, 27584), (186, 27590),

Gene: ParkTD_214 Start: 120548, Stop: 121003, Start Num: 62

Candidate Starts for ParkTD_214:

(28, 120434), (38, 120497), (Start: 45 @120515 has 2 MA's), (Start: 62 @120548 has 183 MA's), (66, 120566), (102, 120698), (109, 120716), (131, 120776), (157, 120884), (160, 120908), (178, 120971), (181, 120977),

Gene: Patter_216 Start: 119562, Stop: 120017, Start Num: 62

Candidate Starts for Patter_216:

(28, 119448), (38, 119511), (Start: 45 @119529 has 2 MA's), (Start: 62 @119562 has 183 MA's), (66, 119580), (102, 119712), (109, 119730), (131, 119790), (157, 119898), (160, 119922), (178, 119985), (181, 119991),

Gene: Pelletreau_52 Start: 29743, Stop: 30210, Start Num: 35

Candidate Starts for Pelletreau_52:

(Start: 35 @29743 has 52 MA's), (Start: 48 @29779 has 1 MA's), (68, 29839), (97, 29905), (114, 29941), (122, 29959), (139, 30019), (151, 30064), (157, 30091), (160, 30115), (162, 30121), (176, 30172), (186, 30199),

Gene: Persistence_79 Start: 45632, Stop: 46033, Start Num: 59

Candidate Starts for Persistence_79:

(49, 45617), (Start: 59 @45632 has 4 MA's), (83, 45707), (92, 45716), (170, 45992),

Gene: PharkleMinkus_217 Start: 119111, Stop: 119566, Start Num: 62

Candidate Starts for PharkleMinkus_217:

(28, 118997), (38, 119060), (Start: 45 @119078 has 2 MA's), (Start: 62 @119111 has 183 MA's), (66, 119129), (102, 119261), (109, 119279), (131, 119339), (157, 119447), (160, 119471), (178, 119534), (181, 119540),

Gene: PhirstandPhine_52 Start: 27904, Stop: 28371, Start Num: 35

Candidate Starts for PhirstandPhine_52:

(27, 27847), (Start: 35 @27904 has 52 MA's), (Start: 48 @27940 has 1 MA's), (68, 28000), (90, 28051), (97, 28066), (114, 28102), (139, 28180), (144, 28192), (157, 28252), (160, 28276), (173, 28327), (176, 28333), (185, 28354), (186, 28360),

Gene: Phlegm_219 Start: 120251, Stop: 120706, Start Num: 62

Candidate Starts for Phlegm_219:

(28, 120137), (38, 120200), (Start: 45 @120218 has 2 MA's), (Start: 62 @120251 has 183 MA's), (66, 120269), (102, 120401), (109, 120419), (131, 120479), (157, 120587), (160, 120611), (178, 120674), (181, 120680),

Gene: PhluffyCoco_45 Start: 28438, Stop: 28911, Start Num: 35

Candidate Starts for PhluffyCoco_45:

(Start: 35 @28438 has 52 MA's), (Start: 48 @28474 has 1 MA's), (75, 28555), (86, 28579), (114, 28639), (122, 28657), (151, 28765), (153, 28777), (176, 28873),

Gene: Phox_216 Start: 120213, Stop: 120668, Start Num: 62

Candidate Starts for Phox_216:

(28, 120099), (38, 120162), (Start: 45 @120180 has 2 MA's), (Start: 62 @120213 has 183 MA's), (66, 120231), (102, 120363), (109, 120381), (131, 120441), (157, 120549), (160, 120573), (178, 120636), (181, 120642),

Gene: Phrank15_92 Start: 49189, Stop: 49614, Start Num: 53

Candidate Starts for Phrank15_92:

(Start: 53 @49189 has 32 MA's), (Start: 62 @49201 has 183 MA's), (66, 49216), (73, 49246), (74, 49252), (85, 49276), (120, 49366), (125, 49384), (135, 49423), (138, 49435), (174, 49579),

Gene: Phusco_213 Start: 119083, Stop: 119538, Start Num: 62

Candidate Starts for Phusco_213:

(28, 118969), (38, 119032), (Start: 45 @119050 has 2 MA's), (Start: 62 @119083 has 183 MA's), (66, 119101), (102, 119233), (109, 119251), (131, 119311), (157, 119419), (160, 119443), (178, 119506), (181, 119512),

Gene: Pier_216 Start: 121090, Stop: 121545, Start Num: 62

Candidate Starts for Pier_216:

(28, 120976), (38, 121039), (Start: 45 @121057 has 2 MA's), (Start: 62 @121090 has 183 MA's), (66, 121108), (102, 121240), (109, 121258), (131, 121318), (157, 121426), (160, 121450), (178, 121513), (181, 121519),

Gene: Pigu_64 Start: 34020, Stop: 34448, Start Num: 48

Candidate Starts for Pigu_64:

(12, 33813), (Start: 48 @34020 has 1 MA's), (Start: 58 @34035 has 2 MA's), (92, 34131), (126, 34221), (170, 34407),

Gene: Pineda_45 Start: 27430, Stop: 27897, Start Num: 35

Candidate Starts for Pineda_45:

(27, 27373), (Start: 35 @27430 has 52 MA's), (Start: 48 @27466 has 1 MA's), (68, 27526), (90, 27577), (97, 27592), (114, 27628), (139, 27706), (144, 27718), (157, 27778), (160, 27802), (173, 27853), (176, 27859), (185, 27880), (186, 27886),

Gene: Pinkcreek_199 Start: 118466, Stop: 118921, Start Num: 62

Candidate Starts for Pinkcreek_199:

(28, 118352), (38, 118415), (Start: 45 @118433 has 2 MA's), (Start: 62 @118466 has 183 MA's), (66, 118484), (102, 118616), (109, 118634), (131, 118694), (157, 118802), (160, 118826), (178, 118889), (181, 118895),

Gene: Pio_223 Start: 122282, Stop: 122737, Start Num: 62

Candidate Starts for Pio_223:

(28, 122168), (38, 122231), (Start: 45 @122249 has 2 MA's), (Start: 62 @122282 has 183 MA's), (66, 122300), (102, 122432), (109, 122450), (131, 122510), (157, 122618), (160, 122642), (178, 122705), (181, 122711),

Gene: Pivoine_216 Start: 120251, Stop: 120706, Start Num: 62

Candidate Starts for Pivoine_216:

(28, 120137), (38, 120200), (Start: 45 @120218 has 2 MA's), (Start: 62 @120251 has 183 MA's), (66, 120269), (102, 120401), (109, 120419), (131, 120479), (157, 120587), (160, 120611), (178, 120674), (181, 120680),

Gene: Pleione_219 Start: 121026, Stop: 121481, Start Num: 62

Candidate Starts for Pleione_219:

(28, 120912), (38, 120975), (Start: 45 @120993 has 2 MA's), (Start: 62 @121026 has 183 MA's), (66, 121044), (102, 121176), (109, 121194), (131, 121254), (157, 121362), (160, 121386), (178, 121449), (181, 121455),

Gene: Polka_43 Start: 27134, Stop: 27601, Start Num: 35

Candidate Starts for Polka_43:

(27, 27077), (Start: 35 @27134 has 52 MA's), (Start: 48 @27170 has 1 MA's), (68, 27230), (90, 27281), (97, 27296), (98, 27299), (114, 27332), (139, 27410), (144, 27422), (157, 27482), (160, 27506), (173, 27557), (176, 27563), (185, 27584), (186, 27590),

Gene: Primadonna_210 Start: 119912, Stop: 120367, Start Num: 62

Candidate Starts for Primadonna_210:

(28, 119798), (38, 119861), (Start: 45 @119879 has 2 MA's), (Start: 62 @119912 has 183 MA's), (66, 119930), (102, 120062), (109, 120080), (131, 120140), (157, 120248), (160, 120272), (178, 120335), (181, 120341),

Gene: Pupusa_219 Start: 121590, Stop: 122045, Start Num: 62

Candidate Starts for Pupusa_219:

(1, 121071), (28, 121476), (38, 121539), (Start: 45 @121557 has 2 MA's), (Start: 62 @121590 has 183 MA's), (66, 121608), (102, 121740), (109, 121758), (131, 121818), (157, 121926), (160, 121950), (178, 122013), (181, 122019),

Gene: PurduePete_215 Start: 121254, Stop: 121709, Start Num: 62

Candidate Starts for PurduePete_215:

(28, 121140), (38, 121203), (Start: 45 @121221 has 2 MA's), (Start: 62 @121254 has 183 MA's), (66, 121272), (102, 121404), (109, 121422), (131, 121482), (157, 121590), (160, 121614), (178, 121677), (181, 121683),

Gene: Purky_56 Start: 37685, Stop: 38155, Start Num: 41

Candidate Starts for Purky_56:

(Start: 41 @37685 has 2 MA's), (66, 37736), (71, 37775), (81, 37805), (109, 37883), (130, 37934), (153, 38033), (157, 38045), (158, 38048), (162, 38075), (176, 38126), (178, 38132), (182, 38141),

Gene: QBert_207 Start: 118614, Stop: 119069, Start Num: 62

Candidate Starts for QBert_207:

(28, 118500), (38, 118563), (Start: 45 @118581 has 2 MA's), (Start: 62 @118614 has 183 MA's), (66, 118632), (102, 118764), (109, 118782), (131, 118842), (157, 118950), (160, 118974), (178, 119037), (181, 119043),

Gene: Quasimodo_217 Start: 119884, Stop: 120339, Start Num: 62

Candidate Starts for Quasimodo_217:

(28, 119770), (38, 119833), (Start: 45 @119851 has 2 MA's), (Start: 62 @119884 has 183 MA's), (66, 119902), (102, 120034), (109, 120052), (131, 120112), (157, 120220), (160, 120244), (178, 120307), (181, 120313),

Gene: Rabbitrun_79 Start: 48496, Stop: 48996, Start Num: 56

Candidate Starts for Rabbitrun_79:

(52, 48490), (Start: 56 @48496 has 4 MA's), (65, 48505), (66, 48511), (76, 48553), (96, 48598), (103, 48625), (124, 48667), (130, 48688), (131, 48691), (136, 48709), (159, 48820), (160, 48823), (162, 48829), (164, 48835), (165, 48838), (178, 48886), (192, 48964),

Gene: Rabinovish_208 Start: 120159, Stop: 120614, Start Num: 62

Candidate Starts for Rabinovish_208:

(28, 120045), (38, 120108), (Start: 45 @120126 has 2 MA's), (Start: 62 @120159 has 183 MA's), (66, 120177), (102, 120309), (109, 120327), (131, 120387), (157, 120495), (160, 120519), (178, 120582), (181, 120588),

Gene: RadFad_91 Start: 48709, Stop: 49134, Start Num: 53

Candidate Starts for RadFad_91:

(36, 48679), (Start: 53 @48709 has 32 MA's), (Start: 62 @48721 has 183 MA's), (66, 48736), (73, 48766), (74, 48772), (85, 48796), (100, 48844), (120, 48886), (138, 48955), (174, 49099),

Gene: Rahel_216 Start: 119986, Stop: 120441, Start Num: 62

Candidate Starts for Rahel_216:

(28, 119872), (38, 119935), (Start: 45 @119953 has 2 MA's), (Start: 62 @119986 has 183 MA's), (66, 120004), (102, 120136), (109, 120154), (131, 120214), (157, 120322), (160, 120346), (178, 120409), (181, 120415),

Gene: Raphaella_86 Start: 47326, Stop: 47757, Start Num: 53

Candidate Starts for Raphaella_86:

(36, 47296), (Start: 53 @47326 has 32 MA's), (Start: 62 @47338 has 183 MA's), (66, 47353), (73, 47383), (74, 47389), (85, 47413), (100, 47461), (138, 47572), (174, 47716),

Gene: Raqqa_86 Start: 48107, Stop: 48511, Start Num: 60

Candidate Starts for Raqqa_86:

(20, 47966), (Start: 60 @48107 has 4 MA's), (74, 48164), (82, 48182), (85, 48188), (120, 48278), (125, 48296), (149, 48380), (160, 48431), (174, 48476),

Gene: Rattail_45 Start: 28560, Stop: 28997, Start Num: 48

Candidate Starts for Rattail_45:

(Start: 35 @28524 has 52 MA's), (Start: 48 @28560 has 1 MA's), (75, 28641), (86, 28665), (114, 28725), (122, 28743), (151, 28851), (153, 28863), (176, 28959),

Gene: RedFox_45 Start: 28437, Stop: 28910, Start Num: 35

Candidate Starts for RedFox_45:

(Start: 35 @28437 has 52 MA's), (Start: 48 @28473 has 1 MA's), (75, 28554), (86, 28578), (114, 28638), (122, 28656), (151, 28764), (153, 28776), (176, 28872),

Gene: Renna12_44 Start: 28294, Stop: 28767, Start Num: 35

Candidate Starts for Renna12_44:

(Start: 35 @28294 has 52 MA's), (Start: 48 @28330 has 1 MA's), (75, 28411), (86, 28435), (114, 28495), (122, 28513), (148, 28600), (151, 28621), (153, 28633), (176, 28729),

Gene: Richie_89 Start: 49559, Stop: 49984, Start Num: 53

Candidate Starts for Richie_89:

(36, 49529), (Start: 53 @49559 has 32 MA's), (Start: 62 @49571 has 183 MA's), (66, 49586), (73, 49616), (74, 49622), (85, 49646), (120, 49736), (174, 49949),

Gene: Rizal_207 Start: 118504, Stop: 118959, Start Num: 62

Candidate Starts for Rizal_207:

(28, 118390), (38, 118453), (Start: 45 @118471 has 2 MA's), (Start: 62 @118504 has 183 MA's), (66, 118522), (102, 118654), (109, 118672), (131, 118732), (157, 118840), (160, 118864), (178, 118927), (181, 118933),

Gene: RoMag_210 Start: 120297, Stop: 120752, Start Num: 62

Candidate Starts for RoMag_210:

(28, 120183), (38, 120246), (Start: 45 @120264 has 2 MA's), (Start: 62 @120297 has 183 MA's), (66, 120315), (102, 120447), (109, 120465), (131, 120525), (157, 120633), (160, 120657), (178, 120720), (181, 120726),

Gene: Rocha_212 Start: 119740, Stop: 120195, Start Num: 62

Candidate Starts for Rocha_212:

(28, 119626), (38, 119689), (Start: 45 @119707 has 2 MA's), (Start: 62 @119740 has 183 MA's), (66, 119758), (102, 119890), (109, 119908), (131, 119968), (157, 120076), (160, 120100), (178, 120163), (181, 120169),

Gene: Ronan_211 Start: 118689, Stop: 119144, Start Num: 62

Candidate Starts for Ronan_211:

(28, 118575), (38, 118638), (Start: 45 @118656 has 2 MA's), (Start: 62 @118689 has 183 MA's), (66, 118707), (102, 118839), (109, 118857), (131, 118917), (157, 119025), (160, 119049), (178, 119112), (181, 119118),

Gene: Rooter_70 Start: 35994, Stop: 36416, Start Num: 58

Candidate Starts for Rooter_70:

(Start: 58 @35994 has 2 MA's), (92, 36090), (160, 36330), (170, 36366),

Gene: Roots515_217 Start: 121805, Stop: 122260, Start Num: 62

Candidate Starts for Roots515_217:

(28, 121691), (38, 121754), (Start: 45 @121772 has 2 MA's), (Start: 62 @121805 has 183 MA's), (66, 121823), (102, 121955), (109, 121973), (131, 122033), (157, 122141), (160, 122165), (178, 122228), (181, 122234),

Gene: Ruchi_41 Start: 28118, Stop: 28588, Start Num: 35

Candidate Starts for Ruchi_41:

(Start: 35 @28118 has 52 MA's), (Start: 48 @28154 has 1 MA's), (52, 28160), (86, 28256), (102, 28295), (114, 28316), (122, 28334), (132, 28370), (157, 28469), (160, 28493), (166, 28511), (178, 28556), (186, 28577),

Gene: SVoro_211 Start: 120599, Stop: 121054, Start Num: 62

Candidate Starts for SVoro_211:

(28, 120485), (38, 120548), (Start: 45 @120566 has 2 MA's), (Start: 62 @120599 has 183 MA's), (66, 120617), (102, 120749), (109, 120767), (131, 120827), (157, 120935), (160, 120959), (178, 121022), (181, 121028),

Gene: Sakai_82 Start: 47520, Stop: 47945, Start Num: 53

Candidate Starts for Sakai_82:

(Start: 53 @47520 has 32 MA's), (Start: 62 @47532 has 183 MA's), (66, 47547), (73, 47577), (74, 47583), (142, 47775), (146, 47787), (174, 47910),

Gene: Salacia_215 Start: 120389, Stop: 120844, Start Num: 62

Candidate Starts for Salacia_215:

(28, 120275), (38, 120338), (Start: 45 @120356 has 2 MA's), (Start: 62 @120389 has 183 MA's), (66, 120407), (102, 120539), (109, 120557), (131, 120617), (157, 120725), (160, 120749), (178, 120812), (181, 120818),

Gene: Sarge_59 Start: 33281, Stop: 33694, Start Num: 57

Candidate Starts for Sarge_59:

(Start: 50 @33269 has 3 MA's), (Start: 57 @33281 has 3 MA's), (92, 33377), (126, 33467), (170, 33653),

Gene: Satrap_85 Start: 47810, Stop: 48229, Start Num: 62

Candidate Starts for Satrap_85:

(36, 47771), (Start: 53 @47801 has 32 MA's), (Start: 62 @47810 has 183 MA's), (66, 47825), (73, 47855), (85, 47885), (120, 47975), (143, 48056), (174, 48188),

Gene: Sauce_211 Start: 119212, Stop: 119667, Start Num: 62

Candidate Starts for Sauce_211:

(1, 118693), (28, 119098), (38, 119161), (Start: 45 @119179 has 2 MA's), (Start: 62 @119212 has 183 MA's), (66, 119230), (102, 119362), (109, 119380), (131, 119440), (157, 119548), (160, 119572), (178, 119635), (181, 119641),

Gene: Scotia_53 Start: 37733, Stop: 38152, Start Num: 59

Candidate Starts for Scotia_53:

(Start: 59 @37733 has 4 MA's), (92, 37826), (131, 37934),

Gene: ScottMcG_209 Start: 119282, Stop: 119737, Start Num: 62

Candidate Starts for ScottMcG_209:

(28, 119168), (38, 119231), (Start: 45 @119249 has 2 MA's), (Start: 62 @119282 has 183 MA's), (66, 119300), (102, 119432), (109, 119450), (131, 119510), (157, 119618), (160, 119642), (178, 119705), (181, 119711),

Gene: Seahorse_92 Start: 52725, Stop: 53156, Start Num: 53

Candidate Starts for Seahorse_92:

(25, 52620), (Start: 53 @52725 has 32 MA's), (Start: 62 @52737 has 183 MA's), (66, 52752), (73, 52782), (74, 52788), (85, 52812), (174, 53115),

Gene: Sebata_216 Start: 120719, Stop: 121174, Start Num: 62

Candidate Starts for Sebata_216:

(28, 120605), (38, 120668), (Start: 45 @120686 has 2 MA's), (Start: 62 @120719 has 183 MA's), (66, 120737), (102, 120869), (109, 120887), (131, 120947), (157, 121055), (160, 121079), (178, 121142), (181, 121148),

Gene: Sejanus_66 Start: 51688, Stop: 52152, Start Num: 41

Candidate Starts for Sejanus_66:

(Start: 41 @51688 has 2 MA's), (66, 51739), (71, 51778), (81, 51808), (109, 51886), (130, 51937), (153, 52036), (157, 52048), (158, 52051), (162, 52078), (176, 52129), (182, 52144),

Gene: Sephiroth_83 Start: 50078, Stop: 50476, Start Num: 61

Candidate Starts for Sephiroth_83:

(Start: 61 @50078 has 9 MA's), (65, 50090), (66, 50096), (86, 50150), (104, 50204), (116, 50231), (131, 50267), (136, 50285), (148, 50327), (150, 50336), (151, 50348), (173, 50447),

Gene: Shaqnato_206 Start: 119420, Stop: 119875, Start Num: 62

Candidate Starts for Shaqnato_206:

(28, 119306), (38, 119369), (Start: 45 @119387 has 2 MA's), (Start: 62 @119420 has 183 MA's), (66, 119438), (102, 119570), (109, 119588), (131, 119648), (157, 119756), (160, 119780), (178, 119843), (181, 119849),

Gene: Shelob_216 Start: 122160, Stop: 122615, Start Num: 62

Candidate Starts for Shelob_216:

(28, 122046), (38, 122109), (Start: 45 @122127 has 2 MA's), (Start: 62 @122160 has 183 MA's), (66, 122178), (102, 122310), (109, 122328), (131, 122388), (157, 122496), (160, 122520), (178, 122583), (181, 122589),

Gene: Shen_42 Start: 27844, Stop: 28311, Start Num: 35

Candidate Starts for Shen_42:

(Start: 35 @27844 has 52 MA's), (Start: 48 @27880 has 1 MA's), (68, 27940), (97, 28006), (114, 28042), (122, 28060), (139, 28120), (157, 28192), (160, 28216), (162, 28222), (176, 28273), (185, 28294), (186, 28300),

Gene: ShiaLabeouf_212 Start: 119194, Stop: 119649, Start Num: 62

Candidate Starts for ShiaLabeouf_212:

(28, 119080), (38, 119143), (Start: 45 @119161 has 2 MA's), (Start: 62 @119194 has 183 MA's), (66, 119212), (102, 119344), (109, 119362), (131, 119422), (157, 119530), (160, 119554), (178, 119617), (181, 119623),

Gene: Shifa_192 Start: 118778, Stop: 119233, Start Num: 62

Candidate Starts for Shifa_192:

(28, 118664), (38, 118727), (Start: 45 @118745 has 2 MA's), (Start: 62 @118778 has 183 MA's), (66, 118796), (102, 118928), (109, 118946), (131, 119006), (157, 119114), (160, 119138), (178, 119201), (181, 119207),

Gene: Shnickers_213 Start: 119258, Stop: 119713, Start Num: 62

Candidate Starts for Shnickers_213:

(28, 119144), (38, 119207), (Start: 45 @119225 has 2 MA's), (Start: 62 @119258 has 183 MA's), (66, 119276), (102, 119408), (109, 119426), (131, 119486), (157, 119594), (160, 119618), (178, 119681), (181, 119687),

Gene: Shoya_62 Start: 35352, Stop: 35765, Start Num: 57

Candidate Starts for Shoya_62:

(31, 35286), (Start: 57 @35352 has 3 MA's), (92, 35448), (126, 35538), (160, 35688),

Gene: Shrimp_217 Start: 121315, Stop: 121770, Start Num: 62

Candidate Starts for Shrimp_217:

(28, 121201), (38, 121264), (Start: 45 @121282 has 2 MA's), (Start: 62 @121315 has 183 MA's), (66, 121333), (102, 121465), (109, 121483), (131, 121543), (157, 121651), (160, 121675), (178, 121738), (181, 121744),

Gene: Shukran_82 Start: 46326, Stop: 46727, Start Num: 59

Candidate Starts for Shukran_82:

(49, 46311), (Start: 59 @46326 has 4 MA's), (77, 46386), (83, 46401), (92, 46410), (101, 46443), (170, 46686),

Gene: SilverDipper_219 Start: 120807, Stop: 121262, Start Num: 62

Candidate Starts for SilverDipper_219:

(28, 120693), (38, 120756), (Start: 45 @120774 has 2 MA's), (Start: 62 @120807 has 183 MA's), (66, 120825), (102, 120957), (109, 120975), (131, 121035), (157, 121143), (160, 121167), (178, 121230), (181, 121236),

Gene: SmallFry_215 Start: 119352, Stop: 119807, Start Num: 62

Candidate Starts for SmallFry_215:

(28, 119238), (38, 119301), (Start: 45 @119319 has 2 MA's), (Start: 62 @119352 has 183 MA's), (66, 119370), (102, 119502), (109, 119520), (131, 119580), (157, 119688), (160, 119712), (178, 119775), (181, 119781),

Gene: SoilZilla_210 Start: 119907, Stop: 120362, Start Num: 62

Candidate Starts for SoilZilla_210:

(28, 119793), (38, 119856), (Start: 45 @119874 has 2 MA's), (Start: 62 @119907 has 183 MA's), (66, 119925), (102, 120057), (109, 120075), (131, 120135), (157, 120243), (160, 120267), (178, 120330), (181, 120336),

Gene: SonDevVon_93 Start: 48390, Stop: 48815, Start Num: 53

Candidate Starts for SonDevVon_93:

(25, 48285), (Start: 53 @48390 has 32 MA's), (Start: 62 @48402 has 183 MA's), (66, 48417), (73, 48447), (74, 48453), (85, 48477), (142, 48645), (146, 48657), (155, 48702), (174, 48780),

Gene: Sonali_52 Start: 41017, Stop: 41565, Start Num: 24

Candidate Starts for Sonali_52:

(Start: 24 @41017 has 2 MA's), (33, 41059), (68, 41170), (77, 41191), (112, 41260), (160, 41446),

Gene: Spec_210 Start: 119543, Stop: 119998, Start Num: 62

Candidate Starts for Spec_210:

(28, 119429), (33, 119459), (38, 119492), (Start: 45 @119510 has 2 MA's), (Start: 62 @119543 has 183 MA's), (66, 119561), (102, 119693), (109, 119711), (131, 119771), (157, 119879), (160, 119903), (178, 119966), (181, 119972),

Gene: Specks_219 Start: 120668, Stop: 121123, Start Num: 62

Candidate Starts for Specks_219:

(28, 120554), (38, 120617), (Start: 45 @120635 has 2 MA's), (Start: 62 @120668 has 183 MA's), (66, 120686), (102, 120818), (109, 120836), (131, 120896), (157, 121004), (160, 121028), (178, 121091), (181, 121097),

Gene: SpicyFrank_87 Start: 47815, Stop: 48240, Start Num: 53

Candidate Starts for SpicyFrank_87:

(Start: 53 @47815 has 32 MA's), (Start: 62 @47827 has 183 MA's), (66, 47842), (73, 47872), (74, 47878), (85, 47902), (112, 47974), (120, 47992), (174, 48205),

Gene: Splinter_57 Start: 38151, Stop: 38588, Start Num: 44

Candidate Starts for Splinter_57:

(Start: 44 @38151 has 5 MA's), (51, 38160), (Start: 54 @38163 has 1 MA's), (66, 38187), (86, 38241), (94, 38262), (124, 38343), (131, 38367), (144, 38412),

Gene: Sporco_87 Start: 49153, Stop: 49578, Start Num: 53

Candidate Starts for Sporco_87:

(25, 49048), (Start: 53 @49153 has 32 MA's), (Start: 62 @49165 has 183 MA's), (66, 49180), (73, 49210), (74, 49216), (85, 49240), (142, 49408), (146, 49420), (155, 49465), (174, 49543),

Gene: Sprinklers_213 Start: 119910, Stop: 120365, Start Num: 62

Candidate Starts for Sprinklers_213:

(28, 119796), (38, 119859), (Start: 45 @119877 has 2 MA's), (Start: 62 @119910 has 183 MA's), (66, 119928), (102, 120060), (109, 120078), (131, 120138), (157, 120246), (160, 120270), (178, 120333), (181, 120339),

Gene: Spud_209 Start: 119622, Stop: 120077, Start Num: 62

Candidate Starts for Spud_209:

(28, 119508), (38, 119571), (Start: 45 @119589 has 2 MA's), (Start: 62 @119622 has 183 MA's), (66, 119640), (102, 119772), (109, 119790), (131, 119850), (157, 119958), (160, 119982), (178, 120045), (181, 120051),

Gene: Squiddly_91 Start: 53227, Stop: 53721, Start Num: 56

Candidate Starts for Squiddly_91:

(Start: 56 @53227 has 4 MA's), (79, 53281), (124, 53386), (130, 53407), (131, 53410), (144, 53455), (156, 53512), (159, 53536), (160, 53539), (162, 53545), (163, 53548), (178, 53602), (190, 53650),

Gene: SrishMeg2525_212 Start: 120786, Stop: 121241, Start Num: 62

Candidate Starts for SrishMeg2525_212:

(28, 120672), (38, 120735), (Start: 45 @120753 has 2 MA's), (Start: 62 @120786 has 183 MA's), (66, 120804), (102, 120936), (109, 120954), (131, 121014), (157, 121122), (160, 121146), (178, 121209), (181, 121215),

Gene: StephanieG_211 Start: 120820, Stop: 121275, Start Num: 62

Candidate Starts for StephanieG_211:

(28, 120706), (38, 120769), (Start: 45 @120787 has 2 MA's), (Start: 62 @120820 has 183 MA's), (66, 120838), (102, 120970), (109, 120988), (131, 121048), (157, 121156), (160, 121180), (178, 121243), (181, 121249),

Gene: StuartMinion_37 Start: 25394, Stop: 25864, Start Num: 35

Candidate Starts for StuartMinion_37:

(Start: 35 @25394 has 52 MA's), (Start: 48 @25430 has 1 MA's), (86, 25535), (97, 25559), (114, 25595), (119, 25604), (122, 25613), (144, 25685), (148, 25697), (151, 25718), (153, 25730), (161, 25772), (173, 25820), (177, 25829),

Gene: Stubby_199 Start: 118669, Stop: 119124, Start Num: 62

Candidate Starts for Stubby_199:

(28, 118555), (38, 118618), (Start: 45 @118636 has 2 MA's), (Start: 62 @118669 has 183 MA's), (66, 118687), (102, 118819), (109, 118837), (131, 118897), (157, 119005), (160, 119029), (178, 119092), (181, 119098),

Gene: StubbySaigey_220 Start: 120341, Stop: 120796, Start Num: 62

Candidate Starts for StubbySaigey_220:

(28, 120227), (38, 120290), (Start: 45 @120308 has 2 MA's), (Start: 62 @120341 has 183 MA's), (66, 120359), (102, 120491), (109, 120509), (131, 120569), (157, 120677), (160, 120701), (178, 120764), (181, 120770),

Gene: Substance289_212 Start: 119400, Stop: 119855, Start Num: 62

Candidate Starts for Substance289_212:

(28, 119286), (38, 119349), (Start: 45 @119367 has 2 MA's), (Start: 62 @119400 has 183 MA's), (66, 119418), (102, 119550), (109, 119568), (131, 119628), (157, 119736), (160, 119760), (178, 119823), (181, 119829),

Gene: Sunshine23_54 Start: 40949, Stop: 41446, Start Num: 33

Candidate Starts for Sunshine23_54:

(Start: 24 @40907 has 2 MA's), (33, 40949), (68, 41060), (77, 41081), (112, 41150), (160, 41336),

Gene: Sweetums_44 Start: 26011, Stop: 25589, Start Num: 61

Candidate Starts for Sweetums_44:

(Start: 61 @26011 has 9 MA's), (80, 25945), (107, 25876), (112, 25864), (130, 25813), (133, 25804), (158, 25699),

Gene: Syleon_86 Start: 50016, Stop: 50414, Start Num: 61

Candidate Starts for Syleon_86:

(Start: 61 @50016 has 9 MA's), (65, 50028), (66, 50034), (86, 50088), (104, 50142), (116, 50169), (131, 50205), (136, 50223), (148, 50265), (150, 50274), (151, 50286), (173, 50385),

Gene: TZGordon_58 Start: 37043, Stop: 37483, Start Num: 44

Candidate Starts for TZGordon_58:

(Start: 44 @37043 has 5 MA's), (55, 37058), (66, 37082), (86, 37136), (124, 37238), (131, 37262), (144, 37307),

Gene: Tainan_216 Start: 119687, Stop: 120142, Start Num: 62

Candidate Starts for Tainan_216:

(28, 119573), (38, 119636), (Start: 45 @119654 has 2 MA's), (Start: 62 @119687 has 183 MA's), (66, 119705), (102, 119837), (109, 119855), (131, 119915), (157, 120023), (160, 120047), (178, 120110), (181, 120116),

Gene: TaylorSipht_43 Start: 28692, Stop: 29159, Start Num: 35

Candidate Starts for TaylorSipht_43:

(Start: 35 @28692 has 52 MA's), (38, 28704), (Start: 48 @28728 has 1 MA's), (86, 28830), (97, 28854), (114, 28890), (117, 28896), (122, 28908), (132, 28944), (137, 28968), (157, 29040), (160, 29064), (166, 29082), (169, 29097), (186, 29148),

Gene: Teardrop_212 Start: 118854, Stop: 119309, Start Num: 62

Candidate Starts for Teardrop_212:

(28, 118740), (38, 118803), (Start: 45 @118821 has 2 MA's), (Start: 62 @118854 has 183 MA's), (66, 118872), (102, 119004), (109, 119022), (131, 119082), (157, 119190), (160, 119214), (178, 119277), (181, 119283),

Gene: Teng_45 Start: 25920, Stop: 25498, Start Num: 61

Candidate Starts for Teng_45:

(32, 25998), (Start: 61 @25920 has 9 MA's), (80, 25854), (107, 25785), (112, 25773), (130, 25722), (133, 25713), (158, 25608),

Gene: ThayneTheZag_91 Start: 48711, Stop: 49115, Start Num: 60

Candidate Starts for ThayneTheZag_91:

(Start: 60 @48711 has 4 MA's), (66, 48732), (74, 48768), (85, 48792), (120, 48882), (125, 48900), (149, 48984), (160, 49035), (174, 49080),

Gene: Tiff81_81 Start: 46437, Stop: 46868, Start Num: 53

Candidate Starts for Tiff81_81:

(25, 46326), (Start: 45 @46428 has 2 MA's), (Start: 53 @46437 has 32 MA's), (Start: 62 @46449 has 183 MA's), (73, 46494), (74, 46500), (85, 46524), (174, 46827),

Gene: TinyTim_213 Start: 119635, Stop: 120090, Start Num: 62

Candidate Starts for TinyTim_213:

(28, 119521), (38, 119584), (Start: 45 @119602 has 2 MA's), (Start: 62 @119635 has 183 MA's), (66, 119653), (102, 119785), (109, 119803), (131, 119863), (157, 119971), (160, 119995), (178, 120058), (181, 120064),

Gene: Toad24_45 Start: 29983, Stop: 30450, Start Num: 35

Candidate Starts for Toad24_45:

(Start: 35 @29983 has 52 MA's), (Start: 48 @30019 has 1 MA's), (68, 30079), (97, 30145), (114, 30181), (122, 30199), (139, 30259), (157, 30331), (160, 30355), (162, 30361), (176, 30412), (185, 30433), (186, 30439),

Gene: Tonenili_237 Start: 125468, Stop: 125920, Start Num: 62

Candidate Starts for Tonenili_237:

(28, 125354), (38, 125417), (Start: 45 @125435 has 2 MA's), (46, 125438), (Start: 62 @125468 has 183 MA's), (66, 125486), (109, 125636), (131, 125696), (157, 125804), (160, 125828),

Gene: Tortoise16_213 Start: 120097, Stop: 120552, Start Num: 62

Candidate Starts for Tortoise16_213:

(28, 119983), (38, 120046), (Start: 45 @120064 has 2 MA's), (Start: 62 @120097 has 183 MA's), (66, 120115), (102, 120247), (109, 120265), (131, 120325), (157, 120433), (160, 120457), (178, 120520), (181, 120526),

Gene: Trax_79 Start: 49196, Stop: 49636, Start Num: 56

Candidate Starts for Trax_79:

(52, 49190), (Start: 56 @49196 has 4 MA's), (65, 49205), (96, 49298), (103, 49325), (124, 49367), (130, 49388), (131, 49391), (136, 49409), (148, 49454), (160, 49523), (162, 49529), (164, 49535), (165, 49538), (167, 49547), (178, 49586),

Gene: Trinitium_211 Start: 118389, Stop: 118844, Start Num: 62

Candidate Starts for Trinitium_211:

(28, 118275), (38, 118338), (Start: 45 @118356 has 2 MA's), (Start: 62 @118389 has 183 MA's), (66, 118407), (102, 118539), (109, 118557), (131, 118617), (157, 118725), (160, 118749), (178, 118812), (181, 118818),

Gene: TurkishDelight_64 Start: 53655, Stop: 54263, Start Num: 19

Candidate Starts for TurkishDelight_64:

(Start: 19 @53655 has 1 MA's), (42, 53787), (68, 53856), (69, 53859), (88, 53901), (117, 53967), (119, 53970), (145, 54060), (148, 54069), (165, 54159), (171, 54189), (175, 54198), (179, 54207),

Gene: Turret_208 Start: 117971, Stop: 118426, Start Num: 62

Candidate Starts for Turret_208:

(28, 117857), (38, 117920), (Start: 45 @117938 has 2 MA's), (Start: 62 @117971 has 183 MA's), (66, 117989), (102, 118121), (109, 118139), (131, 118199), (157, 118307), (160, 118331), (178, 118394), (181, 118400),

Gene: Tyke_213 Start: 121464, Stop: 121919, Start Num: 62

Candidate Starts for Tyke_213:

(28, 121350), (38, 121413), (Start: 45 @121431 has 2 MA's), (Start: 62 @121464 has 183 MA's), (66, 121482), (102, 121614), (109, 121632), (131, 121692), (157, 121800), (160, 121824), (178, 121887),

(181, 121893),

Gene: ValleyTerrace_216 Start: 119548, Stop: 120003, Start Num: 62

Candidate Starts for ValleyTerrace_216:

(28, 119434), (38, 119497), (Start: 45 @119515 has 2 MA's), (Start: 62 @119548 has 183 MA's), (66, 119566), (102, 119698), (109, 119716), (131, 119776), (157, 119884), (160, 119908), (178, 119971), (181, 119977),

Gene: Vendetta_57 Start: 38151, Stop: 38588, Start Num: 44

Candidate Starts for Vendetta_57:

(Start: 44 @38151 has 5 MA's), (51, 38160), (Start: 54 @38163 has 1 MA's), (66, 38187), (86, 38241), (94, 38262), (124, 38343), (131, 38367), (144, 38412),

Gene: Vopal_87 Start: 49392, Stop: 49823, Start Num: 53

Candidate Starts for Vopal_87:

(36, 49362), (Start: 53 @49392 has 32 MA's), (Start: 62 @49404 has 183 MA's), (66, 49419), (73, 49449), (74, 49455), (85, 49479), (100, 49527), (138, 49638), (174, 49782),

Gene: Vortrix_235 Start: 124255, Stop: 124707, Start Num: 62

Candidate Starts for Vortrix_235:

(28, 124141), (38, 124204), (Start: 45 @124222 has 2 MA's), (46, 124225), (Start: 62 @124255 has 183 MA's), (66, 124273), (109, 124423), (131, 124483), (157, 124591), (160, 124615),

Gene: Vulpecula_41 Start: 27795, Stop: 28265, Start Num: 35

Candidate Starts for Vulpecula_41:

(Start: 35 @27795 has 52 MA's), (Start: 48 @27831 has 1 MA's), (52, 27837), (86, 27933), (95, 27954), (102, 27972), (114, 27993), (122, 28011), (132, 28047), (157, 28146), (160, 28170), (166, 28188), (178, 28233), (186, 28254),

Gene: Wally_213 Start: 119532, Stop: 119987, Start Num: 62

Candidate Starts for Wally_213:

(28, 119418), (38, 119481), (Start: 45 @119499 has 2 MA's), (Start: 62 @119532 has 183 MA's), (66, 119550), (102, 119682), (109, 119700), (131, 119760), (157, 119868), (160, 119892), (178, 119955), (181, 119961),

Gene: Westrich_51 Start: 29667, Stop: 30134, Start Num: 35

Candidate Starts for Westrich_51:

(Start: 35 @29667 has 52 MA's), (Start: 48 @29703 has 1 MA's), (68, 29763), (97, 29829), (114, 29865), (122, 29883), (139, 29943), (151, 29988), (157, 30015), (160, 30039), (162, 30045), (176, 30096), (186, 30123),

Gene: WileyE_44 Start: 28771, Stop: 29241, Start Num: 35

Candidate Starts for WileyE_44:

(Start: 35 @28771 has 52 MA's), (Start: 48 @28807 has 1 MA's), (52, 28813), (86, 28909), (102, 28948), (114, 28969), (122, 28987), (132, 29023), (134, 29029), (148, 29074), (151, 29095), (160, 29146), (166, 29164), (178, 29209), (186, 29230),

Gene: Willis_216 Start: 120446, Stop: 120901, Start Num: 62

Candidate Starts for Willis_216:

(28, 120332), (38, 120395), (Start: 45 @120413 has 2 MA's), (Start: 62 @120446 has 183 MA's), (66, 120464), (102, 120596), (109, 120614), (131, 120674), (157, 120782), (160, 120806), (178, 120869), (181, 120875),

Gene: Windest_90 Start: 47044, Stop: 47469, Start Num: 53

Candidate Starts for Windest_90:

(36, 47014), (Start: 53 @47044 has 32 MA's), (Start: 62 @47056 has 183 MA's), (66, 47071), (73, 47101), (74, 47107), (85, 47131), (120, 47221), (174, 47434),

Gene: Wrackline_56 Start: 29872, Stop: 29441, Start Num: 61

Candidate Starts for Wrackline_56:

(33, 29953), (38, 29920), (Start: 58 @29881 has 2 MA's), (Start: 61 @29872 has 9 MA's), (Start: 62 @29869 has 183 MA's), (66, 29854), (70, 29824), (78, 29806), (87, 29788), (91, 29776), (113, 29716), (122, 29695), (126, 29680), (128, 29674), (150, 29593), (157, 29554), (160, 29530), (165, 29515), (183, 29455), (184, 29452),

Gene: Xavia_55 Start: 40820, Stop: 41251, Start Num: 45

Candidate Starts for Xavia_55:

(22, 40712), (Start: 45 @40820 has 2 MA's), (63, 40856), (64, 40859), (109, 40988), (115, 41003), (127, 41024), (148, 41102), (156, 41144), (159, 41168), (163, 41180), (173, 41222),

Gene: Yassified_212 Start: 119896, Stop: 120351, Start Num: 62

Candidate Starts for Yassified_212:

(1, 119377), (28, 119782), (38, 119845), (Start: 45 @119863 has 2 MA's), (Start: 62 @119896 has 183 MA's), (66, 119914), (102, 120046), (109, 120064), (131, 120124), (157, 120232), (160, 120256), (178, 120319), (181, 120325),

Gene: YemiJoy2021_216 Start: 121202, Stop: 121657, Start Num: 62

Candidate Starts for YemiJoy2021_216:

(28, 121088), (38, 121151), (Start: 45 @121169 has 2 MA's), (Start: 62 @121202 has 183 MA's), (66, 121220), (102, 121352), (109, 121370), (131, 121430), (157, 121538), (160, 121562), (178, 121625), (181, 121631),

Gene: YoungHarleezy_87 Start: 48839, Stop: 49270, Start Num: 53

Candidate Starts for YoungHarleezy_87:

(36, 48809), (Start: 53 @48839 has 32 MA's), (Start: 62 @48851 has 183 MA's), (66, 48866), (73, 48896), (74, 48902), (85, 48926), (174, 49229),

Gene: YoungMoneyMata_214 Start: 120016, Stop: 120471, Start Num: 62

Candidate Starts for YoungMoneyMata_214:

(28, 119902), (38, 119965), (Start: 45 @119983 has 2 MA's), (Start: 62 @120016 has 183 MA's), (66, 120034), (102, 120166), (109, 120184), (131, 120244), (157, 120352), (160, 120376), (178, 120439), (181, 120445),

Gene: Yucca_215 Start: 121194, Stop: 121649, Start Num: 62

Candidate Starts for Yucca_215:

(28, 121080), (38, 121143), (Start: 45 @121161 has 2 MA's), (Start: 62 @121194 has 183 MA's), (66, 121212), (102, 121344), (109, 121362), (131, 121422), (157, 121530), (160, 121554), (178, 121617), (181, 121623),

Gene: Zalkecks_214 Start: 120275, Stop: 120730, Start Num: 62

Candidate Starts for Zalkecks_214:

(28, 120161), (38, 120224), (Start: 45 @120242 has 2 MA's), (Start: 62 @120275 has 183 MA's), (66, 120293), (102, 120425), (109, 120443), (131, 120503), (157, 120611), (160, 120635), (178, 120698), (181, 120704),

Gene: Zeenon_217 Start: 120846, Stop: 121301, Start Num: 62

Candidate Starts for Zeenon_217:

(28, 120732), (38, 120795), (Start: 45 @120813 has 2 MA's), (Start: 62 @120846 has 183 MA's), (66, 120864), (102, 120996), (109, 121014), (131, 121074), (157, 121182), (160, 121206), (178, 121269), (181, 121275),

Gene: Zhuangyuan_47 Start: 28900, Stop: 29361, Start Num: 35

Candidate Starts for Zhuangyuan_47:

(Start: 35 @28900 has 52 MA's), (Start: 48 @28936 has 1 MA's), (67, 28993), (86, 29041), (97, 29065), (114, 29107), (151, 29227), (161, 29281), (162, 29284), (178, 29341), (182, 29350),

Gene: Zixiang_42 Start: 29348, Stop: 29815, Start Num: 35

Candidate Starts for Zixiang_42:

(Start: 35 @29348 has 52 MA's), (Start: 48 @29384 has 1 MA's), (68, 29444), (97, 29510), (114, 29546), (122, 29564), (139, 29624), (157, 29696), (160, 29720), (162, 29726), (176, 29777), (185, 29798), (186, 29804),

Gene: Zucker_84 Start: 49086, Stop: 49490, Start Num: 60

Candidate Starts for Zucker_84:

(7, 48822), (10, 48828), (11, 48840), (27, 48981), (Start: 60 @49086 has 4 MA's), (73, 49137), (74, 49143), (82, 49161), (85, 49167), (120, 49257), (125, 49275), (149, 49359), (160, 49410), (174, 49455),

Gene: ZygoTaiga_212 Start: 121466, Stop: 121921, Start Num: 62

Candidate Starts for ZygoTaiga_212:

(28, 121352), (38, 121415), (Start: 45 @121433 has 2 MA's), (Start: 62 @121466 has 183 MA's), (66, 121484), (102, 121616), (109, 121634), (131, 121694), (157, 121802), (160, 121826), (178, 121889), (181, 121895),