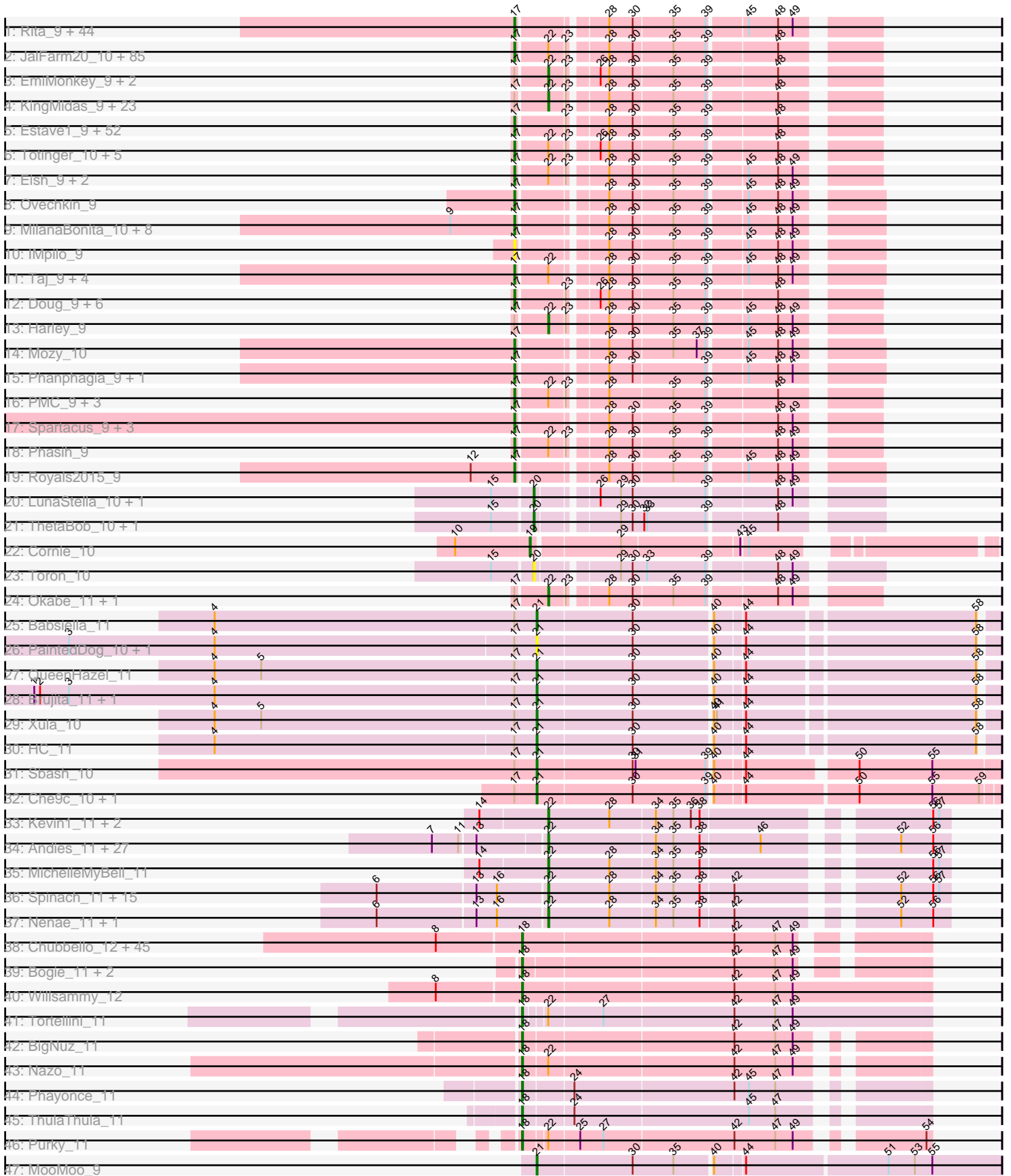


Pham 311106



Note: Tracks are now grouped by subcluster and scaled. Switching in subcluster is indicated by changes in track color. Track scale is now set by default to display the region 30 bp upstream of start 1 to 30 bp downstream of the last possible start. If this default region is judged to be packed too tightly with annotated starts, the track will be further scaled to only show that region of the ORF with annotated starts. This action will be indicated by adding "Zoomed" to the title. For starts, yellow indicates the location of called starts comprised solely of Glimmer/GeneMark auto-annotations, green indicates the location of called starts with at least 1 manual gene annotation.

Pham 311106 Report

This analysis was run 06/27/26 on database version 652.

Pham number 311106 has 383 members, 38 are drafts.

Phages represented in each track:

- Track 1 : Rita_9, DotProduct_9, LunaBlu_9, Enzomatic_10, NewHope4_9, StAnnes_9, Batiatus_9, Clank_9, Phalconet_9, PopTart_9, XFactor_9, Kenuha5_9, Corium_9, MinionDave_10, Krakatau_10, SuperGrey_9, Bipolar_9, Melissauren88_9, EleanorGeorge_9, Aubs_9, Fruitloop_9, Polo2Bam_10, Guppsters_9, SeaLumen_9, Galactic_9, Firehouse51_9, Medindi_9, Chevrolet_9, PhesterPhotato_9, SG4_9, MilleniumForce_10, DoRead_9, Cornucopia_10, DillTech15_9, Chuckly_9, Whatsapiecost_9, Tweety_9, KingJulian_9, PatoPoderoso_9, Hamulus_9, Ardmore_9, SassyB_9, ArcusAngelus_9, CaptainTrips_10, Filuzino_9
- Track 2 : JalFarm20_10, Flathead_10, Scottish_9, ByChance_9, Beanstalk_10, Wachhund_9, Zerg_9, Saal_9, Aloeri_10, Tootsieroll_10, VRedHorse_9, TootsiePop_10, Dorothy_9, Florinda_9, OldBen_9, Burwell21_9, Latretium_9, ChickenDinner_10, BlueCrab_9, Fastidio_9, DocMcStuffins_10, Girr_9, Polka14_9, Nimbo_9, Nivrat_9, Violac_9, Leperchaun_9, Dante_9, Sandalphon_9, Brushbloom_10, Coco12_10, Nitzel_10, Crumble_9, RedBird_9, Bobi_10, Minnie_9, Empress_9, Job42_10, Alexphander_10, Inventum_9, Koella_9, Maravista_9, Sassafras_9, Byougenkin_9, SimranZ1_10, DaddyRickover_9, Kersh_9, LilMoolah_9, SwagPigglett_9, Stap_10, Mahavrat_9, Ogopogo_12, Mattes_9, Eradicator_9, FreddyB_9, Hegedechwinu_10, Awesomesauce_10, Radiance_9, Squirty_10, Bubbles123_9, RitaG_9, Che8_9, NormanBulbieJr_9, BuzzLyseyear_10, Whouxphf_9, Gandolph_9, OlympiaSaint_9, ShiLan_9, Jarcob_9, Martik_9, Deb65_9, MisterCuddles_9, BodEinwohner17_9, PHappiness_9, Cheesepuff_9, JoeyJr_9, Misha28_10, Clifton_9, Spoonbill_9, Geralt_9, Doomphist_9, Brocalys_9, lbOuu_9, Ruby_9, Priscilla_9, Marker_10
- Track 3 : EmiMonkey_9, PhilipPhlop_9, Mantra_9
- Track 4 : KingMidas_9, BobaPhett_9, Doomslug_11, Vivum_9, MulchSalad_9, James_9, Pacc40_9, ShowerHandel_9, Cabrinians_9, Zizzle_9, Ramsey_10, Gorge_9, Pippy_9, Philus_9, Jennelsea_9, Grimmer_10, Seagreen_10, LastJedi_9, Yorick_9, Lizziana_9, Piper2020_10, Daenerys_9, Poenanya_9, Frankie_10
- Track 5 : Estave1_9, Madiba_10, Seabastian_9, Cerasum_10, UncleRicky_10, Veteran_9, Lorde_10, Sabbb_9, OwlsT2W_10, BigPhil_10, Hades_9, Juniper1_9, Boomer_10, Modragons_9, Hlubikazi_9, Lucia_10, MadMen_9, DaWorst_10, Leozinho_10, Donkeykong_9, Brookers_10, DosHalletts_10, Ochi17_9, Tchotchke_10, Spikelee_10, Quico_10, Oksu_10, Plumbus_10, RockyHorror_10, TDanisky_9, Girafales_10, Velveteen_10, DRBy19_9, Kimberlium_10, Beakin_10, Nichirin_9, LordVader_11, Strokeseat_9, Juice456_10, Karhdo_9, MulchExplorer_10, Llama_9, Enby_10, AlpineSix_9, GUmbie_9, Sparkdehlily_9, Mandlovu_9, DirtMcgirt_10, OfUltron_9, Sarma624_10, Kingsley_10, Drago_10, Jinglebell_9

- Track 6 : Totinger_10, GigiOuiOui_9, Rialto_10, Emmaloid_10, Slim_10, Moonbeam_9
- Track 7 : Eish_9, Ibhubesi_9, Mwanjiwa_9
- Track 8 : Ovechkin_9
- Track 9 : MilanaBonita_10, Ms6_9, Topiatin_11, DLane_9, SiSi_9, QuickMath_9, KristaRAM_10, Jant_9, Akhila_10
- Track 10 : IMpilo_9
- Track 11 : Taj_9, Wee_9, DeadP_9, ShroomBoi_9, Emma_9
- Track 12 : Doug_9, LittleShirley_10, Mova_10, Starceвич_10, Peridot_11, Blexus_9, Pollywog_10
- Track 13 : Harley_9
- Track 14 : Mozy_10
- Track 15 : Phanphagia_9, Shauna1_9
- Track 16 : PMC_9, Phatniss_9, Llij_9, Rockne_9
- Track 17 : Spartacus_9, IrishSherpFalk_9, Mutaforma13_9, WillSterrel_9
- Track 18 : Phasih_9
- Track 19 : Royals2015_9
- Track 20 : LunaStella_10, TChen_10
- Track 21 : ThetaBob_10, Renaud18_10
- Track 22 : Cornie_10
- Track 23 : Toron_10
- Track 24 : Okabe_11, Fancypants_9
- Track 25 : Babsiella_11
- Track 26 : PaintedDog_10, Bluvara_11
- Track 27 : QueenHazel_11
- Track 28 : Brujita_11, Island3_11
- Track 29 : Xula_10
- Track 30 : HC_11
- Track 31 : Sbash_10
- Track 32 : Che9c_10, Stuck_10
- Track 33 : Kevin1_11, Butters_11, Rubeelu_11
- Track 34 : Andies_11, Smurph_11, Bosection6_11, Fulbright_11, Journey_11, Gex_11, Schnauzer_11, Scitech_11, Carcharodon_11, Silvy_11, Charlie_11, EGUnicorn_11, Melville_11, Magsby_11, Parmesanjohn_11, Silvafighter_11, Duplicity_11, Xerxes_11, Philonius_11, Pipsqueaks_11, Cubone_10, Xeno_11, Tortoise12_11, Phloss_11, Tessdabest_10, Tapioca_11, Aggie_11, Chewbacca_11
- Track 35 : MichelleMyBell_11
- Track 36 : Spinach_11, Rebel_11, Redi_11, Panchino_11, PhancyPhin_11, Shweta_11, ShrimpFriedEgg_11, Phrann_11, Snekmaggedon_11, Raymond7_11, Jamie19_11, Hanako_11, SkinnyPete_11, Impisi_11, BabeRuth_11, SpongeBob_11
- Track 37 : Nенаe_11, Purgamenstris_11
- Track 38 : Chubbello_12, Langerak_12, Xavia_12, Glaske_12, Fishburne_12, Donovan_12, Ksquared_12, Arib1_12, Bhagsy_12, PeanutPie_12, CactusJack_12, Bartholomew_12, Atcoo_12, Jebeks_12, Etoile_12, GaloreK_12, Sonah_12, Zilizebeth_12, Necropolis_12, Techage_12, Dynamo_12, Venti_12, Gavriela_12, Brusacoram_12, FirstPlacePfu_12, KilKor_12, Phalm_12, Bunnies_12, Malithi_12, Thespis_12, GreaseLightnin_12, Phineas_12, StevieRay_12, Kari_12, HUHilltop_12, Juniormint_12, Mangethe_12, Majeke_12, StressBall_12, Megiddo_12, Polkaroo_12, Camster_12, Vidya_12, Phegasus_12, Jung_12, BronnyJr_12
- Track 39 : Bogie_11, Shipwreck_11, Pygmy_11
- Track 40 : Willsammy_12
- Track 41 : Tortellini_11
- Track 42 : BigNuz_11

- Track 43 : Nazo_11
- Track 44 : Phayonce_11
- Track 45 : ThulaThula_11
- Track 46 : Purky_11
- Track 47 : MooMoo_9

Summary of Final Annotations (See graph section above for start numbers):

The start number called the most often in the published annotations is 17, it was called in 210 of the 345 non-draft genes in the pham.

Genes that call this "Most Annotated" start:

- Akhila_10, Alexphander_10, Aloeri_10, AlpineSix_9, ArcusAngelus_9, Ardmore_9, Aubs_9, Awesomesauce_10, Batiatus_9, Beakin_10, Beanstalk_10, BigPhil_10, Bipolar_9, Blexus_9, BlueCrab_9, Bobi_10, BodEinwohner17_9, Boomer_10, Brocalys_9, Brookers_10, Brushbloom_10, Bubbles123_9, Burwell21_9, BuzzLyseyear_10, ByChance_9, Byougenkin_9, CaptainTrips_10, Cerasum_10, Che8_9, CheesePuff_9, Chevrolet_9, ChickenDinner_10, Chuckly_9, Clank_9, Clifton_9, Coco12_10, Corium_9, Cornucopia_10, Crumble_9, DLane_9, DRBy19_9, DaWorst_10, DaddyRickover_9, Dante_9, DeadP_9, Deb65_9, DillTech15_9, DirtMcGirt_10, DoRead_9, DocMcStuffins_10, Donkeykong_9, Doomphist_9, Dorothy_9, DosHalletts_10, DotProduct_9, Doug_9, Drago_10, Eish_9, EleanorGeorge_9, Emma_9, Emmaloid_10, Empress_9, Enby_10, Enzomatic_10, Eradicator_9, Estave1_9, Fastidio_9, Filuzino_9, Firehouse51_9, Flathead_10, Florinda_9, FreddyB_9, Fruitloop_9, GUmble_9, Galactic_9, Gandolph_9, Geralt_9, GigiOuiOui_9, Girafales_10, Girr_9, Guppsters_9, Hades_9, Hamulus_9, Hegedechwinu_10, Hlubikazi_9, IMpilo_9, IbOuu_9, Ibhubesi_9, Inventum_9, IrishSherpFalk_9, JalFarm20_10, Jant_9, Jarcob_9, Jinglebell_9, Job42_10, JoeyJr_9, Juice456_10, Juniper1_9, Karhdo_9, Kenuha5_9, Kersh_9, Kimberlium_10, KingJulian_9, Kingsley_10, Koella_9, Krakatau_10, KristaRAM_10, Latretium_9, Leozinho_10, Leperchaun_9, LilMoolah_9, LittleShirley_10, Llama_9, Llij_9, LordVader_11, Lorde_10, Lucia_10, LunaBlu_9, MadMen_9, Madiba_10, Mahavrat_9, Mandlovu_9, Maravista_9, Marker_10, Martik_9, Mattes_9, Medindi_9, Melissauren88_9, MilanaBonita_10, MilleniumForce_10, MinionDave_10, Minnie_9, Misha28_10, MisterCuddles_9, Modragons_9, Moonbeam_9, Mova_10, Mozy_10, Ms6_9, MulchExplorer_10, Mutaforma13_9, Mwanjiwa_9, NewHope4_9, Nichirin_9, Nimbo_9, Nitzel_10, Nivrat_9, NormanBulbieJr_9, Ochi17_9, OfUltron_9, Oogopogo_12, Oksu_10, OldBen_9, OlympiaSaint_9, Ovechkin_9, OwlsT2W_10, PHappiness_9, PMC_9, PatoPoderoso_9, Peridot_11, Phalconet_9, Phanphagia_9, Phasih_9, Phatniss_9, PhesterPhotato_9, Plumbus_10, Polka14_9, Pollywog_10, Polo2Bam_10, PopTart_9, Priscilla_9, QuickMath_9, Quico_10, Radiance_9, RedBird_9, Rialto_10, RitaG_9, Rita_9, Rockne_9, RockyHorror_10, Royals2015_9, Ruby_9, SG4_9, Saal_9, Sabbb_9, Sandalphon_9, Sarma624_10, Sassafras_9, SassyB_9, Scottish_9, SeaLumen_9, Seabastian_9, Shauna1_9, ShiLan_9, ShroomBoi_9, SiSi_9, SimranZ1_10, Slim_10, Sparkdehlily_9, Spartacus_9, Spikelee_10, Spoonbill_9, Squirty_10, StAnnes_9, Stap_10, Starceвич_10, StrokeSeat_9, SuperGrey_9, SwagPigglett_9, TDanisky_9, Taj_9, Tchotchke_10, TootsiePop_10, Tootsieroll_10, Topiatin_11, Totinger_10, Tweety_9, UncleRicky_10, VRedHorse_9, Velveteen_10, Veteran_9, Violac_9, Wachhund_9, Wee_9, Whatsapiecost_9, Whouxphf_9, WillSterrel_9, XFactor_9, Zerg_9,

Genes that have the "Most Annotated" start but do not call it:

- Babsiella_11, Bluvara_11, BobaPhett_9, Brujita_11, Cabrinians_9, Che9c_10, Daenerys_9, Doomslug_11, EmiMonkey_9, Fancypants_9, Frankie_10, Gorge_9, Grimmer_10, HC_11, Harley_9, Island3_11, James_9, Jennelsea_9, KingMidas_9, LastJedi_9, Lizziana_9, Mantra_9, MulchSalad_9, Okabe_11, Pacc40_9, PaintedDog_10, Philus_9, PhlipPhlop_9, Piper2020_10, Pippy_9, Poenanya_9, QueenHazel_11, Ramsey_10, Sbash_10, Seagreen_10, ShowerHandel_9, Stuck_10, Vivum_9, Xula_10, Yorick_9, Zizzle_9,

Genes that do not have the "Most Annotated" start:

- Aggie_11, Andies_11, Arib1_12, Atcoo_12, BabeRuth_11, Bartholomew_12, Bhagsy_12, BigNuz_11, Bogie_11, Bosection6_11, BronnyJr_12, Brusacoram_12, Bunnies_12, Butters_11, CactusJack_12, Camster_12, Carcharodon_11, Charlie_11, Chewbacca_11, Chubbello_12, Cornie_10, Cubone_10, Donovan_12, Duplicity_11, Dynamo_12, EGUnicorn_11, Etoile_12, FirstPlacePfu_12, Fishburne_12, Fulbright_11, GaloreK_12, Gavriela_12, Gex_11, Glaske_12, GreaseLightnin_12, HUHilltop_12, Hanako_11, Impisi_11, Jamie19_11, Jebeks_12, Journey_11, Jung_12, Juniormint_12, Kari_12, Kevin1_11, KilKor_12, Ksquared_12, Langerak_12, LunaStella_10, Magsby_11, Majeke_12, Malithi_12, Mangethe_12, Megiddo_12, Melville_11, MichelleMyBell_11, MooMoo_9, Nazo_11, Necropolis_12, Nenae_11, Panchino_11, Parmesanjohn_11, PeanutPie_12, Phalm_12, PhancyPhin_11, Phayonce_11, Phegasus_12, Philonius_11, Phineas_12, Phloss_11, Phrann_11, Pipsqueaks_11, Polkaroo_12, Purgamenstris_11, Purky_11, Pygmy_11, Raymond7_11, Rebel_11, Redi_11, Renaud18_10, Rubeelu_11, Schnauzer_11, Scitech_11, Shipwreck_11, ShrimpFriedEgg_11, Shweta_11, Silvafighter_11, Silvy_11, SkinnyPete_11, Smurph_11, Snekmaggon_11, Sonah_12, Spinach_11, SpongeBob_11, StevieRay_12, StressBall_12, TChen_10, Tapioca_11, Techage_12, Tessdabest_10, Thespis_12, ThetaBob_10, ThulaThula_11, Toron_10, Tortellini_11, Tortoise12_11, Venti_12, Vidya_12, Willsammy_12, Xavia_12, Xeno_11, Xerxes_11, Zilizebeth_12,

Summary by start number:

Start 17:

- Found in 270 of 383 (70.5%) of genes in pham
- Manual Annotations of this start: 210 of 345
- Called 84.8% of time when present
- Phage (with cluster) where this start called: Akhila_10 (F1), Alexphander_10 (F1), Aloeri_10 (F1), AlpineSix_9 (F1), ArcusAngelus_9 (F1), Ardmore_9 (F1), Aubs_9 (F1), Awesomesauce_10 (F1), Batiatus_9 (F1), Beakin_10 (F1), Beanstalk_10 (F1), BigPhil_10 (F1), Bipolar_9 (F1), Blexus_9 (F1), BlueCrab_9 (F1), Bobi_10 (F1), BodEinwohner17_9 (F1), Boomer_10 (F1), Brocalys_9 (F1), Brookers_10 (F1), Brushbloom_10 (F1), Bubbles123_9 (F1), Burwell21_9 (F1), BuzzLyseyear_10 (F1), ByChance_9 (F1), Byougenkin_9 (F1), CaptainTrips_10 (F1), Cerasum_10 (F1), Che8_9 (F1), CheesePuff_9 (F1), Chevrolet_9 (F1), ChickenDinner_10 (F1), Chuckly_9 (F1), Clank_9 (F), Clifton_9 (F1), Coco12_10 (F1), Corium_9 (F1), Cornucopia_10 (F1), Crumble_9 (F1), DLane_9 (F1), DRBy19_9 (F1), DaWorst_10 (F1), DaddyRickover_9 (F1), Dante_9 (F1), DeadP_9 (F1), Deb65_9 (F1), DillTech15_9 (F1), DirtMcgirt_10 (F1), DoRead_9 (F1), DocMcStuffins_10 (F1), Donkeykong_9 (F1), Doomphist_9 (F1), Dorothy_9 (F1), DosHalletts_10 (F1), DotProduct_9 (F1), Doug_9 (F1), Drago_10 (F1), Eish_9 (F1), EleanorGeorge_9 (F1), Emma_9 (F1), Emmaloid_10 (F1), Empress_9 (F1), Enby_10 (F1), Enzomatic_10

(F1), Eradicator_9 (F1), Estave1_9 (F1), Fastidio_9 (F1), Filuzino_9 (F1), Firehouse51_9 (F1), Flathead_10 (F1), Florinda_9 (F1), FreddyB_9 (F1), Fruitloop_9 (F1), GUmbie_9 (F1), Galactic_9 (F1), Gandalph_9 (F1), Geralt_9 (F1), GigiOuiOui_9 (F1), Girafales_10 (F1), Girr_9 (F1), Guppsters_9 (F1), Hades_9 (F1), Hamulus_9 (F1), Hegedechwinu_10 (F1), Hlubikazi_9 (F1), IMpilo_9 (F1), IbOuu_9 (F1), Ibhubesi_9 (F1), Inventum_9 (F1), IrishSherpFalk_9 (F1), JalFarm20_10 (F1), Jant_9 (F1), Jarcob_9 (F1), Jinglebell_9 (F1), Job42_10 (F1), JoeyJr_9 (F1), Juice456_10 (F1), Juniper1_9 (F1), Karhdo_9 (F1), Kenuha5_9 (F1), Kersh_9 (F1), Kimberlium_10 (F1), KingJulian_9 (F1), Kingsley_10 (F1), Koella_9 (F1), Krakatau_10 (F1), KristaRAM_10 (F1), Latretium_9 (F1), Leozinho_10 (F1), Leperchaun_9 (F1), LilMoolah_9 (F1), LittleShirley_10 (F1), Llama_9 (F1), Llij_9 (F1), LordVader_11 (F), Lorde_10 (F1), Lucia_10 (F1), LunaBlu_9 (F1), MadMen_9 (F1), Madiba_10 (F1), Mahavrat_9 (F1), Mandlovu_9 (F1), Maravista_9 (F1), Marker_10 (F1), Martik_9 (F1), Mattes_9 (F1), Medindi_9 (F1), Melissauren88_9 (F1), MilanaBonita_10 (F1), MilleniumForce_10 (F1), MinionDave_10 (F1), Minnie_9 (F1), Misha28_10 (F1), MisterCuddles_9 (F1), Modragons_9 (F1), Moonbeam_9 (F1), Mova_10 (F1), Mozy_10 (F1), Ms6_9 (F1), MulchExplorer_10 (F1), Mutaforma13_9 (F1), Mwanjiwa_9 (F1), NewHope4_9 (F1), Nichirin_9 (F1), Nimbo_9 (F1), Nitzel_10 (F1), Nivrat_9 (F1), NormanBulbieJr_9 (F1), Ochi17_9 (F1), OfUltron_9 (F1), Ogopogo_12 (F1), Okusu_10 (F1), OldBen_9 (F1), OlympiaSaint_9 (F1), Ovechkin_9 (F1), OwlsT2W_10 (F1), PHappiness_9 (F1), PMC_9 (F1), PatoPoderoso_9 (F1), Peridot_11 (F1), Phalconet_9 (F1), Phanphagia_9 (F1), Phasih_9 (F1), Phatniss_9 (F1), PhesterPhotato_9 (F1), Plumbus_10 (F1), Polka14_9 (F1), Pollywog_10 (F1), Polo2Bam_10 (F1), PopTart_9 (F1), Priscilla_9 (F1), QuickMath_9 (F1), Quico_10 (F1), Radiance_9 (F1), RedBird_9 (F1), Rialto_10 (F1), RitaG_9 (F1), Rita_9 (F1), Rockne_9 (F1), RockyHorror_10 (F1), Royals2015_9 (F1), Ruby_9 (F1), SG4_9 (F1), Saal_9 (F1), Sabbb_9 (F1), Sandalphon_9 (F1), Sarma624_10 (F1), Sassafras_9 (F1), SassyB_9 (F1), Scottish_9 (F1), SeaLumen_9 (F1), Seabastian_9 (F1), Shauna1_9 (F1), ShiLan_9 (F1), ShroomBoi_9 (F1), SiSi_9 (F1), SimranZ1_10 (F1), Slim_10 (F1), Sparkdehlily_9 (F1), Spartacus_9 (F1), Spikelee_10 (F1), Spoonbill_9 (F1), Squirty_10 (F3), StAnnes_9 (F1), Stap_10 (F1), Starcevich_10 (F1), Strokeseat_9 (F1), SuperGrey_9 (F1), SwagPigglett_9 (F1), TDanisky_9 (F1), Taj_9 (F1), Tchotchke_10 (F1), TootsiePop_10 (F1), Tootsieroll_10 (F1), Topiatin_11 (F1), Totinger_10 (F1), Tweety_9 (F1), UncleRicky_10 (F1), VRedHorse_9 (F1), Velveteen_10 (F1), Veteran_9 (F1), Violac_9 (F1), Wachhund_9 (F1), Wee_9 (F1), Whatsapiecost_9 (F1), Whouxphf_9 (F1), WillSterrel_9 (F1), XFactor_9 (F1), Zerg_9 (F1),

Start 18:

- Found in 56 of 383 (14.6%) of genes in pham
- Manual Annotations of this start: 50 of 345
- Called 100.0% of time when present
- Phage (with cluster) where this start called: Arib1_12 (P1), Atcoo_12 (P1), Bartholomew_12 (P1), Bhagsy_12 (P1), BigNuz_11 (P4), Bogie_11 (P1), BronnyJr_12 (P1), Brusacoram_12 (P1), Bunnies_12 (P1), CactusJack_12 (P1), Camster_12 (P1), Chubbello_12 (P1), Donovan_12 (P1), Dynamo_12 (P1), Etoile_12 (P1), FirstPlacePfu_12 (P1), Fishburne_12 (P1), GaloreK_12 (P1), Gavriela_12 (P1), Glaske_12 (P1), GreaseLightnin_12 (P1), HUHilltop_12 (P1), Jebeks_12 (P1), Jung_12 (P1), Juniormint_12 (P1), Kari_12 (P1), KilKor_12 (P1), Ksquared_12 (P1), Langerak_12 (P1), Majeke_12 (P1), Malithi_12 (P1), Mangethe_12 (P1), Megiddo_12 (P1), Nazo_11 (P4), Necropolis_12 (P1), PeanutPie_12 (P1), Phalm_12 (P1), Phayonce_11 (P5), Phegasus_12 (P1), Phineas_12 (P1), Polkaroo_12 (P1), Purky_11 (P6), Pygmy_11 (P1), Shipwreck_11 (P1), Sonah_12 (P1), StevieRay_12

(P1), StressBall_12 (P1), Techage_12 (P1), Thespis_12 (P1), ThulaThula_11 (P5), Tortellini_11 (P2), Venti_12 (P1), Vidya_12 (P1), Willsammy_12 (P1), Xavia_12 (P3), Zilizebeth_12 (P1),

Start 19:

- Found in 1 of 383 (0.3%) of genes in pham
- Manual Annotations of this start: 1 of 345
- Called 100.0% of time when present
- Phage (with cluster) where this start called: Cornie_10 (F5),

Start 20:

- Found in 5 of 383 (1.3%) of genes in pham
- Manual Annotations of this start: 4 of 345
- Called 100.0% of time when present
- Phage (with cluster) where this start called: LunaStella_10 (F4), Renaud18_10 (F4), TChen_10 (F4), ThetaBob_10 (F4), Toron_10 (F6),

Start 21:

- Found in 12 of 383 (3.1%) of genes in pham
- Manual Annotations of this start: 10 of 345
- Called 100.0% of time when present
- Phage (with cluster) where this start called: Babsiella_11 (I1), Bluvara_11 (I3), Brujita_11 (I1), Che9c_10 (I2), HC_11 (I1), Island3_11 (I1), MooMoo_9 (singleton), PaintedDog_10 (I1), QueenHazel_11 (I1), Sbash_10 (I2), Stuck_10 (I2), Xula_10 (I1),

Start 22:

- Found in 188 of 383 (49.1%) of genes in pham
- Manual Annotations of this start: 70 of 345
- Called 42.6% of time when present
- Phage (with cluster) where this start called: Aggie_11 (N), Andies_11 (N), BabeRuth_11 (N), BobaPhett_9 (F1), Bosection6_11 (N), Butters_11 (N), Cabrinians_9 (F1), Carcharodon_11 (N), Charlie_11 (N), Chewbacca_11 (N), Cubone_10 (N), Daenerys_9 (F1), Doomslug_11 (F), Duplicity_11 (N), EGUnicorn_11 (N), EmiMonkey_9 (F1), Fancypants_9 (F1), Frankie_10 (F1), Fulbright_11 (N), Gex_11 (N), Gorge_9 (F1), Grimmer_10 (F1), Hanako_11 (N), Harley_9 (F1), Impisi_11 (N), James_9 (F1), Jamie19_11 (N), Jennelsea_9 (F1), Journey_11 (N), Kevin1_11 (N), KingMidas_9 (F1), LastJedi_9 (F1), Lizziana_9 (F1), Magsby_11 (N), Mantra_9 (F1), Melville_11 (N), MichelleMyBell_11 (N), MulchSalad_9 (F7), Nenae_11 (N), Okabe_11 (F8), Pacc40_9 (F1), Panchino_11 (N), Parmesanjohn_11 (N), PhancyPhin_11 (N), Philonius_11 (N), Philus_9 (F1), PhilipPhlop_9 (F1), Phloss_11 (N), Phrann_11 (N), Piper2020_10 (F1), Pippy_9 (F1), Pipsqueaks_11 (N), Poenanya_9 (F1), Purgamenstris_11 (N), Ramsey_10 (F1), Raymond7_11 (N), Rebel_11 (N), Redi_11 (N), Rubeelu_11 (N), Schnauzer_11 (N), Scitech_11 (N), Seagreen_10 (F1), ShowerHandel_9 (F1), ShrimpFriedEgg_11 (N), Shweta_11 (N), Silvafighter_11 (N), Silvy_11 (N), SkinnyPete_11 (N), Smurph_11 (N), Snekmaggon_11 (N), Spinach_11 (N), SpongeBob_11 (N), Tapioca_11 (N), Tessdabest_10 (N), Tortoise12_11 (N), Vivum_9 (F1), Xeno_11 (N), Xerxes_11 (N), Yorick_9 (F1), Zizzle_9 (F1),

Summary by clusters:

There are 19 clusters represented in this pham: P2, F1, singleton, P1, P6, P4, F6, F, I1, P3, F7, N, F8, F3, I3, F4, I2, P5, F5,

Info for manual annotations of cluster F1:

- Start number 17 was manually annotated 209 times for cluster F1.
- Start number 22 was manually annotated 24 times for cluster F1.

Info for manual annotations of cluster F3:

- Start number 17 was manually annotated 1 time for cluster F3.

Info for manual annotations of cluster F4:

- Start number 20 was manually annotated 4 times for cluster F4.

Info for manual annotations of cluster F5:

- Start number 19 was manually annotated 1 time for cluster F5.

Info for manual annotations of cluster I1:

- Start number 21 was manually annotated 6 times for cluster I1.

Info for manual annotations of cluster I2:

- Start number 21 was manually annotated 3 times for cluster I2.

Info for manual annotations of cluster N:

- Start number 22 was manually annotated 46 times for cluster N.

Info for manual annotations of cluster P1:

- Start number 18 was manually annotated 43 times for cluster P1.

Info for manual annotations of cluster P2:

- Start number 18 was manually annotated 1 time for cluster P2.

Info for manual annotations of cluster P3:

- Start number 18 was manually annotated 1 time for cluster P3.

Info for manual annotations of cluster P4:

- Start number 18 was manually annotated 2 times for cluster P4.

Info for manual annotations of cluster P5:

- Start number 18 was manually annotated 2 times for cluster P5.

Info for manual annotations of cluster P6:

- Start number 18 was manually annotated 1 time for cluster P6.

Gene Information:

Gene: Aggie_11 Start: 6975, Stop: 7346, Start Num: 22

Candidate Starts for Aggie_11:

(7, 6867), (11, 6894), (13, 6909), (Start: 22 @6975 has 70 MA's), (34, 7083), (35, 7101), (38, 7128), (46, 7188), (52, 7296), (56, 7329),

Gene: Akhila_10 Start: 7429, Stop: 7758, Start Num: 17

Candidate Starts for Akhila_10:

(9, 7363), (Start: 17 @7429 has 210 MA's), (28, 7507), (30, 7531), (35, 7570), (39, 7603), (45, 7639), (48, 7669), (49, 7684),

Gene: Alexphander_10 Start: 6632, Stop: 6958, Start Num: 17

Candidate Starts for Alexphander_10:

(Start: 17 @6632 has 210 MA's), (Start: 22 @6662 has 70 MA's), (23, 6677), (28, 6710), (30, 6734), (35, 6773), (39, 6806), (48, 6872),

Gene: Aloeri_10 Start: 6635, Stop: 6961, Start Num: 17

Candidate Starts for Aloeri_10:

(Start: 17 @6635 has 210 MA's), (Start: 22 @6665 has 70 MA's), (23, 6680), (28, 6713), (30, 6737), (35, 6776), (39, 6809), (48, 6875),

Gene: AlpineSix_9 Start: 6778, Stop: 7104, Start Num: 17

Candidate Starts for AlpineSix_9:

(Start: 17 @6778 has 210 MA's), (23, 6823), (28, 6856), (30, 6880), (35, 6919), (39, 6952), (48, 7018),

Gene: Andies_11 Start: 6975, Stop: 7346, Start Num: 22

Candidate Starts for Andies_11:

(7, 6867), (11, 6894), (13, 6909), (Start: 22 @6975 has 70 MA's), (34, 7083), (35, 7101), (38, 7128), (46, 7188), (52, 7296), (56, 7329),

Gene: ArcusAngelus_9 Start: 6771, Stop: 7100, Start Num: 17

Candidate Starts for ArcusAngelus_9:

(Start: 17 @6771 has 210 MA's), (28, 6849), (30, 6873), (35, 6912), (39, 6945), (45, 6981), (48, 7011), (49, 7026),

Gene: Ardmore_9 Start: 6781, Stop: 7110, Start Num: 17

Candidate Starts for Ardmore_9:

(Start: 17 @6781 has 210 MA's), (28, 6859), (30, 6883), (35, 6922), (39, 6955), (45, 6991), (48, 7021), (49, 7036),

Gene: Arib1_12 Start: 7913, Stop: 8290, Start Num: 18

Candidate Starts for Arib1_12:

(8, 7829), (Start: 18 @7913 has 50 MA's), (42, 8126), (47, 8168), (49, 8186),

Gene: Atcoo_12 Start: 7900, Stop: 8313, Start Num: 18

Candidate Starts for Atcoo_12:

(8, 7816), (Start: 18 @7900 has 50 MA's), (42, 8113), (47, 8155), (49, 8173),

Gene: Aubs_9 Start: 6781, Stop: 7110, Start Num: 17

Candidate Starts for Aubs_9:

(Start: 17 @6781 has 210 MA's), (28, 6859), (30, 6883), (35, 6922), (39, 6955), (45, 6991), (48, 7021), (49, 7036),

Gene: Awesomesauce_10 Start: 6635, Stop: 6961, Start Num: 17

Candidate Starts for Awesomesauce_10:

(Start: 17 @6635 has 210 MA's), (Start: 22 @6665 has 70 MA's), (23, 6680), (28, 6713), (30, 6737), (35, 6776), (39, 6809), (48, 6875),

Gene: BabeRuth_11 Start: 7020, Stop: 7391, Start Num: 22

Candidate Starts for BabeRuth_11:

(6, 6852), (13, 6951), (16, 6972), (Start: 22 @7020 has 70 MA's), (28, 7083), (34, 7128), (35, 7146), (38, 7173), (42, 7206), (52, 7341), (56, 7374), (57, 7380),

Gene: Babsiella_11 Start: 7921, Stop: 8361, Start Num: 21

Candidate Starts for Babsiella_11:

(4, 7591), (Start: 17 @7900 has 210 MA's), (Start: 21 @7921 has 10 MA's), (30, 8017), (40, 8095), (44, 8122), (58, 8347),

Gene: Bartholomew_12 Start: 7932, Stop: 8309, Start Num: 18

Candidate Starts for Bartholomew_12:

(8, 7848), (Start: 18 @7932 has 50 MA's), (42, 8145), (47, 8187), (49, 8205),

Gene: Batiatus_9 Start: 6781, Stop: 7110, Start Num: 17

Candidate Starts for Batiatus_9:

(Start: 17 @6781 has 210 MA's), (28, 6859), (30, 6883), (35, 6922), (39, 6955), (45, 6991), (48, 7021), (49, 7036),

Gene: Beakin_10 Start: 6635, Stop: 6961, Start Num: 17

Candidate Starts for Beakin_10:

(Start: 17 @6635 has 210 MA's), (23, 6680), (28, 6713), (30, 6737), (35, 6776), (39, 6809), (48, 6875),

Gene: Beanstalk_10 Start: 6631, Stop: 6957, Start Num: 17

Candidate Starts for Beanstalk_10:

(Start: 17 @6631 has 210 MA's), (Start: 22 @6661 has 70 MA's), (23, 6676), (28, 6709), (30, 6733), (35, 6772), (39, 6805), (48, 6871),

Gene: Bhagsy_12 Start: 7903, Stop: 8316, Start Num: 18

Candidate Starts for Bhagsy_12:

(8, 7819), (Start: 18 @7903 has 50 MA's), (42, 8116), (47, 8158), (49, 8176),

Gene: BigNuz_11 Start: 7647, Stop: 8021, Start Num: 18

Candidate Starts for BigNuz_11:

(Start: 18 @7647 has 50 MA's), (42, 7857), (47, 7899), (49, 7917),

Gene: BigPhil_10 Start: 6631, Stop: 6957, Start Num: 17

Candidate Starts for BigPhil_10:

(Start: 17 @6631 has 210 MA's), (23, 6676), (28, 6709), (30, 6733), (35, 6772), (39, 6805), (48, 6871),

Gene: Bipolar_9 Start: 6781, Stop: 7107, Start Num: 17

Candidate Starts for Bipolar_9:

(Start: 17 @6781 has 210 MA's), (28, 6859), (30, 6883), (35, 6922), (39, 6955), (45, 6991), (48, 7021), (49, 7036),

Gene: Blexus_9 Start: 6795, Stop: 7121, Start Num: 17

Candidate Starts for Blexus_9:

(Start: 17 @6795 has 210 MA's), (23, 6840), (26, 6864), (28, 6873), (30, 6897), (35, 6936), (39, 6969), (48, 7035),

Gene: BlueCrab_9 Start: 6779, Stop: 7105, Start Num: 17

Candidate Starts for BlueCrab_9:

(Start: 17 @6779 has 210 MA's), (Start: 22 @6809 has 70 MA's), (23, 6824), (28, 6857), (30, 6881), (35, 6920), (39, 6953), (48, 7019),

Gene: Bluvara_11 Start: 7919, Stop: 8359, Start Num: 21

Candidate Starts for Bluvara_11:

(3, 7442), (4, 7592), (Start: 17 @7898 has 210 MA's), (Start: 21 @7919 has 10 MA's), (30, 8015), (40, 8093), (44, 8120), (58, 8345),

Gene: BobaPhett_9 Start: 6801, Stop: 7097, Start Num: 22

Candidate Starts for BobaPhett_9:

(Start: 17 @6771 has 210 MA's), (Start: 22 @6801 has 70 MA's), (23, 6816), (28, 6849), (30, 6873), (35, 6912), (39, 6945), (48, 7011),

Gene: Bobi_10 Start: 6632, Stop: 6958, Start Num: 17

Candidate Starts for Bobi_10:

(Start: 17 @6632 has 210 MA's), (Start: 22 @6662 has 70 MA's), (23, 6677), (28, 6710), (30, 6734), (35, 6773), (39, 6806), (48, 6872),

Gene: BodEinwohner17_9 Start: 6779, Stop: 7105, Start Num: 17

Candidate Starts for BodEinwohner17_9:

(Start: 17 @6779 has 210 MA's), (Start: 22 @6809 has 70 MA's), (23, 6824), (28, 6857), (30, 6881), (35, 6920), (39, 6953), (48, 7019),

Gene: Bogie_11 Start: 7652, Stop: 8026, Start Num: 18

Candidate Starts for Bogie_11:

(Start: 18 @7652 has 50 MA's), (42, 7862), (47, 7904), (49, 7922),

Gene: Boomer_10 Start: 6632, Stop: 6958, Start Num: 17

Candidate Starts for Boomer_10:

(Start: 17 @6632 has 210 MA's), (23, 6677), (28, 6710), (30, 6734), (35, 6773), (39, 6806), (48, 6872),

Gene: Bosection6_11 Start: 6975, Stop: 7346, Start Num: 22

Candidate Starts for Bosection6_11:

(7, 6867), (11, 6894), (13, 6909), (Start: 22 @6975 has 70 MA's), (34, 7083), (35, 7101), (38, 7128), (46, 7188), (52, 7296), (56, 7329),

Gene: Brocalys_9 Start: 6768, Stop: 7094, Start Num: 17

Candidate Starts for Brocalys_9:

(Start: 17 @6768 has 210 MA's), (Start: 22 @6798 has 70 MA's), (23, 6813), (28, 6846), (30, 6870), (35, 6909), (39, 6942), (48, 7008),

Gene: BronnyJr_12 Start: 7916, Stop: 8293, Start Num: 18

Candidate Starts for BronnyJr_12:

(8, 7832), (Start: 18 @7916 has 50 MA's), (42, 8129), (47, 8171), (49, 8189),

Gene: Brookers_10 Start: 6631, Stop: 6957, Start Num: 17

Candidate Starts for Brookers_10:

(Start: 17 @6631 has 210 MA's), (23, 6676), (28, 6709), (30, 6733), (35, 6772), (39, 6805), (48, 6871),

Gene: Brujita_11 Start: 7922, Stop: 8362, Start Num: 21

Candidate Starts for Brujita_11:

(1, 7409), (2, 7415), (3, 7445), (4, 7595), (Start: 17 @7901 has 210 MA's), (Start: 21 @7922 has 10 MA's), (30, 8018), (40, 8096), (44, 8123), (58, 8348),

Gene: Brusacoram_12 Start: 7899, Stop: 8312, Start Num: 18

Candidate Starts for Brusacoram_12:

(8, 7815), (Start: 18 @7899 has 50 MA's), (42, 8112), (47, 8154), (49, 8172),

Gene: Brushbloom_10 Start: 6631, Stop: 6957, Start Num: 17

Candidate Starts for Brushbloom_10:

(Start: 17 @6631 has 210 MA's), (Start: 22 @6661 has 70 MA's), (23, 6676), (28, 6709), (30, 6733), (35, 6772), (39, 6805), (48, 6871),

Gene: Bubbles123_9 Start: 6798, Stop: 7124, Start Num: 17

Candidate Starts for Bubbles123_9:

(Start: 17 @6798 has 210 MA's), (Start: 22 @6828 has 70 MA's), (23, 6843), (28, 6876), (30, 6900), (35, 6939), (39, 6972), (48, 7038),

Gene: Bunnies_12 Start: 7912, Stop: 8325, Start Num: 18

Candidate Starts for Bunnies_12:

(8, 7828), (Start: 18 @7912 has 50 MA's), (42, 8125), (47, 8167), (49, 8185),

Gene: Burwell21_9 Start: 6779, Stop: 7105, Start Num: 17

Candidate Starts for Burwell21_9:

(Start: 17 @6779 has 210 MA's), (Start: 22 @6809 has 70 MA's), (23, 6824), (28, 6857), (30, 6881), (35, 6920), (39, 6953), (48, 7019),

Gene: Butters_11 Start: 6995, Stop: 7366, Start Num: 22

Candidate Starts for Butters_11:

(14, 6929), (Start: 22 @6995 has 70 MA's), (28, 7058), (34, 7103), (35, 7121), (36, 7139), (38, 7148), (56, 7349), (57, 7355),

Gene: BuzzLyseyear_10 Start: 6631, Stop: 6957, Start Num: 17

Candidate Starts for BuzzLyseyear_10:

(Start: 17 @6631 has 210 MA's), (Start: 22 @6661 has 70 MA's), (23, 6676), (28, 6709), (30, 6733), (35, 6772), (39, 6805), (48, 6871),

Gene: ByChance_9 Start: 6781, Stop: 7107, Start Num: 17

Candidate Starts for ByChance_9:

(Start: 17 @6781 has 210 MA's), (Start: 22 @6811 has 70 MA's), (23, 6826), (28, 6859), (30, 6883), (35, 6922), (39, 6955), (48, 7021),

Gene: Byougenkin_9 Start: 6769, Stop: 7098, Start Num: 17

Candidate Starts for Byougenkin_9:

(Start: 17 @6769 has 210 MA's), (Start: 22 @6799 has 70 MA's), (23, 6814), (28, 6847), (30, 6871), (35, 6913), (39, 6946), (48, 7012),

Gene: Cabrinians_9 Start: 6801, Stop: 7097, Start Num: 22

Candidate Starts for Cabrinians_9:

(Start: 17 @6771 has 210 MA's), (Start: 22 @6801 has 70 MA's), (23, 6816), (28, 6849), (30, 6873), (35, 6912), (39, 6945), (48, 7011),

Gene: CactusJack_12 Start: 7899, Stop: 8312, Start Num: 18

Candidate Starts for CactusJack_12:

(8, 7815), (Start: 18 @7899 has 50 MA's), (42, 8112), (47, 8154), (49, 8172),

Gene: Camster_12 Start: 7932, Stop: 8309, Start Num: 18

Candidate Starts for Camster_12:

(8, 7848), (Start: 18 @7932 has 50 MA's), (42, 8145), (47, 8187), (49, 8205),

Gene: CaptainTrips_10 Start: 7429, Stop: 7758, Start Num: 17

Candidate Starts for CaptainTrips_10:

(Start: 17 @7429 has 210 MA's), (28, 7507), (30, 7531), (35, 7570), (39, 7603), (45, 7639), (48, 7669), (49, 7684),

Gene: Carcharodon_11 Start: 6975, Stop: 7346, Start Num: 22

Candidate Starts for Carcharodon_11:

(7, 6867), (11, 6894), (13, 6909), (Start: 22 @6975 has 70 MA's), (34, 7083), (35, 7101), (38, 7128), (46, 7188), (52, 7296), (56, 7329),

Gene: Cerasum_10 Start: 6631, Stop: 6957, Start Num: 17

Candidate Starts for Cerasum_10:

(Start: 17 @6631 has 210 MA's), (23, 6676), (28, 6709), (30, 6733), (35, 6772), (39, 6805), (48, 6871),

Gene: Charlie_11 Start: 6975, Stop: 7346, Start Num: 22

Candidate Starts for Charlie_11:

(7, 6867), (11, 6894), (13, 6909), (Start: 22 @6975 has 70 MA's), (34, 7083), (35, 7101), (38, 7128), (46, 7188), (52, 7296), (56, 7329),

Gene: Che8_9 Start: 6783, Stop: 7109, Start Num: 17

Candidate Starts for Che8_9:

(Start: 17 @6783 has 210 MA's), (Start: 22 @6813 has 70 MA's), (23, 6828), (28, 6861), (30, 6885), (35, 6924), (39, 6957), (48, 7023),

Gene: Che9c_10 Start: 7526, Stop: 7978, Start Num: 21

Candidate Starts for Che9c_10:

(Start: 17 @7505 has 210 MA's), (Start: 21 @7526 has 10 MA's), (30, 7622), (39, 7697), (40, 7700), (44, 7727), (50, 7838), (55, 7913), (59, 7961),

Gene: Cheesepuff_9 Start: 6781, Stop: 7107, Start Num: 17

Candidate Starts for Cheesepuff_9:

(Start: 17 @6781 has 210 MA's), (Start: 22 @6811 has 70 MA's), (23, 6826), (28, 6859), (30, 6883), (35, 6922), (39, 6955), (48, 7021),

Gene: Chevrolet_9 Start: 6771, Stop: 7100, Start Num: 17

Candidate Starts for Chevrolet_9:

(Start: 17 @6771 has 210 MA's), (28, 6849), (30, 6873), (35, 6912), (39, 6945), (45, 6981), (48, 7011), (49, 7026),

Gene: Chewbacca_11 Start: 6975, Stop: 7346, Start Num: 22

Candidate Starts for Chewbacca_11:

(7, 6867), (11, 6894), (13, 6909), (Start: 22 @6975 has 70 MA's), (34, 7083), (35, 7101), (38, 7128), (46, 7188), (52, 7296), (56, 7329),

Gene: ChickenDinner_10 Start: 6635, Stop: 6961, Start Num: 17

Candidate Starts for ChickenDinner_10:

(Start: 17 @6635 has 210 MA's), (Start: 22 @6665 has 70 MA's), (23, 6680), (28, 6713), (30, 6737), (35, 6776), (39, 6809), (48, 6875),

Gene: Chubbello_12 Start: 7931, Stop: 8308, Start Num: 18

Candidate Starts for Chubbello_12:

(8, 7847), (Start: 18 @7931 has 50 MA's), (42, 8144), (47, 8186), (49, 8204),

Gene: Chuckly_9 Start: 6781, Stop: 7110, Start Num: 17

Candidate Starts for Chuckly_9:

(Start: 17 @6781 has 210 MA's), (28, 6859), (30, 6883), (35, 6922), (39, 6955), (45, 6991), (48, 7021), (49, 7036),

Gene: Clank_9 Start: 6781, Stop: 7107, Start Num: 17

Candidate Starts for Clank_9:

(Start: 17 @6781 has 210 MA's), (28, 6859), (30, 6883), (35, 6922), (39, 6955), (45, 6991), (48, 7021), (49, 7036),

Gene: Clifton_9 Start: 6767, Stop: 7093, Start Num: 17

Candidate Starts for Clifton_9:

(Start: 17 @6767 has 210 MA's), (Start: 22 @6797 has 70 MA's), (23, 6812), (28, 6845), (30, 6869), (35, 6908), (39, 6941), (48, 7007),

Gene: Coco12_10 Start: 6632, Stop: 6958, Start Num: 17

Candidate Starts for Coco12_10:

(Start: 17 @6632 has 210 MA's), (Start: 22 @6662 has 70 MA's), (23, 6677), (28, 6710), (30, 6734), (35, 6773), (39, 6806), (48, 6872),

Gene: Corium_9 Start: 6782, Stop: 7111, Start Num: 17

Candidate Starts for Corium_9:

(Start: 17 @6782 has 210 MA's), (28, 6860), (30, 6884), (35, 6923), (39, 6956), (45, 6992), (48, 7022), (49, 7037),

Gene: Cornie_10 Start: 7003, Stop: 7410, Start Num: 19

Candidate Starts for Cornie_10:

(10, 6928), (Start: 19 @7003 has 1 MA's), (29, 7087), (43, 7198), (45, 7204),

Gene: Cornucopia_10 Start: 6631, Stop: 6960, Start Num: 17

Candidate Starts for Cornucopia_10:

(Start: 17 @6631 has 210 MA's), (28, 6709), (30, 6733), (35, 6772), (39, 6805), (45, 6841), (48, 6871), (49, 6886),

Gene: Crumble_9 Start: 6781, Stop: 7107, Start Num: 17

Candidate Starts for Crumble_9:

(Start: 17 @6781 has 210 MA's), (Start: 22 @6811 has 70 MA's), (23, 6826), (28, 6859), (30, 6883), (35, 6922), (39, 6955), (48, 7021),

Gene: Cubone_10 Start: 6999, Stop: 7370, Start Num: 22

Candidate Starts for Cubone_10:

(7, 6891), (11, 6918), (13, 6933), (Start: 22 @6999 has 70 MA's), (34, 7107), (35, 7125), (38, 7152), (46, 7212), (52, 7320), (56, 7353),

Gene: DLane_9 Start: 6782, Stop: 7111, Start Num: 17

Candidate Starts for DLane_9:

(9, 6716), (Start: 17 @6782 has 210 MA's), (28, 6860), (30, 6884), (35, 6923), (39, 6956), (45, 6992), (48, 7022), (49, 7037),

Gene: DRBy19_9 Start: 6795, Stop: 7121, Start Num: 17

Candidate Starts for DRBy19_9:

(Start: 17 @6795 has 210 MA's), (23, 6840), (28, 6873), (30, 6897), (35, 6936), (39, 6969), (48, 7035),

Gene: DaWorst_10 Start: 6633, Stop: 6959, Start Num: 17

Candidate Starts for DaWorst_10:

(Start: 17 @6633 has 210 MA's), (23, 6678), (28, 6711), (30, 6735), (35, 6774), (39, 6807), (48, 6873),

Gene: DaddyRickover_9 Start: 6779, Stop: 7105, Start Num: 17

Candidate Starts for DaddyRickover_9:

(Start: 17 @6779 has 210 MA's), (Start: 22 @6809 has 70 MA's), (23, 6824), (28, 6857), (30, 6881), (35, 6920), (39, 6953), (48, 7019),

Gene: Daenerys_9 Start: 6809, Stop: 7105, Start Num: 22

Candidate Starts for Daenerys_9:

(Start: 17 @6779 has 210 MA's), (Start: 22 @6809 has 70 MA's), (23, 6824), (28, 6857), (30, 6881), (35, 6920), (39, 6953), (48, 7019),

Gene: Dante_9 Start: 6796, Stop: 7122, Start Num: 17

Candidate Starts for Dante_9:

(Start: 17 @6796 has 210 MA's), (Start: 22 @6826 has 70 MA's), (23, 6841), (28, 6874), (30, 6898), (35, 6937), (39, 6970), (48, 7036),

Gene: DeadP_9 Start: 6781, Stop: 7110, Start Num: 17

Candidate Starts for DeadP_9:

(Start: 17 @6781 has 210 MA's), (Start: 22 @6811 has 70 MA's), (28, 6859), (30, 6883), (35, 6922), (39, 6955), (45, 6991), (48, 7021), (49, 7036),

Gene: Deb65_9 Start: 6779, Stop: 7105, Start Num: 17

Candidate Starts for Deb65_9:

(Start: 17 @6779 has 210 MA's), (Start: 22 @6809 has 70 MA's), (23, 6824), (28, 6857), (30, 6881), (35, 6920), (39, 6953), (48, 7019),

Gene: DillTech15_9 Start: 6781, Stop: 7110, Start Num: 17

Candidate Starts for DillTech15_9:

(Start: 17 @6781 has 210 MA's), (28, 6859), (30, 6883), (35, 6922), (39, 6955), (45, 6991), (48, 7021), (49, 7036),

Gene: DirtMcgirt_10 Start: 6634, Stop: 6960, Start Num: 17

Candidate Starts for DirtMcgirt_10:

(Start: 17 @6634 has 210 MA's), (23, 6679), (28, 6712), (30, 6736), (35, 6775), (39, 6808), (48, 6874),

Gene: DoRead_9 Start: 6769, Stop: 7095, Start Num: 17

Candidate Starts for DoRead_9:

(Start: 17 @6769 has 210 MA's), (28, 6847), (30, 6871), (35, 6910), (39, 6943), (45, 6979), (48, 7009), (49, 7024),

Gene: DocMcStuffins_10 Start: 6635, Stop: 6961, Start Num: 17

Candidate Starts for DocMcStuffins_10:

(Start: 17 @6635 has 210 MA's), (Start: 22 @6665 has 70 MA's), (23, 6680), (28, 6713), (30, 6737), (35, 6776), (39, 6809), (48, 6875),

Gene: Donkeykong_9 Start: 6798, Stop: 7124, Start Num: 17

Candidate Starts for Donkeykong_9:

(Start: 17 @6798 has 210 MA's), (23, 6843), (28, 6876), (30, 6900), (35, 6939), (39, 6972), (48, 7038),

Gene: Donovan_12 Start: 7914, Stop: 8291, Start Num: 18

Candidate Starts for Donovan_12:

(8, 7830), (Start: 18 @7914 has 50 MA's), (42, 8127), (47, 8169), (49, 8187),

Gene: Doomphist_9 Start: 6779, Stop: 7105, Start Num: 17

Candidate Starts for Doomphist_9:

(Start: 17 @6779 has 210 MA's), (Start: 22 @6809 has 70 MA's), (23, 6824), (28, 6857), (30, 6881), (35, 6920), (39, 6953), (48, 7019),

Gene: Doomslug_11 Start: 6661, Stop: 6957, Start Num: 22

Candidate Starts for Doomslug_11:

(Start: 17 @6631 has 210 MA's), (Start: 22 @6661 has 70 MA's), (23, 6676), (28, 6709), (30, 6733), (35, 6772), (39, 6805), (48, 6871),

Gene: Dorothy_9 Start: 6779, Stop: 7105, Start Num: 17

Candidate Starts for Dorothy_9:

(Start: 17 @6779 has 210 MA's), (Start: 22 @6809 has 70 MA's), (23, 6824), (28, 6857), (30, 6881), (35, 6920), (39, 6953), (48, 7019),

Gene: DosHalletts_10 Start: 6632, Stop: 6958, Start Num: 17

Candidate Starts for DosHalletts_10:

(Start: 17 @6632 has 210 MA's), (23, 6677), (28, 6710), (30, 6734), (35, 6773), (39, 6806), (48, 6872),

Gene: DotProduct_9 Start: 6782, Stop: 7111, Start Num: 17

Candidate Starts for DotProduct_9:

(Start: 17 @6782 has 210 MA's), (28, 6860), (30, 6884), (35, 6923), (39, 6956), (45, 6992), (48, 7022), (49, 7037),

Gene: Doug_9 Start: 6781, Stop: 7107, Start Num: 17

Candidate Starts for Doug_9:

(Start: 17 @6781 has 210 MA's), (23, 6826), (26, 6850), (28, 6859), (30, 6883), (35, 6922), (39, 6955), (48, 7021),

Gene: Drago_10 Start: 6632, Stop: 6958, Start Num: 17

Candidate Starts for Drago_10:

(Start: 17 @6632 has 210 MA's), (23, 6677), (28, 6710), (30, 6734), (35, 6773), (39, 6806), (48, 6872),

Gene: Duplicity_11 Start: 6975, Stop: 7346, Start Num: 22

Candidate Starts for Duplicity_11:

(7, 6867), (11, 6894), (13, 6909), (Start: 22 @6975 has 70 MA's), (34, 7083), (35, 7101), (38, 7128), (46, 7188), (52, 7296), (56, 7329),

Gene: Dynamo_12 Start: 7932, Stop: 8309, Start Num: 18

Candidate Starts for Dynamo_12:

(8, 7848), (Start: 18 @7932 has 50 MA's), (42, 8145), (47, 8187), (49, 8205),

Gene: EGUunicorn_11 Start: 6975, Stop: 7346, Start Num: 22

Candidate Starts for EGUunicorn_11:

(7, 6867), (11, 6894), (13, 6909), (Start: 22 @6975 has 70 MA's), (34, 7083), (35, 7101), (38, 7128), (46, 7188), (52, 7296), (56, 7329),

Gene: Eish_9 Start: 6769, Stop: 7095, Start Num: 17

Candidate Starts for Eish_9:

(Start: 17 @6769 has 210 MA's), (Start: 22 @6799 has 70 MA's), (23, 6814), (28, 6847), (30, 6871), (35, 6910), (39, 6943), (45, 6979), (48, 7009), (49, 7024),

Gene: EleanorGeorge_9 Start: 6781, Stop: 7110, Start Num: 17

Candidate Starts for EleanorGeorge_9:

(Start: 17 @6781 has 210 MA's), (28, 6859), (30, 6883), (35, 6922), (39, 6955), (45, 6991), (48, 7021), (49, 7036),

Gene: EmiMonkey_9 Start: 6826, Stop: 7122, Start Num: 22

Candidate Starts for EmiMonkey_9:

(Start: 17 @6796 has 210 MA's), (Start: 22 @6826 has 70 MA's), (23, 6841), (26, 6865), (28, 6874), (30, 6898), (35, 6937), (39, 6970), (48, 7036),

Gene: Emma_9 Start: 6781, Stop: 7110, Start Num: 17

Candidate Starts for Emma_9:

(Start: 17 @6781 has 210 MA's), (Start: 22 @6811 has 70 MA's), (28, 6859), (30, 6883), (35, 6922), (39, 6955), (45, 6991), (48, 7021), (49, 7036),

Gene: Emmaloid_10 Start: 6633, Stop: 6959, Start Num: 17

Candidate Starts for Emmaloid_10:

(Start: 17 @6633 has 210 MA's), (Start: 22 @6663 has 70 MA's), (23, 6678), (26, 6702), (28, 6711), (30, 6735), (35, 6774), (39, 6807), (48, 6873),

Gene: Empress_9 Start: 6779, Stop: 7105, Start Num: 17

Candidate Starts for Empress_9:

(Start: 17 @6779 has 210 MA's), (Start: 22 @6809 has 70 MA's), (23, 6824), (28, 6857), (30, 6881), (35, 6920), (39, 6953), (48, 7019),

Gene: Enby_10 Start: 6632, Stop: 6958, Start Num: 17

Candidate Starts for Enby_10:

(Start: 17 @6632 has 210 MA's), (23, 6677), (28, 6710), (30, 6734), (35, 6773), (39, 6806), (48, 6872),

Gene: Enzomatic_10 Start: 6755, Stop: 7084, Start Num: 17

Candidate Starts for Enzomatic_10:

(Start: 17 @6755 has 210 MA's), (28, 6833), (30, 6857), (35, 6896), (39, 6929), (45, 6965), (48, 6995), (49, 7010),

Gene: Eradicator_9 Start: 6780, Stop: 7106, Start Num: 17

Candidate Starts for Eradicator_9:

(Start: 17 @6780 has 210 MA's), (Start: 22 @6810 has 70 MA's), (23, 6825), (28, 6858), (30, 6882), (35, 6921), (39, 6954), (48, 7020),

Gene: Estave1_9 Start: 6781, Stop: 7107, Start Num: 17

Candidate Starts for Estave1_9:

(Start: 17 @6781 has 210 MA's), (23, 6826), (28, 6859), (30, 6883), (35, 6922), (39, 6955), (48, 7021),

Gene: Etoile_12 Start: 7932, Stop: 8309, Start Num: 18
Candidate Starts for Etoile_12:
(8, 7848), (Start: 18 @7932 has 50 MA's), (42, 8145), (47, 8187), (49, 8205),

Gene: Fancypants_9 Start: 6813, Stop: 7109, Start Num: 22
Candidate Starts for Fancypants_9:
(Start: 17 @6783 has 210 MA's), (Start: 22 @6813 has 70 MA's), (23, 6828), (28, 6861), (30, 6885),
(35, 6924), (39, 6957), (48, 7023), (49, 7038),

Gene: Fastidio_9 Start: 6782, Stop: 7108, Start Num: 17
Candidate Starts for Fastidio_9:
(Start: 17 @6782 has 210 MA's), (Start: 22 @6812 has 70 MA's), (23, 6827), (28, 6860), (30, 6884),
(35, 6923), (39, 6956), (48, 7022),

Gene: Filuzino_9 Start: 6782, Stop: 7111, Start Num: 17
Candidate Starts for Filuzino_9:
(Start: 17 @6782 has 210 MA's), (28, 6860), (30, 6884), (35, 6923), (39, 6956), (45, 6992), (48, 7022),
(49, 7037),

Gene: Firehouse51_9 Start: 6781, Stop: 7110, Start Num: 17
Candidate Starts for Firehouse51_9:
(Start: 17 @6781 has 210 MA's), (28, 6859), (30, 6883), (35, 6922), (39, 6955), (45, 6991), (48, 7021),
(49, 7036),

Gene: FirstPlacePfu_12 Start: 7932, Stop: 8309, Start Num: 18
Candidate Starts for FirstPlacePfu_12:
(8, 7848), (Start: 18 @7932 has 50 MA's), (42, 8145), (47, 8187), (49, 8205),

Gene: Fishburne_12 Start: 7932, Stop: 8309, Start Num: 18
Candidate Starts for Fishburne_12:
(8, 7848), (Start: 18 @7932 has 50 MA's), (42, 8145), (47, 8187), (49, 8205),

Gene: Flathead_10 Start: 6631, Stop: 6957, Start Num: 17
Candidate Starts for Flathead_10:
(Start: 17 @6631 has 210 MA's), (Start: 22 @6661 has 70 MA's), (23, 6676), (28, 6709), (30, 6733),
(35, 6772), (39, 6805), (48, 6871),

Gene: Florinda_9 Start: 6799, Stop: 7125, Start Num: 17
Candidate Starts for Florinda_9:
(Start: 17 @6799 has 210 MA's), (Start: 22 @6829 has 70 MA's), (23, 6844), (28, 6877), (30, 6901),
(35, 6940), (39, 6973), (48, 7039),

Gene: Frankie_10 Start: 6855, Stop: 7151, Start Num: 22
Candidate Starts for Frankie_10:
(Start: 17 @6825 has 210 MA's), (Start: 22 @6855 has 70 MA's), (23, 6870), (28, 6903), (30, 6927),
(35, 6966), (39, 6999), (48, 7065),

Gene: FreddyB_9 Start: 6780, Stop: 7106, Start Num: 17
Candidate Starts for FreddyB_9:
(Start: 17 @6780 has 210 MA's), (Start: 22 @6810 has 70 MA's), (23, 6825), (28, 6858), (30, 6882),
(35, 6921), (39, 6954), (48, 7020),

Gene: Fruitloop_9 Start: 6782, Stop: 7111, Start Num: 17

Candidate Starts for Fruitloop_9:

(Start: 17 @6782 has 210 MA's), (28, 6860), (30, 6884), (35, 6923), (39, 6956), (45, 6992), (48, 7022), (49, 7037),

Gene: Fulbright_11 Start: 6975, Stop: 7346, Start Num: 22

Candidate Starts for Fulbright_11:

(7, 6867), (11, 6894), (13, 6909), (Start: 22 @6975 has 70 MA's), (34, 7083), (35, 7101), (38, 7128), (46, 7188), (52, 7296), (56, 7329),

Gene: GUmbie_9 Start: 6796, Stop: 7122, Start Num: 17

Candidate Starts for GUmbie_9:

(Start: 17 @6796 has 210 MA's), (23, 6841), (28, 6874), (30, 6898), (35, 6937), (39, 6970), (48, 7036),

Gene: Galactic_9 Start: 6755, Stop: 7084, Start Num: 17

Candidate Starts for Galactic_9:

(Start: 17 @6755 has 210 MA's), (28, 6833), (30, 6857), (35, 6896), (39, 6929), (45, 6965), (48, 6995), (49, 7010),

Gene: GaloreK_12 Start: 7920, Stop: 8297, Start Num: 18

Candidate Starts for GaloreK_12:

(8, 7836), (Start: 18 @7920 has 50 MA's), (42, 8133), (47, 8175), (49, 8193),

Gene: Gandalph_9 Start: 6796, Stop: 7122, Start Num: 17

Candidate Starts for Gandalph_9:

(Start: 17 @6796 has 210 MA's), (Start: 22 @6826 has 70 MA's), (23, 6841), (28, 6874), (30, 6898), (35, 6937), (39, 6970), (48, 7036),

Gene: Gavriela_12 Start: 7899, Stop: 8312, Start Num: 18

Candidate Starts for Gavriela_12:

(8, 7815), (Start: 18 @7899 has 50 MA's), (42, 8112), (47, 8154), (49, 8172),

Gene: Geralt_9 Start: 6779, Stop: 7105, Start Num: 17

Candidate Starts for Geralt_9:

(Start: 17 @6779 has 210 MA's), (Start: 22 @6809 has 70 MA's), (23, 6824), (28, 6857), (30, 6881), (35, 6920), (39, 6953), (48, 7019),

Gene: Gex_11 Start: 6975, Stop: 7346, Start Num: 22

Candidate Starts for Gex_11:

(7, 6867), (11, 6894), (13, 6909), (Start: 22 @6975 has 70 MA's), (34, 7083), (35, 7101), (38, 7128), (46, 7188), (52, 7296), (56, 7329),

Gene: GigiOuiOui_9 Start: 6796, Stop: 7122, Start Num: 17

Candidate Starts for GigiOuiOui_9:

(Start: 17 @6796 has 210 MA's), (Start: 22 @6826 has 70 MA's), (23, 6841), (26, 6865), (28, 6874), (30, 6898), (35, 6937), (39, 6970), (48, 7036),

Gene: Girafales_10 Start: 6627, Stop: 6953, Start Num: 17

Candidate Starts for Girafales_10:

(Start: 17 @6627 has 210 MA's), (23, 6672), (28, 6705), (30, 6729), (35, 6768), (39, 6801), (48, 6867),

Gene: Girr_9 Start: 6785, Stop: 7111, Start Num: 17

Candidate Starts for Girr_9:

(Start: 17 @6785 has 210 MA's), (Start: 22 @6815 has 70 MA's), (23, 6830), (28, 6863), (30, 6887), (35, 6926), (39, 6959), (48, 7025),

Gene: Glaske_12 Start: 7899, Stop: 8312, Start Num: 18

Candidate Starts for Glaske_12:

(8, 7815), (Start: 18 @7899 has 50 MA's), (42, 8112), (47, 8154), (49, 8172),

Gene: Gorge_9 Start: 6798, Stop: 7094, Start Num: 22

Candidate Starts for Gorge_9:

(Start: 17 @6768 has 210 MA's), (Start: 22 @6798 has 70 MA's), (23, 6813), (28, 6846), (30, 6870), (35, 6909), (39, 6942), (48, 7008),

Gene: GreaseLightnin_12 Start: 7932, Stop: 8309, Start Num: 18

Candidate Starts for GreaseLightnin_12:

(8, 7848), (Start: 18 @7932 has 50 MA's), (42, 8145), (47, 8187), (49, 8205),

Gene: Grimmer_10 Start: 7464, Stop: 7760, Start Num: 22

Candidate Starts for Grimmer_10:

(Start: 17 @7434 has 210 MA's), (Start: 22 @7464 has 70 MA's), (23, 7479), (28, 7512), (30, 7536), (35, 7575), (39, 7608), (48, 7674),

Gene: Guppsters_9 Start: 6781, Stop: 7107, Start Num: 17

Candidate Starts for Guppsters_9:

(Start: 17 @6781 has 210 MA's), (28, 6859), (30, 6883), (35, 6922), (39, 6955), (45, 6991), (48, 7021), (49, 7036),

Gene: HC_11 Start: 7921, Stop: 8361, Start Num: 21

Candidate Starts for HC_11:

(4, 7594), (Start: 17 @7900 has 210 MA's), (Start: 21 @7921 has 10 MA's), (30, 8017), (40, 8095), (44, 8122), (58, 8347),

Gene: HUHilltop_12 Start: 7932, Stop: 8309, Start Num: 18

Candidate Starts for HUHilltop_12:

(8, 7848), (Start: 18 @7932 has 50 MA's), (42, 8145), (47, 8187), (49, 8205),

Gene: Hades_9 Start: 6782, Stop: 7108, Start Num: 17

Candidate Starts for Hades_9:

(Start: 17 @6782 has 210 MA's), (23, 6827), (28, 6860), (30, 6884), (35, 6923), (39, 6956), (48, 7022),

Gene: Hamulus_9 Start: 6782, Stop: 7111, Start Num: 17

Candidate Starts for Hamulus_9:

(Start: 17 @6782 has 210 MA's), (28, 6860), (30, 6884), (35, 6923), (39, 6956), (45, 6992), (48, 7022), (49, 7037),

Gene: Hanako_11 Start: 7020, Stop: 7391, Start Num: 22

Candidate Starts for Hanako_11:

(6, 6852), (13, 6951), (16, 6972), (Start: 22 @7020 has 70 MA's), (28, 7083), (34, 7128), (35, 7146), (38, 7173), (42, 7206), (52, 7341), (56, 7374), (57, 7380),

Gene: Harley_9 Start: 6799, Stop: 7095, Start Num: 22

Candidate Starts for Harley_9:

(Start: 17 @6769 has 210 MA's), (Start: 22 @6799 has 70 MA's), (23, 6814), (28, 6847), (30, 6871), (35, 6910), (39, 6943), (45, 6979), (48, 7009), (49, 7024),

Gene: Hegedechwinu_10 Start: 6631, Stop: 6957, Start Num: 17

Candidate Starts for Hegedechwinu_10:

(Start: 17 @6631 has 210 MA's), (Start: 22 @6661 has 70 MA's), (23, 6676), (28, 6709), (30, 6733), (35, 6772), (39, 6805), (48, 6871),

Gene: Hlubikazi_9 Start: 6769, Stop: 7095, Start Num: 17

Candidate Starts for Hlubikazi_9:

(Start: 17 @6769 has 210 MA's), (23, 6814), (28, 6847), (30, 6871), (35, 6910), (39, 6943), (48, 7009),

Gene: IMpilo_9 Start: 6769, Stop: 7098, Start Num: 17

Candidate Starts for IMpilo_9:

(Start: 17 @6769 has 210 MA's), (28, 6847), (30, 6871), (35, 6910), (39, 6943), (45, 6979), (48, 7009), (49, 7024),

Gene: IbOuu_9 Start: 6778, Stop: 7104, Start Num: 17

Candidate Starts for IbOuu_9:

(Start: 17 @6778 has 210 MA's), (Start: 22 @6808 has 70 MA's), (23, 6823), (28, 6856), (30, 6880), (35, 6919), (39, 6952), (48, 7018),

Gene: lbhubesi_9 Start: 6769, Stop: 7095, Start Num: 17

Candidate Starts for lbhubesi_9:

(Start: 17 @6769 has 210 MA's), (Start: 22 @6799 has 70 MA's), (23, 6814), (28, 6847), (30, 6871), (35, 6910), (39, 6943), (45, 6979), (48, 7009), (49, 7024),

Gene: Impisi_11 Start: 7020, Stop: 7391, Start Num: 22

Candidate Starts for Impisi_11:

(6, 6852), (13, 6951), (16, 6972), (Start: 22 @7020 has 70 MA's), (28, 7083), (34, 7128), (35, 7146), (38, 7173), (42, 7206), (52, 7341), (56, 7374), (57, 7380),

Gene: Inventum_9 Start: 6779, Stop: 7105, Start Num: 17

Candidate Starts for Inventum_9:

(Start: 17 @6779 has 210 MA's), (Start: 22 @6809 has 70 MA's), (23, 6824), (28, 6857), (30, 6881), (35, 6920), (39, 6953), (48, 7019),

Gene: IrishSherpFalk_9 Start: 6767, Stop: 7093, Start Num: 17

Candidate Starts for IrishSherpFalk_9:

(Start: 17 @6767 has 210 MA's), (28, 6845), (30, 6869), (35, 6908), (39, 6941), (48, 7007), (49, 7022),

Gene: Island3_11 Start: 7922, Stop: 8362, Start Num: 21

Candidate Starts for Island3_11:

(1, 7409), (2, 7415), (3, 7445), (4, 7595), (Start: 17 @7901 has 210 MA's), (Start: 21 @7922 has 10 MA's), (30, 8018), (40, 8096), (44, 8123), (58, 8348),

Gene: JalFarm20_10 Start: 6632, Stop: 6958, Start Num: 17

Candidate Starts for JalFarm20_10:

(Start: 17 @6632 has 210 MA's), (Start: 22 @6662 has 70 MA's), (23, 6677), (28, 6710), (30, 6734), (35, 6773), (39, 6806), (48, 6872),

Gene: James_9 Start: 6801, Stop: 7097, Start Num: 22

Candidate Starts for James_9:

(Start: 17 @6771 has 210 MA's), (Start: 22 @6801 has 70 MA's), (23, 6816), (28, 6849), (30, 6873), (35, 6912), (39, 6945), (48, 7011),

Gene: Jamie19_11 Start: 7020, Stop: 7391, Start Num: 22

Candidate Starts for Jamie19_11:

(6, 6852), (13, 6951), (16, 6972), (Start: 22 @7020 has 70 MA's), (28, 7083), (34, 7128), (35, 7146), (38, 7173), (42, 7206), (52, 7341), (56, 7374), (57, 7380),

Gene: Jant_9 Start: 6781, Stop: 7110, Start Num: 17

Candidate Starts for Jant_9:

(9, 6715), (Start: 17 @6781 has 210 MA's), (28, 6859), (30, 6883), (35, 6922), (39, 6955), (45, 6991), (48, 7021), (49, 7036),

Gene: Jarcob_9 Start: 6780, Stop: 7106, Start Num: 17

Candidate Starts for Jarcob_9:

(Start: 17 @6780 has 210 MA's), (Start: 22 @6810 has 70 MA's), (23, 6825), (28, 6858), (30, 6882), (35, 6921), (39, 6954), (48, 7020),

Gene: Jebeks_12 Start: 7913, Stop: 8290, Start Num: 18

Candidate Starts for Jebeks_12:

(8, 7829), (Start: 18 @7913 has 50 MA's), (42, 8126), (47, 8168), (49, 8186),

Gene: Jennelsea_9 Start: 6797, Stop: 7093, Start Num: 22

Candidate Starts for Jennelsea_9:

(Start: 17 @6767 has 210 MA's), (Start: 22 @6797 has 70 MA's), (23, 6812), (28, 6845), (30, 6869), (35, 6908), (39, 6941), (48, 7007),

Gene: Jinglebell_9 Start: 6778, Stop: 7104, Start Num: 17

Candidate Starts for Jinglebell_9:

(Start: 17 @6778 has 210 MA's), (23, 6823), (28, 6856), (30, 6880), (35, 6919), (39, 6952), (48, 7018),

Gene: Job42_10 Start: 6632, Stop: 6958, Start Num: 17

Candidate Starts for Job42_10:

(Start: 17 @6632 has 210 MA's), (Start: 22 @6662 has 70 MA's), (23, 6677), (28, 6710), (30, 6734), (35, 6773), (39, 6806), (48, 6872),

Gene: JoeyJr_9 Start: 6779, Stop: 7105, Start Num: 17

Candidate Starts for JoeyJr_9:

(Start: 17 @6779 has 210 MA's), (Start: 22 @6809 has 70 MA's), (23, 6824), (28, 6857), (30, 6881), (35, 6920), (39, 6953), (48, 7019),

Gene: Journey_11 Start: 6975, Stop: 7346, Start Num: 22

Candidate Starts for Journey_11:

(7, 6867), (11, 6894), (13, 6909), (Start: 22 @6975 has 70 MA's), (34, 7083), (35, 7101), (38, 7128), (46, 7188), (52, 7296), (56, 7329),

Gene: Juice456_10 Start: 6633, Stop: 6959, Start Num: 17

Candidate Starts for Juice456_10:

(Start: 17 @6633 has 210 MA's), (23, 6678), (28, 6711), (30, 6735), (35, 6774), (39, 6807), (48, 6873),

Gene: Jung_12 Start: 7923, Stop: 8336, Start Num: 18

Candidate Starts for Jung_12:

(8, 7839), (Start: 18 @7923 has 50 MA's), (42, 8136), (47, 8178), (49, 8196),

Gene: Juniormint_12 Start: 7916, Stop: 8329, Start Num: 18

Candidate Starts for Juniormint_12:

(8, 7832), (Start: 18 @7916 has 50 MA's), (42, 8129), (47, 8171), (49, 8189),

Gene: Juniper1_9 Start: 6771, Stop: 7097, Start Num: 17

Candidate Starts for Juniper1_9:

(Start: 17 @6771 has 210 MA's), (23, 6816), (28, 6849), (30, 6873), (35, 6912), (39, 6945), (48, 7011),

Gene: Karhdo_9 Start: 6783, Stop: 7109, Start Num: 17

Candidate Starts for Karhdo_9:

(Start: 17 @6783 has 210 MA's), (23, 6828), (28, 6861), (30, 6885), (35, 6924), (39, 6957), (48, 7023),

Gene: Kari_12 Start: 7932, Stop: 8309, Start Num: 18

Candidate Starts for Kari_12:

(8, 7848), (Start: 18 @7932 has 50 MA's), (42, 8145), (47, 8187), (49, 8205),

Gene: Kenuha5_9 Start: 6781, Stop: 7107, Start Num: 17

Candidate Starts for Kenuha5_9:

(Start: 17 @6781 has 210 MA's), (28, 6859), (30, 6883), (35, 6922), (39, 6955), (45, 6991), (48, 7021), (49, 7036),

Gene: Kersh_9 Start: 6772, Stop: 7098, Start Num: 17

Candidate Starts for Kersh_9:

(Start: 17 @6772 has 210 MA's), (Start: 22 @6802 has 70 MA's), (23, 6817), (28, 6850), (30, 6874), (35, 6913), (39, 6946), (48, 7012),

Gene: Kevin1_11 Start: 6995, Stop: 7366, Start Num: 22

Candidate Starts for Kevin1_11:

(14, 6929), (Start: 22 @6995 has 70 MA's), (28, 7058), (34, 7103), (35, 7121), (36, 7139), (38, 7148), (56, 7349), (57, 7355),

Gene: KilKor_12 Start: 7899, Stop: 8312, Start Num: 18

Candidate Starts for KilKor_12:

(8, 7815), (Start: 18 @7899 has 50 MA's), (42, 8112), (47, 8154), (49, 8172),

Gene: Kimberlium_10 Start: 6633, Stop: 6959, Start Num: 17

Candidate Starts for Kimberlium_10:

(Start: 17 @6633 has 210 MA's), (23, 6678), (28, 6711), (30, 6735), (35, 6774), (39, 6807), (48, 6873),

Gene: KingJulian_9 Start: 6782, Stop: 7111, Start Num: 17

Candidate Starts for KingJulian_9:

(Start: 17 @6782 has 210 MA's), (28, 6860), (30, 6884), (35, 6923), (39, 6956), (45, 6992), (48, 7022), (49, 7037),

Gene: KingMidas_9 Start: 6809, Stop: 7105, Start Num: 22

Candidate Starts for KingMidas_9:

(Start: 17 @6779 has 210 MA's), (Start: 22 @6809 has 70 MA's), (23, 6824), (28, 6857), (30, 6881), (35, 6920), (39, 6953), (48, 7019),

Gene: Kingsley_10 Start: 6631, Stop: 6957, Start Num: 17

Candidate Starts for Kingsley_10:

(Start: 17 @6631 has 210 MA's), (23, 6676), (28, 6709), (30, 6733), (35, 6772), (39, 6805), (48, 6871),

Gene: Koella_9 Start: 6779, Stop: 7105, Start Num: 17

Candidate Starts for Koella_9:

(Start: 17 @6779 has 210 MA's), (Start: 22 @6809 has 70 MA's), (23, 6824), (28, 6857), (30, 6881), (35, 6920), (39, 6953), (48, 7019),

Gene: Krakatau_10 Start: 7433, Stop: 7762, Start Num: 17

Candidate Starts for Krakatau_10:

(Start: 17 @7433 has 210 MA's), (28, 7511), (30, 7535), (35, 7574), (39, 7607), (45, 7643), (48, 7673), (49, 7688),

Gene: KristaRAM_10 Start: 7429, Stop: 7758, Start Num: 17

Candidate Starts for KristaRAM_10:

(9, 7363), (Start: 17 @7429 has 210 MA's), (28, 7507), (30, 7531), (35, 7570), (39, 7603), (45, 7639), (48, 7669), (49, 7684),

Gene: Ksquared_12 Start: 7912, Stop: 8325, Start Num: 18

Candidate Starts for Ksquared_12:

(8, 7828), (Start: 18 @7912 has 50 MA's), (42, 8125), (47, 8167), (49, 8185),

Gene: Langerak_12 Start: 7913, Stop: 8290, Start Num: 18

Candidate Starts for Langerak_12:

(8, 7829), (Start: 18 @7913 has 50 MA's), (42, 8126), (47, 8168), (49, 8186),

Gene: LastJedi_9 Start: 6801, Stop: 7097, Start Num: 22

Candidate Starts for LastJedi_9:

(Start: 17 @6771 has 210 MA's), (Start: 22 @6801 has 70 MA's), (23, 6816), (28, 6849), (30, 6873), (35, 6912), (39, 6945), (48, 7011),

Gene: Latretium_9 Start: 6768, Stop: 7094, Start Num: 17

Candidate Starts for Latretium_9:

(Start: 17 @6768 has 210 MA's), (Start: 22 @6798 has 70 MA's), (23, 6813), (28, 6846), (30, 6870), (35, 6909), (39, 6942), (48, 7008),

Gene: Leozinho_10 Start: 6632, Stop: 6958, Start Num: 17

Candidate Starts for Leozinho_10:

(Start: 17 @6632 has 210 MA's), (23, 6677), (28, 6710), (30, 6734), (35, 6773), (39, 6806), (48, 6872),

Gene: Leperchaun_9 Start: 6768, Stop: 7094, Start Num: 17

Candidate Starts for Leperchaun_9:

(Start: 17 @6768 has 210 MA's), (Start: 22 @6798 has 70 MA's), (23, 6813), (28, 6846), (30, 6870), (35, 6909), (39, 6942), (48, 7008),

Gene: LilMoolah_9 Start: 6780, Stop: 7106, Start Num: 17

Candidate Starts for LilMoolah_9:

(Start: 17 @6780 has 210 MA's), (Start: 22 @6810 has 70 MA's), (23, 6825), (28, 6858), (30, 6882), (35, 6921), (39, 6954), (48, 7020),

Gene: LittleShirley_10 Start: 6633, Stop: 6959, Start Num: 17

Candidate Starts for LittleShirley_10:

(Start: 17 @6633 has 210 MA's), (23, 6678), (26, 6702), (28, 6711), (30, 6735), (35, 6774), (39, 6807), (48, 6873),

Gene: Lizziana_9 Start: 6811, Stop: 7107, Start Num: 22

Candidate Starts for Lizziana_9:

(Start: 17 @6781 has 210 MA's), (Start: 22 @6811 has 70 MA's), (23, 6826), (28, 6859), (30, 6883), (35, 6922), (39, 6955), (48, 7021),

Gene: Llama_9 Start: 6778, Stop: 7104, Start Num: 17

Candidate Starts for Llama_9:

(Start: 17 @6778 has 210 MA's), (23, 6823), (28, 6856), (30, 6880), (35, 6919), (39, 6952), (48, 7018),

Gene: Llij_9 Start: 6796, Stop: 7122, Start Num: 17

Candidate Starts for Llij_9:

(Start: 17 @6796 has 210 MA's), (Start: 22 @6826 has 70 MA's), (23, 6841), (28, 6874), (35, 6937), (39, 6970), (48, 7036),

Gene: LordVader_11 Start: 6627, Stop: 6953, Start Num: 17

Candidate Starts for LordVader_11:

(Start: 17 @6627 has 210 MA's), (23, 6672), (28, 6705), (30, 6729), (35, 6768), (39, 6801), (48, 6867),

Gene: Lorde_10 Start: 6632, Stop: 6958, Start Num: 17

Candidate Starts for Lorde_10:

(Start: 17 @6632 has 210 MA's), (23, 6677), (28, 6710), (30, 6734), (35, 6773), (39, 6806), (48, 6872),

Gene: Lucia_10 Start: 6632, Stop: 6958, Start Num: 17

Candidate Starts for Lucia_10:

(Start: 17 @6632 has 210 MA's), (23, 6677), (28, 6710), (30, 6734), (35, 6773), (39, 6806), (48, 6872),

Gene: LunaBlu_9 Start: 6755, Stop: 7084, Start Num: 17

Candidate Starts for LunaBlu_9:

(Start: 17 @6755 has 210 MA's), (28, 6833), (30, 6857), (35, 6896), (39, 6929), (45, 6965), (48, 6995), (49, 7010),

Gene: LunaStella_10 Start: 7232, Stop: 7546, Start Num: 20

Candidate Starts for LunaStella_10:

(15, 7193), (Start: 20 @7232 has 4 MA's), (26, 7283), (29, 7304), (30, 7316), (39, 7391), (48, 7457), (49, 7472),

Gene: MadMen_9 Start: 6795, Stop: 7121, Start Num: 17

Candidate Starts for MadMen_9:

(Start: 17 @6795 has 210 MA's), (23, 6840), (28, 6873), (30, 6897), (35, 6936), (39, 6969), (48, 7035),

Gene: Madiba_10 Start: 6630, Stop: 6956, Start Num: 17

Candidate Starts for Madiba_10:

(Start: 17 @6630 has 210 MA's), (23, 6675), (28, 6708), (30, 6732), (35, 6771), (39, 6804), (48, 6870),

Gene: Magsby_11 Start: 6975, Stop: 7346, Start Num: 22

Candidate Starts for Magsby_11:

(7, 6867), (11, 6894), (13, 6909), (Start: 22 @6975 has 70 MA's), (34, 7083), (35, 7101), (38, 7128), (46, 7188), (52, 7296), (56, 7329),

Gene: Mahavrat_9 Start: 6768, Stop: 7094, Start Num: 17

Candidate Starts for Mahavrat_9:

(Start: 17 @6768 has 210 MA's), (Start: 22 @6798 has 70 MA's), (23, 6813), (28, 6846), (30, 6870), (35, 6909), (39, 6942), (48, 7008),

Gene: Majeke_12 Start: 7913, Stop: 8290, Start Num: 18

Candidate Starts for Majeke_12:
(8, 7829), (Start: 18 @7913 has 50 MA's), (42, 8126), (47, 8168), (49, 8186),

Gene: Malithi_12 Start: 7935, Stop: 8348, Start Num: 18
Candidate Starts for Malithi_12:
(8, 7851), (Start: 18 @7935 has 50 MA's), (42, 8148), (47, 8190), (49, 8208),

Gene: Mandlovu_9 Start: 6769, Stop: 7095, Start Num: 17
Candidate Starts for Mandlovu_9:
(Start: 17 @6769 has 210 MA's), (23, 6814), (28, 6847), (30, 6871), (35, 6910), (39, 6943), (48, 7009),

Gene: Mangethe_12 Start: 7913, Stop: 8290, Start Num: 18
Candidate Starts for Mangethe_12:
(8, 7829), (Start: 18 @7913 has 50 MA's), (42, 8126), (47, 8168), (49, 8186),

Gene: Mantra_9 Start: 6826, Stop: 7122, Start Num: 22
Candidate Starts for Mantra_9:
(Start: 17 @6796 has 210 MA's), (Start: 22 @6826 has 70 MA's), (23, 6841), (26, 6865), (28, 6874),
(30, 6898), (35, 6937), (39, 6970), (48, 7036),

Gene: Maravista_9 Start: 6769, Stop: 7095, Start Num: 17
Candidate Starts for Maravista_9:
(Start: 17 @6769 has 210 MA's), (Start: 22 @6799 has 70 MA's), (23, 6814), (28, 6847), (30, 6871),
(35, 6910), (39, 6943), (48, 7009),

Gene: Marker_10 Start: 6631, Stop: 6957, Start Num: 17
Candidate Starts for Marker_10:
(Start: 17 @6631 has 210 MA's), (Start: 22 @6661 has 70 MA's), (23, 6676), (28, 6709), (30, 6733),
(35, 6772), (39, 6805), (48, 6871),

Gene: Martik_9 Start: 6781, Stop: 7107, Start Num: 17
Candidate Starts for Martik_9:
(Start: 17 @6781 has 210 MA's), (Start: 22 @6811 has 70 MA's), (23, 6826), (28, 6859), (30, 6883),
(35, 6922), (39, 6955), (48, 7021),

Gene: Mattes_9 Start: 6771, Stop: 7097, Start Num: 17
Candidate Starts for Mattes_9:
(Start: 17 @6771 has 210 MA's), (Start: 22 @6801 has 70 MA's), (23, 6816), (28, 6849), (30, 6873),
(35, 6912), (39, 6945), (48, 7011),

Gene: Medindi_9 Start: 6770, Stop: 7099, Start Num: 17
Candidate Starts for Medindi_9:
(Start: 17 @6770 has 210 MA's), (28, 6848), (30, 6872), (35, 6911), (39, 6944), (45, 6980), (48, 7010),
(49, 7025),

Gene: Megiddo_12 Start: 7899, Stop: 8312, Start Num: 18
Candidate Starts for Megiddo_12:
(8, 7815), (Start: 18 @7899 has 50 MA's), (42, 8112), (47, 8154), (49, 8172),

Gene: Melissauren88_9 Start: 6781, Stop: 7110, Start Num: 17
Candidate Starts for Melissauren88_9:
(Start: 17 @6781 has 210 MA's), (28, 6859), (30, 6883), (35, 6922), (39, 6955), (45, 6991), (48, 7021),
(49, 7036),

Gene: Melville_11 Start: 6975, Stop: 7346, Start Num: 22

Candidate Starts for Melville_11:

(7, 6867), (11, 6894), (13, 6909), (Start: 22 @6975 has 70 MA's), (34, 7083), (35, 7101), (38, 7128), (46, 7188), (52, 7296), (56, 7329),

Gene: MichelleMyBell_11 Start: 7015, Stop: 7386, Start Num: 22

Candidate Starts for MichelleMyBell_11:

(14, 6949), (Start: 22 @7015 has 70 MA's), (28, 7078), (34, 7123), (35, 7141), (38, 7168), (56, 7369), (57, 7375),

Gene: MilanaBonita_10 Start: 7429, Stop: 7758, Start Num: 17

Candidate Starts for MilanaBonita_10:

(9, 7363), (Start: 17 @7429 has 210 MA's), (28, 7507), (30, 7531), (35, 7570), (39, 7603), (45, 7639), (48, 7669), (49, 7684),

Gene: MilleniumForce_10 Start: 7429, Stop: 7758, Start Num: 17

Candidate Starts for MilleniumForce_10:

(Start: 17 @7429 has 210 MA's), (28, 7507), (30, 7531), (35, 7570), (39, 7603), (45, 7639), (48, 7669), (49, 7684),

Gene: MinionDave_10 Start: 7429, Stop: 7758, Start Num: 17

Candidate Starts for MinionDave_10:

(Start: 17 @7429 has 210 MA's), (28, 7507), (30, 7531), (35, 7570), (39, 7603), (45, 7639), (48, 7669), (49, 7684),

Gene: Minnie_9 Start: 6796, Stop: 7122, Start Num: 17

Candidate Starts for Minnie_9:

(Start: 17 @6796 has 210 MA's), (Start: 22 @6826 has 70 MA's), (23, 6841), (28, 6874), (30, 6898), (35, 6937), (39, 6970), (48, 7036),

Gene: Misha28_10 Start: 6635, Stop: 6961, Start Num: 17

Candidate Starts for Misha28_10:

(Start: 17 @6635 has 210 MA's), (Start: 22 @6665 has 70 MA's), (23, 6680), (28, 6713), (30, 6737), (35, 6776), (39, 6809), (48, 6875),

Gene: MisterCuddles_9 Start: 6785, Stop: 7111, Start Num: 17

Candidate Starts for MisterCuddles_9:

(Start: 17 @6785 has 210 MA's), (Start: 22 @6815 has 70 MA's), (23, 6830), (28, 6863), (30, 6887), (35, 6926), (39, 6959), (48, 7025),

Gene: Modragons_9 Start: 6778, Stop: 7104, Start Num: 17

Candidate Starts for Modragons_9:

(Start: 17 @6778 has 210 MA's), (23, 6823), (28, 6856), (30, 6880), (35, 6919), (39, 6952), (48, 7018),

Gene: MooMoo_9 Start: 6202, Stop: 6660, Start Num: 21

Candidate Starts for MooMoo_9:

(Start: 21 @6202 has 10 MA's), (30, 6298), (35, 6340), (40, 6376), (44, 6403), (51, 6544), (53, 6571), (55, 6589),

Gene: Moonbeam_9 Start: 6781, Stop: 7107, Start Num: 17

Candidate Starts for Moonbeam_9:

(Start: 17 @6781 has 210 MA's), (Start: 22 @6811 has 70 MA's), (23, 6826), (26, 6850), (28, 6859), (30, 6883), (35, 6922), (39, 6955), (48, 7021),

Gene: Mova_10 Start: 6634, Stop: 6960, Start Num: 17

Candidate Starts for Mova_10:

(Start: 17 @6634 has 210 MA's), (23, 6679), (26, 6703), (28, 6712), (30, 6736), (35, 6775), (39, 6808), (48, 6874),

Gene: Mozy_10 Start: 6629, Stop: 6958, Start Num: 17

Candidate Starts for Mozy_10:

(Start: 17 @6629 has 210 MA's), (28, 6707), (30, 6731), (35, 6770), (37, 6794), (39, 6803), (45, 6839), (48, 6869), (49, 6884),

Gene: Ms6_9 Start: 6781, Stop: 7110, Start Num: 17

Candidate Starts for Ms6_9:

(9, 6715), (Start: 17 @6781 has 210 MA's), (28, 6859), (30, 6883), (35, 6922), (39, 6955), (45, 6991), (48, 7021), (49, 7036),

Gene: MulchExplorer_10 Start: 6633, Stop: 6959, Start Num: 17

Candidate Starts for MulchExplorer_10:

(Start: 17 @6633 has 210 MA's), (23, 6678), (28, 6711), (30, 6735), (35, 6774), (39, 6807), (48, 6873),

Gene: MulchSalad_9 Start: 6812, Stop: 7108, Start Num: 22

Candidate Starts for MulchSalad_9:

(Start: 17 @6782 has 210 MA's), (Start: 22 @6812 has 70 MA's), (23, 6827), (28, 6860), (30, 6884), (35, 6923), (39, 6956), (48, 7022),

Gene: Mutaforma13_9 Start: 6779, Stop: 7105, Start Num: 17

Candidate Starts for Mutaforma13_9:

(Start: 17 @6779 has 210 MA's), (28, 6857), (30, 6881), (35, 6920), (39, 6953), (48, 7019), (49, 7034),

Gene: Mwanjiwa_9 Start: 6754, Stop: 7080, Start Num: 17

Candidate Starts for Mwanjiwa_9:

(Start: 17 @6754 has 210 MA's), (Start: 22 @6784 has 70 MA's), (23, 6799), (28, 6832), (30, 6856), (35, 6895), (39, 6928), (45, 6964), (48, 6994), (49, 7009),

Gene: Nazo_11 Start: 7647, Stop: 8021, Start Num: 18

Candidate Starts for Nazo_11:

(Start: 18 @7647 has 50 MA's), (Start: 22 @7671 has 70 MA's), (42, 7857), (47, 7899), (49, 7917),

Gene: Necropolis_12 Start: 7932, Stop: 8309, Start Num: 18

Candidate Starts for Necropolis_12:

(8, 7848), (Start: 18 @7932 has 50 MA's), (42, 8145), (47, 8187), (49, 8205),

Gene: Nenae_11 Start: 7020, Stop: 7391, Start Num: 22

Candidate Starts for Nenae_11:

(6, 6852), (13, 6951), (16, 6972), (Start: 22 @7020 has 70 MA's), (28, 7083), (34, 7128), (35, 7146), (38, 7173), (42, 7206), (52, 7341), (56, 7374),

Gene: NewHope4_9 Start: 6755, Stop: 7084, Start Num: 17

Candidate Starts for NewHope4_9:

(Start: 17 @6755 has 210 MA's), (28, 6833), (30, 6857), (35, 6896), (39, 6929), (45, 6965), (48, 6995), (49, 7010),

Gene: Nichirin_9 Start: 6778, Stop: 7104, Start Num: 17

Candidate Starts for Nichirin_9:

(Start: 17 @6778 has 210 MA's), (23, 6823), (28, 6856), (30, 6880), (35, 6919), (39, 6952), (48, 7018),

Gene: Nimbo_9 Start: 6779, Stop: 7105, Start Num: 17

Candidate Starts for Nimbo_9:

(Start: 17 @6779 has 210 MA's), (Start: 22 @6809 has 70 MA's), (23, 6824), (28, 6857), (30, 6881), (35, 6920), (39, 6953), (48, 7019),

Gene: Nitzel_10 Start: 7432, Stop: 7758, Start Num: 17

Candidate Starts for Nitzel_10:

(Start: 17 @7432 has 210 MA's), (Start: 22 @7462 has 70 MA's), (23, 7477), (28, 7510), (30, 7534), (35, 7573), (39, 7606), (48, 7672),

Gene: Nivrat_9 Start: 6780, Stop: 7106, Start Num: 17

Candidate Starts for Nivrat_9:

(Start: 17 @6780 has 210 MA's), (Start: 22 @6810 has 70 MA's), (23, 6825), (28, 6858), (30, 6882), (35, 6921), (39, 6954), (48, 7020),

Gene: NormanBulbieJr_9 Start: 6767, Stop: 7093, Start Num: 17

Candidate Starts for NormanBulbieJr_9:

(Start: 17 @6767 has 210 MA's), (Start: 22 @6797 has 70 MA's), (23, 6812), (28, 6845), (30, 6869), (35, 6908), (39, 6941), (48, 7007),

Gene: Ochi17_9 Start: 6778, Stop: 7104, Start Num: 17

Candidate Starts for Ochi17_9:

(Start: 17 @6778 has 210 MA's), (23, 6823), (28, 6856), (30, 6880), (35, 6919), (39, 6952), (48, 7018),

Gene: OfUltron_9 Start: 6778, Stop: 7104, Start Num: 17

Candidate Starts for OfUltron_9:

(Start: 17 @6778 has 210 MA's), (23, 6823), (28, 6856), (30, 6880), (35, 6919), (39, 6952), (48, 7018),

Gene: Ogopogo_12 Start: 7034, Stop: 7360, Start Num: 17

Candidate Starts for Ogopogo_12:

(Start: 17 @7034 has 210 MA's), (Start: 22 @7064 has 70 MA's), (23, 7079), (28, 7112), (30, 7136), (35, 7175), (39, 7208), (48, 7274),

Gene: Okabe_11 Start: 7472, Stop: 7768, Start Num: 22

Candidate Starts for Okabe_11:

(Start: 17 @7442 has 210 MA's), (Start: 22 @7472 has 70 MA's), (23, 7487), (28, 7520), (30, 7544), (35, 7583), (39, 7616), (48, 7682), (49, 7697),

Gene: Oksu_10 Start: 6633, Stop: 6959, Start Num: 17

Candidate Starts for Oksu_10:

(Start: 17 @6633 has 210 MA's), (23, 6678), (28, 6711), (30, 6735), (35, 6774), (39, 6807), (48, 6873),

Gene: OldBen_9 Start: 6779, Stop: 7105, Start Num: 17

Candidate Starts for OldBen_9:

(Start: 17 @6779 has 210 MA's), (Start: 22 @6809 has 70 MA's), (23, 6824), (28, 6857), (30, 6881), (35, 6920), (39, 6953), (48, 7019),

Gene: OlympiaSaint_9 Start: 6780, Stop: 7106, Start Num: 17

Candidate Starts for OlympiaSaint_9:

(Start: 17 @6780 has 210 MA's), (Start: 22 @6810 has 70 MA's), (23, 6825), (28, 6858), (30, 6882), (35, 6921), (39, 6954), (48, 7020),

Gene: Ovechkin_9 Start: 6781, Stop: 7110, Start Num: 17

Candidate Starts for Ovechkin_9:

(Start: 17 @6781 has 210 MA's), (28, 6859), (30, 6883), (35, 6922), (39, 6955), (45, 6991), (48, 7021), (49, 7036),

Gene: OwlsT2W_10 Start: 6632, Stop: 6958, Start Num: 17

Candidate Starts for OwlsT2W_10:

(Start: 17 @6632 has 210 MA's), (23, 6677), (28, 6710), (30, 6734), (35, 6773), (39, 6806), (48, 6872),

Gene: PHappiness_9 Start: 6779, Stop: 7105, Start Num: 17

Candidate Starts for PHappiness_9:

(Start: 17 @6779 has 210 MA's), (Start: 22 @6809 has 70 MA's), (23, 6824), (28, 6857), (30, 6881), (35, 6920), (39, 6953), (48, 7019),

Gene: PMC_9 Start: 6796, Stop: 7122, Start Num: 17

Candidate Starts for PMC_9:

(Start: 17 @6796 has 210 MA's), (Start: 22 @6826 has 70 MA's), (23, 6841), (28, 6874), (35, 6937), (39, 6970), (48, 7036),

Gene: Pacc40_9 Start: 6809, Stop: 7105, Start Num: 22

Candidate Starts for Pacc40_9:

(Start: 17 @6779 has 210 MA's), (Start: 22 @6809 has 70 MA's), (23, 6824), (28, 6857), (30, 6881), (35, 6920), (39, 6953), (48, 7019),

Gene: PaintedDog_10 Start: 7468, Stop: 7908, Start Num: 21

Candidate Starts for PaintedDog_10:

(3, 6991), (4, 7141), (Start: 17 @7447 has 210 MA's), (Start: 21 @7468 has 10 MA's), (30, 7564), (40, 7642), (44, 7669), (58, 7894),

Gene: Panchino_11 Start: 6996, Stop: 7367, Start Num: 22

Candidate Starts for Panchino_11:

(6, 6828), (13, 6927), (16, 6948), (Start: 22 @6996 has 70 MA's), (28, 7059), (34, 7104), (35, 7122), (38, 7149), (42, 7182), (52, 7317), (56, 7350), (57, 7356),

Gene: Parmesanjohn_11 Start: 6975, Stop: 7346, Start Num: 22

Candidate Starts for Parmesanjohn_11:

(7, 6867), (11, 6894), (13, 6909), (Start: 22 @6975 has 70 MA's), (34, 7083), (35, 7101), (38, 7128), (46, 7188), (52, 7296), (56, 7329),

Gene: PatoPoderoso_9 Start: 6782, Stop: 7111, Start Num: 17

Candidate Starts for PatoPoderoso_9:

(Start: 17 @6782 has 210 MA's), (28, 6860), (30, 6884), (35, 6923), (39, 6956), (45, 6992), (48, 7022), (49, 7037),

Gene: PeanutPie_12 Start: 7903, Stop: 8316, Start Num: 18

Candidate Starts for PeanutPie_12:

(8, 7819), (Start: 18 @7903 has 50 MA's), (42, 8116), (47, 8158), (49, 8176),

Gene: Peridot_11 Start: 6632, Stop: 6958, Start Num: 17

Candidate Starts for Peridot_11:

(Start: 17 @6632 has 210 MA's), (23, 6677), (26, 6701), (28, 6710), (30, 6734), (35, 6773), (39, 6806), (48, 6872),

Gene: Phalconet_9 Start: 6781, Stop: 7110, Start Num: 17

Candidate Starts for Phalconet_9:

(Start: 17 @6781 has 210 MA's), (28, 6859), (30, 6883), (35, 6922), (39, 6955), (45, 6991), (48, 7021), (49, 7036),

Gene: Phalm_12 Start: 7899, Stop: 8312, Start Num: 18

Candidate Starts for Phalm_12:

(8, 7815), (Start: 18 @7899 has 50 MA's), (42, 8112), (47, 8154), (49, 8172),

Gene: PhancyPhin_11 Start: 7020, Stop: 7391, Start Num: 22

Candidate Starts for PhancyPhin_11:

(6, 6852), (13, 6951), (16, 6972), (Start: 22 @7020 has 70 MA's), (28, 7083), (34, 7128), (35, 7146), (38, 7173), (42, 7206), (52, 7341), (56, 7374), (57, 7380),

Gene: Phanphagia_9 Start: 6781, Stop: 7110, Start Num: 17

Candidate Starts for Phanphagia_9:

(Start: 17 @6781 has 210 MA's), (28, 6859), (30, 6883), (39, 6955), (45, 6991), (48, 7021), (49, 7036),

Gene: Phasih_9 Start: 6795, Stop: 7121, Start Num: 17

Candidate Starts for Phasih_9:

(Start: 17 @6795 has 210 MA's), (Start: 22 @6825 has 70 MA's), (23, 6840), (28, 6873), (30, 6897), (35, 6936), (39, 6969), (48, 7035), (49, 7050),

Gene: Phatniss_9 Start: 6779, Stop: 7105, Start Num: 17

Candidate Starts for Phatniss_9:

(Start: 17 @6779 has 210 MA's), (Start: 22 @6809 has 70 MA's), (23, 6824), (28, 6857), (35, 6920), (39, 6953), (48, 7019),

Gene: Phayonce_11 Start: 7601, Stop: 7975, Start Num: 18

Candidate Starts for Phayonce_11:

(Start: 18 @7601 has 50 MA's), (24, 7649), (42, 7811), (45, 7826), (47, 7853),

Gene: Phegasus_12 Start: 7913, Stop: 8290, Start Num: 18

Candidate Starts for Phegasus_12:

(8, 7829), (Start: 18 @7913 has 50 MA's), (42, 8126), (47, 8168), (49, 8186),

Gene: PhesterPhotato_9 Start: 6781, Stop: 7110, Start Num: 17

Candidate Starts for PhesterPhotato_9:

(Start: 17 @6781 has 210 MA's), (28, 6859), (30, 6883), (35, 6922), (39, 6955), (45, 6991), (48, 7021), (49, 7036),

Gene: Philonius_11 Start: 6975, Stop: 7346, Start Num: 22

Candidate Starts for Philonius_11:

(7, 6867), (11, 6894), (13, 6909), (Start: 22 @6975 has 70 MA's), (34, 7083), (35, 7101), (38, 7128), (46, 7188), (52, 7296), (56, 7329),

Gene: Philus_9 Start: 6810, Stop: 7106, Start Num: 22

Candidate Starts for Philus_9:

(Start: 17 @6780 has 210 MA's), (Start: 22 @6810 has 70 MA's), (23, 6825), (28, 6858), (30, 6882), (35, 6921), (39, 6954), (48, 7020),

Gene: Phineas_12 Start: 7920, Stop: 8297, Start Num: 18

Candidate Starts for Phineas_12:

(8, 7836), (Start: 18 @7920 has 50 MA's), (42, 8133), (47, 8175), (49, 8193),

Gene: PhlipPhlop_9 Start: 6826, Stop: 7122, Start Num: 22

Candidate Starts for PhlipPhlop_9:

(Start: 17 @6796 has 210 MA's), (Start: 22 @6826 has 70 MA's), (23, 6841), (26, 6865), (28, 6874), (30, 6898), (35, 6937), (39, 6970), (48, 7036),

Gene: Phloss_11 Start: 6975, Stop: 7346, Start Num: 22

Candidate Starts for Phloss_11:

(7, 6867), (11, 6894), (13, 6909), (Start: 22 @6975 has 70 MA's), (34, 7083), (35, 7101), (38, 7128), (46, 7188), (52, 7296), (56, 7329),

Gene: Phrann_11 Start: 7020, Stop: 7391, Start Num: 22

Candidate Starts for Phrann_11:

(6, 6852), (13, 6951), (16, 6972), (Start: 22 @7020 has 70 MA's), (28, 7083), (34, 7128), (35, 7146), (38, 7173), (42, 7206), (52, 7341), (56, 7374), (57, 7380),

Gene: Piper2020_10 Start: 6664, Stop: 6960, Start Num: 22

Candidate Starts for Piper2020_10:

(Start: 17 @6634 has 210 MA's), (Start: 22 @6664 has 70 MA's), (23, 6679), (28, 6712), (30, 6736), (35, 6775), (39, 6808), (48, 6874),

Gene: Pippy_9 Start: 6797, Stop: 7093, Start Num: 22

Candidate Starts for Pippy_9:

(Start: 17 @6767 has 210 MA's), (Start: 22 @6797 has 70 MA's), (23, 6812), (28, 6845), (30, 6869), (35, 6908), (39, 6941), (48, 7007),

Gene: Pipsqueaks_11 Start: 6975, Stop: 7346, Start Num: 22

Candidate Starts for Pipsqueaks_11:

(7, 6867), (11, 6894), (13, 6909), (Start: 22 @6975 has 70 MA's), (34, 7083), (35, 7101), (38, 7128), (46, 7188), (52, 7296), (56, 7329),

Gene: Plumbus_10 Start: 6633, Stop: 6959, Start Num: 17

Candidate Starts for Plumbus_10:

(Start: 17 @6633 has 210 MA's), (23, 6678), (28, 6711), (30, 6735), (35, 6774), (39, 6807), (48, 6873),

Gene: Poenanya_9 Start: 6809, Stop: 7105, Start Num: 22

Candidate Starts for Poenanya_9:

(Start: 17 @6779 has 210 MA's), (Start: 22 @6809 has 70 MA's), (23, 6824), (28, 6857), (30, 6881), (35, 6920), (39, 6953), (48, 7019),

Gene: Polka14_9 Start: 6780, Stop: 7106, Start Num: 17

Candidate Starts for Polka14_9:

(Start: 17 @6780 has 210 MA's), (Start: 22 @6810 has 70 MA's), (23, 6825), (28, 6858), (30, 6882), (35, 6921), (39, 6954), (48, 7020),

Gene: Polkaroo_12 Start: 7912, Stop: 8325, Start Num: 18

Candidate Starts for Polkaroo_12:

(8, 7828), (Start: 18 @7912 has 50 MA's), (42, 8125), (47, 8167), (49, 8185),

Gene: Pollywog_10 Start: 6632, Stop: 6958, Start Num: 17

Candidate Starts for Pollywog_10:

(Start: 17 @6632 has 210 MA's), (23, 6677), (26, 6701), (28, 6710), (30, 6734), (35, 6773), (39, 6806), (48, 6872),

Gene: Polo2Bam_10 Start: 6755, Stop: 7084, Start Num: 17

Candidate Starts for Polo2Bam_10:

(Start: 17 @6755 has 210 MA's), (28, 6833), (30, 6857), (35, 6896), (39, 6929), (45, 6965), (48, 6995), (49, 7010),

Gene: PopTart_9 Start: 6781, Stop: 7110, Start Num: 17

Candidate Starts for PopTart_9:

(Start: 17 @6781 has 210 MA's), (28, 6859), (30, 6883), (35, 6922), (39, 6955), (45, 6991), (48, 7021), (49, 7036),

Gene: Priscilla_9 Start: 6780, Stop: 7106, Start Num: 17

Candidate Starts for Priscilla_9:

(Start: 17 @6780 has 210 MA's), (Start: 22 @6810 has 70 MA's), (23, 6825), (28, 6858), (30, 6882), (35, 6921), (39, 6954), (48, 7020),

Gene: Purgamenstris_11 Start: 7020, Stop: 7391, Start Num: 22

Candidate Starts for Purgamenstris_11:

(6, 6852), (13, 6951), (16, 6972), (Start: 22 @7020 has 70 MA's), (28, 7083), (34, 7128), (35, 7146), (38, 7173), (42, 7206), (52, 7341), (56, 7374),

Gene: Purky_11 Start: 7613, Stop: 7984, Start Num: 18

Candidate Starts for Purky_11:

(Start: 18 @7613 has 50 MA's), (Start: 22 @7634 has 70 MA's), (25, 7664), (27, 7688), (42, 7820), (47, 7862), (49, 7880), (54, 7979),

Gene: Pygmy_11 Start: 7652, Stop: 8026, Start Num: 18

Candidate Starts for Pygmy_11:

(Start: 18 @7652 has 50 MA's), (42, 7862), (47, 7904), (49, 7922),

Gene: QueenHazel_11 Start: 7927, Stop: 8367, Start Num: 21

Candidate Starts for QueenHazel_11:

(4, 7597), (5, 7645), (Start: 17 @7906 has 210 MA's), (Start: 21 @7927 has 10 MA's), (30, 8023), (40, 8101), (44, 8128), (58, 8353),

Gene: QuickMath_9 Start: 6782, Stop: 7111, Start Num: 17

Candidate Starts for QuickMath_9:

(9, 6716), (Start: 17 @6782 has 210 MA's), (28, 6860), (30, 6884), (35, 6923), (39, 6956), (45, 6992), (48, 7022), (49, 7037),

Gene: Quico_10 Start: 6627, Stop: 6953, Start Num: 17

Candidate Starts for Quico_10:

(Start: 17 @6627 has 210 MA's), (23, 6672), (28, 6705), (30, 6729), (35, 6768), (39, 6801), (48, 6867),

Gene: Radiance_9 Start: 6779, Stop: 7105, Start Num: 17

Candidate Starts for Radiance_9:

(Start: 17 @6779 has 210 MA's), (Start: 22 @6809 has 70 MA's), (23, 6824), (28, 6857), (30, 6881), (35, 6920), (39, 6953), (48, 7019),

Gene: Ramsey_10 Start: 6661, Stop: 6957, Start Num: 22

Candidate Starts for Ramsey_10:

(Start: 17 @6631 has 210 MA's), (Start: 22 @6661 has 70 MA's), (23, 6676), (28, 6709), (30, 6733), (35, 6772), (39, 6805), (48, 6871),

Gene: Raymond7_11 Start: 7020, Stop: 7391, Start Num: 22

Candidate Starts for Raymond7_11:

(6, 6852), (13, 6951), (16, 6972), (Start: 22 @7020 has 70 MA's), (28, 7083), (34, 7128), (35, 7146), (38, 7173), (42, 7206), (52, 7341), (56, 7374), (57, 7380),

Gene: Rebel_11 Start: 7020, Stop: 7391, Start Num: 22

Candidate Starts for Rebel_11:

(6, 6852), (13, 6951), (16, 6972), (Start: 22 @7020 has 70 MA's), (28, 7083), (34, 7128), (35, 7146), (38, 7173), (42, 7206), (52, 7341), (56, 7374), (57, 7380),

Gene: RedBird_9 Start: 6779, Stop: 7105, Start Num: 17

Candidate Starts for RedBird_9:

(Start: 17 @6779 has 210 MA's), (Start: 22 @6809 has 70 MA's), (23, 6824), (28, 6857), (30, 6881), (35, 6920), (39, 6953), (48, 7019),

Gene: Redi_11 Start: 7020, Stop: 7391, Start Num: 22

Candidate Starts for Redi_11:

(6, 6852), (13, 6951), (16, 6972), (Start: 22 @7020 has 70 MA's), (28, 7083), (34, 7128), (35, 7146), (38, 7173), (42, 7206), (52, 7341), (56, 7374), (57, 7380),

Gene: Renaud18_10 Start: 7109, Stop: 7423, Start Num: 20

Candidate Starts for Renaud18_10:

(15, 7070), (Start: 20 @7109 has 4 MA's), (29, 7181), (30, 7193), (32, 7205), (33, 7208), (39, 7268), (48, 7334),

Gene: Rialto_10 Start: 6633, Stop: 6959, Start Num: 17

Candidate Starts for Rialto_10:

(Start: 17 @6633 has 210 MA's), (Start: 22 @6663 has 70 MA's), (23, 6678), (26, 6702), (28, 6711), (30, 6735), (35, 6774), (39, 6807), (48, 6873),

Gene: Rita_9 Start: 6782, Stop: 7108, Start Num: 17

Candidate Starts for Rita_9:

(Start: 17 @6782 has 210 MA's), (28, 6860), (30, 6884), (35, 6923), (39, 6956), (45, 6992), (48, 7022), (49, 7037),

Gene: RitaG_9 Start: 6779, Stop: 7105, Start Num: 17

Candidate Starts for RitaG_9:

(Start: 17 @6779 has 210 MA's), (Start: 22 @6809 has 70 MA's), (23, 6824), (28, 6857), (30, 6881), (35, 6920), (39, 6953), (48, 7019),

Gene: Rockne_9 Start: 6796, Stop: 7122, Start Num: 17

Candidate Starts for Rockne_9:

(Start: 17 @6796 has 210 MA's), (Start: 22 @6826 has 70 MA's), (23, 6841), (28, 6874), (35, 6937), (39, 6970), (48, 7036),

Gene: RockyHorror_10 Start: 6631, Stop: 6957, Start Num: 17

Candidate Starts for RockyHorror_10:

(Start: 17 @6631 has 210 MA's), (23, 6676), (28, 6709), (30, 6733), (35, 6772), (39, 6805), (48, 6871),

Gene: Royals2015_9 Start: 6781, Stop: 7110, Start Num: 17

Candidate Starts for Royals2015_9:

(12, 6736), (Start: 17 @6781 has 210 MA's), (28, 6859), (30, 6883), (35, 6922), (39, 6955), (45, 6991), (48, 7021), (49, 7036),

Gene: Rubeelu_11 Start: 6995, Stop: 7366, Start Num: 22

Candidate Starts for Rubeelu_11:

(14, 6929), (Start: 22 @6995 has 70 MA's), (28, 7058), (34, 7103), (35, 7121), (36, 7139), (38, 7148), (56, 7349), (57, 7355),

Gene: Ruby_9 Start: 6785, Stop: 7111, Start Num: 17

Candidate Starts for Ruby_9:

(Start: 17 @6785 has 210 MA's), (Start: 22 @6815 has 70 MA's), (23, 6830), (28, 6863), (30, 6887), (35, 6926), (39, 6959), (48, 7025),

Gene: SG4_9 Start: 6781, Stop: 7110, Start Num: 17

Candidate Starts for SG4_9:

(Start: 17 @6781 has 210 MA's), (28, 6859), (30, 6883), (35, 6922), (39, 6955), (45, 6991), (48, 7021), (49, 7036),

Gene: Saal_9 Start: 6768, Stop: 7094, Start Num: 17

Candidate Starts for Saal_9:

(Start: 17 @6768 has 210 MA's), (Start: 22 @6798 has 70 MA's), (23, 6813), (28, 6846), (30, 6870), (35, 6909), (39, 6942), (48, 7008),

Gene: Sabbb_9 Start: 6783, Stop: 7109, Start Num: 17

Candidate Starts for Sabbb_9:

(Start: 17 @6783 has 210 MA's), (23, 6828), (28, 6861), (30, 6885), (35, 6924), (39, 6957), (48, 7023),

Gene: Sandalphon_9 Start: 6796, Stop: 7122, Start Num: 17

Candidate Starts for Sandalphon_9:

(Start: 17 @6796 has 210 MA's), (Start: 22 @6826 has 70 MA's), (23, 6841), (28, 6874), (30, 6898), (35, 6937), (39, 6970), (48, 7036),

Gene: Sarma624_10 Start: 6631, Stop: 6957, Start Num: 17

Candidate Starts for Sarma624_10:

(Start: 17 @6631 has 210 MA's), (23, 6676), (28, 6709), (30, 6733), (35, 6772), (39, 6805), (48, 6871),

Gene: Sassafras_9 Start: 6779, Stop: 7105, Start Num: 17

Candidate Starts for Sassafras_9:

(Start: 17 @6779 has 210 MA's), (Start: 22 @6809 has 70 MA's), (23, 6824), (28, 6857), (30, 6881), (35, 6920), (39, 6953), (48, 7019),

Gene: SassyB_9 Start: 6781, Stop: 7110, Start Num: 17

Candidate Starts for SassyB_9:

(Start: 17 @6781 has 210 MA's), (28, 6859), (30, 6883), (35, 6922), (39, 6955), (45, 6991), (48, 7021), (49, 7036),

Gene: Sbash_10 Start: 7504, Stop: 7950, Start Num: 21

Candidate Starts for Sbash_10:

(Start: 17 @7483 has 210 MA's), (Start: 21 @7504 has 10 MA's), (30, 7600), (31, 7603), (39, 7675), (40, 7678), (44, 7705), (50, 7807), (55, 7882),

Gene: Schnauzer_11 Start: 6975, Stop: 7346, Start Num: 22

Candidate Starts for Schnauzer_11:

(7, 6867), (11, 6894), (13, 6909), (Start: 22 @6975 has 70 MA's), (34, 7083), (35, 7101), (38, 7128), (46, 7188), (52, 7296), (56, 7329),

Gene: Scitech_11 Start: 6975, Stop: 7346, Start Num: 22

Candidate Starts for Scitech_11:

(7, 6867), (11, 6894), (13, 6909), (Start: 22 @6975 has 70 MA's), (34, 7083), (35, 7101), (38, 7128), (46, 7188), (52, 7296), (56, 7329),

Gene: Scottish_9 Start: 6779, Stop: 7105, Start Num: 17

Candidate Starts for Scottish_9:

(Start: 17 @6779 has 210 MA's), (Start: 22 @6809 has 70 MA's), (23, 6824), (28, 6857), (30, 6881), (35, 6920), (39, 6953), (48, 7019),

Gene: SeaLumen_9 Start: 6755, Stop: 7084, Start Num: 17

Candidate Starts for SeaLumen_9:

(Start: 17 @6755 has 210 MA's), (28, 6833), (30, 6857), (35, 6896), (39, 6929), (45, 6965), (48, 6995), (49, 7010),

Gene: Seabastian_9 Start: 6778, Stop: 7104, Start Num: 17

Candidate Starts for Seabastian_9:

(Start: 17 @6778 has 210 MA's), (23, 6823), (28, 6856), (30, 6880), (35, 6919), (39, 6952), (48, 7018),

Gene: Seagreen_10 Start: 6662, Stop: 6958, Start Num: 22

Candidate Starts for Seagreen_10:

(Start: 17 @6632 has 210 MA's), (Start: 22 @6662 has 70 MA's), (23, 6677), (28, 6710), (30, 6734), (35, 6773), (39, 6806), (48, 6872),

Gene: Shauna1_9 Start: 6781, Stop: 7110, Start Num: 17

Candidate Starts for Shauna1_9:

(Start: 17 @6781 has 210 MA's), (28, 6859), (30, 6883), (39, 6955), (45, 6991), (48, 7021), (49, 7036),

Gene: ShiLan_9 Start: 6780, Stop: 7106, Start Num: 17

Candidate Starts for ShiLan_9:

(Start: 17 @6780 has 210 MA's), (Start: 22 @6810 has 70 MA's), (23, 6825), (28, 6858), (30, 6882), (35, 6921), (39, 6954), (48, 7020),

Gene: Shipwreck_11 Start: 7630, Stop: 8004, Start Num: 18

Candidate Starts for Shipwreck_11:

(Start: 18 @7630 has 50 MA's), (42, 7840), (47, 7882), (49, 7900),

Gene: ShowerHandel_9 Start: 6811, Stop: 7107, Start Num: 22

Candidate Starts for ShowerHandel_9:

(Start: 17 @6781 has 210 MA's), (Start: 22 @6811 has 70 MA's), (23, 6826), (28, 6859), (30, 6883), (35, 6922), (39, 6955), (48, 7021),

Gene: ShrimpFriedEgg_11 Start: 7020, Stop: 7391, Start Num: 22

Candidate Starts for ShrimpFriedEgg_11:

(6, 6852), (13, 6951), (16, 6972), (Start: 22 @7020 has 70 MA's), (28, 7083), (34, 7128), (35, 7146), (38, 7173), (42, 7206), (52, 7341), (56, 7374), (57, 7380),

Gene: ShroomBoi_9 Start: 6781, Stop: 7110, Start Num: 17

Candidate Starts for ShroomBoi_9:

(Start: 17 @6781 has 210 MA's), (Start: 22 @6811 has 70 MA's), (28, 6859), (30, 6883), (35, 6922), (39, 6955), (45, 6991), (48, 7021), (49, 7036),

Gene: Shweta_11 Start: 7020, Stop: 7391, Start Num: 22

Candidate Starts for Shweta_11:

(6, 6852), (13, 6951), (16, 6972), (Start: 22 @7020 has 70 MA's), (28, 7083), (34, 7128), (35, 7146), (38, 7173), (42, 7206), (52, 7341), (56, 7374), (57, 7380),

Gene: SiSi_9 Start: 6766, Stop: 7095, Start Num: 17

Candidate Starts for SiSi_9:

(9, 6700), (Start: 17 @6766 has 210 MA's), (28, 6844), (30, 6868), (35, 6907), (39, 6940), (45, 6976), (48, 7006), (49, 7021),

Gene: Silvafighter_11 Start: 6975, Stop: 7346, Start Num: 22

Candidate Starts for Silvafighter_11:

(7, 6867), (11, 6894), (13, 6909), (Start: 22 @6975 has 70 MA's), (34, 7083), (35, 7101), (38, 7128), (46, 7188), (52, 7296), (56, 7329),

Gene: Silvy_11 Start: 6975, Stop: 7346, Start Num: 22

Candidate Starts for Silvy_11:

(7, 6867), (11, 6894), (13, 6909), (Start: 22 @6975 has 70 MA's), (34, 7083), (35, 7101), (38, 7128), (46, 7188), (52, 7296), (56, 7329),

Gene: SimranZ1_10 Start: 6632, Stop: 6958, Start Num: 17

Candidate Starts for SimranZ1_10:

(Start: 17 @6632 has 210 MA's), (Start: 22 @6662 has 70 MA's), (23, 6677), (28, 6710), (30, 6734), (35, 6773), (39, 6806), (48, 6872),

Gene: SkinnyPete_11 Start: 7020, Stop: 7391, Start Num: 22

Candidate Starts for SkinnyPete_11:

(6, 6852), (13, 6951), (16, 6972), (Start: 22 @7020 has 70 MA's), (28, 7083), (34, 7128), (35, 7146), (38, 7173), (42, 7206), (52, 7341), (56, 7374), (57, 7380),

Gene: Slim_10 Start: 6633, Stop: 6959, Start Num: 17

Candidate Starts for Slim_10:

(Start: 17 @6633 has 210 MA's), (Start: 22 @6663 has 70 MA's), (23, 6678), (26, 6702), (28, 6711), (30, 6735), (35, 6774), (39, 6807), (48, 6873),

Gene: Smurph_11 Start: 6975, Stop: 7346, Start Num: 22

Candidate Starts for Smurph_11:

(7, 6867), (11, 6894), (13, 6909), (Start: 22 @6975 has 70 MA's), (34, 7083), (35, 7101), (38, 7128), (46, 7188), (52, 7296), (56, 7329),

Gene: Snekmaggedon_11 Start: 7020, Stop: 7391, Start Num: 22

Candidate Starts for Snekmaggedon_11:

(6, 6852), (13, 6951), (16, 6972), (Start: 22 @7020 has 70 MA's), (28, 7083), (34, 7128), (35, 7146), (38, 7173), (42, 7206), (52, 7341), (56, 7374), (57, 7380),

Gene: Sonah_12 Start: 7915, Stop: 8292, Start Num: 18
Candidate Starts for Sonah_12:
(8, 7831), (Start: 18 @7915 has 50 MA's), (42, 8128), (47, 8170), (49, 8188),

Gene: Sparkdehlily_9 Start: 6795, Stop: 7121, Start Num: 17
Candidate Starts for Sparkdehlily_9:
(Start: 17 @6795 has 210 MA's), (23, 6840), (28, 6873), (30, 6897), (35, 6936), (39, 6969), (48, 7035),

Gene: Spartacus_9 Start: 6767, Stop: 7093, Start Num: 17
Candidate Starts for Spartacus_9:
(Start: 17 @6767 has 210 MA's), (28, 6845), (30, 6869), (35, 6908), (39, 6941), (48, 7007), (49, 7022),

Gene: Spikelee_10 Start: 6632, Stop: 6958, Start Num: 17
Candidate Starts for Spikelee_10:
(Start: 17 @6632 has 210 MA's), (23, 6677), (28, 6710), (30, 6734), (35, 6773), (39, 6806), (48, 6872),

Gene: Spinach_11 Start: 7020, Stop: 7391, Start Num: 22
Candidate Starts for Spinach_11:
(6, 6852), (13, 6951), (16, 6972), (Start: 22 @7020 has 70 MA's), (28, 7083), (34, 7128), (35, 7146),
(38, 7173), (42, 7206), (52, 7341), (56, 7374), (57, 7380),

Gene: SpongeBob_11 Start: 7020, Stop: 7391, Start Num: 22
Candidate Starts for SpongeBob_11:
(6, 6852), (13, 6951), (16, 6972), (Start: 22 @7020 has 70 MA's), (28, 7083), (34, 7128), (35, 7146),
(38, 7173), (42, 7206), (52, 7341), (56, 7374), (57, 7380),

Gene: Spoonbill_9 Start: 6781, Stop: 7107, Start Num: 17
Candidate Starts for Spoonbill_9:
(Start: 17 @6781 has 210 MA's), (Start: 22 @6811 has 70 MA's), (23, 6826), (28, 6859), (30, 6883),
(35, 6922), (39, 6955), (48, 7021),

Gene: Squirty_10 Start: 6630, Stop: 6956, Start Num: 17
Candidate Starts for Squirty_10:
(Start: 17 @6630 has 210 MA's), (Start: 22 @6660 has 70 MA's), (23, 6675), (28, 6708), (30, 6732),
(35, 6771), (39, 6804), (48, 6870),

Gene: StAnnes_9 Start: 6781, Stop: 7110, Start Num: 17
Candidate Starts for StAnnes_9:
(Start: 17 @6781 has 210 MA's), (28, 6859), (30, 6883), (35, 6922), (39, 6955), (45, 6991), (48, 7021),
(49, 7036),

Gene: Stap_10 Start: 6632, Stop: 6958, Start Num: 17
Candidate Starts for Stap_10:
(Start: 17 @6632 has 210 MA's), (Start: 22 @6662 has 70 MA's), (23, 6677), (28, 6710), (30, 6734),
(35, 6773), (39, 6806), (48, 6872),

Gene: Starcevich_10 Start: 6632, Stop: 6958, Start Num: 17
Candidate Starts for Starcevich_10:
(Start: 17 @6632 has 210 MA's), (23, 6677), (26, 6701), (28, 6710), (30, 6734), (35, 6773), (39, 6806),
(48, 6872),

Gene: StevieRay_12 Start: 7923, Stop: 8300, Start Num: 18
Candidate Starts for StevieRay_12:

(8, 7839), (Start: 18 @7923 has 50 MA's), (42, 8136), (47, 8178), (49, 8196),

Gene: StressBall_12 Start: 7899, Stop: 8312, Start Num: 18

Candidate Starts for StressBall_12:

(8, 7815), (Start: 18 @7899 has 50 MA's), (42, 8112), (47, 8154), (49, 8172),

Gene: Strokeseat_9 Start: 6769, Stop: 7095, Start Num: 17

Candidate Starts for Strokeseat_9:

(Start: 17 @6769 has 210 MA's), (23, 6814), (28, 6847), (30, 6871), (35, 6910), (39, 6943), (48, 7009),

Gene: Stuck_10 Start: 7516, Stop: 7968, Start Num: 21

Candidate Starts for Stuck_10:

(Start: 17 @7495 has 210 MA's), (Start: 21 @7516 has 10 MA's), (30, 7612), (39, 7687), (40, 7690), (44, 7717), (50, 7828), (55, 7903), (59, 7951),

Gene: SuperGrey_9 Start: 6781, Stop: 7107, Start Num: 17

Candidate Starts for SuperGrey_9:

(Start: 17 @6781 has 210 MA's), (28, 6859), (30, 6883), (35, 6922), (39, 6955), (45, 6991), (48, 7021), (49, 7036),

Gene: SwagPigglett_9 Start: 6781, Stop: 7107, Start Num: 17

Candidate Starts for SwagPigglett_9:

(Start: 17 @6781 has 210 MA's), (Start: 22 @6811 has 70 MA's), (23, 6826), (28, 6859), (30, 6883), (35, 6922), (39, 6955), (48, 7021),

Gene: TChen_10 Start: 7232, Stop: 7546, Start Num: 20

Candidate Starts for TChen_10:

(15, 7193), (Start: 20 @7232 has 4 MA's), (26, 7283), (29, 7304), (30, 7316), (39, 7391), (48, 7457), (49, 7472),

Gene: TDanisky_9 Start: 6795, Stop: 7121, Start Num: 17

Candidate Starts for TDanisky_9:

(Start: 17 @6795 has 210 MA's), (23, 6840), (28, 6873), (30, 6897), (35, 6936), (39, 6969), (48, 7035),

Gene: Taj_9 Start: 6781, Stop: 7110, Start Num: 17

Candidate Starts for Taj_9:

(Start: 17 @6781 has 210 MA's), (Start: 22 @6811 has 70 MA's), (28, 6859), (30, 6883), (35, 6922), (39, 6955), (45, 6991), (48, 7021), (49, 7036),

Gene: Tapioca_11 Start: 6975, Stop: 7346, Start Num: 22

Candidate Starts for Tapioca_11:

(7, 6867), (11, 6894), (13, 6909), (Start: 22 @6975 has 70 MA's), (34, 7083), (35, 7101), (38, 7128), (46, 7188), (52, 7296), (56, 7329),

Gene: Tchotchke_10 Start: 6632, Stop: 6958, Start Num: 17

Candidate Starts for Tchotchke_10:

(Start: 17 @6632 has 210 MA's), (23, 6677), (28, 6710), (30, 6734), (35, 6773), (39, 6806), (48, 6872),

Gene: Techage_12 Start: 7916, Stop: 8293, Start Num: 18

Candidate Starts for Techage_12:

(8, 7832), (Start: 18 @7916 has 50 MA's), (42, 8129), (47, 8171), (49, 8189),

Gene: Tessdabest_10 Start: 6975, Stop: 7346, Start Num: 22

Candidate Starts for Tessdabest_10:

(7, 6867), (11, 6894), (13, 6909), (Start: 22 @6975 has 70 MA's), (34, 7083), (35, 7101), (38, 7128), (46, 7188), (52, 7296), (56, 7329),

Gene: Thespis_12 Start: 7899, Stop: 8312, Start Num: 18

Candidate Starts for Thespis_12:

(8, 7815), (Start: 18 @7899 has 50 MA's), (42, 8112), (47, 8154), (49, 8172),

Gene: ThetaBob_10 Start: 7112, Stop: 7426, Start Num: 20

Candidate Starts for ThetaBob_10:

(15, 7073), (Start: 20 @7112 has 4 MA's), (29, 7184), (30, 7196), (32, 7208), (33, 7211), (39, 7271), (48, 7337),

Gene: ThulaThula_11 Start: 7607, Stop: 7981, Start Num: 18

Candidate Starts for ThulaThula_11:

(Start: 18 @7607 has 50 MA's), (24, 7655), (45, 7832), (47, 7859),

Gene: TootsiePop_10 Start: 6635, Stop: 6961, Start Num: 17

Candidate Starts for TootsiePop_10:

(Start: 17 @6635 has 210 MA's), (Start: 22 @6665 has 70 MA's), (23, 6680), (28, 6713), (30, 6737), (35, 6776), (39, 6809), (48, 6875),

Gene: Tootsieroll_10 Start: 6632, Stop: 6958, Start Num: 17

Candidate Starts for Tootsieroll_10:

(Start: 17 @6632 has 210 MA's), (Start: 22 @6662 has 70 MA's), (23, 6677), (28, 6710), (30, 6734), (35, 6773), (39, 6806), (48, 6872),

Gene: Topiatin_11 Start: 7431, Stop: 7760, Start Num: 17

Candidate Starts for Topiatin_11:

(9, 7365), (Start: 17 @7431 has 210 MA's), (28, 7509), (30, 7533), (35, 7572), (39, 7605), (45, 7641), (48, 7671), (49, 7686),

Gene: Toron_10 Start: 7232, Stop: 7546, Start Num: 20

Candidate Starts for Toron_10:

(15, 7193), (Start: 20 @7232 has 4 MA's), (29, 7304), (30, 7316), (33, 7331), (39, 7391), (48, 7457), (49, 7472),

Gene: Tortellini_11 Start: 7594, Stop: 7998, Start Num: 18

Candidate Starts for Tortellini_11:

(Start: 18 @7594 has 50 MA's), (Start: 22 @7612 has 70 MA's), (27, 7666), (42, 7798), (47, 7840), (49, 7858),

Gene: Tortoise12_11 Start: 6975, Stop: 7346, Start Num: 22

Candidate Starts for Tortoise12_11:

(7, 6867), (11, 6894), (13, 6909), (Start: 22 @6975 has 70 MA's), (34, 7083), (35, 7101), (38, 7128), (46, 7188), (52, 7296), (56, 7329),

Gene: Totinger_10 Start: 6633, Stop: 6959, Start Num: 17

Candidate Starts for Totinger_10:

(Start: 17 @6633 has 210 MA's), (Start: 22 @6663 has 70 MA's), (23, 6678), (26, 6702), (28, 6711), (30, 6735), (35, 6774), (39, 6807), (48, 6873),

Gene: Tweety_9 Start: 6781, Stop: 7110, Start Num: 17

Candidate Starts for Tweety_9:

(Start: 17 @6781 has 210 MA's), (28, 6859), (30, 6883), (35, 6922), (39, 6955), (45, 6991), (48, 7021), (49, 7036),

Gene: UncleRicky_10 Start: 6632, Stop: 6958, Start Num: 17

Candidate Starts for UncleRicky_10:

(Start: 17 @6632 has 210 MA's), (23, 6677), (28, 6710), (30, 6734), (35, 6773), (39, 6806), (48, 6872),

Gene: VRedHorse_9 Start: 6781, Stop: 7107, Start Num: 17

Candidate Starts for VRedHorse_9:

(Start: 17 @6781 has 210 MA's), (Start: 22 @6811 has 70 MA's), (23, 6826), (28, 6859), (30, 6883), (35, 6922), (39, 6955), (48, 7021),

Gene: Velveteen_10 Start: 6631, Stop: 6957, Start Num: 17

Candidate Starts for Velveteen_10:

(Start: 17 @6631 has 210 MA's), (23, 6676), (28, 6709), (30, 6733), (35, 6772), (39, 6805), (48, 6871),

Gene: Venti_12 Start: 7932, Stop: 8309, Start Num: 18

Candidate Starts for Venti_12:

(8, 7848), (Start: 18 @7932 has 50 MA's), (42, 8145), (47, 8187), (49, 8205),

Gene: Veteran_9 Start: 6796, Stop: 7122, Start Num: 17

Candidate Starts for Veteran_9:

(Start: 17 @6796 has 210 MA's), (23, 6841), (28, 6874), (30, 6898), (35, 6937), (39, 6970), (48, 7036),

Gene: Vidya_12 Start: 7932, Stop: 8309, Start Num: 18

Candidate Starts for Vidya_12:

(8, 7848), (Start: 18 @7932 has 50 MA's), (42, 8145), (47, 8187), (49, 8205),

Gene: Violac_9 Start: 6782, Stop: 7108, Start Num: 17

Candidate Starts for Violac_9:

(Start: 17 @6782 has 210 MA's), (Start: 22 @6812 has 70 MA's), (23, 6827), (28, 6860), (30, 6884), (35, 6923), (39, 6956), (48, 7022),

Gene: Vivum_9 Start: 6810, Stop: 7106, Start Num: 22

Candidate Starts for Vivum_9:

(Start: 17 @6780 has 210 MA's), (Start: 22 @6810 has 70 MA's), (23, 6825), (28, 6858), (30, 6882), (35, 6921), (39, 6954), (48, 7020),

Gene: Wachhund_9 Start: 6772, Stop: 7098, Start Num: 17

Candidate Starts for Wachhund_9:

(Start: 17 @6772 has 210 MA's), (Start: 22 @6802 has 70 MA's), (23, 6817), (28, 6850), (30, 6874), (35, 6913), (39, 6946), (48, 7012),

Gene: Wee_9 Start: 6781, Stop: 7110, Start Num: 17

Candidate Starts for Wee_9:

(Start: 17 @6781 has 210 MA's), (Start: 22 @6811 has 70 MA's), (28, 6859), (30, 6883), (35, 6922), (39, 6955), (45, 6991), (48, 7021), (49, 7036),

Gene: Whatsapiecost_9 Start: 6781, Stop: 7110, Start Num: 17

Candidate Starts for Whatsapiecost_9:

(Start: 17 @6781 has 210 MA's), (28, 6859), (30, 6883), (35, 6922), (39, 6955), (45, 6991), (48, 7021), (49, 7036),

Gene: Whouxphf_9 Start: 6771, Stop: 7097, Start Num: 17

Candidate Starts for Whouxphf_9:

(Start: 17 @6771 has 210 MA's), (Start: 22 @6801 has 70 MA's), (23, 6816), (28, 6849), (30, 6873), (35, 6912), (39, 6945), (48, 7011),

Gene: WillSterrel_9 Start: 6767, Stop: 7093, Start Num: 17

Candidate Starts for WillSterrel_9:

(Start: 17 @6767 has 210 MA's), (28, 6845), (30, 6869), (35, 6908), (39, 6941), (48, 7007), (49, 7022),

Gene: Willsammy_12 Start: 7902, Stop: 8315, Start Num: 18

Candidate Starts for Willsammy_12:

(8, 7818), (Start: 18 @7902 has 50 MA's), (42, 8115), (47, 8157), (49, 8175),

Gene: XFactor_9 Start: 6781, Stop: 7110, Start Num: 17

Candidate Starts for XFactor_9:

(Start: 17 @6781 has 210 MA's), (28, 6859), (30, 6883), (35, 6922), (39, 6955), (45, 6991), (48, 7021), (49, 7036),

Gene: Xavia_12 Start: 7936, Stop: 8313, Start Num: 18

Candidate Starts for Xavia_12:

(8, 7852), (Start: 18 @7936 has 50 MA's), (42, 8149), (47, 8191), (49, 8209),

Gene: Xeno_11 Start: 6975, Stop: 7346, Start Num: 22

Candidate Starts for Xeno_11:

(7, 6867), (11, 6894), (13, 6909), (Start: 22 @6975 has 70 MA's), (34, 7083), (35, 7101), (38, 7128), (46, 7188), (52, 7296), (56, 7329),

Gene: Xerxes_11 Start: 6975, Stop: 7346, Start Num: 22

Candidate Starts for Xerxes_11:

(7, 6867), (11, 6894), (13, 6909), (Start: 22 @6975 has 70 MA's), (34, 7083), (35, 7101), (38, 7128), (46, 7188), (52, 7296), (56, 7329),

Gene: Xula_10 Start: 7556, Stop: 7996, Start Num: 21

Candidate Starts for Xula_10:

(4, 7226), (5, 7274), (Start: 17 @7535 has 210 MA's), (Start: 21 @7556 has 10 MA's), (30, 7652), (40, 7730), (41, 7733), (44, 7757), (58, 7982),

Gene: Yorick_9 Start: 6809, Stop: 7105, Start Num: 22

Candidate Starts for Yorick_9:

(Start: 17 @6779 has 210 MA's), (Start: 22 @6809 has 70 MA's), (23, 6824), (28, 6857), (30, 6881), (35, 6920), (39, 6953), (48, 7019),

Gene: Zerg_9 Start: 6780, Stop: 7106, Start Num: 17

Candidate Starts for Zerg_9:

(Start: 17 @6780 has 210 MA's), (Start: 22 @6810 has 70 MA's), (23, 6825), (28, 6858), (30, 6882), (35, 6921), (39, 6954), (48, 7020),

Gene: Zilizebeth_12 Start: 7932, Stop: 8309, Start Num: 18

Candidate Starts for Zilizebeth_12:

(8, 7848), (Start: 18 @7932 has 50 MA's), (42, 8145), (47, 8187), (49, 8205),

Gene: Zizzle_9 Start: 6813, Stop: 7109, Start Num: 22

Candidate Starts for Zizzle_9:

(Start: 17 @6783 has 210 MA's), (Start: 22 @6813 has 70 MA's), (23, 6828), (28, 6861), (30, 6885),
(35, 6924), (39, 6957), (48, 7023),