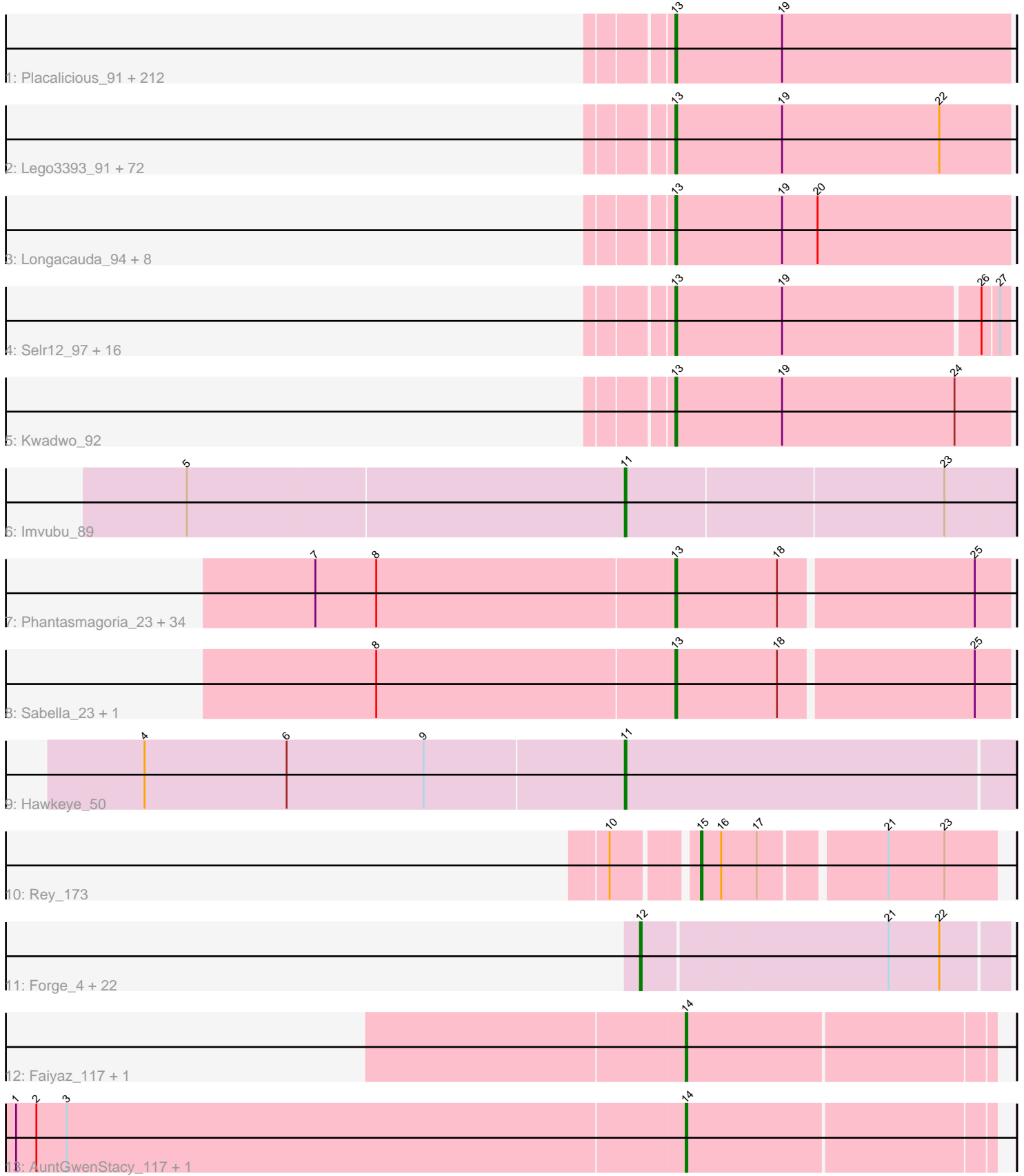


Pham 311109



Note: Tracks are now grouped by subcluster and scaled. Switching in subcluster is indicated by changes in track color. Track scale is now set by default to display the region 30 bp upstream of start 1 to 30 bp downstream of the last possible start. If this default region is judged to be packed too tightly with annotated starts, the track will be further scaled to only show that region of the ORF with annotated starts. This action will be indicated by adding "Zoomed" to the title. For starts, yellow indicates the location of called starts comprised solely of Glimmer/GeneMark auto-annotations, green indicates the location of called starts with at least 1 manual gene annotation.

Pham 311109 Report

This analysis was run 06/27/26 on database version 652.

Pham number 311109 has 380 members, 30 are drafts.

Phages represented in each track:

- Track 1 : Placalicious_91, Pherdinand_94, Dingo_90, BlackBerry_93, Mutante_94, Anderson_94, Flake_92, Gwennie1_92, Chah_95, Triad_93, Caspiboi_92, Surely_93, Nicole21_94, Childish_93, Pipsqueak_90, Matalotodo_91, Tomlarah_93, Legolas_94, LemonSlice_93, Nyala_93, Suffolk_89, LuckyMarjie_90, Apizium_91, DaddyDaniels_96, Zelda_93, Lopsy_89, Mana_90, Magic8_92, Morgushi_90, PallasAthena_94, Mikota_88, Freya_89, Soile_94, LasagnaCat_94, JDog_92, Duggie_93, Skippy_93, DoesntMatter_90, LeiMonet_96, Murdoc_89, Iridessa_95, ShiVal_92, Lehmann_94, Craff_94, Katniss_95, Sigman_92, Happabalu_91, Struggle_93, Phunky_90, BlackStallion_92, Eugenia_95, Samaymay_93, JacAttac_93, Cornobble_91, UncleHowie_89, TallGrassMM_92, Gwilliam_93, Yoshand_94, Cannibal_93, PhrodoBaggins_95, Etaye_92, Toni_92, FugateOSU_93, Fringe_97, Waterdiva_94, Fang_94, Bluephacebaby_92, FriarPreacher_90, OSmaximus_94, Mesmerelda_93, Gyarad_0092, Piglet_0092, Squid_92, Chuni_94, Morty_93, CamL_93, Scoot17C_93, Plmatters_90, SallyH_96, Hamish_90, QueenBeane_93, ProfessorX_91, JakeO_94, Hetaeria_93, Sophia_91, Iridoclysis_92, Vaticameos_90, Xavier_92, Lulwa_90, PhenghisKhan_93, Telesworld_91, Mosaic_90, Emiris_95, SassyCat97_91, PG1_91, Vortex_91, PhrankReynolds_91, Puhltonio_89, Giraffe_94, Kimbrough_94, LeeLot_91, Aelin_92, PinheadLarry_92, ThreeOh3D2_94, Omniscient_94, Vista_92, Aonishiki_93, EmGer13_92, Held_91, OneBrain_95, SilverBell_94, Inchworm_94, Oosterbaan_93, Badfish_93, Chorkpop_94, Hertubise_92, GeneCoco_93, Phareon_90, Lasso_92, Haimas_90, Hartsy_91, Beaglebox_89, Fozzie_90, Simielle_93, Larson_95, Jillium_94, MitKao_93, Altwerkus_90, Cher_93, Buckeye_92, MrPhizzler_96, MRabcd_93, Thora_91, HighStump_95, Virapocalypse_94, Mulan_92, Kahve_93, Coletti_96, Swiphy_95, Mesh1_94, Dice_93, Valjean_91, Nathan_93, KingTut_84, Kloppinator_93, Trypo_93, Potter_87, Veritas_92, Ricotta_94, Lulumae_88, Cosmolli16_95, HenryJackson_93, Squiggle_92, RedMaple_92, Nova1_92, AngelCake_93, YouGoGlencoco_93, Gophee_92, JangoPhett_91, Phamished_92, Carthage_94, UAch1_94, SDcharge11_92, Weher20_90, Timmi_91, Thunderbird_93, Phergie_93, Zaider_94, Virgeve_91, Wallhey_94, Phipps_91, Olive_89, Bishoperium_93, Vaishali24_94, Numberten_93, Khan1_93, Gareth_104, NiaNia_94, Doddsville_90, Quisquilliae_95, Dione_91, OliverWalter_92, FluffyNinja_94, Daffy_92, Antonia_92, Vivaldi_93, Robyn_95, Melc17_90, MiniBoss_89, Nacho_0096, Jiminy_93, ShadowBud_93, Haleema_92, Chute_93, LostAndPhound_92, Grand2040_91, ABU_91, Orion_91, KlimbOn_92, Serpentine_0095, Maru_93, Roy17_90, Keitherie_96, Cobra_93, PhatLouie_95, ElvisPhasley_94, HogWash_93, Dati_90, BatteryCK_91, Serendipity_92, Jesabah_96, Solosis_91, TomBombadil_93

- Track 2 : Lego3393_91, CampRoach_93, Labeouficaum_93, Phleuron_90, Derpp_92, Rollet_90, Oline_92, Kikipoo_95, Riverton_92, Prickles_94, Sheila_87, Basato_92, Kailash_91, AbsoluteMadLad_91, TyrionL_93, Zonia_93, KingVeVeVe_91, Durga_95, Riggan_94, Schueller_91, Mecca_93, Orfeu_93, Soto_90, Podrick_91, Manad_92, Mag7_91, Horchata_88, Karn_93, CheetO_90, BlueHusk_94, Harvey_90, Pops_90, Chunky_92, Newman_89, Inverness_91, Jiraiya_94, Lumine_94, CharlieGBrown_91, DuchessDung_90, Hekos_91, Frankicide_91, KLucky39_91, EmpTee_92, Adriana_94, Plata_92, Usavi_93, Daka_95, Chipette_91, Aleia_92, PhatCats2014_92, Brilliant_96, Taraxa_93, Pinkman_92, HSavage_91, Boehler_91, Banjo_89, Eremos_91, Hocus_92, Colbert_91, GreenChile_92, Roscoe_92, IsaacEli_95, Spartan300_92, Schadenfreude_93, AltPhacts_90, TooFast2Furius_92, Crownjwl_90, MichaelPhcott_91, Megatron_94, Rimu_92, DolOn_97, Swish_94, RedRaider89_92
- Track 3 : Longacauda_94, SirBeauregard_94, Ashraf_94, Maskar_94, MelsMeow_92, Kwksand96_94, Chaelin_94, Windsor_93, ImtiyazSitla_94
- Track 4 : Selr12_97, Orwigg_94, Megamind20_95, BoogieWoogie_94, Slatt_95, Charles1_96, FremontTroll_93, Mcshane_95, DirtJuice_94, Burr_95, Cornbread_93, FleetyMac_97, True_94, Olak_95, Andre_97, Scrick_94, Pacifista_95
- Track 5 : Kwadwo_92
- Track 6 : Imvubu_89
- Track 7 : Phantasmagoria_23, Vic9_00023, Allegro_23, LizLemon_23, Kheth_23, Faze9_23, Godines_23, Coffee_23, Kaleb_23, West99_23, TA17A_23, Calamitous_23, Kolhan_23, Rhinoforte_23, Brownie5_23, Laurie_23, Opia_23, LilSmirk_23, Tres_23, MasterPo_23, Lars_23, Tinciduntolum_24, Bananafish_23, Boyle_23, Eaglehorse_23, Arbiter_23, Hedgerow_23, Holeinone_23, PrinceCharming_23, Glass_23, Lephleur_23, Blocker23_23, ItsyBitsy1_23, Ares_23, FrenchFry_23
- Track 8 : Sabella_23, Qyrzula_21
- Track 9 : Hawkeye_50
- Track 10 : Rey_173
- Track 11 : Forge_4, Daegal_5, Amymech_4, Webster2_4, Gancho_3, Evanesce_4, Hail_4, Wishmaker_4, LilHazelNut_4, OBUpride_4, Ein37_4, Luna22_4, Ubuntu_4, Dewey_4, Gravaillia_4, BloominB_4, Giles_4, Luke_4, Hadrien_4, HH92_4, DeepSoil15_4, Kinbote_4, Amochick_4
- Track 12 : Faiyaz_117, Hilltopfarm_119
- Track 13 : AuntGwenStacy_117, Typha_116

Summary of Final Annotations (See graph section above for start numbers):

The start number called the most often in the published annotations is 13, it was called in 321 of the 350 non-draft genes in the pham.

Genes that call this "Most Annotated" start:

- ABU_91, AbsoluteMadLad_91, Adriana_94, Aelin_92, Aleia_92, Allegro_23, AltPhacts_90, Altwerkus_90, Anderson_94, Andre_97, AngelCake_93, Antonia_92, Aonishiki_93, Apizium_91, Arbiter_23, Ares_23, Ashraf_94, Badfish_93, Bananafish_23, Banjo_89, Basato_92, BatteryCK_91, Beaglebox_89, Bishoperium_93, BlackStallion_92, BlacksBerry_93, Blocker23_23, BlueHusk_94, Bluephacebaby_92, Boehler_91, BoogieWoogie_94, Boyle_23, Brilliant_96, Brownie5_23, Buckeye_92, Burr_95, Calamitous_23, CamL_93, CampRoach_93,

Cannibal_93, Carthage_94, Caspiroi_92, Chaelin_94, Chah_95, Charles1_96, CharlieGBrown_91, CheetO_90, Cher_93, Childish_93, Chipette_91, Chorkpop_94, Chuni_94, Chunky_92, Chute_93, Cobra_93, Coffee_23, Colbert_91, Coletti_96, Cornbread_93, Cornobble_91, Cosmolli16_95, Craff_94, Crownjwl_90, DaddyDaniels_96, Daffy_92, Daka_95, Dati_90, Derpp_92, Dice_93, Dingo_90, Dione_91, DirtJuice_94, Doddsville_90, DoesntMatter_90, DoOn_97, DuchessDung_90, Duggie_93, Durga_95, Eaglehorse_23, ElvisPhasley_94, EmGer13_92, Emiris_95, EmpTee_92, Eremos_91, Etaye_92, Eugenia_95, Fang_94, Faze9_23, Flake_92, FleetyMac_97, FluffyNinja_94, Fozzie_90, Frankicide_91, FremontTroll_93, FrenchFry_23, Freya_89, FriarPreacher_90, Fringe_97, FugateOSU_93, Gareth_104, GeneCoco_93, Giraffe_94, Glass_23, Godines_23, Gophe_92, Grand2040_91, GreenChile_92, Gwennie1_92, Gwilliam_93, Gyarad_0092, HSavage_91, Haimas_90, Haleema_92, Hamish_90, Happabalu_91, Hartsy_91, Harvey_90, Hedgerow_23, Hekos_91, Held_91, HenryJackson_93, Hertubise_92, Hetaeria_93, HighStump_95, Hocus_92, HogWash_93, Holeinone_23, Horchata_88, ImtiyazSitla_94, Inchworm_94, Inverness_91, Iridessa_95, Iridoclysis_92, IsaacEli_95, ItsyBitsy1_23, JDog_92, JacAttac_93, JakeO_94, JangoPhett_91, Jesabah_96, Jillium_94, Jiminy_93, Jiraiya_94, KLucky39_91, Kahve_93, Kailash_91, Kaleb_23, Karn_93, Katniss_95, Keitherie_96, Khan1_93, Kheth_23, Kikipoo_95, Kimbrough_94, KingTut_84, KingVeVeVe_91, KlimbOn_92, Kloppinator_93, Kolhan_23, Kwadwo_92, Kwksand96_94, Labeouficaum_93, Lars_23, Larson_95, LasagnaCat_94, Lasso_92, Laurie_23, LeeLot_91, Lego3393_91, Legolas_94, Lehmann_94, LeiMonet_96, LemonSlice_93, Lephleur_23, LilSmirk_23, LizLemon_23, Longacauda_94, Lopsy_89, LostAndPhound_92, LuckyMarjie_90, Lulumae_88, Lulwa_90, Lumine_94, MRabcd_93, Mag7_91, Magic8_92, Mana_90, Manad_92, Maru_93, Maskar_94, MasterPo_23, Matalotodo_91, Mcshane_95, Mecca_93, Megamind20_95, Megatron_94, Melc17_90, MelsMeow_92, Mesh1_94, Mesmerelda_93, MichaelPhcott_91, Mikota_88, MiniBoss_89, MitKao_93, Morgushi_90, Morty_93, Mosaic_90, MrPhizzler_96, Mulan_92, Murdoc_89, Mutante_94, Nacho_0096, Nathan_93, Newman_89, NiaNia_94, Nicole21_94, Nova1_92, Numberten_93, Nyala_93, OSmaximus_94, Olak_95, Oline_92, Olive_89, OliverWalter_92, Omniscient_94, OneBrain_95, Oosterbaan_93, Opia_23, Orfeu_93, Orion_91, Orwigg_94, PG1_91, Pacifista_95, PallasAthena_94, Phamished_92, Phantasmagoria_23, Phareon_90, PhatCats2014_92, PhatLouie_95, PhenghisKhan_93, Pherdinand_94, Phergie_93, Phipps_91, Phleuron_90, PhrankReynolds_91, PhrodoBaggins_95, Phunky_90, Piglet_0092, PinheadLarry_92, Pinkman_92, Pipsqueak_90, Placalicious_91, Plata_92, Plmatters_90, Podrick_91, Pops_90, Potter_87, Prickles_94, PrinceCharming_23, ProfessorX_91, Puhltonio_89, QueenBeane_93, Quisquilliae_95, Qyrzula_21, RedMaple_92, RedRaider89_92, Rhinoforte_23, Ricotta_94, Riggan_94, Rimu_92, Riverton_92, Robyn_95, Roliet_90, Roscoe_92, Roy17_90, SDcharge11_92, Sabella_23, SallyH_96, Samaymay_93, SassyCat97_91, Schadenfreude_93, Schueller_91, Scoot17C_93, Scrick_94, Selr12_97, Serendipity_92, Serpentine_0095, ShadowBud_93, Sheila_87, ShiVal_92, Sigman_92, SilverBell_94, Simielle_93, SirBeauregard_94, Skippy_93, Slatt_95, Soile_94, Solosis_91, Sophia_91, Soto_90, Spartan300_92, Squid_92, Squiggle_92, Struggle_93, Suffolk_89, Surely_93, Swiphy_95, Swish_94, TA17A_23, TallGrassMM_92, Taraxa_93, Telesworld_91, Thora_91, ThreeOh3D2_94, Thunderbird_93, Timmi_91, Tinciduntolum_24, TomBombadil_93, Tomlarah_93, Toni_92, TooFast2Furius_92, Tres_23, Triad_93, True_94, Trypo_93, TyrionL_93, UAch1_94, UncleHowie_89, Usavi_93, Vaishali24_94, Valjean_91, Vaticameos_90, Veritas_92, Vic9_00023, Virapocalypse_94, Virgeve_91, Vista_92, Vivaldi_93, Vortex_91, Wallhey_94, Waterdiva_94, Weher20_90, West99_23, Windsor_93,

Xavier_92, Yoshand_94, YouGoGlencoco_93, Zaider_94, Zelda_93, Zonia_93,

Genes that have the "Most Annotated" start but do not call it:

-

Genes that do not have the "Most Annotated" start:

- Amochick_4, Amymech_4, AuntGwenStacy_117, BloominB_4, Daegal_5, DeepSoil15_4, Dewey_4, Ein37_4, Evanesce_4, Faiyaz_117, Forge_4, Gancho_3, Giles_4, Gravallia_4, HH92_4, Hadrien_4, Hail_4, Hawkeye_50, Hilltopfarm_119, Imvubu_89, Kinbote_4, LilHazelNut_4, Luke_4, Luna22_4, OBUpride_4, Rey_173, Typha_116, Ubuntu_4, Webster2_4, Wishmaker_4,

Summary by start number:

Start 11:

- Found in 2 of 380 (0.5%) of genes in pham
- Manual Annotations of this start: 2 of 350
- Called 100.0% of time when present
- Phage (with cluster) where this start called: Hawkeye_50 (D2), Imvubu_89 (B10),

Start 12:

- Found in 23 of 380 (6.1%) of genes in pham
- Manual Annotations of this start: 22 of 350
- Called 100.0% of time when present
- Phage (with cluster) where this start called: Amochick_4 (Q), Amymech_4 (Q), BloominB_4 (Q), Daegal_5 (Q), DeepSoil15_4 (Q), Dewey_4 (Q), Ein37_4 (Q), Evanesce_4 (Q), Forge_4 (Q), Gancho_3 (Q), Giles_4 (Q), Gravallia_4 (Q), HH92_4 (Q), Hadrien_4 (Q), Hail_4 (Q), Kinbote_4 (Q), LilHazelNut_4 (Q), Luke_4 (Q), Luna22_4 (Q), OBUpride_4 (Q), Ubuntu_4 (Q), Webster2_4 (Q), Wishmaker_4 (Q),

Start 13:

- Found in 350 of 380 (92.1%) of genes in pham
- Manual Annotations of this start: 321 of 350
- Called 100.0% of time when present
- Phage (with cluster) where this start called: ABU_91 (B1), AbsoluteMadLad_91 (B1), Adriana_94 (B1), Aelin_92 (B1), Aleia_92 (B1), Allegro_23 (B2), AltPhacts_90 (B1), Altwerkus_90 (B1), Anderson_94 (B1), Andre_97 (B1), AngelCake_93 (B1), Antonia_92 (B1), Aonishiki_93 (B1), Apizium_91 (B1), Arbiter_23 (B2), Ares_23 (B2), Ashraf_94 (B1), Badfish_93 (B1), Bananafish_23 (B2), Banjo_89 (B1), Basato_92 (B1), BatteryCK_91 (B1), Beaglebox_89 (B1), Bishoperium_93 (B1), BlackStallion_92 (B1), BlackBerry_93 (B1), Blocker23_23 (B2), BlueHusk_94 (B1), Bluephacebaby_92 (B1), Boehler_91 (B1), BoogieWoogie_94 (B1), Boyle_23 (B2), Brilliant_96 (B1), Brownie5_23 (B2), Buckeye_92 (B1), Burr_95 (B1), Calamitous_23 (B2), CamL_93 (B1), CampRoach_93 (B1), Cannibal_93 (B1), Carthage_94 (B1), Caspiboi_92 (B1), Chaelin_94 (B1), Chah_95 (B1), Charles1_96 (B1), CharlieGBrown_91 (B1), CheetO_90 (B1), Cher_93 (B1), Childish_93 (B1), Chipette_91 (B1), Chorkpop_94 (B1), Chuni_94 (B1), Chunky_92 (B1), Chute_93 (B1), Cobra_93 (B1), Coffee_23 (B2), Colbert_91 (B1), Coletti_96 (B1), Cornbread_93 (B1), Cornobble_91 (B1), Cosmolli16_95 (B1), Craff_94 (B1), Crownjwl_90 (B1), DaddyDaniels_96 (B1), Daffy_92 (B1), Daka_95 (B1), Dati_90 (B1), Derpp_92 (B1), Dice_93 (B1), Dingo_90 (B1), Dione_91 (B1), DirtJuice_94 (B1), Doddsville_90 (B1), DoesntMatter_90 (B1), DolOn_97 (B1), DuchessDung_90 (B1), Duggie_93 (B1), Durga_95 (B1), Eaglehorse_23 (B2), ElvisPhasley_94 (B1),

EmGer13_92 (B1), Emiris_95 (B1), EmpTee_92 (B1), Eremos_91 (B1), Etaye_92 (B1), Eugenia_95 (B1), Fang_94 (B1), Faze9_23 (B2), Flake_92 (B1), FleetyMac_97 (B1), FluffyNinja_94 (B1), Fozzie_90 (B1), Frankicide_91 (B1), FremontTroll_93 (B1), FrenchFry_23 (B2), Freya_89 (B1), FriarPreacher_90 (B1), Fringe_97 (B1), FugateOSU_93 (B1), Gareth_104 (B1), GeneCoco_93 (B1), Giraffe_94 (B1), Glass_23 (B2), Godines_23 (B2), Gophee_92 (B1), Grand2040_91 (B1), GreenChile_92 (B1), Gwennie1_92 (B1), Gwilliam_93 (B1), Gyarad_0092 (B1), HSavage_91 (B1), Haimas_90 (B1), Haleema_92 (B1), Hamish_90 (B1), Happabalu_91 (B1), Hartsy_91 (B1), Harvey_90 (B1), Hedgerow_23 (B2), Hekos_91 (B1), Held_91 (B1), HenryJackson_93 (B1), Hertubise_92 (B1), Hetaeria_93 (B1), HighStump_95 (B1), Hocus_92 (B1), HogWash_93 (B1), Holeinone_23 (B2), Horchata_88 (B1), ImtiyazSitla_94 (B1), Inchworm_94 (B1), Inverness_91 (B1), Iridessa_95 (B1), Iridoclysis_92 (B1), IsaacEli_95 (B1), ItsyBitsy1_23 (B2), JDog_92 (B1), JacAttac_93 (B1), JakeO_94 (B1), JangoPhett_91 (B1), Jesabah_96 (B1), Jillium_94 (B1), Jiminy_93 (B1), Jiraiya_94 (B1), KLucky39_91 (B1), Kahve_93 (B1), Kailash_91 (B1), Kaleb_23 (B2), Karn_93 (B1), Katniss_95 (B1), Keitherie_96 (B1), Khan1_93 (B1), Kheth_23 (B2), Kikipoo_95 (B1), Kimbrough_94 (B1), KingTut_84 (B1), KingVeVeVe_91 (B1), KlimbOn_92 (B1), Kloppinator_93 (B1), Kolhan_23 (B2), Kwadwo_92 (B1), Kwksand96_94 (B1), Labeouficaum_93 (B1), Lars_23 (B2), Larson_95 (B1), LasagnaCat_94 (B1), Lasso_92 (B1), Laurie_23 (B2), LeeLot_91 (B1), Lego3393_91 (B1), Legolas_94 (B1), Lehmann_94 (B1), LeiMonet_96 (B1), LemonSlice_93 (B1), Lephleur_23 (B2), LilSmirk_23 (B2), LizLemon_23 (B2), Longacauda_94 (B1), Lopsy_89 (B1), LostAndPhound_92 (B1), LuckyMarjie_90 (B1), Lulumae_88 (B1), Lulwa_90 (B1), Lumine_94 (B1), MRabcd_93 (B1), Mag7_91 (B1), Magic8_92 (B1), Mana_90 (B1), Manad_92 (B1), Maru_93 (B1), Maskar_94 (B1), MasterPo_23 (B2), Matalotodo_91 (B1), Mcshane_95 (B1), Mecca_93 (B1), Megamind20_95 (B1), Megatron_94 (B1), Melc17_90 (B1), MelsMeow_92 (B1), Mesh1_94 (B1), Mesmerelda_93 (B1), MichaelPhcott_91 (B1), Mikota_88 (B1), MiniBoss_89 (B1), MitKao_93 (B1), Morgushi_90 (B1), Morty_93 (B1), Mosaic_90 (B1), MrPhizzler_96 (B1), Mulan_92 (B1), Murdoc_89 (B1), Mutante_94 (B1), Nacho_0096 (B1), Nathan_93 (B1), Newman_89 (B1), NiaNia_94 (B1), Nicole21_94 (B1), Nova1_92 (B1), Numberten_93 (B1), Nyala_93 (B1), OSmaximus_94 (B1), Olak_95 (B1), Oline_92 (B1), Olive_89 (B1), OliverWalter_92 (B1), Omniscient_94 (B1), OneBrain_95 (B1), Oosterbaan_93 (B1), Opia_23 (B2), Orfeu_93 (B1), Orion_91 (B1), Orwigg_94 (B1), PG1_91 (B1), Pacifista_95 (B1), PallasAthena_94 (B1), Phamished_92 (B1), Phantasmagoria_23 (B2), Phareon_90 (B1), PhatCats2014_92 (B1), PhatLouie_95 (B1), PhenghisKhan_93 (B1), Pherdinand_94 (B1), Phergie_93 (B1), Phipps_91 (B1), Phleuron_90 (B1), PhrankReynolds_91 (B1), PhrodoBaggins_95 (B1), Phunky_90 (B1), Piglet_0092 (B1), PinheadLarry_92 (B1), Pinkman_92 (B1), Pipsqueak_90 (B1), Placalicious_91 (B1), Plata_92 (B1), Plmatters_90 (B1), Podrick_91 (B1), Pops_90 (B1), Potter_87 (B1), Prickles_94 (B1), PrinceCharming_23 (B2), ProfessorX_91 (B1), Puhltonio_89 (B1), QueenBeane_93 (B1), Quisquillae_95 (B1), Qyrzula_21 (B2), RedMaple_92 (B1), RedRaider89_92 (B1), Rhinoforte_23 (B2), Ricotta_94 (B1), Riggan_94 (B1), Rimu_92 (B1), Riverton_92 (B1), Robyn_95 (B1), Roliet_90 (B1), Roscoe_92 (B1), Roy17_90 (B1), SDcharge11_92 (B1), Sabella_23 (B2), SallyH_96 (B1), Samaymay_93 (B1), SassyCat97_91 (B1), Schadenfreude_93 (B1), Schueller_91 (B1), Scoot17C_93 (B1), Scrick_94 (B1), Selr12_97 (B1), Serendipity_92 (B1), Serpentine_0095 (B1), ShadowBud_93 (B1), Sheila_87 (B1), ShiVal_92 (B1), Sigman_92 (B1), SilverBell_94 (B1), Simielle_93 (B1), SirBeauregard_94 (B1), Skippy_93 (B1), Slatt_95 (B1), Soile_94 (B1), Solosis_91 (B1), Sophia_91 (B1), Soto_90 (B1), Spartan300_92 (B1), Squid_92 (B1), Squiggle_92 (B1), Struggle_93 (B1), Suffolk_89 (B1), Surely_93 (B1), Swiphy_95 (B1), Swish_94 (B1), TA17A_23 (B2), TallGrassMM_92 (B1), Taraxa_93

(B1), Telesworld_91 (B1), Thora_91 (B1), ThreeOh3D2_94 (B1), Thunderbird_93 (B1), Timmi_91 (B1), Tinciduntolum_24 (B2), TomBombadil_93 (B1), Tomlarah_93 (B1), Toni_92 (B1), TooFast2Furius_92 (B1), Tres_23 (B2), Triad_93 (B1), True_94 (B1), Trypo_93 (B1), TyrionL_93 (B1), UAch1_94 (B1), UncleHowie_89 (B1), Usavi_93 (B1), Vaishali24_94 (B1), Valjean_91 (B1), Vaticameos_90 (B1), Veritas_92 (B1), Vic9_00023 (B2), Virapocalypse_94 (B1), Virgeve_91 (B1), Vista_92 (B1), Vivaldi_93 (B1), Vortex_91 (B1), Wallhey_94 (B1), Waterdiva_94 (B1), Weher20_90 (B1), West99_23 (B2), Windsor_93 (B1), Xavier_92 (B1), Yoshand_94 (B1), YouGoGlencoco_93 (B1), Zaider_94 (B1), Zelda_93 (B1), Zonia_93 (B1),

Start 14:

- Found in 4 of 380 (1.1%) of genes in pham
- Manual Annotations of this start: 4 of 350
- Called 100.0% of time when present
- Phage (with cluster) where this start called: AuntGwenStacy_117 (Y), Faiyaz_117 (Y), Hilltopfarm_119 (Y), Typha_116 (Y),

Start 15:

- Found in 1 of 380 (0.3%) of genes in pham
- Manual Annotations of this start: 1 of 350
- Called 100.0% of time when present
- Phage (with cluster) where this start called: Rey_173 (M2),

Summary by clusters:

There are 7 clusters represented in this pham: B2, Q, B1, B10, M2, Y, D2,

Info for manual annotations of cluster B1:

- Start number 13 was manually annotated 285 times for cluster B1.

Info for manual annotations of cluster B10:

- Start number 11 was manually annotated 1 time for cluster B10.

Info for manual annotations of cluster B2:

- Start number 13 was manually annotated 36 times for cluster B2.

Info for manual annotations of cluster D2:

- Start number 11 was manually annotated 1 time for cluster D2.

Info for manual annotations of cluster M2:

- Start number 15 was manually annotated 1 time for cluster M2.

Info for manual annotations of cluster Q:

- Start number 12 was manually annotated 22 times for cluster Q.

Info for manual annotations of cluster Y:

- Start number 14 was manually annotated 4 times for cluster Y.

Gene Information:

Gene: ABU_91 Start: 65401, Stop: 65204, Start Num: 13

Candidate Starts for ABU_91:
(Start: 13 @65401 has 321 MA's), (19, 65338),

Gene: AbsoluteMadLad_91 Start: 65354, Stop: 65157, Start Num: 13
Candidate Starts for AbsoluteMadLad_91:
(Start: 13 @65354 has 321 MA's), (19, 65291), (22, 65198),

Gene: Adriana_94 Start: 65916, Stop: 65719, Start Num: 13
Candidate Starts for Adriana_94:
(Start: 13 @65916 has 321 MA's), (19, 65853), (22, 65760),

Gene: Aelin_92 Start: 65034, Stop: 64837, Start Num: 13
Candidate Starts for Aelin_92:
(Start: 13 @65034 has 321 MA's), (19, 64971),

Gene: Aleia_92 Start: 65043, Stop: 64846, Start Num: 13
Candidate Starts for Aleia_92:
(Start: 13 @65043 has 321 MA's), (19, 64980), (22, 64887),

Gene: Allegro_23 Start: 19018, Stop: 18827, Start Num: 13
Candidate Starts for Allegro_23:
(7, 19228), (8, 19192), (Start: 13 @19018 has 321 MA's), (18, 18958), (25, 18847),

Gene: AltPhacts_90 Start: 64619, Stop: 64422, Start Num: 13
Candidate Starts for AltPhacts_90:
(Start: 13 @64619 has 321 MA's), (19, 64556), (22, 64463),

Gene: Altwerkus_90 Start: 64730, Stop: 64533, Start Num: 13
Candidate Starts for Altwerkus_90:
(Start: 13 @64730 has 321 MA's), (19, 64667),

Gene: Amochick_4 Start: 1826, Stop: 1617, Start Num: 12
Candidate Starts for Amochick_4:
(Start: 12 @1826 has 22 MA's), (21, 1685), (22, 1655),

Gene: Amymech_4 Start: 1826, Stop: 1617, Start Num: 12
Candidate Starts for Amymech_4:
(Start: 12 @1826 has 22 MA's), (21, 1685), (22, 1655),

Gene: Anderson_94 Start: 65277, Stop: 65080, Start Num: 13
Candidate Starts for Anderson_94:
(Start: 13 @65277 has 321 MA's), (19, 65214),

Gene: Andre_97 Start: 65668, Stop: 65477, Start Num: 13
Candidate Starts for Andre_97:
(Start: 13 @65668 has 321 MA's), (19, 65605), (26, 65491), (27, 65482),

Gene: AngelCake_93 Start: 65026, Stop: 64829, Start Num: 13
Candidate Starts for AngelCake_93:
(Start: 13 @65026 has 321 MA's), (19, 64963),

Gene: Antonia_92 Start: 64902, Stop: 64705, Start Num: 13
Candidate Starts for Antonia_92:

(Start: 13 @64902 has 321 MA's), (19, 64839),

Gene: Aonishiki_93 Start: 65212, Stop: 65015, Start Num: 13

Candidate Starts for Aonishiki_93:

(Start: 13 @65212 has 321 MA's), (19, 65149),

Gene: Apizium_91 Start: 64555, Stop: 64358, Start Num: 13

Candidate Starts for Apizium_91:

(Start: 13 @64555 has 321 MA's), (19, 64492),

Gene: Arbiter_23 Start: 19106, Stop: 18915, Start Num: 13

Candidate Starts for Arbiter_23:

(7, 19316), (8, 19280), (Start: 13 @19106 has 321 MA's), (18, 19046), (25, 18935),

Gene: Ares_23 Start: 19022, Stop: 18831, Start Num: 13

Candidate Starts for Ares_23:

(7, 19232), (8, 19196), (Start: 13 @19022 has 321 MA's), (18, 18962), (25, 18851),

Gene: Ashraf_94 Start: 65390, Stop: 65193, Start Num: 13

Candidate Starts for Ashraf_94:

(Start: 13 @65390 has 321 MA's), (19, 65327), (20, 65306),

Gene: AuntGwenStacy_117 Start: 69404, Stop: 69580, Start Num: 14

Candidate Starts for AuntGwenStacy_117:

(1, 69011), (2, 69023), (3, 69041), (Start: 14 @69404 has 4 MA's),

Gene: Badfish_93 Start: 65581, Stop: 65384, Start Num: 13

Candidate Starts for Badfish_93:

(Start: 13 @65581 has 321 MA's), (19, 65518),

Gene: Bananafish_23 Start: 19015, Stop: 18824, Start Num: 13

Candidate Starts for Bananafish_23:

(7, 19225), (8, 19189), (Start: 13 @19015 has 321 MA's), (18, 18955), (25, 18844),

Gene: Banjo_89 Start: 64847, Stop: 64650, Start Num: 13

Candidate Starts for Banjo_89:

(Start: 13 @64847 has 321 MA's), (19, 64784), (22, 64691),

Gene: Basato_92 Start: 65310, Stop: 65113, Start Num: 13

Candidate Starts for Basato_92:

(Start: 13 @65310 has 321 MA's), (19, 65247), (22, 65154),

Gene: BatteryCK_91 Start: 64837, Stop: 64640, Start Num: 13

Candidate Starts for BatteryCK_91:

(Start: 13 @64837 has 321 MA's), (19, 64774),

Gene: Beaglebox_89 Start: 64969, Stop: 64772, Start Num: 13

Candidate Starts for Beaglebox_89:

(Start: 13 @64969 has 321 MA's), (19, 64906),

Gene: Bishoperium_93 Start: 65416, Stop: 65219, Start Num: 13

Candidate Starts for Bishoperium_93:

(Start: 13 @65416 has 321 MA's), (19, 65353),

Gene: BlackStallion_92 Start: 65265, Stop: 65068, Start Num: 13
Candidate Starts for BlackStallion_92:
(Start: 13 @65265 has 321 MA's), (19, 65202),

Gene: BlacksBerry_93 Start: 64791, Stop: 64594, Start Num: 13
Candidate Starts for BlacksBerry_93:
(Start: 13 @64791 has 321 MA's), (19, 64728),

Gene: Blocker23_23 Start: 19139, Stop: 18948, Start Num: 13
Candidate Starts for Blocker23_23:
(7, 19349), (8, 19313), (Start: 13 @19139 has 321 MA's), (18, 19079), (25, 18968),

Gene: BloominB_4 Start: 1826, Stop: 1617, Start Num: 12
Candidate Starts for BloominB_4:
(Start: 12 @1826 has 22 MA's), (21, 1685), (22, 1655),

Gene: BlueHusk_94 Start: 65090, Stop: 64893, Start Num: 13
Candidate Starts for BlueHusk_94:
(Start: 13 @65090 has 321 MA's), (19, 65027), (22, 64934),

Gene: Bluephacebaby_92 Start: 65450, Stop: 65253, Start Num: 13
Candidate Starts for Bluephacebaby_92:
(Start: 13 @65450 has 321 MA's), (19, 65387),

Gene: Boehler_91 Start: 65240, Stop: 65043, Start Num: 13
Candidate Starts for Boehler_91:
(Start: 13 @65240 has 321 MA's), (19, 65177), (22, 65084),

Gene: BoogieWoogie_94 Start: 65231, Stop: 65040, Start Num: 13
Candidate Starts for BoogieWoogie_94:
(Start: 13 @65231 has 321 MA's), (19, 65168), (26, 65054), (27, 65045),

Gene: Boyle_23 Start: 19140, Stop: 18949, Start Num: 13
Candidate Starts for Boyle_23:
(7, 19350), (8, 19314), (Start: 13 @19140 has 321 MA's), (18, 19080), (25, 18969),

Gene: Brilliant_96 Start: 65429, Stop: 65232, Start Num: 13
Candidate Starts for Brilliant_96:
(Start: 13 @65429 has 321 MA's), (19, 65366), (22, 65273),

Gene: Brownie5_23 Start: 19139, Stop: 18948, Start Num: 13
Candidate Starts for Brownie5_23:
(7, 19349), (8, 19313), (Start: 13 @19139 has 321 MA's), (18, 19079), (25, 18968),

Gene: Buckeye_92 Start: 65968, Stop: 65771, Start Num: 13
Candidate Starts for Buckeye_92:
(Start: 13 @65968 has 321 MA's), (19, 65905),

Gene: Burr_95 Start: 65271, Stop: 65080, Start Num: 13
Candidate Starts for Burr_95:
(Start: 13 @65271 has 321 MA's), (19, 65208), (26, 65094), (27, 65085),

Gene: Calamitous_23 Start: 19019, Stop: 18828, Start Num: 13
Candidate Starts for Calamitous_23:
(7, 19229), (8, 19193), (Start: 13 @19019 has 321 MA's), (18, 18959), (25, 18848),

Gene: CamL_93 Start: 65201, Stop: 65004, Start Num: 13
Candidate Starts for CamL_93:
(Start: 13 @65201 has 321 MA's), (19, 65138),

Gene: CampRoach_93 Start: 65297, Stop: 65100, Start Num: 13
Candidate Starts for CampRoach_93:
(Start: 13 @65297 has 321 MA's), (19, 65234), (22, 65141),

Gene: Cannibal_93 Start: 65304, Stop: 65107, Start Num: 13
Candidate Starts for Cannibal_93:
(Start: 13 @65304 has 321 MA's), (19, 65241),

Gene: Carthage_94 Start: 64980, Stop: 64783, Start Num: 13
Candidate Starts for Carthage_94:
(Start: 13 @64980 has 321 MA's), (19, 64917),

Gene: Caspiboi_92 Start: 65136, Stop: 64939, Start Num: 13
Candidate Starts for Caspiboi_92:
(Start: 13 @65136 has 321 MA's), (19, 65073),

Gene: Chaelin_94 Start: 65430, Stop: 65233, Start Num: 13
Candidate Starts for Chaelin_94:
(Start: 13 @65430 has 321 MA's), (19, 65367), (20, 65346),

Gene: Chah_95 Start: 65001, Stop: 64804, Start Num: 13
Candidate Starts for Chah_95:
(Start: 13 @65001 has 321 MA's), (19, 64938),

Gene: Charles1_96 Start: 65579, Stop: 65388, Start Num: 13
Candidate Starts for Charles1_96:
(Start: 13 @65579 has 321 MA's), (19, 65516), (26, 65402), (27, 65393),

Gene: CharlieGBrown_91 Start: 64932, Stop: 64735, Start Num: 13
Candidate Starts for CharlieGBrown_91:
(Start: 13 @64932 has 321 MA's), (19, 64869), (22, 64776),

Gene: CheetO_90 Start: 65306, Stop: 65109, Start Num: 13
Candidate Starts for CheetO_90:
(Start: 13 @65306 has 321 MA's), (19, 65243), (22, 65150),

Gene: Cher_93 Start: 65405, Stop: 65208, Start Num: 13
Candidate Starts for Cher_93:
(Start: 13 @65405 has 321 MA's), (19, 65342),

Gene: Childish_93 Start: 65595, Stop: 65398, Start Num: 13
Candidate Starts for Childish_93:
(Start: 13 @65595 has 321 MA's), (19, 65532),

Gene: Chipette_91 Start: 65131, Stop: 64934, Start Num: 13

Candidate Starts for Chipette_91:
(Start: 13 @65131 has 321 MA's), (19, 65068), (22, 64975),

Gene: Chorkpop_94 Start: 65057, Stop: 64860, Start Num: 13
Candidate Starts for Chorkpop_94:
(Start: 13 @65057 has 321 MA's), (19, 64994),

Gene: Chuni_94 Start: 65642, Stop: 65445, Start Num: 13
Candidate Starts for Chuni_94:
(Start: 13 @65642 has 321 MA's), (19, 65579),

Gene: Chunky_92 Start: 64902, Stop: 64705, Start Num: 13
Candidate Starts for Chunky_92:
(Start: 13 @64902 has 321 MA's), (19, 64839), (22, 64746),

Gene: Chute_93 Start: 65596, Stop: 65399, Start Num: 13
Candidate Starts for Chute_93:
(Start: 13 @65596 has 321 MA's), (19, 65533),

Gene: Cobra_93 Start: 65427, Stop: 65230, Start Num: 13
Candidate Starts for Cobra_93:
(Start: 13 @65427 has 321 MA's), (19, 65364),

Gene: Coffee_23 Start: 19132, Stop: 18941, Start Num: 13
Candidate Starts for Coffee_23:
(7, 19342), (8, 19306), (Start: 13 @19132 has 321 MA's), (18, 19072), (25, 18961),

Gene: Colbert_91 Start: 64325, Stop: 64128, Start Num: 13
Candidate Starts for Colbert_91:
(Start: 13 @64325 has 321 MA's), (19, 64262), (22, 64169),

Gene: Coletti_96 Start: 65952, Stop: 65755, Start Num: 13
Candidate Starts for Coletti_96:
(Start: 13 @65952 has 321 MA's), (19, 65889),

Gene: Cornbread_93 Start: 65453, Stop: 65262, Start Num: 13
Candidate Starts for Cornbread_93:
(Start: 13 @65453 has 321 MA's), (19, 65390), (26, 65276), (27, 65267),

Gene: Cornobble_91 Start: 65053, Stop: 64856, Start Num: 13
Candidate Starts for Cornobble_91:
(Start: 13 @65053 has 321 MA's), (19, 64990),

Gene: Cosmolli16_95 Start: 65772, Stop: 65575, Start Num: 13
Candidate Starts for Cosmolli16_95:
(Start: 13 @65772 has 321 MA's), (19, 65709),

Gene: Craff_94 Start: 65814, Stop: 65617, Start Num: 13
Candidate Starts for Craff_94:
(Start: 13 @65814 has 321 MA's), (19, 65751),

Gene: Crownjwl_90 Start: 65081, Stop: 64884, Start Num: 13
Candidate Starts for Crownjwl_90:

(Start: 13 @65081 has 321 MA's), (19, 65018), (22, 64925),

Gene: DaddyDaniels_96 Start: 65548, Stop: 65351, Start Num: 13

Candidate Starts for DaddyDaniels_96:

(Start: 13 @65548 has 321 MA's), (19, 65485),

Gene: Daegal_5 Start: 2105, Stop: 1896, Start Num: 12

Candidate Starts for Daegal_5:

(Start: 12 @2105 has 22 MA's), (21, 1964), (22, 1934),

Gene: Daffy_92 Start: 65042, Stop: 64845, Start Num: 13

Candidate Starts for Daffy_92:

(Start: 13 @65042 has 321 MA's), (19, 64979),

Gene: Daka_95 Start: 65247, Stop: 65050, Start Num: 13

Candidate Starts for Daka_95:

(Start: 13 @65247 has 321 MA's), (19, 65184), (22, 65091),

Gene: Dati_90 Start: 65227, Stop: 65030, Start Num: 13

Candidate Starts for Dati_90:

(Start: 13 @65227 has 321 MA's), (19, 65164),

Gene: DeepSoil15_4 Start: 1826, Stop: 1617, Start Num: 12

Candidate Starts for DeepSoil15_4:

(Start: 12 @1826 has 22 MA's), (21, 1685), (22, 1655),

Gene: Derpp_92 Start: 64965, Stop: 64768, Start Num: 13

Candidate Starts for Derpp_92:

(Start: 13 @64965 has 321 MA's), (19, 64902), (22, 64809),

Gene: Dewey_4 Start: 1826, Stop: 1617, Start Num: 12

Candidate Starts for Dewey_4:

(Start: 12 @1826 has 22 MA's), (21, 1685), (22, 1655),

Gene: Dice_93 Start: 64888, Stop: 64691, Start Num: 13

Candidate Starts for Dice_93:

(Start: 13 @64888 has 321 MA's), (19, 64825),

Gene: Dingo_90 Start: 64608, Stop: 64411, Start Num: 13

Candidate Starts for Dingo_90:

(Start: 13 @64608 has 321 MA's), (19, 64545),

Gene: Dione_91 Start: 64608, Stop: 64411, Start Num: 13

Candidate Starts for Dione_91:

(Start: 13 @64608 has 321 MA's), (19, 64545),

Gene: DirtJuice_94 Start: 65717, Stop: 65526, Start Num: 13

Candidate Starts for DirtJuice_94:

(Start: 13 @65717 has 321 MA's), (19, 65654), (26, 65540), (27, 65531),

Gene: Doddsville_90 Start: 65048, Stop: 64851, Start Num: 13

Candidate Starts for Doddsville_90:

(Start: 13 @65048 has 321 MA's), (19, 64985),

Gene: DoesntMatter_90 Start: 64882, Stop: 64685, Start Num: 13
Candidate Starts for DoesntMatter_90:
(Start: 13 @64882 has 321 MA's), (19, 64819),

Gene: DolOn_97 Start: 66333, Stop: 66136, Start Num: 13
Candidate Starts for DolOn_97:
(Start: 13 @66333 has 321 MA's), (19, 66270), (22, 66177),

Gene: DuchessDung_90 Start: 64563, Stop: 64366, Start Num: 13
Candidate Starts for DuchessDung_90:
(Start: 13 @64563 has 321 MA's), (19, 64500), (22, 64407),

Gene: Duggie_93 Start: 65190, Stop: 64993, Start Num: 13
Candidate Starts for Duggie_93:
(Start: 13 @65190 has 321 MA's), (19, 65127),

Gene: Durga_95 Start: 65671, Stop: 65474, Start Num: 13
Candidate Starts for Durga_95:
(Start: 13 @65671 has 321 MA's), (19, 65608), (22, 65515),

Gene: Eaglehorse_23 Start: 19040, Stop: 18849, Start Num: 13
Candidate Starts for Eaglehorse_23:
(7, 19250), (8, 19214), (Start: 13 @19040 has 321 MA's), (18, 18980), (25, 18869),

Gene: Ein37_4 Start: 1826, Stop: 1617, Start Num: 12
Candidate Starts for Ein37_4:
(Start: 12 @1826 has 22 MA's), (21, 1685), (22, 1655),

Gene: ElvisPhasley_94 Start: 66212, Stop: 66015, Start Num: 13
Candidate Starts for ElvisPhasley_94:
(Start: 13 @66212 has 321 MA's), (19, 66149),

Gene: EmGer13_92 Start: 64902, Stop: 64705, Start Num: 13
Candidate Starts for EmGer13_92:
(Start: 13 @64902 has 321 MA's), (19, 64839),

Gene: Emiris_95 Start: 65578, Stop: 65381, Start Num: 13
Candidate Starts for Emiris_95:
(Start: 13 @65578 has 321 MA's), (19, 65515),

Gene: EmpTee_92 Start: 64979, Stop: 64782, Start Num: 13
Candidate Starts for EmpTee_92:
(Start: 13 @64979 has 321 MA's), (19, 64916), (22, 64823),

Gene: Eremos_91 Start: 65269, Stop: 65072, Start Num: 13
Candidate Starts for Eremos_91:
(Start: 13 @65269 has 321 MA's), (19, 65206), (22, 65113),

Gene: Etaye_92 Start: 65755, Stop: 65558, Start Num: 13
Candidate Starts for Etaye_92:
(Start: 13 @65755 has 321 MA's), (19, 65692),

Gene: Eugenia_95 Start: 65690, Stop: 65493, Start Num: 13
Candidate Starts for Eugenia_95:
(Start: 13 @65690 has 321 MA's), (19, 65627),

Gene: Evanesce_4 Start: 1826, Stop: 1617, Start Num: 12
Candidate Starts for Evanesce_4:
(Start: 12 @1826 has 22 MA's), (21, 1685), (22, 1655),

Gene: Faiyaz_117 Start: 69271, Stop: 69447, Start Num: 14
Candidate Starts for Faiyaz_117:
(Start: 14 @69271 has 4 MA's),

Gene: Fang_94 Start: 65398, Stop: 65201, Start Num: 13
Candidate Starts for Fang_94:
(Start: 13 @65398 has 321 MA's), (19, 65335),

Gene: Faze9_23 Start: 19136, Stop: 18945, Start Num: 13
Candidate Starts for Faze9_23:
(7, 19346), (8, 19310), (Start: 13 @19136 has 321 MA's), (18, 19076), (25, 18965),

Gene: Flake_92 Start: 65170, Stop: 64973, Start Num: 13
Candidate Starts for Flake_92:
(Start: 13 @65170 has 321 MA's), (19, 65107),

Gene: FleetyMac_97 Start: 65450, Stop: 65259, Start Num: 13
Candidate Starts for FleetyMac_97:
(Start: 13 @65450 has 321 MA's), (19, 65387), (26, 65273), (27, 65264),

Gene: FluffyNinja_94 Start: 65267, Stop: 65070, Start Num: 13
Candidate Starts for FluffyNinja_94:
(Start: 13 @65267 has 321 MA's), (19, 65204),

Gene: Forge_4 Start: 1826, Stop: 1617, Start Num: 12
Candidate Starts for Forge_4:
(Start: 12 @1826 has 22 MA's), (21, 1685), (22, 1655),

Gene: Fozzie_90 Start: 65594, Stop: 65397, Start Num: 13
Candidate Starts for Fozzie_90:
(Start: 13 @65594 has 321 MA's), (19, 65531),

Gene: Frankicide_91 Start: 65094, Stop: 64897, Start Num: 13
Candidate Starts for Frankicide_91:
(Start: 13 @65094 has 321 MA's), (19, 65031), (22, 64938),

Gene: FremontTroll_93 Start: 65876, Stop: 65685, Start Num: 13
Candidate Starts for FremontTroll_93:
(Start: 13 @65876 has 321 MA's), (19, 65813), (26, 65699), (27, 65690),

Gene: FrenchFry_23 Start: 19139, Stop: 18948, Start Num: 13
Candidate Starts for FrenchFry_23:
(7, 19349), (8, 19313), (Start: 13 @19139 has 321 MA's), (18, 19079), (25, 18968),

Gene: Freya_89 Start: 64586, Stop: 64389, Start Num: 13

Candidate Starts for Freya_89:
(Start: 13 @64586 has 321 MA's), (19, 64523),

Gene: FriarPreacher_90 Start: 64965, Stop: 64768, Start Num: 13
Candidate Starts for FriarPreacher_90:
(Start: 13 @64965 has 321 MA's), (19, 64902),

Gene: Fringe_97 Start: 65742, Stop: 65545, Start Num: 13
Candidate Starts for Fringe_97:
(Start: 13 @65742 has 321 MA's), (19, 65679),

Gene: FugateOSU_93 Start: 66027, Stop: 65830, Start Num: 13
Candidate Starts for FugateOSU_93:
(Start: 13 @66027 has 321 MA's), (19, 65964),

Gene: Gancho_3 Start: 1532, Stop: 1323, Start Num: 12
Candidate Starts for Gancho_3:
(Start: 12 @1532 has 22 MA's), (21, 1391), (22, 1361),

Gene: Gareth_104 Start: 65416, Stop: 65219, Start Num: 13
Candidate Starts for Gareth_104:
(Start: 13 @65416 has 321 MA's), (19, 65353),

Gene: GeneCoco_93 Start: 65595, Stop: 65398, Start Num: 13
Candidate Starts for GeneCoco_93:
(Start: 13 @65595 has 321 MA's), (19, 65532),

Gene: Giles_4 Start: 1826, Stop: 1617, Start Num: 12
Candidate Starts for Giles_4:
(Start: 12 @1826 has 22 MA's), (21, 1685), (22, 1655),

Gene: Giraffe_94 Start: 65420, Stop: 65223, Start Num: 13
Candidate Starts for Giraffe_94:
(Start: 13 @65420 has 321 MA's), (19, 65357),

Gene: Glass_23 Start: 19139, Stop: 18948, Start Num: 13
Candidate Starts for Glass_23:
(7, 19349), (8, 19313), (Start: 13 @19139 has 321 MA's), (18, 19079), (25, 18968),

Gene: Godines_23 Start: 19032, Stop: 18841, Start Num: 13
Candidate Starts for Godines_23:
(7, 19242), (8, 19206), (Start: 13 @19032 has 321 MA's), (18, 18972), (25, 18861),

Gene: Gophee_92 Start: 65407, Stop: 65210, Start Num: 13
Candidate Starts for Gophee_92:
(Start: 13 @65407 has 321 MA's), (19, 65344),

Gene: Grand2040_91 Start: 65385, Stop: 65188, Start Num: 13
Candidate Starts for Grand2040_91:
(Start: 13 @65385 has 321 MA's), (19, 65322),

Gene: Gravaillia_4 Start: 1565, Stop: 1356, Start Num: 12
Candidate Starts for Gravaillia_4:

(Start: 12 @1565 has 22 MA's), (21, 1424), (22, 1394),

Gene: GreenChile_92 Start: 65080, Stop: 64883, Start Num: 13

Candidate Starts for GreenChile_92:

(Start: 13 @65080 has 321 MA's), (19, 65017), (22, 64924),

Gene: Gwennie1_92 Start: 65231, Stop: 65034, Start Num: 13

Candidate Starts for Gwennie1_92:

(Start: 13 @65231 has 321 MA's), (19, 65168),

Gene: Gwilliam_93 Start: 65950, Stop: 65753, Start Num: 13

Candidate Starts for Gwilliam_93:

(Start: 13 @65950 has 321 MA's), (19, 65887),

Gene: Gyarad_0092 Start: 64905, Stop: 64708, Start Num: 13

Candidate Starts for Gyarad_0092:

(Start: 13 @64905 has 321 MA's), (19, 64842),

Gene: HH92_4 Start: 1826, Stop: 1617, Start Num: 12

Candidate Starts for HH92_4:

(Start: 12 @1826 has 22 MA's), (21, 1685), (22, 1655),

Gene: HSavage_91 Start: 64922, Stop: 64725, Start Num: 13

Candidate Starts for HSavage_91:

(Start: 13 @64922 has 321 MA's), (19, 64859), (22, 64766),

Gene: Hadrien_4 Start: 1826, Stop: 1617, Start Num: 12

Candidate Starts for Hadrien_4:

(Start: 12 @1826 has 22 MA's), (21, 1685), (22, 1655),

Gene: Hail_4 Start: 1826, Stop: 1617, Start Num: 12

Candidate Starts for Hail_4:

(Start: 12 @1826 has 22 MA's), (21, 1685), (22, 1655),

Gene: Haimas_90 Start: 64847, Stop: 64650, Start Num: 13

Candidate Starts for Haimas_90:

(Start: 13 @64847 has 321 MA's), (19, 64784),

Gene: Haleema_92 Start: 64966, Stop: 64769, Start Num: 13

Candidate Starts for Haleema_92:

(Start: 13 @64966 has 321 MA's), (19, 64903),

Gene: Hamish_90 Start: 65135, Stop: 64938, Start Num: 13

Candidate Starts for Hamish_90:

(Start: 13 @65135 has 321 MA's), (19, 65072),

Gene: Happabalu_91 Start: 66060, Stop: 65863, Start Num: 13

Candidate Starts for Happabalu_91:

(Start: 13 @66060 has 321 MA's), (19, 65997),

Gene: Hartsy_91 Start: 65084, Stop: 64887, Start Num: 13

Candidate Starts for Hartsy_91:

(Start: 13 @65084 has 321 MA's), (19, 65021),

Gene: Harvey_90 Start: 64744, Stop: 64547, Start Num: 13

Candidate Starts for Harvey_90:

(Start: 13 @64744 has 321 MA's), (19, 64681), (22, 64588),

Gene: Hawkeye_50 Start: 36867, Stop: 37094, Start Num: 11

Candidate Starts for Hawkeye_50:

(4, 36585), (6, 36669), (9, 36750), (Start: 11 @36867 has 2 MA's),

Gene: Hedgerow_23 Start: 19121, Stop: 18930, Start Num: 13

Candidate Starts for Hedgerow_23:

(7, 19331), (8, 19295), (Start: 13 @19121 has 321 MA's), (18, 19061), (25, 18950),

Gene: Hekos_91 Start: 64759, Stop: 64562, Start Num: 13

Candidate Starts for Hekos_91:

(Start: 13 @64759 has 321 MA's), (19, 64696), (22, 64603),

Gene: Held_91 Start: 64864, Stop: 64667, Start Num: 13

Candidate Starts for Held_91:

(Start: 13 @64864 has 321 MA's), (19, 64801),

Gene: HenryJackson_93 Start: 65584, Stop: 65387, Start Num: 13

Candidate Starts for HenryJackson_93:

(Start: 13 @65584 has 321 MA's), (19, 65521),

Gene: Hertubise_92 Start: 65226, Stop: 65029, Start Num: 13

Candidate Starts for Hertubise_92:

(Start: 13 @65226 has 321 MA's), (19, 65163),

Gene: Hetaeria_93 Start: 65233, Stop: 65036, Start Num: 13

Candidate Starts for Hetaeria_93:

(Start: 13 @65233 has 321 MA's), (19, 65170),

Gene: HighStump_95 Start: 65371, Stop: 65174, Start Num: 13

Candidate Starts for HighStump_95:

(Start: 13 @65371 has 321 MA's), (19, 65308),

Gene: Hilltopfarm_119 Start: 70095, Stop: 70271, Start Num: 14

Candidate Starts for Hilltopfarm_119:

(Start: 14 @70095 has 4 MA's),

Gene: Hocus_92 Start: 64885, Stop: 64688, Start Num: 13

Candidate Starts for Hocus_92:

(Start: 13 @64885 has 321 MA's), (19, 64822), (22, 64729),

Gene: HogWash_93 Start: 65897, Stop: 65700, Start Num: 13

Candidate Starts for HogWash_93:

(Start: 13 @65897 has 321 MA's), (19, 65834),

Gene: Holeinone_23 Start: 19017, Stop: 18826, Start Num: 13

Candidate Starts for Holeinone_23:

(7, 19227), (8, 19191), (Start: 13 @19017 has 321 MA's), (18, 18957), (25, 18846),

Gene: Horchata_88 Start: 65062, Stop: 64865, Start Num: 13
Candidate Starts for Horchata_88:
(Start: 13 @65062 has 321 MA's), (19, 64999), (22, 64906),

Gene: ImtiyazSitla_94 Start: 65390, Stop: 65193, Start Num: 13
Candidate Starts for ImtiyazSitla_94:
(Start: 13 @65390 has 321 MA's), (19, 65327), (20, 65306),

Gene: Imvubu_89 Start: 65261, Stop: 65037, Start Num: 11
Candidate Starts for Imvubu_89:
(5, 65516), (Start: 11 @65261 has 2 MA's), (23, 65078),

Gene: Inchworm_94 Start: 65257, Stop: 65060, Start Num: 13
Candidate Starts for Inchworm_94:
(Start: 13 @65257 has 321 MA's), (19, 65194),

Gene: Inverness_91 Start: 65058, Stop: 64861, Start Num: 13
Candidate Starts for Inverness_91:
(Start: 13 @65058 has 321 MA's), (19, 64995), (22, 64902),

Gene: Iridessa_95 Start: 64983, Stop: 64786, Start Num: 13
Candidate Starts for Iridessa_95:
(Start: 13 @64983 has 321 MA's), (19, 64920),

Gene: Iridoclysis_92 Start: 65148, Stop: 64951, Start Num: 13
Candidate Starts for Iridoclysis_92:
(Start: 13 @65148 has 321 MA's), (19, 65085),

Gene: IsaacEli_95 Start: 65389, Stop: 65192, Start Num: 13
Candidate Starts for IsaacEli_95:
(Start: 13 @65389 has 321 MA's), (19, 65326), (22, 65233),

Gene: ItsyBitsy1_23 Start: 19010, Stop: 18819, Start Num: 13
Candidate Starts for ItsyBitsy1_23:
(7, 19220), (8, 19184), (Start: 13 @19010 has 321 MA's), (18, 18950), (25, 18839),

Gene: JDog_92 Start: 65418, Stop: 65221, Start Num: 13
Candidate Starts for JDog_92:
(Start: 13 @65418 has 321 MA's), (19, 65355),

Gene: JacAttac_93 Start: 64862, Stop: 64665, Start Num: 13
Candidate Starts for JacAttac_93:
(Start: 13 @64862 has 321 MA's), (19, 64799),

Gene: JakeO_94 Start: 65146, Stop: 64949, Start Num: 13
Candidate Starts for JakeO_94:
(Start: 13 @65146 has 321 MA's), (19, 65083),

Gene: JangoPhett_91 Start: 65223, Stop: 65026, Start Num: 13
Candidate Starts for JangoPhett_91:
(Start: 13 @65223 has 321 MA's), (19, 65160),

Gene: Jesabah_96 Start: 65985, Stop: 65788, Start Num: 13

Candidate Starts for Jesabah_96:
(Start: 13 @65985 has 321 MA's), (19, 65922),

Gene: Jillium_94 Start: 65579, Stop: 65382, Start Num: 13
Candidate Starts for Jillium_94:
(Start: 13 @65579 has 321 MA's), (19, 65516),

Gene: Jiminy_93 Start: 65082, Stop: 64885, Start Num: 13
Candidate Starts for Jiminy_93:
(Start: 13 @65082 has 321 MA's), (19, 65019),

Gene: Jiraiya_94 Start: 65166, Stop: 64969, Start Num: 13
Candidate Starts for Jiraiya_94:
(Start: 13 @65166 has 321 MA's), (19, 65103), (22, 65010),

Gene: KLucky39_91 Start: 64941, Stop: 64744, Start Num: 13
Candidate Starts for KLucky39_91:
(Start: 13 @64941 has 321 MA's), (19, 64878), (22, 64785),

Gene: Kahve_93 Start: 65582, Stop: 65385, Start Num: 13
Candidate Starts for Kahve_93:
(Start: 13 @65582 has 321 MA's), (19, 65519),

Gene: Kailash_91 Start: 65281, Stop: 65084, Start Num: 13
Candidate Starts for Kailash_91:
(Start: 13 @65281 has 321 MA's), (19, 65218), (22, 65125),

Gene: Kaleb_23 Start: 19136, Stop: 18945, Start Num: 13
Candidate Starts for Kaleb_23:
(7, 19346), (8, 19310), (Start: 13 @19136 has 321 MA's), (18, 19076), (25, 18965),

Gene: Karn_93 Start: 65137, Stop: 64940, Start Num: 13
Candidate Starts for Karn_93:
(Start: 13 @65137 has 321 MA's), (19, 65074), (22, 64981),

Gene: Katniss_95 Start: 64998, Stop: 64801, Start Num: 13
Candidate Starts for Katniss_95:
(Start: 13 @64998 has 321 MA's), (19, 64935),

Gene: Keitherie_96 Start: 65640, Stop: 65443, Start Num: 13
Candidate Starts for Keitherie_96:
(Start: 13 @65640 has 321 MA's), (19, 65577),

Gene: Khan1_93 Start: 65361, Stop: 65164, Start Num: 13
Candidate Starts for Khan1_93:
(Start: 13 @65361 has 321 MA's), (19, 65298),

Gene: Kheth_23 Start: 19022, Stop: 18831, Start Num: 13
Candidate Starts for Kheth_23:
(7, 19232), (8, 19196), (Start: 13 @19022 has 321 MA's), (18, 18962), (25, 18851),

Gene: Kikipoo_95 Start: 65389, Stop: 65192, Start Num: 13
Candidate Starts for Kikipoo_95:

(Start: 13 @65389 has 321 MA's), (19, 65326), (22, 65233),

Gene: Kimbrough_94 Start: 65461, Stop: 65264, Start Num: 13

Candidate Starts for Kimbrough_94:

(Start: 13 @65461 has 321 MA's), (19, 65398),

Gene: Kinbote_4 Start: 1826, Stop: 1617, Start Num: 12

Candidate Starts for Kinbote_4:

(Start: 12 @1826 has 22 MA's), (21, 1685), (22, 1655),

Gene: KingTut_84 Start: 61621, Stop: 61424, Start Num: 13

Candidate Starts for KingTut_84:

(Start: 13 @61621 has 321 MA's), (19, 61558),

Gene: KingVeVeVe_91 Start: 64594, Stop: 64397, Start Num: 13

Candidate Starts for KingVeVeVe_91:

(Start: 13 @64594 has 321 MA's), (19, 64531), (22, 64438),

Gene: KlimbOn_92 Start: 64901, Stop: 64704, Start Num: 13

Candidate Starts for KlimbOn_92:

(Start: 13 @64901 has 321 MA's), (19, 64838),

Gene: Kloppinator_93 Start: 65030, Stop: 64833, Start Num: 13

Candidate Starts for Kloppinator_93:

(Start: 13 @65030 has 321 MA's), (19, 64967),

Gene: Kolhan_23 Start: 19019, Stop: 18828, Start Num: 13

Candidate Starts for Kolhan_23:

(7, 19229), (8, 19193), (Start: 13 @19019 has 321 MA's), (18, 18959), (25, 18848),

Gene: Kwadwo_92 Start: 64886, Stop: 64689, Start Num: 13

Candidate Starts for Kwadwo_92:

(Start: 13 @64886 has 321 MA's), (19, 64823), (24, 64721),

Gene: Kwksand96_94 Start: 65151, Stop: 64954, Start Num: 13

Candidate Starts for Kwksand96_94:

(Start: 13 @65151 has 321 MA's), (19, 65088), (20, 65067),

Gene: Labeouficaum_93 Start: 64965, Stop: 64768, Start Num: 13

Candidate Starts for Labeouficaum_93:

(Start: 13 @64965 has 321 MA's), (19, 64902), (22, 64809),

Gene: Lars_23 Start: 19139, Stop: 18948, Start Num: 13

Candidate Starts for Lars_23:

(7, 19349), (8, 19313), (Start: 13 @19139 has 321 MA's), (18, 19079), (25, 18968),

Gene: Larson_95 Start: 65230, Stop: 65033, Start Num: 13

Candidate Starts for Larson_95:

(Start: 13 @65230 has 321 MA's), (19, 65167),

Gene: LasagnaCat_94 Start: 65267, Stop: 65070, Start Num: 13

Candidate Starts for LasagnaCat_94:

(Start: 13 @65267 has 321 MA's), (19, 65204),

Gene: Lasso_92 Start: 65127, Stop: 64930, Start Num: 13

Candidate Starts for Lasso_92:

(Start: 13 @65127 has 321 MA's), (19, 65064),

Gene: Laurie_23 Start: 19013, Stop: 18822, Start Num: 13

Candidate Starts for Laurie_23:

(7, 19223), (8, 19187), (Start: 13 @19013 has 321 MA's), (18, 18953), (25, 18842),

Gene: LeeLot_91 Start: 65471, Stop: 65274, Start Num: 13

Candidate Starts for LeeLot_91:

(Start: 13 @65471 has 321 MA's), (19, 65408),

Gene: Lego3393_91 Start: 65588, Stop: 65391, Start Num: 13

Candidate Starts for Lego3393_91:

(Start: 13 @65588 has 321 MA's), (19, 65525), (22, 65432),

Gene: Legolas_94 Start: 65215, Stop: 65018, Start Num: 13

Candidate Starts for Legolas_94:

(Start: 13 @65215 has 321 MA's), (19, 65152),

Gene: Lehmann_94 Start: 65477, Stop: 65280, Start Num: 13

Candidate Starts for Lehmann_94:

(Start: 13 @65477 has 321 MA's), (19, 65414),

Gene: LeiMonet_96 Start: 65348, Stop: 65151, Start Num: 13

Candidate Starts for LeiMonet_96:

(Start: 13 @65348 has 321 MA's), (19, 65285),

Gene: LemonSlice_93 Start: 64874, Stop: 64677, Start Num: 13

Candidate Starts for LemonSlice_93:

(Start: 13 @64874 has 321 MA's), (19, 64811),

Gene: Lephleur_23 Start: 19019, Stop: 18828, Start Num: 13

Candidate Starts for Lephleur_23:

(7, 19229), (8, 19193), (Start: 13 @19019 has 321 MA's), (18, 18959), (25, 18848),

Gene: LilHazelnut_4 Start: 1826, Stop: 1617, Start Num: 12

Candidate Starts for LilHazelnut_4:

(Start: 12 @1826 has 22 MA's), (21, 1685), (22, 1655),

Gene: LilSmirk_23 Start: 19019, Stop: 18828, Start Num: 13

Candidate Starts for LilSmirk_23:

(7, 19229), (8, 19193), (Start: 13 @19019 has 321 MA's), (18, 18959), (25, 18848),

Gene: LizLemon_23 Start: 19136, Stop: 18945, Start Num: 13

Candidate Starts for LizLemon_23:

(7, 19346), (8, 19310), (Start: 13 @19136 has 321 MA's), (18, 19076), (25, 18965),

Gene: Longacauda_94 Start: 65366, Stop: 65169, Start Num: 13

Candidate Starts for Longacauda_94:

(Start: 13 @65366 has 321 MA's), (19, 65303), (20, 65282),

Gene: Lopsy_89 Start: 64781, Stop: 64584, Start Num: 13
Candidate Starts for Lopsy_89:
(Start: 13 @64781 has 321 MA's), (19, 64718),

Gene: LostAndPhound_92 Start: 65416, Stop: 65219, Start Num: 13
Candidate Starts for LostAndPhound_92:
(Start: 13 @65416 has 321 MA's), (19, 65353),

Gene: LuckyMarjie_90 Start: 64626, Stop: 64429, Start Num: 13
Candidate Starts for LuckyMarjie_90:
(Start: 13 @64626 has 321 MA's), (19, 64563),

Gene: Luke_4 Start: 1826, Stop: 1617, Start Num: 12
Candidate Starts for Luke_4:
(Start: 12 @1826 has 22 MA's), (21, 1685), (22, 1655),

Gene: Lulumae_88 Start: 64607, Stop: 64410, Start Num: 13
Candidate Starts for Lulumae_88:
(Start: 13 @64607 has 321 MA's), (19, 64544),

Gene: Lulwa_90 Start: 64240, Stop: 64043, Start Num: 13
Candidate Starts for Lulwa_90:
(Start: 13 @64240 has 321 MA's), (19, 64177),

Gene: Lumine_94 Start: 65065, Stop: 64868, Start Num: 13
Candidate Starts for Lumine_94:
(Start: 13 @65065 has 321 MA's), (19, 65002), (22, 64909),

Gene: Luna22_4 Start: 1826, Stop: 1617, Start Num: 12
Candidate Starts for Luna22_4:
(Start: 12 @1826 has 22 MA's), (21, 1685), (22, 1655),

Gene: MRabcd_93 Start: 65342, Stop: 65145, Start Num: 13
Candidate Starts for MRabcd_93:
(Start: 13 @65342 has 321 MA's), (19, 65279),

Gene: Mag7_91 Start: 64825, Stop: 64628, Start Num: 13
Candidate Starts for Mag7_91:
(Start: 13 @64825 has 321 MA's), (19, 64762), (22, 64669),

Gene: Magic8_92 Start: 65193, Stop: 64996, Start Num: 13
Candidate Starts for Magic8_92:
(Start: 13 @65193 has 321 MA's), (19, 65130),

Gene: Mana_90 Start: 65030, Stop: 64833, Start Num: 13
Candidate Starts for Mana_90:
(Start: 13 @65030 has 321 MA's), (19, 64967),

Gene: Manad_92 Start: 65139, Stop: 64942, Start Num: 13
Candidate Starts for Manad_92:
(Start: 13 @65139 has 321 MA's), (19, 65076), (22, 64983),

Gene: Maru_93 Start: 65478, Stop: 65281, Start Num: 13

Candidate Starts for Maru_93:
(Start: 13 @65478 has 321 MA's), (19, 65415),

Gene: Maskar_94 Start: 65390, Stop: 65193, Start Num: 13
Candidate Starts for Maskar_94:
(Start: 13 @65390 has 321 MA's), (19, 65327), (20, 65306),

Gene: MasterPo_23 Start: 19019, Stop: 18828, Start Num: 13
Candidate Starts for MasterPo_23:
(7, 19229), (8, 19193), (Start: 13 @19019 has 321 MA's), (18, 18959), (25, 18848),

Gene: Matalotodo_91 Start: 65874, Stop: 65677, Start Num: 13
Candidate Starts for Matalotodo_91:
(Start: 13 @65874 has 321 MA's), (19, 65811),

Gene: Mcshane_95 Start: 65257, Stop: 65066, Start Num: 13
Candidate Starts for Mcshane_95:
(Start: 13 @65257 has 321 MA's), (19, 65194), (26, 65080), (27, 65071),

Gene: Mecca_93 Start: 65442, Stop: 65245, Start Num: 13
Candidate Starts for Mecca_93:
(Start: 13 @65442 has 321 MA's), (19, 65379), (22, 65286),

Gene: Megamind20_95 Start: 65221, Stop: 65030, Start Num: 13
Candidate Starts for Megamind20_95:
(Start: 13 @65221 has 321 MA's), (19, 65158), (26, 65044), (27, 65035),

Gene: Megatron_94 Start: 65560, Stop: 65363, Start Num: 13
Candidate Starts for Megatron_94:
(Start: 13 @65560 has 321 MA's), (19, 65497), (22, 65404),

Gene: Melc17_90 Start: 65510, Stop: 65313, Start Num: 13
Candidate Starts for Melc17_90:
(Start: 13 @65510 has 321 MA's), (19, 65447),

Gene: MelsMeow_92 Start: 65148, Stop: 64951, Start Num: 13
Candidate Starts for MelsMeow_92:
(Start: 13 @65148 has 321 MA's), (19, 65085), (20, 65064),

Gene: Mesh1_94 Start: 65603, Stop: 65406, Start Num: 13
Candidate Starts for Mesh1_94:
(Start: 13 @65603 has 321 MA's), (19, 65540),

Gene: Mesmerelda_93 Start: 65441, Stop: 65244, Start Num: 13
Candidate Starts for Mesmerelda_93:
(Start: 13 @65441 has 321 MA's), (19, 65378),

Gene: MichaelPhcott_91 Start: 64822, Stop: 64625, Start Num: 13
Candidate Starts for MichaelPhcott_91:
(Start: 13 @64822 has 321 MA's), (19, 64759), (22, 64666),

Gene: Mikota_88 Start: 64593, Stop: 64396, Start Num: 13
Candidate Starts for Mikota_88:

(Start: 13 @64593 has 321 MA's), (19, 64530),

Gene: MiniBoss_89 Start: 64193, Stop: 63996, Start Num: 13

Candidate Starts for MiniBoss_89:

(Start: 13 @64193 has 321 MA's), (19, 64130),

Gene: MitKao_93 Start: 65043, Stop: 64846, Start Num: 13

Candidate Starts for MitKao_93:

(Start: 13 @65043 has 321 MA's), (19, 64980),

Gene: Morgushi_90 Start: 64858, Stop: 64661, Start Num: 13

Candidate Starts for Morgushi_90:

(Start: 13 @64858 has 321 MA's), (19, 64795),

Gene: Morty_93 Start: 65428, Stop: 65231, Start Num: 13

Candidate Starts for Morty_93:

(Start: 13 @65428 has 321 MA's), (19, 65365),

Gene: Mosaic_90 Start: 65039, Stop: 64842, Start Num: 13

Candidate Starts for Mosaic_90:

(Start: 13 @65039 has 321 MA's), (19, 64976),

Gene: MrPhizzler_96 Start: 65338, Stop: 65141, Start Num: 13

Candidate Starts for MrPhizzler_96:

(Start: 13 @65338 has 321 MA's), (19, 65275),

Gene: Mulan_92 Start: 65072, Stop: 64875, Start Num: 13

Candidate Starts for Mulan_92:

(Start: 13 @65072 has 321 MA's), (19, 65009),

Gene: Murdoc_89 Start: 65151, Stop: 64954, Start Num: 13

Candidate Starts for Murdoc_89:

(Start: 13 @65151 has 321 MA's), (19, 65088),

Gene: Mutante_94 Start: 65045, Stop: 64848, Start Num: 13

Candidate Starts for Mutante_94:

(Start: 13 @65045 has 321 MA's), (19, 64982),

Gene: Nacho_0096 Start: 66116, Stop: 65919, Start Num: 13

Candidate Starts for Nacho_0096:

(Start: 13 @66116 has 321 MA's), (19, 66053),

Gene: Nathan_93 Start: 65571, Stop: 65374, Start Num: 13

Candidate Starts for Nathan_93:

(Start: 13 @65571 has 321 MA's), (19, 65508),

Gene: Newman_89 Start: 65392, Stop: 65195, Start Num: 13

Candidate Starts for Newman_89:

(Start: 13 @65392 has 321 MA's), (19, 65329), (22, 65236),

Gene: NiaNia_94 Start: 64917, Stop: 64720, Start Num: 13

Candidate Starts for NiaNia_94:

(Start: 13 @64917 has 321 MA's), (19, 64854),

Gene: Nicole21_94 Start: 65178, Stop: 64981, Start Num: 13
Candidate Starts for Nicole21_94:
(Start: 13 @65178 has 321 MA's), (19, 65115),

Gene: Nova1_92 Start: 65024, Stop: 64827, Start Num: 13
Candidate Starts for Nova1_92:
(Start: 13 @65024 has 321 MA's), (19, 64961),

Gene: Numberten_93 Start: 65158, Stop: 64961, Start Num: 13
Candidate Starts for Numberten_93:
(Start: 13 @65158 has 321 MA's), (19, 65095),

Gene: Nyala_93 Start: 64894, Stop: 64697, Start Num: 13
Candidate Starts for Nyala_93:
(Start: 13 @64894 has 321 MA's), (19, 64831),

Gene: OBUpride_4 Start: 1826, Stop: 1617, Start Num: 12
Candidate Starts for OBUpride_4:
(Start: 12 @1826 has 22 MA's), (21, 1685), (22, 1655),

Gene: OSmaximus_94 Start: 65724, Stop: 65527, Start Num: 13
Candidate Starts for OSmaximus_94:
(Start: 13 @65724 has 321 MA's), (19, 65661),

Gene: Olak_95 Start: 65427, Stop: 65236, Start Num: 13
Candidate Starts for Olak_95:
(Start: 13 @65427 has 321 MA's), (19, 65364), (26, 65250), (27, 65241),

Gene: Oline_92 Start: 65049, Stop: 64852, Start Num: 13
Candidate Starts for Oline_92:
(Start: 13 @65049 has 321 MA's), (19, 64986), (22, 64893),

Gene: Olive_89 Start: 65290, Stop: 65093, Start Num: 13
Candidate Starts for Olive_89:
(Start: 13 @65290 has 321 MA's), (19, 65227),

Gene: OliverWalter_92 Start: 65343, Stop: 65146, Start Num: 13
Candidate Starts for OliverWalter_92:
(Start: 13 @65343 has 321 MA's), (19, 65280),

Gene: Omniscient_94 Start: 65748, Stop: 65551, Start Num: 13
Candidate Starts for Omniscient_94:
(Start: 13 @65748 has 321 MA's), (19, 65685),

Gene: OneBrain_95 Start: 65308, Stop: 65111, Start Num: 13
Candidate Starts for OneBrain_95:
(Start: 13 @65308 has 321 MA's), (19, 65245),

Gene: Oosterbaan_93 Start: 65285, Stop: 65088, Start Num: 13
Candidate Starts for Oosterbaan_93:
(Start: 13 @65285 has 321 MA's), (19, 65222),

Gene: Opia_23 Start: 19019, Stop: 18828, Start Num: 13
Candidate Starts for Opia_23:
(7, 19229), (8, 19193), (Start: 13 @19019 has 321 MA's), (18, 18959), (25, 18848),

Gene: Orfeu_93 Start: 65408, Stop: 65211, Start Num: 13
Candidate Starts for Orfeu_93:
(Start: 13 @65408 has 321 MA's), (19, 65345), (22, 65252),

Gene: Orion_91 Start: 64978, Stop: 64781, Start Num: 13
Candidate Starts for Orion_91:
(Start: 13 @64978 has 321 MA's), (19, 64915),

Gene: Orwigg_94 Start: 65183, Stop: 64992, Start Num: 13
Candidate Starts for Orwigg_94:
(Start: 13 @65183 has 321 MA's), (19, 65120), (26, 65006), (27, 64997),

Gene: PG1_91 Start: 65550, Stop: 65353, Start Num: 13
Candidate Starts for PG1_91:
(Start: 13 @65550 has 321 MA's), (19, 65487),

Gene: Pacifista_95 Start: 65268, Stop: 65077, Start Num: 13
Candidate Starts for Pacifista_95:
(Start: 13 @65268 has 321 MA's), (19, 65205), (26, 65091), (27, 65082),

Gene: PallasAthena_94 Start: 64880, Stop: 64683, Start Num: 13
Candidate Starts for PallasAthena_94:
(Start: 13 @64880 has 321 MA's), (19, 64817),

Gene: Phamished_92 Start: 65066, Stop: 64869, Start Num: 13
Candidate Starts for Phamished_92:
(Start: 13 @65066 has 321 MA's), (19, 65003),

Gene: Phantasmagoria_23 Start: 19015, Stop: 18824, Start Num: 13
Candidate Starts for Phantasmagoria_23:
(7, 19225), (8, 19189), (Start: 13 @19015 has 321 MA's), (18, 18955), (25, 18844),

Gene: Phareon_90 Start: 64591, Stop: 64394, Start Num: 13
Candidate Starts for Phareon_90:
(Start: 13 @64591 has 321 MA's), (19, 64528),

Gene: PhatCats2014_92 Start: 65550, Stop: 65353, Start Num: 13
Candidate Starts for PhatCats2014_92:
(Start: 13 @65550 has 321 MA's), (19, 65487), (22, 65394),

Gene: PhatLouie_95 Start: 65424, Stop: 65227, Start Num: 13
Candidate Starts for PhatLouie_95:
(Start: 13 @65424 has 321 MA's), (19, 65361),

Gene: PhenghisKhan_93 Start: 65055, Stop: 64858, Start Num: 13
Candidate Starts for PhenghisKhan_93:
(Start: 13 @65055 has 321 MA's), (19, 64992),

Gene: Pherdinand_94 Start: 65270, Stop: 65073, Start Num: 13

Candidate Starts for Pherdinand_94:
(Start: 13 @65270 has 321 MA's), (19, 65207),

Gene: Phergie_93 Start: 65044, Stop: 64847, Start Num: 13
Candidate Starts for Phergie_93:
(Start: 13 @65044 has 321 MA's), (19, 64981),

Gene: Phipps_91 Start: 65122, Stop: 64925, Start Num: 13
Candidate Starts for Phipps_91:
(Start: 13 @65122 has 321 MA's), (19, 65059),

Gene: Phleuron_90 Start: 64855, Stop: 64658, Start Num: 13
Candidate Starts for Phleuron_90:
(Start: 13 @64855 has 321 MA's), (19, 64792), (22, 64699),

Gene: PhrankReynolds_91 Start: 65049, Stop: 64852, Start Num: 13
Candidate Starts for PhrankReynolds_91:
(Start: 13 @65049 has 321 MA's), (19, 64986),

Gene: PhrodoBaggins_95 Start: 65424, Stop: 65227, Start Num: 13
Candidate Starts for PhrodoBaggins_95:
(Start: 13 @65424 has 321 MA's), (19, 65361),

Gene: Phunky_90 Start: 64926, Stop: 64729, Start Num: 13
Candidate Starts for Phunky_90:
(Start: 13 @64926 has 321 MA's), (19, 64863),

Gene: Piglet_0092 Start: 65542, Stop: 65345, Start Num: 13
Candidate Starts for Piglet_0092:
(Start: 13 @65542 has 321 MA's), (19, 65479),

Gene: PinheadLarry_92 Start: 65195, Stop: 64998, Start Num: 13
Candidate Starts for PinheadLarry_92:
(Start: 13 @65195 has 321 MA's), (19, 65132),

Gene: Pinkman_92 Start: 65267, Stop: 65070, Start Num: 13
Candidate Starts for Pinkman_92:
(Start: 13 @65267 has 321 MA's), (19, 65204), (22, 65111),

Gene: Pipsqueak_90 Start: 64879, Stop: 64682, Start Num: 13
Candidate Starts for Pipsqueak_90:
(Start: 13 @64879 has 321 MA's), (19, 64816),

Gene: Placalicious_91 Start: 65914, Stop: 65717, Start Num: 13
Candidate Starts for Placalicious_91:
(Start: 13 @65914 has 321 MA's), (19, 65851),

Gene: Plata_92 Start: 65135, Stop: 64938, Start Num: 13
Candidate Starts for Plata_92:
(Start: 13 @65135 has 321 MA's), (19, 65072), (22, 64979),

Gene: Plmatters_90 Start: 64869, Stop: 64672, Start Num: 13
Candidate Starts for Plmatters_90:

(Start: 13 @64869 has 321 MA's), (19, 64806),

Gene: Podrick_91 Start: 64957, Stop: 64760, Start Num: 13

Candidate Starts for Podrick_91:

(Start: 13 @64957 has 321 MA's), (19, 64894), (22, 64801),

Gene: Pops_90 Start: 65058, Stop: 64861, Start Num: 13

Candidate Starts for Pops_90:

(Start: 13 @65058 has 321 MA's), (19, 64995), (22, 64902),

Gene: Potter_87 Start: 64878, Stop: 64681, Start Num: 13

Candidate Starts for Potter_87:

(Start: 13 @64878 has 321 MA's), (19, 64815),

Gene: Prickles_94 Start: 65246, Stop: 65049, Start Num: 13

Candidate Starts for Prickles_94:

(Start: 13 @65246 has 321 MA's), (19, 65183), (22, 65090),

Gene: PrinceCharming_23 Start: 19135, Stop: 18944, Start Num: 13

Candidate Starts for PrinceCharming_23:

(7, 19345), (8, 19309), (Start: 13 @19135 has 321 MA's), (18, 19075), (25, 18964),

Gene: ProfessorX_91 Start: 64915, Stop: 64718, Start Num: 13

Candidate Starts for ProfessorX_91:

(Start: 13 @64915 has 321 MA's), (19, 64852),

Gene: Puhltonio_89 Start: 65152, Stop: 64955, Start Num: 13

Candidate Starts for Puhltonio_89:

(Start: 13 @65152 has 321 MA's), (19, 65089),

Gene: QueenBeane_93 Start: 65201, Stop: 65004, Start Num: 13

Candidate Starts for QueenBeane_93:

(Start: 13 @65201 has 321 MA's), (19, 65138),

Gene: Quisquilliae_95 Start: 65212, Stop: 65015, Start Num: 13

Candidate Starts for Quisquilliae_95:

(Start: 13 @65212 has 321 MA's), (19, 65149),

Gene: Qyrzula_21 Start: 19105, Stop: 18914, Start Num: 13

Candidate Starts for Qyrzula_21:

(8, 19279), (Start: 13 @19105 has 321 MA's), (18, 19045), (25, 18934),

Gene: RedMaple_92 Start: 65813, Stop: 65616, Start Num: 13

Candidate Starts for RedMaple_92:

(Start: 13 @65813 has 321 MA's), (19, 65750),

Gene: RedRaider89_92 Start: 65500, Stop: 65303, Start Num: 13

Candidate Starts for RedRaider89_92:

(Start: 13 @65500 has 321 MA's), (19, 65437), (22, 65344),

Gene: Rey_173 Start: 81447, Stop: 81283, Start Num: 15

Candidate Starts for Rey_173:

(10, 81489), (Start: 15 @81447 has 1 MA's), (16, 81435), (17, 81414), (21, 81345), (23, 81312),

Gene: Rhinoforte_23 Start: 19136, Stop: 18945, Start Num: 13
Candidate Starts for Rhinoforte_23:
(7, 19346), (8, 19310), (Start: 13 @19136 has 321 MA's), (18, 19076), (25, 18965),

Gene: Ricotta_94 Start: 64897, Stop: 64700, Start Num: 13
Candidate Starts for Ricotta_94:
(Start: 13 @64897 has 321 MA's), (19, 64834),

Gene: Riggan_94 Start: 65382, Stop: 65185, Start Num: 13
Candidate Starts for Riggan_94:
(Start: 13 @65382 has 321 MA's), (19, 65319), (22, 65226),

Gene: Rimu_92 Start: 65361, Stop: 65164, Start Num: 13
Candidate Starts for Rimu_92:
(Start: 13 @65361 has 321 MA's), (19, 65298), (22, 65205),

Gene: Riverton_92 Start: 65140, Stop: 64943, Start Num: 13
Candidate Starts for Riverton_92:
(Start: 13 @65140 has 321 MA's), (19, 65077), (22, 64984),

Gene: Robyn_95 Start: 65648, Stop: 65451, Start Num: 13
Candidate Starts for Robyn_95:
(Start: 13 @65648 has 321 MA's), (19, 65585),

Gene: Roliet_90 Start: 64241, Stop: 64044, Start Num: 13
Candidate Starts for Roliet_90:
(Start: 13 @64241 has 321 MA's), (19, 64178), (22, 64085),

Gene: Roscoe_92 Start: 65501, Stop: 65304, Start Num: 13
Candidate Starts for Roscoe_92:
(Start: 13 @65501 has 321 MA's), (19, 65438), (22, 65345),

Gene: Roy17_90 Start: 64607, Stop: 64410, Start Num: 13
Candidate Starts for Roy17_90:
(Start: 13 @64607 has 321 MA's), (19, 64544),

Gene: SDcharge11_92 Start: 64535, Stop: 64338, Start Num: 13
Candidate Starts for SDcharge11_92:
(Start: 13 @64535 has 321 MA's), (19, 64472),

Gene: Sabella_23 Start: 19022, Stop: 18831, Start Num: 13
Candidate Starts for Sabella_23:
(8, 19196), (Start: 13 @19022 has 321 MA's), (18, 18962), (25, 18851),

Gene: SallyH_96 Start: 65141, Stop: 64944, Start Num: 13
Candidate Starts for SallyH_96:
(Start: 13 @65141 has 321 MA's), (19, 65078),

Gene: Samaymay_93 Start: 65201, Stop: 65004, Start Num: 13
Candidate Starts for Samaymay_93:
(Start: 13 @65201 has 321 MA's), (19, 65138),

Gene: SassyCat97_91 Start: 64869, Stop: 64672, Start Num: 13
Candidate Starts for SassyCat97_91:
(Start: 13 @64869 has 321 MA's), (19, 64806),

Gene: Schadenfreude_93 Start: 64918, Stop: 64721, Start Num: 13
Candidate Starts for Schadenfreude_93:
(Start: 13 @64918 has 321 MA's), (19, 64855), (22, 64762),

Gene: Schueller_91 Start: 65142, Stop: 64945, Start Num: 13
Candidate Starts for Schueller_91:
(Start: 13 @65142 has 321 MA's), (19, 65079), (22, 64986),

Gene: Scoot17C_93 Start: 64982, Stop: 64785, Start Num: 13
Candidate Starts for Scoot17C_93:
(Start: 13 @64982 has 321 MA's), (19, 64919),

Gene: Scrick_94 Start: 65252, Stop: 65061, Start Num: 13
Candidate Starts for Scrick_94:
(Start: 13 @65252 has 321 MA's), (19, 65189), (26, 65075), (27, 65066),

Gene: Selr12_97 Start: 65293, Stop: 65102, Start Num: 13
Candidate Starts for Selr12_97:
(Start: 13 @65293 has 321 MA's), (19, 65230), (26, 65116), (27, 65107),

Gene: Serendipity_92 Start: 65355, Stop: 65158, Start Num: 13
Candidate Starts for Serendipity_92:
(Start: 13 @65355 has 321 MA's), (19, 65292),

Gene: Serpentine_0095 Start: 65434, Stop: 65237, Start Num: 13
Candidate Starts for Serpentine_0095:
(Start: 13 @65434 has 321 MA's), (19, 65371),

Gene: ShadowBud_93 Start: 65209, Stop: 65012, Start Num: 13
Candidate Starts for ShadowBud_93:
(Start: 13 @65209 has 321 MA's), (19, 65146),

Gene: Sheila_87 Start: 64447, Stop: 64250, Start Num: 13
Candidate Starts for Sheila_87:
(Start: 13 @64447 has 321 MA's), (19, 64384), (22, 64291),

Gene: ShiVal_92 Start: 64906, Stop: 64709, Start Num: 13
Candidate Starts for ShiVal_92:
(Start: 13 @64906 has 321 MA's), (19, 64843),

Gene: Sigman_92 Start: 64862, Stop: 64665, Start Num: 13
Candidate Starts for Sigman_92:
(Start: 13 @64862 has 321 MA's), (19, 64799),

Gene: SilverBell_94 Start: 65316, Stop: 65119, Start Num: 13
Candidate Starts for SilverBell_94:
(Start: 13 @65316 has 321 MA's), (19, 65253),

Gene: Simielle_93 Start: 64848, Stop: 64651, Start Num: 13

Candidate Starts for Simielle_93:
(Start: 13 @64848 has 321 MA's), (19, 64785),

Gene: SirBeauregard_94 Start: 65427, Stop: 65230, Start Num: 13
Candidate Starts for SirBeauregard_94:
(Start: 13 @65427 has 321 MA's), (19, 65364), (20, 65343),

Gene: Skippy_93 Start: 65277, Stop: 65080, Start Num: 13
Candidate Starts for Skippy_93:
(Start: 13 @65277 has 321 MA's), (19, 65214),

Gene: Slatt_95 Start: 65533, Stop: 65342, Start Num: 13
Candidate Starts for Slatt_95:
(Start: 13 @65533 has 321 MA's), (19, 65470), (26, 65356), (27, 65347),

Gene: Soile_94 Start: 65402, Stop: 65205, Start Num: 13
Candidate Starts for Soile_94:
(Start: 13 @65402 has 321 MA's), (19, 65339),

Gene: Solosis_91 Start: 64870, Stop: 64673, Start Num: 13
Candidate Starts for Solosis_91:
(Start: 13 @64870 has 321 MA's), (19, 64807),

Gene: Sophia_91 Start: 64858, Stop: 64661, Start Num: 13
Candidate Starts for Sophia_91:
(Start: 13 @64858 has 321 MA's), (19, 64795),

Gene: Soto_90 Start: 64574, Stop: 64377, Start Num: 13
Candidate Starts for Soto_90:
(Start: 13 @64574 has 321 MA's), (19, 64511), (22, 64418),

Gene: Spartan300_92 Start: 65120, Stop: 64923, Start Num: 13
Candidate Starts for Spartan300_92:
(Start: 13 @65120 has 321 MA's), (19, 65057), (22, 64964),

Gene: Squid_92 Start: 65149, Stop: 64952, Start Num: 13
Candidate Starts for Squid_92:
(Start: 13 @65149 has 321 MA's), (19, 65086),

Gene: Squiggle_92 Start: 64876, Stop: 64679, Start Num: 13
Candidate Starts for Squiggle_92:
(Start: 13 @64876 has 321 MA's), (19, 64813),

Gene: Struggle_93 Start: 64974, Stop: 64777, Start Num: 13
Candidate Starts for Struggle_93:
(Start: 13 @64974 has 321 MA's), (19, 64911),

Gene: Suffolk_89 Start: 65047, Stop: 64850, Start Num: 13
Candidate Starts for Suffolk_89:
(Start: 13 @65047 has 321 MA's), (19, 64984),

Gene: Surely_93 Start: 65440, Stop: 65243, Start Num: 13
Candidate Starts for Surely_93:

(Start: 13 @65440 has 321 MA's), (19, 65377),

Gene: Swiphy_95 Start: 65424, Stop: 65227, Start Num: 13

Candidate Starts for Swiphy_95:

(Start: 13 @65424 has 321 MA's), (19, 65361),

Gene: Swish_94 Start: 65286, Stop: 65089, Start Num: 13

Candidate Starts for Swish_94:

(Start: 13 @65286 has 321 MA's), (19, 65223), (22, 65130),

Gene: TA17A_23 Start: 19016, Stop: 18825, Start Num: 13

Candidate Starts for TA17A_23:

(7, 19226), (8, 19190), (Start: 13 @19016 has 321 MA's), (18, 18956), (25, 18845),

Gene: TallGrassMM_92 Start: 64935, Stop: 64738, Start Num: 13

Candidate Starts for TallGrassMM_92:

(Start: 13 @64935 has 321 MA's), (19, 64872),

Gene: Taraxa_93 Start: 64765, Stop: 64568, Start Num: 13

Candidate Starts for Taraxa_93:

(Start: 13 @64765 has 321 MA's), (19, 64702), (22, 64609),

Gene: Telesworld_91 Start: 65009, Stop: 64812, Start Num: 13

Candidate Starts for Telesworld_91:

(Start: 13 @65009 has 321 MA's), (19, 64946),

Gene: Thora_91 Start: 65389, Stop: 65192, Start Num: 13

Candidate Starts for Thora_91:

(Start: 13 @65389 has 321 MA's), (19, 65326),

Gene: ThreeOh3D2_94 Start: 65543, Stop: 65346, Start Num: 13

Candidate Starts for ThreeOh3D2_94:

(Start: 13 @65543 has 321 MA's), (19, 65480),

Gene: Thunderbird_93 Start: 65131, Stop: 64934, Start Num: 13

Candidate Starts for Thunderbird_93:

(Start: 13 @65131 has 321 MA's), (19, 65068),

Gene: Timmi_91 Start: 64906, Stop: 64709, Start Num: 13

Candidate Starts for Timmi_91:

(Start: 13 @64906 has 321 MA's), (19, 64843),

Gene: Tinciduntolum_24 Start: 19138, Stop: 18947, Start Num: 13

Candidate Starts for Tinciduntolum_24:

(7, 19348), (8, 19312), (Start: 13 @19138 has 321 MA's), (18, 19078), (25, 18967),

Gene: TomBombadil_93 Start: 65432, Stop: 65235, Start Num: 13

Candidate Starts for TomBombadil_93:

(Start: 13 @65432 has 321 MA's), (19, 65369),

Gene: Tomlarah_93 Start: 65739, Stop: 65542, Start Num: 13

Candidate Starts for Tomlarah_93:

(Start: 13 @65739 has 321 MA's), (19, 65676),

Gene: Toni_92 Start: 65335, Stop: 65138, Start Num: 13

Candidate Starts for Toni_92:

(Start: 13 @65335 has 321 MA's), (19, 65272),

Gene: TooFast2Furius_92 Start: 65296, Stop: 65099, Start Num: 13

Candidate Starts for TooFast2Furius_92:

(Start: 13 @65296 has 321 MA's), (19, 65233), (22, 65140),

Gene: Tres_23 Start: 19019, Stop: 18828, Start Num: 13

Candidate Starts for Tres_23:

(7, 19229), (8, 19193), (Start: 13 @19019 has 321 MA's), (18, 18959), (25, 18848),

Gene: Triad_93 Start: 64782, Stop: 64585, Start Num: 13

Candidate Starts for Triad_93:

(Start: 13 @64782 has 321 MA's), (19, 64719),

Gene: True_94 Start: 65251, Stop: 65060, Start Num: 13

Candidate Starts for True_94:

(Start: 13 @65251 has 321 MA's), (19, 65188), (26, 65074), (27, 65065),

Gene: Trypo_93 Start: 65603, Stop: 65406, Start Num: 13

Candidate Starts for Trypo_93:

(Start: 13 @65603 has 321 MA's), (19, 65540),

Gene: Typha_116 Start: 69405, Stop: 69581, Start Num: 14

Candidate Starts for Typha_116:

(1, 69012), (2, 69024), (3, 69042), (Start: 14 @69405 has 4 MA's),

Gene: TyrionL_93 Start: 64965, Stop: 64768, Start Num: 13

Candidate Starts for TyrionL_93:

(Start: 13 @64965 has 321 MA's), (19, 64902), (22, 64809),

Gene: UAch1_94 Start: 65233, Stop: 65036, Start Num: 13

Candidate Starts for UAch1_94:

(Start: 13 @65233 has 321 MA's), (19, 65170),

Gene: Ubuntu_4 Start: 1826, Stop: 1617, Start Num: 12

Candidate Starts for Ubuntu_4:

(Start: 12 @1826 has 22 MA's), (21, 1685), (22, 1655),

Gene: UncleHowie_89 Start: 64567, Stop: 64370, Start Num: 13

Candidate Starts for UncleHowie_89:

(Start: 13 @64567 has 321 MA's), (19, 64504),

Gene: Usavi_93 Start: 65729, Stop: 65532, Start Num: 13

Candidate Starts for Usavi_93:

(Start: 13 @65729 has 321 MA's), (19, 65666), (22, 65573),

Gene: Vaishali24_94 Start: 65329, Stop: 65132, Start Num: 13

Candidate Starts for Vaishali24_94:

(Start: 13 @65329 has 321 MA's), (19, 65266),

Gene: Valjean_91 Start: 65123, Stop: 64926, Start Num: 13

Candidate Starts for Valjean_91:

(Start: 13 @65123 has 321 MA's), (19, 65060),

Gene: Vaticameos_90 Start: 63439, Stop: 63242, Start Num: 13

Candidate Starts for Vaticameos_90:

(Start: 13 @63439 has 321 MA's), (19, 63376),

Gene: Veritas_92 Start: 65046, Stop: 64849, Start Num: 13

Candidate Starts for Veritas_92:

(Start: 13 @65046 has 321 MA's), (19, 64983),

Gene: Vic9_00023 Start: 19461, Stop: 19270, Start Num: 13

Candidate Starts for Vic9_00023:

(7, 19671), (8, 19635), (Start: 13 @19461 has 321 MA's), (18, 19401), (25, 19290),

Gene: Virapocalypse_94 Start: 65232, Stop: 65035, Start Num: 13

Candidate Starts for Virapocalypse_94:

(Start: 13 @65232 has 321 MA's), (19, 65169),

Gene: Virgeve_91 Start: 64851, Stop: 64654, Start Num: 13

Candidate Starts for Virgeve_91:

(Start: 13 @64851 has 321 MA's), (19, 64788),

Gene: Vista_92 Start: 65045, Stop: 64848, Start Num: 13

Candidate Starts for Vista_92:

(Start: 13 @65045 has 321 MA's), (19, 64982),

Gene: Vivaldi_93 Start: 65310, Stop: 65113, Start Num: 13

Candidate Starts for Vivaldi_93:

(Start: 13 @65310 has 321 MA's), (19, 65247),

Gene: Vortex_91 Start: 65151, Stop: 64954, Start Num: 13

Candidate Starts for Vortex_91:

(Start: 13 @65151 has 321 MA's), (19, 65088),

Gene: Wallhey_94 Start: 65150, Stop: 64953, Start Num: 13

Candidate Starts for Wallhey_94:

(Start: 13 @65150 has 321 MA's), (19, 65087),

Gene: Waterdiva_94 Start: 65417, Stop: 65220, Start Num: 13

Candidate Starts for Waterdiva_94:

(Start: 13 @65417 has 321 MA's), (19, 65354),

Gene: Webster2_4 Start: 1826, Stop: 1617, Start Num: 12

Candidate Starts for Webster2_4:

(Start: 12 @1826 has 22 MA's), (21, 1685), (22, 1655),

Gene: Weher20_90 Start: 65489, Stop: 65292, Start Num: 13

Candidate Starts for Weher20_90:

(Start: 13 @65489 has 321 MA's), (19, 65426),

Gene: West99_23 Start: 19139, Stop: 18948, Start Num: 13

Candidate Starts for West99_23:
(7, 19349), (8, 19313), (Start: 13 @19139 has 321 MA's), (18, 19079), (25, 18968),

Gene: Windsor_93 Start: 65433, Stop: 65236, Start Num: 13
Candidate Starts for Windsor_93:
(Start: 13 @65433 has 321 MA's), (19, 65370), (20, 65349),

Gene: Wishmaker_4 Start: 1826, Stop: 1617, Start Num: 12
Candidate Starts for Wishmaker_4:
(Start: 12 @1826 has 22 MA's), (21, 1685), (22, 1655),

Gene: Xavier_92 Start: 65044, Stop: 64847, Start Num: 13
Candidate Starts for Xavier_92:
(Start: 13 @65044 has 321 MA's), (19, 64981),

Gene: Yoshand_94 Start: 65269, Stop: 65072, Start Num: 13
Candidate Starts for Yoshand_94:
(Start: 13 @65269 has 321 MA's), (19, 65206),

Gene: YouGoGlencoco_93 Start: 65159, Stop: 64962, Start Num: 13
Candidate Starts for YouGoGlencoco_93:
(Start: 13 @65159 has 321 MA's), (19, 65096),

Gene: Zaider_94 Start: 65534, Stop: 65337, Start Num: 13
Candidate Starts for Zaider_94:
(Start: 13 @65534 has 321 MA's), (19, 65471),

Gene: Zelda_93 Start: 65490, Stop: 65293, Start Num: 13
Candidate Starts for Zelda_93:
(Start: 13 @65490 has 321 MA's), (19, 65427),

Gene: Zonia_93 Start: 65600, Stop: 65403, Start Num: 13
Candidate Starts for Zonia_93:
(Start: 13 @65600 has 321 MA's), (19, 65537), (22, 65444),