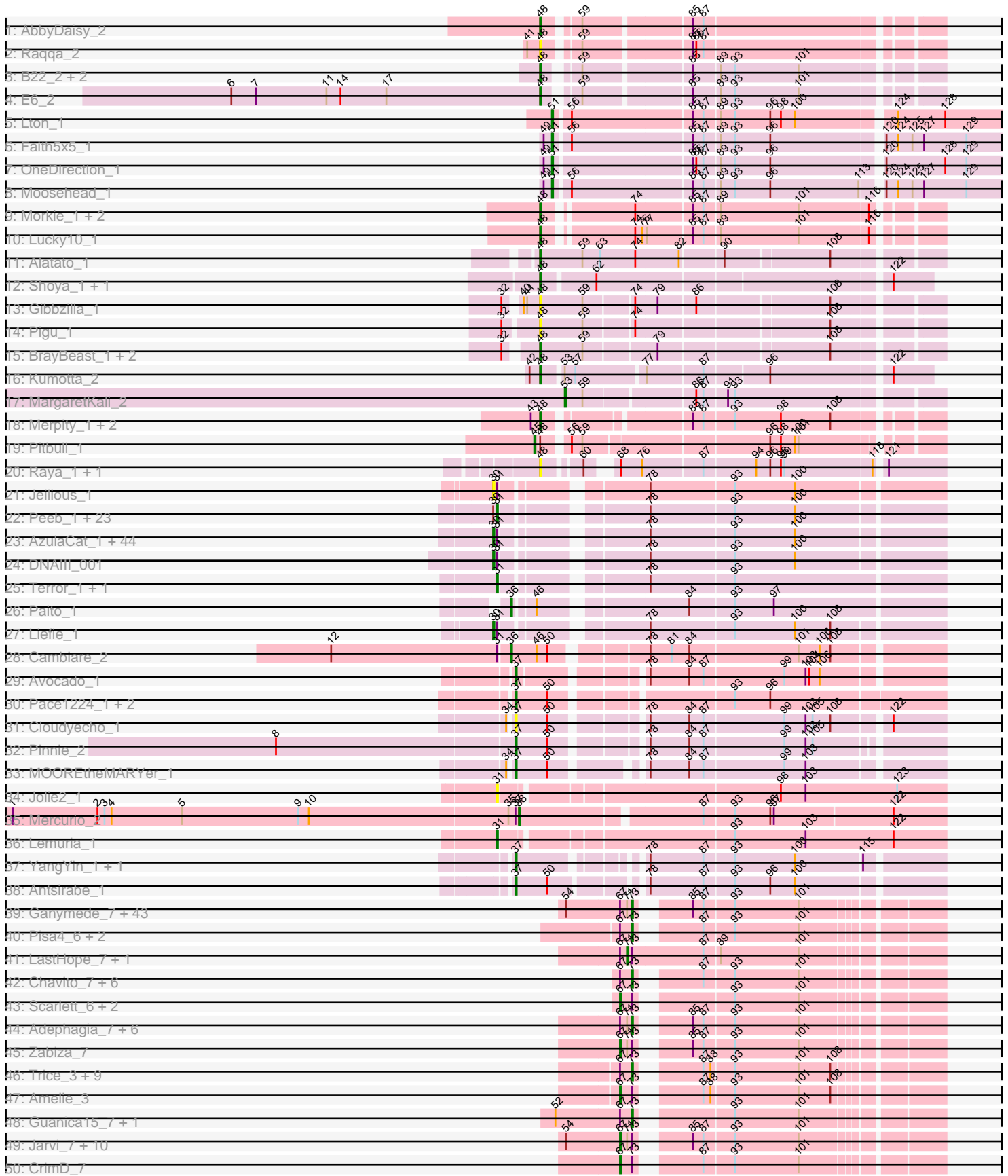
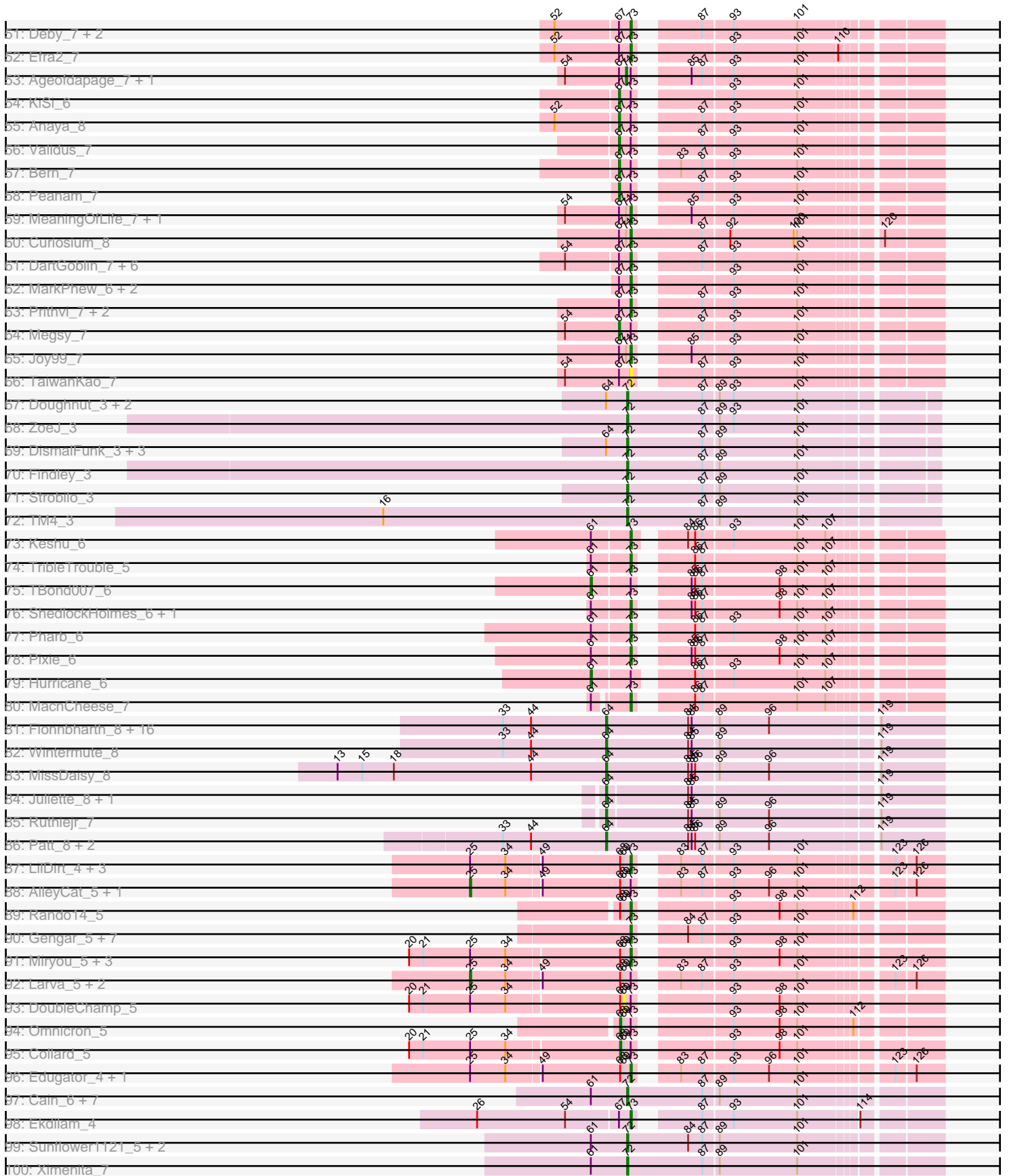


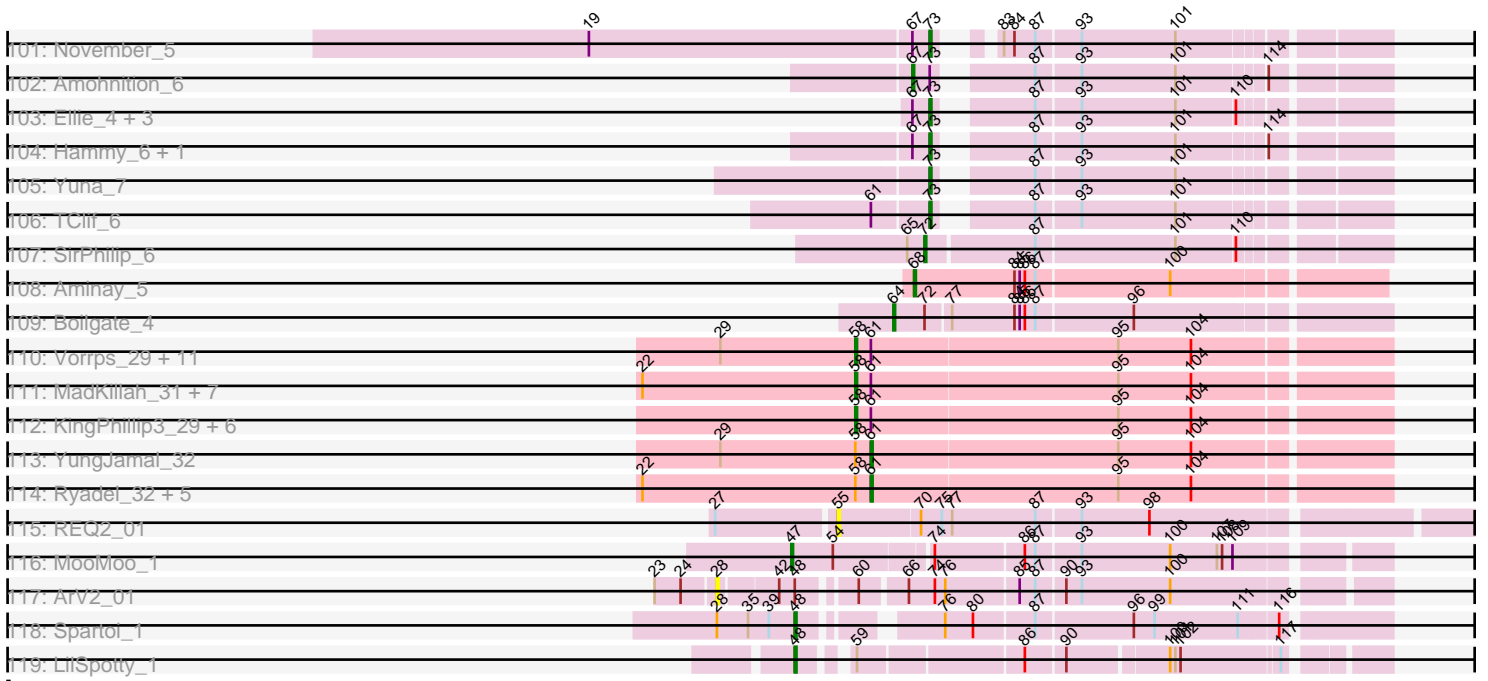
Pham 311110



Pham 311110



Pham 311110



Note: Tracks are now grouped by subcluster and scaled. Switching in subcluster is indicated by changes in track color. Track scale is now set by default to display the region 30 bp upstream of start 1 to 30 bp downstream of the last possible start. If this default region is judged to be packed too tightly with annotated starts, the track will be further scaled to only show that region of the ORF with annotated starts. This action will be indicated by adding "Zoomed" to the title. For starts, yellow indicates the location of called starts comprised solely of Glimmer/GeneMark auto-annotations, green indicates the location of called starts with at least 1 manual gene annotation.

Pham 311110 Report

This analysis was run 06/27/26 on database version 652.

Pham number 311110 has 378 members, 42 are drafts.

Phages represented in each track:

- Track 1 : AbbyDaisy_2
- Track 2 : Raqqa_2
- Track 3 : B22_2, G4_2, Doucette_2
- Track 4 : E6_2
- Track 5 : Lton_1
- Track 6 : Faith5x5_1
- Track 7 : OneDirection_1
- Track 8 : Moosehead_1
- Track 9 : Morkie_1, PhorbesPhlower_1, InLimbo_1
- Track 10 : Lucky10_1
- Track 11 : Alatato_1
- Track 12 : Shoya_1, Rooter_1
- Track 13 : Gibbzilla_1
- Track 14 : Pigu_1
- Track 15 : BrayBeast_1, JeanClaude_1, Sarge_1
- Track 16 : Kumotta_2
- Track 17 : MargaretKali_2
- Track 18 : Merpity_1, MrSmee_1, Skitty_1
- Track 19 : Pitbull_1
- Track 20 : Raya_1, Skyerus_1
- Track 21 : Jeilious_1
- Track 22 : Peeb_1, Sweets_1, Maliketh_1, Cherrybomb426_1, TinaBug_1, Hotshotbaby7_1, Grizzly_1, PinkYoshi_1, Kasen3_1, Primanti_1, Sizemore_1, Phish_1, AizenPogi_1, Olga_1, Darionha_1, Mowgli_1, Schiebel_1, GoldenAsh_1, ForeverHowLong_1, Neoh_1, Plagueis_1, ShaboiShabazz_1, Rattrick_1, DMoney_1
- Track 23 : AzulaCat_1, Rabbs_1, BruceB_1, Hope_1, DingDing_1, Camri_1, Wendigo_1, Barkley26_1, Phloodle_1, CassieYates_1, Marmie_1, ECartman_1, Halo_1, Jane_1, Zombie_1, CLED96_1, Jonghyun_1, Renaissance_1, Remy19_1, Cedasite_1, Periodt_1, BQuat_1, Crespo_1, Gomashi_1, Frosty24_1, ZoMa_1, BPs_1, OctaviousRex_1, Richarlison_1, Phreak_1, Aroostook_1, Ruriko_1, Gideon_1, LouisV14_1, JorRay_1, Jolene_1, Avrafan_1, TomBrady_1, Annihilator_1, MZKinsey_1, Kareem_1, Angel_1, Sneeze_1, Chance64_1, Coleslaw_1
- Track 24 : DNAlII_001
- Track 25 : Terror_1, Taheera_1
- Track 26 : Paito_1
- Track 27 : Liefie_1
- Track 28 : Cambiare_2

- Track 29 : Avocado_1
- Track 30 : Pace1224_1, FlagStaff_1, GodSpeed_1
- Track 31 : Cloudyecho_1
- Track 32 : Pinnie_2
- Track 33 : MOOREtheMARYer_1
- Track 34 : Jolie2_1
- Track 35 : Mercurio_2
- Track 36 : Lemuria_1
- Track 37 : YangYin_1, Stargaze_1
- Track 38 : Antsirabe_1
- Track 39 : Ganymede_7, Durfee_7, ShiaSurprise_7, Clipper_7, MacKat_7, Apocalypse_7, Tiri_7, LaterM_7, Capricorn_7, Dalmuri_7, Asayake_7, Hyperbowlee_7, Beezoo_7, Homura_7, Geraldini_7, Belladonna_7, Lunahalos_7, BEEST_7, Padpat_7, CallaLilly_7, TruffulaTree_7, Devera_7, BarrelRoll_7, Boiiii_7, Pokerus_6, Emerson_7, Topper_7, CheetoDust_7, Piatt_7, Illumine_7, Mynx_7, Llorens_7, Jeckyll_7, Dole_7, Murucutumbu_7, JAWS_7, Blizzard_7, BGIluviae_7, Veliki_7, YoureAdopted_6, Rosmarinus_7, Tachez_7, Spock_7, Inky_7
- Track 40 : Pisa4_6, Marshawn_8, Pisa1_6
- Track 41 : LastHope_7, TingHuaYa_7
- Track 42 : Chavito_7, McMater_7, Richo_7, Shaobing_7, Dartin_7, Lavahound_5, Niklas_7
- Track 43 : Scarlett_6, LeMond_6, Oscar_6
- Track 44 : Adephagia_7, Slimphazie_7, Jayhawk_7, Ramen_7, HedwigODU_7, ActinUp_7, Rapunzel97_7
- Track 45 : Zabiza_7
- Track 46 : Trice_3, Enkosi_3, SgtBeansprout_3, Torres_3, Teejan_3, Nutello_3, Nikao_3, Mdavu_3, LilPharaoh_3, Binglebops_3
- Track 47 : Amelie_3
- Track 48 : Guanica15_7, Yunkel11_7
- Track 49 : Jarvi_7, CREW_7, Stinson_7, Padfoot_7, Zavala_7, AlishaPH_7, Adonis_7, Twitch_7, QuincyRose_6, Peel_7, CaseJules_7
- Track 50 : CrimD_7
- Track 51 : Deby_7, Angelica_7, Sulley_7
- Track 52 : Efra2_7
- Track 53 : Ageofdapage_7, Atiba_7
- Track 54 : KiSi_6
- Track 55 : Anaya_8
- Track 56 : Validus_7
- Track 57 : Bern_7
- Track 58 : Peanam_7
- Track 59 : MeaningOfLife_7, BaghaKamala_7
- Track 60 : Curiosium_8
- Track 61 : DartGoblin_7, DrHayes_7, Anma_7, Bella96_7, SamuelLPlaqson_7, TiniBug_7, Urkel_7
- Track 62 : MarkPhew_6, Nibb_6, Chris_6
- Track 63 : Prithvi_7, LindNT_7, TreyKay_7
- Track 64 : Megsy_7
- Track 65 : Joy99_7
- Track 66 : TaiwanKao_7
- Track 67 : Doughnut_3, BoostSeason_3, Mufasa_3
- Track 68 : ZoeJ_3
- Track 69 : DismalFunk_3, Milly_3, Marcoliusprime_3, DismalStressor_3
- Track 70 : Findley_3

- Track 71 : Strobilo_3
- Track 72 : TM4_3
- Track 73 : Keshu_6
- Track 74 : TribbleTrouble_5
- Track 75 : TBond007_6
- Track 76 : ShedlockHolmes_6, Lea83_6
- Track 77 : Pharb_6
- Track 78 : Pixie_6
- Track 79 : Hurricane_6
- Track 80 : MacnCheese_7
- Track 81 : Fionnbharth_8, Slarp_8, JF1_8, Cheetobro_8, Chancellor_8, Mitti_8, YasnayaPolyana_8, Qhanda_8, Taquito_6, OmniCritical_8, SamScheppers_6, Malthus_8, Kraw_8, Lebo14_8, Y2_08, DanSyl44_8, Y10_08
- Track 82 : Wintermute_8
- Track 83 : MissDaisy_8
- Track 84 : Juliette_8, Eponine_8
- Track 85 : Ruthiejr_7
- Track 86 : Patt_8, Bobquesha_8, Reptar3000_8
- Track 87 : LilDirt_4, Agent47_5, ViviJ_4, Neighly_5
- Track 88 : AlleyCat_5, Psycho_5
- Track 89 : Rando14_5
- Track 90 : Gengar_5, SoSeph_5, Heftyboy_5, Waterfoul_5, OkiRoe_5, Leston_5, Guillsminger_5, Paola_5
- Track 91 : Miryou_5, Feyre_5, Thyatira_5, BananenDer11_5
- Track 92 : Larva_5, InvictusManeo_5, Kratio_4
- Track 93 : DoubleChamp_5
- Track 94 : Omnicron_5
- Track 95 : Collard_5
- Track 96 : Edugator_4, Dadosky_5
- Track 97 : Cain_6, Unicorn_6, Tierra_6, Krueger_6, PhelpsODU_6, Bryler_6, Phrank_6, Tigress9_6
- Track 98 : Ekdilam_4
- Track 99 : Sunflower1121_5, Shadow1_5, Syra333_6
- Track 100 : Ximenita_7
- Track 101 : November_5
- Track 102 : Amohnition_6
- Track 103 : Ellie_4, Applecrisp_5, Fefferhead_6, Amgine_5
- Track 104 : Hammy_6, DarthP_6
- Track 105 : Yuna_7
- Track 106 : TClif_6
- Track 107 : SirPhilip_6
- Track 108 : Aminay_5
- Track 109 : Boilgate_4
- Track 110 : Vorrps_29, Bora_27, Wildflower_30, Ashwin_31, Firecracker_30, Dylan_29, Zakhe101_30, Shida_30, Krili_29, Corndog_31, Mori_29, NiebruSaylor_29
- Track 111 : MadKillah_31, Zebo_29, Smooch_32, Blessica_30, Alkhayr_30, Vagabond_30, Wogge42_29, Schuy_31
- Track 112 : KingPhillip3_29, JangDynasty_29, TelAviv_27, Idergollasper_29, FoulBall_29, Murai_30, Familton_30
- Track 113 : YungJamal_32
- Track 114 : Ryadel_32, YoyoKar_28, Imara_28, SchoolBus_29, Catdawg_29, Winget_30
- Track 115 : REQ2_01

- Track 116 : MooMoo_1
- Track 117 : ArV2_01
- Track 118 : Spartoi_1
- Track 119 : LilSpotty_1

Summary of Final Annotations (See graph section above for start numbers):

The start number called the most often in the published annotations is 73, it was called in 120 of the 336 non-draft genes in the pham.

Genes that call this "Most Annotated" start:

- ActinUp_7, Adephagia_7, Agent47_5, Amgine_5, Angelica_7, Anma_7, Apocalypse_7, Applecrisp_5, Asayake_7, BEEST_7, BGlluviae_7, BaghaKamala_7, BananenDer11_5, BarrelRoll_7, Beezoo_7, Bella96_7, Belladonna_7, Biglebops_3, Blizzard_7, Boiiii_7, CallaLilly_7, Capricorn_7, Chavito_7, CheetoDust_7, Chris_6, Clipper_7, Curiosium_8, Dadosky_5, Dalmuri_7, DartGoblin_7, DarthP_6, Dartin_7, Deby_7, Devera_7, Dole_7, DrHayes_7, Durfee_7, Edugator_4, Efra2_7, Ekdilam_4, Ellie_4, Emerson_7, Enkosi_3, Fefferhead_6, Feyre_5, Ganymede_7, Gengar_5, Geraldini_7, Guanica15_7, Guillsminger_5, Hammy_6, HedwigODU_7, Heftyboy_5, Homura_7, Hyperbowlee_7, Illumine_7, Inky_7, JAWS_7, Jayhawk_7, Jeckyll_7, Joy99_7, Keshu_6, LaterM_7, Lavahound_5, Lea83_6, Leston_5, LilDirt_4, LilPharaoh_3, LindNT_7, Llorens_7, Lunahalos_7, MacKat_7, MacnCheese_7, MarkPhew_6, Marshawn_8, McMater_7, Mdavu_3, MeaningOfLife_7, Miryou_5, Murucutumbu_7, Mynx_7, Neighly_5, Nibb_6, Nikao_3, Niklas_7, November_5, Nutello_3, OkiRoe_5, Padpat_7, Paola_5, Pharb_6, Piatt_7, Pisa1_6, Pisa4_6, Pixie_6, Pokerus_6, Prithvi_7, Ramen_7, Rando14_5, Rapunzel97_7, Richo_7, Rosmarinus_7, SamuelLPlaqson_7, SgtBeansprout_3, Shaobing_7, ShedlockHolmes_6, ShiaSurprise_7, Slimphazie_7, SoSeph_5, Spock_7, Sulley_7, TClif_6, Tachez_7, TaiwanKao_7, Teejan_3, Thyatira_5, TiniBug_7, Tiri_7, Topper_7, Torres_3, TreyKay_7, TribbleTrouble_5, Trice_3, TruffulaTree_7, Urkel_7, Veliki_7, ViviJ_4, Waterfoul_5, YoureAdopted_6, Yuna_7, Yunkel11_7,

Genes that have the "Most Annotated" start but do not call it:

- Adonis_7, Ageofdapage_7, AlishaPH_7, AlleyCat_5, Amelie_3, Amohnition_6, Anaya_8, Atiba_7, Bern_7, CREW_7, CaseJules_7, Collard_5, CrimD_7, DoubleChamp_5, Hurricane_6, InvictusManeo_5, Jarvi_7, KiSi_6, Kratio_4, Larva_5, LastHope_7, LeMond_6, Megsy_7, Omnicron_5, Oscar_6, Padfoot_7, Peanam_7, Peel_7, Psycho_5, QuincyRose_6, Scarlett_6, Stinson_7, TBond007_6, TingHuaYa_7, Twitch_7, Validus_7, Zabiza_7, Zavala_7,

Genes that do not have the "Most Annotated" start:

- AbbyDaisy_2, AizenPogi_1, Alatato_1, Alkhayr_30, Aminay_5, Angel_1, Annihilator_1, Antsirabe_1, ArV2_01, Aroostook_1, Ashwin_31, Avocado_1, Avrafan_1, AzulaCat_1, B22_2, BPs_1, BQuat_1, Barkley26_1, Blessica_30, Bobquesha_8, Boilgate_4, BoostSeason_3, Bora_27, BrayBeast_1, BruceB_1, Bryler_6, CLED96_1, Cain_6, Cambiare_2, Camri_1, CassieYates_1, Catdawg_29, Cedasite_1, Chance64_1, Chancellor_8, Cheetobro_8, Cherrybomb426_1, Cloudyecho_1, Coleslaw_1, Corndog_31, Crespo_1, DMoney_1, DNAllI_001, DanSyl44_8, Darionha_1, DingDing_1, DismalFunk_3, DismalStressor_3, Doucette_2, Doughnut_3, Dylan_29, E6_2, ECartman_1, Eponine_8, Faith5x5_1,

Familton_30, Findley_3, Fionnbharth_8, Firecracker_30, FlagStaff_1, ForeverHowLong_1, FoulBall_29, Frosty24_1, G4_2, Gibbzilla_1, Gideon_1, GodSpeed_1, GoldenAsh_1, Gomashi_1, Grizzly_1, Halo_1, Hope_1, Hotshotbaby7_1, Idergollasper_29, Imara_28, InLimbo_1, JF1_8, Jane_1, JangDynasty_29, JeanClaude_1, Jeilious_1, Jolene_1, Jolie2_1, Jonghyun_1, JorRay_1, Juliette_8, Kareem_1, Kasen3_1, KingPhillip3_29, Kraw_8, Krili_29, Krueger_6, Kumotta_2, Lebo14_8, Lemuria_1, Liefie_1, LilSpotty_1, LouisV14_1, Lton_1, Lucky10_1, MOOREtheMARYer_1, MZKinsey_1, MadKillah_31, Maliketh_1, Malthus_8, Marcoliusprime_3, MargaretKali_2, Marmie_1, Mercurio_2, Merpity_1, Milly_3, MissDaisy_8, Mitti_8, MooMoo_1, Moosehead_1, Mori_29, Morkie_1, Mowgli_1, MrSmee_1, Mufasa_3, Murai_30, Neoh_1, NiebruSaylor_29, OctaviousRex_1, Olga_1, OmniCritical_8, OneDirection_1, Pace1224_1, Paito_1, Patt_8, Peeb_1, Periodt_1, PhelpsODU_6, Phish_1, Phloodle_1, PhorbesPhlower_1, Phrank_6, Phreak_1, Pigu_1, PinkYoshi_1, Pinnie_2, Pitbull_1, Plagueis_1, Primanti_1, Qhanda_8, REQ2_01, Rabbs_1, Raqqa_2, Rattrick_1, Raya_1, Remy19_1, Renaissance_1, Reptar3000_8, Richarlison_1, Rooter_1, Ruriko_1, Ruthiejr_7, Ryadel_32, SamScheppers_6, Sarge_1, Schiebel_1, SchoolBus_29, Schuy_31, ShaboiShabazz_1, Shadow1_5, Shida_30, Shoya_1, SirPhilip_6, Sizemore_1, Skitty_1, Skyerus_1, Slarp_8, Smooch_32, Sneeze_1, Spartoi_1, Stargaze_1, Strobilo_3, Sunflower1121_5, Sweets_1, Syra333_6, TM4_3, Taheera_1, Taquito_6, TelAviv_27, Terror_1, Tierra_6, Tigress9_6, TinaBug_1, TomBrady_1, Unicorn_6, Vagabond_30, Vorrps_29, Wendigo_1, Wildflower_30, Winget_30, Wintermute_8, Wogge42_29, Ximenita_7, Y10_08, Y2_08, YangYin_1, YasnayaPolyana_8, YoyoKar_28, YungJamal_32, Zakhe101_30, Zebo_29, ZoMa_1, ZoeJ_3, Zombie_1,

Summary by start number:

Start 25:

- Found in 17 of 378 (4.5%) of genes in pham
- Manual Annotations of this start: 5 of 336
- Called 29.4% of time when present
- Phage (with cluster) where this start called: AlleyCat_5 (K5), InvictusManeo_5 (K5), Kratio_4 (K5), Larva_5 (K5), Psycho_5 (K5),

Start 28:

- Found in 2 of 378 (0.5%) of genes in pham
- No Manual Annotations of this start.
- Called 50.0% of time when present
- Phage (with cluster) where this start called: ArV2_01 (singleton),

Start 30:

- Found in 72 of 378 (19.0%) of genes in pham
- Manual Annotations of this start: 45 of 336
- Called 66.7% of time when present
- Phage (with cluster) where this start called: Angel_1 (G1), Annihilator_1 (G1), Aroostook_1 (G1), Avrafan_1 (G1), AzulaCat_1 (G1), BPs_1 (G1), BQuat_1 (G1), Barkley26_1 (G1), BruceB_1 (G1), CLED96_1 (G1), Camri_1 (G1), CassieYates_1 (G1), Cedasite_1 (G1), Chance64_1 (G1), Coleslaw_1 (G1), Crespo_1 (G1), DNAIII_001 (G1), DingDing_1 (G1), ECartman_1 (G1), Frosty24_1 (G1), Gideon_1 (G1), Gomashi_1 (G1), Halo_1 (G1), Hope_1 (G1), Jane_1 (G1), Jeilious_1 (G), Jolene_1 (G1), Jonghyun_1 (G1), JorRay_1 (G1), Kareem_1 (G1), Liefie_1 (G1), LouisV14_1 (G1), MZKinsey_1 (G1), Marmie_1 (G1), OctaviousRex_1 (G1),

Periodt_1 (G1), Phloodle_1 (G1), Phreak_1 (G1), Rabbs_1 (G1), Remy19_1 (G1), Renaissance_1 (G1), Richarlison_1 (G1), Ruriko_1 (G1), Sneeze_1 (G1), TomBrady_1 (G1), Wendigo_1 (G1), ZoMa_1 (G1), Zombie_1 (G1),

Start 31:

- Found in 77 of 378 (20.4%) of genes in pham
- Manual Annotations of this start: 23 of 336
- Called 36.4% of time when present
- Phage (with cluster) where this start called: AizenPogi_1 (G1), Cherrybomb426_1 (G1), DMoney_1 (G1), Darionha_1 (G1), ForeverHowLong_1 (G1), GoldenAsh_1 (G1), Grizzly_1 (G1), Hotshotbaby7_1 (G1), Jolie2_1 (G4), Kasen3_1 (G1), Lemuria_1 (G4), Maliketh_1 (G1), Mowgli_1 (G1), Neoh_1 (G), Olga_1 (G1), Peeb_1 (G1), Phish_1 (G1), PinkYoshi_1 (G1), Plagueis_1 (G1), Primanti_1 (G1), Rattrick_1 (G1), Schiebel_1 (G1), ShaboiShabazz_1 (G1), Sizemore_1 (G1), Sweets_1 (G1), Taheera_1 (G1), Terror_1 (G1), TinaBug_1 (G1),

Start 36:

- Found in 2 of 378 (0.5%) of genes in pham
- Manual Annotations of this start: 2 of 336
- Called 100.0% of time when present
- Phage (with cluster) where this start called: Cambiare_2 (G2), Paito_1 (G1),

Start 37:

- Found in 11 of 378 (2.9%) of genes in pham
- Manual Annotations of this start: 6 of 336
- Called 90.9% of time when present
- Phage (with cluster) where this start called: Antsirabe_1 (G5), Avocado_1 (G2), Cloudyecho_1 (G3), FlagStaff_1 (G2), GodSpeed_1 (G2), MOOREtheMARYer_1 (G3), Pace1224_1 (G2), Pinnie_2 (G3), Stargaze_1 (G5), YangYin_1 (G5),

Start 38:

- Found in 1 of 378 (0.3%) of genes in pham
- Manual Annotations of this start: 1 of 336
- Called 100.0% of time when present
- Phage (with cluster) where this start called: Mercurio_2 (G4),

Start 45:

- Found in 1 of 378 (0.3%) of genes in pham
- Manual Annotations of this start: 1 of 336
- Called 100.0% of time when present
- Phage (with cluster) where this start called: Pitbull_1 (FQ1),

Start 47:

- Found in 1 of 378 (0.3%) of genes in pham
- Manual Annotations of this start: 1 of 336
- Called 100.0% of time when present
- Phage (with cluster) where this start called: MooMoo_1 (singleton),

Start 48:

- Found in 28 of 378 (7.4%) of genes in pham
- Manual Annotations of this start: 17 of 336
- Called 92.9% of time when present

- Phage (with cluster) where this start called: AbbyDaisy_2 (AY), Alatato_1 (FB), B22_2 (BW), BrayBeast_1 (FB), Doucette_2 (BW), E6_2 (BW), G4_2 (BW), Gibbzilla_1 (FB), InLimbo_1 (DH), JeanClaude_1 (FB), Kumotta_2 (FB), LilSpotty_1 (singleton), Lucky10_1 (DH), Merpity_1 (FQ1), Morkie_1 (DH), MrSmee_1 (FQ1), PhorbesPhlower_1 (DH), Pigu_1 (FB), Raqqa_2 (AY), Raya_1 (FQ2), Rooter_1 (FB), Sarge_1 (FB), Shoya_1 (FB), Skitty_1 (FQ1), Skyerus_1 (FQ2), Spartoi_1 (singleton),

Start 51:

- Found in 4 of 378 (1.1%) of genes in pham
- Manual Annotations of this start: 4 of 336
- Called 100.0% of time when present
- Phage (with cluster) where this start called: Faith5x5_1 (CZ6), Lton_1 (CZ), Moosehead_1 (CZ6), OneDirection_1 (CZ6),

Start 53:

- Found in 2 of 378 (0.5%) of genes in pham
- Manual Annotations of this start: 1 of 336
- Called 50.0% of time when present
- Phage (with cluster) where this start called: MargaretKali_2 (FB),

Start 55:

- Found in 1 of 378 (0.3%) of genes in pham
- No Manual Annotations of this start.
- Called 100.0% of time when present
- Phage (with cluster) where this start called: REQ2_01 (singleton),

Start 58:

- Found in 34 of 378 (9.0%) of genes in pham
- Manual Annotations of this start: 26 of 336
- Called 79.4% of time when present
- Phage (with cluster) where this start called: Alkhayr_30 (O), Ashwin_31 (O), Blessica_30 (O), Bora_27 (O), Corndog_31 (O), Dylan_29 (O), Familton_30 (O), Firecracker_30 (O), FoulBall_29 (O), Idergollasper_29 (O), JangDynasty_29 (O), KingPhillip3_29 (O), Krili_29 (O), MadKillah_31 (O), Mori_29 (O), Murai_30 (O), NiebruSaylor_29 (O), Schuy_31 (O), Shida_30 (O), Smooch_32 (O), TelAviv_27 (O), Vagabond_30 (O), Vorrps_29 (O), Wildflower_30 (O), Wogge42_29 (O), Zakhe101_30 (O), Zebo_29 (O),

Start 61:

- Found in 56 of 378 (14.8%) of genes in pham
- Manual Annotations of this start: 7 of 336
- Called 16.1% of time when present
- Phage (with cluster) where this start called: Catdawg_29 (O), Hurricane_6 (K3), Imara_28 (O), Ryadel_32 (O), SchoolBus_29 (O), TBond007_6 (K3), Winget_30 (O), YoyoKar_28 (O), YungJamal_32 (O),

Start 64:

- Found in 33 of 378 (8.7%) of genes in pham
- Manual Annotations of this start: 23 of 336
- Called 78.8% of time when present
- Phage (with cluster) where this start called: Bobquesha_8 (K4), Boilgate_4 (K8), Chancellor_8 (K4), Cheetobro_8 (K4), DanSyl44_8 (K4), Eponine_8 (K4), Fionnbharth_8 (K4), JF1_8 (K4), Juliette_8 (K4), Kraw_8 (K4), Lebo14_8 (K4),

Malthus_8 (K4), MissDaisy_8 (K4), Mitti_8 (K4), OmniCritical_8 (K4), Patt_8 (K4), Qhanda_8 (K4), Reptar3000_8 (K4), Ruthiejr_7 (K4), SamScheppers_6 (K4), Slarp_8 (K4), Taquito_6 (K4), Wintermute_8 (K4), Y10_08 (K4), Y2_08 (K4), YasnayaPolyana_8 (K4),

Start 67:

- Found in 131 of 378 (34.7%) of genes in pham
- Manual Annotations of this start: 24 of 336
- Called 18.3% of time when present
- Phage (with cluster) where this start called: Adonis_7 (K1), AlishaPH_7 (K1), Amelie_3 (K1), Amohntion_6 (K6), Anaya_8 (K1), Bern_7 (K1), CREW_7 (K1), CaseJules_7 (K1), CrimD_7 (K1), Jarvi_7 (K1), KiSi_6 (K1), LeMond_6 (K1), Megsy_7 (K1), Oscar_6 (K1), Padfoot_7 (K1), Peanam_7 (K1), Peel_7 (K1), QuincyRose_6 (K1), Scarlett_6 (K1), Stinson_7 (K1), Twitch_7 (K1), Validus_7 (K1), Zabiza_7 (K1), Zavala_7 (K1),

Start 68:

- Found in 22 of 378 (5.8%) of genes in pham
- Manual Annotations of this start: 3 of 336
- Called 13.6% of time when present
- Phage (with cluster) where this start called: Aminay_5 (K7), Collard_5 (K5), Omnicron_5 (K5),

Start 69:

- Found in 19 of 378 (5.0%) of genes in pham
- No Manual Annotations of this start.
- Called 5.3% of time when present
- Phage (with cluster) where this start called: DoubleChamp_5 (K5),

Start 71:

- Found in 71 of 378 (18.8%) of genes in pham
- Manual Annotations of this start: 3 of 336
- Called 5.6% of time when present
- Phage (with cluster) where this start called: Ageofdapage_7 (K1), Atiba_7 (K1), LastHope_7 (K1), TingHuaYa_7 (K1),

Start 72:

- Found in 25 of 378 (6.6%) of genes in pham
- Manual Annotations of this start: 24 of 336
- Called 96.0% of time when present
- Phage (with cluster) where this start called: BoostSeason_3 (K2), Bryler_6 (K6), Cain_6 (K6), DismalFunk_3 (K2), DismalStressor_3 (K2), Doughnut_3 (K2), Findley_3 (K2), Krueger_6 (K6), Marcoliusprime_3 (K2), Milly_3 (K2), Mufasa_3 (K2), PhelpsODU_6 (K6), Phrank_6 (K6), Shadow1_5 (K6), SirPhilip_6 (K6), Strobilo_3 (K2), Sunflower1121_5 (K6), Syra333_6 (K6), TM4_3 (K2), Tierra_6 (K6), Tigress9_6 (K6), Unicorn_6 (K6), Ximenita_7 (K6), ZoeJ_3 (K2),

Start 73:

- Found in 169 of 378 (44.7%) of genes in pham
- Manual Annotations of this start: 120 of 336
- Called 77.5% of time when present
- Phage (with cluster) where this start called: ActinUp_7 (K1), Adephagia_7 (K1), Agent47_5 (K5), Amgine_5 (K6), Angelica_7 (K1), Anma_7 (K1), Apocalypse_7 (K1),

Applecrisp_5 (K6), Asayake_7 (K1), BEEST_7 (K1), BGlluviae_7 (K1),
 BaghaKamala_7 (K1), BananenDer11_5 (K5), BarrelRoll_7 (K1), Beezoo_7 (K1),
 Bella96_7 (K1), Belladonna_7 (K1), Binglebops_3 (K1), Blizzard_7 (K1), Boiiii_7 (K1),
 CallaLilly_7 (K1), Capricorn_7 (K1), Chavito_7 (K1), CheetoDust_7 (K1), Chris_6
 (K1), Clipper_7 (K1), Curiosium_8 (K1), Dadosky_5 (K5), Dalmuri_7 (K1),
 DartGoblin_7 (K1), DarthP_6 (K6), Dartin_7 (K1), Deby_7 (K1), Devera_7 (K1),
 Dole_7 (K1), DrHayes_7 (K1), Durfee_7 (K1), Edugator_4 (K5), Efra2_7 (K1),
 Ekdilam_4 (K6), Ellie_4 (K6), Emerson_7 (K1), Enkosi_3 (K1), Fefferhead_6 (K6),
 Feyre_5 (K5), Ganymede_7 (K1), Gengar_5 (K5), Geraldini_7 (K1), Guanica15_7
 (K1), Guillsminger_5 (K5), Hammy_6 (K6), HedwigODU_7 (K1), Heftyboy_5 (K5),
 Homura_7 (K1), Hyperbowlee_7 (K1), Illumine_7 (K1), Inky_7 (K1), JAWS_7 (K1),
 Jayhawk_7 (K1), Jeckyll_7 (K1), Joy99_7 (K1), Keshu_6 (K3), LaterM_7 (K1),
 Lavahound_5 (K6), Lea83_6 (K3), Leston_5 (K5), LilDirt_4 (K5), LilPharaoh_3 (K1),
 LindNT_7 (K1), Llorens_7 (K1), Lunahalos_7 (K1), MacKat_7 (K1), MacnCheese_7
 (K3), MarkPheW_6 (K1), Marshawn_8 (K6), McMater_7 (K1), Mdavu_3 (K1),
 MeaningOfLife_7 (K1), Miryou_5 (K5), Murucutumbu_7 (K1), Mynx_7 (K1), Neighly_5
 (K3), Nibb_6 (K1), Nikao_3 (K1), Niklas_7 (K1), November_5 (K6), Nutello_3 (K1),
 OkiRoe_5 (K5), Padpat_7 (K1), Paola_5 (K5), Pharb_6 (K3), Piatt_7 (K1), Pisa1_6
 (K1), Pisa4_6 (K1), Pixie_6 (K3), Pokerus_6 (K1), Prithvi_7 (K1), Ramen_7 (K1),
 Rando14_5 (K5), Rapunzel97_7 (K1), Richo_7 (K1), Rosmarinus_7 (K1),
 SamuelLPlaqson_7 (K1), SgtBeansprout_3 (K1), Shaobing_7 (K1),
 ShedlockHolmes_6 (K3), ShiaSurprise_7 (K1), Slimphazie_7 (K1), SoSeph_5 (K5),
 Spock_7 (K1), Sulley_7 (K1), TClif_6 (K6), Tachez_7 (K1), TaiwanKao_7 (K1),
 Teejan_3 (K1), Thyatira_5 (K5), TiniBug_7 (K1), Tiri_7 (K1), Topper_7 (K1), Torres_3
 (K1), TreyKay_7 (K1), TribbleTrouble_5 (K3), Trice_3 (K1), TruffulaTree_7 (K1),
 Urkel_7 (K1), Veliki_7 (K1), ViviJ_4 (K5), Waterfoul_5 (K5), YoureAdopted_6 (K1),
 Yuna_7 (K6), Yunkel11_7 (K1),

Summary by clusters:

There are 24 clusters represented in this pham: singleton, DH, CZ6, K3, K2, FB, BW, K7, K6, K5, K4, K8, G5, G4, G3, G2, G1, G, O, CZ, AY, K1, FQ2, FQ1,

Info for manual annotations of cluster AY:

- Start number 48 was manually annotated 1 time for cluster AY.

Info for manual annotations of cluster BW:

- Start number 48 was manually annotated 4 times for cluster BW.

Info for manual annotations of cluster CZ:

- Start number 51 was manually annotated 1 time for cluster CZ.

Info for manual annotations of cluster CZ6:

- Start number 51 was manually annotated 3 times for cluster CZ6.

Info for manual annotations of cluster DH:

- Start number 48 was manually annotated 3 times for cluster DH.

Info for manual annotations of cluster FB:

- Start number 48 was manually annotated 5 times for cluster FB.
- Start number 53 was manually annotated 1 time for cluster FB.

Info for manual annotations of cluster FQ1:

- Start number 45 was manually annotated 1 time for cluster FQ1.
- Start number 48 was manually annotated 2 times for cluster FQ1.

Info for manual annotations of cluster G:

- Start number 31 was manually annotated 1 time for cluster G.

Info for manual annotations of cluster G1:

- Start number 30 was manually annotated 45 times for cluster G1.
- Start number 31 was manually annotated 21 times for cluster G1.
- Start number 36 was manually annotated 1 time for cluster G1.

Info for manual annotations of cluster G2:

- Start number 36 was manually annotated 1 time for cluster G2.
- Start number 37 was manually annotated 2 times for cluster G2.

Info for manual annotations of cluster G3:

- Start number 37 was manually annotated 2 times for cluster G3.

Info for manual annotations of cluster G4:

- Start number 31 was manually annotated 1 time for cluster G4.
- Start number 38 was manually annotated 1 time for cluster G4.

Info for manual annotations of cluster G5:

- Start number 37 was manually annotated 2 times for cluster G5.

Info for manual annotations of cluster K1:

- Start number 67 was manually annotated 23 times for cluster K1.
- Start number 71 was manually annotated 3 times for cluster K1.
- Start number 73 was manually annotated 83 times for cluster K1.

Info for manual annotations of cluster K2:

- Start number 72 was manually annotated 11 times for cluster K2.

Info for manual annotations of cluster K3:

- Start number 61 was manually annotated 2 times for cluster K3.
- Start number 73 was manually annotated 7 times for cluster K3.

Info for manual annotations of cluster K4:

- Start number 64 was manually annotated 22 times for cluster K4.

Info for manual annotations of cluster K5:

- Start number 25 was manually annotated 5 times for cluster K5.
- Start number 68 was manually annotated 2 times for cluster K5.
- Start number 73 was manually annotated 18 times for cluster K5.

Info for manual annotations of cluster K6:

- Start number 67 was manually annotated 1 time for cluster K6.
- Start number 72 was manually annotated 13 times for cluster K6.
- Start number 73 was manually annotated 12 times for cluster K6.

Info for manual annotations of cluster K7:

- Start number 68 was manually annotated 1 time for cluster K7.

Info for manual annotations of cluster K8:

- Start number 64 was manually annotated 1 time for cluster K8.

Info for manual annotations of cluster O:

- Start number 58 was manually annotated 26 times for cluster O.
- Start number 61 was manually annotated 5 times for cluster O.

Gene Information:

Gene: AbbyDaisy_2 Start: 413, Stop: 712, Start Num: 48

Candidate Starts for AbbyDaisy_2:

(Start: 48 @413 has 17 MA's), (59, 437), (85, 521), (87, 530),

Gene: ActinUp_7 Start: 1376, Stop: 1603, Start Num: 73

Candidate Starts for ActinUp_7:

(Start: 67 @1367 has 24 MA's), (Start: 71 @1373 has 3 MA's), (Start: 73 @1376 has 120 MA's), (85, 1409), (87, 1418), (93, 1442), (101, 1496),

Gene: Adephagia_7 Start: 1376, Stop: 1603, Start Num: 73

Candidate Starts for Adephagia_7:

(Start: 67 @1367 has 24 MA's), (Start: 71 @1373 has 3 MA's), (Start: 73 @1376 has 120 MA's), (85, 1409), (87, 1418), (93, 1442), (101, 1496),

Gene: Adonis_7 Start: 1384, Stop: 1620, Start Num: 67

Candidate Starts for Adonis_7:

(54, 1339), (Start: 67 @1384 has 24 MA's), (Start: 71 @1390 has 3 MA's), (Start: 73 @1393 has 120 MA's), (85, 1426), (87, 1435), (93, 1459), (101, 1513),

Gene: Agent47_5 Start: 1111, Stop: 1338, Start Num: 73

Candidate Starts for Agent47_5:

(Start: 25 @979 has 5 MA's), (34, 1009), (49, 1036), (Start: 68 @1102 has 3 MA's), (69, 1105), (Start: 73 @1111 has 120 MA's), (83, 1135), (87, 1153), (93, 1177), (101, 1231), (123, 1300), (126, 1315),

Gene: Ageofdapage_7 Start: 1322, Stop: 1552, Start Num: 71

Candidate Starts for Ageofdapage_7:

(54, 1271), (Start: 67 @1316 has 24 MA's), (Start: 71 @1322 has 3 MA's), (Start: 73 @1325 has 120 MA's), (85, 1358), (87, 1367), (93, 1391), (101, 1445),

Gene: AizenPogi_1 Start: 46, Stop: 387, Start Num: 31

Candidate Starts for AizenPogi_1:

(Start: 30 @43 has 45 MA's), (Start: 31 @46 has 23 MA's), (78, 148), (93, 217), (100, 268),

Gene: Alatato_1 Start: 48, Stop: 362, Start Num: 48

Candidate Starts for Alatato_1:

(Start: 48 @48 has 17 MA's), (59, 84), (63, 99), (74, 129), (82, 165), (90, 198), (108, 282),

Gene: AlishaPH_7 Start: 1372, Stop: 1608, Start Num: 67

Candidate Starts for AlishaPH_7:

(54, 1327), (Start: 67 @1372 has 24 MA's), (Start: 71 @1378 has 3 MA's), (Start: 73 @1381 has 120 MA's), (85, 1414), (87, 1423), (93, 1447), (101, 1501),

Gene: Alkhayr_30 Start: 13181, Stop: 13480, Start Num: 58

Candidate Starts for Alkhayr_30:

(22, 13058), (Start: 58 @13181 has 26 MA's), (Start: 61 @13190 has 7 MA's), (95, 13331), (104, 13373),

Gene: AlleyCat_5 Start: 997, Stop: 1356, Start Num: 25

Candidate Starts for AlleyCat_5:

(Start: 25 @997 has 5 MA's), (34, 1027), (49, 1054), (Start: 68 @1120 has 3 MA's), (69, 1123), (Start: 73 @1129 has 120 MA's), (83, 1153), (87, 1171), (93, 1195), (96, 1225), (101, 1249), (123, 1318), (126, 1333),

Gene: Amelie_3 Start: 627, Stop: 863, Start Num: 67

Candidate Starts for Amelie_3:

(Start: 67 @627 has 24 MA's), (Start: 73 @636 has 120 MA's), (87, 678), (88, 684), (93, 702), (101, 756), (108, 783),

Gene: Amgine_5 Start: 970, Stop: 1197, Start Num: 73

Candidate Starts for Amgine_5:

(Start: 67 @961 has 24 MA's), (Start: 73 @970 has 120 MA's), (87, 1012), (93, 1036), (101, 1090), (110, 1123),

Gene: Aminay_5 Start: 1070, Stop: 1327, Start Num: 68

Candidate Starts for Aminay_5:

(Start: 68 @1070 has 3 MA's), (84, 1127), (85, 1130), (86, 1133), (87, 1139), (100, 1214),

Gene: Amohnition_6 Start: 1167, Stop: 1403, Start Num: 67

Candidate Starts for Amohnition_6:

(Start: 67 @1167 has 24 MA's), (Start: 73 @1176 has 120 MA's), (87, 1218), (93, 1242), (101, 1296), (114, 1341),

Gene: Anaya_8 Start: 1396, Stop: 1632, Start Num: 67

Candidate Starts for Anaya_8:

(52, 1345), (Start: 67 @1396 has 24 MA's), (Start: 73 @1405 has 120 MA's), (87, 1447), (93, 1471), (101, 1525),

Gene: Angel_1 Start: 43, Stop: 387, Start Num: 30

Candidate Starts for Angel_1:

(Start: 30 @43 has 45 MA's), (Start: 31 @46 has 23 MA's), (78, 148), (93, 217), (100, 268),

Gene: Angelica_7 Start: 1364, Stop: 1591, Start Num: 73

Candidate Starts for Angelica_7:

(52, 1304), (Start: 67 @1355 has 24 MA's), (Start: 73 @1364 has 120 MA's), (87, 1406), (93, 1430), (101, 1484),

Gene: Anma_7 Start: 1355, Stop: 1582, Start Num: 73

Candidate Starts for Anma_7:

(54, 1304), (Start: 67 @1346 has 24 MA's), (Start: 73 @1355 has 120 MA's), (87, 1397), (93, 1421), (101, 1475),

Gene: Annihilator_1 Start: 43, Stop: 387, Start Num: 30

Candidate Starts for Annihilator_1:

(Start: 30 @43 has 45 MA's), (Start: 31 @46 has 23 MA's), (78, 148), (93, 217), (100, 268),

Gene: Antsirabe_1 Start: 53, Stop: 382, Start Num: 37

Candidate Starts for Antsirabe_1:

(Start: 37 @53 has 6 MA's), (50, 80), (78, 146), (87, 191), (93, 215), (96, 245), (100, 266),

Gene: Apocalypse_7 Start: 1360, Stop: 1587, Start Num: 73

Candidate Starts for Apocalypse_7:

(54, 1306), (Start: 67 @1351 has 24 MA's), (Start: 71 @1357 has 3 MA's), (Start: 73 @1360 has 120 MA's), (85, 1393), (87, 1402), (93, 1426), (101, 1480),

Gene: Applecrisp_5 Start: 1329, Stop: 1556, Start Num: 73

Candidate Starts for Applecrisp_5:

(Start: 67 @1320 has 24 MA's), (Start: 73 @1329 has 120 MA's), (87, 1371), (93, 1395), (101, 1449), (110, 1482),

Gene: ArV2_01 Start: 36, Stop: 380, Start Num: 28

Candidate Starts for ArV2_01:

(23, 3), (24, 18), (28, 36), (42, 66), (Start: 48 @75 has 17 MA's), (60, 102), (66, 126), (74, 141), (76, 147), (85, 186), (87, 195), (90, 210), (93, 219), (100, 270),

Gene: Aroostook_1 Start: 43, Stop: 387, Start Num: 30

Candidate Starts for Aroostook_1:

(Start: 30 @43 has 45 MA's), (Start: 31 @46 has 23 MA's), (78, 148), (93, 217), (100, 268),

Gene: Asayake_7 Start: 1426, Stop: 1653, Start Num: 73

Candidate Starts for Asayake_7:

(54, 1372), (Start: 67 @1417 has 24 MA's), (Start: 71 @1423 has 3 MA's), (Start: 73 @1426 has 120 MA's), (85, 1459), (87, 1468), (93, 1492), (101, 1546),

Gene: Ashwin_31 Start: 13191, Stop: 13490, Start Num: 58

Candidate Starts for Ashwin_31:

(29, 13113), (Start: 58 @13191 has 26 MA's), (Start: 61 @13200 has 7 MA's), (95, 13341), (104, 13383),

Gene: Atiba_7 Start: 1342, Stop: 1572, Start Num: 71

Candidate Starts for Atiba_7:

(54, 1291), (Start: 67 @1336 has 24 MA's), (Start: 71 @1342 has 3 MA's), (Start: 73 @1345 has 120 MA's), (85, 1378), (87, 1387), (93, 1411), (101, 1465),

Gene: Avocado_1 Start: 54, Stop: 380, Start Num: 37

Candidate Starts for Avocado_1:

(Start: 37 @54 has 6 MA's), (78, 144), (84, 177), (87, 189), (99, 255), (103, 273), (104, 276), (106, 285),

Gene: Avrafan_1 Start: 43, Stop: 387, Start Num: 30

Candidate Starts for Avrafan_1:

(Start: 30 @43 has 45 MA's), (Start: 31 @46 has 23 MA's), (78, 148), (93, 217), (100, 268),

Gene: AzulaCat_1 Start: 43, Stop: 387, Start Num: 30

Candidate Starts for AzulaCat_1:

(Start: 30 @43 has 45 MA's), (Start: 31 @46 has 23 MA's), (78, 148), (93, 217), (100, 268),

Gene: B22_2 Start: 706, Stop: 1002, Start Num: 48

Candidate Starts for B22_2:

(Start: 48 @706 has 17 MA's), (59, 727), (85, 811), (89, 832), (93, 844), (101, 898),

Gene: BEEST_7 Start: 1426, Stop: 1653, Start Num: 73

Candidate Starts for BEEST_7:

(54, 1372), (Start: 67 @1417 has 24 MA's), (Start: 71 @1423 has 3 MA's), (Start: 73 @1426 has 120 MA's), (85, 1459), (87, 1468), (93, 1492), (101, 1546),

Gene: BGlluviae_7 Start: 1426, Stop: 1653, Start Num: 73

Candidate Starts for BGlluviae_7:

(54, 1372), (Start: 67 @1417 has 24 MA's), (Start: 71 @1423 has 3 MA's), (Start: 73 @1426 has 120 MA's), (85, 1459), (87, 1468), (93, 1492), (101, 1546),

Gene: BPs_1 Start: 43, Stop: 387, Start Num: 30

Candidate Starts for BPs_1:

(Start: 30 @43 has 45 MA's), (Start: 31 @46 has 23 MA's), (78, 148), (93, 217), (100, 268),

Gene: BQuat_1 Start: 43, Stop: 387, Start Num: 30

Candidate Starts for BQuat_1:

(Start: 30 @43 has 45 MA's), (Start: 31 @46 has 23 MA's), (78, 148), (93, 217), (100, 268),

Gene: BaghaKamala_7 Start: 1352, Stop: 1579, Start Num: 73

Candidate Starts for BaghaKamala_7:

(54, 1298), (Start: 67 @1343 has 24 MA's), (Start: 71 @1349 has 3 MA's), (Start: 73 @1352 has 120 MA's), (85, 1385), (93, 1418), (101, 1472),

Gene: BananenDer11_5 Start: 1104, Stop: 1331, Start Num: 73

Candidate Starts for BananenDer11_5:

(20, 921), (21, 933), (Start: 25 @972 has 5 MA's), (34, 1002), (Start: 68 @1095 has 3 MA's), (69, 1098), (Start: 73 @1104 has 120 MA's), (93, 1170), (98, 1209), (101, 1224),

Gene: Barkley26_1 Start: 43, Stop: 387, Start Num: 30

Candidate Starts for Barkley26_1:

(Start: 30 @43 has 45 MA's), (Start: 31 @46 has 23 MA's), (78, 148), (93, 217), (100, 268),

Gene: BarrelRoll_7 Start: 1376, Stop: 1603, Start Num: 73

Candidate Starts for BarrelRoll_7:

(54, 1322), (Start: 67 @1367 has 24 MA's), (Start: 71 @1373 has 3 MA's), (Start: 73 @1376 has 120 MA's), (85, 1409), (87, 1418), (93, 1442), (101, 1496),

Gene: Beezoo_7 Start: 1405, Stop: 1632, Start Num: 73

Candidate Starts for Beezoo_7:

(54, 1351), (Start: 67 @1396 has 24 MA's), (Start: 71 @1402 has 3 MA's), (Start: 73 @1405 has 120 MA's), (85, 1438), (87, 1447), (93, 1471), (101, 1525),

Gene: Bella96_7 Start: 1334, Stop: 1561, Start Num: 73

Candidate Starts for Bella96_7:

(54, 1283), (Start: 67 @1325 has 24 MA's), (Start: 73 @1334 has 120 MA's), (87, 1376), (93, 1400), (101, 1454),

Gene: Belladonna_7 Start: 1426, Stop: 1653, Start Num: 73

Candidate Starts for Belladonna_7:

(54, 1372), (Start: 67 @1417 has 24 MA's), (Start: 71 @1423 has 3 MA's), (Start: 73 @1426 has 120 MA's), (85, 1459), (87, 1468), (93, 1492), (101, 1546),

Gene: Bern_7 Start: 1363, Stop: 1599, Start Num: 67

Candidate Starts for Bern_7:

(Start: 67 @1363 has 24 MA's), (Start: 73 @1372 has 120 MA's), (83, 1396), (87, 1414), (93, 1438), (101, 1492),

Gene: Biglebops_3 Start: 636, Stop: 863, Start Num: 73

Candidate Starts for Biglebops_3:

(Start: 67 @627 has 24 MA's), (Start: 73 @636 has 120 MA's), (87, 678), (88, 684), (93, 702), (101, 756), (108, 783),

Gene: Blessica_30 Start: 13214, Stop: 13513, Start Num: 58

Candidate Starts for Blessica_30:

(22, 13091), (Start: 58 @13214 has 26 MA's), (Start: 61 @13223 has 7 MA's), (95, 13364), (104, 13406),

Gene: Blizzard_7 Start: 1426, Stop: 1653, Start Num: 73

Candidate Starts for Blizzard_7:

(54, 1372), (Start: 67 @1417 has 24 MA's), (Start: 71 @1423 has 3 MA's), (Start: 73 @1426 has 120 MA's), (85, 1459), (87, 1468), (93, 1492), (101, 1546),

Gene: Bobquesha_8 Start: 2153, Stop: 2425, Start Num: 64

Candidate Starts for Bobquesha_8:

(33, 2066), (44, 2090), (Start: 64 @2153 has 23 MA's), (84, 2222), (85, 2225), (86, 2228), (89, 2246), (96, 2288), (119, 2372),

Gene: Boiiii_7 Start: 1426, Stop: 1653, Start Num: 73

Candidate Starts for Boiiii_7:

(54, 1372), (Start: 67 @1417 has 24 MA's), (Start: 71 @1423 has 3 MA's), (Start: 73 @1426 has 120 MA's), (85, 1459), (87, 1468), (93, 1492), (101, 1546),

Gene: Boilgate_4 Start: 1309, Stop: 1578, Start Num: 64

Candidate Starts for Boilgate_4:

(Start: 64 @1309 has 23 MA's), (Start: 72 @1327 has 24 MA's), (77, 1339), (84, 1375), (85, 1378), (86, 1381), (87, 1387), (96, 1441),

Gene: BoostSeason_3 Start: 426, Stop: 674, Start Num: 72

Candidate Starts for BoostSeason_3:

(Start: 64 @408 has 23 MA's), (Start: 72 @426 has 24 MA's), (87, 489), (89, 501), (93, 513), (101, 567),

Gene: Bora_27 Start: 12644, Stop: 12943, Start Num: 58

Candidate Starts for Bora_27:

(29, 12566), (Start: 58 @12644 has 26 MA's), (Start: 61 @12653 has 7 MA's), (95, 12794), (104, 12836),

Gene: BrayBeast_1 Start: 49, Stop: 357, Start Num: 48

Candidate Starts for BrayBeast_1:

(32, 28), (Start: 48 @49 has 17 MA's), (59, 85), (79, 142), (108, 277),

Gene: BruceB_1 Start: 43, Stop: 387, Start Num: 30

Candidate Starts for BruceB_1:

(Start: 30 @43 has 45 MA's), (Start: 31 @46 has 23 MA's), (78, 148), (93, 217), (100, 268),

Gene: Bryler_6 Start: 1277, Stop: 1525, Start Num: 72

Candidate Starts for Bryler_6:

(Start: 61 @1247 has 7 MA's), (Start: 72 @1277 has 24 MA's), (87, 1340), (89, 1352), (101, 1418),

Gene: CLED96_1 Start: 43, Stop: 387, Start Num: 30

Candidate Starts for CLED96_1:

(Start: 30 @43 has 45 MA's), (Start: 31 @46 has 23 MA's), (78, 148), (93, 217), (100, 268),

Gene: CREW_7 Start: 1417, Stop: 1653, Start Num: 67

Candidate Starts for CREW_7:

(54, 1372), (Start: 67 @1417 has 24 MA's), (Start: 71 @1423 has 3 MA's), (Start: 73 @1426 has 120 MA's), (85, 1459), (87, 1468), (93, 1492), (101, 1546),

Gene: Cain_6 Start: 1277, Stop: 1525, Start Num: 72

Candidate Starts for Cain_6:

(Start: 61 @1247 has 7 MA's), (Start: 72 @1277 has 24 MA's), (87, 1340), (89, 1352), (101, 1418),

Gene: CallaLilly_7 Start: 1352, Stop: 1579, Start Num: 73

Candidate Starts for CallaLilly_7:

(54, 1298), (Start: 67 @1343 has 24 MA's), (Start: 71 @1349 has 3 MA's), (Start: 73 @1352 has 120 MA's), (85, 1385), (87, 1394), (93, 1418), (101, 1472),

Gene: Cambiare_2 Start: 534, Stop: 869, Start Num: 36

Candidate Starts for Cambiare_2:

(12, 384), (Start: 31 @525 has 23 MA's), (Start: 36 @534 has 2 MA's), (46, 555), (50, 564), (78, 633), (81, 651), (84, 666), (101, 756), (106, 774), (108, 783),

Gene: Camri_1 Start: 43, Stop: 387, Start Num: 30

Candidate Starts for Camri_1:

(Start: 30 @43 has 45 MA's), (Start: 31 @46 has 23 MA's), (78, 148), (93, 217), (100, 268),

Gene: Capricorn_7 Start: 1426, Stop: 1653, Start Num: 73

Candidate Starts for Capricorn_7:

(54, 1372), (Start: 67 @1417 has 24 MA's), (Start: 71 @1423 has 3 MA's), (Start: 73 @1426 has 120 MA's), (85, 1459), (87, 1468), (93, 1492), (101, 1546),

Gene: CaseJules_7 Start: 1417, Stop: 1653, Start Num: 67

Candidate Starts for CaseJules_7:

(54, 1372), (Start: 67 @1417 has 24 MA's), (Start: 71 @1423 has 3 MA's), (Start: 73 @1426 has 120 MA's), (85, 1459), (87, 1468), (93, 1492), (101, 1546),

Gene: CassieYates_1 Start: 43, Stop: 387, Start Num: 30

Candidate Starts for CassieYates_1:

(Start: 30 @43 has 45 MA's), (Start: 31 @46 has 23 MA's), (78, 148), (93, 217), (100, 268),

Gene: Catdawg_29 Start: 12829, Stop: 13119, Start Num: 61

Candidate Starts for Catdawg_29:

(22, 12697), (Start: 58 @12820 has 26 MA's), (Start: 61 @12829 has 7 MA's), (95, 12970), (104, 13012),

Gene: Cedasite_1 Start: 43, Stop: 387, Start Num: 30

Candidate Starts for Cedasite_1:

(Start: 30 @43 has 45 MA's), (Start: 31 @46 has 23 MA's), (78, 148), (93, 217), (100, 268),

Gene: Chance64_1 Start: 43, Stop: 387, Start Num: 30

Candidate Starts for Chance64_1:

(Start: 30 @43 has 45 MA's), (Start: 31 @46 has 23 MA's), (78, 148), (93, 217), (100, 268),

Gene: Chancellor_8 Start: 2234, Stop: 2506, Start Num: 64

Candidate Starts for Chancellor_8:

(33, 2147), (44, 2171), (Start: 64 @2234 has 23 MA's), (84, 2303), (85, 2306), (89, 2327), (96, 2369), (119, 2453),

Gene: Chavito_7 Start: 1450, Stop: 1677, Start Num: 73

Candidate Starts for Chavito_7:

(Start: 67 @1441 has 24 MA's), (Start: 73 @1450 has 120 MA's), (87, 1492), (93, 1516), (101, 1570),

Gene: CheetoDust_7 Start: 1402, Stop: 1629, Start Num: 73

Candidate Starts for CheetoDust_7:

(54, 1348), (Start: 67 @1393 has 24 MA's), (Start: 71 @1399 has 3 MA's), (Start: 73 @1402 has 120 MA's), (85, 1435), (87, 1444), (93, 1468), (101, 1522),

Gene: Cheetobro_8 Start: 2234, Stop: 2506, Start Num: 64

Candidate Starts for Cheetobro_8:

(33, 2147), (44, 2171), (Start: 64 @2234 has 23 MA's), (84, 2303), (85, 2306), (89, 2327), (96, 2369), (119, 2453),

Gene: Cherrybomb426_1 Start: 46, Stop: 387, Start Num: 31

Candidate Starts for Cherrybomb426_1:

(Start: 30 @43 has 45 MA's), (Start: 31 @46 has 23 MA's), (78, 148), (93, 217), (100, 268),

Gene: Chris_6 Start: 1317, Stop: 1541, Start Num: 73

Candidate Starts for Chris_6:

(Start: 67 @1308 has 24 MA's), (Start: 73 @1317 has 120 MA's), (93, 1380), (101, 1434),

Gene: Clipper_7 Start: 1402, Stop: 1629, Start Num: 73

Candidate Starts for Clipper_7:

(54, 1348), (Start: 67 @1393 has 24 MA's), (Start: 71 @1399 has 3 MA's), (Start: 73 @1402 has 120 MA's), (85, 1435), (87, 1444), (93, 1468), (101, 1522),

Gene: Cloudyecho_1 Start: 52, Stop: 381, Start Num: 37

Candidate Starts for Cloudyecho_1:

(34, 49), (Start: 37 @52 has 6 MA's), (50, 79), (78, 145), (84, 178), (87, 190), (99, 256), (103, 274), (105, 280), (108, 295), (122, 337),

Gene: Coleslaw_1 Start: 43, Stop: 387, Start Num: 30

Candidate Starts for Coleslaw_1:

(Start: 30 @43 has 45 MA's), (Start: 31 @46 has 23 MA's), (78, 148), (93, 217), (100, 268),

Gene: Collard_5 Start: 1095, Stop: 1331, Start Num: 68

Candidate Starts for Collard_5:

(20, 921), (21, 933), (Start: 25 @972 has 5 MA's), (34, 1002), (Start: 68 @1095 has 3 MA's), (69, 1098), (Start: 73 @1104 has 120 MA's), (93, 1170), (98, 1209), (101, 1224),

Gene: Corndog_31 Start: 13270, Stop: 13569, Start Num: 58

Candidate Starts for Corndog_31:

(29, 13192), (Start: 58 @13270 has 26 MA's), (Start: 61 @13279 has 7 MA's), (95, 13420), (104, 13462),

Gene: Crespo_1 Start: 44, Stop: 388, Start Num: 30

Candidate Starts for Crespo_1:

(Start: 30 @44 has 45 MA's), (Start: 31 @47 has 23 MA's), (78, 149), (93, 218), (100, 269),

Gene: CrimD_7 Start: 1342, Stop: 1578, Start Num: 67

Candidate Starts for CrimD_7:

(Start: 67 @1342 has 24 MA's), (Start: 73 @1351 has 120 MA's), (87, 1393), (93, 1417), (101, 1471),

Gene: Curiosium_8 Start: 1733, Stop: 1978, Start Num: 73

Candidate Starts for Curiosium_8:

(Start: 67 @1724 has 24 MA's), (Start: 71 @1730 has 3 MA's), (Start: 73 @1733 has 120 MA's), (87, 1793), (92, 1814), (100, 1868), (101, 1871), (120, 1931),

Gene: DMoney_1 Start: 46, Stop: 387, Start Num: 31

Candidate Starts for DMoney_1:

(Start: 30 @43 has 45 MA's), (Start: 31 @46 has 23 MA's), (78, 148), (93, 217), (100, 268),

Gene: DNAlll_001 Start: 52, Stop: 396, Start Num: 30

Candidate Starts for DNAlll_001:

(Start: 30 @52 has 45 MA's), (Start: 31 @55 has 23 MA's), (78, 157), (93, 226), (100, 277),

Gene: Dadosky_5 Start: 1129, Stop: 1356, Start Num: 73

Candidate Starts for Dadosky_5:

(Start: 25 @997 has 5 MA's), (34, 1027), (49, 1054), (Start: 68 @1120 has 3 MA's), (69, 1123), (Start: 73 @1129 has 120 MA's), (83, 1153), (87, 1171), (93, 1195), (96, 1225), (101, 1249), (123, 1318), (126, 1333),

Gene: Dalmuri_7 Start: 1426, Stop: 1653, Start Num: 73

Candidate Starts for Dalmuri_7:

(54, 1372), (Start: 67 @1417 has 24 MA's), (Start: 71 @1423 has 3 MA's), (Start: 73 @1426 has 120 MA's), (85, 1459), (87, 1468), (93, 1492), (101, 1546),

Gene: DanSyl44_8 Start: 2234, Stop: 2506, Start Num: 64

Candidate Starts for DanSyl44_8:

(33, 2147), (44, 2171), (Start: 64 @2234 has 23 MA's), (84, 2303), (85, 2306), (89, 2327), (96, 2369), (119, 2453),

Gene: Darionha_1 Start: 46, Stop: 387, Start Num: 31

Candidate Starts for Darionha_1:

(Start: 30 @43 has 45 MA's), (Start: 31 @46 has 23 MA's), (78, 148), (93, 217), (100, 268),

Gene: DartGoblin_7 Start: 1334, Stop: 1561, Start Num: 73

Candidate Starts for DartGoblin_7:

(54, 1283), (Start: 67 @1325 has 24 MA's), (Start: 73 @1334 has 120 MA's), (87, 1376), (93, 1400), (101, 1454),

Gene: DarthP_6 Start: 1176, Stop: 1403, Start Num: 73

Candidate Starts for DarthP_6:

(Start: 67 @1167 has 24 MA's), (Start: 73 @1176 has 120 MA's), (87, 1218), (93, 1242), (101, 1296), (114, 1341),

Gene: Dartin_7 Start: 1449, Stop: 1676, Start Num: 73

Candidate Starts for Dartin_7:

(Start: 67 @1440 has 24 MA's), (Start: 73 @1449 has 120 MA's), (87, 1491), (93, 1515), (101, 1569),

Gene: Deby_7 Start: 1364, Stop: 1591, Start Num: 73

Candidate Starts for Deby_7:

(52, 1304), (Start: 67 @1355 has 24 MA's), (Start: 73 @1364 has 120 MA's), (87, 1406), (93, 1430), (101, 1484),

Gene: Devera_7 Start: 1393, Stop: 1620, Start Num: 73

Candidate Starts for Devera_7:

(54, 1339), (Start: 67 @1384 has 24 MA's), (Start: 71 @1390 has 3 MA's), (Start: 73 @1393 has 120 MA's), (85, 1426), (87, 1435), (93, 1459), (101, 1513),

Gene: DingDing_1 Start: 43, Stop: 387, Start Num: 30

Candidate Starts for DingDing_1:

(Start: 30 @43 has 45 MA's), (Start: 31 @46 has 23 MA's), (78, 148), (93, 217), (100, 268),

Gene: DismalFunk_3 Start: 426, Stop: 674, Start Num: 72

Candidate Starts for DismalFunk_3:

(Start: 64 @408 has 23 MA's), (Start: 72 @426 has 24 MA's), (87, 489), (89, 501), (101, 567),

Gene: DismalStressor_3 Start: 426, Stop: 674, Start Num: 72

Candidate Starts for DismalStressor_3:

(Start: 64 @408 has 23 MA's), (Start: 72 @426 has 24 MA's), (87, 489), (89, 501), (101, 567),

Gene: Dole_7 Start: 1393, Stop: 1620, Start Num: 73

Candidate Starts for Dole_7:

(54, 1339), (Start: 67 @1384 has 24 MA's), (Start: 71 @1390 has 3 MA's), (Start: 73 @1393 has 120 MA's), (85, 1426), (87, 1435), (93, 1459), (101, 1513),

Gene: DoubleChamp_5 Start: 1098, Stop: 1331, Start Num: 69

Candidate Starts for DoubleChamp_5:

(20, 921), (21, 933), (Start: 25 @972 has 5 MA's), (34, 1002), (Start: 68 @1095 has 3 MA's), (69, 1098), (Start: 73 @1104 has 120 MA's), (93, 1170), (98, 1209), (101, 1224),

Gene: Doucette_2 Start: 706, Stop: 1002, Start Num: 48

Candidate Starts for Doucette_2:

(Start: 48 @706 has 17 MA's), (59, 727), (85, 811), (89, 832), (93, 844), (101, 898),

Gene: Doughnut_3 Start: 426, Stop: 674, Start Num: 72

Candidate Starts for Doughnut_3:

(Start: 64 @408 has 23 MA's), (Start: 72 @426 has 24 MA's), (87, 489), (89, 501), (93, 513), (101, 567),

Gene: DrHayes_7 Start: 1355, Stop: 1582, Start Num: 73

Candidate Starts for DrHayes_7:

(54, 1304), (Start: 67 @1346 has 24 MA's), (Start: 73 @1355 has 120 MA's), (87, 1397), (93, 1421), (101, 1475),

Gene: Durfee_7 Start: 1426, Stop: 1653, Start Num: 73

Candidate Starts for Durfee_7:

(54, 1372), (Start: 67 @1417 has 24 MA's), (Start: 71 @1423 has 3 MA's), (Start: 73 @1426 has 120 MA's), (85, 1459), (87, 1468), (93, 1492), (101, 1546),

Gene: Dylan_29 Start: 12996, Stop: 13295, Start Num: 58

Candidate Starts for Dylan_29:

(29, 12918), (Start: 58 @12996 has 26 MA's), (Start: 61 @13005 has 7 MA's), (95, 13146), (104, 13188),

Gene: E6_2 Start: 707, Stop: 1003, Start Num: 48

Candidate Starts for E6_2:

(6, 446), (7, 467), (11, 527), (14, 539), (17, 578), (Start: 48 @707 has 17 MA's), (59, 728), (85, 812), (89, 833), (93, 845), (101, 899),

Gene: ECartman_1 Start: 43, Stop: 387, Start Num: 30

Candidate Starts for ECartman_1:

(Start: 30 @43 has 45 MA's), (Start: 31 @46 has 23 MA's), (78, 148), (93, 217), (100, 268),

Gene: Edugator_4 Start: 1129, Stop: 1356, Start Num: 73

Candidate Starts for Edugator_4:

(Start: 25 @997 has 5 MA's), (34, 1027), (49, 1054), (Start: 68 @1120 has 3 MA's), (69, 1123), (Start: 73 @1129 has 120 MA's), (83, 1153), (87, 1171), (93, 1195), (96, 1225), (101, 1249), (123, 1318), (126, 1333),

Gene: Efra2_7 Start: 1360, Stop: 1587, Start Num: 73

Candidate Starts for Efra2_7:

(52, 1297), (Start: 67 @1351 has 24 MA's), (Start: 73 @1360 has 120 MA's), (93, 1426), (101, 1480), (110, 1513),

Gene: Ekdilam_4 Start: 911, Stop: 1138, Start Num: 73

Candidate Starts for Ekdilam_4:

(26, 785), (54, 860), (Start: 67 @902 has 24 MA's), (Start: 73 @911 has 120 MA's), (87, 953), (93, 977), (101, 1031), (114, 1076),

Gene: Ellie_4 Start: 1002, Stop: 1229, Start Num: 73

Candidate Starts for Ellie_4:

(Start: 67 @993 has 24 MA's), (Start: 73 @1002 has 120 MA's), (87, 1044), (93, 1068), (101, 1122), (110, 1155),

Gene: Emerson_7 Start: 1382, Stop: 1609, Start Num: 73

Candidate Starts for Emerson_7:

(54, 1328), (Start: 67 @1373 has 24 MA's), (Start: 71 @1379 has 3 MA's), (Start: 73 @1382 has 120 MA's), (85, 1415), (87, 1424), (93, 1448), (101, 1502),

Gene: Enkosi_3 Start: 636, Stop: 863, Start Num: 73

Candidate Starts for Enkosi_3:

(Start: 67 @627 has 24 MA's), (Start: 73 @636 has 120 MA's), (87, 678), (88, 684), (93, 702), (101, 756), (108, 783),

Gene: Eponine_8 Start: 2229, Stop: 2498, Start Num: 64

Candidate Starts for Eponine_8:

(Start: 64 @2229 has 23 MA's), (84, 2295), (85, 2298), (119, 2445),

Gene: Faith5x5_1 Start: 103, Stop: 465, Start Num: 51

Candidate Starts for Faith5x5_1:

(49, 97), (Start: 51 @103 has 4 MA's), (56, 115), (85, 214), (87, 223), (89, 235), (93, 247), (96, 277), (120, 364), (124, 373), (125, 385), (127, 394), (129, 430),

Gene: Familton_30 Start: 12824, Stop: 13123, Start Num: 58

Candidate Starts for Familton_30:

(Start: 58 @12824 has 26 MA's), (Start: 61 @12833 has 7 MA's), (95, 12974), (104, 13016),

Gene: Fefferhead_6 Start: 1172, Stop: 1399, Start Num: 73

Candidate Starts for Fefferhead_6:

(Start: 67 @1163 has 24 MA's), (Start: 73 @1172 has 120 MA's), (87, 1214), (93, 1238), (101, 1292), (110, 1325),

Gene: Feyre_5 Start: 1105, Stop: 1332, Start Num: 73

Candidate Starts for Feyre_5:

(20, 922), (21, 934), (Start: 25 @973 has 5 MA's), (34, 1003), (Start: 68 @1096 has 3 MA's), (69, 1099), (Start: 73 @1105 has 120 MA's), (93, 1171), (98, 1210), (101, 1225),

Gene: Findley_3 Start: 426, Stop: 674, Start Num: 72

Candidate Starts for Findley_3:

(Start: 72 @426 has 24 MA's), (87, 489), (89, 501), (101, 567),

Gene: Fionnbharth_8 Start: 2221, Stop: 2493, Start Num: 64

Candidate Starts for Fionnbharth_8:

(33, 2134), (44, 2158), (Start: 64 @2221 has 23 MA's), (84, 2290), (85, 2293), (89, 2314), (96, 2356), (119, 2440),

Gene: Firecracker_30 Start: 12894, Stop: 13193, Start Num: 58

Candidate Starts for Firecracker_30:

(29, 12816), (Start: 58 @12894 has 26 MA's), (Start: 61 @12903 has 7 MA's), (95, 13044), (104, 13086),

Gene: FlagStaff_1 Start: 52, Stop: 387, Start Num: 37

Candidate Starts for FlagStaff_1:

(Start: 37 @52 has 6 MA's), (50, 79), (93, 214), (96, 244),

Gene: ForeverHowLong_1 Start: 46, Stop: 387, Start Num: 31

Candidate Starts for ForeverHowLong_1:

(Start: 30 @43 has 45 MA's), (Start: 31 @46 has 23 MA's), (78, 148), (93, 217), (100, 268),

Gene: FoulBall_29 Start: 12818, Stop: 13117, Start Num: 58

Candidate Starts for FoulBall_29:

(Start: 58 @12818 has 26 MA's), (Start: 61 @12827 has 7 MA's), (95, 12968), (104, 13010),

Gene: Frosty24_1 Start: 43, Stop: 387, Start Num: 30

Candidate Starts for Frosty24_1:

(Start: 30 @43 has 45 MA's), (Start: 31 @46 has 23 MA's), (78, 148), (93, 217), (100, 268),

Gene: G4_2 Start: 706, Stop: 1002, Start Num: 48

Candidate Starts for G4_2:

(Start: 48 @706 has 17 MA's), (59, 727), (85, 811), (89, 832), (93, 844), (101, 898),

Gene: Ganymede_7 Start: 1402, Stop: 1629, Start Num: 73

Candidate Starts for Ganymede_7:

(54, 1348), (Start: 67 @1393 has 24 MA's), (Start: 71 @1399 has 3 MA's), (Start: 73 @1402 has 120 MA's), (85, 1435), (87, 1444), (93, 1468), (101, 1522),

Gene: Gengar_5 Start: 1131, Stop: 1358, Start Num: 73

Candidate Starts for Gengar_5:

(Start: 73 @1131 has 120 MA's), (84, 1161), (87, 1173), (93, 1197), (101, 1251),

Gene: Geraldini_7 Start: 1405, Stop: 1632, Start Num: 73

Candidate Starts for Geraldini_7:

(54, 1351), (Start: 67 @1396 has 24 MA's), (Start: 71 @1402 has 3 MA's), (Start: 73 @1405 has 120 MA's), (85, 1438), (87, 1447), (93, 1471), (101, 1525),

Gene: Gibbzilla_1 Start: 49, Stop: 357, Start Num: 48

Candidate Starts for Gibbzilla_1:

(32, 28), (40, 37), (41, 40), (Start: 48 @49 has 17 MA's), (59, 85), (74, 124), (79, 142), (86, 172), (108, 277),

Gene: Gideon_1 Start: 43, Stop: 387, Start Num: 30

Candidate Starts for Gideon_1:

(Start: 30 @43 has 45 MA's), (Start: 31 @46 has 23 MA's), (78, 148), (93, 217), (100, 268),

Gene: GodSpeed_1 Start: 52, Stop: 387, Start Num: 37

Candidate Starts for GodSpeed_1:

(Start: 37 @52 has 6 MA's), (50, 79), (93, 214), (96, 244),

Gene: GoldenAsh_1 Start: 46, Stop: 387, Start Num: 31

Candidate Starts for GoldenAsh_1:

(Start: 30 @43 has 45 MA's), (Start: 31 @46 has 23 MA's), (78, 148), (93, 217), (100, 268),

Gene: Gomashi_1 Start: 44, Stop: 388, Start Num: 30

Candidate Starts for Gomashi_1:

(Start: 30 @44 has 45 MA's), (Start: 31 @47 has 23 MA's), (78, 149), (93, 218), (100, 269),

Gene: Grizzly_1 Start: 46, Stop: 387, Start Num: 31

Candidate Starts for Grizzly_1:

(Start: 30 @43 has 45 MA's), (Start: 31 @46 has 23 MA's), (78, 148), (93, 217), (100, 268),

Gene: Guanica15_7 Start: 1376, Stop: 1603, Start Num: 73

Candidate Starts for Guanica15_7:

(52, 1313), (Start: 67 @1367 has 24 MA's), (Start: 73 @1376 has 120 MA's), (93, 1442), (101, 1496),

Gene: Guillsminger_5 Start: 1106, Stop: 1333, Start Num: 73

Candidate Starts for Guillsminger_5:

(Start: 73 @1106 has 120 MA's), (84, 1136), (87, 1148), (93, 1172), (101, 1226),

Gene: Halo_1 Start: 43, Stop: 387, Start Num: 30

Candidate Starts for Halo_1:

(Start: 30 @43 has 45 MA's), (Start: 31 @46 has 23 MA's), (78, 148), (93, 217), (100, 268),

Gene: Hammy_6 Start: 1173, Stop: 1400, Start Num: 73
Candidate Starts for Hammy_6:
(Start: 67 @1164 has 24 MA's), (Start: 73 @1173 has 120 MA's), (87, 1215), (93, 1239), (101, 1293),
(114, 1338),

Gene: HedwigODU_7 Start: 1376, Stop: 1603, Start Num: 73
Candidate Starts for HedwigODU_7:
(Start: 67 @1367 has 24 MA's), (Start: 71 @1373 has 3 MA's), (Start: 73 @1376 has 120 MA's), (85,
1409), (87, 1418), (93, 1442), (101, 1496),

Gene: Heftyboy_5 Start: 1127, Stop: 1354, Start Num: 73
Candidate Starts for Heftyboy_5:
(Start: 73 @1127 has 120 MA's), (84, 1157), (87, 1169), (93, 1193), (101, 1247),

Gene: Homura_7 Start: 1426, Stop: 1653, Start Num: 73
Candidate Starts for Homura_7:
(54, 1372), (Start: 67 @1417 has 24 MA's), (Start: 71 @1423 has 3 MA's), (Start: 73 @1426 has 120
MA's), (85, 1459), (87, 1468), (93, 1492), (101, 1546),

Gene: Hope_1 Start: 43, Stop: 387, Start Num: 30
Candidate Starts for Hope_1:
(Start: 30 @43 has 45 MA's), (Start: 31 @46 has 23 MA's), (78, 148), (93, 217), (100, 268),

Gene: Hotshotbaby7_1 Start: 46, Stop: 387, Start Num: 31
Candidate Starts for Hotshotbaby7_1:
(Start: 30 @43 has 45 MA's), (Start: 31 @46 has 23 MA's), (78, 148), (93, 217), (100, 268),

Gene: Hurricane_6 Start: 1250, Stop: 1510, Start Num: 61
Candidate Starts for Hurricane_6:
(Start: 61 @1250 has 7 MA's), (Start: 73 @1280 has 120 MA's), (86, 1319), (87, 1325), (93, 1349),
(101, 1403), (107, 1427),

Gene: Hyperbowlee_7 Start: 1426, Stop: 1653, Start Num: 73
Candidate Starts for Hyperbowlee_7:
(54, 1372), (Start: 67 @1417 has 24 MA's), (Start: 71 @1423 has 3 MA's), (Start: 73 @1426 has 120
MA's), (85, 1459), (87, 1468), (93, 1492), (101, 1546),

Gene: Idergollasper_29 Start: 12818, Stop: 13117, Start Num: 58
Candidate Starts for Idergollasper_29:
(Start: 58 @12818 has 26 MA's), (Start: 61 @12827 has 7 MA's), (95, 12968), (104, 13010),

Gene: Illumine_7 Start: 1393, Stop: 1620, Start Num: 73
Candidate Starts for Illumine_7:
(54, 1339), (Start: 67 @1384 has 24 MA's), (Start: 71 @1390 has 3 MA's), (Start: 73 @1393 has 120
MA's), (85, 1426), (87, 1435), (93, 1459), (101, 1513),

Gene: Imara_28 Start: 13076, Stop: 13366, Start Num: 61
Candidate Starts for Imara_28:
(22, 12944), (Start: 58 @13067 has 26 MA's), (Start: 61 @13076 has 7 MA's), (95, 13217), (104,
13259),

Gene: InLimbo_1 Start: 44, Stop: 346, Start Num: 48
Candidate Starts for InLimbo_1:

(Start: 48 @44 has 17 MA's), (74, 110), (85, 155), (87, 164), (89, 176), (101, 242), (116, 299),

Gene: Inky_7 Start: 1426, Stop: 1653, Start Num: 73

Candidate Starts for Inky_7:

(54, 1372), (Start: 67 @1417 has 24 MA's), (Start: 71 @1423 has 3 MA's), (Start: 73 @1426 has 120 MA's), (85, 1459), (87, 1468), (93, 1492), (101, 1546),

Gene: InvictusManeo_5 Start: 979, Stop: 1338, Start Num: 25

Candidate Starts for InvictusManeo_5:

(Start: 25 @979 has 5 MA's), (34, 1009), (49, 1036), (Start: 68 @1102 has 3 MA's), (69, 1105), (Start: 73 @1111 has 120 MA's), (83, 1135), (87, 1153), (93, 1177), (101, 1231), (123, 1300), (126, 1315),

Gene: JAWS_7 Start: 1376, Stop: 1603, Start Num: 73

Candidate Starts for JAWS_7:

(54, 1322), (Start: 67 @1367 has 24 MA's), (Start: 71 @1373 has 3 MA's), (Start: 73 @1376 has 120 MA's), (85, 1409), (87, 1418), (93, 1442), (101, 1496),

Gene: JF1_8 Start: 2221, Stop: 2493, Start Num: 64

Candidate Starts for JF1_8:

(33, 2134), (44, 2158), (Start: 64 @2221 has 23 MA's), (84, 2290), (85, 2293), (89, 2314), (96, 2356), (119, 2440),

Gene: Jane_1 Start: 43, Stop: 387, Start Num: 30

Candidate Starts for Jane_1:

(Start: 30 @43 has 45 MA's), (Start: 31 @46 has 23 MA's), (78, 148), (93, 217), (100, 268),

Gene: JangDynasty_29 Start: 12913, Stop: 13212, Start Num: 58

Candidate Starts for JangDynasty_29:

(Start: 58 @12913 has 26 MA's), (Start: 61 @12922 has 7 MA's), (95, 13063), (104, 13105),

Gene: Jarvi_7 Start: 1417, Stop: 1653, Start Num: 67

Candidate Starts for Jarvi_7:

(54, 1372), (Start: 67 @1417 has 24 MA's), (Start: 71 @1423 has 3 MA's), (Start: 73 @1426 has 120 MA's), (85, 1459), (87, 1468), (93, 1492), (101, 1546),

Gene: Jayhawk_7 Start: 1376, Stop: 1603, Start Num: 73

Candidate Starts for Jayhawk_7:

(Start: 67 @1367 has 24 MA's), (Start: 71 @1373 has 3 MA's), (Start: 73 @1376 has 120 MA's), (85, 1409), (87, 1418), (93, 1442), (101, 1496),

Gene: JeanClaude_1 Start: 49, Stop: 357, Start Num: 48

Candidate Starts for JeanClaude_1:

(32, 28), (Start: 48 @49 has 17 MA's), (59, 85), (79, 142), (108, 277),

Gene: Jeckyll_7 Start: 1426, Stop: 1653, Start Num: 73

Candidate Starts for Jeckyll_7:

(54, 1372), (Start: 67 @1417 has 24 MA's), (Start: 71 @1423 has 3 MA's), (Start: 73 @1426 has 120 MA's), (85, 1459), (87, 1468), (93, 1492), (101, 1546),

Gene: Jeilious_1 Start: 42, Stop: 386, Start Num: 30

Candidate Starts for Jeilious_1:

(Start: 30 @42 has 45 MA's), (Start: 31 @45 has 23 MA's), (78, 147), (93, 216), (100, 267),

Gene: Jolene_1 Start: 43, Stop: 387, Start Num: 30
Candidate Starts for Jolene_1:
(Start: 30 @43 has 45 MA's), (Start: 31 @46 has 23 MA's), (78, 148), (93, 217), (100, 268),

Gene: Jolie2_1 Start: 45, Stop: 404, Start Num: 31
Candidate Starts for Jolie2_1:
(Start: 31 @45 has 23 MA's), (98, 264), (103, 285), (123, 363),

Gene: Jonghyun_1 Start: 43, Stop: 387, Start Num: 30
Candidate Starts for Jonghyun_1:
(Start: 30 @43 has 45 MA's), (Start: 31 @46 has 23 MA's), (78, 148), (93, 217), (100, 268),

Gene: JorRay_1 Start: 43, Stop: 387, Start Num: 30
Candidate Starts for JorRay_1:
(Start: 30 @43 has 45 MA's), (Start: 31 @46 has 23 MA's), (78, 148), (93, 217), (100, 268),

Gene: Joy99_7 Start: 1352, Stop: 1579, Start Num: 73
Candidate Starts for Joy99_7:
(Start: 67 @1343 has 24 MA's), (Start: 71 @1349 has 3 MA's), (Start: 73 @1352 has 120 MA's), (85, 1385), (93, 1418), (101, 1472),

Gene: Juliette_8 Start: 2229, Stop: 2498, Start Num: 64
Candidate Starts for Juliette_8:
(Start: 64 @2229 has 23 MA's), (84, 2295), (85, 2298), (119, 2445),

Gene: Kareem_1 Start: 43, Stop: 387, Start Num: 30
Candidate Starts for Kareem_1:
(Start: 30 @43 has 45 MA's), (Start: 31 @46 has 23 MA's), (78, 148), (93, 217), (100, 268),

Gene: Kasen3_1 Start: 46, Stop: 387, Start Num: 31
Candidate Starts for Kasen3_1:
(Start: 30 @43 has 45 MA's), (Start: 31 @46 has 23 MA's), (78, 148), (93, 217), (100, 268),

Gene: Keshu_6 Start: 1259, Stop: 1489, Start Num: 73
Candidate Starts for Keshu_6:
(Start: 61 @1229 has 7 MA's), (Start: 73 @1259 has 120 MA's), (84, 1292), (86, 1298), (87, 1304), (93, 1328), (101, 1382), (107, 1406),

Gene: KiSi_6 Start: 1261, Stop: 1497, Start Num: 67
Candidate Starts for KiSi_6:
(Start: 67 @1261 has 24 MA's), (Start: 73 @1270 has 120 MA's), (93, 1336), (101, 1390),

Gene: KingPhillip3_29 Start: 12818, Stop: 13117, Start Num: 58
Candidate Starts for KingPhillip3_29:
(Start: 58 @12818 has 26 MA's), (Start: 61 @12827 has 7 MA's), (95, 12968), (104, 13010),

Gene: Kratio_4 Start: 736, Stop: 1095, Start Num: 25
Candidate Starts for Kratio_4:
(Start: 25 @736 has 5 MA's), (34, 766), (49, 793), (Start: 68 @859 has 3 MA's), (69, 862), (Start: 73 @868 has 120 MA's), (83, 892), (87, 910), (93, 934), (101, 988), (123, 1057), (126, 1072),

Gene: Kraw_8 Start: 2221, Stop: 2493, Start Num: 64
Candidate Starts for Kraw_8:

(33, 2134), (44, 2158), (Start: 64 @2221 has 23 MA's), (84, 2290), (85, 2293), (89, 2314), (96, 2356), (119, 2440),

Gene: Krili_29 Start: 12988, Stop: 13287, Start Num: 58

Candidate Starts for Krili_29:

(29, 12910), (Start: 58 @12988 has 26 MA's), (Start: 61 @12997 has 7 MA's), (95, 13138), (104, 13180),

Gene: Krueger_6 Start: 1287, Stop: 1535, Start Num: 72

Candidate Starts for Krueger_6:

(Start: 61 @1257 has 7 MA's), (Start: 72 @1287 has 24 MA's), (87, 1350), (89, 1362), (101, 1428),

Gene: Kumotta_2 Start: 743, Stop: 1042, Start Num: 48

Candidate Starts for Kumotta_2:

(42, 734), (Start: 48 @743 has 17 MA's), (Start: 53 @758 has 1 MA's), (57, 767), (77, 821), (87, 866), (96, 917), (122, 1010),

Gene: Larva_5 Start: 738, Stop: 1097, Start Num: 25

Candidate Starts for Larva_5:

(Start: 25 @738 has 5 MA's), (34, 768), (49, 795), (Start: 68 @861 has 3 MA's), (69, 864), (Start: 73 @870 has 120 MA's), (83, 894), (87, 912), (93, 936), (101, 990), (123, 1059), (126, 1074),

Gene: LastHope_7 Start: 1385, Stop: 1633, Start Num: 71

Candidate Starts for LastHope_7:

(Start: 67 @1379 has 24 MA's), (Start: 71 @1385 has 3 MA's), (Start: 73 @1388 has 120 MA's), (87, 1448), (89, 1460), (101, 1526),

Gene: LaterM_7 Start: 1357, Stop: 1584, Start Num: 73

Candidate Starts for LaterM_7:

(54, 1303), (Start: 67 @1348 has 24 MA's), (Start: 71 @1354 has 3 MA's), (Start: 73 @1357 has 120 MA's), (85, 1390), (87, 1399), (93, 1423), (101, 1477),

Gene: Lavahound_5 Start: 970, Stop: 1197, Start Num: 73

Candidate Starts for Lavahound_5:

(Start: 67 @961 has 24 MA's), (Start: 73 @970 has 120 MA's), (87, 1012), (93, 1036), (101, 1090),

Gene: LeMond_6 Start: 1261, Stop: 1497, Start Num: 67

Candidate Starts for LeMond_6:

(Start: 67 @1261 has 24 MA's), (Start: 73 @1270 has 120 MA's), (93, 1336), (101, 1390),

Gene: Lea83_6 Start: 1277, Stop: 1504, Start Num: 73

Candidate Starts for Lea83_6:

(Start: 61 @1247 has 7 MA's), (Start: 73 @1277 has 120 MA's), (85, 1310), (86, 1313), (87, 1319), (98, 1382), (101, 1397), (107, 1421),

Gene: Lebo14_8 Start: 2234, Stop: 2506, Start Num: 64

Candidate Starts for Lebo14_8:

(33, 2147), (44, 2171), (Start: 64 @2234 has 23 MA's), (84, 2303), (85, 2306), (89, 2327), (96, 2369), (119, 2453),

Gene: Lemuria_1 Start: 45, Stop: 404, Start Num: 31

Candidate Starts for Lemuria_1:

(Start: 31 @45 has 23 MA's), (93, 225), (103, 285), (122, 360),

Gene: Leston_5 Start: 1131, Stop: 1358, Start Num: 73

Candidate Starts for Leston_5:

(Start: 73 @1131 has 120 MA's), (84, 1161), (87, 1173), (93, 1197), (101, 1251),

Gene: Liefie_1 Start: 42, Stop: 386, Start Num: 30

Candidate Starts for Liefie_1:

(Start: 30 @42 has 45 MA's), (Start: 31 @45 has 23 MA's), (78, 147), (93, 216), (100, 267), (108, 297),

Gene: LilDirt_4 Start: 869, Stop: 1096, Start Num: 73

Candidate Starts for LilDirt_4:

(Start: 25 @737 has 5 MA's), (34, 767), (49, 794), (Start: 68 @860 has 3 MA's), (69, 863), (Start: 73 @869 has 120 MA's), (83, 893), (87, 911), (93, 935), (101, 989), (123, 1058), (126, 1073),

Gene: LilPharaoh_3 Start: 636, Stop: 863, Start Num: 73

Candidate Starts for LilPharaoh_3:

(Start: 67 @627 has 24 MA's), (Start: 73 @636 has 120 MA's), (87, 678), (88, 684), (93, 702), (101, 756), (108, 783),

Gene: LilSpotty_1 Start: 54, Stop: 344, Start Num: 48

Candidate Starts for LilSpotty_1:

(Start: 48 @54 has 17 MA's), (59, 75), (86, 162), (90, 183), (100, 237), (101, 240), (102, 243), (117, 297),

Gene: LindNT_7 Start: 1351, Stop: 1578, Start Num: 73

Candidate Starts for LindNT_7:

(Start: 67 @1342 has 24 MA's), (Start: 73 @1351 has 120 MA's), (87, 1393), (93, 1417), (101, 1471),

Gene: Llorens_7 Start: 1426, Stop: 1653, Start Num: 73

Candidate Starts for Llorens_7:

(54, 1372), (Start: 67 @1417 has 24 MA's), (Start: 71 @1423 has 3 MA's), (Start: 73 @1426 has 120 MA's), (85, 1459), (87, 1468), (93, 1492), (101, 1546),

Gene: LouisV14_1 Start: 43, Stop: 387, Start Num: 30

Candidate Starts for LouisV14_1:

(Start: 30 @43 has 45 MA's), (Start: 31 @46 has 23 MA's), (78, 148), (93, 217), (100, 268),

Gene: Lton_1 Start: 107, Stop: 469, Start Num: 51

Candidate Starts for Lton_1:

(Start: 51 @107 has 4 MA's), (56, 119), (85, 218), (87, 227), (89, 239), (93, 251), (96, 281), (98, 290), (100, 302), (124, 377), (128, 416),

Gene: Lucky10_1 Start: 45, Stop: 347, Start Num: 48

Candidate Starts for Lucky10_1:

(Start: 48 @45 has 17 MA's), (74, 111), (76, 117), (77, 120), (85, 156), (87, 165), (89, 177), (101, 243), (116, 300),

Gene: Lunahalos_7 Start: 1426, Stop: 1653, Start Num: 73

Candidate Starts for Lunahalos_7:

(54, 1372), (Start: 67 @1417 has 24 MA's), (Start: 71 @1423 has 3 MA's), (Start: 73 @1426 has 120 MA's), (85, 1459), (87, 1468), (93, 1492), (101, 1546),

Gene: MOOREtheMARYer_1 Start: 53, Stop: 379, Start Num: 37

Candidate Starts for MOOREtheMARYer_1:
(34, 50), (Start: 37 @53 has 6 MA's), (50, 80), (78, 143), (84, 176), (87, 188), (99, 254), (103, 272),

Gene: MZKinsey_1 Start: 43, Stop: 387, Start Num: 30
Candidate Starts for MZKinsey_1:
(Start: 30 @43 has 45 MA's), (Start: 31 @46 has 23 MA's), (78, 148), (93, 217), (100, 268),

Gene: MacKat_7 Start: 1402, Stop: 1629, Start Num: 73
Candidate Starts for MacKat_7:
(54, 1348), (Start: 67 @1393 has 24 MA's), (Start: 71 @1399 has 3 MA's), (Start: 73 @1402 has 120 MA's), (85, 1435), (87, 1444), (93, 1468), (101, 1522),

Gene: MacnCheese_7 Start: 1483, Stop: 1710, Start Num: 73
Candidate Starts for MacnCheese_7:
(Start: 61 @1459 has 7 MA's), (Start: 73 @1483 has 120 MA's), (86, 1519), (87, 1525), (101, 1603), (107, 1627),

Gene: MadKillah_31 Start: 13207, Stop: 13506, Start Num: 58
Candidate Starts for MadKillah_31:
(22, 13084), (Start: 58 @13207 has 26 MA's), (Start: 61 @13216 has 7 MA's), (95, 13357), (104, 13399),

Gene: Maliketh_1 Start: 46, Stop: 387, Start Num: 31
Candidate Starts for Maliketh_1:
(Start: 30 @43 has 45 MA's), (Start: 31 @46 has 23 MA's), (78, 148), (93, 217), (100, 268),

Gene: Malthus_8 Start: 2221, Stop: 2493, Start Num: 64
Candidate Starts for Malthus_8:
(33, 2134), (44, 2158), (Start: 64 @2221 has 23 MA's), (84, 2290), (85, 2293), (89, 2314), (96, 2356), (119, 2440),

Gene: Marcoliusprime_3 Start: 426, Stop: 674, Start Num: 72
Candidate Starts for Marcoliusprime_3:
(Start: 64 @408 has 23 MA's), (Start: 72 @426 has 24 MA's), (87, 489), (89, 501), (101, 567),

Gene: MargaretKali_2 Start: 578, Stop: 871, Start Num: 53
Candidate Starts for MargaretKali_2:
(Start: 53 @578 has 1 MA's), (59, 593), (86, 680), (87, 686), (91, 704), (93, 710),

Gene: MarkPhew_6 Start: 1221, Stop: 1448, Start Num: 73
Candidate Starts for MarkPhew_6:
(Start: 67 @1212 has 24 MA's), (Start: 73 @1221 has 120 MA's), (93, 1287), (101, 1341),

Gene: Marmie_1 Start: 43, Stop: 387, Start Num: 30
Candidate Starts for Marmie_1:
(Start: 30 @43 has 45 MA's), (Start: 31 @46 has 23 MA's), (78, 148), (93, 217), (100, 268),

Gene: Marshawn_8 Start: 1819, Stop: 2043, Start Num: 73
Candidate Starts for Marshawn_8:
(Start: 67 @1810 has 24 MA's), (Start: 73 @1819 has 120 MA's), (87, 1858), (93, 1882), (101, 1936),

Gene: McMater_7 Start: 1449, Stop: 1676, Start Num: 73
Candidate Starts for McMater_7:

(Start: 67 @1440 has 24 MA's), (Start: 73 @1449 has 120 MA's), (87, 1491), (93, 1515), (101, 1569),

Gene: Mdavu_3 Start: 636, Stop: 863, Start Num: 73

Candidate Starts for Mdavu_3:

(Start: 67 @627 has 24 MA's), (Start: 73 @636 has 120 MA's), (87, 678), (88, 684), (93, 702), (101, 756), (108, 783),

Gene: MeaningOfLife_7 Start: 1352, Stop: 1579, Start Num: 73

Candidate Starts for MeaningOfLife_7:

(54, 1298), (Start: 67 @1343 has 24 MA's), (Start: 71 @1349 has 3 MA's), (Start: 73 @1352 has 120 MA's), (85, 1385), (93, 1418), (101, 1472),

Gene: Megsy_7 Start: 1342, Stop: 1578, Start Num: 67

Candidate Starts for Megsy_7:

(54, 1297), (Start: 67 @1342 has 24 MA's), (Start: 73 @1351 has 120 MA's), (87, 1393), (93, 1417), (101, 1471),

Gene: Mercurio_2 Start: 700, Stop: 1044, Start Num: 38

Candidate Starts for Mercurio_2:

(1, 271), (2, 343), (3, 349), (4, 355), (5, 415), (9, 514), (10, 523), (35, 691), (Start: 37 @697 has 6 MA's), (Start: 38 @700 has 1 MA's), (87, 844), (93, 868), (96, 898), (97, 901), (122, 1000),

Gene: Merpity_1 Start: 51, Stop: 347, Start Num: 48

Candidate Starts for Merpity_1:

(43, 45), (Start: 48 @51 has 17 MA's), (85, 156), (87, 165), (93, 189), (98, 228), (108, 270),

Gene: Milly_3 Start: 426, Stop: 674, Start Num: 72

Candidate Starts for Milly_3:

(Start: 64 @408 has 23 MA's), (Start: 72 @426 has 24 MA's), (87, 489), (89, 501), (101, 567),

Gene: Miryou_5 Start: 1105, Stop: 1332, Start Num: 73

Candidate Starts for Miryou_5:

(20, 922), (21, 934), (Start: 25 @973 has 5 MA's), (34, 1003), (Start: 68 @1096 has 3 MA's), (69, 1099), (Start: 73 @1105 has 120 MA's), (93, 1171), (98, 1210), (101, 1225),

Gene: MissDaisy_8 Start: 2177, Stop: 2449, Start Num: 64

Candidate Starts for MissDaisy_8:

(13, 1949), (15, 1970), (18, 1997), (44, 2114), (Start: 64 @2177 has 23 MA's), (84, 2246), (85, 2249), (86, 2252), (89, 2270), (96, 2312), (119, 2396),

Gene: Mitti_8 Start: 2234, Stop: 2506, Start Num: 64

Candidate Starts for Mitti_8:

(33, 2147), (44, 2171), (Start: 64 @2234 has 23 MA's), (84, 2303), (85, 2306), (89, 2327), (96, 2369), (119, 2453),

Gene: MooMoo_1 Start: 63, Stop: 377, Start Num: 47

Candidate Starts for MooMoo_1:

(Start: 47 @63 has 1 MA's), (54, 87), (74, 138), (86, 186), (87, 192), (93, 216), (100, 267), (107, 294), (108, 297), (109, 303),

Gene: Moosehead_1 Start: 103, Stop: 465, Start Num: 51

Candidate Starts for Moosehead_1:

(49, 97), (Start: 51 @103 has 4 MA's), (56, 115), (85, 214), (87, 223), (89, 235), (93, 247), (96, 277), (113, 352), (120, 364), (124, 373), (125, 385), (127, 394), (129, 430),

Gene: Mori_29 Start: 12859, Stop: 13158, Start Num: 58

Candidate Starts for Mori_29:

(29, 12781), (Start: 58 @12859 has 26 MA's), (Start: 61 @12868 has 7 MA's), (95, 13009), (104, 13051),

Gene: Morkie_1 Start: 44, Stop: 346, Start Num: 48

Candidate Starts for Morkie_1:

(Start: 48 @44 has 17 MA's), (74, 110), (85, 155), (87, 164), (89, 176), (101, 242), (116, 299),

Gene: Mowgli_1 Start: 46, Stop: 387, Start Num: 31

Candidate Starts for Mowgli_1:

(Start: 30 @43 has 45 MA's), (Start: 31 @46 has 23 MA's), (78, 148), (93, 217), (100, 268),

Gene: MrSmee_1 Start: 51, Stop: 347, Start Num: 48

Candidate Starts for MrSmee_1:

(43, 45), (Start: 48 @51 has 17 MA's), (85, 156), (87, 165), (93, 189), (98, 228), (108, 270),

Gene: Mufasa_3 Start: 426, Stop: 674, Start Num: 72

Candidate Starts for Mufasa_3:

(Start: 64 @408 has 23 MA's), (Start: 72 @426 has 24 MA's), (87, 489), (89, 501), (93, 513), (101, 567),

Gene: Murai_30 Start: 13049, Stop: 13348, Start Num: 58

Candidate Starts for Murai_30:

(Start: 58 @13049 has 26 MA's), (Start: 61 @13058 has 7 MA's), (95, 13199), (104, 13241),

Gene: Murucutumbu_7 Start: 1351, Stop: 1578, Start Num: 73

Candidate Starts for Murucutumbu_7:

(54, 1297), (Start: 67 @1342 has 24 MA's), (Start: 71 @1348 has 3 MA's), (Start: 73 @1351 has 120 MA's), (85, 1384), (87, 1393), (93, 1417), (101, 1471),

Gene: Mynx_7 Start: 1402, Stop: 1629, Start Num: 73

Candidate Starts for Mynx_7:

(54, 1348), (Start: 67 @1393 has 24 MA's), (Start: 71 @1399 has 3 MA's), (Start: 73 @1402 has 120 MA's), (85, 1435), (87, 1444), (93, 1468), (101, 1522),

Gene: Neighly_5 Start: 869, Stop: 1096, Start Num: 73

Candidate Starts for Neighly_5:

(Start: 25 @737 has 5 MA's), (34, 767), (49, 794), (Start: 68 @860 has 3 MA's), (69, 863), (Start: 73 @869 has 120 MA's), (83, 893), (87, 911), (93, 935), (101, 989), (123, 1058), (126, 1073),

Gene: Neoh_1 Start: 47, Stop: 388, Start Num: 31

Candidate Starts for Neoh_1:

(Start: 30 @44 has 45 MA's), (Start: 31 @47 has 23 MA's), (78, 149), (93, 218), (100, 269),

Gene: Nibb_6 Start: 1364, Stop: 1591, Start Num: 73

Candidate Starts for Nibb_6:

(Start: 67 @1355 has 24 MA's), (Start: 73 @1364 has 120 MA's), (93, 1430), (101, 1484),

Gene: NiebruSaylor_29 Start: 12860, Stop: 13159, Start Num: 58

Candidate Starts for NiebruSaylor_29:

(29, 12782), (Start: 58 @12860 has 26 MA's), (Start: 61 @12869 has 7 MA's), (95, 13010), (104, 13052),

Gene: Nikao_3 Start: 636, Stop: 863, Start Num: 73

Candidate Starts for Nikao_3:

(Start: 67 @627 has 24 MA's), (Start: 73 @636 has 120 MA's), (87, 678), (88, 684), (93, 702), (101, 756), (108, 783),

Gene: Niklas_7 Start: 1449, Stop: 1676, Start Num: 73

Candidate Starts for Niklas_7:

(Start: 67 @1440 has 24 MA's), (Start: 73 @1449 has 120 MA's), (87, 1491), (93, 1515), (101, 1569),

Gene: November_5 Start: 1039, Stop: 1257, Start Num: 73

Candidate Starts for November_5:

(19, 847), (Start: 67 @1030 has 24 MA's), (Start: 73 @1039 has 120 MA's), (83, 1054), (84, 1060), (87, 1072), (93, 1096), (101, 1150),

Gene: Nutello_3 Start: 636, Stop: 863, Start Num: 73

Candidate Starts for Nutello_3:

(Start: 67 @627 has 24 MA's), (Start: 73 @636 has 120 MA's), (87, 678), (88, 684), (93, 702), (101, 756), (108, 783),

Gene: OctaviousRex_1 Start: 43, Stop: 387, Start Num: 30

Candidate Starts for OctaviousRex_1:

(Start: 30 @43 has 45 MA's), (Start: 31 @46 has 23 MA's), (78, 148), (93, 217), (100, 268),

Gene: OkiRoe_5 Start: 1107, Stop: 1334, Start Num: 73

Candidate Starts for OkiRoe_5:

(Start: 73 @1107 has 120 MA's), (84, 1137), (87, 1149), (93, 1173), (101, 1227),

Gene: Olga_1 Start: 46, Stop: 387, Start Num: 31

Candidate Starts for Olga_1:

(Start: 30 @43 has 45 MA's), (Start: 31 @46 has 23 MA's), (78, 148), (93, 217), (100, 268),

Gene: OmniCritical_8 Start: 2221, Stop: 2493, Start Num: 64

Candidate Starts for OmniCritical_8:

(33, 2134), (44, 2158), (Start: 64 @2221 has 23 MA's), (84, 2290), (85, 2293), (89, 2314), (96, 2356), (119, 2440),

Gene: Omnicron_5 Start: 1158, Stop: 1394, Start Num: 68

Candidate Starts for Omnicron_5:

(Start: 68 @1158 has 3 MA's), (69, 1161), (Start: 73 @1167 has 120 MA's), (93, 1233), (98, 1272), (101, 1287), (112, 1329),

Gene: OneDirection_1 Start: 104, Stop: 466, Start Num: 51

Candidate Starts for OneDirection_1:

(49, 98), (Start: 51 @104 has 4 MA's), (85, 215), (86, 218), (87, 224), (89, 236), (93, 248), (96, 278), (120, 365), (128, 413), (129, 431),

Gene: Oscar_6 Start: 1262, Stop: 1498, Start Num: 67

Candidate Starts for Oscar_6:

(Start: 67 @1262 has 24 MA's), (Start: 73 @1271 has 120 MA's), (93, 1337), (101, 1391),

Gene: Pace1224_1 Start: 52, Stop: 387, Start Num: 37
Candidate Starts for Pace1224_1:
(Start: 37 @52 has 6 MA's), (50, 79), (93, 214), (96, 244),

Gene: Padfoot_7 Start: 1417, Stop: 1653, Start Num: 67
Candidate Starts for Padfoot_7:
(54, 1372), (Start: 67 @1417 has 24 MA's), (Start: 71 @1423 has 3 MA's), (Start: 73 @1426 has 120 MA's), (85, 1459), (87, 1468), (93, 1492), (101, 1546),

Gene: Padpat_7 Start: 1382, Stop: 1609, Start Num: 73
Candidate Starts for Padpat_7:
(54, 1328), (Start: 67 @1373 has 24 MA's), (Start: 71 @1379 has 3 MA's), (Start: 73 @1382 has 120 MA's), (85, 1415), (87, 1424), (93, 1448), (101, 1502),

Gene: Paito_1 Start: 47, Stop: 382, Start Num: 36
Candidate Starts for Paito_1:
(Start: 36 @47 has 2 MA's), (46, 62), (84, 173), (93, 209), (97, 242),

Gene: Paola_5 Start: 1106, Stop: 1333, Start Num: 73
Candidate Starts for Paola_5:
(Start: 73 @1106 has 120 MA's), (84, 1136), (87, 1148), (93, 1172), (101, 1226),

Gene: Patt_8 Start: 2153, Stop: 2425, Start Num: 64
Candidate Starts for Patt_8:
(33, 2066), (44, 2090), (Start: 64 @2153 has 23 MA's), (84, 2222), (85, 2225), (86, 2228), (89, 2246), (96, 2288), (119, 2372),

Gene: Peanam_7 Start: 1440, Stop: 1676, Start Num: 67
Candidate Starts for Peanam_7:
(Start: 67 @1440 has 24 MA's), (Start: 73 @1449 has 120 MA's), (87, 1491), (93, 1515), (101, 1569),

Gene: Peeb_1 Start: 46, Stop: 387, Start Num: 31
Candidate Starts for Peeb_1:
(Start: 30 @43 has 45 MA's), (Start: 31 @46 has 23 MA's), (78, 148), (93, 217), (100, 268),

Gene: Peel_7 Start: 1417, Stop: 1653, Start Num: 67
Candidate Starts for Peel_7:
(54, 1372), (Start: 67 @1417 has 24 MA's), (Start: 71 @1423 has 3 MA's), (Start: 73 @1426 has 120 MA's), (85, 1459), (87, 1468), (93, 1492), (101, 1546),

Gene: Periodt_1 Start: 43, Stop: 387, Start Num: 30
Candidate Starts for Periodt_1:
(Start: 30 @43 has 45 MA's), (Start: 31 @46 has 23 MA's), (78, 148), (93, 217), (100, 268),

Gene: Pharb_6 Start: 1077, Stop: 1304, Start Num: 73
Candidate Starts for Pharb_6:
(Start: 61 @1047 has 7 MA's), (Start: 73 @1077 has 120 MA's), (86, 1113), (87, 1119), (93, 1143), (101, 1197), (107, 1221),

Gene: PhelpsODU_6 Start: 1317, Stop: 1565, Start Num: 72
Candidate Starts for PhelpsODU_6:
(Start: 61 @1287 has 7 MA's), (Start: 72 @1317 has 24 MA's), (87, 1380), (89, 1392), (101, 1458),

Gene: Phish_1 Start: 46, Stop: 387, Start Num: 31

Candidate Starts for Phish_1:

(Start: 30 @43 has 45 MA's), (Start: 31 @46 has 23 MA's), (78, 148), (93, 217), (100, 268),

Gene: Phloodle_1 Start: 43, Stop: 387, Start Num: 30

Candidate Starts for Phloodle_1:

(Start: 30 @43 has 45 MA's), (Start: 31 @46 has 23 MA's), (78, 148), (93, 217), (100, 268),

Gene: PhorbesPhlower_1 Start: 44, Stop: 346, Start Num: 48

Candidate Starts for PhorbesPhlower_1:

(Start: 48 @44 has 17 MA's), (74, 110), (85, 155), (87, 164), (89, 176), (101, 242), (116, 299),

Gene: Phrank_6 Start: 1283, Stop: 1531, Start Num: 72

Candidate Starts for Phrank_6:

(Start: 61 @1253 has 7 MA's), (Start: 72 @1283 has 24 MA's), (87, 1346), (89, 1358), (101, 1424),

Gene: Phreak_1 Start: 43, Stop: 387, Start Num: 30

Candidate Starts for Phreak_1:

(Start: 30 @43 has 45 MA's), (Start: 31 @46 has 23 MA's), (78, 148), (93, 217), (100, 268),

Gene: Piatt_7 Start: 1426, Stop: 1653, Start Num: 73

Candidate Starts for Piatt_7:

(54, 1372), (Start: 67 @1417 has 24 MA's), (Start: 71 @1423 has 3 MA's), (Start: 73 @1426 has 120 MA's), (85, 1459), (87, 1468), (93, 1492), (101, 1546),

Gene: Pigu_1 Start: 55, Stop: 363, Start Num: 48

Candidate Starts for Pigu_1:

(32, 28), (Start: 48 @55 has 17 MA's), (59, 91), (74, 130), (108, 283),

Gene: PinkYoshi_1 Start: 46, Stop: 387, Start Num: 31

Candidate Starts for PinkYoshi_1:

(Start: 30 @43 has 45 MA's), (Start: 31 @46 has 23 MA's), (78, 148), (93, 217), (100, 268),

Gene: Pinnie_2 Start: 520, Stop: 846, Start Num: 37

Candidate Starts for Pinnie_2:

(8, 322), (Start: 37 @520 has 6 MA's), (50, 547), (78, 613), (84, 646), (87, 658), (99, 724), (103, 742), (105, 748),

Gene: Pisa1_6 Start: 1151, Stop: 1378, Start Num: 73

Candidate Starts for Pisa1_6:

(Start: 67 @1142 has 24 MA's), (Start: 73 @1151 has 120 MA's), (87, 1193), (93, 1217), (101, 1271),

Gene: Pisa4_6 Start: 1151, Stop: 1378, Start Num: 73

Candidate Starts for Pisa4_6:

(Start: 67 @1142 has 24 MA's), (Start: 73 @1151 has 120 MA's), (87, 1193), (93, 1217), (101, 1271),

Gene: Pitbull_1 Start: 58, Stop: 360, Start Num: 45

Candidate Starts for Pitbull_1:

(Start: 45 @58 has 1 MA's), (Start: 48 @61 has 17 MA's), (56, 79), (59, 88), (96, 235), (98, 244), (100, 256), (101, 259),

Gene: Pixie_6 Start: 1028, Stop: 1255, Start Num: 73

Candidate Starts for Pixie_6:

(Start: 61 @998 has 7 MA's), (Start: 73 @1028 has 120 MA's), (85, 1061), (86, 1064), (87, 1070), (98, 1133), (101, 1148), (107, 1172),

Gene: Plagueis_1 Start: 46, Stop: 387, Start Num: 31

Candidate Starts for Plagueis_1:

(Start: 30 @43 has 45 MA's), (Start: 31 @46 has 23 MA's), (78, 148), (93, 217), (100, 268),

Gene: Pokerus_6 Start: 1336, Stop: 1563, Start Num: 73

Candidate Starts for Pokerus_6:

(54, 1282), (Start: 67 @1327 has 24 MA's), (Start: 71 @1333 has 3 MA's), (Start: 73 @1336 has 120 MA's), (85, 1369), (87, 1378), (93, 1402), (101, 1456),

Gene: Primanti_1 Start: 46, Stop: 387, Start Num: 31

Candidate Starts for Primanti_1:

(Start: 30 @43 has 45 MA's), (Start: 31 @46 has 23 MA's), (78, 148), (93, 217), (100, 268),

Gene: Prithvi_7 Start: 1351, Stop: 1578, Start Num: 73

Candidate Starts for Prithvi_7:

(Start: 67 @1342 has 24 MA's), (Start: 73 @1351 has 120 MA's), (87, 1393), (93, 1417), (101, 1471),

Gene: Psycho_5 Start: 997, Stop: 1356, Start Num: 25

Candidate Starts for Psycho_5:

(Start: 25 @997 has 5 MA's), (34, 1027), (49, 1054), (Start: 68 @1120 has 3 MA's), (69, 1123), (Start: 73 @1129 has 120 MA's), (83, 1153), (87, 1171), (93, 1195), (96, 1225), (101, 1249), (123, 1318), (126, 1333),

Gene: Qhanda_8 Start: 2234, Stop: 2506, Start Num: 64

Candidate Starts for Qhanda_8:

(33, 2147), (44, 2171), (Start: 64 @2234 has 23 MA's), (84, 2303), (85, 2306), (89, 2327), (96, 2369), (119, 2453),

Gene: QuincyRose_6 Start: 1393, Stop: 1629, Start Num: 67

Candidate Starts for QuincyRose_6:

(54, 1348), (Start: 67 @1393 has 24 MA's), (Start: 71 @1399 has 3 MA's), (Start: 73 @1402 has 120 MA's), (85, 1435), (87, 1444), (93, 1468), (101, 1522),

Gene: REQ2_01 Start: 71, Stop: 421, Start Num: 55

Candidate Starts for REQ2_01:

(27, 5), (55, 71), (70, 116), (75, 128), (77, 134), (87, 182), (93, 206), (98, 245),

Gene: Rabbs_1 Start: 44, Stop: 388, Start Num: 30

Candidate Starts for Rabbs_1:

(Start: 30 @44 has 45 MA's), (Start: 31 @47 has 23 MA's), (78, 149), (93, 218), (100, 269),

Gene: Ramen_7 Start: 1376, Stop: 1603, Start Num: 73

Candidate Starts for Ramen_7:

(Start: 67 @1367 has 24 MA's), (Start: 71 @1373 has 3 MA's), (Start: 73 @1376 has 120 MA's), (85, 1409), (87, 1418), (93, 1442), (101, 1496),

Gene: Rando14_5 Start: 1196, Stop: 1423, Start Num: 73

Candidate Starts for Rando14_5:

(Start: 68 @1187 has 3 MA's), (69, 1190), (Start: 73 @1196 has 120 MA's), (93, 1262), (98, 1301), (101, 1316), (112, 1358),

Gene: Rapunzel97_7 Start: 1376, Stop: 1603, Start Num: 73

Candidate Starts for Rapunzel97_7:

(Start: 67 @1367 has 24 MA's), (Start: 71 @1373 has 3 MA's), (Start: 73 @1376 has 120 MA's), (85, 1409), (87, 1418), (93, 1442), (101, 1496),

Gene: Raqqa_2 Start: 745, Stop: 1044, Start Num: 48

Candidate Starts for Raqqa_2:

(41, 736), (Start: 48 @745 has 17 MA's), (59, 769), (85, 853), (86, 856), (87, 862),

Gene: Rattrick_1 Start: 46, Stop: 387, Start Num: 31

Candidate Starts for Rattrick_1:

(Start: 30 @43 has 45 MA's), (Start: 31 @46 has 23 MA's), (78, 148), (93, 217), (100, 268),

Gene: Raya_1 Start: 70, Stop: 369, Start Num: 48

Candidate Starts for Raya_1:

(Start: 48 @70 has 17 MA's), (60, 97), (Start: 68 @112 has 3 MA's), (76, 130), (87, 178), (94, 220), (96, 232), (98, 241), (99, 244), (118, 316), (121, 322),

Gene: Remy19_1 Start: 43, Stop: 387, Start Num: 30

Candidate Starts for Remy19_1:

(Start: 30 @43 has 45 MA's), (Start: 31 @46 has 23 MA's), (78, 148), (93, 217), (100, 268),

Gene: Renaissance_1 Start: 43, Stop: 387, Start Num: 30

Candidate Starts for Renaissance_1:

(Start: 30 @43 has 45 MA's), (Start: 31 @46 has 23 MA's), (78, 148), (93, 217), (100, 268),

Gene: Reptar3000_8 Start: 2152, Stop: 2424, Start Num: 64

Candidate Starts for Reptar3000_8:

(33, 2065), (44, 2089), (Start: 64 @2152 has 23 MA's), (84, 2221), (85, 2224), (86, 2227), (89, 2245), (96, 2287), (119, 2371),

Gene: Richarlison_1 Start: 43, Stop: 387, Start Num: 30

Candidate Starts for Richarlison_1:

(Start: 30 @43 has 45 MA's), (Start: 31 @46 has 23 MA's), (78, 148), (93, 217), (100, 268),

Gene: Richo_7 Start: 1449, Stop: 1676, Start Num: 73

Candidate Starts for Richo_7:

(Start: 67 @1440 has 24 MA's), (Start: 73 @1449 has 120 MA's), (87, 1491), (93, 1515), (101, 1569),

Gene: Rooter_1 Start: 59, Stop: 364, Start Num: 48

Candidate Starts for Rooter_1:

(Start: 48 @59 has 17 MA's), (62, 101), (122, 332),

Gene: Rosmarinus_7 Start: 1426, Stop: 1653, Start Num: 73

Candidate Starts for Rosmarinus_7:

(54, 1372), (Start: 67 @1417 has 24 MA's), (Start: 71 @1423 has 3 MA's), (Start: 73 @1426 has 120 MA's), (85, 1459), (87, 1468), (93, 1492), (101, 1546),

Gene: Ruriko_1 Start: 43, Stop: 387, Start Num: 30

Candidate Starts for Ruriko_1:

(Start: 30 @43 has 45 MA's), (Start: 31 @46 has 23 MA's), (78, 148), (93, 217), (100, 268),

Gene: Ruthiejr_7 Start: 1960, Stop: 2229, Start Num: 64

Candidate Starts for Ruthiejr_7:

(Start: 64 @1960 has 23 MA's), (84, 2026), (85, 2029), (89, 2050), (96, 2092), (119, 2176),

Gene: Ryadel_32 Start: 13643, Stop: 13933, Start Num: 61

Candidate Starts for Ryadel_32:

(22, 13511), (Start: 58 @13634 has 26 MA's), (Start: 61 @13643 has 7 MA's), (95, 13784), (104, 13826),

Gene: SamScheppers_6 Start: 1831, Stop: 2103, Start Num: 64

Candidate Starts for SamScheppers_6:

(33, 1744), (44, 1768), (Start: 64 @1831 has 23 MA's), (84, 1900), (85, 1903), (89, 1924), (96, 1966), (119, 2050),

Gene: SamuelLPlaqson_7 Start: 1355, Stop: 1582, Start Num: 73

Candidate Starts for SamuelLPlaqson_7:

(54, 1304), (Start: 67 @1346 has 24 MA's), (Start: 73 @1355 has 120 MA's), (87, 1397), (93, 1421), (101, 1475),

Gene: Sarge_1 Start: 49, Stop: 357, Start Num: 48

Candidate Starts for Sarge_1:

(32, 28), (Start: 48 @49 has 17 MA's), (59, 85), (79, 142), (108, 277),

Gene: Scarlett_6 Start: 1261, Stop: 1497, Start Num: 67

Candidate Starts for Scarlett_6:

(Start: 67 @1261 has 24 MA's), (Start: 73 @1270 has 120 MA's), (93, 1336), (101, 1390),

Gene: Schiebel_1 Start: 46, Stop: 387, Start Num: 31

Candidate Starts for Schiebel_1:

(Start: 30 @43 has 45 MA's), (Start: 31 @46 has 23 MA's), (78, 148), (93, 217), (100, 268),

Gene: SchoolBus_29 Start: 12830, Stop: 13120, Start Num: 61

Candidate Starts for SchoolBus_29:

(22, 12698), (Start: 58 @12821 has 26 MA's), (Start: 61 @12830 has 7 MA's), (95, 12971), (104, 13013),

Gene: Schuy_31 Start: 13207, Stop: 13506, Start Num: 58

Candidate Starts for Schuy_31:

(22, 13084), (Start: 58 @13207 has 26 MA's), (Start: 61 @13216 has 7 MA's), (95, 13357), (104, 13399),

Gene: SgtBeansprout_3 Start: 636, Stop: 863, Start Num: 73

Candidate Starts for SgtBeansprout_3:

(Start: 67 @627 has 24 MA's), (Start: 73 @636 has 120 MA's), (87, 678), (88, 684), (93, 702), (101, 756), (108, 783),

Gene: ShaboiShabazz_1 Start: 46, Stop: 387, Start Num: 31

Candidate Starts for ShaboiShabazz_1:

(Start: 30 @43 has 45 MA's), (Start: 31 @46 has 23 MA's), (78, 148), (93, 217), (100, 268),

Gene: Shadow1_5 Start: 1191, Stop: 1439, Start Num: 72

Candidate Starts for Shadow1_5:

(Start: 61 @1161 has 7 MA's), (Start: 72 @1191 has 24 MA's), (84, 1242), (87, 1254), (89, 1266), (101, 1332),

Gene: Shaobing_7 Start: 1449, Stop: 1676, Start Num: 73

Candidate Starts for Shaobing_7:

(Start: 67 @1440 has 24 MA's), (Start: 73 @1449 has 120 MA's), (87, 1491), (93, 1515), (101, 1569),

Gene: ShedlockHolmes_6 Start: 1277, Stop: 1504, Start Num: 73

Candidate Starts for ShedlockHolmes_6:

(Start: 61 @1247 has 7 MA's), (Start: 73 @1277 has 120 MA's), (85, 1310), (86, 1313), (87, 1319), (98, 1382), (101, 1397), (107, 1421),

Gene: ShiaSurprise_7 Start: 1426, Stop: 1653, Start Num: 73

Candidate Starts for ShiaSurprise_7:

(54, 1372), (Start: 67 @1417 has 24 MA's), (Start: 71 @1423 has 3 MA's), (Start: 73 @1426 has 120 MA's), (85, 1459), (87, 1468), (93, 1492), (101, 1546),

Gene: Shida_30 Start: 13114, Stop: 13413, Start Num: 58

Candidate Starts for Shida_30:

(29, 13036), (Start: 58 @13114 has 26 MA's), (Start: 61 @13123 has 7 MA's), (95, 13264), (104, 13306),

Gene: Shoya_1 Start: 59, Stop: 364, Start Num: 48

Candidate Starts for Shoya_1:

(Start: 48 @59 has 17 MA's), (62, 101), (122, 332),

Gene: SirPhilip_6 Start: 1153, Stop: 1398, Start Num: 72

Candidate Starts for SirPhilip_6:

(65, 1144), (Start: 72 @1153 has 24 MA's), (87, 1213), (101, 1291), (110, 1324),

Gene: Sizemore_1 Start: 46, Stop: 387, Start Num: 31

Candidate Starts for Sizemore_1:

(Start: 30 @43 has 45 MA's), (Start: 31 @46 has 23 MA's), (78, 148), (93, 217), (100, 268),

Gene: Skitty_1 Start: 51, Stop: 347, Start Num: 48

Candidate Starts for Skitty_1:

(43, 45), (Start: 48 @51 has 17 MA's), (85, 156), (87, 165), (93, 189), (98, 228), (108, 270),

Gene: Skyerus_1 Start: 70, Stop: 369, Start Num: 48

Candidate Starts for Skyerus_1:

(Start: 48 @70 has 17 MA's), (60, 97), (Start: 68 @112 has 3 MA's), (76, 130), (87, 178), (94, 220), (96, 232), (98, 241), (99, 244), (118, 316), (121, 322),

Gene: Slarp_8 Start: 2234, Stop: 2506, Start Num: 64

Candidate Starts for Slarp_8:

(33, 2147), (44, 2171), (Start: 64 @2234 has 23 MA's), (84, 2303), (85, 2306), (89, 2327), (96, 2369), (119, 2453),

Gene: Slimphazie_7 Start: 1376, Stop: 1603, Start Num: 73

Candidate Starts for Slimphazie_7:

(Start: 67 @1367 has 24 MA's), (Start: 71 @1373 has 3 MA's), (Start: 73 @1376 has 120 MA's), (85, 1409), (87, 1418), (93, 1442), (101, 1496),

Gene: Smooch_32 Start: 14365, Stop: 14664, Start Num: 58

Candidate Starts for Smooch_32:

(22, 14242), (Start: 58 @14365 has 26 MA's), (Start: 61 @14374 has 7 MA's), (95, 14515), (104, 14557),

Gene: Sneeze_1 Start: 43, Stop: 387, Start Num: 30

Candidate Starts for Sneeze_1:

(Start: 30 @43 has 45 MA's), (Start: 31 @46 has 23 MA's), (78, 148), (93, 217), (100, 268),

Gene: SoSeph_5 Start: 1127, Stop: 1354, Start Num: 73

Candidate Starts for SoSeph_5:

(Start: 73 @1127 has 120 MA's), (84, 1157), (87, 1169), (93, 1193), (101, 1247),

Gene: Spartoi_1 Start: 95, Stop: 397, Start Num: 48

Candidate Starts for Spartoi_1:

(28, 50), (35, 68), (39, 80), (Start: 48 @95 has 17 MA's), (76, 158), (80, 173), (87, 206), (96, 260), (99, 272), (111, 320), (116, 341),

Gene: Spock_7 Start: 1426, Stop: 1653, Start Num: 73

Candidate Starts for Spock_7:

(54, 1372), (Start: 67 @1417 has 24 MA's), (Start: 71 @1423 has 3 MA's), (Start: 73 @1426 has 120 MA's), (85, 1459), (87, 1468), (93, 1492), (101, 1546),

Gene: Stargaze_1 Start: 52, Stop: 372, Start Num: 37

Candidate Starts for Stargaze_1:

(Start: 37 @52 has 6 MA's), (78, 136), (87, 181), (93, 205), (100, 256), (115, 310),

Gene: Stinson_7 Start: 1348, Stop: 1584, Start Num: 67

Candidate Starts for Stinson_7:

(54, 1303), (Start: 67 @1348 has 24 MA's), (Start: 71 @1354 has 3 MA's), (Start: 73 @1357 has 120 MA's), (85, 1390), (87, 1399), (93, 1423), (101, 1477),

Gene: Strobilo_3 Start: 426, Stop: 674, Start Num: 72

Candidate Starts for Strobilo_3:

(Start: 72 @426 has 24 MA's), (87, 489), (89, 501), (101, 567),

Gene: Sulley_7 Start: 1364, Stop: 1591, Start Num: 73

Candidate Starts for Sulley_7:

(52, 1304), (Start: 67 @1355 has 24 MA's), (Start: 73 @1364 has 120 MA's), (87, 1406), (93, 1430), (101, 1484),

Gene: Sunflower1121_5 Start: 1190, Stop: 1438, Start Num: 72

Candidate Starts for Sunflower1121_5:

(Start: 61 @1160 has 7 MA's), (Start: 72 @1190 has 24 MA's), (84, 1241), (87, 1253), (89, 1265), (101, 1331),

Gene: Sweets_1 Start: 46, Stop: 387, Start Num: 31

Candidate Starts for Sweets_1:

(Start: 30 @43 has 45 MA's), (Start: 31 @46 has 23 MA's), (78, 148), (93, 217), (100, 268),

Gene: Syra333_6 Start: 1295, Stop: 1543, Start Num: 72

Candidate Starts for Syra333_6:

(Start: 61 @1265 has 7 MA's), (Start: 72 @1295 has 24 MA's), (84, 1346), (87, 1358), (89, 1370), (101, 1436),

Gene: TBond007_6 Start: 997, Stop: 1254, Start Num: 61

Candidate Starts for TBond007_6:

(Start: 61 @997 has 7 MA's), (Start: 73 @1027 has 120 MA's), (85, 1060), (86, 1063), (87, 1069), (98, 1132), (101, 1147), (107, 1171),

Gene: TClif_6 Start: 1251, Stop: 1478, Start Num: 73

Candidate Starts for TClif_6:

(Start: 61 @1221 has 7 MA's), (Start: 73 @1251 has 120 MA's), (87, 1293), (93, 1317), (101, 1371),

Gene: TM4_3 Start: 438, Stop: 689, Start Num: 72

Candidate Starts for TM4_3:

(16, 231), (Start: 72 @438 has 24 MA's), (87, 501), (89, 513), (101, 579),

Gene: Tachez_7 Start: 1345, Stop: 1572, Start Num: 73

Candidate Starts for Tachez_7:

(54, 1291), (Start: 67 @1336 has 24 MA's), (Start: 71 @1342 has 3 MA's), (Start: 73 @1345 has 120 MA's), (85, 1378), (87, 1387), (93, 1411), (101, 1465),

Gene: Taheera_1 Start: 47, Stop: 391, Start Num: 31

Candidate Starts for Taheera_1:

(Start: 31 @47 has 23 MA's), (78, 149), (93, 218),

Gene: TaiwanKao_7 Start: 1351, Stop: 1578, Start Num: 73

Candidate Starts for TaiwanKao_7:

(54, 1297), (Start: 67 @1342 has 24 MA's), (Start: 73 @1351 has 120 MA's), (87, 1393), (93, 1417), (101, 1471),

Gene: Taquito_6 Start: 1832, Stop: 2104, Start Num: 64

Candidate Starts for Taquito_6:

(33, 1745), (44, 1769), (Start: 64 @1832 has 23 MA's), (84, 1901), (85, 1904), (89, 1925), (96, 1967), (119, 2051),

Gene: Teejan_3 Start: 636, Stop: 863, Start Num: 73

Candidate Starts for Teejan_3:

(Start: 67 @627 has 24 MA's), (Start: 73 @636 has 120 MA's), (87, 678), (88, 684), (93, 702), (101, 756), (108, 783),

Gene: TelAviv_27 Start: 12815, Stop: 13114, Start Num: 58

Candidate Starts for TelAviv_27:

(Start: 58 @12815 has 26 MA's), (Start: 61 @12824 has 7 MA's), (95, 12965), (104, 13007),

Gene: Terror_1 Start: 47, Stop: 391, Start Num: 31

Candidate Starts for Terror_1:

(Start: 31 @47 has 23 MA's), (78, 149), (93, 218),

Gene: Thyatira_5 Start: 1105, Stop: 1332, Start Num: 73

Candidate Starts for Thyatira_5:

(20, 922), (21, 934), (Start: 25 @973 has 5 MA's), (34, 1003), (Start: 68 @1096 has 3 MA's), (69, 1099), (Start: 73 @1105 has 120 MA's), (93, 1171), (98, 1210), (101, 1225),

Gene: Tierra_6 Start: 1285, Stop: 1533, Start Num: 72
Candidate Starts for Tierra_6:
(Start: 61 @1255 has 7 MA's), (Start: 72 @1285 has 24 MA's), (87, 1348), (89, 1360), (101, 1426),

Gene: Tigress9_6 Start: 1287, Stop: 1535, Start Num: 72
Candidate Starts for Tigress9_6:
(Start: 61 @1257 has 7 MA's), (Start: 72 @1287 has 24 MA's), (87, 1350), (89, 1362), (101, 1428),

Gene: TinaBug_1 Start: 46, Stop: 387, Start Num: 31
Candidate Starts for TinaBug_1:
(Start: 30 @43 has 45 MA's), (Start: 31 @46 has 23 MA's), (78, 148), (93, 217), (100, 268),

Gene: TingHuaYa_7 Start: 1386, Stop: 1634, Start Num: 71
Candidate Starts for TingHuaYa_7:
(Start: 67 @1380 has 24 MA's), (Start: 71 @1386 has 3 MA's), (Start: 73 @1389 has 120 MA's), (87, 1449), (89, 1461), (101, 1527),

Gene: TiniBug_7 Start: 1355, Stop: 1582, Start Num: 73
Candidate Starts for TiniBug_7:
(54, 1304), (Start: 67 @1346 has 24 MA's), (Start: 73 @1355 has 120 MA's), (87, 1397), (93, 1421), (101, 1475),

Gene: Tiri_7 Start: 1393, Stop: 1620, Start Num: 73
Candidate Starts for Tiri_7:
(54, 1339), (Start: 67 @1384 has 24 MA's), (Start: 71 @1390 has 3 MA's), (Start: 73 @1393 has 120 MA's), (85, 1426), (87, 1435), (93, 1459), (101, 1513),

Gene: TomBrady_1 Start: 44, Stop: 388, Start Num: 30
Candidate Starts for TomBrady_1:
(Start: 30 @44 has 45 MA's), (Start: 31 @47 has 23 MA's), (78, 149), (93, 218), (100, 269),

Gene: Topper_7 Start: 1426, Stop: 1653, Start Num: 73
Candidate Starts for Topper_7:
(54, 1372), (Start: 67 @1417 has 24 MA's), (Start: 71 @1423 has 3 MA's), (Start: 73 @1426 has 120 MA's), (85, 1459), (87, 1468), (93, 1492), (101, 1546),

Gene: Torres_3 Start: 636, Stop: 863, Start Num: 73
Candidate Starts for Torres_3:
(Start: 67 @627 has 24 MA's), (Start: 73 @636 has 120 MA's), (87, 678), (88, 684), (93, 702), (101, 756), (108, 783),

Gene: TreyKay_7 Start: 1351, Stop: 1578, Start Num: 73
Candidate Starts for TreyKay_7:
(Start: 67 @1342 has 24 MA's), (Start: 73 @1351 has 120 MA's), (87, 1393), (93, 1417), (101, 1471),

Gene: TribbleTrouble_5 Start: 1095, Stop: 1322, Start Num: 73
Candidate Starts for TribbleTrouble_5:
(Start: 61 @1065 has 7 MA's), (Start: 73 @1095 has 120 MA's), (86, 1131), (87, 1137), (101, 1215), (107, 1239),

Gene: Trice_3 Start: 636, Stop: 863, Start Num: 73
Candidate Starts for Trice_3:

(Start: 67 @627 has 24 MA's), (Start: 73 @636 has 120 MA's), (87, 678), (88, 684), (93, 702), (101, 756), (108, 783),

Gene: TruffulaTree_7 Start: 1376, Stop: 1603, Start Num: 73

Candidate Starts for TruffulaTree_7:

(54, 1322), (Start: 67 @1367 has 24 MA's), (Start: 71 @1373 has 3 MA's), (Start: 73 @1376 has 120 MA's), (85, 1409), (87, 1418), (93, 1442), (101, 1496),

Gene: Twitch_7 Start: 1417, Stop: 1653, Start Num: 67

Candidate Starts for Twitch_7:

(54, 1372), (Start: 67 @1417 has 24 MA's), (Start: 71 @1423 has 3 MA's), (Start: 73 @1426 has 120 MA's), (85, 1459), (87, 1468), (93, 1492), (101, 1546),

Gene: Unicorn_6 Start: 1317, Stop: 1565, Start Num: 72

Candidate Starts for Unicorn_6:

(Start: 61 @1287 has 7 MA's), (Start: 72 @1317 has 24 MA's), (87, 1380), (89, 1392), (101, 1458),

Gene: Urkel_7 Start: 1355, Stop: 1582, Start Num: 73

Candidate Starts for Urkel_7:

(54, 1304), (Start: 67 @1346 has 24 MA's), (Start: 73 @1355 has 120 MA's), (87, 1397), (93, 1421), (101, 1475),

Gene: Vagabond_30 Start: 13088, Stop: 13387, Start Num: 58

Candidate Starts for Vagabond_30:

(22, 12965), (Start: 58 @13088 has 26 MA's), (Start: 61 @13097 has 7 MA's), (95, 13238), (104, 13280),

Gene: Validus_7 Start: 1356, Stop: 1592, Start Num: 67

Candidate Starts for Validus_7:

(Start: 67 @1356 has 24 MA's), (Start: 73 @1365 has 120 MA's), (87, 1407), (93, 1431), (101, 1485),

Gene: Veliki_7 Start: 1426, Stop: 1653, Start Num: 73

Candidate Starts for Veliki_7:

(54, 1372), (Start: 67 @1417 has 24 MA's), (Start: 71 @1423 has 3 MA's), (Start: 73 @1426 has 120 MA's), (85, 1459), (87, 1468), (93, 1492), (101, 1546),

Gene: ViviJ_4 Start: 869, Stop: 1096, Start Num: 73

Candidate Starts for ViviJ_4:

(Start: 25 @737 has 5 MA's), (34, 767), (49, 794), (Start: 68 @860 has 3 MA's), (69, 863), (Start: 73 @869 has 120 MA's), (83, 893), (87, 911), (93, 935), (101, 989), (123, 1058), (126, 1073),

Gene: Vorrps_29 Start: 12860, Stop: 13159, Start Num: 58

Candidate Starts for Vorrps_29:

(29, 12782), (Start: 58 @12860 has 26 MA's), (Start: 61 @12869 has 7 MA's), (95, 13010), (104, 13052),

Gene: Waterfoul_5 Start: 1127, Stop: 1354, Start Num: 73

Candidate Starts for Waterfoul_5:

(Start: 73 @1127 has 120 MA's), (84, 1157), (87, 1169), (93, 1193), (101, 1247),

Gene: Wendigo_1 Start: 43, Stop: 387, Start Num: 30

Candidate Starts for Wendigo_1:

(Start: 30 @43 has 45 MA's), (Start: 31 @46 has 23 MA's), (78, 148), (93, 217), (100, 268),

Gene: Wildflower_30 Start: 12855, Stop: 13154, Start Num: 58

Candidate Starts for Wildflower_30:

(29, 12777), (Start: 58 @12855 has 26 MA's), (Start: 61 @12864 has 7 MA's), (95, 13005), (104, 13047),

Gene: Winget_30 Start: 13096, Stop: 13386, Start Num: 61

Candidate Starts for Winget_30:

(22, 12964), (Start: 58 @13087 has 26 MA's), (Start: 61 @13096 has 7 MA's), (95, 13237), (104, 13279),

Gene: Wintermute_8 Start: 2220, Stop: 2492, Start Num: 64

Candidate Starts for Wintermute_8:

(33, 2133), (44, 2157), (Start: 64 @2220 has 23 MA's), (84, 2289), (85, 2292), (89, 2313), (119, 2439),

Gene: Wogge42_29 Start: 13177, Stop: 13476, Start Num: 58

Candidate Starts for Wogge42_29:

(22, 13054), (Start: 58 @13177 has 26 MA's), (Start: 61 @13186 has 7 MA's), (95, 13327), (104, 13369),

Gene: Ximenita_7 Start: 1459, Stop: 1707, Start Num: 72

Candidate Starts for Ximenita_7:

(Start: 61 @1429 has 7 MA's), (Start: 72 @1459 has 24 MA's), (87, 1522), (89, 1534), (101, 1600),

Gene: Y10_08 Start: 2221, Stop: 2493, Start Num: 64

Candidate Starts for Y10_08:

(33, 2134), (44, 2158), (Start: 64 @2221 has 23 MA's), (84, 2290), (85, 2293), (89, 2314), (96, 2356), (119, 2440),

Gene: Y2_08 Start: 2221, Stop: 2493, Start Num: 64

Candidate Starts for Y2_08:

(33, 2134), (44, 2158), (Start: 64 @2221 has 23 MA's), (84, 2290), (85, 2293), (89, 2314), (96, 2356), (119, 2440),

Gene: YangYin_1 Start: 52, Stop: 372, Start Num: 37

Candidate Starts for YangYin_1:

(Start: 37 @52 has 6 MA's), (78, 136), (87, 181), (93, 205), (100, 256), (115, 310),

Gene: YasnayaPolyana_8 Start: 2221, Stop: 2493, Start Num: 64

Candidate Starts for YasnayaPolyana_8:

(33, 2134), (44, 2158), (Start: 64 @2221 has 23 MA's), (84, 2290), (85, 2293), (89, 2314), (96, 2356), (119, 2440),

Gene: YoureAdopted_6 Start: 1352, Stop: 1579, Start Num: 73

Candidate Starts for YoureAdopted_6:

(54, 1298), (Start: 67 @1343 has 24 MA's), (Start: 71 @1349 has 3 MA's), (Start: 73 @1352 has 120 MA's), (85, 1385), (87, 1394), (93, 1418), (101, 1472),

Gene: YoyoKar_28 Start: 12831, Stop: 13121, Start Num: 61

Candidate Starts for YoyoKar_28:

(22, 12699), (Start: 58 @12822 has 26 MA's), (Start: 61 @12831 has 7 MA's), (95, 12972), (104, 13014),

Gene: Yuna_7 Start: 1452, Stop: 1679, Start Num: 73
Candidate Starts for Yuna_7:
(Start: 73 @1452 has 120 MA's), (87, 1494), (93, 1518), (101, 1572),

Gene: YungJamal_32 Start: 13159, Stop: 13449, Start Num: 61
Candidate Starts for YungJamal_32:
(29, 13072), (Start: 58 @13150 has 26 MA's), (Start: 61 @13159 has 7 MA's), (95, 13300), (104, 13342),

Gene: Yunkel11_7 Start: 1376, Stop: 1603, Start Num: 73
Candidate Starts for Yunkel11_7:
(52, 1313), (Start: 67 @1367 has 24 MA's), (Start: 73 @1376 has 120 MA's), (93, 1442), (101, 1496),

Gene: Zabiza_7 Start: 1367, Stop: 1603, Start Num: 67
Candidate Starts for Zabiza_7:
(Start: 67 @1367 has 24 MA's), (Start: 71 @1373 has 3 MA's), (Start: 73 @1376 has 120 MA's), (85, 1409), (87, 1418), (93, 1442), (101, 1496),

Gene: Zakhe101_30 Start: 13000, Stop: 13299, Start Num: 58
Candidate Starts for Zakhe101_30:
(29, 12922), (Start: 58 @13000 has 26 MA's), (Start: 61 @13009 has 7 MA's), (95, 13150), (104, 13192),

Gene: Zavala_7 Start: 1352, Stop: 1588, Start Num: 67
Candidate Starts for Zavala_7:
(54, 1307), (Start: 67 @1352 has 24 MA's), (Start: 71 @1358 has 3 MA's), (Start: 73 @1361 has 120 MA's), (85, 1394), (87, 1403), (93, 1427), (101, 1481),

Gene: Zebo_29 Start: 12821, Stop: 13120, Start Num: 58
Candidate Starts for Zebo_29:
(22, 12698), (Start: 58 @12821 has 26 MA's), (Start: 61 @12830 has 7 MA's), (95, 12971), (104, 13013),

Gene: ZoMa_1 Start: 43, Stop: 387, Start Num: 30
Candidate Starts for ZoMa_1:
(Start: 30 @43 has 45 MA's), (Start: 31 @46 has 23 MA's), (78, 148), (93, 217), (100, 268),

Gene: ZoeJ_3 Start: 426, Stop: 674, Start Num: 72
Candidate Starts for ZoeJ_3:
(Start: 72 @426 has 24 MA's), (87, 489), (89, 501), (93, 513), (101, 567),

Gene: Zombie_1 Start: 43, Stop: 387, Start Num: 30
Candidate Starts for Zombie_1:
(Start: 30 @43 has 45 MA's), (Start: 31 @46 has 23 MA's), (78, 148), (93, 217), (100, 268),