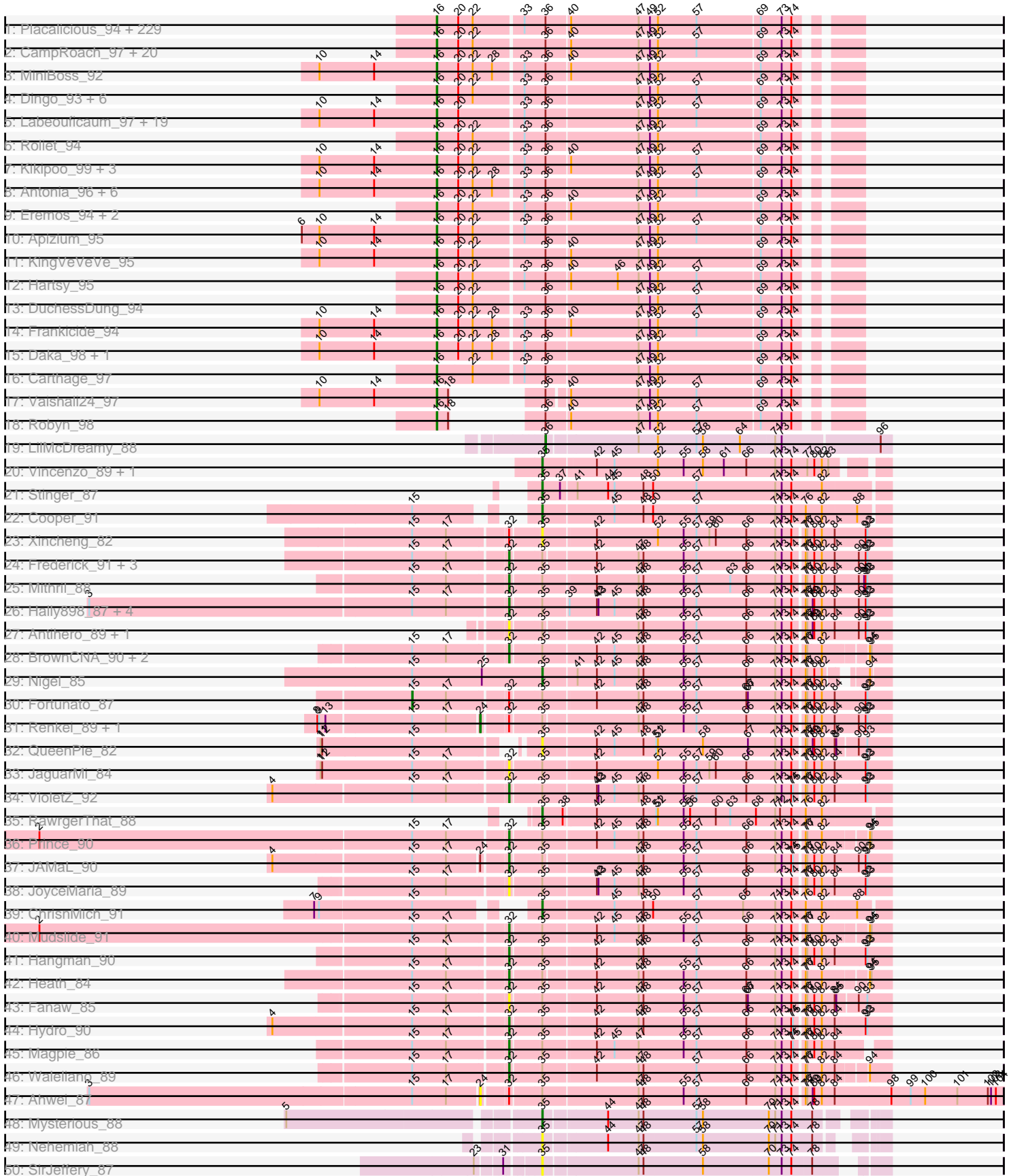
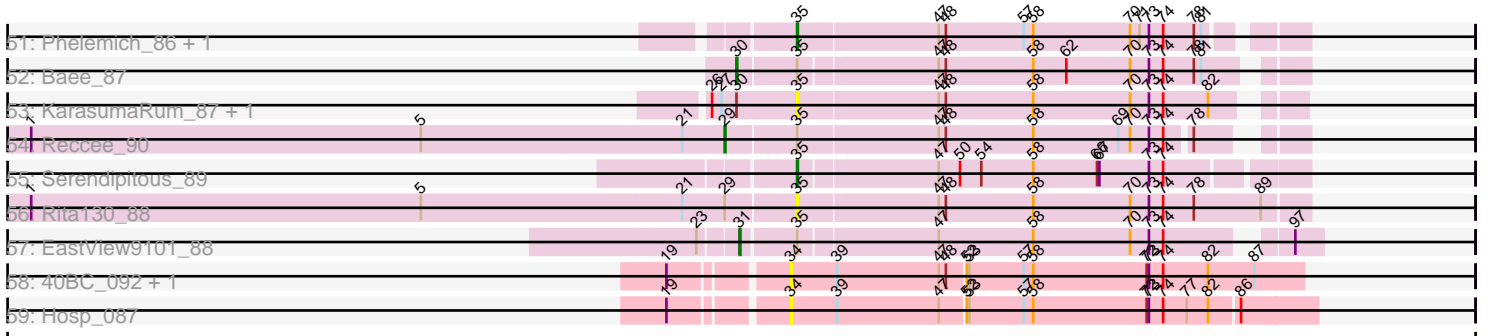


# Pham 311115



Pham 311115



Note: Tracks are now grouped by subcluster and scaled. Switching in subcluster is indicated by changes in track color. Track scale is now set by default to display the region 30 bp upstream of start 1 to 30 bp downstream of the last possible start. If this default region is judged to be packed too tightly with annotated starts, the track will be further scaled to only show that region of the ORF with annotated starts. This action will be indicated by adding "Zoomed" to the title. For starts, yellow indicates the location of called starts comprised solely of Glimmer/GeneMark auto-annotations, green indicates the location of called starts with at least 1 manual gene annotation.

## Pham 311115 Report

This analysis was run 06/27/26 on database version 652.

Pham number 311115 has 360 members, 46 are drafts.

Phages represented in each track:

- Track 1 : Placalicious\_94, Lego3393\_95, Pherdinand\_98, Dione\_95, Oline\_96, Flake\_96, Anderson\_98, Gwennie1\_96, Longacauda\_97, Chah\_99, Daffy\_96, Riverton\_95, Orwigg\_98, Nicole21\_98, DonSanchon\_92, Childish\_97, UncleHowie\_93, Prickles\_97, Legolas\_98, Matalotodo\_95, Tomlarah\_97, LemonSlice\_97, Nyala\_97, Fringe\_101, LuckyMarjie\_94, Jiminy\_97, Zelda\_97, Banjo\_93, Mana\_94, Morgushi\_94, RedRaider89\_95, PallasAthena\_98, Duggie\_97, LasagnaCat\_98, Skippy\_97, DoesntMatter\_94, JDog\_96, PhatCats2014\_96, Katniss\_99, Iridessa\_99, ShiVal\_96, Fang\_97, AbsoluteMadLad\_95, Craff\_98, Simielle\_97, Sigman\_96, Struggle\_97, Happabalu\_95, Riggan\_98, Phunky\_94, BlackStallion\_96, Eugenia\_99, Mecca\_97, Ricotta\_98, JacAttac\_97, Andre\_101, TallGrassMM\_96, Jesabah\_101, Yoshand\_98, Podrick\_95, Cannibal\_97, Beaglebox\_93, Etaye\_96, Kwadwo\_96, FugateOSU\_97, Toni\_96, Manad\_96, Waterdiva\_98, Bluephacebaby\_96, FriarPreacher\_94, Mesmerelda\_97, Piglet\_0096, Squid\_96, LeiMonet\_100, Morty\_97, CamL\_97, Chuni\_98, Scoot17C\_97, Plmatters\_94, Sheila\_91, SassyCat97\_95, Hamish\_94, QueenBeane\_97, Suffolk\_92, BoogieWoogie\_98, Karn\_96, CheetO\_93, JakeO\_98, Sophia\_95, Vaticameos\_94, Iridoclysis\_96, Xavier\_96, Lulwa\_94, PhenghisKhan\_97, Emiris\_99, Telesworld\_95, Mosaic\_94, Weher20\_94, Vortex\_95, PG1\_95, PhrankReynolds\_95, Mutante\_98, Coletti\_100, Giraffe\_98, Kimbrough\_98, LeeLot\_95, PinheadLarry\_96, Soile\_98, Vista\_96, Murdoc\_93, Aonishiki\_97, Olive\_93, Held\_95, Keitherie\_100, OneBrain\_98, Selr12\_101, SallyH\_100, Inverness\_94, SilverBell\_98, Lumine\_98, Jiraiya\_98, ProfessorX\_94, Oosterbaan\_97, Inchworm\_98, Badfish\_97, Hetaeria\_96, Slatt\_99, Hertubise\_96, GeneCoco\_96, Haimas\_94, Phareon\_94, DirtJuice\_98, KlimbOn\_96, Hekos\_94, KLucky39\_94, Burr\_99, EmpTee\_96, Jillium\_97, Larson\_99, Cher\_97, Altwerkus\_94, Buckeye\_95, MitKao\_97, MRabcd\_97, Adriana\_97, Cornbread\_97, Thora\_95, FremontTroll\_97, Virapocalypse\_98, HighStump\_99, Mulan\_96, Plata\_95, Kahve\_97, Usavi\_97, Mesh1\_97, Swiphy\_99, Dice\_97, Chipette\_94, KingTut\_87, Nathan\_96, Trypo\_97, Colbert\_95, Aleia\_96, DolOn\_100, Cosmolli16\_98, HenryJackson\_97, Squiggle\_96, Nova1\_96, Phamished\_96, Gophee\_96, YouGoGlencoco\_97, JangoPhett\_95, Mcshane\_99, UAch1\_97, Puhltonio\_92, True\_98, Thunderbird\_97, Timmi\_95, Zaider\_98, Olak\_99, Orfeu\_97, Phergie\_97, Phipps\_94, Bishoperium\_97, Numberten\_97, Newman\_92, Hocus\_96, Quisquilliae\_99, NiaNia\_98, Doddsville\_94, TomBombadil\_97, Gareth\_97, FluffyNinja\_98, GreenChile\_95, Charles1\_100, Melc17\_94, Spartan300\_96, Samaymay\_97, Nacho\_0099, ShadowBud\_97, Freya\_93, Haleema\_96, Scrick\_98, Chute\_97, LostAndPhound\_96, Serendipity\_96, Grand2040\_94, DaddyDaniels\_100, DelRivs\_96, ThreeOh3D2\_98, ABU\_95, Orion\_95, TooFast2Furius\_95, Lasso\_96,

Serpentine\_0099, Crownjwl\_94, Maru\_96, Cobra\_97, Megatron\_98, Pacifista\_99, PhatLouie\_99, Brilliant\_100, PhrodoBaggins\_99, Dati\_94, Omniscient\_98, HogWash\_97, Swish\_98, Potter\_91, Solosis\_95, OliverWalter\_96

- Track 2 : CampRoach\_97, BlacksBerry\_97, CaspiBoi\_96, Surely\_97, MrPhizzler\_100, Zonia\_97, Durga\_99, Lulumae\_92, FleetyMac\_101, Chorkpop\_98, Fozzie\_93, Roy17\_94, Valjean\_95, Megamind20\_99, Taraxa\_97, Virgeve\_95, Wallhey\_98, Khan1\_97, Pinkman\_96, Kwksand96\_98, Rimu\_96
- Track 3 : MiniBoss\_92
- Track 4 : Dingo\_93, Pipsqueak\_94, Basato\_95, Soto\_93, Harvey\_94, Kloppinator\_97, Mikota\_91
- Track 5 : Labeouficaum\_97, Phleuron\_94, Derpp\_96, SirBeauregard\_97, Magic8\_96, Kailash\_95, Schueller\_95, TyrionL\_97, Ashraf\_98, Windsor\_96, Maskar\_98, CharlieGBrown\_95, MichaelPhcott\_95, Veritas\_96, AngelCake\_97, MelsMeow\_95, Mag7\_95, Chaelin\_97, ImtiyazSitla\_98, BatteryCK\_95
- Track 6 : Roliet\_94
- Track 7 : Kikipoo\_99, Gwilliam\_97, AltPhacts\_94, IsaacEli\_99
- Track 8 : Antonia\_96, EmGer13\_96, Schadenfreude\_97, Cornobble\_95, OSmaximus\_97, RedMaple\_95, Aelin\_96
- Track 9 : Eremos\_94, Lopsy\_93, Tooj\_94
- Track 10 : Apizium\_95
- Track 11 : KingVeVeVe\_95
- Track 12 : Hartsy\_95
- Track 13 : DuchessDung\_94
- Track 14 : Frankicide\_94
- Track 15 : Daka\_98, SDcharge11\_95
- Track 16 : Carthage\_97
- Track 17 : Vaishali24\_97
- Track 18 : Robyn\_98
- Track 19 : LilMcDreamy\_88
- Track 20 : Vincenzo\_89, AlanGrant\_90
- Track 21 : Stinger\_87
- Track 22 : Cooper\_91
- Track 23 : Xincheng\_82
- Track 24 : Frederick\_91, BobbyK\_90, Apex\_91, Zemanar\_88
- Track 25 : Mithril\_88
- Track 26 : Hally898\_87, Nanao\_89, Poster\_88, Lambano\_87, GinPorsche\_91
- Track 27 : Antihero\_89, Epah\_89
- Track 28 : BrownCNA\_90, Austelle\_90, Lolalove\_92
- Track 29 : Nigel\_85
- Track 30 : Fortunato\_87
- Track 31 : Renkei\_89, LittleDigger\_89
- Track 32 : QueenPie\_82
- Track 33 : JaguarMi\_84
- Track 34 : VioletZ\_92
- Track 35 : RawrgerThat\_88
- Track 36 : Prince\_90
- Track 37 : JAMaL\_90
- Track 38 : JoyceMaria\_89
- Track 39 : ChrisnMich\_91
- Track 40 : Mudslide\_91
- Track 41 : Hangman\_90
- Track 42 : Heath\_84
- Track 43 : Fanaw\_85

- Track 44 : Hydro\_90
- Track 45 : Magpie\_86
- Track 46 : Waleliano\_89
- Track 47 : Ahwei\_87
- Track 48 : Mysterious\_88
- Track 49 : Nehemiah\_88
- Track 50 : SirJeffery\_87
- Track 51 : Phelemich\_86, Reprobate\_88
- Track 52 : Bae\_87
- Track 53 : KarasumaRum\_87, StinkyVeggy\_87
- Track 54 : Reccee\_90
- Track 55 : Serendipitous\_89
- Track 56 : Rita130\_88
- Track 57 : EastView9101\_88
- Track 58 : 40BC\_092, 39HC\_092
- Track 59 : Hosp\_087

***Summary of Final Annotations (See graph section above for start numbers):***

The start number called the most often in the published annotations is 16, it was called in 278 of the 314 non-draft genes in the pham.

Genes that call this "Most Annotated" start:

- ABU\_95, AbsoluteMadLad\_95, Adriana\_97, Aelin\_96, Aleia\_96, AltPhacts\_94, Altwerkus\_94, Anderson\_98, Andre\_101, AngelCake\_97, Antonia\_96, Aonishiki\_97, Apizium\_95, Ashraf\_98, Badfish\_97, Banjo\_93, Basato\_95, BatteryCK\_95, Beaglebox\_93, Bishoperium\_97, BlackStallion\_96, BlackBerry\_97, Bluephacebaby\_96, BoogieWoogie\_98, Brilliant\_100, Buckeye\_95, Burr\_99, CamL\_97, CampRoach\_97, Cannibal\_97, Carthage\_97, Caspiboi\_96, Chaelin\_97, Chah\_99, Charles1\_100, CharlieGBrown\_95, CheetO\_93, Cher\_97, Childish\_97, Chipette\_94, Chorkpop\_98, Chuni\_98, Chute\_97, Cobra\_97, Colbert\_95, Coletti\_100, Cornbread\_97, Cornobble\_95, Cosmolli16\_98, Craff\_98, Crownjwl\_94, DaddyDaniels\_100, Daffy\_96, Daka\_98, Dati\_94, DelRivs\_96, Derpp\_96, Dice\_97, Dingo\_93, Dione\_95, DirtJuice\_98, Doddsville\_94, DoesntMatter\_94, DolOn\_100, DonSanchon\_92, DuchessDung\_94, Duggie\_97, Durga\_99, EmGer13\_96, Emiris\_99, EmpTee\_96, Eremos\_94, Etaye\_96, Eugenia\_99, Fang\_97, Flake\_96, FleetyMac\_101, FluffyNinja\_98, Fozzie\_93, Frankicide\_94, FremontTroll\_97, Freya\_93, FriarPreacher\_94, Fringe\_101, FugateOSU\_97, Gareth\_97, GeneCoco\_96, Giraffe\_98, Gophee\_96, Grand2040\_94, GreenChile\_95, Gwennie1\_96, Gwilliam\_97, Haimas\_94, Haleema\_96, Hamish\_94, Happabalu\_95, Hartsy\_95, Harvey\_94, Hekos\_94, Held\_95, HenryJackson\_97, Hertubise\_96, Hetaeria\_96, HighStump\_99, Hocus\_96, HogWash\_97, ImtiyazSitla\_98, Inchworm\_98, Inverness\_94, Iridessa\_99, Iridoclysis\_96, IsaacEli\_99, JDog\_96, JacAttac\_97, JakeO\_98, JangoPhett\_95, Jesabah\_101, Jillium\_97, Jiminy\_97, Jiraiya\_98, KLucky39\_94, Kahve\_97, Kailash\_95, Karn\_96, Katniss\_99, Keitherie\_100, Khan1\_97, Kikipoo\_99, Kimbrough\_98, KingTut\_87, KingVeVeVe\_95, KlimbOn\_96, Kloppinator\_97, Kwadwo\_96, Kwksand96\_98, Labeouficaum\_97, Larson\_99, LasagnaCat\_98, Lasso\_96, LeeLot\_95, Lego3393\_95, Legolas\_98, LeiMonet\_100, LemonSlice\_97, Longacauda\_97, Lopsy\_93, LostAndPhound\_96, LuckyMarjie\_94, Lulumae\_92, Lulwa\_94, Lumine\_98, MRabcd\_97, Mag7\_95,

Magic8\_96, Mana\_94, Manad\_96, Maru\_96, Maskar\_98, Matalotodo\_95, Mcshane\_99, Mecca\_97, Megamind20\_99, Megatron\_98, Melc17\_94, MelsMeow\_95, Mesh1\_97, Mesmerelda\_97, MichaelPhcott\_95, Mikota\_91, MiniBoss\_92, MitKao\_97, Morgushi\_94, Morty\_97, Mosaic\_94, MrPhizzler\_100, Mulan\_96, Murdoc\_93, Mutante\_98, Nacho\_0099, Nathan\_96, Newman\_92, NiaNia\_98, Nicole21\_98, Nova1\_96, Numberben\_97, Nyala\_97, OSmaximus\_97, Olak\_99, Oline\_96, Olive\_93, OliverWalter\_96, Omniscient\_98, OneBrain\_98, Oosterbaan\_97, Orfeu\_97, Orion\_95, Orwig\_98, PG1\_95, Pacifista\_99, PallasAthena\_98, Phamished\_96, Phareon\_94, PhatCats2014\_96, PhatLouie\_99, PhenghisKhan\_97, Pherdinand\_98, Phergie\_97, Phipps\_94, Phleuron\_94, PhrankReynolds\_95, PhrodoBaggins\_99, Phunky\_94, Piglet\_0096, PinheadLarry\_96, Pinkman\_96, Pipsqueak\_94, Placalicious\_94, Plata\_95, Plmatters\_94, Podrick\_95, Potter\_91, Prickles\_97, ProfessorX\_94, Puhltonio\_92, QueenBeane\_97, Quisquiliae\_99, RedMaple\_95, RedRaider89\_95, Ricotta\_98, Riggan\_98, Rimu\_96, Riverton\_95, Robyn\_98, Roliet\_94, Roy17\_94, SDcharge11\_95, SallyH\_100, Samaymay\_97, SassyCat97\_95, Schadenfreude\_97, Schueller\_95, Scoot17C\_97, Scrick\_98, Selr12\_101, Serendipity\_96, Serpentine\_0099, ShadowBud\_97, Sheila\_91, ShiVal\_96, Sigman\_96, SilverBell\_98, Simielle\_97, SirBeauregard\_97, Skippy\_97, Slatt\_99, Soile\_98, Solosis\_95, Sophia\_95, Soto\_93, Spartan300\_96, Squid\_96, Squiggle\_96, Struggle\_97, Suffolk\_92, Surely\_97, Swiphy\_99, Swish\_98, TallGrassMM\_96, Taraxa\_97, Telesworld\_95, Thora\_95, ThreeOh3D2\_98, Thunderbird\_97, Timmi\_95, TomBombadil\_97, Tomlarah\_97, Toni\_96, TooFast2Furius\_95, Tooj\_94, True\_98, Trypo\_97, TyrionL\_97, UAch1\_97, UncleHowie\_93, Usavi\_97, Vaishali24\_97, Valjean\_95, Vaticameos\_94, Veritas\_96, Virapocalypse\_98, Virgeve\_95, Vista\_96, Vortex\_95, Wallhey\_98, Waterdiva\_98, Weher20\_94, Windsor\_96, Xavier\_96, Yoshand\_98, YouGoGlencoco\_97, Zaider\_98, Zelda\_97, Zonia\_97,

Genes that have the "Most Annotated" start but do not call it:

- 

Genes that do not have the "Most Annotated" start:

- 39HC\_092, 40BC\_092, Ahwei\_87, AlanGrant\_90, Antihero\_89, Apex\_91, Austelle\_90, Bae\_87, BobbyK\_90, BrownCNA\_90, ChrisnMich\_91, Cooper\_91, EastView9101\_88, Epah\_89, Fanaw\_85, Fortunato\_87, Frederick\_91, GinPorsche\_91, Hally898\_87, Hangman\_90, Heath\_84, Hosp\_087, Hydro\_90, JAMaL\_90, JaguarMi\_84, JoyceMaria\_89, KarasumaRum\_87, Lambano\_87, LilMcDreamy\_88, LittleDigger\_89, Lolalove\_92, Magpie\_86, Mithril\_88, Mudslide\_91, Mysterious\_88, Nanao\_89, Nehemiah\_88, Nigel\_85, Phelemich\_86, Poster\_88, Prince\_90, QueenPie\_82, RawrgerThat\_88, Reccee\_90, Renkei\_89, Reprobate\_88, Rita130\_88, Serendipitous\_89, SirJeffery\_87, Stinger\_87, StinkyVeggy\_87, Vincenzo\_89, VioletZ\_92, Waleliano\_89, Xincheng\_82, Zemanar\_88,

### Summary by start number:

Start 15:

- Found in 34 of 360 ( 9.4% ) of genes in pham
- Manual Annotations of this start: 1 of 314
- Called 2.9% of time when present
- Phage (with cluster) where this start called: Fortunato\_87 (B4),

Start 16:

- Found in 304 of 360 ( 84.4% ) of genes in pham

- Manual Annotations of this start: 278 of 314
- Called 100.0% of time when present
- Phage (with cluster) where this start called: ABU\_95 (B1), AbsoluteMadLad\_95 (B1), Adriana\_97 (B1), Aelin\_96 (B1), Aleia\_96 (B1), AltPhacts\_94 (B1), Altwerkus\_94 (B1), Anderson\_98 (B1), Andre\_101 (B1), AngelCake\_97 (B1), Antonia\_96 (B1), Aonishiki\_97 (B1), Apizium\_95 (B1), Ashraf\_98 (B1), Badfish\_97 (B1), Banjo\_93 (B1), Basato\_95 (B1), BatteryCK\_95 (B1), Beaglebox\_93 (B1), Bishoperium\_97 (B1), BlackStallion\_96 (B1), BlacksBerry\_97 (B1), Bluephacebaby\_96 (B1), BoogieWoogie\_98 (B1), Brilliant\_100 (B1), Buckeye\_95 (B1), Burr\_99 (B1), CamL\_97 (B1), CampRoach\_97 (B1), Cannibal\_97 (B1), Carthage\_97 (B1), CaspiBoi\_96 (B1), Chaelin\_97 (B1), Chah\_99 (B1), Charles1\_100 (B1), CharlieGBrown\_95 (B1), CheetO\_93 (B1), Cher\_97 (B1), Childish\_97 (B1), Chipette\_94 (B1), Chorkpop\_98 (B1), Chuni\_98 (B1), Chute\_97 (B1), Cobra\_97 (B1), Colbert\_95 (B1), Coletti\_100 (B1), Cornbread\_97 (B1), Cornobble\_95 (B1), Cosmolli16\_98 (B1), Craff\_98 (B1), Crownjwl\_94 (B1), DaddyDaniels\_100 (B1), Daffy\_96 (B1), Daka\_98 (B1), Dati\_94 (B1), DelRivs\_96 (B1), Derpp\_96 (B1), Dice\_97 (B1), Dingo\_93 (B1), Dione\_95 (B1), DirtJuice\_98 (B1), Doddsville\_94 (B1), DoesntMatter\_94 (B1), DolOn\_100 (B1), DonSanchon\_92 (B1), DuchessDung\_94 (B1), Duggie\_97 (B1), Durga\_99 (B1), EmGer13\_96 (B1), Emiris\_99 (B1), EmpTee\_96 (B1), Eremos\_94 (B1), Etaye\_96 (B1), Eugenia\_99 (B1), Fang\_97 (B1), Flake\_96 (B1), FleetyMac\_101 (B1), FluffyNinja\_98 (B1), Fozzie\_93 (B1), Frankicide\_94 (B1), FremontTroll\_97 (B1), Freya\_93 (B1), FriarPreacher\_94 (B1), Fringe\_101 (B1), FugateOSU\_97 (B1), Gareth\_97 (B1), GeneCoco\_96 (B1), Giraffe\_98 (B1), Gophee\_96 (B1), Grand2040\_94 (B1), GreenChile\_95 (B1), Gwennie1\_96 (B1), Gwilliam\_97 (B1), Haimas\_94 (B1), Haleema\_96 (B1), Hamish\_94 (B1), Happabalu\_95 (B1), Hartsy\_95 (B1), Harvey\_94 (B1), Hekos\_94 (B1), Held\_95 (B1), HenryJackson\_97 (B1), Hertubise\_96 (B1), Hetaeria\_96 (B1), HighStump\_99 (B1), Hocus\_96 (B1), HogWash\_97 (B1), ImtiyazSitla\_98 (B1), Inchworm\_98 (B1), Inverness\_94 (B1), Iridessa\_99 (B1), Iridoclysis\_96 (B1), IsaacEli\_99 (B1), JDog\_96 (B1), JacAttac\_97 (B1), JakeO\_98 (B1), JangoPhett\_95 (B1), Jesabah\_101 (B1), Jillium\_97 (B1), Jiminy\_97 (B1), Jiraiya\_98 (B1), KLUcky39\_94 (B1), Kahve\_97 (B1), Kailash\_95 (B1), Karn\_96 (B1), Katniss\_99 (B1), Keitherie\_100 (B1), Khan1\_97 (B1), Kikipoo\_99 (B1), Kimbrough\_98 (B1), KingTut\_87 (B1), KingVeVeVe\_95 (B1), KlimbOn\_96 (B1), Kloppinator\_97 (B1), Kwadwo\_96 (B1), Kwksand96\_98 (B1), Labeoufcaum\_97 (B1), Larson\_99 (B1), LasagnaCat\_98 (B1), Lasso\_96 (B1), LeeLot\_95 (B1), Lego3393\_95 (B1), Legolas\_98 (B1), LeiMonet\_100 (B1), LemonSlice\_97 (B1), Longacauda\_97 (B1), Lopsy\_93 (B1), LostAndPhound\_96 (B1), LuckyMarjie\_94 (B1), Lulumae\_92 (B1), Lulwa\_94 (B1), Lumine\_98 (B1), MRabcd\_97 (B1), Mag7\_95 (B1), Magic8\_96 (B1), Mana\_94 (B1), Manad\_96 (B1), Maru\_96 (B1), Maskar\_98 (B1), Matalotodo\_95 (B1), Mcshane\_99 (B1), Mecca\_97 (B1), Megamind20\_99 (B1), Megatron\_98 (B1), Melc17\_94 (B1), MelsMeow\_95 (B1), Mesh1\_97 (B1), Mesmerelda\_97 (B1), MichaelPhcott\_95 (B1), Mikota\_91 (B1), MiniBoss\_92 (B1), MitKao\_97 (B1), Morgushi\_94 (B1), Morty\_97 (B1), Mosaic\_94 (B1), MrPhizzler\_100 (B1), Mulan\_96 (B1), Murdoc\_93 (B1), Mutante\_98 (B1), Nacho\_0099 (B1), Nathan\_96 (B1), Newman\_92 (B1), NiaNia\_98 (B1), Nicole21\_98 (B1), Nova1\_96 (B1), Numberten\_97 (B1), Nyala\_97 (B1), OSmaximus\_97 (B1), Olak\_99 (B1), Oline\_96 (B1), Olive\_93 (B1), OliverWalter\_96 (B1), Omniscient\_98 (B1), OneBrain\_98 (B1), Oosterbaan\_97 (B1), Orfeu\_97 (B1), Orion\_95 (B1), Orwigg\_98 (B1), PG1\_95 (B1), Pacifista\_99 (B1), PallasAthena\_98 (B1), Phamished\_96 (B1), Phareon\_94 (B1), PhatCats2014\_96 (B1), PhatLouie\_99 (B1), PhenghisKhan\_97 (B1), Pherdinand\_98 (B1), Phergie\_97 (B1), Phipps\_94 (B1), Phleuron\_94 (B1), PhrankReynolds\_95 (B1), PhrodoBaggins\_99 (B1), Phunky\_94 (B1), Piglet\_0096 (B1), PinheadLarry\_96 (B1), Pinkman\_96 (B1), Pipsqueak\_94 (B1), Placalicious\_94 (B1), Plata\_95 (B1),

Plmatters\_94 (B1), Podrick\_95 (B1), Potter\_91 (B1), Prickles\_97 (B1), ProfessorX\_94 (B1), Puhltonio\_92 (B1), QueenBeane\_97 (B1), Quisquiliae\_99 (B1), RedMaple\_95 (B1), RedRaider89\_95 (B1), Ricotta\_98 (B1), Riggan\_98 (B1), Rimu\_96 (B1), Riverton\_95 (B1), Robyn\_98 (B1), Roliet\_94 (B1), Roy17\_94 (B1), SDcharge11\_95 (B1), SallyH\_100 (B1), Samaymay\_97 (B1), SassyCat97\_95 (B1), Schadenfreude\_97 (B1), Schueller\_95 (B1), Scoot17C\_97 (B1), Scrick\_98 (B1), Selr12\_101 (B1), Serendipity\_96 (B1), Serpentine\_0099 (B1), ShadowBud\_97 (B1), Sheila\_91 (B1), ShiVal\_96 (B1), Sigman\_96 (B1), SilverBell\_98 (B1), Simielle\_97 (B1), SirBeauregard\_97 (B1), Skippy\_97 (B1), Slatt\_99 (B1), Soile\_98 (B1), Solosis\_95 (B1), Sophia\_95 (B1), Soto\_93 (B1), Spartan300\_96 (B1), Squid\_96 (B1), Squiggle\_96 (B1), Struggle\_97 (B1), Suffolk\_92 (B1), Surely\_97 (B1), Swiphy\_99 (B1), Swish\_98 (B1), TallGrassMM\_96 (B1), Taraxa\_97 (B1), Telesworld\_95 (B1), Thora\_95 (B1), ThreeOh3D2\_98 (B1), Thunderbird\_97 (B1), Timmi\_95 (B1), TomBombadil\_97 (B1), Tomlarah\_97 (B1), Toni\_96 (B1), TooFast2Furius\_95 (B1), Tooj\_94 (B1), True\_98 (B1), Trypo\_97 (B1), TyrionL\_97 (B1), UAch1\_97 (B1), UncleHowie\_93 (B1), Usavi\_97 (B1), Vaishali24\_97 (B1), Valjean\_95 (B1), Vaticameos\_94 (B1), Veritas\_96 (B1), Virapocalypse\_98 (B1), Virgeve\_95 (B1), Vista\_96 (B1), Vortex\_95 (B1), Wallhey\_98 (B1), Waterdiva\_98 (B1), Weher20\_94 (B1), Windsor\_96 (B1), Xavier\_96 (B1), Yoshand\_98 (B1), YouGoGlencoco\_97 (B1), Zaider\_98 (B1), Zelda\_97 (B1), Zonia\_97 (B1),

#### Start 24:

- Found in 4 of 360 ( 1.1% ) of genes in pham
- Manual Annotations of this start: 2 of 314
- Called 75.0% of time when present
- Phage (with cluster) where this start called: Ahwei\_87 (B4), LittleDigger\_89 (B4), Renkei\_89 (B4),

#### Start 29:

- Found in 2 of 360 ( 0.6% ) of genes in pham
- Manual Annotations of this start: 1 of 314
- Called 50.0% of time when present
- Phage (with cluster) where this start called: Reccee\_90 (B5),

#### Start 30:

- Found in 3 of 360 ( 0.8% ) of genes in pham
- Manual Annotations of this start: 1 of 314
- Called 33.3% of time when present
- Phage (with cluster) where this start called: Bae\_87 (B5),

#### Start 31:

- Found in 2 of 360 ( 0.6% ) of genes in pham
- Manual Annotations of this start: 1 of 314
- Called 50.0% of time when present
- Phage (with cluster) where this start called: EastView9101\_88 (B5),

#### Start 32:

- Found in 32 of 360 ( 8.9% ) of genes in pham
- Manual Annotations of this start: 18 of 314
- Called 84.4% of time when present
- Phage (with cluster) where this start called: Antihero\_89 (B4), Apex\_91 (B4), Austelle\_90 (B4), BobbyK\_90 (B4), BrownCNA\_90 (B4), Epah\_89 (B4), Fanaw\_85 (B4), Frederick\_91 (B4), GinPorsche\_91 (B4), Hally898\_87 (B4), Hangman\_90 (B4),

Heath\_84 (B4), Hydro\_90 (B4), JAMaL\_90 (B4), JaguarMi\_84 (B4), JoyceMaria\_89 (B4), Lambano\_87 (B4), Lolalove\_92 (B4), Maggie\_86 (B4), Mithril\_88 (B4), Mudslide\_91 (B4), Nanao\_89 (B4), Poster\_88 (B4), Prince\_90 (B4), VioletZ\_92 (B4), Waleliano\_89 (B4), Zemanar\_88 (B4),

Start 34:

- Found in 3 of 360 ( 0.8% ) of genes in pham
- No Manual Annotations of this start.
- Called 100.0% of time when present
- Phage (with cluster) where this start called: 39HC\_092 (B6), 40BC\_092 (B6), Hosp\_087 (B6),

Start 35:

- Found in 52 of 360 ( 14.4% ) of genes in pham
- Manual Annotations of this start: 11 of 314
- Called 34.6% of time when present
- Phage (with cluster) where this start called: AlanGrant\_90 (B4), ChrisnMich\_91 (B4), Cooper\_91 (B4), KarasumaRum\_87 (B5), Mysterious\_88 (B5), Nehemiah\_88 (B5), Nigel\_85 (B4), Phelemich\_86 (B5), QueenPie\_82 (B4), RawrgerThat\_88 (B4), Reprobate\_88 (B5), Rita130\_88 (B5), Serendipitous\_89 (B5), SirJeffery\_87 (B5), Stinger\_87 (B4), StinkyVeggy\_87 (B5), Vincenzo\_89 (B4), Xincheng\_82 (B4),

Start 36:

- Found in 305 of 360 ( 84.7% ) of genes in pham
- Manual Annotations of this start: 1 of 314
- Called 0.3% of time when present
- Phage (with cluster) where this start called: LilMcDreamy\_88 (B12),

### **Summary by clusters:**

There are 5 clusters represented in this pham: B4, B5, B6, B12, B1,

Info for manual annotations of cluster B1:

- Start number 16 was manually annotated 278 times for cluster B1.

Info for manual annotations of cluster B12:

- Start number 36 was manually annotated 1 time for cluster B12.

Info for manual annotations of cluster B4:

- Start number 15 was manually annotated 1 time for cluster B4.
- Start number 24 was manually annotated 2 times for cluster B4.
- Start number 32 was manually annotated 18 times for cluster B4.
- Start number 35 was manually annotated 7 times for cluster B4.

Info for manual annotations of cluster B5:

- Start number 29 was manually annotated 1 time for cluster B5.
- Start number 30 was manually annotated 1 time for cluster B5.
- Start number 31 was manually annotated 1 time for cluster B5.
- Start number 35 was manually annotated 4 times for cluster B5.

### **Gene Information:**

Gene: 39HC\_092 Start: 66926, Stop: 66300, Start Num: 34

Candidate Starts for 39HC\_092:

(19, 67055), (34, 66926), (39, 66869), (47, 66740), (48, 66731), (52, 66710), (53, 66707), (57, 66638), (58, 66626), (72, 66485), (73, 66482), (74, 66464), (82, 66413), (87, 66356),

Gene: 40BC\_092 Start: 66926, Stop: 66300, Start Num: 34

Candidate Starts for 40BC\_092:

(19, 67055), (34, 66926), (39, 66869), (47, 66740), (48, 66731), (52, 66710), (53, 66707), (57, 66638), (58, 66626), (72, 66485), (73, 66482), (74, 66464), (82, 66413), (87, 66356),

Gene: ABU\_95 Start: 67275, Stop: 66544, Start Num: 16

Candidate Starts for ABU\_95:

(Start: 16 @67275 has 278 MA's), (20, 67236), (22, 67209), (33, 67122), (Start: 36 @67083 has 1 MA's), (40, 67041), (47, 66915), (49, 66894), (52, 66882), (57, 66810), (69, 66696), (73, 66657), (74, 66639),

Gene: AbsoluteMadLad\_95 Start: 67228, Stop: 66497, Start Num: 16

Candidate Starts for AbsoluteMadLad\_95:

(Start: 16 @67228 has 278 MA's), (20, 67189), (22, 67162), (33, 67075), (Start: 36 @67036 has 1 MA's), (40, 66994), (47, 66868), (49, 66847), (52, 66835), (57, 66763), (69, 66649), (73, 66610), (74, 66592),

Gene: Adriana\_97 Start: 67547, Stop: 66816, Start Num: 16

Candidate Starts for Adriana\_97:

(Start: 16 @67547 has 278 MA's), (20, 67508), (22, 67481), (33, 67394), (Start: 36 @67355 has 1 MA's), (40, 67313), (47, 67187), (49, 67166), (52, 67154), (57, 67082), (69, 66968), (73, 66929), (74, 66911),

Gene: Aelin\_96 Start: 66908, Stop: 66177, Start Num: 16

Candidate Starts for Aelin\_96:

(10, 67127), (14, 67025), (Start: 16 @66908 has 278 MA's), (20, 66869), (22, 66842), (28, 66806), (33, 66755), (Start: 36 @66716 has 1 MA's), (47, 66548), (49, 66527), (52, 66515), (57, 66443), (69, 66329), (73, 66290), (74, 66272),

Gene: Ahwei\_87 Start: 66494, Stop: 65571, Start Num: 24

Candidate Starts for Ahwei\_87:

(3, 67208), (Start: 15 @66614 has 1 MA's), (17, 66551), (Start: 24 @66494 has 2 MA's), (Start: 32 @66452 has 18 MA's), (Start: 35 @66401 has 11 MA's), (47, 66230), (48, 66221), (55, 66149), (57, 66125), (66, 66032), (71, 65981), (73, 65969), (74, 65951), (76, 65933), (77, 65930), (79, 65921), (80, 65918), (82, 65906), (84, 65882), (98, 65780), (99, 65744), (100, 65717), (101, 65657), (102, 65600), (103, 65594), (104, 65585),

Gene: AlanGrant\_90 Start: 68004, Stop: 67411, Start Num: 35

Candidate Starts for AlanGrant\_90:

(Start: 35 @68004 has 11 MA's), (42, 67911), (45, 67878), (52, 67800), (55, 67752), (58, 67716), (61, 67677), (66, 67635), (71, 67584), (73, 67572), (74, 67554), (77, 67524), (80, 67512), (82, 67500), (83, 67491),

Gene: Aleia\_96 Start: 66917, Stop: 66186, Start Num: 16

Candidate Starts for Aleia\_96:

(Start: 16 @66917 has 278 MA's), (20, 66878), (22, 66851), (33, 66764), (Start: 36 @66725 has 1 MA's), (40, 66683), (47, 66557), (49, 66536), (52, 66524), (57, 66452), (69, 66338), (73, 66299), (74, 66281),

Gene: AltPhacts\_94 Start: 66481, Stop: 65750, Start Num: 16

Candidate Starts for AltPhacts\_94:

(10, 66700), (14, 66598), (Start: 16 @66481 has 278 MA's), (20, 66442), (22, 66415), (33, 66328), (Start: 36 @66289 has 1 MA's), (40, 66247), (47, 66121), (49, 66100), (52, 66088), (57, 66016), (69, 65902), (73, 65863), (74, 65845),

Gene: Altwerkus\_94 Start: 66604, Stop: 65873, Start Num: 16

Candidate Starts for Altwerkus\_94:

(Start: 16 @66604 has 278 MA's), (20, 66565), (22, 66538), (33, 66451), (Start: 36 @66412 has 1 MA's), (40, 66370), (47, 66244), (49, 66223), (52, 66211), (57, 66139), (69, 66025), (73, 65986), (74, 65968),

Gene: Anderson\_98 Start: 67151, Stop: 66420, Start Num: 16

Candidate Starts for Anderson\_98:

(Start: 16 @67151 has 278 MA's), (20, 67112), (22, 67085), (33, 66998), (Start: 36 @66959 has 1 MA's), (40, 66917), (47, 66791), (49, 66770), (52, 66758), (57, 66686), (69, 66572), (73, 66533), (74, 66515),

Gene: Andre\_101 Start: 67542, Stop: 66811, Start Num: 16

Candidate Starts for Andre\_101:

(Start: 16 @67542 has 278 MA's), (20, 67503), (22, 67476), (33, 67389), (Start: 36 @67350 has 1 MA's), (40, 67308), (47, 67182), (49, 67161), (52, 67149), (57, 67077), (69, 66963), (73, 66924), (74, 66906),

Gene: AngelCake\_97 Start: 66900, Stop: 66169, Start Num: 16

Candidate Starts for AngelCake\_97:

(10, 67119), (14, 67017), (Start: 16 @66900 has 278 MA's), (20, 66861), (33, 66747), (Start: 36 @66708 has 1 MA's), (47, 66540), (49, 66519), (52, 66507), (57, 66435), (69, 66321), (73, 66282), (74, 66264),

Gene: Antihero\_89 Start: 66371, Stop: 65703, Start Num: 32

Candidate Starts for Antihero\_89:

(Start: 32 @66371 has 18 MA's), (Start: 35 @66320 has 11 MA's), (47, 66152), (48, 66143), (55, 66071), (57, 66047), (66, 65954), (71, 65903), (73, 65891), (74, 65873), (76, 65855), (77, 65852), (79, 65843), (80, 65840), (82, 65828), (84, 65804), (90, 65759), (92, 65747), (93, 65744),

Gene: Antonia\_96 Start: 66776, Stop: 66045, Start Num: 16

Candidate Starts for Antonia\_96:

(10, 66995), (14, 66893), (Start: 16 @66776 has 278 MA's), (20, 66737), (22, 66710), (28, 66674), (33, 66623), (Start: 36 @66584 has 1 MA's), (47, 66416), (49, 66395), (52, 66383), (57, 66311), (69, 66197), (73, 66158), (74, 66140),

Gene: Aonishiki\_97 Start: 67086, Stop: 66355, Start Num: 16

Candidate Starts for Aonishiki\_97:

(Start: 16 @67086 has 278 MA's), (20, 67047), (22, 67020), (33, 66933), (Start: 36 @66894 has 1 MA's), (40, 66852), (47, 66726), (49, 66705), (52, 66693), (57, 66621), (69, 66507), (73, 66468), (74, 66450),

Gene: Apex\_91 Start: 67472, Stop: 66804, Start Num: 32

Candidate Starts for Apex\_91:

(Start: 15 @67640 has 1 MA's), (17, 67577), (Start: 32 @67472 has 18 MA's), (Start: 35 @67421 has 11 MA's), (42, 67331), (47, 67253), (48, 67244), (55, 67172), (57, 67148), (66, 67055), (71, 67004), (73, 66992), (74, 66974), (76, 66956), (77, 66953), (80, 66941), (82, 66929), (84, 66905), (90, 66860), (92, 66848), (93, 66845),

Gene: Apizium\_95 Start: 66429, Stop: 65698, Start Num: 16

Candidate Starts for Apizium\_95:

(6, 66681), (10, 66648), (14, 66546), (Start: 16 @66429 has 278 MA's), (20, 66390), (22, 66363), (33, 66276), (Start: 36 @66237 has 1 MA's), (47, 66069), (49, 66048), (52, 66036), (57, 65964), (69, 65850), (73, 65811), (74, 65793),

Gene: Ashraf\_98 Start: 67284, Stop: 66532, Start Num: 16

Candidate Starts for Ashraf\_98:

(10, 67503), (14, 67401), (Start: 16 @67284 has 278 MA's), (20, 67245), (33, 67131), (Start: 36 @67092 has 1 MA's), (47, 66924), (49, 66903), (52, 66891), (57, 66819), (69, 66705), (73, 66666), (74, 66648),

Gene: Austelle\_90 Start: 68073, Stop: 67420, Start Num: 32

Candidate Starts for Austelle\_90:

(Start: 15 @68241 has 1 MA's), (17, 68178), (Start: 32 @68073 has 18 MA's), (Start: 35 @68022 has 11 MA's), (42, 67929), (45, 67896), (47, 67851), (48, 67842), (55, 67770), (57, 67746), (66, 67653), (71, 67602), (73, 67590), (74, 67572), (76, 67554), (77, 67551), (82, 67527), (94, 67455), (95, 67452),

Gene: Badfish\_97 Start: 67455, Stop: 66724, Start Num: 16

Candidate Starts for Badfish\_97:

(Start: 16 @67455 has 278 MA's), (20, 67416), (22, 67389), (33, 67302), (Start: 36 @67263 has 1 MA's), (40, 67221), (47, 67095), (49, 67074), (52, 67062), (57, 66990), (69, 66876), (73, 66837), (74, 66819),

Gene: Bae\_87 Start: 66191, Stop: 65547, Start Num: 30

Candidate Starts for Bae\_87:

(Start: 30 @66191 has 1 MA's), (Start: 35 @66128 has 11 MA's), (47, 65963), (48, 65954), (58, 65846), (62, 65804), (70, 65729), (73, 65705), (74, 65687), (78, 65651), (81, 65642),

Gene: Banjo\_93 Start: 66721, Stop: 65990, Start Num: 16

Candidate Starts for Banjo\_93:

(Start: 16 @66721 has 278 MA's), (20, 66682), (22, 66655), (33, 66568), (Start: 36 @66529 has 1 MA's), (40, 66487), (47, 66361), (49, 66340), (52, 66328), (57, 66256), (69, 66142), (73, 66103), (74, 66085),

Gene: Basato\_95 Start: 66941, Stop: 66210, Start Num: 16

Candidate Starts for Basato\_95:

(Start: 16 @66941 has 278 MA's), (20, 66902), (22, 66875), (33, 66788), (Start: 36 @66749 has 1 MA's), (47, 66581), (49, 66560), (52, 66548), (57, 66476), (69, 66362), (73, 66323), (74, 66305),

Gene: BatteryCK\_95 Start: 66711, Stop: 65980, Start Num: 16

Candidate Starts for BatteryCK\_95:

(10, 66930), (14, 66828), (Start: 16 @66711 has 278 MA's), (20, 66672), (33, 66558), (Start: 36 @66519 has 1 MA's), (47, 66351), (49, 66330), (52, 66318), (57, 66246), (69, 66132), (73, 66093), (74, 66075),

Gene: Beaglebox\_93 Start: 66843, Stop: 66112, Start Num: 16

Candidate Starts for Beaglebox\_93:

(Start: 16 @66843 has 278 MA's), (20, 66804), (22, 66777), (33, 66690), (Start: 36 @66651 has 1 MA's), (40, 66609), (47, 66483), (49, 66462), (52, 66450), (57, 66378), (69, 66264), (73, 66225), (74, 66207),

Gene: Bishoperium\_97 Start: 67290, Stop: 66559, Start Num: 16

Candidate Starts for Bishoperium\_97:

(Start: 16 @67290 has 278 MA's), (20, 67251), (22, 67224), (33, 67137), (Start: 36 @67098 has 1 MA's), (40, 67056), (47, 66930), (49, 66909), (52, 66897), (57, 66825), (69, 66711), (73, 66672), (74, 66654),

Gene: BlackStallion\_96 Start: 67139, Stop: 66408, Start Num: 16

Candidate Starts for BlackStallion\_96:

(Start: 16 @67139 has 278 MA's), (20, 67100), (22, 67073), (33, 66986), (Start: 36 @66947 has 1 MA's), (40, 66905), (47, 66779), (49, 66758), (52, 66746), (57, 66674), (69, 66560), (73, 66521), (74, 66503),

Gene: BlacksBerry\_97 Start: 66665, Stop: 65934, Start Num: 16

Candidate Starts for BlacksBerry\_97:

(Start: 16 @66665 has 278 MA's), (20, 66626), (22, 66599), (Start: 36 @66473 has 1 MA's), (40, 66431), (47, 66305), (49, 66284), (52, 66272), (57, 66200), (69, 66086), (73, 66047), (74, 66029),

Gene: Bluephacebaby\_96 Start: 67324, Stop: 66593, Start Num: 16

Candidate Starts for Bluephacebaby\_96:

(Start: 16 @67324 has 278 MA's), (20, 67285), (22, 67258), (33, 67171), (Start: 36 @67132 has 1 MA's), (40, 67090), (47, 66964), (49, 66943), (52, 66931), (57, 66859), (69, 66745), (73, 66706), (74, 66688),

Gene: BobbyK\_90 Start: 66980, Stop: 66312, Start Num: 32

Candidate Starts for BobbyK\_90:

(Start: 15 @67148 has 1 MA's), (17, 67085), (Start: 32 @66980 has 18 MA's), (Start: 35 @66929 has 11 MA's), (42, 66839), (47, 66761), (48, 66752), (55, 66680), (57, 66656), (66, 66563), (71, 66512), (73, 66500), (74, 66482), (76, 66464), (77, 66461), (80, 66449), (82, 66437), (84, 66413), (90, 66368), (92, 66356), (93, 66353),

Gene: BoogieWoogie\_98 Start: 67105, Stop: 66374, Start Num: 16

Candidate Starts for BoogieWoogie\_98:

(Start: 16 @67105 has 278 MA's), (20, 67066), (22, 67039), (33, 66952), (Start: 36 @66913 has 1 MA's), (40, 66871), (47, 66745), (49, 66724), (52, 66712), (57, 66640), (69, 66526), (73, 66487), (74, 66469),

Gene: Brilliant\_100 Start: 67303, Stop: 66572, Start Num: 16

Candidate Starts for Brilliant\_100:

(Start: 16 @67303 has 278 MA's), (20, 67264), (22, 67237), (33, 67150), (Start: 36 @67111 has 1 MA's), (40, 67069), (47, 66943), (49, 66922), (52, 66910), (57, 66838), (69, 66724), (73, 66685), (74, 66667),

Gene: BrownCNA\_90 Start: 67488, Stop: 66835, Start Num: 32

Candidate Starts for BrownCNA\_90:

(Start: 15 @67656 has 1 MA's), (17, 67593), (Start: 32 @67488 has 18 MA's), (Start: 35 @67437 has 11 MA's), (42, 67344), (45, 67311), (47, 67266), (48, 67257), (55, 67185), (57, 67161), (66, 67068), (71, 67017), (73, 67005), (74, 66987), (76, 66969), (77, 66966), (82, 66942), (94, 66870), (95, 66867),

Gene: Buckeye\_95 Start: 67599, Stop: 66868, Start Num: 16

Candidate Starts for Buckeye\_95:

(Start: 16 @67599 has 278 MA's), (20, 67560), (22, 67533), (33, 67446), (Start: 36 @67407 has 1 MA's), (40, 67365), (47, 67239), (49, 67218), (52, 67206), (57, 67134), (69, 67020), (73, 66981), (74, 66963),

Gene: Burr\_99 Start: 67145, Stop: 66414, Start Num: 16

Candidate Starts for Burr\_99:

(Start: 16 @67145 has 278 MA's), (20, 67106), (22, 67079), (33, 66992), (Start: 36 @66953 has 1 MA's), (40, 66911), (47, 66785), (49, 66764), (52, 66752), (57, 66680), (69, 66566), (73, 66527), (74, 66509),

Gene: CamL\_97 Start: 67075, Stop: 66344, Start Num: 16

Candidate Starts for CamL\_97:

(Start: 16 @67075 has 278 MA's), (20, 67036), (22, 67009), (33, 66922), (Start: 36 @66883 has 1 MA's), (40, 66841), (47, 66715), (49, 66694), (52, 66682), (57, 66610), (69, 66496), (73, 66457), (74, 66439),

Gene: CampRoach\_97 Start: 67171, Stop: 66440, Start Num: 16

Candidate Starts for CampRoach\_97:

(Start: 16 @67171 has 278 MA's), (20, 67132), (22, 67105), (Start: 36 @66979 has 1 MA's), (40, 66937), (47, 66811), (49, 66790), (52, 66778), (57, 66706), (69, 66592), (73, 66553), (74, 66535),

Gene: Cannibal\_97 Start: 67178, Stop: 66447, Start Num: 16

Candidate Starts for Cannibal\_97:

(Start: 16 @67178 has 278 MA's), (20, 67139), (22, 67112), (33, 67025), (Start: 36 @66986 has 1 MA's), (40, 66944), (47, 66818), (49, 66797), (52, 66785), (57, 66713), (69, 66599), (73, 66560), (74, 66542),

Gene: Carthage\_97 Start: 66633, Stop: 65902, Start Num: 16

Candidate Starts for Carthage\_97:

(Start: 16 @66633 has 278 MA's), (22, 66567), (33, 66480), (Start: 36 @66441 has 1 MA's), (47, 66273), (49, 66252), (52, 66240), (69, 66054), (73, 66015), (74, 65997),

Gene: Caspiboi\_96 Start: 67009, Stop: 66278, Start Num: 16

Candidate Starts for Caspiboi\_96:

(Start: 16 @67009 has 278 MA's), (20, 66970), (22, 66943), (Start: 36 @66817 has 1 MA's), (40, 66775), (47, 66649), (49, 66628), (52, 66616), (57, 66544), (69, 66430), (73, 66391), (74, 66373),

Gene: Chaelin\_97 Start: 67047, Stop: 66295, Start Num: 16

Candidate Starts for Chaelin\_97:

(10, 67266), (14, 67164), (Start: 16 @67047 has 278 MA's), (20, 67008), (33, 66894), (Start: 36 @66855 has 1 MA's), (47, 66687), (49, 66666), (52, 66654), (57, 66582), (69, 66468), (73, 66429), (74, 66411),

Gene: Chah\_99 Start: 66875, Stop: 66144, Start Num: 16

Candidate Starts for Chah\_99:

(Start: 16 @66875 has 278 MA's), (20, 66836), (22, 66809), (33, 66722), (Start: 36 @66683 has 1 MA's), (40, 66641), (47, 66515), (49, 66494), (52, 66482), (57, 66410), (69, 66296), (73, 66257), (74, 66239),

Gene: Charles1\_100 Start: 67453, Stop: 66722, Start Num: 16

Candidate Starts for Charles1\_100:

(Start: 16 @67453 has 278 MA's), (20, 67414), (22, 67387), (33, 67300), (Start: 36 @67261 has 1 MA's), (40, 67219), (47, 67093), (49, 67072), (52, 67060), (57, 66988), (69, 66874), (73, 66835), (74, 66817),

Gene: CharlieGBrown\_95 Start: 66806, Stop: 66075, Start Num: 16

Candidate Starts for CharlieGBrown\_95:

(10, 67025), (14, 66923), (Start: 16 @66806 has 278 MA's), (20, 66767), (33, 66653), (Start: 36 @66614 has 1 MA's), (47, 66446), (49, 66425), (52, 66413), (57, 66341), (69, 66227), (73, 66188), (74, 66170),

Gene: CheetO\_93 Start: 66925, Stop: 66194, Start Num: 16

Candidate Starts for CheetO\_93:

(Start: 16 @66925 has 278 MA's), (20, 66886), (22, 66859), (33, 66772), (Start: 36 @66733 has 1 MA's), (40, 66691), (47, 66565), (49, 66544), (52, 66532), (57, 66460), (69, 66346), (73, 66307), (74, 66289),

Gene: Cher\_97 Start: 67279, Stop: 66548, Start Num: 16

Candidate Starts for Cher\_97:

(Start: 16 @67279 has 278 MA's), (20, 67240), (22, 67213), (33, 67126), (Start: 36 @67087 has 1 MA's), (40, 67045), (47, 66919), (49, 66898), (52, 66886), (57, 66814), (69, 66700), (73, 66661), (74, 66643),

Gene: Childish\_97 Start: 67469, Stop: 66738, Start Num: 16

Candidate Starts for Childish\_97:

(Start: 16 @67469 has 278 MA's), (20, 67430), (22, 67403), (33, 67316), (Start: 36 @67277 has 1 MA's), (40, 67235), (47, 67109), (49, 67088), (52, 67076), (57, 67004), (69, 66890), (73, 66851), (74, 66833),

Gene: Chipette\_94 Start: 66762, Stop: 66031, Start Num: 16

Candidate Starts for Chipette\_94:

(Start: 16 @66762 has 278 MA's), (20, 66723), (22, 66696), (33, 66609), (Start: 36 @66570 has 1 MA's), (40, 66528), (47, 66402), (49, 66381), (52, 66369), (57, 66297), (69, 66183), (73, 66144), (74, 66126),

Gene: Chorkpop\_98 Start: 66931, Stop: 66200, Start Num: 16

Candidate Starts for Chorkpop\_98:

(Start: 16 @66931 has 278 MA's), (20, 66892), (22, 66865), (Start: 36 @66739 has 1 MA's), (40, 66697), (47, 66571), (49, 66550), (52, 66538), (57, 66466), (69, 66352), (73, 66313), (74, 66295),

Gene: ChrisnMich\_91 Start: 66059, Stop: 65439, Start Num: 35

Candidate Starts for ChrisnMich\_91:

(7, 66395), (9, 66386), (Start: 15 @66218 has 1 MA's), (Start: 35 @66059 has 11 MA's), (45, 65930), (48, 65876), (50, 65858), (57, 65780), (65, 65693), (71, 65636), (73, 65624), (74, 65606), (76, 65579), (82, 65552), (88, 65492),

Gene: Chuni\_98 Start: 67516, Stop: 66785, Start Num: 16

Candidate Starts for Chuni\_98:

(Start: 16 @67516 has 278 MA's), (20, 67477), (22, 67450), (33, 67363), (Start: 36 @67324 has 1 MA's), (40, 67282), (47, 67156), (49, 67135), (52, 67123), (57, 67051), (69, 66937), (73, 66898), (74, 66880),

Gene: Chute\_97 Start: 67470, Stop: 66739, Start Num: 16

Candidate Starts for Chute\_97:

(Start: 16 @67470 has 278 MA's), (20, 67431), (22, 67404), (33, 67317), (Start: 36 @67278 has 1 MA's), (40, 67236), (47, 67110), (49, 67089), (52, 67077), (57, 67005), (69, 66891), (73, 66852), (74, 66834),

Gene: Cobra\_97 Start: 67300, Stop: 66569, Start Num: 16

Candidate Starts for Cobra\_97:

(Start: 16 @67300 has 278 MA's), (20, 67261), (22, 67234), (33, 67147), (Start: 36 @67108 has 1 MA's), (40, 67066), (47, 66940), (49, 66919), (52, 66907), (57, 66835), (69, 66721), (73, 66682), (74, 66664),

Gene: Colbert\_95 Start: 66199, Stop: 65468, Start Num: 16

Candidate Starts for Colbert\_95:

(Start: 16 @66199 has 278 MA's), (20, 66160), (22, 66133), (33, 66046), (Start: 36 @66007 has 1 MA's), (40, 65965), (47, 65839), (49, 65818), (52, 65806), (57, 65734), (69, 65620), (73, 65581), (74, 65563),

Gene: Coletti\_100 Start: 67826, Stop: 67095, Start Num: 16

Candidate Starts for Coletti\_100:

(Start: 16 @67826 has 278 MA's), (20, 67787), (22, 67760), (33, 67673), (Start: 36 @67634 has 1 MA's), (40, 67592), (47, 67466), (49, 67445), (52, 67433), (57, 67361), (69, 67247), (73, 67208), (74, 67190),

Gene: Cooper\_91 Start: 66596, Stop: 65976, Start Num: 35

Candidate Starts for Cooper\_91:

(Start: 15 @66749 has 1 MA's), (Start: 35 @66596 has 11 MA's), (45, 66467), (48, 66413), (50, 66395), (57, 66317), (71, 66173), (73, 66161), (74, 66143), (76, 66116), (82, 66089), (88, 66029),

Gene: Cornbread\_97 Start: 67327, Stop: 66596, Start Num: 16

Candidate Starts for Cornbread\_97:

(Start: 16 @67327 has 278 MA's), (20, 67288), (22, 67261), (33, 67174), (Start: 36 @67135 has 1 MA's), (40, 67093), (47, 66967), (49, 66946), (52, 66934), (57, 66862), (69, 66748), (73, 66709), (74, 66691),

Gene: Cornobble\_95 Start: 66927, Stop: 66196, Start Num: 16

Candidate Starts for Cornobble\_95:

(10, 67146), (14, 67044), (Start: 16 @66927 has 278 MA's), (20, 66888), (22, 66861), (28, 66825), (33, 66774), (Start: 36 @66735 has 1 MA's), (47, 66567), (49, 66546), (52, 66534), (57, 66462), (69, 66348), (73, 66309), (74, 66291),

Gene: Cosmolli16\_98 Start: 67403, Stop: 66672, Start Num: 16

Candidate Starts for Cosmolli16\_98:

(Start: 16 @67403 has 278 MA's), (20, 67364), (22, 67337), (33, 67250), (Start: 36 @67211 has 1 MA's), (40, 67169), (47, 67043), (49, 67022), (52, 67010), (57, 66938), (69, 66824), (73, 66785), (74, 66767),

Gene: Craff\_98 Start: 67688, Stop: 66957, Start Num: 16

Candidate Starts for Craff\_98:

(Start: 16 @67688 has 278 MA's), (20, 67649), (22, 67622), (33, 67535), (Start: 36 @67496 has 1 MA's), (40, 67454), (47, 67328), (49, 67307), (52, 67295), (57, 67223), (69, 67109), (73, 67070), (74, 67052),

Gene: Crownjwl\_94 Start: 66943, Stop: 66212, Start Num: 16

Candidate Starts for Crownjwl\_94:

(Start: 16 @66943 has 278 MA's), (20, 66904), (22, 66877), (33, 66790), (Start: 36 @66751 has 1 MA's), (40, 66709), (47, 66583), (49, 66562), (52, 66550), (57, 66478), (69, 66364), (73, 66325), (74, 66307),

Gene: DaddyDaniels\_100 Start: 67422, Stop: 66691, Start Num: 16

Candidate Starts for DaddyDaniels\_100:

(Start: 16 @67422 has 278 MA's), (20, 67383), (22, 67356), (33, 67269), (Start: 36 @67230 has 1 MA's), (40, 67188), (47, 67062), (49, 67041), (52, 67029), (57, 66957), (69, 66843), (73, 66804), (74, 66786),

Gene: Daffy\_96 Start: 66916, Stop: 66185, Start Num: 16

Candidate Starts for Daffy\_96:

(Start: 16 @66916 has 278 MA's), (20, 66877), (22, 66850), (33, 66763), (Start: 36 @66724 has 1 MA's), (40, 66682), (47, 66556), (49, 66535), (52, 66523), (57, 66451), (69, 66337), (73, 66298), (74, 66280),

Gene: Daka\_98 Start: 66879, Stop: 66148, Start Num: 16

Candidate Starts for Daka\_98:

(10, 67098), (14, 66996), (Start: 16 @66879 has 278 MA's), (20, 66840), (22, 66813), (28, 66777), (33, 66726), (Start: 36 @66687 has 1 MA's), (47, 66519), (49, 66498), (52, 66486), (69, 66300), (73, 66261), (74, 66243),

Gene: Dati\_94 Start: 67101, Stop: 66370, Start Num: 16

Candidate Starts for Dati\_94:

(Start: 16 @67101 has 278 MA's), (20, 67062), (22, 67035), (33, 66948), (Start: 36 @66909 has 1 MA's), (40, 66867), (47, 66741), (49, 66720), (52, 66708), (57, 66636), (69, 66522), (73, 66483), (74, 66465),

Gene: DelRivs\_96 Start: 66730, Stop: 65999, Start Num: 16

Candidate Starts for DelRivs\_96:

(Start: 16 @66730 has 278 MA's), (20, 66691), (22, 66664), (33, 66577), (Start: 36 @66538 has 1 MA's), (40, 66496), (47, 66370), (49, 66349), (52, 66337), (57, 66265), (69, 66151), (73, 66112), (74, 66094),

Gene: Derpp\_96 Start: 66839, Stop: 66108, Start Num: 16

Candidate Starts for Derpp\_96:

(10, 67058), (14, 66956), (Start: 16 @66839 has 278 MA's), (20, 66800), (33, 66686), (Start: 36 @66647 has 1 MA's), (47, 66479), (49, 66458), (52, 66446), (57, 66374), (69, 66260), (73, 66221), (74, 66203),

Gene: Dice\_97 Start: 66762, Stop: 66031, Start Num: 16

Candidate Starts for Dice\_97:

(Start: 16 @66762 has 278 MA's), (20, 66723), (22, 66696), (33, 66609), (Start: 36 @66570 has 1 MA's), (40, 66528), (47, 66402), (49, 66381), (52, 66369), (57, 66297), (69, 66183), (73, 66144), (74, 66126),

Gene: Dingo\_93 Start: 66204, Stop: 65473, Start Num: 16

Candidate Starts for Dingo\_93:

(Start: 16 @66204 has 278 MA's), (20, 66165), (22, 66138), (33, 66051), (Start: 36 @66012 has 1 MA's), (47, 65844), (49, 65823), (52, 65811), (57, 65739), (69, 65625), (73, 65586), (74, 65568),

Gene: Dione\_95 Start: 66482, Stop: 65751, Start Num: 16

Candidate Starts for Dione\_95:

(Start: 16 @66482 has 278 MA's), (20, 66443), (22, 66416), (33, 66329), (Start: 36 @66290 has 1 MA's), (40, 66248), (47, 66122), (49, 66101), (52, 66089), (57, 66017), (69, 65903), (73, 65864), (74, 65846),

Gene: DirtJuice\_98 Start: 67591, Stop: 66860, Start Num: 16

Candidate Starts for DirtJuice\_98:

(Start: 16 @67591 has 278 MA's), (20, 67552), (22, 67525), (33, 67438), (Start: 36 @67399 has 1 MA's), (40, 67357), (47, 67231), (49, 67210), (52, 67198), (57, 67126), (69, 67012), (73, 66973), (74, 66955),

Gene: Doddsville\_94 Start: 66922, Stop: 66191, Start Num: 16

Candidate Starts for Doddsville\_94:

(Start: 16 @66922 has 278 MA's), (20, 66883), (22, 66856), (33, 66769), (Start: 36 @66730 has 1 MA's), (40, 66688), (47, 66562), (49, 66541), (52, 66529), (57, 66457), (69, 66343), (73, 66304), (74, 66286),

Gene: DoesntMatter\_94 Start: 66756, Stop: 66025, Start Num: 16

Candidate Starts for DoesntMatter\_94:

(Start: 16 @66756 has 278 MA's), (20, 66717), (22, 66690), (33, 66603), (Start: 36 @66564 has 1 MA's), (40, 66522), (47, 66396), (49, 66375), (52, 66363), (57, 66291), (69, 66177), (73, 66138), (74, 66120),

Gene: DolOn\_100 Start: 67964, Stop: 67233, Start Num: 16

Candidate Starts for DolOn\_100:

(Start: 16 @67964 has 278 MA's), (20, 67925), (22, 67898), (33, 67811), (Start: 36 @67772 has 1 MA's), (40, 67730), (47, 67604), (49, 67583), (52, 67571), (57, 67499), (69, 67385), (73, 67346), (74, 67328),

Gene: DonSanchon\_92 Start: 66440, Stop: 65709, Start Num: 16

Candidate Starts for DonSanchon\_92:

(Start: 16 @66440 has 278 MA's), (20, 66401), (22, 66374), (33, 66287), (Start: 36 @66248 has 1 MA's), (40, 66206), (47, 66080), (49, 66059), (52, 66047), (57, 65975), (69, 65861), (73, 65822), (74, 65804),

Gene: DuchessDung\_94 Start: 66437, Stop: 65706, Start Num: 16

Candidate Starts for DuchessDung\_94:

(Start: 16 @66437 has 278 MA's), (20, 66398), (22, 66371), (Start: 36 @66245 has 1 MA's), (47, 66077), (49, 66056), (52, 66044), (57, 65972), (69, 65858), (73, 65819), (74, 65801),

Gene: Duggie\_97 Start: 67064, Stop: 66333, Start Num: 16

Candidate Starts for Duggie\_97:

(Start: 16 @67064 has 278 MA's), (20, 67025), (22, 66998), (33, 66911), (Start: 36 @66872 has 1 MA's), (40, 66830), (47, 66704), (49, 66683), (52, 66671), (57, 66599), (69, 66485), (73, 66446), (74, 66428),

Gene: Durga\_99 Start: 67545, Stop: 66814, Start Num: 16

Candidate Starts for Durga\_99:

(Start: 16 @67545 has 278 MA's), (20, 67506), (22, 67479), (Start: 36 @67353 has 1 MA's), (40, 67311), (47, 67185), (49, 67164), (52, 67152), (57, 67080), (69, 66966), (73, 66927), (74, 66909),

Gene: EastView9101\_88 Start: 65729, Stop: 65082, Start Num: 31

Candidate Starts for EastView9101\_88:

(23, 65771), (Start: 31 @65729 has 1 MA's), (Start: 35 @65675 has 11 MA's), (47, 65510), (58, 65393), (70, 65276), (73, 65252), (74, 65234), (97, 65117),

Gene: EmGer13\_96 Start: 66776, Stop: 66045, Start Num: 16

Candidate Starts for EmGer13\_96:

(10, 66995), (14, 66893), (Start: 16 @66776 has 278 MA's), (20, 66737), (22, 66710), (28, 66674), (33, 66623), (Start: 36 @66584 has 1 MA's), (47, 66416), (49, 66395), (52, 66383), (57, 66311), (69, 66197), (73, 66158), (74, 66140),

Gene: Emiris\_99 Start: 67452, Stop: 66721, Start Num: 16

Candidate Starts for Emiris\_99:

(Start: 16 @67452 has 278 MA's), (20, 67413), (22, 67386), (33, 67299), (Start: 36 @67260 has 1 MA's), (40, 67218), (47, 67092), (49, 67071), (52, 67059), (57, 66987), (69, 66873), (73, 66834), (74, 66816),

Gene: EmpTee\_96 Start: 66853, Stop: 66122, Start Num: 16

Candidate Starts for EmpTee\_96:

(Start: 16 @66853 has 278 MA's), (20, 66814), (22, 66787), (33, 66700), (Start: 36 @66661 has 1 MA's), (40, 66619), (47, 66493), (49, 66472), (52, 66460), (57, 66388), (69, 66274), (73, 66235), (74, 66217),

Gene: Epah\_89 Start: 66371, Stop: 65703, Start Num: 32

Candidate Starts for Epah\_89:

(Start: 32 @66371 has 18 MA's), (Start: 35 @66320 has 11 MA's), (47, 66152), (48, 66143), (55, 66071), (57, 66047), (66, 65954), (71, 65903), (73, 65891), (74, 65873), (76, 65855), (77, 65852), (79, 65843), (80, 65840), (82, 65828), (84, 65804), (90, 65759), (92, 65747), (93, 65744),

Gene: Eremos\_94 Start: 66900, Stop: 66169, Start Num: 16

Candidate Starts for Eremos\_94:

(Start: 16 @66900 has 278 MA's), (20, 66861), (22, 66834), (33, 66747), (Start: 36 @66708 has 1 MA's), (40, 66666), (47, 66540), (49, 66519), (52, 66507), (69, 66321), (73, 66282), (74, 66264),

Gene: Etaye\_96 Start: 67629, Stop: 66898, Start Num: 16

Candidate Starts for Etaye\_96:

(Start: 16 @67629 has 278 MA's), (20, 67590), (22, 67563), (33, 67476), (Start: 36 @67437 has 1 MA's), (40, 67395), (47, 67269), (49, 67248), (52, 67236), (57, 67164), (69, 67050), (73, 67011), (74, 66993),

Gene: Eugenia\_99 Start: 67564, Stop: 66833, Start Num: 16

Candidate Starts for Eugenia\_99:

(Start: 16 @67564 has 278 MA's), (20, 67525), (22, 67498), (33, 67411), (Start: 36 @67372 has 1 MA's), (40, 67330), (47, 67204), (49, 67183), (52, 67171), (57, 67099), (69, 66985), (73, 66946), (74, 66928),

Gene: Fanaw\_85 Start: 67084, Stop: 66422, Start Num: 32

Candidate Starts for Fanaw\_85:

(Start: 15 @67252 has 1 MA's), (17, 67189), (Start: 32 @67084 has 18 MA's), (Start: 35 @67033 has 11 MA's), (42, 66943), (47, 66865), (48, 66856), (55, 66784), (57, 66760), (66, 66667), (67, 66664), (71, 66616), (73, 66604), (74, 66586), (76, 66568), (77, 66565), (80, 66553), (82, 66541), (84, 66517), (85, 66514), (90, 66478), (93, 66463),

Gene: Fang\_97 Start: 66994, Stop: 66263, Start Num: 16

Candidate Starts for Fang\_97:

(Start: 16 @66994 has 278 MA's), (20, 66955), (22, 66928), (33, 66841), (Start: 36 @66802 has 1 MA's), (40, 66760), (47, 66634), (49, 66613), (52, 66601), (57, 66529), (69, 66415), (73, 66376), (74, 66358),

Gene: Flake\_96 Start: 67044, Stop: 66313, Start Num: 16

Candidate Starts for Flake\_96:

(Start: 16 @67044 has 278 MA's), (20, 67005), (22, 66978), (33, 66891), (Start: 36 @66852 has 1 MA's), (40, 66810), (47, 66684), (49, 66663), (52, 66651), (57, 66579), (69, 66465), (73, 66426), (74, 66408),

Gene: FleetyMac\_101 Start: 67324, Stop: 66593, Start Num: 16

Candidate Starts for FleetyMac\_101:

(Start: 16 @67324 has 278 MA's), (20, 67285), (22, 67258), (Start: 36 @67132 has 1 MA's), (40, 67090), (47, 66964), (49, 66943), (52, 66931), (57, 66859), (69, 66745), (73, 66706), (74, 66688),

Gene: FluffyNinja\_98 Start: 67141, Stop: 66410, Start Num: 16

Candidate Starts for FluffyNinja\_98:

(Start: 16 @67141 has 278 MA's), (20, 67102), (22, 67075), (33, 66988), (Start: 36 @66949 has 1 MA's), (40, 66907), (47, 66781), (49, 66760), (52, 66748), (57, 66676), (69, 66562), (73, 66523), (74, 66505),

Gene: Fortunato\_87 Start: 66949, Stop: 66113, Start Num: 15

Candidate Starts for Fortunato\_87:

(Start: 15 @66949 has 1 MA's), (17, 66886), (Start: 32 @66781 has 18 MA's), (Start: 35 @66730 has 11 MA's), (42, 66640), (47, 66562), (48, 66553), (55, 66481), (57, 66457), (66, 66364), (67, 66361), (71, 66313), (73, 66301), (74, 66283), (76, 66265), (77, 66262), (80, 66250), (82, 66238), (84, 66214), (92, 66157), (93, 66154),

Gene: Fozzie\_93 Start: 67190, Stop: 66459, Start Num: 16

Candidate Starts for Fozzie\_93:

(Start: 16 @67190 has 278 MA's), (20, 67151), (22, 67124), (Start: 36 @66998 has 1 MA's), (40, 66956), (47, 66830), (49, 66809), (52, 66797), (57, 66725), (69, 66611), (73, 66572), (74, 66554),

Gene: Frankicide\_94 Start: 66690, Stop: 65959, Start Num: 16

Candidate Starts for Frankicide\_94:

(10, 66909), (14, 66807), (Start: 16 @66690 has 278 MA's), (20, 66651), (22, 66624), (28, 66588), (33, 66537), (Start: 36 @66498 has 1 MA's), (40, 66456), (47, 66330), (49, 66309), (52, 66297), (57, 66225), (69, 66111), (73, 66072), (74, 66054),

Gene: Frederick\_91 Start: 67286, Stop: 66618, Start Num: 32

Candidate Starts for Frederick\_91:

(Start: 15 @67454 has 1 MA's), (17, 67391), (Start: 32 @67286 has 18 MA's), (Start: 35 @67235 has 11 MA's), (42, 67145), (47, 67067), (48, 67058), (55, 66986), (57, 66962), (66, 66869), (71, 66818), (73, 66806), (74, 66788), (76, 66770), (77, 66767), (80, 66755), (82, 66743), (84, 66719), (90, 66674), (92, 66662), (93, 66659),

Gene: FremontTroll\_97 Start: 67751, Stop: 67020, Start Num: 16

Candidate Starts for FremontTroll\_97:

(Start: 16 @67751 has 278 MA's), (20, 67712), (22, 67685), (33, 67598), (Start: 36 @67559 has 1 MA's), (40, 67517), (47, 67391), (49, 67370), (52, 67358), (57, 67286), (69, 67172), (73, 67133), (74, 67115),

Gene: Freya\_93 Start: 66460, Stop: 65729, Start Num: 16

Candidate Starts for Freya\_93:

(Start: 16 @66460 has 278 MA's), (20, 66421), (22, 66394), (33, 66307), (Start: 36 @66268 has 1 MA's), (40, 66226), (47, 66100), (49, 66079), (52, 66067), (57, 65995), (69, 65881), (73, 65842), (74, 65824),

Gene: FriarPreacher\_94 Start: 66839, Stop: 66108, Start Num: 16

Candidate Starts for FriarPreacher\_94:

(Start: 16 @66839 has 278 MA's), (20, 66800), (22, 66773), (33, 66686), (Start: 36 @66647 has 1 MA's), (40, 66605), (47, 66479), (49, 66458), (52, 66446), (57, 66374), (69, 66260), (73, 66221), (74, 66203),

Gene: Fringe\_101 Start: 67616, Stop: 66885, Start Num: 16

Candidate Starts for Fringe\_101:

(Start: 16 @67616 has 278 MA's), (20, 67577), (22, 67550), (33, 67463), (Start: 36 @67424 has 1 MA's), (40, 67382), (47, 67256), (49, 67235), (52, 67223), (57, 67151), (69, 67037), (73, 66998), (74, 66980),

Gene: FugateOSU\_97 Start: 67901, Stop: 67170, Start Num: 16

Candidate Starts for FugateOSU\_97:

(Start: 16 @67901 has 278 MA's), (20, 67862), (22, 67835), (33, 67748), (Start: 36 @67709 has 1 MA's), (40, 67667), (47, 67541), (49, 67520), (52, 67508), (57, 67436), (69, 67322), (73, 67283), (74, 67265),

Gene: Gareth\_97 Start: 67290, Stop: 66559, Start Num: 16

Candidate Starts for Gareth\_97:

(Start: 16 @67290 has 278 MA's), (20, 67251), (22, 67224), (33, 67137), (Start: 36 @67098 has 1 MA's), (40, 67056), (47, 66930), (49, 66909), (52, 66897), (57, 66825), (69, 66711), (73, 66672), (74, 66654),

Gene: GeneCoco\_96 Start: 67226, Stop: 66495, Start Num: 16

Candidate Starts for GeneCoco\_96:

(Start: 16 @67226 has 278 MA's), (20, 67187), (22, 67160), (33, 67073), (Start: 36 @67034 has 1 MA's), (40, 66992), (47, 66866), (49, 66845), (52, 66833), (57, 66761), (69, 66647), (73, 66608), (74, 66590),

Gene: GinPorsche\_91 Start: 66368, Stop: 65700, Start Num: 32

Candidate Starts for GinPorsche\_91:

(3, 67130), (Start: 15 @66536 has 1 MA's), (17, 66473), (Start: 32 @66368 has 18 MA's), (Start: 35 @66317 has 11 MA's), (39, 66278), (42, 66227), (43, 66224), (45, 66194), (47, 66149), (48, 66140), (55, 66068), (57, 66044), (66, 65951), (71, 65900), (73, 65888), (74, 65870), (76, 65852), (77, 65849), (79, 65840), (80, 65837), (82, 65825), (84, 65801), (90, 65756), (92, 65744), (93, 65741),

Gene: Giraffe\_98 Start: 67294, Stop: 66563, Start Num: 16

Candidate Starts for Giraffe\_98:

(Start: 16 @67294 has 278 MA's), (20, 67255), (22, 67228), (33, 67141), (Start: 36 @67102 has 1 MA's), (40, 67060), (47, 66934), (49, 66913), (52, 66901), (57, 66829), (69, 66715), (73, 66676), (74, 66658),

Gene: Gophee\_96 Start: 67281, Stop: 66550, Start Num: 16

Candidate Starts for Gophee\_96:

(Start: 16 @67281 has 278 MA's), (20, 67242), (22, 67215), (33, 67128), (Start: 36 @67089 has 1 MA's), (40, 67047), (47, 66921), (49, 66900), (52, 66888), (57, 66816), (69, 66702), (73, 66663), (74, 66645),

Gene: Grand2040\_94 Start: 67016, Stop: 66285, Start Num: 16

Candidate Starts for Grand2040\_94:

(Start: 16 @67016 has 278 MA's), (20, 66977), (22, 66950), (33, 66863), (Start: 36 @66824 has 1 MA's), (40, 66782), (47, 66656), (49, 66635), (52, 66623), (57, 66551), (69, 66437), (73, 66398), (74, 66380),

Gene: GreenChile\_95 Start: 66676, Stop: 65945, Start Num: 16

Candidate Starts for GreenChile\_95:

(Start: 16 @66676 has 278 MA's), (20, 66637), (22, 66610), (33, 66523), (Start: 36 @66484 has 1 MA's), (40, 66442), (47, 66316), (49, 66295), (52, 66283), (57, 66211), (69, 66097), (73, 66058), (74, 66040),

Gene: Gwennie1\_96 Start: 67105, Stop: 66374, Start Num: 16

Candidate Starts for Gwennie1\_96:

(Start: 16 @67105 has 278 MA's), (20, 67066), (22, 67039), (33, 66952), (Start: 36 @66913 has 1 MA's), (40, 66871), (47, 66745), (49, 66724), (52, 66712), (57, 66640), (69, 66526), (73, 66487), (74, 66469),

Gene: Gwilliam\_97 Start: 67824, Stop: 67093, Start Num: 16

Candidate Starts for Gwilliam\_97:

(10, 68043), (14, 67941), (Start: 16 @67824 has 278 MA's), (20, 67785), (22, 67758), (33, 67671), (Start: 36 @67632 has 1 MA's), (40, 67590), (47, 67464), (49, 67443), (52, 67431), (57, 67359), (69, 67245), (73, 67206), (74, 67188),

Gene: Haimas\_94 Start: 66721, Stop: 65990, Start Num: 16

Candidate Starts for Haimas\_94:

(Start: 16 @66721 has 278 MA's), (20, 66682), (22, 66655), (33, 66568), (Start: 36 @66529 has 1 MA's), (40, 66487), (47, 66361), (49, 66340), (52, 66328), (57, 66256), (69, 66142), (73, 66103), (74, 66085),

Gene: Haleema\_96 Start: 66840, Stop: 66109, Start Num: 16

Candidate Starts for Haleema\_96:

(Start: 16 @66840 has 278 MA's), (20, 66801), (22, 66774), (33, 66687), (Start: 36 @66648 has 1 MA's), (40, 66606), (47, 66480), (49, 66459), (52, 66447), (57, 66375), (69, 66261), (73, 66222), (74, 66204),

Gene: Hally898\_87 Start: 66208, Stop: 65540, Start Num: 32

Candidate Starts for Hally898\_87:

(3, 66970), (Start: 15 @66376 has 1 MA's), (17, 66313), (Start: 32 @66208 has 18 MA's), (Start: 35 @66157 has 11 MA's), (39, 66118), (42, 66067), (43, 66064), (45, 66034), (47, 65989), (48, 65980), (55, 65908), (57, 65884), (66, 65791), (71, 65740), (73, 65728), (74, 65710), (76, 65692), (77, 65689), (79, 65680), (80, 65677), (82, 65665), (84, 65641), (90, 65596), (92, 65584), (93, 65581),

Gene: Hamish\_94 Start: 67009, Stop: 66278, Start Num: 16

Candidate Starts for Hamish\_94:

(Start: 16 @67009 has 278 MA's), (20, 66970), (22, 66943), (33, 66856), (Start: 36 @66817 has 1 MA's), (40, 66775), (47, 66649), (49, 66628), (52, 66616), (57, 66544), (69, 66430), (73, 66391), (74, 66373),

Gene: Hangman\_90 Start: 67581, Stop: 66913, Start Num: 32

Candidate Starts for Hangman\_90:

(Start: 15 @67749 has 1 MA's), (17, 67686), (Start: 32 @67581 has 18 MA's), (Start: 35 @67530 has 11 MA's), (42, 67440), (47, 67362), (48, 67353), (57, 67257), (66, 67164), (71, 67113), (73, 67101), (74, 67083), (76, 67065), (77, 67062), (80, 67050), (82, 67038), (84, 67014), (92, 66957), (93, 66954),

Gene: Happabalu\_95 Start: 67934, Stop: 67203, Start Num: 16

Candidate Starts for Happabalu\_95:

(Start: 16 @67934 has 278 MA's), (20, 67895), (22, 67868), (33, 67781), (Start: 36 @67742 has 1 MA's), (40, 67700), (47, 67574), (49, 67553), (52, 67541), (57, 67469), (69, 67355), (73, 67316), (74, 67298),

Gene: Hartsy\_95 Start: 66958, Stop: 66227, Start Num: 16

Candidate Starts for Hartsy\_95:

(Start: 16 @66958 has 278 MA's), (20, 66919), (22, 66892), (33, 66805), (Start: 36 @66766 has 1 MA's), (40, 66724), (46, 66637), (47, 66598), (49, 66577), (52, 66565), (57, 66493), (69, 66379), (73, 66340), (74, 66322),

Gene: Harvey\_94 Start: 66617, Stop: 65886, Start Num: 16

Candidate Starts for Harvey\_94:

(Start: 16 @66617 has 278 MA's), (20, 66578), (22, 66551), (33, 66464), (Start: 36 @66425 has 1 MA's), (47, 66257), (49, 66236), (52, 66224), (57, 66152), (69, 66038), (73, 65999), (74, 65981),

Gene: Heath\_84 Start: 65351, Stop: 64701, Start Num: 32

Candidate Starts for Heath\_84:

(Start: 15 @65519 has 1 MA's), (17, 65456), (Start: 32 @65351 has 18 MA's), (Start: 35 @65300 has 11 MA's), (42, 65210), (47, 65132), (48, 65123), (55, 65051), (57, 65027), (66, 64934), (71, 64883), (73, 64871), (74, 64853), (76, 64835), (77, 64832), (82, 64808), (94, 64736), (95, 64733),

Gene: Hekos\_94 Start: 66390, Stop: 65659, Start Num: 16

Candidate Starts for Hekos\_94:

(Start: 16 @66390 has 278 MA's), (20, 66351), (22, 66324), (33, 66237), (Start: 36 @66198 has 1 MA's), (40, 66156), (47, 66030), (49, 66009), (52, 65997), (57, 65925), (69, 65811), (73, 65772), (74, 65754),

Gene: Held\_95 Start: 66738, Stop: 66007, Start Num: 16

Candidate Starts for Held\_95:

(Start: 16 @66738 has 278 MA's), (20, 66699), (22, 66672), (33, 66585), (Start: 36 @66546 has 1 MA's), (40, 66504), (47, 66378), (49, 66357), (52, 66345), (57, 66273), (69, 66159), (73, 66120), (74, 66102),

Gene: HenryJackson\_97 Start: 67458, Stop: 66727, Start Num: 16

Candidate Starts for HenryJackson\_97:

(Start: 16 @67458 has 278 MA's), (20, 67419), (22, 67392), (33, 67305), (Start: 36 @67266 has 1 MA's), (40, 67224), (47, 67098), (49, 67077), (52, 67065), (57, 66993), (69, 66879), (73, 66840), (74, 66822),

Gene: Hertubise\_96 Start: 67100, Stop: 66369, Start Num: 16

Candidate Starts for Hertubise\_96:

(Start: 16 @67100 has 278 MA's), (20, 67061), (22, 67034), (33, 66947), (Start: 36 @66908 has 1 MA's), (40, 66866), (47, 66740), (49, 66719), (52, 66707), (57, 66635), (69, 66521), (73, 66482), (74, 66464),

Gene: Hetaeria\_96 Start: 66830, Stop: 66099, Start Num: 16

Candidate Starts for Hetaeria\_96:

(Start: 16 @66830 has 278 MA's), (20, 66791), (22, 66764), (33, 66677), (Start: 36 @66638 has 1 MA's), (40, 66596), (47, 66470), (49, 66449), (52, 66437), (57, 66365), (69, 66251), (73, 66212), (74, 66194),

Gene: HighStump\_99 Start: 67245, Stop: 66514, Start Num: 16

Candidate Starts for HighStump\_99:

(Start: 16 @67245 has 278 MA's), (20, 67206), (22, 67179), (33, 67092), (Start: 36 @67053 has 1 MA's), (40, 67011), (47, 66885), (49, 66864), (52, 66852), (57, 66780), (69, 66666), (73, 66627), (74, 66609),

Gene: Hocus\_96 Start: 66759, Stop: 66028, Start Num: 16

Candidate Starts for Hocus\_96:

(Start: 16 @66759 has 278 MA's), (20, 66720), (22, 66693), (33, 66606), (Start: 36 @66567 has 1 MA's), (40, 66525), (47, 66399), (49, 66378), (52, 66366), (57, 66294), (69, 66180), (73, 66141), (74, 66123),

Gene: HogWash\_97 Start: 67771, Stop: 67040, Start Num: 16

Candidate Starts for HogWash\_97:

(Start: 16 @67771 has 278 MA's), (20, 67732), (22, 67705), (33, 67618), (Start: 36 @67579 has 1 MA's), (40, 67537), (47, 67411), (49, 67390), (52, 67378), (57, 67306), (69, 67192), (73, 67153), (74, 67135),

Gene: Hosp\_087 Start: 64231, Stop: 63587, Start Num: 34

Candidate Starts for Hosp\_087:

(19, 64360), (34, 64231), (39, 64174), (47, 64045), (52, 64015), (53, 64012), (57, 63943), (58, 63931), (72, 63790), (73, 63787), (74, 63769), (77, 63742), (82, 63715), (86, 63682),

Gene: Hydro\_90 Start: 67357, Stop: 66692, Start Num: 32

Candidate Starts for Hydro\_90:

(4, 67777), (Start: 15 @67525 has 1 MA's), (17, 67462), (Start: 32 @67357 has 18 MA's), (Start: 35 @67306 has 11 MA's), (42, 67216), (47, 67138), (48, 67129), (55, 67057), (57, 67033), (66, 66940), (71, 66889), (73, 66877), (74, 66859), (75, 66856), (76, 66841), (77, 66838), (80, 66826), (82, 66814), (84, 66790), (92, 66736), (93, 66733),

Gene: ImtiyazSitla\_98 Start: 67284, Stop: 66532, Start Num: 16

Candidate Starts for ImtiyazSitla\_98:

(10, 67503), (14, 67401), (Start: 16 @67284 has 278 MA's), (20, 67245), (33, 67131), (Start: 36 @67092 has 1 MA's), (47, 66924), (49, 66903), (52, 66891), (57, 66819), (69, 66705), (73, 66666), (74, 66648),

Gene: Inchworm\_98 Start: 67132, Stop: 66401, Start Num: 16

Candidate Starts for Inchworm\_98:

(Start: 16 @67132 has 278 MA's), (20, 67093), (22, 67066), (33, 66979), (Start: 36 @66940 has 1 MA's), (40, 66898), (47, 66772), (49, 66751), (52, 66739), (57, 66667), (69, 66553), (73, 66514), (74, 66496),

Gene: Inverness\_94 Start: 66689, Stop: 65958, Start Num: 16

Candidate Starts for Inverness\_94:

(Start: 16 @66689 has 278 MA's), (20, 66650), (22, 66623), (33, 66536), (Start: 36 @66497 has 1 MA's), (40, 66455), (47, 66329), (49, 66308), (52, 66296), (57, 66224), (69, 66110), (73, 66071), (74, 66053),

Gene: Iridessa\_99 Start: 66857, Stop: 66126, Start Num: 16

Candidate Starts for Iridessa\_99:

(Start: 16 @66857 has 278 MA's), (20, 66818), (22, 66791), (33, 66704), (Start: 36 @66665 has 1 MA's), (40, 66623), (47, 66497), (49, 66476), (52, 66464), (57, 66392), (69, 66278), (73, 66239), (74, 66221),

Gene: Iridoclysis\_96 Start: 67022, Stop: 66291, Start Num: 16

Candidate Starts for Iridoclysis\_96:

(Start: 16 @67022 has 278 MA's), (20, 66983), (22, 66956), (33, 66869), (Start: 36 @66830 has 1 MA's), (40, 66788), (47, 66662), (49, 66641), (52, 66629), (57, 66557), (69, 66443), (73, 66404), (74, 66386),

Gene: IsaacEli\_99 Start: 67263, Stop: 66532, Start Num: 16

Candidate Starts for IsaacEli\_99:

(10, 67482), (14, 67380), (Start: 16 @67263 has 278 MA's), (20, 67224), (22, 67197), (33, 67110), (Start: 36 @67071 has 1 MA's), (40, 67029), (47, 66903), (49, 66882), (52, 66870), (57, 66798), (69, 66684), (73, 66645), (74, 66627),

Gene: JAMaL\_90 Start: 66895, Stop: 66227, Start Num: 32

Candidate Starts for JAMaL\_90:

(4, 67309), (Start: 15 @67057 has 1 MA's), (17, 66994), (Start: 24 @66937 has 2 MA's), (Start: 32 @66895 has 18 MA's), (Start: 35 @66844 has 11 MA's), (47, 66676), (48, 66667), (55, 66595), (57, 66571), (66, 66478), (71, 66427), (73, 66415), (74, 66397), (75, 66394), (76, 66379), (77, 66376), (80, 66364), (82, 66352), (84, 66328), (90, 66283), (92, 66271), (93, 66268),

Gene: JDog\_96 Start: 67292, Stop: 66561, Start Num: 16

Candidate Starts for JDog\_96:

(Start: 16 @67292 has 278 MA's), (20, 67253), (22, 67226), (33, 67139), (Start: 36 @67100 has 1 MA's), (40, 67058), (47, 66932), (49, 66911), (52, 66899), (57, 66827), (69, 66713), (73, 66674), (74, 66656),

Gene: JacAttac\_97 Start: 66736, Stop: 66005, Start Num: 16

Candidate Starts for JacAttac\_97:

(Start: 16 @66736 has 278 MA's), (20, 66697), (22, 66670), (33, 66583), (Start: 36 @66544 has 1 MA's), (40, 66502), (47, 66376), (49, 66355), (52, 66343), (57, 66271), (69, 66157), (73, 66118), (74, 66100),

Gene: JaguarMi\_84 Start: 67336, Stop: 66665, Start Num: 32

Candidate Starts for JaguarMi\_84:

(11, 67675), (12, 67672), (Start: 15 @67504 has 1 MA's), (17, 67441), (Start: 32 @67336 has 18 MA's), (Start: 35 @67285 has 11 MA's), (42, 67195), (52, 67081), (55, 67033), (57, 67009), (59, 66985), (60, 66973), (66, 66916), (71, 66865), (73, 66853), (74, 66835), (76, 66817), (77, 66814), (80, 66802), (82, 66790), (84, 66766), (92, 66712), (93, 66709),

Gene: JakeO\_98 Start: 67020, Stop: 66289, Start Num: 16

Candidate Starts for JakeO\_98:

(Start: 16 @67020 has 278 MA's), (20, 66981), (22, 66954), (33, 66867), (Start: 36 @66828 has 1 MA's), (40, 66786), (47, 66660), (49, 66639), (52, 66627), (57, 66555), (69, 66441), (73, 66402), (74, 66384),

Gene: JangoPhett\_95 Start: 67098, Stop: 66367, Start Num: 16

Candidate Starts for JangoPhett\_95:

(Start: 16 @67098 has 278 MA's), (20, 67059), (22, 67032), (33, 66945), (Start: 36 @66906 has 1 MA's), (40, 66864), (47, 66738), (49, 66717), (52, 66705), (57, 66633), (69, 66519), (73, 66480), (74,

66462),

Gene: Jesabah\_101 Start: 67861, Stop: 67130, Start Num: 16

Candidate Starts for Jesabah\_101:

(Start: 16 @67861 has 278 MA's), (20, 67822), (22, 67795), (33, 67708), (Start: 36 @67669 has 1 MA's), (40, 67627), (47, 67501), (49, 67480), (52, 67468), (57, 67396), (69, 67282), (73, 67243), (74, 67225),

Gene: Jillium\_97 Start: 67175, Stop: 66444, Start Num: 16

Candidate Starts for Jillium\_97:

(Start: 16 @67175 has 278 MA's), (20, 67136), (22, 67109), (33, 67022), (Start: 36 @66983 has 1 MA's), (40, 66941), (47, 66815), (49, 66794), (52, 66782), (57, 66710), (69, 66596), (73, 66557), (74, 66539),

Gene: Jiminy\_97 Start: 66956, Stop: 66225, Start Num: 16

Candidate Starts for Jiminy\_97:

(Start: 16 @66956 has 278 MA's), (20, 66917), (22, 66890), (33, 66803), (Start: 36 @66764 has 1 MA's), (40, 66722), (47, 66596), (49, 66575), (52, 66563), (57, 66491), (69, 66377), (73, 66338), (74, 66320),

Gene: Jiraiya\_98 Start: 67040, Stop: 66309, Start Num: 16

Candidate Starts for Jiraiya\_98:

(Start: 16 @67040 has 278 MA's), (20, 67001), (22, 66974), (33, 66887), (Start: 36 @66848 has 1 MA's), (40, 66806), (47, 66680), (49, 66659), (52, 66647), (57, 66575), (69, 66461), (73, 66422), (74, 66404),

Gene: JoyceMaria\_89 Start: 67482, Stop: 66805, Start Num: 32

Candidate Starts for JoyceMaria\_89:

(Start: 15 @67650 has 1 MA's), (17, 67587), (Start: 32 @67482 has 18 MA's), (Start: 35 @67431 has 11 MA's), (42, 67335), (43, 67332), (45, 67302), (47, 67257), (48, 67248), (55, 67176), (57, 67152), (66, 67059), (73, 66996), (74, 66978), (76, 66960), (77, 66957), (80, 66945), (82, 66933), (84, 66909), (92, 66852), (93, 66849),

Gene: KLucky39\_94 Start: 66560, Stop: 65829, Start Num: 16

Candidate Starts for KLucky39\_94:

(Start: 16 @66560 has 278 MA's), (20, 66521), (22, 66494), (33, 66407), (Start: 36 @66368 has 1 MA's), (40, 66326), (47, 66200), (49, 66179), (52, 66167), (57, 66095), (69, 65981), (73, 65942), (74, 65924),

Gene: Kahve\_97 Start: 67456, Stop: 66725, Start Num: 16

Candidate Starts for Kahve\_97:

(Start: 16 @67456 has 278 MA's), (20, 67417), (22, 67390), (33, 67303), (Start: 36 @67264 has 1 MA's), (40, 67222), (47, 67096), (49, 67075), (52, 67063), (57, 66991), (69, 66877), (73, 66838), (74, 66820),

Gene: Kailash\_95 Start: 67155, Stop: 66424, Start Num: 16

Candidate Starts for Kailash\_95:

(10, 67374), (14, 67272), (Start: 16 @67155 has 278 MA's), (20, 67116), (33, 67002), (Start: 36 @66963 has 1 MA's), (47, 66795), (49, 66774), (52, 66762), (57, 66690), (69, 66576), (73, 66537), (74, 66519),

Gene: KarasumaRum\_87 Start: 65724, Stop: 65134, Start Num: 35

Candidate Starts for KarasumaRum\_87:

(26, 65826), (27, 65814), (Start: 30 @65796 has 1 MA's), (Start: 35 @65724 has 11 MA's), (47, 65550), (48, 65541), (58, 65433), (70, 65316), (73, 65292), (74, 65274), (82, 65217),

Gene: Karn\_96 Start: 66768, Stop: 66037, Start Num: 16

Candidate Starts for Karn\_96:

(Start: 16 @66768 has 278 MA's), (20, 66729), (22, 66702), (33, 66615), (Start: 36 @66576 has 1 MA's), (40, 66534), (47, 66408), (49, 66387), (52, 66375), (57, 66303), (69, 66189), (73, 66150), (74, 66132),

Gene: Katniss\_99 Start: 66872, Stop: 66141, Start Num: 16

Candidate Starts for Katniss\_99:

(Start: 16 @66872 has 278 MA's), (20, 66833), (22, 66806), (33, 66719), (Start: 36 @66680 has 1 MA's), (40, 66638), (47, 66512), (49, 66491), (52, 66479), (57, 66407), (69, 66293), (73, 66254), (74, 66236),

Gene: Keitherie\_100 Start: 67514, Stop: 66783, Start Num: 16

Candidate Starts for Keitherie\_100:

(Start: 16 @67514 has 278 MA's), (20, 67475), (22, 67448), (33, 67361), (Start: 36 @67322 has 1 MA's), (40, 67280), (47, 67154), (49, 67133), (52, 67121), (57, 67049), (69, 66935), (73, 66896), (74, 66878),

Gene: Khan1\_97 Start: 67235, Stop: 66504, Start Num: 16

Candidate Starts for Khan1\_97:

(Start: 16 @67235 has 278 MA's), (20, 67196), (22, 67169), (Start: 36 @67043 has 1 MA's), (40, 67001), (47, 66875), (49, 66854), (52, 66842), (57, 66770), (69, 66656), (73, 66617), (74, 66599),

Gene: Kikipoo\_99 Start: 67263, Stop: 66532, Start Num: 16

Candidate Starts for Kikipoo\_99:

(10, 67482), (14, 67380), (Start: 16 @67263 has 278 MA's), (20, 67224), (22, 67197), (33, 67110), (Start: 36 @67071 has 1 MA's), (40, 67029), (47, 66903), (49, 66882), (52, 66870), (57, 66798), (69, 66684), (73, 66645), (74, 66627),

Gene: Kimbrough\_98 Start: 67335, Stop: 66604, Start Num: 16

Candidate Starts for Kimbrough\_98:

(Start: 16 @67335 has 278 MA's), (20, 67296), (22, 67269), (33, 67182), (Start: 36 @67143 has 1 MA's), (40, 67101), (47, 66975), (49, 66954), (52, 66942), (57, 66870), (69, 66756), (73, 66717), (74, 66699),

Gene: KingTut\_87 Start: 63252, Stop: 62521, Start Num: 16

Candidate Starts for KingTut\_87:

(Start: 16 @63252 has 278 MA's), (20, 63213), (22, 63186), (33, 63099), (Start: 36 @63060 has 1 MA's), (40, 63018), (47, 62892), (49, 62871), (52, 62859), (57, 62787), (69, 62673), (73, 62634), (74, 62616),

Gene: KingVeVeVe\_95 Start: 66468, Stop: 65737, Start Num: 16

Candidate Starts for KingVeVeVe\_95:

(10, 66687), (14, 66585), (Start: 16 @66468 has 278 MA's), (20, 66429), (22, 66402), (Start: 36 @66276 has 1 MA's), (40, 66234), (47, 66108), (49, 66087), (52, 66075), (69, 65889), (73, 65850), (74, 65832),

Gene: KlimbOn\_96 Start: 66775, Stop: 66044, Start Num: 16

Candidate Starts for KlimbOn\_96:

(Start: 16 @66775 has 278 MA's), (20, 66736), (22, 66709), (33, 66622), (Start: 36 @66583 has 1 MA's), (40, 66541), (47, 66415), (49, 66394), (52, 66382), (57, 66310), (69, 66196), (73, 66157), (74, 66139),

Gene: Kloppinator\_97 Start: 66905, Stop: 66174, Start Num: 16

Candidate Starts for Kloppinator\_97:

(Start: 16 @66905 has 278 MA's), (20, 66866), (22, 66839), (33, 66752), (Start: 36 @66713 has 1 MA's), (47, 66545), (49, 66524), (52, 66512), (57, 66440), (69, 66326), (73, 66287), (74, 66269),

Gene: Kwadwo\_96 Start: 66759, Stop: 66028, Start Num: 16

Candidate Starts for Kwadwo\_96:

(Start: 16 @66759 has 278 MA's), (20, 66720), (22, 66693), (33, 66606), (Start: 36 @66567 has 1 MA's), (40, 66525), (47, 66399), (49, 66378), (52, 66366), (57, 66294), (69, 66180), (73, 66141), (74, 66123),

Gene: Kwksand96\_98 Start: 67025, Stop: 66294, Start Num: 16

Candidate Starts for Kwksand96\_98:

(Start: 16 @67025 has 278 MA's), (20, 66986), (22, 66959), (Start: 36 @66833 has 1 MA's), (40, 66791), (47, 66665), (49, 66644), (52, 66632), (57, 66560), (69, 66446), (73, 66407), (74, 66389),

Gene: Labeouficaum\_97 Start: 66839, Stop: 66108, Start Num: 16

Candidate Starts for Labeouficaum\_97:

(10, 67058), (14, 66956), (Start: 16 @66839 has 278 MA's), (20, 66800), (33, 66686), (Start: 36 @66647 has 1 MA's), (47, 66479), (49, 66458), (52, 66446), (57, 66374), (69, 66260), (73, 66221), (74, 66203),

Gene: Lambano\_87 Start: 66208, Stop: 65540, Start Num: 32

Candidate Starts for Lambano\_87:

(3, 66970), (Start: 15 @66376 has 1 MA's), (17, 66313), (Start: 32 @66208 has 18 MA's), (Start: 35 @66157 has 11 MA's), (39, 66118), (42, 66067), (43, 66064), (45, 66034), (47, 65989), (48, 65980), (55, 65908), (57, 65884), (66, 65791), (71, 65740), (73, 65728), (74, 65710), (76, 65692), (77, 65689), (79, 65680), (80, 65677), (82, 65665), (84, 65641), (90, 65596), (92, 65584), (93, 65581),

Gene: Larson\_99 Start: 67104, Stop: 66373, Start Num: 16

Candidate Starts for Larson\_99:

(Start: 16 @67104 has 278 MA's), (20, 67065), (22, 67038), (33, 66951), (Start: 36 @66912 has 1 MA's), (40, 66870), (47, 66744), (49, 66723), (52, 66711), (57, 66639), (69, 66525), (73, 66486), (74, 66468),

Gene: LasagnaCat\_98 Start: 67141, Stop: 66410, Start Num: 16

Candidate Starts for LasagnaCat\_98:

(Start: 16 @67141 has 278 MA's), (20, 67102), (22, 67075), (33, 66988), (Start: 36 @66949 has 1 MA's), (40, 66907), (47, 66781), (49, 66760), (52, 66748), (57, 66676), (69, 66562), (73, 66523), (74, 66505),

Gene: Lasso\_96 Start: 67001, Stop: 66270, Start Num: 16

Candidate Starts for Lasso\_96:

(Start: 16 @67001 has 278 MA's), (20, 66962), (22, 66935), (33, 66848), (Start: 36 @66809 has 1 MA's), (40, 66767), (47, 66641), (49, 66620), (52, 66608), (57, 66536), (69, 66422), (73, 66383), (74, 66365),

Gene: LeeLot\_95 Start: 67346, Stop: 66615, Start Num: 16

Candidate Starts for LeeLot\_95:

(Start: 16 @67346 has 278 MA's), (20, 67307), (22, 67280), (33, 67193), (Start: 36 @67154 has 1 MA's), (40, 67112), (47, 66986), (49, 66965), (52, 66953), (57, 66881), (69, 66767), (73, 66728), (74, 66710),

Gene: Lego3393\_95 Start: 67462, Stop: 66731, Start Num: 16

Candidate Starts for Lego3393\_95:

(Start: 16 @67462 has 278 MA's), (20, 67423), (22, 67396), (33, 67309), (Start: 36 @67270 has 1 MA's), (40, 67228), (47, 67102), (49, 67081), (52, 67069), (57, 66997), (69, 66883), (73, 66844), (74, 66826),

Gene: Legolas\_98 Start: 67089, Stop: 66358, Start Num: 16

Candidate Starts for Legolas\_98:

(Start: 16 @67089 has 278 MA's), (20, 67050), (22, 67023), (33, 66936), (Start: 36 @66897 has 1 MA's), (40, 66855), (47, 66729), (49, 66708), (52, 66696), (57, 66624), (69, 66510), (73, 66471), (74, 66453),

Gene: LeiMonet\_100 Start: 67222, Stop: 66491, Start Num: 16

Candidate Starts for LeiMonet\_100:

(Start: 16 @67222 has 278 MA's), (20, 67183), (22, 67156), (33, 67069), (Start: 36 @67030 has 1 MA's), (40, 66988), (47, 66862), (49, 66841), (52, 66829), (57, 66757), (69, 66643), (73, 66604), (74, 66586),

Gene: LemonSlice\_97 Start: 66748, Stop: 66017, Start Num: 16

Candidate Starts for LemonSlice\_97:

(Start: 16 @66748 has 278 MA's), (20, 66709), (22, 66682), (33, 66595), (Start: 36 @66556 has 1 MA's), (40, 66514), (47, 66388), (49, 66367), (52, 66355), (57, 66283), (69, 66169), (73, 66130), (74, 66112),

Gene: LilMcDreamy\_88 Start: 66128, Stop: 65508, Start Num: 36

Candidate Starts for LilMcDreamy\_88:

(Start: 36 @66128 has 1 MA's), (47, 65966), (52, 65933), (57, 65861), (58, 65849), (64, 65780), (71, 65717), (73, 65705), (96, 65528),

Gene: LittleDigger\_89 Start: 66350, Stop: 65640, Start Num: 24

Candidate Starts for LittleDigger\_89:

(8, 66638), (9, 66635), (13, 66623), (Start: 15 @66470 has 1 MA's), (17, 66407), (Start: 24 @66350 has 2 MA's), (Start: 32 @66308 has 18 MA's), (Start: 35 @66257 has 11 MA's), (47, 66089), (48, 66080), (55, 66008), (57, 65984), (66, 65891), (71, 65840), (73, 65828), (74, 65810), (76, 65792), (77, 65789), (80, 65777), (82, 65765), (84, 65741), (90, 65696), (92, 65684), (93, 65681),

Gene: Lolalove\_92 Start: 67385, Stop: 66732, Start Num: 32

Candidate Starts for Lolalove\_92:

(Start: 15 @67553 has 1 MA's), (17, 67490), (Start: 32 @67385 has 18 MA's), (Start: 35 @67334 has 11 MA's), (42, 67241), (45, 67208), (47, 67163), (48, 67154), (55, 67082), (57, 67058), (66, 66965), (71, 66914), (73, 66902), (74, 66884), (76, 66866), (77, 66863), (82, 66839), (94, 66767), (95, 66764),

Gene: Longacauda\_97 Start: 66983, Stop: 66231, Start Num: 16

Candidate Starts for Longacauda\_97:

(Start: 16 @66983 has 278 MA's), (20, 66944), (22, 66917), (33, 66830), (Start: 36 @66791 has 1 MA's), (40, 66749), (47, 66623), (49, 66602), (52, 66590), (57, 66518), (69, 66404), (73, 66365), (74, 66347),

Gene: Lopsy\_93 Start: 66654, Stop: 65923, Start Num: 16

Candidate Starts for Lopsy\_93:

(Start: 16 @66654 has 278 MA's), (20, 66615), (22, 66588), (33, 66501), (Start: 36 @66462 has 1 MA's), (40, 66420), (47, 66294), (49, 66273), (52, 66261), (69, 66075), (73, 66036), (74, 66018),

Gene: LostAndPhound\_96 Start: 67290, Stop: 66559, Start Num: 16

Candidate Starts for LostAndPhound\_96:

(Start: 16 @67290 has 278 MA's), (20, 67251), (22, 67224), (33, 67137), (Start: 36 @67098 has 1 MA's), (40, 67056), (47, 66930), (49, 66909), (52, 66897), (57, 66825), (69, 66711), (73, 66672), (74, 66654),

Gene: LuckyMarjie\_94 Start: 66500, Stop: 65769, Start Num: 16

Candidate Starts for LuckyMarjie\_94:

(Start: 16 @66500 has 278 MA's), (20, 66461), (22, 66434), (33, 66347), (Start: 36 @66308 has 1 MA's), (40, 66266), (47, 66140), (49, 66119), (52, 66107), (57, 66035), (69, 65921), (73, 65882), (74, 65864),

Gene: Lulumae\_92 Start: 66481, Stop: 65750, Start Num: 16

Candidate Starts for Lulumae\_92:

(Start: 16 @66481 has 278 MA's), (20, 66442), (22, 66415), (Start: 36 @66289 has 1 MA's), (40, 66247), (47, 66121), (49, 66100), (52, 66088), (57, 66016), (69, 65902), (73, 65863), (74, 65845),

Gene: Lulwa\_94 Start: 66114, Stop: 65383, Start Num: 16

Candidate Starts for Lulwa\_94:

(Start: 16 @66114 has 278 MA's), (20, 66075), (22, 66048), (33, 65961), (Start: 36 @65922 has 1 MA's), (40, 65880), (47, 65754), (49, 65733), (52, 65721), (57, 65649), (69, 65535), (73, 65496), (74, 65478),

Gene: Lumine\_98 Start: 66938, Stop: 66207, Start Num: 16

Candidate Starts for Lumine\_98:

(Start: 16 @66938 has 278 MA's), (20, 66899), (22, 66872), (33, 66785), (Start: 36 @66746 has 1 MA's), (40, 66704), (47, 66578), (49, 66557), (52, 66545), (57, 66473), (69, 66359), (73, 66320), (74, 66302),

Gene: MRabcd\_97 Start: 67216, Stop: 66485, Start Num: 16

Candidate Starts for MRabcd\_97:

(Start: 16 @67216 has 278 MA's), (20, 67177), (22, 67150), (33, 67063), (Start: 36 @67024 has 1 MA's), (40, 66982), (47, 66856), (49, 66835), (52, 66823), (57, 66751), (69, 66637), (73, 66598), (74, 66580),

Gene: Mag7\_95 Start: 66699, Stop: 65968, Start Num: 16

Candidate Starts for Mag7\_95:

(10, 66918), (14, 66816), (Start: 16 @66699 has 278 MA's), (20, 66660), (33, 66546), (Start: 36 @66507 has 1 MA's), (47, 66339), (49, 66318), (52, 66306), (57, 66234), (69, 66120), (73, 66081), (74, 66063),

Gene: Magic8\_96 Start: 67067, Stop: 66336, Start Num: 16

Candidate Starts for Magic8\_96:

(10, 67286), (14, 67184), (Start: 16 @67067 has 278 MA's), (20, 67028), (33, 66914), (Start: 36 @66875 has 1 MA's), (47, 66707), (49, 66686), (52, 66674), (57, 66602), (69, 66488), (73, 66449), (74, 66431),

Gene: Magpie\_86 Start: 67131, Stop: 66481, Start Num: 32

Candidate Starts for Magpie\_86:

(Start: 15 @67299 has 1 MA's), (17, 67236), (Start: 32 @67131 has 18 MA's), (Start: 35 @67080 has 11 MA's), (42, 66990), (45, 66957), (47, 66912), (55, 66831), (57, 66807), (66, 66714), (71, 66663), (73, 66651), (74, 66633), (75, 66630), (76, 66615), (77, 66612), (80, 66600), (82, 66588), (84, 66564),

Gene: Mana\_94 Start: 66904, Stop: 66173, Start Num: 16

Candidate Starts for Mana\_94:

(Start: 16 @66904 has 278 MA's), (20, 66865), (22, 66838), (33, 66751), (Start: 36 @66712 has 1 MA's), (40, 66670), (47, 66544), (49, 66523), (52, 66511), (57, 66439), (69, 66325), (73, 66286), (74, 66268),

Gene: Manad\_96 Start: 67013, Stop: 66282, Start Num: 16

Candidate Starts for Manad\_96:

(Start: 16 @67013 has 278 MA's), (20, 66974), (22, 66947), (33, 66860), (Start: 36 @66821 has 1 MA's), (40, 66779), (47, 66653), (49, 66632), (52, 66620), (57, 66548), (69, 66434), (73, 66395), (74, 66377),

Gene: Maru\_96 Start: 67109, Stop: 66378, Start Num: 16

Candidate Starts for Maru\_96:

(Start: 16 @67109 has 278 MA's), (20, 67070), (22, 67043), (33, 66956), (Start: 36 @66917 has 1 MA's), (40, 66875), (47, 66749), (49, 66728), (52, 66716), (57, 66644), (69, 66530), (73, 66491), (74, 66473),

Gene: Maskar\_98 Start: 67284, Stop: 66532, Start Num: 16

Candidate Starts for Maskar\_98:

(10, 67503), (14, 67401), (Start: 16 @67284 has 278 MA's), (20, 67245), (33, 67131), (Start: 36 @67092 has 1 MA's), (47, 66924), (49, 66903), (52, 66891), (57, 66819), (69, 66705), (73, 66666), (74, 66648),

Gene: Matalotodo\_95 Start: 67748, Stop: 67017, Start Num: 16

Candidate Starts for Matalotodo\_95:

(Start: 16 @67748 has 278 MA's), (20, 67709), (22, 67682), (33, 67595), (Start: 36 @67556 has 1 MA's), (40, 67514), (47, 67388), (49, 67367), (52, 67355), (57, 67283), (69, 67169), (73, 67130), (74, 67112),

Gene: Mcshane\_99 Start: 67131, Stop: 66400, Start Num: 16

Candidate Starts for Mcshane\_99:

(Start: 16 @67131 has 278 MA's), (20, 67092), (22, 67065), (33, 66978), (Start: 36 @66939 has 1 MA's), (40, 66897), (47, 66771), (49, 66750), (52, 66738), (57, 66666), (69, 66552), (73, 66513), (74, 66495),

Gene: Mecca\_97 Start: 67315, Stop: 66584, Start Num: 16

Candidate Starts for Mecca\_97:

(Start: 16 @67315 has 278 MA's), (20, 67276), (22, 67249), (33, 67162), (Start: 36 @67123 has 1 MA's), (40, 67081), (47, 66955), (49, 66934), (52, 66922), (57, 66850), (69, 66736), (73, 66697), (74, 66679),

Gene: Megamind20\_99 Start: 67095, Stop: 66364, Start Num: 16

Candidate Starts for Megamind20\_99:

(Start: 16 @67095 has 278 MA's), (20, 67056), (22, 67029), (Start: 36 @66903 has 1 MA's), (40, 66861), (47, 66735), (49, 66714), (52, 66702), (57, 66630), (69, 66516), (73, 66477), (74, 66459),

Gene: Megatron\_98 Start: 67434, Stop: 66703, Start Num: 16

Candidate Starts for Megatron\_98:

(Start: 16 @67434 has 278 MA's), (20, 67395), (22, 67368), (33, 67281), (Start: 36 @67242 has 1 MA's), (40, 67200), (47, 67074), (49, 67053), (52, 67041), (57, 66969), (69, 66855), (73, 66816), (74, 66798),

Gene: Melc17\_94 Start: 67384, Stop: 66653, Start Num: 16

Candidate Starts for Melc17\_94:

(Start: 16 @67384 has 278 MA's), (20, 67345), (22, 67318), (33, 67231), (Start: 36 @67192 has 1 MA's), (40, 67150), (47, 67024), (49, 67003), (52, 66991), (57, 66919), (69, 66805), (73, 66766), (74, 66748),

Gene: MelsMeow\_95 Start: 66765, Stop: 66013, Start Num: 16

Candidate Starts for MelsMeow\_95:

(10, 66984), (14, 66882), (Start: 16 @66765 has 278 MA's), (20, 66726), (33, 66612), (Start: 36 @66573 has 1 MA's), (47, 66405), (49, 66384), (52, 66372), (57, 66300), (69, 66186), (73, 66147), (74, 66129),

Gene: Mesh1\_97 Start: 67199, Stop: 66468, Start Num: 16

Candidate Starts for Mesh1\_97:

(Start: 16 @67199 has 278 MA's), (20, 67160), (22, 67133), (33, 67046), (Start: 36 @67007 has 1 MA's), (40, 66965), (47, 66839), (49, 66818), (52, 66806), (57, 66734), (69, 66620), (73, 66581), (74, 66563),

Gene: Mesmerelda\_97 Start: 67315, Stop: 66584, Start Num: 16

Candidate Starts for Mesmerelda\_97:

(Start: 16 @67315 has 278 MA's), (20, 67276), (22, 67249), (33, 67162), (Start: 36 @67123 has 1 MA's), (40, 67081), (47, 66955), (49, 66934), (52, 66922), (57, 66850), (69, 66736), (73, 66697), (74, 66679),

Gene: MichaelPhcott\_95 Start: 66696, Stop: 65965, Start Num: 16

Candidate Starts for MichaelPhcott\_95:

(10, 66915), (14, 66813), (Start: 16 @66696 has 278 MA's), (20, 66657), (33, 66543), (Start: 36 @66504 has 1 MA's), (47, 66336), (49, 66315), (52, 66303), (57, 66231), (69, 66117), (73, 66078), (74, 66060),

Gene: Mikota\_91 Start: 66191, Stop: 65460, Start Num: 16

Candidate Starts for Mikota\_91:

(Start: 16 @66191 has 278 MA's), (20, 66152), (22, 66125), (33, 66038), (Start: 36 @65999 has 1 MA's), (47, 65831), (49, 65810), (52, 65798), (57, 65726), (69, 65612), (73, 65573), (74, 65555),

Gene: MiniBoss\_92 Start: 65812, Stop: 65081, Start Num: 16

Candidate Starts for MiniBoss\_92:

(10, 66031), (14, 65929), (Start: 16 @65812 has 278 MA's), (20, 65773), (22, 65746), (28, 65710), (33, 65659), (Start: 36 @65620 has 1 MA's), (40, 65578), (47, 65452), (49, 65431), (52, 65419), (69, 65233), (73, 65194), (74, 65176),

Gene: MitKao\_97 Start: 66917, Stop: 66186, Start Num: 16

Candidate Starts for MitKao\_97:

(Start: 16 @66917 has 278 MA's), (20, 66878), (22, 66851), (33, 66764), (Start: 36 @66725 has 1 MA's), (40, 66683), (47, 66557), (49, 66536), (52, 66524), (57, 66452), (69, 66338), (73, 66299), (74, 66281),

Gene: Mithril\_88 Start: 67142, Stop: 66471, Start Num: 32

Candidate Starts for Mithril\_88:

(Start: 15 @67310 has 1 MA's), (17, 67247), (Start: 32 @67142 has 18 MA's), (Start: 35 @67091 has 11 MA's), (42, 67001), (47, 66923), (48, 66914), (55, 66842), (57, 66818), (63, 66755), (66, 66725), (71, 66674), (73, 66662), (74, 66644), (76, 66626), (77, 66623), (80, 66611), (82, 66599), (84, 66575), (90, 66530), (91, 66521), (92, 66518), (93, 66515),

Gene: Morgushi\_94 Start: 66732, Stop: 66001, Start Num: 16

Candidate Starts for Morgushi\_94:

(Start: 16 @66732 has 278 MA's), (20, 66693), (22, 66666), (33, 66579), (Start: 36 @66540 has 1 MA's), (40, 66498), (47, 66372), (49, 66351), (52, 66339), (57, 66267), (69, 66153), (73, 66114), (74, 66096),

Gene: Morty\_97 Start: 67302, Stop: 66571, Start Num: 16

Candidate Starts for Morty\_97:

(Start: 16 @67302 has 278 MA's), (20, 67263), (22, 67236), (33, 67149), (Start: 36 @67110 has 1 MA's), (40, 67068), (47, 66942), (49, 66921), (52, 66909), (57, 66837), (69, 66723), (73, 66684), (74, 66666),

Gene: Mosaic\_94 Start: 66913, Stop: 66182, Start Num: 16

Candidate Starts for Mosaic\_94:

(Start: 16 @66913 has 278 MA's), (20, 66874), (22, 66847), (33, 66760), (Start: 36 @66721 has 1 MA's), (40, 66679), (47, 66553), (49, 66532), (52, 66520), (57, 66448), (69, 66334), (73, 66295), (74, 66277),

Gene: MrPhizzler\_100 Start: 67212, Stop: 66481, Start Num: 16

Candidate Starts for MrPhizzler\_100:

(Start: 16 @67212 has 278 MA's), (20, 67173), (22, 67146), (Start: 36 @67020 has 1 MA's), (40, 66978), (47, 66852), (49, 66831), (52, 66819), (57, 66747), (69, 66633), (73, 66594), (74, 66576),

Gene: Mudslide\_91 Start: 67615, Stop: 66962, Start Num: 32

Candidate Starts for Mudslide\_91:

(2, 68467), (Start: 15 @67783 has 1 MA's), (17, 67720), (Start: 32 @67615 has 18 MA's), (Start: 35 @67564 has 11 MA's), (42, 67471), (45, 67438), (47, 67393), (48, 67384), (55, 67312), (57, 67288), (66, 67195), (71, 67144), (73, 67132), (74, 67114), (76, 67096), (77, 67093), (82, 67069), (94, 66997), (95, 66994),

Gene: Mulan\_96 Start: 66946, Stop: 66215, Start Num: 16

Candidate Starts for Mulan\_96:

(Start: 16 @66946 has 278 MA's), (20, 66907), (22, 66880), (33, 66793), (Start: 36 @66754 has 1 MA's), (40, 66712), (47, 66586), (49, 66565), (52, 66553), (57, 66481), (69, 66367), (73, 66328), (74, 66310),

Gene: Murdoc\_93 Start: 67025, Stop: 66294, Start Num: 16

Candidate Starts for Murdoc\_93:

(Start: 16 @67025 has 278 MA's), (20, 66986), (22, 66959), (33, 66872), (Start: 36 @66833 has 1 MA's), (40, 66791), (47, 66665), (49, 66644), (52, 66632), (57, 66560), (69, 66446), (73, 66407), (74, 66389),

Gene: Mutante\_98 Start: 66919, Stop: 66188, Start Num: 16

Candidate Starts for Mutante\_98:

(Start: 16 @66919 has 278 MA's), (20, 66880), (22, 66853), (33, 66766), (Start: 36 @66727 has 1 MA's), (40, 66685), (47, 66559), (49, 66538), (52, 66526), (57, 66454), (69, 66340), (73, 66301), (74, 66283),

Gene: Mysterious\_88 Start: 65876, Stop: 65298, Start Num: 35

Candidate Starts for Mysterious\_88:

(5, 66308), (Start: 35 @65876 has 11 MA's), (44, 65771), (47, 65714), (48, 65705), (57, 65609), (58, 65597), (70, 65480), (71, 65468), (73, 65456), (74, 65438), (78, 65399),

Gene: Nacho\_0099 Start: 67746, Stop: 67015, Start Num: 16

Candidate Starts for Nacho\_0099:

(Start: 16 @67746 has 278 MA's), (20, 67707), (22, 67680), (33, 67593), (Start: 36 @67554 has 1 MA's), (40, 67512), (47, 67386), (49, 67365), (52, 67353), (57, 67281), (69, 67167), (73, 67128), (74, 67110),

Gene: Nanao\_89 Start: 66221, Stop: 65553, Start Num: 32

Candidate Starts for Nanao\_89:

(3, 66983), (Start: 15 @66389 has 1 MA's), (17, 66326), (Start: 32 @66221 has 18 MA's), (Start: 35 @66170 has 11 MA's), (39, 66131), (42, 66080), (43, 66077), (45, 66047), (47, 66002), (48, 65993), (55, 65921), (57, 65897), (66, 65804), (71, 65753), (73, 65741), (74, 65723), (76, 65705), (77, 65702), (79, 65693), (80, 65690), (82, 65678), (84, 65654), (90, 65609), (92, 65597), (93, 65594),

Gene: Nathan\_96 Start: 67167, Stop: 66436, Start Num: 16

Candidate Starts for Nathan\_96:

(Start: 16 @67167 has 278 MA's), (20, 67128), (22, 67101), (33, 67014), (Start: 36 @66975 has 1 MA's), (40, 66933), (47, 66807), (49, 66786), (52, 66774), (57, 66702), (69, 66588), (73, 66549), (74, 66531),

Gene: Nehemiah\_88 Start: 65744, Stop: 65178, Start Num: 35

Candidate Starts for Nehemiah\_88:

(Start: 35 @65744 has 11 MA's), (44, 65639), (47, 65582), (48, 65573), (57, 65477), (58, 65465), (70, 65348), (71, 65336), (73, 65324), (74, 65306), (78, 65267),

Gene: Newman\_92 Start: 67023, Stop: 66292, Start Num: 16

Candidate Starts for Newman\_92:

(Start: 16 @67023 has 278 MA's), (20, 66984), (22, 66957), (33, 66870), (Start: 36 @66831 has 1 MA's), (40, 66789), (47, 66663), (49, 66642), (52, 66630), (57, 66558), (69, 66444), (73, 66405), (74, 66387),

Gene: NiaNia\_98 Start: 66793, Stop: 66062, Start Num: 16

Candidate Starts for NiaNia\_98:

(Start: 16 @66793 has 278 MA's), (20, 66754), (22, 66727), (33, 66640), (Start: 36 @66601 has 1 MA's), (40, 66559), (47, 66433), (49, 66412), (52, 66400), (57, 66328), (69, 66214), (73, 66175), (74, 66157),

Gene: Nicole21\_98 Start: 67053, Stop: 66322, Start Num: 16

Candidate Starts for Nicole21\_98:

(Start: 16 @67053 has 278 MA's), (20, 67014), (22, 66987), (33, 66900), (Start: 36 @66861 has 1 MA's), (40, 66819), (47, 66693), (49, 66672), (52, 66660), (57, 66588), (69, 66474), (73, 66435), (74, 66417),

Gene: Nigel\_85 Start: 65605, Stop: 65015, Start Num: 35

Candidate Starts for Nigel\_85:

(Start: 15 @65845 has 1 MA's), (25, 65716), (Start: 35 @65605 has 11 MA's), (41, 65548), (42, 65512), (45, 65479), (47, 65434), (48, 65425), (55, 65353), (57, 65329), (66, 65236), (71, 65185), (73, 65173), (74, 65155), (76, 65128), (77, 65125), (80, 65113), (82, 65101), (94, 65050),

Gene: Nova1\_96 Start: 66898, Stop: 66167, Start Num: 16

Candidate Starts for Nova1\_96:

(Start: 16 @66898 has 278 MA's), (20, 66859), (22, 66832), (33, 66745), (Start: 36 @66706 has 1 MA's), (40, 66664), (47, 66538), (49, 66517), (52, 66505), (57, 66433), (69, 66319), (73, 66280), (74, 66262),

Gene: Numberten\_97 Start: 67032, Stop: 66301, Start Num: 16

Candidate Starts for Numberten\_97:

(Start: 16 @67032 has 278 MA's), (20, 66993), (22, 66966), (33, 66879), (Start: 36 @66840 has 1 MA's), (40, 66798), (47, 66672), (49, 66651), (52, 66639), (57, 66567), (69, 66453), (73, 66414), (74, 66396),

Gene: Nyala\_97 Start: 66768, Stop: 66037, Start Num: 16

Candidate Starts for Nyala\_97:

(Start: 16 @66768 has 278 MA's), (20, 66729), (22, 66702), (33, 66615), (Start: 36 @66576 has 1 MA's), (40, 66534), (47, 66408), (49, 66387), (52, 66375), (57, 66303), (69, 66189), (73, 66150), (74, 66132),

Gene: OSmaximus\_97 Start: 67321, Stop: 66590, Start Num: 16

Candidate Starts for OSmaximus\_97:

(10, 67540), (14, 67438), (Start: 16 @67321 has 278 MA's), (20, 67282), (22, 67255), (28, 67219), (33, 67168), (Start: 36 @67129 has 1 MA's), (47, 66961), (49, 66940), (52, 66928), (57, 66856), (69, 66742), (73, 66703), (74, 66685),

Gene: Olak\_99 Start: 67301, Stop: 66570, Start Num: 16

Candidate Starts for Olak\_99:

(Start: 16 @67301 has 278 MA's), (20, 67262), (22, 67235), (33, 67148), (Start: 36 @67109 has 1 MA's), (40, 67067), (47, 66941), (49, 66920), (52, 66908), (57, 66836), (69, 66722), (73, 66683), (74, 66665),

Gene: Oline\_96 Start: 66923, Stop: 66192, Start Num: 16

Candidate Starts for Oline\_96:

(Start: 16 @66923 has 278 MA's), (20, 66884), (22, 66857), (33, 66770), (Start: 36 @66731 has 1 MA's), (40, 66689), (47, 66563), (49, 66542), (52, 66530), (57, 66458), (69, 66344), (73, 66305), (74, 66287),

Gene: Olive\_93 Start: 67165, Stop: 66434, Start Num: 16

Candidate Starts for Olive\_93:

(Start: 16 @67165 has 278 MA's), (20, 67126), (22, 67099), (33, 67012), (Start: 36 @66973 has 1 MA's), (40, 66931), (47, 66805), (49, 66784), (52, 66772), (57, 66700), (69, 66586), (73, 66547), (74, 66529),

Gene: OliverWalter\_96 Start: 67217, Stop: 66486, Start Num: 16

Candidate Starts for OliverWalter\_96:

(Start: 16 @67217 has 278 MA's), (20, 67178), (22, 67151), (33, 67064), (Start: 36 @67025 has 1 MA's), (40, 66983), (47, 66857), (49, 66836), (52, 66824), (57, 66752), (69, 66638), (73, 66599), (74, 66581),

Gene: Omniscient\_98 Start: 67622, Stop: 66891, Start Num: 16

Candidate Starts for Omniscient\_98:

(Start: 16 @67622 has 278 MA's), (20, 67583), (22, 67556), (33, 67469), (Start: 36 @67430 has 1 MA's), (40, 67388), (47, 67262), (49, 67241), (52, 67229), (57, 67157), (69, 67043), (73, 67004), (74, 66986),

Gene: OneBrain\_98 Start: 66904, Stop: 66173, Start Num: 16

Candidate Starts for OneBrain\_98:

(Start: 16 @66904 has 278 MA's), (20, 66865), (22, 66838), (33, 66751), (Start: 36 @66712 has 1 MA's), (40, 66670), (47, 66544), (49, 66523), (52, 66511), (57, 66439), (69, 66325), (73, 66286), (74, 66268),

Gene: Oosterbaan\_97 Start: 67160, Stop: 66429, Start Num: 16

Candidate Starts for Oosterbaan\_97:

(Start: 16 @67160 has 278 MA's), (20, 67121), (22, 67094), (33, 67007), (Start: 36 @66968 has 1 MA's), (40, 66926), (47, 66800), (49, 66779), (52, 66767), (57, 66695), (69, 66581), (73, 66542), (74, 66524),

Gene: Orfeu\_97 Start: 67281, Stop: 66550, Start Num: 16

Candidate Starts for Orfeu\_97:

(Start: 16 @67281 has 278 MA's), (20, 67242), (22, 67215), (33, 67128), (Start: 36 @67089 has 1 MA's), (40, 67047), (47, 66921), (49, 66900), (52, 66888), (57, 66816), (69, 66702), (73, 66663), (74, 66645),

Gene: Orion\_95 Start: 66852, Stop: 66121, Start Num: 16

Candidate Starts for Orion\_95:

(Start: 16 @66852 has 278 MA's), (20, 66813), (22, 66786), (33, 66699), (Start: 36 @66660 has 1 MA's), (40, 66618), (47, 66492), (49, 66471), (52, 66459), (57, 66387), (69, 66273), (73, 66234), (74, 66216),

Gene: Orwigg\_98 Start: 67057, Stop: 66326, Start Num: 16

Candidate Starts for Orwigg\_98:

(Start: 16 @67057 has 278 MA's), (20, 67018), (22, 66991), (33, 66904), (Start: 36 @66865 has 1 MA's), (40, 66823), (47, 66697), (49, 66676), (52, 66664), (57, 66592), (69, 66478), (73, 66439), (74, 66421),

Gene: PG1\_95 Start: 67424, Stop: 66693, Start Num: 16

Candidate Starts for PG1\_95:

(Start: 16 @67424 has 278 MA's), (20, 67385), (22, 67358), (33, 67271), (Start: 36 @67232 has 1 MA's), (40, 67190), (47, 67064), (49, 67043), (52, 67031), (57, 66959), (69, 66845), (73, 66806), (74, 66788),

Gene: Pacifista\_99 Start: 67142, Stop: 66411, Start Num: 16

Candidate Starts for Pacifista\_99:

(Start: 16 @67142 has 278 MA's), (20, 67103), (22, 67076), (33, 66989), (Start: 36 @66950 has 1 MA's), (40, 66908), (47, 66782), (49, 66761), (52, 66749), (57, 66677), (69, 66563), (73, 66524), (74, 66506),

Gene: PallasAthena\_98 Start: 66754, Stop: 66023, Start Num: 16

Candidate Starts for PallasAthena\_98:

(Start: 16 @66754 has 278 MA's), (20, 66715), (22, 66688), (33, 66601), (Start: 36 @66562 has 1 MA's), (40, 66520), (47, 66394), (49, 66373), (52, 66361), (57, 66289), (69, 66175), (73, 66136), (74, 66118),

Gene: Phamished\_96 Start: 66940, Stop: 66209, Start Num: 16

Candidate Starts for Phamished\_96:

(Start: 16 @66940 has 278 MA's), (20, 66901), (22, 66874), (33, 66787), (Start: 36 @66748 has 1 MA's), (40, 66706), (47, 66580), (49, 66559), (52, 66547), (57, 66475), (69, 66361), (73, 66322), (74,

66304),

Gene: Phareon\_94 Start: 66465, Stop: 65734, Start Num: 16

Candidate Starts for Phareon\_94:

(Start: 16 @66465 has 278 MA's), (20, 66426), (22, 66399), (33, 66312), (Start: 36 @66273 has 1 MA's), (40, 66231), (47, 66105), (49, 66084), (52, 66072), (57, 66000), (69, 65886), (73, 65847), (74, 65829),

Gene: PhatCats2014\_96 Start: 67425, Stop: 66694, Start Num: 16

Candidate Starts for PhatCats2014\_96:

(Start: 16 @67425 has 278 MA's), (20, 67386), (22, 67359), (33, 67272), (Start: 36 @67233 has 1 MA's), (40, 67191), (47, 67065), (49, 67044), (52, 67032), (57, 66960), (69, 66846), (73, 66807), (74, 66789),

Gene: PhatLouie\_99 Start: 67298, Stop: 66567, Start Num: 16

Candidate Starts for PhatLouie\_99:

(Start: 16 @67298 has 278 MA's), (20, 67259), (22, 67232), (33, 67145), (Start: 36 @67106 has 1 MA's), (40, 67064), (47, 66938), (49, 66917), (52, 66905), (57, 66833), (69, 66719), (73, 66680), (74, 66662),

Gene: Phelemich\_86 Start: 65786, Stop: 65199, Start Num: 35

Candidate Starts for Phelemich\_86:

(Start: 35 @65786 has 11 MA's), (47, 65621), (48, 65612), (57, 65516), (58, 65504), (70, 65387), (71, 65375), (73, 65363), (74, 65345), (78, 65306), (81, 65297),

Gene: PhenghisKhan\_97 Start: 66929, Stop: 66198, Start Num: 16

Candidate Starts for PhenghisKhan\_97:

(Start: 16 @66929 has 278 MA's), (20, 66890), (22, 66863), (33, 66776), (Start: 36 @66737 has 1 MA's), (40, 66695), (47, 66569), (49, 66548), (52, 66536), (57, 66464), (69, 66350), (73, 66311), (74, 66293),

Gene: Pherdinand\_98 Start: 67144, Stop: 66413, Start Num: 16

Candidate Starts for Pherdinand\_98:

(Start: 16 @67144 has 278 MA's), (20, 67105), (22, 67078), (33, 66991), (Start: 36 @66952 has 1 MA's), (40, 66910), (47, 66784), (49, 66763), (52, 66751), (57, 66679), (69, 66565), (73, 66526), (74, 66508),

Gene: Phergie\_97 Start: 66918, Stop: 66187, Start Num: 16

Candidate Starts for Phergie\_97:

(Start: 16 @66918 has 278 MA's), (20, 66879), (22, 66852), (33, 66765), (Start: 36 @66726 has 1 MA's), (40, 66684), (47, 66558), (49, 66537), (52, 66525), (57, 66453), (69, 66339), (73, 66300), (74, 66282),

Gene: Phipps\_94 Start: 66718, Stop: 65987, Start Num: 16

Candidate Starts for Phipps\_94:

(Start: 16 @66718 has 278 MA's), (20, 66679), (22, 66652), (33, 66565), (Start: 36 @66526 has 1 MA's), (40, 66484), (47, 66358), (49, 66337), (52, 66325), (57, 66253), (69, 66139), (73, 66100), (74, 66082),

Gene: Phleuron\_94 Start: 66729, Stop: 65998, Start Num: 16

Candidate Starts for Phleuron\_94:

(10, 66948), (14, 66846), (Start: 16 @66729 has 278 MA's), (20, 66690), (33, 66576), (Start: 36 @66537 has 1 MA's), (47, 66369), (49, 66348), (52, 66336), (57, 66264), (69, 66150), (73, 66111), (74,

66093),

Gene: PhrankReynolds\_95 Start: 66923, Stop: 66192, Start Num: 16

Candidate Starts for PhrankReynolds\_95:

(Start: 16 @66923 has 278 MA's), (20, 66884), (22, 66857), (33, 66770), (Start: 36 @66731 has 1 MA's), (40, 66689), (47, 66563), (49, 66542), (52, 66530), (57, 66458), (69, 66344), (73, 66305), (74, 66287),

Gene: PhrodoBaggins\_99 Start: 67298, Stop: 66567, Start Num: 16

Candidate Starts for PhrodoBaggins\_99:

(Start: 16 @67298 has 278 MA's), (20, 67259), (22, 67232), (33, 67145), (Start: 36 @67106 has 1 MA's), (40, 67064), (47, 66938), (49, 66917), (52, 66905), (57, 66833), (69, 66719), (73, 66680), (74, 66662),

Gene: Phunky\_94 Start: 66800, Stop: 66069, Start Num: 16

Candidate Starts for Phunky\_94:

(Start: 16 @66800 has 278 MA's), (20, 66761), (22, 66734), (33, 66647), (Start: 36 @66608 has 1 MA's), (40, 66566), (47, 66440), (49, 66419), (52, 66407), (57, 66335), (69, 66221), (73, 66182), (74, 66164),

Gene: Piglet\_0096 Start: 67417, Stop: 66686, Start Num: 16

Candidate Starts for Piglet\_0096:

(Start: 16 @67417 has 278 MA's), (20, 67378), (22, 67351), (33, 67264), (Start: 36 @67225 has 1 MA's), (40, 67183), (47, 67057), (49, 67036), (52, 67024), (57, 66952), (69, 66838), (73, 66799), (74, 66781),

Gene: PinheadLarry\_96 Start: 67069, Stop: 66338, Start Num: 16

Candidate Starts for PinheadLarry\_96:

(Start: 16 @67069 has 278 MA's), (20, 67030), (22, 67003), (33, 66916), (Start: 36 @66877 has 1 MA's), (40, 66835), (47, 66709), (49, 66688), (52, 66676), (57, 66604), (69, 66490), (73, 66451), (74, 66433),

Gene: Pinkman\_96 Start: 67141, Stop: 66410, Start Num: 16

Candidate Starts for Pinkman\_96:

(Start: 16 @67141 has 278 MA's), (20, 67102), (22, 67075), (Start: 36 @66949 has 1 MA's), (40, 66907), (47, 66781), (49, 66760), (52, 66748), (57, 66676), (69, 66562), (73, 66523), (74, 66505),

Gene: Pipsqueak\_94 Start: 66752, Stop: 66021, Start Num: 16

Candidate Starts for Pipsqueak\_94:

(Start: 16 @66752 has 278 MA's), (20, 66713), (22, 66686), (33, 66599), (Start: 36 @66560 has 1 MA's), (47, 66392), (49, 66371), (52, 66359), (57, 66287), (69, 66173), (73, 66134), (74, 66116),

Gene: Placalicious\_94 Start: 67510, Stop: 66779, Start Num: 16

Candidate Starts for Placalicious\_94:

(Start: 16 @67510 has 278 MA's), (20, 67471), (22, 67444), (33, 67357), (Start: 36 @67318 has 1 MA's), (40, 67276), (47, 67150), (49, 67129), (52, 67117), (57, 67045), (69, 66931), (73, 66892), (74, 66874),

Gene: Plata\_95 Start: 66732, Stop: 66001, Start Num: 16

Candidate Starts for Plata\_95:

(Start: 16 @66732 has 278 MA's), (20, 66693), (22, 66666), (33, 66579), (Start: 36 @66540 has 1 MA's), (40, 66498), (47, 66372), (49, 66351), (52, 66339), (57, 66267), (69, 66153), (73, 66114), (74, 66096),

Gene: Plmatters\_94 Start: 66743, Stop: 66012, Start Num: 16

Candidate Starts for Plmatters\_94:

(Start: 16 @66743 has 278 MA's), (20, 66704), (22, 66677), (33, 66590), (Start: 36 @66551 has 1 MA's), (40, 66509), (47, 66383), (49, 66362), (52, 66350), (57, 66278), (69, 66164), (73, 66125), (74, 66107),

Gene: Podrick\_95 Start: 66831, Stop: 66100, Start Num: 16

Candidate Starts for Podrick\_95:

(Start: 16 @66831 has 278 MA's), (20, 66792), (22, 66765), (33, 66678), (Start: 36 @66639 has 1 MA's), (40, 66597), (47, 66471), (49, 66450), (52, 66438), (57, 66366), (69, 66252), (73, 66213), (74, 66195),

Gene: Poster\_88 Start: 66222, Stop: 65554, Start Num: 32

Candidate Starts for Poster\_88:

(3, 66984), (Start: 15 @66390 has 1 MA's), (17, 66327), (Start: 32 @66222 has 18 MA's), (Start: 35 @66171 has 11 MA's), (39, 66132), (42, 66081), (43, 66078), (45, 66048), (47, 66003), (48, 65994), (55, 65922), (57, 65898), (66, 65805), (71, 65754), (73, 65742), (74, 65724), (76, 65706), (77, 65703), (79, 65694), (80, 65691), (82, 65679), (84, 65655), (90, 65610), (92, 65598), (93, 65595),

Gene: Potter\_91 Start: 66752, Stop: 66021, Start Num: 16

Candidate Starts for Potter\_91:

(Start: 16 @66752 has 278 MA's), (20, 66713), (22, 66686), (33, 66599), (Start: 36 @66560 has 1 MA's), (40, 66518), (47, 66392), (49, 66371), (52, 66359), (57, 66287), (69, 66173), (73, 66134), (74, 66116),

Gene: Prickles\_97 Start: 66878, Stop: 66147, Start Num: 16

Candidate Starts for Prickles\_97:

(Start: 16 @66878 has 278 MA's), (20, 66839), (22, 66812), (33, 66725), (Start: 36 @66686 has 1 MA's), (40, 66644), (47, 66518), (49, 66497), (52, 66485), (57, 66413), (69, 66299), (73, 66260), (74, 66242),

Gene: Prince\_90 Start: 67482, Stop: 66829, Start Num: 32

Candidate Starts for Prince\_90:

(2, 68334), (Start: 15 @67650 has 1 MA's), (17, 67587), (Start: 32 @67482 has 18 MA's), (Start: 35 @67431 has 11 MA's), (42, 67338), (45, 67305), (47, 67260), (48, 67251), (55, 67179), (57, 67155), (66, 67062), (71, 67011), (73, 66999), (74, 66981), (76, 66963), (77, 66960), (82, 66936), (94, 66864), (95, 66861),

Gene: ProfessorX\_94 Start: 66511, Stop: 65780, Start Num: 16

Candidate Starts for ProfessorX\_94:

(Start: 16 @66511 has 278 MA's), (20, 66472), (22, 66445), (33, 66358), (Start: 36 @66319 has 1 MA's), (40, 66277), (47, 66151), (49, 66130), (52, 66118), (57, 66046), (69, 65932), (73, 65893), (74, 65875),

Gene: Puhltonio\_92 Start: 66748, Stop: 66017, Start Num: 16

Candidate Starts for Puhltonio\_92:

(Start: 16 @66748 has 278 MA's), (20, 66709), (22, 66682), (33, 66595), (Start: 36 @66556 has 1 MA's), (40, 66514), (47, 66388), (49, 66367), (52, 66355), (57, 66283), (69, 66169), (73, 66130), (74, 66112),

Gene: QueenBeane\_97 Start: 67075, Stop: 66344, Start Num: 16

Candidate Starts for QueenBeane\_97:

(Start: 16 @67075 has 278 MA's), (20, 67036), (22, 67009), (33, 66922), (Start: 36 @66883 has 1 MA's), (40, 66841), (47, 66715), (49, 66694), (52, 66682), (57, 66610), (69, 66496), (73, 66457), (74, 66439),

Gene: QueenPie\_82 Start: 65696, Stop: 65082, Start Num: 35

Candidate Starts for QueenPie\_82:

(11, 66044), (12, 66041), (Start: 15 @65876 has 1 MA's), (Start: 35 @65696 has 11 MA's), (42, 65603), (45, 65570), (48, 65516), (51, 65495), (52, 65492), (58, 65408), (67, 65324), (71, 65276), (73, 65264), (74, 65246), (76, 65228), (77, 65225), (79, 65216), (80, 65213), (82, 65201), (84, 65177), (85, 65174), (90, 65138), (93, 65123),

Gene: Quisquilliae\_99 Start: 67086, Stop: 66355, Start Num: 16

Candidate Starts for Quisquilliae\_99:

(Start: 16 @67086 has 278 MA's), (20, 67047), (22, 67020), (33, 66933), (Start: 36 @66894 has 1 MA's), (40, 66852), (47, 66726), (49, 66705), (52, 66693), (57, 66621), (69, 66507), (73, 66468), (74, 66450),

Gene: RawrgerThat\_88 Start: 66936, Stop: 66319, Start Num: 35

Candidate Starts for RawrgerThat\_88:

(Start: 35 @66936 has 11 MA's), (38, 66900), (42, 66843), (48, 66756), (51, 66735), (52, 66732), (55, 66684), (56, 66672), (60, 66624), (63, 66597), (68, 66552), (71, 66516), (72, 66507), (74, 66486), (76, 66459), (82, 66432),

Gene: Reccee\_90 Start: 66289, Stop: 65642, Start Num: 29

Candidate Starts for Reccee\_90:

(1, 67168), (5, 66673), (21, 66343), (Start: 29 @66289 has 1 MA's), (Start: 35 @66214 has 11 MA's), (47, 66043), (48, 66034), (58, 65926), (69, 65821), (70, 65809), (73, 65785), (74, 65767), (78, 65740),

Gene: RedMaple\_95 Start: 67409, Stop: 66678, Start Num: 16

Candidate Starts for RedMaple\_95:

(10, 67628), (14, 67526), (Start: 16 @67409 has 278 MA's), (20, 67370), (22, 67343), (28, 67307), (33, 67256), (Start: 36 @67217 has 1 MA's), (47, 67049), (49, 67028), (52, 67016), (57, 66944), (69, 66830), (73, 66791), (74, 66773),

Gene: RedRaider89\_95 Start: 67131, Stop: 66400, Start Num: 16

Candidate Starts for RedRaider89\_95:

(Start: 16 @67131 has 278 MA's), (20, 67092), (22, 67065), (33, 66978), (Start: 36 @66939 has 1 MA's), (40, 66897), (47, 66771), (49, 66750), (52, 66738), (57, 66666), (69, 66552), (73, 66513), (74, 66495),

Gene: Renkei\_89 Start: 66344, Stop: 65634, Start Num: 24

Candidate Starts for Renkei\_89:

(8, 66632), (9, 66629), (13, 66617), (Start: 15 @66464 has 1 MA's), (17, 66401), (Start: 24 @66344 has 2 MA's), (Start: 32 @66302 has 18 MA's), (Start: 35 @66251 has 11 MA's), (47, 66083), (48, 66074), (55, 66002), (57, 65978), (66, 65885), (71, 65834), (73, 65822), (74, 65804), (76, 65786), (77, 65783), (80, 65771), (82, 65759), (84, 65735), (90, 65690), (92, 65678), (93, 65675),

Gene: Reprobate\_88 Start: 65791, Stop: 65204, Start Num: 35

Candidate Starts for Reprobate\_88:

(Start: 35 @65791 has 11 MA's), (47, 65626), (48, 65617), (57, 65521), (58, 65509), (70, 65392), (71, 65380), (73, 65368), (74, 65350), (78, 65311), (81, 65302),

Gene: Ricotta\_98 Start: 66771, Stop: 66040, Start Num: 16

Candidate Starts for Ricotta\_98:

(Start: 16 @66771 has 278 MA's), (20, 66732), (22, 66705), (33, 66618), (Start: 36 @66579 has 1 MA's), (40, 66537), (47, 66411), (49, 66390), (52, 66378), (57, 66306), (69, 66192), (73, 66153), (74, 66135),

Gene: Riggan\_98 Start: 67256, Stop: 66525, Start Num: 16

Candidate Starts for Riggan\_98:

(Start: 16 @67256 has 278 MA's), (20, 67217), (22, 67190), (33, 67103), (Start: 36 @67064 has 1 MA's), (40, 67022), (47, 66896), (49, 66875), (52, 66863), (57, 66791), (69, 66677), (73, 66638), (74, 66620),

Gene: Rimu\_96 Start: 67235, Stop: 66504, Start Num: 16

Candidate Starts for Rimu\_96:

(Start: 16 @67235 has 278 MA's), (20, 67196), (22, 67169), (Start: 36 @67043 has 1 MA's), (40, 67001), (47, 66875), (49, 66854), (52, 66842), (57, 66770), (69, 66656), (73, 66617), (74, 66599),

Gene: Rita130\_88 Start: 65916, Stop: 65299, Start Num: 35

Candidate Starts for Rita130\_88:

(1, 66870), (5, 66375), (21, 66045), (Start: 29 @65991 has 1 MA's), (Start: 35 @65916 has 11 MA's), (47, 65745), (48, 65736), (58, 65628), (70, 65511), (73, 65487), (74, 65469), (78, 65433), (89, 65352),

Gene: Riverton\_95 Start: 66759, Stop: 66028, Start Num: 16

Candidate Starts for Riverton\_95:

(Start: 16 @66759 has 278 MA's), (20, 66720), (22, 66693), (33, 66606), (Start: 36 @66567 has 1 MA's), (40, 66525), (47, 66399), (49, 66378), (52, 66366), (57, 66294), (69, 66180), (73, 66141), (74, 66123),

Gene: Robyn\_98 Start: 67147, Stop: 66548, Start Num: 16

Candidate Starts for Robyn\_98:

(Start: 16 @67147 has 278 MA's), (18, 67126), (Start: 36 @67087 has 1 MA's), (40, 67045), (47, 66919), (49, 66898), (52, 66886), (57, 66814), (69, 66700), (73, 66661), (74, 66643),

Gene: Roliet\_94 Start: 66115, Stop: 65384, Start Num: 16

Candidate Starts for Roliet\_94:

(Start: 16 @66115 has 278 MA's), (20, 66076), (22, 66049), (33, 65962), (Start: 36 @65923 has 1 MA's), (47, 65755), (49, 65734), (52, 65722), (69, 65536), (73, 65497), (74, 65479),

Gene: Roy17\_94 Start: 66481, Stop: 65750, Start Num: 16

Candidate Starts for Roy17\_94:

(Start: 16 @66481 has 278 MA's), (20, 66442), (22, 66415), (Start: 36 @66289 has 1 MA's), (40, 66247), (47, 66121), (49, 66100), (52, 66088), (57, 66016), (69, 65902), (73, 65863), (74, 65845),

Gene: SDcharge11\_95 Start: 66131, Stop: 65400, Start Num: 16

Candidate Starts for SDcharge11\_95:

(10, 66350), (14, 66248), (Start: 16 @66131 has 278 MA's), (20, 66092), (22, 66065), (28, 66029), (33, 65978), (Start: 36 @65939 has 1 MA's), (47, 65771), (49, 65750), (52, 65738), (69, 65552), (73, 65513), (74, 65495),

Gene: SallyH\_100 Start: 67015, Stop: 66284, Start Num: 16

Candidate Starts for SallyH\_100:

(Start: 16 @67015 has 278 MA's), (20, 66976), (22, 66949), (33, 66862), (Start: 36 @66823 has 1 MA's), (40, 66781), (47, 66655), (49, 66634), (52, 66622), (57, 66550), (69, 66436), (73, 66397), (74, 66379),

Gene: Samaymay\_97 Start: 67075, Stop: 66344, Start Num: 16

Candidate Starts for Samaymay\_97:

(Start: 16 @67075 has 278 MA's), (20, 67036), (22, 67009), (33, 66922), (Start: 36 @66883 has 1 MA's), (40, 66841), (47, 66715), (49, 66694), (52, 66682), (57, 66610), (69, 66496), (73, 66457), (74, 66439),

Gene: SassyCat97\_95 Start: 66743, Stop: 66012, Start Num: 16

Candidate Starts for SassyCat97\_95:

(Start: 16 @66743 has 278 MA's), (20, 66704), (22, 66677), (33, 66590), (Start: 36 @66551 has 1 MA's), (40, 66509), (47, 66383), (49, 66362), (52, 66350), (57, 66278), (69, 66164), (73, 66125), (74, 66107),

Gene: Schadenfreude\_97 Start: 66792, Stop: 66061, Start Num: 16

Candidate Starts for Schadenfreude\_97:

(10, 67011), (14, 66909), (Start: 16 @66792 has 278 MA's), (20, 66753), (22, 66726), (28, 66690), (33, 66639), (Start: 36 @66600 has 1 MA's), (47, 66432), (49, 66411), (52, 66399), (57, 66327), (69, 66213), (73, 66174), (74, 66156),

Gene: Schueller\_95 Start: 67016, Stop: 66285, Start Num: 16

Candidate Starts for Schueller\_95:

(10, 67235), (14, 67133), (Start: 16 @67016 has 278 MA's), (20, 66977), (33, 66863), (Start: 36 @66824 has 1 MA's), (47, 66656), (49, 66635), (52, 66623), (57, 66551), (69, 66437), (73, 66398), (74, 66380),

Gene: Scoot17C\_97 Start: 66857, Stop: 66126, Start Num: 16

Candidate Starts for Scoot17C\_97:

(Start: 16 @66857 has 278 MA's), (20, 66818), (22, 66791), (33, 66704), (Start: 36 @66665 has 1 MA's), (40, 66623), (47, 66497), (49, 66476), (52, 66464), (57, 66392), (69, 66278), (73, 66239), (74, 66221),

Gene: Scrick\_98 Start: 67126, Stop: 66395, Start Num: 16

Candidate Starts for Scrick\_98:

(Start: 16 @67126 has 278 MA's), (20, 67087), (22, 67060), (33, 66973), (Start: 36 @66934 has 1 MA's), (40, 66892), (47, 66766), (49, 66745), (52, 66733), (57, 66661), (69, 66547), (73, 66508), (74, 66490),

Gene: Selr12\_101 Start: 67167, Stop: 66436, Start Num: 16

Candidate Starts for Selr12\_101:

(Start: 16 @67167 has 278 MA's), (20, 67128), (22, 67101), (33, 67014), (Start: 36 @66975 has 1 MA's), (40, 66933), (47, 66807), (49, 66786), (52, 66774), (57, 66702), (69, 66588), (73, 66549), (74, 66531),

Gene: Serendipitous\_89 Start: 65633, Stop: 65031, Start Num: 35

Candidate Starts for Serendipitous\_89:

(Start: 35 @65633 has 11 MA's), (47, 65468), (50, 65444), (54, 65420), (58, 65354), (66, 65273), (67, 65270), (73, 65213), (74, 65195),

Gene: Serendipity\_96 Start: 67229, Stop: 66498, Start Num: 16

Candidate Starts for Serendipity\_96:

(Start: 16 @67229 has 278 MA's), (20, 67190), (22, 67163), (33, 67076), (Start: 36 @67037 has 1 MA's), (40, 66995), (47, 66869), (49, 66848), (52, 66836), (57, 66764), (69, 66650), (73, 66611), (74, 66593),

Gene: Serpentine\_0099 Start: 67309, Stop: 66578, Start Num: 16

Candidate Starts for Serpentine\_0099:

(Start: 16 @67309 has 278 MA's), (20, 67270), (22, 67243), (33, 67156), (Start: 36 @67117 has 1 MA's), (40, 67075), (47, 66949), (49, 66928), (52, 66916), (57, 66844), (69, 66730), (73, 66691), (74, 66673),

Gene: ShadowBud\_97 Start: 67083, Stop: 66352, Start Num: 16

Candidate Starts for ShadowBud\_97:

(Start: 16 @67083 has 278 MA's), (20, 67044), (22, 67017), (33, 66930), (Start: 36 @66891 has 1 MA's), (40, 66849), (47, 66723), (49, 66702), (52, 66690), (57, 66618), (69, 66504), (73, 66465), (74, 66447),

Gene: Sheila\_91 Start: 66309, Stop: 65578, Start Num: 16

Candidate Starts for Sheila\_91:

(Start: 16 @66309 has 278 MA's), (20, 66270), (22, 66243), (33, 66156), (Start: 36 @66117 has 1 MA's), (40, 66075), (47, 65949), (49, 65928), (52, 65916), (57, 65844), (69, 65730), (73, 65691), (74, 65673),

Gene: ShiVal\_96 Start: 66780, Stop: 66049, Start Num: 16

Candidate Starts for ShiVal\_96:

(Start: 16 @66780 has 278 MA's), (20, 66741), (22, 66714), (33, 66627), (Start: 36 @66588 has 1 MA's), (40, 66546), (47, 66420), (49, 66399), (52, 66387), (57, 66315), (69, 66201), (73, 66162), (74, 66144),

Gene: Sigman\_96 Start: 66736, Stop: 66005, Start Num: 16

Candidate Starts for Sigman\_96:

(Start: 16 @66736 has 278 MA's), (20, 66697), (22, 66670), (33, 66583), (Start: 36 @66544 has 1 MA's), (40, 66502), (47, 66376), (49, 66355), (52, 66343), (57, 66271), (69, 66157), (73, 66118), (74, 66100),

Gene: SilverBell\_98 Start: 67190, Stop: 66459, Start Num: 16

Candidate Starts for SilverBell\_98:

(Start: 16 @67190 has 278 MA's), (20, 67151), (22, 67124), (33, 67037), (Start: 36 @66998 has 1 MA's), (40, 66956), (47, 66830), (49, 66809), (52, 66797), (57, 66725), (69, 66611), (73, 66572), (74, 66554),

Gene: Simielle\_97 Start: 66722, Stop: 65991, Start Num: 16

Candidate Starts for Simielle\_97:

(Start: 16 @66722 has 278 MA's), (20, 66683), (22, 66656), (33, 66569), (Start: 36 @66530 has 1 MA's), (40, 66488), (47, 66362), (49, 66341), (52, 66329), (57, 66257), (69, 66143), (73, 66104), (74, 66086),

Gene: SirBeauregard\_97 Start: 67044, Stop: 66292, Start Num: 16

Candidate Starts for SirBeauregard\_97:

(10, 67263), (14, 67161), (Start: 16 @67044 has 278 MA's), (20, 67005), (33, 66891), (Start: 36 @66852 has 1 MA's), (47, 66684), (49, 66663), (52, 66651), (57, 66579), (69, 66465), (73, 66426), (74, 66408),

Gene: SirJeffery\_87 Start: 65697, Stop: 65122, Start Num: 35

Candidate Starts for SirJeffery\_87:

(23, 65790), (Start: 31 @65748 has 1 MA's), (Start: 35 @65697 has 11 MA's), (47, 65532), (48, 65523), (58, 65415), (70, 65298), (73, 65274), (74, 65256), (78, 65220),

Gene: Skippy\_97 Start: 67151, Stop: 66420, Start Num: 16

Candidate Starts for Skippy\_97:

(Start: 16 @67151 has 278 MA's), (20, 67112), (22, 67085), (33, 66998), (Start: 36 @66959 has 1 MA's), (40, 66917), (47, 66791), (49, 66770), (52, 66758), (57, 66686), (69, 66572), (73, 66533), (74, 66515),

Gene: Slatt\_99 Start: 67407, Stop: 66676, Start Num: 16

Candidate Starts for Slatt\_99:

(Start: 16 @67407 has 278 MA's), (20, 67368), (22, 67341), (33, 67254), (Start: 36 @67215 has 1 MA's), (40, 67173), (47, 67047), (49, 67026), (52, 67014), (57, 66942), (69, 66828), (73, 66789), (74, 66771),

Gene: Soile\_98 Start: 67276, Stop: 66545, Start Num: 16

Candidate Starts for Soile\_98:

(Start: 16 @67276 has 278 MA's), (20, 67237), (22, 67210), (33, 67123), (Start: 36 @67084 has 1 MA's), (40, 67042), (47, 66916), (49, 66895), (52, 66883), (57, 66811), (69, 66697), (73, 66658), (74, 66640),

Gene: Solosis\_95 Start: 66744, Stop: 66013, Start Num: 16

Candidate Starts for Solosis\_95:

(Start: 16 @66744 has 278 MA's), (20, 66705), (22, 66678), (33, 66591), (Start: 36 @66552 has 1 MA's), (40, 66510), (47, 66384), (49, 66363), (52, 66351), (57, 66279), (69, 66165), (73, 66126), (74, 66108),

Gene: Sophia\_95 Start: 66731, Stop: 66000, Start Num: 16

Candidate Starts for Sophia\_95:

(Start: 16 @66731 has 278 MA's), (20, 66692), (22, 66665), (33, 66578), (Start: 36 @66539 has 1 MA's), (40, 66497), (47, 66371), (49, 66350), (52, 66338), (57, 66266), (69, 66152), (73, 66113), (74, 66095),

Gene: Soto\_93 Start: 66172, Stop: 65441, Start Num: 16

Candidate Starts for Soto\_93:

(Start: 16 @66172 has 278 MA's), (20, 66133), (22, 66106), (33, 66019), (Start: 36 @65980 has 1 MA's), (47, 65812), (49, 65791), (52, 65779), (57, 65707), (69, 65593), (73, 65554), (74, 65536),

Gene: Spartan300\_96 Start: 66993, Stop: 66262, Start Num: 16

Candidate Starts for Spartan300\_96:

(Start: 16 @66993 has 278 MA's), (20, 66954), (22, 66927), (33, 66840), (Start: 36 @66801 has 1 MA's), (40, 66759), (47, 66633), (49, 66612), (52, 66600), (57, 66528), (69, 66414), (73, 66375), (74, 66357),

Gene: Squid\_96 Start: 67021, Stop: 66290, Start Num: 16

Candidate Starts for Squid\_96:

(Start: 16 @67021 has 278 MA's), (20, 66982), (22, 66955), (33, 66868), (Start: 36 @66829 has 1 MA's), (40, 66787), (47, 66661), (49, 66640), (52, 66628), (57, 66556), (69, 66442), (73, 66403), (74, 66385),

Gene: Squiggle\_96 Start: 66750, Stop: 66019, Start Num: 16

Candidate Starts for Squiggle\_96:

(Start: 16 @66750 has 278 MA's), (20, 66711), (22, 66684), (33, 66597), (Start: 36 @66558 has 1 MA's), (40, 66516), (47, 66390), (49, 66369), (52, 66357), (57, 66285), (69, 66171), (73, 66132), (74, 66114),

Gene: Stinger\_87 Start: 65601, Stop: 64981, Start Num: 35

Candidate Starts for Stinger\_87:

(Start: 35 @65601 has 11 MA's), (37, 65568), (41, 65541), (44, 65484), (45, 65472), (48, 65418), (50, 65400), (57, 65322), (71, 65178), (73, 65166), (74, 65148), (82, 65094),

Gene: StinkyVeggy\_87 Start: 65724, Stop: 65134, Start Num: 35

Candidate Starts for StinkyVeggy\_87:

(26, 65826), (27, 65814), (Start: 30 @65796 has 1 MA's), (Start: 35 @65724 has 11 MA's), (47, 65550), (48, 65541), (58, 65433), (70, 65316), (73, 65292), (74, 65274), (82, 65217),

Gene: Struggle\_97 Start: 66848, Stop: 66117, Start Num: 16

Candidate Starts for Struggle\_97:

(Start: 16 @66848 has 278 MA's), (20, 66809), (22, 66782), (33, 66695), (Start: 36 @66656 has 1 MA's), (40, 66614), (47, 66488), (49, 66467), (52, 66455), (57, 66383), (69, 66269), (73, 66230), (74, 66212),

Gene: Suffolk\_92 Start: 66677, Stop: 65946, Start Num: 16

Candidate Starts for Suffolk\_92:

(Start: 16 @66677 has 278 MA's), (20, 66638), (22, 66611), (33, 66524), (Start: 36 @66485 has 1 MA's), (40, 66443), (47, 66317), (49, 66296), (52, 66284), (57, 66212), (69, 66098), (73, 66059), (74, 66041),

Gene: Surely\_97 Start: 67313, Stop: 66582, Start Num: 16

Candidate Starts for Surely\_97:

(Start: 16 @67313 has 278 MA's), (20, 67274), (22, 67247), (Start: 36 @67121 has 1 MA's), (40, 67079), (47, 66953), (49, 66932), (52, 66920), (57, 66848), (69, 66734), (73, 66695), (74, 66677),

Gene: Swiphy\_99 Start: 67298, Stop: 66567, Start Num: 16

Candidate Starts for Swiphy\_99:

(Start: 16 @67298 has 278 MA's), (20, 67259), (22, 67232), (33, 67145), (Start: 36 @67106 has 1 MA's), (40, 67064), (47, 66938), (49, 66917), (52, 66905), (57, 66833), (69, 66719), (73, 66680), (74, 66662),

Gene: Swish\_98 Start: 67160, Stop: 66429, Start Num: 16

Candidate Starts for Swish\_98:

(Start: 16 @67160 has 278 MA's), (20, 67121), (22, 67094), (33, 67007), (Start: 36 @66968 has 1 MA's), (40, 66926), (47, 66800), (49, 66779), (52, 66767), (57, 66695), (69, 66581), (73, 66542), (74, 66524),

Gene: TallGrassMM\_96 Start: 66809, Stop: 66078, Start Num: 16

Candidate Starts for TallGrassMM\_96:

(Start: 16 @66809 has 278 MA's), (20, 66770), (22, 66743), (33, 66656), (Start: 36 @66617 has 1 MA's), (40, 66575), (47, 66449), (49, 66428), (52, 66416), (57, 66344), (69, 66230), (73, 66191), (74, 66173),

Gene: Taraxa\_97 Start: 66639, Stop: 65908, Start Num: 16

Candidate Starts for Taraxa\_97:

(Start: 16 @66639 has 278 MA's), (20, 66600), (22, 66573), (Start: 36 @66447 has 1 MA's), (40, 66405), (47, 66279), (49, 66258), (52, 66246), (57, 66174), (69, 66060), (73, 66021), (74, 66003),

Gene: Telesworld\_95 Start: 66883, Stop: 66152, Start Num: 16

Candidate Starts for Telesworld\_95:

(Start: 16 @66883 has 278 MA's), (20, 66844), (22, 66817), (33, 66730), (Start: 36 @66691 has 1 MA's), (40, 66649), (47, 66523), (49, 66502), (52, 66490), (57, 66418), (69, 66304), (73, 66265), (74, 66247),

Gene: Thora\_95 Start: 67264, Stop: 66533, Start Num: 16

Candidate Starts for Thora\_95:

(Start: 16 @67264 has 278 MA's), (20, 67225), (22, 67198), (33, 67111), (Start: 36 @67072 has 1 MA's), (40, 67030), (47, 66904), (49, 66883), (52, 66871), (57, 66799), (69, 66685), (73, 66646), (74, 66628),

Gene: ThreeOh3D2\_98 Start: 67417, Stop: 66686, Start Num: 16

Candidate Starts for ThreeOh3D2\_98:

(Start: 16 @67417 has 278 MA's), (20, 67378), (22, 67351), (33, 67264), (Start: 36 @67225 has 1 MA's), (40, 67183), (47, 67057), (49, 67036), (52, 67024), (57, 66952), (69, 66838), (73, 66799), (74, 66781),

Gene: Thunderbird\_97 Start: 67005, Stop: 66274, Start Num: 16

Candidate Starts for Thunderbird\_97:

(Start: 16 @67005 has 278 MA's), (20, 66966), (22, 66939), (33, 66852), (Start: 36 @66813 has 1 MA's), (40, 66771), (47, 66645), (49, 66624), (52, 66612), (57, 66540), (69, 66426), (73, 66387), (74, 66369),

Gene: Timmi\_95 Start: 66780, Stop: 66049, Start Num: 16

Candidate Starts for Timmi\_95:

(Start: 16 @66780 has 278 MA's), (20, 66741), (22, 66714), (33, 66627), (Start: 36 @66588 has 1 MA's), (40, 66546), (47, 66420), (49, 66399), (52, 66387), (57, 66315), (69, 66201), (73, 66162), (74, 66144),

Gene: TomBombadil\_97 Start: 67305, Stop: 66574, Start Num: 16

Candidate Starts for TomBombadil\_97:

(Start: 16 @67305 has 278 MA's), (20, 67266), (22, 67239), (33, 67152), (Start: 36 @67113 has 1 MA's), (40, 67071), (47, 66945), (49, 66924), (52, 66912), (57, 66840), (69, 66726), (73, 66687), (74, 66669),

Gene: Tomlarah\_97 Start: 67613, Stop: 66882, Start Num: 16

Candidate Starts for Tomlarah\_97:

(Start: 16 @67613 has 278 MA's), (20, 67574), (22, 67547), (33, 67460), (Start: 36 @67421 has 1 MA's), (40, 67379), (47, 67253), (49, 67232), (52, 67220), (57, 67148), (69, 67034), (73, 66995), (74, 66977),

Gene: Toni\_96 Start: 67209, Stop: 66478, Start Num: 16

Candidate Starts for Toni\_96:

(Start: 16 @67209 has 278 MA's), (20, 67170), (22, 67143), (33, 67056), (Start: 36 @67017 has 1 MA's), (40, 66975), (47, 66849), (49, 66828), (52, 66816), (57, 66744), (69, 66630), (73, 66591), (74, 66573),

Gene: TooFast2Furius\_95 Start: 66927, Stop: 66196, Start Num: 16

Candidate Starts for TooFast2Furius\_95:

(Start: 16 @66927 has 278 MA's), (20, 66888), (22, 66861), (33, 66774), (Start: 36 @66735 has 1 MA's), (40, 66693), (47, 66567), (49, 66546), (52, 66534), (57, 66462), (69, 66348), (73, 66309), (74, 66291),

Gene: Tooj\_94 Start: 66423, Stop: 65692, Start Num: 16

Candidate Starts for Tooj\_94:

(Start: 16 @66423 has 278 MA's), (20, 66384), (22, 66357), (33, 66270), (Start: 36 @66231 has 1 MA's), (40, 66189), (47, 66063), (49, 66042), (52, 66030), (69, 65844), (73, 65805), (74, 65787),

Gene: True\_98 Start: 67125, Stop: 66394, Start Num: 16

Candidate Starts for True\_98:

(Start: 16 @67125 has 278 MA's), (20, 67086), (22, 67059), (33, 66972), (Start: 36 @66933 has 1 MA's), (40, 66891), (47, 66765), (49, 66744), (52, 66732), (57, 66660), (69, 66546), (73, 66507), (74, 66489),

Gene: Trypo\_97 Start: 67477, Stop: 66746, Start Num: 16

Candidate Starts for Trypo\_97:

(Start: 16 @67477 has 278 MA's), (20, 67438), (22, 67411), (33, 67324), (Start: 36 @67285 has 1 MA's), (40, 67243), (47, 67117), (49, 67096), (52, 67084), (57, 67012), (69, 66898), (73, 66859), (74, 66841),

Gene: TyrionL\_97 Start: 66839, Stop: 66108, Start Num: 16

Candidate Starts for TyrionL\_97:

(10, 67058), (14, 66956), (Start: 16 @66839 has 278 MA's), (20, 66800), (33, 66686), (Start: 36 @66647 has 1 MA's), (47, 66479), (49, 66458), (52, 66446), (57, 66374), (69, 66260), (73, 66221), (74, 66203),

Gene: UAch1\_97 Start: 66830, Stop: 66099, Start Num: 16

Candidate Starts for UAch1\_97:

(Start: 16 @66830 has 278 MA's), (20, 66791), (22, 66764), (33, 66677), (Start: 36 @66638 has 1 MA's), (40, 66596), (47, 66470), (49, 66449), (52, 66437), (57, 66365), (69, 66251), (73, 66212), (74, 66194),

Gene: UncleHowie\_93 Start: 66441, Stop: 65710, Start Num: 16

Candidate Starts for UncleHowie\_93:

(Start: 16 @66441 has 278 MA's), (20, 66402), (22, 66375), (33, 66288), (Start: 36 @66249 has 1 MA's), (40, 66207), (47, 66081), (49, 66060), (52, 66048), (57, 65976), (69, 65862), (73, 65823), (74, 65805),

Gene: Usavi\_97 Start: 67603, Stop: 66872, Start Num: 16

Candidate Starts for Usavi\_97:

(Start: 16 @67603 has 278 MA's), (20, 67564), (22, 67537), (33, 67450), (Start: 36 @67411 has 1 MA's), (40, 67369), (47, 67243), (49, 67222), (52, 67210), (57, 67138), (69, 67024), (73, 66985), (74, 66967),

Gene: Vaishali24\_97 Start: 66820, Stop: 66230, Start Num: 16

Candidate Starts for Vaishali24\_97:

(10, 67039), (14, 66937), (Start: 16 @66820 has 278 MA's), (18, 66799), (Start: 36 @66760 has 1 MA's), (40, 66727), (47, 66601), (49, 66580), (52, 66568), (57, 66496), (69, 66382), (73, 66343), (74, 66325),

Gene: Valjean\_95 Start: 66985, Stop: 66254, Start Num: 16

Candidate Starts for Valjean\_95:

(Start: 16 @66985 has 278 MA's), (20, 66946), (22, 66919), (Start: 36 @66793 has 1 MA's), (40, 66751), (47, 66625), (49, 66604), (52, 66592), (57, 66520), (69, 66406), (73, 66367), (74, 66349),

Gene: Vaticameos\_94 Start: 65312, Stop: 64581, Start Num: 16

Candidate Starts for Vaticameos\_94:

(Start: 16 @65312 has 278 MA's), (20, 65273), (22, 65246), (33, 65159), (Start: 36 @65120 has 1 MA's), (40, 65078), (47, 64952), (49, 64931), (52, 64919), (57, 64847), (69, 64733), (73, 64694), (74, 64676),

Gene: Veritas\_96 Start: 66920, Stop: 66189, Start Num: 16

Candidate Starts for Veritas\_96:

(10, 67139), (14, 67037), (Start: 16 @66920 has 278 MA's), (20, 66881), (33, 66767), (Start: 36 @66728 has 1 MA's), (47, 66560), (49, 66539), (52, 66527), (57, 66455), (69, 66341), (73, 66302), (74, 66284),

Gene: Vincenzo\_89 Start: 68034, Stop: 67441, Start Num: 35

Candidate Starts for Vincenzo\_89:

(Start: 35 @68034 has 11 MA's), (42, 67941), (45, 67908), (52, 67830), (55, 67782), (58, 67746), (61, 67707), (66, 67665), (71, 67614), (73, 67602), (74, 67584), (77, 67554), (80, 67542), (82, 67530), (83, 67521),

Gene: VioletZ\_92 Start: 67510, Stop: 66836, Start Num: 32

Candidate Starts for VioletZ\_92:

(4, 67930), (Start: 15 @67678 has 1 MA's), (17, 67615), (Start: 32 @67510 has 18 MA's), (Start: 35 @67459 has 11 MA's), (42, 67363), (43, 67360), (45, 67330), (47, 67285), (48, 67276), (55, 67204), (57, 67180), (66, 67087), (71, 67036), (73, 67024), (74, 67006), (75, 67003), (76, 66988), (77, 66985), (80, 66973), (82, 66961), (84, 66937), (92, 66880), (93, 66877),

Gene: Virapocalypse\_98 Start: 67107, Stop: 66376, Start Num: 16

Candidate Starts for Virapocalypse\_98:

(Start: 16 @67107 has 278 MA's), (20, 67068), (22, 67041), (33, 66954), (Start: 36 @66915 has 1 MA's), (40, 66873), (47, 66747), (49, 66726), (52, 66714), (57, 66642), (69, 66528), (73, 66489), (74, 66471),

Gene: Virgeve\_95 Start: 66725, Stop: 65994, Start Num: 16

Candidate Starts for Virgeve\_95:

(Start: 16 @66725 has 278 MA's), (20, 66686), (22, 66659), (Start: 36 @66533 has 1 MA's), (40, 66491), (47, 66365), (49, 66344), (52, 66332), (57, 66260), (69, 66146), (73, 66107), (74, 66089),

Gene: Vista\_96 Start: 66919, Stop: 66188, Start Num: 16

Candidate Starts for Vista\_96:

(Start: 16 @66919 has 278 MA's), (20, 66880), (22, 66853), (33, 66766), (Start: 36 @66727 has 1 MA's), (40, 66685), (47, 66559), (49, 66538), (52, 66526), (57, 66454), (69, 66340), (73, 66301), (74, 66283),

Gene: Vortex\_95 Start: 67025, Stop: 66294, Start Num: 16

Candidate Starts for Vortex\_95:

(Start: 16 @67025 has 278 MA's), (20, 66986), (22, 66959), (33, 66872), (Start: 36 @66833 has 1 MA's), (40, 66791), (47, 66665), (49, 66644), (52, 66632), (57, 66560), (69, 66446), (73, 66407), (74, 66389),

Gene: Waleliano\_89 Start: 67237, Stop: 66587, Start Num: 32

Candidate Starts for Waleliano\_89:

(Start: 15 @67405 has 1 MA's), (17, 67342), (Start: 32 @67237 has 18 MA's), (Start: 35 @67186 has 11 MA's), (42, 67096), (47, 67018), (48, 67009), (57, 66913), (66, 66820), (71, 66769), (73, 66757), (74, 66739), (76, 66721), (77, 66718), (82, 66694), (84, 66670), (94, 66622),

Gene: Wallhey\_98 Start: 67024, Stop: 66293, Start Num: 16

Candidate Starts for Wallhey\_98:

(Start: 16 @67024 has 278 MA's), (20, 66985), (22, 66958), (Start: 36 @66832 has 1 MA's), (40, 66790), (47, 66664), (49, 66643), (52, 66631), (57, 66559), (69, 66445), (73, 66406), (74, 66388),

Gene: Waterdiva\_98 Start: 67291, Stop: 66560, Start Num: 16

Candidate Starts for Waterdiva\_98:

(Start: 16 @67291 has 278 MA's), (20, 67252), (22, 67225), (33, 67138), (Start: 36 @67099 has 1 MA's), (40, 67057), (47, 66931), (49, 66910), (52, 66898), (57, 66826), (69, 66712), (73, 66673), (74, 66655),

Gene: Weher20\_94 Start: 67363, Stop: 66632, Start Num: 16

Candidate Starts for Weher20\_94:

(Start: 16 @67363 has 278 MA's), (20, 67324), (22, 67297), (33, 67210), (Start: 36 @67171 has 1 MA's), (40, 67129), (47, 67003), (49, 66982), (52, 66970), (57, 66898), (69, 66784), (73, 66745), (74, 66727),

Gene: Windsor\_96 Start: 67050, Stop: 66298, Start Num: 16

Candidate Starts for Windsor\_96:

(10, 67269), (14, 67167), (Start: 16 @67050 has 278 MA's), (20, 67011), (33, 66897), (Start: 36 @66858 has 1 MA's), (47, 66690), (49, 66669), (52, 66657), (57, 66585), (69, 66471), (73, 66432), (74, 66414),

Gene: Xavier\_96 Start: 66918, Stop: 66187, Start Num: 16

Candidate Starts for Xavier\_96:

(Start: 16 @66918 has 278 MA's), (20, 66879), (22, 66852), (33, 66765), (Start: 36 @66726 has 1 MA's), (40, 66684), (47, 66558), (49, 66537), (52, 66525), (57, 66453), (69, 66339), (73, 66300), (74, 66282),

Gene: Xincheng\_82 Start: 67236, Stop: 66616, Start Num: 35

Candidate Starts for Xincheng\_82:

(Start: 15 @67455 has 1 MA's), (17, 67392), (Start: 32 @67287 has 18 MA's), (Start: 35 @67236 has 11 MA's), (42, 67146), (52, 67032), (55, 66984), (57, 66960), (59, 66936), (60, 66924), (66, 66867), (71, 66816), (73, 66804), (74, 66786), (76, 66768), (77, 66765), (80, 66753), (82, 66741), (84, 66717), (92, 66663), (93, 66660),

Gene: Yoshand\_98 Start: 67143, Stop: 66412, Start Num: 16

Candidate Starts for Yoshand\_98:

(Start: 16 @67143 has 278 MA's), (20, 67104), (22, 67077), (33, 66990), (Start: 36 @66951 has 1 MA's), (40, 66909), (47, 66783), (49, 66762), (52, 66750), (57, 66678), (69, 66564), (73, 66525), (74, 66507),

Gene: YouGoGlencoco\_97 Start: 67033, Stop: 66302, Start Num: 16

Candidate Starts for YouGoGlencoco\_97:

(Start: 16 @67033 has 278 MA's), (20, 66994), (22, 66967), (33, 66880), (Start: 36 @66841 has 1 MA's), (40, 66799), (47, 66673), (49, 66652), (52, 66640), (57, 66568), (69, 66454), (73, 66415), (74, 66397),

Gene: Zaider\_98 Start: 67408, Stop: 66677, Start Num: 16

Candidate Starts for Zaider\_98:

(Start: 16 @67408 has 278 MA's), (20, 67369), (22, 67342), (33, 67255), (Start: 36 @67216 has 1 MA's), (40, 67174), (47, 67048), (49, 67027), (52, 67015), (57, 66943), (69, 66829), (73, 66790), (74, 66772),

Gene: Zelda\_97 Start: 67364, Stop: 66633, Start Num: 16

Candidate Starts for Zelda\_97:

(Start: 16 @67364 has 278 MA's), (20, 67325), (22, 67298), (33, 67211), (Start: 36 @67172 has 1 MA's), (40, 67130), (47, 67004), (49, 66983), (52, 66971), (57, 66899), (69, 66785), (73, 66746), (74, 66728),

Gene: Zemanar\_88 Start: 67185, Stop: 66517, Start Num: 32

Candidate Starts for Zemanar\_88:

(Start: 15 @67353 has 1 MA's), (17, 67290), (Start: 32 @67185 has 18 MA's), (Start: 35 @67134 has 11 MA's), (42, 67044), (47, 66966), (48, 66957), (55, 66885), (57, 66861), (66, 66768), (71, 66717), (73, 66705), (74, 66687), (76, 66669), (77, 66666), (80, 66654), (82, 66642), (84, 66618), (90, 66573), (92, 66561), (93, 66558),

Gene: Zonia\_97 Start: 67474, Stop: 66743, Start Num: 16

Candidate Starts for Zonia\_97:

(Start: 16 @67474 has 278 MA's), (20, 67435), (22, 67408), (Start: 36 @67282 has 1 MA's), (40, 67240), (47, 67114), (49, 67093), (52, 67081), (57, 67009), (69, 66895), (73, 66856), (74, 66838),