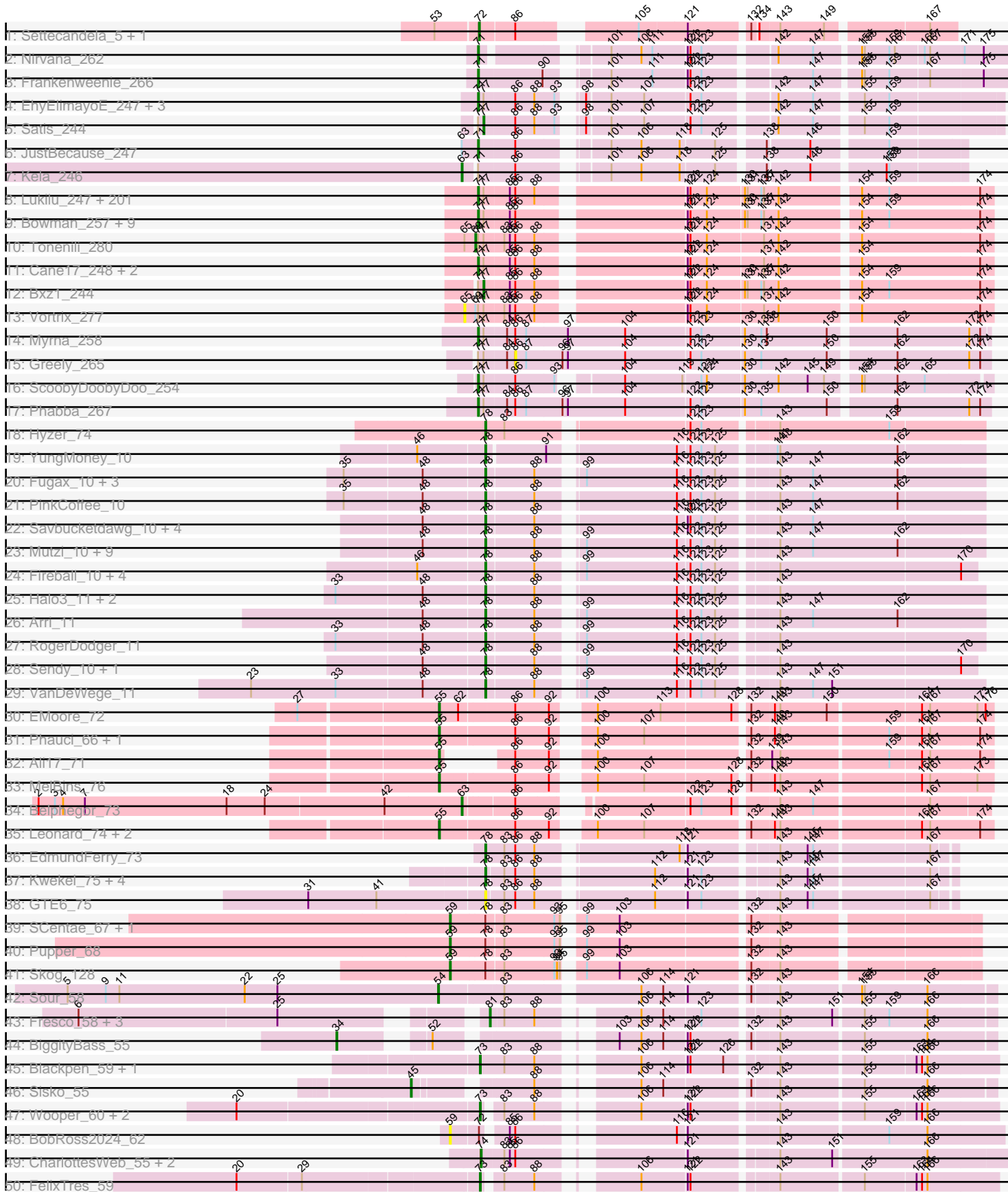
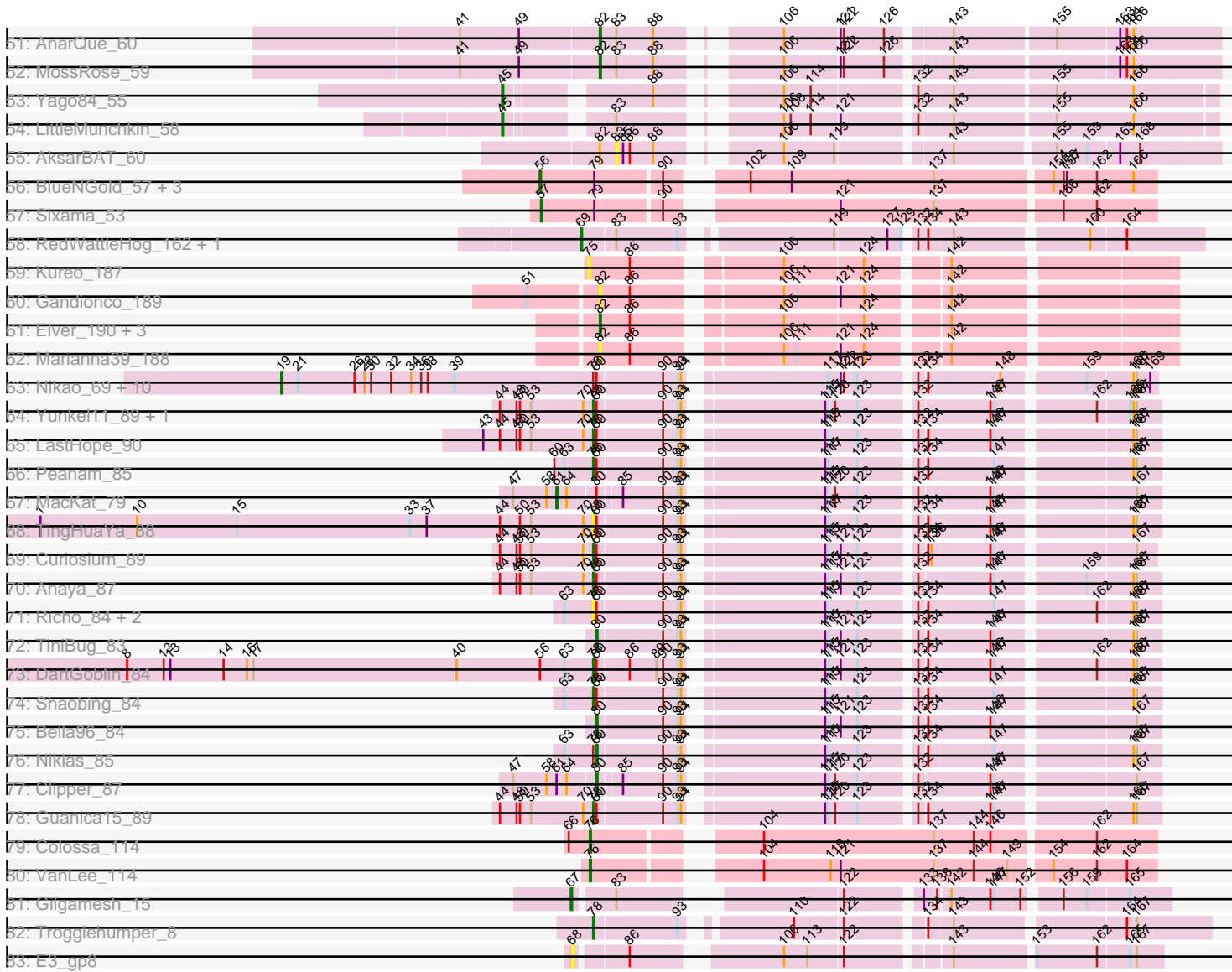


Pham 311116



Pham 311116



Note: Tracks are now grouped by subcluster and scaled. Switching in subcluster is indicated by changes in track color. Track scale is now set by default to display the region 30 bp upstream of start 1 to 30 bp downstream of the last possible start. If this default region is judged to be packed too tightly with annotated starts, the track will be further scaled to only show that region of the ORF with annotated starts. This action will be indicated by adding "Zoomed" to the title. For starts, yellow indicates the location of called starts comprised solely of Glimmer/GeneMark auto-annotations, green indicates the location of called starts with at least 1 manual gene annotation.

Pham 311116 Report

This analysis was run 06/27/26 on database version 652.

Pham number 311116 has 358 members, 59 are drafts.

Phages represented in each track:

- Track 1 : Settecandela_5, Phrappuccino_5
- Track 2 : Nirvana_262
- Track 3 : Frankenweenie_266
- Track 4 : EhyElimayoE_247, Sarkar_244, Quantum_243, Kradal_245
- Track 5 : Satis_244
- Track 6 : JustBecause_247
- Track 7 : Kela_246
- Track 8 : Lukilu_247, FoxtrotP1_257, Shelob_259, Alice_244, Fongie_258, Dietrick_247, EmmaElysia_263, Kamryn_257, Izajani_254, Roots515_261, Nidhogg_259, ArcherS7_259, Sprinklers_256, RoMag_253, Sebata_258, Willis_259, Grasshills_265, Cleatunium_252, ShiaLabeouf_256, Bezza_246, Specks_263, BigCity_266, Basquiat_256, BackyardAgain_253, I3_268, Teardrop_257, Bread_255, Pier_257, Napoleon13_255, Ngannou_253, InigoMontoya_262, Concombre_264, Morizzled23_256, NoodleTree_254, Halldule_250, Littleton_262, StubbySaigey_265, Pinkcreek_238, ZygoTaiga_255, SoilZilla_251, Dessert_255, Yassified_254, Derek_254, Rizal_247, BeanWater_251, Blackbrain_257, Atlantean_258, Essence_256, EmToTheThree_259, Shnickers_257, Nappy_257, Pivoine_259, JigglyPuff_264, Bangla1971_259, EasyJones_259, ScottMcG_250, Wally_256, Maturis_252, QBert_250, Kboogie_262, Jessibeth14_258, Pio_265, ValleyTerrace_259, Catera_247, Matsumoto_256, ET08_244, Delilah_256, Loanshark_255, Drazdys_255, CharlieB_253, ErnieJ_252, Shaqnato_249, Domi_252, StephanieG_252, Khaleesi_257, McGee_260, Chargie21_256, JustHall_252, MikeLiesIn_259, Phusco_257, Ading_261, JayJay_258, Janiyra_262, LifeSavor_259, InterFolia_260, Quasimodo_261, BobaPhatt_251, Issimir_252, Labradorite_255, Shifa_234, TinyTim_257, Cactojaque_253, Dandelion_264, Momo_260, Duckfeet_252, Zeenon_259, Iota_255, FudgeTart_254, BadAgartude_252, Asterius_259, LinStu_255, Babyland_261, Darko_258, SrishMeg2525_256, LookingGlass_256, Spec_252, IkeLoa_252, Gamgam_260, Tortoise16_256, Jezreel_255, Tyke_255, Grungle_240, Adlitam_258, PurduePete_259, JulietS_247, ParkTD_257, Ronan_254, SVoro_253, Bipolarisk_256, Montpel_255, Lunareta_255, Jedediah_260, DeejaClivia_245, CindyLou_259, McWolfish_255, Audrick_261, NuevoMundo_260, Ablatia_258, Fludd_258, Capablanca_263, Fixie_259, Phlegm_263, Belieber_252, Tainan_258, Erdmann_260, Flabslab_253, Chomp_257, Blackdragon_253, Melpomini_253, Sauce_255, Gizmo_264, Rahel_260, SmallFry_259, Lee7_259, Naval22_265, HyRo_243, SilverDipper_263, BananaFence_256, Mangeria_258, Caravan_248, Rocha_254, Jemmno_258, FrayBell_261, Ava3_255, Moby_255, EggyFarm_266, Spud_250, Jaygup_255,

Naija_259, DrPhinkDaddy_255, GlutenPhree_259, Delylah_260, Substance289_254, Daffodil_264, Phox_259, Moiqah_254, DTDevon_259, Ewok_257, Stubby_241, LRRHood_250, Trinitium_255, Pupusa_261, Ghost_258, Latch_258, YoungMoneyMata_258, Rabinovish_251, Cali_248, Burrough_259, Breeniome_258, OrediggerDelux_255, NedWong_257, DirtMonster_247, Patter_260, Amataga_259, Bonray_261, Turret_249, ChaylaJr_257, Koguma_257, Megamind_255, Norm_258, Shrimp_261, Maby2021_259, MoMoMixon_254, Salacia_260, Gabriel_261, JPickles_256, Zalkecks_257, YemiJoy2021_259, ChickenPhender_254, Yucca_259, Pleione_262, Demodog_266

• Track 9 : Bowman_257, PharkleMinkus_262, Bigswole_263, Primadonna_254, Guwapp_254, LordLeafolot_259, Mikro_252, Astraea_254, Lethe_256, LolaVinca_254

• Track 10 : Tonenili_280

• Track 11 : Cane17_248, Colt_249, Blubba_246

• Track 12 : Bxz1_244

• Track 13 : Vortrix_277

• Track 14 : Myrna_258

• Track 15 : Greely_265

• Track 16 : ScoobyDoobyDoo_254

• Track 17 : Phabba_267

• Track 18 : Hyzer_74

• Track 19 : YungMoney_10

• Track 20 : Fugax_10, KimmyK_10, ClamChowder_10, Barb_10

• Track 21 : PinkCoffee_10

• Track 22 : Savbucketdawg_10, Jambalaya_10, TillyBobJoe_10, JohnPork_10, Portcullis_10

• Track 23 : Mutzi_10, Shinji_10, Salvador_10, Twister6_10, Evamon_10,

CoveyB_10, Nubi_10, Togo_10, Danyall_10, SmokingBunny_10

• Track 24 : Fireball_10, Gezellig_10, Phlop_10, Wizard_10, PullumCavea_10

• Track 25 : Halo3_11, CherryCola_11, Valary_11

• Track 26 : Arri_11

• Track 27 : RogerDodger_11

• Track 28 : Sendy_10, Egi03_10

• Track 29 : VanDeWege_11

• Track 30 : EMOore_72

• Track 31 : Phauci_66, Hans_75

• Track 32 : Ali17_71

• Track 33 : MelBins_76

• Track 34 : Belphegor_73

• Track 35 : Leonard_74, Inspectinfecti_75, Phinally_74

• Track 36 : EdmundFerry_73

• Track 37 : Kwekel_75, RoadKill_72, Dextert_70, Chickadee_75, Twonlo_72

• Track 38 : GTE6_75

• Track 39 : SCentae_67, CherryTomatoes_69

• Track 40 : Pupper_68

• Track 41 : Skog_128

• Track 42 : Sour_58

• Track 43 : Fresco_58, Axumite_58, Shatter_58, Ligma_58

• Track 44 : BiggityBass_55

• Track 45 : Blackpen_59, CloverMinnie_59

• Track 46 : Sisko_55

• Track 47 : Wooper_60, TraderJ_60, Yeshua_60

• Track 48 : BobRoss2024_62

- Track 49 : CharlottesWeb_55, JellyBelly_54, Mariokart_55
- Track 50 : FelixTres_59
- Track 51 : AnarQue_60
- Track 52 : MossRose_59
- Track 53 : Yago84_55
- Track 54 : LittleMunchkin_58
- Track 55 : AksarBAT_60
- Track 56 : BlueNGold_57, Forza_58, Mareelih_57, Boopy_59
- Track 57 : Sixama_53
- Track 58 : RedWattleHog_162, Stormageddon_163
- Track 59 : Kureo_187
- Track 60 : Gandionco_189
- Track 61 : Elver_190, Paella_191, Qui_191, JeNeSaisPas_185
- Track 62 : Marianna39_188
- Track 63 : Nikao_69, Nutello_66, Mdavu_67, LilPharaoh_67, Torres_69, Binglebops_66, SgtBeansprout_67, Teejan_68, Trice_66, Enkosi_68, Amelie_66
- Track 64 : Yunkel11_89, Efra2_90
- Track 65 : LastHope_90
- Track 66 : Peanam_85
- Track 67 : MacKat_79
- Track 68 : TingHuaYa_88
- Track 69 : Curiosium_89
- Track 70 : Anaya_87
- Track 71 : Richo_84, Dartin_84, McMater_84
- Track 72 : TiniBug_83
- Track 73 : DartGoblin_84
- Track 74 : Shaobing_84
- Track 75 : Bella96_84
- Track 76 : Niklas_85
- Track 77 : Clipper_87
- Track 78 : Guanica15_89
- Track 79 : Colossa_114
- Track 80 : VanLee_114
- Track 81 : Gilgamesh_15
- Track 82 : Trogglehumper_8
- Track 83 : E3_gp8

Summary of Final Annotations (See graph section above for start numbers):

The start number called the most often in the published annotations is 71, it was called in 189 of the 299 non-draft genes in the pham.

Genes that call this "Most Annotated" start:

• Ablatia_258, Ading_261, Adlitam_258, Alice_244, Amataga_259, ArcherS7_259, Asterius_259, Astraea_254, Atlantean_258, Audrick_261, Ava3_255, Babyland_261, BackyardAgain_253, BadAgartude_252, BananaFence_256, Bangla1971_259, Basquiat_256, BeanWater_251, Belieber_252, Bezza_246, BigCity_266, Bigswole_263, Bipolarisk_256, Blackbrain_257, Blackdragon_253, Blubba_246, BobaPhatt_251, Bonray_261, Bowman_257, Bread_255, Breeniome_258, Burrough_259, Cactojaque_253, Cali_248, Cane17_248, Capablanca_263,

Caravan_248, Catera_247, Chargie21_256, CharlieB_253, ChaylaJr_257, ChickenPhender_254, Chomp_257, CindyLou_259, Cleatunium_252, Colt_249, Concombre_264, DTDevon_259, Daffodil_264, Dandelion_264, Darko_258, DeejaClivia_245, Delilah_256, Delylah_260, Demodog_266, Derek_254, Dessert_255, Dietrick_247, DirtMonster_247, Domi_252, DrPhinkDaddy_255, Drazdys_255, Duckfeet_252, ET08_244, EasyJones_259, EggyFarm_266, EhyElimayoE_247, EmToTheThree_259, EmmaElysia_263, Erdmann_260, ErnieJ_252, Essence_256, Ewok_257, Fixie_259, Flabslab_253, Fludd_258, Fongie_258, FoxtrotP1_257, Frankenweenie_266, FrayBell_261, FudgeTart_254, Gabriel_261, Gamgam_260, Ghost_258, Gizmo_264, GlutenPhree_259, Grasshills_265, Grungle_240, Guwapp_254, Halldule_250, HyRo_243, I3_268, IkeLoa_252, InigoMontoya_262, InterFolia_260, Iota_255, Issimir_252, Izajani_254, JPickles_256, Janiyra_262, JayJay_258, Jaygup_255, Jedediah_260, Jemmno_258, Jessibeth14_258, Jezreel_255, JigglyPuff_264, JulietS_247, JustBecause_247, JustHall_252, Kamryn_257, Kboogie_262, Khaleesi_257, Koguma_257, Kradal_245, LRRHood_250, Labradorite_255, Latch_258, Lee7_259, Lethe_256, LifeSavor_259, LinStu_255, Littleton_262, Loanshark_255, LolaVinca_254, LookingGlass_256, LordLeafolot_259, Lukilu_247, Lunareta_255, Maby2021_259, Mangeria_258, Matsumoto_256, Maturis_252, McGee_260, McWolfish_255, Megamind_255, Melpomini_253, MikeLiesIn_259, Mikro_252, MoMoMixon_254, Moby_255, Moiqah_254, Momo_260, Montpel_255, Morizzled23_256, Myrna_258, Naija_259, Napoleon13_255, Nappy_257, Naval22_265, NedWong_257, Ngannou_253, Nidhogg_259, Nirvana_262, NoodleTree_254, Norm_258, NuevoMundo_260, OrediggerDelux_255, ParkTD_257, Patter_260, Phabba_267, PharkleMinkus_262, Phlegm_263, Phox_259, Phusco_257, Pier_257, Pinkcreek_238, Pio_265, Pivoine_259, Pleione_262, Primadonna_254, Pupusa_261, PurduePete_259, QBert_250, Quantum_243, Quasimodo_261, Rabinovish_251, Rahel_260, Rizal_247, RoMag_253, Rocha_254, Ronan_254, Roots515_261, SVoro_253, Salacia_260, Sarkar_244, Sauce_255, ScoobyDoobyDoo_254, ScottMcG_250, Sebata_258, Shaq nato_249, Shelob_259, ShiaLabeouf_256, Shifa_234, Shnickers_257, Shrimp_261, SilverDipper_263, SmallFry_259, SoilZilla_251, Spec_252, Specks_263, Sprinklers_256, Spud_250, SrishMeg2525_256, StephanieG_252, StubbySaigey_265, Stubby_241, Substance289_254, Tainan_258, Teardrop_257, TinyTim_257, Tortoise16_256, Trinitium_255, Turret_249, Tyke_255, ValleyTerrace_259, Wally_256, Willis_259, Yassified_254, YemiJoy2021_259, YoungMoneyMata_258, Yucca_259, Zalkecks_257, Zeenon_259, ZygoTaiga_255,

Genes that have the "Most Annotated" start but do not call it:

- Bxz1_244, Greely_265, Kela_246, Satis_244, Tonenili_280, Vortrix_277,

Genes that do not have the "Most Annotated" start:

- AksarBAT_60, Ali17_71, Amelie_66, AnarQue_60, Anaya_87, Arri_11, Axumite_58, Barb_10, Bella96_84, Belphegor_73, BiggityBass_55, Binglebops_66, Blackpen_59, BlueNGold_57, BobRoss2024_62, Boopy_59, CharlottesWeb_55, CherryCola_11, CherryTomatoes_69, Chickadee_75, ClamChowder_10, Clipper_87, CloverMinnie_59, Colossa_114, CoveyB_10, Curiosium_89, Danyall_10, DartGoblin_84, Dartin_84, Dexdert_70, E3_gp8, EMoore_72, EdmundFerry_73, Efra2_90, Egi03_10, Elver_190, Enkosi_68, Evamon_10, FelixTres_59, Fireball_10, Forza_58, Fresco_58, Fugax_10, GTE6_75, Gandionco_189, Gezellig_10, Gilgamesh_15, Guanica15_89, Halo3_11, Hans_75, Hyzer_74, Inspectinfecti_75, Jambalaya_10, JeNeSaisPas_185, JellyBelly_54, JohnPork_10, KimmyK_10, Kureo_187, Kwekel_75, LastHope_90, Leonard_74, Ligma_58, LilPharaoh_67, LittleMunchkin_58, MacKat_79, Mareelih_57, Marianna39_188, Mariokart_55,

McMater_84, Mdavu_67, MelBins_76, MossRose_59, Mutzi_10, Nikao_69, Niklas_85, Nubi_10, Nutello_66, Paella_191, Peanam_85, Phauci_66, Phinally_74, Phlop_10, Phrappuccino_5, PinkCoffee_10, Portcullis_10, PullumCavea_10, Pupper_68, Qui_191, RedWattleHog_162, Richo_84, RoadKill_72, RogerDodger_11, SCentae_67, Salvador_10, Savbucketdawg_10, Sendy_10, Settecandela_5, SgtBeansprout_67, Shaobing_84, Shatter_58, Shinji_10, Sisko_55, Sixama_53, Skog_128, SmokingBunny_10, Sour_58, Stormageddon_163, Teejan_68, TillyBobJoe_10, TingHuaYa_88, TiniBug_83, Togo_10, Torres_69, TraderJ_60, Trice_66, Trogglehumper_8, Twister6_10, Twonlo_72, Valary_11, VanDeWege_11, VanLee_114, Wizard_10, Wooper_60, Yago84_55, Yeshua_60, YungMoney_10, Yunkel11_89,

Summary by start number:

Start 19:

- Found in 11 of 358 (3.1%) of genes in pham
- Manual Annotations of this start: 9 of 299
- Called 100.0% of time when present
- Phage (with cluster) where this start called: Amelie_66 (K1), Binglebops_66 (K1), Enkosi_68 (K1), LilPharaoh_67 (K1), Mdavu_67 (K1), Nikao_69 (K1), Nutello_66 (K1), SgtBeansprout_67 (K1), Teejan_68 (K1), Torres_69 (K1), Trice_66 (K1),

Start 34:

- Found in 12 of 358 (3.4%) of genes in pham
- Manual Annotations of this start: 1 of 299
- Called 8.3% of time when present
- Phage (with cluster) where this start called: BiggityBass_55 (DR),

Start 45:

- Found in 3 of 358 (0.8%) of genes in pham
- Manual Annotations of this start: 3 of 299
- Called 100.0% of time when present
- Phage (with cluster) where this start called: LittleMunchkin_58 (DR), Sisko_55 (DR), Yago84_55 (DR),

Start 54:

- Found in 1 of 358 (0.3%) of genes in pham
- Manual Annotations of this start: 1 of 299
- Called 100.0% of time when present
- Phage (with cluster) where this start called: Sour_58 (DR),

Start 55:

- Found in 8 of 358 (2.2%) of genes in pham
- Manual Annotations of this start: 8 of 299
- Called 100.0% of time when present
- Phage (with cluster) where this start called: Ali17_71 (DE2), EMoore_72 (DE2), Hans_75 (DE2), Inspectinfecti_75 (DE2), Leonard_74 (DE2), MelBins_76 (DE2), Phauci_66 (DE2), Phinally_74 (DE2),

Start 56:

- Found in 5 of 358 (1.4%) of genes in pham
- Manual Annotations of this start: 4 of 299
- Called 80.0% of time when present

- Phage (with cluster) where this start called: BlueNGold_57 (DS), Boopy_59 (DS), Forza_58 (DS), Mareelih_57 (DS),

Start 57:

- Found in 1 of 358 (0.3%) of genes in pham
- Manual Annotations of this start: 1 of 299
- Called 100.0% of time when present
- Phage (with cluster) where this start called: Sixama_53 (DS),

Start 59:

- Found in 5 of 358 (1.4%) of genes in pham
- Manual Annotations of this start: 4 of 299
- Called 100.0% of time when present
- Phage (with cluster) where this start called: BobRoss2024_62 (DR), CherryTomatoes_69 (DO), Pupper_68 (DO), SCentae_67 (DO), Skog_128 (DO),

Start 61:

- Found in 2 of 358 (0.6%) of genes in pham
- Manual Annotations of this start: 1 of 299
- Called 50.0% of time when present
- Phage (with cluster) where this start called: MacKat_79 (K1),

Start 63:

- Found in 10 of 358 (2.8%) of genes in pham
- Manual Annotations of this start: 2 of 299
- Called 20.0% of time when present
- Phage (with cluster) where this start called: Belphegor_73 (DE2), Kela_246 (BM),

Start 65:

- Found in 2 of 358 (0.6%) of genes in pham
- No Manual Annotations of this start.
- Called 50.0% of time when present
- Phage (with cluster) where this start called: Vortrix_277 (C1),

Start 67:

- Found in 1 of 358 (0.3%) of genes in pham
- Manual Annotations of this start: 1 of 299
- Called 100.0% of time when present
- Phage (with cluster) where this start called: Gilgamesh_15 (singleton),

Start 68:

- Found in 1 of 358 (0.3%) of genes in pham
- No Manual Annotations of this start.
- Called 100.0% of time when present
- Phage (with cluster) where this start called: E3_gp8 (singleton),

Start 69:

- Found in 4 of 358 (1.1%) of genes in pham
- Manual Annotations of this start: 3 of 299
- Called 75.0% of time when present
- Phage (with cluster) where this start called: RedWattleHog_162 (DX), Stormageddon_163 (DX), Tonenili_280 (C1),

Start 71:

- Found in 231 of 358 (64.5%) of genes in pham
- Manual Annotations of this start: 189 of 299
- Called 97.4% of time when present
- Phage (with cluster) where this start called: Ablatia_258 (C1), Ading_261 (C1), Adlitam_258 (C1), Alice_244 (C1), Amataga_259 (C1), ArcherS7_259 (C1), Asterius_259 (C1), Astraea_254 (C1), Atlantean_258 (C1), Audrick_261 (C1), Ava3_255 (C1), Babyland_261 (C1), BackyardAgain_253 (C1), BadAgartude_252 (C1), BananaFence_256 (C1), Bangla1971_259 (C1), Basquiat_256 (C1), BeanWater_251 (C1), Belieber_252 (C1), Bezza_246 (C1), BigCity_266 (C1), Bigswole_263 (C1), Bipolarisk_256 (C1), Blackbrain_257 (C1), Blackdragon_253 (C1), Blubba_246 (C1), BobaPhatt_251 (C1), Bonray_261 (C1), Bowman_257 (C1), Bread_255 (C1), Breeniome_258 (C1), Burrough_259 (C1), Cactojaque_253 (C1), Cali_248 (C1), Cane17_248 (C1), Capablanca_263 (C1), Caravan_248 (C1), Catera_247 (C1), Chargie21_256 (C1), CharlieB_253 (C1), ChaylaJr_257 (C1), ChickenPhender_254 (C1), Chomp_257 (C1), CindyLou_259 (C1), Cleatunium_252 (C1), Colt_249 (C1), Concombre_264 (C1), DTDevon_259 (C1), Daffodil_264 (C1), Dandelion_264 (C1), Darko_258 (C1), DeejaClivia_245 (C1), Delilah_256 (C1), Delylah_260 (C1), Demodog_266 (C1), Derek_254 (C1), Dessert_255 (C1), Dietrick_247 (C1), DirtMonster_247 (C1), Domi_252 (C1), DrPhinkDaddy_255 (C1), Drazdys_255 (C1), Duckfeet_252 (C1), ET08_244 (C1), EasyJones_259 (C1), EggyFarm_266 (C1), EhyElimayoE_247 (BM), EmToTheThree_259 (C1), EmmaElysia_263 (C1), Erdmann_260 (C1), ErnieJ_252 (C1), Essence_256 (C1), Ewok_257 (C1), Fixie_259 (C1), Flabslab_253 (C1), Fludd_258 (C1), Fongie_258 (C1), FoxtrotP1_257 (C1), Frankenweenie_266 (BM), FrayBell_261 (C1), FudgeTart_254 (C1), Gabriel_261 (C1), Gangam_260 (C1), Ghost_258 (C1), Gizmo_264 (C1), GlutenPhree_259 (C1), Grasshills_265 (C1), Grungle_240 (C1), Guwapp_254 (C1), Halldule_250 (C1), HyRo_243 (C1), I3_268 (C1), IkeLoa_252 (C1), InigoMontoya_262 (C1), InterFolia_260 (C1), Iota_255 (C1), Issimir_252 (C1), Izajani_254 (C1), JPickles_256 (C1), Janiyr_262 (C1), JayJay_258 (C1), Jaygup_255 (C1), Jedediah_260 (C1), Jemmno_258 (C1), Jessibeth14_258 (C1), Jezreel_255 (C1), JigglyPuff_264 (C1), JulietS_247 (C1), JustBecause_247 (BM), JustHall_252 (C1), Kamryn_257 (C1), Kboogie_262 (C1), Khaleesi_257 (C1), Koguma_257 (C1), Kradal_245 (BM), LRRHood_250 (C1), Labradorite_255 (C1), Latch_258 (C1), Lee7_259 (C1), Lethe_256 (C1), LifeSavor_259 (C1), LinStu_255 (C1), Littleton_262 (C1), Loanshark_255 (C1), LolaVinca_254 (C1), LookingGlass_256 (C1), LordLeafolot_259 (C1), Lukilu_247 (C1), Lunareta_255 (C1), Maby2021_259 (C1), Mangeria_258 (C1), Matsumoto_256 (C1), Maturis_252 (C1), McGee_260 (C1), McWolfish_255 (C1), Megamind_255 (C1), Melpomini_253 (C1), MikeLiesIn_259 (C1), Mikro_252 (C1), MoMoMixon_254 (C1), Moby_255 (C1), Moiqah_254 (C1), Momo_260 (C1), Montpel_255 (C1), Morizzled23_256 (C1), Myrna_258 (C2), Naija_259 (C1), Napoleon13_255 (C1), Nappy_257 (C1), Naval22_265 (C1), NedWong_257 (C1), Ngannou_253 (C1), Nidhogg_259 (C1), Nirvana_262 (BM), NoodleTree_254 (C1), Norm_258 (C1), NuevoMundo_260 (C1), OrediggerDelux_255 (C1), ParkTD_257 (C1), Patter_260 (C1), Phabba_267 (C2), PharkleMinkus_262 (C1), Phlegm_263 (C1), Phox_259 (C1), Phusco_257 (C1), Pier_257 (C1), Pinkcreek_238 (C1), Pio_265 (C1), Pivoine_259 (C1), Pleione_262 (C1), Primadonna_254 (C1), Pupusa_261 (C1), PurduePete_259 (C1), QBert_250 (C1), Quantum_243 (BM), Quasimodo_261 (C1), Rabinovish_251 (C1), Rahel_260 (C1), Rizal_247 (C1), RoMag_253 (C1), Rocha_254 (C1), Ronan_254 (C1), Roots515_261 (C1), SVoro_253 (C1), Salacia_260 (C1), Sarkar_244 (BM), Sauce_255 (C1), ScoobyDoobyDoo_254 (C2), ScottMcG_250 (C1), Sebata_258 (C1), Shaqnato_249 (C1), Shelob_259 (C1), ShiaLabeouf_256 (C1), Shifa_234 (C1),

Shnickers_257 (C1), Shrimp_261 (C1), SilverDipper_263 (C1), SmallFry_259 (C1), SoilZilla_251 (C1), Spec_252 (C1), Specks_263 (C1), Sprinklers_256 (C1), Spud_250 (C1), SrishMeg2525_256 (C1), StephanieG_252 (C1), StubbySaigey_265 (C1), Stubby_241 (C1), Substance289_254 (C1), Tainan_258 (C1), Teardrop_257 (C1), TinyTim_257 (C1), Tortoise16_256 (C1), Trinitium_255 (C1), Turret_249 (C1), Tyke_255 (C1), ValleyTerrace_259 (C1), Wally_256 (C1), Willis_259 (C1), Yassified_254 (C1), YemiJoy2021_259 (C1), YoungMoneyMata_258 (C1), Yucca_259 (C1), Zalkecks_257 (C1), Zeenon_259 (C1), ZygoTaiga_255 (C1),

Start 72:

- Found in 3 of 358 (0.8%) of genes in pham
- Manual Annotations of this start: 2 of 299
- Called 66.7% of time when present
- Phage (with cluster) where this start called: Phrappuccino_5 (AA), Settecandela_5 (AA),

Start 73:

- Found in 6 of 358 (1.7%) of genes in pham
- Manual Annotations of this start: 4 of 299
- Called 100.0% of time when present
- Phage (with cluster) where this start called: Blackpen_59 (DR), CloverMinnie_59 (DR), FelixTres_59 (DR), TraderJ_60 (DR), Wooper_60 (DR), Yeshua_60 (DR),

Start 74:

- Found in 3 of 358 (0.8%) of genes in pham
- Manual Annotations of this start: 1 of 299
- Called 100.0% of time when present
- Phage (with cluster) where this start called: CharlottesWeb_55 (DR), JellyBelly_54 (DR), Mariokart_55 (DR),

Start 75:

- Found in 1 of 358 (0.3%) of genes in pham
- No Manual Annotations of this start.
- Called 100.0% of time when present
- Phage (with cluster) where this start called: Kureo_187 (FK),

Start 76:

- Found in 2 of 358 (0.6%) of genes in pham
- Manual Annotations of this start: 2 of 299
- Called 100.0% of time when present
- Phage (with cluster) where this start called: Colossa_114 (KA), VanLee_114 (KA),

Start 77:

- Found in 227 of 358 (63.4%) of genes in pham
- Manual Annotations of this start: 2 of 299
- Called 0.9% of time when present
- Phage (with cluster) where this start called: Bxz1_244 (C1), Satis_244 (BM),

Start 78:

- Found in 72 of 358 (20.1%) of genes in pham
- Manual Annotations of this start: 48 of 299
- Called 77.8% of time when present

- Phage (with cluster) where this start called: Anaya_87 (K1), Arri_11 (DC1), Barb_10 (DC1), CherryCola_11 (DC1), Chickadee_75 (DE3), ClamChowder_10 (DC1), CoveyB_10 (DC1), Curiosium_89 (K1), Danyall_10 (DC1), DartGoblin_84 (K1), Dartin_84 (K1), Dexdert_70 (DE3), EdmundFerry_73 (DE3), Efra2_90 (K1), Egi03_10 (DC1), Evamon_10 (DC1), Fireball_10 (DC1), Fugax_10 (DC1), GTE6_75 (DE3), Gezellig_10 (DC1), Guanica15_89 (K1), Halo3_11 (DC1), Hyzer_74 (CZ1), Jambalaya_10 (DC1), JohnPork_10 (DC1), KimmyK_10 (DC1), Kwekel_75 (DE3), LastHope_90 (K1), McMater_84 (K1), Mutzi_10 (DC1), Nubi_10 (DC1), Peanam_85 (K1), Phlop_10 (DC1), PinkCoffee_10 (DC1), Portcullis_10 (DC1), PullumCavea_10 (DC1), Richo_84 (K1), RoadKill_72 (DE3), RogerDodger_11 (DC1), Salvador_10 (DC1), Savbucketdawg_10 (DC1), Sendy_10 (DC1), Shaobing_84 (K1), Shinji_10 (DC1), SmokingBunny_10 (DC1), TillyBobJoe_10 (DC1), TingHuaYa_88 (K1), Togo_10 (DC1), Trogglehumper_8 (singleton), Twister6_10 (DC1), Twonlo_72 (DE3), Valary_11 (DC1), VanDeWege_11 (DC1), Wizard_10 (DC1), YungMoney_10 (DC1), Yunkel11_89 (K1),

Start 80:

- Found in 29 of 358 (8.1%) of genes in pham
- Manual Annotations of this start: 4 of 299
- Called 13.8% of time when present
- Phage (with cluster) where this start called: Bella96_84 (K1), Clipper_87 (K1), Niklas_85 (K1), TiniBug_83 (K1),

Start 81:

- Found in 4 of 358 (1.1%) of genes in pham
- Manual Annotations of this start: 4 of 299
- Called 100.0% of time when present
- Phage (with cluster) where this start called: Axumite_58 (DR), Fresco_58 (DR), Ligma_58 (DR), Shatter_58 (DR),

Start 82:

- Found in 9 of 358 (2.5%) of genes in pham
- Manual Annotations of this start: 5 of 299
- Called 88.9% of time when present
- Phage (with cluster) where this start called: AnarQue_60 (DR), Elver_190 (FK), Gandionco_189 (FK), JeNeSaisPas_185 (FK), Marianna39_188 (FK), MossRose_59 (DR), Paella_191 (FK), Qui_191 (FK),

Start 83:

- Found in 35 of 358 (9.8%) of genes in pham
- No Manual Annotations of this start.
- Called 2.9% of time when present
- Phage (with cluster) where this start called: AksarBAT_60 (DR),

Start 86:

- Found in 261 of 358 (72.9%) of genes in pham
- No Manual Annotations of this start.
- Called 0.4% of time when present
- Phage (with cluster) where this start called: Greely_265 (C2),

Summary by clusters:

There are 16 clusters represented in this pham: AA, DO, KA, CZ1, BM, DE2, DE3, singleton, K1, DX, C2, C1, FK, DR, DS, DC1,

Info for manual annotations of cluster AA:

- Start number 72 was manually annotated 2 times for cluster AA.

Info for manual annotations of cluster BM:

- Start number 63 was manually annotated 1 time for cluster BM.
- Start number 71 was manually annotated 7 times for cluster BM.
- Start number 77 was manually annotated 1 time for cluster BM.

Info for manual annotations of cluster C1:

- Start number 69 was manually annotated 1 time for cluster C1.
- Start number 71 was manually annotated 179 times for cluster C1.
- Start number 77 was manually annotated 1 time for cluster C1.

Info for manual annotations of cluster C2:

- Start number 71 was manually annotated 3 times for cluster C2.

Info for manual annotations of cluster CZ1:

- Start number 78 was manually annotated 1 time for cluster CZ1.

Info for manual annotations of cluster DC1:

- Start number 78 was manually annotated 31 times for cluster DC1.

Info for manual annotations of cluster DE2:

- Start number 55 was manually annotated 8 times for cluster DE2.
- Start number 63 was manually annotated 1 time for cluster DE2.

Info for manual annotations of cluster DE3:

- Start number 78 was manually annotated 6 times for cluster DE3.

Info for manual annotations of cluster DO:

- Start number 59 was manually annotated 4 times for cluster DO.

Info for manual annotations of cluster DR:

- Start number 34 was manually annotated 1 time for cluster DR.
- Start number 45 was manually annotated 3 times for cluster DR.
- Start number 54 was manually annotated 1 time for cluster DR.
- Start number 73 was manually annotated 4 times for cluster DR.
- Start number 74 was manually annotated 1 time for cluster DR.
- Start number 81 was manually annotated 4 times for cluster DR.
- Start number 82 was manually annotated 2 times for cluster DR.

Info for manual annotations of cluster DS:

- Start number 56 was manually annotated 4 times for cluster DS.
- Start number 57 was manually annotated 1 time for cluster DS.

Info for manual annotations of cluster DX:

- Start number 69 was manually annotated 2 times for cluster DX.

Info for manual annotations of cluster FK:

- Start number 82 was manually annotated 3 times for cluster FK.

Info for manual annotations of cluster K1:

- Start number 19 was manually annotated 9 times for cluster K1.
- Start number 61 was manually annotated 1 time for cluster K1.
- Start number 78 was manually annotated 9 times for cluster K1.
- Start number 80 was manually annotated 4 times for cluster K1.

Info for manual annotations of cluster KA:

- Start number 76 was manually annotated 2 times for cluster KA.

Gene Information:

Gene: Ablatia_258 Start: 149266, Stop: 149787, Start Num: 71

Candidate Starts for Ablatia_258:

(Start: 71 @149266 has 189 MA's), (Start: 77 @149272 has 2 MA's), (85, 149299), (86, 149305), (88, 149326), (121, 149470), (122, 149473), (124, 149491), (130, 149530), (131, 149533), (135, 149548), (137, 149551), (142, 149566), (154, 149644), (159, 149674), (174, 149773),

Gene: Ading_261 Start: 151699, Stop: 152220, Start Num: 71

Candidate Starts for Ading_261:

(Start: 71 @151699 has 189 MA's), (Start: 77 @151705 has 2 MA's), (85, 151732), (86, 151738), (88, 151759), (121, 151903), (122, 151906), (124, 151924), (130, 151963), (131, 151966), (135, 151981), (137, 151984), (142, 151999), (154, 152077), (159, 152107), (174, 152206),

Gene: Adlitam_258 Start: 149047, Stop: 149568, Start Num: 71

Candidate Starts for Adlitam_258:

(Start: 71 @149047 has 189 MA's), (Start: 77 @149053 has 2 MA's), (85, 149080), (86, 149086), (88, 149107), (121, 149251), (122, 149254), (124, 149272), (130, 149311), (131, 149314), (135, 149329), (137, 149332), (142, 149347), (154, 149425), (159, 149455), (174, 149554),

Gene: AksarBAT_60 Start: 50227, Stop: 49754, Start Num: 83

Candidate Starts for AksarBAT_60:

(Start: 82 @50242 has 5 MA's), (83, 50227), (85, 50221), (86, 50215), (88, 50194), (106, 50116), (119, 50071), (143, 49981), (155, 49897), (159, 49870), (163, 49843), (168, 49825),

Gene: Ali17_71 Start: 53072, Stop: 53569, Start Num: 55

Candidate Starts for Ali17_71:

(Start: 55 @53072 has 8 MA's), (86, 53096), (92, 53132), (100, 53159), (132, 53315), (139, 53336), (143, 53345), (159, 53459), (164, 53492), (167, 53501), (174, 53555),

Gene: Alice_244 Start: 146930, Stop: 147451, Start Num: 71

Candidate Starts for Alice_244:

(Start: 71 @146930 has 189 MA's), (Start: 77 @146936 has 2 MA's), (85, 146963), (86, 146969), (88, 146990), (121, 147134), (122, 147137), (124, 147155), (130, 147194), (131, 147197), (135, 147212), (137, 147215), (142, 147230), (154, 147308), (159, 147338), (174, 147437),

Gene: Amataga_259 Start: 148853, Stop: 149374, Start Num: 71

Candidate Starts for Amataga_259:

(Start: 71 @148853 has 189 MA's), (Start: 77 @148859 has 2 MA's), (85, 148886), (86, 148892), (88, 148913), (121, 149057), (122, 149060), (124, 149078), (130, 149117), (131, 149120), (135, 149135), (137, 149138), (142, 149153), (154, 149231), (159, 149261), (174, 149360),

Gene: Amelie_66 Start: 49181, Stop: 49909, Start Num: 19

Candidate Starts for Amelie_66:

(Start: 19 @49181 has 9 MA's), (21, 49196), (26, 49247), (28, 49256), (30, 49262), (32, 49280), (Start: 34 @49298 has 1 MA's), (36, 49307), (38, 49313), (39, 49337), (Start: 78 @49460 has 48 MA's), (Start: 80 @49463 has 4 MA's), (90, 49520), (93, 49532), (94, 49535), (117, 49646), (121, 49655), (122, 49658), (123, 49670), (132, 49715), (134, 49721), (148, 49784), (159, 49850), (166, 49889), (167, 49892), (169, 49904),

Gene: AnarQue_60 Start: 50680, Stop: 50189, Start Num: 82

Candidate Starts for AnarQue_60:

(41, 50800), (49, 50749), (Start: 82 @50680 has 5 MA's), (83, 50665), (88, 50632), (106, 50554), (121, 50506), (122, 50503), (126, 50467), (143, 50419), (155, 50332), (163, 50278), (164, 50272), (166, 50266),

Gene: Anaya_87 Start: 54470, Stop: 54922, Start Num: 78

Candidate Starts for Anaya_87:

(44, 54389), (48, 54404), (50, 54407), (53, 54416), (70, 54461), (Start: 78 @54470 has 48 MA's), (Start: 80 @54473 has 4 MA's), (90, 54530), (93, 54542), (94, 54545), (115, 54653), (117, 54656), (121, 54665), (123, 54680), (132, 54725), (146, 54785), (147, 54788), (159, 54860), (166, 54899), (167, 54902),

Gene: ArcherS7_259 Start: 150598, Stop: 151119, Start Num: 71

Candidate Starts for ArcherS7_259:

(Start: 71 @150598 has 189 MA's), (Start: 77 @150604 has 2 MA's), (85, 150631), (86, 150637), (88, 150658), (121, 150802), (122, 150805), (124, 150823), (130, 150862), (131, 150865), (135, 150880), (137, 150883), (142, 150898), (154, 150976), (159, 151006), (174, 151105),

Gene: Arri_11 Start: 4676, Stop: 5179, Start Num: 78

Candidate Starts for Arri_11:

(48, 4610), (Start: 78 @4676 has 48 MA's), (88, 4727), (99, 4763), (116, 4862), (122, 4874), (123, 4886), (125, 4901), (143, 4958), (147, 4994), (162, 5087),

Gene: Asterius_259 Start: 148904, Stop: 149425, Start Num: 71

Candidate Starts for Asterius_259:

(Start: 71 @148904 has 189 MA's), (Start: 77 @148910 has 2 MA's), (85, 148937), (86, 148943), (88, 148964), (121, 149108), (122, 149111), (124, 149129), (130, 149168), (131, 149171), (135, 149186), (137, 149189), (142, 149204), (154, 149282), (159, 149312), (174, 149411),

Gene: Astraea_254 Start: 148906, Stop: 149427, Start Num: 71

Candidate Starts for Astraea_254:

(Start: 71 @148906 has 189 MA's), (Start: 77 @148912 has 2 MA's), (85, 148939), (86, 148945), (121, 149110), (122, 149113), (124, 149131), (130, 149170), (131, 149173), (135, 149188), (137, 149191), (142, 149206), (154, 149284), (159, 149314), (174, 149413),

Gene: Atlantean_258 Start: 148853, Stop: 149374, Start Num: 71

Candidate Starts for Atlantean_258:

(Start: 71 @148853 has 189 MA's), (Start: 77 @148859 has 2 MA's), (85, 148886), (86, 148892), (88, 148913), (121, 149057), (122, 149060), (124, 149078), (130, 149117), (131, 149120), (135, 149135), (137, 149138), (142, 149153), (154, 149231), (159, 149261), (174, 149360),

Gene: Audrick_261 Start: 148743, Stop: 149264, Start Num: 71

Candidate Starts for Audrick_261:

(Start: 71 @148743 has 189 MA's), (Start: 77 @148749 has 2 MA's), (85, 148776), (86, 148782), (88, 148803), (121, 148947), (122, 148950), (124, 148968), (130, 149007), (131, 149010), (135, 149025), (137, 149028), (142, 149043), (154, 149121), (159, 149151), (174, 149250),

Gene: Ava3_255 Start: 148506, Stop: 149027, Start Num: 71

Candidate Starts for Ava3_255:

(Start: 71 @148506 has 189 MA's), (Start: 77 @148512 has 2 MA's), (85, 148539), (86, 148545), (88, 148566), (121, 148710), (122, 148713), (124, 148731), (130, 148770), (131, 148773), (135, 148788), (137, 148791), (142, 148806), (154, 148884), (159, 148914), (174, 149013),

Gene: Axumite_58 Start: 48670, Stop: 48185, Start Num: 81

Candidate Starts for Axumite_58:

(6, 49066), (25, 48850), (Start: 81 @48670 has 4 MA's), (83, 48658), (88, 48625), (106, 48547), (114, 48523), (123, 48484), (143, 48412), (151, 48355), (155, 48325), (159, 48298), (166, 48256),

Gene: Babyland_261 Start: 149630, Stop: 150151, Start Num: 71

Candidate Starts for Babyland_261:

(Start: 71 @149630 has 189 MA's), (Start: 77 @149636 has 2 MA's), (85, 149663), (86, 149669), (88, 149690), (121, 149834), (122, 149837), (124, 149855), (130, 149894), (131, 149897), (135, 149912), (137, 149915), (142, 149930), (154, 150008), (159, 150038), (174, 150137),

Gene: BackyardAgain_253 Start: 147003, Stop: 147524, Start Num: 71

Candidate Starts for BackyardAgain_253:

(Start: 71 @147003 has 189 MA's), (Start: 77 @147009 has 2 MA's), (85, 147036), (86, 147042), (88, 147063), (121, 147207), (122, 147210), (124, 147228), (130, 147267), (131, 147270), (135, 147285), (137, 147288), (142, 147303), (154, 147381), (159, 147411), (174, 147510),

Gene: BadAgartude_252 Start: 148915, Stop: 149436, Start Num: 71

Candidate Starts for BadAgartude_252:

(Start: 71 @148915 has 189 MA's), (Start: 77 @148921 has 2 MA's), (85, 148948), (86, 148954), (88, 148975), (121, 149119), (122, 149122), (124, 149140), (130, 149179), (131, 149182), (135, 149197), (137, 149200), (142, 149215), (154, 149293), (159, 149323), (174, 149422),

Gene: BananaFence_256 Start: 149535, Stop: 150056, Start Num: 71

Candidate Starts for BananaFence_256:

(Start: 71 @149535 has 189 MA's), (Start: 77 @149541 has 2 MA's), (85, 149568), (86, 149574), (88, 149595), (121, 149739), (122, 149742), (124, 149760), (130, 149799), (131, 149802), (135, 149817), (137, 149820), (142, 149835), (154, 149913), (159, 149943), (174, 150042),

Gene: Bangla1971_259 Start: 148755, Stop: 149276, Start Num: 71

Candidate Starts for Bangla1971_259:

(Start: 71 @148755 has 189 MA's), (Start: 77 @148761 has 2 MA's), (85, 148788), (86, 148794), (88, 148815), (121, 148959), (122, 148962), (124, 148980), (130, 149019), (131, 149022), (135, 149037), (137, 149040), (142, 149055), (154, 149133), (159, 149163), (174, 149262),

Gene: Barb_10 Start: 4632, Stop: 5135, Start Num: 78

Candidate Starts for Barb_10:

(35, 4482), (48, 4566), (Start: 78 @4632 has 48 MA's), (88, 4683), (99, 4719), (116, 4818), (122, 4830), (123, 4842), (125, 4857), (143, 4914), (147, 4950), (162, 5043),

Gene: Basquiat_256 Start: 147821, Stop: 148342, Start Num: 71

Candidate Starts for Basquiat_256:

(Start: 71 @147821 has 189 MA's), (Start: 77 @147827 has 2 MA's), (85, 147854), (86, 147860), (88, 147881), (121, 148025), (122, 148028), (124, 148046), (130, 148085), (131, 148088), (135, 148103), (137, 148106), (142, 148121), (154, 148199), (159, 148229), (174, 148328),

Gene: BeanWater_251 Start: 147891, Stop: 148412, Start Num: 71

Candidate Starts for BeanWater_251:

(Start: 71 @147891 has 189 MA's), (Start: 77 @147897 has 2 MA's), (85, 147924), (86, 147930), (88, 147951), (121, 148095), (122, 148098), (124, 148116), (130, 148155), (131, 148158), (135, 148173), (137, 148176), (142, 148191), (154, 148269), (159, 148299), (174, 148398),

Gene: Belieber_252 Start: 147948, Stop: 148469, Start Num: 71

Candidate Starts for Belieber_252:

(Start: 71 @147948 has 189 MA's), (Start: 77 @147954 has 2 MA's), (85, 147981), (86, 147987), (88, 148008), (121, 148152), (122, 148155), (124, 148173), (130, 148212), (131, 148215), (135, 148230), (137, 148233), (142, 148248), (154, 148326), (159, 148356), (174, 148455),

Gene: Bella96_84 Start: 53555, Stop: 54004, Start Num: 80

Candidate Starts for Bella96_84:

(Start: 80 @53555 has 4 MA's), (90, 53612), (93, 53624), (94, 53627), (115, 53735), (117, 53738), (121, 53747), (123, 53762), (132, 53807), (134, 53813), (146, 53867), (147, 53870), (167, 53984),

Gene: Belphegor_73 Start: 55063, Stop: 55569, Start Num: 63

Candidate Starts for Belphegor_73:

(2, 54601), (3, 54619), (4, 54628), (7, 54652), (18, 54808), (24, 54850), (42, 54979), (Start: 63 @55063 has 2 MA's), (86, 55114), (122, 55264), (123, 55276), (128, 55309), (143, 55351), (147, 55387), (167, 55507),

Gene: Bezza_246 Start: 147584, Stop: 148105, Start Num: 71

Candidate Starts for Bezza_246:

(Start: 71 @147584 has 189 MA's), (Start: 77 @147590 has 2 MA's), (85, 147617), (86, 147623), (88, 147644), (121, 147788), (122, 147791), (124, 147809), (130, 147848), (131, 147851), (135, 147866), (137, 147869), (142, 147884), (154, 147962), (159, 147992), (174, 148091),

Gene: BigCity_266 Start: 150646, Stop: 151167, Start Num: 71

Candidate Starts for BigCity_266:

(Start: 71 @150646 has 189 MA's), (Start: 77 @150652 has 2 MA's), (85, 150679), (86, 150685), (88, 150706), (121, 150850), (122, 150853), (124, 150871), (130, 150910), (131, 150913), (135, 150928), (137, 150931), (142, 150946), (154, 151024), (159, 151054), (174, 151153),

Gene: BiggityBass_55 Start: 49881, Stop: 49282, Start Num: 34

Candidate Starts for BiggityBass_55:

(Start: 34 @49881 has 1 MA's), (52, 49812), (103, 49668), (106, 49644), (114, 49620), (121, 49596), (122, 49593), (132, 49536), (143, 49509), (155, 49422), (166, 49353),

Gene: Biglebops_66 Start: 49196, Stop: 49924, Start Num: 19

Candidate Starts for Biglebops_66:

(Start: 19 @49196 has 9 MA's), (21, 49211), (26, 49262), (28, 49271), (30, 49277), (32, 49295), (Start: 34 @49313 has 1 MA's), (36, 49322), (38, 49328), (39, 49352), (Start: 78 @49475 has 48 MA's), (Start: 80 @49478 has 4 MA's), (90, 49535), (93, 49547), (94, 49550), (117, 49661), (121, 49670), (122, 49673), (123, 49685), (132, 49730), (134, 49736), (148, 49799), (159, 49865), (166, 49904), (167, 49907), (169, 49919),

Gene: Bigswole_263 Start: 150557, Stop: 151078, Start Num: 71

Candidate Starts for Bigswole_263:

(Start: 71 @150557 has 189 MA's), (Start: 77 @150563 has 2 MA's), (85, 150590), (86, 150596), (121, 150761), (122, 150764), (124, 150782), (130, 150821), (131, 150824), (135, 150839), (137, 150842), (142, 150857), (154, 150935), (159, 150965), (174, 151064),

Gene: Bipolarisk_256 Start: 148774, Stop: 149295, Start Num: 71

Candidate Starts for Bipolarisk_256:

(Start: 71 @148774 has 189 MA's), (Start: 77 @148780 has 2 MA's), (85, 148807), (86, 148813), (88, 148834), (121, 148978), (122, 148981), (124, 148999), (130, 149038), (131, 149041), (135, 149056), (137, 149059), (142, 149074), (154, 149152), (159, 149182), (174, 149281),

Gene: Blackbrain_257 Start: 149598, Stop: 150119, Start Num: 71

Candidate Starts for Blackbrain_257:

(Start: 71 @149598 has 189 MA's), (Start: 77 @149604 has 2 MA's), (85, 149631), (86, 149637), (88, 149658), (121, 149802), (122, 149805), (124, 149823), (130, 149862), (131, 149865), (135, 149880), (137, 149883), (142, 149898), (154, 149976), (159, 150006), (174, 150105),

Gene: Blackdragon_253 Start: 149146, Stop: 149667, Start Num: 71

Candidate Starts for Blackdragon_253:

(Start: 71 @149146 has 189 MA's), (Start: 77 @149152 has 2 MA's), (85, 149179), (86, 149185), (88, 149206), (121, 149350), (122, 149353), (124, 149371), (130, 149410), (131, 149413), (135, 149428), (137, 149431), (142, 149446), (154, 149524), (159, 149554), (174, 149653),

Gene: Blackpen_59 Start: 49770, Stop: 49267, Start Num: 73

Candidate Starts for Blackpen_59:

(Start: 73 @49770 has 4 MA's), (83, 49743), (88, 49710), (106, 49632), (121, 49584), (122, 49581), (126, 49545), (143, 49497), (155, 49410), (163, 49356), (164, 49350), (166, 49344),

Gene: Blubba_246 Start: 152860, Stop: 153381, Start Num: 71

Candidate Starts for Blubba_246:

(Start: 71 @152860 has 189 MA's), (Start: 77 @152866 has 2 MA's), (85, 152893), (86, 152899), (88, 152920), (121, 153064), (122, 153067), (124, 153085), (137, 153145), (142, 153160), (154, 153238), (174, 153367),

Gene: BlueNGold_57 Start: 21402, Stop: 20899, Start Num: 56

Candidate Starts for BlueNGold_57:

(Start: 56 @21402 has 4 MA's), (79, 21354), (90, 21300), (102, 21252), (109, 21216), (137, 21090), (154, 20991), (156, 20982), (157, 20979), (162, 20952), (166, 20919),

Gene: BobRoss2024_62 Start: 50270, Stop: 49740, Start Num: 59

Candidate Starts for BobRoss2024_62:

(Start: 59 @50270 has 4 MA's), (Start: 72 @50243 has 2 MA's), (85, 50222), (86, 50216), (116, 50078), (121, 50069), (143, 49979), (159, 49865), (166, 49823),

Gene: BobaPhatt_251 Start: 148716, Stop: 149237, Start Num: 71

Candidate Starts for BobaPhatt_251:

(Start: 71 @148716 has 189 MA's), (Start: 77 @148722 has 2 MA's), (85, 148749), (86, 148755), (88, 148776), (121, 148920), (122, 148923), (124, 148941), (130, 148980), (131, 148983), (135, 148998), (137, 149001), (142, 149016), (154, 149094), (159, 149124), (174, 149223),

Gene: Bonray_261 Start: 151398, Stop: 151919, Start Num: 71

Candidate Starts for Bonray_261:

(Start: 71 @151398 has 189 MA's), (Start: 77 @151404 has 2 MA's), (85, 151431), (86, 151437), (88, 151458), (121, 151602), (122, 151605), (124, 151623), (130, 151662), (131, 151665), (135, 151680), (137, 151683), (142, 151698), (154, 151776), (159, 151806), (174, 151905),

Gene: Boopy_59 Start: 21414, Stop: 20911, Start Num: 56

Candidate Starts for Boopy_59:

(Start: 56 @21414 has 4 MA's), (79, 21366), (90, 21312), (102, 21264), (109, 21228), (137, 21102), (154, 21003), (156, 20994), (157, 20991), (162, 20964), (166, 20931),

Gene: Bowman_257 Start: 150513, Stop: 151034, Start Num: 71

Candidate Starts for Bowman_257:

(Start: 71 @150513 has 189 MA's), (Start: 77 @150519 has 2 MA's), (85, 150546), (86, 150552), (121, 150717), (122, 150720), (124, 150738), (130, 150777), (131, 150780), (135, 150795), (137, 150798), (142, 150813), (154, 150891), (159, 150921), (174, 151020),

Gene: Bread_255 Start: 148558, Stop: 149079, Start Num: 71

Candidate Starts for Bread_255:

(Start: 71 @148558 has 189 MA's), (Start: 77 @148564 has 2 MA's), (85, 148591), (86, 148597), (88, 148618), (121, 148762), (122, 148765), (124, 148783), (130, 148822), (131, 148825), (135, 148840), (137, 148843), (142, 148858), (154, 148936), (159, 148966), (174, 149065),

Gene: Breeniome_258 Start: 148353, Stop: 148874, Start Num: 71

Candidate Starts for Breeniome_258:

(Start: 71 @148353 has 189 MA's), (Start: 77 @148359 has 2 MA's), (85, 148386), (86, 148392), (88, 148413), (121, 148557), (122, 148560), (124, 148578), (130, 148617), (131, 148620), (135, 148635), (137, 148638), (142, 148653), (154, 148731), (159, 148761), (174, 148860),

Gene: Burrough_259 Start: 149919, Stop: 150440, Start Num: 71

Candidate Starts for Burrough_259:

(Start: 71 @149919 has 189 MA's), (Start: 77 @149925 has 2 MA's), (85, 149952), (86, 149958), (88, 149979), (121, 150123), (122, 150126), (124, 150144), (130, 150183), (131, 150186), (135, 150201), (137, 150204), (142, 150219), (154, 150297), (159, 150327), (174, 150426),

Gene: Bxz1_244 Start: 150129, Stop: 150644, Start Num: 77

Candidate Starts for Bxz1_244:

(Start: 71 @150123 has 189 MA's), (Start: 77 @150129 has 2 MA's), (85, 150156), (86, 150162), (88, 150183), (121, 150327), (122, 150330), (124, 150348), (130, 150387), (131, 150390), (135, 150405), (137, 150408), (142, 150423), (154, 150501), (159, 150531), (174, 150630),

Gene: Cactojaque_253 Start: 148544, Stop: 149065, Start Num: 71

Candidate Starts for Cactojaque_253:

(Start: 71 @148544 has 189 MA's), (Start: 77 @148550 has 2 MA's), (85, 148577), (86, 148583), (88, 148604), (121, 148748), (122, 148751), (124, 148769), (130, 148808), (131, 148811), (135, 148826), (137, 148829), (142, 148844), (154, 148922), (159, 148952), (174, 149051),

Gene: Cali_248 Start: 149323, Stop: 149844, Start Num: 71

Candidate Starts for Cali_248:

(Start: 71 @149323 has 189 MA's), (Start: 77 @149329 has 2 MA's), (85, 149356), (86, 149362), (88, 149383), (121, 149527), (122, 149530), (124, 149548), (130, 149587), (131, 149590), (135, 149605), (137, 149608), (142, 149623), (154, 149701), (159, 149731), (174, 149830),

Gene: Cane17_248 Start: 153269, Stop: 153790, Start Num: 71

Candidate Starts for Cane17_248:

(Start: 71 @153269 has 189 MA's), (Start: 77 @153275 has 2 MA's), (85, 153302), (86, 153308), (88, 153329), (121, 153473), (122, 153476), (124, 153494), (137, 153554), (142, 153569), (154, 153647), (174, 153776),

Gene: Capablanca_263 Start: 151577, Stop: 152098, Start Num: 71

Candidate Starts for Capablanca_263:

(Start: 71 @151577 has 189 MA's), (Start: 77 @151583 has 2 MA's), (85, 151610), (86, 151616), (88, 151637), (121, 151781), (122, 151784), (124, 151802), (130, 151841), (131, 151844), (135, 151859), (137, 151862), (142, 151877), (154, 151955), (159, 151985), (174, 152084),

Gene: Caravan_248 Start: 148820, Stop: 149341, Start Num: 71

Candidate Starts for Caravan_248:

(Start: 71 @148820 has 189 MA's), (Start: 77 @148826 has 2 MA's), (85, 148853), (86, 148859), (88, 148880), (121, 149024), (122, 149027), (124, 149045), (130, 149084), (131, 149087), (135, 149102), (137, 149105), (142, 149120), (154, 149198), (159, 149228), (174, 149327),

Gene: Catera_247 Start: 148066, Stop: 148587, Start Num: 71

Candidate Starts for Catera_247:

(Start: 71 @148066 has 189 MA's), (Start: 77 @148072 has 2 MA's), (85, 148099), (86, 148105), (88, 148126), (121, 148270), (122, 148273), (124, 148291), (130, 148330), (131, 148333), (135, 148348), (137, 148351), (142, 148366), (154, 148444), (159, 148474), (174, 148573),

Gene: Chargie21_256 Start: 147821, Stop: 148342, Start Num: 71

Candidate Starts for Chargie21_256:

(Start: 71 @147821 has 189 MA's), (Start: 77 @147827 has 2 MA's), (85, 147854), (86, 147860), (88, 147881), (121, 148025), (122, 148028), (124, 148046), (130, 148085), (131, 148088), (135, 148103), (137, 148106), (142, 148121), (154, 148199), (159, 148229), (174, 148328),

Gene: CharlieB_253 Start: 149089, Stop: 149610, Start Num: 71

Candidate Starts for CharlieB_253:

(Start: 71 @149089 has 189 MA's), (Start: 77 @149095 has 2 MA's), (85, 149122), (86, 149128), (88, 149149), (121, 149293), (122, 149296), (124, 149314), (130, 149353), (131, 149356), (135, 149371), (137, 149374), (142, 149389), (154, 149467), (159, 149497), (174, 149596),

Gene: CharlottesWeb_55 Start: 47473, Stop: 46958, Start Num: 74

Candidate Starts for CharlottesWeb_55:

(Start: 74 @47473 has 1 MA's), (83, 47449), (85, 47443), (86, 47437), (121, 47290), (143, 47203), (151, 47146), (166, 47047),

Gene: ChaylaJr_257 Start: 148763, Stop: 149284, Start Num: 71

Candidate Starts for ChaylaJr_257:

(Start: 71 @148763 has 189 MA's), (Start: 77 @148769 has 2 MA's), (85, 148796), (86, 148802), (88, 148823), (121, 148967), (122, 148970), (124, 148988), (130, 149027), (131, 149030), (135, 149045), (137, 149048), (142, 149063), (154, 149141), (159, 149171), (174, 149270),

Gene: CherryCola_11 Start: 4868, Stop: 5371, Start Num: 78

Candidate Starts for CherryCola_11:

(33, 4709), (48, 4802), (Start: 78 @4868 has 48 MA's), (88, 4919), (116, 5054), (122, 5066), (123, 5078), (125, 5093), (143, 5150),

Gene: CherryTomatoes_69 Start: 23951, Stop: 24478, Start Num: 59

Candidate Starts for CherryTomatoes_69:

(Start: 59 @23951 has 4 MA's), (Start: 78 @23987 has 48 MA's), (83, 24005), (93, 24059), (95, 24065), (99, 24077), (103, 24113), (132, 24245), (143, 24275),

Gene: Chickadee_75 Start: 51572, Stop: 52033, Start Num: 78

Candidate Starts for Chickadee_75:

(Start: 78 @51572 has 48 MA's), (83, 51590), (86, 51602), (88, 51623), (112, 51734), (121, 51767), (123, 51782), (143, 51854), (145, 51884), (147, 51890), (167, 52010),

Gene: ChickenPhender_254 Start: 147519, Stop: 148040, Start Num: 71

Candidate Starts for ChickenPhender_254:

(Start: 71 @147519 has 189 MA's), (Start: 77 @147525 has 2 MA's), (85, 147552), (86, 147558), (88, 147579), (121, 147723), (122, 147726), (124, 147744), (130, 147783), (131, 147786), (135, 147801), (137, 147804), (142, 147819), (154, 147897), (159, 147927), (174, 148026),

Gene: Chomp_257 Start: 150955, Stop: 151476, Start Num: 71

Candidate Starts for Chomp_257:

(Start: 71 @150955 has 189 MA's), (Start: 77 @150961 has 2 MA's), (85, 150988), (86, 150994), (88, 151015), (121, 151159), (122, 151162), (124, 151180), (130, 151219), (131, 151222), (135, 151237), (137, 151240), (142, 151255), (154, 151333), (159, 151363), (174, 151462),

Gene: CindyLou_259 Start: 151215, Stop: 151736, Start Num: 71

Candidate Starts for CindyLou_259:

(Start: 71 @151215 has 189 MA's), (Start: 77 @151221 has 2 MA's), (85, 151248), (86, 151254), (88, 151275), (121, 151419), (122, 151422), (124, 151440), (130, 151479), (131, 151482), (135, 151497), (137, 151500), (142, 151515), (154, 151593), (159, 151623), (174, 151722),

Gene: ClamChowder_10 Start: 4632, Stop: 5135, Start Num: 78

Candidate Starts for ClamChowder_10:

(35, 4482), (48, 4566), (Start: 78 @4632 has 48 MA's), (88, 4683), (99, 4719), (116, 4818), (122, 4830), (123, 4842), (125, 4857), (143, 4914), (147, 4950), (162, 5043),

Gene: Cleatunium_252 Start: 149225, Stop: 149746, Start Num: 71

Candidate Starts for Cleatunium_252:

(Start: 71 @149225 has 189 MA's), (Start: 77 @149231 has 2 MA's), (85, 149258), (86, 149264), (88, 149285), (121, 149429), (122, 149432), (124, 149450), (130, 149489), (131, 149492), (135, 149507), (137, 149510), (142, 149525), (154, 149603), (159, 149633), (174, 149732),

Gene: Clipper_87 Start: 54001, Stop: 54447, Start Num: 80

Candidate Starts for Clipper_87:

(47, 53929), (58, 53959), (Start: 61 @53968 has 1 MA's), (64, 53977), (Start: 80 @54001 has 4 MA's), (85, 54019), (90, 54055), (93, 54067), (94, 54070), (115, 54178), (117, 54181), (120, 54187), (123, 54205), (132, 54250), (146, 54310), (147, 54313), (167, 54427),

Gene: CloverMinnie_59 Start: 50278, Stop: 49775, Start Num: 73

Candidate Starts for CloverMinnie_59:

(Start: 73 @50278 has 4 MA's), (83, 50251), (88, 50218), (106, 50140), (121, 50092), (122, 50089), (126, 50053), (143, 50005), (155, 49918), (163, 49864), (164, 49858), (166, 49852),

Gene: Colossa_114 Start: 59698, Stop: 60159, Start Num: 76

Candidate Starts for Colossa_114:

(66, 59680), (Start: 76 @59698 has 2 MA's), (104, 59815), (137, 59968), (144, 60004), (146, 60019), (162, 60106),

Gene: Colt_249 Start: 152461, Stop: 152982, Start Num: 71

Candidate Starts for Colt_249:

(Start: 71 @152461 has 189 MA's), (Start: 77 @152467 has 2 MA's), (85, 152494), (86, 152500), (88, 152521), (121, 152665), (122, 152668), (124, 152686), (137, 152746), (142, 152761), (154, 152839), (174, 152968),

Gene: Concombres_264 Start: 150753, Stop: 151274, Start Num: 71

Candidate Starts for Concombres_264:

(Start: 71 @150753 has 189 MA's), (Start: 77 @150759 has 2 MA's), (85, 150786), (86, 150792), (88, 150813), (121, 150957), (122, 150960), (124, 150978), (130, 151017), (131, 151020), (135, 151035), (137, 151038), (142, 151053), (154, 151131), (159, 151161), (174, 151260),

Gene: CoveyB_10 Start: 4504, Stop: 5007, Start Num: 78

Candidate Starts for CoveyB_10:

(48, 4438), (Start: 78 @4504 has 48 MA's), (88, 4555), (99, 4591), (116, 4690), (122, 4702), (123, 4714), (125, 4729), (143, 4786), (147, 4822), (162, 4915),

Gene: Curiosium_89 Start: 53399, Stop: 53848, Start Num: 78

Candidate Starts for Curiosium_89:

(44, 53318), (48, 53333), (50, 53336), (53, 53345), (70, 53390), (Start: 78 @53399 has 48 MA's), (Start: 80 @53402 has 4 MA's), (90, 53459), (93, 53471), (94, 53474), (115, 53582), (117, 53585), (121, 53594), (123, 53609), (132, 53654), (134, 53660), (136, 53663), (146, 53714), (147, 53717), (167, 53831),

Gene: DTDevon_259 Start: 150787, Stop: 151308, Start Num: 71

Candidate Starts for DTDevon_259:

(Start: 71 @150787 has 189 MA's), (Start: 77 @150793 has 2 MA's), (85, 150820), (86, 150826), (88, 150847), (121, 150991), (122, 150994), (124, 151012), (130, 151051), (131, 151054), (135, 151069), (137, 151072), (142, 151087), (154, 151165), (159, 151195), (174, 151294),

Gene: Daffodil_264 Start: 149074, Stop: 149595, Start Num: 71

Candidate Starts for Daffodil_264:

(Start: 71 @149074 has 189 MA's), (Start: 77 @149080 has 2 MA's), (85, 149107), (86, 149113), (88, 149134), (121, 149278), (122, 149281), (124, 149299), (130, 149338), (131, 149341), (135, 149356), (137, 149359), (142, 149374), (154, 149452), (159, 149482), (174, 149581),

Gene: Dandelion_264 Start: 151608, Stop: 152129, Start Num: 71

Candidate Starts for Dandelion_264:

(Start: 71 @151608 has 189 MA's), (Start: 77 @151614 has 2 MA's), (85, 151641), (86, 151647), (88, 151668), (121, 151812), (122, 151815), (124, 151833), (130, 151872), (131, 151875), (135, 151890), (137, 151893), (142, 151908), (154, 151986), (159, 152016), (174, 152115),

Gene: Danyall_10 Start: 4504, Stop: 5007, Start Num: 78

Candidate Starts for Danyall_10:

(48, 4438), (Start: 78 @4504 has 48 MA's), (88, 4555), (99, 4591), (116, 4690), (122, 4702), (123, 4714), (125, 4729), (143, 4786), (147, 4822), (162, 4915),

Gene: Darko_258 Start: 149539, Stop: 150060, Start Num: 71

Candidate Starts for Darko_258:

(Start: 71 @149539 has 189 MA's), (Start: 77 @149545 has 2 MA's), (85, 149572), (86, 149578), (88, 149599), (121, 149743), (122, 149746), (124, 149764), (130, 149803), (131, 149806), (135, 149821), (137, 149824), (142, 149839), (154, 149917), (159, 149947), (174, 150046),

Gene: DartGoblin_84 Start: 53515, Stop: 53967, Start Num: 78

Candidate Starts for DartGoblin_84:

(8, 53098), (12, 53131), (13, 53137), (14, 53185), (16, 53206), (17, 53212), (40, 53395), (Start: 56 @53470 has 4 MA's), (Start: 63 @53491 has 2 MA's), (Start: 78 @53515 has 48 MA's), (Start: 80 @53518 has 4 MA's), (86, 53545), (89, 53569), (90, 53575), (93, 53587), (94, 53590), (115, 53698), (117, 53701), (121, 53710), (123, 53725), (132, 53770), (134, 53776), (146, 53830), (147, 53833), (162, 53914), (166, 53944), (167, 53947),

Gene: Dartin_84 Start: 54322, Stop: 54774, Start Num: 78

Candidate Starts for Dartin_84:

(Start: 63 @54298 has 2 MA's), (Start: 78 @54322 has 48 MA's), (Start: 80 @54325 has 4 MA's), (90, 54382), (93, 54394), (94, 54397), (115, 54505), (117, 54508), (123, 54532), (132, 54577), (134, 54583), (147, 54640), (162, 54721), (166, 54751), (167, 54754),

Gene: DeejaClivia_245 Start: 146475, Stop: 146996, Start Num: 71

Candidate Starts for DeejaClivia_245:

(Start: 71 @146475 has 189 MA's), (Start: 77 @146481 has 2 MA's), (85, 146508), (86, 146514), (88, 146535), (121, 146679), (122, 146682), (124, 146700), (130, 146739), (131, 146742), (135, 146757), (137, 146760), (142, 146775), (154, 146853), (159, 146883), (174, 146982),

Gene: Delilah_256 Start: 149167, Stop: 149688, Start Num: 71

Candidate Starts for Delilah_256:

(Start: 71 @149167 has 189 MA's), (Start: 77 @149173 has 2 MA's), (85, 149200), (86, 149206), (88, 149227), (121, 149371), (122, 149374), (124, 149392), (130, 149431), (131, 149434), (135, 149449), (137, 149452), (142, 149467), (154, 149545), (159, 149575), (174, 149674),

Gene: Delylah_260 Start: 149444, Stop: 149965, Start Num: 71

Candidate Starts for Delylah_260:

(Start: 71 @149444 has 189 MA's), (Start: 77 @149450 has 2 MA's), (85, 149477), (86, 149483), (88, 149504), (121, 149648), (122, 149651), (124, 149669), (130, 149708), (131, 149711), (135, 149726), (137, 149729), (142, 149744), (154, 149822), (159, 149852), (174, 149951),

Gene: Demodog_266 Start: 150763, Stop: 151284, Start Num: 71

Candidate Starts for Demodog_266:

(Start: 71 @150763 has 189 MA's), (Start: 77 @150769 has 2 MA's), (85, 150796), (86, 150802), (88, 150823), (121, 150967), (122, 150970), (124, 150988), (130, 151027), (131, 151030), (135, 151045), (137, 151048), (142, 151063), (154, 151141), (159, 151171), (174, 151270),

Gene: Derek_254 Start: 150232, Stop: 150753, Start Num: 71

Candidate Starts for Derek_254:

(Start: 71 @150232 has 189 MA's), (Start: 77 @150238 has 2 MA's), (85, 150265), (86, 150271), (88, 150292), (121, 150436), (122, 150439), (124, 150457), (130, 150496), (131, 150499), (135, 150514), (137, 150517), (142, 150532), (154, 150610), (159, 150640), (174, 150739),

Gene: Dessert_255 Start: 149231, Stop: 149752, Start Num: 71

Candidate Starts for Dessert_255:

(Start: 71 @149231 has 189 MA's), (Start: 77 @149237 has 2 MA's), (85, 149264), (86, 149270), (88, 149291), (121, 149435), (122, 149438), (124, 149456), (130, 149495), (131, 149498), (135, 149513), (137, 149516), (142, 149531), (154, 149609), (159, 149639), (174, 149738),

Gene: Dxdert_70 Start: 50030, Stop: 50491, Start Num: 78

Candidate Starts for Dxdert_70:

(Start: 78 @50030 has 48 MA's), (83, 50048), (86, 50060), (88, 50081), (112, 50192), (121, 50225), (123, 50240), (143, 50312), (145, 50342), (147, 50348), (167, 50468),

Gene: Dietrick_247 Start: 148095, Stop: 148616, Start Num: 71

Candidate Starts for Dietrick_247:

(Start: 71 @148095 has 189 MA's), (Start: 77 @148101 has 2 MA's), (85, 148128), (86, 148134), (88, 148155), (121, 148299), (122, 148302), (124, 148320), (130, 148359), (131, 148362), (135, 148377), (137, 148380), (142, 148395), (154, 148473), (159, 148503), (174, 148602),

Gene: DirtMonster_247 Start: 148827, Stop: 149348, Start Num: 71

Candidate Starts for DirtMonster_247:

(Start: 71 @148827 has 189 MA's), (Start: 77 @148833 has 2 MA's), (85, 148860), (86, 148866), (88, 148887), (121, 149031), (122, 149034), (124, 149052), (130, 149091), (131, 149094), (135, 149109), (137, 149112), (142, 149127), (154, 149205), (159, 149235), (174, 149334),

Gene: Domi_252 Start: 149434, Stop: 149955, Start Num: 71

Candidate Starts for Domi_252:

(Start: 71 @149434 has 189 MA's), (Start: 77 @149440 has 2 MA's), (85, 149467), (86, 149473), (88, 149494), (121, 149638), (122, 149641), (124, 149659), (130, 149698), (131, 149701), (135, 149716), (137, 149719), (142, 149734), (154, 149812), (159, 149842), (174, 149941),

Gene: DrPhinkDaddy_255 Start: 149852, Stop: 150373, Start Num: 71

Candidate Starts for DrPhinkDaddy_255:

(Start: 71 @149852 has 189 MA's), (Start: 77 @149858 has 2 MA's), (85, 149885), (86, 149891), (88, 149912), (121, 150056), (122, 150059), (124, 150077), (130, 150116), (131, 150119), (135, 150134), (137, 150137), (142, 150152), (154, 150230), (159, 150260), (174, 150359),

Gene: Drazdys_255 Start: 150239, Stop: 150760, Start Num: 71

Candidate Starts for Drazdys_255:

(Start: 71 @150239 has 189 MA's), (Start: 77 @150245 has 2 MA's), (85, 150272), (86, 150278), (88, 150299), (121, 150443), (122, 150446), (124, 150464), (130, 150503), (131, 150506), (135, 150521), (137, 150524), (142, 150539), (154, 150617), (159, 150647), (174, 150746),

Gene: Duckfeet_252 Start: 149036, Stop: 149557, Start Num: 71

Candidate Starts for Duckfeet_252:

(Start: 71 @149036 has 189 MA's), (Start: 77 @149042 has 2 MA's), (85, 149069), (86, 149075), (88, 149096), (121, 149240), (122, 149243), (124, 149261), (130, 149300), (131, 149303), (135, 149318), (137, 149321), (142, 149336), (154, 149414), (159, 149444), (174, 149543),

Gene: E3_gp8 Start: 4244, Stop: 4705, Start Num: 68

Candidate Starts for E3_gp8:

(68, 4244), (86, 4286), (106, 4397), (113, 4418), (122, 4448), (143, 4529), (153, 4595), (162, 4649), (165, 4676), (167, 4682),

Gene: EMoore_72 Start: 54510, Stop: 55061, Start Num: 55

Candidate Starts for EMoore_72:

(27, 54363), (Start: 55 @54510 has 8 MA's), (62, 54531), (86, 54588), (92, 54624), (100, 54651), (113, 54720), (128, 54795), (132, 54807), (140, 54831), (143, 54837), (150, 54888), (164, 54984), (167, 54993), (173, 55044), (176, 55053),

Gene: ET08_244 Start: 148563, Stop: 149084, Start Num: 71

Candidate Starts for ET08_244:

(Start: 71 @148563 has 189 MA's), (Start: 77 @148569 has 2 MA's), (85, 148596), (86, 148602), (88, 148623), (121, 148767), (122, 148770), (124, 148788), (130, 148827), (131, 148830), (135, 148845), (137, 148848), (142, 148863), (154, 148941), (159, 148971), (174, 149070),

Gene: EasyJones_259 Start: 148615, Stop: 149136, Start Num: 71

Candidate Starts for EasyJones_259:

(Start: 71 @148615 has 189 MA's), (Start: 77 @148621 has 2 MA's), (85, 148648), (86, 148654), (88, 148675), (121, 148819), (122, 148822), (124, 148840), (130, 148879), (131, 148882), (135, 148897), (137, 148900), (142, 148915), (154, 148993), (159, 149023), (174, 149122),

Gene: EdmundFerry_73 Start: 51112, Stop: 51576, Start Num: 78

Candidate Starts for EdmundFerry_73:

(Start: 78 @51112 has 48 MA's), (83, 51133), (86, 51145), (88, 51166), (118, 51304), (121, 51310), (143, 51397), (145, 51427), (147, 51433), (167, 51553),

Gene: Efra2_90 Start: 54335, Stop: 54787, Start Num: 78

Candidate Starts for Efra2_90:

(44, 54254), (48, 54269), (50, 54272), (53, 54281), (70, 54326), (Start: 78 @54335 has 48 MA's), (Start: 80 @54338 has 4 MA's), (90, 54395), (93, 54407), (94, 54410), (115, 54518), (117, 54521), (120, 54527), (123, 54545), (132, 54590), (146, 54650), (147, 54653), (162, 54734), (165, 54761), (166, 54764), (167, 54767),

Gene: EggyFarm_266 Start: 150647, Stop: 151168, Start Num: 71

Candidate Starts for EggyFarm_266:

(Start: 71 @150647 has 189 MA's), (Start: 77 @150653 has 2 MA's), (85, 150680), (86, 150686), (88, 150707), (121, 150851), (122, 150854), (124, 150872), (130, 150911), (131, 150914), (135, 150929), (137, 150932), (142, 150947), (154, 151025), (159, 151055), (174, 151154),

Gene: Egi03_10 Start: 4403, Stop: 4897, Start Num: 78

Candidate Starts for Egi03_10:

(48, 4337), (Start: 78 @4403 has 48 MA's), (88, 4454), (99, 4490), (116, 4589), (122, 4601), (123, 4613), (125, 4628), (143, 4685), (170, 4880),

Gene: EhyElimayoE_247 Start: 144721, Stop: 144212, Start Num: 71

Candidate Starts for EhyElimayoE_247:

(Start: 71 @144721 has 189 MA's), (Start: 77 @144715 has 2 MA's), (86, 144682), (88, 144661), (93, 144640), (98, 144628), (101, 144604), (107, 144568), (122, 144520), (123, 144508), (142, 144439), (147, 144403), (155, 144358), (159, 144331),

Gene: Elver_190 Start: 91777, Stop: 92235, Start Num: 82

Candidate Starts for Elver_190:

(Start: 82 @91777 has 5 MA's), (86, 91804), (106, 91918), (124, 91987), (142, 92050),

Gene: EmToTheThree_259 Start: 149640, Stop: 150161, Start Num: 71

Candidate Starts for EmToTheThree_259:

(Start: 71 @149640 has 189 MA's), (Start: 77 @149646 has 2 MA's), (85, 149673), (86, 149679), (88, 149700), (121, 149844), (122, 149847), (124, 149865), (130, 149904), (131, 149907), (135, 149922), (137, 149925), (142, 149940), (154, 150018), (159, 150048), (174, 150147),

Gene: EmmaElysia_263 Start: 151110, Stop: 151631, Start Num: 71

Candidate Starts for EmmaElysia_263:

(Start: 71 @151110 has 189 MA's), (Start: 77 @151116 has 2 MA's), (85, 151143), (86, 151149), (88, 151170), (121, 151314), (122, 151317), (124, 151335), (130, 151374), (131, 151377), (135, 151392),

(137, 151395), (142, 151410), (154, 151488), (159, 151518), (174, 151617),

Gene: Enkosi_68 Start: 51794, Stop: 52522, Start Num: 19

Candidate Starts for Enkosi_68:

(Start: 19 @51794 has 9 MA's), (21, 51809), (26, 51860), (28, 51869), (30, 51875), (32, 51893), (Start: 34 @51911 has 1 MA's), (36, 51920), (38, 51926), (39, 51950), (Start: 78 @52073 has 48 MA's), (Start: 80 @52076 has 4 MA's), (90, 52133), (93, 52145), (94, 52148), (117, 52259), (121, 52268), (122, 52271), (123, 52283), (132, 52328), (134, 52334), (148, 52397), (159, 52463), (166, 52502), (167, 52505), (169, 52517),

Gene: Erdmann_260 Start: 149608, Stop: 150129, Start Num: 71

Candidate Starts for Erdmann_260:

(Start: 71 @149608 has 189 MA's), (Start: 77 @149614 has 2 MA's), (85, 149641), (86, 149647), (88, 149668), (121, 149812), (122, 149815), (124, 149833), (130, 149872), (131, 149875), (135, 149890), (137, 149893), (142, 149908), (154, 149986), (159, 150016), (174, 150115),

Gene: ErnieJ_252 Start: 147243, Stop: 147764, Start Num: 71

Candidate Starts for ErnieJ_252:

(Start: 71 @147243 has 189 MA's), (Start: 77 @147249 has 2 MA's), (85, 147276), (86, 147282), (88, 147303), (121, 147447), (122, 147450), (124, 147468), (130, 147507), (131, 147510), (135, 147525), (137, 147528), (142, 147543), (154, 147621), (159, 147651), (174, 147750),

Gene: Essence_256 Start: 149451, Stop: 149972, Start Num: 71

Candidate Starts for Essence_256:

(Start: 71 @149451 has 189 MA's), (Start: 77 @149457 has 2 MA's), (85, 149484), (86, 149490), (88, 149511), (121, 149655), (122, 149658), (124, 149676), (130, 149715), (131, 149718), (135, 149733), (137, 149736), (142, 149751), (154, 149829), (159, 149859), (174, 149958),

Gene: Evamon_10 Start: 4485, Stop: 4988, Start Num: 78

Candidate Starts for Evamon_10:

(48, 4419), (Start: 78 @4485 has 48 MA's), (88, 4536), (99, 4572), (116, 4671), (122, 4683), (123, 4695), (125, 4710), (143, 4767), (147, 4803), (162, 4896),

Gene: Ewok_257 Start: 149102, Stop: 149623, Start Num: 71

Candidate Starts for Ewok_257:

(Start: 71 @149102 has 189 MA's), (Start: 77 @149108 has 2 MA's), (85, 149135), (86, 149141), (88, 149162), (121, 149306), (122, 149309), (124, 149327), (130, 149366), (131, 149369), (135, 149384), (137, 149387), (142, 149402), (154, 149480), (159, 149510), (174, 149609),

Gene: FelixTres_59 Start: 50301, Stop: 49810, Start Num: 73

Candidate Starts for FelixTres_59:

(20, 50553), (29, 50484), (Start: 73 @50301 has 4 MA's), (83, 50286), (88, 50253), (106, 50175), (121, 50127), (122, 50124), (143, 50040), (155, 49953), (163, 49899), (164, 49893), (166, 49887),

Gene: Fireball_10 Start: 4403, Stop: 4897, Start Num: 78

Candidate Starts for Fireball_10:

(46, 4331), (Start: 78 @4403 has 48 MA's), (88, 4454), (99, 4490), (116, 4589), (122, 4601), (123, 4613), (125, 4628), (143, 4685), (170, 4880),

Gene: Fixie_259 Start: 150680, Stop: 151201, Start Num: 71

Candidate Starts for Fixie_259:

(Start: 71 @150680 has 189 MA's), (Start: 77 @150686 has 2 MA's), (85, 150713), (86, 150719), (88, 150740), (121, 150884), (122, 150887), (124, 150905), (130, 150944), (131, 150947), (135, 150962),

(137, 150965), (142, 150980), (154, 151058), (159, 151088), (174, 151187),

Gene: Flabslab_253 Start: 146508, Stop: 147029, Start Num: 71

Candidate Starts for Flabslab_253:

(Start: 71 @146508 has 189 MA's), (Start: 77 @146514 has 2 MA's), (85, 146541), (86, 146547), (88, 146568), (121, 146712), (122, 146715), (124, 146733), (130, 146772), (131, 146775), (135, 146790), (137, 146793), (142, 146808), (154, 146886), (159, 146916), (174, 147015),

Gene: Fludd_258 Start: 148327, Stop: 148848, Start Num: 71

Candidate Starts for Fludd_258:

(Start: 71 @148327 has 189 MA's), (Start: 77 @148333 has 2 MA's), (85, 148360), (86, 148366), (88, 148387), (121, 148531), (122, 148534), (124, 148552), (130, 148591), (131, 148594), (135, 148609), (137, 148612), (142, 148627), (154, 148705), (159, 148735), (174, 148834),

Gene: Fongie_258 Start: 149100, Stop: 149621, Start Num: 71

Candidate Starts for Fongie_258:

(Start: 71 @149100 has 189 MA's), (Start: 77 @149106 has 2 MA's), (85, 149133), (86, 149139), (88, 149160), (121, 149304), (122, 149307), (124, 149325), (130, 149364), (131, 149367), (135, 149382), (137, 149385), (142, 149400), (154, 149478), (159, 149508), (174, 149607),

Gene: Forza_58 Start: 21330, Stop: 20827, Start Num: 56

Candidate Starts for Forza_58:

(Start: 56 @21330 has 4 MA's), (79, 21282), (90, 21228), (102, 21180), (109, 21144), (137, 21018), (154, 20919), (156, 20910), (157, 20907), (162, 20880), (166, 20847),

Gene: FoxtrotP1_257 Start: 150194, Stop: 150715, Start Num: 71

Candidate Starts for FoxtrotP1_257:

(Start: 71 @150194 has 189 MA's), (Start: 77 @150200 has 2 MA's), (85, 150227), (86, 150233), (88, 150254), (121, 150398), (122, 150401), (124, 150419), (130, 150458), (131, 150461), (135, 150476), (137, 150479), (142, 150494), (154, 150572), (159, 150602), (174, 150701),

Gene: Frankenweenie_266 Start: 156366, Stop: 155833, Start Num: 71

Candidate Starts for Frankenweenie_266:

(Start: 71 @156366 has 189 MA's), (90, 156297), (101, 156249), (111, 156204), (121, 156168), (122, 156165), (123, 156153), (147, 156048), (154, 156003), (155, 156000), (159, 155973), (167, 155931), (175, 155874),

Gene: FrayBell_261 Start: 148458, Stop: 148979, Start Num: 71

Candidate Starts for FrayBell_261:

(Start: 71 @148458 has 189 MA's), (Start: 77 @148464 has 2 MA's), (85, 148491), (86, 148497), (88, 148518), (121, 148662), (122, 148665), (124, 148683), (130, 148722), (131, 148725), (135, 148740), (137, 148743), (142, 148758), (154, 148836), (159, 148866), (174, 148965),

Gene: Fresco_58 Start: 48670, Stop: 48185, Start Num: 81

Candidate Starts for Fresco_58:

(6, 49066), (25, 48850), (Start: 81 @48670 has 4 MA's), (83, 48658), (88, 48625), (106, 48547), (114, 48523), (123, 48484), (143, 48412), (151, 48355), (155, 48325), (159, 48298), (166, 48256),

Gene: FudgeTart_254 Start: 148698, Stop: 149219, Start Num: 71

Candidate Starts for FudgeTart_254:

(Start: 71 @148698 has 189 MA's), (Start: 77 @148704 has 2 MA's), (85, 148731), (86, 148737), (88, 148758), (121, 148902), (122, 148905), (124, 148923), (130, 148962), (131, 148965), (135, 148980), (137, 148983), (142, 148998), (154, 149076), (159, 149106), (174, 149205),

Gene: Fugax_10 Start: 4632, Stop: 5135, Start Num: 78

Candidate Starts for Fugax_10:

(35, 4482), (48, 4566), (Start: 78 @4632 has 48 MA's), (88, 4683), (99, 4719), (116, 4818), (122, 4830), (123, 4842), (125, 4857), (143, 4914), (147, 4950), (162, 5043),

Gene: GTE6_75 Start: 52375, Stop: 52836, Start Num: 78

Candidate Starts for GTE6_75:

(31, 52186), (41, 52261), (Start: 78 @52375 has 48 MA's), (83, 52393), (86, 52405), (88, 52426), (112, 52537), (121, 52570), (123, 52585), (143, 52657), (145, 52687), (147, 52693), (167, 52813),

Gene: Gabriel_261 Start: 148486, Stop: 149007, Start Num: 71

Candidate Starts for Gabriel_261:

(Start: 71 @148486 has 189 MA's), (Start: 77 @148492 has 2 MA's), (85, 148519), (86, 148525), (88, 148546), (121, 148690), (122, 148693), (124, 148711), (130, 148750), (131, 148753), (135, 148768), (137, 148771), (142, 148786), (154, 148864), (159, 148894), (174, 148993),

Gene: Gamgam_260 Start: 148843, Stop: 149364, Start Num: 71

Candidate Starts for Gamgam_260:

(Start: 71 @148843 has 189 MA's), (Start: 77 @148849 has 2 MA's), (85, 148876), (86, 148882), (88, 148903), (121, 149047), (122, 149050), (124, 149068), (130, 149107), (131, 149110), (135, 149125), (137, 149128), (142, 149143), (154, 149221), (159, 149251), (174, 149350),

Gene: Gandionco_189 Start: 91171, Stop: 91629, Start Num: 82

Candidate Starts for Gandionco_189:

(51, 91111), (Start: 82 @91171 has 5 MA's), (86, 91198), (106, 91312), (111, 91324), (121, 91360), (124, 91381), (142, 91444),

Gene: Gezellig_10 Start: 4403, Stop: 4897, Start Num: 78

Candidate Starts for Gezellig_10:

(46, 4331), (Start: 78 @4403 has 48 MA's), (88, 4454), (99, 4490), (116, 4589), (122, 4601), (123, 4613), (125, 4628), (143, 4685), (170, 4880),

Gene: Ghost_258 Start: 149467, Stop: 149988, Start Num: 71

Candidate Starts for Ghost_258:

(Start: 71 @149467 has 189 MA's), (Start: 77 @149473 has 2 MA's), (85, 149500), (86, 149506), (88, 149527), (121, 149671), (122, 149674), (124, 149692), (130, 149731), (131, 149734), (135, 149749), (137, 149752), (142, 149767), (154, 149845), (159, 149875), (174, 149974),

Gene: Gilgamesh_15 Start: 11111, Stop: 10656, Start Num: 67

Candidate Starts for Gilgamesh_15:

(Start: 67 @11111 has 1 MA's), (83, 11078), (122, 10916), (133, 10856), (138, 10844), (142, 10835), (146, 10802), (147, 10799), (152, 10775), (156, 10748), (159, 10727), (165, 10691),

Gene: Gizmo_264 Start: 151525, Stop: 152046, Start Num: 71

Candidate Starts for Gizmo_264:

(Start: 71 @151525 has 189 MA's), (Start: 77 @151531 has 2 MA's), (85, 151558), (86, 151564), (88, 151585), (121, 151729), (122, 151732), (124, 151750), (130, 151789), (131, 151792), (135, 151807), (137, 151810), (142, 151825), (154, 151903), (159, 151933), (174, 152032),

Gene: GlutenPhree_259 Start: 148854, Stop: 149375, Start Num: 71

Candidate Starts for GlutenPhree_259:

(Start: 71 @148854 has 189 MA's), (Start: 77 @148860 has 2 MA's), (85, 148887), (86, 148893), (88, 148914), (121, 149058), (122, 149061), (124, 149079), (130, 149118), (131, 149121), (135, 149136), (137, 149139), (142, 149154), (154, 149232), (159, 149262), (174, 149361),

Gene: Grasshills_265 Start: 150646, Stop: 151167, Start Num: 71

Candidate Starts for Grasshills_265:

(Start: 71 @150646 has 189 MA's), (Start: 77 @150652 has 2 MA's), (85, 150679), (86, 150685), (88, 150706), (121, 150850), (122, 150853), (124, 150871), (130, 150910), (131, 150913), (135, 150928), (137, 150931), (142, 150946), (154, 151024), (159, 151054), (174, 151153),

Gene: Greely_265 Start: 156662, Stop: 157165, Start Num: 86

Candidate Starts for Greely_265:

(Start: 71 @156623 has 189 MA's), (Start: 77 @156629 has 2 MA's), (84, 156653), (86, 156662), (87, 156674), (96, 156713), (97, 156719), (104, 156782), (122, 156851), (123, 156863), (130, 156908), (135, 156926), (150, 156998), (162, 157064), (172, 157142), (174, 157154),

Gene: Grungle_240 Start: 146732, Stop: 147253, Start Num: 71

Candidate Starts for Grungle_240:

(Start: 71 @146732 has 189 MA's), (Start: 77 @146738 has 2 MA's), (85, 146765), (86, 146771), (88, 146792), (121, 146936), (122, 146939), (124, 146957), (130, 146996), (131, 146999), (135, 147014), (137, 147017), (142, 147032), (154, 147110), (159, 147140), (174, 147239),

Gene: Guanica15_89 Start: 54029, Stop: 54481, Start Num: 78

Candidate Starts for Guanica15_89:

(44, 53948), (48, 53963), (50, 53966), (53, 53975), (70, 54020), (Start: 78 @54029 has 48 MA's), (Start: 80 @54032 has 4 MA's), (90, 54089), (93, 54101), (94, 54104), (115, 54212), (117, 54215), (120, 54221), (123, 54239), (132, 54284), (134, 54290), (146, 54344), (147, 54347), (166, 54458), (167, 54461),

Gene: Guwapp_254 Start: 147494, Stop: 148015, Start Num: 71

Candidate Starts for Guwapp_254:

(Start: 71 @147494 has 189 MA's), (Start: 77 @147500 has 2 MA's), (85, 147527), (86, 147533), (121, 147698), (122, 147701), (124, 147719), (130, 147758), (131, 147761), (135, 147776), (137, 147779), (142, 147794), (154, 147872), (159, 147902), (174, 148001),

Gene: Halldule_250 Start: 147914, Stop: 148435, Start Num: 71

Candidate Starts for Halldule_250:

(Start: 71 @147914 has 189 MA's), (Start: 77 @147920 has 2 MA's), (85, 147947), (86, 147953), (88, 147974), (121, 148118), (122, 148121), (124, 148139), (130, 148178), (131, 148181), (135, 148196), (137, 148199), (142, 148214), (154, 148292), (159, 148322), (174, 148421),

Gene: Halo3_11 Start: 4943, Stop: 5446, Start Num: 78

Candidate Starts for Halo3_11:

(33, 4784), (48, 4877), (Start: 78 @4943 has 48 MA's), (88, 4994), (116, 5129), (122, 5141), (123, 5153), (125, 5168), (143, 5225),

Gene: Hans_75 Start: 53945, Stop: 54496, Start Num: 55

Candidate Starts for Hans_75:

(Start: 55 @53945 has 8 MA's), (86, 54023), (92, 54059), (100, 54086), (107, 54137), (132, 54242), (140, 54266), (143, 54272), (159, 54386), (164, 54419), (167, 54428), (174, 54482),

Gene: HyRo_243 Start: 148011, Stop: 148532, Start Num: 71

Candidate Starts for HyRo_243:

(Start: 71 @148011 has 189 MA's), (Start: 77 @148017 has 2 MA's), (85, 148044), (86, 148050), (88, 148071), (121, 148215), (122, 148218), (124, 148236), (130, 148275), (131, 148278), (135, 148293), (137, 148296), (142, 148311), (154, 148389), (159, 148419), (174, 148518),

Gene: Hyzer_74 Start: 49503, Stop: 50009, Start Num: 78

Candidate Starts for Hyzer_74:

(Start: 78 @49503 has 48 MA's), (83, 49524), (122, 49704), (123, 49716), (143, 49788), (159, 49908),

Gene: I3_268 Start: 149802, Stop: 150323, Start Num: 71

Candidate Starts for I3_268:

(Start: 71 @149802 has 189 MA's), (Start: 77 @149808 has 2 MA's), (85, 149835), (86, 149841), (88, 149862), (121, 150006), (122, 150009), (124, 150027), (130, 150066), (131, 150069), (135, 150084), (137, 150087), (142, 150102), (154, 150180), (159, 150210), (174, 150309),

Gene: IkeLoa_252 Start: 149199, Stop: 149720, Start Num: 71

Candidate Starts for IkeLoa_252:

(Start: 71 @149199 has 189 MA's), (Start: 77 @149205 has 2 MA's), (85, 149232), (86, 149238), (88, 149259), (121, 149403), (122, 149406), (124, 149424), (130, 149463), (131, 149466), (135, 149481), (137, 149484), (142, 149499), (154, 149577), (159, 149607), (174, 149706),

Gene: InigoMontoya_262 Start: 149517, Stop: 150038, Start Num: 71

Candidate Starts for InigoMontoya_262:

(Start: 71 @149517 has 189 MA's), (Start: 77 @149523 has 2 MA's), (85, 149550), (86, 149556), (88, 149577), (121, 149721), (122, 149724), (124, 149742), (130, 149781), (131, 149784), (135, 149799), (137, 149802), (142, 149817), (154, 149895), (159, 149925), (174, 150024),

Gene: Inspectinfecti_75 Start: 53919, Stop: 54470, Start Num: 55

Candidate Starts for Inspectinfecti_75:

(Start: 55 @53919 has 8 MA's), (86, 53997), (92, 54033), (100, 54060), (107, 54111), (132, 54216), (140, 54240), (143, 54246), (164, 54393), (167, 54402), (174, 54456),

Gene: InterFolia_260 Start: 150263, Stop: 150784, Start Num: 71

Candidate Starts for InterFolia_260:

(Start: 71 @150263 has 189 MA's), (Start: 77 @150269 has 2 MA's), (85, 150296), (86, 150302), (88, 150323), (121, 150467), (122, 150470), (124, 150488), (130, 150527), (131, 150530), (135, 150545), (137, 150548), (142, 150563), (154, 150641), (159, 150671), (174, 150770),

Gene: Iota_255 Start: 149229, Stop: 149750, Start Num: 71

Candidate Starts for Iota_255:

(Start: 71 @149229 has 189 MA's), (Start: 77 @149235 has 2 MA's), (85, 149262), (86, 149268), (88, 149289), (121, 149433), (122, 149436), (124, 149454), (130, 149493), (131, 149496), (135, 149511), (137, 149514), (142, 149529), (154, 149607), (159, 149637), (174, 149736),

Gene: Issimir_252 Start: 149604, Stop: 150125, Start Num: 71

Candidate Starts for Issimir_252:

(Start: 71 @149604 has 189 MA's), (Start: 77 @149610 has 2 MA's), (85, 149637), (86, 149643), (88, 149664), (121, 149808), (122, 149811), (124, 149829), (130, 149868), (131, 149871), (135, 149886), (137, 149889), (142, 149904), (154, 149982), (159, 150012), (174, 150111),

Gene: Izajani_254 Start: 150049, Stop: 150570, Start Num: 71

Candidate Starts for Izajani_254:

(Start: 71 @150049 has 189 MA's), (Start: 77 @150055 has 2 MA's), (85, 150082), (86, 150088), (88, 150109), (121, 150253), (122, 150256), (124, 150274), (130, 150313), (131, 150316), (135, 150331),

(137, 150334), (142, 150349), (154, 150427), (159, 150457), (174, 150556),

Gene: JPickles_256 Start: 148654, Stop: 149175, Start Num: 71

Candidate Starts for JPickles_256:

(Start: 71 @148654 has 189 MA's), (Start: 77 @148660 has 2 MA's), (85, 148687), (86, 148693), (88, 148714), (121, 148858), (122, 148861), (124, 148879), (130, 148918), (131, 148921), (135, 148936), (137, 148939), (142, 148954), (154, 149032), (159, 149062), (174, 149161),

Gene: Jambalaya_10 Start: 4315, Stop: 4818, Start Num: 78

Candidate Starts for Jambalaya_10:

(48, 4249), (Start: 78 @4315 has 48 MA's), (88, 4366), (116, 4501), (121, 4510), (122, 4513), (123, 4525), (125, 4540), (143, 4597), (147, 4633),

Gene: Janiyra_262 Start: 150191, Stop: 150712, Start Num: 71

Candidate Starts for Janiyra_262:

(Start: 71 @150191 has 189 MA's), (Start: 77 @150197 has 2 MA's), (85, 150224), (86, 150230), (88, 150251), (121, 150395), (122, 150398), (124, 150416), (130, 150455), (131, 150458), (135, 150473), (137, 150476), (142, 150491), (154, 150569), (159, 150599), (174, 150698),

Gene: JayJay_258 Start: 148183, Stop: 148704, Start Num: 71

Candidate Starts for JayJay_258:

(Start: 71 @148183 has 189 MA's), (Start: 77 @148189 has 2 MA's), (85, 148216), (86, 148222), (88, 148243), (121, 148387), (122, 148390), (124, 148408), (130, 148447), (131, 148450), (135, 148465), (137, 148468), (142, 148483), (154, 148561), (159, 148591), (174, 148690),

Gene: Jaygup_255 Start: 149376, Stop: 149897, Start Num: 71

Candidate Starts for Jaygup_255:

(Start: 71 @149376 has 189 MA's), (Start: 77 @149382 has 2 MA's), (85, 149409), (86, 149415), (88, 149436), (121, 149580), (122, 149583), (124, 149601), (130, 149640), (131, 149643), (135, 149658), (137, 149661), (142, 149676), (154, 149754), (159, 149784), (174, 149883),

Gene: JeNeSaisPas_185 Start: 91898, Stop: 92356, Start Num: 82

Candidate Starts for JeNeSaisPas_185:

(Start: 82 @91898 has 5 MA's), (86, 91925), (106, 92039), (124, 92108), (142, 92171),

Gene: Jedediah_260 Start: 150429, Stop: 150950, Start Num: 71

Candidate Starts for Jedediah_260:

(Start: 71 @150429 has 189 MA's), (Start: 77 @150435 has 2 MA's), (85, 150462), (86, 150468), (88, 150489), (121, 150633), (122, 150636), (124, 150654), (130, 150693), (131, 150696), (135, 150711), (137, 150714), (142, 150729), (154, 150807), (159, 150837), (174, 150936),

Gene: JellyBelly_54 Start: 47471, Stop: 46956, Start Num: 74

Candidate Starts for JellyBelly_54:

(Start: 74 @47471 has 1 MA's), (83, 47447), (85, 47441), (86, 47435), (121, 47288), (143, 47201), (151, 47144), (166, 47045),

Gene: Jemmno_258 Start: 149148, Stop: 149669, Start Num: 71

Candidate Starts for Jemmno_258:

(Start: 71 @149148 has 189 MA's), (Start: 77 @149154 has 2 MA's), (85, 149181), (86, 149187), (88, 149208), (121, 149352), (122, 149355), (124, 149373), (130, 149412), (131, 149415), (135, 149430), (137, 149433), (142, 149448), (154, 149526), (159, 149556), (174, 149655),

Gene: Jessibeth14_258 Start: 149817, Stop: 150338, Start Num: 71

Candidate Starts for Jessibeth14_258:

(Start: 71 @149817 has 189 MA's), (Start: 77 @149823 has 2 MA's), (85, 149850), (86, 149856), (88, 149877), (121, 150021), (122, 150024), (124, 150042), (130, 150081), (131, 150084), (135, 150099), (137, 150102), (142, 150117), (154, 150195), (159, 150225), (174, 150324),

Gene: Jezreel_255 Start: 149693, Stop: 150214, Start Num: 71

Candidate Starts for Jezreel_255:

(Start: 71 @149693 has 189 MA's), (Start: 77 @149699 has 2 MA's), (85, 149726), (86, 149732), (88, 149753), (121, 149897), (122, 149900), (124, 149918), (130, 149957), (131, 149960), (135, 149975), (137, 149978), (142, 149993), (154, 150071), (159, 150101), (174, 150200),

Gene: JigglyPuff_264 Start: 150312, Stop: 150833, Start Num: 71

Candidate Starts for JigglyPuff_264:

(Start: 71 @150312 has 189 MA's), (Start: 77 @150318 has 2 MA's), (85, 150345), (86, 150351), (88, 150372), (121, 150516), (122, 150519), (124, 150537), (130, 150576), (131, 150579), (135, 150594), (137, 150597), (142, 150612), (154, 150690), (159, 150720), (174, 150819),

Gene: JohnPork_10 Start: 4563, Stop: 5066, Start Num: 78

Candidate Starts for JohnPork_10:

(48, 4497), (Start: 78 @4563 has 48 MA's), (88, 4614), (116, 4749), (121, 4758), (122, 4761), (123, 4773), (125, 4788), (143, 4845), (147, 4881),

Gene: JulietS_247 Start: 146728, Stop: 147249, Start Num: 71

Candidate Starts for JulietS_247:

(Start: 71 @146728 has 189 MA's), (Start: 77 @146734 has 2 MA's), (85, 146761), (86, 146767), (88, 146788), (121, 146932), (122, 146935), (124, 146953), (130, 146992), (131, 146995), (135, 147010), (137, 147013), (142, 147028), (154, 147106), (159, 147136), (174, 147235),

Gene: JustBecause_247 Start: 142767, Stop: 142297, Start Num: 71

Candidate Starts for JustBecause_247:

(Start: 63 @142779 has 2 MA's), (Start: 71 @142767 has 189 MA's), (86, 142728), (101, 142650), (106, 142617), (118, 142575), (125, 142539), (138, 142494), (146, 142452), (159, 142377),

Gene: JustHall_252 Start: 148678, Stop: 149199, Start Num: 71

Candidate Starts for JustHall_252:

(Start: 71 @148678 has 189 MA's), (Start: 77 @148684 has 2 MA's), (85, 148711), (86, 148717), (88, 148738), (121, 148882), (122, 148885), (124, 148903), (130, 148942), (131, 148945), (135, 148960), (137, 148963), (142, 148978), (154, 149056), (159, 149086), (174, 149185),

Gene: Kamryn_257 Start: 150267, Stop: 150788, Start Num: 71

Candidate Starts for Kamryn_257:

(Start: 71 @150267 has 189 MA's), (Start: 77 @150273 has 2 MA's), (85, 150300), (86, 150306), (88, 150327), (121, 150471), (122, 150474), (124, 150492), (130, 150531), (131, 150534), (135, 150549), (137, 150552), (142, 150567), (154, 150645), (159, 150675), (174, 150774),

Gene: Kboogie_262 Start: 149307, Stop: 149828, Start Num: 71

Candidate Starts for Kboogie_262:

(Start: 71 @149307 has 189 MA's), (Start: 77 @149313 has 2 MA's), (85, 149340), (86, 149346), (88, 149367), (121, 149511), (122, 149514), (124, 149532), (130, 149571), (131, 149574), (135, 149589), (137, 149592), (142, 149607), (154, 149685), (159, 149715), (174, 149814),

Gene: Kela_246 Start: 143362, Stop: 142880, Start Num: 63

Candidate Starts for Kela_246:

(Start: 63 @143362 has 2 MA's), (Start: 71 @143350 has 189 MA's), (86, 143311), (101, 143233), (106, 143200), (118, 143158), (125, 143122), (138, 143077), (146, 143035), (158, 142963), (159, 142960),

Gene: Khaleesi_257 Start: 149284, Stop: 149805, Start Num: 71

Candidate Starts for Khaleesi_257:

(Start: 71 @149284 has 189 MA's), (Start: 77 @149290 has 2 MA's), (85, 149317), (86, 149323), (88, 149344), (121, 149488), (122, 149491), (124, 149509), (130, 149548), (131, 149551), (135, 149566), (137, 149569), (142, 149584), (154, 149662), (159, 149692), (174, 149791),

Gene: KimmyK_10 Start: 4632, Stop: 5135, Start Num: 78

Candidate Starts for KimmyK_10:

(35, 4482), (48, 4566), (Start: 78 @4632 has 48 MA's), (88, 4683), (99, 4719), (116, 4818), (122, 4830), (123, 4842), (125, 4857), (143, 4914), (147, 4950), (162, 5043),

Gene: Koguma_257 Start: 148890, Stop: 149411, Start Num: 71

Candidate Starts for Koguma_257:

(Start: 71 @148890 has 189 MA's), (Start: 77 @148896 has 2 MA's), (85, 148923), (86, 148929), (88, 148950), (121, 149094), (122, 149097), (124, 149115), (130, 149154), (131, 149157), (135, 149172), (137, 149175), (142, 149190), (154, 149268), (159, 149298), (174, 149397),

Gene: Kradal_245 Start: 144718, Stop: 144209, Start Num: 71

Candidate Starts for Kradal_245:

(Start: 71 @144718 has 189 MA's), (Start: 77 @144712 has 2 MA's), (86, 144679), (88, 144658), (93, 144637), (98, 144625), (101, 144601), (107, 144565), (122, 144517), (123, 144505), (142, 144436), (147, 144400), (155, 144355), (159, 144328),

Gene: Kureo_187 Start: 90444, Stop: 90911, Start Num: 75

Candidate Starts for Kureo_187:

(75, 90444), (86, 90480), (106, 90594), (124, 90663), (142, 90726),

Gene: Kwekel_75 Start: 51485, Stop: 51946, Start Num: 78

Candidate Starts for Kwekel_75:

(Start: 78 @51485 has 48 MA's), (83, 51503), (86, 51515), (88, 51536), (112, 51647), (121, 51680), (123, 51695), (143, 51767), (145, 51797), (147, 51803), (167, 51923),

Gene: LRRHood_250 Start: 148300, Stop: 148821, Start Num: 71

Candidate Starts for LRRHood_250:

(Start: 71 @148300 has 189 MA's), (Start: 77 @148306 has 2 MA's), (85, 148333), (86, 148339), (88, 148360), (121, 148504), (122, 148507), (124, 148525), (130, 148564), (131, 148567), (135, 148582), (137, 148585), (142, 148600), (154, 148678), (159, 148708), (174, 148807),

Gene: Labradorite_255 Start: 148867, Stop: 149388, Start Num: 71

Candidate Starts for Labradorite_255:

(Start: 71 @148867 has 189 MA's), (Start: 77 @148873 has 2 MA's), (85, 148900), (86, 148906), (88, 148927), (121, 149071), (122, 149074), (124, 149092), (130, 149131), (131, 149134), (135, 149149), (137, 149152), (142, 149167), (154, 149245), (159, 149275), (174, 149374),

Gene: LastHope_90 Start: 54128, Stop: 54580, Start Num: 78

Candidate Starts for LastHope_90:

(43, 54032), (44, 54047), (48, 54062), (50, 54065), (53, 54074), (70, 54119), (Start: 78 @54128 has 48 MA's), (Start: 80 @54131 has 4 MA's), (90, 54188), (93, 54200), (94, 54203), (115, 54311), (117, 54314), (123, 54338), (132, 54383), (134, 54389), (146, 54443), (147, 54446), (166, 54557), (167,

54560),

Gene: Latch_258 Start: 148853, Stop: 149374, Start Num: 71

Candidate Starts for Latch_258:

(Start: 71 @148853 has 189 MA's), (Start: 77 @148859 has 2 MA's), (85, 148886), (86, 148892), (88, 148913), (121, 149057), (122, 149060), (124, 149078), (130, 149117), (131, 149120), (135, 149135), (137, 149138), (142, 149153), (154, 149231), (159, 149261), (174, 149360),

Gene: Lee7_259 Start: 151954, Stop: 152475, Start Num: 71

Candidate Starts for Lee7_259:

(Start: 71 @151954 has 189 MA's), (Start: 77 @151960 has 2 MA's), (85, 151987), (86, 151993), (88, 152014), (121, 152158), (122, 152161), (124, 152179), (130, 152218), (131, 152221), (135, 152236), (137, 152239), (142, 152254), (154, 152332), (159, 152362), (174, 152461),

Gene: Leonard_74 Start: 53982, Stop: 54533, Start Num: 55

Candidate Starts for Leonard_74:

(Start: 55 @53982 has 8 MA's), (86, 54060), (92, 54096), (100, 54123), (107, 54174), (132, 54279), (140, 54303), (143, 54309), (164, 54456), (167, 54465), (174, 54519),

Gene: Lethe_256 Start: 149868, Stop: 150389, Start Num: 71

Candidate Starts for Lethe_256:

(Start: 71 @149868 has 189 MA's), (Start: 77 @149874 has 2 MA's), (85, 149901), (86, 149907), (121, 150072), (122, 150075), (124, 150093), (130, 150132), (131, 150135), (135, 150150), (137, 150153), (142, 150168), (154, 150246), (159, 150276), (174, 150375),

Gene: LifeSavor_259 Start: 150081, Stop: 150602, Start Num: 71

Candidate Starts for LifeSavor_259:

(Start: 71 @150081 has 189 MA's), (Start: 77 @150087 has 2 MA's), (85, 150114), (86, 150120), (88, 150141), (121, 150285), (122, 150288), (124, 150306), (130, 150345), (131, 150348), (135, 150363), (137, 150366), (142, 150381), (154, 150459), (159, 150489), (174, 150588),

Gene: Ligma_58 Start: 48670, Stop: 48185, Start Num: 81

Candidate Starts for Ligma_58:

(6, 49066), (25, 48850), (Start: 81 @48670 has 4 MA's), (83, 48658), (88, 48625), (106, 48547), (114, 48523), (123, 48484), (143, 48412), (151, 48355), (155, 48325), (159, 48298), (166, 48256),

Gene: LilPharaoh_67 Start: 48909, Stop: 49637, Start Num: 19

Candidate Starts for LilPharaoh_67:

(Start: 19 @48909 has 9 MA's), (21, 48924), (26, 48975), (28, 48984), (30, 48990), (32, 49008), (Start: 34 @49026 has 1 MA's), (36, 49035), (38, 49041), (39, 49065), (Start: 78 @49188 has 48 MA's), (Start: 80 @49191 has 4 MA's), (90, 49248), (93, 49260), (94, 49263), (117, 49374), (121, 49383), (122, 49386), (123, 49398), (132, 49443), (134, 49449), (148, 49512), (159, 49578), (166, 49617), (167, 49620), (169, 49632),

Gene: LinStu_255 Start: 148182, Stop: 148703, Start Num: 71

Candidate Starts for LinStu_255:

(Start: 71 @148182 has 189 MA's), (Start: 77 @148188 has 2 MA's), (85, 148215), (86, 148221), (88, 148242), (121, 148386), (122, 148389), (124, 148407), (130, 148446), (131, 148449), (135, 148464), (137, 148467), (142, 148482), (154, 148560), (159, 148590), (174, 148689),

Gene: LittleMunchkin_58 Start: 51077, Stop: 50529, Start Num: 45

Candidate Starts for LittleMunchkin_58:

(Start: 45 @51077 has 3 MA's), (83, 51002), (106, 50891), (108, 50885), (114, 50867), (121, 50843), (132, 50783), (143, 50756), (155, 50669), (166, 50600),

Gene: Littleton_262 Start: 150090, Stop: 150611, Start Num: 71

Candidate Starts for Littleton_262:

(Start: 71 @150090 has 189 MA's), (Start: 77 @150096 has 2 MA's), (85, 150123), (86, 150129), (88, 150150), (121, 150294), (122, 150297), (124, 150315), (130, 150354), (131, 150357), (135, 150372), (137, 150375), (142, 150390), (154, 150468), (159, 150498), (174, 150597),

Gene: Loanshark_255 Start: 148633, Stop: 149154, Start Num: 71

Candidate Starts for Loanshark_255:

(Start: 71 @148633 has 189 MA's), (Start: 77 @148639 has 2 MA's), (85, 148666), (86, 148672), (88, 148693), (121, 148837), (122, 148840), (124, 148858), (130, 148897), (131, 148900), (135, 148915), (137, 148918), (142, 148933), (154, 149011), (159, 149041), (174, 149140),

Gene: LolaVinca_254 Start: 149693, Stop: 150214, Start Num: 71

Candidate Starts for LolaVinca_254:

(Start: 71 @149693 has 189 MA's), (Start: 77 @149699 has 2 MA's), (85, 149726), (86, 149732), (121, 149897), (122, 149900), (124, 149918), (130, 149957), (131, 149960), (135, 149975), (137, 149978), (142, 149993), (154, 150071), (159, 150101), (174, 150200),

Gene: LookingGlass_256 Start: 149598, Stop: 150119, Start Num: 71

Candidate Starts for LookingGlass_256:

(Start: 71 @149598 has 189 MA's), (Start: 77 @149604 has 2 MA's), (85, 149631), (86, 149637), (88, 149658), (121, 149802), (122, 149805), (124, 149823), (130, 149862), (131, 149865), (135, 149880), (137, 149883), (142, 149898), (154, 149976), (159, 150006), (174, 150105),

Gene: LordLeafolot_259 Start: 149306, Stop: 149827, Start Num: 71

Candidate Starts for LordLeafolot_259:

(Start: 71 @149306 has 189 MA's), (Start: 77 @149312 has 2 MA's), (85, 149339), (86, 149345), (121, 149510), (122, 149513), (124, 149531), (130, 149570), (131, 149573), (135, 149588), (137, 149591), (142, 149606), (154, 149684), (159, 149714), (174, 149813),

Gene: Lukilu_247 Start: 150309, Stop: 150830, Start Num: 71

Candidate Starts for Lukilu_247:

(Start: 71 @150309 has 189 MA's), (Start: 77 @150315 has 2 MA's), (85, 150342), (86, 150348), (88, 150369), (121, 150513), (122, 150516), (124, 150534), (130, 150573), (131, 150576), (135, 150591), (137, 150594), (142, 150609), (154, 150687), (159, 150717), (174, 150816),

Gene: Lunareta_255 Start: 150541, Stop: 151062, Start Num: 71

Candidate Starts for Lunareta_255:

(Start: 71 @150541 has 189 MA's), (Start: 77 @150547 has 2 MA's), (85, 150574), (86, 150580), (88, 150601), (121, 150745), (122, 150748), (124, 150766), (130, 150805), (131, 150808), (135, 150823), (137, 150826), (142, 150841), (154, 150919), (159, 150949), (174, 151048),

Gene: Maby2021_259 Start: 150186, Stop: 150707, Start Num: 71

Candidate Starts for Maby2021_259:

(Start: 71 @150186 has 189 MA's), (Start: 77 @150192 has 2 MA's), (85, 150219), (86, 150225), (88, 150246), (121, 150390), (122, 150393), (124, 150411), (130, 150450), (131, 150453), (135, 150468), (137, 150471), (142, 150486), (154, 150564), (159, 150594), (174, 150693),

Gene: MacKat_79 Start: 48852, Stop: 49331, Start Num: 61

Candidate Starts for MacKat_79:

(47, 48813), (58, 48843), (Start: 61 @48852 has 1 MA's), (64, 48861), (Start: 80 @48885 has 4 MA's), (85, 48903), (90, 48939), (93, 48951), (94, 48954), (115, 49062), (117, 49065), (120, 49071), (123, 49089), (132, 49134), (146, 49194), (147, 49197), (167, 49311),

Gene: Mangeria_258 Start: 150204, Stop: 150725, Start Num: 71

Candidate Starts for Mangeria_258:

(Start: 71 @150204 has 189 MA's), (Start: 77 @150210 has 2 MA's), (85, 150237), (86, 150243), (88, 150264), (121, 150408), (122, 150411), (124, 150429), (130, 150468), (131, 150471), (135, 150486), (137, 150489), (142, 150504), (154, 150582), (159, 150612), (174, 150711),

Gene: Mareelih_57 Start: 20832, Stop: 20329, Start Num: 56

Candidate Starts for Mareelih_57:

(Start: 56 @20832 has 4 MA's), (79, 20784), (90, 20730), (102, 20682), (109, 20646), (137, 20520), (154, 20421), (156, 20412), (157, 20409), (162, 20382), (166, 20349),

Gene: Marianna39_188 Start: 91774, Stop: 92232, Start Num: 82

Candidate Starts for Marianna39_188:

(Start: 82 @91774 has 5 MA's), (86, 91801), (106, 91915), (111, 91927), (121, 91963), (124, 91984), (142, 92047),

Gene: Mariokart_55 Start: 47759, Stop: 47244, Start Num: 74

Candidate Starts for Mariokart_55:

(Start: 74 @47759 has 1 MA's), (83, 47735), (85, 47729), (86, 47723), (121, 47576), (143, 47489), (151, 47432), (166, 47333),

Gene: Matsumoto_256 Start: 149295, Stop: 149816, Start Num: 71

Candidate Starts for Matsumoto_256:

(Start: 71 @149295 has 189 MA's), (Start: 77 @149301 has 2 MA's), (85, 149328), (86, 149334), (88, 149355), (121, 149499), (122, 149502), (124, 149520), (130, 149559), (131, 149562), (135, 149577), (137, 149580), (142, 149595), (154, 149673), (159, 149703), (174, 149802),

Gene: Maturis_252 Start: 149656, Stop: 150177, Start Num: 71

Candidate Starts for Maturis_252:

(Start: 71 @149656 has 189 MA's), (Start: 77 @149662 has 2 MA's), (85, 149689), (86, 149695), (88, 149716), (121, 149860), (122, 149863), (124, 149881), (130, 149920), (131, 149923), (135, 149938), (137, 149941), (142, 149956), (154, 150034), (159, 150064), (174, 150163),

Gene: McGee_260 Start: 149641, Stop: 150162, Start Num: 71

Candidate Starts for McGee_260:

(Start: 71 @149641 has 189 MA's), (Start: 77 @149647 has 2 MA's), (85, 149674), (86, 149680), (88, 149701), (121, 149845), (122, 149848), (124, 149866), (130, 149905), (131, 149908), (135, 149923), (137, 149926), (142, 149941), (154, 150019), (159, 150049), (174, 150148),

Gene: McMater_84 Start: 54322, Stop: 54774, Start Num: 78

Candidate Starts for McMater_84:

(Start: 63 @54298 has 2 MA's), (Start: 78 @54322 has 48 MA's), (Start: 80 @54325 has 4 MA's), (90, 54382), (93, 54394), (94, 54397), (115, 54505), (117, 54508), (123, 54532), (132, 54577), (134, 54583), (147, 54640), (162, 54721), (166, 54751), (167, 54754),

Gene: McWolfish_255 Start: 148495, Stop: 149016, Start Num: 71

Candidate Starts for McWolfish_255:

(Start: 71 @148495 has 189 MA's), (Start: 77 @148501 has 2 MA's), (85, 148528), (86, 148534), (88, 148555), (121, 148699), (122, 148702), (124, 148720), (130, 148759), (131, 148762), (135, 148777),

(137, 148780), (142, 148795), (154, 148873), (159, 148903), (174, 149002),

Gene: Mdavu_67 Start: 49185, Stop: 49913, Start Num: 19

Candidate Starts for Mdavu_67:

(Start: 19 @49185 has 9 MA's), (21, 49200), (26, 49251), (28, 49260), (30, 49266), (32, 49284), (Start: 34 @49302 has 1 MA's), (36, 49311), (38, 49317), (39, 49341), (Start: 78 @49464 has 48 MA's), (Start: 80 @49467 has 4 MA's), (90, 49524), (93, 49536), (94, 49539), (117, 49650), (121, 49659), (122, 49662), (123, 49674), (132, 49719), (134, 49725), (148, 49788), (159, 49854), (166, 49893), (167, 49896), (169, 49908),

Gene: Megamind_255 Start: 148820, Stop: 149341, Start Num: 71

Candidate Starts for Megamind_255:

(Start: 71 @148820 has 189 MA's), (Start: 77 @148826 has 2 MA's), (85, 148853), (86, 148859), (88, 148880), (121, 149024), (122, 149027), (124, 149045), (130, 149084), (131, 149087), (135, 149102), (137, 149105), (142, 149120), (154, 149198), (159, 149228), (174, 149327),

Gene: MelBins_76 Start: 54187, Stop: 54738, Start Num: 55

Candidate Starts for MelBins_76:

(Start: 55 @54187 has 8 MA's), (86, 54265), (92, 54301), (100, 54328), (107, 54379), (128, 54472), (132, 54484), (140, 54508), (143, 54514), (164, 54661), (167, 54670), (173, 54721),

Gene: Melpomini_253 Start: 148387, Stop: 148908, Start Num: 71

Candidate Starts for Melpomini_253:

(Start: 71 @148387 has 189 MA's), (Start: 77 @148393 has 2 MA's), (85, 148420), (86, 148426), (88, 148447), (121, 148591), (122, 148594), (124, 148612), (130, 148651), (131, 148654), (135, 148669), (137, 148672), (142, 148687), (154, 148765), (159, 148795), (174, 148894),

Gene: MikeLiesIn_259 Start: 149956, Stop: 150477, Start Num: 71

Candidate Starts for MikeLiesIn_259:

(Start: 71 @149956 has 189 MA's), (Start: 77 @149962 has 2 MA's), (85, 149989), (86, 149995), (88, 150016), (121, 150160), (122, 150163), (124, 150181), (130, 150220), (131, 150223), (135, 150238), (137, 150241), (142, 150256), (154, 150334), (159, 150364), (174, 150463),

Gene: Mikro_252 Start: 151206, Stop: 151727, Start Num: 71

Candidate Starts for Mikro_252:

(Start: 71 @151206 has 189 MA's), (Start: 77 @151212 has 2 MA's), (85, 151239), (86, 151245), (121, 151410), (122, 151413), (124, 151431), (130, 151470), (131, 151473), (135, 151488), (137, 151491), (142, 151506), (154, 151584), (159, 151614), (174, 151713),

Gene: MoMoMixon_254 Start: 148915, Stop: 149436, Start Num: 71

Candidate Starts for MoMoMixon_254:

(Start: 71 @148915 has 189 MA's), (Start: 77 @148921 has 2 MA's), (85, 148948), (86, 148954), (88, 148975), (121, 149119), (122, 149122), (124, 149140), (130, 149179), (131, 149182), (135, 149197), (137, 149200), (142, 149215), (154, 149293), (159, 149323), (174, 149422),

Gene: Moby_255 Start: 147650, Stop: 148171, Start Num: 71

Candidate Starts for Moby_255:

(Start: 71 @147650 has 189 MA's), (Start: 77 @147656 has 2 MA's), (85, 147683), (86, 147689), (88, 147710), (121, 147854), (122, 147857), (124, 147875), (130, 147914), (131, 147917), (135, 147932), (137, 147935), (142, 147950), (154, 148028), (159, 148058), (174, 148157),

Gene: Moiqah_254 Start: 147627, Stop: 148148, Start Num: 71

Candidate Starts for Moiqah_254:

(Start: 71 @147627 has 189 MA's), (Start: 77 @147633 has 2 MA's), (85, 147660), (86, 147666), (88, 147687), (121, 147831), (122, 147834), (124, 147852), (130, 147891), (131, 147894), (135, 147909), (137, 147912), (142, 147927), (154, 148005), (159, 148035), (174, 148134),

Gene: Momo_260 Start: 148853, Stop: 149374, Start Num: 71

Candidate Starts for Momo_260:

(Start: 71 @148853 has 189 MA's), (Start: 77 @148859 has 2 MA's), (85, 148886), (86, 148892), (88, 148913), (121, 149057), (122, 149060), (124, 149078), (130, 149117), (131, 149120), (135, 149135), (137, 149138), (142, 149153), (154, 149231), (159, 149261), (174, 149360),

Gene: Montpel_255 Start: 150539, Stop: 151060, Start Num: 71

Candidate Starts for Montpel_255:

(Start: 71 @150539 has 189 MA's), (Start: 77 @150545 has 2 MA's), (85, 150572), (86, 150578), (88, 150599), (121, 150743), (122, 150746), (124, 150764), (130, 150803), (131, 150806), (135, 150821), (137, 150824), (142, 150839), (154, 150917), (159, 150947), (174, 151046),

Gene: Morizzled23_256 Start: 148669, Stop: 149190, Start Num: 71

Candidate Starts for Morizzled23_256:

(Start: 71 @148669 has 189 MA's), (Start: 77 @148675 has 2 MA's), (85, 148702), (86, 148708), (88, 148729), (121, 148873), (122, 148876), (124, 148894), (130, 148933), (131, 148936), (135, 148951), (137, 148954), (142, 148969), (154, 149047), (159, 149077), (174, 149176),

Gene: MossRose_59 Start: 50311, Stop: 49820, Start Num: 82

Candidate Starts for MossRose_59:

(41, 50431), (49, 50380), (Start: 82 @50311 has 5 MA's), (83, 50296), (88, 50263), (106, 50185), (121, 50137), (122, 50134), (126, 50098), (143, 50050), (163, 49909), (164, 49903), (166, 49897),

Gene: Mutzi_10 Start: 4504, Stop: 5007, Start Num: 78

Candidate Starts for Mutzi_10:

(48, 4438), (Start: 78 @4504 has 48 MA's), (88, 4555), (99, 4591), (116, 4690), (122, 4702), (123, 4714), (125, 4729), (143, 4786), (147, 4822), (162, 4915),

Gene: Myrna_258 Start: 157172, Stop: 157711, Start Num: 71

Candidate Starts for Myrna_258:

(Start: 71 @157172 has 189 MA's), (Start: 77 @157178 has 2 MA's), (84, 157202), (86, 157211), (87, 157223), (97, 157268), (104, 157331), (122, 157400), (123, 157412), (130, 157457), (135, 157475), (138, 157481), (150, 157547), (162, 157613), (172, 157691), (174, 157703),

Gene: Naija_259 Start: 149556, Stop: 150077, Start Num: 71

Candidate Starts for Naija_259:

(Start: 71 @149556 has 189 MA's), (Start: 77 @149562 has 2 MA's), (85, 149589), (86, 149595), (88, 149616), (121, 149760), (122, 149763), (124, 149781), (130, 149820), (131, 149823), (135, 149838), (137, 149841), (142, 149856), (154, 149934), (159, 149964), (174, 150063),

Gene: Napoleon13_255 Start: 148585, Stop: 149106, Start Num: 71

Candidate Starts for Napoleon13_255:

(Start: 71 @148585 has 189 MA's), (Start: 77 @148591 has 2 MA's), (85, 148618), (86, 148624), (88, 148645), (121, 148789), (122, 148792), (124, 148810), (130, 148849), (131, 148852), (135, 148867), (137, 148870), (142, 148885), (154, 148963), (159, 148993), (174, 149092),

Gene: Nappy_257 Start: 149855, Stop: 150376, Start Num: 71

Candidate Starts for Nappy_257:

(Start: 71 @149855 has 189 MA's), (Start: 77 @149861 has 2 MA's), (85, 149888), (86, 149894), (88, 149915), (121, 150059), (122, 150062), (124, 150080), (130, 150119), (131, 150122), (135, 150137), (137, 150140), (142, 150155), (154, 150233), (159, 150263), (174, 150362),

Gene: Naval22_265 Start: 151336, Stop: 151857, Start Num: 71

Candidate Starts for Naval22_265:

(Start: 71 @151336 has 189 MA's), (Start: 77 @151342 has 2 MA's), (85, 151369), (86, 151375), (88, 151396), (121, 151540), (122, 151543), (124, 151561), (130, 151600), (131, 151603), (135, 151618), (137, 151621), (142, 151636), (154, 151714), (159, 151744), (174, 151843),

Gene: NedWong_257 Start: 149207, Stop: 149728, Start Num: 71

Candidate Starts for NedWong_257:

(Start: 71 @149207 has 189 MA's), (Start: 77 @149213 has 2 MA's), (85, 149240), (86, 149246), (88, 149267), (121, 149411), (122, 149414), (124, 149432), (130, 149471), (131, 149474), (135, 149489), (137, 149492), (142, 149507), (154, 149585), (159, 149615), (174, 149714),

Gene: Ngannou_253 Start: 148538, Stop: 149059, Start Num: 71

Candidate Starts for Ngannou_253:

(Start: 71 @148538 has 189 MA's), (Start: 77 @148544 has 2 MA's), (85, 148571), (86, 148577), (88, 148598), (121, 148742), (122, 148745), (124, 148763), (130, 148802), (131, 148805), (135, 148820), (137, 148823), (142, 148838), (154, 148916), (159, 148946), (174, 149045),

Gene: Nidhogg_259 Start: 150382, Stop: 150903, Start Num: 71

Candidate Starts for Nidhogg_259:

(Start: 71 @150382 has 189 MA's), (Start: 77 @150388 has 2 MA's), (85, 150415), (86, 150421), (88, 150442), (121, 150586), (122, 150589), (124, 150607), (130, 150646), (131, 150649), (135, 150664), (137, 150667), (142, 150682), (154, 150760), (159, 150790), (174, 150889),

Gene: Nikao_69 Start: 51794, Stop: 52522, Start Num: 19

Candidate Starts for Nikao_69:

(Start: 19 @51794 has 9 MA's), (21, 51809), (26, 51860), (28, 51869), (30, 51875), (32, 51893), (Start: 34 @51911 has 1 MA's), (36, 51920), (38, 51926), (39, 51950), (Start: 78 @52073 has 48 MA's), (Start: 80 @52076 has 4 MA's), (90, 52133), (93, 52145), (94, 52148), (117, 52259), (121, 52268), (122, 52271), (123, 52283), (132, 52328), (134, 52334), (148, 52397), (159, 52463), (166, 52502), (167, 52505), (169, 52517),

Gene: Niklas_85 Start: 54365, Stop: 54814, Start Num: 80

Candidate Starts for Niklas_85:

(Start: 63 @54338 has 2 MA's), (Start: 78 @54362 has 48 MA's), (Start: 80 @54365 has 4 MA's), (90, 54422), (93, 54434), (94, 54437), (115, 54545), (117, 54548), (123, 54572), (132, 54617), (134, 54623), (147, 54680), (166, 54791), (167, 54794),

Gene: Nirvana_262 Start: 156193, Stop: 155669, Start Num: 71

Candidate Starts for Nirvana_262:

(Start: 71 @156193 has 189 MA's), (101, 156085), (106, 156052), (111, 156040), (121, 156004), (122, 156001), (123, 155989), (142, 155920), (147, 155884), (154, 155839), (155, 155836), (159, 155809), (161, 155803), (165, 155773), (167, 155767), (171, 155731), (175, 155710),

Gene: NoodleTree_254 Start: 145133, Stop: 145654, Start Num: 71

Candidate Starts for NoodleTree_254:

(Start: 71 @145133 has 189 MA's), (Start: 77 @145139 has 2 MA's), (85, 145166), (86, 145172), (88, 145193), (121, 145337), (122, 145340), (124, 145358), (130, 145397), (131, 145400), (135, 145415), (137, 145418), (142, 145433), (154, 145511), (159, 145541), (174, 145640),

Gene: Norm_258 Start: 149476, Stop: 149997, Start Num: 71

Candidate Starts for Norm_258:

(Start: 71 @149476 has 189 MA's), (Start: 77 @149482 has 2 MA's), (85, 149509), (86, 149515), (88, 149536), (121, 149680), (122, 149683), (124, 149701), (130, 149740), (131, 149743), (135, 149758), (137, 149761), (142, 149776), (154, 149854), (159, 149884), (174, 149983),

Gene: Nubi_10 Start: 4504, Stop: 5007, Start Num: 78

Candidate Starts for Nubi_10:

(48, 4438), (Start: 78 @4504 has 48 MA's), (88, 4555), (99, 4591), (116, 4690), (122, 4702), (123, 4714), (125, 4729), (143, 4786), (147, 4822), (162, 4915),

Gene: NuevoMundo_260 Start: 149962, Stop: 150483, Start Num: 71

Candidate Starts for NuevoMundo_260:

(Start: 71 @149962 has 189 MA's), (Start: 77 @149968 has 2 MA's), (85, 149995), (86, 150001), (88, 150022), (121, 150166), (122, 150169), (124, 150187), (130, 150226), (131, 150229), (135, 150244), (137, 150247), (142, 150262), (154, 150340), (159, 150370), (174, 150469),

Gene: Nutello_66 Start: 49181, Stop: 49909, Start Num: 19

Candidate Starts for Nutello_66:

(Start: 19 @49181 has 9 MA's), (21, 49196), (26, 49247), (28, 49256), (30, 49262), (32, 49280), (Start: 34 @49298 has 1 MA's), (36, 49307), (38, 49313), (39, 49337), (Start: 78 @49460 has 48 MA's), (Start: 80 @49463 has 4 MA's), (90, 49520), (93, 49532), (94, 49535), (117, 49646), (121, 49655), (122, 49658), (123, 49670), (132, 49715), (134, 49721), (148, 49784), (159, 49850), (166, 49889), (167, 49892), (169, 49904),

Gene: OrediggerDelux_255 Start: 150151, Stop: 150672, Start Num: 71

Candidate Starts for OrediggerDelux_255:

(Start: 71 @150151 has 189 MA's), (Start: 77 @150157 has 2 MA's), (85, 150184), (86, 150190), (88, 150211), (121, 150355), (122, 150358), (124, 150376), (130, 150415), (131, 150418), (135, 150433), (137, 150436), (142, 150451), (154, 150529), (159, 150559), (174, 150658),

Gene: Paella_191 Start: 92653, Stop: 93111, Start Num: 82

Candidate Starts for Paella_191:

(Start: 82 @92653 has 5 MA's), (86, 92680), (106, 92794), (124, 92863), (142, 92926),

Gene: ParkTD_257 Start: 149046, Stop: 149567, Start Num: 71

Candidate Starts for ParkTD_257:

(Start: 71 @149046 has 189 MA's), (Start: 77 @149052 has 2 MA's), (85, 149079), (86, 149085), (88, 149106), (121, 149250), (122, 149253), (124, 149271), (130, 149310), (131, 149313), (135, 149328), (137, 149331), (142, 149346), (154, 149424), (159, 149454), (174, 149553),

Gene: Patter_260 Start: 149513, Stop: 150034, Start Num: 71

Candidate Starts for Patter_260:

(Start: 71 @149513 has 189 MA's), (Start: 77 @149519 has 2 MA's), (85, 149546), (86, 149552), (88, 149573), (121, 149717), (122, 149720), (124, 149738), (130, 149777), (131, 149780), (135, 149795), (137, 149798), (142, 149813), (154, 149891), (159, 149921), (174, 150020),

Gene: Peanam_85 Start: 54341, Stop: 54793, Start Num: 78

Candidate Starts for Peanam_85:

(60, 54308), (Start: 63 @54317 has 2 MA's), (Start: 78 @54341 has 48 MA's), (Start: 80 @54344 has 4 MA's), (90, 54401), (93, 54413), (94, 54416), (115, 54524), (117, 54527), (123, 54551), (132, 54596), (134, 54602), (147, 54659), (166, 54770), (167, 54773),

Gene: Phabba_267 Start: 156012, Stop: 156554, Start Num: 71

Candidate Starts for Phabba_267:

(Start: 71 @156012 has 189 MA's), (Start: 77 @156018 has 2 MA's), (84, 156042), (86, 156051), (87, 156063), (96, 156102), (97, 156108), (104, 156171), (122, 156240), (123, 156252), (130, 156297), (135, 156315), (150, 156387), (162, 156453), (172, 156531), (174, 156543),

Gene: PharkleMinkus_262 Start: 148906, Stop: 149427, Start Num: 71

Candidate Starts for PharkleMinkus_262:

(Start: 71 @148906 has 189 MA's), (Start: 77 @148912 has 2 MA's), (85, 148939), (86, 148945), (121, 149110), (122, 149113), (124, 149131), (130, 149170), (131, 149173), (135, 149188), (137, 149191), (142, 149206), (154, 149284), (159, 149314), (174, 149413),

Gene: Phauci_66 Start: 51022, Stop: 51573, Start Num: 55

Candidate Starts for Phauci_66:

(Start: 55 @51022 has 8 MA's), (86, 51100), (92, 51136), (100, 51163), (107, 51214), (132, 51319), (140, 51343), (143, 51349), (159, 51463), (164, 51496), (167, 51505), (174, 51559),

Gene: Phinally_74 Start: 53979, Stop: 54530, Start Num: 55

Candidate Starts for Phinally_74:

(Start: 55 @53979 has 8 MA's), (86, 54057), (92, 54093), (100, 54120), (107, 54171), (132, 54276), (140, 54300), (143, 54306), (164, 54453), (167, 54462), (174, 54516),

Gene: Phlegm_263 Start: 150259, Stop: 150780, Start Num: 71

Candidate Starts for Phlegm_263:

(Start: 71 @150259 has 189 MA's), (Start: 77 @150265 has 2 MA's), (85, 150292), (86, 150298), (88, 150319), (121, 150463), (122, 150466), (124, 150484), (130, 150523), (131, 150526), (135, 150541), (137, 150544), (142, 150559), (154, 150637), (159, 150667), (174, 150766),

Gene: Phlop_10 Start: 4403, Stop: 4897, Start Num: 78

Candidate Starts for Phlop_10:

(46, 4331), (Start: 78 @4403 has 48 MA's), (88, 4454), (99, 4490), (116, 4589), (122, 4601), (123, 4613), (125, 4628), (143, 4685), (170, 4880),

Gene: Phox_259 Start: 148701, Stop: 149222, Start Num: 71

Candidate Starts for Phox_259:

(Start: 71 @148701 has 189 MA's), (Start: 77 @148707 has 2 MA's), (85, 148734), (86, 148740), (88, 148761), (121, 148905), (122, 148908), (124, 148926), (130, 148965), (131, 148968), (135, 148983), (137, 148986), (142, 149001), (154, 149079), (159, 149109), (174, 149208),

Gene: Phrappuccino_5 Start: 5780, Stop: 6235, Start Num: 72

Candidate Starts for Phrappuccino_5:

(53, 5735), (Start: 72 @5780 has 2 MA's), (86, 5816), (105, 5918), (121, 5969), (132, 6029), (134, 6035), (143, 6056), (149, 6104), (167, 6206),

Gene: Phusco_257 Start: 149091, Stop: 149612, Start Num: 71

Candidate Starts for Phusco_257:

(Start: 71 @149091 has 189 MA's), (Start: 77 @149097 has 2 MA's), (85, 149124), (86, 149130), (88, 149151), (121, 149295), (122, 149298), (124, 149316), (130, 149355), (131, 149358), (135, 149373), (137, 149376), (142, 149391), (154, 149469), (159, 149499), (174, 149598),

Gene: Pier_257 Start: 150384, Stop: 150905, Start Num: 71

Candidate Starts for Pier_257:

(Start: 71 @150384 has 189 MA's), (Start: 77 @150390 has 2 MA's), (85, 150417), (86, 150423), (88, 150444), (121, 150588), (122, 150591), (124, 150609), (130, 150648), (131, 150651), (135, 150666), (137, 150669), (142, 150684), (154, 150762), (159, 150792), (174, 150891),

Gene: PinkCoffee_10 Start: 4641, Stop: 5144, Start Num: 78

Candidate Starts for PinkCoffee_10:

(35, 4491), (48, 4575), (Start: 78 @4641 has 48 MA's), (88, 4692), (116, 4827), (122, 4839), (123, 4851), (125, 4866), (143, 4923), (147, 4959), (162, 5052),

Gene: Pinkcreek_238 Start: 146710, Stop: 147231, Start Num: 71

Candidate Starts for Pinkcreek_238:

(Start: 71 @146710 has 189 MA's), (Start: 77 @146716 has 2 MA's), (85, 146743), (86, 146749), (88, 146770), (121, 146914), (122, 146917), (124, 146935), (130, 146974), (131, 146977), (135, 146992), (137, 146995), (142, 147010), (154, 147088), (159, 147118), (174, 147217),

Gene: Pio_265 Start: 150780, Stop: 151301, Start Num: 71

Candidate Starts for Pio_265:

(Start: 71 @150780 has 189 MA's), (Start: 77 @150786 has 2 MA's), (85, 150813), (86, 150819), (88, 150840), (121, 150984), (122, 150987), (124, 151005), (130, 151044), (131, 151047), (135, 151062), (137, 151065), (142, 151080), (154, 151158), (159, 151188), (174, 151287),

Gene: Pivoine_259 Start: 149556, Stop: 150077, Start Num: 71

Candidate Starts for Pivoine_259:

(Start: 71 @149556 has 189 MA's), (Start: 77 @149562 has 2 MA's), (85, 149589), (86, 149595), (88, 149616), (121, 149760), (122, 149763), (124, 149781), (130, 149820), (131, 149823), (135, 149838), (137, 149841), (142, 149856), (154, 149934), (159, 149964), (174, 150063),

Gene: Pleione_262 Start: 149512, Stop: 150033, Start Num: 71

Candidate Starts for Pleione_262:

(Start: 71 @149512 has 189 MA's), (Start: 77 @149518 has 2 MA's), (85, 149545), (86, 149551), (88, 149572), (121, 149716), (122, 149719), (124, 149737), (130, 149776), (131, 149779), (135, 149794), (137, 149797), (142, 149812), (154, 149890), (159, 149920), (174, 150019),

Gene: Portcullis_10 Start: 4563, Stop: 5066, Start Num: 78

Candidate Starts for Portcullis_10:

(48, 4497), (Start: 78 @4563 has 48 MA's), (88, 4614), (116, 4749), (121, 4758), (122, 4761), (123, 4773), (125, 4788), (143, 4845), (147, 4881),

Gene: Primadonna_254 Start: 149668, Stop: 150189, Start Num: 71

Candidate Starts for Primadonna_254:

(Start: 71 @149668 has 189 MA's), (Start: 77 @149674 has 2 MA's), (85, 149701), (86, 149707), (121, 149872), (122, 149875), (124, 149893), (130, 149932), (131, 149935), (135, 149950), (137, 149953), (142, 149968), (154, 150046), (159, 150076), (174, 150175),

Gene: PullumCavea_10 Start: 4403, Stop: 4897, Start Num: 78

Candidate Starts for PullumCavea_10:

(46, 4331), (Start: 78 @4403 has 48 MA's), (88, 4454), (99, 4490), (116, 4589), (122, 4601), (123, 4613), (125, 4628), (143, 4685), (170, 4880),

Gene: Pupper_68 Start: 24052, Stop: 24579, Start Num: 59

Candidate Starts for Pupper_68:

(Start: 59 @24052 has 4 MA's), (Start: 78 @24088 has 48 MA's), (83, 24106), (93, 24160), (95, 24166), (99, 24178), (103, 24214), (132, 24346), (143, 24376),

Gene: Pupusa_261 Start: 150882, Stop: 151403, Start Num: 71

Candidate Starts for Pupusa_261:

(Start: 71 @150882 has 189 MA's), (Start: 77 @150888 has 2 MA's), (85, 150915), (86, 150921), (88, 150942), (121, 151086), (122, 151089), (124, 151107), (130, 151146), (131, 151149), (135, 151164), (137, 151167), (142, 151182), (154, 151260), (159, 151290), (174, 151389),

Gene: PurduePete_259 Start: 150226, Stop: 150747, Start Num: 71

Candidate Starts for PurduePete_259:

(Start: 71 @150226 has 189 MA's), (Start: 77 @150232 has 2 MA's), (85, 150259), (86, 150265), (88, 150286), (121, 150430), (122, 150433), (124, 150451), (130, 150490), (131, 150493), (135, 150508), (137, 150511), (142, 150526), (154, 150604), (159, 150634), (174, 150733),

Gene: QBert_250 Start: 147906, Stop: 148427, Start Num: 71

Candidate Starts for QBert_250:

(Start: 71 @147906 has 189 MA's), (Start: 77 @147912 has 2 MA's), (85, 147939), (86, 147945), (88, 147966), (121, 148110), (122, 148113), (124, 148131), (130, 148170), (131, 148173), (135, 148188), (137, 148191), (142, 148206), (154, 148284), (159, 148314), (174, 148413),

Gene: Quantum_243 Start: 144712, Stop: 144203, Start Num: 71

Candidate Starts for Quantum_243:

(Start: 71 @144712 has 189 MA's), (Start: 77 @144706 has 2 MA's), (86, 144673), (88, 144652), (93, 144631), (98, 144619), (101, 144595), (107, 144559), (122, 144511), (123, 144499), (142, 144430), (147, 144394), (155, 144349), (159, 144322),

Gene: Quasimodo_261 Start: 149892, Stop: 150413, Start Num: 71

Candidate Starts for Quasimodo_261:

(Start: 71 @149892 has 189 MA's), (Start: 77 @149898 has 2 MA's), (85, 149925), (86, 149931), (88, 149952), (121, 150096), (122, 150099), (124, 150117), (130, 150156), (131, 150159), (135, 150174), (137, 150177), (142, 150192), (154, 150270), (159, 150300), (174, 150399),

Gene: Qui_191 Start: 92650, Stop: 93108, Start Num: 82

Candidate Starts for Qui_191:

(Start: 82 @92650 has 5 MA's), (86, 92677), (106, 92791), (124, 92860), (142, 92923),

Gene: Rabinovish_251 Start: 148396, Stop: 148917, Start Num: 71

Candidate Starts for Rabinovish_251:

(Start: 71 @148396 has 189 MA's), (Start: 77 @148402 has 2 MA's), (85, 148429), (86, 148435), (88, 148456), (121, 148600), (122, 148603), (124, 148621), (130, 148660), (131, 148663), (135, 148678), (137, 148681), (142, 148696), (154, 148774), (159, 148804), (174, 148903),

Gene: Rahel_260 Start: 149994, Stop: 150515, Start Num: 71

Candidate Starts for Rahel_260:

(Start: 71 @149994 has 189 MA's), (Start: 77 @150000 has 2 MA's), (85, 150027), (86, 150033), (88, 150054), (121, 150198), (122, 150201), (124, 150219), (130, 150258), (131, 150261), (135, 150276), (137, 150279), (142, 150294), (154, 150372), (159, 150402), (174, 150501),

Gene: RedWattleHog_162 Start: 107791, Stop: 108288, Start Num: 69

Candidate Starts for RedWattleHog_162:

(Start: 69 @107791 has 3 MA's), (83, 107818), (93, 107872), (119, 107986), (127, 108031), (129, 108043), (132, 108049), (134, 108058), (143, 108079), (160, 108190), (164, 108220),

Gene: Richo_84 Start: 54322, Stop: 54774, Start Num: 78

Candidate Starts for Richo_84:

(Start: 63 @54298 has 2 MA's), (Start: 78 @54322 has 48 MA's), (Start: 80 @54325 has 4 MA's), (90, 54382), (93, 54394), (94, 54397), (115, 54505), (117, 54508), (123, 54532), (132, 54577), (134, 54583), (147, 54640), (162, 54721), (166, 54751), (167, 54754),

Gene: Rizal_247 Start: 147809, Stop: 148330, Start Num: 71

Candidate Starts for Rizal_247:

(Start: 71 @147809 has 189 MA's), (Start: 77 @147815 has 2 MA's), (85, 147842), (86, 147848), (88, 147869), (121, 148013), (122, 148016), (124, 148034), (130, 148073), (131, 148076), (135, 148091), (137, 148094), (142, 148109), (154, 148187), (159, 148217), (174, 148316),

Gene: RoMag_253 Start: 149590, Stop: 150111, Start Num: 71

Candidate Starts for RoMag_253:

(Start: 71 @149590 has 189 MA's), (Start: 77 @149596 has 2 MA's), (85, 149623), (86, 149629), (88, 149650), (121, 149794), (122, 149797), (124, 149815), (130, 149854), (131, 149857), (135, 149872), (137, 149875), (142, 149890), (154, 149968), (159, 149998), (174, 150097),

Gene: RoadKill_72 Start: 51014, Stop: 51475, Start Num: 78

Candidate Starts for RoadKill_72:

(Start: 78 @51014 has 48 MA's), (83, 51032), (86, 51044), (88, 51065), (112, 51176), (121, 51209), (123, 51224), (143, 51296), (145, 51326), (147, 51332), (167, 51452),

Gene: Rocha_254 Start: 149155, Stop: 149676, Start Num: 71

Candidate Starts for Rocha_254:

(Start: 71 @149155 has 189 MA's), (Start: 77 @149161 has 2 MA's), (85, 149188), (86, 149194), (88, 149215), (121, 149359), (122, 149362), (124, 149380), (130, 149419), (131, 149422), (135, 149437), (137, 149440), (142, 149455), (154, 149533), (159, 149563), (174, 149662),

Gene: RogerDodger_11 Start: 4868, Stop: 5371, Start Num: 78

Candidate Starts for RogerDodger_11:

(33, 4709), (48, 4802), (Start: 78 @4868 has 48 MA's), (88, 4919), (99, 4955), (116, 5054), (122, 5066), (123, 5078), (125, 5093), (143, 5150),

Gene: Ronan_254 Start: 147971, Stop: 148492, Start Num: 71

Candidate Starts for Ronan_254:

(Start: 71 @147971 has 189 MA's), (Start: 77 @147977 has 2 MA's), (85, 148004), (86, 148010), (88, 148031), (121, 148175), (122, 148178), (124, 148196), (130, 148235), (131, 148238), (135, 148253), (137, 148256), (142, 148271), (154, 148349), (159, 148379), (174, 148478),

Gene: Roots515_261 Start: 150328, Stop: 150849, Start Num: 71

Candidate Starts for Roots515_261:

(Start: 71 @150328 has 189 MA's), (Start: 77 @150334 has 2 MA's), (85, 150361), (86, 150367), (88, 150388), (121, 150532), (122, 150535), (124, 150553), (130, 150592), (131, 150595), (135, 150610), (137, 150613), (142, 150628), (154, 150706), (159, 150736), (174, 150835),

Gene: SCentae_67 Start: 23806, Stop: 24333, Start Num: 59

Candidate Starts for SCentae_67:

(Start: 59 @23806 has 4 MA's), (Start: 78 @23842 has 48 MA's), (83, 23860), (93, 23914), (95, 23920), (99, 23932), (103, 23968), (132, 24100), (143, 24130),

Gene: SVoro_253 Start: 149085, Stop: 149606, Start Num: 71

Candidate Starts for SVoro_253:

(Start: 71 @149085 has 189 MA's), (Start: 77 @149091 has 2 MA's), (85, 149118), (86, 149124), (88, 149145), (121, 149289), (122, 149292), (124, 149310), (130, 149349), (131, 149352), (135, 149367), (137, 149370), (142, 149385), (154, 149463), (159, 149493), (174, 149592),

Gene: Salacia_260 Start: 150652, Stop: 151173, Start Num: 71

Candidate Starts for Salacia_260:

(Start: 71 @150652 has 189 MA's), (Start: 77 @150658 has 2 MA's), (85, 150685), (86, 150691), (88, 150712), (121, 150856), (122, 150859), (124, 150877), (130, 150916), (131, 150919), (135, 150934), (137, 150937), (142, 150952), (154, 151030), (159, 151060), (174, 151159),

Gene: Salvador_10 Start: 4483, Stop: 4986, Start Num: 78

Candidate Starts for Salvador_10:

(48, 4417), (Start: 78 @4483 has 48 MA's), (88, 4534), (99, 4570), (116, 4669), (122, 4681), (123, 4693), (125, 4708), (143, 4765), (147, 4801), (162, 4894),

Gene: Sarkar_244 Start: 144742, Stop: 144233, Start Num: 71

Candidate Starts for Sarkar_244:

(Start: 71 @144742 has 189 MA's), (Start: 77 @144736 has 2 MA's), (86, 144703), (88, 144682), (93, 144661), (98, 144649), (101, 144625), (107, 144589), (122, 144541), (123, 144529), (142, 144460), (147, 144424), (155, 144379), (159, 144352),

Gene: Satis_244 Start: 145049, Stop: 144546, Start Num: 77

Candidate Starts for Satis_244:

(Start: 71 @145055 has 189 MA's), (Start: 77 @145049 has 2 MA's), (86, 145016), (88, 144995), (93, 144974), (98, 144962), (101, 144938), (107, 144902), (122, 144854), (123, 144842), (142, 144773), (147, 144737), (155, 144692), (159, 144665),

Gene: Sauce_255 Start: 149318, Stop: 149839, Start Num: 71

Candidate Starts for Sauce_255:

(Start: 71 @149318 has 189 MA's), (Start: 77 @149324 has 2 MA's), (85, 149351), (86, 149357), (88, 149378), (121, 149522), (122, 149525), (124, 149543), (130, 149582), (131, 149585), (135, 149600), (137, 149603), (142, 149618), (154, 149696), (159, 149726), (174, 149825),

Gene: Savbucketdawg_10 Start: 4315, Stop: 4818, Start Num: 78

Candidate Starts for Savbucketdawg_10:

(48, 4249), (Start: 78 @4315 has 48 MA's), (88, 4366), (116, 4501), (121, 4510), (122, 4513), (123, 4525), (125, 4540), (143, 4597), (147, 4633),

Gene: ScoobyDoobyDoo_254 Start: 152971, Stop: 153480, Start Num: 71

Candidate Starts for ScoobyDoobyDoo_254:

(Start: 71 @152971 has 189 MA's), (Start: 77 @152977 has 2 MA's), (86, 153010), (93, 153052), (104, 153103), (119, 153166), (123, 153184), (124, 153190), (130, 153229), (142, 153265), (145, 153295), (149, 153313), (154, 153343), (155, 153346), (162, 153382), (165, 153412),

Gene: ScottMcG_250 Start: 148519, Stop: 149040, Start Num: 71

Candidate Starts for ScottMcG_250:

(Start: 71 @148519 has 189 MA's), (Start: 77 @148525 has 2 MA's), (85, 148552), (86, 148558), (88, 148579), (121, 148723), (122, 148726), (124, 148744), (130, 148783), (131, 148786), (135, 148801), (137, 148804), (142, 148819), (154, 148897), (159, 148927), (174, 149026),

Gene: Sebata_258 Start: 149371, Stop: 149892, Start Num: 71

Candidate Starts for Sebata_258:

(Start: 71 @149371 has 189 MA's), (Start: 77 @149377 has 2 MA's), (85, 149404), (86, 149410), (88, 149431), (121, 149575), (122, 149578), (124, 149596), (130, 149635), (131, 149638), (135, 149653), (137, 149656), (142, 149671), (154, 149749), (159, 149779), (174, 149878),

Gene: Sendy_10 Start: 4403, Stop: 4897, Start Num: 78

Candidate Starts for Sendy_10:

(48, 4337), (Start: 78 @4403 has 48 MA's), (88, 4454), (99, 4490), (116, 4589), (122, 4601), (123, 4613), (125, 4628), (143, 4685), (170, 4880),

Gene: Settecandela_5 Start: 5780, Stop: 6235, Start Num: 72

Candidate Starts for Settecandela_5:

(53, 5735), (Start: 72 @5780 has 2 MA's), (86, 5816), (105, 5918), (121, 5969), (132, 6029), (134, 6035), (143, 6056), (149, 6104), (167, 6206),

Gene: SgtBeansprout_67 Start: 49181, Stop: 49909, Start Num: 19

Candidate Starts for SgtBeansprout_67:

(Start: 19 @49181 has 9 MA's), (21, 49196), (26, 49247), (28, 49256), (30, 49262), (32, 49280), (Start: 34 @49298 has 1 MA's), (36, 49307), (38, 49313), (39, 49337), (Start: 78 @49460 has 48 MA's), (Start: 80 @49463 has 4 MA's), (90, 49520), (93, 49532), (94, 49535), (117, 49646), (121, 49655), (122, 49658), (123, 49670), (132, 49715), (134, 49721), (148, 49784), (159, 49850), (166, 49889), (167, 49892), (169, 49904),

Gene: Shaobing_84 Start: 54409, Stop: 54861, Start Num: 78

Candidate Starts for Shaobing_84:

(Start: 63 @54385 has 2 MA's), (Start: 78 @54409 has 48 MA's), (Start: 80 @54412 has 4 MA's), (90, 54469), (93, 54481), (94, 54484), (115, 54592), (117, 54595), (123, 54619), (132, 54664), (134, 54670), (147, 54727), (166, 54838), (167, 54841),

Gene: Shaqnato_249 Start: 148727, Stop: 149248, Start Num: 71

Candidate Starts for Shaqnato_249:

(Start: 71 @148727 has 189 MA's), (Start: 77 @148733 has 2 MA's), (85, 148760), (86, 148766), (88, 148787), (121, 148931), (122, 148934), (124, 148952), (130, 148991), (131, 148994), (135, 149009), (137, 149012), (142, 149027), (154, 149105), (159, 149135), (174, 149234),

Gene: Shatter_58 Start: 48670, Stop: 48185, Start Num: 81

Candidate Starts for Shatter_58:

(6, 49066), (25, 48850), (Start: 81 @48670 has 4 MA's), (83, 48658), (88, 48625), (106, 48547), (114, 48523), (123, 48484), (143, 48412), (151, 48355), (155, 48325), (159, 48298), (166, 48256),

Gene: Shelob_259 Start: 150646, Stop: 151167, Start Num: 71

Candidate Starts for Shelob_259:

(Start: 71 @150646 has 189 MA's), (Start: 77 @150652 has 2 MA's), (85, 150679), (86, 150685), (88, 150706), (121, 150850), (122, 150853), (124, 150871), (130, 150910), (131, 150913), (135, 150928), (137, 150931), (142, 150946), (154, 151024), (159, 151054), (174, 151153),

Gene: ShiaLabeouf_256 Start: 148505, Stop: 149026, Start Num: 71

Candidate Starts for ShiaLabeouf_256:

(Start: 71 @148505 has 189 MA's), (Start: 77 @148511 has 2 MA's), (85, 148538), (86, 148544), (88, 148565), (121, 148709), (122, 148712), (124, 148730), (130, 148769), (131, 148772), (135, 148787), (137, 148790), (142, 148805), (154, 148883), (159, 148913), (174, 149012),

Gene: Shifa_234 Start: 147979, Stop: 148500, Start Num: 71

Candidate Starts for Shifa_234:

(Start: 71 @147979 has 189 MA's), (Start: 77 @147985 has 2 MA's), (85, 148012), (86, 148018), (88, 148039), (121, 148183), (122, 148186), (124, 148204), (130, 148243), (131, 148246), (135, 148261), (137, 148264), (142, 148279), (154, 148357), (159, 148387), (174, 148486),

Gene: Shinji_10 Start: 4504, Stop: 5007, Start Num: 78

Candidate Starts for Shinji_10:

(48, 4438), (Start: 78 @4504 has 48 MA's), (88, 4555), (99, 4591), (116, 4690), (122, 4702), (123, 4714), (125, 4729), (143, 4786), (147, 4822), (162, 4915),

Gene: Shnickers_257 Start: 148569, Stop: 149090, Start Num: 71

Candidate Starts for Shnickers_257:

(Start: 71 @148569 has 189 MA's), (Start: 77 @148575 has 2 MA's), (85, 148602), (86, 148608), (88, 148629), (121, 148773), (122, 148776), (124, 148794), (130, 148833), (131, 148836), (135, 148851), (137, 148854), (142, 148869), (154, 148947), (159, 148977), (174, 149076),

Gene: Shrimp_261 Start: 150263, Stop: 150784, Start Num: 71

Candidate Starts for Shrimp_261:

(Start: 71 @150263 has 189 MA's), (Start: 77 @150269 has 2 MA's), (85, 150296), (86, 150302), (88, 150323), (121, 150467), (122, 150470), (124, 150488), (130, 150527), (131, 150530), (135, 150545), (137, 150548), (142, 150563), (154, 150641), (159, 150671), (174, 150770),

Gene: SilverDipper_263 Start: 150112, Stop: 150633, Start Num: 71

Candidate Starts for SilverDipper_263:

(Start: 71 @150112 has 189 MA's), (Start: 77 @150118 has 2 MA's), (85, 150145), (86, 150151), (88, 150172), (121, 150316), (122, 150319), (124, 150337), (130, 150376), (131, 150379), (135, 150394), (137, 150397), (142, 150412), (154, 150490), (159, 150520), (174, 150619),

Gene: Sisko_55 Start: 48455, Stop: 47907, Start Num: 45

Candidate Starts for Sisko_55:

(Start: 45 @48455 has 3 MA's), (88, 48347), (106, 48269), (114, 48245), (132, 48161), (143, 48134), (155, 48047), (166, 47978),

Gene: Sixama_53 Start: 19721, Stop: 19218, Start Num: 57

Candidate Starts for Sixama_53:

(Start: 57 @19721 has 1 MA's), (79, 19673), (90, 19619), (121, 19493), (137, 19409), (156, 19301), (162, 19271),

Gene: Skog_128 Start: 52451, Stop: 52978, Start Num: 59

Candidate Starts for Skog_128:

(Start: 59 @52451 has 4 MA's), (Start: 78 @52487 has 48 MA's), (83, 52505), (93, 52559), (94, 52562), (95, 52565), (99, 52577), (103, 52613), (132, 52745), (143, 52775),

Gene: SmallFry_259 Start: 149470, Stop: 149991, Start Num: 71

Candidate Starts for SmallFry_259:

(Start: 71 @149470 has 189 MA's), (Start: 77 @149476 has 2 MA's), (85, 149503), (86, 149509), (88, 149530), (121, 149674), (122, 149677), (124, 149695), (130, 149734), (131, 149737), (135, 149752), (137, 149755), (142, 149770), (154, 149848), (159, 149878), (174, 149977),

Gene: SmokingBunny_10 Start: 4483, Stop: 4986, Start Num: 78

Candidate Starts for SmokingBunny_10:

(48, 4417), (Start: 78 @4483 has 48 MA's), (88, 4534), (99, 4570), (116, 4669), (122, 4681), (123, 4693), (125, 4708), (143, 4765), (147, 4801), (162, 4894),

Gene: SoilZilla_251 Start: 148614, Stop: 149135, Start Num: 71

Candidate Starts for SoilZilla_251:

(Start: 71 @148614 has 189 MA's), (Start: 77 @148620 has 2 MA's), (85, 148647), (86, 148653), (88, 148674), (121, 148818), (122, 148821), (124, 148839), (130, 148878), (131, 148881), (135, 148896), (137, 148899), (142, 148914), (154, 148992), (159, 149022), (174, 149121),

Gene: Sour_58 Start: 51175, Stop: 50615, Start Num: 54

Candidate Starts for Sour_58:

(5, 51583), (9, 51541), (11, 51526), (22, 51388), (25, 51352), (Start: 54 @51175 has 1 MA's), (83, 51109), (106, 50977), (114, 50953), (121, 50929), (132, 50869), (143, 50842), (154, 50758), (155, 50755), (166, 50686),

Gene: Spec_252 Start: 149482, Stop: 150003, Start Num: 71

Candidate Starts for Spec_252:

(Start: 71 @149482 has 189 MA's), (Start: 77 @149488 has 2 MA's), (85, 149515), (86, 149521), (88, 149542), (121, 149686), (122, 149689), (124, 149707), (130, 149746), (131, 149749), (135, 149764), (137, 149767), (142, 149782), (154, 149860), (159, 149890), (174, 149989),

Gene: Specks_263 Start: 150410, Stop: 150931, Start Num: 71

Candidate Starts for Specks_263:

(Start: 71 @150410 has 189 MA's), (Start: 77 @150416 has 2 MA's), (85, 150443), (86, 150449), (88, 150470), (121, 150614), (122, 150617), (124, 150635), (130, 150674), (131, 150677), (135, 150692), (137, 150695), (142, 150710), (154, 150788), (159, 150818), (174, 150917),

Gene: Sprinklers_256 Start: 149178, Stop: 149699, Start Num: 71

Candidate Starts for Sprinklers_256:

(Start: 71 @149178 has 189 MA's), (Start: 77 @149184 has 2 MA's), (85, 149211), (86, 149217), (88, 149238), (121, 149382), (122, 149385), (124, 149403), (130, 149442), (131, 149445), (135, 149460), (137, 149463), (142, 149478), (154, 149556), (159, 149586), (174, 149685),

Gene: Spud_250 Start: 148927, Stop: 149448, Start Num: 71

Candidate Starts for Spud_250:

(Start: 71 @148927 has 189 MA's), (Start: 77 @148933 has 2 MA's), (85, 148960), (86, 148966), (88, 148987), (121, 149131), (122, 149134), (124, 149152), (130, 149191), (131, 149194), (135, 149209), (137, 149212), (142, 149227), (154, 149305), (159, 149335), (174, 149434),

Gene: SrishMeg2525_256 Start: 149758, Stop: 150279, Start Num: 71

Candidate Starts for SrishMeg2525_256:

(Start: 71 @149758 has 189 MA's), (Start: 77 @149764 has 2 MA's), (85, 149791), (86, 149797), (88, 149818), (121, 149962), (122, 149965), (124, 149983), (130, 150022), (131, 150025), (135, 150040), (137, 150043), (142, 150058), (154, 150136), (159, 150166), (174, 150265),

Gene: StephanieG_252 Start: 150113, Stop: 150634, Start Num: 71

Candidate Starts for StephanieG_252:

(Start: 71 @150113 has 189 MA's), (Start: 77 @150119 has 2 MA's), (85, 150146), (86, 150152), (88, 150173), (121, 150317), (122, 150320), (124, 150338), (130, 150377), (131, 150380), (135, 150395), (137, 150398), (142, 150413), (154, 150491), (159, 150521), (174, 150620),

Gene: Stormageddon_163 Start: 108756, Stop: 109253, Start Num: 69

Candidate Starts for Stormageddon_163:

(Start: 69 @108756 has 3 MA's), (83, 108783), (93, 108837), (119, 108951), (127, 108996), (129, 109008), (132, 109014), (134, 109023), (143, 109044), (160, 109155), (164, 109185),

Gene: Stubby_241 Start: 146898, Stop: 147419, Start Num: 71

Candidate Starts for Stubby_241:

(Start: 71 @146898 has 189 MA's), (Start: 77 @146904 has 2 MA's), (85, 146931), (86, 146937), (88, 146958), (121, 147102), (122, 147105), (124, 147123), (130, 147162), (131, 147165), (135, 147180), (137, 147183), (142, 147198), (154, 147276), (159, 147306), (174, 147405),

Gene: StubbySaigey_265 Start: 150095, Stop: 150616, Start Num: 71

Candidate Starts for StubbySaigey_265:

(Start: 71 @150095 has 189 MA's), (Start: 77 @150101 has 2 MA's), (85, 150128), (86, 150134), (88, 150155), (121, 150299), (122, 150302), (124, 150320), (130, 150359), (131, 150362), (135, 150377), (137, 150380), (142, 150395), (154, 150473), (159, 150503), (174, 150602),

Gene: Substance289_254 Start: 149518, Stop: 150039, Start Num: 71

Candidate Starts for Substance289_254:

(Start: 71 @149518 has 189 MA's), (Start: 77 @149524 has 2 MA's), (85, 149551), (86, 149557), (88, 149578), (121, 149722), (122, 149725), (124, 149743), (130, 149782), (131, 149785), (135, 149800), (137, 149803), (142, 149818), (154, 149896), (159, 149926), (174, 150025),

Gene: Tainan_258 Start: 149033, Stop: 149554, Start Num: 71

Candidate Starts for Tainan_258:

(Start: 71 @149033 has 189 MA's), (Start: 77 @149039 has 2 MA's), (85, 149066), (86, 149072), (88, 149093), (121, 149237), (122, 149240), (124, 149258), (130, 149297), (131, 149300), (135, 149315), (137, 149318), (142, 149333), (154, 149411), (159, 149441), (174, 149540),

Gene: Teardrop_257 Start: 149422, Stop: 149943, Start Num: 71

Candidate Starts for Teardrop_257:

(Start: 71 @149422 has 189 MA's), (Start: 77 @149428 has 2 MA's), (85, 149455), (86, 149461), (88, 149482), (121, 149626), (122, 149629), (124, 149647), (130, 149686), (131, 149689), (135, 149704), (137, 149707), (142, 149722), (154, 149800), (159, 149830), (174, 149929),

Gene: Teejan_68 Start: 51794, Stop: 52522, Start Num: 19

Candidate Starts for Teejan_68:

(Start: 19 @51794 has 9 MA's), (21, 51809), (26, 51860), (28, 51869), (30, 51875), (32, 51893), (Start: 34 @51911 has 1 MA's), (36, 51920), (38, 51926), (39, 51950), (Start: 78 @52073 has 48 MA's), (Start: 80 @52076 has 4 MA's), (90, 52133), (93, 52145), (94, 52148), (117, 52259), (121, 52268), (122, 52271), (123, 52283), (132, 52328), (134, 52334), (148, 52397), (159, 52463), (166, 52502), (167, 52505), (169, 52517),

Gene: TillyBobJoe_10 Start: 4318, Stop: 4821, Start Num: 78

Candidate Starts for TillyBobJoe_10:

(48, 4252), (Start: 78 @4318 has 48 MA's), (88, 4369), (116, 4504), (121, 4513), (122, 4516), (123, 4528), (125, 4543), (143, 4600), (147, 4636),

Gene: TingHuaYa_88 Start: 54436, Stop: 54888, Start Num: 78

Candidate Starts for TingHuaYa_88:

(1, 53941), (10, 54028), (15, 54118), (33, 54274), (37, 54289), (44, 54355), (50, 54373), (53, 54382), (70, 54427), (Start: 78 @54436 has 48 MA's), (Start: 80 @54439 has 4 MA's), (90, 54496), (93, 54508), (94, 54511), (115, 54619), (117, 54622), (123, 54646), (132, 54691), (134, 54697), (146, 54751), (147, 54754), (166, 54865), (167, 54868),

Gene: TiniBug_83 Start: 53771, Stop: 54220, Start Num: 80

Candidate Starts for TiniBug_83:

(Start: 80 @53771 has 4 MA's), (90, 53828), (93, 53840), (94, 53843), (115, 53951), (117, 53954), (121, 53963), (123, 53978), (132, 54023), (134, 54029), (146, 54083), (147, 54086), (166, 54197), (167, 54200),

Gene: TinyTim_257 Start: 148582, Stop: 149103, Start Num: 71

Candidate Starts for TinyTim_257:

(Start: 71 @148582 has 189 MA's), (Start: 77 @148588 has 2 MA's), (85, 148615), (86, 148621), (88, 148642), (121, 148786), (122, 148789), (124, 148807), (130, 148846), (131, 148849), (135, 148864), (137, 148867), (142, 148882), (154, 148960), (159, 148990), (174, 149089),

Gene: Togo_10 Start: 4483, Stop: 4986, Start Num: 78

Candidate Starts for Togo_10:

(48, 4417), (Start: 78 @4483 has 48 MA's), (88, 4534), (99, 4570), (116, 4669), (122, 4681), (123, 4693), (125, 4708), (143, 4765), (147, 4801), (162, 4894),

Gene: Tonenili_280 Start: 153922, Stop: 154446, Start Num: 69

Candidate Starts for Tonenili_280:

(65, 153910), (Start: 69 @153922 has 3 MA's), (Start: 71 @153925 has 189 MA's), (Start: 77 @153931 has 2 MA's), (83, 153952), (85, 153958), (86, 153964), (88, 153985), (121, 154129), (122, 154132), (124, 154150), (137, 154210), (142, 154225), (154, 154303), (174, 154432),

Gene: Torres_69 Start: 51795, Stop: 52523, Start Num: 19

Candidate Starts for Torres_69:

(Start: 19 @51795 has 9 MA's), (21, 51810), (26, 51861), (28, 51870), (30, 51876), (32, 51894), (Start: 34 @51912 has 1 MA's), (36, 51921), (38, 51927), (39, 51951), (Start: 78 @52074 has 48 MA's), (Start: 80 @52077 has 4 MA's), (90, 52134), (93, 52146), (94, 52149), (117, 52260), (121, 52269), (122, 52272), (123, 52284), (132, 52329), (134, 52335), (148, 52398), (159, 52464), (166, 52503), (167, 52506), (169, 52518),

Gene: Tortoise16_256 Start: 148595, Stop: 149116, Start Num: 71

Candidate Starts for Tortoise16_256:

(Start: 71 @148595 has 189 MA's), (Start: 77 @148601 has 2 MA's), (85, 148628), (86, 148634), (88, 148655), (121, 148799), (122, 148802), (124, 148820), (130, 148859), (131, 148862), (135, 148877), (137, 148880), (142, 148895), (154, 148973), (159, 149003), (174, 149102),

Gene: TraderJ_60 Start: 50643, Stop: 50152, Start Num: 73

Candidate Starts for TraderJ_60:

(20, 50895), (Start: 73 @50643 has 4 MA's), (83, 50628), (88, 50595), (106, 50517), (121, 50469), (122, 50466), (143, 50382), (155, 50295), (163, 50241), (164, 50235), (166, 50229),

Gene: Trice_66 Start: 49182, Stop: 49910, Start Num: 19

Candidate Starts for Trice_66:

(Start: 19 @49182 has 9 MA's), (21, 49197), (26, 49248), (28, 49257), (30, 49263), (32, 49281), (Start: 34 @49299 has 1 MA's), (36, 49308), (38, 49314), (39, 49338), (Start: 78 @49461 has 48 MA's), (Start: 80 @49464 has 4 MA's), (90, 49521), (93, 49533), (94, 49536), (117, 49647), (121, 49656), (122, 49659), (123, 49671), (132, 49716), (134, 49722), (148, 49785), (159, 49851), (166, 49890), (167, 49893), (169, 49905),

Gene: Trinitium_255 Start: 148143, Stop: 148664, Start Num: 71

Candidate Starts for Trinitium_255:

(Start: 71 @148143 has 189 MA's), (Start: 77 @148149 has 2 MA's), (85, 148176), (86, 148182), (88, 148203), (121, 148347), (122, 148350), (124, 148368), (130, 148407), (131, 148410), (135, 148425), (137, 148428), (142, 148443), (154, 148521), (159, 148551), (174, 148650),

Gene: Trogglehumper_8 Start: 3148, Stop: 3639, Start Num: 78

Candidate Starts for Trogglehumper_8:

(Start: 78 @3148 has 48 MA's), (93, 3220), (110, 3298), (122, 3340), (134, 3403), (143, 3424), (164, 3565), (167, 3574),

Gene: Turret_249 Start: 147276, Stop: 147797, Start Num: 71

Candidate Starts for Turret_249:

(Start: 71 @147276 has 189 MA's), (Start: 77 @147282 has 2 MA's), (85, 147309), (86, 147315), (88, 147336), (121, 147480), (122, 147483), (124, 147501), (130, 147540), (131, 147543), (135, 147558), (137, 147561), (142, 147576), (154, 147654), (159, 147684), (174, 147783),

Gene: Twister6_10 Start: 4415, Stop: 4918, Start Num: 78

Candidate Starts for Twister6_10:

(48, 4349), (Start: 78 @4415 has 48 MA's), (88, 4466), (99, 4502), (116, 4601), (122, 4613), (123, 4625), (125, 4640), (143, 4697), (147, 4733), (162, 4826),

Gene: Twonlo_72 Start: 51554, Stop: 52015, Start Num: 78

Candidate Starts for Twonlo_72:

(Start: 78 @51554 has 48 MA's), (83, 51572), (86, 51584), (88, 51605), (112, 51716), (121, 51749), (123, 51764), (143, 51836), (145, 51866), (147, 51872), (167, 51992),

Gene: Tyke_255 Start: 150718, Stop: 151239, Start Num: 71

Candidate Starts for Tyke_255:

(Start: 71 @150718 has 189 MA's), (Start: 77 @150724 has 2 MA's), (85, 150751), (86, 150757), (88, 150778), (121, 150922), (122, 150925), (124, 150943), (130, 150982), (131, 150985), (135, 151000), (137, 151003), (142, 151018), (154, 151096), (159, 151126), (174, 151225),

Gene: Valary_11 Start: 4868, Stop: 5371, Start Num: 78

Candidate Starts for Valary_11:

(33, 4709), (48, 4802), (Start: 78 @4868 has 48 MA's), (88, 4919), (116, 5054), (122, 5066), (123, 5078), (125, 5093), (143, 5150),

Gene: ValleyTerrace_259 Start: 148853, Stop: 149374, Start Num: 71

Candidate Starts for ValleyTerrace_259:

(Start: 71 @148853 has 189 MA's), (Start: 77 @148859 has 2 MA's), (85, 148886), (86, 148892), (88, 148913), (121, 149057), (122, 149060), (124, 149078), (130, 149117), (131, 149120), (135, 149135), (137, 149138), (142, 149153), (154, 149231), (159, 149261), (174, 149360),

Gene: VanDeWege_11 Start: 4796, Stop: 5299, Start Num: 78

Candidate Starts for VanDeWege_11:

(23, 4544), (33, 4637), (48, 4730), (Start: 78 @4796 has 48 MA's), (88, 4847), (99, 4883), (116, 4982), (122, 4994), (123, 5006), (125, 5021), (143, 5078), (147, 5114), (151, 5135),

Gene: VanLee_114 Start: 59765, Stop: 60226, Start Num: 76

Candidate Starts for VanLee_114:

(Start: 76 @59765 has 2 MA's), (104, 59882), (118, 59942), (121, 59951), (137, 60035), (144, 60071), (149, 60101), (154, 60134), (162, 60173), (164, 60200),

Gene: Vortrix_277 Start: 153225, Stop: 153761, Start Num: 65

Candidate Starts for Vortrix_277:

(65, 153225), (Start: 69 @153237 has 3 MA's), (Start: 71 @153240 has 189 MA's), (Start: 77 @153246 has 2 MA's), (83, 153267), (85, 153273), (86, 153279), (88, 153300), (121, 153444), (122, 153447),

(124, 153465), (137, 153525), (142, 153540), (154, 153618), (174, 153747),

Gene: Wally_256 Start: 148837, Stop: 149358, Start Num: 71

Candidate Starts for Wally_256:

(Start: 71 @148837 has 189 MA's), (Start: 77 @148843 has 2 MA's), (85, 148870), (86, 148876), (88, 148897), (121, 149041), (122, 149044), (124, 149062), (130, 149101), (131, 149104), (135, 149119), (137, 149122), (142, 149137), (154, 149215), (159, 149245), (174, 149344),

Gene: Willis_259 Start: 149776, Stop: 150297, Start Num: 71

Candidate Starts for Willis_259:

(Start: 71 @149776 has 189 MA's), (Start: 77 @149782 has 2 MA's), (85, 149809), (86, 149815), (88, 149836), (121, 149980), (122, 149983), (124, 150001), (130, 150040), (131, 150043), (135, 150058), (137, 150061), (142, 150076), (154, 150154), (159, 150184), (174, 150283),

Gene: Wizard_10 Start: 4403, Stop: 4897, Start Num: 78

Candidate Starts for Wizard_10:

(46, 4331), (Start: 78 @4403 has 48 MA's), (88, 4454), (99, 4490), (116, 4589), (122, 4601), (123, 4613), (125, 4628), (143, 4685), (170, 4880),

Gene: Wooper_60 Start: 50652, Stop: 50161, Start Num: 73

Candidate Starts for Wooper_60:

(20, 50904), (Start: 73 @50652 has 4 MA's), (83, 50637), (88, 50604), (106, 50526), (121, 50478), (122, 50475), (143, 50391), (155, 50304), (163, 50250), (164, 50244), (166, 50238),

Gene: Yago84_55 Start: 48548, Stop: 48000, Start Num: 45

Candidate Starts for Yago84_55:

(Start: 45 @48548 has 3 MA's), (88, 48440), (106, 48362), (114, 48338), (132, 48254), (143, 48227), (155, 48140), (166, 48071),

Gene: Yassified_254 Start: 148972, Stop: 149493, Start Num: 71

Candidate Starts for Yassified_254:

(Start: 71 @148972 has 189 MA's), (Start: 77 @148978 has 2 MA's), (85, 149005), (86, 149011), (88, 149032), (121, 149176), (122, 149179), (124, 149197), (130, 149236), (131, 149239), (135, 149254), (137, 149257), (142, 149272), (154, 149350), (159, 149380), (174, 149479),

Gene: YemiJoy2021_259 Start: 149700, Stop: 150221, Start Num: 71

Candidate Starts for YemiJoy2021_259:

(Start: 71 @149700 has 189 MA's), (Start: 77 @149706 has 2 MA's), (85, 149733), (86, 149739), (88, 149760), (121, 149904), (122, 149907), (124, 149925), (130, 149964), (131, 149967), (135, 149982), (137, 149985), (142, 150000), (154, 150078), (159, 150108), (174, 150207),

Gene: Yeshua_60 Start: 50629, Stop: 50138, Start Num: 73

Candidate Starts for Yeshua_60:

(20, 50881), (Start: 73 @50629 has 4 MA's), (83, 50614), (88, 50581), (106, 50503), (121, 50455), (122, 50452), (143, 50368), (155, 50281), (163, 50227), (164, 50221), (166, 50215),

Gene: YoungMoneyMata_258 Start: 149968, Stop: 150489, Start Num: 71

Candidate Starts for YoungMoneyMata_258:

(Start: 71 @149968 has 189 MA's), (Start: 77 @149974 has 2 MA's), (85, 150001), (86, 150007), (88, 150028), (121, 150172), (122, 150175), (124, 150193), (130, 150232), (131, 150235), (135, 150250), (137, 150253), (142, 150268), (154, 150346), (159, 150376), (174, 150475),

Gene: Yucca_259 Start: 150141, Stop: 150662, Start Num: 71

Candidate Starts for Yucca_259:

(Start: 71 @150141 has 189 MA's), (Start: 77 @150147 has 2 MA's), (85, 150174), (86, 150180), (88, 150201), (121, 150345), (122, 150348), (124, 150366), (130, 150405), (131, 150408), (135, 150423), (137, 150426), (142, 150441), (154, 150519), (159, 150549), (174, 150648),

Gene: YungMoney_10 Start: 5568, Stop: 6068, Start Num: 78

Candidate Starts for YungMoney_10:

(46, 5496), (Start: 78 @5568 has 48 MA's), (91, 5628), (116, 5751), (122, 5763), (123, 5775), (125, 5790), (141, 5844), (143, 5847), (162, 5976),

Gene: Yunkel11_89 Start: 54017, Stop: 54469, Start Num: 78

Candidate Starts for Yunkel11_89:

(44, 53936), (48, 53951), (50, 53954), (53, 53963), (70, 54008), (Start: 78 @54017 has 48 MA's), (Start: 80 @54020 has 4 MA's), (90, 54077), (93, 54089), (94, 54092), (115, 54200), (117, 54203), (120, 54209), (123, 54227), (132, 54272), (146, 54332), (147, 54335), (162, 54416), (165, 54443), (166, 54446), (167, 54449),

Gene: Zalkecks_257 Start: 148798, Stop: 149319, Start Num: 71

Candidate Starts for Zalkecks_257:

(Start: 71 @148798 has 189 MA's), (Start: 77 @148804 has 2 MA's), (85, 148831), (86, 148837), (88, 148858), (121, 149002), (122, 149005), (124, 149023), (130, 149062), (131, 149065), (135, 149080), (137, 149083), (142, 149098), (154, 149176), (159, 149206), (174, 149305),

Gene: Zeenon_259 Start: 149332, Stop: 149853, Start Num: 71

Candidate Starts for Zeenon_259:

(Start: 71 @149332 has 189 MA's), (Start: 77 @149338 has 2 MA's), (85, 149365), (86, 149371), (88, 149392), (121, 149536), (122, 149539), (124, 149557), (130, 149596), (131, 149599), (135, 149614), (137, 149617), (142, 149632), (154, 149710), (159, 149740), (174, 149839),

Gene: ZygoTaiga_255 Start: 151245, Stop: 151766, Start Num: 71

Candidate Starts for ZygoTaiga_255:

(Start: 71 @151245 has 189 MA's), (Start: 77 @151251 has 2 MA's), (85, 151278), (86, 151284), (88, 151305), (121, 151449), (122, 151452), (124, 151470), (130, 151509), (131, 151512), (135, 151527), (137, 151530), (142, 151545), (154, 151623), (159, 151653), (174, 151752),