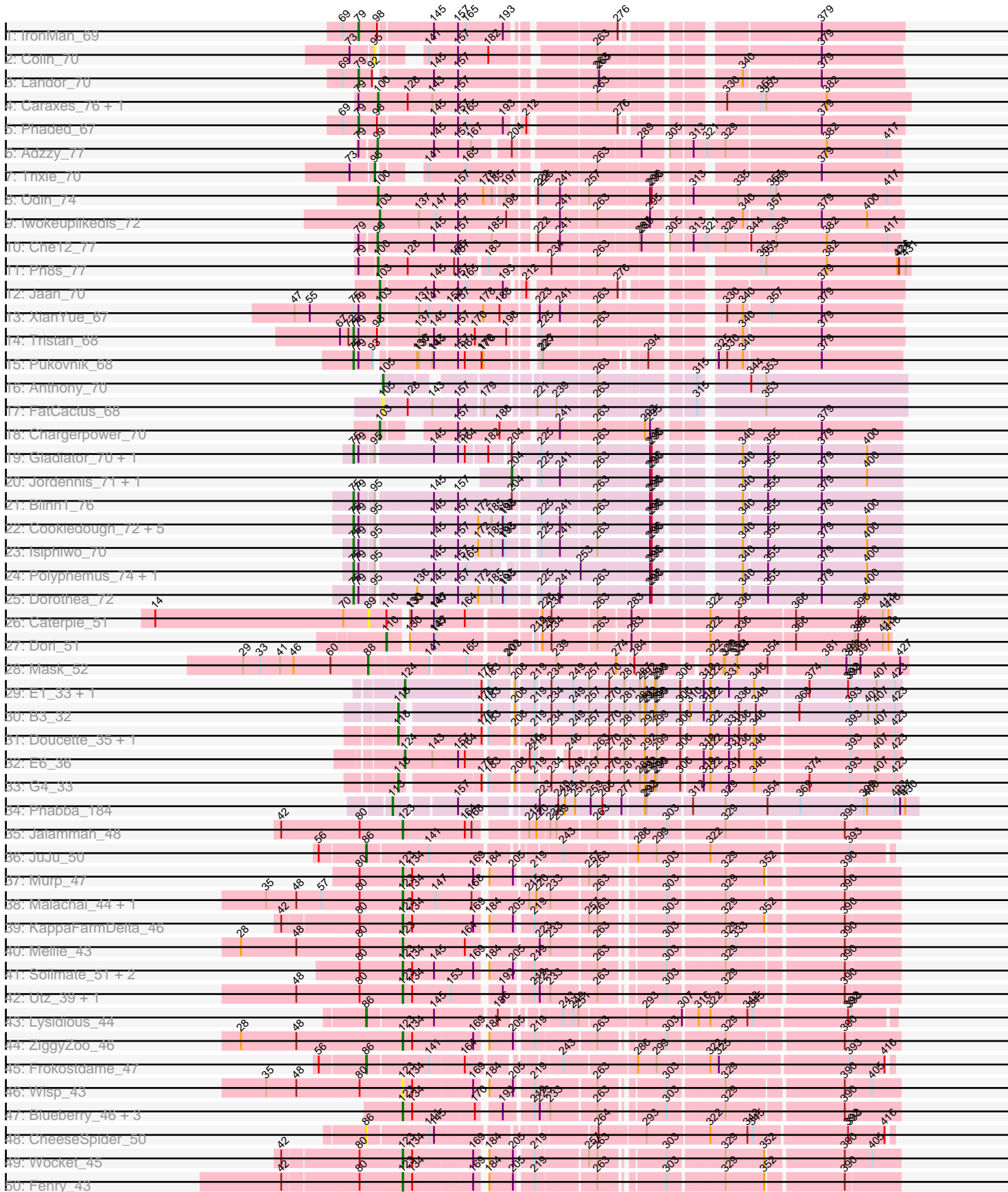
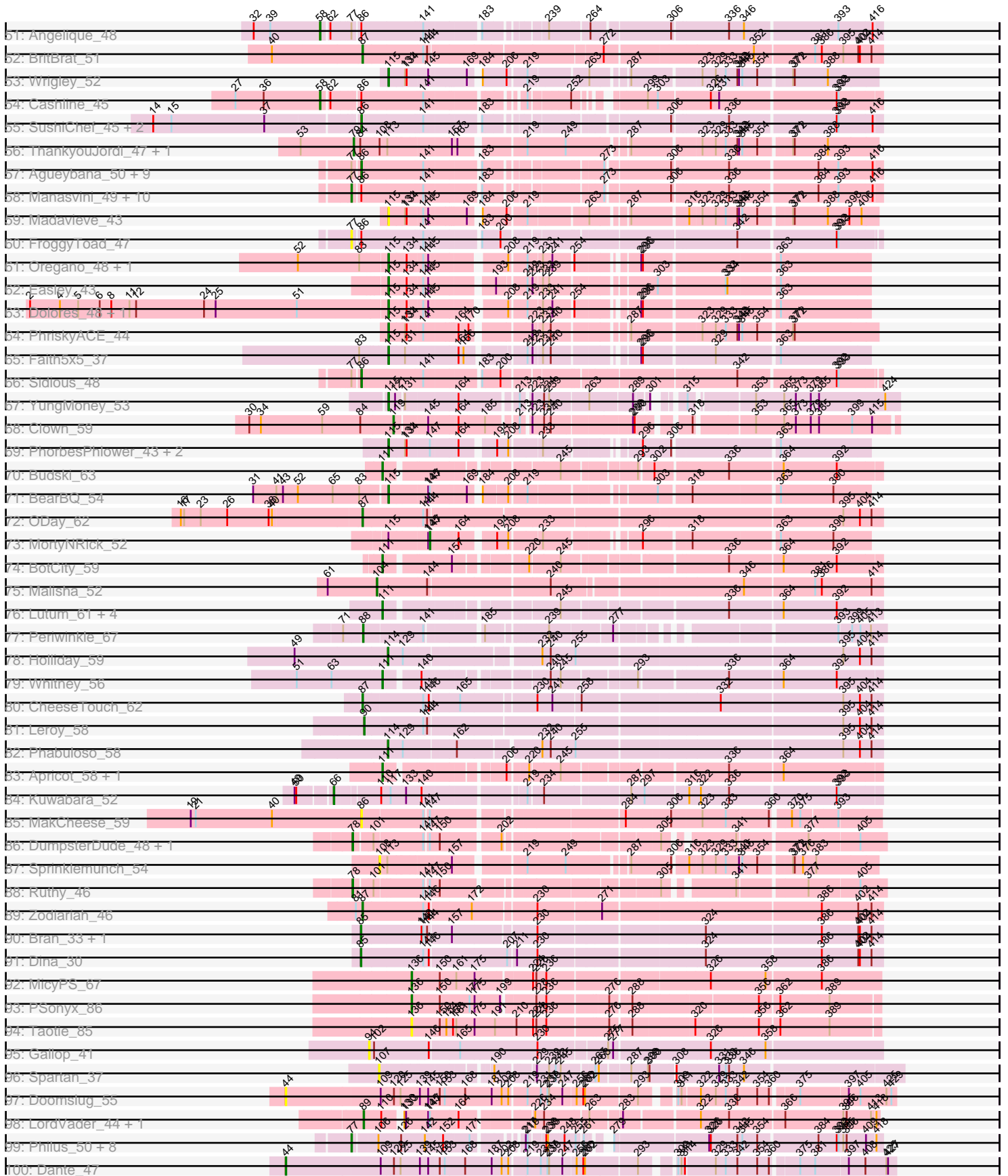


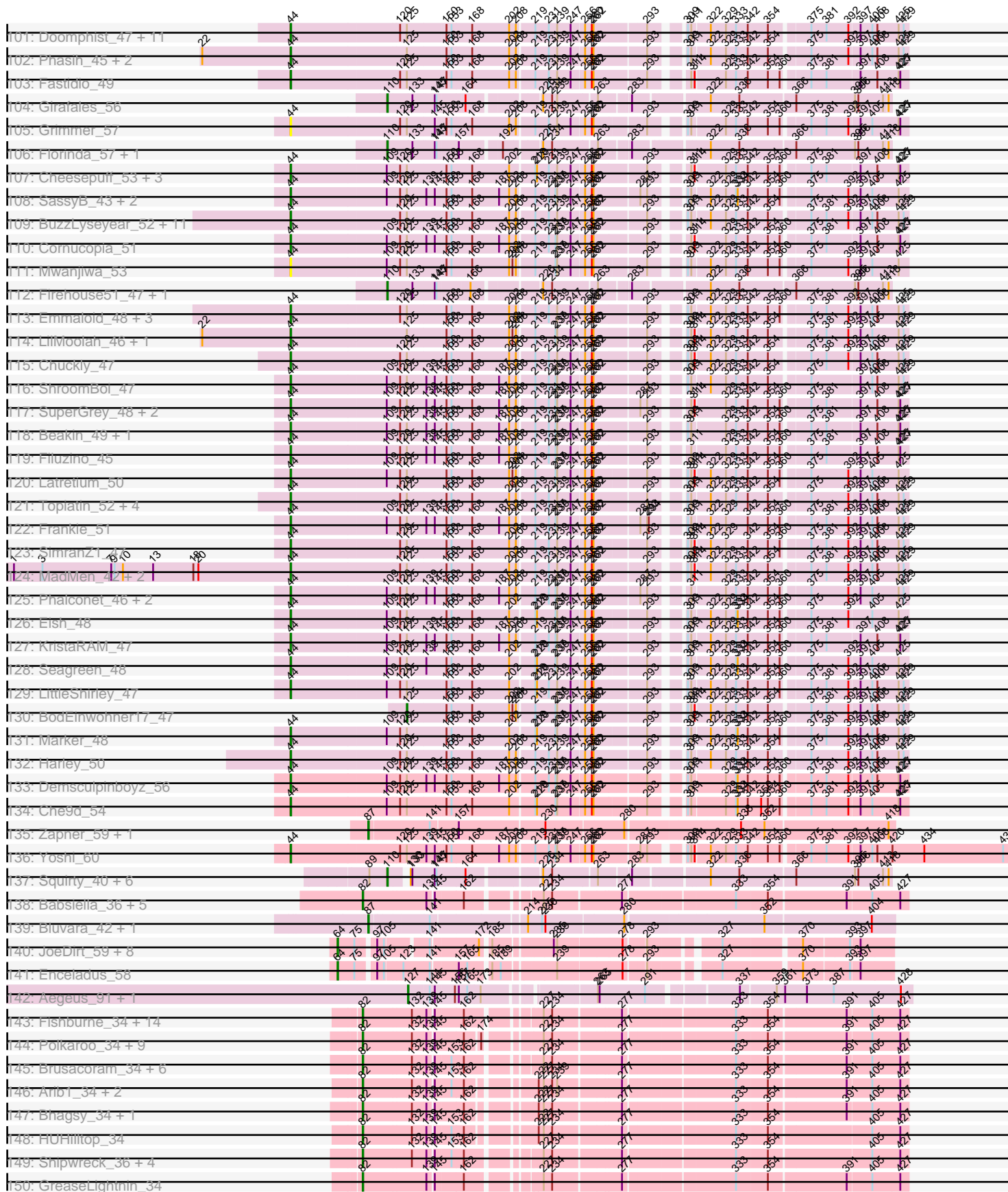
Pham 311131



Pham 311131



Pham 311131



Note: Tracks are now grouped by subcluster and scaled. Switching in subcluster is indicated by changes in track color. Track scale is now set by default to display the region 30 bp upstream of start 1 to 30 bp downstream of the last possible start. If this default region is judged to be packed too tightly with annotated starts, the track will be further scaled to only show that region of the ORF with annotated starts. This action will be indicated by adding "Zoomed" to the title. For starts, yellow indicates the location of called starts comprised solely of Glimmer/GeneMark auto-annotations, green indicates the location of called starts with at least 1 manual gene annotation.

Pham 311131 Report

This analysis was run 06/27/26 on database version 652.

Pham number 311131 has 337 members, 42 are drafts.

Phages represented in each track:

- Track 1 : IronMan_69
- Track 2 : Colin_70
- Track 3 : Landor_70
- Track 4 : Caraxes_76, Superchunk_75
- Track 5 : Phaded_67
- Track 6 : Adzzy_77
- Track 7 : Trixie_70
- Track 8 : Odin_74
- Track 9 : Iwokeuplikedis_72
- Track 10 : Che12_77
- Track 11 : Ph8s_77
- Track 12 : Jaan_70
- Track 13 : XianYue_67
- Track 14 : Tristan_68
- Track 15 : Pukovnik_68
- Track 16 : Anthony_70
- Track 17 : FatCactus_68
- Track 18 : Chargerpower_70
- Track 19 : Gladiator_70, Newrala_72
- Track 20 : Jordennis_71, Priamo_74
- Track 21 : Blinn1_76
- Track 22 : Cookiedough_72, Neeharika16_71, BABullseye_65, SuperCallie99_69, SuperAwesome_72, Pmask_71
- Track 23 : Isiphiwo_70
- Track 24 : Polyphemus_74, JewelBug_72
- Track 25 : Dorothea_72
- Track 26 : Caterpie_51
- Track 27 : Dori_51
- Track 28 : Mask_52
- Track 29 : E1_33, Anatole_33
- Track 30 : B3_32
- Track 31 : Doucette_35, B22_33
- Track 32 : E6_36
- Track 33 : G4_33
- Track 34 : Phabba_184
- Track 35 : Jalammah_48
- Track 36 : JuJu_50

- Track 37 : Murp_47
- Track 38 : Malachai_44, Begonia_44
- Track 39 : KappaFarmDelta_46
- Track 40 : Mellie_43
- Track 41 : Soilmate_51, Blino_49, CarolAnn_48
- Track 42 : Utz_39, Samba_44
- Track 43 : Lysidious_44
- Track 44 : ZiggyZoo_46
- Track 45 : Frokostdame_47
- Track 46 : Wisp_43
- Track 47 : Blueberry_46, Gambino_49, Azula_47, MissRona_47
- Track 48 : CheeseSpider_50
- Track 49 : Wocket_45
- Track 50 : Fenry_43
- Track 51 : Angelique_48
- Track 52 : BritBrat_51
- Track 53 : Wrigley_52
- Track 54 : Cashline_45
- Track 55 : SushiChef_45, Maridalia_49, Bunnybear_41
- Track 56 : ThankyouJordi_47, WelcomeAyanna_47
- Track 57 : Agueybana_50, BoyNamedSue_48, AlumE_48, Eudoria_48, Polly_45, Zameen_48, Trumpet_48, Tayonia_48, Suscepit_48, Neobush_48
- Track 58 : Manasvini_49, Pickett_41, Yeet412_43, LordFarquaad_45, Kita_49, Zirinka_45, EdnaMode_42, SoilAssassin_43, Attis_43, Antonio_48, Bialota_46
- Track 59 : Madavieve_43
- Track 60 : FroggyToad_47
- Track 61 : Oregano_48, Annalisa_45
- Track 62 : Easley_43
- Track 63 : Dolores_48, WinkNick_49
- Track 64 : PhriskyACE_44
- Track 65 : Faith5x5_37
- Track 66 : Sidious_48
- Track 67 : YungMoney_53
- Track 68 : Clown_59
- Track 69 : PhorbesPhlower_43, Pepperoni_38, InLimbo_43
- Track 70 : Budski_63
- Track 71 : BearBQ_54
- Track 72 : ODay_62
- Track 73 : MortyNRick_52
- Track 74 : BotCity_59
- Track 75 : Malisha_52
- Track 76 : Lutum_61, Asapag_56, Birdsong_56, Kenna_56, Getalong_59
- Track 77 : Periwinkle_67
- Track 78 : Holliday_59
- Track 79 : Whitney_56
- Track 80 : CheeseTouch_62
- Track 81 : Leroy_58
- Track 82 : Phabuloso_58
- Track 83 : Apricot_58, Crater_58
- Track 84 : Kuwabara_52
- Track 85 : MakCheese_59
- Track 86 : DumpsterDude_48, ArchiDore_46
- Track 87 : Sprinklemunch_54

- Track 88 : Ruthy_46
- Track 89 : Zodiariah_46
- Track 90 : Bran_33, Adelaide_30
- Track 91 : Dina_30
- Track 92 : MicyPS_67
- Track 93 : PSonyx_86
- Track 94 : Taotie_85
- Track 95 : Gallop_41
- Track 96 : Spartan_37
- Track 97 : Doomslug_55
- Track 98 : LordVader_44, LastJedi_41
- Track 99 : Philus_50, Mattes_50, SwagPigglett_52, DRBy19_49, BobaPhett_49, Saal_49, ByChance_37, Gorge_51, James_50
- Track 100 : Dante_47
- Track 101 : Doomphist_47, Poenanya_47, Job42_48, Dorothy_44, Ruby_46, Stap_46, RedBird_44, BlueCrab_45, MisterCuddles_47, Madiba_43, Blexus_45, Girr_48
- Track 102 : Phasih_45, RockyHorror_48, Zerg_46
- Track 103 : Fastidio_49
- Track 104 : Girafales_56
- Track 105 : Grimmer_57
- Track 106 : Florinda_57, Quico_55
- Track 107 : Cheesepuff_53, DaWorst_49, Ogopogo_48, DillTech15_46
- Track 108 : SassyB_43, Estave1_48, PopTart_43
- Track 109 : BuzzLyseyear_52, Karhdo_46, Tweety_47, Veteran_45, GUmbie_45, Mantra_44, GigiOuiOui_44, Starceвич_47, Vivum_50, Wee_50, SiSi_47, Hamulus_48
- Track 110 : Cornucopia_51
- Track 111 : Mwanjiwa_53
- Track 112 : Firehouse51_47, DosHalletts_47
- Track 113 : Emmaloid_48, DotProduct_44, Totinger_47, Slim_48
- Track 114 : LilMoolah_46, Nivrat_45
- Track 115 : Chuckly_47
- Track 116 : ShroomBoi_47
- Track 117 : SuperGrey_48, Fruitloop_46, Brushbloom_50
- Track 118 : Beakin_49, Jant_52
- Track 119 : Filuzino_45
- Track 120 : Latretium_50
- Track 121 : Topiatin_52, Rockne_45, PMC_42, Pollywog_46, Boomer_50
- Track 122 : Frankie_51
- Track 123 : SimranZ1_47
- Track 124 : MadMen_42, Beanstalk_50, Krakatau_45
- Track 125 : Phalconet_46, PhesterPhotato_49, Okabe_43
- Track 126 : Eish_48
- Track 127 : KristaRAM_47
- Track 128 : Seagreen_48
- Track 129 : LittleShirley_47
- Track 130 : BodEinwohner17_47
- Track 131 : Marker_48
- Track 132 : Harley_50
- Track 133 : Demsculpinboyz_56
- Track 134 : Che9d_54
- Track 135 : Zapner_59, Jabbawokkie_61

- Track 136 : Yoshi_60
- Track 137 : Squirty_40, Pippy_45, Jennelsea_44, Clifton_42, Donkeykong_46, Zizzle_51, Brocalys_43
- Track 138 : Babsiella_36, Island3_36, Brujita_36, HC_34, QueenHazel_32, Xula_31
- Track 139 : Bluvara_42, Stuck_49
- Track 140 : JoeDirt_59, CicholasNage_59, Wyatt2_61, Acquire49_60, Rose5_60, AvadaKedavra_60, Silverleaf_60, Tyson_60, Poochiewood_60
- Track 141 : Enceladus_58
- Track 142 : Aegeus_91, Baudelaire_91
- Track 143 : Fishburne_34, FirstPlacePfu_34, Bartholomew_33, Venti_34, Dynamo_34, BronnyJr_34, Mangethe_34, Phineas_34, Majeke_34, Vidya_34, Necropolis_34, Zilizabeth_34, Chubbello_34, Kari_34, Phegasus_34
- Track 144 : Polkaroo_34, KilKor_34, Gavriela_34, Jung_33, Phalm_34, Willsammy_33, Glaske_34, Megiddo_34, CactusJack_34, StressBall_34
- Track 145 : Brusacoram_34, Atcoo_34, Juniormint_34, Jebeks_35, Ksquared_34, Bunnies_34, Thespis_34
- Track 146 : Arib1_34, Langerak_34, GaloreK_34
- Track 147 : Bhagsy_34, PeanutPie_34
- Track 148 : HUHilltop_34
- Track 149 : Shipwreck_36, Pygmy_36, Camster_34, Bogie_36, Malithi_34
- Track 150 : GreaseLightnin_34
- Track 151 : Donovan_34
- Track 152 : Etoile_34, Techage_34
- Track 153 : StevieRay_34
- Track 154 : Sonah_34
- Track 155 : Tortellini_40, Xavia_42
- Track 156 : BigNuz_37, Nazo_38
- Track 157 : Phayonce_36
- Track 158 : Purky_41
- Track 159 : Bubbykins_83
- Track 160 : LilSpotty_46
- Track 161 : REQ2_43
- Track 162 : Gallia_8
- Track 163 : Min1_10
- Track 164 : Juicebox_36
- Track 165 : GAL1_34
- Track 166 : GAL1_39
- Track 167 : GMA4_34
- Track 168 : P1201_08
- Track 169 : GMA1_36
- Track 170 : Finkle_50

Summary of Final Annotations (See graph section above for start numbers):

The start number called the most often in the published annotations is 44, it was called in 70 of the 295 non-draft genes in the pham.

Genes that call this "Most Annotated" start:

- Beakin_49, Beanstalk_50, Blexus_45, BlueCrab_45, Boomer_50, Brushbloom_50, BuzzLyseyear_52, Che9d_54, Cheese puff_53, Chuckly_47, Cornucopia_51,

DaWorst_49, Dante_47, Demsculpinboyz_56, DillTech15_46, Doomphist_47, Doomslug_55, Dorothy_44, DotProduct_44, Eish_48, Emmaloid_48, Estave1_48, Fastidio_49, Filuzino_45, Frankie_51, Fruitloop_46, GUmbie_45, GigiOuiOui_44, Girr_48, Grimmer_57, Hamulus_48, Harley_50, Jant_52, Job42_48, Karhdo_46, Krakatau_45, KristaRAM_47, Latretium_50, LilMoolah_46, LittleShirley_47, MadMen_42, Madiba_43, Mantra_44, Marker_48, MisterCuddles_47, Mwanjiwa_53, Nivrat_45, Ogotogo_48, Okabe_43, PMC_42, Phalconet_46, Phasih_45, PhesterPhotato_49, Poenanya_47, Pollywog_46, PopTart_43, RedBird_44, Rockne_45, RockyHorror_48, Ruby_46, SassyB_43, Seagreen_48, ShroomBoi_47, SiSi_47, SimranZ1_47, Slim_48, Stap_46, Starcevich_47, SuperGrey_48, Topiatin_52, Totinger_47, Tweety_47, Veteran_45, Vivum_50, Wee_50, Yoshi_60, Zerg_46,

Genes that have the "Most Annotated" start but do not call it:

•

Genes that do not have the "Most Annotated" start:

• Acquire49_60, Adelaide_30, Adzzy_77, Aegeus_91, Agueybana_50, AlumE_48, Anatole_33, Angelique_48, Annalisa_45, Anthony_70, Antonio_48, Apricot_58, ArchiDore_46, Arib1_34, Asapag_56, Atcoo_34, Attis_43, AvadaKedavra_60, Azula_47, B22_33, B3_32, BABullseye_65, Babsiella_36, Bartholomew_33, Baudelaire_91, BearBQ_54, Begonia_44, Bhagsy_34, Bialota_46, BigNuz_37, Birdsong_56, Blinn1_76, Blino_49, Blueberry_46, Bluvara_42, BobaPhett_49, BodEinwohner17_47, Bogie_36, BotCity_59, BoyNamedSue_48, Bran_33, BritBrat_51, Brocalys_43, BronnyJr_34, Brujita_36, Brusacoram_34, Bubbykins_83, Budski_63, Bunnies_34, Bunnybear_41, ByChance_37, CactusJack_34, Camster_34, Caraxes_76, CarolAnn_48, Cashline_45, Caterpie_51, Chargerpower_70, Che12_77, CheeseSpider_50, CheeseTouch_62, Chubbello_34, CicholasNage_59, Clifton_42, Clown_59, Colin_70, Cookiedough_72, Crater_58, DRBy19_49, Dina_30, Dolores_48, Donkeykong_46, Donovan_34, Dori_51, Dorothea_72, DosHalletts_47, Doucette_35, DumpsterDude_48, Dynamo_34, E1_33, E6_36, Easley_43, EdnaMode_42, Enceladus_58, Etoile_34, Eudoria_48, Faith5x5_37, FatCactus_68, Fenry_43, Finkle_50, Firehouse51_47, FirstPlacePfu_34, Fishburne_34, Florinda_57, FroggyToad_47, Frokostdame_47, G4_33, GAL1_34, GAL1_39, GMA1_36, GMA4_34, Gallia_8, Gallop_41, GaloreK_34, Gambino_49, Gavriela_34, Getalong_59, Girafales_56, Gladiator_70, Glaske_34, Gorge_51, GreaseLightnin_34, HC_34, HUHilltop_34, Holliday_59, InLimbo_43, IronMan_69, Isiphiwo_70, Island3_36, Iwokeuplikedis_72, Jaan_70, Jabbawokkie_61, Jalammah_48, James_50, Jebeks_35, Jennelsea_44, JewelBug_72, JoeDirt_59, Jordennis_71, JuJu_50, Juicebox_36, Jung_33, Juniormint_34, KappaFarmDelta_46, Kari_34, Kenna_56, KilKor_34, Kita_49, Ksquared_34, Kuwabara_52, Landor_70, Langerak_34, LastJedi_41, Leroy_58, LilSpotty_46, LordFarquaad_45, LordVader_44, Lutum_61, Lysidious_44, Madavieve_43, Majeke_34, MakCheese_59, Malachai_44, Malisha_52, Malithi_34, Manasvini_49, Mangethe_34, Maridalia_49, Mask_52, Mattes_50, Megiddo_34, Mellie_43, MicyPS_67, Min1_10, MissRona_47, MortyNRick_52, Murp_47, Nazo_38, Necropolis_34, Neeharika16_71, Neobush_48, Newrala_72, ODay_62, Odin_74, Oregano_48, P1201_08, PSonyx_86, PeanutPie_34, Pepperoni_38, Periwinkle_67, Ph8s_77, Phabba_184, Phabuloso_58, Phaded_67, Phalm_34, Phayonce_36, Phegasus_34, Philus_50, Phineas_34, PhorbesPhlower_43, PhriskyACE_44, Pickett_41, Pippy_45, Pmask_71, Polkaroo_34, Polly_45, Polyphemus_74, Poochiewood_60, Priamo_74, Pukovnik_68, Purky_41, Pygmy_36, QueenHazel_32, Quico_55, REQ2_43, Rose5_60, Ruthy_46, Saal_49, Samba_44, Shipwreck_36,

Sidious_48, Silverleaf_60, SoilAssassin_43, Soilmate_51, Sonah_34, Spartan_37, Sprinklemunch_54, Squirty_40, StevieRay_34, StressBall_34, Stuck_49, SuperAwesome_72, SuperCallie99_69, Superchunk_75, Susceptit_48, SushiChef_45, SwagPigglett_52, Taotie_85, Tayonia_48, Techage_34, ThankyouJordi_47, Thespis_34, Tortellini_40, Tristan_68, Trixie_70, Trumpet_48, Tyson_60, Utz_39, Venti_34, Vidya_34, WelcomeAyanna_47, Whitney_56, Willsammy_33, WinkNick_49, Wisp_43, Wocket_45, Wrigley_52, Wyatt2_61, Xavia_42, XianYue_67, Xula_31, Yeet412_43, YungMoney_53, Zameen_48, Zapner_59, ZiggyZoo_46, Zilizebeth_34, Zirinka_45, Zizzle_51, Zodiariah_46,

Summary by start number:

Start 44:

- Found in 77 of 337 (22.8%) of genes in pham
- Manual Annotations of this start: 70 of 295
- Called 100.0% of time when present
- Phage (with cluster) where this start called: Beakin_49 (F1), Beanstalk_50 (F1), Blexus_45 (F1), BlueCrab_45 (F1), Boomer_50 (F1), Brushbloom_50 (F1), BuzzLyseyear_52 (F1), Che9d_54 (F2), Cheesepuff_53 (F1), Chuckly_47 (F1), Cornucopia_51 (F1), DaWorst_49 (F1), Dante_47 (F1), Demsculpinboyz_56 (F2), DillTech15_46 (F1), Doomphist_47 (F1), Doomslug_55 (F), Dorothy_44 (F1), DotProduct_44 (F1), Eish_48 (F1), Emmaloid_48 (F1), Estave1_48 (F1), Fastidio_49 (F1), Filuzino_45 (F1), Frankie_51 (F1), Fruitloop_46 (F1), GUmbie_45 (F1), GigiOuiOui_44 (F1), Girr_48 (F1), Grimmer_57 (F1), Hamulus_48 (F1), Harley_50 (F1), Jant_52 (F1), Job42_48 (F1), Karhdo_46 (F1), Krakatau_45 (F1), KristaRAM_47 (F1), Latretium_50 (F1), LilMoolah_46 (F1), LittleShirley_47 (F1), MadMen_42 (F1), Madiba_43 (F1), Mantra_44 (F1), Marker_48 (F1), MisterCuddles_47 (F1), Mwanjiwa_53 (F1), Nivrat_45 (F1), Ogopogo_48 (F1), Okabe_43 (F8), PMC_42 (F1), Phalconet_46 (F1), Phasih_45 (F1), PhesterPotato_49 (F1), Poenanya_47 (F1), Pollywog_46 (F1), PopTart_43 (F1), RedBird_44 (F1), Rockne_45 (F1), RockyHorror_48 (F1), Ruby_46 (F1), SassyB_43 (F1), Seagreen_48 (F1), ShroomBoi_47 (F1), SiSi_47 (F1), SimranZ1_47 (F1), Slim_48 (F1), Stap_46 (F1), Starcevich_47 (F1), SuperGrey_48 (F1), Topiatin_52 (F1), Totinger_47 (F1), Tweety_47 (F1), Veteran_45 (F1), Vivum_50 (F1), Wee_50 (F1), Yoshi_60 (F2), Zerg_46 (F1),

Start 58:

- Found in 2 of 337 (0.6%) of genes in pham
- Manual Annotations of this start: 2 of 295
- Called 100.0% of time when present
- Phage (with cluster) where this start called: Angelique_48 (CY1), Cashline_45 (CY6),

Start 60:

- Found in 3 of 337 (0.9%) of genes in pham
- No Manual Annotations of this start.
- Called 66.7% of time when present
- Phage (with cluster) where this start called: Gallia_8 (singleton), P1201_08 (singleton),

Start 64:

- Found in 10 of 337 (3.0%) of genes in pham
- Manual Annotations of this start: 9 of 295

- Called 100.0% of time when present
- Phage (with cluster) where this start called: Acquire49_60 (L1), AvadaKedavra_60 (L1), CicholasNage_59 (L1), Enceladus_58 (L1), JoeDirt_59 (L1), Poochiewood_60 (L1), Rose5_60 (L1), Silverleaf_60 (L1), Tyson_60 (L1), Wyatt2_61 (L1),

Start 66:

- Found in 1 of 337 (0.3%) of genes in pham
- Manual Annotations of this start: 1 of 295
- Called 100.0% of time when present
- Phage (with cluster) where this start called: Kuwabara_52 (DN4),

Start 72:

- Found in 2 of 337 (0.6%) of genes in pham
- No Manual Annotations of this start.
- Called 50.0% of time when present
- Phage (with cluster) where this start called: REQ2_43 (singleton),

Start 74:

- Found in 1 of 337 (0.3%) of genes in pham
- Manual Annotations of this start: 1 of 295
- Called 100.0% of time when present
- Phage (with cluster) where this start called: Finkle_50 (singleton),

Start 75:

- Found in 26 of 337 (7.7%) of genes in pham
- Manual Annotations of this start: 15 of 295
- Called 57.7% of time when present
- Phage (with cluster) where this start called: BABullseye_65 (A6), Blinn1_76 (A6), Cookiedough_72 (A6), Dorothea_72 (A6), Gladiator_70 (A6), Isiphiwo_70 (A6), JewelBug_72 (A6), Neeharika16_71 (A6), Newrala_72 (A6), Pmask_71 (A6), Polyphemos_74 (A6), Pukovnik_68 (A2), SuperAwesome_72 (A6), SuperCallie99_69 (A6), Tristan_68 (A2),

Start 77:

- Found in 33 of 337 (9.8%) of genes in pham
- Manual Annotations of this start: 20 of 295
- Called 63.6% of time when present
- Phage (with cluster) where this start called: Antonio_48 (CZ1), Attis_43 (CZ2), Bialota_46 (CZ1), BobaPhett_49 (F1), ByChance_37 (F1), DRBy19_49 (F1), EdnaMode_42 (CZ2), FroggyToad_47 (CZ2), Gorge_51 (F1), James_50 (F1), Kita_49 (CZ1), LordFarquaad_45 (CZ2), Manasvini_49 (CZ1), Mattes_50 (F1), Philus_50 (F1), Pickett_41 (CZ2), Saal_49 (F1), SoilAssassin_43 (CZ2), SwagPiggett_52 (F1), Yeet412_43 (CZ2), Zirinka_45 (CZ1),

Start 78:

- Found in 3 of 337 (0.9%) of genes in pham
- Manual Annotations of this start: 3 of 295
- Called 100.0% of time when present
- Phage (with cluster) where this start called: ArchiDore_46 (DW), DumpsterDude_48 (DW), Ruthy_46 (DW),

Start 79:

- Found in 26 of 337 (7.7%) of genes in pham

- Manual Annotations of this start: 5 of 295
- Called 19.2% of time when present
- Phage (with cluster) where this start called: IronMan_69 (A2), Landor_70 (A2), Phaded_67 (A2), ThankyouJordi_47 (CZ1), WelcomeAyanna_47 (CZ1),

Start 82:

- Found in 55 of 337 (16.3%) of genes in pham
- Manual Annotations of this start: 49 of 295
- Called 100.0% of time when present
- Phage (with cluster) where this start called: Arib1_34 (P1), Atcoo_34 (P1), Babsiella_36 (I1), Bartholomew_33 (P1), Bhagsy_34 (P1), Bogie_36 (P1), BronnyJr_34 (P1), Brujita_36 (I1), Brusacoram_34 (P1), Bunnies_34 (P1), CactusJack_34 (P1), Camster_34 (P1), Chubbello_34 (P1), Donovan_34 (P1), Dynamo_34 (P1), Etoile_34 (P1), FirstPlacePfu_34 (P1), Fishburne_34 (P1), GaloreK_34 (P1), Gavriela_34 (P1), Glaske_34 (P1), GreaseLightnin_34 (P1), HC_34 (I1), HUHilltop_34 (P1), Island3_36 (I1), Jebeks_35 (P1), Jung_33 (P1), Juniormint_34 (P1), Kari_34 (P1), KilKor_34 (P1), Ksquared_34 (P1), Langerak_34 (P1), Majeke_34 (P1), Malithi_34 (P1), Mangethe_34 (P1), Megiddo_34 (P1), Necropolis_34 (P1), PeanutPie_34 (P1), Phalm_34 (P1), Phegasus_34 (P1), Phineas_34 (P1), Polkaroo_34 (P1), Pygmy_36 (P1), QueenHazel_32 (I1), Shipwreck_36 (P1), Sonah_34 (P1), StevieRay_34 (P1), StressBall_34 (P1), Techage_34 (P1), Thespis_34 (P1), Venti_34 (P1), Vidya_34 (P1), Willsammy_33 (P1), Xula_31 (I1), Zilizebeth_34 (P1),

Start 85:

- Found in 3 of 337 (0.9%) of genes in pham
- Manual Annotations of this start: 3 of 295
- Called 100.0% of time when present
- Phage (with cluster) where this start called: Adelaide_30 (EP), Bran_33 (EP), Dina_30 (EP),

Start 86:

- Found in 33 of 337 (9.8%) of genes in pham
- Manual Annotations of this start: 16 of 295
- Called 57.6% of time when present
- Phage (with cluster) where this start called: Agueybana_50 (CZ1), AlumE_48 (CZ1), BoyNamedSue_48 (CZ1), Bunnybear_41 (CZ), CheeseSpider_50 (CV), Eudoria_48 (CZ1), Frokostdame_47 (CV), JuJu_50 (CV), Lysidious_44 (CV), MakCheese_59 (DW), Maridalia_49 (CZ1), Neobush_48 (CZ1), Polly_45 (CZ1), Sidious_48 (CZ7), Suscepit_48 (CZ1), SushiChef_45 (CZ), Tayonia_48 (CZ1), Trumpet_48 (CZ1), Zameen_48 (CZ1),

Start 87:

- Found in 10 of 337 (3.0%) of genes in pham
- Manual Annotations of this start: 8 of 295
- Called 90.0% of time when present
- Phage (with cluster) where this start called: Bluvara_42 (I3), BritBrat_51 (CY2), CheeseTouch_62 (DN1), Jabbawokkie_61 (F2), LilSpotty_46 (singleton), ODay_62 (DN), Stuck_49 (I2), Zapner_59 (F2), Zodiariah_46 (DW),

Start 88:

- Found in 2 of 337 (0.6%) of genes in pham
- Manual Annotations of this start: 2 of 295

- Called 100.0% of time when present
- Phage (with cluster) where this start called: Mask_52 (AD), Periwinkle_67 (DN1),

Start 89:

- Found in 10 of 337 (3.0%) of genes in pham
- Manual Annotations of this start: 1 of 295
- Called 30.0% of time when present
- Phage (with cluster) where this start called: Caterpie_51 (AD), LastJedi_41 (F1), LordVader_44 (F),

Start 90:

- Found in 1 of 337 (0.3%) of genes in pham
- Manual Annotations of this start: 1 of 295
- Called 100.0% of time when present
- Phage (with cluster) where this start called: Leroy_58 (DN1),

Start 91:

- Found in 1 of 337 (0.3%) of genes in pham
- No Manual Annotations of this start.
- Called 100.0% of time when present
- Phage (with cluster) where this start called: GAL1_39 (singleton),

Start 94:

- Found in 1 of 337 (0.3%) of genes in pham
- No Manual Annotations of this start.
- Called 100.0% of time when present
- Phage (with cluster) where this start called: Gallop_41 (ES),

Start 95:

- Found in 15 of 337 (4.5%) of genes in pham
- Manual Annotations of this start: 1 of 295
- Called 13.3% of time when present
- Phage (with cluster) where this start called: Colin_70 (A2), Trixie_70 (A2),

Start 96:

- Found in 4 of 337 (1.2%) of genes in pham
- Manual Annotations of this start: 4 of 295
- Called 100.0% of time when present
- Phage (with cluster) where this start called: BigNuz_37 (P4), Nazo_38 (P4), Phayonce_36 (P5), Purky_41 (P6),

Start 97:

- Found in 11 of 337 (3.3%) of genes in pham
- No Manual Annotations of this start.
- Called 9.1% of time when present
- Phage (with cluster) where this start called: GMA4_34 (singleton),

Start 99:

- Found in 3 of 337 (0.9%) of genes in pham
- Manual Annotations of this start: 2 of 295
- Called 66.7% of time when present
- Phage (with cluster) where this start called: Adzzy_77 (A2), Che12_77 (A2),

Start 100:

- Found in 4 of 337 (1.2%) of genes in pham
- Manual Annotations of this start: 3 of 295
- Called 100.0% of time when present
- Phage (with cluster) where this start called: Caraxes_76 (A2), Odin_74 (A2), Ph8s_77 (A2), Superchunk_75 (A2),

Start 103:

- Found in 4 of 337 (1.2%) of genes in pham
- Manual Annotations of this start: 4 of 295
- Called 100.0% of time when present
- Phage (with cluster) where this start called: Chargerpower_70 (A22), Iwokeuplikedis_72 (A2), Jaan_70 (A2), XianYue_67 (A2),

Start 104:

- Found in 2 of 337 (0.6%) of genes in pham
- Manual Annotations of this start: 1 of 295
- Called 100.0% of time when present
- Phage (with cluster) where this start called: GAL1_34 (singleton), Malisha_52 (DN),

Start 105:

- Found in 14 of 337 (4.2%) of genes in pham
- Manual Annotations of this start: 3 of 295
- Called 28.6% of time when present
- Phage (with cluster) where this start called: Anthony_70 (A20), FatCactus_68 (A20), Tortellini_40 (P2), Xavia_42 (P3),

Start 107:

- Found in 1 of 337 (0.3%) of genes in pham
- No Manual Annotations of this start.
- Called 100.0% of time when present
- Phage (with cluster) where this start called: Spartan_37 (ES),

Start 108:

- Found in 6 of 337 (1.8%) of genes in pham
- Manual Annotations of this start: 1 of 295
- Called 33.3% of time when present
- Phage (with cluster) where this start called: Juicebox_36 (singleton), Sprinklemunch_54 (DW),

Start 110:

- Found in 18 of 337 (5.3%) of genes in pham
- Manual Annotations of this start: 12 of 295
- Called 72.2% of time when present
- Phage (with cluster) where this start called: Brocalys_43 (F1), Clifton_42 (F1), Donkeykong_46 (F1), Dori_51 (AD), DosHalletts_47 (F1), Firehouse51_47 (F1), Florinda_57 (F1), Girafales_56 (F1), Jennelsea_44 (F1), Pippy_45 (F1), Quico_55 (F1), Squirry_40 (F3), Zizzle_51 (F1),

Start 111:

- Found in 11 of 337 (3.3%) of genes in pham
- Manual Annotations of this start: 10 of 295
- Called 100.0% of time when present

- Phage (with cluster) where this start called: Apricot_58 (DN3), Asapag_56 (DN1), Birdsong_56 (DN), BotCity_59 (DN), Bubbykins_83 (UNK), Budski_63 (DN), Crater_58 (DN3), Getalong_59 (DN1), Kenna_56 (DN1), Lutum_61 (DN1), Whitney_56 (DN1),

Start 113:

- Found in 5 of 337 (1.5%) of genes in pham
- Manual Annotations of this start: 1 of 295
- Called 20.0% of time when present
- Phage (with cluster) where this start called: Phabba_184 (C2),

Start 114:

- Found in 3 of 337 (0.9%) of genes in pham
- Manual Annotations of this start: 2 of 295
- Called 66.7% of time when present
- Phage (with cluster) where this start called: Holliday_59 (DN1), Phabuloso_58 (DN1),

Start 115:

- Found in 15 of 337 (4.5%) of genes in pham
- Manual Annotations of this start: 12 of 295
- Called 93.3% of time when present
- Phage (with cluster) where this start called: Annalisa_45 (CZ4), BearBQ_54 (DN), Dolores_48 (CZ4), Easley_43 (CZ4), Faith5x5_37 (CZ6), InLimbo_43 (DH), Madavieve_43 (CZ1), Oregano_48 (CZ4), Pepperoni_38 (CZ), PhorbesPhlower_43 (DH), PhriskyACE_44 (CZ4), WinkNick_49 (CZ4), Wrigley_52 (CY4), YungMoney_53 (DC1),

Start 116:

- Found in 1 of 337 (0.3%) of genes in pham
- No Manual Annotations of this start.
- Called 100.0% of time when present
- Phage (with cluster) where this start called: GMA1_36 (singleton),

Start 118:

- Found in 4 of 337 (1.2%) of genes in pham
- Manual Annotations of this start: 4 of 295
- Called 100.0% of time when present
- Phage (with cluster) where this start called: B22_33 (BW), B3_32 (BV), Doucette_35 (BW), G4_33 (BW),

Start 119:

- Found in 1 of 337 (0.3%) of genes in pham
- Manual Annotations of this start: 1 of 295
- Called 100.0% of time when present
- Phage (with cluster) where this start called: Clown_59 (DC2),

Start 123:

- Found in 20 of 337 (5.9%) of genes in pham
- Manual Annotations of this start: 17 of 295
- Called 95.0% of time when present
- Phage (with cluster) where this start called: Azula_47 (CV), Begonia_44 (CV), Blino_49 (CV), Blueberry_46 (CV), CarolAnn_48 (CV), Fenry_43 (CV), Gambino_49

(CV), Jalamah_48 (CV), KappaFarmDelta_46 (CV), Malachai_44 (CV), Mellie_43 (CV), MissRona_47 (CV), Murp_47 (CV), Samba_44 (CV), Soilmate_51 (CV), Utz_39 (CV), Wisp_43 (CV), Wocket_45 (CV), ZiggyZoo_46 (CV),

Start 124:

- Found in 3 of 337 (0.9%) of genes in pham
- Manual Annotations of this start: 3 of 295
- Called 100.0% of time when present
- Phage (with cluster) where this start called: Anatole_33 (BV), E1_33 (BV), E6_36 (BW),

Start 125:

- Found in 78 of 337 (23.1%) of genes in pham
- Manual Annotations of this start: 1 of 295
- Called 1.3% of time when present
- Phage (with cluster) where this start called: BodEinwohner17_47 (F1),

Start 127:

- Found in 2 of 337 (0.6%) of genes in pham
- Manual Annotations of this start: 2 of 295
- Called 100.0% of time when present
- Phage (with cluster) where this start called: Aegeus_91 (L5), Baudelaire_91 (L5),

Start 136:

- Found in 5 of 337 (1.5%) of genes in pham
- Manual Annotations of this start: 2 of 295
- Called 60.0% of time when present
- Phage (with cluster) where this start called: MicyPS_67 (EQ), PSonyx_86 (EQ), Taotie_85 (EQ),

Start 147:

- Found in 33 of 337 (9.8%) of genes in pham
- Manual Annotations of this start: 1 of 295
- Called 3.0% of time when present
- Phage (with cluster) where this start called: MortyNRick_52 (DN),

Start 149:

- Found in 1 of 337 (0.3%) of genes in pham
- No Manual Annotations of this start.
- Called 100.0% of time when present
- Phage (with cluster) where this start called: Min1_10 (singleton),

Start 204:

- Found in 11 of 337 (3.3%) of genes in pham
- Manual Annotations of this start: 2 of 295
- Called 18.2% of time when present
- Phage (with cluster) where this start called: Jordennis_71 (A6), Priamo_74 (A6),

Summary by clusters:

There are 48 clusters represented in this pham: DN, singleton, I2, DH, CY2, CZ2, CZ1, CZ6, CZ7, CZ4, BV, BW, DW, CY6, I1, DC2, I3, P5, EP, DN4, A2, DN1, DN3, A6, C2, P2, P3, CY1, P1, P6, AD, P4, F, A22, CZ, L5, L1, UNK, EQ, CV, ES, DC1,

A20, F1, F2, F3, F8, CY4,

Info for manual annotations of cluster A2:

- Start number 75 was manually annotated 2 times for cluster A2.
- Start number 79 was manually annotated 3 times for cluster A2.
- Start number 95 was manually annotated 1 time for cluster A2.
- Start number 99 was manually annotated 2 times for cluster A2.
- Start number 100 was manually annotated 3 times for cluster A2.
- Start number 103 was manually annotated 3 times for cluster A2.

Info for manual annotations of cluster A20:

- Start number 105 was manually annotated 1 time for cluster A20.

Info for manual annotations of cluster A22:

- Start number 103 was manually annotated 1 time for cluster A22.

Info for manual annotations of cluster A6:

- Start number 75 was manually annotated 13 times for cluster A6.
- Start number 204 was manually annotated 2 times for cluster A6.

Info for manual annotations of cluster AD:

- Start number 88 was manually annotated 1 time for cluster AD.
- Start number 110 was manually annotated 1 time for cluster AD.

Info for manual annotations of cluster BV:

- Start number 118 was manually annotated 1 time for cluster BV.
- Start number 124 was manually annotated 2 times for cluster BV.

Info for manual annotations of cluster BW:

- Start number 118 was manually annotated 3 times for cluster BW.
- Start number 124 was manually annotated 1 time for cluster BW.

Info for manual annotations of cluster C2:

- Start number 113 was manually annotated 1 time for cluster C2.

Info for manual annotations of cluster CV:

- Start number 86 was manually annotated 3 times for cluster CV.
- Start number 123 was manually annotated 17 times for cluster CV.

Info for manual annotations of cluster CY1:

- Start number 58 was manually annotated 1 time for cluster CY1.

Info for manual annotations of cluster CY2:

- Start number 87 was manually annotated 1 time for cluster CY2.

Info for manual annotations of cluster CY4:

- Start number 115 was manually annotated 1 time for cluster CY4.

Info for manual annotations of cluster CY6:

- Start number 58 was manually annotated 1 time for cluster CY6.

Info for manual annotations of cluster CZ:

- Start number 86 was manually annotated 1 time for cluster CZ.

- Start number 115 was manually annotated 1 time for cluster CZ.

Info for manual annotations of cluster CZ1:

- Start number 77 was manually annotated 5 times for cluster CZ1.
- Start number 79 was manually annotated 2 times for cluster CZ1.
- Start number 86 was manually annotated 11 times for cluster CZ1.

Info for manual annotations of cluster CZ2:

- Start number 77 was manually annotated 6 times for cluster CZ2.

Info for manual annotations of cluster CZ4:

- Start number 115 was manually annotated 6 times for cluster CZ4.

Info for manual annotations of cluster CZ6:

- Start number 115 was manually annotated 1 time for cluster CZ6.

Info for manual annotations of cluster CZ7:

- Start number 86 was manually annotated 1 time for cluster CZ7.

Info for manual annotations of cluster DC1:

- Start number 115 was manually annotated 1 time for cluster DC1.

Info for manual annotations of cluster DC2:

- Start number 119 was manually annotated 1 time for cluster DC2.

Info for manual annotations of cluster DH:

- Start number 115 was manually annotated 1 time for cluster DH.

Info for manual annotations of cluster DN:

- Start number 87 was manually annotated 1 time for cluster DN.
- Start number 104 was manually annotated 1 time for cluster DN.
- Start number 111 was manually annotated 3 times for cluster DN.
- Start number 115 was manually annotated 1 time for cluster DN.
- Start number 147 was manually annotated 1 time for cluster DN.

Info for manual annotations of cluster DN1:

- Start number 87 was manually annotated 1 time for cluster DN1.
- Start number 88 was manually annotated 1 time for cluster DN1.
- Start number 90 was manually annotated 1 time for cluster DN1.
- Start number 111 was manually annotated 5 times for cluster DN1.
- Start number 114 was manually annotated 2 times for cluster DN1.

Info for manual annotations of cluster DN3:

- Start number 111 was manually annotated 2 times for cluster DN3.

Info for manual annotations of cluster DN4:

- Start number 66 was manually annotated 1 time for cluster DN4.

Info for manual annotations of cluster DW:

- Start number 78 was manually annotated 3 times for cluster DW.
- Start number 87 was manually annotated 1 time for cluster DW.

Info for manual annotations of cluster EP:

- Start number 85 was manually annotated 3 times for cluster EP.

Info for manual annotations of cluster EQ:

- Start number 136 was manually annotated 2 times for cluster EQ.

Info for manual annotations of cluster F1:

- Start number 44 was manually annotated 67 times for cluster F1.
- Start number 77 was manually annotated 9 times for cluster F1.
- Start number 89 was manually annotated 1 time for cluster F1.
- Start number 110 was manually annotated 10 times for cluster F1.
- Start number 125 was manually annotated 1 time for cluster F1.

Info for manual annotations of cluster F2:

- Start number 44 was manually annotated 3 times for cluster F2.
- Start number 87 was manually annotated 2 times for cluster F2.

Info for manual annotations of cluster F3:

- Start number 110 was manually annotated 1 time for cluster F3.

Info for manual annotations of cluster I1:

- Start number 82 was manually annotated 6 times for cluster I1.

Info for manual annotations of cluster I2:

- Start number 87 was manually annotated 1 time for cluster I2.

Info for manual annotations of cluster L1:

- Start number 64 was manually annotated 9 times for cluster L1.

Info for manual annotations of cluster L5:

- Start number 127 was manually annotated 2 times for cluster L5.

Info for manual annotations of cluster P1:

- Start number 82 was manually annotated 43 times for cluster P1.

Info for manual annotations of cluster P2:

- Start number 105 was manually annotated 1 time for cluster P2.

Info for manual annotations of cluster P3:

- Start number 105 was manually annotated 1 time for cluster P3.

Info for manual annotations of cluster P4:

- Start number 96 was manually annotated 2 times for cluster P4.

Info for manual annotations of cluster P5:

- Start number 96 was manually annotated 1 time for cluster P5.

Info for manual annotations of cluster P6:

- Start number 96 was manually annotated 1 time for cluster P6.

Gene Information:

Gene: Acquire49_60 Start: 42360, Stop: 43178, Start Num: 64

Candidate Starts for Acquire49_60:

(Start: 64 @42360 has 9 MA's), (Start: 75 @42387 has 15 MA's), (97, 42414), (Start: 105 @42426 has 3 MA's), (141, 42486), (172, 42561), (185, 42573), (235, 42663), (239, 42669), (278, 42774), (293, 42804), (327, 42909), (370, 43032), (393, 43107), (397, 43122),

Gene: Adelaide_30 Start: 26443, Stop: 27321, Start Num: 85

Candidate Starts for Adelaide_30:

(Start: 85 @26443 has 3 MA's), (140, 26545), (141, 26548), (144, 26554), (157, 26590), (230, 26728), (324, 27007), (386, 27211), (402, 27277), (404, 27280), (414, 27301),

Gene: Adzzy_77 Start: 43239, Stop: 42412, Start Num: 99

Candidate Starts for Adzzy_77:

(Start: 79 @43266 has 5 MA's), (Start: 99 @43239 has 2 MA's), (145, 43146), (157, 43107), (167, 43089), (Start: 204 @43032 has 2 MA's), (289, 42843), (305, 42804), (313, 42768), (321, 42747), (329, 42714), (382, 42543), (417, 42435),

Gene: Aegeus_91 Start: 56094, Stop: 56897, Start Num: 127

Candidate Starts for Aegeus_91:

(Start: 127 @56094 has 2 MA's), (141, 56127), (145, 56136), (156, 56169), (157, 56175), (165, 56187), (173, 56208), (263, 56373), (265, 56376), (291, 56457), (337, 56595), (359, 56655), (361, 56670), (373, 56709), (387, 56757), (428, 56877),

Gene: Agueybana_50 Start: 37589, Stop: 38413, Start Num: 86

Candidate Starts for Agueybana_50:

(Start: 77 @37577 has 20 MA's), (Start: 86 @37589 has 16 MA's), (141, 37691), (183, 37778), (273, 37949), (306, 38054), (336, 38150), (384, 38303), (393, 38339), (416, 38399),

Gene: AlumE_48 Start: 36089, Stop: 36913, Start Num: 86

Candidate Starts for AlumE_48:

(Start: 77 @36077 has 20 MA's), (Start: 86 @36089 has 16 MA's), (141, 36191), (183, 36278), (273, 36449), (306, 36554), (336, 36650), (384, 36803), (393, 36839), (416, 36899),

Gene: Anatole_33 Start: 24569, Stop: 25372, Start Num: 124

Candidate Starts for Anatole_33:

(Start: 124 @24569 has 3 MA's), (176, 24692), (183, 24695), (208, 24734), (219, 24761), (234, 24785), (249, 24821), (257, 24848), (270, 24881), (281, 24908), (287, 24929), (292, 24938), (298, 24956), (299, 24959), (306, 25001), (319, 25031), (322, 25043), (331, 25076), (346, 25121), (374, 25211), (392, 25277), (393, 25280), (407, 25328), (423, 25361),

Gene: Angelique_48 Start: 37247, Stop: 38128, Start Num: 58

Candidate Starts for Angelique_48:

(32, 37127), (39, 37157), (Start: 58 @37247 has 2 MA's), (62, 37259), (Start: 77 @37292 has 20 MA's), (Start: 86 @37304 has 16 MA's), (141, 37406), (183, 37493), (239, 37580), (264, 37640), (306, 37769), (336, 37865), (346, 37892), (393, 38054), (416, 38114),

Gene: Annalisa_45 Start: 33306, Stop: 34055, Start Num: 115

Candidate Starts for Annalisa_45:

(52, 33153), (83, 33261), (Start: 115 @33306 has 12 MA's), (134, 33336), (141, 33363), (145, 33372), (208, 33489), (219, 33516), (233, 33540), (241, 33555), (254, 33585), (295, 33675), (296, 33678), (363, 33900),

Gene: Anthony_70 Start: 42960, Stop: 42178, Start Num: 105

Candidate Starts for Anthony_70:

(Start: 105 @42960 has 3 MA's), (263, 42675), (315, 42528), (344, 42453), (353, 42426),

Gene: Antonio_48 Start: 35350, Stop: 36186, Start Num: 77

Candidate Starts for Antonio_48:

(Start: 77 @35350 has 20 MA's), (Start: 86 @35362 has 16 MA's), (141, 35464), (183, 35551), (273, 35722), (306, 35827), (336, 35923), (384, 36076), (393, 36112), (416, 36172),

Gene: Apricot_58 Start: 37168, Stop: 37944, Start Num: 111

Candidate Starts for Apricot_58:

(Start: 111 @37168 has 10 MA's), (206, 37342), (220, 37372), (245, 37420), (336, 37678), (364, 37771),

Gene: ArchiDore_46 Start: 36606, Stop: 37415, Start Num: 78

Candidate Starts for ArchiDore_46:

(Start: 78 @36606 has 3 MA's), (101, 36636), (141, 36714), (Start: 147 @36720 has 1 MA's), (150, 36735), (202, 36831), (305, 37068), (341, 37170), (377, 37284), (405, 37371),

Gene: Arib1_34 Start: 27945, Stop: 28808, Start Num: 82

Candidate Starts for Arib1_34:

(Start: 82 @27945 has 49 MA's), (132, 28026), (139, 28050), (145, 28059), (153, 28086), (162, 28107), (222, 28203), (227, 28212), (234, 28227), (239, 28236), (277, 28338), (333, 28521), (354, 28575), (391, 28704), (405, 28746), (427, 28794),

Gene: Asapag_56 Start: 36674, Stop: 37453, Start Num: 111

Candidate Starts for Asapag_56:

(Start: 111 @36674 has 10 MA's), (245, 36929), (336, 37187), (364, 37280), (392, 37376),

Gene: Atcoo_34 Start: 28426, Stop: 29292, Start Num: 82

Candidate Starts for Atcoo_34:

(Start: 82 @28426 has 49 MA's), (132, 28507), (139, 28531), (145, 28540), (153, 28567), (162, 28588), (227, 28696), (234, 28711), (277, 28822), (333, 29005), (354, 29059), (391, 29188), (405, 29230), (427, 29278),

Gene: Attis_43 Start: 32483, Stop: 33319, Start Num: 77

Candidate Starts for Attis_43:

(Start: 77 @32483 has 20 MA's), (Start: 86 @32495 has 16 MA's), (141, 32597), (183, 32684), (273, 32855), (306, 32960), (336, 33056), (384, 33209), (393, 33245), (416, 33305),

Gene: AvadaKedavra_60 Start: 42433, Stop: 43251, Start Num: 64

Candidate Starts for AvadaKedavra_60:

(Start: 64 @42433 has 9 MA's), (Start: 75 @42460 has 15 MA's), (97, 42487), (Start: 105 @42499 has 3 MA's), (141, 42559), (172, 42634), (185, 42646), (235, 42736), (239, 42742), (278, 42847), (293, 42877), (327, 42982), (370, 43105), (393, 43180), (397, 43195),

Gene: Azula_47 Start: 35195, Stop: 35956, Start Num: 123

Candidate Starts for Azula_47:

(Start: 123 @35195 has 17 MA's), (134, 35210), (170, 35312), (193, 35345), (219, 35390), (223, 35399), (233, 35414), (263, 35483), (303, 35579), (329, 35669), (390, 35861),

Gene: B22_33 Start: 23699, Stop: 24502, Start Num: 118

Candidate Starts for B22_33:

(Start: 118 @23699 has 4 MA's), (176, 23822), (183, 23825), (208, 23864), (219, 23891), (234, 23915), (249, 23951), (257, 23978), (270, 24011), (281, 24038), (292, 24068), (299, 24089), (306, 24131), (322, 24173), (331, 24206), (336, 24224), (346, 24251), (393, 24410), (407, 24458), (423, 24491),

Gene: B3_32 Start: 23829, Stop: 24632, Start Num: 118

Candidate Starts for B3_32:

(Start: 118 @23829 has 4 MA's), (176, 23952), (183, 23955), (208, 23994), (219, 24021), (234, 24045), (249, 24081), (257, 24108), (270, 24141), (281, 24168), (287, 24189), (292, 24198), (293, 24201), (298, 24216), (299, 24219), (306, 24261), (310, 24270), (319, 24291), (322, 24303), (336, 24354), (348, 24384), (368, 24453), (393, 24540), (401, 24573), (407, 24588), (423, 24621),

Gene: BABullseye_65 Start: 39826, Stop: 38978, Start Num: 75

Candidate Starts for BABullseye_65:

(Start: 75 @39826 has 15 MA's), (Start: 79 @39817 has 5 MA's), (Start: 95 @39793 has 1 MA's), (145, 39703), (157, 39664), (172, 39634), (185, 39610), (193, 39592), (195, 39589), (225, 39550), (241, 39517), (263, 39463), (295, 39376), (296, 39373), (340, 39253), (355, 39214), (379, 39121), (400, 39040),

Gene: Babsiella_36 Start: 28877, Stop: 29746, Start Num: 82

Candidate Starts for Babsiella_36:

(Start: 82 @28877 has 49 MA's), (139, 28985), (145, 28994), (162, 29042), (227, 29150), (234, 29165), (277, 29276), (333, 29459), (354, 29513), (391, 29642), (405, 29684), (427, 29732),

Gene: Bartholomew_33 Start: 27939, Stop: 28805, Start Num: 82

Candidate Starts for Bartholomew_33:

(Start: 82 @27939 has 49 MA's), (132, 28020), (139, 28044), (145, 28053), (162, 28101), (227, 28209), (234, 28224), (277, 28335), (333, 28518), (354, 28572), (391, 28701), (405, 28743), (427, 28791),

Gene: Baudelaire_91 Start: 56094, Stop: 56897, Start Num: 127

Candidate Starts for Baudelaire_91:

(Start: 127 @56094 has 2 MA's), (141, 56127), (145, 56136), (156, 56169), (157, 56175), (165, 56187), (173, 56208), (263, 56373), (265, 56376), (291, 56457), (337, 56595), (359, 56655), (361, 56670), (373, 56709), (387, 56757), (428, 56877),

Gene: Beakin_49 Start: 35134, Stop: 36138, Start Num: 44

Candidate Starts for Beakin_49:

(Start: 44 @35134 has 70 MA's), (109, 35302), (120, 35323), (Start: 125 @35335 has 1 MA's), (139, 35368), (145, 35383), (150, 35401), (153, 35410), (168, 35446), (187, 35494), (202, 35512), (208, 35524), (219, 35551), (231, 35575), (237, 35587), (239, 35590), (247, 35611), (256, 35632), (260, 35644), (262, 35647), (293, 35731), (309, 35776), (311, 35782), (329, 35839), (333, 35857), (342, 35878), (354, 35911), (360, 35929), (375, 35971), (381, 35998), (397, 36055), (408, 36085), (425, 36121), (427, 36124),

Gene: Beanstalk_50 Start: 34763, Stop: 35770, Start Num: 44

Candidate Starts for Beanstalk_50:

(1, 34268), (3, 34319), (7, 34442), (9, 34448), (10, 34463), (13, 34517), (18, 34589), (20, 34598), (Start: 44 @34763 has 70 MA's), (120, 34955), (Start: 125 @34967 has 1 MA's), (150, 35033), (153, 35042), (168, 35078), (202, 35144), (208, 35156), (219, 35183), (231, 35207), (239, 35222), (247,

35243), (256, 35264), (260, 35276), (262, 35279), (293, 35363), (309, 35408), (311, 35414), (314, 35420), (322, 35444), (329, 35471), (333, 35489), (342, 35510), (354, 35543), (375, 35603), (381, 35630), (392, 35669), (397, 35687), (405, 35708), (408, 35717), (425, 35753), (429, 35762),

Gene: BearBQ_54 Start: 38297, Stop: 39052, Start Num: 115

Candidate Starts for BearBQ_54:

(31, 38063), (41, 38105), (43, 38117), (52, 38144), (65, 38207), (83, 38255), (Start: 115 @38297 has 12 MA's), (145, 38363), (Start: 147 @38366 has 1 MA's), (169, 38426), (184, 38438), (208, 38480), (219, 38507), (303, 38702), (318, 38753), (363, 38897), (390, 38990),

Gene: Begonia_44 Start: 35305, Stop: 36069, Start Num: 123

Candidate Starts for Begonia_44:

(35, 35065), (48, 35119), (57, 35164), (80, 35230), (Start: 123 @35305 has 17 MA's), (134, 35320), (Start: 147 @35359 has 1 MA's), (168, 35416), (215, 35494), (220, 35506), (233, 35527), (263, 35596), (303, 35692), (329, 35782), (390, 35974),

Gene: Bhagsy_34 Start: 27935, Stop: 28798, Start Num: 82

Candidate Starts for Bhagsy_34:

(Start: 82 @27935 has 49 MA's), (132, 28016), (139, 28040), (145, 28049), (162, 28097), (222, 28193), (227, 28202), (234, 28217), (277, 28328), (333, 28511), (354, 28565), (391, 28694), (405, 28736), (427, 28784),

Gene: Bialota_46 Start: 35982, Stop: 36818, Start Num: 77

Candidate Starts for Bialota_46:

(Start: 77 @35982 has 20 MA's), (Start: 86 @35994 has 16 MA's), (141, 36096), (183, 36183), (273, 36354), (306, 36459), (336, 36555), (384, 36708), (393, 36744), (416, 36804),

Gene: BigNuz_37 Start: 30064, Stop: 30867, Start Num: 96

Candidate Starts for BigNuz_37:

(Start: 96 @30064 has 4 MA's), (Start: 147 @30166 has 1 MA's), (157, 30202), (263, 30394), (298, 30490), (323, 30574), (343, 30640), (345, 30643), (354, 30667), (372, 30721), (383, 30760), (388, 30781), (389, 30784), (412, 30853),

Gene: Birdsong_56 Start: 36895, Stop: 37674, Start Num: 111

Candidate Starts for Birdsong_56:

(Start: 111 @36895 has 10 MA's), (245, 37150), (336, 37408), (364, 37501), (392, 37597),

Gene: Blexus_45 Start: 35131, Stop: 36135, Start Num: 44

Candidate Starts for Blexus_45:

(Start: 44 @35131 has 70 MA's), (120, 35320), (Start: 125 @35332 has 1 MA's), (150, 35398), (153, 35407), (168, 35443), (202, 35509), (208, 35521), (219, 35548), (231, 35572), (239, 35587), (247, 35608), (256, 35629), (260, 35641), (262, 35644), (293, 35728), (309, 35773), (311, 35779), (322, 35809), (329, 35836), (333, 35854), (342, 35875), (354, 35908), (375, 35968), (381, 35995), (392, 36034), (397, 36052), (405, 36073), (408, 36082), (425, 36118), (429, 36127),

Gene: Blinn1_76 Start: 42445, Stop: 41582, Start Num: 75

Candidate Starts for Blinn1_76:

(Start: 75 @42445 has 15 MA's), (Start: 79 @42436 has 5 MA's), (Start: 95 @42412 has 1 MA's), (145, 42322), (157, 42283), (Start: 204 @42196 has 2 MA's), (263, 42067), (295, 41980), (296, 41977), (340, 41857), (355, 41818), (379, 41725),

Gene: Blino_49 Start: 38491, Stop: 39252, Start Num: 123

Candidate Starts for Blino_49:

(80, 38416), (Start: 123 @38491 has 17 MA's), (134, 38506), (145, 38542), (169, 38605), (184, 38617), (205, 38659), (219, 38686), (263, 38779), (303, 38875), (329, 38965), (390, 39157),

Gene: BlueCrab_45 Start: 34857, Stop: 35861, Start Num: 44

Candidate Starts for BlueCrab_45:

(Start: 44 @34857 has 70 MA's), (120, 35046), (Start: 125 @35058 has 1 MA's), (150, 35124), (153, 35133), (168, 35169), (202, 35235), (208, 35247), (219, 35274), (231, 35298), (239, 35313), (247, 35334), (256, 35355), (260, 35367), (262, 35370), (293, 35454), (309, 35499), (311, 35505), (322, 35535), (329, 35562), (333, 35580), (342, 35601), (354, 35634), (375, 35694), (381, 35721), (392, 35760), (397, 35778), (405, 35799), (408, 35808), (425, 35844), (429, 35853),

Gene: Blueberry_46 Start: 35195, Stop: 35956, Start Num: 123

Candidate Starts for Blueberry_46:

(Start: 123 @35195 has 17 MA's), (134, 35210), (170, 35312), (193, 35345), (219, 35390), (223, 35399), (233, 35414), (263, 35483), (303, 35579), (329, 35669), (390, 35861),

Gene: Bluvara_42 Start: 33686, Stop: 34564, Start Num: 87

Candidate Starts for Bluvara_42:

(Start: 87 @33686 has 8 MA's), (141, 33782), (214, 33935), (225, 33959), (230, 33965), (280, 34100), (352, 34337), (404, 34523),

Gene: BobaPhett_49 Start: 36795, Stop: 37598, Start Num: 77

Candidate Starts for BobaPhett_49:

(Start: 77 @36795 has 20 MA's), (106, 36834), (126, 36870), (142, 36909), (152, 36939), (171, 36978), (217, 37041), (219, 37044), (236, 37068), (238, 37071), (248, 37095), (255, 37113), (261, 37122), (279, 37143), (325, 37299), (326, 37302), (342, 37350), (345, 37359), (354, 37386), (384, 37488), (392, 37521), (393, 37524), (395, 37533), (396, 37539), (409, 37572), (418, 37587),

Gene: BodEinwohner17_47 Start: 35274, Stop: 36077, Start Num: 125

Candidate Starts for BodEinwohner17_47:

(Start: 125 @35274 has 1 MA's), (150, 35340), (153, 35349), (168, 35385), (202, 35451), (Start: 204 @35457 has 2 MA's), (208, 35463), (219, 35490), (237, 35526), (239, 35529), (247, 35550), (256, 35571), (260, 35583), (262, 35586), (293, 35670), (309, 35715), (311, 35721), (314, 35727), (322, 35751), (329, 35778), (333, 35796), (342, 35817), (354, 35850), (375, 35910), (381, 35937), (392, 35976), (397, 35994), (405, 36015), (408, 36024), (425, 36060), (429, 36069),

Gene: Bogie_36 Start: 29722, Stop: 30588, Start Num: 82

Candidate Starts for Bogie_36:

(Start: 82 @29722 has 49 MA's), (132, 29803), (139, 29827), (145, 29836), (153, 29863), (162, 29884), (227, 29992), (234, 30007), (277, 30118), (333, 30301), (354, 30355), (405, 30526), (427, 30574),

Gene: Boomer_50 Start: 36306, Stop: 37310, Start Num: 44

Candidate Starts for Boomer_50:

(Start: 44 @36306 has 70 MA's), (120, 36495), (Start: 125 @36507 has 1 MA's), (150, 36573), (153, 36582), (168, 36618), (202, 36684), (208, 36696), (219, 36723), (231, 36747), (239, 36762), (247, 36783), (256, 36804), (260, 36816), (262, 36819), (293, 36903), (309, 36948), (311, 36954), (322, 36984), (329, 37011), (333, 37029), (342, 37050), (354, 37083), (375, 37143), (392, 37209), (397, 37227), (405, 37248), (408, 37257), (425, 37293), (429, 37302),

Gene: BotCity_59 Start: 38122, Stop: 38898, Start Num: 111

Candidate Starts for BotCity_59:

(Start: 111 @38122 has 10 MA's), (157, 38224), (220, 38326), (245, 38374), (336, 38632), (364, 38725), (392, 38821),

Gene: BoyNamedSue_48 Start: 36089, Stop: 36913, Start Num: 86

Candidate Starts for BoyNamedSue_48:

(Start: 77 @36077 has 20 MA's), (Start: 86 @36089 has 16 MA's), (141, 36191), (183, 36278), (273, 36449), (306, 36554), (336, 36650), (384, 36803), (393, 36839), (416, 36899),

Gene: Bran_33 Start: 28148, Stop: 29026, Start Num: 85

Candidate Starts for Bran_33:

(Start: 85 @28148 has 3 MA's), (140, 28250), (141, 28253), (144, 28259), (157, 28295), (230, 28433), (324, 28712), (386, 28916), (402, 28982), (404, 28985), (414, 29006),

Gene: BritBrat_51 Start: 37037, Stop: 37918, Start Num: 87

Candidate Starts for BritBrat_51:

(40, 36878), (Start: 87 @37037 has 8 MA's), (141, 37139), (144, 37145), (272, 37433), (352, 37691), (381, 37796), (386, 37808), (395, 37847), (402, 37874), (404, 37877), (414, 37898),

Gene: Brocalys_43 Start: 31207, Stop: 31986, Start Num: 110

Candidate Starts for Brocalys_43:

(Start: 89 @31177 has 1 MA's), (Start: 110 @31207 has 12 MA's), (130, 31231), (133, 31234), (145, 31270), (Start: 147 @31273 has 1 MA's), (164, 31318), (226, 31426), (234, 31441), (263, 31510), (283, 31558), (322, 31675), (336, 31726), (366, 31822), (395, 31927), (396, 31933), (413, 31975), (418, 31981),

Gene: BronnyJr_34 Start: 28436, Stop: 29302, Start Num: 82

Candidate Starts for BronnyJr_34:

(Start: 82 @28436 has 49 MA's), (132, 28517), (139, 28541), (145, 28550), (162, 28598), (227, 28706), (234, 28721), (277, 28832), (333, 29015), (354, 29069), (391, 29198), (405, 29240), (427, 29288),

Gene: Brujita_36 Start: 29775, Stop: 30644, Start Num: 82

Candidate Starts for Brujita_36:

(Start: 82 @29775 has 49 MA's), (139, 29883), (145, 29892), (162, 29940), (227, 30048), (234, 30063), (277, 30174), (333, 30357), (354, 30411), (391, 30540), (405, 30582), (427, 30630),

Gene: Brusacoram_34 Start: 27932, Stop: 28798, Start Num: 82

Candidate Starts for Brusacoram_34:

(Start: 82 @27932 has 49 MA's), (132, 28013), (139, 28037), (145, 28046), (153, 28073), (162, 28094), (227, 28202), (234, 28217), (277, 28328), (333, 28511), (354, 28565), (391, 28694), (405, 28736), (427, 28784),

Gene: Brushbloom_50 Start: 35774, Stop: 36778, Start Num: 44

Candidate Starts for Brushbloom_50:

(Start: 44 @35774 has 70 MA's), (109, 35942), (120, 35963), (Start: 125 @35975 has 1 MA's), (139, 36008), (145, 36023), (150, 36041), (153, 36050), (168, 36086), (187, 36134), (202, 36152), (208, 36164), (219, 36191), (231, 36215), (237, 36227), (239, 36230), (247, 36251), (256, 36272), (260, 36284), (262, 36287), (287, 36359), (293, 36371), (311, 36422), (314, 36428), (329, 36479), (333, 36497), (342, 36518), (354, 36551), (360, 36569), (375, 36611), (381, 36638), (397, 36695), (408, 36725), (425, 36761), (427, 36764),

Gene: Bubbykins_83 Start: 52362, Stop: 53198, Start Num: 111

Candidate Starts for Bubbykins_83:

(Start: 111 @52362 has 10 MA's), (143, 52437), (155, 52470), (164, 52491), (242, 52632), (246, 52644), (257, 52665), (263, 52677), (287, 52749), (292, 52758), (316, 52845), (321, 52860), (323, 52869), (339, 52923), (374, 53034), (380, 53058), (410, 53154), (419, 53178),

Gene: Budski_63 Start: 39082, Stop: 39861, Start Num: 111

Candidate Starts for Budski_63:

(Start: 111 @39082 has 10 MA's), (245, 39337), (293, 39451), (302, 39472), (336, 39595), (364, 39688), (392, 39784),

Gene: Bunnies_34 Start: 27953, Stop: 28819, Start Num: 82

Candidate Starts for Bunnies_34:

(Start: 82 @27953 has 49 MA's), (132, 28034), (139, 28058), (145, 28067), (153, 28094), (162, 28115), (227, 28223), (234, 28238), (277, 28349), (333, 28532), (354, 28586), (391, 28715), (405, 28757), (427, 28805),

Gene: Bunnybear_41 Start: 33762, Stop: 34586, Start Num: 86

Candidate Starts for Bunnybear_41:

(14, 33405), (15, 33438), (37, 33606), (Start: 86 @33762 has 16 MA's), (141, 33864), (183, 33951), (306, 34227), (336, 34323), (392, 34509), (393, 34512), (416, 34572),

Gene: BuzzLyseyear_52 Start: 36683, Stop: 37687, Start Num: 44

Candidate Starts for BuzzLyseyear_52:

(Start: 44 @36683 has 70 MA's), (120, 36872), (Start: 125 @36884 has 1 MA's), (150, 36950), (153, 36959), (168, 36995), (202, 37061), (208, 37073), (219, 37100), (231, 37124), (239, 37139), (247, 37160), (256, 37181), (260, 37193), (262, 37196), (293, 37280), (309, 37325), (311, 37331), (322, 37361), (329, 37388), (333, 37406), (342, 37427), (354, 37460), (375, 37520), (381, 37547), (392, 37586), (397, 37604), (405, 37625), (408, 37634), (425, 37670), (429, 37679),

Gene: ByChance_37 Start: 29879, Stop: 30682, Start Num: 77

Candidate Starts for ByChance_37:

(Start: 77 @29879 has 20 MA's), (106, 29918), (126, 29954), (142, 29993), (152, 30023), (171, 30062), (217, 30125), (219, 30128), (236, 30152), (238, 30155), (248, 30179), (255, 30197), (261, 30206), (279, 30227), (325, 30383), (326, 30386), (342, 30434), (345, 30443), (354, 30470), (384, 30572), (392, 30605), (393, 30608), (395, 30617), (396, 30623), (409, 30656), (418, 30671),

Gene: CactusJack_34 Start: 28196, Stop: 29059, Start Num: 82

Candidate Starts for CactusJack_34:

(Start: 82 @28196 has 49 MA's), (132, 28277), (139, 28301), (145, 28310), (162, 28358), (174, 28382), (227, 28463), (234, 28478), (277, 28589), (333, 28772), (354, 28826), (391, 28955), (405, 28997), (427, 29045),

Gene: Camster_34 Start: 27969, Stop: 28835, Start Num: 82

Candidate Starts for Camster_34:

(Start: 82 @27969 has 49 MA's), (132, 28050), (139, 28074), (145, 28083), (153, 28110), (162, 28131), (227, 28239), (234, 28254), (277, 28365), (333, 28548), (354, 28602), (405, 28773), (427, 28821),

Gene: Caraxes_76 Start: 43021, Stop: 42170, Start Num: 100

Candidate Starts for Caraxes_76:

(Start: 79 @43054 has 5 MA's), (Start: 100 @43021 has 3 MA's), (128, 42970), (143, 42931), (157, 42889), (263, 42673), (330, 42493), (351, 42433), (353, 42424), (382, 42319),

Gene: CarolAnn_48 Start: 38490, Stop: 39251, Start Num: 123

Candidate Starts for CarolAnn_48:

(80, 38415), (Start: 123 @38490 has 17 MA's), (134, 38505), (145, 38541), (169, 38604), (184, 38616), (205, 38658), (219, 38685), (263, 38778), (303, 38874), (329, 38964), (390, 39156),

Gene: Cashline_45 Start: 35939, Stop: 36781, Start Num: 58

Candidate Starts for Cashline_45:

(27, 35786), (36, 35837), (Start: 58 @35939 has 2 MA's), (62, 35951), (Start: 86 @35996 has 16 MA's), (141, 36098), (219, 36236), (252, 36299), (299, 36383), (303, 36401), (326, 36488), (331, 36503), (392, 36704), (393, 36707),

Gene: Caterpie_51 Start: 43734, Stop: 44543, Start Num: 89

Candidate Starts for Caterpie_51:

(14, 43353), (70, 43689), (Start: 89 @43734 has 1 MA's), (Start: 110 @43764 has 12 MA's), (130, 43788), (133, 43791), (145, 43827), (Start: 147 @43830 has 1 MA's), (164, 43875), (226, 43983), (234, 43998), (263, 44067), (283, 44115), (322, 44232), (336, 44283), (366, 44379), (396, 44490), (413, 44532), (418, 44538),

Gene: Chargerpower_70 Start: 41985, Stop: 41206, Start Num: 103

Candidate Starts for Chargerpower_70:

(Start: 103 @41985 has 4 MA's), (157, 41895), (188, 41829), (241, 41745), (263, 41691), (292, 41613), (295, 41604), (379, 41349),

Gene: Che12_77 Start: 43138, Stop: 42296, Start Num: 99

Candidate Starts for Che12_77:

(Start: 79 @43165 has 5 MA's), (Start: 99 @43138 has 2 MA's), (145, 43045), (157, 43006), (185, 42952), (222, 42889), (241, 42850), (287, 42730), (289, 42727), (305, 42688), (313, 42652), (321, 42631), (329, 42598), (344, 42559), (359, 42514), (382, 42427), (417, 42319),

Gene: Che9d_54 Start: 34668, Stop: 35669, Start Num: 44

Candidate Starts for Che9d_54:

(Start: 44 @34668 has 70 MA's), (109, 34836), (120, 34857), (Start: 125 @34869 has 1 MA's), (150, 34935), (153, 34944), (168, 34980), (202, 35046), (219, 35085), (220, 35088), (237, 35121), (239, 35124), (247, 35145), (256, 35166), (260, 35178), (262, 35181), (293, 35262), (309, 35307), (311, 35313), (329, 35370), (333, 35388), (334, 35391), (342, 35409), (350, 35430), (354, 35442), (360, 35460), (375, 35502), (381, 35529), (392, 35568), (397, 35586), (405, 35607), (425, 35652), (427, 35655),

Gene: CheeseSpider_50 Start: 33609, Stop: 34427, Start Num: 86

Candidate Starts for CheeseSpider_50:

(Start: 86 @33609 has 16 MA's), (141, 33705), (145, 33714), (264, 33939), (293, 34014), (322, 34119), (342, 34185), (345, 34194), (392, 34356), (393, 34359), (416, 34419),

Gene: CheeseTouch_62 Start: 34639, Stop: 35517, Start Num: 87

Candidate Starts for CheeseTouch_62:

(Start: 87 @34639 has 8 MA's), (141, 34738), (146, 34747), (165, 34795), (230, 34918), (241, 34945), (258, 34993), (332, 35230), (395, 35446), (404, 35476), (414, 35497),

Gene: Cheesepuff_53 Start: 37297, Stop: 38301, Start Num: 44

Candidate Starts for Cheesepuff_53:

(Start: 44 @37297 has 70 MA's), (109, 37465), (120, 37486), (Start: 125 @37498 has 1 MA's), (150, 37564), (153, 37573), (168, 37609), (202, 37675), (219, 37714), (220, 37717), (231, 37738), (239, 37753), (247, 37774), (256, 37795), (260, 37807), (262, 37810), (293, 37894), (311, 37945), (314, 37951), (329, 38002), (333, 38020), (342, 38041), (354, 38074), (360, 38092), (375, 38134), (381, 38161), (397, 38218), (408, 38248), (425, 38284), (427, 38287),

Gene: Chubbello_34 Start: 27935, Stop: 28801, Start Num: 82

Candidate Starts for Chubbello_34:

(Start: 82 @27935 has 49 MA's), (132, 28016), (139, 28040), (145, 28049), (162, 28097), (227, 28205), (234, 28220), (277, 28331), (333, 28514), (354, 28568), (391, 28697), (405, 28739), (427, 28787),

Gene: Chuckly_47 Start: 35101, Stop: 36108, Start Num: 44

Candidate Starts for Chuckly_47:

(Start: 44 @35101 has 70 MA's), (120, 35293), (Start: 125 @35305 has 1 MA's), (150, 35371), (153, 35380), (168, 35416), (202, 35482), (208, 35494), (219, 35521), (231, 35545), (239, 35560), (247, 35581), (256, 35602), (260, 35614), (262, 35617), (293, 35701), (309, 35746), (311, 35752), (314, 35758), (322, 35782), (329, 35809), (333, 35827), (342, 35848), (354, 35881), (375, 35941), (381, 35968), (392, 36007), (397, 36025), (405, 36046), (408, 36055), (425, 36091), (429, 36100),

Gene: CicholasNage_59 Start: 42396, Stop: 43214, Start Num: 64

Candidate Starts for CicholasNage_59:

(Start: 64 @42396 has 9 MA's), (Start: 75 @42423 has 15 MA's), (97, 42450), (Start: 105 @42462 has 3 MA's), (141, 42522), (172, 42597), (185, 42609), (235, 42699), (239, 42705), (278, 42810), (293, 42840), (327, 42945), (370, 43068), (393, 43143), (397, 43158),

Gene: Clifton_42 Start: 31558, Stop: 32337, Start Num: 110

Candidate Starts for Clifton_42:

(Start: 89 @31528 has 1 MA's), (Start: 110 @31558 has 12 MA's), (130, 31582), (133, 31585), (145, 31621), (Start: 147 @31624 has 1 MA's), (164, 31669), (226, 31777), (234, 31792), (263, 31861), (283, 31909), (322, 32026), (336, 32077), (366, 32173), (395, 32278), (396, 32284), (413, 32326), (418, 32332),

Gene: Clown_59 Start: 43467, Stop: 44249, Start Num: 119

Candidate Starts for Clown_59:

(30, 43209), (34, 43230), (59, 43341), (84, 43410), (Start: 119 @43467 has 1 MA's), (145, 43518), (164, 43566), (185, 43611), (213, 43656), (223, 43668), (234, 43689), (240, 43701), (289, 43833), (290, 43836), (318, 43908), (353, 44004), (365, 44055), (373, 44076), (379, 44103), (385, 44118), (399, 44178), (415, 44214),

Gene: Colin_70 Start: 43999, Stop: 43229, Start Num: 95

Candidate Starts for Colin_70:

(73, 44038), (Start: 95 @43999 has 1 MA's), (141, 43957), (157, 43909), (182, 43861), (263, 43711), (379, 43372),

Gene: Cookiedough_72 Start: 42134, Stop: 41286, Start Num: 75

Candidate Starts for Cookiedough_72:

(Start: 75 @42134 has 15 MA's), (Start: 79 @42125 has 5 MA's), (Start: 95 @42101 has 1 MA's), (145, 42011), (157, 41972), (172, 41942), (185, 41918), (193, 41900), (195, 41897), (225, 41858), (241, 41825), (263, 41771), (295, 41684), (296, 41681), (340, 41561), (355, 41522), (379, 41429), (400, 41348),

Gene: Cornucopia_51 Start: 36403, Stop: 37407, Start Num: 44

Candidate Starts for Cornucopia_51:

(Start: 44 @36403 has 70 MA's), (109, 36571), (120, 36592), (Start: 125 @36604 has 1 MA's), (139, 36637), (145, 36652), (150, 36670), (153, 36679), (168, 36715), (187, 36763), (202, 36781), (208, 36793), (219, 36820), (231, 36844), (237, 36856), (239, 36859), (247, 36880), (256, 36901), (260, 36913), (262, 36916), (293, 37000), (311, 37051), (314, 37057), (329, 37108), (333, 37126), (342, 37147), (354, 37180), (360, 37198), (375, 37240), (381, 37267), (397, 37324), (408, 37354), (425, 37390), (427, 37393),

Gene: Crater_58 Start: 37563, Stop: 38339, Start Num: 111

Candidate Starts for Crater_58:

(Start: 111 @37563 has 10 MA's), (206, 37737), (220, 37767), (245, 37815), (336, 38073), (364, 38166),

Gene: DRBy19_49 Start: 35582, Stop: 36385, Start Num: 77

Candidate Starts for DRBy19_49:

(Start: 77 @35582 has 20 MA's), (106, 35621), (126, 35657), (142, 35696), (152, 35726), (171, 35765), (217, 35828), (219, 35831), (236, 35855), (238, 35858), (248, 35882), (255, 35900), (261, 35909), (279, 35930), (325, 36086), (326, 36089), (342, 36137), (345, 36146), (354, 36173), (384, 36275), (392, 36308), (393, 36311), (395, 36320), (396, 36326), (409, 36359), (418, 36374),

Gene: DaWorst_49 Start: 35931, Stop: 36935, Start Num: 44

Candidate Starts for DaWorst_49:

(Start: 44 @35931 has 70 MA's), (109, 36099), (120, 36120), (Start: 125 @36132 has 1 MA's), (150, 36198), (153, 36207), (168, 36243), (202, 36309), (219, 36348), (220, 36351), (231, 36372), (239, 36387), (247, 36408), (256, 36429), (260, 36441), (262, 36444), (293, 36528), (311, 36579), (314, 36585), (329, 36636), (333, 36654), (342, 36675), (354, 36708), (360, 36726), (375, 36768), (381, 36795), (397, 36852), (408, 36882), (425, 36918), (427, 36921),

Gene: Dante_47 Start: 34836, Stop: 35840, Start Num: 44

Candidate Starts for Dante_47:

(Start: 44 @34836 has 70 MA's), (109, 35004), (120, 35025), (Start: 125 @35037 has 1 MA's), (139, 35070), (145, 35085), (150, 35103), (153, 35112), (168, 35148), (187, 35196), (202, 35214), (208, 35226), (219, 35253), (231, 35277), (237, 35289), (239, 35292), (247, 35313), (256, 35334), (260, 35346), (262, 35349), (293, 35433), (309, 35478), (311, 35484), (314, 35490), (329, 35541), (333, 35559), (342, 35580), (354, 35613), (360, 35631), (375, 35673), (381, 35700), (397, 35757), (408, 35787), (425, 35823), (427, 35826),

Gene: Demsculpinboyz_56 Start: 34780, Stop: 35781, Start Num: 44

Candidate Starts for Demsculpinboyz_56:

(Start: 44 @34780 has 70 MA's), (109, 34948), (120, 34969), (Start: 125 @34981 has 1 MA's), (139, 35014), (145, 35029), (150, 35047), (153, 35056), (168, 35092), (187, 35140), (202, 35158), (208, 35170), (219, 35197), (231, 35221), (237, 35233), (239, 35236), (247, 35257), (256, 35278), (260, 35290), (262, 35293), (293, 35374), (309, 35419), (311, 35425), (329, 35482), (333, 35500), (334, 35503), (342, 35521), (354, 35554), (360, 35572), (375, 35614), (381, 35641), (392, 35680), (397, 35698), (405, 35719), (408, 35728), (425, 35764), (427, 35767),

Gene: DillTech15_46 Start: 34346, Stop: 35350, Start Num: 44

Candidate Starts for DillTech15_46:

(Start: 44 @34346 has 70 MA's), (109, 34514), (120, 34535), (Start: 125 @34547 has 1 MA's), (150, 34613), (153, 34622), (168, 34658), (202, 34724), (219, 34763), (220, 34766), (231, 34787), (239, 34802), (247, 34823), (256, 34844), (260, 34856), (262, 34859), (293, 34943), (311, 34994), (314, 35000), (329, 35051), (333, 35069), (342, 35090), (354, 35123), (360, 35141), (375, 35183), (381, 35210), (397, 35267), (408, 35297), (425, 35333), (427, 35336),

Gene: Dina_30 Start: 25374, Stop: 26258, Start Num: 85

Candidate Starts for Dina_30:

(Start: 85 @25374 has 3 MA's), (141, 25479), (146, 25488), (207, 25617), (211, 25629), (230, 25665), (324, 25944), (386, 26148), (402, 26214), (404, 26217), (414, 26238),

Gene: Dolores_48 Start: 34386, Stop: 35135, Start Num: 115

Candidate Starts for Dolores_48:

(2, 33747), (4, 33801), (5, 33834), (6, 33873), (8, 33894), (11, 33927), (12, 33939), (24, 34062), (25, 34083), (51, 34230), (Start: 115 @34386 has 12 MA's), (134, 34416), (141, 34443), (145, 34452), (208, 34569), (219, 34596), (233, 34620), (241, 34635), (254, 34665), (295, 34755), (296, 34758), (363, 34980),

Gene: Donkeykong_46 Start: 35576, Stop: 36355, Start Num: 110

Candidate Starts for Donkeykong_46:

(Start: 89 @35546 has 1 MA's), (Start: 110 @35576 has 12 MA's), (130, 35600), (133, 35603), (145, 35639), (Start: 147 @35642 has 1 MA's), (164, 35687), (226, 35795), (234, 35810), (263, 35879), (283, 35927), (322, 36044), (336, 36095), (366, 36191), (395, 36296), (396, 36302), (413, 36344), (418, 36350),

Gene: Donovan_34 Start: 27961, Stop: 28824, Start Num: 82

Candidate Starts for Donovan_34:

(Start: 82 @27961 has 49 MA's), (132, 28042), (139, 28066), (145, 28075), (153, 28102), (162, 28123), (222, 28219), (227, 28228), (234, 28243), (277, 28354), (333, 28537), (354, 28591), (391, 28720), (405, 28762), (427, 28810),

Gene: Doomphist_47 Start: 36071, Stop: 37075, Start Num: 44

Candidate Starts for Doomphist_47:

(Start: 44 @36071 has 70 MA's), (120, 36260), (Start: 125 @36272 has 1 MA's), (150, 36338), (153, 36347), (168, 36383), (202, 36449), (208, 36461), (219, 36488), (231, 36512), (239, 36527), (247, 36548), (256, 36569), (260, 36581), (262, 36584), (293, 36668), (309, 36713), (311, 36719), (322, 36749), (329, 36776), (333, 36794), (342, 36815), (354, 36848), (375, 36908), (381, 36935), (392, 36974), (397, 36992), (405, 37013), (408, 37022), (425, 37058), (429, 37067),

Gene: Doomslug_55 Start: 35048, Stop: 36052, Start Num: 44

Candidate Starts for Doomslug_55:

(Start: 44 @35048 has 70 MA's), (109, 35216), (120, 35237), (Start: 125 @35249 has 1 MA's), (139, 35282), (145, 35297), (150, 35315), (153, 35324), (168, 35360), (187, 35408), (202, 35426), (208, 35438), (219, 35465), (231, 35489), (237, 35501), (239, 35504), (247, 35525), (256, 35546), (260, 35558), (262, 35561), (293, 35645), (309, 35690), (311, 35696), (322, 35726), (329, 35753), (333, 35771), (342, 35792), (354, 35825), (360, 35843), (375, 35885), (397, 35969), (405, 35990), (425, 36035), (429, 36044),

Gene: Dori_51 Start: 44920, Stop: 45693, Start Num: 110

Candidate Starts for Dori_51:

(Start: 110 @44920 has 12 MA's), (130, 44941), (145, 44980), (Start: 147 @44983 has 1 MA's), (219, 45124), (226, 45133), (234, 45148), (263, 45217), (283, 45265), (322, 45382), (336, 45433), (366, 45529), (395, 45634), (396, 45640), (413, 45682), (418, 45688),

Gene: Dorothea_72 Start: 42132, Stop: 41284, Start Num: 75

Candidate Starts for Dorothea_72:

(Start: 75 @42132 has 15 MA's), (Start: 79 @42123 has 5 MA's), (Start: 95 @42099 has 1 MA's), (Start: 136 @42036 has 2 MA's), (145, 42009), (157, 41970), (172, 41940), (185, 41916), (193, 41898), (195, 41895), (225, 41856), (241, 41823), (263, 41769), (295, 41682), (296, 41679), (340, 41559), (355, 41520), (379, 41427), (400, 41346),

Gene: Dorothy_44 Start: 34870, Stop: 35874, Start Num: 44

Candidate Starts for Dorothy_44:

(Start: 44 @34870 has 70 MA's), (120, 35059), (Start: 125 @35071 has 1 MA's), (150, 35137), (153, 35146), (168, 35182), (202, 35248), (208, 35260), (219, 35287), (231, 35311), (239, 35326), (247, 35347), (256, 35368), (260, 35380), (262, 35383), (293, 35467), (309, 35512), (311, 35518), (322,

35548), (329, 35575), (333, 35593), (342, 35614), (354, 35647), (375, 35707), (381, 35734), (392, 35773), (397, 35791), (405, 35812), (408, 35821), (425, 35857), (429, 35866),

Gene: DosHalletts_47 Start: 34853, Stop: 35650, Start Num: 110

Candidate Starts for DosHalletts_47:

(Start: 110 @34853 has 12 MA's), (133, 34895), (145, 34931), (Start: 147 @34934 has 1 MA's), (166, 34988), (226, 35090), (234, 35105), (263, 35174), (283, 35222), (322, 35339), (336, 35390), (366, 35486), (395, 35591), (396, 35597), (413, 35639), (418, 35645),

Gene: DotProduct_44 Start: 34531, Stop: 35535, Start Num: 44

Candidate Starts for DotProduct_44:

(Start: 44 @34531 has 70 MA's), (120, 34720), (Start: 125 @34732 has 1 MA's), (150, 34798), (153, 34807), (168, 34843), (202, 34909), (208, 34921), (219, 34948), (231, 34972), (239, 34987), (247, 35008), (256, 35029), (260, 35041), (262, 35044), (293, 35128), (309, 35173), (311, 35179), (322, 35209), (329, 35236), (333, 35254), (342, 35275), (354, 35308), (360, 35326), (375, 35368), (381, 35395), (392, 35434), (397, 35452), (405, 35473), (408, 35482), (425, 35518), (429, 35527),

Gene: Doucette_35 Start: 25113, Stop: 25916, Start Num: 118

Candidate Starts for Doucette_35:

(Start: 118 @25113 has 4 MA's), (176, 25236), (183, 25239), (208, 25278), (219, 25305), (234, 25329), (249, 25365), (257, 25392), (270, 25425), (281, 25452), (292, 25482), (299, 25503), (306, 25545), (322, 25587), (331, 25620), (336, 25638), (346, 25665), (393, 25824), (407, 25872), (423, 25905),

Gene: DumpsterDude_48 Start: 38831, Stop: 39640, Start Num: 78

Candidate Starts for DumpsterDude_48:

(Start: 78 @38831 has 3 MA's), (101, 38861), (141, 38939), (Start: 147 @38945 has 1 MA's), (150, 38960), (202, 39056), (305, 39293), (341, 39395), (377, 39509), (405, 39596),

Gene: Dynamo_34 Start: 28347, Stop: 29213, Start Num: 82

Candidate Starts for Dynamo_34:

(Start: 82 @28347 has 49 MA's), (132, 28428), (139, 28452), (145, 28461), (162, 28509), (227, 28617), (234, 28632), (277, 28743), (333, 28926), (354, 28980), (391, 29109), (405, 29151), (427, 29199),

Gene: E1_33 Start: 24569, Stop: 25372, Start Num: 124

Candidate Starts for E1_33:

(Start: 124 @24569 has 3 MA's), (176, 24692), (183, 24695), (208, 24734), (219, 24761), (234, 24785), (249, 24821), (257, 24848), (270, 24881), (281, 24908), (287, 24929), (292, 24938), (298, 24956), (299, 24959), (306, 25001), (319, 25031), (322, 25043), (331, 25076), (346, 25121), (374, 25211), (392, 25277), (393, 25280), (407, 25328), (423, 25361),

Gene: E6_36 Start: 26500, Stop: 27273, Start Num: 124

Candidate Starts for E6_36:

(Start: 124 @26500 has 3 MA's), (143, 26542), (157, 26584), (164, 26593), (216, 26680), (219, 26689), (246, 26728), (263, 26761), (270, 26782), (281, 26809), (292, 26839), (299, 26860), (306, 26902), (319, 26932), (322, 26944), (331, 26977), (336, 26995), (346, 27022), (393, 27181), (407, 27229), (423, 27262),

Gene: Easley_43 Start: 32655, Stop: 33410, Start Num: 115

Candidate Starts for Easley_43:

(Start: 115 @32655 has 12 MA's), (134, 32685), (141, 32712), (145, 32721), (193, 32820), (219, 32865), (223, 32874), (233, 32889), (239, 32898), (303, 33060), (333, 33171), (334, 33174), (363, 33255),

Gene: EdnaMode_42 Start: 31171, Stop: 32007, Start Num: 77

Candidate Starts for EdnaMode_42:

(Start: 77 @31171 has 20 MA's), (Start: 86 @31183 has 16 MA's), (141, 31285), (183, 31372), (273, 31543), (306, 31648), (336, 31744), (384, 31897), (393, 31933), (416, 31993),

Gene: Eish_48 Start: 35416, Stop: 36417, Start Num: 44

Candidate Starts for Eish_48:

(Start: 44 @35416 has 70 MA's), (109, 35584), (120, 35605), (Start: 125 @35617 has 1 MA's), (150, 35683), (153, 35692), (168, 35728), (202, 35794), (219, 35833), (220, 35836), (237, 35869), (239, 35872), (247, 35893), (256, 35914), (260, 35926), (262, 35929), (293, 36010), (309, 36055), (311, 36061), (322, 36091), (329, 36118), (333, 36136), (334, 36139), (342, 36157), (354, 36190), (360, 36208), (375, 36250), (392, 36316), (405, 36355), (425, 36400),

Gene: Emmaloid_48 Start: 36261, Stop: 37265, Start Num: 44

Candidate Starts for Emmaloid_48:

(Start: 44 @36261 has 70 MA's), (120, 36450), (Start: 125 @36462 has 1 MA's), (150, 36528), (153, 36537), (168, 36573), (202, 36639), (208, 36651), (219, 36678), (231, 36702), (239, 36717), (247, 36738), (256, 36759), (260, 36771), (262, 36774), (293, 36858), (309, 36903), (311, 36909), (322, 36939), (329, 36966), (333, 36984), (342, 37005), (354, 37038), (360, 37056), (375, 37098), (381, 37125), (392, 37164), (397, 37182), (405, 37203), (408, 37212), (425, 37248), (429, 37257),

Gene: Enceladus_58 Start: 42233, Stop: 43060, Start Num: 64

Candidate Starts for Enceladus_58:

(Start: 64 @42233 has 9 MA's), (Start: 75 @42260 has 15 MA's), (97, 42287), (Start: 105 @42299 has 3 MA's), (Start: 123 @42326 has 17 MA's), (141, 42371), (157, 42413), (165, 42428), (185, 42458), (189, 42473), (239, 42551), (278, 42656), (293, 42686), (327, 42791), (370, 42914), (393, 42989), (397, 43004),

Gene: Estave1_48 Start: 34820, Stop: 35824, Start Num: 44

Candidate Starts for Estave1_48:

(Start: 44 @34820 has 70 MA's), (109, 34988), (120, 35009), (Start: 125 @35021 has 1 MA's), (139, 35054), (145, 35069), (150, 35087), (153, 35096), (168, 35132), (187, 35180), (202, 35198), (208, 35210), (219, 35237), (231, 35261), (237, 35273), (239, 35276), (247, 35297), (256, 35318), (260, 35330), (262, 35333), (287, 35405), (293, 35417), (309, 35462), (311, 35468), (322, 35498), (329, 35525), (333, 35543), (334, 35546), (342, 35564), (354, 35597), (360, 35615), (375, 35657), (392, 35723), (397, 35741), (405, 35762), (425, 35807),

Gene: Etoile_34 Start: 27939, Stop: 28805, Start Num: 82

Candidate Starts for Etoile_34:

(Start: 82 @27939 has 49 MA's), (132, 28020), (139, 28044), (145, 28053), (162, 28101), (227, 28209), (234, 28224), (239, 28233), (277, 28335), (333, 28518), (354, 28572), (391, 28701), (405, 28743), (427, 28791),

Gene: Eudoria_48 Start: 35362, Stop: 36186, Start Num: 86

Candidate Starts for Eudoria_48:

(Start: 77 @35350 has 20 MA's), (Start: 86 @35362 has 16 MA's), (141, 35464), (183, 35551), (273, 35722), (306, 35827), (336, 35923), (384, 36076), (393, 36112), (416, 36172),

Gene: Faith5x5_37 Start: 28702, Stop: 29454, Start Num: 115

Candidate Starts for Faith5x5_37:

(83, 28657), (Start: 115 @28702 has 12 MA's), (131, 28729), (164, 28816), (166, 28825), (219, 28915), (223, 28924), (233, 28939), (240, 28951), (295, 29074), (296, 29077), (329, 29197), (363, 29299),

Gene: Fastidio_49 Start: 34493, Stop: 35497, Start Num: 44

Candidate Starts for Fastidio_49:

(Start: 44 @34493 has 70 MA's), (120, 34682), (Start: 125 @34694 has 1 MA's), (150, 34760), (153, 34769), (168, 34805), (202, 34871), (208, 34883), (219, 34910), (231, 34934), (239, 34949), (247, 34970), (256, 34991), (260, 35003), (262, 35006), (293, 35090), (311, 35141), (314, 35147), (329, 35198), (333, 35216), (342, 35237), (354, 35270), (360, 35288), (375, 35330), (381, 35357), (397, 35414), (408, 35444), (425, 35480), (427, 35483),

Gene: FatCactus_68 Start: 42406, Stop: 41588, Start Num: 105

Candidate Starts for FatCactus_68:

(Start: 105 @42406 has 3 MA's), (128, 42364), (143, 42325), (157, 42283), (179, 42250), (221, 42178), (239, 42145), (263, 42085), (315, 41938), (353, 41836),

Gene: Fenry_43 Start: 34202, Stop: 34963, Start Num: 123

Candidate Starts for Fenry_43:

(42, 33998), (80, 34127), (Start: 123 @34202 has 17 MA's), (134, 34217), (169, 34316), (184, 34328), (205, 34370), (219, 34397), (263, 34490), (303, 34586), (329, 34676), (352, 34742), (390, 34868),

Gene: Filuzino_45 Start: 34250, Stop: 35254, Start Num: 44

Candidate Starts for Filuzino_45:

(Start: 44 @34250 has 70 MA's), (109, 34418), (120, 34439), (Start: 125 @34451 has 1 MA's), (139, 34484), (145, 34499), (150, 34517), (153, 34526), (168, 34562), (187, 34610), (202, 34628), (208, 34640), (219, 34667), (231, 34691), (237, 34703), (239, 34706), (247, 34727), (256, 34748), (260, 34760), (262, 34763), (293, 34847), (311, 34898), (329, 34955), (333, 34973), (342, 34994), (354, 35027), (360, 35045), (375, 35087), (381, 35114), (397, 35171), (408, 35201), (425, 35237), (427, 35240),

Gene: Finkle_50 Start: 34311, Stop: 35156, Start Num: 74

Candidate Starts for Finkle_50:

(Start: 74 @34311 has 1 MA's), (Start: 99 @34359 has 2 MA's), (138, 34431), (139, 34437), (140, 34440), (150, 34470), (162, 34497), (209, 34575), (244, 34635), (245, 34641), (266, 34683), (301, 34767), (353, 34890), (365, 34941), (373, 34962), (379, 34989),

Gene: Firehouse51_47 Start: 36491, Stop: 37288, Start Num: 110

Candidate Starts for Firehouse51_47:

(Start: 110 @36491 has 12 MA's), (133, 36533), (145, 36569), (Start: 147 @36572 has 1 MA's), (166, 36626), (226, 36728), (234, 36743), (263, 36812), (283, 36860), (322, 36977), (336, 37028), (366, 37124), (395, 37229), (396, 37235), (413, 37277), (418, 37283),

Gene: FirstPlacePfu_34 Start: 27971, Stop: 28837, Start Num: 82

Candidate Starts for FirstPlacePfu_34:

(Start: 82 @27971 has 49 MA's), (132, 28052), (139, 28076), (145, 28085), (162, 28133), (227, 28241), (234, 28256), (277, 28367), (333, 28550), (354, 28604), (391, 28733), (405, 28775), (427, 28823),

Gene: Fishburne_34 Start: 27939, Stop: 28805, Start Num: 82

Candidate Starts for Fishburne_34:

(Start: 82 @27939 has 49 MA's), (132, 28020), (139, 28044), (145, 28053), (162, 28101), (227, 28209), (234, 28224), (277, 28335), (333, 28518), (354, 28572), (391, 28701), (405, 28743), (427, 28791),

Gene: Florinda_57 Start: 36157, Stop: 36951, Start Num: 110

Candidate Starts for Florinda_57:

(Start: 110 @36157 has 12 MA's), (133, 36199), (145, 36235), (Start: 147 @36238 has 1 MA's), (157, 36274), (192, 36334), (226, 36391), (234, 36406), (263, 36475), (283, 36523), (322, 36640), (336,

36691), (366, 36787), (395, 36892), (396, 36898), (413, 36940), (418, 36946),

Gene: Frankie_51 Start: 36473, Stop: 37477, Start Num: 44

Candidate Starts for Frankie_51:

(Start: 44 @36473 has 70 MA's), (109, 36641), (120, 36662), (Start: 125 @36674 has 1 MA's), (139, 36707), (145, 36722), (150, 36740), (153, 36749), (168, 36785), (187, 36833), (202, 36851), (208, 36863), (219, 36890), (231, 36914), (237, 36926), (239, 36929), (247, 36950), (256, 36971), (260, 36983), (262, 36986), (287, 37058), (293, 37070), (294, 37073), (309, 37115), (311, 37121), (322, 37151), (329, 37178), (342, 37217), (354, 37250), (360, 37268), (375, 37310), (381, 37337), (392, 37376), (397, 37394), (405, 37415), (408, 37424), (425, 37460), (429, 37469),

Gene: FroggyToad_47 Start: 33512, Stop: 34357, Start Num: 77

Candidate Starts for FroggyToad_47:

(Start: 77 @33512 has 20 MA's), (Start: 86 @33524 has 16 MA's), (141, 33623), (183, 33710), (200, 33740), (342, 34115), (392, 34286), (393, 34289),

Gene: Frokostdame_47 Start: 34936, Stop: 35751, Start Num: 86

Candidate Starts for Frokostdame_47:

(56, 34861), (Start: 86 @34936 has 16 MA's), (141, 35032), (164, 35089), (243, 35212), (286, 35323), (299, 35356), (322, 35443), (325, 35458), (393, 35683), (416, 35743),

Gene: Fruitloop_46 Start: 36116, Stop: 37120, Start Num: 44

Candidate Starts for Fruitloop_46:

(Start: 44 @36116 has 70 MA's), (109, 36284), (120, 36305), (Start: 125 @36317 has 1 MA's), (139, 36350), (145, 36365), (150, 36383), (153, 36392), (168, 36428), (187, 36476), (202, 36494), (208, 36506), (219, 36533), (231, 36557), (237, 36569), (239, 36572), (247, 36593), (256, 36614), (260, 36626), (262, 36629), (287, 36701), (293, 36713), (311, 36764), (314, 36770), (329, 36821), (333, 36839), (342, 36860), (354, 36893), (360, 36911), (375, 36953), (381, 36980), (397, 37037), (408, 37067), (425, 37103), (427, 37106),

Gene: G4_33 Start: 24732, Stop: 25535, Start Num: 118

Candidate Starts for G4_33:

(Start: 118 @24732 has 4 MA's), (176, 24855), (183, 24858), (208, 24897), (219, 24924), (234, 24948), (249, 24984), (257, 25011), (270, 25044), (281, 25071), (287, 25092), (292, 25101), (293, 25104), (298, 25119), (299, 25122), (306, 25164), (319, 25194), (322, 25206), (331, 25239), (346, 25284), (374, 25374), (393, 25443), (407, 25491), (423, 25524),

Gene: GAL1_34 Start: 30600, Stop: 31448, Start Num: 104

Candidate Starts for GAL1_34:

(Start: 104 @30600 has 1 MA's), (129, 30642), (144, 30684), (181, 30768), (240, 30888), (346, 31203), (381, 31326), (386, 31338), (414, 31428),

Gene: GAL1_39 Start: 32334, Stop: 33173, Start Num: 91

Candidate Starts for GAL1_39:

(45, 32199), (54, 32229), (68, 32286), (91, 32334), (117, 32376), (133, 32403), (208, 32556), (219, 32583), (241, 32622), (251, 32652), (263, 32676), (294, 32757), (299, 32772), (300, 32775), (316, 32838), (354, 32961), (392, 33096), (393, 33099), (395, 33108),

Gene: GMA1_36 Start: 26839, Stop: 27690, Start Num: 116

Candidate Starts for GMA1_36:

(Start: 87 @26791 has 8 MA's), (Start: 114 @26836 has 2 MA's), (116, 26839), (122, 26848), (129, 26860), (162, 26953), (209, 27052), (222, 27079), (227, 27088), (234, 27103), (249, 27142), (285, 27244), (338, 27421), (386, 27580), (404, 27649),

Gene: GMA4_34 Start: 28046, Stop: 28852, Start Num: 97

Candidate Starts for GMA4_34:

(97, 28046), (157, 28157), (159, 28160), (223, 28265), (227, 28271), (244, 28304), (250, 28322), (259, 28346), (282, 28388), (292, 28412), (322, 28517), (354, 28616), (360, 28634), (381, 28709), (399, 28772), (431, 28835), (432, 28841),

Gene: GUmbie_45 Start: 34760, Stop: 35764, Start Num: 44

Candidate Starts for GUmbie_45:

(Start: 44 @34760 has 70 MA's), (120, 34949), (Start: 125 @34961 has 1 MA's), (150, 35027), (153, 35036), (168, 35072), (202, 35138), (208, 35150), (219, 35177), (231, 35201), (239, 35216), (247, 35237), (256, 35258), (260, 35270), (262, 35273), (293, 35357), (309, 35402), (311, 35408), (322, 35438), (329, 35465), (333, 35483), (342, 35504), (354, 35537), (375, 35597), (381, 35624), (392, 35663), (397, 35681), (405, 35702), (408, 35711), (425, 35747), (429, 35756),

Gene: Gallia_8 Start: 3136, Stop: 3990, Start Num: 60

Candidate Starts for Gallia_8:

(60, 3136), (61, 3139), (Start: 108 @3184 has 1 MA's), (157, 3289), (164, 3298), (222, 3394), (239, 3427), (263, 3487), (317, 3655), (330, 3691), (347, 3733), (367, 3808), (385, 3868), (405, 3943),

Gene: Gallop_41 Start: 31359, Stop: 32234, Start Num: 94

Candidate Starts for Gallop_41:

(94, 31359), (102, 31368), (146, 31461), (165, 31509), (230, 31644), (275, 31758), (277, 31767), (326, 31929), (358, 32028),

Gene: GaloreK_34 Start: 27935, Stop: 28798, Start Num: 82

Candidate Starts for GaloreK_34:

(Start: 82 @27935 has 49 MA's), (132, 28016), (139, 28040), (145, 28049), (153, 28076), (162, 28097), (222, 28193), (227, 28202), (234, 28217), (239, 28226), (277, 28328), (333, 28511), (354, 28565), (391, 28694), (405, 28736), (427, 28784),

Gene: Gambino_49 Start: 35195, Stop: 35956, Start Num: 123

Candidate Starts for Gambino_49:

(Start: 123 @35195 has 17 MA's), (134, 35210), (170, 35312), (193, 35345), (219, 35390), (223, 35399), (233, 35414), (263, 35483), (303, 35579), (329, 35669), (390, 35861),

Gene: Gavriela_34 Start: 28196, Stop: 29059, Start Num: 82

Candidate Starts for Gavriela_34:

(Start: 82 @28196 has 49 MA's), (132, 28277), (139, 28301), (145, 28310), (162, 28358), (174, 28382), (227, 28463), (234, 28478), (277, 28589), (333, 28772), (354, 28826), (391, 28955), (405, 28997), (427, 29045),

Gene: Getalong_59 Start: 38926, Stop: 39705, Start Num: 111

Candidate Starts for Getalong_59:

(Start: 111 @38926 has 10 MA's), (245, 39181), (336, 39439), (364, 39532), (392, 39628),

Gene: GigiOuiOui_44 Start: 34673, Stop: 35677, Start Num: 44

Candidate Starts for GigiOuiOui_44:

(Start: 44 @34673 has 70 MA's), (120, 34862), (Start: 125 @34874 has 1 MA's), (150, 34940), (153, 34949), (168, 34985), (202, 35051), (208, 35063), (219, 35090), (231, 35114), (239, 35129), (247, 35150), (256, 35171), (260, 35183), (262, 35186), (293, 35270), (309, 35315), (311, 35321), (322, 35351), (329, 35378), (333, 35396), (342, 35417), (354, 35450), (375, 35510), (381, 35537), (392, 35576), (397, 35594), (405, 35615), (408, 35624), (425, 35660), (429, 35669),

Gene: Girafales_56 Start: 35966, Stop: 36760, Start Num: 110

Candidate Starts for Girafales_56:

(Start: 110 @35966 has 12 MA's), (133, 36008), (145, 36044), (Start: 147 @36047 has 1 MA's), (164, 36092), (226, 36200), (234, 36215), (239, 36224), (263, 36284), (283, 36332), (322, 36449), (336, 36500), (366, 36596), (395, 36701), (396, 36707), (413, 36749), (418, 36755),

Gene: Girr_48 Start: 35732, Stop: 36736, Start Num: 44

Candidate Starts for Girr_48:

(Start: 44 @35732 has 70 MA's), (120, 35921), (Start: 125 @35933 has 1 MA's), (150, 35999), (153, 36008), (168, 36044), (202, 36110), (208, 36122), (219, 36149), (231, 36173), (239, 36188), (247, 36209), (256, 36230), (260, 36242), (262, 36245), (293, 36329), (309, 36374), (311, 36380), (322, 36410), (329, 36437), (333, 36455), (342, 36476), (354, 36509), (375, 36569), (381, 36596), (392, 36635), (397, 36653), (405, 36674), (408, 36683), (425, 36719), (429, 36728),

Gene: Gladiator_70 Start: 41751, Stop: 40912, Start Num: 75

Candidate Starts for Gladiator_70:

(Start: 75 @41751 has 15 MA's), (Start: 79 @41742 has 5 MA's), (Start: 95 @41718 has 1 MA's), (145, 41628), (157, 41589), (164, 41580), (182, 41547), (Start: 204 @41517 has 2 MA's), (225, 41484), (263, 41397), (295, 41310), (296, 41307), (340, 41187), (355, 41148), (379, 41055), (400, 40974),

Gene: Glaske_34 Start: 28196, Stop: 29059, Start Num: 82

Candidate Starts for Glaske_34:

(Start: 82 @28196 has 49 MA's), (132, 28277), (139, 28301), (145, 28310), (162, 28358), (174, 28382), (227, 28463), (234, 28478), (277, 28589), (333, 28772), (354, 28826), (391, 28955), (405, 28997), (427, 29045),

Gene: Gorge_51 Start: 35716, Stop: 36519, Start Num: 77

Candidate Starts for Gorge_51:

(Start: 77 @35716 has 20 MA's), (106, 35755), (126, 35791), (142, 35830), (152, 35860), (171, 35899), (217, 35962), (219, 35965), (236, 35989), (238, 35992), (248, 36016), (255, 36034), (261, 36043), (279, 36064), (325, 36220), (326, 36223), (342, 36271), (345, 36280), (354, 36307), (384, 36409), (392, 36442), (393, 36445), (395, 36454), (396, 36460), (409, 36493), (418, 36508),

Gene: GreaseLightnin_34 Start: 28179, Stop: 29045, Start Num: 82

Candidate Starts for GreaseLightnin_34:

(Start: 82 @28179 has 49 MA's), (139, 28284), (145, 28293), (162, 28341), (227, 28449), (234, 28464), (277, 28575), (333, 28758), (354, 28812), (391, 28941), (405, 28983), (427, 29031),

Gene: Grimmer_57 Start: 37247, Stop: 38248, Start Num: 44

Candidate Starts for Grimmer_57:

(Start: 44 @37247 has 70 MA's), (120, 37436), (Start: 125 @37448 has 1 MA's), (145, 37496), (150, 37514), (153, 37523), (168, 37559), (202, 37625), (208, 37637), (219, 37664), (231, 37688), (239, 37703), (247, 37724), (256, 37745), (260, 37757), (262, 37760), (293, 37841), (309, 37886), (311, 37892), (329, 37949), (333, 37967), (342, 37988), (354, 38021), (360, 38039), (375, 38081), (381, 38108), (392, 38147), (397, 38165), (405, 38186), (425, 38231), (427, 38234),

Gene: HC_34 Start: 27658, Stop: 28527, Start Num: 82

Candidate Starts for HC_34:

(Start: 82 @27658 has 49 MA's), (139, 27766), (145, 27775), (162, 27823), (227, 27931), (234, 27946), (277, 28057), (333, 28240), (354, 28294), (391, 28423), (405, 28465), (427, 28513),

Gene: HUHilltop_34 Start: 27972, Stop: 28835, Start Num: 82

Candidate Starts for HUHilltop_34:

(Start: 82 @27972 has 49 MA's), (132, 28053), (139, 28077), (145, 28086), (153, 28113), (162, 28134), (222, 28230), (227, 28239), (234, 28254), (277, 28365), (333, 28548), (354, 28602), (405, 28773), (427, 28821),

Gene: Hamulus_48 Start: 36115, Stop: 37119, Start Num: 44

Candidate Starts for Hamulus_48:

(Start: 44 @36115 has 70 MA's), (120, 36304), (Start: 125 @36316 has 1 MA's), (150, 36382), (153, 36391), (168, 36427), (202, 36493), (208, 36505), (219, 36532), (231, 36556), (239, 36571), (247, 36592), (256, 36613), (260, 36625), (262, 36628), (293, 36712), (309, 36757), (311, 36763), (322, 36793), (329, 36820), (333, 36838), (342, 36859), (354, 36892), (375, 36952), (381, 36979), (392, 37018), (397, 37036), (405, 37057), (408, 37066), (425, 37102), (429, 37111),

Gene: Harley_50 Start: 35468, Stop: 36472, Start Num: 44

Candidate Starts for Harley_50:

(Start: 44 @35468 has 70 MA's), (120, 35657), (Start: 125 @35669 has 1 MA's), (150, 35735), (153, 35744), (168, 35780), (202, 35846), (208, 35858), (219, 35885), (231, 35909), (239, 35924), (247, 35945), (256, 35966), (260, 35978), (262, 35981), (293, 36065), (309, 36110), (311, 36116), (322, 36146), (329, 36173), (333, 36191), (342, 36212), (354, 36245), (375, 36305), (392, 36371), (397, 36389), (405, 36410), (408, 36419), (425, 36455), (429, 36464),

Gene: Holliday_59 Start: 38259, Stop: 39098, Start Num: 114

Candidate Starts for Holliday_59:

(49, 38094), (Start: 114 @38259 has 2 MA's), (129, 38286), (232, 38502), (240, 38517), (255, 38562), (395, 39027), (404, 39057), (414, 39078),

Gene: InLimbo_43 Start: 30497, Stop: 31246, Start Num: 115

Candidate Starts for InLimbo_43:

(Start: 115 @30497 has 12 MA's), (131, 30524), (134, 30527), (Start: 147 @30566 has 1 MA's), (164, 30611), (194, 30662), (208, 30680), (233, 30731), (296, 30869), (306, 30920), (363, 31091),

Gene: IronMan_69 Start: 44419, Stop: 43604, Start Num: 79

Candidate Starts for IronMan_69:

(69, 44446), (Start: 79 @44419 has 5 MA's), (98, 44386), (145, 44302), (157, 44263), (165, 44251), (193, 44194), (276, 44041), (379, 43750),

Gene: Isiphiwo_70 Start: 41692, Stop: 40844, Start Num: 75

Candidate Starts for Isiphiwo_70:

(Start: 75 @41692 has 15 MA's), (Start: 79 @41683 has 5 MA's), (Start: 95 @41659 has 1 MA's), (145, 41569), (157, 41530), (172, 41500), (185, 41476), (193, 41458), (195, 41455), (225, 41416), (241, 41383), (263, 41329), (295, 41242), (296, 41239), (340, 41119), (355, 41080), (379, 40987), (400, 40906),

Gene: Island3_36 Start: 29775, Stop: 30644, Start Num: 82

Candidate Starts for Island3_36:

(Start: 82 @29775 has 49 MA's), (139, 29883), (145, 29892), (162, 29940), (227, 30048), (234, 30063), (277, 30174), (333, 30357), (354, 30411), (391, 30540), (405, 30582), (427, 30630),

Gene: Iwokeuplikedis_72 Start: 43407, Stop: 42592, Start Num: 103

Candidate Starts for Iwokeuplikedis_72:

(Start: 103 @43407 has 4 MA's), (137, 43341), (Start: 147 @43314 has 1 MA's), (157, 43278), (198, 43203), (241, 43134), (263, 43080), (295, 42993), (340, 42870), (357, 42825), (379, 42738), (400, 42657),

Gene: Jaan_70 Start: 44554, Stop: 43772, Start Num: 103

Candidate Starts for Jaan_70:

(Start: 103 @44554 has 4 MA's), (145, 44470), (157, 44431), (165, 44419), (193, 44362), (212, 44341), (276, 44209), (379, 43918),

Gene: Jabbawokkie_61 Start: 36226, Stop: 37107, Start Num: 87

Candidate Starts for Jabbawokkie_61:

(Start: 87 @36226 has 8 MA's), (141, 36322), (157, 36367), (230, 36508), (280, 36643), (338, 36838), (352, 36880), (418, 37096),

Gene: Jalammah_48 Start: 35515, Stop: 36279, Start Num: 123

Candidate Starts for Jalammah_48:

(42, 35311), (80, 35440), (Start: 123 @35515 has 17 MA's), (164, 35614), (168, 35626), (215, 35704), (220, 35716), (233, 35737), (239, 35746), (263, 35806), (303, 35902), (329, 35992), (390, 36184),

Gene: James_50 Start: 35673, Stop: 36476, Start Num: 77

Candidate Starts for James_50:

(Start: 77 @35673 has 20 MA's), (106, 35712), (126, 35748), (142, 35787), (152, 35817), (171, 35856), (217, 35919), (219, 35922), (236, 35946), (238, 35949), (248, 35973), (255, 35991), (261, 36000), (279, 36021), (325, 36177), (326, 36180), (342, 36228), (345, 36237), (354, 36264), (384, 36366), (392, 36399), (393, 36402), (395, 36411), (396, 36417), (409, 36450), (418, 36465),

Gene: Jant_52 Start: 37127, Stop: 38131, Start Num: 44

Candidate Starts for Jant_52:

(Start: 44 @37127 has 70 MA's), (109, 37295), (120, 37316), (Start: 125 @37328 has 1 MA's), (139, 37361), (145, 37376), (150, 37394), (153, 37403), (168, 37439), (187, 37487), (202, 37505), (208, 37517), (219, 37544), (231, 37568), (237, 37580), (239, 37583), (247, 37604), (256, 37625), (260, 37637), (262, 37640), (293, 37724), (309, 37769), (311, 37775), (329, 37832), (333, 37850), (342, 37871), (354, 37904), (360, 37922), (375, 37964), (381, 37991), (397, 38048), (408, 38078), (425, 38114), (427, 38117),

Gene: Jebeks_35 Start: 27924, Stop: 28790, Start Num: 82

Candidate Starts for Jebeks_35:

(Start: 82 @27924 has 49 MA's), (132, 28005), (139, 28029), (145, 28038), (153, 28065), (162, 28086), (227, 28194), (234, 28209), (277, 28320), (333, 28503), (354, 28557), (391, 28686), (405, 28728), (427, 28776),

Gene: Jennelsea_44 Start: 32861, Stop: 33640, Start Num: 110

Candidate Starts for Jennelsea_44:

(Start: 89 @32831 has 1 MA's), (Start: 110 @32861 has 12 MA's), (130, 32885), (133, 32888), (145, 32924), (Start: 147 @32927 has 1 MA's), (164, 32972), (226, 33080), (234, 33095), (263, 33164), (283, 33212), (322, 33329), (336, 33380), (366, 33476), (395, 33581), (396, 33587), (413, 33629), (418, 33635),

Gene: JewelBug_72 Start: 42414, Stop: 41578, Start Num: 75

Candidate Starts for JewelBug_72:

(Start: 75 @42414 has 15 MA's), (Start: 79 @42405 has 5 MA's), (Start: 95 @42381 has 1 MA's), (145, 42291), (157, 42252), (165, 42240), (253, 42090), (295, 41976), (296, 41973), (340, 41853), (355, 41814), (379, 41721), (400, 41640),

Gene: Job42_48 Start: 36721, Stop: 37725, Start Num: 44

Candidate Starts for Job42_48:

(Start: 44 @36721 has 70 MA's), (120, 36910), (Start: 125 @36922 has 1 MA's), (150, 36988), (153, 36997), (168, 37033), (202, 37099), (208, 37111), (219, 37138), (231, 37162), (239, 37177), (247, 37198), (256, 37219), (260, 37231), (262, 37234), (293, 37318), (309, 37363), (311, 37369), (322, 37399), (329, 37426), (333, 37444), (342, 37465), (354, 37498), (375, 37558), (381, 37585), (392, 37624), (397, 37642), (405, 37663), (408, 37672), (425, 37708), (429, 37717),

Gene: JoeDirt_59 Start: 42675, Stop: 43493, Start Num: 64

Candidate Starts for JoeDirt_59:

(Start: 64 @42675 has 9 MA's), (Start: 75 @42702 has 15 MA's), (97, 42729), (Start: 105 @42741 has 3 MA's), (141, 42801), (172, 42876), (185, 42888), (235, 42978), (239, 42984), (278, 43089), (293, 43119), (327, 43224), (370, 43347), (393, 43422), (397, 43437),

Gene: Jordennis_71 Start: 41658, Stop: 41059, Start Num: 204

Candidate Starts for Jordennis_71:

(Start: 204 @41658 has 2 MA's), (225, 41631), (241, 41598), (263, 41544), (295, 41457), (296, 41454), (340, 41334), (355, 41295), (379, 41202), (400, 41121),

Gene: JuJu_50 Start: 36277, Stop: 37092, Start Num: 86

Candidate Starts for JuJu_50:

(56, 36202), (Start: 86 @36277 has 16 MA's), (141, 36373), (243, 36553), (286, 36664), (299, 36697), (322, 36784), (393, 37024),

Gene: Juicebox_36 Start: 30688, Stop: 31461, Start Num: 108

Candidate Starts for Juicebox_36:

(Start: 108 @30688 has 1 MA's), (Start: 110 @30691 has 12 MA's), (180, 30829), (240, 30916), (244, 30925), (245, 30931), (270, 30994), (289, 31045), (301, 31066), (349, 31171), (353, 31189), (365, 31240), (379, 31288), (399, 31363), (424, 31423), (426, 31426), (433, 31453),

Gene: Jung_33 Start: 27903, Stop: 28766, Start Num: 82

Candidate Starts for Jung_33:

(Start: 82 @27903 has 49 MA's), (132, 27984), (139, 28008), (145, 28017), (162, 28065), (174, 28089), (227, 28170), (234, 28185), (277, 28296), (333, 28479), (354, 28533), (391, 28662), (405, 28704), (427, 28752),

Gene: Juniormint_34 Start: 27975, Stop: 28841, Start Num: 82

Candidate Starts for Juniormint_34:

(Start: 82 @27975 has 49 MA's), (132, 28056), (139, 28080), (145, 28089), (153, 28116), (162, 28137), (227, 28245), (234, 28260), (277, 28371), (333, 28554), (354, 28608), (391, 28737), (405, 28779), (427, 28827),

Gene: KappaFarmDelta_46 Start: 33140, Stop: 33901, Start Num: 123

Candidate Starts for KappaFarmDelta_46:

(42, 32939), (80, 33065), (Start: 123 @33140 has 17 MA's), (134, 33155), (169, 33254), (184, 33266), (205, 33308), (219, 33335), (257, 33416), (263, 33428), (303, 33524), (329, 33614), (352, 33680), (390, 33806),

Gene: Karhdo_46 Start: 35555, Stop: 36559, Start Num: 44

Candidate Starts for Karhdo_46:

(Start: 44 @35555 has 70 MA's), (120, 35744), (Start: 125 @35756 has 1 MA's), (150, 35822), (153, 35831), (168, 35867), (202, 35933), (208, 35945), (219, 35972), (231, 35996), (239, 36011), (247, 36032), (256, 36053), (260, 36065), (262, 36068), (293, 36152), (309, 36197), (311, 36203), (322, 36233), (329, 36260), (333, 36278), (342, 36299), (354, 36332), (375, 36392), (381, 36419), (392, 36458), (397, 36476), (405, 36497), (408, 36506), (425, 36542), (429, 36551),

Gene: Kari_34 Start: 27936, Stop: 28802, Start Num: 82

Candidate Starts for Kari_34:

(Start: 82 @27936 has 49 MA's), (132, 28017), (139, 28041), (145, 28050), (162, 28098), (227, 28206), (234, 28221), (277, 28332), (333, 28515), (354, 28569), (391, 28698), (405, 28740), (427, 28788),

Gene: Kenna_56 Start: 37127, Stop: 37906, Start Num: 111

Candidate Starts for Kenna_56:

(Start: 111 @37127 has 10 MA's), (245, 37382), (336, 37640), (364, 37733), (392, 37829),

Gene: KilKor_34 Start: 28196, Stop: 29059, Start Num: 82

Candidate Starts for KilKor_34:

(Start: 82 @28196 has 49 MA's), (132, 28277), (139, 28301), (145, 28310), (162, 28358), (174, 28382), (227, 28463), (234, 28478), (277, 28589), (333, 28772), (354, 28826), (391, 28955), (405, 28997), (427, 29045),

Gene: Kita_49 Start: 35359, Stop: 36195, Start Num: 77

Candidate Starts for Kita_49:

(Start: 77 @35359 has 20 MA's), (Start: 86 @35371 has 16 MA's), (141, 35473), (183, 35560), (273, 35731), (306, 35836), (336, 35932), (384, 36085), (393, 36121), (416, 36181),

Gene: Krakatau_45 Start: 35226, Stop: 36230, Start Num: 44

Candidate Starts for Krakatau_45:

(1, 34731), (3, 34782), (7, 34905), (9, 34911), (10, 34926), (13, 34980), (18, 35052), (20, 35061), (Start: 44 @35226 has 70 MA's), (120, 35415), (Start: 125 @35427 has 1 MA's), (150, 35493), (153, 35502), (168, 35538), (202, 35604), (208, 35616), (219, 35643), (231, 35667), (239, 35682), (247, 35703), (256, 35724), (260, 35736), (262, 35739), (293, 35823), (309, 35868), (311, 35874), (314, 35880), (322, 35904), (329, 35931), (333, 35949), (342, 35970), (354, 36003), (375, 36063), (381, 36090), (392, 36129), (397, 36147), (405, 36168), (408, 36177), (425, 36213), (429, 36222),

Gene: KristaRAM_47 Start: 36438, Stop: 37442, Start Num: 44

Candidate Starts for KristaRAM_47:

(Start: 44 @36438 has 70 MA's), (109, 36606), (120, 36627), (Start: 125 @36639 has 1 MA's), (139, 36672), (145, 36687), (150, 36705), (153, 36714), (168, 36750), (187, 36798), (202, 36816), (208, 36828), (219, 36855), (231, 36879), (237, 36891), (239, 36894), (247, 36915), (256, 36936), (260, 36948), (262, 36951), (293, 37035), (309, 37080), (311, 37086), (322, 37116), (329, 37143), (333, 37161), (342, 37182), (354, 37215), (360, 37233), (375, 37275), (381, 37302), (397, 37359), (408, 37389), (425, 37425), (427, 37428),

Gene: Ksquared_34 Start: 27953, Stop: 28819, Start Num: 82

Candidate Starts for Ksquared_34:

(Start: 82 @27953 has 49 MA's), (132, 28034), (139, 28058), (145, 28067), (153, 28094), (162, 28115), (227, 28223), (234, 28238), (277, 28349), (333, 28532), (354, 28586), (391, 28715), (405, 28757), (427, 28805),

Gene: Kuwabara_52 Start: 36557, Stop: 37444, Start Num: 66

Candidate Starts for Kuwabara_52:

(49, 36500), (50, 36503), (Start: 66 @36557 has 1 MA's), (Start: 110 @36629 has 12 MA's), (117, 36644), (133, 36671), (140, 36695), (219, 36854), (234, 36878), (287, 37013), (297, 37037), (316, 37109), (322, 37130), (336, 37181), (392, 37367), (393, 37370),

Gene: Landor_70 Start: 44512, Stop: 43679, Start Num: 79

Candidate Starts for Landor_70:

(69, 44539), (Start: 79 @44512 has 5 MA's), (92, 44488), (145, 44404), (157, 44365), (263, 44164), (265, 44161), (340, 43957), (379, 43825),

Gene: Langerak_34 Start: 27955, Stop: 28818, Start Num: 82

Candidate Starts for Langerak_34:

(Start: 82 @27955 has 49 MA's), (132, 28036), (139, 28060), (145, 28069), (153, 28096), (162, 28117), (222, 28213), (227, 28222), (234, 28237), (239, 28246), (277, 28348), (333, 28531), (354, 28585), (391, 28714), (405, 28756), (427, 28804),

Gene: LastJedi_41 Start: 31571, Stop: 32380, Start Num: 89

Candidate Starts for LastJedi_41:

(Start: 89 @31571 has 1 MA's), (Start: 110 @31601 has 12 MA's), (130, 31625), (133, 31628), (145, 31664), (Start: 147 @31667 has 1 MA's), (164, 31712), (226, 31820), (234, 31835), (263, 31904), (283, 31952), (322, 32069), (336, 32120), (366, 32216), (395, 32321), (396, 32327), (413, 32369), (418, 32375),

Gene: Latretium_50 Start: 36344, Stop: 37345, Start Num: 44

Candidate Starts for Latretium_50:

(Start: 44 @36344 has 70 MA's), (109, 36512), (120, 36533), (Start: 125 @36545 has 1 MA's), (150, 36611), (153, 36620), (168, 36656), (202, 36722), (Start: 204 @36728 has 2 MA's), (208, 36734), (219, 36761), (237, 36797), (239, 36800), (247, 36821), (256, 36842), (260, 36854), (262, 36857), (293, 36938), (309, 36983), (311, 36989), (314, 36995), (322, 37019), (329, 37046), (333, 37064), (342, 37085), (354, 37118), (360, 37136), (375, 37178), (392, 37244), (397, 37262), (405, 37283), (425, 37328),

Gene: Leroy_58 Start: 36986, Stop: 37864, Start Num: 90

Candidate Starts for Leroy_58:

(Start: 90 @36986 has 1 MA's), (141, 37082), (144, 37088), (395, 37793), (404, 37823), (414, 37844),

Gene: LilMoolah_46 Start: 35122, Stop: 36126, Start Num: 44

Candidate Starts for LilMoolah_46:

(22, 34966), (Start: 44 @35122 has 70 MA's), (Start: 125 @35323 has 1 MA's), (150, 35389), (153, 35398), (168, 35434), (202, 35500), (Start: 204 @35506 has 2 MA's), (208, 35512), (219, 35539), (237, 35575), (239, 35578), (247, 35599), (256, 35620), (260, 35632), (262, 35635), (293, 35719), (309, 35764), (311, 35770), (314, 35776), (322, 35800), (329, 35827), (333, 35845), (342, 35866), (354, 35899), (375, 35959), (381, 35986), (392, 36025), (397, 36043), (405, 36064), (425, 36109), (429, 36118),

Gene: LilSpotty_46 Start: 32678, Stop: 33556, Start Num: 87

Candidate Starts for LilSpotty_46:

(36, 32504), (Start: 87 @32678 has 8 MA's), (141, 32774), (214, 32927), (225, 32951), (230, 32957), (280, 33092), (352, 33329), (404, 33515),

Gene: LittleShirley_47 Start: 36153, Stop: 37157, Start Num: 44

Candidate Starts for LittleShirley_47:

(Start: 44 @36153 has 70 MA's), (109, 36321), (120, 36342), (Start: 125 @36354 has 1 MA's), (150, 36420), (153, 36429), (168, 36465), (202, 36531), (219, 36570), (220, 36573), (231, 36594), (239, 36609), (247, 36630), (256, 36651), (260, 36663), (262, 36666), (293, 36750), (309, 36795), (311, 36801), (322, 36831), (329, 36858), (333, 36876), (342, 36897), (354, 36930), (360, 36948), (375, 36990), (381, 37017), (392, 37056), (397, 37074), (405, 37095), (408, 37104), (425, 37140), (429, 37149),

Gene: LordFarquaad_45 Start: 32464, Stop: 33300, Start Num: 77

Candidate Starts for LordFarquaad_45:

(Start: 77 @32464 has 20 MA's), (Start: 86 @32476 has 16 MA's), (141, 32578), (183, 32665), (273, 32836), (306, 32941), (336, 33037), (384, 33190), (393, 33226), (416, 33286),

Gene: LordVader_44 Start: 30174, Stop: 30983, Start Num: 89

Candidate Starts for LordVader_44:

(Start: 89 @30174 has 1 MA's), (Start: 110 @30204 has 12 MA's), (130, 30228), (133, 30231), (145, 30267), (Start: 147 @30270 has 1 MA's), (164, 30315), (226, 30423), (234, 30438), (263, 30507), (283, 30555), (322, 30672), (336, 30723), (366, 30819), (395, 30924), (396, 30930), (413, 30972), (418, 30978),

Gene: Lutum_61 Start: 38291, Stop: 39070, Start Num: 111

Candidate Starts for Lutum_61:

(Start: 111 @38291 has 10 MA's), (245, 38546), (336, 38804), (364, 38897), (392, 38993),

Gene: Lysidious_44 Start: 34244, Stop: 35065, Start Num: 86

Candidate Starts for Lysidious_44:

(Start: 86 @34244 has 16 MA's), (145, 34352), (186, 34442), (243, 34520), (249, 34538), (251, 34547), (293, 34646), (307, 34709), (316, 34730), (322, 34751), (342, 34817), (345, 34826), (392, 34988), (393, 34991),

Gene: MadMen_42 Start: 34172, Stop: 35179, Start Num: 44

Candidate Starts for MadMen_42:

(1, 33677), (3, 33728), (7, 33851), (9, 33857), (10, 33872), (13, 33926), (18, 33998), (20, 34007), (Start: 44 @34172 has 70 MA's), (120, 34364), (Start: 125 @34376 has 1 MA's), (150, 34442), (153, 34451), (168, 34487), (202, 34553), (208, 34565), (219, 34592), (231, 34616), (239, 34631), (247, 34652), (256, 34673), (260, 34685), (262, 34688), (293, 34772), (309, 34817), (311, 34823), (314, 34829), (322, 34853), (329, 34880), (333, 34898), (342, 34919), (354, 34952), (375, 35012), (381, 35039), (392, 35078), (397, 35096), (405, 35117), (408, 35126), (425, 35162), (429, 35171),

Gene: Madavieve_43 Start: 34739, Stop: 35503, Start Num: 115

Candidate Starts for Madavieve_43:

(Start: 115 @34739 has 12 MA's), (131, 34766), (134, 34769), (141, 34796), (145, 34805), (169, 34868), (184, 34880), (206, 34922), (219, 34949), (263, 35042), (287, 35096), (316, 35189), (323, 35210), (329, 35234), (333, 35252), (342, 35273), (343, 35276), (345, 35279), (354, 35303), (371, 35354), (372, 35357), (388, 35417), (398, 35453), (406, 35474),

Gene: Madiba_43 Start: 33464, Stop: 34468, Start Num: 44

Candidate Starts for Madiba_43:

(Start: 44 @33464 has 70 MA's), (120, 33653), (Start: 125 @33665 has 1 MA's), (150, 33731), (153, 33740), (168, 33776), (202, 33842), (208, 33854), (219, 33881), (231, 33905), (239, 33920), (247, 33941), (256, 33962), (260, 33974), (262, 33977), (293, 34061), (309, 34106), (311, 34112), (322, 34142), (329, 34169), (333, 34187), (342, 34208), (354, 34241), (375, 34301), (381, 34328), (392, 34367), (397, 34385), (405, 34406), (408, 34415), (425, 34451), (429, 34460),

Gene: Majeke_34 Start: 27977, Stop: 28843, Start Num: 82

Candidate Starts for Majeke_34:

(Start: 82 @27977 has 49 MA's), (132, 28058), (139, 28082), (145, 28091), (162, 28139), (227, 28247), (234, 28262), (277, 28373), (333, 28556), (354, 28610), (391, 28739), (405, 28781), (427, 28829),

Gene: MakCheese_59 Start: 40021, Stop: 40845, Start Num: 86

Candidate Starts for MakCheese_59:

(19, 39715), (21, 39724), (40, 39862), (Start: 86 @40021 has 16 MA's), (141, 40123), (Start: 147 @40129 has 1 MA's), (284, 40429), (306, 40504), (323, 40558), (333, 40600), (360, 40672), (370, 40699), (375, 40714), (393, 40774),

Gene: Malachai_44 Start: 35305, Stop: 36069, Start Num: 123

Candidate Starts for Malachai_44:

(35, 35065), (48, 35119), (57, 35164), (80, 35230), (Start: 123 @35305 has 17 MA's), (134, 35320), (Start: 147 @35359 has 1 MA's), (168, 35416), (215, 35494), (220, 35506), (233, 35527), (263, 35596), (303, 35692), (329, 35782), (390, 35974),

Gene: Malisha_52 Start: 35598, Stop: 36443, Start Num: 104

Candidate Starts for Malisha_52:

(61, 35511), (Start: 104 @35598 has 1 MA's), (144, 35682), (240, 35883), (346, 36198), (381, 36321), (386, 36333), (414, 36423),

Gene: Malithi_34 Start: 27862, Stop: 28728, Start Num: 82

Candidate Starts for Malithi_34:

(Start: 82 @27862 has 49 MA's), (132, 27943), (139, 27967), (145, 27976), (153, 28003), (162, 28024), (227, 28132), (234, 28147), (277, 28258), (333, 28441), (354, 28495), (405, 28666), (427, 28714),

Gene: Manasvini_49 Start: 35374, Stop: 36210, Start Num: 77

Candidate Starts for Manasvini_49:

(Start: 77 @35374 has 20 MA's), (Start: 86 @35386 has 16 MA's), (141, 35488), (183, 35575), (273, 35746), (306, 35851), (336, 35947), (384, 36100), (393, 36136), (416, 36196),

Gene: Mangethe_34 Start: 27977, Stop: 28843, Start Num: 82

Candidate Starts for Mangethe_34:

(Start: 82 @27977 has 49 MA's), (132, 28058), (139, 28082), (145, 28091), (162, 28139), (227, 28247), (234, 28262), (277, 28373), (333, 28556), (354, 28610), (391, 28739), (405, 28781), (427, 28829),

Gene: Mantra_44 Start: 34639, Stop: 35643, Start Num: 44

Candidate Starts for Mantra_44:

(Start: 44 @34639 has 70 MA's), (120, 34828), (Start: 125 @34840 has 1 MA's), (150, 34906), (153, 34915), (168, 34951), (202, 35017), (208, 35029), (219, 35056), (231, 35080), (239, 35095), (247, 35116), (256, 35137), (260, 35149), (262, 35152), (293, 35236), (309, 35281), (311, 35287), (322, 35317), (329, 35344), (333, 35362), (342, 35383), (354, 35416), (375, 35476), (381, 35503), (392, 35542), (397, 35560), (405, 35581), (408, 35590), (425, 35626), (429, 35635),

Gene: Maridalia_49 Start: 35508, Stop: 36332, Start Num: 86

Candidate Starts for Maridalia_49:

(14, 35151), (15, 35184), (37, 35352), (Start: 86 @35508 has 16 MA's), (141, 35610), (183, 35697), (306, 35973), (336, 36069), (392, 36255), (393, 36258), (416, 36318),

Gene: Marker_48 Start: 35024, Stop: 36025, Start Num: 44

Candidate Starts for Marker_48:

(Start: 44 @35024 has 70 MA's), (109, 35192), (120, 35213), (Start: 125 @35225 has 1 MA's), (150, 35291), (153, 35300), (168, 35336), (202, 35402), (219, 35441), (220, 35444), (237, 35477), (239, 35480), (247, 35501), (256, 35522), (260, 35534), (262, 35537), (293, 35618), (309, 35663), (311, 35669), (322, 35699), (329, 35726), (333, 35744), (334, 35747), (342, 35765), (354, 35798), (360, 35816), (375, 35858), (381, 35885), (392, 35924), (397, 35942), (405, 35963), (408, 35972), (425, 36008), (429, 36017),

Gene: Mask_52 Start: 46012, Stop: 46845, Start Num: 88

Candidate Starts for Mask_52:

(29, 45796), (33, 45826), (41, 45862), (46, 45886), (60, 45952), (Start: 88 @46012 has 2 MA's), (141, 46111), (165, 46168), (201, 46222), (203, 46225), (239, 46291), (274, 46387), (284, 46414), (322, 46519), (328, 46543), (329, 46546), (333, 46564), (334, 46567), (354, 46618), (381, 46705), (391, 46741), (393, 46747), (397, 46762), (427, 46831),

Gene: Mattes_50 Start: 35673, Stop: 36476, Start Num: 77

Candidate Starts for Mattes_50:

(Start: 77 @35673 has 20 MA's), (106, 35712), (126, 35748), (142, 35787), (152, 35817), (171, 35856), (217, 35919), (219, 35922), (236, 35946), (238, 35949), (248, 35973), (255, 35991), (261, 36000), (279, 36021), (325, 36177), (326, 36180), (342, 36228), (345, 36237), (354, 36264), (384, 36366), (392, 36399), (393, 36402), (395, 36411), (396, 36417), (409, 36450), (418, 36465),

Gene: Megiddo_34 Start: 28196, Stop: 29059, Start Num: 82

Candidate Starts for Megiddo_34:

(Start: 82 @28196 has 49 MA's), (132, 28277), (139, 28301), (145, 28310), (162, 28358), (174, 28382), (227, 28463), (234, 28478), (277, 28589), (333, 28772), (354, 28826), (391, 28955), (405, 28997), (427, 29045),

Gene: Mellie_43 Start: 33024, Stop: 33788, Start Num: 123

Candidate Starts for Mellie_43:

(28, 32739), (48, 32838), (80, 32949), (Start: 123 @33024 has 17 MA's), (164, 33123), (223, 33231), (233, 33246), (263, 33315), (303, 33411), (329, 33501), (333, 33519), (390, 33693),

Gene: MicyPS_67 Start: 44107, Stop: 43298, Start Num: 136

Candidate Starts for MicyPS_67:

(Start: 136 @44107 has 2 MA's), (150, 44056), (161, 44026), (175, 43993), (224, 43900), (228, 43894), (236, 43876), (326, 43600), (358, 43501), (386, 43405),

Gene: Min1_10 Start: 3743, Stop: 4495, Start Num: 149

Candidate Starts for Min1_10:

(130, 3686), (148, 3734), (149, 3743), (151, 3749), (160, 3773), (177, 3809), (212, 3881), (239, 3935), (304, 4118), (334, 4235), (375, 4346), (394, 4418), (411, 4466),

Gene: MissRona_47 Start: 35196, Stop: 35957, Start Num: 123

Candidate Starts for MissRona_47:

(Start: 123 @35196 has 17 MA's), (134, 35211), (170, 35313), (193, 35346), (219, 35391), (223, 35400), (233, 35415), (263, 35484), (303, 35580), (329, 35670), (390, 35862),

Gene: MisterCuddles_47 Start: 35732, Stop: 36736, Start Num: 44

Candidate Starts for MisterCuddles_47:

(Start: 44 @35732 has 70 MA's), (120, 35921), (Start: 125 @35933 has 1 MA's), (150, 35999), (153, 36008), (168, 36044), (202, 36110), (208, 36122), (219, 36149), (231, 36173), (239, 36188), (247, 36209), (256, 36230), (260, 36242), (262, 36245), (293, 36329), (309, 36374), (311, 36380), (322, 36410), (329, 36437), (333, 36455), (342, 36476), (354, 36509), (375, 36569), (381, 36596), (392, 36635), (397, 36653), (405, 36674), (408, 36683), (425, 36719), (429, 36728),

Gene: MortyNRick_52 Start: 37928, Stop: 38608, Start Num: 147

Candidate Starts for MortyNRick_52:

(Start: 115 @37859 has 12 MA's), (145, 37925), (Start: 147 @37928 has 1 MA's), (164, 37973), (194, 38024), (208, 38042), (233, 38093), (296, 38231), (318, 38309), (363, 38453), (390, 38546),

Gene: Murp_47 Start: 36766, Stop: 37527, Start Num: 123

Candidate Starts for Murp_47:

(80, 36691), (Start: 123 @36766 has 17 MA's), (134, 36781), (169, 36880), (184, 36892), (205, 36934), (219, 36961), (257, 37042), (263, 37054), (303, 37150), (329, 37240), (352, 37306), (390, 37432),

Gene: Mwanjiwa_53 Start: 36107, Stop: 37108, Start Num: 44

Candidate Starts for Mwanjiwa_53:

(Start: 44 @36107 has 70 MA's), (109, 36275), (120, 36296), (Start: 125 @36308 has 1 MA's), (150, 36374), (153, 36383), (168, 36419), (202, 36485), (Start: 204 @36491 has 2 MA's), (208, 36497), (219, 36524), (237, 36560), (239, 36563), (247, 36584), (256, 36605), (260, 36617), (262, 36620), (293, 36701), (309, 36746), (311, 36752), (322, 36782), (329, 36809), (333, 36827), (342, 36848), (354, 36881), (360, 36899), (375, 36941), (392, 37007), (397, 37025), (405, 37046), (425, 37091),

Gene: Nazo_38 Start: 30066, Stop: 30869, Start Num: 96

Candidate Starts for Nazo_38:

(Start: 96 @30066 has 4 MA's), (Start: 147 @30168 has 1 MA's), (157, 30204), (263, 30396), (298, 30492), (323, 30576), (343, 30642), (345, 30645), (354, 30669), (372, 30723), (383, 30762), (388, 30783), (389, 30786), (412, 30855),

Gene: Necropolis_34 Start: 27936, Stop: 28802, Start Num: 82

Candidate Starts for Necropolis_34:

(Start: 82 @27936 has 49 MA's), (132, 28017), (139, 28041), (145, 28050), (162, 28098), (227, 28206), (234, 28221), (277, 28332), (333, 28515), (354, 28569), (391, 28698), (405, 28740), (427, 28788),

Gene: Neeharika16_71 Start: 41586, Stop: 40738, Start Num: 75

Candidate Starts for Neeharika16_71:

(Start: 75 @41586 has 15 MA's), (Start: 79 @41577 has 5 MA's), (Start: 95 @41553 has 1 MA's), (145, 41463), (157, 41424), (172, 41394), (185, 41370), (193, 41352), (195, 41349), (225, 41310), (241, 41277), (263, 41223), (295, 41136), (296, 41133), (340, 41013), (355, 40974), (379, 40881), (400, 40800),

Gene: Neobush_48 Start: 35356, Stop: 36180, Start Num: 86

Candidate Starts for Neobush_48:

(Start: 77 @35344 has 20 MA's), (Start: 86 @35356 has 16 MA's), (141, 35458), (183, 35545), (273, 35716), (306, 35821), (336, 35917), (384, 36070), (393, 36106), (416, 36166),

Gene: Newrala_72 Start: 42117, Stop: 41278, Start Num: 75

Candidate Starts for Newrala_72:

(Start: 75 @42117 has 15 MA's), (Start: 79 @42108 has 5 MA's), (Start: 95 @42084 has 1 MA's), (145, 41994), (157, 41955), (164, 41946), (182, 41913), (Start: 204 @41883 has 2 MA's), (225, 41850), (263, 41763), (295, 41676), (296, 41673), (340, 41553), (355, 41514), (379, 41421), (400, 41340),

Gene: Nivrat_45 Start: 34995, Stop: 35999, Start Num: 44

Candidate Starts for Nivrat_45:

(22, 34839), (Start: 44 @34995 has 70 MA's), (Start: 125 @35196 has 1 MA's), (150, 35262), (153, 35271), (168, 35307), (202, 35373), (Start: 204 @35379 has 2 MA's), (208, 35385), (219, 35412), (237, 35448), (239, 35451), (247, 35472), (256, 35493), (260, 35505), (262, 35508), (293, 35592), (309, 35637), (311, 35643), (314, 35649), (322, 35673), (329, 35700), (333, 35718), (342, 35739), (354, 35772), (375, 35832), (381, 35859), (392, 35898), (397, 35916), (405, 35937), (425, 35982), (429, 35991),

Gene: ODay_62 Start: 38884, Stop: 39768, Start Num: 87

Candidate Starts for ODay_62:

(16, 38563), (17, 38569), (23, 38599), (26, 38647), (38, 38722), (40, 38728), (Start: 87 @38884 has 8 MA's), (141, 38986), (144, 38992), (395, 39697), (404, 39727), (414, 39748),

Gene: Odin_74 Start: 43407, Stop: 42565, Start Num: 100

Candidate Starts for Odin_74:

(Start: 100 @43407 has 3 MA's), (157, 43275), (178, 43236), (185, 43221), (197, 43203), (222, 43167), (225, 43161), (241, 43128), (257, 43086), (295, 42987), (296, 42984), (313, 42927), (335, 42852), (357, 42792), (359, 42783), (417, 42588),

Gene: Ogotogo_48 Start: 34646, Stop: 35650, Start Num: 44

Candidate Starts for Ogotogo_48:

(Start: 44 @34646 has 70 MA's), (109, 34814), (120, 34835), (Start: 125 @34847 has 1 MA's), (150, 34913), (153, 34922), (168, 34958), (202, 35024), (219, 35063), (220, 35066), (231, 35087), (239, 35102), (247, 35123), (256, 35144), (260, 35156), (262, 35159), (293, 35243), (311, 35294), (314, 35300), (329, 35351), (333, 35369), (342, 35390), (354, 35423), (360, 35441), (375, 35483), (381, 35510), (397, 35567), (408, 35597), (425, 35633), (427, 35636),

Gene: Okabe_43 Start: 30988, Stop: 31992, Start Num: 44

Candidate Starts for Okabe_43:

(Start: 44 @30988 has 70 MA's), (109, 31156), (120, 31177), (Start: 125 @31189 has 1 MA's), (139, 31222), (145, 31237), (150, 31255), (153, 31264), (168, 31300), (187, 31348), (202, 31366), (208, 31378), (219, 31405), (231, 31429), (237, 31441), (239, 31444), (247, 31465), (256, 31486), (260, 31498), (262, 31501), (287, 31573), (293, 31585), (311, 31636), (329, 31693), (333, 31711), (342, 31732), (354, 31765), (360, 31783), (375, 31825), (392, 31891), (397, 31909), (405, 31930), (425, 31975), (429, 31984),

Gene: Oregano_48 Start: 33939, Stop: 34688, Start Num: 115

Candidate Starts for Oregano_48:

(52, 33786), (83, 33894), (Start: 115 @33939 has 12 MA's), (134, 33969), (141, 33996), (145, 34005), (208, 34122), (219, 34149), (233, 34173), (241, 34188), (254, 34218), (295, 34308), (296, 34311), (363, 34533),

Gene: P1201_08 Start: 2597, Stop: 3520, Start Num: 60

Candidate Starts for P1201_08:

(60, 2597), (61, 2600), (76, 2642), (Start: 108 @2690 has 1 MA's), (145, 2765), (157, 2804), (165, 2816), (196, 2882), (222, 2924), (239, 2957), (263, 3017), (317, 3185), (347, 3263), (385, 3398), (405, 3473), (421, 3509), (422, 3512),

Gene: PMC_42 Start: 34542, Stop: 35546, Start Num: 44

Candidate Starts for PMC_42:

(Start: 44 @34542 has 70 MA's), (120, 34731), (Start: 125 @34743 has 1 MA's), (150, 34809), (153, 34818), (168, 34854), (202, 34920), (208, 34932), (219, 34959), (231, 34983), (239, 34998), (247, 35019), (256, 35040), (260, 35052), (262, 35055), (293, 35139), (309, 35184), (311, 35190), (322, 35220), (329, 35247), (333, 35265), (342, 35286), (354, 35319), (375, 35379), (392, 35445), (397, 35463), (405, 35484), (408, 35493), (425, 35529), (429, 35538),

Gene: PSonyx_86 Start: 47646, Stop: 46867, Start Num: 136

Candidate Starts for PSonyx_86:

(Start: 136 @47646 has 2 MA's), (150, 47595), (171, 47541), (175, 47532), (199, 47487), (228, 47433), (236, 47415), (276, 47313), (288, 47280), (356, 47070), (362, 47037), (389, 46953),

Gene: PeanutPie_34 Start: 27935, Stop: 28798, Start Num: 82

Candidate Starts for PeanutPie_34:

(Start: 82 @27935 has 49 MA's), (132, 28016), (139, 28040), (145, 28049), (162, 28097), (222, 28193), (227, 28202), (234, 28217), (277, 28328), (333, 28511), (354, 28565), (391, 28694), (405, 28736), (427, 28784),

Gene: Pepperoni_38 Start: 29759, Stop: 30508, Start Num: 115

Candidate Starts for Pepperoni_38:

(Start: 115 @29759 has 12 MA's), (131, 29786), (134, 29789), (Start: 147 @29828 has 1 MA's), (164, 29873), (194, 29924), (208, 29942), (233, 29993), (296, 30131), (306, 30182), (363, 30353),

Gene: Periwinkle_67 Start: 39705, Stop: 40481, Start Num: 88

Candidate Starts for Periwinkle_67:

(71, 39675), (Start: 88 @39705 has 2 MA's), (141, 39804), (185, 39891), (239, 39984), (277, 40083), (393, 40401), (399, 40422), (405, 40437), (413, 40455),

Gene: Ph8s_77 Start: 43456, Stop: 42623, Start Num: 100

Candidate Starts for Ph8s_77:

(Start: 79 @43483 has 5 MA's), (Start: 100 @43456 has 3 MA's), (128, 43405), (156, 43330), (157, 43324), (183, 43285), (234, 43195), (263, 43126), (351, 42886), (353, 42877), (382, 42772), (424, 42646), (426, 42643), (431, 42631),

Gene: Phabba_184 Start: 96671, Stop: 95853, Start Num: 113

Candidate Starts for Phabba_184:

(Start: 113 @96671 has 1 MA's), (157, 96584), (223, 96479), (240, 96449), (244, 96440), (250, 96422), (259, 96398), (266, 96380), (277, 96347), (292, 96314), (293, 96311), (312, 96239), (329, 96182), (354, 96110), (369, 96056), (399, 95948), (400, 95942), (423, 95894), (427, 95885), (430, 95876),

Gene: Phabuloso_58 Start: 37489, Stop: 38328, Start Num: 114

Candidate Starts for Phabuloso_58:

(Start: 114 @37489 has 2 MA's), (129, 37516), (162, 37603), (232, 37732), (240, 37747), (255, 37792), (395, 38257), (404, 38287), (414, 38308),

Gene: Phaded_67 Start: 44471, Stop: 43656, Start Num: 79

Candidate Starts for Phaded_67:

(69, 44498), (Start: 79 @44471 has 5 MA's), (98, 44438), (145, 44354), (157, 44315), (165, 44303), (193, 44246), (212, 44225), (276, 44093), (379, 43802),

Gene: Phalconet_46 Start: 34873, Stop: 35877, Start Num: 44

Candidate Starts for Phalconet_46:

(Start: 44 @34873 has 70 MA's), (109, 35041), (120, 35062), (Start: 125 @35074 has 1 MA's), (139, 35107), (145, 35122), (150, 35140), (153, 35149), (168, 35185), (187, 35233), (202, 35251), (208, 35263), (219, 35290), (231, 35314), (237, 35326), (239, 35329), (247, 35350), (256, 35371), (260, 35383), (262, 35386), (287, 35458), (293, 35470), (311, 35521), (329, 35578), (333, 35596), (342, 35617), (354, 35650), (360, 35668), (375, 35710), (392, 35776), (397, 35794), (405, 35815), (425, 35860), (429, 35869),

Gene: Phalm_34 Start: 28196, Stop: 29059, Start Num: 82

Candidate Starts for Phalm_34:

(Start: 82 @28196 has 49 MA's), (132, 28277), (139, 28301), (145, 28310), (162, 28358), (174, 28382), (227, 28463), (234, 28478), (277, 28589), (333, 28772), (354, 28826), (391, 28955), (405, 28997), (427, 29045),

Gene: Phasih_45 Start: 35085, Stop: 36089, Start Num: 44

Candidate Starts for Phasih_45:

(22, 34929), (Start: 44 @35085 has 70 MA's), (Start: 125 @35286 has 1 MA's), (150, 35352), (153, 35361), (168, 35397), (202, 35463), (208, 35475), (219, 35502), (231, 35526), (239, 35541), (247, 35562), (256, 35583), (260, 35595), (262, 35598), (293, 35682), (309, 35727), (311, 35733), (322, 35763), (329, 35790), (333, 35808), (342, 35829), (354, 35862), (375, 35922), (392, 35988), (397, 36006), (405, 36027), (408, 36036), (425, 36072), (429, 36081),

Gene: Phayonce_36 Start: 29962, Stop: 30771, Start Num: 96

Candidate Starts for Phayonce_36:

(Start: 96 @29962 has 4 MA's), (141, 30052), (143, 30058), (263, 30298), (298, 30394), (323, 30478), (343, 30544), (345, 30547), (354, 30571), (383, 30664), (388, 30685), (412, 30757),

Gene: Phegasus_34 Start: 27944, Stop: 28810, Start Num: 82

Candidate Starts for Phegasus_34:

(Start: 82 @27944 has 49 MA's), (132, 28025), (139, 28049), (145, 28058), (162, 28106), (227, 28214), (234, 28229), (277, 28340), (333, 28523), (354, 28577), (391, 28706), (405, 28748), (427, 28796),

Gene: PhesterPhotato_49 Start: 35828, Stop: 36832, Start Num: 44

Candidate Starts for PhesterPhotato_49:

(Start: 44 @35828 has 70 MA's), (109, 35996), (120, 36017), (Start: 125 @36029 has 1 MA's), (139, 36062), (145, 36077), (150, 36095), (153, 36104), (168, 36140), (187, 36188), (202, 36206), (208, 36218), (219, 36245), (231, 36269), (237, 36281), (239, 36284), (247, 36305), (256, 36326), (260, 36338), (262, 36341), (287, 36413), (293, 36425), (311, 36476), (329, 36533), (333, 36551), (342, 36572), (354, 36605), (360, 36623), (375, 36665), (392, 36731), (397, 36749), (405, 36770), (425, 36815), (429, 36824),

Gene: Philus_50 Start: 35558, Stop: 36361, Start Num: 77

Candidate Starts for Philus_50:

(Start: 77 @35558 has 20 MA's), (106, 35597), (126, 35633), (142, 35672), (152, 35702), (171, 35741), (217, 35804), (219, 35807), (236, 35831), (238, 35834), (248, 35858), (255, 35876), (261, 35885), (279, 35906), (325, 36062), (326, 36065), (342, 36113), (345, 36122), (354, 36149), (384, 36251), (392, 36284), (393, 36287), (395, 36296), (396, 36302), (409, 36335), (418, 36350),

Gene: Phineas_34 Start: 28307, Stop: 29173, Start Num: 82

Candidate Starts for Phineas_34:

(Start: 82 @28307 has 49 MA's), (132, 28388), (139, 28412), (145, 28421), (162, 28469), (227, 28577), (234, 28592), (277, 28703), (333, 28886), (354, 28940), (391, 29069), (405, 29111), (427, 29159),

Gene: PhorbesPhlower_43 Start: 29950, Stop: 30699, Start Num: 115

Candidate Starts for PhorbesPhlower_43:

(Start: 115 @29950 has 12 MA's), (131, 29977), (134, 29980), (Start: 147 @30019 has 1 MA's), (164, 30064), (194, 30115), (208, 30133), (233, 30184), (296, 30322), (306, 30373), (363, 30544),

Gene: PhriskyACE_44 Start: 34290, Stop: 35057, Start Num: 115

Candidate Starts for PhriskyACE_44:

(Start: 115 @34290 has 12 MA's), (131, 34317), (134, 34320), (141, 34347), (164, 34404), (170, 34422), (223, 34512), (233, 34527), (240, 34539), (287, 34650), (323, 34764), (329, 34788), (333, 34806), (342, 34827), (343, 34830), (345, 34833), (354, 34857), (371, 34908), (372, 34911),

Gene: Pickett_41 Start: 29647, Stop: 30483, Start Num: 77

Candidate Starts for Pickett_41:

(Start: 77 @29647 has 20 MA's), (Start: 86 @29659 has 16 MA's), (141, 29761), (183, 29848), (273, 30019), (306, 30124), (336, 30220), (384, 30373), (393, 30409), (416, 30469),

Gene: Pippy_45 Start: 33164, Stop: 33943, Start Num: 110

Candidate Starts for Pippy_45:

(Start: 89 @33134 has 1 MA's), (Start: 110 @33164 has 12 MA's), (130, 33188), (133, 33191), (145, 33227), (Start: 147 @33230 has 1 MA's), (164, 33275), (226, 33383), (234, 33398), (263, 33467), (283, 33515), (322, 33632), (336, 33683), (366, 33779), (395, 33884), (396, 33890), (413, 33932), (418, 33938),

Gene: Pmask_71 Start: 42122, Stop: 41274, Start Num: 75

Candidate Starts for Pmask_71:

(Start: 75 @42122 has 15 MA's), (Start: 79 @42113 has 5 MA's), (Start: 95 @42089 has 1 MA's), (145, 41999), (157, 41960), (172, 41930), (185, 41906), (193, 41888), (195, 41885), (225, 41846), (241, 41813), (263, 41759), (295, 41672), (296, 41669), (340, 41549), (355, 41510), (379, 41417), (400, 41336),

Gene: Poenanya_47 Start: 36071, Stop: 37075, Start Num: 44

Candidate Starts for Poenanya_47:

(Start: 44 @36071 has 70 MA's), (120, 36260), (Start: 125 @36272 has 1 MA's), (150, 36338), (153, 36347), (168, 36383), (202, 36449), (208, 36461), (219, 36488), (231, 36512), (239, 36527), (247, 36548), (256, 36569), (260, 36581), (262, 36584), (293, 36668), (309, 36713), (311, 36719), (322, 36749), (329, 36776), (333, 36794), (342, 36815), (354, 36848), (375, 36908), (381, 36935), (392, 36974), (397, 36992), (405, 37013), (408, 37022), (425, 37058), (429, 37067),

Gene: Polkaroo_34 Start: 27953, Stop: 28816, Start Num: 82

Candidate Starts for Polkaroo_34:

(Start: 82 @27953 has 49 MA's), (132, 28034), (139, 28058), (145, 28067), (162, 28115), (174, 28139), (227, 28220), (234, 28235), (277, 28346), (333, 28529), (354, 28583), (391, 28712), (405, 28754), (427, 28802),

Gene: Polly_45 Start: 34805, Stop: 35629, Start Num: 86

Candidate Starts for Polly_45:

(Start: 77 @34793 has 20 MA's), (Start: 86 @34805 has 16 MA's), (141, 34907), (183, 34994), (273, 35165), (306, 35270), (336, 35366), (384, 35519), (393, 35555), (416, 35615),

Gene: Pollywog_46 Start: 35249, Stop: 36253, Start Num: 44

Candidate Starts for Pollywog_46:

(Start: 44 @35249 has 70 MA's), (120, 35438), (Start: 125 @35450 has 1 MA's), (150, 35516), (153, 35525), (168, 35561), (202, 35627), (208, 35639), (219, 35666), (231, 35690), (239, 35705), (247, 35726), (256, 35747), (260, 35759), (262, 35762), (293, 35846), (309, 35891), (311, 35897), (322, 35927), (329, 35954), (333, 35972), (342, 35993), (354, 36026), (375, 36086), (392, 36152), (397, 36170), (405, 36191), (408, 36200), (425, 36236), (429, 36245),

Gene: Polyphemus_74 Start: 42500, Stop: 41664, Start Num: 75

Candidate Starts for Polyphemus_74:

(Start: 75 @42500 has 15 MA's), (Start: 79 @42491 has 5 MA's), (Start: 95 @42467 has 1 MA's), (145, 42377), (157, 42338), (165, 42326), (253, 42176), (295, 42062), (296, 42059), (340, 41939), (355, 41900), (379, 41807), (400, 41726),

Gene: Pochiewood_60 Start: 42683, Stop: 43501, Start Num: 64

Candidate Starts for Pochiewood_60:

(Start: 64 @42683 has 9 MA's), (Start: 75 @42710 has 15 MA's), (97, 42737), (Start: 105 @42749 has 3 MA's), (141, 42809), (172, 42884), (185, 42896), (235, 42986), (239, 42992), (278, 43097), (293, 43127), (327, 43232), (370, 43355), (393, 43430), (397, 43445),

Gene: PopTart_43 Start: 34554, Stop: 35558, Start Num: 44

Candidate Starts for PopTart_43:

(Start: 44 @34554 has 70 MA's), (109, 34722), (120, 34743), (Start: 125 @34755 has 1 MA's), (139, 34788), (145, 34803), (150, 34821), (153, 34830), (168, 34866), (187, 34914), (202, 34932), (208, 34944), (219, 34971), (231, 34995), (237, 35007), (239, 35010), (247, 35031), (256, 35052), (260, 35064), (262, 35067), (287, 35139), (293, 35151), (309, 35196), (311, 35202), (322, 35232), (329, 35259), (333, 35277), (334, 35280), (342, 35298), (354, 35331), (360, 35349), (375, 35391), (392, 35457), (397, 35475), (405, 35496), (425, 35541),

Gene: Priamo_74 Start: 41728, Stop: 41129, Start Num: 204

Candidate Starts for Priamo_74:

(Start: 204 @41728 has 2 MA's), (225, 41701), (241, 41668), (263, 41614), (295, 41527), (296, 41524), (340, 41404), (355, 41365), (379, 41272), (400, 41191),

Gene: Pukovnik_68 Start: 44139, Stop: 43324, Start Num: 75

Candidate Starts for Pukovnik_68:

(Start: 75 @44139 has 15 MA's), (Start: 79 @44130 has 5 MA's), (93, 44106), (Start: 136 @44049 has 2 MA's), (137, 44046), (143, 44025), (145, 44022), (157, 43983), (164, 43974), (176, 43947), (178, 43944), (225, 43878), (227, 43875), (294, 43725), (325, 43641), (330, 43626), (340, 43599), (379, 43467),

Gene: Purky_41 Start: 30689, Stop: 31480, Start Num: 96

Candidate Starts for Purky_41:

(Start: 96 @30689 has 4 MA's), (Start: 147 @30788 has 1 MA's), (157, 30824), (219, 30923), (263, 31016), (323, 31196), (333, 31238), (343, 31262), (345, 31265), (354, 31289), (371, 31340), (372, 31343), (383, 31382), (388, 31403), (403, 31454),

Gene: Pygmy_36 Start: 29778, Stop: 30644, Start Num: 82

Candidate Starts for Pygmy_36:

(Start: 82 @29778 has 49 MA's), (132, 29859), (139, 29883), (145, 29892), (153, 29919), (162, 29940), (227, 30048), (234, 30063), (277, 30174), (333, 30357), (354, 30411), (405, 30582), (427, 30630),

Gene: QueenHazel_32 Start: 27811, Stop: 28680, Start Num: 82

Candidate Starts for QueenHazel_32:

(Start: 82 @27811 has 49 MA's), (139, 27919), (145, 27928), (162, 27976), (227, 28084), (234, 28099), (277, 28210), (333, 28393), (354, 28447), (391, 28576), (405, 28618), (427, 28666),

Gene: Quico_55 Start: 35977, Stop: 36771, Start Num: 110

Candidate Starts for Quico_55:

(Start: 110 @35977 has 12 MA's), (133, 36019), (145, 36055), (Start: 147 @36058 has 1 MA's), (157, 36094), (192, 36154), (226, 36211), (234, 36226), (263, 36295), (283, 36343), (322, 36460), (336, 36511), (366, 36607), (395, 36712), (396, 36718), (413, 36760), (418, 36766),

Gene: REQ2_43 Start: 33255, Stop: 34112, Start Num: 72

Candidate Starts for REQ2_43:

(72, 33255), (112, 33318), (Start: 113 @33324 has 1 MA's), (135, 33360), (218, 33540), (240, 33576), (263, 33633), (287, 33699), (319, 33783), (392, 34029), (393, 34032),

Gene: RedBird_44 Start: 34882, Stop: 35886, Start Num: 44

Candidate Starts for RedBird_44:

(Start: 44 @34882 has 70 MA's), (120, 35071), (Start: 125 @35083 has 1 MA's), (150, 35149), (153, 35158), (168, 35194), (202, 35260), (208, 35272), (219, 35299), (231, 35323), (239, 35338), (247, 35359), (256, 35380), (260, 35392), (262, 35395), (293, 35479), (309, 35524), (311, 35530), (322,

35560), (329, 35587), (333, 35605), (342, 35626), (354, 35659), (375, 35719), (381, 35746), (392, 35785), (397, 35803), (405, 35824), (408, 35833), (425, 35869), (429, 35878),

Gene: Rockne_45 Start: 34542, Stop: 35546, Start Num: 44

Candidate Starts for Rockne_45:

(Start: 44 @34542 has 70 MA's), (120, 34731), (Start: 125 @34743 has 1 MA's), (150, 34809), (153, 34818), (168, 34854), (202, 34920), (208, 34932), (219, 34959), (231, 34983), (239, 34998), (247, 35019), (256, 35040), (260, 35052), (262, 35055), (293, 35139), (309, 35184), (311, 35190), (322, 35220), (329, 35247), (333, 35265), (342, 35286), (354, 35319), (375, 35379), (392, 35445), (397, 35463), (405, 35484), (408, 35493), (425, 35529), (429, 35538),

Gene: RockyHorror_48 Start: 34943, Stop: 35947, Start Num: 44

Candidate Starts for RockyHorror_48:

(22, 34787), (Start: 44 @34943 has 70 MA's), (Start: 125 @35144 has 1 MA's), (150, 35210), (153, 35219), (168, 35255), (202, 35321), (208, 35333), (219, 35360), (231, 35384), (239, 35399), (247, 35420), (256, 35441), (260, 35453), (262, 35456), (293, 35540), (309, 35585), (311, 35591), (322, 35621), (329, 35648), (333, 35666), (342, 35687), (354, 35720), (375, 35780), (392, 35846), (397, 35864), (405, 35885), (408, 35894), (425, 35930), (429, 35939),

Gene: Rose5_60 Start: 42695, Stop: 43513, Start Num: 64

Candidate Starts for Rose5_60:

(Start: 64 @42695 has 9 MA's), (Start: 75 @42722 has 15 MA's), (97, 42749), (Start: 105 @42761 has 3 MA's), (141, 42821), (172, 42896), (185, 42908), (235, 42998), (239, 43004), (278, 43109), (293, 43139), (327, 43244), (370, 43367), (393, 43442), (397, 43457),

Gene: Ruby_46 Start: 35733, Stop: 36737, Start Num: 44

Candidate Starts for Ruby_46:

(Start: 44 @35733 has 70 MA's), (120, 35922), (Start: 125 @35934 has 1 MA's), (150, 36000), (153, 36009), (168, 36045), (202, 36111), (208, 36123), (219, 36150), (231, 36174), (239, 36189), (247, 36210), (256, 36231), (260, 36243), (262, 36246), (293, 36330), (309, 36375), (311, 36381), (322, 36411), (329, 36438), (333, 36456), (342, 36477), (354, 36510), (375, 36570), (381, 36597), (392, 36636), (397, 36654), (405, 36675), (408, 36684), (425, 36720), (429, 36729),

Gene: Ruthy_46 Start: 36193, Stop: 37002, Start Num: 78

Candidate Starts for Ruthy_46:

(Start: 78 @36193 has 3 MA's), (101, 36223), (141, 36301), (Start: 147 @36307 has 1 MA's), (150, 36322), (305, 36655), (341, 36757), (377, 36871), (405, 36958),

Gene: Saal_49 Start: 35536, Stop: 36339, Start Num: 77

Candidate Starts for Saal_49:

(Start: 77 @35536 has 20 MA's), (106, 35575), (126, 35611), (142, 35650), (152, 35680), (171, 35719), (217, 35782), (219, 35785), (236, 35809), (238, 35812), (248, 35836), (255, 35854), (261, 35863), (279, 35884), (325, 36040), (326, 36043), (342, 36091), (345, 36100), (354, 36127), (384, 36229), (392, 36262), (393, 36265), (395, 36274), (396, 36280), (409, 36313), (418, 36328),

Gene: Samba_44 Start: 35414, Stop: 36175, Start Num: 123

Candidate Starts for Samba_44:

(48, 35228), (80, 35339), (Start: 123 @35414 has 17 MA's), (134, 35429), (153, 35492), (193, 35564), (219, 35609), (223, 35618), (233, 35633), (263, 35702), (303, 35798), (329, 35888), (390, 36080),

Gene: SassyB_43 Start: 34554, Stop: 35558, Start Num: 44

Candidate Starts for SassyB_43:

(Start: 44 @34554 has 70 MA's), (109, 34722), (120, 34743), (Start: 125 @34755 has 1 MA's), (139, 34788), (145, 34803), (150, 34821), (153, 34830), (168, 34866), (187, 34914), (202, 34932), (208, 34944), (219, 34971), (231, 34995), (237, 35007), (239, 35010), (247, 35031), (256, 35052), (260, 35064), (262, 35067), (287, 35139), (293, 35151), (309, 35196), (311, 35202), (322, 35232), (329, 35259), (333, 35277), (334, 35280), (342, 35298), (354, 35331), (360, 35349), (375, 35391), (392, 35457), (397, 35475), (405, 35496), (425, 35541),

Gene: Seagreen_48 Start: 35285, Stop: 36286, Start Num: 44

Candidate Starts for Seagreen_48:

(Start: 44 @35285 has 70 MA's), (109, 35453), (120, 35474), (Start: 125 @35486 has 1 MA's), (139, 35519), (150, 35552), (153, 35561), (168, 35597), (202, 35663), (219, 35702), (220, 35705), (237, 35738), (239, 35741), (247, 35762), (256, 35783), (260, 35795), (262, 35798), (293, 35879), (309, 35924), (311, 35930), (322, 35960), (329, 35987), (333, 36005), (334, 36008), (342, 36026), (354, 36059), (360, 36077), (375, 36119), (392, 36185), (397, 36203), (405, 36224), (425, 36269),

Gene: Shipwreck_36 Start: 29753, Stop: 30619, Start Num: 82

Candidate Starts for Shipwreck_36:

(Start: 82 @29753 has 49 MA's), (132, 29834), (139, 29858), (145, 29867), (153, 29894), (162, 29915), (227, 30023), (234, 30038), (277, 30149), (333, 30332), (354, 30386), (405, 30557), (427, 30605),

Gene: ShroomBoi_47 Start: 35208, Stop: 36212, Start Num: 44

Candidate Starts for ShroomBoi_47:

(Start: 44 @35208 has 70 MA's), (109, 35376), (120, 35397), (Start: 125 @35409 has 1 MA's), (139, 35442), (145, 35457), (150, 35475), (153, 35484), (168, 35520), (187, 35568), (202, 35586), (208, 35598), (219, 35625), (231, 35649), (237, 35661), (239, 35664), (247, 35685), (256, 35706), (260, 35718), (262, 35721), (293, 35805), (309, 35850), (311, 35856), (322, 35886), (329, 35913), (333, 35931), (342, 35952), (354, 35985), (375, 36045), (397, 36129), (405, 36150), (408, 36159), (425, 36195), (429, 36204),

Gene: SiSi_47 Start: 35103, Stop: 36107, Start Num: 44

Candidate Starts for SiSi_47:

(Start: 44 @35103 has 70 MA's), (120, 35292), (Start: 125 @35304 has 1 MA's), (150, 35370), (153, 35379), (168, 35415), (202, 35481), (208, 35493), (219, 35520), (231, 35544), (239, 35559), (247, 35580), (256, 35601), (260, 35613), (262, 35616), (293, 35700), (309, 35745), (311, 35751), (322, 35781), (329, 35808), (333, 35826), (342, 35847), (354, 35880), (375, 35940), (381, 35967), (392, 36006), (397, 36024), (405, 36045), (408, 36054), (425, 36090), (429, 36099),

Gene: Sidious_48 Start: 36674, Stop: 37510, Start Num: 86

Candidate Starts for Sidious_48:

(Start: 77 @36662 has 20 MA's), (Start: 86 @36674 has 16 MA's), (141, 36776), (183, 36863), (200, 36893), (342, 37268), (392, 37439), (393, 37442),

Gene: Silverleaf_60 Start: 42430, Stop: 43248, Start Num: 64

Candidate Starts for Silverleaf_60:

(Start: 64 @42430 has 9 MA's), (Start: 75 @42457 has 15 MA's), (97, 42484), (Start: 105 @42496 has 3 MA's), (141, 42556), (172, 42631), (185, 42643), (235, 42733), (239, 42739), (278, 42844), (293, 42874), (327, 42979), (370, 43102), (393, 43177), (397, 43192),

Gene: SimranZ1_47 Start: 34553, Stop: 35554, Start Num: 44

Candidate Starts for SimranZ1_47:

(Start: 44 @34553 has 70 MA's), (120, 34742), (Start: 125 @34754 has 1 MA's), (150, 34820), (153, 34829), (168, 34865), (202, 34931), (208, 34943), (219, 34970), (231, 34994), (239, 35009), (247, 35030), (256, 35051), (260, 35063), (262, 35066), (293, 35147), (309, 35192), (311, 35198), (314,

35204), (322, 35228), (329, 35255), (342, 35294), (354, 35327), (360, 35345), (375, 35387), (381, 35414), (392, 35453), (397, 35471), (405, 35492), (408, 35501), (425, 35537), (429, 35546),

Gene: Slim_48 Start: 36252, Stop: 37256, Start Num: 44

Candidate Starts for Slim_48:

(Start: 44 @36252 has 70 MA's), (120, 36441), (Start: 125 @36453 has 1 MA's), (150, 36519), (153, 36528), (168, 36564), (202, 36630), (208, 36642), (219, 36669), (231, 36693), (239, 36708), (247, 36729), (256, 36750), (260, 36762), (262, 36765), (293, 36849), (309, 36894), (311, 36900), (322, 36930), (329, 36957), (333, 36975), (342, 36996), (354, 37029), (360, 37047), (375, 37089), (381, 37116), (392, 37155), (397, 37173), (405, 37194), (408, 37203), (425, 37239), (429, 37248),

Gene: SoilAssassin_43 Start: 32482, Stop: 33318, Start Num: 77

Candidate Starts for SoilAssassin_43:

(Start: 77 @32482 has 20 MA's), (Start: 86 @32494 has 16 MA's), (141, 32596), (183, 32683), (273, 32854), (306, 32959), (336, 33055), (384, 33208), (393, 33244), (416, 33304),

Gene: Soilmate_51 Start: 38490, Stop: 39251, Start Num: 123

Candidate Starts for Soilmate_51:

(80, 38415), (Start: 123 @38490 has 17 MA's), (134, 38505), (145, 38541), (169, 38604), (184, 38616), (205, 38658), (219, 38685), (263, 38778), (303, 38874), (329, 38964), (390, 39156),

Gene: Sonah_34 Start: 27925, Stop: 28791, Start Num: 82

Candidate Starts for Sonah_34:

(Start: 82 @27925 has 49 MA's), (132, 28006), (139, 28030), (145, 28039), (153, 28066), (162, 28087), (227, 28195), (234, 28210), (277, 28321), (333, 28504), (354, 28558), (391, 28687), (405, 28729), (427, 28777),

Gene: Spartan_37 Start: 33069, Stop: 33911, Start Num: 107

Candidate Starts for Spartan_37:

(107, 33069), (190, 33240), (229, 33300), (239, 33321), (243, 33330), (245, 33339), (267, 33393), (268, 33399), (287, 33444), (299, 33474), (300, 33477), (308, 33519), (331, 33594), (333, 33606), (336, 33612), (346, 33639),

Gene: Sprinklemunch_54 Start: 39274, Stop: 40071, Start Num: 108

Candidate Starts for Sprinklemunch_54:

(Start: 108 @39274 has 1 MA's), (Start: 113 @39286 has 1 MA's), (157, 39388), (219, 39499), (249, 39568), (287, 39664), (306, 39736), (316, 39757), (323, 39778), (329, 39802), (333, 39820), (343, 39844), (345, 39847), (354, 39871), (371, 39922), (372, 39925), (376, 39940), (383, 39964),

Gene: Squirty_40 Start: 32337, Stop: 33116, Start Num: 110

Candidate Starts for Squirty_40:

(Start: 89 @32307 has 1 MA's), (Start: 110 @32337 has 12 MA's), (130, 32361), (133, 32364), (145, 32400), (Start: 147 @32403 has 1 MA's), (164, 32448), (226, 32556), (234, 32571), (263, 32640), (283, 32688), (322, 32805), (336, 32856), (366, 32952), (395, 33057), (396, 33063), (413, 33105), (418, 33111),

Gene: Stap_46 Start: 34844, Stop: 35848, Start Num: 44

Candidate Starts for Stap_46:

(Start: 44 @34844 has 70 MA's), (120, 35033), (Start: 125 @35045 has 1 MA's), (150, 35111), (153, 35120), (168, 35156), (202, 35222), (208, 35234), (219, 35261), (231, 35285), (239, 35300), (247, 35321), (256, 35342), (260, 35354), (262, 35357), (293, 35441), (309, 35486), (311, 35492), (322, 35522), (329, 35549), (333, 35567), (342, 35588), (354, 35621), (375, 35681), (381, 35708), (392, 35747), (397, 35765), (405, 35786), (408, 35795), (425, 35831), (429, 35840),

Gene: Starcevich_47 Start: 35737, Stop: 36741, Start Num: 44

Candidate Starts for Starcevich_47:

(Start: 44 @35737 has 70 MA's), (120, 35926), (Start: 125 @35938 has 1 MA's), (150, 36004), (153, 36013), (168, 36049), (202, 36115), (208, 36127), (219, 36154), (231, 36178), (239, 36193), (247, 36214), (256, 36235), (260, 36247), (262, 36250), (293, 36334), (309, 36379), (311, 36385), (322, 36415), (329, 36442), (333, 36460), (342, 36481), (354, 36514), (375, 36574), (381, 36601), (392, 36640), (397, 36658), (405, 36679), (408, 36688), (425, 36724), (429, 36733),

Gene: StevieRay_34 Start: 27895, Stop: 28758, Start Num: 82

Candidate Starts for StevieRay_34:

(Start: 82 @27895 has 49 MA's), (139, 28000), (145, 28009), (162, 28057), (174, 28081), (227, 28162), (234, 28177), (277, 28288), (333, 28471), (354, 28525), (391, 28654), (405, 28696), (427, 28744),

Gene: StressBall_34 Start: 28196, Stop: 29059, Start Num: 82

Candidate Starts for StressBall_34:

(Start: 82 @28196 has 49 MA's), (132, 28277), (139, 28301), (145, 28310), (162, 28358), (174, 28382), (227, 28463), (234, 28478), (277, 28589), (333, 28772), (354, 28826), (391, 28955), (405, 28997), (427, 29045),

Gene: Stuck_49 Start: 38539, Stop: 39417, Start Num: 87

Candidate Starts for Stuck_49:

(Start: 87 @38539 has 8 MA's), (141, 38635), (214, 38788), (225, 38812), (230, 38818), (280, 38953), (352, 39190), (404, 39376),

Gene: SuperAwesome_72 Start: 42164, Stop: 41316, Start Num: 75

Candidate Starts for SuperAwesome_72:

(Start: 75 @42164 has 15 MA's), (Start: 79 @42155 has 5 MA's), (Start: 95 @42131 has 1 MA's), (145, 42041), (157, 42002), (172, 41972), (185, 41948), (193, 41930), (195, 41927), (225, 41888), (241, 41855), (263, 41801), (295, 41714), (296, 41711), (340, 41591), (355, 41552), (379, 41459), (400, 41378),

Gene: SuperCallie99_69 Start: 42006, Stop: 41158, Start Num: 75

Candidate Starts for SuperCallie99_69:

(Start: 75 @42006 has 15 MA's), (Start: 79 @41997 has 5 MA's), (Start: 95 @41973 has 1 MA's), (145, 41883), (157, 41844), (172, 41814), (185, 41790), (193, 41772), (195, 41769), (225, 41730), (241, 41697), (263, 41643), (295, 41556), (296, 41553), (340, 41433), (355, 41394), (379, 41301), (400, 41220),

Gene: SuperGrey_48 Start: 36177, Stop: 37181, Start Num: 44

Candidate Starts for SuperGrey_48:

(Start: 44 @36177 has 70 MA's), (109, 36345), (120, 36366), (Start: 125 @36378 has 1 MA's), (139, 36411), (145, 36426), (150, 36444), (153, 36453), (168, 36489), (187, 36537), (202, 36555), (208, 36567), (219, 36594), (231, 36618), (237, 36630), (239, 36633), (247, 36654), (256, 36675), (260, 36687), (262, 36690), (287, 36762), (293, 36774), (311, 36825), (314, 36831), (329, 36882), (333, 36900), (342, 36921), (354, 36954), (360, 36972), (375, 37014), (381, 37041), (397, 37098), (408, 37128), (425, 37164), (427, 37167),

Gene: Superchunk_75 Start: 43021, Stop: 42170, Start Num: 100

Candidate Starts for Superchunk_75:

(Start: 79 @43054 has 5 MA's), (Start: 100 @43021 has 3 MA's), (128, 42970), (143, 42931), (157, 42889), (263, 42673), (330, 42493), (351, 42433), (353, 42424), (382, 42319),

Gene: Susceptit_48 Start: 35363, Stop: 36187, Start Num: 86

Candidate Starts for Susceptit_48:

(Start: 77 @35351 has 20 MA's), (Start: 86 @35363 has 16 MA's), (141, 35465), (183, 35552), (273, 35723), (306, 35828), (336, 35924), (384, 36077), (393, 36113), (416, 36173),

Gene: SushiChef_45 Start: 36276, Stop: 37100, Start Num: 86

Candidate Starts for SushiChef_45:

(14, 35919), (15, 35952), (37, 36120), (Start: 86 @36276 has 16 MA's), (141, 36378), (183, 36465), (306, 36741), (336, 36837), (392, 37023), (393, 37026), (416, 37086),

Gene: SwagPigglett_52 Start: 36591, Stop: 37367, Start Num: 77

Candidate Starts for SwagPigglett_52:

(Start: 77 @36591 has 20 MA's), (106, 36630), (126, 36666), (142, 36705), (152, 36735), (171, 36774), (217, 36810), (219, 36813), (236, 36837), (238, 36840), (248, 36864), (255, 36882), (261, 36891), (279, 36912), (325, 37068), (326, 37071), (342, 37119), (345, 37128), (354, 37155), (384, 37257), (392, 37290), (393, 37293), (395, 37302), (396, 37308), (409, 37341), (418, 37356),

Gene: Taotie_85 Start: 44846, Stop: 44055, Start Num: 136

Candidate Starts for Taotie_85:

(Start: 136 @44846 has 2 MA's), (150, 44795), (154, 44783), (158, 44771), (161, 44765), (175, 44732), (191, 44696), (210, 44660), (224, 44630), (228, 44624), (236, 44606), (276, 44501), (288, 44468), (320, 44366), (356, 44258), (362, 44225), (389, 44141),

Gene: Tayonia_48 Start: 35362, Stop: 36186, Start Num: 86

Candidate Starts for Tayonia_48:

(Start: 77 @35350 has 20 MA's), (Start: 86 @35362 has 16 MA's), (141, 35464), (183, 35551), (273, 35722), (306, 35827), (336, 35923), (384, 36076), (393, 36112), (416, 36172),

Gene: Techage_34 Start: 27962, Stop: 28828, Start Num: 82

Candidate Starts for Techage_34:

(Start: 82 @27962 has 49 MA's), (132, 28043), (139, 28067), (145, 28076), (162, 28124), (227, 28232), (234, 28247), (239, 28256), (277, 28358), (333, 28541), (354, 28595), (391, 28724), (405, 28766), (427, 28814),

Gene: ThankyouJordi_47 Start: 37192, Stop: 38031, Start Num: 79

Candidate Starts for ThankyouJordi_47:

(53, 37096), (Start: 79 @37192 has 5 MA's), (84, 37204), (Start: 108 @37237 has 1 MA's), (Start: 113 @37249 has 1 MA's), (157, 37351), (163, 37360), (219, 37462), (249, 37531), (287, 37624), (323, 37738), (329, 37762), (333, 37780), (342, 37801), (343, 37804), (345, 37807), (354, 37831), (371, 37882), (372, 37885), (388, 37945),

Gene: Thespis_34 Start: 27932, Stop: 28798, Start Num: 82

Candidate Starts for Thespis_34:

(Start: 82 @27932 has 49 MA's), (132, 28013), (139, 28037), (145, 28046), (153, 28073), (162, 28094), (227, 28202), (234, 28217), (277, 28328), (333, 28511), (354, 28565), (391, 28694), (405, 28736), (427, 28784),

Gene: Topiatin_52 Start: 36612, Stop: 37616, Start Num: 44

Candidate Starts for Topiatin_52:

(Start: 44 @36612 has 70 MA's), (120, 36801), (Start: 125 @36813 has 1 MA's), (150, 36879), (153, 36888), (168, 36924), (202, 36990), (208, 37002), (219, 37029), (231, 37053), (239, 37068), (247, 37089), (256, 37110), (260, 37122), (262, 37125), (293, 37209), (309, 37254), (311, 37260), (322, 37290), (329, 37317), (333, 37335), (342, 37356), (354, 37389), (375, 37449), (392, 37515), (397,

37533), (405, 37554), (408, 37563), (425, 37599), (429, 37608),

Gene: Tortellini_40 Start: 34462, Stop: 35259, Start Num: 105

Candidate Starts for Tortellini_40:

(Start: 105 @34462 has 3 MA's), (Start: 147 @34528 has 1 MA's), (159, 34567), (172, 34597), (206, 34636), (238, 34699), (240, 34702), (249, 34726), (250, 34729), (259, 34753), (266, 34771), (269, 34780), (277, 34804), (289, 34825), (354, 35017), (378, 35104), (412, 35209), (415, 35212),

Gene: Totinger_47 Start: 34879, Stop: 35883, Start Num: 44

Candidate Starts for Totinger_47:

(Start: 44 @34879 has 70 MA's), (120, 35068), (Start: 125 @35080 has 1 MA's), (150, 35146), (153, 35155), (168, 35191), (202, 35257), (208, 35269), (219, 35296), (231, 35320), (239, 35335), (247, 35356), (256, 35377), (260, 35389), (262, 35392), (293, 35476), (309, 35521), (311, 35527), (322, 35557), (329, 35584), (333, 35602), (342, 35623), (354, 35656), (360, 35674), (375, 35716), (381, 35743), (392, 35782), (397, 35800), (405, 35821), (408, 35830), (425, 35866), (429, 35875),

Gene: Tristan_68 Start: 44342, Stop: 43494, Start Num: 75

Candidate Starts for Tristan_68:

(67, 44366), (72, 44351), (Start: 75 @44342 has 15 MA's), (Start: 79 @44333 has 5 MA's), (98, 44300), (137, 44240), (145, 44216), (157, 44177), (170, 44153), (198, 44099), (225, 44066), (263, 43979), (340, 43772), (379, 43640),

Gene: Trixie_70 Start: 43815, Stop: 43045, Start Num: 95

Candidate Starts for Trixie_70:

(73, 43854), (Start: 95 @43815 has 1 MA's), (141, 43773), (165, 43713), (263, 43527), (379, 43188),

Gene: Trumpet_48 Start: 35363, Stop: 36187, Start Num: 86

Candidate Starts for Trumpet_48:

(Start: 77 @35351 has 20 MA's), (Start: 86 @35363 has 16 MA's), (141, 35465), (183, 35552), (273, 35723), (306, 35828), (336, 35924), (384, 36077), (393, 36113), (416, 36173),

Gene: Tweety_47 Start: 35615, Stop: 36619, Start Num: 44

Candidate Starts for Tweety_47:

(Start: 44 @35615 has 70 MA's), (120, 35804), (Start: 125 @35816 has 1 MA's), (150, 35882), (153, 35891), (168, 35927), (202, 35993), (208, 36005), (219, 36032), (231, 36056), (239, 36071), (247, 36092), (256, 36113), (260, 36125), (262, 36128), (293, 36212), (309, 36257), (311, 36263), (322, 36293), (329, 36320), (333, 36338), (342, 36359), (354, 36392), (375, 36452), (381, 36479), (392, 36518), (397, 36536), (405, 36557), (408, 36566), (425, 36602), (429, 36611),

Gene: Tyson_60 Start: 42697, Stop: 43515, Start Num: 64

Candidate Starts for Tyson_60:

(Start: 64 @42697 has 9 MA's), (Start: 75 @42724 has 15 MA's), (97, 42751), (Start: 105 @42763 has 3 MA's), (141, 42823), (172, 42898), (185, 42910), (235, 43000), (239, 43006), (278, 43111), (293, 43141), (327, 43246), (370, 43369), (393, 43444), (397, 43459),

Gene: Utz_39 Start: 34104, Stop: 34865, Start Num: 123

Candidate Starts for Utz_39:

(48, 33918), (80, 34029), (Start: 123 @34104 has 17 MA's), (134, 34119), (153, 34182), (193, 34254), (219, 34299), (223, 34308), (233, 34323), (263, 34392), (303, 34488), (329, 34578), (390, 34770),

Gene: Venti_34 Start: 27939, Stop: 28805, Start Num: 82

Candidate Starts for Venti_34:

(Start: 82 @27939 has 49 MA's), (132, 28020), (139, 28044), (145, 28053), (162, 28101), (227, 28209), (234, 28224), (277, 28335), (333, 28518), (354, 28572), (391, 28701), (405, 28743), (427, 28791),

Gene: Veteran_45 Start: 34747, Stop: 35751, Start Num: 44

Candidate Starts for Veteran_45:

(Start: 44 @34747 has 70 MA's), (120, 34936), (Start: 125 @34948 has 1 MA's), (150, 35014), (153, 35023), (168, 35059), (202, 35125), (208, 35137), (219, 35164), (231, 35188), (239, 35203), (247, 35224), (256, 35245), (260, 35257), (262, 35260), (293, 35344), (309, 35389), (311, 35395), (322, 35425), (329, 35452), (333, 35470), (342, 35491), (354, 35524), (375, 35584), (381, 35611), (392, 35650), (397, 35668), (405, 35689), (408, 35698), (425, 35734), (429, 35743),

Gene: Vidya_34 Start: 27972, Stop: 28838, Start Num: 82

Candidate Starts for Vidya_34:

(Start: 82 @27972 has 49 MA's), (132, 28053), (139, 28077), (145, 28086), (162, 28134), (227, 28242), (234, 28257), (277, 28368), (333, 28551), (354, 28605), (391, 28734), (405, 28776), (427, 28824),

Gene: Vivum_50 Start: 35865, Stop: 36869, Start Num: 44

Candidate Starts for Vivum_50:

(Start: 44 @35865 has 70 MA's), (120, 36054), (Start: 125 @36066 has 1 MA's), (150, 36132), (153, 36141), (168, 36177), (202, 36243), (208, 36255), (219, 36282), (231, 36306), (239, 36321), (247, 36342), (256, 36363), (260, 36375), (262, 36378), (293, 36462), (309, 36507), (311, 36513), (322, 36543), (329, 36570), (333, 36588), (342, 36609), (354, 36642), (375, 36702), (381, 36729), (392, 36768), (397, 36786), (405, 36807), (408, 36816), (425, 36852), (429, 36861),

Gene: Wee_50 Start: 36114, Stop: 37118, Start Num: 44

Candidate Starts for Wee_50:

(Start: 44 @36114 has 70 MA's), (120, 36303), (Start: 125 @36315 has 1 MA's), (150, 36381), (153, 36390), (168, 36426), (202, 36492), (208, 36504), (219, 36531), (231, 36555), (239, 36570), (247, 36591), (256, 36612), (260, 36624), (262, 36627), (293, 36711), (309, 36756), (311, 36762), (322, 36792), (329, 36819), (333, 36837), (342, 36858), (354, 36891), (375, 36951), (381, 36978), (392, 37017), (397, 37035), (405, 37056), (408, 37065), (425, 37101), (429, 37110),

Gene: WelcomeAyanna_47 Start: 37339, Stop: 38178, Start Num: 79

Candidate Starts for WelcomeAyanna_47:

(53, 37243), (Start: 79 @37339 has 5 MA's), (84, 37351), (Start: 108 @37384 has 1 MA's), (Start: 113 @37396 has 1 MA's), (157, 37498), (163, 37507), (219, 37609), (249, 37678), (287, 37771), (323, 37885), (329, 37909), (333, 37927), (342, 37948), (343, 37951), (345, 37954), (354, 37978), (371, 38029), (372, 38032), (388, 38092),

Gene: Whitney_56 Start: 38733, Stop: 39512, Start Num: 111

Candidate Starts for Whitney_56:

(51, 38580), (63, 38643), (Start: 111 @38733 has 10 MA's), (140, 38784), (240, 38973), (245, 38988), (293, 39102), (336, 39246), (364, 39339), (392, 39435),

Gene: Willsammy_33 Start: 27679, Stop: 28542, Start Num: 82

Candidate Starts for Willsammy_33:

(Start: 82 @27679 has 49 MA's), (132, 27760), (139, 27784), (145, 27793), (162, 27841), (174, 27865), (227, 27946), (234, 27961), (277, 28072), (333, 28255), (354, 28309), (391, 28438), (405, 28480), (427, 28528),

Gene: WinkNick_49 Start: 34309, Stop: 35058, Start Num: 115

Candidate Starts for WinkNick_49:

(2, 33670), (4, 33724), (5, 33757), (6, 33796), (8, 33817), (11, 33850), (12, 33862), (24, 33985), (25, 34006), (51, 34153), (Start: 115 @34309 has 12 MA's), (134, 34339), (141, 34366), (145, 34375), (208, 34492), (219, 34519), (233, 34543), (241, 34558), (254, 34588), (295, 34678), (296, 34681), (363, 34903),

Gene: Wisp_43 Start: 34155, Stop: 34916, Start Num: 123

Candidate Starts for Wisp_43:

(35, 33915), (48, 33969), (80, 34080), (Start: 123 @34155 has 17 MA's), (134, 34170), (169, 34269), (184, 34281), (205, 34323), (219, 34350), (263, 34443), (303, 34539), (329, 34629), (390, 34821), (405, 34866),

Gene: Wocket_45 Start: 33305, Stop: 34066, Start Num: 123

Candidate Starts for Wocket_45:

(42, 33104), (80, 33230), (Start: 123 @33305 has 17 MA's), (134, 33320), (169, 33419), (184, 33431), (205, 33473), (219, 33500), (257, 33581), (263, 33593), (303, 33689), (329, 33779), (352, 33845), (390, 33971), (405, 34016),

Gene: Wrigley_52 Start: 36935, Stop: 37699, Start Num: 115

Candidate Starts for Wrigley_52:

(Start: 115 @36935 has 12 MA's), (131, 36962), (134, 36965), (145, 37001), (169, 37064), (184, 37076), (206, 37118), (219, 37145), (263, 37238), (287, 37292), (323, 37406), (329, 37430), (333, 37448), (342, 37469), (343, 37472), (345, 37475), (354, 37499), (371, 37550), (372, 37553), (388, 37613),

Gene: Wyatt2_61 Start: 42695, Stop: 43513, Start Num: 64

Candidate Starts for Wyatt2_61:

(Start: 64 @42695 has 9 MA's), (Start: 75 @42722 has 15 MA's), (97, 42749), (Start: 105 @42761 has 3 MA's), (141, 42821), (172, 42896), (185, 42908), (235, 42998), (239, 43004), (278, 43109), (293, 43139), (327, 43244), (370, 43367), (393, 43442), (397, 43457),

Gene: Xavia_42 Start: 35045, Stop: 35842, Start Num: 105

Candidate Starts for Xavia_42:

(Start: 105 @35045 has 3 MA's), (Start: 147 @35111 has 1 MA's), (159, 35150), (172, 35180), (206, 35219), (238, 35282), (240, 35285), (249, 35309), (250, 35312), (259, 35336), (266, 35354), (269, 35363), (277, 35387), (289, 35408), (354, 35600), (378, 35687), (412, 35792), (415, 35795),

Gene: XianYue_67 Start: 43032, Stop: 42220, Start Num: 103

Candidate Starts for XianYue_67:

(47, 43182), (55, 43155), (Start: 75 @43077 has 15 MA's), (Start: 79 @43068 has 5 MA's), (Start: 103 @43032 has 4 MA's), (137, 42972), (141, 42957), (153, 42921), (157, 42909), (178, 42870), (188, 42843), (223, 42795), (241, 42759), (263, 42705), (330, 42522), (340, 42495), (357, 42450), (379, 42363),

Gene: Xula_31 Start: 27335, Stop: 28204, Start Num: 82

Candidate Starts for Xula_31:

(Start: 82 @27335 has 49 MA's), (139, 27443), (145, 27452), (162, 27500), (227, 27608), (234, 27623), (277, 27734), (333, 27917), (354, 27971), (391, 28100), (405, 28142), (427, 28190),

Gene: Yeet412_43 Start: 32483, Stop: 33319, Start Num: 77

Candidate Starts for Yeet412_43:

(Start: 77 @32483 has 20 MA's), (Start: 86 @32495 has 16 MA's), (141, 32597), (183, 32684), (273, 32855), (306, 32960), (336, 33056), (384, 33209), (393, 33245), (416, 33305),

Gene: Yoshi_60 Start: 36844, Stop: 38034, Start Num: 44

Candidate Starts for Yoshi_60:

(Start: 44 @36844 has 70 MA's), (120, 37033), (Start: 125 @37045 has 1 MA's), (139, 37078), (145, 37093), (150, 37111), (153, 37120), (168, 37156), (187, 37204), (202, 37222), (208, 37234), (219, 37261), (231, 37285), (237, 37297), (239, 37300), (247, 37321), (256, 37342), (260, 37354), (262, 37357), (287, 37426), (293, 37438), (309, 37483), (311, 37489), (314, 37495), (322, 37519), (329, 37546), (333, 37564), (342, 37585), (354, 37618), (360, 37636), (375, 37678), (381, 37705), (392, 37744), (397, 37762), (405, 37783), (408, 37792), (420, 37819), (434, 37876), (435, 38017),

Gene: YungMoney_53 Start: 42952, Stop: 43722, Start Num: 115

Candidate Starts for YungMoney_53:

(Start: 115 @42952 has 12 MA's), (121, 42964), (131, 42976), (164, 43057), (213, 43147), (223, 43159), (234, 43180), (239, 43189), (263, 43249), (289, 43321), (301, 43342), (315, 43369), (353, 43465), (365, 43516), (373, 43537), (379, 43564), (385, 43579), (424, 43699),

Gene: Zameen_48 Start: 35362, Stop: 36186, Start Num: 86

Candidate Starts for Zameen_48:

(Start: 77 @35350 has 20 MA's), (Start: 86 @35362 has 16 MA's), (141, 35464), (183, 35551), (273, 35722), (306, 35827), (336, 35923), (384, 36076), (393, 36112), (416, 36172),

Gene: Zapner_59 Start: 36227, Stop: 37108, Start Num: 87

Candidate Starts for Zapner_59:

(Start: 87 @36227 has 8 MA's), (141, 36323), (157, 36368), (230, 36509), (280, 36644), (338, 36839), (352, 36881), (418, 37097),

Gene: Zerg_46 Start: 35052, Stop: 36056, Start Num: 44

Candidate Starts for Zerg_46:

(22, 34896), (Start: 44 @35052 has 70 MA's), (Start: 125 @35253 has 1 MA's), (150, 35319), (153, 35328), (168, 35364), (202, 35430), (208, 35442), (219, 35469), (231, 35493), (239, 35508), (247, 35529), (256, 35550), (260, 35562), (262, 35565), (293, 35649), (309, 35694), (311, 35700), (322, 35730), (329, 35757), (333, 35775), (342, 35796), (354, 35829), (375, 35889), (392, 35955), (397, 35973), (405, 35994), (408, 36003), (425, 36039), (429, 36048),

Gene: ZiggyZoo_46 Start: 35375, Stop: 36136, Start Num: 123

Candidate Starts for ZiggyZoo_46:

(28, 35090), (48, 35189), (Start: 123 @35375 has 17 MA's), (134, 35390), (169, 35489), (184, 35501), (205, 35543), (219, 35570), (263, 35663), (303, 35759), (329, 35849), (390, 36041),

Gene: Zilizebeth_34 Start: 27971, Stop: 28837, Start Num: 82

Candidate Starts for Zilizebeth_34:

(Start: 82 @27971 has 49 MA's), (132, 28052), (139, 28076), (145, 28085), (162, 28133), (227, 28241), (234, 28256), (277, 28367), (333, 28550), (354, 28604), (391, 28733), (405, 28775), (427, 28823),

Gene: Zirinka_45 Start: 35970, Stop: 36806, Start Num: 77

Candidate Starts for Zirinka_45:

(Start: 77 @35970 has 20 MA's), (Start: 86 @35982 has 16 MA's), (141, 36084), (183, 36171), (273, 36342), (306, 36447), (336, 36543), (384, 36696), (393, 36732), (416, 36792),

Gene: Zizzle_51 Start: 36006, Stop: 36785, Start Num: 110

Candidate Starts for Zizzle_51:

(Start: 89 @35976 has 1 MA's), (Start: 110 @36006 has 12 MA's), (130, 36030), (133, 36033), (145, 36069), (Start: 147 @36072 has 1 MA's), (164, 36117), (226, 36225), (234, 36240), (263, 36309), (283, 36357), (322, 36474), (336, 36525), (366, 36621), (395, 36726), (396, 36732), (413, 36774), (418,

36780),

Gene: Zodiariah_46 Start: 37518, Stop: 38399, Start Num: 87

Candidate Starts for Zodiariah_46:

(81, 37506), (Start: 87 @37518 has 8 MA's), (141, 37620), (146, 37629), (172, 37698), (230, 37800),
(271, 37911), (386, 38289), (402, 38355), (414, 38379),